

Weather Forecast

Unsettled, cooler tonight. Wednesday fair, lower temperatures. High yesterday 70, low 40. Low this morning 48.

Twin Falls Times

A Regional Newspaper Serving

TWIN FALLS, IDAHO, TUESDAY, MAY 4, 1937

Six Irrigated Counties in Idaho

VOL. XX, NO. 24—5 CENTS.

Full Hour Leased Wire Telephone Service of the United Press

Member of Audit Bureau of Circulation

OFFICIAL COUNTY NEWSPAPER

IN THE DAY'S PARADE

Guides Chamber



George H. Davis, above, Kansas City grain dealer and newly-elected president of the United States Chamber of Commerce, will act as spokesman and head the chamber's yearly program. General proposals included amendment of the Wagner act, opposition to supreme court change and alteration of social security act.

Sues Publisher



Charging that certain parts of her book, 'Authentic History of the Ku Klux Klan,' which she is holding in the above picture, were used without permission in 'Gene With the Wind,' which today had been chosen as the most meritorious book of the year by the Pulitzer prize committee, Susan Lawrence Davis of Washington, D. C., has filed suit asking a profits accounting and injunction from further sale of the novel. Miss Davis' book was published in 1924.

Terrorist Target



Refusal to assist sheriff's deputies in the slaying of Bennett Meek, son of a union organizer, brought retribution in the form of an attempted assassination by them, Hugh Taylor, former Hawaiian county, Ky., deputy, charged before the senate civil liberties inquiry in Washington.

\$300,000 MEAT PLANT ASSURED HERE

STARS OF FILMS CONSIDER STRIKE FOR NEXT WEEK

Actors Walk Through Picket Lines to Go to Work at Movie Plants

MISSOURI BAKERS QUIT

Office Building Unions May Stage Walk-Out in San Francisco Region

LEADERS DIVIDE ON COURT PLAN

Three Groups, Each Having Minority, Are in Battle of Strategy

WASHINGTON, May 4 (UP)—

The congressional battle over judicial reorganization received today a three-handed game of strategy in which the administration sought to clinch partial victory.

STRIKE THREATENED

San Francisco Union workers threatened a strike in big office buildings as 16 of the city's large hotels continued strike bound by a walkout of 3,500 employees.

PITTSBURGH, Pa., (Westinghouse Electric and Manufacturing Co.)

Officials promised cooperation in the holding of an election to determine whether 47,000 employees represented by C. I. O. affiliated United Electrical and Radio Workers union.

MUSIC FESTIVAL RE-SET MAY 17TH

Postponed Countywide Event Will Be Held Here at City Park

CERTIFICATE OF DEATH IS SIGNED

(Copyright, 1937, United Press) MONTICELLO, Idaho, May 4 (UP)—

\$5,000 Fire Damages Pocatello Building

One of this city's largest frame business blocks, soon to be razed to make way for a motion picture establishment, was badly damaged by fire last night.

NEW SUSPECT

PITTSBURGH, May 4 (UP)—Federal bureau of investigation agents were notified today of the arrest of a second man whose police said resembled the description of the Charles Matthew kidnaper.

President Catches Six-Foot Tarpon

GALVESTON, Tex., May 4 (UP)—President Roosevelt, showing he felt his reputation as an angler could not be damaged by the weather today in hopes he would find continued good fishing in the Gulf of Mexico.

LEADERS DIVIDE ON COURT PLAN

Three Groups, Each Having Minority, Are in Battle of Strategy

WASHINGTON, May 4 (UP)—

The congressional battle over judicial reorganization received today a three-handed game of strategy in which the administration sought to clinch partial victory.

STRIKE THREATENED

San Francisco Union workers threatened a strike in big office buildings as 16 of the city's large hotels continued strike bound by a walkout of 3,500 employees.

PITTSBURGH, Pa., (Westinghouse Electric and Manufacturing Co.)

Officials promised cooperation in the holding of an election to determine whether 47,000 employees represented by C. I. O. affiliated United Electrical and Radio Workers union.

MUSIC FESTIVAL RE-SET MAY 17TH

Postponed Countywide Event Will Be Held Here at City Park

CERTIFICATE OF DEATH IS SIGNED

(Copyright, 1937, United Press) MONTICELLO, Idaho, May 4 (UP)—

\$5,000 Fire Damages Pocatello Building

One of this city's largest frame business blocks, soon to be razed to make way for a motion picture establishment, was badly damaged by fire last night.

NEW SUSPECT

PITTSBURGH, May 4 (UP)—Federal bureau of investigation agents were notified today of the arrest of a second man whose police said resembled the description of the Charles Matthew kidnaper.

Tear Gas Used to Disperse "Riot" of Harvard Students

CAMBRIDGE, Mass., May 4 (UP)—Police used tear gas to disperse 1,000 rioting Harvard students today. They had been studying for two and a half hours, using water-filled paper bags as missiles, setting bonfires, and displaying toilet paper.

LEADERS DIVIDE ON COURT PLAN

Three Groups, Each Having Minority, Are in Battle of Strategy

WASHINGTON, May 4 (UP)—

The congressional battle over judicial reorganization received today a three-handed game of strategy in which the administration sought to clinch partial victory.

STRIKE THREATENED

San Francisco Union workers threatened a strike in big office buildings as 16 of the city's large hotels continued strike bound by a walkout of 3,500 employees.

PITTSBURGH, Pa., (Westinghouse Electric and Manufacturing Co.)

Officials promised cooperation in the holding of an election to determine whether 47,000 employees represented by C. I. O. affiliated United Electrical and Radio Workers union.

MUSIC FESTIVAL RE-SET MAY 17TH

Postponed Countywide Event Will Be Held Here at City Park

CERTIFICATE OF DEATH IS SIGNED

(Copyright, 1937, United Press) MONTICELLO, Idaho, May 4 (UP)—

\$5,000 Fire Damages Pocatello Building

One of this city's largest frame business blocks, soon to be razed to make way for a motion picture establishment, was badly damaged by fire last night.

NEW SUSPECT

PITTSBURGH, May 4 (UP)—Federal bureau of investigation agents were notified today of the arrest of a second man whose police said resembled the description of the Charles Matthew kidnaper.

BASQUES PERMIT 1,000 REFUGEES TO BOARD SHIPS

Evacuation of 2,500 Children Postponed Until Tomorrow As Troops Win

FRANCE, BRITAIN READY

Hundreds Reported Killed on Both Sides as Fighting Rages Near Bilbao

By EMILIO HERRERO

BILBAO, Spain, May 4 (UP)—Evacuation of 1,000 Basque refugees pressing on Bilbao, Basque authorities today postponed the evacuation of 2,500 children until tomorrow.

LEADERS DIVIDE ON COURT PLAN

Three Groups, Each Having Minority, Are in Battle of Strategy

WASHINGTON, May 4 (UP)—

The congressional battle over judicial reorganization received today a three-handed game of strategy in which the administration sought to clinch partial victory.

STRIKE THREATENED

San Francisco Union workers threatened a strike in big office buildings as 16 of the city's large hotels continued strike bound by a walkout of 3,500 employees.

PITTSBURGH, Pa., (Westinghouse Electric and Manufacturing Co.)

Officials promised cooperation in the holding of an election to determine whether 47,000 employees represented by C. I. O. affiliated United Electrical and Radio Workers union.

MUSIC FESTIVAL RE-SET MAY 17TH

Postponed Countywide Event Will Be Held Here at City Park

CERTIFICATE OF DEATH IS SIGNED

(Copyright, 1937, United Press) MONTICELLO, Idaho, May 4 (UP)—

\$5,000 Fire Damages Pocatello Building

One of this city's largest frame business blocks, soon to be razed to make way for a motion picture establishment, was badly damaged by fire last night.

NEW SUSPECT

PITTSBURGH, May 4 (UP)—Federal bureau of investigation agents were notified today of the arrest of a second man whose police said resembled the description of the Charles Matthew kidnaper.

Processing Will Be Carried Out For 9 Counties

5,000 Members Planned For Co-op Organization

Construction of a \$300,000 meat processing plant was assured for Twin Falls today following incorporation of the Associated Meat Producers, Inc., cooperative group which will draw livestock from nine southern Idaho counties and will market its meat products in California.

Plans announced here this afternoon call for a Twin Falls plant which will be capable of handling 800 animals per day and will eventually employ 150 persons.

To Get Office

Mr. J. H. Stow, president of the national congress of parents and teachers at a meeting in session today at Richmond, Va. Election is a formality and was to be carried out today.

CHIEF CALLS FOR REPORTS ON MAN

William G. Ringe Having Taken Own Life

Local police, through Chief Howard Gillette, this afternoon called upon anyone seeing William G. Ringe, 37, after Sunday, Feb. 7, to report the incident immediately in order that circumstances surrounding the death of the man might be cleared.

WINDSOR HAPPY AFTER REUNION

Ex-King and Mrs. Simpson Meet Inside House to Avoid Publicity

By MARY FENTRESS (Copyright, United Press) LONDON, May 4 (UP)—The duke of Windsor, ruler no longer of the British empire but obviously no less a king wearing a crown, stood on the terrace of the chateau de Candé this afternoon with Mrs. Wallis Simpson, both wearing London yesterday. True to their aversion to publicizing their romance they arranged not to meet on the terrace of the chateau when Mrs. Simpson's party arrived.

Clark Leaves To Assist in Christenings

By MARY FENTRESS (Copyright, United Press) WASHINGTON, May 4 (UP)—Gov. Clark today will assist in christening two new destroyers, the Jarvis and the Paul C. Hibbard.

Strip-Tease Artists in Washington Burlesque Theater Are Fully Clothed, Observer Reports

By FREDERICK C. OTHMAN (Copyright, United Press) WASHINGTON, May 4 (UP)—Strip-tease artists in Washington burlesque theaters are fully clothed, an observer reports today.

Clark Leaves To Assist in Christenings

By MARY FENTRESS (Copyright, United Press) WASHINGTON, May 4 (UP)—Gov. Clark today will assist in christening two new destroyers, the Jarvis and the Paul C. Hibbard.

Strip-Tease Artists in Washington Burlesque Theater Are Fully Clothed, Observer Reports

By FREDERICK C. OTHMAN (Copyright, United Press) WASHINGTON, May 4 (UP)—Strip-tease artists in Washington burlesque theaters are fully clothed, an observer reports today.

Clark Leaves To Assist in Christenings

By MARY FENTRESS (Copyright, United Press) WASHINGTON, May 4 (UP)—Gov. Clark today will assist in christening two new destroyers, the Jarvis and the Paul C. Hibbard.

Strip-Tease Artists in Washington Burlesque Theater Are Fully Clothed, Observer Reports

By FREDERICK C. OTHMAN (Copyright, United Press) WASHINGTON, May 4 (UP)—Strip-tease artists in Washington burlesque theaters are fully clothed, an observer reports today.

LEADERS AGREE TO LET F. D. R. SETTLE ECONOMY ARGUMENT

LINES BREAK ON ATTEMPT TO CUT DOWN ON BUDGET

WASHINGTON, May 4 (AP)—Congressional leaders agreed today to let President Roosevelt settle the economy-controversy now centering around the proposed \$300,000,000 budget.

Early lines broke on a proposal to pare \$500,000,000 from the appropriation—now looked to as the only way to bring Mr. Roosevelt's budgetary plans into line with his original expenditure of last January.

Efforts to offset the \$400,000,000 difference in expenditures and income for the 1938 fiscal year by reducing regular supply bills have failed appreciably, Congress has been unable to lean away from a senate proposal to cut all appropriations 10 per cent.

"Avalanche Scare" The President and the budget bureau tried to keep congress from expanding federal functions beyond their 1938 budgetary limits.

Rep. Jerry H. O'Connell, D., Mont., sought to form a reclamation bill to provide for a flood control program to force the President to ease off on certain aspects of his economy program.

NEWS IN BRIEF

Return from California Mr. and Mrs. E. W. Champlin, who spent the winter in Anaheim, Calif., have returned to Twin Falls.

Leaves for Oregon Mr. and Mrs. Arthur J. Peavey, Jr., have gone to Pendleton, Ore., where Mr. Peavey will transact business for several days.

Visit Daughter Mr. and Mrs. E. O. Spielberg are visiting several days in Fayetteville with their daughter, Mrs. Wilbur Rowberry.

Meetings Announced Ladies' Aid society of the Methodist church will meet Thursday at 2:30 p. m. in the church parlors.

Returns to Malad SPRINGDALE, May 4 (Special)—Mrs. Viola Mann has returned to Malad after being called home by the death of her father, W. L. Manning.

Receives Treatment Mr. and Mrs. W. G. Thompson have gone to Rochester, Minn., where Mrs. Thompson, who has been ill for the past four and a half months, will receive treatment at the Mayo clinic.

Dress Rehearsal The officers of the first ward primary of the L. D. S. church will hold a dress rehearsal at 7:30 p. m. at the assembly hall Friday at 7 p. m.

Care Collies Machines driven by Thomas Martin and Jackson O. Hightower, both of Twin Falls, were slightly damaged at the intersection of Third avenue south and Second street south yesterday at 8:50 p. m.

Grange to Meet Mrs. and Mrs. E. W. Champlin will meet Wednesday evening at the school house.

\$300,000 PLANT IS ASSURED HERE

Meat Processing Factory Will Serve 9 South Idaho Counties

(Continued From Page One) The program has been endorsed by the Twin Falls Pomona Grange, Twin Falls County Cooperative Dairymen's Association, the Twin Falls Chamber of Commerce, the Jerome and Eden Pomona Granges, the Gooding county livestock pool, and by subordinate Granges of Twin Falls and other counties.

Modern Plant "Design, construction and equipment of the slaughtering plant will be the most important," Mr. Kamrath said. "Production will be under federal inspection. The capacity and layout will be sufficient to salvage and process by-products and reduce operating cost and overhead to compete with any of the plants in the state."

All parts and products not suitable for human consumption will be sold to members of Associated Meat Producers for use as animal feed for pigs and bone products for poultry.

Central Location The plant will be located here, its incorporators decided, because "Twin Falls is centrally located, a central location for receiving livestock from members, and because of the economical distribution of products through the Twin Falls highway to the southwest, over Idaho's farm to market highway No. 93."

Livestock receiving stations will be provided for members outside the Twin Falls area around Twin Falls, plans showed today.

Incorporators Listed "Incorporators of the Associated Meat Producers, as announced here, are: Twin Falls county—Ben O'Harrow, N. V. Nelson, Carl H. Addy, W. W. Williams, John H. Golt, W. J. Godfrey, all of Twin Falls; Frank McCallister, Fred Sells, Ed. H. Peoples, E. L. Metz, J. S. Stansell, Robert Noland, W. J. Holmes, M. J. Gooding, C. A. Harder, J. R. Crawford, Linn Garner, B. W. Giff, all of Bluff; Orville Reed, Filer; Peter Link, Hansen, Oliver Johnson, Murdock, J. E. Cook, H. E. Blamont, Sen. E. Potter, P. T. Roberts, A. M. Walker and Son, E. E. Maxwell, all of Kimberly.

Jerome county—John Slickel, E. V. Cooke, William O. Olson, Tom Calien, H. D. Cook, Jr., I. S. Stockton, Willard McMillan, A. G. Ploss, C. D. Webster, William L. Snyder, A. F. Healer, Frank Peterson, E. M. Gregg, J. R. Webster, all of Jerome; B. F. Heman, Hazelton; B. E. Cron and Roy E. Gordon, both of Eden.

Minidoka county—F. E. Saylor, J. P. Candau, A. Sawyer, O. E. B. Roberts, E. H. Rich, J. E. Blamont, Willard Hayward, Arthur T. Bupp, M. F. and Lester Cullley, all of Bluff.

Gooding county—L. A. Adams, R. W. King and Sons, Ira Anderson, all of Wendell.

THEATERS

Laugh-Maker In Action Drama



Beginning tomorrow the Idaho theater presents as its regular mid-week return hit "The Texas Rangers," an action-filled, dramatic picture with an accurate historic background.

WINDSOR HAPPY AFTER REUNION

Ex-King and Mrs. Simpson Meet Inside House to Avoid Publicity (Continued From Page One) Inside, after an exchange of mutual greetings, the duke and Mrs. Simpson retired momentarily to the library.

No Emotion Display Rogers said there was no display of emotion beyond a show of gladness before the duke's arrival.

Evacuation of 2,500 Children Posed Until Tomorrow As Troops Win (Continued From Page One) Babana last night even as the big gun boomed on the battle lines outside the city.

Evangelist Delivers Sermon on Isaiah "Isaiah's Vision of God" was mentioned by Rev. Mrs. A. B. Morgan, member of the Morgan-Chaffee trio of Seattle, in a sermon last evening at the revival services being held at the Church of the Nazarene.

Local Man Hurt in Auto Mishap Louis Garcia, 47, Twin Falls, was near death in the county general hospital this afternoon as the result of an automobile accident near Richfield yesterday afternoon.

Druggist's Death Word has been received here by friends of the death of Frank Murray, former Twin Falls drug store owner and realtor, who died at Long Beach and funeral and interment were conducted there.

COUNCIL STARTS WORK ON BUDGET

Income Estimate Is Set at \$148,530, Report of City Clerk Shows

(Continued From Page One) deposits, \$531.34; state liquor sales, \$7,277.54.

Expenditures City buildings: budget last year, \$3,410 with actual amount expended, \$3,200.37; police: budget last year, \$14,615.20 with actual expenditures totaling \$14,212.77; administration: amount of budget, \$18,642.50; and amount expended \$15,670.51; streets: \$50,000 with actual expenditures totaling \$37,382.25; water: amount of budget, \$25,225, with actual expenditures of \$21,479.45; fire: actual budget, \$18,400 against expenditures of \$18,803.38; parks: amount of budget, \$5,285 and amount expended, \$6,234.66; public works: amount of budget, \$2,925, and amount expended, \$2,382.92; engineer: amount of last year's budget, \$600, with actual expenditures totaling \$503.97; schools: amount of budget, \$100 with expenditures of \$65.15.

Seen Today Observer reporting to Seen Today that big pleasant, calm, mid-week return hit "The Texas Rangers," an action-filled, dramatic picture with an accurate historic background.

1,000 REFUGEES TO BOARD SHIPS Evacuation of 2,500 Children Posed Until Tomorrow As Troops Win (Continued From Page One) Babana last night even as the big gun boomed on the battle lines outside the city.

Uncle Joe's ROXY LAST TIMES TODAY! "23 1/2 Hours Leave" Comedy - Laughs - Bouffes Don't Miss This One!

IDAHOZ LAST TIMES TONIGHT! "HER HUSBAND LIES" Gail Patrick-Ricardo Cortez Starts TOMORROW!

THE TEXAS RANGERS FRED MACMURRAY JACK GARTIE JEAN PARKER LLOYD HOLLAN EDWARD HELLIS

THINK BEFORE YOU DRINK 5 Cent Scogram's 5 Cent Crown A Milder Whiskey BLENDED FOR FINER TASTE

Pulitzer Prize Committee Announces Awards for '36

NEW YORK, May 4 (AP)—The Pulitzer prize committee appeared to have avoided controversy over its annual awards today by selecting Margaret Mitchell's "Gone With the Wind" as the "most distinguished" novel of the last year and "You Can't Take It With You" by George Kaufman and Moss Hart, the "most distinguished" play.

Awards Criticized The committee's choice of "The Old Maid," by Zoe Akins, as the "best play of 1935" was vigorously disputed. Other awards have been criticized.

Three Groups, Each Having Minority, Are in Battle Of Strategy (Continued From Page One) members with not more than one additional justice appointed in a single year.

Seen Today Observer reporting to Seen Today that big pleasant, calm, mid-week return hit "The Texas Rangers," an action-filled, dramatic picture with an accurate historic background.

1,000 REFUGEES TO BOARD SHIPS Evacuation of 2,500 Children Posed Until Tomorrow As Troops Win (Continued From Page One) Babana last night even as the big gun boomed on the battle lines outside the city.

Uncle Joe's ROXY LAST TIMES TODAY! "23 1/2 Hours Leave" Comedy - Laughs - Bouffes Don't Miss This One!

IDAHOZ LAST TIMES TONIGHT! "HER HUSBAND LIES" Gail Patrick-Ricardo Cortez Starts TOMORROW!

THE TEXAS RANGERS FRED MACMURRAY JACK GARTIE JEAN PARKER LLOYD HOLLAN EDWARD HELLIS

THINK BEFORE YOU DRINK 5 Cent Scogram's 5 Cent Crown A Milder Whiskey BLENDED FOR FINER TASTE

RACKETEERS FATTEN ON SALE OF CORONATION SEATS

Estimated \$100,000,000 Will Change Hands Before May 12

BY DAN ROGERS

LONDON, May 4 (UP)—Hundreds of racketeers are fattening on accommodations for the coronation of King George VI despite strenuous efforts of the government and right-thinking Britons to protect their overseas guests.

Thousands of the unwary will be victimized—some already have been fleeced for considerable sums—but there is no necessity for submitting to extortion, it is emphasized here. At best, prices will be high. This may be expected but foreign visitors who apply to official organizations instead of dealing with independent racketeers will be protected against profiteering of the type where "only 50 guineas" is charged for a room or tiny flat with not more than 5 guineas normally, and where 15 to 20 people are sold "seats" at one window 4 by 8 feet in size, at \$30 to \$125 a head.

Best Speculation Worst
The most flagrant examples of profiteering, and of outright racketeering, are laid to speculators in seats.
The Sunday Dispatch estimated that \$100,000,000 would change hands by May 12 for seating on which the original price was \$30,000,000. These seats, it is estimated, will accommodate 400,000 people along the 9 1/2 mile route of the procession.
They are in addition to seats in government stands, of which there will be scores of thousands. There is no speculation in government seats—speculators cannot obtain them—but they can obtain a private person. They are reserved for the government but take care of officials, foreign delegations, certain distinguished overseas visitors and guests of the government. These seats are being issued in blocks to organizations. Details of the distribution, and the price, are being kept secret, although it was stated in Commons the government will take a heavy loss on the stands on Crown property.

Prices Rise Steadily
Last fall, seats on the coronation route were being sold by reputable agencies for from \$25 to \$75. Some sold at \$150 to \$250 late in February.
Keith Brown & Co., largest and most reliable agency, rented a Regent street balcony accommodating 25 persons for slightly more than \$3,000. This firm is having its eyes on many of the large stores and offices along the route. They do not crowd their windows; they will not knowingly sell to speculators. They report that 25 to 40 per cent of their business in seats is from abroad, and during February they averaged sales of more than 100 seats a week at prices ranging from \$50 to \$250.
Similarly, other agencies report a "very steady" demand. Thousands of "seats" sold abroad are not even on the route and other thousands do not exist at all.

CCC ENROLLMENT SHORT BY 35,000

WASHINGTON, May 4 (UP)—Efforts of the Civilian Conservation Corps to re-establish its enrollment at 350,000 during the last recruiting period fell short by approximately 35,000. It was revealed today.
Director Robert C. Fechner said the deficiency was due to increased employment of youths in private business and a reduction in the number of families on relief rolls from which CCC enrollees are selected.

Camas Has Balance

FAIRFIELD, May 4 (Special)—Annual financial report for Camas county shows \$60,968.31 as a balance for the past fiscal year. The county has a bonded indebtedness of \$31,412.50 as compared with \$42,000 in 1935.

DECLO ELECTS BOARD

DECLO, May 4 (Special)—A. A. Morris, Chas. Parke, Claude Vaillett and W. D. Young were named to the village board last week.

WIRE COMPANIES REDUCE CHARGES

Postal, Western Union Firms Announce Decrease in Message Rates

NEW YORK, May 4 (UP)—Approved rate reduction in overnight telegraph service to become effective June 1, will represent a saving to users of about \$3,000,000 annually, it was estimated today.
The Western Union and Postal telegraph schedule provides for discontinuance of the ten-word night message and 30-word night letter in the future minimum charges will be based on 25 words. The charge will be the same as for the present 10 word night message—the maximum charge, regardless of distance, being 50 cents. Words in excess of 25 will be charged for in groups of five instead of ten.
The schedule of the R. C. A. and

GLASS MOUNTAIN: SALT LAKE CITY, Utah, May 4 (UP)—Not satisfied with the Wasatch mountains, the city fathers today broke glass on 20 acres designated for a glass mountain which will rid the city of glass and attract the eyes of tourists.

Shoshone Students Show Year's Work

SHOSHONE, May 4 (Special)—An exhibit and style show was held Friday in the home economics department at the high school building with a good crowd attending. Sixty girls modeled the dresses they had completed and all the sewing, scrap books and work done during the year were on display.
This is the first year for a home economics department in the Shoshone schools. Miss Helen Wilcox is the teacher.

SERVICES HONOR ACCIDENT VICTIM

Rites Held for Anton Schultz, Shoshone, at Gooding Christian Church

GOODING, May 4 (Special)—Funeral services for Anton Frank Schultz, 28, of Shoshone who was killed in an auto accident three miles south of Gooding on April 26, were held in the Christian church here with Rev. Wilbur Golf officiating. Burial was in Elmwood cemetery.
Pallbearers were: Jack Rader, Kenneth Adams, George Eubanks, Milton Roberts, and Lenon Adams, all of Gooding, and Douglas Anderson, Shoshone.
Mr. Schultz was born in Pawnee county, Neb., Nov. 8, 1908. He came to Gooding in July, 1924, and moved to Shoshone in the spring of 1935. In the latter town he operated a

SHELL SERVICE STATION AND ALSO STUDEBAKER AGENCY AT THE TIME OF HIS DEATH.

He is survived by his wife, a son, Eugene, 18 months and four sisters and three brothers. The sisters are: Mrs. Anna Robinson, Gooding; Mrs. Anna Robinson, Turin; Mrs. Mrs. Emma Glover, Armour, Neb.; Mrs. Ella Otkerson, Lewiston, Neb. Brothers are: Bruce and Joe Schultz, Beatrice, Neb., and Albert Schultz, Lincoln, Neb.

CASSIA OFFICERS EMER POSITIONS

BURLEY, May 4 (Special)—Oaths were taken last evening by Mayor H. L. Harpster and other newly-elected city officials at their first formal meeting and two appointments were announced.

New chief of police is "Bill" Williams, formerly manager of the local state liquor store, succeeding Hall Church, and C. W. Thomas succeeds Arthur C. Dunn as city attorney.
On the program were "The Winger" and "Determination" by the band; "Symphony," "Go Thou, Dear Music," and "Summer Winds, Blow" by the girls' glee club; piano accordion solo, Doris Spradling; "Twilight in the Mountains" band; cornet solo, Mr. Berreza; "Cradle Song," "Beautiful Dreamer," "Sleep, Sleep, My Darling," "Night" from "Liebestraum," glee club.

Services Honor Ensign Stocking

BURLEY, May 4 (Special)—Services were held Friday for Ensign Stocking, 20, at the Starr's Ferry, I. D. B. church house, with M. L. Jensen, member of the bishopric, officiating.

Speakers were Bishop George T. Riley, J. F. Wilcox, and H. O. Hall. Music was furnished by a chorus singing two numbers a solo, "Gloria Home," by Bishop A. O. Hanks, and a duet by Mr. and Mrs. Joseph E. Payne, "Sunset." Invocation was offered by Bishop Charles Smith and benediction by C. W. Hanks.
Following the services the body was taken to South Jordan where services were again held Sunday afternoon with interment there.
Flower girls for the funeral here were under the direction of Mrs. Mary Hughes and Mrs. C. W. Hanks and included Myrtle Smith, Blah Hanks, Phyllis Goodmour, Estelle Lovette, Virginia Duke, Doris Judd, Dorothy Judd and Evelyn Egan.
Pallbearers were Burdett Stocking, Clifford Stocking, Lauron Stocking, Dean Stocking, Blaine Egan and Vaughn Egan.

Golden Rule 41st

C. C. Anderson Company

Anniversary Sale

"A Good Place to Trade"

Continuing our Great Anniversary Event... Note the items listed... They are typical of the hundreds of superior values offered at the Golden Rule... Making your store always "A Good Place to Trade"... Save with the crowds tomorrow...

- Taffeta Slips**
Lace and applique trimmed—non-rip seams and adjustable straps. Save at **41c**
- Ruffled Curtains**
Regular \$1.49 Priscilla type curtains in dotted marquisette, 96 inches by 2 1/2 yards. What a value for **91c**
- Broadcloth Shirts**
Fancy patterns in men's broadcloth shirts with Trubenzel collars, 6 1/2 button front and one pocket. Sizes 14 1/2 to 17. Men will go for these in big way at **81c**
- Bridge Sets**
Imported hand embroidered and appliqued 6-piece bridge sets, also 52x52 in. rayon lunch cloths... **41c**
- Suffer Oxfords**
Children's brown or black softer oxfords with composition soles and rubber heels. Sizes 6 to 2. Just the thing to finish out the school term. Only **91c**
- Silk Hose**
Full fashioned silk stockings... Slight irregularities of finer qualities, and a real buy. Only, pair **41c**
- Sample Neckwear**
Sample line of higher priced lace collars and ties. Buy one to try. Save your neck for only **41c**
- Rayon Panties**
Children's panties, sizes from 2 to 18 years... Only a very special purchase permits this low price of **3 for 41c**
- Wash Frocks**
Print wash frocks with organdy trimming and worth a lot more than **41c**
- Men's Handkerchiefs**
White 18 in. cotton handkerchiefs with 1/2 inch stems and what a buy at, dozen **41c**
- Pillow Cases**
Standard size case of good medium quality muslin and priced very low at **6 for 91c**
- Misses' Anklets**
Delightful summer anklets in fine cotton anklets, size 8 1/2 to 10 1/2, and made to sell for 10c... A value at—pair **10c**
- Rag Rugs**
Large 22x44 yarn dyed rugs in attractive fast color patterns. Ideal scatter rugs, and only **41c**
- Wash Fabrics**
Chiffon voile, printed percales, other dimities and broadcloths. All at one low price **3 Yds. 44c**
- Sample Ties**
Men's peachskin four-in-hand in attractive plaid, stripes and floral patterns. Don't bother to press the old ones when you can get these at **2 for 41c**
- 81-Inch Sheeting**
Wide full bleached sheeting at lower than today's mill price. Stock up and save. Yard **29c**
- Kaylon Pajamas**
Coat and middy styles in famous Kaylon tailored pre-shrunk broadcloth pajamas. Made to sell for \$1.95 **\$1.41**
- Men's Slacks**
Grey wash slacks with heavy duck pockets. Full cut, and reinforced shank with pleated front and side straps. "Nuf said" at **98c**
- Indian Blankets**
Handloom shade cotton work socks at a price that does away with mending **6 pair 41c**
- Men's Unions**
Serviceable bedbriggs union suits in short sleeve, ankle length style. Extra color. Size 28 to 40—stock up for warm weather at **41c**
- Large Towels**
Regular 30x60s black plaid towels in huge bath size. Summer's coming. You'll need several **2 for 51c**
- Men's Slacks**
Grey wash slacks with heavy duck pockets. Full cut, and reinforced shank with pleated front and side straps. "Nuf said" at **98c**
- Organdy Blouses**
Dainty organdy blouses in white and color. Buy one to try for the summer suit and the price **41c**
- Turkish Towels**
17x34 Turkish towels that are fine for hand or face towels. Buy several at **10c**

Selling Dry Cleaning — Not Trucks

Richardson's Cleaners find it costs a lot to run trucks all over town and out in the county. That is one reason why most all our cleaning is brought to the plant. The second reason, we have never been able to get truck drivers that know anything about dry cleaning, so by doing away with the truck and driver, we are going to save you plenty of good money on your cleaning and still turn out a very good grade of work. Start the 1st of the month out right and notice the saving in your cleaning bill.

Some Very Extra Special Prices

At The Plant For Tuesday, May 4th, Wednesday, May 5th and Thursday, May 6

- Men's Suits, cleaned and pressed **49c**
- Men's Pants, cleaned and pressed **28c**
- 2 for **55c**
- Men's Top Coats **49c**
- Men's and Ladies' Hats, cleaned and blocked **49c**
- Ladies' Plain 1 pc. Dress **49c**
- Dark Colors
- Ladies' Swagger Suits, cleaned and pressed **69c**
- Ladies' Spring Coats **69c**
- Skirts, Wool, each **35c**
- 3 for **\$1.00**

Drive Your Own Car and Save Money.

RICHARDSON'S Cleaners & Dyers

JUST BACK OF POST OFFICE

CRYSTAL WHITE SOAP

14 Bars **41c**

JERGENS BATH TABLETS

Box of 8 **41c**

Finer Silk Frocks

Duplan's smoothfines in lovely ice cream shades. Bemberg sheers and chiffons. Most anything your heart desires. You'd think they'd cost twice this special price of—

\$4.41

New Summer Hats

Straws, piques, fabrics, in a wide variety of shapes and sizes. Buy one to go with each frock at only—

81c

Reg. 98c

Costume Flowers

Only a special "buy" brings these gay flowers to you at this price. Add newness and life to your suit for—

41c

Reg. 98c

Dance Sets

Beautiful crepe Marlene dance sets. Tailored or lace trimmed styles. Sizes 32 to 38 only, but what a value at—

61c

Reg. \$1.98

Satin Slips

Superior workmanship and famous washable satin Craylog fabric. Two things that would make you want these fine slips if the price was much higher than—

\$1.41

Hand Made Handkerchiefs

Dainty Appen Zell embroidery in fine linen. Applique in colors on white linen, and many other styles of regular 50 cent goods. Buy half dozen for Mother's Day. Only, each—

29c

Farm Make Card Tables

Strong, sturdy... You can stand on them. We can't mention the name but you'll see it on the bottom of the table. Also the makers' price and you'll recognize their outstanding value at—

\$1.91

Men's Rubber Boots

First quality. Firestone and other good makes. Black rubber with red rubber soles and this price, gentlemen, is—

\$1.91

Double Times TELEPHONE 88 Full Licensed Wire Service... United Press Association... Published Six Days a Week at 130 Second Street West, Twin Falls, Idaho...

POT SHOTS WITH The Gentleman in the Third Row

A LOT OF EARS TO KEEP CLEAN! Dear Mister Shots! Contrary to what I have heard...

AS USUAL, SAITS our Pot Shots staff artist, he found on his first going attempt of the year that he still hasn't acquired that magic putting touch...

DETECTIVE REPORTS In reply to I. M. Curious? Who were the big birds in the park last Monday evening?

NO WONDER—IT'S THE TOP RUN OF THE YEAR! The boys who are the mightiest of Hollywood's actresses fought to get the leading role in "Done with the Wind"...

HE ALWAYS LOOKS THAT WAY TO US! They say that Stepin Fetchit was knocked unconscious in the automobile accident that put him in the hospital...

HARD LUCK PLUS The very luckiest thing of all that could a mortal case befall is being cold as spring comes through...

THE OLD BANDIT SHOWED THE BANDITS UP! Dear Sir: The Evilness went on at great length telling how four old women robbed the mighty United States treasury...

FAMOUS LAST LINE Junior, keep your eye on the cream of the back seat... THE TRIP HOME

TRAILER ADVENTURE By Nard Jones CHAPTER XXV ODDLY Betty looked at Martha...

WITH BETTY'S hurried help, Martha was ready by the time they were notified that the young coast guard officer was in the lobby...

THE evening of the next day found Betty Hayes admiring herself in the tall door-mirror of their hotel room. She wore a white sheath of evening gown...

"It ought to be," she replied in answer to Martha's compliment to that effect. "I told the hair-dresser 'I'm going to stay in here two hours, so give me the works!'"

"I really don't feel like going," Martha said, rising listlessly from theavenport.

"Nonsense! I'll do you good. I've hung your dress in the closet for you. I want it nice that Mr. Weeks will see it. These T-men seem to think of everything!"

"But where'd they find the trailer?"

"I don't know," said Betty. "I saw it in the newspaper. It was a real beauty. I thought I'd like to have it. I'll have it delivered to my home."

"I'll have it delivered to my home."

"Why, yes. Ask him to— She stopped. Beyond the waiter was a handsome and smiling man, tall, dark, with a friendly smile. He was wearing a dark suit and a white shirt with a dark tie.

"You see, I couldn't tell you at first," she said. "I was in San Diego I wasn't sure that you and Betty were part of Cimik's outfit. Then, when I felt utterly certain you two were innocent..."

"I'm sorry you're not here," Betty said, and there was a genuine reluctance in her voice. "I'd like to stay a few days and look around Seattle, wouldn't you?"

"I'm sorry you're not here," Betty said, and there was a genuine reluctance in her voice. "I'd like to stay a few days and look around Seattle, wouldn't you?"

"I'm sorry you're not here," Betty said, and there was a genuine reluctance in her voice. "I'd like to stay a few days and look around Seattle, wouldn't you?"

"I'm sorry you're not here," Betty said, and there was a genuine reluctance in her voice. "I'd like to stay a few days and look around Seattle, wouldn't you?"

"I'm sorry you're not here," Betty said, and there was a genuine reluctance in her voice. "I'd like to stay a few days and look around Seattle, wouldn't you?"

"I'm sorry you're not here," Betty said, and there was a genuine reluctance in her voice. "I'd like to stay a few days and look around Seattle, wouldn't you?"

NEWS BEHIND THE NEWS by PAUL MALLON An Exclusive and Authoritative Evening Times Daily Glimpse into the Background of Events in the Nation's Capital...

LAND PRICES WASHINGTON, May 4—It has been kept so quiet for months that even President Roosevelt is said to know little or nothing about it...

PHILOSOPHY Further research indicates the demagogue club in the house corner still meets daily when the house is in session. It is not inconceivable that the President's stout political ally, condemnation proceedings have long ago been cleared up...

CAREFUL BERRY, besides being the head of Labor's Non-Partisan League for Roosevelt, is well-known man. His private business is flourishing. He is not interested in the money, it is said authoritatively, but in the principle of the thing...

UNITY Mrs. Mary Church entertained at family dinner on Friday honoring Mr. and Mrs. Edwood Church and Mr. and Mrs. Jack Walsh, Payson, Utah...

WENDELL The foundations for the new two-story office are being laid and the basement excavation was completed several days ago...

HAILEY Frank Hoops, who has been working in St. Paul, Minn. for the past year, will move his family there as soon as school closes...

FAIRFIELD Gerhard Schmidt can tell you that Duke is called by the pet name of his father, Mr. George Miner. He was born in Montana and at the father's residence...

DELAY What makes the Berry case unique in TVA condemnation proceedings is that no action was taken until after the property was flooded. In the other Norris dam cases, exacting the President's stout political ally, condemnation proceedings have long ago been cleared up...

UNITY Mrs. Mary Church entertained at family dinner on Friday honoring Mr. and Mrs. Edwood Church and Mr. and Mrs. Jack Walsh, Payson, Utah...

WENDELL The foundations for the new two-story office are being laid and the basement excavation was completed several days ago...

HAILEY Frank Hoops, who has been working in St. Paul, Minn. for the past year, will move his family there as soon as school closes...

FAIRFIELD Gerhard Schmidt can tell you that Duke is called by the pet name of his father, Mr. George Miner. He was born in Montana and at the father's residence...

HAILEY Frank Hoops, who has been working in St. Paul, Minn. for the past year, will move his family there as soon as school closes...

FAIRFIELD Gerhard Schmidt can tell you that Duke is called by the pet name of his father, Mr. George Miner. He was born in Montana and at the father's residence...

A Big Year for Twin Falls Those who plan to build new homes or modernize their present dwellings will find many helpful suggestions in this, the annual Better Homes edition of the Idaho Evening Times.

HISTORY of Twin Falls City & County As gleaned from Files of The Times 15 YEARS AGO MAY 4, 1922

The Family Doctor By DR. MORRIS FISHERIN Editor, Journal of the American Medical Association, and of Hygiene, the Health Magazine

You May Not Know That Idaho received \$43,389,624.67 in federal funds from April 8, 1935 to March 31, 1937.

Closets and Comedy by GEORGE SCARBO

Society

B. F. W. CLUB NAMES COMMITTEES

Members of the Business and Professional Women's club attended the regular monthly dinner meeting of the organization last evening at the Park hotel. Tables were trimmed with spring flowers for the event. Mrs. Effie E. Hinton led community singing accompanied by Mrs. Beulah Osborn.

During the business session a report on the youth affiliation movement was presented by Miss Merle Newton and Miss Izzetta McCoy, state vice president, presented recommendations and amendments to be voted on at the state convention.

The meeting was conducted by Mrs. Crystal Van Anden, president, who named the following chairmen of standing committees: Finance and scholarship, Mrs. Lois Roberts; health and education, Mrs. Elizabeth Smith; research and international relations, Miss Ray Smith; legislative and public relations, Mrs. Katharine Potter; membership and courtesy, Mrs. Josie Jones; publicity and emblem, Mrs. Cora E. Throckmorton; music, Mrs. Hinton; and housing and calling, Mrs. Mabel Belleville.

NEW STAFF NAMED BY CHAPTER

Mrs. E. J. Stepien is president of the Zeta Psi chapter of the Delta Kappa Epsilon society following a meeting held yesterday afternoon at Legion Memorial hall. She succeeds Mrs. Carl H. Hinton, who conducted the session. Other new officers are: Mrs. Mitchell W. Hunt, vice president; Mrs. Harold L. Lackey, secretary; Mrs. D. R. Churchill, treasurer, and Mrs. W. W. Thomas, chairman of the board. Also on the board are Mrs. Claude Brown and Mrs. Russell Potter.

"The Career of Tolstoy" was studied by the chapter with the following topics presented: "Tolstoy as a Young Man," Mrs. R. A. Sutcliffe; "Tolstoy, the Landed Proprietor," Mrs. J. S. Diefenderfer; "Tolstoy the Sage and the Prophet," Mrs. L. H. Lusk; "Influence Shaping Russia's Present Cultural Activities," Mrs. Lackey; "Post-Revolutionary Literature," Mrs. Eichen.

Mrs. Cannon presented a review of "Mooney Skies" by Maurice Hinton. Mrs. Charles B. Beymer supervised the program.

OFFICERS NAMED BY DEMOCRATIC WOMEN

New officers of the Democratic Women's Study club are Mrs. O. W. Witham, president; Mrs. J. L. Hodges, vice president; and Mrs. Cora Stevens, secretary-treasurer, following a meeting of the group held yesterday afternoon at the home of Mrs. T. M. Robertson, retiring president.

The program included a review of the article, "If the Court Please," by George Creel and comments by Mrs. Witham for and against the recent decisions of the supreme court.

Refreshments were served at the close of the session by the hostess.

BRIDGE CLUB ATTENDS MEETING

Mrs. George Carder entertained members of the Mon Con bridge club last evening at the home of her mother, Mrs. Ella M. White. A desert supper was served before the game by the hostess.

Prizes at cards at play at two tables were received by Mrs. William Bond Thomas and Mrs. Howard Wiseman. Quizzes of the group were Mrs. Wiseman and Mrs. Ralph Bacon.

Calendar

The Salmon social club meeting May 5 at the home of Mrs. Rudolph Junker.

Highland View club will meet May 5 at the home of Mrs. Rudolph Junker.

Salmon Social club will meet May 6 at the home of Mrs. Mary Crays, 321 Fourth avenue west.

Lucky Twelve club will hold a 1 o'clock luncheon for mothers and friends Thursday at the home of Mrs. A. L. Bevercomb.

Ladies Aid society will meet Wednesday at the church parlors for a pot-luck dinner. Mrs. Roy Black will be hostess.

Silch and Chatter club will give a Mother's day luncheon Thursday at 1:30 p. m. at the home of Mrs. Fay Baky. All members are asked to bring their own or some other mother as a guest, it is announced.

Officers of the L. D. S. first ward Sunday school will hold their annual Mother's day program on Sunday. All mothers and the public are invited to attend, those in charge state. Special music and program is being arranged by Mrs. Ruby Henderson.

LODGE NAMES TWO OFFICERS

Mrs. Eddie Rogers was elected banker and Mrs. Martha Schiffgen was named adviser to fill vacancies caused by resignations at last evening's meeting of the Neighbors of Woodcraft lodge held at the home of Mrs. Sarah Bower on Sixth avenue east. Mrs. Donna Shepherd, guardian neighbor, presided at the session.

Following the business session, a social hour was enjoyed and refreshments were served by the hostess, assisted by Mrs. Leah Matlock.

GUESTS FETED AT PICNIC EVENT

A number of friends of Mr. and Mrs. A. L. Ronell arranged a picnic dinner on Sunday at Miller dam in honor of Mr. and Mrs. Clarence Ronell, Denver, here visiting Mr. Ronell's uncle, Mrs. Donna Shepherd, accompanied by their daughters, Dolores and Lois Ann.

HIKING AND SIGHTSEEING OCCUPIED THE AFTERNOON

The association was formed by representatives from each civic, fraternal and church organization in Twin Falls and is designed to offer recreational facilities to those who are, at the present time, unable to provide them for themselves and also to all ages and all classes. It is modeled after one established at Nampa.

The budget of the group was presented to the council through a letter from Rev. James S. Butler, president, and Ronald L. Graves, treasurer.

Budgeted items found on the presentation include: director's salary, \$1,800; assistant director's salary, \$1,500; rent for winter building, \$800; light, \$210; heat, \$400; water, \$20; equipment to be purchased first year, \$1,250; playground equipment, \$450; miscellaneous summer supplies, \$200; handicraft tools, \$100; tumbling mat, \$100; gym supplies, \$200; miscellaneous winter supplies, \$200; repairs and alterations on buildings, \$250.

Justice Weds 1,800

JACKSON, Mo. (UP)—John G. Fritz, justice of the peace, has performed his 1,800th marriage ceremony. He has been a justice 24 years.

Coronation Trains

LONDON (UP)—The London Midland and Scottish railway plans to run 130 excursion trains, bringing 65,000 passengers from the provinces to London, during Coronation week, it is announced.

TRIBUTE PAID TO WM. L. MANNING

Impressive Services Held for Prominent Burley Farmer And Stockman

BURLEY, May 4 (Special)—Impressive funeral services for William L. Manning, prominent stockman and farmer, were held Thursday at the L. D. S. tabernacle with Bishop Fred Christensen of the Springfield ward officiating.

The first number was a solo, "O My Father," sung by Raymond Johnson. Invocation was offered by Lewis Preer. The obituary and a brief history of Mr. Manning were read by Bishop Christensen. George Manning of Hooper, Utah, sang a solo, entitled "O Calvary." The first speaker was A. L. Hammond of Ogden, followed by a solo by Mrs. Joseph P. Payne. "That Silver Haird Daddy of Mine" with a violin solo, by Mrs. Catherine Zillner.

The next speakers were Joseph P. Payne and Bishop J. D. Hooper of Hooper, Utah. Albert Catmull sang "I Am a Pilgrim." C. G. Parker and Clayton Beck spoke, and concluding remarks were made by Bishop Christensen. George Durfee offered the benediction.

Interment was in the Burley cemetery under the direction of the Joseph P. Payne mortuary, officiated by Bishop J. D. Hogan dedicating the grave.

Flower girls at the services were Relief society workers and neighbors.

Bearers were M. H. Manning, Frank J. Manning, Ivan Merrill, Clyde Osborn and Rulon Bannley.

Marian Martin Pattern



"FRILLY SLEEVE" PATTERN #240

Picking flowers is lots of fun for a cute little girl of Two-to-Ten years old. It can't compare with the thrill of wearing a brand new frock that mother made! Little Miss Betty-Anne is pleased as can be seen by the daisy she wears for a brief sleeve, and she just adores that beauteous novelty yoke that is accented by six bright buttons! And do notice how the fullness of the short skirt is assured by several well-placed tucks! A love of a frock is Pattern #240, and just the thing to wear for school, Sunday-school, parties or play. Best of all it's easy as one, two, three to make. Ideal in washable, bright colored percale, chambray, dimity, gingham, or dotted swiss. Complete Diagrammed Marian Martin Sew Chart included.

Pattern #240 may be ordered only in sizes 2, 4, 6, 8 and 10. Size 6 requires 2 1/2 yards 36 inch fabric. Price 15c.

Send FIFTEEN CENTS in coins or stamps (coins preferred) for EACH MARIAN MARTIN pattern. Be sure to write plainly your SIZE, NAME, ADDRESS, and TOWN NUMBER.

BE BEST DRESSED IN STYLE! Send for our Spring MARTIN PATTERN BOOK and see its eye-catching collection of styles that stand out in a crowd and have that made-just-for-you look. Becoming outfits for every age—every type—every occasion. Gay frocks, blouses, suits fabric tips. Learn how to have up-to-minute clothes this season. BOOK FIFTEEN CENTS. PATTERN FIFTEEN CENTS. TWENTY-FIVE CENTS FOR BOTH WHEN ORDERED TOGETHER.

Send your order to Idaho Evening

Time, pattern department, Twin Falls, Idaho.

9240

RECREATION UNIT ASKS FOR \$7,510

Newly-Formed Group Oites Needs For Consideration Of City Council

For "consideration of the city council," members of the recently formed Twin Falls Recreation association today had asked an appropriation of \$7,510 to carry on anticipated work in the city during the next 12 months.

The association was formed by representatives from each civic, fraternal and church organization in Twin Falls and is designed to offer recreational facilities to those who are, at the present time, unable to provide them for themselves and also to all ages and all classes. It is modeled after one established at Nampa.

The budget of the group was presented to the council through a letter from Rev. James S. Butler, president, and Ronald L. Graves, treasurer.

Budgeted items found on the presentation include: director's salary, \$1,800; assistant director's salary, \$1,500; rent for winter building, \$800; light, \$210; heat, \$400; water, \$20; equipment to be purchased first year, \$1,250; playground equipment, \$450; miscellaneous summer supplies, \$200; handicraft tools, \$100; tumbling mat, \$100; gym supplies, \$200; miscellaneous winter supplies, \$200; repairs and alterations on buildings, \$250.

Scout Heads Plan Camping Program

Clarence Nye to Direct Hike To Blue Lakes Site

Plans were made for a camp leaders "pow-wow" to discuss arrangements for the summer Boy Scout camping program at a regular district Scout committee meeting held last night at the county court house.

The camping program during the summer will be under the direction of Clarence Nye, camping committee chairman. Nye announced today that he would meet with Scoutmasters in the near future for the purpose of arranging an all-district overnight hike to the Blue Lakes Scout camp in the near future. This was undertaken because of the success of the last sponsored hike.

Presiding at last night's meeting was T. E. Joahn, district chairman, who was given the power to select a committee to arrange for Scout participation in Flag day on June 14.

It is expected that nearly 1,000,000 persons in approximately 350,000 trailers will take to the road this spring.

High School News

"Tormentors," high school stage club, met yesterday afternoon to work on the staging of a comedy which has been used in the past week during stage performances by various organizations. Work on the placing of various properties for the comedy, "No More Frontier," on May 12, 13 and 14, was begun.

Visitors Suarm Streets At Payette's Festival

PAYETTE, Idaho, May 4 (UP)—Thousands of visitors swarmed through this city's streets today as the annual apple blossom festival drew near a close. George Barzila W. Clark officiated at growing Leona Miller, Fruitland, as queen of the festival. The evening program was to consist of dancing, fireworks, and carnivals.

PLAY TO BE PRESENTED

PAIRFIELD, May 4 (Special)—"Little Women," a four-act play, will be presented Friday evening by the high school dramatic class Lydia Henflow, Irma McCarter, Clara Rae Jones and Marjery Agard will lead the leading roles.

CONTRACT BRIDGE

By William E. McKenney

BRILLIANT PLAY MISREAD

By WM. E. MCKENNEY

Secretary, American Bridge League

It must be admitted that it requires plenty of courage to understand an ace against adverse small slam contract, but there are frequent occasions at the bridge table when courage is just as necessary an element as is ability to determine the value of the cards held. In a recent rubber game at the Regency club where New York's Four Hundred met under the leadership of Mrs. T. Charles

her partner could be induced to lead a spade.

With the prayer that her partner would see the situation, she made the brilliant lead of the nine of diamonds. West won with the jack, took time out for study, then returned a heart and the contract was made.

Thus, a well-thought-out defense

Today's Contract Problem

East's contract is four spades. North and South can defeat this contract even after the opening lead of a club honor into West's tenace holding. What old whist signal can be utilized by North to show that he holds three trumps, and thus a certain ruff, if South can win the second lead of trumps?

♠ 8 4 ♠ AQ 10 9 7 3
♥ A 9 8 7 6 5 4 3 2 ♥ K J 10 8 7 6 5 4 3 2
♦ A K 10 9 8 7 6 5 ♦ Q J 7 5 4 3 2
♣ A K 10 9 8 7 6 5 ♣ Q J 7 5 4 3 2

♠ 8 4 ♠ AQ 10 9 7 3
♥ A 9 8 7 6 5 4 3 2 ♥ K J 10 8 7 6 5 4 3 2
♦ A K 10 9 8 7 6 5 ♦ Q J 7 5 4 3 2
♣ A K 10 9 8 7 6 5 ♣ Q J 7 5 4 3 2

N & S. vul. Opener—♠ Q Solution in next issue.

Parrelly and others, Mrs. William Ashton Tucker thought she saw only one chance to beat the adverse contract.

And with splendid courage she took that chance, even though it involved the danger of giving declarer an additional trick.

South, having a perfect fit with his partner's freely bid suit, no losing hearts and a single in diamond, saw no reason to dally, and naturally jumped to the slam at once.

Mrs. Tucker sat East and rightly decided that the situation was desperate. She could cash the ace of diamonds, probably, but where was the setting trick to be found? She had it in her own hand, if only

JOB CONFERENCE SET WEDNESDAY

NYA Cooperates with Eden and Hazelton Schools For Pupil Meets

The fifth and sixth of a series of vocational conferences to be held in this area under the direction of officials of the National Youth Administration and through cooperation with superintendents of the various schools, will be staged at Eden and Hazelton Wednesday and Thursday, respectively. It was announced here this afternoon.

Harold A. Ballou, of Twin Falls, area supervisor of the NYA, and Miss Kathryn Skilern of Boise, administrative assistant of the NYA, will conduct the conferences with cooperation of discussion leaders from Twin Falls and vicinity.

Word has been received here to the effect that W. W. Godfrey, state director, is impressed with the results of the conferences already held and expressed his appreciation for the cooperation extended by school superintendents and principals.

On December 31, 1935, 30,537,367 passenger cars were registered throughout the world.

THRILLED!



BEST FOODS TASTES BETTER THAN ANY MAYONNAISE I CAN BUY OR EVEN MAKE!

THAT'S BECAUSE IT'S REAL MAYONNAISE MADE WITH "FRESH-NEEDED" SALAD OIL!

BEST FOODS REAL MAYONNAISE

Rupert Instructor Weds Murphy Girl

RUPERT, May 4 (Special)—Harold Parley, seventh grade teacher in the Rupert schools, was married Saturday afternoon to Miss Hazel Bruce Neal of Murphy, Idaho.

The ceremony was performed at the Methodist parsonage by Rev. George Roseberry and was witnessed by Mr. and Mrs. Gordon Coff.

The young couple will live in Rupert.

To insure healthy flowers and shrubs, use Post Moss, Dinale and Smith Seed Co.—Adv.

FIRST CHOICE!

Record performance **25¢** A QUART

In less than a year—First choice above all motor oils in the Pacific West!

A NEW STANDARD OIL FOR NEW CARS

Which Type Do Men Marry?



Smart, sophisticated, coldly correct, Sybil Hendry stood at the top of the social scale. Pleasantly attractive, but without background, influence, money, Joan Barrett represented the conventional secretarial type. Both women loved Bob Andrews, rising young executive. But which did he marry? You'll find the absorbing answer in

Afraid to Love

A new serial beginning in the

Radio City

Wednesday, May 5

Cheap Electricity and AN ELECTRIC RANGE

Point the Way to a Man's Heart

• It's "through the stomach," of course, as the old saying so aptly puts it. And there's no surer aid than electric cooking. The perfect heat controls and exact cooking temperatures take out all the guesswork and prevent failures. Rich juices and flavors are retained perfectly. And with electric rates among the nation's lowest, no wonder nearly half the housewives in our territory cook electrically.

Reddy Kilowatt your Electrical Servant, who does the cooking for 47% of our customers' homes.

IDAHO V POWER

Electricity Does So MUCH More in LITTLE!

THIS CURIOUS WORLD

By William Ferguson



THE PANAMA CANAL DOES NOT CROSS THE ISTHMUS OF PANAMA AT ITS NARROWEST POINT.

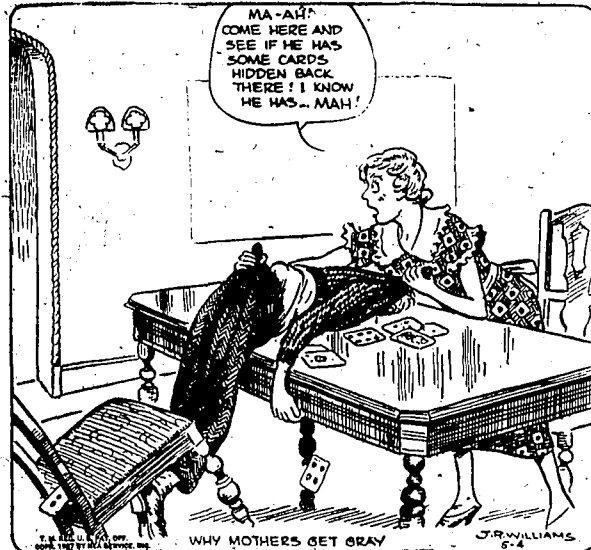
Few persons ever have the privilege of seeing the giant nightjar, so perfect is its protective coloration. Blending exactly with the tree on which it rests, the bird flattens its tail against the trunk, sits erect, and closes its eyes, thereby eliminating all resemblance to a living object.

OUR BOARDING HOUSE

with Major Hoople

OUT OUR WAY

By Williams



SIDE GLANCES

By George Clark



WASH TUBS



BOOTS AND HER BUDDIES



ALLEY OOP



MYRA NORTH SPECIAL NURSE

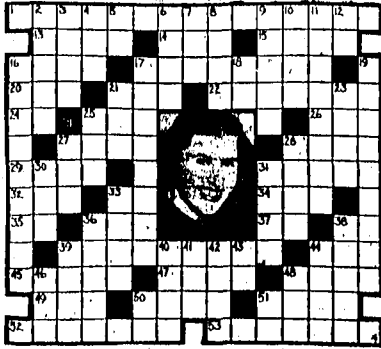


FRECKLES AND HIS FRIENDS



Ice Queen

- HORIZONTAL
- 1 Gracful performer on ice.
 - 12 Violent wind.
 - 14 Wand.
 - 15 Smell.
 - 16 Bottle stopper.
 - 17 Fixed by weight.
 - 20 Female fowl.
 - 21 In what way.
 - 22 Staying power.
 - 24 Luke.
 - 25 Public auto.
 - 26 To make lace.
 - 27 Half.
 - 28 Ado.
 - 29 Schema.
 - 31 Plant hairs.
 - 32 Electrified particle.
 - 33 Note in scale.
 - 34 Form of "be".
 - 35 Dove's cry.
 - 37 Northeast.
 - 38 Italian river.
 - 39 She appears in ice.
 - 44 Convent worker.
- Answer to Previous Puzzle
- 35 Becomes acid.
 - 47 Fodder vat.
 - 48 Abounding.
 - 49 Striped fabric.
 - 50 Yeace.
 - 51 Kilo.
 - 52 She is a figure — (pl.)
 - 53 She is a young girl.
 - 54 Italian river.
 - 55 She appears in ice.
 - 56 Convent worker.
- VERTICAL
- 2 Trees.
 - 3 Hates.
 - 4 To annoy.
 - 5 Note in scale.
 - 6 In line.
 - 7 To petuse.
 - 8 Inequal.
 - 9 Island in the Atlantic.
 - 10 Cow-headed goddess.
 - 11 Pertaining to the lore.
 - 10 Type of cheese.
 - 11 Good-for-nothing person.
 - 12 Grin.
 - 13 She recently became world famous — (pl.)
 - 17 Situation.
 - 18 And.
 - 19 Heritage.
 - 20 To drone.
 - 23 Spike.
 - 25 Wager.
 - 27 Male child.
 - 28 Male ancestor.
 - 30 Card game.
 - 31 Movers' trucks.
 - 33 Death as a duty.
 - 36 Gem weight.
 - 38 Flat-bottomed boat.
 - 39 Island in the Atlantic.
 - 40 Cow-headed goddess.
 - 41 Vigor.
 - 42 On the tea.
 - 43 Behold.
 - 44 Unless.
 - 46 Tree bearing acorns.
 - 48 Chum.
 - 50 Railroad.
 - 51 King of Italian.



Seattle Expert's Survey Finds Six Active Cases of Tuberculosis

CHILD, 3, AMONG THOSE REVEALED BY STUDY HERE

Report Made From X-Ray Examination by Dr. Hart Announced Today

Out of 120 cases studied through chest X-rays for the Twin Falls county health unit by Dr. Alan H. Hart, consultant for the Idaho Anti-Tuberculosis association with headquarters in Seattle, five cases of active pulmonary tuberculosis were found among adults and one among children, it was disclosed today with announcement of the doctor's findings.

A report on the study made by Dr. Hart and Miss Margaret Thoms, field nurse for the Idaho association, was released today through Dr. J. W. Hawkins, director of the county health unit. Dr. Hart's study in Twin Falls last Wednesday and remained here through Saturday. He made a complete study of the X-rays taken as the result of the health unit tuberculin skin test drive carried on in this county, and also held consultations with various local physicians. The health unit cooperated with the Anti-Tuberculosis association in the testing work, all tests being given by Dr. Hawkins.

Two Have Indications Among the 120 persons who had X-rays taken through cooperation of the county general hospital, and outside from the six found with active tuberculosis, two were listed as having indications that adult pulmonary tuberculosis was present. Three persons, the report shows, had healed pulmonary tuberculosis and 36 at sometime had the childhood type of tuberculosis. Sixteen were discovered to have non-tuberculous pulmonary lesions and six probable cardiac lesions. Sixteen of the 120 persons showed no visible evidence of pulmonary infection whatsoever.

The report also shows that 13 patients were given consultant service with their private physicians.

Three-Year-Old Child In an explanation of the report it was disclosed that the remaining active tuberculosis was only three years old. One high school boy was found with early tuberculous infection and this discovery was probably the direct result of the unit's tuberculin skin testing program. One other high school student was found to have a suspicious pulmonary lesion.

Over 500 school children, especially those aged juniors and seniors in high school took the tuberculin tests, as they were given throughout the county by Dr. Hawkins and the staff of public health nurses. Those reacting positively to the test were urged to have an X-ray made so that it could be studied by Dr. Hart.

Cooperating with the health unit and the Anti-Tuberculosis association, the county general hospital made this X-ray service possible at a very nominal cost.

BOARD MEMBERS NAMED

REFIELD, May 4 (Special)—O. W. Stewart and Arthur Perkins were elected to be new members of the village board at the election held last week. There were 120 votes cast this year as compared to 28 votes two years ago. Old members are J. O. Buckley, F. O. Miller, and R. C. Hager.

Reported Exile



Because of her friendship with the wives of men convicted in the recent "Bribeless" scandal, Mrs. Elizabeth L. Lintvorn (top), British born wife of Max Lintvorn (below), Commissioner of Foreign Affairs, is reported to have been exiled to the Ural mountains by the Soviets. Lintvorn's post is said not to have been commensurate by his wife's difficulties.



PAUL

Mrs. Blain Nielson arranged and was hostess recently at a miscellaneous shower given in honor of Mrs. Margene Lindley, daughter of Mr. and Mrs. Henry Manning, who was recently married to Dennis Lindley, Rupert. Forty-five guests were present. Guessing games were played under the direction of Mrs. O. G. Sanford and Mrs. June Jones. A plate luncheon was served by the hostess, assisted by Mrs. Nielson's mother and sister, Louise, and Mrs. George Moser.

The auxiliary members of the Paul American Legion attended a special program given Thursday evening at the Burley Odd Fellows hall. Martha Jensen, oldest daughter of Mr. and Mrs. Charley Jensen, is recovering from an operation for acute appendicitis performed Friday evening at the Rupert Hospital. Floyd Peterson, who was struck by a car while riding a bicycle last Wednesday, is improving after being unconscious for over 12 hours. Members of the Spanish war are corresponding with students in Buenos Aires and have received several answers to letters they sent.

DEGREES AT "U" WILL SET MARK

Total of Bachelor, Master Awards Larger This Year Than Ever Before

MOSCOW, May 4 (Special)—Degrees to be granted at the 42nd annual University of Idaho commencement June 14 will set a new all-time record exceeding the total for the first 21 years in the institution's history. A new record graduating class of 478 is possible this year, judging from the 358 applications now on file for bachelor's degrees and 80 more for masters. Although the final total on commencement day is apt to be a few less, it still will be well above the 1936 class of 420, the present record.

Here Are Divisions Divisionally, the applicants for 1937 degrees are distributed as follows: college of letters and science, 97; college of agriculture, 42; college of engineering, 31; college of law, 8; school of mines, 13; school of forestry, 37; school of education, 127; school of business administration, 43; and graduate school, 80.

Commencement exercises this year, June 14, will be a week later than usual. Dr. Albert William Beaven, president of Colgate-Rochester divinity school at Rochester, N. Y., will be the speaker. He was born in Moscow in 1882, 12 years before the university opened its doors.

Escalatorists Baccalaureate services for the class of 1937 will be held on Sunday, June 13, with Dr. William Henry Boddy, pastor of the Westminster Presbyterian church, delivering the sermon. Saturday, June 12, will be alumni day. Events on the alumni program include a luncheon business meeting and banquet, and dedication of two new buildings, the infirmary and Willis Sweet hall for men.

CLARK REDUCES STATE EXPENSES

BOISE, May 4 (UP)—Governor Barzila W. Clark said today he had begun saving money by cutting three items of the state's public assistance program in order to furnish money for children's clinics.

Relief of crippled children costs the state about \$30,000 annually. Administrative costs of the public assistance program, figured on basis of the first quarterly report, would cost the state about \$360,000 annually.

Governor Clark said he would consolidate departments where possible, and cut down on the administrative payroll where he could, in order to reduce administration to \$300,000 and divert the other \$30,000 for use in the clinics.

New "Aide" for MacArthur



The long journey back to Manila will be turned into a honeymoon trip by General Douglas MacArthur, former chief of staff of the United States army and now military adviser to the Philippine commonwealth. For that's his bride, Miss Joan Faircloth, of Murfreesboro, Tenn., who clings so happily to his arm as they leave the Municipal Building in New York after the ceremony.

Internership In Mental Institutions Suggested for Medical Graduates

BOISE, May 4 (UP)—Dr. J. D. Dunshee, state director of public health, today asked that state mental institutions adopt a form of "internership" for graduates of medical schools in order to relieve the present lack of trained medical assistants.

Dunshee said selected graduates of medical schools who were considering psychiatric or mental hospital work could serve one or two years' internership in Idaho institutions at small salaries.

Such men, he said, would be well qualified for such service when acting under proper supervision.

Result of Study His suggestion came as a result of a study of Idaho's mental institutions which he said showed all institutions were overcrowded, that there was a lack of trained assistants, and that proper equipment was lacking.

No provision is made for allowing relief for vacation periods for the medical superintendents, so that needed rest and change, with opportunity to visit other mental hospitals may be had," he said. "Under these circumstances, a capable director could not do justice to the needs of the institution under his supervision."

Should Have Assistant He also suggests that the department of public health be allowed an assistant medical director of institution, who would be a "qualified" psychiatrist. Such an official, he said, could act as relief man during the vacation periods of institutional directors.

Dunshee said his recommendations could be achieved in the near future because of the possibility of securing financial and technical assistance from the public health service for state hospitals.

JAMBOREE TROOP ADVANCES TO 15

Indications Point to Fact Local Contingent Will Number Over 30

Thirteen Boy Scouts and two Scouters from the Snake river area council, Boy Scouts of America, today were listed as having made application for a place on the contingent to attend the national jamboree in Washington, D. C., and another boy was still to be selected from Blaine county. It was announced by officials of the council here.

The Scout who is to be selected from Blaine county will make the trip with all expenses paid, the amount necessary having been donated by Leon Friedman of Halley. At least five Twin Falls Scouts were expected to make the preliminary application this afternoon, thus bringing the area contingent up to 20. It is expected 15 will number over 20 when the deadline for applications arrives.

Those listed at the present time as intending to make the trip include Carl Gustaf and Eugene Gentzen, troop 7 of Castledale; Francis Lee True, troop 101, Murfreesboro; Jack Nelson, troop 1, Burley; James Brunson and Mahlon Hammerquist, troop 30, Filer; Jack Welton and Dale Burkhalter, troop 40, Jerome; LeRoy Jones, troop 42, Coeur d'Alene; Hollis Houston, troop 20, Burley; Eugene Thompson, troop 33, Gooding; Robert Boone, troop 8, Halley.

W. Dosselt, Scoutmaster of troop 61, Knappa, will make the trip as Scoutmaster while Dr. J. N. Davis of Kimberly will be chief of the medical staff for region 11, which includes the four northwest states and Alaska. Dr. Davis will be assisted by registered doctors from Pocatello and Coeur d'Alene, Wash.

For seed potatoes—the Gobe Seed and Feed Co.—Adv.

Why Laxatives Fail In Stubborn Constipation

Twelve to 18 hours is too long to wait when relief from clogged bowels and constipation is needed. For then enormous quantities of bacteria accumulate causing GAS, indigestion and many restless, sleepless nights. Adierka is a liquid compound such as Adierka, which contains SEVEN active and carminative ingredients that will break up the clog in 8 to 12 hours. Most "over-the-counter" laxatives contain only ONE active ingredient, which does little to break up the clog. Adierka's DOUBLE ACTION gives you a powerful, thorough cleansing, bringing out old poisonous matter that may have caused GAS pains, sour-stomach, headaches and sleepless nights for months.

Adierka relieves stomach GAS, acts on and usually removes bowel constipation in less than two hours. It is a powerful, thorough cleansing, bringing out old poisonous matter that may have caused GAS pains, sour-stomach, headaches and sleepless nights for months.

It is a graduate of the University of Idaho in 1925 and received his master's degree a year later. After receiving his doctorate from the University of Wisconsin in 1933 after two years of study he returned to the university to join the faculty.

Colwell's Majestic Pharmacy in Kimberley by Stowe's Pharmacy.

Scout Heads Call Special Meeting

All Jamboree Scouters and Scouts Here May 16

A special meeting, at which all Scouters and Scouters registered to attend the national jamboree in Washington, D. C., will be expected to be present will be held in Twin Falls Sunday, May 16, at 2 p. m. It was announced today by E. M. Dosselt, Jamboree Scoutmaster, and Milton Powell, chairman of the Jamboree committee.

The meeting will be held in city park and will include national preliminary discussions concerning the trip plans and arrangements.

NEW WENDELL OFFICIAL WENDELL, May 4 (Special)— Dwight L. Huey was named city marshal and town water master for the year on the resignation of Ted Goehner, who is employed in Twin Falls.

ENTERTAIN AT SHOSHONE SHOSHONE, May 4 (Special)— Mrs. F. J. Burnett, Mrs. Charles Martin, Mrs. Edward Hattu and Mrs. A. G. Haght entertained at a desert bridge event on Saturday evening.

Music Students at Paul Plan Program

PAUL, May 4 (Special)—The musical department of the Paul high school will present a special program Sunday evening at the M. J. A. concert meeting at the Paul L. D. S. church.

Numbers are: Trio saxophone number by Walter Basinger, Verly Thomas and Sells Conley; number by girls' sextet; saxophone solo; Darold Green; two instrumental numbers by the band under the direction of Walter Basinger.



CLEAN UP & PAINT UP
The Modern Crusader!

Your Part in the "Home Circle"

Set the example—others will follow and our community will be a better place to live in.

MAKE YOURS AN OUTSTANDING HOME!

You can choose any of our large stock of Ball Bearings, Ball Bearings, Lawn Mowers at a savings of 10% OFF of our regular Low Prices during our sale. Steel, solid rubber or pneumatic rubber tires. A wide range of sizes and price. We guarantee lowest price for quality and also you can choose.

BUY TODAY!

Make sprinkling your lawn an easy task by using some of our large stock sprinklers. Choose from an assortment with prices ranging from

19c to \$3.98

GARDEN HOSE

We have 3,000 feet of 5-8 inch one braid garden hose to sell at 5c per foot.

25 ft. one braid Neptune	Reg. \$2.25	\$1.69
25 ft. two braid Rainbow	Reg. \$3.05	\$2.65
25 ft. Royal Cord	Reg. \$4.75	\$4.15
50 ft. Royal Cord	Reg. \$9.05	\$8.15

A Real Bargain on Very Good Quality House Paint

Acme Acorn "Clean Up" Price for Only Limited Time Per gal. **\$1.98**

CALCIMINE
You can't afford to pay 80c when our price during sale is 49c for 5 lbs. ENAMELS
All colors quick drying first quality. Have 75c of each gallon. Have 20c on each quart.

LIN-X
Flat Glass, Linoleum, Tile, Furniture. You will be surprised at our low price DURING OUR SALE ONLY.
Paints, Brushes, Varnishes, and all kinds of Paints, Polishes or clean up necessities. PRICES ARE MARKED. Last but not least—Rip Ladders, stools, window brushes, Garden Hoses, Shovels, Hoes, Garden Tools of all kinds ON HAND TO HAVE YOU MONEY

TO THE GARDENER
EXTRA SPECIAL ONE WEEK ONLY—We will allow a 15% cash discount on all Planer J. Hand Nippers, Cultivators, Garden Hoes, Flows and other tools. Last chance that back yard or vacant lot into a winter's supply of vegetables.

C. W. & M. Co.

SPECIAL For One Week

MEN'S SUITS	Cleaned and Pressed	75c
MEN'S TROUSERS	Cleaned and Pressed	75c
MEN'S PANTS	Cleaned and Pressed	35c
MEN'S TIES	Each, Cleaned and Pressed	10c
Or 12 for \$1.00		
MEN'S HATS	Cleaned and Blocked, Guaranteed Job	75c
LADIES' PLAIN DRESSES	Cleaned and Pressed	75c
LADIES' SPRING COATS	Cleaned and Pressed	75c
LADIES' HATS	Cleaned and Blocked	50c
LADIES' SWAGGER SUITS	Cleaned and Pressed	75c and up
Ladies' Knit Suits and Dresses	Cleaned and Blocked to look like new. We are authorized users of FORM-ALL Blocking Equipment. If your knits are not finished to your satisfaction the job won't cost you a cent.	

FUR WORK, Glazing, Cleaning, Storage, Work done by experienced FUHRER

Your garments are INSURED — Satisfaction Guaranteed. Cleaning called for and delivered at above prices.

Idaho Cleaners & Dyers

PHONE 407 126 SHOSHONE ST. WEST

"AT LAST WE GOT OUT OF THE 'ALL THREE' CLASS"

"NOW WE'RE DRIVING A GREAT BIG NASH—AND IT COST JUST A FEW DOLLARS MORE"

There may be a "thought" for you... in this story about Mr. H. J. Kempton!

"For the last two years I'd been secretly longing for a big car. Not that I'm any fault to find with the 'All Three'... but I just couldn't get it. Then I heard you could get a '117-inch wheelbase Nash LaFayette' 400' for just a few dollars more than the 'All Three' cars... I lost no time. And, believe me, it's really grand to be driving a big luxurious Nash!"

Look at the picture. See what you get. A luxurious, big, 117-inch wheelbase car. It has a 90 horsepower six cylinder engine—remarkably economical to operate. You get larger double-action hydraulic brakes, stronger all-steel body, extra-wide seats, more headroom and legroom. You get so much extra value in the Nash LaFayette 400'—yet it costs just a few dollars more than any of the "All Three."

See the Nash Ambassador Six and the Nash Ambassador Eight. See the extra value Nash gives for your money.

Ask about the convenient terms and low rates available through the Nash C.I.I. Budget Plan. Automatic Credit Check available on all Nash models at slight extra cost.

NASH

PRICES SUBJECT TO CHANGE WITHOUT NOTICE

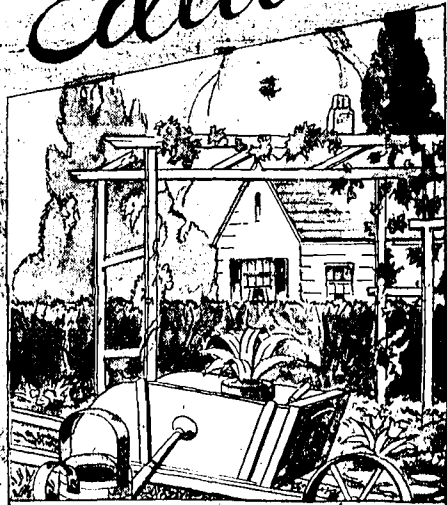
FOR AS LITTLE AS \$1 OR \$2 A MONTH! A check-up made in ten cities shows the Nash LaFayette 400' DELIVERS far less fuel economy than the "All Three" small cars. In many places, the \$100 difference in price amounts to just \$1 or \$2 a month extra on your lease payments.

Actual photograph of Nash LaFayette 400' 4-door Sedan with trunk

REYNOLDS MOTOR CO.
207 SHOSHONE STREET SOUTH PHONE 420

1937 YEAR OF THE BIG OPPORTUNITY

BETTER HOMES Edition



**YOU
Can Own A
BETTER HOME**

Read Every Page
In This Edition

1937 will go down as the year of the Big Opportunity. To many — to hundreds of thousands — it will be remembered as the Golden Year when Dreams Came True. To others — hapless men and women without the vision or the courage that this Big Adventure takes — the memory of '37 will be the memory of Lost Opportunity: the wistful recollection of what might have been.

Not again in the next ten to twenty years will it be possible to build a home, a dream home, complete and modern, at present low prices. For thousands upon thousands of hopeful people, then, this year — 1937 — will be the last opportunity to own a home. 1937 is one of those fabled years that come once in a generation, perhaps once in a lifetime. It is a year when ready home-building

capital is available to almost every man who has a good job and a little nest egg of his own; available at low depression interest rates and on easy terms never before possible in all history. And at the same time, mind you, prices on skilled labor and construction materials are now — not quite as low as they were last year, considerably higher than they were two and three years ago — but from 15% to 25% lower than they will be in the Spring of 1938! And every month that passes is seeing a boost in building costs; mill-work, plumbing, heating installations, all are advancing in price, and skilled labor, never too plentiful since the depression, is getting scarcer still. Just over the horizon of the future lies the promise of a great Building Boom. When it comes — when prices soar and labor is at a premium — then it will be too late. Then the joy and security of modern home ownership will be something to read about in the yellowing files of old newspapers and the pages of ageing magazines — but never again to be captured so easily in this generation.



STAR Page Nineteen

WELLAR STAIR MAY AID OR HINDER HOUSEWORK

Ceiling should be considered green, little of the possibilities of it is necessary to duck point...

CLEAN-UP CAMPAIGN ALIGNS WITH BUILDING DRIVE HERE

CHAMBER PLANS INTENSIVE MOVE; TINKER IS HEAD

Program Calls for Removing Rubbish and Painting Up Homes, Stores

Aligned directly with the spring building and renovating boom in Twin Falls, the Chamber of Commerce clean-up and paint-up campaign swings under way here Wednesday.

Under general chairmanship of Ed M. Tinker, the drive will seek not only to clear the city, its residences and its business buildings of rubbish and trash forming fire hazards, but will also seek to beautify the community through stimulation of painting, modernizing and refurbishing the outward appearance of buildings.

Eight committee chairmen will assist Mr. Tinker in handling details of the campaign. The chairmen will be aided by committees of their own choosing, are:

- Merchants' committee—Voy Hudsell
- Publicity—Earl Baughman
- Fire prevention and police—Fred Perry
- Real estate and housing—Ozell Jones
- Boys' Scouts and schools—Roy Palmer
- Streets—Leonard Avant
- Health—Dr. J. W. Hawkins
- Speakers—R. E. Tofflemire

During the first week of the drive, householders and businessmen are asked to collect rubbish and trash from places where it has accumulated in their buildings. The material is to be placed in containers, with the inflammable rubbish burned.

During the week of May 10 the city administration will send its municipal trucks out to collect the trash. The inflammable material is to be piled in one location for a giant bonfire at the close of the campaign.

Youths Will Aid School students and Boy Scouts will render important aid. Chairman Tinker said, by contacting residents and leaving "report cards" on which types of cleaning-up and painting are to be noted as carried out.

Feel Artistic? Try Your Hand At Color Ideas

Color schemes give every home decorator an opportunity to be a creative artist. This spring, try your hand at color. See how easily you can transform your rooms with brilliant or subtle color changes.

Here are three interesting schemes, each with a new feeling that definitely stays spring, 1937. Each starts with the floor as foundation and works up to all the details of accessories.

For a "modernized" 18th century living room: Broadloom carpet in an all-over, textured design, suggestive of leaf forms, in tones of rich DuRoi red. Walls, painted soft hydrangea blue. Woodwork, white. White venetian blinds with dark red tapes. Hangings of bouquet-patterned chintz, with natural flower colors on an eggplant ground. Wing chair slip-covered in the same chintz. Sofa with slip cover of permanent upholstery of striped fabric, picking up blue and wine shades. Two pull-up chair upholstered in white leather. Furniture, predominantly antique—mahogany finish, with a bookcase or other pieces in blond mahogany. Prints of red chintz, embroidered in white, with white Chinese porcelain.

Federal Housing Setup Permanent

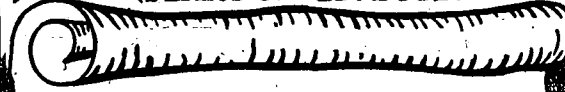
The national housing act does not expire next July as some seem to think. The act is permanent legislation and the federal housing administration is a permanent governmental agency. The modernization credit plan expired April 1, 1937. Treasury guarantee of housing administration insurance fund debentures continues until July, 1939, but insurance of home mortgages continues with a fund that now totals \$100,000,000 and is increasing at the rate of \$500,000 each month.

PROPORTION IS KEY TO BEAUTY

Proportion is the key to good decoration. Small living rooms generally should be furnished with occasional and set pieces that have formal lines. Heavy overstuffed divan-type sets or occasional chairs have a tendency to "stiffen" the room.

Proclamation

CLEAN UP • PAINT UP • FIX UP PLANT UP • GIVE JOBS



Know All Men, Women and Children By These Presents:

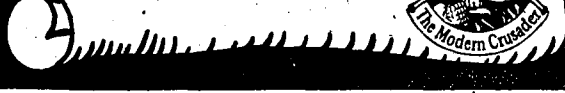
THAT, Whereas the NATIONAL CLEAN UP, PAINT UP AND FIX UP CAMPAIGN has resulted in many advantages to community life throughout the United States,

- In safeguarding HEALTH and SAFETY;
- In promoting EMPLOYMENT and THRIFT;
- In furthering FIRE PREVENTION;
- In promoting BETTER HOUSING;
- In stimulating CIVIC PRIDE; and
- In making the "HOME AND CITY BEAUTIFUL";

NOW, THEREFORE, Be it known that plans have been perfected for a thorough CLEAN UP, PAINT UP AND FIX UP CAMPAIGN IN TWIN FALLS beginning Wednesday, May 5. This date to mark the Opening of a real campaign of persistent and constructive effort in cleaning up, fixing up and KEEPING IT UP. In this worthy movement of Cleaning, Painting, Planting, Repairing and general Rehabilitation and Beautification we urge each citizen to do his or her best part to make our community

Clean, Health, Thrifty
Safe and Beautiful

LEM A. CHAPIN, MAYOR



PROJECT'S START DUE HERE SOON

McRoberts and Smith Ready To Go Ahead With Eight New Residences

Realizing that there is no time like the present to build homes, two local men, E. W. McRoberts and Al Smith, announce that construction will start in the immediate future on eight of the latest type modern houses which can be erected.

Representing an expenditure of approximately \$30,000, the houses will be built on an area located at the end of Lincoln and Buchanan streets at the northern city limits. The new construction will have a private roadway 50 feet in width and will be called Lincoln Terrace sub-division of the district, aside from the private street which will lead into Heyburn avenue, will be construction of a main sewer line and it will also have curbs and cemented private driveways.

The houses will be five and six rooms with full basement, tile floors, hardwood floors, private garages and will be insulated throughout to assure coolness in summer and warmth in winter. They will be of the latest type of popular design, having been selected after a survey of the modern housing needs by experts in the building line.

Construction will be supervised by Mr. Smith with A. B. Christensen of Twin Falls serving as general contractor.

FLOOR COVERING NEEDS SCRUTINY

Marred, Scatched, Souffed Appearance Should Be Remedied Promptly

Marred, scratched and scuffed floors should be taken care of if your home is to be attractive. Refinishing floors, where joints are tight and the floor not warped, is comparatively simple. Modern scraping and sanding machines do an average room in just a short time, and a new finish can then be applied.

Where floors are badly marred, linoleum presents a happy solution. Present day types can be covered over an old floor, to make a light beautiful floor. Linoleum is colorful and easy to clean. However, carpeting is another satisfactory solution in living and dining rooms. Stores today show a wide variety of designs, modern and period, plain and patterned. Care should be taken in selecting carpeting, to avoid getting colors or pile that will soon become shabby. Paying just a little more than you thought you could afford is sometimes the best policy!

JUST A TIP
If concrete or masonry steps are to be installed, be sure the ground on which they are to be placed is solid and not recent fill. Filled ground settles over a long period and the steps will settle with it.

There's a New Residence on Nearly Every Street in City

There's a new house on nearly every street in the city.

Home builders of Twin Falls who have erected approximately 100 new dwellings in the past few months, have done much to beautify the city, a tour of the residential districts shows. All types are represented in the fully completed and inhabited dwellings, in those nearly done and others with hardly more than the foundations finished.

Simply Keynote
Simplicity is the keynote of the great majority of the new structures and wood dominates the materials chosen though many of the more stately homes and one or two brick ones. And of course the trailer houses, just as new as any of the more stationary homes, are of the finest thing in metals.

The homes range in size from the tiniest of minimum residences to more pretentious houses boasting two or more stories with the latest developments in construction and arrangement.

Lines of the new homes in

general follow a pleasingly simple modification of the English cottage with a number of attractive Cape Cod houses and New England colonial styles used too. And with increasing frequency there are large and small houses which have been built along the severe cubic lines of advanced modernistic architecture. These are all found in stucco and plaster.

Some features of the newest houses which strike the eye are the lack of overhanging eaves which were common when many of the older homes of the city were built, the number of large and well placed windows guaranteeing plenty of light on the darkest winter days, the disappearance of the large porch which has been replaced by the tiny stoop or, in some cases, by nothing whatever.

But where your taste runs to the swooping roof-lines of the English cottage or the severe lines of the modernistic cube, you'll find they are all attractive. Because they're new.

Buying Home is Important Deal So Be Careful

BOISE (Special) — Buying or building a home is one of the most important financial transactions in the lives of most of us, according to Idaho offices of the federal housing administration, which says that every effort should be expended in the search for the most advantageous terms and the best construction.

Under the insured mortgage system of the federal housing administration, homes are well constructed, of good workmanship and the best materials available.

The terms upon which you can own your own home are these: one-fifth of the appraised value in cash or its land equivalent, a mortgage for the remainder of 80 per cent. Repayment in equal monthly installments like rent that covers taxes, interest and all fixed charges, as well as principal.

You have 20 years, if necessary to repay the loan. Banks and building and loan associations cooperating with the federal housing administration will be pleased to give you complete details, or consult your building supply dealer or contractor.

PAINT NECESSARY ON STORM DOORS

Don't Overlook Importance Because They're Only Up in Winter

Don't overlook the importance of good paint on storm doors and windows, just because "they're only up during the winter." Your home needs every bit of good appearance that you can muster up during the stormy months. . . and snowstorms and strong winds make protection even more important!

While many people prefer to have windows and doors finished in the same color as the house, matching is often difficult unless these members have been painted at the same time as the house.

A colorful solution is to use a bright, cheerful color for the sash. This makes for a brighter exterior and a cheerier home throughout the winter. Red, green and orange are colors that will make up in part for the absence of greenery and colorful lawns during the colder months.

PRIVATE MONEY USED ON HOMES

Individual Capital Volume Loaned on Mortgages Increased in 1936

WASHINGTON, May 4 (Special) — The effects of the federal housing administration's efforts to improve the home-mortgage lending system of the country may be summarized as follows:

The volume of private funds used in home-mortgage loans increased substantially in 1936, as compared with 1935, the year when the mutual mortgage insurance plan was placed in operation and the home-mortgage market was definitely thawed out. The number of institutions making insured mortgage loans mounted from 1,326 at the end of 1935 to 5,290 at the end of 1936, and the flow of funds from areas requiring outside capital was expanded.

From the borrower's point of view, more general use of insured mortgages resulted, directly and indirectly, in a general downward trend in interest rates in most sections of the country; in wider use of long-term amortization which reduced the size of monthly payments and consequently the immediate burden of carrying debt-free home ownership; and in greater use of single first-mortgage loans up to 80 per cent of the value, the form of operation in which a large proportion of families engaged in acquiring homes. The maximum yearly charge permitted on insured mortgage loans remains unchanged at five per cent interest computed on outstanding monthly balances, plus one-half of one per cent service charge and one-half of one per cent on the original principal amount for mutual mortgage insurance premium.

Humidity Makes Carpets Expand

Humidity does things to rugs and carpets! Experiments show that wool pile floor coverings tend to increase in dimensions as the humidity of the atmosphere surrounding them increases. Thus a carpet tacked down without tension on a dry day may expand in damp weather and puckers itself. Such puckers can be avoided if the carpeting it to the floor in dry weather.

NEED FOR SMALL HOMES IS CITED

Industry Must Give Attention To Less Costly Houses, FHA States

WASHINGTON, May 4 (Special) — Warning that the failure of the building industry to construct enough small, inexpensive houses to supply the demand will result in "overpricing" and its accompanying evils, the federal housing administration reaffirmed today its endorsement of the small-house demonstration program recently launched by various elements of the building industry.

Administration officials pointed out that in many cities builders are concentrating on the construction of the more expensive type of houses and failing to build a sufficient number of small dwelling units. Continuance of such a policy may result either in overpricing or the postponement of home purchase by thousands of families who are now desirous of owning homes.

One of the reasons for the seriousness of the real estate crash of 1930 was the overproduction of homes in the higher-priced ranges which found their way into the hands of families unable to afford them, according to the federal housing administration.

Federal Housing Setup Permanent

It was pointed out that, while there is an enormous demand for small houses, builders must not fall to build houses in the more expensive brackets. Concentration on the higher-priced ranges of larger houses would seriously hamper the recovery of the building industry.

NIGHT COOLING METHODS EASY

Hot weather will again emphasize the need for some way to cool off the house during the night; but now it is easy to get good results by installing one of the very efficient night cooling units that are offered for very little money. If needed they can be financed through the F. H. A. and paid for over a period of years.

Night cooling is simple when it is understood how the unit operates, and best of all it is not necessary to tear the house apart to install it. The large fan is installed in the ceiling of the top floor, and, because of its capacity and position, is able to pump the cooler night air into the other sections of the house.

Breakfast Nook May Cure Your Hubby's Grouch

A bright, cheery breakfast room is one of the best antidotes for "morning grouches" ever discovered, and is especially enjoyable this time of year, for it is possible to inject a gaiety and color in the breakfast "nook" which cannot be attained in the more formal dining room. There is a growing trend in homes which are not provided with a dinette, to include a breakfast suite in the kitchen. This is an especially convenient arrangement for light lunches and night snacks.



IS YOUR PROPERTY FULLY COVERED?
When heart in the dead of the night, it is a frightful word. No person is safe from it. . . . NO BUILDING IMMUNE. YOU CAN NEVER TELL WHEN OR WHERE IT WILL STRIKE.
When property is fully protected by HARTFORD insurance, not only fire, but losses from smoke and water, etc., there need be no sense of loss. . . . No apprehension.

PEAVEY-TABER CO., INC. INSURANCE — SURETY BONDS PHONE 201

We Offer YOU Homebuilders' BUILDING SERVICE



WHICH CAN'T BE EXCELLED!

From the time you start to visualize your future home 'till the last nail is driven you'll find us right on the job, helping and aiding you. Our experience in the building business is extended to you whether you're planning a ten room house or minor repairs to the backyard fence. Ask us. We'll be glad to help you.

Building Products

To meet the demand of every home-builder, we stock a variety of materials, second to none. Every one of them is a quality product and on which you'll find a fair price. Most of them have been tested with years of use—and each will bring you the satisfaction you want. We can supply you from the start to the finish. And we're able to guarantee you satisfaction from every product.

Twin Falls Lumber Co. TRUCK LANE TWIN FALLS PHONE 542 JOHN S. KIMES

APPROVAL OF SCHOOL BONDS WOULD BOOST BUILDING

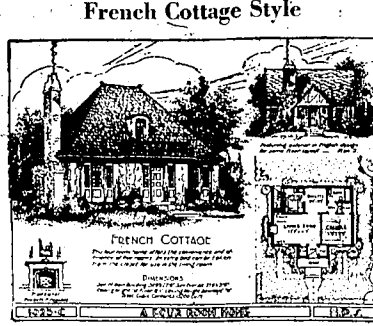
\$350,000 OUTLAY SEEN AS MAJOR AID TO BUSINESS

Funds, Dependent on Ballot May 25, Would Provide Impetus Here

Building construction work in Twin Falls will take a record-breaking leap forward after May 25 providing taxpayers vote approval of the \$350,000 school bond issue termed by Chairman George J. Ward of the board of trustees as "vitally necessary to relieve overcrowded school conditions."

The bond issue election is set for May 25 from 1 to 7 p. m. Residents of school district No. 1 who pay property or personal taxes are eligible to vote under law. Largest Impetus If approved, the \$350,000 building program will form the largest simultaneous construction impetus ever to be felt by labor and dealers in the city. Local observers declare that in addition to remedying an overcrowded school situation that is handicapping Twin Falls pupils, it also will prove an important stimulus to employment and to rate of building materials. That the program is urgently needed was emphasized in the report of Dr. Thomas R. Cole, University of Washington professor of school administration and school consultant for the state of Washington.

Here Is Program The building plans envisage the following phases: High school—remodeling and improvement program including physical education facilities are more than a dozen other necessary changes. Estimated total, \$50,000 with more probably needed if number of new steel lockers is made adequate to handle the present enrollment. Bickel school—new building. Estimated cost, \$139,410. Lincoln school—new unit to be connected to present structure. Cost, \$107,000. Washington school—addition of four rooms. Cost, \$23,560. Thorough modernizing of the lighting systems in the high school.



French Cottage Style

Garden Furniture Decorates Lawns

Every building material concern carries a line of good garden furniture that can be assembled and painted at very little cost. These pieces come in a variety of styles and are so designed to be a decided decoration to the garden or lawn. Hickory chairs in the garden are always in favor because of their ruggedness and add a note of interest to the yard, as well as a comfortable place to rest and enjoy the beauties unfolding. The "handy man" can make seats and benches that are a credit to any garden without spending but a few cents for a board or two; then if these pieces are painted white or weathered brown, or a good shade of green, he may well be proud of his handiwork.

Some Japanese (has) are dyed to improve their color. Junior high, Lincoln and Washington buildings will mean additional outlay under the program approved by the board, but the expense has been called a dramatic necessity to protect eyesight of students in the system. Present lighting facilities are termed uniformly poor. Architects for the building program are Morse, McQuaker and Lash of Twin Falls. Fiscal agent in handling of the bonds, if voted, will be Sudler, Wegener and company. Actual building work will be apportioned by competitive bids as soon as possible after the bonds are voted.

GAIN ADVISED IN LOW-COST HOUSE

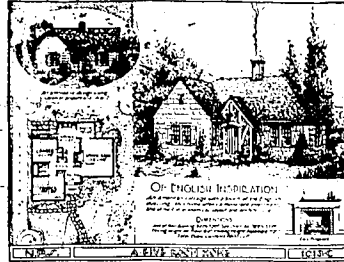
Whittier Tells Builders That Best Field Comes Under \$3,000 Price

Before the building industry can achieve complete recovery and accompanying measure of prosperity, beyond any perhaps the industry has even enjoyed, it must completely change the housing market. This simply means that it must produce and sell the kind of houses people can buy, rather than the kind the industry may like to build, says Harry Whittier, Idaho F.H.A. administrator. The plain fact is, he says, that the building industry is over-shooting its market. Too many are building houses which sell excluding land cost, for above \$3,000. Too few are building in the range below \$3,000, yet there is the real market, Mr. Whittier said. Whether the housing market is analyzed from indisputable income data or from rental data, the result is practically the same. Fully 70 per cent of the housing market was being neglected until the F.H.A. began its campaign for small homes.

Just as the motor industry met the same mass market, deluged it with fine low priced cars and put the whole nation on wheels, so the housing industry must build good houses for the masses of people at prices they can afford to pay, the administrator believes. One of the F.H.A. bulletins, "Principles of Planning Small Homes," is an effort of the administration to direct the thought of the building industry toward the production of substantial and comfortable houses costing, exclusive of land, under \$3,000. The market for such homes is almost inexhaustible. Low priced houses which can be bought on terms of from \$12 to \$20 monthly, including all charges, are in active demand.

CHILD'S ROOM Early American maple or modern are equally good styles to choose for the child's room. Painted furniture, in almost any color is suitable. Many of the new suites are decorated with legendary character which give an added zest to the room, especially for younger children. Plain, solid colored rugs or linoleum are recommended for the floors.

English Design Makes Fine Home



Many Tints Used In Painting Walls

Predicting the decorative trends for the coming year, House and Garden says, "Simply painted walls, of course, will go on in every known color. And in special instances you will see the introduction of a textured painted surface. This takes the form of gesso brushed on with long verticle strokes, rubbed down with 'rottenstone' and finished with tint in the form of a glaze which is susceptible to the natural and artificial light effects of the room."

De-Frosting Needed For Refrigerators

Heavy layers of frost on the coils of the mechanical refrigerator impair its efficiency. When the covering on the coils becomes very thick the refrigerator should be "de-frosted." During the de-frosting the wise housewife will clean out the interior, being careful to follow the instructions which comes with the refrigerator. A number of seams and gaskets can be injured by improper cleaning.

Half of all the gold in the world is held by the United States.

LIGHT WALL AID TO SIZE ILLUSION

Colors Play Important Roles In Determining Atmosphere And Expansiveness

Wall colors play a large part in creating an atmosphere of expansiveness in a room. Light tones have a tendency to make any room seem larger than it really is, while darker, more somber hues have just the opposite effect. If you are planning to re-paper a small room this spring, be sure you pick a pale color paper with a small pattern.

Be careful in selecting wall paper patterns from sample sheets. It is very difficult to get the true effect of the design from such a limited area. You may like the small sample, but despite the same pattern on the walls of the room. Most furniture stores have decoration experts who will help you make the proper selection. It doesn't pay to guess.

The same rule applies to draperies and curtains. Chintzes, cretonnes, linens and silks are always preferred in small rooms, while heavier fabrics such as tapestries should be used in large areas where there is no danger of creating a cramped, stuffy atmosphere.

Recreation Room Gives Decorator Real Opportunity

Recreation-room decoration offers a wide opportunity for color and design display not suitable to other rooms of the home.

White walls or light tints are frequently favored as they form an attractive background for bright trim such as electric blue, spring green, laquer red, with floors of terra cotta, gray, brown or dark green. Bright yellow walls bring an illusion of sunlight and with gay cretonne hangings and vividly hued furniture create a cheerful colorful room.

The variety of design and color possibilities for the decoration of these play rooms is practically unlimited. Some walls are painted in striking manner—one with a white picket fence around the bottom, was covered with garden scenes to stimulate a long vista beyond. Another was painted to resemble a ship with railing around the sides and the blue and green waves of the distance while clouds seemed to float against an azure sky. Flying fish and birds were seen in the distance. Deck furniture was used to sustain the illusion.

BUY QUALITY Faucets and valves are the working parts of the plumbing fixtures. They should be purchased on the basis of quality and not price.

To Make Your Home A Better Home

CHOOSE NORGE!

for PLUS VALUE in Home Appliances

Again Norge Leads!

Rollator Refrigeration
Come in and see the sensational new Norge LOW-TEMP Rollator Refrigerator—the refrigerator that keeps foods PRIME FRESH, with natural moisture retained, from 2 to 5 times longer than the ordinary refrigerator and with no increase in current consumption!

Concentrator Range
See the Norge line of fine cooking equipment. There is a model exactly suited to your requirements. Wide choice of convenience features, styles, colors. Never before has Norge offered such great range value.

Autobuilt Washer
With exclusive Autobuilt transmission and new Pressure-Indicator Wringer.

Dualrol Ironer
Simple control of heat, speed and pressure make this ironer easy to learn to use—fast and efficient.

REFRIGERATOR AND CHOICE OF ANY OTHER APPLIANCE FOR ONE DOWN PAYMENT AS LOW AS \$20

WE SAVE YOU MONEY



1—Through the Economy of Better Materials.

2—By Eliminating Costly Delays in Delivery.

Better Lumber

For years and years the success of Ostrander Lumber Yard has been built on Quality Building Materials. When better lumber is available, we will secure it. Our lumber is Kiln-Dried and Seasoned—squared ends and comes in exact lengths. This makes for permanent construction—lowest final cost—greatest economy.

Better Service

Our yard at 726 Shoshone West opens bright and early each morning. Experienced service men are on the job and at your service. You don't have to wait on us. Our delivery service is prompt and efficient. This means a saving to you in time and money. Try our service. We are confident you will like it. Build your home now—take advantage of the F.H.A. financing system. We are here to help you.

Ostrander Lumber Company

726 Shoshone Street West

Phone 44

Claude Brown Music Co.



GIVE US YOUR HOUSE We'll Make It A Home

"Four walls do not a castle make" . . . is this true of your house? Do you go home to a house or to a "home?" You and your family are entitled to the modern conveniences that make life worth living . . . conveniences that take the drudgery out of living . . . conveniences that will go a long way toward making your house a real "home." Detweiler Bros. Inc.,

Your Home Comfort Dealers, have these conveniences, and we will be more than willing at any time to explain them to you in detail. Every one of these appliances is the leader in its respective field. They are tried and tested by years of successful operation the country over. We will be glad to consult with you regarding your building, remodeling or home improvement plans.



Free Consultation Service
For Your Convenience

YOUR HOME DESERVES THE BEST OF THE MODERN CONVENIENCES

See the Proof here!
NEW "SUPER-DUTY" FRIGIDAIRE
WITH THE METER-MISER

Brings thrilling new Completeness in ALL 5 BASIC SERVICES For Home Refrigeration

Price As Low As \$119.50

1. GREATER ICE-ABILITY
2. GREATER STORAGE-ABILITY
3. GREATER PROTECT-ABILITY
4. GREATER DEPEND-ABILITY
5. GREATER SAVE-ABILITY

Buy only on Proof of Super-Duty . . . and save money for years to come!

MODERNIZE your KITCHEN With a New 1937 "SUPER-DUTY" FRIGIDAIRE



HARD WATER

IS RUINING YOUR COMPLEXION!

You Are Cordially Invited

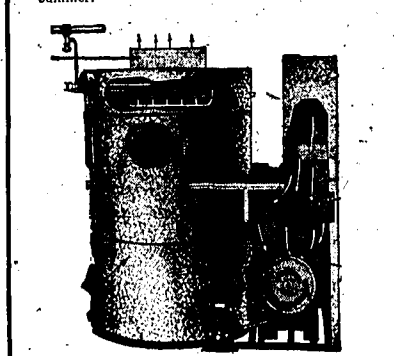
You Owe It to Yourself to Come In and Learn How You Can Have SOFT Water from Every Faucet.

Permutit WATER SOFTENING EQUIPMENT

Soft water from every faucet.

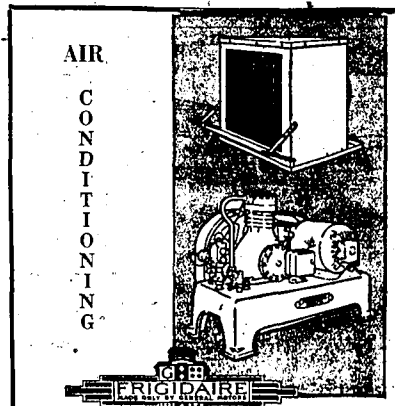
HEAT Your Home COOL Your Home

The Sunbeam offers you one complete compact unit completely conditioning the air in your home regardless of weather conditions. One unit heats your home in winter and cools your home in summer.



SUNBEAM AIR CONDITIONING UNIT

You'll Find Them All AT DETWEILER BROS., Inc.



By **FRIGIDAIRE** For Commercial or Domestic Use



IT ISN'T IF IT ISN'T Modern

GENERAL ELECTRIC Equipped

RANGES—DISHWASHERS

IRON FIREMAN automatic coal heating is your best bet



BETTER HEATING ALL AROUND

Automatic Iron Fireman coal firing regulates itself. See the thermostat at any temperature you want, and Iron Fireman holds it there.

No Coal Handling Iron Fireman feeds direct from the coal bin or bunkers in the fire—does away with coal handling.

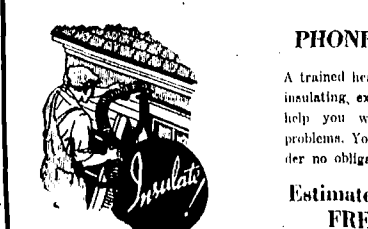
No Smoke Nuisance Iron Fireman has done away with air-stirred fire which causes smoke nuisance. By thoroughly aerating the coal as it is burning, smoke nuisance is eliminated.

Enormous Fuel Cost Savings Iron Fireman fuel costs are from 15% to 30% less than other forms of fuel. Get your share of these savings. How much can Iron Fireman save you? An Iron Fireman dealer can answer this question for you.

Clean and Convenient With dustless coal, and chimneys free from smoke, Iron Fireman is clean indoors and out.

Far More Uniform A characteristic of coal is that it gives off its heat steadily—never suddenly blazing hot one minute and completely out the next. Iron Fireman-fired homes are thoroughly situated with mellow warmth. They have plenty of heat all the time.

EVERY HOME MODERN OR NOT NEEDS "ATTIC WOOL" Insulation



PHONE 309

From the standpoint of Savings alone you should investigate Attic-Wool Insulation. Attic-Wool is equally adaptable to either new or old homes, however if you are building a new home be sure it is insulated with Attic-Wool. It will pay for itself in fuel savings and will give you a more comfortable home in which to live.

The Ideal Combination For Commercial or Domestic Heating

American Radiator Steam Heat Plus Automatic Iron Fireman

GIVES YOU Convenience and Efficiency



Detweiler Bros. Inc. SALES AND SERVICE AGENTS

STANDARD SANITARY FIXTURES for Years the Standard of QUALITY

It takes Standard Sanitary fixtures to make your bathroom modern and up-to-date. Be sure your building or remodeling plans include a set of Standard fixtures.

Sold and Installed By **DETWEILER BROS. Inc.**

We Condition Your Food, Air, and Water

Frigidaire - Iron Fireman - Air Conditioning - Permutit Water Conditions - G-E Products

DETWEILER BROS., INC.

"YOUR HOME COMFORT MERCHANTS"

The Best of Electrical Appliances Will Bear This Trade-Mark

Food Mixers Toasters
Coffee Sets Waffle Irons
Radios Sun Lamps

G-E Home Laundry Equipment

ROOFING CHECKUP GOOD PRECAUTION

Top of Your Home Ought to Get Periodical Scrutiny For Repairs

A roof that will afford necessary protection for a home must be checked periodically.

The four fundamental types of roofs each require special attention. The flat roof, popular in warm climates, should, in spite of its name, have a slight slope, of from 1/4 to 1/2 inch per foot to prevent rain from standing. Joints in the covering should be carefully checked, and disconnections should be fixed. Where this type of roof is used in a cold climate (as on porch roofs and decks), supports should be checked, and arrangements made to keep the roof cleared of snow.

Replace Shingles

Simple gable roofs require only ordinary precautions to keep them weather tight. Loose, weathered shingles should be replaced, if the roof is of wood or strips nailed together. If the covering is of composition, curled or warped roofing units should be watched for and removed.

With a hip roof the joints should be given attention, since weathering is apt to start at these points. Where the roof is broken by chimneys, seams in the roofing material should be repaired and recovered to prevent seepage. Valleys should also be gone over, since snow deposits mean added strain and, in melting, may run an interior.

Gambrel roofs, and extra generally broken by some type of dormer. Where these are of the flat type the same care must be taken. Where a roofline is broken, as in the English type of house, additional precautions must be taken, for each joint requires special attention if it is to be kept weather tight over a long period.

Watch Gutters

Particular attention should be paid to gutters and flashings, no matter what type of roof is used. Since water has a tendency to seep up as well as down, the point at which a roof is joined to the wall should be adequately protected, as should chimneys and other roof joints at an angle. Flashings should be of a good metal, carefully fastened to both roof and wall. While most gutters are of the hanging type, made of sheet metal and hung from the roof, the built-in type, where sheet metal lining is used with either metal or a wood finish on the outside, built against the wall of the house or as a part of the cornice, is attractive and worthy of consideration where gutters must be replaced.

Ridges, on older houses, are generally of wood, and require the cut off shingles at the peak of the roof. Where these are seriously weathered it is generally advisable to replace them with metal sheet metal, the method that is generally used with new construction today.

American Atmosphere in This



Thoroughly American in its convenient plan and modern arrangement, this small house nevertheless retains all of the charm of early English dwellings. Simple lines make it possible to offer the utmost in economical arrangement and architecture with a moderate investment.

The front entrance is directly into a small reception hall, a feature making for desirable privacy, and offering convenient circulation for the entire house, since the living room, kitchen, bedrooms and bath are all accessible from the reception room and the small adjoining hall.

Large Living Room

The good sized living room (12 ft. 8 in. by 15 ft.) is well lighted, and contains an open fireplace. Wide openings lead into the hall and to the dining, which is located at the rear of the house. While this room is small, plenty of space for all the pieces of furniture is allowed, and windows on two sides of the room make it cheerful and pleasant. The kitchen, also at the rear, is almost rectangular in shape, and contains built-in cases, a sink below a window, and an alcove space for the range, in addition to space for refrigerator. One door leads to a grade entrance and the basement and rear entry, and a second gives access to the front hall. This feature is one much appreciated in answering the door, and makes possible a convenient location for the telephone.

The two bedrooms, both reached through a short hall, are large and planned for convenient arrangement of furniture. Twin beds are easily accommodated in one of the rooms. The bath, located between the two bedrooms, contains a medicine chest and modern fixtures.

Closest Space

Closest space is provided in each of the bedrooms and two convenient closets open off the hall.

The house, as sketched, is of frame construction, finished in shingles and brick veneer. The design is equally well adapted to solid brick construction, stone or stucco, wide claspboards might be used for the main body of the house, with the entrance in any of the other materials or in a combination of more than one of them. The roof, depending on the amount spent on the house, might be of wood shingles, stained, of composition roofing, or tile.

It Pays TO INVESTIGATE BEFORE Remodeling, Repairing, or Building



Any plans for improving your present home or building a new one should be considered as an investment; your expenditure should pay you back in dividends of satisfaction, service and increased value. Only expert advice should be taken and acted upon.

We guarantee expert advice without obligation to you, assistance in every detail from plan to financing, trustworthy contracting service or aid in selecting a contractor.

'Outside Living Room' Offers Summer Comfort for Family

By HELEN TOWNSEND BARTON, CHICAGO, May 4 (Special).—America will spend most of this summer in the "outdoor living room" set in the sunshine and the fresh air. And during the next month, thousands of housewives will be getting furnishings ready, so that when the sun begins to shine along, and summer really arrives, the whole family can enjoy every minute of it.

The porch, lawn and garden are part of the home and should be furnished just as carefully as the interior rooms. Their good is a beautiful lawn if the members of the family and their guests must perch on camp stools... or carry heavy furniture from the living room out to the lawn (where it will proceed to tear up the grass) and then carry it back in again?

Stool Chairs

Gliders, metal chairs and tables, umbrellas, sets, bright awnings, porch shades, grass rugs... all these are part of the equipment of the furnished home. People should live outdoors just as much as possible during the warm months. It's a change that is always welcome, and every afternoon and evening spent out in the open is a "little vacation" in itself.

To continually search for something new and different is an old American custom, and this spring the makers of outdoor furnishings have done their best to fill the bill. You'd hardly recognize the new streamlined gliders as essentially the same piece of furniture as their predecessors, and they don't even faintly resemble their "ancestors" of not so long ago, the porch swing. Incidentally, the development of

better finishes for metal furniture, and of waterproof and mildew-proof fabrics for upholstery, has made the new furnishings much more serviceable.

Bright Colors

Although bright colors are all the rage for outdoor use (pure white combined with bright red, blue or green is "top") the trend is toward fairly conservative patterns. Bright bleached white rope and large tufted buttons are favorites for ornamentation. For garden umbrellas, the new square type, called the "Pagoda" style, promises to be one of the hits of the season. All of the better umbrellas are adjustable, so that they will cast cooling shadows during the hot hours of the day.

In addition to large tables and chairs, the stores are now featuring small metal cocktail and end tables, magazine racks, flower stands and similar accessories, so that the lawn may now be furnished as conveniently as the living room. The legs of these pieces are made of continuous strips of metal, so that they won't dig into the grass when moved.

Reed, Batten and Fibre

For the porch, furnishings of reed, rattan and fibre remain popular. Chairs made of these materials are much cooler than the heavily upholstered chairs for the indoors living room.

If your summer furnishings, stored away at the close of the year, appear rather shabby when they come back into the sun, buy some paint and give them a new coat of varnish. It's a good investment, not only will you improve the appearance of the pieces at least 100 per cent, but you'll help them last longer. Newly painted metal furniture will not rust... and furniture of wood also gets a new lease on life from paint jobs. A coat of varnish also helps protect outdoor furniture from sun, wind and dampness... but use only a good grade of varnish, for the cheaper varieties tend to become sticky.

A few hours of work and a little money invested at the start of the season will pay dividends in comfort and happiness every day during June, July, August and September.

REALTORS MEET ON JUNE 4 AND 5

National Association to Hold Northwest Convention in Portland

PORTLAND, May 4 (Special).—Realtors of the five northwestern states—Washington, Oregon, Idaho, Montana and Wyoming—will confer with national leaders in various fields of real estate thought at Portland, Ore., June 4 and 5. Occasion: the northwest regional convention of the national association of real estate boards, the second annual convention of its kind in this region.

The first northwest regional convention of realtors was held in Seattle, Wash., in April, 1936.

A large group of the association's national officers is expected to accompany President Paul E. Stark, Madison, Wis., to the convention. Mr. Stark will make two of the most important talks of the entire regional meet; one on the social significance of the real estate calling, one on the national association's present objectives and projects for real estate advance.

David B. Simpson, Portland; Ernest G. Day, president of the Boise realty board; and Mrs. Vera Landman, Beattie, will be other convention speakers from the region. Mrs. Landman will take the national point of view in selling and buying real estate.

J. W. Wheeler, Beattie, vice-president of the association for the region, will present.

Men leading the great specialized institutes and divisions of the association, which are the bodies making detailed studies of method in real estate appraisal, real estate management, leasing and sale of business properties, home building and farm land marketing, are on the speakers' list for the convention. They include:

E. L. Ostendorf, Cleveland, Ohio, president of the association's Appraisal Institute of real estate appraisers.

Charles B. Wanless, Springfield, Ill., chairman of the land developers and home builders' division of the association.

William A. Eastman, Seattle, regional vice president of the American Institute of real estate appraisers.

Oliver A. Moore, Portland, Ore., regional vice-chairman of the brokers' division.

THE MODERN BINK

A new bath, large drainboards, a ledge at the back, a combination shower and stopper, and a spring-mounted faucet are the distinguishing characteristics of the modern sink.

CHANGE IN HOME DESIGN EXPECTED

New Style is Predicted as Building Resumes Normal Trend

Changes in home design may be expected to come with unusual rapidity in the period just ahead because the normal flow of development has been prevented by a relatively long period of inactivity in home building, writes Miles J. Colman in a recent issue of the Review of the Society of Residential Appraisers. Colman is head of the technical division of the federal housing administration.

In points out that the concept of a modern home as an ascendant mass, with little or no lower level, vaults, and that it is quite possible to produce a modern house pleasing to the eye and harmonious with the environment.

Three Aims

Listing the basic characteristics of modern design, the author says that an attempt is being made to do three major things:

- 1—Create a plan which will make the relationship between the rooms and the present-day ways of living facilitate efficient housekeeping and permit an economical use of materials.
- 2—Permit the exterior treatment to be dictated primarily by the plan with little or no regard for traditional concepts.
- 3—Eliminate decoration of ornate, elaborate, essentially rely upon texture and color of material along with skillfully arranged masses and openings to give the house a pleasing appearance.

He looks upon the introduction of a detached house (showing of some of the efficiency of the multi-family dwelling design as an advance all along the line.

EASILY INSTALLED

A new type of shower may be installed over bathtub without shraping or cutting of the walls.

PLASTER BOARD HAS ADVANTAGES

It's Nothing Now But Right Sealing of Joints is Essential

The use of plaster board, in large sheets, for the interior walls is nothing new, but much trouble will be eliminated if the joints are properly treated. The use of wall paper or paint is applied.

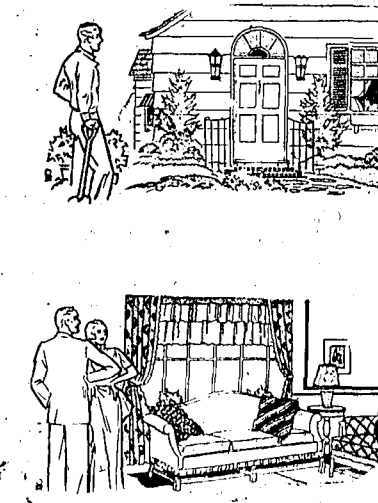
Much is to be said in favor of this material for this use. It does not show nail marks and will not crack as quickly as plaster laid over cheap wood lath which has been poorly nailed and reinforced.

Now plaster board comes with a finish surface imitating knotty pine, walnut, oak, and other woods so closely that it is hard to detect the difference from a distance of a few feet. This style board is useful for paneling work, for lobbies, offices, and such places where a better looking wall finish is desired than plain painted plaster, or where a wall is old and cracked, and needs re-facading.

The cost of this board is not much more than the plain so makes a very good medium for remodeling work. Appraisers put it on one of the new finish decorating treatments.

TIME TO MODERNIZE

Summer is the ideal time to modernize the heating plant. Conversion of a gravity type of hot water plant into a forced circulation system utilizing an electric pump will provide quicker heating and positive circulation of the water.



FREE

One of These Smart (Unfinished) Occasional Tables

Free With Each \$2.50 Purchase of Fuller Paints

Supply limited. Offer holds only from April 26-May 8, inclusive.

Look around your home now. Note the spots that need freshening and brightening. Then jot down your paint list and see us right away. It'll pay you to shop early because our supply of the free tables is limited. (Only one to a customer.)

Make a \$2.50 purchase of any of these Fuller Paints — and you get the Table Free



Fuller Pure Prepared Paint — Fuller Porch and Deck Paint — Decorat Enamel — Fullertan Floor Enamel — Lin-Var Varnish — Speedite Interior Varnish — Fullerspar Exterior Varnish — Fullergin Interior Finish.

Use Our Plan Service

REMEMBER—NO JOB IS TOO BIG FOR THE TRI-STATE TO HANDLE—NO JOB TOO SMALL FOR FULLEST COOPERATION AND ATTENTION

EXPERT ADVICE without Cost or Obligation

TRI-STATE LUMBER CO.

Filel Twin Falls Kimberly

HERE ARE HINTS FOR RUG-BUYING

Remember Each Weave Is Produced in Different Quality Grade

Important things to remember in buying your new rug is that the different weaves of rugs, such as Axminster, Wilton, Velvet and Chenille, are each produced in varying qualities. A good guidepost to these qualities is the price. In carpets and rugs you get what you pay for. Better qualities are in real demand these days. And as in other merchandise, the better the quality, the greater the satisfaction.

Styles in housekeeping change almost as quickly as styles in hats. When you hear someone saying, "I never vacuum more than once a week," recall that experiments show that with the improved carpet construction now being used in American-made, wool pile carpets and rugs, daily vacuuming is not only permissible, but even advisable for frequently traveled floor coverings.

No floor covering gets more soiled, consistent wear than stair carpet. For that reason, be sure to pick carpeting with a dense, thick wool pile surface, and order an extra foot or two to be turned under at one end for extra protection against periodical shifting so that new areas will come over the nose of the stair, thus distributing the wear.

In a well-grounded house it is the little things that count. Take the matter of rugs for example. Nine 9x12 foot rugs were universal recorders of room sizes, and floor borders varied from six inches to four feet. Today's rugs are made to fit the room, with uniform, narrow, floor borders on all sides.

Have you tried the merry-go-round plan to assure longer life and fresh beauty to your rugs? Turn your floor coverings every few weeks so fresh spots get the heavy wear. The slight shifting of new rugs is no cause for alarm. This is merely working out of short ends left in the yarn when the wool pile was cut. Fluffing will stop as soon as these ends have been removed.

Proper humidity in a room will increase the life of the wool pile carpet or rug. Wool wears longer, better, if the air in the room has a proper degree of moisture. In that respect your carpet is like a human.

Laundry Called Forgotten Room

This Housewife Offers Plan She Would Prefer

CHICAGO, May 4 (Special)—"I'd like to see more attention paid to the laundry," said Mrs. Kendall at one of the regular Monday round-table meetings of the neighborhood club. "The laundry room is the forgotten room. In many of the new houses I see it is only a pair of tubs in a dark corner of the basement. Why not a laundry on the ground floor in a small room of its own next to the kitchen? Then it could be the cheerful, convenient working place it ought to be.

Like the kitchen it should have a working counter about four feet long for sorting and sprinkling clothes, and cabinet space for storing supplies and for mending things, too. So often you want to take a stitch in time right in the laundry before you drop the things into the washer.

Some set-tubs are still too low. Thirty-six inches from the floor is 'just about right for comfort."

Washer Sale Is AT RECORD HIGH

Retail Buying of Household Laundry Equipment Soars To Unequaled Rate

CHICAGO, May 4 (Special)—Retail sales of household washers are advancing at a rate unparalleled in the history of the industry. They hit an all-time high in both March and the first quarter of 1937, according to figures revealed by J. H. Bolger, secretary of the American Washing Machine Manufacturers association.

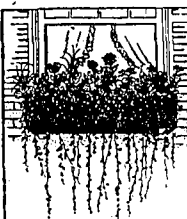
New Plaster Provides Sound-Absorbing Walls

Sound-absorbing plaster with its air pockets that prevent the reflection of sound waves, thus deadening them without excessive reverberation, controls the sound within the room. It comes in white and color, and its finished surface is of plaster finish. It is without surface wear and tear and redecorating without loss of efficiency.

HOME ARE KOLUBIK

Because the minerals found in some vegetables are soluble in water, these vegetables should be steamed or cooked in a small amount of water. A number of cooks add soda to brighten the color of green vegetables such as peas. This is not advisable, however, since the soda detroys part of the vitamins.

Enjoy Window Box Indoors and Out



Window Boxes Can Be Grown From Seed

Next to flower gardens in front yards, nothing would do more to add beauty to our too somber American cities than widespread adoption of the fashion for window boxes.

To make and plant a window box takes very little skill. A good window box should be at least six inches deep and eight inches wide, and as long as required to fit the window, except that when more than three feet long they are difficult to handle.

Constant exposure to moisture and air makes it necessary to build them of the most durable materials. Cypress is the most satisfactory wood. Florists prefer a grade called pecky cypress, which has the appearance of being worm eaten and is even better than a higher grade to withstand the wet.

Several holes half an inch in diameter should be bored in the bottom of the box to drain off excess water. For soil a mixture of three parts garden loam, one part leaf mould and one part well-decayed manure is recommended. A list of plants suitable for window boxes is given in the accompanying article, east, south or west, includes those which grow upright: Ageratum, geranium, petunia, marigold, cannas, cuphea, geraniums, heliotrope, lobelia, mignonette, nasturtium, nicotiana, pelargonium, geranium, and sweet alyssum.

Trailing plants include the balcony type petunias, tall nasturtium including Golden Gleam, ice plant, lantana, trailing lobelia, and dwarf morning glory.

For shady locations, impatiens, tuberosus rooted begonia and various ferns are recommended.

FHA PLAN HELPS LOCAL RESIDENTS

Insured Mortgage Plan Makes Acquiring Your Home Easier Matter

The insured mortgage plan of the federal housing administration is making it easier for Twin Falls people to live in their own homes. The number of applications received from lending institutions for insurance on mortgage loans secured on residential properties has shown an increase in the Idaho office of the federal housing administration each month this year. This may prove one or a number of things.

It is indicative of the general building and loan associations are showing more preference for residential mortgage loans that are insured by the federal housing administration. It also indicates that more home financing is being done as the season advances which may be attributed to the continued increase of new residential properties. It is also an indication that an increased number of home owners prefer the Federal loan plan of the federal housing administration.

The financing plan of the FHA permits home owners to borrow up to 80 per cent of the appraised value of their property and repay these loans in equal monthly payments over a term of years up to 20 years. The rate of interest on these loans is less than was the prevailing rate before the FHA was operative.

WASHER SALE IS AT RECORD HIGH

Retail Buying of Household Laundry Equipment Soars To Unequaled Rate

CHICAGO, May 4 (Special)—Retail sales of household washers are advancing at a rate unparalleled in the history of the industry. They hit an all-time high in both March and the first quarter of 1937, according to figures revealed by J. H. Bolger, secretary of the American Washing Machine Manufacturers association.

New Plaster Provides Sound-Absorbing Walls

Sound-absorbing plaster with its air pockets that prevent the reflection of sound waves, thus deadening them without excessive reverberation, controls the sound within the room. It comes in white and color, and its finished surface is of plaster finish. It is without surface wear and tear and redecorating without loss of efficiency.

HOME ARE KOLUBIK

Because the minerals found in some vegetables are soluble in water, these vegetables should be steamed or cooked in a small amount of water. A number of cooks add soda to brighten the color of green vegetables such as peas. This is not advisable, however, since the soda detroys part of the vitamins.

WOODEN WALLS MAKE CONTRAST

In houses that have a dining alcove off the living room, nice effects can be obtained by treating the walls of the alcove in wood. The contrast is pleasant and makes the space a separate unit and not as a part of the living room itself.

These wood walls may be paneled in many ways. The typical raiob panel may be used where expense is not a primary consideration, or perpendicular boards of pine or cypress or chestnut or other appropriate wood may be used, with milled or beaded joints, or for an inexpensive wall simply plywood may be erected.

The paneling may extend from floor to ceiling or may run three-fourths of the way up or may be divided about 30 inches from the floor by a chair rail. In a small house built recently in

the outskirts of Washington, plywood is used above the rail and horizontal planks of cypress are placed below, and an excellent effect is achieved. A wood cornice and simple cove moldings at each corner cover the joints of the plywood. Many other combinations can be used that will give equally good results.

STAIRWAYS LIGHTED Stairways, especially those leading to basements or attics, should be well lighted. The use of electric switches conveniently located may be the means of preventing serious accidents.

Special Roofing is Offered for Repairs

Many composition roofing companies offer special types of roofing for laying directly over the old roof. The added insulation value of such a procedure has much to recommend it, but care must be taken to see that nails and broken shingles do not tear the new roofing. Shingles can also be laid directly over an old shingle roof, but care must be taken to see that the nails extend through the old shingles and into the sheathing.

Games Played on Painted Driveway

A family that was fond of outdoor games decided to make use of the garage driveway. The cement was stained with green, and shuffleboard and badminton markings were painted in white. A driveway may be laid with funds obtained under the modernization credit plan of the federal housing administration. READ THE TIMES WANT ADS.

New Heating Systems Clean, Cool, Humidify

Heating systems in modern houses have gone far beyond the day when a furnace was expected merely to heat a house. The modern units will heat, cool, humidify and clean the air in any house. The attractive designs that most of these heating units come in, combined with the fact that they are clean and require no dirt collecting fuel storage space, make them a welcome addition to the home where an old type furnace would prevent utilizing the basement for recreation space.

...And Now for the Furniture

● In the building of HOMES, the interior furnishings play an important part, and we assume that now the HOME is nearing completion you will soon be in the market for such interior furnishings as needed. We respectfully solicit your patronage on the basis of being practical Furniture Dealers.

"A Cozy Corner for the Man in the House!" A big luxurious chair and modern end table. Built to insure real rest. Sturdy, modern style, beautifully long covering of real worth.

● Really fine furniture now featured at prices you can so easily afford to pay! We urge every home owner to inspect these decidedly tempting values. The sofa and matching chair make a mighty smart-appearing set for any living room! Trim—sleek, modern lines! Fine quality coverings! Superior workmanship. And a price agreeably moderate—

Make Your Home Furnishing Money Go Twice As Far As Hoosier's!

"FURNITURE THAT SATISFIES"

Should it be that you will use your old furniture to turn in on the new, we shall be most pleased to give you our estimate for the old furnishings.

Do you stay awake until you "take something" or do you go right to sleep on a Hoosier Bedstead in a Vanity Fair? Make the Hoosier Bedstead Bedstead that naturally adjust themselves to your body, take every point of contact. Every position you take is comfortable. Let a Hoosier Bedstead Vanity Fair take your sleeping problem once and for all.

WASHER SALE IS AT RECORD HIGH

Retail Buying of Household Laundry Equipment Soars To Unequaled Rate

Modern Desks AS LOW AS

A fine "retro-sleek" style for the up-to-the-minute home. Carefully made.

"for furniture that Satisfies"

Hoosier Furniture Co.

Elks Building PHONE 151 Twin Falls

CONSTRUCTION ACTIVITY BRINGS BUILDING BOOM TO CITY

Figure in April Totals \$115,574

A real spring building boom is underway in Twin Falls as local citizens build houses of every description, remodel their old homes and local firms construct additions, it is revealed after a study of the building permit records kept by City Clerk W. H. Eldridge.

Official figures show that new construction during the month of April totaled \$45,329 while remodeling and repair jobs reached the figure of \$70,245 for the same period, a grand total of \$115,574 in building going on at the present time or soon to start in the city of Twin Falls.

The April building permits, added to the totals of \$7,700 for January; \$13,250 for February and \$42,000 for March makes a grand total of \$178,724 in building permits issued in Twin Falls so far this year. New homes being constructed here at the present time total all the way from \$300 to \$5,000 and the records show there are 14 which are being erected at the present time, with two to start soon. Under remodeling and additions

the main item to be found is the \$50,000 improvement to the New Ferguson hotel which will see the addition of another floor to the building and construction of a convention banquet hall and completely modern cooling system. This work will get underway soon. Next in line is the \$15,000 remodeling job underway at the Twin Falls Mortuary which will see chapel space doubled, garage space added and other improvements made.

Similar building is going on adjacent to Twin Falls but, because it is outside the city limits, it cannot be counted on the city total. Much of the business, however, goes to Twin Falls merchants and they benefit even though the records of the city do not. The building is expected to continue throughout May with many people contemplating new construction and numerous additions being planned at the present time.

RECEIVING DOOR IDEA IS LAUDED

Provides Protection, Offers Convenience in Delivery Of Perishable Foods

Receptacles for milk or other perishable foods and packages offer protection to the articles, are time-saving for those delivering merchandise, and of inestimable convenience for the housekeeper. The receiver extends through an exterior wall of the kitchen, and the insulated outside door through which deliveries are made is controlled by an automatic locking device which protects deliveries from outside removal as soon as the door is closed. Operated from the inside is a pendant which unlocks the receiver for the next delivery.

SUMMER COOLING
The most economical way to cool a house in the summer is to run cold well water through coils. Home-owners have reported a cost as low as \$20 for the entire summer for the operation of a well water cooling system. The equipment used for winter air conditioning in connection with steam and hot water may be used for summer cooling with well water.

Distinction is Made Between Modern and Modernistic Homes

WASHINGTON, D. C., May 4 (Special)—In the classification of types of houses for insured mortgage loans a distinction is made by the federal housing administration between the modern and the modernistic house. A modern house, according to the definition of the administration, is a dwelling so constructed as to afford comfort, convenience, and durability within certain cost range, while the more or less special design of a so-called modernistic does not particularly add to its utility. Dwelling designs which are likely to meet with the measured approval of the administration are, therefore, other things being equal, those which more nearly conform to what is regarded as the orthodox type of house; that is, the house that is standard in construction and does not depart radically from the style of houses in its immediate vicinity.

Sloping Cellar Doors
Source of Heat Loss
Cellar doors are sources of heat losses generally overlooked. The sloping doors are particularly bad in this respect. Whenever they exist there should be an additional door at the foot of the stairs. Additions to the home may be made under the modernization credit plan of the Federal Housing administration.

FHA AIDS BUYING OF NEW HOMES

Insured Mortgage Enables Mechanic to Pay Rent To Himself

SPRINGFIELD, Ill., May 4 (Special)—How the insured mortgage system of the federal housing administration puts home ownership within the reach of all classes of people, particularly persons in the low-income brackets, is clearly shown by the experience of Carl F. Meyer, of this city. Meyer, a tractor mechanic, earning approximately \$100 per month, recently moved into a new, modern four-room home built according to the standards of the federal housing administration, at a cost of \$3,100 and financed with an insured mortgage of \$2,400. Repaying 80 per cent of the value of the property, the mortgage will be paid off in 20 years by monthly payments of \$20.55. This sum is approximately \$9 a month less than he paid for a small, two-room apartment and \$15 per month less than he could rent a four-room house in the district in which he lives. Just as the Meyer home offers an

Boiler Designed to Fit Basement Spots

With the universal desire to use basement space for recreation purposes, boiler manufacturers have given special thought to the construction and appearance of boilers.

The modern boiler with its colorful jacket of steel is handsome and attractive, particularly the de luxe models in which everything including the dampers, controls, oil burner, and gauges, are concealed or recessed within the jacket. Underneath the jacket is a thick covering of insulation which provides further assurance that all the heat of combustion will be transferred to the water. The modern home constructed and purchased under the insured mortgage system of the Federal Housing administration contains adequate and efficient heating equipment. example of the "pay yourself rent" idea, his building his own home is typical of young industrious Americans anxious to better themselves. Since his home was completed, Meyer has helped to home ownership three fellow workers who when they heard how he achieved home ownership on the insured mortgage plan, decided it was the chance they had been looking for. Hundreds of other people visited the home during its construction and upon completion. There are more than 45,000 offices in the United States.

BLINDS FACTOR IN NEW HOMES

Venetian Arrangement Helps Keep Rooms Bright And Cheery

Beauty, coupled with scientific control of heat and light, is the result found in the use of Venetian blinds in the air conditioned new homes here. The practicability of the Venetian blinds permit the regulation of the amount of light entering the room to an extent that is impossible with the ordinary type of window shade. Defects Rays Tilted upward the slats deflect the direct rays of the sun producing a comfortable indirect light that eliminates all eye strain by giving an even non-glare illumination. The light rays are scientifically reflected into every corner of the room, thus insuring the maximum amount of light with absolutely positive light control. Control of Heat Control of heat in summer is provided by the deflection of the direct rays of the sun without eliminating light. The use of Venetian blinds also permits a greater ventilation

Remodeling Makes Home Easy to Heat

A housewife had a problem on her hands with a living room that not only had grown shabby, but that was hard to heat as well. Stairs to the upper floor went up from this room making it difficult to heat.

With funds obtained from a private financial institution holding a contract with the federal housing administration, she set about to have repairs made that would correct all the faults. The fireplace was rebuilt to give heat without smoking. Then composition wall and ceiling board were put over the old walls and ceiling, giving the appearance of paneling. Drafty windows were corrected, a new door was hung, and the woodwork and floors were refinished. The old rag rugs and colonial furniture took on a new lease of life with this rejuvenated background. without having a direct draft coming into the room. The blinds in the living and dining rooms are often made of ivory colored wooden slats trimmed with bigrundy tape to harmonize with the color of the rugs. In the kitchen the tape is chocolate colored to blend with the predominant shade of the decoration. One great advantage in the use of the blinds, pointed out by the installers, is the ease with which they are kept clean. A queen wasp will produce from 10,000 to 20,000 offspring.

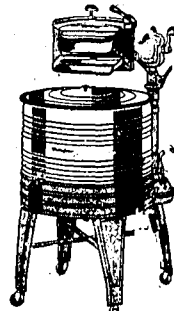


Twin Falls' Better Homes Deserve & Require Better Modern Appliances

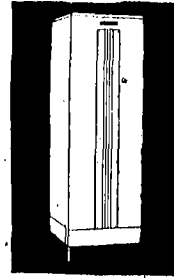


"Westinghouse Electric Cooking is Clean" It's cool, more healthful, time-saving, accurate. Advanced new models to fit every need... priced to meet the most modest budget. Let us demonstrate its economy, and tell you how easy we can make it for you to start at once enjoying the care-free joys and pleasures of modern cooking.

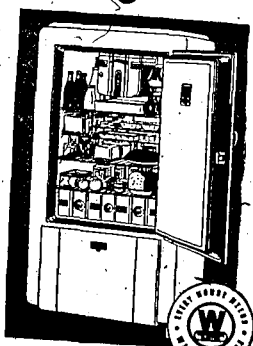
For 50 years Westinghouse has led the world in the manufacture of electrical equipment. Is it not reasonable to assume that in the future your home can enjoy no better proof of dependable service?



If you want the washer you buy to be a permanent investment in a bulky, heavy, noisy, and a lot of other things, backed by the mighty name of Westinghouse.



Now you can have... a smartly modern electric water heater with every economy feature. Our friendly budget buying plan permits you to enjoy this efficient service while paying for it.



Smooth flowing lines, streamline beauty—modern styling at its best. That's the new Westinghouse Refrigerator. And its KITCHEN PROVED! 623 scientific tests... in 80 home proving kitchens... confirm spectacular laboratory records. See for yourself how each new feature contributes to new usability and economy.

STOKOL AUTOMATIC STOKER

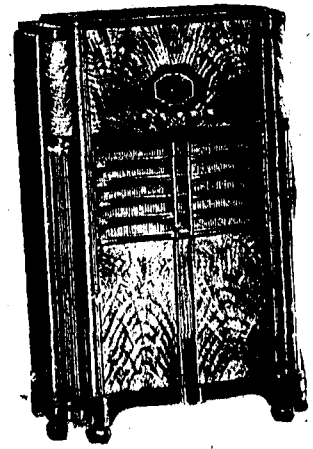
Fires Your Coal Burning Furnace For You—Saves You Money—Eliminates Drudgery—Gives You Constant, Controlled Heat



Stokol, the engineered stoker, fires your coal burning furnace automatically, economically, and with little attention. Install your Stokol now, while prices are low—terms to suit you. No complicated alterations to your present furnace—new bin-feed model feeds from any angle.

STOKOL EXCLUSIVE FEATURES • Fully Automatic—Thermometer • Automatic • Hydraulic Oil Transmission • No Soot Pipe • Airless • Simple • Safe • Clean • Dependable

Here's your answer to Automatic Heat! Install a Stokol Automatic stoker. Stokol feeds, fires and controls coal burning furnaces automatically, saves time and money, assures clean, uniform heat. Stokol is guaranteed for two years, and has many patented exclusive features.



Exclamation of admiration will be the rule when your friends see and hear this Stodden-Carlson in your home. A product of the most careful craftsmanship in the radio industry, it brings unswerving National Tone, combined with a cabinet in the new fashion—a style, set by Stodden-Carlson.

SODEN ELECTRIC



Idaho Federal Housing Chief Advises Renters to Buy Own Home

PAY SELF RENT, WHITTIER SAYS TO TWIN FALLS

Director Points to Advantage and Ease in Purchasing On Federal Plan

By HARRY WHITTIER, State Director, Federal Housing Administration

If you are one of the millions of people in the United States who are paying rent each month, did it ever occur to you that you might pay yourself rent? The building and loan association discovered long ago that there were many people eager to build or buy homes if they could only pay for them on a monthly basis.

Reports all over Idaho show that rents are going up. Word comes from rent lists boards that for the month of February, rents for single family dwellings have increased over the corresponding month of 1936 from five to ten per cent.

Rents Vary. Rents, as we have all discovered, can never be counted upon to remain the same. It is true that in some areas rents are falling and in prosperous times rents go up, but usually ahead of salaries. However, if you are paying yourself rent you know that there will be no fluctuation and you have the home you have always wanted and can improve or add to it as you wish.

The plan under which you pay yourself rent is very simple. It is based on two important considerations from your point of view. First it eliminates the worries of that terrific monster, the old fashioned rent increase. Second, it makes it possible for you to know in advance exactly what you must pay each month for the day you move into your new home until the day you own it outright. For under the federal housing system, all expenses are figured on a monthly basis. And there are never any extras and no increase in what you pay monthly. Remember, you may pay off the entire loan at any time, and if you wish, transfer it in case you want to sell. Whether your monthly rent is now \$20, or \$100, the decision is the same. You may purchase a home under the federal housing mortgage system whether your income will buy a small house or a large one.

Small Down Payment. The down payment is little enough. There are many houses being paid for under this plan today where the down payments are less than \$500, and the monthly payments, including taxes are even less. I have the case of a family in Twin Falls, who a year ago, were paying \$25 a month rent for an old-fashioned, unsatisfactory house and they were constantly calling the agent to report needed repairs. Today that same family is living in a new house of their own and paying only \$23 a month. Just paying rent to themselves! And it is a home, not just a house, something they are proud of because it is their own. They are planting trees, shrubbery, and flowers about it, beautifying it, which at the same time enhances its value. Their ownership and all the satisfaction that goes with it, is immediate, not something they are losing by postponing. They realize that time was wasted in unnecessary delay and that time is man's most valuable possession.

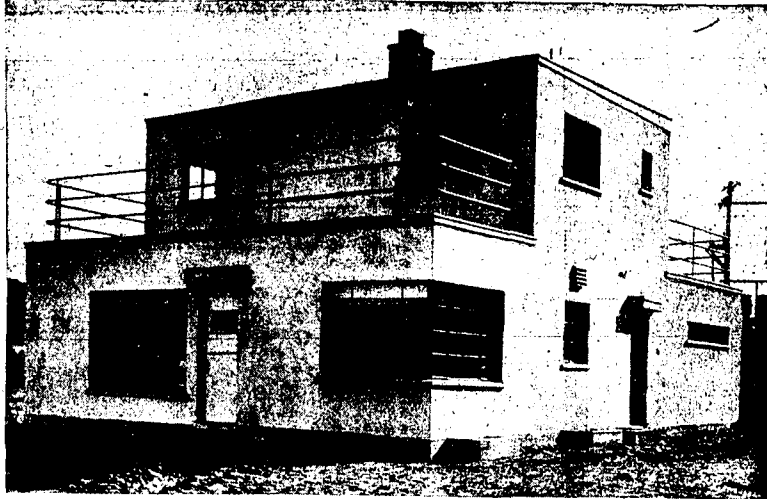
The example of this family is not unique. There is another case in southern Idaho I recall where the husband is a teacher and his wife a teacher. A sister-in-law, who also teaches, lives with them. The three combined their incomes, which may be done under the federal housing plan, and they bought a most attractive property costing \$2,850. Now they are paying rent to themselves at \$24.25 per month, and in 10 years (though 20 years is sometimes allowed) they will have no more rent to pay. Just imagine how this property will look by that time with well planned shrubbery in complete growth, flower gardens, and shade trees in foliage. You can see the outline of a three home creating improvement if you were paying rent to some other fellow.

Directions Given for Laying of Floors

New floors, an attractive feature of new houses, can be made a part of a house when remodeling is considered. It is generally wise to lay new floors in the opposite direction to the old floor, but if it is desired some type can be laid in the same direction.

When this is done a heavy blanket of paper or insulating material should be laid over the old floor first. This will eliminate the appearance of "peaks and valleys" following the contour of the old floor. Flooring now on the market can be purchased already finished on all four sides. Where special is essential in remodeling this type of flooring has much to recommend it.

Idaho Power Company's Model Home



Since its construction, thousands of persons from all sections of the United States have inspected the Idaho Power company's model home, located adjoining the company power plant at Twin falls. The model home features the latest in designing and fixtures, featuring windows and sun porches.

WALL UNIT BATH FIXTURE FAVORED

Individual Types, Ready For Installation, Available For Household

While individual shower units ready for installation, have been popular with home builders for some time, similar units for other bathroom fixtures are not as well known to many who are considering building.

Today's Trends. These units are now available for all bathroom fixtures. Prefabricated, they follow the general trend in the building industry toward simplification of construction.

The panels are of steel, and each contains all necessary piping, thus eliminating the necessity for unusually thick walls. They can be used individually or interlocked with other panels to make the entire bathroom a complete unit. Each unit is complete in itself; the lavatory units, for example, contain all piping, a medicine chest, mirror, indirect lighting and an overhead compartment for towels.

Any decorative finish can be used with the units; they are particularly attractive when merely enameled.

Easy Installation. There is, of course, a considerable saving in labor cost, since the installation can be completed in only a few operations, and there is no duplication of materials and time.

The units are easily adapted to present day construction methods, whether in new work or remodeling, and the simplicity of construction makes it apparent that upkeep cost would be small.

MANITOBA SEES NEW GOLD BOOM

Work Commences on Sinking Of Huge Shaft in Canada Province

WINNIPEG, Man., (U.P.)—Manitoba gold mines are prepared for one of the most active seasons of recent years.

Manitowik Lake Gold Mines, Ltd., plans to begin shaft sinking immediately on its property in the Island Lake area. Since early in February a crew has been engaged in general preparatory operations and already 500 cords of wood have been cut, camp buildings erected and

a steam plant, capable of sinking to 500 feet, assembled at the shaft site.

The boilers, water tanks and steel shaper are set up and the foundations for the compressor poured, and it is expected the head frame will be ready for sinking shortly.

The property consists of 25 mineral claims on High Rock Island, approximately 12 miles west of the Island Lake mines property.

A. J. McLaren, the company's consulting engineer, said he considered this property an excellent prospect. The vein maintains its strength with remarkable uniformity over an exposed distance of 600 feet.

TRAILER CAMPS

With the increasing number of people traveling by trailer, several state legislatures are considering bills which would place the regulation of trailer camps under the control of the state board of health.

FIXTURES DECIDE IN BACKGROUNDS

If Furnishings Are Elaborate, Then Walls, Rooms Should Be Simple

A simple background is effective in almost any type of room. If the furnishings are simple, a plain background is necessary, and if the furnishings are elaborate, a simple background shows them off to advantage.

One home owner set about making the living room of a recently purchased house suitable for the family furniture. Walls were covered with a rough plaster, in sand color. The ceiling was beamed. A composition floor covering resembling tile

was laid. The mantel was removed from the fireplace, giving a modern effect. Yellow brick was used for the hearth.

Between fireplace and window bookcases were built in, but the opposite side of the fireplace, near the door leading into the hall, was untouched. Wall brackets were placed over the fireplace, to provide adequate illumination for the painting which was hung there.

The furniture for which this room was planned was of the heavy Jacobean type. Beds and easy chairs were upholstered in a copper velvet, with a barrel chair done in gold and an occasional chair in blue. Bright blue and green were used as color accents.

NEW-TYPE BOILER

A new all-purpose boiler which operates with high efficiency with liquid, gas, or solid fuel has recently been introduced. The boiler can be used for hot water, steam, or vapor heating, and will also heat the domestic water supply in the summer as well as winter.

NAVY TO RETIRE 66 SHIPS BY '38

SAN DIEGO, Calif. (U.P.)—During the next 20 months the United States navy will place at least 66 ships on the "retired list," it was learned in naval circles here today.

The majority of these vessels will be destroyers and submarines which now are based at San Diego and which will be replaced by newer fighting craft.

By the end of the 1938 fiscal year, 32 San Diego-owned destroyers will have been decommissioned, along with three submarines.

Thirteen other destroyers will lose their places on Navy lists before July, 1938.

There are more than 115,000,000 sheep in Australia.

Advertisement for Fire Insurance and Safeguard Your Home. Includes text: 'Fire Insurance is a wise step! For ease of mind—for security—take out a policy now!' and 'Reasonable Rates Only \$7.00 per \$1000 insures your home in Twin Falls for a period of 3 years.' Also features a small illustration of a person and the name 'J. E. ROBERTS-AGENCY'.

Advertisement for wiring services. Text: 'Built Last Year ... BUT IT NEEDS RE-WIRING ALREADY! When You Build or Re-model SAVE ... by Adequate Wiring'.

Large advertisement for Idaho Power featuring a kitchen illustration and a cartoon character. Text: '2/3 of your steps... eliminated!' and 'ONE AND ONE-HALF MILES of walking to cook dinner for five' is the result of a test taken in an old-fashioned kitchen. Astounding but true! Back and forth ... pantry to cabinet, cabinet to pantry ... table to pantry to cabinet and back again ... refrigerator to sink to stove and on endlessly! No wonder the housewife is tired when her day is over.'

IDAHO R A MAKES \$1,433,700 LOANS

Resettlement Administration Marks 2nd Anniversary On April 30

PORTLAND, May 4 (Special) — April 30 marked the second anniversary of the resettlement administration's attack on land misuse and rural poverty in Idaho, today announced Walter A. Duffy, regional director. Established by executive order of the President two years ago, RA was officially transferred to the U. S. department of agriculture, January 1, 1937, as part of Secretary Wallace's approach to problems of low-income farm families and unwise land policies.

Idaho's rehabilitation program, directed by D. L. Bush, Boise, has made standard loans totaling \$1,433,700 to 2,280 farm families lacking credit facilities for feed, seed, livestock and other required capital goods, and subsistence grants to 3,333 destitute farm families.

Each loan was accompanied by a practical farm and home plan insuring a livelihood for the family and ability to repay the loan. Repayment on installments currently due already total \$277,481, although loans run from three to five years. Hundreds of farm families from drought areas have been extended rehabilitation aid.

Supplementing the rehabilitation program L. K. Baum, community and cooperative service specialist, has established 101 cooperative canning equipment, cleaned, sired, blasting powder, farming equipment and similar services for 1,008 low-income and rehabilitation families.

Farm — Voluntary county farm debt adjustment committees working with R. J. Lloyd, state supervisor, have effected adjustments between debtors and creditors in 654 cases with debts totaling \$2,193,000 reduced 37 per cent.

Carrying out a program of land use adjustment, acquisition of 130,400 acres of sub-standard wheat and grazing lands in Owyhee county for retirement from agricultural use is 45 per cent completed. Checks totaling \$166,800 have been paid to 80 residential and 123 non-residential owners, the total purchase price being \$407,300. R. R. Best, Malad, is project manager.

Tough Plate Glass is New Building Material
A plate glass of extra strength and toughness has recently been developed. It is highly polished, perfectly transparent, and strong enough to support five times the weight that ordinary plate glass can

carry and will bend five times as far without breaking. This durable glass may be substituted for wire glass or exterior and interior wire guards now being used where added protection is required in buildings.

WINDING STAIRS O. K.
In a stair that turns a corner, winding steps are perfectly easy and safe if only two are set in a 90-degree turn. Such steps allow ample floor space where one normally steps. To divide this 90 degrees into three steps makes unsafe footing.

READ THE TIMES WANT ADS.

FARM BECOMES INDIAN MUSEUM

North Dakota Ranchers Make Hobby of Collecting Ancient Relics

BOTTINEAU, N. Dak. (U.S.) — On the farm of Mr. and Mrs. Henry Klebe near here is one of the most novel and interesting collections of Indian trophies and relics in the entire northwest.

The Klebe farm is several miles from Bottineau in the Turtle mountains.

Since childhood, Klebe has been captivated by the addition, place by place, to his fund of knowledge and his visible collection of what manner of life the Indians lived in this territory before the white man moved in.

The farm itself is pitched in the heart of a country rich in Indian history and legend. The territory, therefore has yielded many striking articles to the home museum, ranging from an Indian skull with arrowheads lodged in the cranium and vertebra, to buffalo horns dug from the garden—in addition to countless arrowheads, stone hammers, etc.

One of the most valuable articles in the Klebe collection is a mounted group of arrowheads of all sizes and descriptions, numbering among them at least one arrowhead found in each state of the union. This particular display also includes arrowheads from Canada, the Mexican States, and the South American Incas.

Compact Heating Units Adapted to Old Homes

Heating experts have constructed a graceful unit 40 per cent smaller in space without loss in efficiency. Many sizes are available to fit into almost any niche or setting. These "vest-pocket" radiators are adapted equally for steam, hot water, vapor, or vacuum heating systems. Old houses are brought up to date by their use, and smartness is added to new construction. In the modernization of old buildings more room space is made available by the installation of these smaller units, and vastly improved radiation and general heating service is provided.

Wide Doorway Gives Air of Spaciousness

A wide doorway from hall to living room creates a feeling of spaciousness. If a home owner contemplates the widening of a narrow doorway, however, he must first secure himself that wall framing which acts as support for the floor above is amply strong to do its duty after some of it has been removed to widen the doorway.

It may be necessary to substitute two stouter timbers at the sides of the opening for the studding which now carries the weight of the floor above. The new timbers and wall and a heavier horizontal member to extend from the top of one of the heavier uprights to that of the other.

MEMORABLE EFFECT
The installation of the design of the plumbing fixtures in a bathroom creates an ensemble effect. The fixtures as well as the showerheads, faucets, and valves are so designed that they go together.

PHONE 603 144 3rd AVE.-SO.

How Many Rented Apartments Would You Trade for ONE Home You Can Call YOUR OWN?

A place with beautiful home-like surroundings and every necessary convenience is now within your means, and locations are more than desirable.

We'll Help You With Your Plans and Estimating
Our planning service covers both remodeling and new home construction. Estimates will be furnished without obligation on your part.

Wellners' Planing Mill
"LET US BUILD YOUR HOME"

Just Like Your Home— A Dexter Washer

Is An Investment From Which The Whole Family Benefits

"Dollar for Dollar" there are few investments you could make which pay as big a yearly dividend to the happiness of your home as a Dexter Washer.

Washes In Half The Time

Until you have actually washed with a Dexter Double Tub Washer with its convenient Two Successive Suds methods, you cannot fully appreciate its many advantages. No soaking — no boiling — no rubbing by hand.

Let Us Demonstrate in Your Home

Moon's Paint & Furniture Store
PHONE 5

Stewart-Warner Refrigerator Is Leaping To The Front In Sales Volume

America Is Buying Them By The Thousands

Last Year The Sales Increased By 127% While The Refrigerator Industry Gained Only 29%

It's Here Brand New 1937 STEWART-WARNER With 32 Great Features

The Only Refrigerator With SAV-A-STEP!
... the swinging triple-shelf... PLUSH Slid-A-Trey, Lighted 16-Point Cold Control Dial, Vapor-Sealed Preserver Door — and 26 others that bring you MORE FEATURES FOR YOUR MONEY

NO DOWN PAYMENT 3 YEARS TO PAY

For A Better Home Buy A STEWART-WARNER

MOON'S PAINT & FURNITURE STORE

And Associated STEWART-WARNER Dealers

APPLIANCE SALES CO. (Formerly Bob Miller's Sales Co.)

JEROME—Geo. Prentice, Mgr. Twin Falls—Bob Miller, Mgr. BOHL—L. Gribble, Mgr.

H & S TRADE STORE GOODING A. H. GARRARD BURLEY
WILSON JEWELRY BOHL GREGORY HDW. CO. RUPERT

KNOW FHA DATA, REALTORS JURGED

Boost in Sales and Added Satisfaction to Buyers Offered by Hummel

Immediate cash sales, increased satisfaction to home buyers and other advantages may be derived by real estate operators who impress their selling organizations with the advantages to be gained from a clear knowledge of the federal housing administration's insured mortgage system, F. C. Hummel, chief underwriter for Idaho, pointed out today.

Mr. Hummel's comment followed the discovery that in frequent instances real estate salesmen evince lack of knowledge of this form of insured home financing.

"To remedy this situation," Mr. Hummel said, "and at the same time provide a benefit to the real estate business, our office is open at all times to provide such information. We will arrange group meetings or send representatives to sales centers whenever there is an opportunity to add to the general knowledge concerning insured mortgage financing."

There are actual cases where the salesman knows less about the insured mortgage system than prospective buyers. In such instances, real estate organizations may increase this form of business and benefit by the immediate cash payments in full which they receive when a mortgage is insured. After that, the bank handles the convenient, monthly payments.

Loss Opportunity
"Many salesmen are losing great opportunities to make sales from lack of knowledge of the federal housing administration plan. Real estate men who wish to educate their salesmen along these lines have access to any or all of our facilities to improve their organization's knowledge along these lines."

Mr. Hummel explained that throughout the past year numerous real estate organizations have met in group conferences with experts from the federal housing administration's district office and that additional groups have been acquainted with the insured mortgage system at meetings conducted by housing administration workers in towns and villages adjacent to the district.

STATE OPERATES TRAILER SCHOOL TO AID MOTHERS

MADISON, Wis. (AP)—The Wisconsin board of health this month began to bring "visual instruction to motherhood" to women of the state's rural areas in a house trailer.

The trailer is equipped for showing sound movies of child care to audiences of 15 women, according to Dr. Amy Louise Hunter, supervisor of the state board's bureau of maternal and child health.

The "rolling classroom," Dr. Hunter said, is designed to reach the young women and mothers in the state's thinly populated areas by the most practical tie that connects them with their state government—our fine highway system.

She pointed out that Wisconsin pioneered with traveling education in 1921 when the state board of health used a truck called the "Child Welfare Special," in conducting health centers in small communities. The truck served six years and was instrumental in demonstrating to the state the value of health examinations, Dr. Hunter said.

ENGINEER TRIES IRON PAVEMENT TO END SKIDDING

MINNEAPOLIS (AP)—Prof. E. W. Davis, superintendent of the mines experiment station of the University of Minnesota, has a job with a double purpose—highway safety and an additional market for Minnesota iron ore.

Davis was detailed by the state to try to discover a means of building safe highways with iron surfacing. A new market is sought for the vast low grade iron ore mined in Minnesota.

Extensive tests have been made and further ones are planned by Davis and his staff.

After more than a year's experiments, Davis has designed a surfacing of iron blocks which prevents forward skidding by an automobile. Tests have proved that another design prevents the skidding to a greater extent than it has been on concrete.

Township Urges Change Name of 'No God Road'

NEWARK, O. (AP)—Majesty township trustees have asked County Engineer Charles O'Neil to change the name of No God road.

The highway has borne the title for two years. Legend has it that a stranger traveling over the road one Sunday saw farmers at work and asked why the Sabbath was not observed.

"All days are alike," a resident replied.

"Don't you know God created the sabbath?"

"God?" the native is said to have asked, "Who's he?"

Perfect X-Ray Camera

LONDON (AP)—An X-ray camera which will take moving pictures has been perfected by a British radiologist.

The invention, due to a doctor to take fast-moving X-ray pictures, and then show it down so that he may study it in detail, a feat which has hitherto been impossible. It is expected to prove a great aid to the study of gastric, abdominal and respiratory illnesses.

The House That Went to College

(By NEA Service)

NEW YORK.—Set down on an old plantation in Tennessee is the first house that ever went to college. Owned by Mrs. Louise Burr Jacobs, it matrimoniated at George Peabody College for Teachers, a graduate school affiliated with Vanderbilt university, last year, and has just been graduated, a perfect picture of the old south.

Never before was a house built as this one, and it is comfortable and convenient—modern as this evening's newspaper.

Mrs. Jacobs has been for years an enthusiast on the subjects of the old southern home and Tennessee architecture. Two years ago she enrolled as a special student in a home-planning course. During a Sunday afternoon picnic at which she entertained the class of twenty-six students on the wooded land of her Harpeth river estate, thirteen miles from Nashville, she conceived the idea of turning the construction of her home over to the class in home-planning.

Real Action
"We've talked theory," she said, but here's a chance to put our knowledge into real action. I'll sit only as a member of the class until the time comes when a decision is made with which I don't agree. Then I'll speak up, because after all I have to live in the house. But I'll be open-minded, and with the combined judgment of the class, I think we can make this the perfect Tennessee home."

So the class went to work. The students did the surveying, drawing and blueprinting work drawn up, discussed and voted upon. Materials were studied, lumber yards were visited, bids were collected and contracts let after each step was approved by the entire class on every point.

Much Research
From the asphalt shingle roof, tinted a beautiful green to blend with the foliage that shelters the home, down to the sturdy concrete foundation, no piece of material was put into this unique "thesis" of stone and lumber. Daily, there were conferences with contractor and foreman as the southern pine order, stained to bring out the greens, yellows and browns of the landscape, took shape.

"I want a real old double construction fireplace," said Mrs. Jacobs one morning. She a fireplace was used for cooking outside as well as inside. In the summer especially, when the old-fashioned southern barbecue were all the rage, it was necessary to have some place outside to cook, because it was too hot to do it inside.

The search started. But in all the countryside, not a single such relic of the slave days could be found. So the search became a search. From books and pictures and ancient family archives finally came the material. The result is the only double construction fireplace of authentic lines in Tennessee. Built of field-stone from the fence constructed on the plantation by slave labor a century ago, here's a fireplace that would fool Uncle Tom himself.

It is furnished with old southern antiques with the exception of the bedrooms and kitchen. Beautiful hooked rugs, made by Mrs. Jacobs herself, are used throughout the whole house.

The walls are light nut brown. Dark, unfinished wood ceilings are being left to age, and in a few years will take on a light brown.

The kitchen is entirely electric, with built-in cabinets. There are two baths, one upstairs and one down, which are also completely modern. Both are done in green with chrome fixtures. The walls and floors are linoleum.

There are no ceiling or wall fixtures. The whole house is wired for electric fixtures operated by switches on the wall, rather than on the lamps.



The double construction fireplace, authentic reproduction of "before the war" plantation fireplaces. One of many interesting features of the "House That Went to College." The old meets the new in this thoroughly modernized representation of an old Tennessee plantation home. The fireplace is equipped to bake everything from corn bread to wild turkey, but the electric equipment which marks the entire house will probably be used much more.

"Glow Old Gracefully," Medical Advice at 40

ALBANY, N. Y. (AP)—"Be good to your heart, by keeping your activities within your capacities," says the New York state medical society.

"Every person who reaches 40 should give a little thought how to avoid stress and strain, yet get as much work done and perhaps more real enjoyment in life," said the society.

"At this age," the society quoted "a wise doctor," "everyone should begin to learn to glow old gracefully."

Dilemma Solved Pasadena, Calif. City

PASADENA, Calif. (AP)—This city's name will not have to be shortened. When the Pasadena Junior Chamber of Commerce decided to advertise the city by painting the name of the city on a 100,000 square foot space, it failed to reckon with the paint. It got as far as "Pas" when the paint was exhausted. Rather than shorten the name of the city municipal authorities delved into the city's store of paint and donated enough to complete the name.

Missouri is Skeptical Of Painless Dentists

JEFFERSON CITY, Mo. (AP)—There may be painless dentists in Missouri but they are prohibited from advertising by an act approved by the legislature and signed by Gov. Lloyd C. Stark.

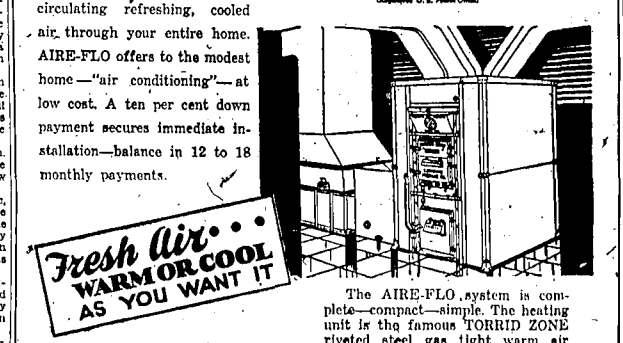
The statute also forbids dentists to advertise their prices and limits the size of letters on office nametags to seven inches.

The bill was sponsored by Dr. J. G. Christy, speaker of the house and a practicing dentist.

READ THE TIMES WANT ADS

Perfect Comfort

Summer is coming and with it blazing hot days. AIRE-FLO will make your home cool by circulating refreshing, cooled air through your entire home. AIRE-FLO offers to the modest home—"air conditioning"—at low cost. A ten per cent down payment secures immediate installation—balance in 12 to 18 monthly payments.

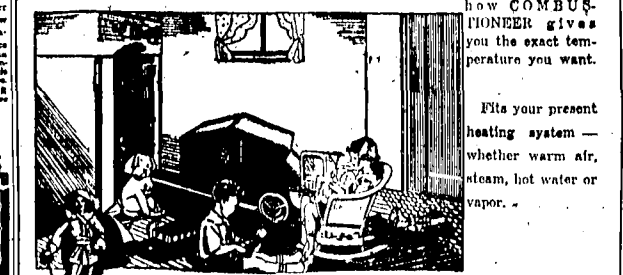


Fresh Air... WARM OR COOL AS YOU WANT IT

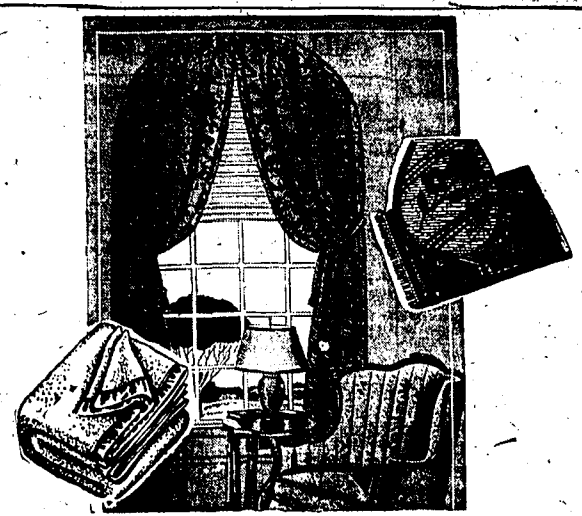
Completely Automatic Coal Heating....

A home comfort you have never experienced before—a saving in fuel that, in a short time, will pay for your COMBUSTIONEER. No other form of home heating—gas, oil, or even hand-fired coal—can approach COMBUSTIONEER AUTOMATIC HEAT in economy—burns the low priced sizes of bituminous coal.

EASY TO OWN... LET US DEMONSTRATE. Come in.



COMBUSTIONEER FURNASTOKER
Brizee Metal Works
227 2nd Ave. East Phone 10



Spring Time... May Time... Clean Time

Why not call us today to handle your spring housecleaning problems? Just turn your drapes, upholstery, bedspreads, blankets, rugs and other household accessories over to our driver. In a few days they'll be returned fresh and clean, ready for use. When articles have been Sanitoned you know that all imbedded dirt has been removed and that they are free from moths.

Winter coats, too, should be Sanitoned before they are stored...



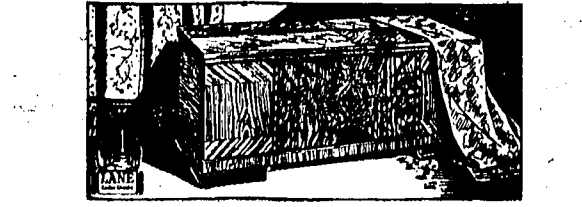
PARISIAN INC.

ATTEND THE SENIOR CLASS PLAY — "NO MORE FRONTIER" To Be Presented May 12, 13 and 14. Deals with Frontier Days of This Vicinity!



Pages from the Diaries of American Women

- 1635 "Today, from the patternmaker's, with my father's blessings, came a sturdy chest of good size. It is to be nice..."
- 1732 "... finished making a blanket today and put it away in my dowry chest..."
- 1789 "Saw the inauguration of General Washington today... started patchwork quilt for my dowry chest..."
- 1865 "Hannah Bob will be home from the army next week! Spent afternoon going over my hope chest... It will not be long now..."
- 1915 "Saw 'The Chocolate Soldier' with Frank last night. Finished crocheting my pair of pillowcases. They look swell... put them away in my hope chest..."
- 1936 "I love my Lane Cedar Chest and have pride of place collecting for it." Jess Parker.



A Graduation Gift Steeped in the Romance of the Past

Lane is the glorified hope chest of today. This modern cedar chest combines the beauty and romance of the past with exclusive features which make every Lane absolutely mothproof. As evidence of this guaranteed protection, you get a moth insurance policy written by one of the world's largest insurance companies. Don't be satisfied with less.

We will be most happy to have you inspect our many pleasing Lane models. For the girl graduate—for any girl or young woman—no finer or more acceptable gift is conceivable. Convenient terms.

The Jean Parker Hope Chest shown above is as smartly modern as its name. On the outside, it has the loveliest of Oriental and American woods, while the inside is of the choicest aromatic red cedar, 3/4 inch thick in accordance with U.S. Government recommendations for a moth-killing cedar chest. Center panels stamped without bordered with marquetry. Equipped with the Lane Automatic Rising Tray.

For Furniture That Satisfies
Hoosier Furniture Co.
Phone 151 — — Elks Bldg.

INDIRECT LIGHT IN MANY HOMES

Less Strain on Eyes Provided By Latest of Modern House Fixtures

Total indirect lighting—that until now had been used only in public buildings and large stores—is a regular feature of many new homes.

More light with less strain to the eyes is provided by the latest modern fixtures.

Dining rooms are equipped with a large cream colored fixture trimmed in colonial gold, which casts a bright diffused illumination toward the ceiling from an aluminum reflector within the interior of the fixture.

The interior of the fixture holds three bulbs which can be regulated from the bottom to provide light of 100, 200 or 300-watt intensity.

Beds with Decorations

Although the fixture is trimmed with variegated pie-crust edge and is colonial in design, it is modeled to blend with the modern decoration of the home.

A similar total indirect lighting fixture has been installed in the dining room.

The breakfast room adjoining the kitchen is provided with a special semi-direct glass reflector trimmed in ivory and gold that is designed to give the room a soft and cozy atmosphere.

A large globe of opaque white glass, set in a base of gleaming chromium in the center of the kitchen ceiling is large enough to hold a 100-watt bulb. This center fixture is supplemented by recessed light flush with the ceiling over the sink and eliminates the usual shadow made by the person working over the sink. This unusual indirect light is projected through a white diffusing ground glass.

Bedroom Fixtures

Bedroom fixtures are cream colored with ivory and gold metal trim designed to give a semi-light. The neutral cream finish has been used because it blends with every style of decoration and color.

HAZARD OF FIRE CAUSES PROBLEM

Twenty-Two Per Cent of U.S. Nation Demands Aid Against Ravages

In the United States there are now 823 municipalities containing 27,534,000 people—representing 22 per cent of the national population—which demand protection from fire hazards.

The ever present danger of fire in home dwellings has enforced this ruling as a precautionary measure and as a safeguard to lives and property.

It is a reminder, too, to the American home owner of the advisability of utilizing every means available during the construction or modernization of his home to promote safety and to protect his family against fire hazards, federal housing administration inspected homes must meet definite requirements in this field.

Offset Risk

On the market today are materials, machinery, and equipment, designed and constructed to offset fire risk in the home. Their use may mean security from danger.

Statistics indicate that the operators of manufacturing and mercantile establishments through constant vigilance and strict observance of fire ordinances have reduced the number of fires occurring in such places of business. Fires in home dwellings, however, have increased until now between 25 and 40 per cent of all fires in the country occur in dwellings.

Frequent Fires

It is estimated that a dwelling-house fire occurs every two minutes and that the total loss from home fires alone amounts to more than \$48,000,000. According to Percy Bugbee, expert of the National Fire Protective Association, much of this total sum might have been saved, because the great majority of dwelling fires may be traced to causes easily corrected. Careless disposal of rubbish, combustible roof, defective or dirty chimneys, thoughtless use of matches, and improper use of kerosene and gasoline are responsible for many of these fires which sometimes cause serious disasters and always mean disturbing damage.

Doctor Sees Peanuts Gaining New Richness

ORLANDO, Fla., (AP) — Peanut eating baseball fans soon will be scooping peanuts into their victrolas along with their daily amusements this summer, believes Dr. Charles Northen of this city, discoverer of natural vitamin E.

He explained that these elements when added to the soil in which peanuts are produced, not only insure bigger and better peanuts and more of them, but, actually add nutritious values to the unsalted meals that come in small paper bags.

All this apparently will mean a greater prosperity for the peanut grower, but equally important, said Dr. Northen, will increase the health of those who eat the goobers.

EXTRA BATHROOMS

Unused spaces such as closets, hall-ends, and parts of bedrooms may be converted into bathrooms or first-floor "powder rooms." A space 3 by 4 1/2 feet is sufficient for a powder room.

"SHELF-BACK"

The lavatory with a shelf-back has become one of the most popular plumbing fixtures. The shelf is 4 and 1/2 inches wide and is a convenient place for toilet articles.

An Opportunity to Brighten Home

(By NEA Service)

NEW YORK — Whether you intend to refurnish completely or merely replace a few pieces here and there, 1937 furniture sales are sure to appeal to your taste, not to mention your pocketbook.

This really is the time to do something about the coffee table you got for a wedding present and never have liked. From neat little numbers with mirror, glass or white leather tops to an expensive antique model of solid walnut with a black marble top (46 inches square), one of these will make a party incident of a simple gesture like parting after dinner coffee.

Other little tables are utilitarian as well as decorative. One, for instance, has space for magazine, (providing you don't save them from month to month), two boxes for ash tray, a cigarette box and, believe it or not, grooves for your husband's pipes. Another (Duncan Phyfe) has a round top which can be twisted about without causing the base to quiver even a little bit. This, in an era of wobbly tables, is something!

Now Is The Time

You can be a keeper-upper-with-the-Joneses and get a pure white leather divan or easy chair (available, of course), or the more conservative shopper everyone expects you to be and get some of the featured Eighteenth-Century pieces in highly polished mahogany. In either case, you'll find something in excellent taste but which won't ruin your budget.

For those with a penchant for the modern, furniture designers are including in the February (and March) catalogues, as well as left-overs. Strictly modern breakfast room tables, chairs, and such in walnut veneer and natural bleached walnut are simply handsome.

Fun In This Past

This certainly is the deal month to do something about your basement. Did you ever stop to think how much space is wasted down there? Couldn't it be a game room, gymnasium for your children or merely a quaint, tavern-like place to entertain friends?

Wallboards, paints, floor coverings, curtains and light fixtures are on sale now, too, you know. Get the entire family to enter into the fun of adding an extra room to your home simply by fixing up the cellar. Sister could make curtains, brother might help Dad put on wallboard, paint or, if you want the natural bricks to show, help with the polishing. The job takes time and patience but not much money. Thousands of families are doing it.

READ THE TIMES WANT ADS.



BELOW: The corner of the bedroom shows a generous use of the print motif in the rug flooring, vanity chair and wall paper. The massive dresser affords drawer space. The odd chair-cushion enhances the room's quaint effect.

ABOVE: The living room features light furniture against a background of dark tables and rug — the new note in furnishing. The wide valance on the window arrangement is a novel device for making the window appear shorter. (From R. H. Macy's New York.)

WINTER AIR CONDITIONERS

Seven manufacturers are now offering various types of winter air conditioners made especially for use with hot water, steam and vapor heating plants. The equipment provides a constant flow of cleaned and humidified air. The heating is done with radiators or convectors and is separate from the conditioning equipment, thus offering greater flexibility. While most manufacturers offer a central conditioning plant located in the basement, others offer unit conditioners which are placed in the rooms.

PACT FORBIDS CAGING BIRDS FROM MEXICO

NEW ORLEANS (AP)—Prosecutions for possession of caged wild song birds were indicated here as federal officials prepared to enforce the amended migratory bird treaty. Formerly the treaty was in operation only between the United States and Canada, but inclusion of Mexico provides protection for birds wintering in the southern country. Under the classifications of migratory birds are: mocking birds, Indigo and painted buntings, Louisiana summer mallard, fulvous tree duck, the white wing, Eastern ground doves and 149 other species.

BETTER PLUMBERS

How to provide the United States with more and better trained apprentice plumbers will be one of the most important subjects to be discussed at the 55th annual convention of the National Association of Master Plumbers in Atlantic City, May 24-27.

**Municipal Docket Has
8-Year-Old Civil Case**

LORAIN, O., (AP) — Civil case number 7-81 on the municipal docket, pending for eight years, is to come to trial soon. The case, a claim for a small sum of money, was filed in 1929. During the eight years it awaited trial, 10,000 others were filed.

CAST IRON LISTS

Cast iron water mains installed when John Quincy Adams was president are still in service in Philadelphia.

All America Is Talking... Planning Building HOMES!



But Not From Just Any Old Set Of Plans...

They want their home to conform with their own ideas . . . old fashioned plan books are a thing of the past. The modern young couple of today wants something a little different and better than the ordinary . . . they are modern with modern ideas. They know what they want and where they want it in their home. They're smart too, because it's just as economical and in many cases more so. Let us build it on paper first . . . Home Lumber and Coal Co. customers have a regular clearing house for ideas at your disposal in our planning department.

FREE Home Designing and Planning Service For Our Customers . . .

Our services are at your disposal from the time you plan your home until the time the home is ready for occupancy. Visit our offices at and see for yourself actual photographs of well planned homes designed and built in Southern Idaho.

We Help You Get The Money!

For your convenience we suggest many reliable sources from which you may borrow the money to pay for every detail . . . and your government is behind most of these sources . . . guaranteeing the safety and protection to your loan.

HOME LUMBER And Coal Company

"EVERYTHING TO BUILD ANYTHING"

Krengel's Hardware



Buy Now! Save On PAINTS

A Standout Selection of Choice Quality Paints . . .
For added beauty and protection to your home this quality tested paint will work wonders . . .



Have A Modern Bath

We Carry a Complete Supply of The Newest Plumbing Fixtures. The smartest, most practical enamelyaro for your bathroom at prices that express real economy values.



Real Savings On All Electrical Supplies

The best materials in helping you to install more comfort and convenience in your home . . . All at lowest cost.



So Be Sure It's The Best Quality

It makes a good home a better home. An ordinary home a beautiful. The decorative quality of hardware can be just as important as its usefulness. Get the newer, more modern fixtures at Krengel's.

Strike A Charming Note In Kitchen Beauty and Convenience

Make your kitchen a room of beauty with all the features of modern utility. Visit us today and inspect our most modern kitchen installations.



SPECIALS!

On All Garden Needs

A complete stock of the finest quality garden tools at prices that you can easily afford to pay.

"BUILD NOW" IS EXPERT'S ADVICE

Magazine Writer Cites Study Of Conditions in 200 Communities

NEW YORK, May 4 (Special)—"Build now" is the advice given by J. A. Hall in a recent issue of American Homes.

Before offering this unbiased opinion Mr. Hall made an exhaustive study of conditions in more than 200 communities throughout the country. In urging the thousands of families who are discussing this all-important question at the present time to "build now," he presents definite reasons why home construction should be expedited.

Many persons purchased lots before the depression and have been waiting for an advantageous time to build. Some still hesitate, fearing to meet unsatisfactory mortgage conditions. Others apparently believe that large sums of money must be immediately available for construction. There are, too, those people who, purchasing land on the installment plan, have completed payments recently but are at a loss to know the best method of building procedure.

The answer to these problems, Mr. Hall says, is that there is a great shortage of homes in many sections, which will naturally increase the demand for building and may bring to realization a threatened labor shortage.

Seek Advice

Mr. Hall suggests that should there be question of the suitability of the lot and the neighborhood in which the contemplated home is to be located, a responsible local real estate man be consulted.

The advice of a reliable architect is also recommended for economic selection of materials, building materials, etc. His practical judgment in many cases may save many times more than the amount of his fee. He will suggest, in addition to that given by the housing administrator's representative during the construction, offers the prospective owner a double assurance of substantial construction of his home.

ALPINIST IS NOW CLOCK SEARCHER

Famed Mountain Climber of 10 Years Ago Equally Noted Collector

PAWCATUCK, Conn. (UP)—Howard Palmer, who spent the greater part of his life climbing mountains, has taken to collecting clocks with wooden mechanisms. He has 140 rare time-pieces now.

His clock collection is winning him as much fame as his feats up rugged-sided mountains. He did 10 years ago, for the exhibits are considered as fine as any in the country.

The Alpine club member started rummaging into dusty attics and antique shops six years ago, seeking clocks made between 1810, when the old, lumbering, grand-father clock bowed to the more compact mantle clock, and 1840, when the wooden-walk time-piece, propelled by weights, passed into history before the coiled-spring apparatus.

All of the Palmer collection have wooden wheels, some adorned with mirrors, others with oil paintings. The plates are of white oak, the wheels of cherry. In one room there are 42 clocks. They seem to tick as one.

He has an original clock by Eli Terry, who made the first wooden-walk piece. Terry, Palmer says, apprenticed under Thomas Hatfield at Norwich, Conn., the latter having come there from London. Palmer has another early clock, made at Plymouth, Conn., with an 11-inch dial, a landscape painting on the lower glass, gold on the dial, all in a mahogany veneer with brass fittings.

Some Pointers On Paint Jobs

Certain rules must always be observed if a paint job is to be successful. The requirements for finishing different types of wood vary, and the correct procedure for each paint necessarily varies with each type of paint. Therefore, observe the directions of the manufacturer in the first step toward a satisfactory retouching job.

Practically all paint manufacturers recommend a thorough cleaning before painting. This is important, and sand-papering, removing grease and dusting should be taken care of before the brush touches the opened can.

Good paint deserves a good brush. Buy good ones. Cheap brushes have a way of losing their bristles right in the middle of a smooth surface, and you'll be picking out these stray bristles if you're making a cheap brush do the job.

Don't paint on a wet surface. Paint will not cling to a damp piece of wood or metal. If there is any doubt about the piece you're painting, postpone the job until you're sure that it's thoroughly dry.

Use a paint mixed for the purpose you have in mind. Different ingredients and binders are used to give the paint you buy the qualities the manufacturer specifies. Only the correct paint will give you a satisfactory job, and it should be used for only one purpose.

Flowers are held in lavender in Japan, and Japanese people are taught to bow low before inspecting them.

New Ideas in Bedroom Furnishings



Add-a-piece plan can now be used in furnishing your bedroom. Start with as little as a single piece if you wish. Illustrated is a new do lux vanity with modern Tuf-Flex glass shelves and full length mirror. Beside it is the handy pier cabinet with deep drawers designed especially for cosmetics. The tall chest has the concealed typewriter desk. Night stand is provided with a handy book shelf. The design here is featured in Honduras mahogany, luxuriously accented with blond maple tops and "satin" gold metal trimmings.

ROOTS CROSSED TO CURB FOES OF PEACH TREE

WASHINGTON (UP)—Through triumph of tree budding and grafting, the department of Agriculture has developed a peach tree that is immune from root-knot.

Root-knot, a disease which causes extensive damage to trees in the light sandy soils of the south and southwest, is caused by the nematode, which lives in the soil and attacks the roots of the trees.

Two rootstocks for peaches, both so resistant to root-knot that they are virtually immune, have been introduced and tested by the department. Both promote vigorous growth of peach trees budded on them—also normal bloom and fruit.

In the new home the door knob should be decorative as well as firm and useful. Special attention to this small detail is suggested to the prospective owner of a new home.

VARIED SHOWERS

A new type of showerhead may be so adjusted that the bath may enjoy any type of stream he wishes from the finest needle spray to a soothing Alughisa flood. Sixteen different adjustments in the type of spray may be made by the bath. The new head is instantly self-cleaning.

NEW HEATING IDEAS

New developments in heating with particular reference to equipment which combines the advantages of radiant or sunlight heat and convected or convected heat will be among the chief subjects to be discussed at the annual convention of Heating, Piping, and Air Conditioning Contractors National Association in Minneapolis, May 17-19.

NOW ON DISPLAY the Plus-Powered KELVINATOR



FACT 1

The new Kelvinator is Plus-Powered. It has as much as double the cooling capacity of other well-known refrigerators of equal size.

FACT 2

The new Kelvinator runs only half as many miles per day during the rest of the time it maintains low temperatures using no current at all.

ONLY KELVINATOR GIVES YOU ALL THESE ADVANTAGES

Convenient Terms

PLUS-POWERED

Kelvinator

...GIVES THE BEST OF BETTER LIVING



FREE! KELVIN HOME BOOK
See complete floor plans—illustrations of appliances—and full specifications on the Kelvin Home, in this complete 66-page, illustrated book. It's Best! Come for your very best!

Golden Rule

C. C. Anderson Co.

"A Good Place To Trade"

Home Office — 231 Shoshone Street North
Phone 955

LOW COST HELPS PIPE INSTALLING

Building of Water Systems Urged Now With Prices Still Down

CHICAGO, May 4 (Special)—The early period of recovery from a depression presents a golden opportunity for the construction or repair of water systems at minimum cost to taxpayers.

It is an interval when the cost

of borrowing money has been pushed to the depths but before material prices have risen fully that the prudent city can advantageously make the necessary repairs and additions to its water system with substantial saving.

That period of lowest costs has prevailed since early in 1925 but there is evidence that it soon will fade into the past in the wake of rising money rates, material values and labor charges.

Forward looking engineers, knowing that water needs in any given city soon will be taxing or overtaxing even modern equipment, can seize this chance to make timely enlargements in cast iron pipe mains or extend lines or install auxiliary lines while construction costs are lower than economists estimate they will be for years.

Statistics showed that on January

1 this year construction costs had risen slightly from the "low" point in more than a decade and were pointing sharply upward. Even so, they still were less than in 1922 and 1924, when the cost of borrowing money was comparatively high, and they were little or no higher than levels prevailing at the bottom of the depression in 1923 and 1922.

Engineers point out that cast-iron pipe laid now to increase the capacity of a water works system will be good years after the cost has been paid and forgotten. Original cast-iron water mains—some of them laid more than a century ago, still are serving 38 of America's largest cities.

John Hunter, English anatomist, once transplanted a rooster's spur to its comb.



OWN your OWN HOME IN TWIN FALLS

In the past ten years there has never been a more opportune time than the present for buying or building your own home. Business is better and times are better... and 1927 will undoubtedly see a building boom in Twin Falls.

Real Estate—Loans

Twin Falls is right in the midst of the biggest building program of its history... new homes cheap as you can rent. All you need is the necessary down payment and a permanent position that will assure you of a steady income. We'll finance you to build your own home. We can offer you Low Rates—Immediate Commitments and Quick Service. Investigate our plan before you borrow money to Build or Remodel.

PHONE 910
For Appointments

Sudler-Wegener Co.



Your HOME can be "BETTER" WITHOUT BEING NEW

You don't have to build a new house to have a more comfortable and more livable home. You can renew and refresh the interior of your home simply by "house cleaning" the National way. Your rugs, drapes and overstuffed furniture have all had hard use during the winter months. Cleaning them now will add much to the interior appearance of your house and will go a long way toward making yours a "Better Home."

Phone 788 for Cleaning Estimates

NATIONAL LAUNDRY & DRY CLEANERS

TWIN FALLS TAKE WASH DAY OUT OF YOUR HOME 788

LONG RANGE UP-TREND PREDICTED IN HOME BUILDING

REALTY MEN AND INVESTORS THINK MARKET GROWING

New Mortgage Plan, Lower Interest Rates Provide Great Impetus

By EDWARD DUNN, Jr., Associate Idaho F.H.A. Director

We have probably never known a time when the informed investor and the realtor alike had such great confidence as they have today that we are at the beginning of a long-term upswing in home construction.

The establishment of the long-term, monthly amortized loan, up to 80 per cent of the appraised value of the house, in the mortgage practice of the nation, and the general lowering of interest rates that followed the advent of the insured mortgage system of the federal housing administration, have not only made mortgage money plentiful, but also have provided a means of opening up a heretofore practically unexplored market for low-priced houses.

Great Market

Every sign, every indication, points to the rapid development of the greatest market in homes the country has ever known.

The opportunity is at hand, but the important question is how will the housing industry grasp it?

The manner in which houses were produced and the methods employed in financing their sales, during the housing boom of 1925-1929, in no small measure to the extent, duration and severity of the depression in the home construction market. Much of the blame for this condition can be directly charged to the appraisal methods used during that period.

Slushbox Method

Little or no attempt was made to analyze accurately the various component parts of a mortgage and the bearing each has on the inherent risk in a mortgage. Little consideration was given the all-important factor of whether or not the applicant for a loan had an income sufficient to warrant his building or buying a home of the value contemplated. Plans, specifications and estimates were not carefully studied, nor were inspections made during the building of a house to insure its being constructed of good materials and that the workmanship was what it should be.

That some kind of a house was built seemed about all that was necessary to obtain a loan. Whether it was properly located and fitted its environment, whether the water, gas and electricity were on hand, whether there were schools and adequate transportation facilities and many other factors that determine the replacement value of a house were overlooked.

Scientific Appraisals

The underwriting methods adopted by the federal housing administration have marked a great advance in the understanding of the principles of real estate appraisal. This scientific system of underwriting has resulted in striking progress being made in the analysis of problems involved in the appraisal of homes, in selecting those conditions which are the most accurate and in securing the general acceptance on the part of lending institutions.

The "horseback" appraisal system was an invitation to the unscrupulous dealer and the "jerry" builder, an opportunity they capitalized to the later bitter cost of the real estate business. To say those days are gone forever would hardly be a wise statement, but it is safe to say that financial institutions investing funds in mortgages conforming to the underwriting procedure of the federal housing administration have more confidence in the home mortgage lending business than they ever had before.

ANNAPOLIS MEN WIDEN TRAINING

111 Have Completed Courses At University of California

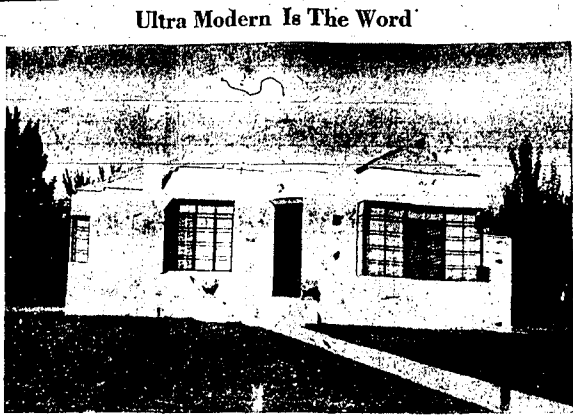
BERKELEY, Calif. (AP)—The University of California has become very much of an adjunct of the United States Naval Academy for the final training in engineering, mechanics and technology generally, according to the authorities of the university.

While a senate commission has turned down the request of California citizens to establish a branch of the Academy on the Pacific coast, nevertheless California universities and technical schools are being used to an ever-increasing extent for finishing the education of Annapolis men who are destined for engineers or other technical branches of the navy service.

Since 1922, 111 Annapolis men have finished their training at the University of California, of which 92 became mechanical engineers and the remainder electrical engineers.

The mechanical engineering of these specialists in the problems of ship construction and maintenance. The electrical engineers perfect themselves in radio engineering, construction and communication.

The bulk of the Annapolis men sent to the Pacific Coast are sent to one of the University of California technical institutions for two semesters and about 200 are employed at all times.



This modernistic home shows the very latest in design. Corner windows give it plenty of sunlight and Venetian blinds add to its appearance. It is an ultra modern dwelling that is being built by people of all wage earning groups throughout the nation.

Amount of Entertaining Figures in Home Plans

The amount of entertaining to be done by a family is of prime importance when the purchase or building of a new home is under consideration.

The relative use to which living, dining, and bedrooms are to be put must be thought over by the prospective purchaser.

The current trend in small houses is to do away with the dining room. In some instances junior dinettes are substituted, while in others a corner of the living room is devoted to a table and chairs suitable for dining purposes.

The business who entertains frequently, however, will want a sizeable dining room and a large living room. A room in which people are to be assembled frequently should have comfortable seating arrangements but should not be over-crowded with furniture.

Conversational groups should be considered when grouping the furniture. A living room planned for entertaining had ivory woodwork, deep ivory walls, and a beige carpet. The draperies had a neutral background, with accents of muberry and Chinese blue. A divan was upholstered in mulberry, one chair in blue, and a love seat was done in gold. Other furnishings followed these key pieces.

War on Caterpillars

ST. PAUL (AP)—State foresters and entomologists are laying battle lines for the opening of the war on the tentless caterpillar which last year did so much damage to forest trees of the north.

Land Lost

GOLD BEACH, Ore. (AP)—A half section of land purchased by Charles G. Johnson, Milaca, Minn., in 1902 and on which he has paid yearly taxes of \$25, is missing. Johnson decided to take a trip west and look at his land, supposedly rich in timber. Arriving here, he made a trip up the Rogue river, but returned without finding his property.

Many tribes of savages do not know that the sun is the source of daylight.

READ THE TIMES WANT ADS.

HOUSES TERMED FINE INVESTMENT

Federal Administrator Okays Homes Are No Longer for Speculation

WASHINGTON, D. C. May 4 (Special)—Development of a national home-construction program, financed by private capital under terms of the federal housing administration's insured mortgage system, creates a condition in the real estate market where good real estate investments rather than good real estate speculations are available to the public, Administrator Stewart McDonald says.

Further Impetus

While the widespread adoption of the insured mortgage system has given further impetus to the factor of neighborhood control, thereby creating better environments and decreasing occupancy costs and removing to a great degree investment hazards from home ownership and mortgage investment, any ideas on the part of the public that such operations open a field of speculation are misguided, according to the administrator.

"Successful operation and ownership of real estate, financed under the insured mortgage system," he said, "is predicated entirely upon an expectation of a reasonable return from the direct services of the property, rather than from any form of real estate manipulation."

Successful "Investment"

"The insured mortgage system makes such properties a successful investment, rather than a speculation, as it assures stability and a minimum of mortgage risk. These factors represent security. On the other hand, speculation does not require security but is inevitably related to the presence of risk."

Elements of uncertainty which existed in outmoded forms of mortgage practice have been eliminated, he said, and have been replaced by a definite system of amortized mortgage payment—payable like rent, covering interest, principal, taxes, and fire and other insurance.

READ THE TIMES WANT ADS.

Hotel Is Tear-Gassed

When Apparatus Fails

TORONTO, Ont. (AP)—Hotel managers and a few early-rising guests wept bitterly when a short circuit in the tear-gas circuit over the cashier's desk sent the gas billowing through the rotunda.

The clerks on duty, with tears pouring down their faces, rushed to open doors, as several guests at breakfast on the same floor were sobbing into their food.

Land Lost

GOLD BEACH, Ore. (AP)—A half section of land purchased by Charles G. Johnson, Milaca, Minn., in 1902 and on which he has paid yearly taxes of \$25, is missing. Johnson decided to take a trip west and look at his land, supposedly rich in timber. Arriving here, he made a trip up the Rogue river, but returned without finding his property.

Many tribes of savages do not know that the sun is the source of daylight.

READ THE TIMES WANT ADS.

A HOME
Best Possession of All

The first meal in a spanking new dining room—the first guests at a brand new door—the first blade of grass in a newly graded lawn—they're the things that make the saving and planning seem really well worth while.

But back of them there's the knowledge that an extra security will be yours from now on; that your wife and your family will enjoy the comfort and convenience of a home planned for actually better living.

It is our sincere wish that this will be the ultimate achievement of every Twin Falls family.

TWIN FALLS CITY BANKS

Brewers' Yeast Keeps Rate Fat and Sleek

MILWAUKEE (AP)—Several hundred rats kept in a brewery laboratory here suffer from hangovers when yeast is eliminated from their diets, company officials revealed.

The rats are used to test the vitamin content of brewers' yeast which is one of the sources of vitamins B and G. The brewery sells its yeast to pharmaceutical houses which incorporate it in medical preparations.

When deprived of either vitamin B or G the rats lose their appetites and wither away until they die unless they are fed yeast. Placed on a brewers' yeast diet the rats are weighed daily and the weight gain in 28 days is used in a mathematical formula to determine the vitamin content of the yeast batch.

It's Spring in Postoffice

REEDSBORO, Ore. (AP)—One of this city's postoffice is the chirping the surest signs of spring around of baby chicks, destined to reach new homes via the mail routes. The temporary visitors often make such a disturbance that postal workers find it difficult to concentrate.

Beer Mugs Are Scarce

In Dry League Town OBERLIN, O. (AP)—In this home of the Anti-Saloon league, the dramatic association of Oberlin college had a hard time finding seven beer mugs.

The mugs, not the ordinary ones but the kind with the lids and fancy-figure sides, were to be used in a play, "The Wind and the Rain."

Engineers have estimated that it would cost more than \$250,000,000 to duplicate the Great Wall of China.

SECURITY Is Based On INSURANCE

The security of your home and future is based on insurance, so wise and insured with a reputable company.

We Offer Full Coverage

We can offer you an unusually attractive insurance program for new home construction or remodeling—insurance FREE for 90 days from day construction begins on your new home. We also insure home furnishings at reasonable rates.

F. C. Graves and Sons
PHONE 318 Real Estate — Loans — Insurance 150 MAIN WEST

Yes! Penney's for PAINTS

Because They're Laboratory Tested—Highest Quality and Low-Priced

AS FINE A PAINT AS YOU CAN BUY! Goes Farther, Lasts Longer!

Penco HOUSE PAINT
\$2.98 Gal.

A paint that's made from the best possible ingredients, to meet your every demand. One gallon covers 800 to 1,000 square feet, one coat, or 400 to 500 square feet for two coats. The best quality.

5 Gallons Penco HOUSE PAINT \$13.90

Nationwide HOUSE PAINT \$2.00 gal.
A good paint at a bargain price! A gallon covers 600 sq. ft. one coat or 800 sq. ft. for two coats. A value!

Penco Floor Enamel
High Quality 98c qt.
Durable, glossy, and water-proof. Dries in a hurry. Makes your old floor like new.

Makes Your Home Look New, Works Wonders Penco 4 HOUR ENAMEL
Does It Quickly, Economically 98c qt.
No home should be without Penco Enamel... It's a real necessity, fills all scores of household jobs. Dries in four hours. Choice of modern colors.

Penco Varnish Stain
Dries Quickly 98c qt.
Stains and varnishes at the same time. Good on old or new surfaces.

4 in PAINT BRUSH
Set in Rubber 98c
Ideal brush for house painting. Long, smooth bristles and a wooden handle.

Penco KITCHEN GLOSS
For Walls, Furniture, Woodwork 89c qt.
Brighten up your kitchen, bathroom walls or woodwork with Penco Kitchen Gloss. A semi-gloss paint with an enamel-like finish. Easy to apply.

PINT 59c — GALLON \$3.29 Enamel Primer 59c PL. 89c QT.

PENNEY'S
I. C. PENNEY COMPANY, Incorporated