

SPANISH LOYAL DEFENSE REPORTED NEAR COLLAPSE

REBELS ADVANCE GAINS ALONG 120 MILES OF FRONT

By JOHN DE GANDT WITH THE SPANISH NATIONAL ARMY... Rebels advance gains along 120 miles of front...

The nationalists, all their strength loyalist resistance and the civil war that has raged for 20 months, went over the top at 7 a. m. today in a new drive southeast to headquarter the Guadalupe river...

The nationalists now hold numerous road leading to Guasca. It is known that some of the nationalists have already passed the direct road from Zaragoza...

DECISIVE OPERATION John De Gandt's dispatch was believed to mean that the nationalists had started a most important, possibly decisive operation in the Alsancor sector of the Aragon front...

BRITISH COUNCIL HITS GOVERNMENT LONDON, March 26 (Special)—The national labor council, incorporating all phases of British labor, said in a declaration of policy today that it continues to insist that the British government is a grave menace to the peace of Europe.

RITES TO HONOR TWO UTAH MINERS MARYSVILLE, Utah, March 26 (Special)—Funeral services will be held here Sunday for two miners who were overcome by deadly carbon monoxide gas fumes Wednesday when trapped in the new Deer Trail gold and silver mine.

JOHN H. HUNTER DIES AT HAILEY HAILEY, March 26 (Special)—John Harvey Hunter, 24, died yesterday at the family home after a brief illness caused by a spinal meningitis.

Public Forum TERMS BASIS AS REAL GAME FISH Editor, Evening Times: It was with a great deal of pleasure that we read the article of March 23 of your paper concerning the intention of local sportsmen to plant bass in some of the nearby waters.

John H. Hunter Dies at Hailey HAILEY, March 26 (Special)—John Harvey Hunter, 24, died yesterday at the family home after a brief illness caused by a spinal meningitis.

Student Operetta Here Scores Hit with Crowd

By MURIEL SCOTT Junior high school students received enthusiastic approval of the audience at the high school auditorium to witness the final presentation of the operetta, "The Torsioners."

The director of the operetta, Harby B. Smith, assisted by Miss Elizabeth Smith at the piano, the entire cast performed with an ecstacy and competence surprising to young voices.

Strength and clarity of voice was noted for all girls carrying solo parts. Characterization of the male parts was exceptional with the makeup adding materially to the enjoyment of the production.

Spanish Dances Spanish dances were incorporated in the musical play. The dance of Miss Margaret Ebert, Hilma Sweet was featured as soloist and other dances were: Tango, Betty Jean Sommer, Marion Taylor, Virginia Morris and Althena Hannan.

Spanish Dances (Continued) Spanish dances were incorporated in the musical play. The dance of Miss Margaret Ebert, Hilma Sweet was featured as soloist and other dances were: Tango, Betty Jean Sommer, Marion Taylor, Virginia Morris and Althena Hannan.

HONOR ROLL FOR JEROME LISTED

JEROME, March 26 (Special)—The following is the honor roll for the Jerome high school for the period ending March 26. The following day through the office of the superintendent:

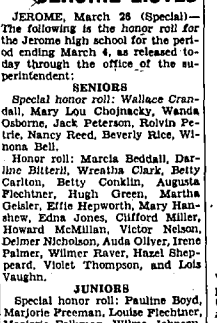
SPECIAL HONOR ROLL: Wallace Crandall, Mary Lou Chojnacky, Wanda Osborne, Jack Peterson, Robin Peeler, Nancy Reed, Beverly Rice, Wilma Bell.

SENIORS Special honor roll: Wallace Crandall, Mary Lou Chojnacky, Wanda Osborne, Jack Peterson, Robin Peeler, Nancy Reed, Beverly Rice, Wilma Bell.

JUNIORS Special honor roll: Pauline Boyd, Marjorie Freeman, Louise Flechtner, Marjorie Folkman, Wilma Johnson, Barbara Peterson, Marie Oliver, Edith Edwards, Bonnie Fry, Louise Gray, Morton Hall, Geraldine Hays, Eleanor Henry, Fayne Hinz, Margaret McCallister, Zella Hendrick, Edna Smith, Sylvia Williams, Lillian Thompson, Sylvia Tyler, Betty Ann Whitte, Nina Wilson, Barbara Whisman.

SENIORS (Continued) Special honor roll: Wallace Crandall, Mary Lou Chojnacky, Wanda Osborne, Jack Peterson, Robin Peeler, Nancy Reed, Beverly Rice, Wilma Bell.

Hit Picture Comes to Roxy



The scene in Walt Disney's full-length feature production, "Snow White and the Seven Dwarfs," as the dwarfs find Snow White occupying all of their beds in the cottage where she has taken refuge from the wicked queen who wants to take her life.

At Orpheum PEG LEG PUT IN VAULT VISALIA, Calif. (UP)—While serving a five months' sentence for vagrancy, Ohan Gedeklan, 42, native of Turkey, will have his leg locked up in the county jail's wood, jail authorities felt that for safe keeping.

HOOD "TOO BUSY" BOISE, Idaho, March 26 (UP)—In answer to rumors that he might be a candidate for congressman from Idaho's second district, Leo Hood, state WPA administrator today said that "keeping 12,000 persons at work hasn't given me much time to think about myself."

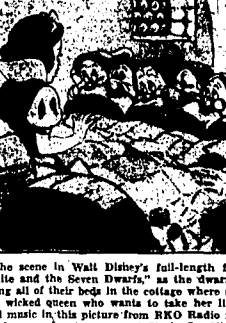
SOUTH IDAHO IN GLEE CLUB TOUR CALDWELL, March 26 (Special)—The Men's Glee club of the Caldwell high school will be in Twin Falls during the spring of 1938 for their annual tour of southern Idaho.

John H. Hunter Dies at Hailey HAILEY, March 26 (Special)—John Harvey Hunter, 24, died yesterday at the family home after a brief illness caused by a spinal meningitis.

Seed Potatoes RUSSETS AND RED BLISS TRIUMPHS Certified and Non-Certified R. A. Bacon Produce Co. Shippers of Idaho Potatoes and Onions Phone 230

SENIORS (Continued) Special honor roll: Wallace Crandall, Mary Lou Chojnacky, Wanda Osborne, Jack Peterson, Robin Peeler, Nancy Reed, Beverly Rice, Wilma Bell.

COMIC TALE FOR IDAHO'S FEATURE



Now showing—"Everybody Sings" western cast and "Tuffy." Starts Sunday for entire week—"Snow White and the Seven Dwarfs," Walt Disney's first feature-length all color cartoon.

Starts TOMORROW! Doors Open at 1 P. M. Continuous FLASH! If you like your romance rowdy... with a howl for every heart-beat... HERE'S A GRAND SCREEN TREAT!

HOOD "TOO BUSY" BOISE, Idaho, March 26 (UP)—In answer to rumors that he might be a candidate for congressman from Idaho's second district, Leo Hood, state WPA administrator today said that "keeping 12,000 persons at work hasn't given me much time to think about myself."

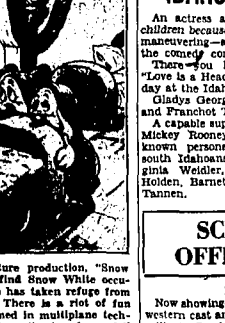
John H. Hunter Dies at Hailey HAILEY, March 26 (Special)—John Harvey Hunter, 24, died yesterday at the family home after a brief illness caused by a spinal meningitis.

Seed Potatoes RUSSETS AND RED BLISS TRIUMPHS Certified and Non-Certified R. A. Bacon Produce Co. Shippers of Idaho Potatoes and Onions Phone 230

SENIORS (Continued) Special honor roll: Wallace Crandall, Mary Lou Chojnacky, Wanda Osborne, Jack Peterson, Robin Peeler, Nancy Reed, Beverly Rice, Wilma Bell.

SENIORS (Continued) Special honor roll: Wallace Crandall, Mary Lou Chojnacky, Wanda Osborne, Jack Peterson, Robin Peeler, Nancy Reed, Beverly Rice, Wilma Bell.

Gooding Choir to Present Concert



KIMBERLY, March 26 (Special)—Gooding college a choir will present its sacred concert at the high school here Sunday at 8 p. m. It was announced today.

HOOD "TOO BUSY" BOISE, Idaho, March 26 (UP)—In answer to rumors that he might be a candidate for congressman from Idaho's second district, Leo Hood, state WPA administrator today said that "keeping 12,000 persons at work hasn't given me much time to think about myself."

John H. Hunter Dies at Hailey HAILEY, March 26 (Special)—John Harvey Hunter, 24, died yesterday at the family home after a brief illness caused by a spinal meningitis.

Seed Potatoes RUSSETS AND RED BLISS TRIUMPHS Certified and Non-Certified R. A. Bacon Produce Co. Shippers of Idaho Potatoes and Onions Phone 230

SENIORS (Continued) Special honor roll: Wallace Crandall, Mary Lou Chojnacky, Wanda Osborne, Jack Peterson, Robin Peeler, Nancy Reed, Beverly Rice, Wilma Bell.

SENIORS (Continued) Special honor roll: Wallace Crandall, Mary Lou Chojnacky, Wanda Osborne, Jack Peterson, Robin Peeler, Nancy Reed, Beverly Rice, Wilma Bell.

SENIORS (Continued) Special honor roll: Wallace Crandall, Mary Lou Chojnacky, Wanda Osborne, Jack Peterson, Robin Peeler, Nancy Reed, Beverly Rice, Wilma Bell.

Public Forum

TERMS BASIS AS REAL GAME FISH Editor, Evening Times: It was with a great deal of pleasure that we read the article of March 23 of your paper concerning the intention of local sportsmen to plant bass in some of the nearby waters.

John H. Hunter Dies at Hailey HAILEY, March 26 (Special)—John Harvey Hunter, 24, died yesterday at the family home after a brief illness caused by a spinal meningitis.

Seed Potatoes RUSSETS AND RED BLISS TRIUMPHS Certified and Non-Certified R. A. Bacon Produce Co. Shippers of Idaho Potatoes and Onions Phone 230

SENIORS (Continued) Special honor roll: Wallace Crandall, Mary Lou Chojnacky, Wanda Osborne, Jack Peterson, Robin Peeler, Nancy Reed, Beverly Rice, Wilma Bell.

SENIORS (Continued) Special honor roll: Wallace Crandall, Mary Lou Chojnacky, Wanda Osborne, Jack Peterson, Robin Peeler, Nancy Reed, Beverly Rice, Wilma Bell.

SENIORS (Continued) Special honor roll: Wallace Crandall, Mary Lou Chojnacky, Wanda Osborne, Jack Peterson, Robin Peeler, Nancy Reed, Beverly Rice, Wilma Bell.

SENIORS (Continued) Special honor roll: Wallace Crandall, Mary Lou Chojnacky, Wanda Osborne, Jack Peterson, Robin Peeler, Nancy Reed, Beverly Rice, Wilma Bell.

SENIORS (Continued) Special honor roll: Wallace Crandall, Mary Lou Chojnacky, Wanda Osborne, Jack Peterson, Robin Peeler, Nancy Reed, Beverly Rice, Wilma Bell.

Advertisement for GLEN G. JENKINS featuring car deals and services.

Large advertisement for GLEN G. JENKINS with car and truck listings, prices, and contact information.

IONA AND DOWNEY FIGHT FOR CHAMPIONSHIP

Two Clubs Enter Title Contest With Easy Wins

Glenns Ferry and Grangeville to Battle For Consolation Crown at Burley

BURLEY, March 26 (Special)—Downey and Iona, the cream of the Class B cage teams of Idaho, will tangle here tonight at 9 p. m. for the championship of the small schools of Idaho. In a preliminary tilt, set to start at 8 p. m., Glenns Ferry will take on Grangeville in the consolation fight championship game.

Side Lights ON THE CLASS B Tournament

Downey gained the right to play for the championship title by conquering Notus 9-2. Iona moved into the finals in the afternoon by downing Rathdrum by a count of 66-27.

The "fire-engine" type of basketball played by the Grangeville courtiers is certainly keeping the spectators agog at the tournament. Action and offense is stressed with the Grangevillians taking plenty of shots at the old hoop.

Downey Club Coach—Downey, the holder from the southeastern district, showed championship form in eliminating Notus, the southeast champion. This Downey club led by George Steels, and Tom Cooney in the victory.

Class B covers from now on will be a high water mark. In fact, Glenns Ferry, Iona, center, bagged 23 points in an outstanding individual scoring against Rathdrum. This is the first annual Class B tournament and that record will probably stand for many years.

Holley coach—Glenns Ferry, south central representative, took its right to play in the consolation final. The Wolverines were defeated by the Idaho champion, Glenns Ferry, 10-5.

Class B covers from now on will be a high water mark. In fact, Glenns Ferry, Iona, center, bagged 23 points in an outstanding individual scoring against Rathdrum. This is the first annual Class B tournament and that record will probably stand for many years.

Coach Bill Briggs' club was fighting desperately and knotted the score at 30-30 and again at 32-32. That was the end of the third quarter, dropped in a long one.

Class B covers from now on will be a high water mark. In fact, Glenns Ferry, Iona, center, bagged 23 points in an outstanding individual scoring against Rathdrum. This is the first annual Class B tournament and that record will probably stand for many years.

Through an error in the first announcements, Pleasant View was not listed in any of the seven districts.

Class B covers from now on will be a high water mark. In fact, Glenns Ferry, Iona, center, bagged 23 points in an outstanding individual scoring against Rathdrum. This is the first annual Class B tournament and that record will probably stand for many years.

New Wardrobe

Class B covers from now on will be a high water mark. In fact, Glenns Ferry, Iona, center, bagged 23 points in an outstanding individual scoring against Rathdrum. This is the first annual Class B tournament and that record will probably stand for many years.

Murtaugh Students Present School Play

MURTAUGH, March 26 (Special)—The Murtaugh Grangeville, the high school play, presented a play at the high school auditorium to a large crowd.

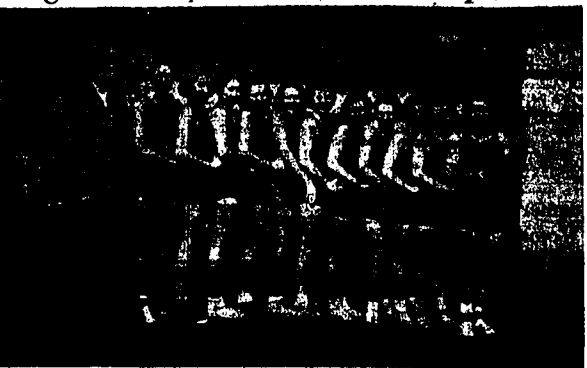
Visitors Enter Agua Caliente For Big Season

By JACK GUENTHER

AGUA CALIENTE, Mex., March 26 (UP)—Visitors streamed into this historic resort for week-end of racing that will be topped Sunday with the \$12,000-odd Agua Caliente handcap, first major offer here since the Mexican government banned gambling in 1924.

Handicap shapes up as strictly Seabiscuit against the field. At 10 he is sporting slight rivals from the stable of the late Eddie Hart.

Hagerman Girls—Idaho State Champs, 1938



This group of Hagerman girls today could lay claim to the state high school title of Idaho. They have defeated every team of note in south central Idaho and in their latest bout trimmed the Meridian sextet.

Boston Clubs Play Again

SARASOTA, Fla., March 26 (UP)—Boston's inter-city baseball rivalry was revived today in the second of six exhibition games between the Sox and Red Sox.

Baseball Leaders Gather at Salt Lake to Discuss New Loop

SALT LAKE CITY, March 26 (UP)—Baseball representatives from six Utah and Idaho cities will meet here today to discuss possible revival of the Utah-Idaho Class C league.

Trainer of Battiship, the first American-bred horse to win the Grand National steeplechase, and caught up in his last special trials to Alintree yesterday to see her horse win, but she did not have a bet on him.

Logan, Cowley Play for Title

SALT LAKE CITY, March 26 (UP)—Logan and Cowley, Wyo., coaches defeated in three rounds of a tournament battle for the 1938 title in their first consolation championship game tonight.

Headquarters for the skiers will be the Ketchum postoffice and the station, to which the meet will be limited, will be run off in two heats on Round mountain. Trophies will be awarded the men placing first, second and third.

30 Amateur Skiers to Take Part in Meet

With more than 30 amateur skiers expected from this section of Idaho, plans were completed today for the first "strictly amateur" ski meet which will be held at Sun Valley starting at 11 a. m. Sunday.

South Idaho Boxers Feature Burley Eagles' Matches

BURLEY, March 26 (Special)—The South Idaho boxing circuit featured a doubleheader of Burley Eagles fights here last night.

Headquarters for the skiers will be the Ketchum postoffice and the station, to which the meet will be limited, will be run off in two heats on Round mountain. Trophies will be awarded the men placing first, second and third.

Reds Tackle Detroiters

LAKELAND, Fla., March 26 (UP)—The Cincinnati Reds come here today for the first of four scheduled exhibitions with the Detroit Tigers.

Mac Doesn't Jump at Conclusions—He Has Just Finished Reading Landis Decision

By HENRY McLENDER Tampa, Fla., March 26 (UP)—One thing I learned early in life was not to jump at conclusions. I have never been no more than eight years old when I learned that.

Headquarters for the skiers will be the Ketchum postoffice and the station, to which the meet will be limited, will be run off in two heats on Round mountain. Trophies will be awarded the men placing first, second and third.

Headquarters for the skiers will be the Ketchum postoffice and the station, to which the meet will be limited, will be run off in two heats on Round mountain. Trophies will be awarded the men placing first, second and third.

Giants and Cubs Co-Favorites For Loop Title

ST. LOUIS, March 26 (UP)—James J. Carroll, betting commissioner, issued his first pre-season odds on the 1938 baseball season today, setting the New York Giants and Chicago Cubs as co-favorites to take the National League pennant.

Vandal Team Scores 30 Points to Win

SACRAMENTO, Calif., March 26 (UP)—University of Idaho's eight man team won the Pacific coast intercollegiate boxing championship last night, piling up 30 points.

Pirates Lose To Frisco

SAN FRANCISCO, March 26 (UP)—Pittsburgh Pirates and the San Francisco Seals continue their spring exhibition series here today. The Seals won, 9 to 6, Saturday, in their eighth night game.

Lind's Team Advances

Annexing a 2-1 victory over Brookfield, Lind's Motor Service took itself into a tie for third place in City Bowling League.

Zivic Loses to Negro Flash

DETROIT, March 26 (UP)—There may be a fighter who can halt Eddie Zivic's streak. It is not Eddie Zivic of Pittsburgh.

Bowling Schedule

Table listing bowling league schedules for various leagues including Commercial League, City League, and Ladies League.

Cunningham Meets Fenske

CHICAGO, March 26 (UP)—Near the end of his greatest indoor season, Gene Cunningham, 30-year-old Pittsburgh fighter collapsed across the ropes, and his seconds threw in the towel.

Girls Pick Sweaters

Members of the Olmit Athletic association at the high school reached a decision this week on sweaters to be purchased and worn by the group.

Koverly Pins Rudy Dusek

NEW YORK, March 26 (UP)—George Koverly, Hollywood, pinned Rudy Dusek, Omaha, 3-0, Saturday night at the Ketchum postoffice.

Dodge Special

1936 Dodge four-door touring sedan with large built-in trunk. Has radio and heater. Now six-ply tires. Car has had extra good care and is a \$595 real buy at \$595.

Advertisement for Dodge Special car, featuring specifications and price. Includes 'GUARANTEED WELDING' and 'Wake The Welder' text.

MARKETS AND FINANCE

By United Press

LIVESTOCK

DEVELOPMENTS: 75 market... Chicago: 6,000 market... Omaha: 1,000 market...

WHEAT DECLINES IN SHORT TRADES

CHICAGO, March 28 (UP)—Wheat... The market opened irregular with a tendency to higher prices but continued weakness of New York stocks...

N. Y. STOCKS

NEW YORK, March 28 (UP)—The stock market closed lower... American Chemical 135 1/2, American Cyanamid 29 1/2...

STOCKS MARKET HITS NEW LOWS

NEW YORK, March 28 (UP)—Stocks plunged to new lows since Saturday... Heavy marginal selling in the first hour caused prices to fall behind...

GRAIN MARKET

CHICAGO—Grain market... Wheat: No. 2 hard 1.10, No. 3 1.05... Corn: No. 2 41 1/2, No. 3 40 1/2...

POTATOES

CHICAGO—Potatoes... Idaho: No. 1 1.10, No. 2 1.05... Oregon: No. 1 1.05, No. 2 1.00...

Local Markets

Soft wheat 1.10, Hard wheat 1.05... Potatoes 1.10, Apples 1.00... Eggs 1.00, Butter 1.00...

INDIANS ON VACATION RESORT

LAO DU ZHANGBAU, Wis.—Vacation resort operated by the tribal council... The first unit will include six cabins located in virgin pine timber...

Markets at a Glance

Stocks low in active trading... Wheat 1.10, Corn 41 1/2... Potatoes 1.10, Apples 1.00...

SPECIAL WIRE

CHICAGO—Wheat market... The market opened irregular with a tendency to higher prices but continued weakness of New York stocks...

BUTTER, EGGS

CHICAGO—Butter market... Eggs: No. 1 1.00, No. 2 0.95... Butter: No. 1 1.00, No. 2 0.95...

BOBAC ON SREET

RAVTLAND, Tex.—A bobac on a downtown street here had... The young bobac one night walking toward the downtown section...

RUPERT

With Floyd Britt and N. K. Jensen as hosts of the Men's club... The Christian church met in regular session at the church annex Thursday...

Wool

NEW YORK—Wool market... The market opened irregular with a tendency to higher prices but continued weakness of New York stocks...

Wool

NEW YORK—Wool market... The market opened irregular with a tendency to higher prices but continued weakness of New York stocks...

Wool

NEW YORK—Wool market... The market opened irregular with a tendency to higher prices but continued weakness of New York stocks...

WORK NEARS END IN LEVY CHANGE

WASHINGTON, March 28 (UP)—The senate financing committee today virtually had ended work on major provisions of the general tax revision bill...

Love Bug

The Rehoboth and Odd Fellows met Monday evening in the I. G. O. F. hall. After their regular business meetings they met for a social...

EDEN

The Rehoboth and Odd Fellows met Monday evening in the I. G. O. F. hall. After their regular business meetings they met for a social...

STANLEY FORMS WILDLIFE GROUP

BOZEMAN, March 26 (Special)—Located at the fringe of one of Idaho's great game areas, Stanley is the latest adjunct to the protection of our wildlife...

Local Markets

Soft wheat 1.10, Hard wheat 1.05... Potatoes 1.10, Apples 1.00... Eggs 1.00, Butter 1.00...

14 SCOUTS GAIN AWARD APPROVAL

Fourteen boys, members of four troops located in two districts, this afternoon received approval of area officials here for their applications for nine merit badge applications...

MURTAUGH

The Pioneer Bridge club was entertained last week by Mrs. Betty Hall at her home. Mrs. Alvin Klock and Mrs. W. C. Abbott, former residents of Wendell, were recently named as the four members of the junior class at work. Frank Vencroff is taking charge of the local work during his absence...

WENDELL

Paris Kall, local salesman for the Idaho Power company, returned this week from a conference of electrical businessmen held at Moscow, Ore. Mrs. Marion MacQuay, daughter of Mr. and Mrs. G. D. MacQuay, was initiated into Myra Tella society at the College of Idaho this week...

HAILEY

A shower was given for Mrs. Milton Schager at the home of Mrs. Floyd Gardner. The evening was spent playing contract bridge with Edith Schaefer and Mrs. John Beyrnon non prizes...

BIDS OPENED ON BOISE'S TOWERS

Following closely on the heels of bid-opening for the five new airport directional towers near Burley's airport, estimates have been opened by the bureau of public works for similar towers at Boise, according to word received here this afternoon...

FOR SALE

All kinds of Good Used Farm Equipment See This Machinery On His Lot. Harry Musgrave Mdse. Mart

SEXED BABY PULLETS

From a popular Strain of White Leghorns 95% accuracy guaranteed. Why waste room and feed with Leghorn, Cockerel? Buy your pullets from a U. S. Approved and Pullorum Tested Hatchery at home. HAVE PROTECTION Hatches every Tuesday. Sunny Chix Hatchery Filer, Idaho Phone 203

TIME TABLE

Schedules of passenger trains and motor stages passing through Twin Falls are as follows: OREGON SHORT LINE Eastbound No. 564, leaves 8:50 a.m. No. 572, leaves 2:15 p.m. Westbound No. 571, leaves 10:00 a.m. No. 563, leaves 1:00 p.m. Daily except Sunday No. 329, to Warburg, 5:15 p.m. No. 340, from Warburg, 8:00 p.m.

Fears Burglars

OAKLAND, Calif. (UP)—The police have just had their first experience with a sleep walker who took her own clothes. A woman reported the loss of a fur coat and other garments. Later she informed the police she had found them in another place, adding that they were the result of several burglaries in the neighborhood and worrying about her fur, she had walked in her sleep and transferred them to another place.

BLISS TRIUMPH SEED Potatoes

Certified and Non-Certified GLOBE SEED & FEED CO.

MR. FARMER

WHY do CALIFORNIA GROWERS, who produce three bags of BEANS to our one, prefer a NEGOTIABLE WAREHOUSE RECEIPT MARKET to a FREE BAG MARKET? WHY do we, a small concern, pay you more on NEGOTIABLE WAREHOUSE RECEIPTS than the present FREE BAG MARKET? The word "FREE" is usually a danger signal in any kind of business. We are in the market for GREAT NORTHERN and are interested in growing contracts for RED, WHITE and PINK BEANS. The Chas. W. Barlow Co. QUINN WILSON—Mgr.

EVERGREENS

Before buying evergreens, shade or ornamental trees, fruit trees, shrubs, roses or vines, grown out of the state, call and see our hardy home-grown plants. Prices reasonable. Now on the way to plant. FREE CATALOG Kimberly, Idaho

EVERGREENS

Before buying evergreens, shade or ornamental trees, fruit trees, shrubs, roses or vines, grown out of the state, call and see our hardy home-grown plants. Prices reasonable. Now on the way to plant. FREE CATALOG Kimberly, Idaho

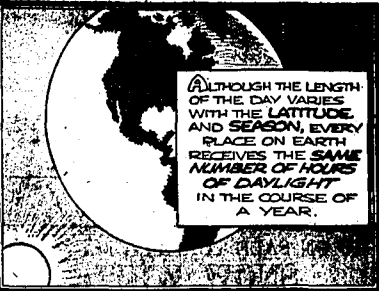
EVERGREENS

Before buying evergreens, shade or ornamental trees, fruit trees, shrubs, roses or vines, grown out of the state, call and see our hardy home-grown plants. Prices reasonable. Now on the way to plant. FREE CATALOG Kimberly, Idaho

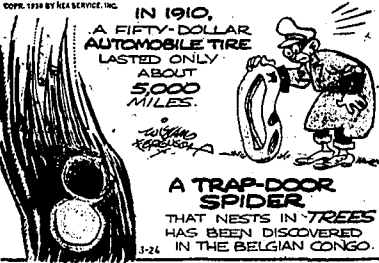
EVERGREENS

Before buying evergreens, shade or ornamental trees, fruit trees, shrubs, roses or vines, grown out of the state, call and see our hardy home-grown plants. Prices reasonable. Now on the way to plant. FREE CATALOG Kimberly, Idaho

THIS CURIOUS WORLD By William Ferguson



ALTHOUGH THE LENGTH OF THE DAY VARIES WITH THE LATITUDE AND SEASON, EVERY PLACE ON EARTH RECEIVES THE SAME NUMBER OF HOURS OF DAYLIGHT IN THE COURSE OF A YEAR.



IN 1910, A FIFTY-DOLLAR AUTOMOBILE TIRE LASTED ONLY ABOUT 500 MILES.

A TRAP-DOOR SPIDER THAT NESTS IN TREES HAS BEEN DISCOVERED IN THE BELGIAN CONGO.

The newly discovered arboreal trap-door spiders have not been identified as any recognized species, but they are just as interesting, if not more so, than their ground-building relatives. They hollow out a groove in the bark of a tree, then build their structure therein, and camouflage it so expertly that, until a few years ago, they had been overlooked.

SIDE GLANCES By George Clark



"I wish you and Dad would stop trying to stay young for our sake, and stay home once in a while."

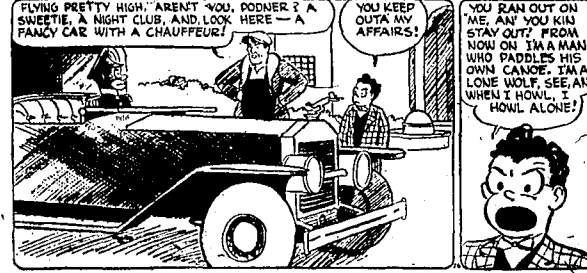
The Blood Pump

Crossword puzzle grid with clues for 'The Blood Pump'.

OUR BOARDING HOUSE with Major Hoople



WASH TUBS



BOOTS AND HER BUDDIES



ALLEY OOP



MYRA NORTH, SPECIAL NURSE



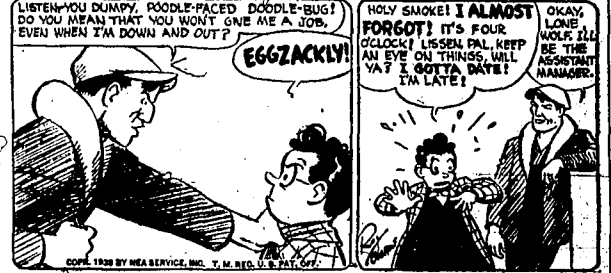
FRECKLES AND HIS FRIENDS



OUT OUR WAY By Williams



By Crane



By Marth



By Hamlin



By Thompson and Coll



By Blosser





VALUES THAT DWARF ALL OTHERS

HAPPY
You May Attend Snow White and The Seven Dwarfs While Your Clothes Are Being Washed Snow White If You Own a Bendix Home Laundry See It Demonstrated at

BENDIX HOME LAUNDRY
Washers, Dryers, Damp Dryers, AUTOMATICALLY

SODEN ELECTRIC
ELKS BLDG.

At Uncle Joe's Norge Air Conditioned

ROXY

7 Days — Starts Tomorrow. One Big Week

HIS FIRST FULL-LENGTH FEATURE PRODUCTION

Three years in the making... an hour and a half in the showing... and a lifetime in the remembering!

"As exciting as a Western, as funny as a haywire comedy, as sad as a symphony... Will be beloved by new generations long after the current crop of Hollywood stars are sleeping where no prince's-kiss can wake them."
—Time

"In all my 19 years of reviewing I have never met screen characters that more completely captured my heart than did 'Snow White' and the seven dwarfs. Children, young folks, men and women — put it on your 'must' list."
—Jimmy Fidler

Hear the songs and tunes now sweeping the airways — hits like "Whistle While You Work" — "With a Smile and a Song" — "Some Day My Prince Will Come" — "One Song" — "Isn't This a Silly Tune?" — "Marching Song, etc."

Filed in all the theaters and plots of the marvelous Multiplane Technicolor



Walt Disney's Snow White and the Seven Dwarfs

SUNDAY ALL DAY! Special Added Attractions!
Adults...40¢
Kiddies...20¢

WEEK DAYS MATINEES 1 to 5:30 P.M.
Adults...30¢
Kiddies...10¢

EVENINGS Adult...40¢
Kiddies...15¢

SHOWS 1, 3, 5, 7, 9 & 11 P. M.
Distributed by MCO, 6500 N. Main, Inc.

From **SNOW WHITE** To **NUBIAN BLACK**
Select From Our 54 Beautiful, Useful Colors in

BENNETT'S PAINT

Twin Falls Glass & Paint Co.
Twin Falls, Idaho, Phone 1620

SNOW WHITE Invites You to Visit

THE EUGENE BEAUTY STUDIO
In the Fidelity National Bank Building

The most modern equipped shop in Twin Falls Everything for the comfort and convenience of our patrons.

Featuring—
A complete line of beauty services for the discriminating woman — also hair styling. Permanent waves from \$9.50 up. Very competent operators. Soft water used exclusively.

Next time make your appointment with The Eugene
Phone 69

A Leader in Entertainment **'SNOW WHITE'**

A LEADER in **ELECTRIC REFRIGERATION COLDSPOT**

On Sale at **SPARS ROEBUCK AND CO.**
Selling FALK'S Agents

Snow White

... IS THE NAME FOR **DRI-CESSE LAUNDRY SERVICE...**

With spring and warm weather busy little kiddies turn to the sand pile and mud pies for their play...

That's why mothers who have discovered DRI-CESSE laundry service are doubly grateful. DRI-CESSE laughs at grime, soil and stains... they wash out easily when fabrics are Dri-Cessed. And Dri-Cess means less frequent laundering too!

Troy-National
Launderers and Dry Cleaners
66 Phones 788

See Walt Disney's **"Snow White and the Seven Dwarfs"**

Then Play and Sing the **Songs**

"Some Day My Prince Will Come"
"With a Smile and a Song"
"Whistle While You Work"
"Heigh-Ho"
"I'm Wishing"
"One Song" "The Silly Song"

DUMAS-WARNER MUSIC CO.
Elks Building.

GO ON SALE TUESDAY, MARCH 29!
SNOW WHITE
And The Seven Dwarfs **DRESSES**

Smart Washable Rayons.
Sizes 3-6 **\$1.98**
Sizes 7-14 **\$2.98**

COMPLIMENTARY PICTURE of Snow White and the Seven Dwarfs for each of the first 2000 kiddies accompanied by their parental Burry! Ready to Wear 'Balcony

PENNEY'S

"Snow White" & **Hart Schaffner & Marx**

NO RELATION — EXCEPT THEY'RE BOTH LEADERS IN THEIR FIELD

See the New Spring Hart Schaffner & Marx Suits at **Rowles - Mack - Co.**

For a Real Value in Entertainment See **'Snow White'** And for Extra **VALUES**

See Our Selection in **The Newest TOPPERS and SUITS**
Priced **\$6.98 to \$19.95**

The Paris Co.

The Whole Family Will Enjoy **"SNOW WHITE" and Butter Krust Bread**

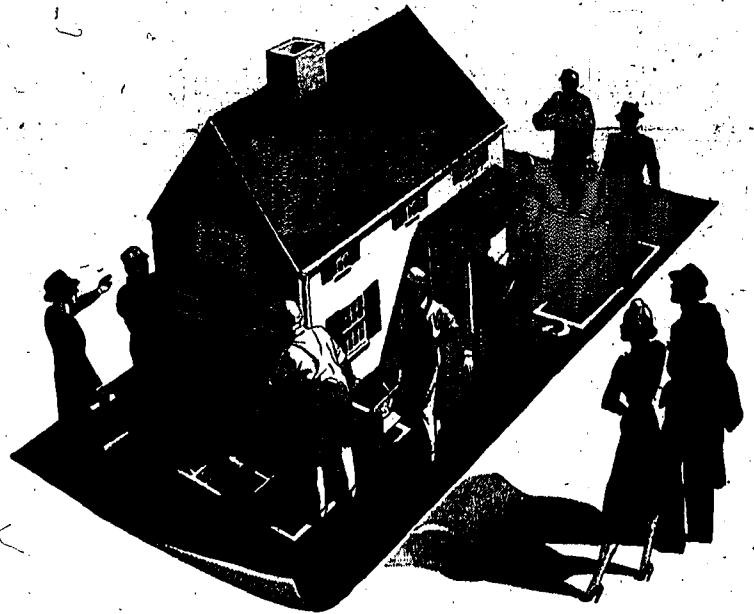
Ask Your Grocer for **BUTTER-KRUST**... it's good because it's fresh every day of the week!



It's Spring!

NOW'S THE TIME TO

BUILD · REMODEL · REPAIR



ENLIST NOW!

War talk? Not exactly . . . but it is a war cry against old, outmoded homes; homes that are in need of repair and homes which would benefit with a few dollars spent in remodeling. For the third successive year, F H A is backing the splendid opportunity which is being offered all America—the chance to live in Better Homes.

There's nothing opens the flood gates of commerce like building . . . this is the time to do it . . . and certainly there's no better spot in these United States to do it than in our own prosperous Magic Valley!

A Wealth of New Ideas!

The advertisers in this section are eager to help you with your home building and improvement plans. In their advertisements you will find many helpful suggestions to start you on your way to greater happiness and comfort in your home.

Let them help you plan TODAY!

Again, in this new spring season, all America swings into action in a concerted drive for better homes in 1938. And Magic Valley follows that big swing! For three years now, our nation and our own community have been wrapped in one of the soundest movements of the century—building! Spring of 1938 finds added interest in an all ready successful endeavor.

Young people have learned that a home of their own is a toe-hold on future happiness; middle-aged folks have learned that a home of their own is their best insurance for security in declining years and elderly couples add their words of wisdom: "own your own home." And so this edition welcomes and signals another season of building, remodeling and repairing. You'll find scores of new ideas in these pages . . . a wealth of information and interesting building advertisements . . . all in celebration of Better Homes in Magic Valley!

CITY MOVES AHEAD TO EQUAL OR PASS 1937 BUILDING MARK

Last Year Saw 3rd Best Total In Twin Falls

Twin Falls Building Soars For Past 15 Months Period

Following are the official city figures, as compiled by W. H. Eldridge, city clerk, of building activities in Twin Falls for the past 15 months (including all of 1937):

Month	Dwellings	All Other New Repairs and Remodeling	Totals
Jan. 1937	1,500	3,900	5,400
Feb.	7,400	1,850	9,250
March	16,100	10,400	26,500
April	15,350	11,850	27,200
May	46,000	27,810	73,810
June	9,050	58,095	67,145
July	17,250	19,650	36,900
Aug.	15,950	23,000	38,950
Sept.	9,100	4,205	13,305
Oct.	17,000	800	17,800
Nov.	18,750	259,000	277,750
Dec.	8,700	200	8,900
Totals:	\$212,179	\$402,944	\$615,123
Jan. 1938	10,300	400	10,700
Feb. 1938	2,900	3,275	6,175
March 1-25, 1938	11,700	72,150	83,850
Totals	27,900	74,825	102,725

By O. A. KELKER

Twin Falls, having just completed a year which was the third largest in its history so far as money expended for construction is concerned, now bids to equal or eclipse the record of 1937, records at the offices of City Clerk W. H. Eldridge show.

January, February and March building expenditures in Twin Falls this year amounted to \$106,200, against \$83,150 for the first three months of last year.

New Dwellings
During the first three months of this year new dwellings lead all expenditures, figures compiled by Mr. Eldridge show. Homes are springing up all sections of the city and builders have been taking advantage of ideal winter weather to "get their buildings done early."

If the trend continues through the last, construction will increase during April and May and June, with new dwellings holding their own among other construction.

Twin Falls' record of building expenditures during 1937 totaled \$881,543. Added to the \$106,200 for the first three months this year, the total for the 15 month period is equal to \$987,743, almost at the million dollar mark.

1937 Exceeds 1936
During 1936, past records reveal, total expenditures in the city amounted to \$438,126, or just a little more than half of the record set up last year. Some of the building operations started during 1937 will carry over into 1938, a survey of conditions. Among the most notable instances of this fact is the school construction now progressing at the Lincoln and Bickel. A new unit is being built at the Lincoln and an entire new building at the Bickel.

Permits approved by the city council during 1937 numbered 90 for new dwellings, 94 for all other new construction and 14 for remodeling, addition and repair jobs. In 1936, the year previous, the permits issued totaled 139 for new dwellings, 87 for other construction and 210 for remodeling, addition and repair work.

243 New Homes
During 1936 and 1937 the records show a total of 243 new homes was constructed in the city and 134 other new structures were built. Repair and remodeling jobs for the two years totaled 341.

Value of the new homes constructed in Twin Falls for the two year period is listed at \$448,498 or nearly half a million dollars.

At the same time the records show estimated value of all other new structures to stand at \$470,389 for the period of last year.
In other words the records show that despite a "boom" in large construction during 1937 such as the addition to the Rogerson hotel, new home construction was able to stay out in front over the two-year period. Remodeling, repair and additions during the two-year span reached an estimated cost of \$370,341, according to city records.

SAVINGS & LOAN BACKS' U. S. ACT

Representative from hundreds of building, savings and loan associations all over the nation have pledged wholehearted and complete cooperation to the federal housing administration, and the first Federal Savings and Loan association, Twin Falls, is among the groups backing the home building drive.

National representatives of the savings and loan industry pledged cooperation at a three-day conference between federal housing administration officials and the "FSA Savings and Loan Advisory Council," a representative body selected from different sections of the country, called to Washington to discuss problems confronting the savings and loan association in relation to the new FSA program.

The group, headed by Chairman George McKinnis of Shawnee, Okla., past president of the United States Building and Loan League, told O. Wylie Allen, chief of the FSA's national and loan sections that the saving and loan act was a "great deal more serviceable" in its amended form.

Less than 4000 Indians reside on Idaho reservations.

Comfort is the Theme of This Home



The residence of Mr. and Mrs. Guy H. Shearer (pictured above), at 1121 Tenth avenue east, is one of the homes which has been completed recently in Twin Falls. Insulated throughout, the home is cool in summer and warm in winter. Shrubs and new trees add to the beauty of the structure during the late spring and summer months. (Evening Times Staff Photo.)

Recreation Room Gives Newest Lure to Homes

The basement recreation room stands out as one of the most notable recent developments in Twin Falls residential buildings. Scores of homes erected here in the past year or 15 months now possess such rooms, and their owners find that recreation at home is a major lure for grown-ups and for youngsters of any age. These recreation rooms differ widely in appointments and furnishing, but 99 per cent are located in basements that otherwise would be devoted to storage of odds and ends.
Here's Typical One
And here's a typical recreation room in a new Twin Falls home on Lincoln street:
It uses one-half the full basement of the residence. The walls are knotty-pine all around. The novel fireplace forms a complete circle, and is edged with brick veneer. The rest of the brick-work is covered by the knotty pine.
Over the fireplace hangs an old-type map that lends a unique air.
Radio connections are provided, and also a device for the radio which with a photograph can be attached. That comes in handy when dancing is in order.
Early American furniture is used.
Because brick table tennis

works up a perspiration when it's played correctly, a shower bath is provided just outside the recreation room. The bath is entirely enclosed and while near the coal storage container, its concrete walls block off the shower occupant from any trace of coal dust. He can splash to his heart's content.
Billiard Table
In the play room itself, a bridge table is set up permanently at one end.
A special light plug has been installed in the center of the ceiling for a flood light directly above what would be the middle of the table tennis or billiard table when these are in place. This particular home owner plans on the former, but others may have the billiard table. Billiard, if the recreation room is large enough, might even figure on getting its spot of handball provided the walls are of concrete or smooth wood.
This specific room is 26 by 14 feet. And to reach it, you needn't go into the basement laundry or furnace room. A stairway comes directly down to the doorway.
Thus the recreation room.
Drop over sometime and take a liking at table tennis!

Walls Need Long Time for Drying

It is not wise to paint or paper a plastered wall in a new house for several months. It should be given a chance to dry thoroughly before a final finish is applied.
Because the frame of a house may settle and shrink during the first few months, cracks may show up in the plaster. Moisture spots are likely to appear, too, when moisture forces itself from the plaster, and both of these conditions are accentuated when the wall has been finished. Paper will peel and discolored when the plaster has not been dried thoroughly.

LOANS MADE FOR MODERN HEATING

Modernize the heating plant now. Pay later. This is the opportunity offered to Twin Falls homeowners as a result of the revival of Title I of the national housing act.
The convenience of automatic hot water and steam heating is made available to home owners on the easy payment plan as a result of the amendments recently made by congress to the national housing act.
Of the 30,000,000 homes in the United States, only 14,000,000 have central heating plants, the remainder for the most part being heated with stoves.
Many of the central heating plants are obsolete, judged by modern standards of efficiency.
The installation of a modern steam or hot water heating plant, with or without supplementary winter conditioning, not only provides greater convenience and healthfulness for the occupants of the house but adds greatly to the re-sale value of the property.
Twin Falls heating contractors are glad to offer their advice as to the type of heating plant best adapted to the conditions and to the financial circumstances of the owner.

CLASSIC EFFICIENCY
A furniture like developed by the Shaker sect of Pennsylvania 150 years ago is blossoming out in contemporary homes under the name "Shaker Modern." The Shaker style has a classic simplicity inspired by the sect's abhorrence of ornamentation. The Shakers, disdainful of paint, applied only light stains and varnishes for protection of the wood.

Material Reduction
Reduction in the cost of materials generally was ascribed to lower prices of materials, although in January labor rates were lower or unchanged in 14 out of 18 cities surveyed.
Cities in which declines in building costs were registered in February covered two distinct areas, said the Review. One begins in Philadelphia and runs diagonally across the country to Texas; the other covers Nevada and California, with the exception of Los Angeles, where costs rose but where they still are below the level of other California cities.

BUILDING COSTS TURN DOWNWARD

WASHINGTON, D. C., March 26 (Special)—Building costs throughout the country have turned definitely downward, confirming the trend noted in scattered sections since the end of last fall of 1937, the Federal Home Loan Board reported today.
In earlier analyses, declines were interlined with considerable increases in some areas. The Board declared, but February reports show costs downward in 16 out of 23 cities in comparing February, 1938, with February, 1937. For the first time since the full effect of the rise in the general building price level became evident late in 1936, one city reported the cost of constructing the standard home was below the level of cost in the first three months of 1937.
The board's findings, published in the current issue of the Federal Home Loan Bank Review, stated: "It is particularly significant that February building costs in four cities were below costs in these cities for February, 1937, and in one city, Little Rock, Ark., were below costs for February, 1936."
The small-house building index in the Review showed that "the first signs of a halt in rising building costs appeared in July, 1937, continuing in August and September. Between October and January, 1938, fluctuations were more violent than usual, with the general trend, however, toward reduction in costs.

Millions Ready For Construction Of U. S. Homes

WASHINGTON, March 26 (Special)—Machinery for making a billion dollars of private funds available for new home financing was set in motion when Stewart McDonald, federal housing administrator, signed the charter authorizing creation of a national mortgage association, the first to be organized under the terms of the national housing act administration act amendments of 1938.
The association to be known as the National Mortgage Association of Washington, has initial capital of \$10,000,000 and surplus of \$1,000,000 paid by the Reconstruction Finance corporation. The corporation has stated that it is prepared, if necessary, to contribute additional sums up to \$40,000,000 to the capital of this or other national mortgage associations, thus providing a total of \$50,000,000 as the base for \$1,000,000,000 of private funds ultimately available for housing construction and financing.
In order to raise the cash needed to make loans and purchase mortgages, the association may issue its own obligations up to an amount not exceeding 2 times its paid-up capital and not exceeding the unpaid principal of insured mortgages owned, plus its cash and government and government-guaranteed securities. The insured mortgages are exchanged, in case of default, for government-guaranteed debentures of the federal housing administration's insurance funds.

WEST LEADING IN LOAN REPAYMENT

WASHINGTON, March 26 (Special)—The San Francisco region embracing the states of Arizona, California, Idaho, Montana, Nevada, Oregon, Utah, Washington and Wyoming ranks first in repayment of loans to the Home Owners' Loan corporation, with \$38,798,037, or 16.1 per cent of its principal repaid as of December 31, 1937. Among the states, Nevada ranks first, with \$61,165, or 18.9 per cent repaid. Wyoming ranks 17.9 per cent repaid, followed by Arizona. In loans fully liquidated, the San Francisco region ranks third, with 341 accounts, totaling \$120,450, crossed off the lists. Nevada, with 106 accounts, totaling \$200,186, repaid, ranks first among the states over the country.

A TIMELY TIP! CURTAINS
Crisp, Fresh, Bright, and Water and Stain Resistant. Call 68 or 788 for...
TROY-NATIONAL Dri-Cess Service

NOW! WE'LL GET PERFECT HEAT IN EVERY ROOM
A Holland Can't Fail Air System warm you complete satisfaction because it is scientifically planned by Holland's own special trained engineers and installed by Holland's own expert mechanics. What's more, Holland guarantees you perfect heat in every room. Easy to own too—prices are remarkably low and you virtually make your own terms. Call factory branch below.
138 Third Ave. So., Phone: 670 Twin Falls, Idaho
HOLLAND FURNACE COMPANY HOLLAND MICHIGAN
World's Largest Installers of Home Heating and Air Conditioning Systems

LET Twin Falls Lumber Co. Put you in... Your Own Home
There's a "once-in-a-lifetime" thrill awaiting you when you can point to a house and say, "That's MY Home!" It gives you a proud feeling of security and independence and furnishes the perfect environment for an enjoyable family life. Investigate now... we'll show you how you can own your own home.
BUILDING SUPPLIES
A better home requires better building materials and you can be sure you're getting the best when you get all your supplies for building and repairing from our complete stock.
FREE Expert Planning Service
Plans for new homes, plans for modernization... remodeling! Take advantage of our complete home service. Stop in today or phone, and our representative will call!
We take this opportunity to introduce...
A FEW OF OUR ASSOCIATE CONTRACTORS
JOE GARRNER... 241 24 Ave. N. E. L. SMITH... North of Hospital A. E. CHRISTENSEN...
111 Tyler St. O. W. LINDAU... Merzugh, Ida. HARVEY BITTIGER... 34th, 166. ANDY WILSON... Hagerman, Ida. D. KENNISON... 443 Adams MARK WOOD... 101 7th Ave. East
"SEE US BEFORE YOU BUILD"

ANNOUNCING A NEW ALL-RISK INSURANCE POLICY ... for prospective and present HOME-OWNERS
Here is an all-risk policy which will prove the most popular of Hartford's offerings... a policy which covers every type of risk on your home. Nominally priced, it includes hazards seldom covered... but which are always factors towards a possible loss. Investigate this policy for your home today!
Coverages insured by this all-risk policy include:
Fallen Building Clause Waiver Aircraft Property Damage Explosion Damage Motor Vehicle Damage Windstorm Damage Riot Smoke Damage
You may buy this policy for only \$2 per \$1000 for 3 years
PEAVEY-TABER CO. Agents for Hartford Insurance

NORGE Leads Again!
Come in today and see this amazing demonstration. It proves the NORGE Electric Rollator Compressor gives you...
MORE POWER MORE ELECTRIC COLD MORE ECONOMY
ALL 3 REFRIGERATORS KEPT COLD BY 1 NORGE Electric ROLLATOR COMPRESSOR
COME IN TODAY AND SEE THIS AMAZING DEMONSTRATION! See how the smallest NORGE Electric Rollator compressor—the surplus-powered miracle-mechanism of refrigeration—keeps three Norge refrigerators cold. See with your own eyes how Norge gives you *unfailing cold*—less wear—longer life. See the Norge before you buy!
10-YEAR WARRANTY
on the Rollator® compressor only you buy today will be in effect in 1948... Only Norge has the surplus-powered Rollator compressor that makes cold by revolving slowly in a permanent bath of protecting oil... That's why the Rollator compressor is... exclusive to Norge... carries a 10-Year Warranty...
Buy NORGE Appliances On Easy Monthly Terms
Claude Brown Music Co. Twin Falls

KITCHENS SHOW SCIENCE'S HAND

Science has entered the kitchen and all its resources are used by home builders in the twin falls area to produce the new kitchen in efficiency and labor economy.

Owners' Ideas Rule \$14,000 Ranch Home

In a class by itself is the \$14,000 home of Mr. and Mrs. C. M. Gordon located on a 240-acre ranch four miles east of Twin Falls.

Shown through the recently completed home by the owners, an Evening Times reporter was awed at the modern conveniences which were to be found.

NEW STYLE HAS TROPICAL CHARM

Introduction of an interior decoration style that brings the charm of tropical lands into the house is reported by the Modern Home Institute.

The immediate Twin Falls area have the only section in south Idaho which boasts imposing new farm and town homes.

Other Lands Have Odd Spring Cleaning Ways

While the American housewife gathers up her sops and brushes and electrical household helps in preparation for spring cleaning, the preparation of many foreign countries is busily preparing magic charms for ridding her home of evil spirits.

In Tyrol the homes are cleaned carefully and fumigated with juniper berries while church bells are rung, whips are cracked and twigs burned to drive away the evil spirits.

METHODS GIVEN TO COOL HOUSE

Hot weather will again emphasize the need for some way to cool off the house during the night; but now it is easy to get good results by installing one of the very efficient night cooling units that are offered for very little money.

In Calabria the spring cereoncles in Calabria are appealingly simple. As the church bells peal forth at Easter time, the natives bid temptation to depart and good to enter while they sprinkle their newly-cleaned homes with holy water.

Breakfast Nook Termed Cure for Spouse's Grinch

A bright, cheery breakfast room is one of the best antidotes for "morning grinch" ever discovered, and is especially enjoyable this time of year, for it is possible to inject a gaiety and color in the breakfast room which cannot be attained in the mere formal dining room.

There is a growing trend in homes where they are not provided with a dinette, to include a breakfast table in the kitchen. This is an especially convenient arrangement for light lunches and night snacks.

Savings-Loan At New High For Business

During February the First Federal Savings and Loan association in Twin Falls set a new record in the month's business in its history, according to a financial report received this afternoon by H. R. Crandall, manager.

Decorative Value Bookshelves Have

Bookshelves are being fitted into the decorative scheme for cabinets as well as for practical reasons, says the Modern Home Institute.

Wallboard Joins Can Be Stressed

Modern decoration has faced squarely a problem that has been dodged for years. In using wallboard in a room, the hiding of the joints has been to what amounted to a major crime.

217 Rooms in Big Ranch Residence Near Castleford

The immediate Twin Falls area have the only section in south Idaho which boasts imposing new farm and town homes.

Built for solid comfort, the nine rooms on the first floor and the three full rooms in the basement are just that. And it is a completed example of what individual enterprise can do because the ideas embodied in its construction were those of the owners.

250 HOME SHOW PARLEYS MAPPED

WASHINGTON, March 26 (Special)—More than 250 home shows to be held in various sections of the country for the balance of this year will provide a common meeting ground for the three groups that are most interested in home building—the consumer, industry, and the financing agency.

A TIMELY TIP! LINENS

Snowy White, Perfectly Laundered and Finished the DRESS Way at the TROY-NATIONAL 66 Phones 788

Complete Lines of Dining Suites Tables C lamps Poreh and Lawn Furniture Linoleums Breakfast Suites Period Pieces

Handsome occasional chairs in a wide selection of covering. One of these to eat off of a corner of your favorite home.

Smart, Vogueish BEDROOM SUITES

Arsh we offer the most modern of suites... this time in a tastefully done bedroom suite. It has everything the modern taste demands with the distinct bonus of quality and correct styling.

Advertisement for Hoosier Furniture Co. featuring various furniture pieces like dining chairs, coffee tables, wall mirrors, and occasional tables.

HOW TO WIN FRIENDS AND INFLUENCE PEOPLE!

FURNISH YOUR HOME TASTEFULLY... MAKE IT INTERESTING... make your home interesting for people to look at, restful for them to visit in and appealing throughout in color, beauty and style.

See Our Displays of Rugs Lounge Suites Ranges Occasional Chairs Book-Cases Occasional Pieces Office Furniture

CLAUD C. PRATT SALES COMPANY "Mail On The Road To The Hospital"

HOOSIER FURNITURE CO. "For Furniture That Satisfies" TWIN FALLS

SCHOOL BUILDING MOVE BRINGS MODERN STRUCTURES

HEAD OF SYSTEM CALLS PROGRAM A 'REAL CREDIT'

By HOMER M. DAVIS
(Superintendent of Schools)

During the month of May last year the people of the Twin Falls District No. 1, Twin Falls county, voted to issue \$250,000 worth of bonds. These bonds were sold during the summer at the lowest rate of interest ever reported in this part of the country.

This money was made available so that each of the five grade schools could have either a new building or an addition. It also provided for a complete renovation and reconstruction of the junior and senior high school building.

The trustees of the local district procured the services of Thomas E. Cole, a former superintendent of schools and a building expert. His findings have been an excellent guide to follow in working out the basic plans.

In constructing any kind of a building it is necessary to have an architect. The services of Burton Moore, Homer G. Leah, and Andrew McQuaker were obtained, and Frank Hummel of Boise has acted as a consultant.

Credits to City

These buildings are a real credit to Twin Falls. The school building will cost about \$180,000, will contain one of the most beautiful grade buildings in all the mountain district. This building contains 18 classrooms, a cafeteria and auditorium combined, teacher rest rooms, office quarters, health clinic, and lavatories on both floors.

The Lincoln building will cost about \$180,000, and will be a complete unit by itself. The Lincoln building will be comprised of 11 classrooms and ten of the same special rooms as mentioned above in the school building.

The Washington primary unit cost about \$240,000, and it has been said many times it is the finest primary building in Idaho and contains the best equipment of any primary building in the state. This building will be completed in the month of November, and it contains three classrooms, a playroom, two lavatories, a cafeteria kitchen, two rest rooms, and many closets. The new wardrobes, modern furniture, and floor finish are really unusual.

The junior and senior high school building was given considerable attention last summer. New lavatories were constructed, new drainage fountains, maple floors were laid in 17 classrooms, all desks, chairs and tables were refinished. New lights were installed in some rooms and old plaster which was falling was removed and replaced.

LENDERS OFFER BUILDERS' HELP

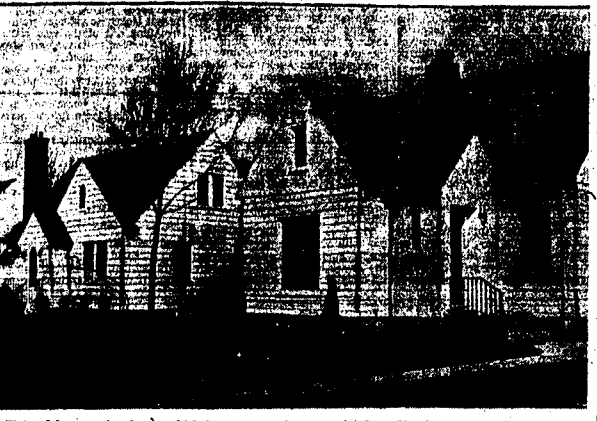
WASHINGTON, D. O., March 25 (Special)—In every community in the United States there are banks, savings and loan associations, or other approved lending institutions where funds to buy or build a home may be borrowed under the terms of the recent amendments to the national housing act.

More than 6,000 thousand institutions of all kinds are engaged actively in making insured mortgage loans, according to an announcement by Stewart McDonald, federal housing administrator, today. These are located in every state in the Union, Hawaii, and Alaska.

From December through February 16, 118 institutions were added to the list of approved mortgagees with \$8 of these institutions approved in the first three days of February, the period which witnessed the signing of the amended act.

During the last 10 years the enrollment of the local high school has increased at a very high rate. We have a 40 per cent increase in our high school enrollment and 20 per cent in the grades. Our junior and senior high school building houses over 2,000 students.

Two New Homes in Popular Section



Pictured here are two homes which have recently been completed on Lincoln street, heart of a section which is producing many fine homes. The home on the right is that of Mr. and Mrs. Charles Casey, at 184 Lincoln. It was completed at an estimated cost of \$6,500. On the left is the home of Mr. and Mrs. Fred Bates at 174 Lincoln, completed at a similar cost. They are typical of the homes being constructed in that section. (Breveling Times Staff Photo.)

Boys, Girls Should Have Own Space In Home, Says State P.-T.A. Chief

Take it from Mrs. I. E. Joelyn, president of the Idaho Congress of Parents and Teachers, every boy and girl is entitled to some space of his own in the home, even if it's only a corner.

And for this reason Mrs. Joelyn this afternoon took time out to point out such a need to an Evening Times reporter.

First of all the Parent-Teacher leader declared that, contrary to general opinion, a small house is not hopeless so far as providing this needed space is concerned.

There's Always Space

"Even if the home does seem terribly small there is always room for the youngsters if time will be taken to find it," she said. "For instance a playroom can be furnished by covering one wall with cork for dart games or thumb-tack collections. It might not sound important but then many a girl would be very well satisfied with just that. In other words the youngsters should have their fair share of any home."

So far as the boys are concerned, Mrs. Joelyn pointed out that shelves, even in a small space, are capable of multiplying until the ceiling is reached.

"One boy I know," she commented, "has fitted cheese boxes into

packing boxes as drawers. They even have tiny spoons attached to them to serve as drawer pulls. As far as the girl is concerned we must always remember that orange crates make fine doll houses and furniture and something which they make themselves will be more than appreciated if they can take it into a room that is their own."

Needed for Youth

In pointing out that such things are needed for youth, Mrs. Joelyn said that "something can always be done within our means."

"Something can always be done within our own budget for the betterment of housing for children," she said. "For example they can be provided with new tables and chairs, improved cloakrooms and floor-surfaces right here in Twin Falls at the Washington school. Why go along with things as they have always been?"

"So far as providing room in homes for the children I can say this. What if adding to the house does cause it to part from traditional lines?"

Make It Usable

"And here I might say that children's rooms should never be too

completely as a boy's room may be completely usable including the walls, furniture and rugs, and the same pertains to a girl's room. Children have to stretch. By addition of an upper room, a lower room or at least some room economically furnished, a place is provided for the 'gang' to meet or for the girls to hold their Camp Fire meetings," she said.

She stressed the fact that providing such space can many times be "easy." Such space could be provided in the basement, or by finishing store rooms or by adding a sun porch or other enclosed porches.

They Can Help

"Any of these can be made over economically if a girl is old enough to improve her own draped dressing table or the boy is able to build shelves or other necessities where wanted."

"Providing a place for the children to play, a place they can call their very own and a place where they can keep what they want to without fear of its being lost or swept aside will serve to bring them into an environment which will aid them as the years go on," Mrs. Joelyn concluded.

CHIMNEY IS NOT HOUSE SUPPORT

A chimney is not a prop or a structural column to give support to framing members of a house, such as joists and studs. Framing members around a chimney should be at least two inches away from the chimney.

Due to the weight of materials used in its construction, practically any chimney built on the average soil is likely to settle slightly. If the framing members of a house are attached to a chimney, they will settle also, resulting in cracked plaster and sagging floors.

Cracks in the masonry, due to settling may develop when the framing members have been built in to give some support to the upper portion of the chimney. These cracks may permit the passage of flames or air currents of high temperature and result in fire starting in the walls, floors, or roof.

For these reasons the chimney should be constructed so as to be absolutely independent of the house framing. It should rest on a solid foundation, and its base should be provided for. Snow and rain water in the early spring frequently cause difficulty in this respect.

Water draining down walls during rainstorms and accumulating in soil pockets saturates the soil against basement walls, and damp cellars result. For this reason fresh soil should be put in all sunken places around the foundation, and, if possible, it should be graded with a slight slope away from the house to assist in draining.

After the soil has been filled in and graded, foundation walls should be thoroughly cleaned and painted, if necessary. Rubbish, such as leaves and straw, should be cleared away, and termite mud tunnels should be removed to prevent possible structural damage to the property.

These precautions should be taken before any landscaping is done, such as the planting of shrubbery and flowers.

The average speed of six army "flying fortresses" that flew to South America and back was 180 miles an hour.

KITCHEN AFFECTS WIFE'S ATTITUDE

A kitchen that isn't convenient to work in will make a housewife dissatisfied with her home. The quality of equipment, the kitchen that does not have adequate storage space will be a trial to the person who has to live with it.

Sinks, cabinets, and closets may be built in a kitchen with funds obtained from local private financial institutions. Walls may be refinished, floors repaired, or a new sink installed.

The sponge fisheries of the Mediterranean, grew into an important industry at an early date, and the entire population of seacoast towns made their living at the trade.

Idaho Territory was organized March 3, 1853.

Sport Equipment Closet Good Idea

A large closet or small room dedicated to the storage of sports equipment is an asset to the household interested in sports and also affords a material saving because the proper care of such equipment prevents deterioration.

Racks, hooks, and pegs should be provided in the storage space to hold golf clubs, tennis rackets, hockey sticks, skis, skis, etc. Series of stout wooden hooks, like old-fashioned hat racks, sloping down toward the wall make a good place to hold the golf clubs. Shoe shelves with grooves can be arranged for skates. Wooden pegs set in the wall hold tennis rackets without straining the frames or damaging the gut.

BUSINESS REPAIR CASH AVAILABLE

A list of some of the repairs and improvements to commercial and miscellaneous buildings which may be financed under the property improvement credit plan has been compiled by the federal housing administration.

The list includes built-in air-conditioning systems, ash-removal equipment when part of the heating system, barn pens, bins, boots, burglar-alarm systems, dust collectors, elevators, escalators, fire-alarm systems, fire escapes, fire-hose systems (mounted on reels and permanently attached to the water system), sprinkler systems, stairs, troughs.

CARE NEEDED ON FOUNDATION SOIL

When exterior foundation repairs that necessitate soil excavations are made, the settling of soil should be provided for. Snow and rain water in the early spring frequently cause difficulty in this respect.

Water draining down walls during rainstorms and accumulating in soil pockets saturates the soil against basement walls, and damp cellars result. For this reason fresh soil should be put in all sunken places around the foundation, and, if possible, it should be graded with a slight slope away from the house to assist in draining.

After the soil has been filled in and graded, foundation walls should be thoroughly cleaned and painted, if necessary. Rubbish, such as leaves and straw, should be cleared away, and termite mud tunnels should be removed to prevent possible structural damage to the property.

These precautions should be taken before any landscaping is done, such as the planting of shrubbery and flowers.

The average speed of six army "flying fortresses" that flew to South America and back was 180 miles an hour.

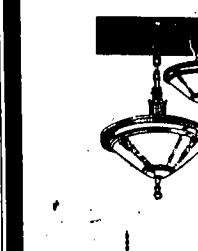
Spring Fix-Up

Your home deserves the best care you can give it. Now is the time to fix-up and repair. For only a few dollars you can preserve your property against the ravages of time and weather. See us for paints, Muresco plumbing fixtures and supplies, lighting fixtures and supplies, tools, builders hardware, fencing and ornamental iron work.

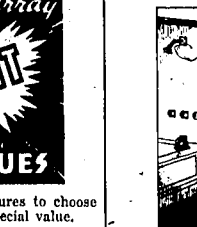
Electrical Supplies

Dazzling Array of LIGHT VALUES

Dozens of beautiful fixtures to choose from. Every one a special value.



Plumbing Supplies



Closet combinations, complete	\$18.50
Lavatories, complete	\$13.50
Chrome combination sink, faucets with soap dial	\$4.50
4x8 recess soap holders (to be built-in) white	\$1.85
Chrome plain sink faucets	\$1.00
1/2 inch galvanized nipples	6c
4 inch No. 1 sewer tile, per ft.	20c

Modernize Your Home

with **Dry-Cleaned DRAPES RUGS CURTAINS**

ALL DRY CLEANING DONE BY **SANTONE**

This year you can put real economy in force in your home when you plan your modernizing... modernize the modern way... dress up your home with bright, new-looking drapes... rugs... or curtains. Have them dry cleaned the Santone way in our big plant. Dingy, after a winter's wear, they'll come home to you freshened, brightened... ready for another year of beauty in your home.

Check over your dry-cleaning needs right now... this is the time of year to do it... and have it done by Santone!

PHONE 850

and an experienced, smiling routeman will call at your home to discuss your cleaning problems with you.

PARISIAN
Laundry & Dry Cleaners

SAFETY

How Do You Invest Your Money?

The First Federal Savings & Loan Ass'n. Insures Your Funds Up to \$5000.

Your Stock is Never Below Par

Federal Savings & Loan Associations have no membership or withdrawal fees, penalties, fines, or forfeitures of any kind.

\$1.00 Opens an Account

First Federal Savings and Loan Association of Twin Falls

Office—231 Shoshone St. N. Phone... 955

Paints, Enamels Muresco

Save Costly Repair Bills—Paint NOW

Oriental outside house paint. 14 beautiful colors. Per gallon **\$1.95**

Interior gloss enamel. The best enamel you can buy. For walls, ceilings and wood work. Per quart **\$1.00**

Quick drying floor enamel. Per quart **\$1.05**

Krengel's Hardware

CHIMNEY PLANS NEED ATTENTION

A chimney is one of the most versatile parts of a house and care should be exercised in its construction.

To build a good chimney costs little more than to build a bad one. In the first place, it must start on a solid foundation. Unless it is built on an outside wall, it should be built so that no part of the structure rests upon it. When chimneys are built in with the structure, particularly in frame construction, the variance in shrinkage and settlement between the wood and the masonry will cause cracks, uneven floors, cracked hearths, and other disagreeable troubles.

Separate the Wood—All wood should be kept at least two inches away from the masonry. No floor or ceiling beams may be buried in or rest on the masonry of a chimney.

Each fire stove, or fireplace should have a completely separate flue right through to the top of the chimney. All flues should be lined with fire tile, and not more than two flue tiles should be placed side by side without a masonry division. When they do run side by side, the joints of the flue tile should be staggered so as to prevent any possibility of leakage from one flue to another. There must be at least four inches of masonry around the outside of the flue.

Adequate Flues—Flues must be large enough for the first flue they are available from which this information can be easily figured. All chimneys should extend at least above the highest ridge of the roof, or poor drafts are liable to occur.

Hearths should be cantilevered from the chimney and not supported on wood members.

Fireplaces should be properly constructed with adequate smoke stacks and large symmetrical smoke chambers, with the first flue tile rising perpendicularly directly above the center of the fireplace. Flues should be made with gradual turns and at no two flat an angle.

If these rules are followed, a good chimney should result.

REPORT REVEALS PLUMBING NEEDS

The need for the inspection and modernization of much of the plumbing in residential, commercial and industrial buildings is indicated by a report entitled "The Public Health Hazards in Plumbing" just issued by the United States Public Health Service.

The report is based on an inspection of 24,684 plumbing fixtures in 206 federal buildings in New York and Detroit.

U. S. Survey—The survey was undertaken by the United States public health service in order to determine if plumbing in federal buildings is as dangerous to public health as the plumbing in Chicago hotels which resulted in the amebic dysentery epidemic in 1933. This epidemic caused 98 deaths and the illness of more than one thousand persons.

The New York and Detroit surveys revealed that a substantial amount of the plumbing in federal buildings is potentially dangerous to health in that, under certain conditions, the drinking water supply of the building might become polluted with sewage.

Found Bad Conditions—Conditions favorable for the spreading of contamination in the water supply which the investigators found to a greater or less extent in all of the buildings examined included: The occurrence of a vacuum in the water system; the leaking or "generating" of gas at the valves; the leaking or general disrepair of water, soil, and waste lines; the stopping up of soil and waste pipes with debris; the development of back pressure; and the contamination of open water storage tanks.

The survey disclosed that the degree of hazard to health in the plumbing systems of the various buildings varied roughly with the age of the building.

The report says: "While about the same percentage of fixtures was listed as disapproved in the older buildings as in the newer buildings, the health hazards surrounding their use was many times greater." Of the 206 buildings surveyed, 523 are used as residences; 72 are multiple apartments, barracks, or dormitories; 49 are office buildings; 23 are hotels; and the balance "unclassified."

Sharp Decrease in Farm Foreclosures

WASHINGTON, March 26 (Special)—A sharp decrease in foreclosures on non-farm real estate throughout the United States in January, 1937, was shown today in a report by the division of research and statistics of the federal home loan bank board.

Surveying the national field of urban home owners, the district found that 71 per cent fewer foreclosures saw their properties foreclosed upon through failure to keep up their payments in December than in the previous month. Moreover, the report said, foreclosures in January exceeded those of the average month in 1936—a high property year—by only 600 cases. January was recorded as a "new low" month in foreclosures for the recovery period. Figures for the month were 24 per cent under those of January, 1937.

Reports from all over the country showed 10,235 foreclosures on non-farm property in January as compared with 11,013 in December. This decline brought the foreclosure index figure from 873 (1934 being taken as a norm of 100) in December to 82.2 in January.

MIRROR SHELVES—Recessed mirrored shelves in a small dining room are both decorative and useful and add a modern touch. Black, blue, or rose-tinted glass is particularly effective.

Two Homes Exemplify Modern Trends



The homes of Mr. and Mrs. C. M. Smith at 1815 Eleventh avenue east (on the right) and Mr. and Mrs. Miles Browning (left) are typical examples of modern, higher priced homes which are finding favor with local builders. The former cost approximately \$10,000 while \$12,000 was expended for the latter. Large windows add to the charm of the houses and also permit an abundance of sunlight to enter. (Evening Times Staff Photo.)

Smaller Houses Top Building Trend Here

Two Twin Falls contractors, Fred Read and John S. Kimes, this afternoon revealed in exclusive interviews with the Idaho Evening Times the trend in modern housing and also "just what people demand" when they construct a home of their own in Twin Falls.

Both contractors pointed out that the present building activity calls for construction of smaller type houses, ranging in average size from four to five rooms. They also said that two-story houses were the exception rather than the rule today and that nearly all of the homes being constructed are of the one-story size, a few being one and one-half stories in height.

Colonial Popular—During his talk with an Evening Times reporter Mr. Read stressed the fact that Colonial type homes are proving popular at the present time and that next to them in popularity come the modified English. Studio and bay windows are also coming into their own and full basements are being demanded.

"In fact," Mr. Read commented, "you can hardly sell a house today which does not have a deep, full basement."

Another interesting fact is that while the people are "going" for the large windows they are showing little desire for enclosed porches.

Demand Insulation—Both Mr. Read and Mr. Kimes were of the opinion that perhaps the greatest "solid" front demand made by builders today is that the house be completely insulated. Several different types of insulation are proving popular, records of sales show.

Wooden construction is still leading all fields with brick veneer homes coming in second place. Brick, however, is being used extensively for exterior decorations and for entrances, according to observations made by Mr. Read.

People are also demanding fireplaces in their homes and hardly a "tailor made" house does not have one. They are really not limited by any price range but rather are being asked in homes which are being constructed from \$3,500 on up.

Good heating plants are also demanded now-a-days, according to Read, with not-at-circulation systems in the lead for popularity.

Advantage to Build Now—Speaking of the advantages in building at the present time, Mr. Read said:

"Building materials at the present time are low and those contemplating a home should take advantage of this fact before they wait too long."

Mr. Kimes pointed out the tendency toward compactness in the modern homes being constructed in Twin Falls at the present time.

To those contemplating home construction, Mr. Kimes had the following to say:

"Home builders should be sure that good material is being used in the construction. They should also be sure that they hire a contractor who is competent and has experience to back him up."

Avoid Fly-By-Night—Builders should not patronize these fly-by-night contractors who are here today and gone tomorrow. They should deal with local firms who can stand back of their jobs should something go wrong.

The fly-by-night contractor isn't here when something does go wrong. He has left the city and the home owner is left holding the bag.

"These types of contractors who are here and then gone usually have no financial backing and operate on a shoe-string. Those persons who deal with them are taking a chance of not only being 'stuck' with money due on building material bills but also on having a house built for them that, in a few years, will do well to stand of its own accord. If people would patronize their local, established builders they would be assured that the house they would be constructed for them, as they want it," Mr. Kimes said.

BUY QUALITY—Faucets and valves fit the working parts of the plumbing fixtures. They should be purchased on the basis of quality and not price.

CASTLE GATE COAL "That Good Coal"

HOME LUMBER AND COAL CO. Paint and Wall Paper Headquarters Ph. 34—301 Second St. S.

TEST PROVES AIR CONDITION VALUE

WASHINGTON, March 26 (Special)—Engineering reports of a series of tests made in the Chicago Tribune building from Jan. 8 to Feb. 10 were characterized here today by William B. Henderson, executive vice-president of the Air Conditioning Manufacturers' association, as "one of the most convincing revelations of the utility of air conditioning ever recorded."

The Tribune structure includes the printing plant and complete newspaper layout, radio station WGN and a tower structure filled with offices, all of which have year-round air conditioning.

With equipment adjusted for various requirements based on the different needs of the Tribune's editorial business and mechanical staffs, the special space needs of the radio studio and the tastes of a wide variety of office tenants, the installation was declared by Mr. Henderson to be a striking demonstration of the "flexibility" of air conditioning.

The engineering report showed that the system, which has been operating since the summer of 1934, last 12 months with buildings which have been "doiled up" for the winter.

The Evening Times revealed that the store fronts which have been changed during that period of time have left the drab color scheme and entered into that of colors showing more "life."

White with black trimmings has proved popular, the survey showed. Colors also entered into the picture with orange and like shades predominating.

Added to this is the practice of using a type of colored glass for trimming purposes. It is not only durable, the store owners will tell you, but likewise is easy to keep clean and always presents a fresh appearance which makes it look very much as though it was just installed yesterday.

Name "Photographer"—One local store even went so far as to install a new type of glass which has the store name "photographed" in it. In other words the sign will remain new looking as long as the glass lasts—and that will be for scores of years. It is easily backlit at night so that it stands out rather than being just a glass extending across the front of the building.

Even the brick used in construction is going modern. When it uses to be of one color it is now, in some cases, fitted with several or has two or more shades of one color. In other words the trend is toward beautifying the store front.

Such modernization is expected to continue throughout the coming year and prove even more active than it has been during the past when many thousands of dollars were spent in this type of work in Twin Falls.

The practice reminds one of plastic surgery in which a new face is, figuratively speaking, given to the patient. So it is with the buildings. The fronts which have weathered

Business Structures Given Improvements

Dressed up with new fronts, some of the buildings in the downtown business section of Twin Falls have, during the past year, assumed a strictly modern look.

Where tendency in early Twin Falls followed the then popular trend over the country, buildings were not so much for looks as for durability, the modern stores are now constructed for both beauty and durability.

"Doiled Up"—So it has been during the last 12 months with buildings which have been "doiled up" for the winter.

The Evening Times revealed that the store fronts which have been changed during that period of time have left the drab color scheme and entered into that of colors showing more "life."

White with black trimmings has proved popular, the survey showed. Colors also entered into the picture with orange and like shades predominating.

Added to this is the practice of using a type of colored glass for trimming purposes. It is not only durable, the store owners will tell you, but likewise is easy to keep clean and always presents a fresh appearance which makes it look very much as though it was just installed yesterday.

Name "Photographer"—One local store even went so far as to install a new type of glass which has the store name "photographed" in it. In other words the sign will remain new looking as long as the glass lasts—and that will be for scores of years. It is easily backlit at night so that it stands out rather than being just a glass extending across the front of the building.

Even the brick used in construction is going modern. When it uses to be of one color it is now, in some cases, fitted with several or has two or more shades of one color. In other words the trend is toward beautifying the store front.

Such modernization is expected to continue throughout the coming year and prove even more active than it has been during the past when many thousands of dollars were spent in this type of work in Twin Falls.

The practice reminds one of plastic surgery in which a new face is, figuratively speaking, given to the patient. So it is with the buildings. The fronts which have weathered

ARCHITECT FEES UNDER FHA LOAN

Under the property improvement credit plan of the federal housing administration, a loan not in excess of \$2,500 to finance the building of a new structure may include the cost of architectural and engineering services.

The proceeds of the loan must be expended for the erection of a building that will be structurally complete and ready for occupancy or use upon completion.

TAPE FOR BLINDS—Colorful Venetian-blind tape is on the market that will clip to the blinds' tapes and can be taken off and washed. This may be bought in a variety of colors and designs to fit any decorative scheme.

BUY QUALITY—Faucets and valves fit the working parts of the plumbing fixtures. They should be purchased on the basis of quality and not price.

Paint for Exteriors Will Balk Elements

There are paints on the market that add in making stucco, brick or cement, proof against frost and the elements.

Funds for applying this material may be borrowed locally.

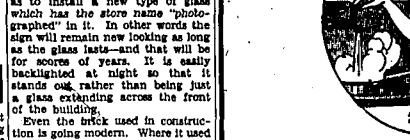
Fort Hall was built by Capt. Nathaniel Wyeth in 1854.

A TIMELY TIP! DRAPES

Will lend a Fresh, Bright Atmosphere to Your Home When Repaired at the...

TROY-NATIONAL 66 Phones 788

MODERNIZE



Modern Plumbing Means Economy in Time & Effort

You'll find that a modern sink and bath with running water will repay the original investment many times over in increased convenience.

On the farm or in town, modern plumbing gives the most satisfaction of any home improvement for the money.

Phone 283

Home Plumbing & Heating Co.

OOOPS! I Didn't See That Extension Cord!!

Don't Skimp on WIRING When You Build or Re-model!

It Costs Less to Do It Right—NOW—Than to Rewire Later!

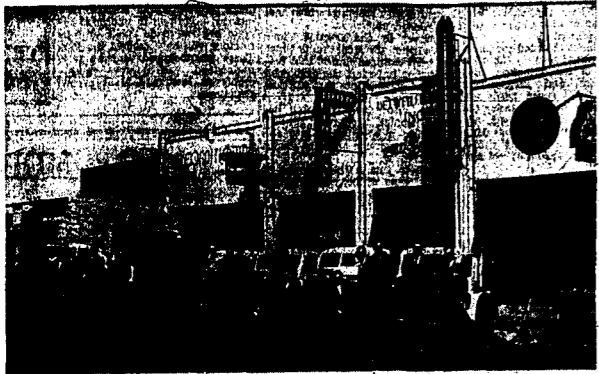
Is your new home going to be cluttered with extension cords in a year or two, because you skimped on wiring? Proper wiring is one of the most important factors in home planning. It means—enough outlets in every room—switches placed within easy reach—wiring large enough to carry the load. Without adequate wiring, your new home may be obsolete next year. Consult your local wiring contractor before your building plans are finally approved.

Re-wiring, after two or three years, is expensive. And a bother. Wire your home properly at the beginning and save money.

IDAHO POWER
Check with the Power Dept. MUCH Cost So LITTLE!

DETWEILER'S bring to Magic Valley a complete HOME MODERNIZATION SERVICE

the firm you helped to build

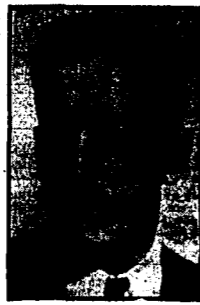


View of Detweiler Bros., Inc., Recently Remodeled Home at 144 2nd Ave. N., Twin Falls

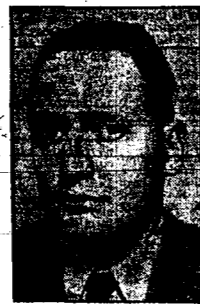
A modern business enterprise embracing the many services such as Detweiler's offer must necessarily be housed in a suitable business home. Three major steps have brought us to our present location at 144 2nd Ave. N. in Twin Falls. Our present home is conveniently located with ample room for display purposes. Shops in the rear of the building afford us space for service and manufacturing work.

We feel that our present home is a modern workshop and display room where the modern home planner may come for up-to-the-minute home modernization features.

The DETWEILER Organization has grown and kept pace with the growth and needs of this community!

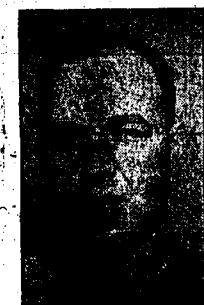


CLAUDE DETWEILER
Management of this fast-growing concern lies within the hands of this man. Raised in Twin Falls he knows the modernization problems of the local home-owner.



GEORGE DETWEILER
He ably assists in the management and has chalked up a long list of sales to thoroughly satisfied customers of Detweiler service.

SERVICE DEPARTMENT



Charles (Chuck) Sieber known to thousands of residents of this area for his willingness to serve Detweiler customers.

We place particular importance upon this department because we know that merchandise merely sold and not properly serviced is of no value to the customer. In this department, directly under the charge of Charles Sieber, is the answer to every operation problem of the home-owner. Installation of Frigidaire equipment, Iron Fireman and Permutit is taken care of by this department—as well as the complete servicing of that equipment. Parts and repairs are kept on hand for immediate service work. Associated with this department are also: Delbert Stevens, Forbes Patterson, Delmar Shumway, Russell Whitehurst, Frank McCleary.

You may be sure that any piece of equipment which you buy from Detweiler Bros. is backed by our guarantee of continual service through the hands of this department's personnel.

SHEET METAL and AIR CONDITIONING INSTALLATION



Lloyd (Slim) Gilkey
In charge of Detweiler's fastest growing department. It fills a real need in our home-modernization plan.

This comparatively new department has found a real place in our home modernization service work. Down spouts, gutter troughs, cornices, renewing warm air furnace efficiency are just a part of the work done in this department. A modernly equipped shop enables us to do this work quickly and as reasonably as possible.

Air conditioning installation is handled through this department also. So often the real solution to air conditioning problems is found in the proper conduction of air through metal ducts that these two services go hand in hand. In charge of this department is Lloyd "Slim" Gilkey with capable assistance rendered by Glen Hostetler, Charles Stevens and Jack Koehler.



Willis (Will) Skinner
Commercial Sales Department. Skilled in all types of home modernization problems and all types of refrigeration. Call him for immediate service.

Commercial Sales Dept.

How about having your business keep step with modern progress? Consult us for estimates on grocery store and market refrigeration. You will also be interested in our line of Tyler market display cases, vegetable racks, sprays, and all other types of store fixtures. Frigidaire "Flowing Cold" is also an important feature of this department—it's tops in commercial air-conditioning.

PHONE 8-0-9

The phone number 809 is one of the best known in this area. It has always stood for immediate attention to home needs. Today it brings the home-owner in immediate touch with a corps of expert workmen who are ready and capable of bringing to your home complete home modernization service. Make this phone number . . . 8-0-9 a by word in your household.

FREE ESTIMATE and CONSULTATION SERVICE

Home planning brings so many problems that we are anxious to give every customer the benefit of our experience along these lines. You incur no obligation whatsoever when you ask us to help you with your home-modernization. If these pages of advertising bring to mind a problem of yours, let us know and we shall be glad to advise you, prepare estimates and give practical demonstrations of our ability to help.

During the past three years a steadily increasing interest has been shown in building in Magic Valley. This interest has been more than a passing fancy. Today, every family thinks in definite terms of one day owning their own home . . . remodeling the one they now own . . . or keeping in fine repair their present one.

This widespread, lively interest has brought the need for a complete home modernization service. It has meant that some firm has had to step to the front with facilities and personnel to answer this need. So many problems . . . aside from actual construction . . . confront the builder of today. The ideas of home conveniences of yesterday have become living realities of today.

To keep pace these changes calls for an organization which specializes in such matters. We have grown with building in Magic Valley and have, naturally, acquainted ourselves with the problems of home modernization in order to create and maintain our leadership.

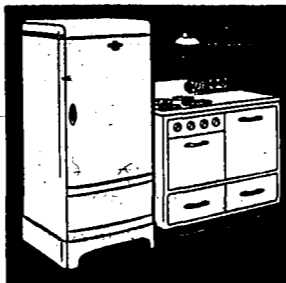
We feel sure that nowhere can one find an organization that is prepared to serve the home-owning public as we are. When home modernization becomes a question in your household remember that Detweiler's are ready, capable and willing to help you.

Sales Department

Upon this group of energetic young men, falls the biggest load in the modernization. They are the ones whose duty it is to bring home modernization to the residents of our community. Every one of them has been specially trained, particularly informed upon the products which he sells. They know and understand the home modernization problems of the Magic Valley community . . . and you'll find each one of them enthusiastic in bringing the solution of those problems to you! Shown here are the products with which they work to make better homes in Magic Valley!



Reading from left to right: George Detweiler, Bill Slim, John Steber and Henry Wendling. Their abilities backed by the products they sell have brought satisfaction to hundreds of home owners in our communities.



FRIGIDAIRE REFRIGERATORS and RANGES

Outstanding this year is the Frigidaire line of the Frigidaire Range. Now, a kitchen can be completely equipped with Frigidaire—General Motors. Frigidaire electric refrigerators have been the standard of top-notch quality—a trail blazer that has continued to lead the way in the still young life of electric refrigeration. See both of these fine products on display in our show rooms. We know you'll be delighted with their appearance and enthusiastic about their performance.



IRON FIREMAN AUTOMATIC COAL BURNERS

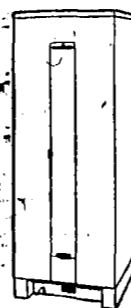
There is no automatic coal burner like the Iron Fireman. The Iron Fireman, too, has pioneered a field of convenience and maintained a leadership against a score of competing products in that field year after year. Now the Iron Fireman represents the highest degree of convenience, economy and performance. Ask your neighbor who owns one—he'll tell you he wouldn't be without it. The newest adjunct to this product is the Coal Feed which makes additional savings and even greater convenience in your home. There's a size and type for every home business institution!



Lee Skinner
Office Manager
For over 21 years, Lee Skinner has been moving the people of this community and serving them with kindness and courtesy. Now you'll find him presiding over our office in our business residence. It's an integral part of our organization . . . and we're proud of his far reaching friendships.

General Electric Hot Water Heaters

At an extremely small expense this appliance can bring you convenience far greater than the original cost or expense of upkeep would be. Hot water is an essential part of the modern home. When you investigate how cheaply convenience can be brought you, you'll insist on an electric hot water heater . . . you'll specify General Electric.



The Household Hit of 1938! PERMUTIT WATER SOFTENER

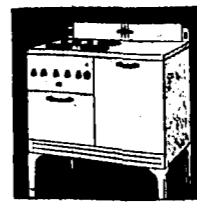
Chemical conditions in our water supply have long demanded a convenience such as Permutit . . . and now it's here . . . the home water softener. No more dirty wash basin . . . no more grimy tuba . . . no more clogged pipes. Permutit is the answer! Every household washing operation from shampooing to the weekly laundry benefits through Permutit. There's soft water every minute of the day for every purpose. Permutit is easily installed in a size which takes a minimum of space. And it's economically priced, too. Ask anyone in our sales department to tell you about the household hit of 1938 . . . PERMUTIT.



Home Laundries AND Small Household Appliances

Home modernization goes farther than just the front rooms of your home. Greater conveniences than ever are available now for once-dilatory basement rooms. And the G-E Home Laundry Units are the reason why. Inspect a completely assembled G-E Home Laundry. Home-managers will realize the economy of these labor and time saving products.

On our display floor is a wealth of smaller appliances . . . all designed to bring electrical economy and convenience to your home. Waffle Irons, Toasters, Coffee Urns, Irons, Food Mixers, Heaters, Vacuum Cleaners, Fans . . . these and many others are products of General-Electric. Don't overlook the time and labor saved by these small appliances—no say nothing of better results—when you plan to modernize your home.



General Electric Ranges

The Tripl-Oven and the High Speed Calrod Unit are two outstanding features of this modernly designed range. The G-E simplifies the art of cooking, assures better results and a cleaner, cooler kitchen. In beauty, the G-E is definitely a leader. You'll want to inspect this range thoroughly in our show-rooms when you plan on home modernization. Like all G-E products it brings the greatest convenience at the most economical cost.

PLEASE NOTE: F. I. A. terms are available again this year on your plumbing, Heating, Iron Fireman, Permutit Water Softener and Insulation. Take advantage of this outstanding opportunity to modernize your home easily. . . .
NO DOWN PAYMENT REQUIRED—3 YEARS TO PAY
ASK US FOR DETAILS OF THIS CONVENIENTLY ARRANGED DISTRIBUTED PAYMENT PLAN!

AN AGE OF SPECIALIZATION

On every hand we find evidence of work done by experts who have specialized in a particular effort. The clothes you wear, the car you ride in . . . these are distinctly products of specialists. The same holds true in the plumbing and plumbing to the electrical needs of your kitchen . . . should be placed in the hands of experts.

Because we wish to serve you best in the matter of home modernization, we have gathered into our organization highly trained experts who have studied the needs of the modern home planner. One works intimately with the conveniences of the home . . . that's the reason that every appliance, heating or refrigerating unit should be exactly what you need . . . and correctly installed.

We pride ourselves in being specialists in home modernization. The products and the service which we advertise in these pages are typical of our efforts to serve you well. Read them over carefully . . . notice the members of our organization who have been specially trained to help . . . realize that Detweiler's are building themselves to bring you the utmost in specialized home modernization service.



O. C. MILLER, Sr.
Recognized as one of the Northwest's leading designers in Heating, Plumbing, Ventilation and Insulation. He has been associated with Detweiler Bros. for the past 5 years.



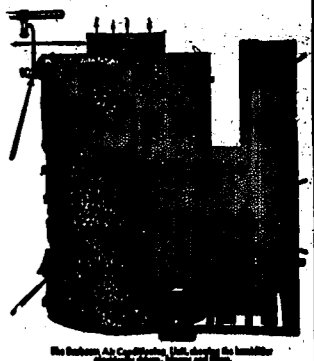
OTIS MILLER, Jr.
Thoroughly informed on all types of home-modernization problems he is the able head of our Insulation department and assists in the Plumbing, Heating and Ventilation departments.

HEATING --- PLUMBING AIR CONDITIONING ATTIC-WOOL INSULATION SALES DEPT.

with supervision over installation

Sunbeam Furnaces

Here's the completely modern home heating plant. It's modern in every way from the strong construction, durable fire grates and convenience of operation to the blower attached unit which brings a strict economy in fuel. Either the straight warm air furnace may be had or the complete unit with air conditioning incorporated. When you build or plan a modernization program in your home—be sure that the Sunbeam Furnace is included in your estimate.



The Sunbeam Air Conditioning Unit, showing the blower, ductwork, valves and filter.

Our plumbing and heating equipment is installed by capable workmen including Steve Cooks, his son, Glade, and Wayne and Bob Robinson. Attic-Wool is installed by Russell and Maurice Whitehurst. These boys are experts at this work and devote their entire time to the installation of Attic-Wool.

SUNBEAM and FRIGIDAIRE Air Conditioning

The modern home demands—and deserves—air-conditioning. Air-conditioning brings greater comfort and better health. Dry, dust-laden atmosphere can be washed and humidified easily with either the Frigidaire or the Sunbeam air-conditioning unit. The cost is nominal—not without the means of the average home-builder.

Have you often thought that modernization of your home would be too expensive? Let us prove through plans and estimates just how cheaply you can accomplish the things you want to do with your home to make it more modern. We shall be glad to discuss these problems with you at no obligation.

Attic-Wool Insulation

Here's a product which has risen to a new high in popularity—and not without reason. Insulation brings new fuel savings you never dreamed were possible. Attic-Wool gives more warmth in the winter—and greater coolness in the summer. It can be installed easily without fuss or fuss in your present home—or in the home you're planning to build.

Save Heating Dollars With Attic-Wool Insulate

Standard Sanitary American Radiator Plumbing Fixtures Heating

From this well-known, nationally advertised line of plumbing supplies and fixtures, you may select the correct plumbing equipment for your new home. New installations in old homes can be accomplished easily . . . inexpensively. Our own plumbing department will be glad to give you estimates and to install your selections. Plumbing is an important part of your home modernization plan.

For winter-time comfort in your home, choose from our line of American Radiator supplies. If you consider renovating your business home, consider the indirect system—fan and coil type. All installations done by our specially trained men to bring the utmost in satisfaction. Specify American Radiator Heating! Estimates, plans gladly furnished in our Heating, Plumbing and Air-Conditioning Department.

Here's the 1938 Home as Twin Falls is Building and Planning It

Moderate Prices But Latest Trend Mark Residences

There's no such thing as blind tradition for these Twin Falls wives of 1938 who are building or who intend to build new homes this year.

What was good enough for mother is no guiding light to them.

This 1938 wife—and let's stick to the wife because she rules the building roost although her husband does the paying—has definite ideas as to just what she wants. She knows just what the latest trend in comfort happens to be. And she isn't building just any kind of a home.

This Twin Falls wife, and there are scores of her who will be doing the same thing before summer, has her home planned before she ever starts it.

And this is what she wants, as evidenced by an Evening Times interview with one Twin Falls wife who will move into their new residence by April 15.

She (and that includes her husband, who is behind her) wants a house with as many windows as possible. She knows that light is no problem now as regards heat expense, because the residence is a gas heat.

She wants large casement windows in front. These will not open, but the rest of the house has windows that are operable.

She wants large casement windows in front. These will not open, but the rest of the house has windows that are operable.

Compact homes with rooms that are big and bright. She wants a kitchen with a built-in stove and refrigerator.

She wants a kitchen with a built-in stove and refrigerator. She wants a kitchen with a built-in stove and refrigerator.

She wants a kitchen with a built-in stove and refrigerator. She wants a kitchen with a built-in stove and refrigerator.

She wants a kitchen with a built-in stove and refrigerator. She wants a kitchen with a built-in stove and refrigerator.

She wants a kitchen with a built-in stove and refrigerator. She wants a kitchen with a built-in stove and refrigerator.

She wants a kitchen with a built-in stove and refrigerator. She wants a kitchen with a built-in stove and refrigerator.

She wants a kitchen with a built-in stove and refrigerator. She wants a kitchen with a built-in stove and refrigerator.

She wants a kitchen with a built-in stove and refrigerator. She wants a kitchen with a built-in stove and refrigerator.

She wants a kitchen with a built-in stove and refrigerator. She wants a kitchen with a built-in stove and refrigerator.

She wants a kitchen with a built-in stove and refrigerator. She wants a kitchen with a built-in stove and refrigerator.

She wants a kitchen with a built-in stove and refrigerator. She wants a kitchen with a built-in stove and refrigerator.

She wants a kitchen with a built-in stove and refrigerator. She wants a kitchen with a built-in stove and refrigerator.

She wants a kitchen with a built-in stove and refrigerator. She wants a kitchen with a built-in stove and refrigerator.

She wants a kitchen with a built-in stove and refrigerator. She wants a kitchen with a built-in stove and refrigerator.

HOUSE INSURANCE GROUP FUNCTIONS

WASHINGTON, D. C., March 28—Completion of a field organization to service all applications for insurance of multifamily and group housing mortgages under the new federal housing administration program began functioning on March 15, it was announced today by Miles Coleman, deputy federal housing administrator.

The announcement followed a week's rental housing conference with valuers of the field personnel. At these meetings, which were presided over by Mr. Coleman and Clyde T. Powell, deputy administrator, all phases of the amended national housing act were explained in minute detail by administration officials, each an expert in his own particular field. Particular emphasis was laid on the rental housing program which provides mortgage insurance on a 100 per cent basis for group housing, embracing projects from \$10,000 up to a maximum of \$5,000,000.

With this "schooling" Mr. Coleman said the field force would be qualified to examine and process applications, work previously performed by the central office. In this manner the volume of new business expected to result from recent liberalization of the act may be expedited, he explained.

DESIGN IN SMALL HOMES IMPROVES

WASHINGTON, March 28 (Special)—Evidence of improvement in planning and designing of homes following a series of small-home planning conferences is cited nationally.

At 38 conferences included builders, architects, contractors, and material dealers during the year, and evidence of improvement in planning and designing of homes following a series of small-home planning conferences is cited nationally.

Over 10,000 builders, bankers, architects, material dealers, and the general public attended the small-home-planning conferences.

During the first 21 months of 1937, a total of 1,063,876 passengers were carried by domestic airlines in the United States.

motor, and then flushes away. The system will handle anything but large bones.

She wants a chute from kitchen into basement, for cans, papers, etc.

She wants one of those built-in receptacles for rear deliveries. It has a dial, which you set to tell the milk man how many bottles you want. A similar idea works for groceries, only the dial isn't used.

The delivered goods are placed inside; the outer door is locked.

And there you have it. Home Focal Point.

The Twin Falls house that's destined to make the home once more the focal point for enjoyment of life.

And it doesn't cost a fortune. You can build it, with a large share of the things this house-wise wife has outlined for you, for \$6,000.

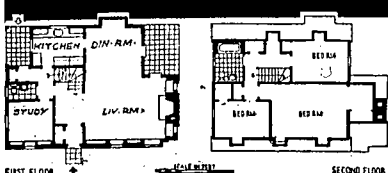
You can borrow that sum and repay it, like rent. And what you can't install in the way of conveniences now, you can add on by a later.

That's half the fun of a home, anyway.

Sheet Metalwork. She wants a kitchen with attractive patterns. The same goes for the bathroom. And, for husband's delectation.

She wants a house built so that the backyard and garden are a unit to be enjoyed right with the house. That's the latest modern housing trend in Twin Falls... getting away from the front yard, with its proximity to traffic into a secluded rear yard. The French doors opening to the patio, or directly to the yard, enhance the "air-mindedness" that the wife learns.

Field Stone Goes Well With White Wood Trim



Simplicity is always an admirable quality in the small house. This one has it.

Rough stone effectively combines with white wood trim to make an unusually attractive exterior for this Brookline, Mass., home.

The compact plan throws living room and dining room together for spaciousness and includes what most masculine home-owners crave—a study well located for privacy.

The first floor lavatory can be reached easily from the living rooms.

Upstairs are three well-closed bedrooms and a bathroom big enough to turn round in without bumping an elbow.

Architect Samuel Glaser designed this plan, which was selected by the Architectural Forum, 135 East 42nd St., New York, N. Y.

Rules Given for Good Paint Job

Certain rules must always be observed if a paint job is to be successful. The requirements for finishing different types of wood (special), and the correct procedure for painting woodwork, are given with each type of paint.

Therefore, observing the directions of the manufacturer is the first step toward a satisfactory refinishing job.

Practically all paint manufacturers recommend a thorough cleaning before painting. This is done by sand-papering, removing grease and dusting should be taken care of before the brush touches the opened can.

Good paint deserves a good brush. Buy good ones... cheap brushes have a way of losing their bristles right in the middle of a smooth surface, and you'll lose time picking out these stray bristles if you're making a cheap brush do the job.

Don't paint on a wet surface. Paint will not cling to a damp piece of wood or metal. If there is any doubt about the piece you're painting, postpone the job until you're sure that it's thoroughly dry.

Use a paint mixed for the purpose you have in mind. Different ingredients and binders are used to give the paint you buy the quality the manufacturer specifies. Only the correct paint will give you a satisfactory job, and it should be used for only one purpose.

Loans Insured for Structural Changes

In cases where such improvements as an elevator or a built-in air-conditioning system become a structural part of a building a loan for the purchase and installation of such equipment would be eligible for insurance under the property improvement credit plan of the federal housing administration.

DECORATIVE DOORS

Doors may serve a decorative as well as a purely useful purpose and add a subtle accent of color to a room. When pale-green walls are used in a room, for instance, doors may be lacquered red and cream.

ICE-CUBE SAVING ECONOMY FACTOR

No sane person would think of throwing a cent out of every dollar spent for making ice in a home refrigerator down the kitchen drain. But the fact that many people do is a waste of money.

The new Frigidaires cube tray does away with all of this waste and gives the user dollar for dollar economy in ice making. And think of all the disgusting tray gurgling and sink splashing it eliminates.

Made of all-metal, because water freezes faster in metal than any material used in making ice trays, the new quick-tray tray is equipped with an automatic tray release for loosening it from the shelf of the freezer. A light downward pressure on the handle and the tray is free.

Lawn Furniture Prices are Low. Every building material concern carries a line of wood garden furniture that can be assembled and painted at very little cost. These pieces come in a variety of styles and are so designed to be a decided asset to the garden or lawn.

The "handy man" can make seats and benches that are a credit to any garden without spending but a few cents for a board of two; then if these pieces are painted white or weathered brown, or a good shade of green, he may well be proud of his handiwork.

FHA PLAN CUTS FINANCING COST

WASHINGTON, March 28 (Special)—The new federal housing administration program of 60 per cent mortgage financing for home building provides for reduced financing costs, representing a maximum saving of approximately one per cent per annum to home builders and buyers on newly constructed homes carrying mortgages of \$5,000 or less.

On newly constructed houses appraised at \$8,000 or less the minimum permissible down-payment or equity requirement has been reduced from 20 per cent to 10 per cent. Thus, on a \$5,000 newly constructed house, the minimum down-payment would be \$500 and the maximum insurable mortgage would be \$4,500, representing 90 per cent of the appraised value. Such mortgages may be paid off on a monthly installment basis under the new program over a period as long as 25 years.

On newly constructed houses appraised at \$10,000 or less, the insurable limit will be 90 per cent of the appraised value up to \$6,000 plus 80 per cent of the appraised value above \$6,000. For example, on a newly constructed \$10,000 house the minimum down-payment would be \$1,400 and the insurable mortgage limit will remain at 80 per cent of the appraised value, but not in excess of \$16,000 under any circumstances.

SAVE ON PEACE FUND

TOLEDO (AP)—The Toledo Industrial Peace Board finished the year 1937 with a balance of \$971 in its budget. Edmund G. Ruffin, director, has reported that the board spent only \$6,879 during the year out of an original appropriation of \$7,250.

PLAQUE HITS INDIANS

OTTAWA (AP)—The death rate among Indians in Canada, from tuberculosis is 17 times as high as that for the white population because of the lack of medical facilities, according to Dr. G. J. Wherrett, secretary of the Canadian Tuberculosis association.

U. S. Now Backs Loans for Farm Water Systems

The amended and revised title I of the national housing act provides for government insurance of loans made for providing existing farm dwellings with a water supply. The new ruling is expected to give tremendous impetus to the modernization of farm homes in this area.

The liberalization of this law makes it possible for the farmer to purchase on the deferred payment plan the complete equipment for a farm water system.

The provisions of the new ruling are sufficiently broad to cover the drilling of the well pit, the construction of the well pit, the pump whether it is a hand pump, a windmill with a jack, or an electrically operated pump, the necessary water supply piping, the plumbing fixtures for the bathroom, kitchen, and laundry, a water heater, and the sewage disposal system.

Only about 11 per cent of the nation's 6,732,462 farm homes now have the convenience of running water. The lack of ready cash has always been the most serious obstacle to farm home modernization.

The new plan permits the farmer to pay for a water system in easy monthly or seasonal payments spread over a period of five years. The loans are made on the character basis without a mortgage and without collateral.

The government, of course, does not lend the money but merely insures loans made in accordance with certain standards by building and loan associations, banks, finance companies, and other lending agencies.

Mattresses Need Regular Cleaning

Mattresses should have their regular cleaning like everything else in the home. It is surprising to see how much dust and lint can accumulate in the nooks and crannies of the average mattress.

The electrical vacuum cleaner is perfect for freshening the outside of the mattress.

RIBBONS REJUVENATED

Often the silk ribbon ties of baby's bonnet and booties become stringy and stiff after being washed. To avoid this, do not dip them in water but wet them with lukewarm soap suds and draw through the fingers a few times. Press on the wrong side with a low temperature iron while still damp.



"This is the year we're going to build our home!"

Here is a wise young couple... knowing they want a home of their own... but being even wiser in knowing how they are going to get it before they start. This year their goal is reached... this is the year they are to build! Let them tell how they went about it!

"There's nothing so hard about it... two years ago when we were married we knew we wanted a home all our own... not one we just paid rent on... but one we could really call our own and rear our family in."

"So we began to set a little aside each month in a savings account which really grew faster than we ever expected. We were careful to be sure we had enough to get started. Then we bought our lot... it was paid for last year. We've been saving ever since and now our capital is enough to start building."

"We've had to borrow some... but we know that we can pay our loan with the money we'd ordinarily spend for rent... and it won't take forever before we own our home."

That isn't such an improbability... this year costs are down... labor is cheaper and more men are available. This is the year to take advantage of your opportunity and build! If you, too, have been prudent and saved for the foundation as this couple has done, consult your builder... he'll be glad to give you every bit of information regarding a great American custom... that of owning your own home.

For Further Information and Estimates (Call 378-W)

Fidelity National Bank -- Twin Falls Bank and Trust Co.

Members Federal Deposit Insurance Corp. and Federal Reserve

BUILD, REPAIR NOW!

ENJOY THE COMFORTS OF A NEW HOME

Enjoy a home that is modern and convenient—that gives all the advantages your children need—to which you will be proud to invite your friends. Whether you plan to remodel, repair or build... see us first. We will be glad to let our many years of building experience help you solve your individual problems.

W. MONTGOMERY & SONS

CABINET WORK MILL WORK GENERAL CONTRACTING

REGULAR CHECK OF ROOFS NEEDED

A roof that will afford necessary protection for a home must be checked periodically.

The four fundamental types of roofs which require special treatment are: The flat roof, popular in warm climates, should, in spite of its name, have a slight slope, of from 1/8" to 1/4" foot for every foot.

With a hip roof the joints should be given attention since weathering is apt to start at these points. Where the roof is broken by dormers, seams in the roofing material should be repaired and renewed.

Watch Gutters Particular attention should be paid to gutters and flashings, no matter what type of roof is used. Since water has a tendency to seep up as well as down, the point at which a roof is joined to the wall should be adequately protected.

Ridge, on old homes, are generally of wood, covering the cut off shingles at the peak of the roof. Where these are seriously weathered it is generally advisable to replace them with a metal ridge.

Try Your Hands At Color to Get Remodeled Room Color schemes give every home decorator an opportunity to be a creative artist.

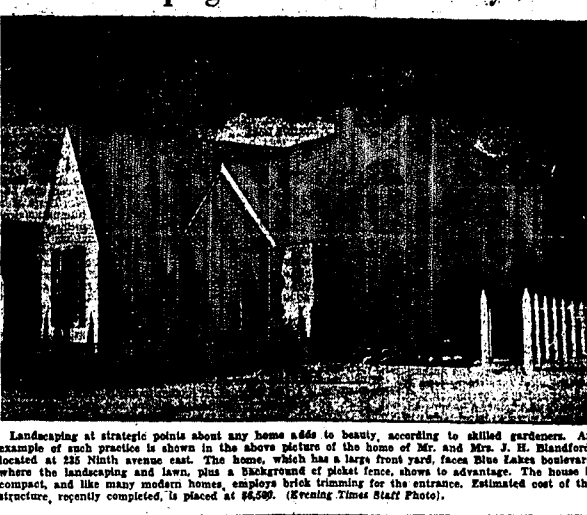
Electric Needs Show Increase With more and more electrical appliances on the market, the housewife finds that more outlets than was considered essential in a house built 10 years ago.

Proportion Is Key to Beauty Proportion is the key to good decoration. Small living rooms generally should be furnished with occasional and odd pieces rather than large formal units.

Beautiful Garden Homes Just a few of those wonderful Garden Homes lots left. Size 90x300 ft. Building restrictions for good homes only.

Reese Williams 125 Shoshone Street South

Landscaping Adds to Home Beauty



Landscaping at strategic points about any home adds to beauty, according to skilled gardeners. An example of such practice is shown in the above picture of the home of Mr. and Mrs. J. H. Blandford.

Citizens' Group Seeks Homes By Earning and Not Charity

Because a group of relief workers in Pocatello wanted homes, but not charity, the organization started in Pocatello back in 1934.

Such a group of relief workers in Pocatello wanted homes, but not charity, the organization started in Pocatello back in 1934.

Statistics indicate that the operation of manufacturing and mercantile establishments through constant vigilance and strict observance of fire ordinances have reduced the number of fires occurring in such places of business.

Electric Needs Show Increase With more and more electrical appliances on the market, the housewife finds that more outlets than was considered essential in a house built 10 years ago.

Proportion Is Key to Beauty Proportion is the key to good decoration. Small living rooms generally should be furnished with occasional and odd pieces rather than large formal units.

Beautiful Garden Homes Just a few of those wonderful Garden Homes lots left. Size 90x300 ft. Building restrictions for good homes only.

LITTLE BUSINESS MAN GETS HELP

WASHINGTON, March 26 (Special)—The "little business man" problem of procuring funds for alterations and repairs of his establishment is met by the new regulations of the national housing act.

In fact, the problem of procuring funds for the repair, alteration or improvement of existing commercial and industrial establishments, as well as securing the financing from private lending institutions for the construction of certain new structures is given specific treatment in the new modernization credit plan.

Under the new regulations, ample provision is made to cover the financing needs of the smaller business of the country for repair, alteration and improvement.

MODERN GARAGES ASSET TO HOMES

A modern garage is a distinct asset to a home.

The garage may be used for other purposes than storing the family car. Shelves can be built in to hold tools and extra parts for the car.

Individual Units for Bathrooms While individual shower units, ready for installation, have been popular with home builders for some time.

Colors Help in Determining Size of House Rooms Wall colors play a large part in creating an atmosphere of coziness in a room.

A Timely Tip! RUGS New Brilliance, New Color, New Charm for Your Home.

WELLNER'S for fine millwork this spring

Wellner Cabinet Shop 726 Shoshone St. W. Phone 608

Residence Construction Started Swiftly in '38

Adhesive Tape Puts Halt to Rugs Slipping CHICAGO, March 26 (Special)—Do your rugs slip on highly polished floors?

FHA GRANTS AID IN IMPROVEMENT In compiling a list of improvements to dwelling units that may be financed under the property improvement credit plan of the federal housing administration, no attempt has been made to include all eligible repairs or improvements.

HERE'S HINT FOR NEW SUBDIVISION When residential lots are located on a major street or a subdivision, Twin Falls realtors suggest that the through traffic be separated from the local service to the residential lots by a strip of planting about 30 feet wide.

Colors Help in Determining Size of House Rooms Wall colors play a large part in creating an atmosphere of coziness in a room.

Individual Units for Bathrooms While individual shower units, ready for installation, have been popular with home builders for some time.

Electric Needs Show Increase With more and more electrical appliances on the market, the housewife finds that more outlets than was considered essential in a house built 10 years ago.

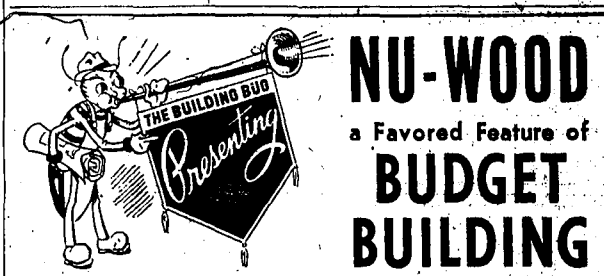
Proportion Is Key to Beauty Proportion is the key to good decoration. Small living rooms generally should be furnished with occasional and odd pieces rather than large formal units.

Beautiful Garden Homes Just a few of those wonderful Garden Homes lots left. Size 90x300 ft. Building restrictions for good homes only.

Reese Williams 125 Shoshone Street South

Wellner Cabinet Shop 726 Shoshone St. W. Phone 608

NU-WOOD a Favored Feature of BUDGET BUILDING



NU-WOOD The All-Purpose Interior Finish

The above illustration shows how the attic bedroom, the sleeping porch or an old room can be converted into modern quarters with NU-WOOD.

Boise Payette Lumber Company

HOME FINANCING REDUCED BY FHA

WASHINGTON, D. C., March 26 (Special)—Reductions in the cost of home financing under the federal housing administration plan in accordance with the national housing act, announced today by Administrator Stewart McDonald.

The total maximum annual carrying charge for an FHA insured mortgage on which a commitment is hereafter issued, will be five and one-half per cent.

This will include five per cent interest and one-half of one per cent mortgage insurance premium in the case of newly constructed homes securing mortgages not exceeding \$5,000 and meeting certain other conditions. The maximum rate will be one-fourth of one per cent, making the total annual carrying charge to the borrower five and one-fourth per cent.

Service Charge

The annual service charge of one-half of one per cent which the lending institution is permitted to charge under FHA regulations will be discontinued on all mortgages for which a commitment to insure is issued hereafter.

The insurance premium in the future will be based upon the outstanding balance instead of the original face value of the mortgage as provided in the old law.

Reduced Cost

Elimination of the annual service charge and the reduced cost of the mortgage insurance will represent a maximum saving of approximately one-half of one per cent to home builders and buyers on newly constructed homes carrying mortgages of \$5,000 or less. On all other insurable mortgages the saving will be approximately three-fourths of one per cent per annum.

On newly constructed homes appraised at \$5,000 or less, the minimum permissible down payment or equity requirement will be reduced from twenty per cent to ten per cent. Total cash required on newly constructed house, the minimum down payment would be \$500 and the maximum insurance premium will be \$5,000, representing ninety per cent of the appraised value.

Use of Brick Trimming Popular Here.



The use of brick trimmings in a home which is built of wood is shown to advantage in this picture of the new home of Mrs. Velma Johnson, 2604 North. The entrance lends distinction to the home which was completed at an estimated cost of \$6,000. Built on an improved lot, the house is well shaded during the summer months. (Evening Times Staff Photo.)

OPPOSITES ARE THE THING IN DRAPERIES, WALLPAPER

By JEAN SPRAGUE

Draperies and wallpapers go by opposites this year but combined they form a harmonious background for any type of room. Remember that in furnishing your new home, or refurbishing your old one.

If you are shopping for drapes in Twin Falls you will find that materials for hangings have large figures against wide spacing and placed against lighter backgrounds. Both of contrasting patterns carry out the forecast.

Paper Designs Smaller

On the other hand, because of the downward brilliant drapes, the new papers are chiefly of smaller, widely-spaced figures on much lighter backgrounds than formerly. This creates a background that is rich and yet unobtrusive for the bright hangings and furniture coverings. However, when dark shades are used in papers they are startlingly deep, as for example the one that has a background of the darkest number 12 by which a stylized leaf design of dull chartreuse is placed at wide intervals.

The outstanding summer drapes are of woven homespun and novelty monks cloths. They have lateral stripes, horizontal stripes and chevron patterns. Or you may prefer the broken plaid design found this year in many attractive combinations or the pattern with the broken cord lateral design.

Patterns in the crestone families repeat the favorites of other years with the small chevron prints. These, however, graduate in size until some bolts will show huge perfectly executed floral prints that measure 12 inches in height spaced without a running pattern against wide areas of solid deep backgrounds.

The Coloring

Coloring in this year is part of a general trend toward perfection of material and in the floral patterns many shades may be used to make a rich hanging. Each shade is applied in a separate step of manufacture.

They are all sun and sub fast with a manufacturer's guarantee. Damasks also show the widely-spaced pattern trend seen in wallpaper and crestone designs and always both the seed repp and the plain repp are found in the fabrics. Also as in past years, large jacquard figures are placed side against a satin background.

Perhaps the newest development is a combination of types with the usual formal design used with a lateral striping of muted shades. The fabric shows an effort to match the drapes to the furniture covers to make a harmonious ensemble in a room.

One of the most attractive of the new shams locally is a beautiful forest green broken satin repp

which gives a satisfying richness of tones due to the light and shadow of the fabric and yet is light enough in weight to hang to advantage. Some of the broken repps also have jacquard figures.

The lace curtains this year have very large floral patterns and more open work to give a far shearer effect than the older type although the thread used is much heavier. Wide panels are used as a bottom border or extending around the sides as well. Some even have a graduated border effect which is emphasized by inch-wide tucks on the wrong side to provide a background for the bands.

Several manufacturers have hit upon a clever scheme to make curtains and spooling the pattern. They have placed several rows of slots for the curtain rods. If the windows are short the upper rows may be folded back to form a heavier heading. Some are made in Even the net or marquisette curtains have gone into color. The sombre effect is most attractive when shading from deep cream to the center which is light. The shading is done by clever dyeing instead of seaming.

Others are Solid

Others are solid, either white or cream and depend on ball fringe which is more popular than ever this year with the balls even larger. The colors are deep, some dark brown, bright red or deep blue, depending on the color scheme of the room to be worked out.

A modernistic effect can be evolved with the curtains of this type by hanging them double over the window and tying them back at uneven heights on each side.

Cottage sets also go heavily for color with the curtains of this type covered by a tie-back curtain of deep color and the lower part with a straight covering of white trimmed with a large applied figure reflecting the color of the upper window.

However, if you don't especially care for the colored curtains, many plain ones are displayed that are plain white and trimmed with self-office. One that is most attractive has three wide-spaced rows of black bias tape as its only trim.

With these lighter curtains the wallpaper that have more pronounced figures can be used effectively and many bright floral patterns may be selected, especially for bedrooms where the furniture is not apt to be as elaborate as in other rooms.

It is for rooms where heavier furniture and more brilliant hangings are used that the papers tend to become a soft background. As said before, patterns are smaller and widely-spaced.

A paper seen here which bears out this trend is one which has a highly-stylized Grecian urn medallion placed at intervals of 10 or 12 inches against a soft gray or cream background. Another has a soft green and brown vine used vertically from backboard to ceiling giving a striped effect as the pattern never interlaces as has been the tradition.

Fewer Scenes

Scenes are still used but in far fewer patterns and those very indefinite. A leaf print that is large but softly blended into a neutral background is the typical pattern for this type of paper. However, as an exception you will find scenery papers showing clear-cut pen drawings in startling colors.

Even the brocade patterns are losing favor. Those shown feature a soft background and shaded pattern. The imitation plaids are still used but like the brocades and simulated fabrics are less frequently seen.

Some Modernistic

Modernistic patterns are shown but only for rooms or houses that definitely require this type. Even here colors are muted and patterns, though geometric, are soft.

For the brilliant and exact patterns the kitchen, bathroom, nursery and game room papers provide a wealth of exciting styles. Here sharp outlines, amusing designs and bright colors are used in profusion. But bright or soft, they are all light proof and may be kept spot free with soap and water. The manufacturer says so!

CITY HOUSING IS URGED FOR IDAHO

By RALPH W. OLMSTEAD

WASHINGTON, March 26 (Special)—Recommendation that Idaho enact a housing legislation authorizing municipalities themselves to undertake low-rent projects has been made to Sen. James P. Pope by Nathan Straus, administrator of the U. S. housing authority.

The Straus report said: "Idaho is one of the 18 states where housing legislation has not been enacted. This means that Idaho cannot take advantage of the federal aid which is available for public housing projects until it passes legislation providing for the creation of public housing agencies."

"At the present time the public housing laws have been passed in 30 states. Most of these laws provide for local housing authorities which are separate legal corporations distinct from the state and its subdivisions. Although the authority is the most satisfactory form of local organization for Idaho should be established, the restrictions of the Idaho constitution is doubtful whether a housing authority law would be sustained by the supreme court of Idaho in view of the court's interpretation of the restrictions of the Idaho constitution."

"For this reason we believe that enacting legislation for Idaho should authorize municipalities themselves to undertake low-rent housing and slum clearance projects."

Calm Perspective Termed as No. 1 Need of U. S. Business

Most vitally needed asset to American and American business today is a calm perspective, according to an able presentation of national outlook quoted from the Bridgeport Brass Works, a commercial trade publication, by J. A. Campbell, Twin Falls plumbing and heating man.

The article, as quoted by Mr. Campbell, says:

A CALM PERSPECTIVE

"There are so many conflicting factors in the world today that anyone making an attempt to keep abreast of the situation soon becomes dizzy and confused. We recognize that in this country business is suffering mainly from a lack of confidence in the future, and when we take a look around the pond, there is certainly nothing, either in Europe or the Far East, to calm our disturbed minds."

"It is for this reason that it is so important to try to have a calm perspective and to recognize the wheat from the chaff, the fundamentals from the mere incidents."

"Fundamentally, this country is sound. There is a vast demand for all kinds of products, including homes. People are planning for the time when they will have some of those demands satisfied, but when temporary disturbances occur, those demands are temporarily set aside and they postpone the program as originally planned. When this postponement reaches the point where it is being done by a great many people, then we have a recession in business and everything slows up."

"Barely six months ago, business was fairly booming and everybody thought we were well on our way to

PAINTING, TRIM NOT EVERYTHING

Painting and trim are the two most conspicuous features of a house to the layman's eye. To the casual observer, the frame of the house, the wiring and piping, even the plaster and floors are concealed behind these two items. Only the experienced observer looks beyond them.

The house that is down at the heels can be brought up to date, thus increasing its value and improving the appearance of the entire neighborhood.

Before any other repairs are made a house should be checked for structural soundness. If the value of the property is to be maintained it must be basically sound. Repairs of this order should be made first.

It is poor economy to agree to one less coat of paint or enamel in an effort to cut down the cost of building or repair. Before the work is started there should be a definite agreement as to the number of coats and the quality of the paint to be used.

Cheap millwork shows up in opened joints, warped edges, and raised grain. Grades of wood and methods of finish and joining should be agreed upon before the contract is signed. When it is necessary to cut down costs, it is better to omit nonessential features completely than to skimp on the quality of those contributing to fundamental soundness.

Even though there is an air cleaner in the carburetor this does not remove the need for having the strainer cleaned periodically.

20 Half-Acre Lots are New Building Step

The time to own a small piece of ground and have a garden, a couple of few chickens may be gratified by a number of Twin Falls residents this year. Twenty half-acre lots in "Breezy" subdivision have been put on the market.

Through offices of E. K. White, realtor, one of these small plots of ground may be purchased on the easy installment payment plan.

Facing south on 17th avenue, the subdivision has a Jefferson street for a center thoroughfare with Adams on the west and Madison on the east.

Several families have taken advantage of this opportunity to date. Five have moved onto the lots, some in temporary shacks up until new homes can be erected. A number of other residents have purchased lots and will occupy them as soon as new homes are completed.

CAREFULLY FIT EXPOSED TRIM

When installing a porch rail and trim or other exterior portion of the house which are exposed to the weather all of the pieces should fit together so they will not do not fit together. True selection will assist in preventing deterioration of the material and result in a lower maintenance cost.

FOLDING DOORS

Sometimes the door to a bathroom or closet cannot be opened without knocking into fixtures. A door, divided in two vertically and hinged with double-section hinges might prove helpful.

IT'S "BETTER" LIVING IN A HOME OF YOUR OWN

Life is best is no "bed of roses" so why not enjoy it as much as you can. No single possession can give you more contentment, more peace and joy than the ownership of a HOME of your own. You can own that home you have been dreaming about and pay for it like rent. The idea is not as far fetched as you think. Stop in and let us explain how you can make these dreams come true.

A COMPLETE HOME-BUILDERS SERVICE

In our 20 years of business on the Twin Falls we have built up a service that will completely fill the Home Builders needs. We have some choice building lots for sale at reasonable prices. We can add you greatly in securing the necessary financing to build. We can insure your Home from the day construction starts. We can furnish you with all the plans and specifications you need. If you are planning on building or buying this spring come in. We have the service you need.

F. C. GRAVES AND SONS

REAL ESTATE—LOANS—INSURANCE

114 1/2 North, Telephone 318

Floors Guide to Room Appearance

No matter how well furnished a room might be, if the floors are shabby, its entire appearance will be spoiled. Floors that have splintered or rough places are dangerous when there are small children.

New floors are one solution. If this is not desirable, a composition covering that is cemented or otherwise permanently laid may be installed.

I'M THE "SAXAUR SYSTEM MAN"

As Advertised in the SATURDAY EVENING POST I'm equipped with the SAXAUR PORTABLE SYSTEM OF STANDARDIZED REPAIR SERVICE that permits me to do the job while on the job. NEXT TIME YOU NEED A PLUMBER for any kind of plumbing work, call me.

TWIN FALLS PLUMBING COMPANY
Floyd Campbell

Phone 423 126 3rd Ave. Nrd.

P. O. Box 10, Twin Falls, Idaho. Repair and install Toilet Bowl, Chamber and Urinals by Saxaur Portable System.

Safeguard YOUR HOME

After You BUILD PROTECT YOUR INVESTMENT with adequate FIRE INSURANCE

REMEMBER—Fire plays no favorites... it strikes at the loveliest new dwelling as easily and quickly as it does at the dingy shack. Your plans, your dreams, your life are probably wrapped in the home you are building or now live in. Don't let fire destroy them. Keep them safe through an adequate planned insurance against fire.

You Save 20%

Take advantage of our saving plan. We are paying every policyholder a 20% dividend on every dollar invested in fire insurance. Isn't that a good investment?

J. E. ROBERTS AGENCY

127 Main West Phone 563

The Complete Building Service

Prospective home builders in Twin Falls will be glad to know that the TRI-STATE Lumber Co. can now furnish the COMPLETE home builder's service. We can handle your building problems from the first step on. While we are not in the contracting business we will be glad to recommend someone who is capable and willing to build your home. This new service eliminates all the delay and redtape, connected with financing and building a home. Every phase of the planning, financing and constructing of your home can be dealt with right here in our office... and at no added expense to you.

F. H. A. LOANS

We can secure 80% F.H.A. financing for you. We can also apply for you with an excellent Financing and Estimating Service... these services are for your convenience and cost you nothing.

FULLER PAINTS

When you come to painting your house insist on the best paint you can get. It will be cheaper in the long run. Fuller Paints and Varnishes are known the country over for their quality. Your house will look new longer if you use Fuller Paints.

TRI-STATE LUMBER CO.

Twin Falls Phone 41

Pioneer Lumberman Sees Active Building Year Ahead

PRIDE OF HOME-OWNING BASIS FOR PREDICTIONS

Pointing out that most people want to own their own homes out of self pride, E. J. Ostrander, pioneer lumberman of Twin Falls, today forecast a year active in home-building for Twin Falls residents.

"The greatest percentage of people who own their own home out of personal pride," Mr. Ostrander said; "and it is for this reason that I believe the home building operations in Twin Falls this coming season will continue apace with the activity of last year."

Seeing Advance "Right now I would say the building outlook for this community is fast and I believe we will see a very active season once the federal housing administration gets actively underway. It will add materially to the people being home conscious."

"Right now they are not and radio conscious and I believe that without a doubt they will soon be home-conscious," he said.

Understand of the F.H.A., Mr. Ostrander pointed out, 90 per cent of the cost of a home up to \$6,000 is guaranteed by the government. "The balance would have a cash amount equal to 10 per cent of the cost and the balance would be borrowed through a private agency and paid of course, he backed by the government. All costs of the home, including the taxes and interest on the mortgage, would be included in the monthly payment which is made on the home in the form of rent.

"It should be remembered by people obtaining homes in this manner," Mr. Ostrander said, "that the monthly payments which they are really paying it to themselves just as surely as if they were putting it in the bank in an account under their names."

"Every monthly payment made means that the builder has a greater equity in the home as the time soon comes when the house is paid for," he said.

He commented that the average three-room house could be constructed for approximately \$4,000 but this depends on how elaborate the builder wishes it to be.

"Because of unusual snow conditions in Twin Falls and vicinity, Mr. Ostrander is against the use of thick insulation in the walls.

"Some people like them," he commented, "but in my own personal opinion, I think they should not be constructed here. The peaked or angled type is much more desirable."

He also pointed out that builders should not try to "build good houses cheap."

"You should build only as far as your finances will permit," he said. "But when you do build you want to build well. It is far better to leave off a room than to build the house and then the whole house by so doing."

"In conclusion, he expressed the opinion that the home building project is a long one and that in the city, unless some unforeseen project is inaugurated on a large scale.

Poets Sing of Home as Lure in Every Era

A home has long been recognized as one of the most important parts of any free country. Throughout the ages in all such nations poets have sung of the lure of the home.

"National government programs in the United States have been founded upon the knowledge that contented persons are those who have a comfortable place which they can call their own and call their home."

Home in Literature "In an attempt to just 'scratch the surface' so far as the meaning of the words 'house' and 'home' are concerned, an Evening Times reporter turned to the poets, the writers and the thinkers. And, the findings were rather startling. Thousands of poems, stories and dreams have the house as their foundation and are then built upward."

Pur instance Sir Edward Coke, back in the 14th century, termed the home a castle. Said Sir Edward, "The house of every one is to him as his castle and fortress, as well for his defence against injury and violence as for his repose."

Even in Shakespeare's time the home was the same as the castle. "The house of every one is to him as his castle and fortress, as well for his defence against injury and violence as for his repose."

And then if Sir Walter Scott were alive today, he might even have invoked a famous verse which he once wrote: "Whose heart hath peer within him burn'd as home his foothold he hath turn'd from wandering on a foreign strand."

With modern conveniences and safe construction a home nowadays is something to return to.

42 Per Cent of Home Financing in Small Cities

WASHINGTON, D. C., March 26 (AP)—The flow of mortgage funds for home financing in small cities and communities of the nation where mortgage money has been traditionally scarce, is shown by the fact that 42 per cent of the mortgages accepted for insurance by the federal housing administration are in cities of 10,000 population or less.

The figures are based on a survey of 1,200 per cent.

The flow of mortgage funds for home financing in small cities and communities of the nation where mortgage money has been traditionally scarce, is shown by the fact that 42 per cent of the mortgages accepted for insurance by the federal housing administration are in cities of 10,000 population or less.

The figures are based on a survey of 1,200 per cent.

This Was Fine House in City Pioneer Time

Twin Falls is speeding its building pace again, and new homes are going up in all sections of the city.

They're all modern, whether large or small. But what was the best in home facilities in Twin Falls back in the days of its infancy—January, 1907?

Here's the way one Twin Falls pioneer woman describes it.

No Impoing Houses "There weren't any impoing houses then, because Twin Falls hadn't gotten its first real attack of growing pains."

"We were first proud of our home at the time, although I look back now at the conveniences I have at hand today, and chuckle a bit."

"Our house was 24 feet square, and consisted of one floor only. There wasn't any upstairs. Lumber was too hard to get to waste it on a luxury like that. When you can't get it, you don't want it, even the Blue Lakes grade, you don't use any more than you had to."

"The house was built of 12 inch boards nailed to two-by-fours."

"Wind Whistled "Through, and madd'd things up quite a bit, especially when we had a dust storm. And we really had them in those days."

"Sometimes in winter there were icicles inside the house, at the cracks in the wall. We managed to melt them by heating up the house as a whole even if it was pretty cold, off in the corners."

"We were very thankful to have what we had. Not everybody had a house. The first boarding house in Twin Falls was built by James All the time with folks who had no homes of their own."

"We stayed there when we first came—there was no other place for much in our room except the bed. All around the room were pegs on which were hung the overalls of the men who slept in cots in the lobby."

"It cost 50 cents a night for a chair. The rest of the early-day folk had 10 by 12 foot shacks. "So we felt that our house was quite elegant for the time. It had a box-car or a shanty."

Laundry Termed Forgotten Room by Club Member

"I'd like to see more attention paid to the laundry," said one local woman club member recently.

"It's the forgotten room. In many of the new houses I see it is only a pair of tubs in a dark corner of the basement. Why not have a small room on the ground floor in a small room of its own next to the kitchen? Then it could be the cleanest, convenient place it ought to be."

"Like the kitchen it should have a working counter about four feet long for sorting and spreading clothes, and cabinet space for storing supplies and for mending things. So often you want to take a shirt in time to give the laundry before you get the things into the washer."

"Some set-tubs are still too low. They're hard to get into. The one I like is just about right for comfort."

"If the laundry must be in the basement, a little thoughtful planning could make it well ventilated, adequately lighted, and well arranged, but in that case there should be a direct entrance into the basement from outdoors."

TWO SHOWERHEADS "A new type of metal prefabricated shower cabinet has two heads, one six feet above the receptor and the other four feet above the receptor. The lower head is convenient for children, for adults who wish to take a shower while seated, and for too bathing."

And then if Sir Walter Scott were alive today, he might even have invoked a famous verse which he once wrote: "Whose heart hath peer within him burn'd as home his foothold he hath turn'd from wandering on a foreign strand."

With modern conveniences and safe construction a home nowadays is something to return to.

And then if Sir Walter Scott were alive today, he might even have invoked a famous verse which he once wrote: "Whose heart hath peer within him burn'd as home his foothold he hath turn'd from wandering on a foreign strand."

With modern conveniences and safe construction a home nowadays is something to return to.

And then if Sir Walter Scott were alive today, he might even have invoked a famous verse which he once wrote: "Whose heart hath peer within him burn'd as home his foothold he hath turn'd from wandering on a foreign strand."

With modern conveniences and safe construction a home nowadays is something to return to.

And then if Sir Walter Scott were alive today, he might even have invoked a famous verse which he once wrote: "Whose heart hath peer within him burn'd as home his foothold he hath turn'd from wandering on a foreign strand."

With modern conveniences and safe construction a home nowadays is something to return to.

Combed Shakes Show to Advantage



Aside from being durable, "combed shake" shingling also sets off a house which employs such outside covering as shown in this picture of the home of Mr. and Mrs. A. E. Cobwell, located at 148 North avenue north. Iron trimmings on the cement entrance steps and also twin door light fixtures also serve to increase the beauty of the residence. The home was completed at an estimated cost of \$7,500. Landscaping is underway at the present time. (Evening Times Staff Photo.)

All Areas of City Boast New Homes

Nearly every section of Twin Falls and many areas just outside have their quota of new houses which have gone up by the score during the past year. Many are still under construction and still others have gotten no further than blueprints and property deeds.

The largest single development is found in the Blue Lakes addition west where every street has several homes either nearly built or just finished. On Lincoln street new houses are going up side by side with carpenters adding finishing touches simultaneously. As few as three lots will be left vacant when these are finished and other builders carry out their plans for early construction.

Among Most Prententious "The homes on Lincoln and Buchanan are among the most pretentious in the city with their spacious floor plans and second stories. Many of them are reminiscent of the Cape Cod homes or the English cottages although all of them show in material of the original type. Exteriors are frame and usually painted white with green roofs and shutters for contrast. Flower boxes of the attractive blue are stained to a rich brown. Shakes and wide boards are used in many of these homes for trim."

Staido Windows "The windows are paneled and nearly all have large studio windows. The exposure of windows in all rooms is marked. Some of those of this group which are in the frame classification have stucco and timber used in effective combination to trim the gabled upper story. In some cases the stucco is material of the same type as others it is tinted. For a home on Buchanan which has a stained exterior the stucco of quite dark. Pierce street is also newly built up with homes of the same type as those nearer the boulevard and in addition are several small, ultra-modern California-type homes of cement or stucco. There are also found on Adalain avenue near the end of Eighth avenue north."

Extremely modern in line they are arranged to accommodate a family seeking compactness and convenience combined with the utmost in newness of exterior. The window space allotted to each room is nothing short of remarkable. Other Sections "Other parts of town also show new homes on what were once untidy vacant lots. A large house has been built on Second street on Fifth avenue east is a large duplex which has room for apartments in the basement. The first floor is high and is reached by short paint and red roof cut short at the eaves.

Smaller Homes are favored in the South Park addition and the west side of the city but these, too, follow the newest trends in style involving the north Atlantic coast style.

Some Duplexes "Worthy of mention among the recent homes are the duplexes although these are not numerous. One on Shoshone street north looks for all the world like one of the most attractive of the larger homes of the city with a small dark brick entrance for the next white residence. The two entries to the apartments are inside in a small hallway. On Fifth avenue east is a large duplex which has room for apartments in the basement. The first floor is high and is reached by short

When it comes to rebuilt homes the older parts of the city have several examples which are so well done that without knowledge you would take them for this year's houses. Two are found as neighbors on Eighth avenue north with one done in stucco with a new shingling roof life and the other in wide overlapping boards stained dark brown.

Another is just completed on Ninth avenue north, and is attractive with its exterior finished with large composition shingles painted soft gray. The entire line of the house has been altered by removal of a heavy front and side porch which has been replaced by a tiny cement stoop under a gable. The portion of the house that was included in the porch has become on one side a sun room and on the other a continuation of the living room with a large window overlooking the street.

While new houses have been constructed on the hospital road which are as attractive as those in other sections, one of the most interesting constructions is the as yet unfinished improvement on a small acreage.

The original house has lost its front porch and as yet has not been replaced by any newer addition. But improvement of the barn is finished and includes two tiny but complete apartments on the upper floor reached by an outside stairway. The downstairs house another family and the exterior of the whole is entirely remodelled to look like one of the newest English cottages. Old and new alike, they add an unestimated degree to the appearance of Twin Falls."

When it comes to rebuilt homes the older parts of the city have several examples which are so well done that without knowledge you would take them for this year's houses. Two are found as neighbors on Eighth avenue north with one done in stucco with a new shingling roof life and the other in wide overlapping boards stained dark brown.

Another is just completed on Ninth avenue north, and is attractive with its exterior finished with large composition shingles painted soft gray. The entire line of the house has been altered by removal of a heavy front and side porch which has been replaced by a tiny cement stoop under a gable. The portion of the house that was included in the porch has become on one side a sun room and on the other a continuation of the living room with a large window overlooking the street.

While new houses have been constructed on the hospital road which are as attractive as those in other sections, one of the most interesting constructions is the as yet unfinished improvement on a small acreage.

The original house has lost its front porch and as yet has not been replaced by any newer addition. But improvement of the barn is finished and includes two tiny but complete apartments on the upper floor reached by an outside stairway. The downstairs house another family and the exterior of the whole is entirely remodelled to look like one of the newest English cottages. Old and new alike, they add an unestimated degree to the appearance of Twin Falls."

When it comes to rebuilt homes the older parts of the city have several examples which are so well done that without knowledge you would take them for this year's houses. Two are found as neighbors on Eighth avenue north with one done in stucco with a new shingling roof life and the other in wide overlapping boards stained dark brown.

Another is just completed on Ninth avenue north, and is attractive with its exterior finished with large composition shingles painted soft gray. The entire line of the house has been altered by removal of a heavy front and side porch which has been replaced by a tiny cement stoop under a gable. The portion of the house that was included in the porch has become on one side a sun room and on the other a continuation of the living room with a large window overlooking the street.

Young Democrats Scan Law To Bring Idaho Housing Aid

Embarking on a campaign to help boost residential construction in the south central area and in Idaho in general, the Twin Falls county Young Democratic club has a committee at work today scanning proposed legislation to permit Idaho participation in federal low-cost housing and slum clearance projects.

A three-man group named several months ago and reappointed recently by the new president of the club, Duncan McD. Johnston, is carrying out the project. Hugh O. Boone is chairman. Other members are Paul S. Boyd of Buhl and George M. Paulson, Twin Falls.

Goal of the Young Democratic group is Idaho enabling legislation to permit municipalities and counties to take part directly in the federal housing projects. Participation by municipalities is the method suggested for Idaho by Administrator Nathan Struss to Sen. James P. Pope, when the latter requested the slum clearance administration to draft proposed Idaho legislation. Many thousands of dollars in residential construction would help swell the channels of Idaho business if the 1938 legislature takes proper action, the young Bourbon group believes. Its drive for municipal and county projects would supplement—and does not conflict with—the low-cost housing aims for individuals, as proposed by the

Municipal Projects "The Young Democratic committee is expected to submit approved model legislation to the general membership this summer or fall. Action by the legislature in January of 1938 would pave the way for what is expected to be a major construction boom, beneficial not only from the standpoint of labor and money circulation but also from the angle of eliminating housing conditions termed disgraceful to southern Idaho."

Lighted Entrance "Adequate light at the entrance to a house is always desirable. Replaced light fixtures, flush with the side of a doorway or directly over it will display the street number of a house adequately and will prevent the visitor from stumbling over the steps or walk."

Lighted Entrance "Adequate light at the entrance to a house is always desirable. Replaced light fixtures, flush with the side of a doorway or directly over it will display the street number of a house adequately and will prevent the visitor from stumbling over the steps or walk."

Lighted Entrance "Adequate light at the entrance to a house is always desirable. Replaced light fixtures, flush with the side of a doorway or directly over it will display the street number of a house adequately and will prevent the visitor from stumbling over the steps or walk."

Lighted Entrance "Adequate light at the entrance to a house is always desirable. Replaced light fixtures, flush with the side of a doorway or directly over it will display the street number of a house adequately and will prevent the visitor from stumbling over the steps or walk."

Lighted Entrance "Adequate light at the entrance to a house is always desirable. Replaced light fixtures, flush with the side of a doorway or directly over it will display the street number of a house adequately and will prevent the visitor from stumbling over the steps or walk."

Lighted Entrance "Adequate light at the entrance to a house is always desirable. Replaced light fixtures, flush with the side of a doorway or directly over it will display the street number of a house adequately and will prevent the visitor from stumbling over the steps or walk."

Lighted Entrance "Adequate light at the entrance to a house is always desirable. Replaced light fixtures, flush with the side of a doorway or directly over it will display the street number of a house adequately and will prevent the visitor from stumbling over the steps or walk."

Lighted Entrance "Adequate light at the entrance to a house is always desirable. Replaced light fixtures, flush with the side of a doorway or directly over it will display the street number of a house adequately and will prevent the visitor from stumbling over the steps or walk."

Lighted Entrance "Adequate light at the entrance to a house is always desirable. Replaced light fixtures, flush with the side of a doorway or directly over it will display the street number of a house adequately and will prevent the visitor from stumbling over the steps or walk."

Lighted Entrance "Adequate light at the entrance to a house is always desirable. Replaced light fixtures, flush with the side of a doorway or directly over it will display the street number of a house adequately and will prevent the visitor from stumbling over the steps or walk."

Lighted Entrance "Adequate light at the entrance to a house is always desirable. Replaced light fixtures, flush with the side of a doorway or directly over it will display the street number of a house adequately and will prevent the visitor from stumbling over the steps or walk."

Lighted Entrance "Adequate light at the entrance to a house is always desirable. Replaced light fixtures, flush with the side of a doorway or directly over it will display the street number of a house adequately and will prevent the visitor from stumbling over the steps or walk."

Lighted Entrance "Adequate light at the entrance to a house is always desirable. Replaced light fixtures, flush with the side of a doorway or directly over it will display the street number of a house adequately and will prevent the visitor from stumbling over the steps or walk."

Lighted Entrance "Adequate light at the entrance to a house is always desirable. Replaced light fixtures, flush with the side of a doorway or directly over it will display the street number of a house adequately and will prevent the visitor from stumbling over the steps or walk."

Lighted Entrance "Adequate light at the entrance to a house is always desirable. Replaced light fixtures, flush with the side of a doorway or directly over it will display the street number of a house adequately and will prevent the visitor from stumbling over the steps or walk."

Lighted Entrance "Adequate light at the entrance to a house is always desirable. Replaced light fixtures, flush with the side of a doorway or directly over it will display the street number of a house adequately and will prevent the visitor from stumbling over the steps or walk."

Lighted Entrance "Adequate light at the entrance to a house is always desirable. Replaced light fixtures, flush with the side of a doorway or directly over it will display the street number of a house adequately and will prevent the visitor from stumbling over the steps or walk."

Lighted Entrance "Adequate light at the entrance to a house is always desirable. Replaced light fixtures, flush with the side of a doorway or directly over it will display the street number of a house adequately and will prevent the visitor from stumbling over the steps or walk."

Lighted Entrance "Adequate light at the entrance to a house is always desirable. Replaced light fixtures, flush with the side of a doorway or directly over it will display the street number of a house adequately and will prevent the visitor from stumbling over the steps or walk."

STEPS TOLD FOR PLACING OF LOTS

It is seldom necessary for lots in a well-planned subdivision to be so located as to be injured by adjoining nonresidential properties, local realtors say.

"The lots should be arranged so that they will not be seriously affected by any nonconforming use of adjoining property. Objectionable properties can be completely blocked off from the proposed neighborhood by screen plantings of the lots backed against the nonconforming land so that the houses built on them front away from the objectionable use."

"The appearance and value of every building site are improved when it faces similar sites across a street. Where possible the subdivision boundary line should be along the rear of a lot line rather than through the center of a street."

Proper location of residential lots, well-driven restrictive covenants, and adequate zoning ordinances are three protective measures against nonconforming uses of property which will tend to stabilize a neighborhood and make it a desirable home community.

GARBAGE PAIL SANITATION

Even though the garbage pail is kept out of sight, it needs as much looking after as the rest of the kitchen equipment or it becomes a source of unpleasant odors and a breeding place for germs. As soon as the refuse is emptied, the container should be filled with hot soapwater, thoroughly scrubbed and scalded and then turned upside down to drain or stored in the sun.

Lighted Entrance Helpful to Visitor

Adequate light at the entrance to a house is always desirable. Replaced light fixtures, flush with the side of a doorway or directly over it will display the street number of a house adequately and will prevent the visitor from stumbling over the steps or walk.

Lighted Entrance "Adequate light at the entrance to a house is always desirable. Replaced light fixtures, flush with the side of a doorway or directly over it will display the street number of a house adequately and will prevent the visitor from stumbling over the steps or walk."

Lighted Entrance "Adequate light at the entrance to a house is always desirable. Replaced light fixtures, flush with the side of a doorway or directly over it will display the street number of a house adequately and will prevent the visitor from stumbling over the steps or walk."

Lighted Entrance "Adequate light at the entrance to a house is always desirable. Replaced light fixtures, flush with the side of a doorway or directly over it will display the street number of a house adequately and will prevent the visitor from stumbling over the steps or walk."

Lighted Entrance "Adequate light at the entrance to a house is always desirable. Replaced light fixtures, flush with the side of a doorway or directly over it will display the street number of a house adequately and will prevent the visitor from stumbling over the steps or walk."

Lighted Entrance "Adequate light at the entrance to a house is always desirable. Replaced light fixtures, flush with the side of a doorway or directly over it will display the street number of a house adequately and will prevent the visitor from stumbling over the steps or walk."

Lighted Entrance "Adequate light at the entrance to a house is always desirable. Replaced light fixtures, flush with the side of a doorway or directly over it will display the street number of a house adequately and will prevent the visitor from stumbling over the steps or walk."

Lighted Entrance "Adequate light at the entrance to a house is always desirable. Replaced light fixtures, flush with the side of a doorway or directly over it will display the street number of a house adequately and will prevent the visitor from stumbling over the steps or walk."

Lighted Entrance "Adequate light at the entrance to a house is always desirable. Replaced light fixtures, flush with the side of a doorway or directly over it will display the street number of a house adequately and will prevent the visitor from stumbling over the steps or walk."

Lighted Entrance "Adequate light at the entrance to a house is always desirable. Replaced light fixtures, flush with the side of a doorway or directly over it will display the street number of a house adequately and will prevent the visitor from stumbling over the steps or walk."

Lighted Entrance "Adequate light at the entrance to a house is always desirable. Replaced light fixtures, flush with the side of a doorway or directly over it will display the street number of a house adequately and will prevent the visitor from stumbling over the steps or walk."

Lighted Entrance "Adequate light at the entrance to a house is always desirable. Replaced light fixtures, flush with the side of a doorway or directly over it will display the street number of a house adequately and will prevent the visitor from stumbling over the steps or walk."

Lighted Entrance "Adequate light at the entrance to a house is always desirable. Replaced light fixtures, flush with the side of a doorway or directly over it will display the street number of a house adequately and will prevent the visitor from stumbling over the steps or walk."

Lighted Entrance "Adequate light at the entrance to a house is always desirable. Replaced light fixtures, flush with the side of a doorway or directly over it will display the street number of a house adequately and will prevent the visitor from stumbling over the steps or walk."

Lighted Entrance "Adequate light at the entrance to a house is always desirable. Replaced light fixtures, flush with the side of a doorway or directly over it will display the street number of a house adequately and will prevent the visitor from stumbling over the steps or walk."

Lighted Entrance "Adequate light at the entrance to a house is always desirable. Replaced light fixtures, flush with the side of a doorway or directly over it will display the street number of a house adequately and will prevent the visitor from stumbling over the steps or walk."

Lighted Entrance "Adequate light at the entrance to a house is always desirable. Replaced light fixtures, flush with the side of a doorway or directly over it will display the street number of a house adequately and will prevent the visitor from stumbling over the steps or walk."

Lighted Entrance "Adequate light at the entrance to a house is always desirable. Replaced light fixtures, flush with the side of a doorway or directly over it will display the street number of a house adequately and will prevent the visitor from stumbling over the steps or walk."

SWEET'S SUBDIVISION

1/2 acre tract adjacent Twin Falls
1/4 mile outside city limits

Adams Street

Jefferson Street

Madison Street

140' Filler Ave.

JOIN UP! TODAY!

The army of occupation is about to take over! This Spring scores of Twin Falls families will enlist in the army of builders . . . and hundreds of thousands of dollars will be spent. How many of those thousands of dollars will be spent wisely in homes remains to be seen.

We urge you to join with the other home builders . . . but we urge you to spend your building dollars wisely . . . consider prices and also consider **QUALITY**. For a score of years we have served this community, dealing in quality building materials which have gone into homes and buildings that have been a pride to each owner.

See us - we'll make it easier for you to build

Let us show you how you may finance your home . . . how you may save money in materials . . . how you may make your home a lasting home through **PROPER materials**. Building materials is our work . . . put us to work on your new home!

OSTRANDER LUMBER CO.

728 Shoshone St. WestPhone 44

Demand the Best Material for your NEW HOME



Start it Right With a Good Foundation

Prompt Delivery Service

Palace Sand & Gravel Co.

8th St. S. Phone 801

FHA PLAN GIVES VARIED HOME AID

WASHINGTON, D. C., March 26 (Special)—Every prospective home owner should be able to find a "tailor-made" home-buying transaction among the 1,500 different varieties of mortgages eligible for insurance under the federal housing administration's mutual mortgage insurance system.

Since mortgages may be made in any multiple of \$100 (over \$1,000), borrowers may choose between 150 different mortgage amounts. The borrower may pay off the mortgage over periods of 5, 6, 10, 15, 17, 20, and even 24 and 25 years. The last two periods apply only to 80 per cent mortgages of \$5,400 or less.

Better Terms

New amendments to the national housing act individualize the plan still further, allowing the family of moderate means more favorable terms than those permitted for families desiring to finance houses valued at \$10,000 or more.

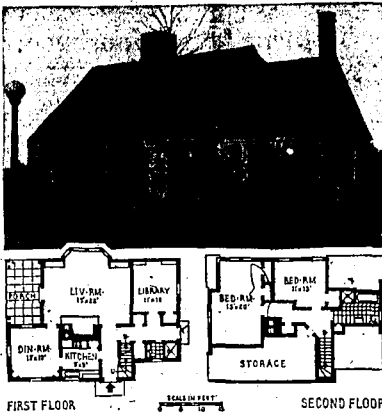
Prospective owners of properties valued at \$6,000, or less, may make down payments as small as 10 per cent of the appraised value of the property, financing the remaining cost of the property with a 90 per cent insured mortgage. At the same time, borrowers may take as long as 24 or 25 years to purchase these small houses.

Also Benefit

Families desiring to obtain mortgages of not more than \$8,000 may also benefit from the new provisions. The first \$4,000 of the appraised value of the property may be financed on a 90 per cent loan basis, while amounts over \$4,000 and under \$10,000 will be subject to the former 80 per cent loan-value ratio. This is a material reduction in the down payment required for properties falling in this classification.

Properties valued above the \$10,000 limit are subject to the same favorable terms which prevailed under the original national housing act.

Charm of Colonial Days Seen in Modern Cottage



Modern planning combined with colonial style in this *Living Island* cottage.

By placing the living and bedrooms at the rear, Architect Stewart McCondonald has added considerably to the occupants' privacy and has kept the simple roof planes in front.

The living room has a generous bay window. The dining room has corner cupboards built in. The porch is where it should be—at the rear. The library, for the sake of cohesion, doesn't even connect with the living room. If necessary, this room could become a guest room, for a shower, bath and lavatory are just across the hall.

Benefits in Business Revealed From Air Conditioning Growth

Far-reaching industrial and business benefits from the growth of air conditioning are revealed by Roderick P. Stewart, business editor, in a discussion in the current issue of *Harvard's The Financial Weekly*.

"To collect atmosphere 'as is' on the outside and deliver it in adequately conditioned form on the inside takes more than 'fan and wet rag,' to use a trade expression," he asserts.

Some of the equipment used in the largest air conditioning installations falls almost in the heavy industry class, Mr. Stewart points out.

More Than Engineering

"So this industry, which looks beyond the current recession to further substantial growth, has to buy a good deal more than engineering and merchandising ability. What industries get out will get the business?"

"Steel and iron makers, for one group, and non-ferrous metal makers, for another, one of the leading air conditioners lists among its steady purchases such items as: "Iron and steel castings, galvanized sheets (for air ducts), grey iron castings, steel stampings, various copper products, non-ferrous castings, and forgings."

Regulate Values

"Instrument makers send it temperature and pressure controls while valve manufacturers deliver water regulating valves. From the chemical industry come refrigerants, and if any of its customers use water from deep wells for cooling purposes, pump manufacturers make sales."

"Cold air is more sluggish than warm air, so cooling installations call for fans, which are used in great numbers, whether they are made by the installing company or by somebody else. And in this connection, don't overlook electric motors."

"Once you've got the air inside, properly warmed or cooled, humidified or dehumidified, it'll cost you less if you keep it that way without much further use of energy. Which brings up the subject of insulation, of which plenty has been heard in connection with heating. It has its place, too, in cooling, both in holding down size and cost of the cooling apparatus needed, and in the length of time such apparatus has to work."

Aids Glass Brick Use

"With reference to glass, air conditioning has facilitated the use of glass, (in the form of glass bricks and otherwise) in building construction."

"While on the subject of the spending set in motion by the demand of people or of business for conditioned air, some 20 or 30 building trades share in certain installations, and in some cases the labor portion of the total installed cost runs up to 70 per cent."

BUILDING SPURTS AFTER NEW LAW

WASHINGTON, March 26 (Special)—More than \$100,000,000 of new business has been recorded on the books of the federal housing administration since the amended national housing act was signed by President Roosevelt on Feb. 26. Administrator Stewart McCondonald announced today.

This includes approximately \$70,000,000 in mortgage selections for appraisal and about \$30,000,000 in large scale multi-family projects submitted to the Washington headquarters for approval. It does not include all the large scale multi-family projects submitted to the insuring offices in the field, or loans made by banks and other lending institutions for property improvement under Title I. Complete reports on these phases of FHA activity are not yet available.

It is estimated that between \$65,000,000 and \$70,000,000 of the new business represents proposed new construction and that a part of the remainder consists of mortgages on residential construction already in progress.

For the second successive week records for FHA business volume were broken when insuring offices reported \$20,871,111 in mortgages selected for appraisal on small homes, principally single family dwellings, during the five and one-half working days ending March 22.

This compares with \$17,813,462 for the previous week which itself established a new high. Up to that week the greatest high point was recorded for the week ending March 20, 1937, when \$18,879,710 in small home mortgages were selected for appraisal.

FARM PROPERTY ELIGIBLE ON FHA

WASHINGTON, March 26 (Special)—Farm properties may be repaired, altered, or improved under the federal housing administration's new modernization credit plan, it was announced recently by Federal Housing Administrator Stewart McCondonald.

In addition, entirely new structures to be used solely for residential purposes may be built on farms with the proceeds of privately financed loans up to a maximum of \$2,500 and "insurable" under the modernization credit plan, Mr. McCondonald explained.

Seasonal Crop Basis

Provisions for repayment of the loans in the case of mortgaged farms as well as entirely new farm residential structures, take into consideration the seasonal return to the farmer from crop sales, it was announced.

Under the modernization plan, a farmer desiring to make repairs, alterations, or improvements to an existing farm structure may procure loans or advances of credit up to \$10,000 for such purposes from private lending institutions. Included in this group are banks, trust companies, personal finance companies, mortgage companies, building and loan associations, installment lending companies, and other financial institutions authorized by the federal housing administration to make such loans under Title I modernization insurance provisions.

\$10,000 Class

In the case of loans up to the maximum of \$10,000 for repairs, alterations, or improvements to existing farm properties, a maximum period of five years for the repayment of the borrowed amount is set in the new regulations.

Financing charges to be made by the individual lending institution for such purposes are limited to the equivalent to \$3 discount per \$100 original face value of a one-year note, payable in monthly installments.

Penny Saving On Stairway Is Poor Idea

To build anything but a first-class stairway is unwise and therefore poor economy. The stairs in a house are important from the standpoint of both use and decoration.

The results of poor stair building are many, aggravating, and continuing. Security or safety is sacrificed, treads, loose hand rails or newels, rattling balusters, open joints, all are the result of improper construction.

From Back

In a properly built stair the wall string (that sloping member at the wall against which the treads and risers butt) is cut so that the treads and risers slip in from the back. The grooves into which they fit are tapered so that wedges can be put in, driven up tight, and glued to hold them securely in place. The treads and risers are interlocked where they meet by means of a tongue and groove.

After all the members are in place, tapered-shaped pieces are set under the treads and these, too, are glued. About three of these blocks are placed under each tread. Thus the whole structure is wedged and glued together into one solid whole.

Not So Good

Frequently, in inexpensive house construction, the treads and risers are merely nailed together and to the wall string, or the string is cut so that the treads rest on top of it and are nailed to it. In such a case the nails work loose and the sagging and squeaking result.

Balusters should be dovetailed into the string and should fit into a groove in the rail with blocks set in the groove between the balusters to hold them securely in place.

Pre-standing newels should extend down and be screwed to the floor joists that surround the stair well. They should be fastened with iron bolts.

Wallpaper Strip Offers Variety

A border strip of wallpaper adds interest to a room with painted walls. These strips which are produced by the manufacturers of wallpaper, may be obtained in hundreds of styles and designs, and a type may be found to fit any period of room.

Rooms which appear too high for prevailing taste may be lowered in appearance by proper use of a border design.

Joints Hidden in New Wallboard

A recessed edge wallboard has been put on the market to solve one of the problems of wallboard construction, that is the joints between the boards.

The new type of board covers cut in ceiling heights, and of various widths and two thicknesses. The long edges are slightly depressed so that when two boards come together the recessed edges form a shallow channel at the joint. A special tape is then cemented in this channel over the joint and, when dry, sandpapered to a surface level with the boards. This cementing process strengthens the joint and helps to eliminate weak spots in the wall.

The boards may be papered or painted as desired.

FHA Pays Taxes on Property It Holds

Local taxing authorities are deprived of no revenues by the transfer of a property to the federal housing administration by an approved mortgagee, for the administration pays taxes on all such real estate at the same rate as the private owner. Incidentally, the taxes are paid promptly in order to take advantage of all allowable discounts.

INDIRECT LIGHTS FEATURE HOMES

Total indirect lighting—that until now had been used only in public buildings and large stores—is a regular feature of many new homes.

More light with less strain to the eyes provided by the latest modern fixtures.

Living rooms are equipped with a large cream colored fixture trimmed with ivy, or a fixture which casts a bright diffused illumination toward the ceiling from an aluminum fixture.

The interior of the fixture holds three tubes which can be regulated from the bottom to provide light of 100, 200 or 300-watt intensity.

Blends With Decorations

Although the fixture is trimmed with ivy, the design is not colonial in design. It is modeled to blend with the modern decoration of home.

Indirect lighting fixture has been installed in the dining room.

The breakfast room adjoining the kitchen is provided with a special semi-direct glass reflector trimmed in ivory and gold that is designed to give the room a soft and cozy atmosphere.

Bedroom Features

A large globe of pure white glass, set in a base of gleaming chromium in the center of the ceiling is large enough to hold a 100-watt bulb. This center fixture is supplemented by recessed light fixtures with the ceiling over the sink and, in the case of the bathroom, a recessed light fixture in the ceiling over the toilet.

Bedroom fixtures are cream colored with ivory and gold metal trim and are designed to give a semi-direct light. The neutral cream finish has been used because it blends with every style of decoration and color.

Up-to-Date Home Mantels Advised

Beautiful fireplaces are found in many old houses, but the old-fashioned mantels that accompany them spoil their beauty. Scroll work or grotesque columns are the despair of the modern decorator.

Mantels can be removed completely, if the housewife desires, and replaced by one of modern design.

Decorating Makes Room Look Larger

In modernizing a house it is not always possible to tear out partitions, or to add additional walls, or to make a room look as large as possible, while it should be light and plain, a carpet should be laid from wall to wall, draperies could be the same color as the walls, mirror panels could be used, and massive furniture must be avoided.

Humidity Causes Carpet Expansion

Weather does things to rugs and carpets. Experiments show that woolen rugs increase in length in dimensions as the humidity of the atmosphere surrounding them increases. Thus a carpet laid down without allowance for a dry day may expand in damp weather and produce result. Make allowance for that when you choose the carpet for the floor in dry weather.

VENETIAN BLINDS REGULATE LIGHT

Beauty, coupled with scientific control of heat and light, is the result found in the use of Venetian blinds in the air conditioned new homes here. Their use is gaining rapidly in Twin Falls.

The practicability of the Venetian blinds permit the regulator of the amount of light entering the room to an extent that is impossible with the ordinary type of window shade.

Deflects Rays

"Tilted upward the slats deflect the direct rays of the sun producing a comfortable indirect light that eliminates all eye strain by giving an even non-glare illumination."

"The light rays are scientifically reflected in every corner of the room, thus insuring the maximum amount of light with absolutely positive light control."

Control of Heat

Control of heat in summer is provided by the deflection of the direct rays of the sun without eliminating light. The use of Venetian blinds also permits a greater ventilation without having a direct draft coming into the room.

The blinds in the living and dining rooms are often made of ivory colored wooden slats trimmed with burgundy tape to harmonize with the color of the room.

In the kitchen the tape is chocolate colored to blend with the predominant shade of the decor.

One great advantage in the use of the blinds, pointed out by the installers, is the ease with which they are kept clean.

STREET LINE IS GUIDE FOR LOTS

In order that a maximum of use be obtained from all lots, local experts suggest that the lot lines be kept perpendicular to street lines when a new subdivision is planned. When this is not done there is a tendency to build the house on the lot, so that the sides of the house are parallel with the side lot line. This creates an unattractive sawtooth arrangement and many times causes the front of one house to face into the side or rear of a neighboring house.

If a maximum use is to be made of every square foot of the lot area, it is important that the lot be well shaped. If lines are not kept perpendicular to the street, sharp-angled corners will result. These are difficult to utilize and give the area an undesirable appearance.

Change of Wall Finish Suggested

If you want to renovate a completely new room in your house, try giving the walls an entirely new treatment.

If they have been papered with a sprightly design, try then plain. If the walls have been plain, try a patterned paper or a paneled effect. Wood paneling can be obtained in a variety of styles and finishes, or simulated paneling may be used.

S BETTER HOMES

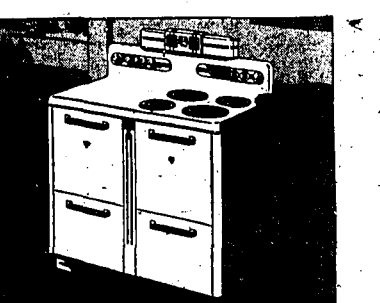
deserve... demand... require

BETTER MODERN APPLIANCES

1938 is to be a banner year in the modernization of Magic Valley homes... and the better home of 1938 is going to deserve better appliances to complete the modernization job. A selection from our line of appliances will make a definite step toward the modernization of YOUR home!

Westinghouse Electric Ranges

We're showing advanced new models in this popular range. Magic Valley housewives proclaim the WESTINGHOUSE a better range in 1938 than ever. For a clean, cool and modern kitchen, select a WESTINGHOUSE RANGE... they're Kitchen-Proved by experienced cooks.



BENDIX HOME LAUNDRY

There is nothing finer than a Stromberg-Carlson



WESTINGHOUSE ELECTRIC REFRIGERATORS

Beauty is paramount in the new, 1938 models of this popular refrigerator... but beauty isn't all that makes Westinghouse a leader. Tests under the toughest cooling conditions have Kitchen-proved Westinghouse to be the most economical of electric refrigerators.

WESTINGHOUSE HOT-WATER HOUSE HEATER

There's no use handicapping your home with an old-fashioned hot water system. Westinghouse brings you the electric heater—the heater which is designed to give you an ample hot water supply for every hour of the day at a minimum of cost. Installation is easily made... purchase price is reasonable.

STROMBERG-CARLSON RADIOS

The patented Labyrinth eliminates the false sounds that mar the ordinary radio reproduction. Stromberg-Carlson is a better radio... designed for quality buyers and constructed to bring the utmost in radio enjoyment. Remember, there is nothing finer than a Stromberg-Carlson!

THE NEW STOKOL STOKER

Only RCA-VICTOR Radios bring you the magic eye, the metal tubes and the magic gain... they're the innovations in radio reception. Meticulously designed cabinets plus mechanical efficiency make RCA-VICTOR the buy of the 1938 radio year.

THE NEW STOKOL STOKER

No home can be completely modern without the inclusion of a Stokol Stoker. Out fuel costs... do away with worry... let Stokol take complete charge of your heating problems. Available in blue and hopper type.

SODEN ELECTRIC

ELKS BUILDING