

# GERMANY GRABS MEMEL AS DRIVE CONTINUES

## House Rules Group Votes for Investigation of WPA

### European Nations Quake as Fuehrer Adds New Region

#### CHAIRMAN SEES EARLY PASSAGE OF PROBE PLAN

WASHINGTON, March 22 (U.P.)—The house rules committee today reported favorably, by a 7 to 4 vote, a resolution by Rep. Eugene Cox, D. Ga., authorizing the house appropriations committee to investigate the works progress administration.

Cox said the resolution would be called up next week and would be "unquestionably" approved by the house.

"There won't be more than 40 votes against it," he predicted.

The investigation resolution was reported amid the battle in the appropriations deficiency subcommittee over President Roosevelt's request for \$150,000,000 to finance relief until next July.

Members of the house economy bloc, with a majority of the subcommittee Democrats in their ranks, are seeking to cut the fund to \$100,000,000. Administration leaders are seeking to compromise on \$125,000,000.

Speaker William B. Bankhead was lukewarm to the Cox resolution, although he said he would not object if a majority of the house supports it.

He contended that the deficiency subcommittee has conducted an extensive inquiry into WPA policies during hearings on the new relief funds. "The committee has heard WPA officials," he said.

Members of the rules committee said that chairman Adolph J. Sabath, D. Ill., and Rep. John J. Delaney, D. N. Y., William M. Colmer, D. Miss., and William L. Nelson, D. Mo., voted against the resolution.

Those voting in favor, they said, were Reps. Cox, Howard W. Smith, D. Va., Martin Dies, D. Tex., Lawrence Lewis, D. Colo., John J. Duggan, D. N. Mex., Carl E. Bruen, D. Mich., and Leo E. Allen, R. Ill.

Cox's resolution would "authorize and direct the appropriations committee to conduct a thorough investigation and study of the WPA and the administration of law, regulations, and orders, and to report to the house as soon as practicable" during the present session.

Kimberly high school championship band, which two years ago competed as a guest band at the Portland rose festival, this afternoon became the first to enter competition in Twin Falls in connection with the spring opening Thursday and Friday.

Band competition will be held Saturday starting at 8 p. m. in the "big block" on Main avenue east and south. Bands will turn along Division street between Division avenue east and Second avenue west.

With Leonard Fisher as drum major, the Kimberly band includes 75 youthful musicians under the direction of Bert Christensen.

Aside from Kimberly, other communities entering bands in the contest which is sponsored by the Chamber of Commerce, include Caldwell, Elmore, Piner and Twin Falls.

Added feature of the event will be the marching and playing of the Big Bands drum and bugle corps of the American Legion and Auxiliary Junior drum and bugle corps.

Officials announced this afternoon that one of the drum corps would parade first, then the five entered bands will parade, followed by the second drum corps. The drum corps are not competing and are marching on parade in the other last, judges in the band contest will be able to announce the winner by the time the drum corps has completed its march.

**Long Strike Ended**  
On Eastern Dailies

WILKES-BAILEY, Minn., March 22 (U.P.)—The nearly six-month strike of non-mechanical department employees of three Wilkes-Barre dailies was ended today after acceptance by members of the American Newspaper Guild of a new contract negotiated at a New York conference.

The contract provided reinstatement of all strikers without prejudice, a five-day, 48-hour work beginning Labor day, sick leave, and severance pay from one week for six weeks' service to 20 weeks for 10 years' service. The agreement was called for a guild shop, with exception of members of publishers' families.

#### House Group Reports 185 Million Deficiency Measure for Defense

WASHINGTON, March 22 (U.P.)—The house appropriations committee today reported a \$185,622,028 second deficiency bill carrying new funds for immediate use to accelerate the greatest defense program in the peacetime history of the United States.

The committee, however, maintained its consistent policy of cutting President Roosevelt's budget requests by shingling the bill \$27,562,903 below the President's recommendations.

The bill, drafted chiefly to provide cash for defense purposes, carries \$30,000,000 to continue construction of 53 war vessels and \$69,738,287 in cash for the war department's defense program plus army contract authorization totaling \$46,891,000.

Major Features  
The committee, however, eliminated a \$10,000,000 request for a new aeronautical research station at Sunnyvale, Calif. It also rejected a \$7,300,000 appropriation to finance the civil aeronautics authority program to train 20,000 pilots annually in universities, on grounds the appropriation must await authorizing legislation.

With these major exceptions, President Roosevelt's requests for funds for the vast armament program were approved virtually without change.

Major Features  
Major rearmament funds: Navy department, \$30,000,000 to carry forward construction of 53 combat ships, including one battleship under the billion-dollar navy program approved last year.

Navy department: \$16,539,287 which includes: 10 semi-automatic rifles, tank, anti-tank guns, renovation of ammunition and weapons now in stock, purchase of explosives and powder, searchlights, trucks, modernization of field pieces, and other equipment.

Orderance department: \$5,366,382 in cash, and contract authorization for \$44,000,000 for critical war material, such as semi-automatic rifles, tank, anti-tank guns, renovation of ammunition and weapons now in stock, purchase of explosives and powder, searchlights, trucks, modernization of field pieces, and other equipment.

Former president of Czechoslovakia, will be a guest speaker at the University of Idaho at Moscow, April 28 and 29. (See story on page three).

**Idaho Speaker**  
EDWARD BENES

WASHINGTON, March 22 (U.P.)—The senate reversed itself today, in response to a vigorous administration crusade, and rejected the Wheeler amendment to the government reorganization bill which would have greatly restricted President Roosevelt's authority to reallocate federal agencies.

The amendment was eliminated by a vote of 46 to 44. The administration victory was achieved through the shift of Sen. Dennis Chavez, D. N. M., who yesterday voted to attach the Wheeler amendment to the bill. Sen. John F. Miller, former Wheeler supporter, absented himself from the chamber but this was believed by the absence of Sen. John Overton, D. La., who voted with the administration yesterday.

**Selected Last Year**  
Last year, when the bitter battle over reorganization ended in a crushing defeat for the administration in the house, the Wheeler amendment was rejected in the senate by a vote of 46 to 43. But parliamentary maneuvers permitted administration forces to draw upon new strength overnight.

The amendment would have required congress to approve each reorganization proposal before it could be carried out.

At Last—More  
Tender Steaks  
In Short Time

PITTSBURGH, March 22 (U.P.)—After three years and nine months of experimentation, today served up beef steak that is served in 10 times faster than ordinary methods of serving meat.

The new method, developed at Mellon Institute of Industrial Research, not only saves labor in the packing house, but makes the beef "approximately one and a half times as tender."

High speed cutting may be applied to all cuts, ranging from expensive prime steaks to lowly chuck and hamburger steak. The result, said Conner, will mean a reduction in the cost of tender beef to a price within reach of all consumers.

**Stemmer Receives \$6,000 Back Pay**

HOUSTON, March 22 (U.P.)—Furner Highway Bureau (FHB) Attorney Stemmer and C. E. McKeever, former public works commissioner, today had collected on the American Medical Association's magazine, *Hygiene*, damaged his professional reputation.

Several of Agriculture's Henry A. Wallace told the house agriculture committee that proposed changes in the administration farm program might adversely affect 100,000 acres and alienate farm support.

**TROOPS MOVE THURSDAY**  
KORONIA, East Prussia, March 22 (U.P.)—German troops will begin to move into Memel area at 4 a. m. Thursday, it was understood today.

#### RESERVIST CALL CAUSES PANIC IN RUMANIA AREAS

BUCHAREST, Rumania, March 22 (U.P.)—An outpouring of reserve troops, answering a call to the colors, and the requisitioning of horses and carts to the extent that it stopped city milk deliveries had Rumanians in a state of near panic today.

The calling up of several classes of reserves, announced officially by the government last night, was explained as a move to "counterbalance similar measures by neighboring countries."

The communique attempted to calm the people by saying that the reservists would stay "far behind the frontiers"; that they had been called for instruction only and would be dismissed as soon as other countries disbanded their reservists.

**Taxis Disappear**  
The slight of reservists crowding around police stations to register, the disappearance of taxis, which had been requisitioned for transport, and the lack of horses and carts to deliver the peasants' milk supplies to the city, however, contributed to the widespread alarm.

Newspapers, taking their cue from the government, announced Rumania was now secure against any possibility of a foreign attack on Rumania by Hungary or Poland.

They also displayed dispatches from Budapest denying mobilization had been ordered in Hungary or that Hungarian radio stations were broadcasting anti-Rumanian speeches.

**Rumors Spread**  
Nevertheless, wild rumors spread. Most persistent were reports of trouble on the Rumania-Hungary frontier, and that German army forces were warning into Slovakia.

The government was reported to be considering the possibility of a joint attack on Rumania by Hungary and Germany, perhaps with help from Poland.

In spite of official denials, it was reported that a detachment of Hungarian troops had crossed the border yesterday, pressing for a settlement, and had clashed with Rumanian troops, killing three Rumanian officers.

**Crippled Prison Convicts Escape**

HUNTSVILLE, Tex., March 22 (U.P.)—Five convicts, all crippled and barely able to walk, disappeared in the dead-end east of here today after one of the most daring prison breakings in Texas history.

Mysteriously producing a pistol, they had disarmed a guard at Wynne prison farm, commandeered a Texas highway patrol automobile and escaped without a shot having been fired. Three of them hobbled into the city, and the first had only one arm and was otherwise physically disabled.

The fugitives were today being hunted by a posse of 100 men, and they undoubtedly had been aided by a confederate outside the prison farm. He believed they had split up the posse and had been joined there by the confederate in another machine.

The fugitives were today being hunted by a posse of 100 men, and they undoubtedly had been aided by a confederate outside the prison farm. He believed they had split up the posse and had been joined there by the confederate in another machine.

**Stemmer Receives \$6,000 Back Pay**

HOUSTON, March 22 (U.P.)—Furner Highway Bureau (FHB) Attorney Stemmer and C. E. McKeever, former public works commissioner, today had collected on the American Medical Association's magazine, *Hygiene*, damaged his professional reputation.

Several of Agriculture's Henry A. Wallace told the house agriculture committee that proposed changes in the administration farm program might adversely affect 100,000 acres and alienate farm support.

**TROOPS MOVE THURSDAY**  
KORONIA, East Prussia, March 22 (U.P.)—German troops will begin to move into Memel area at 4 a. m. Thursday, it was understood today.

#### 'Poor Rich Girl' Weds Once More



Anna Cooper Hewitt, widow of the Peter Cooper Hewitt fortune, and in court with sensational charges against her mother, has wed again. She is shown with Gene Bradstreet, former bar steward, whom she wed in Reno after her divorce from her first husband, a garage mechanic.

#### Clean-Up Starts on Monday; Zones Fixed

Annual spring cleanup in Twin Falls will start next Monday and will continue through Saturday with seven trucks being used to cart away the winter accumulation of debris, it was announced here this afternoon by Leonard Avant, city commissioner of streets.

At the same time Avant and Charles Larsen, city streets superintendent, announced that the city had been divided into three zones for the cleanup drive and that all seven trucks will operate in each section for a two-day period.

**Four City Vehicles**  
Four of the trucks used will be city vehicles. It was pointed out, and will be manned by two workers, and the driver. The other three trucks are being provided during the cleanup by C. E. Prescott, who holds the city garbage contract. Regular garbage should be put in containers, those in charge said, while such debris as trees, stumps and grass should be stacked so that it will be easy to shovel onto the trucks.

All garbage and trash to be disposed of should be put in the regular collection place, officials said, and the trucks will pick it up when that particular area in the city is being traveled.

People should start immediately to get the rubbish and garbage in condition to be hauled away. Avant said. "They should put such rubbish in the same spot where they always put their garbage during regular collection rounds."

**Here are Zones**  
Following are the three zones into which the city has been divided for the cleanup drive and the days such areas will be visited:

Monday and Tuesday, March 22 and 23: All territory north and east of Main avenue, bounded by Addison avenue to Blue River creek, and north to Brigham avenue east to Leland and south to Kimberly road.

Wednesday and Thursday, March 24 and 25: All of Blue River creek and north to Brigham avenue east to Leland and south to Kimberly road.

Friday and Saturday, March 26 and 27: All city territory south and west of Main avenue, bounded by North Park and Thuma Valley addition.

**27 San Quentin Convicts Remain On Hunger Strike**

SAN QUENTIN PRISON, Calif., March 22 (U.P.)—With 27 asserted "die hard" prisoners in solitary confinement, prison officials announced today that the second hunger strike at San Quentin this year had been broken.

Warden Johns said virtually all of the 5200 prison inmates entered the mess hall for dinner last night and ate leave presented as the prison's wordless plea for demands for "more meat and fresh meat."

#### European Nations Quake as Fuehrer Adds New Region

Nazi Germany grabbed another thousand square miles of Europe today and left every power from the Atlantic to the Black sea guessing whether Adolf Hitler would strike next.

The little state of Memel, another product of the treaty of Versailles, was handed over to the expanding reich by Lithuania as the Nazis struck up the Baltic coast with the new nation's conquests.

and an ultimatum—that they used to destroy Czechoslovakia.

Nazi storm troops occupied public buildings as Memel's 152,000 inhabitants "came home to the reich" and Lithuania was forced to close into the German orbit that, even if she does not become a protectorate, she is almost wholly dependent on Berlin.

Memel was little more than a curiosity in the eyes of the world, having been taken out of the map of Europe and its seizure by the reich was a foregone conclusion, merely because of the momentum of the "march to the east" after annexation of Bohemia and Moravia.

**May Strike Soon**  
The reich, which has driven Great Britain to forget a quarrel of two decades with Soviet Russia, that has forced Poland to talk of abandoning her hard-won neutrality and has put almost every nation in Europe on a semi-war footing is whether the momentum is so great that Hitler will strike again at once.

One side of that hazardous problem of diplomatic guessing is whether the "stop Hitler" drive led by the British can capitalize on the fears of endangered European nations sufficiently to cause them to join together in a revised system of defensive alliance or in some modified league for collective security such as was abandoned by the big powers with collapse of the League of Nations.

Two or perhaps three obvious points of view stand out. It is assumed that the momentum of the Nazi revolution will carry on immediately.

**Polish Corridor**  
One is in Polish territory, especially the "Polish corridor," which the Versailles treaty-makers carved out of Germany in 1919. It is divided East Prussia from the reich.

The Warsaw government, fearing the steady encroachment of its territory by Germany, has been in the developments of the last 10 days, is seeking to bind Britain, France and Russia to a definite pledge of military aid as the price of conferences among the general staffs of the powers involved.

**No Cause for Action**  
The government declared that it saw no cause for action in connection with German seizure of Memel and it was indicated that France would not act if the Nazis also took Danzig.

But at the same time, French sources reported that the British move for a consultative pact against the acts of aggression was progressing smoothly and that it probably would provide for conferences among the general staffs of the powers involved.

**Kimberly Dog Cop Gets His Man in Theft**

"Pat" barked a bored bark today and opined there practically nothing to this business of law enforcement.

For "Pat" made another arrest today and a had a nifty little dog with him doing it.

The big police dog, who has been a constant assistant in the capture of criminals, was today arrested a man who had been arrested in the morning.

**REASON**  
DETROIT, March 22 (U.P.)—Mike Venturini, car dealer, was granted a divorce in circuit court after alleging that his wife traded her eggs for liquor and went on a drunk raving every week the last "29 dozen times," he said.

**NINTH**  
LOS ANGELES, March 22 (U.P.)—Mrs. Louisa Duncan, gravely ill, today was taken to the hospital by a private ambulance.

**GAIN**  
DALLAS, Tex., March 22 (U.P.)—Doctors were at a loss to explain why Mrs. Garcia, 30, increased her weight 240 in the last three months. Mrs. Garcia, who is only five feet three inches tall, now weighs 400 pounds.

**PERFECT SCORE**  
CLEVELAND, March 22 (U.P.)—William McDougall, of Kent, O., today scored a perfect 100 in his 40th event in the American Bowling Congress tournament.

**PEITZ LATELY CHARGE**  
Shirley Parker said that peitzy Parker charges would be filed against the trio this afternoon. All three are held in county jail on suspicion of having stolen a car from the parked truck under their own name.

**PEITZ LATELY CHARGE**  
Shirley Parker said that peitzy Parker charges would be filed against the trio this afternoon. All three are held in county jail on suspicion of having stolen a car from the parked truck under their own name.

**PEITZ LATELY CHARGE**  
Shirley Parker said that peitzy Parker charges would be filed against the trio this afternoon. All three are held in county jail on suspicion of having stolen a car from the parked truck under their own name.

**PEITZ LATELY CHARGE**  
Shirley Parker said that peitzy Parker charges would be filed against the trio this afternoon. All three are held in county jail on suspicion of having stolen a car from the parked truck under their own name.

**PEITZ LATELY CHARGE**  
Shirley Parker said that peitzy Parker charges would be filed against the trio this afternoon. All three are held in county jail on suspicion of having stolen a car from the parked truck under their own name.

**PEITZ LATELY CHARGE**  
Shirley Parker said that peitzy Parker charges would be filed against the trio this afternoon. All three are held in county jail on suspicion of having stolen a car from the parked truck under their own name.

# LITTLE SUPPORT SEEN FOR FEDERAL TAX REFORM PROGRAM

## ECONOMY PLANS REPORTED TO BE OUT OF QUESTION

By Lyle C. Wilson  
WASHINGTON, March 22 (Special)—Economic reform is on the cards today and the tax reform part of business assessment appears to be the most important. The adoption of methods which have little positive support from the White House.

Nothing short of a political miracle will make economy men triumphant over congressional and White House pressure for more and more defense, public works and related spending. Practical politicians are coming to acknowledge that.

Economy is caught between President Roosevelt's refusal to accept substantial reduction of relief spending and the inability of congressional economists to agree on cuts in any other field.

But Congress may take charge of tax revision to abolish so-called business deterrent taxes and substitute for the income derived from them some new source of tax on corporation income. There must be a tax bill this year to continue manufacturing's easy life, the so-called business taxes which will open the gate for tax revision.

Treasury Loss  
Mr. Roosevelt's tax press conference yesterday that tax revisionists were confronted with a dilemma which, simply stated, was as follows:

If existing excess profits, capital stock, undistributed profits, and carryover losses of the last year are abandoned there will be a loss of \$200,000,000 to \$250,000,000 of annual revenue to the treasury. He said that would have to be made up by increasing the corporation income tax but that the 15,000 small corporations among the \$200,000,000 would be protested and probably could not stand increased income tax. Therefore, he suggested it might be necessary to limit the increase to big corporations with incomes over \$100,000 a year. And the President said he doubted if that would be popular.

Current Level  
Except for inattention upon maintenance of the current level of treasury income from corporation taxes and a sympathetic attitude toward the smaller corporations, Mr. Roosevelt seemed to be feeling about the tax matter more than that it posed an extremely difficult question.

Some observers came away from his conference with the impression that Mr. Roosevelt felt that current tax revision suggestions had come from Chairman Pat Harrison, D. Miss., of the senate finance committee. And the senate had initiated current discussion of repeal of business deterrents.

## GERMANY GRABS MEMEL REGION

(From Page One)  
For Polish participation in the "war" front.

Whether Britain and France would pledge themselves to such an alliance (although France already is a military ally of Poland) remains to be seen, although the Sovietia has urged such a military pact by all of the powers involved. Britain is seeking as a first step a pledge that the four powers will consult in event of further Nazi aggression on the grounds that they could then decide what action would be taken.

Second Danger Spot  
A second danger spot for Europe is in the Mediterranean, where Premier Benito Mussolini of Italy is preparing formally to initiate his demands for concessions from France.

It may well be that Hitler, having taken all of the profits of the Berlin-Rome partnership to date, has not told the French premier to get his share while the time is ripe. The French grand council indicated as much when it denounced the "Hitler" movement as a serious danger of war and reiterated the solidarity of relations with the relief in preparation for an important speech by Mussolini next Sunday.

Mussolini's task is much more difficult than Hitler's because the Italians must go directly up against Britain and France and because the French leader is less willing than Hitler to risk a major war. As a result there is a mounting hope that the Italian quest for France and less directly with Britain can yet be settled peacefully.

## SOLONS REVERSE AMENDMENT VOTE

(From Page One)  
become effective. As now written, the bill permits reorganization to become effective within 60 days after submission unless specifically rejected by both houses of congress.

Motion Tabled  
Sen. Harry Truman, D. Mo., arrived by airplane this morning to vote with the administration. He said, if Chavez had not changed his position the result would have been a tie. A tie would have put the issue up to Vice-President John N. Garner. Senate rules permit the vice-president a vote to break ties.

After eliminating the amendment, the senate, by a vote of 46 to 41, tabled a motion to reconsider the vote by which the elimination was accomplished.

The motion was made as a formality by Majority Leader Alben W. Barkley to clinch the administration's victory.

## News in Brief

Guest of Parents  
Miss Milton Hess, daughter of the late J. G. Kirkman.

Back from Nevada  
Mrs. Kate Brown returned yesterday from Reno, Nev., where she spent the winter.

At Water Cabin  
Miss Helen Mac, daughter of Mr. and Mrs. W. O. Watts, spent the week-end at the Water cabin in Kelchum.

In Boise  
Twelve families visited in Boise yesterday including Mr. and Mrs. Andrew Dean and Mrs. D. B. Moorhead, Ralph Diamond and George Wiley.

Birth Announced  
Mr. and Mrs. H. L. Stinson, Nampa, Ore., are the parents of a daughter born yesterday. Mrs. Stinson was formerly Miss Mildred Williams, Twin Falls.

San Valley Guests  
Miss Belle Hager, Miss Mary, Mrs. Burt, Kenneth Green, Dr. Frank J. McAlister, Walt Williams and Dr. Harry Abner were among the week-end guests from Twin Falls and Kimberly at Sun Valley.

On Brief Visit  
Beret and Emilie Hoffman, who have spent the winter in Oakland, Calif., and Olympia, Wash., are here for a brief visit with Mr. and Mrs. George Webb. They are en route to their home in Roy, Idaho.

Elderly Man Better  
Mr. B. Gwin, father-in-law of Judge J. W. Porter, who was critically ill last evening, rallied this morning and was improved during this afternoon, according to word received by friends. Mr. Gwin is at the P. E. Meul country home.

Leave for Wedding  
Mr. and Mrs. P. A. Babel and son, Roy Babel, left this morning for Salt Lake City, where the marriage of Roy Babel and Miss Rhoda Weiler is scheduled to take place today in the Latter Day Saints temple.

Croquet Club  
Croquet club will meet at the home of Mrs. R. T. Bell, 1335 Fifth avenue east, Friday at 2 p. m. Each one attending is requested to bring one half yard of printed material and tape to match. A seed and bulb exchange will be conducted.

Hear K. of C. Speaker  
George Beldel, grand knight of the local Knights of Columbus council, will address the K. of C. O'Halloran, Harvey Quenell and Al Knefel represented the local council at a Ponceville affair last evening, addressed by Paul McGuire, national speaking representative of the supreme council of the order. Father H. E. Heilmann and Miss Ann Heilmann accompanied the local delegation.

Present at Rites  
Mr. and Mrs. P. L. Evans, Kimberly, have gone to Seattle to attend funeral services for Mrs. Evans' brother, Harry T. West, Jr., flight engineer and radio technician, who was killed in the crash of a Boeing plane at Alder, Wash. Mrs. Helen West, Kimberly, Salt Lake City, joined them in Boise, where she flew by airplane. She is also a sister of the late Mr. West.

Local Police Today  
Local police today had been asked to be on the lookout for Sam Norland, 16-year-old Buell youth who is believed to have run away from his home and headed toward Montana.

Fact that the youth had disappeared was announced by his father, Robert Norland. He left home for school yesterday morning but never returned. It is believed he had approximately \$10 in cash on his person.

The boy is described as being five feet, five inches tall, weighing 115 to 120 pounds. He has grey eyes and wears glasses. When last seen he was wearing black overalls, blue trousers and a red sweater and a blue zipper jacket as well as an orange cap trimmed in black.

Mr. Norland asked that his son be held if located.

News of Record Births  
To Mr. and Mrs. Joe Owen, Buell, a boy, today at the Twin Falls county general hospital maternity home.

Temperatures  
Min. Max. Prev.  
Boise 42 60 50  
Chicago 38 60 50  
Denver 35 60 50  
Houston 42 68 50  
Los Angeles 52 68 50  
New York 42 68 50  
Philadelphia 42 68 50  
Portland 42 68 50  
San Francisco 42 68 50  
Seattle 42 68 50  
Twin Falls 42 68 50  
Walla Walla 42 68 50  
Yakima 42 68 50

MOVING  
BOB'S TRANSFER  
Bob McCracken

## Freight Hits Car; Mother, Infant Saved

WENDELL, March 22 (Special)—Thrown out of a motor car as it was struck by a freight train, Mrs. M. L. Gates and her infant son, Melvin, Jr., escaped injuries here yesterday at the crossing half a mile east of the depot.

The pair sustained minor bruises and contusions.

Mrs. W. W. Kelley, driver of the motor car, was also shaken up. She was driving across the tracks from the south and the freight train crashed into the rear end of the auto, hitting Mrs. Gates and her child out of the machine.

An iron cow-catcher on the locomotive was knocked loose from its foundations.

Varied Program  
Highlight of the program was a skit by the junior girls, "Wild Nell of the Plains." Reader was Mary Strong, character player, Joyce Miller as Lady Vere de Vere, of the most ancient English aristocracy; Miss Delia Green, as Handsome Harry, strong as a lion with his hair as tender as a dove's feathers; Mary Hanes as Wild Nell, a daughter of the plains; Frances Thompson as Bad Bill, a gambler, Hotel Terry as Chief Redding Cloud, and Patzi Warner as Sally.

Second feature was "Alexander's Rag Time Band" directed by Mrs. Edward Stigel, played on the harmonica by 30 students, and was taught to play for the occasion.

Group singing of "The Umbrella Man" and "Comin' Through the Rye" opened the program. Virginia Ann Chase gave a toast, "Deep in a Dream." Greeting to the mothers, "Mother Machine," was given by Margaret Chevalier, and was responded to with "I Love You Truly" by a mother, Mrs. B. W. Wright.

A girls' octet dressed in old-fashioned costumes, under the direction of Miss Eunice Ewer, sang "Song My Mother Sang to Me." Humorous toasts, "Small Fry" by Miss Irma Gooding and "They Say" composed of original lyrics about girls in the group, by Rita, Mac Salamon, were presented.

The group sang "Oh, Dem Golden Slippers" and "Swing Low, Sweet Chariot."

Sing in Costumes  
Miss Virginia Brose in Irish costume sang an Irish folk song, and Miss Belle Painter in German costume sang "Bräutli Lullaby."

In a camp fire scene around a camp fire the girls' chorus sang "Home on the Range." Under the "Spreading Chestnut Tree," "White Camellia" and "Taps."

An inspirational toast, "There's a Long Long Trail" was given by Miss Dorothy Margaret Smith. Group singing of "Love's Old Sweet Song" and "I Love You Truly" concluded the program.

Suggesting spring were the programs in pink, green, yellow, blue, orange and lavender, having as cover designs sketches of "Song Bags" tagged with "packed by the Girls' League for distribution at the Mother-Daughter banquet."

The pink and green nut cups had tall skinny soprano and fat tenor silhouettes in black.

Road Route Set  
CAREY, March 22 (Special)—At a meeting of the Carey Chamber of Commerce last week it was learned the highway has definitely been located, going through the Solender and McCarter places and coming out near the Thompson house and on through town.

BEING IN LOVE CERTAINLY HAS AFFECTED HARRY  
YEARLING MERLIN, HIS GIRL BROOMSTICK ALMOST AS MUCH CHANGE INTO HIS LIFE AS SHE TOOK OUT OF HIS POCKET

YOU DON'T have to be continually taking money out of your pocket when you drive one of our dependable H. & C. Used Cars. Our thorough reconditioning saves you REAL MONEY!

37 Hudson Coupe, low mileage \$650  
37 Chevrolet Town Sedan \$400  
36 Chevrolet Sport Sedan, heater, radio \$650  
36 Dodge Coupe, heater, radio \$650  
37 V-8 Buick Sportster Tour \$625  
37 Ford Tudor Tour \$625  
37 Packard Sedan \$600  
36 Plymouth Deluxe Sedan \$575  
36 V-8 Coupe \$575  
36 V-8 Tudor Sedan \$550  
35 V-8 Deluxe Tudor \$525  
35 V-8 Sedan \$525  
36 V-8 Pickup \$525  
37 V-8 Ford, 197, very good \$450  
37 Studebaker Coupe \$450

Liberal Trade, Easy Terms, Many Others, All Makes, all prices.

UNION MOTOR CO.  
"YOUR Ford DEALER"

## HILARITY REIGNS AT GIRLS' PARTY

Establishing a tempo of gaiety throughout the evening, the Girls' League of the Twin Falls high school entertained at the annual "Latter Day Saints" recreation ball for 250 guests. A "Song Bag" theme was featured, with Mrs. E. W. Dunagan directing the group music, accompanied by Miss Josephine Throckmorton at the piano.

Mrs. Homer Davis and daughter, Dorothy, were special guests of the evening. Mrs. Rose M. North is sponsor of the Girls' League.

Varied Program  
Highlight of the program was a skit by the junior girls, "Wild Nell of the Plains." Reader was Mary Strong, character player, Joyce Miller as Lady Vere de Vere, of the most ancient English aristocracy; Miss Delia Green, as Handsome Harry, strong as a lion with his hair as tender as a dove's feathers; Mary Hanes as Wild Nell, a daughter of the plains; Frances Thompson as Bad Bill, a gambler, Hotel Terry as Chief Redding Cloud, and Patzi Warner as Sally.

Second feature was "Alexander's Rag Time Band" directed by Mrs. Edward Stigel, played on the harmonica by 30 students, and was taught to play for the occasion.

Group singing of "The Umbrella Man" and "Comin' Through the Rye" opened the program. Virginia Ann Chase gave a toast, "Deep in a Dream." Greeting to the mothers, "Mother Machine," was given by Margaret Chevalier, and was responded to with "I Love You Truly" by a mother, Mrs. B. W. Wright.

A girls' octet dressed in old-fashioned costumes, under the direction of Miss Eunice Ewer, sang "Song My Mother Sang to Me." Humorous toasts, "Small Fry" by Miss Irma Gooding and "They Say" composed of original lyrics about girls in the group, by Rita, Mac Salamon, were presented.

The group sang "Oh, Dem Golden Slippers" and "Swing Low, Sweet Chariot."

Sing in Costumes  
Miss Virginia Brose in Irish costume sang an Irish folk song, and Miss Belle Painter in German costume sang "Bräutli Lullaby."

In a camp fire scene around a camp fire the girls' chorus sang "Home on the Range." Under the "Spreading Chestnut Tree," "White Camellia" and "Taps."

An inspirational toast, "There's a Long Long Trail" was given by Miss Dorothy Margaret Smith. Group singing of "Love's Old Sweet Song" and "I Love You Truly" concluded the program.

Suggesting spring were the programs in pink, green, yellow, blue, orange and lavender, having as cover designs sketches of "Song Bags" tagged with "packed by the Girls' League for distribution at the Mother-Daughter banquet."

The pink and green nut cups had tall skinny soprano and fat tenor silhouettes in black.

Road Route Set  
CAREY, March 22 (Special)—At a meeting of the Carey Chamber of Commerce last week it was learned the highway has definitely been located, going through the Solender and McCarter places and coming out near the Thompson house and on through town.

BEING IN LOVE CERTAINLY HAS AFFECTED HARRY  
YEARLING MERLIN, HIS GIRL BROOMSTICK ALMOST AS MUCH CHANGE INTO HIS LIFE AS SHE TOOK OUT OF HIS POCKET

YOU DON'T have to be continually taking money out of your pocket when you drive one of our dependable H. & C. Used Cars. Our thorough reconditioning saves you REAL MONEY!

37 Hudson Coupe, low mileage \$650  
37 Chevrolet Town Sedan \$400  
36 Chevrolet Sport Sedan, heater, radio \$650  
36 Dodge Coupe, heater, radio \$650  
37 V-8 Buick Sportster Tour \$625  
37 Ford Tudor Tour \$625  
37 Packard Sedan \$600  
36 Plymouth Deluxe Sedan \$575  
36 V-8 Coupe \$575  
36 V-8 Tudor Sedan \$550  
35 V-8 Deluxe Tudor \$525  
35 V-8 Sedan \$525  
36 V-8 Pickup \$525  
37 V-8 Ford, 197, very good \$450  
37 Studebaker Coupe \$450

Liberal Trade, Easy Terms, Many Others, All Makes, all prices.

UNION MOTOR CO.  
"YOUR Ford DEALER"

## Freight Hits Car; Mother, Infant Saved

WENDELL, March 22 (Special)—Thrown out of a motor car as it was struck by a freight train, Mrs. M. L. Gates and her infant son, Melvin, Jr., escaped injuries here yesterday at the crossing half a mile east of the depot.

The pair sustained minor bruises and contusions.

Mrs. W. W. Kelley, driver of the motor car, was also shaken up. She was driving across the tracks from the south and the freight train crashed into the rear end of the auto, hitting Mrs. Gates and her child out of the machine.

An iron cow-catcher on the locomotive was knocked loose from its foundations.

Varied Program  
Highlight of the program was a skit by the junior girls, "Wild Nell of the Plains." Reader was Mary Strong, character player, Joyce Miller as Lady Vere de Vere, of the most ancient English aristocracy; Miss Delia Green, as Handsome Harry, strong as a lion with his hair as tender as a dove's feathers; Mary Hanes as Wild Nell, a daughter of the plains; Frances Thompson as Bad Bill, a gambler, Hotel Terry as Chief Redding Cloud, and Patzi Warner as Sally.

Second feature was "Alexander's Rag Time Band" directed by Mrs. Edward Stigel, played on the harmonica by 30 students, and was taught to play for the occasion.

Group singing of "The Umbrella Man" and "Comin' Through the Rye" opened the program. Virginia Ann Chase gave a toast, "Deep in a Dream." Greeting to the mothers, "Mother Machine," was given by Margaret Chevalier, and was responded to with "I Love You Truly" by a mother, Mrs. B. W. Wright.

A girls' octet dressed in old-fashioned costumes, under the direction of Miss Eunice Ewer, sang "Song My Mother Sang to Me." Humorous toasts, "Small Fry" by Miss Irma Gooding and "They Say" composed of original lyrics about girls in the group, by Rita, Mac Salamon, were presented.

The group sang "Oh, Dem Golden Slippers" and "Swing Low, Sweet Chariot."

Sing in Costumes  
Miss Virginia Brose in Irish costume sang an Irish folk song, and Miss Belle Painter in German costume sang "Bräutli Lullaby."

In a camp fire scene around a camp fire the girls' chorus sang "Home on the Range." Under the "Spreading Chestnut Tree," "White Camellia" and "Taps."

An inspirational toast, "There's a Long Long Trail" was given by Miss Dorothy Margaret Smith. Group singing of "Love's Old Sweet Song" and "I Love You Truly" concluded the program.

Suggesting spring were the programs in pink, green, yellow, blue, orange and lavender, having as cover designs sketches of "Song Bags" tagged with "packed by the Girls' League for distribution at the Mother-Daughter banquet."

The pink and green nut cups had tall skinny soprano and fat tenor silhouettes in black.

Road Route Set  
CAREY, March 22 (Special)—At a meeting of the Carey Chamber of Commerce last week it was learned the highway has definitely been located, going through the Solender and McCarter places and coming out near the Thompson house and on through town.

BEING IN LOVE CERTAINLY HAS AFFECTED HARRY  
YEARLING MERLIN, HIS GIRL BROOMSTICK ALMOST AS MUCH CHANGE INTO HIS LIFE AS SHE TOOK OUT OF HIS POCKET

YOU DON'T have to be continually taking money out of your pocket when you drive one of our dependable H. & C. Used Cars. Our thorough reconditioning saves you REAL MONEY!

37 Hudson Coupe, low mileage \$650  
37 Chevrolet Town Sedan \$400  
36 Chevrolet Sport Sedan, heater, radio \$650  
36 Dodge Coupe, heater, radio \$650  
37 V-8 Buick Sportster Tour \$625  
37 Ford Tudor Tour \$625  
37 Packard Sedan \$600  
36 Plymouth Deluxe Sedan \$575  
36 V-8 Coupe \$575  
36 V-8 Tudor Sedan \$550  
35 V-8 Deluxe Tudor \$525  
35 V-8 Sedan \$525  
36 V-8 Pickup \$525  
37 V-8 Ford, 197, very good \$450  
37 Studebaker Coupe \$450

Liberal Trade, Easy Terms, Many Others, All Makes, all prices.

UNION MOTOR CO.  
"YOUR Ford DEALER"

## GAS MOVE HALTS BOTT TALK HERE

Gov. C. A. Bottolfsen this afternoon wired officials of the local Kiwanis club he would be unable to attend a "farmers' rally" meeting at that organization here this evening because of contemplated action in connection with the recent rise in gasoline prices by distributors in Idaho.

The governor was to have been principal speaker at tonight's session, which gets underway at the Park hotel at 7 p. m. with President Wilbur S. Hill presiding.

Idaho's chief executive said in the telegram received here that "every possible effort" would be made to have Lieut. Gov. Donald S. Whitely appear in place of the governor. However, it was not known whether or not Whitely would be here.

E. N. Pettigrove, state commissioner of agriculture, will be one of tonight's featured speakers, those in charge of arrangements announced. Each club member will bring as his guest a farmer of the Twin Falls tract.

Gem State Club  
Gem State Study club will meet at the home of Mrs. D. R. Johnson at 8 p. m. Friday.

NOW! Ends Thurs.  
Banking with the greatest adventure stories ever screened! It's thrilling enough to see again and again!

"PRISONER OF ZENDA"  
United Artists Release  
RONALD COLMAN  
MADEIRA CARROLL  
DOUG FAIRBANKS,  
JR.  
Extra! Popeye Cartoon  
Last Complete Performance at 9:15 p. m.

DAHOL  
Continuous Shows

## Lewis Binder Rites

HAERMAN, March 22 (Special)—Funeral services for Lewis Andrew Binder were conducted at the Legion hall yesterday afternoon with Rev. Carl Davidson of Wendell officiating. Music was furnished by a mixed quartet. Mrs. Roy Peterson, Miss Willa Walker, Charles Holt and Edward Dunn.

Funeral services were held at the Legion hall yesterday afternoon with Rev. Carl Davidson of Wendell officiating. Music was furnished by a mixed quartet. Mrs. Roy Peterson, Miss Willa Walker, Charles Holt and Edward Dunn.

Funeral services were held at the Legion hall yesterday afternoon with Rev. Carl Davidson of Wendell officiating. Music was furnished by a mixed quartet. Mrs. Roy Peterson, Miss Willa Walker, Charles Holt and Edward Dunn.

Funeral services were held at the Legion hall yesterday afternoon with Rev. Carl Davidson of Wendell officiating. Music was furnished by a mixed quartet. Mrs. Roy Peterson, Miss Willa Walker, Charles Holt and Edward Dunn.

Funeral services were held at the Legion hall yesterday afternoon with Rev. Carl Davidson of Wendell officiating. Music was furnished by a mixed quartet. Mrs. Roy Peterson, Miss Willa Walker, Charles Holt and Edward Dunn.

Funeral services were held at the Legion hall yesterday afternoon with Rev. Carl Davidson of Wendell officiating. Music was furnished by a mixed quartet. Mrs. Roy Peterson, Miss Willa Walker, Charles Holt and Edward Dunn.

Funeral services were held at the Legion hall yesterday afternoon with Rev. Carl Davidson of Wendell officiating. Music was furnished by a mixed quartet. Mrs. Roy Peterson, Miss Willa Walker, Charles Holt and Edward Dunn.

Funeral services were held at the Legion hall yesterday afternoon with Rev. Carl Davidson of Wendell officiating. Music was furnished by a mixed quartet. Mrs. Roy Peterson, Miss Willa Walker, Charles Holt and Edward Dunn.

Funeral services were held at the Legion hall yesterday afternoon with Rev. Carl Davidson of Wendell officiating. Music was furnished by a mixed quartet. Mrs. Roy Peterson, Miss Willa Walker, Charles Holt and Edward Dunn.

Funeral services were held at the Legion hall yesterday afternoon with Rev. Carl Davidson of Wendell officiating. Music was furnished by a mixed quartet. Mrs. Roy Peterson, Miss Willa Walker, Charles Holt and Edward Dunn.

Funeral services were held at the Legion hall yesterday afternoon with Rev. Carl Davidson of Wendell officiating. Music was furnished by a mixed quartet. Mrs. Roy Peterson, Miss Willa Walker, Charles Holt and Edward Dunn.

Funeral services were held at the Legion hall yesterday afternoon with Rev. Carl Davidson of Wendell officiating. Music was furnished by a mixed quartet. Mrs. Roy Peterson, Miss Willa Walker, Charles Holt and Edward Dunn.

Funeral services were held at the Legion hall yesterday afternoon with Rev. Carl Davidson of Wendell officiating. Music was furnished by a mixed quartet. Mrs. Roy Peterson, Miss Willa Walker, Charles Holt and Edward Dunn.

Funeral services were held at the Legion hall yesterday afternoon with Rev. Carl Davidson of Wendell officiating. Music was furnished by a mixed quartet. Mrs. Roy Peterson, Miss Willa Walker, Charles Holt and Edward Dunn.

Funeral services were held at the Legion hall yesterday afternoon with Rev. Carl Davidson of Wendell officiating. Music was furnished by a mixed quartet. Mrs. Roy Peterson, Miss Willa Walker, Charles Holt and Edward Dunn.

Funeral services were held at the Legion hall yesterday afternoon with Rev. Carl Davidson of Wendell officiating. Music was furnished by a mixed quartet. Mrs. Roy Peterson, Miss Willa Walker, Charles Holt and Edward Dunn.

Funeral services were held at the Legion hall yesterday afternoon with Rev. Carl Davidson of Wendell officiating. Music was furnished by a mixed quartet. Mrs. Roy Peterson, Miss Willa Walker, Charles Holt and Edward Dunn.

Funeral services were held at the Legion hall yesterday afternoon with Rev. Carl Davidson of Wendell officiating. Music was furnished by a mixed quartet. Mrs. Roy Peterson, Miss Willa Walker, Charles Holt and Edward Dunn.

Funeral services were held at the Legion hall yesterday afternoon with Rev. Carl Davidson of Wendell officiating. Music was furnished by a mixed quartet. Mrs. Roy Peterson, Miss Willa Walker, Charles Holt and Edward Dunn.

Funeral services were held at the Legion hall yesterday afternoon with Rev. Carl Davidson of Wendell officiating. Music was furnished by a mixed quartet. Mrs. Roy Peterson, Miss Willa Walker, Charles Holt and Edward Dunn.

Funeral services were held at the Legion hall yesterday afternoon with Rev. Carl Davidson of Wendell officiating. Music was furnished by a mixed quartet. Mrs. Roy Peterson, Miss Willa Walker, Charles Holt and Edward Dunn.

Funeral services were held at the Legion hall yesterday afternoon with Rev. Carl Davidson of Wendell officiating. Music was furnished by a mixed quartet. Mrs. Roy Peterson, Miss Willa Walker, Charles Holt and Edward Dunn.

Funeral services were held at the Legion hall yesterday afternoon with Rev. Carl Davidson of Wendell officiating. Music was furnished by a mixed quartet. Mrs. Roy Peterson, Miss Willa Walker, Charles Holt and Edward Dunn.

Funeral services were held at the Legion hall yesterday afternoon with Rev. Carl Davidson of Wendell officiating. Music was furnished by a mixed quartet. Mrs. Roy Peterson, Miss Willa Walker, Charles Holt and Edward Dunn.

Funeral services were held at the Legion hall yesterday afternoon with Rev. Carl Davidson of Wendell officiating. Music was furnished by a mixed quartet. Mrs. Roy Peterson, Miss Willa Walker, Charles Holt and Edward Dunn.

Funeral services were held at the Legion hall yesterday afternoon with Rev. Carl Davidson of Wendell officiating. Music was furnished by a mixed quartet. Mrs. Roy Peterson, Miss Willa Walker, Charles Holt and Edward Dunn.

Funeral services were held at the Legion hall yesterday afternoon with Rev. Carl Davidson of Wendell officiating. Music was furnished by a mixed quartet. Mrs. Roy Peterson, Miss Willa Walker, Charles Holt and Edward Dunn.

Funeral services were held at the Legion hall yesterday afternoon with Rev. Carl Davidson of Wendell officiating. Music was furnished by a mixed quartet. Mrs. Roy Peterson, Miss Willa Walker, Charles Holt and Edward Dunn.

Funeral services were held at the Legion hall yesterday afternoon with Rev. Carl Davidson of Wendell officiating. Music was furnished by a mixed quartet. Mrs. Roy Peterson, Miss Willa Walker, Charles Holt and Edward Dunn.

Funeral services were held at the Legion hall yesterday afternoon with Rev. Carl Davidson of Wendell officiating. Music was furnished by a mixed quartet. Mrs. Roy Peterson, Miss Willa Walker, Charles Holt and Edward Dunn.

## Visits Sister

Miss Goldie Dobbs has concluded a visit with her sister, Mrs. Fannie Taylor, Caldwell.

Miss Goldie Dobbs has concluded a visit with her sister, Mrs. Fannie Taylor, Caldwell.

Miss Goldie Dobbs has concluded a visit with her sister, Mrs. Fannie Taylor, Caldwell.

Miss Goldie Dobbs has concluded a visit with her sister, Mrs. Fannie Taylor, Caldwell.

Miss Goldie Dobbs has concluded a visit with her sister, Mrs. Fannie Taylor, Caldwell.

Miss Goldie Dobbs has concluded a visit with her sister, Mrs. Fannie Taylor, Caldwell.

Miss Goldie Dobbs has concluded a visit with her sister, Mrs. Fannie Taylor, Caldwell.

Miss Goldie Dobbs has concluded a visit with her sister, Mrs. Fannie Taylor, Caldwell.

Miss Goldie Dobbs has concluded a visit with her sister, Mrs. Fannie Taylor, Caldwell.

Miss Goldie Dobbs has concluded a visit with her sister, Mrs. Fannie Taylor, Caldwell.

Miss Goldie Dobbs has concluded a visit with her sister, Mrs. Fannie Taylor, Caldwell.

Miss Goldie Dobbs has concluded a visit with her sister, Mrs. Fannie Taylor, Caldwell.

Miss Goldie Dobbs has concluded a visit with her sister, Mrs. Fannie Taylor, Caldwell.

Miss Goldie Dobbs has concluded a visit with her sister, Mrs. Fannie Taylor, Caldwell.

Miss Goldie Dobbs has concluded a visit with her sister, Mrs. Fannie Taylor, Caldwell.

Miss Goldie Dobbs has concluded a visit with her sister, Mrs. Fannie Taylor, Caldwell.

Miss Goldie Dobbs has concluded a visit with her sister, Mrs. Fannie Taylor, Caldwell.

# BRITAIN'S "STOP HITLER" CAMPAIGN STRIKES SNAG

## POLAND DEMANDS ARMED ALLIANCE TO ACCEPT PACT

LONDON, March 22 (U.P.)—Great Britain's plan for a four-power declaration against Adolf Hitler's march to the east, which was reported to have forced the government to consider limiting the pact to Britain, France and Soviet Russia.

Poland was understood in well-informed sources to be hesitant about immediately joining in any anti-German bloc but the Russians generally were believed to have decided to fall into line with the plan already approved by Britain and France.

**Three Quick Action**

The German seizure of Memel under threat of force against Lithuania prompted British sponsors of the plan to urge quick action by the three powers in order to prevent aggression in Europe.

In addition to the four principal nations, the Balkan and Little Entente powers also were advised if the proposal for the pact was for general adherence.

Final decisions have not yet been made, but it was understood that Poland was holding out for a firm military pledge which would assure protection of the three big powers if she signed any declaration that might arouse German hostility.

**Nearly Surround Poland**

Adolf Hitler's Nazi troops have almost surrounded Poland on three sides as a result of the destruction of Czechoslovakia, the extension of its complete Nazi influence in Hungary, the acquisition of Memel and the forcing of Lithuania closely into the German sphere.

The Soviet government also wanted a more powerful military instrument among nine European nations but it was said that the Moscow regime was likely to accept the British plan because of the need for quick action. In return, Great Britain was believed to have held out the prospect of military arrangements in the future.

## JEROME, BRUINS WIN AT DEBATES

ALBION, March 22 (Special)—Two spirited debating squads will represent the south central district at the state debate tournament in Huntington, March 26-27 and April 1.

The two are those from Jerome and Twin Falls high schools, which took top place in the district meet here Tuesday.

Four Each

Jerome and Twin Falls, on the basis of the results of the "first string" representatives, decided at four wins apiece. Copeland and Burley tied for fifth with three victories.

The winning schools will each send one affirmative and one negative team to Pocatello. Opposing them will be Caldwell and Nampa from the Boise area, and Blackfoot and Grace from eastern Idaho.

**Full Standing**

Alvin Kempton, head of the Albion Normal speech department, sponsor of the district meet, announced standings of both first and second teams as:

School	Won	Lost
Twin Falls	7	1
Jerome	5	3
Burley	5	3
Gooding	3	5
Paifield	3	5
Blackfoot	3	5
Grace	3	5

Paifield and Eden were the only Class B schools. The Campus group was over Eden, and they went up against Class A, Pocatello.

**WOMAN'S ETHICAL QUALITY**

WOLFPIOR, N. H. (U.P.)—Mrs. Amanda E. Sargent celebrated her 80th birthday by completing a cross-quilt containing 2,300 pieces in an intricate pattern.

## Benes will Speak at University of Idaho

MOSCOW, March 22 (Special)—The central figure in the desperate but unsuccessful attempt to preserve the independence of Czechoslovakia, which failed with the Hitler-engineered "peace of Munich," Dr. Eduard Benes, former president of that country, is coming to the University of Idaho, April 28 and 29 to deliver two addresses to university students, announces President Harrison C. Dale.

Dr. Benes is appearing at the university under the auspices of the William E. Borah foundation for the study of war, established 10 years ago to honor Idaho's senior senator. Last year the foundation brought Mrs. Franklin D. Roosevelt to the campus to speak on "Peace."

Since he was crowned out of Europe by Hitler's successful conquest of the republic he sought to keep intact. Dr. Benes has been a guest lecturer at the University of Chicago. He fought the breaking up of his country to the very last, stepping aside only when Britain and France repudiated their treaty obligations in a final agreement to prevent a general European war.

His engagement at Idaho will be the only one in this section. Prior to the World War Dr. Benes was a professor in various Czechoslovakian universities. Since the war he has been a key figure in the struggles of that country. In 1915 he went to Paris to work as a diplomat seeking the liberation of Czechoslovakia. A leading figure in the creation of the Little Entente, he was minister of his country's foreign affairs from 1918 to 1923. He was also the country's premier in 1921 and 1922, holding this post in addition to being minister.

Dr. Benes has written extensively on central European problems and since coming to the United States has been in great demand as a speaker. He is probably as well informed as any man in the world today regarding conditions in that troubled spot.

At the next meeting, announced for the evening of April 7, the Bull G. Reserves from the high school will present the program.

## The Public Forum

OPPOSES BENES' PLAN FOR U. S. "MIDDLING"

Editor, The Times:

Here is hoping that the appeal of Dr. Benes, to the American people, to meddle in the affairs of European intrigue will not take root.

That would be exactly contrary to the advice of the father of our country. Does anyone believe that Dr. Benes is more able to know what is good for a democracy than George Washington?

In that part of Dr. Benes' Sunday speech, over the N.B.C. network, in which he told of the pride and bravery of the people of his dismembered nation, a democracy, he forgot to tell about that part of their history of about 1819 or 1920 when, immediately following their creation as a democracy, they grabbed a strip of territory from the Poles.

In other words, a newly born European democracy turns wolf rather suddenly. How come? Can it be that a true democracy in Europe cannot exist?

Sincerely yours,

JOE SCHORZMAN.

Paul, March 20.

**"Sentenced"**

WOOSTER, O. (U.P.)—Common Pleas Judge Walter J. Mouney, former president of the Wooster Kiwanis club, was sentenced to a jail of crackers and soup at a luncheon of the organization, because he didn't know how to spell the name of a corn contention.

## MOUNTAIN KILLER MENACES FARMER

POWELL, Wyo., March 22 (U.P.)—Earl Durand, 26, shaggy haired, raw meat eating mountain man who has kept northwestern Wyoming in terror since he killed two others and fled last Thursday, popped out of hiding today long enough to force a Powell farmer and his wife to drive him farther into the wilderness.

Bloodhounds from the Colorado penitentiary at Canon City were trying to pick up the scent near Powell when Durand stalked into the farmhouse of Art Thurnburg, half a mile east of Powell, at daybreak. At rifle point he forced Thurnburg and his wife to drive him over a winding mountain road to the headwaters of Rocky creek 30 miles distant, near the Wyoming-Mountain border.

Jumping from the car, Durand waved his deer rifle menacingly, and plunged into the forest of the Elk Horn mountains, leaving Thurnburg and his wife to return unharmed to their ranch home.

In other words, a newly born European democracy turns wolf rather suddenly. How come? Can it be that a true democracy in Europe cannot exist?

Sincerely yours,

JOE SCHORZMAN.

Paul, March 20.

**"Sentenced"**

WOOSTER, O. (U.P.)—Common Pleas Judge Walter J. Mouney, former president of the Wooster Kiwanis club, was sentenced to a jail of crackers and soup at a luncheon of the organization, because he didn't know how to spell the name of a corn contention.

## KIMBERLY PLAY PUT OFF 4 DAYS

KIMBERLY, March 21 (Special)—Postponement of the Kimberly Little Theater play from Friday, March 24, to Tuesday, March 28, was announced here today.

The production, "Three Taps at Twelve," a mystery-influenced drama by Albert Smoot, was delayed because of entry of Kimberly high school's band in the spring opening band contest at Twin Falls Friday.

The dramatic offering was postponed because a large contingent of Kimberly residents plans to follow the band to Twin Falls Friday evening.

Cast for "Three Taps at Twelve" offers Kimberly talent that is expected to stage an impressive production. Harvey Wood, who scored a hit in the Little Theater after two years ago, takes the role of Jameson Edmonds, warden of the prison.

Other parts are taken by Oubourne Mullins as Dick Edwards, Mrs. James Alastra as Martha Gager, Mabel Snow as Mrs. Jane Baker, Mr. Palmer as Edna Dahlbeck, Mrs. Ken Ridgway as Cassandra, Ray Potter as Catfish Carothers, the comic relief.

## MERGERS TO BE TRUSTEE TOPIC

Discussion of the advantages of school district consolidations—now looming as one of the important future phases of educational administration in Idaho—will be a featured matter at a Jerome and Twin Falls county meeting of all school trustees Thursday, March 23.

The trustees from both counties will convene at 1 p. m. Thursday at the Twin Falls high school auditorium. Board members from all education in Idaho—will be a featured matter at a Jerome and Twin Falls county meeting of all school trustees Thursday, March 23.

The trustees from both counties will convene at 1 p. m. Thursday at the Twin Falls high school auditorium. Board members from all education in Idaho—will be a featured matter at a Jerome and Twin Falls county meeting of all school trustees Thursday, March 23.

The trustees from both counties will convene at 1 p. m. Thursday at the Twin Falls high school auditorium. Board members from all education in Idaho—will be a featured matter at a Jerome and Twin Falls county meeting of all school trustees Thursday, March 23.

The trustees from both counties will convene at 1 p. m. Thursday at the Twin Falls high school auditorium. Board members from all education in Idaho—will be a featured matter at a Jerome and Twin Falls county meeting of all school trustees Thursday, March 23.

The trustees from both counties will convene at 1 p. m. Thursday at the Twin Falls high school auditorium. Board members from all education in Idaho—will be a featured matter at a Jerome and Twin Falls county meeting of all school trustees Thursday, March 23.

The trustees from both counties will convene at 1 p. m. Thursday at the Twin Falls high school auditorium. Board members from all education in Idaho—will be a featured matter at a Jerome and Twin Falls county meeting of all school trustees Thursday, March 23.

The trustees from both counties will convene at 1 p. m. Thursday at the Twin Falls high school auditorium. Board members from all education in Idaho—will be a featured matter at a Jerome and Twin Falls county meeting of all school trustees Thursday, March 23.

The trustees from both counties will convene at 1 p. m. Thursday at the Twin Falls high school auditorium. Board members from all education in Idaho—will be a featured matter at a Jerome and Twin Falls county meeting of all school trustees Thursday, March 23.

The trustees from both counties will convene at 1 p. m. Thursday at the Twin Falls high school auditorium. Board members from all education in Idaho—will be a featured matter at a Jerome and Twin Falls county meeting of all school trustees Thursday, March 23.

The trustees from both counties will convene at 1 p. m. Thursday at the Twin Falls high school auditorium. Board members from all education in Idaho—will be a featured matter at a Jerome and Twin Falls county meeting of all school trustees Thursday, March 23.

The trustees from both counties will convene at 1 p. m. Thursday at the Twin Falls high school auditorium. Board members from all education in Idaho—will be a featured matter at a Jerome and Twin Falls county meeting of all school trustees Thursday, March 23.

## 99 AT CCC CAMP LEAVE FOR EAST

There were exactly 99 fewer enrollees today at Rock Creek CCC camp.

Most of the young men left the camp Saturday bound for their homes in New York and New Jersey on completion of their enrollment period.

A new replacement contingent is to come later.

Several assistant leaders were among those going home. Among them were Albert Axtell, tool-house clerk, Reginald Bailey, second cook, Patrick Gauthier, baker; Vincent Perillo, road construction leader; Anthony Strogan, camp-ground leader; Rogelio Torres, bridge construction leader; and Teddy Zaglinski, road construction leader.

Wallace Campbell, senior cook, and John Finn, painter steward, also left.

Camp officials praised the departing youths for valuable service to southern Idaho in helping build trails and improve camp grounds.

"Rip Van Winkle," the famous skater of Washington Irving, was made into a movie this year by Monogram Studios.

"Rip Van Winkle," the famous skater of Washington Irving, was made into a movie this year by Monogram Studios.

"Rip Van Winkle," the famous skater of Washington Irving, was made into a movie this year by Monogram Studios.

"Rip Van Winkle," the famous skater of Washington Irving, was made into a movie this year by Monogram Studios.

"Rip Van Winkle," the famous skater of Washington Irving, was made into a movie this year by Monogram Studios.

"Rip Van Winkle," the famous skater of Washington Irving, was made into a movie this year by Monogram Studios.

"Rip Van Winkle," the famous skater of Washington Irving, was made into a movie this year by Monogram Studios.

"Rip Van Winkle," the famous skater of Washington Irving, was made into a movie this year by Monogram Studios.

"Rip Van Winkle," the famous skater of Washington Irving, was made into a movie this year by Monogram Studios.

"Rip Van Winkle," the famous skater of Washington Irving, was made into a movie this year by Monogram Studios.

"Rip Van Winkle," the famous skater of Washington Irving, was made into a movie this year by Monogram Studios.

"Rip Van Winkle," the famous skater of Washington Irving, was made into a movie this year by Monogram Studios.

"Rip Van Winkle," the famous skater of Washington Irving, was made into a movie this year by Monogram Studios.

"Rip Van Winkle," the famous skater of Washington Irving, was made into a movie this year by Monogram Studios.

"Rip Van Winkle," the famous skater of Washington Irving, was made into a movie this year by Monogram Studios.

"Rip Van Winkle," the famous skater of Washington Irving, was made into a movie this year by Monogram Studios.

"Rip Van Winkle," the famous skater of Washington Irving, was made into a movie this year by Monogram Studios.

"Rip Van Winkle," the famous skater of Washington Irving, was made into a movie this year by Monogram Studios.

"Rip Van Winkle," the famous skater of Washington Irving, was made into a movie this year by Monogram Studios.

"Rip Van Winkle," the famous skater of Washington Irving, was made into a movie this year by Monogram Studios.

"Rip Van Winkle," the famous skater of Washington Irving, was made into a movie this year by Monogram Studios.

"Rip Van Winkle," the famous skater of Washington Irving, was made into a movie this year by Monogram Studios.

"Rip Van Winkle," the famous skater of Washington Irving, was made into a movie this year by Monogram Studios.

"Rip Van Winkle," the famous skater of Washington Irving, was made into a movie this year by Monogram Studios.

## In HOLLYWOOD Today

(By United Press)

Billy Rose, Broadway showman, and Etta Hall, Olympic swimming champion, who turned professional under his guidance, said they would be married in New York Sept. 19, the day after Comedienne Fanny Brice's divorce from Rose becomes final.

Lawyers for Natalie Draper, actress, said she would sign a property settlement preparatory to seeking a divorce from Tom Brown, young actor.

Johnny Weissmuller and Mrs. Beryl Scott, San Francisco divorcee, have at their marriage for sometime in July, when Luke Veres secures her final divorce decree from the film Tarn.

Harold Lloyd is recovering from bruises and a shaking up suffered when his limousine was struck by a truck and pushed into a lamp post. The actor's chauffeur was unhurt.

Harold Lloyd is recovering from bruises and a shaking up suffered when his limousine was struck by a truck and pushed into a lamp post. The actor's chauffeur was unhurt.

Harold Lloyd is recovering from bruises and a shaking up suffered when his limousine was struck by a truck and pushed into a lamp post. The actor's chauffeur was unhurt.

Harold Lloyd is recovering from bruises and a shaking up suffered when his limousine was struck by a truck and pushed into a lamp post. The actor's chauffeur was unhurt.

Harold Lloyd is recovering from bruises and a shaking up suffered when his limousine was struck by a truck and pushed into a lamp post. The actor's chauffeur was unhurt.

Harold Lloyd is recovering from bruises and a shaking up suffered when his limousine was struck by a truck and pushed into a lamp post. The actor's chauffeur was unhurt.

Harold Lloyd is recovering from bruises and a shaking up suffered when his limousine was struck by a truck and pushed into a lamp post. The actor's chauffeur was unhurt.

Harold Lloyd is recovering from bruises and a shaking up suffered when his limousine was struck by a truck and pushed into a lamp post. The actor's chauffeur was unhurt.

Harold Lloyd is recovering from bruises and a shaking up suffered when his limousine was struck by a truck and pushed into a lamp post. The actor's chauffeur was unhurt.

Harold Lloyd is recovering from bruises and a shaking up suffered when his limousine was struck by a truck and pushed into a lamp post. The actor's chauffeur was unhurt.

Harold Lloyd is recovering from bruises and a shaking up suffered when his limousine was struck by a truck and pushed into a lamp post. The actor's chauffeur was unhurt.

Harold Lloyd is recovering from bruises and a shaking up suffered when his limousine was struck by a truck and pushed into a lamp post. The actor's chauffeur was unhurt.

Harold Lloyd is recovering from bruises and a shaking up suffered when his limousine was struck by a truck and pushed into a lamp post. The actor's chauffeur was unhurt.

Harold Lloyd is recovering from bruises and a shaking up suffered when his limousine was struck by a truck and pushed into a lamp post. The actor's chauffeur was unhurt.

Harold Lloyd is recovering from bruises and a shaking up suffered when his limousine was struck by a truck and pushed into a lamp post. The actor's chauffeur was unhurt.

Harold Lloyd is recovering from bruises and a shaking up suffered when his limousine was struck by a truck and pushed into a lamp post. The actor's chauffeur was unhurt.

Harold Lloyd is recovering from bruises and a shaking up suffered when his limousine was struck by a truck and pushed into a lamp post. The actor's chauffeur was unhurt.

Harold Lloyd is recovering from bruises and a shaking up suffered when his limousine was struck by a truck and pushed into a lamp post. The actor's chauffeur was unhurt.

Harold Lloyd is recovering from bruises and a shaking up suffered when his limousine was struck by a truck and pushed into a lamp post. The actor's chauffeur was unhurt.

Harold Lloyd is recovering from bruises and a shaking up suffered when his limousine was struck by a truck and pushed into a lamp post. The actor's chauffeur was unhurt.

Harold Lloyd is recovering from bruises and a shaking up suffered when his limousine was struck by a truck and pushed into a lamp post. The actor's chauffeur was unhurt.

Harold Lloyd is recovering from bruises and a shaking up suffered when his limousine was struck by a truck and pushed into a lamp post. The actor's chauffeur was unhurt.

Harold Lloyd is recovering from bruises and a shaking up suffered when his limousine was struck by a truck and pushed into a lamp post. The actor's chauffeur was unhurt.

Harold Lloyd is recovering from bruises and a shaking up suffered when his limousine was struck by a truck and pushed into a lamp post. The actor's chauffeur was unhurt.

## SPUD MEN POINT TO LAW'S TEETH

Two significant new features concerning seed potatoes are included in H. B. 277, now a law in Idaho.

Twin Falls growers and dealers pointed out here today following a warning by E. N. Pettigrew, agriculture commissioner, for farmers to beware of "spud" seed potatoes.

The two new sections, they explained, are these:

**Certificate**

"Section 1.—All potatoes that are sold or offered for sale as seed potatoes other than as certified seed potatoes shall be packed in containers and accompanied by certificate of inspection describing the grade and quality and the name of producer and place of production.

"Section 2.—No potatoes shall be admitted into the state of Idaho that are to be sold or offered for sale as seed potatoes from any other state or territory unless packed in new or clean containers accompanied by a certificate of inspection describing the grade and quality and the name of producer and place of production.

Section 3.—When a seed potato is offered for sale as certified seed potato, the certificate shall show that the potatoes comply with the certification standards of the state or territory in which the same were produced.

Section 4.—The law was passed, it was pointed out, to halt sale of seed spuds by some trucking men who offered culls, some of which were diseased.

Other provisions of the law reiterate the regulations included in a prior law the inspection seal and declaration that offenders are guilty of a misdemeanor. On spuds sold as Idaho certified seed potatoes, packing must be in sealed containers with the seal approved by the university extension service.

## FACTORY RADIO SERVICE

Everything in Radio Service.

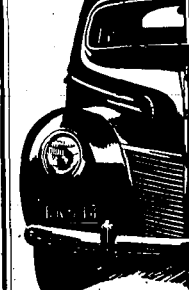
American made watches for GRADUATION GIFTS Official U. S. Watch Inspector.

ROBERTS Jeweler

## Now drive the newest Car of the Year

IN PRICE AND SIZE, the Mercury is between the Ford and Lincoln-Zephyr. Its engine is more powerful than the Ford's, its wheelbase longer, its bodyroom greater.

Yet its principles of engine and chassis design have been proved by millions of Ford owners in billions of Ford miles. It is much lower-priced than the Lincoln-Zephyr, yet its roominess and smartness are comparable with those of the bigger car. In Mercury you will find another new Ford-built value—and the newest new car of the year!



Style Leadership • 95 H.P. V-8 Engine • Hydraulic Brakes • 116-inch Wheelbase; 127-inch Springbase; 136 inches overall • Unusual seat width • Triple-cushioned comfort • Stabilized Chassis • Scientific Soundproofing.

SEE YOUR FORD-MERCURY OR LINCOLN-ZEPHYR-DEALER

'934.00 IS THE DETROIT DELIVERED PRICE OF THE Mercury 8 Town Sedan. Illustration—State and Federal taxes extra. Also available in three other body types. • Delivered Prices in Detroit (State and Federal taxes extra) are as follows: Mercury Coupe-Sedan, \$934; Sport Convertible, \$994.

Visit the FORD BUILDING at the Golden Gate International Exposition Admission Free

## MERCURY 8

FORD MOTOR COMPANY NOW OFFERS FORD, MERCURY, LINCOLN-ZEPHYR AND LINCOLN MOTOR CARS

## PLAN TO SEE The Golden Rule Style Parade

IN OUR WINDOWS

## Thursday Evening 8 o'clock

Spring's Newest Coats, Frocks and Millinery

Shown on Living Models

C.C. Anderson Co.

THE GOLDEN RULE

## CONOCO GERM PROCESSED OIL

ANY MERE OIL CHANGE - Brings your engine the plus of OIL-PLATING

"Net Contents Five U. S. Quarts," says the can. And that's right for your car, most Instruction Books say. They also warn you that Spring is the time to change oil!

"I'll make sure you get your correct seasonal grade," says Your Mileage Merchant. "And your 5 quarts—or 6 or 7 quarts—that you buy from me at an everyday price will give your engine the great big change to the plus of OIL-PLATING."

"You and I never heard of anything doing the job of OIL-PLATING except Conoco Germ Processed oil. It's all sewed up with patents. They make it so it hugs every surface in your engine as steady as chromium-plate hugs your bumpers."

"You don't think of plating draining down or frying up—not all the time your car is parked or heading a thousand miles yonder. Then you know your OIL-PLATING is always on guard—can't let loose and disappear. So every start you make and every inch you go all Summer is mighty well wear-proofed by OIL-PLATING."

"You aren't back here every minute adding a quart of Germ Processed oil, but that's just why I can count on you to be my customer forever. Come on, in five minutes I'll change your engine to OIL-PLATING!"

from Your Mileage Merchant

CONOCO GERM PROCESSED OIL













# MARKETS & FINANCE

By United Press

## LIVESTOCK

**DENVER CATTLE:** 1,000; steady to strong; beef steers \$10.15 to \$11.25; cows \$9.75 to \$10.75; calves \$10.00 to \$11.00; sheep \$7.50 to \$8.50; steady; lamb \$8.50 to \$9.50; steady; yearling \$10.00 to \$11.00; steady.

**LOS ANGELES CATTLE:** 1,000; steady; beef steers \$10.00 to \$11.00; cows \$9.50 to \$10.50; calves \$10.00 to \$11.00; sheep \$7.50 to \$8.50; steady; lamb \$8.50 to \$9.50; steady; yearling \$10.00 to \$11.00; steady.

**SAN FRANCISCO CATTLE:** 1,000; steady; beef steers \$10.00 to \$11.00; cows \$9.50 to \$10.50; calves \$10.00 to \$11.00; sheep \$7.50 to \$8.50; steady; lamb \$8.50 to \$9.50; steady; yearling \$10.00 to \$11.00; steady.

## WHEAT GAINS ON TENSE SITUATION

**CHICAGO:** March 22 (U.P.)—Nervousness over the European situation and higher market prices for wheat and flour stimulated buying of wheat on the Chicago board. Wheat prices advanced 1/2 cent to 1 1/2 cents for No. 1 hard red winter wheat, and 1/2 cent to 1 1/2 cents for No. 2 hard red winter wheat. Flour prices advanced 1/2 cent to 1 1/2 cents for No. 1 hard red winter wheat, and 1/2 cent to 1 1/2 cents for No. 2 hard red winter wheat.

## GRAIN TABLE

Wheat	Barley	Oats	Flour
No. 1 hard red winter	No. 1	No. 1	No. 1
No. 2 hard red winter	No. 2	No. 2	No. 2
No. 3 hard red winter	No. 3	No. 3	No. 3
No. 4 hard red winter	No. 4	No. 4	No. 4
No. 5 hard red winter	No. 5	No. 5	No. 5
No. 6 hard red winter	No. 6	No. 6	No. 6
No. 7 hard red winter	No. 7	No. 7	No. 7
No. 8 hard red winter	No. 8	No. 8	No. 8
No. 9 hard red winter	No. 9	No. 9	No. 9
No. 10 hard red winter	No. 10	No. 10	No. 10

## POTATOES

**CHICAGO:** March 22 (U.P.)—Potato prices advanced 1/2 cent to 1 1/2 cents for No. 1 white, and 1/2 cent to 1 1/2 cents for No. 2 white. Potato prices advanced 1/2 cent to 1 1/2 cents for No. 1 white, and 1/2 cent to 1 1/2 cents for No. 2 white.

## Local Markets

**GRAINS:** Soft wheat, 1/2 cent to 1 1/2 cents; hard wheat, 1/2 cent to 1 1/2 cents; barley, 1/2 cent to 1 1/2 cents; oats, 1/2 cent to 1 1/2 cents; flour, 1/2 cent to 1 1/2 cents.

**MEATS:** Beef, 1/2 cent to 1 1/2 cents; pork, 1/2 cent to 1 1/2 cents; lamb, 1/2 cent to 1 1/2 cents; mutton, 1/2 cent to 1 1/2 cents.

**POULTRY:** Chickens, 1/2 cent to 1 1/2 cents; turkeys, 1/2 cent to 1 1/2 cents; ducks, 1/2 cent to 1 1/2 cents; geese, 1/2 cent to 1 1/2 cents.

## Butting Prices

**GRAINS:** Soft wheat, 1/2 cent to 1 1/2 cents; hard wheat, 1/2 cent to 1 1/2 cents; barley, 1/2 cent to 1 1/2 cents; oats, 1/2 cent to 1 1/2 cents; flour, 1/2 cent to 1 1/2 cents.

**MEATS:** Beef, 1/2 cent to 1 1/2 cents; pork, 1/2 cent to 1 1/2 cents; lamb, 1/2 cent to 1 1/2 cents; mutton, 1/2 cent to 1 1/2 cents.

**POULTRY:** Chickens, 1/2 cent to 1 1/2 cents; turkeys, 1/2 cent to 1 1/2 cents; ducks, 1/2 cent to 1 1/2 cents; geese, 1/2 cent to 1 1/2 cents.

## DENVER BEANS

**DENVER:** Pinto \$2.35 to \$2.50; Great Northern \$1.50 to \$1.75; Navy \$1.50 to \$1.75; Kidney \$1.50 to \$1.75; Lima \$1.50 to \$1.75; Broad \$1.50 to \$1.75; Crowder \$1.50 to \$1.75; Pinto \$2.35 to \$2.50; Great Northern \$1.50 to \$1.75; Navy \$1.50 to \$1.75; Kidney \$1.50 to \$1.75; Lima \$1.50 to \$1.75; Broad \$1.50 to \$1.75; Crowder \$1.50 to \$1.75.

## BUTTER, EGGS

**BAN FRANCISCO:** Butter \$2.00 to \$2.25; Eggs \$1.50 to \$1.75; Milk \$1.50 to \$1.75; Cream \$1.50 to \$1.75; Cheese \$1.50 to \$1.75; Meat \$1.50 to \$1.75; Fish \$1.50 to \$1.75; Fruit \$1.50 to \$1.75; Vegetables \$1.50 to \$1.75; Grains \$1.50 to \$1.75; Flours \$1.50 to \$1.75; Oils \$1.50 to \$1.75; Soap \$1.50 to \$1.75; Paper \$1.50 to \$1.75; Textiles \$1.50 to \$1.75; Miscellaneous \$1.50 to \$1.75.

## Markets at a Glance

**Blue Bird Groups Give Folk Program**  
Members of the Blue Bird and Robin Blue Bird groups presented a special program at the Washington school yesterday afternoon. The girls presented six folk songs and three folk dances, representing different countries. Ann Parry told a folk tale.

## ADDED HOSPITAL SPACE STUDIED

Two sections of Twin Falls county officials had greeted today with favorable reception a proposal that the county hospital be enlarged by 50 to 60 beds.

## Pastor from Jerome Sees Killer Escape

**Jerome, March 22 (Special)**—The Rev. W. P. Willis, pastor of the local Presbyterian church, who was called to his former parish last week because of the death of a friend of his, said today that he believed the sensational jail break of Earl Durand, convicted game poacher, who had been sentenced to serve six months in the Park county jail at Cody, Wyo.

## See Outlaw

As the noise ceased suddenly they thought nothing more of it, but had no sooner entered the house when they saw the escaped criminal driving the deputy sheriff, Non Riley, toward the street with a Winchester rifle. They immediately informed city police authorities by phone, and the two drove toward the scene.

## Two-Thirds Value

In event of such election, Mr. Reineke explained, the proposal must be carried by a two-thirds vote of the qualified voters of the county.

## BAR GROUP WILL MEET MONDAY

Members of the Elveth Judicial District Bar association from four counties will convene in Twin Falls today for their annual business meeting.

## JURY EXCUSED

District court jury panel had been excused today by Judge J. W. Porter today until 10 a. m. Monday.

## ACTION PICTURES ON DISPLAY HERE

Six action flash pictures taken during the boys' class A district tournament in Twin Falls and also the girls' all-star basketball tournament last week, as well as a "still" of Dean Parsons, Huguenot, all-state forward, are being displayed in windows of the Pioneer Photo shop located in the Fidelity bank building in Twin Falls.

## At the Hospital

Mr. and Mrs. R. W. Clayton and John Clayton, Mrs. Harriet McManis and Mrs. W. A. Todd, Castleford, Oscar White, Robert Pupple and Mrs. C. A. Wernick, Twin Falls, Miss Mary Herick, Kimberly, and Mr. and Mrs. Yost, Hudson, Idaho, were admitted to the Twin Falls county hospital today.

## Declarations Given Rotary

Harry Bond, Jr., and William Lake, Twin Falls high school students, declared before the Twin Falls Rotary club members today.

## CLEANUP TERMED VITAL TO HEALTH

**Twin Falls:** annual spring cleanup drive which starts next Monday and continues through the week, was described this afternoon by H. R. Post, district health unit, sanitarian, as a "fine move" and one of which "all citizens should take advantage."

## Resident of Eden Paid Last Tribute

Final tribute was paid Mrs. Florence Harris, 44, resident of Eden for 24 years, this afternoon at the Twin Falls Baptist church. Mrs. Harris died Sunday.

## Niece Receives TAYLOR ESTATE

Sole beneficiary of the \$5,000 estate of the late Orlando C. Taylor, of Twin Falls, is a niece residing at Spokane, according to the will filed for probate here Tuesday.

## Used Cars - Trucks - Farm Machinery

2-1936 Chev. 157 in. W. B. A-1 \$425  
1-1935 Chev. 157 in. W. B. Good rubber, bed \$385  
1 Buick, 4 Door Sedan, Good Rubber, Motor Good \$125  
1 Plymouth 2 Door, Good Rubber, Low Mileage \$550  
1 Olds 1937 4 Door, Good Rubber, Motor Good, Radio and Heater \$550  
1-1930 Chev. Model, Pickup, Motor Good \$60  
Beun Culler for John Deere Cultivator, New Type \$50  
Rebuilt Big 6 Mower, Your Choice, Each \$35  
Moline Tumble Plow, New Style \$135  
15-30 Tractor, Runs Good, A Buy \$140  
Reg. Farmall Rebuilt, O. K. Guarantee \$480

## Finest for Drinking

**Jerome, March 22 (Special)**—Henry Corley was arrested and brought before Police Judge Clark T. Stanton this week of a charge of driving a motor vehicle without a license and was assessed a fine of \$10.

## RENEGADE KILLERS...BAD MEN...CLAIM-JUMPING... AMBUSCADES...THE OLD WEST IS AN EXCITING PLACE, LITTLE BEAVER.

**YOU TELL 'UM, RED RYDER! ME THINKUM READERS GOT HEAP BIG THRILLS COMIN'!**



## REWARD

**YOURSELF WITH SPINE-TINGLING ADVENTURES BY FOLLOWING THE GUN-SMOKE TRAIL OF RED RYDER!**

**GREAT NEW ADVENTURE STRIP!**

**25% MORE MILEAGE with Firestone CHAMPION LEAD PROOF TUBES**  
Special sealing compound prevents loss of air from seepage.  
**NO EXTRA COST**  
You pay no more for this economy feature.  
Firestone Auto Supply and Service Stores  
410 Main North Phone 73





## WPA Cut Perils Status Of Baseball Park Here

Status of Twin Falls' baseball park project, planned with aid of WPA funds to be constructed in the immediate future, was in doubt here this afternoon after WPA officials had announced that failure of the United States congress to appropriate \$150,000,000 in additional funds would "influence the opening of new projects."

Although officials, during a visit here yesterday afternoon, made no particular mention of the baseball project as such they did say, however, that should congress fail to appropriate the funds needed to carry on the WPA work some projects now working will be reduced in personnel and other projects, now in operation, may be discontinued entirely.

**Prepare for Slush**  
Making the announcement here was H. E. Echols, state director of operations for WPA. He said that those offices of the WPA have been ordered by Washington to make immediate preparations for the reduction unless additional funds are made available.

Approximately 150 heads of families employed on the WPA in Twin Falls county will be removed from their jobs during the week beginning April 1 unless the appropriation is passed. Echols said. The district quota will be slashed by 1,720 persons to a low of 9,775. Reductions in this amount will be made on a project basis and will include super-

visory workers in addition to the relief workers on projects.  
"Eight hundred and seven workers were employed on Twin Falls county WPA jobs a week ago and on the basis of state reductions, about 15 per cent will be taken from the projects. All counties in the state will be similarly reduced under present orders," Echols said.

**Quota Instructions**  
Section of the instructions from Washington which may cause delay in construction of the ball park here was quoted by Echols, although he made no mention of the park by name.  
"It will be necessary to advise sponsors that opening of new projects may be influenced by this action," he said. The same order is being issued to all WPA zones in the state.  
Echols stopped in Twin Falls briefly yesterday afternoon en route to southeastern Idaho on a tour of project inspection and also to discuss reductions of quotas. He was accompanied by House N. Parker, supervisor of public relations for the Idaho WPA.

## PHYSICALS ASKED FOR BOY SCOUTS

Possibility that all Boy Scouts of the Snake river area council, before going on any summer camping trip, would first submit to a complete physical examination was seen here this afternoon.

Recommendation that such a procedure be undertaken was made last night at a joint meeting of the district camping and health and safety committee chairman held at the Park hotel.

The examination policy now goes before the executive board and, if adopted by board members, will become effective at once.  
Milton Powell, chairman of the council camping committee, pointed out that the policy, if adopted, was not designed to eliminate any boy from making a camping trip.

"Rather, if we know a youth has a particular ailment, it will permit the Scoutmaster to govern the activities selected," Powell said. "For instance, a boy with a weak heart will not be allowed to over-exert himself to such an extent that it would become dangerous."

In charge of the joint session, aside from Powell, was R. W. Carpenter, Twin Falls, council chairman of health and safety.

At the session it was announced that district and troop camping will again be followed this year, having proved entirely successful last year.

## Burley Students Enter Music Meet

BURLEY, March 22 (Special)—Five Burley students are planning to attend the Northwest Music conference March 29, 30, 31, and April 1 at Tacoma, Wash., according to Reed T. Hyde, high school music instructor.  
Nona Marchant will enter the solo and chorus division, Louise Burgett, Keith Connor and Alvin White, chorus, and Jimmie Roper, conference band.

## Burley Clerk Will Not Seek Re-election

BURLEY, March 22 (Special)—After April 25, Emory T. Herrin, city clerk, will devote his entire time to working for the Pacific Mutual Life Insurance company. He will not be a candidate for re-election to the office of city clerk at the municipal elections April 25, he announced.  
Before he was elected to his present office two years ago, Mr. Herrin had served as principal of the Miller school here for 10 years. His territory for the insurance company will be southern Idaho east from Boise and north to Ashton.

## SCREEN OFFERINGS

### BOXY

Wed., Thurs.—"Whispering Enemies," Jack Holt; "The Lady Fights Back," Irene Hervey.  
Fri., Sat.—"Home on the Prairie," Gene Autry.

Sun., Mon., Tues.—"Lone Wolf Spy Hunt," Warren William-Ida Lupino.

### IDAHO

Wed., Thurs.—"Prisoner of Zenda," Ronald Colman-Madeleine Carroll.

Fri., Sat.—"Burn 'em Up O'Connor," Dennis O'Keefe-Cecilia Parker.

Sun., Mon., Tues.—"Four Girls in White," Florence Rice-Una Merkel.

Wed., Thurs.—"Adventures of Marco Polo," Gary Cooper.

### ORPHEUM

Wed., Thurs.—"King of the Underworld," Humphrey Bogart; "Secret Service of the Air," Ronald Reagan.

Fri., Sat.—"St. Louis Blues," Dorothy Lamour-Lloyd Nolan; Friday night, "Jitterbug Jamboree," on stage.

Sun., Mon., Tues.—"Stagecoach," John Wayne—Claire Trevor.  
Wed., Thurs.—"Off the Record," Pat O'Brien-Jean Blondell; and "Society Smugglers."

## Character Topic At Faculty Meet

"Character, Education" was the topic for a faculty meeting of the Twin Falls junior high school today. In charge of the program were Miss Rebecca Curtis, Miss Winnifred Fryer, Miss Mary Gillispie, Miss Sue Evans, Mrs. Emma Jones and Lawrence Lundin.

A curriculum meeting was held yesterday to study the curriculum for next year and discuss changes.

## TASTE OF PROOF Monogram

Imported, Straight Bourbon  
**WHISKEY**  
Code Distilled Cuts  
-244 in 243  
Pint in Quarts  
Imported by WOODPORTERS, Inc.,  
Seattle

## FREE COOKING SCHOOL

Idaho Power Co. Auditorium  
THURSDAY, 2 P. M. MAR. 23

FEATURING THE RANGE OF THE WEEK

### "MONARCH"

Food is to be prepared on the Monarch Range and the free time discussed. Range furnished by, Housley Panmar.

## CHICKEN PIE

Um-m-m So delicious—nice for dinners, luncheons and suppers.

## SALMON PUFFS

A new way to serve salmon which is new and different.

## CREAM SCONES

A tasty snack with a cup of tea.

Come and Enjoy Learning New  
Menus—New Methods

# Easter in ALL ITS GLORY at Penney's

It's Easter Time for Fine Feathers—One of the Gayest Seasons at Penney's! We're All Set to Outfit You and Your Whole Family from Head to Foot — in the Newest of Styles, the Best of Quality — at Savings That Will Amaze You. Be Sure to See the Jumbled Slogans in Our Windows and Ask for Your Entry Blank!



## Easter HATS

The Newest and Smartest  
of Lovely Spring Styles!

**\$1.98**

Perky sailors, bumpers, and small hats in stunning, lustrous new straw braids! Enchantment in veils and flowers! Not only smart—but becoming!

## Dunbury Gabardines

Men! Here's the  
King of All-Occa-  
sion Fabrics!

- Different Weaves!
- New 1939 Colorings!
- Wide Array of Styles!

**\$19.75**

Gabardine fills the bill—whether you want a tough, hard twist that will take plenty of rough and tumble—or a smooth, handsome finish and precise drape that gives you that successful appearance! See our line of all worsted gabardines—you'll find a cool, rugged combination at a price you want to pay! Ask about our Lay-Away Plan.



## MARATHON ★ HATS

Smartest Styles! **\$2.98**  
Quality Built!

Genuine fur felt, water-felt processed for longer service! Hand-blocked to keep their shape! In styles and colors that set off your features to best advantage! • Item U.S. Pat. Off.



## Highlight for Easter! HANDBAGS

Simulated Patent! **\$1.00**  
Gleaming smartness to set off your Easter outfit! Stunning shapes and excellent fittings!

## Spring's EASTER DRESSES

LATEST  
AND LOVELIEST STYLES!

**\$3.98**

Complete Selection  
of New Styles from  
**\$1.98 to \$9.90**

Perfect expressions of newest trends! The cunning bolero made different by all-over embroidery... the unusual print... the delectable, sugary pastel—to mention but a few! Sizes 12 to 20.

Use the  
Lay-Away Plan



## J. C. PENNEY CO. Presents Easter Style Revue

In the Store Windows  
THURSDAY NIGHT, 8 P. M.  
Music & Entertainment by Ray Jennings

- MODELS**
1. Mrs. Wilhite.
  2. Mrs. Rieke.
  3. Gladys Gingery.
  4. Norma Scheurer.
  5. Mary Hamilton.
  6. Jean Bacon.
  7. Lorraine Tiffany.
  8. Mrs. Holland.
  9. Gloria Adams.
  10. Shirley Schwendiman.
  11. Bobbie Robinson.

Flowers Courtesy of  
TWIN FALLS FLORAL CO.

Hair Dressing Courtesy of  
CRAWFORD BEAUTY SALON

## BEAUTIFUL TAILORING, FLATTERING LINES —AT THE HEAD OF THE Easter PARADE!

## Coats and Suits \$9.90

In always-smart black or navy blue, or in soft, lovely Easter colors! Coats and suits with that brand new "softer" look—suits that are really un-tailored! Styles that are jaunty, or dressy, or swaggy. In materials best suited to each! Sizes 12-40.

Others \$4.98 to \$14.75



# PENNEY'S

J. C. PENNEY COMPANY, Incorporated

# It's Spring - Enjoy it!



Enthusiastic gardeners  
turn their thoughts aside  
from weary winter house-lasks  
to the pleasures outside!



Glad to be out  
in the air once more—  
Little girls, you'll find,  
Don't think Spring a bore!



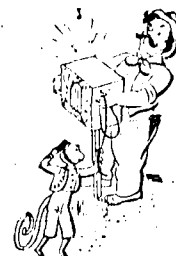
Nothing so nice  
on a warm Spring day  
As strolling in the park—  
Maybe pausing by the way?



The Birds are back  
from their Winter vacation  
Helping make Spring  
the annual sensation!



To barefoot boys  
Spring's the occasion  
for ditchin' school  
to go a fishin'



The organ grinder man  
comes as Spring begins  
With his monk swingin' out  
to the hurdy-gurdy din!

AND the best way to enjoy this brand new season is to dress up the whole family in new spring costumes. New apparel gives you a lift that simply can't be had any other way. It puts you in step with the sunshine, the birds and flowers. So prepare to enjoy Spring the modern way . . . your merchants are bent on helping you with complete new stocks in all the exciting fashions . . . for every member of the family. Come to Twin Falls Thursday, Friday nights and all day Saturday for one of the biggest Spring Opening events in years. Join in the "Jumbled Slogan" contest presented in downtown store windows . . . it starts Thursday night! Come to the Twin Falls downtown section for a thrill when Magic Valley high school bands participate in a big marching and music contest Friday night . . . and shop here all day Saturday for outstanding spring fashions.

STARTING THURSDAY, March 23rd . . . the "Jumbled Slogan" window contest. Make the rounds of Twin Falls store windows and unscramble their slogans correctly. Cash prizes offered for most correct solutions—1st prize \$20; 2nd prize, \$10; 3rd prize, \$5; 4th prize, \$2.50; 5th prize, \$2.50. Get your blanks from Chamber of Commerce or participating merchants. Contest closes 6:00 P. M. Saturday evening.

STARTING FRIDAY, March 24th . . . Marching and Music contest for Magic Valley High School Bands. Starting time: 8:00 P. M. Performing area will be between Bank of Idaho and Rogerson Hotel corner on Main. Bands will be contesting for \$50, \$30 and \$20 prizes with a special event featuring the American Legion and Auxiliary Junior Drum and Bugle Corps and the Boy Scout Drum and Bugle Corps.

EVERY DAY IN TWIN FALLS will be marked through the spring season with the presentation of the finest in the new season's merchandise by your merchants. For greater values, for finer fashions, shop your Twin Falls stores. Your merchants have made this gala celebration possible and you are cordially invited to take part in the events arranged for your entertainment.



# Spring is Here

## AND YOU NEED NEW CLOTHES

Select your spring wardrobe from the complete stocks featured in the  
**Main Floor Ready-to-Wear Department and the  
 Economy Basement Budget Dress Shop**



**MAN TAILORED!**

**\$9.90**  
and up

Suits you'll love on sight! New longer-jacket man-tailored suits you'll wear merrily day and night thru spring! Exquisitely tailored of fine worsteds, twills, coverts. Navy, black, oxford, stripes. Suit-shop here for chic-for thrift!

**MAIN FLOOR  
READY TO WEAR  
DEPT.**

**\$7.90**  
and up

### The Smart New Spring Dresses

In the Ready to Wear Dept.



Procks to capture your heart instantly (this too)! Blithe and appealingly young with snug basque bodices, full dancing skirts. — frocks full of new figure-flattery, new "hills and valleys" cleverly tucked, shirred, pleated, crisp with lingerie, flower trims! Rayon crepes and sheers in black, navy, pastel, tiny prints.

**\$5.90**  
and up

### SPRING '39 COATS

Grand "dress-up" coats that ensemble with everything! Fitted-flared, dressy swaggers, ripply-skirted reefers. Fine woolens, twills. Navy, black, colors.

**\$9.90 up**



### ECONOMY BASEMENT BUDGET DRESS SHOP

#### New Spring TOPPER COATS

**\$5.90**  
**\$7.90**  
**\$8.90**

New spring styles, knee lengths and regular lengths. Solid colors and tweeds. Colors are new for this spring — aqua, crush strawberry, beige, green, Fuchsia, navy and black. Sizes from 12 to 44.

### ECONOMY BASEMENT BUDGET DRESS SHOP

#### New Spring LADIES' HATS 89c

New fine straws and silks — and soft felts in off face and brim styles. Newest of colors and veil trims.

*Toy Crowns! Sailors! Bonnets!*  
**98c—\$2.98 and up**  
*Straws! Felts! Suedes!*

Beguiling hats with a catch-your-breath chic! Everything that's NEWS—toy crowns, slashed brims, heart-shaped bonnets, tiny or high crowned sailors, snood pillboxes, angelic off-faces! All brilliantly pretty with colored veils, flowers, ribbons! In navy, black, heart-melting pastels. All headpieces.

### ECONOMY BASEMENT

The Budget Dress Shop offers a large assortment of  
**Rayon Crepe  
DRESSES**



**\$1.98-\$2.98**  
**\$3.98**

Choices of floral and geometric pattern prints — bold colored polka dots and stripes. To be had in navy, blue, aqua, blue, red, green, mint, japonica, gold black. These are made in crown tested rayons, crepes, spun rayons. All fast color materials.

### Start Collecting Blouses

Styles for Every Suit!

**98c**  
**\$1.98**  
and up

Organdies! Crepes!

Spring's prettiest blouses to make your suit a shining success! filmy chiffons, sheer batistes, crisp organdies! Lots of tailored rayon crepes in glowing pastels, prints, stripes, white! 34 to 40. Buy a blouse wardrobe.



### Pre-Easter Shoe Special

IN THE ECONOMY BASEMENT

#### STARTS THURSDAY

A Special Close-Out of 192 Pairs  
 Women's Novelty Dress Pumps,  
 Wedgies and Sport Ties



**\$1.47**

All new styles. Regular values to \$2.98. Dutch Boy in black or brown calf and wine step-in pumps. Wedgies in black, brown and wine. Novelty styles in patents, black, wine, copper tans, and browns. Dependable quality, priced low. Most all sizes in the lot.

### For the Little Miss! A Grand Selection of New

#### Spring Dresses

Made by

—Sarah De Salx  
—Shirley Temple  
—Dianna Durbin

**\$1.98 and up**

Easter is dress-up time for the tot too, and we've all the bright new Easter clothes they want. Low priced.

#### Children's Coats

**\$2.98**  
and up

Tweeds and plain colors in the prettiest little coats to dress her up for Easter. See them.



# IDAHO DEPARTMENT STORE

"IF IT ISN'T RIGHT, BRING IT BACK"

# IT'S SPRING in the MEN'S STORE

OUR FIRST SUIT SPECIAL OF THE NEW SEASON STARTS THURSDAY!

**70**  
Fine \$24.75  
and \$27.50  
**SPRING**  
**SUITS**  
**\$18.90**

Double breasted Drape models, men's conservative in light and medium green, grey greens, dark greys, dark browns, dark blue, diagonal and herring bone weaves. These are the newest spring patterns.

**REGULARS**  
1 Size 35 9 Size 39  
4 Size 36 8 Size 40  
6 Size 37 5 Size 42  
15 Size 38 1 Size 44  
1 Size 46

**IN SHORTS OR STUB MODELS**  
2 Size 35 3 Size 38  
1 Size 36 2 Size 39  
2 Size 37 1 Size 40  
1 Size 42

**IN LONG OR SLIM MODELS**  
1 Size 37 2 Size 40  
2 Size 38 1 Size 42  
2 Size 39 1 Size 44  
1 Size 46

This Lot a Factory Close-Out  
**\$18.90**



Shop the men's store for quality--for assortments--at prices that are right. Here you'll find complete stocks of up to the minute style merchandise and remember it's backed by our guarantee  
**IF IT ISN'T RIGHT BRING IT BACK**

**ARROW!**  
AMERICA'S FOREMOST  
SHIRT



**\$2**

Foremost in style--foremost in quality. Arrow has everything a good shirt should have. In white and fancy patterns.

Pre-Shrunk  
**DRESS SHIRTS**  
For Men  
**98c**

—Plain shades  
—Fancy patterns  
—Fused collars  
—4-eye ocean pearl buttons  
—Pleated back and pleated sleeves.

A Great Shirt Value Compare!

New Shipment  
Fruit-of-the-Loom

**SHIRTS**  
**\$1.65**

Made of the genuine Fruit-of-the-Loom fabrics. These shirts assure you the maximum in wear — as well as style and quality.



**INTERWOVEN HOSE**



**35c**  
and  
**50c**

New smart spring patterns in the famous wear resisting Interwoven construction

Men's and Young Men's  
**SPORT SWEATERS**

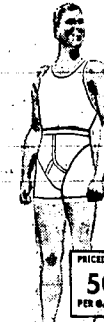
By Barclay



**\$1.98**  
and up

All the popular styles in slip-overs, button and zipper fronts. New shades, color combinations and novelty effects.

The  
**INSIDE STORY**  
of  
**COMFORT**



PRICED FROM  
**50c**  
PER GARMENT

You Hit Three High "C's" In This



**STETSON PLAYBOY**

Coolness, Comfort and Color are yours, though the sun be blazing: The coolness of a featherweight felt... the comfort of Air-Light construction... and Stetson's new, attractive International colors. An added note of cheer is the moderate price. \$5.

New Shipment of  
**DOBBS HATS FOR SPRING**

Cross-country and two times shapes. Green, blues, greys and tans.

**THE POMONA HAT**

Hand shrunk, genuine fur felt, super quality hats in new shapes and shades.

**\$2.98**

**\$5.00**

Hickock  
Suspenders  
And Belts  
**\$1.00**

New spring and summer styles.

President  
Suspenders  
**49c**

New All Leather  
Belts  
**49c**

Blacks, browns and grays.

Hickock New Novelty  
Tie Chains  
and  
And Collar Bars  
**50c** and  
**\$1.00**

Silver or gold finish. Initials free with most of them.



Colorful Spring  
Ties  
By Botany!  
Grayco!  
And Arrow!  
**\$1.00**

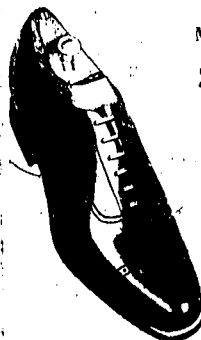
Lots of color or subdued tones. No matter what you prefer, you'll find it in this big selection of smart neckwear — and of course they are hand tailored.

**HOLLYWOOD HAND TAILORED TIES**

A great tie value — hand tailored in spring's newest patterns and color combinations.

**49c**

For Men Who Demand the Finest in  
Style and Quality  
**FLORSHEIM SHOES**



Most Styles  
**\$8.75**

The sleeker lines, the lighter leathers, the fine silk stitching, the turned and double turned tips. These are the earmarks of Florsheim finer handwork.



FOR THE  
TOWN'S BEST  
DRESSERS.

**DOUBLE SATISFACTION**

1. You'll like Freeman Shoes.  
2. Others will like them on you. Part of the satisfaction of wearing a smart article of apparel is having your friends admire it and confirm your good taste in selecting it.

**\$5**

**Jockey UNDERWEAR**

Gives Sleek Fit  
Ends Squirreling

Your clothes will hang better over Jockey's snug, piece knit fit. They'll look better because Jockey ends unsatisfactory squirming. Patented Y-front construction gives masculine support with a convenient angled opening that never gaps. Buttonless, easy to launder, need no ironing. Enthusiastically approved by millions of men. Various fabrics and models, with shirts to match. Illustrated Jockey Midway.

Originated and Manufactured by  
**COOPERS**



IT'LL BE A BIG SEASON FOR  
**POLO SHIRTS**  
OUR STOCKS ARE COMPLETE

POLO SHIRTS BY  
MUNSINGWEAR

**75c**

Cotton rib in white and blue, short sleeves and crew neck. A popular style for spring and summer.

Fancy Hawaiian  
Design  
Polo Shirts  
**98c**

If it's color you want, then see these 3 button styles.

Basque Stripe  
Polo Shirts  
**49c**

Made of fine woven cotton rib in the popular Basque stripes.

1939  
**SPRING OPENING**

Thursday, Friday  
and Saturday...  
March 23, 24, 25

Twin Falls biggest, gayest spring opening. It starts Thursday night at 7:30 with the Jumbled Slogan window contests. On Friday night attend the Band Contest to be held on Main starting at 8 P. M. Be on hand both Thursday and Friday evenings.

BOYS' POLO SHIRTS  
KAYNEE  
**98c**

Boys' polo shirt in plain shades, fancy plaids and bright Hawaiian and Spanish designs. Assorted materials, knits, crepes, broadcloth and terry cloth.

Small Boys' SPORT COATS  
JACKIE JUMPER  
**\$3.45**

Small boys' WOOL sport coats, fancy tweed material, double breasted, sport back. Colors, tan and green mixtures.

BOYS' DRESS PANTS  
**\$1.98 to \$3.98**

Boys' dress pants. Part wool and all wool. A very good selection in the newest patterns and colors.

# IDAHO DEPARTMENT STORE

"IF IT ISN'T RIGHT, BRING IT BACK"

# DRESS UP FOR EASTER

## THE CASE OF 999



May we sum up the evidence for this famous chiffon stockings:

- 1—It looks sheerer than a 4 thread
- 2—It wears longer than other 4 threads
- 3—It's made by NoMend—the name that means "stockings that satisfy."

Exhibit A, the proof, can be seen in our hosiery department. Ask for

**NoMend**

STYLE 999 4-THREAD  
**SHEER**  
Short • Medium • Long

**98c**

**Queen's Lace Hose \$165**  
Van Raffle silk lace hose, new colors.

**Silk Hose 49c**  
Pure thread silk, first quality. Picot top, ringless, three thread chiffon.

## CHOOSE YOUR ACCESSORIES FROM THE COMPLETE STOCKS IN THE DRY GOODS DEPARTMENT

Here at the I. D. you'll find those strikingly smart "different" accessories. Accessories other women envy — men admire.

"IF IT ISN'T RIGHT, BRING IT BACK"

**DOESKIN GLOVES \$1.98**



Four and six button length gloves in new spring shades. Fuschia, japonica, cyclomen, gold, lime, green.

**FABRIC GLOVES 59c—98c**

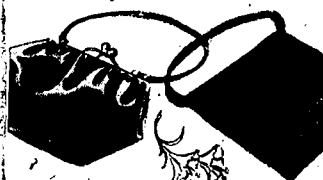
New spring styles, new colors. Novelty trims.

**New Novelty JEWELRY 98c**



Necklaces, bracelets, clips, earrings, etc. Pearls, shells, novelty jewels in all wanted colors.

**Spring HAND BAGS \$2.98**



New novelty patent leather, suedes, calfskin, and grain leathers. New spring shades, navy and black.

**Simulated LEATHER BAGS 98c**

Newest styles and colors in this assortment. Calfskin, patent leather, suedes and rough grains.

**Spring FABRIC BAGS 98c**

A nice selection of solid colors or prints in new spring bags.

EXCLUSIVE



**\$2.98**

Large roomy shirred bag to be used either on shoulder or with double handle. Made in patent leather, doeskin and the new Florentine capelin, in all the new spring colors.

**SILK SLIPS \$1.98**



Taffeta, crepe, satin slips, lace trim or tailored. All sizes 32 to 44. Dark shades and tea rose, white.

**SILK PANTIES 49c**

Glove silk, tailored or lace trimmed panties. Tea rose only. Assorted sizes.

### NEW SPRING PRINTS

Denier crepes. Fine quality with new colorings and design. 39 inches wide. Washable.

**49c**

### NOVELTY SHEER CREPES

Jerome sheers, solid coloring. 39 inches wide. All the new high shades. Also black and navy.

**98c**

### NEW SPRING WOOLENS

Dress weights, suitings and coatings. 54 inches wide. Novelty patterns and plain colors.

**\$1.98**

### CHAMPION BELTS

**98c**

Genuine leathers. Calf, patent leathers—suedes. All the newest colors.



STARTS THURSDAY!

## Pre-Easter LINEN SPECIAL

One Large Group of Novelty Linens Including

CHAIR BACK SETS  
SCARFS  
BOXED NAPKINS  
PILLOW CASES

BRIDGE SETS  
7 PC. SETS  
TOWELS  
TEA NAPKINS

Above items in gross linens, petit point embroidery, madeira, Italian, Porto Rican and Sullicio lace edgings — Also one group of all linen crash lunch cloths in the following sizes: 57x57 — 51x51 — 51x67 and 57x77. Assorted colors, plaids, etc.

Special

**98c**

### NEW SPRING NECKWEAR

**49c 98c**

Lace, pique, linen and other novelty fabrics. Separate colors of sets.

### NEW COMPACTS

**98c**

You will want a new compact with your spring outfit. Novelty cases.

### CORSAGES

**49c**

A large group of new styled corsages. Solid colors or variegated color assortments.



**JOIN IN THE FUN! Solve The "JUMBLED SLOGANS"**

See our windows for the "JUMBLED SLOGANS"—contest opens Thursday night at 7:30; closes Saturday at 5 P. M. For additional entertainment see and hear the big "Band Contest" to be held on the down town streets, Friday night starting at 8:00 — It's Twin Falls biggest Spring Opening celebration!

Striking New Color for Spring by

**Vitality Flamingo Calf**

**\$6.75**



**RETA (above)**  
Novel twist and lacing effect! Open toe and stank

**ESTELLE (left)**  
This sophisticated pump features an open laced vamp treatment and tiny perforations.

**Blue (claberdine)**  
Also Black Kid and Patent



**AAAA in KEY**  
Sizes 5 to 11

You'll like the new Vitality spring shoes in Flamingo calf! This is a striking color that goes remarkably well with all the favorite colors of the season. Vitality styles are authentic, and Vitality fit and comfort are traditional! Come in today, see these good new shoes.

**VITALITY OPEN ROAD SHOES** for Outdoor and Campus Wear, \$6.

## SMART FOOTWEAR FOR SPRING AS FEATURED IN THE MAIN FLOOR SHOE DEPT.

### PEACOCK SHOES

Exclusive Styles by the Nation's Finest Designer! Smart women have long realized that there is no shoe that compares with "PEACOCKS"



**Nebula...**

Highlights the simple beauty line over toes and heels. Parlatan blue calf — neatly trimmed with suede.

Price—**\$8.75**



**Cossina...**

In Peacock's masterpiece — it wraps itself around the foot in slender, graceful lines. Come in Japonica calf. Big to match.

**\$8.75**

INSTINCTIVELY CHOSEN BY WOMEN OF FLAWLESS TASTE!

**FOOT DELIGHT SHOES**

"RAVENNA"



Available in rich Japonica calf. A perfect style for street and afternoon wear.

**\$7.95**

### THE NEW SHOES

Are As Flattering As A Hollywood Star Featuring The Newest, Smartest Styles! At New Lower Prices!



Featured in Japonica calf and patent. Priced at—**\$2.98**



Full of foot appeal—open toe and heel. Your choice of patent, Japonica calf, Parlatan blue. Priced at—**\$3.75**

**Rah Rah...**  
New Hand Woven RAICHAS Direct from Hollywood. The new hit of the season. Genuine leather, hand woven by skilled workmen. Featured in natural and white. Widths: Narrow and medium. All—**\$3.95**

**New Easter Shoes for the Kiddies**

All the new styles. Patent, black and brown calf. Bandals, straps, oxfords. Priced from—**\$1.98 to \$3.45**

All Shoes Fitted By X-Ray!

**Klompers...**  
"The Newest Rage"  
Smart Dutch Boy shoes, with wooden soles that conform to the foot. Priced at—**\$3.95**

**Campus Queens Will Vote For Our Sport Shoes!**  
New Smart

**SPORT OXFORDS**  
Square toes, saddle oxfords. Woven natural leathers. Crepe and leather soles. Priced from—**\$2.95 to \$4.95**

# IDAHO DEPARTMENT STORE



# CONTEST, BAND EVENTS, STYLES FEATURE SPRING OPENING

## Drum and Bugle Competition on 2-Day Program

It's springtime in the Magic Valley. And so on Thursday and Friday merchants of Twin Falls will stage their annual "spring opening" events—this year on a larger and grander scale than ever before.

Sponsored by the merchants' bureau of the Chamber of Commerce, the events scheduled for this year are expected to bring hundreds of tourists into the downtown sections—not only to see the preview of what "Mr. and Mrs. Magic Valley" will be wearing this spring and summer but also to partake in the fun and enjoyment of a unique "jumbled slogan" contest. "Living models" wearing displays of particular interest to the women, and also band and drum and bugle corps contests, featuring some of the finest high school bands of this irrigated section of Idaho.

The "jumbled slogan" contest is open to all of adult age who wish to enter. Only requirement is that all entries must be submitted on the official blanks which will be available at participating merchants' stores, and there are approximately 75 stores participating. Blanks will also be available at the Chamber of Commerce.

**Cash Awards**  
Substantial cash awards are being offered to the winners in this contest, which will run both days of the spring opening and also Saturday and which will concentrate in the downtown and immediate area. Here's what the "jumbled slogan" contest is all about:  
For instance a merchant chooses the slogan "Satisfaction Guaranteed, or Your Money Back." Instead of putting that slogan in his or her window in just that manner it would appear something like this: "Aislaicfion! Ro Deetnaraug, Yryo akh Eymme."

Now, from there on out, it is up to the contestant. All each must do is to decipher the jumbled letters into words, which make up the slogan. The man or woman getting the greatest number of them right will be declared winner. Awards will also go to winners of other positions. All entry blanks, bearing the name and address of the contestant, must be turned in not later than 6 p. m. Saturday. All entries after they are completed should be taken to the Chamber of Commerce, next to the Orpheum theater.

**Models Show Styles**  
Feature of the first night of the opening, in addition to the window slogan contest, will be "living models" displays which individual downtown stores are planning.  
At these displays will be featured everything from shoes, stockings and dresses, to purses, gloves and hats. All will be the latest as "fashion goes on parade" here.

The unveiling of store windows and the jumbled slogan contest are set for 7:30 p. m. Thursday. Then, on Friday starting at 8 p. m. in a special "road off" section on Main avenue in the downtown section, will welcome the band marching and music contest.

Feature of the contest will be a special competition between the Boy Scouts drum and bugle corps and the American Legion and auxiliary junior drum and bugle corps. In addition to this special event, keen competition for the generous awards which will be presented at conclusion of the marching and music playing will be staged between bands representing the high schools at Shoshone, Piler, Twin Falls, Castletown and Kimberly.

**Rules Listed**  
These bands will vie for the awards. A special set of rules has been drawn by Frank Warner, chairman of the judging. The rules follow:

- 1—Forward march while playing and while not playing.
  - 2—Halt, while playing and also while not playing. The bands will continue to play after the halt.
  - 3—Column right, while playing.
  - 4—Column left, while playing.
  - 5—Counter-march, while playing.
  - 6—Drumline front, while playing.
  - 7—Increase front, while playing.
  - 8—Change of right oblique, left oblique, column half right, or column half left, while playing.
  - 9—Original or a maneuver, of any kind selected by the director.
- Judging will be on the following basis: Warner said: Playing ability, 40 points; discipline, both individual and organization, five points; alignment of ranks, files and diagonals and uniformity of intervals and distance, 10 points.
- Carriage, personal bearing and position of instrument, five points; cadence, metronome tempo, regularity, military stride and suitability of style of marching, 10 points; inspection of instruments, uniforms and extra equipment, 10 points; precision, uniformity of action and military character of movements, 10 points; and general effect from the standpoint of showmanship, 10 points.

In short, the merchants of Twin Falls invite all of Magic Valley to participate in the two-day spring opening—to take "part in the jumbled slogan" contest—to watch the parade of fashions—to witness the bands and drum and bugle corps compete.

**A GAY SPRING**  
Dresses that suggest a gay spring are displayed in store windows this week. A good share of this gaiety is provided by Paris fashions and copies. While colors, checks and stripes are given recognition, there is an interesting amount of attention shown black.

The total number of radio receiving licenses, turned in to the London post office, in force at the end of September was 8,758,000, an increase of 410,810 during the year.

### Black Wool



The 1939 snug basque bodice of this youthful Helen Cookman coat breaks into a full skirt of unpressed pleats. Of Rodley's sheer black wool, it has rounded lapels and a concealed closing. The white orchid has a deep purple center.

Man tailored suits are still very good this spring, though the trend is to dressmaker suits for early in the fall season.

## SHOES BLEND IN SPRING COSTUME

ST. LOUIS, March 22 (Special)—The shoe merchant's consciousness of the customer's nifty footwear needs to harmonize with a complete costume this spring is cited as an important point for the variety in color and design in Betty Jones, designer for the International Shoe Co. in its Merchants Service News.

The need for helping a customer to choose and combine her accessories attractively is illustrated. Nothing that women have become increasingly accessory-minded in the last few seasons, it is also shown that many customers with wrong interpretations on coordination or blending of accessories, for example. To match or blend shoes, bag, belt and gloves many women will stop to achieve an entire assortment in exactly the same shade. As a consequence, when she wears all these together, the effect will often be overbalanced and the customer will wonder why, when she has followed fashion instructions, the result has not been better.

Miss Jones, in the bulletin, suggests that the shoe retailer urge customers to have several sets of matching accessories chosen to suit her spring ensembles, and then, when appropriate mix two colors at a time.

**Vary Them**  
"A woman may buy shoes, bag, belt, hat, gloves and boutonniere all of the same color, but she should know better than to wear them all at once," it is suggested. "If she does not know how to dress in good taste, it is up to the merchant to teach her, tactfully but definitely."

"It is a good idea for her to have several sets of matching accessories, chosen because they suit her spring costumes and her own coloring. However, she will have much more variety if she wears the two colors at a time... she will help her own appearance by always being well dressed."

A chart completely covering color fashions in fabrics, frocks, shoes and gloves offers additional aid to a clear projection of a costume color, with shoe colors appropriate to blend; match or contrast with it in the next column, hosiery shades in a third, and glove colors in a fourth. For instance, to wear with the mauve pink costume family appropriate, shoe colors set down included marine blue, claret, red burgundy and black patent, with Grenet, the suggested hosiery shade, while glove tones included black, blue and cream. For wear with yellow saddle tan, black patent or dark blue shoes, tan, hosiery and ginger or cream gloves were recommended.

Hosiery is among the novelty fabrics appearing in tailored hose-cosies and in pajamas in two colors.

## Tuck-in Shirt Gains Popularity As Sports Dress

A sports dress that is constantly gaining more and more supporters, is the shirt frock with tuck-in shirt contrasted with the skirt, the top usually patterned, the skirt plain. What are some of the leaders?

The striped chambray shirt with plain skirt and striped belt has long been a favorite, especially with college girls. This resort season the version with the very swing skirt appeared repeatedly at Palm Beach on smart girls and was quoted by shops as a very good seller.

For summer many are in bold multi-color gypsy stripes in crepe, checks in khaki, flowers in Chinese silk—cite just a few. And the skirts to go with these, in swing, moderately kored, all-round pleated or front-falshes styles are in solid colors but not always the same fabric.

There will be many solid color contrast shirts, too, for the mix-your-solid colors fashion is not to be denied. The belts are usually narrow, often in patterned fabric to match the top or else very wide and crunched, in leather.

READ THE TIMES WANT ADS.

## JUNIORS ADOPT GIRLISH STYLES

Following the lead of the "grown-up" juniors are adopting wholeheartedly the "little girl" fashions of this spring. Gimpie frocks, with un-maculate white fronts, navy blue serge jumper frocks over "frou frou" blouses, "baby bias" of exquisite embroidery on simple dark dresses, and Peter Pan collars and cuffs to dress up "school" girl frocks with simple longer waists and wide pleated

## skirts, give to today's junior mixer great opportunity to look more "grown-up" than her mother.

Prints frocks, with tiny chintz designs, neat all-over florals, or perennial dots, are shown with perky sweaters, high necklines, and wide swirling skirts. Taffie ruffles through spring, lifted breezily to show crisp white embroidered petticoats or bright plaid ruffles.

Topping their little basque suits with bright jackets is a favorite fashion with juniors this year. Two tones of one color, such as two shades of rose pink or two tones of blue, is used with matching or blending accessories of the same color. Two colors in contrasting hue are also liked in these little soft suits, usually with light-colored above the darker skirt or pleated skirt.

Plaids and checks in lovely pastel colorings give further variety to the junior suit mode. And "poppers" of great plaid designs will also be a great favorite.

**CUFFS**  
Economy, plus appearance, dictate that a man's shirt cuffs and collar should project a little beyond the cuffs and collar of his coat. Thus, any stray dirt or perspiration has first crack at the shirt, which visits the tub more often—and more economically—than the suit.

## It's no matter of chance that in this spring we are presenting our largest and finest selection of spring ready-to-wear. We have bought carefully for this seasonal event and our big store is more completely stocked than ever to meet your every demand. Take advantage of this wide selection—your choice is not hampered—either as to styles or prices.

It's no matter of chance that in this spring we are presenting our largest and finest selection of spring ready-to-wear. We have bought carefully for this seasonal event and our big store is more completely stocked than ever to meet your every demand. Take advantage of this wide selection—your choice is not hampered—either as to styles or prices.

It's no matter of chance that in this spring we are presenting our largest and finest selection of spring ready-to-wear. We have bought carefully for this seasonal event and our big store is more completely stocked than ever to meet your every demand. Take advantage of this wide selection—your choice is not hampered—either as to styles or prices.

It's no matter of chance that in this spring we are presenting our largest and finest selection of spring ready-to-wear. We have bought carefully for this seasonal event and our big store is more completely stocked than ever to meet your every demand. Take advantage of this wide selection—your choice is not hampered—either as to styles or prices.

It's no matter of chance that in this spring we are presenting our largest and finest selection of spring ready-to-wear. We have bought carefully for this seasonal event and our big store is more completely stocked than ever to meet your every demand. Take advantage of this wide selection—your choice is not hampered—either as to styles or prices.

It's no matter of chance that in this spring we are presenting our largest and finest selection of spring ready-to-wear. We have bought carefully for this seasonal event and our big store is more completely stocked than ever to meet your every demand. Take advantage of this wide selection—your choice is not hampered—either as to styles or prices.

It's no matter of chance that in this spring we are presenting our largest and finest selection of spring ready-to-wear. We have bought carefully for this seasonal event and our big store is more completely stocked than ever to meet your every demand. Take advantage of this wide selection—your choice is not hampered—either as to styles or prices.

It's no matter of chance that in this spring we are presenting our largest and finest selection of spring ready-to-wear. We have bought carefully for this seasonal event and our big store is more completely stocked than ever to meet your every demand. Take advantage of this wide selection—your choice is not hampered—either as to styles or prices.

It's no matter of chance that in this spring we are presenting our largest and finest selection of spring ready-to-wear. We have bought carefully for this seasonal event and our big store is more completely stocked than ever to meet your every demand. Take advantage of this wide selection—your choice is not hampered—either as to styles or prices.

It's no matter of chance that in this spring we are presenting our largest and finest selection of spring ready-to-wear. We have bought carefully for this seasonal event and our big store is more completely stocked than ever to meet your every demand. Take advantage of this wide selection—your choice is not hampered—either as to styles or prices.

It's no matter of chance that in this spring we are presenting our largest and finest selection of spring ready-to-wear. We have bought carefully for this seasonal event and our big store is more completely stocked than ever to meet your every demand. Take advantage of this wide selection—your choice is not hampered—either as to styles or prices.

## NEW EASTER FROCKS

... in which to greet the year's newest season.

**\$6.95 to \$29.75**  
Lingerie... trimmed sheers... tiny prints... flower pastels... these and others to give you the fashionable "little girl" charm for 1939. Look for the new high, square or low V-necks. Look for tucks, pleats, shirtings, pretty flares and lingers trim. Boleros, Basques, Jacket Frocks in rayon crepes, sheers. They're all here for your selection.

## SUIT SUCCESSES

... you'll wear smartly all through spring!

**\$10.95 to \$39.75**  
New three piece suits, two piece suits. Man-tailored and the popular soft suits. 1939's assured suit successes. See yourself in the new "little suits" with upped shoulders, nipped-in waists and flared skirts. New 3-piece styles in chic combinations. New jacket, jacket, man-tailored. Choose your spring suit from our exciting collection!

## UNTRIMMED COATS

... to give your wardrobe a start this spring!

**\$10.95 to \$29.75**  
Be smart! Start your spring wardrobe with an untrimmed coat... ensemble your dresses to go with it! And the Mayfair Shop is the place to start... where spring's smartest coats are priced low. New fitted or flared dress coats with crisp, collarless necklines. New swing back or boxy awayers. All are excitingly new with dressmaker detail in tucks, pleats and clever seaming. Colors: Bandai, Silverleaf Green, Currant, Crotto Blue, Chamale, Puchia, Iris Black, Navy and an outstanding selection of Tweeds!

## DANCE FROCKS

... full skirted for ultra-femininity!

**\$7.95 to \$19.75**  
They'll who hearts. See their hoop skirts, doll waists and ruffles. They're all the rage and rightfully so... for they'll do things for the lucky wearer. You can be romantic in frothy nets, chiffons or lace. While and the soft pastel colorings so popular this coming spring. Sizes 12-20.

## ADORABLE BLOUSES

... that lend an alterable charm to your costumes!

**\$2.95 Others \$1.25 to \$4.95**  
These blouses are just as much fashion news as your new spring dress! Flatter bustles with tiny tucks, icy collars—cuffs! Crisp organza with pleated or ruffled jabots. Pert piquet Little tailored blouses with tucked waists, shirtings. Sizes 34-44!

## SPRING HATS

... that are, above all, just right!

**\$2.95 to \$9.95**  
Gay, youthful straw, felt, bellies, saucy satins! Beguiling bonnets. New wimple! Bottly veiled, ribboned or flowered! Bonnets, colors, all sizes. A sparkling collection of spring hats at wee prices. Don't miss seeing this collection!

## The "SPORT SHACK"

... to help you enjoy the out-of-doors!

Be sure to see Twin Falls outstanding selection featured here in the Mayfair. A complete line of: Swimsuits, \$1 to \$1.98; Sport Jackets, \$1 to \$1.98; Blouses, \$1.00 to \$2.98; Tailored Skirts, \$1 to \$2.98; \$2.98 to \$7.00.

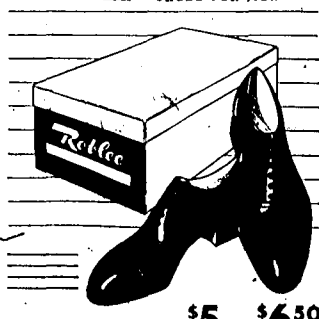
The  
**MAYFAIR SHOP**  
presents a gala spring selection  
of apparel in Twin Falls'  
largest exclusive ready-to-wear  
shop



This spring, it's the  
**MAYFAIR SHOP**

There's a new name in shoes—  
and we're headquarters for it

**Roblee**  
SHOES FOR MEN



\$5 to \$6.50

The kind of styles you're proud to have your feet in...  
The kind of fit you're happy to slip your feet in...  
The kind of wear you're glad you put your feet in...  
Plenty of sizes and plenty of new styles to fit you out for the season at \$5 to \$6.50.

**Hudson-Clark**  
Twin Falls' Only Shoe Store

1

## DUCHESS EXERTS STYLE INFLUENCE

NEW YORK, March 22 (Special).—From arrivals on the Queen Mary come reports on the Paris millinery, furs and accessories likely to succeed in this country, rounding out the spring program for fashions in all phases of costume.

Most interesting, in the reports of milliners, is the several-times-quoted reference to the influence exerted by the duchess of Windsor in both hat and coiffure styles. Several of her selections from the spring showings of Paris modistes are included in the imports brought back by American millinery authorities. The duchess' coiffure arrangement is said to be significant in view of the fact that the predominant tendency now in Paris is towards "neat-looking" hairdressing, sparsely embellished by rather low but heavily curled back coiffures, while the sides are brushed upward and given somewhat more fullness than in the flat-temple hairdressing favored here.

**Strongest Influence**  
Strongest of the period influences in millinery, according to latest reports, is the 1920 era and this is welcomed because of the fact that the costumes in the millinery absolutely require the right hats and more of them. It is believed that "more hats will be worn this summer," because the full-skirted fashions stemming from the 1920s require the trimmed millinery also allied to the period. Apart from the fact that high crowns are quoted as paramount, there is said to be a wide scope of choice in silhouettes, including: sailors, flower, turbans, bonnets, perched-forward and off-the-face outlines.

**More Trimmings**  
There is a "more trimmed than ever" look about the new Paris hats, it is said, the trimmings involving jewels, flowers of both customary and unusual varieties, veils in profusion and chiffons.

Lavish costume jewelry for evening and sport, including, among others, are quoted prominent accessories. Chanel's colored stone jewelry, in brilliant shades, is especially favored. Handbags are said to be partial to large, dress-maker-detailed outlines.

## COSMETICS MUST MATCH COSTUME

Color harmony is the watchword of smart make-up this season. Like accessories, make-up must harmonize with one's costume and so intricate has the art of face-do become that lipsticks, rouges and powders are designed with an eye on costume colors these days.

The safest way to be sure that your make-up is definitely harmonious with your ensemble is to visit your favorite beautician and talk over with her the colors in your wardrobe. Then, let her suggest the best color of lipstick, rouge, nail varnish and powder for your costume make-up.

And don't think for a moment that you will be able to get by with just one set of cosmetics and still be smartly made up. It isn't possible this season. One needs at least three complete sets of make-up in one's beauty kit—two for daytime and one for evening, although two for evening is really better.

The violet, cerise, fuchsia and magenta shades require a rather bright red lipstick and nail varnish with a purplish cast. The browns, beiges, rusts, greens and terra cottas call for a rich clear red without a hint of purple. For even there are two different types of make-up designed to blend with the after dark colors of the current mode.

Lipstick, rouge and nail polish for wear with petunia shades, purplish blues or to accent black or white should be rather bright and clear, a red verging on the strawberry. For mauve, purplish blues and the cyclamen shades there is an exciting color very similar to the cyclamen flower.

A smart trick for the season is to accent one's nail varnish and lipstick with a matching flower, bit of costume jewelry or an ostrich tip in the hair.

## Child Apparel Shows Bright Color Themes

NEW YORK, March 22 (Special).—Not to be outdone by the grown-ups, children are be-docking themselves in gay new colors and a gay new animated silhouette. Not in many years, say America's merchants, have children been so pleased with the fashions designed especially for them. New swimmy skirts, wide swimming pleated skirts, light little waists, bright peeping petticoats, and new "soft" rears that give definite figure lines to the smart little miss, are all in great favor. Young men of 12 to 16 are wearing neat little suits with a dash of color in shirt and tie. And young men of 17 to 18, are choosing very masculine suits made in lively soft colors.

**Grown-ups Copy**  
This year, mothers are buying the clothes that look like little daughters', it is said. For fashion has chosen the "little girl" mode as the favorite for 1939. The little girl's little girl frocks, little school-girl frocks set the whole fashion trend. No wonder small fashionables are so delighted with themselves, when they see how much they resemble the grown-ups in their clothes.

Even classic clothes for children this year are made in lively soft colors, and the new softer silhouette. Mothers have away skirts and suits, little waists, flaring and swayer coats have the smart full rippling back. "Doppies" come in lively pastels and awing wide, or are made in sleek boyish lines without a ripple.

**Suits Favored for Little**  
This year is a suit year for little girls as well as for their mothers. Tuxedo suits with adorable rippling skirts in skater lines are the favored

type. Bolero suits with bright little blouses and often worn over "suspender skirts" are also popular. Three-piece suits are seen for even very small girls, with neat tailored coats or bright tweed jiggers worn over collarless fitted jackets and pleated or gored skirts.

Suit costumes are liked, too, with coats chosen to match or blend perfectly with bright print frocks, or contrasting pastel dresses. Costume ensembles in simple types are often chosen as the "basic" wardrobe costume, and extra frocks selected in colors to wear with the ensemble coat. The addition of a flower-colored jigger coat, and a couple of bright wash frocks gives a complete wardrobe to the little miss.

Hat styles, too, are set by little girls this year, and grown-ups follow their lead, in gay little bonnets that set far back to show the curls. Wide brimmed sailors are also favored by youngsters.

# Added Attraction For Spring Opening!

Here's Your Chance to Win a Prize in Addition to the Prizes Offered by the Twin Falls Merchants for Spring Opening.

## UNSCRAMBLE THESE SLOGANS And WIN A Valuable Prize . . . . It's Easy!

1st PRIZE  
G-E

Automatic Featherweight Iron

2nd PRIZE  
G-E

Glass Coffee Maker

3rd PRIZE  
G-E

Sav-A-Burn Pan Lifter

## HERE'S HOW YOU DO IT

Pictured here are 11 scrambled slogans. In each slogan the second line is not related to the first line, but is related to the first line of some other slogan pictured here. When rearranged in their proper order you will have 11 characteristics that make trading with Detweiler Bros., Inc., a pleasure. After you have made a list of the correct slogans choose one of the 11 products listed below and write a 50 word statement telling why you would like to have that particular product for your home. Entries will be judged on accuracy in rearranging the slogans and originality of the statements. The decision of the judges will be final. In case of a tie duplicate awards will be made. Here's a TIP . . . the first line of each slogan belongs to the picture under which it appears. Join the fun! You may win a prize!

All Entries Must Be In  
By Fri. Mar. 31st

## HERE'S YOUR LIST!

"Cold Wall"  
Frigidaire

Frigidaire  
Ranges

Iron Fireman  
Heatmakers

Permutit  
Water  
Conditioners

Attic-Wool  
Insulation

Air Conditioning  
(Domestic)

Heating System  
(Modern)

Plumbing System  
(Modern)

G-E Range

G-E Radio  
"Beam-A-Scope"

G-E Home  
Laundry  
Equipment

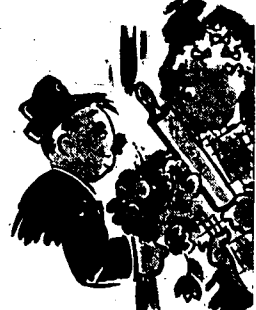
If you feel that you are not well enough informed to write a statement on one of the above products you are cordially invited to come in and discuss any or all of them with a trained salesman. You are ABSOLUTELY under NO OBLIGATION TO BUY.

For Further  
Details See



The FRIENDLINESS  
Of a Bill Collector

Now everybody knows that bill collectors are not particularly friendly . . . but you'll notice a friendly atmosphere the minute you step in our front door.



The DIPLOMACY  
Of a Flapper

Unlike the flapper who has no tact at all you'll find that we endeavor at all times to be tactful and diplomatic in our dealings with our patrons.



The SELF-ASSURANCE  
Of a Cat

Of course a cat lacks self-assurance, but he makes up for it in curiosity. Our salesmen and servicemen have had the training necessary to give them self-assurance in their work.



The PATIENCE  
Of a Taxicab Driver

Good taxicab drivers are impatient with delays in delivering you to your destination. We sympathize with housewives who are patient about the daily drudgery of house work.



The DETERMINATION  
Of a Wayward Husband

Our determination to serve you better is exceeded only by the determination of a wayward husband to be entirely diplomatic on his return from his errand wanderings.



The SIMPLICITY  
Of a Bulldog

We're as stubborn as a jackass in our belief that simplicity eliminates difficulty. It's simple to deal with us. Our spacious show-rooms are full of the latest home conveniences.



The ENTHUSIASM  
Of a College Boy

College boys are often self-assured but seldom enthusiastic about the right things. We are very enthusiastic about the new "Cold Wall" Frigidaire and invite you in to see it.



The CURIOSITY  
Of a Jackass

We would be idiotic indeed if we were not curious to know just what your home needs in the way of better home conveniences. We now have on display nationally known products you need.



The TIRELESS ENERGY  
Of An Idiot

Our tireless energy in seeking out the newest and best of home needs is surpassed only by that of a dull collector. If it has been tested and proved you'll find it at Detweiler's.



The TENACITY  
Of a Child

Our bulldog-like tenacity in clinging to the belief that the best is oftentimes the cheapest has always been the reason that you find only nationally known products here.



The GOOD HUMOR  
Of a Self-Sacrificing Wife

It's idiotic to expect a self-sacrificing wife to be in good humor when she must put up with old-fashioned drudgery. Visit our store and see how these drudgeries may be eliminated.

Adapted From Sidney Carter

# DETWEILER Bros., Inc.

144 Second Ave. North — Twin Falls



# Toes and Heels will be 'Out' in Latest of Women's Shoe Fashions

## And Wooden Soles Are Available, Too, If You Like Those

Toes and heels out, forward march! Into spring you go, notwithstanding Rep. Randall Smart of Missouri to the contrary. It's fashionable, and furthermore, it's legal, in spite of the senator, who would have you keep the tootsies covered except during the three summer months.

This isn't just another spring, as far as shoes are concerned. It's a refreshingly new spring, with the accent on the "light fantastic" part of the anatomy.

If you prefer to clomp instead of skip into Spring 1939, you may do that, too. The "Little Dutch Girl" wooden shoes for sportswear have arrived in town, ahead of the fashion.

Something Different  
The heels and soles are fashioned of wood, and have the upturned toe that you expect from Dutch shoes, and the uppers are of kid. Best sellers, according to the department manager who has made them available to Twin Falls and vicinity clientele, are the slip-ons. They may also be had in a two-eyelet pattern, and in a perforated upper, three-eyelet variety, the latest more sports and masculine.

Advance sales already indicate that among the most popular sports footwear this spring are the leather-soled, hand-woven leather in warm beige or white, following the lead of the dressier types of shoes in leaving the toes and heels free, and set onto leather soles and wooden heels. A thoroughly comfortable sports sandal.

Dutch clompers, which have swept the campus world by storm, are made near Boston, and the Ruachars are a western product, having their origin in Hollywood. Shoes are in reality, "Conversation-pieces" this spring. A trend toward the unusual in design, pattern, terms, last, silhouettes, colors and detailing, brings shoes "into the news."

Pronounced 1939 is the red tinge that is found in certain shoes. Showing to as good an advantage as any seen locally, is an eyelet and scalloped-toe shoe with a spool heel available at a Twin Falls shoe store. A survey of Twin Falls shoe stores and shoe shops, however, reveals that styles for all occasions and tastes are available. For daytime, leisure time, formal footwear, take your pick.

During the Day  
For shopping or streetwear consider: Fresh Earth calf two eyelet with scalloped apron vamp. Black alligator pump, square toe and heel, tongue overlay, built up. Black Cuban heel. Black patent leather perforated oxford with open-toe and heel. Black patent leather step-in with latest summer suede, solid strap and covered sole. Lido blue racer calf blue step-in with ascot ornament. Lido blue calf and heel cover. White suede elasticated pump with calf platform sole.

Business and general wear: Ginger brown suede latest step-in, open toe and heel with high collar. Burgundy wine elasticated perforated calf step-in. Fresh Earth calf pump with open toe and heels draped vamp, ankle strap. Blue elasticated "Twiltex" high cut pump with open toe, patent leather trim on the quarter, patent leather covered heel. Red alligator open toe tie. Eye shadow blue alligator, open toe and heel oxford, cambric collar top line. Black patent pump, low cut vamp, grain ribbon binding and bow. Black suede thick soles, rocker bottom with gold nail heads on ankle strap and sole.

On Into Afternoon  
If your afternoon includes club meetings, a bridge game, an afternoon wedding or a cocktail hour, then: Black baby calf with open toe, cut out trim. High crowned Burgundy wine suede pump, perforated vamp, open shank. Black patent leather oxford, open toe, entire pleated vamp. Dalia calf slip-on, top going, pin perforated vamp. Opusette calf with black patent leather pump, gold nail heads on platform sole.

Should your participation in sports be strictly spectator, choose: Japonica alligator derby pump with tongue overlay and built up all leather heel. Classic black patent leather pin point perforated pump open toe and heel with Japonica platform. Japonica oxford of white buck with Japonica calf saddle, platform sole of Japonica with combination perfor clip heel. Five eyelet oxford with open toe, heel and shank, perforated forepart. Blitzen on pump of rust elasticated surde, open tip and heel, v-neckline at instep.

Best bets for active sportswear: White buckskin active sport oxford with a tan calf saddle, rubber soles and one inch rubber heel. Highly decorative white linen play shoes with Chinese motif on vamp, high blue blue linen platform and heel, open toe and heel, lattice effect on side. Blue linen classic ghillie. White linen classic ghillie. Open-toe and heel play shoe of awning stripe with black tie and unusual square heel construction. White or beige. Maracah type play shoe with contrasting sole and novelty wooden heel. Black shoe of multi-colored fish net with cork sole and red tie.

And for Evening  
Typical of formal wear: Silver kid draped sandal open toe and heel with brilliant bow knot buckle. Rhinestone studded gold kid sandal with silver platform and heel, open toe and heel, lattice effect on side. Draped sandal with open toe and heel of pink, opalescent or other color kid. Gold shoe with eye shadow violet, bow knot and open toe.

## LATEST PAJAMAS ARE DOUBLE-DUTY

New freedom in cut, in pattern, in appearance and comfort, is the keynote of the new pajama styles for "double-duty" for fun as well as slumber, and which also may be worn on the beach and boardwalk.

Designed for cool sleeping or lounging around in an overall type with slide fastener front and pailies or duobonnet blouse top, worn with navy trousers. The "double duty" is a broadcloth in a casual dotted print with accompanying jacket that comes off when blankets come on. Blue, wine and green are the color choice.

Spun Rayon  
In a spun rayon, there are polka dots, blazer stripes and novelty prints developing in a tailored style in dusty pink, green, raspberry and blue. Scampers is an overblouse pajama suit, using a four-leaf print in broadcloth, trimmed with two spacious pockets and contrasting piping. Suitable for sleeping or lounging, the pajama has a smooth fitted waistband.

Other broadcloth styles feature swirl patterns, plume prints, squares and glorified polka dots and blazer stripes. Solid colors also are shown. In lighter weight cottons, there are basket weaves, checks, floral prints, polka dots and solid colors.

Pert Kilde Shirt  
A pert, little-shirt adds just the right touch to a summer sleep and play combination. The shirts are suitable for slumber coolness, while the "sleeve" front makes the suit adaptable to beach or boardwalk. It is made of broadcloth in smart stripes of blue wine or green. Another play suit is a yellow batiste with blown-aster print, consisting of slipover short cut and shorts.

"Evening dress" nightgowns also are included in the spring collection, these employing batiste with floral and small floral prints, sometimes scattered, others arranged in decorative stripes. Square necklines, ruffles, wide sashes and rickracks are some of the trims.

The solar system is the assemblage of asteroids, comets, meteoric material and planets, with the attendant satellites, which form a family of objects intimately connected with the sun and practically isolated from the other stars.

Step out in clothes that are fresh and clean as a spring morning. You won't need a new wardrobe either. Just send us your favorite clothes for Sanitone cleaning and see how bright and new-looking we'll make them. That's because Sanitone's unique penetrating action cleans thoroughly to the heart of fabric fibres and removes imbedded dirt particles. Even often worn clothes look fresh and clean again. Why not try out Sanitoning today and have your clothes looking like new for Easter?

MONEY BACK GUARANTEE  
Try out Sanitone with assurance

PHONE 850  
PARISIAN LAUNDRY AND DRY CLEANERS

## English Drape Model



Smartest of the new single-breasted suits for Easter parades is this three-button English drape model of clear finished wool worn in broad-rib design. Snappy dressers will button center button only.

## Bedtime Washing Will Widen Girls' Lingerie Supplies

It's nice to own dozens of pairs of stockings and enough underthings to be able to toss every article into the laundry hamper at night without a thought for tomorrow's needs. "Second day" panties, brassieres, and girdles, neither feel well nor wear well, while stockings worn more than once without washing are apt to fit poorly besides.

Many girls with true sensibilities and limited lingerie supplies, are going in for bedtime washing. It's only a matter of moments to squeeze the pieces through frothy lukewarm soap suds, rinse them in lukewarm water, and hang them over a bathroom rod or a wash line to dry.

Since no pressing is needed for many of these daily garments, they are ready to be donned the next morning after bathing without further ado.

Air services available to travelers in the western hemisphere now extend a total of 141,000 miles, or 44 per cent of the combined lengths of all the world's scheduled air services.

of satisfaction or your money back. Sanitoning is a cleaning process in which gentle action combines with thorough cleaning. It restores the finishing oils that keep cloth pliable and soft.

As licensed Sanitone cleaners, we are skilled in the cleaning art. Our trial offer guarantee of satisfaction is backed by Emery Industries, the manufacturers of Sanitone. Call us today for quality service.

PHONE 850  
PARISIAN LAUNDRY AND DRY CLEANERS

## SPORT SHIRT IS 1939 MALE ITEM

The sport shirt is here to stay. Not that it will push into the discard the old standbys (heaven forbid) but because of its comfort, wearing quality, roominess and "looks" it is popular.

For men who care how they dress, Twin Falls' merchants have laid in a complete line of such sport shirts, all made likable to the eye—and also—flattering to the form.

Long Sleeves  
Some will have the short sleeves but a majority will have the long full ones. They will be appropriate either with slacks or other types of sport pants, with shorts (not the underwear kind of course) and with regular trousers, provided, in most instances, a coat is worn with regulation length. The collars are made so that they will either "take" a tie or will look natural without them. In other words the sport shirt is made for comfort and for looks.

Solid Colors First  
In the regular shirts' light weight materials in solid, pale colors rank first. Some drop-stitch stripings for those who like them are available in an extra-lightweight fabric. Knitted cotton and like pull-overs, with both round neck and long point collars—with horizontal stripes—will be asked for and also will be available.

But back to the sport shirts with their various prints. These prints will be for instance—sailing boats, diving girls, bull fighters and almost everything imaginable. Those shirts

are made of different materials such as silk, shantung, synthetics, cotton and rough linen. In some cases trunk to match are available.

Volcanic shocks from earthquakes are seldom as serious as those caused by the slipping of rocks along a fault line.

Believe it or not, riding boots will be about as out of place on the Twin Falls municipal airport as a horse for a co-pilot.

The leather jackets, however, will still remain popular and the regular tan and brown shades will take the lead. Women fliers will lean toward slacks for their aerial adventures, such fliers pointing out that there is nothing so hard to handle as a full flare skirt in the backwash of a propeller.

But then, when it comes right down to it, the plane is the important thing and so, if you want to fly, just dress in almost anything and we'll be seeing you in the clouds.

While local stores do not stock as a permanent affair, the many accessories which go to make up the flier, any of them will gladly take orders for such articles, obtaining them on short notice through their supply houses.

BRACES  
This year's braces have ends (tips) which are as important from a style standpoint as the braces themselves. The streamer and eliminates the need of suspender buttons. The cord type is a streamlined note for today's modern. The braided leather end is ideal for the sportsman. Silk, plaid and other fancy models are all in accepted good taste. Today's braces include a wide webbed elastic, college stripes, tweeds, diagonal, tie-initiated jewelry and many others.

A fire in the Congressional Library in 1852 destroyed over 35,000 volumes, many of them irreplaceable.

day's modern. The braided leather end is ideal for the sportsman. Silk, plaid and other fancy models are all in accepted good taste. Today's braces include a wide webbed elastic, college stripes, tweeds, diagonal, tie-initiated jewelry and many others.

## WOODEN SOLES Popular with College Girls

PORTLAND, Ore., March 22 (Special)—Wooden-soled wet weather shoes are again popular on high school and college campuses here since the beginning of the rainy season.

The campus shoe is made of fine leather with inch-thick wooden soles of highly polished, natural color maple. They are best liked in brown and black leather for winter weather, states Oscar Anstad, manager of the American Wooden Sole Shoe Co. On southern campuses for desert resort wear and in Florida, white, blue and red leather uppers are popular.

These modern versions of old world sabots are entirely handmade. The wooden soles are hollowed to fit the ball of the foot and curve upward to support the arch. Rocker soles are used.

On local campuses young women have been observed wearing these shoes with regular hose but in most cases they are worn with handkerchiefs or other type anklets. Some of the most attractive combinations have been pastel shade, handkerchiefs matching or contrasting the costume worn with the wooden soled shoes with brown uppers.

are made of different materials such as silk shantung, synthetics, cotton and rough linen. In some cases trunk to match are available.

Volcanic shocks from earthquakes are seldom as serious as those caused by the slipping of rocks along a fault line.

Believe it or not, riding boots will be about as out of place on the Twin Falls municipal airport as a horse for a co-pilot.

The leather jackets, however, will still remain popular and the regular tan and brown shades will take the lead. Women fliers will lean toward slacks for their aerial adventures, such fliers pointing out that there is nothing so hard to handle as a full flare skirt in the backwash of a propeller.

But then, when it comes right down to it, the plane is the important thing and so, if you want to fly, just dress in almost anything and we'll be seeing you in the clouds.

While local stores do not stock as a permanent affair, the many accessories which go to make up the flier, any of them will gladly take orders for such articles, obtaining them on short notice through their supply houses.

BRACES  
This year's braces have ends (tips) which are as important from a style standpoint as the braces themselves. The streamer and eliminates the need of suspender buttons. The cord type is a streamlined note for today's modern. The braided leather end is ideal for the sportsman. Silk, plaid and other fancy models are all in accepted good taste. Today's braces include a wide webbed elastic, college stripes, tweeds, diagonal, tie-initiated jewelry and many others.

A fire in the Congressional Library in 1852 destroyed over 35,000 volumes, many of them irreplaceable.

day's modern. The braided leather end is ideal for the sportsman. Silk, plaid and other fancy models are all in accepted good taste. Today's braces include a wide webbed elastic, college stripes, tweeds, diagonal, tie-initiated jewelry and many others.

day's modern. The braided leather end is ideal for the sportsman. Silk, plaid and other fancy models are all in accepted good taste. Today's braces include a wide webbed elastic, college stripes, tweeds, diagonal, tie-initiated jewelry and many others.

## WHITE TOGS FOR IDAHO AVIATORS

Clothes don't make the flier but they help.

Local aviators this summer will be going in for white togs more than anything else, a survey of local pilots revealed.

Principally white will be airmen coveralls and also the light, summer weight helmets—for those in open ships—and white caps for those in cabin planes.

Believe it or not, riding boots will be about as out of place on the Twin Falls municipal airport as a horse for a co-pilot.

The leather jackets, however, will still remain popular and the regular tan and brown shades will take the lead. Women fliers will lean toward slacks for their aerial adventures, such fliers pointing out that there is nothing so hard to handle as a full flare skirt in the backwash of a propeller.

But then, when it comes right down to it, the plane is the important thing and so, if you want to fly, just dress in almost anything and we'll be seeing you in the clouds.

While local stores do not stock as a permanent affair, the many accessories which go to make up the flier, any of them will gladly take orders for such articles, obtaining them on short notice through their supply houses.

BRACES  
This year's braces have ends (tips) which are as important from a style standpoint as the braces themselves. The streamer and eliminates the need of suspender buttons. The cord type is a streamlined note for today's modern. The braided leather end is ideal for the sportsman. Silk, plaid and other fancy models are all in accepted good taste. Today's braces include a wide webbed elastic, college stripes, tweeds, diagonal, tie-initiated jewelry and many others.

A fire in the Congressional Library in 1852 destroyed over 35,000 volumes, many of them irreplaceable.

day's modern. The braided leather end is ideal for the sportsman. Silk, plaid and other fancy models are all in accepted good taste. Today's braces include a wide webbed elastic, college stripes, tweeds, diagonal, tie-initiated jewelry and many others.

day's modern. The braided leather end is ideal for the sportsman. Silk, plaid and other fancy models are all in accepted good taste. Today's braces include a wide webbed elastic, college stripes, tweeds, diagonal, tie-initiated jewelry and many others.

day's modern. The braided leather end is ideal for the sportsman. Silk, plaid and other fancy models are all in accepted good taste. Today's braces include a wide webbed elastic, college stripes, tweeds, diagonal, tie-initiated jewelry and many others.

day's modern. The braided leather end is ideal for the sportsman. Silk, plaid and other fancy models are all in accepted good taste. Today's braces include a wide webbed elastic, college stripes, tweeds, diagonal, tie-initiated jewelry and many others.

## Lookie, Men! Neckerchiefs Will be Rage

Neckerchiefs for men—worn in a jaunty fashion and not as if the individual wearing one were trying to commit suicide by choking himself to death—will be all the rage this spring and early summer, take it from Twin Falls merchants who now have the latest in stock.

The bright scarfs should be worn loosely tied in a square knot or loose ascot.

All neckwear this spring and summer will be colorful with foulards and crepes the best liked materials. The cravat type, Twin Falls merchants agree, will be along the large and bold geometrical designs.

A tie is a tie and, as always, will be part of man's wear unless, of course, the event happens to be in certain lines of sports. The soft, spring-like ties will be popular as usual as will the washables.

All these latest fashionable—silk—on racks by the thousands at local stores handling clothing for the male of the species.

Merchants have ties—all Twin Falls' male residents must do to furnish the neck.

day's modern. The braided leather end is ideal for the sportsman. Silk, plaid and other fancy models are all in accepted good taste. Today's braces include a wide webbed elastic, college stripes, tweeds, diagonal, tie-initiated jewelry and many others.

A fire in the Congressional Library in 1852 destroyed over 35,000 volumes, many of them irreplaceable.

day's modern. The braided leather end is ideal for the sportsman. Silk, plaid and other fancy models are all in accepted good taste. Today's braces include a wide webbed elastic, college stripes, tweeds, diagonal, tie-initiated jewelry and many others.

day's modern. The braided leather end is ideal for the sportsman. Silk, plaid and other fancy models are all in accepted good taste. Today's braces include a wide webbed elastic, college stripes, tweeds, diagonal, tie-initiated jewelry and many others.

day's modern. The braided leather end is ideal for the sportsman. Silk, plaid and other fancy models are all in accepted good taste. Today's braces include a wide webbed elastic, college stripes, tweeds, diagonal, tie-initiated jewelry and many others.

day's modern. The braided leather end is ideal for the sportsman. Silk, plaid and other fancy models are all in accepted good taste. Today's braces include a wide webbed elastic, college stripes, tweeds, diagonal, tie-initiated jewelry and many others.

day's modern. The braided leather end is ideal for the sportsman. Silk, plaid and other fancy models are all in accepted good taste. Today's braces include a wide webbed elastic, college stripes, tweeds, diagonal, tie-initiated jewelry and many others.

## ... and the parade begins at ROWLES-MACK

Y O U ' L L feel better . . . look smarter . . . and there'll be a spring in your step when you shed winter-weight clothes and don a new Spring suit or topcoat! And if you're looking for finer . . . longer wearing clothing—Clothing with Expert Craftsmanship—you're sure to appreciate the wide selection here at Rowles-Mack. We strongly urge you to make an early choice, so that you can take advantage of the current moderate price.

Hart Schaffner & Marx  
SUITS  
The world's finest Clothing . . . Suits you'll be proud to wear.

\$35.00  
Other Suit Ranges  
\$19.75 \$22.50 \$25.00

SHIRTS AND SHORTS  
Made by Wilson Bros., Button or Ring  
50c Each

SPRING HOSIERY  
"Interwoven" and Wilson  
Ties in all Styles 35c

TIES  
... dress up your wardrobe for Spring! See our complete selection. Special—  
65c and \$1.00

HATS  
... Plenty of snap and color! and plenty of styles to choose from! Felt, straw, spring hats and bowlers. A real value  
\$2.95

SHIRTS  
Unusually smart patterns this season from Wilson Bros. and Shirts, Inc.  
\$1.45 \$1.95

ROWLES-MACK CO.

# FASHIONS MUST BE ADAPTED TO FIGURE, PERSONALITY

## Wool Fabrics Climb To High Favor; Suit Popularity Advances

By VIVIAN MINYARD  
Extension Specialist in Clothing

Fashions must be adapted to your own figure and personality to be good style. Fabrics are varied but wool is the fashion leader. Woolen fabrics never have been used more widely. The newer sheer woollens are suitable for wearing every month in the year, and will be especially popular. These are plain, in tweeds, stripes and plaids. Printed silks, rayons, cottons, and linens are popular. Stripes, plaids and dots are shown in these fabrics also. It is a "big-print" year with much bright color.

Accessories are more colorful with many pastels. Leading styles warn against having too many accessories in contrasting color. Two in contrast are always safe. Scarfs, belts, handkerchiefs, and jewelry add color to the costume.

**More Suits**  
Suits—there are more kinds than ever before. Manish, tailored ones are good, but many dressy types are featured. Many of the latter have colorful neck lines. The latter have skirts, and are shown in two-color combinations. For example, a cinnamon color jacket may be worn with black skirt, or a navy blue jacket with a navy blue skirt. A pink and gray plaid jacket may be worn with a gray skirt. The skirt may be worn with a harmonizing, plain skirt. The skirt may be straight, pleated, flared, or gathered. These places in the skirt are also featured. They have loose, boxy, outer coats.

Hats with veils are again popular. Sailor types, brenna, and high hats are featured. Hats in pastels are popular.

**New Blouses**  
Trespassing is the word to use when talking about new blouses. Many are shown in sheer lingerie material, trimmed with lace and ruffles. Pleated and gathered chiffon blouses dress up the suit. Tailored types always are smart. Ornaments of all types are being shown and some add interest, but one should use care in selecting them. A bit of color on the lapel of the suit coat adds interest to the coat.

Neck lines continue being high, without collars in many cases. This is true of dresses, suits and coats. Draped throat lines are good. "Mousseline" collars in white are shown on dark blue and black dresses.

**Sleeve Style**  
Shiftwaist styles are softer. There is more fullness in sleeves, pleats, ruffles, and flares. Sheer shirtwaist styles are new. Initials are used for trimming. They are applied on pockets or embroidered in contrasting color. They are on blouses, scarfs, etc. Lines in general are becoming to many more people. Princess styles and the more and more are being featured. Dresses are fitted, with extended waist lines which fit well down over the hips. Waist lines look slim. Corseted skirts and baggy bodies give this effect. Skirts have pleats, gores, or flares. Shoulders are also emphasized with fullness through the upper arm. Many styles have fullness through the bodice. Sleeves are all lengths.

**Exciting Hues**  
Hues and colors are exciting. Dove gray and pearl gray are important as are lavender, lilac, and violet. Navy blue with crisp white is featured. Blue with black or coral, yellow-gold-bronze ranges of colors, coppery or tobacco tones, fuchsia, geranium red, teal blue, and pastels are favorites. Old jewelry is just the thing to wear with many of the plainer dresses. Old necklaces add interest to plain, black neck lines. Brooches also may be worn. Unique buttons and belts are being used. Buttons in the form of bon-bons, flowers, etc., are used. Belts and buttons are in leather, wood, plastics, etc.

**Well-Planned Ensembles**  
Ensembles must be well-planned. The coat is considered first. A well-planned ensemble gives a dark point dress a good-looking ensemble. A line coat over a dark dress is smart. Again, coat line is well-fitted and look like dresses. These will be worn over well-fitted, plain dresses. Coats are straight, fitted, or flared, and must be selected for wearing with the right style of dress. Three wool dress and coat suits are popular. Trimmings are interesting. Tucks, pleats, and flares are the only trimmings many times. Buttons are a popular trimming. Rows of maroon stitching also trim the dresses. Contrasting belts and flowers or scarfs trim many dresses. White collars, yokes, vests, etc., trim other dresses.

**DANGLE PURSE**  
A dangle purse is in the fashion. You'll notice a neat little purse hooked over the belt of the Alaska above the left hip. It usually is a bright, nude purse clipped onto the belt. A girl in a silk skirt and blouse wears an envelope purse of the skirt with the flap clipped over her belt. Another girl really dressed up has a "parade bag" hanging by the handle from her waist. It's a very independent fashion, preclaiming to the world that this girl can play her own way. And her hands are absolutely free for whatever comes along. No handbag to balance on her forearm. No handbag to clutch in her left hand while she dances.

Smart for Town or Country



As smart for town as it is for travel or country, this Easter coat is of soft tweed in rose and deep green. Cut on dolman lines. It has squared shoulders and a collarless neckline with fullness placed above instead of below the waistline.

## EXCITING RECIPES ON SPRING STYLES

The new spring clothes will be "nice enough to eat," especially if the way are important shoe features. Telling how to use duck, blue, mauve and rose. Hildegarde Filmore gives exciting recipes in McCall's for April.

**RECIPE FOR DUCK BLUE**  
1 fitted wool skirt  
1 Breton sailor  
1 ascot  
2 gloves  
2 shoes  
To 1 fitted wool skirt and 1 Breton sailor. Stir in Roman striped mustard-yellow ascot. Add equal parts of Roman striped ascot to hat. Blend in beige fabric. Top off with duck cap. Call it with stubby toes and spool heels. Heels are unusual shoes for spring—squared or goosed. Gingham with gingham copper leather band bag. Caution: Duck blue is a greenish cast; remember this in selection of other color ingredients.

**RECIPE FOR MAUVE BLUE**  
1 two-piece dressmaker dress  
1 ascot  
2 bracelets  
1 buttonhole  
1 glove  
2 sandals  
1 envelope purse  
To 1 two-piece fitted bodice-top dress of rayon, add a striped hat of straw braid with some color ingredient. Gingham hat with excellent streamers. Spunk with copper jewelry. Blend in off-white sherry gloves. Garb with high-cut skirt.

**Primitive Influence Exploited in Gotham**  
One New York store recently devoted a whole frontage of windows to the exploitation of a new primitive influence—African.

Stressed were busier trims of geometric design, embroideries in bright colors on white or high sherry for both daytime and evening. Gingham type sleeves, bunched with peaked crowns in round, rugged styles, and especially a group of heavy, fringed leather purses carried out adapted from the museum treasures of ancient Peru.

**Buy and save at these prices**

**Heavy Galvanized Wash Tubs**

Largest size 84c  
Family size 74c

**Large Size GALVANIZED WASH BOILER**

Guaranteed Leak Proof \$1.79

**Beautiful Pastel Dish Sets**

Each Piece a Solid Color  
Four Colors in Each Set

30-piece Luncheon Set \$2.98  
35-piece Dinner Set \$4.98

**RITEWAY STORE**  
Twin Falls, Idaho

## SILK UNDERWEAR REVIVAL LOOMS

Old-fashioned underwear is being revived in silk, according to Women's Wear Daily. Illustrative of this trend is a pair of pink chiffon drawers reaching the knees, with each leg pulled in above the knee by back wing of narrow black and pink satin ribbon, and ending in a ruffle with embroidered scalloped border. These drawers accompany a short chemise combination of the same fabric with the same kind of ribbon passed through beading at the waist.

Another example of this reminiscence is the princess petticoat-slip, which has fullness in the skirt, with light-fitting bodice and trimming of ruffles, ruffles or fluting. Typical of this is a French-Front in changeable tulle with shirred hem ruffled edged with cream lace, matching the top of the square décolleté.

Night dresses show two trends, one rather slim with slight fullness around the hem, the other full, especially at back where it often trails. These show a tendency to cover the top of the shoulders by short sleeves or long sleeves of wide effect, while décolletés are either discreet or largely open, especially when they reach the waist line in deep V.

For these garments chiffon is much used, and so is satin; combinations of both are often seen and chiffon is sometimes used for the embroidery. Sky blue is particularly featured and mixtures of blue and pink. Compensatory style are frequently seen.

## LINGERIE BOASTS FRILLS, RUFFLES

With the swing of the fashion pendulum, feminine interest has returned to dainty, lacey lingerie, whether it be in the bodice or under a plain tailored suit. Gowns are still sheer, tulle or satin and frilled and ruffled in the best "Zaza" tradition; lace beading again makes its appearance now with baby ribbon.

Many gowns have matching, full length coats either fitted or in the dainty manner. Boudoir capelets, baby bonnets are new and smart. One white silk satin gown many styles brides will be including in their trousseau has pleated silk sheer panels from the shoulder to the waist, forming loops through which the sash is run.

**Pleated Pant Front**  
The matching lace trimmed coat also has pleated pant fronts and there is a little white silk ascot bonnet with a ruffle to frame the face.

In addition to the usual pink, white and tea rose shades for lingerie there are many light shades including lime green, hyacinth, fuchsia and blue. Combination is interesting as lime green with a darker green, pale pink with brown, white with pink and mauve or delicate silk sheers such as mauve to purple or greenish yellow to dark green.

**Silks Suit Costume**  
Silks this season will suit the costume. There are the suit silks of heavy silk satin with rainbow tints and straps of United Alcon lace. There are the "little girl" silks to wear with the "little girl" dresses. There are in silk crepe and have Wallace gathered in the middle edging the neck and forming shoulder straps so that it looks like a little girl's built up slip.

Newest looking are the bra-silk taffeta petticoats. These have real sequin braes either in black or tea rose silk satin that is made to slip on to the top of the plain, plaid or striped petticoat so that they may be laundered easily.

## Paris Millinery Reveals Back-to-Normalcy Sizes

PARIS, March 22 (Special)—If any one generation can be made to wear the normal in the spring collections, the Paris opening is a return to normalcy as regards size. Even this has contradictions, for there are still lots of tiny bonnet affairs and pillboxes perched on the forehead, and an occasional fancy such as two dolls hats piled one on the other, but somehow the final impression is of hats better suited to size and the proportions of the heads than has been recently the case.

At Jeanne Lanvin, for instance, where the double decker dolls hat arrangement was seen, are to be found large off-the-face berets, and another which is small in height, but has a crown more than 2 inches high and medium large of head entry. The big collection which Houbert showed while the opening was on, definitely approved bigger head entries, one or two of the sports shapes fitting well down on the back of the head. The Molyneux canotiers are small but not doll sized, and have highish crowns.

**Large Coolie Hats**  
Even Schiaparelli, who was so successful with the doll hat a year ago, includes several large coolie hats in her showing, like shallow domes, basins, modeled on the bands and made of reed frames over which are stretched "alp" covers to look like real hats. This is a fashion well worth summer promotion.

In many cases it is the trim which gives a great deal of interest, the crowns smaller than ordinary head size but higher than those of last year, in height in being (on the average). Bruyere has a very becoming shape which she shows with several costumes; it is worn far enough back on the head to show the hair at left front under the wide, upward bow, bonnet-like, and the crown is turned back. Here, too, are to be found some of the shapes with wide cuffs or flanges that shoot up in air as if from a circular base, and which are in other collections, as at Reboux.

**Profile Hat Like Aureole**  
Robert Figue's has some becoming wide-brimmed hats, notably a profile model in felt worn well on one side of the head with a crown shaped to look like a head of a bird, and a rounded brim that frames the face like an aureole. Many collections, among them Molyneux, show wide-brimmed canotiers, which do not look too big even with short skirted dresses. Maria Guy has made the drooping back and front type of capoline called shepherdess, to go with some of the Marcel Rochas dresses.

Hats may be worn off the face, on the nose or straight on the head, according to these openings. There seems to be an increase in the number of off-the-face shapes, not merely in youthful bonnet types but in more sophisticated hats.

It is natural there should be lots of the little poke and cabriole bonnets around in view of all the "little girl" dresses in the collections, and that the type will appeal to women who like prettiness is fairly certain. Simone Simon was at the Leagon opening wearing a mere scoop brim swathed in bright blue veiling tied under the chin; and Allico Cocco, leading the current fashion, wore a tiny scoop tied under the chin when she attended Robert Figue's opening.

Molyneux shows a style of small modernized Directoire poke with some of her own ensembles which should not be too quaint for any woman not really matronly.

**Justly off the Forehead**  
Every hat in the Chanel show is worn off the face, even the

canotiers or boater styles, which are tilted jauntily a little to the right and off the forehead, looking now and youthful with the low hairlines still adhered to at this house. Hats here are quite normal in size and include many berets and bonnets. Schiaparelli is the leader of the forward tilted school with her narrow, longish hats pitched so far forward they nearly reach the nose. The mannequins here wear their hats up to the eyebrows, and smooth up from the neck as possible, and many of the forward hats have ribbon streamers falling over the hair at back.

**Lingerie Trims**  
Some of these shapes are piled with flowers, but fewer than the others have white linen ruffles with narrow lace edges around the crown, or a long ribbon-like streamer of white handkerchief linen lace.

still is seen, but in small, simple motifs disposed on the back of the hand, contrasting or matching colors. Eyelid embroidery is largely emphasized for next summer, and evening dresses of 12-button length, which are often in suede, shiny effects are sometimes opposed to the dull ground. Several of these have each hole of the embroidery outlined by shiny paillettes.

## DUO-DYE OFFERS NEW GLOVE FIND

PARIS, March 22 (Special)—Duo-dye is the name of a process for dyeing gloves which the Maison Gaston is featuring for spring. When gloves have gone through this duo-dye treatment the exterior remains black or dark and black, while the interior appears in light and soft color, such as mimosa yellow, lavender, pinstripe green, fuchsia, etc. They are pull-on type of four- or six-button length.

In general, medium-length gloves predominate in this collection, but there is a noticeable tendency toward longer ones, and combinations of glove for the inner side and lace leather for the back of the hand are frequently adopted.

Whether kid or suede, gloves show discreet trimmings, such as drapings or shirrings achieving a rounded cuff line. Other decorations consist of fine pleated ruffles, tuckings and narrow ribbons disposed in spirals to decorate the cuff. Embroidery

it is claimed by some mechanics that steering troubles can be caused by uneven balance of one of the front wheels, caused by a heavy curb on the inner tube. The solution they advance is to place a duplicate patch on the opposite side of the tube.

**Spring Opening**

**ROTHMOOR COATS**

**\$25 to \$59.50**

There's just no sense in wasting words about the glorious colors—the smart styles—the superb quality in these Rothmoor coats. See them—feel them—try them on—then you'll know why we say "words can't begin to tell half the story!"

**OTHER SUITS AND COATS AT LOWER PRICES**

**Easter Dresses**  
By the Hundreds

All prices—\$4.98 to \$24.80, Sizes 11 to 52. Half sizes available. . . . Formula in all the new spring shades. \$4.98 to \$24.80.

**Suits-Suits-Suits**

Man tailored—dress maker type—three piece suits and topper coat styled suits. . . . Prices \$5.90 to \$29.00. Always the new things first.

**Bertha E. CAMPBELL'S STORE**  
181 MAIN ST.

**THE LESS SHOE—THE MORE STYLE**

**Cutaways**

**AIR STEP**

BLUE  
BLACK  
OR  
JAPONICA

● The less shoe—the more each bit of line, each wrap of leather counts, in creating high style in cutaways. Our Air Step cutaways are inspirations of design—and beautiful of the foot. They are a joy to walk in, too—the Magic Sole wings you along on a \$6.00 cushion like velvet under your foot.

**Hudson-Clark**  
Twin Falls' Only Shoe Store

# VERY YOUNG FOLKS HAVE NEW SPRING STYLES, TOO!

## There's Wealth of Novelty in Apparel For Your Children

By MARGARET ELLSWORTH  
As one very young lady of Twin Falls remarked to her mother, "Oh, I do look sweet in this, don't I?"

She knew the effect children's clothes this spring produce.

One of the very newest things for younger girls seen in one Twin Falls store, is a pair of slippers in your piece, with a semi-circular skirt with contrasting lining. These are worn shorter than usual, so that the lining may show as the skirt flares up.

**Petticoat Dress.**  
Another of the newest things for older misses this time is the petticoat dress, with lace or a fluted ruffle just showing beneath a full skirt.

And the young girl may now have a housecoat just like big sisters, even to the apron. These come in stripes and character prints, with wide borders.

One thing is certain about the young lady's skirt for this spring—it will be full. It may be one of several types, but it will be full. Some of the skirts shown are the "Wind Influence," with a flare skirt, gored, or semi-circular one. Skating skirts are a newer edition to the skirt. Pleated skirts, in new, unpressed pleats, achieve fullness, as does a ruffle trim.

**Decorative Trims.**  
Trims this year will be decorative. Lace, sometimes rows of it, and embroidery, furnishes a dainty touch to some dresses. Ducky, quilting, stitching, smocking, ruffling and shirring all add a touch of femininity. Ribbon trims and plumes or feathers in the hair are also popular.

Materials are much used for novelty—bookends, dots, faces and character buttons. Heart buttons with heart pockets are seen on several models. Novelty belts will be worn, too, as will the pins children love. Girls of 12 and 13 will hold their unruly locks in place with hair ribbons or bows, plain or fancy in materials from velvet to rayon.

Many dresses show a lowered waist. Lots of suspender dresses are shown, or simulated suspender dresses in print and blue. For the very young girl, prints are small, in floral design or dots, but for older girls, prints are large. The character prints that children love are much in evidence. For young children, nursery influence and animals are most popular. One print showed bird houses with all sorts of birds flying in, another showed a cat, and a third, a Mexican and Caribbean prints, flower garden prints, and the peaceful influence is seen. One dress showed peasant daisies, with a wide border of mountain scenery.

**Gaudy Waist Dresses.**  
Gaudy colors are much seen in waist dresses. Prints, stripes and stripes effects, and large floral prints, many with wide borders are popular. Many dresses are reminiscent of peasant costumes in print and design. Symbol designs suggest Indian influence.

For very small girls, dresses are largely in plain colors, pastels and bright clear colors. They are miniature models of the dresses of older girls, which in turn are miniatures of their mothers. Simulated suspender skirts, embroidered boleros, and even zipper dresses may be seen. Materials are largely more than for older girls. Linens, pleats, lawn, dotted Swiss, shadow organza, voile and dimity are among those used. Smocking for waists is most popular trim, with embroidery running a close second. A dress with an apron sewed on looks businesslike.

For older girls, dresses in pastel colors look as if they might be doll dresses. For very special occasions, taffeta dresses, with flared or ruffled full skirts, or tulle dresses, are darling in baby blue, pink, peach, color of maize. Trims may be shirring, lace or velvet ribbon trim, in contrasting color.

**The Small Boy.**  
For the small boy of this age, suits may be had in very similar styles, but with more masculine trim. Embroidery shows such things as roosters, horses, ships, soldiers, dogs, arrows, and geometric designs. Nautical suits are seen, and no one, little suspender suits, forerunners of overalls.

For dress there are velvet short pants with blouses in white or pale colors for small boys. His coat will resemble Daddy's.

Silk dresses for older girls show the new spring colors. Blue, rose, duck blue, corundum blue and also wine shades and blues very before. They will show the all-popular full skirts, with shirring and lace trim. Some are shown with blue waists, and many have a square neckline. Boleros are seen, with the model in one Twin Falls store especially attractive, with apron extending all the way around.

**Mostly Straps.**  
Hats are mostly straw for the younger girl this spring, in peak bonnet and off the face flange styles. Ribbons which extend under the chin, or extend to extend down the back, add to the bonnet effect. Navy and light colors, with some touches with small flowers, are popular. Some felt hats are shown, reflecting the styles for women, with new crown blocks.

Toppers top the list for caps, in such colors as straw, daisy, blue, rose, blue and aqua. Flowers are outstanding this season. Materials are tweeds, some with velvet trim, tulle, tulle and domet. Very small children will wear tiny princess styles in tweeds and flannels, with elaborate detailing, practical touch is in small white collars which wash. Until school age the suit may get a hat to match the material of her coat.

**Swish will be important this spring.** Among the most clever are jackets with a white belt, generous, padded with large, red, red, red, in place of the white cape formerly worn while directing traffic at night.

## FORMALS STRESS TREND OF YOUTH

The fullest expression of the youth trend in spring fashions is found in formal dresses whose full and pleated skirts will be whipping over the floor. These formal dresses are so small-waisted that they are reminiscent of the 19th century hour-glass silhouette.

Equally youthful, however, are the more sophisticated frocks, some of which favor silk skirts contrasted with soft fullness in the bodice or with very low placed fullness in the skirt.

**Sleeves Important.**  
Sleeves, too, play an important part in the new evening dresses, showing up in dinner dresses, many of which combine lace or other fancy feminine logs with wide, high waisted skirts. Long sleeves are particularly new looking, with popularity in gowns to be worn for the most formal occasions.

Jackets of self-fabric or wool are important in the evening scene, whether in bolero or fitted silhouette, and make the very formal frock doubly wearable for dinner hour. One apple green silk chiffon ensemble seen, has a matching wool jacket embroidered in gold after the Venetian style, and freshly effective are the little pink jackets, which give a smart bookish appearance.

**Varied Necklines.**  
Necklines are varied, including the high closely fitted type, the deep V-square, low heart shape, and draped broader top. One dramatic model with this last named top, in orchid pink silk chiffon, has a full length skirt, and the other half fuchsia, orchid pink, the other half fuchsia.

A newcomer in the evening picture this spring is the shift dress, which plays color against color in shirt and skirt, often introducing a third color in a wide, effective belt. With long or above-the-elbow sleeves, the shift dress is equally appropriate for at-homes as it is for the night club or hotel grill.

**Colors Soft.**  
There are many soft blended tones in solid colors. Silk prints range from the flat opaque type to vivid green, mill sage green and the more delicate chartreuse. Many interesting combinations add flattery to femininity, as turquoise with grape or yellow gold with lavender.

The designs themselves are generally large in both all-over and spaced versions. One silk print evening dress noted is said to have 63 colors in the design.

**Going to Fair.**  
CONCORD, N. H., U.P.—A century and a quarter old, four-horse stage coach built here by Abbott Dowdell, will be exhibited at the New York world's fair. It has been freshly painted and the paint is of English blue, at the wheels and springs are the same.

## Gypsy Fiesta Mood Has Place in Evening Wear

Silhouettes that flash by night, what are they? This is the comeback season of the lingerie dress, equally adaptable to mature as well as youthful customers and gay young juniors. It is prom-worthy, and it is bridesmaidish, and it is Queen Cotton at her most elegant, high-style best.

There's the gypsy fiesta mood to be seen in the new evening dresses, and it is growing in favor with American women, and its wide-skirted, bold colored freedom is its hallmark of success.

The radical among them all is the high-waisted, narrow skirted silhouette, in direct contrast to the wide-skirted long-bodice type, and characterized by the diversity of trim.

Welcoming back to lace dinner and evening gowns, delicate variety, and quite in accord with the pre-war days which are influencing the styles this season.

Laces that are sheer and filmy, and laces that are heavier, and have a fabric look about them, Chantilly will continue to lead in the first group in larger formal frocks, for evening dresses with or without sleeves, and in smaller more closely spaced effects for combinations with chiffon and other sheer silks, rayons or cottons.

Shadow lace, a particular favorite of the new casual look about evening fashion drama of this season, Valenciennes, the Buche lace and Irish crochet are back to adorn the shirt-waist blouses, crinoline evening gowns, petticoats and daytime dresses as well.

Seen at a local shop, and similar in design if not in fabric, to the one pictured, is a rough crepe pailley in old gold, violet, black, coral and leaf green, the gold being the major color, to which is attached a hood, which may be worn up, or down, to form a cowl collar at the back. The hood is lined with periwinkle blue crepe. Like nothing seen hereabouts before.

Also observed locally is a gown that shouldn't fail to make the junior prom. Of petal pink batiste, it is fashioned on slim, princess lines, to just below the knees, where it flares unexpectedly into a multi-layered skirt. A panel, tucked and lace-trimmed extends from neckline to hemline, and down the center line an endless line of silk turquoise buttons, almost invisibly minute. The type of dress that permits a young girl to look grown-up, and not overdone.

Of the type of dress that would give a mature woman that "little girl look."

**Exotic Styles.**  
Among the exotics available locally, is a tri-color dinner gown that makes one think of "South Sea Island Magic." Of loosely meshed cotton material, it has a clear yellow blouse, a grass green polo belt and a voluminous, Japanese skirt. For decoration it wears, directly over the waist, embroidery which lines the long slash pockets.

## GYPSY FASHIONS FEATURE BODICES

The big news in "influences" is seen in gypsy fashions, which brings into play full skirts with contrasting bodices. The gayer of cotton prints belted by gypsies, vivid colors, gypsy stripes, too, are bidding for the place in fashion left vacant by the fall of the dromed.

Taking a cue from Paris, too—the lingerie gilet bids for attention. From a color standpoint the return of boleros as introduced by Aline and Vionnet is noteworthy. These include ginger and cinnamon tones similar to the luscious tints and browns of last year. Lavish combinations light blue and light red as an allusion for prints as well as two-tone treatments.

Vionnet likes the combination of print and plain, inserting one into the other as a belt or bust outline continuing to tie in a bow at back.

## PRINTS REVIVE VICTORIAN ERA

Small print designs inspired by old Victorian calicoes are refreshing. Plaids and checks are other ideas that will be important. In view of the prospective visit to America by King George and Queen Elizabeth of England, these checks and plaids will be seen in silks, woolsens and spun rayon for immediate wear.

Even sports frocks have gone feminine this spring. They are decidedly softer as to silhouette, and this new line "does something for you" as the saying goes. Skirts will flutter and swirl around the martinet knees, with fullness obtained by gathers, shirring, circular cuts, gored and pleated—pleats are used in bodices and sleeves, as well as in skirts.

With a few hoop-skirts showing up in the spring groups, though not as many as last winter, of course.

**While Pique Dress.**  
Typical of the cotton gowns which will be worn throughout the summer is a white pique dress in the princess silhouette, and over it a quilted jacket, the quilting repeating the bodice detail of the gown. Surprising, too, are the clever effects obtained by red, white and blue combinations.

The fanfare of warm colors, strong, bright and powerful on the one hand, and the whispered elegance of pastels, mauve pink, lilac, yellow, lime green, turquoise, pale blue and quantities of white, on the other, tell the current color preferences in spring evening wear.

## Smart Scholar



## DOT FROCKS TO SWEEP COUNTRY

Watch for the dot frock. They are going to take the country by storm this spring and summer. They will be available in the lower price range as well as in the higher. They'll be seen in the more extreme styles, and in the classic styles. They'll be combined with stripes, too.

Bolero shops say that for early summer, wear short dresses and have dots combined with small floral designs or other motifs. One of the big successes at Palm Beach was the print with dots grouped in stripe formation, often with lacquer dots. This type will be seen again for summer, both on rayon crepe and silk crepe for simply tailored petal skirt dresses or for the sport spectator frock.

There are going to be quantities of dots arranged in stripe formation of some sort, sometimes combining different sizes, sometimes with several colors or matching single color stripe.

In cottons the classic pin and polka dots are high style, but the novelty dot treatment is strong. Color on color is going to be the most interesting for spring. The new color combinations such as fuchsia and aqua or yellow and rose.

## Now the Ladies Use Suspenders

Young ladies of fashion will wear suspenders this year. But they will have nothing whatever to do with the masculine mode. Nor should they decide the masculine overtones in thinking the dreaded days of "petticoat rule" have arrived.

Some Twin Falls girls, always ready to promote a fashion, have already begun to "suspend" their skirts while the older sisters are still contemplating the idea. Worn with pleated skirts, they give an adorable "little girl" air to the most sophisticated young woman of today.

Suspenders in bright flowering colors are being worn to match the new spring colors, trimmed with bright edges and buttons and tiny pockets, they are as amazing young as the puff-sleeved blouses worn with them.

Topping wide swirling "skater" skirts, they might be borrowed from the wardrobe of any Swiss miss. They are prettier over little pastel sweaters, lacy blouses with boyish collars, or immaculate white kumpees of crisp white organdie or lace.

## FOOTWEAR for a real



GORGEOUSLY designed to harmonize with your new Easter ensemble, as well as to fit snugly and comfortably to your feet. These are the high-style shoes for spring! New colors, designs, and fashion-favorites set the tempo for a modern, well-dressed Easter!

There will be many of the jockey type, most elegant with the "box" silhouette, some with sagging back lines.

There will be little velvet shoes, because women materials for jackets and coats has taken the public fancy and favor. However, watch for some velvet jackets in high colors.

The long, full skirted light waisted evening wrap will still be wanted, and a few caps along classic lines, will be seen.

For a novelty some shops will be showing "cotton" jackets with ruffled sleeves, tight waists and pleating.

Details are going to be more interesting than ever. Use of embroidery gold on white wool is very good, brocade bindings, plique for trimming or reverses, and some beads and sequins.

Newest and smartest materials for evening wraps are light weight tweeds and wools in such colors as young green, blue, dust rose and ecru, and to match a soft or other ensemble in the new spring costume suit. There also are satin slips with cascade tops.

**Wear Spangles.**  
HADDONFIELD, N. J., U.P.—Traffic policemen here are bedeviled with dazzling new spangles. A recent police order required the substitution of a white belt, generously studded with large, red, red, red, in place of the white cape formerly worn while directing traffic at night.

## Spring DRESSES



Most popular, and dazzling are our new black-as-night spring dresses. They are in combination with other colors with beautiful frothy white trimmings. Navy is always in harmony with spring as well as our pastel of the minute hues. Prints of the gayest spring moods, all priced from

**Coats . . .** We are pleased to feature the season's most popular colors—black, navy, fuchsia, periwinkle, teal, spring wine and tweeds.

**Suits . . .** The most enviable quality of man tailored, dress maker tweeds, navy, black and light shades.

**Millinery . . .** \$2.95 to \$6.95

**Hadley's**

Illustrations of shoes: SHEILA JOHNSON SHOES \$6.95, ROCKET, and others.



## HERE'S SUMMARY ON MEN'S SHOES

Men of Twin Falls and men of the Magic Valley will ride to the two wheels of the shoe business, but they will walk plenty after they get there and so, with spring opening here, many are thinking of shoes.

And this spring, with the new styles coming in, more emphasis than ever is being put on "what touches the pavement when we walk." In other words—shoes.

**Lots of Walking**  
In New York, at the fair there, a visitor, it is estimated, would have to walk in order to cover all the roads and paths a distance of more than 20 miles a day during an average day visit. At Treasure Island in San Francisco bay, although the fair area is more compact, the visitor will still get plenty of "hoofing" from here to there and around everywhere.

Even if male residents of Twin Falls and the Magic Valley do not intend to go to the fair, and be among the 35,000,000 who will go, they still must walk and local stores this spring will feature shoes made not only for beauty, but for comfort and durability as well.

Local experts point out that this spring tan shoes will be equal to black in sales volume. When summer sports styles become more active it is believed that tan will forge into the lead so far as popularity is concerned, even making the going tough for the all-white shoes.

**Lighter Shades**  
Aside from the tan business, a strong trend will be noticed this spring toward lighter shades in men's shoes, the experts in Twin Falls say. One of the innovations this spring will be shoes designed for loafing, that is, shoes to wear when you're "just resting" or "playing around"—but not at night clubs of course.

A look at these new shoes will make even the most shoe-heated man with envy. The new shoes have good, soft, leather uppers plus limber, flexible leather soles.

**Varied Types**  
For instance there will be the brown elk, pug nose oxford with the ventilated vamp, drawing through the quarter, oak sole and rubber heels. Then, of course, the upper must also come into play in "cherry" elk, streamlined-tipper alippers. Still, the construction is featured.

White buck will also be popular, this year especially in a ventilated model. Of course, the old standards will also be found at local stores dealing in men's shoes. They will always be there—but mark the word of the experts—there will be a variety of shoes seen on the streets of Twin Falls when the warm weather definitely sets in.

## SEPARATE SKIRT, JACKET FAVORED

LOS ANGELES, March 22 (Special)—Mix them and match them and scramble the wardrobe of sportswear departments just now, with the separate jacket and skirt continuing to find high favor.

The trend jacket skirt everything with most stores, some finding just colorful mixtures preferred. Interesting checks and stripes and plaids with light grounds and muted high shades combined. Monotone Greenland jackets are also very popular with skirts that match, blend or contrast.

**Strong Contrast**  
The strong contrast is perhaps the most popular in these mixed and scrambled suits. Although some departments find the one-tone or combination of various shades of one color preferred by their customers. Such combinations as fuchsia with shell pink, chartreuse with navy, cyclamen with purple, violet with gold are mentioned.

Also important are shades of rose all used together from light dusty pink to deep fuchsia, including sweaters or blouses with jacket or skirt. Best selling shades up to one color are chartreuse, the rose or fuchsia family, violet and purple group, powder blue and pink.

**Cardigan Jackets**  
Cardigan jackets are very active, according to the majority of buyers, some with high round necklines, some with interesting square cuts, others with a slight V into which a scarf may be tucked for added color.

Tailored styles with revers or levers and collar are also important, selling in one to four or five-button lengths.

Thirties skirts seem to have the edge in most departments, both striped and plain, and circular flares are also active. Some all-around pleated models are selling, but these are not as important with most stores as those easier to take care of, it is noted.

The jacket and skirt combinations bring back play into blouse and sweater, most stores showing these in shades dyed to match as well as in harmonizing groups. There are twill with tulle trim, the jackets in twill and back and sleeves in ribbed knit, with button or pullover sweaters exactly matching in color and type in some stores. Even socks and bras are added to match. Sweaters have the edge right now, most stores report, but blouses are gaining ground as the weather becomes warmer.

**NURSERY NEWS**  
Of all the new equipment designed to keep baby clean and comfortable, the one of the most practical pieces is a quilted rubber pad which protects the mattress while it buys up the weight of the body and permits free circulation of air. Since it can be easily washed with soap and water and quickly dried, it is an ideal addition to the list of nursery supplies.

A new type tire for use in wheelbarrows, lawnmowers, and other rubber-traction lawns, which grip into stub and snow just as tractor treads do. In the summer, they can be buffed off by the dealer, leaving a new tread that has never been used.

## 1939—Double Breasted Suits



This double-breasted suit—British Blade cut—is of imported wool flannel in lighter-than-navy blue with chalk stripes. It's lightweight and soft and ideal to wear in late spring and in the summer.

## Sport Wear will Top Male Spring Fashions

By O. A. KELKER  
Soft-faced cloths in odd jackets—pale and high colors in light-weighted, flannels and gabardines in trousers—this is the picture of men in spring and summer, 1939.

A survey of Twin Falls merchants, made by the Evening Times, disclosed that sport wear, especially the jackets, will be supreme in popularity. In shirts and materials of that type, they appear to be woolly but, on handling, they are found to be light in weight and not coarse.

**Neat Patterns**  
Patterns generally in the lighter weight rough fabrics just described will be neat. Local merchants point out that plain diagonals, hosiery and dot designs about find up the whole picture of men in spring so far as new cloth ideas go.

For the man who wants to keep that "well dressed" look at the same time he is actually keeping cool, there will be the old standbys—the gabardine. Nothing seems to take the place of the gabardine whether coat or trousers. The best color locally in this extremely popular cloth is a blue, while close behind that no so popular out here in the west will be champagne.

## Skating Togs Sales at Sun Valley Show Gains

Skating togs, according to a Sun Valley story in Women's Wear, have shown the greatest increase in interest of anything in the winter sports field, says Roberta Braun, manager of the Sun Valley show in Sun Valley, Idaho. Flaring skirts that cover the knees and can do duty for other occasions than skating have come into decided favor, she notes. In velvet and in light-weight wools.

**Good Business**  
Business in ski clothes has been very good, with 90 per cent of the demand for downhill trousers and sweaters have come into decided favor. Light slacks and blue flares are increasing somewhat, and dark green is fair in the color family. Processed cotton windbreakers are worn by the majority during the warmer weather, even though they have jackets to which they act trousers in gabardine or twill.

Many women who came to Sun Valley equipped with ski suits added the lighter weight jackets to their wardrobe almost at once. Reverse-pleated windbreakers with monochrome natural, white or navy on one side, have been very well liked. Also the natural, light gray, white or navy trimmed, with yokes and collars of contrasting color. Miss Braun finds light blue windbreakers definitely increasing in popularity.

**Skating Suit Preferred**  
In skating suits, ski suits in soft wools and velveteen and corduroy with the longer length skirt about the jacket and skirt, and skaters have been especially well liked by skaters here.

These skating skirts often do duty for all-act and after-skating wear. With sweaters, novelty jackets or blouses, with or without the matching skirt, Miss Braun points out. Among other items, they have bought plaid and monochrome taffeta jackets that are light and elastic quilted. Lots of blue and navy flared sweaters are selling also, particularly in white with clusters and borders of colorful flowers or conventional patterns. Sweaters, flared and a-skating jackets are increasing in popularity for wear with slacks or trousers for after-ski time, she reports.

## HERE'S VIEW OF HANDBAG TREND

NEW YORK, March 22 (Special)—Cross section of a few of the different levels gives fashion a peek which run through the spring handbag market in general.

**Black Patent Leads**—In all price ranges, save the very top notch (most of which collections are not complete as yet) it is black patent which is listed as the biggest volume for the first spring bag. New supplies of this leather, said to have been designed to obviate cracking as in the case of shoes, have made it possible to introduce the very soft workings which are such an important style characteristic this spring, and drapes, shirtings, garters, folds and the ubiquitous "ribbon" handle of leather give a very new feeling to the black patent bags. Large size, it is needless to say, is an essential.

**Bags Continue to Grow in Size**—Is there no limit to the size of bags which women will carry? Bigger and bigger grow new bags: 15, 18, 17 inches across, puffed and gathered to give thickness and vast area within. It seems that the small women, whom such bags practically dwarf, is going to have a difficult time unless some alert manufacturer puts out a special line of style proportioned to her less Amazonian size. However that may be, the big bag is still the most important shape.

**More Colors Than Ever**—Note that plural expression. Spring handbag lines include not only color bags—one or two colors—but dozens of colors, even several shades of each family. Outstanding promotions are two groups; the shoe colors, and bright pastels.

This latter group is the sensation of the season. Expressed in shades; occasionally counted on for much further development in caps; even in occasional felt a panorama of lively pastels is registering for immediate and widespread sale. It is this makes all the other color seasons appear dim in retrospect. Most significant color families, fuchsia and cyclamen and American beauty, lime, chartreuse, citron and other yellow greens; water blues notably aqua and grayed dusty pinks and roses, especially bold de roses. These are cited in the order of their interest as it registers currently. Despite the fact that the purple-plains are a carryover, they are still counted upon for biggest business when it comes to selling colored bags.

**Continuance of "Shoe Colors"**—Even more coordination of bag colors to shoe colors is going on this year than other years, and now that glove colors have been selected to harmonize with both, retailers put even more emphasis than previously on related colors. Admirably blue is figured first. Following this come the two bright tan-rust shades, Japonica and Glenna Rust, and the wines, cranberry and cherry. Their relative positions are debatable. Japonica and similar tans are currently figured first, but many makers figure, as is the case once more with shoe manufacturers, that over the period of the entire season the wine family will account for the greatest volume. This is particularly true since the wine shades are considered to harmonize with so many different costume colors. In the handbag makers bank on the lighter, cherry shade to go ahead of the darker, rustier cranberry tone.

**Details in the Early Showings**—Include much accent on the new games of cloths with efforts made to design the bags so that the design is highlighted as part of the design rather than merely a convenient form of closure. Drapery and gathers and shirtings, frilled top lines are all expressions of the feeling for rather "feminine" styles. "Ribbon" handles, that is, wide bands of very supple leather, sometimes tied in contrast, appear on all types of bags including flared, large, tailored envelope shapes.

Unusual frames, chiefly covered and distinguished by their type opening, carry on the interest in openings and closings characteristic of last season.

**ENTER THE WINDOW CONTEST**  
Be sure to inspect our three windows and other Twin Falls merchants' windows in the "Jumbled Slogans" contest. Official entry blanks obtainable at the Chamber of Commerce. Contest starts Thursday, 7:30 P. M., ends Saturday 5:00 P. M.

**PANTALETTES AND PETICOATS BACK**  
Petitottes are receiving fresh impetus from reports of the Paris couture openings.

Vibrant, for example, is showing afternoon dresses in black faille, organza with lace-trimmed white chiffon petticoats or pointillistes showing the below the dress line, according to reports from Women's Wear Daily. This dressmaker also sponsors sheer evening gowns with hem held out by hoops, sheer low in the accompanying petticoat.

A new idea in necessary coordination is suggested by Natchez, who features an occasional model in navy taffeta with bright colored gloves, matching the laced petticoats under the frock.

An unusual amount of embroidered muslin and lawn of the so-called "plumage" or "floral" type are being used for petticoats.

In the collection of Robert Piguet, a dress in a thick black and white check skirt is worn over an embroidered muslin petticoat with a hoop in the hem. Other dark colors in this collection are revealed by embroidered muslin neck ruffles, plastrons and petticoat flounces.

**CAPE FOR QUICK WASH-UP**  
The "fussy" "combed jacket" that mother used to wear has been antedated by a trim rubber cape which has many other uses besides keeping stray hairs from settling on a clean dress or blouse. Slipped on and off in a jiffy, it is ideal for repairing complexion and for washing up at odd moments when there isn't time to dab.

One of the new make-up caps on the market has a little pocket in the form of a flower for holding hair pins, powder puff or comb. The soft rubberized fabric takes to soap and water like a dish cloth, thus making it possible to keep its delicate pastel colors flower-fresh.

Two themes run through spring bag collections. Bags are **SOFT**. Bags are **LARGE**. This bags continue to grow larger. In taken, Twin Falls dealers comment, to indicate a definite demand on the part of the customer. Women simply cannot get too much into their bags, they believe, hence the continuance of the huge sizes which have been with us now for several seasons.

But if bags are large they must be soft to be handy conveniently, the merchants believe. Once again it is the softly gathered bag, the draped bag, the slitted bag, or the bag out to give a supple handle through the leather. This is true even when the bag is apparently of stiff frame material. Despite there are no heavy, rigid, large, stiff bags this spring.

**READ THE TIMES WANT ADS.**

# It's Spring

and the

## Style Leaders Start From Van Engelen

You'll feel better . . . and there'll be a "new-man" feeling about you when you get out of heavy winter clothes and into a suit to match the new spring season. And in choosing a new suit, look for better, longer wearing clothing . . . clothing with finer details that denote more expert workmanship. Be sure you choose at Van Engelen where selection and quality abound.

# Spring SUITS

22.50 to 35.00

It takes more than the song of the robin to make the season really spring. You must see it that you are wearing a new Michael-Stern or Clothcraft Suit . . . They'll give you a feeling of real jauntness . . . make you glad to be alive. See the new stripes, diagonal weaves, in new color harmonies today!

## See Our Windows YOU . . . May Win A PRIZE!

Dunlap

# HATS

First choice of men who prefer the best . . . Dunlap. Grey, green, blue, tan.

## New Spring TIES

Diagonal, plaid, pattern in light and dark tones.

## Spring Pattern SOCKS

Wife's stout for men this spring, with these plaid, socks.

## SHIRTS

Don't let your shirt be out of harmony with your new spring suit. Select from these new colors, patterns.

\$1.49 \$1.98

# Van Engelen

## FLOWERY THEME IN SPRING PRINTS

Flowers are already flourishing on the latest crop of silk and rayon prints. Delicate pastel posies vie with tropical blossoms, foliage, and fruits in bringing challenging flashes of color to some of the smartest spring dresses on view in pre-Easter parades.

These lovely garments, like Nature's handiwork, lose their appealing quality the minute they begin to fade. Fortunately, most of them are washable, however, and soapy water does for them what the gentle rains do for the flowers in the garden—keeps the fabrics from wilting and makes the colors ring out bright and clear.

**Try It First**  
If any doubt should exist as to whether or not a particular dress is colorfast, it is best to squeeze a sample of the fabric or a detachable part such as the belt, in a tumbler of lukewarm water, carefully examining the results when it dries. Once the tumbler test is passed, the dress can be washed again and again without damage to the color, texture, or sheen, because any fabric that is safe in clear water can be safely washed with the good soaps on the market today.

Before the dress goes into the tub or washer, remove buckles, buttons, bows and other trimmings. Not only are they likely to be damaged by water, they may tear the fabric or cause streaks. Prepare a good thick suds of like warm suds and wash the dress directly without soaking. Work gently but quickly. Once the job is started, don't stop except to keep on renewing the lather with more soap.

**Needn't Rub**  
Unless a dress has gone too long without washing it will not be necessary to endeavor the fabric by attempting to rub out the soil. If soiled patches or spots should remain after the first sudsing, put the dress through a second fresh sudsing or else rub a little dry soap directly into the soiled parts with the finger tips.

Rinse well in water of the same lukewarm temperature used in washing, making sure to press out the suds and water thoroughly between each rinse. Finally, blot to excess moisture by rolling in clean absorbent towels. Unroll almost at once and unless it is dry enough for immediate pressing, hang to dry in the shade, and press with a moderately warm iron on the wrong side.

## PARIS REFLECTED IN U. S. DRESSES

Spring daytime and afternoon dresses reflect the influence of the Paris openings.

For example, there are dresses and jacket costumes done in "navy green," sponsored by Molynex, Wemans West Bolla out. There are instances of back fullness of perky peplums, of petticoats, and of wide, wide skirts. Youthful school girl collars, lingerie accents, and pockets are other important details.

The jacket costume is going to be very popular. Accent is on boleros as well as easily fitted, top-of-the-hip types, and there is definite interest in the long-coat ensemble that introduces light weight woolen, crepe or cashmere-lined linen for the fitted coat and skirt dress, sheer or linen for the one-piece dress.

Shops are proud of their "youthful type" dresses. Accent here is on lingerie touches, especially lace. Long bodices and skirts that are softly full are highlighted with wide, wide bands and easily fitted treatments contributing to this fullness. The lingerie touch appears sometimes in eyelet embroidered blouse-gloves and again in neckline borders.

The bolero jacket and the jacket on baguette lines are both represented in this group. "Tutu" appears in a youthful dress with big bow giving a bustle suggestion. There are most of the daytime dresses in this "youthful" time, but there are also a few wide-skirted dinner dresses, in two-layer chiffons over a crepe foundation, and the high-type dress appears in embroidered mousseline de soie.

## Spring Fashions Feature Resistant Cotton Materials

It is the cottons with resistance to crushing that are important this spring, according to Women's Wear Daily.

The volles this season, and sweater yarns are used with interesting results in a sheer colored fancy of this type for hot weather dresses. The summery impression is further brightened through the clean "contour" colors combined in the yarns which are "worked" into shining effects—stripes and over-plaid checks on white grounds.

There is also a thin sweater with permanent pleats that gives it a starched-like quality especially nice for the full-skirted dress styles. It is printed in designs suitable not only for daytime dresses and sportswear but also for evening gowns. One of the most striking is a broad, closely repeated stripe done in violet, lime, cyclamen and dulled blue.

For the spectator sports type of dress as well as evening occasions, there is a printed cloque pique dress in widely spaced designs so as to allow the blazer surface. The patterns naturally lean to decorative treatments of flowers and colors.

Over-riding voile is being featured again in prints that are decidedly feminine in effect and gay as to colors. Florals, completely dominant and prominent in combination with bold, downy, as in one pattern, or are arranged in a plaid or checked garland effect.

Also, one-third of the number of all kinds is now being cut from the neckline.

## Hats are Hats for 1939 Not Mere Straw Wisps



By MARIAN YOUNG  
(NEA Service)

Hats are hats this Easter—not mere wisps of straw or eucalyptus blossoms worn on the right eyebrow, and pretty is the word that best describes them.

Gone are the freakish, crazy, often unflattering bonnets which made men shout and boo last season. In their place we have charming, downright lovely toppers which manage to be becoming and chic at the same time. They'll get you as much attention as that odd circle of felt with the even more odd feathers on it did last fall, but a different and infinitely more pleasant kind of attention.

**Two Categories**  
Roughly, the most important hats of the season are divided into two categories—disarmingly youthful, in fact, almost childish. And feminine in a rest but demurely fragile kind of way.

In the first, straw Bretons with schoolgirl ribbons down the back are new. In the other, small but not miniature bowlers and bonnets, both small and large, simply loaded down with flowers and veils, are outstanding.

Between the two headlined types are pretty salons of shiny straw, finished with alluring veils and ribbons bows of graceful clusters of roses or field flowers. Indeed, the perfect hat to wear with a suit is one of these sleek though completely feminine models.

For conservatives and for traveling or week-ends in the country, there still are quantities of classic felts. They are a little wider brimmed and a bit higher crowned than formerly, however, and hence manage to make you look prettily tailored instead of severely so.

Less Hat Trouble  
With your hair cut short all over your head and finished in a "baby" collar of ringlets or else worn in a low chignon on the back of your neck, you won't have as much hat trouble as you did when you wore a long bob or a highly unflattering although smart looking upswing.

If you are very young, push a wide Breton far back on your head and let its ribbon streamers float down your back. For dressier occasions, consider a huge bonnet with ribbon bows under your chin and a wreath of flowers around the crown.

**Past Thirty?**  
If you are past thirty, however, the chances are that wide Bretons with little girl streamers down the back will make you look more ridiculous than young. Try a romantic, wide-brimmed felt or a pert sailor of shiny straw with yards of veiling.

For afternoon and informal evening, the most attractive hats are nothing more than yards and yards of gauze or veiling, floating mislaid about your head. For formal evening, try a black snood studded with gleaming rhinestones or one of gold or silver mesh. The thing to keep in mind for both daytime and evening is that it's chic to wear a simple costume and top it off with a really exciting hat or headress—pretty AND exciting.

## Vari-Hued Accessories Stress Color for '39

NEW YORK, March 22 (Special)—Color is the brightest fashion trend on which spring accessories are staked.

Color this year means many colors. Color is one style factor which distinguishes all accessories. New York shop windows reflect this mood of color. Up and down the avenue windows are light, bright, and convincing women that their current costumes look dark and over-winter without some enlivening note of vivid color against black or brown furs and coats.

**The Same Story**  
This is also true of many accessories. Colorful new being shown by manufacturers for spring retailing shows promise a more colorful spring season than in many years.

So importantly do colors loom in footwear that the position of white shoes for the coming season is one which is causing many retailers much consideration. Briefly, the important shoe colors are: For street, Admiralty blue, tan, and brown. For the party, the navy blue, and the cherry (the wine family); for summer wear, bright pastels such as aqua, rose, lime greens, used in combination with white or in all-over shades or with each other.

Now that handbag collections are opening, it is the same story again. For street bags, following the all-important black, current in bags as in shoes, a volume leader for early spring the blue colors are more approved than ever.

In addition to this, blue bags, as gloves, can more often form the single bright note in a dark costume than shoes can, there is an enormous group of colored bags designed for early spring. Particularly is this true of the more moderate price, and the very high priced merchandise. Here again, certain families stand out in the shades and capes or glove leathers which are being used.

**These Family Fashions**  
All the cyclamen and fuchsia shades are still considered important, usually named first. There is much interest in bright lively blues, either in the royal family, or in the aqua groupings. Yellow, gold, maize, mustard are all repeated names in a family which is growing in importance, sometimes Jonquil or Buttercup or dandelion represent different yellow interpretations in leathers. More high style, but also occasionally sponsored in moderate price bags, is the lime green family, including citrine, Peridot and other identifications of the yellowish-green.

All these colors appear in spring scarfs as well, often blended or contrasted with each other, but also used in monochromatic schemes. The New Combinations  
All these colors, available in accessories for spring, reflect the new moods and treatment of combined colors in the costume. As compared to other years, color fashions have changed much. Formerly, it was "framing accessories," i.e., matched bags, gloves, shoes, possibly scarf or flower, in contrast to the costume, whether navy, black, gray, beige. Or

accessories matched to the costume, which this year is considered a very limited and high style treatment.

Much more general this year is one or several of these treatments. 1—Two accessories in bright, startling colors, matched to each other and contrasted to the costume—fuchsia gloves and veil or bag with a black costume, or wheel color bag, carnation shoes, golden veil with a navy costume.

2—Two accessories blended to each other, contrasting with the costume—crabapple shoes and bag, carnation shoes and scarf, beige or navy costume.

3—Accessories blended to each other and to the costume—Admiralty blue shoes and bag, aqua blue gloves and veil or scarf, navy costume.

**Often Chanceable**  
These are just suggestions of the types of new handling of color which your costume should be wearing this spring. Often, you can point out to them, the exactly colored accessories are changeable for different costumes. It is up to the retailer to merchandise colored accessories in the new way, remembering also that color can offer contrasting business through the season to a much greater degree than dark tones, as women become tired of dramatic color ranges and turn to others. Once the eye has become accustomed to the ensemble involving color, it is no difficult matter to sell other colors, building a business in colored accessories right through the season.

**NOVELTY DESIGNS  
FEATURE OF HATS**  
The campus and the Tyrol combine to be the influencing factors in the styling and manufacture of hats for spring. All new hats have some new idea, whether in either in novelty design or in detail color combination.

The new Tyrolean apron hats are featured in smart new fabrics. Featured is the rough-up texture type, with its crown high in front, sloping lower towards the back. Other new Tyrolean effects are the new apron weave, the telescope shape and a brand new treatment of feathers, plaid bands and other novelties.

The new snap brim features a smart raw-edge and is designed for its adaptability to all types of faces. Also new is the smarter and lighter weight homburg in new shades of color.

Formerly men were inclined to forget hats, when wearing sports outfits. But now hats are considered that can be rolled and pocketed up at the end of the fest. And the general appearance of a man is always improved by the "finishing touch" of a smart new hat.

READ THE TIMES WANT ADS

# Spring Starts At Van Engelens

THIS ISN'T JUST ANOTHER SPRING... The curtain rises on a new era of fashion! A romantic new season takes the stand... a season so dramatic, so irresistible, that it has started a whole new trend in fashion! So... to her, this charming new season, we dedicate these brilliant new styles... clothes inspired by a romantic past, but unmistakably as modern as tomorrow.

## SPRING COATS HATS

Come Out In Color!  
Color's the key note in the melody of spring. Select your spring hat from this grand selection.

\$198 to \$498

For the most beautiful legs you've ever owned

Humming Bird  
Hosiery  
98c  
Others 75c and \$1.25

Sheer, flattering, you can pay your legs and your ensemble no finer compliment than new Humming Bird Hosiery for spring.



The new season brings you the most romantic coats in years... Dressmakers, swapper alhotties, Tuxedos, tailored twills, bowties. Navy, pastels.

\$1090  
\$1650

See Our Spring Windows



SPRING  
FROCKS  
\$790

Wee walked with full dancing skirts, all figure flatterers. Princess, bolero and jacket types. Navies, prints, pastels.

Spring's Prettiest  
SHOES  
\$395 to \$650

Added chic for spring... stunning top handles, envelopes, pouches in newest colors.

98c and \$1.98

POSIES  
Plant one on your suit, your coat for added smartness.



Enter the Spring Window Contest

Contest Rules

It's all in good fun... three windows and unjumble the slogans you'll find therein. Make the rounds of Twin Falls stores, using the official entry blank obtainable at the Chamber of Commerce. Contest starts Thursday at 7:30 P. M. — Continues Saturday 6 P. M. Prizes: \$20, \$10, \$5, \$2.50 and \$2.00.

You May Win a PRIZE

Van Engelens