

NO LATE-COMERS FOR YULE VESPER

After the start of the vesper service Sunday by the high school at 4 p. m. in the high school auditorium, the doors will be locked and no more persons will be admitted. Miss Marie Albertson, director, warned today.

She explained that to have anyone coming around in the room would take away from the religious spirit of the music and pageantry. The chorus is giving a "Christmas Mystery," a pageant based on the early liturgical drama accompanied by some of the oldest of choral music.

Cathedral Setting

Background for the pantomime on the stage will be a cathedral setting with a cathedral window designed in art classes of Miss Agnes Schubert dominating the stage.

This window, seven by four feet in dimension, is modern Gothic in design, and was drawn by Gladys Dekkio and Betty Lou Cardwell, after they studied stained windows in several churches here.

It includes a central window of Mary and the infant, and on each side is a panel of angels kneeling in prayer. It is made up of colored cellophane pasted on transparent wax cloth, and will be lighted from the back by a soft light.

Handled Mosaics

Cutting and pasting the mosaics were Lark Tyler, June Rogers, Woodrow Livingston, Roy Brewer, Fran Thompson, Bill Whitehead, Donald Zuck, Harold Gerber and Maxine Nielsen.

Carpenter for the window was Dale Chan, and manual training students constructed the framework. Grille work was done by Bob Harvey.

L. D. S. CHANGES PRIMARY LEADER

SALT LAKE CITY, Dec. 15 (UP)—Continuing reorganization of general boards of auxiliary church organizations, the L.D.S. church first presidency today announced selection of Mrs. May Green Hinkley as general superintendent of the Mormon Primary association.

Mrs. Hinkley and an assisting board yet to be named will take office Jan. 1 when the release of Miss May Anderson, superintending since 1925 and an association officer for 50 years, becomes effective. Miss Anderson's successors, Mrs. Isabelle S. Ross and Mrs. Edith H. Smith, and Secretary-Treasurer Mary R. Jack will also be released.

The new primary association superintendent is the wife of Bryant S. Hinkley, former president of the L.D.S. northern states mission. She will be the association's first superintendent.

The primary association reorganization followed by 24 hours the release of Mrs. Louise L. Robinson as president of the National Women's Relief society and appointment of Mrs. Amy Brown Lomas as her successor, also effective on the first of the year.

SHOSHONE

The school board met Monday evening at the high school to appoint a new member to fill the unexpired term of Ben Weeks. Ed Hahn was appointed to serve.

Mrs. Inga Probst has come from Boise to take care of Mrs. Ben Darr.

Shoshone grade school is preparing an opera for presentation Dec. 22. The chorus will have 162 voices, each class taking part. It is under the direction of F. J. Harada.

Mr. and Mrs. Norval Rutherford have started construction of their new home to be located west of the Lincoln school on the north side of town.

P.E.O. met Tuesday evening with Mrs. Ross Borden.

The Elias Thumbrilla Serenaders entertained a large audience with native Jugoslav music at the Lincoln auditorium Tuesday evening.

Nearly half the enrollees at the Wood River CCC camp returned to their homes in Illinois Dec. 15. One hundred twenty-eight men will be replaced by new recruits from the same area but will not arrive until the second week in January.

Neighboring Churches

MURTAUGH GOSPEL HALL
10:30 a. m. Sunday school.
7:30 p. m. Evening service.
7:30 p. m. Thursday, prayer meeting.

SHOSHONE NAZARENE MISSION
Cyril Dec, pastor.
10 a. m. Sunday school.
11 a. m. Morning worship.
7:30 p. m. Evangelistic services.
Services are held regularly in the McMahon building, prayer and fasting.
Noon Friday, prayer and fasting.

BUHL NAZARENE
L. A. Ogden, pastor.
10 a. m. Sunday school, Mrs. E. Engele, superintendent.
11 a. m. Morning worship.
6:30 p. m. N.Y.P.S. E. Martin, president.
7:30 p. m. Evangelistic services.
7:30 p. m. Wednesday, prayer meeting.
Noon Friday, prayer and fasting.

JEROME CHURCH OF GOD
Clyde Wolfe, pastor.
10 a. m. Sunday school.
11 a. m. Morning worship.
7:30 p. m. Young People's meeting.
8 p. m. Preaching service.
8:20 p. m. Tuesday and Friday, college prayer meeting.

EDEN CHURCH OF GOD
Harry McDaniel, pastor.
10 a. m. Sunday school.
11 a. m. Morning service.
7:30 p. m. Young People's meeting.
8:20 p. m. Evening service.
8 p. m. Wednesday, prayer meeting.

GOODING NAZARENE
G. J. Roberts, pastor.
10 a. m. Sunday school.
11 a. m. Morning worship.
6:30 p. m. N.Y.P.S.
7:30 p. m. Evangelistic service.
7:30 p. m. Wednesday, prayer meeting.
Noon Friday, prayer and fasting.

JEROME NAZARENE
Milo Roberts, pastor.
10 a. m. Sunday school.
11 a. m. Morning worship.
6:30 p. m. Junior and senior N.Y.P.S.
7:30 p. m. Evangelistic service.
7:30 p. m. Wednesday, prayer meeting.
Noon Friday, prayer and fasting.

KIMBERLY NAZARENE
Clive Williams, pastor.
10 a. m. Sunday school, Sam Savage, superintendent.
11 a. m. Morning worship.
6:30 p. m. N.Y.P.S. Herman Carrel, president.
7:30 p. m. Evangelistic service.
7:30 p. m. Wednesday, prayer meeting.
Noon Friday, prayer and fasting.

FILER NAZARENE
James Barr, pastor.
10 a. m. Sunday school, F. J. Kolb, superintendent.
11 a. m. Morning worship.
6:30 p. m. Junior and Senior N.Y.P.S.
7:30 p. m. Evangelistic services.
7:30 p. m. Thursday, prayer meeting.
Noon Friday, prayer and fasting.

BUHL TRINITY EPISCOPAL
Tina L. Jenkins, vicar.
Dec. 17, third Sunday in Advent.
8 p. m. Evening prayer with sermon, Rt. Rev. Frederick B. Bartlett, bishop of Idaho, will come at this time for his annual visitation and will preach the evening service. Also the program for the coming year will be planned.



With Snowdrift, Creaming-labor ends, In any weather It quickly blends.

It's constantly creamy

Quick-Mixing

Snowdrift

Digestible All-Vegetable Shortening

GOODING MARKET POOL WILL MEET

GOODING, Dec. 15 (Special)—Annual meeting of the Gooding County Marketing association will be held at 10 a. m. Saturday morning, it was announced today by C. L. Mink, county extension agent.

A complete program has been arranged for the day's session which will continue until about 5 p. m. The University of Idaho extension division, United States department of agriculture and the Gooding county commissioners are cooperating.

Free Lunch

At noon a free lunch will be served and, according to Mink, "every sheep" and hog grower in Camas, Elmore, Lincoln, Gooding and Jerome counties who ship through the pools is invited and requested to attend. Special entertainment during the luncheon hour will be given by Luciano Uria, who will play the accordion, and Miss Lucia Uria, who will tell of her four years' experience in Spain during the recent war.

The luncheon will be served by the high school domestic science department.

Following is the balance of the program:

Reports

10 a. m. Reading of minutes of the last meeting; 10:15 a. m. report on wool pool and discussion of methods; 11 a. m. report on lamb pool and discussion of methods of improving; 1:30 p. m. report on hog pool and discussion of methods used; 1:45 p. m. talks by leading speakers; 2:45 p. m. report on audit of association books by Warren Vickery, certified public accountant; Pucelle; 3 p. m. election of directors for 1940; 3:30 p. m. general open discussion by members on methods of improving the marketing of livestock and other important matters of interest to all members.

Xmas trees. Cook's Drive Inn. Adv.

GOODING MARKET POOL WILL MEET

GOODING, Dec. 15 (Special)—Annual meeting of the Gooding County Marketing association will be held at 10 a. m. Saturday morning, it was announced today by C. L. Mink, county extension agent.

A complete program has been arranged for the day's session which will continue until about 5 p. m. The University of Idaho extension division, United States department of agriculture and the Gooding county commissioners are cooperating.

Free Lunch

At noon a free lunch will be served and, according to Mink, "every sheep" and hog grower in Camas, Elmore, Lincoln, Gooding and Jerome counties who ship through the pools is invited and requested to attend. Special entertainment during the luncheon hour will be given by Luciano Uria, who will play the accordion, and Miss Lucia Uria, who will tell of her four years' experience in Spain during the recent war.

The luncheon will be served by the high school domestic science department.

Following is the balance of the program:

Reports

10 a. m. Reading of minutes of the last meeting; 10:15 a. m. report on wool pool and discussion of methods; 11 a. m. report on lamb pool and discussion of methods of improving; 1:30 p. m. report on hog pool and discussion of methods used; 1:45 p. m. talks by leading speakers; 2:45 p. m. report on audit of association books by Warren Vickery, certified public accountant; Pucelle; 3 p. m. election of directors for 1940; 3:30 p. m. general open discussion by members on methods of improving the marketing of livestock and other important matters of interest to all members.

Xmas trees. Cook's Drive Inn. Adv.

Truck Invader

PETER'S JUNCTION, N. D. (UP)—An empty truck caused a pile at the Gus Brockheiser residence when it left the highway at an intersection, overturned on a four-foot embankment and landed upside down on the front porch.

BIRTHDAY PETES ENDURE

NEW LONDON, Conn. (UP)—Charles C. Perkins and Charles N. Butler have observed each other's birthday.

SEE PAGE 7 FOR SPECIAL

SODEN ELECTRIC

Exclusive Westinghouse Refrigerator Dealer

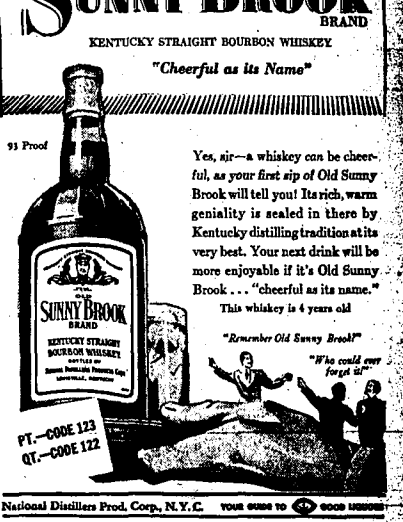
NOW 4 YEARS OLD

no increase in price!

OLD SUNNY BROOK BRAND

KENTUCKY STRAIGHT BOURBON WHISKEY

"Cheerful as its Name"



Yes, sir—a whiskey can be cheerful, as your first sip of Old Sunny Brook will tell you! Its rich, warm geniality is sealed in there by Kentucky distilling tradition at its very best. Your next drink will be more enjoyable if it's Old Sunny Brook... "cheerful as its name."

This whiskey is 4 years old

"Remember Old Sunny Brook!"

"If he could ever forget it!"

PT.—CODE 123
QT.—CODE 122

National Distillers Prod. Corp., N.Y.C. YOUR GUARANTEE IS GOOD

Everyday LOW FOOD PRICES

PERFECT FOR SERVING INFORMALLY DURING THE HOLIDAYS OR AS A DELICIOUS GIFT

RITEWAY

112 Main Ave. S.

SPECIALS FOR SATURDAY, SUNDAY, MONDAY!

CANNED MILK

Large Cans 3 20c

JELLO 4 pkgs 19c

SHORTENING 4 lb. pkg. 39c

CRANBERRY SAUCE 2 cans 27c

HERSHEYS COCOA 13c

1-Pound Can

MINCE MEAT 2 lbs. 23c

BABy FOODS 3 for 23c

SPAM 12-oz. can 27c

GRAPEFRUIT No. 2 Cans 3 29c

Plenty of FREE Convenient PARKING!

YOU'LL FIND US AT THE Corner of Main and 8th Street West.

BULK DATES

Imported Variety lb. 10c

POPCORN 3 lbs. 14c

SYRUP 3 lb. can 25c

BAKING POWDER 2 lb. can 21c

TOMATOES Nancy Jane 3 Cans 29c

No. 2 1/2 Cans

HEADQUARTERS

For Xmas Candy-Nuts

WALNUT MEATS lb. 45c

Light halves

PEANUTS 2 lbs. 23c

Fresh Roasted

MIXED NUTS 2 lbs. 35c

Panoy, no peanuts

HARD MIX CANDY 2 lbs. 19c

Sweet's old fashioned

CHOCOLATES 2 lbs. 19c

Commercial

CHERRIES 1 lb. box 20c

Chocolate covered

XMAS CHOCOLATES 5 lb. box 99c

Sweet's

Smoothly Yours WINDSOR

A Royal Good Whiskey

within reach of every man's purse!

Windso today is finer than ever—as your first taste will tell you. That extra year of aging produced such smoothness and superb flavor that every drink is a royal good one!

PINT 90 Proof

When buying Whiskey ask for name.

YOUR GUIDE TO GOOD LIQUORS

NATIONAL DISTILLERS PROD. CORP. N. Y.

S & H PARK-IN MARKET

It's the saving on every item that counts!

LOANS ON WHEAT GIVEN EXTENSION

All wheat loans in Twin Falls county secured by wheat held in approved commodity warehouses will be extended to April 30, 1940, Walter Reese, chairman of the county agricultural conservation committee, said today.

Reese said his announcement was based on word received this week from the commodity credit corporation, which underwrites loans to farmers on their wheat.

"Prior to the announcement, loans on warehouse-stored wheat were written to mature seven months after the date the loan was made, or April 30, 1940, whichever was the earlier."

Now, all warehouse-stored loans will mature on the same date. This will give many borrowers additional time in which to repay their loans and resume possession of their wheat, Reese said.

"Title to the wheat will be taken by the corporation in cases where farmers do not repay loans by the April 30 expiration date."

Loans for which the wheat security is stored in bins on the borrower's own farm will mature on April 30, 1940, as specified in the original loan program.

Wheat producers have until Dec. 31 to borrow from the commodity credit corporation on 1939 wheat. Loans are made at three per cent interest.

Trinity Aid Sets

Benevolence Plans

CLOVER, Dec. 15 (Special)—Thirty-one members answered roll call at Trinity Ladies Aid society last week at the central school room. Rev. Dannenfeldt conducted devotions.

The group voted to appropriate the birthday bank fund for the building of the deaf mute institute in Detroit; to have a tree will silver offering for the benefit of the orphanage at Fremont, Neb.; to appropriate \$10 for the iron lung fund sponsored by the family club at Buhl; and to sponsor giving of Christmas cheer gifts for shut-ins of the congregation.

Mrs. Sigmund Reinke and Mrs. Raymond Schmidt were admitted into membership. Members were requested to bring silverware coupons to the January meeting, for purpose of buying additional silverware. Miss Alma Roseler was a guest.

Decorations in keeping with the Yuletide season were used by the serving delicious tray lunch.

Your Christmas gift will mean more when wrapped with the beautiful papers and accessories found at the Clo Book store—Adv.

SEE PAGE 7 FOR XMAS SPECIAL

SODEN ELECTRIC
Exclusive Westinghouse
Refrigerator Dealer

SCREEN OFFERINGS

ORPHEUM
Fri., Sat.—"At the Circus." Marx Brothers-Kenny Baker.
Sun., Mon., Tues.—"Remember." Robert Taylor-Greer Gerson.

BOXY
Fri., Sat.—"Marshall of Mesa City." George O'Brien.
Sun., Mon., Tues.—"Meet Dr. Christian." Jack Herring.
Wed., Thurs.—"Two Thoroughbreds." Joan Blondell-Jimmy Lydon; "Sky Patrol." Talipin Tommy.

IDAHO
Fri., Sat.—"Llano Kid." Tito Guizar-Jane Clayton.
Sun., Mon., Tues.—"Pride of the Blue Grass." Edith Feltows with Gantry, the blind horse.
Wed., Thurs.—"Oklahoma Kid." James Cagney-Rosemary Lane.

COURT UPHOLDS WOMAN'S CLAIM

BOISE, Dec. 15 (AP)—An industrial accident board decision denying La Verne Mauldin's claim to damages in the death of John Lewis Mauldin, deceased Kellogg miner, was reversed today by the state supreme court and remanded for rehearing.

The high tribunal upheld the woman's contention she was the deceased man's common law wife and entitled to \$1,000 damages previously claimed and paid to the state industrial accident fund by the Sunshine Mining company on the grounds Mauldin had no survivors.

Mauldin died as a result of injuries suffered in an accident, June 24, 1938.

Directors Elected
SHOSHONE, Dec. 15 (Special)—The American Falls reservoir district No. 2 held the annual election Tuesday to elect two directors from Richfield districts No. 3 and 4. W. J. Tapper and Lloyd Layne were



Tastes expensive, costs so little,
Van Camp's Pork and Beans—
The quick-to-prepare, economical, balanced meal
a minute to heat, a delight to eat...
...tasty cold...savory secret
sauce...flavor penetration
cooking method...nutritious
...energizing...Vitamin B...

Van Camp's Pork and BEANS
Feast for the Least

unopposed. Voting in the two showings precincts was very light.
Xmas from Cook's Drive Inn. Adv.



...operations of us
Will...have spent our
life or distillers...and
just you try Our family's
personal whiskey recipe!



PINT No. 192 QUART No. 191

90 Proof. 75% Grain Neutral Spirits.
Copyright 1939, The Wilken Family,
Inc., Aladdin, Schenley P. O., Pa.

HERE'S THE HOME-TYPE FLOUR

Made especially
for your home-type recipes

Home baking differs from commercial baking. You use special home-type baking powders and shortening. And you need this new home-type flour... Kitchen Craft.

Light-bodied, it mixes perfectly. It is always uniform. That is guarantee you better results in all your baking. Try it.

48-lb.
Sack

\$1.25

2 48-Pound Sacks **\$2.45**

CANNED FOODS

TOMATOES No. 2 1/2 Solid Pack Can 10c

CORN Del-Maiz, Cream Style 2 17-oz. Cans 19c

PEAS Green Giant 2 No. 2 Cans 29c

STRING BEANS 3 Cut Green No. 2 Cans 25c

KRAUT Aro Brand 2 No. 2 1/2 Cans 19c

HOMINY Van Camp's 2 No. 2 1/2 Cans 19c

SPINACH Emerald Brand 2 No. 2 1/2 Cans 25c

PORK & BEANS Van Camp's 300 Tall Can 10c

BEETS Pierce's Whole 2 No. 2 Cans 25c

CORNER BEEF Libby's 12-oz. Can 18c

AIRWAY COFFEE

Fresh Ground 1 lb. 14c

Dependable Coffee, lb. 22c



Canterbury Tea 1/2 lb. 19c

Green 19c

Baker's Cocoa 1-lb. Can 15c

Crisco, 3 lb. Can 53c

Piedmont Mayonnaise, Quart Jar 33c

Lunch Box Sandwich Spread, Quart Jar 33c

Ocean Spray Cranberry Sauce, 2 No. 1 Cans 27c

SEA FOODS

SHRIMP Broken, 5-oz. can. Each 10c

CRAB MEAT Chitka, No. 1/2 Can, Each 23c

TUNA FISH White Star, No. 1/2 Can 2 for 33c

Prices Effective in Both Twin Falls
Stores **FRIDAY AFTERNOON—**
ALL DAY SATURDAY

FRUITS and VEGETABLES

AVACADOS
Pine for Salads.
Each 5c

CRANBERRIES
Cape Cod
2 lbs. 35c

ORANGES
New Crop Navela
2 Doz. 29c

SWEET POTATOES
No. 1 Jersey
5 lb. 19c

LETTUCE
Large Crisp Head
2 for 15c

GRAPEFRUIT
Arizona
2 Doz. 39c

GRAPEFRUIT TOMATO JUICE

Glennaire No. 2 Cans 19c
Sunny-Dawn, 4 No. 1 Tall Cans 25c

GRAPEFRUIT JUICE—Townhouse, 2 No. 2 cans...17c

PINEAPPLE Hillsdale Broken Slices, 2 No. 2 1/2 cans 38c

PEACHES—Yellowcling, 2 No. 2 1/2 cans...29c

PEARS—Bartlett, Harper House, 2 No. 2 1/2 cans...89c

FRUIT COCKTAIL—Libby's 2 No. 1 tall cans...25c

PRUNE JUICE—Sunweet, 2 12-oz. cans...17c

PINEAPPLE JUICE—Libby's 3 12-oz. cans...25c

KOOL CIGARETTES—2 Packages 27c

Nuts Candy

NO. 1 MIXED (no peanuts) 6-POUND BOX Assorted Chocolates 89c

2 Pounds 39c

WALNUTS, Emerald Baby, 2 Pounds 23c

BRAZIL, Fancy No. 1, 2 Pounds 19c

ALMONDS, IXI, Soft Shell, 2 Pounds 23c

JUMBO PEANUTS, 2 Pounds 25c

1-lb. Box 23c

Dates 2 Pound Cello 23c

Raisins 4 Pkg. 21c

Fruit Mix 1-lb. Pkg. Assorted Candied 35c

Mother's Oats Large Package 27c

Crackers Liberty Bell 1-lb. Box 15c

Matches 6 Box Carton 14c

Minicemeat 2-lb. bulk 19c

Cherub Brand MILK It's Baby Pure Case \$3.19 4 Lge. Cans 27c

Main Street
Store Only

Twin Falls' Finest



SALMON or HALIBUT...lb. 17c

Fresh Northern Deep Water Fish
Finest Quality Whole or Half

Chickens Fancy Colored Hens and Fryers, lb. 18c

Corned Beef Boneless-Cherry Red, Safeway Quality, lb. 19c

TENDER CURE SKINNED HAMS . . . lb. 16c

LOIN PORK ROASTS Young Pig Pork, Pound 16c

LOIN PORK CHOPS All Loin Centers, Pound 19c

LIGHT LEAN SLAB BACON lb. 14c

LARGE WEINERS 15c

BULK KRAUT 15c

GENUINE PREPARED LUTEFISK lb. 14c

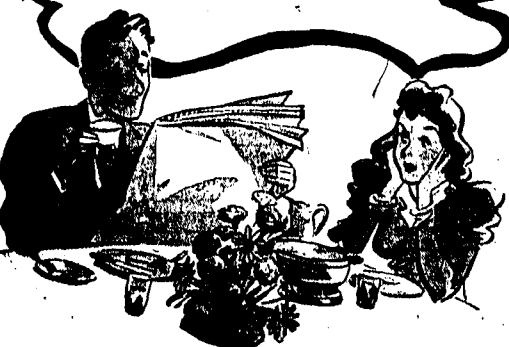
Complete Line of Smoked-Salt and Pickled Fish

WHAT GOES ON

in a wife's mind at the breakfast table?

Look at him! The brute! — but he IS nice . . . especially when he has that pleased and satisfied look on his face . . . even if he does waste it on that old newspaper. Well, even if he won't talk to me, I've the satisfaction of knowing his breakfast pleased him. It always does when I serve that delicious, tasty, not-too-expensive

EX-CEL
Brand
BACON



Insist on seeing the EX-CEL Stamp

Packed and Produced by

IDAHO PACKING CO.

Twin Falls, Idaho

SAFEWAY

Social-Clubs-Lodges

Lincoln PTA Praised By National Officer

Commendation for attendance and membership was given Lincoln Parent-Teacher association last evening by Mrs. John E. Hayes, first vice-president of the National Congress of Parent-Teacher associations, when she addressed 200 attendees at the Christmas program hour, following open house. Mrs. Hayes spoke on the subject, "Let Us Rejoice Christmas." Membership of the Lincoln P.T.A. is 160 at present.

Dominating the hallway was a mammoth lighted Christmas tree, purchased with pennies brought by the school children, and each room was bright with illuminated Christmas trees, wreaths and candles at some of the windows, and other symbols of the season.

Carol singing led by Rev. Claud Pratt opened the program. Mrs. Ida Allen played the piano accompaniment. Miss Eleanor Jensen's second grade room presented a clever musical play, "Mr. and Mrs. Santa Claus," written by the pupils.

A vocal trio, Mrs. Gerald Wallace, Mrs. Edward Rogel and Miss Ruth Johnston, accompanied by Mrs. Josephine Throckmorton, sang Christmas carols of other lands. Mrs. Lloyd Gilmore, presiding officer, announced the following rooms as attendance winners: Miss Helen Stearns' second graders, first; Miss Ida Allen's first graders, second; Miss Florence Schuler and Miss Lavonne Harrison's fourth graders, tied for third; and Miss Dorothy Parker's fourth graders and Miss Clara Koster's first graders, tied for fourth place.

Garth Reed announced a club pack meeting for Dec. 21. Mrs. O. O. Johnson read the national and state presidents' messages. Mrs. W. J. Dix announced the program.

JUNIOR HIFU PUPILS ATTEND SKATING PARTY

Home room 58 of the Twin Falls junior high school entertained home rooms 218-A, 218-B, 218-C, 218-D, 218-E, 218-F, 218-G, 218-H, 218-I, 218-J, 218-K, 218-L, 218-M, 218-N, 218-O, 218-P, 218-Q, 218-R, 218-S, 218-T, 218-U, 218-V, 218-W, 218-X, 218-Y, 218-Z, 219-A, 219-B, 219-C, 219-D, 219-E, 219-F, 219-G, 219-H, 219-I, 219-J, 219-K, 219-L, 219-M, 219-N, 219-O, 219-P, 219-Q, 219-R, 219-S, 219-T, 219-U, 219-V, 219-W, 219-X, 219-Y, 219-Z, 220-A, 220-B, 220-C, 220-D, 220-E, 220-F, 220-G, 220-H, 220-I, 220-J, 220-K, 220-L, 220-M, 220-N, 220-O, 220-P, 220-Q, 220-R, 220-S, 220-T, 220-U, 220-V, 220-W, 220-X, 220-Y, 220-Z, 221-A, 221-B, 221-C, 221-D, 221-E, 221-F, 221-G, 221-H, 221-I, 221-J, 221-K, 221-L, 221-M, 221-N, 221-O, 221-P, 221-Q, 221-R, 221-S, 221-T, 221-U, 221-V, 221-W, 221-X, 221-Y, 221-Z, 222-A, 222-B, 222-C, 222-D, 222-E, 222-F, 222-G, 222-H, 222-I, 222-J, 222-K, 222-L, 222-M, 222-N, 222-O, 222-P, 222-Q, 222-R, 222-S, 222-T, 222-U, 222-V, 222-W, 222-X, 222-Y, 222-Z, 223-A, 223-B, 223-C, 223-D, 223-E, 223-F, 223-G, 223-H, 223-I, 223-J, 223-K, 223-L, 223-M, 223-N, 223-O, 223-P, 223-Q, 223-R, 223-S, 223-T, 223-U, 223-V, 223-W, 223-X, 223-Y, 223-Z, 224-A, 224-B, 224-C, 224-D, 224-E, 224-F, 224-G, 224-H, 224-I, 224-J, 224-K, 224-L, 224-M, 224-N, 224-O, 224-P, 224-Q, 224-R, 224-S, 224-T, 224-U, 224-V, 224-W, 224-X, 224-Y, 224-Z, 225-A, 225-B, 225-C, 225-D, 225-E, 225-F, 225-G, 225-H, 225-I, 225-J, 225-K, 225-L, 225-M, 225-N, 225-O, 225-P, 225-Q, 225-R, 225-S, 225-T, 225-U, 225-V, 225-W, 225-X, 225-Y, 225-Z, 226-A, 226-B, 226-C, 226-D, 226-E, 226-F, 226-G, 226-H, 226-I, 226-J, 226-K, 226-L, 226-M, 226-N, 226-O, 226-P, 226-Q, 226-R, 226-S, 226-T, 226-U, 226-V, 226-W, 226-X, 226-Y, 226-Z, 227-A, 227-B, 227-C, 227-D, 227-E, 227-F, 227-G, 227-H, 227-I, 227-J, 227-K, 227-L, 227-M, 227-N, 227-O, 227-P, 227-Q, 227-R, 227-S, 227-T, 227-U, 227-V, 227-W, 227-X, 227-Y, 227-Z, 228-A, 228-B, 228-C, 228-D, 228-E, 228-F, 228-G, 228-H, 228-I, 228-J, 228-K, 228-L, 228-M, 228-N, 228-O, 228-P, 228-Q, 228-R, 228-S, 228-T, 228-U, 228-V, 228-W, 228-X, 228-Y, 228-Z, 229-A, 229-B, 229-C, 229-D, 229-E, 229-F, 229-G, 229-H, 229-I, 229-J, 229-K, 229-L, 229-M, 229-N, 229-O, 229-P, 229-Q, 229-R, 229-S, 229-T, 229-U, 229-V, 229-W, 229-X, 229-Y, 229-Z, 230-A, 230-B, 230-C, 230-D, 230-E, 230-F, 230-G, 230-H, 230-I, 230-J, 230-K, 230-L, 230-M, 230-N, 230-O, 230-P, 230-Q, 230-R, 230-S, 230-T, 230-U, 230-V, 230-W, 230-X, 230-Y, 230-Z, 231-A, 231-B, 231-C, 231-D, 231-E, 231-F, 231-G, 231-H, 231-I, 231-J, 231-K, 231-L, 231-M, 231-N, 231-O, 231-P, 231-Q, 231-R, 231-S, 231-T, 231-U, 231-V, 231-W, 231-X, 231-Y, 231-Z, 232-A, 232-B, 232-C, 232-D, 232-E, 232-F, 232-G, 232-H, 232-I, 232-J, 232-K, 232-L, 232-M, 232-N, 232-O, 232-P, 232-Q, 232-R, 232-S, 232-T, 232-U, 232-V, 232-W, 232-X, 232-Y, 232-Z, 233-A, 233-B, 233-C, 233-D, 233-E, 233-F, 233-G, 233-H, 233-I, 233-J, 233-K, 233-L, 233-M, 233-N, 233-O, 233-P, 233-Q, 233-R, 233-S, 233-T, 233-U, 233-V, 233-W, 233-X, 233-Y, 233-Z, 234-A, 234-B, 234-C, 234-D, 234-E, 234-F, 234-G, 234-H, 234-I, 234-J, 234-K, 234-L, 234-M, 234-N, 234-O, 234-P, 234-Q, 234-R, 234-S, 234-T, 234-U, 234-V, 234-W, 234-X, 234-Y, 234-Z, 235-A, 235-B, 235-C, 235-D, 235-E, 235-F, 235-G, 235-H, 235-I, 235-J, 235-K, 235-L, 235-M, 235-N, 235-O, 235-P, 235-Q, 235-R, 235-S, 235-T, 235-U, 235-V, 235-W, 235-X, 235-Y, 235-Z, 236-A, 236-B, 236-C, 236-D, 236-E, 236-F, 236-G, 236-H, 236-I, 236-J, 236-K, 236-L, 236-M, 236-N, 236-O, 236-P, 236-Q, 236-R, 236-S, 236-T, 236-U, 236-V, 236-W, 236-X, 236-Y, 236-Z, 237-A, 237-B, 237-C, 237-D, 237-E, 237-F, 237-G, 237-H, 237-I, 237-J, 237-K, 237-L, 237-M, 237-N, 237-O, 237-P, 237-Q, 237-R, 237-S, 237-T, 237-U, 237-V, 237-W, 237-X, 237-Y, 237-Z, 238-A, 238-B, 238-C, 238-D, 238-E, 238-F, 238-G, 238-H, 238-I, 238-J, 238-K, 238-L, 238-M, 238-N, 238-O, 238-P, 238-Q, 238-R, 238-S, 238-T, 238-U, 238-V, 238-W, 238-X, 238-Y, 238-Z, 239-A, 239-B, 239-C, 239-D, 239-E, 239-F, 239-G, 239-H, 239-I, 239-J, 239-K, 239-L, 239-M, 239-N, 239-O, 239-P, 239-Q, 239-R, 239-S, 239-T, 239-U, 239-V, 239-W, 239-X, 239-Y, 239-Z, 240-A, 240-B, 240-C, 240-D, 240-E, 240-F, 240-G, 240-H, 240-I, 240-J, 240-K, 240-L, 240-M, 240-N, 240-O, 240-P, 240-Q, 240-R, 240-S, 240-T, 240-U, 240-V, 240-W, 240-X, 240-Y, 240-Z, 241-A, 241-B, 241-C, 241-D, 241-E, 241-F, 241-G, 241-H, 241-I, 241-J, 241-K, 241-L, 241-M, 241-N, 241-O, 241-P, 241-Q, 241-R, 241-S, 241-T, 241-U, 241-V, 241-W, 241-X, 241-Y, 241-Z, 242-A, 242-B, 242-C, 242-D, 242-E, 242-F, 242-G, 242-H, 242-I, 242-J, 242-K, 242-L, 242-M, 242-N, 242-O, 242-P, 242-Q, 242-R, 242-S, 242-T, 242-U, 242-V, 242-W, 242-X, 242-Y, 242-Z, 243-A, 243-B, 243-C, 243-D, 243-E, 243-F, 243-G, 243-H, 243-I, 243-J, 243-K, 243-L, 243-M, 243-N, 243-O, 243-P, 243-Q, 243-R, 243-S, 243-T, 243-U, 243-V, 243-W, 243-X, 243-Y, 243-Z, 244-A, 244-B, 244-C, 244-D, 244-E, 244-F, 244-G, 244-H, 244-I, 244-J, 244-K, 244-L, 244-M, 244-N, 244-O, 244-P, 244-Q, 244-R, 244-S, 244-T, 244-U, 244-V, 244-W, 244-X, 244-Y, 244-Z, 245-A, 245-B, 245-C, 245-D, 245-E, 245-F, 245-G, 245-H, 245-I, 245-J, 245-K, 245-L, 245-M, 245-N, 245-O, 245-P, 245-Q, 245-R, 245-S, 245-T, 245-U, 245-V, 245-W, 245-X, 245-Y, 245-Z, 246-A, 246-B, 246-C, 246-D, 246-E, 246-F, 246-G, 246-H, 246-I, 246-J, 246-K, 246-L, 246-M, 246-N, 246-O, 246-P, 246-Q, 246-R, 246-S, 246-T, 246-U, 246-V, 246-W, 246-X, 246-Y, 246-Z, 247-A, 247-B, 247-C, 247-D, 247-E, 247-F, 247-G, 247-H, 247-I, 247-J, 247-K, 247-L, 247-M, 247-N, 247-O, 247-P, 247-Q, 247-R, 247-S, 247-T, 247-U, 247-V, 247-W, 247-X, 247-Y, 247-Z, 248-A, 248-B, 248-C, 248-D, 248-E, 248-F, 248-G, 248-H, 248-I, 248-J, 248-K, 248-L, 248-M, 248-N, 248-O, 248-P, 248-Q, 248-R, 248-S, 248-T, 248-U, 248-V, 248-W, 248-X, 248-Y, 248-Z, 249-A, 249-B, 249-C, 249-D, 249-E, 249-F, 249-G, 249-H, 249-I, 249-J, 249-K, 249-L, 249-M, 249-N, 249-O, 249-P, 249-Q, 249-R, 249-S, 249-T, 249-U, 249-V, 249-W, 249-X, 249-Y, 249-Z, 250-A, 250-B, 250-C, 250-D, 250-E, 250-F, 250-G, 250-H, 250-I, 250-J, 250-K, 250-L, 250-M, 250-N, 250-O, 250-P, 250-Q, 250-R, 250-S, 250-T, 250-U, 250-V, 250-W, 250-X, 250-Y, 250-Z, 251-A, 251-B, 251-C, 251-D, 251-E, 251-F, 251-G, 251-H, 251-I, 251-J, 251-K, 251-L, 251-M, 251-N, 251-O, 251-P, 251-Q, 251-R, 251-S, 251-T, 251-U, 251-V, 251-W, 251-X, 251-Y, 251-Z, 252-A, 252-B, 252-C, 252-D, 252-E, 252-F, 252-G, 252-H, 252-I, 252-J, 252-K, 252-L, 252-M, 252-N, 252-O, 252-P, 252-Q, 252-R, 252-S, 252-T, 252-U, 252-V, 252-W, 252-X, 252-Y, 252-Z, 253-A, 253-B, 253-C, 253-D, 253-E, 253-F, 253-G, 253-H, 253-I, 253-J, 253-K, 253-L, 253-M, 253-N, 253-O, 253-P, 253-Q, 253-R, 253-S, 253-T, 253-U, 253-V, 253-W, 253-X, 253-Y, 253-Z, 254-A, 254-B, 254-C, 254-D, 254-E, 254-F, 254-G, 254-H, 254-I, 254-J, 254-K, 254-L, 254-M, 254-N, 254-O, 254-P, 254-Q, 254-R, 254-S, 254-T, 254-U, 254-V, 254-W, 254-X, 254-Y, 254-Z, 255-A, 255-B, 255-C, 255-D, 255-E, 255-F, 255-G, 255-H, 255-I, 255-J, 255-K, 255-L, 255-M, 255-N, 255-O, 255-P, 255-Q, 255-R, 255-S, 255-T, 255-U, 255-V, 255-W, 255-X, 255-Y, 255-Z, 256-A, 256-B, 256-C, 256-D, 256-E, 256-F, 256-G, 256-H, 256-I, 256-J, 256-K, 256-L, 256-M, 256-N, 256-O, 256-P, 256-Q, 256-R, 256-S, 256-T, 256-U, 256-V, 256-W, 256-X, 256-Y, 256-Z, 257-A, 257-B, 257-C, 257-D, 257-E, 257-F, 257-G, 257-H, 257-I, 257-J, 257-K, 257-L, 257-M, 257-N, 257-O, 257-P, 257-Q, 257-R, 257-S, 257-T, 257-U, 257-V, 257-W, 257-X, 257-Y, 257-Z, 258-A, 258-B, 258-C, 258-D, 258-E, 258-F, 258-G, 258-H, 258-I, 258-J, 258-K, 258-L, 258-M, 258-N, 258-O, 258-P, 258-Q, 258-R, 258-S, 258-T, 258-U, 258-V, 258-W, 258-X, 258-Y, 258-Z, 259-A, 259-B, 259-C, 259-D, 259-E, 259-F, 259-G, 259-H, 259-I, 259-J, 259-K, 259-L, 259-M, 259-N, 259-O, 259-P, 259-Q, 259-R, 259-S, 259-T, 259-U, 259-V, 259-W, 259-X, 259-Y, 259-Z, 260-A, 260-B, 260-C, 260-D, 260-E, 260-F, 260-G, 260-H, 260-I, 260-J, 260-K, 260-L, 260-M, 260-N, 260-O, 260-P, 260-Q, 260-R, 260-S, 260-T, 260-U, 260-V, 260-W, 260-X, 260-Y, 260-Z, 261-A, 261-B, 261-C, 261-D, 261-E, 261-F, 261-G, 261-H, 261-I, 261-J, 261-K, 261-L, 261-M, 261-N, 261-O, 261-P, 261-Q, 261-R, 261-S, 261-T, 261-U, 261-V, 261-W, 261-X, 261-Y, 261-Z, 262-A, 262-B, 262-C, 262-D, 262-E, 262-F, 262-G, 262-H, 262-I, 262-J, 262-K, 262-L, 262-M, 262-N, 262-O, 262-P, 262-Q, 262-R, 262-S, 262-T, 262-U, 262-V, 262-W, 262-X, 262-Y, 262-Z, 263-A, 263-B, 263-C, 263-D, 263-E, 263-F, 263-G, 263-H, 263-I, 263-J, 263-K, 263-L, 263-M, 263-N, 263-O, 263-P, 263-Q, 263-R, 263-S, 263-T, 263-U, 263-V, 263-W, 263-X, 263-Y, 263-Z, 264-A, 264-B, 264-C, 264-D, 264-E, 264-F, 264-G, 264-H, 264-I, 264-J, 264-K, 264-L, 264-M, 264-N, 264-O, 264-P, 264-Q, 264-R, 264-S, 264-T, 264-U, 264-V, 264-W, 264-X, 264-Y, 264-Z, 265-A, 265-B, 265-C, 265-D, 265-E, 265-F, 265-G, 265-H, 265-I, 265-J, 265-K, 265-L, 265-M, 265-N, 265-O, 265-P, 265-Q, 265-R, 265-S, 265-T, 265-U, 265-V, 265-W, 265-X, 265-Y, 265-Z, 266-A, 266-B, 266-C, 266-D, 266-E, 266-F, 266-G, 266-H, 266-I, 266-J, 266-K, 266-L, 266-M, 266-N, 266-O, 266-P, 266-Q, 266-R, 266-S, 266-T, 266-U, 266-V, 266-W, 266-X, 266-Y, 266-Z, 267-A, 267-B, 267-C, 267-D, 267-E, 267-F, 267-G, 267-H, 267-I, 267-J, 267-K, 267-L, 267-M, 267-N, 267-O, 267-P, 267-Q, 267-R, 267-S, 267-T, 267-U, 267-V, 267-W, 267-X, 267-Y, 267-Z, 268-A, 268-B, 268-C, 268-D, 268-E, 268-F, 268-G, 268-H, 268-I, 268-J, 268-K, 268-L, 268-M, 268-N, 268-O, 268-P, 268-Q, 268-R, 268-S, 268-T, 268-U, 268-V, 268-W, 268-X, 268-Y, 268-Z, 269-A, 269-B, 269-C, 269-D, 269-E, 269-F, 269-G, 269-H, 269-I, 269-J, 269-K, 269-L, 269-M, 269-N, 269-O, 269-P, 269-Q, 269-R, 269-S, 269-T, 269-U, 269-V, 269-W, 269-X, 269-Y, 269-Z, 270-A, 270-B, 270-C, 270-D, 270-E, 270-F, 270-G, 270-H, 270-I, 270-J, 270-K, 270-L, 270-M, 270-N, 270-O, 270-P, 270-Q, 270-R, 270-S, 270-T, 270-U, 270-V, 270-W, 270-X, 270-Y, 270-Z, 271-A, 271-B, 271-C, 271-D, 271-E, 271-F, 271-G, 271-H, 271-I, 271-J, 271-K, 271-L, 271-M, 271-N, 271-O, 271-P, 271-Q, 271-R, 271-S, 271-T, 271-U, 271-V, 271-W, 271-X, 271-Y, 271-Z, 272-A, 272-B, 272-C, 272-D, 272-E, 272-F, 272-G, 272-H, 272-I, 272-J, 272-K, 272-L, 272-M, 272-N, 272-O, 272-P, 272-Q, 272-R, 272-S, 272-T, 272-U, 272-V, 272-W, 272-X, 272-Y, 272-Z, 273-A, 273-B, 273-C, 273-D, 273-E, 273-F, 273-G, 273-H, 273-I, 273-J, 273-K, 273-L, 273-M, 273-N, 273-O, 273-P, 273-Q, 273-R, 273-S, 273-T, 273-U, 273-V, 273-W, 273-X, 273-Y, 273-Z, 274-A, 274-B, 274-C, 274-D, 274-E, 274-F, 274-G, 274-H, 274-I, 274-J, 274-K, 274-L, 274-M, 274-N, 274-O, 274-P, 274-Q, 274-R, 274-S, 274-T, 274-U, 274-V, 274-W, 274-X, 274-Y, 274-Z, 275-A, 275-B, 275-C, 275-D, 275-E, 275-F, 275-G, 275-H, 275-I, 275-J, 275-K, 275-L, 275-M, 275-N, 275-O, 275-P, 275-Q, 275-R, 275-S, 275-T, 275-U, 275-V, 275-W, 275-X, 275-Y, 275-Z, 276-A, 276-B, 276-C, 276-D, 276-E, 276-F, 276-G, 276-H, 276-I, 276-J, 276-K, 276-L, 276-M, 276-N, 276-O, 276-P, 276-Q, 276-R, 276-S, 276-T, 276-U, 276-V, 276-W, 276-X, 276-Y, 276-Z, 277-A, 277-B, 277-C, 277-D, 277-E, 277-F, 277-G, 277-H, 277-I, 277-J, 277-K, 277-L, 277-M, 277-N, 277-O, 277-P, 277-Q, 277-R, 277-S, 277-T, 277-U, 277-V, 277-W, 277-X, 277-Y, 277-Z, 278-A, 278-B, 278-C, 278-D, 278-E, 278-F, 278-G, 278-H, 278-I, 278-J, 278-K, 278-L, 278-M, 278-N, 278-O, 278-P, 278-Q, 278-R, 278-S, 278-T, 278-U, 278-V, 278-W, 278-X, 278-Y, 278-Z, 279-A, 279-B, 279-C, 279-D, 279-E, 279-F, 279-G, 279-H, 279-I, 279-J, 279-K, 279-L, 279-M, 279-N, 279-O, 279-P, 279-Q, 279-R, 279-S, 279-T, 279-U, 279-V, 279-W, 279-X, 279-Y, 279-Z, 280-A, 280-B, 280-C, 280-D, 280-E, 280-F, 280-G, 280-H, 280-I, 280-J, 280-K, 280-L, 280-M, 280-N, 280-O, 280-P, 280-Q, 280-R, 280-S, 280-T, 280-U, 280-V, 280-W, 280-X, 280-Y, 280-Z, 281-A, 281-B, 281-C, 281-D, 281-E, 281-F, 281-G, 281-H, 281-I, 281-J, 281-K, 281-L, 281-M, 281-N, 281-O, 281-P, 281-Q, 281-R, 281-S, 281-T, 281-U, 281-V, 281-W, 281-X, 281-Y, 281-Z, 282-A, 282-B, 282-C, 282-D, 282-E, 282-F, 282-G, 282-H, 282-I, 282-J, 282-K, 282-L, 282-M, 282-N, 282-O, 282-P, 282-Q, 282-R, 282-S, 282-T, 282-U, 282-V, 282-W, 282-X, 282-Y, 282-Z, 283-A, 283-B, 283-C, 283-D, 283-E, 283-F, 283-G, 283-H, 283-I, 283-J, 283-K, 283-L, 283-M, 283-N, 283-O, 283-P, 283-Q, 283-R, 283-S, 283-T, 283-U, 283-V, 283-W, 283-X, 283-Y, 283-Z, 284-A, 284-B, 284-C, 284-D, 284-E, 284-F, 284-G, 284-H, 284-I, 284-J, 284-K, 284-L, 284-M, 284-N, 284-O, 284-P, 284-Q, 284-R, 284-S, 284-T, 284-U, 284-V, 284-W, 284-X, 284-Y, 284-Z, 285-A, 285-B, 285-C, 285-D, 285-E, 285-F, 285-G, 285-H, 285-I, 285-J, 285-K, 285-L, 285-M, 285-N, 285-O, 285-P, 285-Q, 285-R, 285-S, 285-T, 285-U, 285-V, 285-W, 285-X, 285-Y, 285-Z, 286-A, 286-B, 286-C, 286-D, 286-E, 286-F, 286-G, 286-H, 286-I, 286-J, 286-K, 286-L, 286-M, 286-N, 286-O, 286-P, 286-Q, 286-R, 286-S, 286-T, 286-U, 286-V, 286-W, 286-X, 286-Y, 286-Z, 287-A, 287-B, 287-C, 287-D, 287-E, 287-F, 287-G, 287-H, 287-I, 287-J, 287-K, 287-L, 287-M, 287-N, 287-O, 287-P, 287-Q, 287-R, 287-S, 287-T, 287-U, 287-V, 287-W, 287-X, 287-Y, 287-Z, 288-A, 288-B, 288-C, 288-D, 288-E, 288-F, 288-G, 288-H, 288-I, 288-J, 288-K, 288-L, 288-M, 288-N, 288-O, 288-P, 288-Q, 288-R, 288-S, 288-T, 288-U, 288-V, 288-W, 288-X, 288-Y, 288-Z, 289-A, 289-B, 289-C, 289-D, 289-E, 289-F, 289-G, 289-H, 289-I, 289-J, 289-K, 289-L, 289-M, 289-N, 289-O, 289-P, 289-Q, 289-R, 289-S, 289-T, 289-U, 289-V, 289-W, 289-X, 289-Y, 289-Z, 290-A, 290-B, 290-C, 290-D, 290-E, 290-F, 290-G, 290-H, 290-I, 290-J, 290-K, 290-L, 290-M, 290-N, 290-O, 290-P, 290-Q, 290-R, 290-S, 290-T, 290-U, 290-V, 290-W, 290-X, 290-Y, 290-Z, 291-A, 291-B, 291-C, 291-D, 291-E, 291-F, 291-G, 291-H, 291-I, 291-J, 291-K, 291-L, 291-M, 291-N, 291-O, 291-P, 291-Q, 291-R, 291-S, 291-T, 291-U, 291-V, 291-W, 291-X, 2

FINLAND ORDERS ADDITIONAL RESERVES TO COLOR

FIGHT STRENGTH OF DEFENDERS IS AT FULL QUOTA

By NORMAN B. DEUEL

HELSINKI, Dec. 18 (AP)—Finland

called additional men to the colors today, completing what amounts to total mobilization although the word mobilization itself is not used here. Summoning of last reserves means that about 10 per cent of the whole population of military age now is in the army.

Placards posted in the streets as fighting raged in the north, on the central front in the east and on the Karelian Isthmus ordered all reserves not previously called up to report to their regiments tomorrow.

The numbers involved in the latest call to arms could not be learned. But it was known the armed forces will be at full fighting strength tomorrow when responses to today's summons are in.

The Finns are holding their own on the Karelian Isthmus between Lake Ladoga and the gulf of Finland. In the north, near Salma-järvi, the country's second nicest city on the Norwegian frontier, they were reported meeting a new Russian mechanized offensive. The Russians had Salma-järvi but it was a heap of charred ruins.

Heavy fighting raged on the central front.

The Finnish government today declared six additional danger zones. These zones, it was ordered, must be cleared entirely of civilians. All departures will be controlled by the military and after the evacuation zone will be permitted to return except with consent of the army. The orders were regarded as further indication of Finland's grim determination to fight to the bitter end.

Pioneer Barber Opens Own Shop

Opening of a new barber shop in Twin Falls had been announced today by George Ayres, pioneer barber.

The shop is situated at 230 Main avenue north, next door to the Twin Falls bowling alley. Mr. Ayres was formerly associated with the Sanitary barber shop here.

Greeting Cards with the sentiment that means so much and thoughts to select from, at Cloc Book Store—Adv.

School Audit Shows Achievements of \$353,271 Fund for Building Program

Financial books of the Twin Falls school district are in excellent condition and the \$353,271.08 building fund balanced to the penny at the close of an extensive construction program which achieved wide improvements, it was shown today in the audit completed by Edwin A. Wilson for the period from July 1, 1937, to June 30, 1939.

The comprehensive audit covered all phases of operations in the \$1,224,566.23 Twin Falls school system. It includes recommendations as to changes in bookkeeping procedure.

The audit was originally requested by S. H. Graves, who retired as treasurer in September.

High spots in the audit included these:

Building Fund
Complete receipts for the building fund showed \$350,000 from the bond issue; \$460 premium on the issue; \$7,765.48 insurance from the fire loss at old Elbert school, and \$15.20 refund on curtains. That added up to \$353,271.08.

Disbursements under the building fund were audited as follows: High school work—lighting and electrical \$2,870.00; plumbing equipment \$2,820.88; furniture \$2,087.08; instructional equipment \$401.89; other equipment \$4,452.21; alteration and improvement of the building \$18,112.12—total \$31,774.07.

Junior high school—lighting and electrical \$1,268.55; furniture \$457.27; instructional equipment \$719.32; other equipment \$4,571.23; alteration and improvement \$7,440—total \$26,960.40.

Lincoln school—New buildings \$60,204.49; heating equipment \$12,900.98; lighting and electrical \$5,170.81; plumbing \$8,934.56; furniture \$12,810.70; instructional equipment \$1,107.11; other equipment \$823.63; alteration and improvement of old building \$86.31—total \$336,232.10.

Bicket school—New buildings \$17,544.00; heating equipment \$14,473.12; lighting and electrical \$6,877.15; plumbing \$7,677.91; furniture \$1,279.35; instructional equipment \$719.32; other equipment \$5,017.95—total \$140,260.28.

Washington school—New buildings \$23,785.72; lighting and electrical \$2,668.93; plumbing \$6,270.85; furniture \$1,285.81; other equipment \$2,611.19; alteration and improvement of old building \$86.31—total \$36,709.43.

Balance in the building fund as of last June 30 was exactly zero.

Concerning the audit of the treasurer's cash, the report by Mr. Wilson to the school board says that

Mr. Wilson's summary paragraph says:

"The high percentage of books collected, the increase in the inventory of books on hand out of current income, and the success in showing over expense all tend to show the successful operation of the plan and its practical results."

The numerous other phases into which it goes in detail, outlines the status of the various funds as of June 30, 1939, goes into the matter of tax rolls, collections of current and delinquent taxes, report on the judgment obtained in 1938 against a number of common school districts, and report on bonded indebtedness.

The bond section shows that last July 6 the old paid-off securities were audited and then turned. As for current obligations, the audit finds:

Total bonded indebtedness as of last June 30 was \$351,000, including the \$350,000 building fund and one \$1,000 bond of 1910 date which has apparently become lost and has never been submitted for payment. Since June 30 the first installment of the \$350,000 building bonds has been paid.

The audit shows that value of the school system, listed under capital accounts, was \$1,175,079.73 as of June 30. Later figures obtained and reported by the school board, show the system valued as follows: Buildings and grounds \$1,103,875.71; furniture and fixtures \$115,529.97; total \$1,219,405.68. Against this now remains an aggregate of \$355,000 in bonds.

Rental Plan Success

The grade school book rental audit shows "high percentage of collections of rental fees at all buildings." Percentage collected was 92.18 per cent at Lincoln; 93.35 at Bicket and 96.87 at Washington.

Although disbursements were \$786.36 more than receipts under the rental plan, Auditor Wilson pointed out that "the inventory of books on hand at the close of the two-year period is \$2,163.37 greater than at the beginning of the period."

The figures, requested to simple terms, show these facts:

No Cost to Taxpayers

The grade school book rental system went into effect as of the school year of 1937-38; enough available information is not at hand to say that the rental will pay for the books at no cost to the taxpayers, and parents have been saved considerable money because the rental cost is much less than the cost of buying the books outright.

Extra space for frozen foods in top of Super Freezer.

Centrally located interior light.

Removable shelf in freezer.

All steel cabinet and styling same as highest priced models.

Don't let the holiday season go by without seeing these wonderful Christmas Specials.

Don't let the holiday season go by without seeing these wonderful Christmas Specials.

Don't let the holiday season go by without seeing these wonderful Christmas Specials.

Don't let the holiday season go by without seeing these wonderful Christmas Specials.

Don't let the holiday season go by without seeing these wonderful Christmas Specials.

Don't let the holiday season go by without seeing these wonderful Christmas Specials.

Don't let the holiday season go by without seeing these wonderful Christmas Specials.

Don't let the holiday season go by without seeing these wonderful Christmas Specials.

Don't let the holiday season go by without seeing these wonderful Christmas Specials.

Don't let the holiday season go by without seeing these wonderful Christmas Specials.

Don't let the holiday season go by without seeing these wonderful Christmas Specials.

Don't let the holiday season go by without seeing these wonderful Christmas Specials.

Don't let the holiday season go by without seeing these wonderful Christmas Specials.

Don't let the holiday season go by without seeing these wonderful Christmas Specials.

Don't let the holiday season go by without seeing these wonderful Christmas Specials.

Don't let the holiday season go by without seeing these wonderful Christmas Specials.

Don't let the holiday season go by without seeing these wonderful Christmas Specials.

Don't let the holiday season go by without seeing these wonderful Christmas Specials.

Don't let the holiday season go by without seeing these wonderful Christmas Specials.

Don't let the holiday season go by without seeing these wonderful Christmas Specials.

Don't let the holiday season go by without seeing these wonderful Christmas Specials.

Don't let the holiday season go by without seeing these wonderful Christmas Specials.

Don't let the holiday season go by without seeing these wonderful Christmas Specials.

Don't let the holiday season go by without seeing these wonderful Christmas Specials.

Don't let the holiday season go by without seeing these wonderful Christmas Specials.

Don't let the holiday season go by without seeing these wonderful Christmas Specials.

Don't let the holiday season go by without seeing these wonderful Christmas Specials.

Don't let the holiday season go by without seeing these wonderful Christmas Specials.

Don't let the holiday season go by without seeing these wonderful Christmas Specials.

Don't let the holiday season go by without seeing these wonderful Christmas Specials.

Don't let the holiday season go by without seeing these wonderful Christmas Specials.

Don't let the holiday season go by without seeing these wonderful Christmas Specials.

Don't let the holiday season go by without seeing these wonderful Christmas Specials.

Don't let the holiday season go by without seeing these wonderful Christmas Specials.

Don't let the holiday season go by without seeing these wonderful Christmas Specials.

Don't let the holiday season go by without seeing these wonderful Christmas Specials.

Don't let the holiday season go by without seeing these wonderful Christmas Specials.

Don't let the holiday season go by without seeing these wonderful Christmas Specials.

Don't let the holiday season go by without seeing these wonderful Christmas Specials.

Don't let the holiday season go by without seeing these wonderful Christmas Specials.

Don't let the holiday season go by without seeing these wonderful Christmas Specials.

Don't let the holiday season go by without seeing these wonderful Christmas Specials.

Don't let the holiday season go by without seeing these wonderful Christmas Specials.

Don't let the holiday season go by without seeing these wonderful Christmas Specials.

Don't let the holiday season go by without seeing these wonderful Christmas Specials.

Don't let the holiday season go by without seeing these wonderful Christmas Specials.

Don't let the holiday season go by without seeing these wonderful Christmas Specials.

Don't let the holiday season go by without seeing these wonderful Christmas Specials.

Don't let the holiday season go by without seeing these wonderful Christmas Specials.

Don't let the holiday season go by without seeing these wonderful Christmas Specials.

7 SHOPPING DAYS LEFT

YOU'VE GOT TO IMPROVE YOURSELF A LOT FOR NEW YEAR'S



BUY CHRISTMAS SEALS

AUTOS AND FARM TRUCKS INCREASE

Passenger cars, farm trucks and commercial trucks showed an increase in registration in Twin Falls county for the past 11 months of 1939—but total receipts dropped under the \$5 license plan—according to a summary prepared today by County Assessor George A. Childs.

Auto licenses totaled \$2,826 through November of this year. The figure for last year during the same period was only \$215 in this county.

Farm Trucks

Farm truck registration, with impetus of lower license fees, shown 1,219 for 1939 and 1,085 for the first 11 months of 1939. Other classifications showing an increase were commercial trucks, up by 41 licenses, and private trailers, up by 525 licenses.

Divisions registering a decline through November of this year compared with one year ago are private trucks, down 72; dealers, down seven; motorcycles, down three, and commercial trailers, down four.

Districts' Revenue Up

License amounts collected at the assessor's office in Twin Falls (and through the Buhl branch) totaled \$102,890.20 to Dec. 1, according to a summary issued by Jack Shrest, deputy auditor. The revenue a year ago at the same time was \$101,102.63.

NEIL'S

Weyling Coal

Store Mail \$7.95 per ton on the track

\$5.70 per ton Delivered

At West 5 Points P.H. 2013

At West 5 Points P.H. 2013

At West 5 Points P.H. 2013

At West 5 Points P.H. 2013

At West 5 Points P.H. 2013

At West 5 Points P.H. 2013

At West 5 Points P.H. 2013

At West 5 Points P.H. 2013

At West 5 Points P.H. 2013

At West 5 Points P.H. 2013

At West 5 Points P.H. 2013

At West 5 Points P.H. 2013

At West 5 Points P.H. 2013

At West 5 Points P.H. 2013

At West 5 Points P.H. 2013

At West 5 Points P.H. 2013

At West 5 Points P.H. 2013

At West 5 Points P.H. 2013

At West 5 Points P.H. 2013

At West 5 Points P.H. 2013

At West 5 Points P.H. 2013

At West 5 Points P.H. 2013

At West 5 Points P.H. 2013

At West 5 Points P.H. 2013

At West 5 Points P.H. 2013

At West 5 Points P.H. 2013

At West 5 Points P.H. 2013

At West 5 Points P.H. 2013

At West 5 Points P.H. 2013

At West 5 Points P.H. 2013

At West 5 Points P.H. 2013

At West 5 Points P.H. 2013

At West 5 Points P.H. 2013

At West 5 Points P.H. 2013

At West 5 Points P.H. 2013

At West 5 Points P.H. 2013

At West 5 Points P.H. 2013

At West 5 Points P.H. 2013

At West 5 Points P.H. 2013

At West 5 Points P.H. 2013

At West 5 Points P.H. 2013

At West 5 Points P.H. 2013

At West 5 Points P.H. 2013

At West 5 Points P.H. 2013

At West 5 Points P.H. 2013

At West 5 Points P.H. 2013

At West 5 Points P.H. 2013

At West 5 Points P.H. 2013

At West 5 Points P.H. 2013

At West 5 Points P.H. 2013

At West 5 Points P.H. 2013

At West 5 Points P.H. 2013

At West 5 Points P.H. 2013

At West 5 Points P.H. 2013

At West 5 Points P.H. 2013

At West 5 Points P.H. 2013

At West 5 Points P.H. 2013

At West 5 Points P.H. 2013

At West 5 Points P.H. 2013

At West 5 Points P.H. 2013

At West 5 Points P.H. 2013

At West 5 Points P.H. 2013

At West 5 Points P.H. 2013

At West 5 Points P.H. 2013

At West 5 Points P.H. 2013

At West 5 Points P.H. 2013

At West 5 Points P.H. 2013

100 ACTORS FLEE FILM SET BLAZE

TUCSON, Ariz., Dec. 15 (AP)—

Reconstruction of a movie set from the village of Tucson here today after a \$50,000 fire destroyed 40 framework buildings and endangered movie players' lives.

Gary Cooper and Walter Brennan were among 100 actors, actresses and studio employees who fled the blaze. A small section of the village was supposed to burn in the scene "The Westerner," but a sudden gust of wind sent the flames roaring out of control through the light timber buildings.

Paul High School Gives Play Friday

PAUL, Dec. 15 (Special)—Friday

evening, Dec. 15, the junior class of the Paul high school will present a play of four acts, entitled "Oh Susan."

Those taking part are Edward Everett, Coon, Mary Maxwell, Viola Ashton, Lydia Galt, Verne Winn, Mary Rich, Billy Tucker, Carlisle Brown, Floyd Merrill, Edith Hathaway and Karl Janzen.

That represents a drop of \$83,612.45 but the revenue to highway districts in this county (according to official figures of the county auditor) has already exceeded that for the entire year of 1938. State distribution of gas tax funds, plus the highway districts' share of license money, accounts for the income boost.

Leather Brief and Zipper Cases

Full Price, Keychains and Novelty, at Cloc Book Store—Adv.

Full Price, Keychains and Novelty, at Cloc Book Store—Adv.

Full Price, Keychains and Novelty, at Cloc Book Store—Adv.

Full Price, Keychains and Novelty, at Cloc Book Store—Adv.

Full Price, Keychains and Novelty, at Cloc Book Store—Adv.

Full Price, Keychains and Novelty, at Cloc Book Store—Adv.

Full Price, Keychains and Novelty, at Cloc Book Store—Adv.

Full Price, Keychains and Novelty, at Cloc Book Store—Adv.

Full Price, Keychains and Novelty, at Cloc Book Store—Adv.

Full Price, Keychains and Novelty, at Cloc Book Store—Adv.

Full Price, Keychains and Novelty, at Cloc Book Store—Adv.

Full Price, Keychains and Novelty, at Cloc Book Store—Adv.

Full Price, Keychains and Novelty, at Cloc Book Store—Adv.

Full Price, Keychains and Novelty, at Cloc Book Store—Adv.

Full Price, Keychains and Novelty, at Cloc Book Store—Adv.

Full Price, Keychains and Novelty, at Cloc Book Store—Adv.

Full Price, Keychains and Novelty, at Cloc Book Store—Adv.

Full Price, Keychains and Novelty, at Cloc Book Store—Adv.

Full Price, Keychains and Novelty, at Cloc Book Store—Adv.

Full Price, Keychains and Novelty, at Cloc Book Store—Adv.

Full Price, Keychains and Novelty, at Cloc Book Store—Adv.

Full Price, Keychains and Novelty, at Cloc Book Store—Adv.

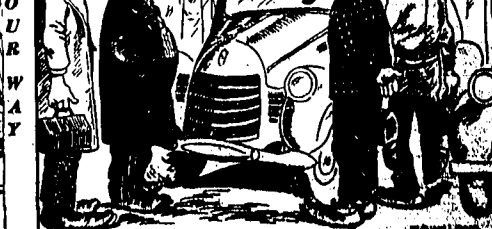
Full Price, Keychains and Novelty, at Cloc Book Store—Adv.

Full Price, Keychains and Novelty, at Cloc Book Store—Adv.

Full Price, Keychains and Novelty, at Cloc Book Store—Adv.

Full Price, Keychains and Novelty, at Cloc Book Store—Adv.

Full Price, Keychains and Novelty, at Cloc Book Store—Adv.



PAGE 1 FOR INDEX
 SPECIAL
 DEN ELECTRIC
 exclusive Washington
 Refrigerator Dealer

Battle Rages for Control of North Finland

RUSSIAN TROOPS PUSH SOUTHWARD IN BIGGEST DRIVE

By EDWARD W. BEATTIE, Jr.
COPENHAGEN, Denmark, Dec. 15 (UP)—A fierce battle for control of northern Finland began today, reports from Swedish on the Norwegian-Finnish border, said.
Russian troops were said to be pushing southward and to have attacked the Finnish defense lines south of Salmlaervi.
Russian infantry cooperated with the tanks and a few artillery pieces in the offensive. Soviet planes bombed the Finnish lines.
The battle was raging about 20 miles south of Salmlaervi, the reports said. Cannon fire was plainly audible on the Norwegian border where the battle was described as one of the most violent in that region so far.

CANADIANS TAKE TWO U. S. PLANES

SANTA MONICA, Calif., Dec. 15 (UP)—The first two of 20 bombing planes built by the Douglas Aircraft company for the Canadian royal air force were ready today for delivery flights to the Canadian border.
They will be flown to Sweetgrass, Mont., this week-end, and then pulled over the line in compliance with neutrality laws.
The planes, known as DB-280 type, similar to the U. S. army craft, have a range of 5,000 miles at 200 miles per hour with a three-ton bomb load. Canada contracted for \$3,000,000 worth of planes and spare parts.

Rites Conducted In Two Languages

BURLEY, Dec. 15 (Special)—Services for the late Mrs. Amelia Moore were conducted Wednesday afternoon at the Paul Congregational church for Mrs. Amelia Moore, who died last Saturday at a Soda Springs hospital. Rev. K. K. Maier, of the Congregational church, and Rev. Albert Parrell, of the Methodist church at Paul, conducted the services.
The choir sang two numbers at the church and two songs at the graveside. Rev. Maier gave the German part of the service, and Rev. Parrell presided in English. Mark Burley, accompanied by Mrs. Chris Boynton, sang "Lay My Head Beneath a Rose."
Burial was made in the family plot in the Paul cemetery under direction of Vern McCulloch of the Burley funeral home. The graveside service was also carried out in German.
Pallbearers were Dave Sprell, Jake Klemm, Elwood Young, John Kraus, David Kraus, and George Zimmerman. Flowers were carried by Mrs. Adam Zimmerman, Mrs. Jake Klemm, Mrs. David Helms, Mrs. Henry Ferrow, Mrs. Gottlieb Schenk and Mrs. Martin Gerlach.

Taylor Rules on Highway Voting

BOLLE, Dec. 15 (UP)—The electors of a highway district cannot force elections to be held in public places whether they are available or not, under Idaho statutes, Attorney General J. W. Taylor informed Roy Shaver, Buhl, Ida., in an opinion released today.
An entire water board may be ousted from office if it fails to perform its duties in keeping irrigation canals in order and preventing the overflow of water to adjacent lands, Taylor informed John Kent of Bole.

John Redd, Jr., Is Paid Last Tribute

BURLEY, Dec. 15 (Special)—Funeral services were held Wednesday at the Payne mortuary chapel for John Redd, Jr., son of Mr. and Mrs. John Redd, Springdale, who died Monday of pneumonia. The little boy was one year old.
Bishop Gerald Marchant officiated, and Edith Cornea sang "Face to Face." Inunction was offered by Raymond Johnson, who also sang "Your Sweet Little Rosebud Has Left You." Mr. Marchant and Joseph J. Payne were speakers. Jay Marchant gave the benediction.
Burial, in charge of the Payne mortuary, was made in the Burley cemetery. Bishop Marchant died, eating the grave.

Annual Xmas TURKEY SHOOT!

Sunday, Dec. 17th
100
Fat, well fed birds distributed over traps, card tables, dice tables.
Sponsored by Kimberly Legion
Harvey Wood Ranch
1 Mi. N. 1/4 West Kimberly Highway No. 30

Annual Reception Passes at White House Minus Incident

By RUBY A. BLACK
WASHINGTON, Dec. 15 (UP)—Washington officials breathed a sigh of relief today—diplomacy had come through without a crisis at the President's annual diplomatic reception last night.
The reception, which officially opened the social season for the President and Mrs. Roosevelt, had had administration officials in a tizzy for weeks as to what might occur when Britisher met German, Russian bumped into Finn or Japanese encountered Chinese.
Diplomatic procedure, however, functioned smoothly and no international social crises resulted.
Reception Colorful
The reception was just as colorful as its predecessors, but was smaller and much more brief than in former years. Approximately 700 guests attended instead of the usual 1,200 or 1,500. The last guest had departed at 10:15 p. m.—about an hour after the festivities began and about two hours before the usual closing time.
The reception, though brilliant, was held in a tense atmosphere. In the spotlight were the envoys of those nations now at war, those representing powers striving to remain neutral, and at least one who serves a country no longer on the map.
Included in the list were Finnish Minister Hjalmar Procope, Soviet Ambassador Constantin Oumansky, British Ambassador Lord Lothian, German Charge d'Affaires Hans Thomsen, Ambassador Count Jerzy Potocki, representing the exiled government of Poland, and Vladimir Murban, minister of non-existent Czechoslovakia.
Follow Rules
Much of the smooth-functioning of the reception was attributed to the rules laid down by the state department's division of protocol—the Emily Post of international good manners. Carefully outlined instructions on procedure for the reception were sent to each embassy and legation.
The President and Mrs. Roosevelt gave a pre-reception dinner party for 20 of the guests. No belligerent powers were represented. Secretary of State Cordell Hull and Mrs. Hull, Undersecretary of State and Mrs. Sumner Welles, and Sen. and Mrs. William E. Borah also were dinner guests.

FDR REFUSES TO MAKE COMMENT

HYDE PARK, N. Y., Dec. 15 (UP)—President Roosevelt said today he was too old to fall for such a question as whether he agreed with Secretary of Interior Harold Ickes that Federal Security Administrator Paul V. McNutt was unsatisfactory as a liberal candidate for the 1940 Democratic presidential nomination.
At the same time he made it clear no amount of questioning or controversy would draw him out on the 1940 campaign until he was ready to speak.
The President laughed when the question of Ickes' views on McNutt was asked, and said of course he had nothing to say on that subject. He told reporters that by getting comment on this man and that man, eventually by a process of elimination they would have the whole story. The President said he might have fallen for the story 25 or 30 years ago.

Marguerite Sears Elected by O. E. S.

ALBION, Dec. 15 (Special)—At a regular meeting of the Eastern Star chapter last week in the Masonic hall, Miss Marguerite Sears was elected worthy matron. Miss Sears succeeds Mrs. Lillian Smith as worthy matron.
Willis Sears was elected worthy patron; Miss Laura Mae Bourg, as associate matron; J. B. Chabum, as-

Xmas trees, Cook's Drive Inn, Adv.

social patron; Mrs. E. E. Woody, conductress; Mrs. E. E. Woody, social conductress; Mrs. Mary Heyman, secretary, and Mrs. J. M. Mahoney, treasurer.
Other officers are appointive and will be named at the next regular meeting, Dec. 21.
The remainder of the evening was spent reviewing the proceedings of grand chapter by the five star points and the worthy matron.

HOLIDAY BAKING

is an old-fashioned custom!
... and the truest part of the statement is that it is old-fashioned ... and no fun for mother! The modern woman shops in our fine selection of pies, cakes, cookies, and other pastries with the assurance that it's more economical than home holiday baking ... and certainly more pleasant.

SPECIAL! FRUIT CAKE

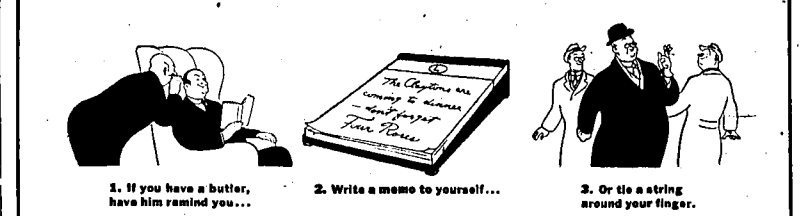
A holiday item if there ever was one! Thick, delicious Fruit Cake—just the right moisture—just the right texture. Baked the way you really like it!

And Remember that Always Fresh BETTY ANNE BREAD Baked Every Day in Twin Falls

ELECTRIC BAKERY

Special Offer On Xmas Photographs —FREE—
1 8x10 Enlargement With Each Portrait Order of \$5.00 or Over.
Offer Good Until Dec. 18.
Young's Studio

Don't forget...



Four Roses is THE whiskey for special occasions



IT'S NOT SURPRISING that so many people regard Four Roses as the whiskey for special occasions—when special guests come to dinner.
Every drop of Four Roses is distilled in the slow, costly, old-fashioned way. And because no single straight whiskey, however fine, can be great enough for Four Roses, we take several outstanding straight whiskeys—each at least 4 years old—and combine them into one whiskey that is finer still—Four Roses!
So, get a goodly supply of Four Roses at your favorite liquor store—today!

GUESTS REMEMBER THE MOST WHO SERVES—

Four Roses

Every drop is whiskey at least 4 years old. A blend of straight whiskeys—90 proof. The straight whiskeys in Four Roses are 4 years or more old. Frankfort Distilleries, Incorporated, Louisville & Baltimore.

A blend of straight whiskeys 90 proof

SATURDAY SIZZLERS!

Give More - Spend Less - Buy All Your Gifts at Penney's!



The Gift Women Appreciate

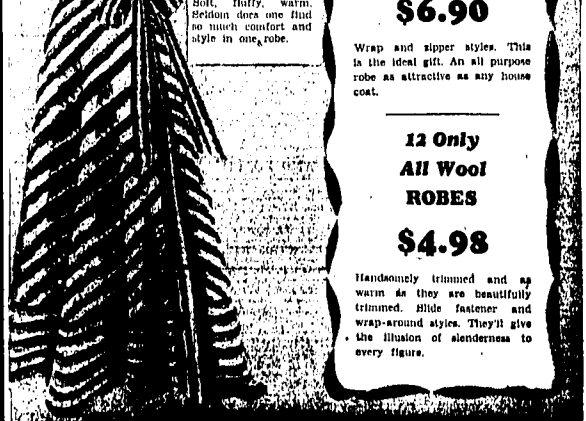
Robes

Imagine! All-Wool Flannel ROBES \$3.98
Luxuriously warm - softly tailored! Delightful slide fastener robe. The latest styles and a complete selection of colors.

60 Only HOUSE COATS \$2.98
Broad Shoulders Nipped in Waist Sweeping Skirts
There's a definite military air to these smooth rayon coats. Satin or taffeta that are luxuriously lovely. Values found only at Penney's. Savel!

10 Only All Wool ROBES \$6.90
Wrap and slipper styles. This is the ideal gift. An all purpose robe as attractive as any house coat.

12 Only All Wool ROBES \$4.98
Handsomely trimmed and as warm as they are beautifully trimmed. Slide fastener and wrap-around styles. They'll give the illusion of slenderness to every figure.



PENNEY'S
J. C. PENNEY COMPANY, Incorporated