

**Weather Forecast**  
Heavy heavy drizzle and rain today with snow flurries or showers in mountainous. Not in doubt in south and east. High yesterday 52, low 31. Low this morning 31.

# Idaho Times

A Regional Newspaper Serving TWIN FALLS, IDAHO, TUESDAY, DECEMBER 9, 1941

**TODAY'S NEWS TODAY**

VOL. XXIV, NO. 304—5 CENTS

Published by the Idaho Times Co., 215 N. Main St., Twin Falls, Idaho.

TWIN FALLS, IDAHO, TUESDAY, DECEMBER 9, 1941

Member of Audit Bureau of Circulations

OFFICIAL CITY NEWSPAPER

# JAPS SLASH AT PHILIPPINES

## Jap Planes Heard Over 'Frisco

### WESTERN COAST GETS BLACKOUT ON RAID SCARE

SAN FRANCISCO, Dec. 8 (UP)—California radio stations were ordered off the air indefinitely today after recurrent air raid alarms. Army and navy authorities said enemy planes had approached the central California coast.

The federal communications commission issued the order after reports of radio broadcasts as far east as Salt Lake City. It followed three air raid alarms here. There were similar alarms in other San Francisco bay and central coast cities.

By LES WAGNER  
SAN FRANCISCO, Dec. 9 (UP)—A night of blackouts and air raid alarms ordered by military authorities brought the war close to the west coast today.

Army authorities asserted enemy aircraft was operating off California's shores, and before dawn two blackouts had been ordered for the San Francisco bay region while the Pacific northwest and San Diego remained in darkness night-long.

Considerable confusion surrounded the signals. The first was ordered when planes were sighted about 100 miles off San Francisco. Gen. William H. Tunner, commander of the fourth intercept command, was convinced they were enemy craft. The navy's emergency alert was also sounded.

The second warning presumably was caused by U. S. navy patrol bombers that failed to identify themselves.

60 Planes in Group  
The initial "enemy" force was believed to number 60 planes. It approached the Golden Gate, divided into two squadrons that raced up and down just off the coast and apparently ventured over Point Barry, the entrance to the strait. The planes were flying too high to be visible to searchlights that swept the skies. They soon disappeared at sea.

The report was relayed up and down the coast. Radio stations were ordered off the air in their signals afford direction posts. Blackouts (Continued on Page 2, Column 1)

### ARMY AIRFIELDS PUT ON 'ALERT'

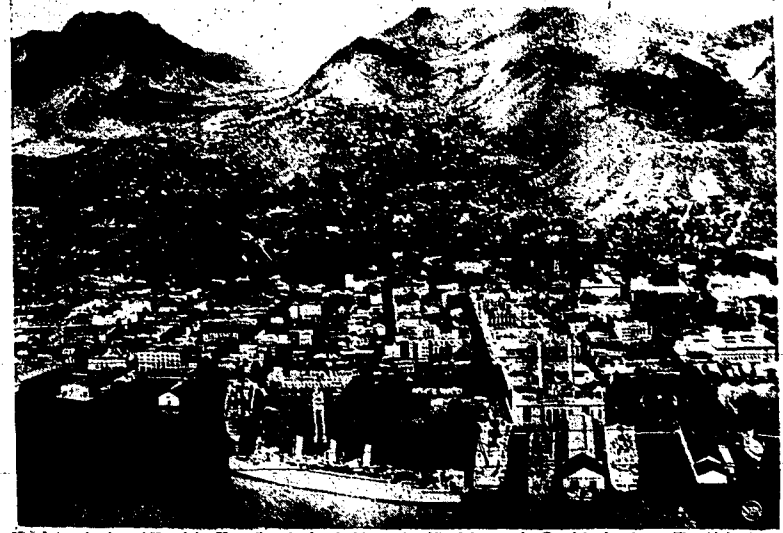
WASHINGTON, Dec. 9 (UP)—The war department today ordered all army air fields placed "on alert" as precautionary measure against possible enemy attacks.

Officials said the order was a general precaution and was not based on any information that enemy bombers were approaching New York City or elsewhere.

The alert was ordered by Maj. Gen. Henry H. Arnold, chief of the U. S. army air force.

At the same time, officials said no personnel was being evacuated from airfields. Chapter should at once devote full efforts to raising their quotas in shortest possible time. Please report action taken. We must not and shall not fall in this crisis.

### Air View of Honolulu—Bombed by Japs



Here's an air view of Honolulu, Hawaiian city bombed by the Japs in their first attack on U. S., which featured a terrific drive on the Pearl harbor base. The Aloha tower shows.

### RED CROSS CALLS WAR AID DRIVE

Called to mobilize resources of this area as part of a gigantic war relief campaign, the Twin Falls county chapter of the American Red Cross was asked today to raise a quota of \$5,000.

News of the drive and the county quota came to President Tom Alworth in a telegram from Norman H. Davis, national Red Cross executive. Mr. Alworth and the county directors immediately called a meeting for 7:30 p. m. Thursday, Dec. 11, in the lower auditorium of the public library.

The session was set for Thursday, Alworth said, in order to permit time to contact Red Cross committees in outlying sections. The chapter includes all the county except Buhl and Castleford. It was understood here that the west unit also received the emergency call today and will act immediately to start its own campaign.

The wife from Mr. Davis at San Francisco said: "Again the American Red Cross is called upon to serve our nation in war. Both nationally and locally we face vast and definite responsibilities for service to our armed forces and for relief to distressed civilians. To provide essential funds the Red Cross today is launching a campaign for a war fund of minimum of \$50,000,000. The President will issue on Friday a proclamation appointing this appeal."

Your chapter quota is \$5,000. Chapters may retain 15 per cent of their collections for local war relief expenditures. Chapter should at once devote full efforts to raising their quotas in shortest possible time. Please report action taken. We must not and shall not fall in this crisis.

### These Guns Roar Defiance



These guns yesterday roared in defense of Hawaii. Coast artillery guns, they are here photographed in inaction a short time ago. Now they are being used against the enemy Japanese raiders.

### Sugar Men Will Discuss Part in Helping Defense

National defense discussion—what sugar beet growers of the western states can and will do to aid the government—will highlight sessions of the National Beet Growers' association here Wednesday and Thursday. Charles M. Kearney, national president, announced this afternoon.

Kearney has been in Twin Falls since last Saturday evening. During that time he has conferred with many sugar beet leaders in this section and also with various national officials who have visited here since they have arrived since that time.

"Naturally, at a time like this, national defense and what we beet growers and farmers can do to aid will be one of the principal discussion topics," Kearney said. He added that all phases of the beet industry would be discussed before the two-day convention is concluded.

Convention headquarters will be the Hagerman hotel while all business sessions as well as a general reception Wednesday at 6 p. m. and a banquet Thursday at 6:30 p. m. will be held at Radio Room.

Annual Report  
President Kearney will give his annual report Wednesday morning. Major Joe Koehler will open the convention at 10 a. m. with an address of welcome and then appointment of various committees will follow. Committee meetings will be held and special speeches will be given.

## U. S. Plane Attack On Tokyo, Kobe Hinted in Message

### LATE FLASHES

MANILA, Dec. 9 (UP)—Gen. Douglas MacArthur said today that the Japanese sustained considerable aerial losses yesterday in attacks on the Philippines.

MacArthur said material losses in planes were suffered by both sides. The exact number lost is a military secret, he said.

NEW YORK, Dec. 9 (UP)—The National Broadcasting company's Stockholm correspondent, David Anderson, reported in a broadcast at 8 a. m. EST today reports in Stockholm said Germany would declare war on the United States within a few hours.

WASHINGTON, Dec. 9 (UP)—Recruiting officers were swamped with applications today as congress talked through a bill extending the selective service age limit from 21-35 years to 18-35 years. The original draft law had a top age limit of 25 but it was reduced to 23 early last year.

NEW YORK, Dec. 9 (UP)—New Zealand declared war on Japan today, a German official gained foothold on the British new news agency dispatch heard by the United Press last night post reported.

HONG KONG, Dec. 9 (UP)—British hospital and Japanese patrol are maintaining activity along roads in the mainland part of the island colony. It was said that the garrison awaits a full scale Japanese attack.

MANILA, Dec. 9 (UP)—Japanese planes again attacked the Manila area tonight, but were met by heavy anti-aircraft defenses here.

The capital was obscured by a dense blackout and black clouds cloaked the three-quarter moon, reducing visibility sharply.

The first anti-aircraft batteries opened fire northwest of the capital in vicinity of Zabala airport. Later the defensive guns south of the city around Nichols air field which was attacked by the Japanese yesterday went into action.

CHICAGO, Dec. 9 (UP)—The American Association of Railroad announced today that it would petition for a 10 per cent increase in all base rates. The increase would be effective on Feb. 1, 1942.

A blanket increase in freight rates also will be asked, the association said, but the percentage has not been decided.

Japan slashed at the Philippines and Malaya today but there were hints that American long-range bombers had retaliated with attacks on Tokyo, Kobe and the island of Formosa.

Official confirmation of raids on Japanese industrial and naval centers was lacking, but the German radio said Tokyo had ordered air raid precautions in the areas north and southwest of the capital.

A Tokyo broadcast said there had been no enemy planes over Japan up to 6:20 p. m. MST, Monday, but a Columbia Broadcasting system correspondent at Manila relayed reports that the Japanese capital and Kobe, which is the center of an important naval yard, had been bombed.

A British communique said artillery batteries at Hong Kong had "halted" a Japanese land attack on that isolated and blockaded colony with Canadian troops taking the lead in defense action. One Japanese plane was hit by anti-aircraft guns, the communique said.

Japanese planes bombed the Manila area by moonlight and returned to the islands this morning after a series of attacks that caused considerable damage at Clark field, near Manila, and scattered objectives throughout the Philippines including Davao, Iba, Baguio and Taguigharao. One American naval ensign was killed at Davao and one was killed and 12 wounded at the United States army station at Nichols field.

There were persistent reports without confirmation that Japanese had landed on the island of Luzon, which lies off the entrance to Manila bay and is about 90 miles from the Philippine capital. Japanese claims that Guam and Wake islands had been taken, also were not confirmed.

Severe land fighting was in progress on the Malay coast, where the Japanese sought to strike toward British base near Singapore.

Northward, where Thailand joins Burma and Indo-China, the Japanese were said by the Berlin radio to have opened an attack on the Burma supply route to China.

Japan was paying greatest attention to the position of Germany and the Soviet Union toward the far eastern war, and indicated that immediate help was expected from the axis partners.

The capital was obscured by a dense blackout and black clouds cloaked the three-quarter moon, reducing visibility sharply.

The situation:  
HAWAII—Apparently quiet. No reports of renewed Japanese activity; no new word on operations of the U. S. battle fleet.

PHILIPPINES—Japanese infiltrated small communities in moonlight air raids directed chiefly at Nichols air field and Ft. McKinley in Manila area. Japanese landings reported, but not confirmed—on Luzon island, 90 miles from Manila.

GUAM—U. S. army communique admits sinking of 80-ton minesweeper Penguin and a handful of casualties in Japanese attack on Guam; no confirmation that Japanese now hold Guam.

JAP CLAIMS—Ottawa started against Burma road; 200 "enemy" ships seized in Pacific, including 1,800-ton liner President Harrison. Japanese troops enter Bangkok. Midway island attacked, 1,200 miles west of Hawaii; claim destruction of 300 American planes at Hawaii and Philippines.

BRITAIN—More Japanese troops land on Malaya coast; but British forces are successfully repelling. London claims number of Japanese landings is so small operation is only "mop up."

MELBOURNE—Australia and New Zealand formalize war against Japan; Japanese bomb Nauru and Ocean Islands, southeast of Guam and Wake.

Important diplomatic activity was under way at Kaulboyke, temporary Russian headquarters. Official Russia was silent on the Japanese attack but "important developments" were expected.

### House to Probe Hawaii 'Affair'

WASHINGTON, Dec. 9 (UP)—The house naval affairs committee instituted an inquiry today to determine whether "somebody was asleep" among the navy high command when Japanese planes launched their initially successful attack on Hawaii Sunday.

The committee decided to ask Secretary of Navy Frank Knox and Admiral Harold R. Stark, chief of naval operations, to appear at a secret session tomorrow after Rep. Beverly Vincent, D. Ky., in a public session questioned the fitness of high naval officials and charged "somebody was asleep" when the Hawaiian assault was launched.

The action came after scattered congressional criticism of the lack of alertness at Hawaii which permitted enemy ships and planes to come to the U. S. naval bastion without detection until after the bombing began.

Chairman Carl Vinson, D. Ga., refrained from taking sides in the committee discussion which followed Vincent's accusations. But he disagreed at one point when Vincent criticized the aptitude of an admiral to perform his duties at the age of 64.

### PALS

DENVER, Dec. 9 (UP)—Patrol Kenner West A. W. O. I. from Ft. Warren, Colo., in 1928 because of the food prepared by Staff Sgt. Blufford Cooper "was something special."

Kenner walked into Lowry field, Denver, yesterday and told the post's marshal, "Here I am. I figure the army can use me now."

Later he discovered Sgt. Cooper has been transferred to Lowry field where he is chief cook.

### FULL 'ALERT'

WASHINGTON, Dec. 9 (UP)—The navy announced today all naval air stations everywhere "have been ordered on the alert."

### AIR RAID ALARM HITS NEW YORK

NEW YORK, Dec. 9 (UP)—Recruiting but wholly unconfirmed rumors about enemy aircraft off the Atlantic coast gave the Atlantic seaboard an air raid scare today.

New York's official police radio twice broadcast air raid alarms during a two-hour stretch.

In Boston, there was also a lengthy air raid alarm, police advised manufacturers to prepare for a civil defense units were ordered to duty and 12,500 air raid wardens were summoned out—but the all clear signal came early in the afternoon.

In Boston, military authority suggested the reports of enemy aircraft "two hours out of Boston" might have started when an American plane flew out to test anti-aircraft defenses.

However, all army and navy air stations in the country were ordered on the alert.

### We Confirmation

United Press instructed all of its coastal correspondents to be especially careful about giving circulation to rumors of enemy aircraft activity in the interests of preventing undue alarm.

Back to authorized sources, the instructions said.

Explaining to confirmation of the presence of hostile aircraft off the coast had been obtained. Lieut. Col. Deton Sumner, chief of the army air force central command, announced through the White House in Washington, "we're taking no host aircraft on the field unless they

### Armed Guards Placed at Local Airport; All Japanese Banned

By G. A. KEEKER  
Armed guards today were placed at the Twin Falls airport and the federal government ordered all Japanese excluded from the field and likewise ordered all pilot permits held by local pilots cancelled.

Request for the armed guards came from Gov. Chase A. Clark and was received in the form of a telegram by Maj. Joe Koehler, Koehler said. The guards are placed on request.

The governor wired as follows: "Important that you take adequate steps to safeguard airport and to prevent any Japanese from being on the field night and day for protection of Civil facilities."

The guards were placed on the field unless they are engaged in scheduled transportation or are publicly owned or operated under contract with the federal government.

With business of the airport suspended it is necessary that you call on you for this service."

The executive order to exclude all Japanese from the field was received here from civil aeronautics authority officials. The order also stated that under no circumstances were Japanese to be permitted to rent planes to fly themselves or even are they to be carried as passengers.

With business of all local pilots cancelled, there was no activity at the field here today.

The local airport manager said that he was informed in a telephone communication with A. G. Miller, C.A.A. inspector at Boise, that all Japanese pilots were to be excluded from the field unless they could prove, by birth certificate, that they were born in the United States or that they actually are naturalized citizens. If they were not born here, Craig said that he had contacted all local pilots by telephone and had informed them of the executive order. He said that he had instructed them they should take immediate steps to secure a birth certificate or other such documentary evidence in the United States, and that if there are any pilots here who are not naturalized citizens, they should immediately apply for naturalization papers.

One's New Year  
Craig was informed that two pilots could fly any day, but the inspector had looked over certificates or naturalization papers.

The airport manager was informed that the executive order was intended to prevent Japanese from being on the field unless they actually are naturalized citizens. If they were not born here, Craig said that he had contacted all local pilots by telephone and had informed them of the executive order. He said that he had instructed them they should take immediate steps to secure a birth certificate or other such documentary evidence in the United States, and that if there are any pilots here who are not naturalized citizens, they should immediately apply for naturalization papers.



### MUST BEAT JAPS, KEARNEY STATES

There is only one thing to do—beat Japan so decisively that they never again become a power of any consequence.

The war was the frank opinion expressed here this afternoon by Charles M. Kearney, Morrill, Neb., and Washington, D. C., president of the National Beet Growers association.

Kearney is in Twin Falls to attend sessions of the national convention here on Wednesday and Thursday.

In saying that the war must be an "all-out effort" with no holds barred, the speaker said that "certainly feel that farmers of the west will fight right step with the great national defense program."

"Give No Quarter" Discussing the happenings in the Pacific, Kearney said that Japan is an unprovoked aggressor on U. S. possessions, attacks which are even now intensifying.

"We must subject them (the Japanese) to just what they would do to us in Hawaii. In other words we should give no quarter and we must make it an all out fight to the end that the warlords Japan will be wiped from the face of the earth."

The national executive pointed out that the situation which now exists "brings to the fore the vital part of the American sugar industry will play."

He said: "The sugar shipments from the Philippines will now, in all probability, cease. There are two reasons. The first is that there will probably be no ships available for transportation of non-strategic materials such as sugar and foodstuffs, and if ships were available to a haul sugar over here it would be a serious question whether they could get through the war zone without getting sunk."

He declared that the sea lane from the Philippines to the United States is "so long that it can't be adequately patrolled with the available naval forces."

Plant Area Acreage He said that as their part in national defense the farmers should plant more acreage, provide for more livestock, eggs and produce.

Kearney was also emphatic in his denunciation of strikes "which have actually been a tragedy during the past year." He said:

"These strikes have helped back an enormous amount of defense materials—and production—and from now on strikes should be outlawed. I'm keen for that."

He also said that in his opinion there should be "no more appeasement anywhere."

"I say that because we've been appeasing Japan and now what do we find? We find that they've built ships, planes and other machines of war out of materials which we have been giving them to appease them. They are even now using our aviation fuel to fill the very planes which are releasing bombs to kill Americans."

"Every appeasement has its Munich," he said, "and the Munich of the Japanese attacks, the executive declared that the development is something which might have been anticipated "had we (the people) taken seriously the information that was available to us."

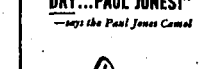
### Declo Girl Wins Clothing Medal

DECLE, Dec. 9 (Special)—Miss Rachel Matthews, Declo, fifth year 4-H clothing club member, was winner of a gold medal in the National Clothing Achievement contest sponsored by the Spool Cotton company.

Rachel also received a gold medal in the style dress revue contest being sponsored by the Chicago Mail Order company for being selected as a district blue ribbon award winner and contesting in the state dress revue.

"Ponder no more, O Puzzled One. Just remember... The very best BUY is the whiskey that's DRY... PAUL JONES!"

—says the Paul Jones Camel



### Winter's So Much Fun

... for those with the resistance to challenge its rigors ...

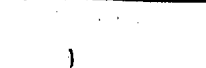
This winter why not try to get the most enjoyment out of every pleasure the season affords, instead of shutting yourself in because of "cold weather"? Being able to join in the fun the year around is largely a case of physical condition. It's well worth an attempt to build up a supply of extra resistance, and it may not be nearly so difficult as you perhaps think.

### BUTTER-KRUST "Enriched" BREAD

will help you to enjoy it

For the very purpose of supplying those vital food elements that are so often lacking in the average diet, and as a consequence account for a lack of energy in many instances, scientific experts have wholeheartedly endorsed the "enrichment" of bread. It's the most convenient method of helping to correct such conditions. With the addition of Vitamin B1, iron and other minerals, "Enriched" bread now becomes increasingly important in every household. BUTTER-KRUST "Enriched" Bread contains the standard amounts of all these elements science has recommended.

FOR BETTER HEALTH EAT MORE BUTTER-KRUST BREAD — BUY IT FROM YOUR GROCER



### Pioneer Days of County Described

CASTLEFORD, Dec. 9 (Special)—Mrs. Eliza Barr was the first to hold about early time Castleford Thursday evening in keeping with the pioneer theme of the bazaar at the Methodist church.

Her most vivid memories seem to be of dust and winds making a person always cold. She told of a dust and wind storm 30 odd years ago in July, followed by a snow storm. She said many of the plate glass windows in Twin Falls business houses were blown out by that storm.

Road Conditions She also told of the poor road conditions and the difficulty in crossing the Salmon Falls creek and told of the building of Lily grade across the canyon.

Others of the program were Miss Naomi Jean Darrow, who sang a solo, the high school girls sextet, Pauline Jones, Eleanor Stelma, Mildred Barnes, Edna Todd, Maryella Bays and Della Brady.

Taylor, who gave two readings; Elmer Oskey, who played a group of piano solos, and F. B. Crawford, who sang an original song. Dorothy Brown and Merlin Netzer accompanied the musical numbers.

Mrs. Pearl Blick won first and Mrs. Albert Heller second in a "style show."

Roy Hopkins auctioned off a cake for the Epworth league.

Old-Time Theme The old-time theme was carried out with the women in charge of booths dressed in old-fashioned clothes and the waitress in colonial fashion of black and white.

Mrs. Pearl Blick and Mrs. Albert Heller were general chairmen; Mrs. Lee Conrad, hostess; Mrs. Ed Conrad, program chairman; Mrs. Frank Hastings and Mrs. Parley Harmon in charge of the noon meal, and Mrs. John Thompson and Mrs. John Harrison of the evening meal.

Mrs. Minnie McBride and Mrs. H. A. Kinyon were in charge of the apron booth; Mrs. Bill Kinyon and Mrs. Fred Sentien, cooked food; Miss Amelia Rosenzweig, leaguette; Mrs. Rankin Rutherford and Mrs. Johnny Black, fancy work; Mrs. Charles Shorthouse, fish pond and Mrs. Charles Runyon, grab bag.

### Heyburn Students Appear at Rotary

RUPERT, Dec. 9 (Special)—Walter Baalinger, superintendent of Heyburn schools, and a group of Heyburn high school students were luncheon guests at the Rupert Rotary club Wednesday in the Caledonian hotel.

Club president, Dr. A. E. Johnson, presided. A. C. DeMery, program committee chairman, introduced Mr. Baalinger, who in turn introduced his students, who presented the program.

Entertainment features included a clarinet quartet by Dick Lanthorn, Paul LaRue, MarDean Nelson and Niace Borenson; a reading by LaRue Heiner; vocal solo, Joe Haycock; saxophone solo, Reed T. Dunn and a vocal solo, Letta Speer.

All musical numbers were accompanied by Miss Marjorie Mae Anderson. Group singing with Mrs. Edna Sinclair, Rotary pianist, completed the program.

### Two Pay Fines for Disturbing Peace

CASTLEFORD, Dec. 9 (Special)—Conrad King and Frank Whaley were each fined \$200 costs in the court of Police Judge Nellie Ulrich this week for disturbing the peace in the village of Castleford. Both paid the fine.

Constable Parley Harmon made the arrests.

### POMONA INSTALLS AT PUBLIC MEET

First public installation in Twin Falls county Pomona Orange history will be held at 8:30 p. m. next Saturday, Dec. 13, in the I. O. O. F. hall here. Pomona Master, Eric E. Jones, Twin Falls, said this afternoon.

Major address will be by E. T. Taylor, Cœur d'Alene, State Grange master who has just returned from the National Grange session at Worcester, Mass., and from many hearings at Washington, D. C. Mr. Taylor is expected to outline defense of the "right of freedom" needs that will prove of high importance to agricultural Idaho.

Ray Smith, Wendell, the State Grange treasurer, will be installing officer at the Saturday meeting. Refreshments will be served after the gathering.

The staff which is to be installed is headed by Mr. Jones, who was re-elected to serve another term.

### Hansen Serving 156 Hot Lunches

HANSEN, Dec. 9 (Special)—A report on the first week's progress on the hot lunches in the Hansen schools, as given by Supt. H. J. Deering, and the cook, Mrs. Zola Gray, states that the setup has proven itself with hopes for more improvement.

Lunches were served for the first time Thursday, Nov. 27, with 101 students being seated. The daily service since has been 156 plates. Mrs. Gray, who was in charge of the Hartnigh school kitchen for several years before coming to Hansen, is being assisted by her daughter, Miss Babe Gray, and Miss Effie Dean Oliver, who are expecting to be certified for the work in the near future.

### Eubanks to Head Unit of I.O.O.F.

COODING, Dec. 9 (Special)—Ira Eubanks was elected chief patriarch of the encampment No. 56, I.O.O.F., at a meeting Friday evening. He will succeed E. W. Dwyer.

Others elected were C. L. Bolton, high priest; Edwin E. Burt, Wenden senior warden; George Eubanks, junior warden; P. A. Robinson, scribe; H. A. Cleveland, treasurer; John Trip, trustee for a three year term; and Milton Roberts for a two year term.

Appointive officers will be named and will be installed with the officers-elect at the first meeting in January.

### Gift Packages Idaho Russet Baking POTATOES

SPONSORED BY B.P.W. On Display and Sold by VOGEL'S MARKET CONSUMER'S MARKET IDAHO DEPARTMENT STORE HOME MARKET SAFEWAY STORES MAX GROCERY NELS GROCERY STATION 8 & H PARK-IN MARKET ZIP-WAY MARKET BUNGALOW GROCERY MARKET

shipped prepaid to any point in the United States by railway

10 Lbs. \$1.50 15 Lbs. \$1.75

Packed by E. S. HARPER CO.

### Buhl Group Holds Christmas Meeting

Buhl, Dec. 9 (Special)—Mrs. Roy A. Smith had charge of the program at the Christmas meeting of the Women's Christian Missionary society at the home of Mrs. F. E. Merriman Wednesday.

The first six months of study based on the book "Author of Liberty" by Robert W. Searle was completed. Mrs. Smith concluded the study hour with a re-reading of the work covered in the six months, and announced the next six months top of study as "World Wide Christianity and Democracy."

An invitation was extended members and friends of the church to attend the meeting at the church, Jan. 7 to hear Mrs. Ernest Kennerly, returned missionary from China, who will be the guest speaker at that time.

### Mrs. Kunau Named As Worthy Matron

BURLEY, Dec. 9 (Special)—Mrs. R. H. Kunau was elected worthy matron of the Evergreen chapter of Order of the Eastern Star at a election meeting this week at the Old Fellows hall, succeeding Mrs. Ward Smith.

Other elective officers are A. T. Kline, worthy patron; Mrs. Ben Schwagerl, associate matron; Hugh Crawford, associate patron; Mrs. G. L. Barclay, secretary; Mrs. J. R. Simplot, treasurer; Miss Mary Barclay, conductress, and Mrs. Roma Rambo, associate conductress. Appointive officers will be named at the next meeting.

### Gained, Then Lost

It has been calculated that the earth once had a diameter of only 2,500 miles; grew to 8,100 miles by adding materials; and finally diminished to its present diameter of 7,918 miles.

### HOME GUARD IS FORMED IN IDAHO

BOISE, Dec. 9 (Special)—Formation of an Idaho home guard was announced today by Gov. Chase A. Clark as plans were rushed to organize civilians to meet requirements for vigilance at power plants, dams and important public works.

The state advisory defense council was called into session to perfect details of the home guard system. Clark also ordered mayors of Idaho to immediately assign "properly authorized police officers to landing fields day and night for protection of field facilities, and to hold such aircraft on the field unless they are engaged in scheduled transportation, or publicly owned, or operated under contract with the federal government."

He also announced all railroad and highway officers will be deputized to meet requirements for vigilance at power plants, dams and important public works.

### Dean Wilcox Heads Claremont Grange

DECELO, Dec. 9 (Special)—Dean Wilcox, Declo, was chosen master of the Claremont Grange Wednesday, succeeding Russell Heilig, retiring master. The new officers will be installed at their meeting Jan. 7.

### MONTGOMERY SCORES KAYO

PHILADELPHIA, Dec. 9 (Special)—Bob Montgomery, 128, Philadelphia, technically knocked out Jimmy Garston, 141, Kansas City, in 4 rounds here last night.

### O. E. S. at Buhl Elects Officers

Buhl, Dec. 9 (Special)—Mrs. Florence Ring was elected worthy matron of the Buhl chapter of the Order of Eastern Star to succeed Mrs. Vera Overbaugh, worthy matron for the past year, at the regular meeting Thursday evening at the Masonic hall.

Additional officers elected were: Worthy patron, O. W. Maraden; associate matron, Mrs. Nell Foster; associate patron, Roy A. Smith; secretary, Miss Lois Rudy; treasurer, Mrs. Grace French; conductress, Mrs. Jessie Rugg; associate conductress, Mrs. Theo Love.

Installation of the newly-elected officers will be held Friday, Dec. 12. Mr. and Mrs. Roy A. Smith were affiliated with the Buhl chapter, having been former members of the

### Many Never Suspect Cause Of Backaches

The Old Russian (O.R.) method of massage is a new discovery of kidney function, scientific evidence to remedy the cause of many common ailments, rheumatic pains, leg and back pain, and many other ailments, relieving, reducing the pressure, and restoring the normal function of the kidneys.

Do not let your doctor tell you that your kidneys are not the cause of your backache, leg pain, or other ailments. Do not let your doctor tell you that your kidneys are not the cause of your backache, leg pain, or other ailments.

## The LAST .. of Previous Purchases Silk Hosiery

Buy Now for Christmas

Whether we will be able to offer All Silk Hosiery after our present stocks are sold we do not know—

BUY AS MANY AS YOU WISH WHILE THEY LAST

### The FACTS about SILK STOCKINGS

We have received the last of previous purchases. We don't know the future of the silk stocking situation. No one does. But we do know that the silk stocking market is changing rapidly ... that in the country there is limited amount of silk on hand at the present time ... that many of the largest silk stocking manufacturers have already ceased making, for the present, all-silk stockings! The finest of them are now using tops and feet of lisle, rayon, and other fabrics.

## Here Is What We're Selling

Thousands of pairs of high-quality silk stockings that include our regular Fall order of uniformly high-quality silk stockings, placed before the silk situation became as acute as it is now. Buy as many pairs as you want. You'll find the newest Fall Colors. And you'll find every pair up to the C. C. Anderson's regular standards of fine quality. We think they're among the best silk stockings you'll find anywhere ... we know certainly they're among the best you'll find anywhere at these low prices!

Famous MILLAY SILK HOSE \$1.00

In a beautiful, sheer, 3 thread Crepe De Chine. All the latest colors in sizes 8½ to 10½ including outsize.

A Special Xmas Offer VAN RAALE

2 pair beautiful all silk hose in the best colors and packed in an attractive Christmas box. These hose sold regularly for \$1.00 per pair.

Box of 2 \$2.63

ROYAL BLUE 2 and 4 Thread 79c

MAXENE 2-4 and 7 Thread \$1.00

VANETTE 2 and 3 thread in medium and long lengths \$1.25

3 Thread \$1.25

Stretch Top, 4 and 7 Thread \$1.35

MILLAY CORDAIRE 4 Thread \$1.00

VANETTE For beauty and wear ... 3 thread medium and long lengths \$1.15

VANETTE NYLONS \$1.65

BUY NOW!

This May Be The Last Silk Hosiery Of The Quality Now In Stock



# CONGRESSMEN READY TO ACKNOWLEDGE WAR WITH AXIS

## BATTLE AGAINST GERMANY, ITALY PREDICTED NEAR

WASHINGTON, Dec. 9 (AP)—Congressional leaders were ready today to acknowledge war with Germany and Italy if those axis powers join their Japanese partner in hostilities against the United States.

Speaker Sam Rayburn told United Press another war resolution would be adopted immediately if either Italy or Germany moves against this country.

President Roosevelt, still apparently uncertain of intentions from Berlin, said tonight in his new and virtually all-powerful role as "war president." He will give an address on the state of the Pacific where Japan has dealt our naval and air arms a punishing blow.

Congressional Protest There is a scattering of sharp and bitter congressional protest against officers presumed to have been responsible for permitting Japan to get away with a surprise attack on our Pacific airfields. The capital is speculating on possibility of high command although information reaching the public is so meager there is no constructive sound basis for fears spreading here regarding extent of our reserves in the Pacific.

But after 48 hours of war, it appears Japan and the axis had won the headlines and the radio, bulletins if nothing else. For the most part the American public is ignorant and hearing of apparently successful and damaging of astonishingly successful Japanese air attacks on our bases, on our bases, on units of the fleet and on our shipping.

From foreign diplomatic sources here came a suggestion that United States also is preparing against surprise attack in the Atlantic similar to that which enabled Japan to get away with our fleet in Pearl harbor, Hawaii.

May Act Without Notice An official DNB German news service report heard last night by United Press listening station hinted that Germany was preparing to move against the United States and other nations which are at war with Germany.

Rayburn countered with the statement that congress would be ready to acknowledge war in the same fashion as it has done in the past. He enabled both houses to vote a war resolution 33 minutes after Mr. Roosevelt had requested it.

But there seemed to be disappointment in congress from the top leadership down on our showing—so far as it is known to them—of the public—in the first round of the war in the Pacific.

Few, if any, were willing to go along with Rep. John D. Dingell, D, Mich., who wanted a court martial inquiry into the conduct of five high ranking officers, including Admiral Husband E. Kimmel, commander-in-chief of the United States fleet in the Pacific. He proposed similar action toward Lt. Gen. Walter D. Short, commander of the Hawaiian department, Maj. Gen. Henry H. Arnold, chief of army air forces, Maj. Gen. George H. Brett, chief of the army air corps, and Maj. Gen. Fred L. Martin, chief of the Hawaiian air force.

Dingell said if those officers were blameless for Pacific reverses, then "we'll have to go higher up in our probe."

"Caught Astoop" The army in Hawaii obviously was caught off guard if they were not sound asleep in the same bed, said Dingell. "The American people have a right to know who was to blame for the great catastrophe which befell our American fighting forces in the stronghold of the Pacific."

As the nation plunged into the Pacific war, our relations with the other axis powers steadily deteriorated. The White House opened fire on Berlin with a charge Germany had sought to push Japan into the war in the hope of intercepting the flow of lend-lease supplies to Britain and to the Soviet Union. The statement said German claims that lend-lease aid would be withheld were further proof that Berlin's propaganda was "continually, completely and 100 per cent inaccurate." Lend-lease aid will continue in full operation, the statement said.

But Prime Minister Winston Churchill, speaking from London, warned that our sudden emergency in the Pacific would tend somewhat to diminish the immediate flow of material aid although his remarks in no way supported German contentions.



Hickam field, near Pearl harbor, with bombers poised for flight. This photo was made two years ago. Today, heavy smoke arose from this air base, following a bombing by Japanese.

## "First Beet" Claimants And Contract of 1898!

The matter of who raised the first sugar beets in Idaho still wasn't settled today as delegates arrived for the National Beet Growers association convention—but two eastern Idaho men laid claim to the honor and weren't disputed so far this afternoon.

The claim was voiced by Byrd Trego, widely known editor of the Daily Bulletin at Blackfoot, here for the convention. Trego said that he and Austin Hollingsworth both planted sugar beets in 1898. He doesn't know any plantings that ante-date those.

For Ogden and U. of I. Hollingsworth grew his first beets for the Ogden Sugar company. Trego planted his in cooperation with the University of Idaho extension division in an effort to provide data to inaugurate the beet industry. He has been an earnest beet booster ever since.

Trego showed a copy of Hollingsworth's 1898 contract with the Ogden concern. It makes the modern contract all "freshness and light" the editor remarked with a smile.

Here's that early contract, dated March 24, 1898, at Preston and applying to two acres planted to beets by Mr. Hollingsworth.

"I, Hollingsworth, that the first party agrees to purchase from the second party any and all beets he may produce (from seed furnished by the first party) at the rate of 15 cents per pound. . . .

Strict Requirements "Before any beets are received, they must each have the tops closely and squarely cut off at the base of the lower or bottom leaf.

"Beets must not weigh over three and one-half pounds each nor contain no less than 12 per cent sugar and they must have the tops efficient of no less than 50 per cent. No diseased, frozen, damaged or improperly topped beets shall be delivered or received, and the first party shall be the sole judge of the

Angry Crowd Breaks Windows Of Stores Lighted in Blackout SEATTLE, Dec. 9 (AP)—An angry crowd of 3,000 persons roamed the downtown business district early today, heaving cans and bottles through windows of stores that failed to observe a blackout ordered throughout the Pacific northwest.

Police finally broke up the demonstration with bursts of fire-hosing, but by that time—an hour and a half later—damage had reached many thousands of dollars, authorities estimated.

Six persons, one a woman, were held on an open charge and four others were injured by flying glass. One was hospitalized.

Luckless merchants were called to their stores hastily, but by the time they were supplying the stores, authorities estimated.

As the blackout went into effect, soldiers, police and home defense units patrolled the streets. They conveyed on the "blow" but were unable to control it.

Shouts of "turn them out" and "this is war!" arose from the crowd as it moved from one illuminated store to another.

Shattered by police in squad cars, soldiers on the "blow" and a British warship, the crowd covered 18 square blocks.

The men and women were in a

## NEWSPAPERMAN'S BROTHER, 41, DIES

Word was received here late yesterday of the death in San Francisco earlier in the day of Jack K. Kelker, 41, brother of O. A. Kelker, Twin Falls newspaperman.

Mr. Kelker, a civilian electrical engineer at the Presidio of San Francisco, was found dead in his quarters yesterday morning. His body was found in bed after he failed to report for duty. The attending physician listed cause of death as an acute kidney ailment.

He was one of the youngest soldiers of the first World War, having given the wrong age when he was enlisted although he had not yet reached his 17th birthday.

Funeral arrangements had not been completed today, although it was believed that burial would be at the soldiers' cemetery at the Presidio.

In addition to the brother in Twin Falls and also his sister-in-law here, Mrs. Betty Kelker, he is survived by his mother, Mrs. J. J. Kelker, and a brother, H. P. Kelker, both of Sacramento, and a sister, Mrs. George L. Weil, Chicago. In Sacramento his mother resides at 2031 I street.

GERMAN RAIDER MONTEVIDEO, Uruguay, Dec. 9 (AP)—The newspaper El Pais reported today that the German pocket battleship Lutzow was raising off the Argentine coast. There was no confirmation from other sources.

Leather Bill Folds, Keytainers, Zipper Cases and Perforates make acceptable gifts. A fine selection is found at the Clas Book Store.—Adv.

## Best Wishes for the Continued Success of the EUGENE BEAUTY STUDIO

In Their New Location

It is indeed a matter of pride that we have been instrumental in the construction of this modern beauty salon.

R. D. THOMPSON General Contractor

"Festive" mood, chanting and singing as they roamed the streets: "We want a blackout!"

Experiments with rats at the University of Chicago indicate the rodents can digest a lead bearing.

## Congratulations to the NEW Eugene Beauty Studio

Your new home is a credit to Twin Falls and we sincerely wish you continued prosperity.

The Following Materials Supplied and installed by

DETWEILER'S Iron Fireman — Bin Fed Stoker American Radiator Boiler Modine Copper, Concealed Radiation Standard Sanitary Plumbing Fixtures

## FDR TO DISCUSS GERMAN PATTERN

WASHINGTON, Dec. 9 (AP)—President Roosevelt's address to the nation tonight will be devoted largely to a discussion of the "Nazi pattern" of the present war involving the United States, the White House said today.

Secretary Stephen Early said at a press conference the chief executive would spend most of the day working on his address, which would deal more with "the Nazi pattern of this overall situation" than with specific details of war operations with Japan in the Pacific.

Asked for latest news of the war, Early said the President had checked his official dispatches with newspaper stories on the battle of the Pacific and had found the newspapers had most of the facts that the government has at this time.

About reports of air raids on San Francisco, Early said "You know as much about it as the President does."

"How was it, if the reports from San Francisco are true, the Japanese planes could get so near our west coast?" Early was asked. "You can be sure the army and navy on the President's instructions are on the alert for defense," he said, adding this alert involved not only the Pacific coast and San Francisco but other areas.

"The picture is much bigger," Early said.

## JAPANESE CLAIM HAWAII HELPLESS

SAN FRANCISCO, Dec. 9 (AP)—A Japanese broadcast heard by United Press listening post here today said the "suddenness and large scale" of the Japanese attack on Hawaii Sunday left its American defenders "helpless."

"The United States army was not surprised," Radio Tokyo said. "According to information from Havana, the United States is very weak in fighting planes, despite its claims."

The Japanese announcer said although several small Latin American countries had "succumbed to pressure" and joined the United States against Japan, it was significant that the larger countries were "impressed by Japanese victories and will preserve their independence."

## AROUND the WORLD

With United Press WASHINGTON—The navy today announced creation of a "Potomac river naval command," apparently designed to coordinate defense of the national capital from attacks by sea as well as to protect naval establishments in the area.

NEW YORK—Private advice from Europe to the United Press reported Adm. Jean Francois Darlan, Vichy vice premier had left Vichy to confer with either Benito Mussolini or Count Galeazzo Ciano, Italian foreign minister, and discuss the status of French Tunisia, adjoining Libya.

SINGAPORE—Japan has succeeded in landing additional troops in northern Malaya and savage fighting continued throughout last night for the important Kota Bharu airfield, a communique of the Malaya command said today.

LOS ANGELES—Hermann Schwinn, stated German American band leader for the west coast, and Hans Diebel, German youth group leader, were jailed today by FBI agents along with more than 90 other Germans and Italians founded up by the federal agents during the night.

KUIBYSHEV, Russia—Russia maintained official silence regarding the U. S.-Japanese war, but diplomatic circles anticipated "important developments" in view of American lend-lease aid and Russia's obvious strategic potentialities in the oriental war theater.

HOLLYWOOD—Actress Blinnie Barnes was reported in "unfavorable" condition at Cedars of Lebanon hospital today following an abdominal operation.

READ THE TIMES WANT ADS.

Eddy's Sensational New Bread Flavor! Half and Half White Wheat Bread. Buy at your dealer.

## BEAUTY SHOP IN NEW HOME HERE

The Eugene Beauty studio, located in a new building at 125 Fourth avenue north, will be open for business tomorrow morning, Venice H. Leopold, owner, said here this afternoon.

The studio was formerly located in the basement of the Fidelity National bank building, having been there for five years. Mrs. Leopold has been in the beauty business in Twin Falls for 14 years.

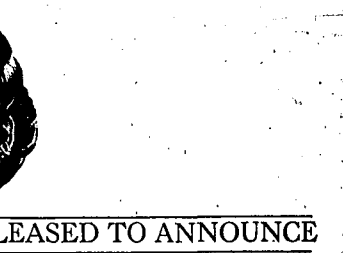
The present location is a completely new two-story structure with basement. The entire ground floor will be given over to beauty studio work. Eight booths have been constructed in addition to a body contouring department.

All modern equipment has been installed at the new location, offering the latest in beauty treatment. Six operators are employed, in addition to the owner.

Private parking is provided for patrons in the rear of the building. Receptionist will be Mrs. Mable Tolson, representing Merle Norman cosmetics.

It is regarded as improper for a mother-in-law to speak to her daughter's husband among some Indian tribes.

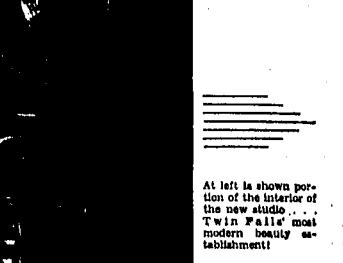
WE WISH TO CONGRATULATE THE Eugene Beauty Studio Now Open In Their Fine New Salon. We extend this progressive firm sincere wishes for continued success. Materials Furnished by the Home Lumber & Coal Co. See Us For Your Building Needs. 301 Second Street S. PHONE 34 TWIN FALLS



## VENICE LEOPOLD IS PLEASED TO ANNOUNCE THE OPENING OF HER NEW . . .

# EUGENE BEAUTY STUDIO

IN ITS NEW LOCATION AT 125 FOURTH AVE. NORTH



At left is shown portion of the interior of the new studio. . . . Twin Falls' most modern beauty establishment!

This move is occasioned by our need for additional room and at the same time gives us opportunity to present to our public a completely modern beauty studio. Up-to-the-minute in every detail, comfort, beauty, convenience and utility. . . . with ample parking space provided at the rear of our establishment. . . .

Phone 69 for appointments in types of beauty service!

FEMININE GIFT SUGGESTIONS Satin and crepe quilted robes, as well as Bemberg flannels richly embroidered. Black nylon gowns, black satin and lace housecoats. Silk and satin pajamas and gowns. All grades of slips and the much wanted Slimikins. . . Also Slim Skins. Hosiery by Mojud and Gordon. Silk and nylon now available. Bertha Campbell's Store 131 MAIN EAST

These young ladies will be glad to serve you in Twin Falls' most modern studio! Wilma Atkins, Marjorie Goodnight, Katella Green, Marguerite Schmidt, Frances Threlkeld, Marie Frank. Especially trained in all types of hair styling, these young ladies can serve you best! Mrs. Mabel Tolson, Merle Norman Cosmetics and Body Contouring. Phone 69 for appointments for all types of beauty service!











MARKETS AND FINANCE By United Press

GRAIN FUTURES STAY UNSTEADY

CHICAGO, Dec. 9 (UPI)—Grain futures were quiet and a wide range today with wheat and soy beans leading...

Table with columns: Wheat, Corn, Soy Beans, Rye, Barley. Includes prices for various grades and locations.

Table with columns: No. 1 Hard, No. 2 Hard, No. 3 Hard. Lists prices for different wheat grades.

LIVESTOCK

Table with columns: DENVER CATTLE, DENVER SHEEP, DENVER HOGS, DENVER GOATS, DENVER HORSES. Lists prices for various livestock types.

POTATOES

Table with columns: CHICAGO POTATOES, SALT LAKE MINING STOCKS, POTATO FUTURES. Includes prices for potatoes and mining stocks.

NEW YORK STOCKS

Table with columns: American Red, American Woolen, Allied Stores, etc. Lists major stock prices.

Local Markets

Table with columns: Local Markets, Buying Prices, Soft Wheat. Lists local market prices.

POTATOES

Table with columns: Local Potatoes, Salt Lake Potatoes, etc. Lists potato prices.

STOCKS DROP TO THREE-YEAR LOW

NEW YORK, Dec. 9 (UPI)—Stocks broke sharply today to new low since mid 1931...

INVESTORS URGED TO AID NAZIS

Defense stamps and bonds are not a donation to the government and America must unite to build a...

Local Markets continued with details on various commodity prices and market trends.

Times Sales Boom after War Starts

Swift and dramatic events following in rapid-fire order on the heels of Japanese aggression...

No Word Yet On Fate for Wake Island

BOISE, Dec. 9 (UPI)—Reports received here today from Pacific Islands, where an estimated 500 to 600...

TRIO CITED FOR PASSING BUSES

Expanding the Twin Falls campaign to eliminate passing of stationary school buses...

Continuation of Times Sales article discussing market activity and economic conditions.

Continuation of No Word Yet article regarding Wake Island and military operations.

Continuation of Trio Cited article detailing the incident with school buses and the individuals involved.

SUGAR MEN SET FOR CONVENTION

heard their complaints with special entertainment numbers to feature the general reception that evening...

CHARGE FILED IN ACCIDENT DEATH

JEROME, Dec. 9 (Special)—Charge in this county manslaughter were filed in probate court here today...

SKI CLUB WILL MAP SPORT FAIR

Final arrangements for the winter sports fair scheduled Thursday afternoon and night...

BUTTER, EGGS

BAN FRANCISCO (Special)—Butter, eggs prices are reported to have advanced again...

DENVER BEANS

DENVER (Special)—Beans, coffee prices are reported to have advanced again...

RUSSIANS CLAIM NAZI LOSS HIGH

LONDON, Dec. 9 (UPI)—Russian dispatches said today that since start of the war the Germans have lost...

My Duty Is to Tell of Relief

MRS. EMMA GOLE, 721 7th St. South, Twin Falls, Mont. says: 'I feel it my duty to tell of the relief...

DEATH SUMMONS DUPLICATED

RUPERT, Dec. 9 (Special)—Mrs. Alice Stella Healy, wife of George Healy, a prominent resident...

WEDNESDAY SALE 1500 Head Cattle

SALE STARTS AT 12:00 NOON STOCK INCLUDES: 100 Head Fat Whiteface Cows...

POTATO FUTURES

CHICAGO POTATOES—Weather partly cloudy, temperature 15 degrees, allowance 80 cents...

POTATOES

CHICAGO POTATOES—Weather partly cloudy, temperature 15 degrees, allowance 80 cents...

POTATOES

CHICAGO POTATOES—Weather partly cloudy, temperature 15 degrees, allowance 80 cents...

POTATOES

CHICAGO POTATOES—Weather partly cloudy, temperature 15 degrees, allowance 80 cents...

POTATOES

CHICAGO POTATOES—Weather partly cloudy, temperature 15 degrees, allowance 80 cents...

ATTENTION

Cash paid for worthless or dead cows, horses and price paid for dead sheep.

ATTENTION

Cash paid for worthless or dead cows, horses and price paid for dead sheep.

ATTENTION

Cash paid for worthless or dead cows, horses and price paid for dead sheep.

ATTENTION

Cash paid for worthless or dead cows, horses and price paid for dead sheep.



# 14 NATIONS JOIN U. S. IN CONFLICT

**By United Press**

Fourteen nations and the exiled governments of five other nations have declared war on Japan since Sunday, and at least two more—Cuba and South Africa—are expected to declare war today.

Those proclaiming a state of war are the United States, Britain, Australia, Canada, New Zealand, Costa Rica, Panama, Nicaragua, El Salvador, Honduras, Haiti, Dominican Republic, Guatemala and Chile.

The Netherlands East Indies also declared war as did the exiled governments of Free France, Greece, Belgium and Poland.

Three countries have severed diplomatic relations with Japan—Mexico, Colombia and Ecuador. Mexico and other American countries were lining up behind the United States, and eight of them have declared war. Brazil declared the same today, a non-belligerent and placed her resources at disposal of the United States. Argentina is expected to follow suit during the day.

Other Latin American nations announced their intentions of aiding the United States.

# HOOVER DEMANDS SUPPORT FOR FOR

**NEW YORK, Dec. 9 (UP)—**Former President Herbert Hoover, who long had denounced President Roosevelt's foreign policies, called upon Americans today to stand up and fight with everything they have to smother this invasion by Japan.

He issued the following statement: "American soil has been treacherously attacked by Japan. Our decision is clear. It has been forced upon us. We must fight to the bitter end. I have opposed the foreign policies of our government. I have believed alternative policies would have been better. But whatever our differences of view as to the causes which have led to this situation, those are matters to be thrashed out by history.

"Today there is just one job before the American people. We must defeat this invasion by Japan and we must fight it in any place that will defeat it.

"This job we must have and we will have until in America. We must have and will have full support for the President and his agencies in this war to defend America. This will be victory."

# GOLFALEX SELECTS NEW PATRIARCH

**Colfax Encampment No. 20** has elected Floyd Mall, Twin Falls, as chief patriarch. Other officers named are:

High priest, Robert E. Nelson, Twin Falls; senior warden, Earl V. Brown, Twin Falls; junior warden, Roy Lancaster, Pocatello; scribe, T. D. Blankenship, Buhl; and financial scribe, Sam E. Crismore, Twin Falls.

Executive officers will be installed Jan. 5, 1942. It was announced that the local encampment will visit the Rupert encampment Dec. 18, when the candidates will be given the degrees.

# NAMED BISHOP VATICAN CITY, Dec. 9 (UP)—

Pope Pius today appointed Monsignor Joseph Willingham as bishop of Pueblo, N. M. Monsignor Willingham is at present general vicar of Helena, Mont.

# Marian Martin Pattern



Pattern 9507 may be ordered only in retail and women's sizes 12, 14, 16, 18, 20, 22, 24, 26, 28 and 30. Size 12, 2 1/2 yard 4 1/2 inch. To get this pattern send FIFTY-CENT check to THE PATTERNS CENTRAL, 1007 N. CENTRAL ST., CHICAGO, ILL. 60610. PATTERNS CENTRAL, 1007 N. CENTRAL ST., CHICAGO, ILL. 60610. PATTERNS CENTRAL, 1007 N. CENTRAL ST., CHICAGO, ILL. 60610.

# Home of Army's Hawaiian Division



Air view of Schofield barracks, headquarters of U. S. Army's Hawaiian Division.

# In Washington—Japanese Papers Burned



(NEA Telephone) Right on the heels of the sudden announcement of a Japanese attack on Hawaii, Japanese embassy employees were clearing their office files of secret papers. Staff members are here shown burning thousands of records on the embassy's back lawn, an hour after the attack was announced.

# Chief Says Law Units Ready; Mayor Seeks Volunteer Plan

**Chief of Police Howard Gillette today had told members of the city council that if there is any emergency here he is "confident" it could be handled by local law enforcement agencies in cooperation with the FBI.**

Gillette made his statement last night at a meeting of the city council. He said that the city's law enforcement agencies are well equipped to handle any emergency that may arise. He also mentioned that the city is looking for a volunteer plan to supplement the regular police force.

# 400 ITALIANS AND GERMANS SEIZED

**WASHINGTON, Dec. 9 (UP)—** Federal bureau of investigation agents seized nearly 400 German and Italian aliens in nationwide raids last night, an authoritative source said today.

Those seized were considered dangerous to the "peace and security" of the United States. There were said to be "more than 300" Germans and about 400 Italians in the country. The raids were staged under a proclamation recently promulgated by President Roosevelt. It was understood. He acted under the same sections of the U. S. code which permit the internment of alien enemies. The credentials of Japanese nationals within 12 hours of Japan's declaration of war.

# Police on Guard To Halt Japanese Suicide Attempts

**WASHINGTON, Dec. 9 (UP)—** Special American guards at the Japanese embassy today are guarding against possible attempts at "suicide" by the Japanese staff.

Local police have been stationed outside the embassy. It was learned and have special instructions to frustrate, if possible, any suicide attempts. The Japanese staff is being guarded by National Guardsmen and members of the staff.

**NOTICE**

Having made different arrangements, I will be UNABLE TO HOLD MY SALE as advertised for Thursday, Dec. 11.

**GEO. F. MOORE**

Hansen, Idaho

# GRAZING SESSION DELAYED BY WAR

**SALT LAKE CITY, Dec. 9 (UP)—**Western states grazing session scheduled 10-day meeting here as a result of American's declaration of war against Japan. The meeting was to have started today.

Jay C. Newman, agent in charge of the grazing session, advised delegates against meeting at this time and declared they could aid in the current emergency more by remaining in their respective offices on "an alert."

The future date for a meeting has been set.

# WAR DEAD

**WASHINGTON, Dec. 9 (UP)—**The war department today issued the first official (partial) casualty list of the United States-Japanese war, today listed the names of 37 American soldiers killed in the air corps who were killed in Japanese air raids on Oahu, the list:

- 2d Lt. Robert H. Markley, Manding, Okla.
- 2d Lt. John E. Pletzsch, Amarillo, Tex.
- 1st Lt. Capt. J. S. Greene, Colfax, Ia.
- 1st Lt. Robert M. Richey, Wellsville, Va.
- 2d Lt. George A. Whitman, Seaside, Mo.
- 2d Lt. Hans C. Christiansen, Woodland, Calif.
- Pvt. Robert G. Allen, Sims, Ind.
- 1st Sgt. Edward J. Burns, Air Corps, Pittsfield, Mass.
- Corp. Robert P. Buss, Elkhart, Ind.
- Pvt. Theodore P. Byrd, Jr., Tampa, Fla.
- Pvt. Wilbur S. Carr, Miami, Okla.
- Corp. Malachy J. Cahen, Lehigh, Pa.
- Pvt. Dean W. Gebert, Galesburg, Ill.
- Pvt. Eugene L. Chambers, Apollo, Penn.
- Pvt. William C. Creech, Cumberland, Pa.
- Sgt. Frank J. Depolis, Reno, Nev.
- Sgt. James H. Derthick, Ravenna, O.
- Sgt. James Everett, James Springs, N. M.
- Pvt. John R. Fleischer, Jonesville, Wis.
- Sgt. Joseph E. Good, Pittsburgh, Penn.
- Sgt. James E. Guthrie, Naphale, Va.
- Sgt. Joseph C. Herbert, Clear Springs, Md.
- Corp. Vincent M. Horan, Stamford, Conn.
- Pvt. George O. Leslie, Arnold, Penn.
- Pvt. William H. Manley, Atlanta, Ga.
- Pvt. John G. Mitchell, Hoisting, Kan.
- Pvt. Robert R. Niedzwiecki, Grand Rapids, Mich.
- Donald D. Plant (no rank shown), Wausau, Wis.
- Sgt. John A. Price, McCormick, Miss.
- Alton E. Robison (no rank shown), Boston, Mass.
- Sgt. George R. Schmetsel, Corona, N. Y.
- Robert R. Shattuck (no rank shown), Blue River, Wis.
- Sgt. Robert P. Sherman, Middletown, N. Y.
- Sgt. Morris Stacey, Fairmont, W. Va.
- Sgt. Andrew A. Walczynski, Duluth, Minn.
- Pvt. Lumaus E. Walker, Ziegler, Ill.

# ADMINISTRATION FAILED IN PRESSURE AGAINST NEW SUGAR BEET BILL

**WASHINGTON, Dec. 9 (Special)—**All the pressure the administration could apply to the house failed to change its view on the sugar bill, which is yet to be considered by the senate. At the last minute President Roosevelt sent a communication; also a letter from Secretary of State Cordell Hull and another from Secretary of Agriculture Wickard. Enough votes were available from the sugar beet states to pass the legislation by a large margin.

Mr. Hull's opposition, as that of the President, was apprehensive that it would disturb the "good neighbor" plans of the United States with sugar producing islands at a time when the administration is doing everything possible to please them. A poll taken of the senate indicates that the sugar bill will pass that body, although there are more 100 per cent New Dealers who follow the administration in the senate than in the house. Some of the ad-

**MINISTERS' STRONGEST SUPPORTERS** returned to head the communications dispatched to the house.

For communities where landlords are raising the rent congress has enacted a model rent-control law, applying particularly to the District of Columbia, but the statement is made that any community where rents are going up high can adopt the model law and rents will be frozen as of Jan. 1, 1942. Real estate agents stated protests but congress gave no heed as none of the western protestants were familiar with the bill's application and terms.

Without fuss or feathers a subcommittee of the senate public lands committee is in the field (last week in Arizona) gathering data to determine whether the grazing act requires revision. There are five grazing districts in Idaho—Owyhee, Twin Falls, Lost River, Lemhi and Wood river, which will be affected by any amendments to the existing law.

The probe, as one phase, will look into the cost a cattleman must pay to graze his herd. There is a wide assortment to know whether the value of the land has been taken into consideration in issuing permits. Members of the committee do not know; they wish to learn. The system may be perfect, or it may be full of holes.

For a month the subcommittee has been browsing around the ten grazing states collecting information talking to livestock men. Head of the subcommittee is Senator Pat McCarran of Nevada, who before he entered public life raised sheep in Nevada, Idaho and Oregon and is thoroughly versed with the western country.

Study includes an examination of

# ALL MORMONS IN HAWAII ARE SAFE

**SALT LAKE CITY, Dec. 9 (UP)—**All Mormon missionaries and Mormons in Hawaii are "safe and well," the LDS first presidency was advised today.

Pres. David O. McKay, second counselor, announced receipt of a cablegram from Jay C. Jensen, president of the Japanese mission with headquarters in Honolulu. The message read: "All missionaries and natives safe and well."

There are about 125 American missionaries in the Hawaiian field of the church, which has a Hawaiian membership of more than 16,000.

# HARTNETT NAMED MANAGER

**INDIANAPOLIS, Ind., Dec. 9 (UP)—**Gabby Hartnett, veteran big league catcher, has been signed to manage the Indianapolis club of the American Association. Hartnett formerly managed the Chicago Cubs, and last year served as coach of the New York Giants.

# VANISHED

**HONG KONG, Dec. 9 (UP)—**Hong Kong defectors saw a Japanese agent signaling yesterday from what he apparently thought was a neutral island. Actually it was a concealed mine. The mine was touched off. The signal vanished.

**MINISTERS' STRONGEST SUPPORTERS** returned to head the communications dispatched to the house.

For communities where landlords are raising the rent congress has enacted a model rent-control law, applying particularly to the District of Columbia, but the statement is made that any community where rents are going up high can adopt the model law and rents will be frozen as of Jan. 1, 1942. Real estate agents stated protests but congress gave no heed as none of the western protestants were familiar with the bill's application and terms.

Without fuss or feathers a subcommittee of the senate public lands committee is in the field (last week in Arizona) gathering data to determine whether the grazing act requires revision. There are five grazing districts in Idaho—Owyhee, Twin Falls, Lost River, Lemhi and Wood river, which will be affected by any amendments to the existing law.

The probe, as one phase, will look into the cost a cattleman must pay to graze his herd. There is a wide assortment to know whether the value of the land has been taken into consideration in issuing permits. Members of the committee do not know; they wish to learn. The system may be perfect, or it may be full of holes.

For a month the subcommittee has been browsing around the ten grazing states collecting information talking to livestock men. Head of the subcommittee is Senator Pat McCarran of Nevada, who before he entered public life raised sheep in Nevada, Idaho and Oregon and is thoroughly versed with the western country.

Study includes an examination of

# KNOX, STARK SUMMONED

**WASHINGTON, Dec. 9 (UP)—**The house naval affairs committee today summoned Secretary of Navy Frank Knox and Chief of Naval Operations Harold R. Stark to explain in secret session tomorrow why Japan was able to carry out the devastating attack on Pearl harbor Sunday.

**1600 Montana Never-Shed — CHRISTMAS TREES —**  
Wraps, 35¢ and up  
**GROWERS' MARKET**  
664 Main South

# CHRISTMAS SPECIALS At The IDAHO DEPT. STORE



**Genuine DURHAM CARD TABLES \$2.49**

Lots of designs to choose from. All constructed with round steel legs... wood frame reinforced with steel. Reg. \$3.00 Value

As above but heavier grade fiber and caster and ash tray to match. **\$3.98**

**Durham Heavy Steel Chairs \$1.98**

With padded seat and back... All steel frame. Folds flat for storing when not in use. Fawn color.

**Beautiful Round Table \$6.50**

All steel construction. Steel frame and round steel legs. Fawn color to match chairs.

# The Men's Store Christmas Special

**FOR TUESDAY ONE BIG LOT MENS' FINE LEATHER JACKETS OF IMPORTED GOAT SKINS \$9.90**

To Be Compared to \$12.90 Garments Anywhere

Aviation Tan in Color  
One Top Zipper Pocket  
Two Muff and Two Side Pockets  
Inverted Plait Backs  
Fine Nylon Linings  
**PLEASE NOTE**

The leather stock in these fine jackets is a selected imported leather. If there are any jackets left anywhere that can sell around this price in a regular way, just examine the leather. Then you will really appreciate the excellence of this special gift value.

**IDAHO DEPT. STORE**

"If It Isn't Right Bring It Back"

**Relieves HEAD COLD - DISCOMFORTS**

MENTHOLATUM

It can be used safely during the winter months. It is a natural remedy and relieves the common cold, headache, sinusitis, and other ailments. It is a natural remedy and relieves the common cold, headache, sinusitis, and other ailments.

## Smile From National President



Here's Charles M. Kearney, Merrill, Neb., president of the National Beet Growers association. (Times-News Engraving)

## Bill of Rights 150 Years Old

WASHINGTON — The American Bill of Rights, 150 years old on December 15, has been the most ardently defended section of the constitution. Here is a summary of this charter of individual freedom as provided by the first 10 amendments to the constitution:

Congress shall make no law prohibiting the free exercise of religion or abridging the freedom of speech, of the press and the peaceful assembly.

The right of the people to be secure in their persons, houses, papers and effects against unreasonable searches and seizures shall not be violated.

No person shall be held to answer for a major crime unless on an indictment of a grand jury, or be deprived of liberty or property without due process of law.

In all criminal prosecutions the accused shall enjoy the right to a speedy and public trial by an impartial jury.

Excessive bail shall not be required, nor excessive fines imposed nor cruel and unusual punishment inflicted.

provide a cash crop. The Amalgamated Sugar company's processing plant in Twin Falls contributes much to this vicinity in the way of payrolls, and the combination rounds out our business picture generally," the president said.

"It is gratifying to know that the sugar beet industry in south central Idaho is able to draw a meeting of this magnitude to our area. This fact alone will serve to magnify views of the commodity in the eyes of the residents," said Holmes.

## Colorado Leader Mourns Death of Senator Adams

By W. L. SANFORD  
President of the Southern Colorado Beet Growers association and director of the national association, with headquarters at Pueblo.

### From Colorado



W. L. SANFORD  
... Leader of southern Colorado growers, mourns loss of Sen. Alva B. Adams but sees sugar legislation as helping industry. (Times-News Engraving)

It is with heavy hearts that we of southeastern Colorado anticipate the future.

We have just attended the funeral of Sen. Alva B. Adams, one of our native sons. He was a good man and a good friend of our industry. He was always out in front carrying the ball for the west.

However, we of southeastern Colorado take comfort in the fact that the sugar bill has passed the lower house by such a nice majority. Due to so many important legislative matters, especially in regard to the defense of our country, the wonder is that the congress could find time for sugar legislation at all.

The fact that we are organized so well and have such able leadership in Washington, leadership that has been able to convince the congress that sugar is defense, has enabled us to get some consideration.

True, we are not getting all we had hoped for, but if the present legislation is finally passed by both houses and signed by the President, you can be assured we have made substantial gains and the position of the beet grower, especially on the family sized farm, will be greatly improved.

When smoozed for being in arrears with his taxes, a man in Liverpool, England, stated that his only asset was a lion.

Dirty breaker points, which cause the engine to miss frequently, are responsible for many troubles laid to the carburetor.

## Beet Industry Makes Gains in Importance

The sugar beet industry, already providing a cash crop for growers in Magic Valley and supplying a processing factory in Twin Falls, will be magnified in the eyes of Twin Falls residents by the fact it has attracted the National Beet Growers' convention here, in the opinion of Ray J. Holmes, president of the Twin Falls Chamber of Commerce.

"Naturally, the Twin Falls Chamber of Commerce is gratified to have this opportunity to entertain beet growers from nine western states," said Holmes. "We will do everything possible to make this a pleasant visit."

"Beet growers should feel free to call at the chamber office for any information, or if they need assistance in any convention arrangements," he urged.

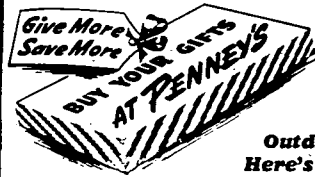
"Undoubtedly, many prominent local beet growers will avail themselves of this opportunity to hear some of the nation's foremost authorities on sugar beets.

"Thereby, they hope to become more familiar with the possibilities of the sugar beet industry in south central Idaho," said Holmes.

Holmes said he wished to congratulate Harry A. Elcock, Idaho manager of the Amalgamated Sugar company for his part in making it possible for Twin Falls to be host at this national meeting of beet growers. Elcock is a past president of the Twin Falls chamber.

"The sugar beet industry is becoming increasingly important in Magic Valley," Holmes pointed out. "The scientific development of resistant seed has made the crop all the more important in this territory."

"Year in and year out, sugar beets



**WELCOME, Beetgrowers To Twin Falls, Dec. 10-11**

We know your convention will be a success and we want to join other Twin Falls merchants in acknowledging one of Magic Valley's important industries.

**100% WOOL**

### Casual Coats

**\$5.90**      **\$9.90**

Smart, herringbone, dressy suede in a saddle tan that can be worn with any slack or trouser. You can enjoy the convenience of four handy pockets and the latest styling at this special low price. A gift that is amazing for warmth and smartness!

An aristocratic coat with leather saddle stitching on collar and pockets. Solid color and two-tone effects. These have a full rayon lining for added warmth and smart appearance. This is a perfect gift for any man who is sports minded.



**Marvelous for Sports or Outdoor Wear**



**MEN'S GOATSKIN JACKETS**

**\$9.90**      **\$12.75**

A super bargain. Only at Penney's can so much jacket value be had. We invite you to see this jacket and compare it with anything you've seen. Rayon lined, three handy pockets and tanned a practical dark brown.

The pilot model so popular now and used by the flying men in our army. A practical gift for any man who is a sportsman at heart—and what man isn't? Roomy, free action shoulders, five handy pockets and a heavy rayon lining.

**Buy a Jacket That Doesn't Peel and Crack. Buy GoatSkin!**

**PENNEY'S**  
C. PENNEY COMPANY, Incorporated

12TH ANNUAL NATIONAL BEET GROWERS ASSOCIATION CONVENTION TWIN FALLS

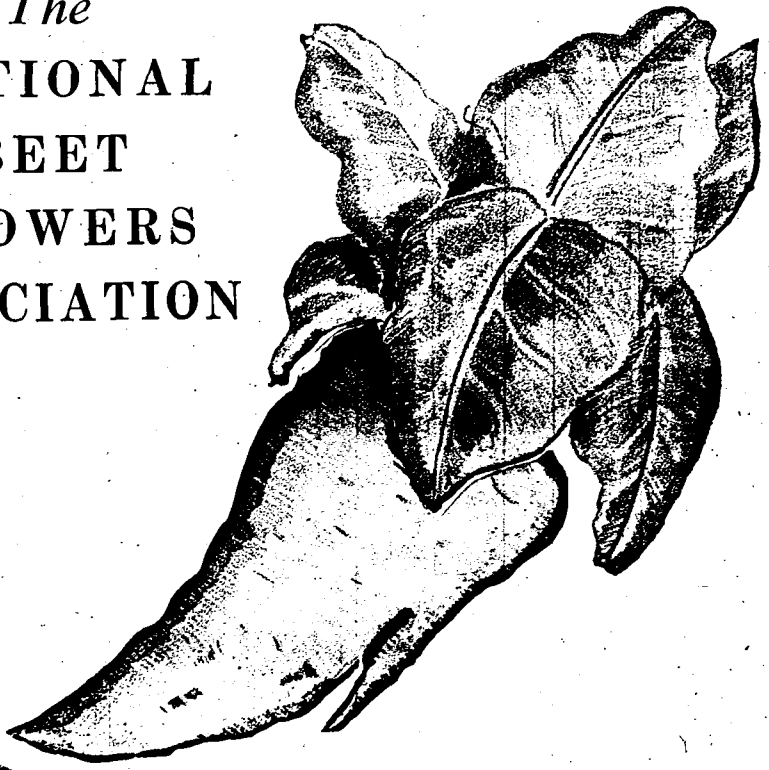


Merchants' and Manufacturers' SOUVENIR EDITION to Celebrate 12th Annual Convention, Dec. 10-11

IDAHO EVENING TIMES TABLOID EDITION TUESDAY EVENING, DECEMBER 9, 1941

# TWIN FALLS SALUTES

## The NATIONAL BEET GROWERS ASSOCIATION



**IN CONVENTION**  
**Twin Falls, Idaho**  
*December 10, 11, 1941*

**12TH ANNUAL CONVENTION**

a **HEARTY Welcome**

TO THE 12TH ANNUAL CONVENTION OF THE NATIONAL BEET GROWERS ASSOCIATION

Twin Falls and Magic Valley in general are proud of the fact that you have chosen this as your 1941 convention site. We sincerely hope that this will be the best convention you have ever had and that you will find Magic Valley hospitality as generous as we know it can be. The management and entire personnel join in extending you a cordial invitation to come in and visit.

**BLE STORES**  
TWIN FALLS

# BUSINESS, PLEASURE FOR BEET MEN

## 9 Western States Send Delegations To National Meet

Complete program for sessions of the National Beet Growers' association... will be held in Twin Falls Wednesday and Thursday shows business to be mixed with pleasure for the many delegates who are expected to be present from nine western states including Idaho.

Headquarters for the convention... first national meeting ever to be staged in Twin Falls will be the Rogerson hotel while all sessions will be held at Radio Rodeo.

The convention proper gets underway Wednesday at 10 a. m. when Mayor Joe Koshler gives the address of welcome at Radio Rodeo.

The convention proper gets underway Wednesday at 10 a. m. when Mayor Joe Koshler gives the address of welcome at Radio Rodeo.

Following naming of committee members... the annual meeting of the board of directors will be held, addresses of the last year will be read and officers will be elected for the coming year.

Following luncheon... the annual banquet will be staged at the hotel Thursday night, starting at 6:30 p. m.

Two vocal solos will be given by Juliet Hayden... the banquet will close with all delegates and guests joining in singing "God Bless America."

A special program of entertainment has been arranged for women who accompany their husbands to the convention.

Thursday at 1:30 p. m. they will attend a dinner... the evening they will attend the annual banquet.

Convention program... were prepared by the Times-News... showing a general scene of Sun Valley.

Convention program... were prepared by the Times-News... showing a general scene of Sun Valley.

Convention program... were prepared by the Times-News... showing a general scene of Sun Valley.

Convention program... were prepared by the Times-News... showing a general scene of Sun Valley.

Convention program... were prepared by the Times-News... showing a general scene of Sun Valley.

Convention program... were prepared by the Times-News... showing a general scene of Sun Valley.

Convention program... were prepared by the Times-News... showing a general scene of Sun Valley.

### Salutes Idaho



C. W. KJAR, president of the Central Nebraska Beet Growers Association.

### NEBRAKSA GROUP SENDS GREETINGS

By C. W. KJAR, President, Central Nebraska Beet Growers Association. We extend our greetings to Idaho beet producers and to Twin Falls, the host city for the national convention.

The Central Nebraska Beet Growers association is made up of about 500 members, or about 90 per cent of all growers in our area.

Water conditions have improved to the point where they are no longer a serious problem.

money and labor into this country. The beet growers of Canada are very grateful for the sugar factory at Burley.

As an indication of interest in the industry, it is noted that applications received for beet pulp this year were about three times over the amount of pulp which was available.

Beekkeeping has become a growing and remunerative industry in Manitoba and other prairie provinces of Canada.

On the occasion of your first visit to Twin Falls, Krengel's takes pleasure in bidding you welcome.

For years we have served the beet farmers of Magic Valley, handling their repairing problems and manufacturing special machinery for beet work of all kinds.

Best wishes to you and your families. We trust you will enjoy your visit here to the utmost and we would be pleased to meet you and discuss your problems.

Best wishes to you and your families. We trust you will enjoy your visit here to the utmost and we would be pleased to meet you and discuss your problems.

Best wishes to you and your families. We trust you will enjoy your visit here to the utmost and we would be pleased to meet you and discuss your problems.

### REFUGEES' WOES STILL UNCHANGED

SCHENECTADY, N. Y. — The troubles of war refugees have always been the same, it seems.

Non-Aryan groups, harassed by the Nazis, fled Germany and sought haven in Poland, Czechoslovakia, France and other pre-war democracies.

Colonial Tories look refuge in lower Canada to escape the wrath of Colonial patriots. Later they discovered instead of being residents of Canada, they were still residents of the United States.

William B. Eber, told a Schenectady fraternal society meeting that the papers, important in the local history of the Windmill Point area, were discovered in a chest of old documents.

Edna explained that the Hammond papers date from 1793 and the Hammond business from 1811. Included in the old manuscripts were letters, letters and miscellaneous

account books, invoices, receipts, due bills and notes, legal documents and indentures, covering a period of half a century.

On the early days Windmill Point housed a custom house. A case to the south, Eber said, was a rendezvous for smugglers and their runners.

Hammond was the kingpin in local business. He was the general store keeper, business, tavern keeper, community banker and the best known character at the point, as well as hat maker.

On the early days Windmill Point housed a custom house. A case to the south, Eber said, was a rendezvous for smugglers and their runners.

Hammond was the kingpin in local business. He was the general store keeper, business, tavern keeper, community banker and the best known character at the point, as well as hat maker.

On the early days Windmill Point housed a custom house. A case to the south, Eber said, was a rendezvous for smugglers and their runners.

Hammond was the kingpin in local business. He was the general store keeper, business, tavern keeper, community banker and the best known character at the point, as well as hat maker.

On the early days Windmill Point housed a custom house. A case to the south, Eber said, was a rendezvous for smugglers and their runners.

Hammond was the kingpin in local business. He was the general store keeper, business, tavern keeper, community banker and the best known character at the point, as well as hat maker.

On the early days Windmill Point housed a custom house. A case to the south, Eber said, was a rendezvous for smugglers and their runners.

Hammond was the kingpin in local business. He was the general store keeper, business, tavern keeper, community banker and the best known character at the point, as well as hat maker.

### WELCOME

To the beet growers of the nation and of Magic Valley, may your annual convention be a complete success.

Serving the Farmers of Magic Valley With

- Philco Radios and Refrigerators
- MAYTAG Washers
- L. & H. and MONARCH Electric Ranges, Coal and Wood Ranges and Combinations.
- Estate Heatrolas

WILSON - BATES APPLIANCE

Expert Twin Falls Buhl

## KRENGEL'S ...

EXTENDS A CORDIAL

## WELCOME

To The Members and Delegates

to the Annual

## NATIONAL

## BEET GROWERS

## ASSOCIATION

On the occasion of your first visit to Twin Falls, Krengel's takes pleasure in bidding you welcome. For years we have served the beet farmers of Magic Valley, handling their repairing problems and manufacturing special machinery for beet work of all kinds.

Best wishes to you and your families. We trust you will enjoy your visit here to the utmost and we would be pleased to meet you and discuss your problems.

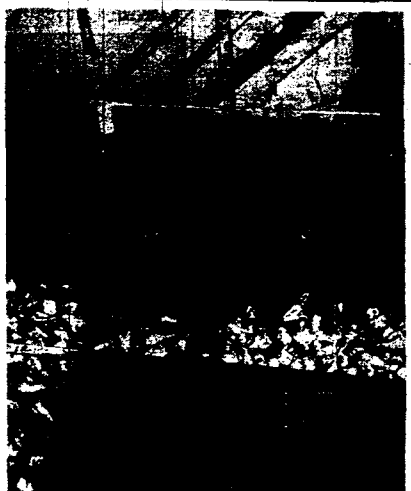
Best wishes to you and your families. We trust you will enjoy your visit here to the utmost and we would be pleased to meet you and discuss your problems.



A Pioneer Firm in Magic Valley

# Highlights in a Great Industry

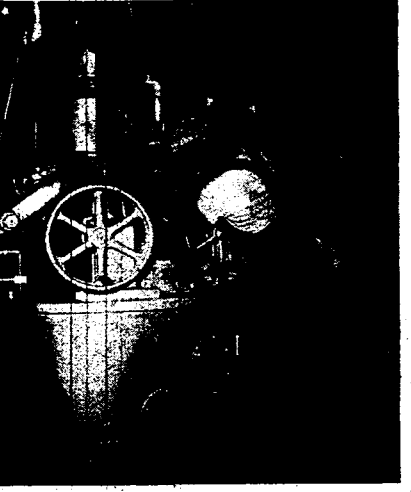
(Times-News Photos and Engravings)



Let's take a trip through the Amalgamated Sugar company plant in Twin Falls here are beets in the great washing machine at the start of the sugar-making process.



Here the beets have reached what is called the "needle" stage. Workers run the needles down into deep tanks, the first step in taking off the juice.



The great centrifugal machine, where the brown sugar from the beets is spun under pressure and turned into white crystals, are shown above. It is one of the many steps from the beet to the sugar and one of the best.



And here is the finished product—white sugar fit for the table of anyone. The sugar beet industry is one of the biggest in the Magic Valley and Amalgamated's "White Sugar" is known far and wide.

# BEETS INCREASE NATION'S WEALTH

WASHINGTON — The domestic sugar beet industry is a "distinct asset to the agricultural and industrial life of America and worthy of our protection and encouragement."

This industry contributes about 26 per cent of our national sugar requirements, employs directly in excess of 77,000 workers and utilizes nearly a million acres of land which in 1940 produced a crop having a farm value of \$24,718,000.

Our climatic conditions, fertile soil and ample water obtained from the finest irrigation projects in the world have the steady growing industry when protected against the importation of foreign sugar produced under sub-American labor standards.

Further possibilities for sugar-beet expansion, cases have been from the fact that new lands available for agriculture in the west on reclamation projects which are authorized or are being constructed are estimated to amount to 2,033,319 acres.

Federal expenditures for irrigation projects in western beet sugar producing areas have reached a total of \$64,770,000. These splendid projects are economically feasible only when utilized in the production of high cash-value crops requiring intensive cultivation and irrigation.

However, the quota provisions of the sugar act have already begun to restrict the growth of sugar beet production in areas now under cultivation and the utilization of these new lands for such growing is an impossibility under present legislation.

Motorists Win Moral Victory

NASHVILLE, Tenn.—Two automobile drivers, who met each other following a collision, found themselves at dead-end street after months of litigation. Here's what happened:

1. Cars collided.
2. Each driver charges other with reckless driving.
3. Same judge dismisses both warrants same day.
4. Drivers appeal to circuit court.
5. Circuit court jury awards each defendant judgment.
6. Both courts disposed of—so far as court is concerned.

The winners? Harry Temple and Robert Lillard, only they didn't win anything except a moral victory.

### Any Similarity Is Coincidental

ROCHESTER, Ind.—Mr. and Mrs. Roy Kummer have a son, Loren, and a daughter, Lois, and live in Rochester.

Mr. and Mrs. Roy Kummer have a son, Loren, and a daughter, Lois, and live in Bellflower, Ill.

The two families learned of the similarity of their names through a missive letter. They are not related.

## .. Welcome..

## Beet Growers

Stop at the MINT

- Music
- Dancing
- Beer

Downstairs at the Perrine Hotel

### ARMY STILL IN NEED OF MULES

SAN FRANCISCO—The army, despite its mechanization, still is in the market for horses and mules.

The animals will be purchased through removal stations at Fort Douglas, Utah, and San Mateo, Calif.

The army is offering a maximum of \$100 each for light riding horses; \$185 for all other classes of horses; and \$175 for mules. All animals must be gentle, well-broken and in good physical condition.

### Recording Artist Stands on Head

NEW YORK—Fred Malsch, sound engineer of a phonograph record company in this city, says that in 31 years of the work he has noticed that almost every star, when recording, shows some idiosyncrasy.

William Primrose, violinist, rehearses without coat or tie, but insists on being well-groomed during an actual recording.

John Jacob Niles starts on his head before singing—to get a nasal tone in American folk songs. Alexander Bralowsky indicates the studio be entirely dark, except for a spotlight over his head.

### Recording Artist Stands on Head

NEW YORK—Fred Malsch, sound engineer of a phonograph record company in this city, says that in 31 years of the work he has noticed that almost every star, when recording, shows some idiosyncrasy.

William Primrose, violinist, rehearses without coat or tie, but insists on being well-groomed during an actual recording.

John Jacob Niles starts on his head before singing—to get a nasal tone in American folk songs. Alexander Bralowsky indicates the studio be entirely dark, except for a spotlight over his head.

From 1483 to 1933, the western hemisphere mined silver to an estimated value of more than \$5,300,000,000.

From 1483 to 1933, the western hemisphere mined silver to an estimated value of more than \$5,300,000,000.

From 1483 to 1933, the western hemisphere mined silver to an estimated value of more than \$5,300,000,000.

From 1483 to 1933, the western hemisphere mined silver to an estimated value of more than \$5,300,000,000.

# INFLUENCE OF SUGAR BEET PRODUCERS IS NATIONWIDE

## Many Associations Band Together for Betterment of All

Although "western" for the most part, the influence of the sugar beet industry and of the various organizations of growers is felt throughout the United States from the country store to the halls of congress and even the White House.

Beet growers' associations—each with a strong membership in the various localities—the many and the national association "carried out" the instructions which start as a suggestion made by an individual grower.

In the Magic Valley there are several active organizations and officers, plus a good representation of the membership in each case, expected to attend the convention here. Likewise, officers of associations in the various other states will also come here, as will some of the members in these cases.

Following is a list of the officers of the various organizations, in cases those officers will be present for the national convention in Twin Falls:

- California**  
Central California Beet Growers' association: G. W. Wilson, president, Clarkburg, Calif.  
Utah Sugar Beet Cooperative association: J. R. Cavellina, Draper, Utah, president.  
Southern Colorado Beet Growers' association: W. J. Sanford, Pueblo, Colo., president.  
Black Hills Beet Growers' Cooperative association: R. P. Johnson, Rapid City, S. D., president.  
Eastern Washington Beet Growers' association: Charles E. Franklin, McGrew, Neb., president.  
Central Nebraska Beet Growers' association: C. W. Kjar, Lexington, Neb., president.

- Montana-Wyoming**  
Montana-Wyoming Beet Growers' association: W. J. Gorst, Worland, Wyo., president.  
Sugar Beet Growers' association: Floyd V. Kelly, Torrington, Wyo., president.  
Delta-Montrose Beet Growers' association: I. E. Williamson, Astoria, Colo., president.  
National Beet Growers' association: Charles M. Kearney, Washington, D. C., president; W. J. Gorst, Worland, Wyo., secretary-treasurer. The National Beet Grower magazine: Gordon Lyons, editor, Stockton, Calif.

- Idaho Beet Growers' Association**  
Preston Elsworth, Lewistown, president; M. E. Willis, Rupert, vice-president; Harold Mackie, Pariser, secretary-treasurer. Beet Growers' Idaho Falls: W. O. Stead, Idaho Falls; S. W. Beck, Rupert; H. M. Vay, Blakely; George Soder, Blakely; Dan Bennett, Loveland; and Carl Leonard, Twin Falls, all directors.

- Jerome-Gooding-Lincoln County Beet Growers' Association**: H. A. Buckton, Jerome, president; Sam Balk, Jerome, secretary-treasurer; Sam Housman, Gooding; Bob Edman, Wendell; A. K. Walker, Richfield; and Sam Steen, Gooding, all directors.

- Lower Snake River Beet Growers' Association**: H. R. Brown, Jerome, president; William Bangh, Jr., Burley, secretary-treasurer; Sam Hornsman, Gooding; J. C. Chace, Burley; Sam Eakin, Jerome; and Vera Stingham, Burley, all directors.

- Missouri**  
Missouri Beet Growers' Association: M. E. Willis, Rupert, president; S. W. Beck, Rupert, vice-president; Frank Saylor and Russell Bowman, directors.  
Twin Falls County Beet Growers' Association: Carl Leonard, Piler, president; Noel Bailey, Curry, vice-president; J. D. Calhoun, Kimbert, secretary-treasurer; Glenn Briggs, Parma; L. E. Wilson, Hansen; John Thompson, Casselton; Vern Smith, Cotlar; W. O. Sampson, Bliss; Coates, Piler; Hy Pickens, Murtaugh; and C. A. Maxwell, Twin Falls, all directors.

- Nebraska**  
Jerome-Gooding-Lincoln County Beet Growers' Association: H. A. Buckton, Jerome, president; Sam Balk, Jerome, secretary-treasurer; Sam Housman, Gooding; Bob Edman, Wendell; A. K. Walker, Richfield; and Sam Steen, Gooding, all directors.

## Montana-Wyoming Leader Sees Help Under New Act

### Two-State Chief



**BY W. J. GORST**  
(President, Montana-Wyoming Beet Growers association and secretary-treasurer of the National Beet Growers association).  
The Montana-Wyoming Beet Growers association has its membership among growers in the six sugar factory districts of Billings, Hardin and Sidney, Mont., and Sheridan, Lovell and Worland, Wyo. These districts normally produce about 25,000 acres of beets. They maintain steady volume, except when reduced by the application of the quota system, have good soil, abundant water and considerable possibility of growth.

Harvesting conditions that fall have been unfavorable owing to unusual rains and some labor shortage, but practically all the crop has been taken out.  
Net returns for beets in these districts, as in others, have not been very satisfactory for several years. Our present sugar control system has not been made to work quite as well as it could. The new sugar legislation just passed by the house of representatives, and on which we are hoping for immediate favorable action by the senate, if backed up with additional market support, should be of considerable value to our district as well as to all other sugar beet and cane producers in continental United States.

Approved Electric Fence Controller Declared Safest  
When you want to do some well blasting, you don't get a few cans of dynamite and try to mix your own dynamite. Or, if you do, you're usually not around to finish the well!

It is unfortunate that plans are still being distributed for homemade electric fence controllers. These controllers are NOT 100 per cent safe and NOT 100 per cent effective. Because a fence is connected to a battery does not mean it's invariably safe. Under the right conditions of dampness and close contact, a child or animal could be seriously injured.  
Stay on the safe side by using only a fence which has approval of a recognized authority.

How true this is of sugar beets is now recognized that sugar is not only an indispensable part of our daily diet but enters into many important phases of our national defense.  
Our beet growers are ready to meet this emergency with every available acre. Our National Beet Growers association is ready with every means at its command to provide sugar in abundance for our own food supply and the defense of our nation.  
The habit does not reproduce until about 10 years old, and has about the same life span as that of a human being.  
A biste is an isolated steep hill.

**W. J. GORST**  
... of Worland, Wyo., Montana-Wyoming grower leader and national association secretary-treasurer.  
(Times-News Engraving)

## Beet Producers Ready to Meet Defense Emergency

**BY I. E. WILLIAMSON**  
(President of the Delta-Montrose Beet Growers association and all district beet growers in the national association).  
At this time it is noteworthy that the people of the United States are realizing more and more that the safety and security of our nation is dependent upon an adequate food supply furnished by our American farmers.

How true this is of sugar beets is now recognized that sugar is not only an indispensable part of our daily diet but enters into many important phases of our national defense.  
Our beet growers are ready to meet this emergency with every available acre. Our National Beet Growers association is ready with every means at its command to provide sugar in abundance for our own food supply and the defense of our nation.  
The habit does not reproduce until about 10 years old, and has about the same life span as that of a human being.  
A biste is an isolated steep hill.

Our beet growers are ready to meet this emergency with every available acre. Our National Beet Growers association is ready with every means at its command to provide sugar in abundance for our own food supply and the defense of our nation.

The habit does not reproduce until about 10 years old, and has about the same life span as that of a human being.  
A biste is an isolated steep hill.

Our beet growers are ready to meet this emergency with every available acre. Our National Beet Growers association is ready with every means at its command to provide sugar in abundance for our own food supply and the defense of our nation.

The habit does not reproduce until about 10 years old, and has about the same life span as that of a human being.  
A biste is an isolated steep hill.

Our beet growers are ready to meet this emergency with every available acre. Our National Beet Growers association is ready with every means at its command to provide sugar in abundance for our own food supply and the defense of our nation.

The habit does not reproduce until about 10 years old, and has about the same life span as that of a human being.  
A biste is an isolated steep hill.

Our beet growers are ready to meet this emergency with every available acre. Our National Beet Growers association is ready with every means at its command to provide sugar in abundance for our own food supply and the defense of our nation.

The habit does not reproduce until about 10 years old, and has about the same life span as that of a human being.  
A biste is an isolated steep hill.

## Governor of Idaho Welcomes Delegates

**By CHASE A. CLARK**  
Governor of Idaho

The state of Idaho heartily welcomes delegates to the National Beet Growers' association convention. It is our earnest desire that your stay in Twin Falls will be both pleasant and profitable.

We are proud to receive visitors from other farming states in our great agricultural areas, knowing that your interests coincide, to a very considerable extent, with ours.

Selection of Twin Falls, in the center of southern Idaho's productive Snake river valley, as site of this gathering, is particularly appropriate.

The sugar beet industry is one of Idaho's most important. Average annual production over a 10-year period is in the neighborhood of 700,000 tons; the state's year-in-and-year-out record for production per acre is recognized as outstanding.

Income from sugar beet sources is a notably substantial and important factor contributing to the well-being of our farmers and to the workers and others connected with our sugar processing plants.

We look forward to even greater development of this vital industry, not only for Idaho, but for all domestic beet sugar producing states, in the future.

The beet tree wraps and counter-wraps each of its buds in a blanket of 16 scales to protect them from the cold.



GOV. CHASE A. CLARK

## SUGAR REFINERS' STOCKS INCREASE

**WASHINGTON**—Despite heavy consumer purchases of sugar this year, eastern seaboard refiners were said today to have had larger supplies of raw stocks for processing during the last two months of the year than in the corresponding period in 1940.

Agriculture department officials said they had received reports of shortages of raw sugar from some eastern refiners. Marketings of raw sugar are controlled by the department under a quota system.

The department said the quantity of sugar available to refiners south of Cape Hatteras, N. C., during the last two months of this year totaled 429,957 short tons, as compared with their meetings of 219,792 tons during the last two months of 1940.

The total quantity of sugar delivered to the American market during the first ten months of 1941 amounted to 8,802,000 short tons, raw sugar, compared with 9,122,570 tons during the corresponding period last year. The sugar was from the following sources:

## Idaho President Offers Welcome "Truly Western"

**By PRESTON ELSWORTH**  
(President of the Idaho Beet Growers' Association, with headquarters at Lewistown).

To the National Beet Growers' association the Idaho beet growers extend a genuine welcome. It may be true, but it is true that we greet you with enthusiasm and sincerity. We felicitate ourselves upon the pleasure of the presence in Twin Falls of a typical group of western ladies and gentlemen.

It is pre-eminently proper that we extend hearts warmed by former pleasant meetings and with hand-claps as firm and gentle as ever pledged friendship, yet the Idaho Beet Growers' association wishes to do even more—to offer you our constant attention and to assure you of our appreciation for the privilege that is ours in playing host to one of America's finest organized groups.

**Work Together**  
The National Beet Growers' association is a group of enterprising associates unbiassed by social distinctions, politics, or divergent issues. Ours is a group that has long since learned that kindred interests cement ties more securely than partisan ideas. We are to be congratulated upon the opportunity of greeting the national organization.

Work together. The National Beet Growers' association is a group of enterprising associates unbiassed by social distinctions, politics, or divergent issues. Ours is a group that has long since learned that kindred interests cement ties more securely than partisan ideas. We are to be congratulated upon the opportunity of greeting the national organization.

It is a great pleasure to welcome former friends to our much-famed little Idaho city—Twin Falls. As an Idaho group of growers we yield to our sister states only in population; in integrity, spirit, and good fellowship we hope to be as one. We hope always to find ourselves dedicated to the ideals of service. World Needs Same Spirit. Our sincere wish at this time in the history of the world is that the same understanding and interplay of feeling, the same fellowship that exists among members of the National Beet Growers' association might exist among the peoples of the world, thus promoting a more friendly understanding. Fully realizing the distinguished privilege that is ours and anticipating the real pleasure that is assured the Idaho association and the people of Twin Falls in meeting our friends of the national group, we extend to our guests a truly fraternal western greeting. May our attitudes of mind and heart be allied in purpose with our goal and the good of a particular few, but the harmonious associations of the whole.

**Cora E. Stevens**  
County Treasurer  
Twin Falls County  
extends sincere  
GREETINGS  
to local and  
national beet  
growers  
"It's a Great Country, Isn't It?"

*The Home of*  
**SELF FARM MACHINES**  
and ATTACHMENTS  
**WELCOMES**  
delegates to  
**NATIONAL BEET GROWERS ASSOCIATION**  
Convention, Dec. 9-10

As originators and manufacturers of outstanding beet farm machinery, we sincerely wish you success in your current meeting.

Your dealer — located in most beet producing territories will be glad to show you the Self side dressing fertilizer, the Self adjustable new type beet discs and the new Self beet corugator.

**SELF**  
MANUFACTURING CO.  
TWIN FALLS

To All Delegates of the 12th Annual Convention of National BEET GROWERS ASSOCIATION  
Detweiler's Extend **WELCOME**  
A Sincere

We Cordially Invite You To View Our "Nativity Scene"  
Designed and Built by Mrs. Marie Patterson

Twin Falls is proud of this opportunity of being host to your National Convention, and we join other merchants in expressing appreciation in your selecting this as your convention city.

**DETWEILER'S**  
144 2nd Ave. N.

**C. C. ANDERSON CO.**  
Joins in **WELCOMING**  
OUR HONORED GUESTS

Every employe in our big store joins us in extending a sincere welcome to our guests in these two days of the National Beet Growers Convention. We are proud that you are with us and we assure you we shall do everything in our power to make your stay in the Magic City a fine experience you will long remember.

**C. C. ANDERSON COMPANY**  
is one of Idaho's and Twin Falls' most outstanding mercantile institutions... you will find our stocks complete and attractive in every big department.

We join with the Idaho Beet Growers' Association and our local civic forces in extending a hearty **WELCOME** to the **National Beet Growers Association**

You may be sure that Twin Falls, the Magic City, in the heart of the beet growing and processing industries, is indeed proud to have your organization as our guests. It is our sincere hope that your Twelfth Annual Convention will bring forth new plans and ideas to insure the success of one of America's most important production efforts in the coming year. You are cordially invited to visit our business institution during your visit in our city.

**TWIN FALLS BANK**  
And **TRUST Company**  
MEMBER of F. D. I. C.

# O'Mahoney Tells Aims of Sugar Bill's Amendments

(From "The National Beet Grower")  
On Nov. 7 a new sugar bill was introduced in both houses of congress. Senator O'Mahoney introduced it in the senate for himself, Senator Adams of Colorado (who has since died) and Senator Ellender of Louisiana who are co-authors of this bill in the senate. Congressman Fuhrer, chairman of the house agricultural committee, introduced the bill in the house.

Senator O'Mahoney when introducing this bill in the United States senate for consideration made the following statement:  
"In an effort to meet realistically the complex problem of sugar supply for the consumers of the United States caused by the national defense emergency and the resulting increase of sugar consumption, a sugar bill has been introduced in the senate in the house today to provide a continuation of the sugar act for three years and to correct several unsound provisions of the act."

"During the past year the secretary of agriculture has found himself difficult to meet several instances of the shortage of sugar for which, under the sugar law, production is guaranteed, and at the present time all beet and cane sugar producers have brought about a condition of sugar shortage and production of sugar beets and cane in the continental United States if the country is to escape the danger of a sugar shortage. The sugar law, in its present form, is a source of serious concern to the sugar grower in the United States from other areas, and the boundaries of continental United States is stimulated sugar consumption are extremely likely to be con-

fronted with a short supply. The sugar act is the best guarantee against such a condition. The amendments provided in the bill introduced today are intended to extend the sugar law for three years.  
"Second. To increase the price of sugar to the growers of the United States by a slight advance of the annual payment to growers needed to meet a season as well as to increase payments made to the larger growers of sugar beets and cane."  
"Fourth. A re-evaluation of sugar supplies which the Philippines may be unable to deliver."  
"In addition to all this money it is estimated that the beet growers get out of the Twin Falls district about \$75,000 a year for thinning, topping and hoisting operations. A like amount is distributed in wages paid by the farmers to workers in the Berkeley and Jerome areas.

## BEETS ARE CASH TO MAGIC VALLEY

An industry above the three million dollar mark each year is "real industry" in any sense of the word, and that's just what the sugar beet industry represents in the Magic Valley.  
For instance, estimates this year show that the total payment made to farmers turning over their beets to the Amalgamated Sugar company came to \$1,000,000. Of this amount \$70,000 went to growers in the Twin Falls district who delivered 140,000 tons at the total payment of \$24.5 a ton, and \$21,517.06 went to growers in the Berkeley-Rupert districts who turned in 128,577 tons at the same initial price.  
In the Twin Falls factory district the annual payroll to the many

workers required amounts to an estimated \$750,000 a year with another labor payment being made in both the Rupert and Berkeley districts.

workers required amounts to an estimated \$750,000 a year with another labor payment being made in both the Rupert and Berkeley districts.

workers required amounts to an estimated \$750,000 a year with another labor payment being made in both the Rupert and Berkeley districts.

# Newport Commends Beet Growers' Meet

By JAMES E. NEWPORT  
Special Correspondent

The Sugar Beet Growers' annual convention which will be held in Twin Falls on Dec. 10 and 11, should be one of the most important to be held by the farmers of the seven western states.

Southern Idaho is dotted with these tall chimneys that represent factories that cost from one to three million dollars, turning out a product which pays the farmers of Idaho approximately four million and a half dollars annually. The beets grown in the United States bring to the farmers approximately fifty million dollars. To the farmers who produce this wealth, it would be a great thing if at these annual meetings in a splendid place in which to work out their problems, learn to cooperate between individuals and between states.

No doubt at this meeting there will be large delegations from the seven western states and the two central states, Ohio and Michigan, that produce the principal amount of sugar beets grown in the United States.



JAMES E. NEWPORT

# Twin Falls County Beet Leader Extends Welcome

By CARL LEONARD  
(President of the Twin Falls County Beet Growers)

The city of Twin Falls was selected as host city for the national sessions of the National Beet Growers' association because it is located in one of the world's largest and most successful irrigated projects.

The convention comes to Twin Falls for the first time in history and growers from nine western states will attend. These states are, aside from Idaho, California, Nebraska, South Dakota, Wyoming, Colorado, Montana, Oregon and Washington.

As I said before Twin Falls is located on one of the world's largest and most successful irrigated tracts, with the exception of the year, Twin Falls county produced the largest yields of sugar beets per acre than any other county in the nation, with the exception of some California districts which have maintained the largest yields per acre in the nation. In agriculture, Twin Falls county ranks among the best in the nation.

Twin Falls has much of interest to offer members of the National Beet Growers' association, both from the point of view of sugar beet production and from the standpoint of scenic areas. The valley is surrounded by lofty mountains and deep canyons and also nearby is Sun Valley, the nation's greatest playground.

# Tells of Tract

President of the Twin Falls County Beet Growers' association, who will take an active part in the national convention in Twin Falls.

As it is customary, President Kearney will make his annual report the first day of the convention, this coming Wednesday at 10 a. m. This report is always informative and constructive and will have particular interest to all this year because of the many important happenings in the sugar beet industry which have developed during the year and

president. At these sessions many serious problems of the sugar beet industry will be given consideration. As it is customary, President Kearney will make his annual report the first day of the convention, this coming Wednesday at 10 a. m. This report is always informative and constructive and will have particular interest to all this year because of the many important happenings in the sugar beet industry which have developed during the year and

# Beet Pulp Conditions Cattle and Sheep Here

By-products of sugar beets are quite extensively used in fattening sheep and cattle in Magic Valley, in the opinion of M. M. Daniels, manager of the Twin Falls Commission company.  
"There are approximately 100,000 to 125,000 head of cattle on feed in the area extending from Minidoka to Glenns Ferry, and from the north side to the south side," said Daniels.  
"Quite a few feeders use beet pulp, supplied from the factory. Another important feed is beet tops, used to fatten cattle and sheep," he said.  
He estimated there are 150,000 head of lambs in the area. The by-products are regarded as good conditioners for cattle and sheep, Daniels said.

shoppers will not be able to buy new ornaments this season.  
A species of house mouse found in Europe and Asia makes a noise like a canary.

Marble Sidewalks  
The world's cheapest sidewalks are in Marble, N. C., yet they are made of marble taken from the surface quarries a few yards from the walk.

# TWIN FALLS' LEADING HOTEL AND COFFEE SHOP BIDS YOU

## WELCOME!


**ROGERSON HOTEL & COFFEE SHOP**

A hospitable welcome awaits you here! And we join with our citizens in wishing you every success in your twelfth annual convention. Remember Twin Falls, the Magic City, and come again.

**OUR COFFEE SHOP** sincerely invites your patronage. Reasonable prices in an atmosphere of friendly, efficient service makes our fine food even more enjoyable.

# WELCOME

We join the beet growers of Magic Valley in welcoming you to Twin Falls. We hope your stay here will be thoroughly enjoyable.



## OLIVER Horse and Tractor SUGAR BEET TOOLS

*Squeeze* More profit from sugar beets with tools that

### INCREASE

The acreage you can handle  
Your stand per acre  
Your yield per acre  
Ease of cultivation  
Profits for you

that

### DECREASE

Your need for labor  
Amount of seed used  
Amount of fertilizer needed  
Weeding entirely  
Time and cost of thinning  
Time and cost of lifting

## MOUNTAIN STATES IMPLEMENT CO.

TWIN FALLS      BUTEL

*Traditionally a part of Magic Valley,*

# The IDAHO DEPARTMENT STORE

*joins in our community's welcome to our guests and greets the NATIONAL BEET GROWERS ASS'N.*

Our organization has watched the growth of this community from its first . . . and dustiest . . . streets to the time when it has grown able to discharge the honor of having an organization such as the National Beet Growers Association as its guests. The Idaho Department Store, we feel, is as much a part of Twin Falls as Main street itself. For that reason we are proud to take a part in the welcome our city, our Chamber of Commerce and citizens are extending your organization. May your present session be successful in every respect.

### A Sincere Invitation Is Extended

to our guests to visit our store. Whether you buy or not, we believe you will enjoy our outstanding Christmas decorations and the hospitable spirit of our store and its employes.

**IDAHO DEPARTMENT STORE**  
*"The Christmas Store"*

*As one producer to another,*

# WELCOME

MEMBERS OF THE NATIONAL BEET GROWERS ASSOCIATION

Your job is the production of top sugar yield beets . . . ours is the production of fine, branded meats. Both are important to the welfare of our nation in a time when defenses start in the field of production. We know you'll get your job done and we'll do ours in producing the best of meats for our customers right here in Magic Valley.

INDEPENDENT MEAT COMPANY,  
*packers of*  
**FALLS BRAND MEATS**



## WELCOME, beet growers, to Idaho! May your National Beet Growers' Association enjoy a profitable meeting in Twin Falls, the Magic City.

Your industry—agriculture—is the most important industry in the Nation—and it is the life-blood of the West.

Here in Idaho we recognize the necessity for making agriculture more profitable. We are told that "food will win the war and dictate the peace," but our efforts to increase production should not overshadow the vital problem of establishing and maintaining a stable agriculture.

Farm Chemurgy is nearly one year old in Idaho. Its purpose is to get more money for farmers. The new potato starch factory of the Magic Valley Processing Company here in Twin Falls is a substantial result of the Farm Chemurgy program. We believe that farmers, business and professional men can work together to create new agricultural wealth for our state by carrying on a program of research and by heeding the constant changes in agricultural markets. That is our aim.

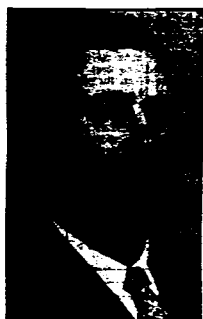
# IDAHO POWER

*Electricity...Does So MUCH—Costs So LITTLE!*



# Vital Matters Scheduled At Sessions, Willis Says

## Heads Convention



M. E. Willis, vice-president of the Idaho Beet Growers' Association who is convention chairman for the national session here. (Times-News Engraving)

BY M. E. WILLIS  
(General convention chairman; vice-president of the Idaho Beet Growers' association and a director of the national association.)

The Idaho Beet Growers' association will be host to the National Beet Growers' association at their 12th annual meeting to be held in Twin Falls Dec. 10 and 11. This meeting will bring together the leaders of the beet industry from throughout the sugar producing areas in these western states where sugar beets are grown. We are glad of the privilege to bring this important gathering to Twin Falls and believe the beet growers, or as many as attend, will avail themselves of the opportunity of attending each of the sessions. At these sessions there will be a full discussion of every important phase of our sugar beet industry, problems which are ever growing more complex, particularly at this time when our country is faced with an unlimited national emergency.

**President Reports**  
The morning of the first day will bring the report of our national president, Charles M. Kearney, who has been in Washington, D. C., continually since last February working on sugar beet legislation. He had an important part in the framing of the bill which has just passed the house of representatives and for which a speedy passage is expected in the senate.

This report will be instructive and constructive and will be of particular interest this year, in view of the many important happenings in the industry which have occurred during the past year and which are anticipated in the future.

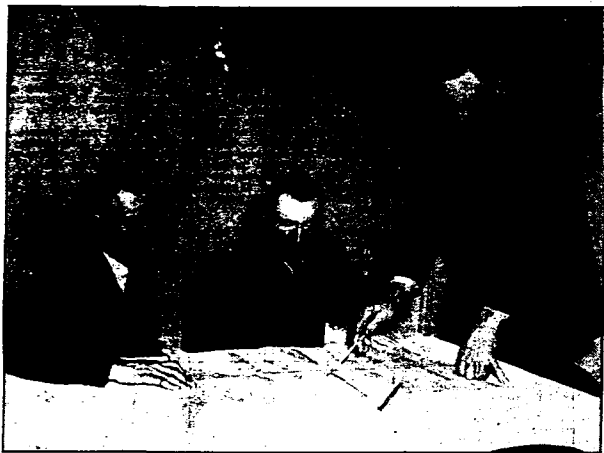
**Governor Coming**  
The evening of the second day will see the annual banquet being held. For this occasion we have secured as speakers Gov. Chase A. Clark and J. R. Newport, Idaho commissioner of agriculture. The guest speaker of the evening will be E. T. Taylor, member of the Idaho State Grange. Entertainment numbers have also been arranged.

All meetings will be held in Radio Room and all who are interested in the growing of sugar beets are welcome to attend. In all the committee on arrangements for our meetings feel confident that all who will attend these meetings will find them instructive and entertaining and will be well repaid.

without saying that chemical or heat sterilization will still be necessary.

Dairy utensils get greasy rather than dirty, and it takes hot water to melt that grease for ready removal. Hot water is so useful in this manner, that some farmers say having an abundant supply of hot water in the milkhouse saves them as much as an hour a day.

# Scanning Cheerful Sugar Beet Chart



Although beet prospects looked dark earlier this year, the picture now has changed to a cheery tone. And here you see three leaders of the Idaho Beet Growers' association—led unit for the national convention in Twin Falls this week—studying a chart of sugar beet price trends for the past 10 years. M. E. Willis, Parker, Idaho, secretary of the state association, points to lines on the chart indicating a new high in price for 1941. Seated at left is M. E. Willis, report, state vice-president; in center is Preston Eissworth, Lewistown, Idaho, state president. (Times-News Photo and Engraving)

## British Guards Study Terrain

LONDON—If Nazi troops invade England, they will find themselves on the terrain where they trained. In towns they will have to defend, guardsmen are learning how best to cross particular streets while they are under fire, the book ways to every house, and to estimate number of anti-tank mines needed to block approaches.

mg piket German troops, they would have the unique advantage of carrying out battle operations on the terrain where they trained. In towns they will have to defend, guardsmen are learning how best to cross particular streets while they are under fire, the book ways to every house, and to estimate number of anti-tank mines needed to block approaches.

## Like United States

Siamese call their country "Muan Thai," now its official name, which means land of the free. Their flag consists of red, white and blue stripes. In Argentina, American motion pictures hold a dominant position. German films rank second, French third and Spanish fourth.

In recognition of a basic industry in our United States... and our own Idaho

# we congratulate the National Beet Growers Association

assembled in our city for their 12th annual session!

It is our sincere hope that this year's convention will bring forth plans which will play an important part in the defense of our nation... for upon the shoulders of such producers as are represented in this association falls the primary responsibility for the success of a great program. We welcome newcomers to our city... and remind members of our own community that ours is a friendly institution ready to serve you where we can.

# Fidelity National Bank

With Branch at Filer

MEMBER FEDERAL RESERVE SYSTEM MEMBER OF F. D. I. C.

# Dworshak Lists Merits of House-Approved Sugar Bill

BY HENRY DWORSHAK  
Representative in Congress, Second Idaho District

It is timely to note that the house, under suspension of rules, passed the Fulmer sugar bill making certain changes in the sugar act of 1937, and continuing this legislation for another three years. Although this measure was not everything that the sugar beet growers desired, it improved the outlook for the industry, and I trust that the senate will promptly approve the bill. The Fulmer bill contains the following provisions:

First, the bill proposes to increase the basic quotas of continental sugar produced by four per cent. This increase amounts to \$2,088,000 tons for the sugar-beet industry, and 16,880 tons for Louisiana and Florida. Quotas for Cuba and other foreign countries, and the dutiable portion of the Philippine quotas, are reduced to accommodate the increase for continental producers. The Cuban reduction is about 50,700 tons, the Philippines 27,850 tons of the dutiable portion of its quota, and foreign countries other than Cuba about 700 tons.

Second, the bill proposes to change the method by which deficits in the Philippine quota, and in the quotas for foreign countries other than Cuba, are to be allocated. At present all deficits in the Philippine quota go to full-duty countries. The bill proposes to allocate to continental producers all deficits in the islands' refined sugar quota, to give to foreign countries other than Cuba the first 100,000 tons of any raw deficit, and to the insular areas and Cuba any deficit in excess of 100,000 tons. The quota of 100,000 tons for foreign countries other than Cuba is an amount greater than these areas have ever marketed in the United States. The present act restricts the re-allocation of deficits in the quotas of foreign countries other than Cuba to full-duty countries. In the case of an over-all deficit in these quotas, the sugar cannot be allotted to areas which have available supplies. The bill proposes to permit the domestic areas and Cuba to share proportionately in any deficits in the quotas of foreign countries other than Cuba which these countries cannot supply.

Third, the bill reduces the quota of Cuban refined sugar from 375,000 tons to 300,000 tons, which means only that Cuba shall market an additional 75,000 tons of her quota as raw, rather than refined, sugar. Fourth, the bill proposes to amend the conditional-payment provisions of the Sugar Act by increasing the base rate of payment from 60 cents to 80 cents a hundred pounds. The scale-off in payments begins at 350 tons as compared with 500 tons in the present act. Fifth, the bill provides that the expiration date of the law be changed from Dec. 31, 1941, to Dec. 31, 1944.

**Denies Contention**  
There is no substance in the contention that the increased quotas allotted to the continental sugar-producing areas in the pending bill are achieved at the expense of Hawaii, Puerto Rico, or the Virgin Islands. At a basic estimate of consumption of 4,878,875 short tons, raw value, the Hawaiian quota is reduced by only 209 tons and the Puerto Rican quota by 145 tons. At the same time the quota for the Virgin Islands is increased by 180 tons. The net reduction in the quotas for the domestic offshore areas, therefore, is 255 tons, or only fifteen thousandths of 1 per cent of the combined basic quota for these areas of 1,744,835 short tons, raw value. The increase of 78,968 tons in the basic quota for the continental producing area is brought about by a reduction in the quotas for Cuba and the Philippine Islands and not by any discrimination against domestic producers and the insular areas. In the case of the Philippine Islands the reduction occurs only in the dutiable portion of the island's quota, a matter which is of no concern to Philippine producers, since they have never shipped themselves of that portion of the quota which must pay a duty.

**Need Evident**  
The need and the justice of providing an increase in the quota for the continental producing areas becomes evident by reference to production with the last three years. In 1938 the beet-sugar industry produced 1,802,850 short tons of sugar, raw value. In 1939 the production was 1,758,010 tons, and in 1940 it was 1,884,270 tons—a three-year average of 1,815,077 tons. Against this production—all of it occurring on acreage allotted by the secretary of agriculture—the bill proposes a

basic quota to 1,811,986, or 203,000 tons less than the average production of the last three years. At a consumption estimate of 7,000,000 tons, the quota for the beet-sugar producing areas would be 1,688,510 tons, which is still 127,000 tons less than the average production in the period 1938-40.

**No Burden on Consumer**  
It is not to be imagined, however, that increase in payment is a burden to be borne by consumers. On the contrary, as the department of agriculture has often pointed out, the lag on sugar and the conditional payments are not reflected in retail prices so long as quotas remain in effect and sugar supplies can be related to demand. The Fulmer bill represents a compromise which does not fulfill maximum desires of any sugar-producing area. It does, however, make an honest effort to relieve some of the hardships which have arisen under the act, and to make certain adjustments which are necessary in view of rapidly changing

and increases in the prices for crops which are competitive with sugar crops. The secretary of agriculture has announced that, as a part of the mobilization of agriculture for national defense, no acreage restrictions on domestic sugar crops are contemplated in 1942 and as a consequence, the increased payments should have the effect of encouraging the production of sugar within the domestic areas.

Of importance to all domestic producers of sugar, particularly those producers on family-sized farms, is the provision of the bill which establishes the base rate of the conditional payment at 80 cents a hundred pounds, with a graduated scale of reductions in the rate of payment for those who produce more than 350 tons of sugar. This increase in the rate of payment is necessary because of rising costs of production,

and increases in the prices for crops which are competitive with sugar crops. The secretary of agriculture has announced that, as a part of the mobilization of agriculture for national defense, no acreage restrictions on domestic sugar crops are contemplated in 1942 and as a consequence, the increased payments should have the effect of encouraging the production of sugar within the domestic areas.

# Mr. Poor Poorer After Paying Fine

ORLANDO, Fla.—Policeman Joe Ouband of the traffic department looked up at the man with the red tag and asked, "How'd I put you down?" "Poor," was the reply. "I mean, what's your name?" the officer explained. "P-o-o-r, Poor," answered the irate motorist. "And I'll be poorer after I pay the buck for this darned thing."

# WELCOME NATIONAL BEET GROWERS ASSN.

A sincere greeting to our local and national associations.

## WALTER C. MUSGRAVE

Clerk of the District Court and Ex-Officio Twin Falls County Auditor and Recorder

# MILK REQUIRES CLEAN UTENSILS

About 20 per cent of the bacterial contamination of milk is due to poorly cleaned and poorly sterilized milk utensils. And a good percentage of poorly cleaned utensils get that way because someone puts off rinsing them in cold water, and then doesn't give them a good washing in really hot water. Pails, strainers, milkers, separator parts and everything else that milk coaches need rinsing with cold water immediately—not after breakfast or after another chore has been finished. Milk itself is clean, but a utensil on which milk has dried is dirty. Postponing the rinsing increases the work load and makes the production of clean milk a lot harder than it need be. Prompt rinsing cleans away the casing... before it can turn into what is known as skin. The next step in proper cleaning is an energetic job of washing with plenty of hot water. Clean, cold water rinses away the milk, but only hot water will wash away the film of butter fat... grease... that remains on utensils. It goes almost

# WELCOME NATIONAL BEET GROWERS ASSOCIATION

In the midst of a busy Christmas season, we pause to welcome our city's guests. Our hope is that your 12th Annual Convention may prove worthwhile in every respect, and that Twin Falls hospitality makes your stay a pleasant one.

# Hudson-Clark

MEMBER FEDERAL RESERVE SYSTEM

# "Cat-Like" POWER in this "CATERPILLAR" D-8 TRACTOR

5,040,000 LBS. LIFTED DAILY BY THIS "CATERPILLAR" DIESEL POWER AND TRACTABILITY SPELL SUCCESS WHEN "CATERPILLAR" IS USED!

Here's a story of real power... power that's easy to handle... handy, quick as a cat... yet power that's as tireless and dependable as a bulldog! The local factory of the Amalgamated Sugar Co., employs the huge beet loading equipment pictured above. Powered by the "Caterpillar" D-8, the outfit loads 66 45-ton cars per day at a rate of seven cars per hour.

It's a big job and tough one—shutting back and forth between dump and tongs—this "Caterpillar" Diesel must prove its easy handling, its unflinching endurance and its steady power. But there's plenty of power in the D-8... power to pull and power to lift and load 2520 tons of beets every day. And this same power must be smooth as a cat's tread to insure mobility and to keep the heavy equipment from bogging down.

It's an extraordinary job... but just another one to prove that no job's too hard, too precise for the "Caterpillar" D-8 tractor. Let us tell you more about the "Caterpillar" Diesel and how it can do the little and big jobs on your farm.

# Bunting Tractor Co.

Twin Falls  
Diesel Engines Track-Type Tractors Road Machinery

# Twin Falls Area Invites Nation's Beet Producers

BY HARRY A. ELCOCK

Chief President, Twin Falls Chamber of Commerce and Idaho Beet Growers Association (Representative Sugar Company)

The National Beet Growers are cordially invited by the city of Twin Falls to their national convention to be held in this city Dec. 10-11.

Farming is the backbone of the west—and in farming, the Twin Falls region ranks among the best in the nation.

Located in the heart of one of the world's largest irrigated territories, Twin Falls county produces exceptionally large yields of sugar beets and other crops. The county, when considered as a whole, is one of the exceptionally productive states—counties surrounding it forms the hub of Idaho's beet raising tract. As a result, the city of Twin Falls with a population of approximately 12,000 people has become the major trading center for Southern Idaho.

Parasitic land within Southern Idaho is watered by the mighty Snake river. A series of dams on the Snake river assures ample water for irrigation year in and year out. Twin Falls has much to offer to the National Beet Growers from the point of view of sugar beet production and soil fertility. Located at Twin Falls is the United States department of agriculture station, consisting of the bureau of entomology and bureau of plant industry. These two bureaus in cooperative work have played an important part in the development of curly top resistant sugar beets, and analyzing the life history of the "white fly."

The Amalgamated Sugar company has its largest Idaho factory just outside of Twin Falls. Other industries in the vicinity are a new potato starch factory, wheat flour mills and a modern cheese factory. The area has a beet harvest in 1946 in Twin Falls county was 13,877 tons per acre, and an all-Southern Idaho average of 17.25 tons per acre.

Beetle views are Rhoads falls, Twin Falls—after which the falls is named—carry the Snake river 476 feet deep. Thousand Springs in Hagerman valley, and the famous Sun Valley which is 90 miles to the north.

"The people of the city of Twin Falls hope that the members of the National Beet Growers association will avail themselves of the opportunity to attend their convention and enjoy the hospitality of Twin Falls, Idaho.

"While an amendment of the provision which governs the importation of sugar in liquid form so as to correct a deficiency in the present law which allows sugar to come in as sirup without regard to either the tax or quota provisions of the law.

**Provisions of New Bill**  
"Section 1 of the bill increases the maximum total quota of all beet sugar-producing areas from 3,715,000 to 3,797,000 tons. This means a 4 per cent increase for the continental beet sugar area, or 62,000 tons, and a 4 per cent increase amounting to 14,000 tons for methanol sugar cane.

The percentages of the total quota have been so arranged for all of the areas to make substantial changes in the quotas for Hawaii, Puerto Rico, or the Virgin Islands while increasing the quota in the continental area, without which, of course, the effort to provide an adequate supply for continental consumers in the present emergency would not be successful.

"The continental increase is accomplished by reduction of the Cuban quota, of the Philippine quota, and of the quota for countries other than Cuba. The reductions have been made in order to afford the opportunity to increase the quotas of the continental area.

"The total consumption in continental United States was 6,882,870 tons, Cuba's quota under the present law is 52,791 tons, that of the Philippines by 27,363 tons, and that of foreign countries other than Cuba by 702 tons.

"Section 2 of the bill deals with the realization of a deficit in the Philippine quota. Under the law as it stands, this deficit goes only to foreign countries other than Cuba. The amendatory bill provides that the domestic beet sugar areas and the methanol cane sugar areas would share proportionately in any deficit of duty free, refined sugar from the Philippines. The first 100,000 tons of the remainder of any deficit would go to foreign countries other than Cuba and the balance would be distributed proportionately to Hawaii, Puerto Rico, the Virgin Islands, and Cuba. None of this deficit, except that which goes to de-

being charged against the quota of any exporting country and without paying the tax which is paid by all other growers and processors.

"Section 3 extends the act, which now expires on Dec. 31, 1941, for three years, to Dec. 31, 1944.

"Section 4 continues the tax for the same period.

"Section 5 extends for three years the provisions of the present law relating to the refund of taxes collected on sugar produced from sugar cane grown in the Philippines."

**Falmer's Comments**  
Congressman Falmer, sponsor of the bill in the house, offered the following comments:  
"The measure which was introduced today is designated to extend the life of the sugar act for three years and to make some, but not all, of the adjustments which the sugar industry, as a whole, has desired for many years.

"The bill is a recognition, in the first place, of the fact that under present abnormal conditions it is highly desirable to produce in the continental United States as much as possible of the sugar consumed by the people of the United States, which is unable to meet its essential needs. The bill is also intended, without increasing the conditional payments to the larger growers of sugar beets and sugar cane, to recognize the increased costs of labor and materials involved in production by small growers and planters. Finally, it recognizes that with the termination of the emergency the quota system is necessary to prevent disastrous reaction upon the American sugar industry. The terms of the law and the amendments are such that the retail price of sugar cannot get out of hand, regardless of any other legislation affecting prices."

"Section 6 deals with the conditional payments and while it increases the basic rate from 60 to 80 cents, the scale-down is so arranged as to provide no increased payment to the larger producers. The purpose of this section is to recognize increased costs particularly for the small farmer and rancher. These costs have been substantial as indicated by the figures gathered by the agricultural marketing service which show that the labor costs in the beet area are now 93.3 per cent greater than they were during the parity period. The last wage determination made under the sugar act increased wages in 1940 for the beet areas 4.6 per cent above what they were in 1937. Defense industry and priorities are now operating to make the labor costs even greater. The full increase from 60 to 80 cents by the amendment goes only to producers of less than 300 tons.

"In this connection it is worth while pointing out that the consumption of sugar has increased so rapidly since the beginning of the emergency that the processing tax, which is paid by the processors and the growers, will produce \$80,000,000 instead of \$68,000,000 in previous years. This revenue is more than sufficient to bear all of the cost of administration of the sugar act and to meet the conditional payments.

"Section 8 amends the definition of beet sugar in order to meet the complaints of the sugar industry that under the present definition as much as \$1,000,000 of sugar is brought into the United States annually in the form of sirup without

**WELCOME**  
to  
TWIN FALLS

**WE'LL WELCOME**  
Newberry's is pleased to welcome to Twin Falls the delegates to the annual convention of the National Beet Growers Association on Dec. 10 and 11, 1941.

**COME AGAIN**  
Your visit to the famous Newberry fountain when you're seeking a tasty lunch or a refreshing fountain specialty.

## COPPER MINE IN UTAH SETS MARK

SALT LAKE CITY, Utah — The Utah Copper company's giant open cut mine at Bingham, near Salt Lake City, is producing more ore per day than any other mining operation in the world.

During September, the Bingham mine—which incidentally is the largest open cut copper operation on the earth—produced 200,000 tons of material each day, of which 87,000 tons was one per cent copper ore.

Col. D. C. Jackling, president of the copper firm, said the plant at Bingham originally was geared for only 70,000 tons of productive ore daily, but defense requirements had forced the increase.

Jackling predicted the company's production for 1941 would be above the half-billion-pound mark. In 1940, Utah led the non-ferrous metal states with production valued at about \$100,000,000. Of this amount, nearly three-fourths was attributed to the Bingham-Carson mines, in the heart of a fabulously rich "treasure mountain" of copper, zinc, gold and silver ore.

Col. Jackling also heads the Nevada Consolidated Copper corporation, which has properties in eastern Nevada, at Ray, Ariz, and Chino; N. M. He said these three mines were producing about 50,000 tons of copper ore daily, which, combined with the Bingham output, would make a total of 277,000 tons from the properties under Jackling's direction.

**China Aided by Big Rice Harvest**  
CHUNGKING—Nature has come to the aid of embattled Free China. Shipping shortages in rice exports are reported by the ministry of agriculture.

Crops in the 14 rice growing provinces not invaded by the Japanese averaged 70 per cent of the maximum yield in record years. The harvest was nine per cent greater than a year ago, during the reported cholera death rate of 19.7 per 100,000 of the population.

**Van Engelen's**  
Take pleasure in extending Greetings  
to the Beet Growers of Magic Valley and the nation in convention in Twin Falls, December 10, 11, 1941.

**Van Engelen's**  
You're cordially invited to visit Van Engelen, Magic Valley's progressive department store devoted to the service of a progressive community. You'll receive a hearty welcome here.

## Sugar Beets Viewed as Ideal Chemurgic Crop

The past few years a great deal has been written about chemurgy. Chemists have become so important in these days, the United States government has set up laboratories for studying possibilities of various chemurgic products, such as plastics, alcohol, soy beans for plastics and by-products of milk for industrial purposes.

By "chemurgy" is meant potting chemistry, agriculture and industry combined. The sugar beet is a crop where correct agriculture for the maintenance of soil fertility is easily practiced. Sugar is a pure chemical consisting of C12, H22, O11 and carries no elements needed by the soil to maintain fertility.

Sugar, as far as the farmer is concerned in maintaining plant life in his soil, is the by-product of the industry. The true products are then beet pulp, beet tops and molasses used for feed to build up the farm.

**Here's Example**  
To demonstrate this thing called "chemurgy" take a 40 acre farm—10 acres in sugar beets, 10 acres in potatoes, 10 acres in beans, five acres in onions and 10 acres in alfalfa. The potato yield is 250 bushels per acre. This 10 acre crop has used 530 pounds of nitrogen, 180 pounds of phosphorus and 800 pounds of potash. The alfalfa crop has used 310 pounds of nitrogen, 140 pounds of phosphorus and 330 pounds of potash, plus the rare elements. These three crops were shipped to market, all the plant food in the soil has gone to market also, the soil has lost some of its fertility.

**Alfalfa**  
The alfalfa crop produced four tons of hay per acre and will not be sold, but used for cattle feed. The alfalfa has used from the 10 acres—1,900 pounds of nitrogen, but due to being a legume has built

**Distinguished Pair Join Decorators**  
NEW YORK—John D. Rockefeller, Jr. and Henry F. DuPont, recently accepted honorary membership in the American Institute of Decorators. The A. I. D. invited them to join because of Mr. Rockefeller's services in restoring Williamsburg, preserving records of past culture and encouraging art museums, and because of Mr. DuPont's achievement in assembling collections of American furnishings and arts and crafts for three centuries.

**4-H Champion**  
Idaho's champion 4-H livestock club member for 1941 is Walt Fraher, 16, Goodwin, Coeur d'Alene State Club Leader J. W. Barber for his six-year record, the boy handled 194 heifers, 28 sheep, and 9 baby heifers. He also took part in judging and demonstration contests. Cash prizes on his exhibits at county, state and national shows total \$275, which brought the income of all projects to \$4,842.25. He showed grand champion fat lamb and reserve champion pen of fat lambs, at the 1940 state fair.

## Sugar Beets Viewed as Ideal Chemurgic Crop

beet pulp will be fed back on the farm and most of the natural soil fertility will be put back on the farm.

**From one year's operation,** this farm has lost a good quantity of its essential elements for plant growth. The elements that went to make up the bean, potato and onion crops have been shipped out, only the alfalfa crop and beet crop has helped to maintain this farm's fertility.

**Back to Soil**  
These elements get back to soil. The roots sent to the factory (12 tons crop) contain 630 pounds of nitrogen, 190 pounds of phosphorus and 770 pounds of potash, plus the essential elements for plant growth. Most of this will stay on the farm in the form of cattle manure to be added to the soil fertility. With the sugar beet crop, the tops are left on the land to be used for feed or plowed under, the tops contain approximately 600 pounds of nitrogen, 140 phosphorus and 400 pounds of potash.

**These elements get back to soil.** The roots sent to the factory (12 tons crop) contain 630 pounds of nitrogen, 190 pounds of phosphorus and 770 pounds of potash, plus the essential elements for plant growth. Most of this will stay on the farm in the form of cattle manure to be added to the soil fertility. With the sugar beet crop, the tops are left on the land to be used for feed or plowed under, the tops contain approximately 600 pounds of nitrogen, 140 phosphorus and 400 pounds of potash.

**By "chemurgy" is meant potting chemistry, agriculture and industry combined.** The sugar beet is a crop where correct agriculture for the maintenance of soil fertility is easily practiced. Sugar is a pure chemical consisting of C12, H22, O11 and carries no elements needed by the soil to maintain fertility.

**Sugar, as far as the farmer is concerned in maintaining plant life in his soil, is the by-product of the industry.** The true products are then beet pulp, beet tops and molasses used for feed to build up the farm.

**Here's Example**  
To demonstrate this thing called "chemurgy" take a 40 acre farm—10 acres in sugar beets, 10 acres in potatoes, 10 acres in beans, five acres in onions and 10 acres in alfalfa. The potato yield is 250 bushels per acre. This 10 acre crop has used 530 pounds of nitrogen, 180 pounds of phosphorus and 800 pounds of potash. The alfalfa crop has used 310 pounds of nitrogen, 140 pounds of phosphorus and 330 pounds of potash, plus the rare elements. These three crops were shipped to market, all the plant food in the soil has gone to market also, the soil has lost some of its fertility.

**Alfalfa**  
The alfalfa crop produced four tons of hay per acre and will not be sold, but used for cattle feed. The alfalfa has used from the 10 acres—1,900 pounds of nitrogen, but due to being a legume has built

One of Magic Valley's Pioneer Hardware Stores

# WELCOMES

The twelfth Annual Convention of the National Beet Growers Ass'n.

As a pioneer firm in Twin Falls we have watched the beet industry grow until it has taken its place as one of the leading industries of this fertile valley. We are proud of the fact that we too have been able to grow and progress and extend to local and visiting delegates a cordial invitation to visit the most completely stocked hardware store in Magic Valley.

## DIAMOND HDWE.

"Magic Valley's Complete Hardware Store"

\* \* \* \* \*

# The TWIN FALLS CHAMBER OF COMMERCE

... a progressive business organization . . . in a community founded on the great industry of agriculture

## EXTENDS GREETINGS to the NATIONAL BEET GROWERS ASSOCIATION

AS YOU MEET in your twelfth annual session, may this body of Twin Falls business men and farmers extend the heartiest of greetings and wish you well in the success of your meeting. Grave responsibilities lie upon us all these days . . . and it is only through carefully considered measures in meetings such as you will conduct that great good can come.

Remember our Magic City and Magic Valley and Plan Another Visit Here!

\* \* \* \* \*

WELCOME to TWIN FALLS WE'LL WELCOME NEWBERRY'S COME AGAIN



We sincerely trust your visit will be pleasant and successful and we'll look forward to seeing you again.



## AMALGAMATED SUGAR CO.