

Weather Forecast

Unsettled tonight and Thursday; cooler Thursday with probable showers. High yesterday 87; low 46. Low this morning 50.

TODAY'S NEWS TODAY

VOL. XIX, NO. 31—5 CENTS

Published by the Idaho Times Co., 114 N. Main St., Twin Falls, Idaho. Telephone 114. Second-class postage paid at Twin Falls, Idaho, May 15, 1936.

TWIN FALLS, IDAHO, WEDNESDAY, MAY 13, 1936

Six Irrigated Counties in Idaho

OFFICIAL COUNTY NEWSPAPER

Taft Delegates Take Wide Edge Over Sen. Borah

Ohio's Favorite Son Rolls Up Big Margin as Returns Come Slowly

ROOSEVELT IS ENDORSED

Buckeye Bourbons Give F.D.R. Sweeping Approval Over Breckinridge

COLUMBUS, O., May 13 (AP)—Chairman of Republican national convention delegates pledged to Robert A. Taft of Cincinnati as the "favorite son" and substantial leads over those pledged to Senator William E. Borah of Idaho as "favorite son" returns from Tuesday's Ohio primary were counted today.

ROOSEVELT IS ENDORSED

Early returns indicated President Roosevelt had been given an enthusiastic endorsement by Democrats. Entered in the presidential preference primary at Columbus, Ohio, today, Sen. Henry Breckinridge, former assistant secretary of war, the Democrat received better than a 12 per cent vote.

IN 1016 precincts the vote was Roosevelt—400,291; Breckinridge—149,029.

The Roosevelt slate of delegates to the Democratic national convention without exception. There was no presidential preference contest on the Republican ticket. Stephen A. May of Washington, D. C., was the only candidate endorsed.

Governor Wins Governor Martin L. Davey, whose administration had been in the center of Ohio politics, was approved approximately 60 per cent to succeed Congressman Stephen A. May for the Democratic nomination.

ATLANTA, May 13 (AP)—The Roosevelt slate of delegates to the Democratic national convention without exception. There was no presidential preference contest on the Republican ticket. Stephen A. May of Washington, D. C., was the only candidate endorsed.

Leading Borah



Robert A. Taft, Ohio's "favorite son" on the Republican ticket, was leading Sen. William E. Borah by a substantial margin today as slow returns trickled in from the Ohio primary yesterday.

DIRIGIBLE NEARS BRITISH SHORES

Hindenburg Bapes Toward New Record in Smooth Flight Through Rain, Fog

By JEANNE STUEBES

ALBANY, N.Y., May 13 (AP)—The Hindenburg dirigible was making steady progress toward the north Atlantic on a cruise today, with the hope of landing in a little over 48 hours from its start at Lakehurst, N. J.

TAIL WINDS were in prospect as the great ship neared England, and was making steady progress toward the north Atlantic on a cruise today, with the hope of landing in a little over 48 hours from its start at Lakehurst, N. J.

WORKERS, TROOPS CLASH IN GREECE

ARMY AND POLICE ON ALERT As Labor Holds Brief General Strike

ATHENS, May 13 (AP)—Spontaneous clashes between workers and troops and policemen throughout Greece today broke out as a general strike in protest against the killing of striking tobacco workers.

Rome Awaits Duce's Dramatic Order to Resign from League

LEAGUE WORRIED AT CRITICAL AND ENGLISH BREACH

Council Fears Estrangement Is Key to Situation at Geneva

By WALLACE CARROLL

GENEVA, May 13 (AP)—League council members feared today that the situation threatening the league's effectiveness if not its life, depended for solution upon developments in the relations between Italy and Great Britain.

Overshadows Hence they felt the anger of Italy at Britain overshadowed for the present the situation precipitated by Italy's withdrawal from the council meeting.

YOUTH WARNED FASTER TEMPO Affects Heart

Cardiac Disease Gaining in Younger Generation, Doctor Says

MURDER CASE AGAINST WOMAN Opens With Calling of Witnesses

TRIAL OF MARY HANSON, 37, Negro, for the murder of Charles Herber, 35, Negro porter, here April 21, got under way before Judge A. H. Bland today in the federal court.

ODDITIES FROM HERE AND THERE

Four Killed, 11 Hurt in Frisco Night-Club Fire

Two Women Among Victims as Blaze Starts from Torch Carried by Dancer

FLIMSY DRAPERIES BURN

Patron Seizes Arm of Girl; Police Blame 'Criminal' Exit Conditions

SAN FRANCISCO, May 13 (AP)—Four persons were killed and 11 hurt in a night-club fire today.

U. S. and France Sign Trade Pact

Treaty Ends Tariff War and Grants Mutual Lowering of Barriers

By JOSEPH A. BAIHD

WASHINGTON, May 13 (AP)—A decade-long diplomatic war over tariffs was ended today by a commercial treaty designed to promote a profitable flow of trade between France and the United States.

ROOSEVELT, SEN. POPE Talk Power Statute

WASHINGTON, May 13 (AP)—President Roosevelt and Senator James P. Pope, D., Idaho, today discussed pending legislation for the disposal of surplus power from Columbia river dams.

Oklahoma Convicts Riot, Slay Yard Official and Flee in Captured Truck

At Least Six Escape With Guard Hostage

Police Scandal

ROBINSON TRADE TO AVOID DEATH HINTED IN CASE

Louisville Heads Kidnap May Swap Plea of Guilty for Prison Sentence

JEWEL AND BOND TRAIL FOR G-MEN

CHIEF TERSLEY ORDERS AGENTS TO SMASH RACKETEERS AS NEXT OBJECTIVE

MORE IN RACE

FARM BUREAU BACKS ACCIDENT PREVENTION

PENSION FRAUDS

DRINK DOESN'T RUIN LIVER, DOCTORS FIND

TODAY'S GAMES



THOMAS MILLER



SIDNEY HINSON

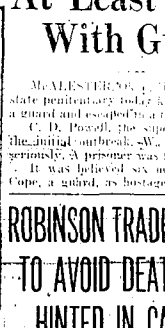


JOHN FARRELL

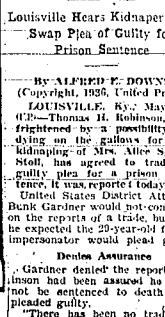


LAWRENCE BALLARD

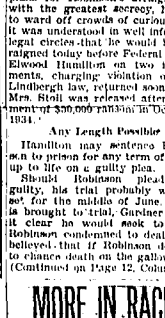
DR. WILSON REIGNS



SIDNEY HINSON

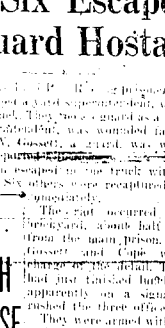


JOHN FARRELL

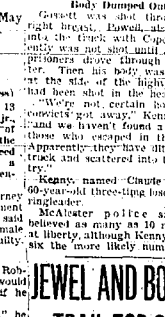


LAWRENCE BALLARD

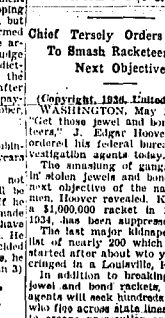
DR. WILSON REIGNS



LAWRENCE BALLARD



JOHN FARRELL



LAWRENCE BALLARD

DR. WILSON REIGNS

COMMENCEMENT

SET AT RUPERT

Class of 92 Graduates to Be Awarded Diplomas at Final Exercises

RUPERT, May 12 (Special) - The graduation of the class of 1936 from the Rupert high school will be held at the Will-John Stevens Russell Theater, Rupert, on Sunday, May 25.

The exercises will be held at the Will-John Stevens Russell Theater, Rupert, on Sunday, May 25.

BIBLE CLASSES

AT CASTLEFORD

CASTLEFORD, May 12 (Special) - Summer daily vacation Bible school will be held at the First Baptist church beginning June 7 through June 22, and every

CASTLEFORD, May 12 (Special) - The First Baptist church will conduct a two weeks revival meeting in the church building here beginning Sunday, June 7, and continuing daily for two weeks.

Mrs. Harry B. Webber is to have charge of all music and Rev. Earl R. Berg is the evangelist.

PLANS REVIVAL

MURTAUGH STUDENTS

MURTAUGH, May 12 (Special) - The Murtaugh high school will participate during noon a ban-

MURTAUGH, May 12 (Special) - The Murtaugh high school will participate during noon a ban-

MURTAUGH, May 12 (Special) - The Murtaugh high school will participate during noon a ban-

QUEEN MARY, GIANT NEW SHIP

OFFERS AIR-CONDITIONED CENTRAL CHAMBER

QUEEN MARY, GIANT NEW SHIP OFFERS AIR-CONDITIONED CENTRAL CHAMBER

QUEEN MARY, GIANT NEW SHIP OFFERS AIR-CONDITIONED CENTRAL CHAMBER

QUEEN MARY, GIANT NEW SHIP OFFERS AIR-CONDITIONED CENTRAL CHAMBER

SEEN TODAY

RUPERT

RUPERT, May 12 (Special) - The graduation of the class of 1936 from the Rupert high school will be held at the Will-John Stevens Russell Theater, Rupert, on Sunday, May 25.

RUPERT, May 12 (Special) - The graduation of the class of 1936 from the Rupert high school will be held at the Will-John Stevens Russell Theater, Rupert, on Sunday, May 25.

RUPERT, May 12 (Special) - The graduation of the class of 1936 from the Rupert high school will be held at the Will-John Stevens Russell Theater, Rupert, on Sunday, May 25.

SEEN TODAY

CAREY

CAREY, May 12 (Special) - The graduation of the class of 1936 from the Carey high school will be held at the Carey high school, Carey, on Sunday, May 25.

CAREY, May 12 (Special) - The graduation of the class of 1936 from the Carey high school will be held at the Carey high school, Carey, on Sunday, May 25.

CAREY, May 12 (Special) - The graduation of the class of 1936 from the Carey high school will be held at the Carey high school, Carey, on Sunday, May 25.

SEEN TODAY

HOLLISTER

HOLLISTER, May 12 (Special) - The graduation of the class of 1936 from the Hollister high school will be held at the Hollister high school, Hollister, on Sunday, May 25.

HOLLISTER, May 12 (Special) - The graduation of the class of 1936 from the Hollister high school will be held at the Hollister high school, Hollister, on Sunday, May 25.

HOLLISTER, May 12 (Special) - The graduation of the class of 1936 from the Hollister high school will be held at the Hollister high school, Hollister, on Sunday, May 25.

VALUE Demonstration DAYS

Van Engelen's Thursday-Friday-Saturday

Van Engelen's believe that business is built upon their ability to offer the best values. Money can buy at prices consistent with good quality. We hope you will visit us and view this demonstration of GOOD VALUES.

FOR SUMMER SEWING! SHEERS 15c Yard. A real demonstration of value. Lovely sheers in every wanted color combination. Most all are Dummies and Vellies.

1c SALE WOODBURY'S TOILET PREPARATIONS. A Real Opportunity to Save on Fine Quality Toiletries! Simply Buy One Article at 49c and Your Choice of Any Other 49c Item for Only ONE CENT!

FAST COLOR PRINT 9c Yard. CROWN RAYON PRINT 49c Yard. HOOKED RUGS 79c. HALF LINEN CRASH 9c Yard. NEW CHEVIOTS 12 1/2c Yard.

SPRING AND SUMMER FOOTWEAR. Now Only \$2.59 A Pair. Odd lots of much higher priced lines. There is not a size of every style - but a complete size range in all there are whites and light shades you'll want for summer.

LOVELY NEW BLOUSES BLOUSES 69c. They've just arrived these elegant and lovely cotton blouses in past zipper and goncho front fasteners. Many pretty colors to choose from.

MAY TIME IS LINGERIE TIME! SLIPS 69c. CHILDREN'S CHILDREN'S SLEEPERS 59c. Kids' sleepers made from the finest Vici Dyeed Popperel fabric.

ANKLETS 15c Pair. CHILDREN'S WASH DRESSES 98c. INFANTS' DRESSES 49c. A fine pure silk full fashioned-hose in summer shades, with elastic top. Buy several pair now!

HERE IS OUR BEST Overall Value. 8 OZ. SANFORIZED Guaranteed OVERALLS 98c. Big roomy full cut and exceptionally well made - and a better quality because denim that is guaranteed not to shrink.

Idaho Times TELEPHONE 38 Full Leased Wire Service United Press Association Full N. E. A. Feature Service

POT SHOTS WITH The Gentleman in the Third Row

PAUL MALLON'S NEWS BEHIND THE NEWS An Exclusive Evening Times Daily Report on the Paul Mallon's Events in the Nation's Capital

Subscription Rates By Mail, White Idaho and Blue Co. Rates: \$1.00 per month, \$10.00 per year, \$1.00 per copy.

Lucid Explanation About Dog Houses To lighten the educational standards of Pot Shots readers, you should have your own five foot dog house.

Thinking Washington—Several mighty men of the Republican party are thinking currently along these lines: Borah will have 100 delegates.

Magic City Marches On Twin Falls has good reason to be proud of its building progress, the impressive figure of a \$1,000,000 day building permit record since the first of the year setting a mark which no doubt will be greatly exceeded during the remainder of 1936.

Chapter XXV Toby's eyes searched Hilary's. "You mean," she said, "that he's come back to town?"

Ammonition Obviously the contest for Republican control has been carried on with less jealousy and personal animosity than the ordinary hotly fought campaign.

Shoshone Falls Restored scenic beauty of Shoshone falls resulting from the run-off of sand at this time, gives rise to the pertinent suggestion of John E. Hayes, pioneer local engineer, of the possibility of this community staging an annual celebration which would feature the Shoshone falls spectacle.

Chapter XXVI Toby's eyes searched Hilary's. "You mean," she said, "that he's come back to town?"

Hoover Hoover strength is one of the most interesting mysteries of the Republican situation.

Shoshone Falls Continued scenic beauty of Shoshone falls resulting from the run-off of sand at this time, gives rise to the pertinent suggestion of John E. Hayes, pioneer local engineer, of the possibility of this community staging an annual celebration which would feature the Shoshone falls spectacle.

Chapter XXVII Toby's eyes searched Hilary's. "You mean," she said, "that he's come back to town?"

Hoover Hoover strength is one of the most interesting mysteries of the Republican situation.

Shoshone Falls Continued scenic beauty of Shoshone falls resulting from the run-off of sand at this time, gives rise to the pertinent suggestion of John E. Hayes, pioneer local engineer, of the possibility of this community staging an annual celebration which would feature the Shoshone falls spectacle.

Chapter XXVIII Toby's eyes searched Hilary's. "You mean," she said, "that he's come back to town?"

Hoover Hoover strength is one of the most interesting mysteries of the Republican situation.

Shoshone Falls Continued scenic beauty of Shoshone falls resulting from the run-off of sand at this time, gives rise to the pertinent suggestion of John E. Hayes, pioneer local engineer, of the possibility of this community staging an annual celebration which would feature the Shoshone falls spectacle.

Chapter XXIX Toby's eyes searched Hilary's. "You mean," she said, "that he's come back to town?"

Hoover Hoover strength is one of the most interesting mysteries of the Republican situation.

Shoshone Falls Continued scenic beauty of Shoshone falls resulting from the run-off of sand at this time, gives rise to the pertinent suggestion of John E. Hayes, pioneer local engineer, of the possibility of this community staging an annual celebration which would feature the Shoshone falls spectacle.

Chapter XXX Toby's eyes searched Hilary's. "You mean," she said, "that he's come back to town?"

Hoover Hoover strength is one of the most interesting mysteries of the Republican situation.

Shoshone Falls Continued scenic beauty of Shoshone falls resulting from the run-off of sand at this time, gives rise to the pertinent suggestion of John E. Hayes, pioneer local engineer, of the possibility of this community staging an annual celebration which would feature the Shoshone falls spectacle.

Chapter XXXI Toby's eyes searched Hilary's. "You mean," she said, "that he's come back to town?"

Hoover Hoover strength is one of the most interesting mysteries of the Republican situation.

Shoshone Falls Continued scenic beauty of Shoshone falls resulting from the run-off of sand at this time, gives rise to the pertinent suggestion of John E. Hayes, pioneer local engineer, of the possibility of this community staging an annual celebration which would feature the Shoshone falls spectacle.

Chapter XXXII Toby's eyes searched Hilary's. "You mean," she said, "that he's come back to town?"

Hoover Hoover strength is one of the most interesting mysteries of the Republican situation.

Shoshone Falls Continued scenic beauty of Shoshone falls resulting from the run-off of sand at this time, gives rise to the pertinent suggestion of John E. Hayes, pioneer local engineer, of the possibility of this community staging an annual celebration which would feature the Shoshone falls spectacle.

Chapter XXXIII Toby's eyes searched Hilary's. "You mean," she said, "that he's come back to town?"

Hoover Hoover strength is one of the most interesting mysteries of the Republican situation.

Shoshone Falls Continued scenic beauty of Shoshone falls resulting from the run-off of sand at this time, gives rise to the pertinent suggestion of John E. Hayes, pioneer local engineer, of the possibility of this community staging an annual celebration which would feature the Shoshone falls spectacle.

Chapter XXXIV Toby's eyes searched Hilary's. "You mean," she said, "that he's come back to town?"

Hoover Hoover strength is one of the most interesting mysteries of the Republican situation.

Shoshone Falls Continued scenic beauty of Shoshone falls resulting from the run-off of sand at this time, gives rise to the pertinent suggestion of John E. Hayes, pioneer local engineer, of the possibility of this community staging an annual celebration which would feature the Shoshone falls spectacle.

Chapter XXXV Toby's eyes searched Hilary's. "You mean," she said, "that he's come back to town?"

Hoover Hoover strength is one of the most interesting mysteries of the Republican situation.

Shoshone Falls Continued scenic beauty of Shoshone falls resulting from the run-off of sand at this time, gives rise to the pertinent suggestion of John E. Hayes, pioneer local engineer, of the possibility of this community staging an annual celebration which would feature the Shoshone falls spectacle.

Chapter XXXVI Toby's eyes searched Hilary's. "You mean," she said, "that he's come back to town?"

Hoover Hoover strength is one of the most interesting mysteries of the Republican situation.

Shoshone Falls Continued scenic beauty of Shoshone falls resulting from the run-off of sand at this time, gives rise to the pertinent suggestion of John E. Hayes, pioneer local engineer, of the possibility of this community staging an annual celebration which would feature the Shoshone falls spectacle.

Chapter XXXVII Toby's eyes searched Hilary's. "You mean," she said, "that he's come back to town?"

Hoover Hoover strength is one of the most interesting mysteries of the Republican situation.

Shoshone Falls Continued scenic beauty of Shoshone falls resulting from the run-off of sand at this time, gives rise to the pertinent suggestion of John E. Hayes, pioneer local engineer, of the possibility of this community staging an annual celebration which would feature the Shoshone falls spectacle.

Chapter XXXVIII Toby's eyes searched Hilary's. "You mean," she said, "that he's come back to town?"

Hoover Hoover strength is one of the most interesting mysteries of the Republican situation.

Shoshone Falls Continued scenic beauty of Shoshone falls resulting from the run-off of sand at this time, gives rise to the pertinent suggestion of John E. Hayes, pioneer local engineer, of the possibility of this community staging an annual celebration which would feature the Shoshone falls spectacle.

Chapter XXXIX Toby's eyes searched Hilary's. "You mean," she said, "that he's come back to town?"

Hoover Hoover strength is one of the most interesting mysteries of the Republican situation.

Shoshone Falls Continued scenic beauty of Shoshone falls resulting from the run-off of sand at this time, gives rise to the pertinent suggestion of John E. Hayes, pioneer local engineer, of the possibility of this community staging an annual celebration which would feature the Shoshone falls spectacle.

Chapter XL Toby's eyes searched Hilary's. "You mean," she said, "that he's come back to town?"

Hoover Hoover strength is one of the most interesting mysteries of the Republican situation.

Shoshone Falls Continued scenic beauty of Shoshone falls resulting from the run-off of sand at this time, gives rise to the pertinent suggestion of John E. Hayes, pioneer local engineer, of the possibility of this community staging an annual celebration which would feature the Shoshone falls spectacle.

Chapter XLI Toby's eyes searched Hilary's. "You mean," she said, "that he's come back to town?"

Hoover Hoover strength is one of the most interesting mysteries of the Republican situation.

Shoshone Falls Continued scenic beauty of Shoshone falls resulting from the run-off of sand at this time, gives rise to the pertinent suggestion of John E. Hayes, pioneer local engineer, of the possibility of this community staging an annual celebration which would feature the Shoshone falls spectacle.

Chapter XLII Toby's eyes searched Hilary's. "You mean," she said, "that he's come back to town?"

Hoover Hoover strength is one of the most interesting mysteries of the Republican situation.

Shoshone Falls Continued scenic beauty of Shoshone falls resulting from the run-off of sand at this time, gives rise to the pertinent suggestion of John E. Hayes, pioneer local engineer, of the possibility of this community staging an annual celebration which would feature the Shoshone falls spectacle.

Chapter XLIII Toby's eyes searched Hilary's. "You mean," she said, "that he's come back to town?"

Hoover Hoover strength is one of the most interesting mysteries of the Republican situation.

Shoshone Falls Continued scenic beauty of Shoshone falls resulting from the run-off of sand at this time, gives rise to the pertinent suggestion of John E. Hayes, pioneer local engineer, of the possibility of this community staging an annual celebration which would feature the Shoshone falls spectacle.

Chapter XLIV Toby's eyes searched Hilary's. "You mean," she said, "that he's come back to town?"

Hoover Hoover strength is one of the most interesting mysteries of the Republican situation.

Shoshone Falls Continued scenic beauty of Shoshone falls resulting from the run-off of sand at this time, gives rise to the pertinent suggestion of John E. Hayes, pioneer local engineer, of the possibility of this community staging an annual celebration which would feature the Shoshone falls spectacle.

Chapter XLV Toby's eyes searched Hilary's. "You mean," she said, "that he's come back to town?"

Hoover Hoover strength is one of the most interesting mysteries of the Republican situation.

...SOCIETY...

You Are Invited to Telephone Your Social Items Phone 35 Before 10:30 a. m.

BRIDGE TEA SERIES CONCLUDED Mrs. James R. Rothwell was hostess this afternoon at the concluding one of two bridge tea held at her home on Seventh avenue east. Following games of contract bridge, Mrs. Rothwell served tea to her guests from an especially attractive tea table centered with a silver bowl of yellow tulips. The table was covered with a lace cloth and a silver service completed the appointments. She was assisted by Mrs. F. H. Adams, Mrs. Wilbur S. Hill and Mrs. W. R. Friebe. The first of the series of events was given yesterday afternoon, with prizes at cards going to Mrs. Herman Hinz and Mrs. Stanley Larkin. The hostess was assisted by Mrs. Hill, Mrs. Friebe and Mrs. George Herriott.

SPECIAL PROGRAM GIVEN AT CLASS SESSION At the morning convocation afternoon of the Mary-Maria class of the Baptist Sunday school held at the home of Mrs. J. L. Hodges, newly elected officers—look their places and the session was conducted by Mrs. M. O. Kaykendall. The program followed the business session and presented by Mrs. North Nichols was a special observance of Mother's day. Readings and poems were presented by Mrs. E. T. Wells, Mrs. F. S. Munro and Mrs. Patton. Mrs. Arthur Gordon and Mrs. Paul Gordon sang "Sweet Mother of Mine," accompanied by Mrs. Hodges. Mrs. Nichols presented a series of living pictures of famous mothers. The play "Mother's Day" was portrayed by Mrs. Marvin Mayo; "Indian Mother," Mrs. Walter Turner; "Washington's Mother," Mrs. W. Miller; "Nancy Hanks and the Infant Abraham Lincoln," Mrs. John Bigley; "Washing's Mother," Mrs. Belle Wilkins; "Christian Mother," Mrs. Adkins. A toast to mothers was given by Mrs. Nichols and was followed by a prayer by Mrs. A. S. Martyn. During the social hour, Mrs. Munro and Mrs. Myrtle Johnson served refreshments.

STAFF NAMED BY J. V. CLUB Mrs. Ethel Watkins was elected president of the J. V. club at the regular meeting of the organization held yesterday at the home of Mrs. Ruth. Other officers are: Mrs. Belle Green, vice president; Mrs. Winifred Whitehead, secretary-treasurer; and retiring officers are Mrs. Florence Christopherson, president; Mrs. Eleanor Scott, vice president; Mrs. Margaret Empey, secretary-treasurer. For the program Mrs. Kaape read a poem entitled "Mother" and Mrs. Margie McCann gave further tribute to mother. The white elephant was won by Mrs. Janice Kincaid. Refreshments were served by the hostess.

FAREWELL GIVEN FOR THIRTEEN SENIORS A picnic was held yesterday afternoon at Vinoyard lake by members of the Phoebe club, national high school dramatic society, as a farewell for senior members of the organization. Miss Martha Farrar, sponsor, accompanied the group. After lunch the honored members received gifts presented by Miss Ida Lee Lamb, newly elected president of the club.

CARDS ENJOYED BY CLUB MEMBERS Mrs. John B. Robertson was hostess last evening to members of the H. N. O. bridge at her home. High score at contract, at play through the evening, was recorded by Mrs. Al Westergren, and Mrs. F. C. Shensberger won the traveling award. A trial of the club was Mrs. Richard St. Robertson. At a late hour the hostess served refreshments. Games were used in forming the teams.

Marian Martin Pattern 9880. Buttons add a decorative note. A tribute to modern Cinderella, this delightful afternoon frock designed by Marian Martin for the up-to-date Madame X or Madame who likes style combined with comfort. If you would like to have something extra for those warm summer days, it takes very little time and expense to brighten up your wardrobe with this interesting make model. Two rows of millifiori little buttons accent the novel shirring which is fitted snugly to the waist by an adjustable drawstring. The dress has a high neck in a cool and fashionable idea and two wide kick pleats allow you to take extra-long steps. Glossy and of the new summer materials such as linen, plume, seersucker or crease. Complete, diagrammed Marian Martin new chart included. Pattern 9880 can be ordered only in sizes 12, 14, 16, 18, 20, 22, 24, 26, 28, 30, 32, 34, 36, 38, 40 and 42. Size 18 requires 3 1/2 yards 56 inch fabric. Send PATTERN COUPON in plain or lined envelope to: MARIAN MARTIN PATTERN CO., 1000 Broadway, New York 10, N. Y. Be sure to write plainly your NAME, ADDRESS, PHONE NUMBER and SIZE of each pattern. Send for our MARIAN MARTIN SUMMER PATTERN BOOK—just out! See what's latest for women of every age, in every fascinating summer color, the latest home-the-vacationer, the bride, the deb-deb-partying, the town-swinging in the smart special occasions. Includes: 100 and more of the latest fabrics and accessories. Order this book and THE GOSWORTHY FIFTEEN CENTS BOOK AND A PATTERN TOGETHER, TWENTY-FIVE CENTS. Send your order to Idaho Evening Times, pattern department.

Calendar

Salmon Social club will hold a dance Friday evening at Legion Memorial hall. Shammock club will meet tomorrow at the home of Mrs. A. C. Ecklin for a pot-luck luncheon. The regular meeting of Assessor Episcopal Guild scheduled for tomorrow has been postponed until further notice. A. C. Ecklin for a pot-luck luncheon. Past Noble Grand's trip will be tomorrow, May 13, at the home of Mrs. Evan Farr, 333 Third avenue east. Friendly Circle will meet tomorrow at 2 p. m. at the home of Mrs. Al Westergren. Roll call will be answered with Mother's day quotations. Evening Guild of Assessor Episcopal church will meet today 8 p. m. at the home of Mrs. M. B. Roberts. Refreshments will be served. Miss Wilma Howarth will be hostess. Ann Sothern and Victor Jary in "Hull Ship Morgan"—A Columbia picture. The star is George Bancroft as "Morgan" in this thrilling six-act picture showing at Lude Jauch's Roxy theater Thursday and Friday.

THEATERS

ROXY'S NEXT AT ORPHEUM. Eddie Cantor opened a four-day engagement today at the Orpheum in his sixth annual comedy, "Strike Me Pink." Others in the cast are Ethel Merman, Parlayarkitis, Sally Eiler and the gorgeous Goldwyn girls.

DOCTORS BELONG TO "FEAST" CLUB. This is the "Society for the Encouragement of Arthritis," a dining club composed exclusively of physicians with the cynical object of giving the members an opportunity to eat and drink all that they forbid to their patients. The club has a fixed membership of 25 and a long waiting list. Their banquets consist of all the good things which the medical profession considers contributory to arthritis. Two bottles of still wine and one of champagne are served to each group of three diners, and must be emptied. The rules, however, permit the less hardy diners to dilute their wine with mineral water.

Idaho Theater Will Run Merry Comedy. This is the Idaho theater Friday and Saturday is that uproarious comedy "Every Saturday Night" with Jug Laug, Thomas Beck, Jed Prouty and Spring Byington. It is happy, scrappy comedy-drama of a horse-and-buggy day drama fringed by a gang of step-the-guns led in which every Saturday night proved to be a thorn in the father's side. The program is completed with "Morgan" of Rex and Ritzy" No. 11 cartoon and news. Showing today and Thursday is "The Irish in U.S." with Frank McHugh and Allen Jenkins.

COMPLIMENTARY. CHARLESTON, W. Va., May 13 (AP)—President Roosevelt and Senator William E. Borah received complimentary passes to attend Tuesday's West Virginia primary. Returns from which were being counted slowly today. Roosevelt, in the Democratic preference primary, and Borah, in the Republican primary, were the only major candidates. The President received almost three times as many votes as Borah in returns from 215 of the state's 417 precincts showed. Roosevelt received 57,200 popular votes and Borah 34,616.

GOODING GIRL WEBS. BOISE, May 13 (Special)—L. come to see the best issued here to Oscar Schmit, film, and Geneva Rose Boyer, Gooding.

IF YOU LIKE TO DRIVE A GOOD AUTOMOBILE, AND WHO DOESN'T YOU'LL GET MORE MILES FOR YOUR MONEY WITH ONE OF OUR SQUARE DEAL USED CARS

UNION MOTOR CO. 35 Ford DeLuxe Coupe, Rumble Seat—heater, '30 license, low mileage... \$590. 36 Ford V-8 Touring Fordor Sedan... \$590. 34 Ford V-8 Fordor Sedan, good... \$445. 33 Chevrolet Touring Sedan... \$395. 38 Ford Coupe... \$365. 31 DeSoto 6 Sedan, reconditioned... \$325. 30 Chevrolet Coupe... \$150. 34 Chevrolet Sedan Six Sedan... \$495. 35 Chevrolet Touring Sedan... \$275. 34 Pontiac Sedan... \$450. 31 Ford DeLuxe Tudor... \$385. 29 Chrysler Sedan... \$405. 28 Humblett Sedan... \$165. 30 Ford Coupe... \$225. 30 Ford Pickup... \$450. 30 Ford Fordor Sedan... \$475. 29 Ford Sedan, license, new motor... \$475. 29 Ford Sedan... \$340. 29 Ford Tudor Sedan... \$475. 30 Chevrolet Truck... \$475. 34 Chevrolet Truck... \$475. 30 Chevrolet Truck... \$475. 29 Chevrolet Truck... \$475. 30 Ford V-8 Truck... \$290. 34 Ford V-8 Truck... \$490. Cash or Terms It Pays to See Your Ford Dealer First. Special Plans for Veterans.

HOOD'S Specially Purchased Items For Three Days Selling Thursday—Friday—Saturday MAY SALES A Three Day Event Starting The New Summer Season With Fresh Style Right Merchandise... At Sale Prices

New Summer DRESSES \$3.95 Values \$2.94. 200 New HATS Just Unpacked! 84¢. SILK HOSE Perfect Quality 44¢ pair. SALE! POLO SHIRTS \$1.19 "Spun-Lo" Slips White and Tea Rose 94¢. Styles for Girls and Boys. Novelty cotton polo shirts for girls and boys in sizes up to 18. White and pastel shades. A special purchase sale of brand new styles.

Union Motor Co. Your FORD Dealer. New Sheer Cotton Frocks Regularly 98¢ 84¢. New, Crisp Sheer Blouses Sizes 34 to 40 84¢. Girls' Summer DRESSES Regularly 98¢ 84¢. Introductory Sale of Foundation Garments FOR ONE WEEK ONLY! P-N Practical Front La Camille 20% Reduction Princess Youth Hickory. Choose any combination garment from our regular stock selling from \$1.05 up during this Introductory Sale and you may purchase it at a 20% reduction. Here's an opportunity to make a real saving on a new summer foundation.

DERBY WINNER HEADS 17 ENTRANTS FOR BREAKNESS

CRACK FIELD TO RUN AT PIMLICO

Brevity Is Only Major Threat Year Old Not Entered For Classic

BALTIMORE, Md., May 12 (AP)—Seventeen three-year-olds headed by the Kentucky derby winner, Bold Venture, are to run in the prospectively named 1936 running of the \$25,000 Pimlico classic, the stakes of \$100,000, at Pimlico, Md., Saturday.

With Raymond (sonny) World, mentioned to ride the mount on L. Schwartz out, Bold Venture probably will go to the post on the favorite to win the fifth horse in history to capture both the derby and the presidential pacesetter award.

Brevity Is Only Major Threat Year Old Not Entered For Classic

SEALS WIN OVER LEAGUE LEADERS

O'Doul Prophecy Partly Borne Out As Frisco Wins Missions Gain

By United Press

Lefty O'Doul's excellent prediction that his San Francisco Seals would "get going" after an extended slump, was partially substantiated Tuesday when they stamped out a 9 to 7 victory over the Negro-league Oakland Grays.

HEAD SCOUT AT STANFORD SICK

PALO ALTO, Calif., May 12 (AP)—Physicians and Palo Alto hospital attendants today reported a head scout on the condition of the late Col. Robert H. Hoover, who died at Stanford University.

Bliss Squad Loses To Hagenman Team

Bliss, the Blue school baseball team was scheduled to play a return game this afternoon on its picnic to Hamilton.

STANDINGS

Table with columns for American League and National League, listing teams and their records.

INITIAL INVESTMENT PAYS

GEORGE McQUINN

FOR SIX YEARS I HAVE INVESTED IN THE STOCK MARKET AND I HAVE MADE A PROFIT OF \$100,000.00. I HAVE MADE THIS PROFIT BY BUYING AND HOLDING STOCKS.



FOR SIX YEARS I HAVE INVESTED IN THE STOCK MARKET AND I HAVE MADE A PROFIT OF \$100,000.00. I HAVE MADE THIS PROFIT BY BUYING AND HOLDING STOCKS.

Mac Nearly Goes for Ride in Iceboat—Only There's No Ice

MADISON, Wis., May 12 (AP)—A 100-mile iceboat race today—a race of 100 miles an hour or better in the world's champion iceboat.

By United Press

GREAT GOLF

Grip Club Near End For Your Long Shots

WHEN A SHORT SHOT IS DESIRED WITH A PIERCING CLUB, MOVE THE HANDS DOWN THE LEADERS.

STANDINGS

Table with columns for American League and National League, listing teams and their records.

U. S. C. TRACKMEN RANKED AS TOPS

Crownell's Squad Almost Sure To Place Ten Stars in Olympic Berths

By LESLIE JOHNSON (AP Staff Writer)

LOS ANGELES, May 12 (AP)—Pacific coast trackmen believe that the University of Southern California has the finest track and field team ever assembled at one institution.

By LESLIE JOHNSON (AP Staff Writer)

LOUIS OBSERVES BIRTHDAY NO. 22

Celebrates by Starting Series Training for Max; Receives Gold Belt Trophy

LAKEWOOD, N. Y., May 12 (AP)—Joe Louis celebrated his 32nd birthday today by going into boxing training in his bout with Max Baer in Yankee stadium.

O. S. C. JOB GOES TO PERCY LOEY

Former Denver Coach Taking Over Student Activities Except Athletics

CORVALLIS, Ore., May 12 (AP)—Percy Loey, ex-Denver State football star and former head football coach at Denver university, will become director of general student activities at Oregon State college.

BRIDGES ANXIOUS FOR 20

FOURTEEN-TWO, I understand, will be the number of the year in a row he has accomplished the feat.

JOBBIL TURTLE CAUGHT

FOURTEEN-TWO, I understand, will be the number of the year in a row he has accomplished the feat.

SCORES YESTERDAY

Table with columns for National League and American League, listing scores for various games.

BACK AGAIN

End 13 Game Losing Streak By Blanking Yankees and Uncovering Hurier



By LESLIE AVERY (AP Staff Writer)

ST. LOUIS, May 12 (AP)—The New York Yankees just couldn't get on today and it probably gave Manager Joe Judge some satisfaction to snap the 13-game losing streak at the expense of the uncovering New York Yankees than any other team in the circuit.

LOUIS OBSERVES BIRTHDAY NO. 22

Celebrates by Starting Series Training for Max; Receives Gold Belt Trophy

LAKEWOOD, N. Y., May 12 (AP)—Joe Louis celebrated his 32nd birthday today by going into boxing training in his bout with Max Baer in Yankee stadium.

LOUIS OBSERVES BIRTHDAY NO. 22

Celebrates by Starting Series Training for Max; Receives Gold Belt Trophy

LAKEWOOD, N. Y., May 12 (AP)—Joe Louis celebrated his 32nd birthday today by going into boxing training in his bout with Max Baer in Yankee stadium.

U. S. Horse Takes Newmarket Stakes

NEWARK, N. J., May 12 (AP)—William Winkler's Flash won the Woodward horse finished ahead of a Gordon Smith's Flash.

CRAB ORCHARD

IT'S GOT TO BE CRAB ORCHARD. EIGHT TIMES MORE POPULAR NOW... It pays you to buy Crab Orchard—the top-run Kentucky straight bourbon. Made just like the most expensive whiskeys.

Advertisement for Crab Orchard Kentucky Straight Bourbon Whiskey, featuring a logo and descriptive text.

BROWNIES CHECK MURDERERS' ROW

End 13 Game Losing Streak By Blanking Yankees and Uncovering Hurier

By LESLIE AVERY (AP Staff Writer)

ST. LOUIS, May 12 (AP)—The New York Yankees just couldn't get on today and it probably gave Manager Joe Judge some satisfaction to snap the 13-game losing streak at the expense of the uncovering New York Yankees than any other team in the circuit.

By LESLIE AVERY (AP Staff Writer)

LOUIS OBSERVES BIRTHDAY NO. 22

Celebrates by Starting Series Training for Max; Receives Gold Belt Trophy

LAKEWOOD, N. Y., May 12 (AP)—Joe Louis celebrated his 32nd birthday today by going into boxing training in his bout with Max Baer in Yankee stadium.

LOUIS OBSERVES BIRTHDAY NO. 22

Celebrates by Starting Series Training for Max; Receives Gold Belt Trophy

LAKEWOOD, N. Y., May 12 (AP)—Joe Louis celebrated his 32nd birthday today by going into boxing training in his bout with Max Baer in Yankee stadium.

U. S. Horse Takes Newmarket Stakes

NEWARK, N. J., May 12 (AP)—William Winkler's Flash won the Woodward horse finished ahead of a Gordon Smith's Flash.

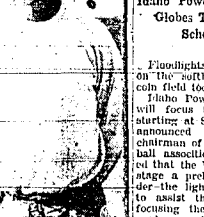
CRAB ORCHARD

IT'S GOT TO BE CRAB ORCHARD. EIGHT TIMES MORE POPULAR NOW... It pays you to buy Crab Orchard—the top-run Kentucky straight bourbon. Made just like the most expensive whiskeys.

Advertisement for Crab Orchard Kentucky Straight Bourbon Whiskey, featuring a logo and descriptive text.

TARHEEL TUTOR

Idaho Power Men Will Focus Globes Tonight; Practice Schedule Issued



Football destined for the University of North Carolina this year will be in the hands of Raymond (Bear) Wolf, above, just appointed successor to Carl Gnavely, who recently resigned.

By United Press

LOUIS OBSERVES BIRTHDAY NO. 22

Celebrates by Starting Series Training for Max; Receives Gold Belt Trophy

LAKEWOOD, N. Y., May 12 (AP)—Joe Louis celebrated his 32nd birthday today by going into boxing training in his bout with Max Baer in Yankee stadium.

LOUIS OBSERVES BIRTHDAY NO. 22

Celebrates by Starting Series Training for Max; Receives Gold Belt Trophy

LAKEWOOD, N. Y., May 12 (AP)—Joe Louis celebrated his 32nd birthday today by going into boxing training in his bout with Max Baer in Yankee stadium.

U. S. Horse Takes Newmarket Stakes

NEWARK, N. J., May 12 (AP)—William Winkler's Flash won the Woodward horse finished ahead of a Gordon Smith's Flash.

CRAB ORCHARD

IT'S GOT TO BE CRAB ORCHARD. EIGHT TIMES MORE POPULAR NOW... It pays you to buy Crab Orchard—the top-run Kentucky straight bourbon. Made just like the most expensive whiskeys.

Advertisement for Crab Orchard Kentucky Straight Bourbon Whiskey, featuring a logo and descriptive text.

SOFTBALL FIELD LIGHTS SET UP

Idaho Power Men Will Focus Globes Tonight; Practice Schedule Issued

Football destined for the University of North Carolina this year will be in the hands of Raymond (Bear) Wolf, above, just appointed successor to Carl Gnavely, who recently resigned.

By United Press

By United Press

LOUIS OBSERVES BIRTHDAY NO. 22

Celebrates by Starting Series Training for Max; Receives Gold Belt Trophy

LAKEWOOD, N. Y., May 12 (AP)—Joe Louis celebrated his 32nd birthday today by going into boxing training in his bout with Max Baer in Yankee stadium.

LOUIS OBSERVES BIRTHDAY NO. 22

Celebrates by Starting Series Training for Max; Receives Gold Belt Trophy

LAKEWOOD, N. Y., May 12 (AP)—Joe Louis celebrated his 32nd birthday today by going into boxing training in his bout with Max Baer in Yankee stadium.

U. S. Horse Takes Newmarket Stakes

NEWARK, N. J., May 12 (AP)—William Winkler's Flash won the Woodward horse finished ahead of a Gordon Smith's Flash.

CRAB ORCHARD

IT'S GOT TO BE CRAB ORCHARD. EIGHT TIMES MORE POPULAR NOW... It pays you to buy Crab Orchard—the top-run Kentucky straight bourbon. Made just like the most expensive whiskeys.

Advertisement for Crab Orchard Kentucky Straight Bourbon Whiskey, featuring a logo and descriptive text.

66 RECEIVE HELP IN YOUTH SET-UP

Twin Falls Boys Given Part Time Work; Idaho College Students Aided

Sixty-six Twin Falls youths have been receiving part-time work from the National Youth Administration, according to V. L. Hudelson, assistant state director, here this week on business.

Forty of the number have received part time jobs under the direction of W. B. Smith, superintendent of schools, and C. H. Bond, high school principal, on student aid projects.

Twenty-six youths from different rural families have received work at one-third security wages under the supervision of Mayor Duncan McElhannon, L. F. Wiseman, of the resettlement administration office, Miss Jessie Prasser, city librarian, J. R. Douglas, of the bureau of entomology, and Ralph S. Reynolds, of the national re-employment service, according to Hudelson.

Collegians Aided

In Idaho 925 young men and women were classified to attend college during the past school year by working on N. Y. A. college aid projects. Applications for this type of aid is made direct to the college principal. Only non-profit making institutions are eligible to give this type of N. Y. A. work. The visiting officer said.

Over 800 youths from relief families are carrying on their college work on N. Y. A. work projects which are being carried on throughout the state. Approximately 500 of this number are working on recreational and community development projects in N. Y. A. recreation centers which are correlated with the W. P. A. recreational program under the sponsorship of the state department of education.

Public Service Project

Nearly 300 youths are employed on the N. Y. A. statewide public service project. City, county, state and federal agencies have needed as supervisors over the project.

POCAHELLO, Idaho, May 13—(AP)—Police of two 20-year-old youths to turn on the headlights of the motorcycle they were riding were blamed by authorities today for the death of one and serious injury to the other.

Leroy D. McDaniel, 20, was injured, and Richmond, suffered critical injuries when their motorcycle crashed head-on with an automobile driven by Roy Hansen of Pary.

Hansen and three passengers in his car were cut and bruised in the accident, which occurred on the highway near North Willard.

Hansen was not held.

McDaniel was a private in the 68th Infantry, Fort Douglas, Utah. He leaves his mother, Mrs. M. S. Skaggs, of Pocatello and brother Walter E. McDaniel, U. S. Army pilot stationed at Sunneyville, Calif.

LARSON ELECTED STUDENT LEADER

Kimberly Trustees Seek Deeper Well

Twin Falls Youth at Moscow Unopposed in University's Quiet Election

Bert Larson, son of Mr. and Mrs. E. Larson, Twin Falls, has been elected president of the student body of the University of Moscow, Idaho in one of the quietest elections in many years. He was unopposed for the honor.

Others also were two other Twin Falls students for members of the governing board of the school.

They are Miss Miriam McFall, daughter of Mr. and Mrs. J. A. McFall, and Roy Gray, son of Mrs. Ethel Gray.

The other seven members of the governing board are Bill Armstrong, Chuck Collins, Doris McHenry, Paul Robertson, John Robertson, Fred Robertson and Bill Robertson.

The election marked the first time that the proportional representation system has been used in choosing student body officers.

GETS ARTISTIC TEST

CARMEL, Calif. (AP)—Carmel world-renowned artist, sculptor and literary editor has captured one more client. It is Jan Kubelik, the violinist. He will give it a five-month try out before deciding whether Greenwich Village, Montparnasse or Montmartre offer a better atmosphere for genius.

THRAL ADVERTISEMENTS

NOTICE TO CLAIMANTS

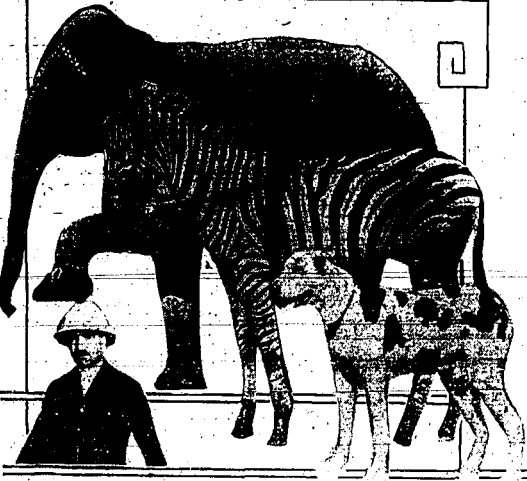
Notice is hereby given that contract with Van Housen of Twin Falls, Idaho, covering the construction of a 150' concrete bridge across the Twin Falls South Twin Canal and 160' concrete overhead over the Oregon Short Line Railroad and reached and reached great surfacing between Hansen and Atchafalaya known as Idaho 11. R. P. 11. The project was completed and accepted on May 4, 1936.

Any person, company or organization who has furnished labor, materials or supplies under the above contract, payment for which has not been made, shall file with the Department of Public Works, Boise, Idaho, within ninety (90) days from the above date, an itemized statement of his claim for all amounts due and unpaid by the contractor.

Failure of any claimant to file his claim within ninety (90) days from the above date shall constitute a waiver of any claim against the State of Idaho.

G. E. MCKILVEY, Commissioner of Public Works.

HERE'S AN ODDITY IN ANIMAL ACTS!



Max Gruber, seasonal subjugator of strange wild beasts, presents his "Animal Oddities" at each performance at the Zoo. This unique combination of performing animals—a cub, elephant, uneducated zebra and a kangaroo dog perform under his command at the command of their noted trainer. Shows of max and wild animal acts, performing horses, ponies and canines will be seen when Tom Mix brings his big three-ring circus to Twin Falls, Monday, May 18.

YOUTH IS KILLED ON MOTORCYCLE

Another Critically Hurt When Failure to Use Headlight Brings Collision

POCAHELLO, Idaho, May 13—(AP)—Police of two 20-year-old youths to turn on the headlights of the motorcycle they were riding were blamed by authorities today for the death of one and serious injury to the other.

Leroy D. McDaniel, 20, was injured, and Richmond, suffered critical injuries when their motorcycle crashed head-on with an automobile driven by Roy Hansen of Pary.

Hansen and three passengers in his car were cut and bruised in the accident, which occurred on the highway near North Willard.

Hansen was not held.

McDaniel was a private in the 68th Infantry, Fort Douglas, Utah. He leaves his mother, Mrs. M. S. Skaggs, of Pocatello and brother Walter E. McDaniel, U. S. Army pilot stationed at Sunneyville, Calif.

Father Siphons Way Into Jail By Aiding Son

BURLEY, Idaho, May 13—Henry Peterson was serving a 30-day jail sentence today. He siphoned himself into the calaboose with a six-foot length of rubber tubing, police explained.

It all came about when Peterson decided to help his son Sterling, celebrate his impending release from jail after a month sentence for driving a car without an operator's license.

Police said the father poked the hose through his son's cell window, passing the muzzling end in a bottle of liquor he had in his pocket. Young Peterson and other jail inmates were munching their threat when Deputy Sheriff George Bray interrupted, officers reported.

Probate Judge Henry W. Tucker gave the elder Peterson 30 days.

As the father went in, his son left the jail.

UNITED WORKERS WILL MEET HERE

BOISE, May 13—(AP)—Climbing the votes of 20,000 unemployed in Idaho, labor leaders of the state will meet in Twin Falls July 11 and 12. It was announced today to select their preference in candidates of the coming state and national candidates.

A recent secret meeting of a United Workers of Idaho voted to join the "Workers Alliance" of America, a national organization. The meeting was called to plan a course of action and duties were set for the convention.

Before the Ice Age, the Columbia river flowed against the eastern shore of the Snake range, of Washington. At the place, it plunged over a cliff almost one-third of a mile deep.

Frown on Drinking

FRATON, Utah, May 13—A man who had been drinking for a night and had a high fever and vomiting, is popular with coeds of Brigham Young University, a poll reveals.

DAHO TODAY!

3 Inch Muleteer

JAMES BARTON

THE IRISH

WELL-SHIP MORGAN

GEORGE BANCROFT

FARM ELECTRIC LEVEL OF SNAKE AVERAGE SOARS RIVER INCREASES

Southern Idaho Rural Homes Served Are Nearly Six Times U. S. Mark

According to figures compiled by federal government sources, the percentage of farms in southern Idaho served with electricity is nearly six times the national average.

The summary compiled in Washington last week shows that in the United States as a whole 11.6 per cent of the farms have electric service. In the territory served by the Idaho Power Co. according to H. W. Carpenter, division manager, 65 per cent of the farms are electrified. The average for the entire state is 35 per cent, while in Twin Falls county 88 per cent of the total number of farms are receiving electric service.

Ready Acceptance

"Southern Idaho's lead in rural electrification is due in large measure to the ready acceptance of electric service by the farmers," said Mr. Carpenter. "As more farm customers are added to our firm lines, and as customers increase their use of electricity, the cost of furnishing electric service drops and this is passed back to the customer in the form of lower rates."

The river was discharging at a rate of 12,800 second foot Saturday and has risen steadily since Sunday.

The dam reached its peak in 1935, officials reported several days ago. May 12, when a storm of 2 1/2 inches of rain fell, the water level rose to 100 feet above normal. The dam is 1,000 feet long and 100 feet high.

LEGAL ADVERTISEMENTS

ESTIMATE OF EXPENSES OF THE VILLAGE OF HOLLISTER, IDAHO, FOR THE CURRENT FISCAL YEAR.

By making an estimate of the probable amount of money necessary to carry on the business of the Village of Hollister, County of Twin Falls, State of Idaho during the fiscal year beginning with the 31st day of May, 1936 and ending on the 31st day of May, 1937:

For General Council Expenses	\$ 322.00
For Police for Water Pump	250.00
For Police for Water Pump	1,200.00
For Road Bumping Road	160.00
For Water for Public Buildings	632.00
Total	\$2,564.00

Done at Twin Falls, Idaho, this 11th day of May, 1936.

The Trustees of the Village of Hollister, Idaho, to-wit: James H. Brown, Chairman; N. W. Schmitt, Treasurer; J. H. Brown, Secretary; J. H. Brown, Clerk.

Men Try Cooking SALT LAKE CITY, Utah—A cooking class for men featured a free cooking school program last here. The men were taught how to broil steaks, make biscuits, prepare soups, and make other dishes.

The program was given by the "Housewife Study Club" in the kitchen.

Rev. Davis Speaks To Hollister Class

HOLLISTER, May 13 (Special)—Rev. R. E. Davis, Hollister Presbyterian pastor, delivered the dedicatory sermon Sunday evening at the Community church. His topic was "Opportunity."

The program included the following: Processional, "The Hebrews' Re-creation" by Mrs. Georgia McMaster; solo, "Miserere Machere"; E. E. Lawrence, scripture reading; prayer, C. A. Ross; "The Earth is the Lord's" and the "Halleluiah Chorus" male choir; solo, "The Old Road" Leo Kaufman; "Now the Day is Over," boys' double quartet; benediction, William Albert McCullough; reception, Miss McMiller.

NOTICE TO CLAIMANTS

Notice is hereby given that contract with Robinson Construction Company of Twin Falls, Idaho, covering the construction of crushed gravel surfacing on a 4.92 mile of the Northside Highway from Hazelton-East, known as U. S. W. P. Highway Project 4741, U. S. State 35-E, surfacing in Jerome county was completed and accepted on May 5, 1936.

Any person, company or corporation who has furnished labor, materials or supplies used on the work, payment for which has not been made, shall file with the Department of Public Works, Boise, Idaho, within ninety (90) days from the above date, an itemized statement of his claim for all amounts due and unpaid by the contractor.

Failure of any claimant to file his claim within ninety (90) days from the above date shall constitute a waiver against the State of Idaho.

G. E. MCKILVEY, Commissioner of Public Works.

ORPHEUM

304 Nat. - 256 Eve. - Any Seat

NOW PLAYING!

Great!

Eddie CANTOR

Strike Me Pink

with ETHEL MERMAN SALLY ELLERS

PARKY AKARUS and the Gipsy GOLDWYN Dicks

Sh-Sh-Sh! That's our ACE IN THE HOLE!



You can't keep good news from spreading — so the word is out that the handsome Series '40 Buick Special is not only big, but amazingly thrifty to boot!

One fellow, for instance, writes that he is getting three more miles per gallon than the salesman promised — why, asks he, don't we print such important news?

The fact is, we don't advertise specific miles-per-gallon figures because you simply can't set a figure that could be right for all drivers under all conditions.

So, instead of following the popular custom of claiming the world, on such matters we prefer to play safe and "talk small" — leaving Buick's really surprising frugality to be one of those nice things you discover after you've driven one awhile!

It works out fine, too! Owners are constantly coming in to brag about long mileage averages, low costs on oil, long trips without a penny for service or attention.

With all of its style, and comfort, and standard performance — at prices beginning at \$765 list — Buick is a winner and its thrift is all plus — Ride in one and see if that's not the truth!

"Buick's the Buy"

...A GENERAL MOTORS PRODUCT...

MILES J. BROWNING, INC.

Main and 4th East Twin Falls, Idaho

What Would You Do?

If you were Linda Bourne, with a broken engagement but still in love, would you say "Yes" to a marriage proposal from the man you considered your best friend?

Linda did — and that was only the beginning of her exciting adventures. Watch for the story, "Folly and Farewell," beginning

SATURDAY IN

TWIN FALLS ONE DAY ONLY!

MON., MAY 18th

Grounds—B. E. Blvd. South

Ticket—Circus Day at Pavilion Hotel News Stand

Where's George?

COMING YOUR WAY EVERYTHING NEW!

THE TOMMYX CIRCUS

TOMMYX & TONY IN PARSON

200 ACRES OF PALMS
1500 ANGRY STARS
50 DANCING HORSES
MILITARY LIFEGUARDS
50 AERIALISTS
50 RIDERS
TIGERS
ACROBATS
CLOWNS
GLOWING HOODS
HIPPOCORN

Barnard Auto Co.

Can George be forgotten? No, he can't, but if you've forgotten to buy a new car, it's time to get it. Barnard's that he wants to buy to make the trip.

1935 Chrysler Coupe - 12V "mileage" 1000 hours - \$750.00

1934 Dodge Coupe - A real buy! Drive and look like - \$495.00

1931 Chevrolet Coupe - New - \$465.00

1931 Plymouth Coupe - Hydraulic Brakes, Exceptional car - \$295.00

MANY OTHERS!

Barnard Auto Co.

UNCLE JOE'S ROXY

TODAY ONLY!

Good clean fun based on dirty humor!

THE TREE

JAMES BARTON

Special Added Attraction At 8:00 P. M. Tonight!

Also Comedy-Novelty Shows

THURSDAY-FRIDAY

WELL-SHIP MORGAN

GEORGE BANCROFT

TWO GATES OPEN AT YELLOWSTONE

North and Western Entrances Available to Autoists At Park

YELLOWSTONE PARK, Wyo., May 13 (Special).—With snow plow working at present in snow 10 feet of snow near Lewis lake, the north and west gates now open to motorists and the main points of interest at Mammoth Hot Springs, Old Faithful, Canyon and Tower falls are accessible, park authorities announced today.

Truck rangers will begin the collection of the 33 motor vehicle license fee at the north and west gates beginning May 16 but it will usually be June 10 before the east and south gates are cleared of snow so that travel can be permitted over them. Because of the heavy snow on the new northeast entrance road from the Red Lodge to Cooke, Mont., it is not expected that this highway will be in suitable condition for travel before July 1.

Following the opening of the south and east entrance roads the plow will return to Old Faithful and open the Continental divide from Old Faithful to West Thumb and will then open the Durrivan pass road from Canyon to Tower falls.

Truck and lodgings are now obtainable at the general store and the filling station are also open at present at Mammoth Hot Springs and Canyon. Beginning Monday, the housekeeping cabins and cafeterias will be open at Mammoth, Old Faithful, Fish Springs and Canyon and will provide the necessary accommodations until the hotels and lodges open on June 15.

The fishing season will open on May 23 and while many of the streams will be high and muddy, the water will be sufficiently clear to permit good fly fishing.

KTFI PROGRAM

- 12:40 to 1:00 1,000 watts Program Schedule From 8 p. m. Thursday to 6 p. m. Friday Thursday 7 p. m. 7:00 Tommy Dorsey's Orchestra 8:15 Pickens Sisters 9:45 Victor Novely orchestra 9:45 Benny Goodman orchestra 7:00 Main Fete and Rhythm boys presented by Moon's and Miller 7:15 Chevrolet Motors presents 7:20 Worldwide transradio news 7:45 Ford V8 Revue 8:30 Bar-B-Bunch 8:30 The Consequences of Inflation by Dr. Paul Wright 9:00 Evening request hour 10:00 Evening request hour continued 11:00 Signing off tune 11:30 p. m. 8:00 Farmers' breakfast club 6:30 Farm and home flashings 6:45 General market quotations 7:00 Morning discussion 7:15 Worldwide transradio news 7:30 Tolly Wilson orchestra 7:45 Roundtable, vocal selections 8:00 Ted Black and his orchestra 8:15 Clark Van, vocal selections 8:30 Earl Burnett dance orchestra 9:00 Milton Charles organ recital 9:30 Evening Times news flashings 10:00 Vegal market program 10:15 Nick Lacey, songs 10:30 J. Jacobs ensemble 11:15 Frank Davis, piano selections 11:00 Paul Whiteman's Rhythm Boys 11:45 "Twin Falls" market quotations 11:45 Concert "Tribute, vocal selections Friday 8 p. m. 9:30 The Whittington and his orchestra 11:15 "Shanty" quartet 11:30 My Duchin and his orchestra 11:40 Closing market quotations 11:45 Worldwide transradio news (time limit) Motor presents the latest dance releases 1:15 Low White, organ selections 2:00 Guy Lombardo's orchestra 2:00 Victor string ensemble 2:30 Evening Times news flashings 3:00 Afternoon request hour 1:15 Gertrude Spitzer, vocal selections 5:15 Sid Felton's orchestra 5:15 Friends band concert 5:30 Times and transradio news 5:40 Crown of the west presents "The Three Keys" 6:40 Mark Weber and his orchestra

Only 8 per cent of the population of Spokane, Wash., are classed as illiterate.

LISTEN TO PINTO PETE And His Ranch Boys (One of the most successful programs ever broadcast) Programs Each Tues. and Thurs. 7:00 p. m. Local KTFI Station Sponsored by Moon's Paint & Furniture Store Bob Miller Sales Co. and Associated Department Stores

Conquest of Ethiopia Spurs Italian, British Rivalry Over Mediterranean

By MORRIS GILBERT (NEA Service) PARIS—While young Fascists in Rome are mingling in the streets, after we've won the guerra, "We'll swallow Inghilterra." Informed circles in Paris are re-echoing that as the defeat of Ethiopia seems nearly complete, the rivalry between Great Britain and Italy over the Mediterranean grows clearer and more definitely menacing.

Italy is being taught by the experience of Mussolini's propaganda that the British Empire is finally tottering, and that Rome is to succeed to a new empire greater than in the days of the Caesars. French observers who have studied British history through the ages cynically remark that the same prophecies have been made for centuries, but that nothing has happened. That's right, nothing happened. But after forty years ago Emperor of Rome forty years ago Emperor of Italy, the falling house of the British Empire is being shaken by the Italian.

Still, even if young Italy is being debilitated about her capacity to conquer, one thing is certain: the final fact always exists which makes the idea serious. The Mediterranean is not only the British road to empire, the route to India and the white east, and it is also, and once, and might be again, an Italian lake. Here are two conflicting notions of power, namely that even if Italy can't win her lake back for herself, she can possibly prevent Britain from using it as a thoroughfare.

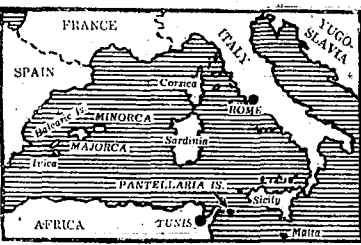
The British are firmly entrenched at Gibraltar, recent months have given Italy lots of trenches for at the other end. The Italian Navy bases for submarines already exist in Italian Africa territories there, an increasing menace to British shipping about conditions here when a "menace" would have weight.

The British are firmly entrenched at Gibraltar, recent months have given Italy lots of trenches for at the other end. The Italian Navy bases for submarines already exist in Italian Africa territories there, an increasing menace to British shipping about conditions here when a "menace" would have weight.

Italy Can Dominate But there is another element in this terrific problem, Paris heard which Hitler has been publishing and which, if true, his intention is to walk into the Mediterranean through Gibraltar but unable to get out the other end, without a lot of trouble.

It is affirmed that there are no provisions in Spanish budgets for such works in the Balearics.

It is affirmed that there are no provisions in Spanish budgets for such works in the Balearics.



The Anglo-Italian Trouble Spot on "Road to Empire"

SPLIT TEETH OF DOG ARE PUZZLE

Scientists Can't Figure Just What Caused Formation in Mongrel

SANTA ANA, Calif., (UP)—Split teeth in both the upper and lower jaws of a mongrel dog have puzzled southern professors following discovery by Paul Curtis, assistant at the Santa Ana Junior College.

White cleaning the end of the dog for an experiment in his dog's anatomy course, Curtis found the split teeth and reported the finding to J. Russell Bruff, college science head. Professors at the University of Southern California and the University of California were consulted but an explanation of the canines teeth formation could not be given.

Hereby was cited as the cause of the split teeth, although he admitted it was the first case of its kind to come to his attention.

The dog's skeleton has been mounted for exhibition in the college laboratories.

Mrs. O. J. Cullis entertained at a dinner luncheon Saturday for 10 guests. At bridge, Mrs. G. W. Potter and Mrs. C. H. Fox received awards. Mrs. L. H. Brown won the traveling prize.

Mrs. O. J. Cullis and Mrs. Brown entertained at a luncheon Monday afternoon at the Cullis home, honoring Mrs. R. K. Dillingham. Mrs. Dillingham was presented with a gift. Dillingham guests were Mrs. L. W. Lund, Miss L. G. Parkin, Mrs. M. Cantion, E. H. Lund and Mrs. Lund also received a gift.

Mrs. O. J. Cullis and Mrs. Brown entertained at a luncheon Monday afternoon at the Cullis home, honoring Mrs. R. K. Dillingham. Mrs. Dillingham was presented with a gift. Dillingham guests were Mrs. L. W. Lund, Miss L. G. Parkin, Mrs. M. Cantion, E. H. Lund and Mrs. Lund also received a gift.

Mrs. O. J. Cullis and Mrs. Brown entertained at a luncheon Monday afternoon at the Cullis home, honoring Mrs. R. K. Dillingham. Mrs. Dillingham was presented with a gift. Dillingham guests were Mrs. L. W. Lund, Miss L. G. Parkin, Mrs. M. Cantion, E. H. Lund and Mrs. Lund also received a gift.

Mrs. O. J. Cullis and Mrs. Brown entertained at a luncheon Monday afternoon at the Cullis home, honoring Mrs. R. K. Dillingham. Mrs. Dillingham was presented with a gift. Dillingham guests were Mrs. L. W. Lund, Miss L. G. Parkin, Mrs. M. Cantion, E. H. Lund and Mrs. Lund also received a gift.

Mrs. O. J. Cullis and Mrs. Brown entertained at a luncheon Monday afternoon at the Cullis home, honoring Mrs. R. K. Dillingham. Mrs. Dillingham was presented with a gift. Dillingham guests were Mrs. L. W. Lund, Miss L. G. Parkin, Mrs. M. Cantion, E. H. Lund and Mrs. Lund also received a gift.

Mrs. O. J. Cullis and Mrs. Brown entertained at a luncheon Monday afternoon at the Cullis home, honoring Mrs. R. K. Dillingham. Mrs. Dillingham was presented with a gift. Dillingham guests were Mrs. L. W. Lund, Miss L. G. Parkin, Mrs. M. Cantion, E. H. Lund and Mrs. Lund also received a gift.

Mrs. O. J. Cullis and Mrs. Brown entertained at a luncheon Monday afternoon at the Cullis home, honoring Mrs. R. K. Dillingham. Mrs. Dillingham was presented with a gift. Dillingham guests were Mrs. L. W. Lund, Miss L. G. Parkin, Mrs. M. Cantion, E. H. Lund and Mrs. Lund also received a gift.

Mrs. O. J. Cullis and Mrs. Brown entertained at a luncheon Monday afternoon at the Cullis home, honoring Mrs. R. K. Dillingham. Mrs. Dillingham was presented with a gift. Dillingham guests were Mrs. L. W. Lund, Miss L. G. Parkin, Mrs. M. Cantion, E. H. Lund and Mrs. Lund also received a gift.

Mrs. O. J. Cullis and Mrs. Brown entertained at a luncheon Monday afternoon at the Cullis home, honoring Mrs. R. K. Dillingham. Mrs. Dillingham was presented with a gift. Dillingham guests were Mrs. L. W. Lund, Miss L. G. Parkin, Mrs. M. Cantion, E. H. Lund and Mrs. Lund also received a gift.

Mrs. O. J. Cullis and Mrs. Brown entertained at a luncheon Monday afternoon at the Cullis home, honoring Mrs. R. K. Dillingham. Mrs. Dillingham was presented with a gift. Dillingham guests were Mrs. L. W. Lund, Miss L. G. Parkin, Mrs. M. Cantion, E. H. Lund and Mrs. Lund also received a gift.

MEMPHIS GREETES COTTON CARNIVAL

Chorus of 600 Negro Voices Welcomes King and Queen At Big Fete

By WALTER LOGAN MEMPHIS, Tenn., May 13 (UP)—A chorus of 600 Negro voices cheered the king and queen of the Mississippi as the King and Queen of the Mid-South Cotton Carnival left their royal seats last night to inaugurate five days of revelry glorifying the south's greatest product.

Fireworks flaring from King Cotton Island illuminated the scene as the King and Queen and their Royal Court, clad in cotton finery for the first time, boarded tellyhous and floats pulled by white horses and driven by a Royal Parade.

Two Indian elephants led the way as the regent wound his way to Court Square where Mayor Watkins Overton presented King John Williams and Queen Mary Ann Pooton with the keys to Memphis.

Open Midway Later the King and Queen opened the Mid-way—a blaze of riotous color along the waterfront. They then went to the inaugural ball at Municipal auditorium.

Wednesday and Saturday nights King John Williams and Queen Mary Ann Pooton will dance in Memphis. A 100-mile automobile "steep-chase" is the high spot of Wednesday's program. A group of youngsters will drive their cars through the city streets.

The race will start and end at the Mid-South fairgrounds. The winners will receive three prizes and bring the cars back to the grounds often. Before the race a corps of daredevils will do stunts on motorcycles and stage exhibition crashes in passenger automobiles.

The most beautiful girls in the Mid-South will ride flower covered floats in the floral parade Thursday morning. Miss Dixie will be selected from beauties of the Royal court and their maids.

Thursday night is set aside for the floral ball at the auditorium. Thousands of blossoms will decorate the huge hall.

Friday is children's day. Five thousand singing, costumed youngsters will parade in the morning featuring "Sing a Song of Sunshine." That afternoon 8,000 youngsters will assemble at municipal auditorium for a children's ball.

Crank athletes of the Mid-South will compete in the Mid-South athletic meet at the Municipal auditorium.

The Mid-South athletic meet at the Municipal auditorium.

The Mid-South athletic meet at the Municipal auditorium.

The Mid-South athletic meet at the Municipal auditorium.

The Mid-South athletic meet at the Municipal auditorium.

The Mid-South athletic meet at the Municipal auditorium.

The Mid-South athletic meet at the Municipal auditorium.

The Mid-South athletic meet at the Municipal auditorium.

The Mid-South athletic meet at the Municipal auditorium.

The Mid-South athletic meet at the Municipal auditorium.

The Mid-South athletic meet at the Municipal auditorium.

"ALIBI WITNESS"

An Important witness against Robert James and Charles...

An Important witness against Robert James and Charles... James alive after her husband left the home on the day of her death.

An Important witness against Robert James and Charles... James alive after her husband left the home on the day of her death.

An Important witness against Robert James and Charles... James alive after her husband left the home on the day of her death.

An Important witness against Robert James and Charles... James alive after her husband left the home on the day of her death.

An Important witness against Robert James and Charles... James alive after her husband left the home on the day of her death.

An Important witness against Robert James and Charles... James alive after her husband left the home on the day of her death.

An Important witness against Robert James and Charles... James alive after her husband left the home on the day of her death.

An Important witness against Robert James and Charles... James alive after her husband left the home on the day of her death.

An Important witness against Robert James and Charles... James alive after her husband left the home on the day of her death.

An Important witness against Robert James and Charles... James alive after her husband left the home on the day of her death.

An Important witness against Robert James and Charles... James alive after her husband left the home on the day of her death.

An Important witness against Robert James and Charles... James alive after her husband left the home on the day of her death.

An Important witness against Robert James and Charles... James alive after her husband left the home on the day of her death.

An Important witness against Robert James and Charles... James alive after her husband left the home on the day of her death.

An Important witness against Robert James and Charles... James alive after her husband left the home on the day of her death.

An Important witness against Robert James and Charles... James alive after her husband left the home on the day of her death.

An Important witness against Robert James and Charles... James alive after her husband left the home on the day of her death.

An Important witness against Robert James and Charles... James alive after her husband left the home on the day of her death.

An Important witness against Robert James and Charles... James alive after her husband left the home on the day of her death.

An Important witness against Robert James and Charles... James alive after her husband left the home on the day of her death.

IDAHO LIVESTOCK CONDITION GOOD

Monthly Report Shows Range Status Satisfactory On First of May

BOISE, May 13 (Special).—Idaho range livestock and ranges were reported in good condition May 1, according to the monthly range and livestock summary released by Richard C. Ross, federal agricultural statistician. Weather was favorable for ranges following the cold spell of late March and early April and condition of ranges is now reported to be materially improved over last year.

Feed on western ranges showed a general improvement in condition during April, except in the southwest and livestock is generally in good condition, according to the monthly livestock and range report of the United States division of crop and livestock estimates.

STEAMER SINKS TWICE NAPA, Calif., (UP)—The river steamer Neptune has the distinction of having twice sunk. The latest time 105 barrels of whisky had to be taken off before it could be floated.

STEAMER SINKS TWICE NAPA, Calif., (UP)—The river steamer Neptune has the distinction of having twice sunk. The latest time 105 barrels of whisky had to be taken off before it could be floated.

STEAMER SINKS TWICE NAPA, Calif., (UP)—The river steamer Neptune has the distinction of having twice sunk. The latest time 105 barrels of whisky had to be taken off before it could be floated.

STEAMER SINKS TWICE NAPA, Calif., (UP)—The river steamer Neptune has the distinction of having twice sunk. The latest time 105 barrels of whisky had to be taken off before it could be floated.

STEAMER SINKS TWICE NAPA, Calif., (UP)—The river steamer Neptune has the distinction of having twice sunk. The latest time 105 barrels of whisky had to be taken off before it could be floated.

STEAMER SINKS TWICE NAPA, Calif., (UP)—The river steamer Neptune has the distinction of having twice sunk. The latest time 105 barrels of whisky had to be taken off before it could be floated.

STEAMER SINKS TWICE NAPA, Calif., (UP)—The river steamer Neptune has the distinction of having twice sunk. The latest time 105 barrels of whisky had to be taken off before it could be floated.

STEAMER SINKS TWICE NAPA, Calif., (UP)—The river steamer Neptune has the distinction of having twice sunk. The latest time 105 barrels of whisky had to be taken off before it could be floated.

STEAMER SINKS TWICE NAPA, Calif., (UP)—The river steamer Neptune has the distinction of having twice sunk. The latest time 105 barrels of whisky had to be taken off before it could be floated.

STEAMER SINKS TWICE NAPA, Calif., (UP)—The river steamer Neptune has the distinction of having twice sunk. The latest time 105 barrels of whisky had to be taken off before it could be floated.

STEAMER SINKS TWICE NAPA, Calif., (UP)—The river steamer Neptune has the distinction of having twice sunk. The latest time 105 barrels of whisky had to be taken off before it could be floated.

STEAMER SINKS TWICE NAPA, Calif., (UP)—The river steamer Neptune has the distinction of having twice sunk. The latest time 105 barrels of whisky had to be taken off before it could be floated.

STEAMER SINKS TWICE NAPA, Calif., (UP)—The river steamer Neptune has the distinction of having twice sunk. The latest time 105 barrels of whisky had to be taken off before it could be floated.

STEAMER SINKS TWICE NAPA, Calif., (UP)—The river steamer Neptune has the distinction of having twice sunk. The latest time 105 barrels of whisky had to be taken off before it could be floated.

STEAMER SINKS TWICE NAPA, Calif., (UP)—The river steamer Neptune has the distinction of having twice sunk. The latest time 105 barrels of whisky had to be taken off before it could be floated.

STEAMER SINKS TWICE NAPA, Calif., (UP)—The river steamer Neptune has the distinction of having twice sunk. The latest time 105 barrels of whisky had to be taken off before it could be floated.

STEAMER SINKS TWICE NAPA, Calif., (UP)—The river steamer Neptune has the distinction of having twice sunk. The latest time 105 barrels of whisky had to be taken off before it could be floated.

STEAMER SINKS TWICE NAPA, Calif., (UP)—The river steamer Neptune has the distinction of having twice sunk. The latest time 105 barrels of whisky had to be taken off before it could be floated.

Advertisement for Gilbey's Distilled London Dry Gin, 4/5 QUART. Includes text: "The Finest Malted Distillation of National Distillers Products Corp., N. Y. City."

Advertisement for Gilbey's Distilled London Dry Gin, 4/5 QUART. Includes text: "The Finest Malted Distillation of National Distillers Products Corp., N. Y. City."

Advertisement for Union Pacific Railroad Summer Vacation Trip by Train. Includes text: "Enjoy air conditioned comfort, economy meals, safety. Low fares everywhere."

Advertisement for Studebaker. Includes text: "Besides, Studebaker is the Economy Champion. 'I tried out all the 1936 cars and for me Studebaker offers the most.'"

Advertisement for Studebaker. Includes text: "Studebaker prices start as low as \$927. Delivered fully equipped. Studebaker's New 6 1/2 Plan Offers a New 'Low' in Cost to the 'Time Buyer'."

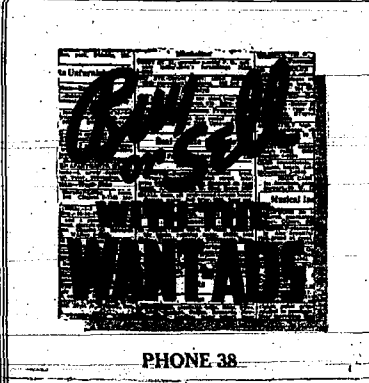
Large advertisement for Old Quaker Rule No. 5 Distilling. Includes text: "You don't have to be rich to enjoy rich whiskey! Remember—slow and careful is the way to get real character in whiskey, you slowly... never, never hurry! You'll never fail to get a barrel of quality in every bottle!"

Advertisement for Studebaker. Includes text: "Holder and Overdrive sold me on Studebaker."

Advertisement for Studebaker. Includes text: "Besides, Studebaker is the Economy Champion. 'I tried out all the 1936 cars and for me Studebaker offers the most.'"

You'll Find Real Opportunities in the CLASSIFIED ADS

Evening Times CLASSIFIED AD RATES
RATES PER LINE PER DAY
Six days, per line per day...
One day, per line...
Minimum Two Lines
Minimum Charge 25c
Classified Display Rates on Request.



PHONE 38

Classified Directory
Responsible Business Firms
and Professional Offices
of Twin Falls

AUTO TOP & BODY WORKS
Expert body and fender straightening.
Thomson Top & Body Works
DENTIST
DR. T. L. CARTNEY, Dentist, Wilson Bldg., 228 Main Ave. S. Phone 53.

FOR SALE - MISCELLANEOUS
Heavy timbers, bridge plank, rough lumber, Woodman's lumber yard opposite Swift & Co. Phone 381.

FOR SALE - MISCELLANEOUS
Lawn Mowers sharpened.
Key Shop, Back of I. D. Store.

FOR SALE - MISCELLANEOUS
FRID BROS. DEALER in Marble and Granite.
246 Main St., Twin Falls.

AUTOMOBILES
'30 Ford Truck. Completely overhauled, new paint, overized tires, priced right. Call 75.

FOR SALE - MISCELLANEOUS
Canvas, Tents, Awning. All new.
McCurry House, Paint, 4-hour service.

FOR SALE - MISCELLANEOUS
STALLION SERVICE - Belgians and Percheron.
Merrill Finney, 1 mi. So. and 1 mi. W. of So. Park.

SPOT CASH
USED CARS
JOHN R. WHITE

FARMS FOR SALE
WELL located 5 Acres next to City Limits.
5 room plastered house, etc.

PERSONAL
TO SETTLE ESTATE
6 room home - 126 1/2th Avenue North.
SUDLER-WEGENER & CO.

APARTMENTS FOR RENT
Two room furn. Apt. with kitchenette.
126-13th Ave. No.

FOR SALE - MISCELLANEOUS
SPECIAL - Tailor-made suits.
\$34.95. Men's suits cleaned and pressed.

WANTED - MISCELLANEOUS
WANTED - Dairy cows, close up.
C. O. Marble, Justman Inn.

FOR RENT - ROOMS
Large front sleeping room outside entrance.
Phone 672-R.

LIVESTOCK AND POULTRY
Six weanling pigs and seventeen choats.
Phone 0384-74.

REAL ESTATE FOR SALE
Four 1/4-acre lots adjoining Dahl.
Twin Falls, 11200 E. H. R. Hall, Perrine Hotel.

FOR RENT - HOUSES
FOR RENT - 3 room house.
181 Adams St.

SALES MEN WANTED
WANTED - Experienced salesman to sell radios.
Inquire at the Times.

TIME TABLE
Schedules of passenger trains and motor stages passing through Twin Falls daily are as follows:

SITUATIONS WANTED
Do you need an experienced young man - bookkeeper - stenographer.
Write Box 2180 care Times.

FOR SALE OR TRADE
For Sale or Trade - For truck, small 5-room house.
Jess Smith, 1 N. So. 7th.

UNION PACIFIC STAGES
Arrives 6:10 a. m.
Leaves 6:20 a. m.

FOR SALE - MISCELLANEOUS
FURNITURE and set of drums.
130 10th Ave. East.

MONEY TO LOAN
Good 5-room house and bath on paved Bl. 11100. Terms.

ARRIVES AND DEPARTS
TWIN FALLS - JEROME
Leaves 11:00 a. m.
Arrives 11:00 a. m.

FOR SALE - MISCELLANEOUS
FURNITURE FOR SALE - New and used furniture.
111 Main St.

MONEY TO LOAN
Good 5-room house and bath on paved Bl. 11100. Terms.

ARRIVES AND DEPARTS
TWIN FALLS - JEROME
Leaves 11:00 a. m.
Arrives 11:00 a. m.

FOR SALE - MISCELLANEOUS
FURNITURE FOR SALE - New and used furniture.
111 Main St.

MONEY TO LOAN
Good 5-room house and bath on paved Bl. 11100. Terms.

ARRIVES AND DEPARTS
TWIN FALLS - JEROME
Leaves 11:00 a. m.
Arrives 11:00 a. m.

FOR SALE - MISCELLANEOUS
FURNITURE FOR SALE - New and used furniture.
111 Main St.

MONEY TO LOAN
Good 5-room house and bath on paved Bl. 11100. Terms.

ARRIVES AND DEPARTS
TWIN FALLS - JEROME
Leaves 11:00 a. m.
Arrives 11:00 a. m.

FOR SALE - MISCELLANEOUS
FURNITURE FOR SALE - New and used furniture.
111 Main St.

MONEY TO LOAN
Good 5-room house and bath on paved Bl. 11100. Terms.

ARRIVES AND DEPARTS
TWIN FALLS - JEROME
Leaves 11:00 a. m.
Arrives 11:00 a. m.

FOR SALE - MISCELLANEOUS
FURNITURE FOR SALE - New and used furniture.
111 Main St.

MONEY TO LOAN
Good 5-room house and bath on paved Bl. 11100. Terms.

ARRIVES AND DEPARTS
TWIN FALLS - JEROME
Leaves 11:00 a. m.
Arrives 11:00 a. m.

FOR SALE - MISCELLANEOUS
FURNITURE FOR SALE - New and used furniture.
111 Main St.

MONEY TO LOAN
Good 5-room house and bath on paved Bl. 11100. Terms.

ARRIVES AND DEPARTS
TWIN FALLS - JEROME
Leaves 11:00 a. m.
Arrives 11:00 a. m.

FOR SALE - MISCELLANEOUS
FURNITURE FOR SALE - New and used furniture.
111 Main St.

MONEY TO LOAN
Good 5-room house and bath on paved Bl. 11100. Terms.

ARRIVES AND DEPARTS
TWIN FALLS - JEROME
Leaves 11:00 a. m.
Arrives 11:00 a. m.

WOOD EXPERT IS FIRED BY ICKES

Man Who Sought to Assist Hauptmann Dismissed; "No Connection"

WASHINGTON, May 13 (AP)—Public Works Administrator Harold L. Ickes today discharged Arch W. Loney, government wood expert who sought to save Bruno Richard Hauptmann from the electric chair.

Then, working with Gov. Harold L. Hefman, he sought to prove that the ladder was not made from boards taken from Hauptmann's Bronx home.

Fire at Hagerman
HAGERMAN, May 13 (Special)—Explosion of a propane lamp accidentally filled with gasoline, at the Leo Bell ranch Friday evening.

WANTED - MISCELLANEOUS
WANTED - Dairy cows, close up.
C. O. Marble, Justman Inn.

JARIBIDGE

Mrs. Carl Sprague and son, Jack, Manhattan, Nev., are visiting at the home of Mrs. Lena Dougherty, Mrs. Sprague is Mrs. Dougherty's daughter.

JARIBIDGE

Mrs. Norman Robinson has gone to Paisley, Utah, to visit with his parents there.

JARIBIDGE

Mr. B. Snyder, who received a serious electric shock from a heater in the mill a few weeks ago, was able to return to his home here Sunday.

JARIBIDGE

Mr. and Mrs. Alfred Nelson announce the birth of a baby daughter on Sunday, May 10, at the Twin Falls hospital.

JARIBIDGE

Miss Norma Galt, who is visiting at the home of Mrs. Lena Dougherty, is the daughter of Mrs. Galt.

JARIBIDGE

Miss Norma Galt, who is visiting at the home of Mrs. Lena Dougherty, is the daughter of Mrs. Galt.

Zioncheck Demands Marine Aid To Protect Him in Puerto Rico

SAN JUAN, Puerto Rico, May 13 (AP)—Zioncheck, driving truck, demanded that the U. S. navy command here call out 700 marines to protect him from annoyance on his honeymoon.

Colonel Refuses
Col. Moore refused to order his men to do duty. So did Lt. Jose Caballero, commanding the squadron of marines.

Slams Door
The owner of the home said the fishermen were unknown to him and slammed the door in the congressman's face.

Fire at Hagerman
HAGERMAN, May 13 (Special)—Explosion of a propane lamp accidentally filled with gasoline, at the Leo Bell ranch Friday evening.

WANTED - MISCELLANEOUS
WANTED - Dairy cows, close up.
C. O. Marble, Justman Inn.

JARIBIDGE

Mrs. Carl Sprague and son, Jack, Manhattan, Nev., are visiting at the home of Mrs. Lena Dougherty, Mrs. Sprague is Mrs. Dougherty's daughter.

JARIBIDGE

Mrs. Norman Robinson has gone to Paisley, Utah, to visit with his parents there.

JARIBIDGE

Mr. B. Snyder, who received a serious electric shock from a heater in the mill a few weeks ago, was able to return to his home here Sunday.

JARIBIDGE

Mr. and Mrs. Alfred Nelson announce the birth of a baby daughter on Sunday, May 10, at the Twin Falls hospital.

JARIBIDGE

Miss Norma Galt, who is visiting at the home of Mrs. Lena Dougherty, is the daughter of Mrs. Galt.

JARIBIDGE

Miss Norma Galt, who is visiting at the home of Mrs. Lena Dougherty, is the daughter of Mrs. Galt.

D. A. V. SELECTS FOUR DELEGATES

Harry Stradley Chapter Names Quartet to Attend State Convention

Named as delegates to the state convention of the Disabled American Veterans of the World, held at Pocatello, May 22-23, by Harry Stradley chapter members in section were last night, were H. C. Van Asselt, T. M. Knight, Vernon Lawson and Roy Gordon.

Slams Door
The owner of the home said the fishermen were unknown to him and slammed the door in the congressman's face.

Fire at Hagerman
HAGERMAN, May 13 (Special)—Explosion of a propane lamp accidentally filled with gasoline, at the Leo Bell ranch Friday evening.

WANTED - MISCELLANEOUS
WANTED - Dairy cows, close up.
C. O. Marble, Justman Inn.

JARIBIDGE

Mrs. Carl Sprague and son, Jack, Manhattan, Nev., are visiting at the home of Mrs. Lena Dougherty, Mrs. Sprague is Mrs. Dougherty's daughter.

JARIBIDGE

Mrs. Norman Robinson has gone to Paisley, Utah, to visit with his parents there.

JARIBIDGE

Mr. B. Snyder, who received a serious electric shock from a heater in the mill a few weeks ago, was able to return to his home here Sunday.

JARIBIDGE

Mr. and Mrs. Alfred Nelson announce the birth of a baby daughter on Sunday, May 10, at the Twin Falls hospital.

JARIBIDGE

Miss Norma Galt, who is visiting at the home of Mrs. Lena Dougherty, is the daughter of Mrs. Galt.

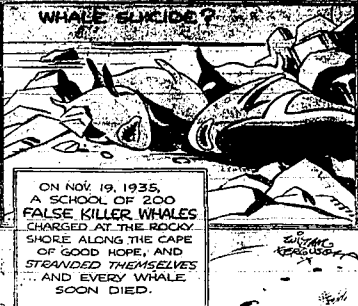
JARIBIDGE

Miss Norma Galt, who is visiting at the home of Mrs. Lena Dougherty, is the daughter of Mrs. Galt.

Large advertisement for Tom Mix Circus, Twin Falls, Monday, May 18. Includes text: 'HURRY KIDS! and get FREE Tickets'. Also includes a coupon for a free ticket and a list of names for a drawing.

WHALE SLICED?

By William Hoopler



ON NOV. 19, 1935, A SCHOOL OF 200 FALSE KILLER WHALES CHARGED AT THE ROCKY SHORE ALONG THE CAPE OF GOOD HOPE, AND STRANDED THEMSELVES AND SEVERAL WHALES SOON DIED.

THE TRAIL OF A FOX IN THE SNOW CAN BE RECOGNIZED BY THE BRUSH MARKS AT THE SIDE, MADE BY THE BUSHY TAIL.

INSECTS

GO DOWN THEIR SKELETONS AND SHED THEM FROM TIME TO TIME.

Insects have their skeletons on the outside of their bodies, and, since the skeleton is hard and inflexible, molting must be done to accommodate the increase in size. This problem is cared for by periodic molting of the outside skin, or skeleton. Mayflies molt 20 times or more before reaching maturity.

SIDE GLANCES

By George Clark



"But, what would happen to us if I decided to retire, too?"

Former President

Word search puzzle with a grid and a list of words to find. Includes a crossword puzzle grid below.

OUR FARMING HOUSE

with

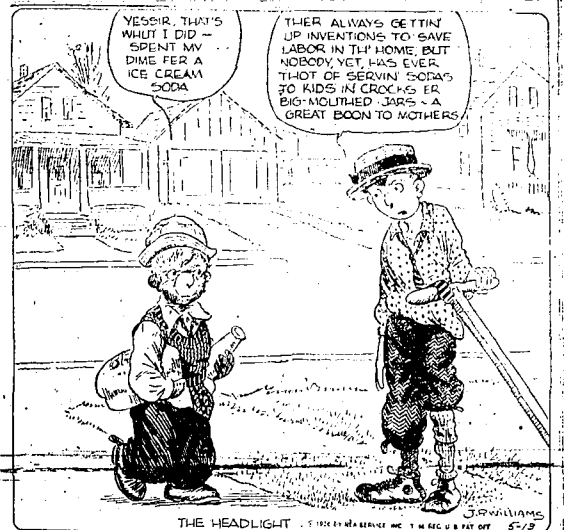
Major Hoopler

OUT OUR WAY

By Williams



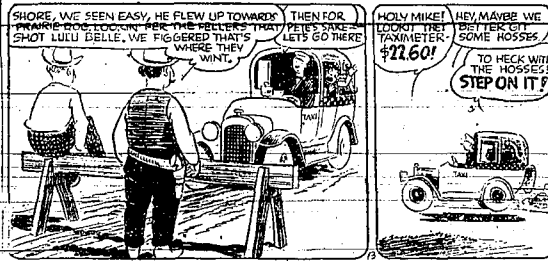
LUTHER BURBANK HOOPLE =



THE HEADLIGHT

By Crane

WASH TUBS



OUR BUDDIES



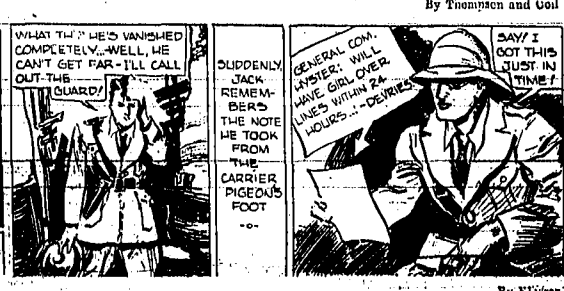
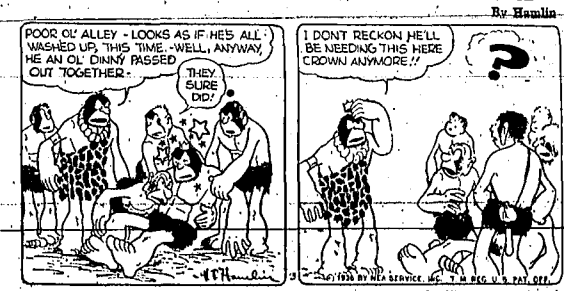
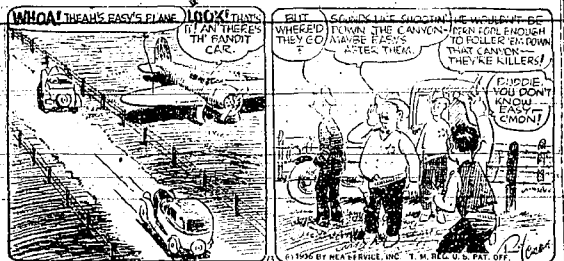
MYRA NORTH, SPECIAL NURSE



WITH LANE'S GUN



FRANKIE AND HIS VA



ELECTRICAL MEN WILL HEAR PEAK

Head of National Body Will Speak at Banquet Here This Evening

Members of the electrical industry in this section were gathered here Tuesday to participate in a number of events in connection with the visit of Earl N. Peak, president of the National Electrical Contractors' Association, who is to speak at the banquet meeting in connection with the dinner at the Park hotel by Charles Briggs, Twin Falls, has taken his place and moved his family here.

All those connected with the industry in this central Idaho have been invited, as have mayors and city fathers of Commerce representative of the several towns.

Speakers present Mr. Peak is one of the oldest and most respected in the industry in the United States. His subject will be "Industry Cooperation and Rural Electrification."

Peak is the owner of a broadcasting station, is president of the Rural Development Corporation in his section, chairman of the newly formed Electrical Industry Promotion committee composed of representatives of the four national industrial groups—manufacturers, wholesalers, contractors, and utilities and president of the N. E. C. A. For years he served the national organization as its representative on the National Fire Protection association, the sponsoring body which develops the national electric code.

Executive Meeting
Peak's program in connection with his visit here is called for an executive meeting of local members of the N. E. C. A. at 10:30 a. m. and 11:30 a. m. at a reception at the Park hotel from 11:30 to noon; presence of Mr. Peak as guest speaker at the Rotary club during the noon-hour luncheon at 2 p. m. at the Park hotel; a dinner, bridge and return by way of Kimberly.

FILER STUDENTS HEAR BUHL MAN

Commencement Scheduled for Friday With Address By Roy Painter

PHILIP, May 18 (Special)—Baccalaureate exercises for the Filer high school graduates were held Sunday evening at the county fairgrounds, with Rev. Brooks Moore, Buhl, delivering the sermon.

The program included "Drink Water—Why? Think Eyes" by a mixed chorus; invocation, Rev. William Jackson; "Singing Hallelujah" a vocal solo; Bible reading; scripture reading, Rev. L. S. Metz; chorale solo, "In the Lonely Month of May"; Chorus Snyder; vocal solo, "Ships of Ready"; Maurice Luke; "Ging Home" girls' chorus; benediction, Rev. Sidney Olson.

Commencement exercises will be held Friday at 8 p. m. at the recreation building at the fairgrounds and the address will be delivered by Roy Painter, member of the Faculty National bank, Tula Falls.

Senior Class Graduates are:
Larab Allen, Elaine Beem, Michael Bennett, Mickey Case, Margorie Dexter, Fern Edwards, Eldin Engdrecht, Jean Hauge, Max Hatch, Zola Hatch, Margaret Hayes, Beth Hailer, Minjorie Johnson, Yvonne Johnson, Joseph Kintner, Bill Lincoln, Mabel Loring, Maurine Lutz, Genell Murray, Helen New-Yen Olson,
Betty Peterson, Charlotte Peterson, Laurence Hill, Beulah Harker, Ann Smith, Inez Spencer, Jack Brown, Jim Clark, Lee Gaultes, Jay Cobb Hanger, Crawford, Grace Edwards, Robert Fenner, Lloyd Gilmer, Howard Gordon, Marvin Hartley, Charles Herrick, Wayne Hunter, Richard Hunter, Robert Johnson, Norbert Jasso, Wayne Madole, Vernon Larson, Tom Nelson, Boyd Pender, Robert Peterson, Russell Sheridan, Daniel Smith, Charles Snyder, Robert Wilson.

PELLA

Mr. and Mrs. William R. Oberlach and daughter, Norma, made a trip to Salt Lake City the last of the week and expect to visit in Soda Springs on route home.

Mr. and Mrs. W. H. Hill and children, visited relatives in Logan recently.

Darlene Wyatt, who has been visiting here, has returned to her home in Los Angeles accompanied by his father.

Mrs. Al Spackman has been ill with a heart attack.
Mrs. Crowder entertained friends Wednesday afternoon at a quilting party. Supper was served.

MURTAUGH MURTAUGH HOLDS

The Murtaugh Ladies Aid society held Thursday at the Methodist church with 20 members present. Guests were Mrs. Taylor and her mother, Mrs. Stevens. Catholic Devotionals were led by Mrs. William Lindon, Mrs. A. M. Hoover, group leader, presided at a short business meeting. Mrs. Hazel Lovace spoke on Rocky Bay, Idaho where she has spent the winter. Hostesses were Mrs. Gladys Jackson, Mrs. Lee Vining and Mrs. Ray Jackson.

Fort Carson and family have in a number of events in connection with the visit of Earl N. Peak, president of the National Electrical Contractors' Association, who is to speak at the banquet meeting in connection with the dinner at the Park hotel by Charles Briggs, Twin Falls, has taken his place and moved his family here.

A girl was born to Mr. and Mrs. Bob Ross at American Falls, last week. Mrs. Ross was formerly Miss Margaret Fisher, Murtaugh.

BACCALAUREATE

Commencement exercises for the Northview eighth grade graduates will be held Monday night, May 18, at the school auditorium. The public is invited.

Mr. and Mrs. Rowland and Mrs. Milla Rowland arrived Friday night from Oklahoma to make a visit at the R. S. Skinner home.

Thora Bates, Berthene Stewart and Betty Perkins
Graduates are: Earl Wright, Harold Savage, Roland Bates, Tom A. John, "If With All Your Heart" was presented by Lawrence Low and Inez Tolman and Florence Hacking sang a duet. The scripture reading and prayer were led by Mr. White. A vocal, "Betty Perkins", Berthene Stewart, Thora Bates, Ruth Davis, Lora Tolman and Barbara Davis, presented a treaty for your garden and window number 111 a song was sung by boxes at Randall Floral Co. green-lavender, Leo, Roland Bates, house—adv.

MARATHON HATS

NEW! Jacquard Cotton
Stroller Coats
\$2.98

Exquisitely dainty styles in Manicelli's fine silks with Taffeta slips. White and pastels. She'll wear them time and time again after graduation, too! See them tomorrow!

NEW! "Cynthia"
SLIPS
98c

Beautifully "true" tricot taffeta! Extra long wearing.

New Ruffly
Organdy Collars
79c

Exotic styles in white and pastels with courage attached!

NEW! Jacquard Cotton
Stroller Coats
\$2.98

Short colored jacquard patterns in white backgrounds, stroller length! Pink, blue and tan, awaggers. Also white and ecru in stroller and the-quarter length styles!

NEW! Jacquard Cotton
Stroller Coats
\$2.98

Short colored jacquard patterns in white backgrounds, stroller length! Pink, blue and tan, awaggers. Also white and ecru in stroller and the-quarter length styles!

NEW! Jacquard Cotton
Stroller Coats
\$2.98

Short colored jacquard patterns in white backgrounds, stroller length! Pink, blue and tan, awaggers. Also white and ecru in stroller and the-quarter length styles!

NEW! Jacquard Cotton
Stroller Coats
\$2.98

Short colored jacquard patterns in white backgrounds, stroller length! Pink, blue and tan, awaggers. Also white and ecru in stroller and the-quarter length styles!

NEW! Jacquard Cotton
Stroller Coats
\$2.98

Short colored jacquard patterns in white backgrounds, stroller length! Pink, blue and tan, awaggers. Also white and ecru in stroller and the-quarter length styles!

NORTHVIEW

Commencement exercises for the Northview eighth grade graduates will be held Monday night, May 18, at the school auditorium. The public is invited.

Mr. and Mrs. Rowland and Mrs. Milla Rowland arrived Friday night from Oklahoma to make a visit at the R. S. Skinner home.

Thora Bates, Berthene Stewart and Betty Perkins
Graduates are: Earl Wright, Harold Savage, Roland Bates, Tom A. John, "If With All Your Heart" was presented by Lawrence Low and Inez Tolman and Florence Hacking sang a duet. The scripture reading and prayer were led by Mr. White. A vocal, "Betty Perkins", Berthene Stewart, Thora Bates, Ruth Davis, Lora Tolman and Barbara Davis, presented a treaty for your garden and window number 111 a song was sung by boxes at Randall Floral Co. green-lavender, Leo, Roland Bates, house—adv.

BACCALAUREATE

Commencement exercises for the Northview eighth grade graduates will be held Monday night, May 18, at the school auditorium. The public is invited.

Mr. and Mrs. Rowland and Mrs. Milla Rowland arrived Friday night from Oklahoma to make a visit at the R. S. Skinner home.

Thora Bates, Berthene Stewart and Betty Perkins
Graduates are: Earl Wright, Harold Savage, Roland Bates, Tom A. John, "If With All Your Heart" was presented by Lawrence Low and Inez Tolman and Florence Hacking sang a duet. The scripture reading and prayer were led by Mr. White. A vocal, "Betty Perkins", Berthene Stewart, Thora Bates, Ruth Davis, Lora Tolman and Barbara Davis, presented a treaty for your garden and window number 111 a song was sung by boxes at Randall Floral Co. green-lavender, Leo, Roland Bates, house—adv.

MARATHON HATS

NEW! Jacquard Cotton
Stroller Coats
\$2.98

Exquisitely dainty styles in Manicelli's fine silks with Taffeta slips. White and pastels. She'll wear them time and time again after graduation, too! See them tomorrow!

NEW! "Cynthia"
SLIPS
98c

Beautifully "true" tricot taffeta! Extra long wearing.

New Ruffly
Organdy Collars
79c

Exotic styles in white and pastels with courage attached!

NEW! Jacquard Cotton
Stroller Coats
\$2.98

Short colored jacquard patterns in white backgrounds, stroller length! Pink, blue and tan, awaggers. Also white and ecru in stroller and the-quarter length styles!

NEW! Jacquard Cotton
Stroller Coats
\$2.98

Short colored jacquard patterns in white backgrounds, stroller length! Pink, blue and tan, awaggers. Also white and ecru in stroller and the-quarter length styles!

NEW! Jacquard Cotton
Stroller Coats
\$2.98

Short colored jacquard patterns in white backgrounds, stroller length! Pink, blue and tan, awaggers. Also white and ecru in stroller and the-quarter length styles!

NEW! Jacquard Cotton
Stroller Coats
\$2.98

Short colored jacquard patterns in white backgrounds, stroller length! Pink, blue and tan, awaggers. Also white and ecru in stroller and the-quarter length styles!

NEW! Jacquard Cotton
Stroller Coats
\$2.98

Short colored jacquard patterns in white backgrounds, stroller length! Pink, blue and tan, awaggers. Also white and ecru in stroller and the-quarter length styles!

Thursday, Friday, Saturday! Penney's!

LIMITED DAYS

The limit in Value! Come Early!

300 Only!

TERRY TOWELS

Absorbent and Serviceable!



10¢ ea.

Field or plain center with gay colored borders. Handy size for many needs. 17 1/2 x 31 inches! Stock up now for everyday use!

PART LINEN KITCHEN TOWELS
7c

WE EXPECT A MOB! HERE'S WHY!

SPECIAL PURCHASES—New merchandise, purchased specially for this event!

TIMELY MERCHANDISE—Things you want right now—things you NEED right now!


BARGAIN PRICES—When 1452 department stores offer to make one combined purchase, they get ACTION—they get the LIMIT IN VALUE—they get

BARGAINS FOR YOU!
Come Early Tomorrow—and Save!

250 Only!

Sugar Liners

7c ea.



You'll find a dozen uses for these—and you'll want at least a dozen sacks—so hurry!

180 Yards

MUSLIN

7 1/2¢ yd.

Bleached or unbleached! Ideal for many uses! 36 inches wide. Come early and save!

140 Only!

RAYON AND COTTON SPREADS

\$1.00 ea.



So smart you'd never know they could cost so little. They're good weight spreads with rich rayon patterns in relief. See them! Feel them! And you'll agree they're the best spreads you can buy for the money. In lovely colors. 60x105-inches.

Women's White Oxfords

240 Pr. at \$1.69



Women's and Girls' OXFORDS and SANDALS \$1.19

Above: Cool, comfortable sandal with military heel. White Acrabuck fabric.

Below: Lightweight white-mesh cloth oxford with perforations. Leather sole, walking heel. Cool and smart!

Children's Barefoot SANDALS \$1.19

Perforated two-strap sandal with leather sole. Sizes 8 1/2 to 9.

Tested Quality! Oxhide

OVERALLS

69c



Full cut, not slumped! Strong or because they're triple reinforced! Highest standard 220 denim! Built to wear and wear! 8 deep pockets! Parva buckles!

BOYS' SIZES 4-6

144 Only!


Men's Work Shirts

49c

Heavy chambray or cover! Made to meet Penney's rigid specifications—which means they have to be good! Blue, grey and tan. 2 button-through pockets! 14 1/2 to 17.

Canvas GLOVES SUSPENDERS

2 pr. 15c



They're buy!

Police Back 29c

Sturdy, snappy elastic, 14 1/2 wide. Great for work! Genuine leather ends and brass trim. They'll hold up!

Men's Balbriggan

UNION SUITS

Quality at a Price!

49c



They're full sized for ease and comfort! Tailored right for extra months of wear! Ankle length legs, short sleeves! Bargain priced!

Men's Dept. — Main Floor

Men's Covert

Work Pants

98c

Banforced... won't shrink!



Prize winning value of the year! Sturdy covert for long, tough wear. Strong pockets; reinforced at working points!

NASH DELAVERETTE

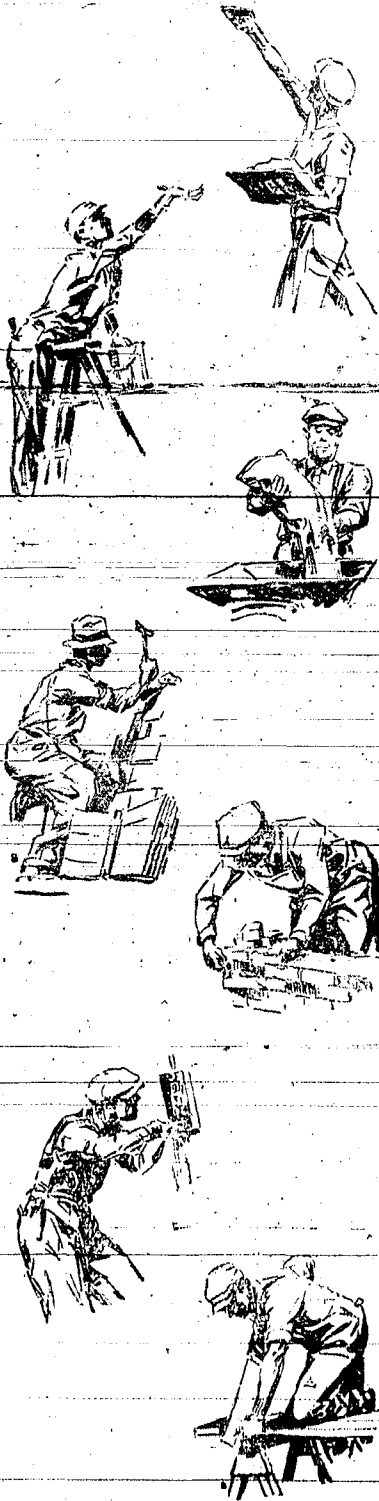
REYNOLDS MOTOR CO.
1000 1/2 N. 1st St.
Twin Falls, Idaho

PENNEY'S

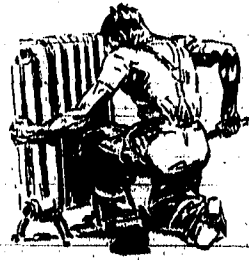
J. C. PENNEY COMPANY, Incorporated

PENNEY'S

J. C. PENNEY COMPANY, Inc.



BETTER HOMES *Edition*



Take four friendly walls. Put into them some little scuffling feet and a few baby tears, paint them with sunshine and winter fire-light and touch them with laughter and the lingering voices of old friends. Heap there all your hopes and plans and cover them deep with love and living and you have a home! This edition is dedicated to better homes—repaired, remodeled and new homes. Within these pages those who are planning such improvements will find many valuable suggestions and ideas, together with the messages of those firms which make home modernization their business. It will be well worthwhile if in only a small way it helps you make and keep your home the dream castle you always wanted it to be.

POOL ENHANCES GARDEN BEAUTY Adds Greatly to Refreshing Appearance; Sets Off Plantings

The desirability of gardens is usually enhanced by a pool. They add immensely to the cool appearance...

A drain should be provided, but a regular pipe cannot be included in a pool...

COAST BUILDING PERMITS CLIMB Volume in 88 Cities Reveals 45.5 Per Cent Advance Over 1935

SAN FRANCISCO, May 13 (AP)—Building permits in 88 cities of the Pacific coast area were 45.5 per cent higher in April, 1936...

Here's Whitewash Formula U.S. Uses For Light Houses Whitewash on brick, stone or concrete walls is coating material...

Don't Skimp When You Paint Up Home Painting is one of the most important operations in the building of the new house...

Paint Before Your Surface Cracks Up Don't wait until the old paint on the exterior of your home is so weathered it begins to crack and fall off...

Don't Skimp When You Paint Up Home Painting is one of the most important operations in the building of the new house...

Paint Before Your Surface Cracks Up Don't wait until the old paint on the exterior of your home is so weathered it begins to crack and fall off...

Don't Skimp When You Paint Up Home Painting is one of the most important operations in the building of the new house...

Paint Before Your Surface Cracks Up Don't wait until the old paint on the exterior of your home is so weathered it begins to crack and fall off...

Don't Skimp When You Paint Up Home Painting is one of the most important operations in the building of the new house...

Paint Before Your Surface Cracks Up Don't wait until the old paint on the exterior of your home is so weathered it begins to crack and fall off...

Don't Skimp When You Paint Up Home Painting is one of the most important operations in the building of the new house...

Paint Before Your Surface Cracks Up Don't wait until the old paint on the exterior of your home is so weathered it begins to crack and fall off...

Don't Skimp When You Paint Up Home Painting is one of the most important operations in the building of the new house...

Paint Before Your Surface Cracks Up Don't wait until the old paint on the exterior of your home is so weathered it begins to crack and fall off...

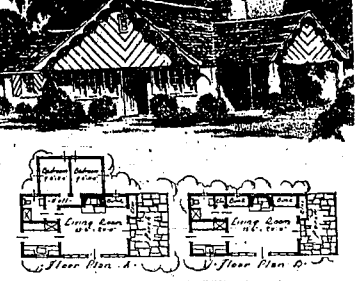
Don't Skimp When You Paint Up Home Painting is one of the most important operations in the building of the new house...

Paint Before Your Surface Cracks Up Don't wait until the old paint on the exterior of your home is so weathered it begins to crack and fall off...

Don't Skimp When You Paint Up Home Painting is one of the most important operations in the building of the new house...

Paint Before Your Surface Cracks Up Don't wait until the old paint on the exterior of your home is so weathered it begins to crack and fall off...

"JOURNEY'S END" 5E36



Picturesque Sweden with its brightly stained and waxed. The many lakes and rolling country...

Reason of its simple construction is its location. Features a fireplace, a small kitchen, a living room, a bedroom, a bathroom, a dining room, a living room, a bedroom, a bathroom, a dining room...

There are two floor plans shown. One provides for two additional bedrooms (floor plan 2) to be built by adding \$1 to Home Plan 1 at a later date...

These are on either side of the fireplace and may be supplemented by a studio couch, day bed and the like...

Don't Forget Where To Put Wall Switches The location of electric wall switches is a minor but important detail...

FOR HOT AND COLD Water For a laboratory, a mixing faucet is much more convenient than separate hot and cold-water faucets...

Don't Forget Where To Put Wall Switches The location of electric wall switches is a minor but important detail...

FOR HOT AND COLD Water For a laboratory, a mixing faucet is much more convenient than separate hot and cold-water faucets...

Don't Forget Where To Put Wall Switches The location of electric wall switches is a minor but important detail...

FOR HOT AND COLD Water For a laboratory, a mixing faucet is much more convenient than separate hot and cold-water faucets...

Don't Forget Where To Put Wall Switches The location of electric wall switches is a minor but important detail...

FOR HOT AND COLD Water For a laboratory, a mixing faucet is much more convenient than separate hot and cold-water faucets...

Don't Forget Where To Put Wall Switches The location of electric wall switches is a minor but important detail...

FOR HOT AND COLD Water For a laboratory, a mixing faucet is much more convenient than separate hot and cold-water faucets...

Don't Forget Where To Put Wall Switches The location of electric wall switches is a minor but important detail...

FOR HOT AND COLD Water For a laboratory, a mixing faucet is much more convenient than separate hot and cold-water faucets...

Don't Forget Where To Put Wall Switches The location of electric wall switches is a minor but important detail...

FOR HOT AND COLD Water For a laboratory, a mixing faucet is much more convenient than separate hot and cold-water faucets...

Don't Forget Where To Put Wall Switches The location of electric wall switches is a minor but important detail...

BUILDING SPURT Importance of Heating Has Grown Over Years SHOWS INCREASE

The heating of the modern home is a much more important factor than it was a few years ago. Our forefathers had open fireplaces and did not think on underclothes...

Liberalized Credit, Recognition Of Need Help Responsible For Upward Boom Speculative home-builders' operation and development company activities have broadened considerably during the last 15 months...

FOR HOT AND COLD Water For a laboratory, a mixing faucet is much more convenient than separate hot and cold-water faucets...

Don't Forget Where To Put Wall Switches The location of electric wall switches is a minor but important detail...

FOR HOT AND COLD Water For a laboratory, a mixing faucet is much more convenient than separate hot and cold-water faucets...

Don't Forget Where To Put Wall Switches The location of electric wall switches is a minor but important detail...

FOR HOT AND COLD Water For a laboratory, a mixing faucet is much more convenient than separate hot and cold-water faucets...

Don't Forget Where To Put Wall Switches The location of electric wall switches is a minor but important detail...

FOR HOT AND COLD Water For a laboratory, a mixing faucet is much more convenient than separate hot and cold-water faucets...

Don't Forget Where To Put Wall Switches The location of electric wall switches is a minor but important detail...

FOR HOT AND COLD Water For a laboratory, a mixing faucet is much more convenient than separate hot and cold-water faucets...

Don't Forget Where To Put Wall Switches The location of electric wall switches is a minor but important detail...

FOR HOT AND COLD Water For a laboratory, a mixing faucet is much more convenient than separate hot and cold-water faucets...

Don't Forget Where To Put Wall Switches The location of electric wall switches is a minor but important detail...

FOR HOT AND COLD Water For a laboratory, a mixing faucet is much more convenient than separate hot and cold-water faucets...

Don't Forget Where To Put Wall Switches The location of electric wall switches is a minor but important detail...

FOR HOT AND COLD Water For a laboratory, a mixing faucet is much more convenient than separate hot and cold-water faucets...

Don't Forget Where To Put Wall Switches The location of electric wall switches is a minor but important detail...

FOR HOT AND COLD Water For a laboratory, a mixing faucet is much more convenient than separate hot and cold-water faucets...

Don't Forget Where To Put Wall Switches The location of electric wall switches is a minor but important detail...

FOR HOT AND COLD Water For a laboratory, a mixing faucet is much more convenient than separate hot and cold-water faucets...



Take a Look inside your home Is it as bright and cheerful as you would like? Are the walls beginning to look a little shabby? Would a change in decoration, a fresh background for your furniture, make you happier? Then why not redecorate!

PLUMBING GIVEN NEW IMPORTANCE Fixtures—Get More Attention In Modern Homes Now Being Built Each year sees more effort put into the designing of beautiful bathrooms and their conveniences...

FOR HOT AND COLD Water For a laboratory, a mixing faucet is much more convenient than separate hot and cold-water faucets...

Don't Forget Where To Put Wall Switches The location of electric wall switches is a minor but important detail...

FOR HOT AND COLD Water For a laboratory, a mixing faucet is much more convenient than separate hot and cold-water faucets...

Don't Forget Where To Put Wall Switches The location of electric wall switches is a minor but important detail...

FOR HOT AND COLD Water For a laboratory, a mixing faucet is much more convenient than separate hot and cold-water faucets...

Don't Forget Where To Put Wall Switches The location of electric wall switches is a minor but important detail...

FOR HOT AND COLD Water For a laboratory, a mixing faucet is much more convenient than separate hot and cold-water faucets...

Don't Forget Where To Put Wall Switches The location of electric wall switches is a minor but important detail...

FOR HOT AND COLD Water For a laboratory, a mixing faucet is much more convenient than separate hot and cold-water faucets...

Don't Forget Where To Put Wall Switches The location of electric wall switches is a minor but important detail...

FOR HOT AND COLD Water For a laboratory, a mixing faucet is much more convenient than separate hot and cold-water faucets...

Don't Forget Where To Put Wall Switches The location of electric wall switches is a minor but important detail...

FOR HOT AND COLD Water For a laboratory, a mixing faucet is much more convenient than separate hot and cold-water faucets...

Don't Forget Where To Put Wall Switches The location of electric wall switches is a minor but important detail...

FOR HOT AND COLD Water For a laboratory, a mixing faucet is much more convenient than separate hot and cold-water faucets...

Don't Forget Where To Put Wall Switches The location of electric wall switches is a minor but important detail...

FOR HOT AND COLD Water For a laboratory, a mixing faucet is much more convenient than separate hot and cold-water faucets...

Don't Forget Where To Put Wall Switches The location of electric wall switches is a minor but important detail...

FOR HOT AND COLD Water For a laboratory, a mixing faucet is much more convenient than separate hot and cold-water faucets...

Advertisement for Westinghouse Electrical Equipment, featuring a list of appliances like refrigerators, water heaters, ranges, washers, ironers, and appliances.

Advertisement for Stokol Stokers, promoting them as a convenient and economical heating solution for homes.

Advertisement for 'Give Your House' featuring a checklist of home improvements and a list of products like estate electric ranges, estate coal and oil heaters, and estate electric refrigerators.

Advertisement for Crosley Shelvador, highlighting its beauty, economy, and dependability as a modern home convenience.

It Will Pay You to Consult

DETWEILER BROS. INC.

YOUR COMFORT AND CONVENIENCE MERCHANTS Before You Repair, Modernize or Build!



Whether you plan to repair, improve or modernize your present home or build a new one, you will find Detweiler Bros., Inc., "Your Comfort and Convenience Merchants", best equipped to assist you with your problems. Best equipped because our service is complete, our home improvement experts are the best, and all the products we handle are the recognized leaders in their respective fields. Such names as Iron Fireman, General

Electric, Frigidaire, Delco and Sunbeam speak for themselves. They are known the world over because of their outstanding supremacy. That is why you can deal with Detweiler Bros., Inc., with absolute confidence. You know you are getting the best that can be had . . . in Twin Falls or any place else. That is why it will pay you to consult Detweilers' before you repair, modernize, or build!

Air Conditioning

- 1- Protects Your Health
- 2- Modernizes Your Home
- 3- Reduces Cleaning and Dusting
- 4- Prolongs the Life of Furnishings

EXPECT wonderful results from a Sunbeam Air Conditioning System in your home, because you will receive them. It will protect your health and reduce the colds, flu, sore throats and other ailments so prevalent in winter, by warming the air to the correct temperature, by adding the necessary moisture, and by filtering the dirt, germ colonies and bacteria from it.

A Sunbeam System modernizes your home because it can be placed in one corner of the basement releasing valuable space for a recreation or work room.

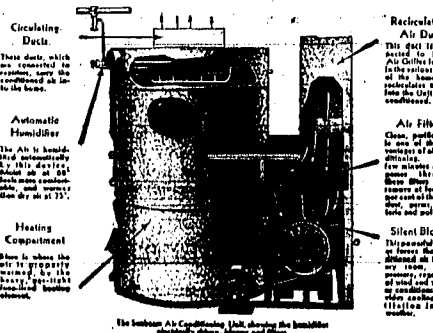
Every few minutes, all the air in your home is drawn through filters where dust, dirt and other foreign matter is deposited—instead of on your floors, walls, drapes and furniture.

The life of furnishings is prolonged because they do not dry out or require frequent cleaning.

Whether you are thinking of air conditioning a new residence or your present home, or whether you intend to burn coal, gas, or oil, there is a Sunbeam Unit particularly suited to your requirement.

We will gladly tell you more about Air Conditioning or give you cost estimates.

SUNBEAM AIR CONDITIONING UNIT



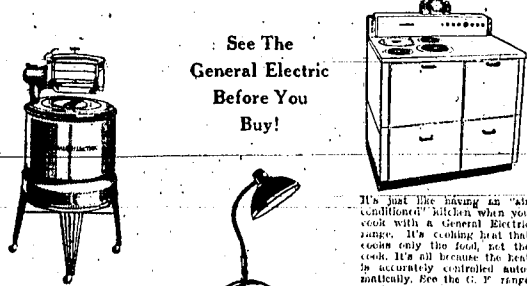
HAVE A FREE SURVEY MADE NOW

Whether your problem is refrigeration, air conditioning, heating, insulation, or the installation of modern kitchen or laundry equipment, remember, Detweilers' will be glad to make a free survey for you at any time. When we say "Free Survey Without Obligation" we mean just that. It will be entirely up to you to decide just what equipment you want. This free service is yours for the asking, and we invite you to take advantage of it.

General Electric!

... A Great Name Upon Which You Can Always Depend! Products That Always Excel!

Ranges! Washers! Radios! Cleaners! Fan Lamp! Panel! And a Complete Line of Appliances! They're All General Electric, the best to be had, and you'll find them all at Detweilers.



See The General Electric Before You Buy!

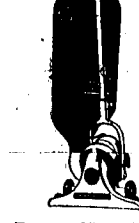
Each of these six major features makes the General Electric the outstanding washer: Jetwater Washing Action, Lovell Wringer, No Oiling Required, Adjustable Mechanism, Quiet Washing Operation, Made by General Electric.

Be Sure to See the General Electric Fan!



The General Electric metal-tube radio more than measures up to the standards of their manufacturer. You'll thrill to their quality of tone, their volume, their range and selectivity. Don't make the mistake of not seeing them before you!

A Complete Line of GENERAL ELECTRIC Appliances



The new "Life-Way" Cleaner creates a path of powerful illumination that precedes the cleaner. Removes all the dirt from your rug . . . grit, litter, and dust . . . by the tapping and sweeping action of its motor-driven brush, and by its powerful suction. There's a G-E cleaner for every purpose.

Check these Important SERVICES

AUTOMATIC FIRING

The new Iron Fireman "Coal Flow" automatic is the last word in modern heating. It does away with coal handling entirely, brings you still greater comforts and added economy. Available for both residential and industrial heating. Can be installed in a new or old furnace of any kind.

INSULATION

One of our most important services is insulation, because of its importance to the present-day home owner. Nothing will save you as much money on fuel or give you as much comfort as scientific insulation with "Attic Wool." It's a service it will pay you to investigate, and we'll be glad to give you estimates without obligation.

STEAM HEATING PLANTS

We are equipped to install your steam heating plant, both for industrial and residential purposes. Estimates gladly given.

REFRIGERATION

Frigidaire sets the standard for modern refrigeration. There's Frigidaire equipment for every refrigeration purpose . . . the home, the store, the safe, or whatever you want. No matter what your refrigeration problem may be, you may depend on Detweiler Bros., Inc., for absolute satisfaction.

AIR CONDITIONING

With the new Sunbeam Air Conditioning Unit, this most modern of home improvements is now possible for everyone who plans to modernize. The cost is far less than you would expect and the added comforts and conveniences far greater. Don't hesitate to ask us for complete information. We offer you this service gladly—at no cost.

JOHNSON SEAHORSE Outboard Motors

Outboard enthusiasts, here's the motor that will give you a thrill! Single and twin, both large and small, for fishing, pleasure and speed. A motor for every purpose, including the new "Alternate Tying."

Let Us Show You The New Johnson Seahorse Motor. Priced—**\$65.00** and up

There's No Better Motor Than a Johnson!

DELCO "LITTLE JOE" Lighting Plants

Generate 100 watt current, sufficient to light ten 15-watt lamps. Weigh 40 lbs. Ideal for summer cottages, camps and small homes. Each unit has self-starter and runs 10 hours on one gallon of gasoline.

Just the thing for the Modern Sportsman!

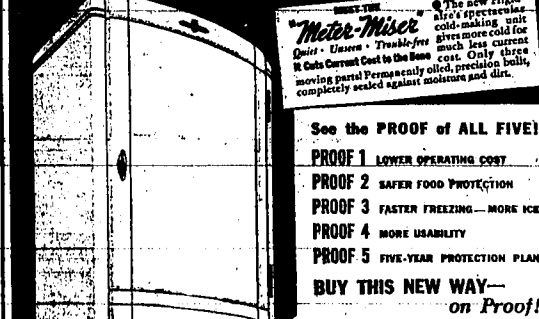
Complete with Storage Battery, Wires, Lights and Reflectors.

\$100.00

One Thing Sure...

You can't beat Proof!

NEW FRIGIDAIRE WITH THE "METER-MISER"



See the PROOF of ALL FIVE!

- PROOF 1 LOWER OPERATING COST
- PROOF 2 SAFER FOOD PROTECTION
- PROOF 3 FASTER FREEZING—MORE ICE
- PROOF 4 MORE USABILITY
- PROOF 5 FIVE-YEAR PROTECTION PLAN

BUY THIS NEW WAY—on Proof!

You can't afford to miss our Frigidaire PROOF DEMONSTRATION. You'll see the most thrillingly beautiful models in Frigidaire history. Best refrigerated pantries. "Wider, roomier, with every work-saving convenience. But more, you'll discover a new way to buy a refrigerator. Not on mere claims, but on PROOF. Your own eyes will convince you that here at last is the complete refrigerator. One that asks you to take nothing for granted, but prove every point. Before you buy any refrigerator, see our PROOF DEMONSTRATION. Years from now, you'll still be thanking us for the suggestion.

On Approval! Frigidaire's "Safety Indicator" Built Right Into the Cabinet!

Only Frigidaire dares to give you the Food-Safety Indicator—visible proof that foods are kept at Safety-Zone Temperature, below 30 degrees and above 52 degrees.

Next Prices as Low as **\$92.50**

Ask us for Proof!

A new day has dawned

Iron Fireman Does Away with Coal Handling

Up until a few months ago oil and gas were considered the only fuels which gave fully automatic heating convenience. But the Iron Fireman Coal Flow changes all that. Coal now becomes the most economical fuel for heating. From the time that the coal is put into the bin until it is transformed into heat in the furnace, it is an invisible, self-serving fuel. Just telephone us and we will have a man out immediately to serve your heating system, make a dependable report, and tell you all about this marvelous coal burner. We will show you how 15% to 50% is saved on fuel cost, and conserve you beyond any doubt that a 100 Iron Fireman Coal Flow is an investment as well as a luxurious convenience.

Keels Coal from Bin to Fire Automatically.

CAN BE INSTALLED IN NEW OR OLD FURNACE!

TERMS AS LOW AS **\$10.23** A MONTH

"Attic Wool" Insulation IS THE FIRST STEP!

If you realized how much cooler your home would be this summer, how much easier you could heat it next winter, and how much you would save on your fuel bills alone . . . you would have us insulate your home with "Attic Wool" tomorrow! Once you understand the principles of modern insulation you'll realize that it's a real economy, no matter how you figure. We'll be glad to make a free survey of your home, tell you just what your insulation would cost . . . and just how much you could expect to save, to say nothing about the many added conveniences. Just give us a ring and we'll be at your service, without obligation.

No Matter How You Figure . . . INSULATION PAYS

DETWEILER BROS., INC.

TWIN FALLS

"YOUR COMFORT AND CONVENIENCE MERCHANTS"

PHONE 808

WALLPAPER AIDS HOME 'COOLNESS'

Use of Right Shades Makes Rooms Appear Cooler and Lighter

Warm rooms can be made to appear cooler, dark rooms can be given better lighting by the selection of the proper wallpaper color and pattern, according to the Wallpaper Institute.

This explains in part why an analysis of Federal Housing Administration modernization credit shows that a large part of the money has been used by borrowers for interior decoration.

Not only the color but the pattern and texture of the paper as well influence the amount of light and the seeming degree of warmth or coldness in a room, authorities reveal.

Reflect More

The lighter colors reflect more light and generally appear warmer, whereas the dark colors absorb light and make a room seem cooler, more restful.

Colors most used to create light are light yellow, buff, cream, pink, strawberry, and certain metallic papers. White ceiling and white wallpaper augment the effect of light and make a room seem cooler, more restful.

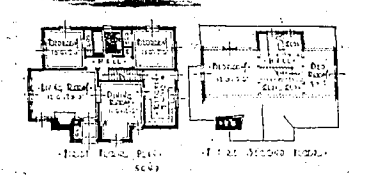
Cooler, darker effects result from using dark groups, blues—especially the darker blues—tan, brown, and deep reds, including whites and maroons. Wallpapers with glossy finishes, such as the burnished papers popular for bathrooms and kitchens emphasize the "cool" qualities of wallpaper, the Institute states.

Hall Closet Serves For Added Comforts

A coat closet installed in the main hall of a home is a modern convenience. The size of the closet will necessarily depend upon individual requirements and the space available.

A closet adequate for home use should be built with inside dimensions 20 inches deep and three to four feet wide. This depth permits the hangers to hang on a pole running the width of the closet; centered on the pole, the hanger arms extend to the two sides about five feet. The depth of the closet should be from the floor. Hooks may be hung on the walls if desired. Two shelves spaced about 12 inches apart may be installed above the rod. The floor in the closet preferably should be of an easily cleaned material. To determine the cost in this vicinity, write for catalog and prices, send to the Home Furniture Co., 84 Mobile Ave., back of the corner. A metal N. E. Atlanta, Ga., for the blue-lined trough with a drainage which will catch water drainage off wet umbrellas and prevent floor damage.

"OF COLONIAL ANCESTRY"



The house with a "colonial" air is a "past" for here is a home whose long accommodations may be greatly enhanced at a low cost. The convenient stairs supply the added two rooms and a built-in outfit for the future second floor.

It isn't absolutely necessary to have the first floor a complete five-room unit in itself, but the second floor possibilities are like the reverse power in a well-built automobile—very nice to have when you need it.

This house is a descendant from the Colonial and presents a very charming story, and altogether intriguing appearance. The side walls are white stained shingles, which offer an interesting contrast to the weathered gray of the roof. The fireplace is designed for the use of stone and is original and distinctive in design and construction.

Pay close attention to the construction and architectural details shown in the working drawings, for it is from them that the designer's style and charming effect is obtained. Watch the design of the doors, both inside and out; they should be of slatted, the manner in which four feet wide. This depth permits the hangers to hang on a pole running the width of the closet; centered on the pole, the hanger arms extend to the two sides about five feet. The depth of the closet should be from the floor. Hooks may be hung on the walls if desired. Two shelves spaced about 12 inches apart may be installed above the rod. The floor in the closet preferably should be of an easily cleaned material. To determine the cost in this vicinity, write for catalog and prices, send to the Home Furniture Co., 84 Mobile Ave., back of the corner. A metal N. E. Atlanta, Ga., for the blue-lined trough with a drainage which will catch water drainage off wet umbrellas and prevent floor damage.

EYESIGHT SAVED BY WALL COLORS

Lightness or Darkness Plays Important Part When Building Home

Wall color is closely allied to sight, according to the Better Vision Institute, which is devoting its energies to appraising the public of the urgent need for adequate lighting if eyes and sight are to be carefully conserved.

In undertaking home improvement projects, it is well to consider the natural lightness or darkness of a room before selecting a wall color. If a room is ordinarily very dark, it is wise to select a light and cheerful tint that will reflect and make the most of every ray of light that enters.

If a room has so many doors and windows that there is usually a brilliant glare reflected, a restful tone should be chosen that will absorb the excess light and soothe the eyes.

PRIME FRAMES

It is considered good practice to prime window and door frames with a coat of paint before they are set in the opening which are made for them. The priming coat is not so expensive, \$7.00 per thousand will insure your new home in Twin Falls for a period of three years. Your home may be next. Insure it from the day you start construction . . . and insure it with an old line stock company.

QUESTIONS and ANSWERS

Q. We want to do over our bathroom. The walls are made of boards running up and down, and we want to have tile. We are having all new fixtures put in, so we want it all modern. Is it practical to put in tile?

A. Yes. The wood paneling can be taken down, wire lath put up, and tile erected on it without any difficulty. If you want a tile floor it will be necessary to lay a concrete base first. This means that the joists under the floor will have to be leveled and cut down to what and a form built between the joists to hold the concrete. If any pipes occur in this area they should be covered with a piece of expanded metal lath or iron formed into very dense, so that they are not imbedded in the concrete. Linoleum or some form of composition tile could be laid directly over the present wood floor, if you desire.

Q. We need another living room, as our daughter has reached the age when she wants to entertain her friends without the "old folks" around. We have no cellar in our house, so could we have one built to put a game room in? A. Yes; a cellar could be built, but if it is possible to add a room to the house above ground, would make for them. The priming coat is not so expensive, \$7.00 per thousand will insure your new home in Twin Falls for a period of three years. Your home may be next. Insure it from the day you start construction . . . and insure it with an old line stock company.

be cheaper and make less of a mess.

Q. I would like to put in an outside driveway to the collar of my house. Can it be done without a great deal of expense and trouble? A. It can be done but the amount of trouble will depend upon the conditions. If the walls are of brick or block it will be comparatively easy to break through the necessary opening, but if it is poured concrete it may take considerable drilling. You had better consult some experienced contractor and, if possible, an architect as well.

Q. What kind of fence would be best to put around my garden? A. It depends upon the purpose of the fence. If it is to be a real weather, screened-in porch, trellis, garden furniture, window boxes, concrete driveways, etc.

Back Yard Is Safe Place for Kiddies

To Have Their Fun

The back yard is coming into its own. Safety campaigns being conducted in various cities through the country are bringing to the minds of parents the fact that their children must have protected playgrounds.

The back yard is the ideal playground for children. It offers opportunities for games or recreation, and in modernizing the home the grounds which surround it should not be forgotten. Pools and rock gardens may be built.

A contest is conducted in Los Angeles, Calif., every spring by the department of playgrounds in cooperation with parent-teacher associations for back-yard improvement.

NECK SAVER

A thin, cork-like product in a plastic sheet to put under ceiling tiles to keep them from rattling.

INSURE against FIRE

Why take chances when fire insurance is so inexpensive, \$7.00 per thousand will insure your new home in Twin Falls for a period of three years. Your home may be next. Insure it from the day you start construction . . . and insure it with an old line stock company.

J. E. ROBERTS - REALTOR
127 MAIN W. PHONE 663

BUILD NOW

Stop dreaming about that home you have always wanted. It's time to act now. Time and opportunities were never better for building. New ideas, new materials, new conveniences, and new savings make it possible to have the home you have dreamed of.

We, too, can help you have your home the way you want it. We'll build or remodel your home to your plans . . . or we will furnish you with a complete Planning Service.

Phone 378-W for Consultation

Montooth & Sons

BUILDING and REMODELING CONTRACTORS

FREE ESTIMATES

We will be glad to talk building with you at no obligation, because we are interested in your building and remodeling problems. Take advantage of this service. There is no charge for consultations.

It Pays TO INVESTIGATE

BEFORE Remodeling, Repairing, or Building

Any plans you may have for improving your present home or building a new one should be considered as an investment; your expenditure should pay you back in dividends of satisfaction, service and increased value. Only expert advice should be taken and acted upon.

We will be glad to place you in contact with reliable contractors and aid you in solving any problem you may have relative to better homes. Our reputation is your safeguard. We are equipped to handle orders for all types of building supplies and home equipment. Your satisfaction is our main consideration. A visit to our lumberyard, a talk with one of our expert advisers, and you're ready to plan the right way.

The National Housing Act enables you to have the home you want on more liberal terms than ever before. Our guaranteed minimum prices for all quality materials, plus our facilities for handling estimates and work will aid you greatly. Our architect is at your service and we urge you to take advantage of his advice. Our planning service is complete and we make no charge for consultations. Investigate our free planning service before you build or remodel.

EXPERT ADVICE WITHOUT COST OR OBLIGATION

Home Lumber & Coal Co.

HERMAN HINZE, Mgr.

Specialists in HOME Improvement

NOW You can afford to MODERNIZE!

Our nation, in its most recent and vigorous activity against the depression has centered all its interests in its homes. Improvements and modernization are admittedly on the way, and behind them is mobilized an impressive force of technicians, laborers and quality materials with which all the work will be done. Foremost of all the materials that will be used are lumber and millwork. Upon their quality depends the value, in permanence, beauty and convenience of all modernizing that you plan.

We'll Help You With Your Plans and Estimating

Plan from the start with expert, unbiased advice. We will gladly consult with you and help you make improvements of greatest value. Our planning service covers both remodeling and new home construction. Estimates will be furnished without obligation on your part.

Wellner's Planing Mill
"REMODELING and NEW HOME CONSTRUCTION"

Phone 603

MORTGAGE SETUP PROTECTS OWNER

FHA Provides Inspections to Guarantee Satisfactory Construction

By COL. E. C. HEMMEL, Chief Architect, Idaho Office, Federal Housing Administration

So that persons who build new houses under the FHA mortgage plan will get full value for every dollar spent...

The first inspection is made when the foundation is ready to be placed and at that time it is necessary to determine whether the house will occupy the proper position on the lot...

The second inspection is made when the framework has all been placed and the house is ready for plaster and plaster is then placed...

OWNER OF SMALL HOME TO BENEFIT

FHA Particularly Interested in Houses Less Than \$2,000

By GEORGE A. BIEMER, Chief Underwriter, Idaho Office, Federal Housing Administration

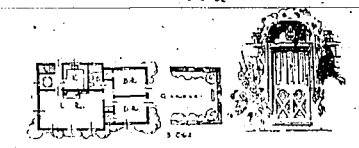
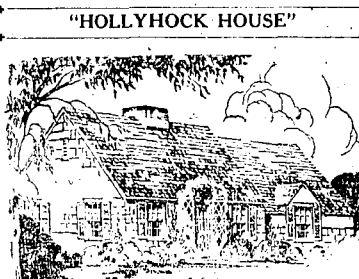
The new amendments to the national housing act which authorize the Federal Housing Administration to insure new construction...

We believe that it was the aim of the congress to encourage home ownership by insuring loans...

Under this insured mortgage system, certain home owners of construction, design, location and use are required to sign and the owner's name must be inscribed in the Federal records...

It has been found in all quarters that these standards are the possibility of obtaining a home costing \$2,000 or less...

CALL IN APPLYING INTERESTED Builders have practically no structural strength and is applied to the walls less than an inch thick...



A friendly little house—smaller than a cottage. Future expansion enough to fit in with the most modest budget, but spacious enough to have an air of graciousness and well being...

Just such a place is "Hollyhock House," pictured above to plan and elevation. It has been designed especially for the better homes section of this paper...

Its economy of construction is of them often interesting possibilities and are entirely practical from architectural details show.

Be sure and give this little home Atlanta, Ga. for the completion of working drawings. Submit them to the service at 81 North Ave. N. E., Atlanta, Ga.

Do not delay longer the building of your home. Boise Payette's own financial department has the money ready to complete your financing.

Do not delay longer the building of your home. Boise Payette's own financial department has the money ready to complete your financing.

Advertisement for Boise Payette Lumber Co. featuring a large illustration of a house and the text: "Have Your New Home Designed By Experts ... Without Charge At Boise Payette".

STAINED SHINGLES GAINING IN FAVOR

Soft Color and Line Effects Add to Appearance of Dwelling

Many homes have been built with the wrong materials for best expressing the true character of the design in mind.

Both of these materials should be explained to the parties building so that everyone interested will understand why the shingle, or brick, or stucco, is the only thing to use to get the effect desired.

Staining the interior of this home the cost should be kept to a minimum. It is important to estimate the cost in this work.

When the last borings indicate the soil is not solid, the footings can be reinforced with steel rods.

When the last borings indicate the soil is not solid, the footings can be reinforced with steel rods.

When the last borings indicate the soil is not solid, the footings can be reinforced with steel rods.

When the last borings indicate the soil is not solid, the footings can be reinforced with steel rods.

When the last borings indicate the soil is not solid, the footings can be reinforced with steel rods.

Home Mortgages Reach New High In Spring Boom

WASHINGTON, May 12—The Federal Housing Administration today announced that for the week ending April 18th, total home mortgages selected for appraisal amounted to \$9,951,536, which, according to W. D. Flinders, deputy administrator, constitutes the largest individual week since the inception of the program and indicates that the expected spring rise in residential construction is materializing.

The mortgage money is furnished by private capital—principally by life insurance companies, banks, building and loan associations and savings banks.

This very definitely indicates that our program in insured mortgages is very definitely going forward.

It is good practice to test the solidity of soil before placing the footings of a building.

When the last borings indicate the soil is not solid, the footings can be reinforced with steel rods.

When the last borings indicate the soil is not solid, the footings can be reinforced with steel rods.

When the last borings indicate the soil is not solid, the footings can be reinforced with steel rods.

When the last borings indicate the soil is not solid, the footings can be reinforced with steel rods.

When the last borings indicate the soil is not solid, the footings can be reinforced with steel rods.

DECORATION HAS UNIQUE EFFECTS

Air of Spaciousness Can Be Obtained by Proper Arrangements

Much can be done through the art of the interior decorator to remove the cramped atmosphere of small living rooms, and to give an air of spaciousness to those of ordinary size, through arrangement of furniture and furnishings and the judicious use of color.

One of the first rules of the art is to keep the center of the room clear with the heavier pieces of furniture and the rugs parallel or at right angles to the walls.

Too much mahogany or other dark wood gives a heavy atmosphere to the room. Much can be done to lighten this effect by use of a few painted or draped pieces.

When the last borings indicate the soil is not solid, the footings can be reinforced with steel rods.

When the last borings indicate the soil is not solid, the footings can be reinforced with steel rods.

When the last borings indicate the soil is not solid, the footings can be reinforced with steel rods.

When the last borings indicate the soil is not solid, the footings can be reinforced with steel rods.

When the last borings indicate the soil is not solid, the footings can be reinforced with steel rods.

Indicator Aids in Lower Light Bills

How often have you opened the door to the cellar stairs to be greeted with a blaze of light and realized that when you came up from the cellar last night you neglected to switch off the light?

This experience can be avoided by installing a switch with a red "bulbeye" that shines merely while the light in the cellar is on.

Too much mahogany or other dark wood gives a heavy atmosphere to the room. Much can be done to lighten this effect by use of a few painted or draped pieces.

When the last borings indicate the soil is not solid, the footings can be reinforced with steel rods.

When the last borings indicate the soil is not solid, the footings can be reinforced with steel rods.

When the last borings indicate the soil is not solid, the footings can be reinforced with steel rods.

When the last borings indicate the soil is not solid, the footings can be reinforced with steel rods.

When the last borings indicate the soil is not solid, the footings can be reinforced with steel rods.

When the last borings indicate the soil is not solid, the footings can be reinforced with steel rods.

Washable Walls Are Logical Investment

Walls covered with washable paint or wallpaper are an excellent investment, especially in kitchens, bathrooms and children's playrooms.

In cities or neighborhoods where the air is polluted with soot, dust and destructive fumes, walls and ceilings covered with washable paint or wallpaper make it possible to keep the home clean and sanitary at all times at a minimum of expense.

When the last borings indicate the soil is not solid, the footings can be reinforced with steel rods.

When the last borings indicate the soil is not solid, the footings can be reinforced with steel rods.

When the last borings indicate the soil is not solid, the footings can be reinforced with steel rods.

When the last borings indicate the soil is not solid, the footings can be reinforced with steel rods.

When the last borings indicate the soil is not solid, the footings can be reinforced with steel rods.

When the last borings indicate the soil is not solid, the footings can be reinforced with steel rods.

When the last borings indicate the soil is not solid, the footings can be reinforced with steel rods.

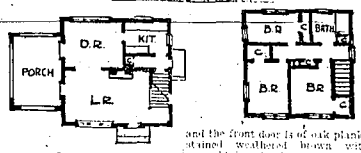
Advertisement for Irrigated Lands Co. featuring the text: "\$135.00 Per Month Rent From Three Apartments" and "Irrigated Lands Co." with contact information for Perrino Hotel Bldg.

Large advertisement for Moon's Paint & Furn. Store and Bob Milner Sales Co. featuring the text: "Here Are Two Important Items to consider when you modernize your home!" and "UNIVERSAL and ELECTROMASTER Electric Ranges".

KITCHEN SHOULD SAVE YOU STEPS

Proper Grouping Important If It Is to Be Made Efficient

Housewives can save many steps every day by modernizing their kitchens. A general rule for efficient kitchen planning is to group as closely as possible, the sink, range, and refrigerator, with working surface adjacent to each. This is best done by having a narrow kitchen with all floor space used to its best advantage. Wall space is best utilized for built-in cabinets which are most necessary in an efficient and modern kitchen.



The desired location of a sink is directly below a window. This arrangement conserves wall space. It also gives the housewife a view of the exterior which greatly relieves the drudgery of her work. If the window is placed directly in front of the window, the housewife may watch the children at any saving time and money. The cooking range is most convenient near the sink and a working surface. Since most cooking fumes move directly to the dining table after dining, it is advisable to place the range near the dining room with a working surface for serving cooked foods adjacent to the door.

A refrigerator is best located near a working surface and the sink since most groceries must be washed before storing, and foods in storage must be prepared before serving. Brown and mahogany are very convenient near exterior or basement doors. Built-in exterior boards should be located so that the board is free from the shadow of the worker.

SPACE GAINING
In small bathrooms where every inch counts, it is often possible to recess the lavatory between the stairs and gain about 3 inches which may make just the difference between a comfortable space and a cramped one.

BATHROOM LOCATION
Bathrooms adjoining one another also to own his own house, as a wall or, or placed in them one above the other from the basement to the attic, minimize installation costs.

are painted white and trimmed in Savina in material and labor cost. In meeting persons who are rough cut stone. Windows are are affected when they are so installed.

standard wood frames and sash.

the main fault with the old system was its expense. It encouraged high prices, hidden charges and overcharging.

The new single mortgage system, inaugurated by the government under the National Home Administration, is leading home owners to realize the advantage of a plan that brings them from emerging from dark to a realm of security.

The mortgage system of the past has become obsolete in the opinion of a administration official.

Mr. Higgins will explain in detail the federal plan. He hopes to personally meet with every citizen under the National Home Act.

as those who are thinking of making improvements to their present homes. Particularly, is he interested in meeting persons who are planning the construction of a new home.

Mr. Higgins will explain in detail the federal plan. He hopes to personally meet with every citizen under the National Home Act.

as those who are thinking of making improvements to their present homes. Particularly, is he interested in meeting persons who are planning the construction of a new home.

Mr. Higgins will explain in detail the federal plan. He hopes to personally meet with every citizen under the National Home Act.

as those who are thinking of making improvements to their present homes. Particularly, is he interested in meeting persons who are planning the construction of a new home.

Mr. Higgins will explain in detail the federal plan. He hopes to personally meet with every citizen under the National Home Act.

as those who are thinking of making improvements to their present homes. Particularly, is he interested in meeting persons who are planning the construction of a new home.

Mr. Higgins will explain in detail the federal plan. He hopes to personally meet with every citizen under the National Home Act.

as those who are thinking of making improvements to their present homes. Particularly, is he interested in meeting persons who are planning the construction of a new home.

Mr. Higgins will explain in detail the federal plan. He hopes to personally meet with every citizen under the National Home Act.

as those who are thinking of making improvements to their present homes. Particularly, is he interested in meeting persons who are planning the construction of a new home.

Mr. Higgins will explain in detail the federal plan. He hopes to personally meet with every citizen under the National Home Act.

as those who are thinking of making improvements to their present homes. Particularly, is he interested in meeting persons who are planning the construction of a new home.

Mr. Higgins will explain in detail the federal plan. He hopes to personally meet with every citizen under the National Home Act.

as those who are thinking of making improvements to their present homes. Particularly, is he interested in meeting persons who are planning the construction of a new home.

Mr. Higgins will explain in detail the federal plan. He hopes to personally meet with every citizen under the National Home Act.

as those who are thinking of making improvements to their present homes. Particularly, is he interested in meeting persons who are planning the construction of a new home.

Mr. Higgins will explain in detail the federal plan. He hopes to personally meet with every citizen under the National Home Act.

as those who are thinking of making improvements to their present homes. Particularly, is he interested in meeting persons who are planning the construction of a new home.

EXPERT HERE TO EXPLAIN SYSTEM

New Single Mortgage Plan Called Great Boon to Home Owners

The new single mortgage system has been called "the greatest boon for home owners ever devised." In order that every citizen of this section of Idaho may be made fully acquainted with the provisions of the new plan, the Federal Housing Administration's headquarters at Boise has placed Donald Higgins at the Chamber of Commerce office here to explain to all interested the advantages of the government's program.

Mr. Higgins answers all questions that may arise in the minds of those contemplating to build, remodel, or modernize their homes. The program devised by the government has brought together the architect, the builder, the financial institution, the real estate man, the contractor and the merchant of building supplies into one mutually helpful group.

Under the National Housing act, this group can meet on common ground and solve problems of home ownership that will benefit the community. Mr. Higgins will explain in detail the federal plan. He hopes to personally meet with every citizen under the National Home Act.

as those who are thinking of making improvements to their present homes. Particularly, is he interested in meeting persons who are planning the construction of a new home.

Mr. Higgins will explain in detail the federal plan. He hopes to personally meet with every citizen under the National Home Act.

as those who are thinking of making improvements to their present homes. Particularly, is he interested in meeting persons who are planning the construction of a new home.

Mr. Higgins will explain in detail the federal plan. He hopes to personally meet with every citizen under the National Home Act.

as those who are thinking of making improvements to their present homes. Particularly, is he interested in meeting persons who are planning the construction of a new home.

Mr. Higgins will explain in detail the federal plan. He hopes to personally meet with every citizen under the National Home Act.

as those who are thinking of making improvements to their present homes. Particularly, is he interested in meeting persons who are planning the construction of a new home.

Mr. Higgins will explain in detail the federal plan. He hopes to personally meet with every citizen under the National Home Act.

as those who are thinking of making improvements to their present homes. Particularly, is he interested in meeting persons who are planning the construction of a new home.

Mr. Higgins will explain in detail the federal plan. He hopes to personally meet with every citizen under the National Home Act.

as those who are thinking of making improvements to their present homes. Particularly, is he interested in meeting persons who are planning the construction of a new home.

Mr. Higgins will explain in detail the federal plan. He hopes to personally meet with every citizen under the National Home Act.

as those who are thinking of making improvements to their present homes. Particularly, is he interested in meeting persons who are planning the construction of a new home.

Mr. Higgins will explain in detail the federal plan. He hopes to personally meet with every citizen under the National Home Act.

as those who are thinking of making improvements to their present homes. Particularly, is he interested in meeting persons who are planning the construction of a new home.

Mr. Higgins will explain in detail the federal plan. He hopes to personally meet with every citizen under the National Home Act.

as those who are thinking of making improvements to their present homes. Particularly, is he interested in meeting persons who are planning the construction of a new home.

Mr. Higgins will explain in detail the federal plan. He hopes to personally meet with every citizen under the National Home Act.

as those who are thinking of making improvements to their present homes. Particularly, is he interested in meeting persons who are planning the construction of a new home.

Mr. Higgins will explain in detail the federal plan. He hopes to personally meet with every citizen under the National Home Act.

as those who are thinking of making improvements to their present homes. Particularly, is he interested in meeting persons who are planning the construction of a new home.

Mr. Higgins will explain in detail the federal plan. He hopes to personally meet with every citizen under the National Home Act.

as those who are thinking of making improvements to their present homes. Particularly, is he interested in meeting persons who are planning the construction of a new home.

Mr. Higgins will explain in detail the federal plan. He hopes to personally meet with every citizen under the National Home Act.

as those who are thinking of making improvements to their present homes. Particularly, is he interested in meeting persons who are planning the construction of a new home.

Mr. Higgins will explain in detail the federal plan. He hopes to personally meet with every citizen under the National Home Act.

as those who are thinking of making improvements to their present homes. Particularly, is he interested in meeting persons who are planning the construction of a new home.

Mr. Higgins will explain in detail the federal plan. He hopes to personally meet with every citizen under the National Home Act.

Twin Falls on Verge of Building Activity—Dunn

From present indications Twin Falls is on the verge of a building boom. The state office of the Federal Housing Administration, under the direction of Mr. Dunn, Jr., associate director of the Federal Housing Administration, is planning the construction of new residential loans under the new construction loans plan. Mr. Dunn has been in Twin Falls for a representative of the Federal Housing Administration.

Mr. Dunn has been in Twin Falls for a representative of the Federal Housing Administration. He has been in Twin Falls for a representative of the Federal Housing Administration. He has been in Twin Falls for a representative of the Federal Housing Administration.

Mr. Dunn has been in Twin Falls for a representative of the Federal Housing Administration. He has been in Twin Falls for a representative of the Federal Housing Administration. He has been in Twin Falls for a representative of the Federal Housing Administration.

Mr. Dunn has been in Twin Falls for a representative of the Federal Housing Administration. He has been in Twin Falls for a representative of the Federal Housing Administration. He has been in Twin Falls for a representative of the Federal Housing Administration.

Mr. Dunn has been in Twin Falls for a representative of the Federal Housing Administration. He has been in Twin Falls for a representative of the Federal Housing Administration. He has been in Twin Falls for a representative of the Federal Housing Administration.

Mr. Dunn has been in Twin Falls for a representative of the Federal Housing Administration. He has been in Twin Falls for a representative of the Federal Housing Administration. He has been in Twin Falls for a representative of the Federal Housing Administration.

Mr. Dunn has been in Twin Falls for a representative of the Federal Housing Administration. He has been in Twin Falls for a representative of the Federal Housing Administration. He has been in Twin Falls for a representative of the Federal Housing Administration.

Mr. Dunn has been in Twin Falls for a representative of the Federal Housing Administration. He has been in Twin Falls for a representative of the Federal Housing Administration. He has been in Twin Falls for a representative of the Federal Housing Administration.

Mr. Dunn has been in Twin Falls for a representative of the Federal Housing Administration. He has been in Twin Falls for a representative of the Federal Housing Administration. He has been in Twin Falls for a representative of the Federal Housing Administration.

Mr. Dunn has been in Twin Falls for a representative of the Federal Housing Administration. He has been in Twin Falls for a representative of the Federal Housing Administration. He has been in Twin Falls for a representative of the Federal Housing Administration.

Mr. Dunn has been in Twin Falls for a representative of the Federal Housing Administration. He has been in Twin Falls for a representative of the Federal Housing Administration. He has been in Twin Falls for a representative of the Federal Housing Administration.

Mr. Dunn has been in Twin Falls for a representative of the Federal Housing Administration. He has been in Twin Falls for a representative of the Federal Housing Administration. He has been in Twin Falls for a representative of the Federal Housing Administration.

Mr. Dunn has been in Twin Falls for a representative of the Federal Housing Administration. He has been in Twin Falls for a representative of the Federal Housing Administration. He has been in Twin Falls for a representative of the Federal Housing Administration.

Mr. Dunn has been in Twin Falls for a representative of the Federal Housing Administration. He has been in Twin Falls for a representative of the Federal Housing Administration. He has been in Twin Falls for a representative of the Federal Housing Administration.

Mr. Dunn has been in Twin Falls for a representative of the Federal Housing Administration. He has been in Twin Falls for a representative of the Federal Housing Administration. He has been in Twin Falls for a representative of the Federal Housing Administration.

Mr. Dunn has been in Twin Falls for a representative of the Federal Housing Administration. He has been in Twin Falls for a representative of the Federal Housing Administration. He has been in Twin Falls for a representative of the Federal Housing Administration.

Mr. Dunn has been in Twin Falls for a representative of the Federal Housing Administration. He has been in Twin Falls for a representative of the Federal Housing Administration. He has been in Twin Falls for a representative of the Federal Housing Administration.

Mr. Dunn has been in Twin Falls for a representative of the Federal Housing Administration. He has been in Twin Falls for a representative of the Federal Housing Administration. He has been in Twin Falls for a representative of the Federal Housing Administration.

Mr. Dunn has been in Twin Falls for a representative of the Federal Housing Administration. He has been in Twin Falls for a representative of the Federal Housing Administration. He has been in Twin Falls for a representative of the Federal Housing Administration.

Mr. Dunn has been in Twin Falls for a representative of the Federal Housing Administration. He has been in Twin Falls for a representative of the Federal Housing Administration. He has been in Twin Falls for a representative of the Federal Housing Administration.

Mr. Dunn has been in Twin Falls for a representative of the Federal Housing Administration. He has been in Twin Falls for a representative of the Federal Housing Administration. He has been in Twin Falls for a representative of the Federal Housing Administration.

Mr. Dunn has been in Twin Falls for a representative of the Federal Housing Administration. He has been in Twin Falls for a representative of the Federal Housing Administration. He has been in Twin Falls for a representative of the Federal Housing Administration.

Mr. Dunn has been in Twin Falls for a representative of the Federal Housing Administration. He has been in Twin Falls for a representative of the Federal Housing Administration. He has been in Twin Falls for a representative of the Federal Housing Administration.

Mr. Dunn has been in Twin Falls for a representative of the Federal Housing Administration. He has been in Twin Falls for a representative of the Federal Housing Administration. He has been in Twin Falls for a representative of the Federal Housing Administration.

Mr. Dunn has been in Twin Falls for a representative of the Federal Housing Administration. He has been in Twin Falls for a representative of the Federal Housing Administration. He has been in Twin Falls for a representative of the Federal Housing Administration.

Mr. Dunn has been in Twin Falls for a representative of the Federal Housing Administration. He has been in Twin Falls for a representative of the Federal Housing Administration. He has been in Twin Falls for a representative of the Federal Housing Administration.

Mr. Dunn has been in Twin Falls for a representative of the Federal Housing Administration. He has been in Twin Falls for a representative of the Federal Housing Administration. He has been in Twin Falls for a representative of the Federal Housing Administration.

Mr. Dunn has been in Twin Falls for a representative of the Federal Housing Administration. He has been in Twin Falls for a representative of the Federal Housing Administration. He has been in Twin Falls for a representative of the Federal Housing Administration.

Mr. Dunn has been in Twin Falls for a representative of the Federal Housing Administration. He has been in Twin Falls for a representative of the Federal Housing Administration. He has been in Twin Falls for a representative of the Federal Housing Administration.

Mr. Dunn has been in Twin Falls for a representative of the Federal Housing Administration. He has been in Twin Falls for a representative of the Federal Housing Administration. He has been in Twin Falls for a representative of the Federal Housing Administration.

Mr. Dunn has been in Twin Falls for a representative of the Federal Housing Administration. He has been in Twin Falls for a representative of the Federal Housing Administration. He has been in Twin Falls for a representative of the Federal Housing Administration.

CABINETS PUT IN NEW LAVATORIES

New-Type Fixture Has Ample Storage Space in Easily Accessible Spot

A new type of lavatory fixture with ample storage space in an easily accessible spot is being introduced by Stewart-Warner. The fixture is designed to fit into a standard lavatory cabinet and is made of a material that is easy to clean. It has a built-in shelf for storing toiletries and a small mirror above the sink. The fixture is available in several colors and finishes.

The fixture is designed to fit into a standard lavatory cabinet and is made of a material that is easy to clean. It has a built-in shelf for storing toiletries and a small mirror above the sink. The fixture is available in several colors and finishes.

The fixture is designed to fit into a standard lavatory cabinet and is made of a material that is easy to clean. It has a built-in shelf for storing toiletries and a small mirror above the sink. The fixture is available in several colors and finishes.

The fixture is designed to fit into a standard lavatory cabinet and is made of a material that is easy to clean. It has a built-in shelf for storing toiletries and a small mirror above the sink. The fixture is available in several colors and finishes.

The fixture is designed to fit into a standard lavatory cabinet and is made of a material that is easy to clean. It has a built-in shelf for storing toiletries and a small mirror above the sink. The fixture is available in several colors and finishes.

The fixture is designed to fit into a standard lavatory cabinet and is made of a material that is easy to clean. It has a built-in shelf for storing toiletries and a small mirror above the sink. The fixture is available in several colors and finishes.

The fixture is designed to fit into a standard lavatory cabinet and is made of a material that is easy to clean. It has a built-in shelf for storing toiletries and a small mirror above the sink. The fixture is available in several colors and finishes.

The fixture is designed to fit into a standard lavatory cabinet and is made of a material that is easy to clean. It has a built-in shelf for storing toiletries and a small mirror above the sink. The fixture is available in several colors and finishes.

The fixture is designed to fit into a standard lavatory cabinet and is made of a material that is easy to clean. It has a built-in shelf for storing toiletries and a small mirror above the sink. The fixture is available in several colors and finishes.

The fixture is designed to fit into a standard lavatory cabinet and is made of a material that is easy to clean. It has a built-in shelf for storing toiletries and a small mirror above the sink. The fixture is available in several colors and finishes.

The fixture is designed to fit into a standard lavatory cabinet and is made of a material that is easy to clean. It has a built-in shelf for storing toiletries and a small mirror above the sink. The fixture is available in several colors and finishes.

The fixture is designed to fit into a standard lavatory cabinet and is made of a material that is easy to clean. It has a built-in shelf for storing toiletries and a small mirror above the sink. The fixture is available in several colors and finishes.

The fixture is designed to fit into a standard lavatory cabinet and is made of a material that is easy to clean. It has a built-in shelf for storing toiletries and a small mirror above the sink. The fixture is available in several colors and finishes.

The fixture is designed to fit into a standard lavatory cabinet and is made of a material that is easy to clean. It has a built-in shelf for storing toiletries and a small mirror above the sink. The fixture is available in several colors and finishes.

The fixture is designed to fit into a standard lavatory cabinet and is made of a material that is easy to clean. It has a built-in shelf for storing toiletries and a small mirror above the sink. The fixture is available in several colors and finishes.

The fixture is designed to fit into a standard lavatory cabinet and is made of a material that is easy to clean. It has a built-in shelf for storing toiletries and a small mirror above the sink. The fixture is available in several colors and finishes.

The fixture is designed to fit into a standard lavatory cabinet and is made of a material that is easy to clean. It has a built-in shelf for storing toiletries and a small mirror above the sink. The fixture is available in several colors and finishes.

The fixture is designed to fit into a standard lavatory cabinet and is made of a material that is easy to clean. It has a built-in shelf for storing toiletries and a small mirror above the sink. The fixture is available in several colors and finishes.

The fixture is designed to fit into a standard lavatory cabinet and is made of a material that is easy to clean. It has a built-in shelf for storing toiletries and a small mirror above the sink. The fixture is available in several colors and finishes.

The fixture is designed to fit into a standard lavatory cabinet and is made of a material that is easy to clean. It has a built-in shelf for storing toiletries and a small mirror above the sink. The fixture is available in several colors and finishes.

The fixture is designed to fit into a standard lavatory cabinet and is made of a material that is easy to clean. It has a built-in shelf for storing toiletries and a small mirror above the sink. The fixture is available in several colors and finishes.

The fixture is designed to fit into a standard lavatory cabinet and is made of a material that is easy to clean. It has a built-in shelf for storing toiletries and a small mirror above the sink. The fixture is available in several colors and finishes.

The fixture is designed to fit into a standard lavatory cabinet and is made of a material that is easy to clean. It has a built-in shelf for storing toiletries and a small mirror above the sink. The fixture is available in several colors and finishes.

The fixture is designed to fit into a standard lavatory cabinet and is made of a material that is easy to clean. It has a built-in shelf for storing toiletries and a small mirror above the sink. The fixture is available in several colors and finishes.

The fixture is designed to fit into a standard lavatory cabinet and is made of a material that is easy to clean. It has a built-in shelf for storing toiletries and a small mirror above the sink. The fixture is available in several colors and finishes.

The fixture is designed to fit into a standard lavatory cabinet and is made of a material that is easy to clean. It has a built-in shelf for storing toiletries and a small mirror above the sink. The fixture is available in several colors and finishes.

The fixture is designed to fit into a standard lavatory cabinet and is made of a material that is easy to clean. It has a built-in shelf for storing toiletries and a small mirror above the sink. The fixture is available in several colors and finishes.

The fixture is designed to fit into a standard lavatory cabinet and is made of a material that is easy to clean. It has a built-in shelf for storing toiletries and a small mirror above the sink. The fixture is available in several colors and finishes.

The fixture is designed to fit into a standard lavatory cabinet and is made of a material that is easy to clean. It has a built-in shelf for storing toiletries and a small mirror above the sink. The fixture is available in several colors and finishes.

The fixture is designed to fit into a standard lavatory cabinet and is made of a material that is easy to clean. It has a built-in shelf for storing toiletries and a small mirror above the sink. The fixture is available in several colors and finishes.

The fixture is designed to fit into a standard lavatory cabinet and is made of a material that is easy to clean. It has a built-in shelf for storing toiletries and a small mirror above the sink. The fixture is available in several colors and finishes.

New invention gives 30% more front-shelf room for food, makes work easier, saves current.

HERE'S THE invention every woman has wanted in refrigeration! A brand new idea—SAVA-STEP—that keeps the foods you use most in the handier place ever found for them—takes everything for a whole meal to the kitchen table at one trip—saves the current wasted by repeated opening of the refrigerator—and actually gives 30% more front shelf space than other refrigerators of the same size give you!

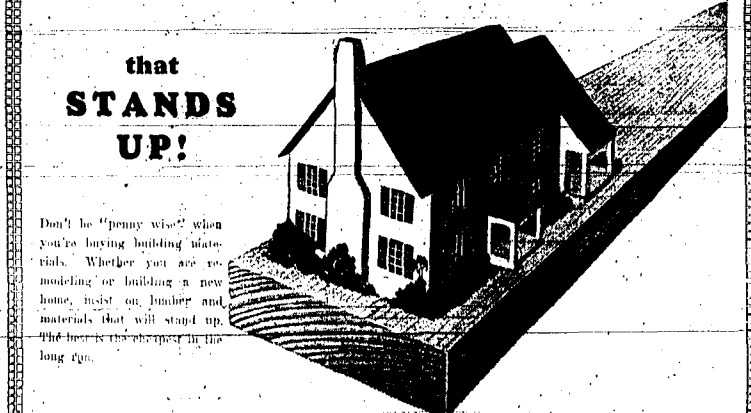
This feature alone would make Stewart-Warner the best buy in refrigeration. Yet it's only one of a dozen hit features in this beautiful box, SLID-A-TRAY, TILT-A-SHIELD, and many others—you'll be delighted with every one. For they at last give complete refrigerator convenience—permit you to arrange things to suit your own personal ideas—and let you do your kitchen work with half the effort.

We've another surprise for you, too, in our new easy payment plan—the simplest, easiest plan we've ever offered, with surprisingly modest monthly payments spread out to suit your convenience. Let us explain when you stop to look at the new Stewart-Warner, today or tomorrow, sure!

RUNS LESS COSTS LESS Let Us Prove It!

ASSOCIATED Stewart-Warner Dealers
MOON'S PAINT AND FURNITURE STORE
BOB MILNER'S SALES CO.
Wilson's Jewelry, Buil
A. O. Travis, Filer
A. H. Gerard Radio, Rod and Gun Service, Burley
Bob Milner Sales Co. (temporarily located with Avery Trust & Awnings) Jerome
H. S. Trade Store, Coalinga
Gregory Hardware, Rupert

FOR YOUR NEW HOME INSIST ON LUMBER



Every Piece Carefully Graded and Protected

That's the kind of lumber you get at the TRI-STATE Lumber Co. We'll fill your lumber requirements in any quantity for any type of building or remodeling from the most complete and expertly selected stock in Twin Falls.

TRI-STATE has long been a name identified with the type of lumber that "stands up" to its claims of "higher quality at lower prices."

Our services include planning, estimating, and executing all building needs. All work is guaranteed and we welcome the opportunity to discuss your building and remodeling plans with you. Estimates gladly given.

TRI-STATE LUMBER CO.
"Everything in Building Materials"
Filer, Twin Falls, Phone 41, Kimberly

MIRRORS ADD TO CHARM OF HOMES

They Give Pleasant Decorative Effect and Reflect Light and Color

Decorative mirrors are one of the most effective means of adding to the charm of a home. They reflect light and color, and give a sense of spaciousness and brightness to the room.

Modern mirrors are obtainable in numerous sizes, shapes and designs. They may be plain with simple or elaborate frames, or they may be of the type known as "beveled" or "cut" glass.

Large mirrors are particularly effective in reflecting light and color. They may be placed in a room to reflect a view of the outdoors, or to reflect a view of the interior.

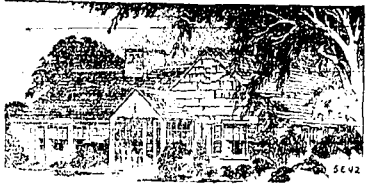
The treatment of fireplaces with mirrors has always been one of the most unusual methods of obtaining attractive and charming effects.

A large plate glass mirror, rectangular or of curved design, and in some cases tall ones, may be installed on each side of the fireplace so that the hearth and mantel are practically framed in the mirrors, giving a luxurious and appealing effect.

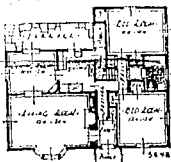
Large, specially designed mirrors are popular for bedrooms. A large wall mirror with sparkling beveled edges not only adds to the brightness and cheerfulness of the room, but adds to the desired illusion of wide space.

Bedrooms offer exceptional opportunities for the full length mirror door with sparkling beveled edges.

COLONIAL CHARM



This little white Colonial style house with its green shutters and its gabled roof is a charming example of the Colonial style. It has a simple, elegant design that is both practical and attractive.



Modern mirrors are obtainable in numerous sizes, shapes and designs. They may be plain with simple or elaborate frames, or they may be of the type known as "beveled" or "cut" glass.

The treatment of fireplaces with mirrors has always been one of the most unusual methods of obtaining attractive and charming effects.

A large plate glass mirror, rectangular or of curved design, and in some cases tall ones, may be installed on each side of the fireplace so that the hearth and mantel are practically framed in the mirrors, giving a luxurious and appealing effect.

Large, specially designed mirrors are popular for bedrooms. A large wall mirror with sparkling beveled edges not only adds to the brightness and cheerfulness of the room, but adds to the desired illusion of wide space.

Bedrooms offer exceptional opportunities for the full length mirror door with sparkling beveled edges.

Decorative mirrors are one of the most effective means of adding to the charm of a home. They reflect light and color, and give a sense of spaciousness and brightness to the room.

EXTRA ROOM CAN BE MADE 'CABIN'

Basement Is Good Place for Acquiring Rustic Atmosphere

Home owners who take of the basement of the house and convert it into a rustic cabin will find it a most attractive and useful addition to the home.

A log cabin room can be easily constructed in a variety of ways. It can be made of wood, or of other materials, and can be decorated to suit the owner's taste.

The bathroom and kitchen should be given a five-foot-wide ceiling of linoleum. This will give the room a clean, bright appearance.

To obtain the ceiling effects of log cabins of early days, the joints may be exposed, covered with log-cabin slating to give the effect of joints made of poles, re-impaled into live beams, or the under side of the joists may be covered with boards of standard or random widths.

Windows of simple design, small panes, and wrought iron fastenings are desirable. Likewise, the door should be solid, constructed of boards in one of the several plain and primitive designs.

On or two corner cupboards or other built-in furniture of colonial design may be installed. Then a wall cabinet may be constructed for guns, fishing tackle, and the like.

Electric light fixtures are preferably of wrought iron of colonial design made to imitate lanterns or candles.

A heavy board table and rustic chairs harmonize with the interior plan of the room.

Distinctive Entry Is Key to Home; Gives 'Impression'

Yours front door gives the visitor the first impression of your home. It is the key to the home, and it should be designed to give a distinctive and attractive appearance.

The front door is the key to the home, and it should be designed to give a distinctive and attractive appearance. It should be made of a material that is both durable and attractive.

Many home owners find unusual space the best place for acquiring a log cabin room, especially when it is to be used in part as a recreation or playroom by the children.

With the growing interest in sports, all the members of the family need some place to keep their golf clubs, tennis rackets, and other sports equipment.

A series of stout wooden brackets, like old-fashioned hat racks, sloping down toward the wall make good places to hold the golf clubs, tennis rackets, and other sports equipment.

On or two corner cupboards or other built-in furniture of colonial design may be installed. Then a wall cabinet may be constructed for guns, fishing tackle, and the like.

Electric light fixtures are preferably of wrought iron of colonial design made to imitate lanterns or candles.

A heavy board table and rustic chairs harmonize with the interior plan of the room.

Decorative mirrors are one of the most effective means of adding to the charm of a home. They reflect light and color, and give a sense of spaciousness and brightness to the room.

'THE ELMS'



This house, with its rambling walls and steep roof lines, has an atmosphere of comfort and hominess that calls for a setting in the country or suburbs where trees and flowers will afford the proper background.

Here are combined the rooms needed for the small family, but with a view to adding another bedroom later. This room will be built to the rear of the kitchen and access gained by cutting a doorway through the rear wall in the kitchen.

Every line of this place breathes of the country so must be treated carefully when paper and paint are used. In the living room it will be best to use a Colonial paper. A high wainscot painted white might be good to add the needed touch to the paper above. That will be a matter of taste and the furnishings you have on hand and have to use.

In the dining alcove, however, it is better to go into color. The room is to be used for the dining alcove, and it should be decorated accordingly.

The kitchen can be papered in a snappy color paper in which yellow and greens are blended so that the color may be blended into the paper above. The woodwork in this room, as in all others, would paint a lustrous white to help to create the appearance of size as much as possible.

A simple Colonial treatment of the bedroom walls and ceiling will be as safe if you depend on your present furnishings to fill the room.

A colorful little house inside and out, with its gray stained shingle walls outside and its sparkling colors throughout the interior, yet the cost of such a place may well be near the \$2,000 mark than one where the friction exists.

FLAGGING WINS IN POPULARITY

Stone Walk Back in High Favor With Home Builders

The many uses of flagging have brought this material into high favor. What more lovely than a flagstone walk in a garden? The informality of the separate stones with grass or moss or sedum growing up between just suits our American scene. Such walks may be laid directly on the earth, although frost may move them, though they can be replaced easily.

When used for terraces where the stones are set close together, they will get quite uneven if laid directly on the earth and the unevenness will be a nuisance when one tries to set a chair down. One other method is to lay a slab of concrete on which the stones are bedded and score out channels between the stones to form pockets for earth where grass or other herbs may root. These slabs should have sloping sides to relieve frost pressure, and should be deep enough to allow the roots to penetrate. The best method is to lay the stones on a concrete base, frequently to keep the grass from burning.

A more practical method of laying, and a less expensive one, is to lay the stones in concrete with mortar joints. This has the advantage of offering less chance for chipping and tapers being set on an uneven keel.

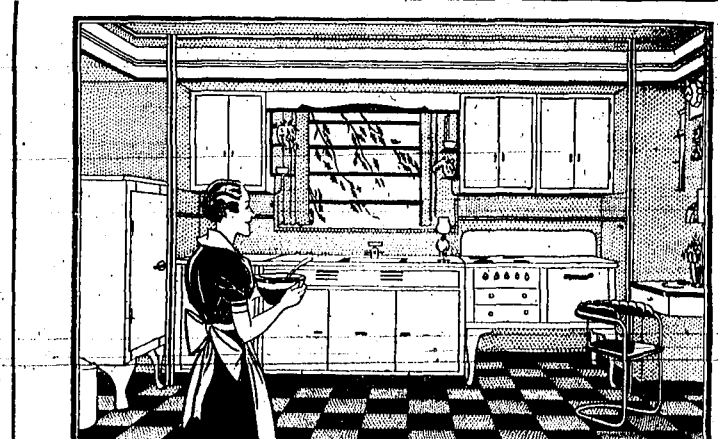
Let New Plaster Dry Up Thoroughly

In new houses that have plaster walls, the owner will do well to leave the walls unfinished for several months to allow the plaster to dry thoroughly. Some fine cracks will show up here and there in the best jobs, due to the settlement and shrinkage that goes on in the frame during its early life.

If the walls are painted immediately, cracks will show up more plainly, and they are almost certain to appear where dampness tries to come out of the plaster.

WAX LOOSENS DRAWER

If a drawer or window sashes, the trouble can be remedied by rubbing a little wax on the surface where the friction exists.



Electrify Your Kitchen

...See the...
"HOUSE OF TODAY"
You are cordially invited to visit the Idaho Power Company's "HOUSE OF TODAY" located at the Twin Falls Power Plant, to see and inspect the model "All-Electric Kitchen" and the other modern features of this truly modern home.

In the modern home the most important room is the kitchen. It is in the kitchen that most of the business of housekeeping is carried on. New science and invention, through the application of electricity, have given women new ways and means for doing their work with a minimum of effort and with greater convenience and more economy than was ever before possible.

The All-Electric Kitchen is a marvel of efficiency, cleanliness and beauty. There is no smoke, soot or dirt to blacken windows and walls... no open flame to rob the air of oxygen. Old fashioned methods and all the disagreeable features that went with them have been supplanted with modern methods made possible by the use of electrical appliances.

You don't have to completely rebuild to have an All-Electric Kitchen. You can begin by the step-by-step plan. Start with one appliance... electric range... water heater... refrigerator... or dishwasher... then add the others later on. The important thing is to make the start.

IDAHO POWER
AT YOUR SERVICE

It Pays TO INVESTIGATE BEFORE BORROWING MONEY

The First Federal Savings and Loan Association, "Your Home Institution," makes loans speedily with no red tape and at as low a cost and interest rate as any institution operating in this territory.

100% Federalized

We are very proud of the fact that the First Federal Savings and Loan Association of Twin Falls is one of the few institutions of its kind in the entire United States to be entirely and 100% Federalized. Every dollar that is put into this association up to \$5,000 is insured by the Federal Savings and Loan Insurance Corporation, an agency of the United States Government. Not one dollar of our loans was disallowed or turned down when we were made a member.

All Our Funds Loaned in this Territory

Every appraisal is made by local men, familiar with local conditions. Our funds are used to build and improve homes and are helping build our community, being distributed to the building trades and local merchants.

Pioneered and Controlled by Local Men

The first Federal Savings and Loan Association was formed January 7, 1916 by local men. Every officer and Director is a local resident and lives in his own home. They take justifiable pride in the fact that this Association is now the largest Building and Loan Association in the State of Idaho and on January 3, 1936 paid its twenty-fourth CONSERVATIVE DIVIDEND to its stockholders.

IF YOU WANT TO BORROW MONEY FOR A HOME CONSULT WITH THE

First Federal Savings and Loan Association

231 Shoshone North Phone 955

COST OF POWER RISES AS ISSUE

Senator Pope Fights Oregon Move to 'Stick' Idaho On Rates

By RALPH W. OLNSTEAD
Power Rates

WASHINGTON (Special)—In the hearings on the Federal Power Act, legislation which is progressing along at an encouraging rate, the main issue has already come up. Oregon, it is reported, would like to have the power from Bonneville dam sold at a rate based on transmission charges. In other words, the rate would be close to Bonneville, which is getting exceedingly cheap power. Idaho, which is some distance away, would get stuck. Senator Pope, chairman of the subcommittee, is insisting on "blanket" rates which means that Idaho gets Bonneville power just as cheap as Oregon.

Senator Pope is reporting the Idaho's contention. He is reported favorably on three bills introduced by Senator Pope. The bills appropriate \$20 for B. W. Winward, \$40 for Rufus C. Long, and \$50 for Zan A. Welch, all citizens of Idaho. The claims have grown out of the "blinker" slaughter of cattle suspected of being a disease.

Forest Roads
Annually and semi-annually there is an argument between the forest service and Congressmen. White about roads to mines in the national forests. Even W. Kelly, regional forester at Missoula, has just submitted a report to the congressman showing the investment of the forest service in roads during the past five years.

In northern Idaho the forest service has built 470 miles of road costing \$2,146,167. In Montana, the forest service has built 502 miles of road costing \$7,701,101. In eastern Washington, 22 miles have been built at the cost of \$41,836. Mr. Kelly says, "Where else outside of the national forest boundaries in the west can be found any public agency giving aid to miners in this respect?"

Here Are Figures
Here is the way the figures look for the various forests of northern Idaho. In the Clearwater forest, 66.1 miles of road costing \$1,829,046 have been built. In the Knappton forest, 97 miles costing \$1,238,678 have been built. In the Selkirk forest, 150.5 miles of road have been completed at a cost of \$1,330,726. St. Joe forest has built of 157.1 miles costing \$533,123.

Lighting In Garden Can Achieve Many Enjoyable Effects

Lighting effects are now being installed in many private gardens, so that they may be enjoyed both day and evening. Such effects should be well conceived, and the source of the light should be out of view.

A beam thrown on a particularly lovely flowering bush, or a group of flowers, or on a statue over a pool, makes delightful pictures from the house windows.

It should not be overdone, however. "You mustn't show" is their intimate feeling and avoid the character of public amusement parks, so no attempt should be made at general illumination. Light should be so arranged that the various parts of the garden can be illuminated in their best season.

THINGS WANT AND BRING RESULTS.

"MILFORD HAVEN"



Home, like people, are capable of possessing distinguishing characteristics. Some are "snooty," others are "friendly, inviting, and intimate," while still others have a negative quality, expressing little or nothing in the way of personality.

Fortunately, most small houses fall into the latter class.

Today's home, which we call "Milford Haven" because of the English ancestry it comes to this liberty in the country from that rock-bound section of England near Manchester where stone was plentiful and the waters severe, certainly comes under the second category. For it is friendly as an old slipper; as intimate as a cigarette advertisement; and as intimate as a well-built bed before election.

The roof-pitch is steep to with a small heavy square, the house struts snugly and close to the ground to combat strong winds. The exterior walls would be best if constructed of native stone, but white-washed common brick or stucco—an off-white shade—would do. The massive chimney is as much a part of the picture as the white picket fence, the comfortable front bench, and the heavy oaken door.

The foundation planting is cleverly planned to emphasize the "naturalness" and sense of "longing" so well portrayed in the drawing. Waving roof line, window and doors, and other important details all should be definite purpose and should be included as part of the working drawings in actual construction.

Inside, there is a compact, efficient room arrangement with a minimum of waste space. There is a large, convenient wrap closet off the entrance hall; a generous-sized living room, with ample window space and a generous fireplace; a corner dining room with cross-lighting and built-in cabinets, work table, sink, and refrigerator space.

SALES OF PAINT CLIMBED IN 1935

Modernizing and Building of Homes Brought Advance Last Year

Point sales in 1935 showed substantial gains over the four previous years, according to reports made to the bureau of census by 575 concerns in the paint, varnish and lacquer industry.

Comparison of 1935 with other years shows a gain of 21 per cent over 1934, 31.7 per cent over 1933, 64.4 per cent over 1932 and 20.1 per cent over 1931. The 1935 volume, however, was 4.1 per cent less than 1930, 23.1 per cent less than 1929, and 30.4 per cent less than 1928.

Gains for December, 1935, over the same month in the four previous years were substantially greater than the gains for the entire year. The increase for the last month of last year was 20.2 per cent above December, 1934; 25.1 per cent above December, 1933; 41.1 per cent above December, 1932;

SIDEWALK CURB PROJECT MAPPED

WPA Labor Will Aid Private Home Owners After Best Thinning Ends

Completion of the best thinning project in Twin Falls, Idaho, will be followed by WPA laborers in a sidewalk and curbing program in Twin Falls, under sponsorship of the Twin Falls Junior Chamber of Commerce.

All available curbing are now reserved for the best thinning, and when this work is over the park those on the WPA will be installed in the city curbing program. It is stated.

Citywide in Scope
The project is citywide in scope and is being directed by a special Junior Chamber committee of which Paul Gilman is chairman.

Property owners are being solicited to sign agreements to supply the material, with the labor furnished. Cost of curbing under the plan will be \$15 a foot, and for sidewalks, \$25. A block of curbing on both sides of the street will cost \$240 and for sidewalks, \$250.

Contact Urged
Copies of the plan have been printed and it is desired that home owners avail themselves of this inexpensive method of curbing their sidewalk and curbing to contact the committee so that they will be sufficient orders on hand to undertake the program as soon as the labor is available.

Under the contracts signed by the lot owners, the subscribed money is to be kept intact in the bank, and should the work not be done for any reason, the funds will be returned to those who have paid.

LANDSCAPE WORK DESERVES STUDY

The prospective home builder frequently neglects to investigate the suitability of his building from the standpoint of landscape treatment.

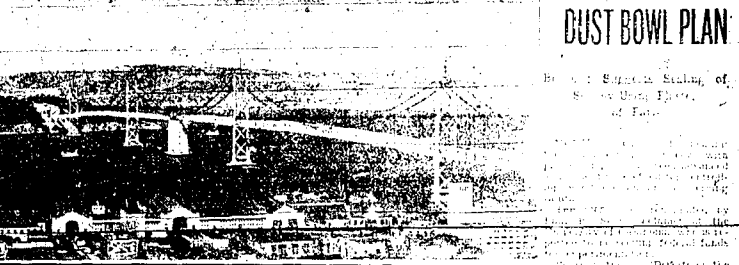
Before he purchases his property he is to his advantage to retain both an architect and a landscape architect. The latter can give him expert advice on such matters as the soil, tree growth, drainage, and cost of grading and will work in close cooperation with the architect in locating the house on the property in order to develop the landscape plan.

After it has been decided that the site is in a proper neighborhood and is suited to the requirements of the home life, an preliminary inspection and final selection of the property is made, a survey is made. Present data are referred to the property's fitness to proper landscape treatment may be attached.

In the grade very steep, and will expensive grading be out of proportion with the cost of the house, the three most important features of a yard, flower or vegetable garden, and other features the prospective owner desires? Is there a pit top soil or will it plodding require expensive fertilization? Does the water drain properly or is the property swampy? Is the soil rocky?

These are the questions that are answered by the landscape architect, and that are often 25 per cent of the job in involved painting. The drive was planned both in and out of what is commonly termed "newborn" in the construction industry.

SOLID STEEL SPANS SAN FRANCISCO BAY



A solid, unbroken span—comprising the longest bridge in the world—now stretches across San Francisco bay, linking San Francisco with Oakland with the last great section of the great span in place. So here is how the suspension bridge looks as a permanent part of the bay.

INSULATED PIPES CUT FUEL BILLS

Insulation used for each purpose is easy and economical to apply and is just as important as the pipe itself. Insulation on hot water pipes leading from it will insulate the water and prevent it from losing its heat. Insulation on cold water pipes will prevent them from freezing.

Insulation used for each purpose is easy and economical to apply and is just as important as the pipe itself. Insulation on hot water pipes leading from it will insulate the water and prevent it from losing its heat. Insulation on cold water pipes will prevent them from freezing.

THE Smiling BATH BRIGADE



Make This a Comfortable Summer with AUTOMATIC ELECTRIC HOT WATER

● Pleasure bound on the good ship "Bath." It takes no ballyhoo to make the bathtub popular in your household. Just install AUTOMATIC ELECTRIC HOT WATER. Then watch the smiling faces of the bath brigade. All it takes is plentiful hot water... available any time, day or night. It's simple. All you have to do is install ELECTRIC HOT WATER. New LOW ELECTRIC RATES make it so economical. You no longer need to skimp on hot water—use it generously for every hot water purpose.

INSTANT Abundant HOT WATER at New Low Electric Rates

ONLY \$3 DOWN

84 Months to Pay the Balance

Westinghouse and Hotpoint Automatic ELECTRIC WATER HEATERS \$84.50 Cash Completely Installed

IDAHO POWER

Electricity... Does So MUCH—Costs So LITTLE!

Live In Your Own HOME

Nothing will give you that feeling of security, like owning your own home. With the present trend towards inflation, a home is the best investment you can make. We are in an excellent position to help you in planning, building or buying a home.

We'll Be Glad To Help You with REAL ESTATE - LOANS - INSURANCE

We Have An Unlimited Amount of Money to Loan on New Homes!

- Lowest Rates—
- Long Terms—
- Quick Service—
- No Guarantees—
- No Red Tape—
- See Us for

Cholco Building Lots \$100 - \$250 - \$450

SANGER-JONES

REAL ESTATE AND LOAN AGENCY

NEW REGULATIONS FOR MODERNIZING

Several Important Changes

Are Explained by Whittier

BOISE, May 12. Several important changes in the regulations governing the purpose for which modernization credit may be used under the new federal housing act were explained today by Harry Whittier, director of the Federal Housing Administration.

Among some of the changes are the following:

- (1) The modernization credit provisions of the National Housing Act were extended one year to April 1, 1937.
- (2) A borrower need now be the owner of the property to be modernized, or have a lease on it running for six months longer than the loan.
- (3) New construction on vacant property is barred.
- (4) Portable equipment of any type is ineligible.
- (5) Churches are included in the eligible class A properties. They were barred under the old regulations.

Explain Regulations

Detailed explanation of the new regulations on new construction, and machinery and equipment, under Title I were given by the state director.

"Under Title I, as in effect up to April 1, 1936," Director Whittier said, "new construction on vacant property could be financed with the proceeds of loans not in excess of \$2,000. Under the amendment it is now required by law that the property upon which the proceeds of an insured loan are to be expended be already improved by some existing building structure at the time the loan is made."

"Unless a complete structure exists at the time the loan is made, the loan will not be eligible for insurance. Of course, this does not prohibit the repair of a previously complete structure which has been damaged, but not substantially destroyed by destruction, or fire, flood, or other casualty; or the construction of an attached or unattached garage, barn, outbuilding or other appurtenant structure in connection with a completed house or other major structure. It does, however, make ineligible loans for the purchase or financing the erection of an independent structure. The device of erecting an independent structure first, and then obtaining an insured loan for the erection or completion of the major structure, cannot be approved under Title I as amended."

Loans in excess of \$2,000 for new construction were never eligible for insurance and are not eligible now.

Equipment and Machinery

"The second important change is that which makes ineligible for insurance all loans of \$2,000 or less for the purchase and installation of equipment and machinery. Under this provision, loans of \$2,000 or less will be eligible for insurance only if the proceeds are to be used to finance structural repairs, alterations, or additions upon existing buildings."

"Equipment and machinery which has heretofore been ineligible for loans of \$2,000 or less will continue to be eligible only if such equipment and machinery is so installed in the real property as to become a part thereof. Therefore, an installed sprinkler system for fire control is eligible, but a lathe bolted to the floor of a machine shop would not be."

"The intention of the Congress in this respect is clearly stated in the floor of the Senate in explanation of the proposed amendment at the time it was submitted to the Senate. It was stated that there was no doubt that heating, plumbing and wiring systems would be eligible under the new law, but that refrigerators, water heaters, and similar equipment not built-in to the real property would not be eligible. This interpretation, in turn, will be applied to loans of \$2,000 or less applies also to equipment and machinery which is to be installed upon the real property."

"Eligible" List

"It is, therefore, listed by the Federal Housing Administration that heating systems, including boilers, all burners and coal, gas and electric furnaces which are part of such a system, wiring systems including permanent fixtures and plumbing systems including permanently installed water heaters, sinks, tubs, and so forth built into the building and the central systems will be eligible for financing with the proceeds of insured modernization loans."

Refrigerators, both commercial and domestic, washers, hot water cooking stoves, built-in toasters, and domestic electric ranges, bar broilers, and so forth which may have been previously eligible for purchase and installation in either Class A or Class B properties, are now ineligible unless the proceeds of the loan to be used for their purchase and installation are in excess of \$2,000 and cover installation on Class A properties.

"As a general rule, equipment and machinery which was previously eligible when purchased and installed on Class A properties will continue to be eligible provided that the proceeds of the loan used for the purchase of such equipment and machinery are in excess of \$2,000."

"In any cases of doubt as to the eligibility of any project, or item of equipment and machinery, a ruling should be requested from Washington."

REPAIR MODERNIZATIONS

Wooden doorills that wear down and leave a gap that lets in rain and the wind indoors may be replaced with other new hardware made of cast brass and with metal weatherstripping.

Dampness in Wood Menaces Painting; Care Is Suggested

Most paint failures are due to dampness. Either the wood swells or damp when the paint was applied or dampness enters the wood at some exposed surface. Most paint failures have happened in the last few years due to the increased use of air-conditioning with its attendant humidity and with the fact that since the discovery of a more luminous work at home, the humidity produced by these two agencies works through the base and causes the outside paint to blister and check and eventually peel.

PLAN FOR SHRINKAGE

In erecting the baseboard in a house, the best practice is to have the base on the outside and butt the end up against it. Even if it is not the fact that since the discovery of a more luminous work at home, the humidity produced by these two agencies works through the base and causes the outside paint to blister and check and eventually peel.

With the approach of the hot summer months, many home owners may be contemplating the addition of a shower bath to their浴室. There are several concerns now offering a complete, self-contained shower cabinet that may be set up on any kind of floor and against any type of wall which will economically solve the question of shower-bath comfort.

The "ready-to-use" shower cabinet is simple to assemble. These shower cabinets are completely equipped in a large variety of colors and finishes.

Shower Baths May Be Bought as Unit; Simple to Install

With the approach of the hot summer months, many home owners may be contemplating the addition of a shower bath to their浴室. There are several concerns now offering a complete, self-contained shower cabinet that may be set up on any kind of floor and against any type of wall which will economically solve the question of shower-bath comfort.

The "ready-to-use" shower cabinet is simple to assemble. These shower cabinets are completely equipped in a large variety of colors and finishes.

STORE SPACE IS NEEDED IN HOME

Many houses are being built these days without cellars. New style heating systems make it possible for furnaces to be installed in a small room on the first floor, while the rest of the floor is available for other uses.

servantless home, it does away with the ample storage space in a cellar. To offset this lack of storeroom facilities, ample shelves should be built in the kitchen. Stoves, household equipment, kitchen equipment need a "parking place," and this should be kept in mind when planning a cellarless home. Built-in shelves and closets may be obtained through the use of the Federal Housing Administration.

TIMES WANT ADS BRING RESULTS.

Don't Paper Until Plaster Has Dried

Wall paper put on plaster walls that are not thoroughly dry will peel and discolor, and cracks will show. Bare plaster walls are not as unpleasant as they sound. With the firm painted and the room furnished, with bright curtains at the windows and a few pictures hung, not one person in 50 will notice the absence of wall finish. The First-class materials expertly present fact for white in decomposition will make these white walls seem intentional.

Next to poor workmanship and materials, moisture is the greatest factor in paint failure. Moisture comes from within the house as well as from without, so to insure a good paint job the back of an outside wall should be painted before it is erected. The original painting job, therefore, is of the greatest importance. The First-class materials expertly present fact for white in decomposition will make these white walls seem intentional.

Hint on Painting

Next to poor workmanship and materials, moisture is the greatest factor in paint failure. Moisture comes from within the house as well as from without, so to insure a good paint job the back of an outside wall should be painted before it is erected. The original painting job, therefore, is of the greatest importance. The First-class materials expertly present fact for white in decomposition will make these white walls seem intentional.

Your Home Comes First!



SAFEGUARD Your Home AGAINST FIRE

INSURE WITH HARTFORD FOR SECURITY

No matter whether your insurance problem concerns the home in which you now live, a new home under construction, or insurance on a remodeling job, you can rest assured that if it is insured with HARTFORD, that your losses will be promptly paid if the need arises. A proof of its dependability, HARTFORD points with pride to its record during the great San Francisco earthquake and fire of 1906. Over \$44,000,000 was paid in cash by the HARTFORD to San Francisco firms at the time of the earthquake. Now, as then, you can depend upon the financial responsibility of HARTFORD.

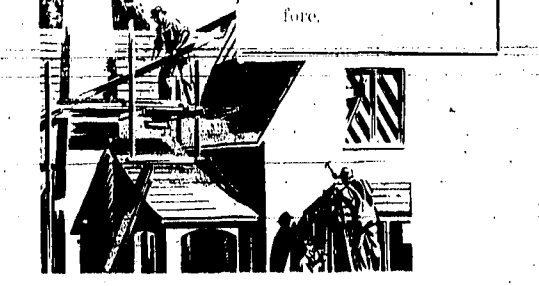
Be sure when you insure—Place your insurance with HARTFORD.

PEAVEY-TABER CO., INC.

INSURANCE SURETY BONDS PHONE 201

BUILD ...

Your opportunity today is greater than ever before.



REAL ESTATE

Build your home where you want to live. We have choice building sites in the best residential districts. See us before you buy.

LOANS

We have an unlimited amount of money to loan on new building construction. Lowest rates, no red tape, and no delay. Ask about our rates before you borrow money.

INSURANCE

Be sure your home is well covered by insurance. Don't put off buying fire insurance. Insure from the day construction begins.

F. C. Graves & Sons

REAL ESTATE - LOANS - INSURANCE 100 Main N., Twin Falls Telephone 818

Make Your Home HAPPY with Good FURNITURE

Modern furniture will work miracles in your home modernization program. Whether you are building or not you'll be interested in these new styles in home furnishings. We will give you a liberal allowance on your old furniture. Easy terms of course.



7 All Star Features at No Extra Cost

- 1-Kant-Sag Base
- 2-No-Sag Backs
- 3-Hand Tailoring
- 4-Kiln-Dried-Hardwood-Frames
- 5-Hair-Flexed-Cushions
- 6-Velour-Platforms
- 7-Sanitized-Hair-and-Moss-Filled

CURLY MOHAIR LOUNGE SUITE—This suite with its generous proportions is in great demand because of its comfort and beauty. Its curly mohair covering assures you the latest in quality fabrics. In Beige or Maroon. \$200.00

The DINING ROOM

No detail is spared to make this Dining Room Furniture as finely constructed as it is beautiful. The soft corners and curves, the thickness of the tops, the graceful curves and proportions, the imported Mahogany, are combined to make this a livable, lovable suite. The old masters themselves would be pleased with it.

\$250.00



SANFORSTAN RUGS

"THE GREATEST VALUE OF THEM ALL"

... say the rug experts

The Bigelow Weavers did a grand job for the American Home when they perfected these Sanforstans. Just imagine a rug woven of lively wool—so close and smooth that it feels like velvet and wears like iron—that is clear and clean in pattern and design and has the brilliance of color effects found only in today's brighter decorative fabrics—and there you have Sanforstan. Now look at the price \$75.00 for a 9 x 12!

full range of styles and sizes

Hoosier Furniture Co.

"FURNITURE THAT SATISFIES"

TIMES WANT ADS GET RESULTS