

BLACKSHEEP!

By Meredith Nicholson



ILLUSTRATION BY Henry Lee

Copyright Charles Scribner's Sons—Released thru Publishers Auto-Cast Service

CHAPTER I

MRS. HOWARD FEATHERSTONE spent much time thinking up things for her brother, Archie Bennett, to do, and as Archie was the ideal bachelor brother, he accepted her commissions to the most amiable spirit and his replies were unflinchingly satisfactory.

"The agent who's been looking up a summer house for us here is a unusual opportunity, so there are a few places to let at Bailey Harbor and this one is especially on the square. How simply swamped with work—and we'd all appreciate it if you could run up there for us."

"The many preoccupations of his brother-in-law, who held a seat in Congress and took his job seriously, were well known to Archie, but Archie had nothing on earth to do, it was eminently fitting that he should assume some of Featherstone's cares and his plans, Archie had planned to leave for the Canadian Rockies two days later, but he reluctantly agreed to take a look at the Harbor house that had been placed so provisionally within reach of his side."

"The owner belongs to that old New England Congdon family," Mrs. Featherstone explained, "they date from the beginning of time, and some of them are a trifle eccentric."

"If you're renting a house, from that family it's just as well to look into it carefully. All right, May, I'll inspect the premises for you."

Archie was already minutely planning the details of his trip with his customary exactness. He traveled constantly in the interest of his health and knew his own schedules by heart.

Archie's condition was always a fragile topic of conversation and Mrs. Featherstone, in whom you must at once have recognized the subject of his health.

"I haven't much faith in the idea of your going to the Rockies. You know you tried this five years ago and the altitude nearly killed you."

"I'm not going to the Rockies, I'm going to the mountains and watch the game," he agreed gleefully.

To look at him no one would believe that he had a nerve in his tall frame. Once a friend carried him off to a farm where he was a successful athletic trainer and resuscitated business men, and Archie received the heroic treatment and repaired himself and his nerves and feeling better than he ever had felt in his life. That after a winter spent in an office and an easy to think of himself as an invalid, he renewed his acquaintance with the waiting rooms of specialists.

"There will be a few people for your dinner tonight," remarked Mrs. Featherstone as he was to go "sunny simple, and I always thought Howard just telephoned that he can't possibly come, so if you can arrange it, Archie, it will be a real help to me."

"All right, May, I was going to have dinner with Wald and Co. burn, but if you really want me—"

"Oh, that's perfectly fine of you, Archie! And Isabel Perry will be here; you know she's the dearest girl, and I always thought you really did like her. Her father lost all his money before he died and she's had a position as a gymnasium teacher in Miss Congdon's school. This summer she's to run a girls' camp up in Michigan and she can't help making a splendid success of it."

When he found himself sitting beside her later at Mrs. Featherstone's table she said to him: "I passed you on the street the other day and made traffic efforts to attract your attention but you were in a tangle and failed to recognize me."

"I was taking my walk," he stammered.

"My walk?" she repeated.

"Yes, I speak as though you had a monopoly of that form of exercise I must say you didn't appear to be enjoying yourself. My walk was wholly fanciful and your demeanor that of a man with a certain number of miles walked on him."

"Four a day," Archie confessed, with an air of resignation; "two in the morning and two before dinner."

"Oh, the doctors?" she asked, the girl so though she had no great opinion of doctors in general or of Mr. Bennett's medical advice in particular. He was used to a great deal of sympathy and he was convinced that Miss Perry was an utterly unsympathetic person.

"What would you call a good walk?" he asked a little faintly.

"Oh, ten, twenty, thirty! I've

TWIN FALLS FILER WENDELL HAGERMAN FAIRFIELD KING HILL CALDWELL

Suits

Right at the start of the season we are offering our best of the season values. 100 men's suits directed from the factory. The very newest, variety models. Jigsaw stripes, Herringbones and Diamond back stripes. Every suit has an extra pair of trousers. All one price

There was a question of her future. It was not of it, he said, but of her vitality, her exuberance, the confidence with which she viewed the future.

"I wish you all would look at me when I reach the house of the friend she was visiting. The same will be a great success. In one of that. This has been the happiest evening I've spent."

"Since you began taking exercise, how do you feel? Please quit looking on your life as a burden; try to get some fun out of it!"

"I don't forget me in the rush of things. And particularly don't forget that note of instructions. I'll be sure to be ready to do anything I will be readily disappointed."

She surveyed him gravely, then smiled and said: "You're very well! You shall have it, sir!"

(TO BE CONTINUED)

O'coats

\$29.50

These are advance models from Clothcraft and Gordon in Blue and Brown Overplaid, Grey and Brown Herringbones and Powder Blues. Single and Double Breasted.

\$24.50 to \$35.00

Other Overcoats for men in good heavy materials and newest fall colors.

\$13.95 to \$22.50

AMSTERDAM

A good crowd from the vicinity were in attendance at the carnival given by the Hollister school Friday night, in the high school building.

Because of the stormy weather, the church services in Amsterdam Sunday morning were not very well attended.

Mr. and Mrs. L. V. Dean and children visited at the C. L. Kundt home on Sunday afternoon.

E. P. Erickson spent the week with his parents, near Ellers.

Mr. and Mrs. H. Birkhoff of Ellers were here on Friday evening, coming for Miss Helen Hiltner, who spent the week end with them.

Miss Dove White and children and Mrs. Brown of Raparson, spent Sunday at the John Raparson home. Mrs. Brown and Mrs. White's children remaining the week at the Farmer home, while Mrs. White returned to Rogerson.

The stormy weather of the past week has given the farmers some-what of a vacation. Most everywhere in the vicinity went to Twin Falls Saturday, as there was little work that could be done in the fields.

After Helen White was a week end visitor at her home in Twin Falls.

Mr. and Mrs. Paul Reed and family spent Saturday and Sunday in Twin Falls, visiting.

B. B. Kelly and sister Mrs. James Sice of Rogerson, were here on Saturday. They were substituting the mail route for Ivan Perry.

Rain and snow fell here most of the day Sunday. Monday morning found the ground frozen hard, and much ice over the water ponds. The surrounding hills remained snow covered throughout Monday, and the ice paddles did not melt during the day. The skies were more or less cleared, with indications of a general clearing to follow.

Ladies' COATS

Sport Coats and Dress Coats developed of the finest exclusive materials. Every model trimmed with the most lavish use of furs and all warmly interlined. Fur cuffs, fur borders, fur fronts.

Priced from

\$14.95 to \$29.50

Children's Coats

Dress the children with style in view—Not only are these coats desirable for their style but also for value. Nearly all fur trimmed. Ages 2 to 11 fur.

\$4.50 to \$22.95

VERY SPECIAL SELLING OF FALL HATS

Full Fall Hats—embroidered with the grace and charm that women demand—Lovely hues, adorable trimmings. Any 2 for \$2.95 of them for \$3.95

Velvet Hats—A host of new shapes. Youthful models, that add charm and dignity to the wearer. Your choice of these for \$3.95

WINTER WEAR

WOOL SHIRTS

All wool shirts in large plaid and plain colors. Two necks. \$3.95 and \$4.95

BLAZERS

Men's blazers, 100 per cent wool, fancy patterns. All sizes. \$5.45 and \$5.95

UNION SUITS

Men's "Three Stripes" unions in both extra and regular. Long sleeves and long length. All sizes. Each 2 suits. \$1.25 and \$2.39

OUTING PAJAMAS

Good full cut outing pajamas. Pink, blue, and white. Sizes 16 and 17. \$2.75. Per suit \$1.95

WOOL SOX

Men's wool socks—Green, blue and red. Some with fancy toes. Extra long. 59c to 75c

WOOL SOX

Men's all wool socks in blue and grey. Some of the fine grade of wools. Special price. Arrge 25c

LADIES' UNIONS

Fine quality and nicely tailored—full cut shoulders. Tied knee. Sizes 26 to 30. \$8c

LADIES' UNIONS

White, the last, medium fitted, Dutch neck, elbow sleeves, ankle length. Each \$1.25

OUTING GOWNS

Striped, dainty fitted gowns, trimmed with fur and hemstitching. Regular sizes. 79c

OUTING GOWNS

Pretty shades of orchid, pink, blue and white. Sizes 16 and 17. 95c

MISSES' PAJAMAS

The nice pajamas of extra quality. Ample fitting. Trimmed with silk fringes and facings. Price \$1.49

MISSES' UNIONS

Part Union unions. Cream color with rayon slings. Elbow sleeves. Knee length. Ages 2 to 12. 89c and \$1.19

Nu-Way Grocery DEPARTMENT

"Better Quality for Less Money"

"Serve Yourself and Save"

Guaranteed Fresh

Fig Bars—13¢ lb

1927 Crop of

SEEDLESS RAISINS - 4 pound package 39c

CRYSTAL WHITE Soap—10 bars 37¢

COUNTRY GENTLEMAN SWEET No. 2 CORN can 3 for 29c

ROLLED OATS 9 lb. bag 39c

SPECIAL FREE WITH 6 Cakes of Am-an-dol 59c 6 GLASSES Soap for

Overshoes AND Rubbers

Shoe Department

SELZ SHOES

Selz Shoes give extra shoe service and when we say extra shoe service we mean FIT, WEAR, COMFORT, APPEARANCE, and LOW PRICE.

\$6.00 to \$8.50

GIRLS' OXFORDS

For school wear in patent, tan and gun metal. Very serviceable. Prices ranging from \$2.95 to \$4.95

ENNA JETTICK HEALTH SHOES

Ladies straps and laces combining both style and comfort. Patent, tan, and brown. Priced at \$4.95 and \$5.95

WOLVERINE SHOES

The long wearing flexible coriolan horse hide shoes. We carry the complete line of Wolverines in all different styles and sizes. Priced from \$3.45 to \$5.95

"I shall expect the document tomorrow afternoon."

"You're a tremendously forward person, Mr. Bennett. What you really need is a good hard rain. Every morning you're ready to go what you're going to do every hour of the day. It's routine that kills. Suppose you were to hold up a hand, now—enter in Wall street and skip with a sackful of negotiable securities and then, after the papers were through, dragging the police for their inefficiency when you went in to the bank in a taxi, walk in and receive the money you had found in it in the old family penitentiary when you went in to say your prayers. Here would be an opportunity to break the force of habit and awaken your self-confidence."

"I don't intend to do that. I mean to be impatient, but really—"

"Oh, but perfectly capable of doing anything I've suggested, mean to sign for buried treasure this summer, taking the train to Bismarck, and the return being dead? My grandfather was a planter in Mississippi before the Civil war. In about 1850 he was troubled ahead, and as he was opposed to secession he turned everything he had into gold, bought himself a farm where he was a successful athletic trainer and resuscitated business men, and Archie received the heroic treatment and repaired himself and his nerves and feeling better than he ever had felt in his life. That after a winter spent in an office and an easy to think of himself as an invalid, he renewed his acquaintance with the waiting rooms of specialists."

"There will be a few people for your dinner tonight," remarked Mrs. Featherstone as he was to go "sunny simple, and I always thought Howard just telephoned that he can't possibly come, so if you can arrange it, Archie, it will be a real help to me."

"All right, May, I was going to have dinner with Wald and Co. burn, but if you really want me—"

"Oh, that's perfectly fine of you, Archie! And Isabel Perry will be here; you know she's the dearest girl, and I always thought you really did like her. Her father lost all his money before he died and she's had a position as a gymnasium teacher in Miss Congdon's school. This summer she's to run a girls' camp up in Michigan and she can't help making a splendid success of it."

When he found himself sitting beside her later at Mrs. Featherstone's table she said to him: "I passed you on the street the other day and made traffic efforts to attract your attention but you were in a tangle and failed to recognize me."

"I was taking my walk," he stammered.

"My walk?" she repeated.

"Yes, I speak as though you had a monopoly of that form of exercise I must say you didn't appear to be enjoying yourself. My walk was wholly fanciful and your demeanor that of a man with a certain number of miles walked on him."

"Four a day," Archie confessed, with an air of resignation; "two in the morning and two before dinner."

"Oh, the doctors?" she asked, the girl so though she had no great opinion of doctors in general or of Mr. Bennett's medical advice in particular. He was used to a great deal of sympathy and he was convinced that Miss Perry was an utterly unsympathetic person.

"What would you call a good walk?" he asked a little faintly.

"Oh, ten, twenty, thirty! I've

FOR SALE

Auto Glass, Headlights and Window Glass, 200 Auto Windshields, \$2.50 each.

No charge for setting glass.

We have an auto glass grinding and polishing machine to grind and polish edges. Ford prices.

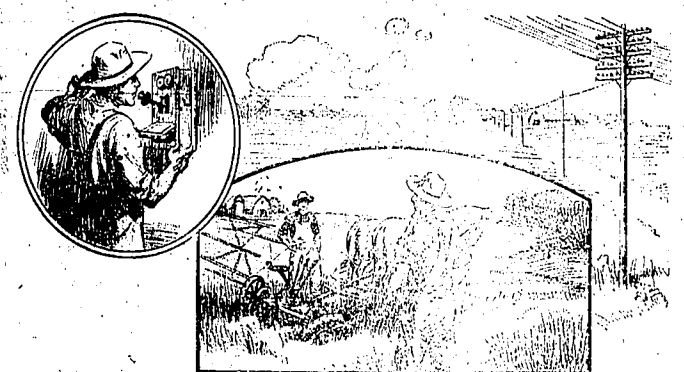
Pure Linsed Oil, gallon \$1.00

Barn Paint, gallon \$1.45

Green Roof Stain, gallon \$1.25

Moon's Paint Store

FARM TELEPHONE DEVELOPMENT HAS REVOLUTIONIZED FARM LIFE AND FARM METHODS IN THE UNITED STATES



In Emergencies the Telephone Brings Timely Assistance to the American Farmer

with the nation-wide network of lines comprising the Toll System. The comprehensive telephone system is now available to the farmer on a few cents benefit as it aids in production as well as in marketing.

of a plan that it had the occasion when those of rural and farm life of the telephone man took him and his family, who are not available to him from a telephone is needed to a farmer in the most critical of great hours. The head of a farm family, who is the only person in the family who is in the farm, is the only person who is in the farm.

The telephone as insurance. In fact, the progressive farmer has the telephone as insurance against fire, inasmuch as the telephone is a means of communication with the fire department. The telephone is a means of communication with the fire department.

The social value of the telephone. It is not to be passed over lightly. The telephone is a means of communication with the fire department. The telephone is a means of communication with the fire department.

Telephone Now Interconnecting. "Twenty years ago a farmer dealer is all the locality in which his office was located, could not miss the lines of the company to which his telephone was connected.

Third Goodrich Head. The Ladies Aid of the Presbyterian Church of Eden, W. Va., will have a social and dinner at the church basement Thursday evening, November 10.

Decayed. "Goodness, have you been in an accident?" "No, you remember that play of mine that was produced the other night?" "Well, he called for the author at the end, and unfortunately I didn't realize how much they wanted him."

WE BUY FOR LESS—WE SELL FOR LESS. SCRUTINIZE FOR BETTER VALUES. UNION SUITS FOR THE FAMILY. Boys' heavy fleeced union suits, long sleeves, ankle length, warm and comfy. Priced the New York Store way.

Hazelton. George Zehner returned Sunday from his northern part of the state where he had been employed for several weeks. "Boy Lower Hill" Amherst Sumner is visiting at the home of the Sawtooth mountains to hunt deer.

English Tea Pots. Comes in brown and blue with gilt decorations. Something very useful. 98c to \$1.09, \$2.49. You will want to see this assortment of imported English Tea Pots.

Men's Moccasin Work Shoes. Soft tan elk stock; heavy rubber sole and lined interior. A great shoe for service. \$2.98. Men's Trench Moccasin Work Shoes. Heavy rubber sole and lined interior. A great shoe for service. \$5.85.

Men's Three Seasons brand union. Full and grey mottled, ribbed and lined with wool, and warmth for all kinds of weather. You can "scrutinize" close enough to find a better value. \$1.45.

Men's heavy fleeced union suits, long sleeves, ankle length, warm and comfy. Priced the New York Store way. \$1.25. Men's heavy fleeced union suits, long sleeves, ankle length, warm and comfy. Priced the New York Store way. \$1.00.

Men's heavy fleeced union suits, long sleeves, ankle length, warm and comfy. Priced the New York Store way. \$1.25. Men's heavy fleeced union suits, long sleeves, ankle length, warm and comfy. Priced the New York Store way. \$1.00.

Men's heavy fleeced union suits, long sleeves, ankle length, warm and comfy. Priced the New York Store way. \$1.25. Men's heavy fleeced union suits, long sleeves, ankle length, warm and comfy. Priced the New York Store way. \$1.00.

Men's heavy fleeced union suits, long sleeves, ankle length, warm and comfy. Priced the New York Store way. \$1.25. Men's heavy fleeced union suits, long sleeves, ankle length, warm and comfy. Priced the New York Store way. \$1.00.

THE IDAHO DEPARTMENT STORE. The Value-Watchdog of Twin Falls. The ECONOMY BASEMENT. Nothing Succeeds Like Success. This busy understore is growing by leaps and bounds. And the jam we expect when this bargain center is turned into a Christmas holiday fairland.

Lower priced clothes for the working man. Flannelette Shirts. Wool Mixed Shirts. Merino Wool Shirts. Boys' Khaki Shirts. Men's Dress Sox. Men's Flannel Shirts. Riding Breeches. Boys' Work Sox. Shoe Laces. Turkish Towel. Ingersoll Watches. Fast Color Gingham. Outing Flannel. Women's Rayon Bloomers. Women's Owing. Rayon Marquiette. Electric Home Appliances.

Men's Women's and Children's Shoes. Our Special value at \$1.69. Boys' 14-in. Best-Nailed. Men's Moccasin Work Shoes. Men's Trench Moccasin Work Shoes. Boys' Black Wax Veal Blushes. Men's Three Seasons brand union. Boys' heavy fleeced union suits.

New York Store. TWIN DESTROYERS OF HIGH PRICES FALLS. WE BUY FOR LESS—WE SELL FOR LESS. "IF IT ISN'T RIGHT, BRING IT BACK". Men's heavy fleeced union suits, long sleeves, ankle length, warm and comfy. Priced the New York Store way. \$1.25. Men's heavy fleeced union suits, long sleeves, ankle length, warm and comfy. Priced the New York Store way. \$1.00.

THE IDAHO CITIZEN

SEMI-WEEKLY PER YEAR, \$2.50

A semi-weekly newspaper published on Tuesday and Friday of each week at Twin Falls, Idaho.

TOM BLOUGHT, Editor and Publisher
 Tom Blodgett, manager; J. H. Shinn, news editor.

The Idaho Citizen has the exclusive rights in this community to all NEWS, FEATURES and ADVERTISING SERVICE OF THE PUBLISHERS AUTOCASTER SERVICE of New York City.

Entered as second class matter at the postoffice at Twin Falls, Idaho, under the act of March 3, 1925.

The Idaho Citizen is an authorized medium of publicity for the official cooperative organizations of the great State of Idaho, including the Farmers' Group, Intercommunal Cooperative Dairy Association, Idaho Egg Producers Association, Idaho Wool Growers Association, Southern Idaho Fruit Growers Association, Southern Idaho Best Grapes Association, Idaho Turkey Growers Association, Mountain State Honey Producers Association.

CITIZEN PUBLISHING CO., 263 Second Avenue North, Twin Falls, Idaho. Phone 172.

STILL SLAVERY

Dr. Mason, head of the University of Chicago, says college study should be a pleasure, not a bore. "We have been examining our students in America, stuffing them with facts, dates and thoughts in which they are not interested."

"What applies to education applies especially to industry. More than a hundred years ago, Charles Fourier declared that, to settle humanity's troubles, 'industry must be made attractive.' When men work because they like to work, as boys play, or as scientists study, civilization will have begun. Men work now because they must starve if they don't, and that is not much better than old slavery, under which men worked because they were lashed if they didn't work."

"Many pictures will make education pleasant for children, and enable them to learn in a month more than they can learn now in a year. Higher wages, with many luxuries unknown to workers of other days, begin to make industry attractive. But it is only a beginning. The next step will be an end of horrible monotony in work, and dreadful uncertainty as to the future."

THESE WIVES

Virtuous, mildly rebellious wives of Chicopee, Massachusetts, prepared ten commandments for husbands and show that they do not understand the problem of husbands or marriage. It is useless to talk about details, including the double standard of morals. The problem is in two words, sympathy and justice. If a man is sympathetic and just, he will try to do what he ought to do. His success will depend on his age and his degree of sentimentality.

Men, once as imperfect as the higher apes, are slowly improving, and marriage is their training school. Wives know it and prepare their matrimonial denouements chiefly for amusement. It interests them to think what a husband might be, if he were not what he is.

Neurer really is the "husband calling contest." At the Suffolk, Va., fair prizes were for wives that could call their husbands with a voice endearing and audible from afar. The wife combining endearment with extreme rancor was to be crowned queen of husband calling. Unregenerate husbands will shudder at the thought of that penetrating, endearing call.

Wives have been engaged in that husband-calling contest for 500,000 years, first to get him, then to keep him. Their patience throughout the ages is amazing, the smallness of their reward pathetic.

It is now up to Morrow in Mexico.

Pedestrians these days are going ahead by leaps and bounds.

Land of the FREE and home of the BRAVE. Ask Admiral Magruder who was brave and now is free.

It is reported President Coolidge is "wastling away" with a new electric vibrator at the White House.

Maine voters' refusal to give up the direct primary system of nomination is one time when we all hope, "As Maine goes, so goes the nation."

When jumping from an airplane with a parachute one is supposed to count ten before pulling the string. It is said there are few "Dempsey-Tunney" counts on record.

If the two bobbed-hair girls on the Fall-Sinclair jury had "modern" haircuts like we saw on a local girl last week, there was little chance for defense attorneys to pull the wool over their eyes.

Luvine, first trans-Atlantic jet passenger, home again at last, announces he will build \$1500 silver planes. If true it would seem every year is going to be a grass-hopper year from now on.

Scientists have now decided that "excitement" is an emotion ranking along with love, anger, fear, hate and joy. For a demonstration watch that these days as Christmas shopping gets under way.

An Alaska store is creating much talk by passing out pennies in change, the first ever seen by many natives—who think they are nickles with an inferiority complex.

There are now 20,991,333 automobiles under license and being driven in the United States, according to a Washington report. They are clogged them in a traffic jam in Twin Falls Saturday night.

"Onions Strong at Twin Falls" was the heading that appeared in a newspaper recently. Why specify the town where onions were strong does not seem to be necessary. There is a quick lunch any hour of the day or night and one would any weeks just as strong in Pocatello.—Idaho State Journal.

Idaho's timber resources are vast. It is estimated there are 24 billion feet of timber standing on 23 million acres of land. Included in this is 16.2 billion feet of white pine, the largest stand in the world. The industry operates over 300 mills, employs approximately 20,000 people and pays annual wages totalling \$22,000,000. To harvest and manufacture lumber, it is estimated that 100,000 cords of wood will be paid, an amount sufficient to pay 100,000 men \$5 a day each, 300 days a year for 108 consecutive years.



Press Comment

PLENTY OF WEEKS

Being a patriotic individual with a lively sense of civic duty, Guy E. Marston of the Los Angeles chamber of commerce has been checking up on the various special "weeks" which good American are urged to celebrate, so that he might not miss any of them.

As a result of his researches he finds that we have 135 of these "weeks" or "observes" during the year although the regulation calendar only shows 52. The busiest months for the commemorations are April and November with nine each; October has seven.

ATHLETES AS WRITERS

The crammeries may be more plentiful this year than the turkey, due to a late season which has retarded the growth of birds. Idaho turkey growers are taking only a few out of each flock for the Thanksgiving trade, holding the others for Christmas.

In the course of a recent lawsuit in which he was involved, dark houpouy stated that he never wrote a line of the syndicated articles which had appeared over his signature in the papers, and that he rarely ever saw them.

The fact that articles signed by fighters, runners, jumpers, swimmers, bathing beauties, basketball players and football players have regularly been written by some regular writer and never been seen by the celebrity whose name is merely hired has been pointed out by the public for a long time, yet the newspapers continue to silyly brag. They evidently agree with Barnum that the public likes to be fooled. In their own small world series are now announcing pieces of articles by a leading pitcher made the starting claim that they would be written by the pitcher himself. Another pitcher's "I year old son was also a "special correspondent" but the man who "reported" him said his remarks during the game were something like: "I wish I had some pants," "hey, won't you buy me a hot dog?"

How long is this sort of hoodluming to continue? It is not honore and newspapers that report it cannot fail to undermine the trust and confidence of their readers. Let the fighters fight and the writers write, let the publisher stick to his job.

TURKEYS WITH CRANBERRIES

The Idaho Turkey Growers' Association today will sell to the highest bidder 20,000 birds down to the Thanksgiving dinner. Buyers from Chicago, Milwaukee, Omaha and Kansas City are among those ready to bid. It is expected that the turkey which produces the finest birds in America, will go far toward eradicating the price of turkey this year.

DRUNKEN DRIVERS

North Carolina, one of the most progressive of the southern states, has a law that makes it mandatory upon judges to suspend or revoke the driver's license of any person found guilty of driving an automobile while under the influence of liquor; and the legislators of the adjoining state of South Carolina have recently been urged to enact a similar law.

There should be no difference of opinion as to the wisdom and merits of such a law.

The law of prohibiting or that of prohibition enforcement does not enter into it.

It is not a debatable question involving as it does only the rights of sober drivers and of humanity in general on the highway.

Prohibition or no prohibition, when any person lets his brain become addled from excessive consumption whiskey, moonshine, hollie or what not, he is easy to drive an automobile while in that condition, he endangers not only his own life, but that of everyone else on the highway.

He immediately becomes a public menace, and automatically he ought to forfeit all rights he might otherwise have to use the public thoroughfares as a driver.

It is not a matter of right or wrong, but of principle and theory ought to have one, and it should be vigorously enforced to the letter.

Marriage Licenses

MONDAY—G. L. Larson to Lilly, both of Clarkston, M. Young to L. S. Laird; Walter L. Smith to Blanche Barnes.

KITCHEN NOOK

Little Helps for the Housewife—Readers Are Invited To Send Us Your Proven Recipes

PUMPKIN PIE
 1 cup steamed strained pumpkin, 1 teaspoon salt, ½ teaspoon ginger, ½ teaspoon cloves, 2 teaspoons cinnamon, 2 eggs, 1 cup canned sweetened condensed milk, 1 cup water, unbleached pie crust.

Mix ingredients in the order given; pour into pan lined with unbleached pie crust. Bake in a hot oven (450 degrees F.) for about ten minutes, then reduce the temperature to moderate (350 degrees F.) and bake for about thirty-five additional minutes, or until the filling has set.

JUNKET PLUM PUDDING
 1 pkc. vanilla junket, 1 pint milk, speck each of nutmeg, cloves and cinnamon, ½ cup grape-nuts, ½ cup raisins, ½ cup chopped dates.

Put grape-nuts, raisins and dates in the bottom of the dessert glass. Warm the milk to the boiling point, then remove from the stove, add spices and junket powder and stir for one minute to dissolve. Pour at once over the fruit and grape-nuts in the glasses. Let stand in a warm room until firm.—about 20 minutes.

produced from the acreage in question, weight to be determined on the basis of uncleaned seed. This penalty shall be in addition to the regular fee of \$2.00. This regulation applies only to those acreages which have been previously recognized by this department as genuine Grimm alfalfa.

2. In view of the fact that field inspection may or may not have been made on acreages when applications are received after the time limit expires, we will not recognize as certified until proper analysis has been made to determine its purity. Samples of this determination shall be drawn by a duly authorized deputy of the State Seed Commissioner.

3. Effective after June 1, 1928, notification must be given at least two weeks before the given date here-

RAEDER RULES
ONLY CERTIFIED ALFALFA SEED

Those Delinquent in Paying Fees on Old Fields to Be Penalized Cent a Pound—Regulations Given

A ruling has been made by L. B. Raeder, assistant agronomist and state seed commissioner on the matter of the certification of Grimm alfalfa seed, concerning which a hearing was held in Twin Falls, October 18.

The decision of Mr. Raeder in the matter is set out in a letter several growers in this county, the effect of which is that those who failed to pay the fee June 1, are acreages previously recognized by the department must pay a penalty at once in order to obtain proper certification.

E. E. Brown, county agent, urges that any Grimm alfalfa seed planted in 1927 that has not been reported should be reported by their part at once in order to obtain proper certification.

"Mr. Raeder's statement, together with the new rules promulgated by the department, are given here in their entirety. Says the state seed commissioner: "At the conclusion of our meeting in Twin Falls on October 18, I stated that a decision would be forthcoming in the near future with respect to whether or not late applicants for certification would be recognized by this department."

"All growers present at the above meeting stated that it had been a case of pure negligence on their part in not returning their applications to the County Agent's office before June first, which was the time limit set for the receipt of same. It would seem then that the certifying agent of the state is in no way to blame for their delinquency, for it is felt that sufficient notice had been given of the time limit.

"After hearing your complaints, however, and realizing the loss that will occur if certification is not granted, I wish to state that the following changes have been promulgated in the rules and regulations for the certification of Grimm alfalfa seed:

"The time limit for the receipt of applications shall remain the same, namely June first. After that date applications will be received subject to a penalty of one cent per pound on the seed

INVEST Now In Idaho Power Company

\$6 Cumulative Preferred Stock

NO PAR VALUE

EACH SHARE PAYS **6%** ON YOUR MONEY

Why These Shares Are Being Sold

To meet the demands upon the Company for service there is a constant need for funds to make extensions, additions, etc., to its system. Money for such purposes must be raised through the sale of the Company's securities—such as its \$6 Cumulative Preferred Stock.

Protective Rights and Safeguards

Dividends. The dividends (or wages earned by the money you invest in this stock) amount to \$6.00 per share a year. They are paid every three months, \$1.50 per share on February 1, May 1, August 1 and November 1, and which time dividend checks are mailed to stockholders.

Dividends Tax Free from the present normal Federal Income tax.

Re-deemable. This stock is redeemable at the option of the company at \$10.00 and accrued dividend per share.

Preferred as to Assets and Dividends. Besides having preference over the Common Stock, this Stock has preference in case of liquidation as to assets over the Common Stock.

Cumulative. This Stock is Cumulative, therefore, the Company must pay the dividends in full before any penny of dividend can be paid on the Common Stock.

Fully Paid and Non-Assessable. Every share of this Stock is fully paid and non-assessable.

Resale Department. The Company has a Resale Department, designed to assist and advise local stockholders who may wish to sell shares.

Send me _____ shares of your \$6 Cumulative Preferred Stock at price of \$10.00 and accrued dividend per share. Send bill to me shortly after amount due.

Send me _____ shares of your \$6 Cumulative Preferred Stock on Easy Payment plan of \$2.00 per share down and \$1.00 per share per month until \$10.00 and accrued dividend per share is paid.

Send me _____ shares of your \$6 Cumulative Preferred Stock at \$10.00 and accrued dividend per share with draft attached through _____

Name of Your Bank _____

Street _____

City _____

State _____

What Does Your Wife Do?

ONIONS YIELD HEAVY CROPS

Weaver Field North of Elliot Shows Thousand Bushels to Acre

Nine acres of Spanish Sweet onions grown by H. J. Weaver on a plot of nine acres located where the state highway turns west a mile and half north of Elliot, this year averaged yields of 1,000 bushels to the acre, which are being marketed at \$1 a hundred pounds, or \$100 an acre.

The piece yielded six sacks to the acre or 6400 sacks on the nine-acre field. As they stood stacked in the field, they presented the appearance of soldiers and hundreds of cars stopped to view the sight. Mr. Weaver states that he had not less than a hundred persons took photographs of the field, many of these being tourists who would stop at their cars and take snapshots.

This yield is not considered prodigious, as it has been made on a number of different plots which they say yielded just as heavy. Together they grew 75 acres of onions this season, and other growers in the Elter territory are expected to raise 500 acres and 100,000 bushels of onions.

Weaver & Davis early in the season contracted to sell 20 cars of onions at \$1 a hundred, this price materially above the average market which was quoted this fall. The week-end amount of 75 cents.

Agricultural

(Continued from Page One)

Having 20 objectives, of which the report states, 20 are fully completed, eight are in progress or being attained, and the remaining two have no results been attained. They comprised the following:

Assist Idaho Wool Growers' association to secure legislation which will fix freight rates from Nevada; Twin Falls-Derome Bridge, including the territory between the completion of highway south to Walla; encourage dairying, poultry, livestock, farming, railroad construction in our territory; attention to letters of inquiry; continue enrolling after for farmers; securing industries allied to farm products' manufacture; cooperation with retailers' advertising program; feature our Idaho products and other products; improvement of mail and passenger service to Wells, Nevada; repair sign in highway near Fire Falls; secure erection of billboard signs at Wells and other points to direct tourist travel towards Twin Falls; conduct merchants' united advertising campaign; secure advertising display at Reno exposition; assist new irrigation projects; construction of sidewalks to county hospital; erection of street signs at Blue Lakes boulevard; city zoning law and city planning; blue card system of checking solicitors; write-ups in tourist books and non folders; secure conventions for Twin Falls; discussion of legislative measures and policies; arrange trade excursions and trips; foster tourist travel to our community; secure highway signs on highway-arteries; secure travel an Addison avenue; work for tax reductions and adjustments; cooperate with farmers and other bodies.

Concerning the last mentioned item the report lists the following accomplishments:

Secure freight rates on livestock and farm products being worked out; secured placement of Idaho Enter Potatoes at U. S. Chamber of Commerce Banquet and business men; furnishing labor to all those who care to make use of this service; arranged meeting of growers and shippers with Mr. Kipp of the Portland Chamber of Commerce; secure information on fruit marketing; maintain Idaho Wool Growers' association to secure free-intramont freight rates on sheep from Nevada; attend convention of State Grange at Twin Falls; fruit inspector's office being maintained in our Chamber of Commerce; quarters free of charge; paid rental of warehouse accommodations for Idaho Egg Producers Cooperative association



To Head Steel

James A. Farrell, now 60, who is credited with leading to the place vacated through the death of Elbert Gary, as Chairman of the Board of Twin Steel Corporation. Mr. Farrell for many years has been general head of the organization.

In order to guarantee starting of this concern in our community arranged closing of stores and places of business on Twin Falls day of the County Fair secured and entertained United States Secretary of Agriculture Jardine, who gave public address on his economic viewpoint for agriculture; placing, in cooperation with the County Fair State Board, 100,000 leaflets advertising the quality of farm products especially and placement of Twin Falls marketing news as a separate newspaper for agricultural officials marketing report being sent throughout the United States.

CHANGE IS MADE IN FIRM OWNERS

Glenn A. Blue Sells Interest in Funeral Parlor - Now White Mortuary

Mr. and Mrs. Glenn A. Blue, who for about three years were connected with Mrs. Ella M. White in the funeral directing work in Twin Falls, under the firm name of Blue & Company, have sold their interest in the business to Mr. W. H. Brown, father and sister, J. A. Brown, and Miss Kathryn Brown. Miss Brown is on the teaching staff of our city high school. Mr. Brown makes his home with his daughters in Twin Falls.

Because the firm will be known as the White Mortuary, with Ella M. White as manager, Paul Beer who has worked with Blue & company for the past three years, will continue with the new firm as embalmer. He has had 21 years of funeral directing experience and holds diplomas from the Kansas, Nebraska and Idaho examining boards.

Local News

Angie Miller and Jewell Keen, both of Buhl, were married in Jerome Friday by Probate Judge W. B. Sumner.

Lillie B. Hall of Henson and Glenn A. Peterson of Gooding were married at the latter town Friday evening by Rev. Mr. McPhilly, Baptist minister.

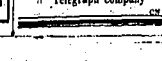
Robert W. C. A. Jones field of Popperet where yields 87 1/2 bushels per acre.

Concerning the last mentioned item the report lists the following accomplishments:

Secure freight rates on livestock and farm products being worked out; secured placement of Idaho Enter Potatoes at U. S. Chamber of Commerce Banquet and business men; furnishing labor to all those who care to make use of this service; arranged meeting of growers and shippers with Mr. Kipp of the Portland Chamber of Commerce; secure information on fruit marketing; maintain Idaho Wool Growers' association to secure free-intramont freight rates on sheep from Nevada; attend convention of State Grange at Twin Falls; fruit inspector's office being maintained in our Chamber of Commerce; quarters free of charge; paid rental of warehouse accommodations for Idaho Egg Producers Cooperative association

RADIO SERVICE

We repair any make of set See us for Batteries, Tubes and Accessories



CASTLEFORD

The next meeting of the P. T. A. will be held Tuesday evening, November 8. Come prepared to join as we need you all at members. The following program will be given. Community singing, practical suggestions for P. T. A. workers, by Mrs. J. E. Johnson, dramatization by Mrs. Downey's room, "The Little Pilgrim Maiden" by Miss Hamilton's room, singing by Popular Grove school choir.

The Methodist Ladies Aid will hold their annual Bazaar Friday, December 2.

The apple harvest at the E. O. Spielberg orchard was finished Thursday. He shipped 27 carloads in addition to the usual program, the worthy lecturer, Mrs. Arthur Smith, has arranged for the Eden Grange Revue to put on a program of musical and other numbers, which will be much enjoyed. This program will be given about 2:30 and, as usual, will be open.

Twin Falls Grange is planning

Business - - - - - Rushing

Mrs. Fred Knight, his Park and Lloyd Churchfield of Wells, who have been visiting the past week in the A. C. Park, some left for their home Sunday morning.

Clara Bybee has bought the property belonging to the Holy Trinity church, which is the part of town and will take possession November 1st.

Edel Atwood submitted to an operation at the Twin Falls hospital Tuesday.

Mr. and Mrs. A. B. McGowan and son Norman left Monday for their home in Kirwin, Kansas.

Mr. and Mrs. Velmer Gray and children of Kimberly visit relatives here Thursday and Friday.

Ray Hiley made a business trip to Idaho City Wednesday returning Friday.

CHRISTIAN SCIENCE CHURCH

100 Ninth Avenue East. "Adam and John Mary" is the subject of the lesson sermon in all churches of Christ, Scientists, November 11, 1927. The lesson text: Psalms 116:8. "Thou hast delivered my soul from death, mine eyes from tears, and my feet from falling. Among the scriptures which comprise the lesson sermon is the following from the Bible: As for me, I will behold, by face in righteousness: I shall not be satisfied when I awake, with thy likeness. Psalms 17:16. The lesson sermon also includes the following questions from the Christian Science textbook "Science and Health with Key to the Scriptures" by Mary Baker Eddy. "Whoever indicates the fall of man or the opposite of God or God's abode, is the Adam-1900 dream, which is neither Mind nor

Grange Broadcasting Station

MESSAGES FROM THE ORDER OF HUSBANDRY

Dedicated officials of each Grange in the Twinned territory are invited and officially requested to make up a table department in The Citizens' Notice of events. Lists, accurate of gatherings and information, concerning all Grange activities will find a welcome here.

A large crowd of Eden Grange friends met at the home of Mrs. and Mr. J. E. Kniffey last Friday evening when a lively meeting of the Grange was held. Social games and refreshments of sandwiches and pumpkin pie were enjoyed. Rev. Horton winning the biggest stake of 50 cents because of his efforts to sing a solo. The Grange ladies decided to open a lunch at the kinder sale to be held in November. Mrs. Elmer White and Mr. Gray will have charge of arrangements.

The next meeting of the Eden Grange will be held Friday evening, November 11, in the Legion building, and will be the annual election of officers.

John Overhill, west of Jerome killed six bushels of red clover seed to the acre from new seed. While that is not considered a very big yield for new seed, it is an unusual one for this time of the year. The seed was done in March without a top crop. In July the field was plowed to clean the seeds from the ground and ground. Mr. Overhill says he

Here typifies America's chief interest during the crisp fall days of October and November - America's great school sports - Football! Thousands of games are played every week and on thousands of grounds watched by hundreds of thousands of spectators all over the land.



by face in righteousness: I shall not be satisfied when I awake, with thy likeness. Psalms 17:16. The lesson sermon also includes the following questions from the Christian Science textbook "Science and Health with Key to the Scriptures" by Mary Baker Eddy. "Whoever indicates the fall of man or the opposite of God or God's abode, is the Adam-1900 dream, which is neither Mind nor

by face in righteousness: I shall not be satisfied when I awake, with thy likeness. Psalms 17:16. The lesson sermon also includes the following questions from the Christian Science textbook "Science and Health with Key to the Scriptures" by Mary Baker Eddy. "Whoever indicates the fall of man or the opposite of God or God's abode, is the Adam-1900 dream, which is neither Mind nor

by face in righteousness: I shall not be satisfied when I awake, with thy likeness. Psalms 17:16. The lesson sermon also includes the following questions from the Christian Science textbook "Science and Health with Key to the Scriptures" by Mary Baker Eddy. "Whoever indicates the fall of man or the opposite of God or God's abode, is the Adam-1900 dream, which is neither Mind nor

by face in righteousness: I shall not be satisfied when I awake, with thy likeness. Psalms 17:16. The lesson sermon also includes the following questions from the Christian Science textbook "Science and Health with Key to the Scriptures" by Mary Baker Eddy. "Whoever indicates the fall of man or the opposite of God or God's abode, is the Adam-1900 dream, which is neither Mind nor

by face in righteousness: I shall not be satisfied when I awake, with thy likeness. Psalms 17:16. The lesson sermon also includes the following questions from the Christian Science textbook "Science and Health with Key to the Scriptures" by Mary Baker Eddy. "Whoever indicates the fall of man or the opposite of God or God's abode, is the Adam-1900 dream, which is neither Mind nor

by face in righteousness: I shall not be satisfied when I awake, with thy likeness. Psalms 17:16. The lesson sermon also includes the following questions from the Christian Science textbook "Science and Health with Key to the Scriptures" by Mary Baker Eddy. "Whoever indicates the fall of man or the opposite of God or God's abode, is the Adam-1900 dream, which is neither Mind nor

by face in righteousness: I shall not be satisfied when I awake, with thy likeness. Psalms 17:16. The lesson sermon also includes the following questions from the Christian Science textbook "Science and Health with Key to the Scriptures" by Mary Baker Eddy. "Whoever indicates the fall of man or the opposite of God or God's abode, is the Adam-1900 dream, which is neither Mind nor

by face in righteousness: I shall not be satisfied when I awake, with thy likeness. Psalms 17:16. The lesson sermon also includes the following questions from the Christian Science textbook "Science and Health with Key to the Scriptures" by Mary Baker Eddy. "Whoever indicates the fall of man or the opposite of God or God's abode, is the Adam-1900 dream, which is neither Mind nor

by face in righteousness: I shall not be satisfied when I awake, with thy likeness. Psalms 17:16. The lesson sermon also includes the following questions from the Christian Science textbook "Science and Health with Key to the Scriptures" by Mary Baker Eddy. "Whoever indicates the fall of man or the opposite of God or God's abode, is the Adam-1900 dream, which is neither Mind nor

by face in righteousness: I shall not be satisfied when I awake, with thy likeness. Psalms 17:16. The lesson sermon also includes the following questions from the Christian Science textbook "Science and Health with Key to the Scriptures" by Mary Baker Eddy. "Whoever indicates the fall of man or the opposite of God or God's abode, is the Adam-1900 dream, which is neither Mind nor

by face in righteousness: I shall not be satisfied when I awake, with thy likeness. Psalms 17:16. The lesson sermon also includes the following questions from the Christian Science textbook "Science and Health with Key to the Scriptures" by Mary Baker Eddy. "Whoever indicates the fall of man or the opposite of God or God's abode, is the Adam-1900 dream, which is neither Mind nor

by face in righteousness: I shall not be satisfied when I awake, with thy likeness. Psalms 17:16. The lesson sermon also includes the following questions from the Christian Science textbook "Science and Health with Key to the Scriptures" by Mary Baker Eddy. "Whoever indicates the fall of man or the opposite of God or God's abode, is the Adam-1900 dream, which is neither Mind nor

by face in righteousness: I shall not be satisfied when I awake, with thy likeness. Psalms 17:16. The lesson sermon also includes the following questions from the Christian Science textbook "Science and Health with Key to the Scriptures" by Mary Baker Eddy. "Whoever indicates the fall of man or the opposite of God or God's abode, is the Adam-1900 dream, which is neither Mind nor

by face in righteousness: I shall not be satisfied when I awake, with thy likeness. Psalms 17:16. The lesson sermon also includes the following questions from the Christian Science textbook "Science and Health with Key to the Scriptures" by Mary Baker Eddy. "Whoever indicates the fall of man or the opposite of God or God's abode, is the Adam-1900 dream, which is neither Mind nor

by face in righteousness: I shall not be satisfied when I awake, with thy likeness. Psalms 17:16. The lesson sermon also includes the following questions from the Christian Science textbook "Science and Health with Key to the Scriptures" by Mary Baker Eddy. "Whoever indicates the fall of man or the opposite of God or God's abode, is the Adam-1900 dream, which is neither Mind nor

by face in righteousness: I shall not be satisfied when I awake, with thy likeness. Psalms 17:16. The lesson sermon also includes the following questions from the Christian Science textbook "Science and Health with Key to the Scriptures" by Mary Baker Eddy. "Whoever indicates the fall of man or the opposite of God or God's abode, is the Adam-1900 dream, which is neither Mind nor

by face in righteousness: I shall not be satisfied when I awake, with thy likeness. Psalms 17:16. The lesson sermon also includes the following questions from the Christian Science textbook "Science and Health with Key to the Scriptures" by Mary Baker Eddy. "Whoever indicates the fall of man or the opposite of God or God's abode, is the Adam-1900 dream, which is neither Mind nor

by face in righteousness: I shall not be satisfied when I awake, with thy likeness. Psalms 17:16. The lesson sermon also includes the following questions from the Christian Science textbook "Science and Health with Key to the Scriptures" by Mary Baker Eddy. "Whoever indicates the fall of man or the opposite of God or God's abode, is the Adam-1900 dream, which is neither Mind nor

by face in righteousness: I shall not be satisfied when I awake, with thy likeness. Psalms 17:16. The lesson sermon also includes the following questions from the Christian Science textbook "Science and Health with Key to the Scriptures" by Mary Baker Eddy. "Whoever indicates the fall of man or the opposite of God or God's abode, is the Adam-1900 dream, which is neither Mind nor

by face in righteousness: I shall not be satisfied when I awake, with thy likeness. Psalms 17:16. The lesson sermon also includes the following questions from the Christian Science textbook "Science and Health with Key to the Scriptures" by Mary Baker Eddy. "Whoever indicates the fall of man or the opposite of God or God's abode, is the Adam-1900 dream, which is neither Mind nor

Font Qui.



EDEN GRANGE

A large crowd of Eden Grange friends met at the home of Mrs. and Mr. J. E. Kniffey last Friday evening when a lively meeting of the Grange was held. Social games and refreshments of sandwiches and pumpkin pie were enjoyed. Rev. Horton winning the biggest stake of 50 cents because of his efforts to sing a solo. The Grange ladies decided to open a lunch at the kinder sale to be held in November. Mrs. Elmer White and Mr. Gray will have charge of arrangements.

The next meeting of the Eden Grange will be held Friday evening, November 11, in the Legion building, and will be the annual election of officers.

SIX BUSHELS CLOVER FROM NEW SEEDING

John Overhill, west of Jerome killed six bushels of red clover seed to the acre from new seed. While that is not considered a very big yield for new seed, it is an unusual one for this time of the year. The seed was done in March without a top crop. In July the field was plowed to clean the seeds from the ground and ground. Mr. Overhill says he

FARM HAULING

Call on us for trucks for hauling beans, clover seed, apples, potatoes or onions. Largest fleet of trucks in Twin Falls county. Prompt and careful service. Prices reasonable.

Phone 210 SANGER SERVICE

would have been filled with three bushels but when it had been sown, it was a happy surprise.

AUCTION - 1200 HEAD SHEEP

Twelve hundred head of heavy ewes were sold at an auction sale of old ewes at the county fair ground at Ellet, Tuesday, J. W. Peterson conducted the sale and the outcome was done by C. L. Earl Moxson. The prices ranged up to \$5.75 a head.

At Last It Is Here

Just what you have been waiting for

R. C. A. Radiola 17

Operate directly from the electric light socket without batteries or battery eliminators. The year's outstanding achievement in radio.

Another outstanding feature of the Radiola 17 is the simplicity of operation.

Tuning is accomplished last entirely by one knob. Another knob controls the volume desired. This device simplifies the operation. Isn't it magnificent?

Our supply of the model is limited and we would suggest that you see it right away for a demonstration.

Sampson Music Co.

One Price - A Square Deal

Radio Service Six Complete Music Stores

Are You One

of the 100 who are going to own a new Oliver

No. 23 Two-way Plow

This Fall?

possible only with the Knight patented sleeve-valve engine, which gives sustained brilliant performance with any gas

The trend today is toward high compression. Willys-Knight offers you the advantages of high compression - greater speed, flashier activity - with none of its disadvantages - the need for special gas, undue wear and tear on the motor, engine knocking even after inconsiderable mileage.

Only the patented Knight sleeve-valve engine, because of the fundamental principle of its design, gives highest uniform compression at all times, at all speeds.

Drive a Willys-Knight, and your enthusiasm will be added to that of its present 300,000 owners.

Exquisitely beautiful new colors Your color of many distinctive colors, both in design and upholstery.

NO VALVES TO GRIND - GROWS SMOOTHER WITH USE

WILLYS-KNIGHT BROWNING AUTO COMPANY

Phone 364 2 and 2 West

Exquisitely beautiful new colors Your color of many distinctive colors, both in design and upholstery.

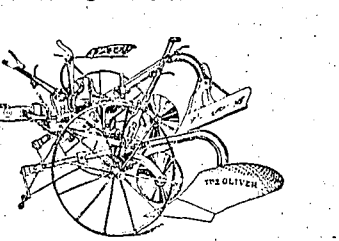
NO VALVES TO GRIND - GROWS SMOOTHER WITH USE

Exquisitely beautiful new colors Your color of many distinctive colors, both in design and upholstery.

NO VALVES TO GRIND - GROWS SMOOTHER WITH USE

Reynolds Bros. Co.

Distributors



OLIVER No. 23 TWO WAY PLOW

The unusually heavy frame and beams on the Oliver Two Way Plow give it the necessary strength which is needed in deep plowing. Especially designed by the oldest plow manufacturers in the United States for Twin Falls territory. See this plow on our floors. Place your order NOW to be insured delivery this fall.

More than 100 Twin Falls Farmers have signified their intention of purchasing the Oliver Two Way Plow this fall.

POULTRY

SELECTING BEST BREEDING STOCK

In your poultry business, cleanliness is the key to success. In crowded places, dirt, dust and darkness are good conditions to raise and rear the breeding stock of flocks. These parasites are insects that get on the birds at night and bite and irritate the breeding stock. These insects will bite and irritate the birds at night and breed. These insects will bite and irritate the birds at night and breed.

These insects bring about a train of trouble to the flock. The first is that of drinking water should get special attention by providing fresh water. All birds seem to have an appetite for drinking from every foul puddle they see. This is the reason why it is so important to keep the water clean. All birds should be kept in clean water. This is the reason why it is so important to keep the water clean.

Don't forget that muddy grain, moldy feed, stinky water, and other things will do much to reduce the health of the flock. It is important to keep the water clean. This is the reason why it is so important to keep the water clean.

Chickens Paralyzed Causing Heavy Losses. According to Dr. L. P. Doyle of Purdue University, chicken paralysis is a disease resulting in a paralysis of the legs which is highly distressing and is causing heavy losses. The disease is caused by a virus which attacks the nerves of the legs.

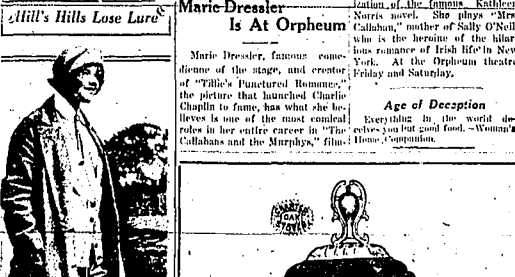
Why Hens Roost Out. Sometimes people complain that the hens do not like to roost in a poultry house, but when you see why they prefer to stay out of doors. You often find the house dirty, poorly ventilated, and infested with insects which suck the blood from the hens.

POULTRY SQUIBS. The well-fed, well-housed hen certainly knows her own mind. She will leave the house if she is not satisfied with the conditions.

Christmas. Many people do a lot of thinking to show that increased profit that would come by bringing birds that are heavier producers but they fail to make any additional charge for feed.

Oh, That's Different. "Why don't you dance with young Thompson?" "Oh—why, I wouldn't dance with young Thompson."

And That's That By Albert T. Reid



Chickens Paralyzed Causing Heavy Losses
According to Dr. L. P. Doyle of Purdue University, chicken paralysis is a disease resulting in a paralysis of the legs which is highly distressing and is causing heavy losses. The disease is caused by a virus which attacks the nerves of the legs.

Why Hens Roost Out
Sometimes people complain that the hens do not like to roost in a poultry house, but when you see why they prefer to stay out of doors. You often find the house dirty, poorly ventilated, and infested with insects which suck the blood from the hens.

Oh, That's Different. "Why don't you dance with young Thompson?" "Oh—why, I wouldn't dance with young Thompson."

The "Average" Man



Roy L. Gray, Ft. Madison Ia. has been termed America's "average" citizen. The American Magazine, after careful survey, gives the title to Gray because he earns an average income, conducts a one-man tailor shop and clothing store in the average small sized town; belongs to church—did not attend regularly; has an average education, and his principal interests are in his family of wife and two children—and his business.

The Orpheum
This week — Friday and Saturday
Matinee and Evening
10c - 25c - 30c

The Laugh Hit!
The Callahans and the Murphys
Kathleen Norris' famous novel
With the latest comedy team sensation — Marie Dressler and Polly Moran.

COMING
Sunday, Monday and Tuesday
Matinee and Evening
10c - 25c - 30c
The Season's 3-Act Film Hit

MARION DAVIES
The Comic-Strip Sensation
—now a Film howl!
Tillie the Toiler
2-Act Comedy
Latest News—Orpheum Orchestra—A show you can't afford to miss

Tillie the Toiler

How many times have you laughed, chuckled and roared at the antics, follies and schemes of Tillie the Toiler—Russ Weaver's famous comic-strip appearing daily in newspapers throughout the country?
Now, for the first time, she has been brought to life on the screen in the person of Marion Davies and can be seen at the Orpheum theatre for the next three days, November 6, 7 and 8.
Tillie the Toiler is comedy, romance and pathos—the natural, human and true-life adventures of a typical business girl—a modern and English flapper—portrayed with fidelity and realism by Marion Davies who has never done anything finer or more subtle to her great talents.

In the cast are many other well-known players including Matt Moore, Estelle Clark, George K. Arthur, George Fawcett, Bert Roney, Claire McDowell.

A Solution
The way to "rescue" a domestic "plumbe" is to put all three of them in jail.—Actionist Democrat.

On the Gridiron—On the Road
They All Admire the All-American
Target of every eye, something the life is out of the mud—something that all America instinctively admires.

Twin Falls Oakland Co.
229 2nd Ave. East Phone 719
OAKLAND
ALL-AMERICAN SIX
PRODUCT OF GENERAL MOTORS

"Electricity has added to the wealth of the nation"
Says Hon. Albert C. Ritchie, Governor of Maryland
"In your development of cheap power you have added immeasurably to the wealth of the nation; and it is not old wealth taken from others by the process of trade, but new wealth from the treasure house of nature."

ELECTRICITY has become the most universally useful force the world has ever known. This result has not been obtained merely by converting coal and water into electrical energy. Far-sighted planning, and the success of the principle of individual initiative in the management of power companies are responsible.

Fair Exchange
Teacher: "And now, children, give me the definition of a fair exchange."
Tommy: "It's something no respectable family would be without."

Right in His Life
Medicals wife: "And do you really think I allowed that silly thing you gave me last night?"
"I don't know, my dear. But I can have you X-rayed."

Skin of Hippopotamus
The average thickness of the skin of a hippopotamus is two inches.

NEW LOW PRICES
2-door Sedan... \$1145
4-door Sedan... \$1195
Coupe... \$1245
Roadster... \$1295
The New and Finest Priced... \$1345

Electricity has added to the wealth of the nation"
Says Hon. Albert C. Ritchie, Governor of Maryland

ELECTRICITY has become the most universally useful force the world has ever known. This result has not been obtained merely by converting coal and water into electrical energy. Far-sighted planning, and the success of the principle of individual initiative in the management of power companies are responsible.

IDAHO POWER COMPANY
The electrical business under individual initiative and government regulation, supported by public acceptance, has increased the wealth, comfort and happiness of the whole nation. The full development of an electrical age can be safeguarded in its future by continued support of these principles.

For Printing, telephone 172. THE IDAHO CITIZEN

For Printing, telephone 172. THE IDAHO CITIZEN

For Printing, telephone 172. THE IDAHO CITIZEN

FILER Kiddies' Evening Story

Mrs. E. H. Snyder entertained Tuesday at 1 o'clock with a luncheon for Mesdames P. A. Ditzel, G. A. Elizabeth and H. L. Beamer...

Mrs. and Mr. E. W. Borling, former Filer residents, arrived Thursday evening for a few days' visit with their friends and relatives at Bulli.

Mrs. Belle Gough left Friday for Los Angeles after a short visit with relatives. Mrs. Gough and Mrs. S. A. Bevan are sisters.

Mrs. E. H. Snyder and Mr. H. L. Beamer entertained at the home of the former Friday afternoon for four tables of bridge. The 1 o'clock luncheon was catered with full flowers and Hallowsen decorations were used for the rooms.

Mrs. E. H. Snyder and Mr. H. L. Beamer entertained at the home of the former Friday afternoon for four tables of bridge. The 1 o'clock luncheon was catered with full flowers and Hallowsen decorations were used for the rooms.

Mrs. E. H. Snyder and Mr. H. L. Beamer entertained at the home of the former Friday afternoon for four tables of bridge. The 1 o'clock luncheon was catered with full flowers and Hallowsen decorations were used for the rooms.

Mrs. E. H. Snyder and Mr. H. L. Beamer entertained at the home of the former Friday afternoon for four tables of bridge. The 1 o'clock luncheon was catered with full flowers and Hallowsen decorations were used for the rooms.

Mrs. E. H. Snyder and Mr. H. L. Beamer entertained at the home of the former Friday afternoon for four tables of bridge. The 1 o'clock luncheon was catered with full flowers and Hallowsen decorations were used for the rooms.

Mrs. E. H. Snyder and Mr. H. L. Beamer entertained at the home of the former Friday afternoon for four tables of bridge. The 1 o'clock luncheon was catered with full flowers and Hallowsen decorations were used for the rooms.

Mrs. E. H. Snyder and Mr. H. L. Beamer entertained at the home of the former Friday afternoon for four tables of bridge. The 1 o'clock luncheon was catered with full flowers and Hallowsen decorations were used for the rooms.

Mrs. E. H. Snyder and Mr. H. L. Beamer entertained at the home of the former Friday afternoon for four tables of bridge. The 1 o'clock luncheon was catered with full flowers and Hallowsen decorations were used for the rooms.

Mrs. E. H. Snyder and Mr. H. L. Beamer entertained at the home of the former Friday afternoon for four tables of bridge. The 1 o'clock luncheon was catered with full flowers and Hallowsen decorations were used for the rooms.

Mrs. E. H. Snyder and Mr. H. L. Beamer entertained at the home of the former Friday afternoon for four tables of bridge. The 1 o'clock luncheon was catered with full flowers and Hallowsen decorations were used for the rooms.

Mrs. E. H. Snyder and Mr. H. L. Beamer entertained at the home of the former Friday afternoon for four tables of bridge. The 1 o'clock luncheon was catered with full flowers and Hallowsen decorations were used for the rooms.

Mrs. E. H. Snyder and Mr. H. L. Beamer entertained at the home of the former Friday afternoon for four tables of bridge. The 1 o'clock luncheon was catered with full flowers and Hallowsen decorations were used for the rooms.

Mrs. E. H. Snyder and Mr. H. L. Beamer entertained at the home of the former Friday afternoon for four tables of bridge. The 1 o'clock luncheon was catered with full flowers and Hallowsen decorations were used for the rooms.

Mrs. E. H. Snyder and Mr. H. L. Beamer entertained at the home of the former Friday afternoon for four tables of bridge. The 1 o'clock luncheon was catered with full flowers and Hallowsen decorations were used for the rooms.

Mrs. E. H. Snyder and Mr. H. L. Beamer entertained at the home of the former Friday afternoon for four tables of bridge. The 1 o'clock luncheon was catered with full flowers and Hallowsen decorations were used for the rooms.

Mrs. E. H. Snyder and Mr. H. L. Beamer entertained at the home of the former Friday afternoon for four tables of bridge. The 1 o'clock luncheon was catered with full flowers and Hallowsen decorations were used for the rooms.

Mrs. E. H. Snyder and Mr. H. L. Beamer entertained at the home of the former Friday afternoon for four tables of bridge. The 1 o'clock luncheon was catered with full flowers and Hallowsen decorations were used for the rooms.

Mrs. E. H. Snyder and Mr. H. L. Beamer entertained at the home of the former Friday afternoon for four tables of bridge. The 1 o'clock luncheon was catered with full flowers and Hallowsen decorations were used for the rooms.

Mrs. E. H. Snyder and Mr. H. L. Beamer entertained at the home of the former Friday afternoon for four tables of bridge. The 1 o'clock luncheon was catered with full flowers and Hallowsen decorations were used for the rooms.

Mrs. E. H. Snyder and Mr. H. L. Beamer entertained at the home of the former Friday afternoon for four tables of bridge. The 1 o'clock luncheon was catered with full flowers and Hallowsen decorations were used for the rooms.

DOROTHY DARNIT

HOLD THIS DARNIT AND WAIT HERE TILL I COME OUT OF THE STORE



HURRY UP MAMA WANTS THESE THINGS



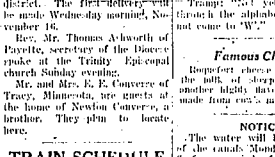
FOR GOODNESS SAKE WHAT'S THE MATTER WITH YOU?



COME QUICK PAPA DANGER IS BLOWING BUZZLE'S BRING A



Very Proud of Her Parrot.



Train Schedule

Table with columns for No., Time, and Destination (To Wells, Monday, Wednesday, Friday; Eastbound; Westbound).

MAIL CLOSING

Table with columns for No., Time, and Destination (Westbound; Eastbound).

SOUTHBOUND

Train number 339 (Wells branch) mail closes at 12:15 p. m., messenger leaves at 12:20.

Advertisement for 'The Jew's Joke' featuring a cartoon and text about getting a run for your money.

TRANSFERS OF REAL ESTATE

SATURDAY, OCTOBER 29... SATURDAY, OCTOBER 29... SATURDAY, OCTOBER 29...

SATURDAY, OCTOBER 29... SATURDAY, OCTOBER 29... SATURDAY, OCTOBER 29...

SATURDAY, OCTOBER 29... SATURDAY, OCTOBER 29... SATURDAY, OCTOBER 29...

SATURDAY, OCTOBER 29... SATURDAY, OCTOBER 29... SATURDAY, OCTOBER 29...

SATURDAY, OCTOBER 29... SATURDAY, OCTOBER 29... SATURDAY, OCTOBER 29...

SATURDAY, OCTOBER 29... SATURDAY, OCTOBER 29... SATURDAY, OCTOBER 29...

SATURDAY, OCTOBER 29... SATURDAY, OCTOBER 29... SATURDAY, OCTOBER 29...

SATURDAY, OCTOBER 29... SATURDAY, OCTOBER 29... SATURDAY, OCTOBER 29...

SATURDAY, OCTOBER 29... SATURDAY, OCTOBER 29... SATURDAY, OCTOBER 29...

SATURDAY, OCTOBER 29... SATURDAY, OCTOBER 29... SATURDAY, OCTOBER 29...

BUSINESS PERSONALS

Abstracts and Insurance... Abstracts and Insurance... Abstracts and Insurance...

Abstracts and Insurance... Abstracts and Insurance... Abstracts and Insurance...

Abstracts and Insurance... Abstracts and Insurance... Abstracts and Insurance...

Abstracts and Insurance... Abstracts and Insurance... Abstracts and Insurance...

Abstracts and Insurance... Abstracts and Insurance... Abstracts and Insurance...

Abstracts and Insurance... Abstracts and Insurance... Abstracts and Insurance...

Abstracts and Insurance... Abstracts and Insurance... Abstracts and Insurance...

Abstracts and Insurance... Abstracts and Insurance... Abstracts and Insurance...

Abstracts and Insurance... Abstracts and Insurance... Abstracts and Insurance...

Abstracts and Insurance... Abstracts and Insurance... Abstracts and Insurance...

CITIZEN WANT ADS

White to sell the best... White to sell the best... White to sell the best...

White to sell the best... White to sell the best... White to sell the best...

White to sell the best... White to sell the best... White to sell the best...

White to sell the best... White to sell the best... White to sell the best...

White to sell the best... White to sell the best... White to sell the best...

White to sell the best... White to sell the best... White to sell the best...

White to sell the best... White to sell the best... White to sell the best...

White to sell the best... White to sell the best... White to sell the best...

White to sell the best... White to sell the best... White to sell the best...

White to sell the best... White to sell the best... White to sell the best...

Advertisement for 'The Jew's Joke' featuring a cartoon and text about getting a run for your money.

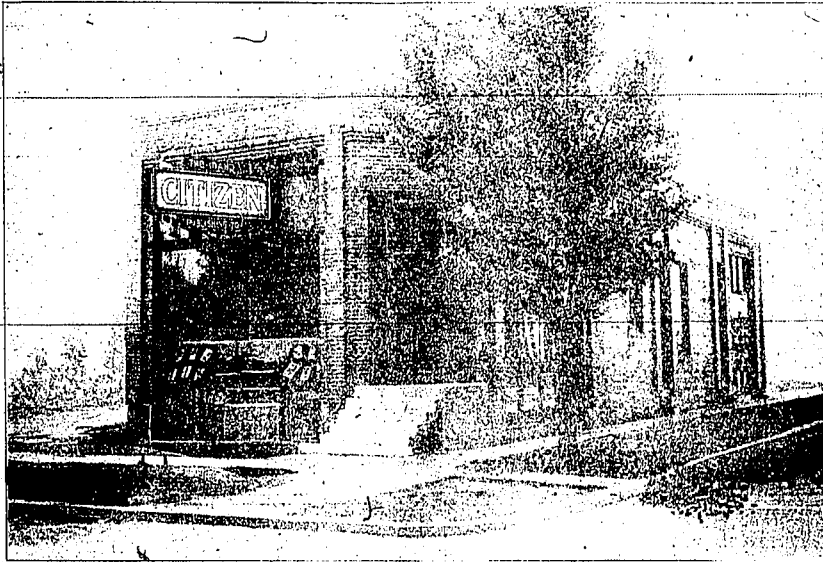
Advertisement for 'Krengel Machine Co.' featuring a list of services and contact information.

Advertisement for 'Gustav Fletcher Studio' and 'Louisy Hens' featuring contact information and services.

Advertisement for 'PUBLIC SALE' featuring details about a public auction on Tuesday, November 8th.

The Home of The

IDAHO CITIZEN



—The Future Policy of The Idaho Citizen—

By TOM BLODGETT
(EDITOR and PUBLISHER)

This issue of the Idaho Citizen celebrates our second birthday. It is printed on our own high speed Duplex press and in our own home.

The Idaho Citizen is no longer an experiment; it is a proven fact; an established factor in the program of community building in the Twinland Empire.

It has imbedded itself in the confidence and good will of the reading public by maintaining a policy of intelligent optimism and by consistently espousing the cause of agriculture.

The Idaho Citizen, because of its record as a broadcaster of dependable and helpful news and information, has become the authorized publication for all agricultural cooperative organizations transacting business in the Twinland Empire.

An evidence of our appreciation of the splendid support given us during the past two years, by the reading and advertising public, in the Twinland Empire, we hereby re-dedicate the Idaho Citizen to the great cause of Agriculture.

In plain, understandable English; we intend to make it our first and foremost business, to not only give all the dependable news concerning all of the various cooperative organizations, but to give the problems of agriculture in general and cooperative marketing in particular, our energetic support.

It always has been, and always will be our policy to help create the most cordial understanding and coopera-

tion between the farmer and the other business interests of the Twinland Empire. We will not knowingly lend our assistance to irresponsible agitators whose sole subject in life seems to be the job of creating discord and misunderstanding.

The Idaho Citizen has the most complete newspaper plant in the Twinland Empire. It has a live, fast hitting, up-to-the-minute organization. It goes into more farm homes in the Twinland Empire than any other two Twinland Empire newspapers.

Seventy-five cents out of every dollar spent over the store counters and deposited in the banks of the Twinland Empire, come from the purses of the farmer. The Idaho Citizen plays an active part in the home life of the majority of these farmers.

The messages of the advertisers appearing in the columns of the Idaho Citizen are as eagerly read as are the interesting community happenings and intimate discussions of the problems of every member of the farm household that are discussed in its anticipated, twice-a-week visits.

The cause of agriculture does not need or want any special legislative pills or political hypodermic injections. All agriculture asks for is the same tariff protection afforded other lines of business, the privilege of paying its own just share of taxes, and as low interest rates on loans on bonded warehouse collateral for its cooperative marketing organizations as given to other lines of business.

We don't want any political nurse bottle concoctions. We are neither paupers nor feeble minded. We don't want any preferences. We only want and demand an equal chance to enjoy our rightful share of prosperity or adversity, as the case may be, and the opportunity to cheerfully bear our part of the responsibility and pay our just part of the bills incident thereto.

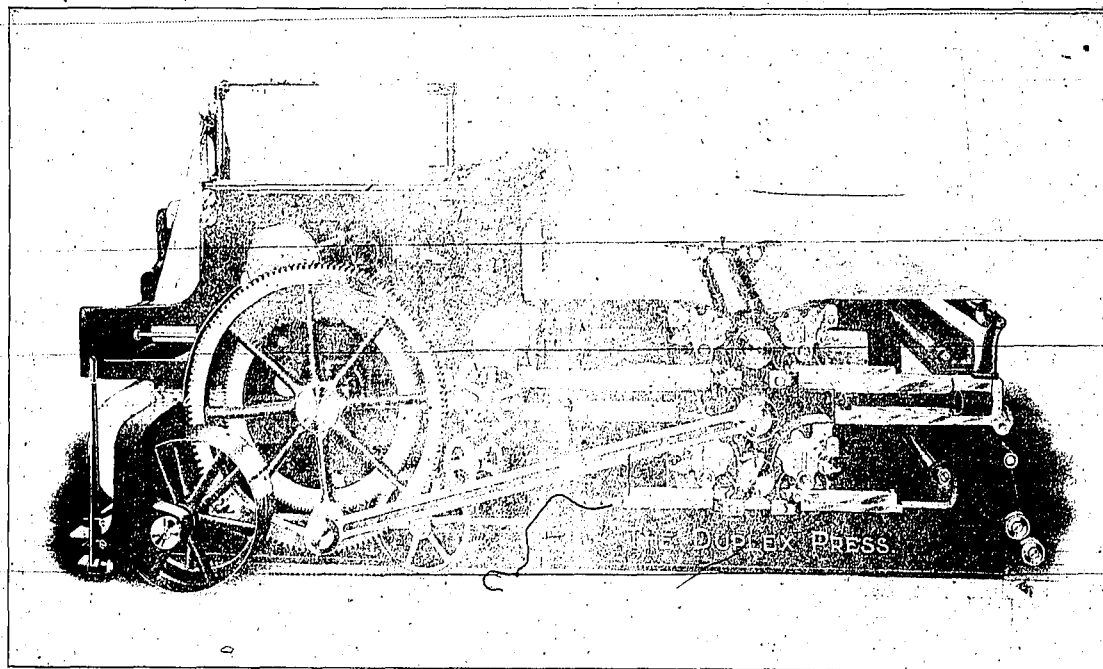
The farmers of Idaho, including those in the Twinland Empire, produce three-fourths of the wealth and hold sixty per cent of the voting power. That makes agricultural cooperation the most important job in the state.

The Idaho Citizen is one of the very few independent papers published in the state that has committed itself irrevocably to the great cause of agricultural cooperation and that gives its editorial support to all cooperative organizations that consistently represent the best interests of the farmer.

The Idaho Citizen is absolutely independent political-ly and religiously. We have no personal axes to grind or pet notions to foist upon the public.

Our entire organization is a bunch of enthusiastic boosters itching to render the keenest, most helpful service to the community in general and to the great cause of agricultural cooperation in particular, that human ingenuity can devise. We are boosters—not knockers; builders—not wreckers; optimists—not pessimists.

Installation of High Speed Duplex Press Completes Equipment of Citizen's Modern Printing Plant



OUR NEW DUPLEX 8 COLUMN WEB PERFECTING PRESS NOW HOUSED IN THE CITIZEN BUILDING

This issue of the Idaho Citizen is printed on a new press which has just been installed in our press room. Increasing business, the progress of the community and the desire of the Idaho Citizen to keep abreast of the times and to make any improvements that business conditions warrant have led us to add this latest investment.

With the installation of the new press the Idaho Citizen appears as an 8-column paper, the new machine enabling us to be one of the four 8-column papers now operating in the State of Idaho.

LAST WORD IN EQUIPMENT

The new press is manufactured by the Duplex Printing Press Company of Battle Creek, Michigan, and is a marvel of mechanical skill, and the many functions it performs in one operation are interesting to watch. The huge roll of paper will be noticed at the extreme left of the above picture. If unrolled this paper would reach a distance of about three miles. The paper is threaded over the web and across the bottom of the press to the

left, where it passes over the bottom bed where the type forms for four pages of the paper first come in contact with the moving paper. Going to the extreme left of the press the paper is carried by rollers to the top, where it starts again to the right. In the picture the four pages printed on one side on the bottom form can be seen. The paper then passes over the upper bed of forms, and the reverse four pages are printed.

The printing is now done, but the press has not completed its work. Still traveling to the right the paper enters the folder, which, working with almost human intelligence, it folds, cuts and trims the paper and passes out the finished produce in the chute ready for delivery. Four and six-page papers are printed in the same manner.

The machine will print 4, 6, or 8 pages at one time at the rate of 6000 complete papers per hour. It is driven by a 10-horsepower, variable-speed Cline motor equipment, with button control system.

With the installation of this modern printing machine, the printing capacity of our plant has been more than tripled, which means much to our readers and commercial patrons.

The paper is now in the 8-column class, the same as the big Metropolitan papers print.

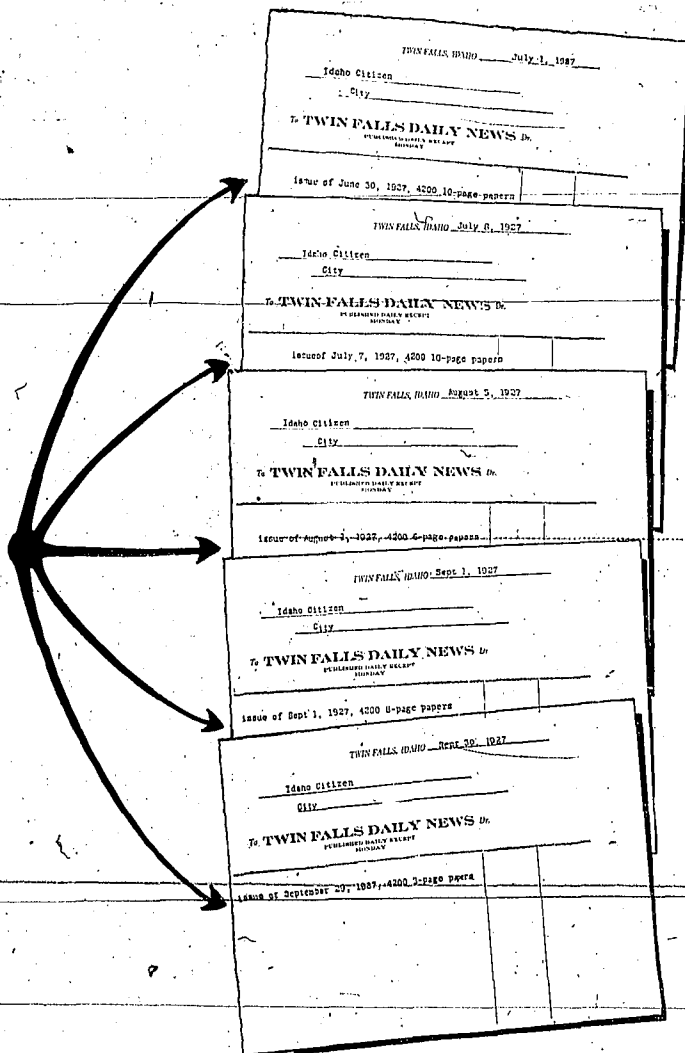
The 8-column paper gives us a chance for a better display of news matter and advertisements can be arranged to be of greater benefit to our advertisers. It also gives the office control of every page in the newspaper up to the time of going to press, which assures better positions for our advertisers, and the standardizing of the make-up of the Idaho Citizen into departments, which we feel will be appreciated by our patrons and readers.

The press will be in operation between 2 and 4 o'clock each Monday and Thursday afternoons and all who are interested are invited to visit the Citizen office and watch it in action.

THE IDAHO CITIZEN

4200

GUARANTEED CIRCULATION



The circulation of the Idaho Citizen has been and is at present 4200.

The Idaho Citizen goes into more farm homes than the combined rural circulation of any two papers in the Twinland Empire.

Day by day in every way, we are growing Bigger, Better and Stronger.

More and more the business men of Twin Falls recognize the Idaho Citizen as the best medium to place their messages before the rural population of the Twinland Empire.

4200 Circulation

That Circulates In The Following Towns and Their Rural Routes.

Twin Falls	Eden	Burley
Filer	Jerome	Heyburn
Buhl	Murtaugh	Milner
Kimberly	Rogerson	Declo
Hansen	Hagerman	Elba
Amsterdam	Hollister	Oakley
Castleford	Berger	Gooding
Hazelton	Rupert	Wendell

Phone 172 and a representative will call and gladly go over the situation with you.

The Idaho Citizen

Old System Revolutionized In Setting Display Type

With the installation of the new Ludlow Typograph in the Idaho Citizen composing room, a final blow was given to the old method of setting individual types from cases by hand.

While typesetting machines have been used generally for more than thirty years in newspaper production, they have been confined to the smaller sizes of type and used primarily for setting straight body matter. The invention of the Ludlow has made it possible to cast all forms of headings, advertisements and display composition this new, simple way in slugs.

Economy In New System

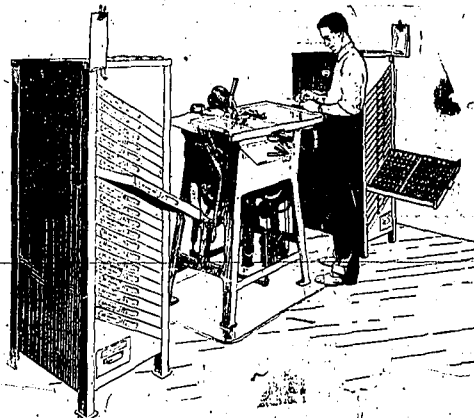
There is economy in labor cost in the use of the Ludlow, but the great advantages are the saving of time, the savings in floor space and the producing of new typefaces for every line. Prior to the use of the Ludlow, a tremendous amount of space was required for storing of reserve type. This type was used again and again and, as it grew old and worn, the clearness of the printed page naturally suffered. But in the Ludlow-equipped paper every line is new and bright.

These economies and conveniences have been made possible through the Ludlow System whereby all the display lines are cast on solid slugs, from brass matrices or molds, which are set, by hand, from a Ludlow cabinet.

Machine Last Word In Simplicity

The casting machines are the last word in simplicity. In appearance they are like steel tables about three feet long and less than two feet wide. At the back there is a pot containing molten type metal. A lever on the top holds the stick in place while the cast is made.

From the matrix cabinets the matrices are assembled in a line, held in place in a metal frame called a "stick." This is placed on the Ludlow, the lever pressed and in six seconds the stick is released whereupon the matrices may be returned to the cabinet. In another six seconds the finished slug, ready for printing, is delivered on a tray. There is no chance of running short of a certain face as the matrices are always ready to furnish new type in slugs as needed.



No More Type Set

Under the old system of composition thousands of pounds of type stood in cases and was set by hand, picked up again after being used, and distributed. From constant handling this type quickly became worn and battered and its value in properly displaying an advertisement was naturally seriously impaired.

Under the Ludlow system only enough matrices of each letter are required as would normally be used in a single line. A Ludlow matrix cabinet holds either sixteen or twenty full fonts of matrices—each a different size or face—and takes up far less room than a modern type cabinet filled with the same number of full length type cases.

The metal used in casting the Ludlow slugs is the same as that used in keyboard slug-casting machines and when a form is dead it may be dumped without the necessity of separating different kinds of metal.

The Ludlow equipment marks a distinct step forward in the improvement of the Idaho Citizen and demonstrates the desire of this paper to give its readers and advertisers the best paper possible.

JOB PRINTING—"The Kind You Want—When You Want It"

We are now equipped to render faster service and better printing on a short notice

Letter Heads
Envelope Enclosures
Bill Heads
Statements
Ledger Supplies
Office Forms
Filing Cards
Report Slips
Time Cards
Schedules
Business Cards
Circular Letters

Tags
Legal Blanks
Labels
Announcements
Bill and Charge Sheets
Wedding Announcements
Birth Announcements
Calling Cards
Programs
Placards
Window Cards
Booklets

Envelopes
Folders
Pamphlets
Receipts
Checks
Tickets
Briefs
Legal Notices
Dodgers
Menus

Christmas Cards
Place your orders here for
engraved work of all kinds.

The Idaho Citizen

Phone 172