

A questionnaire was sent to 1,000 representative firms...

This plan will probably receive the support of the League...

Even if every nation accepts the new calendar it can only be put in effect after 1928...

Mr. Eastman and his co-workers are making great headway...

Almost all business executives in America are in favor of it...

Of course, the past would have to be taken into consideration...

Table with 7 columns labeled S, M, T, W, T, F, S and rows of numbers representing a calendar.

Cultures for Crops Offered by University

Cultures for inoculation of leguminous crops are again being offered to Idaho farmers...

From 11,000 to 14,000 acres have been inoculated annually since 1916...

The inoculation contains bacteria which form nodules on the roots of legume plants...

Five types of cultures are obtainable through the bacteriology department...

Idaho farmers can have a voice in tax matters by building up the Democratic party...

SPUD OUTLOOK NOT BRIGHT FOR YEAR 1928

Larger Acreage to Be Planted This Year According to Report from Department of Agriculture

The United States Department of Agriculture has the following to say regarding the potato acreage outlook for 1928.

Present indications are that unless farmers change their plans there will be a substantial increase in the acreage planted to potatoes this year.

The acreage of potatoes in the United States steadily is becoming more and more concentrated...

The quality of potatoes used for seed also is improving—at a remarkable rate.

There is an up to date 10 acre fruit orchard 10 miles east of Twin Falls...

Apples and prunes are the principal fruits. Mr. Conroy believes in the law of averages...

He has especially good results using lime and sulfur together with other standard dormant spray mixtures.

The Man and Woman of It

Written Specially for the Idaho Citizen. By BOBIE McLELLIN, Through Automobile Service, Citizens of the Great State of New York...

THE IDAHO CITIZEN

TWIN FALLS, TWIN FALLS COUNTY, IDAHO, FRIDAY, FEBRUARY 10, 1928. Number 64

Twin Falls to Finance Baseball

A decision has been reached by the members of the business men's club...

RESIGNS FROM COUNTY OFFICE

Dr. L. H. Giffen Will Move to North Side Place February 18

Governor H. C. Birdair will have the opportunity of naming a new member of the board of commissioners of Twin Falls county...

It is learned that Dr. Giffen has traded his farm here for property on the north side in Jerome county...

His colleagues on the board are T. E. Moore, filler, chairman, and James H. Hovens, Jr.

P. T. Conroy Orchard Example of Good Cultural Methods

There is an up to date 10 acre fruit orchard 10 miles east of Twin Falls...

Apples and prunes are the principal fruits. Mr. Conroy believes in the law of averages...

Got His Eye on this Young Crasher

HEY THERE, KID—BATE IF BEFORE GIVES YE A KICK IN THE PANTS



000, the number of savings-bank deposits nearly twenty-two and a half millions.

In 1927 three savings deposits had grown more than twenty-four and a half millions.

The assets of the life insurance companies grew from about seven billion three hundred million in 1924 to eleven and a half billion in 1925.

In 1926 we had \$2,825 building and loan associations for the encouragement of home building...

In 1926 we had 12,103 building and loan associations, with nearly 16,000,000 members and assets of a little more than five and a half billions.

After calling attention to the present remarkable position of the United States, Senator Sheppard said...

Senator Sheppard, on the occasion of the eighth anniversary of prohibition, called attention to the remarkable effect of the dry law upon business.

By TOM DUDGETT. Senator Sheppard, on the occasion of the eighth anniversary of prohibition...

In 1926 deposits in savings banks were about \$1,100,000,000.

Mail Order Houses Would Destroy Local Community

Bill Before Congress Would Discriminate Against Merchants in Cities of 25,000 or Less by Clever Change in Postal Rates—Sap Life of Smaller Communities

There is no man before the post office committee of the house...

But in the case of the smaller cities of mail by the merchants...

Any one piece of direct-mail advertising of the mail order houses...

Any one piece of direct-mail advertising of the mail order houses...

The report of Roy D. Smith, manager of the national grocers' organization at Jerome...

The report of Roy D. Smith, manager of the national grocers' organization at Jerome...

Greater efficiency is the chief. The cooperative effort is aimed toward securing an adequate supply of milk...

Greater efficiency is the chief. The cooperative effort is aimed toward securing an adequate supply of milk...

Greater efficiency is the chief. The cooperative effort is aimed toward securing an adequate supply of milk...

Greater efficiency is the chief. The cooperative effort is aimed toward securing an adequate supply of milk...

Greater efficiency is the chief. The cooperative effort is aimed toward securing an adequate supply of milk...

Greater efficiency is the chief. The cooperative effort is aimed toward securing an adequate supply of milk...

PROHIBITION HERE TO STAY

Prohibition a Matter of Economics Rather Than a Moral Issue Is Here to Stay on This Basis

By TOM DUDGETT. Senator Sheppard, on the occasion of the eighth anniversary of prohibition...

Senator Sheppard, on the occasion of the eighth anniversary of prohibition...

Senator Sheppard, on the occasion of the eighth anniversary of prohibition...

Senator Sheppard, on the occasion of the eighth anniversary of prohibition...

Senator Sheppard, on the occasion of the eighth anniversary of prohibition...

Senator Sheppard, on the occasion of the eighth anniversary of prohibition...

Senator Sheppard, on the occasion of the eighth anniversary of prohibition...

DRIFTED TO COUNTY MEET AT FEAR TOWN

Tuesday Will See Another Session of Association Members at District—Outing Was \$207,700

Following the annual meeting of the Twin Falls Cooperative dairymen's association...

Following the annual meeting of the Twin Falls Cooperative dairymen's association...

Following the annual meeting of the Twin Falls Cooperative dairymen's association...

Following the annual meeting of the Twin Falls Cooperative dairymen's association...

Following the annual meeting of the Twin Falls Cooperative dairymen's association...

Following the annual meeting of the Twin Falls Cooperative dairymen's association...

Following the annual meeting of the Twin Falls Cooperative dairymen's association...

Following the annual meeting of the Twin Falls Cooperative dairymen's association...

Check Champ Retains Crown

Bushman ramp rampant at the Kimberly camp Wednesday night...

Bushman ramp rampant at the Kimberly camp Wednesday night...

Bushman ramp rampant at the Kimberly camp Wednesday night...

Bushman ramp rampant at the Kimberly camp Wednesday night...

Bushman ramp rampant at the Kimberly camp Wednesday night...

FILES APPEAL IN CASES OF "BUCK" VAN EATON

E. V. Larson, attorney for "Buck" Van Eaton, recently consulted and sentenced to the state penitentiary on charges of assault...

ANVIL SOLO

BY ANDY HAMMER
CHAMPION KNOCKER OF IDAHO

Pres. of the Palatinists' Union; Vice-Pres. of the Idaho Dill-killers' Club; Secy. of the Husband's Protective Assoc.; Treas. of the Calamity Howlers' Society; Woe-Jag Specialist

ANDY CRAVES PURE UNADULTERATED LIBERTY.

The ancient order of busy bodies has adopted all the infernal methods of modern torture & removed all speed limits. About every other heginik or sheginik you ran across is working overtime trying to reform somebody or enforce some uncharitably law.

If I had my own sweet way about it, I would ludo a brand clear across their faces with that would read, "This bird is spending his life trying to make 2 corns grow on the toe where only one grew before." You are not allowed to blow your nose on the ground, park your car within a half mile of any place of business or take a drink either with one or by yourself, or express your feelings when the continuous antics of stop-&-go signs burn out your brake bands & run your batteries down.

Here we farmers are compelled to furnish feed 2 fatten a couple crates of pheasants & when open season comes a bunch of broken minded city guys come belching along & carry them out in the sagebrush & murder them.

Just for once in my young life I would like to enjoy the good old days before both tubs joined high society; when the family drinking cup & tooth brush hung over the water pan on the back porch & the old hen could come in through the kitchen window and lay in the wood box.

Now days we are driven 2 the point of suicide with an avalanche of modern hogwash consisting of sterilizing, pasteurizing, appendicitis, sanitation, vaccination, simple partridge & diet.

I must ring off now as Ma Hammer has announced supper & from certain insal evidences I know we are going 2 have a light lunch, consisting of pork sausage, fried onions, boiled cabbage, mashed apuds & brown gravy; corn bread, baked beans, apple pie & frosted cake, which may make the world look a little brighter when properly moved away.

Mexico Had Pioneer in Feminist Cause

South American nations are older than those of North America. The University of Mexico and that of San Carlos, Lima, were established by Carlos V in 1521. In Mexico as early as 1520 was published the first book on the rights of women, titled, from the earliest colonial days, a spirit of constant litigation. Whether in the struggle for the spiritual field, the fight here in the present since the advent of the conquest, a recent elaboration of Thomas Paine writes that the first laws passed on this continent in the case of feminism were probably his "draft" issued in 1776 in the French Revolution. The nineteenth century progress toward a remarkable position on which laws less dispensed than that nation. She was St. Justus (late 1790s), from which she came to the fore and pioneer in celebration of women. South American culture follows a more or less double track of civilization, the achievement of humanity and the entrance into the first ranks of the larger world as this has done. Its romantic and sentimental phases. From the first it shows evidence of contact with the new home; the language indicates subtle influences of recent and vocabulary; a feeling for the art is developed, and there are at least a few examples of French literature, the nationalities of the continent; Poetry, for the first time in the history of the Americas, Jean de La Motte, in 1792, first history magazine.

Triumph Over Handicap

Although he lost his limbs through burns when he was only three years old, William H. Miller, a native of North Carolina, and who, besides politics, writes and plays cricket and billiards. He has been pushed into a burning tub-bath, fell into a river from a diving board, and was almost killed by a horse. He has been injured by falling down stairs, and has sustained injuries in his head. All his life he has made himself a name as a writer. He has written for the Times, the Australian, and can write the name himself.

Busy Man at Home

Mr. Fletcher will not leave a hard day at the office, drop in on his wife and children, and on his day at the office, will say that his business matters were pressing and that it was very hard.

Mr. Fletcher will, after dinner be ready.

Fletcher—your statement in regard to my call, and your suggestion while we are together, as possible.—Vancouver Province.

For Printing, telephone 172.

SYRINGA

The L. A. Green family are moving from this district to Nampa.

Mrs. Ed Greenwood who formerly lived in this district is seriously ill with inflammatory rheumatism. She was taken to Lava Hot Springs Thursday.

Mr. and Mrs. Lou Robbins are living in the tenant house on the Andrus Mackintosh ranch. Mrs. Edna Rosenkrantz was an overnight guest with Judge Necheer Tuesday.

Mr. Walter Shaver entertained at dinner Sunday in honor of Mr. Shaver's birthday. Those present were Mr. and Mrs. Ray Shaver and family, Mr. and Mrs. Sam Shaver and family, Mr. and Mrs. Lee Shaver and family, Mrs. D. H. Shaver, Margaret Anderson, Mrs. and Mrs. Laurence Van Hise and daughter Billy Lou, Mrs. Lucy Perry, Mr. and Mrs. Harry Cannon.

Mrs. Berlinger is visiting at the Hartel Zoo house.

Mrs. Luke W. Sanny and her mother, Mrs. James Wilson left Monday evening for California where they were called by death of a relative.

CASTLEFORD

Harry Brown has quit school and has employment at the Becker ranch.

Mrs. John French is caring for Mr. Reese and doing the house work.

L. Keith returned Friday from the hospital where he has been ill with pneumonia.

Mr. and Mrs. C. H. Laantz and family have moved to the Abbe ranch four miles east of Castleford.

The Castleford Falls Ad will meet Thursday, February 16, at 10 o'clock of the nation's south.

West Point Graduates \$92

From its establishment as the United States Military Academy in 1819, until 1919, West Point has had 30,000 graduates, was the locale. At the end of July, 1922, the oldest army cadet, 170, the oldest of the nation's south.

ALL SAID? NOT SO!

YOU'LL BE HEARING FROM
Graham—Paige
MODERN MOTORS, Inc.

WANTED News Correspondent

FOR
Kimberly Territory

A real opportunity for some wide-awake man or woman who wants to turn a little spare time into cash. Must be in touch with what folks are doing in the country around Kimberly, and write exclusively for The Idaho Citizen. Write or call at the office of

The Idaho Citizen

Silver Jubilee **REXALL** Silver Jubilee

BIRTHDAY SALE

TREMEUDOUS BARGAINS FOR YOU

CITY PHARMACY

Opposite Idaho Theatre TWIN FALLS
TYPICAL EXAMPLES OF THE 160 DRUG BARGAINS OFFERED DURING FEBRUARY

MAXIMUM-HOT WATER BOTTLES, P. \$1.49	KLENZO DENTAL CREAM 39¢
ELECTREX FLAT IRON \$2.49	JONTEEL GOLD CREAM 39¢
KLENZO SHAVING CREAM 29¢	Lord Baltimore Paper and Envs. 72 sheets, 50 Envs. 98¢
MAXIMUM RUBBER GLOVES 59¢	100 PURETEST ASPIRIN TABLETS 49¢
PINT HARMONY BAY RUM 49¢	QUALITY TOOTH BRUSH 19¢

SALE ENDS SATURDAY, FEBRUARY 25.
SAVE WITH SAFETY AT YOUR REXALL STORE.
H. F. FITZPATRICK, Proprietor Phone 46

Tingwalls

QUALITY—SERVICE—VALUE

Saturday

(OUR FIRST BIRTHDAY IN TWIN FALLS)

9c SALE Saturday ONLY

Crepe de Chine Beautiful 10-12 inch Crepe de Chine in a host of the newest spring colors, yd. 99¢

Dress Shirts Iron's collar-attached dress shirts, newest materials and all sizes ul. 89¢

Men's Unions Men's medium weight unions, cream color, long sleeve and ankle length—now 89¢

Guantlet Gloves Men's heavy weight Wolverine horsehide guantlet gloves \$1.19

Flannel Shirts Men's shirt in plain gray and fancy dyes \$1.19

Work Sox Men's mixed gray and white and brown and white, pair 9c

Suffer Shoes Children's brown soft soles in sizes 7 1/2 to 13; pair 99c

Ladies' Slippers Medium and Spanish heel, in straps and lisle, pair \$4.19

Men's Unions Medium weight long sleeve, unbleached, suit \$1.19

Dress Hats One lot of Men's Dress Hats, all in latest styles \$2.49

Dress Shirts One lot of collar attached Dress Shirts; value to \$1.19

Ladies' Oxfords One lot of ladies' oxfords, in black and brown—medium width pair 39c

Men's Dress Shoes Men's black dress shoes, in sizes 6 to 12, pair \$1.99

Ladies' Lisle Hose Fancy lisle hose in black and tan; pair 9c

Ladies' Silk Gloves White and cream silk gloves, neatly all sizes; pair 9c

9c Day IN OUR SANITARY Meat Dept.

- Sauserkant 2 pounds for 19c
- Boston Butts 19c
- Roasted Shoulders 19c
- Oleomargarin 2 lbs. for 39c
- See Our Windows Grammed With 9c Articles
- 6 inch Miers 9c
- Black Baking Pans 9c
- Muffin Pans 9c
- Spring Axes 9c
- 1 dozen for 9c
- 24 for 9c
- 2 1/2-1 Oil 9c
- 2 for 9c
- House Traps 9c
- 2 for 9c
- Galvanized 2 1/2 Gallon Pails, for 9c
- Dust Pans for 9c
- Carpet Beaters for 9c
- Soap Dishes for 9c
- Toilet Paper Holders for 9c
- Screw Drivers for 9c
- Glass Measuring Cups for 9c
- Mop-Handles for 9c
- Cost Hangers for 9c
- Carlin Rods for 9c
- Scissors for 9c
- Percolator Tops for 9c
- 2 for 9c
- Grey Enamel Basin for 9c
- Grey Enamel Cups for 9c
- Grey Enamel Pudding Pans for 9c
- Grey Enamel Dairy Pans for 9c
- Grey Enamel Sauce Pans for 9c
- Boiling Pans for 9c
- Can Openers for 9c
- Steel Wood for 9c
- Egg Beaters for 9c
- Apple Corers for 9c
- Spatulas for 9c
- Boys' Gyn Shoes All leather black arch shoes; regular \$1.25 value, pair 49c
- Infants' Blankets White cotton blankets with blue and pink borders; price 49c
- Misses Cotton Unions White cotton knit unions; neatly all sizes, close out price 69c
- Comfo-Nap Soft, light weight, absorbent sanitary pads; box of one dozen 39c
- Children's Shoes White canvas shoes with all-pure in broken sizes; pair 19c
- Goldettes Patent cut comfot bloomers; rayon materials; pretty shades \$1.59
- Ladies' Slippers Medium and low heel, strap slippers, pet. 19c

9c Day IN THE Nu-Way Grocery Department

- Serve Yourself and Save
- Fig Bar Cookies 19c
- Maple Liko Penick Syrup 1 lb. full 89c
- Helms Cream of Tomato Soup 3 cans 29c
- Crayal White Soap 10 bars 39c
- Hillside Broken Slice Pineapple, No. 2 can 19c
- Betty Bright Self Wringing Eggs 99c
- Desert Dried Peaches 2 lb package 39c
- Castle Toilet Soap 19c
- Campbell's Medium Size Pork & Beans, can 9c
- Jersey Corn Flakes package 9c

THE IDAHO CITIZEN

SEMI-WEEKLY PUBLISHED ON TUESDAY AND FRIDAY OF EACH WEEK AT TWIN FALLS, IDAHO. PER YEAR, \$2.50

A semi-weekly newspaper published on Tuesday and Friday of each week at Twin Falls, Idaho. Tom Blodgett, manager; Juneau H. Shinn, news editor.

The Idaho Citizen has the exclusive rights in the community to all NEWS, FEATURES AND ADVERTISING SERVICE OF THE PUBLISHERS AUTOCASTER SERVICE OF New York City

Entered as second class mail matter at the postoffice at Twin Falls, Idaho, under the act of March 3, 1879.

The Idaho Citizen is a medium of publicity for the agricultural cooperative organizations of the great state of Idaho including the Farmers' Group, Intermountain Cooperative Dairy Association, Idaho Egg Producers' Association, Idaho Fruit Growers' Association, Southern Idaho Bean Growers' Association, Southern Idaho Beet Growers' Association, Idaho Turkey Growers' Association, Mountain States Honey Producers' Association, Twin Falls Horticultural Society.

CITIZEN PUBLISHING CO., 203 Second Avenue North, Twin Falls, Idaho, Phone 172

ARE YOU TOO EASILY SATISFIED?

We hear a great deal about people being too hard to satisfy, but we seldom hear so much about their being too easily satisfied.

The cause of agriculture is suffering today because too many farmers are all together too easily satisfied.

The cooperative plan of the orderly marketing of agricultural products is the only solution to the lamentable condition that the farmers of the nation have been confronted with ever since the after war reconstruction period.

The key to the solution of the situation is in the hands of the farmers themselves. When the great majority of farmers join hands in a mass formation of cooperative marketing they will immediately be emancipated from the bondage of destructive prices.

The only perceptible relief so far, has come from the results of cooperative marketing, which is comparatively speaking, only an infant in swaddling clothes. This slow progress is due to the fact in almost every community there are a large number of apparently well meaning farmers who are too easily satisfied.

They know that while they themselves do not belong to any cooperative marketing association, that the favorable prices at which they are frequently able to sell their products are possible because enough of their neighbors have pooled their crops in the various cooperative organizations and brought price levels up materially above the standards of open market methods.

The fact that they are getting a better price and doing absolutely nothing themselves to bring them about seems to satisfy them perfectly. While the neighbor who has pooled his crops had a much higher conception of loyalty and was not satisfied with the higher prices alone but wanted to have the satisfaction of knowing that he had done his full share toward bringing about the more favorable price levels.

Most of us dislike to be compelled to admit that the cause of agriculture is suffering more from this internal cause than from all outside conditions combined. It not only shows poor moral fiber in the make up of a nation, but is evidence of their shortsightedness and poor business judgment.

The Twinland Empire has a number of very successful cooperative marketing agencies, chief of which may be cited the dairy and bean growers' associations. The almost miraculous improvement of the market stability and higher price level of dairy products and beans is not so notable because the cooperators have overcome the stupendous opposition of organized capital, but because it was done in addition to having endured the more dandy condition of disloyalty on the part of fellow farmers who persist in staying out of the associations.

When these easily satisfied farmers develop a keen business insight to see their mistake, then both the producers and consumers of agricultural products can reap full benefits of the highest type of cooperative marketing.

THE STATE CHAMBER OF COMMERCE

We are never adverse to commending duty well performed. Just now we have in mind the report of the special committee, appointed by the state chamber of commerce to study the present precarious potato situation and report with recommendations.

This report was published in its entirety in our last issue and meets with our sincere appreciation. The committee found that reports as to the number of cars of unsold potatoes in the state have been exaggerated and the results have been disastrous to the potato market as a whole. The Idaho Citizen has steadfastly avoided making any mention of the quantity of unsold potatoes.

The committee stated that consignments were to be frowned upon, that nothing but top grades be shipped the rest of this season and that top grades be salvaged as far as possible by feeding, to all of which we heartily subscribe.

We are just as emphatic also in sticking to our very first statement made when the Idaho potato dilemma first attracted notoriety, that "unbranded sacks will kill the Idaho potato industry."

The state department of agriculture will have no difficulty in proving this fact to their entire satisfaction if they will get an expression of the honest convictions of the great mass of growers apart from any influence on the part of shippers and dealers.

Probably the reason the brokers never get down is that seats on the New York Stock exchange cost more than \$300,000.

BUHL

Thursday evening was Rotarian Annual Farmers' Night. Dinner was served at 6:00 with plates full of 70. Forty-five farmers of the west end were guests. Shad L. Hugin of Twin Falls addressed the gathering on "Multiple Laws."

There is something so distinctive that is the family physician only; the surgeon and the specialist may be expert in their line of practice; they do things for which family physician is not even prepared, and he does not attempt that, I would never select either for my family physician. Their fields are a narrow one limited to a few common ills, only on the advice of my family doctor.

Year physician should be a broad, well-rounded general practitioner. If that, he is better posted in the management of your year conditions than the surgeon of the specialist. He has a far more extensive knowledge of the remedies needed for you than either. He will be a more capable and discerning in diagnosis (illness) and he will know when to refer a surgeon or specialist, better than any one else.

Your family physician is indeed an indispensable man in the community. He looks after sanitation and other community measures which others do not take the time to do.

Finally, the family doctor is to a large extent, what his community makes him. He is not a progressive neighborhood will attract just that sort of a physician. Proper payment of bills encourages you a more willing and efficient health guardian.

Members of the Rotary club with their wives were guests Sunday evening of the Presbyterian church at a special service. There was special music by the choir and a male quartet.

Work began this week on the new Fox theater following the signing of the contract to the Sittler of Buhl. Mr. Sittler has a net worth of \$25,000.

Between the buildings formerly owned by the Starr grocery and Amy Brothers' grocery will be built a new modern building and a garage created at the west end. Chairs have been ordered and will arrive in a few days. The building will have seating capacity of 800 when finished.

George Marshall, who recently sold his 80 acre farm to the east of Buhl on the state highway to Willard Cornelius, Jr., has sold the 30 acre place owned by Dr. F. A. Marshall in the Caledonia district for \$130 an acre. Mr. Marshall will not live on the place but will move to the new home in the Treva House near Freeland addition.

Members of the high school orchestra who entered several contests received them at the regular meeting of the student association held recently. The concert was made by Mr. Harry Barry, leader of the orchestra to the following students: John Smith, Walter Lanier, Alton Foreman, Ellen Evans, Howard Hubbard, Sherry Anne Lanier, Dolores Gilmore, Edith Galloway, Ed. Gage, Howard Huson, Gertrude Moore, Lillith Spik.

Sixteen Buhl ladies attended the benefit bridge given at the Falls Saturday by members of the American Association of University Women. The afternoon was presided over by Mrs. George Layne, J. C. Mason, Fletcher Stillers, Earl McGrath, Gertrude Duncan, L. J. Johnson, Mrs. E. C. Johnson, D. F. Fricler, V. R. Laird, C. S. Peck, Avery Condon, Ben Tilly, John J. Conroy, J. W. C. A. staff will speak.

The subject will be a discussion of the Y. W. C. A. which will be held at Spokane during the month of April.

Mrs. Edith McCreath was hostess to members of the Saturday Night Bridge club. Mrs. L. P. McCreath was high scorer and Mrs. Ben Tilly, a guest of the club, was low.

Members of the Highway Kensington entertained at an evening

About Your Health

Things You Should Know

Year Physician

India. A cake, suitcases off, brought to the club tonight. Valentine motifs were used for decoration.

The Idaho Power company has recently completed a new rural extension in Buhl territory, three miles north and one-half west of Buhl which will serve Adams, Menden and Elstrand. A newly built line five miles south and one east of Buhl will make one to C. O. Olsen, Frank Tracy and C. H. Schroeder.

J. J. Brennan, who has spent the winter months at the Hot Lake, Oregon, is preparing following an operation, is seriously ill at Nampa. Mr. Brennan was on credit home when he suffered a stroke.

Mrs. Andy Wilson was hostess Tuesday to members of the "200" club. Following the games the hostesses served a lovely refreshment. The guest list included Mrs. and Mrs. Earl Davis, Mrs. and Mrs. Fred Ripley, Mr. and Mrs. Ed Cunningham, Mr. and Mrs. E. B. Lacey, Mr. and Mrs. J. H. Steward, Mr. and Mrs. W. C. Post, Mr. and Mrs. C. A. Marshall, Mr. and Mrs. Fay Hann and Mr. and Mrs. J. H. Gault.

The series of evangelistic meetings which have been conducted the past few weeks at the Star-ene church by Rev. E. J. Curtis, closed Sunday evening. Rev. Curtis, closed an interesting speaker through his audience were attracted during the entire series. He left Monday morning for his home in Louisville, N. Y., from where he will go to New Brunswick to continue his work. Mrs. Ellen High of Caldwell, who assisted the Rev. Curtis, left Monday for her home.

Samuel E. Vance, Jr., was in Jerome on business Monday, from Hazelton, B. C., where he will go to New Brunswick to continue his work. Mrs. Ellen High of Caldwell, who assisted the Rev. Curtis, left Monday for her home.

One of the interesting events of the week was the Pleasant Plains Grange entertainment, The Wood River Center serving non profit miles north of Shoshone came in a body of 48 strong and brought their fifty cents and put on the third and fourth degrees. Six candidates took the third and fourth degrees. Most of the business of the meeting was put on by the entertainment of the visitors. A one-act comedy play was put on by the Pleasant Plains Grange. A number of the old

Members of the Rotary club with their wives were guests Sunday evening of the Presbyterian church at a special service. There was special music by the choir and a male quartet.

Work began this week on the new Fox theater following the signing of the contract to the Sittler of Buhl. Mr. Sittler has a net worth of \$25,000.

Between the buildings formerly owned by the Starr grocery and Amy Brothers' grocery will be built a new modern building and a garage created at the west end. Chairs have been ordered and will arrive in a few days. The building will have seating capacity of 800 when finished.

George Marshall, who recently sold his 80 acre farm to the east of Buhl on the state highway to Willard Cornelius, Jr., has sold the 30 acre place owned by Dr. F. A. Marshall in the Caledonia district for \$130 an acre. Mr. Marshall will not live on the place but will move to the new home in the Treva House near Freeland addition.

Members of the high school orchestra who entered several contests received them at the regular meeting of the student association held recently. The concert was made by Mr. Harry Barry, leader of the orchestra to the following students: John Smith, Walter Lanier, Alton Foreman, Ellen Evans, Howard Hubbard, Sherry Anne Lanier, Dolores Gilmore, Edith Galloway, Ed. Gage, Howard Huson, Gertrude Moore, Lillith Spik.

Sixteen Buhl ladies attended the benefit bridge given at the Falls Saturday by members of the American Association of University Women. The afternoon was presided over by Mrs. George Layne, J. C. Mason, Fletcher Stillers, Earl McGrath, Gertrude Duncan, L. J. Johnson, Mrs. E. C. Johnson, D. F. Fricler, V. R. Laird, C. S. Peck, Avery Condon, Ben Tilly, John J. Conroy, J. W. C. A. staff will speak.

The subject will be a discussion of the Y. W. C. A. which will be held at Spokane during the month of April.

Mrs. Edith McCreath was hostess to members of the Saturday Night Bridge club. Mrs. L. P. McCreath was high scorer and Mrs. Ben Tilly, a guest of the club, was low.

Members of the Highway Kensington entertained at an evening

THE YOUNG LADY ACROSS THE WAY.



The young lady across the way was one of the beauties in politics and no more should be appointed to public office except from natives of pure political conviction.

These songs were sung along with an original song for the visitors by John L. Gault. It was decided that Pleasant Plains return the visit in March.

Through Jernigan arrived in Jerome Thursday from Ingham, Montana, to take the position as inspector in the Jerome County Journal.

Rev. and Mrs. C. E. Tatro made a trip to Hazelton Saturday and on their return stopped at the Bulte Pomona Grange meeting held at Eden in the Grange hall.

John Koblanek has been appointed superintendent of Jerome highway district. Ed Turner, who has held the job for several years will go with the state highway department.

John L. Gault visited the Gooding County Pomona held at Wendover Saturday.

Members of the Rotary club with their wives were guests Sunday evening of the Presbyterian church at a special service. There was special music by the choir and a male quartet.

Work began this week on the new Fox theater following the signing of the contract to the Sittler of Buhl. Mr. Sittler has a net worth of \$25,000.

Between the buildings formerly owned by the Starr grocery and Amy Brothers' grocery will be built a new modern building and a garage created at the west end. Chairs have been ordered and will arrive in a few days. The building will have seating capacity of 800 when finished.

George Marshall, who recently sold his 80 acre farm to the east of Buhl on the state highway to Willard Cornelius, Jr., has sold the 30 acre place owned by Dr. F. A. Marshall in the Caledonia district for \$130 an acre. Mr. Marshall will not live on the place but will move to the new home in the Treva House near Freeland addition.

Members of the high school orchestra who entered several contests received them at the regular meeting of the student association held recently. The concert was made by Mr. Harry Barry, leader of the orchestra to the following students: John Smith, Walter Lanier, Alton Foreman, Ellen Evans, Howard Hubbard, Sherry Anne Lanier, Dolores Gilmore, Edith Galloway, Ed. Gage, Howard Huson, Gertrude Moore, Lillith Spik.

Sixteen Buhl ladies attended the benefit bridge given at the Falls Saturday by members of the American Association of University Women. The afternoon was presided over by Mrs. George Layne, J. C. Mason, Fletcher Stillers, Earl McGrath, Gertrude Duncan, L. J. Johnson, Mrs. E. C. Johnson, D. F. Fricler, V. R. Laird, C. S. Peck, Avery Condon, Ben Tilly, John J. Conroy, J. W. C. A. staff will speak.

The subject will be a discussion of the Y. W. C. A. which will be held at Spokane during the month of April.

Mrs. Edith McCreath was hostess to members of the Saturday Night Bridge club. Mrs. L. P. McCreath was high scorer and Mrs. Ben Tilly, a guest of the club, was low.

gill Saturday. Nelson has built a new cooper shop near "WAC" Gill's livery barn and moved in ready for business.

The Blue Light Service Station has added another room to their building and are prepared to do better charging.

Hats Carry Lights A hatmaker has been selected in England for women, to protect them from being run down by automobiles for highway in night. The light is placed in glowing chemicals or phosphorescent in some instances, as the motorist can see the woman in time to avoid striking them.

Glows Worms Glow worms have been seen in the mountains of a recent year. They complete a series of tests of the crawler.

Railway Sacks Billion jars, made 25 inches by 25 inches, and of quality 12 weight 12 threads, per pound, 100 million grain sacks for the states and shippers of Britain grain into Britain's bread. It is said that the average life of a railway sack is seventeen years, and even then it is not useless, for it is usually sold to labor factories, or used by acid manufacturers for rough gloves for their workmen.

JUST ARRIVED Our 1928 Imported Wall-Paper Book English, French and German designs. This is the only book of its kind in this territory. We were very fortunate in obtaining this book. Ladies, there are just the patterns you need in your art work. 10 per cent discount on wall paper and all sized paints. Phone us for estimate on your spring painting.

Kunkle's Contracting & Paint Store Back of I. D. Store Phone 1513-W 110 Second Street South

Money! Money! Money! We have an abundance of money to loan on the very best terms. Money on City Property at 7% Money on Business Property at 6% Money on Farm Lands at 5 1/2%

Come in and let us talk over your needs along this line. We may be able to help you solve your problems. WE WRITE FIRE INSURANCE IN THE VERY BEST OF COMPANIES WE WANT YOUR BUSINESS

J. E. WHITE Phone 247 139 Main Ave. East

FOLDING CHAIRS FOR SALE

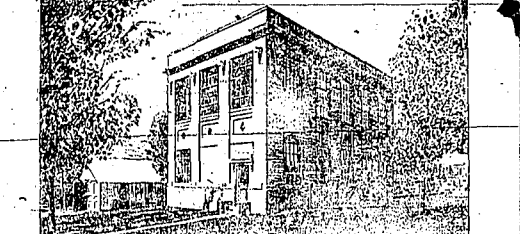
40 extra good form-fitting chairs with one-piece moulded backs and seats. Regular retail price \$3.00. Ideal for church or lodge rooms. There are 40 in the lot. Will sell all or part for only \$1.95 each while they last. Inquire—

The Idaho Citizen

When in Chicago Enjoy your stay at the superb New MORRISON HOTEL



1,944 Rooms \$2.50 Up all outside, each with bath, running hot water, and perfect sanitary. A house never so cozy. Economical Prices In Our Boston Oyster House Chicago's Best Dining Room. Table d'Hôte, \$1.25



"Electricity!" Keeps Modern Civilization Going!

Says Ernest Greenwood in his new book, "Aladdin, U. S. A."

"It were possible to visualize our complex daily life of today suddenly set down in the midst of conditions as they were a hundred, or even fifty years ago, totally lacking in modern resources which keep things moving, we could, perhaps, get some idea of the confusion and even hysteria which would be the inevitable result if our electric light and power industries should cease for function."

ELECTRICITY, first a curiosity, then a novelty, then a luxury, has now come to play so vital a part in every process of manufacturing, selling, transportation, communication and our ordinary daily living that interruption to its efficient generation and distribution would paralyze the nation.

Electric light and power companies do much more than merely care for the day-by-day demands of their customers.

The modern electric utility is run on plans made years in advance. The entire structure of America's unparalleled electric development has its origin in the stimulation given to the greater use of electricity by having an abundant supply always ready at the lowest possible cost.

To plan ahead, to keep eternally on the watch for better methods and new economies, requires a type of management not unknown to American business men. But it requires one condition without which it can neither function nor exist—that is the freedom of the individual to plan, to execute his plans and to prosper as he wins success.

With public regulation of its rates, its services and its earnings, the electric light and power industry thus far has been able to hold the individual type of management within its ranks. The continuance of this principle of individual initiative will assure the maintenance of economy and efficiency in public service.

Idaho Power Company

MARKETS

Table listing market prices for various commodities including wheat, flour, sugar, and other goods.

Special Currency for Use of Dead-Chinese

The spirit of China are extrajurisdictional... This money is real Chinese money...

Forests Give Name to Land of Holland

Allow us to give another explanation of the name Holland... The land along the North Sea was in the time before Christ mostly flat...

Historians in Dispute

There is a great difference of opinion as to which of the two theories... Many historians are of the opinion that the name Holland is a corruption of the name of the river...

Life in Fort Mink

A young Englishman has brought back a number of letters from Fort Mink... The letters are full of interesting news...

Proof Positive

To avoid cluttering a special card... A manufacturer received it in a rough oblong box and checked the contents...

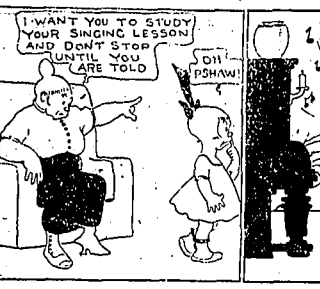
Cruel Comment

A young woman, newly engaged... A young woman, newly engaged, was invited to a party...

Beauty From Worry

Perhaps some women worry about their appearance... A young woman, newly engaged, was invited to a party...

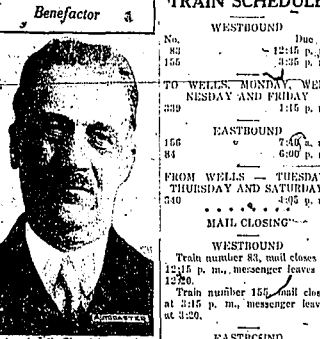
DOROTHY DARNIT



The Worst Is Yet to Come



Benefactor



Amadeo P. Giannini, son of an Italian vegetable grower and founder of the Bank of Italy... He is now a prominent banker...

Are you nervous? Do you become irritated at trifles, start at sudden noises, lie awake nights?

Advertisement for DR. MILES' NERVINE, a medicine for nervousness and irritation.

COL. MUNYON AUCTIONEER

Regular Saturday Sales at Twin Falls City Grounds... Auctioneering services for various properties.

FARM MONEY

We have the best farm loan, we think, that is being made on the Twin Falls Tract... Letsch and Williams.

NOTICE OF WRIT OF ATTACHMENT. J.G. READ & BROS. CO., Attorneys.

BUSINESS PERSONALS

Attorneys: E. L. ASHTON, 1st Natl. Bank Bldg., Phone 222. J. H. BARNES, 138 Main North, Phone 181.

PUBLIC LAND SALE

Department of the Interior, U. S. Land Office at Blackfoot, Idaho, January 28, 1928.

TRAIN SCHEDULE

Table showing train schedules for Westbound, Eastbound, and Southbound routes.

NOTICE OF WRIT OF ATTACHMENT

In the District Court of the Eleventh Judicial District of the State of Idaho and in for Twin Falls County.

NOTICE OF WRIT OF ATTACHMENT

In the District Court of the Eleventh Judicial District of the State of Idaho and in for Twin Falls County.

NOTICE OF WRIT OF ATTACHMENT

In the District Court of the Eleventh Judicial District of the State of Idaho and in for Twin Falls County.

NOTICE OF WRIT OF ATTACHMENT

In the District Court of the Eleventh Judicial District of the State of Idaho and in for Twin Falls County.

By Charles McManus. Illustration of a man singing into a microphone with the text 'WILL YOU STOP THAT SINGING?' and 'CERTAINLY!'.

CITIZEN WANT ADS

WANTED—100 boxes to paint and kalsomine... PAINT STORE—Paint, glass and wallpaper... FOR SALE—Roberts Corn in Car Late.

NOTICE OF WRIT OF ATTACHMENT

In the District Court of the Eleventh Judicial District of the State of Idaho and in for Twin Falls County.

NOTICE OF WRIT OF ATTACHMENT

In the District Court of the Eleventh Judicial District of the State of Idaho and in for Twin Falls County.

NOTICE OF WRIT OF ATTACHMENT

In the District Court of the Eleventh Judicial District of the State of Idaho and in for Twin Falls County.

NOTICE OF WRIT OF ATTACHMENT

In the District Court of the Eleventh Judicial District of the State of Idaho and in for Twin Falls County.

NOTICE OF WRIT OF ATTACHMENT

In the District Court of the Eleventh Judicial District of the State of Idaho and in for Twin Falls County.

NOTICE OF WRIT OF ATTACHMENT

In the District Court of the Eleventh Judicial District of the State of Idaho and in for Twin Falls County.

Advertisement for Gustav Fletcher Studio, Orphan Bldg., Phone 118-W.

