

State College  
This Week  
Get Your Christmas Cards from Idaho Citizen Office  
By Arthur Brisbane  
GOOD SUCR, GOOD SERVICE.  
WHAT IS A RICH MAN?  
CAPTAIN OF HIS SOUL.  
NO SOCRATIC METHODS.

Chiefs of many hotels competed to see who would make the best soup. Six men, including Clarence H. Mackay, French chef, were allowed to try to win the prize to L. Allart.  
That competition means more to business than the average soup taster; more, for instance, than any Olympic competition.

Income tax returns show 283 Americans with net incomes of \$100,000 or more in the two years. Citizens reporting income of \$50,000 or more number only 125. They were four-tenths of them in 1928.

There are several billionaires in the country. One man with a million was not so rich now you need \$2,000,000 a year.

It is hard to be sure that you are a capitalist. Scientists say you have got any money, and you don't know where you're going, and you're not sure you're not just dragging it along.

William McAdams, who was superintendent of Chicago schools, is charged with teaching the "method" of teaching. His plan, may heaven be praised, is to teach the "method" in modern schools.

Socrates, if Plato describes his method accurately, touched a new peak in the history of the world when he had to say, "I know that I know nothing."

What modern education needs is a method of teaching that is not Socratic. It is a method of teaching that is not Socratic. It is a method of teaching that is not Socratic.

Two Directors Ask Re-election  
F. A. Snyder of Blaine were the only candidates for the nomination by popular vote at the Illinois state election last Friday at the American Falls Reservoir district. No. 1 has served for six years, and no names are written in on the ballots in opposition they will be elected to their second terms.

Canada Wants U. S. Fruit Taxed  
A delegation of business men and fruit growers of Vancouver, B. C., last week appealed to the minister of finance of British Columbia. Mr. Robb, in endeavoring to have parliamentary legislation that would prevent United States firms from dumping their surplus fruit upon the Canadian market.

Important meeting of potato growers and dealers will be held at Pocatello Monday to discuss the alleged violation of the potato marketing measures agreed on at the Pocatello meeting in the fall of 1927. It is expected to offer only No. 1 on the market, feeding culms to livestock and holding the remainder in storage for one year. A few farmers are reported to have failed to comply with these regulations, resulting in depressed prices for No. 1 grade.

Damaged Pages  
THE IDAHO CITIZEN  
ONLY 17 Shopping Days Until Christmas  
WEEKLY POTATO MARKET REVIEW  
New Organization of Fruit Men Would Protect Industry  
WOMEN START ON-CHRISTMAS SEAL CAMPAIGN  
Twin Falls, Twin Falls County, Idaho, Tuesday, December 4, 1928. Number 46

VOLUME 9  
DIRECTORATE OF CANAL COMPANY SETS 1929 LEVY

At a meeting of the Twin Falls Canal company directors Saturday the ensuing year's tax levy was set at \$2.25 per share, making a budget of approximately \$350,000. This is a decrease from the tentative levy agreed on the previous Monday when \$2.40 was suggested, with the budget total of more than \$480,000.

COMPLETE FILER CITIZENS REPORT GIVEN

The complete tabulation of the vote in Idaho gives Herbert Hoover a record-breaking majority for the presidency. He secured 59.5 per cent of the total vote, while Alvin Karpis secured the highest majority of 42,700 more than Cox in 1928.

\$70,000 BRIDGE IS DEDICATED

Several thousand people attended the dedication ceremonies at the opening of the new \$70,000 bridge over the Snake river at Idaho Falls Monday. Joe D. Wood, commissioner of public works, presided over the occasion and the following speakers took part: Mayor and Mrs. B. W. Clark of Idaho Falls, the band of the city, the band of the county, and the band of the city.

Potato Growers and Dealers to Assemble in Pocatello Friday

An important meeting of potato growers and dealers will be held at Pocatello Monday to discuss the alleged violation of the potato marketing measures agreed on at the Pocatello meeting in the fall of 1927. It is expected to offer only No. 1 on the market, feeding culms to livestock and holding the remainder in storage for one year.

New Bridge and More Roads Underway in this District

Dan L. Caravanish of Twin Falls awarded a contract at Saturday meeting of the Twin Falls highway district board in \$200 over the low bid of \$100,000 for the new bridge over the Snake river. The new span will measure 60 feet long and 16 feet wide and will eliminate the necessity of crossing the canal over the existing bridge, which is in need of a narrow trail.

Buhl Citizens Cast Votes on Power Plant

Registration began Friday in Buhl for those who will vote today on the matter of a new power plant. Much interest has been aroused the last few weeks by the proponents and opponents of the measure to determine its present effect on the community.

Tharp Will Be Sentenced Today

Ward Otis Tharp is to receive sentence Tuesday morning at 9:30 o'clock, according to the announcement of Judge Hugh A. Baker at the time he returned the verdict of guilty of first degree murder.

House Burns

Fire that is thought to have started from an overturned stove caused the almost total destruction of the home of Mrs. J. H. Galt at the corner of the street near Kimberly road last Thursday morning.

Wedding Anniversary

The 25th anniversary of the marriage of Dr. and Mrs. E. A. Parrott of Twin Falls was observed Sunday, November 25, with a dinner party at the home of the couple.

School Man Goes East

John I. Hillman, secretary of the Idaho Education association, is leaving for the east on Monday. He will be in charge of the annual convention in Washington, D. C., of representatives of other state associations to discuss proposals for revision of the state constitution.

Tharp Will Be Sentenced Today

Ward Otis Tharp is to receive sentence Tuesday morning at 9:30 o'clock, according to the announcement of Judge Hugh A. Baker at the time he returned the verdict of guilty of first degree murder.

WEEKLY POTATO MARKET REVIEW

The general tone of the potato market was dull during the past week, with little change in prices reported for the entire region. The lowest prices prevailing in Pacific Coast markets, shipments decreased over 400 cars from the previous week. The highest prices were reported from Michigan, Minnesota and Wisconsin containing 2,000 cars of the 375 bushel. Movement from the Idaho Falls section increased 45 cars, accounting for most of the state's 10 per cent increase of 407 cars.

WOMEN START ON-CHRISTMAS SEAL CAMPAIGN

The annual Christmas Seal campaign got under way Monday with five tenters of women canvassing the business section of town for the purchase of the Christmas seals. Of the 2000 allotted to the Twin Falls county, about half will be raised in this city.

Tharp Will Be Sentenced Today

Ward Otis Tharp is to receive sentence Tuesday morning at 9:30 o'clock, according to the announcement of Judge Hugh A. Baker at the time he returned the verdict of guilty of first degree murder.

House Burns

Fire that is thought to have started from an overturned stove caused the almost total destruction of the home of Mrs. J. H. Galt at the corner of the street near Kimberly road last Thursday morning.

Wedding Anniversary

The 25th anniversary of the marriage of Dr. and Mrs. E. A. Parrott of Twin Falls was observed Sunday, November 25, with a dinner party at the home of the couple.

School Man Goes East

John I. Hillman, secretary of the Idaho Education association, is leaving for the east on Monday. He will be in charge of the annual convention in Washington, D. C., of representatives of other state associations to discuss proposals for revision of the state constitution.

Tharp Will Be Sentenced Today

Ward Otis Tharp is to receive sentence Tuesday morning at 9:30 o'clock, according to the announcement of Judge Hugh A. Baker at the time he returned the verdict of guilty of first degree murder.

New Organization of Fruit Men Would Protect Industry

Fruit growers of Payette county have formed an organization which they hope will extend to all Idaho for the purpose of making arrangements with the industry for the improvement of marketing and crop control conditions. A previous meeting was held at Payette last week. The Payette district has the largest number of fruit growers in Idaho, the aims of the movement being to protect the growers from unfair competition by the fruit buyers and officers of the new organization were to be elected at a third meeting hereafter. The proposed organization is the result of the sentiment of the growers, who are organized in county units, and the new organization is being organized by the growers and the fruit buyers. The organization will ask the state department of agriculture to enforce laws passed for the benefit of the growers, and that the fruit buyers should be organized to protect the growers from unfair competition by the fruit buyers. The organization will ask the state department of agriculture to enforce laws passed for the benefit of the growers, and that the fruit buyers should be organized to protect the growers from unfair competition by the fruit buyers.

Buhl and Eden Men High Winners—29 Other Hubs on Honor Roll

The October report of the Buhl Caw-Trustee association submitted by W. H. Byrne, treasurer, shows 47 herds comprising 400 cows and 112 calves. The association produced more than 100 pounds of butter fat each. Average yield per cow was 462 pounds and 411 and 411 pounds of butterfat. The high herd in each class was 23 pounds below ten cows, George Evans of Eden. Four herds produced an average of 550 pounds of milk and 36.2 pounds of butterfat.

Tharp Will Be Sentenced Today

Ward Otis Tharp is to receive sentence Tuesday morning at 9:30 o'clock, according to the announcement of Judge Hugh A. Baker at the time he returned the verdict of guilty of first degree murder.

House Burns

Fire that is thought to have started from an overturned stove caused the almost total destruction of the home of Mrs. J. H. Galt at the corner of the street near Kimberly road last Thursday morning.

Wedding Anniversary

The 25th anniversary of the marriage of Dr. and Mrs. E. A. Parrott of Twin Falls was observed Sunday, November 25, with a dinner party at the home of the couple.

School Man Goes East

John I. Hillman, secretary of the Idaho Education association, is leaving for the east on Monday. He will be in charge of the annual convention in Washington, D. C., of representatives of other state associations to discuss proposals for revision of the state constitution.

Tharp Will Be Sentenced Today

Ward Otis Tharp is to receive sentence Tuesday morning at 9:30 o'clock, according to the announcement of Judge Hugh A. Baker at the time he returned the verdict of guilty of first degree murder.

(Continued on Page Four)

TWIN FALLS BOY PERFECTS FEED RATION DEVICE

Designed to Greatly Benefit Stock Feeders—Patented at Moscow and Used in Three Universities.

Lyon H. Hempleman, son of Mr. and Mrs. H. Hempleman, Twin Falls dairyman and farmer, is the inventor of a mechanical device for the rapid solution of the balanced ration in determining the quantities of the various feeds to be used for animals according to the different weights and requirements of the latter. He expects it to prove of great value and benefit to livestock feeders in determining the proper rations accurately and quickly.

Mr. Hempleman, who is 23 years of age, graduated from the University of Idaho in 1932 and perfected the ration device during his junior year at Moscow. He was in Moscow and in directing copyrighted and is now introducing it to prospective customers.

He sold for \$7.50 and is using the University of Wisconsin, Illinois and Idaho as his research organizations. Professors at the University of Idaho in similar manner calculate and its efficiency was demonstrated at the feed yards of the state university. It was then used to demonstrate the device to students in Illinois and Wisconsin.

The feeds used in the ration are represented by the lines extending from Point X to the requirement point as shown. Determination of the quantities of the various feeds to be used in the ration is made by moving the arm along the nutritive ration angle according to the requirements of the animal. The device is represented by the proportion to be used being indicated by the operation of the arm along the scale.

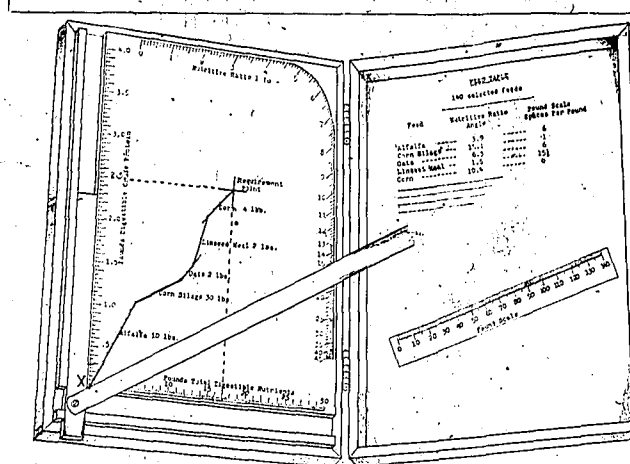
History and use for dairy cattle and other classes of livestock have been advocated by the representatives of agricultural colleges in many years. The various books have been published outlining the methods and advantages of the balanced ration and the agriculture press has not only urged, but also instructed stock feeders have actually acquainted themselves with the method of balanced rations and many of those who are not workers have either depended on others for this service or done without.

Apparently something has prevented the more universal adoption of the system as all livestock feeders are interested in. It is believed that the reason would bring about more profitable production. Perhaps the device has been so generally used to juggle around constituent materials the various constituents of the feeds to determine a balanced ration. The majority of the livestock feeders today are relying on guess work in making up their rations.

It would seem therefore that any means providing for the quick solution of the balanced ration would prove of considerable value to the practical livestock feeder. The inventor of this device saw this need and set about to meet it in a simple, accurate, mechanically and quickly. The result of the effort was a slide rule device with a ration card which is balanced in about three to five minutes time. The device is arranged to be used in connection with the "Meridian Feeding Standards" and its operation can be performed by anyone.

The feeding standards give the nutrients—digestible crude protein and total digestible nutrients—required for properly nourish a given animal for a period of twenty-four hours. Feeds are given percentage of digestible crude protein and total digestible nutrients and it is the purpose of this device to combine the feeds in the right amounts and proportions to supply the exact nutrient requirements of the animal. Any number of feeds may be used in the ration and the complexity of feeds used does not make the problem more difficult to solve.

HEMPLEMAN'S RAPID RATION CALCULATOR



by a number of agricultural colleges as a big step toward being introduced. Acclaimed by a number of agricultural colleges as a big step forward in the matter of ration computation, the calculator seems destined to bring deserving credit to its creator.

Table with columns: Feed—, Pounds, Percent Digestible Protein, Percent Total Digestible Nutrients, Pounds Total, Pounds Crude Protein, Pounds Digestible Nutrients. Rows include Alfalfa, Corn silage, Oats, Limestone meal, Corn, and Requirements of ration.

nutrient scales respective to the nutrient requirements of the livestock. These lines are shown as the dotted lines in the figure and their intersection locates the requirement point.

Feeds are represented on the chart by feed lines and one feed line is added to that of another to form a synthetic amount of feed lines extending between point X and the requirement point as shown in the figure. The nutritive ration angle is drawn in connection with the nutritive ration scale. The arm is set at the required angle for drawing these feed lines. For example, the figure shows the arm set at the 15.11 ratio angle of corn silage (15.11). By moving the slide in the groove the arm is set at correct angle for a feed. The feed table is placed anywhere on the chart. The pounds are measured off on the feed line before a second feed line is added to the feed table to show how many pounds on the pound scale are equal to one pound of the feed. The example of how the pounds are measured: the spaces per pound value of alfalfa is 0.16, thus, the pounds to be placed on the scale for 10 lbs and six spaces counted off for each pound.

The question that often arises is: How is the determining the length of a given feed line? To secure bulk in the ration and also to change the ration, the roughages must be fed to the animal in the right proportion. In this case it was estimated that the 1000 lb cow would contain 10 lbs of alfalfa and 30 lbs of corn silage daily. Therefore, the length of the feed line was drawn to a length of 10 lbs. The remaining three feeds compose the concentrates of this ration. The roughage feeds are determined by their percentage composition in drawing the concentrate feed line. It is only necessary to adjust the lengths in such a way as to have the last intersect the requirement point. The resulting lengths of the concentrate feed lines determine the amounts of each that must be fed in addition to the roughage to give a balanced ration. This, reading from the figure, the amount of each feed required to balance the ration for the 1000 lb cow is four lbs of 16.5 percent milk, we have as follows:

Table with columns: Feed, Pounds. Rows: Alfalfa, Corn silage, Oats, Limestone Meal, Corn.

As a check on this method of balancing rations and to give the reader some idea of what a balanced ration looks like in figures, the following table shows the percentage of each of the above feeds multiplied by their percentage composition of digestible crude protein and total digestible nutrients. They are added and checked with the nutrient requirements of the 1000 lb cow:

Table with columns: Feed, Pounds, Percent Digestible Protein, Percent Total Digestible Nutrients, Pounds Total, Pounds Crude Protein, Pounds Digestible Nutrients.

Method of Operation. The method of balancing a ration with this device is best shown by balancing an example ration.

Example Ration. A 100 lb cow giving 30 lbs of milk per day. Feeds available are alfalfa, corn silage, oats, limestone meal and corn.

The feeding standards give the nutrient requirements of the 1000 lb cow as follows: Digestible crude protein 2.5 lbs. Total digestible nutrients 17.0 lbs.

A requirement point is located on the chart of the calculator to represent the above amounts of nutrients by extending two lines from the point on the digestible crude protein and total digestible

nutrient scales respective to the nutrient requirements of the livestock. These lines are shown as the dotted lines in the figure and their intersection locates the requirement point.

Feeds are represented on the chart by feed lines and one feed line is added to that of another to form a synthetic amount of feed lines extending between point X and the requirement point as shown in the figure. The nutritive ration angle is drawn in connection with the nutritive ration scale. The arm is set at the required angle for drawing these feed lines. For example, the figure shows the arm set at the 15.11 ratio angle of corn silage (15.11). By moving the slide in the groove the arm is set at correct angle for a feed. The feed table is placed anywhere on the chart. The pounds are measured off on the feed line before a second feed line is added to the feed table to show how many pounds on the pound scale are equal to one pound of the feed. The example of how the pounds are measured: the spaces per pound value of alfalfa is 0.16, thus, the pounds to be placed on the scale for 10 lbs and six spaces counted off for each pound.

ROGERSON

Another delightful snow fell upon this vicinity Monday night which was welcomed with much joy. Cold weather prevails and the great amount of sickness seems to be lifting somewhat.

Mr. and Mrs. J. D. Jones of Three Creeks were business callers in Rogerson Saturday.

Miss Helen Walle, Twin Falls, was a recent guest of Mrs. Helen Walle, Twin Falls.

Miss Florence Skinner was an overnight Sunday visitor with her folks, returning to her work in Twin Falls on Monday evening.

Master Marvin White of Rogerson, who has been with his aunt and uncle, Mr. and Mrs. John Farmer, has recovered from an illness.

Miss Mary Ellen White of Twin Falls was a week-end visitor with her folks, returning to her work in Twin Falls on Monday evening.

Miss Margaret Peters, Twin Falls, was a week-end visitor with her folks, returning to her work in Twin Falls on Monday evening.

A. E. Caldwell is loading two carloads of wheat on the track at this station. Dale Kunkel is

Miss Helen Walle, Twin Falls, was a recent guest of Mrs. Helen Walle, Twin Falls.

Miss Florence Skinner was an overnight Sunday visitor with her folks, returning to her work in Twin Falls on Monday evening.

Master Marvin White of Rogerson, who has been with his aunt and uncle, Mr. and Mrs. John Farmer, has recovered from an illness.

Miss Mary Ellen White of Twin Falls was a week-end visitor with her folks, returning to her work in Twin Falls on Monday evening.

Miss Margaret Peters, Twin Falls, was a week-end visitor with her folks, returning to her work in Twin Falls on Monday evening.

A. E. Caldwell is loading two carloads of wheat on the track at this station. Dale Kunkel is

Miss Helen Walle, Twin Falls, was a recent guest of Mrs. Helen Walle, Twin Falls.

Miss Florence Skinner was an overnight Sunday visitor with her folks, returning to her work in Twin Falls on Monday evening.

Master Marvin White of Rogerson, who has been with his aunt and uncle, Mr. and Mrs. John Farmer, has recovered from an illness.

Miss Mary Ellen White of Twin Falls was a week-end visitor with her folks, returning to her work in Twin Falls on Monday evening.

Old Timers Get Together Here

Two boyhood friends of forty years ago were brought together in Twin Falls this week by a local new statement of one of them being in town to spend Thanksgiving with relatives. He was Leo Harlan of Lakeside, New Mexico, who was elected this month as state treasurer after serving two terms in the house of representatives.

Harlan is a well known figure in the history of the state. He was one time city marshal of Dodge City, Kansas, in the wild days of that town, and he has had a big part in subsequent years in clearing up the state by his restlers and desperadoes.

The other man is L. L. Breckenridge, manager of Twin Falls Tourist Hotel. He came west forty years ago, having just seen his friend Harlan in the "Badlands" of Arizona, county, Oklahoma, and together they rode the range and played a part in pioneer clearing up the state by their restlers there, a fact which gave them plenty to talk about in their reunion here.

Several were seen lately in a typical westerner and his local relatives are Mrs. E. C. Bell, a sister, and F. S. Bell, a nephew.

For Printing, telephone 172.

Announcement

We have installed at our place of business a new

McCray Meat Display Case

Cooled by FRIGIDAIRE and will keep on hand a stock of Fresh and Smoked Meats, Vegetables & Citrus Fruits

Our line of Groceries is fresh and clean and our prices are low

We also carry Coal and Gas and Oils Men's Work Clothes and Shoes

Car Fancy Lump just arrived—priced at \$11.00 per ton

Berger Mercantile Co. BERGER, IDAHO

FOR SALE

AUTO GLASS

Auto door glass and Windshields, a specialty. No charge for setting. 200 windshields, \$2.00 each. We have installed an auto glass grinding and polishing machine. Get our prices on auto glass.

WINDOW GLASS

We have a large stock of window glass in your yard, or phone and we will deliver. No charge for setting.



THE IDAHO CITIZEN

SEMI-WEEKLY PER YEAR, \$2.00 A semi-weekly newspaper published on Tuesday and Friday of each week at Twin Falls, Idaho, by the Citizen Publishing Company

AUTOCASTER NEWS SERVICE Entered as second class matter at the postoffice at Twin Falls, Idaho, under the act of March 3, 1879

The Idaho Citizen is an authorized medium of publication for the agricultural cooperative organizations of the great State of Idaho, including the Farmers' Grange, International Cooperative Dairy Association, Idaho Egg Producers' Association, Idaho Wool Growers' Association, Southern Idaho Bean Growers' Association, Southern Idaho Beet Growers' Association, Idaho Turkey Growers' Association, Mountain States Honey Producers' Association, Twin Falls County Horticultural Society

CITIZEN PUBLISHING CO., 262 Second Avenue North, Twin Falls, Idaho, Phone 172

BROADCASTS FARM NEWS



Now Farmers Can Get Noon Hour Farm News

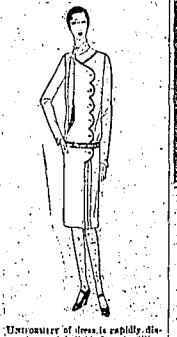
Secretary W. M. Jardine is an advocate of the use of radio for the dissemination of information. The department of agriculture, which he heads, cooperates with more than 200 stations in sending weather, market and general agricultural information through the air.

There is now a special 3-day-a-week noon hour broadcast for farmers, occupying three-fourths of an hour each day. The first third of the time the program comes from Montgomery Ward and Company in Chicago. Then the scene shifts to Washington, where the National Broadcasting Company sends from its studio the latest information, reports, etc., supplied by the department of agriculture. Back again to Chicago for the last third.

October Dairy

Table with columns for names and numbers: O. Eversen 3 25, P. Boone 3 26, C. Walker 3 26, G. Evans 3 26, H. Adams 3 26, W. Beckley 3 21, C. Tencknick 3 20, G. McLean 3 20, R. Dusk 3 18, C. Hensley 3 18, C. Campbell 3 18, W. P. McCasby 3 18, C. Hart 3 16, W. Hatfield 2 12, C. Campbell 2 10, J. Webber 2 10, A. Davis 2 10, G. Freeman 1 12

Ever-Dress Must Have A Meaning All Its Own



Concealer of lines is rapidly disappearing and instead is utilizing its place. The woman of today has her hair dressed or cut, chooses perfume and cosmetic articles, hats, bags, and shoes, all to express herself as a woman. That is particularly evident in the designing of her frocks. They must be a part of her, they must be a little touch of originality and suit her type of face and figure. For a woman whose self she will appreciate the maintenance of simplicity, the dress above is a splendid suggestion for staid or business wear during the winter. (The smart collar thrown carelessly about the neck and over the shoulder is especially suitable as the original weathered outline down the left side and ending in pleats on the skirt. The long straight sleeves buttoned at the wrists and the narrow belt at the hips emphasize the details of this youthful frock. Made in light woolen tweed, it is very comfortable and makes a very smart and becoming outfit for the winter. Long plumpers. For small figures, it will be better to have the neck, cuffs and collar in a contrasting color. Made in light woolen tweed, it is very comfortable and makes a very smart and becoming outfit for the winter. Long plumpers. For small figures, it will be better to have the neck, cuffs and collar in a contrasting color.)

Tomato Juice Healthful



Recent discoveries of Science which place tomatoes in the very front rank of healthful foodstuffs have been found for this succulent fruit - especially in canned form. Tomatoes possess advantages of both fruits and green vegetables, being rich in vegetable acids, mineral salts and containing in remarkable proportion all vitamins necessary for growth and development. The department of agriculture, which he heads, cooperates with more than 200 stations in sending weather, market and general agricultural information through the air.

IDAHO SCHOOL REPORT GIVEN

A study of Idaho schools submitted in a report by the state commissioner of education, W. H. Vincent, shows the state to have 75 schools in which one teacher teaches all subjects in all the classes in her charge. Of this number, 600 had an enrollment of less than 16 students.

WENDELL FARM SHIP CATTLE

Three carloads of fat-Hanford cattle were shipped from Wendell Thursday to the Sand Springs farm, the beef stock being consigned to the Portland market. This is the second shipment since the stock were put on fattening feed about six weeks ago. Three carloads were sent previously to the Portland market while ten more were sent to Los Angeles.

GIRL WINS PIC CLUB-HONORS

A girl, Alta Fisher, of Oxford, Idaho, won first place at the Eastern Idaho district fair and at the Utah state fair this fall with a picture that she raised. She was declared to be the second best pig club member in the state.

Power lines extended. The Idaho power company is extending its lines to serve 13 additional farm families northwest of Jerome by the construction of three miles of transmission line. Construction of another line three miles east of that town has also been started.

THE YOUNG LADY ACROSS THE WAY



The young lady across the way says she has a new dress. She says she has a new dress. She says she has a new dress. She says she has a new dress. She says she has a new dress.

CITY TO BE DRESSED IN 'GAY' SATIRE

Two Idaho business streets are to be "dressed" for the holiday season presenting an appearance that has never before been attained here.

The decoration system consists of five streamers across the street in each block, there will be 42 feet in length and composed of evergreen, garlands, wreaths and Christmas bells.

POWER LINES EXTENDED

The Idaho power company is extending its lines to serve 13 additional farm families northwest of Jerome by the construction of three miles of transmission line.

THE FARM FLOCK SHOULD NOT BE A "PINK MONKEY" PROPOSITION

Wool and egg prices for the coming year indicate a good profit for the farmer who has the proper stock on the farm, and realize a profit.

GENUINE Ford Battery will operate 85 per cent of all cars \$8.50 Liberal Allowance on Old Battery Free Installation and Inspection Service YOUR FORD DEALER

OBEY THE LAW

Residents of this section are responding nobly to the request and order of the state and county public health departments in shutting down public assemblages for a time.

This must not be construed as a quarantine in any sense of the word. The county or city is not quarantined and doubtlessly will not be if the present order is consistently observed.

Persons affected with meningitis and those believed to be exposed to the disease are quarantined, as they should be.

The best way to obtain relief from the present situation is for everyone to obey the rules; aid in enforcing the preventive measures, and thus bring to an early end an epidemic, expensive in human toll and economic loss.

EZRA MEEKER

The man that made the Oregon Trail famous has passed the last Great Divide. Following an historic career that extended nearly a century, Ezra Meeker, patriarch of the plains, laid him down in his last sleep Monday morning.

All America honors his memory and that of his kinmen who wore our forebears in this great western country. Pioneer of pioneers, his weary feet will tread no more "where rolls the Oregon." They have earned for him the eternal rest that now is his.

TAXATION MEETING

A state taxation meeting at Boise has been called for December 13 and 14 at which it is proposed that a number of projects be taken up.

The meeting of course is entirely unofficial, it being called by the state chamber of commerce, but it is the desire to make certain recommendations to the state legislature. Organizations cooperating with the state chamber are listed at the Idaho State Grange and the Idaho Educational Association.

Principal subjects for consideration are: State Tax Commission—Plan similar to "Indiana Plan" as outlined in the August Issue of The Idaho Taxpayer and report of the Western States Taxpayers' conference.

Sales Tax—Tax on cigarettes, cigars, tobacco, cosmetics and chewing gum.

Amusement Tax—Tax on tickets to entertainment.

Municipal Utilities Accounting—Shall municipally owned utilities be required to keep their accounts and file their reports the same as privately owned utilities?

Bureau of Public Accounting—Shall this department have more supervision over taxing units and be empowered to require them to file complete reports?

At the outset, more commissions in this state should be discouraged. Idaho certainly does not want another bunch of nuisance taxes; the county school unit system cannot seriously be considered in this state at this time; and other of the subjects outlined will strike objectionable snags.

It is predicted that the meeting will result in a lively session. Just how profitable it will be remains to be seen.

In a story by Sunat about the "Success of One Idaho Farmer," the writer says: "Today he has a nice home, and for all these blessings he awards the major share of the credit to the abundant use of cheap electric current on his farm." This is wonderful information for the childless, and would delight the heart of Theodore Roosevelt were he alive to relate the wonderful progress made by modern science. Friend Putnam should certainly use this in his propaganda. Should suggest something like this for a scare heading: "Electricity Populates the World," etc.—Frank Burroughs in Idaho Pioneer.

Now at last there is some real farm relief! The farmers are no longer reminded of their plight over the very single night.

BOY IS BANKS PRESIDENT

Because he had saved \$22.50 out of his earnings as a golf caddy on the Chicago Golf course, Russell Johnson, 13 years old, was made president of the Gary, Wheaton Junior bank. This was started by officials of the Gary, Wheaton bank of Illinois to encourage savings by younger people. The junior bank will be regulated by the big bank, it is operated by the boys and is officers of the parent institution.

Christmas Greeting Cards

Order your cards for Christmas NOW, and save last minute worries. Cards will be delivered anytime you wish. We have selected, for your approval, the largest line of Christmas Cards in the City. Many beautiful styles and sizes never shown before, and at the lowest possible price for quality cards. Engraved, Relief Engraved, or Printed with your own name. CALL AT THIS OFFICE, OR PHONE 172 and we will be glad to send our representative to your house or place of business.

Idaho Citizen Commercial Printing Department Quality and Service

Prompt Ambulance Service Day or Night White Mortuary ELLA M. WHITE, Mgr. Funeral Directors Phone 1400 Twin Falls

GENUINE BAYER ASPIRIN SAY "BAYER ASPIRIN" and "INSIST!" Unless you see the "Bayer Cross" on tablets you are not getting the genuine Bayer Aspirin, proved safe by millions and prescribed by physicians for 25 years. DOES NOT AFFECT THE HEART Safe Accept only "Bayer" package which contains proven directions. Ready "Bayer" boxes of 10 tablets. Also bottles of 24 and 100—Bayer is the trade mark of Bayer Manufacturing Co., Elberfeld, Germany.

FAIRVIEW

Mrs. Elizabeth Ward of Wendell came over to attend the wedding of Mr. and Mrs. Barlow Saturday evening...

It has been considerable disappointment to several of the farmers that hope they are being received by a company which contracted last fall for raising of a certain breed...

Charles Kuesell has been to Gray Hill pulling up the fence and bringing them to the tract. Charley has been one of the longest...

After three months' infection Joe Kuehn has since his feet, triumph potatoes and stored them with the P. F. Alquist Produce company...

A number are reported as being ill, the flu being prevalent. On account of the measles epidemic has been over the county and all gatherings have been banned...

Mr. and Mrs. West were at the Wendell fair and were gone about six weeks. They drove through to Salt Lake, where they left their car to complete the journey...

The Wendell Red Cross, composed of 50 members has held subscription for a few days, reports Rev. Barnett...

Three deaths have occurred in Wendell this week. Mrs. Pauline Lyonnath, who has been at the hospital for the past two weeks...

Charles Banks, 82 years of age, was taken to his home by his son, J. S. Banks, passed away Monday. He will be taken to Kendall...

Local Masons attended the annual get-together banquet, held in Goodwin hall...

Mrs. H. D. Jackson was hostess at a bridge dinner Monday night at the home of Mrs. W. S. Johnson...

LIVE STOCK WELL-FED PIG IS MOST PROFITABLE Most producers with few exceptions will make more money from their pig crop...

Blue Grass Superior Cop for Pasturing Blue grass is good, even during the fall and winter months...

Treatment for Pigs in Essential White Young Young pigs are the backbone of the pig raising industry...

Wendell Wendell Red Cross, composed of 50 members has held subscription for a few days...

Wendell Wendell Red Cross, composed of 50 members has held subscription for a few days...

Wendell Wendell Red Cross, composed of 50 members has held subscription for a few days...

Wendell Wendell Red Cross, composed of 50 members has held subscription for a few days...

Wendell Wendell Red Cross, composed of 50 members has held subscription for a few days...

Wendell Wendell Red Cross, composed of 50 members has held subscription for a few days...

Wendell Wendell Red Cross, composed of 50 members has held subscription for a few days...

DOROTHY DARNIT NOW IS YOUR SISTER GETTING? 'SHE'S FINE!' SAY 'YOU'RE IN!' SISTER 'AIN'T THAT SAD

Pleasant Plains Mr. and Mrs. Al. DeWalt and wife enjoyed a trip to Boise Friday and returned home Sunday...

Pleasant Plains Mrs. C. C. Jones entertained the country life club last Thursday with a large attendance...

Pleasant Plains John Silleck, Jack Buckler, Walter Zander and Guy Hallen held their Christmas party...

Pleasant Plains Mr. and Mrs. M. B. Jones and daughter Rachel returned Monday from a two months' auto trip...

Pleasant Plains Mrs. Burkes and family moved to Jerome Friday where Mr. Mull is going to farm the Burkes ranch...

Pleasant Plains A letter from Mr. Merritt Fry who is visiting here states that the influenza, starts at Stillwater, Idaho...

Pleasant Plains Mr. and Mrs. Otto are home from Wendell holiday Wednesday. Mr. and Mrs. Otto are being congratulated over the arrival of their first baby...

Pleasant Plains Mr. and Mrs. Otto are home from Wendell holiday Wednesday. Mr. and Mrs. Otto are being congratulated over the arrival of their first baby...

Pleasant Plains Mr. and Mrs. Otto are home from Wendell holiday Wednesday. Mr. and Mrs. Otto are being congratulated over the arrival of their first baby...

CITIZEN WANT ADS WANTED-100 houses to paint and wallpaper. We have exciting thing you need. Let us estimate your work...

CITIZEN WANT ADS WANTED-100 houses to paint and wallpaper. We have exciting thing you need. Let us estimate your work...

CITIZEN WANT ADS WANTED-100 houses to paint and wallpaper. We have exciting thing you need. Let us estimate your work...

CITIZEN WANT ADS WANTED-100 houses to paint and wallpaper. We have exciting thing you need. Let us estimate your work...

CITIZEN WANT ADS WANTED-100 houses to paint and wallpaper. We have exciting thing you need. Let us estimate your work...

CITIZEN WANT ADS WANTED-100 houses to paint and wallpaper. We have exciting thing you need. Let us estimate your work...

CITIZEN WANT ADS WANTED-100 houses to paint and wallpaper. We have exciting thing you need. Let us estimate your work...

CITIZEN WANT ADS WANTED-100 houses to paint and wallpaper. We have exciting thing you need. Let us estimate your work...

CITIZEN WANT ADS WANTED-100 houses to paint and wallpaper. We have exciting thing you need. Let us estimate your work...

CITIZEN WANT ADS WANTED-100 houses to paint and wallpaper. We have exciting thing you need. Let us estimate your work...

By Charles McManus DO YOU THINK THAT'S SUCCESSFUL IN TIME

By Charles McManus DO YOU THINK THAT'S SUCCESSFUL IN TIME

By Charles McManus DO YOU THINK THAT'S SUCCESSFUL IN TIME

By Charles McManus DO YOU THINK THAT'S SUCCESSFUL IN TIME

By Charles McManus DO YOU THINK THAT'S SUCCESSFUL IN TIME

By Charles McManus DO YOU THINK THAT'S SUCCESSFUL IN TIME

By Charles McManus DO YOU THINK THAT'S SUCCESSFUL IN TIME

By Charles McManus DO YOU THINK THAT'S SUCCESSFUL IN TIME

By Charles McManus DO YOU THINK THAT'S SUCCESSFUL IN TIME

By Charles McManus DO YOU THINK THAT'S SUCCESSFUL IN TIME

TRANSFERS OF REAL ESTATE

Tuesday, November 27 62 1/2 W. B. White, 32 1/2 S. B. Johnson, 10 1/2 W. B. White, 32 1/2 S. B. Johnson, 10 1/2

Tuesday, November 27 62 1/2 W. B. White, 32 1/2 S. B. Johnson, 10 1/2 W. B. White, 32 1/2 S. B. Johnson, 10 1/2

Tuesday, November 27 62 1/2 W. B. White, 32 1/2 S. B. Johnson, 10 1/2 W. B. White, 32 1/2 S. B. Johnson, 10 1/2

Tuesday, November 27 62 1/2 W. B. White, 32 1/2 S. B. Johnson, 10 1/2 W. B. White, 32 1/2 S. B. Johnson, 10 1/2

Tuesday, November 27 62 1/2 W. B. White, 32 1/2 S. B. Johnson, 10 1/2 W. B. White, 32 1/2 S. B. Johnson, 10 1/2

Tuesday, November 27 62 1/2 W. B. White, 32 1/2 S. B. Johnson, 10 1/2 W. B. White, 32 1/2 S. B. Johnson, 10 1/2

Tuesday, November 27 62 1/2 W. B. White, 32 1/2 S. B. Johnson, 10 1/2 W. B. White, 32 1/2 S. B. Johnson, 10 1/2

Tuesday, November 27 62 1/2 W. B. White, 32 1/2 S. B. Johnson, 10 1/2 W. B. White, 32 1/2 S. B. Johnson, 10 1/2

TWINLAND EMPIRE MARKETS

Received as of date preceding date 20.00 @ 83.00 20.00 @ 83.00 20.00 @ 83.00

Received as of date preceding date 20.00 @ 83.00 20.00 @ 83.00 20.00 @ 83.00

Received as of date preceding date 20.00 @ 83.00 20.00 @ 83.00 20.00 @ 83.00

Received as of date preceding date 20.00 @ 83.00 20.00 @ 83.00 20.00 @ 83.00

Received as of date preceding date 20.00 @ 83.00 20.00 @ 83.00 20.00 @ 83.00

Received as of date preceding date 20.00 @ 83.00 20.00 @ 83.00 20.00 @ 83.00

Received as of date preceding date 20.00 @ 83.00 20.00 @ 83.00 20.00 @ 83.00

Received as of date preceding date 20.00 @ 83.00 20.00 @ 83.00 20.00 @ 83.00

BUSINESS PERSONALS

Attorneys J. H. BARNES, 138 Main Street, Phone 181. BOWHELL & CHAPMAN, 200 Wood Blvd., Phone 812

Attorneys J. H. BARNES, 138 Main Street, Phone 181. BOWHELL & CHAPMAN, 200 Wood Blvd., Phone 812

Attorneys J. H. BARNES, 138 Main Street, Phone 181. BOWHELL & CHAPMAN, 200 Wood Blvd., Phone 812

Attorneys J. H. BARNES, 138 Main Street, Phone 181. BOWHELL & CHAPMAN, 200 Wood Blvd., Phone 812

Attorneys J. H. BARNES, 138 Main Street, Phone 181. BOWHELL & CHAPMAN, 200 Wood Blvd., Phone 812

Attorneys J. H. BARNES, 138 Main Street, Phone 181. BOWHELL & CHAPMAN, 200 Wood Blvd., Phone 812

Attorneys J. H. BARNES, 138 Main Street, Phone 181. BOWHELL & CHAPMAN, 200 Wood Blvd., Phone 812

Attorneys J. H. BARNES, 138 Main Street, Phone 181. BOWHELL & CHAPMAN, 200 Wood Blvd., Phone 812

SELL US YOUR POULTRY & EGGS

We Always Pay the Highest Cash Price MERIDIAN PRODUCE CO. Phone 175 Twin Falls

PHILIPPS' SOUR STOMACH SWEETENED INSTANTLY Employ the best way yet evolved in the art of sweetening...

CALL ON US

Trucks for Moving Any Kind of Farm Crops Prices Reasonable Dependable Drivers Phone 210 SANGER SERVICE

DR. MILES' NERVE TONIC Are you nervous? Do you become irritated at trifles? Start at sudden twinges, lie awake nights? Your nerves are out of order.

Charleston Dance Contest Judged By England's Leader

Miss Irene Smith, chief judge of the Charleston contest for English prices: 'My only position in the dancing world today would never have happened if I had not taken the proper daily care of my health.'

Smoke Now 56 ROOM RUSKIN CIGARS THEY COULD BE SMALLER BUT NOT BETTER

NOTICE FOR PUBLICATION Department of the Interior, U. S. Land Office at Blackfoot, Idaho. Notice is hereby given that...

**MORE RAILWAY SERVICE ASKED**

A complaint was filed last week at Boise by Idaho and Oregon, stating that the growth of southern Idaho and southern Oregon has been handicapped by poor railroad connections with the northern California market. The Central Pacific and other railroads complained against the Oregon public service commission, with the Idaho public service commission intervening. The brief stated that while the land put under cultivation in the counties of southwestern Idaho had increased from 183,000 acres in 1902 to 667,000 acres in 1925, no better railroad connections had been provided westward in the last forty years. Of the 14,582 pounds of produce that were shipped out in 1925, the complainants stated, 4000 would have gone west through Oregon had adequate rail lines been provided. It was proposed to extend a railroad westward from Burns, Oregon, to connect with coal lines as a means of improving the transportation for eastern Oregon and the Caldwell territory.

**POTATO TESTS PROVE OF VALUE**

Twenty-seven dry land and irrigation farmers in Cassia and Minidoka counties conducted potato tests last summer. The irrigated fields were on the Minidoka and Oakley projects while the dry land tests were made on higher altitudes around Albion, Sublett, Basin and Moulton. The weather proved detrimental to the potatoes on both dry land and irrigation areas. In the high or dry districts yields reached only 25 or 20 sacks per acre, and the irrigated sections the tubers were knobby and ill-shaped, with disease prevalent. The Idaho Bureau proved to be especially susceptible to mosaic disease, which also existed in the high altitude tests. Nettle Ginn held tractor in type than the Buatale, and freer from disease. One farmer, L. W. Prier of Burley, has maintained open fields for seven seasons and still has a good type of potatoes free from disease. His yield this year exceeded that raised from imported certified seed. A collection of ten potatoes he placed winning second place at the Burburg seed show.

**Complete Vote**  
(Continued from Page One)


029; Smith (D) 52,657; Perry (S) 1167.  
Attorney General—Gills (A) 98,206; Sature (D) 50,663; Sants (S) 1100.  
State Treasurer—Deffenbach—(118,548); Porter (D) 51,709; Ayotte (S) 117.  
State Superintendent of Public Instruction—Myrtle Davis (S) 98,206; Jesse Hunt (D) 50,663; 61430; 303; John Henricks (S) 1148.  
State Inspector—Campbell (A) 100,512; Hieby (S) 1172.  
The final vote on the eight proposed constitutional amendments revealed the passing of five of them, the losing one being that providing for an increase of pay from \$2 to \$10 a day for state legislators. The measure seemed almost to have passed when the vote from Ada and Canyon counties came in with large opposing majorities.

**SOME SENSE TO THIS MARATHON**

Non-stop records in flying, swimming, dancing, piano and other activities have been given a great deal of publicity of late, but one of the most interesting as yet to be reported was a plowing record recently set at the farm operated by the University of California. In this test a tractor was run continuously for 17 days and nights, drawing a six plow, during which time the outfit plowed 1230 miles and disked 1,280 miles of land. During the 406 hours of the test the engine was never stopped, but the tractor was used 16 minutes four times a day for re-rolling and servicing. Only one case of mechanical trouble developed, the loosening of a valve push rod, but this was adjusted without stopping the engine. During the test 1,161 gallons of gasoline and 117 quarts of oil were consumed.

# Make Them Happy This Christmas with Electrical Gifts

~the easiest gift to give!



## Tell Old Santa to Put It on Your Light Bill

How easily and well you can choose suitable remembrances if you decide to give Electrical Gifts this Christmas—Gifts that keep on giving! No gift could convey your sentiment in a more appropriate manner. No gift could be more expressive, more useful or more acceptable. Electrical Gifts bring permanent and lasting joy to those who receive them. From the time breakfast is started in the morning until its time to go to bed at night, their usefulness is appreciated. No one with a gift list to fill need look further than to the Electric Shop for ideal Gifts. For here are great stores of many, many Electrical Appliances in such variety that selection is a simple matter. Visit the Electric Shop and inspect all the lovely Christmas Gifts.

## Choose from this List of Helpful Suggestions

- Heating Pads ..... \$6.00 and \$8.50
- Electric Irons ..... \$9.50 and \$8.95
- Tree Lighting Sets ..... \$2.00 to \$5.00
- Electric Wreaths ..... \$2.00 to \$3.50
- Curling Irons ..... \$1.00 to \$7.50
- Tobacco Lighters ..... \$2.75 to \$1.50
- Soldering Irons ..... \$3.95 to \$9.50
- Bus Utility Lamps ..... \$3.00 to \$4.00
- Air Heaters ..... \$3.95 to \$5.50
- Sew E. Z. Motor Sews ..... \$18.50
- Toasters ..... \$5.00 to \$12.50
- Percolators ..... \$7.95 to \$23.75
- Grills and Table Stoves ..... \$7.00 to \$13.50
- Percolator and Urn Sets ..... \$24.00 to \$67.50
- Vacuum Cleaners ..... \$58.50 to \$79.00
- Waffle Irons ..... \$10.00 to \$18.00
- Hair/Dryers ..... \$18.50 to \$22.50
- Electric Trains ..... \$11.00 to \$45.00
- Vibrators ..... \$22.50
- Electric Ironers ..... \$52.00 to \$225.00
- Electric Ranges ..... \$67.50 to \$425.00
- Electric Washers ..... \$107.00 to \$185.00
- G. E. Refrigerators ..... \$290.00 up



Use Our Convenient Payment Plan to Purchase Gifts

You do not need to pay cash for the gifts you wish to buy at the Electric Shop. You may select one or several Electrical Appliances, make a small payment down and pay the balance in easily spared amounts each month along with your light bill. If you prefer, this convenient payment plan will simplify your Christmas shopping.

The vote was as follows: The amendment giving state officials the pay method of fixing it constitutionally was passed by 62,000 yes and 34,438 no. On the four-year term for state executive officers the vote was 62,000 yes and 48,497 no. Extension of the field of per capita investment of state funds carried by 48,591 yes and 31,970 no. Voters approve of providing out of the constitutional provision making the county tax collector an office tax collector by a vote of 52,740 yes and 32,088 no. The amendment giving the state control of water power sites was passed, 56,624 yes and 38,001 no. The amendment to make the pay of legislators \$10 a day instead of \$5 was lost, 48,906 yes and 49,862 no. Ada and Canyon counties each gave approximate majorities of 1000 against the amendment.

Clean and oil all tools and machinery and store under cover for winter. Care must be taken to see that they get plenty of green feed, flax, green clover and alfalfa and satisfactory for this purpose. A well selected purchased dairy bull, coupled by care, management and selection means "Not More, but Better Cows." "Hatchery Chicks for Greater Profits" is the slogan of a national organization of hatcherymen who serve farm flocks through better breeding of chicks coming from the hatcheries. Idaho Falls—Montgomery Ward and company opens the new store at this place with 60 sales people employed. Three story building occupied with 18,000 square feet floor space.

**DELONG CASE DISMISSED**  
Judge C. J. Taylor of the district court at Idaho Falls last Wednesday dismissed the case of the Idaho Falls potato growers' association against Carl DeLong, Inc. for its alleged infractions of state laws requiring accurate branding of potato bins shipped from the Gem state. The action was taken when it was learned that the DeLong produce company is conforming to the regulations by which each sack of potatoes must bear a mark indicating the grade of the contents.



### Give HER a Thor Rotary Iron

This year—you can't give her a more useful gift than the Thor Rotary Iron—electrically heated—electrically operated. With this gift you give her leisure—more time for other things—because this new day appliance will save six hours a week in the average home. Come in and let us show you this Rotary Iron. See how simple it is to operate, how efficiently and quickly it irons clothes. Priced at..... \$85

ONLY \$5. DOWN  
Balance in Easy Monthly Payments 25¢

### Here's What MOTHER Really Wants

## New Model Hotpoint Christmas Range

What gift would make Mother happier than this advanced 1925 DeLuxe Hotpoint Automatic Electric Range. Its unflinching, efficient service day after day for years to come, will be a constant reminder of your thoughtfulness. This brand new Range is the greatest value we have ever offered in a DeLuxe range. Mother will have a new lease on life when she finds this modern range in her kitchen on Christmas morning.

ONLY \$5.00 DOWN

We have made it easy for you to give Mother this wonderful gift. Just think—only Five Dollars down and the balance in convenient monthly sums. Come in and see this beautiful new range.

## GENERAL ELECTRIC Refrigerator

No Gift Could Bring This Whole Family More Pleasure

What family wouldn't welcome a G. E. Refrigerator on Christmas?—It is one gift that everyone would enjoy from Mother and Dad down to the smallest like of the lot.

Think of the wonderful convenience a G. E. will bring to your home. Think how it will protect the health of your family by preserving foods perfectly—and what a variety of delightful frozen dainties it will make.

Sold on Easy Terms

It is surprising how easy it is to own a G. E. Refrigerator. Come in and let us explain the many G. E. features as well as our easy purchase plan.

**QUALITY**

Cold Weather Tests Radiators, Engines, and your Car in General.

Let us help PREVENT winter troubles.

Cogswell SERVICE STATION

**LAUNDRY**

**WHITE STAR LAUNDRY**

DRY CLEANERS

# Idaho Power Company

SHOP EARLY

## ELECTRIC GIFT SHOPS

SHOP EARLY