

TARIFF POLICY DEBATE THEME IN CONVENTION

Discussions at Annual Meeting of Chamber of Commerce of United States to Cover Many Questions Agitating Traders

ATLANTIC CITY, (AP)—Many questions at present agitating the business world will come up for discussion at the ninth annual meeting of the Chamber of Commerce of the United States to be held in Atlantic City, April 27 to 29. A large attendance is expected. The proposition to change the tariff will be considered in these phases: Should a tariff be framed with due regard to export trade sales or the protection of manufacture in the United States? Should the fact that the United States now is a creditor nation after the American tariff policy with respect to protection? Should the United States tariff offer trading or bargaining possibilities for international commercial treaties to encourage export trade? Should the United States tariff be liberal in the provisions in view of the American policy for liberality of tariff on the part of other countries?

Exposition Proposed
A resolution favoring the holding of an exposition in Philadelphia in 1926 to commemorate the 150th anniversary of American independence with proper business, governmental and foreign support, will be offered for adoption. Other proposals that are expected to be acted upon by the convention are: Repeal of the legislation dealing for an aeronautical code and the necessary machinery for its enforcement. Promulgation of desirable and economic methods of adjusting commercial disputes and also offering relief to the courts whose dockets are usually crowded. Necessity that independent lines of communication, cables, etc., be promptly developed between the United States and other countries. Reconsideration of cuts in appropriations for consular service, so that export business will be in all-American hands.

Highways Program Laid
Creation of a federal highway commission to lay out and direct construction and maintenance of an interstate system of highways. Modification and amendment or repeal of all legislation that restricts the operation of natural economic laws.

Adoption of a national budget system.
Development of the merchant marine and of ports on the Atlantic and Pacific.

Insistence upon proper treatment and facilities for American ships in foreign ports.
Reduction of freight rates if it can be done without impairing railroad credit or efficiency.

Reduction of wages, valuation, taxes, cost of production, and cost of living.

BEAN GROWERS ATTENTION
We are now ready to make contracts for a limited amount of bean acreage for 1921.

ALFRED J. BROWN SEED CO.
For A. L. Stone.
The paving situation is discussed by the Citizens in ad on page 3. Read it now.—adv.

What is useless to you may be valuable to others—advertise it in the classified.

LEGION WILL DECORATE 61,000 GRAVES OVERSEAS

Veterans' Organization Sends Out Call for Remembrance of Heroic Dead

INDIANAPOLIS, (AP)—More than 61,000 American soldiers who died during the world war still sleep on foreign soil. Shall the graves of our fallen be forgotten on the third Memorial Day since the armistice? reads a bulletin issued today by national headquarters of the American Legion. A report to the legion from Quartermaster General of the Army Rogov shows that there are 61,029 American graves in seven foreign countries. In France 20,077 of the A. E. F. are buried, in England there are 517, in Belgium 751, in Russia 97, in Italy 76, in Germany 43 and in Luxembourg 8. The legion is reported to show that the organization decorated 75,900 graves overseas last year with a fund of 1,000,000 franc raised in America and France.

The bulletin, which the Legion to date forwarded to each of its 11,000 posts, emphasized the individual obligation of the Legionnaires and their prompt action.

ADDS GATE TO MEMORIAL

New York Man's Gift is Completed by Addition of Massive Structure

VERDUN, (AP)—An impressive bronze gate will soon be added to the Rand memorial monument over the famous French of Verdun. The gate has been designed by Andre Ventre, the Paris architect, and now is on exhibition in Paris. Like the memorial itself, the gate is the gift of the late George P. Rand, of Buffalo, N. Y.

The gate will be erected at the entrance of the historic trench about 100 feet from the entrance which were the bodies of the French soldiers who were killed in the trench leaving their bayonets exposed above ground. The gate is of thick bronze, about 12 by 8 feet. A massive sword entwined with bronze leaves extends from the top to the bottom of the door. On each side of the entrance will be two bronze tablets; giving the name of the donor and a brief history of the trench. The memorial is of concrete construction and is being given a smooth finish.

SENATOR AND CONGRESSMAN TO PAY TRIBUTE TO GRANT FITZSIMMONS, JR. (AP)—United States Senator Joseph P. Franklyn, of New Jersey, and Congressman William A. Rodenberg, of Illinois, will be the principal speakers at the annual Great Day dinner of the American Republican club here April 27. The senator will speak on "General Grant," while Mr. Rodenberg will talk on the subject of "The New Freedom."

Classified Ads are cheap—effective, advertised in the classified—you'll find your buyer.

TWIN FALLS TO BOISE STAGE LINE

DAILY SERVICE—12 PASSENGER CADILLAC CARS

Leave Twin Falls 8 A. M. Via Filer, Buhl, Hagaman, Bliss, King Hill, Glenns Ferry, Mountain Home to Boise.

(Dinner at Mountain Home, 30 Minutes).

Seven-hour Schedule to Boise. Fare same as Railroad.

TRASK BROTHERS

We Call for You Free of Charge Twin Falls Office: The Hogewon Hotel; Boise Office: 112 N. 12th St. J. J. ZEBBONTO, Driver

GERMANY OFFERS MARKET 'FOUR COAL FROM AMERICA'

Industry is Reported Suffering from Shortage Due to Heavy Deliveries to Britain

BERLIN, (AP)—A report from Halle states that American coal is being offered for industrial plants in that section at a price 20 marks below the present German figure. German industry is said to be suffering from a coal shortage owing to the enormous monthly deliveries to the Entente. (The dispatch adds that Germany is gradually developing into a promising market for American coal in view of the prevalent aversion to purchasing the English product.)

TO LOT OWNERS IN THE TWIN FALLS CEMETERY.

The annual upkeep charge for caring for lots in the Twin Falls cemetery not including those who have paid for perpetual care, for the year 1921 will be due and payable May 1st, 1921. The charge for this year is \$4.00 for a full lot, \$2.00 for a half lot and \$1.00 for a single grave. Payments may be made at Stuart L. Taylor's office. The secretary will make arrangements with any lot owners desiring their lots cared for perpetually.

TWIN FALLS CEMETERY ASS'N.

BRITAIN IS PANNED BY 'FENIAN SYMPATHIZERS'

Attacks on England Characterize Session of Irish Sympathizers

CHICAGO, (AP)—The resolutions committee of the fifth convention of the American Association for the Recognition of the Irish Republic today had before it a dozen or more resolutions nearly all of them attacking England.

Foremost among the resolutions were those calling for a boycott against certain European goods, opposing the teaching of English history in American schools and establishing a bureau of publicity and education in the association.

A resolution urging intervention by the United States in behalf of the "Irish republic" also was expected to come before the convention late in the day.

Numerous speakers continued the verbal attacks on England, chief among them being J. L. Farwell, consul general of the "Irish republic."

Classified advertising is the easiest thing you can buy—measured by the profits it may bring you.

Young Socialists of Spain Favor Soviets

MADRID, (AP)—Resolutions favoring admission to the Third International of Moscow were adopted by the congress of young socialists of Spain in session here Monday night. The vote stood 3,254 to 354. The congress also passed a motion that it separate from the socialist party which has been split by a decision reached at the socialist congress here last week by which admission to the international was defeated.

MONTEVIDEO, (AP)—Resolutions declaring admission to the international of Moscow were passed by a vote of 111 to 110 by the Uruguayan socialist congress Tuesday.

Occidental Dancing Holds Sway in Japan

TOKIO, (AP)—Western dancing is being actively taken up by the younger Japanese generation and is developing into a national craze. The fox trot, the waltz, the bunny hug and all fanciful steps are being learned to the tune of jazz music. And with the coming of the dancing fad, the conversation turns to jazz and to steps and to music.

As the Japanese girls the kimono and obi seem as comfortable for the glide around the dance floor as the costume of the American girl.

A Japanese newspaper says: "A dancing teacher is now as much a necessity to the Japanese student as a person well acquainted with the grammar of a foreign language. Dancing seems to be included in the curriculum of most well-educated Japanese."

28

Telephone

COAL

Nibley-Channel

LUMBER COMPANY

GROCERY 1
PHONE

IDAHO DEPARTMENT STORE

STORE 325
PHONE



GREAT SALE OF WOMEN'S NEW SPRING SUITS

THURSDAY, FRIDAY and SATURDAY

April 21st, 22nd and 23rd

THREE DAYS ONLY!

F. J. BEHRMAN

Remarks:

There is no doubt but what one of the chief reasons for the magical growth of Twin Falls is due to wide benevolent policies adopted by the Twin Falls Commercial Club to further the interest of the outside districts as much as possible. Co-operation is a wonderful developer. Build up the outlying districts and we are sure to grow.

For these three days only we are going to offer to the trade our entire stock of NEW SPRING SUITS which were formerly priced at \$52.50, \$55.00, \$57.50, \$59.50, \$62.50, \$65.00 and \$69.50 at a ridiculously low price. These suits are all new styles and are of the very latest designs and trimmings. Come in all the principal colors, shades and combinations. All sizes are to be had in this great sale for THREE DAYS ONLY.

\$47.50

SILK DRESS SPECIAL

Wonderful are these dresses which we are sacrificing this early in the season. Never before have you been able to buy such really wonderful dresses so early at such an attractive price. The style range is large and includes all the wanted ones.

EVERY DRESS IS THIS SEASON'S STYLE. Wonderfully trimmed and tailored. These dresses were priced very low at \$69.50, \$72.50 and \$75.00 to be sacrificed THREE DAYS ONLY at—

\$59.50



These petticoats are really wonderful. Come in all colors one would want with fancy borders, with variegated colors. This skirt is a remarkable value at much more than we ask but we are going to sell them at the very special price of—

\$4.95

SCRATCHING FOR A LIVING

Too many men scratch for a living—never getting beneath the surface—always missing the fertile ground below.

The man who sets aside a portion of his income regularly is tilling rich soil. He is hoeing a straight row towards contented years.

Twin Falls Bank & Trust Company

TWIN FALLS, IDAHO

"Member of Federal Reserve System"

New Waists Just Arrived

TRICOLETTES and GEORGETTES

This is truly the most wonderful buy you have been offered for a long time. These blouses come in all and every wanted shade, and all sizes.

The value of these blouses is much more than we are asking for them. These are such real buys that you will have to be here early to partake of the buying. To be sold very special at—

\$5.50

VISIT OUR BOYS' DEPT. ALWAYS SOMETHING NEW FOR THE BOYS.

Skirt Special

ALL SILK JERSEY SKIRTS

These petticoats are really wonderful. Come in all colors one would want with fancy borders, with variegated colors. This skirt is a remarkable value at much more than we ask but we are going to sell them at the very special price of—

\$4.95

The Greater IDAHO DEPARTMENT STORE Ltd
Up to date TWIN FALLS, IDAHO Progressive

After All the I. D. is the BEST PLACE to TRADE

ORDERS SIBERIA TO AVOID CLASH WITH JAPANESE

Russian Bolshevik Government Directs Far Eastern Republic at Chita to Seek a Trade Treaty with Nippon

WASHINGTON, (AP)—The Far Eastern republic at Chita has received orders from the Russian bolshevik government to avoid any possible conflict with the Japanese and if possible to undertake the negotiation of a trade treaty with Japan, according to official advices Tuesday.

China's Other Conditions
Younis, representative of the Far Eastern republic for some time in Peking, and who has endeavored to negotiate a trade agreement with the Chinese government, according to the same advices has been informed that two conditions preliminary to any understanding between the two governments were: Preamble of abstinence from any bolshevik propaganda in China and the adequate protection of Chinese in Siberia.

By an agreement concluded between the bolshevik government of Moscow and the Far Eastern republic, the boundaries of the latter country were reported to have been for the first time fixed and to include the northern part of the island of Saghalien, recently occupied by Japan despite the protest of the American government.

Boundary Traced
Beginning at a point where the Balanga river enters Siberia from Mongolia, the boundary follows the river where it turns west there along the Verkhne-Udsk line to the center of Lake Balkal, north to the lake, eastward along the northern boundaries of the Trans-Balkal, Amur and multi-time provinces to the coast drainage, thence to the Okhotsk sea near latitude 56 and including the islands near the mainland and the northern half of the island of Saghalien.

Opens War on Booze Makers of Province

TORONTO, (AP)—Placing the majority vote for "bone dry prohibition" in Ontario yesterday at 300,000 the Rev. Dr. A. F. Grant, secretary of the Ontario referendum committee, today announced immediate steps toward procuring measures against the manufacture of intoxicating liquors in the entire Dominion.

Dr. Grant expressed the opinion that the manufacture, sale or importation of liquor will be prohibited throughout Canada within five years.

Over 200 varieties of plants for garden and house ready in May. Largest stock in southern Idaho; finest plants, lowest price. Don't waste your time driving all over the country when we have everything you want at a lower price. Pansy specialists for a dozen years, three fine strains—largest, freest and most beautiful colors known (small plants while we have them half price). City Tower Greenhouses, Twin Falls.—adv.

The paving situation is discussed by the Citizens in ad on page 7. Read it now.—adv.

PANSY PLANTS
Large transplanted "Giant Trimardeau" French strain, for sale at Spackman's any time except Sundays. Phone 35013.—adv.

Today's Sporting News

HAZELTON BALL TEAM GETS HOP ON BLUE AND WHITE BUT CLIFF FIX RESCUES GAME—HARD TILT

Rural's Jump into Lead in Three Innings of Poor Baseball, but Evans' Sturdy Moundsman Takes Hand and Promptly Checks Rampant Visitors—Lee, of Invaders, a Worthy Twirler



CLIFF EVANS' Blue and White ball tossers yesterday afternoon administered a non-tossing to the Hazelton ball club, but it was not done before a score of good proportions had been thrown into Evans' hands and his supporters. The game was won by the home lads, 10 to 5.

The Hazelton outfit, however, made the Evansian go the limit to win that game, and displayed a baseball acumen that not only surprised the home force but actually upset the equilibrium of the outfit for several rounds. So much so, in fact, that the opposition gathered a neat little lead on the Blue and White before the latter contingent found its feet and was able to display its wretched prowess.

Frenzied at First.
Evans sent a youthful righthander named Patz to the mound to start the tilt, but the lad had nothing that put the men from the north side. Young Patz proved a veritable mark for the bludgeons of the visiting team,

and, after walking the first man, Maris, and fanning the second, Kelly, he gave a couple of healthy blows, one a single and the other a triple, which counted a brace of markers. Immediately thereafter he grazed the bench and Paul Bieler took up the white man's burden on the peak. Paul got by nicely but the leggy left on the bag by his predecessor developed into a run. Brown, Hazelton's middle gardener, ranned the snailing youth for a single and R. Jeffers competently from third base, where he had reposed since battering Patz for a three-quarter round trip. Bieler walked Ross but struck out E. Jeffers, ending the first round agon.

Out of three hits, two walks and an error the visitors had, in the initial session chalked up three counts. They were set down in order in the second but a series of bad breaks on the part of infield support, especially at third base, got Bieler in a bad hole in the third, and he had to be rescued by Fix, the sturdy and reliable.

A bad bungie by Solt, Evans' third (Continued on Page 7).

How The Citizens Ticket Will Meet Paving Situation

There is a great deal of defective paving and curbing in Twin Falls.

The Citizens Ticket Executive Committee is informed that the interests of the city are protected by a good and sufficient bond.

Should this prove to be the case, the remedy should be simple and should consist of insistence on compliance with the terms of the bond, and, if necessary, the taking of legal steps to secure the rights of the municipality and the people.

Pledge Definite Action

The Citizens Party candidates, if entrusted with power and responsibility, will carry on any movement that may have been initiated by the city government to protect the rights of the city and the people, and, further, will initiate any new proceedings that may be required to protect such rights. They will leave no stone unturned to procure a dollar's worth of service for every dollar expended on paving and curbing, and will push the matter to the finish.

They will apply to the fullest extent every remedy available that the construction company be compelled to comply with the terms of the contract and specifications entered into between the city and the company.

No Strings on Candidates

The attention of the voters is called to the fact that there is no candidate on the Citizens Ticket identified with any interest which would in any way interfere with the carrying out of the pledges made, the gravity of which are fully realized.

Executive Committee Citizens Ticket



The First National Bank of Twin Falls

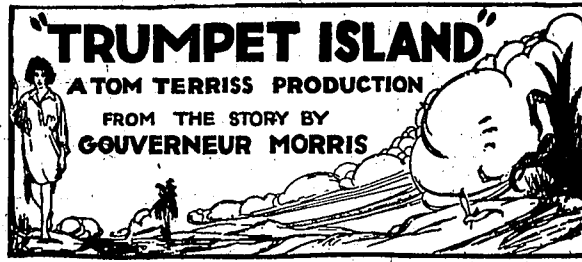
TWIN FALLS, IDAHO

Capital and Surplus
\$165,000.00

F. F. Johnson, Pres. W. H. Eldridge, Vice, Pres.
J. M. Maxwell, Cash. W. E. Nixon, Asst. Cash.
H. L. Maxwell, Assistant Cashier
A. Dorman Johnson, Assistant Cashier

THE ORPHEUM THEATRE

TODAY AND TOMORROW



"TRUMPET ISLAND"
A TOM TERRISS PRODUCTION
FROM THE STORY BY
GOUVERNEUR MORRIS

A SEVEN-PART SPECIAL PRODUCTION
A Super Feature in every sense of the word—Spectacular, Thrilling Adventure Story—Staged at a cost of more than a Quarter Million of Dollars.

"The Strange Story of Three Lives"
Staged in the Imperial Valley of California and Catalina Islands—Also Feature Vaudeville—
"FRANCO" The Man of One Hundred Faces
A BANNER SHOW Always a Good Variety
MATINEE AND EVENING Always Your Money's Worth

Local Briefs

Social Notes

Thousands in Want in Alabama Coal Fields

BIRMINGHAM, Ala., (AP)—Twenty-six thousand persons are at the point of starvation in the coal fields of northern Alabama...

Today's Markets

WHEAT PRICE SOARS ON CROP DAMAGE REPORTS

Sharp Uprate Follow Discounts to New Low Levels: Close Strong, 2 1/4 to 4 Cents Higher

CHICAGO, (AP)—Discounts to new low price records for the season followed in the wheat market today...

Later a sharp uprate resulted from scattered reports of domestic crop deterioration and from advice that because of drought the yield of wheat in the Punjab, the most important wheat section of India, would be cut down half...

Further export business gave firmness to the corn market. After opening 1 3/8 to 1 1/2 higher, including July 40 7-8 to 6 1/2...

The market was also strengthened by predictions that as soon as the season progressed a tremendous farm consumption of corn would be revealed...

Oats were governed by the action of corn, starting off 1 1/4 off to 1 1/8 up, July 37 1/2 to 37 1/2, and after a slight sag scored gains all around...

Lower quotations on hogs tended to pull down provisions. Cash Quotations: CHICAGO, (AP)—Wheat—No. 2 hard \$2.37...

CHICAGO, (AP)—Wheat—No. 2 hard \$2.37; No. 1 mixed \$1.31 to 1.38; Corn No. 2 mixed \$8 to \$8 1/4...

MINNEAPOLIS, (AP)—Flour unchanged to 10c lower in bond lots, family brands quoted at \$3.10 to \$3.60 a barrel in 98-pound cotton sacks...

Portland Livestock: PORTLAND, Ore., (AP)—Cattle nominally steady; receipts none; unchanged. Hogs: steady; receipts 35; unchanged.

NEW YORK, (AP)—Liberty bonds second 3 1/2's \$80.10; first 4's \$87.20; second 4 1/4's \$87.30; third 4 1/4's...

Omaha Livestock

OMAHA, Neb., (AP)—Hog receipts 13,500; market 2 1/2 to 3 1/2 lower; bulk 180 to 240 pound butchers \$7.50 to 8; practical top \$8.15; part load \$8.25...

CHICAGO, (AP)—Cattle receipts 11,000; market uneven; light and heavy-weight beef steers steady to strong; heavy lower; \$8.50 bid on choice handweights...

CHICAGO, (AP)—Cattle receipts 11,000; market uneven; light and heavy-weight beef steers steady to strong; heavy lower; \$8.50 bid on choice handweights...

CHICAGO, (AP)—Hog receipts 21,000; light and light heavy receipts 15 to 20 lower; 10 to 15c lower than yesterday's average; fairly well sold; top early \$9.20...

NEW YORK STOCK MARKET: NEW YORK, (AP)—The today's receding their bullish operations in speculative stocks, especially oil, but made little headway because of the reactionary trend manifested by rails and industrials...

NEW YORK, (AP)—Liberty bonds second 3 1/2's \$80.10; first 4's \$87.20; second 4 1/4's \$87.30; third 4 1/4's...

NEW YORK, (AP)—Cattle receipts 11,000; market uneven; light and heavy-weight beef steers steady to strong; heavy lower; \$8.50 bid on choice handweights...

NEW YORK, (AP)—Cattle receipts 11,000; market uneven; light and heavy-weight beef steers steady to strong; heavy lower; \$8.50 bid on choice handweights...

NEW YORK, (AP)—Cattle receipts 11,000; market uneven; light and heavy-weight beef steers steady to strong; heavy lower; \$8.50 bid on choice handweights...

NEW YORK, (AP)—Cattle receipts 11,000; market uneven; light and heavy-weight beef steers steady to strong; heavy lower; \$8.50 bid on choice handweights...

NEW YORK, (AP)—Cattle receipts 11,000; market uneven; light and heavy-weight beef steers steady to strong; heavy lower; \$8.50 bid on choice handweights...

NEW YORK, (AP)—Cattle receipts 11,000; market uneven; light and heavy-weight beef steers steady to strong; heavy lower; \$8.50 bid on choice handweights...

NEW YORK, (AP)—Cattle receipts 11,000; market uneven; light and heavy-weight beef steers steady to strong; heavy lower; \$8.50 bid on choice handweights...

NEW YORK, (AP)—Cattle receipts 11,000; market uneven; light and heavy-weight beef steers steady to strong; heavy lower; \$8.50 bid on choice handweights...

NEW YORK, (AP)—Cattle receipts 11,000; market uneven; light and heavy-weight beef steers steady to strong; heavy lower; \$8.50 bid on choice handweights...

NEW YORK, (AP)—Cattle receipts 11,000; market uneven; light and heavy-weight beef steers steady to strong; heavy lower; \$8.50 bid on choice handweights...

NEW YORK, (AP)—Cattle receipts 11,000; market uneven; light and heavy-weight beef steers steady to strong; heavy lower; \$8.50 bid on choice handweights...

NEW YORK, (AP)—Cattle receipts 11,000; market uneven; light and heavy-weight beef steers steady to strong; heavy lower; \$8.50 bid on choice handweights...

NEW YORK, (AP)—Cattle receipts 11,000; market uneven; light and heavy-weight beef steers steady to strong; heavy lower; \$8.50 bid on choice handweights...

NEW YORK, (AP)—Cattle receipts 11,000; market uneven; light and heavy-weight beef steers steady to strong; heavy lower; \$8.50 bid on choice handweights...

NEW YORK, (AP)—Cattle receipts 11,000; market uneven; light and heavy-weight beef steers steady to strong; heavy lower; \$8.50 bid on choice handweights...

NEW YORK, (AP)—Cattle receipts 11,000; market uneven; light and heavy-weight beef steers steady to strong; heavy lower; \$8.50 bid on choice handweights...

NEW YORK, (AP)—Cattle receipts 11,000; market uneven; light and heavy-weight beef steers steady to strong; heavy lower; \$8.50 bid on choice handweights...

NEW YORK, (AP)—Cattle receipts 11,000; market uneven; light and heavy-weight beef steers steady to strong; heavy lower; \$8.50 bid on choice handweights...

NEW YORK, (AP)—Cattle receipts 11,000; market uneven; light and heavy-weight beef steers steady to strong; heavy lower; \$8.50 bid on choice handweights...

TWIN FALLS MARKETS

NEW YORK, (AP)—How sugar was quiet and unchanged early, with the committee quoting Cuba's at a 58 cent and freightly equal to 55 1/4 for centrifugal...

Furnished by Twin Falls Flour Mills Wheat, No. 1, cwt. \$1.15

Furnished by Boyle Commission Co. White Butter 55c; Russets 55c

Furnished by Independent Meat Market Cattle—Cows 45c; steers 50¢ to 1.20

Furnished by Farm Bureau Standard or better hay, in stack, first quality, \$7.50; second, poorer, at less as \$5.00; baled, \$12.00

HOSEBURY'S GUIDE (Retail Prices) Flour, 98-lb. sack \$3.00 to \$3.10; Sugar, best, 100 lb. \$10.75 to \$10.85

Cheese 40c; Cream 30c; Butter, creamery 55c

Butter, ranch 50c; Eggs, fresh, doz. 20¢ to 25¢

Chicken 35c; Round steak 35c; Bacon 40c

Ham, sliced 40c; Ham, whole 50c; Pork chops 25¢ to 30¢

Mutton chops 25¢ to 30¢; Pork sausage 25¢; T-bone steak 80c

Beef 35c; Pork 40c; Chicken 35c

Liberty Bonds NEW YORK, (AP)—Liberty bonds second 3 1/2's \$80.10; first 4's \$87.20; second 4 1/4's \$87.30; third 4 1/4's

NEW YORK, (AP)—Liberty bonds second 3 1/2's \$80.10; first 4's \$87.20; second 4 1/4's \$87.30; third 4 1/4's

NEW YORK, (AP)—Liberty bonds second 3 1/2's \$80.10; first 4's \$87.20; second 4 1/4's \$87.30; third 4 1/4's

NEW YORK, (AP)—Liberty bonds second 3 1/2's \$80.10; first 4's \$87.20; second 4 1/4's \$87.30; third 4 1/4's

NEW YORK, (AP)—Liberty bonds second 3 1/2's \$80.10; first 4's \$87.20; second 4 1/4's \$87.30; third 4 1/4's

NEW YORK, (AP)—Liberty bonds second 3 1/2's \$80.10; first 4's \$87.20; second 4 1/4's \$87.30; third 4 1/4's

NEW YORK, (AP)—Liberty bonds second 3 1/2's \$80.10; first 4's \$87.20; second 4 1/4's \$87.30; third 4 1/4's

NEW YORK, (AP)—Liberty bonds second 3 1/2's \$80.10; first 4's \$87.20; second 4 1/4's \$87.30; third 4 1/4's

NEW YORK, (AP)—Liberty bonds second 3 1/2's \$80.10; first 4's \$87.20; second 4 1/4's \$87.30; third 4 1/4's

NEW YORK, (AP)—Liberty bonds second 3 1/2's \$80.10; first 4's \$87.20; second 4 1/4's \$87.30; third 4 1/4's

NEW YORK, (AP)—Liberty bonds second 3 1/2's \$80.10; first 4's \$87.20; second 4 1/4's \$87.30; third 4 1/4's

NEW YORK, (AP)—Liberty bonds second 3 1/2's \$80.10; first 4's \$87.20; second 4 1/4's \$87.30; third 4 1/4's

NEW YORK, (AP)—Liberty bonds second 3 1/2's \$80.10; first 4's \$87.20; second 4 1/4's \$87.30; third 4 1/4's



GLASSES THAT FIT

YOUR EYES— YOUR FACE— YOUR PURSE—

We specialize in testing eyes and fitting your features with glasses that become you, at a price you can afford to pay.

CONSULTATION FREE

DAVIS OPTICAL CO.

EYE SPECIALISTS

110 Main Ave. North PHONE 223

LAVERING WEDNESDAY, APRIL 20 THEATRE ONE NIGHT

PRICES---\$1.00 and \$1.50---Plus War Tax

SEVENTH AND ENTIRE NEW SHOW

"BRINGING UP FATHER AT THE SEASHORE"

THE LAUGH SHOW OF CREATION 25---BIG SONG HITS---25

30---PEOPLE---MOSTLY GIRLS---30

The Season's Finest and Best Singing and Dancing Chorus



C. M. GATES AUTO CO. We repair and rebuild automobiles and ask for a share of your business. Special Ford Mechanic All Work Guaranteed For night calls, Phone 5022.

The Twin Falls National Bank Capital and Surplus \$167,000 MEMBER FEDERAL RESERVE BANK

Good For Small Sums

A Savings Account with the Twin Falls National Bank is a safe, profitable investment. Any day you have a dollar you want to put to work, a Savings Account is ready with ample protection for that dollar and the benefits of compound interest.

You need a Savings Account to conserve your first savings, and also for the small sums it will help you to get together in the future. We'll be glad to open an account in YOUR name for the small sum you can save.



"Go To It Ma--I'm With You!"

MA says she's going to go easy on buying my clothes this year. Says she wants her money's worth for every dollar spent, and I'm old enough to know she is right. That's how she came to buy me this

Johnny Tupaits SUIT AT \$16.50 You see, I never wear my coats out anyhow, and that extra pair of pants makes it just like having two suits. The coat is Mohair lined and there's extra buttons and cloth for patching. It's the dandiest looking suit I've ever had, and if anything goes wrong with it, I can always get my money back. Tell your Ma about these Johnny Tupaits Suits—they sell 'em at STRAUS & GLAUBER

FARM HELP PLENTY BUT RANGERS ARE PRACTICING RIGID ECONOMY ALL ALONG THE LINE THIS SPRING

Supply of Workers for Agricultural Fields is Heavier Than for Some Years—Operators Doing Work Themselves, Exchanging with the Neighbors and Depending on Women and Youth to Help Out in Emergencies

The labor situation on Idaho farms is more favorable than it has been for the past three or four years as regards supply and the wage level, says Julius H. Jacobson, state agricultural statistician in a bulletin recently issued by the bureau of crop estimates.

Reports indicate the present supply of workers is being 104 per cent of normal and that the demand is only 88 per cent of normal, Mr. Jacobson announces. He adds that the direct ratio between the two indicates that the supply is 118 per cent of the demand. Farmers need help just as much as they ever did but they are unable to finance their labor requirements. Indications are they will exchange work with each other as much as possible and the women and children will be called upon to help out.

Comparisons.
In the year 1919, when the supply of farm work was at its minimum strength, the supply was 70 per cent of normal, the demand 95 per cent of normal and the per cent of supply to the demand 74 per cent.

There was a betterment of conditions in 1919 when the supply of labor was 88 per cent of normal; the demand 100 per cent of normal, and the supply to demand 88 per cent.

There was a decline in 1920 there was a declining reaction again, showing 84 per cent of normal supply; 99 per cent demand of normal and 85 per cent of supply to the demand.

This year the estimates place the figures as follows: Per cent of normal supply, 104; per cent of normal demand, 88; per cent of supply to demand, 118.

Quote Indications.
April reports from the fields are always taken as an indication of the general trend of farm affairs, and reveal the attitude of the farmers on problems confronting them. Following are some sample reports received at the bureau of crop estimates:
Benevise: "Best prospect for fall wheat for last eight years. Labor plentiful. Larger oats acreage."
Bonner: "Weather still cold—wheat not started. Some farmers cutting down acreage."
Blaine: "Crop outlook good. Ground well soaked. Farmers doing their own work."
Kootenai: "Prospects never better at this time of year."

Knights Templar, Attention!

All Knights Templar who are able to go to Gooding on Friday to assist in the work of installing a Commandery there, are invited to appear at Masonic Temple on Thursday evening of this week, at 7:30 o'clock, when final arrangements will be made.

It is the hope that as many as possible will be present at this meeting whether they are able to make the trip or not.

S. H. KAYLER, Commander.

ANNOUNCEMENT!

The Lawrence Machine and Iron Works

Turret or Production LATHE

This machine is especially designed for production work. Making duplicate parts as well as shortening the operation on general machine work, as multiple tools can be used. The machine is adapted to general lathe work as well as pipe and bolt threading with the use of automatic die heads.

Will be glad to show this machine in operation at any time.

FRENCH TO HOLD TRADE EXPOSITION IN BEIRUT

Successors to Germans in Administration Capacity Lay Great Plans

BEIRUT, Syria, (AP)—A trade fair will be held here this month, organized by the French, who are completing the military occupation of this new colony or possession.

It is pointed out that Syria, if given a chance, will become as rich as portions of it were in ancient times, during peaceful epochs when the Romans dominated the peoples. Its soil, like much of western Asia, is rich enough, but what is needed is the peace that will let its people work, with the hope of holding their earnings.

The territory reaching from Constantinople to Egypt is sprinkled with the ruins of past civilizations of various cities such as Tyre and Sidon and the Phoenicians which attest to the development of ancient times. The Germans, with their Baghdad railway scheme, had realized what might be done again to re-people and re-occupy this great region, and the French are planning in the same manner, though not on an ambitious scale, as the Germans, whose object was to control, virtually, the old Ottoman empire and reach up to the Persian gulf.

TRANSFERS OF REAL ESTATE

Furnished by the Twin Falls Title and Abstract Company

- Deed: L. H. Lattrop to E. D. Duster, 81, lots 45, 43, block 1, Blue Lakes Add, Twin Falls.
- Deed: Penatello Sec. Trust Co. to E. Duster, 81, lots 17, 19, block 8, lots 10, 11, 12, block 9, lots 27, 29, block 3, Blue Lakes Add, Twin Falls.
- Deed: Lawrence Hansen to J. F. Hansen, 81, lot 11, block 40, Twin Falls.
- Deed: E. P. Laubenthal to E. A. Moon, 110, lot 8, block 114, Twin Falls.
- Deed: E. A. Moon to E. P. Laubenthal, 500, lot 8, block 114, Twin Falls.
- Deed: N. P. Ring to H. A. Ring, 42570 of west half southwest quarter 20-9-14.
- Deed: E. S. Wright to Olaf Nelson, 81, lot 16, block 1, Sub. Park Add, Twin Falls.
- Deed: J. A. Donaldson to A. Green, \$2000, same land.
- Deed: A. B. Mann to A. T. Smith, 988, lot 3, block 132, Twin Falls.
- Deed: P. C. Sec. Trust Co. to C. L. Detwiler, 81, lots 23, 24, block 13, Blue Lakes.
- Deed: C. R. Detwiler to C. M. Lloyd, 81, same lot.
- Deed: Wm. Slack to H. G. Munyon, 6000, lots 17, 18, block 14, Filer.

Theatre

Pago Mr. and Mrs. Jiggs Mahoney! Don't know 'em! Where have you been! To the tall timbers or in the desert of Sahara along with the other multitudes of oblivion. Stop your kidding. We knew you knew 'em all the time. Will the favorite characters of George Melvoin's popular comedy, "Bringing Up Father" will be seen in an entirely new musical company at Laverie's theater tonight.

(The entire production, of course, is under the direction of Manager Gus Hill who made it possible for the Mahoneys and the other likeable characters of the universally well known comedy to see the light of day on the stage. The title of the new play is "Bringing Up Father" at the Beaumont, and it repeats the original tunes, screams, surprises, novelties and ingredients sure to arouse mirth and laughter in a moshanopoe. "The entertainment is divided into three acts of speed, action and zest.

Gouverneur Morris is famous for his tales of love and adventure—stirring, vivid and true to life.

George Randolph Chester is equally noted for his stories, such as the "Get-Rich-Quick Wallingford" series—rapid moving, interest holding, breathless narratives.

It is no wonder, then, that when the two master writers combine forces, as they have in "Trumpet Island," the great special Vitaphone screen production to be shown at the Orpheum theater today the result should be a dramatic offering of rare power and of beauty.

NOTICE OF SALE ENCLOSED FREIGHT

Notice is hereby given that on April 23rd, 1921, commencing at 2 o'clock p. m. of said date, the undersigned will sell at public auction at warehouse of the Boyle Commission Company, located at 233 Wall Street, Twin Falls, Twin Falls County, Idaho, to the highest bidder for cash, and in accordance with the statute of the State of Idaho, relative thereto, the following describe property to-wit:

101 casks of best seed, shipper, Alexander Hiltchuk Company, Inc., New York City, New York, consigned 6-0 notify Idaho Mutual Sugar Company and moving on D.L.W. R.R. Company Pier 41, New York to Water, Idaho, W-15110, March 23, 1920, in car J 1 63471 and reconditioned in Twin Falls,

Idaho, on W-B 1800 May 1, 1920, and notified. Amalgamated Sugar Company Charges against shipment up to date of sale are as follows: Freight, \$76.08; demurrage, \$30.14; storage, \$30.00; and expense incident to sale.

Said shipment having remained on hand unclaimed for a period of more than four months, the sale is ordered.

ORION SHORT LINE RAILROAD COMPANY, Per D. E. GULLIVAN, Agent.

If your property is desirable, and is advertised in the classifieds—you'll find your buyer.

Gold in Head?

Attend to it now. Put Turpo, the only Turpentine ointment, in the nostrils, also on forehead, throat and chest. Rub in well.

TURPO

SCHRAMM-JOHNSON DRUGS TWIN FALLS

Every Week Is Sale Week at PRIEBE'S

THIS WEEK IT'S OUT GLASS. SEE OUR WINDOW FOR SPECIAL PRICES

W. R. PRIEBE THE HALLMARK STORE

"WHERE THE BEST IS FOUND"

Shoe Repairing at Pre-War Prices

ALEXANDER'S

SHOE REPAIRING and STANDARD SHOE SHOP

Men's Half Sole	\$1.50
Men's Rubber Heels	60c
Men's Leather Heels	60c
Ladies' Half Sole, nailed	\$1.10
Ladies' Half Sole, sewed	\$1.25
Ladies' Rubber Heels	50c
Ladies' Leather Heels	50c

To advertise our new Standard Shoe Shop—FOR ONE DAY ONLY—we will put on every pair of soles a new pair of rubber heels free of charge.

We use the very best materials and workmanship, every job is guaranteed. The united shops, Alexander's Shoe Repairing, 232 West Broadway, and Standard Shoe Shop, Woods Building opposite post office.

New Standard Shoe Shop will be open and ready for business Thursday, April 21.

Pictorial Review Patterns

Red Cross Shoes For Women

NEW ARRIVALS MAKE SHOPPING INTERESTING IN OUR READY TO WEAR DEPARTMENT

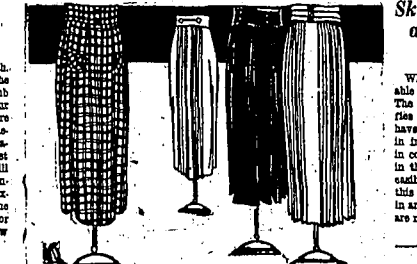
Interesting development in skirts, clever creations in blouses, and new colors being shown are a few among the many recent arrivals in this up-to-date department. Every garment shown is authentic as to style, and the prices are surprisingly moderate.

Wool Skirts in Popular Plaids and Stripes

An extra skirt helps out so much. For a hurried shopping trip, for the afternoon, for the matinee, or club meeting an extra skirt completes your wardrobe. The new ones shown here will fit in with your ideas as to something suitable. Made of all wool materials in plaids and stripes in a host of different colors and styles, you will find something that you will like. Only good materials are used. Only expert workmanship to give style to the garments have been employed. And for the quality shown they are indeed low in price.

\$2.50 to \$10.00

The Big White Store



Skirts in Canton Crepes are Made in Becoming Styles

Who can think of anything more suitable for dress wear than Canton crepe? The popularity of this material testifies as to that. Add the new skirts we have just received, will go a long way in increasing this popularity. Coming in colors of gray, white and tan, made in the newest of such styles they will easily set the pace for skirt styles in this city. When down town today stop in and see these new models. The prices are moderate at \$22.50 and up to \$28.50.

The Big White Store



Lovely New Georgette Waists Are Specially Priced at \$4.95

A new shipment of these georgette waists has just been opened. There are colors of white, bisque, flesh, camel and blue, in a profusion of clever styles. Embroidered motifs in gay colors form the decorative scheme and the variety is such that you will want more than one when you see them. They are indeed very remarkable in the lowness of price—\$4.95.

The Big White Store

Sheer Voile Waists Special at \$1.00-\$1.50-\$1.95-\$3.95

Sheer voiles in the daintiest of patterns and trimmings will please the most fastidious dresser. The embroidery and trimmings are complete with their smartness, some waists have open work designs, others with clever all over embroidery. Pearl buttons are used on some, others have buttons of embroidery. They are inexpensive, yet very chic and charming. These prices are also very reasonable.

The Big White Store



TWIN FALLS DAILY NEWS

Published every afternoon except Sunday... Twin Falls News Publishing Co., Inc. (Incorporated 1910)

JOY A. ROAD, President... JOHN C. HARVEY, Editor

Entered as second class mail matter April 2, 1918, at the postoffice at Twin Falls, Idaho, under the Act of March 3, 1879.

SUBSCRIPTION RATES: One year \$12.00, Six months \$7.00, Three months \$4.00

MEMBER OF ASSOCIATED PRESS: The Associated Press is exclusively authorized to use the name of this newspaper in its publications...

NO RESPONSIBILITY IS ASSUMED FOR THE CARE OF UNDELIVERED MATTER... EASTERN REPRESENTATIVES: George R. Davis Co., Inc., 111 Madison Ave., New York...

THE RAINY DAY AND ITS LESSON

The proverbial rainy day has arrived for a good many of us, and sermoneering on the advantages of thrift pretty generally are accorded a more cordial hearing than they were say a year or eighteen months ago.

The Government Savings Organization is not overlooking the possibilities of the situation and is pounding away on the need and desirability of thrift with better prospects than heretofore for making its influence felt.

"One of the objects of the perpetuation of the Government Savings Organization, which still continues to market the smaller securities of the United States Government, is to increase the number of savers in this country."

As a part of its work, the Government Savings Organization has developed financial budgets and budgets for school children... The facts presented constitute simply a statement of conditions and suggestion for their betterment.

ORDINANCE NO. 340

An Ordinance establishing Local Improvement District No. 40 in the City of Twin Falls, Idaho, for the purpose of raising funds to sprinkle certain streets, avenues and alleys, and certain parts of streets, avenues and alleys within the said city.

Section 1: That there be, and there be hereby established Local Improvement District No. 40, in the City of Twin Falls, Idaho, for the purpose of raising funds to sprinkle certain streets, avenues and alleys, and certain parts of streets, avenues and alleys in said city.

Street North from Main Avenue to Addison Avenue; Third Street North from Main Avenue to Addison Avenue; Third Avenue North from Shoshone Street to Addison Avenue; Fourth Avenue North from Shoshone Street to Addison Avenue; Fourth Street North from Main Avenue to Addison Avenue; Fourth Avenue North from Main Avenue to Addison Avenue; Fifth Avenue North from Second Street North to Addison Avenue; Fifth Street North from Main Avenue to Addison Avenue; Sixth Avenue North from Shoshone Street to Addison Avenue; Sixth Street North from Main Avenue to Addison Avenue; Seventh Avenue North from Shoshone Street to Addison Avenue; Seventh Street North from Main Avenue to Addison Avenue; Eighth Avenue North from Shoshone Street to Addison Avenue; Eighth Street North from Main Avenue to Addison Avenue; Ninth Avenue North from Shoshone Street to Addison Avenue; Tenth Avenue North from Shoshone Street to Addison Avenue; Eleventh Avenue North from Shoshone Street to Addison Avenue; Twelfth Avenue North from Shoshone Street to Addison Avenue.

Section 2: That the streets, avenues and alleys, and the parts of streets, avenues and alleys, to be sprinkled are described as follows: Shoshone street from the southwest corner of Section Sixteen (16), Township Ten (10), Range Seventeen (17), East of Boise Meridian, to the intersection with Blue Lakes Boulevard and Addison Avenue; Main Avenue from the southeast corner of Section Sixteen (16), Township Ten (10), Range Seventeen (17), East of Boise Meridian, to the northeast corner of said section; Second Street West from Main Avenue to Wall Street; Second Avenue West from Shoshone Street to Washington Street; Third Street West from Main Avenue to Washington Street; Fourth Avenue West from Main Avenue to Washington Street; Fifth Avenue West from Shoshone Street to Washington Street; Sixth Avenue West from Washington Street to Washington Street; Seventh Avenue West from Washington Street to Washington Street; Eighth Avenue West from Washington Street to Washington Street; Ninth Avenue West from Washington Street to Washington Street; Tenth Avenue West from Washington Street to Washington Street; Eleventh Avenue West from Washington Street to Washington Street; Twelfth Avenue West from Washington Street to Washington Street.

Section 3: That said district shall include all the lots and parcels of land fronting or abutting on said streets, avenues and alleys to be sprinkled, as hereinbefore named, and extending back from the said street, avenue and alley, a distance of 100 feet.

Section 4: The cost of said improvement shall be assessed upon all the lots and parcels of land within the said improvement district, as hereinbefore designated, each lot or parcel of land therein to be separately assessed for the full expense of such improvement, in proportion of the number of feet of each respective lot or parcel of land fronting or abutting on said street, avenue or alley to be improved, and in proportion of the benefits to be derived to the said property by reason of such improvement.

Section 5: That upon the passage of this ordinance, the committee on streets in said city, together with the city engineer, shall make out an Assessment Roll in accordance with the provisions of Idaho as amended, compiled statutes of 1909, and the said assessment roll shall contain among other things, the names of the property owners affected by said proposed improvement, the description of the lots and parcels of land contained in the improvement district, and the amount assessed against the same, which roll, when completed, shall be filed with the City Clerk of said city.

Section 6: On receiving the said assessment roll, the City Clerk shall give notice by publication in three successive publications of the official newspaper of the said city, the date of filing the same, and said notice shall state the time when the City Council will hear and consider the objections to said roll by parties aggrieved by such assessment.

Section 7: That the assessment herein specified shall be known as Special Assessment for Street Sprinkling, and shall be levied and collected as a separate tax in addition to the taxes for general revenue purposes, to be placed on the tax roll for collection, subject to the same penalties, and collected in the same manner as other city taxes.

Section 8: That the said City of Twin Falls, Idaho, shall pay the expense of sprinkling in the space formed by the intersection of streets and avenues and the space opposite alleys in said improvement district.

Approved by the Mayor of the city of Twin Falls, Idaho, this 18th day of April, 1921.

Attest: W. H. ELDRIDGE, Mayor. W. A. MINNICK, City Clerk.

The paving situation is discussed by the Citizens in ad on page 3. Read it now—adv.

AMUSEMENTS

ORM—Earle Williams in a 6 part production "The Roman Promoters"; Larry Simon comedy.

READ THE CLASSIFIED ADS.

Advertisement for STAMMOLIN soap. Features a diamond-shaped logo with the text "ECONOMIZE ON QUANTITY Whenever You Can" and "PURE FRESH SWEET". Includes an image of the soap box.

Large advertisement for The Telephone Is Back to Normal. Text includes: "During the past three or four months there has been a steady improvement in the telephone service, both Local and Long Distance." and "The Mountain States Telephone and Telegraph Co."

Large advertisement for The Service Men's Ticket. Text includes: "Will state their stand on city problems. FRIDAY EVENING---High School Auditorium, 8 o'clock." and "Register NOW!"

