

TWIN FALLS DAILY NEWS

VOL. 7, NO. 180.

LEADED WITH MEMBER OF ASSOCIATED PRESS

TWIN FALLS, IDAHO, SUNDAY MORNING, NOVEMBER 2, 1924.

MEMBER AUDIT BUREAU OF CIRCULATION

PRICE FIVE CENTS

STATE TROOPS
PATROL RIOT
RIDDEN CITY

Hooded Order and Anti-Klan Organizations Clash; Gun Battles Take Place in the Streets; Many Hurt.

NILES, Ohio, Nov. 1 (AP)—State militia tonight patrolled the streets of Niles following a day of rioting between members of the Ku Klux Klan and Knights of the Flaming Circle. Military control, however, was not established until after almost a dozen persons had been shot and badly maimed. Some are in hospitals in serious condition at Warren, the county-seat of Trumbull county, five miles away.

Gun battles between Flaming Circle and Ku Klux Klan members had occurred near the meeting places of the rival factions. Pistol fights between speeding automobiles of Klansmen and Klan foes added to the casualty toll.

Fire Into Camps.

Several times shots were fired by opposing factions into their rival camps. Many of these shots went wild as large numbers of men fell flat on the ground as the firing started.

Arrival of the uniformed troops was the most welcome sight which citizens of this city had seen for some time as it meant immediate disintegration of the opposing forces. As the big motor trucks rolled through the street loaded with soldiers and machine guns mounted on their hoods and tops, shouts and cheers went up from the crowds which lined the streets.

Sheriff John E. Thomas said this evening after a tour of the city that "everything is quiet and I don't expect any more trouble."

Keep Mobs Apart.

The sheriff with scores of special deputies had managed to keep the opposing forces from coming together on mass until the arrival of state troops. His efforts in preserving order, however, did not prevent numerous sporadic clashes among detached units of the opposing forces, resulting in the casualties.

"I am tickled to death that it was no worse," was the only statement Sheriff Thomas could make tonight.

Colonel L. S. Connolly of the 145th infantry, who was placed in command of all troops ordered to Niles by Governor Donahy, in a statement to the citizens of Niles said it was not his intention to impose unnecessary military regulations on them and urged all to cooperate with him in maintaining order.

HORSE THEFT REPORTED

Murtagh Man Advises Sheriff's Office of Two Black Mares A-Missing From His Farm.

Loss of two black mares, believed to have been stolen Friday night from his farm near Murtagh, was reported Saturday to the sheriff's office by J. M. Boyd. No trace of the missing animals was found.

ACTION AGAINST
BOND SALE FAILS

Court Grants Costello's Motion to Dismiss Suit Against Falls District.

Suit instituted recently by Thomas Costello against the American Falls reservoir district and its directors to prevent delivery to the purchasers of \$149,000 worth of the district's bonds, was dismissed by Judge W. A. Babcock in district court here today on motion of attorneys for Costello. A temporary writ of prohibition heretofore issued in the case was rescinded.

Twenty Injured in
Train Wreck Near
Fargo; Rail Breaks

Three Coaches Leave Rails and Tumble on Sides; Injured Are Rushed to Hospitals.

FARGO, N. D., Nov. 1 (AP)—Twenty persons were hurt, several of them serious, when Great Northern passenger train No. 4 was wrecked a mile south of Grandin, late today.

The injured passengers were brought to Fargo in a baggage car and taken to St. John's hospital.

A broken rail is believed to have caused the accident.

The smoking car, one baggage car and a Pullman car rolled over onto their sides, the engine, tender and mail car remaining on the track.

BOY VICTIM OF
AUTO ACCIDENT
SEVERELY HURT

Lloyd Schnell, 12, Suffers Fracture of Skull; Harry Ihler, 16, Injured When Car Overturns.

Lloyd Schnell, 12, son of F. C. Schnell, was dangerously injured, and Harry Ihler, 16, son of E. D. Ihler, suffered bruises and shock when the Studebaker car in which they were driving at about 9:30 o'clock Saturday morning, overturned in an unexplained manner, and hurled its occupants clear of the wreckage.

Both boys were brought to the county general hospital here where Lloyd Schnell Saturday afternoon underwent an operation for fractured skull. His condition Saturday evening was reported to be critical. A younger brother of Lloyd Schnell will also come to the work with only slight injury to his hand.

Motor Continues Running.

Both boys were unconscious when George E. Sandholtz of this city, passing on the road shortly after the accident, took them aboard his car to Filer for medical attention. The top and radiator of the overturned car was crushed, the windshield shattered and three wheels broken off, but the motor was running when Mr. Sandholtz arrived on the scene.

Parents of the injured boys stated that they had planned a hunting trip when the phantasm hunting season opened today. The boys had started to Filer to obtain a hunting license when the accident occurred. They had left their guns at home. Their parents did not know that they had left home until word was brought back that they had been hurt in the accident.

CHAMBER OF COMMERCE
VOTING NEARING CLOSE

More Than 100 Ballots Already Cast in Election of Eight New Directors, Secretary Reports.

More than 100 members of Twin Falls Chamber of Commerce already have cast their ballots in the vote for eight directors of the organization which will also Monday evening. It was announced Saturday evening by Secretary Charles F. Dwight. Ballots in this election may be delivered either in person or by mail up to Monday evening. The voting is on 16 candidates heretofore chosen from the membership at a primary election.

OFFICERS SEIZE LIQUOR

Raid on Second Avenue South Resort Results in Confiscation of Fluid in Pitcher and Arrest of Spaniard.

Operatives of the sheriff's office in a descent Saturday evening on a small dwelling opposite the fire department station, Second avenue south, seized a quantity of liquor contained in a pitcher concealed under a cord table and arrested Jack Espalaga, Spaniard, who was lodged in the county jail and against whom it was charged, charge of illegal possession of liquor will be filed.

ELECTION RUMORS TURN
ATTENTION TO NEW LAW

Rumors current here during the past few days regarding possible appointments for probation officer in the event of the election of one or another candidate for probate judge have brought to attention the provisions of an amendment adopted by the last session of the legislature that involves the board of county commissioners in such appointments.

Under this amendment the commissioners must approve both the appointment and the compensation of the probation officer.

WAR SITUATION
IN CHINA BAD;
CHAOS REIGNS

American Commander Advises Removal of Foreign Women and Children From Tangshan to Safety.

TIENTSIN, Nov. 1 (AP)—The war situation continued to grow worse in the vicinity of Tientsin tonight.

The American commandant at Tangshan, 82 miles northeast of here, center of the Kailan mining administration, formally advised removal from Tangshan of all foreign women and children, on the international train now reported returning from Chingwangtao. (Previous dispatches said the retreating defeated Chihli province troops from the Shan-hai-kuan front had fallen back toward Tangshan.)

Railway officials announced that the Tientsin-Pukow railway line (the most direct route to Shanghai by rail) had been cut near the Shantung province border.

Directing Campaign.

Wu Pei-Fu tonight still was directing from the Tientsin central railway station his military campaign against Feng Yu-Shiang, his former subordinate, who by a coup d'etat has succeeded General Wu's military base of the central government at Peking. General Wu's private train, however, had been moved to a different siding.

Some Shansi province troops entered Tientsin tonight, deserting their trains and scattering in the western suburb of Hopei. Following their arrival, the American consul called in all American citizens from the native city and suburbs into the foreign settlement, while strong Japanese patrols were sent out to man defense posts around the city and prevent further incursions of armed Chinese fighters.

DEATHS MOUNT
FROM MALADY

List of Victims of Strange Malady at Los Angeles Now 14; Ten Others Are Sick.

LOS ANGELES, Nov. 1 (AP)—The death list of victims of a strange malady here which physicians have tentatively diagnosed as pneumonia plague, late today mounted to 14, according to an announcement by Dr. Elmer R. Pearce, acting health commissioner.

Ten others are ill of the disease and a similar number under observation, according to the acting commissioner's figures. He stated also that the stricken area was confined to the Mexican section in the northeastern section of the city.

Gordon of Police.

Following a conference of city officials, an announcement was made that a cordon of 60 policemen would be thrown about the affected area tonight, which has been placed under strict quarantine, to prevent residents from entering or leaving.

While the disease, which has been declared by the health authorities to be from 40 to 90 per cent fatal, remained unexplained definitely, every effort was being made in municipal laboratories to seek relief for the suffering victims.

Not Sure Yet.

"We cannot definitely say as yet tonight," Dr. Pearce said, "that we are actually confronted with the pneumonia plague, but while analysis are being made in the laboratories and strict quarantine is being observed, we are proceeding upon the assumption that it is such."

The first victim of the disease was Miss Luciana Samanara, who died on October 19, last, and since that date many of those who attended her funeral have sickened and died. The majority of deaths have occurred at the county hospital.

L. D. S. YOUNG PEOPLE WILL HAVE CHARGE OF PROGRAM

Members of the L. D. S. First Ward Mutual Improvement Association this evening are to have charge of a program that will include talks by Miss Pearl Arrington, Miss Pearl Freeman and Frank Welch of the commandment.

"Honor thy father and mother," Benj. girls will present a pageant and Benj. girls will sing in chorus. Readings are to be given by Mrs. J. D. Ritchie and Miss Willis, and a play also by Thelma Willis.

CLAIMS OF VICTORY ARE MADE
BY ALL 3 POLITICAL PARTIESElectoral College
Will Give Coolidge
350 of 531 Votes

Issues Clear Cut and Country Understands Them Says Butler in Prediction: 248 House Members.

CHICAGO, Nov. 1 (AP)—Statements predicting success in Tuesday's national election were issued from republican national headquarters today.

Chairman William M. Butler of the national committee said:

"I have been asked for a statement of 500 words giving my opinion as to the outcome of the election. It is my belief that Calvin Coolidge and Charles G. Dawes will be elected on Tuesday and that they will have more than 350 votes of 531 in the electoral college. The issues are clear cut and I believe the country understands them thoroughly."

House of Representatives

Representative Will R. Woods, chairman of the republican congressional committee, issued this statement:

"We will elect not less than 248 republican members of the next house of representatives; we may elect 265. In a total membership of 435 this will give us a margin of 20 to 47 over a bare majority."

"Making due allowance for those who, though selected as republicans, cannot be counted on as true adherents to the republican faith, we will have a minimum 31 votes more than can be mustered by the combined opposition and if our most sanguine hopes are realized we will lead the combined minority by 65."

Based on Returns.

The estimates are based upon returns which have been received from every congressional district in the country. Those returns, however, for instance, that in every state, have one which now has republican representatives in the house, we will retain our present strength and we will make certain gains in at least 14 states and possibly in as many as 22.

"Based on our latest information we will hold our own in California, Connecticut, Colorado, Idaho, Illinois, Indiana, Iowa, Kansas, Kentucky, Maine, Maryland, Massachusetts, Michigan, Missouri, Montana, Nebraska, New Hampshire, New Jersey, New York, North Dakota, Ohio, Oklahoma, Oregon, Pennsylvania, Rhode Island, South Dakota, Tennessee, Texas, Utah, Vermont, Washington, West Virginia, Wisconsin and Wyoming."

REPUBLICAN WOMEN OF
HOLLISTER HOSTESSES

Judge E. A. Walters of Twin Falls Addresses Largest and Most Enthusiastic Political Meeting of Year.

HOLLISTER, Nov. 1 (Special to The News)—Republican women of Hollister served luncheon at the close of a meeting here this evening at which Judge E. A. Walters of Twin Falls was the principal speaker. The meeting, which was the largest and most enthusiastic political assembly here this year, was attended by about 150 persons. Republican candidates for legislature and county officers were introduced.

CONGRESSMAN SMITH TO
CLOSE CAMPAIGN HERE

Congressman Addison T. Smith, returning to Twin Falls to close his campaign for re-election, will address a public meeting Monday evening in the city hall.

On the platform at that occasion with Lieutenant Governor H. S. Baldrige, who also is a candidate for re-election. Both speakers also will address a meeting Monday afternoon at Thoniet school house.

VETERANS OFFER SERVICES
IN GETTING VOTERS TO POLLS

Twin Falls post, American Legion, for the purpose of assisting in getting to the polls to vote next Tuesday will have headquarters for the day at the Magel garage. It was announced Saturday evening. Cars will be available for transportation of voters who will call the Legion headquarters, phone 540. This service is to be entirely non-partisan and is to be rendered in accordance with the pronouncement of the national organization of the Legion.

RAINS PREDICTED FOR
REGION DURING WEEK

WASHINGTON, Nov. 1 (AP)—The weather outlook for the week beginning Monday:

Northern Rocky mountain and plateau regions: Rain or showers at beginning and end about the middle of the week; temperatures mostly below normal.

HOT CAMPAIGN
IN IDAHO NOW
NEARING CLOSE

All Three Parties Are Waging Fierce Battle for Votes; Governing Southeast With Speakers and Literature.

IDAHO FALLS, Nov. 1.—Southeastern Idaho is bringing to a close one of the warmest political campaigns seen in this section of the state in many years. All three parties—republican, democratic and progressive, have waged hot campaigns, blanketing this portion of the state with their best speakers and the progressives have sent out enormous quantities of literature.

Outstanding in interest in the campaign has been the tremendous ovation given to Governor C. C. Moore, when he returned to his home county early in the week to close his campaign among the folks he has known for the past 25 years. The largest audience ever assembled in the state for a political rally greeted him at Idaho Falls Tuesday night and as he continued the campaign through Teton, Fremont, Jefferson and Madison counties he has met with an ovation unusual for a candidate in his home territory. The climax came last night when the hall was jammed in his home town of St. Anthony, to hear him give an accounting of his administration.

Economy Stressed.

He has stressed the economy program inaugurated during the past two years which has saved the taxpayers of the state a million dollars, and has openly challenged the veracity of campaign statements of his opponents. Governor Moore was given a loud out of his home territory two years ago that sent him to the governor's chair and deplores figure that this year will see another huge majority rolled up for him in the southeast.

The democratic campaign in this section has been confined to addresses by A. L. Frechler, candidate for governor; Frank Martin, candidate for the senate; and Arthur B. Wilson, candidate for congress, as the headlines. In addition to thousands of copies of the Democratic Call, a campaign paper, have been circulated. Not a great amount of interest has been aroused in the democratic campaign and in many counties in this part of the state, complete tickets for local officers under that heading are missing.

An innovation in campaign strategy has been the progressive under the leadership of H. P. Samuels, candidate for governor, who is basing his campaign on promises made last summer of cheaper coal for Idaho from his mine in Teton county. The mine he bought the mine he asked the railway company to repair a spur track to his landing station. A hearing was arranged before the public utilities commission at Driggs, and hundreds of eastern Idaho people attended the meeting to help in getting the railway company to assist in the case and commercial clubs and other organizations lent a hand. Samuels was given everything for which he asked and the people of southeastern Idaho began their wait for his coal.

One of Samuels' stock arguments has been that the state refused to buy his coal. A sensation was caused Monday in Rexburg when G. A. Samuels, state pyrrhian agent, whose home is in Rexburg, publicly challenged the progressive candidate to prove his charges and presented records of his office to show that every effort had been made to get Samuels coal for state institutions. He then failed, and when a bid was finally offered Samuels refused to post a certified check or bond to insure that he could fulfill the contract.

Street corner meetings and the distribution of a large amount of literature have supplemented Samuels' campaign, which was originally based on the hope that the state would refuse to cooperate in his plan to open his coal mine, but when that cooperation came some months ahead of election time, his boom suffered a collapse that observers say can not be over-come.

Particular interest attaches to a straw vote taken at the Idaho Falls high school Friday morning which gave Moore 361, Samuels 101, and Frechler 57.

G. O. P. Chairman Is
Only One to Make
Formal Prediction

Coolidge and Davis to Deliver Radio Addresses Monday Evening to Entire United States.

WASHINGTON, Nov. 1 (AP)—The last big come but one in the quadrennial drama of American politics was played tonight with the whole country for its theater.

Two who have aspired to highest office—John W. Davis and Robert M. La Follette—summed up their case at the bar of public opinion while in every state those who have taken lesser roles made their final bow to cheering millions.

After Sunday's interlude the campaign will have its dramatic epilogue in election eve addresses by President Coolidge and Mr. Davis, carried from coast to coast by radio, but a few hours before the voters march to the polls to record their decisions.

Coolidge Majority.

To supporters of all three candidates in the triangular fight for the presidency, there came tonight new claims of victory. Chairman Butler of the republican national committee, alone among the party chieftains issued a formal prediction, however, declaring Coolidge and Dawes would have more than 350 of the 531 votes in the electoral college.

At the same time the republican congressional committee, predicted that at least 248 republican representatives would be elected among the 435 that are to make up the new house. John W. Davis chose Carnegie hall, New York city, for tonight's final platform speech in which he asked his fellow countrymen to decide the issues of the campaign on reality and conscience rather than prejudice. Senator La Follette spoke in Cleveland's public hall, assuring a vast congregation of his supporters that their cause was the cause of the people and would triumph.

Dawes Ends Campaign.

Charles G. Dawes, who has headed the active stump campaign for the republican ticket, brought his fight to a conclusion at a night meeting in South Bend, Ind., with a speech again denouncing "insincerity in public life and asking that the republican administration be retained in power in the interest of efficient government. Governor Charles W. Bryan at the same time was saying his last words to the home folks in Nebraska and Senator Wheeler was appealing again to the voters of New York city.

Throughout the speech making of the major candidates on the last day and night of the official campaign season, there were only scattering references to the senatorial campaign fund investigation. Chairman Borah of the investigating committee, meantime returned to Washington to confer with some of his colleagues but reached no decision whether to make a statement of his findings or let the testimony speak for itself.

BANKS OF IDAHO
SHOW INCREASE

Total Deposits in 100 Depositories Jumps Million and Half Since June 30.

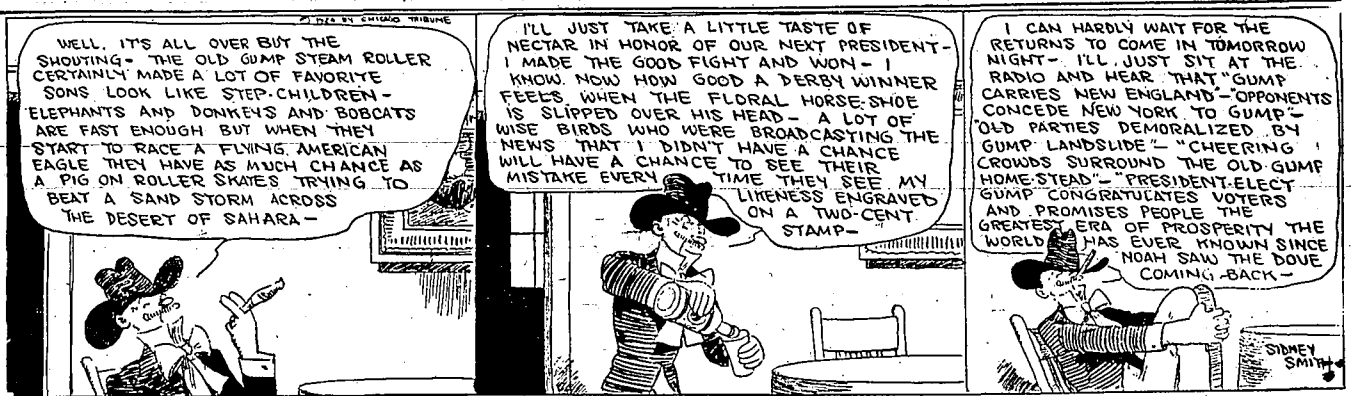
BOISE, Nov. 1 (AP)—Total deposits of more than 100 Idaho state banks under the jurisdiction of the state department of finance, have increased \$1,480,000 since June 30 of this year, according to a summary of the reports made to E. W. Porter, commissioner, answering his call for a statement of condition as of October 31.

The aggregate deposits of the state banks October 30 were \$29,409,107.70, while on June 30 the banks reported \$27,929,112.55.

During the same period loans and discounts decreased from \$10,000,561.70 to \$10,189,000.17, a reduction of more than \$271,000, in less than four months. Mr. Porter pointed out that this showing of the banks is made in spite of the fact that all money form crops has not been received and deposited.

Total resources of the banks increased from \$35,340,000.00 in June to \$36,100,849.53, a jump of more than \$1,000,000. This increase is principally made up of the increase in the reserve funds which show \$1,000,000 more on October 10 than had June 30.

THE GUMPS—COUNTING HIS POULTRY



DAVIS IS READY FOR VERDICT AT THE POLLS

Democratic Presidential Nominee Completes Campaign With Address in New York Hall.

NEW YORK, Nov. 1 (AP)—Candidate John W. Davis summed up his case tonight and virtually rested his campaign for the presidency with the jury of American voters. His final appearance before a public audience was made in Carnegie hall here and, except for a radio address to be delivered Monday night, he brought his personal campaign to a close. The speech tonight, Mr. Davis said,

was an "appeal to reason and conscience rather than to prejudice." And, on that plane, he chose to await the verdict to be returned by the jury November 4, the result of which will return him again to private life or give him the reins of government for four years, beginning March 4, next. Summing up his argument in behalf of the democratic national ticket, headed by himself and Governor Charles W. Bryan, Mr. Davis told his audience the decision before the country could be left to impulse but should be arrived at "soberly, reverently and in the fear of God." The candidate spent a busy day at his campaign headquarters, slipping out between conferences to address a women's luncheon meeting and later a gathering of college men. He also greeted a delegation of prominent Jews headed by Nathan Straus.

READ THE TWIN FALLS NEWS

ANNOUNCEMENTS

A regular communication of Twin Falls lodge, A. F. and A. M., is to be held at 7:30 o'clock Wednesday evening in the Masonic temple.

The regular meeting of the Twentieth Century club will be held Tuesday afternoon at 2:30 o'clock at Justamere Inn. It is desired that all members attend as an important amendment is to be voted upon. An interesting program has been prepared under leadership of Mrs. W. Orr Chapman.

Honry V. Walling circle, No. 10.

French Lessons

Private or in Classes.
MRS. CHARLES F. LARSEN
Phone 1594-NW

Ladies of the G. A. R., will meet at the home of Mrs. W. O. Taylor, 359 Eighth avenue north, Monday evening, November 3, at 8 o'clock.

The P. E. O. Sisterhood will meet Tuesday evening, November 4, at the home of Mrs. Stuart Taylor, 227 Eighth avenue north, with Mrs. Edward Cooper assistant hostess. After the business meeting election returns will be listened to on the radio.

The Business and Professional Women



Hoosier Furniture Co.
TWIN FALLS

en will have their regular dinner and business meeting in their club rooms Monday evening.

Renfro Beauty Shoppe. Phone 278.
—adv.

50c buys a can of PIPE FLUSH.
Salladay Hardware Company.—adv.

APPLES

Until they are gone, you can get winter varieties of apples at the Hardin cellar, two miles south, one-quarter west of Shoshone Street Bridge. Prices reasonable.

HARDIN & SON

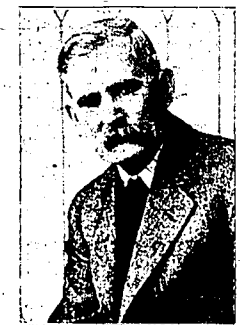
Need One or the Other
The less logic you can use to defend your faith, the more temper you must use.—Duluth Herald.



DORA NELSON
THORPSTON TWIN FALLS, ID.

Motor Replacement Parts
Regardless of Make or Model.
SEE STEP

W. P. Shinn
Candidate for
County Treasurer
Democratic Ticket



Treasurer of Adams County, Iowa, for two terms.
For ten years Postmaster at Filer.
For twenty years a resident and taxpayer of this county.

For Potato Bags
While they last, get them now at reduced prices from
E. D. KELLOGG,
304 Second Avenue North
P. O. Box 754. Phone 650-W.

BULBS
There is nothing equal to the early Spring Flowers to beautify your grounds. We have the finest selection ever offered in Idaho.
50 Giant Darwin Tulips.....\$2.25
50 Early Flowering Tulips.....\$1.75
We also have the Hyacinths, Daffodils, Narcissus and Crocus.
These Must Be Planted in the Fall.
Darrow Bros. Seed & Supply Co.
"Idaho's Leading Seed House"
Phone 8

\$1 TWENTY POUNDS \$1
SATISFACTION
TWO WEEKS AGO WE ANNOUNCED OUR
INDIVIDUAL
DAMP WASH

AT TWENTY POUNDS FOR ONE DOLLAR

The many Twin Falls housewives who tried it during the last two weeks, pronounce it the most satisfactory and most economical family washing service
A NEW LAUNDRY A NEW SERVICE

White Star Laundry

—Phone 788—

\$1 Don't Forget Monday Morning Just Phone 788 \$1

THIRD PARTY NOMINEE ENDS HIS CAMPAIGN

LaFollette at Cleveland Tells
Audience He Believes Pro-
gressives Will Carry Election
November 4.

CLEVELAND, Ohio, Nov. 1 (AP)—In Cleveland's public hall, where his independent candidacy for president was announced, and the recent republican national convention was held, Robert M. LaFollette closed his campaign tonight with a speech in which he reiterated confidence that he will win in the Tuesday election.

"The progressive tide is rising," he declared, "and will carry the progressives on to victory."

"But this is only the beginning of the fight. We cannot in one short struggle capture all the strongholds in which privilege has become entrenched. For more than 50 years the private monopoly system has been digging itself into the very heart of government. Its allies are in the executive departments, in congress and in the courts. They are in the state and city governments. They have spent millions in securing their present power, and they cannot be evicted in a day."



Edited by Mrs. E. R. Williams
Telephone 384

Mr. and Mrs. Good Miller entertained at dinner Friday evening at their home in the Reed apartments. The centerpiece for the table was a large jack o'lantern with four faces, this with other small lanterns was used to light the table and dining room. Beside the hosts covers were laid for Mr. and Mrs. Merlin Batley, Mr. and Mrs. Frank Magel and Mr. and Mrs. R. P. Parry. The party attended the Elks dance later in the evening.

George Taylor and Ted Sizer were hosts at a Halloween party Friday evening at the Taylor home on Eighth avenue north. The early part of the evening was spent with games in the house after which the boys gathered around a splendid bonfire outdoors and roasted "winkles" and marshmallows. Those invited were Russell Osgood, Tom and Frank Peavy, Warwick DeLong, Lovitt Graves, Mortimer Bunce, Claudius McCoy, Billie Thomas, Owen Keeler and Gwinn Porter.

Mrs. Mary Cooney entertained 16 little boys and girls with a Halloween party Thursday evening from 6:30 to 9 in honor of her little grand daughters, Catherine and Mary Cooney. The evening was spent with games and singing. Halloween devices and colors decorated the rooms and the same idea was carried out in the refreshments. Mrs. Cooney was assisted in entertaining by Mrs. Robert Leo Hunt. Those present were Susan, John and Mary Elizabeth Waters, Rosemary and Philip McIlwain, Mary and Ronie O'Connor, Buddie, Ruth and Walter Wilkinson, Betty

and Anastasia Cooney and the honored guests.

The Blue Triangle club entertained Friday evening in the high school gymnasium with a Halloween party for the high school faculty and the members of the club. Prizes were awarded for the most grotesque and artistic costumes, which were won by Boss Duke and Edith Miller, respectively. After games and various stunts older and pumpkin pie was served. The club now has a membership of 148 and the majority of them were present at the party.

The members of the M. S. and S. club entertained their families and friends at a delightful Halloween party given Friday evening in the Business and Professional Women's club rooms. The

rooms were very prettily decorated with the season's colors and Halloween symbols. Witches and ghosts welcomed the guests upon their arrival. Contests and games provided the entertainment during the early part of the evening, which was followed by a musical program and several selections by the young men's quartet, consisting of Wayne Parish, Milo Davis, James Requa and Berkeley Griggs. The grand march afforded a clever method of allotting

partners for refreshments. The remainder of the evening was spent in dancing, which lasted until a late hour. All present voted the affair one of the most successful of the social activities of the club.

MRS. WRIGHT'S China for Christmas. Orders for lessons. Phone 250713—adv.

If your property is desirable and is advertised in the classified—you'll find your buyer.

To the Voters of Twin Falls County:

I wish to state to my friends who supported me in the primary election and to those who expect to support me in the general election that I can not be nor ever have been a candidate for the position of County Assessor.

GEORGE E. REYNOLDS.

Motor Replacement Parts

Regardless of Make or Model
SEE STEP

FUR AND RHINESTONE TRIMMED

EVENING DRESSES

Sizes 16, 18 and 38

Only four of them; one yellow trimmed in brown fur and chenille; one gray and blue cut velvet, trimmed in wide bands of gray fur; one green chiffon over metal cloth; one rose-orchid, rhinestone, and ostrich trimmed.

\$42.75 to \$83.75



NEW FROCKS, VERY SPECIALLY PRICED IN

FAILLE AND CHARMEEN

Sizes 18 to 42.

Simply styled, yet smart dresses; the kind one wears and wears and never tires of. Though inexpensive, the materials are uniformly good, and the tailoring is splendid.

\$22.50 to \$33.95



RECENT ARRIVALS IN Dress Coats

Fur trimmed dress coats, just received; styles so attractive, fabrics so rich and soft, workmanship so careful and thorough, that we recommend every coat as a particular value.

\$37.50 to \$76.50

ENGLISH BROADCLOTH BLOUSES

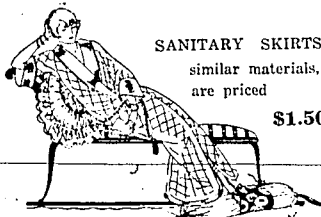
\$3.50

Smartly tailored blouses of firm, silky English broadcloth; launder beautifully. Long sleeves; finished with band around bottom. In white and blue.

SANITARY STEP-INS

\$2.95 and \$3.50

Dainty step-ins of fine, silky materials, with detachable aprons of light rubber. A most comfortable and convenient garment.



SANITARY SKIRTS
similar materials,
are priced

\$1.50

SILK JERSEY BRASSIERES

\$4.50

Unusually long and heavy brassieres of long-wearing silk jersey. Come well down over the lowest corset; faced up from the bottom with six-inch facing of heavy coutil, giving a trim, firm line over the waist and hip.

A VOTE FOR

M. E. FINCH

For Sheriff

Means Efficient Law Enforcement, Economy and Square Dealing to Every Citizen in Twin Falls County.

I realize and appreciate the fact that I was placed in office by the voters of Twin Falls County, and that I am indebted to each and every one of such voters. Therefore as your servant and representative it is my first desire to please you by working in your behalf.

I respectfully submit my record as Sheriff for the past twenty-two months and solicit your vote for re-election.

"Live and learn," an old saying and quite true in any calling. I therefore, feel justified in telling you that from my twenty-two months as Sheriff, I am in a better position to serve you best by reason of past experience.

I believe that you will agree with me, and that it is generally conceded that if an officer "makes good" that he is entitled to your support for re-election.

I have been a taxpayer in Twin Falls County since 1910. My interests are all in Twin Falls County, and economy and efficiency mean as much to me as to any voter or taxpayer in this county.

Vote for the betterment of Twin Falls County.

Yours respectfully,

M. E. Finch.



SIZES 6 TO 14

MIDDY SKIRTS

\$2.50 and \$3.25

Skirts for little girls to wear with middie and sweaters. Pretty pleated styles in plaids and solid red, navy and black.

RICH, YET INEXPENSIVE LOUNGING ROBES

\$6.50 to \$14.50

Corduroy, quilted silk and silk crepes in delicate flower shades. Some are warmly lined in soft, silky mull; some trimmed with lace and hand-made flowers. You never saw so much luxury and value combined.

Idaho Dept. Store

If It Isn't Right, Bring It Back

Hours 8 to 6

A NEW SHOE STYLE

The
South-
ern
Tie
\$5.50



A two-eyel tie in Nubia calf. Fashion's broad toe; welt sole; low rubber heel. A distinctive style at an exceptional price.

Phone No. 325

SPORTS

U. S. C. NOT TO PLAY 2 TEAMS NEXT SEASON

Conference Held Before Game in Which California Won 7 to 0 Brings Climax in School Athletics.

CALIFORNIA STADIUM, Berkeley, Cal., Nov. 1 (AP)—The University of California defeated the University of Southern California 7 to 0 this afternoon in one of the crucial football games of the coast conference.

A single touchdown, made on straight football and a converted goal accounted for the score.

RELATIONS SEVERED.

- CALIFORNIA STADIUM, Berkeley, Cal., Nov. 1 (AP)—Athletic relations between the University of California and Stanford University on the one hand, and the University of Southern California, on the other hand, will be severed at the close of the present football season, it was announced at the stadium here today just before the game between California and Southern California started.
- FOOTBALL RESULTS IN GAMES OVER U. S.**
- Birmingham Southern 25, Jacksonville Normal 6.
 - Louisiana College 9, Stetson 22.
 - Cumtland University 7, Milligan College 10.
 - Rice 19, Texas 6.
 - Baylor 15, Texas A. and M. 7.
 - Buena Vista 24, Morningside 6.
 - Parsons 14, Simpson 14 (tie).
 - Mississippi A. and M. 14, Tulane 6.
 - Southern 23, Arizona 14.
 - Southern Methodist University 0, Texas Christian University 0.
 - River Falls Normal 3, Eau Claire Normal 0.
 - Honolulu College 22, Randolph Macon 0.
 - Fordham College 13, Cedarville 12.
 - Baker 10, William Jewell 0.
 - College of Emporia 28, Washington 1.
 - Fordham 27, New York University 0.
 - Western State Normal 23, Oskosh Normal 7.
 - Michigan State Normal 14, Kalamazoo College 0.
 - St. John's University 0, Hamline 10.
 - Arkansas 10, Louisiana 7.
 - University of Richmond 0, St. John's 7.
 - Spring Hill 0, Howard 0.
 - Indiana 24, Haverford 0.
 - Princeton 21, Swarthmore 6.
 - Ohio State 7, Wooster 7.
 - Washington and Jefferson 18, University of Detroit 6.
 - Massachusetts Aggies 17, Amherst 7.
 - Chicago 19, Purdue 6.
 - Griener 6, Coe 0.
 - Iowa State 21, Kansas Aggies 0.
 - Michigan 13, Minnesota 0.
 - Northern 24, Georgia Tech 3.
 - University of Denver 3, Colorado College 0.
 - University of Colorado 3, University of Utah 0.
 - North Dakota A. C. 20, University of North Dakota 7.
 - Colorado School of Mines 6, University of Wyoming 3.
 - Illinois 36, Iowa 0.
 - Georgia 29, Montana 14.
 - Oregon 7, Washington 3.
 - Nebraska 14, University of Missouri 6.
 - Dartmouth 10, Brown 3.
 - West Point 7, Yale 7.
 - Penn State 6, Kansaspolis 0.
 - Penn State 47, Brigham Young 0.
 - Cornell 14, Columbia 0.

T. J. LLOYD



Candidate for reelection to the State Legislature on the Democratic ticket, respectfully solicits your consideration.

Weather Conditions Ideal for Hunters

Forecast for today: Fair.

Ideal weather conditions in the Twin Falls region attended the opening of the pheasant shooting season Saturday. Temperature was mild and skies were clear.

LIBERAL IN LEAD.

HAVANA, Nov. 1 (AP)—General Gerardo Machado, liberal candidate for president of Cuba, had a lead of more than 16,000 votes over General Mario C. Menocal, the conservative candidate, according to figures compiled at 11 o'clock tonight at the office of the secretary of the interior.

SO THE PUBLIC MAY KNOW

ATTENTION, TAXPAYERS

On September 3rd, my daughter was injured in front of the high school at Filer. The matter was taken up with the Sheriff's office, but very little help was secured in running down the guilty party. For this reason and no other, I am against Mose Finch for sheriff of this county.

I say to those who have their children, those who are Americans, don't vote for Finch. To those who believe that children should have some protection from reckless drivers, don't vote for Finch.

—E. E. HALL.

My attention has been called to the foregoing article in handbill form with the information that Mr. E. E. Hall was circulating the same over the county. It is true that Mr. Hall reported such an accident at this office two or three days after it occurred. Immediately two deputies went to Filer and made every effort to find the party who had been in the car that had caused the accident with Mr. Hall's daughter. The teachers and pupils of the high school at Filer were interviewed and they, as well as Mr. Hall, know that every effort was put forth to help him in this case. However, no one knew what kind of a car it was, who the driver was, how many occupants there were, or the license number of the car itself. Mr. Hall could give us no information of the kind; nothing except some car had hit the horse which his daughter was riding and that she was injured. The car had gone its way two days before Mr. Hall reported the accident, and yet Mr. E. E. Hall demanded that we arrest somebody at once, though he failed and neglected to appear before a magistrate and file a complaint which would have been necessary before an arrest in this case could be made.

Mr. Hall says "very little" help was secured in running down the guilty party. Mr. E. E. Hall, himself, failed to furnish even a "very little" help in the case in which he was so vitally interested. The investigation came to naught. E. E. Hall had no help whatever to offer. Now, he suddenly remembers to get all worked up over the

matter. He has "this reason and no other" to vote against Finch for sheriff. It occurs to me that Mr. E. E. Hall ought not to have much to say to "those who believe that children should have some protection from reckless drivers." Let's see. It was Mr. E. E. Hall who was driving his car just the school house near Knoll some five or six years ago and hit Arnel Daniels, the eight-year-old child of L. E. Daniels, at that time living near Knoll. The child died that night. I am informed. Yet Mr. E. E. Hall, I am also informed, did not immediately demand that all children should be "protected from reckless drivers" at that time. Perhaps the present accident, over which Mr. E. E. Hall gets so excited, was just as unavoidable as the one in which Mr. Hall's car killed the Daniels child.

Mr. Hall should remember that Mr. and Mrs. L. E. Daniels probably loved their child just as dearly as any American do, and quite likely just as well as Mr. E. E. Hall loves his child.

Each argument as Mr. Hall puts forth is ill-timed and is not made for the purpose of honest criticism, for he knows that everything that could possibly be done by the sheriff's office was done to serve him in this particular case.

M. E. FINCH, Sheriff.

NO HUNTING

Will be allowed on the following farms located in the Hansen district: SAMPSON BROS., W. M. HOLIFIELD, C. M. WIREMAN, A. R. SCOTT, VANCE NAYLOR, C. W. COINER, O. D. BILLS, D. J. KOENIG, J. M. GOODMAN, J. S. WISEMAN, L. R. CARTER, MRS. ADAMS, ROBT. McALLUM, STUART SEVERNS, S. N. HULL, E. R. SMITH.

ORPHEUM MONDAY and TUESDAY

Matinee.....10c and 20c
Evening, Adults 20c and 30c

The MASKED DANCER
with
HELENE CHADWICK and LOWELL SHERMAN
Adapted from "The Woman with the Mask"
by Rodolph Lothar.
Directed by Burton King

WOULD YOU KNOW YOUR OWN WIFE IF SHE WORE A MASK?

Will Rogers Comedy Feature—His Latest Two-Act Fun Special.
LATEST NEWS WEEKLY ORPHEUM ORCHESTRA

COMING—NORMA TALMADGE IN "SECRETS"

Taking the CERTAIN ROAD

After all, there's reliance in old friends. And to stick to The Florsheim Shoe is taking the certain road to shoe satisfaction.

The Rugby \$10

Idaho Department Store
If It Isn't Right, Bring It Back.

FOR THE MAN WHO CARES

Joe-K Says:

As a Citizen and Taxpayer of Twin Falls City and Country, I hereby am filing a complaint against the willful destruction of my property by so-called Halloween Celebrators. I trust the City Fathers will pass an ordinance with a stiff penalty attached so that by next year the citizens will not again have to put up with this willful destruction of their property.

Idaho THEATRE

PRICES:
Matinee.....10c, 20c
Evening.....10c, 20c, 30c
Logo Seats 10c Extra.

TOMORROW AND TUESDAY

'THE STORY WITHOUT A NAME'
IRVIN WILLAT
A Paramount Picture
Agnes Ayres
Antonio Moreno

ADDED NEWS
COMEDY
IDAHO ORCHESTRA

This radio-melodrama has everything except a name. Romance, mystery, adventure and thrill upon thrill.

Founded on Photoplay Magazine's prize title contest story, and magnificently produced by the director of "Wanderer of the Wasteland."

STARTING WEDNESDAY

Attraction extraordinary, the one and only authentic scenes of the ZR-3 crossing the Atlantic. Taken aboard the ZR-3 for the

International News

ALSO FIRST SHOWING

Zane Grey's 'THE BORDER LEGION'
ANTONIO MORENO
HELENE CHADWICK

COMING NEXT WEEK

Captain Blood

You Know in Advance

Dodge Brothers Dealers realize that a car's good performance is no longer the sole basis of an owner's good will.

It is equally essential that dealers give good service.

Because of this, they employ the Flat Rate Service System, which insures accurate work at a fair, predetermined price.

When you leave your car with a Dodge Brothers Dealer for service you know just what work will be done, when it will be finished and what it will cost. There are no unpleasant surprises in your bill.

You know in advance.

MAGEL AUTOMOBILE COMPANY
PHONES 540-541
TWIN FALLS, IDAHO

BREVITIES

Leaves for Kansas—H. E. Swisher left Saturday on a trip to Maline, Kansas.

Goes to Hammett—D. R. Taylor left Saturday evening on a visit to Hammett, Idaho.

On Business to Burley—Gleed Miller went to Burley Saturday morning on a business trip.

Parents of Son—Mr. and Mrs. Paul R. Taber are the parents of a son, Paul R. Taber, Jr., born Saturday at their home.

To Visit Mother—Mrs. E. J. Colbert and baby left Saturday morning for Whitewater, Wisconsin, to visit her mother.

Concludes Visit—Mrs. Mary Smith left Saturday morning for her home in Denver after a visit with friends and relatives in Twin Falls.

Returns to Oregon—Mrs. E. P. Swank, who has been visiting friends in Twin Falls for a few days left Saturday morning for her home in Eugene, Oregon.

Visiting Parents—Mr. and Mrs. Art Hancock arrived the middle of the week from Seattle to visit Mrs. Hancock's parents, Mr. and Mrs. W. J. Taylor.

Returns to Los Angeles—Thomas Costello left Saturday evening returning to Los Angeles after spending several weeks here looking after property interests.

Visits Sister Here—Mrs. F. C. Bulkley left Saturday morning for her home in Oklahoma City, after spending the week here with her sister, Mrs. O. R. Defeweller.

Leave Hospital—Mrs. W. A. Ring of Contact, and Mrs. Paul Neuman of Castleford, returned to their homes Saturday from the county general hospital where both recently underwent major operations.

Family Leave Hospital—Mr. and Mrs. James Clawson, both of whom recently underwent major operations at the county general hospital, were discharged from that institution Saturday to return to their home at Twin Springs.

Speaks for Republicans—Shad L. Hodgins, Twin Falls mayor, returned Saturday from Weiser, where he spoke Friday evening in the interests of the republican party and candidates. He also addressed a public meeting Thursday evening at American Falls.

Licensed to Wed—Marriage licenses were issued Saturday at the office of the county recorder here, to Clark E. Kleinkopf of Eden, and Maud Early of Ellet; John V. Carson and Dolores Hollister, both of Burley; Joe Najzchloba and Mary Pappalick, both of Buhl.

O. S. L. Freight Agent Visits—H. E. Godwin of Salt Lake, general freight agent for the Oregon Short Line, was here Saturday in conference with chamber of commerce officials relative to application for reduction in rates on certain commodities shipped out of Twin Falls.

Accident Victim in Hospital—Miss

HUGHES WINDS UP CAMPAIGN SPEECHES

NEW YORK, Nov. 1 (AP)—Secretary Hughes wound up his campaigning here tonight with the declaration that the opponents of President Coolidge had started out with an attempt to "stampede" the country with "ill-measured attacks upon reputation," but had found their efforts vain.

"Long after his detractors have been forgotten," he continued, "the memory of Calvin Coolidge will be cherished by the American people."

"Let violators of the law be punished, however they may be, but it would be extraordinary to assert that their misconduct, for which they are being duly prosecuted, affords any reason why we should adopt free trade instead of protection, or alter our fiscal administration, or change of foreign policy or have governmental ownership, or denature the supreme court."

Peggy Brown, who was Thursday evening run down by an automobile on Fourth avenue east and suffered shock and severe bruises, is reported to be making satisfactory recovery at the county general hospital where she has been a patient for two days.

THRIFT--

Ben Franklin gave two simple rules for "getting ahead."

First: Honesty and industry be thy constant companion.

Second: Spend one shilling every day less than thy clear gain.

"Then shall thy pockets soon begin to thrive and thy creditors will never insult thee, nor hunger bite, nor nakedness freeze. The whole hemisphere will shine bright—pleasure spring up in every corner of thy heart."

INVEST YOUR SAVINGS WITH US.

The Mutual Building & Loan Association

A HOME INSTITUTION

BIG ELECTION DANCE

FILER ROOF
TUESDAY NIGHT
BLUEBIRD ORCHESTRA
LET'S ALL GO

Dan Connor's Record in Office

DAN, HOW DO YOU GET THAT WAY?

This reminds us of two Irishmen walking from New York to Chicago. On nearing their destination, they passed through a marsh full of bullfrogs one evening. Having never heard them before, they sneaked up nearer to the noise to find out what it was. After careful investigation, Pat said, "Aw, Mike, it's nothing but a noise."

Dan invites comparison for the whole board's record. All right, here goes.

Dan says: That they cut tax valuations \$1,417,423.82. Where do you get that noise? Our assessor, Gland Stewart, is solely to be credited for this, the commissioners had nothing whatever to do with it.

Dan says: That they refused a raise in salary of \$600 each per year. You never had it offered to you. The facts are that you commissioners tried to have Twin Falls county changed back to a first class county, thereby getting an increase in salary; but you were refused this by the legislature.

Dan says: That further savings were effected by not furnishing autos to county officials. Courthouse records show that the present board's auto hire has increased 148 per cent over the preceding board. Is that a saving? Dan, do you know where the commissioners went? And who went with them? Two and one-half times as much traveling was done the last two years as former years.

Dan also says: That the board saved the county \$28,911. The expense accounts do not show it. The only department for which you can claim credit for economy is your own. It cost you \$600 more to run your own office this year than it did last year. You have spent \$3,889.11 more to run the county this year than you spent last year. If the people elect men to offices who conduct their respective offices in a business like manner so as to effect a saving in their department, why should the commissioners claim the credit?

Dan, after careful investigation, we found that it is "nothing but a noise."

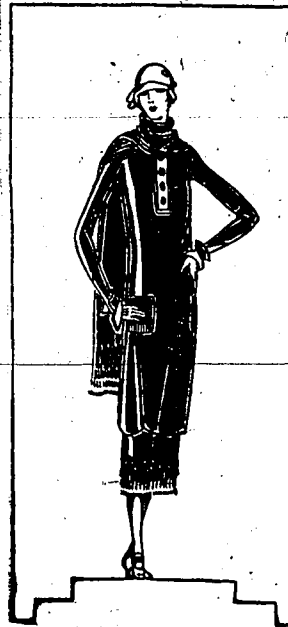
Dan says: That the commissioners saved \$1,600.10 in the care of the poor. How did you do it? Why did you pay \$2.20 per ton more for a very inferior grade of coal for the poor than was offered you? You could have "effected" a greater saving in this, maybe.

DETWEILER'S PLATFORM

1. We favor cutting personal expenses on County Commissioners.
2. We favor giving destitute widows all they are entitled to, a thing they have not got in the past; the difference credited to savings to the county by the present board.
3. We favor paying full value for services rendered by employees and no more.
4. We do not favor cutting salaries of some employees and raising them on a few favored ones, as has been done in the past.
5. We favor a square deal to all and special privilege to none.
6. We pledge ourselves to have a complete audit made. If we fail to do this we will show cause why.

Vote for Hatfield, Pitullo and Detweiler for an economical and business like administration.

D. F. DETWEILER.

Wright's
A GOOD PLACE TO TRADE

A Special Sale
of Beautiful Fall

FROCKS

of Flannel, Wool and Silks
Tomorrow Specially Priced

\$14.95

This important offering brings to you the variety, beauty, practicability and the season's lowest price. Economies that will immediately appeal to prudent women, who would purchase up-to-the-minute styles in fall and winter dresses at a price considerably less than regular. This assortment includes checked flannels, plain flannels, poiret twills, pan velvet, crepe satins and cantons, in dark and light colors; size range complete. Priced \$14.95



China Sale

China ware that women love to own. In going to Wright's you are sure to get quality at the price you want to pay. The November Sale of China ware is now in progress. Values are exceptionally good just now.

Downstairs.

VASES AND BOWLS
25 PER CENT OFF

Summer has gone but we can still have many of our favorite flowers and plants in the house to remind us of the pleasant sun-shiny days just past. You can buy that famous Van Brughe Pottery at Wright's to put them in. Vases and bowls, special—25 PER CENT OFF

Downstairs.

FLORAL PATTERN
42-PIECE SET

This 42-piece set of floral pattern is a set you would be proud to use for your Thanksgiving day dinner. A regular \$19.50 set. On sale at Wright's now at \$10.95

Downstairs.

WATER PITCHERS
PRICED 50c

We want to help you with your household problem and perhaps this bit of news is just what you have been waiting for. At Wright's there is a good size water pitcher of earthenware in blue and white for only 50c

Downstairs.

EVERY-DAY SET
42-PIECE

Now is the opportune time to buy a set of dishes for your every-day use. Wright's have a large assortment to pick from. A very neat one, has a blue flower pattern; 42-piece set \$8.95

Downstairs.



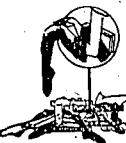
Kid Gloves

Wear Pevin kid gloves if you want your hands smartly clad. Newest fall novelties in a glove that will wear and look stylish.



Novelty Bags

An assortment of novelty bags and purses is a fad every woman enjoys. They do mean a lot to one's costume. Here are some fine ones.



Silk Hosiery

Beautiful Gotham Gold Stripe hose, sheer chiffons, heavy pure silk, and a utility number for every-day wear. All of super-quality.



Novelty Glass

Colored glassware brightens up a nook in your house. Candlesticks, bowls, vases. A happy gift suggestion: 55 days until Christmas.



Black Oxfords

Oxfords are the backbone of shodden. Here are some new black calf oxfords, spade toe and creased vamp. You will like them, \$5.95.



LOGIC

To be smart, wear silk stockings.

To be smart, have poise. To have poise be comfortable.

To be comfortable in cold weather wear GOTHAM INVISIBLES, flesh colored knitted spats, beneath silk stockings.

GOTHAM INVISIBLES

\$1 per pair

PLAN PARTIAL FUND REPORT

Senate Investigating Committee Withholds Statement Until Monday for Conference.

WASHINGTON, Nov. 1 (AP)—Decision as to whether the senate committee investigating campaign funds will submit a partial report before the election on the testimony produced at the hearing in Washington and Chicago was held in executive session tonight, pending a conference between members of the committee, probably Monday.

Chairman Borah said tonight that although he had "very positive ideas" on hearing on the testimony and thought a statement should be issued for the benefit of the public, he did not feel that he should issue a statement until he had obtained the views of the other members of the committee. He reached Washington late today from Chicago where he and Senator Shipstead, farmer-labor, Minnesota, heard testimony concerning campaign financing.

Senator Caraway of Arkansas, and Senator Harrell of Delaware, both democrats, who conducted the Washington section of the hearing, were both out of the city today.

The investigation will be resumed after the election, Chairman Borah said, but not "immediately after."

Use PIPE FLOUT to open up that clog in your drain pipe. Does not injure the plumbing in any way. Saturday Hardware Company.—adv.

MADAME HENTLEY, PRIVATE PSYCHIC, advisor and clairvoyant, at Intermore Inn, opposite court house, Room 8; hours 10 a. m. to 8 p. m.—adv.

KIMBERLY

KIMBERLY—Mrs. R. H. Denton entertained five tables of bridge Tuesday afternoon at her home in Kimberly. Motifs and colors characteristic of Halloween were carried out in the house decorations. Mrs. J. Frank Henry received the high score favor and Mrs. L. G. Stettler second high. Dainty refreshments were served by the hostess, assisted by Mrs. L. C. Doty; with Mrs. J. P. Henry; F. W. Swearingen, W. A. L. Stowe, R. G. Wilson, Carl Ridgeway, Gerald Douglas, G. W. Whitney, William Downing, G. F. Blockeath, A. J. Wilson, E. C. Doty, J. B. Hardin, W. M. Arnold and L. G. Stettler.

The E. L. B. club held a very enjoyable meeting on Wednesday afternoon at the home of Mrs. W. E. Martin on East Center street, the occasion being a shower for Mrs. Hardy Hopkins. Twenty members and several guests were present.

A large crowd was in attendance at the costume dance at the Legion hall on Wednesday night, given by the Broken lodge of Kimberly.

Kimberly Tuesday from Alberta, Canada, and are contemplating buying land in southern Idaho.

N. W. Swearingen who has spent the past two months marketing potatoes in California, returned home Thursday.

Mr. and Mrs. Fred Tatterton and children of Dry Creek, were shopping in Kimberly on Tuesday.

Mrs. Florence Wright and Mrs. L. C. Doty returned the latter part of the week from Boise.

Mr. and Mrs. H. Scott arrived in Kimberly Tuesday from the Magic City Wednesday.

Mr. and Mrs. Valner Greybeal, who recently bought the Sam Strong home, moved to their new location on Wednesday from their former home at Castleford.

Arthur Black of Murtaugh, who has spent the past six weeks in the apple harvest of the Kimberly vicinity, returned to his home Monday for the winter.

Mrs. Ernest Whitte of Twin Falls was calling on friends in Kimberly Monday afternoon.

Mr. and Mrs. John Gamble of Twin Falls, and Mr. and Mrs. Kenneth Annett of Jerome, attended the dance in Kimberly Wednesday evening.

Mrs. E. C. Taylor entertained Thursday afternoon in honor of the Kimberly Bridge club. Halloween suggestions were carried out in the tully cards and house decorations. The hostess was assisted by Mrs. James Nygard. Mrs. J. P. Henry received high honor score at bridge, and Mrs. Glenn Whitney the prize for having the most complete list of words in a verse of prose contest.

Mrs. Art Atkinson of Twin Falls visited her parents, Mr. and Mrs. James Nygard on Thursday.

Frank Burkhalter was over from Edon Thursday in connection with business, preparatory to his sale in the early part of November. Mr. and Mrs. Burkhalter will leave soon for Minnesota to make their home.

Mr. and Mrs. W. R. Lodham announce the birth of a son, Robert May, October 22, at their home in Stockton, Cal.

The Parent-Teachers' association have postponed their regular meeting until the second Friday in November.

H. M. Smith of Hansen was a business visitor in Kimberly Friday afternoon.

The school children of the grade building experienced a real vacation Friday afternoon when the teachers of each room planned a party for the little folks, Halloween suggestions and games being the entertainment. Candy, apples, popcorn, etc., furnished the refreshments for the afternoon.

W. A. Masack of Salt Lake is assisting at Wilson brothers' during their sale, beginning Tuesday November 5.

W. A. Masack of Salt Lake is assisting at Wilson brothers' during their sale, beginning Tuesday November 5.

W. A. Masack of Salt Lake is assisting at Wilson brothers' during their sale, beginning Tuesday November 5.

W. A. Masack of Salt Lake is assisting at Wilson brothers' during their sale, beginning Tuesday November 5.

W. A. Masack of Salt Lake is assisting at Wilson brothers' during their sale, beginning Tuesday November 5.

W. A. Masack of Salt Lake is assisting at Wilson brothers' during their sale, beginning Tuesday November 5.

W. A. Masack of Salt Lake is assisting at Wilson brothers' during their sale, beginning Tuesday November 5.

W. A. Masack of Salt Lake is assisting at Wilson brothers' during their sale, beginning Tuesday November 5.

W. A. Masack of Salt Lake is assisting at Wilson brothers' during their sale, beginning Tuesday November 5.

W. A. Masack of Salt Lake is assisting at Wilson brothers' during their sale, beginning Tuesday November 5.

W. A. Masack of Salt Lake is assisting at Wilson brothers' during their sale, beginning Tuesday November 5.

W. A. Masack of Salt Lake is assisting at Wilson brothers' during their sale, beginning Tuesday November 5.

W. A. Masack of Salt Lake is assisting at Wilson brothers' during their sale, beginning Tuesday November 5.

W. A. Masack of Salt Lake is assisting at Wilson brothers' during their sale, beginning Tuesday November 5.



Frances Marion prepared the script for Miss Talmadge's new First National picture, "Secrets," at the Orpheum Monday and Tuesday.

It is cast in four periods, 1923, 1924, 1925 and 1926, and the action takes place both in the far west and in modern society settings.

CALLS FOR SEED EXHIBITS FOR INTERNATIONAL SHOW

All entries for the Chicago International Hay and Grain show can be left at the county agent's office prior to November 8 at which time they must be sent to C. B. Ashion of Boise, it was announced Saturday. As many entries as possible are wanted in the line of small seeds.

W. A. Masack of Salt Lake is assisting at Wilson brothers' during their sale, beginning Tuesday November 5.

W. A. Masack of Salt Lake is assisting at Wilson brothers' during their sale, beginning Tuesday November 5.

W. A. Masack of Salt Lake is assisting at Wilson brothers' during their sale, beginning Tuesday November 5.

W. A. Masack of Salt Lake is assisting at Wilson brothers' during their sale, beginning Tuesday November 5.

W. A. Masack of Salt Lake is assisting at Wilson brothers' during their sale, beginning Tuesday November 5.

W. A. Masack of Salt Lake is assisting at Wilson brothers' during their sale, beginning Tuesday November 5.

W. A. Masack of Salt Lake is assisting at Wilson brothers' during their sale, beginning Tuesday November 5.

W. A. Masack of Salt Lake is assisting at Wilson brothers' during their sale, beginning Tuesday November 5.

W. A. Masack of Salt Lake is assisting at Wilson brothers' during their sale, beginning Tuesday November 5.

W. A. Masack of Salt Lake is assisting at Wilson brothers' during their sale, beginning Tuesday November 5.

W. A. Masack of Salt Lake is assisting at Wilson brothers' during their sale, beginning Tuesday November 5.

W. A. Masack of Salt Lake is assisting at Wilson brothers' during their sale, beginning Tuesday November 5.

W. A. Masack of Salt Lake is assisting at Wilson brothers' during their sale, beginning Tuesday November 5.

W. A. Masack of Salt Lake is assisting at Wilson brothers' during their sale, beginning Tuesday November 5.

W. A. Masack of Salt Lake is assisting at Wilson brothers' during their sale, beginning Tuesday November 5.

W. A. Masack of Salt Lake is assisting at Wilson brothers' during their sale, beginning Tuesday November 5.

W. A. Masack of Salt Lake is assisting at Wilson brothers' during their sale, beginning Tuesday November 5.

W. A. Masack of Salt Lake is assisting at Wilson brothers' during their sale, beginning Tuesday November 5.

W. A. Masack of Salt Lake is assisting at Wilson brothers' during their sale, beginning Tuesday November 5.

W. A. Masack of Salt Lake is assisting at Wilson brothers' during their sale, beginning Tuesday November 5.

W. A. Masack of Salt Lake is assisting at Wilson brothers' during their sale, beginning Tuesday November 5.

W. A. Masack of Salt Lake is assisting at Wilson brothers' during their sale, beginning Tuesday November 5.

W. A. Masack of Salt Lake is assisting at Wilson brothers' during their sale, beginning Tuesday November 5.

W. A. Masack of Salt Lake is assisting at Wilson brothers' during their sale, beginning Tuesday November 5.

W. A. Masack of Salt Lake is assisting at Wilson brothers' during their sale, beginning Tuesday November 5.

W. A. Masack of Salt Lake is assisting at Wilson brothers' during their sale, beginning Tuesday November 5.

W. A. Masack of Salt Lake is assisting at Wilson brothers' during their sale, beginning Tuesday November 5.

W. A. Masack of Salt Lake is assisting at Wilson brothers' during their sale, beginning Tuesday November 5.

W. A. Masack of Salt Lake is assisting at Wilson brothers' during their sale, beginning Tuesday November 5.

W. A. Masack of Salt Lake is assisting at Wilson brothers' during their sale, beginning Tuesday November 5.

W. A. Masack of Salt Lake is assisting at Wilson brothers' during their sale, beginning Tuesday November 5.

W. A. Masack of Salt Lake is assisting at Wilson brothers' during their sale, beginning Tuesday November 5.

W. A. Masack of Salt Lake is assisting at Wilson brothers' during their sale, beginning Tuesday November 5.

W. A. Masack of Salt Lake is assisting at Wilson brothers' during their sale, beginning Tuesday November 5.

W. A. Masack of Salt Lake is assisting at Wilson brothers' during their sale, beginning Tuesday November 5.

W. A. Masack of Salt Lake is assisting at Wilson brothers' during their sale, beginning Tuesday November 5.

W. A. Masack of Salt Lake is assisting at Wilson brothers' during their sale, beginning Tuesday November 5.

W. A. Masack of Salt Lake is assisting at Wilson brothers' during their sale, beginning Tuesday November 5.

W. A. Masack of Salt Lake is assisting at Wilson brothers' during their sale, beginning Tuesday November 5.

W. A. Masack of Salt Lake is assisting at Wilson brothers' during their sale, beginning Tuesday November 5.

W. A. Masack of Salt Lake is assisting at Wilson brothers' during their sale, beginning Tuesday November 5.

W. A. Masack of Salt Lake is assisting at Wilson brothers' during their sale, beginning Tuesday November 5.

W. A. Masack of Salt Lake is assisting at Wilson brothers' during their sale, beginning Tuesday November 5.

W. A. Masack of Salt Lake is assisting at Wilson brothers' during their sale, beginning Tuesday November 5.

W. A. Masack of Salt Lake is assisting at Wilson brothers' during their sale, beginning Tuesday November 5.

W. A. Masack of Salt Lake is assisting at Wilson brothers' during their sale, beginning Tuesday November 5.

W. A. Masack of Salt Lake is assisting at Wilson brothers' during their sale, beginning Tuesday November 5.

W. A. Masack of Salt Lake is assisting at Wilson brothers' during their sale, beginning Tuesday November 5.

W. A. Masack of Salt Lake is assisting at Wilson brothers' during their sale, beginning Tuesday November 5.

W. A. Masack of Salt Lake is assisting at Wilson brothers' during their sale, beginning Tuesday November 5.

W. A. Masack of Salt Lake is assisting at Wilson brothers' during their sale, beginning Tuesday November 5.

W. A. Masack of Salt Lake is assisting at Wilson brothers' during their sale, beginning Tuesday November 5.

W. A. Masack of Salt Lake is assisting at Wilson brothers' during their sale, beginning Tuesday November 5.

W. A. Masack of Salt Lake is assisting at Wilson brothers' during their sale, beginning Tuesday November 5.

Radio Programs

Advance offerings at principal station within range of receiving sets in Twin Falls country, arranged briefly for busy readers. TWIN FALLS TIME

SUNDAY, NOVEMBER 2

4:30 p. m.—Concert by KGO Little Symphony orchestra.

8:30 p. m.—Church service.

KGW, PORTLAND.

7 p. m.—Church service sponsored by the council of churches.

WQAY, OMAHA.

1:30 p. m.—Matinee program by First Christian church orchestra.

8 p. m.—Musical chapel service by the First Presbyterian church.

KYW, CHICAGO.

6 p. m.—Chicago Sunday Evening club service. Special musical program.

WOC, DAVENPORT.

7 p. m.—Church service, Evangelical Church of Peace.

8:30 p. m.—Musical program. Palmer Radio orchestra.

KJL, LOS ANGELES.

7:30 p. m.—Art Hickman's concert orchestra.

8 p. m.—Organ recital.

10 p. m.—Musical program. KED, ST. LOUIS.

8 p. m.—Musical specialties from Grand Central theater.

KFI, LOS ANGELES.

10 p. m.—Jane's hour, presented by Jane of the Examiner.

Alex W. Murray, plumbing, 430 Seventh avenue east.—adv.

Breeder's Sale of Guernseys

I will sell at public auction my herd of Registered and High Grade Guernsey Cattle at my farm, one mile north of Twin Falls, on Blue Lake Boulevard, at 1 o'clock, November 12, 1924.

J. A. WATERS, Owner

EARL O. WALTER, Auctioneer.

H. B. GRANT, of First National Bank, Clerk.

Reference to First National Bank of Twin Falls, Idaho.



An Appeal From the Republicans of the West End of the County to Republicans of



the East End of the County, More Particularly to Those Who Live in the City of Twin Falls

THE West End of Twin Falls County has as candidates on the Republican ticket two men who stand very high with the people of their vicinity, but who unfortunately are not acquainted with the people of the East End of the County. We refer to **E. R. Brooks**, candidate for the Legislature, and **A. E. Kliss**, candidate for County Commissioner from the West End. The people of the West End vouch for these men in the most positive terms and assure the voters of the East End of the County that they are worthy in every respect and eminently qualified for the offices that they seek. These men are busy with their own affairs and have not had the time or opportunity either in past years or during the campaign, to make extensive acquaintanceship with the people of Twin Falls, and the Eastern part of the County. For that reason we are making this appeal to those voters who are not familiar with the names of these candidates, and that they be remembered upon election day. We believe that the people of the City of Twin Falls are willing to concede that in fairness representation in county offices should be equitably distributed over the County, and that the center of population should not take advantage of its superiority of numbers to select as county officers only those who live in that center.

A vote for Brooks and Kliss will be appreciated not only by these gentlemen, but by their numerous friends in the West End.

A COMPLETE SERVICE

Few people appreciate the completeness that has been attained in mortuary service within the past few years. To the mortician there is no detail too unimportant to receive his scrupulous attention.

14 YEARS OF HIGH STANDARDS

In completeness of service—as in facilities, location and equipment—we have pioneered.

This community has benefitted by a complete and efficient mortuary service for a number of years. This service includes invalid and ambulance service, in fact the standards of every branch are of the highest.

Maximum Service Minimum Charge

In another respect we offer a service that is noteworthy.

Everything that is done here is marked by sympathetic understanding and unobtrusive efficiency, and the cost is always moderate and governed by the wishes of the patron.

P. J. GROSSMAN

Republican Ticket**X****PRESIDENT**
CALVIN COOLIDGE**VICE PRESIDENT**
CHAS. G. DAWES**UNITED STATES SENATOR**
WM. E. BORAH**REPRESENTATIVES IN CONGRESS**
First Congressional District
BURTON L. FRENCH
Second Congressional District
ADDISON T. SMITH**GOVERNOR**
CHARLES C. MOORE**LIEUTENANT GOVERNOR**
H. C. BALDRIDGE**JUSTICES OF THE SUPREME COURT**
Six-Year Term
ALFRED BUDGE
RAYMOND L. GIVENS**SECRETARY OF STATE**
F. A. JETER**STATE TREASURER**
D. F. BANKS**STATE AUDITOR**
E. G. GALLET**ATTORNEY GENERAL**
A. H. CONNER**SUPERINTENDENT OF PUBLIC**
INSTRUCTION
ELIZABETH RUSSUM**STATE MINE INSPECTOR**
STEWART CAMPBELL**SENATOR**
O. P. DUVAL**REPRESENTATIVES**
W. D. GILLIS
E. R. BROOKS
FRANK L. STEPHAN**PROSECUTING ATTORNEY**
J. W. TAYLOR**ASSESSOR**
S. CLAUD STEWART**TREASURER**
EMMA L. WARREN**SHERIFF**
C. T. BRACKEN**PROBATE JUDGE**
J. L. HODGIN**SUPERINTENDENT**
CHARLOTTE POND**CORONER**
P. J. GROSSMAN**SURVEYOR**
HAROLD W. MERRITT**COUNTY COMMISSIONERS**
A. E. KLISS
IVAN G. LINCOLN
W. F. BRECKON

A Vote for Prosperity in Idaho and the Nation

Should be the Vote You Cast on Tuesday

Herewith is the list of the Candidates on the Republican Ticket. Examine it name by name, scrutinize its personnel, subject every individual to the closest inspection.

Compare this ticket with all others, then

Go to the Polls and Vote the Republican Ticket

The Republican Party should be proud of the Ticket which is presented for consideration this year. Every candidate has a right to depend on the united support of the Republican voters, not primarily because they are Republicans, but because the selection of candidates is such as to merit the confidence and support of all who are interested in the welfare of the American Government in County, State and Nation.

The Republican Ticket Stands on Its Merits

It is offered to the electors in the sincere conviction that no better or more useful group of men was ever assembled under any political banner in the history of Twin Falls county.

In the interests of a United Republican Party, the Republican Ticket is confidently presented.

Take No Chances; Vote the Republican Ticket Straight

Republican County Central Committee

JOHN W. GRAHAM, Chairman.

TWIN FALLS DAILY NEWS
Issued every morning except Monday.
Twin Falls News Publishing Co., Inc.
(Established 1904.)

Entered as second class mail matter, April 9, 1918, at the postoffice at Twin Falls, Idaho, under the act of March 3, 1879.

SUBSCRIPTION RATES
One Year \$6.00
6 months \$3.50
3 months \$2.00
1 month \$1.00

MEMBER OF ASSOCIATED PRESS
This Association Press is exclusively authorized for the use of publication of all news dispatches credited in this paper, and also the local news published herein. All rights of reproduction of special dispatches herein are also reserved.
50 cents per copy.

The News is a member of the Audit Bureau of Circulation, from whom full information as to circulation may be obtained upon application. Detailed information supplied locally upon request.

No responsibility is assumed for the loss of unsolicited manuscripts, photographs or other contributed matter. Articles submitted for publication will be used or not at the discretion of the editor, and no manuscript will be returned, unless accompanied by necessary postage.

EASTERN REPRESENTATIVES
George B. David Co., Inc., New York
A. R. Keator, Chicago and L. Hall Company, Inc., San Francisco.

THE SPIRIT OF YOUTH

Once more the gladtime festival known as "Halloween" has come, and again our people settle back into their accustomed ways and begin the work of planning for the entertainment of the youth upon the next anniversary of this happy occasion.

Not for a long time has Twin Falls, rising generation enjoyed itself more. From early evening until late at night there was hardly a dull moment. Sincere and earnest Twin Falls men and women had planned a sort of community celebration of the occasion in and about the City Park where children and parents gathered in crowds and joined wholeheartedly in the merry-making.

And all the time, even unto the late hours, other laughing, carefree groups of our young people invaded the alleys and backyards of the residence section, kicked garbage cans into the middle of the next block, stamped over hedges and gardens, tore down fences and playfully carried off everything which could be moved, all in a spirit of light-hearted gaiety and childish abandon which was beautiful to witness.

Halloween to be seen at its best, must be examined the morning after, and certainly there should be few complaints in Twin Falls as to the entire success of the occasion. Main and Shoshone streets in the business district bear eloquent testimony of the scope and extent of the holiday making.

Then, too, there is the scientific aspect of its usefulness. For instance, it has been established that tallow rubbed upon window glass is much funnier than soap because soap can be rubbed off more or less readily, while tallow willigh defies all efforts to remove it. This is an important discovery and full credit should be given for it.

Long live Halloween!
It's great!
Do we like it?
I should say we do—we've got to.

THOSE CANADIAN RAILWAYS

In pointing to the Canadian railways as shining examples of the benefits of government ownership and operation, the Progressive spokesmen have made the common mistake of visionaries and theoretical crusaders. They overlook the facts in the case.

Instead of attaining an efficiency of

To The Public

Having bought the Lincoln Grocery, 552 Fifth Avenue North, will be pleased to meet all former customers and new ones. We solicit your patronage.

Hattie M. Ludlom

Let Us Test Your Brakes

We'll be glad to test and inspect your brakes without cost to you. Maybe they're not properly adjusted. Every car needs new lining. Always bring your car around and

HAVE YOUR BRAKES INSPECTED

We specialize in brake service and can quickly tell you what the trouble is.

CASEY-PARKER
INSPECTION CO.

THE HUMAN ZOO

By C. D. Batchelor

(Continued from Page 7)



Waiter—That ain't a beetle, mister, it's just a roach.

this, although concern to rescue you was the chief motive of his embracing that same service.

She had turned her shoulder to him so that he should not see her face. His lordly's unusual nervousness was steadily increasing. "He thought, then—so he told me—that my presence here had contributed to his inability to redeem himself in your sight; and unless he were so redeemed, there was redemption nothing."

"He thought that you had contributed?" she echoed.

"Aye, and he said so in terms which told me something that I hope above all things, and yet dare not believe, for, God knows, I am no coxcomb. Arabella. He said

I had gone aboard his ship to demand the instant surrender of your uncle. He laughed at me. Colonel Bishop should be a hostage for his safety. By readily venturing aboard his ship, I afforded him in my own person yet another hostage as valuable at least as Colonel Bishop. Yet he bade me depart; not from the fear of consequences, for he is above fear, nor from any personal esteem for me whom he confessed that he had come to find detestable; and this for the very reason that made him concerned for my safety."

"I do not understand," she said, as he paused. "Is not that a coxcomb in itself?"
"It seems so only. The fact is,

Arabella, this unfortunate man has the temerity to love you."

She cried out at that, and clutched her breast whose calm was suddenly disturbed. "Go on," she bade him.

"Well, then, he saw in me one who made it impossible that he should win you—as he said. Therefore he could with satisfaction have killed me. But because my death might cause you pain, he caused your happiness was the thing that above all things he desired, he surrendered that part of my person afforded him. If his departure were my life in what might follow, there was the risk that—that you might mourn me. Because of that he bade me leave his ship, and had me put ashore." She looked at him with eyes that were awing with tears. "Was he right, Arabella? My life's happiness hangs upon your answer."

(Continued in our next issue)

Cash buyers of

BEANS

Filer Seed Co. Filer, Ida.

JAMES L. BARNES

HANSEN, IDAHO



Democratic Candidate, Probate Judge

In deciding whom you will elect for your next probate judge, do not overlook the fact that the probate judge is not the probate officer. The probate officer is appointed by the probate judge and works under him, but they are two separate and distinct offices. If I am elected, the probate officer will be the parent of children, and not one whose first thought is to send a delinquent child to the reform school.

The work of the probate court necessarily deals with legal problems, and can be handled most efficiently by one who has a legal training. The probate work of the court is in itself a highly technical matter, where one mistake by an untrained man might work great harm and injustice. When you elect a probate judge you are simply hiring some one to take over a job which, to be well done, requires a man who, in addition to a mature judgment and ripe experience, possesses the requisite legal training.

READ THE TWIN FALLS NEWS.

CAPTAIN BLOOD

(Continued.)

"He desired me," he said at last, "to give you a message that should prove to you that there is still something left in him of the unfortunate gentleman that—that . . . for which once you knew him. It is not easy. Stab me, it is not. He was a man who deserved well. And amongst us we have marred his chances: your uncle, because he could not forget his rancor; you, because because having told him that in the King's service he would find his redemption of what was past, you would not afterwards admit to him that he was so redeemed. And

WANTED

COEN AND
OULL BEANS

Twin Falls Feeder Co.

PHONE 80-J

READ THE TWIN FALLS NEWS.

SAVE YOUR

MAGAZINES

We Buy Them

IDAHO JUNK HOUSE

PHONE 640.

Across From the Sales Grounds



As candidate for election to Congress from the Second District on the Democratic ticket your vote is solicited on basis of Democratic principles.

I shall be for such legislation as will assist in causing agricultural and kindred interests to receive fair pay for labor performed and fair return on investment required.

Am for amendment of Federal Reserve Act so that profits may be used as guarantee of deposits in membership banks. Am for the farmer rather than Federal officials receiving loans from Federal Land Banks and Live Stock Loan Companies created under acts of Congress.

If elected shall give same attention to official duties as have given to public matters and to private business in past.

ASHER B. WILSON,
Twin Falls, Idaho.

CONGRESSMAN ADDISON T. SMITH

AND

Lieutenant Governor H. C. BALDRIDGE

Lavering Theater, Twin Falls
Monday Evening 8 o'Clock
Pleasant View School House
Monday Afternoon 3 o'Clock

National and State issues to be discussed by men who know, with explanation of the proposed government ownership of railroads, the tariff and its effects on prices of Western Products.

Mr. Baldrige will also speak for 15 minutes at the Idaho Theater Monday evening at 8:45

In the Interest of a
Better Understanding

EVERYBODY WELCOME

Republican County Central Committee

JOHN W. GRAHAM, Chairman.

Potato Storage

M. & R. PINK Warehouse

JACK PERSONIUS
TAXI

CLOSED CAR

Phone 57. Night Phone 22

THINK RADIO
THINK BILL

Bill Helm's Motor Service
"Exide Batteries"

THE MARKETS

MARKETS AT A GLANCE

NEW YORK, Nov. 1 (AP)—Stocks—Strong commercial solvent issues buoyant.
Bonds—Firm; treasury 4 1/4 at record high.
Foreign exchanges—Higher; sterling advances two cents; highest since mid-September.
Cotton—Slightly lower; southern selling.
Sugar—Fertileless.
Coffee—Lower; trade selling.
CHICAGO, Nov. 1 (AP)—Wheat—Lower; poor export demand.
Corn—Easy; productions larger receipts.
Cattle—Steady to lower.
Hogs—Higher; broad demand.

TWIN FALLS MARKETS

These prices are obtained daily at 4 o'clock in the afternoon and are intended to cover only the average of prices. Where certain dealers for short periods offer more than the quoted prices no effort is made to include such quotations. Quotations are offered merely as a guide to producers and should not be accepted as quotations at extremes of either high or low prices.

RETAIL MARKETS

The Twin Falls markets yesterday were as follows:

	Livestock
Hogs	\$6.50 to \$8.50
Cows	\$3.00 to \$3.50
Heifers	\$4.00
Steers	\$4.00 to \$5.00
Veal calves	\$5.00 to \$6.00
Lambs	\$8.00

	Poultry
Heavy hens	15c
Light hens	14c
Broilers (light)	15c
Broilers (heavy)	14c

	Dairy
Butterfat, creamery	35c
Butterfat, station	33c to 35c
Country butter	35c
Eggs (shippers)	45c
Eggs (local store)	45c

	Wheat and Mill Feed
Wheat, bushel	\$1.29
Barley, bushel	\$1.15
Oats, bushel	\$1.10
Stock feed, 500-lb. lots	\$1.65

	Potatoes
Potatoes, Russets, cwt.	50c to 60c
Potatoes, Gems	75c to 80c

	BEANS
Beans, Great Northern	\$4.75
Sugar, Wholesale	\$9.48
Beet	\$9.28

	RETAIL PRICES
Potatoes, lb.	10c
Red lettuce	10c to 20c
Cabbage, lb.	10c
Cauliflower, lb.	12 1/2c

	Fruit
Grapes, lb.	10c to 15c
Grapefruit, each	10c to 15c
Lemons, dozen	45c
Oranges, dozen	35c to 40c
Apples, lb.	10c

	Dairy
Creamery butter	45c
Butter, 1-lb. tubs	25c
Wholesale cheese	50c

WHEAT GOES DOWN ON THE CHICAGO MARKET

CHICAGO, Nov. 1 (AP)—Selling preparatory to the election holiday, together with dearth of export business, led to price downturns in wheat and other cereals today. Rye showed an untimely decline. Wheat closed unsteady at the same as yesterday's finish to 1 1/2c lower. Corn advanced 1/4 to 3/8, with corn 5-8 to 1 1/8c off, oats 1-2 to 1c down and provisions varying from unchanged figures to a setback of 12 cents.

Wheat made a hesitating start but as a result of firmness of quotations at Liverpool developed a transit upward tendency until traders began to put themselves in shape for the week-end and for the usual fall preceding a Tuesday holiday. The fact that European continental exchanges were closed today had some effect toward curtailing the volume of export business and causing the market here to be easily influenced. Under such circumstances liquidation sales of rye were given more attention than might otherwise have been the case and were a late bearish factor as to wheat and corn and oats as well.

Prospects that the United States visible supply figures on Monday would show another increase of the stock of wheat were given some attention. A total of 90,000,000 bushels was talked of as likely. Meanwhile, relative firmness of the July delivery here was associated with reports that moisture of late has been insufficient for the welfare of newly seeded domestic wheat. Corn and oats were weak owing to sympathy with wheat and rye. Besides, forecasts of colder weather pointed to possible larger receipts of rye.

Provisions reflected grain weakness, despite firmer hog values.

	Wheat	Open	High	Low	Close
Dec.	141 1/2	142 1/2	140	140 1/2	141 1/2
Jan.	141 1/2	142 1/2	140	140 1/2	141 1/2
Feb.	139 1/2	139 1/2	137 1/2	137 1/2	139 1/2
Mar.	139 1/2	139 1/2	137 1/2	137 1/2	139 1/2
Apr.	139 1/2	139 1/2	137 1/2	137 1/2	139 1/2
May	110 1/2	110 1/2	108 1/2	108 1/2	110 1/2
June	110 1/2	110 1/2	108 1/2	108 1/2	110 1/2
July	110 1/2	110 1/2	108 1/2	108 1/2	110 1/2
Aug.	49 1/2	49 1/2	47 1/2	47 1/2	49 1/2
Sept.	54 1/2	54 1/2	52 1/2	52 1/2	54 1/2
Oct.	51 1/2	51 1/2	49 1/2	49 1/2	51 1/2

PORTLAND GRAIN

PORTLAND, Nov. 1 (AP)—Wheat—Hard white B. S. Barst, December \$1.50; soft white, November \$1.48, December \$1.48; western white, November \$1.45, December \$1.40; hard winter, November \$1.42, December \$1.41; hard winter, November \$1.42, December \$1.41; western red, November \$1.40, December \$1.40.

Oats—No. 2 gray, November \$36, December \$36.

CASH GRAIN

CHICAGO, Nov. 1 (AP)—Wheat—No. 2 red \$1.48 1/2; No. 2 hard \$1.45 1/2; No. 2 mixed \$1.05 1/4; No. 2 yellow \$1.06 1/4 to 1.06 3/4. Oats—No. 2 white 48 to 49 3/4; No. 3 white 43 1/4 to 44 1/4. Rye—No. 2 \$1.17 1/4 to 1.18. Barley—No. 2 \$1.17 1/4 to 1.18. Timothy seed \$5 to 6.50. Clover seed \$13 to 20.50. Lord—\$15.37. Ribs—\$13.25.

POTATOES AND PRODUCE

CHICAGO, Nov. 1 (AP)—Potatoes—Bovine seedling sales \$1.25 to \$1.50; 105 cwt. total United States shipments 1310; Minnesota and North Dakota sacked Red River mostly 55c to 61c; South Dakota sacked Early Ohio 50c to 60c; bulk mostly 70c to 75c; Minnesota sacked round whites 70c to 85c; Minnesota and South Dakota bulk round whites 70c to 85c; Wisconsin sacked round whites 70c to 85c; few shade higher. Butter—Lower; creamery extra 38 1/2c; standards 37c; extra firsts 30c to 31c; firsts 32c to 34c; seconds 29 1/2c to 30 1/2c. Eggs—Lower; receipts 7600 cases; firsts 42c to 49c; ordinary firsts 37c to 41c. Poultry—Alive, unchanged.

PORTLAND LIVESTOCK

PORTLAND, Nov. 1 (AP)—Cattle—Compared with week ago mostly steady; week's bulk prices \$13.50 to \$15.00; a few at 17c; cows and heifers \$12.25 to 14.75; scattering sales made at 25c to 55c; canners and cutters \$1.50 to 2c; few light steers to the country \$3.75 to 5.50. Hogs—Compared with week ago: 50 cents to 41c prices; head prices \$1.25 to 1.50; desirable weight butchers \$5.50 to 10c; extreme top Friday \$9.50; weighty butchers \$9.25 to 9.50; heavy packers and throwouts \$5.50 to 7c; slaughter pigs \$5.50 to 7c; nothing above \$5.50. Few small lots of pigs almost unobtainable; few small lots of pigs almost unobtainable.

Sheep—Compared with week ago: 25c to 50c higher; good valley lambs \$11 to 12.25; extreme heavies \$10; a few fairly good yearlings \$8.50; wethers \$8; ewes mostly off quality kinds selling at 4c to 5c; choice hand weights quotable up to 10c; a few breeding ewes at 5c to 8c per head.

LOS ANGELES LIVESTOCK

LOS ANGELES, Nov. 1 (AP)—Cattle—For week, receipts moderate; both heavy and fat stock unevenly 25c to 50c lower; top stock 7c to 8c lower; weights: heavy \$7.00; bulk steers mostly northern \$6.40 to 7.00; top steers \$6.50; bulk 3.50 to 5c; southwestern calves 34c down; canners and cutters 10c to 15c lower; bulk \$1.75 to 2.50; bulls \$1.50 to 2.50; for week: Receipts moderate; receipts moderate; heavy and fat stock unevenly 25c to 50c lower; top stock 7c to 8c lower; weights: heavy \$7.00; bulk steers mostly northern \$6.40 to 7.00; top steers \$6.50; bulk 3.50 to 5c; southwestern calves 34c down; canners and cutters 10c to 15c lower; bulk \$1.75 to 2.50; bulls \$1.50 to 2.50; for week: Receipts moderate; receipts moderate; heavy and fat stock unevenly 25c to 50c lower; top stock 7c to 8c lower; weights: heavy \$7.00; bulk steers mostly northern \$6.40 to 7.00; top steers \$6.50; bulk 3.50 to 5c; southwestern calves 34c down; canners and cutters 10c to 15c lower; bulk \$1.75 to 2.50; bulls \$1.50 to 2.50; for week: Receipts moderate; receipts moderate; heavy and fat stock unevenly 25c to 50c lower; top stock 7c to 8c lower; weights: heavy \$7.00; bulk steers mostly northern \$6.40 to 7.00; top steers \$6.50; bulk 3.50 to 5c; southwestern calves 34c down; canners and cutters 10c to 15c lower; bulk \$1.75 to 2.50; bulls \$1.50 to 2.50; for week: Receipts moderate; receipts moderate; heavy and fat stock unevenly 25c to 50c lower; top stock 7c to 8c lower; weights: heavy \$7.00; bulk steers mostly northern \$6.40 to 7.00; top steers \$6.50; bulk 3.50 to 5c; southwestern calves 34c down; canners and cutters 10c to 15c lower; bulk \$1.75 to 2.50; bulls \$1.50 to 2.50; for week: Receipts moderate; receipts moderate; heavy and fat stock unevenly 25c to 50c lower; top stock 7c to 8c lower; weights: heavy \$7.00; bulk steers mostly northern \$6.40 to 7.00; top steers \$6.50; bulk 3.50 to 5c; southwestern calves 34c down; canners and cutters 10c to 15c lower; bulk \$1.75 to 2.50; bulls \$1.50 to 2.50; for week: Receipts moderate; receipts moderate; heavy and fat stock unevenly 25c to 50c lower; top stock 7c to 8c lower; weights: heavy \$7.00; bulk steers mostly northern \$6.40 to 7.00; top steers \$6.50; bulk 3.50 to 5c; southwestern calves 34c down; canners and cutters 10c to 15c lower; bulk \$1.75 to 2.50; bulls \$1.50 to 2.50; for week: Receipts moderate; receipts moderate; heavy and fat stock unevenly 25c to 50c lower; top stock 7c to 8c lower; weights: heavy \$7.00; bulk steers mostly northern \$6.40 to 7.00; top steers \$6.50; bulk 3.50 to 5c; southwestern calves 34c down; canners and cutters 10c to 15c lower; bulk \$1.75 to 2.50; bulls \$1.50 to 2.50; for week: Receipts moderate; receipts moderate; heavy and fat stock unevenly 25c to 50c lower; top stock 7c to 8c lower; weights: heavy \$7.00; bulk steers mostly northern \$6.40 to 7.00; top steers \$6.50; bulk 3.50 to 5c; southwestern calves 34c down; canners and cutters 10c to 15c lower; bulk \$1.75 to 2.50; bulls \$1.50 to 2.50; for week: Receipts moderate; receipts moderate; heavy and fat stock unevenly 25c to 50c lower; top stock 7c to 8c lower; weights: heavy \$7.00; bulk steers mostly northern \$6.40 to 7.00; top steers \$6.50; bulk 3.50 to 5c; southwestern calves 34c down; canners and cutters 10c to 15c lower; bulk \$1.75 to 2.50; bulls \$1.50 to 2.50; for week: Receipts moderate; receipts moderate; heavy and fat stock unevenly 25c to 50c lower; top stock 7c to 8c lower; weights: heavy \$7.00; bulk steers mostly northern \$6.40 to 7.00; top steers \$6.50; bulk 3.50 to 5c; southwestern calves 34c down; canners and cutters 10c to 15c lower; bulk \$1.75 to 2.50; bulls \$1.50 to 2.50; for week: Receipts moderate; receipts moderate; heavy and fat stock unevenly 25c to 50c lower; top stock 7c to 8c lower; weights: heavy \$7.00; bulk steers mostly northern \$6.40 to 7.00; top steers \$6.50; bulk 3.50 to 5c; southwestern calves 34c down; canners and cutters 10c to 15c lower; bulk \$1.75 to 2.50; bulls \$1.50 to 2.50; for week: Receipts moderate; receipts moderate; heavy and fat stock unevenly 25c to 50c lower; top stock 7c to 8c lower; weights: heavy \$7.00; bulk steers mostly northern \$6.40 to 7.00; top steers \$6.50; bulk 3.50 to 5c; southwestern calves 34c down; canners and cutters 10c to 15c lower; bulk \$1.75 to 2.50; bulls \$1.50 to 2.50; for week: Receipts moderate; receipts moderate; heavy and fat stock unevenly 25c to 50c lower; top stock 7c to 8c lower; weights: heavy \$7.00; bulk steers mostly northern \$6.40 to 7.00; top steers \$6.50; bulk 3.50 to 5c; southwestern calves 34c down; canners and cutters 10c to 15c lower; bulk \$1.75 to 2.50; bulls \$1.50 to 2.50; for week: Receipts moderate; receipts moderate; heavy and fat stock unevenly 25c to 50c lower; top stock 7c to 8c lower; weights: heavy \$7.00; bulk steers mostly northern \$6.40 to 7.00; top steers \$6.50; bulk 3.50 to 5c; southwestern calves 34c down; canners and cutters 10c to 15c lower; bulk \$1.75 to 2.50; bulls \$1.50 to 2.50; for week: Receipts moderate; receipts moderate; heavy and fat stock unevenly 25c to 50c lower; top stock 7c to 8c lower; weights: heavy \$7.00; bulk steers mostly northern \$6.40 to 7.00; top steers \$6.50; bulk 3.50 to 5c; southwestern calves 34c down; canners and cutters 10c to 15c lower; bulk \$1.75 to 2.50; bulls \$1.50 to 2.50; for week: Receipts moderate; receipts moderate; heavy and fat stock unevenly 25c to 50c lower; top stock 7c to 8c lower; weights: heavy \$7.00; bulk steers mostly northern \$6.40 to 7.00; top steers \$6.50; bulk 3.50 to 5c; southwestern calves 34c down; canners and cutters 10c to 15c lower; bulk \$1.75 to 2.50; bulls \$1.50 to 2.50; for week: Receipts moderate; receipts moderate; heavy and fat stock unevenly 25c to 50c lower; top stock 7c to 8c lower; weights: heavy \$7.00; bulk steers mostly northern \$6.40 to 7.00; top steers \$6.50; bulk 3.50 to 5c; southwestern calves 34c down; canners and cutters 10c to 15c lower; bulk \$1.75 to 2.50; bulls \$1.50 to 2.50; for week: Receipts moderate; receipts moderate; heavy and fat stock unevenly 25c to 50c lower; top stock 7c to 8c lower; weights: heavy \$7.00; bulk steers mostly northern \$6.40 to 7.00; top steers \$6.50; bulk 3.50 to 5c; southwestern calves 34c down; canners and cutters 10c to 15c lower; bulk \$1.75 to 2.50; bulls \$1.50 to 2.50; for week: Receipts moderate; receipts moderate; heavy and fat stock unevenly 25c to 50c lower; top stock 7c to 8c lower; weights: heavy \$7.00; bulk steers mostly northern \$6.40 to 7.00; top steers \$6.50; bulk 3.50 to 5c; southwestern calves 34c down; canners and cutters 10c to 15c lower; bulk \$1.75 to 2.50; bulls \$1.50 to 2.50; for week: Receipts moderate; receipts moderate; heavy and fat stock unevenly 25c to 50c lower; top stock 7c to 8c lower; weights: heavy \$7.00; bulk steers mostly northern \$6.40 to 7.00; top steers \$6.50; bulk 3.50 to 5c; southwestern calves 34c down; canners and cutters 10c to 15c lower; bulk \$1.75 to 2.50; bulls \$1.50 to 2.50; for week: Receipts moderate; receipts moderate; heavy and fat stock unevenly 25c to 50c lower; top stock 7c to 8c lower; weights: heavy \$7.00; bulk steers mostly northern \$6.40 to 7.00; top steers \$6.50; bulk 3.50 to 5c; southwestern calves 34c down; canners and cutters 10c to 15c lower; bulk \$1.75 to 2.50; bulls \$1.50 to 2.50; for week: Receipts moderate; receipts moderate; heavy and fat stock unevenly 25c to 50c lower; top stock 7c to 8c lower; weights: heavy \$7.00; bulk steers mostly northern \$6.40 to 7.00; top steers \$6.50; bulk 3.50 to 5c; southwestern calves 34c down; canners and cutters 10c to 15c lower; bulk \$1.75 to 2.50; bulls \$1.50 to 2.50; for week: Receipts moderate; receipts moderate; heavy and fat stock unevenly 25c to 50c lower; top stock 7c to 8c lower; weights: heavy \$7.00; bulk steers mostly northern \$6.40 to 7.00; top steers \$6.50; bulk 3.50 to 5c; southwestern calves 34c down; canners and cutters 10c to 15c lower; bulk \$1.75 to 2.50; bulls \$1.50 to 2.50; for week: Receipts moderate; receipts moderate; heavy and fat stock unevenly 25c to 50c lower; top stock 7c to 8c lower; weights: heavy \$7.00; bulk steers mostly northern \$6.40 to 7.00; top steers \$6.50; bulk 3.50 to 5c; southwestern calves 34c down; canners and cutters 10c to 15c lower; bulk \$1.75 to 2.50; bulls \$1.50 to 2.50; for week: Receipts moderate; receipts moderate; heavy and fat stock unevenly 25c to 50c lower; top stock 7c to 8c lower; weights: heavy \$7.00; bulk steers mostly northern \$6.40 to 7.00; top steers \$6.50; bulk 3.50 to 5c; southwestern calves 34c down; canners and cutters 10c to 15c lower; bulk \$1.75 to 2.50; bulls \$1.50 to 2.50; for week: Receipts moderate; receipts moderate; heavy and fat stock unevenly 25c to 50c lower; top stock 7c to 8c lower; weights: heavy \$7.00; bulk steers mostly northern \$6.40 to 7.00; top steers \$6.50; bulk 3.50 to 5c; southwestern calves 34c down; canners and cutters 10c to 15c lower; bulk \$1.75 to 2.50; bulls \$1.50 to 2.50; for week: Receipts moderate; receipts moderate; heavy and fat stock unevenly 25c to 50c lower; top stock 7c to 8c lower; weights: heavy \$7.00; bulk steers mostly northern \$6.40 to 7.00; top steers \$6.50; bulk 3.50 to 5c; southwestern calves 34c down; canners and cutters 10c to 15c lower; bulk \$1.75 to 2.50; bulls \$1.50 to 2.50; for week: Receipts moderate; receipts moderate; heavy and fat stock unevenly 25c to 50c lower; top stock 7c to 8c lower; weights: heavy \$7.00; bulk steers mostly northern \$6.40 to 7.00; top steers \$6.50; bulk 3.50 to 5c; southwestern calves 34c down; canners and cutters 10c to 15c lower; bulk \$1.75 to 2.50; bulls \$1.50 to 2.50; for week: Receipts moderate; receipts moderate; heavy and fat stock unevenly 25c to 50c lower; top stock 7c to 8c lower; weights: heavy \$7.00; bulk steers mostly northern \$6.40 to 7.00; top steers \$6.50; bulk 3.50 to 5c; southwestern calves 34c down; canners and cutters 10c to 15c lower; bulk \$1.75 to 2.50; bulls \$1.50 to 2.50; for week: Receipts moderate; receipts moderate; heavy and fat stock unevenly 25c to 50c lower; top stock 7c to 8c lower; weights: heavy \$7.00; bulk steers mostly northern \$6.40 to 7.00; top steers \$6.50; bulk 3.50 to 5c; southwestern calves 34c down; canners and cutters 10c to 15c lower; bulk \$1.75 to 2.50; bulls \$1.50 to 2.50; for week: Receipts moderate; receipts moderate; heavy and fat stock unevenly 25c to 50c lower; top stock 7c to 8c lower; weights: heavy \$7.00; bulk steers mostly northern \$6.40 to 7.00; top steers \$6.50; bulk 3.50 to 5c; southwestern calves 34c down; canners and cutters 10c to 15c lower; bulk \$1.75 to 2.50; bulls \$1.50 to 2.50; for week: Receipts moderate; receipts moderate; heavy and fat stock unevenly 25c to 50c lower; top stock 7c to 8c lower; weights: heavy \$7.00; bulk steers mostly northern \$6.40 to 7.00; top steers \$6.50; bulk 3.50 to 5c; southwestern calves 34c down; canners and cutters 10c to 15c lower; bulk \$1.75 to 2.50; bulls \$1.50 to 2.50; for week: Receipts moderate; receipts moderate; heavy and fat stock unevenly 25c to 50c lower; top stock 7c to 8c lower; weights: heavy \$7.00; bulk steers mostly northern \$6.40 to 7.00; top steers \$6.50; bulk 3.50 to 5c; southwestern calves 34c down; canners and cutters 10c to 15c lower; bulk \$1.75 to 2.50; bulls \$1.50 to 2.50; for week: Receipts moderate; receipts moderate; heavy and fat stock unevenly 25c to 50c lower; top stock 7c to 8c lower; weights: heavy \$7.00; bulk steers mostly northern \$6.40 to 7.00; top steers \$6.50; bulk 3.50 to 5c; southwestern calves 34c down; canners and cutters 10c to 15c lower; bulk \$1.75 to 2.50; bulls \$1.50 to 2.50; for week: Receipts moderate; receipts moderate; heavy and fat stock unevenly 25c to 50c lower; top stock 7c to 8c lower; weights: heavy \$7.00; bulk steers mostly northern \$6.40 to 7.00; top steers \$6.50; bulk 3.50 to 5c; southwestern calves 34c down; canners and cutters 10c to 15c lower; bulk \$1.75 to 2.50; bulls \$1.50 to 2.50; for week: Receipts moderate; receipts moderate; heavy and fat stock unevenly 25c to 50c lower; top stock 7c to 8c lower; weights: heavy \$7.00; bulk steers mostly northern \$6.40 to 7.00; top steers \$6.50; bulk 3.50 to 5c; southwestern calves 34c down; canners and cutters 10c to 15c lower; bulk \$1.75 to 2.50; bulls \$1.50 to 2.50; for week: Receipts moderate; receipts moderate; heavy and fat stock unevenly 25c to 50c lower; top stock 7c to 8c lower; weights: heavy \$7.00; bulk steers mostly northern \$6.40 to 7.00; top steers \$6.50; bulk 3.50 to 5c; southwestern calves 34c down; canners and cutters 10c to 15c lower; bulk \$1.75 to 2.50; bulls \$1.50 to 2.50; for week: Receipts moderate; receipts moderate; heavy and fat stock unevenly 25c to 50c lower; top stock 7c to 8c lower; weights: heavy \$7.00; bulk steers mostly northern \$6.40 to 7.00; top steers \$6.50; bulk 3.50 to 5c; southwestern calves 34c down; canners and cutters 10c to 15c lower; bulk \$1.75 to 2.50; bulls \$1.50 to 2.50; for week: Receipts moderate; receipts moderate; heavy and fat stock unevenly 25c to 50c lower; top stock 7c to 8c lower; weights: heavy \$7.00; bulk steers mostly northern \$6.40 to 7.00; top steers \$6.50; bulk 3.50 to 5c; southwestern calves 34c down; canners and cutters 10c to 15c lower; bulk \$1.75 to 2.50; bulls \$1.50 to 2.50; for week: Receipts moderate; receipts moderate; heavy and fat stock unevenly 25c to 50c lower; top stock 7c to 8c lower; weights: heavy \$7.00; bulk steers mostly northern \$6.40 to 7.00; top steers \$6.50; bulk 3.50 to 5c; southwestern calves 34c down; canners and cutters 10c to 15c lower; bulk \$1.75 to 2.50; bulls \$1.50 to 2.50; for week: Receipts moderate; receipts moderate; heavy and fat stock unevenly 25c to 50c lower; top stock 7c to 8c lower; weights: heavy \$7.00; bulk steers mostly northern \$6.40 to 7.00; top steers \$6.50; bulk 3.50 to 5c; southwestern calves 34c down; canners and cutters 10c to 15c lower; bulk \$1.75 to 2.50; bulls \$1.50 to 2.50; for week: Receipts moderate; receipts moderate; heavy and fat stock unevenly 25c to 50c lower; top stock 7c to 8c lower; weights: heavy \$7.00; bulk steers mostly northern \$6.40 to 7.00; top steers \$6.50; bulk 3.50 to 5c; southwestern calves 34c down; canners and cutters 10c to 15c lower; bulk \$1.75 to 2.50; bulls \$1.50 to 2.50; for week: Receipts moderate; receipts moderate; heavy and fat stock unevenly 25c to 50c lower; top stock 7c to 8c lower; weights: heavy \$7.00; bulk steers mostly northern \$6.40 to 7.00; top steers \$6.50; bulk 3.50 to 5c; southwestern calves 34c down; canners and cutters 10c to 15c lower; bulk \$1.75 to 2.50; bulls \$1.50 to 2.50; for week: Receipts moderate; receipts moderate; heavy and fat stock unevenly 25c to 50c lower; top stock 7c to 8c lower; weights: heavy \$7.00; bulk steers mostly northern \$6.40 to 7.00; top steers \$6.50; bulk 3.50 to 5c; southwestern calves 34c down; canners and cutters 10c to 15c lower; bulk \$1.75 to 2.50; bulls \$1.50 to 2.50; for week: Receipts moderate; receipts moderate; heavy and fat stock unevenly 25c to 50c lower; top stock 7c to 8c lower; weights: heavy \$7.00; bulk steers mostly northern \$6.40 to 7.00; top steers \$6.50; bulk 3.50 to 5c; southwestern calves 34c down; canners and cutters 10c to 15c lower; bulk \$1.75 to 2.50; bulls \$1.50 to 2.50; for week: Receipts moderate; receipts moderate; heavy and fat stock unevenly 25c to 50c lower; top stock 7c to 8c lower; weights: heavy \$7.00; bulk steers mostly northern \$6.40 to 7.00; top steers \$6.50; bulk 3.50 to 5c; southwestern calves 34c down; canners and cutters 10c to 15c lower; bulk \$1.75 to 2.50; bulls \$1.50 to 2.50; for week: Receipts moderate; receipts moderate; heavy and fat stock unevenly 25c to 50c lower; top stock 7c to 8c lower; weights: heavy \$7.00; bulk steers mostly northern \$6.40 to 7.00; top steers \$6.50; bulk 3.50 to 5c; southwestern calves 34c down; canners and cutters 10c to 15c lower; bulk \$1.75 to 2.50; bulls \$1.50 to 2.50; for week: Receipts moderate; receipts moderate; heavy and fat stock unevenly 25c to 50c lower; top stock 7c to 8c lower; weights: heavy \$7.00; bulk steers mostly northern \$6.40 to 7.00; top steers \$6.50; bulk 3.50 to 5c; southwestern calves 34c down; canners and cutters 10c to 15c lower; bulk \$1.75 to 2.50; bulls \$1.50 to 2.50; for week: Receipts moderate; receipts moderate; heavy and fat stock unevenly 25c to 50c lower; top stock 7c to 8c lower; weights: heavy \$7.00; bulk steers mostly northern \$6.40 to 7.00; top steers \$6.50; bulk 3.50 to 5c; southwestern calves 34c down; canners and cutters 10c to 15c lower; bulk \$1.75 to 2.50; bulls \$1.50 to 2.50; for week: Receipts moderate; receipts moderate; heavy and fat stock unevenly 25c to 50c lower; top stock 7c to 8c lower; weights: heavy \$7.00; bulk steers mostly northern \$6.40 to 7.00; top steers \$6.50; bulk 3.50 to 5c; southwestern calves 34c down; canners and cutters 10c to 15c lower; bulk \$1.75 to 2.50; bulls \$1.50 to 2.50; for week: Receipts moderate; receipts moderate; heavy and fat stock unevenly 25c to 50c lower; top stock 7c to 8c lower; weights: heavy \$7.00; bulk steers mostly northern \$6.40 to 7.00; top steers \$6.50; bulk 3.50 to 5c; southwestern calves 34c down; canners and cutters 10c to 15c lower; bulk \$1.75 to 2.50; bulls \$1.50 to 2.50; for week: Receipts moderate; receipts moderate; heavy and fat stock unevenly 25c to 50c lower; top stock 7c to 8c lower; weights: heavy \$7.00; bulk steers mostly northern \$6.40 to 7.00; top steers \$6.50; bulk 3.50 to 5c; southwestern calves 34c down; canners and cutters 10c to 15c lower; bulk \$1.75 to 2.50; bulls \$1.50 to 2.50; for week: Receipts moderate; receipts moderate; heavy and fat stock unevenly 25c to 50c lower; top stock 7c to 8c lower; weights: heavy \$7.00; bulk steers mostly northern \$6.40 to 7.00; top steers \$6.50; bulk 3.50 to 5c; southwestern calves 34c down; canners and cutters 10c to 15c lower; bulk \$1.75 to 2.50; bulls \$1.50 to 2.50; for week: Receipts moderate; receipts moderate; heavy and fat stock unevenly 25c to 50c lower; top stock 7c to 8c lower; weights: heavy \$7.00; bulk steers mostly northern \$6.40 to 7.00; top steers \$6.50; bulk 3.50 to 5c; southwestern calves 34c down; canners and cutters 10c to 15c lower; bulk \$1.75 to 2.50; bulls \$1.50 to 2.50; for week: Receipts moderate; receipts moderate; heavy and fat stock unevenly 25c to 50c lower; top stock 7c to 8c lower; weights: heavy \$7.00; bulk steers mostly northern \$6.40 to 7.00; top steers \$6.50; bulk 3.50 to 5c; southwestern calves 34c down; canners and cutters 10c to 15c lower; bulk \$1.75 to 2.50; bulls \$1.50 to 2.50; for week: Receipts moderate; receipts moderate; heavy and fat stock unevenly 25c to 50c lower; top stock 7c to 8c lower; weights: heavy \$7.00; bulk steers mostly northern \$6.40 to 7.00; top steers \$6.50; bulk 3.50 to 5c; southwestern calves 34c down; canners and cutters 10c to 15c lower; bulk \$1.75 to 2.50; bulls \$1.50 to 2.50; for week: Receipts moderate; receipts moderate; heavy and fat stock unevenly 25c to 50c lower

POLITICIANS USE VAUDEVILLE ACT

Punch and Judy Show in Connection With Progressive Speaking Marks Innovation.

A "balancing and magic act with special old English Punch and Judy" presented by Lon Hihner in connection with addresses by A. B. Lucas of Jerome, progressive candidate for secretary of state, and L. L. Haynes of Florida, representative of the LaFollette-Wheeler national campaign organization, at the Lavering theater here Saturday evening, offered an innovation in political meetings here and attracted an audience that at its peak numbered 175 persons.

Mr. Haynes, who is said to be a brother of the national prohibition director and who came here from Chicago, where he assisted in presentation of the LaFollette charges before the Borah committee investigating campaign contributions, discussed the attitude of LaFollette with respect to "special privilege" and other issues stressed by the independent candidate for the presidency.

Mr. Lucas also criticized national and state administrations and related the plans of the progressive platform.

Speakers were introduced by W. E. Hihner, chairman of the progressive county committee.

WHERE TWIN FALLS ELECTORS WILL VOTE

Twin Falls voters at the election next Tuesday will cast their ballots at polling places to be provided in the seven Twin Falls precincts as follows:

Twin Falls No. 1—Lavering pavilion.
Twin Falls No. 2—Courthouse.
Twin Falls No. 3—Pittsburgh Motor company building, Main avenue west.
Twin Falls No. 4—Big White store building, Main avenue south.
Twin Falls No. 5—Bickel school.
Twin Falls No. 6—Lincoln school.
Twin Falls No. 7—Washington school.
Polls are to be opened at 8 a. m. and remain open until 7 p. m.

WHEELER CLOSES HIS CAMPAIGN WITH THREE NEW YORK SPEECHES

NEW YORK, Nov. 1 (AP)—In a hurried, last minute skirmish for votes, Senator Wheeler, independent vice presidential candidate, got in three speeches in the New York arena. He invaded New Jersey at Hoboken early in the evening, but returned in time to make the final talk of the day in New York city itself.

DEATHS

OSHLUND—Arnold Francis Oslund, junior, two years old, son of Mr. and Mrs. A. F. Oslund, 543 Fourth avenue north, died suddenly Saturday at the county general hospital from effects of a digestive disorder that apparently became serious within an hour before death resulted. The body was taken to the Grossman mortuary. Arrangements for funeral services have not been completed.

FUNERALS

GRAY—Funeral services for Mrs. Susan Gray, pioneer settler of this region, whose death occurred Friday at her home here, will be held at 2 o'clock Monday afternoon at the Grossman chapel, and will be conducted by the Rev. O. D. Harris of the Christian church.

NEW BOOKS ON SHELVES OF PUBLIC LIBRARY

The following books have been added to the Twin Falls public library this week:

Her Book and Heart, Harris; non-fiction; true account of the life of Cora Harris, the author.

Men, Women and God, Gray; discussion of sex question from the Christian viewpoint.

The Normal Mind, Barnham; how to make the most of one's native ability; how to gain the power of clear thinking.

The Library and the Community—Wheeler.

The Truth About the Movies by the Stars, Hughes, ed. Fiction.

The Enchanted Hill—Kyne.

Motor Replacement Parts
Regardless of Make or Model.
SEE STEP

FURNITURE
at
Lower Prices
Rugs, Stoves, Linoleum
Visit Our Exchange Department.
A. H. VINCENT CO.
207-209 Shoshone South.

The Interpreter's House—Burt. Strategems and Spoils—White. Avatar—Reeve. Old New York—Wharton. Juvenile School Children, the World Over—Danton. Two Children in Old Paris—Slaugh.

CLOTHCRAFT Tailored Clothes

Fit • Style • Service
GUARANTEED
by ourselves and by the maker

Clothcraft Guarantee

We hereby Guarantee this Clothcraft garment to give satisfactory wear and service. We stand back of the retailer in assuring prompt and satisfactory adjustments should any cause for complaint or dissatisfaction arise.

*The Joseph T. Lewis Co.
Cleveland, Ohio*

CLOTHCRAFT No. 5130 Serge Suits
Blue • Brown • Gray

A great value!
\$29.50

Straus Clothing Company
TWIN FALLS

VOTERS and TAXPAYERS

If you will elect three county COMMISSIONERS on November 4th that will represent the taxpayers of Twin Falls county instead of the fire insurance agents, a saving of \$786.69 can be made on the cost of fire insurance covering the property owned by Twin Falls county.

The present COUNTY COMMISSIONERS had the opportunity to place this insurance in the last two years and make this saving for you, and refused to act in your behalf.

DO YOU WANT THEM TO REPRESENT YOU FOR ANOTHER TWO YEARS?

I can save you from 20 per cent to 35 per cent on the cost of fire insurance on your own property and place the insurance in the GENERAL INSURANCE COMPANY OF AMERICA—a stock company. Let me write your next policy.

P. S.—Taxpayer, I will report to you in two years how the county commissioners-elect handle the county fire insurance.

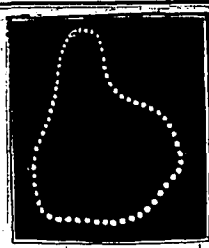
J. E. ROBERTS

The Insurance Man Twin Falls, Idaho
VOTE NOVEMBER 4
Vote As You Please
BUT VOTE

Free Election Returns

The management of the Lavering Theater have made arrangements to receive election returns. Special telegraph and telephone wires have been installed and results will be thrown on the screen. Lunch will be served by Methodist Ladies. Open all night.

Everybody Welcome



Now is the Time to Think Jewelry.

—a ring—a watch—a bracelet—a string of pearls.

Also precious and semi-precious stones set in platinum, green gold or white gold.

Good jewelry is a good investment.

J. H. Umbaugh Co.

JEWELERS
Phone 95-W for Correct Time.

BATTERY RE-CHARGING



REPAIRING

COMPLETE AUTO BATTERY SERVICE

Includes repairs of all kinds and re-charging. You are sure to get best results by letting an experienced firm like ours do your battery work. We re-charge and repair radio batteries also. Consult us for details.

Electric Service Station

GEO. O. WALLACE, Mgr.
143 Second Ave. N. Phone 15
Twin Falls' LEADING Service Station

MAGNAVOX Radio

Receiving Sets—Tubes—Reproducers

Receiving Set TRF 50 \$150.00

The Most Successful Radio Set For the Home

ITS amazing simplicity and dependability places the new Magnavox Radio Receiver far in the lead of all instruments offered for daily use in the home.

To select any desired station, merely turn a single dial—absolutely no previous experience or technical knowledge required for perfect results.

TRF-50 is encased in handsomely carved cabinet with built-in Magnavox Reproducer which insures purest tone. Order your Magnavox today—enjoy the choicest programs from near and far tonight.

Before buying any radio equipment visit our Magnavox Department—Receiving Sets, Tubes and Reproducers

750-300

this message broadcast from

Logan Music Company

Postoffice Block. Phone 108. Twin Falls.
Registered Magnavox Dealer