

TWIN FALLS DAILY NEWS

VOL. 7, NO. 212

MEMBER OF ASSOCIATED PRESS

TWIN FALLS, IDAHO, SUNDAY MORNING, DECEMBER 14, 1934.

MEMBER AUDIT BUREAU OF CIRCULATIONS

PRICE FIVE CENTS

NATION MOURNS
LOSS OF LABOR
CHIEF IN TEXAS

Body of Samuel Gompers on Way East in Special Coach; Military Honors Accorded in San Antonio.

FUNERAL SERVICES THURSDAY

NEW YORK, Dec. 13 (AP)—Chaplains of the Elks and the Masons and two rabbis will officiate at the services for Samuel Gompers in the Elks club here next Thursday, Hugh F. Ryan, national organizer of the American Federation of Labor, announced tonight in making public arrangements for the funeral of the president of the federation, who died in San Antonio this morning.

SAN ANTONIO, Texas, Dec. 13 (AP)—Samuel Gompers, who for more than 40 years directed the destinies of the American Federation of Labor, died here early today, after realizing his last hope—that the end came on American soil.

The labor chieftain died surrounded by his comrades, many of whom had fought beside him, and he was buried in a special casket in the city where he had been a resident for many years.

The end came in a local hotel 11 hours after his arrival from Mexico City, where he had been a resident for many years.

His last words were spoken to his nurse about an hour before he died. Realizing that he was going to die, he turned to her and whispered: "Nurse, this is the end. God bless our American institutions. May they grow better day by day."

Funeral Directions.

Shortly before he lapsed into unconsciousness, which preceded the end, Mr. Gompers gave a few simple directions for his funeral and had a few lifelong friends farewell.

Tonight the labor chieftain, sleeping in a massive bronze casket, is being taken to the city of San Antonio, where he was born, for the funeral services.

Pay Respect.

A cosmopolitan throng all day long filed past the body and tonight the city paid its respects to the labor leader when his body was borne to the station for the beginning of the trip.

(Continued on Page 4, Col. 2)

LABOR CHIEFTAIN DEAD
IN TEXAS

Samuel Gompers

SAMUEL GOMPERS, for many years president of the American Federation of Labor, died early Saturday morning at San Antonio, Texas, following an illness which began while in Mexico City, where he attended the inaugural ceremony of President Calles. The remains are being taken to New York, where funeral services will be held Thursday.

THE DAY IN WASHINGTON

The naval appropriation bill, carrying \$185,385,578, was reported to the house.

The Blue Ridge of Virginia was selected as a national park site for the eastern section of the country.

The Chamber of Commerce of the United States urged President Coolidge to consider an economy conference.

Increases in postal rates on virtually all classes of mail except letter mail were recommended by Postmaster General E. A. Tamm.

The house committee which framed the naval appropriation bill reported no ground for alarm that "our naval prestige is rapidly waning."

Major General Patrick, chief of the army air service, told a house committee that army aircraft now used were obsolete.

The house shipping board committee was told the board held claims aggregating \$117,000,000 on which it estimated only \$5,000,000 could be collected.

Secretary Wilbur's testimony before the house appropriations committee disclosed his opinion the United States would have to spend \$110,000,000 annually for 20 years to maintain a navy equal to Great Britain and superior to Japan.

SEAPLANE TAKES UP CHASE

VANCOUVER, B. C., Dec. 13 (AP)—The house naval committee was told the board held claims aggregating \$117,000,000 on which it estimated only \$5,000,000 could be collected.

Secretary Wilbur's testimony before the house appropriations committee disclosed his opinion the United States would have to spend \$110,000,000 annually for 20 years to maintain a navy equal to Great Britain and superior to Japan.

Bride Sees Husband
Shoot Down Another
Woman at Her Desk

Telegraph Employee Killed to Save Man's Wife From Ruin, Is His Assertion.

ATLANTA, Dec. 13 (AP)—In the presence of his year-old bride of two months, and more than 100 employees at the Western Union Telegraph company operating room here, C. A. Roark, 32, Centerhill, Ga., tonight fired four shots into the back of Miss Vena Moore, 20, multiple operator, as she sat at her machine. She died instantly.

Roark is said to have dropped the smoking pistol and collapsed, crying that he had killed Miss Moore "to save my wife from ruin."

Mrs. Roark laid blame for the shooting upon the victim.

ARMY AIRCRAFT
HELD OBSOLETE

Chief of Service Declares Type of Planes Used by Nation Could Not Sink Warship.

WASHINGTON, Dec. 13 (AP)—Modern battle ships have the power of resisting bombs carried by the type of airplanes possessed by the United States army, Major General Patrick, chief of the army air service, said today in testifying before the house committee investigating air craft problems.

Tests on the hull of the uncompleted battleship Washington off the Virginia capes recently, he said, proved that the army bombing craft were obsolete and should be replaced with bigger and more powerful ships capable of carrying bombs which would be effective against modern enemy capital ships.

The United States, he said, had developed several types of bombing planes which quailed any in the world, but the majority of the bombers now in service were of an older type.

COLORED MAN RUNS AMUCK

ELKHART, Ind., Dec. 13 (AP)—One policeman was fatally wounded, a woman proprietor of a negro roadhouse near here was instantly killed and two other men were shot but not seriously injured late today when a negro known only as Ike, ran amuck in the roadhouse with two pistols in his hands. He was in turn shot and killed by an officer.

POSTAL CHIEF
WOULD RAISE
MAIL CHARGES

Recommends Increase in All Classes of Postage Except Letters; Sixty-Eight Millions Needed.

WASHINGTON, Dec. 13 (AP)—Advances in postal rates, designed to yield very close to the proposed \$68,000,000 a year increase in the pay of postal employees were suggested to congress today by Postmaster General E. A. Tamm.

They would effect virtually all classes of mail except letter mail. Simultaneously with the transmission of the postmaster general's recommendations to congress, the postal committee of the American Newspaper Publishers' association attacked the departmental measure declaring that the suggested increase of \$10,870,000 annually on second class mail, consisting entirely of newspapers and periodicals, would have the effect of doubling the rates on newspaper circulation going through the mails.

"This action by congress," said a statement from the association, "will have the double result of reducing the revenue accruing to the department and absolutely forbidding the circulation of daily newspapers in the mails."

STATE FOREST SUPERVISION

MOSCOW, Dec. 13 (AP)—Recommendation that supervision of the state forests of Idaho be taken over by a committee of 12 to include the state land board, which now discharges the responsibility, with additional members to be named by the governor, was made to the North Idaho Chamber of Commerce meeting here today by a special committee of which Dean P. G. Miller of the state university school of forestry was the chairman. The committee also recommended that promise burning of slashings in forests be prohibited.

TO PROVIDE REVENUE

WASHINGTON, Dec. 13 (AP)—A duty of one cent on the dollar to every liquidated judgment debt to provide constant revenue to supply disbursements of the government, is proposed in a bill introduced by Representative Don B. Colton, republican, Idaho, today.

DARN IT!

WASHINGTON, Dec. 13 (AP)—A bill calling for competitive freight rates among interstate railroads was introduced today by Representative Don B. Colton, republican, Idaho, today.

Fourteen Held for
Hearing in Million
Dollar Fraud Case

Fifty-Five Firms Wrecked by Collapse of Chicago Men, Indictments Issued Declare.

CHICAGO, Dec. 13 (AP)—Fourteen men are under indictment here and in New York in connection with the operations, exceeding \$1,000,000 of a band that is alleged to have wrecked 55 firms, the Chicago Association of Credit Men announced today.

The indictments were returned by the November federal grand jury but were suppressed.

According to Frank W. Hill, manager of the prosecution department of the credit association, the men were indicted on charges of using the mails to defraud.

NEED HUGE SUM
FOR U. S. NAVY

Appropriation Measure Would Set Aside Nearly 300 Million for Service.

WASHINGTON, Dec. 13 (AP)—The controversy as to whether the American navy is fit to fight found new fuel today with the publication of confidential testimony given to a house committee during the preparation of the annual naval supply bill.

The committee itself reported to congress that it did not feel "the country need be alarmed" that "our naval prestige" is rapidly waning.

\$110,000,000 Annually

Accompanying this report was an official transcript of the testimony of Secretary Wilbur that the government must spend \$110,000,000 annually for the next 20 years for new construction if the navy is to be maintained on an equal footing in all branches with that of Great Britain and superior to that of Japan.

The committee's observation and the secretary's statement went to the house along with the naval appropriation bill, proposing nearly \$300,000,000 to take care of the existing establishment and construction heretofore authorized.

SNOWS PREDICTED FOR
WEEK BEGINNING MONDAY

WASHINGTON, Dec. 13 (AP)—Weather outlook for the week beginning Monday: Northern Rocky mountains and plateau region: Frequent local snows; colder Monday or Tuesday and cold thereafter.

ANNUAL GRIDIRON FROLIC
ATTENDED BY CELEBRITIES

WASHINGTON, Dec. 13 (AP)—The Gridiron diners had their winter frolic tonight to the accompaniment of music and music in which public men and officials came in for the usual good natured roasting over the gridiron of this oldest club of Washington newspaper correspondents.

Gathered at the banquet table as guests, as heretofore, were President Coolidge, members of the cabinet, of congress, the diplomatic set, governors of states and men prominent in the business and professional life of the country.

Jusserand Honored.

As a graceful interlude, the club presented to the retiring French ambassador, Jules J. Jusserand, dean of the Washington corps, a decoration in the form of a large golden gridiron similar to the one it presented to "Uncle Joe" Cannon on the occasion of his retirement from congress.

Sanctioned in between the sittings of comedy and music were speeches under the rule of the club none may be published. Among them were remarks by President Coolidge, Ambassador Jusserand, Senator Butler of Massachusetts, Governor Alfred E. Smith of New York, whose name is legion among radio devotees throughout America.

Campaign Entertainers.

The presidential campaign, of course, furnished the material for much of the entertainment. An auctioneer opened the proceedings by offering to the highest bidder "the greatest accumulation of election remains in history." Imprimos of John W. Davis, Senator La Follette, Chairman Butler of the republican national committee; Chairman Shaver of the democratic national committee, William G. McAdoe, Magnus Johnson and Theodore Roosevelt, defeated candidate for governor of New York, appeared as bidders.

The proceeds of this political rummage sale, announced the auctioneer with gusto, "will be used for charity. They will be donated to the democratic national committee."

Gets Maxim Silenced.

A comedian, the first item to go up, brought out eager bids from everybody but Chairman Shaver. He declared that never again would the proceedings of a democratic national convention be broadcast by radio if he could help it. The instrument was knocked down to Chairman Butler.

When Mr. Butler examined his purchase he discovered it was not an amplifier at all, but a Maxim silencer.

"Stung," chorused the losing bidders joyously.

"Oh, not at all," responded Mr. Butler blandly. "It's just what I wanted to send to a friend for Christmas."

TO SECRETARY WILBUR

Explanations developed that the friend to whom he wished to apply the silencer was Secretary Wilbur of the navy department, whose sudden recall from a speaking trip in the west during the campaign at the call of the White House was the subject of lively comment and speculation.

Nobody wanted to bid on "the famous campaign teapot," which next was offered, but there was excited competition for the "pictorial farmers costume, guaranteed to make any candidate look like a Vermont farmer."

Magnus Johnson bid highest for it and carried it off.

"Going to have your picture taken in it," suggested the auctioneer.

"Picture nothing," roared Magnus. "I'm going to use it after March 4."

Kentucky Not Shown

A map of the southern states went to Chairman Shaver of the democratic national committee, who explained it made it easy for him to figure out the electoral votes cast for John W. Davis.

"But this map," he objected on examination, "does not show Kentucky."

"It's a new map," explained the auctioneer. "Kentucky was democratic B. C.—before Coolidge."

"So this map is A. D. I," queried the democratic chairman.

"Yes, after Davis."

The campaign hat of Senator La Follette was knocked down to McAdoe, and the auctioneer offered the "platform that won the election."

"If anybody has a right to the republican platform," shouted Chairman Butler, "I have."

Elected Coolidge

"I said the winning platform," admonished the auctioneer.

"This is the progressive platform."

(Continued on Page 5, Col. 1)

DARN IT!

DARN IT!

DARN IT!

DARN IT!

DARN IT!

DARN IT!

DARN IT!

DARN IT!

DARN IT!

DARN IT!

DARN IT!

DARN IT!

DARN IT!

DARN IT!

DARN IT!

DARN IT!

DARN IT!

DARN IT!

DARN IT!

COMMITTEE TO
HEAR CAMPAIGN
FUND CHARGES

Documents Pertaining to Republican Expenditures Now in Hands of Borah and Senate Investigating Body.

WASHINGTON, Dec. 13 (AP)—Having come into possession of documents bearing on the "mystery" story of campaign expenditures related by two Chicago men, Chairman Borah of the senate campaign investigating committee said today he would call the committee together early next week to consider the matter.

These documents are the ones Samuel Undermyer, New York attorney, who assisted in procuring the production inquiry of the committee, presented at Chicago to Chairman Butler of the republican national committee, who testified that he had never seen them before and had "no" information as to their subject matter.

Closely Guarded.

Up to this time the documents have been closely guarded from the disclosure of which neither Mr. Undermyer nor the committee would assume responsibility.

As described today by Senator Borah they are telegrams forwarded to have been sent from the Franklin National bank at Washington, D. C., to the federal reserve banks at St. Louis, Kansas City, Minneapolis and San Francisco, and referring to \$1,000,000 to be sent to those banks in equal installments of \$250,000 for use in behalf of the republican national ticket in the last campaign.

COMPETITIVE FREIGHT
RATE BILL COMES UP
FOR CONGRESS ACTION

WASHINGTON, Dec. 13 (AP)—A bill calling for competitive freight rates among interstate railroads was introduced today by Representative Don B. Colton, republican, Utah. Under the bill each railroad would be required to file with the secretary of commerce before January 1, 1935, a base rate per ton mile which would then become the basis for competitive rates over the line and over terminal lines. Freight would be classified in five categories, rates on each of which would be multiples of the base rate. Carriers would be allowed to establish common points between which, to equalize the factor of mileage in special regions of production and distribution, they could transport certain commodities at common car rates, computed on such equalized mileage.

APPLE CROP IS SOLD

HOOD RIVER, Ore., Dec. 13 (AP)—The Apple Growers' association today sold to New York city export apple merchants, the entire remaining export tonnage of all grades and varieties of apples, totalling 300,000 boxes. The sale was made for the payment of an approximate \$500,000 was the largest in the history of the northwestern apple industry.

REDUCTION IN
TAXES URGED

United States Chamber of Commerce Asks President to Call Economic Conference.

WASHINGTON, Dec. 13 (AP)—American business as represented in the Chamber of Commerce of the United States urged President Coolidge today to consider the advisability of calling a conference of representatives of the several states with a view to promoting economy in expenditures and reduction in taxation.

The suggestion was made as a part of a program submitted the chamber as a means of aiding in the recovery of agriculture. It was presented by a special committee consisting of Richard P. Grant, president of the chamber; Julius H. Barnes, former president, and Lewis E. Pierson, chairman of the chamber's executive committee.

Part in Tax Relief.

"The administration has played a great part in tax relief," the committee said in a statement issued after the conference with the president. "The chamber hopes that the administration will particularly consider the advisability of some form of economy with the governors of each state that they may facilitate legislation and administrative action—state, county and municipal—toward the utmost economy particularly of taxes which rest on farm lands."

PRESS OFFICE
WILL BE USED
AS LIGHTHOUSE

Miami Daily News Soon to
Move Into Tallest Building in
South Which Will Guide the
Ships at Sea.

MIAMI, Fla., Dec. 13 (AP)—Claimed to be the tallest building in the world in the same latitude, the Miami Daily News tower, now nearing completion, will serve both to house offices and to act as a lighthouse. It will have the distinction of being the only business structure known to fill this dual purpose.

With walls of stucco, elaborate balconies and iron grill work, the whimsical and beautiful old Spain will be wrought into lasting brick, stone and iron.

Location of the newspaper office is ideal from a viewpoint of beauty. It is along a driveway fringed with cacti, nut palms and faces the shimmering blue water of Biscayne bay. Directly in front of it the city of Miami is filling in a new city park at an expense of several million dollars, and all other city improvements are trending in its direction.

Newspaper work will be done in the three-story structure that serves as a base for the tower. The 15 stories of the tower will be entirely for business offices and will be separate from the newspaper section, except in actual structure. On top of the tower, a copy of a Spanish galleon will serve as a weather vane, a symbol visible for miles in every direction.

The building is being erected by former Governor James M. Cox, of Ohio, owner of the Miami Daily News, who has merged his own personal ideas with those of the architects with a result that has brought forth praise from some of the greatest artists in the country.

HANSEN

HANSEN—Mrs. O. J. Wellwood went to Ogden on Tuesday in response to a message announcing the serious illness of her father.

Ralph Taylor and Gordy Thompson shipped their household goods to Ogden the first of the week and with their families left by auto. Mrs. Thompson and Mrs. Taylor will visit the former's mother, while the men look for a location in California.

Miss Florence Turney was forced to give up work here and go home the first of the week on account of a serious attack of the flu. Latest reports from Kimbly are that she is on the way to recovery.

Mrs. Pennawahl and Lenora were Twin Falls shoppers on Wednesday.

Max, the little son of Mr. and Mrs. Ruyner Burk, is reported to be recovering satisfactorily from an operation for appendicitis which he underwent last week.

Mr. and Mrs. Kelly Lacourse entertained at bridge Saturday evening. After a delightful evening at cards the hostess served delicious refreshments. Twelve guests were present.

Mrs. S. E. Brewer of Twin Falls was a guest of Jim Lewis the first of the week.

The gravel is being spread between the Sampson and Galleys, corners this week.

Sherman circle, Ladies of the G. A. R. held their first meeting at the country home of Mrs. Pay Sheedy Tuesday. After a most bountiful feast the regular business meeting was held at which time the annual election of officers was held, which resulted in the following: President, Mrs. Callie Lewis; senior vice president, Annie B. Wiseman; junior vice president, Bessie Martin; secretary, Mrs. Sheedy; treasurer, Lulu B. Severns; chaplain, Carrie Galleys; conductor, Sadie Goodman; guard, Louise Kennedy; delegates to the convention to be held in Twin Falls in June, Nellie Taylor and Sadie Carter; registrar, Nellie Taylor. Mrs. Elizabeth of Twin Falls, inspected the circle and complimented the members upon their work and the splendid condition of the organization. Nine members were present from Dan McCook circle, and one from Lincoln circle of Eden. Thirteen local members responded to roll call.

Mrs. John Schaeffer very delightfully entertained the members of the Bridge club on Wednesday afternoon. Mrs. Jim Lewis, Mrs. M. A. Robinson, Mrs. Stella Wheeler were guests of the club. The hostess served cake and sandwiches to the ladies at 5 o'clock. The next meeting will be held on January 7.

The Women's Council held a pleasant and profitable meeting in the church parlors on Thursday afternoon. Thirty members were present, and excellent reports were given by most of the committees. Mrs. Haddock and Mrs. Montgomery of Russell Lane, acted as hostesses and served sandwiches, pickles and coffee. The next meeting will be held on December 30, and the social committee will have charge making a holiday party of the same. A full attendance is desired and a good time is promised.

Willie Sampson and A. R. Scott returned Wednesday from a business trip to Portland.

The choir, under the direction of Mrs. F. S. Bell, will give a musical program at the church on Christmas eve, December 24.

The Boy Scouts held their regular meeting on Tuesday evening. Tom Hill, Donald Blakeley, Clarence Lacourse and John Galleys passed the tests for second class scouts and were presented with their badges. After the regular business meeting the boys were entertained at the home of Mr. and Mrs. Calvert with a radio concert, and games and were treated to nuts and apples.

Mr. and Mrs. George Truitt visited with friends at Artesian Thursday evening.

The boys of the high school have organized a basketball team and will practice in the evening at Modern Woodmen hall.

Mrs. May Hill, with her family, moved to her farm east of town the first of the week.

On account of the illness of the teacher, the honorary list of pupils for the fifth grade was not published last week.

The following list shows those who made a grade of 90 or over: Orace Brewer, Gladys Colner, Rosina McCallum, Charles Bailey, Paul Ferguson, Robert Hill, Ruby Wiseman and Herbert Hughes.

High school camp, M. W. A., entertained their wives and families at the Woodman hall Friday evening. One hundred men, women and children enjoyed the program, which was well prepared and varied to provide entertainment for both the old and young. The program started at 8:30 o'clock with the following musical numbers: Vocal solo, Fay Sheedy; saxophone solo, Alfred Pettygrove; vocal solo, Mrs. H. M. Smith; piano solo, Mrs. Everett Webb; exhibition drill by Chief Forester Bean and team, and a vocal solo by E. N. Pettygrove. Mrs. Everett Webb, Mrs. A. E. Pettygrove and Mrs. Warren Lowery provided piano accompaniment for the numbers. After serving a delicious lunch the remainder of the evening was given over to dancing.

WARRANT CALL

Dec. 11th, 1924.
Warrants of the American Falls Reservoir District Numbers 421 to 461, both inclusive will be paid if presented at the office of the District on December 22nd, 1924.

Interest on these warrants ceases on December 22nd, 1924.
AMERICAN FALLS RESERVOIR DISTRICT.
By W. H. SPENCE, Treasurer.

NARCISSUS BULBS AND BOWLS.
Narcissus bulbs in beautiful bowls make acceptable gifts for the home. (See Book Store—adv.)

VIOLIN OUTFITS complete, ranging from \$10 to \$35; splendid for Christmas gifts. For sale at Prof. Flechtner's 452 Third avenue north—adv.

READ THE TWIN FALLS NEWS.



"BOY OF MINE" IS GEM

One of the finest gems of the photodramatic art will be on view Monday at the Orpheum theater. It is "Boy of Mine," a First National picture to be presented under auspices of the Parent-Teachers' association.

Ben Alexander, who won our hearts in his "Penrod" in "Penrod and Sam," heads the remarkably capable cast which includes Irene Rich, Henry Walshall, Rockliffe, Follows and Dot Farlow.

Booth Tarkington, the famous writer, is the author of "Boy of Mine," and has made of it one of the most human works of art that it has ever been our pleasure to meet. As you watch the fascinating story unfold on the screen, you are made to feel that this life as it is being lived in many thousands of American homes, and you thrill with recognition.

IDAHO.

The new James Cruze production for Paramount, "The Garden of Weeds," starring Betty Compson, opens tomorrow at the Idaho theater for a run of two days.

The story is one of theatrical life and features Warner Baxter, Rockliffe Follows, Charles Ogilvie and Al St. John.

For Murray, the Plumber, Phone 518.—adv.

BOOKS AND GAMES FOR THE KIDDEES

We have a large variety of books and games for children of all ages. Close Book Store—adv.

Use PIPE FLUSH to open up that clog in your drain pipe. Does not injure the plumbing in any way. Saltsday Hardware Company—adv.

15c Lb. 15c Lb.

Christmas Mix Candy
(Can You Beat It?)
Made Fresh Daily
Special price for 50 pounds or more.

HERBST & RAMBO

Not Faro But—

Some people will gamble and some will not, but not many will take chances on freezing their families at this time of year.

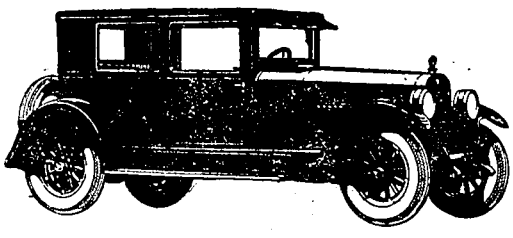
We are selling our Good Castle Gate and Peerless Lump Coal for \$10.50 per ton and there is no better coal in town.

Why pay more for an inferior coal?

T. J. Douglas Coal Co.

PHONE 211

Again HUDSON-ESSEX
Reduce Prices



"World's Greatest Buy"
Everyone Says it—Sales Prove it

Largest production of 6-cylinder closed cars in the world makes possible these price reductions. Hudson-Essex alone have the resources to produce these values.

Hudson-Essex build the Coach to provide a good-looking, well-built, all-year closed car, with finest chassis quality, at a moderate price. Chassis value is the basis of this great value. It must always be the uppermost factor in the service, satisfaction and economy of any car.

All motordom knows Hudson and Essex chiefly as unrivalled chassis values. Their smooth, vibrationless motors give performance, distinction and enduring service that are famous everywhere. Their economy includes the most important of all savings—long life, freedom from repair need, low maintenance and exceptionally high resale value. A ride will convince you that the "World's Greatest Buy" is exclusive to Hudson and Essex.

ESSEX Six COACH \$895
HUDSON Super-Six COACH \$1345

Hudson Super-Six Sedans Reduced \$355
5-Passenger \$1795 7-Passenger \$1895
Freight and Tax Extra

PARTS

E. T. GUTTERY

128 SECOND AVENUE NORTH
Phone 525—Twin Falls, Idaho.

SERVICE

ACCESSORIES

OUR 1925
"SYSTEM"
CALENDERS

are now ready for distribution.
Please call for yours

Twin Falls Title
& Abstract Co.

"Every Kind of Insurance and Bonds"
Phone 168

POTATOES
WANTED
J. H. SEAYER
PHONE 335

ANTIFREEZE

For Your Car—25c Per Qua
MOON'S PAINT SHOP

CANDY CANES

The only place to get the perfect candy cane.
Special price for 25 or more.
HERBST & RAMBO

CASH
For

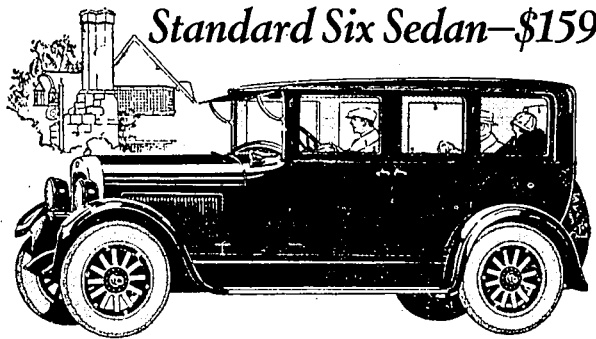
Corn and
Cull Beans

BEST PRICES
Will buy the year 'round.

McNichols Transfer Co.

PHONE 200
TWIN FALLS
T. D. SMITH'S COAL YARD
FILER

The New
STUDEBAKER
Standard Six Sedan—\$1595



HERE is a fascinating new closed car—new in beauty, new in convenience, new in driving ease—it's the Studebaker Standard Six Sedan.

It is built complete by Studebaker—assurance of mechanical excellence plus finest coachwork. It is also a guarantee of utmost value, for the savings Studebaker makes through complete manufacture are reflected in its surprisingly low price.

New beauty

New body—new radiator—new hood—new fenders—new lamps—genuine mohair upholstery—new walnut-finished instrument board—new grouping of instruments on silver-faced dial—new stop-and-tail light—new natural wood wheels—new satin lacquer finish.

New convenience

New control of lights from steering wheel—

new automatic spark control—new one-piece windshield—new winged radiator cap—new gasoline gauge on dash—glare-proof visor—automatic windshield cleaner—rear-view mirror—corner reading lights—new tire carrier with lock—new-type accelerator.

New driving ease

Improved engine of greater power—new crankshaft machined on all surfaces—new heavy frame—new large brakes—new steering mechanism specially designed for full-size balloon tires—new ease of gear shifting with unit power plant—new emergency brake lever, located at the dash—new force-fed lubrication system.

By all means see this new Sedan before you buy. Sit behind the wheel and experience its smooth, quiet, vibrationless performance and its delightful ease of operation.

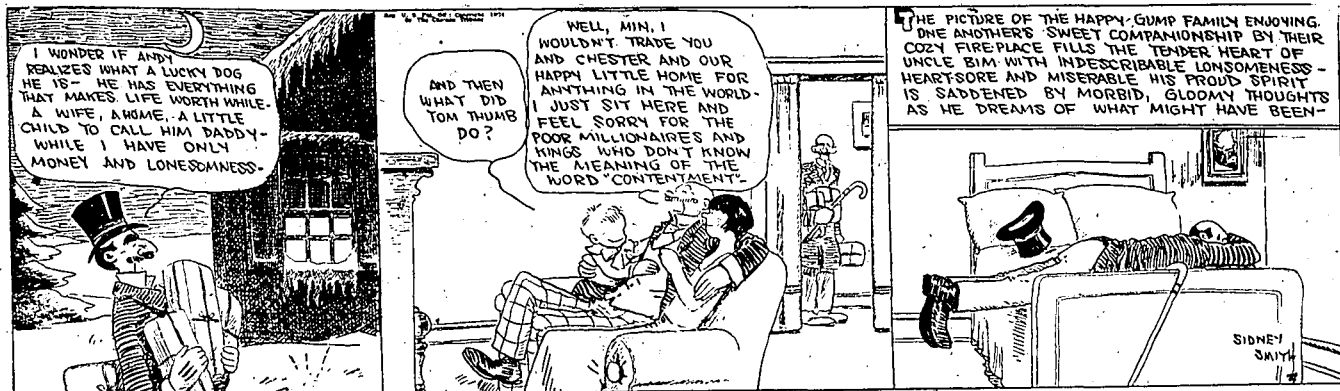
STANDARD SIX	SPECIAL SIX	BIG SIX
114-in. W.B. 50 H.P.	120-in. W.B. 61 H.P.	127-in. W.B. 73 H.P.
5-Pass. Duplex Phaeton . . . \$1125	5-Pass. Duplex Phaeton . . . \$1495	7-Pass. Duplex Phaeton . . . \$1875
5-Pass. Duplex Roadster . . . 1125	5-Pass. Duplex Roadster . . . 1450	5-Pass. Coupe . . . 2650
5-Pass. Country Club Coupe . . . 1395	5-Pass. Victoria . . . 2050	7-Pass. Sedan . . . 2785
5-Pass. Sedan . . . 1395	5-Pass. Sedan . . . 2150	7-Pass. Sedan . . . 2860
5-Pass. Sedan . . . 1395	5-Pass. Sedan . . . 2150	7-Pass. Sedan . . . 2860
5-Pass. Sedan . . . 1395	5-Pass. Sedan . . . 2150	7-Pass. Sedan . . . 2860

J. A. BARRETT AUTO CO.

PHONE 56

THIS IS A STUDEBAKER YEAR

THE GUMPS—THE WIDOW'S MIGHT



MEMORIAL FUND GIVEN \$10,000

Four Mining Companies of the Coeur d'Alenes Subscribe to Monument to Service Men.

BOISE, Dec. 13.—(Special to The News).—Four mining companies in the Coeur d'Alene district have subscribed \$10,000 to the Idaho Memorial building, according to information received yesterday by State Chairman Paul Davis from Axel P. Ramstedt, chairman of the Shoshone county executive committee of the memorial drive. The Bunker Hill and Sullivan, the Federal, the Hecla and the Hercules and Tamarack each gave \$2500 toward the fund. Besides the mining subscriptions more than \$6000 has been raised and the total quota of \$25,000 will soon be raised in the opinion of the chairman. The Wallace Board of Trade appropriated \$50 for the memorial; the Wallace Study club, \$25, and the Kellogg Chamber of Commerce, \$30. Commercial bodies in all sections of the state have made appropriations toward the memorial fund and women's clubs are also raising money for the same purpose. A number of counties have completed their quotas and several others will reach their amounts within the coming week. State officers of the Memorial Association expect the major portion of the \$250,000 quota to be raised before Christmas day.

HAZELTON

HAZELTON—Mr. and Mrs. S. E. Vance and Mr. and Mrs. W. E. DeWolter attended the convention of the American Legion at Twin Falls Tuesday as delegates from the Hazelton unit. Dr. E. L. Berry attended the medical convention at Twin Falls last week. Mr. and Mrs. Gordon Murphy motored to Twin Falls Tuesday. Guy Judson has recovered from an attack of tonsillitis. Dad Sheppard, Mrs. G. M. Lindley and daughter, Hazel, motored to the capital city Monday returning Tuesday.

RAIL WORKERS TO CONFER

H. Bruner, Freight Agent, and Assistants to Meet With Agents, Engineers, Firemen and Conductors Here.

H. Bruner, freight agent of the Oregon Short Line, with headquarters at Salt Lake, is expected to reach Twin Falls next Tuesday with a staff of assistants by whom a meeting of agents, engineers, firemen, conductors and railroad men generally will be held during the afternoon.

The meeting will be held in the banquet room of Tom's cafe immediately following lunch, and is in the nature of a sort of school of instruction for railroad employees in any manner connected with handling of freight.

It is anticipated that between 25 and 30 will attend the meeting.

KIMBERLY

KIMBERLY—The Sam Daniels sale, held at his ranch north of Kimberly on Wednesday, was well attended, everything selling at a good price. The Daniels' will leave soon for their new home in Mississippi.

S. B. Blackford and Ernest Muggenson of Salt Lake, and A. W. Workman of Burley, were business visitors in Kimberly Wednesday.

Miss Katherine Mulder of Rock Valley, Iowa, is here for an indefinite visit with her brother, Pete Mulder and family.

F. E. Ogg returned to Kimberly on Wednesday, his business in the future being with the Southern Idaho Wholesale of Twin Falls.

Mr. and Mrs. R. A. Johnson and Mrs. and Mrs. Jess Whitely of Murtaugh, were Kimberly visitors Friday.

Mr. and Mrs. Wayne Hardin and son left Kimberly Friday morning for Salt Lake to spend the holidays with Mrs. Hardin's parents in that city.

Mrs. W. M. Arnold is substituting at the high school in the absence of Miss Parrott, who is ill at her home in Twin Falls.

Mrs. J. N. Hilliges is spending the holidays with relatives in Clinton, Mo. Grandma Hilliges of Hansen, is assisting with household cares at the home of her son in the absence of Mrs. Hilliges.

R. L. Reed of Jerome, stopped in Kimberly Friday morning driving to Oakley later on business.

The Ladies' Pioneer club met on Thursday at the home of Mrs. W. T. Combs. During the business hour several matters of interest were under discussion, the hot lunch movement predominating. At a vote of the club

it was decided to accept Mrs. Whitney's report, who being chairman of the appointed committee to aid the public service committee in putting the matter over. It was also voted by the club to hold an apron sale on Saturday, December 20, at Noble's store, to help swell the fund. With Mrs. Florence Wright as leader, an interesting program consisting of readings and Christmas stories were enjoyed, after which the hostesses served tea and wafers from a beautifully appointed tea table with Mrs. J. N. Davis presiding.

Miss Pearl Tunney, who has spent the past two weeks at home on account of illness, returned to Hanson Sunday morning.

Mrs. Marguerite Buchanan and daughter, Esther, were Christmas shopping in the Magic City Saturday.

G. L. Noble is reported on the sick list this week.

Mr. and Mrs. Curtis Bower and family of Rock Creek, were Kimberly visitors Friday.

A number of neighborhood friends of Mr. and Mrs. Mike Teator gathered at their home Friday night for an old-fashioned surprise party. Music and dancing furnished the evening's entertainment and later refreshments were served by the ladies who had previously arranged for the lunch.

Mr. and Mrs. B. H. Denton and sons, Robert and O. Lewis, motored to Boise Saturday, returning Sunday.

Lloyd James has suffered an attack of flu the past week.

Mr. and Mrs. W. H. Spencer, Mr. and Mrs. S. H. Proctor of Kimberly and Mr. and Mrs. E. D. Johnson of Twin Falls, were dinner guests at the home of Mr. and Mrs. W. T. Combs Thursday evening.

REAL ESTATE TRANSFERS

Friday, December 12.

Quit claim deed, W. E. Smalley to E. D. Smalley, \$1; SW 1/4 NE 12-10-14.

C. I. Price to O. E. Hootch, \$1; part of lot 5, block 1, Fire Point addition.

Ida E. Miller to D. B. Voeberg, \$3500; SW 1/4 NE 12-10-14.

O. A. Wilson to H. E. Laughlin, \$10; lots 29, 40, 41, and N 1/2 42, Flier Aero Tracts.

H. W. Jennings to M. Early, \$750; lots 12, 13, block 11, Kimberly.

OXFORD AND AMERICAN VERSION BIBLES.

A new supply of Bibles with moderate prices at Old Book Store—adv.

LEGAL ADVERTISEMENTS

SHERIFF'S SALE. Notice of Sheriff's Sale of Real Estate Under Decree of Foreclosure and Order of Sale.

The First National Bank of Kimberly, a banking corporation, and Frank Bower, Plaintiffs,

vs. W. D. Stark and Blanche A. Stark, his wife, The Bank of Kimberly, a banking corporation, and the Twin Falls Canal Company, Ltd., a corporation, Defendants.

Under and by virtue of an Order of Sale and Decree of Foreclosure issued out of the District Court of the Eleventh Judicial District of the State of Idaho, in and for the County of Twin Falls, dated the 17th day of November, 1924, wherein the plaintiffs above mentioned obtained a decree against the defendants herein on the 17th day of November, 1924, which said decree was on the said 17th day of November, 1924, recorded in Judgment Book ten at page 170 of said District Court; I am commanded to sell all that certain lot, piece or parcel of land situated in the County of Twin Falls, State of Idaho, and bounded and described as follows, to-wit:

The Northeast Quarter of the Northwest Quarter of Section 28, Township 11 South, Range 18 East, B. M.

Public notice is hereby given, that on the 23rd day of December, 1924, at the hours of 2:00 o'clock p. m. (Mountain Time) of said day, at the East front door of the Court House of the County of Twin Falls, State of Idaho, I will, in obedience to said Order of Sale and Decree of Foreclosure, sell the above described property to satisfy plaintiff's decree with interest thereon, together with all costs that have accrued or may accrue, to the highest bidder for cash, lawful money of the United States of America.

Noted this 28th day of November, 1924.

M. E. FINCH, Sheriff.

By E. P. PRATER, Deputy.

COLUMBIA—

Excelsior--Tribune--Bicycles

Bicycles with a reputation. Models and prices to suit all.

Good Tires \$1.95 Up. FISK TIRES

Roller and Ice Skates, Tricycles, Scooters.

Repairing Bicycles Our Specialty

We Will Deliver Christmas Eve

Werner's Repair Shop

222 SECOND STREET EAST

Only Nine More Shopping Days Till Christmas

A Gift that is always appreciated by "Her"

SILK HOSIERY
SILK UNDERGARMENTS
FANCY HANDKERCHIEFS
POCKETBOOKS
HANDBAGS
LEATHER HAT BOXES
OR A BEAUTIFUL DRESS OR COAT

To the Men—
Come in and let us help you make your selections for your wife, sister or sweetheart.

DORA NELSON

JACK PERSONIUS TAXI CLOSED CAR Phone 57. Night Phone 22

Storage Warehouse Negotiable Receipts Issued Cash Advanced on Warehouse Receipts J. H. SEAVER

CHLORINE GAS TREATMENT For colds, bronchitis, laryngitis, coryza and similar ailments. Hours of treatment, 9:30 a. m. and 6 p. m. TWIN FALLS CLINIC

Taking the CERTAIN ROAD

After all, there's reliance in old friends. And to stick to The Florsheim Shoe is taking the certain road to shoe satisfaction.

The Rugby \$10

MAIN FLOOR SHOE DEPARTMENT
The Idaho Dept. Store
IF IT ISN'T RIGHT, BRING IT BACK

FOR THE MAN WHO CARES

Florsheim SHOE

Give something for "The Car"—this Christmas

"Some" Gifts

Some gifts are useless
Some gifts are ornamental.
Some gifts are Practical—Auto Accessories come under this heading—that's why we call them "some" gifts—with the emphasis on the "some"

We are all going to give this Christmas—but let us cultivate the habit of giving sensible gifts—they cost no more and they give genuine satisfaction all around.

Choose auto accessories for your gifts this year and know what the joy of giving really is.

J. A. BARRETT AUTO CO.
250 Main Avenue North
Phone 56 Twin Falls

PUBLICITY FOR IDAHO IS URGED

Newly-Formed State Federation of Chambers of Commerce to Back Proposed Legislation.

An appropriation for the office of state immigration inspector which was denied by the last legislature, and the adoption of a legislative measure that will permit counties to make money for advertising and another measure that will permit the state to form a district for maintenance of a district fair, will be urged upon the next session of the state legislature by the Idaho Federation of Chambers of Commerce which was formed Friday at a conference of chambers of commerce representatives at Pocatello, according to Charles P. Dwight, secretary of the Twin Falls Chamber of Commerce, who attended the conference, returning here Saturday.

Shad L. Hodgins, president of the Twin Falls Chamber of Commerce, who with Secretary Dwight, represented the local organization at the conference, was named as one of a committee to draft proposed legislation to be urged before the legislature. Mr. Dwight served as the chairman of the committee that drafted the constitution for the federation formed at the conference.

Need Emphasized.

Need for intensive advertising of Idaho's resources and possibilities was emphasized in the conference. Mr. Dwight stated, in view of extensive advertising campaigns to be launched next year by the states of Oregon and Washington in co-operation with the four great railroad systems by which they are served and by the state of Montana in cooperation with five railroad systems traversing its borders.

"Resources and possibilities of our neighbor states are not greater than our own and if Idaho is to hold its own this state and the countries composing it must enter upon a similar advertising campaign," Mr. Dwight stated.

"Objection that such a campaign would cost money is short sighted," Mr. Dwight asserted. "For the reason that the objective of the advertising campaign is the bringing in of additional capital and population to the state that would assume its share of the tax burden and reduce the state's proportionately to capital already invested and citizens already located here."

Where Idaho is Stronger.

Mr. Dwight stated that he had become convinced of need for greater advertising of Idaho and its possibilities while attending the national dairy exposition last fall at Milwaukee.

"These people for the most part," he said, "didn't even know where Idaho was situated, and they were surprised to learn the great resources and wide range of activities of the state."

In the absence of president S. E. Brady, J. A. Harzard, secretary of the Pocatello Chamber of Commerce, acted as chairman and D. A. Caldwell of Idaho Falls, as secretary. Representatives were in attendance at the meeting from Pocatello, Burley, Jerome, Gooding, Arco, Mackay, Blackfoot, Idaho Falls, Moscow, McCall, Blaine, Shoshone, Rexburg, American Falls and Twin Falls. Joel Priest of Boise, general agent for the Short Line, represented the railroad at the meeting.

SENATE AROUSED WITH EDITORIAL

Attack by Washington Paper on Muscle Shoals Bill Results in Investigation.

WASHINGTON, Dec. 13 (AP)—State-ments in an editorial in the Washington Herald attacking the Underwood Muscle Shoals bill and its author will be the subject for investigation by the senate judiciary committee.

Senator Underwood, democrat, Alabama, who drafted the measure, obtained unanimous consent of the senate today for such an investigation after he had delivered a denunciation of the editorial and its writer.

To Start Monday.

The inquiry will be taken up by the committee Monday and Senator Underwood said he would demand a subpoena for the editorial "to find out the truth of this editorial and who is responsible for it."

The heading of the editorial, Senator Underwood said, was "Another Teapot Dome Is Thrust Upon Mr. Coolidge."

"This slimy snake," Senator Underwood declared, "that crawls through an editorial column bearing misrepresentation and slanders too cowardly to attack the president of the United States and seeks by innuendo and charge to attack other people who are only worrying out exactly what the president of the United States has recommended."

INSPECTOR IS AMBUSHED.

El Paso, Tex., Dec. 13 (AP)—An smuggler in ambush on the banks of the Rio Grande tonight shot and killed Immigration Inspector Frank Clark. Inspector Clark was on duty with another inspector, another inspector who was fired upon but not injured.

READ THE TWIN FALLS NEWS.

NATION MOURNS DEATH OF SAMUEL GOMPERS

(Continued from Page 1)

last journey on an artillery caisson, surrounded by a military escort and accompanied by delegation representing the city and the labor organizations here.

Up almost to the hour of departure the crowds thronged about the little brass house that had been turned into a mortuary.

As the hour approached for the start of the cortege to the Missouri, Kansas and Texas railroad station, streets along the line of march were roped off while the city, which ere this has known the tramp of many feet, paused in its frenzied rush to eling for a hushed moment to the passing visitor. The city was reluctant to let him go.

All Mourm Less.

The cosmopolitan metropolis of this Alamo, with its soldiers, its seafarers from all states and its adopted sons from the land below the border, ceased their Saturday night diversions to give a many voiced salute to the gallant gentleman who could not prolong his stay, though he wished it mightily.

"Two special coaches on a regular Missouri, Kansas and Texas train waited at the depot for their noted passenger and the labor officials who had been Mr. Gompers' official counsel in life and were now his chief mourners in death."

Services are to be held in Washington and the body is to be taken to New York Wednesday morning, where further services probably will be held and a funeral oration preached by some one to be selected. Burial will be in Sleepy Hollow cemetery at Tarrytown, New York.

FRENCH PRAISE.

PARIS, Dec. 13 (AP)—The death of Samuel Gompers is given prominent mention in the French newspapers. The official organ of the French labor federation, Le Peuple, edited by Leon Jouhaux, often called the "Gompers of France," says:

"Labor has lost a great chief. Mr. Gompers dies upon his return from an errand of peace in Mexico after an entire life devoted to the welfare and prosperity of the laboring man."

LONDON COMMENT.

LONDON, Dec. 13 (AP)—Sketches dwelling on the personal characteristics of Samuel Gompers appear in the London newspapers, but thus far there is little comment. All admit the strong and forceful personality and striking individual traits of the dead leader and draw a contrast between the labor leadership of the new and the old world.

CANADIAN COMMENT.

OTTAWA, Dec. 13 (AP)—"By the death of Samuel Gompers the world has lost one of the outstanding personalities of the last decade," said Tom Moore, president of the Canadian Trades and Labor congress.

GERMAN PRESS COMMENT.

BERLIN, Dec. 13 (AP)—The traditional conservatism of Samuel Gompers and his stubborn fight against the influx of European socialistic tendencies into the ranks of the American Federation of Labor are stressed by the

German press today in its comment on the death of the American labor leader. The Tagblatt characterizes Mr. Gompers as one of the strongest figures in the social movement of the last few decades, while the Vossische Zeitung says his influence in the White House during the Wilson regime was more potent than that of Colonel House.

MCADOO'S TRIBUTE.

LOS ANGELES, Dec. 13 (AP)—Samuel Gompers was "one of the great men of our generation, a life worker for humanity," said William Gibbs McAdoo, war time director general of the railroads, and unsuccessful candidate for the democratic presidential nomination this year, in a message of condolence which he sent tonight to the American Federation of Labor headquarters in Washington.

LYNCH MOURNS DEATH.

INDIANAPOLIS, Ind., Dec. 13 (AP)—In the death of Samuel Gompers the American labor movement and the American people as well have suffered a tremendous loss," said James M. Lynch, president of the International Typographical Union. "Thousands of us, too, feel the sorrow of losing a personal friend. To every leader in the labor movement—Sam Gompers was a powerful inspiration and a pillar of support."

HOBBES TO PAY TRIBUTE.

CINCINNATI, Dec. 13 (AP)—Jett Davis, king of hoboes, requested tonight that all of his "brethren of the road" pay silent tribute for one minute, beginning at 9 o'clock Monday morning to Samuel Gompers, who died at San Antonio, Texas, today. The "king" paid tribute to Mr. Gompers as a friend of the organized as well as unorganized laborers.

REGRET BARRED FOR YEAR

PORTLAND, Ore., Dec. 13 (AP)—Harry Regret of the University of Idaho football team was declared ineligible to play in the Northwest conference next year at a meeting of that body here today and five minutes later was reinstated.

Regret's case was brought up at the annual meeting of the coast conference Friday and he was declared eligible. He was accused of teaching calisthenics in the east, thereby professionalizing himself.

CABINET RESIGNS MONDAY.

BERLIN, Dec. 13 (AP)—Chancellor Marx at a meeting with socialist leaders this evening announced that the cabinet would resign Monday.

Potato Consumption

Ireland is an easy winner in the eating of potatoes. The average per capita consumption in the Emerald Isle is four pounds a day. The United States is second in this class, with a record of 200 pounds yearly for each inhabitant.

SPORTS

WORK OUT PLANS FOR BASKETBALL

High School Coaches Meet at Caldwell and Fix Up Schedules; Rules Laid Down.

CALDWELL, Dec. 13 (AP)—Twenty-three coaches and principals of southwestern Idaho high schools met here today and worked out a schedule for this season's basketball games. Complete schedules were not perfected in all cases, however.

Each school arranges its own games, but, under rules of the intercollegiate athletic association, each school must play at least six games with at least three different opponents in order to be eligible for the district tournament. The board of control will select the eight teams making the best showing in the regular season an entries for the district tournament to be held in Boise March 5, 6 and 7 on the Y. M. C. A. floor.

Emery Duan, principal of the Parma high school and president of the district organization, and the district tournament will be conducted on the double defeat system. Eight men from each school participating will comprise the eligible number for the meet. All schools wishing to be considered for the district contest must have the record of games played and results in to the president by February 27. Mr. Duan said today. Plans are being made also for a district track meet to be held in this city May 3 at which time the athletes eligible for the state interscholastic meet at Pocatello, May 8, will be chosen.

AT THE HOTELS

PERNINE—Due and wife, Burley; L. J. Foselle and wife, San Francisco; W. W. Powell, Hollister; R. B. Humphreys, Ogden; C. M. McAllister, Portland; Charles C. Johnson, Denver; U. G. Baker, Jarbridge; Charles H. Fairfield, Washington, D. C.; Lane Helms, Jarbridge; Arthur Reed, Jess Reed, Rigby; Guy Edmunds, Boise; G. B. Storrin, Seattle; H. LeMoine, Hailey; George Braman and wife, Pocatello; C. N. Willard, Salt Lake; H. Mine, Murtaugh; Hans Muller, Boise; L. C. Cooper, Twin Falls; Mrs. W. E. Brown, Twin Falls; B. Garmendia, Boise; E. L. Turner, Burley.

ROGERSON—E. Mack Tucker, Den-

ver; H. B. Way, Ogden; C. R. King, H. S. Coburn, Salt Lake; R. L. Shepherd, G. E. Beckstead and wife, H. P. Risher, Pocatello; F. E. Mattison, Salt Lake; W. W. Widens, Omaha; May Agnes Jeffries, Margaret Mueller, Glens Ferry; Charles McMunnif, Los Angeles; Mr. and Mrs. Ray N. Davis, Castleford; E. E. Barkmeyer, Great Falls; Carl J. Jerome; C. H. Smith, Rupert; Sam Clement, Portland; W. R. Harma, M. A. Nelson, Boise; C. R. Hillsbury, Portland; Allen Peel, Spokane; H. A. Luff, Salt Lake; C. W. Brown, New York; Donald G. McClaffin, Bogerson; Isotta Schneider, Ruth Van Caten, Hansen; G. R. Hibbert, J. S. Andrews, Pocatello; Mr. and Mrs. Ograt, Berger, Mr. and Mrs. I. B. Fritzer, S. B. Sweetland, Jerome; C. H. Smith, Rupert; Sam Powell, Glens Ferry.



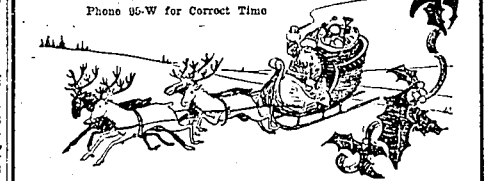
Presents of Silver and Gold

Rings, watches, charms and cuff links are a few things that capture the fancy of every man. But there are only a few of the many other gifts found at Umbaugh's that every man likes.

There's a Christmas gift for dad, brother or sweetheart that fits your choice as well as your purse.

We guarantee to please.

J. H. Umbaugh Co. JEWELERS Phone 95-W for Correct Time



Joe-K Says:

"THE CHRISTMAS THAT LIES BETWEEN." In such remembrance lies the happiness of thousands who now allow Christmas to pass by with scarcely a thought of the day. If ever a day were given us wherein to be happy and in which to add to the happiness of others it is the Christmas Day. (Continued Tuesday).

Idaho THEATRE

PRICES: Matinee 10c and 20c Evening 10c, 20c, 30c TIME—2-4-7-9-P. M.

TOMORROW AND TUESDAY

A James Cruze Production

Betty Compson

—IN—

"The Garden of Weeds"

Pin another medal on the "Covered Wagon" director! Cruze's best yet is Betty's best bet!

A PARAMOUNT PICTURE

ALSO

"OFF HIS TROLLEY"

A FEAST OF FAST FUN

News Weekly News

IDAHO ORCHESTRA

"DUNKLEY'S DOO-DADS"

"Your Ears Hear What Your Eyes See"

WEDNESDAY, THURSDAY AND FRIDAY

AN ALL-STAR CAST

IN

BEHOLD THIS WOMAN

A Romance of Movie Land

SATURDAY—ONE DAY ONLY

JAMES L. LARKY PRESENTS

Zane Grey's

"TO THE LAST MAN"

WITH LOIS WILSON

RICHARD DIX

"North of 36". Yes, Soon!

"ALWAYS THE BEST FOR THE IDAHO GUEST, ALWAYS"

ORPHEUM

MONDAY and TUESDAY

Matinee 10c and 20c Evening 10c, 20c, 30c

A wonderful photoplay by America's own author

BOOTH TARKINGTON

Truly a Masterpiece

More Human Than Any Drama in Twenty Years!

Under-stand- ing—the greatest bond between parent and son.

with BEN ALEXANDER

IRENE RICH

ROCKLIFE FELLOWS

HENRY WALTHALL

Also Showing

Comedy—Our Gang in Their Latest: Two Real Fun Riot.

with LATEST NEWS WEEKLY

ORPHEUM ORCHESTRA

For the "Handy man around the house"

Make it a Practical GIFT

Gifts That Are Useful as Well as Ornamental.

FOR THE BOYS

Baseball Mitt

Football

Set Tools

Sled

Watch

Boy Scout Knife

Tricycle

Scout

FOR GIRLS

Tennis Racquet

Basketball

Nice Dishes

FOR MOTHER

Percolator

Glassware

Silverware

Coleman Lamp

Grill

Sets Dishes

Potex Dish

Bird Cage

We have a wonderful complete line of merchandise that is suitable for gifts. We ask you to see our line.

Salladay Hardware Co.

for small cost at all good dealers
—adv.

TR.

100

COMPANY

If not delighted. Get Blonder told
for small cost at all good dealer
—adv.

THE MARKETS

MARKETS AT A GLANCE

NEW YORK, Dec. 13 (AP)—Stocks Strong; Van Swearingen issues at new high.

Bonds—Firm; Erie lions extend gains.

Foreign exchange—Higher; Spanish pesetas at year's high.

Cotton—Lower; southern selling.

Sugar—Steady; better buying.

Coffee—Higher; firm Brazilian markets.

CHICAGO, Dec. 13 (AP)—Wheat— Steady; expected decrease in visible supply.

Corn—Easier; better Argentine weather.

Cattle—Irregular; lower.

Hogs—Steady to strong.

TWIN FALLS MARKETS

These prices are obtained daily at 4 o'clock in the afternoon and are intended to cover only the average of prices. Where certain dealers for short periods offer more than the quoted prices no effort is made to include such quotations. Quotations are offered merely as a guide to producers and should not be accepted as reflecting extremes of either high or low prices.

RETAIL MARKETS

The Twin Falls markets yesterday were as follows:

Livestock	
Hogs	\$5.50 to \$8.00
Cattle	\$2.00 to \$3.00
Sheep	\$3.50 to \$4.50
Steers	\$3.00 to \$4.00
Veal calves	\$5.00 to \$6.00
Lambs	\$5.00

Poultry	
Heavy hens	13c
Light hens	12c
Broilers (Leghorns)	11c
Broilers (colored)	12c
Turkeys	22c
Ducks	10c
Geese	10c

Dairy	
Butterfat, creamery	30c
Butterfat, station	31c
Country butter	32c
Eggs (shipper)	30c
Eggs (local store)	35c

Wheat and Mill Feed	
Wheat, bushel	\$1.52
Barley, cwt.	\$1.75
Hay, 500-lb. lots	\$1.85
Stock feed, 500-lb. lots	\$1.80

Potatoes, Rural	
Potatoes, Rural	85c
Potatoes, Gems	85c
Beans in dirt	\$4.00
Beans, reconditioned, sacked	\$4.50
Cane	\$9.48
Root	\$9.28

Sugar, Wholesale	
Sugar, Wholesale	\$9.48
Root	\$9.28

RETAIL PRICES	
Potatoes, lb.	2c
Head lettuce	10c to 12c
Cauliflower, lb.	12c
Celery, bunch	10c

Vegetables	
Grapes, each	10c to 15c
Oranges, dozen	35c to 40c
Apples, dozen	10c to 15c
Grapes, pound	10c to 15c

Butter	
Creamery, butter	45c
Butter, cheese	45c
Wisconsin cheese	25c

PORTLAND GRAIN

PORTLAND, Dec. 13 (AP)—Wheat— Hard white 1.57; soft white, December 1.70, January 1.70; hard winter, December 1.67; western red, December 1.63, January 1.63.

Oats—No. 2 white feed, January 10.50.

Corn—No. 3 E. Y. shipment, December 95.50.

GRAINS REACH NEW HEIGHTS ON MARKET IN CLOSING SESSION

CHICAGO, Dec. 13 (AP)—New heights for this season were reached today by prices in all deliveries of wheat, corn and oats, but deliveries of wheat and corn were not sufficient to realize profits and to bring about the usual announcement of accounts resulted in complete wiping out of the advance. When closed nervous at the same as yesterday's finish to 3-8 lower, May \$1.67 3/4 to 1.67 7/8; corn unchanged to 1-8 down; oats 1-8 to 1-2 off; provisions varying from 2 cents decline to 1 cent gain.

Notwithstanding that enlarged selling forced the wheat market backward several times, what reaction occurred the last was quickly followed by a dearth of offerings, by increased efforts to purchase and by a fresh upsurge of values. It was said that a considerable portion of the demand for foreign sources. One of the items which also attracted special notice in connection with the rallies was the fact that domestic primary arrivals of wheat this week amounted to only 12,997,000 bushels last week.

Preparations for any surplus in the government crop report. Tuesday next were said to have been responsible for part of the selling today at the last. On the other hand, leading

DUMB BELLS



Advertisement for dumbbells, claiming a permanent gain in muscle tone.

to 5.50; canners and cutters 10 to 15c lower; bulk \$1.75 to 3.25; bulls firm; most hogs \$3 to 4; stockers and feeders largely \$4 to 5; prime steers fed by University of California for international \$18 to 20; heifers largely \$15 to 18 including baby beef; calves supply fairly liberal; prices generally 25 to 50c lower when compared with week ago; bulk 210 to 325 pound weights \$3.25 to 6.25; load lots good handy weight \$2.25 to 5.50.

Hogs—Receipts, approximately 7500 for week; prices generally 25 to 50c higher; extreme top \$10.00; bulk 145 to 200 pound weight at close \$10.25; to 10.50; packing hogs fully steady; bulk \$8.50 to 9.75.

Sheep—Not enough arrived to test market; two decks good 74 pound California wethers \$15; straight choice bandy weight wool skins quotable upward to \$14; choice light weight ewes upward to \$7.50; wethers fed by University of California for the international sold from \$15.50 to 20; with one at \$25 at yesterday's auction; these wethers 128 to 160 pounds.

IDAHO LIVESTOCK

OMAHA, Dec. 13 (AP)—Hogs— Receipts 19,900; mostly 5 to 10c higher; bulk 200 to 300 pound butchers \$8.85 to 9.50; top \$9.60; desirable 160 to 200 pounds \$9.25 to 8.85; light lights down to \$7; packing hogs \$8.60 to 8.75; bulk of all sales \$8.25 to \$9.00; average cost Friday \$8.84; weight 250.

Cattle—Receipts 450; compared with week ago bulk fed steers and yearlings 85c to \$1.00; practical top \$7.75; few head \$12.75; weeks bulk \$6 to 9; butchers' canners and feeders mostly 7c lower; canners and feeders 25 to 30c lower; bulk bulls 75c to \$1 lower; hogs 25c lower; choice light weight calves 25c higher; heavy calves 25c lower; hogs 25c lower; feeders bulk, unevenly lower on narrow demand; bulk prices for week follow: Butcher cows and heifers \$3.25 to 6; canners and cutters \$2.35 to 3.50; hogs 25c to 3.25; bulk top \$10; packers and feeders \$5 to 6.75.

Sheep—Receipts 300; compared with week ago fat lambs 75c to \$1 higher; yearlings and sheep 50 to 75c higher; feeders 50c higher; closing bulk follow: Fed western lambs \$14.75 to 15.25; week's top \$15.50; natives \$14 to 14.50; fed clipped lambs \$12.25 to 12.75; fat ewes \$8.75 to 9; week's top \$9.50; feeding lambs \$14 to 14.50; week's top \$14.85.

CHICAGO LIVESTOCK

CHICAGO, Dec. 13 (AP)—Sheep— Receipts 3000; includes about 2000 direct today's market steady; choice heavy weight lambs \$16; clipped \$13; for week around 3800 direct; compared with week ago: fat lambs 50 to 75c higher; fat sheep 25c to 50c lower; feeding lambs 50c higher; bulk prices follow: Fat woolled lambs \$15.50 to 16; top \$16.25; fed clipped \$12.25 to 13.50; top \$13.75; fat yearlings \$12.50 to 13; top \$13.25; fat ewes \$6.50 to 8.50; top \$9; desirable feeding lambs \$14.50 to 15.50; top \$15.60; full month breeding lambs \$12 to 13; top \$13.50; feeding lambs 50c higher; bulk prices follow: Fat woolled lambs \$15.50 to 16; top \$16.25; fed clipped \$12.25 to 13.50; top \$13.75; fat yearlings \$12.50 to 13; top \$13.25; fat ewes \$6.50 to 8.50; top \$9; desirable feeding lambs \$14.50 to 15.50; top \$15.60; full month breeding lambs \$12 to 13; top \$13.50; feeding lambs 50c higher; bulk prices follow: Fat woolled lambs \$15.50 to 16; top \$16.25; fed clipped \$12.25 to 13.50; top \$13.75; fat yearlings \$12.50 to 13; top \$13.25; fat ewes \$6.50 to 8.50; top \$9; desirable feeding lambs \$14.50 to 15.50; top \$15.60; full month breeding lambs \$12 to 13; top \$13.50; feeding lambs 50c higher; bulk prices follow: Fat woolled lambs \$15.50 to 16; top \$16.25; fed clipped \$12.25 to 13.50; top \$13.75; fat yearlings \$12.50 to 13; top \$13.25; fat ewes \$6.50 to 8.50; top \$9; desirable feeding lambs \$14.50 to 15.50; top \$15.60; full month breeding lambs \$12 to 13; top \$13.50; feeding lambs 50c higher; bulk prices follow: Fat woolled lambs \$15.50 to 16; top \$16.25; fed clipped \$12.25 to 13.50; top \$13.75; fat yearlings \$12.50 to 13; top \$13.25; fat ewes \$6.50 to 8.50; top \$9; desirable feeding lambs \$14.50 to 15.50; top \$15.60; full month breeding lambs \$12 to 13; top \$13.50; feeding lambs 50c higher; bulk prices follow: Fat woolled lambs \$15.50 to 16; top \$16.25; fed clipped \$12.25 to 13.50; top \$13.75; fat yearlings \$12.50 to 13; top \$13.25; fat ewes \$6.50 to 8.50; top \$9; desirable feeding lambs \$14.50 to 15.50; top \$15.60; full month breeding lambs \$12 to 13; top \$13.50; feeding lambs 50c higher; bulk prices follow: Fat woolled lambs \$15.50 to 16; top \$16.25; fed clipped \$12.25 to 13.50; top \$13.75; fat yearlings \$12.50 to 13; top \$13.25; fat ewes \$6.50 to 8.50; top \$9; desirable feeding lambs \$14.50 to 15.50; top \$15.60; full month breeding lambs \$12 to 13; top \$13.50; feeding lambs 50c higher; bulk prices follow: Fat woolled lambs \$15.50 to 16; top \$16.25; fed clipped \$12.25 to 13.50; top \$13.75; fat yearlings \$12.50 to 13; top \$13.25; fat ewes \$6.50 to 8.50; top \$9; desirable feeding lambs \$14.50 to 15.50; top \$15.60; full month breeding lambs \$12 to 13; top \$13.50; feeding lambs 50c higher; bulk prices follow: Fat woolled lambs \$15.50 to 16; top \$16.25; fed clipped \$12.25 to 13.50; top \$13.75; fat yearlings \$12.50 to 13; top \$13.25; fat ewes \$6.50 to 8.50; top \$9; desirable feeding lambs \$14.50 to 15.50; top \$15.60; full month breeding lambs \$12 to 13; top \$13.50; feeding lambs 50c higher; bulk prices follow: Fat woolled lambs \$15.50 to 16; top \$16.25; fed clipped \$12.25 to 13.50; top \$13.75; fat yearlings \$12.50 to 13; top \$13.25; fat ewes \$6.50 to 8.50; top \$9; desirable feeding lambs \$14.50 to 15.50; top \$15.60; full month breeding lambs \$12 to 13; top \$13.50; feeding lambs 50c higher; bulk prices follow: Fat woolled lambs \$15.50 to 16; top \$16.25; fed clipped \$12.25 to 13.50; top \$13.75; fat yearlings \$12.50 to 13; top \$13.25; fat ewes \$6.50 to 8.50; top \$9; desirable feeding lambs \$14.50 to 15.50; top \$15.60; full month breeding lambs \$12 to 13; top \$13.50; feeding lambs 50c higher; bulk prices follow: Fat woolled lambs \$15.50 to 16; top \$16.25; fed clipped \$12.25 to 13.50; top \$13.75; fat yearlings \$12.50 to 13; top \$13.25; fat ewes \$6.50 to 8.50; top \$9; desirable feeding lambs \$14.50 to 15.50; top \$15.60; full month breeding lambs \$12 to 13; top \$13.50; feeding lambs 50c higher; bulk prices follow: Fat woolled lambs \$15.50 to 16; top \$16.25; fed clipped \$12.25 to 13.50; top \$13.75; fat yearlings \$12.50 to 13; top \$13.25; fat ewes \$6.50 to 8.50; top \$9; desirable feeding lambs \$14.50 to 15.50; top \$15.60; full month breeding lambs \$12 to 13; top \$13.50; feeding lambs 50c higher; bulk prices follow: Fat woolled lambs \$15.50 to 16; top \$16.25; fed clipped \$12.25 to 13.50; top \$13.75; fat yearlings \$12.50 to 13; top \$13.25; fat ewes \$6.50 to 8.50; top \$9; desirable feeding lambs \$14.50 to 15.50; top \$15.60; full month breeding lambs \$12 to 13; top \$13.50; feeding lambs 50c higher; bulk prices follow: Fat woolled lambs \$15.50 to 16; top \$16.25; fed clipped \$12.25 to 13.50; top \$13.75; fat yearlings \$12.50 to 13; top \$13.25; fat ewes \$6.50 to 8.50; top \$9; desirable feeding lambs \$14.50 to 15.50; top \$15.60; full month breeding lambs \$12 to 13; top \$13.50; feeding lambs 50c higher; bulk prices follow: Fat woolled lambs \$15.50 to 16; top \$16.25; fed clipped \$12.25 to 13.50; top \$13.75; fat yearlings \$12.50 to 13; top \$13.25; fat ewes \$6.50 to 8.50; top \$9; desirable feeding lambs \$14.50 to 15.50; top \$15.60; full month breeding lambs \$12 to 13; top \$13.50; feeding lambs 50c higher; bulk prices follow: Fat woolled lambs \$15.50 to 16; top \$16.25; fed clipped \$12.25 to 13.50; top \$13.75; fat yearlings \$12.50 to 13; top \$13.25; fat ewes \$6.50 to 8.50; top \$9; desirable feeding lambs \$14.50 to 15.50; top \$15.60; full month breeding lambs \$12 to 13; top \$13.50; feeding lambs 50c higher; bulk prices follow: Fat woolled lambs \$15.50 to 16; top \$16.25; fed clipped \$12.25 to 13.50; top \$13.75; fat yearlings \$12.50 to 13; top \$13.25; fat ewes \$6.50 to 8.50; top \$9; desirable feeding lambs \$14.50 to 15.50; top \$15.60; full month breeding lambs \$12 to 13; top \$13.50; feeding lambs 50c higher; bulk prices follow: Fat woolled lambs \$15.50 to 16; top \$16.25; fed clipped \$12.25 to 13.50; top \$13.75; fat yearlings \$12.50 to 13; top \$13.25; fat ewes \$6.50 to 8.50; top \$9; desirable feeding lambs \$14.50 to 15.50; top \$15.60; full month breeding lambs \$12 to 13; top \$13.50; feeding lambs 50c higher; bulk prices follow: Fat woolled lambs \$15.50 to 16; top \$16.25; fed clipped \$12.25 to 13.50; top \$13.75; fat yearlings \$12.50 to 13; top \$13.25; fat ewes \$6.50 to 8.50; top \$9; desirable feeding lambs \$14.50 to 15.50; top \$15.60; full month breeding lambs \$12 to 13; top \$13.50; feeding lambs 50c higher; bulk prices follow: Fat woolled lambs \$15.50 to 16; top \$16.25; fed clipped \$12.25 to 13.50; top \$13.75; fat yearlings \$12.50 to 13; top \$13.25; fat ewes \$6.50 to 8.50; top \$9; desirable feeding lambs \$14.50 to 15.50; top \$15.60; full month breeding lambs \$12 to 13; top \$13.50; feeding lambs 50c higher; bulk prices follow: Fat woolled lambs \$15.50 to 16; top \$16.25; fed clipped \$12.25 to 13.50; top \$13.75; fat yearlings \$12.50 to 13; top \$13.25; fat ewes \$6.50 to 8.50; top \$9; desirable feeding lambs \$14.50 to 15.50; top \$15.60; full month breeding lambs \$12 to 13; top \$13.50; feeding lambs 50c higher; bulk prices follow: Fat woolled lambs \$15.50 to 16; top \$16.25; fed clipped \$12.25 to 13.50; top \$13.75; fat yearlings \$12.50 to 13; top \$13.25; fat ewes \$6.50 to 8.50; top \$9; desirable feeding lambs \$14.50 to 15.50; top \$15.60; full month breeding lambs \$12 to 13; top \$13.50; feeding lambs 50c higher; bulk prices follow: Fat woolled lambs \$15.50 to 16; top \$16.25; fed clipped \$12.25 to 13.50; top \$13.75; fat yearlings \$12.50 to 13; top \$13.25; fat ewes \$6.50 to 8.50; top \$9; desirable feeding lambs \$14.50 to 15.50; top \$15.60; full month breeding lambs \$12 to 13; top \$13.50; feeding lambs 50c higher; bulk prices follow: Fat woolled lambs \$15.50 to 16; top \$16.25; fed clipped \$12.25 to 13.50; top \$13.75; fat yearlings \$12.50 to 13; top \$13.25; fat ewes \$6.50 to 8.50; top \$9; desirable feeding lambs \$14.50 to 15.50; top \$15.60; full month breeding lambs \$12 to 13; top \$13.50; feeding lambs 50c higher; bulk prices follow: Fat woolled lambs \$15.50 to 16; top \$16.25; fed clipped \$12.25 to 13.50; top \$13.75; fat yearlings \$12.50 to 13; top \$13.25; fat ewes \$6.50 to 8.50; top \$9; desirable feeding lambs \$14.50 to 15.50; top \$15.60; full month breeding lambs \$12 to 13; top \$13.50; feeding lambs 50c higher; bulk prices follow: Fat woolled lambs \$15.50 to 16; top \$16.25; fed clipped \$12.25 to 13.50; top \$13.75; fat yearlings \$12.50 to 13; top \$13.25; fat ewes \$6.50 to 8.50; top \$9; desirable feeding lambs \$14.50 to 15.50; top \$15.60; full month breeding lambs \$12 to 13; top \$13.50; feeding lambs 50c higher; bulk prices follow: Fat woolled lambs \$15.50 to 16; top \$16.25; fed clipped \$12.25 to 13.50; top \$13.75; fat yearlings \$12.50 to 13; top \$13.25; fat ewes \$6.50 to 8.50; top \$9; desirable feeding lambs \$14.50 to 15.50; top \$15.60; full month breeding lambs \$12 to 13; top \$13.50; feeding lambs 50c higher; bulk prices follow: Fat woolled lambs \$15.50 to 16; top \$16.25; fed clipped \$12.25 to 13.50; top \$13.75; fat yearlings \$12.50 to 13; top \$13.25; fat ewes \$6.50 to 8.50; top \$9; desirable feeding lambs \$14.50 to 15.50; top \$15.60; full month breeding lambs \$12 to 13; top \$13.50; feeding lambs 50c higher; bulk prices follow: Fat woolled lambs \$15.50 to 16; top \$16.25; fed clipped \$12.25 to 13.50; top \$13.75; fat yearlings \$12.50 to 13; top \$13.25; fat ewes \$6.50 to 8.50; top \$9; desirable feeding lambs \$14.50 to 15.50; top \$15.60; full month breeding lambs \$12 to 13; top \$13.50; feeding lambs 50c higher; bulk prices follow: Fat woolled lambs \$15.50 to 16; top \$16.25; fed clipped \$12.25 to 13.50; top \$13.75; fat yearlings \$12.50 to 13; top \$13.25; fat ewes \$6.50 to 8.50; top \$9; desirable feeding lambs \$14.50 to 15.50; top \$15.60; full month breeding lambs \$12 to 13; top \$13.50; feeding lambs 50c higher; bulk prices follow: Fat woolled lambs \$15.50 to 16; top \$16.25; fed clipped \$12.25 to 13.50; top \$13.75; fat yearlings \$12.50 to 13; top \$13.25; fat ewes \$6.50 to 8.50; top \$9; desirable feeding lambs \$14.50 to 15.50; top \$15.60; full month breeding lambs \$12 to 13; top \$13.50; feeding lambs 50c higher; bulk prices follow: Fat woolled lambs \$15.50 to 16; top \$16.25; fed clipped \$12.25 to 13.50; top \$13.75; fat yearlings \$12.50 to 13; top \$13.25; fat ewes \$6.50 to 8.50; top \$9; desirable feeding lambs \$14.50 to 15.50; top \$15.60; full month breeding lambs \$12 to 13; top \$13.50; feeding lambs 50c higher; bulk prices follow: Fat woolled lambs \$15.50 to 16; top \$16.25; fed clipped \$12.25 to 13.50; top \$13.75; fat yearlings \$12.50 to 13; top \$13.25; fat ewes \$6.50 to 8.50; top \$9; desirable feeding lambs \$14.50 to 15.50; top \$15.60; full month breeding lambs \$12 to 13; top \$13.50; feeding lambs 50c higher; bulk prices follow: Fat woolled lambs \$15.50 to 16; top \$16.25; fed clipped \$12.25 to 13.50; top \$13.75; fat yearlings \$12.50 to 13; top \$13.25; fat ewes \$6.50 to 8.50; top \$9; desirable feeding lambs \$14.50 to 15.50; top \$15.60; full month breeding lambs \$12 to 13; top \$13.50; feeding lambs 50c higher; bulk prices follow: Fat woolled lambs \$15.50 to 16; top \$16.25; fed clipped \$12.25 to 13.50; top \$13.75; fat yearlings \$12.50 to 13; top \$13.25; fat ewes \$6.50 to 8.50; top \$9; desirable feeding lambs \$14.50 to 15.50; top \$15.60; full month breeding lambs \$12 to 13; top \$13.50; feeding lambs 50c higher; bulk prices follow: Fat woolled lambs \$15.50 to 16; top \$16.25; fed clipped \$12.25 to 13.50; top \$13.75; fat yearlings \$12.50 to 13; top \$13.25; fat ewes \$6.50 to 8.50; top \$9; desirable feeding lambs \$14.50 to 15.50; top \$15.60; full month breeding lambs \$12 to 13; top \$13.50; feeding lambs 50c higher; bulk prices follow: Fat woolled lambs \$15.50 to 16; top \$16.25; fed clipped \$12.25 to 13.50; top \$13.75; fat yearlings \$12.50 to 13; top \$13.25; fat ewes \$6.50 to 8.50; top \$9; desirable feeding lambs \$14.50 to 15.50; top \$15.60; full month breeding lambs \$12 to 13; top \$13.50; feeding lambs 50c higher; bulk prices follow: Fat woolled lambs \$15.50 to 16; top \$16.25; fed clipped \$12.25 to 13.50; top \$13.75; fat yearlings \$12.50 to 13; top \$13.25; fat ewes \$6.50 to 8.50; top \$9; desirable feeding lambs \$14.50 to 15.50; top \$15.60; full month breeding lambs \$12 to 13; top \$13.50; feeding lambs 50c higher; bulk prices follow: Fat woolled lambs \$15.50 to 16; top \$16.25; fed clipped \$12.25 to 13.50; top \$13.75; fat yearlings \$12.50 to 13; top \$13.25; fat ewes \$6.50 to 8.50; top \$9; desirable feeding lambs \$14.50 to 15.50; top \$15.60; full month breeding lambs \$12 to 13; top \$13.50; feeding lambs 50c higher; bulk prices follow: Fat woolled lambs \$15.50 to 16; top \$16.25; fed clipped \$12.25 to 13.50; top \$13.75; fat yearlings \$12.50 to 13; top \$13.25; fat ewes \$6.50 to 8.50; top \$9; desirable feeding lambs \$14.50 to 15.50; top \$15.60; full month breeding lambs \$12 to 13; top \$13.50; feeding lambs 50c higher; bulk prices follow: Fat woolled lambs \$15.50 to 16; top \$16.25; fed clipped \$12.25 to 13.50; top \$13.75; fat yearlings \$12.50 to 13; top \$13.25; fat ewes \$6.50 to 8.50; top \$9; desirable feeding lambs \$14.50 to 15.50; top \$15.60; full month breeding lambs \$12 to 13; top \$13.50; feeding lambs 50c higher; bulk prices follow: Fat woolled lambs \$15.50 to 16; top \$16.25; fed clipped \$12.25 to 13.50; top \$13.75; fat yearlings \$12.50 to 13; top \$13.25; fat ewes \$6.50 to 8.50; top \$9; desirable feeding lambs \$14.50 to 15.50; top \$15.60; full month breeding lambs \$12 to 13; top \$13.50; feeding lambs 50c higher; bulk prices follow: Fat woolled lambs \$15.50 to 16; top \$16.25; fed clipped \$12.25 to 13.50; top \$13.75; fat yearlings \$12.50 to 13; top \$13.25; fat ewes \$6.50 to 8.50; top \$9; desirable feeding lambs \$14.50 to 15.50; top \$15.60; full month breeding lambs \$12 to 13; top \$13.50; feeding lambs 50c higher; bulk prices follow: Fat woolled lambs \$15.50 to 16; top \$16.25; fed clipped \$12.25 to 13.50; top \$13.75; fat yearlings \$12.50 to 13; top \$13.25; fat ewes \$6.50 to 8.50; top \$9; desirable feeding lambs \$14.50 to 15.50; top \$15.60; full month breeding lambs \$12 to 13; top \$13.50; feeding lambs 50c higher; bulk prices follow: Fat woolled lambs \$15.50 to 16; top \$16.25; fed clipped \$12.25 to 13.50; top \$13.75; fat yearlings \$12.50 to 13; top \$13.25; fat ewes \$6.50 to 8.50; top \$9; desirable feeding lambs \$14.50 to 15.50; top \$15.60; full month breeding lambs \$12 to 13; top \$13.50; feeding lambs 50c higher; bulk prices follow: Fat woolled lambs \$15.50 to 16; top \$16.25; fed clipped \$12.25 to 13.50; top \$13.75; fat yearlings \$12.50 to 13; top \$13.25; fat ewes \$6.50 to 8.50; top \$9; desirable feeding lambs \$14.50 to 15.50; top \$15.60; full month breeding lambs \$12 to 13; top \$13.50; feeding lambs 50c higher; bulk prices follow: Fat woolled lambs \$15.50 to 16; top \$16.25; fed clipped \$12.25 to 13.50; top \$13.75; fat yearlings \$12.50 to 13; top \$13.25; fat ewes \$6.50 to 8.50; top \$9; desirable feeding lambs \$14.50 to 15.50; top \$15.60; full month breeding lambs \$12 to 13; top \$13.50; feeding lambs 50c higher; bulk prices follow: Fat woolled lambs \$15.50 to 16; top \$16.25; fed clipped \$12.25 to 13.50; top \$13.75; fat yearlings \$12.50 to 13; top \$13.25; fat ewes \$6.50 to 8.50; top \$9; desirable feeding lambs \$14.50 to 15.50; top \$15.60; full month breeding lambs \$12 to 13; top \$13.50; feeding lambs 50c higher; bulk prices follow: Fat woolled lambs \$15.50 to 16; top \$16.25; fed clipped \$12.25 to 13.50; top \$13.75; fat yearlings \$12.50 to 13; top \$13.25; fat ewes \$6.50 to 8.50; top \$9; desirable feeding lambs \$14.50 to 15.50; top \$15.60; full month breeding lambs \$12 to 13; top \$13.50; feeding lambs 50c higher; bulk prices follow: Fat woolled lambs \$15.50 to 16; top \$16.25; fed clipped \$12.25 to 13.50; top \$13.75; fat yearlings \$12.50 to 13; top \$13.25; fat ewes \$6.50 to 8.50; top \$9; desirable feeding lambs \$14.50 to 15.50; top \$15.60; full month breeding lambs \$12 to 13; top \$13.50; feeding lambs 50c higher; bulk prices follow: Fat woolled lambs \$15.50 to 16; top \$16.25; fed clipped \$12.25 to 13.50; top \$13.75; fat yearlings \$12.50 to 13; top \$13.25; fat ewes \$6.50 to 8.50; top \$9; desirable feeding lambs \$14.50 to 15.50; top \$15.60; full month breeding lambs \$12 to 13; top \$13.50; feeding lambs 50c higher; bulk prices follow: Fat woolled lambs \$15.50 to 16; top \$16.25; fed clipped \$12.25 to 13.50; top \$13.75; fat yearlings \$12.50 to 13; top \$13.25; fat ewes \$6.50 to 8.50; top \$9; desirable feeding lambs \$14.50 to 15.50; top \$15.60; full month breeding lambs \$12 to 13; top \$13.50; feeding lambs 50c higher; bulk prices follow: Fat woolled lambs \$15.50 to 16; top \$16.25; fed clipped \$12.25 to 13.50; top \$13.75; fat yearlings \$12.50 to 13; top \$13.25; fat ewes \$6.50 to 8.50; top \$9; desirable feeding lambs \$14.50 to 15.50; top \$15.60; full month breeding lambs \$12 to 13; top \$13.50; feeding lambs 50c higher; bulk prices follow: Fat woolled lambs \$15.50 to 16; top \$16.25; fed clipped \$12.25 to 13.50; top \$13.75; fat yearlings \$12.50 to 13; top \$13.25; fat ewes \$6.50 to 8.50; top \$9; desirable feeding lambs \$14.50 to 15.50; top \$15.60; full month breeding lambs \$12 to 13; top \$13.50; feeding lambs 50c higher; bulk prices follow: Fat woolled lambs \$15.50 to 16; top \$16.25; fed clipped \$12.25 to 13.50; top \$13.75; fat yearlings \$12.50 to 13; top \$13.25; fat ewes \$6.50 to 8.50; top \$9; desirable feeding lambs \$14.50 to 15.50; top \$15.60; full month breeding lambs \$12 to 13; top \$13.50; feeding lambs 50c higher; bulk prices follow: Fat woolled lambs \$15.50 to 16; top \$16.2

ACTIVITY MARKS COMING HERE OF CHRISTMASTIDE

Throngs of Shoppers Make
Generous Selections From
Plenteous Stores; Charitable
Activities Launched.

Approach of the Christmas season in Twin Falls is marked by throngs of holiday shoppers crowding stores and shops; preparations for Christmas services in the churches and schools, and activity on the part of charitable and civic organizations looking toward sharing of Christmas cheer with those under the burden of misfortune. Hundreds of holiday shoppers all day Saturday thronged the streets and crowded stores and shops, settling a record for early Christmas shopping here. Postal employees stated that outgoing holiday mails for several days past have been unusually heavy, and they look forward to no diminution with the nearer approach of Christmas day. Shoppers here were presented with a varied range of holiday wares drawn from all of the great market places of the country, from which to make their selections. Heavily laden shoppers at the close of the day here witness of success attending their hunt for Santa Claus.

Noed on Decline.
With the purpose that no home in Twin Falls shall be devoid of Christmas cheer, plans are being worked out, as in previous years, for co-operation, on the part of churches and charitable and civic organizations, and representatives of all these organizations have been invited to meet Tuesday evening in the probate court rooms to make a preliminary canvass of the situation to be met. Initiative in the movement developed upon Mrs. John R. Ault, who for several years past has served in this work.

County commissioners stated Saturday that the number of needy families in Twin Falls this year is less than last, when there were fewer than 100 families on the list of those to be given assistance on Christmas day. Officials in Twin Falls have declined materially during the year, but O. E. Carlson, Twin Falls member of the board of commissioners stated the number of persons and families afflicted by illness is greater this year than last.

Lodgemen Make Plans.
The Elks lodge is working out plans for entertainment of Twin Falls boys and girls under 12 years old at a Christmas tree with exercises and distribution of gifts, in the afternoon of Christmas day, following a free motion picture show, which the Elks in co-operation with Manager Joe Kuehler of the Idaho theater, have arranged to give Christmas morning.

Carol singers of the Presbyterian church, under leadership of J. S. Hall, are arranging in accordance with their annual custom, to sing carols Christmas morning, concluding their itinerary at the county general hospital.

SALESMEN TO TEST RULE
Validity of an ordinance by the Village of Hazelton, which requires furnishing of bond by solicitors accepting cash payment in advance of delivery of merchandise is to be tested in the district court by L. B. Stratton, Decatur, and C. M. Kelly, Twin Falls, hosiery salesmen, who have appealed from judgment on conviction last week in justice court at Hazelton of violating this ordinance. They were sentenced to pay fine of \$50 and costs each.

HARD-BOILED PRISONERS UNCOMFORTABLE IN JAIL.

Two Exponents of I. W. W. Reap
Disastrous Reward for Attempt to
Play Hooch in Cell.

Two individuals who gave the names of Ed Maloney and Art Murray, were released Saturday afternoon from the city jail, where they spent an uncomfortable night under circumstances of their own making. Membership of both men in the I. W. W. was established by cards found in their possession when they were arrested Friday evening on charges of begging and being intoxicated.

Immediately upon his arrival at the jail, police stated, Murray feigned nervous illness, displaying in a less degree the performance that Maloney had staged when he was taken in custody Thursday evening when a doctor was called to attend him. Murray's illness was of brief duration, his recovery being assisted, officers stated, by his evident recognition of the fact that his net was not "getting over."

Thereafter the prisoners, who admitted previous acquaintance, proceeded to wreak devastation on meager accommodations provided at the jail. Bedding was taken from them when they began to tear it in pieces and to soak it in water from the faucet in the cell room, and they were reduced to necessity of sleeping on bare iron bunks or cold concrete. Disabling sleep under these conditions the prisoners engaged long and lustily in caroling and sang selections from a wide and varied repertoire. They were stretched out on the iron bunks and snoring when officers, on night duty were relieved Saturday morning. J. L. Moe, police magistrate, Saturday expressed the opinion that worst of Twin Falls' hard-hearted police force will be broadcasted by the prisoners, who were released Saturday afternoon among members of their fraternity, and that the result will be beneficial to this locality.

KIMBERLY LEGION ELECTS

Veterans Choose Officers for Coming
Year, Plan Forty-Nine Show and
Dance; To Launch Drive.

KIMBERLY, Dec. 13.—Kimberly post, American Legion, completed plans for a Forty-Nine show and dance to be held December 19 and 20, at Kimberly Legion hall and launched a membership drive at a meeting Friday evening at which officers of the post for the coming year were elected as follows:

Post commander, Walter Goller; vice commanders, Merle Taylor and Harold Smith; adjutant, Lloyd N. James; historian, Dr. J. N. Taylor; chaplain, M. Webb; sergeant at arms, James E. Thompson.

POST BONDS FOR LIBERTY

E. J. Murray and Mrs. A. Avery, Appearing From Judgment on Conviction of Dry Law, Furnish Security.

Bonds in the sum of \$1500 each, signed by J. G. Johnston and P. B. Johnston were approved in district court here Saturday as security for liberty of E. J. Murray and Mrs. A. Avery pending the outcome of their appeal to the state supreme court for judgment involving two months' jail term and fine in the sum of \$400 each on conviction last month of violation of the liquor laws.

Motion of counsel for Murray and Mrs. Avery for a new trial in the case was denied by Judge W. A. Babcock.

COURT HOLDS JAPANESE' TITLE TO LAND IS GOOD

Decree was issued by Judge W. A. Babcock in district court here Saturday establishing the title of J. M. Joo, subject of the emperor of Japan, to land near Twin Falls which had been purchased from trustees of the Ferguson Fruit and Land company, in September, 1919, during the time that the company's charter had been permitted to lapse. Question was raised as to the sufficiency of the title issued under these circumstances.

BREVITIES

On Trip to Omaha—A. L. Houghton left Saturday morning on a business trip to Omaha.

Visitors From Film—Mr. and Mrs. Arthur England of Elmer were business visitors here Saturday.

Returns From Los Angeles—Mrs. Paul Strobel returned Saturday from a visit to Los Angeles.

To Visit in Missouri—Mr. and Mrs. W. J. Griffin left Saturday on a visit to La Platte, Missouri.

Goes to Idaho Falls—H. Robinson, 730 Second avenue east, left Saturday on a visit to Idaho Falls.

Home for Week End—Edwin True left Saturday to spend the week end at his home in Murtaugh.

Back From Middle West—H. E. Swisher returned Saturday from six weeks' visit to Kansas and Oklahoma.

Home for Visit—L. B. Perrine arrived Saturday from Salt Lake City to spend a few days visiting home folks.

On Business Trip—Frank Mattison of the Allen Oil company, left Saturday evening on a business trip to Salt Lake.

Returns to Washington—Mrs. D. C. Strange left Saturday evening, returning to her home at Raymond, Washington, after a visit here.

Visits Sister Here—Mrs. C. M. Smith and children of Rupert arrived Saturday to visit a few days at the home of her sister, Mrs. J. G. Meade.

Summoned to San Diego—Mrs. Mollie Kellogg left Saturday evening for San Diego, California, in response to a message telling of the death of her sister there.

Take Marriage License—Louis P. Weesener of Bohli and Grace Fynn of Omaha obtained a marriage license Saturday at the office of the county recorder here.

To Los Angeles for Holidays—George R. Jones, manager of the Union Motor company, left Friday evening for Los Angeles, where he will spend the holidays with relatives and friends.

To Dedicate New Church—Dr. E. L. White, district superintendent, left Saturday evening for Gooding, where today he is to dedicate a new church building recently completed by the Methodist church there.

Silver Black Fox Coming—Several pair of silver black foxes from Rest Island fox farm in Minnesota, are being shipped to Elmer from where they will be taken to a fox farm recently started on Dr. T. L. Cartney's place, it was announced Saturday by Dr. Cartney. Dr. Cartney is general manager of the Northwestern Silver Fox company, and Dr. H. W. Wilson of Twin Falls, vice president. The company plans upon breeding the silver black fox on their farms near Elmer.

JURY GIVES LANDOWNER PART OF WAGES CLAIMED

Verdict awarding to A. D. P. Keith of Hansen, \$206.50 on account of his claim for \$354 from Frank Muso and William Woods for wages for farm work last season was returned into Saturday afternoon by a jury in probate court here. Keith asked for wages at the rate of \$3 a day for 118 days. He is 75 years old. Defendants denied liability for payment of Keith's claim and in turn sued him for \$210 damages, alleging that the work for which he claimed compensation was done without their consent and was inadequately performed so that damage to crops resulted. Evidence showed that the work for which Keith sought payment was done on his farm which he had rented last spring to the defendants. Plaintiff Keith was represented by C. A. North of Stephan and North, the case for the defendants being conducted by E. M. Sweeney of Sweeney and Sweeney.

Mercury Continues Its Upward Trend

Forecast for today—Fair. Warm weather Saturday was reflected in records at the government weather observer's station here showing mercury a high mark for the day at 60 above, representing an advance of eight degrees as compared with Friday's maximum. Low at 24 was an advance of two degrees. There was a generous measure of sunshine during the day.

SEES SPREAD OF GOLF

CHICAGO, Dec. 13 (AP)—The spreading of golf to every hamlet was the keynote at the annual meeting tonight of the Western Golf association which selected President Charles O. Fleet of Memphis for the third time and reinstated most of the other officers.

Atwater-Kent Radio



How's This for Newness?
Charged battery. Not a drop of solution in it. Starts its life when we fill it.

WILLARD RADIO BATTERIES are rechargeable and they last for years.

ELECTRIC SERVICE STATION
GEORGE O. WALLACE, Mgr.
143 Second Avenue North
Phone 15
"Twin Falls" LEADING Service Station.

The Best Christmas Gift for the Car Owner—

Stickalite
Stick in any position on car on steel or iron.
—A portable trouble lamp.
—A powerful spotlight.
—A convenient camp light.
Complete with 10-foot cord only. **\$2.50**

Western Sales Co.
227 Shoshone Street South
Twin Falls

Square Brand FURNITURE
Lower Prices
Bugs, Stoves, Linoleum
Visit Our Exchange Department
A. H. VINCENT CO.
207-209 Shoshone South

GET A LOAF OF PREMIUM MALTED MILK BREAD
And notice the difference. At your grocer, or at the
PREMIUM BAKERY
101 Main West

Monarch
Hoosier Furniture Co.
TWIN FALLS

Why Not a Useful Gift?

Men's, Women's, Children's

Felt Slippers

Closing for **\$1.29** Values to \$1.85

One bargain table loaded with men's, women's and children's felt slippers (over 200 pairs). Soft chrome leather soles, most any color felt. Values selling regularly for \$1.85; closing for \$1.29. Most all sizes.

Barber Shoe Co.

NEXT TO ORPHEUM THEATER

Balloon Tires

You KNOW Are Stronger and Safer

You want more than just "balloon tires." You want dependable balloon tires that wear long and hold the road safely. You want Goodyear Balloon Tires. Here they are, at lowest prices.

29x4.40	\$16.95
31x5.25	25.70
32x5.77	35.00
33x6.20	34.65
33x6.75	43.55
34x7.30	44.30

Lind Automobile Co.
Finest Garage in the West
Parts Phone 298. Office and Shop Phone 299.
TWIN FALLS, IDAHO.

CASEY-PARKER

Motor Service Department
Opposite the Rear Entrance to Postoffice.

Our Service Is Dependable

Whether you are the owner of a private car or a business truck, you know that proper care will save you money in the end. Drive in with your car troubles, we will do the rest.

"ALL WORK GUARANTEED"

Authorized GABCO Brake Lining Service Station.

CASEY-PARKER IMPLEMENT CO.

MOTOR SERVICE
PHONE 485 STATION PHONE 485

Low-Cost Transportation

STAR CARS

The STAR CAR outsold all other makes of cars during the past week, from December 6, to December 12, inclusive, as shown by report of new car registrations at the County Assessor's office for Twin Falls County.

COPY OF REPORT:
For Automotive Service Bureau, Boise, Idaho

NAME	ADDRESS	STAR
A. E. Williams	Twin Falls	STAR
P. E. White	Kimberly	STAR
John F. Goodwill	Hansen	STAR
Goodyear Tire and Rubber Co.	Twin Falls	BUICK
W. A. Thompson	Buhl	CHEVROLET
Wilford Frantz	Twin Falls	STAR
Lloyd S. Jones	Kimberly	STAR
Floyd S. Lacey	Kimberly	STAR

By G. W. SHROUT,
Twin Falls, Idaho

This report speaks for itself. Come to our Sales Room and let us explain fully the Facts about

Low-Cost Transportation

The Car for the Millions—With the Million Dollar Motor.

Rendahl & Wright Auto Co.

Home of the Star and Durant Cars.