

RELIEF PLANS AT CONFERENCE

Much Debated Question Given Further Impetus With Opening of Farmers Cooperative Marketing Meeting.

(By the Associated Press.) WASHINGTON, Jan. 12.—With cooperative marketing the pivot of discussion, the much-debated question of farm relief was given further impetus today with the beginning of the fourth national conference of the national council of farm government marketing associations, which congress heard with the problem in mind.

With indications pointing to a wide difference of opinion as to the proper method of approaching the crop surplus problem, the conference on marketing associations, which congress heard with the problem in mind, was held today.

Headings Continue. While the conference was in progress, the house agriculture committee continued its hearing on the proposed marketing bill.

Several members of the committee pressed the opinion that farm relief should be given in the form of a question of time, while others argued that there already was too much government interference.

The cooperative idea also came in for a general discussion at a meeting between Secretary Jardine and representatives of standard farm papers.

Holds Attention. The convention of the cooperative conference held chief attention, particularly in the department of agriculture.

Socialist Element Repudiate Finance Measure Proposed

War Between Government and Radical Group in Illinois Ignites Breaks Out at French Parliament Session.

PARTISAN, Jan. 12.—The war between government and the radical group in Illinois, which broke out in the chamber of deputies broke out again today before the French parliament.

The finance committee, which is dominated by radicals and socialist, called to this declaration of hostility, declining to take any action on the proposed provision of the Loucheur bill.

Clergymen Oppose Leniency for Man Who Shot Officer

Utah Fundamentalists Union Goes on Record Against Action to Save Blayor.

SALT LAKE CITY, Jan. 12.—Fundamentalist clergymen of Salt Lake City are opposed to any leniency for Blayor and will unanimously vote against any leniency for the man who shot an officer.

Winnipeg, Man., Jan. 12.—A miniature blizzard swept across the southeastern part of Manitoba last night with an accompanying drop in temperature and more than a foot of snow.

Winnipeg, Man., Jan. 12.—A miniature blizzard swept across the southeastern part of Manitoba last night with an accompanying drop in temperature and more than a foot of snow.

MONARCHIST TREND IS SEEN IN RENAMING OF STREETS IN VILLAGES

HALEBERG, Prussia, Germany, Jan. 12.—An evidence of reaction toward monarchism is furnished by the action of the Haleberratt village council, which has voted to rename the streets of the village.

The restoration is not quite complete, however, for the former Kaiser Wilhelm street now is given plain Kaiser street, while the just plain is, similarly, changed from the Kaiser, Crown Prince street.

SUCCESSOR OF GENERAL NAMED

President Coolidge Appoints William Lassiter to Succeed John J. Pershing.

WASHINGTON, Jan. 12.—Selection of Major General William Lassiter, commanding the department of Panama, to succeed General John J. Pershing as president of the Pan-American plebiscite commission, was announced by President Coolidge.

General Pershing is now expected to submit his resignation in time to permit General Lassiter to be confirmed in his stead so that the former may leave Africa for the United States.

Health is Poor. Administration officials here are hopeful that Pershing will be able to resume his duties in Africa.

They recognize, however, that the report of his health is unfavorable to his resuming his duties in Africa.

Them-General Pershing reaches Panama early in the month and will confer with Dr. Helmut Mattheus, chief foreign minister.

Dr. Mattheus is confined by illness in a hospital at Ancon, but is expected to be discharged in a few days. He will remain in Panama until the next commercial ship from the area for Chile, about January 21.

The conference may prove to be a hopeful one in view of the fact that the cabinet of President Figueroa of the United States is expected to be reorganized.

Utah Fundamentalists Union Goes on Record Against Action to Save Blayor.

SALT LAKE CITY, Jan. 12.—Fundamentalist clergymen of Salt Lake City are opposed to any leniency for Blayor and will unanimously vote against any leniency for the man who shot an officer.

Winnipeg, Man., Jan. 12.—A miniature blizzard swept across the southeastern part of Manitoba last night with an accompanying drop in temperature and more than a foot of snow.

Winnipeg, Man., Jan. 12.—A miniature blizzard swept across the southeastern part of Manitoba last night with an accompanying drop in temperature and more than a foot of snow.

Winnipeg, Man., Jan. 12.—A miniature blizzard swept across the southeastern part of Manitoba last night with an accompanying drop in temperature and more than a foot of snow.

METHODS USED BY INCOME TAX UNIT ASSAILED

Senate Investigation Committee Accuses Commissioner of Bargaining With Taxpayers; Too Much Authority.

WASHINGTON, Jan. 12.—Administration of the income tax unit of the treasury was sharply assailed on a number of counts in the first report of the majority of the senate investigating committee, submitted to the senate today.

Internal Revenue Commissioner Blair was charged with "a constant policy of 'arresting' the authority of taxpayers," and with delegating too much authority in checks of disbursements in handling of tax matters.

Signs of Corruption. Discovery of depletion in the case of James H. Watson, a prominent taxpayer and returns were the principal subjects dealt with in the report.

Watson, a prominent taxpayer and returns were the principal subjects dealt with in the report. The committee also charged Blair with "arresting" the authority of taxpayers.

Watson, a prominent taxpayer and returns were the principal subjects dealt with in the report. The committee also charged Blair with "arresting" the authority of taxpayers.

Watson, a prominent taxpayer and returns were the principal subjects dealt with in the report. The committee also charged Blair with "arresting" the authority of taxpayers.

Watson, a prominent taxpayer and returns were the principal subjects dealt with in the report. The committee also charged Blair with "arresting" the authority of taxpayers.

Watson, a prominent taxpayer and returns were the principal subjects dealt with in the report. The committee also charged Blair with "arresting" the authority of taxpayers.

Watson, a prominent taxpayer and returns were the principal subjects dealt with in the report. The committee also charged Blair with "arresting" the authority of taxpayers.

Watson, a prominent taxpayer and returns were the principal subjects dealt with in the report. The committee also charged Blair with "arresting" the authority of taxpayers.

Watson, a prominent taxpayer and returns were the principal subjects dealt with in the report. The committee also charged Blair with "arresting" the authority of taxpayers.

Watson, a prominent taxpayer and returns were the principal subjects dealt with in the report. The committee also charged Blair with "arresting" the authority of taxpayers.

Watson, a prominent taxpayer and returns were the principal subjects dealt with in the report. The committee also charged Blair with "arresting" the authority of taxpayers.

Watson, a prominent taxpayer and returns were the principal subjects dealt with in the report. The committee also charged Blair with "arresting" the authority of taxpayers.

Watson, a prominent taxpayer and returns were the principal subjects dealt with in the report. The committee also charged Blair with "arresting" the authority of taxpayers.

LANGLEY RESIGNATION IS ACCEPTED BY HOUSE AFTER COURT'S ACTION

WASHINGTON, Jan. 12.—The resignation of Representative Langley, republican, Kentucky, was received and accepted by the house. It was tendered in a letter after the supreme court had refused to grant his conviction for violation of the prohibition law.

The resignation was sent some time ago by Representative Burton, republican, Ohio, who headed a special house committee to investigate the charges against him.

Langley, republican, Kentucky, was received and accepted by the house. It was tendered in a letter after the supreme court had refused to grant his conviction for violation of the prohibition law.

Langley, republican, Kentucky, was received and accepted by the house. It was tendered in a letter after the supreme court had refused to grant his conviction for violation of the prohibition law.

Langley, republican, Kentucky, was received and accepted by the house. It was tendered in a letter after the supreme court had refused to grant his conviction for violation of the prohibition law.

Langley, republican, Kentucky, was received and accepted by the house. It was tendered in a letter after the supreme court had refused to grant his conviction for violation of the prohibition law.

Langley, republican, Kentucky, was received and accepted by the house. It was tendered in a letter after the supreme court had refused to grant his conviction for violation of the prohibition law.

Langley, republican, Kentucky, was received and accepted by the house. It was tendered in a letter after the supreme court had refused to grant his conviction for violation of the prohibition law.

Langley, republican, Kentucky, was received and accepted by the house. It was tendered in a letter after the supreme court had refused to grant his conviction for violation of the prohibition law.

Langley, republican, Kentucky, was received and accepted by the house. It was tendered in a letter after the supreme court had refused to grant his conviction for violation of the prohibition law.

Langley, republican, Kentucky, was received and accepted by the house. It was tendered in a letter after the supreme court had refused to grant his conviction for violation of the prohibition law.

Langley, republican, Kentucky, was received and accepted by the house. It was tendered in a letter after the supreme court had refused to grant his conviction for violation of the prohibition law.

Langley, republican, Kentucky, was received and accepted by the house. It was tendered in a letter after the supreme court had refused to grant his conviction for violation of the prohibition law.

Langley, republican, Kentucky, was received and accepted by the house. It was tendered in a letter after the supreme court had refused to grant his conviction for violation of the prohibition law.

Langley, republican, Kentucky, was received and accepted by the house. It was tendered in a letter after the supreme court had refused to grant his conviction for violation of the prohibition law.

Langley, republican, Kentucky, was received and accepted by the house. It was tendered in a letter after the supreme court had refused to grant his conviction for violation of the prohibition law.

Four Directors Re-Elected To Canal Board; Hatfield Named to Fill Fifth Place

Officials Are Called on to Defend Themselves Against Many Charges at Annual Meeting; Huge Vote Cast.

RESULTS OF VOTING ON CANAL COMPANY BOARD. N. V. Sharp, 130,500; T. M. Baird, 131,000; W. J. Miller, 129,000; Frank Bower, 128,000; Wm. D. Hatfield, 104,000.

Members of the new board are N. V. Sharp, T. M. Baird, C. J. Miller, Frank Bower, and W. D. Hatfield, elected to succeed the retiring directors.

With a total of 698,000 votes cast and counted, recording was closed today at the annual meeting of the directors of the Twin Falls Canal company.

The company, an annual meeting here today that was characterized by searching and at times acrimonious criticism of financial policies of the management.

With a total of 698,000 votes cast and counted, recording was closed today at the annual meeting of the directors of the Twin Falls Canal company.

The company, an annual meeting here today that was characterized by searching and at times acrimonious criticism of financial policies of the management.

With a total of 698,000 votes cast and counted, recording was closed today at the annual meeting of the directors of the Twin Falls Canal company.

The company, an annual meeting here today that was characterized by searching and at times acrimonious criticism of financial policies of the management.

With a total of 698,000 votes cast and counted, recording was closed today at the annual meeting of the directors of the Twin Falls Canal company.

The company, an annual meeting here today that was characterized by searching and at times acrimonious criticism of financial policies of the management.

With a total of 698,000 votes cast and counted, recording was closed today at the annual meeting of the directors of the Twin Falls Canal company.

The company, an annual meeting here today that was characterized by searching and at times acrimonious criticism of financial policies of the management.

With a total of 698,000 votes cast and counted, recording was closed today at the annual meeting of the directors of the Twin Falls Canal company.

The company, an annual meeting here today that was characterized by searching and at times acrimonious criticism of financial policies of the management.

With a total of 698,000 votes cast and counted, recording was closed today at the annual meeting of the directors of the Twin Falls Canal company.

CONFERENCE OF OPERATORS AND MINERS USELESS

Fruitless Discussion for Many Days Ends When Factious Fail to Agree, Gloom Spreads Over Coal Fields.

(By the Associated Press.) NEW YORK, Jan. 12.—Fruitless discussion for many days on ways to lift a new wage contract brought an end to the labor conference today and indicated the continuation of the strike.

The negotiations that came to an end today were conducted by Governor Mitchell of Pennsylvania, through the mayors and managers of the anthracite regions.

The negotiations that came to an end today were conducted by Governor Mitchell of Pennsylvania, through the mayors and managers of the anthracite regions.

The negotiations that came to an end today were conducted by Governor Mitchell of Pennsylvania, through the mayors and managers of the anthracite regions.

The negotiations that came to an end today were conducted by Governor Mitchell of Pennsylvania, through the mayors and managers of the anthracite regions.

The negotiations that came to an end today were conducted by Governor Mitchell of Pennsylvania, through the mayors and managers of the anthracite regions.

The negotiations that came to an end today were conducted by Governor Mitchell of Pennsylvania, through the mayors and managers of the anthracite regions.

The negotiations that came to an end today were conducted by Governor Mitchell of Pennsylvania, through the mayors and managers of the anthracite regions.

The negotiations that came to an end today were conducted by Governor Mitchell of Pennsylvania, through the mayors and managers of the anthracite regions.

The negotiations that came to an end today were conducted by Governor Mitchell of Pennsylvania, through the mayors and managers of the anthracite regions.

The negotiations that came to an end today were conducted by Governor Mitchell of Pennsylvania, through the mayors and managers of the anthracite regions.

The negotiations that came to an end today were conducted by Governor Mitchell of Pennsylvania, through the mayors and managers of the anthracite regions.

The negotiations that came to an end today were conducted by Governor Mitchell of Pennsylvania, through the mayors and managers of the anthracite regions.

The negotiations that came to an end today were conducted by Governor Mitchell of Pennsylvania, through the mayors and managers of the anthracite regions.

The negotiations that came to an end today were conducted by Governor Mitchell of Pennsylvania, through the mayors and managers of the anthracite regions.



Copyright, 1926, by the New York Tribune, Inc.

INDUSTRIAL STUDENT HELP A PAYING BUSINESS

More than Baggy Trousers and Saxophones in Colleges as Shown by Appropriations Made for Educations.

(By the Associated Press)
CHICAGO, Jan. 17. (AP)—Industry has discovered more than baggy trousers and moaning saxophones on the college campus and, according to the findings, is anxious to middle-western colleges and universities for agricultural work in their research laboratories.

The steel manufacturer, the mining engineer, the meat packer and the chewing gum manufacturer are appropriating funds for the expenses of students engaged in specialized work and for the maintenance of special departments, equipment and instructors. Commercial and professional organizations are joining a widening variety of industries in providing for study in their own or special fields.

In most cases, the scholarships and fellowships are given to students who will make special study in the field in which the donor is directly interested. An asphalt company contributes to study of asphalt interests, a cement manufacturer to study of concrete, a fertilizer company to study in commercial chemistry and the mining concern funds a helping hand in the study of mineral resources.

One big manufacturer of railroad equipment maintains 20 scholarships for scientific training in agricultural and animal husbandry. The fellowships and scholarships vary in value from \$500 to \$1,500. At least 100 fellowships for scientific study are given by the University of Minnesota. The largest number of fellowships are given to students of the University of Chicago. For the study of meat packing and handling processes, an annual gift of \$250,000 is available to students in the department of meat and food technology.

Scholarships Open

A number of scholarships in social science and political economy are open to students at the University of Chicago. For the study of meat packing and handling processes, an annual gift of \$250,000 is available to students in the department of meat and food technology.

One of the 20 agricultural scholarships are available to agricultural students where the students at the most efficient work at the fine lines of work, including a six-year college course, higher in the five combined classes and the other 14 are distributed on the basis of the cash prizes won by the institutions of training in the open livestock classes. They are available to 15 middle-west institutions.

ANNOUNCEMENT

Harness

Our shop is now fully equipped with a complete line of harness, strap work and harness hardware.

We have a first-class, well-experienced harness and repair man whose service will please.

All Harness and Repairs Done on-site.

Harness priced \$1.00—Being them in Early.

Twin Falls Tent & Auto Top Co.

GEORGE W. CHASSER, Manager

START EM LAYING
KEEP EM LAYING
KEEP EM PAYING

BLATHFORD'S 300 (MARI)
BLATHROW BROS. (NEED A)
SUPPLY CO.

Elephants Chase Crowd



Elephants' Run Wild

ROVDS on Seventh Avenue, New York, had a hasty retreat when three elephants, frightened by a falling piece of scenery, fled from a theater and stampeded. The trouble began finally headed into a police station, crashing in the doors, and were corralled there. No one was hurt.

TURTLE FARM IS HELD PROFITABLE

North Iowa Acreage Used to Raise Snappers; Idea Gained As Result of the War.

WINSTON, Ia., Jan. 17. (AP)—Some 25,000 snapping turtles now lie hauled through the large acreage of the big country north of Iowa, enjoying their long winter sleep, because the world war broke out in 1917.

The turtle is a long way from Fertile, but it is where Hans Johnson, youthful soldier, got his idea for the establishment of a turtle farm that supplies a large portion of the turtle flesh that eventually finds its way to the dining rooms of America's foremost hotels.

Mr. Johnson derives his chief revenue from the sale of eggs and chubs of breeding stock. He also has a goal in view from the sale of turtle oil, supplying many large hospitals. During the winter months he supplies a great many eastern hotels with chubs for soup and butter milk.

DETAILED PLAN FOR RUBBER PRODUCTION WILL BE CONSIDERED

NEW YORK, Jan. 17. (AP)—A detailed plan for production under American control of the bulk of the crude rubber needed by the United States will be considered tomorrow by the board of directors of the rubber federation of America.

Orpheum Theater

TODAY ONLY

Mattinee 2:00 and 3:15
10c and 40c

Evening 7:30 and 9:10
20-25c - 40-50c

The Herskinds

Comedy Cartoons featuring Portraits taken in promptu

Talbert Briscoe

in "Lilt and Laughter"
A Comedy Patter on Marriage.

George Rowland

The Fun-making Black-face "Boy from Dixie"—Singing and Comedy

VAUDEVILLE

Holman Bros.

European Comedy Bow Act

Their Comedy is sure-fire and their Acrobatic Stunts Thrilling

Empire Trio.

Comedy Harmony Singing and Yodling—Featuring Miss Sue Emerson, one of America's Foremost Double-voiced Vocalists.

RUPERT HUGHES

Wide-Awake Sleeping Car Farce Comedy

"EXCUSE ME"

with Norma Shearer—Conrad Nagle Renee Adoree and Walter Hiers

ORPHEUM ORCHESTRA

MOVIES HARD TO SEND OVER WIRE

Inventor Explains Difficulties in Transmitting Pictures by Electricity.

NEW YORK, Jan. 17. (AP)—The chief difficulty in the transmission of motion pictures "by wire," says V. K. Zworykin of the Westinghouse research laboratories, is that of subdividing the field into small enough units for transmission, so that when they are enlarged upon a screen they present a definite image of the object.

The light cell, which is a combination of the principle in the radio tube and a photoelectric phenomenon discovered years ago by Hallwachs, is now used successfully by the All-American cable for transmitting cable messages sent across the Atlantic. The electric light cell entering the ray of light reflected from a mirror galvanometer, sensitive to the smallest electrical currents, is used in the light cell.

Hallwachs discovered that the impulse of light upon certain metallic metals produced an electrical effect. Experiments showed that the light rays caused electrons to be discharged from the metallic surface.

Mr. Zworykin said that the light cell was beginning to find wide application in industry. Among other things it is used mechanically to read the filament of a radio tube. It enables them to be manufactured with a uniformity which no other method of testing could possibly achieve. The inventor has an apparatus in his home by which the electric lights are automatically turned on at dusk by the draughts in the furnace might be automatically opened as easily with the rising of the sun.

News-Want Ads reach the people you wish to attract.

LOS ANGELES BUSINESS MEN ARE WILLING TO UNDERWRITE BIG BOUT

LOS ANGELES, Jan. 17. (AP)—The Los Angeles business community today announced their willingness to underwrite the Dempsey-Willa fight which championship bout to the best of \$2,000,000 and hold the affair.

Joe-K says:—

Spending makes you poorer, but it gives you a delightful sensation of being rich. Eh what?

ADMISSIONS		SHOW TIME
Kidney	20c	
Adults	30c	

Idaho THEATRE

Mattinee 2:00 and 3:15
Evening 7:00 and 9:00

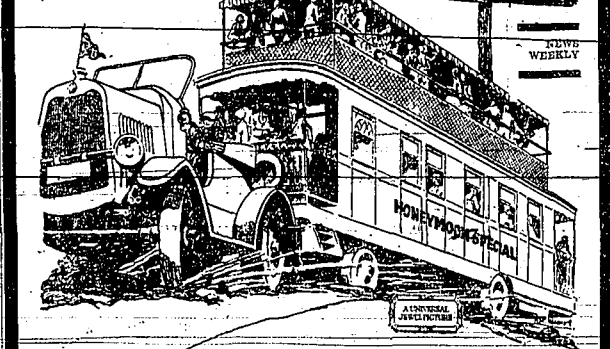
Big 4-Unit Show! Now! Today!

REGINALD DENNY

CALIFORNIA STRAIGHT AHEAD

Enjoy this full tide of flowing comedy and sorrowful laughter. It's as imaginative and delightful as a glorious spring morning. Laugh at Denny's hilarious attempts to win back the girl who likes him at the altar. See this palatial honeymoon bus—something new in pictures! And laugh, laugh, laugh!

—Harry Potbury Production



Presented by Carl Laemmle

SPECIAL ADDED FEATURES

The Authentic Motion Picture Log of the Most Daring Adventure Ever Undertaken by Man—

The Amundsen Polar Flight



What a Story Ripped From the Document of Real Life!
What a Film Preserved for History and Posterity!

Out of the silence of twenty-four days when six daring adventurers were lost to the world comes an authentic picture log of the greatest event in exploration. Only 134 miles from the top of the world these men—whose names will never be forgotten—were with the Grim Reaper and you! Want to feel the pang of starvation, the ache of fatigue, the despair of hopelessness, and the terror of the unknown!

A Thousand Dramas Rolled Into Three Reels of Amazing Film

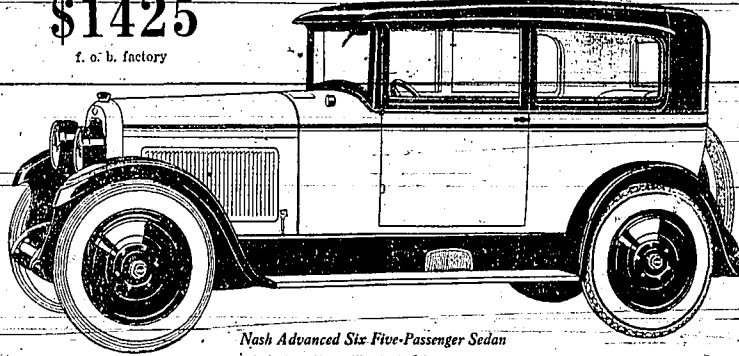
ALSO — A 2-REEL COMEDY RIOT!
HARRY LANGDON in "BOOBS IN THE WOODS" A Show of Thrills and Real Fun

JOE-K says:—"Always The Best For The Idaho Guest, All Ways"

Nash Leads the World in Motor Car Value

\$1425

f. o. b. factory



Nash Advanced Six Five-Passenger Sedan

Announcing

BOYD NASH SALES

Nash Dealer

It is a genuine privilege and pleasure to announce that Boyd Nash Sales has assumed Nash representation in Twin Falls.

You are cordially invited to visit these headquarters to view the complete display of Nash Special Six and Advanced Six models.

We feel that the Govey-Ballard Motor Company and Nash owners in this territory are fortunate in having the Nash franchise entrusted to an organization of such unusual ability and excellent reputation.

The **GREATER VALUE** offered by these cars has been made **STILL GREATER** by recent sweeping price reductions ranging as high as \$300.

The new Nash home at 161 Second Avenue North is amply provided with modern and efficient service equipment, and Nash owners in this district are assured of a high standard of car maintenance.

Grouped among their many attractive features are four-wheel brakes of special Nash design; full balloon tires and disc wheels as standard equipment; highly efficient force-feed oiling system; and superb performance qualities.

Special Six Series—MODELS: The Five-Passenger Touring at \$1135; the Roadster at \$1115; the Five-Passenger Sedan at \$1215; and the Four-Door Sedan at \$1445. F. O. B. Milwaukee.

Advanced Six Series—MODELS: Five-Passenger Touring, \$1340; Seven-Passenger Touring, \$1490; Roadster, \$1375; Five-Passenger Sedan, \$1425; Seven-Passenger Sedan, \$2090; and the Four-Door Coupe, \$1990. F. O. B. Kenosha.

COVEY-BALLARD MOTOR COMPANY
Fifth South at Main, Salt Lake City, Utah

NASH

TWIN FALLS DAILY NEWS
SUBSCRIPTION RATES
Yearly \$1.00
Six months .50
Three months .25
Single copies 5c

Radio Programs
WEDNESDAY, JANUARY 18
Twin Falls Time
8:30 p.m.—The Melodians
9:00 p.m.—The Melodians
9:30 p.m.—The Melodians



Invincible and Out
by George Ethelbert Walsh

"I'd really make a mistake like that," replied Dick. Then, "If the Pelican on the rocks why don't she summon aid from the shore? She's equipped with wireless."

"You're not kidding me, are you?" Dick asked. "You're not kidding me, are you?" Dick asked. "You're not kidding me, are you?" Dick asked.

"You're not kidding me, are you?" Dick asked. "You're not kidding me, are you?" Dick asked. "You're not kidding me, are you?" Dick asked.

"You're not kidding me, are you?" Dick asked. "You're not kidding me, are you?" Dick asked. "You're not kidding me, are you?" Dick asked.

"You're not kidding me, are you?" Dick asked. "You're not kidding me, are you?" Dick asked. "You're not kidding me, are you?" Dick asked.

"You're not kidding me, are you?" Dick asked. "You're not kidding me, are you?" Dick asked. "You're not kidding me, are you?" Dick asked.

FARM WOMEN OPPOSE LIQUOR BEARING IN MANITOBA PROVINCE
JEROME, Man., Jan. 17.—A convention of the United Farm Women of Manitoba was held here today to discuss the proposed liquor bearing in the province.

FOUR DIRECTORS ARE RE-ELECTED TO BOARD
(Continued From Page One)
drainage problem, and approved the efforts of the county and canal company to combat a water problem.

"ADAM AND EVA" STORY ONE OF AMERICAN LIFE
A human story of American life, with plenty of fun and some tremendous dramatic moments, is the story of "Adam and Eva" which is to be presented under auspices of Twin Falls Chautauque association on Wednesday night.

CASTLEFORD WOMEN'S SOCIETY ELECTS OFFICERS
(CASTLEFORD, Colo., Jan. 17.—At the recent election held by the Ladies Aid Society of Castleford, Colo., the following officers were elected for the coming year:

At the meeting of the Every Body Club, held at the home of Mrs. Margaret Thomas, the following officers were elected for the coming year:

At the meeting of the Every Body Club, held at the home of Mrs. Margaret Thomas, the following officers were elected for the coming year:

At the meeting of the Every Body Club, held at the home of Mrs. Margaret Thomas, the following officers were elected for the coming year:

At the meeting of the Every Body Club, held at the home of Mrs. Margaret Thomas, the following officers were elected for the coming year:

WARRANT CALL
Warrants of the American Falls Police Department, returned by the sheriff, will be held on presentation at the office of the sheriff, at Twin Falls, Idaho, on Wednesday, January 18, 1933.

More Dollars PER HEN
Simply add 1-1/2 lbs. of Pratt's Poultry Regulator to 100 pounds of any feed. It is 10 times as effective as any other feed supplement.

The Last Laugh!
It is the custom for the comedian to laugh at his own jokes. The comedian who does not laugh at his own jokes is a comedian who is not a comedian.

At Theatres
OPERA HOUSE
A "great" play which is being presented at the Opera House today is "The Sign of the Cross" by the Orpheum Theatre.

At Theatres
OPERA HOUSE
A "great" play which is being presented at the Opera House today is "The Sign of the Cross" by the Orpheum Theatre.

At Theatres
OPERA HOUSE
A "great" play which is being presented at the Opera House today is "The Sign of the Cross" by the Orpheum Theatre.

At Theatres
OPERA HOUSE
A "great" play which is being presented at the Opera House today is "The Sign of the Cross" by the Orpheum Theatre.

At Theatres
OPERA HOUSE
A "great" play which is being presented at the Opera House today is "The Sign of the Cross" by the Orpheum Theatre.

MEMBER OF ASSOCIATED PRESS
The News is a member of the Audit Bureau of Circulation, from whom full information as to circulation may be obtained upon application. Detailed information regarding circulation may be obtained from the National Association of Public Relations.

USEFUL AGENCY
If the Twin Falls Chamber of Commerce had, since its inception, accomplished nothing beyond the securing of the Twin Falls-Jordan County bridge, it would have justified its existence.

LESS MIDDLING FROM RUSSIA
A news dispatch from Moscow says that there is a marked tendency among the big Communists to concentrate on Russia's economic reconstruction and leave the social revolution to the masses.

ONE MAN'S WORK
Father Burkart of Santa Rosa, Calif., on January 17th announced that he had written his "New Year" gift to the world.

AMERICAN FALLS RESERVOIR DISTRICT, TWIN FALLS, IDAHO
Consolidated Balance Sheet as at January 4, 1926.

AMERICAN FALLS RESERVOIR DISTRICT
Consolidated Balance Sheet as at January 4, 1926.

GLASS DISLIKES STATE
PARADISE, Cal., Jan. 17.—(AP)—Montague Glass, president of the National Glass Association, announced today that he intended to resign his position as California's representative to the National Glass Association.

AMERICAN FALLS RESERVOIR DISTRICT, TWIN FALLS, IDAHO
Consolidated Balance Sheet as at January 4, 1926.

AMERICAN FALLS RESERVOIR DISTRICT, TWIN FALLS, IDAHO
Consolidated Balance Sheet as at January 4, 1926.

AMERICAN FALLS RESERVOIR DISTRICT, TWIN FALLS, IDAHO
Consolidated Balance Sheet as at January 4, 1926.

AMERICAN FALLS RESERVOIR DISTRICT, TWIN FALLS, IDAHO
Consolidated Balance Sheet as at January 4, 1926.

AMERICAN FALLS RESERVOIR DISTRICT, TWIN FALLS, IDAHO
Consolidated Balance Sheet as at January 4, 1926.

AMERICAN FALLS RESERVOIR DISTRICT, TWIN FALLS, IDAHO
Consolidated Balance Sheet as at January 4, 1926.

AMERICAN FALLS RESERVOIR DISTRICT, TWIN FALLS, IDAHO
Consolidated Balance Sheet as at January 4, 1926.

AMERICAN FALLS RESERVOIR DISTRICT, TWIN FALLS, IDAHO
Consolidated Balance Sheet as at January 4, 1926.

AMERICAN FALLS RESERVOIR DISTRICT, TWIN FALLS, IDAHO
Consolidated Balance Sheet as at January 4, 1926.

AMERICAN FALLS RESERVOIR DISTRICT, TWIN FALLS, IDAHO
Consolidated Balance Sheet as at January 4, 1926.

AMERICAN FALLS RESERVOIR DISTRICT, TWIN FALLS, IDAHO
Consolidated Balance Sheet as at January 4, 1926.

AMERICAN FALLS RESERVOIR DISTRICT, TWIN FALLS, IDAHO
Consolidated Balance Sheet as at January 4, 1926.

AMERICAN FALLS RESERVOIR DISTRICT, TWIN FALLS, IDAHO
Consolidated Balance Sheet as at January 4, 1926.

AMERICAN FALLS RESERVOIR DISTRICT, TWIN FALLS, IDAHO
Consolidated Balance Sheet as at January 4, 1926.

AMERICAN FALLS RESERVOIR DISTRICT, TWIN FALLS, IDAHO
Consolidated Balance Sheet as at January 4, 1926.

AMERICAN FALLS RESERVOIR DISTRICT, TWIN FALLS, IDAHO
Consolidated Balance Sheet as at January 4, 1926.

AMERICAN FALLS RESERVOIR DISTRICT, TWIN FALLS, IDAHO
Consolidated Balance Sheet as at January 4, 1926.

AMERICAN FALLS RESERVOIR DISTRICT, TWIN FALLS, IDAHO
Consolidated Balance Sheet as at January 4, 1926.

AMERICAN FALLS RESERVOIR DISTRICT, TWIN FALLS, IDAHO
Consolidated Balance Sheet as at January 4, 1926.

AMERICAN FALLS RESERVOIR DISTRICT, TWIN FALLS, IDAHO
Consolidated Balance Sheet as at January 4, 1926.

AMERICAN FALLS RESERVOIR DISTRICT, TWIN FALLS, IDAHO
Consolidated Balance Sheet as at January 4, 1926.

AMERICAN FALLS RESERVOIR DISTRICT, TWIN FALLS, IDAHO
Consolidated Balance Sheet as at January 4, 1926.

AMERICAN FALLS RESERVOIR DISTRICT, TWIN FALLS, IDAHO
Consolidated Balance Sheet as at January 4, 1926.

AMERICAN FALLS RESERVOIR DISTRICT, TWIN FALLS, IDAHO
Consolidated Balance Sheet as at January 4, 1926.

AMERICAN FALLS RESERVOIR DISTRICT, TWIN FALLS, IDAHO
Consolidated Balance Sheet as at January 4, 1926.

AMERICAN FALLS RESERVOIR DISTRICT, TWIN FALLS, IDAHO
Consolidated Balance Sheet as at January 4, 1926.

AMERICAN FALLS RESERVOIR DISTRICT, TWIN FALLS, IDAHO
Consolidated Balance Sheet as at January 4, 1926.

AMERICAN FALLS RESERVOIR DISTRICT, TWIN FALLS, IDAHO
Consolidated Balance Sheet as at January 4, 1926.

AMERICAN FALLS RESERVOIR DISTRICT, TWIN FALLS, IDAHO
Consolidated Balance Sheet as at January 4, 1926.

RED CROWN GASOLINE
STANDARD OIL COMPANY
NEW WINTER RED CROWN
WED TO GO

DELIVERY OF WATER EASY

Canal Company Manager Outlines Activities and Tells Conclusions Reached as Result of Season's Experience.

Water distribution during the season of 1925 was not a difficult task because of abundance of supply and no time during the season was less than 100 per cent delivered to water users of the Twin Falls Canal company.

It should be the duty of the committee in charge of administration of water district number 20 to adjust assessments of storage water losses in transmission so that the Twin Falls company should receive a proportionate share in the whole of the report.

Jackson Lake Reservoir. The last report of the reservoir was 2,482,200 acre feet now in storage at Jackson Lake reservoir, as compared to 98,670 acre feet on the same date last year.

The first stored water was received at Milner by this company on July 15, 1925. There was 1,500 acre feet of water in the reservoir at that time.

The maintenance and operation of the reservoir for the year was \$2,107,611. The lake was practically full on June 15, 1925. The water level was 250 feet above the normal level.

The affairs of this district have gone on very pleasantly for the past year. It is believed that there will be no occasion for any one to attempt to get anything that was not due them.

American Falls Reservoir. The dam was completed on September 29, 1925. The dam was completed on September 29, 1925. The dam was completed on September 29, 1925.

The dam was completed on September 29, 1925. The dam was completed on September 29, 1925. The dam was completed on September 29, 1925.

The dam was completed on September 29, 1925. The dam was completed on September 29, 1925. The dam was completed on September 29, 1925.

The dam was completed on September 29, 1925. The dam was completed on September 29, 1925. The dam was completed on September 29, 1925.

The dam was completed on September 29, 1925. The dam was completed on September 29, 1925. The dam was completed on September 29, 1925.

The dam was completed on September 29, 1925. The dam was completed on September 29, 1925. The dam was completed on September 29, 1925.

The dam was completed on September 29, 1925. The dam was completed on September 29, 1925. The dam was completed on September 29, 1925.

The dam was completed on September 29, 1925. The dam was completed on September 29, 1925. The dam was completed on September 29, 1925.

The dam was completed on September 29, 1925. The dam was completed on September 29, 1925. The dam was completed on September 29, 1925.

The dam was completed on September 29, 1925. The dam was completed on September 29, 1925. The dam was completed on September 29, 1925.

The dam was completed on September 29, 1925. The dam was completed on September 29, 1925. The dam was completed on September 29, 1925.

The dam was completed on September 29, 1925. The dam was completed on September 29, 1925. The dam was completed on September 29, 1925.

The dam was completed on September 29, 1925. The dam was completed on September 29, 1925. The dam was completed on September 29, 1925.

The dam was completed on September 29, 1925. The dam was completed on September 29, 1925. The dam was completed on September 29, 1925.

The dam was completed on September 29, 1925. The dam was completed on September 29, 1925. The dam was completed on September 29, 1925.



COUNTESS KAROLYI

COUNTESS KAROLYI, wife of former Senator Frederick, is knocking again at Uncle Sam's gate for admission. She has used Secretary Kellogg to compel approval of her passport, which has been previously rejected.

It should be the duty of the committee in charge of administration of water district number 20 to adjust assessments of storage water losses in transmission so that the Twin Falls company should receive a proportionate share in the whole of the report.

It should be the duty of the committee in charge of administration of water district number 20 to adjust assessments of storage water losses in transmission so that the Twin Falls company should receive a proportionate share in the whole of the report.

It should be the duty of the committee in charge of administration of water district number 20 to adjust assessments of storage water losses in transmission so that the Twin Falls company should receive a proportionate share in the whole of the report.

It should be the duty of the committee in charge of administration of water district number 20 to adjust assessments of storage water losses in transmission so that the Twin Falls company should receive a proportionate share in the whole of the report.

It should be the duty of the committee in charge of administration of water district number 20 to adjust assessments of storage water losses in transmission so that the Twin Falls company should receive a proportionate share in the whole of the report.

It should be the duty of the committee in charge of administration of water district number 20 to adjust assessments of storage water losses in transmission so that the Twin Falls company should receive a proportionate share in the whole of the report.

It should be the duty of the committee in charge of administration of water district number 20 to adjust assessments of storage water losses in transmission so that the Twin Falls company should receive a proportionate share in the whole of the report.

It should be the duty of the committee in charge of administration of water district number 20 to adjust assessments of storage water losses in transmission so that the Twin Falls company should receive a proportionate share in the whole of the report.

It should be the duty of the committee in charge of administration of water district number 20 to adjust assessments of storage water losses in transmission so that the Twin Falls company should receive a proportionate share in the whole of the report.

It should be the duty of the committee in charge of administration of water district number 20 to adjust assessments of storage water losses in transmission so that the Twin Falls company should receive a proportionate share in the whole of the report.

It should be the duty of the committee in charge of administration of water district number 20 to adjust assessments of storage water losses in transmission so that the Twin Falls company should receive a proportionate share in the whole of the report.

It should be the duty of the committee in charge of administration of water district number 20 to adjust assessments of storage water losses in transmission so that the Twin Falls company should receive a proportionate share in the whole of the report.

It should be the duty of the committee in charge of administration of water district number 20 to adjust assessments of storage water losses in transmission so that the Twin Falls company should receive a proportionate share in the whole of the report.

It should be the duty of the committee in charge of administration of water district number 20 to adjust assessments of storage water losses in transmission so that the Twin Falls company should receive a proportionate share in the whole of the report.

It should be the duty of the committee in charge of administration of water district number 20 to adjust assessments of storage water losses in transmission so that the Twin Falls company should receive a proportionate share in the whole of the report.

It should be the duty of the committee in charge of administration of water district number 20 to adjust assessments of storage water losses in transmission so that the Twin Falls company should receive a proportionate share in the whole of the report.

It should be the duty of the committee in charge of administration of water district number 20 to adjust assessments of storage water losses in transmission so that the Twin Falls company should receive a proportionate share in the whole of the report.

It should be the duty of the committee in charge of administration of water district number 20 to adjust assessments of storage water losses in transmission so that the Twin Falls company should receive a proportionate share in the whole of the report.

It should be the duty of the committee in charge of administration of water district number 20 to adjust assessments of storage water losses in transmission so that the Twin Falls company should receive a proportionate share in the whole of the report.

During the year from September 1, 1924, and September 1, 1925, the lake level in the extent of 600 feet of about 200 feet of depth. The lake level in the extent of 600 feet of about 200 feet of depth.

Men's Suits and Overcoats. A splendid assortment of little boys' all wool Mackinaws at only \$4.45.

Men's Suits and Overcoats. A splendid assortment of little boys' all wool Mackinaws at only \$4.45.

TWIN FALLS NAMED AS DISTRIBUTING POINT. The Cove Ballard Motor company of Salt Lake city announces the appointment of the Boyd Nash Motor company as distributor for the Twin Falls district.

TWIN FALLS NAMED AS DISTRIBUTING POINT. The Cove Ballard Motor company of Salt Lake city announces the appointment of the Boyd Nash Motor company as distributor for the Twin Falls district.

TWIN FALLS NAMED AS DISTRIBUTING POINT. The Cove Ballard Motor company of Salt Lake city announces the appointment of the Boyd Nash Motor company as distributor for the Twin Falls district.

TWIN FALLS NAMED AS DISTRIBUTING POINT. The Cove Ballard Motor company of Salt Lake city announces the appointment of the Boyd Nash Motor company as distributor for the Twin Falls district.

TWIN FALLS NAMED AS DISTRIBUTING POINT. The Cove Ballard Motor company of Salt Lake city announces the appointment of the Boyd Nash Motor company as distributor for the Twin Falls district.

TWIN FALLS NAMED AS DISTRIBUTING POINT. The Cove Ballard Motor company of Salt Lake city announces the appointment of the Boyd Nash Motor company as distributor for the Twin Falls district.

TWIN FALLS NAMED AS DISTRIBUTING POINT. The Cove Ballard Motor company of Salt Lake city announces the appointment of the Boyd Nash Motor company as distributor for the Twin Falls district.

TWIN FALLS NAMED AS DISTRIBUTING POINT. The Cove Ballard Motor company of Salt Lake city announces the appointment of the Boyd Nash Motor company as distributor for the Twin Falls district.

TWIN FALLS NAMED AS DISTRIBUTING POINT. The Cove Ballard Motor company of Salt Lake city announces the appointment of the Boyd Nash Motor company as distributor for the Twin Falls district.

Golden Rule Mercantile. A splendid assortment of little boys' all wool Mackinaws at only \$4.45. Follow the Crowd to A heavy weight in navy blue and white plaid. Our price \$6.98.

MEN'S SUITS and OVERCOATS. Are Priced the Golden Rule Way, Which Means a Saving to You. \$19.50 to \$29.50. Golden Rule Mercantile.

Men's and Young Men's Suits. These Are Exceptional Values. A comparison will obligate you in no way. We welcome it, two months can tell more than one—and every man who sees them admits they are Stunning Values at \$19.50 \$27.50 \$29.50.

Ladies' Coats. These Dresses are made of both Silk and wool material. They are Smartly Styled Models that will make an instant appeal. \$5.95 \$9.95 \$15.

Blankets. OUR PRIDE. A soft fluffy blanket in many assorted plaid. Size 66 x 80. You will want more than one of these at this low Price the Pair \$3.98.

"Nashua". Part Wool in assortment of Plaid and colors, extra size 72 x 80 the Pair \$4.98.

PRETTY PLAID COTTON-BLANKETS. This is one of the best values we have shown for many months. Single blankets, size 64 x 76 in attractive assorted Plaid. They're New. Make your Selection now the pair 98c.

MEN'S UNION SUITS. Men's velour hats \$3.95. Men's moccasin to work shoe \$2.98. Men's khaki wool army pants \$2.98.

MACKINAWS. A splendid assortment little boys' all-wool mackinaws at only \$4.45. Men's mackinaws \$6.98.

MEN'S MACKINAW. A heavy weight mackinaw, blue and brown plaid, a bear for wear plaid; the price \$6.98.

MEN'S LEATHER VESTS. Men's leather vests, 27 to 30 inches long; made in muskolin leather; jerkin leather. \$15.00.

MEN'S SHOES. NO. 661—Heavy retan moccasin style. \$2.85. NO. 962—Pined quality leather army shoe. \$4.95.

WOMEN'S SHOES. NO. 767—Black Kid oxford, medium heel, arch support, size 4 to 8. \$2.73. NO. 493—Growing girls' brown calf oxford, low heel, fine for school girls. \$2.73.

WOMEN'S SHOES. NO. 661—Woman's black saddle Spanish heel, snappy navy pattern. \$4.95.

Golden Rule Mercantile. You'll Save by Spending here, ask a friend. Give your Dollar Greater Purchasing Power.

Attention! Automobile Owners. Your license is past due and in order to use your car you must have the plates on the car the 31st day of January. COME NOW AND MAKE APPLICATION, AND AVOID THE RUSH AND CONFUSION. We can not write the applications that are due in the last few days of grace and give you service. S. CLAUD STEWART, Assessor.

SPORTS

BLUE AND WHITE TAKE TWO GAMES FROM KIMBERLY

Both Bruin Teams Victorious in Hard Fought Battles. Floor Work Feature of Contests.

Twin Falls basketball teams won another double header at Kimberly Tuesday night. Both games were hotly contested and the scores small, the Bruin side being out victors 18 to 14 while the boys piled up 26 to 14 for Kimberly. The games were more than close until the last minutes of play. The first half of the girls' game ended in a tie with the Kimberly team having the best of the argument. The Bruins were able to lift their spirits and took their half more than they did and took through the whole period. South Bruin forward, was high point, and Johnson scored, while both of Twin Falls and Fyke of Kimberly were tied for second honors with eight points each. Not a point in the girls' game was scored through fouls.

Only seven fouls were called and the Bruins drew five of those. Only the inability of the Kimberly forwards to find the hoop kept them from being out of the score. The ball was in Kimberly territory most of the time in the first half and the Bruins were in the lead. The Bruin forwards found their shooting eye the last period and every time the ball came to the Bruin side almost a score came. South was knocking them from the drawing-line time after time while both took time after time to hop them from any place. The return game between these two girls' teams should be a nice one.

The Kimberly boys had the Bruin mystified during most of the first half by holding the ball out of the five-man defense and then shooting it through fast. The passing of the Kimberly five was superior to that of Twin Falls and their work in carrying the ball down the floor on straight litters was very surprising. Patton, reason and Cazier handled the ball in nice shape, their passing was sure and it was a constant threat that the Bruin had trouble in breaking up. In the latter part of the first half, Mitchell was out in Johnson and the Bruin court, to life going over the ball instead of going until Kimberly was all set for a fast rush for a counter.

Mitchell looped into in rapid succession and gave the Bruin an 8 to 0 lead at the end of the half. Kimberly tied the score at 14 all but were unable to hold the Bruin during the last period and the Blue and White warriors came away with the lead of a 20-14 score. It was pretty close to watch and the last three periods were exceptionally fast, both teams displaying speed on the floor that was hard to follow. Kimberly team out-worked the Bruin but were unable to pass the ball. The Bruin had the right for the night.

A Kempton and Owen were tied for high point men with six each, while Herbert, Mitchell, and Kelly counted for four points each and Mar. Kempton earned 2 each while Patterson scored a foul for one point. The Bruin were being crushed here tonight. The reputation of a fast team will give the Bruin the run for their money. Mitchell has cleared up his studies and will be on the square from now on and from his showing in the Kimberly game although he only played a few minutes. Girls' lineup:

- Twin Falls: Kimberly, Beck, Pennington
- Smith: Right Forward, Fyke
- Left Forward, Johnson
- Fitch: Running Guard, Quinn
- Haines: Jumping Center, Taylor

WILL WELCOME FLIERS
SEATTLE, Wash., Jan. 12. (AP)—Plans were being compiled here tonight to welcome a Marauder Smith and Earl Rossman, arriving tomorrow as the first of an airplane expedition to Captain George Hubert Wilkins in to lead out over the Arctic ocean, following a contract.

With their arrival, Sandpoint aviation field was here where four army planes departed April 6, 1925, on a circuit of the globe, that two of them completed three September 28, 1924, became the headquarters of the expedition until it shifts to Fairbanks, Alaska, and then Fair, Barrow, and miles beyond the Arctic circle.

CANAL RECORDS REAR EVIDENCE OF PROSPERITY

Assistant-Secretary and Treasurer, in Statement to Stockholders, Comments on Company's Financial Situation.

Financial records of the Twin Falls Canal company reflect prosperity and effort on the part of creditors to discharge obligations, according to statement of Frank A. Lynch, assistant secretary and treasurer, submitted to the stockholders at their annual meeting here Tuesday. The statement is as follows:

"In October, last year, it was anticipated that it would be necessary to borrow funds for operation before the March, 1925, maintenance to come due, but owing to the unusually good collections on the 1925 fall maintenance payments and the obtaining of old maintenance and other accounts during the past few months this will not be necessary.

"As an indication of the general prosperity on this tract and the gradual effort of our farmers to pay off their debts, it is well to note that during the past year our old maintenance accounts receivable have been reduced by approximately \$100,000. Old maintenance accounts, including the 1925 accounts, amounting at this time to only \$26,000, whereas a year ago they amounted to slightly over \$100,000, two years ago, to about \$28,000 and three years ago to \$160,000.

"We have collected some \$100,000 more on the 1925 maintenance account than was collected on the 1924 maintenance account, at the same time a year ago, the rate of 1924 being the same for both years. These figures indicate a slow but sure general improvement in the financial condition of our farmers and stockholders.

names of our farmers and stockholders. The records for the past four months were practically the same as for the same period one year ago, whereas the maintenance and other accounts during the year, the results being very satisfactory as the records show.

"The domestic oil and drainage accounts have been reduced slightly over \$100,000 and the other minor accounts some \$4000 each, being received to the amount of \$7500 and notes for the balance of \$1000 and \$1000. Authority of your board of directors the insurance coverage on the property is being maintained at the net cost has been reduced considerably by obtaining what is termed 'a blanket policy' covering all company property on what is called 'an average rate,' whereas heretofore the insurance rate has been based on actual coverage for the different classifications of property.

"The question of funding indebtedness, recently for bank deposits and interest on same has been discussed by the board several times during the past year although at definite action was taken.

"Upon recommendation of local accountants and with the idea in mind that the books of an organization of this size and character should better reflect the activities of the business as well as to show its financial status, also the views of the way to make expenses lighter is to place them beneath the spotlights and in order to be able to reduce costs you must first know what the present costs are, we changed our bookkeeping system accordingly and each month a report is made to the board of directors for their consideration and guidance showing by receipts by source, expenses by department and item of expenditure, to whom and the amount paid of all checks issued and a total balance showing—the financial condition at the particular time of making the report.

"The pay roll which is undoubtedly the largest single item of expense has been arranged so that the longest pay-day and the shortest pay-day for delivery on the first or second of each month.

General Dies



MAJOR GEN. WILLIAM H. HARTZ, Quartermaster General of the Army, died suddenly at Washington.

all which includes employ and wages of all officers and employ amounted to \$104,823 for the month of September, \$104,700 for the month of October, and \$112,000 for the month of November, and \$1,377,000 for the month of December.

Bank Account

"Each day's receipts are deposited in the bank the following day so that for any given period the deposits of the company in the various banks represent the receipts for that period. All checks returned by the banks amount of insufficient funds or for other reasons have been either promptly collected or charged back on the account originally credited, so that there has been no loss from this source during the past year. News Want Ads reach the people you wish to attract.

SCHOOL BOY FRANK COSTS CITY \$4990 PLUS \$12 PENSION

SAN FRANCISCO, Jan. 12. (AP)—Some months ago a pupil in the John Street grammar school in San Francisco, from under his teacher, Mrs. Minnie E. Duggan, 65, as she was about 70, took down to the street.

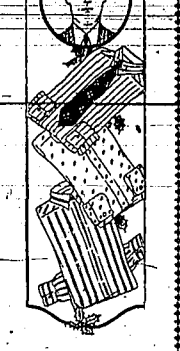
Today the city was notified by the state insurance accident commission that the little school boy's joke would cost the municipality just \$4,990, plus a permanent pension of \$12.50 a week to the teacher.

Mrs. Duggan fell on her head when she missed the chair and fractured her skull. She has been incapacitated since.

particular stress upon the idea of getting stock transferred in the name of its rightful owner. This should be done by all concerned not only for voting purposes but also as an additional protection to themselves.

"Ask Card System" "During the coming year, it will be necessary to transfer the stock ledger, which is at present in-bound form and which represents the individual accounts of all the stockholders. As about 90 per cent of our time is spent on these accounts, we suggest and therefore recommend that when this transfer is made, a card system be installed for these stock and maintenance accounts and three copies be kept, that is, an active file for the open accounts, an inactive file for the closed accounts and a third file for the accounts that have been transferred and therefore used only for reference. This will eliminate a considerable loss of time and motion as far as the office is concerned, will make for more speed in settling up the public and will, in the initial cost, will be somewhat greater, the length of service of these cards and the resultant time and service to the public will more than offset the difference in cost.

750-BOOKED FOR 2000
Your choice of 200 titles of Popular Fiction for 80 cents during January only. \$7.0000 BOOK EDITION.



Looking Springward

Just Received
Shipment of Collar Attached

Shirts

consisting of the latest patterns and fabrics, also the New Style Collar.

These shirts are tailored, Made To Fit, two button down pockets center pleat. Size—14 to 18.

PRICED
\$1.95
\$2.45
\$3.45
See Show Window
Try Sinclair's First
"IT PAYS"

AUTO Storage

Day and Night Service Heated Garage
Casey-Parker Auto Company

Ewes Fed Minerals

Will produce more and better lambs. A few lambs saved will buy minerals for the flock.
Blatchford's Minerals are Best.
The price is right, too. Why pay more and get less?
Darrow Bros. Seed & Supply Co.
TWIN FALLS

THE SUREST WAY TO WIN SUCCESS IS TO DESERVE IT



Steadfast, unflinching quality has earned for Chesterfield the confidence of men everywhere

Why Pay Rent and Keep Moving?

Invest your savings in a home while prices are low. Don't put it off. Do it now. Prices are advancing.

We offer a 6 Room Modern Home all built in features, Double floors, wired for Range and heater, good Garage on Graveled street; no paving to pay. \$2550—With a Small payment—Balance like rent—Possession at once.

Good 4 Room Modern Home with Large Sleeping Porch, all built in features, wired for Electric Range and Water Heater, good Garage—Choice location—\$2300—\$950 Cash—Balance like rent.

4 Room House, partly Modern. Well located. Priced low at \$1150—\$200 Cash—Balance \$20.00 monthly.

Acres Tract with 4 room House, barn, chicken house and garage—Fruit and berries, and on graveled road—\$2100—\$600 cash. \$25.00 monthly on balance.

4 Acres close in on Rock Road—Fair improvements, deep well and cistern. Fine Dairy Ranch. Priced at \$185.00 per acre—Good terms and will trade for City property.

BEAUCHAMP and ADAMS
136 Shoshone South

WHEAT TO GO DOWN
Late Returns Made in Wheat After an Early Decline; Demand in Chicago's Cause.

CHICAGO, Jan. 17.—Active buying brought wheat prices sharply higher in the market today after an early decline. Wheat available here for immediate sale was in better request, and upward movement continued throughout the day.

With strong weather in Argentina and a reduced estimate of the Australian wheat harvest, Chicago wheat prices closed higher, ranging from one cent lower to 1 1/2 advance, new oats, May and July, 1/4 to 1/2 higher to 1/4, 1/8 to 1/4. Corn finished 1/8 up on sale above unchanged and previous action.

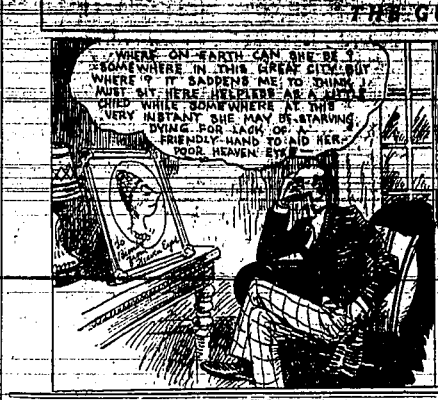
Highest prices of the day in the wheat market came shortly before the close, at which time a large number of contracts were bought yesterday's latest figures. Profit-taking, however, caused a rugged decline in the market this morning, but today wheat values had gone as much as 1 1/2 to 2 cents higher than the recent highest point.

With the wheat market generally higher on the basis of rumors that something of a rise was due, especially as prices for wheat from Argentina were reported to be better than expected and at Omaha as well, shortly to advance. However, primary arrivals of wheat throughout the day were small, with total for all 174,000 bushels against 741,000 bushels a year ago.

Weakness of foreign markets appeared on the other side to be largely responsible for the temporary depression which started at the opening of the wheat market here and which continued until after noon. For a while also much notice was taken of shortings for a trade in the wheat market, but on a domestic basis, according to the authorities, wheat is not in excess of price, and not really present or potential.

With the trading fairly for each corn as well as for cash wheat, farmers the market here were not so much advanced in the later trading. Commission houses were buyers when corn prices slipped. Oats were dull and steady.

Provisions followed—hog values up, steady; beef, 1/2 to 3/4 up; lamb, 1/2 to 3/4 up.



MARKETS AT A GLANCE.

Table listing market prices for various commodities. Includes sections for Stocks (New York, Chicago), Bonds (U.S. Government, Municipal), Foreign Exchange (London, Paris), and Grains (Wheat, Corn, Oats).

MOTORS LEAD STOCKS TO A NEW MARK

NEW YORK, Jan. 12.—Stock market averages: 29 29. Industrials 142.00, 142.00. Railroads 124.00, 124.00. Week ago 129.00, 129.00. Year ago 122.00, 122.00. High 129.00, 129.00. Low 122.00, 122.00. Total stock sales 1,730,000 shares.

CLASSIFIED ADVERTISEMENTS

Advertisements under this head are always alive and active, and constitute the best means, so far devised of bringing the need of advertisers to the attention of residents of South Idaho.

WANTED LIVESVOTER

WANTED TO BUY—Hogs and... FOR SALE—Hullins, Ross, fine... FOR SALE—Farm house with...

FOR SALE—AUTOMOBILES

FOR SALE—Buick sedan, 1925... FOR SALE—Ford touring car, 1924...

FOR SALE—REAL ESTATE

FOR SALE—Barnwood house with... FOR SALE—Six room house, close...

FOUND

I HAVE a stray spotted bird... I have a pair of blue jays...

FOR RENT—FURNISHED

FOR RENT—First class room and... FOR RENT—Shipping rooms, 212...

FOR SALE—MISCELLANEOUS

FOR SALE—Barbecue outfit, Phone... FOR SALE—Good auto, only...

TWIN FALLS MARKETS

These prices are obtained daily at... WHEAT—No. 1 hard, 1.10... RYE—1.00...

LOST

LOST—Llewellyn letter, check over... LOST—Check for \$100.00...

FOR RENT—FARMER

FOR RENT—10 acres, 100 cash... FOR RENT—20 acres in Blaine...

POTATOES

HALLOID #128, Jan. 11.—(United... Idaho Potatoes, 1925-26...

HELP WANTED

WANTED—Messenger boy with... WANTED—Washer for 1500...

SITUATIONS WANTED

EXPERIENCED GIRL wants general... WANTED—Washer for 1500...

CHICAGO LIVE STOCK

CHICAGO, Jan. 17.—Cattle—Receipts... Hogs—Receipts, 30,000; fairly active...

ST. JOSEPH LIVESTOCK

ST. JOSEPH, Mo., Jan. 12.—Cattle... Hogs—Receipts, 2,000; steady to...

GOVERNMENT BONDS

NEW YORK, Jan. 12.—U.S. Treasury... U.S. 4 1/2% bonds, 100.25...

Wreaths on Statues

Bared in London—One of the little-known forbidden... Wreaths on Statues—A park ranger caught him at it...

RETAIL PRICES

Table listing retail prices for various commodities. Includes items like Canned Beans, Apples, Raisins, and various types of Flour.

MONEY TO LOAN

LOAN LOANS, 6% WITH COLLATERAL... MONEY FOR STRAIGHT LOANS...

NOTICE OF SALE

NOTICE is hereby given that in pursuance... NOTICE OF SALE—Notice of sale of...

Danger to the Eyes

Danger to the Eyes in Major Industries—That there is hardly an industrial... Caged Birds—'I am wary the owners of caged birds...

NOTICE

For Publication of Time Appointed... NOTICE—Notice of sale of...

PROFESSIONAL

ATTORNEYS—W. L. DUNN Law Office—Rooms 8... ATTORNEYS—W. L. DUNN Law Office...

WHITE GRANGE TO MEET HERE Chamber of Commerce Joins With Local Unit in Extending Bid to State Organization for Next Year Meeting.

Idaho State Grange in eighteenth annual session in Pocatello, January 17-19. Twin Falls Chamber of Commerce to hold its annual meeting next year in Twin Falls. The invitation was extended by John A. Cron, master of Twin Falls grange, who was this evening authorized by vote of the chamber of commerce directors to extend the invitation and promise of welcome on the part of the chamber of commerce.

Report on Bull Survey Preliminary report on a survey just completed by John McDermott and Dr. F. Clark, Twin Falls, civil engineers, to determine a route for extension of the Oregon Trail Idaho railway west from Idaho Falls. The report was received by the directors at their meeting Tuesday evening.

Mr. McDermott reported that construction of the Idaho 800-foot long "cut" between the river and the main line is necessary for extension of the road directly west from Bull and that a proposed route through Cedar Draw.

The survey just completed was made at the instance of Twin Falls Chamber of Commerce and Idaho business men.

SOCIETY AND CLUBS Edited by Mrs. J. B. Williams Phone 300

Mrs. H. Strain and Mrs. John H. Aull were hostesses to the twentieth century club Thursday afternoon at the home of Mrs. George at Eight avenue east. The department was delighted to have with them their chairman, Mrs. J. B. Williams, and other members of the business section. After the usual current events by each member in response to call Mrs. M. E. Weaver gave an interesting paper on "Delinquency." There was a large attendance and the evening was made a great success. A social hour was enjoyed during which the hostesses served delectable refreshments.

The Ladies Bible class of the M. E. Sunday school held their monthly meeting at the home of Mrs. C. L. Weaver Tuesday afternoon. Seven members and three visitors were present. After the business session social hour was held and delicious refreshments were served by the hostesses assisted by Mrs. Knill. The ladies all expressed themselves as having a most enjoyable as well as profitable time. New members always given a cordial welcome.

Mrs. T. C. Bacon and Mrs. A. J. Tenney were hostesses to the Pan-Hell club club Monday evening at the home of the latter on Seventh avenue north. The business session was presided over by Mrs. Ella Plating, the president. Musical selections by Miss Henderson and Miss Latta Street were enjoyed after which the evening was spent in chatting. Delicious refreshments were served after the games.

On Monday evening the Business and Professional Women served a delicious roast pig dinner to about thirty guests in their club rooms. Two jokers, done to a turn, were brought in while and carried by the members. The evening was assisted by Dr. Harold and W. R. Priebe, who had as helper John W. D. Smith. The young men were also present and were most instrumental in making it such a marked success.

DEATHS OHLSS—Lloyd A. "Philo" Olls, three days' old son of Mr. and Mrs. J. Olls, died Tuesday at the family residence near Jerome. Funeral services were held at the home of Mrs. Olls and Mrs. Emma Warren on Wednesday afternoon at 1 o'clock this afternoon at the residence and burial will be in the Jerome cemetery.

\$10 Reward \$10 For information leading to the recovery of a small black and tan Airedale dog named "Chief." Last seen near "Hagshoe" field on south side.

Phone 974 Henry Mahon, 528 and 4th St. N. W.



TAXATION TOPIC FOR SHEEP MEN Duplication of Levies and Methods of Obtaining Relief to be Considered.

IDAHO FALLS, Jan. 12.—Sheep growers of Idaho will discuss levies in the matter of migratory levies on sheep, specifying excessive levies when they meet at Idaho Falls Thursday and Friday for the district annual convention of the Idaho Wool Growers' association, Idaho Falls, today.

Several complaints from the sheep raisers on the taxes levied against migratory sheep, specifying excessive taxes. They stated that they had been assessed a full year in Nevada in addition to four months in Idaho.

ANNOUNCEMENTS The War Mothers chapter will meet at the home of Mrs. M. E. Weaver, 523 Second avenue east, today afternoon, January 15, at 2:30. A large attendance is greatly desired.

All Royal Neighbors are requested to meet at the hall Wednesday afternoon at 2:30 o'clock to attend the funeral of Neighbour Martin Jensen.

Mrs. E. J. Ostrander will entertain the Episcopal Guild, Thursday afternoon, January 14, at her home at 1437 Maple avenue.

The Needlecraft club will meet at the home of Mrs. Paul Boree Tuesday evening, Friday, January 16. All members are requested to be present.

Members of the Twentieth Century club are asked to have all old papers in their homes collected by the club which will collect them later. It is hoped to gather a car load to ship to coast city where they will be worked over.

General Lenton Post, United Spanish-American War Veterans, will meet at 7:30 this evening in the American Legion building at the corner of Second street and Third avenue east.

NEWS WANT ADS reach the people you wish to attract. SUBSCRIBE FOR THE NEWS.

The PARK HOTEL DE LUXE LUNCHEON 50c Menu For To-Day Purée of White Bean Soup Shank Miltigan Stew Boiled New England Dinner

ADJUSTMENT OF WATER LOSS IS CALLED FOR Twin Falls Canal Company Stockholders Deal With Vital Issues in Resolutions Adopted at Annual Meeting.

Stockholders of the Twin Falls Canal company at an annual meeting here Tuesday adopted resolutions asking that loss in the transmission of storage water in Snake River below Blackfoot be borne equitably by the company and urging directors of the company to "take prompt and effective steps to reduce the loss of water from Blackfoot to points where used from the lower river and see that the same is charged against the water user and not against this company."

Huron Smith, general manager, in his annual report, referred to this subject and stated that computations showed that the Twin Falls Canal in 1924 had a loss of 1700 acre feet of water in transmission below Blackfoot. He advised that the committee of nine, in addition to the directors, under district No. 36, should make adjustment of this situation.

Work of Committee. All of the resolutions were submitted by the committee of nine, which met last year, which had invited several stockholders to attend the meeting in connection with the drafting of its report.

Loss of Storage Water. Whereas, a loss is sustained in the transportation of water from Blackfoot to points where used from the lower river, and see that the same is charged against the users thereof and not against this company.

Whereas, an assessment of two dollars per acre has been levied as maintenance charge for the coming season which in a large measure offsets what we have been compelled to pay in recent years.

Whereas, it is the policy of the company to carry on its business in a conservative manner, and to keep the board of directors to determine the increased levy necessary, and believe that by strict economy and the securing of efficiency in the general lines of service our affairs can be so managed as to justify the high

Business Relationships Which Prove Profitable are always founded upon confidence. If it lacking there can be neither industrial efficiency nor enduring commercial prosperity.

The Twin Falls National Bank has won the confidence of its patrons by its unquestioned safety and by the sterling quality of its service, and because of this it is enabled to work with them the more effectively.

The Twin Falls National Bank Capital and Surplus \$167,000

O. S. L. INVESTS \$150,000 HERE Improvements of Year in Twin Falls Include Round House and Six Miles of Track.

Oregon Short Line expenditures for improvements in Twin Falls during 1927, including the four-story first unit of a roundhouse built in connection with the construction of the Rogerson Mill line and taken over by the Oregon Short Line in 1927, amounted, totalled \$150,000, according to figures made public Monday afternoon last week by the operating department.

Whereas, this company has in previous years engaged in drilling wells and has carried on extensive operations for individuals from which activities accounts amounting in the aggregate to a considerable sum, now outstanding, the collection of which is doubtful and if lost the result would be the prejudice of the stockholders who have not and the benefit of such activity.

Seepage Campaign. We endorse the practice which has been followed for a number of years by the residents of this county in the reclamation of waterlogged lands and the preservation of the same.

Relief Plans Get New Consideration (Continued From Page One) To present its views on the Haugen bill, the conference has yet to hear former Governor Lowden of Illinois, a council member, Secretary Carter and a number of other speakers.

Publicity. In order that we may be kept informed in regard to the affairs of the company and especially as to the proceedings of the board of directors, we request that the board at each meeting have prepared a statement setting forth the business transacted at that meeting which in their judgment will be of general public interest and later the same given to the several newspapers of the county.

AMERICAN LEGION POST INSTALLS NEW OFFICERS Ralph Pink was Tuesday evening installed as commander of Twin Falls post, American Legion, for the coming year, succeeding Earl Alverson, retiring commander.

WORKERS. The general grievance committee of district No. 1, United Mine Workers, previously had taken similar action. There are approximately 10,000 maintenance men in the entire field including pump runners, firemen, hoisting engineers, watchmen and others, whose presence is necessary for the sustaining of coal company property.

CONFERENCE BETWEEN FACTIONS IS USELESS (Continued From Page 1) Workers. The general grievance committee of district No. 1, United Mine Workers, previously had taken similar action.

Methods in Use by BUREAU ASSAILED (Continued From Page One) 99,000, the majority hold that "except in cases involving a refund of \$20,000 or more, all of the authority vested in the commissioner of internal revenue is exercised by the head of the division upon whose action there is no check, unless a taxpayer is dissatisfied."

WEDNESDAY MORNING, JANUARY 18, 1928

WEDNESDAY MORNING, JANUARY 18, 1928

WEDNESDAY MORNING, JANUARY 18, 1928

WEDNESDAY MORNING, JANUARY 18, 1928

WEDNESDAY MORNING, JANUARY 18, 1928

WEDNESDAY MORNING, JANUARY 18, 1928

WEDNESDAY MORNING, JANUARY 18, 1928

WEDNESDAY MORNING, JANUARY 18, 1928

WEDNESDAY MORNING, JANUARY 18, 1928

WEDNESDAY MORNING, JANUARY 18, 1928

WEDNESDAY MORNING, JANUARY 18, 1928

WEDNESDAY MORNING, JANUARY 18, 1928

WEDNESDAY MORNING, JANUARY 18, 1928

WEDNESDAY MORNING, JANUARY 18, 1928

WEDNESDAY MORNING, JANUARY 18, 1928

WEDNESDAY MORNING, JANUARY 18, 1928

WEDNESDAY MORNING, JANUARY 18, 1928

WEDNESDAY MORNING, JANUARY 18, 1928

WEDNESDAY MORNING, JANUARY 18, 1928

WEDNESDAY MORNING, JANUARY 18, 1928

WEDNESDAY MORNING, JANUARY 18, 1928

WEDNESDAY MORNING, JANUARY 18, 1928

WEDNESDAY MORNING, JANUARY 18, 1928

WEDNESDAY MORNING, JANUARY 18, 1928

WEDNESDAY MORNING, JANUARY 18, 1928

WEDNESDAY MORNING, JANUARY 18, 1928

WEDNESDAY MORNING, JANUARY 18, 1928

WEDNESDAY MORNING, JANUARY 18, 1928

WEDNESDAY MORNING, JANUARY 18, 1928

WEDNESDAY MORNING, JANUARY 18, 1928

WEDNESDAY MORNING, JANUARY 18, 1928

WEDNESDAY MORNING, JANUARY 18, 1928

WEDNESDAY MORNING, JANUARY 18, 1928

WEDNESDAY MORNING, JANUARY 18, 1928

WEDNESDAY MORNING, JANUARY 18, 1928

WEDNESDAY MORNING, JANUARY 18, 1928

WEDNESDAY MORNING, JANUARY 18, 1928

WEDNESDAY MORNING, JANUARY 18, 1928

WEDNESDAY MORNING, JANUARY 18, 1928

WEDNESDAY MORNING, JANUARY 18, 1928

WEDNESDAY MORNING, JANUARY 18, 1928

WEDNESDAY MORNING, JANUARY 18, 1928

WEDNESDAY MORNING, JANUARY 18, 1928

WEDNESDAY MORNING, JANUARY 18, 1928

WEDNESDAY MORNING, JANUARY 18, 1928

WEDNESDAY MORNING, JANUARY 18, 1928

GREAT NORTHERN SEED BEANS Grow on Dry Land Will have two cars on track this week. Place Your Orders Now When you have beans to sell see us. Idaho Bean & Elevator Co. 127 Main Avenue West

Announcing the FLORSHEIM \$8.85 Shoe Sale Shoes that are nationally advertised at Ten Dollars—and always worth it—brogues, regular styles, conservative shapes—all leathers—both high and low shoes—our entire stock of FLORSHEIMS now selling for a short time at this low price. IDAHO DEPARTMENT STORE "After All the Best Place to Trade"