

THE SPORTS OF A DAY

GOODING WINS TITLE IN DEFEATING RUPERT BY SCORE OF 12 TO 7

Poor Kicking by East End Team Almost Directly Responsible for Senators' Victory; McCloy Races 40 Yards for Lone Tally

JEROME, Nov. 15 (Special to The News).—The Gooding Senators won the South Central district football championship here this afternoon by defeating Rupert 12 to 7. Poor kicking on the part of Rupert is almost directly responsible for her defeat. Both Gooding touchdowns came as a result of short kicks that left the ball deep in Rupert territory and hard smashes of the Gooding backs drove it over each time for scores. Rupert's score came as a result of a fumble which McCloy scooped up and raced 40 yards for the lone score for Rupert. Another fumble almost cost Gooding another touchdown earlier in the game when Moller grabbed a loose ball and struggled 52 yards before he was downed.

The game provided thrills aplenty for the throng of 1200 persons who witnessed the contest. Sanford lived up to his reputation for speed in the broken field and his running back punts was perhaps the feature of the game. The Gooding aggregation apparently played the winning game and her ability to take advantage of the breaks when they presented themselves won the district title.

Rupert Is Aggressor

The game opened with both teams warily feeling each other out like two boxers were the title at stake. Neither team was willing to open up to any extent in the first quarter. Rupert took the aggressive from the start and lost it but once during the game in the last quarter the Senators apparently stung by being scored upon opened an offensive that carried them the length of the field and missed a touchdown by inches when it pass was knocked down behind the goal. And as the final gun spoke the Senators were again with the 10-yard mark headed for a score.

The game opened with Rupert kicking off short to Gooding on the 40-yard line. A succession of line bucks carried the ball to the 40-yard line where Rupert held and punned the ball rolling over the goal. Gooding opened an offensive from the 20-yard

DUMB BELLS



line, but fumbled on the first play. The Rupert backs were unable to gain through the line and the ball went over on the 22-yard mark. Gooding punt was short. Sanford taking it on his 40-yard line. Rupert started for the goal, but the Gooding forward wall held on its own 29-yard line and again Toone's boot was shot, the ball rolling out of bounds again. A fourth down pass was attempted but failed to gain through the line coupled with a short successful pass forced Rupert to kick again and the ball rolled over the goal. Toone, Prince and Patterson carried the ball through the line 25 yards in seven tries and Toone lost five yards on an attempted end run and booted. Sanford ran the punt back 10 yards and a 15-yard penalty for holding put Rupert on the 42-yard mark. Toyer made it first down the three tries and a 10-yard pass to which Sanford added eight more yards put the ball on the 15-yard mark as the quarter ended.

Rupert Makes Desperate Bid

The second period opened with Rupert making a desperate bid to score, but a fourth down pass was grounded and Gooding took the ball on her own 6-yard line. Toone got off a 30-yard punt that rolled to the 10-yard line where Sanford carried it. The Rupert punt traveled barely 20 yards and the Senators had their first opportunity to score. Prince raced four yards and Patterson broke through the line for 25 more to be downed on the 10-yard line. A five-yard penalty for offside left Gooding with but five yards to go in four downs. Toone tried it and made a yard. Prince added another one and finally plunged over on his next try, diving the last yard over the line of scrimmage. Toone's attempted drop kick was wide. Rupert kicked off and Toone elected to kick. On the second down his boot was partially blocked and Rupert took the ball carried the ball to the 40-yard line and an incomplete pass gave the ball to Gooding on the 31-yard line. Toone booted to the 10-yard line and San-

ford ran it back to the 10-yard line. An attempted pass was incomplete and the Rupert punt traveled barely three yards. It looked as though Gooding would score again but Oloichea fumbled on the first try and Moller scooped up the ball to run 52 yards before he was down. Five line smashes put the ball on the 15-yard mark, but McCloy lost six yards and the ball went over. Toone booted to the 40-yard line and Sanford wriggled back 25 yards before he was stopped. Prince put an end to the Rupert hopes of a score by intercepting a pass on his own 25-yard line at the half ended.

Gooding Kicks Off in Third

Gooding kicked off as the third period opened to the 5-yard line. Sanford ran it back to the 20-yard mark. Two line plays netted eight yards and again the Rupert punt was short, rolling out of bounds on the 40-yard mark. From this mark the Senators opened a stiff offensive that netted them their last score of the game. Prince and Patterson alternating gave a beautiful exhibition of line smashing carrying the ball to the 10-yard line where a 10-yard pass was downed on the 2-yard mark. Prince carried it over after Toone was stopped on his own 10-yard line. Sanford carried the ball away around end for 16 more and a succession of off-tackle smashes carried the ball to the 29-yard mark before the Gooding line stiffened and held. Toone punted 40 yards and Sanford ran it back 20 and again Rupert started for the goal working off-tackle smashes and end runs with the interference working smoothly. The drive halted on the Gooding 3-yard mark when Prince intercepted a pass at the opening of the last period of the game.

Gooding started from her own 3-yard mark, plunging through the Rupert line for 40 yards, when Prince fumbled as he hit the line and McCloy gathered the pigskin in and raced the 40 yards for the lone Rupert tally of the game. Toyer tossed a pass to Sanford for the extra point. The Senators apparently got mad for they took the Rupert kickoff on the 15-yard line and started down the field. Toone

made his own 10-yard line in this drive, carrying the ball eight times he gained 37 yards and tossed a pass for 10 more. Before he was Toone smashed the line as he did in this drive. The Gooding hopes for a score were blasted when a pass was grounded over the goal. Sanford got away from his 20-yard line for 18 yards and Toyer added 10 more but an intercepted pass stopped the rally and Toone booted to the 20-yard line. The first Rupert pass was intercepted and Toone raced 25 yards before he was downed. The final run spoke with Gooding inside the 10-yard line apparently headed for a score.

It was a real battle between two hard fighting teams, furnishing thrills for the crowd almost every minute of play. For Gooding, Prince and Patterson deserve much credit. Both men displayed fine line smashing ability. Toone got little opportunity except in his last drive. For Rupert, Toyer, Sanford, McCloy and M. Norby carried the glory. Sanford carried the Gooding punts back many yards and his open-field running was beautiful.

The lineup:

GOODING	RUPERT
R. Patterson	Huggins
Leeper	left end
Anderson	left tackle
Buckner	left guard
Saulsaker	right guard
R. Prince	right tackle
Clennom	quarterback
Oloichea	right end
Toone	McClay
O. Prince	left half
H. Pitterson	right half
	Sanford
	M. Norby
	fullback

Score by periods: Gooding 0 6 0 0-12; Rupert 0 0 0 7-7.

Summary: Yardage from scrimmage: Gooding 226, Rupert 185; first downs: Gooding 14, Rupert 9; passes: Gooding two complete out of five for 20 yards; Rupert, two complete out of 12 for 20 yards; penalties: Gooding 2 for 20 yards; Rupert 1 for 5 yards; punts: Gooding 9 for 321 yards, average 36 yards; Rupert 6 for 125 yards, average 27 yards; Referee, Caffey, U. A. C.; Umpire, Thompson, Idaho; headlinesman, Hard.

OO-NUT SERIES SEES YEAR'S FASTEST TILT

Wolverines and Skunks, Winners in Yesterday's Games, to Compete for First Place.

Twin Falls high school doughnut basket ball league fans saw the fastest game of the season yesterday afternoon when the Wolverines emerged victorious from a speedy and hard fought mix with the Mavericks. The score at the close of the game stood 23 to 18 in favor of the Wolverines. The Bees were defeated by the Skunks in the second game by the one-sided score of 38 to 9.

Unexpected strength was displayed by the Wolverines yesterday which promises a hard game with the Skunks for tonight. The opening contest today is expected to be the big game of the series. Until last night it was thought by fans that the Skunks would be easy victors, but after the showing made by the Wolverines yesterday doubt-clouds have appeared on the horizon.

Donald Bacon, Elmer Oivens and Jim Weaver of the Wolverines are going strong and will give plenty of trouble to the Skunks' guards as all three are accurate shooters. Both the Skunks and Wolverines are 1000 per cent aggressions having won all contests played.

Lineups and scoring for yesterday are:

First game: Wolverines 33; E. Oivens 9, and D. Bacon 11, forwards; J. Weaver 7, center; M. Pettum and B. Towan 6, guards, Mavericks 18; W. Brown 12 and J. McCauley 2, forwards; O. Meigs 2, center; A. Finlayson and B. Hedstrom 5, guards.

Second game: Skunks 39; E. McClean 9 and W. Morgan, forwards; A. Kelley 17, center; D. Lincoln 13 and W. Smith 3, guards. Bees 9; D. Turnipseed 1, and P. Stanley, forwards; H. Meigs 2, center; R. Brewer 6 and D. Wark, guards.

Maxim for Success
If you can't win make the one ahead break the record!

SLUMP STRIKES DEPOT SHIPMENTS ON TUESDAY

Another slump struck the shipping exports from the Oregon Short Line depot here Tuesday. Monday 44 cars went out. P. E. Haasch, station agent, said, while Tuesday the total dropped down to about 24 cars. There was a general stacking up on all lines.

LARGER GYMNASIUM DISCUSSED AT BUHL

Prospect for National Girls' Basketball Tournament Basis for Expansion Program.

BUHL, Nov. 15 (Special to The News).—Buhl citizens have become somewhat excited this week over the possibilities of holding the national tournament in girls' basketball in Buhl for 1928. A letter was received here last Saturday in which it was stated that the committee would meet the first of this week in Philadelphia to determine the place for the 1928 meet and that Buhl is among the cities being considered.

Should Buhl be awarded the 1928 national tournament the board of education will consider plans for enlarging the seating capacity of the Buhl gymnasium. At the meeting of the board last evening the possibilities of enlarging the seating capacity were considered and an architect will be asked to furnish plans and estimates for doing the work. If the gymnasium is enlarged the local fans who are interested in holding the tournament here will supply the funds for the same, a committee of Buhl business men assured members of the board of education yesterday.

The most feasible plan for enlarging the gymnasium, members of the board of education said, is to lengthen and widen it, then remove the balconies and have seats set in tiers back and elevated above the front rows on all sides of the playing court. By carrying out this plan 3000 or more could be seated in the Buhl gymnasium.

GIRLS' BASKET BALL TOURNAMENT IS PLANNED

Class Teams to Meet in Series Which Begins Saturday Morning; Finals Come Wednesday.

Plans for a double elimination girls' inter-class basket ball tournament have been completed at Twin Falls high school, according to a statement issued yesterday by Miss Edith Cooper, junior high school instructor who is coaching the teams.

Creation of greater interest in basket ball among the girls of the high school is the object behind the plans for the tournament. The series will also enable many more girls to participate in and secure the advantages of athletics than is possible through the medium of school teams alone.

Townpeople who are interested in the school and athletics for girls are invited to attend the contests, which begin next Saturday morning. The various class teams have not yet completed their organization but will do so within the next few days.

Next Saturday morning at 10 o'clock the Freshmen and Sophomore girls meet in the initial contest of the series. The Junior and Senior teams compete in the second game which will be held at 11 o'clock Saturday, Monday afternoon at 4 o'clock the freshmen meet the Juniors. The senior-sophomore game is called for the same hour on Tuesday. Finals to determine the school championship will occur at 4 o'clock Wednesday afternoon.

Regular practice for the Twin Falls high school girls' basket ball first-string squad begins next Monday. About 60 girls are now trying for places on the squad.

SUBSCRIBE FOR THE NEWS

GREBE RADIO
Tubes, Batteries, Eliminators
Phone for a Demonstration
THE FRED FOSS CO.

Overcoat Time Now

Just arrived, another shipment of Overcoats consisting of the latest models and fabrics, at Reasonable Prices. We are sure you will agree that they are exceptional values. They are made to give lasting satisfaction, pride of ownership; fullest return on your investment. A large assortment for you to select from. Models for men and young men. Priced—

\$29.50 \$34.50
\$39.50
\$45.00 \$49.50

SEE SHOW WINDOW

Try Sinclair's First
"IT PAYS"

Camel

One of life's great pleasures is smoking

Camels give you all of the enjoyment of choice tobaccos. Is enjoyment good for you? You just bet it is.

If all cigarettes were as good as Camel you wouldn't hear anything about special treatments to make cigarettes good for the throat. Nothing takes the place of choice tobaccos.

© 1927, R. J. Reardon Tobacco Company, Winston-Salem, N. C.

**QUALITY AND PACK
VITAL FACTORS IN
MARKETS OF COAST**

Idaho Trade Envoy Summarizes
Conclusions Formulated on
Visit to Trade Centers of
California and Oregon.

BOISE, Nov. 15—More attention to quality and attractiveness in packing are important factors in a program for increasing consumption of Idaho products in California, according to a summary of conditions in Pacific coast markets made by R. L. Spangler, representative of the state department of agriculture and the state chamber of commerce. His statement follows:

In summarizing facts concerning our market outlets on the Pacific coast markets, Los Angeles stands by far the greatest amount of Idaho products. At the present time it is a most logical outlet from an economic standpoint. This market consumed in 1926 278 cars of apples, 1800 carloads of potatoes, \$1,450,000 pounds of dressed poultry, 56,135 cases of eggs, 13,101,000 pounds of butter, 4,441,400 pounds of cheese and 97 cars of livestock from Idaho.

We should be able to maintain this market outlet for these surplus products and increase consumption of our products as the population increases in Los Angeles. Idaho shippers should not be satisfied, however, with the present consumption of Idaho products on this market. I am thoroughly convinced that consumption can be increased if Idaho shippers will give more attention to quality and attractiveness in packing when shipping. These points cannot be overemphasized as appearance is the most important factor when bids are made. As reported previously the trade men do not like the basket apple pack for Idaho apples, and much prefer the loose box pack. They prefer potatoes in clean, branded bags, and emphasize quality in particular. In future years, potato shippers would do well not to flood the market with immature stock at the beginning of the season. If the price is once established for poor quality, immature stock it takes considerable time after mature good quality potatoes have been offered to reestablish confidence in the trade, and thereby raise the price level. After a price is once established it attains never again to a higher level again throughout the season.

San Francisco Market

The geographical location of San Francisco makes it a less desirable market for Idaho products. Its proximity to a heavy producing section, the Sacramento valley and the Oregon coast, which Oregon and Washington have in a cheaper boat rate make it difficult for Idaho to look to this port for an outlet of a very large quantity of the more bulky products, such as apples and potatoes. Under present conditions Idaho dairy and poultry products and livestock can be handled more advantageously through this market. Hard red winter varieties of wheat from Idaho are in demand at San Francisco also. The shipping of high quality products to the Bay City markets should lead to increased consumption of Idaho products.

Attention is called to a statement made in the report for the week of October 22, in which it was stated that freight rates were higher from Idaho points to San Francisco than they are from Idaho points to Los Angeles. This is an error and I am glad to correct this statement by saying that rates to both points from Idaho are practically the same. Sacramento and adjacent territory has been and promises to be a good outlet for Idaho potatoes, they having come from 200 to 250 cars annually. Competition from Yakima, Klamath Falls and Nevada is getting more keen each year and Idaho shippers should take care to ship only the highest quality produce to this point. Sacramento offers an opportunity as an outlet for some Idaho apples, provided they are packed in boxes as the trade there demands.

Portland Market

Outside of grain and livestock, Portland at present does not handle much Idaho produce. However, Idaho ranks first of the other states in supplying livestock to this market, and is one of our best outlets for grain. Export trade develops and facilities for handling exports increase Idaho should be able to find a better outlet through this port for many of her products.

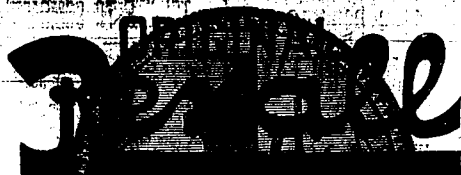
Speaking generally of Idaho's possibilities on the Pacific coast, for a market outlet for her produce, I would say that quality of the produce and attractiveness of the packs will do more to increase business there than any other thing. Our geographical location makes it that much more important to send out only the best and the best at home. Other states are quick to adopt federal grades, branded bags, No. 1 sacks, uniform containers, standard packs, etc. and they do not need to go through years of experience as we have done in order to place a high quality product on the market in competition with our own produce.

THIEVES STEAL BLANKETS DURING FAMILY'S ABSENCE

Thieves entered the home of E. W. Richards at 428 Third avenue south during the absence of the family Monday afternoon and stole two woolen blankets and a small sum of money from a pocket book, leaving the purse behind. It is believed that entrance was gained by means of a pick key as the doors which were locked were found open by the family upon their return.

News Want Ads reach the people you wish to attract.

**Thursday
Friday
Saturday**



**Thursday
Friday
Saturday**

ONE CENT SALE

COPYRIGHT 1926 UNITED DRUG CO.

THIS IS ONE of the big annual Sales at your local Rexall Drug Store. It gives you almost double for your money. Here's how it works: You buy an article at the regular price, say 25 cents. You buy another article of the same kind for 1 cent. Two .25-cent articles for 26 cents. That's saving! This great Sale has been an established event for 15 years. Though followed as a model by many others it is the original One Cent Sale. It is made possible by the nationwide partnership of 10,000 Rexall Druggists and the United Drug Company, the world's largest producers of drug store commodities. Every piece of Sale merchandise is standard Rexall stock. No fictitious values. Every price genuine. Note the items shown here. They are only a few of the hundreds offered—all advertised and thoroughly known and approved in every part of the country.

Don't miss this Rexall One Cent Sale. Supply your home for the coming months. Make your money go practically twice as far as usual.

TOILET ARTICLES

- Lemon Cocoa Butter Lotion, reg. 50c 2 for 51¢
- Cream of Almonds Lotion, reg. 50c 2 for 51¢
- Rose Water and Glycerine, reg. 25c 2 for 26¢
- Rexall Cold Cream, reg. 25c; 2 for 26¢
- Jonteel Soap, reg. 25c 2 for 26¢
- Jonteel Face Powder, reg. 50c; 2 for 51¢
- Jonteel Cold Cream, reg. 50c; 2 for 51¢
- Jonteel Vanishing Cream, reg. 50c; 2 for 51¢
- Bouquet Ramee Face Powder, reg. \$1.00 2 for \$1.01
- Bouquet Ramee Talcum, reg. 50c; 2 for 51¢
- Bouquet Ramee Toilet Water, reg. \$1.50 2 for \$1.51
- Bouquet Ramee Soap, reg. 50c 2 for 51¢
- Bouquet Ramee Rouge, reg. 50c 2 for 51¢
- Juneve Talcum, reg. 50c 2 for 51¢
- Narcissus Talcum, reg. 25c 2 for 26¢
- Tiny Tot Baby Talcum, reg. 25c 2 for 26¢
- Juneve Cold Cream, reg. 75c 2 for 76¢
- Juneve Vanishing Cream, reg. 75c 2 for 76¢
- Toilet Water, ass'd odors, reg. \$1.00 2 for \$1.01
- Arbutus Vanishing Cream, reg. 50c 2 for 51¢
- Theatrical Cold Cream (1 lb.), reg. 75c 2 for 76¢
- Hair Fix, reg. 50c 2 for 51¢
- Petroleum Hair Rub, reg. 50c 2 for 51¢
- Antiseptic Tooth Powder, reg. 35c 2 for 36¢
- Hair Stimulator Tonic, reg. 75c 2 for 76¢
- Rexall Tooth Paste, reg. 25c 2 for 26¢
- Harmony Quinine-Hair-Tonic, reg. \$1.00 2 for \$1.01
- Olive Shampoo, reg. 50c 2 for 51¢
- Harmony Rolling Massage Cream, reg. 50c 2 for 51¢
- Rexall Shaving Lotion, reg. 60c 2 for 61¢
- Georgia Rose Body Powder, reg. \$1.00 2 for \$1.01
- Rexall Shaving Cream, Powder or Stick, reg. 35c 2 for 36¢
- Klenzo Dental Cream, large size, reg. 50c 2 for 51¢
- Klenzo Antiseptic Solution, large, reg. 50c 2 for 51¢
- Rexoline Soap, reg. 10c 2 for 11¢
- Jonteel Powder Puff, 4-in., reg. 25c 2 for 26¢
- Wash Rags, ass'd. colors, fancy border, 20c 2 for 21¢



REXALL REMEDIES

- Dyspepsia Tablets, reg. 50c 2 for 51¢
- Corn Solvent, reg. 25c 2 for 26¢
- Eczema Ointment, reg. 50c 2 for 51¢
- Cherry Bark Cough Syrup, reg. 50c 2 for 51¢
- Little Liver Pills (100's), reg. 25c 2 for 26¢
- One Minute Headache Powder, reg. 25c 2 for 26¢
- Milk of Magnesia, reg. 50c 2 for 51¢
- Penetrating Lihment, reg. 50c 2 for 51¢
- Syrup of Hypo Phosphites, reg. \$1.00 2 for \$1.01
- Tooth Ache Drops, reg. 25c 2 for 26¢
- Rubbing Oil, reg. 35c 2 for 36¢
- Mentholated White Pine and Tar with Cod Liver extract and Eucalyptus, reg. 25c 2 for 26¢
- Peptona Tonic, reg. \$1.00 2 for \$1.01
- Granular Effervescent Sodium Phosphate, reg. 50c; 2 for 51¢
- Zinc Oxide Ointment, reg. 25c 2 for 26¢
- Cascara Compound Hinkle Pill, reg. 100's 50c; 2 for 51¢
- Stenolax Wafers 25c 2 for 26¢

ine. Note the items shown here. They are only a few of the hundreds offered—all advertised and thoroughly known and approved in every part of the country.

Don't miss this Rexall One Cent Sale. Supply your home for the coming months. Make your money go practically twice as far as usual.

The United Drug Company developed this Sale as an advertising plan rather than spend large sums of money in other ways to convince you of the merits of these goods. They are spending it on this Sale by permitting the Rexall Stores to sell you a full-size package of high standard merchandise for 1 cent. It costs money to get new customers, but the sacrifice in profit is justified by knowledge that the goods will please you.

Fountain Special

Three flavored pint brick Vesta Ice Cream, made by Lincoln Produce Co., extra special for Thursday, Friday and Saturday.

EACH 25c
2 for 26c

RUBBER GOODS

- Maximum Hot Water Bottle, 2-quart size, one year guarantee, regular \$2.00 2 for \$2.01
- Maximum Fountain Syringe, 2-quart size, one year guarantee, reg. \$2.00 2 for \$2.01
- Household Rubber Apron, reg. \$1.00 2 for \$1.01
- Hard Rubber Pocket Comb, coarse and fine, in leather case, reg. 40c 2 for 41c
- Ivory Bobby Comb, amber combination, 60c 2 for 61c
- Household Rubber Gloves, reg. \$1.00 2 for \$1.01

- ## CANDY
- Mary Alice Chocolates, hand rolled creams, nut centers, hard cut nuggets and caramels, full pound, reg. \$1.00; 2 for \$1.01
 - Liggett's Candy Wafer Rolls, 55 pieces, reg. 5c; 2 for 6c
 - Liggett's Milk Chocolate Bar, 1/2 lb., reg. 30c; 2 for 36c

DRUGS AND CHEMICALS

- Puretest Rubbing Alcohol, 16 oz., reg. \$1.00 2 for \$1.01
- Puretest Aspirin Tablets (24's), reg. 35c 2 for 36¢
- Puretest Aspirin Tablets (100's), reg. \$1.00 2 for \$1.01
- Puretest Heavy Russian Mineral Oil, (16 oz.), reg. \$1.00; 2 for \$1.01
- Puretest Fluid Extract Cascara Aromatic, (2 oz.), reg. 25c; 2 for 26¢
- Puretest Spirits of Camphor, (1 oz.), reg. 25c; 2 for 26¢
- Puretest Tincture of Iodine, glass applicator, reg. 25c; 2 for 26¢
- Puretest Castor Oil, reg. 25c 2 for 26¢
- Puretest Norwegian Cod Liver Oil, reg. \$1.00; 2 for \$1.01
- Aromatic Spirits of Ammonia (1 oz.), reg. 25c; 2 for 26¢
- Senna Leaves, (1 oz.), reg. 10c 2 for 11¢
- Boric Acid Powder, (4 oz.), reg. 25c 2 for 26¢
- Powdered Borax, (4 oz.), reg. 15c 2 for 16¢
- Epsom Salts (8 oz.), reg. 15c 2 for 16¢
- Epsom Salts (16 oz.), reg. 25c 2 for 26¢
- Stearate of Zinc, automatic top, reg. 25c 2 for 26¢
- Puretest Hydrogen Peroxide (16 oz.), reg. 75c 2 for 76¢

MISCELLANEOUS

- Hair Brush, rubber cushion, latest style, guaranteed bristle with removable cushion, reg. \$2.00 2 for \$2.01
- Electric Curling Iron, reg. \$1.25 2 for \$1.26
- Electric Curling Iron, reg. \$1.50 2 for \$1.51
- Vanilla Extract, imitation, 2-oz. bottle, 20c 2 for 26¢
- Vanilla Extract, true vanilla, 2 oz. bottle, 50c; 2 for 51¢
- Lemon Extract, 2 oz. 50c 2 for 51¢
- Pure Virgin Olive Oil, \$1.25 2 for \$1.26
- Liggett's Grape Juice, 8 oz. 50c 2 for 51¢

SILVERWARE

- Tea Spoons, 1 for 30c 2 for 31c
- Medium Knife, 1 for 80c 2 for 81c
- Medium Fork, 1 for 60c 2 for 61c

STATIONERY

- Major, fine box stationery, reg. \$1.00 2 for \$1.01
- Guardsmen, extra fine stationery, interlined envelopes; 24 sheets, 24 envelopes, \$1.50 2 for \$1.51
- Arabesque, fancy stationery, choice of three colors; reg. \$1.00 2 for \$1.01
- Pierre, choice box stationery, reg. 75c 2 for 76¢
- Cascade, pound paper, linen finish; 50c 2 for 51¢
- Cascade, linen envelope to match, 50 in package, 40c; 2 for 41c
- Cascade Bond, pound paper 50c; 2 for 51¢
- Cascade Bond Envelope to match, 50 in package, 40c 2 for 41c
- Marsala, Pound Paper, large sheets, 85c lb. 2 for 86¢
- Envelope to match 60c 2 for 61¢
- Writing Tablets, lined or unlined, reg. 15c 2 for 16¢
- Wedgewood xxx Envelope, reg. 10c 2 for 11¢
- Elmhurst Envelope, linen, reg. 15c 2 for 16¢
- Rippled Envelope, large, gold decorated edge, reg. 25c; 2 for 26¢
- Lord Baltimore, brocade, 50c 2 for 51¢

CITY PHARMACY

"Save With Safety at Your Rexall Store"

125 Shoshone North

H. F. Fitzpatrick, Prop.

POWER COMPANY CUTS TWIN FALLS DIVISION INTO TWO DISTRICTS

Charles Neely Goes to Boise to Become Assistant to General Superintendent; J. D. Orr of Payette Comes Here.

Coincident with the division of the Idaho Power company's Twin Falls division into two divisions, one for the North Side and the other for the South Side region, promotion of Charles Neely, since 1921 manager at Twin Falls, to be assistant to general superintendent, at Boise, was announced yesterday. Mr. Neely came to Twin Falls from Pocatello to succeed Mr. King as manager for the company here. He expects to leave for Boise next Sunday, while Mrs. Neely and family will remain here perhaps until the end of the school year.

D. Orr, Payette manager, is to be manager of the Twin Falls division succeeding Mr. Neely.

Official announcement of the Idaho Power company reorganization in this territory was made here by W. R. Putnam of Boise, general manager, in the following statement:

Effective November 15, 1927, the following changes in the organization and officers of the Idaho Power company will take place. The present Twin Falls division will be divided into two divisions; one on the South Side with headquarters at Twin Falls, and the other on the North Side with headquarters at Jerome. The division on the South Side will take in all of the territory of the present Twin Falls division on the north side of Snake river. Charles Neely, the present Twin Falls division manager, is transferred to the general office as assistant to R. B. King on operating matters. J. D. Orr, the present Payette division manager, moves to Twin Falls as manager of the new South Side, Twin Falls division. Kinsey Robinson becomes Payette division manager. R. W. Carpenter, local manager at Nampa, moves to Jerome as manager of the new division on the North Side. C. A. Miller, local manager at Buhl, is transferred to the power department. Ralph Reynolds, at present local manager at Wendell, becomes local manager at Buhl. F. H. Folland of the Twin Falls office becomes local manager at Wendell. R. W. Mangum, local manager at Glenns Ferry, moves to Nampa as local manager. A. I. Sawyer becomes division engineer for the Payette division.

LEGION STARTS CAMPAIGN FOR ADDITIONAL MEMBERS

Twin Falls American Legion post launched a drive for 200 members at its regular noon luncheon at the Perrine hotel yesterday. The list of prospects eligible for membership was apportioned to members present at the gathering by Harry Bennett, chairman of the membership committee. Reports on the success of the membership solicitors will be made later this week.

Newspapers reach the people you wish to attract.

Willie Willis

BY ROBERT QUILLLEN



"Twice this week I kept skinned from being a worst spell in our grade. Once I told him how to spell 'either' and once I was the worst." (Copyright, 1927, Publishers Syndicate)

EMPLOYMENT OFFICE FINDS JOBS FOR 1555

Twin Falls Chamber of Commerce to Continue Service; Government Office Closes.

United States employment service office conducted here during the past four months by C. W. Hart in cooperation with Twin Falls Chamber of Commerce, has during this period found employment for 1555 persons and is credited with handling the labor supply in such manner that the largest crops in the history of this region have been harvested without delay and loss caused by labor shortage.

The office which was established here last July 15 is to be maintained for four months as closed for the current year last evening. The chamber of commerce has maintained an employment service continuously since 1923. It was instrumental in obtaining the government office here this year, and will endeavor to have the government office reopened next season. In the meantime the chamber will continue operation of its employment service. Records made public last evening by Secretary N. S. Wright of the chamber of commerce showed that employment had been obtained for 2059 persons since the first of the year by the chamber and the government office cooperating.

MOMENTOUS ISSUE IS SETTLED BY DEBATERS

A dozen members of the New Forum, a literary and debating high school association organized for practice, met last evening at the high school for a big feed and comic debate. The question for debate was "Resolved: That chin whiskers are more of a handicap than bow legs." Howard Patrick, Howard Reynolds and Dick Dowell argued eloquently for the affirmative but were floored by the cold logic of Ed Cobert, Paul Petzoldt and Ralph Webb, who won the decision.

FUNERALS

LORD—Funeral services for Anna Margaret Lord, 72, will be held at the White chapel this afternoon at 3 o'clock. Rev. A. C. Pearson of the Presbyterian church officiating.

COUNTY WILL SELL 1200 PARCELS OF LAND FOR TAXES

Date Sets for Delinquency Sale With County Auditor as Auctioneer; All Parts of District to Be Represented.

Twelve hundred pieces of real estate will be sold December 19 at the court house for delinquent taxes. The county auditor, H. C. Parsons, will conduct the sale. Mr. Parsons is now in California attending the golden wedding of his parents, but will be back about two weeks. It is stated, and will be ready to take charge.

The property is located in all parts of the county. The total amount will not be known for about two weeks, it is stated at the office of the auditor, as totaling the figures started only yesterday.

Small Farms Cash. All sums of \$300 and under will be cash. Over that amount, after payment of \$300 has been paid the rest may be made in five payments, with 8 per cent interest. The \$300 payment, however, must be made in cash on every purchase that totals that amount. A buyer cannot be required to pay for a good deal more than the amount listed against it, while heavy losses were taken by the county on blocks north of the railroad track in Burley and other undesirable locations. The commissioners refused to accept very heavy losses on fairly desirable locations, hence many parcels were not disposed of. City lots in Burley sold from \$10 up to \$1000. Dry land quarter sections averaged \$300 to \$400 and one sold for \$500. The grazing quarters averaged \$150.

DEATHS

HUNT—William Hunt, 78, died at noon yesterday at the county general hospital. Hunt had been a county charge for some time and had been employed about the hospital. He had as his particular duty the upkeep of the lawns. It is reported that he has relatives in the east, but their names and addresses are not known here. The body lies at the Grossman funeral parlors.

Classified

HERE AGAIN—VELVET TWO-TONED and fluff suits, utilizing your old carpets, rugs and clothing. Samples shown at your home, town or country. Friday last day here. Phone 659-J.

VETERANS TO PAY LAST TRIBUTE TO COMRADE

Paul Max Gott, Summoned at Salmon City, to Be Buried at Home With Military Honors.

Comrades in arms of Twin Falls Post of the American Legion will conduct funeral services with military honors here next Thursday for Paul Max Gott, son of Mr. and Mrs. Frank Gott of Twin Falls, who died last Saturday at Salmon City, Idaho, from effects of an accidental injury occasioned by a heart attack. Preparations for the military burial were begun here yesterday on receipt of word from the American Legion post at Salmon City, where Mr. Gott had lived for some time.

Mr. Gott was a veteran of 18 months service in Siberia during the world war as a member of the Twelfth Infantry, and entered overseas service from Portland, Maine, in France. On his return he married Miss Marvel Kelly of Burley. Besides his parents and widow he is survived by two brothers, Glenn Gott of Twin Falls and Roy Gott of Burley, and his sister, Mrs. L. J. Tenbrunck of Twin Falls. He was born January 28, 1886, at Lowell, Michigan, and came to Twin Falls with his parents in 1909.

BOWS TO JUDGMENT AFTER LONG FIGHT

W. R. George, Convicted of Interfering With Ditch, Goes to Jail for 10 Days.

William R. George, Twin Falls district farmer, last evening began serving in Twin Falls county jail a term of 10 days to which he was sentenced about two years ago on conviction of illegal interference with irrigation water. He also paid \$200 fine that was imposed in the sentence.

George appealed from the judgment to the state supreme court which affirmed the lower court, and then appealed to the United States supreme court for review of the case. Under ruling finally issued by the state supreme court, an order for carrying the sentence into effect was signed by Judge Hugh A. Baker of Rupert in district court at Jerome yesterday.

THE RADIO SEASON is upon us—and how many of you have installed that new set or had your old one fixed? Let us demonstrate a KOLSTER for you—the set you've heard so much about. Very Easy Payments. Our testing laboratory at your service. Electric Service Station. Open Evenings. Radios Repaired. Willard "A" and "B" Eliminators.

SCHOOL CENSUS AND ENROLLMENT TO DATE SHOW GOOD INCREASE

Total of 3253 Are Now Attending Various Branches of System in District; Minors Over Six Number 3963.

Twin Falls school census for all between the ages of six and 21 years, just completed, and the school enrollment in the whole system with Washington second; junior high third; senior high fourth, and Lincoln fifth. In attendance senior high ranked first; Washington, second; junior high, third; Bickel, fourth and Lincoln fifth.

Total by Schools. The enrollment this year in the several schools shows 739 pupils in Lincoln; 605 in Bickel; 523 in Washington; 620 students in junior high, and 766 in high school. More complete figures were furnished in the comparative statement of enrollment for the first six weeks period ending October 21, 1927, showing all the details of that period of the first semester. At that time the enrollment for all schools was 3139 against 2839 for the same period in 1926. Of these 573 were enrolled in Bickel; 702 in Lincoln; 497 in Washington; 608 in junior high and 759 in senior high. The increase from October 11 to November 14 has been 312.

Percentage by Schools. The percentage of attendance for the first period of the semester was Bickel, 95; Lincoln, 81.8; Washington, 98.5; junior high, 98.2; senior high, 97.0; whole system 95. In the elementary grades there were 1772 enrollments for the period. The total attendance days were 49,449.5; the average daily attendance was 1048.3; there were 206 cases of tardiness, and 1197.5 total days absence, with total days unenrolled of 2653 due to those who enrolled after school had started.

In the elementary schools Washington

USED CAR 1926 Dodge Special Sedan; good tires, fine condition \$675.00 PARKS AUTO CO. Phone 525, 128 2nd Ave. N.

ranked first in comparative attendance, Bickel second and Lincoln third. Bickel Pupils Fanzatal. In punctuality Bickel ranked first; Washington second, and Lincoln third. Bickel also ranked first in punctuality in the whole system with Washington second; junior high third; senior high fourth, and Lincoln fifth. In attendance senior high ranked first; Washington, second; junior high, third; Bickel, fourth and Lincoln fifth.

LOCAL YOUTH-FACES TRIAL FOR ALLEGED KIDNAPING

Accused of attempting to kidnap a minor girl, Bernard Miller, 20, son of Mrs. Sula Melton, 176 Jackson street, was taken to Jerome yesterday for trial. The complaint charges an attempt to abduct a minor girl recently from the vicinity of the Russell Lane school house.

CANAL COMPANY STARTS SURVEY OF WATERSHED

Twin Falls Canal company will send out a surveying crew this morning to make a short survey of the topography of the Snake river watershed in connection with the bank storage at American Falls reservoir. This survey will follow up work carried on by the company throughout the summer.

News Want Ads reach the people you wish to attract.

W. E. FRIEBE Jeweler 209 Main E. Carrying a complete line of Christmas Jewelry.

Wright's for Galoshes

The Tempest Gaiter

Value! Value! Through our volume buying we can still make a profit and sell you this good looking gaiter in grey and tan, exactly as pictured, for only—

\$2.19

The Peary for Service

The plain black 4-buckle galosh will always be a very popular number. It's serviceable above all else and very warm. Our special price makes it easy on the purse. Only

\$2.19

The Streak

Here is the gaiter for the woman in a hurry. It's fastened in a streak. Tan net with service heel; unusually good value.—In black or tan for only

\$3.50

The Radcliffe Gaytee

This is Fashion's latest galosh—a fancy cuff in blending colors; with a silken finish; in tan or grey.—Has Zip fastener. Special—

\$4.50

Buccaneer Boot

The foot is new and ever so fashionable. Black with fancy tan trimmed top, exactly as pictured. Prepare now for slushy weather while sizes are complete. Specially priced at—

\$3.50

Seven-Inch Streak

This good looking galosh has the new fancy cuff, a streak fastener. Black only, with mottled grey cuff; special—

\$3.50

Children's Galoshes

Children's galoshes are just like mothers. Fancy cuffs, with Zip fasteners or plain black buckled numbers.

\$1.95, \$2.19, \$2.95, \$3.50

Radiola 17

Loudspeaker Model 100-A

This is a wonderful combination

RADIOLA 17 is a six-tube set operating directly from the e light socket. No batteries or eliminators to bother with.

Simplicity of operation is another feature of this set. Only one dial to operate.

Be fair to yourself and hear the Radiola 17 before you buy.

RADIOLA 17
Complete with 100-A speaker
\$192.50

Boise
Weiser
Nampa

Sambson

Twin Falls
Payetta
Pocatello

At Wright's Aluminum Pan SPECIAL

You Will Need These Pans for Thanksgiving

ALUMINUM PANS SPECIAL

Starting today we will offer 500 aluminum three-quart kettles at less than wholesale prices. Made of firm heavy, durable aluminum ware that is guaranteed to wear. These kettles have flat bottoms which makes them especially suitable for use on electric ranges—

40c each or

2 for 75c

TWIN FALLS, IDAHO, WEDNESDAY MORNING, NOVEMBER 16, 1927.

NEWS OF THE DAY AS CAUGHT BY THE CAMERA



SAVES HORSES—Here's one of the 200 dobbins that were rescued at Springfield, Mass., fair grounds when imprisoned in stables by flood waters. (International Illustrated News)

QUEEN HELEN—An informal and wholly charming picture of the justly popular sovereign of the tennis courts, Helen Wills, pictured back home in Berkeley, Cal. (International Newsreel)



REIGNING BEAUTIES OF CHINATOWN—Ella Dong, (third from left) holds sway as queen at the "Feast of the Magnificent Lion" in oriental section of San Francisco. She is here pictured with runners-up in beauty contest. (International Illustrated News)

"THE SPIRIT OF VICTORY"—Both Merrill, actress, takes chief role in stirring tableau staged at Governor's Island, N. Y., to stimulate interest in army recruiting service, as this unusual photo depicts. (International Illustrated News)



STORM LASHES WATERS—Breaking waves dash high against rocks of Brighton Beach, N. Y., and subject harbor craft to merciless pounding during furious storm. (International Newsreel)



HORSE SHOW OPENS—Eclipsing last year's event in brilliance and attendance, society turns out in record numbers for annual showing at Madison Square Garden, N. Y. (International Illustrated News)

"WE" IN BRONZE—St. Louis school children's pennies purchased this bust of Col. Lindbergh, now on view at All-Illinois Society of Fine Arts exhibition at Chicago. (International Illustrated News)



LABOR JOINS RANKS—William Green, president of American Federation of Labor, enrolls in Red Cross at Los Angeles and promises hearty support of national roll call. (International Illustrated News)



THEY CAN'T BEAT HIM!—Walter Hagen writes new page in golf history by winning fourth straight professional title at Dallas, Tex.; Walter is shown putting in final match against Joe Turnesa. (International Illustrated News)

KIWANIS OF FILER HEAR INSURANCE MAN

Speaker Outlines Rapid Growth and Extent of Business; Boys Quartet Sings.

FILER, Nov. 15.—The Filer Kiwanis club enjoyed 100 per cent membership attendance at its Tuesday noon luncheon.

Entertainment was furnished by the Filer rural high school male quartet, consisting of LeRoy Grant, Grant Allison, Charles Sieber and Wilmer Small, under the direction of Miss Ellen Ostrot. The "Gypsy Train" and "Down in Mobile" were creditably sung by the boys.

R. H. Mueser of Twin Falls spoke on the subject of life insurance, giving interesting facts and figures on its progress. He called attention to the fact that life insurance represents more money than all the banks of the country and stated that the total of insurance in existence now amounts to over eighty-two and a half billions of dollars.

Guests included H. C. Schuppel of Boise, general agent of the Oregon Life Insurance company, and William Diefenthaler of Decatur, Illinois.

Mr. and Mrs. Ronald Graves entertained at dinner Friday evening for Mr. and Mrs. J. E. Bess, Mrs. Bertha McCleary and Reese Olick.

Mrs. J. A. Dement entertained at dinner Friday evening on her husband's birthday anniversary. Guests were Mr. and Mrs. O. J. Childs and son Winston.

Mr. and Mrs. Charles Reichert are having extensive improvements made to their home southwest of Filer.

The Order of Eastern Star held a special meeting Friday afternoon in Masonic hall. Mrs. Percy Jones, grand worthy matron, was a guest. Following the regular meeting luncheon was served by members of the Past matrons club. A gift was presented for the O. E. S. by Mrs. J. H. Shinn to Mrs. Jones.

Myrtle Peterson, daughter of Mr. and Mrs. F. L. Peterson, who has been seriously ill with meningitis which followed an attack of influenza, died Monday morning at the home.

Earl Murray, who has been confined to his room for several days, is much better and is able to be out again.

Misses Alice Turner and Ellen Ostrot were week end guests of Mr. and Mrs. W. D. Childs.

W. A. Shear and J. A. Dement left Tuesday morning by auto, for Portland, Seattle and other coast points. They expect to be away about two weeks.

The Filer Woman's club members are busy selling tickets to the woman's club literary benefit dance to be given at Roybrook roof garden Friday evening, November 18.

The second number of the Lyceum course, The American Glee club, gave a varied and pleasing entertainment Monday evening at the Filer rural high school auditorium.

Madame T. E. Moore, P. A. Dement, Ethel Coates and E. S. Childs attended a Girl Reserve luncheon Tuesday at Twin Falls at the Presbyterian church.

The card party which was to have been given by the Catholic Women's league on November 18 has been postponed to Tuesday, November 22. This is a benefit card party and will be given at the Frank Keenan home. Everyone is welcome.

C. W. Case is at Mountain Home on business.

Mrs. E. A. Bess gave a dinner party Tuesday noon honoring her daughter Patricia on her fifth birthday anniversary. Guests were Harry Bess and children, Annamargaret, Lucile Isaac, Mary and Kathryn Bess.

COLLEGE ORCHESTRA TO GIVE EVENING'S CONCERT

GOODING, Nov. 15.—The Gooding college orchestra, under the direction of B. McGoole, popular Gooding band leader and county treasurer, besides making itself heard and felt in church, school, club and lodge circles will give a full evening concert, Friday evening, December 2.

The orchestra meets for regular practice every Tuesday and Thursday afternoon at 4:30 in order not to conflict with the regular college classes and Prof. Gooding is planning for two more concerts to be given March 23 and May 7, respectively.

Those who will take part in the concert will include Elmer Dale, Violin; Oregon, and Dorothy Delch, Burley, piano; Dean Bailey, Ashton, Dylbe Clemens, Gooding, Gladys Stearnman, Burley, Marcia Bundy, Bliss, and Ethel Strong, Oden, Utah, violins; Grace Dale, Vale, Oregon, and Burdette Stearnman, Burley, violas; Alice Borden, Shoshone, Robert Tapper, Richfield, Clarence Lewis and Ferril Cross, Gooding, clarinet; Howard Brunson, Kimberly, and Claude Nedrow, Astoria, cornets; H. C. Wilmorth, Kampa, trombone; Louise Kuna, Wayne Stokes and William Stokes, King Hill, saxophones.

PASTOR KILLED ACCIDENTALLY
CHICAGO, Nov. 15 (AP)—The Rev. W. Hawley, 65, pastor of the Unity Unitarian church, was killed here today when he stepped from a street car in front of an automobile truck.

Rev. Hawley once held the office of secretary of the western Unitarian conference, which had supervision of churches in fourteen states.

DRIVE WORKERS MEET AT NOON LUNCHEON
Solicitors From Five Towns Discuss Plans for Girl Reserve Financial Campaign.

spirit of democracy among the girls of the high school. Mrs. Barnhardt stated.

Rev. C. C. Curtis of the Christian church stated that the girl reserves is one of the most valuable of community organizations because it is an organization which meets the needs of the young people.

Instructions Solicitors
Instructions to campaign solicitors were given by Miss Ruth Deemer of the finance service bureau of the Y. W. C. A. national board. Following the luncheon program solicitation began in the various communities of the district.

Team workers for this city are Mrs. C. W. Witham, Mrs. F. C. Dawson, Mrs. Tom Evans, Mrs. C. L. DeLong, Mrs. E. Hollingsworth, Mrs. June Kirkman, Mrs. Thomas Rowberry, Mrs. F. F. McEhee, Mrs. B. A. Heitler, Mrs. Donald McLean, Mrs. W. H. Edwards, Mrs. W. T. Leslie, Mrs. Katherine Proctor, Mrs. B. N. Rendani, Mrs. John Harvey and Mrs. R. W. Hooper.

News Want Ads reach the people you wish to attract.

THE WINGED BULL A GOD OF THE ASSYRIANS
This figure symbolizing swiftness, strength and intelligence guarded the entrance to the king's palace. In these sculptured examples of Assyrian art we see the best specimens of art before the time of the Greeks.

There is harmony and dignity in the arrangements of our service. There is definite evidence of our experience and true respect.

WHITE MORTUARY.
FUNERAL DIRECTORS
Ella M. White, Mgr.
Phone 1400 221 Shoshone South

CHICAGO KILLED ACCIDENTALLY
CHICAGO, Nov. 15 (AP)—The Rev. W. Hawley, 65, pastor of the Unity Unitarian church, was killed here today when he stepped from a street car in front of an automobile truck.


Rev. Hawley once held the office of secretary of the western Unitarian conference, which had supervision of churches in fourteen states.

Values of the girl reserves to the high school were discussed by Mrs. Frank Barnhardt, dean of girls. The girl reserves' work is in reality a course in ethics and development, leadership, initiative, responsibility and a

Values of the girl reserves to the high school were discussed by Mrs. Frank Barnhardt, dean of girls. The girl reserves' work is in reality a course in ethics and development, leadership, initiative, responsibility and a

Values of the girl reserves to the high school were discussed by Mrs. Frank Barnhardt, dean of girls. The girl reserves' work is in reality a course in ethics and development, leadership, initiative, responsibility and a

GRAPHIC OUTLINES OF HISTORY



THE WINGED BULL A GOD OF THE ASSYRIANS
This figure symbolizing swiftness, strength and intelligence guarded the entrance to the king's palace. In these sculptured examples of Assyrian art we see the best specimens of art before the time of the Greeks.

There is harmony and dignity in the arrangements of our service. There is definite evidence of our experience and true respect.

WHITE MORTUARY.
FUNERAL DIRECTORS
Ella M. White, Mgr.
Phone 1400 221 Shoshone South

Visit Our Homeware Basement

\$1.00 earthenware Tea Pots ... 59¢	\$2.00 De Luxe Food Chopper; special \$1.25
\$5.00 Electric Iron special— \$2.98	86c Coal Hod, special ... 59¢
\$1.50 Electric Hair Curler, special ... 98¢	\$2.00 Close Cutting Hair Clipper ... 95¢
\$3.50 Electric Toaster, Special \$1.99	\$1.50 Pint Thermos Bottle, special 75¢
\$10.00 Guaranteed Waffle Iron, special ... \$5.98	\$2.50 Lunch Kit with 1-pint Vacuum Bottle, special \$1.15
\$23.50 Last Aluminum Pressure Cooker \$17.95	Nice white Bread Box, special ... \$1.00
\$15.00 Bicycle complete with mud guards and stand, special ... \$37.50	\$2.75 guaranteed Wrist Watch, special ... \$3.29
No more chapped hands from mopping. Buy a Betty Bright Self Wringing Mop ... \$1.25	Beautiful Dolls Very pretty, special 98¢
Buy one of these heavy \$10.00 Winchester Wagons, special ... \$7.50	A beautiful 9-cup Percolator Set, with gold-lined creamer and sugar—and a nice heavy tray; \$24.75 value, special ... \$19.75
	\$11.50 Electric Hair Curlers; just like your barber uses, special— \$9.50

"Frances Starr is right, Luckies give the greatest pleasure"

Said Mary Nash to Basil Rambone before the performance of "The Command to Love," the successful comedy in which they are starring.



MADE OF THE CREAM OF THE TOBACCO CROP



Frances Starr, Popular Actress of the American Stage, writes:

"A voice in perfect condition is the every day requisite of an actress. Pleasure and no throat irritation are the essentials that I demand in a cigarette. I smoke Lucky Strikes for they alone give me what I seek."


Frances Starr

You, too, will find that LUCKY STRIKES give the greatest pleasure—Mild and Mellow, the finest cigarettes you ever smoked. Made of the choicest tobaccos, properly aged and blended with great skill, and there is an extra process—"IT'S TOASTED"—no harshness, not a bit of bite.

"It's toasted"

No Throat Irritation—No Cough.

A New Quick Dessert VIRGINIA HOLMES Famous Hostess



I'VE just discovered a new simple dessert recipe from Logansberry Jell-Well. It is a berry delicious and a healthful dessert that is suitable for any occasion.

Order Logansberry Jell-Well from your grocer today. Then try this new recipe.

Miss Holmes has just completed a set of 25 new and simple recipes for Logansberry Jell-Well. It is a book of 25 recipes for Logansberry Jell-Well. It is a book of 25 recipes for Logansberry Jell-Well. It is a book of 25 recipes for Logansberry Jell-Well.

Logansberry Dessert Co. 50-51K. Logansberry, Idaho.

Diamond Hardware Co. THE WINCHESTER STORE

Buy one of these heavy \$10.00 Winchester Wagons, special ...**\$7.50**

A beautiful 9-cup Percolator Set, with gold-lined creamer and sugar—and a nice heavy tray; \$24.75 value, special ...**\$19.75**

NEARLY FOUR TONS OF TURKEYS SHIPPED BY JEROME GROWERS

North Side Provides Thanksgiving Birds for Holiday Trade Through Cooperative Pool in Neighboring Community.

JEROME, Nov. 15—Jerome's first shipment of dressed turkeys was forwarded from Jerome last Tuesday. The birds were shipped through a pool organized by the Idaho Turkey Growers' association and were sold to the Caldwell-Pomona market. The load totaled 7855 pounds and included 678 birds. Many birds are left on the tract, around Jerome, to be taken up for the holiday trade.

Funeral services for Eda Mary Jones, infant daughter of Mr. and Mrs. W. R. Jones of east of Jerome, were held at the undertaking chapel on Friday afternoon.

An interesting meeting of the Pleasant Plains grange was held at the school on Friday evening. Mr. Prescott of the Gooding grange was guest. There was election of officers and a social time enjoyed.

Harold Schaffer left for his home in Nebraska the last of the week after spending the summer with relatives in Jerome.

Mrs. Walter Jennings spent several days in Twin Falls the last of the week.

Mr. and Mrs. George A. Gillespie have returned from trip to Albany, Missouri.

W. McClanahan left the first of the week for Oklahoma with a load of apples purchased from the Mountain View ranch.

Mrs. James Freider is a patient in the Twin Falls hospital and will be able to return home the last of the week.

Mr. and Mrs. Russell Stinnett are moving to Hazelton where they purchased a ranch.

School News Completion

The new rock school house at Falls City is nearing completion and a community house warming party is to be held there on Monday.

Considerable stealing of turkeys has been taking place on the North Side. On one occasion the thief was captured by a farmer and his dog but got away.

The infant son of Mr. and Mrs. Harold Orey who has been seriously ill at their home east of Jerome is reported to be recovering satisfactorily.

Charles Anderson has as her house guest her sister from Portland, Oregon.

Leige Graham of Kelowna visited the first of the week for Butlers Valley, California, where they will make their home.

The special district meetings being held at the Nazareth church are being well attended each evening.

Country Home Burns

The country home of Mr. and Mrs. Will Walker was totally destroyed by fire on Friday night. Mr. Walker found the ashes as he returned from Twin Falls where Mrs. Walker had taken the train for a visit in California. There was no insurance.

Mr. and Mrs. Frank Spencer are the parents of a daughter born on November 7 at their home north of Jerome.

Mr. and Mrs. Sam Hansen are the parents of a daughter born at their home southeast of Jerome on November 14.

Mr. and Mrs. Ted Emerick of Twin Falls called on Jerome friends Sunday.

Jerome chapter Order of the Eastern Star observed Armistice day with an interesting program at the lodge room on Tuesday evening. Members of that order and of the Masonic order were guests at an impressive official light lunch was served at a late hour.

Dr. and Mrs. Milo F. Sheldon of Twin Falls, formerly of Jerome, have returned to Jerome to make their home and Dr. Sheldon will establish his office rooms on North Main.

L. E. Phillips and Mrs. Brough left Wednesday for Long View, Washington, where they will visit friends before going to California, to spend the winter.

The Tuesday luncheon meeting of Jerome Rotary club was devoted to an Armistice day program. Judge Hugh A. Baker of Rupert was a guest. Popular war songs were sung and the American Legion were present.

The Minor and Stinnett families who have made their home east of Jerome, left on Monday for their former home in Kansas where they will remain.

Dr. E. O. Phillips returned home the first of the week from several weeks spent in Chicago and Detroit. He was accompanied by a brother, W. P. Phillips of Chicago, who will make a visit in Jerome.

Since the recent rains the farmers are busy plowing and preparing their fields for a new crop.

The Jerome volunteer fire department is planning to give a benefit annual ball at the Victory theatre on Thanksgiving night.

The Catholic women of Jerome gave a silver tea at the new parish house on Saturday afternoon. A large

SCHOLARSHIP BRINGS PRIVILEGE AT HANSEN

High School Student Body Launches "C or Better" Club for Classwork Encouragement

HANSEN, Nov. 15—The home of Ralph Bean was the scene of a pleasant event—Sunday night when a surprise party was given for Mr. and Mrs. Harry Bean, who were married recently. Cards and dancing were enjoyed, followed later by a delicious luncheon. The bride was formerly Miss Genevieve Foster of Kimberly. They will make their home in Hansen for the present, having no definite plans for the immediate future. Forty guests were entertained.

Breaks Arm on Playground

Little Arlene Walt, student at the Hansen school, had the misfortune, while playing on the grounds yesterday, to trip and fall in such a manner as to break her left arm at the elbow. The arm was given at once and Superintendent D. A. Hiles took her to Kimberly to a doctor, who set the arm. She was later taken home and according to late reports, is getting along nicely.

Hansen high school students, during assembly session yesterday, voted to have a "C or Better" club. This means that anyone who attains the grades rated as "C or Better" in school work, during any one week is accorded the privilege of reading newspapers, magazines or stories during school hours, or other liberties as the faculty may permit, for a week or until the grade falls below C again. The student body was heartily in favor of the club and anxious to try it out.

Miss Showell, teacher at the grade school, is on the sick list, and her place is being filled by Miss Pennington, who is substitute teacher this

attendance was present and many from out of town. Armistice day was very quiet in Jerome. The stores were closed and from the looks of things many went elsewhere for entertainment. Mr. and Mrs. R. E. Bobier visited Sunday with relatives in Jerome.

BUHL INVITES BIDS FOR STREET GRAVEL

Action in Special Session Takes Improvement of Thoroughfares.

BUHL, Nov. 15 (Special to The News)—At a special meeting of the mayor and city council last evening a resolution was passed calling for sealed bids on the cost of delivering 2000 yards of gravel on Eleventh and Twelfth avenues in Buhl and on their connecting cross streets. The gravel is to be of the quality used by the Buhl highway district on roads tributary to Buhl, and the delivery should be completed by next December 15.

A number of gravel pits near Buhl contain a good grade of gravel, and there are a number of persons who make the delivery of same their principal occupation. The problem that most of them will confront will be getting the gravel hauled within the specified time. Frank Cluster, west of Buhl, has the largest outfit, having two trucks with five yards capacity each. He has been hauling gravel for the highway district this summer. The other source for getting gravel is to ship it in by railroad.

Mr. H. LaCourse has gone to California by motor with her son for a visit.

Cal Owens left Saturday for Pendleton for a few days visit and business trip.

Oscar Asbury has gone to Kansas City on an extended visit with friends and relatives.

Dr. Cornell of Portland, who has been visiting with Mr. and Mrs. Guy L. Cowan, returned to his home Saturday.

Mrs. George Truitt was in Salt Lake over the week end for a visit with her daughter Coralline who is attending the University of Utah.

R. O. Grimmer, traveling freight agent for the Missouri Pacific railroad, was here Monday visiting the shippers.

New Brunswick Records every Thursday at Umbaugh's—Avis.

ARMISTICE DAY PROGRAM FOR ROCK CREEK CLUB

Lesson No. 6 Question: Why is emulsified cod-liver oil so highly recommended as food for nursing mothers?

ROCK CREEK, Nov. 15—Mrs. Henry Hansen was hostess to the club Wednesday with several members present. Roll call was answered by quotations pertaining to Armistice day. An interesting game was provided with pictures cut from magazines and contestants were invited to tell what they advertised. Mrs. Geo. Crockett presided the first prize and Mrs. Edgar Owen the consolation prize. The club will meet with Mrs. Dan Iverson next Wednesday, November 16, at the next regular meeting will be too close to Thanksgiving. Roll call will be answered with Thanksgiving quotations. The Parent Teacher association met at the school house Friday night with a short business meeting. Roll call was answered by telling why we are glad that we are American citizens. Miss Loretta Donrose played a piano number.

Mack Gray went to Soldier Creek Wednesday to help for a few days with the cattle.

WHAT PROFIT?

What profit a man who gains the height of success, if in the end he loses his most precious possession—his eyes. There is no man so busy but what he can well afford to give an hour of his time to the care of his eyes. Phone 219-J for an appointment at your convenience.

Parrott Optical Company

Twin Falls
Permanently Located in Twin Falls 17 years.

P P

P P

P P

P P

P P

P P

P P

P P

P P

P P

P P

P P

P P

P P

P P

P P

P P

P P

P P

P P

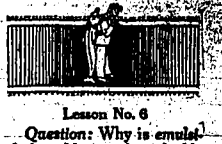
P P

P P

P P

P P

P P



Lesson No. 6
Question: Why is emulsified cod-liver oil so highly recommended as food for nursing mothers?
Answer: Because it benefits the nutritional condition not only of the mother but of baby as well.
Mothers should keep vitamin-nourished with
SCOTT'S EMULSION

What they say about the Calendar Bank

A Prominent Executive—The Saving habit is a mighty important rung in the ladder of success, and the Calendar Bank is one of the best means I know of to acquire that habit. I keep one on my desk and recommend it to my employes.

A Stenographer—It seemed that I never could save—but now my Calendar Bank reminds me every morning how easy it is; I'm financing my next year's vacation with my "dime a day."

A Bond Salesman—The Calendar Bank on my desk is a constant challenge to save—I feel ashamed if the date falls behind! And the \$3.50 a month that's required to keep the Calendar up-to-date is just the start. The "Conscience Fund" gets lots of my spare change—and I don't seem to miss it at all.

A Street Railway Conductor—I keep my Calendar Bank in my locker and, believe me, it's taught me to save money. Never could save before—but with yesterday's date staring me in the face every morning it just seems to dare me to start out on my run without putting in that dime!

A Housewife—Changing the date on the Calendar Bank is a regular morning ceremony in our house. The children take turns at putting in the dime; it's teaching them a big lesson pleasantly, and it's helping me to save that elusive 'change'.

Twin Falls Bank & Trust Co.

Twin Falls, Idaho

A Telephone Call will bring one of our representatives. Phone No. 2

Caswell's Coffee

NATIONAL CREST

starts the day right!
SOLD EXCLUSIVELY BY US
Order by Telephone
Phone 603

1,500,000 cups were served at the PANAMA International Exposition

THE ORPHEUM THEATRE

LON CHANEY

MR. WU

A Sensational Drama of the Orient.

The Cast
Lon Chaney, Louise Dresser, Renée Adoree, Holmes Herbert, Ralph Forbes, Gertrude Olmsted, Mrs. Wong Wing, Claude King, Anna May Wong, Sonny Loy.

GERTRUDE OLMSTED in MR. WU
RENEE ADOREE in MR. WU

Also—Comedy—and Hodge Poage Novelty — Orpheum Orchestra

Louise Fazenda and Clyde Cook

WILLIAM DEMAREST — MYRNA LOY

The Funniest Team in the Movies in a Laundry Comedy of Clean Laughs

—LAST TIMES TODAY—
ADOLPHE MENJOU in "SERVICE FOR LADIES"
A Paramount Menjou Dressed-up Society Comedy

—ALSO—
"THE PERILS OF PETERSBORO"
A 2-Real Comedy and Tired Wheels—A Cartoon

USUAL PRICES
2:00 3:30 7:00 9:00

THE ORPHEUM THEATRE

TODAY
One Day Only
10c—25c and 30c

What a Difference!

When you let the Laundry do the Washing

GONE are the tell-tale signs of worry and drudgery—for the woman who lets us shoulder the burden of the family washing! Youthful complexion—sparkling eyes—hands that are graceful and velvet-smooth—all these are her's who sensibly avoids wash-day toil! We can add years to the span of your natural charm if you will let us relieve you of this aging weekly chore. Patronize us regularly—your mirror will soon detect an amazing change!

TROY LAUNDRY AND DRY CLEANING CO.

"wife saving station"

Phone 66 TWIN FALLS

Orpheum Theatre

ONE NIGHT ONLY
THURSDAY, NOVEMBER 17

Hillman's Ideal Stock Co.

Presenting a study in Oritmology

"Who's Guilty?"

It Will Keep You Guessing to the Finish

Lower Floor 50c Balcony 40c
Seats on Sale at Box Office. Curtain at 8:20.

DO YOU KNOW

That we will sell you a 100 Ampere hour GUARANTEED RADIO A BATTERY for \$11.00. Why Pay More?

The Idaho-Nevada Electric Company

Electrical and Radio Supplies
Phone 17 130 Shoshone West.

QUOTATIONS ON CORN AND WHEAT HIGHER

Cereals in Speculative Demand; Persistent Adverse Hauling Returns and Export Buying.

CHICAGO, Nov. 15 (AP)—Corn as well as wheat scored a sharp advance in price today with gains being better, however, for corn than for wheat. Corn was in active speculative demand, based on extreme scarcities of receipts, persistent adverse hauling returns and export buying. Wheat owed its strength largely to export sales totaling 1,000,000 bushels and a report of crop damage, advice from Argentina.

Closing quotations on corn were strong, 2 1/2c to 3 1/2c net higher, with wheat 1 1/2c to 1 3/4c up, oats showing 1/2c to 3/4c to 2 1/2c advance and provisions varying from 1/2c decline to a rise of 2 1/2c to 5c.

AGGRESSIVE CORN BUYERS

Aggressive buying of future deliveries of corn was especially stimulated as a result of dearth of speculative offerings and owing to the word that 70,000 bushels had been sold at the Gulf of Mexico to exporters at 3c over Chicago December 1, 6, 8, with more being inquired for. Meanwhile eastern cash demand for corn showed improvement and there was a forecast of rain or snow throughout the corn belt. Outwent up with corn.

Rust, frost and extreme hot weather were all reported as responsible for Argentine crop losses and it was noted that the rust damage advice came from a Chicago observer who has had enough experience with rust. Other authorities, however, indicated that Argentine conditions were generally favorable with the crop making good progress and rains occurring in the south where it is wanted.

Provisions rallied from downturns at the start. Cash interest rates were purchasers of nearby deliveries.

Table with columns: Wheat—Open, High, Low, Close. Rows for Dec, March, May, etc.

CASH GRAIN CHICAGO, Nov. 15 (AP)—Wheat—No. 2 hard \$1.29; No. 2 soft \$1.28; No. 2 yellow \$1.27.

PORTLAND GRAIN PORTLAND, Nov. 15 (AP)—Wheat—No. 2 hard white \$1.29; hard white Blue \$1.28; Federation, soft white, western white \$1.25; hard winter, northern spring \$1.21; western red \$1.20.

LOS ANGELES PRODUCE LOS ANGELES, Nov. 15 (AP)—Produce exchange receipts: Eggs—None. Butter—145,000 pounds. Cheese—2,000 pounds.

CHICAGO PRODUCE CHICAGO, Nov. 15 (AP)—Butter—Higher; receipts 537 tons; creamery extras 48c; standard 45c; extra firsts 46c to 48c; firsts 40c to 43c, seconds 36c to 38c.

SAN FRANCISCO PRODUCE SAN FRANCISCO, Nov. 15 (AP)—Net wholesale prices: Eggs—No. 3 special 46c; No. 1 extra 45c; No. 3 special medium 37c.

MARKETS AT A GLANCE

NEW YORK—Stocks—Irregular; sugar shares reflect international trade agreement. Bonds—Firm; treasury 4 1/2 and 3 1/2 at new highs.

CHICAGO—Wheat—Firm; unfavorable Argentine advice. Corn—Firm; eastern cash demand for corn showed improvement.

BOSTON WOOL BOSTON, Nov. 15 (AP)—Dealers' stocks of wool on September 30 amounted to \$1,000,000 pounds, greater than quarterly official reports issued today.

DENVER SHEEP DENVER, Nov. 15 (AP)—Sheep—Receipts around 300,000; fat lambs and sheep about steady; three loads and a half medium weight fat Colorado \$13; fat ewes \$5.50.

LIBERTY BONDS NEW YORK, Nov. 15 (AP)—Liberty bonds closed today: 3 1/2s \$101.21; First 4 1/2s \$102.13; Third 4 1/2s \$102.28.

TWIN FALLS MARKETS

These prices are obtained daily at 4 o'clock in the afternoon and are subject to change without notice. Prices of various grades of wheat, corn, etc., are given in cents per bushel.

PAID TO PRODUCERS The Twin Falls markets yesterday were as follows: Livestock—Hogs \$1.50; Light Heavy Hogs \$1.70.

PORTLAND GRAIN PORTLAND, Nov. 15 (AP)—Wheat—No. 2 hard white \$1.29; hard white Blue \$1.28; Federation, soft white, western white \$1.25.

LOS ANGELES PRODUCE LOS ANGELES, Nov. 15 (AP)—Produce exchange receipts: Eggs—None. Butter—145,000 pounds. Cheese—2,000 pounds.

STOCK PRICE MOVEMENTS LACKING IN UNIFORMITY

NEW YORK, Nov. 15 (AP)—Price movements in today's stock market again lacked uniformity, but the day's advance appeared to rest on the side of those writing for higher prices.

CHICAGO—Wheat—Firm; unfavorable Argentine advice. Corn—Firm; eastern cash demand for corn showed improvement.

BOSTON WOOL BOSTON, Nov. 15 (AP)—Dealers' stocks of wool on September 30 amounted to \$1,000,000 pounds, greater than quarterly official reports issued today.

DENVER SHEEP DENVER, Nov. 15 (AP)—Sheep—Receipts around 300,000; fat lambs and sheep about steady; three loads and a half medium weight fat Colorado \$13; fat ewes \$5.50.

LIBERTY BONDS

NEW YORK, Nov. 15 (AP)—Liberty bonds closed today: 3 1/2s \$101.21; First 4 1/2s \$102.13; Third 4 1/2s \$102.28.

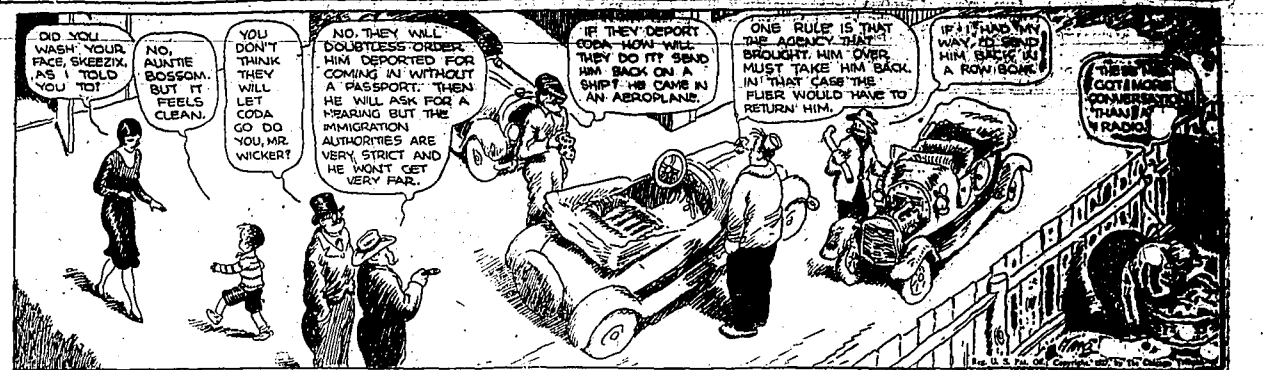
TWIN FALLS MARKETS

These prices are obtained daily at 4 o'clock in the afternoon and are subject to change without notice. Prices of various grades of wheat, corn, etc., are given in cents per bushel.

PAID TO PRODUCERS The Twin Falls markets yesterday were as follows: Livestock—Hogs \$1.50; Light Heavy Hogs \$1.70.

PORTLAND GRAIN PORTLAND, Nov. 15 (AP)—Wheat—No. 2 hard white \$1.29; hard white Blue \$1.28; Federation, soft white, western white \$1.25.

GASOLINE ALLEY—COMMITTEE IN SESSION



LOS ANGELES LIVESTOCK LOS ANGELES, Nov. 15 (AP)—Hogs—Receipts 1400; active; all offerings cleaned up at steady prices.

ODDEN LIVESTOCK ODDEN, Nov. 15 (AP)—Hogs—Receipts 410, including 113 market and 297 San Francisco market.

OMAHA LIVESTOCK OMAHA, Nov. 15 (AP)—Hogs—Receipts 4500; active; mostly steady to 10c higher.

PORTLAND LIVESTOCK PORTLAND, Nov. 15 (AP)—Cattle—Hogs and sheep—No early trading in any department.

SAN FRANCISCO LIVESTOCK SOUTH SAN FRANCISCO, Nov. 15 (AP)—Hogs—Receipts 160; steady to weak; four loads 160 to 175 pound.

WINTER FARES WEST For low-cost trips to the summerland west of the Sierra.

CONOCO Extra SERVICE The Bank of Personal Service. In the proper protection of the money entrusted to our care, we are conservative—and proud of it!

Schilling Paprika advertisement featuring a bowl of paprika and text: 'A Garniture for the Epicure... Schilling Paprika Coffee Tea & Baking Powder 19 Spices & 31 Extracts'.

OTHER KILLING CLASSES ACTIVE, STRONG STOCKERS AND FEEDERS FROM 10c TO 15c higher; bulk fed steers and yearlings \$12.25 to \$15; yearlings 1070 pounds \$17.25; grass heifers \$8 to \$9.25.

CHICAGO LIVESTOCK CHICAGO, Nov. 15 (AP)—Receipts 12,000; steer trade steady to 25c higher; fat cows and heifers steady to strong.

ODDEN LIVESTOCK ODDEN, Nov. 15 (AP)—Hogs—Receipts 410, including 113 market and 297 San Francisco market.

OMAHA LIVESTOCK OMAHA, Nov. 15 (AP)—Hogs—Receipts 4500; active; mostly steady to 10c higher.

PORTLAND LIVESTOCK PORTLAND, Nov. 15 (AP)—Cattle—Hogs and sheep—No early trading in any department.

SAN FRANCISCO LIVESTOCK SOUTH SAN FRANCISCO, Nov. 15 (AP)—Hogs—Receipts 160; steady to weak; four loads 160 to 175 pound.

WINTER FARES WEST For low-cost trips to the summerland west of the Sierra.

CONOCO Extra SERVICE advertisement: 'The Bank of Personal Service. In the proper protection of the money entrusted to our care, we are conservative—and proud of it! The Twin Falls National Bank Capital and Surplus \$167,000'.

OTHER KILLING CLASSES ACTIVE, STRONG STOCKERS AND FEEDERS FROM 10c TO 15c higher; bulk fed steers and yearlings \$12.25 to \$15; yearlings 1070 pounds \$17.25; grass heifers \$8 to \$9.25.

CHICAGO LIVESTOCK CHICAGO, Nov. 15 (AP)—Receipts 12,000; steer trade steady to 25c higher; fat cows and heifers steady to strong.

ODDEN LIVESTOCK ODDEN, Nov. 15 (AP)—Hogs—Receipts 410, including 113 market and 297 San Francisco market.

OMAHA LIVESTOCK OMAHA, Nov. 15 (AP)—Hogs—Receipts 4500; active; mostly steady to 10c higher.

PORTLAND LIVESTOCK PORTLAND, Nov. 15 (AP)—Cattle—Hogs and sheep—No early trading in any department.

SAN FRANCISCO LIVESTOCK SOUTH SAN FRANCISCO, Nov. 15 (AP)—Hogs—Receipts 160; steady to weak; four loads 160 to 175 pound.

WINTER FARES WEST For low-cost trips to the summerland west of the Sierra.

CONOCO Extra SERVICE advertisement: 'The Bank of Personal Service. In the proper protection of the money entrusted to our care, we are conservative—and proud of it! The Twin Falls National Bank Capital and Surplus \$167,000'.

RED CROSS MEMBERSHIP DRIVE BEGINS AT BUHL

Organization Complete for Enlisting Support for Better Work; New Chapter Launched

BUHL, Nov. 15 (Special to The News)—Organization was completed last evening at a meeting in the city library for the Red Cross membership drive which is being conducted in Buhl this week. Captains were elected for the town and the business section was divided into two districts. About 50 members have been enrolled in the local Red Cross chapter and it is planned to increase this to 200 before the drive is concluded. At a recent meeting of those interested, the Buhl chapter of American Red Cross was re-organized, and the charter will be issued shortly. Rev. C. E. Heiman, pastor of the Methodist church, is chairman and Mrs. B. Richards, city librarian, is the secretary. Rev. Mr. Miller, pastor of the Presbyterian church, is chairman of the membership drive. The by-laws of the Red Cross chapter were adopted, which permits the expenditure in the home town of 50 per cent of the money collected for membership drives. The money donated to the local Red Cross organization may be expended for local charity.

JUNIOR PLAY CAST NAMED

BUHL, Nov. 15 (Special to The News)—The Junior play cast of the high school has been selected by the class advisers, Miss Iva Oman and Harry W. Barry, and the play will be given early in December. "The Whole Town's Talking" is the name of the three act comedy that will be given. Members of the cast are Emory Wainwright, Glenn Gray, Inez Darrand, Don Gray and Margaret Griffin. There were 46 Juniors who tried out for parts which made it possible to select persons who have excellent speaking voices and acting ability, according to the advisers. The play is said to be one of the funniest ever presented by a Buhl high school cast.

Good News for - Pretty Skins

MELLO-GLO is a wonderful new shade—youth color. Perspiration hardly affects it and it will not leave the skin dry. It has a soft, lustrous finish. MELLO-GLO is made of purest ingredients. Processed by the best of experts. It is a marvelous beautifying quality. Sticks with a soft, lustrous finish. It does not clog the pores. You will surely love MELLO-GLO. Planer Drug Co. Adv.

ORDINANCE NO. 453

An Ordinance of the City of Twin Falls, Idaho, making and levying a special tax and assessment to pay the cost and expenses of Local Improvement District No. 56, consisting of certain portions of certain streets and tracts for which the said district was formed, to-wit, a portion of Fifth avenue east from Third street east to Elm street, and Fourth street east from Fifth street east to Elm street, and Fourth street east from the said district, said portion of the amount of the special tax and assessment upon and against each lot, parcel or tract of land within the said district, providing that the special tax and assessment so levied and assessed shall become a lien upon the property which is levied and assessed, and providing for the time and manner of payment and collection.

Whereas, the Mayor and Council of the City of Twin Falls, Idaho, has heretofore by ordinance duly passed and adopted created Local Improvement District No. 56, in and of the said City for the purpose of improving by grading and paving, and for the payment of the cost and expense of the said improvement and the said improvement is in connection therewith, with an assessment roll and for the said district was prepared, certified to the Council, and, after notice given as required by statute, no protests thereto having been made or filed, was by the Mayor and Council by order duly made and adopted, the same to be levied and assessed as follows:

Table with columns: Assessor's Name of Owner or Tenant, Description of Property, Lot, Block Addition, Area, and Amount. Lists various property owners like Anton Hendricks, Wm. Miller, F. C. Dawson, etc., and their respective property details and tax amounts.

Who order Christmas cards from Bell Ringers when you can make your selection from a complete stock already on hand and receive your what better than ever. Clos Book Store.

Table with columns: Name, Age, and Amount. Lists names such as Edwin A. Wilson, Allen McCreath, John T. Roberts, etc., with their ages and associated amounts.

Total. The special assessment of the several owners of the \$4,014.00 lots above set forth and as herein levied and assessed upon and against the several lots, pieces, parcels or tracts of lands above described, shall be known and designated as Special Assessments for Local Improvement District No. 56, and shall be and shall constitute in each instance a lien to the full amount thereof upon each of the several designated pieces of property, each lot, piece, parcel or tract of land being subject to the lien of the amount of the assessment above specified set upon it, such lien to attach and become such upon the making effect hereof.

THE GUMPS—ADDRESS ALL LETTERS TO MAIN OFFICE

Large advertisement for 'THE GUMPS' featuring three circular callouts. The first says 'I'LL HAVE MY BANKER ARRANGE TO BUY THAT BUILDING AND CONTENTS AT ONCE—MAYBE THE OWNER DOESN'T WANT TO SELL—BUT MONEY TALKS AND I HAVE A GRAND VOICES OF ONE BILLION VOICES'. The second says 'IT LOOKS AS STRONG AS GIBRALTAR—BY SIMPLY PUTTING HEAVY IRON BARS OVER EACH WINDOW IT WOULD BECOME AN IMPREGNABLE FORTRESS'. The third says 'IT SEEMS TO BE A GOOD STORAGE WAREHOUSE—AND SUPPOSE IT IS LOADED WITH ALL SORTS OF PROVISIONS WHICH SHALL HAVE TO BE MOVED BEFORE WE CAN TAKE POSSESSION'. Below the callouts is an illustration of a large industrial building with a person standing in front.

WANT ADS BARGAINS AND OPPORTUNITIES

A collection of small advertisements under various headings: 'ONE CENT PER WORD PER INSERTION', 'FOR SALE—REAL ESTATE', 'FOR SALE—MISCELLANEOUS', 'DIRECTORY PROFESSIONAL ATTORNEYS', 'BUSINESS MILL WORK & GLASS', 'WANTED—MISCELLANEOUS', 'LOST', 'FOR RENT—APARTMENTS', 'FOR RENT—ROOM IN MODERN HOME', 'FOR RENT—THREE ROOM FURNISHED APARTMENT', 'TRADE-40 ACRES ON HARI', 'FOR SALE—FARMS', 'MISCELLANEOUS', and 'FOR SALE—AUTOMOBILES'. Each ad contains specific details about the item or service being offered.

WANT ADS BARGAINS AND OPPORTUNITIES

Continuation of the 'WANT ADS BARGAINS AND OPPORTUNITIES' section, featuring more advertisements including 'FOR SALE—ROOM HOUSE', 'FOR SALE—MISCELLANEOUS', 'FOR SALE—ONE OF THE BEST FARMS', 'WANTED—MISCELLANEOUS', 'FOR SALE—ROOM IN MODERN HOME', 'FOR RENT—THREE ROOM FURNISHED APARTMENT', 'TRADE-40 ACRES ON HARI', 'FOR SALE—FARMS', 'MISCELLANEOUS', 'FOR SALE—AUTOMOBILES', 'FOR SALE—REAL ESTATE', 'FOR SALE—MISCELLANEOUS', 'FOR SALE—ONE OF THE BEST FARMS', 'WANTED—MISCELLANEOUS', 'FOR SALE—ROOM IN MODERN HOME', 'FOR RENT—THREE ROOM FURNISHED APARTMENT', 'TRADE-40 ACRES ON HARI', 'FOR SALE—FARMS', 'MISCELLANEOUS', 'FOR SALE—AUTOMOBILES', 'FOR SALE—REAL ESTATE', 'FOR SALE—MISCELLANEOUS', 'FOR SALE—ONE OF THE BEST FARMS', 'WANTED—MISCELLANEOUS', 'FOR SALE—ROOM IN MODERN HOME', 'FOR RENT—THREE ROOM FURNISHED APARTMENT', 'TRADE-40 ACRES ON HARI', 'FOR SALE—FARMS', 'MISCELLANEOUS', 'FOR SALE—AUTOMOBILES'.

The Idaho Dept. Store for Men

Offers Clothing Economies

Come in Today



Sheep-Lined Coat

Sheep-pelt lined horsehide coat in a full 32-inch length. Wide leather collar and knitted wristlets. Adjustable tab buttons at back and at sleeve. An excellent value at **\$14.95**

Horsehide Coat

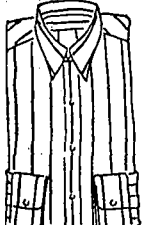
First quality black horsehide 30-inch coat. Warm wool blanket lining. Button tabs at back and on the cuffs. Compare this with others **\$9.85**

Horsehide Jacket

A 27-inch vest of black horsehide, with wool mixed lining. Roomy pockets and wide collar. You'll like this one for the protection it will give. Priced low at **\$7.75**

Artistic Dress Shirts

Another shipment of these famous shirts has arrived and being unpacked and marked at this time. There are a large number of the good wearing broadcloths in attractive checks, stripes and plaids, as well as some plain colors. These are exceptionally well made and are positively the best value that can be bought for the money, anywhere. Come in, now, and see them **\$1.95 to \$4.95**



Wool Mixed Shirt

This khaki shirt for men is made for extra wear. It has a double front and re-inforced elbow sleeves. In all sizes **\$1.95**

Khaki Shirt

A 40% wool shirt for men in good quality of serge. Coat style. A wonderful value **\$2.45**

Boys' Overcoats

For the most warmth and service this overcoat for boys is an unusual value. It is an all-wool, medium-weight overcoat in the popular double-breasted style, in sizes 10 to 18. The price is **\$5.45**



Men's Rayon Hose

Here is a quality hose in many attractive patterns. Made of hard-wearing rayon with mercurized top. Very good values at **49c**. There are also many good values in cashmere hose, and silk and wool mixed hose at—

89c, 75c, \$1.00

IDAHO DEPT. STORE FOR MEN

IF IT ISN'T RIGHT BRING IT BACK

The IDAHO DEPT. STORE

ESTABLISHED IN TWIN FALLS JULY 30TH 1906

The Idaho Department Store thanks the public of the entire Twin Falls section for the largest business in the history of this big store. The success spurs us on to still greater efforts, from now until the great finale of the Holiday period. New merchandise is arriving daily, with new and tempting prices on each shipment; and then, the big, happy, dazling, 'Christmas time. This big store will be entirely made over into a Holiday Emporium. Our Economy Basement will be aglitter with the largest stock of toys ever shown in Southern Idaho, and the prices will speak for themselves. We have this big stock all marked and ready to display. It won't be long now. Read every item—they are your friends.

Visit Our Piece Goods Section



Outing Flannel

An extra good quality flannel in 36-inch width. Checks, stripes and plaids in either light or dark patterns. Special **19c**

40-Inch Washable Silks

Our well known line of wash silks will give the utmost satisfaction. We have a nice assortment of shades and in these three qualities— **\$1.00, \$1.49, \$1.98**

Windsor Flannel

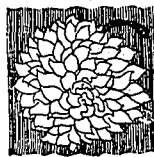
Genuine Windsor flannels in floral and nursery designs. They make very cunning pajamas, gowns and sleeping garments. 36 inches wide **29c**

Silk Pongee

This is a genuine re-label, 12-momme pure silk pongee in the natural shade. Very specially priced at— **49c**

Corsages

Here are corsages that closely resemble the real flowers, in both bright and subdued colors; some small, some large **39c to 89c**



All Wool Botany Flannel

This is 54 inches wide. An all wool fabric with colors guaranteed. Made by the well known Botany manufacturers. Yard **\$2.89**

Woolen Dress Goods

These woolen dress fabrics are in plain and novelty patterns also made by the Botany Woolen Mills. Ask to see these attractive patterns— **98c to \$4.50**

Brocaded Silks

Good quality silks in many attractive seasonal colors. 36 inches wide— **\$1.49 and \$1.98**



Peacock Hosiery

This hose, carried exclusively by us, is full fashioned of pure thread silk and has a double heel and toe. In eight beautiful shades— **\$1.40**

OUR ECONOMY COLUMN

Needle point brass pins; best quality; 300 count **8c**
 Snap fasteners in black or white. All sizes; card **8c**
 Daintie darning silks; assorted colored threads **8c**
 Wright's bias tape. Assorted colors; sizes 4, 5, 6 yard piece..... **8c**
 Extra quality laces in dainie patterns. Yard **8c**
 Pearl buttons; one dozen to the card..... **4c**
 Steel crochet hooks..... All sizes..... **8c**
 Hickory garters. Black or white. Any size..... **25c**
 Sewing needles; solid and assorted sizes..... **8c**
 Lace edges in assorted widths; yard..... **4c**
 Belding darning silk in 25-yard spools..... **8c**
 Cotton stay binding; all sizes, per roll..... **4c**
 Safety pins in assorted sizes. Per card..... **8c**
 Tape lines. Good quality cloth in 60-inch length **4c**
 Basting thread, good quality; size 50; 500 yard spool..... **8c**
 Buffalo button and carpet thread. Extra strong; black, white and brown; 75-yard spool..... **8c**

Pendleton Indian Robes

These exclusive Indian designs are in unusually attractive color combinations. They are virgin wool blankets that are durable as well as attractive **\$14.95**

Kickernick Bloomers

Only Kickernick can give you the freedom and good fitting bloomer that fits and individual type. Made of first quality rayon. In Flannel, Peach and Orchid **\$2.65**

MAIN FLOOR DRY GOODS DEPARTMENT

THE ECONOMY BASEMENT

Has Lowest in the City Prices

Men's heavy part-wool unions. Made on the well-known Utica spring-needle knitting machines. A very warm garment. Here is a value **\$1.69**



Ladies' 'Rosemary' silk stripe unions; a very fine ribbed garment. Here is a value that cannot be equalled for the same price **69c**

Children's Downy-ribbed sleeping garments, with drop seat, reinforced feet, and pockets..... **69c**

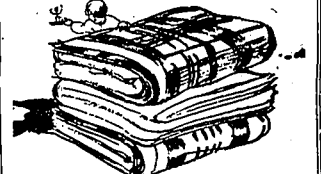
Men's 100 per cent wool, spring knit, unions in gray color. You will like the fitting qualities of this suit. **\$4.49**

Children's waist unions; completely taped and reinforced; full stretch. A splendid garment. Sizes 1 to 6 **69c**

Special **\$1.19**

Men's gray-mottled, heavy weight jersey, fleeced lined unions. Very warm and serviceable. Priced remarkably low at **\$1.19**

Compare the price and quality with any other, and you will want this one..... **89c**



Double Blanket

Attractive cotton double blanket. Colors gray and tan; pink and blue borders. We recommended this as a very good wearing number. Compare the quality. Per pair..... **\$1.25**

'California' Blanket

Very good quality 'California' cotton blankets, in colors gray, tan and white. Very attractive borders. A splendid value in a year-round blanket **\$1.98**

'Montrose' Blanket

'Montrose' plaid blanket. Made in good-looking large plaids. The colors are blue and white, orange and white, and pink and white. Size 72x80 **\$2.49**

Cotton Blanket

'California' cotton blankets, size 62x74. A good weight; finely fleeced. You must see this one. **\$1.49**

Per pair

ECONOMY BASEMENT

Men's and Boys' Low Priced Work Shoes

Dress Boot

Men's 8-inch dress boot—black calf leather, full double sole. Weatherproof lining; another Chipewa. Price—

\$7.95



Men's Scout Shoe

Men's best quality scout shoe. Here is a shoe for service—made of brown elk leather, rubber sole and heel—

\$2.75

A very clever style and moderately priced—Cuban heel, leather type: a value at **\$3.85**

Genuine Horsehide Work Shoe

Genuine Pinto Horse Hide Work Shoes—Munson last, welt sole; a good shoe for rough wear; pair **\$4.95**

Growing Girls' Pumps and Oxfords

Rich patent-leather; novelty trim; low heel; rubber tire; priced at— **\$3.95**

Children's School Shoes

In patent, and tan calf, two tone effect; skuffer last; all leather construction; priced from **\$1.98 to \$2.39**

\$2.98 Boys' Dress Shoes \$2.98

See our bargain table; a splendid assortment to choose from; tan and black calf leather.

MAIN FLOOR SHOE DEPARTMENT



Patent Tie

Cleverly trimmed with black pin seal; 18-8 spike heel. French toe; price, pr. **\$5.85**

Sport Oxfords

In the new dark tan shade—also black calf—college heel, new full toe, welt sole, combination last; price **\$6.85**

Velvet Pumps

This chic model just in—the very latest material for fall wear, 17-8 spike heel. D'Orsay pump; also one-strap pattern; price, pr. **\$6.85**

Black Satin Pumps

Extremely smart styles for fall wear—one-strap pump; also D'Orsay pump; rich black shoe satin; 18-8 spike heel; price—

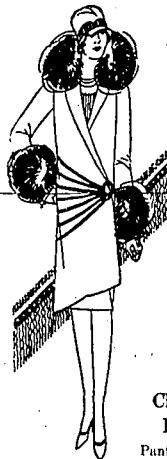
\$6.50

Rubber Footwear

For the whole family, all new fresh stock; our prices are very low—

Ladies' Sport Coats

Saddle shoulders give a roomy, well-fitting appearance to a youthful, semi-sport coat, appropriate for sport and semi-dress wear. The flap-top, patch pockets are a well liked feature. Inverted stitched pleat in back. Satin of self material on side. Beaver and fox fur collars, shawl and regular styles, self cuffs; made up in novelty plaids and mixtures. Priced— **\$67.50 to \$85.00**



Lounging Robes

Tailored lines give these robes their smart appearance. Quilted Benetton satina and figured silks are the materials. Designs of appliqued lace and self materials, and oriental embroidery make them very attractive. In colors, Crimson Maple, Black and light Blue **\$2.95 to \$3.75**

\$8.50 to \$19.95

READY-TO-WEAR DEPARTMENT

Nelly Don Aprons and House Frocks

Fast Color Prints

When the unsuspected caller drops in during busy morning hours, how satisfying to be smartly frocked in a Nelly Don. The romance of fast color prints, in three and four colors, is expressed in the individual styling of these perfect-fitting frocks. Each has a new and charming tale to tell with its own adorable 'Nelly Don difference'. The scalloped waistline accented by contrasting bindings and a flat flower pocket, a scarf-like panel of contrasting colors which terminates in a flower pocket, swirling outline on skirt and decorative Petunia pocket, a rambler rose running out of a flower-pot pocket is outlined in black silk embroidery. Shoulder trimmings, smart bindings, and double belts. Valuable frocks that even the most thrifty will appreciate at these modest prices— **\$2.19 to \$4.98**

Sizes 16 to 44.

Nelly Don Aprons

The colorful print; white dimity with smart-colored bindings, and all white cloth buttonless all-on apron. Attractive, comfortable and practical. The perfect fitting Nelly Don Apron. These new fall models come in sizes, junior, and medium, large and extra large. An unexpected joy to every housewife at these low prices— **\$1.00 to \$1.69**

Children's Dresses

Panty dresses for children of crepe, velvet and wool jersey. Cuffs and collars are designed with silk stitching. There are full pleated skirts, with some inverted pleats at the sides. In the newest fall colors **\$2.95 to \$3.75**



Ladies' and Misses' Sweaters

Here are tuxedo types, rayon pull-over, styles, and the heavier shaker knit sweaters. Rose, Tan, Cedar Blue, Cardinal, Black, and Yellow are the colors **\$1.49 to \$10.50**