

Nationalists Recapture Communists' Stronghold In China; 3000 Men Die

UNITED STATES GUNS GUARDING AMERICAN CONSULATE IN CANTON

Communists Gain Control of City in Coup During Absence of Regular Troops; Retained Possession; Russia Involved.

(By The Associated Press) BEAINGHAT, (Wednesday Morning), Dec. 14.—The nationalists have recaptured Canton. It is estimated that 3000 men were killed in the fighting.

Nationalists, by an enveloping attack last night, regained Canton city, except police headquarters, where the communists forces with "certain Russians" are holding out.

The Chinese navy, which seems not to have joined the raid, raised the city with 12-pounders from their gunboats and with machine guns.

SHANGHAI, Dec. 13.—American guns tonight were protecting the American consulate at Canton against possible disorders resulting from seizure of the city by communists.

The communists, who gained control of the city in a coup during the absence of regular troops, still were in possession of the city. It was understood to have established a Soviet people's council on the Russian plan, and to have received the influence from Moscow, say that four Russian officers are on the red army operating in Canton. A leader of the seamen's union and the former secretary of Michael Borodin, one Russian adviser to the former Chinese government.

SHIPPING BOARD ACTS TO CANCEL CONTRACT

San Francisco Company Will Not Operate Line; Action is Result of Loan to W. S. Hill.

WASHINGTON, Dec. 13 (AP)—The contract of E. Swayne and Hoyt, San Francisco company for operation of the American-Australia-Orient line was cancelled today by the shipping board.

This action followed disclosure that J. L. Day, Washington agent of the company, had made a loan to W. S. Hill, South Dakota, who resigned yesterday from the board after President Coolidge had sent to the senate the nomination of Albert H. Denton, Kansas, to succeed him.

At the meeting today, Hill's former colleagues adopted a resolution characterizing his action in accepting the loan as "grave impropriety." They did so despite Hill's contention that the loan never had affected any action on his part while a member of the board.

Issues Statement Subsequent to the board's action, Commissioner Child, who presides over the Pacific coast on the board, and who formerly was financially interested in ships operated by Swayne and Hoyt, issued a statement. He said reports in shipping circles here that he had been a party to the Hill-Hill transaction.

Mr. Teller declared that he had no part in the transaction.

(Continued on Page Two)

ATTORNEYS IN ROBBERY CASE ARGUE FOR HOURS

LA ORANGE, Texas, Dec. 13 (AP)—State and defense attorneys in the trial of Robert Raymond, charged as bank robber, argued for hours today over the question of whether testimony reported from a prosecution marshal expert concerning the family history of Mrs. Rogers could be used to impeach testimony supporting the defense plea of insanity.

POWERFUL SEARCHLIGHT WATCHES FOR LINDBERGH

CORPUS CHRISTI, Texas, (Wednesday Morning), Dec. 14 (AP)—A powerful searchlight, whose rays are visible from 87 to 93 miles, was trained on the skies this morning from a stop on a 12-story building to serve as a beacon for Colonel Charles Lindbergh. An operator stood by ready to flash the identity of the city to Colonel Lindbergh, should he should pass over before dawn.

LAST OF POTATO CROP CAN DEMAND PROFIT

Balance of Gem State Tubers Can Make Money for Growers; Agent Visits Windy City.

BOISE, Dec. 13 (AP)—The balance of the Idaho potato crop can be marketed at a profit if shippers will adopt the policy of sending only top grade potatoes in attractive branded containers, R. L. Spangler, director of the Idaho potato growers' association, advised today in a special report to the department of agriculture and Idaho Chamber of Commerce following an investigation of the Chicago market.

Shipments should be curtailed to meet market needs, Mr. Spangler, said, in urging: "It is certainly more reasonable to sell part of our output at a profit than to sell it all at a loss."

There are two main reasons for the low price of Idaho potatoes at the present time," the report continued. "First, the crop is being marketed to Chicago for more potatoes than that market can consume; and second, a large part of these are field run, old-grade stock in unbranded containers. Better shippers are sending to Chicago an average of over twice as many potatoes as were consumed on that market last year."

Chicago was reported to be a good outlet for Idaho potatoes. The assumption has increased in proportion to production. Idaho apples were reported to be in demand on the Chicago market favoring the tub basket pack.

Rumanian Students Face Court Martial For Demonstrations

BUCHAREST, Dec. 13 (AP)—Court martial proceedings are under way today against 33 students arrested as an outgrowth of the rioting last week at Gracina Park, and a demonstration in Bucharest.

At the same time it was announced that a 24-hour strike of students throughout Rumania was being called today in protest against the arrests among the students.

The government threatens to present to parliament a bill asking credit of more than \$200,000,000 (about \$45,000,000) in order to pay damages caused by the students' actions. The bill, if passed, would be a landmark in Rumanian history, it is believed the government will pay for the damages in full.

NAVY DRAFTS LARGE BUILDING PROGRAM

President Coolidge Sets at Rest Report of His Approval of Departmental Designs.

WASHINGTON, Dec. 13 (AP)—While President Coolidge was setting at rest published reports that he had approved a large naval building program, it was disclosed today that he had been drafted by the navy department and transmitted to the budget bureau, which would pass on requests for funds to carry it into effect.

The navy's recommendations are designed to cover new war craft, construction and replacement over a five-year period although it probably would take nine years to finish all of the proposed work. It is the initial phase of a program that takes in the needs of the navy for the next 20 years.

HENRY L. STIMSON IS GOVERNOR GENERAL OF PHILIPPINE ISLANDS

Successful Mediator in Nicaragua Civil War Accepts President Coolidge's Appointment as Successor of Wood.

(By Associated Press) WASHINGTON, Dec. 13.—At the request of President Coolidge, Henry L. Stimson, New York former secretary of war, successful mediator in the Nicaraguan civil war and close friend of the late Major General Leonard Wood, whom he succeeds, has been appointed as governor general of the Philippine islands. The nomination was sent to the senate today by the president.

In accepting the post, Mr. Stimson is understood to have put aside fears that his health would not permit a prolonged stay at Manila. The president's appeal was to his patriotism and that coupled with his long-standing interest in the Philippine affairs and his interest in disregarding health considerations.

Davis Recommends Stimson Secretary of War of the department today said that he recommended Mr. Stimson for the post and was greatly pleased that the president had accepted the appointment. Other war department officials predicted that the nomination would be approved.

(Continued on Page Two)

SENATE APPROVES FIRST LARGE DEFICIENCY BILL

Measure Carries Total of \$210,000,000; Includes Fund for Extension of Ship Guns.

WASHINGTON, Dec. 13 (AP)—After more than four hours' consideration, the senate today approved the first large deficiency bill, containing a total of approximately \$210,000,000 including a fund for increasing the production of the big guns on the battle-ship Oklahoma and Nevada.

This provision of the bill, added in the house, was not a subject for discussion in the senate, and there was no discussion of it.

The deficiency bill carries funds for every department of the government, including those for a number of public buildings in various cities. The senate approved all of the house proposals for such structures and also approved two amendments by its appropriations committee, one carrying \$20,000 to begin work on a federal building at Durango, Colorado, and \$200,000 for beginning work on a territorial building at Juneau, Alaska.

Girl Does Not Return to Parents

WINDY CITY, Dec. 13 (AP)—The object of a search for a girl, announced by the police here today, was a girl named Edna, who was taken from her home in Chicago and taken to her parents in Windy City.

A special search party, led by James Kelly, who the girl was first seen in Chicago, was taken to her home in Chicago, where she was taken to her parents in Windy City.

15 ROBBERS HOLD UP TRAIN IN ROSE BATTLE

Bandits Throw \$100,000 Worth of Silk From Cars; Gun Play Ensures; Drew Wins in Fight.

LANCHON, Pa., Dec. 13 (AP)—Fifteen men held up a Reading railroad freight train here early today, threw \$100,000 worth of raw silk from the cars, but were driven off after a gun fight with members of the grain crew before they could cart any of the loot away.

One of the robbers was shot by a conductor, but was carried away by his comrades, and a member of the train crew narrowly escaped death when a bullet whizzed through his hat. Search of the vicinity resulted in the discovery of marks of six trucks in a lane close by the tracks. These apparently had been placed there to receive the silk and had been used by the robbers to make their escape.

Some of the robbers are believed to have headed for Jersey City and in some cases were driving the trucks as the train was passing the spot where the trucks were hidden.

21-Year-Old Boise Man Breaks Bigamy Laws; Goes to Jail

BOISE, Dec. 13 (AP)—Joseph Francis Ross, 21 years old, Boise truck driver, and the husband of three wives, was sentenced today by Judge Clinton Hartson of the Ada county district court to imprisonment in the penitentiary for six months to three years for bigamy. Ross entered a plea of guilty.

Ross married Johanna Brown at Caldwell before obtaining final decree of divorce from Nellie May Striker Ross, whom he married in Boise in 1924. After marrying Johanna Brown, Ross returned to Boise and married Mary Marie Heard, the third wife.

GENERAL LINDBERGH WINGS WAY FORWARD CAPITAL OF MEXICO

Famous Transatlantic Flier Departs From Washington; Disaster Threatens as Sturdy Monoplane Soars Forth.

(By The Associated Press) WASHINGTON, Dec. 13.—Charles A. Lindbergh, the world's first solo flier, tonight took to the air on his second international flight today, heading from Bolling field toward Mexico City at the invitation of President Calles.

The weather bureau made the prediction for the area from Alabama to and along the Texas coast after consulting its weather reports.

The cloud bank, it was said, however, would be broken in many places, permitting the monoplane to filter through. The winds along the Gulf coast were said not to exceed 15 miles an hour in velocity, where a 25-mile blow had been expected.

WASHINGTON, Dec. 13.—Charles A. Lindbergh soared into the air on his second international flight today, heading from Bolling field toward Mexico City at the invitation of President Calles.

The flier threatened the young transatlantic flier at the start, but The Spirit of St. Louis responded to the challenge.

IDAHO'S NEW FORESTRY LAW CONSERVING TIMBER

Ben Bush, State Officer, Gives Favorable Report on Statute to Protect Trees; Aides Secretary.

SPOKANE, Dec. 13 (AP)—Idaho's new state forestry law has been generally approved today by the legislature, following a report to the Northern Idaho forest protective association meeting here today.

He said the law is beginning to have effect in conserving the beauty of northern Idaho. Thousands of acres of young timber have been saved and ground work laid for re-forestation. The majority of operators are now disposing of slashings in such a manner as to protect all standing growth, he said.

A. W. Laird, Potlatch, declared that observance of this law will prevent destruction of the young growth and that as a result of its observance last year, great economies in fire fighting have been effected and loss kept to a minimum.

Shippers' Advisory Board Would Include Maritime Carrier In Organization

THREE PERSONS DIE IN ACCIDENT ON CROSSING

SAN JOSE, Calif., Dec. 13 (AP)—Three persons were killed and two injured when the automobile in which they were riding was struck and demolished by a Southern Pacific passenger train at Salinas near here today.

Joseph Tull, 21, transfer driver of the car; Eddie Perry, 10; Rose Perry, 12.

Shippers' Advisory Board's Docket

Meeting called promptly at 8:30 a. m. in Elks hall. Invocation. Rev. Arthur G. Freeman.

Address of welcome, Ather E. Wilson, president of Twin Falls Chamber of Commerce.

Spending Remarks, Will E. Gibson, vice president.

Executive Committee Report, W. L. Harvey, Denver, executive representative.

Report of General Conditions Throughout the Country, H. G. Taylor, manager of public relations, American Railway association.

District Manager's Report, W. J. Smith, Omaha.

Commodity Committee Reports

Standards of Agricultural Products, E. E. Shepherd, Federal Land Bank, Spokane.

Banker's Viewpoint of Work of Shippers' Advisory Board, C. Howard, president Walker Brothers Bank, Salt Lake.

Banker's Viewpoint of Work of Shippers' Advisory Board, C. Howard, president Walker Brothers Bank, Salt Lake.

Report of Freight Station Section.

Board Reports, including Private Car Lines.

MOTION TO INVITE FLEET CORPORATION CARRIES UNANIMOUSLY

Executive Committee Votes Accept Invitation Extended by Denver to Hold Next Meeting in Colorado During June

Representatives of the United States Fleet Corporation will be invited to attend meetings of the Central Western Shippers' Advisory Board, provided the board at its fourteenth regular meeting here today takes favorable action on a recommendation approved by the board's executive committee in session here last evening.

The motion to invite the fleet corporation was adopted without dissent.

Accept Colorado Invitation The executive committee of the Shippers' Advisory Board, meeting here last evening, unanimously accepted the invitation of the Denver Chamber of Commerce to hold the next meeting of the board in Colorado.

It is decided to recommend the holding of a regular meeting of the board in Denver during the first Thursday of June and the following Thursday of July.

(Continued on Page Four)

DEMOCRATS SCORE IN TAX RATE PROBLEMS

Cordon of Republican Values Defending Bill in House Pierced for the Second Time

WASHINGTON, Dec. 13 (AP)—The cordon of republican values defending the tax bill in the house today was pierced for the second time by a democratic attack that hit directly at large corporations which file inflated tax returns.

World Get Tax Rate The proposal, like the one adopted yesterday which would reduce the flat rate for small corporations with a taxable income of \$10,000 or less, is subject to another vote before passage of the bill. At that time the democratic can be called upon to maintain their positions on a roll call vote.

Both of the amendments were sponsored by Representative Garner. The minority leader of the house was and means committee which drafted the amendment. The bill would increase the total tax and imposed by the committee. Estimating that today's proposal applying to affiliated related corporations would increase by 24,000,000 annually the total tax rate, Mr. Garner argued.

(Continued on Page Two)

OKLAHOMA FARMER KILLS FAMILY OF SIX AND SELF

HENNING, Okla., Dec. 13 (AP)—A farmer here today was charged with the killing of his wife and five children and himself.

The victim was Mrs. Mary E. Henning, 38, a former school teacher, who was killed with a shot from the head. Her five children, all under 10 years of age, were also killed.

THAT ALL DEPENDS ON THE LADY



Copyright, 1927, by The New York Tribune, Inc.

never taken to any other... it is not expected that it will... now. It is rumored that radio advertising may be announced...

SOCIETY AND CLUBS

Mrs. E. A. Brice was hostess to the Hi-Lo Bridge club Tuesday afternoon at her home on Second avenue...

CONSTRUCTIVE MEXICO

Will Rogers, jaunting about through Mexico with President Calles and Ambassador Morrow, follows his admirable custom of telling us Americans...

MRS. BALDWIN TO HEAD EASTERN STAR CHAPTER

Mrs. Winifred Baldwin was last evening elected worthy matron of Twin Falls chapter of the Eastern Star, to succeed Mrs. Eleanor Reiter...

MORE BUILDING THAN EVER

Business prophets foresee an amount of construction in America as a whole next year greater than this year's total. To get the full force of that, it must be remembered that this year's total is said to be about seven billion dollars...

ANNOUNCEMENTS

The Blue Lakes Boulevard club will hold its annual o'clock luncheon for husbands and guest exchange on Friday, December 16 at the home of Mrs. R. G. Davis on Pals avenue...

AT THE HOTELS

PARK—M. C. Cutting, St. Paul; George E. Graham, Omaha; C. J. Westcott, H. W. Crockett, M. O. Park...

A FIVE-DAY AD RECORD

The amazing record of sustained interest and curiosity that gripped the public for months while it awaited the new Ford car was only one phase of a remarkable advertising campaign...

MOTION TO INCLUDE FLEET CORPORATION CARRIES UNANIMOUSLY

The executive committee went on record in definite opposition to a proposed amendment to the constitution of the Central Western Railway...

NEW GEOGRAPHY

WASHINGTON, Dec. 13 (AP)—The United States Geological Survey has announced that it will publish a new edition of its "Geographical Names of the United States"...

GOVERNOR H. C. BALDRIDGE OF IDAHO

Governor H. C. Baldrige of Idaho and E. C. Calvin of Omaha, vice president of the Union Pacific system, will be in Twin Falls today...

THE FARMERS' STORE

Where Mr. Arns has his shoe and fur department, the new store has been replenished. We will sell you, nice clean, wheat straw, bean sprouts and green peas in any quantity...

FAIRM SALE

Thursday, Dec. 14, 9 a.m. to 5 p.m. at the fair grounds. Head cattle; farm machinery; Primrose cream separator No. 1...

HOLIDAY EXCURSION

One or one-third fare for the round trip between all class points on the Oregon Short Line Railroad December 16, 17, 18, 20, 21, 22, 23, 24, 25, 30, 31, and January 1, 2. Final limit January 4.

DRY MODIFICATION

LAFAYETTE, Ind., Dec. 13 (AP)—No modification, but eventual disposition of the eighteenth amendment in its entirety is the prime issue in the hearing...

TEA ENJOYMENT

The flavor of tea is a delicate will-o'-the-wisp. Unless the tea is tip top; cream-of-the-crop, you have nothing but a hot drink. Those who sit tea-wise place their flavor-faith in Tree Tea Japan. For only choice, tender leaves of first crop mountain tea are selected for this wonder-blend of green tea. And, you pay less.

AMERICAN STUDENTS IN PARIS FREQUENT CHURCH

PARIS, Dec. 13 (AP)—The wicked Paris of fiction isn't wicked after all for hundreds of American students and artists, says The Rev. Henry Rawlings...

DRY MODIFICATION

LAFAYETTE, Ind., Dec. 13 (AP)—No modification, but eventual disposition of the eighteenth amendment in its entirety is the prime issue in the hearing...

TEA ENJOYMENT

The flavor of tea is a delicate will-o'-the-wisp. Unless the tea is tip top; cream-of-the-crop, you have nothing but a hot drink. Those who sit tea-wise place their flavor-faith in Tree Tea Japan. For only choice, tender leaves of first crop mountain tea are selected for this wonder-blend of green tea. And, you pay less.

GIFT DAY at PRIEBE'S

W. R. Priebé will give every lady who is the head of a household a free gift. Call at the store. 200 Main Ave. E.

TEA ENJOYMENT

The flavor of tea is a delicate will-o'-the-wisp. Unless the tea is tip top; cream-of-the-crop, you have nothing but a hot drink. Those who sit tea-wise place their flavor-faith in Tree Tea Japan. For only choice, tender leaves of first crop mountain tea are selected for this wonder-blend of green tea. And, you pay less.

TEA ENJOYMENT

The flavor of tea is a delicate will-o'-the-wisp. Unless the tea is tip top; cream-of-the-crop, you have nothing but a hot drink. Those who sit tea-wise place their flavor-faith in Tree Tea Japan. For only choice, tender leaves of first crop mountain tea are selected for this wonder-blend of green tea. And, you pay less.

TEA ENJOYMENT

The flavor of tea is a delicate will-o'-the-wisp. Unless the tea is tip top; cream-of-the-crop, you have nothing but a hot drink. Those who sit tea-wise place their flavor-faith in Tree Tea Japan. For only choice, tender leaves of first crop mountain tea are selected for this wonder-blend of green tea. And, you pay less.

TEA ENJOYMENT

The flavor of tea is a delicate will-o'-the-wisp. Unless the tea is tip top; cream-of-the-crop, you have nothing but a hot drink. Those who sit tea-wise place their flavor-faith in Tree Tea Japan. For only choice, tender leaves of first crop mountain tea are selected for this wonder-blend of green tea. And, you pay less.

TEA ENJOYMENT

The flavor of tea is a delicate will-o'-the-wisp. Unless the tea is tip top; cream-of-the-crop, you have nothing but a hot drink. Those who sit tea-wise place their flavor-faith in Tree Tea Japan. For only choice, tender leaves of first crop mountain tea are selected for this wonder-blend of green tea. And, you pay less.

TEA ENJOYMENT

The flavor of tea is a delicate will-o'-the-wisp. Unless the tea is tip top; cream-of-the-crop, you have nothing but a hot drink. Those who sit tea-wise place their flavor-faith in Tree Tea Japan. For only choice, tender leaves of first crop mountain tea are selected for this wonder-blend of green tea. And, you pay less.

TEA ENJOYMENT

The flavor of tea is a delicate will-o'-the-wisp. Unless the tea is tip top; cream-of-the-crop, you have nothing but a hot drink. Those who sit tea-wise place their flavor-faith in Tree Tea Japan. For only choice, tender leaves of first crop mountain tea are selected for this wonder-blend of green tea. And, you pay less.

TEA ENJOYMENT

The flavor of tea is a delicate will-o'-the-wisp. Unless the tea is tip top; cream-of-the-crop, you have nothing but a hot drink. Those who sit tea-wise place their flavor-faith in Tree Tea Japan. For only choice, tender leaves of first crop mountain tea are selected for this wonder-blend of green tea. And, you pay less.

TEA ENJOYMENT

The flavor of tea is a delicate will-o'-the-wisp. Unless the tea is tip top; cream-of-the-crop, you have nothing but a hot drink. Those who sit tea-wise place their flavor-faith in Tree Tea Japan. For only choice, tender leaves of first crop mountain tea are selected for this wonder-blend of green tea. And, you pay less.

TEA ENJOYMENT

The flavor of tea is a delicate will-o'-the-wisp. Unless the tea is tip top; cream-of-the-crop, you have nothing but a hot drink. Those who sit tea-wise place their flavor-faith in Tree Tea Japan. For only choice, tender leaves of first crop mountain tea are selected for this wonder-blend of green tea. And, you pay less.

TEA ENJOYMENT

The flavor of tea is a delicate will-o'-the-wisp. Unless the tea is tip top; cream-of-the-crop, you have nothing but a hot drink. Those who sit tea-wise place their flavor-faith in Tree Tea Japan. For only choice, tender leaves of first crop mountain tea are selected for this wonder-blend of green tea. And, you pay less.

TEA ENJOYMENT

The flavor of tea is a delicate will-o'-the-wisp. Unless the tea is tip top; cream-of-the-crop, you have nothing but a hot drink. Those who sit tea-wise place their flavor-faith in Tree Tea Japan. For only choice, tender leaves of first crop mountain tea are selected for this wonder-blend of green tea. And, you pay less.

TEA ENJOYMENT

The flavor of tea is a delicate will-o'-the-wisp. Unless the tea is tip top; cream-of-the-crop, you have nothing but a hot drink. Those who sit tea-wise place their flavor-faith in Tree Tea Japan. For only choice, tender leaves of first crop mountain tea are selected for this wonder-blend of green tea. And, you pay less.

TEA ENJOYMENT

The flavor of tea is a delicate will-o'-the-wisp. Unless the tea is tip top; cream-of-the-crop, you have nothing but a hot drink. Those who sit tea-wise place their flavor-faith in Tree Tea Japan. For only choice, tender leaves of first crop mountain tea are selected for this wonder-blend of green tea. And, you pay less.

TEA ENJOYMENT

The flavor of tea is a delicate will-o'-the-wisp. Unless the tea is tip top; cream-of-the-crop, you have nothing but a hot drink. Those who sit tea-wise place their flavor-faith in Tree Tea Japan. For only choice, tender leaves of first crop mountain tea are selected for this wonder-blend of green tea. And, you pay less.

TEA ENJOYMENT

The flavor of tea is a delicate will-o'-the-wisp. Unless the tea is tip top; cream-of-the-crop, you have nothing but a hot drink. Those who sit tea-wise place their flavor-faith in Tree Tea Japan. For only choice, tender leaves of first crop mountain tea are selected for this wonder-blend of green tea. And, you pay less.

TEA ENJOYMENT

The flavor of tea is a delicate will-o'-the-wisp. Unless the tea is tip top; cream-of-the-crop, you have nothing but a hot drink. Those who sit tea-wise place their flavor-faith in Tree Tea Japan. For only choice, tender leaves of first crop mountain tea are selected for this wonder-blend of green tea. And, you pay less.

TEA ENJOYMENT

The flavor of tea is a delicate will-o'-the-wisp. Unless the tea is tip top; cream-of-the-crop, you have nothing but a hot drink. Those who sit tea-wise place their flavor-faith in Tree Tea Japan. For only choice, tender leaves of first crop mountain tea are selected for this wonder-blend of green tea. And, you pay less.

TEA ENJOYMENT

The flavor of tea is a delicate will-o'-the-wisp. Unless the tea is tip top; cream-of-the-crop, you have nothing but a hot drink. Those who sit tea-wise place their flavor-faith in Tree Tea Japan. For only choice, tender leaves of first crop mountain tea are selected for this wonder-blend of green tea. And, you pay less.

TEA ENJOYMENT

The flavor of tea is a delicate will-o'-the-wisp. Unless the tea is tip top; cream-of-the-crop, you have nothing but a hot drink. Those who sit tea-wise place their flavor-faith in Tree Tea Japan. For only choice, tender leaves of first crop mountain tea are selected for this wonder-blend of green tea. And, you pay less.

TEA ENJOYMENT

The flavor of tea is a delicate will-o'-the-wisp. Unless the tea is tip top; cream-of-the-crop, you have nothing but a hot drink. Those who sit tea-wise place their flavor-faith in Tree Tea Japan. For only choice, tender leaves of first crop mountain tea are selected for this wonder-blend of green tea. And, you pay less.

TEA ENJOYMENT

The flavor of tea is a delicate will-o'-the-wisp. Unless the tea is tip top; cream-of-the-crop, you have nothing but a hot drink. Those who sit tea-wise place their flavor-faith in Tree Tea Japan. For only choice, tender leaves of first crop mountain tea are selected for this wonder-blend of green tea. And, you pay less.

TEA ENJOYMENT

The flavor of tea is a delicate will-o'-the-wisp. Unless the tea is tip top; cream-of-the-crop, you have nothing but a hot drink. Those who sit tea-wise place their flavor-faith in Tree Tea Japan. For only choice, tender leaves of first crop mountain tea are selected for this wonder-blend of green tea. And, you pay less.

TEA ENJOYMENT

The flavor of tea is a delicate will-o'-the-wisp. Unless the tea is tip top; cream-of-the-crop, you have nothing but a hot drink. Those who sit tea-wise place their flavor-faith in Tree Tea Japan. For only choice, tender leaves of first crop mountain tea are selected for this wonder-blend of green tea. And, you pay less.

TEA ENJOYMENT

The flavor of tea is a delicate will-o'-the-wisp. Unless the tea is tip top; cream-of-the-crop, you have nothing but a hot drink. Those who sit tea-wise place their flavor-faith in Tree Tea Japan. For only choice, tender leaves of first crop mountain tea are selected for this wonder-blend of green tea. And, you pay less.

TEA ENJOYMENT

The flavor of tea is a delicate will-o'-the-wisp. Unless the tea is tip top; cream-of-the-crop, you have nothing but a hot drink. Those who sit tea-wise place their flavor-faith in Tree Tea Japan. For only choice, tender leaves of first crop mountain tea are selected for this wonder-blend of green tea. And, you pay less.

TEA ENJOYMENT

The flavor of tea is a delicate will-o'-the-wisp. Unless the tea is tip top; cream-of-the-crop, you have nothing but a hot drink. Those who sit tea-wise place their flavor-faith in Tree Tea Japan. For only choice, tender leaves of first crop mountain tea are selected for this wonder-blend of green tea. And, you pay less.

TEA ENJOYMENT

The flavor of tea is a delicate will-o'-the-wisp. Unless the tea is tip top; cream-of-the-crop, you have nothing but a hot drink. Those who sit tea-wise place their flavor-faith in Tree Tea Japan. For only choice, tender leaves of first crop mountain tea are selected for this wonder-blend of green tea. And, you pay less.

TEA ENJOYMENT

The flavor of tea is a delicate will-o'-the-wisp. Unless the tea is tip top; cream-of-the-crop, you have nothing but a hot drink. Those who sit tea-wise place their flavor-faith in Tree Tea Japan. For only choice, tender leaves of first crop mountain tea are selected for this wonder-blend of green tea. And, you pay less.

TEA ENJOYMENT

The flavor of tea is a delicate will-o'-the-wisp. Unless the tea is tip top; cream-of-the-crop, you have nothing but a hot drink. Those who sit tea-wise place their flavor-faith in Tree Tea Japan. For only choice, tender leaves of first crop mountain tea are selected for this wonder-blend of green tea. And, you pay less.

TEA ENJOYMENT

The flavor of tea is a delicate will-o'-the-wisp. Unless the tea is tip top; cream-of-the-crop, you have nothing but a hot drink. Those who sit tea-wise place their flavor-faith in Tree Tea Japan. For only choice, tender leaves of first crop mountain tea are selected for this wonder-blend of green tea. And, you pay less.

TEA ENJOYMENT

The flavor of tea is a delicate will-o'-the-wisp. Unless the tea is tip top; cream-of-the-crop, you have nothing but a hot drink. Those who sit tea-wise place their flavor-faith in Tree Tea Japan. For only choice, tender leaves of first crop mountain tea are selected for this wonder-blend of green tea. And, you pay less.

TEA ENJOYMENT

The flavor of tea is a delicate will-o'-the-wisp. Unless the tea is tip top; cream-of-the-crop, you have nothing but a hot drink. Those who sit tea-wise place their flavor-faith in Tree Tea Japan. For only choice, tender leaves of first crop mountain tea are selected for this wonder-blend of green tea. And, you pay less.

TEA ENJOYMENT

The flavor of tea is a delicate will-o'-the-wisp. Unless the tea is tip top; cream-of-the-crop, you have nothing but a hot drink. Those who sit tea-wise place their flavor-faith in Tree Tea Japan. For only choice, tender leaves of first crop mountain tea are selected for this wonder-blend of green tea. And, you pay less.

TEA ENJOYMENT

The flavor of tea is a delicate will-o'-the-wisp. Unless the tea is tip top; cream-of-the-crop, you have nothing but a hot drink. Those who sit tea-wise place their flavor-faith in Tree Tea Japan. For only choice, tender leaves of first crop mountain tea are selected for this wonder-blend of green tea. And, you pay less.



TEA ENJOYMENT SO EASY TO GET IT The flavor of tea is a delicate will-o'-the-wisp. Unless the tea is tip top; cream-of-the-crop, you have nothing but a hot drink. Those who sit tea-wise place their flavor-faith in Tree Tea Japan. For only choice, tender leaves of first crop mountain tea are selected for this wonder-blend of green tea. And, you pay less.

ARMOUR WILL ESTABLISH MEAT MARKET AT FILER

Room Adjoining Quarters of Creamery Company to Be Occupied by New Institution.

FILER, Dec. 13.—The Armour company will open a meat market in Filer in the east half of the building now occupied by the Armour Creamery company and expected to be ready for business by Saturday of this week.

O. J. Hicks, western representative of the D. Landreth Seed and Plant returned Monday from Bozeman, Montana, where he had been for several weeks on business.

Miss Ella Vista has accepted a position in the C. A. Love store where she is well known as a former clerk.

Mr. and Mrs. Harry Ross and son of Hazelton spent Sunday with Mr. and Mrs. John Armour, parents of Twin Falls.

Miss Alice Pine and Miss Hilda Cook spent the week end at Hagerman.

Mr. and Mrs. George N. Tucker and family, who spent the past week visiting at the E. B. Lattin home, left Sunday afternoon by auto for their home in Boise.


Mrs. Ray L. Shearer returned home Tuesday from a visit with relatives at Missouri Valley, Iowa. She was called home by the illness of Mr. Shearer.

Mrs. Mrs. Albert Lancaster and baby motored to Caldwell Sunday to visit relatives.

Charles B. Shuff expects to leave this week for a visit with relatives in Kansas.

J. A. Dement, former editor of the Filer Record, has fully recovered from his recent illness.

Willie Willis
BY ROBERT QUINLAN



"I didn't mean to be impudent to Mrs. Brown at dinner. I just noticed she couldn't see still and asked her if she had a fix."

COURT GIVES DECISION IN LIQUOR POSSESSION CASE

Frank Gregory, 246 Fourth avenue west, was sentenced to serve 30 days in the county jail and fined \$100 by Probate Judge C. A. Bailey Tuesday morning after he had entered a plea of guilty to the charge of illegal possession of intoxicating liquor at his arraignment Monday.

Gregory was arrested following a raid by police at his residence Sunday night which disclosed about a pint of moonshine liquor, two gallon jugs, a funnel and two boxes of empty pint bottles.

Christmas greeting cards and gift drawings at Closs Book Store—Adv.

BLIZZARD CONDITION PREVAILS FOR TIME

Furious Wind and Heavy Snow Are Sent by Old Boreas; Jack Frost Loses His Hold.

Old Boreas "came down" like the American of old on southern Idaho late yesterday and covered the landscape with a mantle of white, accompanied by fuss and fury that reminded many of the land beyond the Rockies. Whether the early settlers at Springtown in the Snake canyon recall anything like it or not, later residents do not. But it was largely bluff over all. Nobody was hurt. The harder it snowed, the warmer it grew; and the blizzard-features soon died out. Later the weather got colder and the drifting snow made traveling disagreeable.

Arrivals for the shippers' advisory board conference will come from the west over the Oregon short line reported that the storm was lighter north and east, reported that it was equal to the storm there.

The total snowfall here amounted to about four inches yesterday.

New Brunswick Records every Thursday at Umbaugh's—Adv.

Year books and diaries for 1928 at Closs Book Store—Adv.

BANKER HELPS YOUTHFUL PROWLER MAKE ESCAPE

John Peterson, Twin Falls banker, was called to a youthful prowler's aid when he escaped from Wright's department store about 1:30 p. m. Tuesday evening. Peterson, a reporter to police headquarters, was called by the fire club from above the store, and heard calls for help coming from the rear of the building. Emerging downstairs and to the street, he saw a boy about 15 years of age, who had escaped from the store through the office window about 14 feet from the pavement.

The boy, who had been lowered by a rope, explained that he was employed by the store and had been locked in by mistake. He thanked his benefactor, walked about a block down the street with him, and bidding him good night, disappeared.

When the police force arrived yesterday morning they found that some one had provided about the premises during the night, although nothing was stolen. The boy had gathered together some boys and carried them to the office building but had abandoned them there. He had attempted to escape by means of a rope constructed by tying women's silk hosiery together, but had failed to get to the air shaft, cut his way through the screen over the window and started to lower himself to the alley when the men unting the two top units of his rope came untied leaving him hanging by his hands from the window ledge. Hearing to make the drop, he called for help and was assisted to the pavement by Mr. Peterson.

It is thought that the boy entered the store before the doors closed at 8 o'clock Monday evening and remained hidden until the last employee left the building about 11:15 p. m.

WRIGHT'S CAR WRECK REPAIRED FOR PROWLER

Wright's department store has had its car repaired after being wrecked by a prowler. The car, a 1927 model, was damaged by a young man who entered the store through the office window and attempted to escape by means of a rope. The car was damaged by the rope and the driver's side window was shattered.

PERSONS WHO WISH TO ATTRACT

Persons who wish to attract attention should use the services of the Twin Falls Daily News. There are two columns of advertising space available for the purpose. The cost of advertising is reasonable and the results are guaranteed.

Every Man Invited TO THE BIG STAG PARTY FOR MEN ONLY

—at the—

Idaho Department Store

Thursday Night, Dec. 15th

From 7:30 Until 10:00

In order to provide all men with at least one time when they can shop for Christmas Presents for Her in true man style and comfort away from all prying feminine eyes this idea of a store stag party was conceived. We want you to come in, just as you are; look around as long as you want to; ask questions; smoke to your heart's content; throw ashes and stubs on the floor; enjoy our jazz orchestra and make yourselves comfortable in every way.

You will find every kind of present that would delight her. Ladyship attractively displayed and plainly marked. All departments are coming in to help make our party a huge success. Our salespeople will be ready to help you with suggestions and to answer questions but at no time will you be approached or solicited to purchase. If you decide to select something you will find a courteous sales person ready to attend you.

Our pessimistic friends Mr. D. S. Gnsted, Mr. D. S. Mayed, Mr. P. R. Plexed and Mr. X. Cited will all be there and we want to see you there, too.

If you are in doubt as to the correct size or shade don't worry. We will gladly adjust it after Christmas.

We will gladly wrap and prepare your packages for giving and mailing.

For a 25 per cent down payment we will lay any purchase away and deliver to you as instructed.

Free cigars, cigarettes and candy for every one.

Emery Benoit's jazz orchestra will entertain you during the evening.

Idaho Department Store

THE CHRISTMAS STORE

DELAYS CAUSE HEART ACHES



"Positively Everything Cheaper"

SALE CONTINUES UNTIL DECEMBER 24

We are continuing to give the public the benefit of these remarkably low prices. Now is the time to buy your toys while the selection is complete and at prices that cannot possibly be any lower. Remember: "Delays cause heart aches."



Kiddie Cars
Red kiddie car, disc wheels, priced **\$2.67**
Small size kiddie car, rubber wheels **\$1.75**
Cuddie kiddie car, steel frame with wooden seat, **\$2.95**
Jumping toadcar, spring guaranteed not to break **\$3.39**



Mechanical Toys
Red dump truck, rubber tires, priced **\$5.43**
Stem wind mechanical auto, **1.90**
Larger size stem wind toy **27c**
Antique steam wagon, stem wind, **4.20**
Wagon, trucks, etc. Heavy pressed tin, red, blue, green **\$1.11**



Dolls
Baby dolls, imported **\$3.42**
Baby dolls, imported with knit hosiery **\$4.42**
Mamma dolls, 16-inch, **59c**
Dolls, baby and mamma **\$3.22**
Small dolls **1.90**



Steam Shovels
Buddy L steam shovel, heavy pressed steel, built just like genuine shovels **\$3.00**
Red pressed tin fire truck very strong **\$7.43**



Wash Sets
Wash everyday sets consisting of tub, board and clothes line **53c**
Pig slip foot ball **\$1.11**
Large size basket ball **\$1.97**
Boxing gloves, per pair **\$1.42**



Tinker Toys
Tinker toy block truck with alphabet **42c**
Tinker toys, large size **3.20**
Tinker toys, small size **42c**
Tinker toys, large toys **42c**
Tinker toy, big wagon **52c**



Dishes
China dishes, floral design, 17 pieces **59c**
Aluminum dish sets, 15 pieces for 4 **59c**
Large aluminum dish sets **\$1.11**
Tin cups and saucers, 100 set **59c**
Pill cream, wicker stand **59c**
Pill cream, wicker stand **\$1.75**

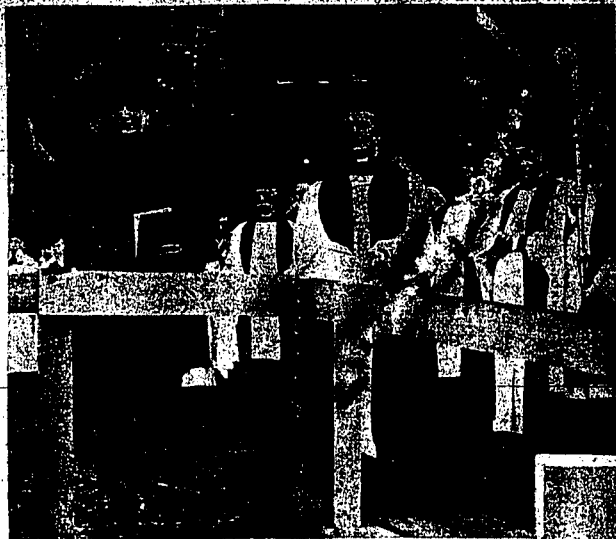


Balls
Six-inch **67c**
Ball, 3-inch **59c**
Ball, 1-inch **13c**
Ball, 5-inch **42c**



Blocks
Set 16—Bright colors, A. B. C. and animals **1.90**
Set 30—Bright colors, A. B. C. and animals **42c**
Set 60—Bright colors, A. B. C. and animals **59c**
Set 40—A. B. C. and animals **42c**

NEWS OF THE DAY AS CAUGHT BY THE CAMERA



WOMEN'S WING UNDER WAY—With Bishop Manning officiating, ground is broken for transept for which women raised \$750,000 at Cathedral of St. John the Divine, New York. (International Newsweek)



BOMBARDMENT OF SPRAY—Plenty of spindrift whips inland when heavy, storm lashes waves against sea wall at Winthrop, Mass. (International Newsweek)



USHER FAMOUS—Morgan Henninger, of Indianapolis, Ind., usher at a New York movie theatre, wins art course in France and Germany by his excellent spare-time canvases. (International Newsweek)



HOW TIMES HAVE CHANGED!—How mama dolled up to play golf in the Mauve Decade is illustrated by Gwen Lee, picture player, at the left, of course. Beside her is Gwen as your lady pill-swatter a la mode. (International Newsweek)



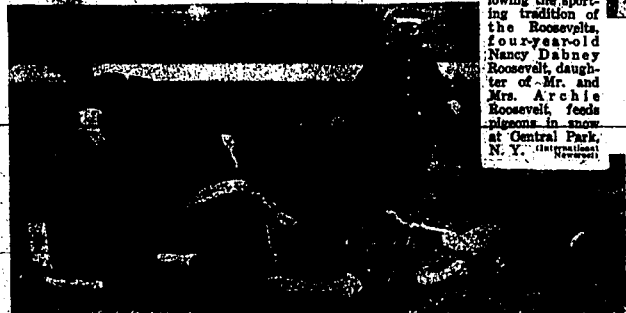
BAREFOOT—Henry Hughes, of Hawaii, member of Oregon State College freshman football team, drops kicks the oval 55 yards in his naked tooties. (International Newsweek)



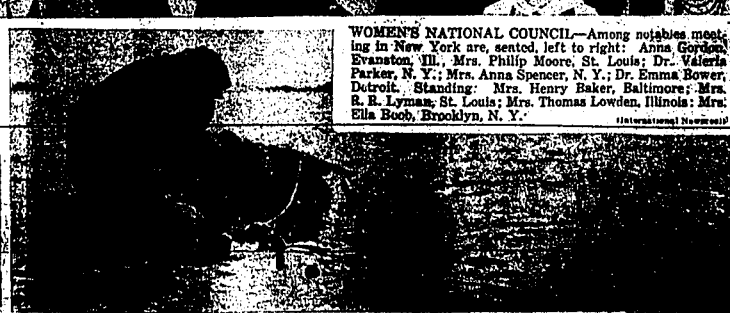
AT PLAY—Following the sporting tradition of the Roosevelt, four-year-old Nancy Dabney Roosevelt, daughter of Mr. and Mrs. Archie Roosevelt, feeds pigeons in snow at Central Park, N. Y. (International Newsweek)



WOMEN'S NATIONAL COUNCIL—Among noisables meeting in New York are seated, left to right: Anna Gordon, Evanston, Ill.; Mrs. Phillip Moore, St. Louis; Dr. Valeria Parker, N. Y.; Mrs. Anna Spencer, N. Y.; Dr. Emma Bower, Detroit. Standing: Mrs. Henry Baker, Baltimore; Mrs. R. E. Lyman, St. Louis; Mrs. Thomas Lowden, Illinois; Mrs. Ella Booth, Brooklyn, N. Y. (International Newsweek)



IT'S ALL IN THE GAME—Jockey Brooks takes a nose-dive off Factotus at the open ditch in the Staines Handicap Steeplechase at Hawthorn Hill, England. (International Newsweek)



NO BEGGAR-LIKE DUCK HUNTING—Even wintry blasts chill arctic of 'embrace in snow; 'Wren's a typical sportsman in Long Island waters, busy plucking decoys. 'Duckers are wags full of this stunts.

SUGAR BEETS BRING \$160,000 TO BUHL DISTRICT GROWERS

West End Shipments to Local Factory Aggregate 380 Carloads During Season; A. Machacek Raises 1500 Tons.

BUHL, Dec. 13.—West End beet growers shipped 380 cars of beets to the Twin Falls factory this year, 140 cars going from Buhl and 240 from Coaled.

Northway Grange has installed the following officers for 1928: President, Fred Conrad; lecturer, Mrs. Fred Clute; steward, Maurice Curington; assistant steward, Charles Reed; chaplain, Mrs. F. A. Bonar; secretary, Juanita Bonar; gatekeeper, C. H. Gately; lady assistant steward, Ruth Brock.

The three Graces will be elected during the next meeting. An open meeting will be held at the Grange on December 23 with a dinner program and Christmas tree.

Christmas tree has been placed Wednesday to the Women's Missionary Society of the Christian church. During the meeting a box was packed with toys and goodies for the Christian Children's home at Denver.

Mrs. Emma O'Leary, president of the Rebekah assembly of Idaho and Mrs. Marie Gutierrez of Twin Falls were honored guests at the banquet served at 6 o'clock at the I. O. O. F. hall.

Mr. O'Leary, Mrs. Effie Watkins of Twin Falls, past president of the Rebekah assembly of Idaho and Mrs. Marie Gutierrez of Twin Falls were honored guests at the banquet served at 6 o'clock at the I. O. O. F. hall.

Wives of the directors of the Bull Retory club complimented Mrs. Horace O. Merrill, wife of the president of the club, at the opening of the 7 o'clock dinner Friday evening at the home of Mrs. E. J. Daly.

Christmas Seal Sale. Mrs. A. J. Fink, local chairman of the Anti-Tuberculosis seal sale, announces that the campaign is nearing with success in the west and will be received early next week from all clubs and rural schools of the east end.

The Junior Girl Reserves met Tuesday with the senior reserves and Miss Elsie Sult to receive instructions on reserve card. They were instructed in the meaning of G. R. in reserve slogans and the flag salute.

Norris Westby was awarded a merit badge for progress in swimming at the meeting of the court of honor of the boy scouts Tuesday evening.

Plan Christmas Tree. Members of the Business Women's club are completing plans for Christmas tree honoring little folks of Buhl during the holiday season.

A pantomime of well known books was given by several of the girls in costume as follows: Treasurer, "The Prince and the Pauper"; Elizabeth Smithwick, "David Copperfield"; Ruth Lacey, "The Blue Bird"; Ernest DeGhar and Carolyn Gibbs, "Romeo and Juliet"; Lulu Shank, "Bones From the Bible"; Bernice McCloskey, "The Story of Santa Claus"; Anna Walker and Lois Smith sang, "Jacob's Ladder."

Members of the Business Women's club are completing plans for Christmas tree honoring little folks of Buhl during the holiday season.

Members of the senior girl reserves met Wednesday, Charlie Borina was in charge of the program on "Knowledge."

Members of the Business Women's club are completing plans for Christmas tree honoring little folks of Buhl during the holiday season.

Members of the senior girl reserves met Wednesday, Charlie Borina was in charge of the program on "Knowledge."

Members of the Business Women's club are completing plans for Christmas tree honoring little folks of Buhl during the holiday season.

Members of the senior girl reserves met Wednesday, Charlie Borina was in charge of the program on "Knowledge."

Members of the Business Women's club are completing plans for Christmas tree honoring little folks of Buhl during the holiday season.

BIG SHAKEUP COMING IN NATIONAL TENNIS RANK



PRESIDENT JONES W. MESEBEAU of New York (upper left), may be ousted as head of the United States Lawn Tennis association at annual election. Rumor has it that Vice President Samuel H. Collins of Philadelphia (upper right center) will succeed him. New development is due to ordinary method of handling stars and tournaments and is regarded as direct reaction to storm of criticism and rebuke aimed at Mesereau particularly in the case of Vincent Richards (left), Bill Tilden (lower right), and Mary K. Browne (upper right).

BIG FOUR-AVIATION PROBLEMS SOLVED BY SCIENTISTS IN 1927

BAITIMORE, Dec. 13 (AP)—Airplanes have been made safer, cheaper and easier to control at low speeds than was possible at the beginning of the year.

That is a development of the last year which Dr. Ames views as most interesting. The public has been impressed by the achievements of aviation to recognize its commercial possibilities.

Today the United States has more privately owned airplanes than any other nation. They are no longer viewed as mere vehicles of hazardous, expensive sport, but as valuable means of quick transportation for business and professional men and of swift delivery for needed articles.

In the scientific field, Dr. Ames finds four distinct advances which have grown out of the odious task of research. It has been made possible to increase the strength of airplane structures, the problem of control at low speed has been "90 per cent solved," more reliable motors have been evolved, and one of the major questions of balance has been answered with a change in the shape of wings.

The engineer has been ready to make a sound airplane structure if he could find out just where the greatest stresses would be encountered during flight.

The scientist's job was to tell him how the loads were distributed in the form of air pressure at different points, by completing that task this year, he has made it possible for the manufacturer to work more efficiently at a lower cost, and produce planes which are safer.

Control of planes at low speed, a difficulty encountered most frequently when they are taking-off or landing, has been solved for many years, but within the last month or two, several schemes have been tried out which have proved more or less effective.

Control of planes at low speed, a difficulty encountered most frequently when they are taking-off or landing, has been solved for many years, but within the last month or two, several schemes have been tried out which have proved more or less effective.

Control of planes at low speed, a difficulty encountered most frequently when they are taking-off or landing, has been solved for many years, but within the last month or two, several schemes have been tried out which have proved more or less effective.

Control of planes at low speed, a difficulty encountered most frequently when they are taking-off or landing, has been solved for many years, but within the last month or two, several schemes have been tried out which have proved more or less effective.

Control of planes at low speed, a difficulty encountered most frequently when they are taking-off or landing, has been solved for many years, but within the last month or two, several schemes have been tried out which have proved more or less effective.

Control of planes at low speed, a difficulty encountered most frequently when they are taking-off or landing, has been solved for many years, but within the last month or two, several schemes have been tried out which have proved more or less effective.

Control of planes at low speed, a difficulty encountered most frequently when they are taking-off or landing, has been solved for many years, but within the last month or two, several schemes have been tried out which have proved more or less effective.

Control of planes at low speed, a difficulty encountered most frequently when they are taking-off or landing, has been solved for many years, but within the last month or two, several schemes have been tried out which have proved more or less effective.

Control of planes at low speed, a difficulty encountered most frequently when they are taking-off or landing, has been solved for many years, but within the last month or two, several schemes have been tried out which have proved more or less effective.

Control of planes at low speed, a difficulty encountered most frequently when they are taking-off or landing, has been solved for many years, but within the last month or two, several schemes have been tried out which have proved more or less effective.

FLAPPER INHERITS BEAUTY AIDS FROM NILE MAIDS OF 3000 B. C.

Flapper inherits beauty aids from Nile Maids of 3000 B. C. The flapper who inherits beauty aids from the Nile Maids of 3000 B. C. is the modern woman who uses eye-brow pencil, lipstick, and other cosmetics.

The flapper who inherits beauty aids from the Nile Maids of 3000 B. C. is the modern woman who uses eye-brow pencil, lipstick, and other cosmetics.

The flapper who inherits beauty aids from the Nile Maids of 3000 B. C. is the modern woman who uses eye-brow pencil, lipstick, and other cosmetics.

The flapper who inherits beauty aids from the Nile Maids of 3000 B. C. is the modern woman who uses eye-brow pencil, lipstick, and other cosmetics.

The flapper who inherits beauty aids from the Nile Maids of 3000 B. C. is the modern woman who uses eye-brow pencil, lipstick, and other cosmetics.

The flapper who inherits beauty aids from the Nile Maids of 3000 B. C. is the modern woman who uses eye-brow pencil, lipstick, and other cosmetics.

The flapper who inherits beauty aids from the Nile Maids of 3000 B. C. is the modern woman who uses eye-brow pencil, lipstick, and other cosmetics.

The flapper who inherits beauty aids from the Nile Maids of 3000 B. C. is the modern woman who uses eye-brow pencil, lipstick, and other cosmetics.

The flapper who inherits beauty aids from the Nile Maids of 3000 B. C. is the modern woman who uses eye-brow pencil, lipstick, and other cosmetics.

The flapper who inherits beauty aids from the Nile Maids of 3000 B. C. is the modern woman who uses eye-brow pencil, lipstick, and other cosmetics.

The flapper who inherits beauty aids from the Nile Maids of 3000 B. C. is the modern woman who uses eye-brow pencil, lipstick, and other cosmetics.

The flapper who inherits beauty aids from the Nile Maids of 3000 B. C. is the modern woman who uses eye-brow pencil, lipstick, and other cosmetics.

The flapper who inherits beauty aids from the Nile Maids of 3000 B. C. is the modern woman who uses eye-brow pencil, lipstick, and other cosmetics.

The flapper who inherits beauty aids from the Nile Maids of 3000 B. C. is the modern woman who uses eye-brow pencil, lipstick, and other cosmetics.

The flapper who inherits beauty aids from the Nile Maids of 3000 B. C. is the modern woman who uses eye-brow pencil, lipstick, and other cosmetics.

The flapper who inherits beauty aids from the Nile Maids of 3000 B. C. is the modern woman who uses eye-brow pencil, lipstick, and other cosmetics.

The flapper who inherits beauty aids from the Nile Maids of 3000 B. C. is the modern woman who uses eye-brow pencil, lipstick, and other cosmetics.

The flapper who inherits beauty aids from the Nile Maids of 3000 B. C. is the modern woman who uses eye-brow pencil, lipstick, and other cosmetics.

The flapper who inherits beauty aids from the Nile Maids of 3000 B. C. is the modern woman who uses eye-brow pencil, lipstick, and other cosmetics.

The flapper who inherits beauty aids from the Nile Maids of 3000 B. C. is the modern woman who uses eye-brow pencil, lipstick, and other cosmetics.

The flapper who inherits beauty aids from the Nile Maids of 3000 B. C. is the modern woman who uses eye-brow pencil, lipstick, and other cosmetics.

The flapper who inherits beauty aids from the Nile Maids of 3000 B. C. is the modern woman who uses eye-brow pencil, lipstick, and other cosmetics.

FLAPPER INHERITS BEAUTY AIDS FROM NILE MAIDS OF 3000 B. C.

Flapper inherits beauty aids from Nile Maids of 3000 B. C. The flapper who inherits beauty aids from the Nile Maids of 3000 B. C. is the modern woman who uses eye-brow pencil, lipstick, and other cosmetics.

The flapper who inherits beauty aids from the Nile Maids of 3000 B. C. is the modern woman who uses eye-brow pencil, lipstick, and other cosmetics.

The flapper who inherits beauty aids from the Nile Maids of 3000 B. C. is the modern woman who uses eye-brow pencil, lipstick, and other cosmetics.

The flapper who inherits beauty aids from the Nile Maids of 3000 B. C. is the modern woman who uses eye-brow pencil, lipstick, and other cosmetics.

The flapper who inherits beauty aids from the Nile Maids of 3000 B. C. is the modern woman who uses eye-brow pencil, lipstick, and other cosmetics.

The flapper who inherits beauty aids from the Nile Maids of 3000 B. C. is the modern woman who uses eye-brow pencil, lipstick, and other cosmetics.

The flapper who inherits beauty aids from the Nile Maids of 3000 B. C. is the modern woman who uses eye-brow pencil, lipstick, and other cosmetics.

The flapper who inherits beauty aids from the Nile Maids of 3000 B. C. is the modern woman who uses eye-brow pencil, lipstick, and other cosmetics.

The flapper who inherits beauty aids from the Nile Maids of 3000 B. C. is the modern woman who uses eye-brow pencil, lipstick, and other cosmetics.

The flapper who inherits beauty aids from the Nile Maids of 3000 B. C. is the modern woman who uses eye-brow pencil, lipstick, and other cosmetics.

The flapper who inherits beauty aids from the Nile Maids of 3000 B. C. is the modern woman who uses eye-brow pencil, lipstick, and other cosmetics.

The flapper who inherits beauty aids from the Nile Maids of 3000 B. C. is the modern woman who uses eye-brow pencil, lipstick, and other cosmetics.

The flapper who inherits beauty aids from the Nile Maids of 3000 B. C. is the modern woman who uses eye-brow pencil, lipstick, and other cosmetics.

The flapper who inherits beauty aids from the Nile Maids of 3000 B. C. is the modern woman who uses eye-brow pencil, lipstick, and other cosmetics.

The flapper who inherits beauty aids from the Nile Maids of 3000 B. C. is the modern woman who uses eye-brow pencil, lipstick, and other cosmetics.

The flapper who inherits beauty aids from the Nile Maids of 3000 B. C. is the modern woman who uses eye-brow pencil, lipstick, and other cosmetics.

The flapper who inherits beauty aids from the Nile Maids of 3000 B. C. is the modern woman who uses eye-brow pencil, lipstick, and other cosmetics.

The flapper who inherits beauty aids from the Nile Maids of 3000 B. C. is the modern woman who uses eye-brow pencil, lipstick, and other cosmetics.

The flapper who inherits beauty aids from the Nile Maids of 3000 B. C. is the modern woman who uses eye-brow pencil, lipstick, and other cosmetics.

The flapper who inherits beauty aids from the Nile Maids of 3000 B. C. is the modern woman who uses eye-brow pencil, lipstick, and other cosmetics.

The flapper who inherits beauty aids from the Nile Maids of 3000 B. C. is the modern woman who uses eye-brow pencil, lipstick, and other cosmetics.

The flapper who inherits beauty aids from the Nile Maids of 3000 B. C. is the modern woman who uses eye-brow pencil, lipstick, and other cosmetics.

FLAPPER INHERITS BEAUTY AIDS FROM NILE MAIDS OF 3000 B. C.

Flapper inherits beauty aids from Nile Maids of 3000 B. C. The flapper who inherits beauty aids from the Nile Maids of 3000 B. C. is the modern woman who uses eye-brow pencil, lipstick, and other cosmetics.

The flapper who inherits beauty aids from the Nile Maids of 3000 B. C. is the modern woman who uses eye-brow pencil, lipstick, and other cosmetics.

The flapper who inherits beauty aids from the Nile Maids of 3000 B. C. is the modern woman who uses eye-brow pencil, lipstick, and other cosmetics.

The flapper who inherits beauty aids from the Nile Maids of 3000 B. C. is the modern woman who uses eye-brow pencil, lipstick, and other cosmetics.

The flapper who inherits beauty aids from the Nile Maids of 3000 B. C. is the modern woman who uses eye-brow pencil, lipstick, and other cosmetics.

The flapper who inherits beauty aids from the Nile Maids of 3000 B. C. is the modern woman who uses eye-brow pencil, lipstick, and other cosmetics.

The flapper who inherits beauty aids from the Nile Maids of 3000 B. C. is the modern woman who uses eye-brow pencil, lipstick, and other cosmetics.

The flapper who inherits beauty aids from the Nile Maids of 3000 B. C. is the modern woman who uses eye-brow pencil, lipstick, and other cosmetics.

The flapper who inherits beauty aids from the Nile Maids of 3000 B. C. is the modern woman who uses eye-brow pencil, lipstick, and other cosmetics.

The flapper who inherits beauty aids from the Nile Maids of 3000 B. C. is the modern woman who uses eye-brow pencil, lipstick, and other cosmetics.

The flapper who inherits beauty aids from the Nile Maids of 3000 B. C. is the modern woman who uses eye-brow pencil, lipstick, and other cosmetics.

The flapper who inherits beauty aids from the Nile Maids of 3000 B. C. is the modern woman who uses eye-brow pencil, lipstick, and other cosmetics.

The flapper who inherits beauty aids from the Nile Maids of 3000 B. C. is the modern woman who uses eye-brow pencil, lipstick, and other cosmetics.

The flapper who inherits beauty aids from the Nile Maids of 3000 B. C. is the modern woman who uses eye-brow pencil, lipstick, and other cosmetics.

The flapper who inherits beauty aids from the Nile Maids of 3000 B. C. is the modern woman who uses eye-brow pencil, lipstick, and other cosmetics.

The flapper who inherits beauty aids from the Nile Maids of 3000 B. C. is the modern woman who uses eye-brow pencil, lipstick, and other cosmetics.

The flapper who inherits beauty aids from the Nile Maids of 3000 B. C. is the modern woman who uses eye-brow pencil, lipstick, and other cosmetics.

The flapper who inherits beauty aids from the Nile Maids of 3000 B. C. is the modern woman who uses eye-brow pencil, lipstick, and other cosmetics.

The flapper who inherits beauty aids from the Nile Maids of 3000 B. C. is the modern woman who uses eye-brow pencil, lipstick, and other cosmetics.

The flapper who inherits beauty aids from the Nile Maids of 3000 B. C. is the modern woman who uses eye-brow pencil, lipstick, and other cosmetics.

The flapper who inherits beauty aids from the Nile Maids of 3000 B. C. is the modern woman who uses eye-brow pencil, lipstick, and other cosmetics.

The flapper who inherits beauty aids from the Nile Maids of 3000 B. C. is the modern woman who uses eye-brow pencil, lipstick, and other cosmetics.

FLAPPER INHERITS BEAUTY AIDS FROM NILE MAIDS OF 3000 B. C.

Flapper inherits beauty aids from Nile Maids of 3000 B. C. The flapper who inherits beauty aids from the Nile Maids of 3000 B. C. is the modern woman who uses eye-brow pencil, lipstick, and other cosmetics.

The flapper who inherits beauty aids from the Nile Maids of 3000 B. C. is the modern woman who uses eye-brow pencil, lipstick, and other cosmetics.

The flapper who inherits beauty aids from the Nile Maids of 3000 B. C. is the modern woman who uses eye-brow pencil, lipstick, and other cosmetics.

The flapper who inherits beauty aids from the Nile Maids of 3000 B. C. is the modern woman who uses eye-brow pencil, lipstick, and other cosmetics.

The flapper who inherits beauty aids from the Nile Maids of 3000 B. C. is the modern woman who uses eye-brow pencil, lipstick, and other cosmetics.

The flapper who inherits beauty aids from the Nile Maids of 3000 B. C. is the modern woman who uses eye-brow pencil, lipstick, and other cosmetics.

The flapper who inherits beauty aids from the Nile Maids of 3000 B. C. is the modern woman who uses eye-brow pencil, lipstick, and other cosmetics.

The flapper who inherits beauty aids from the Nile Maids of 3000 B. C. is the modern woman who uses eye-brow pencil, lipstick, and other cosmetics.

The flapper who inherits beauty aids from the Nile Maids of 3000 B. C. is the modern woman who uses eye-brow pencil, lipstick, and other cosmetics.

The flapper who inherits beauty aids from the Nile Maids of 3000 B. C. is the modern woman who uses eye-brow pencil, lipstick, and other cosmetics.

The flapper who inherits beauty aids from the Nile Maids of 3000 B. C. is the modern woman who uses eye-brow pencil, lipstick, and other cosmetics.

The flapper who inherits beauty aids from the Nile Maids of 3000 B. C. is the modern woman who uses eye-brow pencil, lipstick, and other cosmetics.

The flapper who inherits beauty aids from the Nile Maids of 3000 B. C. is the modern woman who uses eye-brow pencil, lipstick, and other cosmetics.

The flapper who inherits beauty aids from the Nile Maids of 3000 B. C. is the modern woman who uses eye-brow pencil, lipstick, and other cosmetics.

The flapper who inherits beauty aids from the Nile Maids of 3000 B. C. is the modern woman who uses eye-brow pencil, lipstick, and other cosmetics.

The flapper who inherits beauty aids from the Nile Maids of 3000 B. C. is the modern woman who uses eye-brow pencil, lipstick, and other cosmetics.

The flapper who inherits beauty aids from the Nile Maids of 3000 B. C. is the modern woman who uses eye-brow pencil, lipstick, and other cosmetics.

The flapper who inherits beauty aids from the Nile Maids of 3000 B. C. is the modern woman who uses eye-brow pencil, lipstick, and other cosmetics.

The flapper who inherits beauty aids from the Nile Maids of 3000 B. C. is the modern woman who uses eye-brow pencil, lipstick, and other cosmetics.

The flapper who inherits beauty aids from the Nile Maids of 3000 B. C. is the modern woman who uses eye-brow pencil, lipstick, and other cosmetics.

The flapper who inherits beauty aids from the Nile Maids of 3000 B. C. is the modern woman who uses eye-brow pencil, lipstick, and other cosmetics.

FLAPPER INHERITS BEAUTY AIDS FROM NILE MAIDS OF 3000 B. C.

Flapper inherits beauty aids from Nile Maids of 3000 B. C. The flapper who inherits beauty aids from the Nile Maids of 3000 B. C. is the modern woman who uses eye-brow pencil, lipstick, and other cosmetics.

The flapper who inherits beauty aids from the Nile Maids of 3000 B. C. is the modern woman who uses eye-brow pencil, lipstick, and other cosmetics.

The flapper who inherits beauty aids from the Nile Maids of 3000 B. C. is the modern woman who uses eye-brow pencil, lipstick, and other cosmetics.

The flapper who inherits beauty aids from the Nile Maids of 3000 B. C. is the modern woman who uses eye-brow pencil, lipstick, and other cosmetics.

The flapper who inherits beauty aids from the Nile Maids of 3000 B. C. is the modern woman who uses eye-brow pencil, lipstick, and other cosmetics.

The flapper who inherits beauty aids from the Nile Maids of 3000 B. C. is the modern woman who uses eye-brow pencil, lipstick, and other cosmetics.

The flapper who inherits beauty aids from the Nile Maids of 3000 B. C. is the modern woman who uses eye-brow pencil, lipstick, and other cosmetics.

The flapper who inherits beauty aids from the Nile Maids of 3000 B. C. is the modern woman who uses eye-brow pencil, lipstick, and other cosmetics.

The flapper who inherits beauty aids from the Nile Maids of 3000 B. C. is the modern woman who uses eye-brow pencil, lipstick, and other cosmetics.

The flapper who inherits beauty aids from the Nile Maids of 3000 B. C. is the modern woman who uses eye-brow pencil, lipstick, and other cosmetics.

The flapper who inherits beauty aids from the Nile Maids of 3000 B. C. is the modern woman who uses eye-brow pencil, lipstick, and other cosmetics.

The flapper who inherits beauty aids from the Nile Maids of 3000 B. C. is the modern woman who uses eye-brow pencil, lipstick, and other cosmetics.

The flapper who inherits beauty aids from the Nile Maids of 3000 B. C. is the modern woman who uses eye-brow pencil, lipstick, and other cosmetics.

The flapper who inherits beauty aids from the Nile Maids of 3000 B. C. is the modern woman who uses eye-brow pencil, lipstick, and other cosmetics.

The flapper who inherits beauty aids from the Nile Maids of 3000 B. C. is the modern woman who uses eye-brow pencil, lipstick, and other cosmetics.

The flapper who inherits beauty aids from the Nile Maids of 3000 B. C. is the modern woman who uses eye-brow pencil, lipstick, and other cosmetics.

The flapper who inherits beauty aids from the Nile Maids of 3000 B. C. is the modern woman who uses eye-brow pencil, lipstick, and other cosmetics.

The flapper who inherits beauty aids from the Nile Maids of 3000 B. C. is the modern woman who uses eye-brow pencil, lipstick, and other cosmetics.

The flapper who inherits beauty aids from the Nile Maids of 3000 B. C. is the modern woman who uses eye-brow pencil, lipstick, and other cosmetics.

The flapper who inherits beauty aids from the Nile Maids of 3000 B. C. is the modern woman who uses eye-brow pencil, lipstick, and other cosmetics.

The flapper who inherits beauty aids from the Nile Maids of 3000 B. C. is the modern woman who uses eye-brow pencil, lipstick, and other cosmetics.

FLAPPER INHERITS BEAUTY AIDS FROM NILE MAIDS OF 3000 B. C.

Flapper inherits beauty aids from Nile Maids of 3000 B. C. The flapper who inherits beauty aids from the Nile Maids of 3000 B. C. is the modern woman who uses eye-brow pencil, lipstick, and other cosmetics.

The flapper who inherits beauty aids from the Nile Maids of 3000 B. C. is the modern woman who uses eye-brow pencil, lipstick, and other cosmetics.

The flapper who inherits beauty aids from the Nile Maids of 3000 B. C. is the modern woman who uses eye-brow pencil, lipstick, and other cosmetics.

The flapper who inherits beauty aids from the Nile Maids of 3000 B. C. is the modern woman who uses eye-brow pencil, lipstick, and other cosmetics.

The flapper who inherits beauty aids from the Nile Maids of 3000 B. C. is the modern woman who uses eye-brow pencil, lipstick, and other cosmetics.

The flapper who inherits beauty aids from the Nile Maids of 3000 B. C. is the modern woman who uses eye-brow pencil, lipstick, and other cosmetics.

The flapper who inherits beauty aids from the Nile Maids of 3000 B. C. is the modern woman who uses eye-brow pencil, lipstick, and other cosmetics.

The flapper who inherits beauty aids from the Nile Maids of 3000 B. C. is the modern woman who uses eye-brow pencil, lipstick, and other cosmetics.

The flapper who inherits beauty aids from the Nile Maids of 3000 B. C. is the modern woman who uses eye-brow pencil, lipstick, and other cosmetics.

The flapper who inherits beauty aids from the Nile Maids of 3000 B. C. is the modern woman who uses eye-brow pencil, lipstick, and other cosmetics.

The flapper who inherits beauty aids from the Nile Maids of 3000 B. C. is the modern woman who uses eye-brow pencil, lipstick, and other cosmetics.

The flapper who inherits beauty aids from the Nile Maids of 3000 B. C. is the modern woman who uses eye-brow pencil, lipstick, and other cosmetics.

The flapper who inherits beauty aids from the Nile Maids of 3000 B. C. is the modern woman who uses eye-brow pencil, lipstick, and other cosmetics.

The flapper who inherits beauty aids from the Nile Maids of 3000 B. C. is the modern woman who uses eye-brow pencil, lipstick, and other cosmetics.

The flapper who inherits beauty aids from the Nile Maids of 3000 B. C. is the modern woman who uses eye-brow pencil, lipstick, and other cosmetics.

The flapper who inherits beauty aids from the Nile Maids of

JARJIDGE MURDERER MAKES UNIQUE PLEA TO OBTAIN PAROLE

Man Who Killed Fred Searcy,
Stage Driver, Claims Act Was
Result of Quarrel Because
Victim Shrank From Crime.

Ben Kuhl, who murdered Fred Searcy, Jarjidge stage driver about 11 years ago, creating tremendous excitement throughout Nevada and Idaho at the time, is making a desperate effort to secure a parole on the ground that while he admitted the crime, it was done as a result of a quarrel, because Searcy whom he claimed was in collusion with him and others, to the death of Searcy, it was a legal and judicial crime because it was the first case in the history of litigation where the print of a palm of a hand was admitted in evidence. The supreme court of a state sustained the trial court in admitting it.

Story of Case
The story of Kuhl's attempt to secure a parole, the unusual argument he makes for favorable action on his request is told by the Idaho Independent, as follows:

In an impassioned letter to Newton Crumley of this city, Ben Kuhl, confined about 11 years ago for the murder of Fred Searcy, Jarjidge stage driver, pleads for Crumley's assistance in gaining his freedom from the Parole Board of the Nevada State Penitentiary. Crumley, operating a restaurant and bar at Jarjidge at the time of the shooting, was the principal loser through Kuhl's robbery of the mails following the killing of Searcy.

Would Return Money
"I do wish you to know I do my very best to have that blood money returned to you, its rightful owner," Kuhl's letter says. Kuhl makes a variety of charges against several individuals, whom he claims were accomplices in getting away with the three thousand dollars or more that was rifled from the mail sacks on the fatal night.

Describes Killing
"I do not know how you feel toward me relative to my guilt," the letter continues. "I do not know how that you will give me the benefit of the doubt if you will take the trouble to look at the charges which I have elaborately displayed during my trial. You will see that from the spot where I shot Searcy I drove some quarter-of-a-mile towards town with my so-called victim, directly past houses and people on the road, who knew me and recognized me and who saw me drive between their wagons beside the road while I had my arm around Fred's shoulder holding him in the seat while I hastened the team towards town in hopes of getting him a doctor. When I saw two teamsters I had passed called to me it was then I became frightened and realized if Fred was dead, which I feared he was, after I had shook him and bled to him many times, that I would be lynched by that hostile mob of doctors, who I had all the trouble with when I jumped that squatter's lot which he claimed. It was simply this fear which prevented me of going into town and giving myself up to the Marshal."

Claims Fought With Driver
Kuhl briefly claims in the communication that he and Searcy were partners in the planned robbery but Searcy at the last moment declined to be party to it, whereupon he and Kuhl quarreled violently and Kuhl shot him. The evidence in the case showed that Searcy had been shot with a forty-four revolver in the back of the head.

Pleas for Aid
"After being denied consideration time and time again, I tell you it makes a fellow," Kuhl declares to Crumley in his appeal for assistance. "I feel that I have served sufficient time to discharge the demands of justice and should be given clemency."

Hints at Hunger Strike
"After receiving a sorrowful letter from my wife who has stood with me during all these years of sorrow be-

lieve me, I would have died at her side, I would have committed any crime to be perfectly justified in going on a hunger strike in order to bring my case before the world in a vain hope of getting justice. I was to go along though, and drive my thing like a man. I could have walked away from the scene of the crime any time but no, I don't want to do that. I want to get out of here and return to my loving wife, a wife in a million."

Parole Consistently Fought
All Kuhl's attempts to secure leniency have been consistently opposed by officials of Idaho County who regarded his crime one of the most brutal in criminal annals here. He is particularly bitter in his letter toward Judge Carville who was district attorney at the time of Kuhl's conviction and whom he charges with having "persecuted" him. His special efforts are directed toward securing approval of Judge E. J. L. Taber, who presided over the trial for his application for parole. Crumley's efforts would be advantageous, but those whose consent to extension of leniency would be most valuable for Kuhl have refused it and he has now served a decade of his life sentence for his crime.

Case Was Unique in Criminal Law
The case of the state vs. Kuhl was extraordinary in criminal law. It was the only trial in the history of a human palm was offered in evidence with the contention that it possessed "a unique standing as the finger-print. No authority existed to support the accuracy of the palm print as evidence and for this reason courts throughout the Nevada Supreme Court when it was decided that such evidence was acceptable. The case was made the subject of several discussions in leading lawyers' magazines of the country. The palm print was secured by photo-etching an impression left in the flap of an envelope as the container was split open to permit extraction of its contents. Kuhl was prosecuted by Judge then District Attorney E. F. Carville and his assistant, Charles A. Cantwell, and Defendants Edwin E. Caine. The case was argued for Mr. Caine by the Supreme Court by Harold P. Hale, who was then engaged in the practice of law in Idaho.

TRIBUNE IS PAID TO D. A. R. ORGANIZATION

Mrs. D. O. McCully, regent of the Daughters of the American Revolution is in receipt from the publishers of the national organization an eloquent historical resume and tribute to the D. A. R. by Mrs. W. O. Spencer, vice president general of the society. The charter of the society named it part of the government, its reports are made to the president of the institution and are subject to the government. The charter was filed in 1890 and was signed by President Adlai E. Stevenson, Thomas B. Reed and Secretary Richard Olney of the department of state. Its first president general was Mrs. Benjamin Harrison. Mrs. Alfred Brucecar is its present president.

Discovery Worth While
Archaeologists have unearthed some tablets in Babylon which prove that banking was flourishing 5,000 years ago. Now, if that could be done up into town and giving myself up to the Marshal."

**STOP—
LOOK—
LISTEN**

**new
prices!**

ATWATER KENT RADIO

THE RADIO you have always wanted is here at the new prices. Only the best and most up-to-date factory in the world could make good radio so inexpensive. Take advantage of the saving now. Liberal terms. Let us show you today.



**Caswell's
Coffee**

delightful
completely satisfying

SOLD EXCLUSIVELY BY US
Order by Telephone
Phone 606

1500,000 CANS WERE MADE AT THE PANAMA PACIFIC INTERNATIONAL EXPOSITION

Electrical Appliances - GIFTS - that keep on Giving



No one who has a gift list to fill need look farther than to the Electric Shop for ideal gifts. For here are great stores of many, many electrical appliances that make the very nicest kind of gifts—something electrical for everyone.

Electrical Gifts bring permanent and lasting joy to those who receive them. From the time breakfast is started in the morning until it is time to go to bed at night their usefulness is appreciated.

By adding comfort and convenience to the lives of those who possess them, Electrical Appliances serve as constant reminders of the giftmaker's thoughtfulness in selecting practical remembrances.

Our Convenient Term Payment Plan Simplifies Gift Buying

Christmas shopping is simplified from a financial standpoint at the Electric Shop. You may buy one or a number of Electrical Gifts for a small payment down, and complete the balance in easily spared amounts over a period of months. Take advantage of this easy, convenient method of buying the gifts you plan to give.

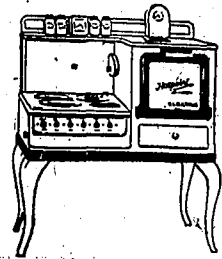
A List of Helpful Suggestions To Aid You In Choosing Gifts

Heating Pads..... \$6.00 and \$8.00	Soldering Irons..... \$3.95 to \$9.50
Electric Irons..... \$5.00 to \$8.95	Bus Utility Lamps... \$3.00 to \$4.00
Waffle Irons..... \$10.00 to \$17.50	Air Heaters..... \$5.00 to \$8.00
Toasters..... \$6.00 to \$12.50	Sew E. Z. Motor Sets..... \$18.50
Percolators..... \$8.00 to \$22.50	Hair Dryers..... \$18.50 to \$22.50
Perc. and Urn Sets... \$24.00 to \$67.50	Vibrators..... \$18.50
Grills and Table Stoves... \$7.00 to \$13.50	Xmas Tree Light Sets \$2.30 to \$6.00
Curling Irons..... \$1.60 to \$7.50	Electric Wreaths... \$2.00 to \$3.50
Electric Ironers..... \$12.00 to \$25.00	Electric Trains..... \$11.00 to \$45.00
Vacuum Cleaners... \$58.50 to \$79.00	G. E. Refrigerators... \$305.00 up
Electric Washers... \$107.00 to \$168.50	Red and Green Porch Lights and Electric socket..... \$1.00
Electric Ranges... \$67.50 to \$125.00	
Tobacco Lighters... \$2.25 to \$7.50	

Come and choose the gifts you plan to give, while there is still plenty of time to make satisfactory selections and while assortments are so complete. You will find many suggestions here that will help solve the problem of what to give.

Here's the Gift that Mother Really Wants —an Electric Range

Mother deserves the best in the matter of gifts. This year resolve to give her what she really wants—an Electric Range! What gift could be more expressive of your thoughtfulness? What gift could please her more than a beautiful Electric Range—and the bonus of freedom which it will give to her? What pleasure she will take in the cooking of three meals a day with an electric range to lighten the task!



Decide now to give Mother this wonderful Christmas Gift. You can give it to her for a down payment of as little as \$1.00 on some models, and pay the balance in convenient monthly amounts. Come to the Electric Shop today and see the many models—a size and type for any family.

ELECTRIC SHOP IDAHO POWER COMPANY



EDEN
BUCKLE DRIVE

Proceeds of Auction Sale of Products to Be Used in Making Payments on Legion Hall.

EDEN, Dec. 13—A "Buckle Drive" was conducted here the first day of the week by the members of the Eden Lee Flora post of the American Legion. A large amount of produce was collected by the committee in charge. The cleanings are to be sold at auction at some near future date and the proceeds used to assist the post in making the payments on its hall purchased last spring.

The Women of the Eden American Legion Auxiliary unit met here Friday. Miss Mary Van Dusen of the university extension department addressed the meeting. A letter of greeting was read from Miss Topworth of the university at Moscow. The unit pledged \$3 for the benefit of the legion hall.

H. B. Hogue came here Thursday evening from Gooding for a few days visit with his parents, Mr. and Mrs. A. F. Hogue.

The first sleigh ride of the season was enjoyed here Friday by Mr. and Mrs. A. F. Edon who drove out to the Hogue sale in one of the very modern ways of transportation here having fallen to a depth of more than three inches made the sleighing comfortable.

George Meador has left for Oklahoma where he will be employed in an oil field this winter.

A series of social dances given by the members of the I. O. O. F. lodge were started here for the coming winter on Friday evening. More than thirty couples were present. Dances to suit the old as well as the young were a feature of the evening. The Rebekahs served lunch at midnight. Many from the North Side took the opportunity Saturday to go to Twin Falls to get a glimpse of Santa Claus.

The public speaking class of the Eden high school under the direction of Mrs. Pieck will present the three act play entitled, "The Cheerful Liar" at the high school auditorium on next Wednesday evening, December 14th, at eight o'clock. This is said to be a real comedy with a happy ending.

Masons Elect Officers
The annual election of officers of the Eden F. & M. lodge took place at the regular meeting of the lodge on Thursday evening. The following were elected to serve: H. E. Gundfurther, president; W. E. S. Kincald, senior warden; J. L. Sizmore, junior warden; George D. Buckler, secretary.

The remaining officers which are appointed are: A. M. Shafter, chaplain; C. E. Vignard, master; H. W. Dunn, senior deacon; E. Sumner, junior deacon; H. K. Belmont, senior steward; J. R. Staples, junior steward; E. L. Kintz, tyler. Installation to be held on Thursday evening December twenty-first.

Arthur Nelson arrived this week from Washington to spend the winter at the home of his uncle, N. L. Swenson. Arthur spent several years here before going to Washington and he was a student in the Eden school.

Frank Hogue held a farm sale at his home a mile south of Edinburg school last Friday. Mr. Hogue is retiring from the farm and has made arrangements to take over the garage and auto station in Edinburg. This was formerly the place of business of the Eden Auto Company. Wendell Roden, who operated the station during the past few months, has returned to Hazelton where he will enter business again. Fred Kelley has been employed by Mr. Hogue to take charge of the repair department. Mr. Hogue ended upon his new line of work Monday. He will formally move to Hazelton within the next few days.

Charles Jackson and Paul Okleberg left Thursday by motor for Phoenix. Their winter here will extend a few weeks, later going on to Los Angeles to spend the remainder of the winter months.

The condition of E. M. Patterson, who was taken suddenly ill Wednesday, has improved during the last few days. A complete recovery is expected to be a matter of a few days.

The adult committee of the Eden Old Reserves held a special meeting on Wednesday afternoon that was well attended. Miss Elsie Sult, district secretary of old reserves organization, was present at the meeting.

Basketball Uniforms Ordered
New basketball uniforms for the members of the Eden boys and girls' high school teams have been ordered. The suits are to be here in time for the opening game on the home floor on next Friday evening, December 16.

C. J. Metcalf, rural mail carrier, and a truck driven by E. L. Ferris met with a head on collision Friday afternoon while Metcalf was making his daily mail delivery. The Metcalf car was damaged and the Ferris car was badly flamed.

The wet condition of the dirt roads on which they were traveling, together with the large extent of the collision.

C. O. Holte returned Thursday evening from a few days visit at home at the home of his daughter, Mrs. Minnie Swan.

ODD FISH PLentiful
WASHINGTON, Dec. 13 (AP)—The catch of odd on the North American Atlantic coast averaged 1,100,000 50 pounds yearly for the past 30 years, it is estimated. The fish is important as a food source and is used for medicinal purposes. It is estimated that 20 per cent of the total catch is used for medicinal purposes. The fish is used for medicinal purposes and is estimated that 20 per cent of the total catch is used for medicinal purposes.

THE CHRISTMAS STORE

Fancy Boxed Towel Sets
Japanese Set Design
This all-over Jacquard with design in colors worked in is based on the Japanese rising sun motif. Towels and a cloth come in a set. **\$1.89**

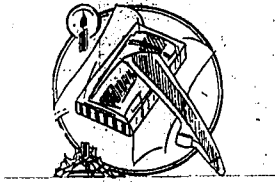
One of Our Prettiest Towel Sets
Exquisite rayon striping on an all-over Jacquard cloth in contrasting colors. Classic design. **\$2.29**

IDAHO DEPT STORE
ESTABLISHED IN TWIN FALLS JULY 30, 1906

Special Offering of Christmas Pillows
Rayon Covered Pillows
A large size pillow with fancy flower and ball trimming. A heavy flannel cover. Insertion of the best cotton. Processed cotton for use for a soft, even fluffy filling. **\$2.49**

You Will Find Many Gift Ideas for Her at the Christmas Store

A Visit to the Hosiery Dept. Will Solve Your Christmas Problems
A very fine gussie rayon to top hose with reinforced microzer heel and toe and double sole. All new shades. Compare. **49c**



Full Fashioned Silk Hose
Ask for 50's—the best full fashioned silk hose made at this price. They fit and they wear and if they don't you know our guarantee. All wanted shades. **99c**

Peacock, Kayser and Theme Fine Full Fashioned Hose
Semi-chiffons and real service weights in three of the best known brands in the country. All new shades and all sizes. She can tell the quality of the gift from the label. Give a brand she knows. **\$1.49**

Kayser Slipper Heel and Theme Fine Christmas Hose
Extra fine gussie, pure dye silk to top, hose in a shade for every purpose. Quality hose always. The very best we can serve you with. **\$1.98**

Gordon Four Point Top Hose
Gordon's famous hose now showing in the new four point slip top effect, new so popular. All colors. **\$2.59**

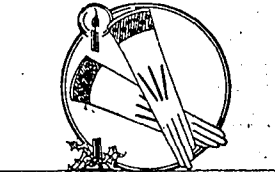
SHE CAN USE A NEW BAG Large Size Pouches
Constructed of contrasting leathers of alligator and snake grain. Mirror and large inside coin purse. This assortment is wanted and popular at this price. **\$2.98**



Pouch and Under Arm Bag Assortment
A big showing of all the new leathers. Imported alligator, snake, calf skins, etc. in latest Parisian styles. Completely equipped with mirror, coin pockets, silk linings and all the finer features. **\$4.95**

Leather Hand Bags for Christmas Giving
The safe gift and one always appreciated and needed. These bags are new. The quality is surprising and represents a snap-group purchase by our New York buying office. Compare. **\$1.00**

Give Gloves This Christmas If They Aren't the Right Sizes We Gladly Exchange After Christmas
Kayser, Beacon, Conquest and Ferris Gloves. Some of the World's finest makes.



Kayser's Novelty Fabric Gloves
Exceedingly smart little gloves with assorted cuffs, assorted trims and in shades of tan and medium grey. **99c**

Perrin's Fine Kid Gloves
Fancy lizard trim, turn down cuffs. Soft, finest quality that fits and holds its shape. Shades of beige and tan. Price—**\$3.29**

Lingerie—the Gifts of Charm and Individuality

Luxite Exclusive Glove Silk Underwear
You can give no nicer gift of a charmingly intimate nature. Each garment is designed personally by Dracoll of Paris.

Exquisite Rayon Panty Bloomers
A very fine smooth rayon of exquisite texture with the approved style so popular. Right now. Colors of flesh, peach, orchid, maize and Nile green. Send will approve of this quality. Price—**\$1.39**

Silray Gowns of Rayon
The best of 42 gauge rayon, most attractively designed in either the V-neck or square neck. Delicately trimmed in contrasting color touches at top; priced **\$3.95**

Dainty Luxite Glove Silk Gowns of Individuality
This lovely assortment of pure glove silk gowns contains no duplication of design. Each one is different. Some have self trims, some contrasting trims in V neck, round neck or square neck styles. **\$9.75 to \$10.95**



Glove Silk Bloomers of Perfection
Short bloomers, perfectly tailored of a sheerness and fineness that appeals to the most sophisticated taste. Colors of peach and flesh. **\$3.95**

Glove Silk Vests to Match
Among its many features it is carefully fitted to hip contours and has the added protection. Colors of flesh and peach. A gift set of these two garments would be ideal. **\$2.25**

Luxite Pajama Suits of Parisian Style Inspiration
Individually bored for styling. The glove silk is the best and the clever combination of style the most perfect that money can buy. Combinations of corn, Nile, peach and tomato, maize and naid, spring green and pink, tomato and black. Per suit—**\$9.75 to \$20.00**

Munsing's Double Rayon Bandeaux
A beautiful little article made with silk elastic gusset, designed properly; colors of flesh, peach, orchid, Nile green. **\$1.00**

Sheer Glove Silk Brassiere and Bloomer Sets
Made by Luxite—Designed by Dracoll Bloomers have adjustable waist band, with a clever lace insert motif trim in contrasting colors. Each set packed individually in a Luxite box. Combinations of peach and tomato, Nile and nude and pink and nude. Per set—**\$7.95**

The Biggest Christmas Handkerchief Department, New, Novel Chic Patterns at Every Price, All New Merchandise—Compare

Handkerchiefs at 5c
Fine woven cotton handkerchiefs in copies of French print designs, white centers with printed fancy borders and solid shades with colored embroidered corners. Juvenile prints also. Compare. **5c**

Handkerchiefs at 10c
Swiss, voiles and sheer, mercerized cottons in a bewildering display of new designs including embroidered and checked edges, plain centers, solid colors with embroidered corners. Compare. **10c**

Exclusive Handkerchiefs at 69c
The new lace edged, geometrics, printed geometrics, hand rolled crepe de chine, all new designs of unusual beauty or fine lace edges with plain centers. **69c**



Christmas Boxed Handkerchiefs
Plain color Swisses with colored embroidered corners. Two to a box. Imitation hand rolled edges. All colors. 3-4-inch embroidered hems. Attractive boxes. **25c**

Very Fine Christmas Box Handkerchiefs
Come three to a box. Imitation hand drawn borders in assorted colors. Plain white with self embroidery or colored embroidery. Printed Swiss voiles, etc. Per gift box—**49c**

Christmas Handkerchiefs at 15c
Hundreds of fine quality handkerchiefs at this price in plains, fancies and fancy embroidery designs. **15c**

Some of Our Nicest Boxed Christmas Handkerchiefs
Plain white pure linens with colored fancy edges. Super fine Swisses in solid colors with novelty embroidered corners and single handkerchiefs in box with hand worked lace edges. **99c**

Pure White All Linen Handkerchiefs
Fine handkerchiefs with a narrow sixteen-inch hem. Compare. 6 for—**\$1.00**

Blankets, the Gift Expressive of Thoughtfulness

BLANKETS — The Gift Expressive of Thoughtfulness
Part Wool Indian Blanket
A 68x84 Indian design blanket, heavy of single thickness. Makes a showy present and is much prized for day beds, couches, cars, etc. **\$2.98**

Beacon Bath Robe Blankets
A 72x90 part wool blanket that can be made up into a bath robe if desired. Comes with silk bath robe cord. Patterns that only Beacon can produce. Price—**\$3.75**

Pendleton Bed Blankets
A virgin wool 60x80 blanket weighing 4 1/2 lbs. Satin bound; colors of pink, blue and grey. Soft, warm, fluffy, but so woven as to be the most durable wool blankets made. **\$12.95**

Rich All Wool Bed Blankets
Heavy all wool blankets, both warp and filling. Satin bound. Size 68x90. Assorted colors of orchid, pink and blue, peach and grey. Very delicate plaid. Wonderful blanket. **\$9.50**



Pendleton Indian Robes
Striking designs symbolizing the religious, the legends, the traditions of the Western Indians. These blankets are sold all over the world and make ideal auto robes or top bed blankets. Of a fleecy all-wool filling woven on a cotton warp they combine warmth with long wear. Price—**\$14.95**

The Gift Supreme
Give Her a Pendleton Indian Blanket or Bed Blanket. There is no Better Blanket Made.

Pendleton All Wool Grey Bed Blankets
A heavy 5 lb. double blanket sized 68x90 with colored border stripes. Felt binding on edge. Excellent bed blankets, camp blankets or out-door blankets for any purpose. **\$10.90**

CHRISTMAS LINENS

Pure White German Linen Half Bleached
54-inch square cloth and six napkins all weighty cloth of merit. **\$3.48**

Gold Metal Imported Irish Linen Damask
Unfinished Cloth and Napkin sets. A luxurious, heavy linen of wonderful pattern designing. Napkins must be cut out and hemmed and the cloth must be hemmed and neatly packed in individual boxes **\$10.75**

All Pure Irish Linen Damask Table Cloths
A 68x88 pattern cloth of exceptional quality. We have always sold lots of linens and we buy from the two most reliable and largest makers in the entire field. **\$4.95**



Medium Weight Irish Linen Damask Cloths
A 70x72 cloth in chrysanthemum and clover designs. A real Belfast quality fine and firm satin surface finish and up to our best standards at this price. **\$7.49**

Extra Heavy Linen Cloth
Here is an exceptional value. Glossy satin finish, grape design; size is 70x90. Linen any one would be proud of. **\$8.95**

Napkins to Match
22-inch napkins uncut and unhemmed to match the table cloth, 8 napkins. **\$6.25**

SURPRISE HER WITH A CHARMING BED SPREAD
Cottage aprons 68x105 cotton spreads with scalloped edges. Square corners, assorted color striping of blue, gold, pink or beige. **\$1.99**

Alhambra Fine Bed Spread Values
These come in either cottons or rayons. Dark fancy assorted colors with contrasting stripes guaranteed for washing and sunlight. Scalloped edges. **\$2.98**

Towels
The acceptable gift to say one. You will like our big stock of fancy towels and towel sets.

Fancy Stripe Towels
A double striped rib weave towel with pretty Jacquard border design and colored lengthwise stripes. Good size. **\$2.50**

Fancy Towels at 34c
A striking pattern in long stripes and end borders in a large size towel. Assorted colors. **34c**

Cross Check Double Thread Towels
Large size towels in a slightly geometric design of assorted fast colors. Pink, gold and blue. **39c**

Extra Heavy Jacquard Border Towel
One of our finest bath towels. Heavy double thread, fancy assorted color Jacquard border of permanent dye. A very appropriate gift at this price. **\$5.95**

Perfume Set Novelties
Consists of bottle perfume, toilet water and talcum powder in various shapes and assorted color bottles. **99c**

Paintex Gift Sets
A complete set for special decorating. Four colors in fabric paint. Stamping powder, liquid embroidery brush, etc. **\$2.95**

From the Toilet Goods and Gift Counter
Christmas boxed candy, Give her a nice 3 1/2 lb. box of Sweet's quality assorted chocolates in a novelty Xmas box. Two 1/2 lb. boxes. **\$1.25**