

WISHAP TAKES LIFE OF NEWSPAPER MAN

Parker E. Branin, Injured in Auto Accident, Succumbs After Grim Fight

Parker E. Branin, 35, city editor of the Idaho Evening Times, Twin Falls, died last September, at 9:30 A. M. Thursday at the county general hospital from effects of injuries received when the automobile in which he was riding, hurtled off the highway north of Filer last Sunday evening. His father, Charles E. Branin, city editor of the Associated Press Bureau at Portland, was with him when he expired. The father had been summoned Tuesday when Parker Branin submitted to an operation attempted in an effort to overcome effects of internal injuries received in the mishap.

Body Goes to Portland
The body will be taken to Portland this evening for funeral services and burial.

Besides his father, Mr. Branin is survived by his wife, Mrs. M. W. Branin, to whom he was married at Astoria, Oregon, in August 1926; his brother, Paul Branin, student at the University of Oregon; his step-mother and two step-sisters.

Mrs. Branin was with her husband on the fatal automobile trip and her recovery from severe shock has been hastened by knowledge of the serious injuries received by her husband.

Proves Capability
Although a young man, Parker Branin had made his mark in the newspaper field, proving his capability when the "boss" came this morning and sent out over thousands of miles of press wires from Pendleton, Oregon, the first interview with W. E. Hickman, Governor-elect, since the latter had been captured near Pendleton.

Mr. Branin also had been employed on staffs of the Salem, Oregon, Statesman, and Astoria, Oregon, Astorian.

He attended the University of Oregon, Eugene, for three years, after graduating from Portland schools, and was a member of Sigma Alpha Epsilon fraternity.

His interests outside of newspaper work turned toward the sea, and as a youth he shipped before the mast, making a number of voyages. On one trip to the Orient he spent several months in Japan and China.

NAZARENE CHURCH WILL CONSTRUCT EXTENSION

Twin Falls Church of the Nazarene, 302 Third avenue north, will build an addition to the present church, extending backward 50 feet to the alley. This determination, announced yesterday by Rev. A. E. Sanner, Calumet, district superintendent of the Idaho-Oregon district, which closed last Sunday.

The new addition will increase the seating capacity of the church from 125 to 200. There will be basement under the new addition which will be used as a Sunday school room. It is planned to arrange for installation of a new organ in the present church building, thence whether this will be done at present has not yet been decided by the church will be said. This will be the present parsonage in the rear of 125-135 Third street, which is the four-room building.

City Takes Over Buhl Cemetery From Masons

Conveyance of the Buhl cemetery to the city of Twin Falls, Idaho, A. F. and A. M., was filed in the office of the county recorder here yesterday. The consideration named was \$710. The instrument was signed by H. W. Johnson and C. D. Borish, as president and secretary, respectively, of the lodge.

Beautiful Women Simply Love It

MILLO-GLO Face Powder is preferred by beautiful women because it leaves no trace of pastiness, flakiness or irritation. Stays on longer—no shiny patches. Made by a new French process—prevents large pores. Spreads more smoothly—reveals a youthful bloom. Very pure. The MILLO-GLO Face Powder. It's wonderful. Theerson's Drug Store, adv.

All foot troubles. Phone Dr. Foster, adv.

BUY A VORHEES USED CAR And Get the Best Buy in Town.

1928 Chev. Coach, like new \$535.00
1928 Chrysler 52 Coupe; looks good, motor runs good \$425.00
1928 Chev. Coupe, in perfect condition, 6000 miles \$550.00
1927 Chev. Coach \$375.00
1926 Chev. Coach \$300.00
1925 Chev. Coach \$250.00
1926 Ford Coupe \$175.00
1924 Ford Torador Sedan \$100.00
1925 Ford Pickup \$125.00

And various others from \$15 up; your present car accepted as part payment.

Easy G. M. A. C. payment plan. Compare our finance charges with others.

VOORHEES MOTOR CO. 313 Main Ave. W. Phone 707

JUST KIDS

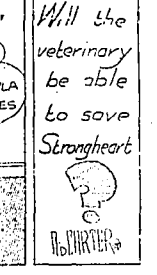
Notwithstanding their straitened circumstances Mrs. Stebbins has called a veterinary to see what he can do for Strongheart.



GEE-MOM! WHY DON'T YOU DO IT? THE DOCTOR COME FOR STRONGHEART?



YOU MUST BE PATIENT—IT ONLY CALLED HIM ABOUT TWO MINUTES AGO!



Will the veterinary be able to solve Strongheart's problem?

ETERNAL MINUTES



THREE YOUTHS NAMED IN NEW BURGLARY CHARGES

The number of Twin Falls schoolboys and young men charged with complicity in a number of house-breakings in and about Twin Falls during recent months was increased yesterday to 13, when the prosecuting attorney filed complaints charging burglary against three more youths. On arraignment, one of the accused youths pleaded guilty and was released on his own recognizance pending the action of the district court. Another pleaded not guilty and preliminary hearing was set tentatively for next Saturday.

Warrants for the arrest of the third youth were a yesterday had not been returned.

Preliminary hearing in the case of one youth who pleaded not guilty, arrested on arraignment on burglary charges Wednesday, has been set for next Tuesday.

In each instance where admission of guilt has been made, the accused youth has asserted that houses were entered only for the purpose of obtaining incriminating evidence.

Willie Willis



Mania thought I was done' something had in Sunday school, an't was lettin' me fall out on the seat to get some 'fre h' air'.

School Board Plans Next Year's Repairs

Necessary improvements for next year in Twin Falls school systems will include putting a new coating on the Washington school, painting and sanding outside entrance and dome on the high school, reconstructing a number of rooms in the high school and doing repair work, painting, patching and making some plumbing changes in the different school buildings. It was decided Wednesday evening after a tour of inspection made Wednesday afternoon by the Twin Falls school board and Superintendent W. B. Smith.

KIWANIANS CELEBRATE CLUB'S EIGHTH BIRTHDAY

Twin Falls Kiwanis club celebrated its eighth birthday anniversary at a special meeting at luncheon in the Ferguson hotel Thursday, a big day cake with eight candles playing a prominent part in the decorative scheme.

W. J. Crawford, first president of the club, presided and outlined the history of the organization, referring to some of its undertakings, naming its nine presidents and including a charter membership of 124 persons who have been members, and that its present membership of 53 includes nine charter members. Only two members have been lost through death.

Shad L. Hodgin, past president, in a brief address dealt with ideals and objectives of Kiwanis organization. The program was arranged by the club's educational committee of which W. B. Smith is chairman. Talking acquaintance of recent disclosures of school house-breakings in this vicinity, the club named a committee to inquire into the situation with view especially to making certain that the rights of young men involved are safe-guarded.

CALL FOR BIDS
Bids will be received at 302 Third avenue north up to 6 P. M. Saturday, April 20, for the sale of the four room house with sleeping porch at the rear of the lot at the corner of Third avenue north and Third street north, building to be moved from lot at once. Owner reserves right to reject any or all bids. Paul Vorester, Church of the Nazarene, adv.

SOCIETY

By Mrs. E. B. Williams Phone 396

Mr. and Mrs. Owen Crawford, who were married a short time ago were honored with a prettily arranged shower by the Young People's Class of the Christian Church Wednesday evening. After the Bible study at the church the class motored to the home of their teacher, Mrs. C. C. Curtis on Seventh Avenue East where the evening was spent with amusing games arranged by Mrs. E. B. Williams. Late in the evening the bride and groom were blindfolded and required to wheel two doll carriages containing the newly lovely into the living room where they were opened and admired. Delicious refreshments were served at the close of the evening. Those present in addition to the honorees were Mrs. Florain Dunham, Misses Effie Oliver, Amy Phil, Gertrude Silsons, Gertrude Ritchie, Muriel Kellie, Vivian Brewer, Mrs. Mayman Dunham, George A. Conrad, Hubert Kuhlman, Harold Silsons, Charles Conway, Mrs. Crawford and Mr. and Mrs. C. C. Curtis and children, Gail and Cherrill.

Mr. Thomas Robertson was hostess to an afternoon Episcopal Guild luncheon at her home on Ninth Avenue north. The president, Mrs. Mary Y. Norton, opened the meeting with prayer and the business meeting was given over to final plans for the dinner to be given Saturday evening in the Parish Hall. Mrs. Walter Gwin and Mrs. Stuart Taylor, sr., were elected delegates to convocation which will be held in Boise May fifth and sixth. Mrs. Robertson reviewed the April number of the magazine "Spirit of Missions" and read a fine article from the issue on "Missionary Writings by Bishop Middleton S. Jarrwell. During a pleasant social hour Mrs. Robertson served refreshments assisted by Mrs. George F. Sprague and Mrs. Don Henry.

Mrs. O. A. Fuller presided at the meeting of the Methodist Ladies Aid Thursday afternoon in the church parsonage.

MODERN WOODMEN PLAN ZONE CLASS ADOPTION

Plans were completed for John Wesley Church night to be held this evening. Mrs. Harry Smoek in charge of the program conducted a scripture contest, in which Mrs. Cecil R. Ricketts answered the largest number of questions. Miss Irene Parrott played two piano solos and Mrs. J. H. Burges gave two selections on the harmonica. During a social hour refreshments were served by Mrs. F. T. Kellie, Mrs. W. W. Wright, Mrs. C. H. Silston, Mrs. H. C. Mangure and Mrs. Frank Winder.

Members of the Highland View Club were entertained at the home of Mrs. Frank Griffith, Wednesday afternoon. Mrs. Valentine Mrs. Griffith, sr., and Mrs. Richard Eggers were guests and sixteen members were in attendance. After the transaction of business the afternoon was spent eating on the club quilt. Refreshments were served at the close of the afternoon. The next meeting will be announced later.

Miss Marie Charlotte Kibland, daughter of Mr. and Mrs. G. W. Ebbland, Twin Falls, and John Everett Ford, Alameda, California, was married last Wednesday evening in the Methodist church at Twenty-fourth and Broadway, Oakland, California, the ceremony being conducted by the pastor, Rev. Edgar Lechner, in the church study. The ring ceremony was used. The young couple were attended by Mr. and Mrs. N. O. Ward, parents of the groom; Mr. and Mrs. Russell Ford, Lee Ford and Miss Anne Fowell, a wedding dinner was served at the "Rainbow" for relatives and a few intimate friends after the ceremony. The bride lived for a number of years in Twin Falls, and went to Oakland three years ago to take a clerical position with the Bell Telephone company. Mr. Ford is connected with a garage in Alameda. They will make their home after April 25 at 674 Sixteenth Street, Oakland, after making a trip to Southern California.

BOY SCOUT COUNCIL SETS TIME FOR SUMMER CAMPS

BURLEY, April 18 (Special to The News)—Camp Sitohoun will open June 16 and close June 30; Camp Independence will open July 7 and close July 31; Camp Sawtooth will open July 28 and close August 11. It was decided at a meeting of the Snake River Council of the Boy Scouts of America held here last night.

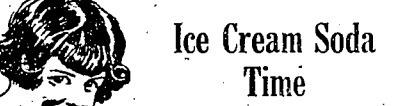
J. H. Jamme, Twin Falls, district executive, reported organization of two new troops at Kimberly and one which he believes is the largest in the history of the district.

HEMSTITCHING
I am now located at 330 Third Avenue North. Phone 1472. Mrs. Moore-Stearns, adv.

Phone 707 for a ride in the new Chevrolet '29. adv.

WILEY DRUG COMPANY

The Small Store



Ice Cream Soda Time

As the weather warms up thoughts turn to those delicious Ice Cream Sodas. Our modern Fountain enables us to prepare for you your favorite refreshments. We acknowledge these principles as the foundation of our popularity.

ABSOLUTE CLEANLINESS. PROPER REFRIGERATION. QUALITY GYRUPS AND ICE CREAM. COURTEOUS SERVICE.

Fountain Lunches every day—"Vic" also serves breakfast.

Don't forget a supply of films for the week-end

For the best pictures use the film in the yellow box—We have your size.

Headquarters for Eastman Kodaks
Whitman's and Johnston's Candy
PHONE 46 We Deliver PHONE 46

Real Values For Thrifty Shoppers



Here is positive proof that we CAN and DO SELL FOR LESS every day in the year! And this, we claim, is the direct result of savings made on purchases through co-operation of our Eastern office. Quantity buying for our Eleven Stores means enormous savings, and we in turn pass them on to our customers. Which means Quality Merchandise and everything the newest, at Lowest in the City Prices. This spells ECONOMY—THE NEW YORK STORE WAY!

Newest Spring Suits

\$16.75-\$23.75 and 23

Our New Spring Suits for Men and Young Men are outstanding values. They are well tailored and will keep their shape; fabrics are of cassimeres, worsteds, chevots. The models are two-button, Tattersall vest, and pleated trousers.

Men's Athletic Unions
Our Men's Athletic Union are full of style and sport. V-neck and double breasted with wide elastic band and double button of strain, which assures comfort and service. EXTRA SPECIAL, pr. \$1.25
Others at 75c and 95c

Men's Dress Shirts
Men's Gold Coast Broadcloth Dress Shirts, good full cut, box plait front, cast size, long point collars and guaranteed fast colors. AN OUTSTANDING VALUE, each \$3.95-\$4.95

Men's Dress Oxfords
Men's Snappy Dress Oxfords, for the man who wants to be in step with style, in colors of tan or black; plain or cap toe, ballroom or modified lasts. Priced at pair \$3.95-\$4.95

Men's Moleskin Work Pants
Excellent Quality Moleskin Pant with black and white stripes, big full cut, well seams. EXTRA SPECIAL, pr. \$1.75

Men's Riding Breeches
Men's Heavy Weight Khaki Riding Breeches, Army cut, with double slash seams, top pockets and button-down flaps and button bottoms. Very low priced, pair \$2.25

NEW YORK STORE

TWIN FALLS WATCH OUR WINDOWS FOR SPECIALS TWIN FALLS
BOISE BUIL BURLEY NAMPICA CLOWELL EMMAET RUPERT LA GRANDE PENDINGTON WALLA WALLA TWIN FALLS

WE WISH IT WERE LARGER

The Big Special Starts Friday, April 19

PLEASE READ!

The Idaho Department Store tries very hard never to disappoint our customers. Do not expect a big stock of close outs, but we believe you will be pleased with the quality and price reductions of what we offer you. We value your confidence in us above all else. We must not disappoint you hence the explanation below the picture—We worked hard, at considerable expense to get this merchandise. It will not be much effort on your part to look it over. We list the lines below—

—Idaho Department Store



The Big Special Starts Friday, April 19

The Wheeler-Motter Wholesale House of St. Joseph, Missouri

Has closed out their big stock of Merchandise. Two of our buyers attended the big Sale. We were not successful in buying as much of it as we wanted but we purchased a fair amount of the merchandise, and will pass it on to the Twin Falls people at attractive prices in connection with numerous specials from our own large and splendid stock and will try in every way to make your response visit profitable to you. Specials in every department except in the Sanitary Grocery Department.

—Idaho Department Store

An Explanation of This Advertisement

Every item in this circular that came from the Wheeler-Motter Sale, says so plainly. All other items listed are either specials from our own stock or some special purchases made and sold back for this occasion.

Please don't expect the radical savings on merchandise that we have always offered you when we closed out local stores. Prices on the Wheeler-Motter goods, however, are enough below the local market to make a special visit worthwhile if you are in need of any of the items mentioned.

ITEMS FROM MAIN FLOOR DRY GOODS DEPARTMENT

Silk Broadcloth We bought all they had left in silk broadcloth. Not a large quantity but a wonderful value for those who want this material. 36 inches wide; white only; regular \$1.70 value; Wheeler-Motter Close-Out, yard \$1.19	Guaranteed Wash Crepe Heavy-weight silk crepe that you will find to be a regular \$1.98 value; seventeen colors; to choose from, every yard stamped on Selvage "Guaranteed Washable"; 40 inches wide; Wheeler-Motter Close-Out, yard \$1.49	Canterbury Lawns Fine quality printed Lawns in new summer patterns, 36 inches wide; regular \$1.00 value; Wheeler-Motter Close-Out, yard 43c	Georgette Crepe One group Georgette Crepe, 16 good colors; heavy weight, regular \$1.00 value; 40 inches wide; Wheeler-Motter Close-Out \$1.59
Celanese Voiles Soft lustrous Celanese Voiles; plain shades, 36 in. wide; only seven shades in this group; regular 98c value; Wheeler-Motter Close-Out, yd. 83c	Longcloth Fine quality sheer Longcloth suitable for lingerie, infants' wear, etc. Regular 30c quality; Wheeler-Motter Close-Out 27c	Infants' Silk Coats Infants' Silk Coats, full lined contrasting embroidery trim. Regular \$5.75 value; Wheeler-Motter Close-Out \$4.98	Infants' Crib Blankets The genuine Wamban Crib Blankets; large block plaids, pink, white and blue, white; size 36x55; regular \$2.55 value; W.-M. Close-Out \$1.98
Heavy Flat Crepe A guaranteed washable crepe, extra heavy, the same quality as our \$2.00 washable crepe; only six shades in this lot; 40 inches wide; Wheeler-Motter Close-Out, yard \$1.98	All Silk Charmeuse A good quality all silk Charmeuse; black only; 40 inches wide; regular \$1.50 value; Wheeler-Motter Close-Out, yard 98c	Lingerie Cloth Rayon striped Lingerie Cloth; voile and jersey; pastel shades, 36 inches wide; regular 29c value; Wheeler-Motter Close-Out, yard 29c	Wool Dress Flannels All Wool Dress Flannel, 54 inches wide, 8 good shades to choose from; regular \$2.49 value; Wheeler-Motter Close-Out \$1.59
Bleached Indian Head Genuine Indian Head cloth 36-inch; regular 35c value; Wheeler-Motter Close-Out 31c 54-inch; regular 55c value; Wheeler-Motter Close-Out 49c	Imperial Chambrays Nationally advertised and always guaranteed fast color; 27 good patterns to choose from; regular 29c value; Wheeler-Motter Close-Out 29c	Fancy Bootees Fancy Wool Bootees, Knee-Fit; heavy wool yarn; pink and blue trim; regular 62c value; Wheeler-Motter Close-Out 49c	Wool Bootees Knee length Rayon striped Wool Bootees; regular 29c value; Wheeler-Motter Close-Out 29c
Khaki Shirting Part Wool Khaki Shirting, 36 in. wide; olive drab shade only; regular \$1.20 value; Wheeler-Motter Close-Out 89c	Guaranteed Washable Flannel Fine quality Dress Flannel, 54 inches wide, finest quality; regular \$2.75 value; only 2 shades; Wheeler-Motter Close-Out, yard \$1.59	"Aberfoyle Tissues" Cable and Leno well known Tissue Cloths; all fresh new patterns; regular 52c value; Wheeler-Motter Close-Out 39c	Dress Goods All Wool Shepherd Check Dress Goods, 46 inches wide; black and white only; regular \$1.98 value; Wheeler-Motter Close-Out \$1.49
Wool Dress Crepe Fine quality Dress Crepe, all wool, 40 inches wide. Two pieces only in this group; cream only; washable; regular \$1.49 value; Wheeler-Motter Close-Out 98c	Crepe Back Satins Twenty shades in this group; good quality Satin, 40 inches wide; regular \$1.98 value; Wheeler-Motter Close-Out \$1.59	Window Curtains Seratons 5-piece Voile Curtain Sets, Cream with colored trim, regular \$1.00 value; Wheeler-Motter Close-Out \$1.00	Rayon Underwear One large group of Rayon Underwear in plain tailored, fashion and lace trimmed; vests, bloomers, step-ins, chemise, shorts, slips, gowns; all made from good quality 25 and 25 gauge rayon; pastel colors; assorted sizes; choice 98c
Wool French Serge Guaranteed all wool Dress Serge, 36 inches wide; Tint, empire, copen, scendil, navy; a real bargain; regular \$1.19 value; Wheeler-Motter Close-Out, yard 98c	Moon Glow Voiles Fine quality Rayon Voiles; neat plaid patterns; 36 in. wide; regular 98c value; Wheeler-Motter Close-Out 59c	Turkish Towels Large size double thread Turkish Towels; 22x44 full bordered, extra absorbent; a real E. D. value; 12 per set 25c	Fabric Gloves One group of fine quality Fabric Gloves; sizes 6 to 8 1/2; some regular values to 98c; choice, pair 49c
Hope Muslin Full bleached yard wide muslin; well known brand that gives real satisfaction; only a few pieces in this lot. Limit 5 yards to customer; yard 10c	Canton Weave Cotton Canton weave Crepe, ideal summer dress goods; 36 in. wide; regular 98c value; Wheeler-Motter Close-Out 59c	Glass Towels Check pattern Glass Towels, with stripe border all around; pink, blue, gold with white to match your kitchen; 16x22; 19c	Bed Spreads Cotton Knit Bed Spreads, 72x90; each, blue, and rose; another E. D. value 98c
Sandwich Sets Individual Sandwich Sets made of latest ware, consists of separate tray and cup to match, tan and blue with contrasting decorations; regular 98c value; to close, set 29c	Boys' Suits Boys' wool mixed Play Suits, Good quality fabrics and best styles. Regular values to \$1.39. Sizes 6, 7, 8; to close 69c	Handkerchiefs Ladies' Voile Handkerchiefs, embroidered corners; assorted colors; our regular \$1.00 value; 3 for 10c	Brown Muslin 36-inch Brown Muslin, good quality; regular 12c value; Wheeler-Motter Close-Out 9c
	Table Damask Full bleached Table Damask, heavy quality; 64 inches wide; two good patterns, yard 49c		Bleached LL Muslin Fine quality, to match, 36 inches wide; only a small amount of this 36-inch wide regular 12c value; Wheeler-Motter Close-Out 10c

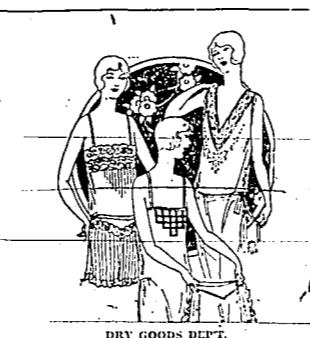
DRY GOODS DEPT.

Infants' Silk Coats Infants' Silk Coats, full lined contrasting embroidery trim. Regular \$5.75 value; Wheeler-Motter Close-Out \$4.98	Infants' Caps Infants' Caps, mottled pink and white and blue and white with pom pom; regular \$1.70 value; Wheeler-Motter Close-Out 98c	Fancy Bootees Fancy Wool Bootees, Knee-Fit; heavy wool yarn; pink and blue trim; regular 62c value; Wheeler-Motter Close-Out 49c	Wool Bootees Knee length Rayon striped Wool Bootees; regular 29c value; Wheeler-Motter Close-Out 29c
Bootees Infants' Wool Bootees, white with pink and blue trim; regular 29c value; Wheeler-Motter Close-Out 19c	Window Curtains Seratons 5-piece Voile Curtain Sets, Cream with colored trim, regular \$1.00 value; Wheeler-Motter Close-Out \$1.00	Turkish Towels Large size double thread Turkish Towels; 22x44 full bordered, extra absorbent; a real E. D. value; 12 per set 25c	Fabric Gloves One group of fine quality Fabric Gloves; sizes 6 to 8 1/2; some regular values to 98c; choice, pair 49c

Window Curtains
Seratons 5-piece Voile Curtain Sets, Cream with colored trim, regular \$1.00 value; Wheeler-Motter Close-Out **\$1.00**

Turkish Towels
Large size double thread Turkish Towels; 22x44 full bordered, extra absorbent; a real E. D. value; 12 per set **25c**

Fabric Gloves
One group of fine quality Fabric Gloves; sizes 6 to 8 1/2; some regular values to 98c; choice, pair **49c**



Rayon Underwear
One large group of Rayon Underwear in plain tailored, fashion and lace trimmed; vests, bloomers, step-ins, chemise, shorts, slips, gowns; all made from good quality 25 and 25 gauge rayon; pastel colors; assorted sizes; choice **98c**

Fabric Gloves
One group of fine quality Fabric Gloves; sizes 6 to 8 1/2; some regular values to 98c; choice, pair **49c**

DRY GOODS DEPT.

Silk Hose Service weight silk hose, full fashioned pure thread silk to the best good assortment of colors; 18-1/2 to 21-1/2; of our \$1.49 quality; choice, pair \$1.19	Service Weight Hose Full fashioned silk hose with reinforced heel foot and toe; 18-1/2 to 21-1/2; of our \$1.94 quality; all sizes; choice, pair \$1.29	Rayon Hose Good quality Rayon Hose, 8 size with colored back seams; all sizes \$1.00 to \$1.00. A regular 40c value; Special, pair \$1.00	Bed Spreads Cotton Knit Bed Spreads, 72x90; each, blue, and rose; another E. D. value 98c
Rayon Underwear One large group of Rayon Underwear in plain tailored, fashion and lace trimmed; vests, bloomers, step-ins, chemise, shorts, slips, gowns; all made from good quality 25 and 25 gauge rayon; pastel colors; assorted sizes; choice 98c	Brown Muslin 36-inch Brown Muslin, good quality; regular 12c value; Wheeler-Motter Close-Out 9c	Bleached LL Muslin Fine quality, to match, 36 inches wide; only a small amount of this 36-inch wide regular 12c value; Wheeler-Motter Close-Out 10c	Woven Huck Towels Good quality woven Huck Towels, 18x24, colored stripes with pattern border; regular 16c value; Wheeler-Motter Close-Out 15c

Rayon Underwear
One large group of Rayon Underwear in plain tailored, fashion and lace trimmed; vests, bloomers, step-ins, chemise, shorts, slips, gowns; all made from good quality 25 and 25 gauge rayon; pastel colors; assorted sizes; choice **98c**

Brown Muslin
36-inch Brown Muslin, good quality; regular 12c value; Wheeler-Motter Close-Out **9c**

Bleached LL Muslin
Fine quality, to match, 36 inches wide; only a small amount of this 36-inch wide regular 12c value; Wheeler-Motter Close-Out **10c**



ECONOMY BASEMENT
Percale Prints
Assorted Print patterns, suitable for dresses, aprons and play suits; 36 inches wide, fast color; regular 15c quality; Wheeler-Motter Close-Out **15c**

ECONOMY BASEMENT
32-Inch Dress Gingham
Standard quality Dress Gingham, checks and plaid patterns; regular 25c value; Wheeler-Motter Close-Out **19c**

ECONOMY BASEMENT
Fast Color Prints
Guaranteed fast color Prints, all new spring patterns; 36 inches wide; regular 25c value; Wheeler-Motter Close-Out **19c**

ECONOMY BASEMENT
Plain Alpaca
Good quality plain Alpaca for dresses, slips, lingerie and many other uses; regular 29c value; W.-M. Close-Out **29c**

ECONOMY BASEMENT
Turkish Towels
Good quality Turkish Towels, 22x44, colored borders, double bordered; regular 16c value; Wheeler-Motter Close-Out **15c**

ECONOMY BASEMENT
Woven Huck Towels
Good quality woven Huck Towels, 18x24, colored stripes with pattern border; regular 16c value; Wheeler-Motter Close-Out **15c**



ECONOMY BASEMENT
Brocades
Brocaded fabrics, 36-inch wide, fine quality assorted patterns and colors; regular 30c value; Wheeler-Motter Close-Out **29c**

ECONOMY BASEMENT
24 Girls' Dresses
Very pretty patterns in printed broadcloth, nicely made. Regular price \$1.75. Wheeler-Motter Close-Out **\$1.29**

ECONOMY BASEMENT
Blended LL Muslin
Double thread, very absorbent; size 18x22, fine quality; a regular 50c value; to close **43c**

ECONOMY BASEMENT
Blended LL Muslin
Double thread, very absorbent; size 18x22, fine quality; a regular 50c value; to close **43c**

ECONOMY BASEMENT
Blended LL Muslin
Double thread, very absorbent; size 18x22, fine quality; a regular 50c value; to close **43c**

ECONOMY BASEMENT
Blended LL Muslin
Double thread, very absorbent; size 18x22, fine quality; a regular 50c value; to close **43c**

MAIN FLOOR MEN'S STORE
192 Men's Fine Dress Shirts
Fancy broadcloth, madras, plain white broadcloth, values up to \$2.75 a shirt. 62-4 patterns and well made. A Wheeler-Motter Close-Out **48c**

MAIN FLOOR MEN'S STORE
60 Men's Fine Dress Shirts
Regular \$2.25 and \$3.00 values. Fine patterns and an exceptionally fine make. You will like this value. A Wheeler-Motter Close-Out **\$1.10**

MAIN FLOOR MEN'S STORE
Silk Striped Broadcloth Dress Shirts
A fair value in a dress shirt that would have to sell regularly for \$3.00 and \$3.50. A big special value at **\$1.98**

MAIN FLOOR MEN'S STORE
Men's Heavy Radium Silk Shirts
A regular \$5.00 to \$5.50 silk shirt in new up-to-date patterns with the attached collar that you can buy for **\$1.98**

Main Floor Men's Store
8 Genuine York \$3.50 Shirts with royal collars. Printed front; sizes 14, 14 1/2, 15, 16; to close **\$1.00**

Main Floor Men's Store
6 All Wool Fine French-Flannel Dress Shirts
A fine quality shirt but the collars are a little narrow **98c**

MAIN FLOOR MEN'S STORE
360 Men's Two Pocket Work Shirts
A regular 75c work shirt made of good chambray, cut all, two button pockets. A Wheeler-Motter Close-Out **48c**

MAIN FLOOR MEN'S STORE
19 Blue, White Dotted Railroad Men's Shirts
Two stiff collars to match. Regular \$2.00 values. To close **\$1.40**

MAIN FLOOR MEN'S STORE
360 Men's Fine Work Shirts
Another lot from the one listed above and a slightly different quality. Either one is a wonderful buy at this price. Regular 75c or the anywhere. A Wheeler-Motter Close-Out **49c**

MAIN FLOOR MEN'S STORE
18 Pocket Cigarette Lighters
All these 1-1/2 of a lot that sold regularly for \$1.00; to close **19c**

MAIN FLOOR MEN'S STORE
540 Men's Ide Stiff Collars 1c Each
Closing out our entire Ide collar stock. Big assortment of styles and sizes. Regular 20c or 2 for 35c; To close **1c**

MAIN FLOOR MEN'S STORE
120 Soft Collars
Aratex, Chult, Peabody, Ide, Feltex; regular 25c, 35c, 50c; to close **5c**

MAIN FLOOR MEN'S STORE
79 Men's Fine All-Wool Suits
Light patterns. Two and three-button styles. Regular \$22.50 values. A big worthwhile special purchase clothing value to go with this event **\$13.75**

MAIN FLOOR MEN'S STORE
768 Pairs Imported English Hose
A fancy hose made of finest English woven cotton. The patterns are good and an absolutely fast color. A regular 75c value **35c** or 3 pairs **\$1.00**

Idaho Department Store

Pennsylvanian Starts Row Over New Football Fumble Rule

S. E. Hutchinson Records Emphatic Protest to Change

"Certainly Effort Should Be Made Not to Saddle On Game Radical Innovations," Says Writer

(By The Associated Press) PHILADELPHIA, April 18—Emphatic protest against the new football fumble rule and a plea that its application be postponed until 1930 are made by Sydney E. Hutchinson, chairman of the council on athletics and the football committee of the University of Pennsylvania, in an article for "Franklin Field Illustrated."

"Certainly every effort should be made not to saddle upon the game a radical innovation that offends the millions who have helped to make football America's most popular outdoor sport," he asserted.

Declaring that the reaction to the change in the rules which makes it illegal for a player on the defending side to run with a fumble ball has been almost unanimously unfavorable, Mr. Hutchinson formally recommends: "That because of the strong opposition expressed to this radical rule the rules committee postpone its application until 1930, and that in the meantime it make an effort to lessen the weight of its entire college work, for which it legislates, with regard to this change."

Also, "that hereafter no important changes in the rules become effective until one year after they have been promulgated, or until they have been approved by a representative membership of the National Collegiate Athletic Association."

"In my recollection, which extends back to my own football days in the 60's," Mr. Hutchinson continues, "no change has produced so much unfavorable comment. "The Penn alumni also registers objection to the rule moving back the goal posts, which was adopted two years ago, and suggests that a year's consideration before final action might have been wise. While the danger of injury by collision with the uprights has been eliminated by a new type of goal posts, the posts themselves to be set back a few yards, with the cross bar projected at the level above the goal line."

TERMS CHANGE ABSURD NEW YORK, April 18 (AP)—Any idea that football leaders generally did not have opportunity to express their opinion before the new fumble provision was adopted is termed "absurd" by Chairman Edward K. Hall of the national football rules committee today, when he informed the protest made by Sydney E. Hutchinson of Pennsylvania.

The Football Coaches' association favored the change "an overwhelming vote" at its New Orleans convention and the rule was passed unanimously three months later at a meeting of the rules committee to which were invited prominent coaches and football officials, Mr. Hall recalled.

BREVITIES

Returns to Rupert—Mrs. Dean Scofield, returned last evening to Rupert after a brief business visit in Twin Falls.

Licensed to Wed—A marriage license was issued here yesterday to J. A. Jagels and Leona Schroeder, both of Idaho.

Abstractor Visits—Albin C. DeMay, abstractor, head of the Rupert Abstract company, made a business visit to Twin Falls yesterday.

Returns from Reburg—Mrs. Nina Cowdell, accompanied by Miss Mildred Fritch, returned late Wednesday from Reburg after a week's visit with her son, Ralph Cowdell.

Will Visit Parents—Lewis Birch arrived yesterday from the San Diego navy yard, where he is in naval service on his way home to Burley to visit his parents, Mr. and Mrs. Lewis P. Birch.

Wrapping Catches Fire—Wrapping around a hot water tank at the home of Mrs. P. J. Costello, 511 Second avenue east, caught fire from furnace fire at 11 A. M. yesterday. The fire department was called and extinguished the flames. The loss was negligible.

Ship Out Cattle—Sampson brothers, Hansen shipped 11 cars of cattle through Twin Falls to San Francisco, over the Twin Falls-Wells branch Wednesday. The Carletons Packing company, Kimberly, shipped five car loads to Tacoma yesterday. Leo Beckstead, Twin Falls, and William Walker, Filer, each shipped

Captain of Track Team



EMERY CURTICE, captain of the California track team.

a car of cattle to Portland yesterday. All were inspected by Carl Donroose, brand inspector.

Home on Well—Jere Long, jr., student of the University of Idaho senior class, will leave this morning returning to Moscow following a few days' visit here at the home of his parents, Mr. and Mrs. Jere Long.

Leaves for California—Mrs. J. L. Des Ruisseaux, accompanied by her grandson, Robbie Brown, left last evening with her son-in-law and daughter, Mr. and Mrs. Hugh Ambury, who are returning to their home in Los Angeles, where Mrs. Des Ruisseaux and her grandson will be their guests for a few months.

Join Shearing Camp—Mr. and Mrs. Earl Moss went to Mindoka yesterday where Mr. Moss will join the shearing camp of William H. Jenkin, Twin Falls, starting a 40-day run at Mindoka, after which it will be moved to Sod Springs and later to Montana. Shearing is going on around Twin Falls with a good yield in wool. It is stated.

Will Attend Convention—Mrs. Grant Kunkle, Mrs. Arthur Eldred, Mrs. C. J. Eldred, Mrs. A. C. Zacharias, Mrs. C. H. Higbee, Mrs. W. A. Mianick, Mrs. N. Young and Mrs. Albert Butcher will leave this morning for Pocatello as Twin Falls delegates to attend the district convention of the Pythian Sisters, which convenes at noon today. The convention will adjourn tonight.

At the Hotels

PARK—Gleed Miller, Twin Falls; W. T. Taylor, Mr. and Mrs. S. L. Black, C. F. Sizer, C. E. Boggs, Mr. and Mrs. F. J. McCaslin, Boise; Homer C. Elliot, G. A. Macchiusi, Seattle; J. C. Aiken, T. E. Ford, Mrs. and Mrs. Charles Thayer, Mr. and Mrs. Glen F. Walker, Henry P. Houston, J. E. Cronin, J. K. Kyle, G. Ensign Smith, Mr. and Mrs. George M. Meyers, H. Timby, Horace Eldred, E. Reaney, Decker Little, Salt Lake City; A. W. Bowman, San Jacinto; Leslie S. Baird, R. J. Johnson, Mr. and Mrs. Charles S. Shearer, Walter Houston, San Francisco; J. H. Boyle, Rupert; Elmer L. Simpson, Frank Walker, Filer; G. F. Horn, Fremont; William Lewis Clark, Emmett; Frank Burns, Mr.

Cinder Artists to Vie for Honors at Track-Meet Series

Teams Will Assemble For Early Tests of Season at Events in Shoshone, Hansen, Filer and Burley

Track teams of South Idaho, after several weeks of practice interrupted at intervals by adverse weather, will compete at meets to be held today at Shoshone, Hansen and Burley, and at Filer Saturday, when the Bull and Filer teams will vie for honors in a dual contest at Filer fairgrounds beginning at 10 A. M.

The Shoshone triangular meet, starting at 2 P. M., will include six events of Jerome, Hagerman and Shoshone, while teams of Kimberly, Hazelton, Eden, Murrumbidgee and Hansen are slated to vie on Hansen's underpauis.

Will Determine Strength The strength of the various teams will to a certain extent be made known by this year's competitive events. Bull, this year, is expected to make a strong bid for point-winning places during the season. The West End team is coached by "Gif" Davison, former star sprinter at the University of Idaho under Coach Mathews.

Burley Meets Albin Burley high school today will face Albin Normal team on the Burley field. Albin is expected to have several stellar track men who have displayed ability and speed during the training period. Last week Jerome, in the first meet of the season for that school, defeated the Wendell track and field men, and therefore enters today's triangular event with the necessary amount of confidence. The Jerome track squad is coached by H. A. White.

that to have done this would have been to lift, like Don Quixote, with a lance against windmills.

"It was not at all certain that President Wilson would have accorded without difficulty to my demand and sacrifice, Pershing," Marshal Foch told M. Recouly. "If after that incident, with which he would naturally have been acquainted, General Pershing had been kept at his post he would without doubt have been more stubborn than ever. "Even supposing he had been replaced, his successor would have needed time to get in touch with everything."

NO COMMENT WASHINGTON, April 18 (AP)—Word from Paris that interviews with the late Marshal Foch, soon to be published, would show that the Allied generalissimo had refused during the war to require that General Pershing be relieved of command of the American expeditionary force was received without comment by Washington officials.

Army officers who were attached to Pershing's staff recalled his vigorous and successful championship of the policy of crating an independent American army under command of American officers and with its own staff system. This, they indicated, had run counter to the desires of some of the Allied chief as well as military leaders.

Story of French Man's Effort to Depose Army Leader Comes to Light (Continued From Page One) American commander—M. Clemenceau declared that the time had come to oust General Pershing's head and appeal directly to President Woodrow Wilson to intervene, and if that failed, to remove him. It was on October 21, when Chateau-Thierry, St. Mihiel and the Argonne were history, that Clemenceau, according to M. Recouly's story, after having already spoken to Foch on the subject, sent the marshal a letter insisting that Pershing failed to yield results he should have had for moment to appeal to President Wilson. Marshal Foch is said to have replied

Protest of Fighter Must Be in Writing

BOISE, April 18 (AP)—The protest of George (Buddy) Washington, Pocatello negro, against the adverse decision given him last Thursday in a fight with Joe Cortez, Boise Mexican, will not be considered unless the protest is made in writing to the state athletic commission, W. B. Pratt, member of the commission, said today.

The commission will meet next Monday with a view of business which was expected to include both the Washington-Cortez affair and that of the Weiser Athletic club.

The latter organization was accused by many fans of having failed to publish a substitution in the main event of a boxing card several weeks ago.

Washington's protest was raised after the referee awarded the fight to Cortez after the Pocatello boxer had refused to fight an additional three rounds when the scheduled 10 rounds resulted in a draw.

Game Licenses for This Year Arrive

Fishing on Snake River to Open Within Few Days; Hatchery Will Get Paint

Licenses of the state fish and game department for the year 1929 arrived here yesterday and were placed in the hands of all dealers by L. W. Hawkins, deputy game warden. There will be little use for the licenses until May 6, when the Snake river will open for fishing.

The new local hatchery will be painted-Sunday, according to the plans worked out by the officers of the Southern Idaho Fish and Game association. Twin Falls painters have volunteered to spread the paint which has been contributed by the following firms here: Saffery Hardware company, Diamond Hardware company, Twin Falls Hardware company, Consolidated Wagon and Machine company, Krenge-Machinac company, Gray State Lumber company and Moon Paint store.

"The first fish eggs placed in the hatchery are nearly all hatched and a lot of little rainbow trout are in the troughs. Visitors are invited to come and see them. About 200 eggs have been taken here so far. There is a heavy run of trout to the traps at Rock creek and Sloughhouse creek.

News Want Ads reach the people you wish to attract.

Legion Will Stage Championship Bout

Rocky Moore to Defend Idaho Lightweight Title in Fight With Pocatello Man

Idaho lightweight boxing championship will be at stake in a 10-round bout between Rocky Moore, Twin Falls, and Alvin Lewis, Pocatello, which has been arranged to headline Twin Falls American Legion post's last boxing card of the season at Pleasure ring on Friday evening, April 26.

The match was announced last evening by Duncan Johnston, matchmaker for the Legion post.

Idaho athletic commission, the matchmaker stated, has approved the match and sanctioned styling of the bout as a championship bout.

Lewis Challenger Lewis is the challenger. Moore's claim to the title having been won with his victory over Jackie Andrews, Salt Lake City, at Richfield recently.

Lewis is to weigh in at 137 pounds giving him the advantage of only two pounds in weight over Moore who will weigh 135.

The matchmaker is looking for an opponent for Ted Kopp, Hansen, in a

preliminary bout, and has his eye on two good boys, one a resident of Twin Falls and the other in Bliss.

A heavyweight bout has been arranged for the semi-final, the contenders being Doris Jeffries, Ellettsville, and Jess Swain, Salt Lake City. Each one weighs in excess of 160 pounds. Swain has been in Twin Falls for some time and appeared on a Legion card recently when he defeated Benny Benson with a technical knockout.

Radio Programs

(Twin Falls Time) DAILY NOON BROADCAST 10:00-10:30—Prelude Period 10:30-11:30—Miss Thrift's Hour 11:30-12:00—Parsons' Topics 12:00-1:00—Merchants' Hour 1:00-2:00—Afternoon Variety Program DAILY EVENING HOUR 8:00-9:00—Amateur and Children's Period 9:00-10:00—Classical and Semi-Classical Program 11:00-12:30—Popular Dance Program 12:30-1:00—Midnight Frolic (Saturday only) Note: Sundays exceptional—Off air only for one hour 7:15 to 8:15 P. M. SUBSCRIBE FOR THE NEWS.

JOIN the Crowd!
OIL-WISE CLUB

Big Buying Power

CHAIN BUYING POWER
DEPARTMENT STORES BUYING POWER
1500 HORSE POWER BUYING POWER

But Still--The Facts Remain

- a Ford Car is still a Ford!
- a Buick is still a Buick!
- a Pierce-Arrow is still a Pierce-Arrow!

AND---

- a \$13.50 Suit is still a \$13.50 Suit!
- a \$15 Suit is still a \$15 Suit!
- a \$50 Suit is still a \$50 Suit!

THE PUBLIC GETS WHAT IT PAYS FOR—NO MORE—NO LESS

See Our Line of Suits

\$13.50 to \$65

SHOES HATS HOSE
\$1.98 to \$11.00 \$2.95 to \$10.00 10c to \$1.50

OVERALLS WORK SHIRTS
\$1.29 to \$1.65 49c to \$1.75

The Most Complete Stock of Clothing in the City

Straus Clothing Co.

JUST OUT

DANCE RECORDS
1767-D My Castle in Spain in 3 parts—Lance, On the Alam—Fox Trots—Leo Reisman and His Orchestra. 10-inch, 75c.

1761-D Kansas City Kitty. I'm Wild about Horns and Hooves. That Go Ta-Ta-Ta-Ta—Fox Trots—Harry C. Reser's Syncope. 10-inch, 75c.

VOCAL RECORDS
1762-D Button Up Your Overcoat—(From "Follow Thru"). Means to Me—Vocals—Ruth Etting. 10-inch, 75c.

1763-D Makin' Whoopee!—(From "Whoopee!"). I'm "Ka-tasy" for You—Vocals—Eddie Wallers. 10-inch, 75c.

1764-D Plucky Lindy's Lucky Day. (You Can't Take Away The Things That Were Made for Love)—Vocals—Irving Kaufman. 10-inch, 75c.

1757-D Withered Rose. I Love to Bumpity Bump (On a Bump)—Vocals—Guy Lombardo and His Royal Canadians. 10-inch, 75c.

Columbia's STAR OF THE WEEK
GUY LOMBARDO And His Royal Canadians

NEW PROCESS RECORDS
VMA-TONAL RECORDING—THE RECORDS WITHOUT SCRATCH
CLAUDE BROWN MUSIC CO. TWIN FALLS

OREGON TRAIL COFFEE

Quality Strength Flavor Aroma
15 FRESH



Quite the prettiest of the new Spring Shoes! Patent with strap and heel of Dull Kid and harmonizing buckle.
\$5.90



The smart lines of this pump please for it a well deserved popularity. Champagne Kid, with brown kid trimming.
\$4.98



In the ever-favored patent leather... its pleasing smartness heightened by the trimming of fancy kid.
\$3.98



"Lido Sand," a smart Spring shade, destined to be a great favorite. Trimmed with sandalwood calf lacing.
\$5.90

Outing Flannel
Plain White

An excellent value—and a useful material. Plain white, in 27-inch width. Our low price is a worthwhile saving. Yard

10c

"No Sales" -- Always Low Prices

Timely Values -- In Tune With the Season

Economical! Reliable! Our Own "Belle Isle" Muslin

A staple item of a standard quality that is assured by our trademark! Housewives the country over are using it satisfactorily.

10c

Bleached or Unbleached

This useful muslin is one of our outstanding values the year 'round — always at the same low price.

Choose "Penco"

If You Want the Utmost Service from Sheets and Sheeting!

Every inch of "Penco" Sheets, Cases, Sheeting and Tubing is a brimful of Quality and Service. Now, during May White Week, replenish your stocks and be sure to have plenty of cool, clean sheets for hot nights to come!

8/4 bleached; 9/4 unbleached Sheeting, yard 49c
9/4 bleached and 10/4 unbleached Sheeting, yard 53c
Pillow Tubing, 42-inch, yard 35c

Sizes Before Hemming

72x90 Sheets, each \$1.29
72x99 Sheets, each \$1.49
81x90 Sheets, each \$1.39
81x99 Sheets, each \$1.59
Pillow Cases, 42x36, each 35c
Pillow Cases, 45x36, each 37c

"Honor" Muslin

The Choice of Thrifty Housewives

You'll find many uses for this splendid quality muslin. Housewives who have used it tell us they would not be without it. 36-inch bleached and 39-inch unbleached. Yard

12 1/2c

"Ramona" Cloth

A Popular Linen-finish Fabric

Its linen finish makes it especially desirable for nurses' uniforms, children's clothes and art needlework. In white only. Yard

36-inch, 25c 44-inch, 33c
34-inch, 39c

Turkish Bath Towels

At Thrifty Low Prices!

You never can have too many soft, absorbent bath towels... especially when you can get such good ones as these at such small cost! All-white or with colored borders or cross-bars.

18x36 inches **15c** 22x44 inches **25c**

Ladies' Hose

Assorted colors, mercerized cotton, all of the newest shades; all sizes—**25c**

Rayon Hose

Full assortment of sizes and newest colors. A wonderful wearing hose—**49c**

Child's 3/4 Hose

Fancy rayon. A beautiful assortment; all sizes—**39c**

Child's 1/2 Sox

Plain colors, for the kiddies—**19c**

"Nation-Wide" Sheets

Cases and Wide Sheeting—Our Own Trade-marked Brand!

Splendid quality, firm weave, long wearing, and very moderately priced... that's "Nation-Wide"... our own trade-marked brand of Sheets, Cases, Tubing and Sheeting. Get acquainted with it during May White Week! You'll be glad you did!

8/4 bleached and 9/4 unbleached Sheeting, yard 39c
9/4 bleached and 10/4 unbleached Sheeting, yard 43c
Pillow Tubing, 42-inch, yard 72c

Sizes Before Hemming

72x90 Sheets, each \$1.10
72x99 Sheets, each \$1.19
81x90 Sheets, each \$1.19
81x99 Sheets, each \$1.29
Pillow Cases, 42x36, each 29c
Pillow Cases, 45x36, each 33c

Blankets
Several Weights and Qualities



Plain blankets to keep you warm—and to decorate your bedroom. If you select a color that harmonizes.

Part wool Blankets. Beautiful assortment of colors. 66x80—
\$2.98

Tooth Pastes

Ipana 33c
Pebbles 33c
Pepsodent 33c
Listerine 19c
Squibbs 33c
Colgate 19c
Pentax 25c
Porphan 39c

Tooth Brushes
23c and 39c

Oil Cloth

48-inch fancy patterns, splendid assortment, yard 27c

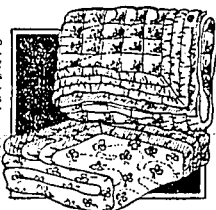
Oil Cloth

Table Patterns, 48-inch 39c

Comforts To Harmonize
With the Furnishings in Your Bedroom

Colorful, soft and so good looking—every housewife wants one or more of these comforts—and now is the best time of all to select them. A fresh stock is attractive and temptingly low-priced.

Comforts—a heavy weight with dark filling—a choice of patterns. Inexpensively priced—
\$1.98



Fancy figured comforts—light weight but comfortably warm—filled with white cotton for \$2.98

Comforts of plain saten or of pleasing figured patterns with a plain saten border. Filled with white cotton. \$3.98

Straw Hats

Largest assortment of Straw Hats in Twin Falls; all shapes and colors. Children's, boys' girls' and adults.

Prices range from—

10c to 49c

Carpenters' Overalls

A New "Pay-Day" Value

This newcomer to the "Pay-Day" family of work clothes is made of 8 oz. fine count white duck and upholds the "Pay-Day" reputation for service and value.

Special Nail Pocket
The 4-division, loose button-strap, nail pocket is a special improvement. Also hip pockets, combination watch pocket, and ruck pocket. Has hammer loops and is bar-tacked at all points of strain.

Union-Made

\$1.98 All Sizes



"Pay-Day" Overalls

For Boys and Youths

Union Made. Of heavy, durable 2.20 blue denim. Will stand the hard knocks active youngsters will impose.

Cut full. High back. Two seam legs. Large front and back pockets. "Pay-Day" Overalls are built to our own exacting specifications and represent truly outstanding values.

3 to 9 Years **98c** 10 to 17 Years **\$1.10**



Boys' Overalls

Ask For Our "Ox-Hide" Brand

Sturdily made to give hard-wearing service to the active youngster.

Made of 2.20 fine yarn blue denim, full cut for comfort and freedom of movement.

Two seam legs, triple-stitched seams throughout, high back styles. Sizes 4 to 16 years.

69c



"Big Mac" for Rough Wear

This Sturdy Shirt in Coat Style or with Closed Front

The "Big Mac" Shirt, fashioned from fine and coarse yarn chambray, is one of the outstanding values that our immense buying power alone makes possible.

Roomy in cut. Size 17 finishes 54 inches; other sizes in proportion. All sizes including slim and extra sizes.

69c



Men's Work Sox

Blue and grey mixed; good wearing—
5c Pair

Men's Sox

Cotton work sox, black, brown, grey and tan—
3 pair 25c

Sturdy Wear

At a Low Price



Men's Work Shoes. Excellent for summer wear—
\$1.89

Man's High Shoe

Of Sturdy Tan Elk



A shoe that will give many a mile of hard service! And so comfortable! Rubber sole and best Army last!
\$3.98

Work Pants

Heavyweight Khaki

Fine for work and outing wear. Of heavy weight khaki, with two side, two button-flap hip and watch pockets. Cuff bottoms and d belt loops. Sizes 30 to 46. An excellent value, at—

\$1.89

Moleskin Work Pants

Made of heavy-weight, good quality moleskin.

Comfortable Sturdy Low-Priced

Printed black and white stripes. Cuff bottoms, belt loops, five pockets.

\$1.98

Suspenders

Men's heavy work Suspenders or dress Suspenders—
49c

Shop Caps

Black or stripe material; all sizes—
25c

Heavy Duty Shirts

Are Known by the "Compass" Label

Our "Compass" brand Shirts are in demand among two classes of men who have to "rough it" on the job; and the outdoor men whose vacation time means rough wear on their clothes.

"Compass" Shirts make good with these men because expertly made of heavy mercerized blue or grey chambray and khaki jeans. Triple-stitched bodies.

98c

Sizes 14 1/2 to 17, including slim and extra sizes



"Compass" brand Shirts are also offered in khaki and twills, with button through pockets, triple-stitched bodies and the other features as sketched above. Well made and expertly shaped for correct fit.

98c

"Ox-Hide" Overalls

Staunch and Serviceable

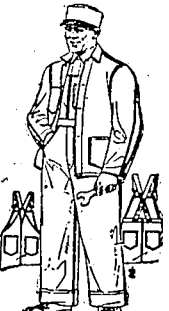
Made standard size of 2.20 blue denim—triple stitched seams—high-back or suspender-back styles.

They Make Good on the Job

Two front set-in pockets, two hip pockets, one watch bib pocket and a ruck pocket.

Assorted lengths, sizes 30 to 48 waist.

89c



Millions of Workers Wear

"Pay-Day" Overalls

Overalls Because They Stand the Test of Service

Jackets with engineers' cuffs to match. Every Pay-Day Overall or Jumper is made to our own specifications. A big value at the low price, for overall or jumper for men—

Of durable 2.20 blue denim; cut big and roomy all over; triple-stitched; six bar-tacked pockets to prevent ripping.

Every "Pay Day" Overall bears the Union Label.

\$1.29



Boys' Sox

Blue and grey mixed. Long wearing. Just like Dad's—
2 pair 25c

Boys' Unions

Athletic Unions; Nain-sook or knit; all sizes—
49c

Idaho's Metal Output During Year Decreases in Value

GOLD, ZINC, COPPER AND SILVER OUTPUT INCREASES IN 1928

Reduction in Price of Lead Responsible for Lower Income, According to Report of State Mine Inspector

(By The Associated Press) BOISE, April 18.—Increases in the output of gold, zinc, copper and silver failed to offset the reduction in the price and resultant output of lead, with the result that the state's metal output for 1928 revealed a reduction in value of \$1,193,888, a report of Stewart Campbell said today.

Production of the mines for the year was valued at \$25,001,222 compared with \$26,195,110 in 1927, the report said. Several counties other than Shoshone, the big mining county, revealed substantial increases in metal production. Blaine, Owyhee and Idaho counties recorded an increase of about three times that of the previous year. Boise county production being nearly double while Custer and Elmore held their own.

Shoshone, Lemhi, Bonner and Owyhee decreased.

Twenty-three more mines were producing in 1928 than in 1927, the report said. Shoshone county continued to maintain its position as the largest metal producing county in the state and, with the exception of lead, recorded an increase in the production of the five chief metals particularly zinc. Its rank in percentage as compared with the rest of the state was practically the same. Boise county production was valued at \$2,822 per cent in 1928 and \$2,730 in 1927. Its total production in 1928 was \$27,474,740 as against \$28,574,891 in 1927.

Shoshone county led in production of all the metals but gold, the old producing county of Boise being ahead in this case. Gold production was valued at \$2,740 ounces valued at \$420,858, an increase of 5143 ounces and \$100,407 as compared with 1927 when it was valued at \$322,287.

Inspector Campbell said the increase was significant in indicating that the state again being taken in gold mining, and that this resource still offers many possibilities.

Production increased from 8,892,293 ounces with a value of \$6,014,810 in 1927 to an output of 9,387,484 ounces in 1928 with a value of \$6,228,638, an increase of 91,191 ounces and \$212,748 in value.

Inspector Campbell pointed out that Shoshone county produced 94.27 per cent of the silver in the state, an amount which represented virtually one-third the output of the entire country.

Lead production decreased from 312,770,885 pounds to 302,590,871 pounds in 1928 with a corresponding reduction in value from \$21,127,073 in 1927 to \$10,078,354 in 1928. The tremendous output still maintains Idaho as the second lead producing state in the United States, Campbell said, producing about one-fourth of the nation's output.

Bunker Hill and Sullivan mining and concentrating company held its record as the largest lead-producing company in the state. It is not in the United States report said, listing the Federal Mining and Smelting company second and the Hecla Mining company third.

Part of the reduced value was laid to the drop in price per pound from 6.55 cents per pound in 1927 to 6.205 cents per pound in 1928.

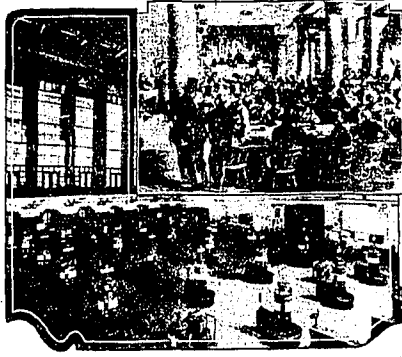
The 1928 production of zinc was greater than any year since war times, adding \$500,000 to its 1927 value. Production this year was 74,234,543 pounds valued at \$4,480,143 compared with 64,479,833 pounds valued at \$4,028,831 in 1927.

The high production was attributed to the favorable price received during the year.

As an outstanding event in the year in the zinc production industry, he pointed to commencement of operations of the Bunker Hill and Sullivan electrolytic zinc smelting plant which produced the highest grade zinc known.

The output of copper in 1928 was 2,642,201 pounds valued at \$28,574,740, which represented an increase in poundage of 281,438 and a value of \$79,992 over 1927. The price of copper averaged 14.57 cents during the year compared with 12.92 in 1927. He attributed much of the increase to the reopening of the Empire copper mine in Custer county.

New Trading Post on Stock Exchange Proves Efficient



Contrasting the old trading post (above) when members had seats but hard eyes—with the modern trading post (below) of today.

NEW YORK, April 18.—New York stock exchange officials say that tests of the new horseshoe trading post have been successful in speeding up transactions on the floor.

When John D. Rockefeller, sr., bought his membership in 1883 it cost him almost \$20,000 and he had to stand up. For real seats already were beginning to disappear. In 1889 when seats first were made available, the price was as low as \$3000.

Prior to 1869 exchange seats, hard and uncomfortable, were free to duly elected members. They began to be "vestigial" with the establishment of a continuous market for securities in 1871 and in 1882, with the abolition of the old system of "calling" the roll of stocks, they disappeared, except as a symbol of membership.

Today the old chairs have found their way into antique shops, toment kitchens and garrets and would-be buyers of standing room only must trample almost 5000,000 before an exchange member to get his attention.

The "post" now being tested is an arrangement whereby, in effect, the telephone clerks with their direct lines to member brokers' offices, are moved from their old compartments around the edge of the floor to positions on the floor. The theory is that the traders will save time by being able to maintain contact with their offices without leaving the floor. Technically, of course, the space within the horseshoe, occupied by the clerks, will be "off the floor."

ed brooms, wire, axes, oilcloth—everything for which the government had search to others. President Hoover, then secretary of commerce, called a conference of state representatives in 1921. A division of specifications resulted, with one worker, Dr. A. S. McAllister, as chief. Letters were written to manufacturers asking if they could produce goods which would voluntarily certify when asked, as up to standard.

There was an instant response. Now there is a list of firms manufacturing more than 748 types of goods, according to government specifications. The one-man division has grown to a score or more of workers.

FLORIDA MAN BUILDING 1895 MODEL AIRPLANE

NEW SMYRNA, Fla., April 18.—Gabriel Gomez is spending much of his time in his workshop here fashioning from memory a model of the first airplane that ever flew over Florida.

Gomez built the plane in 1895 at the request of a northern capitalist and financier. The project was clothed in secrecy and carried out behind closed doors.

The plane was of the glider type, with no engine, but with wings similar to those of a aircraft used today. The frame was entirely of wood, encased in tin cloth. The wing spread was 20 feet by seven feet.

The trout was held at what was then known as North beach, now called Vi-

lano beach or Surfside. The owner, builder and two others were the only spectators. The plane soared upward for about 40 feet, was caught in a gust of wind and crashed down, breaking in two.

The experimenter, as yet unidentified, was satisfied with the test. Gomez does not remember his name. A complete model of the plane of earlier days is to be made by Gomez, and presented to the historical society at St. Augustine.

Add To Fairground Area

BURLEY, April 18.—(Special to The News)—An additional tract of land has just been added to the Cassia-county fairgrounds. A deed has been recorded transferring a half block to the county, the tract adjoining the present grounds on the west. This plot will be used to accommodate several new exhibit buildings to be erected the present season.

FARM WORK LATE IN SOUTHWESTERN IDAHO

Weekly Weather and Crop Summary Reports Delay in Agricultural Activity

BOISE, April 18.—Cool weather and delayed farm work characterized the week ending April 12 in Southwest Idaho, according to the weekly summary of weather and crop conditions, issued by Clinton E. Norquist, meteorologist of the United States department of agriculture weather bureau. The summary for Southwest and Southeast Idaho follows:

Southwest Idaho.—The week was quite cool for the season and there was much cloudiness with frequent rains or snow flurries. Farm work in all departments was much delayed by the unfavorable weather conditions and vegetation made but slow growth. Sunshine and increased warmth are much needed. Soil moisture is generally adequate. Fruit buds are beginning to show signs of life, but as yet no bloom has been reported in this district. Cattle and sheep are being put on desert range in a few localities, but range feed is poor at best and in most sections stock are still being held on feed. Some loss of lambs is reported, due to inclement weather.

Southeast Idaho.—The week has been cold with frequent snow storms, heavy in places. Some plowing is being done in southern sections, but fields in the north are still snow covered. Feed is still doing well. Cattle and sheep are being turned out to pasture in the south. Lambing is progressing with some losses the first of the week on account of storms. Winter wheat is doing well. Roads are improving.

Notes from the field: American Falls, Power County.—Winter wheat doing well. Rupert, Minidoka County.—Not many crops planted; weather cold and cloudy. Shoshone, Lincoln County.—Spring very backward; most stock has been turned out on range; grain seedling on; cold weather has delayed seed-

DAIRY ASSOCIATIONS IN IDAHO ADOPT NEW NAME

MOSCOW, April 18.—(AP)—A new name for the "cow testing associations" which have come into prominence in the dairy industry in recent years is being adopted in Idaho, D. L. Fourfield, dairy manager of the university extension division, said today.

The new title is "Dairy Herd Improvement association" and is designed to tell more clearly the purpose and aim of the association. Four said: "We feel sure that Idaho dairymen will welcome the new name, as it indicates something of the nature of the work of the group. To many of the dairymen, county agents, farmers and the general public the name 'cow testing association' has not indicated clearly the real function of the association."

line quite a bit; not enough sunshine to start corn growing.

Durley, Cassia County.—Cold and cloudy most all week; storm on Thursday stopped work; section sowing grain seedling continued and beet planting started heavy winds first of week.

Wendell, Gooding County.—Wind blowing next of week; crop planting in full swing; fruit spraying just started; only one day in the week fit for spraying; frequent showers.

Gooding, Gooding County.—Field work has been going forward rapidly, but is behind the average for the season; hard winter has been followed by late spring; some snow the past week; ground is in excellent condition, but water in reservoir is below normal.

Blackfoot, Blaine County.—Moderate temperatures during the day with freezing temperatures at night; moderate snowfall; some plowing started in a few places; cattle and sheep being turned out to pasture; lambing progressing with some losses first of week on account of weather.

Oakley, Cassia County.—Plowing mostly done, but ground too dry to sow; some beet sowing; snow in mountains going slowly with water going into the ground; most dry farm wheat good; old alfalfa winter killed to some extent; cattle and sheep have wintered well, but need grass as hay is scarce; good lambing; some gardens planted.

Seed potatoes for sale from Ashton stock. Delivered, Twin Falls, D. L. per hundred, Phone 195-W. C. L. Moorman, adv.

Prince of Wales Will Open Aero Exhibition

LONDON, April 18.—The Prince of Wales plans to open the International Aero exhibition at Olympia this summer.

Every inch of space has been booked along with almost every type of aircraft engine in use. The Royal Aeronautical society will have an exhibit tracing the development of flying from the earlier days.

SOUTHWEST BEST MART FOR IDAHO POTATO CROP

MOSCOW, April 18.—(AP)—Southwest states will furnish Idaho its best potato market this year, a survey by the Idaho school of agriculture revealed today.

The southwest, the report said, should provide a better market this year than it did in 1928. Southern states, including as far west as Texas, are expected to reduce their acreage about 20 per cent, and as a result Idaho's crop should bring a higher price in the south this year.

Pacific coast markets should also be better than last year, according to the survey.

Play Cast Rehearses at Hansen For "Ace High"

HANSEN, April 18.—The cast for the school play, "Ace High," will practice April 22, 23, 25, 29, 30, May 1 and 2, each rehearsal starting at 7 P. M. The play will be staged May 3, and includes the following cast: Dorothy Cline, Bill Cline, Jewell Pike, Clarence LaCourse, Jack Spruill, Louise Cowan, Frances Goodman, Lenora Fennwald, Zenda Robinson and Tom Hill.

At the commencement exercises to be held in the high school at a date to be announced later, the senior class will have as valedictorian Zenda Robinson and Dorothy Cline, salutatorian.

Hansen high school baseball team gained a decisive victory over Eden high school team Wednesday.

SCHOOL ASSOCIATION AT DIXON ELECTS OFFICERS

DIXON, April 18.—The Dixon Parent-Teacher association elected three men to hold the three offices in the association for the coming year. Dewitt Lohus received a unanimous vote for president. Will Brown was elected vice-president and Guy Dixon, secretary-treasurer. Following election of officers at the Monday evening session, a program that included three numbers by new residents of the neighborhood was presented. Mr. and Mrs. Fred Beer sang a vocal duet accompanied by Mrs. Ray Looney. Mr. Looney gave several banjo numbers and Mrs. Beer played a piano solo. At the next meeting, April 29, the new officers of the association will be installed and the social committee will have charge of the social hour.

The regular school election will be held Saturday afternoon at the Dixon schoolhouse. One member of the board will be elected for a three-year term. Frank Grant, whose term expires, has been re-nominated.

Leticia Marguerite Ingram has been ill with influenza for several days. Bert Payne has purchased the Jack Craig 40 acres, but will not take possession until after the crops are harvested next fall. Mr. Craig intends to return to Hansen where he owns property.

The Lent-A-Hand club was present at a play at the Dixon school house Thursday evening.

Mr. and Mrs. J. E. Kinder, Filer, arrived here Saturday afternoon to spend the week end with Mr. and Mrs. Will Brown.

Many people from this vicinity attended the Operetta given Wednesday evening by the pupils of the Hazelton high school.

Miss Donna Johanson has been very ill the past week with influenza. Mrs. Ted Rice and Miss Heester Freeman have recently recovered from the snailpox.

Mr. and Mrs. Fred Beer and two children, Twin Falls, are making an extended visit at the home of Mr. and Mrs. Ray Looney.

The girls of the 4-H Sewing club will meet Saturday afternoon with Miss Edna Fern.

MARCELLINE 560 at 719 2nd Ave. North, Ph. 1050, adv.

Why buy a four cylinder car when you can get the new Chevrolet Six for as low as \$699.50 delivered here. adv.

This is the package with the original SHREDDED WHEAT

Good to eat - Ready to eat -

FOR breakfast—hasty luncheon—after-school snack for the children—no finer food than Shredded Wheat.

Delicious and satisfying, it provides all the food elements of whole wheat. Carbohydrates for heat and energy, proteins for muscle and strength, mineral salts, vitamins and the right amount of bran to keep the system clear.

Perfect food?—yes! And always ready to serve. With milk or cream and sugar—with melted butter and salt—with fruits, fresh or canned—or with honey—you have an appetizing treat on the table in less than it takes to tell it.

Of course you'll want Shredded Wheat on hand—ready to serve the whole family. Better order two packages—one goes so fast.

SHREDDED whole WHEAT

Full size biscuits—the kind that fills the cereal dish

Meals are better

with TREE TEA

Orange Pekoe

We have a fine DEMONSTRATOR MAYTAGS

To be sold at Reduced Prices

These washers are the latest Aluminum Tub Models with the new, soft rubber water cover and are in very good condition.

Subject to previous sale

THE MAYTAG SHOP 225 Shoshone St., Twin Falls Phone 1270

TWIN FALLS DAILY NEWS

SUBSCRIPTION RATES: One Year \$12.00, Six Months \$7.00, Three Months \$4.00, One Month \$1.50

MEMBERS OF ASSOCIATED PRESS: The Associated Press is exclusively entitled to the use of all information...

ANNIUS HOURS

Under no circumstances is crime to be condoned, and yet— A young man or group of young men convicted of the crime of burglary are marked with a bar sinister for life.

A New Yorker at Large

NEW YORK, April 18 (AP)—Aboard ocean liners ducked at New York piers it is often difficult these days to discern where a bric-a-brac luncheon ends and a ten dantais begins.

OVERHAULING JUSTICE

President Hoover is said to be having trouble with his plan to overhaul the American judicial system.

GRADE SCHOOL AT FILER ANNOUNCES HONOR ROLL

FILER, April 18—Grade cards have been issued and the grade school honor roll announced.

CEMETERY SPECULATION

American real estate, the statisticians say, has been dull for some time compared with other branches of business.

Relief From Curse Of Constipation

A Battle Creek physician says, "Constipation is responsible for more misery than any other cause."

PART-TIME HONESTY

An Eastern newspaper man who rented an automobile for an afternoon found

of a curious fact. The auto renting business, like most other businesses, is successful because of public trustworthiness. A properly identified person is allowed to drive away with a high-priced car.

Human nature has puzzling features. The news is a member of the Audit Bureau of Circulations, from whom all information as to circulation will be furnished upon application.

A Washington Bystander

WASHINGTON, April 18 (AP)—Friends in the diplomatic corps the Bystander learns that great has been the impression made by President and Mrs. Hoover right at the outset of the new administration.

Minister of Twin Falls Gooding College Speaker

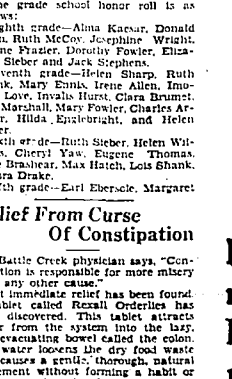
Case, Marjorie Dexter, Wanda Prince, Florence Rich, Fern Ebersole and Robert Garber.

FILER BOY SCOUT TROOP HONORS LEADER AT PARTY

FILER, April 18—Ralph Stuckey, scoutmaster, was honored on his birthday by Boy Scouts at a surprise party given at the home of F. F. Runge Wednesday evening.

CREAM DISHES at a real saving

When made with Borden's Evaporated Milk. Doubly rich compared to fresh. Economical, convenient, no waste. Always pure.



Time in on "The Borden Dairy" every Friday, 10:30 P.M., Mountain Time (9:30 P.M., Pacific Time) KOA, KSI, KFI, KGO, KPO, KGW, KHQ, KOMO.

Guiding Your Child

SERVANTS Peter's mother took pains to use the little happiness of home to teach him fair play, consideration and courtesy.

It will help, too, in cultivating a decent, courteous attitude if we do not permit the child to feel that servants must do personal favors for him, or that his requests of them may be anything but entirely polite.

A Washington Bystander

WASHINGTON, April 18 (AP)—Friends in the diplomatic corps the Bystander learns that great has been the impression made by President and Mrs. Hoover right at the outset of the new administration.

Minister of Twin Falls Gooding College Speaker

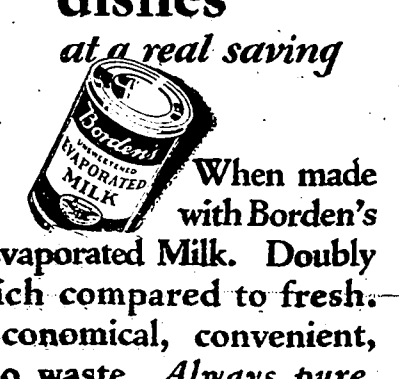
Case, Marjorie Dexter, Wanda Prince, Florence Rich, Fern Ebersole and Robert Garber.

FILER BOY SCOUT TROOP HONORS LEADER AT PARTY

FILER, April 18—Ralph Stuckey, scoutmaster, was honored on his birthday by Boy Scouts at a surprise party given at the home of F. F. Runge Wednesday evening.

CREAM DISHES at a real saving

When made with Borden's Evaporated Milk. Doubly rich compared to fresh. Economical, convenient, no waste. Always pure.



Time in on "The Borden Dairy" every Friday, 10:30 P.M., Mountain Time (9:30 P.M., Pacific Time) KOA, KSI, KFI, KGO, KPO, KGW, KHQ, KOMO.

Rock Creek Club Meets

ROCK CREEK, April 18 (Special to The News)—Mrs. Magnus Larsen was hostess to members of the Rock Creek Women's Club April 18.

CALL FOR BIDS

Notice is hereby given that the Clerk of the Board of Trustees of Independent School District No. 1, Twin Falls County, Idaho, will receive bids up to 8 P. M. May 10, 1929, for the calculating and painting of approximately fifteen rooms in the Junior and Senior High School.

TO THE PUBLIC

You quit-buying most of us in clunks so we have quit keeping it. We thank you for your patronage and we are all set and will serve you again when the time comes.

Use Garden Spading Forks Now

Where embassy and legation personnel find it desirable to appear at the tea or "at home" of Madame Ambassador or Madame Minister, they just hop into their cars and drive there.

Lawn Mower

With self-spring adjusting ball bearings— \$7.95

Nail Hammer

A Good Foreal One— \$2.19

Measuring Tapes

A Correct Tape in Brass Bound Case— 25-Foot \$4.40, 50-Foot \$5.90, 75-Foot \$8.90

IRON PLANE

High Grade, Regular \$4.50, Smooth Planes— \$2.79

Sharp Axes

Useful for Spring Cleaning Up— Short Handled Axe— \$1.49, Long Handled Axe— \$2.49

A Handy Saw

With 16 Inch Steel Blade— 39c, Distal Hand saw— \$3.45

Garden Trowel

All Steel, Rite-Way Priced— 12c

Cassia Superintendent Asks Display of Flags

BURLEY, April 18 (Special to The News)—George Tucker, of the department of dairying, has spent a few days in Burley with his newly appointed assistant, H. L. Hurray.

CALL FOR BIDS

Notice is hereby given that the Clerk of the Board of Trustees of Independent School District No. 1, Twin Falls County, Idaho, will receive bids up to 8 P. M. May 10, 1929, for approximately forty squares, more or less, of forty pound tin roofing.

TO THE PUBLIC

You quit-buying most of us in clunks so we have quit keeping it. We thank you for your patronage and we are all set and will serve you again when the time comes.

Use Garden Spading Forks Now

Where embassy and legation personnel find it desirable to appear at the tea or "at home" of Madame Ambassador or Madame Minister, they just hop into their cars and drive there.

Lawn Mower

With self-spring adjusting ball bearings— \$7.95

Nail Hammer

A Good Foreal One— \$2.19

Measuring Tapes

A Correct Tape in Brass Bound Case— 25-Foot \$4.40, 50-Foot \$5.90, 75-Foot \$8.90

IRON PLANE

High Grade, Regular \$4.50, Smooth Planes— \$2.79

Sharp Axes

Useful for Spring Cleaning Up— Short Handled Axe— \$1.49, Long Handled Axe— \$2.49

A Handy Saw

With 16 Inch Steel Blade— 39c, Distal Hand saw— \$3.45

Garden Trowel

All Steel, Rite-Way Priced— 12c

Inspect Cream Stations

BURLEY, April 18 (Special to The News)—George Tucker, of the department of dairying, has spent a few days in Burley with his newly appointed assistant, H. L. Hurray.

CALL FOR BIDS

Notice is hereby given that the Clerk of the Board of Trustees of Independent School District No. 1, Twin Falls County, Idaho, will receive bids up to 8 P. M. May 10, 1929, for approximately forty squares, more or less, of forty pound tin roofing.

TO THE PUBLIC

You quit-buying most of us in clunks so we have quit keeping it. We thank you for your patronage and we are all set and will serve you again when the time comes.

Use Garden Spading Forks Now

Where embassy and legation personnel find it desirable to appear at the tea or "at home" of Madame Ambassador or Madame Minister, they just hop into their cars and drive there.

Lawn Mower

With self-spring adjusting ball bearings— \$7.95

Nail Hammer

A Good Foreal One— \$2.19

Measuring Tapes

A Correct Tape in Brass Bound Case— 25-Foot \$4.40, 50-Foot \$5.90, 75-Foot \$8.90

IRON PLANE

High Grade, Regular \$4.50, Smooth Planes— \$2.79

Sharp Axes

Useful for Spring Cleaning Up— Short Handled Axe— \$1.49, Long Handled Axe— \$2.49

A Handy Saw

With 16 Inch Steel Blade— 39c, Distal Hand saw— \$3.45

Garden Trowel

All Steel, Rite-Way Priced— 12c

REED'S STORES RITE-WAY STORES 214 MAIN AVE. SOUTH "Where Bargains Await You" Is Worth Remembering Whenever You Go to Market. Our Stores Now Offer You so Many Timely Needs at Saving Prices—

Famous Gotham Architect Visualizes Cities Built Around Airports

\$300,000,000 GOES FOR AIRPORTS SINCE FAMOUS SOLO FLIGHT

Architectural League Indicates Keen Interest in Francis Keally's Design For "Air City" of Future

(By The Associated Press) NEW YORK, April 18.—Cities built around airports are predicted for America by Francis Keally, New York architect, who has completed a study of airport conditions in this country and in Europe.

Mr. Keally's design for such a development is one of the features of the Architectural and Allied Arts exposition here April 15 to 27. It embraces a combined air and railroad terminal in the center of a landing field 7500 feet in diameter. Space is provided for hangars, hotels and necessary buildings. Pneumatic tubes would transfer mail and express and a tunnel system would provide for railroad and motor traffic.

Circular Avenues
The cindered field, in Mr. Keally's plan, would be surrounded by a parkway 100 feet deep. The city would begin beyond this stretch, streets radiating from the airport. Circular avenues would parallel the outline of the field.

A most important phase of the construction of this "air city" is in Mr. Keally's plan for setback buildings mounting in a series of graceful planes from the level of the airport. A ratio of 1 to 7 has been set up as being the most harmonious and suited for incoming ships. That is, for every foot of height, he backs seven feet from the field.

Will Create Interest
The Architectural league is said to be keenly interested in airport construction and this design of Mr. Keally's is expected to create considerable interest. Since Colonel Lindbergh landed in France not less than \$300,000,000 is said to have been spent on airports in the United States. This has created the need for a definite and comprehensive type of architecture satisfactory for the future.

Loud Speakers Announce Planes at French Field

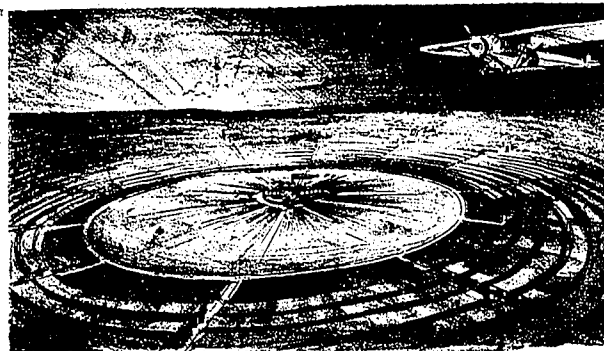
PARIS, April 18 (AP)—Four groups of loud speakers, installed on the roof of the main building at the Le Bourget flying field, announce the approach of airplanes about to land.

The name and number of the plane, hour and place from which it started, and the part of the airframe in which it is about to land can be heard clearly in all directions three quarters of a mile away.

Portugal Establishes National Air Council

LISBON, April 18 (AP)—Portugal has established a national air council to advise the government on all matters pertaining to aeronautics.

The council will be made up of representatives from each of the ministries: interior, finance, war, marine, foreign affairs, commerce, communica-



A city of an "air-minded civilization" has been designed by Francis Keally, New York architect. An airport is the nucleus for development of the plan, buildings being set back in tiers to permit easy access to the field.

Tourists Visit Burley

BURLEY, April 18 (Special to The News)—Burley's many tourist parks are awakening from a long winter's period of quiet while travelers are beginning to roll in from many states. A larger proportion than usual seem to be from outside states. Many cars have stopped over from as far away as Texas, Illinois, Nebraska and Iowa, while all of the Pacific coast states have been represented. Improvements are already under way at some of the camps.

ions and colonies, and will function under the presidency of the prime minister.

The military and naval air service will continue to be ruled by their own laws, with the national air council seeking to coordinate their activities and to aid the development of commercial aviation.

49 STUDENTS OF HANSEN DISTRICT ATTAIN HONORS

HANSEN, April 18—Forty-three students of the Hansen school district are named on the honor roll announced here by D. A. Hiles, superintendent, as follows:

First grade—Kenneth McFarland, Paul Clontz, Helen Pettygrove, Mary Ellen Wood.

Second grade—Bert Bennett, Betty Jo Gustafson, Dorothy Schaefer.

Third grade—Virginia Durk, Patricia Hill, Pava McFarland, Ann Cowan.

Fourth grade—Irene Scott, Ruth Bennett, Theora Belle Barris, Blaise Froelich, Edith Trunkley.

Fifth grade—Beulah Smith, Charlotte Babcock, Opal Fike, Rose Pennington.

Sixth grade—Margaret Klingemann, Martha Froelich, Irene Schaefer,

er, Helen Frann, Lucille Walker, Eighth grade—Robert Durk, Bud Pledger, Grant Reynolds, Norval Reynolds.

High school—Grace Brewer, Margaret Cowart, Jewell Fike, Tom Kendall, Victor Mal, Fern McFarland, Janet McFarland, Lester Naylor, Cecil LaCourse, Clarence LaCourse, Jane Holston, Zaida Robinson, Gerald Stanger, Ruby Wiseman.

Sheriff Pace Defendant in Action For Damages

BURLEY, April 18 (Special to The News)—In district court a jury is considering the case of J. H. Pace against Sheriff P. D. Pace for damages arising from alleged improper custody of some 450 sacks of wheat. The wheat was attached and placed in the custody of a keeper. Soon thereafter the wheat vanished. The sheriff is being sued for the market value of the staple at the time of its disappearance.

Removal of Snow From Roads Pays Big Profit

CONCORD, N. H., April 18 (AP)—Highway snow removal pays in dollars and cents in New Hampshire.

It has been estimated that for every \$100 spent for snow removal the spenders reap a profit of \$1000. New Hampshire has found that the additional \$1-1-4 from kerosene road toll more than offsets the comparatively small outlay necessary to keep the roads open.

If it is pointed out, does not take into consideration the additional fire protection accorded to real estate due to the accessibility of apparatus over the open roads.

SCIENTIST CLAIMS BRAIN CAUSES FEAR REACTIONS

ST. LOUIS, April 18 (AP)—Fear may be accompanied by a linking feeling in the stomach, but the brain, not the stomach, in the abdomen is the cause of four menacing asserts Professor Alfred C. Shackle, St. Louis university.

Nine years' study of pigeons is the basis of his findings that disagree with theories of fear born due to gland action.

"In these experiments with pigeon," he says, "it was desired to confirm and

extend the knowledge of the relation of mind and brain in man. We find that the portions of the pigeon which enable it to recognize its food are not exactly the same as those that enable it to take food, or as the portions which produce fear reactions.

"Thus we realize more clearly that the different portions of the brain in man, which is built up on the same general plan as that of the pigeon, also has different parts for physical and mental processes."

Scientists are learning from the birds, according to Professor Shackle, how to locate more accurately the parts of the human brain where different diseases or injuries may occur.

SUBSCRIBE FOR THE NEWS.

The Most Outstanding Values of The Season

Chic Frocks

The Frocks, we believe are values that challenge competition. Exquisite Prints, Crepe Silks, Beautiful Flat Crepes. Models for every daytime and evening occasion in all the leading new colors for Spring and Summer! You'll buy more than one at the price.



- \$3.95
- \$7.95
- \$14.95
- \$16.95
- and
- \$24.75



COATS

Fur Trimmed and Plain Tailored

They are youthfully smart, with collars that tie... Paquin shawl collars... deep capes scarfs... shoulder bows and many, many more brilliant effects. You'll admire the fineness of their finishing and workmanship... the custom type tailoring.

- \$9.95, \$12.75, \$14.95 to \$42.50

HATS

Three Prices

- \$1.95 - \$3.95 - \$5.95

Among these are many summer hats that sold regularly to \$13.50 all hats on sale.

HOSIERY

- 89c - \$1.39 - \$1.79

All perfect hose, all the newest shades; square or pointed heels.

"OUR PRICES ARE NEVER HIGH"

We carry the Largest Selection of Hats, Coats and Dresses at Popular Prices.



The Most Popular Ready-to-Wear and Millinery Shop in Town.

PIGGLY WIGGLY

Money Saved is Money Earned

Price Tags Tell the Story
Better Than Words



The Little Price Tag swinging before your eyes make your shopping at Piggly Wiggly simple. The story that Piggly Wiggly price tags tell, spells economy and you know how much.

We Pay Cash For Eggs

- | | |
|----------------------------------|-----|
| VAN CAMP'S PORK AND BEANS | |
| 3 Medium Tins for | 32c |
| BAKER'S COCOANUT | |
| 1/2-Pound Package | 17c |
| 1/4-Pound Package | 10c |
| WHITE EAGLE LAUNDRY SOAP | |
| 10 Bars For | 37c |
| SUPER SUDS | |
| 2 Packages for | 19c |

- | | |
|-----------------------------------|-----|
| GULF KIST OYSTERS | |
| 8 Ounce Tin | 32c |
| 4 Ounce Tin | 16c |
| THOMPSON'S MALTED MILK | |
| Large size, (1 pound) | 49c |
| WINNER BRAND MATCHES | |
| 1 Carton of 6 Boxes | 18c |
| RUBBER APRON and WOOL SOAP | |
| 12 Bars | 80c |

A PRICE REDUCTION ON ALL CASE OR DOZEN LOTS

One stitch and then another makes the fine **SEAM**

HILLS BROS. apply this principle to roasting coffee. A few pounds at a time is the secret of their attended, continuous process. Every berry is roasted evenly and a delicious, uniform flavor is assured.

HILLS BROS COFFEE

COFFEE

MARKET OPERATIONS FOR ADVANCE GAIN

Credit Conditions Indicate Further Improvement During Day On Mart

MARKETS AT A GLANCE

NEW YORK, April 18 (AP)—Stocks: Strong. Wheat market at highest since war time. Bonds: Steady. Attention general as at new high.

Curb: Strong; Oil: Firm. Equipment at new high.

Foreign exchanges: Irregular; trading extremely dull.

Cotton: Trading mainly speculative from bid to new crop.

Sugar: Steady; export market. Coffee: Easy; disappointing Brazilian.

CHICAGO:

Cattle: Steady to strong. Cows steady to lower.

BY CLAUD A. JACOB

(Associated Press Financial Writer)

NEW YORK, April 18 (AP)—Operations for the advance were expanded to the largest proportions in more than a fortnight. The stock exchange today, as credit conditions showed further improvement and excellent first quarter earnings reports of a large number of industrial concerns, gave indications of what the reports of the chief industrial producers will show when outlined next week.

There was further quickening in the pace of trading, total sales aggregating 3,768,000 shares and was shaded 7 1/2. A development particularly encouraging to speculators was a drop of 1/2 per cent in time money rate for all maturities, with an abnormally high rate, but indicating the heavy spring commercial credit requirements which have been met.

Compilation Disappointing

Federal reserve bank announcement, released after the close of the market, showed that the federal reserve bank had a deposit of only \$200,000,000, leaving a volume of deposits the sharp curtailment in stock market activity.

New York banks withdrew \$200,000,000, but of town banks increased their loans to an extent which concealing the banks' withdrawals. The account of others increased by \$100,000,000, in the federal reserve bank by \$200,000,000, presumably to provide funds for the mid-month settlements.

The New York Federal Reserve bank retained its 5 per cent discount rate and further raised the rate of 1/2 per cent. The Bank of England and Bank of France reported improved conditions and no change in rates. Traders generally became confident, however, that the federal reserve bank would take to effective action should speculative activity again break out of bounds.

Independent Analysts

Independent analysts were strong. Some of the criticisms were but up sharply. The market was again a year ago.

Some were all optimistic, others were pessimistic, but all agreed that the market is still fluctuating.

Commodities moved in narrow range

Commodities moved in narrow range. Grain: Steady. Cotton: Steady. Sugar: Steady. Coffee: Steady. Oil: Steady.

CHICAGO PRODUCE

CHICAGO, April 18 (AP)—Butter: Unchanged, receipts 743,214 lbs. Eggs: Lower, receipts 218,930 dozen. Cattle: Steady, receipts 1,200 head.

CHICAGO LIVESTOCK

CHICAGO, April 18 (AP)—Cattle: Receipts 1,200 head. Hogs: Receipts 1,200 head. Sheep: Receipts 1,200 head.

LOS ANGELES PRODUCE

LOS ANGELES, April 18 (AP)—Produce exchange receipts: Butter 12,000 pounds. Eggs 1,200 dozen. Cattle 1,200 head.

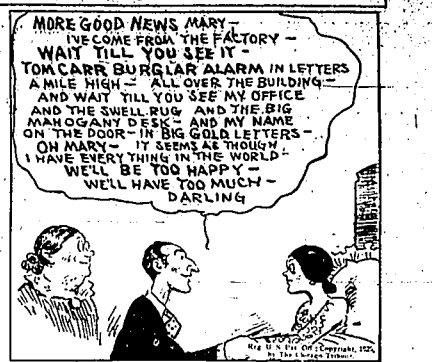
DUIEN FEEDS

DUIEN FEEDS, April 18 (AP)—Dried fruit and nuts steady.

LIVESTOCK MARKETS

Light Butcher	107 1/2
Heavy Butcher	107 1/2
Light Cows	107 1/2
Heavy Cows	107 1/2
Light Hogs	107 1/2
Heavy Hogs	107 1/2
Light Sheep	107 1/2
Heavy Sheep	107 1/2
Light Poultry	107 1/2
Heavy Poultry	107 1/2
Light Dairy	107 1/2
Heavy Dairy	107 1/2
Light Eggs	107 1/2
Heavy Eggs	107 1/2
Light Cattle	107 1/2
Heavy Cattle	107 1/2
Light Hogs	107 1/2
Heavy Hogs	107 1/2
Light Sheep	107 1/2
Heavy Sheep	107 1/2
Light Poultry	107 1/2
Heavy Poultry	107 1/2
Light Dairy	107 1/2
Heavy Dairy	107 1/2
Light Eggs	107 1/2
Heavy Eggs	107 1/2
Light Cattle	107 1/2
Heavy Cattle	107 1/2
Light Hogs	107 1/2
Heavy Hogs	107 1/2
Light Sheep	107 1/2
Heavy Sheep	107 1/2
Light Poultry	107 1/2
Heavy Poultry	107 1/2
Light Dairy	107 1/2
Heavy Dairy	107 1/2
Light Eggs	107 1/2
Heavy Eggs	107 1/2
Light Cattle	107 1/2
Heavy Cattle	107 1/2
Light Hogs	107 1/2
Heavy Hogs	107 1/2
Light Sheep	107 1/2
Heavy Sheep	107 1/2
Light Poultry	107 1/2
Heavy Poultry	107 1/2
Light Dairy	107 1/2
Heavy Dairy	107 1/2
Light Eggs	107 1/2
Heavy Eggs	107 1/2
Light Cattle	107 1/2
Heavy Cattle	107 1/2
Light Hogs	107 1/2
Heavy Hogs	107 1/2
Light Sheep	107 1/2
Heavy Sheep	107 1/2
Light Poultry	107 1/2
Heavy Poultry	107 1/2
Light Dairy	107 1/2
Heavy Dairy	107 1/2
Light Eggs	107 1/2
Heavy Eggs	107 1/2
Light Cattle	107 1/2
Heavy Cattle	107 1/2
Light Hogs	107 1/2
Heavy Hogs	107 1/2
Light Sheep	107 1/2
Heavy Sheep	107 1/2
Light Poultry	107 1/2
Heavy Poultry	107 1/2
Light Dairy	107 1/2
Heavy Dairy	107 1/2
Light Eggs	107 1/2
Heavy Eggs	107 1/2
Light Cattle	107 1/2
Heavy Cattle	107 1/2
Light Hogs	107 1/2
Heavy Hogs	107 1/2
Light Sheep	107 1/2
Heavy Sheep	107 1/2
Light Poultry	107 1/2
Heavy Poultry	107 1/2
Light Dairy	107 1/2
Heavy Dairy	107 1/2
Light Eggs	107 1/2
Heavy Eggs	107 1/2
Light Cattle	107 1/2
Heavy Cattle	107 1/2
Light Hogs	107 1/2
Heavy Hogs	107 1/2
Light Sheep	107 1/2
Heavy Sheep	107 1/2
Light Poultry	107 1/2
Heavy Poultry	107 1/2
Light Dairy	107 1/2
Heavy Dairy	107 1/2
Light Eggs	107 1/2
Heavy Eggs	107 1/2
Light Cattle	107 1/2
Heavy Cattle	107 1/2
Light Hogs	107 1/2
Heavy Hogs	107 1/2
Light Sheep	107 1/2
Heavy Sheep	107 1/2
Light Poultry	107 1/2
Heavy Poultry	107 1/2
Light Dairy	107 1/2
Heavy Dairy	107 1/2
Light Eggs	107 1/2
Heavy Eggs	107 1/2
Light Cattle	107 1/2
Heavy Cattle	107 1/2
Light Hogs	107 1/2
Heavy Hogs	107 1/2
Light Sheep	107 1/2
Heavy Sheep	107 1/2
Light Poultry	107 1/2
Heavy Poultry	107 1/2
Light Dairy	107 1/2
Heavy Dairy	107 1/2
Light Eggs	107 1/2
Heavy Eggs	107 1/2
Light Cattle	107 1/2
Heavy Cattle	107 1/2
Light Hogs	107 1/2
Heavy Hogs	107 1/2
Light Sheep	107 1/2
Heavy Sheep	107 1/2
Light Poultry	107 1/2
Heavy Poultry	107 1/2
Light Dairy	107 1/2
Heavy Dairy	107 1/2
Light Eggs	107 1/2
Heavy Eggs	107 1/2
Light Cattle	107 1/2
Heavy Cattle	107 1/2
Light Hogs	107 1/2
Heavy Hogs	107 1/2
Light Sheep	107 1/2
Heavy Sheep	107 1/2
Light Poultry	107 1/2
Heavy Poultry	107 1/2
Light Dairy	107 1/2
Heavy Dairy	107 1/2
Light Eggs	107 1/2
Heavy Eggs	107 1/2
Light Cattle	107 1/2
Heavy Cattle	107 1/2
Light Hogs	107 1/2
Heavy Hogs	107 1/2
Light Sheep	107 1/2
Heavy Sheep	107 1/2
Light Poultry	107 1/2
Heavy Poultry	107 1/2
Light Dairy	107 1/2
Heavy Dairy	107 1/2
Light Eggs	107 1/2
Heavy Eggs	107 1/2
Light Cattle	107 1/2
Heavy Cattle	107 1/2
Light Hogs	107 1/2
Heavy Hogs	107 1/2
Light Sheep	107 1/2
Heavy Sheep	107 1/2
Light Poultry	107 1/2
Heavy Poultry	107 1/2
Light Dairy	107 1/2
Heavy Dairy	107 1/2
Light Eggs	107 1/2
Heavy Eggs	107 1/2
Light Cattle	107 1/2
Heavy Cattle	107 1/2
Light Hogs	107 1/2
Heavy Hogs	107 1/2
Light Sheep	107 1/2
Heavy Sheep	107 1/2
Light Poultry	107 1/2
Heavy Poultry	107 1/2
Light Dairy	107 1/2
Heavy Dairy	107 1/2
Light Eggs	107 1/2
Heavy Eggs	107 1/2
Light Cattle	107 1/2
Heavy Cattle	107 1/2
Light Hogs	107 1/2
Heavy Hogs	107 1/2
Light Sheep	107 1/2
Heavy Sheep	107 1/2
Light Poultry	107 1/2
Heavy Poultry	107 1/2
Light Dairy	107 1/2
Heavy Dairy	107 1/2
Light Eggs	107 1/2
Heavy Eggs	107 1/2
Light Cattle	107 1/2
Heavy Cattle	107 1/2
Light Hogs	107 1/2
Heavy Hogs	107 1/2
Light Sheep	107 1/2
Heavy Sheep	107 1/2
Light Poultry	107 1/2
Heavy Poultry	107 1/2
Light Dairy	107 1/2
Heavy Dairy	107 1/2
Light Eggs	107 1/2
Heavy Eggs	107 1/2
Light Cattle	107 1/2
Heavy Cattle	107 1/2
Light Hogs	107 1/2
Heavy Hogs	107 1/2
Light Sheep	107 1/2
Heavy Sheep	107 1/2
Light Poultry	107 1/2
Heavy Poultry	107 1/2
Light Dairy	107 1/2
Heavy Dairy	107 1/2
Light Eggs	107 1/2
Heavy Eggs	107 1/2
Light Cattle	107 1/2
Heavy Cattle	107 1/2
Light Hogs	107 1/2
Heavy Hogs	107 1/2
Light Sheep	107 1/2
Heavy Sheep	107 1/2
Light Poultry	107 1/2
Heavy Poultry	107 1/2
Light Dairy	107 1/2
Heavy Dairy	107 1/2
Light Eggs	107 1/2
Heavy Eggs	107 1/2
Light Cattle	107 1/2
Heavy Cattle	107 1/2
Light Hogs	107 1/2
Heavy Hogs	107 1/2
Light Sheep	107 1/2
Heavy Sheep	107 1/2
Light Poultry	107 1/2
Heavy Poultry	107 1/2
Light Dairy	107 1/2
Heavy Dairy	107 1/2
Light Eggs	107 1/2
Heavy Eggs	107 1/2
Light Cattle	107 1/2
Heavy Cattle	107 1/2
Light Hogs	107 1/2
Heavy Hogs	107 1/2
Light Sheep	107 1/2
Heavy Sheep	107 1/2
Light Poultry	107 1/2
Heavy Poultry	107 1/2
Light Dairy	107 1/2
Heavy Dairy	107 1/2
Light Eggs	107 1/2
Heavy Eggs	107 1/2
Light Cattle	107 1/2
Heavy Cattle	107 1/2
Light Hogs	107 1/2
Heavy Hogs	107 1/2
Light Sheep	107 1/2
Heavy Sheep	107 1/2
Light Poultry	107 1/2
Heavy Poultry	107 1/2
Light Dairy	107 1/2
Heavy Dairy	107 1/2
Light Eggs	107 1/2
Heavy Eggs	107 1/2
Light Cattle	107 1/2
Heavy Cattle	107 1/2
Light Hogs	107 1/2
Heavy Hogs	107 1/2
Light Sheep	107 1/2
Heavy Sheep	107 1/2
Light Poultry	107 1/2
Heavy Poultry	107 1/2
Light Dairy	107 1/2
Heavy Dairy	107 1/2
Light Eggs	107 1/2
Heavy Eggs	107 1/2
Light Cattle	107 1/2
Heavy Cattle	107 1/2
Light Hogs	107 1/2
Heavy Hogs	107 1/2
Light Sheep	107 1/2
Heavy Sheep	107 1/2
Light Poultry	107 1/2
Heavy Poultry	107 1/2
Light Dairy	107 1/2
Heavy Dairy	107 1/2
Light Eggs	107 1/2
Heavy Eggs	107 1/2
Light Cattle	107 1/2
Heavy Cattle	107 1/2
Light Hogs	107 1/2
Heavy Hogs	107 1/2
Light Sheep	107 1/2
Heavy Sheep	107 1/2
Light Poultry	107 1/2
Heavy Poultry	107 1/2
Light Dairy	107 1/2
Heavy Dairy	107 1/2
Light Eggs	107 1/2
Heavy Eggs	107 1/2
Light Cattle	107 1/2
Heavy Cattle	107 1/2
Light Hogs	107 1/2
Heavy Hogs	107 1/2
Light Sheep	107 1/2
Heavy Sheep	107 1/2
Light Poultry	107 1/2
Heavy Poultry	107 1/2
Light Dairy	107 1/2
Heavy Dairy	107 1/2
Light Eggs	107 1/2
Heavy Eggs	107 1/2
Light Cattle	107 1/2
Heavy Cattle	107 1/2
Light Hogs	107 1/2
Heavy Hogs	107 1/2
Light Sheep	107 1/2
Heavy Sheep	107 1/2
Light Poultry	107 1/2
Heavy Poultry	107 1/2
Light Dairy	107 1/2
Heavy Dairy	107 1/2
Light Eggs	107 1/2
Heavy Eggs	107 1/2
Light Cattle	107 1/2
Heavy Cattle	107 1/2
Light Hogs	107 1/2
Heavy Hogs	107 1/2
Light Sheep	107 1/2
Heavy Sheep	107 1/2
Light Poultry	107 1/2
Heavy Poultry	107 1/2
Light Dairy	107 1/2
Heavy Dairy	107 1/2
Light Eggs	107 1/2
Heavy Eggs	107 1/2
Light Cattle	107 1/2
Heavy Cattle	107 1/2
Light Hogs	107 1/2
Heavy Hogs	107 1/2
Light Sheep	107 1/2
Heavy Sheep	107 1/2
Light Poultry	107 1/2
Heavy Poultry	107 1/2
Light Dairy	107 1/2
Heavy Dairy	107 1/2
Light Eggs	107 1/2
Heavy Eggs	107 1/2
Light Cattle	107 1/2
Heavy Cattle	107 1/2
Light Hogs	107 1/2
Heavy Hogs	107 1/2
Light Sheep	107 1/2
Heavy Sheep	107 1/2
Light Poultry	107 1/2
Heavy Poultry	107 1/2
Light Dairy	107 1/2
Heavy Dairy	107 1/2
Light Eggs	107 1/2
Heavy Eggs	107 1/2
Light Cattle	107 1/2
Heavy Cattle	107 1/2
Light Hogs	107 1/2
Heavy Hogs	107 1/2
Light Sheep	107 1/2
Heavy Sheep	107 1/2
Light Poultry	107 1/2
Heavy Poultry	107 1/2
Light Dairy	107 1/2
Heavy Dairy	107 1/2
Light Eggs	107 1/2
Heavy Eggs	107 1/2
Light Cattle	107 1/2
Heavy Cattle	107 1/2
Light Hogs	107 1/2
Heavy Hogs	107 1/2
Light Sheep	107 1/2
Heavy Sheep	107 1/2
Light Poultry	107 1/2
Heavy Poultry	107 1/2
Light Dairy	107 1/2
Heavy Dairy	107 1/2
Light Eggs	107 1/2
Heavy Eggs	107 1/2
Light Cattle	107 1/2
Heavy Cattle	107 1/2
Light Hogs	107 1/2
Heavy Hogs	107 1/2
Light Sheep	107 1/2
Heavy Sheep	107 1/2
Light Poultry	107 1/2
Heavy Poultry	107 1/2
Light Dairy	107 1/2
Heavy Dairy	107 1/2
Light Eggs	107 1/2
Heavy Eggs	107 1/2
Light Cattle	107 1/2
Heavy Cattle	107 1/2
Light Hogs	107 1/2
Heavy Hogs	107 1/2
Light Sheep	107 1/2
Heavy Sheep	107 1/2
Light Poultry	107 1/2
Heavy Poultry	107 1/2
Light Dairy	107 1/2
Heavy Dairy	107 1/2
Light Eggs	107 1/2
Heavy Eggs	107 1/2
Light Cattle	107 1/2
Heavy Cattle	107 1/2
Light Hogs	107 1/2
Heavy Hogs	107 1/2
Light Sheep	107 1/2
Heavy Sheep	107 1/2
Light Poultry	107 1/2
Heavy Poultry	107 1/2
Light Dairy	107 1/2
Heavy Dairy	107 1/2
Light Eggs	107 1/2
Heavy Eggs	107 1/2
Light Cattle	107 1/2
Heavy Cattle	107 1/2
Light Hogs	107 1/2
Heavy Hogs	107 1/2
Light Sheep	107 1/2
Heavy Sheep	107 1/2
Light Poultry	107 1/2
Heavy Poultry	107 1/2
Light Dairy	107 1/2
Heavy Dairy	107 1/2
Light Eggs	107 1/2
Heavy Eggs	

THE GUMPS—BROADCASTING SUCCESS



COUNT LUCKNER THE Sea Devil by LOWELL THOMAS

They made some kind of change; I believe. I never could figure out just how it was. I never was much good at mathematics or at figuring out anything...

CHAPTER XI Shipwrecked in Southern Seas. We had our course set for the Pacific with the sharks. The landlubber can scarcely imagine the hatred the sailor feels for those bloodthirsty monsters...

Or they would take a large shark, and tie an empty and water tight barrel to his tail, and heave him over. The fish would be downed, but the barrel would stay afloat on the surface...

Continued in next issue. Legal Advertisements TO THE PATRONS OF THE COMMON SCHOOL DISTRICTS OF TWIN FALLS COUNTY:

Want Ads - Bargains - Opportunities

One Cent Per Word Per Insertion. All Want Ads alive and active and they bring the buyer. Phone 32

For Rent - Unfurnished. FOR RENT - OFFICE ROOMS, CALL 977, or apartment 8, Central Bldg. FOR RENT - BRICK BUILDING IN business district. Inquire 1110 7th ave east.

Loans. FARM LOANS, 6%. SWIM & CO. MONEY TO LOAN. POTTER REAL ESTATE. MONEY FOR STRAIGHT LOANS ON modern houses in Twin Falls.

For Sale - Automobiles. 7-PASSENGER HUDSON TOURING car, good condition. Phone 973-444 and 490 north. SOUTH SIDE USED CAR MARKET offers several Ford's at from \$30 to \$300.

MAGEL LEADS. With Good Used Cars, and Trucks For Less Money. 1928-Advanced Nash Six Coach, new tires, trunk, runs and looks like new, sold last year for \$1665.00.

For Sale - Poultry. FOR SALE - TURKEY EGGS. PHONE 5634. FOR SALE - PUREBRED RHODE ISLAND red hatching eggs. Phone 4717.

For Rent - Farms. Shoshone Basin country, good water. 2000 ACRES of sheep or cattle pasture in Kunkled Broe, Amsterdam.

Business Opportunities. FOR SALE - QUICK LUNCH AND CHILI parlor, 132 East Main St., Kimberly, Idaho.

Want Ads - Bargains - Opportunities

For Sale - Seeds. FOR SALE - NO. 1 BARLEY. PHONE 517-R-3. TRESE seed barley for sale. See at Kimberly Elevator.

For Sale - Real Estate. FOR SALE - FIRST CLASS DAIRY 40 or 50 acres. Phone 51783. FOR SALE - MY EQUITY IN 5-ROOM modern house. Call 1514-J after 12 noon.

Help Wanted. WANTED - A MAN AND WIFE TO live on acreage and milk cows. Reference required. Call evenings. 651 2nd ave west. WANTED - SALESMAN TO SELL automobile insurance in the company that leads all others in Idaho.

For Sale - Furniture. FOR SALE - ORTHOPHONIC VICTROLA practically new. Phone 480. FOR SALE - TWIN FURNISHED BEDROOMS. 527 Main ave. Phone 1077.

Situations Wanted. WOMAN WANTS WORK BY THE hour. Phone 578-W. WANTED - LAUNDRY WORK TO DO at home. Phone 672J.

Strayed. STRAYED - BAY MARE ABOUT 14 years old, dark eye, black, heavy black mane. Weight about 1300. Frank Staty, phone 519-R4.

For Sale - Livestock. JERSEY BULL FOR SALE. INQUIRE at Otter ranch. 3 miles east, 1 mile north of Hansen. FOR SALE - A GOOD DAIRY COWS, 2 year old, 2 1/2 milk, fresh, 3 1/2 miles east, Washington School.

Wanted - Miscellaneous. WANTED - SEWING OF ALL KINDS. Phone 1185. WANTED - PUMPTON, SWEETS Store. Phone 1285.

For Sale - Trade. TRADE YOUR OLD PIANO FOR A good Radio or Victrola. Sampson Music Co. TO TRADE FOR SHEEP - EQUITY IN good equity near Bull, need to be made. Ask at west 35, C. N. News.

Want Ads - Bargains - Opportunities

For Sale - Miscellaneous. FIRST CROP HAY IN STACK OR DELIVERED. 1112-J. FOR SALE - HAY, FIRST CUTTING, three miles out. 1165-W.

For Sale - Real Estate. FOR SALE - ALMOST NEW JOHN Deere 14 inch gang plow, priced to sell. Phone 1301R1. MATTHEWS - YOUR OLD ONE acre like new, \$650, half acre. Phone 1295, Sweet's Store.

For Sale - Real Estate. FOR SALE - COMPLETE SET OF orchestra traps in excellent condition. Inquire 935 Shoshone street north. OYSTER SHELL PER CWT. \$125; Sheep salt per cwt., 70c. Kinney Warehouse Store, Twin Falls, Idaho.

For Sale - Real Estate. FOR SALE - HIGH GRADE BALDWIN made piano. Can be had for balance on contract. Write or phone Claude Brown Music Company. FARMERS - WE ARE FULLY EQUIPPED to do your cleaning, grading and sealing of seed grain and grass seeds.

For Rent - Furniture. FRONT BEDROOM CLOSE IN. Phone 4233. FOR RENT - ROOM, BOARD IF DESIRED. Phone 907-J.

For Sale - Furniture. FRONT BEDROOM, DESIRABLE LOCATION. Inquire 119 9th ave east. ROOM AND BOARD, IN PRIVATE HOME. 161 8th St., Phone 10122.

For Sale - Real Estate. FOR RENT - FURNISHED HOUSE, 5 room and sleeping porch. 651 2nd ave west. FOR RENT - LIGHT HOUSEKEEPING apartment. Sleeping room. 64 Main North.

For Sale - Real Estate. FOR RENT - TILLY JUNE 9-ROOM HOUSE partly furnished. Inquire 520 Main Avenue South. FOR RENT - LIGHT HOUSE KEEPING apartment, 160, Second avenue north, telephone 820.

For Sale - Real Estate. FOR RENT - NICE FURNISHED apartment, modern, suburban; garage, acreage. Phone 444W. LARGE LIGHT ROOM FOR RENT - Sleeping porch if desired. Hot water always. Call 538, or 321 7th ave north, phone 1028.

DIRECTORY

Professional. FRANK L. STEVIAN - Rooms 6 and 7, Bank and Trust Bldg. W. L. DUNN - Law Offices - Rooms 3 and 4, Smith-Rice Building.

Business. PLUMBING. HOME PLUMBING & HEATING CO. New location, 153 3rd ave. Phone 282.

Insurance. E. D. KELLOGG, AGENT FOR LATTIMER'S Dry Arsenate of Lead, costs less per tank of spray as no commercial sprayer required for spray materials.

Transfer. CROZIER TRANSFER CO. - Phone 348. Crozier storage and Liberty Coal.

Musical Organizations. MODERN WOODMEN OF AMERICA meets in I. O. O. F. hall every second and fourth Monday.

For Sale - Fruits. FOR SALE - GOOD NETTED GEM eating potatoes, 50c sack, 1 1/2 mile east on Kimberly Road, or phone 1085J2.

Miscellaneous. PIANO FOR RENT - AT WARBURG'S. PIANO FOR RENT - INQUIRE AT Sampson Music Co.

For Sale - Real Estate. RALSOMING, PAINTING AND PAPER hanging. C. A. Rowan, 235 6th ave east. Phone 382-J.

For Sale - Real Estate. SHIP BY TRUCK, TWIN FALLS. Boise, B. B. Transfer. Phone 303 or 741, Boise, Id.

For Exchange. 100 Acres of fine timber for Twin Falls property.

For Rent - Apartments. FOR RENT - THREE ROOM FURNISHED apartment, Sampson Apartments, 2nd ave west.

