



# DR. JAMES H. SNOOK REPUUDIATES SIGNED MURDER CONFESSION

### Former Ohio State University Professor Declares On Stand Inability to Remember Beating Girl

(By The Associated Press)  
COLUMBUS, Ohio, Aug. 8 (AP)—Dr. James H. Snook, on the stand in his first degree murder trial today, repudiated his signed confession and declared that he could not remember the beating and slaying of Miss Thelma Hix of Ohio State University student.

The former professor, his steady composure unshaken, held the stand throughout today's session, reciting events leading up to the girl's death on a lonely ranch near here, the night of June 13 and accusing his captors of intimidating him into signing a confession.

Snook, hoping to hear out the plea of temporary emotional insanity, told of the automobile ride he and Miss Hix took to the rifle range, saying that he did not remember the details of the ride, but that he recalled an emotional excitement in his mind.

He declared that he quarreled when he and Miss Hix returned home early to his wife and that Miss Hix arranged for a gun which she had bought for her use. He told the jury he feared his life was in danger and that he struck her over the head with a hammer.

Admits Striking Three Blows  
"The first blow was a light one," he said. He admitted striking her twice on the head with the gun which she had bought for her use. He told the jury he feared his life was in danger and that he struck her over the head with a hammer.

He said that he then went home and slept soundly. The former professor wept when he spoke of his wife.

He said that he was "blinded" by four language during the long questioning after his arrest and charged that Prosecutor John J. Chester, Jr. slapped him. He said he signed a confession, which he claimed was no more than a stenographer's shorthand notes, to rid himself of the questioning which had broken him down.

Prosecutor Chester vigorously cross-examined him, and showed that the gun which he said the girl threatened to use was broken and would not fire. A relentless cross-examination broke down Dr. Snook's account of the killing, was undertaken by the prosecutor just before adjournment.

Prosecutor Chester made no reference to the defendant's direct testimony about the killing itself during his first barrage of cross-questioning, but took Dr. Snook through a review of letters he had written Miss Hix on several occasions.

# The Weather

### FORECAST FOR TODAY AND TO-MORROW—Fair and warm.

Maximum temperature yesterday was 90 degrees, according to the government weather observer, and the minimum was 44 degrees. Extremes on the previous day were 90 and 52 degrees.

### Leaders in Capital Delay Settlement Of Tariff Measure

(Continued From Page One)

The actual revision sessions of the committee while Republicans are in power and vice versa, and proceed with re-writing the administrative features.

Senator Watson said ample time would be given the Democrats to consider changes in the administrative provisions before the bill is taken up on the floor early in September.

Proceeding with their revision work, the majority committee approved the rejection of "crude oil" and all its by-products, including gasoline, on the free list, but they did not vote to measure to permit American automobiles purchased abroad to be returned to this country free of duty.

The proposed automobile tariff amendment was designed to save American travelers and workers abroad who purchase cars shipped from the United States from duties and duties which they desire to return to this country and bring the machines with them.

The decision to keep petroleum on the free list, as does the house bill, was a defeat for those independent oil producers of Oklahoma and other southern fields who advocated a duty to cut down importation of cheap oil from Colombia, Venezuela, and other countries.

The committee tariff-framers have yet to act on some items in the paper and book duties, and the entire sundries, wool and sugar schedules, before reaching the administrative section.

Controversy over the house provision transferring hides, leather, and sheep from the free list to the dutiable list involved in the sundries schedule, while Chairman Smoot's sliding scale sugar tariff also has to be considered by the committee.

The Utah senator announced today that he was preparing another scale plan with the duties based on the market prices instead of refined, as provided in his present proposal which met with widespread approval from the industry's representatives at yesterday's public hearing.

# QUALITY PRODUCTS PLEA OF INSPECTOR

### W. H. Wicks Points to Relation Between Prices and Standard of Produce

BOISE, Aug. 8 (AP)—Pointing out that the price of farm products is governed by their quality, W. H. Wicks, chief field inspector of the state department of agriculture, has prepared a plan for standardization of products to be published in Oregon Business, organ of the Oregon State Chamber of Commerce.

The article, Wicks pointed out, is in line with the policy of the Idaho Chamber of Commerce which has started this year to emphasize the importance of Idaho agriculture.

When produced, the state standard, Wicks explained, "the buyers of this country are enabled to place orders in our state without the trouble and expense of examination, depending upon the grade of produce, and the standardized grades for protection."

"Ungraded produce has but little value until it reaches the grade and is examined by the buyer at the destination," he said.

The article carries a table of shipping costs since 1921, showing that in that period Idaho has sent forth 21,217 carloads of apples, 565 cars of peaches, 2629 carloads of berries, 2991 of corn, and 107,629 of potatoes.

# Globe-Circling Air Giant Passes Over Ships On Atlantic

(Continued On Page 3, Column 7)

The following her cargo and course toward her European goal. The Graf Nordberg continued her way for increased activity by those seeking mineral wealth.

From all indications the vein, which is 12 to 14 inches wide, will continue to yield high grade ore. It adjoins the Gray property. The strike was made at a depth of about 15 feet after several feet of ore averaging 35 ounces of silver per ton and 50 per cent lead had been shipped. Four men have been working on the claim, but this number will be increased immediately, according to reports here.

Those interested in mining property in the Conata declare the silver strike far surpasses in value and gives promise of holding out much longer than any other vein of ore uncovered in hills of this region.

# Thousands of Men Batting Fires In Pacific Northwest

(Continued From Page One)

The Quartzburg population began to repair damages as far as possible. Complete checks on losses are virtually impossible to obtain, because they were largely personal belongings, such as the library and furniture of the A. L. Zernan home, the effects of miners boarding at the company hotel, and stamps and other valuables at the post office.

Mild weather has made the problem of shelter at the camp easy, and there is a sufficiency of provisions, since the store was undamaged.

### IDAHO FIRES RAGING

LEWISTON, Idaho, Aug. 8 (AP)—Two Selway forest fires, believed to have been placed under control yesterday, tonight were raging through heavy timber stands.

The Bald Mountain fire, which burned 800 acres, headed for new grounds despite efforts of augmented crews to stop it. A 150-acre blaze in Old Man creek also jumped beyond bounds and tonight was spreading rapidly. The Glover creek fire and a new one in Pass creek were gaining.

In the Clearwater forest Mussell Sheld district, a blaze defied regular crews and 20 more men were rushed to aid in the fight today. All other blazes in Selway Clearwater and Nez Perce preserves either were out or under control tonight.

# Boise Gets Bus Service Through From Spokane

SPOKANE, Aug. 8 (AP)—One-day through service from Spokane to Boise will be offered starting August 20 by the Interstate Coach company, subsidiary of Union Pacific Stages, Inc. It was announced here tonight.

Salt Lake City will be included in the schedule, as buses at Boise will make connection for the Utah city.

One bus will be run daily at the beginning, leaving Spokane at 7:30 A. M. and arriving at Boise before midnight.

WESTERNER HEADS EAGLES  
MINNEAPOLIS, Aug. 8 (AP)—Charles J. Chenu, Sacramento, California, was elected grand worthy president of the Fraternal Order of Eagles at the annual election of officers held tonight at the national convention.

# METHODIST BISHOP OFFERS INFORMATION

### James Cannon, Jr., Brands Tinkham's Attack as Per- iodical Political Move

WASHINGTON, Aug. 8 (AP)—Bishop James Cannon, Jr., announced in a statement today that he had written to Attorney General Mitchell offering "needs" to any "information" desired by the latter concerning the operations of the board of temperance and social services of the Methodist Episcopal church, South, and the bishop's personal activities in the 1928 presidential campaign.

The statement, made in response to a letter from Representative Tinkham, Republican, Massachusetts, to the attorney general requesting an investigation of the bishop and the board, declared "Tinkham's attack upon me is simply one of his periodical attacks upon the South, prohibition and Methodism to convince his act Roman Catholic Boston constituency that he should be retained as their representative in congress, which many of them seemed seriously to doubt in the last election."

Replying to a challenge by the congressman that he tell the source of money loaned to the Virginia anti-Smith Democrats, Bishop Cannon said his previous statements on the subject "is clear and explicit."

"I declare," the bishop said, "that all loans were made by James Cannon, Jr. personally. Mr. Tinkham wants to know from what source did he (Bishop Cannon) obtain the large sums which between August and November he loaned to the anti-Smith Democratic committee. . . . He insinuates that it was his own money, but he dare not say so."

"Bishop Cannon 'insinuates' nothing," the churchman's statement added. "He stated the exact facts."

# England, Italy and France at Odds On German Debt Issue

(Continued From Page One)

France Former Position  
Henri Cheron, speaking for France declared the position of his country was quite as firm as that of Great Britain. "There are physical and moral sacrifices," he declared, "that are greater than any financial sacrifices and for a question of money Mr. Snowden proposes to destroy this conference. We are determined on the adoption of the Young plan. We leave to somebody else the responsibility for the failure to take this opportunity for finally settling the war problems."

Concerning Mr. Cheron's remarks concerning the sacrifice France had made the British financial expert said he did not call them sacrifices because "it is not a sacrifice to give up something one never has received."

Snowden contended no country made such financial sacrifices as Great Britain during the war. The chancellor compared the French and British public debt and declared that Great Britain had made a most generous and magnanimous settlement with her war debtors. "We cannot compromise," Mr. Snowden retorted.

# NEVADA OFFICERS TRY TO IDENTIFY MAN'S REMAINS

RENO, Aug. 8 (AP)—Reno officials today are investigating the possibility that a body found in Lake Tahoe July 31 may have been that of Thomas Emory Kling, last heard of by relatives from Oakland, California, on May 16, 1928. The body was at first supposed to be that of a missing Canadian officer, Colonel H. H. Beta.

Information received today from a sister, Mrs. W. L. Miller, Colfax, Washington, revealed that Kling had a suicide note found in a bottle at the lake. "The handwriting in a letter written by Kling to his niece from Oakland closely resembles the writing on the note the officials said."

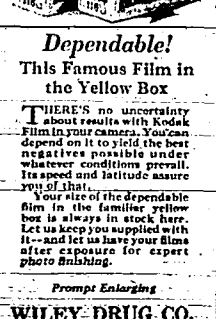
# 665 Athletes Will Compete At Boise

BOISE, Aug. 8 (AP)—A. Hendricks, president of the United Pacific Athletic association, has established headquarters here to prepare for the system's annual meet to be held September 1 and 2. One of the big events of the athletic carnival will be the parade on the morning of the first day. Hendricks said today the railroad would bring 15 bands and 665 athletes.

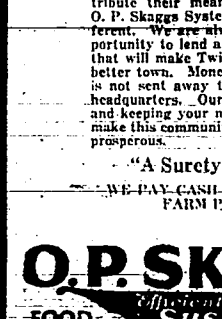
With the cooperation of Boise business men and surrounding towns and their bands, there is promise that it will be outstanding in the history of Boise. Last year's parade was gigantic, but Hendricks intimated that this one will be even more so.

# DANCE DANCE DANCE OAKLEY

Every Friday Night  
Vince Howerton And His  
DANCELAND ORCHESTRA

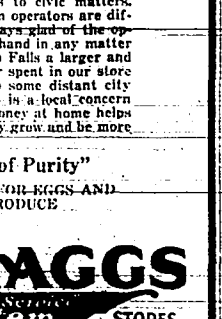


**Kodak Film**  
Dependable!  
This Famous Film in the Yellow Box  
THERE'S no uncertainty about results with Kodak film in your camera. You can depend on it to yield the negative conditions prevail. It gives you the assurance of that.



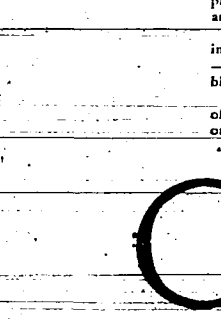
## Building This Town

The growth and development of Twin Falls is of great interest and importance to every local citizen, and especially property owners. Everyone engaged in business here benefits from the city's growth and development and should lend every possible aid in all matters that help build our community.



## Holding It Back

There are almost always some people of every community that oppose progressive movements or who refuse to contribute their share to city maintenance. O. P. Skaggs System operators are different. We are always glad of the opportunity to lend a hand in any matter that will make Twin Falls a larger and better town. Money spent in our store is not sent away to some distant city headquarters. Ours is a local concern and keeping your money at home helps make this community grow and be more prosperous.



## OP SKAGGS

FOOD System STORES



...with the guns it's **PRECISION!**

...in a cigarette it's **TASTE!**

**GOOD MARKSMANSHIP**, you might say, explains Chesterfield's success. We aim at taste—and hit it squarely!

No smoker can taste Chesterfield without realizing that here is a cigarette made to precise formula—exactly balanced, accurately blended and cross-blended, the standard Chesterfield method. Rich, spicy aroma, and the satisfying character of good tobacco perfectly blended—a direct hit on the target of good taste.

"TASTE above everything"

MILD...and yet THEY GET IT

# Chesterfield

FINE TURKISH and DOMESTIC tobacco, not only BLENDED but CROSS-BLENDED

# White Sox Win Double-Header With St. Louis Browns

## Cissel Stars For Chicagoans At Bat Getting Four Hits

Windy City Shortstop Bangs Out Homer, Double, Two Singles and Sacrifices in Eleventh For Last Run

CHICAGO, Aug. 8.—The White Sox triumphed today over the St. Louis Browns, winning the first game, 3 to 2, and the second encounter, 6 to 1. The total score was 9 to 3, with the Sox leading in the eleventh to help out in the winning effort.

AB	R	H	E	
Chicago	9	11	12	1
St. Louis	9	3	11	1

AB	R	H	E	
Chicago	9	11	12	1
St. Louis	9	3	11	1

AB	R	H	E	
Chicago	9	11	12	1
St. Louis	9	3	11	1

AB	R	H	E	
Chicago	9	11	12	1
St. Louis	9	3	11	1

AB	R	H	E	
Chicago	9	11	12	1
St. Louis	9	3	11	1

AB	R	H	E	
Chicago	9	11	12	1
St. Louis	9	3	11	1

AB	R	H	E	
Chicago	9	11	12	1
St. Louis	9	3	11	1

**DUMB BELLS**  
REGISTERED BELLS  
MILWAUKEE

IF AFRAID YOUR WIFE INDULGES IN LOQUACITY...  
NOT AN ENEMY NEVER TAKES ANYTHING ALCOHOLIC

## Variety Of Talent At Quarter-Final Round In Tourney

Four Clerks, Two Salesmen, Mailman and Student in Competition at Forest Park at Close of Day

By PAUL R. NICKELSON (Associated Press Sports Writer)

ST. LOUIS, Aug. 8.—Four clerks, two salesmen, a mailman and a 16-year-old student representing seven cities in the "States" stroked their way into the quarter-final round of the eighth national public links golf tournament at Forest Park today.

Carl Kaufmann, the steel mill clerk of Pittsburgh, who has won with the title for the last two years and who paced the field with better than perfect golf today, John Hornsby, a railroad clerk who holds the championship of Topeka, Kansas; Gordon Denny, Louisville, reigning Kentucky amateur champion; and W. J. "Red" Hays, a 16-year-old Philadelphia bank clerk.

## Seattle Women to Vie For Golf Championship

TACOMA, Aug. 8.—Mrs. Hilda McAuslan and Mrs. H. O. Young, both of Seattle, will meet in competition tomorrow over the 50-hole route for the 1929 Washington state women's golf championship.

## Pittsburgh Defeats St. Louis Club, 5-1

Grover Cleveland Alexander Fails in Attempt to Better Mathewson's Record

AB	R	H	E	
Pittsburgh	9	11	12	1
St. Louis	9	3	11	1

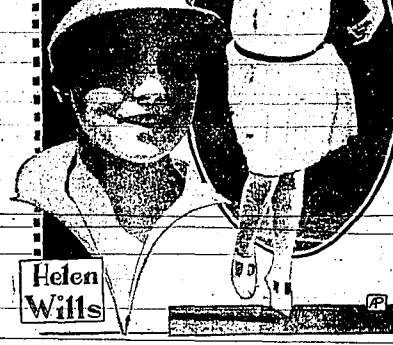
AB	R	H	E	
Pittsburgh	9	11	12	1
St. Louis	9	3	11	1

AB	R	H	E	
Pittsburgh	9	11	12	1
St. Louis	9	3	11	1

AB	R	H	E	
Pittsburgh	9	11	12	1
St. Louis	9	3	11	1

## Net Stars of Two Nations Compete for Wightman Cup

Betty Nuthall



Here are the aces of the American and British women's tennis teams which play for the Wightman cup at Forest Hills, L. I., August 9 and 10.

FOREST HILLS, L. I., Aug. 8.—To send back to Britain's shores its formidable team of female tennis players minus the Wightman cup is the task an American team tackle soon with none too much certainty of success.

## Minor League Clubs

WESTERN ASSOCIATION  
Shawnee 6, Joplin 4.  
Independence 9, Fort Smith 2.  
Muskegee 9, Springfield 6.

SOUTHERN ASSOCIATION  
Nashville 6, Atlanta 2.  
Chattanooga 2, Birmingham 1.  
Memphis 2, Mobile 0.  
New Orleans 6, Little Rock 3.

MISSISSIPPI VALLEY  
Waterloo 3, Davenport 1.  
Rock Island 4, Keokuk 2.  
Holtville 2, Burlington 0.  
Dubuque 3, Cedar Rapids 1.

AMERICAN ASSOCIATION  
Kansas City 4, Columbia 0.  
Milwaukee 3, Toledo 10.  
Minneapolis 7, Indianapolis 1.  
St. Paul 16, Louisville 8.

INTERNATIONAL LEAGUE  
Rochester 4, Jersey City 1.  
Hartford 6, Newark 5.  
Toronto 6, Reading 4.  
Baltimore 5, Montreal 2.

## Oakland Vanquishes Boxing Association Seattle Two Times Official Tells Of Offer Of Big Bribe

Roy Carlyle Hammers Oaks to Victory in First By Three Doubles and Triple

OAKLAND, Aug. 8.—Oakland defeated Seattle in both games of today's double-header, 9 to 0 and 4 to 1. Roy Carlyle hammered the Oaks to victory in the first game by hitting three doubles and a triple. Lou McEvoy let the Indians down with only six hits in the second game. Oakland will be credited with only one victory as the second game was a hold-over from the first half of the season.

SEATTLE, Aug. 8.—Paul Pohn, president of the National Boxing Association, and recently ousted as head of the Illinois state boxing commission, wanted tonight the \$10,000 to be used for appointment of a certain individual as referee of the Dempsey-Tunney heavyweight championship fight at Soldier field here in September, 1929.

ANGELES 14, STARS 7.  
LOS ANGELES, Aug. 8.—Los Angeles forged ahead of Hollywood today by taking its third straight game from the Stars, 14 to 7. "Big" Tolson clouted two home runs for the Angels, while Berger got another on a long hit that landed inside the park.

PORTLAND 7, SOLONS 2.  
STOCKTON, Aug. 8.—Portland won today's game from Sacramento 7 to 2. The Solons used three pitchers trying to stop the Portland hitters who garnered 4 hits.

HOLIER GETS RELEASE.  
ST. LOUIS, Aug. 8.—Howard Holier, pitcher, released from the St. Louis Cardinals has been released out-right to the Houston club of the Texas league. Holier, used mostly in a relief role, has had several regular starts but failed to win the route.

ST. LOUIS, Aug. 8.—Grover Cleveland Alexander failed this afternoon in an attempt to better the late Harry Mathewson's National league record of 372 victories. His career—Ole's record was defeated by the Pirates 5 to 1—but he can claim a victory over the poor-souled Cardinals. Alexander secured him, the victory in the 11th inning when he pitched the game-winning hit and two hits for the season to date. 11.

ST. LOUIS, Aug. 8.—Grover Cleveland Alexander failed this afternoon in an attempt to better the late Harry Mathewson's National league record of 372 victories. His career—Ole's record was defeated by the Pirates 5 to 1—but he can claim a victory over the poor-souled Cardinals. Alexander secured him, the victory in the 11th inning when he pitched the game-winning hit and two hits for the season to date. 11.

ST. LOUIS, Aug. 8.—Grover Cleveland Alexander failed this afternoon in an attempt to better the late Harry Mathewson's National league record of 372 victories. His career—Ole's record was defeated by the Pirates 5 to 1—but he can claim a victory over the poor-souled Cardinals. Alexander secured him, the victory in the 11th inning when he pitched the game-winning hit and two hits for the season to date. 11.

## A Quick Action Value Here's Proof that Our Prices Are Lowest!!

### AUGUST CLEARANCE OF FINE QUALITY SUITS SUITS EXTRA \$10.95 SUITS SPECIAL

The Call of The Night-Hawks

## DANCE Hislop Orchards TONIGHT

Men's Dress Shirts  
Men's Work Shirts

Our Blue and Gray Chamber Work Shirt, we claim, is an outstanding value; full cut, triple stitch, two breast pockets, with 49c special pearl buttons.

NEW YORK STORE  
TWIN FALLS WATCH OUR WINDOWS FOR BARGAINS! TWIN FALLS

Buhl Burley  
Twin Falls Rupert  
Camp Caldwell  
Boise Emmett  
La-Grande Walla Walla

TWIN FALLS DAILY NEWS

Subscription Rates: One Year \$10.00, Six Months \$6.00, Three Months \$3.50. Single Copies 5c.

Published for the proprietors by the TWIN FALLS DAILY NEWS COMPANY, established 1904.

Third-class postage paid at Twin Falls, Idaho, under the act of March 3, 1879.

Acceptance for mailing as second class mail matter, April 15, 1918, at the postoffice at Twin Falls, Idaho, under the act of March 3, 1879.

Postage will be paid by addressee. This publication is published weekly except on holidays. The price of this paper is 5c per copy. Single copies 5c.

Advertising Rates: One inch per line for 10 days, \$1.00. Special rates for longer terms and large displays.

Responsible for the contents of all advertisements. No responsibility is assumed for the loss of articles not accompanied by proper postage.

NATIONAL REPRESENTATIVES: F. J. Spindler, Twin Falls, Idaho; W. J. Spindler, Boise, Idaho.

Wool and Substitutes: There is reason to believe that the protective tariff has made possible the development of the sheep industry in this country.

Children's Commission: A third investigating committee, which ranks in importance with the Law Enforcement Commission and the Federal Farm Board, has been appointed by President Hoover.

At the Hotels: PARK-Joe Saffran, L. Grissom, W. Mortzen, Jr. and Mrs. William Homer, R. S. Smith, etc.

SOCIETY AND CLUBS Mrs. E. B. Williams Phone 296 Complimentary to her cousin C. J. McNew...

Mrs. H. C. Dickerson entertained with an informal bridge party Thursday afternoon in the garden at her home on Walnut Street...

Mrs. E. F. Ashby was hostess at a party attended by several musical groups Saturday evening at her home on Sixth Avenue...

Members of the Wayside Club entertained their husbands and families Tuesday evening with a picnic dinner at the Highland Park, Boise, Idaho.

Mrs. J. M. Morgan was hostess to the Club Wednesday afternoon. After a short business session, a Dutch, mock wedding in Dutch...

Mrs. A. N. Bonnell entertained the Meritor Club Wednesday at her home on the Hudson Street. During the business session, which opened with community singing...

At the Hotels PARK-Joe Saffran, L. Grissom, W. Mortzen, Jr. and Mrs. William Homer, R. S. Smith, etc.

Wool and Substitutes: There is reason to believe that the protective tariff has made possible the development of the sheep industry in this country.

DOUBLE RICH DOUBLE RICH DOUBLE RICH DOUBLE RICH DOUBLE RICH DOUBLE RICH DOUBLE RICH DOUBLE RICH DOUBLE RICH DOUBLE RICH

CHURCH ASSOCIATION MEETS AT MURTAUGH Address by Hyrum Pickett, Music Numbers and Readings Program Features

MURTAUGH, Aug. 8.—An address by Hyrum Pickett and music numbers featured the Mutual Improvement Association's joint program Sunday evening...

Mrs. J. L. Tolman is visiting her daughter, Mrs. J. L. Tolman, and son, Lynn Bates, after visiting in Boise, Campbell and Jerome.

Delbert Clawson returned home Sunday from a 10 days' trip through Yellowstone Park, Idaho, Nevada and California.

Mrs. J. L. Tolman and son, Lynn Bates, visited at the A. L. Bronson home Sunday.

W. Hansen, P. C. Breene, Spokane; Art Hansen, P. C. Breene, Spokane; Art Hansen, P. C. Breene, Spokane; Art Hansen, P. C. Breene, Spokane...

Relief From Curse Of Constipation A battle Creek physician says, "Constipation is responsible for more misery than any other cause." RENEE ADOREE George Duryea "MARKERS-OF-MELODY" Fred Kohler A Paramount Sound Act

Clip this Advertisement IT IS WORTH \$1 IF PRESENTED ON OR BEFORE SATURDAY, AUGUST 10TH AT TROLINGER'S PHARMACY!

GILLILAN TO ADDRESS OLD SETTLERS' PICNIC Committee Plans Program for Fourth Annual Meeting at Filer Fairgrounds

FILER, Aug. 8. (Special to The News) The fourth annual picnic meeting of the Old Settlers' society of Twin Falls county since its reorganization will meet at Filer, Sunday, August 18, the date which has been set by the officers of the society...

Home at Svirga Scene Of Farewell Gathering SYRINGA, Aug. 8.—Mr. and Mrs. George Konjek and son, Milo, who leave soon for Nebraska, were honored by a farewell party at the Edward Herding home Sunday afternoon.

GOODING ALUMNUS AIDS IN CAUSE OF EDUCATION GOODING, Aug. 8. (Special to The News) Many of the former students of Gooding college 10 years ago and now a resident of Chicago, heard that the Idaho school was awarding over 50 scholarships this year to home high school graduates...

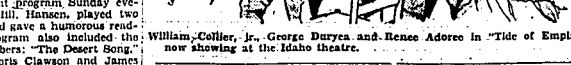
GREENWOOD Young Folks Guests at Lawn Party GREENWOOD, Aug. 8.—Members of the young people's class of the Community Sunday school were entertained by Violet and Oliver Helms at a lawn party Friday evening.

Relief From Curse Of Constipation A battle Creek physician says, "Constipation is responsible for more misery than any other cause." RENEE ADOREE George Duryea "MARKERS-OF-MELODY" Fred Kohler A Paramount Sound Act

Clip this Advertisement IT IS WORTH \$1 IF PRESENTED ON OR BEFORE SATURDAY, AUGUST 10TH AT TROLINGER'S PHARMACY!

It's No Secret! EVERYBODY KNOWS THE IDAHO PRESENTS THE BEST ENTERTAINMENT! AND THIS ONE STARTS SUNDAY! WARNER BROS. present

ON WITH THE SHOW FIRST AID NATURAL ALL-NONE ALL-SHANGING ALL-SHANGING PICTURE



William Collier, Jr., George Duryea and Renee Adoree in "Tide of Empire" now showing at the Idaho theatre.

farmers of Rogerson Cutting Grain Crops ROGERS, Aug. 8.—Farmers here are cutting grain and stacking hay this week. According to reports dry farm crops are fairly good, although short-crop of water has reduced yields.

350 acres of beets grown by Neil Jensen. Steward Henderson, Jr. left for Boise Sunday to visit his mother. Thomas Allen Terrell, who has spent the last month visiting his father, left for Lovelock, Nevada, Sunday, to join his mother and return to California.

Mrs. Lettie Brown, who has resided at the home of Mrs. J. E. Walden for the last two years, left for Fall Brook, California recently to make an extended visit at the home of her son, Herbert Brown.

Mrs. Jess Smith is recovering from a number of bad stagings. Home at Svirga Scene Of Farewell Gathering SYRINGA, Aug. 8.—Mr. and Mrs. George Konjek and son, Milo, who leave soon for Nebraska, were honored by a farewell party at the Edward Herding home Sunday afternoon.

GREENWOOD Young Folks Guests at Lawn Party GREENWOOD, Aug. 8.—Members of the young people's class of the Community Sunday school were entertained by Violet and Oliver Helms at a lawn party Friday evening.

Relief From Curse Of Constipation A battle Creek physician says, "Constipation is responsible for more misery than any other cause." RENEE ADOREE George Duryea "MARKERS-OF-MELODY" Fred Kohler A Paramount Sound Act

Clip this Advertisement IT IS WORTH \$1 IF PRESENTED ON OR BEFORE SATURDAY, AUGUST 10TH AT TROLINGER'S PHARMACY!

It's No Secret! EVERYBODY KNOWS THE IDAHO PRESENTS THE BEST ENTERTAINMENT! AND THIS ONE STARTS SUNDAY! WARNER BROS. present

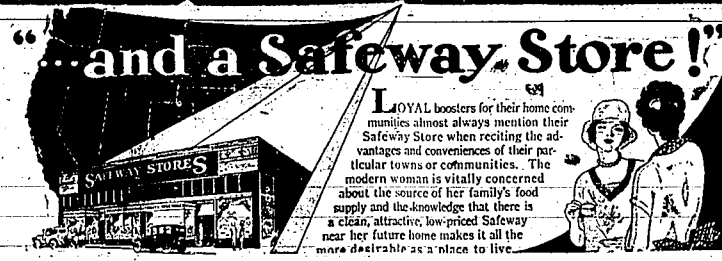
larger group of the pioneers. Officers of the society are James L. James, president, and Stanley H. Shinn, filer, secretary-treasurer. Other officers: Ray W. Gager, Cashier; Chester Chamberlain, Bull; G. D. Thomas, Filer; Harry T. West, Kimbrey; Mrs. T. E. Moore, Filer; George Decker, Murrain; and Ross A. Carter, Twin Falls, representing the Galtion project. Officers make up the executive committee.

Brownings Used Car Specials Ford Delivery: motor in good shape; good tires \$40 Ford Fordor Sedan, all in extra good shape; new paint; good tires \$215 Ford Touring \$95 Ford Coupe \$150 Whippet Coach, 1923; all in first-class shape—New tires \$550 BROWNING AUTO COMPANY

IDAHO THEATRE "There's Real Entertainment Here!" An Epic—in SOUND! TODAY! PETER B. KYNE'S THE OF EMPIRE HE was the enemy of her people... Peter B. KYNE brought them together in this epic... A Cosmopolitan Production ROY SIEDLEY "NITE CLUB REVUE A Vitaphone Act AND LATEST PARAMOUNT NEWS!

# SKAGGS SAFEWAY STORES

Distribution Without Waste



LOYAL boosters for their home communities almost always mention their Safeway Store when reciting the advantages and conveniences of their particular towns or communities. The modern woman is vitally concerned about the source of her family's food supply and the knowledge that there is a clean, attractive, low-priced Safeway near her future home makes it all the more desirable as a place to live.

**Milk**  
Sego Brand—an Idaho Product.  
Tall Cans  
10 FOR 89c

**Vinegar**  
Cider Vinegar, for those home made pickles; finest quality.  
PER GAL. 39c

**Tomatoes**  
Standard Pack  
Large No. 2 1/2 Tins  
6 CANS 79c  
PER CASE \$3.10

**Marshmallows**  
Fresh and Fluffy.  
POUND 19c

**Sweet Corn**  
Standard, splendid quality.  
No. 2 tins.  
6 FOR 65c  
PER CASE \$2.59

**Peas**  
Sno-Line Brand.  
No. 2 tins.  
6 FOR 69c  
PER CASE \$2.69

## Safeway Harvest Features

August 9 to 17, Inclusive—Unmatchable Values In Highest Quality Merchandise

<p><b>Flour</b> Big K Brand, milled from the finest Idaho hard wheat—every sack guaranteed 48 POUND SACK \$1.49</p>	<p><b>Stock Salt</b> Another car of air-dried salt. It is clean, contains very little moisture and is put up in good heavy sacks. PER SACK 69c</p>	<p><b>Amazo Syrup</b> Butter Scotch flavor. The syrup that you have heard so much about over the radio. 10-pound pails. EACH 79c</p>	<p><b>Lard</b> Pure kettle-rendered lard in 8-pound pails. \$1.18</p>
---	--	--	---

<p><b>Salmon</b> Alaska Pink; fine for a salmon loaf. No. 1 tall tins. 3 FOR 55c</p>	<p><b>Sardines</b> Maximum Brand; packed in mustard or tomato sauce. Large oval tins. 4 FOR 49c</p>	<p><b>Shrimp</b> Maximum Brand, dry pack, finest quality. Regular size. 2 FOR 35c</p>	<p><b>Mustard</b> Maximum Brand. Try it with the next sandwich. 3 JARS 29c</p>	<p><b>Mustard</b> French's Prepared Salad, Cream, Mustard. 2 JARS 25c</p>	<p><b>Salmon</b> Maximum Brand, Alaska Red Sockeye. Large No. 1 flat tins. 2 FOR 65c</p>
--	---	---	--	---	--

<p><b>Apricots</b> Cascade Brand; large No. 10 tins. EACH 79c</p>	<p><b>Peaches</b> Sliced or Halves in large No. 10 tins. EACH 59c</p>	<p><b>Blackberries</b> Fine for table use or pies. Large No. 10 tins. EACH 59c</p>	<p><b>Loganberries</b> Finest quality; large No. 10 tins. EACH 69c</p>	<p><b>Pineapple</b> Highway Brand; matched Slices. No. 2 1/2 tins. 3 FOR 69c</p>	<p><b>Kraut</b> Libby's Brand; ready to serve, economical to use. Large No. 2 1/2 tins. 3 FOR 49c</p>
---	---	--	--	--	---

<p><b>Berries</b> Maximum Brand: Strawberries or Blackberries. Finest that are packed. No. 2 tins. 2 FOR 45c</p>	<p><b>Syrup</b> Safeway Brand, pure cane and maple; contains high percentage pure maple syrup. 5 POUND CAN 89c</p>	<div style="border: 2px solid black; padding: 5px;"> <p><b>COFFEE</b> Maximum Brand; roasted by experts in our own plant. Every pound guaranteed. <b>Per Lb. 49c</b></p> </div>	<p><b>Frute Gel</b> Assorted flavors, makes the finest summer desserts. Every package guaranteed. 5 PACKAGES 29c</p>	<p><b>Salad Oil</b> Amazo for salads or deep frying. Try a can and be convinced of the quality. Every can guaranteed. QUART CAN 45c</p>
<p><b>Peaches</b> Maximum Brand, Halves, packed in heavy syrup. No. 2 1/2 tins. 2 FOR 55c</p>	<p><b>Pancake Flour</b> Rob Ross makes the finest pancakes. Large 20-oz. package. 2 FOR 29c</p>		<p><b>Vinegar</b> Heinz pure cider Vinegar PINT BOTTLE 15c</p>	<p><b>Tea</b> Safeway Brand, green or black; finest quality. POUND PKG. 69c</p>

<p><b>Starch</b> Amazo, corn or glass, full pound packages; every package guaranteed. 3 FOR 29c</p>	<p><b>Flit</b> Fly Spray kills flies, mosquitoes and other insects. PINT CAN 49c</p>	<p><b>Preserves</b> Safeway Brand, pure fruit, sorted flavors. No. 5 tins. EACH 79c</p>	<p><b>Oats</b> Highland Brand, oven toasted. An ideal breakfast dish. Large package. 2 FOR 49c</p>	<p><b>Toasties</b> Post-Toasties, the double quick—Corn Flakes—Serve with cream. Large size. 2 FOR 25c</p>	<p><b>Toilet Paper</b> Tissue—1000-Sheet Rolls 8 ROLLS AND SHOPPING BAG 49c</p>
---	--	---	--	--	---

<p><b>Soap</b> Cream Oil Toilet Soap. Exceptional value 12 BARS 69c</p>	<p><b>Honey</b> Pure Extracted Honey. 1929 Crop. 10 LB. PAIL 89c</p>	<p><b>Mayonnaise</b> Best Foods; a salad necessity at a very attractive price. PINT JAR 33c</p>	<p><b>Fruit Jars</b> A car of Kerr-Mason jars. Buy now while the stock is complete PINTS, PER DOZ. 75c QUARTS, PER DOZ. 89c</p>
---	--	---	---

<p><b>Rice</b> Blue Rose, fancy whole grain 10 POUNDS 69c</p>	<p><b>Macaroni</b> Elbo cut, finest quality; in bulk. 5 POUNDS 49c</p>	<p><b>Picnics</b> Mild Sugar Cured. PER POUND 19c</p>	<p><b>Bacon</b> Sugar Cured, well streaked with lean. PER POUND 25c</p>	<p><b>Crackers</b> Fresh baked soda crackers. 3-pound boxes. EACH 39c</p>	<p><b>Peanut Butter</b> Hoody's finest quality—it makes the finest sandwiches. 2 POUND TIN 43c</p>
<p><b>Hominy</b> Maximum Brand; ready to serve; economical to use. Large No. 2 1/2 tins. 3 FOR 43c</p>	<p><b>Baking Powder</b> Calumet, every pound guaranteed. 1-lb. tins. EACH 28c</p>	<p><b>Laundry Soap</b> Luna Brand White Soap—For Family Laundry. 10 BARS 35c</p>	<p><b>Tobacco</b> Prince Albert, 16-oz. tins. 89c</p>	<p><b>Cookies</b> Snow Peaks, fresh baked. Try a box. 3 POUND BOX 59c</p>	<p><b>Matches</b> Safeway; full count. 6-box cartons. CARTON 15c</p>

Prices In Effect In Our Buhl, Twin Falls and Jerome Stores

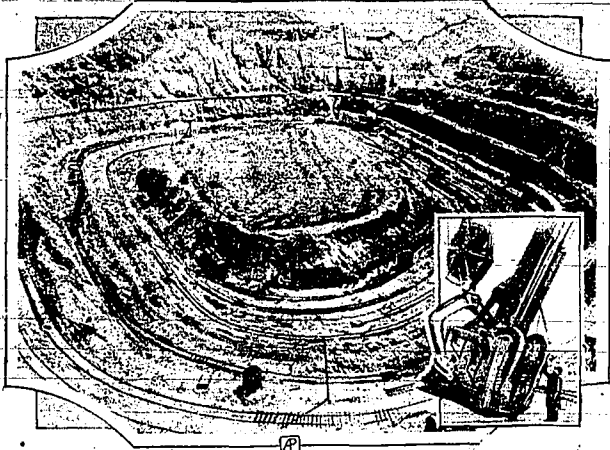


# Strip Mining Rapidly Gaining on Honey-Combing Tunnels

## GIGANTIC SHOVELS PLAY MAJOR ROLES IN EXPOSING ORES

From Slender Beginning of Method in Middle of Last Century New Scheme Rises to Heights of Industry

(By The Associated Press) WASHINGTON, Aug. 10.—An outstanding increase in the removal of the country's mineral resources directly from the surface, instead of through tunnels honeycombing the earth, is noted in a newly completed survey by the United States geological survey.



The use of strip methods to mine minerals instead of hewing them from under the ground has increased to a vast extent in the United States. Huge dippers (inset) have been developed exclusively for the purpose. A mountain in Bisbee, Arizona, has been reduced to a pit (above) in strip-ping for copper.

To expose the minerals, giant shovels annually scoop away three times as much earth as was done in the entire amount of dirt excavation during the 11-year period of the cutting of the Panama canal.

Strip-ping machinery has been perfected until, during an average year, the United States produces 18,000,000 tons of coal, twenty million tons of iron ore, thirty-two million tons of copper ore, 150,000 tons of bauxite and 2,700,000 tons of phosphate.

The increase has been such in the coal fields that, where 7,223,500 tons were stripped in 1911, 20,000,000 tons were stripped by the method in 1927, the investigators reported.

From the slender beginnings of strip mining in the middle of the last century, when picks and shovels were wielded by hand and ox teams transported the minerals, the mining has progressed to the point where electric shovels were brought into the earth to remove 15 cubic yards in one operation.

Huge mechanical monsters, virtual power plants on wheels, have been developed, with an increasing trend toward the substitution of electric power for steam.

With the earth laid bare by the shovels and by blasting operations referred to as open-pit mining, some of the companies to get better returns from the waste stretches.

In addition to reclaiming resources that could not be mined underground, strip mining produces minerals at cheaper cost and with decreased hazard to employees. There are few accidents.

## HOT WEATHER AIDS SOUTH IDAHO CROPS

### Week's High Temperatures Result in Rapid Growth in Irrigated Districts

BOISE, Aug. 8 (Special to The News)—High temperatures, with some districts of southern Idaho experiencing the warmest weather of the season, resulted in abundant growth of crops on irrigated lands during the week ending August 6, according to the weather and crop summary issued by Clinton E. Norquist, meteorologist of the United States weather bureau.

Reports of conditions are included in the summary as follows: **NEIGHBORHOOD—IDAHO**—The past week was the warmest of the season, temperatures above 100 degrees being reported in many stations in the district. In the well watered irrigation district all growing crops made phenomenal progress. Corn, beans, beets, potatoes, and all garden and truck grew rapidly. Conditions were also very favorable for the harvesting and threshing of grain and the harvesting of the second crop of alfalfa and these activities were pushed vigorously. Scattered thunderstorms occurred but were not sufficiently heavy to interfere with farm work, nor did they yield enough moisture to affect crops. Pastures and ranges are still affording adequate feed and livestock continue to thrive.

**SOUTHEAST IDAHO**—The week was warm. Light to heavy rains, local in character, occurred in most sections. Spring wheat and oats are ripening and the harvest of the spring crop is starting. Second crop alfalfa is making good progress and is ready to cut in some sections. Potatoes are doing well generally. Beets are making good growth. The ranges have been improved by the rains. Cattle and sheep are in good condition.

**FIELD NOTES**—TWIN FALLS—All crops looking excellent; grain most all out, some threshed; good yields of alkali clover being threshed; beans, beets, and potatoes doing fine; apples in good shape; spraying still continues.

**BUHL**—All field crops upward crops, except red clover, look good and promising; barley and some Federation wheat cut; mowing of second cutting alfalfa in hand; irrigation water plentiful.

**BUFFET**—Crops all going well; second cutting hay being harvested; part of this project visited by heavy thun-

derstorms on the first, with some hail but no damage. **POCAHONTO**—Warm weather; good rain middle of week; local showers in vicinity; second cutting of alfalfa nearly completed; wheat harvest started; oats ripening fast; potatoes doing well; beets making good growth; range improved by rains; cattle and sheep in good condition.

## BURLEY DISTRICT FAVORS BUILDING OF SUB-STATION

BURLEY, Aug. 8 (Special to The News)—Authorization for construction by the United States reclamation service of an inter-connecting sub-station at the Minidoka dam has been granted by the Burley irrigation district, which is the organization representing the pumping system farmers on the Minidoka project.

This sub-station will be erected at the government power plant at the Minidoka dam, for the purpose of connecting with the Idaho power company system. Burley irrigation district power profits exclusively will be used to provide funds for this construction, as the Minidoka irrigation district has refused to join in the construction work. This action on the part of the Burley irrigation district is the most recent development in the controversy which finally resulted in temporary permission being granted the Idaho power company to enter the Minidoka field.

## FORMER UTAH GOVERNOR PRAISES IDAHO SCENERY

HAILEY, Aug. 8 (Special to The News)—Ex-Governor Charles R. Mabey, of Utah, who made the address of the day at Carey's Pioneer celebration, writes as follows: "After the celebration, it was our privilege to make a brief visit in the Sawtooth and Salmon river country. My surprise at finding such wonderful scenery in this section was unbounded. I have no hesitancy in saying it is equal to anything I have ever seen on three continents, and I have traveled extensively not only in the United States but in Europe and parts of Asia. The people of Idaho must be proud of the natural beauties of their state, but they should also lend every effort toward making the entire world acquainted with these rare scenic gems."

## Stakes Mark Site for Potato Mill at Burley

BURLEY, Aug. 8 (Special to The News)—Corners and grade stakes have been set along some 450 feet of frontage adjoining the new Oregon Short Line side track here, for the proposed building to be erected for the potato flour mill. Clearing has also been done, and some stakes set for two seed ware houses contemplating the erection of plants here. Indications are that considerable building will be under way along this new siding in the near future.

The birth rate per thousand of Japanese population in California is three times that of the Caucasians.

## WIRE WORM INFESTATION IN IDAHO UNDER SURVEY

MOSCOW, Aug. 8 (Special to The News)—A survey of the extent of wire worm infestation and damage in the Snake river valley from Ashton to Huntington is under way by the United States department of agriculture in cooperation with the University of Idaho college of agriculture experiment station. The survey will cover all of the principal farming areas of the Snake river valley, especially the irrigated sections. The investigators will gather data on the distribution of the pest, density of population, and other factors necessary to outline a program of control.

Engaged in the survey is Horace Lancaster, Moscow, a graduate of the University in June, who recently passed a civil service examination with high standing. He has been appointed junior entomologist in the United States department of agriculture, bureau of entomology, working under the supervision of M. G. Lawrence, assistant entomologist. Lancaster's headquarters are at Parma, N. W. News Want Ads reach the people you wish to attract.

**R. McClure Head of New Hailey Mining Company**  
HAILEY, Aug. 8 (Special to The News)—Articles of incorporation were filed with the county recorder Tuesday for the Treasure Vault Mining company. The company's registered office is in Hailey. Capital stock is divided into 150,000 shares. The officers of the company are R. McClure, president; Jack Harper, vice president; H. R. McClure, treasurer; and N. Loewen, secretary. The board of directors is made up of the officers. The company is to conduct a general mining and milling business and may manufacture and sell mineral products of any kind.

## NECESSITIES FOR THE SEASON PRICED AT SAVING PRICES!

# RITEWAY

REED'S STORES  
"WHERE BARGAINS AWAIT YOU!"

### CANNING SUPPLIES

We are prepared to help you in putting up fruits and vegetables, because we have here those things that lessen the work, and we have priced them so that you can buy

**SUPREME MASON FRUIT JARS**

With non-rust lids

1 Pint ..... 76¢ Doz.  
1 Quart ..... 86¢ Doz.  
2 Quart ..... \$1.22 Doz.

**JELLY GLASSES**

Per Doz. ..... 42¢  
Fresh Jar Rubbers—Four Doz. .... 20¢

**FRUIT JAR HOLDER**

Fits inside of wash boiler. Holds 3 1-quart jars. This strong wire rack saves time, labor and fruit, and costs but little.

**RITEWAY PRICE ..... 49¢**

### LAUNDRY NEEDS

Wash day is made easier if you come in and pick out a few inexpensive needs that will last long in service.

**WASH BOILERS**

We offer the two best sellers at greatly reduced prices. Medium size galvanized boiler ..... \$1.69  
Copper bottom boiler, \$2.69  
Copper bottom boiler, \$1.98

### KEEP COOL SUGGESTIONS

Here you will find that for a small expenditure you can equip your home with good electrical utilities that will keep your home cool.

Note These Saving Prices!

**ELECTRIC FANS**

\$3.50 Fan Special ..... **\$2.98**  
\$4.00 Fan Special ..... **\$3.30**

Enjoy Cool Breezes in Your Home By Using One of These Fans.

**FRUIT JAR HOLDER**

Fits inside of wash boiler. Holds 3 1-quart jars. This strong wire rack saves time, labor and fruit, and costs but little.

**RITEWAY PRICE ..... 49¢**

**WASH TUBS**

Galvanized non-rust, medium size ..... 79¢  
Largest size ..... 85¢

**Brass King Wash Board ..... 59¢**

**TWO BURNER ELECTRIC STOVE**

This large size cooking stove has two switches. Both burners can be on full at one time. A \$5.00 Electric Stove ..... **\$3.89**

**THE VERY BEST ALUMINUM DISH PANS**

No better grade can be bought than these. All have sturdy side handles.

10-Quart size ..... **\$1.39**  
14-Quart size ..... **\$1.69**  
17-Quart size ..... **\$1.89**

**CLOTHES BASKET**

Made of selected whole willows. Medium size ..... **98¢**

**98c ELECTRIC TOASTER**

Yes, all complete, with cord—toasts two slices at once and has hot plate top! Limit one to customer.

**FRUIT JAR HOLDER**

Fits inside of wash boiler. Holds 3 1-quart jars. This strong wire rack saves time, labor and fruit, and costs but little.

**RITEWAY PRICE ..... 49¢**

**WASH TUBS**

Galvanized non-rust, medium size ..... 79¢  
Largest size ..... 85¢

**Brass King Wash Board ..... 59¢**

**ICE TEA OR LEMONADE SET**

The tipped pitcher and six tall tumblers are daintily tinted. A timely bargain. **\$1.29**

**FRUIT JAR HOLDER**

Fits inside of wash boiler. Holds 3 1-quart jars. This strong wire rack saves time, labor and fruit, and costs but little.

**RITEWAY PRICE ..... 49¢**

**WASH TUBS**

Galvanized non-rust, medium size ..... 79¢  
Largest size ..... 85¢

**Brass King Wash Board ..... 59¢**

**Electric Waffle**

This \$9.00 4 quart waffle iron is a summer necessity. Bargain Special ..... **\$5.38**

**JUICE EXTRACTORS**

We suggest one of these sanitary glass lemon or orange juice extractors. **RITEWAY PRICED ..... 20¢**

**Vapo-Seal Cooker**

The largest size aluminum 7-piece time tested cooker. Sale Price **\$4.29**

**Aluminum Electric Coffee Percolator**

Complete **\$1.39**

## Self 4-Row Bean Cutter Attachments

We Now Have On Demonstration a Cultivator With a SELF 4-ROW BEAN CUTTER ATTACHMENT On It!

If you are not acquainted with this locally manufactured device, it will pay you to investigate its merits.

It fits P. & O. and John Deere, double-bar cultivators and the Moline single and double bar machines.

We sold 60 of these attachments last season and were not able to supply the demand. We advise placing your order early. Come in today!

## Self Manufacturing Co.

Phone 524 250 Second Ave. South TWIN FALLS, IDAHO

## BARGAIN Summer Excursion FARES EAST and WEST

YOUR vacation destination is nearer—by train! And not only do you have more time to spend when you get there, but you are rested and ready for full enjoyment of the attractions awaiting you.

Low round trip fares are now in effect. Liberal stop over privileges enroute. Convenient departures daily. And superlative travel comfort always.

For further details consult the nearest ticket office.

J. L. FULLER, Ticket Agent Phone 611

# Union Pacific

THE OVERLAND ROUTE

### AUXILIARY AT JEROME SEEKS NEW MEMBERS

#### Women of Organization in Two Teams Will Conduct Campaign During Month

JEROME, Aug. 8.—Plans were made at the regular meeting of the American Legion Auxiliary Monday night for membership drive to be conducted during the month of August. The membership was divided into two teams and each will endeavor to secure the greatest number of new members. Mrs. F. E. Tuttle is captain of one team, which is composed of the following women: Mrs. W. W. Meyer, Mrs. Harry Forbes, Mrs. H. P. King, Mrs. John Nims, Mrs. John Schmehall, Mrs. W. D. Baker, Mrs. W. B. Henry, Mrs. ...

### Scout Chief a Baron



**SIR ROBERT BADEN-POWELL** has been created a baron for his development of the boy scout movement which is celebrating its twenty-first birthday at a great jamboree.

Monday night for their regular monthly meeting. Reports were given by delegates representing the state convention held at Boise last week. Following the business meeting, refreshments were served by the hostess, and the following hostesses: Mrs. Quilick and Mrs. Diehl.

### Mentor Club's Members Meet at Home in Curry

THIRTEEN members of the Mentor club met with Mrs. A. N. Bonwell here Wednesday. During the business meeting, which was opened with community singing, plans were made to send a quantity of canned fruit to the children's home at Boise. It was also decided to hold a party for club members and their families late in August. The program included two piano solos by Isabelle Miller. Refreshments were served by the hostess.

### McKinley's Ohio Home Will Become Museum

CANTON, Ohio, Aug. 8 (AP)—William McKinley's home, where he made his famous "front porch" presidential campaign in 1896, is being moved to Meyer park, where it will be preserved as a museum. The home has been used as an annex to Mercy hospital since soon after McKinley was assassinated in 1901. This spring the Canton Civitan club raised \$10,000 to pay for moving it. It will have some of its original furnishings and the Civitan club plan a drive for \$50,000 to restore the home.

### Peanut Industry Grows in Arizona Farm Belt

YUMA, Ariz., Aug. 8 (AP)—A new industry for the irrigated empire of the Southwest—peanut growing—is just coming into its own with 185 acres of the soft shell variety to be harvested this year. During the last eight years, more than 500 acres have been planted to peanuts near here. From 12 to 17 trees are on an acre and it takes approximately eight years for them to bear. In 1928, approximately 150 acres were harvested with an average production of 100 pounds to the tree. Canadian fisheries have an export value of more than \$20,000,000 per year.

### MINIDOKA PROJECT TO RECEIVE MORE WATER

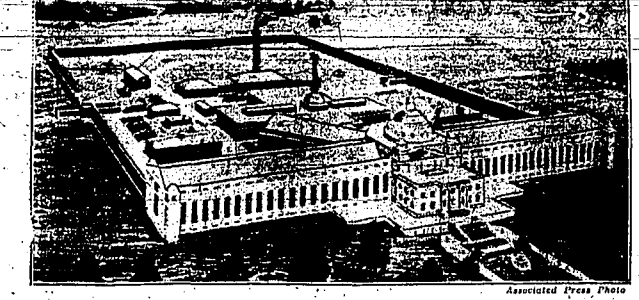
#### E. B. Darlington, Superintendent, Suggests Plans for Increase in Supply

DURLEY, Aug. 8 (Special to The News)—At a meeting of the board of directors of the Burley Irrigation district, E. B. Darlington, project superintendent of the United States reclamation service, suggested plans for the early increase of available irrigation water for the pumping system of the Minidoka project.

Superintendent Darlington's plans contemplated an increase of about 12 per cent in volume of water in the canals to be available for use during the irrigation season of 1931. Heretofore, it has been thought that any material increase in water for this system could hardly be expected as such an early date. Work has been begun on a 25 per cent enlargement of the canals serving the pumping system, but a marked increase in available water had not been looked for within seven or eight years.

Plans for carrying on construction work incident to increasing the canal capacity are "drawn" from the profits accruing to the Burley Irrigation district from sale of commercial power. The district directors approved the proposal to buy a drag line excavator, Tuesday. This being part of the equipment necessary to carry out Superintendent Darlington's plans for enlargement.

### Prisoners Riot At Leavenworth Penitentiary



ONE CONVICT was killed and four others were shot when prisoners rioted in the mess hall of the federal penitentiary at Leavenworth, Kansas.

Prisoners rioted in the mess hall of the federal penitentiary at Leavenworth, Kansas, Sunday. One convict was killed and four others were shot when the riot broke out. The riot was the most serious since the institution was opened in 1895.

### Australia May Obtain New Funds in England

SYDNEY, Australia, Aug. 8 (AP)—The Australian loan council, which supervises the finances of the commonwealth and the six states, is expected to start negotiations soon for new financing. It is anticipated that the council will seek loans in the London market this year, instead of in New York. In the last four years, the council has floated three loans in the American market, aggregating \$165,000,000.

### Southern Insurers Form Holding Firm

COLUMBIA, S. C., Aug. 6 (AP)—A \$22,000,000 holding company to be known as the Associated Life Companies, Inc., is the South's latest contribution to cooperative finance. Announcing the formation of the gigantic holding company, C. O. Milford, president of the Southeastern Life Insurance company, said, "Our long cherished dream of a giant life insurance organization has been realized." The new concern begins with a paid-in capital of approximately \$6,000,000. Milford said, "It will hold substantial stock in the Southeastern Life Insurance company, a \$3,600,000 concern, and the Inter-Southern Life Insurance company of Louisville. Other southern companies will be added from time to time. The holding company has been incorporated under the laws of Delaware, and will open offices in Louisville, Nashville and New York. Milford will represent the Southeastern company on the board of directors which will include C. O. Arnett, president of the Inter-Southern company; Rogers Caldwell, president of Caldwell and company, Nashville investment bankers; and Henry Almsfeldt, of Almsfeldt Brothers, Louisville investment bankers. It is estimated that 10 per cent of America's population has Swedish blood.

## REMEMBER

For the richest, smoothest, creamiest white sauces, you can count on Carnation Milk. It is pure whole milk in the most convenient and dependable form.

Write for Cook Book: CARNATION MILK PRODUCTS CO., 200 N. 3rd St., Seattle, Wash.

The Safeguarded Milk "from Contented Cows"

# Ride Today In The NEW FORD

## A New Sedan Awaits Your Call No Obligation On Your Part

The new FORD car is distinctly a quality car—it is designed to meet every modern requirement—it is highly attractive in appearance and its performance is remarkable—

The Model "A" has a quick get-away—is fast on the road—takes hills with ease and is built to endure and give long, trouble-free service at a minimum of upkeep cost.

### Immediate Delivery on Nearly All Models Your Choice of Beautiful Colors

Ride in Safety Behind a Shatter-Proof Windshield

# UNION MOTOR CO.

Your Ford Dealer Twin Falls



# Political Situation Hastening Manchurians' Record Soy Bean Crop

## PRODUCT FURNISHING FOOD AND MUNITIONS IN NATION'S CRISIS

"Meat and Milk" of Orient for Over 40 Centuries, One of Romances of Modern Scientific Thought

By JAMES P. HOWE  
Associated-Press Staff-Writer

MUKDEN, Manchuria, Aug. 8.—Explores of the political disruption between China and Russia in Manchuria have added importance to the Manchurian soy bean crop, foundation of the country's economic structure.

The harvest this year is expected to be the largest in history. Last year the output aggregated about 5,000,000 tons, approximately 75 per cent of the total soy bean production of all China. This year it is estimated that the crop will be more than 8,000,000 tons.

Used in the manufacture of both food and munitions, soy beans occupy a significant position in the present national emergency. The possibility of an increasing industrial demand, however remote, has spurred producers for extraordinary efforts.



Coolies storing soy bean cakes in Manchuria, preparatory to shipment. The soy bean plant (below) is being studied in its native soil by P. H. Dorsett (right) and W. J. Morse (left), American specialists, who are seeking new varieties for their country.

## Market For Real Estate Improving Says Noted Bay State Statistician

Total Volume of Property Transactions Greater At Present Time Than During Same Period Year Ago

By ROGER W. HAINSON  
DABSON PARK, Mass., Aug. 8.—Although credit stringency and high money rates have undeniably clouded up the speculative building and real estate market, the demand for real estate is still strong, according to a report by Roger W. Hainson, a noted Bay State statistician.

The total volume of property transactions is greater at present time than during the same period last year. In 1928, the total volume of transactions was \$1,000,000,000, while in 1929 it is estimated to be \$1,200,000,000.

On the other hand, the banks are scrutinizing applications for large speculative enterprises very carefully. Undoubtedly apartment house building in some of our large cities was overdone. Until the demand catches up with the supply a resting period in speculative transactions and new construction is only natural. The principal effect of high money from a building and real estate standpoint has been in connection with the decline in municipal financing. Borrowing by cities, towns and states has been slowed down by the higher rates which they must pay for money. Also, the dullness in the general bond market and the craze for stocks make the sale of even high-grade municipal issues more difficult. The slackening in public developments and improvements can only be alleviated by an easier trend in the money market. Until credit stringency relaxes—the slowing down in public works will continue to have a retarding influence on real estate expansion and sub-division work.

Reits About Same as Last Year  
The rising trend of rents has been definitely checked. Today rents in most cities, both for residential and business property are fairly well stabilized at just about the same level as last year. Fifty-six per cent of the leading

Long Staple Food  
Although a staple food in China for more than 4000 years, the soy bean, "meat and milk" of the Orient, is one of the romances of modern scientific thought. For centuries it was made into a curd that took the place of meat and bread among the poor. A vegetable milk was pressed from the curd. It was not until 1910, when a shipment of 100 tons was sent to England, that the soy bean became a factor in international trade.

Since then scores of products have been developed. Credit for much of the almost boom-like development and prosperity of Manchuria is given to the varied uses of the soy bean. They include the manufacture of soy and other sauces, soups, breakfast foods, cereals, cheese, crackers, macaroni, flour, confections, glycerine, explosives, enamels, varnishes, butter and lard substitutes, diabetic foods, edible oils, salad oils, illuminating and lubricating oils, water-proofing materials, linoleum, paints, soaps, celluloid, rubber, printing inks, meal for the softening of paper, baked beans, roasted beans, infants' foods, soy bean butter and soy bean fertilizer.

Shell Utilized  
Even the shell is utilized, charcoal being produced from it.

The new product is known as "brain tonic." It was discovered by German scientists and developed by the Japanese in the central laboratory at Dairen. The tonic is being perfected as a medicine for under-developed children and for adults in excessive use of the brain. It resembles old-fashioned apple butter.

So important commercially has the soy bean become that the United States has been promoting a schedule of its numerous uses. The American acreage has increased steadily with the bean used principally as forage crops.

To find additional varieties, some of which will flourish in northern latitudes, the department of agriculture has sent two specialists, P. H. Dorsett and W. J. Morse, to the Orient to study the soy bean in its native land. Now in northern Japan, they expect to reach Manchuria within a year.

Snuff contains 2-12 per cent nicotine.

In the Province of Quebec some 15,000,000 trees were planted in 1928.

Canada is endeavoring to conserve her forests.

The Canadian National is Canada's largest railway.

THE TREASURE VAULT-MINING CO., Inc.  
of Halley, Idaho, are offering for sale a small block of stock, One Dollar per share, to finance the erection of a mill on their property in the Gold Belt, ten miles west of Halley, Idaho, on the Fairfield Highway.

They have open on the surface a twenty-foot vein containing eight feet of free-milling gold bearing ore, with assay value from ten to sixty-five dollars per ton, and have proven this for a distance of eight hundred feet.

There are no mining tunnels or deep shafts to be driven, no roads to build, in fact everything is in readiness for the mine will immediately be on a paying basis.

The company not only desires but welcomes any and all investigations of this property.

It is only a three hour drive from Twin Falls to the mine, good roads all the way, and up Sunday and look it over. For further information address the Treasure Vault Mining Co., Inc., Box 32, Halley, Idaho, or Box 486, Twin Falls, Idaho. adv

**OREGON TRAIL**  
The Fresh COFFEE  
for Quality Strength Flavor Aroma  
It's FRESH

Cities say rents for single family houses are the same as in 1928, 17 per cent of them say rents are higher, while 27 per cent say they are lower. Apartment rents in 65 per cent of the cities show no appreciable change from last year, in 18 per cent they are higher and in 17 per cent lower. Central business property is renting about the same as in 1928 in 53 per cent of the cities; higher in 40 per cent and lower in 8 per cent. Well situated business rents seem to be maintained on a higher level than most other classes of property. Overbuilding in the city has caused a decline in all types of rents, but the situation for the whole country is one of stability at prices slightly below the high peak previously reached.

Suburban Real Estate Most Active  
Several years ago I called attention to the great movement toward the suburbs brought about by the automobile and improved rapid transit facilities. This movement is continuing in spite of adverse money conditions. Today the cities and towns under 25,000 inhabitants are the ones that are showing the greatest real estate activity. Fifty-eight per cent of these small towns and cities show more property transactions than last year. On the other hand, only 50 per cent of the large cities with a population of 100,000 or over, and only 24 per cent of the cities with populations of 100,000 to 200,000, show an increase in activity over last year. The cities are rapidly spreading out and the demand for road suburban property is constant. Movement away from congested city districts is an excellent thing, both for the public health and social welfare of the country. Incidentally, it opens

up new opportunities for the enterprising real estate men and investors who have the vision to "look ahead" ten or fifteen years and to see the picture which the automobile, the airplane, and other transportation marvels are unfolding.

Plane Will Aid  
As the aviation industry grows and the number of places in use increases, many seemingly useless and inaccessible places will soon become of great value. More ground space will be required for landing purposes. As present many desirable tracts for this purpose can be purchased for the price of unpaid taxes. Just as roadside property took on more value with the great popularity of the automobile, real estate which can be readily employed as an airport will in the same way jump into value. Also, it must be remembered that adjacent land will take on new values. In the future some airports will be of such magnitude as to require railroad terminals. We have seen that the automobile and steam engine have done for real estate. The airplane will also convert many "lost" and "undiscovered" sections into profitable airports. Those who own tracts of land or who are considering real estate purchases should consider very seriously whether the property will fit in with airport developments.

more parts and territories of the United States also will be opened up both for travel and settlement. In this connection, Alaska may ultimately become a thickly settled and thriving section of the country. There are many beautiful but isolated sections of Canada which may become thriving summer resorts. Also in Northern Canada are many rich mineral deposits merely awaiting an easy way of access. These will be exploited as airplane travel grows. Quick transportation developed by the airplane may bring a revival of the "gold rushes" of earlier history.

Such land booms, however, are not as a rule wise things to invest in. The new opportunities will come through sound development of values in desirable property, made readily available by the new means of transportation. The growth may be slow at first, but ultimately such favorably situated land should prove a highly profitable investment.

Business by the Babson chart now stands at 6 per cent above normal compared with just normal a year ago.

Salutes are only fired between sunrise and sunset.

The buildings and grounds at West Point are valued at \$25,000,000.

The White House is repaired white every 10 years.

Los Angeles draws 250 million gallons of water daily a distance of 235 miles.

## FARM-OWNED ELEVATORS PROSPER IN NORTHWEST

BISMARCK, N. D., Aug. 8.—Farm-er-owned padlocks and cooperative elevators are doing a big business in North Dakota as shown by statistics compiled by the state railroad and warehouse commission.

These indicate that 60 per cent of the grain shipped from towns where such elevators are located, was handled through them. In most cases, they achieved this record in competition with independent and chain elevators.

## Irrigation to Enlarge Rio Grande Citrus Area

HARLINGEN, TEXAS, Aug. 8.—More than half a million acres in the citrus-growing "magic valley" of Texas will be irrigated with the completion of a 129,000-acre project now under way.

The new ditch, ranking with the country's largest irrigation projects, will be 40 miles long, 90 feet wide and 14 feet deep. It will cost \$3,000,000. The furrow system of irrigation rather than the flood method will be employed.

Cooperative marketing among citrus fruit farmers of the lower Rio Grande valley will be attempted in the new district, which will be irrigated with flood waters from the Rio Grande.

# Idaho Bean & Elevator Co. ANNOUNCEMENT Twin Falls Warehouse

Our new warehouse, leased from the Palace Sand and Gravel Co., at Twin Falls, is all completed except for installing the bean cleaners, which will be done in the very near future.

Our Twin Falls office is located in this building, and is located at the east end of Main street, one block off the pavement, with a graveled road to the building.

Our sign is plainly visible, enabling you to find our place. This building is 100 by 100 feet, giving us storage room for approximately one hundred cars at this point. Three large unloading doors, and private switch makes this a great deal like our house at Filer, in that it is away from the congested traffic, enabling us to give you the best service. The place where you get unloaded quick!

## Filer Warehouse

We have completed an addition to our war house at Filer, office enlarged, scales conveniently placed, and a graveled road right to the door.

We believe now that we have one of the best and most convenient warehouses at Filer, which enables us to store approximately one hundred cars of beans.

## Contracting

The past few days there has been a lot of talk about contracting beans. The amount of beans actually contracted is hard to estimate; in my opinion, not as many as some might think.

Whether this is good business or not remains to be seen. I wouldn't care to make any prophecies either way at this time.

Our policy has always been against contracting, and our opening prices in the past have invariably been higher than the contract prices. As other dealers on the tract are contracting, we are in a position at this time to offer you the following prices: September delivery, \$6.75; October 14th, \$6.25. I see no reason why September and middle of October beans should not bring good prices. I base my opinion on the fact that we have had a clean-up on all varieties of beans in the past season.

We have other announcements to make before the bean crop is ready to harvest which we believe will be of benefit to bean growers.

We would like to make a personal call on every bean grower on the tract. However, if we are unable to do this, it will be because we haven't the time and we hope that you will realize this and not feel that we slighted you intentionally.

## Seed Beans

We have always been believers of good seed beans, and for this reason, last spring we shipped another car of dry land seed from Montana to our Filer warehouse. All reports coming in from the growers, and what we have seen ourselves, indicate an exceptionally fine stand.

We believe that this is the proper time to select your seed, while it is growing. We will gladly furnish you with the names of growers who have these beans.

We would appreciate your coming in and looking over our new warehouses. If you are too busy, call us at either of the telephones listed and if there is any way that we can be of service to you we will only be too glad to help you.

# IDAHO BEAN & ELEVATOR COMPANY

DUDLEY DRISCOLL, Manager Southern Idaho Branch

Twin Falls Office 36.  
Twin Falls Residence 1342.

TELEPHONES:  
Filer Office 133.  
Filer Residence 76.

FROM the welding of these two.....

comes a  
**New Symbol**  
of the greater  
**CONTINENTAL OIL COMPANY**

CALL MONEY MARKET STATUS IMPROVING

Many Traders Withhold Operations Pending Publication of Loan Statement

By CLAUDE A. JACOBSON (Associated Press Financial Writer) NEW YORK, Aug. 8.—Further improvement in the call money market, and reaction by the bank of England to the 3 1/2 per cent discount rate, prompted heavy buying covering on the stock market today, and produced considerable buoyancy in a rather dull market, total sales falling below 100,000 shares.

Many traders withheld operations, pending publication of the Federal Reserve Board's statement after the close, and conditions on the loan market were improved by the prospect of a higher rate, such action not having been taken by the Board. The stock market is recalled, however, that "Sometimes it is more effective to do the unexpected."

Directed Against Loans The action is believed to be an effect of the rising brokerage loan total, which in the week ended last night amounted to \$100,000,000, another new record for \$100,000,000.

Stock Market Averages NEW YORK, Aug. 8 (AP)—Stock market averages: Dow Jones Industrial Average, 250.12; S&P 500, 118.12; NYSE Composite, 118.12.

NEW YORK, Aug. 8 (AP)—Copper, steady; electrolytic spot and futures 87c. Lead, steady; spot, New York 64.75; East 64.75.

TWIN FALLS MARKETS These prices are obtained daily at 6 o'clock in the afternoon and are in cents per bushel unless otherwise stated.

Table of market prices for various commodities including Wheat, Corn, Beans, Potatoes, and other goods. Columns include item names and prices.

NEW YORK STOCK MARKET

Table of stock market closing bids for various companies including Alch & Dye, Am. Sugar, and others.

STOCK MARKET AVERAGES

Table showing stock market averages for New York, Aug. 8, including Dow Jones and S&P 500 indices.

LIBERTY BONDS

Table of Liberty bond prices for various denominations and maturities.

MONETARY

NEW YORK, Aug. 8 (AP)—Call money: high 5/8; low 3/8; ruling rate 5/8.

SUGAR

NEW YORK, Aug. 8 (AP)—The raw sugar market was quiet today, with no sales reported.

LOS ANGELES PRODUCE

LOS ANGELES, Aug. 8 (AP)—Produce market: Potatoes, 1.25; Apples, 1.00.

TOTALLY GOING TO SPRING? A NEW ONE NEXT YEAR? WE'LL NEED YOU TO KEEP ME POSTED FROM WALLET'S OFFICE.

CAN'T BE DONE ANY MORE GOING ON MY VACATION. I'LL BE AT PINE CONE RESORT ON SQUARE LAKE IN NORTHERN WISCONSIN.

YOU MEAN I'VE GOT TO TAKE MY STUNT TO AWAIT YOUR PLEASURE? WHAT DO YOU GO UP THERE FOR ANYWAY?

I'VE FOUND OUT YOU'VE BEEN GOING TO DOUBLE GABLES HOTEL ON THE SAME LAKE. I JUST THOUGHT IT WOULD BE A WONDERFUL COINCIDENCE.



WHEAT PRICES TEND TO GO DOWN AND WILD CITY

Upward Slant; Corn Finishes at Slight Decline (Associated Press Market Editor) CHICAGO, Aug. 8.—In a fairly quiet market, wheat prices today averaged lower, but close with upward slant, despite a drought report from the southern states, which was offset by reports of heavy rains in the north.

CHICAGO CASH RICE

Table of Chicago cash rice prices for various grades and types.

REGULAR APRIL SESSION

REGULAR APRIL SESSION Twin Falls, Idaho, June 28, 1929, 10:00 o'clock A. M.

MEETING OF BOARD OF EQUALIZATION

MEETING OF BOARD OF EQUALIZATION Twin Falls, Idaho, July 1, 1929, 11:00 o'clock A. M.

REGULAR APRIL SESSION

REGULAR APRIL SESSION Twin Falls, Idaho, June 25, 1929, 10:00 o'clock A. M.

MEETING OF BOARD OF EQUALIZATION

MEETING OF BOARD OF EQUALIZATION Twin Falls, Idaho, June 25, 1929, 11:00 o'clock A. M.

REGULAR APRIL SESSION

REGULAR APRIL SESSION Twin Falls, Idaho, June 25, 1929, 10:00 o'clock A. M.

MEETING OF BOARD OF EQUALIZATION

MEETING OF BOARD OF EQUALIZATION Twin Falls, Idaho, June 25, 1929, 11:00 o'clock A. M.

REGULAR APRIL SESSION

REGULAR APRIL SESSION Twin Falls, Idaho, June 25, 1929, 10:00 o'clock A. M.

REGULAR APRIL SESSION

REGULAR APRIL SESSION Twin Falls, Idaho, June 28, 1929, 10:00 o'clock A. M.

MEETING OF BOARD OF EQUALIZATION

MEETING OF BOARD OF EQUALIZATION Twin Falls, Idaho, July 1, 1929, 11:00 o'clock A. M.

REGULAR APRIL SESSION

REGULAR APRIL SESSION Twin Falls, Idaho, June 25, 1929, 10:00 o'clock A. M.

MEETING OF BOARD OF EQUALIZATION

MEETING OF BOARD OF EQUALIZATION Twin Falls, Idaho, June 25, 1929, 11:00 o'clock A. M.

REGULAR APRIL SESSION

REGULAR APRIL SESSION Twin Falls, Idaho, June 25, 1929, 10:00 o'clock A. M.

MEETING OF BOARD OF EQUALIZATION

MEETING OF BOARD OF EQUALIZATION Twin Falls, Idaho, June 25, 1929, 11:00 o'clock A. M.

REGULAR APRIL SESSION

REGULAR APRIL SESSION Twin Falls, Idaho, June 25, 1929, 10:00 o'clock A. M.

MEETING OF BOARD OF EQUALIZATION

MEETING OF BOARD OF EQUALIZATION Twin Falls, Idaho, June 25, 1929, 11:00 o'clock A. M.

REGULAR APRIL SESSION

REGULAR APRIL SESSION Twin Falls, Idaho, June 28, 1929, 10:00 o'clock A. M.

MEETING OF BOARD OF EQUALIZATION

MEETING OF BOARD OF EQUALIZATION Twin Falls, Idaho, July 1, 1929, 11:00 o'clock A. M.

REGULAR APRIL SESSION

REGULAR APRIL SESSION Twin Falls, Idaho, June 25, 1929, 10:00 o'clock A. M.

MEETING OF BOARD OF EQUALIZATION

MEETING OF BOARD OF EQUALIZATION Twin Falls, Idaho, June 25, 1929, 11:00 o'clock A. M.

REGULAR APRIL SESSION

REGULAR APRIL SESSION Twin Falls, Idaho, June 25, 1929, 10:00 o'clock A. M.

MEETING OF BOARD OF EQUALIZATION

MEETING OF BOARD OF EQUALIZATION Twin Falls, Idaho, June 25, 1929, 11:00 o'clock A. M.

REGULAR APRIL SESSION

REGULAR APRIL SESSION Twin Falls, Idaho, June 25, 1929, 10:00 o'clock A. M.

MEETING OF BOARD OF EQUALIZATION

MEETING OF BOARD OF EQUALIZATION Twin Falls, Idaho, June 25, 1929, 11:00 o'clock A. M.

THE GUMPS - THE WIDOW ZANDER

The GREEN SHADOW by Herman Landon

(Continued From Yesterday's News) "Three quarters. Of course, I didn't measure it..."

"I guess you didn't," said Summers dryly. He took a swallow of coffee. "The reason you didn't was that there was no moon to measure. It was cloudy last night."

"Dale's fork paused in the act of conveying a morsel of omelet to his mouth. His eyes narrowed slightly. "That's curious. I'm sure there were no clouds when I was out to measure."

"No? Well, go on. What did you do after that?" "I was wide awake, so I drove around a bit, seeking infrequented highways. Ever feel a craving for solitude, Summers? That was how I felt last night. So, I drove and drove, and the first thing I knew the engine began to sputter and my tank was dry."

"At that hour there was no service station open within miles, so I pushed the car along the roadside, anguished in the back seat, and slept."

"And then?" "When I woke up it was too late to go to bed, so I took the car to the garage and ran the pump for a while. Ever study protective colorings, Summers? Most fascinating. Summers watched the brown little bodies of the squirrels scuttling back and forth into the brown foliage of autumn."

"You don't say? Well, how? Next?" "Then—then I went home. That was only an hour and a half ago. I found my room empty and my bed unmade. My blankets were beside himself. Summers, old dear, next time you wish to be murdered by scratching my human fingers, I wish you wouldn't be quite so disorderly. I detect confusion."

"Gorry," said Summers tearlessly. "Well, you've worked out a great little nibble, Dale. Barring the moon, that was just what I needed."

"Allright," asked Dale innocently. Summers chuckled. "I can't check up on you, and so I can't call you a liar."



Want Ads - Bargains - Opportunities

One Cent Per Word Per Insertion. All Want Ads alive and active and they bring the buyer.

For Rent - Unfurnished. APARTMENT FOR RENT - BENOTT Flats.

For Rent - Furnished. ROOM AND BOARD, CLOSE IN. 315 Second ave north.

For Sale - Miscellaneous. FOR SALE - 7-FOOT BINDER IN running order.

Professional. ATTORNEYS. FRANK L. STEPHAN - Room 6 and 7, Bank and Trust Bldg.

Lost. LOST - SATURDAY NIGHT BROWN '27 FORD TOURING CAR.

For Sale - Poultry. FOR SALE - BROILERS, DRESSED and delivered, 65c each.

For Sale - Real Estate. FOR SALE - LOT 30 IN BLOCK 101.

For Sale - Furniture. FOR SALE - 8-PIECE DINING ROOM set.

Businesses. HOME PLUMBING & HEATING CO. show room and shops, 153 3rd east.

For Sale - Real Estate. FOR SALE - DUPLEX HOUSE, GOOD income property.

Wanted to Rent. WANTED TO RENT - 1 OR 5 ROOM house, furnished or unfurnished.

Help Wanted. WANTED - WOMAN FOR HEAD COOK in Southern Idaho institution.

For Sale - Seeds. ALPALPA SEED AT REDUCED PRICE to seed in stubble.

Insurance. AUTO INSURANCE - All coverage. Potler Real Estate, Phone 374.

MEETING OF BOARD OF EQUALIZATION. Equalization of Real and Personal Property Assessment Rolls.

REGULAR QUARTERLY MEETING. Twin Falls, Idaho, July 8, 1929, 11 o'clock A. M.

MEETING OF BOARD OF EQUALIZATION. Equalization of Real and Personal Property Assessment Rolls.

MEETING OF BOARD OF EQUALIZATION. Equalization of Real and Personal Property Assessment Rolls.

Miscellaneous. PIANO FOR RENT - AT WARBURG'S. WANTED - CHILDREN WITH FEATHERS.

MEETING OF BOARD OF EQUALIZATION. Equalization of Real and Personal Property Assessment Rolls.

MEETING OF BOARD OF EQUALIZATION. Equalization of Real and Personal Property Assessment Rolls.

MEETING OF BOARD OF EQUALIZATION. Equalization of Real and Personal Property Assessment Rolls.

MEETING OF BOARD OF EQUALIZATION. Equalization of Real and Personal Property Assessment Rolls.

Miscellaneous. FOR SALE - 16 YEARLING HAMPSHIRE Bucks.

MEETING OF BOARD OF EQUALIZATION. Equalization of Real and Personal Property Assessment Rolls.

MEETING OF BOARD OF EQUALIZATION. Equalization of Real and Personal Property Assessment Rolls.

MEETING OF BOARD OF EQUALIZATION. Equalization of Real and Personal Property Assessment Rolls.

MEETING OF BOARD OF EQUALIZATION. Equalization of Real and Personal Property Assessment Rolls.

Miscellaneous. FOR SALE - 1927 CHEVROLET COACH.

MEETING OF BOARD OF EQUALIZATION. Equalization of Real and Personal Property Assessment Rolls.

MEETING OF BOARD OF EQUALIZATION. Equalization of Real and Personal Property Assessment Rolls.

MEETING OF BOARD OF EQUALIZATION. Equalization of Real and Personal Property Assessment Rolls.

MEETING OF BOARD OF EQUALIZATION. Equalization of Real and Personal Property Assessment Rolls.

Miscellaneous. FOR SALE - 1927 CHEVROLET COACH.

MEETING OF BOARD OF EQUALIZATION. Equalization of Real and Personal Property Assessment Rolls.

MEETING OF BOARD OF EQUALIZATION. Equalization of Real and Personal Property Assessment Rolls.

MEETING OF BOARD OF EQUALIZATION. Equalization of Real and Personal Property Assessment Rolls.

MEETING OF BOARD OF EQUALIZATION. Equalization of Real and Personal Property Assessment Rolls.

Miscellaneous. FOR SALE - 1927 CHEVROLET COACH.

### LADIES AID HOLDS MEETING AT FILER

Methodist Church Society Re-elects Officers; 25 Members in Attendance

FILER, Aug. 8.—The Ladies Aid society of the Methodist church held a meeting in the church basement Tuesday. Former officers were re-elected. They are Mrs. Clyde Hawkins, president; Mrs. W. M. Price, vice president, and Mrs. Harry Musgrave, secretary. There were 25 members present. Musical Shearer sang two vocal solos. Hostesses for this meeting were Mrs. S. A. Beem and Mrs. W. S. McCreary.

### Legionnaires' Host



Associated Press Photo

HARVEY WHITE, American Legion commander of Kentucky, will be charged with the entertainment of delegates to the national convention at Louisville September 30-October 3.

day morning on a month's vacation trip. They will visit at Competition, Missouri, making the trip in their car. Mr. and Mrs. Kenneth Rendahl are moving to Twin Falls the latter part of this week. Mr. Rendahl has been employed for several months by the Detweiler Mercantile company.

### Wife and Sister at the M. Y. Goode home until Wednesday.

The Filer Methodist Sunday school will picnic on the fairgrounds here Friday at 4 P. M. Mrs. and Mrs. C. W. Duell left on Monday for LaGrande, Oregon, for a two weeks' vacation. Mr. R. B. Kearns, Nampa, was a weekend visitor at the home of his daughter, Mrs. J. E. Read. C. W. Wright and a brother-in-law, O. Schram, left Thursday for their home in Los Angeles. They visited the W. F. Wright home for two days. Mr. Schram was very much pleased with Idaho. Mr. and Mrs. Brannon and two sons moved into the F. E. Drake home Monday. Mrs. Brannon is in charge of marketing and meats work at the Modern drug shop. They formerly lived near Buhl. F. C. Graves motored to Shoshone Wednesday, where he met Mrs. Graves who has just returned from David City, Nebraska, where she attended the funeral of her mother. Mrs. W. F. Wright's mother, Mrs. Ada L. Wright, and her brother B. F. Wright, and wife and two children are here visiting at the W. F. Wright home. They expect to be here a month. Mr. Ralph Stuekey, Pocatello, and County Agent Ralph Bristol, of Blaine county, were here to attend the Filer fair sale Wednesday. They returned Thursday. W. H. McLaughlin and son, Max, Huntington Park, California, are visiting here. Mr. McLaughlin was formerly a Filer barber. Mr. and Mrs. Rudolph P. Gambrel and small son, David, left on Thursday morning for their home in Omaha after a visit of a few weeks with Mr. and Mrs. Ray Herring and other relatives in this part of Idaho. Mr. Gambrel is an employee of the Union-Pacific Railroad company. Mrs. J. A. Grant was in Filer the first of the week from Burns, Oregon, where the Morris-Grout company is now conducting Evangelistic services. He was called here to preach the sermon of Levi T. Kelley, which was held Monday. Mrs. F. A. Klass and son, E. J. Grant, motored to Boise and returned Saturday. While there they visited with the Frank Keenan family. Gertrude and Harley Billington and Hazel Erickson, Salt Lake City, were weekend-end visitors at the George Potter home. Lyle, oldest son of Mr. and Mrs. E. E. Lee, has been critically ill with an attack of quinsy and is now greatly improved. Miss Margaret and Evelyn Klink, Burley, teachers in the Filer schools this coming year, were in Filer Thursday. Dr. and Mrs. M. J. Goode and Mr. and Mrs. R. A. Gerard went to Robinson bar Sunday and returned Monday. Mr. and Mrs. R. A. Gerard arrived in Filer Saturday from Kansas City, Miss.

# Idaho Department Store

"If it isn't Right bring it Back"

## New Fall Merchandise Displayed Daily

### See the Popular Fall Fabrics in the Big Dry Goods Department

### Special Purchase of \$9.90 Print Dresses for Friday and Saturday

An Especially Interesting Assortment of Printed Crepes and Chiffons—in All Sizes—Ranging From 14 to 50—Flared Skirts and Attractive Neck-Lines—Are Featured, But Many Are Plain Models—Styles Include Sleeveless Types and Dresses With Sleeves.



### You'll Like the New Fall Hats

Through a Special Purchase This Group Will Go At This Low Figure—

# \$9.90

French felts and felt and velvet combinations are indeed good looking—in off-the-face and brim types. We were able to secure large head sizes also in youthful types. In newer fall shades—black, browns, Independence blue, red and tan—

Women who require larger sizes should be sure to see these dresses. READY-TO-WEAR DEPT.

**You get a different story here**

**WE don't lean on another fellow's reputation by saying "all tires are about alike" and "ours are just as good."**

**We sell Goodyears which we can prove are superior.**

**We don't even stop with the facts about the popularity of Goodyear Tires which offer overwhelming evidence.**

**We go ahead and show you by demonstration that the tread and carcass of a Goodyear—in any shape you buy—are definitely superior.**

**Then we put on the tires correctly—shift your other ones around, if they need it—and give you a year's round, watchful service which helps you to get all the extra troublefree mileage built into Goodyear Tires.**

**SPECIAL PRICES ON ALL SIZES**

Goodyear Double Eagles  
Goodyear Regular All-Weathers  
Goodyear Heavy Duty All-Weathers

## LIND AUTOMOBILE CO.

"THE FINEST AND BEST EQUIPPED GARAGE IN THE WEST!"  
Office and Shop Phone 299  
Timken, New Departure and Hyatt Bearing Service.  
Parts Phone 295  
Official Bosch Magneto Sales and Service Station

## First New Fall Fabrics Are Here

**New-Fall Piece Goods**  
Already our Piece Goods Department is filling up with the new fall fabrics.

**Printed Crepe Back Satins**  
All the new feather designs that are being shown in New York for fall—40 inches wide. Heavy **\$2.95** Quality

**Flat Crepe**  
Complete new fall color range—40 inches wide. Guaranteed washable. Pure Thread Silk—**98c** Yard

**Crepe de Chine**  
Guaranteed fast color, 40 inches wide, heavyweight crepe. **\$1.49** Pure Thread Silk

**New Fall Kid Gloves**  
Guaranteed washable kid. All new fall shades and patterns. New cuff trims and two-tone effects. Sizes 6 to 8 1/2. Only **\$1.98** PAIR

**Novelty-French Handkerchiefs**  
A new showing of plain white or printed linens. Hand-rolled-hems. Printed or plain crepes. New print effects and lace edge linens. Priced—**19c to 79c**

**Heavyweight Crepe Back Satin**  
Complete fall color range and pastel shades; 40 inches wide. Guaranteed fast colors. Pure thread silk—Yard **\$1.95**

**Pongitweed**  
A new print fabric for dresses, smocks, coats and many other garments. 36 inches wide. Guaranteed fast colors. All new fall color combinations—Yard **49c**

**Canton Crepe**  
You will find many garments shown in heavy Canton Crepe for fall. All new fall shades in this group. Pure thread silk, 40 inches wide. Guaranteed anteed washable—Yard **\$2.98**

**Correct Fall Accessories Are On Display**

**Cobweb Hose**  
The newest styled hose that is being shown. Again the I. D. Store leads in the first showing of novelty merchandise. Ask to see these new items. Sizes 8 1/2 to 10. Red, blue, yellow green effects. Pair **\$2.49**

**Full-Fashioned Hose**  
Silk to the top. Heavyweight 42-gauge, seven-strand-reinforced all-silk foot; toe guard. All new fall shades. Sizes 8 1/2 to 10 1/2 **\$1.49**

The well-dressed woman is anxious to see the smart accessories for fall—and the I. D. Dry Goods Department shows price-right accessories.

### After All The Best Place To Trade