

TWIN FALLS DAILY NEWS

VOL. 15, NO. 118

LAUREL, WEDNESDAY

TWIN FALLS, IDAHO, TUESDAY MORNING, AUGUST 25, 1932

MEMBER, ADITY BUREAU

8 PAGES - 5 CENTS

Supreme Court Hears: Attorney For Walker Argue Against Ouster

EDITH McCORMICK'S CONDITION IMPROVES

CHICAGO, Aug. 22 (AP)—Mrs. Edith Rockefeller McCormick, on the verge of death several times last week, today was reported cheerful and stronger than at any time in three weeks.

PHILOSOPHERS MEET—PRISONERS GET BREAK

SAN FRANCISCO, Aug. 22 (AP)—Harold Lord, 23, Northwestern university student, is a student of philosophy. So, too, is Municipal Judge Sylvian J. Lazarus.

THOMAS BACKS BOISE FOR FEDERAL OFFICE

SPOKANE, Aug. 22 (AP)—Boise, Idaho, today made a bid for a branch office of the Federal Agricultural Administration.

BIRDS QUINN IN RETURN OF THREE LOST BILLS

ELEENBURG, Wash., Aug. 22 (AP)—Things like this happen, but not often.

DR. A. A. Berger Declares 'Aged Woman's Wounds Not Due to Auto Collision'

SAN FRANCISCO, Aug. 22 (AP)—Testimony of an autopsy surgeon today showed that the wounds on the neck of an elderly woman were not killed by collision with an automobile.

JACKIE COOGAN ENROLLS IN CALIFORNIA COLLEGE

SANTA CLARA, Cal., Aug. 22 (AP)—Jackie Coogan, former boy motion picture star, today enrolled as a student at Santa Clara university, it was revealed here today, and he is seeking admission for the fall term.

INVALID FOR NINE YEARS DIES IN COAST HOSPITAL

STOCKTON, Cal., Aug. 22 (AP)—Merle Browning Wagner, 39, who for nine years lay in a hospital with the result of a fall, died at St. Joseph's hospital here Saturday, it became known today.

FEDERAL AGENTS STOP IDAHO BUTTER SHIPMENT

DETROIT, Aug. 22 (AP)—One thousand pounds of butter shipped by the Strawberry Point Farmers Creamery association, Strawberry Point, Idaho, was ordered held today pending a ruling by the United States admiralty.

LEWISTON FARMERS JOIN MOVEMENT FOR HIGHER PRICES

More Than 400 Ranchers of Idaho Agree Not to Sell Any of 5,000,000 Bushels of Grain Except for Profit

(By The Associated Press) (BOYK CITY, Iowa, Aug. 22)—Farmers' holiday movement today picked up momentum which carried it into many parts of the Middle West.

HITLER DISCIPLES CONFONT DEATH

German Court Sentences Five Men to Die for Killing Communist in Uprising

BERLIN, Germany, Aug. 22 (AP)—Impudent and brazen sentences of five followers of Adolf Hitler in the killing of a Communist today led to a courtroom trial and a firm situation in this Upper Silesian town.

TWIN FALLS WOMAN GETS HURT IN WRECK

POCATELLO, Aug. 22 (AP)—Mrs. Adora Cunningham, 54, Idaho Falls and Twin Falls, was reported by a physician to be improving in a hospital here today following injuries received in an automobile accident here.

SURGEON TESTIFIES IN TRIAL OF EGAN

DR. A. A. Berger Declares 'Aged Woman's Wounds Not Due to Auto Collision'

404,317 UNITED STATES CITIZENS RESIDE ABROAD

WASHINGTON, Aug. 22 (AP)—A total of 404,317 American citizens live permanently outside of the United States, created all the way from Norway to the Philippines.

ST. ANTHONY GIRL WEDS MONTANA MAN

LIVINGSTON, Mont., Aug. 22 (AP)—Livingston, Mont., today celebrated the wedding of a young girl from St. Anthony, Minn., to a young man from Livingston, Mont.

Business Barometers Point to Better Days

Freight-car Loadings Mount—Stocks Reach Peak for Present Recovery—Labor Conditions Improve—Wheat and Cotton Prices Rise

Business news which came to light yesterday included: CHICAGO—Twenty hundred persons recently have been given full-time employment by the business pick-up in factories reporting to the Illinois Chamber of Commerce from six Illinois cities.

SOUTH IDAHO MEN WIN DISTINCTION

Twin Falls, Jerome, and Gooding Men Receive Invitations to Aid National Cause

BOISE, Aug. 22 (AP)—Leading public figures of the state have been elected to the National Economic League today.

RELATIVE OF WENDELL AND BULL FOLKS DIES

MINNEAPOLIS, Minn., Aug. 22 (AP)—Scott Banbury, vice-president of the Security State Bank, Geddes, S. D., died at a hotel here today, victim of what was held to be a self-inflicted pistol shot.

CHEER UP, THINGS HAVE BEEN A LOT WORSE AROUND HERE

DEAT IT FOR THE EQUATOR BROTHER. THE GLACIERS ARE CHASING DOWN THE NORTH

IDAHO LIGHTNING STORM CAUSES FOREST FIRES

SPOKANE, Aug. 22 (AP)—Another week-end lightning storm scattered fire over the Idaho and eastern Idaho forests, it was found today, and heavy rains were reported falling in the mountains.

NOTED VIRGINIA ACTOR SUCSUMS IN GOTHAM

NEW YORK, Aug. 22 (AP)—Wilton Lackaye, noted Virginia actor, here today made a dramatic entrance long in theater annals, died today at the age of 70.

RAIN AND HAIL CAUSE DAMAGE IN MONTANA

GREAT FALLS, Mont., Aug. 22 (AP)—A terrific rain and hail storm, accompanied by a heavy wind, today struck the Great Falls area today, causing thousands of dollars damage to fields and towns and city streets.

AVIATRICES AND PLANE AFTER AIR RECORDS TUMBLE

Mrs. Louise Thaden and Mrs. Frances Marsalis Fly Continually for 196 Hours and Five Minutes

(By The Associated Press) (ALBANY STREAM, N. Y., Aug. 22)—Appearing trim and fresh when they took the air, even to maneuvered finger-nails, two 24-year-old housewives brought down their "flying bounds" late today with a new woman's refueling flight record of 196 hours, 5 minutes and 45 seconds.

ONE WORKMAN DIES IN ILLINOIS STRIKE

Scene of Disorder in Tense Situation Shifts to South As Wage Dispute Continues

SPRINGFIELD, Ill., Aug. 22 (AP)—Scene of disorder in Illinois mine strike situation, as result of opposition to the new contract wage scale, shifted from Central Illinois to southern Illinois today as one miner was killed and at least six other miners and a child were slightly wounded in two clashes at Ziegler, near here.

RAIN AND HAIL CAUSE DAMAGE IN MONTANA

GREAT FALLS, Mont., Aug. 22 (AP)—A terrific rain and hail storm, accompanied by a heavy wind, today struck the Great Falls area today, causing thousands of dollars damage to fields and towns and city streets.

VALUATION OF PROPERTY IN STATE \$18,000,000

Beauty Parlors Draw Men, Too

CHICAGO, Aug. 22 (AP)—Are American men becoming infatuated with beauty parlors? No, but they are scattering into beauty parlors, some boldly, some timidly, in great numbers.

REDUCTION APPLIES MAINLY TO AGRICULTURE WITH PUBLIC UTILITIES ASSUMING INCREASED PUBLIC BURDEN

(By The Associated Press) (CHICAGO, Aug. 22 (AP)—Idaho will be taxed on a valuation of \$18,000,000 to \$20,000,000 a year that last year through an action of the state board of equalization.

ONE WORKMAN DIES IN ILLINOIS STRIKE

Scene of Disorder in Tense Situation Shifts to South As Wage Dispute Continues

VALUATION OF PROPERTY IN STATE \$18,000,000

Beauty Parlors Draw Men, Too

REDUCTION APPLIES MAINLY TO AGRICULTURE WITH PUBLIC UTILITIES ASSUMING INCREASED PUBLIC BURDEN

(By The Associated Press) (CHICAGO, Aug. 22 (AP)—Idaho will be taxed on a valuation of \$18,000,000 to \$20,000,000 a year that last year through an action of the state board of equalization.

ONE WORKMAN DIES IN ILLINOIS STRIKE

Scene of Disorder in Tense Situation Shifts to South As Wage Dispute Continues

VALUATION OF PROPERTY IN STATE \$18,000,000

Beauty Parlors Draw Men, Too

Idaho Tax Board Cuts Valuation of Property in State \$18,000,000

Beauty Parlors Draw Men, Too

CHICAGO, Aug. 22 (AP)—Are American men becoming infatuated with beauty parlors? No, but they are scattering into beauty parlors, some boldly, some timidly, in great numbers.

REDUCTION APPLIES MAINLY TO AGRICULTURE WITH PUBLIC UTILITIES ASSUMING INCREASED PUBLIC BURDEN

(By The Associated Press) (CHICAGO, Aug. 22 (AP)—Idaho will be taxed on a valuation of \$18,000,000 to \$20,000,000 a year that last year through an action of the state board of equalization.

ONE WORKMAN DIES IN ILLINOIS STRIKE

Scene of Disorder in Tense Situation Shifts to South As Wage Dispute Continues

SPRINGFIELD, Ill., Aug. 22 (AP)—Scene of disorder in Illinois mine strike situation, as result of opposition to the new contract wage scale, shifted from Central Illinois to southern Illinois today as one miner was killed and at least six other miners and a child were slightly wounded in two clashes at Ziegler, near here.

VALUATION OF PROPERTY IN STATE \$18,000,000

Beauty Parlors Draw Men, Too

REDUCTION APPLIES MAINLY TO AGRICULTURE WITH PUBLIC UTILITIES ASSUMING INCREASED PUBLIC BURDEN

(By The Associated Press) (CHICAGO, Aug. 22 (AP)—Idaho will be taxed on a valuation of \$18,000,000 to \$20,000,000 a year that last year through an action of the state board of equalization.

ONE WORKMAN DIES IN ILLINOIS STRIKE

Scene of Disorder in Tense Situation Shifts to South As Wage Dispute Continues

VALUATION OF PROPERTY IN STATE \$18,000,000

Beauty Parlors Draw Men, Too

REDUCTION APPLIES MAINLY TO AGRICULTURE WITH PUBLIC UTILITIES ASSUMING INCREASED PUBLIC BURDEN

(By The Associated Press) (CHICAGO, Aug. 22 (AP)—Idaho will be taxed on a valuation of \$18,000,000 to \$20,000,000 a year that last year through an action of the state board of equalization.

ONE WORKMAN DIES IN ILLINOIS STRIKE

Scene of Disorder in Tense Situation Shifts to South As Wage Dispute Continues

VALUATION OF PROPERTY IN STATE \$18,000,000

Beauty Parlors Draw Men, Too

REDUCTION APPLIES MAINLY TO AGRICULTURE WITH PUBLIC UTILITIES ASSUMING INCREASED PUBLIC BURDEN

(By The Associated Press) (CHICAGO, Aug. 22 (AP)—Idaho will be taxed on a valuation of \$18,000,000 to \$20,000,000 a year that last year through an action of the state board of equalization.

ONE WORKMAN DIES IN ILLINOIS STRIKE

Scene of Disorder in Tense Situation Shifts to South As Wage Dispute Continues

Idaho Tax Board Cuts Valuation of Property in State \$18,000,000

Beauty Parlors Draw Men, Too

CHICAGO, Aug. 22 (AP)—Are American men becoming infatuated with beauty parlors? No, but they are scattering into beauty parlors, some boldly, some timidly, in great numbers.

REDUCTION APPLIES MAINLY TO AGRICULTURE WITH PUBLIC UTILITIES ASSUMING INCREASED PUBLIC BURDEN

(By The Associated Press) (CHICAGO, Aug. 22 (AP)—Idaho will be taxed on a valuation of \$18,000,000 to \$20,000,000 a year that last year through an action of the state board of equalization.

ONE WORKMAN DIES IN ILLINOIS STRIKE

Scene of Disorder in Tense Situation Shifts to South As Wage Dispute Continues

SPRINGFIELD, Ill., Aug. 22 (AP)—Scene of disorder in Illinois mine strike situation, as result of opposition to the new contract wage scale, shifted from Central Illinois to southern Illinois today as one miner was killed and at least six other miners and a child were slightly wounded in two clashes at Ziegler, near here.

VALUATION OF PROPERTY IN STATE \$18,000,000

Beauty Parlors Draw Men, Too

REDUCTION APPLIES MAINLY TO AGRICULTURE WITH PUBLIC UTILITIES ASSUMING INCREASED PUBLIC BURDEN

(By The Associated Press) (CHICAGO, Aug. 22 (AP)—Idaho will be taxed on a valuation of \$18,000,000 to \$20,000,000 a year that last year through an action of the state board of equalization.

ONE WORKMAN DIES IN ILLINOIS STRIKE

Scene of Disorder in Tense Situation Shifts to South As Wage Dispute Continues

VALUATION OF PROPERTY IN STATE \$18,000,000

Beauty Parlors Draw Men, Too

REDUCTION APPLIES MAINLY TO AGRICULTURE WITH PUBLIC UTILITIES ASSUMING INCREASED PUBLIC BURDEN

(By The Associated Press) (CHICAGO, Aug. 22 (AP)—Idaho will be taxed on a valuation of \$18,000,000 to \$20,000,000 a year that last year through an action of the state board of equalization.

ONE WORKMAN DIES IN ILLINOIS STRIKE

Scene of Disorder in Tense Situation Shifts to South As Wage Dispute Continues

VALUATION OF PROPERTY IN STATE \$18,000,000

Beauty Parlors Draw Men, Too

REDUCTION APPLIES MAINLY TO AGRICULTURE WITH PUBLIC UTILITIES ASSUMING INCREASED PUBLIC BURDEN

(By The Associated Press) (CHICAGO, Aug. 22 (AP)—Idaho will be taxed on a valuation of \$18,000,000 to \$20,000,000 a year that last year through an action of the state board of equalization.

ONE WORKMAN DIES IN ILLINOIS STRIKE

Scene of Disorder in Tense Situation Shifts to South As Wage Dispute Continues



Copyright, 1932, by The New York Tribune, Inc.



### TWIN FALLS CITY COUNCIL REDUCES BUDGET \$11,300

Session Breaks Precedent And Cuts Total Figures For Current Year From \$112,673 to \$101,373

Sweeping revision, reducing the annual budget for the city of Twin Falls from \$112,673 to \$101,373, a total cut of \$11,300 was adopted last night at the regular meeting of the council. Eight of the 12 departments of municipal government were affected.

The city budget for the current year was adopted May 15. Revision of a municipal budget is said to be unusual after its adoption and is believed to be unprecedented in the history of the city.

Members of the council said that this action was not taken in any spirit of parsimony, but was simply precautionary. When the budget was adopted in May, the estimated assessed valuation of Twin Falls made by the council and on which the budget was based, was \$4,600,000. Complete certified figures furnished by the office of the county auditor, just received, show that this figure is a quarter of a million dollars too low and that the total assessed valuation is actually \$4,850,000 this year.

The second largest item of the budget has been in the police department where the total has been reduced from \$125,000 to \$110,000. This item is stated, reduction of the police force by two men; \$2000 from salaries for special officers; \$100 from fund for disposal of dogs; \$2000 from fund for board of prisoners; \$300 from fund for motor vehicle operation and repairs; \$200 from fund for telegraph and telephone calls; and \$100 for miscellaneous items.

The water department receives the third heaviest reduction, \$2100, cutting the total from \$42,000 to \$39,900. Cuts include pipes and filter fixtures, \$800; repairs, \$200; electric, \$800; operation, \$1000. The heaviest relative cut in the item of scales where the sum is reduced from \$700 to \$400. This department is cut \$600 from \$13,280 to \$12,680; the administration department is cut \$1000 from \$14,570 to \$13,570; the park department is cut \$800 from \$1810 to \$1010; and the health department is cut \$200 from \$2500 to \$2300.

The budget for the municipal police force is reduced \$1000 from \$125,000 to \$110,000, and meat and dairy inspection, \$2000 were untouched.

States under the sprinkling ordinance as ordered varied will be the same as last year. It was announced: five calls for paving streets in the residence district; six calls for paved streets in the business district and seven calls for city and grave streets. Common sprinkling paved streets in the residence district and every closing of the sprinkling season is expected to reduce the cost it was stated.

RESIDENTS OF OAKLEY ENJOY TWO MEETINGS

OAKLEY, Aug. 22 (Special to The News)—A dough event and a club session were featured here last week in Oakley.

Ask any teacher of cooking. Ask any dietitian. Ask them this: Which do you prefer? Cream of Tartar Baking Powder. Or a cheap one containing a substitute.

### VICTIM OF BLAST AT 'SHOSHONE IMPROVES

HERSONSON, Aug. 22 (Special to The News)—Condie Hersonson, who was hurt when an underground gas tank which he was repairing exploded, is feeling much better. The accident happened on Saturday evening, and Mr. Hersonson was taken to the hospital. The tank exploded, and he was burned about the upper part of the body and face.

### HONORS MARK RITES FOR AGED VETERAN

Many Join in Tribute to W. G. Sampson, 90-Year-Old, Civil War Soldier

With military honors, largely attended funeral services were held for William G. Sampson, 90-year-old Civil War veteran and Twin Falls county auditor, who died early last Friday at his residence in Kimberly following ill health of several months duration.

Interment was in Twin Falls cemetery, following services at 10:00 a. m. at the chapel conducted by Rev. C. W. Cronk of Hansen Community church. A firing squad composed of Idaho national guard members, including the late Lieutenant Elmer W. Jones, Twin Falls, fired the three-volley salute over the grave, and a national guard bugle sounded taps at the close of the service.

Services at the chapel included singing of three hymns, "Nearby My God to Thee," "Tenting Tonight," and "The Old Churchyard." A quartet composed of Mrs. C. W. Cronk, Mrs. Robinson, W. Taylor and A. R. Scott, Kansas, with accompaniment at the piano by Mrs. J. R. Hall.

### SHERIFF INVESTIGATES CASTLEFORD EXPLOSION

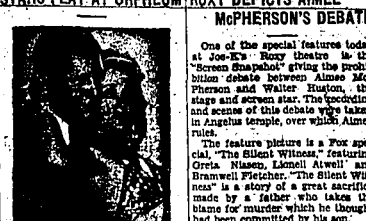
Explosion of dynamite which tore a hole in the roof of the building occupied by the postoffice at Castleford and a gas station, and destruction among Castleford residents last week, has been investigated by Sheriff E. F. Peterson. The explosion occurred Monday, following an investigation.

The sheriff took from the roof of the damaged building a handful of shredded paper resembling the paper wrapper used in packing dynamite. Indications, he said, were that the dynamite was an outgrowth of apple work. Federal authorities probably will continue the investigation, it was indicated.

Mrs. Bertha E. Severe, Alona McMurray, Bernice Mackey, Thora Martindale, Priscilla Martindale, Anna Mercer, Anna Butler, Vendia Moynaux, Louise Peterson, Bernice Nelson, Betty Elson, Wilma Dahlquist and Luella Anderson.

Mrs. Ray Bedke entertained the Oakley bridge club at her home this week. Those present were Mrs. Charles Elliott, Mrs. C. B. Beymer, Mrs. Melvin Elson, John E. Murray, Mrs. C. H. McMurray, Mrs. W. W. Quillan, Mrs. J. Verne Thompson, Mrs. Bill Quillan and Mrs. Ollie Baker. Guest of the club were Mrs. Verne Peterson, Miss Odette Critchfield, and Mrs. Fred Robinson. Guest prize was won by Mrs. W. W. Quillan; guest prize, by Mrs. Verne Peterson; and cut prize by Mrs. C. H. McMurray.

### STARS PLAY AT ORPHEUM ROXY DEPICTS ALMEE



One of the special features today at Joe E. Ruppert's Orpheum Theatre is the play "The Silent Witness" giving the prohibition debate between Almee McPherson and Walter Whelan, the stars and screen star. The background and scenes of this debate were taken in Angulus temple, over which Almee ruled.

### ROOSEVELT LEADERS VISIT IN TWIN FALLS

W. A. Pife, Pocatello, Idaho chairman of the National Business and Professional League, headquarters of which is in New York City, visited Twin Falls yesterday accompanied by J. B. Galt, brother of the present Republican state auditor, E. C. Galt. He conferred with Asher B. Lloyd, chairman of the Second congressional district Democratic committee; D. J. Cavanagh, chairman of the Idaho county Democratic committee; and with T. J. Lloyd, president, Juneau H. Shinn and E. E. Babcock, vice presidents, and James D. Whelan, secretary of the Roosevelt and Garner club of Idaho, and several Democratic officials regarding presidential campaign developments.

### SOCIALIST SPEAKER DRAWS VIVID CROWD

Dr. R. B. Green, Chicago, campaign speaker for the Socialist party, drew a vivid picture of what he declared to be unbalanced condition of incomes received by the few concentrated with those received by the majority of the producing classes of the United States in an address in the city park last night, presided over by H. H. Freedheim, of this city, secretary of the Idaho State Socialist party.

## 100 MILES per Day

### EDDIE PULLEN DRIVES 33,000 MILES IN 33 DAYS IN NEW FORD V-8

Veteran automotive expert gives Ford V-8 3 Years Hard Driving in one month! Dashes over a variety, 31 mile, road, in desert temperatures, at every speed, under every sort of strain that could be put on an automobile.

ENDURANCE!! STAMINA!! ECONOMY!! From 9:30 a. m., June 6, to 2:35 p. m., July 9, on the road constantly, without stop except for service... covering a total of 33,801 miles, in 33 days, 4 hours and 25 minutes, at an average of 46.661 miles per hour, and this high speed was maintained, even for several stops, day and night for more than 33 consecutive days.

HERE ARE PROOFS... NOT PROMISES 19.64 miles per gallon of gas... 1,000 miles on 8/10 quart of oil... 27,625 miles per set of tires... Don't guess—don't wonder how your new car will form three years from now. Buy the new Ford V-8 and KNOW.

### RUPERT'S SOCIAL EVENTS FLOURISH

Parties, Celebrations and Club Events Head Activities During Week End

RUPERT, Aug. 22 (Special to The News)—Card parties, birthday celebrations, club gatherings and a number of other social events occupied the social activities in Rupert for the past week.

One of the largest parties was given by Mrs. Rose Woodford, Wednesday afternoon for the "Lucky" thirteen club, and other guests for the occasion. Mrs. George A. Suggal and Mrs. Carl Lippe received the afternoon's visitors.

Mrs. F. C. Lowder was the inspiration of a large family gathering at the Lowder home Friday. It being her sister's birthday, Mrs. Lowder was honored by Mrs. Mattie Smith, now of Whittier, and Mrs. Elsie Prutting, Los Angeles, former residents here who have been spending this summer in Rupert and Paul, Mrs. Joe H. Pettit and Mrs. S. Anna Ellis entertained at a bridge party at the Pettit and Mrs. Anna Pettit home by Mrs. Charles Collins and Mrs. Edna Nelson.

Virginia Judd entertained a group of friends Wednesday evening with a swimming party in the canal and a waffle supper at the home of her parents, Mr. and Mrs. H. E. Judd. The event concluded with a summer party at the Judd home.

Mrs. H. E. Judd was hostess Friday afternoon to the Bon Poi Social club. Mrs. Elton Larsen and Mrs. Harvey Johnson were guests. A short program was presented during the afternoon. Virginia Judd played a piano solo, Mrs. Judd and Mrs. Johnson gave a vocal duet, Mrs. Johnson accompanying on the guitar.

As a special courtesy to Mrs. East Broadhead, members of the Bon Poi club went to her home Monday, Ganges provided amusement for the afternoon. There were a dozen ladies present.

The largest social gathering of the week took place Thursday night when members of Rupert Second Ward church tendered an evening party to Bishop Frank Hammond, residing in Oregon and to his wife and family. Program numbers were given by Irene, Annie and Elsie Mabel, H. M. Don, Frank Watson, Alvin Cattani, John Nisbet, Mrs. A. C. Duffin, Morris Baker, R. C. May and a chorus of girls, directed by Zella Humphreys. Bishop Hammond was presented with a beautiful watch chain, the gift of the ward. The last of the evening was devoted to dancing.

Mrs. Vern Dawley and sister, Miss Minnie Swanson, entertained at a three-table bridge party at the home of their mother, Mrs. Anna Swanson Thursday afternoon. Mrs. Gladys Ballard and Mrs. Paul Spradlin received prizes. Bertha the three tables of guests, Mrs. Mabel Woodson, Burley, was a member of the company.

## THE FIRST TIME EVER OFFERED IN TWIN FALLS

### Read This Ad Carefully It Means Money Saved For You

# The Idaho Dept. Store Places On Sale Now

## FULL FASHIONED Silk Hosiery UNCONDITIONALLY GUARANTEED

# 85¢ pair

HERE IS THE GUARANTEE

If for any reason at any time you are dissatisfied with this hose return it and receive a new pair FREE.

ALL THAT WE ASK OF YOU IS

That the returned hose be accompanied by the guarantee card that goes with every pair and that the card be signed by yourself.

## Two Numbers are Stocked

NO. 200 SERVICE WEIGHT  
7 thread, Narrow French heel, 45 gauge, built up toe, peccot top, lace welting, mercerized top.

NO. 100 SEMI-CHIFFON WEIGHT  
4 thread, 45 gauge, all silk to top, peccot top, built up toe, Narrow French heel.

AND A SPECIAL OFFER FOR ALL WEEK

With every pair of full fashioned silk hosiery sold in our department from 49c up you will receive

# FREE

A Regular 10c Package Of Lux AND---

## MISS FARNSWORTH, an EXPERT

On the proper washing of all kinds of fabrics has been sent to us by the manufacturers of Lux to help you with your washing problems.

DO YOU KNOW HOW TO WASH SILK HOSE SO IT WON'T STREAK?

WHAT IS THE PROPER WAY TO WASH WOOLEN GOODS TO AVOID SHRINKING?

HOW SHOULD SHEER SILK UNDERWEAR BE WASHED?

Miss Farnsworth answers all of these and any other questions you want to ask her.

SHE WILL BE IN THE DEPARTMENT ALL DAY AND EVERY DAY THIS WEEK

# Idaho Dept. Store

EXCLUSIVE HOME OF KAYSER HOSIERY





# St. Louis Drubs Yanks, 5-1, While Cubs Beat Phils, 8-4

## Irving Hadley's Hurling Figures In 1932 Records

Browns' Right-Hander Sets Slugging Gotham Aggregation Down With Only Four Scattered Bingles

### GAMES TODAY

AMERICAN LEAGUE  
St. Louis at New York  
Detroit at Washington  
Chicago at Philadelphia

### STANDINGS

Club	Won	Lost	Pct.
New York	27	23	.542
Philadelphia	27	23	.542
Washington	27	23	.542
St. Louis	27	23	.542
Chicago	27	23	.542
Detroit	27	23	.542

(By The Associated Press)  
NEW YORK, Aug. 22.—Irving Hadley, St. Louis right-hander, set the slugging Yankees down, 5 to 1, on four scattered hits today and took for a last time would have gained the distinction of being the first pitcher to shut-out the Yankees this year.

Earl Coombes opened the game with a sharp center that got away from Schultz and booted for a triple. Moments later to score on Joe Sawicki's infield out. But for that, Hadley had the Yankees stopped as cold as an iceberg's nose.

In the last eight frames the Phils collected only three hits, all of them by Ben Chapman, and never went down swinging as Hadley's curves. The veteran leaved eight-inning, but did not hit his own change. Babe Ruth struck out three times.

White Harold was thus taming the local legion. Hadley's speed was having his troubles. The bespectacled star gave up 11 hits, eight runs in the St. Louis lineup hitting safely and "Close". Goulin punching a home run.

ST. LOUIS AB R H O A E

Schulte, c	5	2	1	0	0
Burns, 1b	5	1	1	1	0
Conroy, 2b	4	1	1	0	0
Garns, 3b	4	1	1	0	0
Ferrill, c	4	1	2	0	0
McCarthy, 1b	4	1	2	0	0
Schultz, 3b	4	2	2	0	0
Lewis, 2b	4	1	1	0	0
Hadley, p	2	0	0	0	0

TOTALS AB R H O A E

36	5	11	27	10	1
----	---	----	----	----	---

NEW YORK AB R H O A E  
Columb, c  
Sevell, 3b  
Ruth, 1b  
Cobb, 2b  
Lazear, 2b  
Dickey, c  
Chapman, 1b  
Cronin, 1b  
Crowell, 1b  
MacFadden, p

TOTALS AB R H O A E

36	5	11	27	10	1
----	---	----	----	----	---

PHILADELPHIA AB R H O A E  
Punk, c  
Hays, 2b  
Seeds, 1b  
Sullivan, 1b  
Appling, 1b  
Relph, 3b  
Barnes, 1b  
Berry, c  
Gallivan, p

TOTALS AB R H O A E

36	1	4	27	10	1
----	---	---	----	----	---

PHILADELPHIA AB R H O A E

36	1	4	27	10	1
----	---	---	----	----	---

## SURPRISE

• We promise you a surprise in shaving comfort when you try the Gillette BLUE SUPER-BLADE. Secret tempering methods, a patented center slot, automatic manufacture, exclusive testing equipment—these features and many others contribute to the quality of this excellent blade.

LOOK FOR THIS SIGN  
Exide  
Kyle M. Waite  
ELECTRICIAN  
MOTOR REWINDING  
Next to Postoffice Hood Tires.

## DUMB BELLS

HAVE YOU ANY LUBRICATING OIL? WILL YOU GIVE ME ONE IF YOU HAVE ANY?



HEAVY, 1 2 0 0 0  
COCHRAN, 2 2 2 2 1 0  
Brimmer, 1 0 0 0 0 0  
Cox, 1b 0 0 1 0 0 0  
McNeil, 1 0 0 1 4 0 0  
Foye, 2b 4 1 1 0 0 0  
Grove, p 2 2 2 0 0 0

TOTALS AB R H O A E  
100 000 000-0  
Philadelphia 100 000 000-0  
Summary: Two-base hits—Bull-va, Blahop, 2 Fox, Cochrane 2; home run—Grove; sacrifice—Hays; error—Grove; double play—Bull-va; Hays to Sullivan; 2; Bishop to McNeil; Fox; McNeil to Bishop to Fox; McNeil to Fox.

### SENATORS & CLEVELAND

CLEVELAND, Aug. 22 (AP)—Big Fred Marberry, after a season devoted mostly to relief pitching, shut out Cleveland today with one bingle, a single by Porter, the first man to face him, Washington, won, 4 to 0.

His four men got to first base and none reached second. Porter was erased on a double play. Vomack walked twice and began out to first base, but he was out at first. Other- wise there was no semblance of trouble for the Senators' battery.

Porter, Marberry, and Marberry had the ninth to help the pitching effort of the busy right-hander. But for the most part, Marberry had the opposition popping up, over-throwing into easy plays.

CLEVELAND AB R H O A E

Porter, 1b	4	1	2	0	0
Burns, 1b	4	0	1	0	0
Conroy, 2b	4	0	1	0	0
Vomack, 1b	4	0	0	0	0
Morgan, 1b	3	0	1	0	0
Cassell, 2b	3	0	1	0	0
Kinn, 3b	3	0	1	0	0
Stull, c	3	0	0	0	0
Ward, 1b	3	0	0	0	0
Ward, 1b	3	0	0	0	0
X Powers	3	0	0	0	0

TOTALS AB R H O A E  
27 0 12 21 10  
Batted for Hudlin in eighth.

WASHINGTON AB R H O A E

Blanch, 2b	4	0	3	0	0
McCarthy, 1b	4	1	2	0	0
Conroy, 2b	4	0	2	0	0
Reynolds, 1b	4	0	0	0	0
West, c	3	0	3	0	0
Ward, 1b	3	0	0	0	0
Apper, c	4	0	2	0	0
MacBerry, p	4	1	2	0	0

TOTALS AB R H O A E  
34 4 10 27 10  
Summary: Two-base hits—Mar- uah, Cronin, Kuhn; stolen base—Kuhn; double play—Kerr to Cron- in to Kuhn; pitcher—Marberry.

### BOSTON & DETROIT

BOSTON, Aug. 22 (AP)—A two-bagger by Tom Oliver with two out and two on the base and the home run and two runs and gave the Red Sox a 5-to-3 victory over Detroit today.

Cleard Walker, Detroit's ace, hit a home run in the eighth, put his team in the lead with a home run over the left-field fence. Marberry had for the Sox with a man on base in the fifth.

DETROIT AB R H O A E

Davis, 1b	4	1	1	0	0
Gehringer, 2b	4	1	2	0	0
Conroy, 1b	4	1	1	0	0
Walker, 1b	4	1	1	0	0
Webb, 1b	4	0	1	0	0
Wright, 1b	4	0	1	0	0
Rhul, 3b	3	1	0	0	0
Richardson, 3b	3	0	0	0	0
Keasdale, 1b	3	0	0	0	0
Olson, 2b	3	0	0	0	0
McMahon, 2b	3	0	0	0	0
Stump, 1b	4	2	2	0	0
Alexander, 1b	4	2	2	0	0

TOTALS AB R H O A E  
34 5 22 18  
Two-out hit in ninth, when winning run scored.

BOSTON AB R H O A E

Olson, 2b	5	0	2	1	0
McMahon, 2b	5	0	0	0	0
Stump, 1b	4	2	2	0	0
Alexander, 1b	4	2	2	0	0

## Windy City Team Increases Margin At Top of League

Chicagoans Hammer "Flint" Rhem and John Berley for 13 Hits, and Take Advantage of Ragged Fielding

CHICAGO, Aug. 22.—Chicago increased their lead over Brooklyn in the National League championship race to three games by winning their third straight over Philadelphia today, 8 to 4.

The victory was topped "Flint" Rhem and John Berley for 13 hits, and were further aided by some ragged fielding on the part of the Phils. "Bud" Thinning started for the Cubs and gained credit for his fourth victory, although Bushy Goyne relieved him when the Phils threatened in the fifth.

PHILADELPHIA AB R H O A E  
G. Davis, c 5 0 1 4 0 1  
Barrett, 1b 3 0 2 4 0 1  
Cassell, 2b 3 0 2 0 0 0  
Wright, 1b 3 1 3 2 0 0  
Whitely, 3b 4 1 2 2 0 0  
Cronin, 1b 3 0 2 0 0 0  
V. Davis, c 3 0 1 0 1 0  
"Tod" 3 0 0 0 0 0  
Fryberg, 2b 4 3 0 0 0 1  
Cassell, 2b 3 0 0 0 0 0  
Rhem, p 2 0 0 0 0 0  
Hendricks 1 0 0 0 0 0  
Berley, 1b 1 0 0 0 0 0  
J. Hill 1 0 0 0 0 0  
McCurdy 1 0 0 0 0 0

TOTALS AB R H O A E  
33 4 10 24 10  
Batted for Rhem in seventh.  
Berley for Fryberg in ninth.  
Batted for McCurdy in ninth.

CHICAGO AB R H O A E  
Herrman, 2b 5 0 2 8 0 0  
Huges, 3b 2 1 1 0 2 0  
Ottima, 3b 4 2 2 0 0 0  
Stenphenson, 1b 4 1 1 0 0 0  
Moore, c 4 1 1 3 0 0  
Grimm, 1b 4 0 2 0 0 0  
Hartnett, c 4 0 2 1 2 0  
Koenig, 2b 4 2 1 6 0 0  
Trumbull, p 2 1 1 0 0 0  
Griffin, p 2 1 1 0 0 0

TOTALS AB R H O A E  
36 8 13 27 11  
Chicago 101 000 000-0  
Summary: Two-base hits—Herrman, Cobb, Hurd; stolen bases—Jurgens; sacrifice—Jurgens; double play—Cobb to Herrman; Hurd to Herrman; Koenig to Herrman to Griffin; Batted for Fryberg to Hurd; Hurd; pitcher—Thinning.

Jolley, 1b 4 1 1 3 0 0  
Oliver, 1b 4 0 1 6 0 0  
Cassell, 2b 4 0 1 2 0 0  
Conroy, 1b 4 0 1 2 0 0  
Andrew, 1b 4 0 1 0 0 0  
X Johnson 4 0 0 0 0 0  
X Wagner 4 0 0 0 0 0  
Kline, p 4 0 0 0 0 0

TOTALS AB R H O A E  
36 1 4 27 11  
Batted for Andrews in eighth.  
X-Batted for Johnson in eighth.  
X-Batted for Johnson in eighth.  
Summary: Two-base hits—Gehring, Picking 2, Jolley, Oliver; three-base hits—Stones; home runs—Walker, Alexander; sacrifice—Desaulais, Stump, Andrew; double play—Davis to Rogell to Davis; Gehring to Rogell to Davis; Rogers to Gehring to Rogell; walking—Olson, Alexander; winning pitcher—Kline.

## GAMES TODAY

PACIFIC COAST LEAGUE  
Sacramento at Seattle  
Columbia at Portland  
Stockton at Minner  
San Francisco at Los Angeles

## Twin Falls Whips Paul and Wendell Beats Castleford

Twin Falls baseball team invoked the spirit of a track meet to defeat the visiting Pauls, 24 to 4, in an inland league game Sunday afternoon.

The victory puts Twin Falls in a tie for second place.

Wendell F. Castleford 9  
Castleford, Aug. 22 (Special)  
Twin Falls, 24 to 4, in an inland league game Sunday afternoon.

Wendell F. Castleford 9  
Castleford, Aug. 22 (Special)  
Twin Falls, 24 to 4, in an inland league game Sunday afternoon.

## Kaye Don Tests Boat at Detroit

DETROIT, Aug. 22 (AP)—World's fastest motorboat, with her pilot, Kaye Don, today speeded at the helm of a foaming wake over the Harroworth course in Lake St. Clair today. Kaye Don, a 100-horsepower boat, was estimated from 110 to 115 miles an hour.

It was the first test of Miss Kaye Don's new motorboat, the "Kaye Don", which she had purchased from the estate of her late husband, Kaye Don, who had been killed in a plane crash.

The first test of the Harroworth race will be run September 3, with successive heats on September 3 and 4.

DETROIT, Aug. 22 (AP)—Pirates 4-0  
Pittsburgh, Aug. 22 (AP)—Pirates could get no better than an "awful break" with the New York Giants today, winning the first hit, 5 to 1.

With Meins turning in one of his finest performances of the year, the opener was a simple matter for the Pirates. Three Giant pitchers were hammered for 14 hits, Jimmy Mooney being driven from the box under a four-run barrage in the fifth.

Adam commended by the finishing touches on the big left-hander by hitting a home run inside the park with two on base.

Waite Hoyt went the route for the Giants in the second game and, although he gave up nine hits, was tight in the benches and held the Buccos scoreless after he had been given his minimum margin in the sixth inning. Leon Chagnon went seven frames for the Pirates and was charged with the defeat.

NEW YORK AB R H O A E  
Fitzhugh, 1b 4 0 0 1 0 0  
Batterman, 1b 4 0 0 1 0 0  
Moosey, 1b 4 0 0 1 0 0  
Schmuckler and Hogan; Meins and Padgett.

TOTALS AB R H O A E  
36 1 4 27 11  
Batted for Andrews in eighth.  
X-Batted for Johnson in eighth.  
Summary: Two-base hits—Gehring, Picking 2, Jolley, Oliver; three-base hits—Stones; home runs—Walker, Alexander; sacrifice—Desaulais, Stump, Andrew; double play—Davis to Rogell to Davis; Gehring to Rogell to Davis; Rogers to Gehring to Rogell; walking—Olson, Alexander; winning pitcher—Kline.

## World Trapshoot Scores Fall Again

VANDALLIA, Ohio, Aug. 22 (AP)—World trapshoot scores were smashed right and left today as those championships of North America were decided in the third day's events of the thirty-third annual grand American handtrap tournament.

Five marksmen broke 200 straight targets, a hitherto unbroken feat in class championships, establishing a mark that probably will stand several years.

Another record was set when C. M. Leach, Calgary, Alberta, won the Class B title with a perfect score, the first time in the 22 years of the tournament. A Class B trophy has attained perfection.

In Class AA, Ralph Shookoff, Kenton, Ohio, won in a shoot-off with Steve Crothers, Channah Hill, Pennsylvania, and Walter Weaver, Pennsylvania, each of whom finished the regulation 300 targets without a miss. Shookoff was straight to continue his perfect score, while Crothers broke 69 and Weaver retired after missing his twenty-fifth target.

George Stauffer, Benton Harbor, Michigan, was the fifth 300 straight shooter over the course of the afternoon undisturbed possession of first place in Class A.

## Opal Hill Shows Golfing Ability

PEORIA, Ill., Aug. 22 (AP)—Mrs. Opal Hill, Kansas City, shot a par-breaking 71 over the course of the Peoria Country Club today, to win local honors and prove that she is the best woman golfer in the Midwest.

Her record was a 69 in the defense of her woman's "Western golf championship." Mrs. Hill shot 71 and 80 to best par by a stroke and lower the course record for women by one stroke over Mrs. J. W. Hill, Peoria, Ill.

Five starters shot 80 and had to play off for the last three qualifying places.

## Sunday's Results

NATIONAL LEAGUE  
Cubs 2, Pirates 1  
Reds 2, Pirates 0  
Dodgers 2, Giants 2  
Braves 7-2, Cards 5-2

AMERICAN LEAGUE  
Yanks 3, Browns 1  
Tigers 1-4, Red Sox 3-2  
No other games.

PACIFIC COAST LEAGUE  
Angels 5-2, Mission 5-7  
Oaks 4-3, Sees 18-4  
Seas 7-2, Stars 10-4  
Indians 7-3, Ducks 8-7

## Baseball Nines Pair for Clash

OMAHA, Aug. 22 (AP)—Pairings for the American Legion's annual junior baseball tournament, in which regional play will open here tomorrow, were announced tonight.

New Orleans and Minneapolis will open the elimination contest at 7 P. M. Aug. 23. Seattle and Salt Lake City will meet, Los Angeles and Boulder, Colorado, each drew two and were paired for one of the semifinals Wednesday.

ONE DAY AUTOMATIC BATTERY CHARGING  
50c  
24 Plates \$4.95  
BATTERIES \$4.95  
Fast-Start Batteries  
E. O. HAVENS BATTERY CO.

## STATZ, LOS ANGELES OUTFIELDER, SETS COAST BASE HITTING CLIP

(By The Associated Press)  
SAN FRANCISCO, Aug. 22.—Arnold Statz, single-eye outfielder of Los Angeles, continued his base hitting clip to lead Pacific coast league batting in games up to and including yesterday's contests. Official averages released today showed Statz on the top of the column among his teammates with a percentage of 387. Johnny Bassler, Hollywood, catcher, was a point behind, with Lou Finsky, Portland flanneler, was in third place with 356.

LEADING BATTERS—  
G AB R H RBI Pct.  
Statz, Los Angeles 143 40 8 124 202 4 2 287  
Bassler, Hollywood 122 34 11 125 0 2 285  
Finsky, Portland 143 32 9 107 0 5 108  
Schubert, Los Angeles 90 28 8 126 4 18 352  
Burns, Seattle 138 54 14 146 7 18 344  
Muesel, Hollywood 111 30 23 82 4 3 244  
Statz, Los Angeles 80 20 27 102 6 14 340  
R. Johnson, Portland 128 40 9 104 25 9 323  
Malanca, Missoula 111 30 2 10 10 5 1 322

## FIGHTS

RELINGER WINS  
BUFFALO, N. Y., Aug. 22 (AP)—Charley Belanger, Canadian light-heavyweight champion, tonight stopped Jimmy Slattery, former boxer of the light-heavyweight division, in two rounds, and took only 25 seconds of the second round.

Slattery, showing little in his comeback attempt, was helpless after Belanger knocked him out with a right to the jaw in the first minute of the battle, and belatedly from pillar to post. In the second round, after Slattery had been knocked down again, and was reeling about under Belanger's attack, referee Dick O'Leary halted proceedings. Belanger weighed 160½ and Slattery 165½.

## HAZELTON DEFEATS HANSEN NINE, 8-7

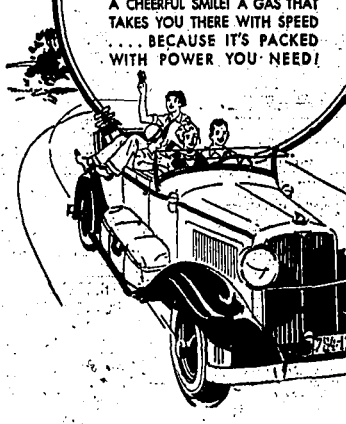
HAZELTON, Aug. 22 (Special)  
The Hazelton-Hampton defeated Hansen, 8 to 7, in a close contest on the local diamond Sunday afternoon.

The score—R. H. Hansen 500 001 000-7, 9-3; Hazelton 100 000 000-8. Batters: Smith and Brown; Lulworth and Kalky.

## BIG SIX

(By The Associated Press)  
PARIS, Aug. 22 (AP)—A special committee of the International Olympic Union today awarded the verdict in a 15-round boxing bout at Marseille July 10 to "Panama" Al Brown of the Central Zone, over Kiki Francis of New York. No verdict was given at the time.

## FOR CONOCO SERVICE SUPREME SEE H. M. BEAM Opposite Washington School



HERE'S OUR PASSPORT, WERE ON OUR WAY... SIGHTS TO SEE, AND HOW WELL PLAY! ROAD MAPS MARKED FOR EVERY MILE... AND SERVICE WITH A CHEERFUL SMILE! A GAS THAT TAKES YOU THERE WITH SPEED... BECAUSE IT'S PACKED WITH POWER YOU NEED!

Let's Go! with CONOCO  
THE Gasoline THAT'S PACKED WITH POWER!  
CHACE ANDERSON Gives CONOCO SERVICE with a Smile  
Main West and Fourth Street

Sure we have a hidden quart. But there's nothing else about our service. RICHARD'S CONOCO SERVICE STATION  
Main and Blue Lakes Blvd.

## Jerome, Hailey And Twin Falls Meet on Court

SPRINGFIELD, Aug. 22 (Special)  
The Jerome, Hailey, and Twin Falls tennis acts competed at the court court Sunday afternoon before a large gallery. Results follow:

Jerome, Hailey, and Twin Falls tennis acts competed at the court court Sunday afternoon before a large gallery. Results follow:

Jerome, Hailey, and Twin Falls tennis acts competed at the court court Sunday afternoon before a large gallery. Results follow:

Jerome, Hailey, and Twin Falls tennis acts competed at the court court Sunday afternoon before a large gallery. Results follow:

Jerome, Hailey, and Twin Falls tennis acts competed at the court court Sunday afternoon before a large gallery. Results follow:

## SINUS INFECTION

Hay Fever  
Colds  
Sore Throat  
Cough  
Bronchitis  
Allergies  
DR. H. W. HILL  
Phone 1244

## YOU GET MORE Pay For IN A UNION MOTOR CO. USED CAR

WE HAVE A LOT OF VALUES  
1929 Ford Standard Coupe \$160  
1929 Model A Tudor Sedan \$165  
1928 Oldsmobile Coach \$160  
1926 Ford Standard Coupe \$225  
1929 Ford Tudor Sedan \$225  
1929 Ford Town Sedan \$215  
1931 Chevrolet Deluxe Coach \$350  
1931 Ford Standard Coupe \$350  
1931 Ford Standard Coupe \$325  
1930 Ford Sedan \$350  
1930 Ford Panel Delivery \$300

## YOU GET MORE Pay For IN A UNION MOTOR CO. USED CAR

WE HAVE A LOT OF VALUES  
1929 Ford Standard Coupe \$160  
1929 Model A Tudor Sedan \$165  
1928 Oldsmobile Coach \$160  
1926 Ford Standard Coupe \$225  
1929 Ford Tudor Sedan \$225  
1929 Ford Town Sedan \$215  
1931 Chevrolet Deluxe Coach \$350  
1931 Ford Standard Coupe \$350  
1931 Ford Standard Coupe \$325  
1930 Ford Sedan \$350  
1930 Ford Panel Delivery \$300

## YOU GET MORE Pay For IN A UNION MOTOR CO. USED CAR

WE HAVE A LOT OF VALUES  
1929 Ford Standard Coupe \$160  
1929 Model A Tudor Sedan \$165  
1928 Oldsmobile Coach \$160  
1926 Ford Standard Coupe \$225  
1929 Ford Tudor Sedan \$225  
1929 Ford Town Sedan \$215  
1931 Chevrolet Deluxe Coach \$350  
1931 Ford Standard Coupe \$350  
1931 Ford Standard Coupe \$325  
1930 Ford Sedan \$350  
1930 Ford Panel Delivery \$300

## YOU GET MORE Pay For IN A UNION MOTOR CO. USED CAR

WE HAVE A LOT OF VALUES  
1929 Ford Standard Coupe \$160  
1929 Model A Tudor Sedan \$165  
1928 Oldsmobile Coach \$160  
1926 Ford Standard Coupe \$225  
1929 Ford Tudor Sedan \$225  
1929 Ford Town Sedan \$215  
1931 Chevrolet Deluxe Coach \$350  
1931 Ford Standard Coupe \$350  
1931 Ford Standard Coupe \$325  
1930 Ford Sedan \$350  
1930 Ford Panel Delivery \$300

## YOU GET MORE Pay For

STOCK PRICES RISE TO NEW HIGH LEVEL

In Flurry of Buying Many Issues Record Advances Of From 1 to 5 Points

MARKETS AT A GLANCE

NEW YORK, Aug. 28 (AP)—Stocks: Strong; rails lead broad advance. Bonds: Strong; railroads buoyant. Com: Strong; rattles force ahead. Foreign exchanges: Irregular; sterling lower. Cattle: Higher; trade and Wall street buyers; higher cables. Sugar: Quiet; steady spot market.

Stock Market Averages

Table with columns for NY Stock Index, NY Bond Index, NY Cotton Index, NY Sugar Index, NY Wheat Index, NY Corn Index, NY Soybean Index, NY Lumber Index, NY Cattle Index, NY Sheep Index, NY Hogs Index, NY Poultry Index, NY Eggs Index, NY Butter Index, NY Cheese Index, NY Flour Index, NY Rice Index, NY Beans Index, NY Peas Index, NY Lentils Index, NY Oats Index, NY Barley Index, NY Rye Index, NY Triticale Index, NY Misc. Grains Index, NY Fats Index, NY Oils Index, NY Resins Index, NY Gums Index, NY Waxes Index, NY Rubber Index, NY Leather Index, NY Textiles Index, NY Metals Index, NY Chemicals Index, NY Pharmaceuticals Index, NY Consumer Goods Index, NY Industrial Index, NY Utility Index, NY Transportation Index, NY Real Estate Index, NY Finance Index, NY Insurance Index, NY Entertainment Index, NY Miscellaneous Index.

GOVERNMENT BONDS

NEW YORK, Aug. 27 (AP)—Bond quotations: Liberty 3 1/2s 87-47 100.20; Liberty 4 1/2s 87-47 101.11; Liberty 5 1/2s 87-47 102.02; Liberty 6 1/2s 87-47 102.93; Treasury 4 1/2s 87-47 101.14; Treasury 5 1/2s 87-47 102.05; Treasury 6 1/2s 87-47 102.96; Treasury 7 1/2s 87-47 103.87; Treasury 8 1/2s 87-47 104.78; Treasury 9 1/2s 87-47 105.69; Treasury 10 1/2s 87-47 106.60; Treasury 11 1/2s 87-47 107.51; Treasury 12 1/2s 87-47 108.42; Treasury 13 1/2s 87-47 109.33; Treasury 14 1/2s 87-47 110.24; Treasury 15 1/2s 87-47 111.15; Treasury 16 1/2s 87-47 112.06; Treasury 17 1/2s 87-47 112.97; Treasury 18 1/2s 87-47 113.88; Treasury 19 1/2s 87-47 114.79; Treasury 20 1/2s 87-47 115.70; Treasury 21 1/2s 87-47 116.61; Treasury 22 1/2s 87-47 117.52; Treasury 23 1/2s 87-47 118.43; Treasury 24 1/2s 87-47 119.34; Treasury 25 1/2s 87-47 120.25; Treasury 26 1/2s 87-47 121.16; Treasury 27 1/2s 87-47 122.07; Treasury 28 1/2s 87-47 122.98; Treasury 29 1/2s 87-47 123.89; Treasury 30 1/2s 87-47 124.80; Treasury 31 1/2s 87-47 125.71; Treasury 32 1/2s 87-47 126.62; Treasury 33 1/2s 87-47 127.53; Treasury 34 1/2s 87-47 128.44; Treasury 35 1/2s 87-47 129.35; Treasury 36 1/2s 87-47 130.26; Treasury 37 1/2s 87-47 131.17; Treasury 38 1/2s 87-47 132.08; Treasury 39 1/2s 87-47 132.99; Treasury 40 1/2s 87-47 133.90; Treasury 41 1/2s 87-47 134.81; Treasury 42 1/2s 87-47 135.72; Treasury 43 1/2s 87-47 136.63; Treasury 44 1/2s 87-47 137.54; Treasury 45 1/2s 87-47 138.45; Treasury 46 1/2s 87-47 139.36; Treasury 47 1/2s 87-47 140.27; Treasury 48 1/2s 87-47 141.18; Treasury 49 1/2s 87-47 142.09; Treasury 50 1/2s 87-47 143.00; Treasury 51 1/2s 87-47 143.91; Treasury 52 1/2s 87-47 144.82; Treasury 53 1/2s 87-47 145.73; Treasury 54 1/2s 87-47 146.64; Treasury 55 1/2s 87-47 147.55; Treasury 56 1/2s 87-47 148.46; Treasury 57 1/2s 87-47 149.37; Treasury 58 1/2s 87-47 150.28; Treasury 59 1/2s 87-47 151.19; Treasury 60 1/2s 87-47 152.10; Treasury 61 1/2s 87-47 153.01; Treasury 62 1/2s 87-47 153.92; Treasury 63 1/2s 87-47 154.83; Treasury 64 1/2s 87-47 155.74; Treasury 65 1/2s 87-47 156.65; Treasury 66 1/2s 87-47 157.56; Treasury 67 1/2s 87-47 158.47; Treasury 68 1/2s 87-47 159.38; Treasury 69 1/2s 87-47 160.29; Treasury 70 1/2s 87-47 161.20; Treasury 71 1/2s 87-47 162.11; Treasury 72 1/2s 87-47 163.02; Treasury 73 1/2s 87-47 163.93; Treasury 74 1/2s 87-47 164.84; Treasury 75 1/2s 87-47 165.75; Treasury 76 1/2s 87-47 166.66; Treasury 77 1/2s 87-47 167.57; Treasury 78 1/2s 87-47 168.48; Treasury 79 1/2s 87-47 169.39; Treasury 80 1/2s 87-47 170.30; Treasury 81 1/2s 87-47 171.21; Treasury 82 1/2s 87-47 172.12; Treasury 83 1/2s 87-47 173.03; Treasury 84 1/2s 87-47 173.94; Treasury 85 1/2s 87-47 174.85; Treasury 86 1/2s 87-47 175.76; Treasury 87 1/2s 87-47 176.67; Treasury 88 1/2s 87-47 177.58; Treasury 89 1/2s 87-47 178.49; Treasury 90 1/2s 87-47 179.40; Treasury 91 1/2s 87-47 180.31; Treasury 92 1/2s 87-47 181.22; Treasury 93 1/2s 87-47 182.13; Treasury 94 1/2s 87-47 183.04; Treasury 95 1/2s 87-47 183.95; Treasury 96 1/2s 87-47 184.86; Treasury 97 1/2s 87-47 185.77; Treasury 98 1/2s 87-47 186.68; Treasury 99 1/2s 87-47 187.59; Treasury 100 1/2s 87-47 188.50; Treasury 101 1/2s 87-47 189.41; Treasury 102 1/2s 87-47 190.32; Treasury 103 1/2s 87-47 191.23; Treasury 104 1/2s 87-47 192.14; Treasury 105 1/2s 87-47 193.05; Treasury 106 1/2s 87-47 193.96; Treasury 107 1/2s 87-47 194.87; Treasury 108 1/2s 87-47 195.78; Treasury 109 1/2s 87-47 196.69; Treasury 110 1/2s 87-47 197.60; Treasury 111 1/2s 87-47 198.51; Treasury 112 1/2s 87-47 199.42; Treasury 113 1/2s 87-47 200.33; Treasury 114 1/2s 87-47 201.24; Treasury 115 1/2s 87-47 202.15; Treasury 116 1/2s 87-47 203.06; Treasury 117 1/2s 87-47 203.97; Treasury 118 1/2s 87-47 204.88; Treasury 119 1/2s 87-47 205.79; Treasury 120 1/2s 87-47 206.70; Treasury 121 1/2s 87-47 207.61; Treasury 122 1/2s 87-47 208.52; Treasury 123 1/2s 87-47 209.43; Treasury 124 1/2s 87-47 210.34; Treasury 125 1/2s 87-47 211.25; Treasury 126 1/2s 87-47 212.16; Treasury 127 1/2s 87-47 213.07; Treasury 128 1/2s 87-47 213.98; Treasury 129 1/2s 87-47 214.89; Treasury 130 1/2s 87-47 215.80; Treasury 131 1/2s 87-47 216.71; Treasury 132 1/2s 87-47 217.62; Treasury 133 1/2s 87-47 218.53; Treasury 134 1/2s 87-47 219.44; Treasury 135 1/2s 87-47 220.35; Treasury 136 1/2s 87-47 221.26; Treasury 137 1/2s 87-47 222.17; Treasury 138 1/2s 87-47 223.08; Treasury 139 1/2s 87-47 223.99; Treasury 140 1/2s 87-47 224.90; Treasury 141 1/2s 87-47 225.81; Treasury 142 1/2s 87-47 226.72; Treasury 143 1/2s 87-47 227.63; Treasury 144 1/2s 87-47 228.54; Treasury 145 1/2s 87-47 229.45; Treasury 146 1/2s 87-47 230.36; Treasury 147 1/2s 87-47 231.27; Treasury 148 1/2s 87-47 232.18; Treasury 149 1/2s 87-47 233.09; Treasury 150 1/2s 87-47 234.00; Treasury 151 1/2s 87-47 234.91; Treasury 152 1/2s 87-47 235.82; Treasury 153 1/2s 87-47 236.73; Treasury 154 1/2s 87-47 237.64; Treasury 155 1/2s 87-47 238.55; Treasury 156 1/2s 87-47 239.46; Treasury 157 1/2s 87-47 240.37; Treasury 158 1/2s 87-47 241.28; Treasury 159 1/2s 87-47 242.19; Treasury 160 1/2s 87-47 243.10; Treasury 161 1/2s 87-47 244.01; Treasury 162 1/2s 87-47 244.92; Treasury 163 1/2s 87-47 245.83; Treasury 164 1/2s 87-47 246.74; Treasury 165 1/2s 87-47 247.65; Treasury 166 1/2s 87-47 248.56; Treasury 167 1/2s 87-47 249.47; Treasury 168 1/2s 87-47 250.38; Treasury 169 1/2s 87-47 251.29; Treasury 170 1/2s 87-47 252.20; Treasury 171 1/2s 87-47 253.11; Treasury 172 1/2s 87-47 254.02; Treasury 173 1/2s 87-47 254.93; Treasury 174 1/2s 87-47 255.84; Treasury 175 1/2s 87-47 256.75; Treasury 176 1/2s 87-47 257.66; Treasury 177 1/2s 87-47 258.57; Treasury 178 1/2s 87-47 259.48; Treasury 179 1/2s 87-47 260.39; Treasury 180 1/2s 87-47 261.30; Treasury 181 1/2s 87-47 262.21; Treasury 182 1/2s 87-47 263.12; Treasury 183 1/2s 87-47 264.03; Treasury 184 1/2s 87-47 264.94; Treasury 185 1/2s 87-47 265.85; Treasury 186 1/2s 87-47 266.76; Treasury 187 1/2s 87-47 267.67; Treasury 188 1/2s 87-47 268.58; Treasury 189 1/2s 87-47 269.49; Treasury 190 1/2s 87-47 270.40; Treasury 191 1/2s 87-47 271.31; Treasury 192 1/2s 87-47 272.22; Treasury 193 1/2s 87-47 273.13; Treasury 194 1/2s 87-47 274.04; Treasury 195 1/2s 87-47 274.95; Treasury 196 1/2s 87-47 275.86; Treasury 197 1/2s 87-47 276.77; Treasury 198 1/2s 87-47 277.68; Treasury 199 1/2s 87-47 278.59; Treasury 200 1/2s 87-47 279.50; Treasury 201 1/2s 87-47 280.41; Treasury 202 1/2s 87-47 281.32; Treasury 203 1/2s 87-47 282.23; Treasury 204 1/2s 87-47 283.14; Treasury 205 1/2s 87-47 284.05; Treasury 206 1/2s 87-47 284.96; Treasury 207 1/2s 87-47 285.87; Treasury 208 1/2s 87-47 286.78; Treasury 209 1/2s 87-47 287.69; Treasury 210 1/2s 87-47 288.60; Treasury 211 1/2s 87-47 289.51; Treasury 212 1/2s 87-47 290.42; Treasury 213 1/2s 87-47 291.33; Treasury 214 1/2s 87-47 292.24; Treasury 215 1/2s 87-47 293.15; Treasury 216 1/2s 87-47 294.06; Treasury 217 1/2s 87-47 294.97; Treasury 218 1/2s 87-47 295.88; Treasury 219 1/2s 87-47 296.79; Treasury 220 1/2s 87-47 297.70; Treasury 221 1/2s 87-47 298.61; Treasury 222 1/2s 87-47 299.52; Treasury 223 1/2s 87-47 300.43; Treasury 224 1/2s 87-47 301.34; Treasury 225 1/2s 87-47 302.25; Treasury 226 1/2s 87-47 303.16; Treasury 227 1/2s 87-47 304.07; Treasury 228 1/2s 87-47 304.98; Treasury 229 1/2s 87-47 305.89; Treasury 230 1/2s 87-47 306.80; Treasury 231 1/2s 87-47 307.71; Treasury 232 1/2s 87-47 308.62; Treasury 233 1/2s 87-47 309.53; Treasury 234 1/2s 87-47 310.44; Treasury 235 1/2s 87-47 311.35; Treasury 236 1/2s 87-47 312.26; Treasury 237 1/2s 87-47 313.17; Treasury 238 1/2s 87-47 314.08; Treasury 239 1/2s 87-47 314.99; Treasury 240 1/2s 87-47 315.90; Treasury 241 1/2s 87-47 316.81; Treasury 242 1/2s 87-47 317.72; Treasury 243 1/2s 87-47 318.63; Treasury 244 1/2s 87-47 319.54; Treasury 245 1/2s 87-47 320.45; Treasury 246 1/2s 87-47 321.36; Treasury 247 1/2s 87-47 322.27; Treasury 248 1/2s 87-47 323.18; Treasury 249 1/2s 87-47 324.09; Treasury 250 1/2s 87-47 325.00; Treasury 251 1/2s 87-47 325.91; Treasury 252 1/2s 87-47 326.82; Treasury 253 1/2s 87-47 327.73; Treasury 254 1/2s 87-47 328.64; Treasury 255 1/2s 87-47 329.55; Treasury 256 1/2s 87-47 330.46; Treasury 257 1/2s 87-47 331.37; Treasury 258 1/2s 87-47 332.28; Treasury 259 1/2s 87-47 333.19; Treasury 260 1/2s 87-47 334.10; Treasury 261 1/2s 87-47 335.01; Treasury 262 1/2s 87-47 335.92; Treasury 263 1/2s 87-47 336.83; Treasury 264 1/2s 87-47 337.74; Treasury 265 1/2s 87-47 338.65; Treasury 266 1/2s 87-47 339.56; Treasury 267 1/2s 87-47 340.47; Treasury 268 1/2s 87-47 341.38; Treasury 269 1/2s 87-47 342.29; Treasury 270 1/2s 87-47 343.20; Treasury 271 1/2s 87-47 344.11; Treasury 272 1/2s 87-47 345.02; Treasury 273 1/2s 87-47 345.93; Treasury 274 1/2s 87-47 346.84; Treasury 275 1/2s 87-47 347.75; Treasury 276 1/2s 87-47 348.66; Treasury 277 1/2s 87-47 349.57; Treasury 278 1/2s 87-47 350.48; Treasury 279 1/2s 87-47 351.39; Treasury 280 1/2s 87-47 352.30; Treasury 281 1/2s 87-47 353.21; Treasury 282 1/2s 87-47 354.12; Treasury 283 1/2s 87-47 355.03; Treasury 284 1/2s 87-47 355.94; Treasury 285 1/2s 87-47 356.85; Treasury 286 1/2s 87-47 357.76; Treasury 287 1/2s 87-47 358.67; Treasury 288 1/2s 87-47 359.58; Treasury 289 1/2s 87-47 360.49; Treasury 290 1/2s 87-47 361.40; Treasury 291 1/2s 87-47 362.31; Treasury 292 1/2s 87-47 363.22; Treasury 293 1/2s 87-47 364.13; Treasury 294 1/2s 87-47 365.04; Treasury 295 1/2s 87-47 365.95; Treasury 296 1/2s 87-47 366.86; Treasury 297 1/2s 87-47 367.77; Treasury 298 1/2s 87-47 368.68; Treasury 299 1/2s 87-47 369.59; Treasury 300 1/2s 87-47 370.50; Treasury 301 1/2s 87-47 371.41; Treasury 302 1/2s 87-47 372.32; Treasury 303 1/2s 87-47 373.23; Treasury 304 1/2s 87-47 374.14; Treasury 305 1/2s 87-47 375.05; Treasury 306 1/2s 87-47 375.96; Treasury 307 1/2s 87-47 376.87; Treasury 308 1/2s 87-47 377.78; Treasury 309 1/2s 87-47 378.69; Treasury 310 1/2s 87-47 379.60; Treasury 311 1/2s 87-47 380.51; Treasury 312 1/2s 87-47 381.42; Treasury 313 1/2s 87-47 382.33; Treasury 314 1/2s 87-47 383.24; Treasury 315 1/2s 87-47 384.15; Treasury 316 1/2s 87-47 385.06; Treasury 317 1/2s 87-47 385.97; Treasury 318 1/2s 87-47 386.88; Treasury 319 1/2s 87-47 387.79; Treasury 320 1/2s 87-47 388.70; Treasury 321 1/2s 87-47 389.61; Treasury 322 1/2s 87-47 390.52; Treasury 323 1/2s 87-47 391.43; Treasury 324 1/2s 87-47 392.34; Treasury 325 1/2s 87-47 393.25; Treasury 326 1/2s 87-47 394.16; Treasury 327 1/2s 87-47 395.07; Treasury 328 1/2s 87-47 395.98; Treasury 329 1/2s 87-47 396.89; Treasury 330 1/2s 87-47 397.80; Treasury 331 1/2s 87-47 398.71; Treasury 332 1/2s 87-47 399.62; Treasury 333 1/2s 87-47 400.53; Treasury 334 1/2s 87-47 401.44; Treasury 335 1/2s 87-47 402.35; Treasury 336 1/2s 87-47 403.26; Treasury 337 1/2s 87-47 404.17; Treasury 338 1/2s 87-47 405.08; Treasury 339 1/2s 87-47 405.99; Treasury 340 1/2s 87-47 406.90; Treasury 341 1/2s 87-47 407.81; Treasury 342 1/2s 87-47 408.72; Treasury 343 1/2s 87-47 409.63; Treasury 344 1/2s 87-47 410.54; Treasury 345 1/2s 87-47 411.45; Treasury 346 1/2s 87-47 412.36; Treasury 347 1/2s 87-47 413.27; Treasury 348 1/2s 87-47 414.18; Treasury 349 1/2s 87-47 415.09; Treasury 350 1/2s 87-47 416.00; Treasury 351 1/2s 87-47 416.91; Treasury 352 1/2s 87-47 417.82; Treasury 353 1/2s 87-47 418.73; Treasury 354 1/2s 87-47 419.64; Treasury 355 1/2s 87-47 420.55; Treasury 356 1/2s 87-47 421.46; Treasury 357 1/2s 87-47 422.37; Treasury 358 1/2s 87-47 423.28; Treasury 359 1/2s 87-47 424.19; Treasury 360 1/2s 87-47 425.10; Treasury 361 1/2s 87-47 426.01; Treasury 362 1/2s 87-47 426.92; Treasury 363 1/2s 87-47 427.83; Treasury 364 1/2s 87-47 428.74; Treasury 365 1/2s 87-47 429.65; Treasury 366 1/2s 87-47 430.56; Treasury 367 1/2s 87-47 431.47; Treasury 368 1/2s 87-47 432.38; Treasury 369 1/2s 87-47 433.29; Treasury 370 1/2s 87-47 434.20; Treasury 371 1/2s 87-47 435.11; Treasury 372 1/2s 87-47 436.02; Treasury 373 1/2s 87-47 436.93; Treasury 374 1/2s 87-47 437.84; Treasury 375 1/2s 87-47 438.75; Treasury 376 1/2s 87-47 439.66; Treasury 377 1/2s 87-47 440.57; Treasury 378 1/2s 87-47 441.48; Treasury 379 1/2s 87-47 442.39; Treasury 380 1/2s 87-47 443.30; Treasury 381 1/2s 87-47 444.21; Treasury 382 1/2s 87-47 445.12; Treasury 383 1/2s 87-47 446.03; Treasury 384 1/2s 87-47 446.94; Treasury 385 1/2s 87-47 447.85; Treasury 386 1/2s 87-47 448.76; Treasury 387 1/2s 87-47 449.67; Treasury 388 1/2s 87-47 450.58; Treasury 389 1/2s 87-47 451.49; Treasury 390 1/2s 87-47 452.40; Treasury 391 1/2s 87-47 453.31; Treasury 392 1/2s 87-47 454.22; Treasury 393 1/2s 87-47 455.13; Treasury 394 1/2s 87-47 456.04; Treasury 395 1/2s 87-47 456.95; Treasury 396 1/2s 87-47 457.86; Treasury 397 1/2s 87-47 458.77; Treasury 398 1/2s 87-47 459.68; Treasury 399 1/2s 87-47 460.59; Treasury 400 1/2s 87-47 461.50; Treasury 401 1/2s 87-47 462.41; Treasury 402 1/2s 87-47 463.32; Treasury 403 1/2s 87-47 464.23; Treasury 404 1/2s 87-47 465.14; Treasury 405 1/2s 87-47 466.05; Treasury 406 1/2s 87-47 466.96; Treasury 407 1/2s 87-47 467.87; Treasury 408 1/2s 87-47 468.78; Treasury 409 1/2s 87-47 469.69; Treasury 410 1/2s 87-47 470.60; Treasury 411 1/2s 87-47 471.51; Treasury 412 1/2s 87-47 472.42; Treasury 413 1/2s 87-47 473.33; Treasury 414 1/2s 87-47 474.24; Treasury 415 1/2s 87-47 475.15; Treasury 416 1/2s 87-47 476.06; Treasury 417 1/2s 87-47 476.97; Treasury 418 1/2s 87-47 477.88; Treasury 419 1/2s 87-47 478.79; Treasury 420 1/2s 87-47 479.70; Treasury 421 1/2s 87-47 480.61; Treasury 422 1/2s 87-47 481.52; Treasury 423 1/2s 87-47 482.43; Treasury 424 1/2s 87-47 483.34; Treasury 425 1/2s 87-47 484.25; Treasury 426 1/2s 87-47 485.16; Treasury 427 1/2s 87-47 486.07; Treasury 428 1/2s 87-47 486.98; Treasury 429 1/2s 87-47 487.89; Treasury 430 1/2s 87-47 488.80; Treasury 431 1/2s 87-47 489.71; Treasury 432 1/2s 87-47 490.62; Treasury 433 1/2s 87-47 491.53; Treasury 434 1/2s 87-47 492.44; Treasury 435 1/2s 87-47 493.35; Treasury 436 1/2s 87-47 494.26; Treasury 437 1/2s 87-47 495.17; Treasury 438 1/2s 87-47 496.08; Treasury 439 1/2s 87-47 496.99; Treasury 440 1/2s 87-47 497.90; Treasury 441 1/2s 87-47 498.81; Treasury 442 1/2s 87-47 499.72; Treasury 443 1/2s 87-47 500.63; Treasury 444 1/2s 87-47 501.54; Treasury 445 1/2s 87-47 502.45; Treasury 446 1/2s 87-47 503.36; Treasury 447 1/2s 87-47 504.27; Treasury 448 1/2s 87-47 505.18; Treasury 449 1/2s 87-47 506.09; Treasury 450 1/2s 87-47 507.00; Treasury 451 1/2s 87-47 507.91; Treasury 452 1/2s 87-47 508.82; Treasury 453 1/2s 87-47 509.73; Treasury 454 1/2s 87-47 510.64; Treasury 455 1/2s 87-47 511.55; Treasury 456 1/2s 87-47 512.46; Treasury 457 1/2s 87-47 513.37; Treasury 458 1/2s 87-47 514.28; Treasury 459 1/2s 87-47 515.19; Treasury 460 1/2s 87-47 516.10; Treasury 461 1/2s 87-47 517.01; Treasury 462 1/2s 87-47 517.92; Treasury 463 1/2s 87-47 518.83; Treasury 464 1/2s 87-47 519.74; Treasury 465 1/2s 87-47 520.65; Treasury 466 1/2s 87-47 521.56; Treasury 467 1/2s 87-47 522.47; Treasury 468 1/2s 87-47 523.38; Treasury 469 1/2s 87-47 524.29; Treasury 470 1/2s 87-47 525.20; Treasury 471 1/2s 87-47 526.11; Treasury 472 1/2s 87-47 527.02; Treasury 473 1/2s 87-47 527.93; Treasury 474 1/2s 87-47 528.84; Treasury 475 1/2s 87-47 529.75; Treasury 476 1/2s 87-47 530.66; Treasury 477 1/2s 87-47 531.57; Treasury 478 1/2s 87-47 532.48; Treasury 479 1/2s 87-47 533.39; Treasury 480 1/2s 87-47 534.30; Treasury 481 1/2s 87-47 535.21; Treasury 482 1/2s 87-47 536.12; Treasury 483 1/2s 87-47 537.03; Treasury 484 1/2s 87-47 537.94; Treasury 485 1/2s 87-47 538.85; Treasury 486 1/2s 87-47 539.76; Treasury 487 1/2s 87-47 540.67; Treasury 488 1/2s 87-47 541.58; Treasury 489 1/2s 87-47 542.49; Treasury 490 1/2s 87-47 543.40; Treasury 491 1



# AUGUST BLANKET EVENT

Presenting The Low Ebb of Prices and The High Tide of Blanket Values  
**It's The Blanket Event Of Events**  
 STARTING TUESDAY AUGUST 23rd



We've outdone all former efforts in assembling for our customers the PEAK of Blanket VALUES from America and Europe. Every Blanket is a SPECTACULAR VALUE outstanding for QUALITY, BEAUTY and LOW PRICING. We bring them to you at the LOWEST PRICES EVER QUOTED. The varieties are better, the qualities higher and values greater. You may never again buy quality Blankets at such low prices.



**"Beacon Part Wool Blankets"**  
**\$3.57**

REMARKABLE VALUE  
 This is a Blanket in Rose, Maize, Nile and Blue Plaids, with 3-inch Sateen binding. The quality is beautiful, the size 70x80, the weight 4 1/2 lbs. and the price is exceedingly low.

**Great Blanket Values At Unusual Savings**

**Sunglow**  
 Single Blankets  
**87c**

"Decoration by Day—Comfort by Night"

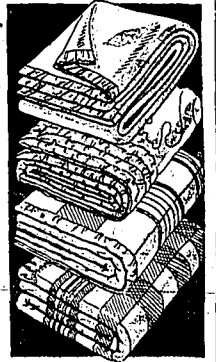
Sunglow is a lovely fancy Cotton Single Blanket, size 70x80 with stitched ends. It's to be had in several pleasing color combinations and in such interesting patterns as Tulip Garden, Cape Cod and Daffodil. It presents more Blanket for your outlay.

SOMETHING NEW  
**Swarma**  
 SILK AND WOOL BLANKETS  
 20% Silk—80% Wool  
 WARMTH WITH LESS WEIGHT **\$3.97**

It's a Silk and Wool Blanket making for beauty and unusual strength. It's a new idea in Blankets. Contains Silk for luxury and long wear and wool for soft, thick warmth. This Blanket has been thoroughly washed with soap at the mill and has been shrunken in the process. The size is 70x84. Has a beautiful Charmeuse binding.

Now Is The Time To Buy Your Blankets

USE OUR CONVENIENT PAYMENT PLAN  
 A SMALL DOWN PAYMENT AND A LITTLE EACH MONTH  
 WHEN YOU NEED THE BLANKETS THEY WILL BE PAID FOR AND YOU WILL HARDLY REALIZE IT



**BEACON'S KISMET PLAID PART WOOL BLANKETS**  
**\$1.57**

Kismet is a beautiful Reversible Beacon single Blanket with a 3-inch Sateen binding. Really, it's a wonderful value. Comes in a wide assortment of very attractive Plaid patterns. The size is 66x80, the price remarkably low.

**BEACON'S CAMEO BLANKETS**  
 MARVELOUS VALUES **\$1.97**

Cameo is a part Wool Blanket, size 70x80, weighing 3 1/2 lbs. It is beautiful in its assorted Plaid colorings and has a 3-inch sateen binding. It's unequalled for value and beauty.

**BEACON'S AGAWAM INDIAN BLANKETS**  
**\$1.87**

Agawam, the well known Beacon Indian Blanket, is another Beacon triumph for beauty. It is Reversible in size 60x80, and has a 1 1/2-inch Sateen binding. It comes in brilliant Indian designs and colorings and is brought to you at a new low price.

**BEACON'S B & H PART WOOL BLANKETS**  
**\$2.97**

Here are two outstanding Beacon Part Wool Blanket Values, known in every household. This year, they are in the larger 72x84 double bed size. "B" is a part wool with 3-inch Sateen binding. In plain colors of Rose, Blue, Orchid, Green and Gold with fancy borders. Weighs 4 1/2 lbs. Beacon "H" is a part wool Blanket with 3-inch Sateen binding, in beautiful Plaid designs. It weighs 4 1/2 pounds.

**Nashua's Snowden**

UNUSUAL VALUE FOR **\$1.17**  
 DOUBLE SIZE 70x80

Snowden is a lovely soft Cotton Sheet-Blanket, double bed size, 70x80, and weighs 2 1/2 lbs. In most attractive Plaid designs in Blue, Rose, Orchid, Green and Peach, with a band of White with contrasting stripes. Yes it's a remarkable value.

**BEACON'S YUKON BLANKETS**  
**\$2.97**

Yukon is a Reversible Blanket in fancy Indian Jacquard patterns, in what's apparently an unending assortment of colors. The size is 72x84. Has an attractive Sateen binding. There's a pattern in "Yukon" to please every taste, without a doubt, and the low price is pleasing, too. It's mighty outstanding in value.

**ALL WOOL BLANKETS**  
**\$5.00**  
 SENSATIONAL VALUES

The TOP value ever offered in a Blanket Event. It's a 5-pound ALL VIRGIN WOOL two-tone Plaid Blanket with Sateen bound ends, and wide stripe borders. In size 70x80, it's an eclipsing ALL WOOL BLANKET VALUE.

**BEACON'S NOMAD FANCY BLANKETS**  
**\$2.97**

And of such unusual beauty. Nomad in another of Beacon's fancy Blankets in Rose, Green, Blue, Tan and Gold with handsome fancy borders. This is a Reversible Blanket that has an extra wide Sateen binding. You buy this at a new low price.

**Beautiful All-Wool REVERSIBLE SINGLE BLANKETS**

**\$3.87**

Here's truly remarkable value in a Reversible single Blanket weighing 3 1/2 lbs. It comes in a wide assortment of good colors and is Sateen bound. It's a value with an instant thrift appeal.

**The Ionic From HOLLAND**

**Wonderfully Woven Imported Blankets**

**70-x 84 \$11.95**

A genuine Holland Blanket and Holland knows how to weave them. It's in beautiful colorings and fancy designs. Made in the large size 70x84 (all virgin wool, of course), perfectly made and simply loaded with warmth. You'll love this Blanket.

**BEACON'S INCA INDIAN BLANKETS**  
 THEY'RE POSITIVELY STUNNING AND 'BEGGAR' PROPER DESCRIPTION **\$2.97**

Never before, we believe, has Beacon produced such a beautiful Blanket as it presents in "Inca." Inca should be seen to be appreciated to its fullest extent. Weighs 3 1/2 lbs., has 4-inch Sateen binding and the old Inca patterns in various color assortments simply make one marvel at their beauty. They are the blending of a color "Master." The size is 70x80.



SPARKLING COLORFUL MODERN BLANKETS BROUGHT TO YOU AT MOST UNUSUAL SAVINGS

**BIG VALUE SINGLE BLANKETS**

BEAUTIFUL PLAID COTTONS **39c**

Here is a Twill weave beautiful Plaid Cotton Sheet Blanket. It's a single Blanket in the popular 70x80 size. It comes in a wide color assortment and is a real buy, you'll immediately agree.

**THE LENOX**  
 70x80 DOUBLE SIZE **97c**

Lenox is the same Blanket as California below described except that it comes in colorful Blue, Rose, Orchid or Green Plaids, and in no plain colors. A fine buy.

**NASHUA'S TWO STORKS**  
 DOUBLE SIZE 70x80 **\$1.17**

Two Storks is the same Blanket as Snowden, above described, except it's in plain Gray or Tan with colored borders. It weighs 2 1/2 lbs. Both "Snowden" and this Blanket have attached ends.

**CALIFORNIA DOWNY COTTON BLANKETS**

70x80 DOUBLE SIZE **97c**

California, a double bed size Sheet Blanket, comes in plain Tans and Greys. This Blanket is slightly irregular but is an outstanding value at the price, nevertheless. It weighs 2 1/2 lbs., and will give lots of service.

**Beacon's "P" Blankets**

THEY'RE PERFECTLY LOVELY

**\$4.77**

The Beacon "P" is a 72x84 Double Bed size Jacquard Blanket weighing 5 lbs. It has a handsome 4-inch Sateen binding and comes in a color assortment of outstanding handsome borders. "Perfectly lovely" seems a fit phrase to express their beauty.



Buy Your Blankets Now On Our Convenient Payment Plan

A Small Deposit Down and Balance In Regular Payments  
 NO EXTRA CHARGE FOR THIS SERVICE

If you do not want to pay cash for your Blankets, buy them on our payment plan or have them placed in the Lay-a-Way. Terms may be arranged to suit your convenience.

**NASHUA PART WOOL "Durable Blankets"**  
 FOUR POUND BLANKETS

**\$2.77**

"Durable" Blankets, meaning just what the name implies, are beautiful in Rose, Maize, Nile and Blue Plaid designs. They have 3-inch Sateen bindings and come in the popular 70x80 double bed size. They are very outstanding in value.

**EUREKA PART WOOL BLANKETS**

A RUN OF THE MILL

**\$1.57**

"Eureka" is presented to you in an assortment of good colors. It is a part Wool Blanket, size 66x80 and offers much Blanket value for a very low price. One looking for a real bargain in a light weight Blanket will find it in "Eureka."



# C. C. ANDERSON CO.

BUHL TWIN FALLS GOODING WENDELL