

**12 PAGES — 5 CENTS**

## 1.

# LISTS OF PRIMARY ENTRIES COMPLETE

## Twenty-three Republicans, 24 Democrats Seek Nominations

BOISE, July 14 (AP)—Twenty-three Republicans and 24 Democrats have filed their names for nomination for the first congressional district, and the lists for nominations to congressional and state offices when the filing deadline passed tonight at 3 p. m.

There was still a chance, however, that the number of candidates would be increased by the filing of late entries. The lists were in the mail before the deadline persons who mailed them after the deadline would be eligible to appear at the primary.

There was still a chance, however, that the number of candidates would be increased by the filing of late entries. The lists were in the mail before the deadline persons who mailed them after the deadline would be eligible to appear at the primary.

There was still a chance, however, that the number of candidates would be increased by the filing of late entries. The lists were in the mail before the deadline persons who mailed them after the deadline would be eligible to appear at the primary.

There was still a chance, however, that the number of candidates would be increased by the filing of late entries. The lists were in the mail before the deadline persons who mailed them after the deadline would be eligible to appear at the primary.

There was still a chance, however, that the number of candidates would be increased by the filing of late entries. The lists were in the mail before the deadline persons who mailed them after the deadline would be eligible to appear at the primary.

There was still a chance, however, that the number of candidates would be increased by the filing of late entries. The lists were in the mail before the deadline persons who mailed them after the deadline would be eligible to appear at the primary.

There was still a chance, however, that the number of candidates would be increased by the filing of late entries. The lists were in the mail before the deadline persons who mailed them after the deadline would be eligible to appear at the primary.

There was still a chance, however, that the number of candidates would be increased by the filing of late entries. The lists were in the mail before the deadline persons who mailed them after the deadline would be eligible to appear at the primary.

There was still a chance, however, that the number of candidates would be increased by the filing of late entries. The lists were in the mail before the deadline persons who mailed them after the deadline would be eligible to appear at the primary.

There was still a chance, however, that the number of candidates would be increased by the filing of late entries. The lists were in the mail before the deadline persons who mailed them after the deadline would be eligible to appear at the primary.

# WEATHER

## FORECAST FOR TODAY AND TOMORROW—Idaho: Fair Sunday and Monday; somewhat lower temperature.

High and low temperatures yesterday as reported by the government weather observer were 92 and 67 degrees; there was a northwest wind and the sky was partly cloudy; barometric pressure at 5 p. m. was 29.87 and the humidity range, 88 to 92 per cent of saturation.

Weather a year ago was clear with temperatures of 92 and 62 degrees.

## Temperatures High In Western States

A broad area of low barometric pressure covers the interior western and middle states with the lowest values over Arizona, Utah, and western Colorado. As a result temperatures remain well above normal in this area. Unusually high values occurred in western Colorado and northern Utah; Grand Junction reporting a maximum of 102 degrees and Salt Lake City, 101. Fair weather over the Pacific coast, with traces of rain on the extreme Pacific coast and the middle Atlantic coast.

|             | Max. | Min. | Prev. | Wind. |       |
|-------------|------|------|-------|-------|-------|
| Boise       | 92   | 67   | 92    | SW    | Clear |
| Idaho Falls | 90   | 65   | 90    | SW    | Clear |
| Shoshone    | 88   | 63   | 88    | SW    | Clear |
| Blackfoot   | 86   | 61   | 86    | SW    | Clear |
| Arco        | 84   | 59   | 84    | SW    | Clear |
| Donnerstag  | 82   | 57   | 82    | SW    | Clear |
| Jerome      | 80   | 55   | 80    | SW    | Clear |
| Blaine      | 78   | 53   | 78    | SW    | Clear |
| Hamlet      | 76   | 51   | 76    | SW    | Clear |
| St. Paul    | 74   | 49   | 74    | SW    | Clear |
| Blackfoot   | 72   | 47   | 72    | SW    | Clear |
| Arco        | 70   | 45   | 70    | SW    | Clear |
| Donnerstag  | 68   | 43   | 68    | SW    | Clear |
| Jerome      | 66   | 41   | 66    | SW    | Clear |
| Blaine      | 64   | 39   | 64    | SW    | Clear |
| Hamlet      | 62   | 37   | 62    | SW    | Clear |
| St. Paul    | 60   | 35   | 60    | SW    | Clear |
| Blackfoot   | 58   | 33   | 58    | SW    | Clear |
| Arco        | 56   | 31   | 56    | SW    | Clear |
| Donnerstag  | 54   | 29   | 54    | SW    | Clear |
| Jerome      | 52   | 27   | 52    | SW    | Clear |
| Blaine      | 50   | 25   | 50    | SW    | Clear |
| Hamlet      | 48   | 23   | 48    | SW    | Clear |
| St. Paul    | 46   | 21   | 46    | SW    | Clear |
| Blackfoot   | 44   | 19   | 44    | SW    | Clear |
| Arco        | 42   | 17   | 42    | SW    | Clear |
| Donnerstag  | 40   | 15   | 40    | SW    | Clear |
| Jerome      | 38   | 13   | 38    | SW    | Clear |
| Blaine      | 36   | 11   | 36    | SW    | Clear |
| Hamlet      | 34   | 9    | 34    | SW    | Clear |
| St. Paul    | 32   | 7    | 32    | SW    | Clear |
| Blackfoot   | 30   | 5    | 30    | SW    | Clear |
| Arco        | 28   | 3    | 28    | SW    | Clear |
| Donnerstag  | 26   | 1    | 26    | SW    | Clear |
| Jerome      | 24   | -1   | 24    | SW    | Clear |
| Blaine      | 22   | -3   | 22    | SW    | Clear |
| Hamlet      | 20   | -5   | 20    | SW    | Clear |
| St. Paul    | 18   | -7   | 18    | SW    | Clear |
| Blackfoot   | 16   | -9   | 16    | SW    | Clear |
| Arco        | 14   | -11  | 14    | SW    | Clear |
| Donnerstag  | 12   | -13  | 12    | SW    | Clear |
| Jerome      | 10   | -15  | 10    | SW    | Clear |
| Blaine      | 8    | -17  | 8     | SW    | Clear |
| Hamlet      | 6    | -19  | 6     | SW    | Clear |
| St. Paul    | 4    | -21  | 4     | SW    | Clear |
| Blackfoot   | 2    | -23  | 2     | SW    | Clear |
| Arco        | 0    | -25  | 0     | SW    | Clear |
| Donnerstag  | -2   | -27  | -2    | SW    | Clear |
| Jerome      | -4   | -29  | -4    | SW    | Clear |
| Blaine      | -6   | -31  | -6    | SW    | Clear |
| Hamlet      | -8   | -33  | -8    | SW    | Clear |
| St. Paul    | -10  | -35  | -10   | SW    | Clear |
| Blackfoot   | -12  | -37  | -12   | SW    | Clear |
| Arco        | -14  | -39  | -14   | SW    | Clear |
| Donnerstag  | -16  | -41  | -16   | SW    | Clear |
| Jerome      | -18  | -43  | -18   | SW    | Clear |
| Blaine      | -20  | -45  | -20   | SW    | Clear |
| Hamlet      | -22  | -47  | -22   | SW    | Clear |
| St. Paul    | -24  | -49  | -24   | SW    | Clear |
| Blackfoot   | -26  | -51  | -26   | SW    | Clear |
| Arco        | -28  | -53  | -28   | SW    | Clear |
| Donnerstag  | -30  | -55  | -30   | SW    | Clear |
| Jerome      | -32  | -57  | -32   | SW    | Clear |
| Blaine      | -34  | -59  | -34   | SW    | Clear |
| Hamlet      | -36  | -61  | -36   | SW    | Clear |
| St. Paul    | -38  | -63  | -38   | SW    | Clear |
| Blackfoot   | -40  | -65  | -40   | SW    | Clear |
| Arco        | -42  | -67  | -42   | SW    | Clear |
| Donnerstag  | -44  | -69  | -44   | SW    | Clear |
| Jerome      | -46  | -71  | -46   | SW    | Clear |
| Blaine      | -48  | -73  | -48   | SW    | Clear |
| Hamlet      | -50  | -75  | -50   | SW    | Clear |
| St. Paul    | -52  | -77  | -52   | SW    | Clear |
| Blackfoot   | -54  | -79  | -54   | SW    | Clear |
| Arco        | -56  | -81  | -56   | SW    | Clear |
| Donnerstag  | -58  | -83  | -58   | SW    | Clear |
| Jerome      | -60  | -85  | -60   | SW    | Clear |
| Blaine      | -62  | -87  | -62   | SW    | Clear |
| Hamlet      | -64  | -89  | -64   | SW    | Clear |
| St. Paul    | -66  | -91  | -66   | SW    | Clear |
| Blackfoot   | -68  | -93  | -68   | SW    | Clear |
| Arco        | -70  | -95  | -70   | SW    | Clear |
| Donnerstag  | -72  | -97  | -72   | SW    | Clear |
| Jerome      | -74  | -99  | -74   | SW    | Clear |
| Blaine      | -76  | -101 | -76   | SW    | Clear |
| Hamlet      | -78  | -103 | -78   | SW    | Clear |
| St. Paul    | -80  | -105 | -80   | SW    | Clear |
| Blackfoot   | -82  | -107 | -82   | SW    | Clear |
| Arco        | -84  | -109 | -84   | SW    | Clear |
| Donnerstag  | -86  | -111 | -86   | SW    | Clear |
| Jerome      | -88  | -113 | -88   | SW    | Clear |
| Blaine      | -90  | -115 | -90   | SW    | Clear |
| Hamlet      | -92  | -117 | -92   | SW    | Clear |
| St. Paul    | -94  | -119 | -94   | SW    | Clear |
| Blackfoot   | -96  | -121 | -96   | SW    | Clear |
| Arco        | -98  | -123 | -98   | SW    | Clear |
| Donnerstag  | -100 | -125 | -100  | SW    | Clear |
| Jerome      | -102 | -127 | -102  | SW    | Clear |
| Blaine      | -104 | -129 | -104  | SW    | Clear |
| Hamlet      | -106 | -131 | -106  | SW    | Clear |
| St. Paul    | -108 | -133 | -108  | SW    | Clear |
| Blackfoot   | -110 | -135 | -110  | SW    | Clear |
| Arco        | -112 | -137 | -112  | SW    | Clear |
| Donnerstag  | -114 | -139 | -114  | SW    | Clear |
| Jerome      | -116 | -141 | -116  | SW    | Clear |
| Blaine      | -118 | -143 | -118  | SW    | Clear |
| Hamlet      | -120 | -145 | -120  | SW    | Clear |
| St. Paul    | -122 | -147 | -122  | SW    | Clear |
| Blackfoot   | -124 | -149 | -124  | SW    | Clear |
| Arco        | -126 | -151 | -126  | SW    | Clear |
| Donnerstag  | -128 | -153 | -128  | SW    | Clear |
| Jerome      | -130 | -155 | -130  | SW    | Clear |
| Blaine      | -132 | -157 | -132  | SW    | Clear |
| Hamlet      | -134 | -159 | -134  | SW    | Clear |
| St. Paul    | -136 | -161 | -136  | SW    | Clear |
| Blackfoot   | -138 | -163 | -138  | SW    | Clear |
| Arco        | -140 | -165 | -140  | SW    | Clear |
| Donnerstag  | -142 | -167 | -142  | SW    | Clear |
| Jerome      | -144 | -169 | -144  | SW    | Clear |
| Blaine      | -146 | -171 | -146  | SW    | Clear |
| Hamlet      | -148 | -173 | -148  | SW    | Clear |
| St. Paul    | -150 | -175 | -150  | SW    | Clear |
| Blackfoot   | -152 | -177 | -152  | SW    | Clear |
| Arco        | -154 | -179 | -154  | SW    | Clear |
| Donnerstag  | -156 | -181 | -156  | SW    | Clear |
| Jerome      | -158 | -183 | -158  | SW    | Clear |
| Blaine      | -160 | -185 | -160  | SW    | Clear |
| Hamlet      | -162 | -187 | -162  | SW    | Clear |
| St. Paul    | -164 | -189 | -164  | SW    | Clear |
| Blackfoot   | -166 | -191 | -166  | SW    | Clear |
| Arco        | -168 | -193 | -168  | SW    | Clear |
| Donnerstag  | -170 | -195 | -170  | SW    | Clear |
| Jerome      | -172 | -197 | -172  | SW    | Clear |
| Blaine      | -174 | -199 | -174  | SW    | Clear |
| Hamlet      | -176 | -201 | -176  | SW    | Clear |
| St. Paul    | -178 | -203 | -178  | SW    | Clear |
| Blackfoot   | -180 | -205 | -180  | SW    | Clear |
| Arco        | -182 | -207 | -182  | SW    | Clear |
| Donnerstag  | -184 | -209 | -184  | SW    | Clear |
| Jerome      | -186 | -211 | -186  | SW    | Clear |
| Blaine      | -188 | -213 | -188  | SW    | Clear |
| Hamlet      | -190 | -215 | -190  | SW    | Clear |
| St. Paul    | -192 | -217 | -192  | SW    | Clear |
| Blackfoot   | -194 | -219 | -194  | SW    | Clear |
| Arco        | -196 | -221 | -196  | SW    | Clear |
| Donnerstag  | -198 | -223 | -198  | SW    | Clear |
| Jerome      | -200 | -225 | -200  | SW    | Clear |
| Blaine      | -202 | -227 | -202  | SW    | Clear |
| Hamlet      | -204 | -229 | -204  | SW    | Clear |
| St. Paul    | -206 | -231 | -206  | SW    | Clear |
| Blackfoot   | -208 | -233 | -208  | SW    | Clear |
| Arco        | -210 | -235 | -210  | SW    | Clear |
| Donnerstag  | -212 | -237 | -212  | SW    | Clear |
| Jerome      | -214 | -239 | -214  | SW    | Clear |
| Blaine      | -216 | -241 | -216  | SW    | Clear |
| Hamlet      | -218 | -243 | -218  | SW    | Clear |
| St. Paul    | -220 | -245 | -220  | SW    | Clear |
| Blackfoot   | -222 | -247 | -222  | SW    | Clear |
| Arco        | -224 | -249 | -224  | SW    | Clear |
| Donnerstag  | -226 | -251 | -226  | SW    | Clear |
| Jerome      | -228 | -253 | -228  | SW    | Clear |
| Blaine      | -230 | -255 | -230  | SW    | Clear |
| Hamlet      | -232 | -257 | -232  | SW    | Clear |
| St. Paul    | -234 | -259 | -234  | SW    | Clear |
| Blackfoot   | -236 | -261 | -236  | SW    | Clear |
| Arco        | -238 | -263 | -238  | SW    | Clear |
| Donnerstag  | -240 | -265 | -240  | SW    | Clear |
| Jerome      | -242 | -267 | -242  | SW    | Clear |
| Blaine      | -244 | -269 | -244  | SW    | Clear |
| Hamlet      | -246 | -271 | -246  | SW    | Clear |
| St. Paul    | -248 | -273 | -248  | SW    | Clear |
| Blackfoot   | -250 | -275 | -250  | SW    | Clear |
| Arco        | -252 | -277 | -252  | SW    | Clear |
| Donnerstag  | -254 | -279 | -254  | SW    | Clear |
| Jerome      | -256 | -281 | -256  | SW    | Clear |
| Blaine      | -258 | -283 | -258  | SW    | Clear |
| Hamlet      | -260 | -285 | -260  | SW    | Clear |
| St. Paul    | -262 | -287 | -262  | SW    | Clear |
| Blackfoot   | -264 | -289 | -264  | SW    | Clear |
| Arco        | -266 | -291 | -266  | SW    | Clear |
| Donnerstag  | -268 | -293 | -268  | SW    | Clear |
| Jerome      | -270 | -295 | -270  | SW    | Clear |
| Blaine      | -272 | -297 | -272  | SW    | Clear |
| Hamlet      | -274 | -299 | -274  | SW    | Clear |
| St. Paul    | -276 | -301 | -276  | SW    | Clear |
| Blackfoot   | -278 | -303 | -278  | SW    | Clear |
| Arco        | -280 | -305 | -280  | SW    | Clear |
| Donnerstag  | -282 | -307 | -282  | SW    | Clear |
| Jerome      | -284 | -309 | -284  | SW    | Clear |
| Blaine      | -286 | -311 | -286  | SW    | Clear |
| Hamlet      | -288 | -313 | -288  | SW    | Clear |
| St. Paul    | -290 | -315 | -290  | SW    | Clear |
| Blackfoot   | -292 | -317 | -292  | SW    | Clear |
| Arco        | -294 | -319 | -294  | SW    | Clear |
| Donnerstag  | -296 | -321 | -296  | SW    | Clear |
| Jerome      | -298 | -323 | -298  | SW    | Clear |
| Blaine      | -300 | -325 | -300  | SW    | Clear |
| Hamlet      | -302 | -327 | -302  | SW    | Clear |
| St. Paul    | -304 | -329 | -304  | SW    | Clear |
| Blackfoot   | -306 | -331 | -306  | SW    | Clear |
| Arco        | -308 | -333 | -308  | SW    | Clear |
| Donnerstag  | -310 | -335 | -310  | SW    | Clear |
| Jerome      | -312 | -337 | -312  | SW    | Clear |
| Blaine      | -314 | -339 | -314  | SW    | Clear |
| Hamlet      | -316 | -341 | -316  | SW    | Clear |
| St. Paul    | -318 | -343 | -318  | SW    | Clear |
| Blackfoot   | -320 | -345 | -320  | SW    | Clear |
| Arco        | -322 | -347 | -322  | SW    | Clear |
| Donnerstag  | -324 | -349 | -324  | SW    | Clear |
| Jerome      | -326 | -351 | -326  | SW    | Clear |
| Blaine      | -328 | -353 | -328  | SW    | Clear |
| Hamlet      | -330 | -355 | -330  | SW    | Clear |
| St. Paul    | -332 | -357 | -332  | SW    | Clear |
| Blackfoot   | -334 | -359 | -334  | SW    | Clear |
| Arco        | -336 | -361 | -336  | SW    | Clear |
| Donnerstag  | -338 | -363 | -338  | SW    | Clear |
| Jerome      | -340 | -365 | -340  | SW    | Clear |
| Blaine      | -342 | -367 | -342  | SW    | Clear |
| Hamlet      | -344 | -369 | -344  | SW    | Clear |
| St. Paul    | -346 | -371 | -346  | SW    | Clear |
| Blackfoot   | -348 | -373 | -348  | SW    | Clear |
| Arco        | -350 | -375 | -350  | SW    | Clear |
| Donnerstag  | -352 | -377 | -352  | SW    | Clear |
| Jerome      | -354 | -379 | -354  | SW    | Clear |
| Blaine      | -356 | -381 | -356  | SW    | Clear |
| Hamlet      | -358 | -383 | -358  | SW    | Clear |
| St. Paul    | -360 | -385 | -360  | SW    | Clear |
| Blackfoot   | -362 | -387 | -362  | SW    | Clear |
| Arco        | -364 | -389 | -364  | SW    | Clear |
| Donnerstag  | -366 | -391 | -366  | SW    | Clear |
| Jerome      | -368 | -393 | -368  | SW    | Clear |
| Blaine      | -370 | -395 | -370  | SW    | Clear |
| Hamlet      | -372 | -397 | -372  | SW    | Clear |
| St. Paul    | -374 | -399 | -374  | SW    | Clear |
| Blackfoot   | -376 | -401 | -376  | SW    | Clear |
| Arco        | -378 | -403 | -378  | SW    | Clear |
| Donnerstag  | -380 | -405 | -380  | SW    | Clear |
| Jerome      | -382 | -407 | -382  | SW    | Clear |
| Blaine      | -384 | -409 | -384  | SW    | Clear |
| Hamlet      | -386 | -411 | -386  | SW    | Clear |
| St. Paul    | -388 | -413 | -388  | SW    | Clear |
| Blackfoot   | -390 | -415 | -390  | SW    | Clear |
| Arco        | -392 | -417 | -392  | SW    | Clear |
| Donnerstag  | -394 | -419 | -394  | SW    | Clear |
| Jerome      | -396 | -421 | -396  | SW    | Clear |
| Blaine      | -398 | -423 | -398  | SW    | Clear |
| Hamlet      | -400 | -425 | -400  | SW    | Clear |
| St. Paul    | -402 | -427 | -402  | SW    | Clear |
| Blackfoot   | -404 | -429 | -404  | SW    | Clear |
| Arco        | -406 | -431 | -406  | SW    | Clear |
| Donnerstag  | -408 | -433 | -408  | SW    | Clear |
| Jerome      | -410 | -435 | -410  | SW    | Clear |
| Blaine      | -412 | -437 | -412  | SW    | Clear |
| Hamlet      | -414 | -439 | -414  | SW    | Clear |
| St. Paul    | -416 | -441 | -416  | SW    | Clear |
| Blackfoot   | -418 | -443 | -418  | SW    | Clear |
| Arco        | -420 | -445 | -420  | SW    | Clear |
| Donnerstag  | -422 | -447 | -422  | SW    | Clear |
| Jerome      | -424 | -449 | -424  | SW    | Clear |
| Blaine      | -426 | -451 | -426  | SW    | Clear |
| Hamlet      | -428 | -453 | -428  | SW    | Clear |
| St. Paul    | -430 | -455 | -430  | SW    | Clear |
| Blackfoot   | -432 | -457 | -432  | SW    | Clear |
| Arco        | -434 | -459 | -434  | SW    | Clear |
| Donnerstag  | -436 | -461 | -436  | SW    | Clear |
| Jerome      | -438 | -463 | -438  | SW    | Clear |
| Blaine      | -440 | -465 | -440  | SW    | Clear |
| Hamlet      | -442 | -467 |       |       |       |

## CANDIDATES ENTER CASSIA PRIMARIES

Complete List of Entries  
Announced After Filing  
Date Closes

**BURLEY, July 14**—Filings for county officers in the Cassia county primary election are:

**State senator:** K. C. Barlow, R.; incumbent, Sol P. Worthington, D.

**Representative:** Hyrum S. Lewis, R.; R. H. Parish, J. D. M. Man-

**Auditor and recorder:** B. P. Wilson, R.; incumbent, J. C. Hines, R.

**Assessor:** Seth F. Harper, R.; incumbent, J. V. Yelton, D.

**Probate judge:** Henry W. Tucker, D.; incumbent, J. C. Hines, R.

**County superintendent of schools:** Margaret M. Buchanan, R.; incumbent, J. C. Hines, R.

**Commissioner:** Burley district: Levi H. Draney, J. D. M. Man-

**County clerk:** John C. Derrington, R.; H. E. Canine, D.

**Commissioner:** Oakley district: H. Parley Matthews, R.; Joseph B. Alexander, R.; Lewis R. Critchfield, R.; Ray Beck, D.; incumbent, M. T. Woodhouse, D.

**Commissioner:** Raft river district: J. Roy Eames, R.; Arthur D. Pierce, D.; incumbent, J. C. Hines, R.

**County clerk:** D. E. Johnson, R.; incumbent, Joseph P. Payne, R.

**Commissioner:** Frank Beecher, R.; incumbent, J. C. Hines, R.

**Justice of the peace:** Frank Rib-

**Justice of the peace:** John H. Fairchild, R.; Oakley, Frank B. Parker, R.; Burley, R. A. Crawford, D.; Burley, Edward W. R. Oakley, Mary O. Fay, R.; Burley.

**Constables:** C. R. McVern, R.; Oakley, L. M. Shaw, R.; Burley, Thomas N. Fairchild, R.; Burley.

**Filings for precinct committees in the Cassia county primary election are:**

**Republican—J. B. Chabrier, Albion; Louis A. Eames, Albion; John F. Fairchild, Blaine; Clarence C. Baker, Burley 1; Robert D. Werner, Burley 1; Harry L. Harpster, Burley 1; Alvin L. Hines, Burley 1; Albert Catmull, Burley 1; George H. Scholer, Burley 1; Elsie Powers, Burley 1; H. E. Lewis, Burley 1; E. A. Ottley, Elba; Claude Jensen, Hegler; W. C. Paul, Jackson; Frank Ribbitt, Malia; W. H. Matthews, Marion; Edward W. R. Oakley, J. H. Boddy, Pella; James Brownson, Springdale; J. Clayton Beck, Shart's Ferry; C. M. Olsen, Unity; Raymond-Wigley, View; Frank E. Crane, Yale; Charles H. Powers, Sublet.**

**Democrat—W. L. Bedford, Unity; A. J. Ayler, Pella; J. P. Hackney, Burley 1; Valentine W. Brammer, Burley 2; Ernest O. Hansen, Burley 2; Harold C. Moeller, Burley 4.**

## CANADIANS VISIT AT HILLSIDE HOME

**HILLSIDE, July 14**—Mr. and Mrs. Tom McCurry and family of Medicine Hat, Alberta, Canada, Mrs. Tom, daughter of Mountain House, Alberta, Canada; and Mrs. W. C. McKie and Bill McKie of Blackfoot, visited this week at the J. N. McKie home here. Mr. McCurry is Mrs. McKie's uncle. Mrs. McKie is his mother, and Bill McKie is his brother.

Mrs. J. R. Diehl and daughter of Utah are visitors at the home of Mrs. Willard Cornelius.

Reuben Schacht left Friday for Portland.

Prof. Landreth arrived home this week from Bellevue.

Mrs. Pearl Barde and son left Friday for their home in Denver after a visit at the home of her mother, Mrs. B. E. Hawkins.

Hillside Helpers sewing club met Wednesday at the home of Mrs. G. A. Erhardt.

Mr. and Mrs. Clyde Edgerly visited Sunday at the H. E. Glasier's.

Mr. and Mrs. Harry Rogers and Mrs. Willard Rose Barber, visited here recently at the home of Mr. and Mrs. Harkins. They were accompanied home by Kenneth Rogers who had made a visit here with his sister, Mrs. Harkins.

Mr. and Mrs. Rudolf Martens and family returned recently from a trip through Southern California.

## LEAVE FOR MOUNTAINS

**MURTAUGH, July 14**—Murtaugh Boy Scouts are slated to leave today morning for a trip to the mountains. George Stinger, scout leader, has been added recently to the Murtaugh troop.

Plans for the trip were outlined at a meeting held Wednesday evening at the L. D. Church.

**VACATION GLAZE**

Every form of sweet requires good light. Use your flashlight to improve your sight and you'll play a better game of golf.

**J. E. White**  
REAL ESTATE  
INSURANCE

179 South Main



Film Hit, "The Thin Man," Now at Orpheum



'The Love Captive' at Joe-K's Roxy



Idaho Today!

**SIX YEAR OLD IS NEW  
AMERICAN SWEETHEART**

The "foreign invasion" of movie sweethearts for the American public is temporarily over. The new princess of the talkies is Shirley Temple, six years old, who plays the title role of "Little Miss Marker," that charmed an audience invited Friday evening to the Orpheum theater to a special review showing of the film production, an adaptation of Damon Runyon's story by the same name.

It's a story of guys of the race track racket, and dolls of the night club, and the little "daddy" of all, a curly-haired child, left as security with "Borrowed" Jones when her father gives an I. O. U. to bet on a horse race, loses, and then commits suicide.

Adolph Menjou is superb as "Borrowed" the lightweight race promoter who is so reformed by "Little Miss Marker" that he buys himself a new suit, literally stopping the Broadway parade for the moment, and outfits the "little doll" elaborately.

"Borrowed" Jones, played by Dorothy Dell, a night club singer, completes the transformation of "Borrowed" Charles Bickford as "Big Stevens" is a riot in his final scene as "The Strong Knight."

## FILER PEOPLE LEAVE FOR SAWTOOTH CABIN

**FILER, July 14**—Mr. and Mrs. G. H. Shearer and daughter, Maryann, left Saturday for a week-end in the Sawtooth, guests of Mr. and Mrs. W. M. Bunce at their cabin.

H. W. Graves left Friday evening in company with Mr. and Mrs. T. C. Graves and Mrs. Glick of Twin Falls for Chilo, California, called by the death of a brother.

Mrs. R. K. Dillingham and Mrs. W. M. Canton left Sunday morning for a vacation at Eagle.

Mr. and Mrs. H. E. Hammerquist and sons, Mahlon and Emerson, left Sunday for a vacation at Eagle.

The Star Social club will meet Wednesday, July 18, with Mrs. F. E. Abbin for a 1 o'clock no-host luncheon and regular meeting.

**Have it INSURED Now!**

That feeling of confidence in driving a new car is often dangerous. Accidents still happen to the best of drivers, proving that the only way to safeguard yourself against loss is to carry sound insurance.

Full public liability and property damage insurance is not expensive.

**J. E. White**  
REAL ESTATE  
INSURANCE

**UNION MOTOR COMPANY**  
Your FORD Dealer  
Twin Falls, Idaho

## PEA THRESHING STARTS ON NORTH SIDE TRACT

**HAZELTON, July 14**—The threshing of field peas has been under way on the North Side tract for a few days. Fields are being threshed as soon as they are sufficiently dry. The crop is one of the first of its kind to be raised in this section as well as one of the very earliest to mature.

Yields so far have varied from 20 to 28 bushels per acre, machine measure. The quality is said to be very good and threshers, some of whom are experiencing their first work of handling such a crop, are doing excellent work of cleaning.

The crop is being grown under contract for the Washington section of Moscow, at a price of 2 to 2 1/2 cents per pound. The growers are hauling the crop to the Barlow warehouse where cleaning and grading will be done later.

Hand picking will be necessary on part of the crop, especially on peas received from the east and of the segregation where a slight hail storm did a small injury during the growing season. Larger yields are reported on fields that were not planted broadcast. Weeds being beyond control, cut down the yields of the broadcast plantings.

## JUBILEE SINGERS APPEAR AT ALBION

**ALBION, July 14**—A large audience of college students and townspeople as well as many out-of-town guests attended the concert of the Jubilee singers, the first number of the summer program here Wednesday night, in the auditorium of Bonanza.

This group, sent out through the extension division of the University of Minnesota, was made up of eight voices, directed by Mrs. James Meyer. All members of the group are graduates of Park university, Nashville, Tenn., and some have their masters degrees.

This school for Negroes was founded in 1865 and the jubilee singers began the following year. This particular group, according to Mrs. Meyer, has sung before most of the royal families in Europe and since 1923 has made five trips to Europe.

The group came to Albion from Dillon, Montana, where they sang at the normal college and left Albion Thursday en route for Pullman, Washington, where they give a concert at Washington State college.

## Writer Dies



JULIAN HAWTHORNE

## DEATH WRITES FINIS TO AUTHOR'S CAREER

**SAN FRANCISCO, July 14**—Death wrote the final paragraph in the life story of the writer, Julian Hawthorne, 88. He was the only son of the noted author, Nathaniel Hawthorne.

The fiction writer's death came after he had apparently recovered from a critical illness. Recently, however, he weakened, and failed to rally.

Hawthorne, who wrote "Gentle," "Dust," "Beast," "Idolatry," "Fortune's Fool," and more than two score other books, became a writer against the advice of his illustrious parent.

His writings in connection with

mining promotions led to his conviction in 1912 of using the mails to defraud. After a few months in Alcatraz penitentiary he was paroled. He had been accused of taking \$2,500,000 in his promotions. Following his release he came to California, living in La Jolla, Pasadena, Sausalito and San Francisco at various times.

Hawthorne was a great grandfather, his immediate family including his widow, seven children, five grandchildren and three great grandchildren. The widow is the former Edith H. Garrigue, who was his secretary and nurse before their marriage in 1894. She is now 84 years old and his first wife being Mary Albertine Amelung.

With the passing of Hawthorne goes the world's last living link to the Concord group with which his illustrious father, Nathaniel, Ralph Waldo Emerson and other New England literary giants of the 19th century were identified.

## CAMAS PRAIRIE SCENE OF PIONEER PICNIC

**FAIRFIELD, July 14**—Camas Prairie Pioneer organization will meet at the camp grounds on Soldier creek Sunday, opening with a business meeting at 11:30 o'clock, followed by a picnic dinner at 1, after which cornucopia and games will be held.

The July Bitcher 4-H club met Monday to plan for a trip to Gooding soon.

The Sunshine class of the Community church will present a missionary program at Epworth league Sunday evening.

Sunday Assistant Scout Master Earl Fuchman accompanied thirteen boy scouts from this vicinity to Camp Sawtooth on Big Wood river above Ketchikan, Scout Master R. L. Dixon met with other district scout masters last week arranging for the boys to go.

John Beth Renfrew, eighth grade Soldier Creek pupil, won third place among thousands of competitors for

honors in the essay on the Mount Rushmore memorial contest in the Pacific Northwest.

Mrs. Frank Nelson entertained the Ladies Aid on Friday. A musical program was given by Margaret Bloom, Mary Abbott and Charlotte Nelson. Mr. and Mrs. A. A. Higgs and daughter, Angela, and son, Billy, arrived from China Vista, California, Wednesday. They are visiting at the Fred Muffley ranch.

Mrs. DeVola Shaw accompanied Mr. and Mrs. Miles Tsch of Spokane to that city this week. Mrs. Shaw who is taking nurse's training in a Spokane hospital, will visit her husband, Mrs. Samuel Swayne, in Pierce, Idaho, en route.

W. F. C. Pahl suffered a broken ankle recently.

Mrs. Clyde Martin of Corral returned Sunday from a visit in Denver.

## BURLEY PEOPLE LEAVE ON VACATION TRIPS

**BURLEY, July 14**—Mr. and Mrs. Gilbert Hogue left Burley Saturday for a two week vacation trip. They plan to visit with relatives in Kansas City, Moberly, Missouri, Chicago and Minneapolis.

Mr. and Mrs. L. C. Doty plan to leave Burley Sunday morning to drive to Ontario, Oregon, to visit Mrs. Doty's father and to travel in the Pacific Northwest. The Dotys plan to be gone about two weeks.

Mr. and Mrs. G. A. Bauer spent the last week vacationing at Yellowstone park.

**Threshing?**

LET US SAVE YOU  
TIME AND MONEY ON  
REPAIRS

We are equipped to make any modern repair part, for any thrasher, including:

- MAPLE BEARINGS
- SHAKER ARMS
- ETC...

BRING US YOUR TROUBLES

**W. MONTGOMERY & SONS**  
PLANING MILL

**CHEVROLET**

**20,000 IN SIX MONTHS**

**A Record Breaking Demand Has Sent Chevrolet Production To Its Highest Total in Four Years**

SINCE January 1, Chevrolet has produced more than half a million cars and trucks. This tremendous total has broken all Chevrolet records for the last four years. And here is the reason behind it: No other manufacturer has so much to offer as Chevrolet.

Chevrolet is the only low-priced car to give you patented Knee-Action, and only patented Knee-Action gives you shock-proof steering combined with the new job-proof gliding ride. Chevrolet alone in its field provides Fisher Bodies with genuine No Draft Ventilation—the safest and most comfortable bodies built today. No low-priced car but Chevrolet has safe, sure cable-controlled brakes, the sturdy Y-K frame, and a dozen and one other important features. Do you wonder that the trend is to Chevrolet?

Let these features guide you when you buy your low-priced car. Don't accept anything less than all of them. Save with a Chevrolet.

**CHEVROLET MOTOR COMPANY, DETROIT, MICHIGAN**  
Compare Chevrolet's low delivered prices and easy G. M. A. C. terms. A General Motors Value.

**CHEVROLET**  
Glen G. Jenkins  
TWIN FALLS  
OLDSMOBILE

**NEW REDUCED PRICES**

| STANDARD MODELS                   | New Reduced Price | Amount of Reduction |
|-----------------------------------|-------------------|---------------------|
| Sport Roadster.....               | \$465             | \$25                |
| Coach.....                        | 495               | 25                  |
| Coupe.....                        | 485               | 25                  |
| <b>MASTER MODELS</b>              |                   |                     |
| Sport Roadster.....               | 540               | 35                  |
| Coach.....                        | 570               | 35                  |
| Town Sedan.....                   | 615               | 30                  |
| Sedan.....                        | 640               | 35                  |
| Coupe.....                        | 640               | 35                  |
| Sport Coupe.....                  | 690               | 35                  |
| Sedan Delivery.....               | 600               | 45                  |
| <b>COMMERCIAL CARS</b>            |                   |                     |
| Commercial Chassis.....           | 355               | 30                  |
| Utility Long Chassis.....         | 535               | 35                  |
| Dual Long Chassis and Cab.....    | 575               | 50                  |
| Dual Chassis and Cab.....         | 595               | 50                  |
| Utility Long Chassis and Cab..... | 645               | 50                  |
| Dual Long Chassis and Cab.....    | 625               | 50                  |
| Commercial Panel.....             | 575               | 35                  |
| Special Commercial Panel.....     | 595               | 35                  |
| Utility Panel.....                | 750               | 50                  |
| Dual Cab and Stake Body.....      | 690               | 50                  |
| Dual Long Cab and Stake Body..... | 740               | 50                  |

Below are list prices of passenger cars at Plant, Mich. With bumpers, spare tire and tire lock. List price of Standard Models is \$18 additional. Master Models, \$20 additional. List prices of commercial cars quoted are \$18 additional. Special equipment extra. Prices subject to change without notice.

# TWIN FALLS DAILY NEWS

Published every morning except Monday, by The Twin Falls News Publishing Co., Inc., Twin Falls, Twin Falls County, Idaho. Established 1904.

Daily edition entered as second class mail matter, April 8, 1918, at the postoffice at Twin Falls, Idaho, under the act of March 3, 1879.

**SUBSCRIPTION RATES**  
By Carrier  
Payable in Advance  
One Year \$5.00  
Six Months \$2.75  
Three Months \$1.50  
One Month .75

By Mail  
One Year Outside State of Idaho \$4.50  
One Year \$4.00

**MEMBER OF ASSOCIATED PRESS**  
The Associated Press is exclusively entitled to the use for publication of all news dispatches credited to it, or not otherwise credited to this paper, and to the local news published herein. All right of republication of special dispatches herein also reserved.

Our means Associated Press.  
Member Advertiser Bureau of Circulations.

**NATIONAL REPRESENTATIVES**  
PROUDEN, KING AND PROUDEN, NEW  
Chicago, Ill. San Francisco, Los Angeles,  
Seattle.

The News assumes no financial responsibility for errors in advertisements but in cases where the paper is at fault a correction of that part of the advertisement in which the error occurs will be published without charge.

All notices required by law or by order of court of competent jurisdiction to be published weekly will be published in the Wednesday edition of this paper pursuant to Section 18-109, I. C. 1932, as added thereto by Chapter 144, 1929 Session Laws of Idaho.

## IN SAN FRANCISCO

The waterfront strike situation in San Francisco and other coast cities has now reached a point when almost anything can happen and almost nothing can be done which has not already been attempted.

Food of all kinds has already begun to grow scarce. Many restaurants have closed because they have nothing left with which to feed their patrons. A limited quantity of canned goods is held in cold storage but fresh meat and vegetables cannot be hauled or distributed. An exception is being made in the matter of the city's milk supply. Children and babies should not suffer for lack of milk, say the strikers, and San Francisco is thankful for that.

Accumulations of garbage, says the city health officer, promises an epidemic of rats which in turn causes fear of bubonic plague and kindred evils. The health of the entire city is threatened while every avenue of activity is paralyzed and idleness in every line increases.

All this because of a dispute between two sets of rival interests in which each side vies with the other in a spirit of stubborn determination not to give in no matter what the cost. Coast cities are beginning to feel the cost and gradually but surely the effects of the struggle are drifting affluid.

In the meantime a condition of open warfare exists in the waterfront area of San Francisco. Armed guards patrol the district and fighting of one kind or another is going on most of the time. Hatred and distrust are fostered and fanned and through it all the waterfront saloons do a rushing business. Disregard for law and contempt of authority are in the air.

Not since the days of the famous railroad strike which centered in Chicago has there been any such labor disturbance as this or one with as many attendant evils in its train. The country awaits a solution in the hope that the end may not be too long deferred.

## TOO MUCH SPEECH

General Hugh S. Johnson does not speak for the American government in matters of international import, nevertheless the General would do well to exercise a little restraint when it comes to a discussion of matters international, supposing that he has any business whatever to enter into any discussion upon such a subject.

This it appears is the view of the State department with reference to Johnson's Waterloo address of a few days ago in which the General referred to recent executions in Germany in the following words: "I have seen something of that sort in Mexico during the Villa ravages and among semi-civilized peoples or savages half drunk on alcohol and marijuana, but that such a thing should happen in a country of some supposed culture passes comprehension."

No matter if we agree with General Johnson's views the fact remains that the State department is compelled to explain to Germany and will probably have to issue some sort of an apology to Mexico. The reference to both countries was injudicious and the fact that Johnson's official position made it possible for remarks made by him as an individual to be construed as official is to be regretted.

## INDIAN STATESMEN

It is interesting to learn that General Lazaro Cardenas, the new president of Mexico, is a pure-blooded Indian. The ability with which he is credited is not usually associated,

In this country, with the Indian race. There are many authentic cases of brilliant leadership among the red men themselves, in handling affairs of their own tribes, but we have never had pure "redskins," and seldom half-breeds or even quarter-breeds, in our state and national government.

Mexico, on the contrary, has usually had rulers with considerable Indian blood in their veins, and often they have been almost as completely Indian as Cardenas. Even Diaz, the ablest Mexican statesman of recent times, was known as an Indian.

It would be strange if the land of the Montezumas, where civilization had risen so high before the White man came, should have lost the art and talent of government. And apparently it hasn't.

Another interesting thing about the new president is his youth—he is only 39 years old. Another, of special interest to us "Yanquits" is his political policy, which agrees pretty well with that now prevailing at Washington. Cardenas has advanced ideas about national conservation, control of production, protection for consumers, public works activity, educational reforms, and so on. The two countries ought to be able to understand each other better than usual.

## KEEP SPECIAL FUNDS INVOLVATE

(Moscow Star-Mirror)

Every now and then longing public games are directed to certain money coming into the hands of the state. These money are those paid into the states for definite and specific purposes, or held in trust for specific uses.

One of these vast pools of public money which acts as a lure to many individuals and some state officials is that pool of gasoline tax funds. When states are hard-pressed to meet their bonded or funded obligations, they are usually tempted to use the money for the proposition that "a small portion" of the vehicle motor fuel tax be used to meet the emergency. It looks so simple, the funds are generally so large, the income so certain.

By and large the states generally have been successful in keeping their motor fuel tax funds intact from such "raids." The efforts to draw into these funds, however, are persistent. They look up to the bonded state which levies such a special tax, sometimes several times a year. Vigilance will be needed to retain the precedent that motor fuel taxes are a contribution motorists have levied upon themselves to provide easier and more pleasurable traveling, and as such are merely held in trust by the state as collecting and disbursing agencies.

Idaho's motor fuel taxes are comparatively meager, as motor fuel taxes go. Even so they amount to almost as much as the general income tax levied by the state. In our neighbor states the volume of gasoline tax collections runs many times the amount collected in Idaho. Washington collects nearly 19 million dollars a year from her motorists. In California the figure again is multiplied.

Idaho's motor fuel taxes are a small amount for a state of her size. It is a small amount for a state of her size. It is a small amount for a state of her size. It is a small amount for a state of her size.

Let the precedent be broken once, and those who pay for a special service by contributing a certain number of cents for every gallon of motor fuel they buy would merely become a new army of general tax payers, and the whole burden of taxation increased by just the amount that goes into the gasoline tax kitty. For roads would, eventually, have to be maintained and new roads built, the burden of taxation would merely be increased instead of lowered.

Other funds that come in for long-term gains are those accruing to the states from their land endowments. Idaho has a landed endowment for its schools.

In years past a portion of these funds have been dribbled away by careless investment. An attempt has been made to use the endowment funds for liquidating bankrupt railroads, but the results have been disastrous. The funds have been lost to the state by purchase, from endowment funds, of tax anticipation notes and warrants.

It is a wise law that provides safeguards against such practices. It will be a wise public that keeps the highway funds derived from special fuels and license taxes held strictly in trust for the people who pay these special-purpose taxes.

## BRAIN TRUST ADVICE

(Tropics Capital)

A man out in Montana was trying to get a government loan on his sheep. He needed cake, meaning loaned cake, for the ewes at lambing time. The money was slow in coming and he was in great need of it. Finally he telegraphed Washington: "Lambing season here. Must have money at once." The reply came back: "Money available in two weeks. Postpone lambing season until then."

## BREAKFAST FOOD

Restaurant Guest—Bring me a Welsh rarebit, a broiled lobster, some French fried potatoes, a bottle of imported wine and a doubleportion of ice cream.  
Waiter—What you write that order out sir, and sign it.

Guest—What for?  
Waiter—It can show it to the coroner as an alibi for the hour.

## KIND OFFER

A woman and her young son were walking through the toy department of a big store.  
"How would the little lad like a game of ludo?" asked the clerk.  
"Oh, he'd be delighted, if it's not taking up too much of your time," replied the woman, beaming.

## THE SILENT OBSTACLE

Mrs. Guzman—The friend who gave me the recipe for this soup is in great trouble.  
Mr. Guzman—Then, out of respect, let's drink it in silence.

## SAY "MOO"

Young Man—This real cutlet is small as well as tough. It's an insult to a self-respecting calf.  
Waiter—Oh, no insult to you was intended, sir.

Small Boy—My dad's got a new set of teeth.  
Friend—What are they going to do with his old ones?  
Small Boy—I hope they'll save 'em and put 'em down for me.

## VAN BORING

(The New York Times)



## By Tish Tash

(The New York Times)

## NATIONAL WHIRLIGIG

(NEWS BEHIND THE NEWS)  
(Copyright, McClure Newspaper Syndicate)

### WASHINGTON

By George Durso

**DILEMMA.** The Roosevelt New Deal is currently being put on a spot of its own making in connection with the over-growing strike menace.

Washington officials are scared to death that it shortly may be forced either to support comparatively large numbers of strikers with federal relief funds or adopt a policy that would be absolutely poisonous to the labor vote.

One way or the other the administration figures to lose. The State of industry and the State of labor are both being squeezed.

Word is being passed around in circles about as follows: "Go ahead and strike; the government will support you while you're off the job."

It is a perfect setup for the unions. In the past strikes have been lost because of the government's refusal to support them.

Now a man out of work has had to wait until the New Deal has been established. He has now had to wait until the New Deal has been established.

Relief Administrator Harry Hopkins, now in Europe, has been asked repeatedly to rule whether a strike was entitled to government relief.

Each time he has given the effect: "It is not the function of the government to determine WHY a strike is called. It is the government's function to take care of him if he is out of a job."

Hopkins never liked to render this opinion. He had to, however. Other was the labor union. He knew the New Deal would have raised dead cats all over him. Also involved are a lot of other things.

The situation has changed radically since late Hopkins was forced into making this statement. He is now in a position to make a bluff for his position. There are enough men out now to force the relief issue if they see fit.

There is little danger of a general strike. The workers always stand to lose public sympathy and mercy.

There are enough men out now to force the relief issue if they see fit. There are enough men out now to force the relief issue if they see fit.

FERA officials are checking their relief figures in strike cities each morning with anxiety. Thus far, no disturbances as the West Coast longshoremen's strike have failed to produce any material increase in the dole line in San Francisco, Portland and Oakland only a comparatively handful of new families have been added since the strike began.

But those running FERA in Hopkins' absence will tell you precisely how worried they are about the strike. A noticeable jump in relief statistics in an strike center, the Roosevelt administration would be squaring in the strike.

It would either feed the strikers and set up a terrific howl from the employers or it would force the strikers to self-imposed idleness doesn't matter what it is. Thus far, no disturbances as the West Coast longshoremen's strike have failed to produce any material increase in the dole line in San Francisco, Portland and Oakland only a comparatively handful of new families have been added since the strike began.

But those running FERA in Hopkins' absence will tell you precisely how worried they are about the strike. A noticeable jump in relief statistics in an strike center, the Roosevelt administration would be squaring in the strike.

It would either feed the strikers and set up a terrific howl from the employers or it would force the strikers to self-imposed idleness doesn't matter what it is. Thus far, no disturbances as the West Coast longshoremen's strike have failed to produce any material increase in the dole line in San Francisco, Portland and Oakland only a comparatively handful of new families have been added since the strike began.

But those running FERA in Hopkins' absence will tell you precisely how worried they are about the strike. A noticeable jump in relief statistics in an strike center, the Roosevelt administration would be squaring in the strike.

It would either feed the strikers and set up a terrific howl from the employers or it would force the strikers to self-imposed idleness doesn't matter what it is. Thus far, no disturbances as the West Coast longshoremen's strike have failed to produce any material increase in the dole line in San Francisco, Portland and Oakland only a comparatively handful of new families have been added since the strike began.

But those running FERA in Hopkins' absence will tell you precisely how worried they are about the strike. A noticeable jump in relief statistics in an strike center, the Roosevelt administration would be squaring in the strike.

It would either feed the strikers and set up a terrific howl from the employers or it would force the strikers to self-imposed idleness doesn't matter what it is. Thus far, no disturbances as the West Coast longshoremen's strike have failed to produce any material increase in the dole line in San Francisco, Portland and Oakland only a comparatively handful of new families have been added since the strike began.

### NEW YORK

By James McMillin

**SHOWN.** Republic Steel's refusal to honor its contract with the Amalgamated is a very live topic in New York's inner circle. There's a general excitement about it.

It is a very live topic in New York's inner circle. There's a general excitement about it. It is a very live topic in New York's inner circle.

It is a very live topic in New York's inner circle. There's a general excitement about it. It is a very live topic in New York's inner circle.

It is a very live topic in New York's inner circle. There's a general excitement about it. It is a very live topic in New York's inner circle.

It is a very live topic in New York's inner circle. There's a general excitement about it. It is a very live topic in New York's inner circle.

It is a very live topic in New York's inner circle. There's a general excitement about it. It is a very live topic in New York's inner circle.

It is a very live topic in New York's inner circle. There's a general excitement about it. It is a very live topic in New York's inner circle.

It is a very live topic in New York's inner circle. There's a general excitement about it. It is a very live topic in New York's inner circle.

It is a very live topic in New York's inner circle. There's a general excitement about it. It is a very live topic in New York's inner circle.

It is a very live topic in New York's inner circle. There's a general excitement about it. It is a very live topic in New York's inner circle.

It is a very live topic in New York's inner circle. There's a general excitement about it. It is a very live topic in New York's inner circle.

It is a very live topic in New York's inner circle. There's a general excitement about it. It is a very live topic in New York's inner circle.

It is a very live topic in New York's inner circle. There's a general excitement about it. It is a very live topic in New York's inner circle.

It is a very live topic in New York's inner circle. There's a general excitement about it. It is a very live topic in New York's inner circle.

It is a very live topic in New York's inner circle. There's a general excitement about it. It is a very live topic in New York's inner circle.

It is a very live topic in New York's inner circle. There's a general excitement about it. It is a very live topic in New York's inner circle.

It is a very live topic in New York's inner circle. There's a general excitement about it. It is a very live topic in New York's inner circle.

It is a very live topic in New York's inner circle. There's a general excitement about it. It is a very live topic in New York's inner circle.

It is a very live topic in New York's inner circle. There's a general excitement about it. It is a very live topic in New York's inner circle.

It is a very live topic in New York's inner circle. There's a general excitement about it. It is a very live topic in New York's inner circle.

It is a very live topic in New York's inner circle. There's a general excitement about it. It is a very live topic in New York's inner circle.

It is a very live topic in New York's inner circle. There's a general excitement about it. It is a very live topic in New York's inner circle.

## A New Yorker

at Large

By MARK HARRON

(The New York Times)

(The New York Times)

(The New York Times)

(The New York Times)

(The New York Times)

(The New York Times)

(The New York Times)

(The New York Times)

(The New York Times)

(The New York Times)

(The New York Times)

(The New York Times)

(The New York Times)

(The New York Times)

(The New York Times)

(The New York Times)

(The New York Times)

(The New York Times)

(The New York Times)

(The New York Times)

(The New York Times)

(The New York Times)

(The New York Times)

(The New York Times)

(The New York Times)

(The New York Times)

(The New York Times)

(The New York Times)

(The New York Times)

(The New York Times)

(The New York Times)

(The New York Times)

(The New York Times)

(The New York Times)

(The New York Times)

(The New York Times)

(The New York Times)

(The New York Times)

(The New York Times)

(The New York Times)

(The New York Times)

(The New York Times)

(The New York Times)

(The New York Times)

(The New York Times)

(The New York Times)

(The New York Times)

(The New York Times)

(The New York Times)

(The New York Times)

(The New York Times)

(The New York Times)

(The New York Times)

(The New York Times)

(The New York Times)

(The New York Times)

(The New York Times)

(The New York Times)

(The New York Times)

(The New York Times)

(The New York Times)

(The New York Times)

(The New York Times)

(The New York Times)

(The New York Times)

(The New York Times)

(The New York Times)

(The New York Times)

(The New York Times)

(The New York Times)

(The New York Times)

(The New York Times)

(The New York Times)

(The New York Times)

(The New York Times)

(The New York Times)

(The New York Times)

(The New York Times)

(The New York Times)

(The New York Times)

(The New York Times)

(The New York Times)

(The New York Times)

(The New York Times)

(The New York Times)

(The New York Times)

(The New York Times)

(The New York Times)

(The New York Times)

(The New York Times)

(The New York Times)

(The New York Times)

(The New York Times)

(The New York Times)

(The New York Times)

(The New York Times)

(The New York Times)

(The New York Times)

(The New York Times)

(The New York Times)

(The New York Times)

(The New York Times)

(The New York Times)

(The New York Times)

## FEDERAL MILLIONS POURED INTO IDAHO

RFC and Home Owners Loan  
Corporation Disburse  
Over \$12,000,000

WASHINGTON, July 14 (AP)—Federal money totaling \$12,000,000 has been poured into the state of Idaho during the past two years through Reconstruction Finance Corporation loans. In addition, \$2,381,448 was disbursed in the state through the Home Owners Loan Corporation.

The loans for Idaho, irrigation districts and home owners amounted to \$5,900,000; of which \$2,400,000 was for banks and \$1,900,000 for irrigation projects.

Total advances authorized for Idaho loans were \$12,000,000. The approved amount of loans approved for irrigation districts were announced as follows:

Boise district, \$1,000,000; Orem, Owyhee county, \$12,000; Canyon Creek, Fremont county, \$20,000; Grandview, Owyhee county, \$10,000; Moore Creek, Weiser, \$21,000; Milner Low-lift, Twin Falls, \$21,000, and Strong-arm, Preston, \$15,000.

Irrigation Districts Apply  
Application for loans amounting to approximately \$12,000,000 from drainage and irrigation districts of Idaho are on file with the RFC.

Senator Philip D. Mendenhall stated that the RFC advances for irrigation districts would be more than doubled under the appropriation of \$12,000,000 provided for such purposes in the loans to industry act.

Out of an appropriation of \$12,000,000, \$1,000,000 has been loaned to irrigation and drainage districts up to July 15 of this year, which amount would be approximately \$11,000,000 in bonds through adjustment of the outstanding debt.

Under the law, the senator said, loans could be made only to irrigation districts organized prior to the adoption of 1933. An amendment adopted at the recent session makes it possible to loan to newly organized districts, mutual irrigation companies and associations.

## BURLEY PREPARES CITY PARKING LOT

BURLEY, July 14.—A parking space for automobiles is being prepared on a quarter block of vacant lots between the Burley laundry and Gam-amart stores. The ground is being cleared and leveled and three asphalt reflecting lights have been installed by the city electric department. Police protection will be afforded the lot and will be provided from the Albion avenue side, as well as from three alleyways.

Traffic congestion has become a serious during some afternoons of the week, as well as on Saturday.

The city council was impelled to provide this parking quarters in the downtown district.

## Bugs From Japan For Idaho Fruit Growers

CAMDEN, N. J., July 14 (AP)—A shipment of 3,000 insects left by air express today for growers in Idaho who seek to save their apple and peach crops from the oriental fruit moth.

The insects arrived from Japan four weeks ago in the cotton stage and were hatched by the federal bureau of entomology at Moorestown, New Jersey.

## INCOME TAX COLLECTIONS

BOISE, July 14 (AP)—Ben Dietrich, chief commissioner of finance, said today that the Idaho income tax bureau collections on 1933 incomes amounted to \$29,548. The cost of making the collections was \$3,597, he reported.

Of this amount 322 corporations paid \$23,612; 410 married individuals paid \$21,254, and 2045 single persons paid \$14,851.

## SURPRISE PARTY HELD HONORING JEROME GIRL

JEROME, July 14.—Around twenty friends of Evelyn Bullock staged a surprise party Wednesday evening in honor of Evelyn's twelfth birthday. The affair was held at the home of her parents, Mr. and Mrs. A. P. Bullock. Games, refreshments, and a singing. Mrs. Emma Wall favored with more than a dozen members of two classes of the Jerome Baptist church today enjoyed a picnic at the Banbury natatorium.

## Kimberly Students Take Part In First All-Idaho High School Orchestral Group



MOSCOW, July 13.—Eighty-high school musicians who attended a school musicians who attended a special band and orchestra course held in connection with the University of Idaho summer school, liked their work so well that they didn't want to go home when it ended last week, instructors said.

This unusual course, the first of its kind in Idaho, was directed by Harold Bachman of Chicago, considered the outstanding man in his field in the United States. His instruction served two purposes: En-

riched new work in conducting for a class of 70 band and orchestra leaders and music supervisors, and an equally new summer camp program of intensive study for talented high school musicians from all parts of the state.

Students who attended this year's summer camp are shown above. In what one supervisor called Idaho's first all-state high school orchestra, Bachman is standing near the piano. A few in the rear row played in the band only. Each student spent at least five hours a day in rehearsal all week.

Kimberly has four representatives in the above group: Gerald Ridge, Gerald Ridge, Sherrill, Miss Lois Anderson, accompanist, Mrs. W. E. Anderson.

Evening—Prelude: "Farewell to the Piano,"ethoven.

Vocal solo: "The 3rd Movement From Sonata in G Minor," Tartini.

Miss Lois Anderson, accompanist, Mrs. W. E. Anderson.

Offertory, "Estrellita," Ponc-Kobmann.

Vocal solo, "Be Thou With Me," Hiller, Donald G. Claycomb, bass; accompanist, Miss Grace Bell.

Mrs. J. S. Bell, choir director pro tem.

## Church Services

### UNION SERVICES

A union service at the Presbyterian church at 8 o'clock Sunday evening will be in charge of Rev. George Clark, pastor of the Presbyterian church, with W. E. Anderson, pastor of the Christian church, as preacher for the evening. The subject of the evening sermon: "The Unfulfilled Christ in a Depressed World."

### MENNONITE BRETHREN IN CHRIST

A. W. Barbest, pastor  
10:00 a. m.—Sunday school  
11:00 a. m.—Morning worship. The message will be brought by C. E. Gifford.

### CHURCH OF THE BRETHREN

Corner of Third and Fourth streets  
Rev. C. H. Hinegardner, pastor  
343 Third avenue north  
10:00 a. m.—Sunday school  
11:00 a. m.—Worship and praise

### FOUR SQUARE GOSPEL CHURCH

First avenue and Third street east, Twin Falls  
308 Fifth street, Piler  
Rev. Julia Hinde, pastor  
10:00 a. m.—Sunday school at Piler  
11:00 a. m.—Morning worship  
8:00 p. m.—Evening service at Twin Falls  
Wednesday 8 p. m.—Service at Twin Falls

### CHURCH OF THE NAZARENE

L. D. Smith, pastor  
9:45 a. m.—Sunday school, C. M. Little, superintendent  
11:00 a. m.—Morning worship, Sermon subject: "Birds With Black Wings and Blue Breasts." Mrs. Oscar Christian will sing a solo.

### CHURCH OF THE NAZARENE

L. D. Smith, pastor  
9:45 a. m.—Sunday school, C. M. Little, superintendent  
11:00 a. m.—Morning worship, Sermon subject: "Birds With Black Wings and Blue Breasts." Mrs. Oscar Christian will sing a solo.

### CHURCH OF THE NAZARENE

L. D. Smith, pastor  
9:45 a. m.—Sunday school, C. M. Little, superintendent  
11:00 a. m.—Morning worship, Sermon subject: "Birds With Black Wings and Blue Breasts." Mrs. Oscar Christian will sing a solo.

### CHURCH OF THE NAZARENE

L. D. Smith, pastor  
9:45 a. m.—Sunday school, C. M. Little, superintendent  
11:00 a. m.—Morning worship, Sermon subject: "Birds With Black Wings and Blue Breasts." Mrs. Oscar Christian will sing a solo.

### CHURCH OF THE NAZARENE

L. D. Smith, pastor  
9:45 a. m.—Sunday school, C. M. Little, superintendent  
11:00 a. m.—Morning worship, Sermon subject: "Birds With Black Wings and Blue Breasts." Mrs. Oscar Christian will sing a solo.

### CHURCH OF THE NAZARENE

L. D. Smith, pastor  
9:45 a. m.—Sunday school, C. M. Little, superintendent  
11:00 a. m.—Morning worship, Sermon subject: "Birds With Black Wings and Blue Breasts." Mrs. Oscar Christian will sing a solo.

### CHURCH OF THE NAZARENE

L. D. Smith, pastor  
9:45 a. m.—Sunday school, C. M. Little, superintendent  
11:00 a. m.—Morning worship, Sermon subject: "Birds With Black Wings and Blue Breasts." Mrs. Oscar Christian will sing a solo.

### CHURCH OF THE NAZARENE

L. D. Smith, pastor  
9:45 a. m.—Sunday school, C. M. Little, superintendent  
11:00 a. m.—Morning worship, Sermon subject: "Birds With Black Wings and Blue Breasts." Mrs. Oscar Christian will sing a solo.

### CHURCH OF THE NAZARENE

L. D. Smith, pastor  
9:45 a. m.—Sunday school, C. M. Little, superintendent  
11:00 a. m.—Morning worship, Sermon subject: "Birds With Black Wings and Blue Breasts." Mrs. Oscar Christian will sing a solo.

### CHURCH OF THE NAZARENE

L. D. Smith, pastor  
9:45 a. m.—Sunday school, C. M. Little, superintendent  
11:00 a. m.—Morning worship, Sermon subject: "Birds With Black Wings and Blue Breasts." Mrs. Oscar Christian will sing a solo.

### CHURCH OF THE NAZARENE

L. D. Smith, pastor  
9:45 a. m.—Sunday school, C. M. Little, superintendent  
11:00 a. m.—Morning worship, Sermon subject: "Birds With Black Wings and Blue Breasts." Mrs. Oscar Christian will sing a solo.

### CHURCH OF THE NAZARENE

L. D. Smith, pastor  
9:45 a. m.—Sunday school, C. M. Little, superintendent  
11:00 a. m.—Morning worship, Sermon subject: "Birds With Black Wings and Blue Breasts." Mrs. Oscar Christian will sing a solo.

### CHURCH OF THE NAZARENE

L. D. Smith, pastor  
9:45 a. m.—Sunday school, C. M. Little, superintendent  
11:00 a. m.—Morning worship, Sermon subject: "Birds With Black Wings and Blue Breasts." Mrs. Oscar Christian will sing a solo.

### CHURCH OF THE NAZARENE

L. D. Smith, pastor  
9:45 a. m.—Sunday school, C. M. Little, superintendent  
11:00 a. m.—Morning worship, Sermon subject: "Birds With Black Wings and Blue Breasts." Mrs. Oscar Christian will sing a solo.

### CHURCH OF THE NAZARENE

L. D. Smith, pastor  
9:45 a. m.—Sunday school, C. M. Little, superintendent  
11:00 a. m.—Morning worship, Sermon subject: "Birds With Black Wings and Blue Breasts." Mrs. Oscar Christian will sing a solo.

### CHURCH OF THE NAZARENE

L. D. Smith, pastor  
9:45 a. m.—Sunday school, C. M. Little, superintendent  
11:00 a. m.—Morning worship, Sermon subject: "Birds With Black Wings and Blue Breasts." Mrs. Oscar Christian will sing a solo.

### CHURCH OF THE NAZARENE

L. D. Smith, pastor  
9:45 a. m.—Sunday school, C. M. Little, superintendent  
11:00 a. m.—Morning worship, Sermon subject: "Birds With Black Wings and Blue Breasts." Mrs. Oscar Christian will sing a solo.

## SERVICES PLANNED FOR PIONEER BUILT FARMER

BUILT, July 14.—Funeral services will be held Sunday afternoon at 3 o'clock at the Methodist Episcopal church here for Dan T. Currington, the Rev. H. E. Holman, pastor of the Piler church and Rev. O. L. Kendall, local pastor, officiating.

Mr. Currington died at the St. Mary's hospital in Rochester, Minnesota, Tuesday night, and the body arrived in Burley Thursday afternoon accompanied by Mrs. Currington and her sister, Mrs. J. O. Williams.

Mr. Currington, who was 68 years of age, was one of the leading and substantial citizens of the Northview district. A few years ago he and Mrs. Currington retired from farm life and built a home in Buhi which they have occupied since. For many years he has been active in the Methodist church.

Surviving him besides Mrs. Currington are three children, Mrs. Charles H. Buhi, Maurice Currington, Buhi; and Miss Velda Currington, California. All three children will be present for the funeral services.

## SURFACING OF ROAD NEARS COMPLETION

EDEN, July 14.—Surfacing of the new road from the three-mile corner west of Eden to the Hansen bridge is to be completed within the next few days. This will complete the work of the road for the present time and following satisfactory inspection will be turned over for the maintenance of the state department.

William Hoops, Twin Falls, who had charge of the contract of construction of the road, said he will have completed the work close to schedule time. Crushed rock of two different sizes were used for surfacing. A coarse gravel and rock, topped with a finer cut gravel and rock. Gravel is expected to be a part of the state program next year.

## DEEP CREEK GRANGERS CONSIDER FAIR EXHIBIT

BURLEY, July 14.—The Deep Creek Grange met Friday evening at the home of Mrs. Nettie Shriver with a good attendance. Master A. P. Carter opened the meeting and introduced C. D. Prehler, master of the Latrobe Grange, who filled the master's chair during the rest of the business session. Application for membership of Mr. and Mrs. R. A. McDonnell was accepted.

A committee from the Lincero Grange requested the Deep Creek Grange to join in a booth at the state fair at Piler this fall. A committee composed of M. L. McQuire, Richard McLean and J. R. Hill, was appointed to look into the matter.

Following the business meeting the lecturer, Mrs. J. R. Hill, presented a short program, opening with each member reciting something that happened on Fourth of July in years past. Buhi Grange read "Just As the Sun Went Down," members of the Buhi Grange orchestra furnished several musical selections.

The next regular meeting will be at the M. L. McQuire home.

## BACK FROM CONVENTION

GOODING, July 14.—Superintendent P. C. Fouts of the State School for the Deaf and Blind and Professor G. H. Dean of the blind department returned home this week from

## KIMBERLY CHURCH OF THE NAZARENE

Theodore Martin, pastor  
10:00 a. m.—Sunday school, Sam Savage, superintendent  
12:00 p. m.—Service by Mrs. Mackay, Brown, Twin Falls  
Subject: "The Baptism With the Holy Spirit"

## CHURCH OF THE ASCENSION

Victor E. Newman, pastor  
8 a. m.—Daily communion  
10 a. m.—Morning prayer and sermon

## NEIGHBORS' CHURCHES

HANSEN COMMUNITY  
Sunday school promptly at 10:30 with Harvey A. Forswall in charge. Special music has been arranged and all members are urged to attend. No evening service as the members will join in attending the Epworth League service at Wood River Institute.

## CHRISTIAN CHURCH

W. E. Anderson, minister  
9:45 a. m.—Bible school, F. W. Slack, superintendent  
10:45 a. m.—Lord's supper and communion. Sermon: "Imitators of God"

## FIRST METHODIST EPISCOPAL CHURCH

Corbett Shoshone and Fourth  
William Hall Young, minister  
9:45 a. m.—Church school, T. F. Wilma, superintendent  
11:00 a. m.—Public worship, Theme: "The Mind of Christ." Special music, 8:00 p. m.—Union service at the Presbyterian church, Speaker, Dr. W. E. Anderson of the First Christian church.

## CONGRATULATIONS?

NEW ROGERSON COFFEE SHOP

## CONGRATULATIONS?

NEW ROGERSON COFFEE SHOP

## CONGRATULATIONS?

NEW ROGERSON COFFEE SHOP

## CONGRATULATIONS?

NEW ROGERSON COFFEE SHOP

## CONGRATULATIONS?

NEW ROGERSON COFFEE SHOP

## CONGRATULATIONS?

NEW ROGERSON COFFEE SHOP

## CONGRATULATIONS?

NEW ROGERSON COFFEE SHOP

## CONGRATULATIONS?

NEW ROGERSON COFFEE SHOP

## CONGRATULATIONS?

NEW ROGERSON COFFEE SHOP

## CONGRATULATIONS?

NEW ROGERSON COFFEE SHOP

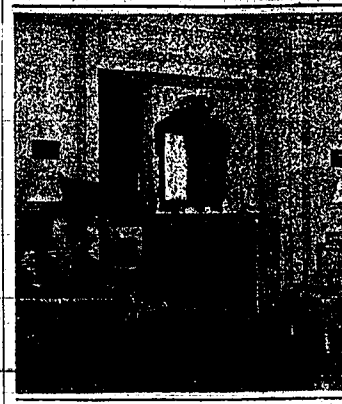
## CONGRATULATIONS?

NEW ROGERSON COFFEE SHOP

## CONGRATULATIONS?

NEW ROGERSON COFFEE SHOP

## BORDERS IMPROVE A ROOM Entire Appearance Changed By Wallpaper



Careful workmanship is essential to this plan.

(Prepared By The Decorators' Club Of New York For The News)

This border shows an interesting architectural effect gained by the use of wallpaper borders—an idea which is to be used in many other types of rooms. And, of course, the expense involved is much less than actual architectural detail of a similar character would be.

In this case the decorator, Nancy McColland, has had the entire wall covered with a plain powder-pink paper, and has then applied the border paper of blue, pink and white to form panels. The borders could also be applied to a painted wall to give a similar effect. The one caution necessary for either of these is that the workman be highly skilled. A careless job would ruin the entire effect.

## THE ELECTRIC Work On The New, Modern ROGERSON HOTEL COFFEE SHOP

Was Done By Us.

May We Congratulate  
Them On Their Splendid  
New Establishment!

Kyle M. Waite  
ELECTRICIAN  
Phone 23 Next to P. O.

## ROGERSON COFFEE SHOP

Will Open

Meet Your Friends  
Here

The Grand Opening Day  
Special Dinners

75c

COCKTAILS—Fruit or Sea Food  
SOUP—Chicken Consomme

SALAD—Cucumber and Quartered Tomatoes  
RELISH—Celery on Branch and Olives

Special T-Bone Steak Drained Butter.  
Grilled Double Tenderloin Steak.  
Half Baked Spring Chicken—Oyster Dressing.  
Milk Fed Baby Lamb Chops on Toast.  
Grilled Veal Chop—Currant Jelly.  
Cold Breast of Chicken, Tomatoes, Potato

Prime Rib Steak—Rasher of Bacon.  
Baked Potatoes Corn on the Cob

CHOICE OF DESSERTS  
Assorted Sundaes—Tapioca Pudding—Fresh Apple  
Pie—Jello with Whipped Cream

CHOICE OF BEVERAGES  
Coffee -- Tea -- Milk -- Glass of Beer

WE ARE  
Also Featuring  
A Special Dinner For

50c

Be Sure to Visit Us Today

WE WANT TO GET ACQUAINTED

NOTE: While some of our new modern features have not yet arrived, we still believe you will appreciate the beauty and goodness of our Coffee Shop when it opens today and we invite you to attend the opening.

**H★A**  
AND  
"STAR BRAND"  
Binder Twine  
Dependable — Smooth — Strong  
MADE BY AMERICAN LABOR  
MT. STATES IMP. CO.  
TWIN FALLS

**We Congratulate the  
NEW ROGERSON  
COFFEE SHOP**  
Drop In Today and  
Enjoy a Cold Glass of  
Beckers Draught Beer  
HAVE YOU TRIED  
WESTERN LIME RICKEY  
WESTERN GINGER ALE  
KINGS COURT  
Western Bottling Co., Inc.  
227 Second Avenue South Phone 255

**Congratulations  
and Success**  
**THE  
New Rogerson  
Coffee Shop**  
is refrigerated throughout  
by  
**Detweiler  
Coal Co.  
Twin Falls**  
Your Comfort Merchants

**THE NEW  
ROGERSON  
COFFEE SHOP**  
Will Open  
Meet Your Friends  
Here  
The Grand Opening Day  
Special Dinners  
75c  
COCKTAILS—Fruit or Sea Food  
SOUP—Chicken Consomme  
SALAD—Cucumber and Quartered Tomatoes  
RELISH—Celery on Branch and Olives  
Special T-Bone Steak Drained Butter.  
Grilled Double Tenderloin Steak.  
Half Baked Spring Chicken—Oyster Dressing.  
Milk Fed Baby Lamb Chops on Toast.  
Grilled Veal Chop—Currant Jelly.  
Cold Breast of Chicken, Tomatoes, Potato  
Prime Rib Steak—Rasher of Bacon.  
Baked Potatoes Corn on the Cob  
CHOICE OF DESSERTS  
Assorted Sundaes—Tapioca Pudding—Fresh Apple  
Pie—Jello with Whipped Cream  
CHOICE OF BEVERAGES  
Coffee -- Tea -- Milk -- Glass of Beer  
WE ARE  
Also Featuring  
A Special Dinner For  
50c  
Be Sure to Visit Us Today  
WE WANT TO GET ACQUAINTED  
NOTE: While some of our new modern features have not yet arrived, we still believe you will appreciate the beauty and goodness of our Coffee Shop when it opens today and we invite you to attend the opening.

# MANY GATHER FOR GUERNSEY PICNIC

## Breeders Assemble at Thousand Springs Farm for Contests and Talks

JEROME, July 14—A crowd numbering about 200 persons Thursday attended the twelfth annual picnic of the Idaho State Guernsey Breeders' association, held at the Thousand Springs farm on the Snake river, southwest of Wendell. A speaking program, a picnic dinner, and a visit to the barns of the farm constituted the main events of the day.

In the morning, the visitors viewed the barns and stock of the farm and checked test cows; results, and other matters of interest were seen. A contest for the placing of calves regarding size was conducted. Out of a mixed group of calves, contestants were required to pick calves, which, according to characteristics, were descendants of the famous three herd sires—A. J. Sells, Meridian, and first place, with a total of eight bulls and five buns of the herd of each: Jack Wain, Twin Falls, and F. A. Gingrich, Buhl, tied for second place, with a count of eight bulls and four buns.

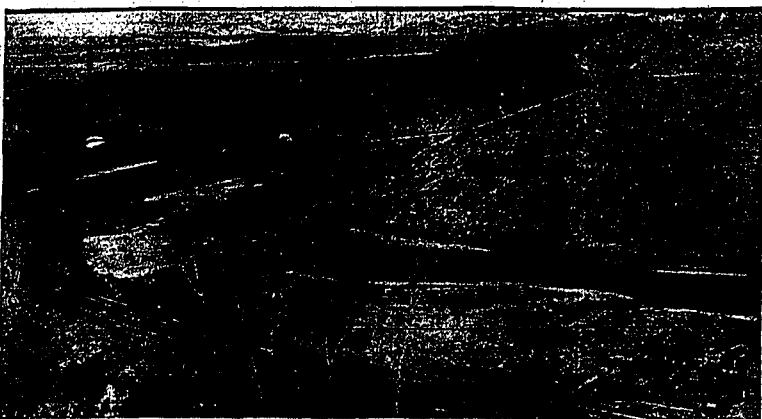
Free ice cream and Guernsey milk were served by the farm at noon when a picnic dinner was held in the orchard of the farm.

Speakers of the afternoon included: J. P. Barnard, Dwyerville, Idaho; I. D. Neymann, Buhl; and D. A. Paine, Coaling.

Jack Robinson, western representative of the American Guernsey Breeders' association, was present, and read a letter from Carl Mueser, secretary of the American Guernsey Cattle club, in which Mueser stated that the Idaho Guernsey Breeders' association had placed first place in a national contest, and would receive a \$50 prize. The Southern Idaho Guernsey Breeders' association was awarded second place.

The contest, which was conducted under the auspices of the American Guernsey Breeders' association, gave points for attendance at meetings, club membership, and stock sales. Minnie W. Miller, owner of the Thousand Springs Guernsey farm, was present and addressed the group.

# Dotsero Cutoff Route Along Colorado River, Reduces Denver To Pacific Coast Span



DENVER TO OGDEN ROUTE—807 MILES SHORTENED 175 MILES BY CUTOFF

THE DOTSERO cutoff, shortening the rail route between Denver and the Pacific Coast by 175 miles and putting the Colorado capital on a through transcontinental line for the first time, at last is ready for traffic. The two views above show how the cutoff, 89 miles long, follows the winding Colorado river through the mountain country of western Colorado. The map illustrates the saving in mileage possible through use of the cutoff in conjunction with the famous Moffat tunnel through James peak.—(P) Photos.

# MAKE THIS MODEL AT HOME

## Twin Falls Daily News Pattern



YOU'VE LOVE THIS IN A SHEER PRETTY COTTON!  
Pattern 1225

When you have reached the point where you simply cannot wait to have these pretty cottons in the shops, buy a few of them! Always of course, presupposing that you have this smart easy-to-make pattern in your sewing machine drawer... or wherever it is you keep your patterns. It is pretty for a large design or for a small, neat one. And it is very pretty for a plain fabric as well. It goes together in just no time... and we are sure you will agree that it is charming with its graceful ruffles, slender panels and unusual neck line.

Pattern 1225 is available in sizes 14, 16, 18, 20, 22, 24, 26, 28, 30, 32, 34, 36, 38, 40 and 42. Size 18 takes 3 1/2 yards 36 inch fabric. Illustrated step-by-step sewing instructions included.

Send FIFTEEN CENTS (15c) in coins or stamps (coins preferred) for this Anne Adams pattern. Write plain name, address and style number. BE SURE TO STATE SIZE.

The smartest warm weather fashion, the new, elegant, and the summer season's outstanding accessories are illustrated and described in the NEW ANNE ADAMS PATTERN BOOK FOR SUMMER. ORDER YOUR COPY OF THIS HELPFUL NEW SUMMER BOOK. PRICE OF BOOK FIFTEEN CENTS. BOOK AND PATTERN TOGETHER, TWENTY-FIVE CENTS.

Address orders to The News Pattern Dept., Twin Falls, Idaho.

# SOCIETY and CLUBS

Phone 32

**TRAVEL-THEME. FEATURED AT PARTY.**  
Mrs. H. L. Holmes and Mrs. G. W. Parsons, Buhl, entertained Friday evening at bridge at the home of the former on Buchanan Street in honor of Mrs. C. C. Castille and Mrs. C. Q. McGinnis, Los Angeles. The honorees are en route to Boston and New York on a visit to the Moffat tunnel.

The travel motif was effectively employed in the bridge appointments, tables being miniature suitcases, Mrs. D. H. Shover, Buhl, giving the traveling party, Mrs. Guy Shearer, Buhl, won the high score.

Guests, in addition to the honorees, were Mrs. T. E. Moore, Mrs. Guy Shearer, Mrs. C. J. Childs, Mrs. D. H. Shover, Mrs. L. V. Hawkins, Mrs. Ed. Helcher and Mrs. A. A. Dwight, Buhl, and Mrs. F. J. Costello, Twin Falls.

**SABADO CLUB MEETS FOR LUNCHEON**  
The Sabado Club met yesterday afternoon at the home of Mrs. T. C. Bacon on Maple Avenue. After luncheon at Mrs. A. C. Victor's, the club played bridge at the Bacon home, with Mrs. H. O. Miller winning high score. Mrs. Earl Felt, Mrs. Charles Larson and Mrs. R. L. Roberts were guests of the club.

**HOTEL STAFF MOTORS TO KETCHUM**  
Mrs. and Mr. William Hoops are entertaining the New Rogerson Hotel staff at the annual outing this week end at Bald Mountain Hot Springs.

**BIRTHDAY IS OCCASION FOR DINNER PARTY**  
Mr. and Mrs. O. E. Weldon entertained at dinner last evening in honor of the birthday of Mrs. C. A. Bickford. The latter part of the evening was spent at the dance. Red napkins formed the centerpiece. Guests were Dr. and Mrs. O. T. Tolson, Mr. and Mrs. George South, Mr. and Mrs. E. E. Blooming, Mr. and Mrs. E. P. Gardner, Mr. and Mrs. A. Bickford and Mr. and Mrs. O. E. Weldon.

**COLONIAL DANCES ENTERTAINED THURSDAY**  
The Sacramento Chapter of Colonial Dames, seventeenth Century, met Thursday evening at the home of Mrs. George Sprague in honor of Mrs. W. S. Campbell, Pasadena, California. Mrs. Norton gave a report of the conference at Boise and Mrs. Sprague read an account of the reconstruction of Old Williamsburg, Virginia, along the original line. The hostess, Mrs. Sprague, daughter, Miss Jean Sprague, served refreshments.

**ENTERTAINS BIRTHDAY CLUB**  
Mrs. Rebecca Knape, entertained her birthday club Friday afternoon at her home with a one o'clock luncheon. The members presented her with a gift and the afternoon was spent with needle work.

**HARRIES PLANNED BY CAMP FIRE GROUP**  
Members of the We-Tom-A-Click Camp Fire Group met yesterday afternoon at the home of Mrs. A. A. Sauter. Individual hobby projects were discussed. The girls planned a visit next week to the Little W. A. Oakall, Dike Lakes Boulevard North.

**YOUNG BOYS HAVE BIRTHDAY CELEBRATION**  
Master Herbert Cowham entertained a number of his playmates at a birthday party Friday afternoon at his home.

# Classes In Tumbling Exercises Prove To Be "Most Fun of All"

The newest craze of Twin Falls, youngster generation, is tumbling. They're tumbling here and there, tumbling everywhere, these boys and girls who are participating in the supervised playground activities launched this week at Harmon, City and Drury parks and Lincoln field.

At City park yesterday morning when the 11:30 o'clock announcement "It's time to go home to lunch" was made, the tumbling group was the most reluctant to leave the park. And did those little girls, wearing colorful gymnastic rompers, walk out of the park? They did not. In pairs and singly they tumbling. The girls, who had arrived at the sidewalks. Then they ceased their tumbling exercises.

They have tumbling-classes three days a week, and the other two days they practice," Mrs. Kathryn McGill, one of the playground supervisors, said. Mrs. McGill said the girls are orderly, easily directed, and the volunteer assistants are getting uncounted good results from the tumbling classes, after the successful first week of the program.

Mrs. McGill and Miss Woodcock are being paid with IERA funds for the time they are spending on the work. They oversee all activities. All parks. The Twin Falls Council of Parent-Teacher associations is co-operating in the project.

New Schedules Made  
Lincoln field, 9 to 10 a. m.; Drury park, 9 to 10:30 a. m.; City park, 10 to 11:30 a. m. and Harmon park, 1:15 to 3:30 p. m. A picnic will be held at Harmon park every Friday afternoon at 2 o'clock, each child bringing his own lunch.

As part of the handcraft program, doll dressing projects are being handled at each park. The closing day, a doll show will be held at the City park, with all children attending. A time of 10 to 11 a. m. will be held at Lincoln field, including the mother and father, the children, a nurse maid, and even relatives. Girls attending will be dressing their dolls as circus characters. Those at Harmon are learning all about children in other lands by dressing their dolls in costumes of foreign countries. Little Bo-Peep and Mother Goose and other famous characters of the well-known fables are the inspiration for the girls who are dressing dolls at Drury park.

Mac Hopkin is instructing the boys at City park in the making of a doll house, and the girls will furnish all the furniture, and the boys will hold office, when it is completed. These boys who do a good job of carpentering on the house, will be shown how to make wooden "pop guns later.

Programs Made Variously  
City band will play Monday and Wednesday at 1 o'clock at Harmon park. At the same location boys and girls are taught tennis at 2 o'clock every Monday, Wednesday and Friday morning. Baseball is offered boys at Lincoln field Monday morning at 10 o'clock. They are playing baseball at Harmon park. All these are in addition to the folk dancing, drawing classes, sewing, games, nature study and reading which are being offered at the various parks. An expression class is being conducted at Harmon field.

Volunteer assistants are: City park, Arvilla Downing, Becky Victor, Shirley Smith, Ruth Chastain, Mac Hopkin, Perry Chapman, Kamella Hendrix, Wilma Fleming, Bette McGee, Mary Priebe, Arabella Brown; Harmon park, Robert Bellinger, Cora Melpa, Betty McCormick, Hazel Terry, Betty McDermott, Dorcas Cross, Paula Paul, Margaret Reid, Helen Willard; Lincoln field, Virginia Logan, Mary Halpin, Maxine Doss, Jean Ballinger, Joan Buckmaster, "Skip" Tolan.

# Son Of North Side Organizer Visits As NRA Representative

BOISE, July 14 (AP)—Fuentes Kuhn of Washington, D. C., assistant deputy administrator of the NRA, stopping in Boise on the way to the Western states, today that complaints and criticisms of the NRA are being handled rapidly.

Kuhn's father, W. A. Kuhn, an organizer of the Twin Falls North Side Land and Water conservation, which has been in the Wendell-Shoshone district under cultivation. The elder Kuhn resided for many years at Wendell.

The younger Kuhn's work with the NRA embraces the setting up of an education program to inform the public generally of the fundamentals of the NRA and to gather information as to what can be done to improve regional industrial self-government.

# IDAHO 10c

Continuous news from 1230 P. M.

The King and Queen of Wives Cradlers!

# Today!

A new kind of love story... "The Personal Life of a Girl" by Pat O'Brien and Glenda Farrell.

**RUPERT SCHOOL BOARD TO REPEAT BOND VOTE**  
RUPERT, July 14—Meeting Wednesday night, the board of trustees of Rupert school district voted to hold another bond election on the same bond issue that met defeat in the special election of the last August and set the date for the new election for Wednesday, August 15.

It was believed that the election was not representative and many voters had expressed the same opinion. The bond issue to be voted upon calls for \$2000 in negotiable bonds to be used in a two-class room addition to the present farm shop and garage building.

# SERVICES HELD FOR KIMBERLY PIONEER

KIMBERLY, July 14—Relatives and scores of friends and fellow pioneers paid final tribute to George J. Noble, merchant and owner of Kimberly for the past 31 years, at the Methodist church of Kimberly this afternoon. The service was of floral offerings decorated the church.

Rev. George O. Roseberry, pastor, assisted by Rev. H. J. Reynolds, former pastor of the Christian church, conducted the service. B. H. Proctor and James Reynolds, accompanied by Mrs. H. Miller Proctor, were soloists.

Wall leaders were W. H. Spence, W. A. L. Stone, O. H. Munson and H. Cowling. L. C. and Burton Morgan of Twin Falls, the wife of the late Mrs. Mollie A. Noble were the only surviving relatives here to attend the service.

# JAMES CYRUS SABIN BURIED WITH HONORS

BURLEY, July 14—James Cyrus Sabin, last surviving G. A. R. veteran of Cassia county, who died at his home here Monday evening, was buried with military honors following funeral services at the L. D. S. tabernacle Friday afternoon.

Mr. Sabin served in the Civil war under General Philip Sheridan and later was assigned to border patrol in Nevada and Colorado and was a fire proof constructed affair 50x100 feet with a 30x30 foot wing at the end. It has a facing to the Oregon Short Line track and joins the former plant of 50x100 on the west.

The new main building is to be used for storage purposes only and is supplemented by the original building and basement. The cleaning machinery is being placed about midway of the original building with three floors being necessary for proper installation. New equipment is arriving daily and plans for having the plant ready for operation by not later than August 20.

A new grader, polisher and other modern heavy cleaning machinery is being installed. In addition, a two-1/2-ton unit-tram pickup is being installed. The hand picking of peas is expected to be commenced some time the coming month. To facilitate the unloading of trucks from the farms, a drive way is being provided for in the new addition. The new main building is a fire proof of the 1924 crop have been stored to be cleaned when the plant is ready for operation.

The cortege, led by the Legionnaires and Veterans, proceeded to the Burley cemetery where interment was in charge of the Payne mortuary. At the graveside, Adonia Nelson, American Legion chaplain, officiated. Legionnaires' songs, tape and Mrs. Sabin's eulogy were given by F. C. Ramsey, Bill Franks, J. S. King, George Eitner, Lester O. Parsons and Ernest Welch were pallbearers. The flowers were taken care of by women of the Second ward relief society.

# Real Estate Transfers

Published by this International Title Guaranty Company

Deed C. Wintry to R. N. Holmes \$1800, lot 22 and NW 1/4 lot 24 1/2 25, Twin Falls townsite.

Deed R. N. Holmes to H. Russell \$2500, lot 21 and NW 1/4 lot 24 1/2 25, Twin Falls townsite.

Deed First National Bank to St. J. S. Stansell \$1, W. 1/2 NW 1/4 lot 25 1/2.

# Coming Events

The Dorcas Sunday school class of the First Baptist church will meet at the country home of Mrs. Shewell, Tuesday afternoon at 2:30 o'clock. Hostess, George O. Roseberry will have charge of the program.

# YOUR CAR NEEDS Special Care

**GAS OIL TIRES Repairs Greasing Accessories Towing**

**MILES J. BROWNING**  
BUICK — PONTIAC  
Corner 4th Street and Main Ave. E.

# ORPHEUM

**TODAY! A Swell Picture If There Ever Was One!**

**POWELL MYRNA LOY**  
in Dashiell Hammett's latest **THE THIN MAN**  
with MAUREN O'SULLIVAN  
HAT PENDBLETON-MINA GOMBEL  
M-G-M PICTURE

**LOVE CAPTIVE**  
with MELVINE ANDERSON, OLIVIA STUART, PAUL KELLY, ALICE DICKERSON, REESE GOLD, PAUL BOWEN.

**FLUS + COMEDY - Novelty - News**  
MICKY MOUSE CARTOONS

And again folks, REMEMBER: JOE-K SAYS—It's All in Fun and WE NEVER RAISE OUR PRICES!

**10c 25c**



# Cavalcade Takes \$35,000 Classic In Dramatic Finish

## Otto Parry Tours 18 Holes Of Twin Falls Course In 66 Strokes

### 3-Year-Old Turf Champion Scores Thrilling Victory

Mrs. Isabel Dodge Sloane's Horse Defeats Discovery For Sixth Time—Earnings Amount to \$126,965

By CHARLES DUNKLEY (Associated Press Sports Writer)  
CHICAGO, July 14.—Surging forward from last place, Mrs. Isabel Dodge Sloane's Cavalcade won the \$35,000 added Arlington championship by four lengths today, capturing the three-year-old class of the American turf in a dramatic finish which set a crowd of 30,000 into a delirium of cheers.

As the three-year-old swept past the judge's stand, the conqueror of Alameda, Vanderbilt's son, came out of the sixth time, the crowd was on its feet cheering him on while "Under the Hammer" Cavalcade, took a quick look over his shoulder to make sure he was safely in front.

Half a length back of Discovery was Hadal, the entry of Warren Wright of Chicago, with Alakula, the challenger owned by Norman W. Church of Los Angeles, three lengths back.

Cavalcade's Best Race  
Today's race at a mile and a quarter was the fastest Cavalcade has ever run. He covered the distance in 2:02 4-5, a second off the record set by Sun Bee in 1931.

Cavalcade earned \$30,325 by his victory, bringing his total winning to date, both as a 2 year old and this year, to \$126,965. Cavalcade, coupled with Good Goods as the Brooklynite, went to the post prohibitive favorite at 1-10. He paid \$274 to win, \$218 to place and \$214 to show. The price for Discovery was \$225 to win, \$256 to place, while Hadal paid \$294 to show.

### Missions Defeat Seals by 10 to 9

Three-Run Rally In Twelfth Inning Breaks Deadlock

PACIFIC COAST LEAGUE STANDINGS

|               | W. | L. | Pct. |
|---------------|----|----|------|
| Hollywood     | 12 | 6  | .667 |
| San Francisco | 13 | 6  | .684 |
| Los Angeles   | 12 | 8  | .600 |
| Seattle       | 10 | 10 | .500 |
| Portland      | 10 | 9  | .526 |
| Sacramento    | 8  | 12 | .400 |
| Oakland       | 7  | 13 | .344 |
| Portland      | 3  | 18 | .143 |

SAN FRANCISCO, July 14 (AP)—San Francisco's Missions came from behind in the twelfth inning today to beat out the Seals, 10 to 9. After their home town rival had broken the deadlock with two runs in the first half of the twelfth the Missions came back with a three-run rally that clinched the game.

R. H. E. Seals—200 300 300 002—9 13 1 Missions—100 630 300 000—10 20 3 Batteries: Malle, Ruiz, Sherman and McCullen, Woodall; Johnson, Osborne, Lucas and Fitzpatrick.

ANGELS & STARS 2  
LOS ANGELES, July 14 (AP)—While Lynn Nelson was letting Hollywood down with five hits, his Los Angeles teammates put on a first-inning splurge of five runs and picked up three others in the last three innings to defeat the Stars 8 to 2 here today.

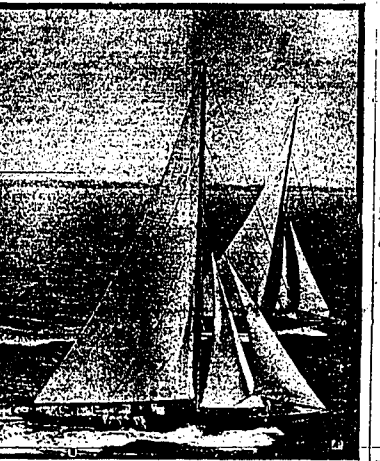
Victory gave the Angels the lead in the series, 2 to 1. R. H. E. Los Angeles—500 111 111—11 13 1 Stars—100 000 000—2 12 8 Batteries: Nelson and G. Campbell; A. Campbell, Rheinheiser and Basher.

### Mrs. Sloane's Cavalcade Wins By Four Lengths



CAVALCADE  
A crowd of 30,000 yesterday witnessed another amazing victory for Cavalcade, Mrs. Isabel Dodge Sloane's three-year-old champion of the American turf, in the \$35,000 added Arlington classic. Cavalcade beat Discovery for the sixth time, winning the race by four lengths. (AP Photo.)

### BRITISH YACHTS COMPETE



FOREMOST contenders for the right to represent England in the bid for the America's cup, T. O. M. Sopwith's all-steel yacht Endeavour (foreground) is shown during a brisk brush with the Velocette owned by the Royal Harwich Yacht club course, England.

### Star Threesome Opens Play Here

Peterson, Winterholer and Parry First to Play In Today's Meet

Three of southern Idaho's highest ranking amateur golf stars will form the threesome which will tour the fairways at the Twin Falls Country club this morning at 10 o'clock to open the invitational meet between Pocastello, Clear Lakes and Country club aggregations. Ben Peterson, the Pocastello flash who last year was Idaho state amateur champion and this year dropped the title to Ray Critchfield, Boise, by one stroke, will lead off for the easterners. He will be joined by Winterholer, southern Idaho amateur champion, and Otto Parry, Buhl, one of the flashiest club swingers in the state.

**DUMB BELLS**  
THAT WAS A FINE SHOT, PROFESSOR—WHY, YOU HARDLY HAD TIME TO TAKE AIM AT IT!

### Roosevelt Leaves Fishing Grounds on Voyage to Hawaii

ABOARD THE U. S. S. NEW ORLEANS, accompanying President Roosevelt, July 14 (AP)—President Roosevelt tonight set out on his 4000 mile cruise to the Hawaiian Islands after a field day of sport on the water with the Cocos Island, a green dot in the Pacific ocean west of Panama. Burned by the sun and wind of a day of varied rain storms and smiling skies, the president retired early. Just at sunset the president's cruiser, the Houston, struck out for the west. The New Orleans followed in her wake and soon the verdant Cocos Island dropped below the horizon.

**AUTO PARTS**  
For Your Car, Truck or Tractor  
WHOLESALE  
Ask Your Dealer or Repair Man  
**Step-Ken Auto Parts**  
For PEP—See STEP

### Eaton, Goldman Vie in Western Tourney's Finals

21-Year-Old Oklahoma City Golf Ace Meets Dallas Expert for Championship In 36th Annual Event

By CHARLES A. GRIMMER (Associated Press Sports Writer)  
OKLAHOMA CITY, July 14 (AP)—Patron of Oklahoma City will celebrate his twenty-first birthday tomorrow trying to win the Western amateur golf championship and Dave Goldman of Dallas will try to spoil it by beating the slim tournament medalist out of the first major title win in his sport.

Goldman, 25-year-old "old man" of the semi-finals, reached the finale of the 36th annual tournament with a hard-fought 1-up victory over Charley Yates of Atlanta, the national collegiate champion, while Patton easily defeated Vernon Stewart of Albuquerque, New Mexico, and Stanford University, 6 and 4.

To out Stewart, Eaton needed only to hold as much as he could for 10 minutes. He finished the morning 18 holes, but for Goldman it was a tight battle all the way. He won the match 2-1, thinking about a 1-up lead the 30-year-old-Georgian held over him.

Goldman stended to a 71 this afternoon and was one up on Yates going to the thirty-third hole. He pulled their second shot to the right of the green, but were not stymied by the scrub oaks fringing the green.

### 'Obstacle' Golf Tourney Slated At Canyon Crest

Canyon Crest golfers will get a taste of traps and hazards today when they enter the novel obstacle tournament at the club course. Dick Olson, Crest professional, said last night.

Olson announced that the hazards would remain secret until the players appeared on the course, but maintained that the stroke would have to be over, around or under the obstacles.

### Retains Net Title

NEW ALBANY, Ind., July 14 (AP)—Catherine Wolfe of Elkhart retained her Indiana women's singles championship by defeating Grace Wheeler of Santa Monica, California, 6-1, 6-0, in the final of the Indiana Tennis tournament here today.

Gene Mako of Los Angeles, California, favorite in the men's singles, defeated Gilbert Hunt of Washington, D. C., 6-4, 6-2, to enter the final round to be played tomorrow.

SPANKING JUDGE POPULAR  
ENID, Okla., July 14 (AP)—Enid's sparring judge, Jerry G. Crowley, of the county court, has no objection to re-election. Occasionally during his first term he has spanked some wayward youth. Apparently the taxpayers, if not the boys, like it.

TOO LATE TO CLASSIFY  
WANTED—PARTNER FOR PROGRESSION. Experience unnecessary. Must have cash. Write box 100 in care News.

WANTED—TWO TO 4 TONS OF barley. C. S. Maxwell, three miles east. Phone 02912.

**YUM! YUM!**  
Chicken Pie Apple Sauce Baked Beans  
New Potatoes Fried Rolls Butter Jelly Ice Cream and Cake Hot Coffee  
All For 25¢ Per Plate, at the HANSEN CHURCH COME TUESDAY EVENING, JULY 17th, 6 to 9 P. M.

### Don't Worry About '36 Olympics, Say West Coast Prep Phenoms

By PAUL ZIMMERMAN (Associated Press Sports Writer)  
LOS ANGELES, July 14.—By way of offering to take part of the 1936 Olympic games burden of the United States, a group of juvenile athletes from southern California's high school athletes have posted a flock of impressive track and field marks this spring.

They have broken three national scholastic records and set up a few other marks sufficient to put joy in the hearts of college coaches who have been wondering when where material for their future teams is coming.

Perhaps the most promising youth is Le Roy Kirkpatrick, El Centro, California, senior, who has marks of 145 and 238 for the high and low hurdles. His 120-yard hurdle performance, accomplished twice this spring, is two-tenths of a second faster than the record set last spring by Phillip Cole of Oklahoma City, now a freshman at U. C.

Half-mile Relay Mark Falls  
A close second is 17-year-old Louis Zamperini of Torrance, who shattered an 18-year-old record when he ran the mile in 4 minutes 21.2 seconds in the Southern California championship. He had a previous mark of 4:28.9. The record of 4 minutes 21.2 seconds was set by Ed Shields of Mercedburg academy in 1916.

But Zamperini is not alone. Virgil Hoover of Antelope Valley, 16, 4:24.2 to defeat a field of college runners. He won the state high school title last year in 4:29.2.

The other national record fell when the Manual Arts high school (Los Angeles) half-mile relay team of Lee LeFord, Jim Davis, Bob Cushman and Don Skinner passed the baton to a mark of 1 minute 47.2 seconds, eclipsing the record of 1:52.2 set by Los Angeles Polytechnic in 1931.

More Red-Shot Schoolboys  
Then there are a few others whom college coaches would enjoy naming. The 16-year-old Red-Shot Thurber of Glendale has been consistent at 6 feet 8 inches in the high jump. He's won the state title in 1933. Manuel Arts has marks of 6 feet 4 inches in the high jump.

### Cooper, Laffoon Overtake Field

Marathon Twins Threaten To Stage Another Overtime Act

By PAUL MICKELSON (Associated Press Sports Writer)  
ST. PAUL, Minn., July 14 (AP)—"Lightnings" Henry Cooper and Jack Laffoon of Denver, the marathon twins of the recent western open, claimed to stage another of their famous overtakes today as they entered a Laffoon race to the \$5,000 St. Paul open golf championship.

Back from Peoria, Ill., where they battled 108 holes before the Chicago star shot almost 100 over par on the front nine of the second over-time round to sail away his triumph, the two toughies were back in action again at 142 shots, two under par, and one shot better than Horton Smith of Chicago who blew himself to a 153 over in front yesterday with a par-shattering 8.

It was Laffoon who made up the ground as the sun beat down with 92-degree heat and all but exhausted the first young Denver par, the feathery, four shots behind Smith with even 67 yesterday, played with Cooper today and outshot him, 70 to 73, to finish his marathon trip.

Happy but Tired  
The hotter the weather got, the hotter Laffoon got. Banging his

### California Lad Sets New Records



Two of the most sensational of a bumper crop of southern California high school track brilliants this season are LeRoy Kirkpatrick of El Centro, with marks of 145 and 238 for the high and low hurdles, and Louis Zamperini of Torrance, who paced a 4:21.2 mile. The high hurdle and mile marks better the national prep standards in those events.

school lads have leaped better than 22 feet in the broad jump this spring. In these parts, Don Skinner of Manual Arts heads the list with a 5 feet 7 inches mark.

A few performances like 4:23 seconds in the quarter-mile, 55 feet 8 inches in the 12-pound shot and 9 feet in the 100-yard dash can be thrown in for good measure. And these are "unrecorded" by Amateur Athletic union officials.

Two of the most sensational of a bumper crop of southern California high school track brilliants this season are LeRoy Kirkpatrick of El Centro, with marks of 145 and 238 for the high and low hurdles, and Louis Zamperini of Torrance, who paced a 4:21.2 mile. The high hurdle and mile marks better the national prep standards in those events.

### Record Smashed By Jack Medina

SAN FRANCISCO, July 14 (AP)—Jack Medina, flashy University of Washington swimmer, set a new American record of 18 minutes 20 seconds for 1500 meters free style in an exhibition race here today. He swam the first 800 meters of the distance in the new world's record time of 10:11.6, bettering his own mark of 10:17.5.

approaches still to the pin, he picked up five briefs of the record, scoring 35's each way, as Cooper, took 37-36, and was a happy but tired man when he finished.

Smith was well on his way to the undisputed leadership until he started the hick-nick. Out in par he had to take the lead by taking 38 and three in front of Laffoon through 71 holes, but he developed such a sudden streak of wildness on his way back that he needed 39 more shots to get home.

In third place tied with 144's were Walter Hagen of Detroit, with 71-72, and George Von Elm, golf's business man, who turned in his second straight par 72, losing a golden chance to take the lead by taking 38 on the back nine.

Olin Dutra of Los Angeles, national open champion, had, 72-73-115, a score duplicated by William Kaiser of Louisville, Ky., who had 73-72, and Sam Parks, Pittsburgh, who shot a 69 after shooting a hole in one yesterday as he tallied 72. "Wild" Bill Mellohorn of Louisville, Ky., had 74-72-146 while Tommy Armour, veteran Scot, was far from out of it with 73-74-147.

Sixty-four qualified for the final 36 holes tomorrow with 159 or better.

**USED CARS**  
"30-BUICK SEDAN, light 6, side mounts, Karl-Keen trunk, new heavy-duty tires, fully equipped—\$400  
"25-OLAHAM COUPE, runs good, 6 wire wheels, side mounts—\$450  
"28-LASALLE CABRIOLET, had the best of cars—\$350  
"29-CHEV. COACH, runs good, fully equipped—\$200  
"29-CHEV. SEDAN, very clean, good condition, fully equipped—\$250  
"29-CHEV. COUPE, new finish, runs good, fully equipped—\$325  
"32-CHEV. Coupe, had best of care, fully equipped—\$425  
"30-FORD SEDAN, new finish, seat covers, motor reconditioned—\$275  
"31-FORD PICK-UP, new finish, heavy duty tires for only—\$250  
"31-FORD TRUCK, 157 Dual, platform body, overloads—\$300  
"28-OLDSMOBILE DeLuxe SEDAN, side mounts, extra good—\$285  
LOW RATE G.M.A.C. TERMS SAVES \$5

### Buhl Golf Star Goes After Title In News Tourney

"We'll Go Around in 60 Before This Thing's Over," Says West-End Expert After Showing Fine Form

Otto Parry, Buhl "bearded beauty"—and one of the outstanding golfers in Southern Idaho, sneezed through his whiskers yesterday afternoon, muttered a few words into the depths of his Pioneer day hair matress, and proceeded to tour 18 holes of the Twin Falls Country club course in 66 strokes.

Parry walked off the course with a confident air that he and his partner, Jesse Moore, would win The News best ball tournament which is slated to open Monday.

Parry willingly admitted that he was a "news terror" "but" trying when they chalked up a 60 in their qualifying rounds—"Why—well—go around in 60 before this thing's over," the Clear Lakes club swinger confidently maintained.

Parry shot the 66 "just to show them 'Twins terror' that I'm trying to win this thing." Winterholer and Pete Gray, "that Buhl can still be heard from." Winterholer and Pete Gray, "that Buhl can still be heard from." Winterholer and Pete Gray, "that Buhl can still be heard from."

May Get Surprise  
Last night the Twin Falls "birds" continued to smile confidently and await what is slated to be the battle of the century. However, from appearances both pair may get the surprise of their lives when the actual competition opens.

Tony Leonard and Al Smith, Country club players, toured the course last night in a 37 which coupled with a previous 34, gives them a qualifying score of 71. Thiney and Buhl were in the "twelve" in a 40-37 for a 77.

Qualifying rounds are slated to be concluded today and the actual tournament will begin Monday. Everything is set and were ready for a tourney that is bound to be a big success. Ernie Schellert, country club pro who with members of the News staff is directing the tourney, said last night.

Championship cups have been ordered by The News and other trophies and awards will be purchased from the entry fee fund.

ain's international tennis reign. I think they are in as fine shape as I ever saw a bunch of tennis players. They look like a lot of young colts.

"Even Wilmer Allison, despite his boat trip, appears in an excellent frame of mind."

Ask for an Orange Funny at the Log Cabin Barbecue—Adv.

**Congratulations!**  
**Sanitary Barber Shop**  
ON YOUR  
**FRIGIDAIRE**  
**'FLOWING COLD'**  
Air Conditioning System

We know that your many patrons will enjoy the comfort of your most modern shop — the only Frigidaire Air-Conditioned shop in Idaho. We are sure that Twin Falls will appreciate this distinctive improvement and you will win many new friends.

**Detweiler Coal Co.**  
"Your Comfort Merchant"  
We Cordially Invite You to Stop in at the Sanitary Barber Shop—and Cool Off With Frigidaire!

**GLEN G. JENKINS**  
CHEVROLET OLDSMOBILE

# NARD COMPANY

NASH      PLYMOUTH

# 90 STOCKS' AVERAGE REMAINS UNCHANGED

Selective Buying in Few  
Issues Helps to Give  
Firm Undertone

## MARKETS AT A GLANCE

**NEW YORK, July 14 (AP)—**Stocks steady; market up in dull trading.  
Bonds firm; U. S. government bonds steady.  
Curb irregular; price movements erratic.  
Foreign exchange quiet; gold currencies slightly higher.  
Cotton quiet; forest products western belt; week-end liquids.  
Sugar and coffee closed.  
**CHICAGO:**  
Wheat strong; active speculative buying.  
Corn higher; abnormal heat southwest.  
Cattle nominally steady.  
Hogs nominally steady.

By FREDERICK GARDNER,  
Associated Press Financial Writer

## NEW YORK, July 14 (AP)—

Stocks went through routine motions in another exceedingly dull week-end session today.  
While cotton and wheat set new high marks for the week's advance, the security markets continued stagnant.  
A rally in German government bonds on reports the German government had given its assurance that it would not seek discrimination against the United States in the transfer of assets on foreign loans added a touch of activity to the market.  
Further selective buying in a few individual issues helped to impart an undertone of firmness to the market, as it rounded off two months of narrow fluctuations.  
American Sugar Refining gained 3 points to a new peak at 72. United States Smelting attained a new top on a 3-point spurt, closing at 185. 2 National Lead climbed 3 points to 182, also a new peak.  
American Beet Sugar preferred, Cuban-American Sugar preferred, Hershey Chocolate and International Business Machines were other strong spots.  
The call of issues showing strength was interpreted as evidence of continued confidence in the economy. The usual speculative mediums traded in a narrow rut.

Average Unchanged

Volume on the stock exchange totaled 19,200,000 shares compared with 18,000,000 a week ago. The Standard and Poors' average for 90 stock remained unchanged at 78.9.  
While December wheat at Chicago topped \$1.01 a bushel, standard market traders continued to ignore strength there. Wheat reacted before the close, and Western wheat was higher. Other cereals were mixed.  
Cotton added reacted after a further advance of about 50 cents to a bid and closed 15 to 20 cents a bale lower.  
The market direct waiting for further indications of expanding industrial operations. Automobile output this week was estimated to have been stepped up to above twice the output of the preceding week, which included a 100 percent increase.

The recent low level of textile production, following curtailment of the U. S. cotton surplus, and the surplus, was mirrored in June statistics on domestic cotton consumption. The U. S. cotton bureau said the June total 233,414 bales, compared with 218,765 in May and 207,700 in April. The bureau said the abnormal summer boom in textile manufacturing was under way.

SILVER

NEW YORK, July 14 (AP)—Silver steady and unchanged at 46 1/2.

## TWIN FALLS MARKETS

The Twin Falls market report yesterday was as follows:

| Livestock                          |                  |
|------------------------------------|------------------|
| Light butchers, 210 to 230 pounds  | \$1.50           |
| Heavy butchers, 230 to 250 pounds  | \$1.50           |
| Underweight butchers, 135-180 lbs. | \$1.50           |
| Light calves, 80 to 125 pounds     | \$1.50           |
| Cows                               | \$1.50 to \$1.75 |
| Heifers                            | \$1.50 to \$1.75 |
| Yearlings                          | \$1.50 to \$1.75 |
| Steers                             | \$1.50 to \$1.75 |
| Swine                              | \$1.50 to \$1.75 |
| Sheep                              | \$1.50 to \$1.75 |
| Goats                              | \$1.50 to \$1.75 |
| Chickens                           | \$1.50 to \$1.75 |
| Ducks                              | \$1.50 to \$1.75 |
| Geese                              | \$1.50 to \$1.75 |
| Quail                              | \$1.50 to \$1.75 |
| Pheasants                          | \$1.50 to \$1.75 |
| Partridges                         | \$1.50 to \$1.75 |
| Guinea fowls                       | \$1.50 to \$1.75 |
| Game birds                         | \$1.50 to \$1.75 |
| Wild fowl                          | \$1.50 to \$1.75 |
| Waterfowl                          | \$1.50 to \$1.75 |
| Game mammals                       | \$1.50 to \$1.75 |
| Wild mammals                       | \$1.50 to \$1.75 |
| Game fish                          | \$1.50 to \$1.75 |
| Wild fish                          | \$1.50 to \$1.75 |
| Game birds                         | \$1.50 to \$1.75 |
| Wild birds                         | \$1.50 to \$1.75 |
| Game mammals                       | \$1.50 to \$1.75 |
| Wild mammals                       | \$1.50 to \$1.75 |
| Game fish                          | \$1.50 to \$1.75 |
| Wild fish                          | \$1.50 to \$1.75 |
| Game birds                         | \$1.50 to \$1.75 |
| Wild birds                         | \$1.50 to \$1.75 |
| Game mammals                       | \$1.50 to \$1.75 |
| Wild mammals                       | \$1.50 to \$1.75 |
| Game fish                          | \$1.50 to \$1.75 |
| Wild fish                          | \$1.50 to \$1.75 |
| Game birds                         | \$1.50 to \$1.75 |
| Wild birds                         | \$1.50 to \$1.75 |
| Game mammals                       | \$1.50 to \$1.75 |
| Wild mammals                       | \$1.50 to \$1.75 |
| Game fish                          | \$1.50 to \$1.75 |
| Wild fish                          | \$1.50 to \$1.75 |
| Game birds                         | \$1.50 to \$1.75 |
| Wild birds                         | \$1.50 to \$1.75 |
| Game mammals                       | \$1.50 to \$1.75 |
| Wild mammals                       | \$1.50 to \$1.75 |
| Game fish                          | \$1.50 to \$1.75 |
| Wild fish                          | \$1.50 to \$1.75 |
| Game birds                         | \$1.50 to \$1.75 |
| Wild birds                         | \$1.50 to \$1.75 |
| Game mammals                       | \$1.50 to \$1.75 |
| Wild mammals                       | \$1.50 to \$1.75 |
| Game fish                          | \$1.50 to \$1.75 |
| Wild fish                          | \$1.50 to \$1.75 |
| Game birds                         | \$1.50 to \$1.75 |
| Wild birds                         | \$1.50 to \$1.75 |
| Game mammals                       | \$1.50 to \$1.75 |
| Wild mammals                       | \$1.50 to \$1.75 |
| Game fish                          | \$1.50 to \$1.75 |
| Wild fish                          | \$1.50 to \$1.75 |
| Game birds                         | \$1.50 to \$1.75 |
| Wild birds                         | \$1.50 to \$1.75 |
| Game mammals                       | \$1.50 to \$1.75 |
| Wild mammals                       | \$1.50 to \$1.75 |
| Game fish                          | \$1.50 to \$1.75 |
| Wild fish                          | \$1.50 to \$1.75 |
| Game birds                         | \$1.50 to \$1.75 |
| Wild birds                         | \$1.50 to \$1.75 |
| Game mammals                       | \$1.50 to \$1.75 |
| Wild mammals                       | \$1.50 to \$1.75 |
| Game fish                          | \$1.50 to \$1.75 |
| Wild fish                          | \$1.50 to \$1.75 |
| Game birds                         | \$1.50 to \$1.75 |
| Wild birds                         | \$1.50 to \$1.75 |
| Game mammals                       | \$1.50 to \$1.75 |
| Wild mammals                       | \$1.50 to \$1.75 |
| Game fish                          | \$1.50 to \$1.75 |
| Wild fish                          | \$1.50 to \$1.75 |
| Game birds                         | \$1.50 to \$1.75 |
| Wild birds                         | \$1.50 to \$1.75 |
| Game mammals                       | \$1.50 to \$1.75 |
| Wild mammals                       | \$1.50 to \$1.75 |
| Game fish                          | \$1.50 to \$1.75 |
| Wild fish                          | \$1.50 to \$1.75 |
| Game birds                         | \$1.50 to \$1.75 |
| Wild birds                         | \$1.50 to \$1.75 |
| Game mammals                       | \$1.50 to \$1.75 |
| Wild mammals                       | \$1.50 to \$1.75 |
| Game fish                          | \$1.50 to \$1.75 |
| Wild fish                          | \$1.50 to \$1.75 |
| Game birds                         | \$1.50 to \$1.75 |
| Wild birds                         | \$1.50 to \$1.75 |
| Game mammals                       | \$1.50 to \$1.75 |
| Wild mammals                       | \$1.50 to \$1.75 |
| Game fish                          | \$1.50 to \$1.75 |
| Wild fish                          | \$1.50 to \$1.75 |
| Game birds                         | \$1.50 to \$1.75 |
| Wild birds                         | \$1.50 to \$1.75 |
| Game mammals                       | \$1.50 to \$1.75 |
| Wild mammals                       | \$1.50 to \$1.75 |
| Game fish                          | \$1.50 to \$1.75 |
| Wild fish                          | \$1.50 to \$1.75 |
| Game birds                         | \$1.50 to \$1.75 |
| Wild birds                         | \$1.50 to \$1.75 |
| Game mammals                       | \$1.50 to \$1.75 |
| Wild mammals                       | \$1.50 to \$1.75 |
| Game fish                          | \$1.50 to \$1.75 |
| Wild fish                          | \$1.50 to \$1.75 |
| Game birds                         | \$1.50 to \$1.75 |
| Wild birds                         | \$1.50 to \$1.75 |
| Game mammals                       | \$1.50 to \$1.75 |
| Wild mammals                       | \$1.50 to \$1.75 |
| Game fish                          | \$1.50 to \$1.75 |
| Wild fish                          | \$1.50 to \$1.75 |
| Game birds                         | \$1.50 to \$1.75 |
| Wild birds                         | \$1.50 to \$1.75 |
| Game mammals                       | \$1.50 to \$1.75 |
| Wild mammals                       | \$1.50 to \$1.75 |
| Game fish                          | \$1.50 to \$1.75 |
| Wild fish                          | \$1.50 to \$1.75 |
| Game birds                         | \$1.50 to \$1.75 |
| Wild birds                         | \$1.50 to \$1.75 |
| Game mammals                       | \$1.50 to \$1.75 |
| Wild mammals                       | \$1.50 to \$1.75 |
| Game fish                          | \$1.50 to \$1.75 |
| Wild fish                          | \$1.50 to \$1.75 |
| Game birds                         | \$1.50 to \$1.75 |
| Wild birds                         | \$1.50 to \$1.75 |
| Game mammals                       | \$1.50 to \$1.75 |
| Wild mammals                       | \$1.50 to \$1.75 |
| Game fish                          | \$1.50 to \$1.75 |
| Wild fish                          | \$1.50 to \$1.75 |
| Game birds                         | \$1.50 to \$1.75 |
| Wild birds                         | \$1.50 to \$1.75 |
| Game mammals                       | \$1.50 to \$1.75 |
| Wild mammals                       | \$1.50 to \$1.75 |
| Game fish                          | \$1.50 to \$1.75 |
| Wild fish                          | \$1.50 to \$1.75 |
| Game birds                         | \$1.50 to \$1.75 |
| Wild birds                         | \$1.50 to \$1.75 |
| Game mammals                       | \$1.50 to \$1.75 |
| Wild mammals                       | \$1.50 to \$1.75 |
| Game fish                          | \$1.50 to \$1.75 |
| Wild fish                          | \$1.50 to \$1.75 |
| Game birds                         | \$1.50 to \$1.75 |
| Wild birds                         | \$1.50 to \$1.75 |
| Game mammals                       | \$1.50 to \$1.75 |
| Wild mammals                       | \$1.50 to \$1.75 |
| Game fish                          | \$1.50 to \$1.75 |
| Wild fish                          | \$1.50 to \$1.75 |
| Game birds                         | \$1.50 to \$1.75 |
| Wild birds                         | \$1.50 to \$1.75 |
| Game mammals                       | \$1.50 to \$1.75 |
| Wild mammals                       | \$1.50 to \$1.75 |
| Game fish                          | \$1.50 to \$1.75 |
| Wild fish                          | \$1.50 to \$1.75 |
| Game birds                         | \$1.50 to \$1.75 |
| Wild birds                         | \$1.50 to \$1.75 |
| Game mammals                       | \$1.50 to \$1.75 |
| Wild mammals                       | \$1.50 to \$1.75 |
| Game fish                          | \$1.50 to \$1.75 |
| Wild fish                          | \$1.50 to \$1.75 |
| Game birds                         | \$1.50 to \$1.75 |
| Wild birds                         | \$1.50 to \$1.75 |
| Game mammals                       | \$1.50 to \$1.75 |
| Wild mammals                       | \$1.50 to \$1.75 |
| Game fish                          | \$1.50 to \$1.75 |
| Wild fish                          | \$1.50 to \$1.75 |
| Game birds                         | \$1.50 to \$1.75 |
| Wild birds                         | \$1.50 to \$1.75 |
| Game mammals                       | \$1.50 to \$1.75 |
| Wild mammals                       | \$1.50 to \$1.75 |
| Game fish                          | \$1.50 to \$1.75 |
| Wild fish                          | \$1.50 to \$1.75 |
| Game birds                         | \$1.50 to \$1.75 |
| Wild birds                         | \$1.50 to \$1.75 |
| Game mammals                       | \$1.50 to \$1.75 |
| Wild mammals                       | \$1.50 to \$1.75 |
| Game fish                          | \$1.50 to \$1.75 |
| Wild fish                          | \$1.50 to \$1.75 |
| Game birds                         | \$1.50 to \$1.75 |
| Wild birds                         | \$1.50 to \$1.75 |
| Game mammals                       | \$1.50 to \$1.75 |
| Wild mammals                       | \$1.50 to \$1.75 |
| Game fish                          | \$1.50 to \$1.75 |
| Wild fish                          | \$1.50 to \$1.75 |
| Game birds                         | \$1.50 to \$1.75 |
| Wild birds                         | \$1.50 to \$1.75 |
| Game mammals                       | \$1.50 to \$1.75 |
| Wild mammals                       | \$1.50 to \$1.75 |
| Game fish                          | \$1.50 to \$1.75 |
| Wild fish                          | \$1.50 to \$1.75 |
| Game birds                         | \$1.50 to \$1.75 |
| Wild birds                         | \$1.50 to \$1.75 |
| Game mammals                       | \$1.50 to \$1.75 |
| Wild mammals                       | \$1.50 to \$1.75 |
| Game fish                          | \$1.50 to \$1.75 |
| Wild fish                          | \$1.50 to \$1.75 |
| Game birds                         | \$1.50 to \$1.75 |
| Wild birds                         | \$1.50 to \$1.75 |
| Game mammals                       | \$1.50 to \$1.75 |
| Wild mammals                       | \$1.50 to \$1.75 |
| Game fish                          | \$1.50 to \$1.75 |
| Wild fish                          | \$1.50 to \$1.75 |
| Game birds                         | \$1.50 to \$1.75 |
| Wild birds                         | \$1.50 to \$1.75 |
| Game mammals                       | \$1.50 to \$1.75 |
| Wild mammals                       | \$1.50 to \$1.75 |
| Game fish                          | \$1.50 to \$1.75 |
| Wild fish                          | \$1.50 to \$1.75 |
| Game birds                         | \$1.50 to \$1.75 |
| Wild birds                         | \$1.50 to \$1.75 |
| Game mammals                       | \$1.50 to \$1.75 |
| Wild mammals                       | \$1.50 to \$1.75 |
| Game fish                          | \$1.50 to \$1.75 |
| Wild fish                          | \$1.50 to \$1.75 |
| Game birds                         | \$1.50 to \$1.75 |
| Wild birds                         | \$1.50 to \$1.75 |
| Game mammals                       | \$1.50 to \$1.75 |
| Wild mammals                       | \$1.50 to \$1.75 |
| Game fish                          | \$1.50 to \$1.75 |
| Wild fish                          | \$1.50 to \$1.75 |
| Game birds                         | \$1.50 to \$1.75 |
| Wild birds                         | \$1.50 to \$1.75 |
| Game mammals                       | \$1.50 to \$1.75 |
| Wild mammals                       | \$1.50 to \$1.75 |
| Game fish                          | \$1.50 to \$1.75 |
| Wild fish                          | \$1.50 to \$1.75 |
| Game birds                         | \$1.50 to \$1.75 |
| Wild birds                         | \$1.50 to \$1.75 |
| Game mammals                       | \$1.50 to \$1.75 |
| Wild mammals                       | \$1.50 to \$1.75 |
| Game fish                          | \$1.50 to \$1.75 |
| Wild fish                          | \$1.50 to \$1.75 |
| Game birds                         | \$1.50 to \$1.75 |
| Wild birds                         | \$1.50 to \$1.75 |
| Game mammals                       | \$1.50 to \$1.75 |
| Wild mammals                       | \$1.50 to \$1.75 |
| Game fish                          | \$1.50 to \$1.75 |
| Wild fish                          | \$1.50 to \$1.75 |
| Game birds                         | \$1.50 to \$1.75 |
| Wild birds                         | \$1.50 to \$1.75 |
| Game mammals                       | \$1.50 to \$1.75 |
| Wild mammals                       | \$1.50 to \$1.75 |
| Game fish                          | \$1.50 to \$1.75 |
| Wild fish                          | \$1.50 to \$1.75 |
| Game birds                         | \$1.50 to \$1.75 |
| Wild birds                         | \$1.50 to \$1.75 |
| Game mammals                       | \$1.50 to \$1.75 |
| Wild mammals                       | \$1.50 to \$1.75 |
| Game fish                          | \$1.50 to \$1.75 |
| Wild fish                          | \$1.50 to \$1.75 |
| Game birds                         | \$1.50 to \$1.75 |
| Wild birds                         | \$1.50 to \$1.75 |
| Game mammals                       | \$1.50 to \$1.75 |
| Wild mammals                       | \$1.50 to \$1.75 |
| Game fish                          | \$1.50 to \$1.75 |
| Wild fish                          | \$1.50 to \$1.75 |
| Game birds                         | \$1.50 to \$1.75 |
| Wild birds                         | \$1.50 to \$1.75 |
| Game mammals                       | \$1.50 to \$1.75 |
| Wild mammals                       | \$1.50 to \$1.75 |
| Game fish                          | \$1.50 to \$1.75 |
| Wild fish                          | \$1.50 to \$1.75 |
| Game birds                         | \$1.50 to \$1.75 |
| Wild birds                         | \$1.50 to \$1.75 |
| Game mammals                       | \$1.50 to \$1.75 |
| Wild mammals                       | \$1.50 to \$1.75 |
| Game fish                          | \$1.50 to \$1.75 |
| Wild fish                          | \$1.50 to \$1.75 |
| Game birds                         | \$1.50 to \$1.75 |
| Wild birds                         | \$1.50 to \$1.75 |
| Game mammals                       | \$1.50 to \$1.75 |
| Wild mammals                       | \$1.50 to \$1.75 |
| Game fish                          | \$1.50 to \$1.75 |
| Wild fish                          | \$1.50 to \$1.75 |
| Game birds                         | \$1.50 to \$1.75 |
| Wild birds                         | \$1.50 to \$1.75 |
| Game mammals                       | \$1.50 to \$1.75 |
| Wild mammals                       | \$1.50 to \$1.75 |
| Game fish                          | \$1.50 to \$1.75 |
| Wild fish                          | \$1.50 to \$1.75 |
| Game birds                         | \$1.50 to \$1.75 |
| Wild birds                         | \$1.50 to \$1.75 |
| Game mammals                       | \$1.50 to \$1.75 |
| Wild mammals                       | \$1.50 to \$1.75 |
| Game fish                          | \$1.50 to \$1.75 |
| Wild fish                          | \$1.50 to \$1.75 |
| Game birds                         | \$1.50 to \$1.75 |
| Wild birds                         | \$1.50 to \$1.75 |
| Game mammals                       | \$1.50 to \$1.75 |
| Wild mammals                       | \$1.50 to \$1.75 |
| Game fish                          | \$1.50 to \$1.75 |
| Wild fish                          | \$1.50 to \$1.75 |
| Game birds                         | \$1.50 to \$1.75 |
| Wild birds                         | \$1.50 to \$1.75 |
| Game mammals                       | \$1.50 to \$1.75 |
| Wild mammals                       | \$1.50 to \$1.75 |
| Game fish                          | \$1.50 to \$1.75 |
| Wild fish                          | \$1.50 to \$1.75 |
| Game birds                         | \$1.50 to \$1.75 |
| Wild birds                         | \$1.50 to \$1.75 |
| Game mammals                       | \$1.50 to \$1.75 |
| Wild mammals                       | \$1.50 to \$1.75 |
| Game fish                          | \$1.50 to \$1.75 |
| Wild fish                          | \$1.50 to \$1.75 |
| Game birds                         | \$1.50 to \$1.75 |
| Wild birds                         | \$1.50 to \$1.75 |
| Game mammals                       | \$1.50 to \$1.75 |
| Wild mammals                       | \$1.50 to \$1.75 |
| Game fish                          | \$1.50 to \$1.75 |
| Wild fish                          | \$1.50 to \$1.75 |
| Game birds                         | \$1.50 to \$1.75 |
| Wild birds                         | \$1.50 to \$1.75 |
| Game mammals                       | \$1.50 to \$1.75 |
| Wild mammals                       | \$1.50 to \$1.75 |
| Game fish                          | \$1.50 to \$1.75 |
| Wild fish                          | \$1.50 to \$1.75 |
| Game birds                         | \$1.50 to \$1.75 |
| Wild birds                         | \$1.50 to \$1.75 |
| Game mammals                       | \$1.50 to \$1.75 |
| Wild mammals                       | \$1.50 to \$1.75 |
| Game fish                          | \$1.50 to \$1.75 |
| Wild fish                          | \$1.50 to \$1.75 |
| Game birds                         | \$1.50 to \$1.75 |
| Wild birds                         | \$1.50 to \$1.75 |
| Game mammals                       | \$1.50 to \$1.75 |
| Wild mammals                       | \$1.50 to \$1.75 |
| Game fish                          | \$1.50 to \$1.75 |
| Wild fish                          | \$1.50 to \$1.75 |
| Game birds                         | \$1.50 to \$1.75 |
| Wild birds                         | \$1.50 to \$1.75 |
| Game mammals                       | \$1.50 to \$1.75 |
| Wild mammals                       | \$1.50 to \$1.75 |
| Game fish                          | \$1.50 to \$1.75 |
| Wild fish                          | \$1.50 to \$1.75 |
| Game birds                         | \$1.50 to \$1.75 |
| Wild birds                         | \$1.50 to \$1.75 |
| Game mammals                       | \$1.50 to \$1.75 |
| Wild mammals                       | \$1.50 to \$1.75 |
| Game fish                          | \$1.50 to \$1.75 |
| Wild fish                          | \$1.50 to \$1.75 |
| Game birds                         | \$1.50 to \$1.75 |
| Wild birds                         | \$1.50 to \$1.75 |
| Game mammals                       | \$1.50 to \$1.75 |
| Wild mammals                       | \$1.50 to \$1.75 |
| Game fish                          | \$1.50 to \$1.75 |
| Wild fish                          | \$1.50 to \$1.75 |
| Game birds                         | \$1.50 to \$1.75 |
| Wild birds                         | \$1.50 to \$1.75 |
| Game mammals                       | \$1.50 to \$1.75 |
| Wild mammals                       | \$1.50 to \$1.75 |
| Game fish                          | \$1.50 to \$1.75 |
| Wild fish                          | \$1.50 to \$1.75 |
| Game birds                         | \$1.50 to \$1.75 |
| Wild birds                         | \$1.50 to \$1.75 |
| Game mammals                       | \$1.50 to \$1.75 |
| Wild mammals                       | \$1.50 to \$1.75 |
| Game fish                          | \$1.50 to \$1.75 |
| Wild fish                          | \$1.50 to \$1.75 |
| Game birds                         | \$1.50 to \$1.75 |
| Wild birds                         | \$1.50 to \$1.75 |
| Game mammals                       | \$1.50 to \$1.75 |
| Wild mammals                       | \$1.50 to \$1.75 |
| Game fish                          | \$1.50 to \$1.75 |
| Wild fish                          | \$1.50 to \$1.75 |
| Game birds                         | \$1.50 to \$1.75 |
| Wild birds                         | \$1.50 to \$1.75 |
| Game mammals                       | \$1.50 to \$1.75 |
| Wild mammals                       | \$1.50 to \$1.75 |
| Game fish                          | \$1.50 to \$1.75 |
| Wild fish                          | \$1.50 to \$1.75 |
| Game birds                         | \$1.50 to \$1.75 |
| Wild birds                         | \$1.50 to \$1.75 |
| Game mammals                       | \$1.50 to \$1.75 |
| Wild mammals                       | \$1.50 to \$1.75 |
| Game fish                          | \$1.50 to \$1.75 |
| Wild fish                          | \$1.50 to \$1.75 |
| Game birds                         | \$1.50 to \$1.75 |
| Wild birds                         | \$1.50 to \$1.75 |
| Game mammals                       | \$1.50 to \$1.75 |
| Wild mammals                       | \$1.50 to \$1.75 |
| Game fish                          | \$1.50 to \$1.75 |
| Wild fish                          | \$1.50 to \$1.75 |
| Game birds                         | \$1.50 to \$1.75 |
| Wild birds                         | \$1.50 to \$1.75 |
| Game mammals                       | \$1.50 to \$1.75 |
| Wild mammals                       | \$1.50 to \$1.75 |
| Game fish                          | \$1.50 to \$1.75 |
| Wild fish                          | \$1.50 to \$1.75 |
| Game birds                         | \$1.50 to \$1.75 |
| Wild birds                         | \$1.50 to \$1.75 |
| Game mammals                       | \$1.50 to \$1.75 |
| Wild mammals                       | \$1.50 to \$1.75 |
| Game fish                          | \$1.50 to \$1.75 |
| Wild fish                          | \$1.50 to \$1.75 |
| Game birds                         | \$1.50 to \$1.75 |
| Wild birds                         | \$1.50 to \$1.75 |
| Game mammals                       | \$1.50 to \$1.75 |
| Wild mammals                       | \$1.50 to \$1.75 |
| Game fish                          | \$1.50 to \$1.75 |
| Wild fish                          | \$1.50 to \$1.75 |
| Game birds                         | \$1.50 to \$1.75 |
| Wild birds                         | \$1.50 to \$1.75 |
| Game mammals                       | \$1.50 to \$1.75 |
| Wild mammals                       | \$1.50 to \$1.75 |
| Game fish                          | \$1.50 to \$1.75 |
| Wild fish                          | \$1.50 to \$1.75 |
| Game birds                         | \$1.50 to \$1.75 |
| Wild birds                         | \$1.50 to \$1.75 |
| Game mammals                       | \$1.50 to \$1.75 |
| Wild mammals                       | \$1.50 to \$1.75 |
| Game fish                          | \$1.50 to \$1.75 |
| Wild fish                          | \$1.50 to \$1.75 |
| Game birds                         | \$1.50 to \$1.75 |
| Wild birds                         | \$1.50 to \$1.75 |
| Game mammals                       | \$1.50 to \$1.75 |
| Wild mammals                       | \$1.50 to \$1.75 |
| Game fish                          | \$1.50 to \$1.75 |
| Wild fish                          | \$1.50 to \$1.75 |
| Game birds                         | \$1.50 to \$1.75 |
| Wild birds                         | \$1.50 to \$1.75 |
| Game mammals                       | \$1.50 to \$1.75 |
| Wild mammals                       | \$1.50 to \$1.75 |

# Read the

50 PER LINE PER INSERTION. COUNT 5 WORDS PER LINE

All Ads Must Be Ordered for a Specific Number of Insertions. All Want Ads active and active—and they bring the news. Phone 22

## For Rent—Furnished

APARTMENT, 800 N. MAIN. ROOM—BATH, 315 2nd No. ROOM AND MEALS, PH. 756-W. ROOMS, 151 7TH AVE. NO. PH. 521. APARTMENTS, 222 5TH AVENUE

## For Sale—Automobiles

THREE 100 BOXES \$4.95 and \$10. PH. 1504, 169 1st St. W. ROYAL NO. 10 TYPEWRITER REBUILT, guaranteed, \$30. PH. 715. PORTABLE REMINGTON TYPEWRITER, \$15. PH. 715. HOLLYWOOD U.S.E.D. 3 L.K. 6000, priced to sell, 619 3rd Ave. West. FOR SALE—COON B-FLAT GOLD plated Boehm system clarinet, Box 432, care News. HOOVER MANUFACTURING CO. Uniforms and washable apparel. H. Wozel, Clendenia Hotel. TWIN ENVIROBE OUTBOARD motor in good running order, 7 1/2 H. P., \$25 at Sawtooth Station in Jerome, Idaho. ARSENATE OF LEAD FOR ORCHARD and spraying in any quantity. Screen wire, screen doors and the supplier. Beware of the "deadly fly". Moon's, Phone 8. FOR SALE—1 WOODS BROG. thrasher, for grain and beans. 1 Rumley flower huller, 1 Rumley tractor, 1 Case 15-27 tractor, 1 Hart-P tractor, 18-27. Mountain States Tractor Co., Elmer. FIVE BURNER PERFECTION kitchen range, all porcelain, built-in, oven, affluents and accessories, 200. Century refrigerator, solid oak, like new, 75 lbs. capacity, side service, \$15. Mrs. E. L. Clark, Ph. 63, Elmer. GREASE PACK & OIL PUMPS, OIL pump and drum complete, small show case, girl's bicycle, 21 in. wheel, steel stock tank six barrel saw, 2 Deering binders and one John Deer, adding machine, cash register, combination, filing cabinet and hundreds of other useful articles. Harry Muegler.

## For Sale—Livestock

FOR SALE—ONE FRESH HOLSTEIN cow with first calf, H. W. Reidenman, Phone 098-24. 1000 RANGE KINGS TO LET out on the 10 to 15 calves who have had previous experience with sheep. These ewes will be bred to registered Hampshire rams, to commence lambing about January 20, and will be ready for delivery October 1. Robert Blotz, phone 11-70, Elmer.

## For Sale—Furniture

NEW AND USED FURNITURE of all kinds. Call Baker at 100 N. 1st. We trade and buy or sell. We pay cash for stoves and refrigerators. Call Baker at 100 N. 1st. Furniture and Paints. Phone 8. FOR SALE OR TRADE 1 ROOM FURNISHED HOUSE, PH. 6001 after 5 o'clock.

## Washing Machines

GOOD USED EAST—WASHER, excellent bargain. C. O. Anderson.

## Daily Cross-Word Puzzle

ACROSS Solution of Saturday's Puzzle

1. Despair 2. Gains 3. Overly 4. Lame 5. Love 6. Live 7. Cover with 8. Part of my assistance 9. A 10. Alcoholic 11. Decompose 12. A 13. Living for the sake of 14. Japanese 15. Type square 16. A 17. A 18. A 19. A 20. A 21. A 22. A 23. A 24. A 25. A 26. A 27. A 28. A 29. A 30. A 31. A 32. A 33. A 34. A 35. A 36. A 37. A 38. A 39. A 40. A 41. A 42. A 43. A 44. A 45. A 46. A 47. A 48. A 49. A 50. A 51. A 52. A 53. A 54. A 55. A 56. A 57. A 58. A 59. A 60. A 61. A 62. A 63. A 64. A 65. A 66. A 67. A 68. A 69. A 70. A 71. A 72. A 73. A 74. A 75. A 76. A 77. A 78. A 79. A 80. A 81. A 82. A 83. A 84. A 85. A 86. A 87. A 88. A 89. A 90. A 91. A 92. A 93. A 94. A 95. A 96. A 97. A 98. A 99. A 100. A 101. A 102. A 103. A 104. A 105. A 106. A 107. A 108. A 109. A 110. A 111. A 112. A 113. A 114. A 115. A 116. A 117. A 118. A 119. A 120. A 121. A 122. A 123. A 124. A 125. A 126. A 127. A 128. A 129. A 130. A 131. A 132. A 133. A 134. A 135. A 136. A 137. A 138. A 139. A 140. A 141. A 142. A 143. A 144. A 145. A 146. A 147. A 148. A 149. A 150. A 151. A 152. A 153. A 154. A 155. A 156. A 157. A 158. A 159. A 160. A 161. A 162. A 163. A 164. A 165. A 166. A 167. A 168. A 169. A 170. A 171. A 172. A 173. A 174. A 175. A 176. A 177. A 178. A 179. A 180. A 181. A 182. A 183. A 184. A 185. A 186. A 187. A 188. A 189. A 190. A 191. A 192. A 193. A 194. A 195. A 196. A 197. A 198. A 199. A 200. A 201. A 202. A 203. A 204. A 205. A 206. A 207. A 208. A 209. A 210. A 211. A 212. A 213. A 214. A 215. A 216. A 217. A 218. A 219. A 220. A 221. A 222. A 223. A 224. A 225. A 226. A 227. A 228. A 229. A 230. A 231. A 232. A 233. A 234. A 235. A 236. A 237. A 238. A 239. A 240. A 241. A 242. A 243. A 244. A 245. A 246. A 247. A 248. A 249. A 250. A 251. A 252. A 253. A 254. A 255. A 256. A 257. A 258. A 259. A 260. A 261. A 262. A 263. A 264. A 265. A 266. A 267. A 268. A 269. A 270. A 271. A 272. A 273. A 274. A 275. A 276. A 277. A 278. A 279. A 280. A 281. A 282. A 283. A 284. A 285. A 286. A 287. A 288. A 289. A 290. A 291. A 292. A 293. A 294. A 295. A 296. A 297. A 298. A 299. A 300. A 301. A 302. A 303. A 304. A 305. A 306. A 307. A 308. A 309. A 310. A 311. A 312. A 313. A 314. A 315. A 316. A 317. A 318. A 319. A 320. A 321. A 322. A 323. A 324. A 325. A 326. A 327. A 328. A 329. A 330. A 331. A 332. A 333. A 334. A 335. A 336. A 337. A 338. A 339. A 340. A 341. A 342. A 343. A 344. A 345. A 346. A 347. A 348. A 349. A 350. A 351. A 352. A 353. A 354. A 355. A 356. A 357. A 358. A 359. A 360. A 361. A 362. A 363. A 364. A 365. A 366. A 367. A 368. A 369. A 370. A 371. A 372. A 373. A 374. A 375. A 376. A 377. A 378. A 379. A 380. A 381. A 382. A 383. A 384. A 385. A 386. A 387. A 388. A 389. A 390. A 391. A 392. A 393. A 394. A 395. A 396. A 397. A 398. A 399. A 400. A 401. A 402. A 403. A 404. A 405. A 406. A 407. A 408. A 409. A 410. A 411. A 412. A 413. A 414. A 415. A 416. A 417. A 418. A 419. A 420. A 421. A 422. A 423. A 424. A 425. A 426. A 427. A 428. A 429. A 430. A 431. A 432. A 433. A 434. A 435. A 436. A 437. A 438. A 439. A 440. A 441. A 442. A 443. A 444. A 445. A 446. A 447. A 448. A 449. A 450. A 451. A 452. A 453. A 454. A 455. A 456. A 457. A 458. A 459. A 460. A 461. A 462. A 463. A 464. A 465. A 466. A 467. A 468. A 469. A 470. A 471. A 472. A 473. A 474. A 475. A 476. A 477. A 478. A 479. A 480. A 481. A 482. A 483. A 484. A 485. A 486. A 487. A 488. A 489. A 490. A 491. A 492. A 493. A 494. A 495. A 496. A 497. A 498. A 499. A 500. A 501. A 502. A 503. A 504. A 505. A 506. A 507. A 508. A 509. A 510. A 511. A 512. A 513. A 514. A 515. A 516. A 517. A 518. A 519. A 520. A 521. A 522. A 523. A 524. A 525. A 526. A 527. A 528. A 529. A 530. A 531. A 532. A 533. A 534. A 535. A 536. A 537. A 538. A 539. A 540. A 541. A 542. A 543. A 544. A 545. A 546. A 547. A 548. A 549. A 550. A 551. A 552. A 553. A 554. A 555. A 556. A 557. A 558. A 559. A 560. A 561. A 562. A 563. A 564. A 565. A 566. A 567. A 568. A 569. A 570. A 571. A 572. A 573. A 574. A 575. A 576. A 577. A 578. A 579. A 580. A 581. A 582. A 583. A 584. A 585. A 586. A 587. A 588. A 589. A 590. A 591. A 592. A 593. A 594. A 595. A 596. A 597. A 598. A 599. A 600. A 601. A 602. A 603. A 604. A 605. A 606. A 607. A 608. A 609. A 610. A 611. A 612. A 613. A 614. A 615. A 616. A 617. A 618. A 619. A 620. A 621. A 622. A 623. A 624. A 625. A 626. A 627. A 628. A 629. A 630. A 631. A 632. A 633. A 634. A 635. A 636. A 637. A 638. A 639. A 640. A 641. A 642. A 643. A 644. A 645. A 646. A 647. A 648. A 649. A 650. A 651. A 652. A 653. A 654. A 655. A 656. A 657. A 658. A 659. A 660. A 661. A 662. A 663. A 664. A 665. A 666. A 667. A 668. A 669. A 670. A 671. A 672. A 673. A 674. A 675. A 676. A 677. A 678. A 679. A 680. A 681. A 682. A 683. A 684. A 685. A 686. A 687. A 688. A 689. A 690. A 691. A 692. A 693. A 694. A 695. A 696. A 697. A 698. A 699. A 700. A 701. A 702. A 703. A 704. A 705. A 706. A 707. A 708. A 709. A 710. A 711. A 712. A 713. A 714. A 715. A 716. A 717. A 718. A 719. A 720. A 721. A 722. A 723. A 724. A 725. A 726. A 727. A 728. A 729. A 730. A 731. A 732. A 733. A 734. A 735. A 736. A 737. A 738. A 739. A 740. A 741. A 742. A 743. A 744. A 745. A 746. A 747. A 748. A 749. A 750. A 751. A 752. A 753. A 754. A 755. A 756. A 757. A 758. A 759. A 760. A 761. A 762. A 763. A 764. A 765. A 766. A 767. A 768. A 769. A 770. A 771. A 772. A 773. A 774. A 775. A 776. A 777. A 778. A 779. A 780. A 781. A 782. A 783. A 784. A 785. A 786. A 787. A 788. A 789. A 790. A 791. A 792. A 793. A 794. A 795. A 796. A 797. A 798. A 799. A 800. A 801. A 802. A 803. A 804. A 805. A 806. A 807. A 808. A 809. A 810. A 811. A 812. A 813. A 814. A 815. A 816. A 817. A 818. A 819. A 820. A 821. A 822. A 823. A 824. A 825. A 826. A 827. A 828. A 829. A 830. A 831. A 832. A 833. A 834. A 835. A 836. A 837. A 838. A 839. A 840. A 841. A 842. A 843. A 844. A 845. A 846. A 847. A 848. A 849. A 850. A 851. A 852. A 853. A 854. A 855. A 856. A 857. A 858. A 859. A 860. A 861. A 862. A 863. A 864. A 865. A 866. A 867. A 868. A 869. A 870. A 871. A 872. A 873. A 874. A 875. A 876. A 877. A 878. A 879. A 880. A 881. A 882. A 883. A 884. A 885. A 886. A 887. A 888. A 889. A 890. A 891. A 892. A 893. A 894. A 895. A 896. A 897. A 898. A 899. A 900. A 901. A 902. A 903. A 904. A 905. A 906. A 907. A 908. A 909. A 910. A 911. A 912. A 913. A 914. A 915. A 916. A 917. A 918. A 919. A 920. A 921. A 922. A 923. A 924. A 925. A 926. A 927. A 928. A 929. A 930. A 931. A 932. A 933. A 934. A 935. A 936. A 937. A 938. A 939. A 940. A 941. A 942. A 943. A 944. A 945. A 946. A 947. A 948. A 949. A 950. A 951. A 952. A 953. A 954. A 955. A 956. A 957. A 958. A 959. A 960. A 961. A 962. A 963. A 964. A 965. A 966. A 967. A 968. A 969. A 970. A 971. A 972. A 973. A 974. A 975. A 976. A 977. A 978. A 979. A 980. A 981. A 982. A 983. A 984. A 985. A 986. A 987. A 988. A 989. A 990. A 991. A 992. A 993. A 994. A 995. A 996. A 997. A 998. A 999. A 1000. A 1001. A 1002. A 1003. A 1004. A 1005. A 1006. A 1007. A 1008. A 1009. A 1010. A 1011. A 1012. A 1013. A 1014. A 1015. A 1016. A 1017. A 1018. A 1019. A 1020. A 1021. A 1022. A 1023. A 1024. A 1025. A 1026. A 1027. A 1028. A 1029. A 1030. A 1031. A 1032. A 1033. A 1034. A 1035. A 1036. A 1037. A 1038. A 1039. A 1040. A 1041. A 1042. A 1043. A 1044. A 1045. A 1046. A 1047. A 1048. A 1049. A 1050. A 1051. A 1052. A 1053. A 1054. A 1055. A 1056. A 1057. A 1058. A 1059. A 1060. A 1061. A 1062. A 1063. A 1064. A 1065. A 1066. A 1067. A 1068. A 1069. A 1070. A 1071. A 1072. A 1073. A 1074. A 1075. A 1076. A 1077. A 1078. A 1079. A 1080. A 1081. A 1082. A 1083. A 1084. A 1085. A 1086. A 1087. A 1088. A 1089. A 1090. A 1091. A 1092. A 1093. A 1094. A 1095. A 1096. A 1097. A 1098. A 1099. A 1100. A 1101. A 1102. A 1103. A 1104. A 1105. A 1106. A 1107. A 1108. A 1109. A 1110. A 1111. A 1112. A 1113. A 1114. A 1115. A 1116. A 1117. A 1118. A 1119. A 1120. A 1121. A 1122. A 1123. A 1124. A 1125. A 1126. A 1127. A 1128. A 1129. A 1130. A 1131. A 1132. A 1133. A 1134. A 1135. A 1136. A 1137. A 1138. A 1139. A 1140. A 1141. A 1142. A 1143. A 1144. A 1145. A 1146. A 1147. A 1148. A 1149. A 1150. A 1151. A 1152. A 1153. A 1154. A 1155. A 1156. A 1157. A 1158. A 1159. A 1160. A 1161. A 1162. A 1163. A 1164. A 1165. A 1166. A 1167. A 1168. A 1169. A 1170. A 1171. A 1172. A 1173. A 1174. A 1175. A 1176. A 1177. A 1178. A 1179. A 1180. A 1181. A 1182. A 1183. A 1184. A 1185. A 1186. A 1187. A 1188. A 1189. A 1190. A 1191. A 1192. A 1193. A 1194. A 1195. A 1196. A 1197. A 1198. A 1199. A 1200. A 1201. A 1202. A 1203. A 1204. A 1205. A 1206. A 1207. A 1208. A 1209. A 1210. A 1211. A 1212. A 1213. A 1214. A 1215. A 1216. A 1217. A 1218. A 1219. A 1220. A 1221. A 1222. A 1223. A 1224. A 1225. A 1226. A 1227. A 1228. A 1229. A 1230. A 1231. A 1232. A 1233. A 1234. A 1235. A 1236. A 1237. A 1238. A 1239. A 1240. A 1241. A 1242. A 1243. A 1244. A 1245. A 1246. A 1247. A 1248. A 1249. A 1250. A 1251. A 1252. A 1253. A 1254. A 1255. A 1256. A 1257. A 1258. A 1259. A 1260. A 1261. A 1262. A 1263. A 1264. A 1265. A 1266. A 1267. A 1268. A 1269. A 1270. A 1271. A 1272. A 1273. A 1274. A 1275. A 1276. A 1277. A 1278. A 1279. A 1280. A 1281. A 1282. A 1283. A 1284. A 1285. A 1286. A 1287. A 1288. A 1289. A 1290. A 1291. A 1292. A 1293. A 1294. A 1295. A 1296. A 1297. A 1298. A 1299. A 1300. A 1301. A 1302. A 1303. A 1304. A 1305. A 1306. A 1307. A 1308. A 1309. A 1310. A 1311. A 1312. A 1313. A 1314. A 1315. A 1316. A 1317. A 1318. A 1319. A 1320. A 1321. A 1322. A 1323. A 1324. A 1325. A 1326. A 1327. A 1328. A 1329. A 1330. A 1331. A 1332. A 1333. A 1334. A 1335. A 1336. A 1337. A 1338. A 1339. A 1340. A 1341. A 1342. A 1343. A 1344. A 1345. A 1346. A 1347. A 1348. A 1349. A 1350. A 1351. A 1352. A 1353. A 1354. A 1355. A 1356. A 1357. A 1358. A 1359. A 1360. A 1361. A 1362. A 1363. A 1364. A 1365. A 1366. A 1367. A 1368. A 1369. A 1370. A 1371. A 1372. A 1373. A 1374. A 1375. A 1376. A 1377. A 1378. A 1379. A 1380. A 1381. A 1382. A 1383. A 1384. A 1385. A 1386. A 1387. A 1388. A 1389. A 1390. A 1391. A 1392. A 1393. A 1394. A 1395. A 1396. A 1397. A 1398. A 1399. A 1400. A 1401. A 1402. A 1403. A 1404. A 1405. A 1406. A 1407. A 1408. A 1409. A 1410. A 1411. A 1412. A 1413. A 1414. A 1415. A 1416. A 1417. A 1418. A 1419. A 1420. A 1421. A 1422. A 1423. A 1424. A 1425. A 1426. A 1427. A 1428. A 1429. A 1430. A 1431. A 1432. A 1433. A 1434. A 1435. A 1436. A 1437. A 1438. A 1439. A 1440. A 1441. A 1442. A 1443. A 1444. A 1445. A 1446. A 1447. A 1448. A 1449. A 1450. A 1451. A 1452. A 1453. A 1454. A 1455. A 1456. A 1457. A 1458. A 1459. A 1460. A 1461. A 1462. A 1463. A 1464. A 1465. A 1466. A 1467. A 1468. A 1469. A 1470. A 1471. A 1472. A 1473. A 1474. A 1475. A 1476. A 1477. A 1478. A 1479. A 1480. A 1481. A 1482. A 1483. A 1484. A 1485. A 1486. A 1487. A 1488. A 1489. A 1490. A 1491. A 1492. A 1493. A 1494. A 1495. A 1496. A 1497. A 1498. A 1499. A 1500. A 1501. A 1502. A 1503. A 1504. A 1505. A 1506. A 1507. A 1508. A 1509. A 1510. A 1511. A 1512. A 1513. A 1514. A 1515. A 1516. A 1517. A 1518. A 1519. A 1520. A 1521. A 1522. A 1523. A 1524. A 1525. A 1526. A 1527. A 1528. A 1529. A 1530. A 1531. A 1532. A 1533. A 1534. A 1535. A 1536. A 1537. A 1538. A 1539. A 1540. A 1541. A 1542. A 1543. A 1544. A 1545. A 1546. A 1547. A 1548. A 1549. A 1550. A 1551. A 1552. A 1553. A 1554. A 1555. A 1556. A 1557. A 1558. A 1559. A 1560. A 1561. A 1562. A 1563. A 1564. A 1565. A 1566. A 1567. A 1568. A 1569. A 1570. A 1571. A 1572. A 1573. A 1574. A 1575. A 1576. A 1577. A 1578. A 1579. A 1580. A 1581. A 1582. A 1583. A 1584. A 1585. A 1586. A 1587. A 1588. A 1589. A 1590. A 1591. A 1592. A 1593. A 1594. A 1595. A 1596. A 1597. A 1598. A 1599. A 1600. A 1601. A 1602. A 1603. A 1604. A 1605. A 1606. A 1607. A 1608. A 1609. A 1610. A 1611. A 1612. A 1613. A 1614. A 1615. A 1616. A 1617. A 1618. A 1619. A 1620. A 1621. A 1622. A 1623. A 1624. A 1625. A 1626. A 1627. A 1628. A 1629. A 1630. A 1631. A 1632. A 1633. A 1634. A 1635. A 1636. A 1637. A 1638. A 1639. A 1640. A 1641. A 1642. A 1643. A 1644. A 1645. A 1646. A 1647. A 1648. A 1649. A 1650. A 1651. A 1652. A 1653. A 1654. A 1655. A 1656. A 1657. A 1658. A 1659. A 1660. A 1661. A 1662. A 1663. A 1664. A 1665. A 1666. A 1667. A 1668. A 1669. A 1670. A 1671. A 1672. A 1673. A 1674. A 1675. A 1676. A 1677. A 1678. A 1679. A 1680. A 1681. A 1682. A 1683. A 1684. A 1685. A 1686. A 1687. A 1688. A 1689. A 1690. A 1691. A 1692. A 1693. A 1694. A 1695. A 1696. A 1697. A 1698. A 1699. A 1700. A 1701. A 1702. A 1703. A 1704. A 1705. A 1706. A 1707. A 1708. A 1709

## NEW CONTESTS IN LAST OF FILINGS

Democrats Bring Out Additional Candidates; Republicans Fill

New contests developed for nominations on the Democratic ticket, tonight except for one candidate for state representative, during the time limit for filing of candidates for legislative and county offices in Twin Falls county.

A surprise development was the filing of Duncan McD. Johnston, Twin Falls mayor, as candidate for the Democratic nomination for state senator, in opposition to T. Dan Connor, Piler.

A. J. Russell of Twin Falls, a local businessman, filed for nomination for state representative, his entry increasing the list of candidates for Democratic nomination for state representative to a total of six, with only three nominations for that office to be made at the primary election.

Three times elected Twin Falls county commissioner and candidate for re-election, James L. Hansen was faced with opposition for the nomination when E. R. Type of Murtaugh yesterday filed candidacy for the Democratic nomination for Third district commissioner.

Republican Filings  
Republican candidates filed yesterday, none of whom are opposed for the nomination, were Stanley Weber of Buhl, candidate for state representative; Charles P. Larsen of Twin Falls, business man and former banker, candidate for county treasurer; Harold William Merritt of Twin Falls, candidate for county surveyor in which office he served several terms; J. L. Johnson of Buhl, candidate for coroner.

In addition to these candidates, dozens of nominations for precinct committees were filed during the day. Howard Douglas of Kimberly, Republican, and Oliver W. Madden of Buhl, filed for justice of the peace, and F. W. Murphy of Twin Falls, Democrat; W. B. Munger of Twin Falls, Republican, and Lester R. Musser of Piler, Democrat, filed for nominations for constable. Endorsement of Duncan McD. Johnston's candidacy for the Democratic nomination for state senator was given by Arthur B. Wilson, Twin Falls; Dan S. O'Connell, Twin Falls; Elwood Henderson, Hollister; R. E. Morehouse, Hollister; William Hooper Twin Falls; Harry W. Barry, Buhl; B. D. Kester, Twin Falls.

A. L. Ronald of Twin Falls was endorsed for state representative by Mrs. Ira Wynn, Twin Falls; W. E. Woods, Twin Falls; O. H. Hample, Twin Falls; C. W. Johnson, Twin Falls; F. W. Wachob, Murtaugh; J. R. Bunch, Hansen; R. O. Wilson, Kimberly; R. O. Munger, Piler; L. E. Stansell, Buhl; Frank E. Atkins, Buhl.

Endorsement of the candidacy of E. R. Type of Murtaugh for county commissioner was signed by H. O. Munger, Piler; J. T. Windle, Twin Falls; T. E. Stansell, Buhl; W. E. Woods, Twin Falls; O. W. Johnson, Murtaugh; F. P. Walker, Murtaugh.

Stanley Weber of Buhl, as candidate for Republican nomination for state representative, was endorsed by F. T. Parish, Buhl; J. E. Barber, Buhl; Martin Miller, Castleford; W. H. Hudson, Buhl; E. N. Pettigrove, Hansen; E. M. Taylor, Piler; Stuart H. Taylor, Twin Falls; H. H. Blanford, Twin Falls; A. J. Peavey, Jr., Twin Falls.

Charles P. Larsen's candidacy for county treasurer was endorsed by J. H. Blanford, Twin Falls; A. J. Peavey, Jr., Twin Falls; R. C. Felt, Piler; Taber, Twin Falls; E. W. McRoberts, Twin Falls; Harry Benoit, Twin Falls; J. L. Hodgin, Twin Falls; Ivan O. Lincoln, Twin Falls; E. L. Ray, Twin Falls; James H. Sheldrick, Jr., Buhl; P. T. Parish, Buhl.

Endorsement of Harold William Merritt's candidacy for county surveyor was signed by R. B. Smith, Twin Falls; J. L. Hodgin, Twin Falls; George E. Sandholts, Twin Falls; J. H. Blanford, Twin Falls; R. C. Felt, Piler; C. M. Merrick, Buhl; Guy H. Shearer, Piler; Curtis Turner, Twin Falls; Mervin B. Oll, Kimberly; William Arnold, Buhl.

J. L. Johnson of Buhl, as candidate for coroner on the Republican ticket, was endorsed by R. O. Felt, Piler; W. E. Woods, Twin Falls; H. Sheldrick, Jr., Buhl; P. T. Parish, Buhl; J. H. Barker, Buhl; E. M. Rayburn, Piler; Stuart H. Taylor, Twin Falls; A. J. Peavey, Jr., Twin Falls.

Republican candidates filed yesterday, none of whom are opposed for the nomination, were Stanley Weber of Buhl, candidate for state representative; Charles P. Larsen of Twin Falls, business man and former banker, candidate for county treasurer; Harold William Merritt of Twin Falls, candidate for county surveyor in which office he served several terms; J. L. Johnson of Buhl, candidate for coroner.

In addition to these candidates, dozens of nominations for precinct committees were filed during the day. Howard Douglas of Kimberly, Republican, and Oliver W. Madden of Buhl, filed for justice of the peace, and F. W. Murphy of Twin Falls, Democrat; W. B. Munger of Twin Falls, Republican, and Lester R. Musser of Piler, Democrat, filed for nominations for constable. Endorsement of Duncan McD. Johnston's candidacy for the Democratic nomination for state senator was given by Arthur B. Wilson, Twin Falls; Dan S. O'Connell, Twin Falls; Elwood Henderson, Hollister; R. E. Morehouse, Hollister; William Hooper Twin Falls; Harry W. Barry, Buhl; B. D. Kester, Twin Falls.

A. L. Ronald of Twin Falls was endorsed for state representative by Mrs. Ira Wynn, Twin Falls; W. E. Woods, Twin Falls; O. H. Hample, Twin Falls; C. W. Johnson, Twin Falls; F. W. Wachob, Murtaugh; J. R. Bunch, Hansen; R. O. Wilson, Kimberly; R. O. Munger, Piler; L. E. Stansell, Buhl; Frank E. Atkins, Buhl.

Endorsement of the candidacy of E. R. Type of Murtaugh for county commissioner was signed by H. O. Munger, Piler; J. T. Windle, Twin Falls; T. E. Stansell, Buhl; W. E. Woods, Twin Falls; O. W. Johnson, Murtaugh; F. P. Walker, Murtaugh.

Stanley Weber of Buhl, as candidate for Republican nomination for state representative, was endorsed by F. T. Parish, Buhl; J. E. Barber, Buhl; Martin Miller, Castleford; W. H. Hudson, Buhl; E. N. Pettigrove, Hansen; E. M. Taylor, Piler; Stuart H. Taylor, Twin Falls; H. H. Blanford, Twin Falls; A. J. Peavey, Jr., Twin Falls.

## Candidates' Line-Up For Primary Election

Expiration of time limit for filing brings into picture all declared aspirants for Republican and Democratic nominations for legislative and county offices. The list in Twin Falls county is as follows:

| REPUBLICAN  | DEMOCRATIC   |
|---|--|
| State Senator<br>Ray Sanborn, Buhl  | State Senator<br>T. Dan Connor, Piler<br>Duncan McD. Johnston, Twin Falls  |
| Representatives (3)<br>Hyrum Pickett, Murtaugh<br>Stanley Weber, Buhl                                       | Representatives (3)<br>"Harry W. Barry, Buhl<br>D. J. Cavanaugh, Twin Falls<br>J. R. Crawford, Buhl<br>R. P. Mallon, Twin Falls<br>H. E. Powers, Kimberly<br>A. L. Russell, Twin Falls |
| Commissioner, 1st District<br>Martin Miller, Castleford   | Commissioner, 1st District<br>George E. Hart, Buhl<br>Ray E. Wilkinson, Deep Creek   |
| Commissioner, 2nd District<br>M. G. Reinken, Twin Falls   | Commissioner, 2nd District<br>"Robert Ray, Allendale   |
| Commissioner, 3rd District<br>Otis Sampson, Hansen  | Commissioner, 3rd District<br>"James L. Barnes, Hansen<br>E. S. True, Murtaugh   |
| Clerk, Auditor, Recorder<br>Ralph E. Leighton, Twin Falls   | Clerk, Auditor, Recorder<br>"Frank J. Smith, Twin Falls  |
| Treasurer<br>Charles P. Larsen, Twin Falls  | Treasurer<br>"Mrs. Cora E. Stevens, Twin Falls   |
| Assessor<br>T. Martin Miller, Twin Falls<br>Claude M. Gates, Allendale                                      | Assessor<br>"James D. Barnhart, Twin Falls   |
| Sheriff<br>L. W. Hawkins, Piler   | Sheriff<br>"E. P. Frater, Twin Falls<br>B. B. Elrod, Twin Falls<br>Lee H. Pruitt, Rogerson   |
| Prosecuting Attorney<br>G. A. Bailey, Twin Falls<br>A. J. Myers, Twin Falls<br>Charles A. North, Twin Falls | Prosecuting Attorney<br>Edward E. Babcock, Twin Falls<br>J. W. Taylor, Buhl  |
| Probate Judge<br>F. S. Bell, Twin Falls   | Probate Judge<br>"Guy L. Kinney, Twin Falls  |
| Superintendent Public Instruction<br>Victor F. Strobeck, Twin Falls   | Superintendent Public Instruction<br>"Mrs. Maude F. Kleinkopf, Twin Falls  |
| Surveyor<br>Harold William Merritt, Twin Falls  | Surveyor<br>"W. A. Minnick, Twin Falls   |
| Coroner<br>L. J. Johnson, Buhl  | Coroner<br>"E. P. A. Dwight, Piler   |
| Incumbents.   |  |

## Clark Will Speak At Union Services

Union church services will be held in the Presbyterian church Sunday evening at 8 o'clock, according to announcements by the Twin Falls Industrial Association. Rev. George L. Clark, pastor of the Presbyterian church, will be in charge and Dr. W. E. Kester of the Christian church will be the speaker. His subject will be "The Unfulfilled Christ's Promise."

## DRIVE OPENS FOR CANNING AT BURLEY

BURLEY, July 14—Woman's division of the FERA will make a drive through the city next week to secure from each home two or more fruit jars equipped for use for relief canning. Mrs. B. P. Wilson, chairman, announces.

Solicitors will call from house to house to collect the jars, clothing, and other useful things that housewives will contribute. A plea was made for anyone needing help with household and canned goods to call the FERA office, where workers are registered, that is acting as an employment bureau for those desiring to hire help.

Twin Falls; J. L. Hodgin, Twin Falls; George E. Sandholts, Twin Falls; J. H. Blanford, Twin Falls; R. C. Felt, Piler; C. M. Merrick, Buhl; Guy H. Shearer, Piler; Curtis Turner, Twin Falls; Mervin B. Oll, Kimberly; William Arnold, Buhl.

J. L. Johnson of Buhl, as candidate for coroner on the Republican ticket, was endorsed by R. O. Felt, Piler; W. E. Woods, Twin Falls; H. Sheldrick, Jr., Buhl; P. T. Parish, Buhl; J. H. Barker, Buhl; E. M. Rayburn, Piler; Stuart H. Taylor, Twin Falls; A. J. Peavey, Jr., Twin Falls.

Republican candidates filed yesterday, none of whom are opposed for the nomination, were Stanley Weber of Buhl, candidate for state representative; Charles P. Larsen of Twin Falls, business man and former banker, candidate for county treasurer; Harold William Merritt of Twin Falls, candidate for county surveyor in which office he served several terms; J. L. Johnson of Buhl, candidate for coroner.

In addition to these candidates, dozens of nominations for precinct committees were filed during the day. Howard Douglas of Kimberly, Republican, and Oliver W. Madden of Buhl, filed for justice of the peace, and F. W. Murphy of Twin Falls, Democrat; W. B. Munger of Twin Falls, Republican, and Lester R. Musser of Piler, Democrat, filed for nominations for constable. Endorsement of Duncan McD. Johnston's candidacy for the Democratic nomination for state senator was given by Arthur B. Wilson, Twin Falls; Dan S. O'Connell, Twin Falls; Elwood Henderson, Hollister; R. E. Morehouse, Hollister; William Hooper Twin Falls; Harry W. Barry, Buhl; B. D. Kester, Twin Falls.

A. L. Ronald of Twin Falls was endorsed for state representative by Mrs. Ira Wynn, Twin Falls; W. E. Woods, Twin Falls; O. H. Hample, Twin Falls; C. W. Johnson, Twin Falls; F. W. Wachob, Murtaugh; J. R. Bunch, Hansen; R. O. Wilson, Kimberly; R. O. Munger, Piler; L. E. Stansell, Buhl; Frank E. Atkins, Buhl.

Endorsement of the candidacy of E. R. Type of Murtaugh for county commissioner was signed by H. O. Munger, Piler; J. T. Windle, Twin Falls; T. E. Stansell, Buhl; W. E. Woods, Twin Falls; O. W. Johnson, Murtaugh; F. P. Walker, Murtaugh.

Stanley Weber of Buhl, as candidate for Republican nomination for state representative, was endorsed by F. T. Parish, Buhl; J. E. Barber, Buhl; Martin Miller, Castleford; W. H. Hudson, Buhl; E. N. Pettigrove, Hansen; E. M. Taylor, Piler; Stuart H. Taylor, Twin Falls; H. H. Blanford, Twin Falls; A. J. Peavey, Jr., Twin Falls.

## PARTY COMMITTEE POSTS AT PREMIUM

Both Democrats and Republicans Develop Contests In Precincts

Membership in both Republican and Democratic county central committees in Twin Falls county is at a premium, involving a number of contests at the primary election August 14, when precinct committees who make up the committee personnel are to be elected.

Contests for election of Democratic precinct committees have developed in 15 of the county's 27 precincts. In one precinct there are three candidates for committee members, and in the others, two each.

Republican contests are in Twin Falls and Murtaugh precincts. The list of candidates for precinct committees as shown by the county recorder's records when the time limit for filing expired last evening, are as follows:

|  |   |
|--|---|
| Democratic List  | Republican List   |
| Twin Falls 1—Frank McKee, Twin Falls 2—E. L. Patrick, Twin Falls 3—John Nye, J. L. Rupp, Lawrence Murphy, Twin Falls 4—W. Ford, Idaho; Twin Falls 5—W. A. Minnick, Stanley O. Phillips, Twin Falls 6—Robert W. Hollister, Twin Falls 7—John E. Slater, Thomas M. Robertson, Jr., Buhl 8—H. A. DeNeal, P. B. Griggs, Buhl 9—W. R. Parker, Harry W. Barry, Buhl 10—W. B. Samuels, M. B. Divables, Buhl 11—Will L. Hawkins, Allendale—Lee Leckliter, Berger—J. M. Humphries, Castleford—E. D. Loran, E. O. Davis, Edwin A. Merman, George Baxter, Deep Creek—M. L. McGuire, W. F. Co. Piler—D. L. Beamer, Hansen—J. W. Wagon, Hollister—R. E. Morehouse, Kimberly—J. H. Kimball, R. O. Wilson, Lucerne—W. R. Morrison, George F. Smith, Maros—J. G. Winkle, Robert L. Griggs, Murtaugh—Fanny M. Fahy, Deep Creek—Curtis W. Bower, Rogerson—Fred L. Clute, Berry Duncan, Roseworth—Ols Estes, Thomist—Albert Knedel, F. S. Cappel. | Twin Falls 1—E. V. Larson, Paul J. Clinean, Twin Falls 2—Paul R. Taber, Twin Falls 3—George W. Rice, Twin Falls 4—F. J. Cordes, Twin Falls 5—John L. Harvey, Twin Falls 6—M. O. Robinson, Buhl 7—L. E. McNamara, Buhl 8—H. C. Ryan, Buhl 9—H. Sheldrick, Jr., Buhl 10—W. V. Swiger, Allendale—Claude M. Gates, Berger—E. L. Rayburn, Castleford—George H. Clement, Piler—E. M. Rayburn, Hansen—H. G. Lauterbach, Kimberly—J. M. Davis, Maros—L. H. Brown, Murtaugh—Walter V. Day, T. T. Rutledge, Thomist—V. E. Morgan. |

## DIRECTOR TO SPEAK ON SOCIAL SERVICE

Interested Persons Invited To Hear IERA Program At Luncheon

Persons wishing to familiarize themselves with the social service program to be carried out in Idaho and in Twin Falls county by the IERA, are invited to attend a noon luncheon Monday noon at the New Rogerson Hotel, P. O. Thompson, acting district administrator of the IERA, announced last evening.

Mrs. Anita L. Tidwell, Boise, state administrator, will be the principal speaker. Mrs. Tidwell, highly recommended from Washington, D. C., comes to Idaho from the state of Washington, where she has successfully directed a number of social service projects.

Those attending the luncheon are requested to make reservations at the IERA office here by 11 o'clock Monday morning.

Twin Falls; J. L. Hodgin, Twin Falls; George E. Sandholts, Twin Falls; J. H. Blanford, Twin Falls; R. C. Felt, Piler; C. M. Merrick, Buhl; Guy H. Shearer, Piler; Curtis Turner, Twin Falls; Mervin B. Oll, Kimberly; William Arnold, Buhl.

J. L. Johnson of Buhl, as candidate for coroner on the Republican ticket, was endorsed by R. O. Felt, Piler; W. E. Woods, Twin Falls; H. Sheldrick, Jr., Buhl; P. T. Parish, Buhl; J. H. Barker, Buhl; E. M. Rayburn, Piler; Stuart H. Taylor, Twin Falls; A. J. Peavey, Jr., Twin Falls.

Republican candidates filed yesterday, none of whom are opposed for the nomination, were Stanley Weber of Buhl, candidate for state representative; Charles P. Larsen of Twin Falls, business man and former banker, candidate for county treasurer; Harold William Merritt of Twin Falls, candidate for county surveyor in which office he served several terms; J. L. Johnson of Buhl, candidate for coroner.

In addition to these candidates, dozens of nominations for precinct committees were filed during the day. Howard Douglas of Kimberly, Republican, and Oliver W. Madden of Buhl, filed for justice of the peace, and F. W. Murphy of Twin Falls, Democrat; W. B. Munger of Twin Falls, Republican, and Lester R. Musser of Piler, Democrat, filed for nominations for constable. Endorsement of Duncan McD. Johnston's candidacy for the Democratic nomination for state senator was given by Arthur B. Wilson, Twin Falls; Dan S. O'Connell, Twin Falls; Elwood Henderson, Hollister; R. E. Morehouse, Hollister; William Hooper Twin Falls; Harry W. Barry, Buhl; B. D. Kester, Twin Falls.

A. L. Ronald of Twin Falls was endorsed for state representative by Mrs. Ira Wynn, Twin Falls; W. E. Woods, Twin Falls; O. H. Hample, Twin Falls; C. W. Johnson, Twin Falls; F. W. Wachob, Murtaugh; J. R. Bunch, Hansen; R. O. Wilson, Kimberly; R. O. Munger, Piler; L. E. Stansell, Buhl; Frank E. Atkins, Buhl.

Endorsement of the candidacy of E. R. Type of Murtaugh for county commissioner was signed by H. O. Munger, Piler; J. T. Windle, Twin Falls; T. E. Stansell, Buhl; W. E. Woods, Twin Falls; O. W. Johnson, Murtaugh; F. P. Walker, Murtaugh.

Stanley Weber of Buhl, as candidate for Republican nomination for state representative, was endorsed by F. T. Parish, Buhl; J. E. Barber, Buhl; Martin Miller, Castleford; W. H. Hudson, Buhl; E. N. Pettigrove, Hansen; E. M. Taylor, Piler; Stuart H. Taylor, Twin Falls; H. H. Blanford, Twin Falls; A. J. Peavey, Jr., Twin Falls.

## Willie Wilkie By ROBERT GUNLAW



"It didn't seem to be important about it. I just asked 'em if they took a bath every day when they were kids."

## RITES FOR YOUNG BOY ARRANGED FOR SUNDAY

Kenneth Hughes, eight, son of Mr. and Mrs. Eugene Hughes, died yesterday morning at the family home, 234 Fourth avenue west. Funeral services will be held this

## SEEKS DIVORCE DECREE

Alleging cruelty and non-support, Mrs. Virgil Welch of Buhl, mother of a five-year-old son, started suit in the district court here yesterday for divorce from Miles B. Welch, to whom she was married in Twin Falls, January 20, 1926. She asked for custody of the child, and for attorney's fees and suit money. Harold L. Yeamans of Buhl is her attorney.

Surviving relatives are his parents, a brother, Howard, aged three; his grandparents, Mr. and Mrs. Charles Hughes, and Mr. and Mrs. Rowland Bybee, an aunt and uncle.

The body rests at the White mortuary.

## REGISTRATIONS FOR SWIM WEEK STARTED

Registration for the Red Cross swimming instruction will start Monday in the Perrine hotel lobby, according to Mrs. Genevieve Dwight, secretary of the Twin Falls chapter, American Red Cross. Members of the P. T. A. association will conduct the registration "booth," which will be open from 10 to 12 m. and from 1 to 3 p. m. daily until the opening of the school on July 30.

Those who are able to furnish cars for transportation to Nat-Soo-Pah are requested to notify the registrar. Instruction is free to all children under 21, and Charles Gill, instructor of athletics in Fayette high school, will conduct the classes.

## YOU ARE WELCOME

You are always welcome at our yard and office, whether you want to ask for information about your building or repair plans, or to sit down and visit a few moments when you are in town.

It is our business to provide the best information we know on building problems without obligation on your part.

**HOME LUMBER & COAL CO.**  
Hansen Bldg.  
THE FARMER'S FRIENDLY SUPPLY HEADQUARTERS  
PHONE 24

**CHALLENGE**  
**Peppermint Ice Cream**  
BULK PINTS  
ALSO A 3-FLAVOR BRICK  
Peppermint, Vanilla, Maple Nut  
"A Home Product"  
JEROME  
COOPERATIVE CREAMERY

**AUTO GLASS**  
SPECIAL PRICES  
On Auto Glass and Windshields. No Charge for Setting. Get Our Prices  
**MOON'S**  
Paint and Furniture Store  
Everything for the Home



Figures from Ford V-8 owners show 272,815,970 miles of steady running, without a penny for repairs

The true story of motor-car value is written on the road. There a car reveals its character. There it shows what it can do.

Figures from 34,954 Ford V-8 owners show a total of 272,815,970 miles without a penny for repairs. Their letters are further proof of Ford V-8 economy and dependability.

"I transport school children," writes a Ford owner in Minnesota, "and see plenty of tough going. In three years and eight months I have never missed a trip nor have I been late. My Fords have all been honest cars."

Another Ford V-8 owner writes: "A friend of mine was planning on buying a new car but was considering another make. To prove to him the economy of the Ford V-8 we made a 59-mile run. The gas used was exactly three gallons, measured for the run. It is needless to tell you that my friend now owns a V-8."

A salesman writes: "I drive about 1500 miles a month. I have not spent five dollars for repairs on the five Ford cars I have used. In more than 100,000 miles I have had no motor trouble."

A police officer writes: "To date I have operated my Ford V-8 for seven months and have driven 15,000 miles—most of which was done at speeds up to 88 miles per hour. I have not paid out one penny for repairs or replacements of any kind."

A business man writes: "I am interested in a corporation operating eleven cars in the same price range as the Ford. Five are Fords and six are other makes. "Our experience over a two-year period shows that the Ford is the most economical car to operate and it is our intention to replace the six other cars with Fords."

"I have had better results and been better satisfied with my Fords than with cars costing much more."

No words of ours about the Ford V-8 could be half so convincing as these letters from owners showing what the car is doing in actual service. We invite you to drive it and let it tell you its own story of performance, comfort, safety and economy.

**FORD MOTOR COMPANY**

TUNE IN FORD DEALERS' RADIO PROGRAM. From Washington and Its PENNSYLVANIA direct music. Every Sunday night at 8:30, Eastern Standard Time. Columbia Broadcasting System. In the meantime—"WATCH THE FORDS GO BY."

**Sincerest Congratulations to the New Rogerson Coffee Shop**

**Eat Your 50c FULL COURSE SUNDAY DINNER AT THE GRILL CAFE**

SERVED FROM 11 A. M. TO 9 P. M.  
GRAB COCKTAIL or CHICKEN A LA ROYAL

Your Choice of—  
Roast Young Chickens, Celery Dressing  
Breaded Pork Tenderloin, Potato Sauce  
Fried Spring Chicken, a la Maryland  
Grilled Dinner Steak a la Bordelaise  
Assorted Cold Meats, Sliced Tomatoes  
Roast Leg of Spring Lamb, Mint Jelly

Fruit Salad  
Golden Bannan Corn on the Cob  
Creamed New Potatoes  
Your Choice Dessert—  
Orange Sherbet  
Pumpkin Pie  
Apple Pie a la Mode or Chilled Watermelon  
Coffee

Hot Tea Biscuits  
Snowflake Potatoes  
Vanilla Ice Cream  
Fruit Jelly, Whipped Cream  
Iced Tea or Fresh Buttermilk

**BE THRIFTY, EAT AT THE GRILL AND SAVE THE DIFFERENCE**

**THE Laundry Service**

For Hot Summer Days  
**Prim-Pressed**

all the WASHING, IRONING and Mending

Try This Perfect SUMMER LAUNDRY SERVICE

Every piece you send us will be carefully washed, beautifully ironed and perfectly mended. Your biggest task will be putting everything away where it belongs after it comes home.

**TROY LAUNDRY & IMPERIAL CLEANERS**

TWIN FALLS, IDAHO  
PHONE 66

... call 66 for one of our routemen

**VISIT THE FORD EXPOSITION AT CHICAGO**

IMMEDIATE DELIVERY ON ALL MODELS

**UNION MOTOR COMPANY**

Your FORD Dealer  
Twin Falls