





## CONTESTS IN FIVE JUDICIAL DISTRICTS

Names of Nominees May Be Written in on Ballots In Six Others

BOISE, July 18 (AP)—There will be no non-partisan judicial primary in six of the 11 Idaho judicial districts, records of filings at the office of the secretary of state showed here today. Names of nominees may be written in on ballots in six districts.

All but two of 16 incumbent judges seek re-election. Judge William A. Babcock of Twin Falls has withdrawn from the bench and Judge Robert M. Terrell of Pocatello is seeking the Democratic nomination for congress.

There are 16 positions to be filled. The non-partisan judicial primary August 14 will provide, theoretically two candidates for each judgeship. In some instances where there has been only one nomination for one judgeship, there will be no contest unless names are written in by the voters.

### List of Candidates

Th. list of aspirants for district judges:

First district (Shoshone county) — Two to be nominated—Therrell, Babcock and E. W. Featherston, both of Wallace, and T. P. Wormward of Kellogg.

Second district (Clearwater and Latah) two to be nominated—Giles D. Hodge and Abe Goff, both of Moscow.

Third district (Ada, Boise, Elmore and Owyhee) four to be nominated—Charles E. Winstedt and C. F. Koelch, both of Boise.

Fourth district (Blaine, Camas, Gooding, Payette and Shoshone) two to be nominated—Doran H. Sutphen of Gooding.

Fifth district (Bannock, Bear Lake, Caribou, Franklin, Oneida and Power) four to be nominated—W. C. Lofbourn of American Falls, McGoulin of Pocatello, B. A. McGoulin of Pocatello, P. J. Evans of Pocatello, E. E. Ray of Malad and Phila Bentley of Pocatello.

Sixth district (Bligham, Butte, Lemhi and Custer) one to be nominated—Gibby Stevens of Blackfoot.

Seventh district (Canyon, Adams, Gem, Payer, Valley and Washington) four to be nominated—A. O. Sutton of Weiser and John C. Rice of Caldwell.

Eighth district (Benewah, Bonner, Boundary and Kootenai) four to be nominated—E. Hunt of Sandpoint and Bert A. Reed of Coeur d'Alene.

Ninth district (Bonsville, Clark, Fremont, Jefferson Teton and Madison) two to be nominated—C. J. Taylor, Charles S. Sanders and A. H. White, all of Idaho Falls.

Tenth district (Idaho, Lewis and Nez Perce) two to be nominated—Mike Johnson of Lewiston.

Eleventh district (Twin Falls, Jerome, Minidoka and Cassia) four to be nominated—Adam B. Badgley of Jerome, W. O. Whitman of Twin Falls, T. Bailey Lee of Rupert, Everett M. Sweeney of Twin Falls and Edmond M. Wolfe of Twin Falls.

IDAHO GASOLINE TAX COLLECTIONS SHOW GAIN

BOISE, July 18 (AP)—Gasoline tax collections during the first six months of 1934 amounted about 40 per cent compared with the same months of 1933. E. A. Taylor, director of the motor fuels bureau in the department of transportation, reported today.

Collections during the first half of 1934 were \$1,577,000 compared with \$1,132,775 for the first half of 1933. The department collected \$290,049 in taxes from \$302,243 gallons last June compared with \$202,931 in June of 1933.

LUPE VELEZ AND TARZAN SEE FIGHTS TOGETHER

LOS ANGELES, July 18 (AP)—Lupe Velez and John Welsamiller were together again tonight at the Olympic club fight.

They sat together at the Hollywood fight last Friday. In the fight, the actress says they still love each other but just cannot get along.

She charged the film Tarzan at her and broke up furniture in their home, when she filed suit for divorce last week. The suit has not been withdrawn and both have said there was no chance for a reconciliation.

## Nu-Enamel

(NEW IN NAME ONLY)

NU-ENAMEL IS THE FINEST PRODUCT YOU CAN POSSIBLY BUY FOR SURFACES WHICH MUST WITHSTAND REPEATED WASHINGS, EXPOSURE TO WEATHER, ACIDS, STEAM, ETC.

IT IS THE MOST NEARLY PERFECT PAINT FOR THE PROFESSIONAL AND THE AMATEUR

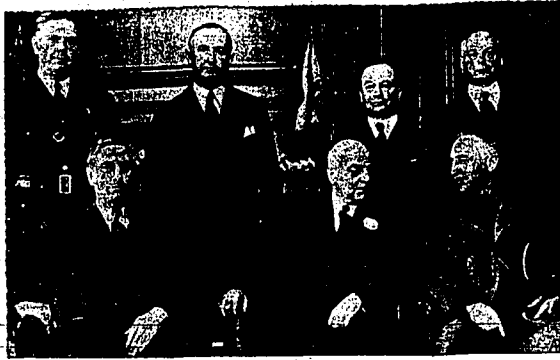
Come in and visit our store.

Koto Building Phone 355W Twin Falls

Also Stores in BOISE LEWISTON AND MURTAUGH

WATCH US COVER IDAHO

## Officials May Program To Combat Strike



MILITARY, police and city officials gathered in San Francisco. In the throes of a general strike, they are formulating a comprehensive plan of cooperation to deal with the grave situation. They refused to divulge the strategy they determined upon. Standing, left to right: Chief of Police William J. Quinn of San Francisco and Police Commissioners Frank J. Foran, Theodore J. Roche and Dr. Thomas E. Shumate. Seated: Adjutant-General Seth Howard of the national guard, Mayor Angelo Rossi and Major General David P. Barrows of the militia. (AP) Photo.

## FEDERAL MONEY FOR MINING OPERATIONS

RFC Issues Regulations For Five-Year Loans To Miners

WASHINGTON, July 18 (AP)—The Reconstruction Finance Corporation today made available to Western mining companies which can qualify money with which to develop and operate their properties.

Acting under the mandate of congress voted at the instance of senators from the silver states, the corporation today issued regulations under which it is willing to make five-year loans to mining companies.

The loans, however, are not available to any mining outfit except those which mine metals that must be smelted. This provision bars coal and similar companies.

The regulations provide that adequate security based on mineral acreage must be given. Mineral acreage is defined as "land or mineral rights on which there has been a reasonable amount of development and at least a partial blocking out of ore."

The corporation would take the first mortgage on property owned or where there is a lease an assignment of the applicants rights under the lease.

Promotional loans are, however, barred.

The interest rate on such loans will be determined in individual cases but the corporation said it probably would not exceed six per cent.

BOISE MAN ON VISIT

PORTLAND, OREGON, July 18 (AP)—Word was received here today from Portland, Oregon, by friends of T. J. Sherlock of Boise, that he died there last night. He was a former chairman of the Idaho State Athletic commission and served under Angus Sutherland, former United States senator as a deputy minister for one year.

Sherlock was in Portland visiting a sister when he succumbed to a stomach ailment.

NEW MOWER REPAIRS

Repairs and Parts for McCormick, Deering, John Deere, McCormick-Deering, Moline, Milwaukee, Emerson and Osborne Mowers. Krenkel's

NU-ENAMEL

(NEW IN NAME ONLY)

NU-ENAMEL IS THE FINEST PRODUCT YOU CAN POSSIBLY BUY FOR SURFACES WHICH MUST WITHSTAND REPEATED WASHINGS, EXPOSURE TO WEATHER, ACIDS, STEAM, ETC.

IT IS THE MOST NEARLY PERFECT PAINT FOR THE PROFESSIONAL AND THE AMATEUR

Come in and visit our store.

Koto Building Phone 355W Twin Falls

Also Stores in BOISE LEWISTON AND MURTAUGH

WATCH US COVER IDAHO

## DIEFFENDORF SEES ECONOMIC GAINS

Idaho Finance Commission Points to Increase in Bank Deposits

BOISE, July 18 (AP)—Pointing to an actual increase of \$3,664,471 in deposits in Idaho state banks during the year ending June 30, 1934, Ben Dieffendorf, Idaho commissioner of finance, declared today: "Economically, we are definitely on the upward swing."

"The comparative statement of the condition of the state banks at the close of June 30, 1933, however," he said, "included the deposits of \$2,820,402 in seven state banks which since have been nationalized. This would reflect an increase in deposits of \$6,664,074 for the one-year period ending last June 30."

He noted an increase in resources during the year ending last June 30 of \$3,664,471. Of June 30, 1934, resources amounted to \$38,123,735 compared with a total of \$35,018,977 on June 30, 1933.

Feed Inflation Effects

"We are getting inflation," declared the gray-haired bank commissioner, a Kansas City, Mo., bank executive many years, before he came to Idaho.

"We are beginning to feel it everywhere. There is no more fear for safety of bank deposits. Debts are being paid. The serious-minded businessmen and farmers are going slow. We are becoming conservative, financially. The trend is positively upward."

"We have found out after all from the speculative years of the twenties that we too must face tremendous readjustment following such periods."

"I think all speculators and gamblers—if they keep on long enough—will come back to the place from which they started—that goes for cards, horses, grain or stocks."

That was the epitome of the commissioner whose hobby would be his farm at Jerome, if he had, the time to go to it.

Deposits Increase

There was a decrease of \$725,000 in common stock and an increase of \$685,000 in preferred stock; surplus decreased \$25,100. Total capitalization in common stock June 30, 1934 of the state banks was \$1,825,000 compared with \$2,820,000 a year previous. Preferred stock on June 30, 1934, totaled \$685,000; a year ago there was none.

Per cent deposits on June 30, 1934, were \$2,770,039; on June 30, 1933, \$1,680,472; time deposits on June 30, 1934, were \$1,094,332, and \$1,094,332. The total deposits on the same dates were \$31,739,247 and \$27,674,776.

YOUTH LEAPS TO DEATH FROM 12-STORY BUILDING

LOS ANGELES, July 18 (AP)—A well-dressed youth identified as Robert Landowson, about 24, of Los Angeles, leaped from the roof of a 12-story building at Ninth and Hill streets today and was killed instantly.

Police reported the hurdling body narrowly missed several pedestrians. Police sought further information concerning the victim.

## New Deal Critics Gave Poor Advice, Farley Comments

ALBUQUERQUE, N. M., July 18 (AP)—The answer to critics of the "New Deal" is that they are the same men who advised President Hoover during the four worst years in American history," James A. Farley, postmaster general and national Democratic chairman, told an audience here last night.

Farley declared these men "advise us to turn our backs on the rising sun of improving conditions, and march back into the caves of dependency where we were for four years."

He cited improving business conditions, increased employment, removal of banking from speculation and making of deposits safe, stopping of cut-throat competition and a most hopeful outlook for agriculture as proofs of the success of the "New Deal."

Acting under the mandate of congress voted at the instance of senators from the silver states, the corporation today issued regulations under which it is willing to make five-year loans to mining companies.

The loans, however, are not available to any mining outfit except those which mine metals that must be smelted. This provision bars coal and similar companies.

The regulations provide that adequate security based on mineral acreage must be given. Mineral acreage is defined as "land or mineral rights on which there has been a reasonable amount of development and at least a partial blocking out of ore."

The corporation would take the first mortgage on property owned or where there is a lease an assignment of the applicants rights under the lease.

Promotional loans are, however, barred.

The interest rate on such loans will be determined in individual cases but the corporation said it probably would not exceed six per cent.

BOISE MAN ON VISIT

PORTLAND, OREGON, July 18 (AP)—Word was received here today from Portland, Oregon, by friends of T. J. Sherlock of Boise, that he died there last night. He was a former chairman of the Idaho State Athletic commission and served under Angus Sutherland, former United States senator as a deputy minister for one year.

Sherlock was in Portland visiting a sister when he succumbed to a stomach ailment.

NEW MOWER REPAIRS

Repairs and Parts for McCormick, Deering, John Deere, McCormick-Deering, Moline, Milwaukee, Emerson and Osborne Mowers. Krenkel's

NU-ENAMEL

(NEW IN NAME ONLY)

NU-ENAMEL IS THE FINEST PRODUCT YOU CAN POSSIBLY BUY FOR SURFACES WHICH MUST WITHSTAND REPEATED WASHINGS, EXPOSURE TO WEATHER, ACIDS, STEAM, ETC.

IT IS THE MOST NEARLY PERFECT PAINT FOR THE PROFESSIONAL AND THE AMATEUR

Come in and visit our store.

Koto Building Phone 355W Twin Falls

Also Stores in BOISE LEWISTON AND MURTAUGH

WATCH US COVER IDAHO

## Governor Extends Mortgage Holiday

BOISE, July 18 (AP)—With a pledge to hard-pressed Idaho mortgagors a proclamation extending till next September 16 the moratorium relating to foreclosures of mortgages and contracts.

Every 60 days since he was empowered to issue moratorium proclamations for that period, the governor has issued such mandates in order to protect persons the 1933 legislature had in mind when it created the mortgage holiday.

The chief executive has proclaimed the mortgage holiday.

Tammany Again Gets Federal Patronage

NEW YORK, July 18 (AP)—Tammany hall was getting a share of the federal patronage yesterday.

James J. Pooling, serving his first day as leader, announced he had dispersed between 20 and 25 federal jobs already.

Pooling was known to have had the tacit approval of the national Democratic administration, prior to his election, Monday.

STATE BAR RECOMMENDS SUSPENSION OF ATTORNEY

BOISE, July 18 (AP)—Sam S. Griffin of Boise, secretary of the state bar organization, announced tonight that the constitution of Idaho recommended to the state supreme court that Otto D. Burns, Lewiston attorney, be suspended for three months from practicing before the Idaho bar on grounds of "unprofessional conduct."

The charges against the Lewiston lawyer, Griffin said, were based on alleged irregularities in collection of money for his clients.

## The MAY FAIR Continues Its ... GREATEST CLEARANCE

S. A. L. E

The response has been tremendous and will long be remembered. Women respond to our sales because they know our fine merchandise and that they can depend upon the values being as represented. We have made further reductions on all remaining summer merchandise for final clearance.

Summer Silks

You will find sheers, chiffons, crepes, fresh prints, frosty whites, pastels; many with jackets, in sizes and styles—sufficient for everyone to find what they want.

Values To \$7.95

\$2.98 and \$3.98

Values To \$14.75

\$4.98 and \$5.98

Values To \$19.75

\$7.98

Cotton Dresses

Voiles, seersuckers, gingham, linens, batiste, and organdies.

Values To \$3.95

NOW \$1.98

NO RETURNS—NO REFUNDS—ALL SALES FINAL

The MAY FAIR Shop

All White Coats

Now Reduced 1/2 Price to

Blouses and Skirts

Now 1/2 Price or less

Summer Hats

ALL OUR REMAINING STOCK OF SUMMER HATS, REGARDLESS

48c OF PRICE

## NOW LADIES!

You are not going to be slighted. We know that you read our ads. We were not so sure about the gentlemen.

BUT— From the interest shown in the Men's Suit Special for Friday and Saturday we rather think the male population also glances at them at times.

NOW FOR YOU

Mrs. Turner just sent us a fine shipment of

Nellie Don

Dresses

that she closed out in Kansas City. You will get a wonderful saving next Friday and Saturday, July 20th and 21st.

45

BEAUTIFUL NELLY DON DRESSES AND SHORTS AND BLOUSES in very attractive voiles and dimities, and gingham. Short and three-quarter sleeves, trimmed and made as only Nellie Don can make. Now, what is the use? We sold these dresses in season at \$1.98 and \$2.98. In this special you will get your selection at

98c

THEY ARE IN OUR WINDOW—Glance at them as you pass by. We think this is a splendid opportunity. However, we gladly submit them to your judgment.

120

NELLY DON EXCEPTIONAL DRESSES in stripes and printed seersucker, piques and voiles. YOU MUST see these if you possibly can arrange to come down. Regular values up to \$3.90.

Friday and Saturday, July 20 and 21st you may take them at—

\$1.98

Do Not Miss Them!

ONLY 36

HIGHEST GRADES OF NELLY DON EXCLUSIVE DRESSES in linens with seersucker jackets, string lace garments and the ever popular eyelet dresses. These sold regular at \$5.90 and \$7.90. While they last—

\$2.98

Please do not ask us by phone to send out any of these dresses as the quantities are not large and we cannot reduce the assortments, for the ladies who visit the store personally.

PLEASE NOTE

We carry the top notch high-grade lines of the United States at all times. We are giving you now and have been doing so, for years, these wonderful specials from these nationally known exclusive lines. Can you name another store in this wide, wide nation that does the same?

FRIENDLY TO YOU

Idaho Dept. Store

"If It Isn't Right, Bring It Back"





\_\_\_\_\_







## MAKE THIS MODEL AT HOME




A FASHION AS ORIGINAL AS  
THIS SCARF IS RARE  
PATTERN 1920  
by *Jane Adams*




We hear a lot about new fashions, but it is not often that we see something as new and original as the clever draped scarf in this good looking frock. It is just about the most becoming thing a woman ever put on—so soft and flattering, and yet always in position because the tabs keep it so. This time it is developed in a twin print. It is nice, too, in a plain fabric of contrasting color and even in the material of the frock. And besides the scarf, the frock itself is cleverly constructed to give its wearer good lines and make her smart.


Pattern 1922 is available in sizes 12, 14, 16, 18, 20, 22, 24, 26 and 40. Size 18 takes 2½ yards in silk fabric and ¾ yard contrasting material. Illustrations and step-by-step instructions included.

Send **FIFTEEN CENTS (15c)** in coins or stamps (coins preferred) for


 this Anne Adams pattern. Write plainly name, address and style number. **BE SURE TO STATE SIZE.**

NEW. ANNE ADAMS PATTERN BOOK FOR SUMMER. ORDER YOUR COPY OF THIS HELPFUL NEW SUMMER BOOK. PRICE OF BOOK FIFTEEN CENTS. BOOK AND PATTERN TOGETHER


 TWENTY-FIVE CENTS.  
 Address orders to The News, Pat-  
 tern Dept., Twin Falls, Idaho.



More for your money than you expect!




100

# "TRIPLES"

## -FOR MEN

Our Triple Value hosiery package—Wilson Brothers hose with Tri-ply Buffer heel and toe.

They wear and Wear and WEAR!  
A beautiful silk and rayon mixture.




 Your choice of  
black, blue,

grey, brown

3-Ply Buffer Heel      3-Ply Buffer Toe

3 PAIRS FOR  
\$100

\$100

# Rowles-Mack Co.

## TWIN FALLS

PENCIL

HOW MANY DID YOU WATCH, ANDY?

**ONE - COUNT IT!**



U.S. Pat. Off., Copyright, 1936,  
by The Chicago Tribune.







# Read Little

5¢ PER LINE PER INSERTION. COUNT 5 WORDS PER LINE

All ads must be ordered for a specified number of insertions.

All Want Ads alive and active and they bring this boy.

Phone 31

## For Rent—Furnished

ROOM & BOARD, 315 2nd No.

ROOM AND MEALS, Ph. 756-W.

ROOMS, 121 1/2 AVE. NO. 591.

APARTMENTS, 22 6TH AVENUE, EAST.

ROOM, CLOSE IN, Ph. 604 AFTER 6:30 p. m.

ROOM, BOARD IF DESIRED, 44 3rd Ave. East.

ROOM AND BOARD, MRS. Stearns, Phone 1478.

BEDROOM, 309 5TH AVE. EAST, Near Victor boarding house.

APARTMENTS—TWO-ROOM, Furnished complete, The Oxford, 42 Main North.

FOR RENT—ONE-ROOM APARTMENT, Adults only, 310 8th ave. north.

FULLY FURNISHED APARTMENTS at Justran Inn and Oasis, Main Ave. 658 and 671 respectively.

FURNISHED SLEEPING ROOM, twin beds. Business people, preferred; downtown location. Phone 711.

## Wanted to Rent

FURNISHED HOUSE ACCOMMODATING 8 people for first two weeks in August. Call 487.

For Sale—Real Estate

ONE-ROOM FLAT-RENTED HOUSE, 215 7th Ave. E.

5-ROOM MODERN HOUSE ON Main Ave. #1590, Irrigated Lands Co. Ph. 140.

## For Sale—Fruits, Vegetables

ALBERTA PEACHES FOR CANNING, 110 9th Ave. East, Best cutters.

RED RASPBERRIES, BRING CONSUMERS. Second house north hospital, Ph. 6485-J1.

## Chinese Apocryphs—The Kind

you bought from me 3 years ago. Smiling and Thursday. Go out Blue Lakes Blvd. and is mile east on Falls avenue, James Agnewbrook, Nampa-Bring, contact.

## Washing Machines

WRINGER ROLLERS TO FIT ALL machines, \$100. C. G. Anderson.

## FOR SALE OR TRADE

M. O'NEER FOR DAIRY STOCK, Phone 6283-J1.

# Daily Cross-Word Puzzle

**ACROSS**

- Part of a curve
- Red to the fold
- Remembrance
- Swing
- Black wood
- Before
- Small vessels for heating liquids
- Operative solo
- Foot withered old woman
- State of time
- Closest to the north of the land
- From lack of
- Chatterbox
- Tomato
- Carriage
- Underneath
- Underneath
- Mass
- Speechless
- Humorous

**DOWN**

1. Time measure
2. Part of a curve
3. Southern radiation
4. Affirmative
5. Part of a curve
6. Part of a curve
7. Not expensive
8. Part of a curve
9. Part of a curve
10. Part of a curve
11. Part of a curve
12. Part of a curve
13. Part of a curve
14. Part of a curve
15. Part of a curve
16. Part of a curve
17. Part of a curve
18. Part of a curve
19. Part of a curve
20. Part of a curve

1	2	3	4	5	6	7	8	9	10	11
12	13	14	15	16	17	18	19	20	21	22
23	24	25	26	27	28	29	30	31	32	33
34	35	36	37	38	39	40	41	42	43	44
45	46	47	48	49	50	51	52	53	54	55
56	57	58	59	60	61	62	63	64	65	66

## For Sale—Miscellaneous

OIL STOVE AT 800 NORTH MAIN, 45-PASSENGER SCHOOL BUS, body used. Phone 246.

HOLLYWOOD USED SILEX, 1964, priced to sell. 619 3rd Ave. W.

PORTABLE REMINGTON TYPE-Writer, gift, never used. Phone 7311.

SEE THE HAIR SPECIALIST! Will grow hair, stop falling hair, will be under Bank of Trust-Pratt and Saunders.

ASSISTANT OF LEAD FOR OHIO-And Spraying in any quantity. Screen wire, screen doors and bee supplies. Beware of the "deadly fly". 800-24-Phone-1.

## For Sale—Automobiles

1926 CADILLAC SEDAN FOR SALE, cheap. Phone 246.

JOHN O'CONNOR USED CAR CO. (Near of Penney's New Location) All Cars Have 1924 Idaho Licenses

1939 Ford rumble seat coupe, new paint, \$185; 1937 Whippet coupe, runs good, new paint, \$170; 1939 Ford coupe, wire wheels, \$185; 1935 Oakland sedan, new paint, \$170; 1938 Chev. roadster pickup, \$125; 1927 Oakland sedan, good condition, \$80; 1930 Chev. coupe, \$125.

Cars Painted \$6.50 Up. Buy, Sell, Trade. Repair Work Reasonable.

## Help Wanted—Female

WANTED—EXPERIENCED WOMAN COOK. Apply Speer's Coffee Shop.

Wanted—Miscellaneous

WANTED—USED CARS. WE PAY cash. Jim B. White Co.

WANTED TO BUY—FIVE-GALLON bottles/Hayes Hatcher.

PAINTING, KALOMINING, paper hanging, E. L. Shaffer, Ph. 1253-J.

WANTED—TWO TO 4-TONS OF barley, C. S. Maxwell, three miles east. Phone 6291-J.

WANTED—USED FURNITURE, stoves, etc. B. E. Eberhart, Ph. 1274, 169 2nd St.

TO BUY A GRINARY OR BUILDING suitable for same, need one preferred. Phone 6195-J1.

## Wanted to Rent

FURNISHED HOUSE ACCOMMODATING 8 people for first two weeks in August. Call 487.

For Sale—Real Estate

ONE-ROOM FLAT-RENTED HOUSE, 215 7th Ave. E.

5-ROOM MODERN HOUSE ON Main Ave. #1590, Irrigated Lands Co. Ph. 140.

## Chinese Apocryphs—The Kind

you bought from me 3 years ago. Smiling and Thursday. Go out Blue Lakes Blvd. and is mile east on Falls avenue, James Agnewbrook, Nampa-Bring, contact.

## Washing Machines

WRINGER ROLLERS TO FIT ALL machines, \$100. C. G. Anderson.

## FOR SALE OR TRADE

M. O'NEER FOR DAIRY STOCK, Phone 6283-J1.

# Daily Cross-Word Puzzle

**ACROSS**

- Part of a curve
- Red to the fold
- Remembrance
- Swing
- Black wood
- Before
- Small vessels for heating liquids
- Operative solo
- Foot withered old woman
- State of time
- Closest to the north of the land
- From lack of
- Chatterbox
- Tomato
- Carriage
- Underneath
- Underneath
- Mass
- Speechless
- Humorous

**DOWN**

1. Time measure
2. Part of a curve
3. Southern radiation
4. Affirmative
5. Part of a curve
6. Part of a curve
7. Not expensive
8. Part of a curve
9. Part of a curve
10. Part of a curve
11. Part of a curve
12. Part of a curve
13. Part of a curve
14. Part of a curve
15. Part of a curve
16. Part of a curve
17. Part of a curve
18. Part of a curve
19. Part of a curve
20. Part of a curve

1	2	3	4	5	6	7	8	9	10	11
12	13	14	15	16	17	18	19	20	21	22
23	24	25	26	27	28	29	30	31	32	33
34	35	36	37	38	39	40	41	42	43	44
45	46	47	48	49	50	51	52	53	54	55
56	57	58	59	60	61	62	63	64	65	66

## For Sale—Automobiles

1926 CADILLAC SEDAN FOR SALE, cheap. Phone 246.

JOHN O'CONNOR USED CAR CO. (Near of Penney's New Location) All Cars Have 1924 Idaho Licenses

1939 Ford rumble seat coupe, new paint, \$185; 1937 Whippet coupe, runs good, new paint, \$170; 1939 Ford coupe, wire wheels, \$185; 1935 Oakland sedan, new paint, \$170; 1938 Chev. roadster pickup, \$125; 1927 Oakland sedan, good condition, \$80; 1930 Chev. coupe, \$125.

Cars Painted \$6.50 Up. Buy, Sell, Trade. Repair Work Reasonable.

## Help Wanted—Female

WANTED—EXPERIENCED WOMAN COOK. Apply Speer's Coffee Shop.

Wanted—Miscellaneous

WANTED—USED CARS. WE PAY cash. Jim B. White Co.

WANTED TO BUY—FIVE-GALLON bottles/Hayes Hatcher.

PAINTING, KALOMINING, paper hanging, E. L. Shaffer, Ph. 1253-J.

WANTED—TWO TO 4-TONS OF barley, C. S. Maxwell, three miles east. Phone 6291-J.

WANTED—USED FURNITURE, stoves, etc. B. E. Eberhart, Ph. 1274, 169 2nd St.

TO BUY A GRINARY OR BUILDING suitable for same, need one preferred. Phone 6195-J1.

## Wanted to Rent

FURNISHED HOUSE ACCOMMODATING 8 people for first two weeks in August. Call 487.

For Sale—Real Estate

ONE-ROOM FLAT-RENTED HOUSE, 215 7th Ave. E.

5-ROOM MODERN HOUSE ON Main Ave. #1590, Irrigated Lands Co. Ph. 140.

## Chinese Apocryphs—The Kind

you bought from me 3 years ago. Smiling and Thursday. Go out Blue Lakes Blvd. and is mile east on Falls avenue, James Agnewbrook, Nampa-Bring, contact.

## Washing Machines

WRINGER ROLLERS TO FIT ALL machines, \$100. C. G. Anderson.

## FOR SALE OR TRADE

M. O'NEER FOR DAIRY STOCK, Phone 6283-J1.

## FOR SALE OR TRADE

M. O'NEER FOR DAIRY STOCK, Phone 6283-J1.

# Daily Cross-Word Puzzle

**ACROSS**

- Part of a curve
- Red to the fold
- Remembrance
- Swing
- Black wood
- Before
- Small vessels for heating liquids
- Operative solo
- Foot withered old woman
- State of time
- Closest to the north of the land
- From lack of
- Chatterbox
- Tomato
- Carriage
- Underneath
- Underneath
- Mass
- Speechless
- Humorous

**DOWN**

1. Time measure
2. Part of a curve
3. Southern radiation
4. Affirmative
5. Part of a curve
6. Part of a curve
7. Not expensive
8. Part of a curve
9. Part of a curve
10. Part of a curve
11. Part of a curve
12. Part of a curve
13. Part of a curve
14. Part of a curve
15. Part of a curve
16. Part of a curve
17. Part of a curve
18. Part of a curve
19. Part of a curve
20. Part of a curve

1	2	3	4	5	6	7	8	9	10	11
12	13	14	15	16	17	18	19	20	21	22
23	24	25	26	27	28	29	30	31	32	33
34	35	36	37	38	39	40	41	42	43	44
45	46	47	48	49	50	51	52	53	54	55
56	57	58	59	60	61	62	63	64	65	66

## For Sale—Automobiles

1926 CADILLAC SEDAN FOR SALE, cheap. Phone 246.

JOHN O'CONNOR USED CAR CO. (Near of Penney's New Location) All Cars Have 1924 Idaho Licenses

1939 Ford rumble seat coupe, new paint, \$185; 1937 Whippet coupe, runs good, new paint, \$170; 1939 Ford coupe, wire wheels, \$185; 1935 Oakland sedan, new paint, \$170; 1938 Chev. roadster pickup, \$125; 1927 Oakland sedan, good condition, \$80; 1930 Chev. coupe, \$125.

Cars Painted \$6.50 Up. Buy, Sell, Trade. Repair Work Reasonable.

## Help Wanted—Female

WANTED—EXPERIENCED WOMAN COOK. Apply Speer's Coffee Shop.

Wanted—Miscellaneous

WANTED—USED CARS. WE PAY cash. Jim B. White Co.

WANTED TO BUY—FIVE-GALLON bottles/Hayes Hatcher.

PAINTING, KALOMINING, paper hanging, E. L. Shaffer, Ph. 1253-J.

WANTED—TWO TO 4-TONS OF barley, C. S. Maxwell, three miles east. Phone 6291-J.

WANTED—USED FURNITURE, stoves, etc. B. E. Eberhart, Ph. 1274, 169 2nd St.

TO BUY A GRINARY OR BUILDING suitable for same, need one preferred. Phone 6195-J1.

## Wanted to Rent

FURNISHED HOUSE ACCOMMODATING 8 people for first two weeks in August. Call 487.

For Sale—Real Estate

ONE-ROOM FLAT-RENTED HOUSE, 215 7th Ave. E.

5-ROOM MODERN HOUSE ON Main Ave. #1590, Irrigated Lands Co. Ph. 140.

## Chinese Apocryphs—The Kind

you bought from me 3 years ago. Smiling and Thursday. Go out Blue Lakes Blvd. and is mile east on Falls avenue, James Agnewbrook, Nampa-Bring, contact.

## Washing Machines

WRINGER ROLLERS TO FIT ALL machines, \$100. C. G. Anderson.

## FOR SALE OR TRADE

M. O'NEER FOR DAIRY STOCK, Phone 6283-J1.

## FOR SALE OR TRADE

M. O'NEER FOR DAIRY STOCK, Phone 6283-J1.

# Daily Cross-Word Puzzle

**ACROSS**

- Part of a curve
- Red to the fold
- Remembrance
- Swing
- Black wood
- Before
- Small vessels for heating liquids
- Operative solo
- Foot withered old woman
- State of time
- Closest to the north of the land
- From lack of
- Chatterbox
- Tomato
- Carriage
- Underneath
- Underneath
- Mass
- Speechless
- Humorous

**DOWN**

1. Time measure
2. Part of a curve
3. Southern radiation
4. Affirmative
5. Part of a curve
6. Part of a curve
7. Not expensive
8. Part of a curve
9. Part of a curve
10. Part of a curve
11. Part of a curve
12. Part of a curve
13. Part of a curve
14. Part of a curve
15. Part of a curve
16. Part of a curve
17. Part of a curve
18. Part of a curve
19. Part of a curve
20. Part of a curve

1	2	3	4	5	6	7	8	9	10	11
12	13	14	15	16	17	18	19	20	21	22
23	24	25	26	27	28	29	30	31	32	33
34	35	36	37	38	39	40	41	42	43	44
45	46	47	48	49	50	51	52	53	54	55
56	57	58	59	60	61	62	63	64	65	66

# Save Little

THE NEWS WISHERS TO MAKE it clear to readers of the classified page that there is a strict rule against giving any additional information concerning "blind ads" that is, advertisements signed with a box number or code of the News.

## Miscellaneous

GRANITE AND MARBLE MONUMENTS, Jellison Bros. Ph. 6687, 433 Main St.

## Business Opportunities

FOR SALE—RENTAL AND COLLECTING AGENCY, and more in 5000-5100. Call 683, ask for Mr. Long.

Beauty Parlors

LUXURY OR OIL PERMANENT, \$150. \$150 permanent, \$250. \$100. Ave. Beauty shop, 410 5th ave. east. Phone 628-W. Tikkers Haircare, operator.

SPECIALTY BEAUTY SALON AND COLLECTING AGENCY, and more in 5000-5100. Call 683, ask for Mr. Long.

## Wanted to Rent

FURNISHED HOUSE ACCOMMODATING 8 people for first two weeks in August. Call 487.

For Sale—Real Estate

ONE-ROOM FLAT-RENTED HOUSE, 215 7th Ave. E.

5-ROOM MODERN HOUSE ON Main Ave. #1590, Irrigated Lands Co. Ph. 140.

## Chinese Apocryphs—The Kind

you bought from me 3 years ago. Smiling and Thursday. Go out Blue Lakes Blvd. and is mile east on Falls avenue, James Agnewbrook, Nampa-Bring, contact.

## Washing Machines

WRINGER ROLLERS TO FIT ALL machines, \$100. C. G. Anderson.

## FOR SALE OR TRADE

M. O'NEER FOR DAIRY STOCK, Phone 6283-J1.

## FOR SALE OR TRADE

M. O'NEER FOR DAIRY STOCK, Phone 6283-J1.

# Daily Cross-Word Puzzle

**ACROSS**

- Part of a curve
- Red to the fold
- Remembrance
- Swing
- Black wood
- Before
- Small vessels for heating liquids
- Operative solo
- Foot withered old woman
- State of time
- Closest to the north of the land
- From lack of
- Chatterbox
- Tomato
- Carriage
- Underneath
- Underneath
- Mass
- Speechless
- Humorous

**DOWN**

1. Time measure
2. Part of a curve
3. Southern radiation
4. Affirmative
5. Part of a curve
6. Part of a curve
7. Not expensive
8. Part of a curve
9. Part of a curve
10. Part of a curve
11. Part of a curve
12. Part of a curve
13. Part of a curve
14. Part of a curve
15. Part of a curve
16. Part of a curve
17. Part of a curve
18. Part of a curve
19. Part of a curve
20. Part of a curve

1	2	3	4	5	6	7	8	9	10	11
12	13	14	15	16	17	18	19	20	21	22
23	24	25	26	27	28	29	30	31	32	33
34	35	36	37	38	39	40	41	42	43	44
45	46	47	48	49	50	51	52	53	54	55
56	57	58	59	60	61	62	63	64	65	66

# SPITE MARRIAGE

SYNOPSIS: Marsha Moore had thought herself in love with Geoffrey Trelton. But he had been married to the "Mrs. Trelton," and she married Bob Powers out of pique. Now Geoffrey has come to call on Marsha, and although Bob has gone to the village, Marsha feels the danger that he may discover the truth. And Marsha loves Bob now, and does not want him to know.

## Miscellaneous

GRANITE AND MARBLE MONUMENTS, Jellison Bros. Ph. 6687, 433 Main St.

## Business Opportunities

FOR SALE—RENTAL AND COLLECTING AGENCY, and more in 5000-5100. Call 683, ask for Mr. Long.

Beauty Parlors

LUXURY OR OIL PERMANENT, \$150. \$150 permanent, \$250. \$100. Ave. Beauty shop, 410 5th ave. east. Phone 628-W. Tikkers Haircare, operator.

SPECIALTY BEAUTY SALON AND COLLECTING AGENCY, and more in 5000-5100. Call 683, ask for Mr. Long.

## Wanted to Rent

FURNISHED HOUSE ACCOMMODATING 8 people for first two weeks in August. Call 487.

For Sale—Real Estate

ONE-ROOM FLAT-RENTED HOUSE, 215 7th Ave. E.

5-ROOM MODERN HOUSE ON Main Ave. #1590, Irrigated Lands Co. Ph. 140.

## Chinese Apocryphs—The Kind

you bought from me 3 years ago. Smiling and Thursday. Go out Blue Lakes Blvd. and is mile east on Falls avenue, James Agnewbrook, Nampa-Bring, contact.

## Washing Machines

WRINGER ROLLERS TO FIT ALL machines, \$100. C. G. Anderson.



# Here It Is! What You've Been Waiting For!

## PENNEY'S STOCK REDUCING--BARGAIN GIVING

# REMOVAL EVENT

**Stocks Must Be Reduced at Once! It Costs Money to Move Merchandise!**  
**You Save Money at These Sacrifice Prices! We Are Paying You to Move It for Us!**

We have gone through our great stock of fine merchandise and have slashed the prices on all odds and ends and seasonable goods! We are closing out many broken lines! Many special features have been added to this event for your benefit! Quick action necessary! If you want your share of these bargains! **HURRY! HURRY! HURRY!**

## Starting This Morning, 8 O'clock

<b>Removal Special!</b> <b>Just 4 Left</b> <b>Waffle Coats</b> <small>Those beautiful, stunning summer coats and we are going to sell them to the first 4 ladies at the ridiculous price of</small> <b>\$1.00 each</b> <small>Removal Price</small>	<b>Removal Special!</b> <b>Only 97</b> <b>Daytime Pajamas</b> <small>Left! Ladies, these are made out of good quality, fast color prints and if you are here early you can have any or all you want at Removal Price</small> <b>50c each</b>	<b>Removal Special!</b> <b>Only 7</b> <b>Corduroy Jackets</b> <small>for ladies in sleeveless type. Bright colors. You'll have to hurry to get one of these at</small> <b>50c</b> <small>Reduced Removal Price!</small>	<b>Removal Special!</b> <b>224 Men's</b> <b>Unions</b> <small>Short Sleeve--Long Leg! Here's a great special added to our Removal Event! Fine quality, elastic ribbed knit unions go at only</small> <b>63c each</b> <small>Reduced Removal Price!</small>	<b>Removal Special!</b> <b>Close Out!</b> <b>Flannel Pants</b> <small>Out they go! Just 23 pair men's white and cream color flannel slacks go at the ridiculous low price of only</small> <b>\$1.00 Pair</b> <small>Reduced Removal Price!</small>	<b>Removal Special!</b> <b>Save! Bargain!</b> <b>Overalls</b> <small>Here's your chance to save! Just 68 pair men's 220 wt. blue denim Value Overalls go at</small> <b>49c Pair</b> <small>Reduced Removal Price!</small>
<b>Removal Special!</b> <b>1 Table</b> <b>SHEER PRINTS</b> <small>Ladies, here's a value you must be so appreciate. You'll want 4 or 5 dress lengths. Don't delay!</small> <b>10c yd.</b> <small>Reduced Removal Price!</small>	<b>Removal Special!</b> <b>183 Pair</b> <b>SILK HOSE</b> <small>For ladies! Full fashioned, pure silk, wanted shades. Service and chiffon weights.</small> <b>37c</b> <small>Reduced Removal Price!</small>	<b>Removal Special!</b> <b>199 Pair</b> <b>FABRIC GLOVES</b> <small>Ladies, you will appreciate this value. White and eggshell. All sizes.</small> <b>25c</b> <small>Reduced Removal Price!</small>	<b>Removal Special!</b> <b>One Lot</b> <b>L.D.S. GARMENTS</b> <small>for men and women. Summer weight. To be closed out at--</small> <b>79c Suit</b> <small>Buy Now! Save!</small>	<b>Removal Special!</b> <b>6 Only</b> <b>MEN'S SUITS</b> <small>They are good suits in summer fabrics. Close out price--</small> <b>\$7.50</b> <small>Reduced Removal Price!</small>	<b>Removal Special!</b> <b>Boys'</b> <b>Value Overalls</b> <small>We have quite a stock of these and want to reduce it so we are going to let you have them at--</small> <b>35c Pair</b> <small>Reduced Removal Price!</small>

**REMOVAL SPECIAL!**  
**299 PAIR**  
**Ladies' Shoes**  
Straps, Ties, Pumps and Oxfords from our higher price groups in white. Practically all sizes. Close Out Price--  
**\$1.50**  
Don't Delay, Buy Now!

**Buy Here! Buy Now! Save!**

ALL BATHING CAPS	1/2 PRICE	BOYS' WASH SUIT	25c
1 FILE FABRIC SHORT JACKETS, EACH	\$1.99	SPECIAL	
ONE LOT WHITE BEACH OXFORDS, PAIR	50c	MEN'S ALL WOOL BATHING TRUNKS	\$1.49
ONE LOT WOMEN'S FELT SLIPPERS, PAIR	32c	1 LOT MEN'S DRESS STRAW HATS	35c
7 "LIDO" FOLDING SUN HATS, EACH	25c	1 LOT MEN'S SUMMER CAPS	25c
12 PAIR LITEN LUNCHION CLOTHS, EACH	33c	1 LOT MEN'S ATHLETIC UNDERWEAR	25c
200 YDS. HIGHWAY MUSLIN, YARD	6 1/2c	1 LOT BOYS' SUGGER UNIONS	25c
1 WHITE HANDBAG, EACH	50c	1 LOT BOYS' BATHING SUITS	49c
15 PR. SHEER CHIFFON SILK HOSE, PAIR	47c	1 LOT MEN'S FINE STRAW HATS	49c
ONE LOT WOMEN'S DRESS HATS, EACH	25c	1 LOT MEN'S FANCY DRESS ROCKS	2 PR. 25c
ONE LOT CHILDREN'S DRESS SUITS, EACH	25c	1 LOT MEN'S WORK SHIRTS	39c
ONE LOT CHILDREN'S BATHING SUITS, EACH	25c	1 LOT MEN'S FINGER GLOVES	25c
ONE TABLE SILKS, EACH	57c	1 LOT MEN'S FINE DRESS SHIRTS	99c
ONE TABLE SHEER PRINTS, YARD	17c	1 LOT FEBCO TOOTH PASTE	25c
ONE TABLE NOVELTY FABRICS, YARD	27c	1 LOT MEN'S BETTER SUITS	\$10.00
TWO TABLES	1/2 PRICE	1 LOT MEN'S SUMMER DRESS CAPS	25c
REMPANTS		1 LOT MEN'S FLAM PAJAMAS	99c
ONE LOT LADIES' PIQUE SKIRTS, EACH	67c	1 LOT SUIT CASES	98c
ONE LOT LADIES' WASH SLACKS, EACH	67c	MEN'S KHAKI WORK PANTS	98c
2 ONLY LADIES' WOOL SKIRTS, EACH	\$1.77	MEN'S COVERT WORK PANTS	98c
ONE LOT COTTON SHIRT BLANKETS, EACH	57c	MEN'S CORDUROY PANTS	\$1.98

**REMOVAL SPECIAL!**  
**ALL**  
**Ladies' Millinery**  
In summer straws, cloths and braids goes at the Close Out Price of--  
**50c ea.**  
Now You Can Have A Hat!

**REMOVAL SPECIAL!**  
**COME A RUNNING!**  
**5 ONLY MEN'S SPORT SUITS**  
Don't delay! Get here early if you want one! Just five good quality sport suits sacrificed at--  
**\$5.00 Each**  
Reduced Removal Price!

**REMOVAL SPECIAL!**  
**353 PAIR**  
**Men's Shorts**  
Fast color broadcloth shorts. Sizes 30 to 42. A real buy for you--  
**19c Pair**  
They Won't Be Here Long!

**Hurry! These Values Won't Last Long**

# J. C. PENNEY CO. INC.