

IDAHO DEPARTMENT STORE

FEATURING FOR TODAY

3 Big Fine Money Saving Special Events TO CELEBRATE GIVING AWAY THE HOUSE

"If it Isn't Right, Bring it Back"

APPLE DATE SLASH MEETS OPPOSITION

Northwest Growers' Request
Attracts Protest From
Eastern Orchardists

WASHINGTON, March 12 (AP)—Eastern apple growers served informal notice today on the interstate commerce commission of opposition to the proposed 23-cent a hundred pound slash in apple rates from the coast to Mississippi gateway.

The present rate from the Pacific northwest to all points east of Colorado is 41.25 cents per 100 pounds and northwest growers have obtained consent of western railroads to lower this rate to 41 cents as far east as Chicago until the bulk of the current crop is moved. However, the approval of the I. C. C. is necessary to making the proposed emergency rate effective.

Opponents of the emergency reduction advised interstate commerce commission officials study of 58 markets east of the Mississippi showed northwest growers are undercutting the east as much as 30 cents per bushel.

Eastern growers' representatives planned to seek extension of the proposed 21 cent emergency rate to territories east of the Mississippi river.

It was said the western growers were given a 25 cent per 100 pound cut in rates two years ago but that no compensatory slash has been made for the benefit of eastern apple growers.

BURGLARY SUSPECT DISCLOSES RECORD

Man Held Here for Harness
Theft Alleged Fugitive
From California

A man who gave the name of Harry Campbell, arrested and brought back from Caldwell to answer here to a burglary charge of theft of harness from a Kimberly district farm, is G. E. Rodgers, a fugitive from Folsom prison in California.

Sheriff E. F. Ivator said last evening it had been disclosed that the harness thief suspect disclosed his identity to E. L. Rayborn, Twin Falls attorney, whom he asked to see after being arraigned Monday on the burglary charge. The sheriff said he recalled to the attorney's residence in Caldwell yesterday, the sheriff said, that Rayborn, as a prosecuting attorney, had assisted in sending him to the penitentiary in Missouri several years ago.

Local authorities indicated probably that Rodgers will be prosecuted here on the harness theft charge and later delivered to California of fugitive.

Rodgers is accused of stealing harness from the Ben Jensen and John Blaisch farms, south of Kimberly, last Friday night. The harness was recovered at public sale grounds at Caldwell the following day. Rodgers is alleged to have taken the harness to Caldwell in an automobile that he bought from a local dealer last Friday, giving in payment a check signed with the name of Chris Jensen.

ROSS' ENDORSEMENT IGNORED IN DEFEAT OF LEVY ON SALES

(Continued from Page One)

"Because of the expenditure of the above-stated \$13,000,000 in Idaho, and the expenditure in excess of \$2,000,000,000 by the government in the United States, business conditions have improved until a large portion of the citizens of Idaho are making a profit."

Money Goes Into Trade

"If the state of Idaho cooperates with the federal government to the extent of \$100,000 per month, during the next six months approximately \$4,000,000 more money will come from the federal government to match our \$2,000,000. This money again goes into the channels of trade and every citizen in Idaho, will be the beneficiary."

There are before you gentlemen, certain bills which are designed to match the federal emergency money that comes into Idaho. One of them proposes to take the money from the income tax, inheritance tax and the fact that any money diverted from the income and inheritance tax to the emergency relief fund, will raise the ad valorem levy to just that extent, and the farmers and property owners of this state will be compensated for the obligation. If the revenue raised from these sources is diverted, the effect will be the same as if you placed a direct ad valorem levy upon the property of Idaho.

You also have under consideration a general sales tax. In the raising of necessary revenue there is always an effort to broaden the base of taxation. A sales tax furnishes the broadest base for raising revenue. In other words, an average sales tax on 17,000 people in Idaho will participate in the payment of a sales tax at the average rate per person of from 12 to 20 cents. I want to call your attention to the further fact that the proposed sales tax is an emergency temporary measure expiring by its terms, March 15, 1937, and that no business man should object to contributing his part in either time or money during this emergency.

SPECIAL NO. 1 THIS IS AN UNUSUAL SPECIAL EVENT IN THE MEN'S DEPT. FOR WEDNESDAY, MARCH 13TH

50 All Wool Spring TOP COATS

\$7.90



Every One Regular \$11.90 Values!

These fine top coats were discovered and closed out by two of our buyers while in Minneapolis. This is the lowest price we have ever been able to offer all-wool spring overcoats for: Single and Double Breasted — Half Belt Models — Sizes 34 to 44

Fine Twist Fabrics—Imitation Harris Tweeds—Basket Weaves—Shades of Tan, Brown and Gray

All Alterations Free by Our Own Tailor in The Department at All Times!

WATCH

The Big, New, I-D Store this year! We are going to save you more money than ever on merchandise of a known quality. You will know this to be true by your own comparison.

STATE TOURNAMENT BASKETBALL TICKETS FOR SALE HERE!

SPECIAL NO. 2 THE DRY GOODS DEPARTMENT Celebrates Giving the House Away

WEDNESDAY, MARCH 13TH
With a Special Purchase Offering

876 PAIRS Women's Full Fashioned HOSE IN FIRST QUALITY 39c

Regular 59c and 69c Hose

These hose were made and labeled for the Edison Brothers' Store, a chain store system in the south, who recently discontinued business. The manufacturer had this stock on hand and because their labels were on the hose, he closed this lot out to us at a big loss to himself.

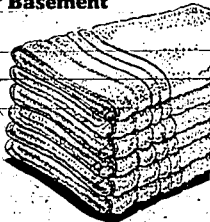
THIS SAVING IS PASSED ON TO YOU! Construction—Elast. top with earlier run ston. 4 thread and 32 gauge. Full fashioned. Silk plated feet. First quality. Colors—Distingue, Taupe Bark, Pale Brown, Tea-Dance, Bolero, Trotteur, Gray-Dusk, Smoke Mist, Gray Tone, Cedar, Malibu Brown. STARTING WEDNESDAY MORNING!



Just Unpacked in The Economy Basement

1200 18x36 Heavy, Closely Woven Turkish Towels 10c

A fine white bleached first quality towel. Full absorbent and a heavy firm construction. An extraordinary good value 10c



SPECIAL NO. 3

A PLANNED SPECIAL EVENT OFFERED IN THE BIG, NEW

Economy Basement

WEDNESDAY, MARCH 13TH

To Celebrate Giving the House Away

It's Going to Be A Big Day in Twin Falls! Be Sure and Be Here!

144 CHILDREN'S WASH FROCKS 25c



A Close-Out of Regular 49c Dresses A Beautiful Assortment Close-Out By Mrs. Turner in New York!

Geometrical Designs—Belted Models—Pleated Skirts—Puff Sleeves.

Every Dress Is Fast Color! Sizes 7 to 12 — Sizes 2 to 6

This is a buy that comes only once in a blue moon. There are just 144 so unless you are here fairly early, you will find them sold down.

GOOD NEWS FOR HARD TO FIT WOMEN!

Announcing! Marie Dressler WASH DRESSES

Sizes 38 1/2 to 52 1/2 for Tall Large Women
And Sizes 37 1/2 to 51 1/2 for Short Large Women
\$1.98 and \$2.98



Style Without Fit Has No Value! A Good Fit Makes the Style! Here Are The Special Features That You Get With These Dresses:

1. Sleeves set up high on shoulder.
2. Deep arm holes give more freedom.
3. Correctly proportioned across the bust.
4. Necessary fullness across the hips.
5. Skirts never hike up.
6. No binding anywhere.

Known The Country Over For Their Remarkable Fit!

\$1.98 and \$2.98

127 PAIR SHOES

Special Close-Out of Sample Short Lasts and Broken Sizes

\$1.97

Pumps, Ties and Sport Oxfords. Brownish Hamilton Street, Flors Whites, Grays, Blue, Black, Brown.

ALL REGULAR \$3.95 to \$4.95 VALUES

This should be of special interest to women with small feet as there are a lot of small sizes in sample shoes.

WE INVITE YOUR INSPECTION OF THE NEW

The Commodore

Coats and Suits!



We consider these remarkable garments to be the finest "value" in women's apparel!

Fashioned in the best of taste, from specially constructed pure virgin wool fabrics—that are tailored to retain their smart lines and proportions fit. Commodore are long wearing—grand looking coats and suits—that cost so much less than you'd expect.

\$29.75

The Dress with a Jacket for women and little women



who want a practical and flattering new spring outfit.

10⁹⁵

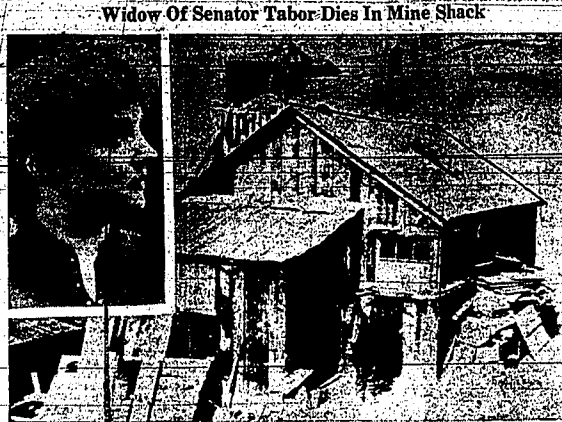
These youthful dresses make you seem taller ... younger ... more slender than ever before! They're beautifully made with unusually fine trimmings—drawn work, cording, fagotings! All important—jacket-lengths, swaggers, redingotes! Colorful their prints especially selected for women who wear sizes 16 1/2 to 24 1/2 38 to 44

REDINGOTES • SWAGGERS • JACKETS

NEW POST OFFERED BISHOP BARNWELL

Proposal to Discontinue Missionary District of Idaho Considered

PORTLAND, Ore., March 12 (AP)—Possible change in the boundary lines of at least three northwest dioceses of the Episcopal church in Idaho, as a result of a proposal to discontinue the missionary district of Idaho, has been listed as the major item of business to be discussed by the provincial house of Episcopal bishops meeting here tomorrow.



Widow Of Senator Tabor Dies In Mine Shack

MRS. ELIAEBETH "BABY DOE" TADOR (inset) was found dead in this tumble-down cabin of the Matchless mine near Leadville, Colo., where she had lived alone in poverty on the last bit of property once controlled by H. A. W. Tabor, famous Colorado multi-millionaire and United States senator many years ago. The picture of Mrs. Tabor was taken in a happier day when she was the toast of Denver and Washington society. She had hoped the famous mine which helped to build the Tabor fortune would restore her finances. (AP) Photos.

Scientist Summoned



PROFESSOR MICHAEL PUPPINI

DEATH CALLS INVENTOR

NEW YORK, March 12 (AP)—Professor Michael Puppini, whose invention made it possible to turn telephone and telegraph wires underground, died of heart disease today at the age of 78. After spending 20 years in this country as a penniless Italian immigrant boy of 16, Puppini rose to a high place in the world of science, perfecting devices which revolutionized telephony, wireless telegraphy and the X-ray.

Idaho House Votes Down State Sales Tax, 26 to 31

Revenue Problem Unsolved (Continued From Page One) had been fighting a severe cold and a high fever. What appeared to be a test vote came shortly after 2 o'clock when the administration supporters forced through a "motion" to recess to permit the governor to address them. The vote was 29-28, with Representative Gossett fighting to the end. A first motion to recess was substituted by Gossett with one calling for adjournment for three minutes. Gossett's motion carried on a roll call. When the three minutes were up the house reconvened and Representative Goodwin moved to recess subject to the call of the chair. It was raised and sustained after a number of parliamentary points had been raised and settled by Speaker Troy Smith.

Representative Smith opened the argument for the tax bill, declared it to be "one of the most equitable that could be applied."

TURNER LEAVES JAIL TO FACE NEW CHARGE

Accused of theft of an automobile belonging to Alex Watson of Gooding in Twin Falls last February 14, Grant Sawyer, 37, was arrested and hauled into court yesterday when he completed serving a 30-day term in Twin Falls county jail for driving a car past a school bus that children were leaving.

Turner was in the probate court, dreading the preliminary hearing Wednesday by Boise City National bank in a dividend of 20 per cent on approved deposits. The dividend is the third granted since the bank closed in 1922. J. L. Eckersley, receiver, said checks were ready for 3,700 claims.

Total paid by the three dividends will be approximately \$400,000.

Critics Call Their Work Best

The Dodge tax plan, which was defeated by the house in the regular session, made its appearance in the house slightly changed, again late today. It would place a tax on the privilege of doing business. Other measures which the house will have to consider now in its efforts to solve the taxation problem include a 2-cent per package tax on cigarettes; a 5-cent-a-pint tax on liquor; an increase in all brackets of the income tax; diversion of 1 cent of the present gasoline tax to the relief fund; an increased inheritance tax and the intangibles tax that was drawn by Attorney General Bert Miller and defeated by the house during the regular session, and several others.

Tax on Gas Approved

The house this morning approved a house bill increasing the license tax on 1 1/2 fills on each gallon of motor fuel sold by jobbers in the state, 35-0. Representative Day (D-Jewett) estimated that the measure would produce \$100,000 annually.

Sketcher Appointment

Representative Hynde, one of the sponsors in answering Coker's bill, said \$200,000 of revenue raised from the bill would go to relief that 50 per cent of the balance, if any, would go to schools, and that the remaining 50 per cent of the balance would go into the general fund.

Sketcher Appointment

Representative Coker (R-Idaho) said "a tax on the ability of the poor people of the state to taxation not based on the ability of people to pay."

Then Representative Lusk (D)

Then Representative Lusk (D) said "I am referring to a discussion yesterday on national security problems, which Mrs. Franklin D. Roosevelt, as chairman of the Camp Fire Girls advisory council, has graciously invited the United States government to contribute to the emergency conservation work, 37-7, seven to these questionnaires will be presented to Mrs. Roosevelt next June."



Camp Fire Girls Learn By Doing; Emphasis Placed on Citizenship

"My place in the world to discover" will deliver a nation-wide broadcast tomorrow on the subject, "The City of the Future," a message for Camp Fire Girls, and those interested in girls. The address will be broadcast at 2 o'clock, Mountain Standard time, over the Columbia network.

Such is the slogan of 250,000 Camp Fire Girls throughout the United States as they celebrate their twenty-third anniversary this week. Twin Falls Camp Fire girls, with their own good depends on that of others around them. Citizenship is one of the seven crafts of Camp Fire.

The Day In Washington

(By The Associated Press) President Roosevelt reiterated his demand for dissolution of public utility holding companies which prove unnecessary.

Donald Richberg advocated abandonment under the revised NRA of all costs affecting only "local" industries.

The house passed the home owners' loan guaranty bill, increasing its capitalization by \$1,750,000,000.

The work relief bill, after surviving tests on two amendments, ran into determined efforts to cut the \$4,000,000,000 work appropriation.

William B. Shearer, big navy advocate, at a turbulent senate munitions hearing defended his campaign for more warships.

Secretary Perkins and Chairman Biddle of the labor relations board stated their differences over the Wagner labor disputes bill before a senate committee.

Chairman Smith of the senate agriculture committee predicted renewal of the 10-cent a pound loan on the 1935 cotton crop.

Somewhat divergence between the Long and Coughlin camps will occur in their opposing stands on support for President Roosevelt.

PERJURY SUSPECT IN QUINTELL BLAYING FRED KANSAS CITY, March 12 (AP)—A federal court jury quickly acquitted Eugene C. Reppert, former director of police, tonight on a charge that he committed perjury in testimony before a grand jury relative to the Union station plaza quinquennial slayings in 1932. The jury was out 19 minutes.

symbolism of their own Indian names. They are being taught to sing with enthusiasm and ardor both original songs and literary ones. They are heading headbands with

DECLAMATORY ENTRANTS CHOSEN FOR CONTEST

Louise Kregel was chosen to enter the high school sub-district declamatory contest Friday. The twin Falls representative in the humorous reading division yesterday was Miss Simpson. The declamatory contest was won by Evans who was picked for the extemporaneous contest in a preliminary try-out last week.

In the historical and dramatic reading divisions, judges Mrs. Bonnie Simpson, Miss Dorothy Call and Loyal Perry were unable to pick a winner. Mrs. Simpson announced that she would coach two entries in each division and choose the one to represent the school on Monday, March 18. Milo Sawyer and Lola Darling were chosen from the dramatic readers; Bob Stephan and "Bertie" Conclat from the oration.

Contestants and the selections were: Oratorical, Bob Stephan, "Bertie" Conclat at the "Hazy of the Nile"; Tracy Olson, "They That Take the Sword"; Paul Dudley, "Rope."

Dramatic, Lola Darling, "The Little Orphan and the Christ Child"; Milo Sawyer, "The Rocky"; Walter Wells, "The Trial in Tom Belcher's Shop"; Homer Nixon, "Congo"; Alice Havens, "The Tragedy of Micah."

Humorous, Louise Kregel, "While the Heroes Watch and Smile"; Grant Sawyer, "Ten Cent Flyers"; Ruth Wiseman, "Byrd's Christmas Carol."

BOISE CITY NATIONAL BANK'S DEPOSITORS

BOISE, March 12 (AP)—Three thousand dollars will be paid Wednesday by Boise City National bank in a dividend of 20 per cent on approved deposits. The dividend is the third granted since the bank closed in 1922. J. L. Eckersley, receiver, said checks were ready for 3,700 claims.

Total paid by the three dividends will be approximately \$400,000.

The Steel Highways are ALWAYS OPEN!

SAVE TIME • COST • WORRY • BY TRAIN

Avoid highway hazards, delay, detours, stops for meals. Travel by rail for a little as 2 to a mile (even less for round trips) in clean, roomy, modern coaches, with porter service—cheaper than driving your own car.

And, this summer, Union Pacific through trains will be completely air-conditioned, from coaches and sleeping cars to rest and observation cars—this utmost in cool, clean, comfortable travel.

Ask your Union Pacific Agent for full information.

UNION PACIFIC

...and back of Chesterfield there is more than 85 million dollars invested in mild ripe tobacco... for milder better taste

Because you cannot make a good cigarette from just one year's crop there are today 4 1/2 miles of warehouses filled with cigarette tobaccos from the crops of 1931-32-33-34—most of it for Chesterfield cigarettes.

Just as money accumulates interest, two and a half years of ageing makes these tobaccos milder and naturally sweeter.

Think what this means—an eighty-five million dollar reason why men and women who smoke Chesterfields will always enjoy a milder, better-tasting cigarette.

LIGGETT & MYERS TOBACCO CO.

GOOD BUY!

380 acres of good land in Eden Country with two sets of buildings, that we can sell for \$125.00 per acre and divide into smaller farms.

F. C. GRAVES & SON
150 Main Ave. No. Phone 318

SENATORS DEFEND SESSION'S RECORD

Donart, Points to Relief Needs, Liquor Control As Big Problems

BOISE, March 12 (AP)—Senator George Donart, (D-Wash.), Senator Charles Clark, (D-Tennessee) President Pro Tempore Mitchell (D-Louis) and President Mils today defended the 23rd legislative session against attacks by critics who opposed the extraordinary session.

"There is no reason why one house should criticize the other or that both houses should criticize the governor," Donart declared in a written statement in which he criticized the attacks.

"A situation simply existed which made it impossible for the twenty-third session to complete its work within the 60-day allotted period."

Two Big Problems

"Two problems of sufficient economic and social importance to the people of this state should necessarily engage the undivided attention of the legislature for a period of at least 100 days now are being considered," he said.

"The first was the problem of liquor control, the second the problem of the 100,000 acres of additional revenue made necessary by relief conditions. These two measures stand alone, now being consumed for their proper consideration 30 days of the legislative session."

"When it is considered that these are measures such as do not occur to the attention of legislative bodies in the state other than once in 28 years, it is readily observable that the legislature had only about 10 days to perform the labors which usually require 60."

"Nearly 600 bills were introduced, of which approximately 200 were given actual and careful consideration by both houses."

"Notwithstanding therefore, more or less comment to the contrary, the members of the twenty-third session have nothing to be ashamed of which they should be ashamed or be called upon to apologize by reason of the special session," the statement concluded.

MAN Against NATURE

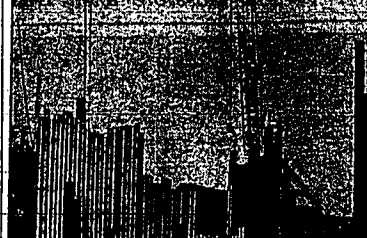
Grand Coulee Job Follows Dam Of Ice Age

BY HAROLD TURNBLAD

GRAND COULEE, Wash., March 6 (AP)—The site of one of the world's tremendous geological experiments is the scene today of one of man's greatest efforts to conquer nature.

Seven times as much water as Boulder dam will be harnessed at Grand Coulee to produce three times the horsepower contemplated in the Colorado river structure.

Almost 2,000,000 acres of land—four times the amount to be benefited by Boulder—may eventually be transformed from arid waste into blooming orchard—and farm lands sufficient to support 300,000 people.



Nature's Dam In Ice Age

Nature placed the first dam across the Columbia during the ice age near the spot where the present day dam is being constructed. Turned aside by nature's dam runs ago, the Columbia river in the foreground.

Huge electric "whirlies" drive the interlocking sheet piling down through clay to bedrock on the first cofferdam at the Grand Coulee dam site in central Washington.

GRAND COULEE DAM FACTS IN SUMMARY

GRAND COULEE, Wash. (AP)—The gargantuan project of Grand Coulee dam may be summarized as follows:

Location: On Columbia river in north central Washington.

Purpose: To generate electricity for power and irrigation.

Completion: Work started July, 1933. The entire project will take 30 years. Reclamation could begin after the high dam is completed in eight years.

Cost: Estimated at \$200,000,000 as authorized at present; \$23,000,000 high dam (provisional); \$175,000,000 reclamation project; \$2,000,000,000 for the entire project.

Workers: From 3,500 to 5,000 directly in construction.

land reclamation project.

Surpasses in Magnitude

Sheer magnitude differentiates the Grand Coulee from other power and irrigation dams. One-twelfth of the Columbia river's water power is bound up in this project.

Although only a low dam costing \$23,000,000 has been authorized so far, the dam and power plant are the largest northwest congressmen are confident work will not stop until the high dam, which will tower 374 feet above the present low water level and cost \$175,000,000, is built, and followed by reclamation development costing about \$2,000,000,000.

Nine and a half million cubic yards of concrete, twice as much as Boulder is using, will be required for the dam and power installation. A lake 137 miles long, backing up to the Canadian border and opening a 400-mile-long, 100-foot-deep, navigable artery to navigation, will be formed.

Model Cities for Workers

Mushroom towns of log, paper and rough boards projected along the Columbia work at the dam site. Two model cities, one built by the reclamation service and the other by the dam contractors, provide the dwelling for many of the 3,500 workers.

At the dam site nearby, huge electric shovels gouge the over-burden from the solid granite base and deposit the soil upon a belt conveyor capable of handling 30,000 yards a day. The mountain of dirt being moved will fill adjacent Battlemente canyon.

Electric "whirlies" pound steel sheet piling into water-tight cofferdams on either side of the stream. No diversion tunnel is required at Grand Coulee because of the width of the river-channel. The Columbia will be shut down through the center at first, then permitted to flow over various sections of the partially built structure as the work progresses.

Cofferdams May Go

Engineers expect to see part of their cofferdams swept away by the mighty river, from time to time. They are surprised that the river did not take out a temporary log trestle hastily erected below the damsite to facilitate handling of building materials for their model cities.

Cheap power may result in the establishment of steel and other industries near the damsite, which can be transported cheaply by barges from the highly mineralized upper stretches of the stream.

Suchan assailing her. Mrs. O. R. White told of her trip to Arizona and Mrs. Harry Davis gave a talk on the planting and care of shrubs. The Christian Workers circle will meet Thursday afternoon, March 14, at the home of Mrs. E. D. McManus. Mrs. H. S. Piper will assist. Mrs. Neuman.

On Thursday evening the Buhl chapter of the Order of the Eastern Star held a meeting in honor of the past patrons and past matrons. Dinner the past matrons and patrons to boost the season total. 100 guests were present from Twin Falls and patron was presented with a small gift for her badge.

Mrs. H. C. Coleman entertained the No-Highes club at her home on Monday afternoon. Mrs. O. N. Davis won high score was an award. Mrs. John Nelson received the traveling prize. Guests for the afternoon were Mrs. W. H. Harvey, Mrs. Parker L. Runyon, and Mrs. O. N. Davis.

The Women's Foreign Missionary society of the Methodist church will have a tea at the home of Mrs. John Noble, Thursday afternoon in honor of Mrs. Edna Barry, missionary from Brindaban, India. Miss Barry is a sister of Harry Barry and is here for a short visit at the home of Mr. and Mrs. Harry Barry.

Dr. F. W. MacManus and Dr. E. L. Berry attended a medical meeting at the Cuyler hotel in Boise on Sunday evening.

SNOWFALL PASSES SEASON AVERAGE

Cumulative Mark at Halley 76.15 Inches; Soldier Creek 109.66 Inches

HALLEY, March 12—For the first time since 1924 records of cumulative snowfall were started last October 1, the peak this season has surpassed the average "fall" of this time of year. This was reported by M. B. Benedict, supervisor of the Sawtooth national forest, in his weekly bulletin Monday. At present the cumulative fall is 76.15 inches—compared with an average of 74.77 inches and a cumulative total of 48.95 inches a year ago.

The big boost here came during the past week when 18 inches of snow fell. Water content this year has been 3.1 inches as compared with 4.1 inches a year ago. There has been 1.26 inches of rain this year and 2.74 inches a year ago.

On Soldier creek a total of 10.70 inches fell during the past week to boost the season total to 106.88 inches with 9.08 inches of water content and 2.9 inches of rain. A year ago there was a cumulative snowfall of 87.41 inches with 3.74 inches of water content and 8.74 inches of rain.

Snow-depths in the Sawtooth forest by inches follow: Halley 106.1; Baldy No. 38; Old Baldy No. 45; Old Baldy No. 46; Old Baldy No. 47; Old Baldy No. 48; Old Baldy No. 49; Old Baldy No. 50; Old Baldy No. 51; Old Baldy No. 52; Old Baldy No. 53; Old Baldy No. 54; Old Baldy No. 55; Old Baldy No. 56; Old Baldy No. 57; Old Baldy No. 58; Old Baldy No. 59; Old Baldy No. 60; Old Baldy No. 61; Old Baldy No. 62; Old Baldy No. 63; Old Baldy No. 64; Old Baldy No. 65; Old Baldy No. 66; Old Baldy No. 67; Old Baldy No. 68; Old Baldy No. 69; Old Baldy No. 70; Old Baldy No. 71; Old Baldy No. 72; Old Baldy No. 73; Old Baldy No. 74; Old Baldy No. 75; Old Baldy No. 76; Old Baldy No. 77; Old Baldy No. 78; Old Baldy No. 79; Old Baldy No. 80; Old Baldy No. 81; Old Baldy No. 82; Old Baldy No. 83; Old Baldy No. 84; Old Baldy No. 85; Old Baldy No. 86; Old Baldy No. 87; Old Baldy No. 88; Old Baldy No. 89; Old Baldy No. 90; Old Baldy No. 91; Old Baldy No. 92; Old Baldy No. 93; Old Baldy No. 94; Old Baldy No. 95; Old Baldy No. 96; Old Baldy No. 97; Old Baldy No. 98; Old Baldy No. 99; Old Baldy No. 100.

300 ASSEMBLE FOR BARN DANCE AT BUHL

BUHL, March 12—Mr. and Mrs. L. W. Piper, Mr. and Mrs. Charles Sherman, Mr. and Mrs. Edna Lutz, Mr. and Mrs. J. D. Pence, Mr. and Mrs. Fred J. Borden, Mr. and Mrs. C. M. Pickett, and Mr. and Mrs. Harry Wilson entertained at a barn dance on Monday evening at the home of Mrs. B. D. McManus. Over 300 guests were present for the occasion, dressed in aprons and overalls. Music was furnished during the evening by Mrs. George Layton, Dave Brenner, Mr. Harry Webber and Mrs. and Mrs. James Dwyer. The hall was decorated with bunting and farm implements. Coffee and doughnuts were served over a new manure spreader from one corner of the hall. Glen Bates and his Night Hawks furnished the music for the dance. Little Miss Vera Piper did a specialty number during intermission.

Miss Helen Danbury entertained Misses Beth Bostwick and Andrew Burke at her home over the weekend.

Mr. and Mrs. Kenneth Curtis entertained at a dinner party at their home on Monday evening preceding the dance for ten guests.

Miss Margaret Evans of Twin Falls was a week-end visitor at the home of Miss Doris Leacy.

Mrs. Alfred Livingston entertained the Home Culture club at her country home on Friday afternoon with Mrs. Ben Pecker and Mrs. Anton

JEROME HIGH HONOR STUDENTS LISTED

JEROME, March 12—Honor roll students of Jerome high school for the period ending March 1, as announced today by Principal Harold H. Roberts:

Freshmen: High honors, Darlene Bitterli, Victor Nelson, Wanda O'Brien, Helen Peterson, Ruth Peterson; honors, Florence Bishop, Vincent Chobanecy, Clarence Hill, M. L. Lewis, Mary Ann McBeck, Beverly Rice, Louis Sugg, Hazel Sheppard and Helen Shambaugh.

Sophomores: High honors, Arvid and Florence Achenbach, Barbara Burk, Eleanor Patton, Deborah Gendron, Helen Miller, Margaret Pyle, Margaret Sue, Angela Wirt, and Elizabeth Wirt; honors, Edna Barker, Lorel Bird, David Becker, Edna B. B. Barker, 177, Ruth Clayton, Lena Clark, James Dalton, Dorothy Poole, Stanley Priddy, George Sander, Orance Gladowski, Helen Holmquist, Phyllis Leger, Virginia Keating, Helen McCabe, Christine Newman, Kenneth Meier, Gayle Owens, Mildred Terry, Wal-

50 Contestants Receive Corsair Model Airplanes

Mail from the east brought more good news for contestants in the Twin Falls News-Orpheum "Devil Dog Plane Modeling Contest" yesterday, that good news being that the first 50 boys to enter their planes will receive a 10 inch model Vought Corsair airplane free!

These model planes are being provided through the courtesy of the Quaker Oats company and are an added inducement for the boys and girls who are endeavoring to win that United Air Line trip to the Quaker Oats factory in Cedar Rapids.

Planes Not Assembled

The 50 model planes which will be given away are in themselves a prize worth working for. They are not assembled and the work of building each plane will give plenty of entertainment in addition to the fun they will have building these models, after they have put them together. The model landing field in the Orpheum theater is beginning to fill up with entries and they are causing plenty of attention together with the miniature United Air Line model, the landing lights, revolving beacon and other miniature airport facilities.

Takes New Post



MAJ. GEN. PAUL B. MALONE

(above) arrived in San Francisco from Baltimore, Maryland, to take command of the ninth army corps area with headquarters at the Presidio.

HANSEN GRANGE AND CREAMERY MEN MEET

HANSEN, March 12—Hansen Grange met last Thursday evening at the church. O. T. Koster, manager of the Twin Falls branch of the Young Cooperative Creamery, was present. Other short talks were given by Tom Speedy, field man; Albert East and Mr. Johnson, truckmen. Ice cream was furnished by the creamery and cakes were furnished by Mrs. Charles Prior and Mrs. Lloyd Spencer.

Excelsior Grange met last week at the grange hall for a card party and oyster supper followed by dancing. High score prizes were won by Mrs. W. V. Lowery and Loran S. Miller. Low score prizes went to Mrs. Pete Newman and D. A. Peterson.

Mr. and Mrs. J. O. Bernard, Twin Falls, Mr. and Mrs. Frank Beer and son; Kimberly, Mr. and Mrs. Floyd Bued and family, Hissellon, Mr. and Mrs. Claude Bernard, and son; and Mrs. Lois Rowle were dinner guests at the J. J. Froehlich home Sunday.

Mr. and Mrs. Earl Potter and family spent the week-end in Boise visiting relatives.

REV. O. L. KENDALL QUILTS POST AT BUHL

BUHL, March 12—Rev. O. L. Kendall of the Methodist Episcopal church presented his resignation on Sunday morning at the church to accept a similar position in Haines, Alaska. He will leave over the next few days on the first Sunday in April. Rev. Kendall will be succeeded by Pastor W. H. Smith about March 25 for his new post.

Rev. Kendall has been with the Buhl Methodist church for the past three years and leaves many friends in Buhl.

That deep rich Schilling flavor

Those who know their tea, know that rich fragrant flavor that comes from just one thing... TOASTING!

... by Schilling!

Schilling Toasted Tea

ANNOUNCES CANDIDACY

BURLEY, March 12—Ernest O. Hansen has announced his candidacy for the office of city treasurer for the coming election. Mr. Hansen has been a resident of Cassia and Blaine counties for the past 25 years. He received his education in the local schools, the University of Arizona and the University of California, majoring in business management and economics.

MOUNTAIN STATES DIVIDED

DRIVER, March 12 (AP)—Director of the Mountain States Telephone and Telegraph company today declared the regular dividend of \$2 a share on capital stock for the first quarter, payable April 15 to stockholders of record March 31.

We Are Closing Out Our Entire Stock of FIRESTONE Tires and Tubes

at

OFF LIST PRICE

WE ARE DISCONTINUING OUR TIRE DEPARTMENT

Entire Stock Consisting of 81 Passenger Car and Truck Tires and 85 Tubes Go On Sale This Morning at 1/4 Off List Price

Here Is An Opportunity to Buy Tires and Tubes at Wholesale Prices—They'll Sell Out Quickly So Be Here Early Today

ON SALE IN OUR DOWNSTAIRS STORE

'31 Ford Town Sedan, today's special	\$225
'31 Plymouth Sedan	\$250
'32 Pontiac Coach	\$265
'27 Chevrolet Coach	\$265
'30 Chevrolet Coupe	\$245
'32 Ford V-8 Deluxe Fordor Sedan	\$425
'33 Ford V-8 Deluxe Sedan with trunk	\$525
'33 Chevrolet Sedan with trunk	\$515
'33 Plymouth Sedan	\$425
'32 Ford V-8 Deluxe Fordor Sedan	\$625
'29 Ford Tudor Sedan	\$345
'30 Ford Tudor Sedan	\$240
'30 Dodge Sedan	\$275
'30 Oldsmobile Coupe	\$275
'33 Ford V-8 Truck	\$425
'31 Ford Truck 157 W. B., had body	\$325
'33 Ford Truck, stake body	\$325
'33 Ford Pickup, good as new	\$365
'29 Ford Roadster, new finish	\$135

We call these big value used cars of our income cars because they can be bought at a price which puts them within reach of every man, woman and child. You be bought and paid for out of income. Terms or cash you will get better at—

Union Motor Co.

Your FORD Dealer

Golden Rule

C. C. Anderson Company

Twin Falls Empire Exposition's 'Model Home' Project

House Votes Additional Fund For Home Owners

Measure For Relief Of Mortgagees Includes \$200,000,000 For Modernization

WASHINGTON, March 12 (AP)—With only two votes against it, the house passed today the measure which provides an additional \$1,750,000,000 for the home owners' loan and improvement of commercial corporation to help mortgage-burdened homeowners.

The bill was sent to the senate after repeated attempts to raise the \$1,750,000,000 to \$3,000,000,000 were beaten. Members of the banking committee gave assurance again and again that the bill provided sufficient funds to help deserving home owners in distress.

Even so, the committee itself had added \$250,000,000 to the \$1,500,000,000 originally in the measure. It also wrote in a provision that any applications for help might be filled for 60 days after the bill becomes law.

Only eight of two score amendments were accepted. One of the most last adopted boosted from \$25,000 to

LENDING AGENCIES AID HOUSING DRIVE

93,000 Insured Loans Already Made; Quarter Billion Spent

More than 12,000 financial institutions of the nation, representing a tremendous portion of the country's resources, are being qualified to make modernization loans insurable by the Federal Housing Administration, as the spring property rehabilitation drive gains early momentum.

At the present time 12,456 financial organizations, having resources totalling \$4,973,000,000 have signed the Administration's insurance contract.

\$3,000 Loans.

The banking institutions of the country to date, have made loans to 93,000 individual insured loans to owners of property in the several states for the purpose of making repairs, additions and alterations, involving an aggregate expenditure of \$40,000,000. Nor does this figure take into consideration the 30-day lapse between the time loans are made and the filing of reports covering them with the housing administration.

FARMERS' INCOME INCREASE TRACED

Earnings at Billion Dollars More in 1934 Than in 1933

Farmers of the United States as a whole received close to a billion dollars more cash income in 1934 than in 1933, according to preliminary estimates from several sources, while estimates of their 1935 income rose as high as nine and ten billion dollars.

This strong improvement in farmers' income has already been reflected in farm equipment sales, according to figures gathered by Dun and Bradstreet for the year 1933 were around \$120,000,000 while sales for 1934 were around \$180,000,000.

The past year was the best in the last decade for the sale of pumps, tractors, lawnmowers, tractors and well drilling equipment. This was mainly due to the great increase in water supply equipment of all kinds in the growth areas.

Need New Equipment.

In spite of the great improvement last year, however, practically every farmer is still in need of new equipment in the past year.

Economy, Simplicity, Comfort are Possible with Built-in Furnishings



A built-in furniture unit, eligible for financing under the Modernization Credit Plan of the Federal Housing Administration, is pictured in the above drawing.

The popular conception that modern decoration eliminates informality in a room is disproved by the effect shown in the illustration of a built-in davenport ensemble in the above living room scene.

Blending with the chair and simple luxury of the entire room, the built-in davenport utilizes a minimum of space and is decidedly decorative effect to the entire. Permanent placement also reduces cleaning tasks in such a room and gives the home owner new freedom and flexibility for other furnishings and fixtures.

Note the charming side table, built in to the right of the davenport and the balance given the whole by the relation of the built-in book case to the glass door. The built-in telephone cabinet also eliminates a usual room irregularity and adds to the general simplicity. The simple, substantial construction is obvious without any suggestion of stiffness or discomfort.

Such built-in features are becoming increasingly popular throughout the country and modernizers are becoming more and more acquainted with the advantages of conservation of space without loss of beauty. A wide variety is possible in the upholstery of the davenport, which should in all cases harmonize or provide a pleasant contrast to the general color scheme of the room.

ANALYSTS PREDICT DOOM IN HOUSING

Modernization Gains Seen As Country Forges Ahead

One of the biggest modernizing booms "of all time" is rapidly getting under way, according to building analysts and experts close to the construction industry of the nation, the federal housing administration has been informed.

Given as reason for this opinion are the following factors in present-day modernization impetus:

The easy payment, "no-money-down" features of the federal housing administration's modernization loan plan.

The approach of spring and summer, ideal building and repair seasons.

The nation-wide act-up of financial institutions as lending agencies under the modernization credit plan.

More widespread understanding of the true nature of the federal housing administration's plan of financing and more general appreciation of the profits open to financial institutions through the making of "character loans" for modernization.

A noticeable "modernization consciousness" on the part of the general public, resulting from steady and frequent repeated publicity of all phases of the modernization credit plan.

The fact that contractors, builders, carpenters, glaziers and subcontractors have become "sufficiently bold" on the better housing program and are now making serious efforts to merchandise building materials and sell the idea of renovating to the public.

The introduction into the building trades of the installment selling method.

The housing administration also has been notified that there is a widespread understanding of the difficulties involved in the modernization of the better housing program and that the building trades are recognizing the fact that the housing movement was slow to get into full swing because of the magnitude of the project. Now that the housing act has been well laid, the sentiment on every hand is that the spring of 1935 will mark a boom in modernization in the United States that is without precedent in history.

State of building materials is on the upgrade; sales methods are being taught the widespread membership of the same trade; every impetus and drive are being placed behind the drive to "step up" housing and modernization activity in every village, town, hamlet and metropolitan center. It is predicted authoritatively that the spring of 1935 will bear out these contentions.

OUR OFFER

Visit the beautiful "Magic Empire Cottage," see the changes which have been made since it was first moved into Twin Falls, note the charming architecture, the clever lighting arrangement, study particularly the way the woodwork has been done.

then come down to the Home-Lumber and "Gore" Co. and let us explain how you can work a similar Magic to your home. Let us make you estimate on the necessary work and supplies. You are under no obligation for this service... it costs you nothing and you may get some ideas which will make your home vastly more modern.

WHEN REMODELING, INSIST UPON QUALITY PRODUCTS

- WE ARE AGENTS FOR:
- PABCO PAINTS
- PABCO ROOFING
- MASONITE INSULATION
- MASONITE WALLBOARD
- PORTLAND CEMENT

And Dozens of Other Equally Famous Products

HOME LUMBER & COAL CO.
HERMAN HINZE
Phone 32
ESTIMATES AT NO OBLIGATION

The administration, by careful analysis of its figures and study of reports from community campaign chairmen all over the country on the progress of the Better Housing Program to be more than \$249,000,000.

Private Pledges.

In addition, various private industries have told the Housing Administration they will spend more than half a billion dollars for betterments and replacements during the present year, the operations to be paid for out of their own funds already on hand for the purpose.

Chrysler operating in the field have received \$1,000 pledges from home owners for work involving expenditure of \$21,000,000. This report is based on surveys in 1440 cities in which more than 6,000,000 calls were made by field workers.

The average amount of insured loans made to date is \$422. Although the lending agencies may extend credit under the plan for periods up to five years, the average repayment period is shown in the Administration's analysis to be 28 months.

BENEFIT FOR CHILDREN IS MOTHER'S AMBITION

Utilization of the provisions of the housing act to make possible repairs which might be enjoyed by her children while they are young, is the motive of an Elsie, Mitch, mother, in seeking for a modernizing loan.

"I, no doubt, would have a modern home in the next five or six years, but I want it now, so that my children can enjoy it," she writes the housing administration at Washington.

"I can't have it while they are still home to enjoy it. I don't care if I never have it."

Housing Hints

Switches Avoid Stumbling.

Many home owners find it advisable to install electric switches at the main door of each room in the home. This procedure eliminates the inconvenience of walking into dark rooms and stumbling.

Foil Corrosion.

Window, door and porch screens made of non-corrosive material are an excellent investment to make when purchasing the necessary equipment for modernizing an existing home or building a new one. This durability makes for permanency and eliminates the necessity of replacing them at frequent intervals.

Economy Hint.

Considerable expense can be saved during construction when it is possible to join the bathroom

Dark Walls Suggested

Some home owners are reported as favoring a dark color for painting the walls behind their bookshelves. This tends to reduce the contrast between the color of the books and the book wall. It also reduces the unattractive appearance of rows of books of uneven height.

Bathroom Location

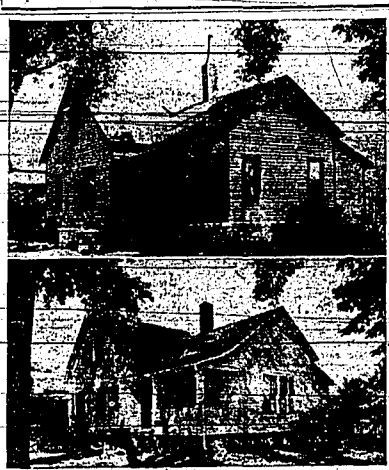
Bathrooms by a sitting one another, or placed in lifts 019 above the other from the basement to the attic, minimize installation costs. Savings in material and labor costs are effected when they are so installed.

TWO CITIES REPORT BIG BUILDING GAINS

A 40 per cent rise in St. Louis building permits in January, 1935, over the same month last year is reported to the Federal Housing Administration. The figures—January, 1934, \$136,400; January, 1935, \$55,870.

Jacksonville, Fla., reported 2201-116 building permits in January as compared with \$122,226 for the month of 1934.

Results Great—Cost Low



Remarkable transformations are possible in modernization projects without extreme outlay, as is shown in the above photographs. The top view shows this suburban dwelling before the improvements changed it into the attractive, modern structure shown below. Careful attention will show that the principal changes, aside from the remodeling of the front porch were principally a coat of paint, new roofing and a small decorative dormer. Such improvements are easily available within the provisions of modernization credit loans and well within the means of thousands of American property owners.

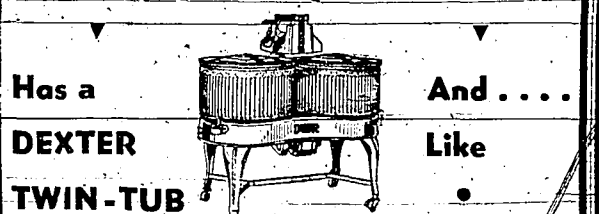
FARMER MAY BORROW FROM MANY SOURCES

Farmers of the United States have more credit facilities at their command than property owners in cities under the Modernization Program and the Federal Housing Administration.

Around 600 production credit associations have been authorized to make Modernization loans to farmers, under regulations made by the Farm Credit Administration. In order to be eligible for such loans, however, the farmer must own or be in a position to own the class B stock acquired in connection with the general agricultural purpose loan from the association.

These associations are in addition to the banks and other lending institutions authorized by the Federal Housing Administration to extend Modernization Loans to all classes of property owners.

The Magic Empire Cottage



Has a DEXTER TWIN-TUB And.... Like

THE "MAGIC EMPIRE COTTAGE" Every Model Home Should Have One...

See this Model at the Cottage, then Come Over and let Us Demonstrate this 'Modern Washing Marvel' in Your Own Home

- SPEEDS UP WASHING TIME
- WASHES CLOTHES WHITER
- NEEDS NO PRE RINSING

TWIN RINSE TUBS FREE WITH THIS MODEL...

PHONE 5 **MOON'S** PHONE 5
Write MR. HEINER at the Moon's Paint & Furniture Trade Us A Cow or Furniture As A Down Payment

SAVE... TIME MONEY "TEMPERS"

By Having Your Milling And Cabinet Work Done By Experts

LET US...

- Fit Your Sashes
- Build Those Odd Cupboards
- Refinish Your Woodwork
- Assist Your Remodeling

FROM.... Remodeling Your Attic Into A Cozy Den or Game Room

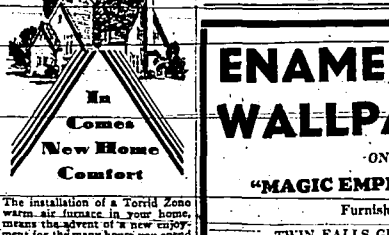
TO.... Installing A Convenient and Attractive Cupboard In Your Kitchen.

YOU'LL FIND OUR WORK SUPERIOR AND GUARANTEED IN EVERY WAY

W. Montooth & Sons
PLANING MILL

- Paint, Glass and Other Builders Supplies

ENAMEL AND WALLPAPER... ON THE "MAGIC EMPIRE COTTAGE"



Furnished by the TWIN FALLS GLASS & PAINT CO.
We Can Work The Same Kind of Wonders In Your Own Home.

LET US HELP YOU WITH YOUR PAINTING AND WALLPAPER PROBLEMS

Twin Falls Glass And Paint Co.
Phone 1620 133 Main West

Typical Of Results Of Nation-Wide Modernization Drive

FALSE THRIFT IN NEGLECT OF HOME

Getting Along With Old and Worn Out Days Over, Moffett Says

"That it is still 'smart to be thrifty' but not to the point of penny-pinching is indicated by the success of the Better Housing Campaign fostered by the Federal Housing Administration, Administrator A. Moffett said at a recent address.

Mr. Moffett stressed the value of the Better Housing Campaign in helping the country back to normalcy, declaring that while the benefits of the movement have already been felt, its potential force is tremendous.

"During the depression a conservatism of power came to have a sense of pride in getting along with the old and worn-out. The slogan, 'It's smart to be thrifty' was coined, but in many instances it was carried too far. Thrift doesn't mean being stingy. Intelligent people began to realize that this attitude was slowly but surely breaking down the American living standard.

"Individuals in every community began to grow tired of putting the worst foot forward instead of the best. It wasn't natural for the average American woman to wear last year's hat and live a life of bare existence. Her desire to create comfortable and cheerful surroundings for herself and family was strong. And it paved the way for the present program.

"The national housing act started a great wave of modernizing and repairing. Carpenters, plumbers are going back to payrolls. Manufacturers who make building supplies are getting orders and more orders.

"People have been depriving themselves of those things which mean good living, perhaps to an even greater extent than they have been neglecting a leaky roof or a rotting porch. The inception of the modernization program has provided an impetus to many people to lift themselves out of the depression today. Women who have tried to satisfy their desire for modern improvements by looking at pictures in magazines are actually making modern bathrooms, installed and old inconvenient tubs, reconditioned with the latest equipment. With this as background, do you believe that the people who are improving their permanent equipment in their homes are going to be satisfied with dingy old-fashioned furnishings? Whether it is a rug or draperies, kitchen utensils or table linens, if they are old, these people will want new ones. And they are buying them today."

ESCAPING HEAT COSTS MILLIONS EVERY YEAR

Are you bothered with an expensive heating system which proves inadequate for heating your home? Nine times out of ten the reason is that your house is a thermal stove, that 40 per cent of the heat generated by your heating system is going right out through the windows, walls and roof.

Insulation means saving up to 40 per cent of fuel costs. It has been computed by the Armour Institute of Technology in Chicago that \$100,000,000 could be saved by home owners every year in the United States if all residential buildings were adequately insulated.

BUILD CHIMNEY CORNER

A convenient chimney corner nest adds to the attractiveness of the room. Seats with hinged tops are serviceable, and they add that unique touch. The space inside the corner will be found handy for the storage of kindling wood, old papers and other articles.

COMPLETE MODERN MILLING SERVICE

FOR ALL NEW OR REMODELING WORK

A. WELLNER & SON

PLANNING MILL

'Gingerbread' to Colonial



This striking transformation in the appearance of a home built several years ago was brought about through a carefully planned modernization program. Loans available under the Federal Housing Administration's modernization credit plan are being invested in such work all over the United States today.

Fence Grounds Enclosures Come in Varied Styles

The old, painted, wooden fence is coming back into favor with the "New Order."

From time immemorial an enclosure of any sort has been regarded as a sort of protection.

The picket fence was hardly that, but it expressed the idea. Moreover, it did provide an enclosure for children and domestic animals.

From the aesthetic standpoint there are many styles in fences, the most attractive of which is probably the old stone. They may be of brick, concrete, iron woven wire or other materials. At times different materials are combined. In England the boxwood, privet or Japanese barberry is common. In the United States a hedge of cypress or sometimes sycamore is the plain or barbed wire and it gives perfect protection.

Distinctive American fences may be of decorative board, split rail, woven split saplings, trellis, screen, sheep hurdle, fences and zig saw fences.

LIGHT FIXTURES MODERNIZED

The old order of lighting fixtures is changing. Unconscious home owners have clung to the old gas-burner type of ornamentation.

The house of tomorrow will have lights so placed that the bulbs will be entirely invisible, and types of lighting will be as important in decorating a room as furniture is now.

Is Your Name on the Hoover Men's appointment list?

The Hoover men are in town for only a short time. We know that you will want to see the new Sentinel Series models—the beautiful streamlined Hoovers—with the built-in Dirt-Finder, greatest cleaning aid of years. Telephone us then, your most convenient for a home showing—then you'll be sure not to be missed in the Hoover men's call. SPECIAL OFFER on Hoovers—a complete home-cleaning service—while the Hoover men are here.

The HOOVER

Hoover owners! You're clean and respected free. Replacements at low cost. Leave your name.

Golden Rule
C. C. Anderson Co.

Horses' Return Creates Demand For New Stables

Many old stables are being modernized to accommodate the increasing number of horses and mules now in use by farmers. The demand for work animals is far in excess of the supply of more than 12,000,000 horses and 2,000,000 mules now available in this country.

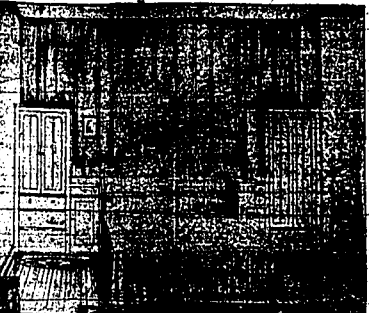
The Horse Association of America, in a recent study of the situation, says that between 1910 and 1923 there was a decrease of almost 7,000,000 horses and mules in use on American farms. During the same period, the capital invested in farm machinery increased more than \$2,000,000,000, and the mortgage debt of owner-operated farms grew more than \$2,350,000,000.

According to the Horse Association, the years between 1909 and 1912 were the most prosperous ever enjoyed by farmers of this country. The association points out that during those five years the farmers made wider use of modern horse-drawn implements than of motor-propelled machinery. There were about 29,000,000 horses and mules in use, which kept substantial amounts of hay and grain off the cash markets and helped maintain prices for farm commodities.

When all over the country are again using horses and mules for plowing, discing and other heavy work, according to Col. Charles L. Scott of the U. S. Cavalry, authorities believe that it will be some years before breeders will be able to meet this demand.

With increasing use of the horse and mule, comes a need to rehabilitate stables throughout the nation. The Federal Housing Administration sets up machinery for private loans to farmers under the terms of the national housing act for repairing and remodeling farm properties.

Built-In Bedroom Suite



Built-in furnishings, considered the vogue by many, are eligible for financing under the terms of the National Housing Act's modernization credit plan. Here is an illustration of a built-in bedroom group, including bed, wardrobe, bedside tables, etc.

exists the greatest demand for work animals that has ever been known in this country. The Horse Association believes that it will be some years before breeders will be able to meet this demand.

With increasing use of the horse and mule, comes a need to rehabilitate stables throughout the nation. The Federal Housing Administration sets up machinery for private loans to farmers under the terms of the national housing act for repairing and remodeling farm properties.

Modernize

CONSULT US ABOUT PRICES ON YOUR NEEDS

OSTRANDER LUMBER CO.

COMPLETE LINE BUILDING NEEDS PHONE 44

MAKE YOURS

SPIC and SPAN

FOR SPRING

PLAN NOW—

to do that much needed, but long delayed remodeling. Most buildings have not had normal attention during the last few years... perhaps you have neglected yours too.

THIS SPRING—

is the time to make alterations, repairs and improvements. Check the plumbing, the electrical outlets, the condition of both exterior and interior paint, etc., and let us give you a figure on the cost of making your home modern and more livable.

PROTECT—

your investment by stopping further deterioration and at the same time, improve the usefulness and value of your property. Let us help you plan for a more attractive home.

Good plumbing has a rightful place in every home. This convenience can now be added at the lowest cost ever known. When you remodel your home be sure to install an up-to-date bathroom and kitchen sink. Modern plumbing fixtures are a source of pride to any family—let us furnish an estimate for your complete plumbing installation.

Painting should not be neglected. It not only adds to appearance but also preserves surfaces and adds to your pride and satisfaction in your home. We can give you many timely suggestions and color charts to aid in painting both the exterior and interior of your home.

THE EXTERIOR TOO . . .

can be made beautiful with very little expense. Your home can be made spic and span with fresh paint—selected from our big new stock.

The lawn and garden are just as important as other items in your improvement program. The comfort and charm of beautiful lawns, shrubbery and garden is a real asset that every home owner can have with sound planning and the right equipment—let us help you select an extra length of garden hose, a new lawn mower, and an assortment of small tools, including pruners, grass shears, shovel, rake, trowels, etc.

Krengel's Hardware

PHONE 1202

WE SAY NORGE

ROLLATOR REFRIGERATION

WILL PAY FOR ITSELF

NORGE OWNERS GO US

ONE Better

"What I can save on my food bill more than makes my Norge payments."

(Signed)
A NORGE OWNER
(Name on file)

NORGE does save on food costs—by making possible more economical marketing and by eliminating wastes. It also saves on refrigeration costs because of its efficient Rollator mechanism, which uses so little current that you scarcely notice it on your light bills. We say that Norge saves up to \$11 a month.

Here's a typical Norge owner who saves up to \$12 a month—saves enough on food alone to meet the monthly payment! Thousands have had similar experiences.

Amazing? Not when you know Rollator Refrigeration. Not when you understand the famous Rollator—the almost everlasting mechanism which actually improves with use.

See the Norge before you buy any refrigerator.

NORGE CORPORATION
Div. of Borg-Warner Corp., Detroit, Mich.

NORGE

Rollator refrigeration

84-N-4

CLAUDE BROWN

MUSIC CO.

NORGE ROLLATOR REFRIGERATION & HEATING UNIT & ROLLATOR STOVES & AEROLATOR AIR CONDITIONERS
REFRIGERATOR CALL NUMBERS—643 AND 642-2233-2400

A Frank Statement and a Personal Pledge From R. H. Tallman, Superintendent of the Sugar Factory

I want to give all beet growers my personal guarantee that absolutely nothing but U.S. No. 1 Curley Top Resistant Seed will be issued this year. It is the only seed we have in our factory warehouse. There is nothing else that could be issued.

THIS SEED

Is the last word in resistant seed. It is from the latest increase of the 1934 crop grown at Las Cruces, New Mexico. The seed will be delivered to the growers in the original bags as received by us from Las Cruces.

IT TOOK TEN YEARS

To develop this seed and at an estimated cost of \$250,000.00. This is good proof of our faith in Idaho's beet industry and our intentions of staying here if humanly possible. I consider this resistant seed far superior to the seed of last year. It is a full year further ahead in strength and development.

LAST YEAR

This same strain produced 9 1/2 tons per acre on our experimental field at John Thomas' place in Castleford, one of the worst hopper infected districts we could find. It produced 9 tons to the acre on the Ralph Faulkner place near Gooding. Now it is one year older, stronger, and better.

THIS IS THE FIRST YEAR

In our history that we have had enough of this seed to supply all of our growers. No other seed can be obtained from our factory.

I BELIEVE

That the use of the new seed together with timely planting and proper care, on the best available land, should be a great factor in securing a crop.

I HAVE THE GREATEST CONFIDENCE

In the beet growers of this section. I want them to have an equal confidence in us. It is the only way this industry can be made successful. For that reason I don't want to influence one single man to plant beets this year if he feels that his obligation to himself and his family does not justify the risk as he sees it.

ON THE OTHER HAND

I do know that the sugar beet industry for Idaho is facing a crisis right now. If, because of lack of signed acreage, we lose our present allotment, we probably will never get it back. I appeal to the man who believes in the Idaho beet industry and who, at the same time, can back up this belief with acres of beets.

PIONEERS

In any line of endeavor suffer many discouragements. For years the growers and the Amalgamated Sugar Company have been pioneering sugar beets in Idaho. With the development of a fine resistant seed, success seems near. It would mean one more permanently established industry for Twin Falls minus the ups and downs of the pioneering years. It would seem a great pity to lose it now.

Signed,
R. H. TALLMAN

We have read the above statement and heartily agree with the facts presented and in the interest of the Sugar Beet Industry for Idaho we are glad to endorse it.

Signed, J. N. DAYLEY, President Twin Falls and Jerome County Beet Growers Association
J. S. FELDHUSEN,
F. E. HAASCH.

Up to Monday night, Burley had signed for 8,850 Acres
Twin Falls had signed for 3,671 Acres **Total 12,521 Acres**

NOTICE—C. E. McClain will talk over K.T.F.I. at 7 o'clock Thursday morning immediately following the market reports. His subject will be "The Importance of a Beet Crop to the Individual Farmer." BE SURE AND TUNE IN

AN APOLOGY—John Feldhusen was scheduled to speak over K.T.F.I. Tuesday morning but due to a break-down in the control room of the radio station it was necessary to postpone his talk until this morning.