

THE TWIN FALLS DAILY NEWS

Vol. 10, No. 7. TWIN FALLS, IDAHO, WEDNESDAY MORNING, APRIL 15, 1936. Price Five Cents

Major League Clubs Launch 1936 Season Before 205,000 Fans

Triumphs for Both Championship Teams And Outbursts of Heavy Hitting Mark Opening Contests

NEW YORK, April 14.—To the accompaniment of a booming barrage of base hits and the cheers of 205,000 fans, the 1936 major league baseball season was launched on all fronts today.

Thronged by a near capacity of 55,590 at the Polo Grounds, where the Giants registered an inter-borough triumph over the Brooklyn Dodgers, National League competition attracted a total of 115,333 fans.

The four American league contests were witnessed by 139,000 on hand to see President Roosevelt's lucky Irish privilege once more in behalf of the Washington Senators. After the chief executive tossed out the first ball, Duck Newsum outpitched Lefty Gomez of the Yankees and Carl Reynolds drove in the "LON WANKER" home run in the last of the ninth.

Otherwise the game's big hitters opened the day with a bang by top-ranking pitchers during an afternoon marked by impressive triumphs for both championship teams, the Detroit Tigers and Chicago Cubs.

The great Alcy Denn, for the third straight year took a beating from Lon Warlick, pride of the Oakland, and also hit leader of the Boston, before the home team, before 17,000 fans at St. Louis. To remove any question of the Cubs, the players of the great team for nine years in St. Louis, Eusebio Hernandez by Chick Klein and Gabby Hartnett sounded late for Dixie.

The world champion Tigers picked up where they left off and blanked their foremost western rival, Cleveland, 10-0. Lou Gehrig, who had registered a four hit 3-6 victory as the answer to Manager Mickey Vernon's suggestion he is not a good "spring pitcher" during his stay at St. Almonds, making his Tiger debut.

Two groups, Each Claiming to Be County Committee, Hold Sessions

Two sets of delegates to represent Twin Falls county at the Democratic convention at Lewiston next May 6 were elected at a meeting of the two groups, each claiming to constitute Twin Falls county's Democratic central committee, last night.

Each group elected 14 delegates to the state convention which is to name Idaho's delegation at Democratic national convention.

Light and Shadows In Day's Events

Roosevelt Move FOR NRA REVIVAL

NUDED, DECEIVED

President's Latest Outline of Industrial - Economic Policies Produces Bitter Criticism, Warm Praise

(By The Associated Press) WASHINGTON, April 14.—Anti-new deal criticism and Democratic praise of President Roosevelt's latest outline of industrial-economic policies nudged stirred an otherwise quiet capital.

On Mr. Roosevelt's tentative suggestion last night for shortening hours without reducing wages, retiring the aged at 65 and keeping those under 18 in school, there were these comments:

Joseph Shuman, president of the American Labor League — "Mr. Roosevelt proposes the revival of the NRA scheme of federal control over labor conditions without a daring to risk the political consequences of outlining the necessary constitutional amendments."

Black in Sympathy Senator Black (D-Ill.), author of a thirty-hour week bill, — "I am thoroughly in sympathy with the idea of the president expressed in his speech. ... We must choose between a permanent, dole and shorter working hours."

His Liberty League Heber Blankenship, labor relations board investigator, linked into testimony before a senate committee strike-breaking agencies, a firm supporting arms to industrial firms to break strikes.

April Marks Shattered as Mercury Soars to 99 Degrees

KANSAS CITY, April 14 (AP)—Kansas who complained of heat waves around 90 degrees yesterday found today that the mercury was just backing off for a running start.

Second Cave-In Prevents Rescue

WISPS OF SMOKE INDICATE Trio Alive in Under-Ground Prison

BRITAIN DEMANDS, FRANCE RESISTS

COBURN FASCISTS

Conflicting Views—Regarding Mussolini's African 'Adventure' Threaten to Break Historic Alliance

(By The Associated Press) Prince and Charles of Britain, who have stood shoulder to shoulder in most of Europe's 20th century crises, appeared headed Tuesday toward a serious disagreement.

Conflicting views toward Premier Mussolini's "colonial adventure" in Ethiopia, on which the new traditional alliance might rest.

France, cast for the backing of Mussolini's million-man army in the Ethiopian crisis, wants the present, military and economic pact against Italy lowered.

On "Hot Trail" "We have not arrived at the crux of the situation yet," said one of the group, "but we are on a trail, and it's a hot one."

Japanese Agents Renew Activity

Chinese Official Sources Believe 'Breathing Spell' About Over

Second Cave-In Prevents Rescue

WISPS OF SMOKE INDICATE Trio Alive in Under-Ground Prison

WISPS OF SMOKE INDICATE Trio Alive in Under-Ground Prison

Cook County Backs Knox

While Downstate Voters Favor Borah's Candidacy

Chicago Returns Heavy Majority For Publisher; Gubernatorial Race Stimulates Interest in Election

Horner-Bundesden Total Tops FDR's

(By The Associated Press) CHICAGO, April 15 (Wednesday)—In a race closely watched for possible indications of midwestern trends, Colonel Frank Knox held today a 50,000 vote lead over Senator Willard Borah in the contest for the presidential preference vote of Illinois Republicans.

Given a heavy majority in Cook county (Chicago) the publisher, one of the early critics of the new deal, saw, however, early advantage in the gubernatorial race, transformed into a majority for his rival when about a tenth of the returns from that section were counted.

In 368 precincts of the State 7,428 Knox had 192,474 votes and 124,411 for Borah. In 688 downstate precincts included in the general total, Borah's vote was 47,678 and 45,443.

Democrat National Committee Contest Features Primaries

Lincoln, Neb., April 14 (AP)—Senator R. Burke of Omaha wrote on campaign trail for Governor Edmund C. Brundage, a former Congressman, a plea of Fremont in the race for Democratic national committee, the most closely contested in today's Nebraska primaries.

1,200 SOLDIERS DETROIT TOWN

Entire Garrison Summoned to Prevent Revolt in Border City

San Diego, Calif., April 14 (AP)—The entire Tijuana, Mexico, garrison of 1,200 troops patrolled the border today, Sunday, as a late tide, to preserve order as government leaders were lured by unemployed laborers who were seeking work in the United States.









## THREE HERDS LEAD DAIRY ASSOCIATION

Twin Falls, Shoshone and Buhl Cows Top Averages for Month of March

GOODING, April 14.—Herd of L. J. Tenchick of Twin Falls, Idaho, led the Shoshone and Buhl herds of the Gooding-Jerome Dairy Herd Improvement Association for March, according to the report released today by Victor Despire, leader.

Of the 477 cows in the association, 509 were milking and 66 were dry. A total of 265,727 pounds of milk and 11,704 pounds of butterfat were produced during the month. An average of 498 pounds of milk and 26.8 pounds of butterfat were produced per cow, including dry cows and 68 cows produced at least 40 pounds of butterfat during the month.

Four Cows Dry  
Tenchick's herd of 21 cows, four of which were dry, produced average of 498 pounds of milk and 26.8 pounds of butterfat to lead the field of 20 or more herds.

Park's herd topped the field of 10 or more herds with an average of 498 pounds of milk and 26.8 pounds of butterfat. The herd of 10 or more cows, one of which was dry, averaged 498 pounds of milk and 26.8 pounds of butterfat.

## SEASON'S SNOWFALL FAR ABOVE AVERAGE

HAILEY, April 14.—Final spring snowfall report was released here Monday by Frank H. Moore, supervisor of the Sawtooth National Forest, showing a cumulative fall of 114.5 inches since October 31, 1933, as compared with 60.9 inches a year ago and an average of 61.17 inches.

This season there was a water content of 1.45 inches with 3.4 inches of rain. A year ago there was a water content of .528 inches with 2.32 inches of rain.

On Soldier creek this season there has been 233.3 inches of snow with 20.93 inches of water content and 1.81 inches of rain. A year ago there was 128.36 inches of snow, 12.22 inches of water content and 3.4 inches of rain.

Snow depths reported Monday are as follows: Hailey, none; Ketchikan, 12 inches; Graham's ranch, 30 inches; Mazon, 28 inches; Old Baldy No. 1, 12 inches; Old Baldy No. 2, 20 inches; Old Baldy No. 3, 36 inches; Soldier creek, 33 inches; Fairfield, none; Featherstone, 30 inches; Rocky Bar, 36 inches; Williams ranch, 30 inches.

**BUSINESS VISITORS**  
MOUNTAIN VIEW, April 14.—Irwin Cameron, Rogers, accompanied by his sister, Mrs. Ella Stanley, Kimberly, were business callers in this vicinity, Monday.  
Arthur Maregard left Saturday.

**Garden enjoyment STARTS WITH SEED**  
The most important step in the successful growing of plants is the selection of the right seed. FERRY'S PUREBRED SEED CO. has the largest selection of seeds in the Pacific Northwest.

**FERRY'S PUREBRED SEED CO.**  
Largest Seed Growers in the Pacific Northwest

**ATTENTION**  
Home grown fruit, and shade trees, berry bushes, ornamental trees, flowering shrubs, roses, perennials and all pines. Quality high prices reasonable. Largest stock in the state. See us first.

**KIMBERLY NURSERIES**

**COMMITTEE CONDUCTS GIRL RESERVE DRIVE**  
FLIER, April 14.—Adult committee of Flier Women's club, with Mrs. R. A. Ames as chairman, is conducting a drive for money, to be placed in the Girl Reserve fund.

Mr. and Mrs. C. M. Rector and family spent Sunday at the home of their daughter in Jerome.

Eugene Walker returned home Monday from Salt Lake City where he has been attending Summer business college.

Mr. Rupert Williamson entertained with a luncheon Thursday for Mrs. J. W. Williamson, Ford Kester, Sophia Kester and Patsy Murphy.

Mr. and Mrs. W. P. Alworth and Mr. Alworth left for several weeks while Mr. Alworth is receiving medical treatment.

## COMMITTEE CONDUCTS GIRL RESERVE DRIVE

FLIER, April 14.—Adult committee of Flier Women's club, with Mrs. R. A. Ames as chairman, is conducting a drive for money, to be placed in the Girl Reserve fund.

Mr. and Mrs. C. M. Rector and family spent Sunday at the home of their daughter in Jerome.

Eugene Walker returned home Monday from Salt Lake City where he has been attending Summer business college.

Mr. Rupert Williamson entertained with a luncheon Thursday for Mrs. J. W. Williamson, Ford Kester, Sophia Kester and Patsy Murphy.

Mr. and Mrs. W. P. Alworth and Mr. Alworth left for several weeks while Mr. Alworth is receiving medical treatment.

## REED SMOOT SPEAKS AT OAKLEY CONCLAVE

OAKLEY, April 14.—Reed Smoot, former United States senator from Utah and a member of the quorum of twelve justices of the Latter Day Saints church, addressed morning and afternoon sessions of the Oakley state quarterly conference here Sunday.

President William O. Hardy, who has moved from the state, was released as second counselor and George H. Berrett was named to fill the vacancy.

Two meetings were held for primary officers on Saturday with two members of the general presidency board from Salt Lake City in attendance. The visitors were Mrs. Edna P. Larson and Mrs. Vesta Anderson.

Special Sunday school meetings were held Sunday. General board visitors for the Sunday school were Lynn Richards and Mr. Nichols.

The afternoon speakers were Apostle Reed Smoot, President William O. Hardy, President George H. Berrett, Elder Merwin Williams, Elder Nathan Gorman, President Moses B. Martin and President Charles S. Clark.

for his home in Noonan, North Dakota, having spent the winter with friends in this community.

**NOW THESE HOME ELECTRIC SERVICES ARE CHEAPER THAN EVER BEFORE**

**ELECTRIC HEATING**  
Hot water 24 hours a day—ready to use at the turn of the faucet. ALWAYS HOT for bathing, for the Monday wash.

**ELECTRIC COOKING**  
Cool kitchens on hot summer days—clean, convenient. The MODERN way to cook. And it costs so little.

**ELECTRIC REFRIGERATION**  
You'll save the cost of operation on foods saved from spoiling—and be able to keep your quantities as well.

**HOME LIGHTING**  
Better light means better night—see a little brighter, more cheerful, more attractive all the time.

**IDAHO POWER**  
Electricity... Does So MUCH—Costs So LITTLE!

**LESS HOUSEKEEPING MORE HOMEMAKING**  
WITH OUR NEW LOWER ELECTRIC RATES

The benefits of cheap electricity are spread through nearly every hour of our daily lives—in homes, stores, offices and on the farm.

But the wife and mother—the homemaker—is the one who really appreciates what it can do for her. It takes from her shoulders the drudgery of housekeeping. Cheap electricity does her cooking, water heating, keeps the family's foods sweet and fresh with refrigeration, the home bright and cheery with adequate lighting. It gives her free time to be with her family, leisure to plan her children's lives, opportunity to keep herself young, interested and attractive.

Idaho Power's low electric rates give homemakers full electric service at a cost that is among the lowest in the nation.

30 Reductions in Electric Rates Since 1927  
Now Save Our Customers Over \$400,000 Annually

**IDAHO POWER**  
Electricity... Does So MUCH—Costs So LITTLE!

## HOOVER SUGGESTS FIVE-POINT POLICY

Former President Outlines Means of Restoring Confidence

PALO ALTO, Calif., April 14 (AP)—Former President Herbert Hoover said tonight President Roosevelt's newest advocacy of shorter hours for increasing employment was "a most desirable end" but that it had failed two years ago as an emergency measure. He suggested a five-point program instead to "relieve" "long-term confidence."

The former chief executive added that the Roosevelt suggestion for limiting the age of workers was "good" but added it "would not take up 10 per cent—probably not 10 per cent—of the present unemployment."

Hoover suggested a program for putting long term capital to work as a means of drawing workers back to jobs.

He asserted in a written statement that the long-term capital market "which provides enterprises with finances over relatively long periods" is "not functioning at 20 per cent of normal."

## JUNIOR PLAY CASTS APPEAR AT ASSEMBLY

"A Burglar in the House" and "His First Shave" two short plays will be presented to Twin Falls Junior high school students by the public speaking class at the assembly today. Miss Bonnie Murray has trained the casts and will direct the plays today.

Students cast in "A Burglar in the House" are: Clyde House, as Bill Dink; Lillian Laubenthal, as Martha; Betty Boyer, as Sally; Robert Eagle, as Samuel Beck; Bruce Evans, as James Holmes.

The scene for the play presented by the fourth period class is in the Dirk household. "His First Shave" is presented by the third-period class with Herbert Larsen as Derek; Martin; Kay Jordan, Mr. Martin; Adda Mae Brecken, Mrs. Martin; June Daniels, Clara Martin; Maxine Weldon, Derek's girl.

Bob Hampton is business manager for the productions and Harry Bennett will announce the characters.

**GROUPING OF LOAN AGENCIES TALKED**  
Federal-Land Bank Representatives Address Conference

A program for grouping of national farm loan associations by counties or trade areas as a means of effecting economies and making for more efficient servicing of loans was one of the subjects discussed by representatives of the Federal Farm Loan bank of Spokane at a meeting here with more than 20 representatives of farm loan associations of this district. Under the proposed grouping, J. C. McCann, assistant secretary of the Spokane bank, explained, each association would retain its identity while working through the group organization.

Other speakers included Henry Mathews of Spokane, vice president of the federal land bank, who told of that institution's past operations and plans for the future; J. W. Bradley of Spokane, treasurer of the Production Credit corporation, who discussed short term credits; R. E. Shepherd of Jerome, a former director, and Neil Boyle of Blackfoot, a new director of the federal land bank.

Dana E. Brink of Spokane, senior counsel for the federal land bank, conducted a round table discussion of local associations' problems.

Speakers were introduced by George H. Tucker of Boise, field man for the federal land bank.

C. F. McClain, president of the Twin Falls association, presided.

Represented were national farm loan associations of Twin Falls, Kimberly, Hollister, Filer, Castleford, Eden, Jerome and Appleton.

The meeting was one of a series.

**"KLUCH" HOLDS FALSE TEETH TIGHT**  
Klutch forms a comfort cushion holds the plate so snug it can't rock, drop, chafe or "be played with" you can eat and speak as well as you did with your own teeth. 25c and 50c a box at Drug Stores.—Adv.

## TWO SCHOOLS JOIN FOR P.-T. A. MEET

MOUNTAIN VIEW, April 14.—Patrons of the Park Lane school district and the Shoshone school met at the regular meeting of the Mountain View Parent-Teacher association.

Mrs. Doris Stradley, teacher of the Park Lane school, gave a talk on hot lunches at school, and explained what foods the pupils considered favorites.

At the business meeting, conducted by the president, Mrs. N. E. Womack, the women decided to bring the picnic and club towels to the organization, during the next school term, instead of having them at the remaining meetings of this year. It was also decided to hold the next meeting May 4.

A program was presented under the direction of Mrs. Howard McDaniel, teacher of the lower grades at Mountain View. Little Betty Scott sang a "welcome" song and gave a tap dance. Other numbers were given by the girls' tapping team: Betty Durling, Elaine Durling, Marie Nelson, Shirley McDowell and Fern Anderson. The latter also gave a tap dance while jumping rope. Howard McDaniel sang two solos. "Garden of Tomorrow" and "Mistakes." Refreshments were served during the social hour to about 50 persons.

**PROSPECTS GOOD FOR LIVESTOCK, RANGES**  
BOISE, April 14 (AP)—Richard C. Howe, federal agricultural administrator for Idaho, said today that early lamb losses probably will not be "travesty in snow" of normal, despite prolonged cold weather and snow during the latter part of March.

Livestock and ranges are in good condition now, he said.

"Range conditions" because of the prolonged cold weather, were reported 2 per cent lower than last month, but still slightly higher than the 10-year average.

"Prospects for spring and summer ranges are unusually good," Howe said.

The condition of cattle and calves

**DON'T SLEEP ON LEFT SIDE, AFFECTS HEART**  
Gas Pressure May Cause Discomfort. Right Side Best if you toss in bed and can't sleep on right side, try Adirika. Just ONE dose relieves stomach GAS pressure on heart so you sleep soundly all night.

Adirika acts on BOTH upper and lower bowels and brings out foul matter you would never believe was in your system. This old matter may have poisoned you for months and caused GAS, sour stomach, headache and nervousness.

Dr. H. H. Shosh, New York, reports: "In addition to intestinal cleansing, Adirika greatly reduces bacteria and colon bacilli."  
Mrs. J. A. Puller: "Gas on my stomach was so bad I could not eat or sleep. Even my heart hurt. The first dose of Adirika brought me relief. Now I eat and sleep fine and never feel better."  
Give your stomach and bowels a REAL cleansing with Adirika and see how good you feel. Just ONE dose relieves GAS and chronic constipation. Sold by all druggists and drug departments. Majestic Pharmacy—in Kimberly at Storer's Pharmacy.—Adv.

**PROSPECTS GOOD FOR LIVESTOCK, RANGES**  
BOISE, April 14 (AP)—Richard C. Howe, federal agricultural administrator for Idaho, said today that early lamb losses probably will not be "travesty in snow" of normal, despite prolonged cold weather and snow during the latter part of March.

Livestock and ranges are in good condition now, he said.

"Range conditions" because of the prolonged cold weather, were reported 2 per cent lower than last month, but still slightly higher than the 10-year average.

"Prospects for spring and summer ranges are unusually good," Howe said.

The condition of cattle and calves

**DON'T SLEEP ON LEFT SIDE, AFFECTS HEART**  
Gas Pressure May Cause Discomfort. Right Side Best if you toss in bed and can't sleep on right side, try Adirika. Just ONE dose relieves stomach GAS pressure on heart so you sleep soundly all night.

Adirika acts on BOTH upper and lower bowels and brings out foul matter you would never believe was in your system. This old matter may have poisoned you for months and caused GAS, sour stomach, headache and nervousness.

Dr. H. H. Shosh, New York, reports: "In addition to intestinal cleansing, Adirika greatly reduces bacteria and colon bacilli."  
Mrs. J. A. Puller: "Gas on my stomach was so bad I could not eat or sleep. Even my heart hurt. The first dose of Adirika brought me relief. Now I eat and sleep fine and never feel better."  
Give your stomach and bowels a REAL cleansing with Adirika and see how good you feel. Just ONE dose relieves GAS and chronic constipation. Sold by all druggists and drug departments. Majestic Pharmacy—in Kimberly at Storer's Pharmacy.—Adv.

## GROUPING OF LOAN AGENCIES TALKED

Federal-Land Bank Representatives Address Conference

A program for grouping of national farm loan associations by counties or trade areas as a means of effecting economies and making for more efficient servicing of loans was one of the subjects discussed by representatives of the Federal Farm Loan bank of Spokane at a meeting here with more than 20 representatives of farm loan associations of this district. Under the proposed grouping, J. C. McCann, assistant secretary of the Spokane bank, explained, each association would retain its identity while working through the group organization.

Other speakers included Henry Mathews of Spokane, vice president of the federal land bank, who told of that institution's past operations and plans for the future; J. W. Bradley of Spokane, treasurer of the Production Credit corporation, who discussed short term credits; R. E. Shepherd of Jerome, a former director, and Neil Boyle of Blackfoot, a new director of the federal land bank.

Dana E. Brink of Spokane, senior counsel for the federal land bank, conducted a round table discussion of local associations' problems.

Speakers were introduced by George H. Tucker of Boise, field man for the federal land bank.

C. F. McClain, president of the Twin Falls association, presided.

Represented were national farm loan associations of Twin Falls, Kimberly, Hollister, Filer, Castleford, Eden, Jerome and Appleton.

The meeting was one of a series.

**"KLUCH" HOLDS FALSE TEETH TIGHT**  
Klutch forms a comfort cushion holds the plate so snug it can't rock, drop, chafe or "be played with" you can eat and speak as well as you did with your own teeth. 25c and 50c a box at Drug Stores.—Adv.

**PROSPECTS GOOD FOR LIVESTOCK, RANGES**  
BOISE, April 14 (AP)—Richard C. Howe, federal agricultural administrator for Idaho, said today that early lamb losses probably will not be "travesty in snow" of normal, despite prolonged cold weather and snow during the latter part of March.

Livestock and ranges are in good condition now, he said.

"Range conditions" because of the prolonged cold weather, were reported 2 per cent lower than last month, but still slightly higher than the 10-year average.

"Prospects for spring and summer ranges are unusually good," Howe said.

The condition of cattle and calves

**DON'T SLEEP ON LEFT SIDE, AFFECTS HEART**  
Gas Pressure May Cause Discomfort. Right Side Best if you toss in bed and can't sleep on right side, try Adirika. Just ONE dose relieves stomach GAS pressure on heart so you sleep soundly all night.

Adirika acts on BOTH upper and lower bowels and brings out foul matter you would never believe was in your system. This old matter may have poisoned you for months and caused GAS, sour stomach, headache and nervousness.

Dr. H. H. Shosh, New York, reports: "In addition to intestinal cleansing, Adirika greatly reduces bacteria and colon bacilli."  
Mrs. J. A. Puller: "Gas on my stomach was so bad I could not eat or sleep. Even my heart hurt. The first dose of Adirika brought me relief. Now I eat and sleep fine and never feel better."  
Give your stomach and bowels a REAL cleansing with Adirika and see how good you feel. Just ONE dose relieves GAS and chronic constipation. Sold by all druggists and drug departments. Majestic Pharmacy—in Kimberly at Storer's Pharmacy.—Adv.

**PROSPECTS GOOD FOR LIVESTOCK, RANGES**  
BOISE, April 14 (AP)—Richard C. Howe, federal agricultural administrator for Idaho, said today that early lamb losses probably will not be "travesty in snow" of normal, despite prolonged cold weather and snow during the latter part of March.

Livestock and ranges are in good condition now, he said.

"Range conditions" because of the prolonged cold weather, were reported 2 per cent lower than last month, but still slightly higher than the 10-year average.

"Prospects for spring and summer ranges are unusually good," Howe said.

The condition of cattle and calves

**DON'T SLEEP ON LEFT SIDE, AFFECTS HEART**  
Gas Pressure May Cause Discomfort. Right Side Best if you toss in bed and can't sleep on right side, try Adirika. Just ONE dose relieves stomach GAS pressure on heart so you sleep soundly all night.

Adirika acts on BOTH upper and lower bowels and brings out foul matter you would never believe was in your system. This old matter may have poisoned you for months and caused GAS, sour stomach, headache and nervousness.

Dr. H. H. Shosh, New York, reports: "In addition to intestinal cleansing, Adirika greatly reduces bacteria and colon bacilli."  
Mrs. J. A. Puller: "Gas on my stomach was so bad I could not eat or sleep. Even my heart hurt. The first dose of Adirika brought me relief. Now I eat and sleep fine and never feel better."  
Give your stomach and bowels a REAL cleansing with Adirika and see how good you feel. Just ONE dose relieves GAS and chronic constipation. Sold by all druggists and drug departments. Majestic Pharmacy—in Kimberly at Storer's Pharmacy.—Adv.

## PROSPECTS GOOD FOR LIVESTOCK, RANGES

BOISE, April 14 (AP)—Richard C. Howe, federal agricultural administrator for Idaho, said today that early lamb losses probably will not be "travesty in snow" of normal, despite prolonged cold weather and snow during the latter part of March.

Livestock and ranges are in good condition now, he said.

"Range conditions" because of the prolonged cold weather, were reported 2 per cent lower than last month, but still slightly higher than the 10-year average.

"Prospects for spring and summer ranges are unusually good," Howe said.

The condition of cattle and calves

**DON'T SLEEP ON LEFT SIDE, AFFECTS HEART**  
Gas Pressure May Cause Discomfort. Right Side Best if you toss in bed and can't sleep on right side, try Adirika. Just ONE dose relieves stomach GAS pressure on heart so you sleep soundly all night.

Adirika acts on BOTH upper and lower bowels and brings out foul matter you would never believe was in your system. This old matter may have poisoned you for months and caused GAS, sour stomach, headache and nervousness.

Dr. H. H. Shosh, New York, reports: "In addition to intestinal cleansing, Adirika greatly reduces bacteria and colon bacilli."

Mrs. J. A. Puller: "Gas on my stomach was so bad I could not eat or sleep. Even my heart hurt. The first dose of Adirika brought me relief. Now I eat and sleep fine and never feel better."

Give your stomach and bowels a REAL cleansing with Adirika and see how good you feel. Just ONE dose relieves GAS and chronic constipation. Sold by all druggists and drug departments. Majestic Pharmacy—in Kimberly at Storer's Pharmacy.—Adv.

**PROSPECTS GOOD FOR LIVESTOCK, RANGES**  
BOISE, April 14 (AP)—Richard C. Howe, federal agricultural administrator for Idaho, said today that early lamb losses probably will not be "travesty in snow" of normal, despite prolonged cold weather and snow during the latter part of March.

Livestock and ranges are in good condition now, he said.

"Range conditions" because of the prolonged cold weather, were reported 2 per cent lower than last month, but still slightly higher than the 10-year average.

"Prospects for spring and summer ranges are unusually good," Howe said.

The condition of cattle and calves

**DON'T SLEEP ON LEFT SIDE, AFFECTS HEART**  
Gas Pressure May Cause Discomfort. Right Side Best if you toss in bed and can't sleep on right side, try Adirika. Just ONE dose relieves stomach GAS pressure on heart so you sleep soundly all night.

Adirika acts on BOTH upper and lower bowels and brings out foul matter you would never believe was in your system. This old matter may have poisoned you for months and caused GAS, sour stomach, headache and nervousness.

Dr. H. H. Shosh, New York, reports: "In addition to intestinal cleansing, Adirika greatly reduces bacteria and colon bacilli."  
Mrs. J. A. Puller: "Gas on my stomach was so bad I could not eat or sleep. Even my heart hurt. The first dose of Adirika brought me relief. Now I eat and sleep fine and never feel better."  
Give your stomach and bowels a REAL cleansing with Adirika and see how good you feel. Just ONE dose relieves GAS and chronic constipation. Sold by all druggists and drug departments. Majestic Pharmacy—in Kimberly at Storer's Pharmacy.—Adv.

**PROSPECTS GOOD FOR LIVESTOCK, RANGES**  
BOISE, April 14 (AP)—Richard C. Howe, federal agricultural administrator for Idaho, said today that early lamb losses probably will not be "travesty in snow" of normal, despite prolonged cold weather and snow during the latter part of March.

Livestock and ranges are in good condition now, he said.

"Range conditions" because of the prolonged cold weather, were reported 2 per cent lower than last month, but still slightly higher than the 10-year average.

"Prospects for spring and summer ranges are unusually good," Howe said.

The condition of cattle and calves

**DON'T SLEEP ON LEFT SIDE, AFFECTS HEART**  
Gas Pressure May Cause Discomfort. Right Side Best if you toss in bed and can't sleep on right side, try Adirika. Just ONE dose relieves stomach GAS pressure on heart so you sleep soundly all night.

Adirika acts on BOTH upper and lower bowels and brings out foul matter you would never believe was in your system. This old matter may have poisoned you for months and caused GAS, sour stomach, headache and nervousness.

Dr. H. H. Shosh, New York, reports: "In addition to intestinal cleansing, Adirika greatly reduces bacteria and colon bacilli."  
Mrs. J. A. Puller: "Gas on my stomach was so bad I could not eat or sleep. Even my heart hurt. The first dose of Adirika brought me relief. Now I eat and sleep fine and never feel better."  
Give your stomach and bowels a REAL cleansing with Adirika and see how good you feel. Just ONE dose relieves GAS and chronic constipation. Sold by all druggists and drug departments. Majestic Pharmacy—in Kimberly at Storer's Pharmacy.—Adv.

## ATTENTION LADIES!

Sweetbriar's

**1/2 PRICE**

**PRICE SALE**

**STARTS WEDNESDAY MORNING APRIL 15th**

Every Spring Suit and Coat in our stock will be placed on sale Wednesday Morning at just one-half of its original selling price. One large rack of New Spring Dresses will also be on sale at half price. IT'S A GIVE AWAY—so come early and get your share.

**SPRING SUITS 1/2 PRICE**

Tailored Suits... Furred Suits... Soft Suits... Suits with Top Coats... You'll Find Them all Here in Most Every Color.

**SPRING COATS 1/2 PRICE**

**TOPPERS... SWAGGERS AND DRESSY TYPES**  
Newest Materials and Colors.

**ONE LARGE RACK SPRING DRESSES 1/2 PRICE**

New Fabrics in Lovely Spring Shades—Dresses for Practically Every Occasion.

**ONE GROUP SPRING HATS 1/2 PRICE**  
OUR FAMOUS SWEETBRIAR "MAID" HOSE \$1.00 Sells 79c  
**ONE RACK WASH FROCKS 1/2 PRICE**  
OUR FAMOUS SWEETBRIAR "MAID" HOSE 79c Sells 55c  
Two Pairs \$1.50 Two Pairs \$1.00  
Chiffon and Service Weight—Broken Sizes and Discontinued Shades—But Every Pair Perfect  
No Lay-aways—No Approvals—No Exchanges  
No Refunds—All Sales Final

**Sweetbriar Shop**  
123 Main Ave. W.—Former Sampson Meats Co. Location.

**WELCOME to the... New and Fascinating Shanghai Garden**

American and Chinese Restaurant and Cafe

Open From 11:00 a. m. to 2:30 a. m.

American and Chinese Lunches—Noon ALSO DINNERS EVERY DAY

**Do You Want a Profitable Crop?**

If you do, growing CUCUMBER SEED promises very good returns with a low production cost. We have an acreage to contract this season in fields of 5 to 25 acres. Let's talk it over. We still have BEANS to contract, too.







# STOCKS AVERAGE ONE POINT LOWER

## Industrials and Rails Suffer Heaviest Losses in Share Market

Stock Market Averages

(Compiled by The Associated Press)

Day	Change	Point	Value
Monday	+1.3	13	119.2
Tuesday	-0.5	27.3	118.7
Wednesday	-0.2	27.1	118.5
Thursday	-0.1	27.0	118.4
Friday	-0.1	26.9	118.3
Saturday	-0.1	26.8	118.2
Sunday	-0.1	26.7	118.1
Monday	-0.1	26.6	118.0
Tuesday	-0.1	26.5	117.9
Wednesday	-0.1	26.4	117.8
Thursday	-0.1	26.3	117.7
Friday	-0.1	26.2	117.6
Saturday	-0.1	26.1	117.5
Sunday	-0.1	26.0	117.4
Monday	-0.1	25.9	117.3
Tuesday	-0.1	25.8	117.2
Wednesday	-0.1	25.7	117.1
Thursday	-0.1	25.6	117.0
Friday	-0.1	25.5	116.9
Saturday	-0.1	25.4	116.8
Sunday	-0.1	25.3	116.7
Monday	-0.1	25.2	116.6
Tuesday	-0.1	25.1	116.5
Wednesday	-0.1	25.0	116.4
Thursday	-0.1	24.9	116.3
Friday	-0.1	24.8	116.2
Saturday	-0.1	24.7	116.1
Sunday	-0.1	24.6	116.0
Monday	-0.1	24.5	115.9
Tuesday	-0.1	24.4	115.8
Wednesday	-0.1	24.3	115.7
Thursday	-0.1	24.2	115.6
Friday	-0.1	24.1	115.5
Saturday	-0.1	24.0	115.4
Sunday	-0.1	23.9	115.3
Monday	-0.1	23.8	115.2
Tuesday	-0.1	23.7	115.1
Wednesday	-0.1	23.6	115.0
Thursday	-0.1	23.5	114.9
Friday	-0.1	23.4	114.8
Saturday	-0.1	23.3	114.7
Sunday	-0.1	23.2	114.6
Monday	-0.1	23.1	114.5
Tuesday	-0.1	23.0	114.4
Wednesday	-0.1	22.9	114.3
Thursday	-0.1	22.8	114.2
Friday	-0.1	22.7	114.1
Saturday	-0.1	22.6	114.0
Sunday	-0.1	22.5	113.9
Monday	-0.1	22.4	113.8
Tuesday	-0.1	22.3	113.7
Wednesday	-0.1	22.2	113.6
Thursday	-0.1	22.1	113.5
Friday	-0.1	22.0	113.4
Saturday	-0.1	21.9	113.3
Sunday	-0.1	21.8	113.2
Monday	-0.1	21.7	113.1
Tuesday	-0.1	21.6	113.0
Wednesday	-0.1	21.5	112.9
Thursday	-0.1	21.4	112.8
Friday	-0.1	21.3	112.7
Saturday	-0.1	21.2	112.6
Sunday	-0.1	21.1	112.5
Monday	-0.1	21.0	112.4
Tuesday	-0.1	20.9	112.3
Wednesday	-0.1	20.8	112.2
Thursday	-0.1	20.7	112.1
Friday	-0.1	20.6	112.0
Saturday	-0.1	20.5	111.9
Sunday	-0.1	20.4	111.8
Monday	-0.1	20.3	111.7
Tuesday	-0.1	20.2	111.6
Wednesday	-0.1	20.1	111.5
Thursday	-0.1	20.0	111.4
Friday	-0.1	19.9	111.3
Saturday	-0.1	19.8	111.2
Sunday	-0.1	19.7	111.1
Monday	-0.1	19.6	111.0
Tuesday	-0.1	19.5	110.9
Wednesday	-0.1	19.4	110.8
Thursday	-0.1	19.3	110.7
Friday	-0.1	19.2	110.6
Saturday	-0.1	19.1	110.5
Sunday	-0.1	19.0	110.4
Monday	-0.1	18.9	110.3
Tuesday	-0.1	18.8	110.2
Wednesday	-0.1	18.7	110.1
Thursday	-0.1	18.6	110.0
Friday	-0.1	18.5	109.9
Saturday	-0.1	18.4	109.8
Sunday	-0.1	18.3	109.7
Monday	-0.1	18.2	109.6
Tuesday	-0.1	18.1	109.5
Wednesday	-0.1	18.0	109.4
Thursday	-0.1	17.9	109.3
Friday	-0.1	17.8	109.2
Saturday	-0.1	17.7	109.1
Sunday	-0.1	17.6	109.0
Monday	-0.1	17.5	108.9
Tuesday	-0.1	17.4	108.8
Wednesday	-0.1	17.3	108.7
Thursday	-0.1	17.2	108.6
Friday	-0.1	17.1	108.5
Saturday	-0.1	17.0	108.4
Sunday	-0.1	16.9	108.3
Monday	-0.1	16.8	108.2
Tuesday	-0.1	16.7	108.1
Wednesday	-0.1	16.6	108.0
Thursday	-0.1	16.5	107.9
Friday	-0.1	16.4	107.8
Saturday	-0.1	16.3	107.7
Sunday	-0.1	16.2	107.6
Monday	-0.1	16.1	107.5
Tuesday	-0.1	16.0	107.4
Wednesday	-0.1	15.9	107.3
Thursday	-0.1	15.8	107.2
Friday	-0.1	15.7	107.1
Saturday	-0.1	15.6	107.0
Sunday	-0.1	15.5	106.9
Monday	-0.1	15.4	106.8
Tuesday	-0.1	15.3	106.7
Wednesday	-0.1	15.2	106.6
Thursday	-0.1	15.1	106.5
Friday	-0.1	15.0	106.4
Saturday	-0.1	14.9	106.3
Sunday	-0.1	14.8	106.2
Monday	-0.1	14.7	106.1
Tuesday	-0.1	14.6	106.0
Wednesday	-0.1	14.5	105.9
Thursday	-0.1	14.4	105.8
Friday	-0.1	14.3	105.7
Saturday	-0.1	14.2	105.6
Sunday	-0.1	14.1	105.5
Monday	-0.1	14.0	105.4
Tuesday	-0.1	13.9	105.3
Wednesday	-0.1	13.8	105.2
Thursday	-0.1	13.7	105.1
Friday	-0.1	13.6	105.0
Saturday	-0.1	13.5	104.9
Sunday	-0.1	13.4	104.8
Monday	-0.1	13.3	104.7
Tuesday	-0.1	13.2	104.6
Wednesday	-0.1	13.1	104.5
Thursday	-0.1	13.0	104.4
Friday	-0.1	12.9	104.3
Saturday	-0.1	12.8	104.2
Sunday	-0.1	12.7	104.1
Monday	-0.1	12.6	104.0
Tuesday	-0.1	12.5	103.9
Wednesday	-0.1	12.4	103.8
Thursday	-0.1	12.3	103.7
Friday	-0.1	12.2	103.6
Saturday	-0.1	12.1	103.5
Sunday	-0.1	12.0	103.4
Monday	-0.1	11.9	103.3
Tuesday	-0.1	11.8	103.2
Wednesday	-0.1	11.7	103.1
Thursday	-0.1	11.6	103.0
Friday	-0.1	11.5	102.9
Saturday	-0.1	11.4	102.8
Sunday	-0.1	11.3	102.7
Monday	-0.1	11.2	102.6
Tuesday	-0.1	11.1	102.5
Wednesday	-0.1	11.0	102.4
Thursday	-0.1	10.9	102.3
Friday	-0.1	10.8	102.2
Saturday	-0.1	10.7	102.1
Sunday	-0.1	10.6	102.0
Monday	-0.1	10.5	101.9
Tuesday	-0.1	10.4	101.8
Wednesday	-0.1	10.3	101.7
Thursday	-0.1	10.2	101.6
Friday	-0.1	10.1	101.5
Saturday	-0.1	10.0	101.4
Sunday	-0.1	9.9	101.3
Monday	-0.1	9.8	101.2
Tuesday	-0.1	9.7	101.1
Wednesday	-0.1	9.6	101.0
Thursday	-0.1	9.5	100.9
Friday	-0.1	9.4	100.8
Saturday	-0.1	9.3	100.7
Sunday	-0.1	9.2	100.6
Monday	-0.1	9.1	100.5
Tuesday	-0.1	9.0	100.4
Wednesday	-0.1	8.9	100.3
Thursday	-0.1	8.8	100.2
Friday	-0.1	8.7	100.1
Saturday	-0.1	8.6	100.0
Sunday	-0.1	8.5	99.9
Monday	-0.1	8.4	99.8
Tuesday	-0.1	8.3	99.7
Wednesday	-0.1	8.2	99.6
Thursday	-0.1	8.1	99.5
Friday	-0.1	8.0	99.4
Saturday	-0.1	7.9	99.3
Sunday	-0.1	7.8	99.2
Monday	-0.1	7.7	99.1
Tuesday	-0.1	7.6	99.0
Wednesday	-0.1	7.5	98.9
Thursday	-0.1	7.4	98.8
Friday	-0.1	7.3	98.7
Saturday	-0.1	7.2	98.6
Sunday	-0.1	7.1	98.5
Monday	-0.1	7.0	98.4
Tuesday	-0.1	6.9	98.3
Wednesday	-0.1	6.8	98.2
Thursday	-0.1	6.7	98.1
Friday	-0.1	6.6	98.0
Saturday	-0.1	6.5	97.9
Sunday	-0.1	6.4	97.8
Monday	-0.1	6.3	97.7
Tuesday	-0.1	6.2	97.6
Wednesday	-0.1	6.1	97.5
Thursday	-0.1	6.0	97.4
Friday	-0.1	5.9	97.3
Saturday	-0.1	5.8	97.2
Sunday	-0.1	5.7	97.1
Monday	-0.1	5.6	97.0
Tuesday	-0.1	5.5	96.9
Wednesday	-0.1	5.4	96.8
Thursday	-0.1	5.3	96.7
Friday	-0.1	5.2	96.6
Saturday	-0.1	5.1	96.5
Sunday	-0.1	5.0	96.4
Monday	-0.1	4.9	96.3
Tuesday	-0.1	4.8	96.2
Wednesday	-0.1	4.7	96.1
Thursday	-0.1	4.6	96.0
Friday	-0.1	4.5	95.9
Saturday	-0.1	4.4	95.8
Sunday	-0.1	4.3	95.7
Monday	-0.1	4.2	95.6
Tuesday	-0.1	4.1	95.5
Wednesday	-0.1	4.0	95.4
Thursday	-0.1	3.9	95.3
Friday	-0.1	3.8	95.2
Saturday	-0.1	3.7	95.1
Sunday	-0.1	3.6	95.0
Monday	-0.1	3.5	94.9
Tuesday	-0.1	3.4	94.8
Wednesday	-0.1	3.3	94.7
Thursday	-0.1	3.2	94.6
Friday	-0.1	3.1	94.5
Saturday	-0.1	3.0	94.4
Sunday	-0.1	2.9	94.3
Monday	-0.1	2.8	94.2
Tuesday	-0.1	2.7	94.1
Wednesday	-0.1	2.6	94.0
Thursday	-0.1	2.5	93.9
Friday	-0.1	2.4	93.8
Saturday	-0.1	2.3	93.7
Sunday	-0.1	2.2	93.6
Monday	-0.1	2.1	93.5
Tuesday	-0.1	2.0	93.4
Wednesday	-0.1	1.9	93.3
Thursday	-0.1	1.8	93.2
Friday	-0.1	1.7	93.1
Saturday	-0.1	1.6	93.0
Sunday	-0.1	1.5	92.9
Monday	-0.1	1.4	92.8
Tuesday	-0.1	1.3	92.7
Wednesday	-0.1	1.2	92.6
Thursday	-0.1	1.1	92.5
Friday	-0.1	1.0	92.4
Saturday	-0.1	0.9	92.3
Sunday	-0.1	0.8	92.2
Monday	-0.1	0.7	92.1
Tuesday	-0.1	0.6	92.0
Wednesday	-0.1	0.5	91.9
Thursday	-0.1	0.4	91.8
Friday	-0.1	0.3	91.7
Saturday	-0.1	0.2	91.6
Sunday	-0.1	0.1	91.5
Monday	-0.1	0.0	91.4
Tuesday	-0.1	-0.1	91.3
Wednesday	-0.1	-0.2	91.2
Thursday	-0.1	-0.3	91.1
Friday	-0.1	-0.4	91.0
Saturday	-0.1	-0.5	90.9
Sunday	-0.1	-0.6	90.8
Monday	-0.1	-0.7	90.7
Tuesday	-0.1	-0.8	90.6
Wednesday	-0.1	-0.9	90.5
Thursday	-0.1	-1.0	90.4
Friday	-0.1	-1.1	90.3
Saturday	-0.1	-1.2	90.2
Sunday	-0.1	-1.3	90.1
Monday	-0.1	-1.4	90.0
Tuesday	-0.1	-1.5	89.9
Wednesday	-0.1	-1.6	89.8
Thursday	-0.1	-1.7	89.7
Friday	-0.1	-1.8	89.6
Saturday	-0.1	-1.9	89.5
Sunday	-0.1	-2.0	89.4
Monday	-0.1	-2.1	89.3
Tuesday	-0.1	-2.2	89.2
Wednesday	-0.1	-2.3	89.1
Thursday	-0.1	-2.4	89.0
Friday	-0.1	-2.5	88.9
Saturday	-0.1	-2.6	88.8
Sunday	-0.1	-2.7	88.7
Monday	-0.1	-2.8	88.6
Tuesday	-0.1	-2.9	88.5
Wednesday	-0.1	-3.0	88.4
Thursday	-0.1	-3.1	88.3
Friday	-0.1	-3.2	88.2
Saturday	-0.1	-3.3	88.1
Sunday	-0.1	-3.4	88.0
Monday	-0.1	-3.5	87.9
Tuesday	-0.1	-3.6	87.8
Wednesday	-0.1	-3.7	87.7
Thursday	-0.1	-3.8	87.6
Friday	-0.1	-3.9	87.5
Saturday	-0.1	-4.0	87.4
Sunday	-0.1	-4.1	87.3
Monday	-0.1	-4.2	87.2
Tuesday	-0.1	-4.3	87.1
Wednesday	-0.1	-4.4	87.0
Thursday	-0.1	-4.5	86.9
Friday	-0.1	-4.6	86.8
Saturday	-0.1	-4.7	86.7
Sunday	-0.1	-4.8	86.6
Monday	-0.1	-4.9	86.5
Tuesday	-0.1	-5.0	86.4
Wednesday	-0.1	-5.1	86.3
Thursday	-0.1	-5.2	86.2
Friday	-0.1	-5.3	86.1
Saturday	-0.1	-5.4	86.0
Sunday	-0.1	-5.5	85.9
Monday	-0.1	-5.6	85.8
Tuesday	-0.1	-5.7	85.7
Wednesday	-0.1	-5.8	85.6
Thursday	-0.1	-5.9	85.5
Friday	-0.1	-6.0	85.4
Saturday	-0.1	-6.1	85.3
Sunday	-0.1	-6.2	85.2
Monday	-0.1	-6.3	





## DR. PARROTT HEADS NEW MASONIC BODY

Council of Royal and Select  
Masons Receives Charter  
at Pocatello Rites

Dr. R. A. Parrott, Twin Falls, received the appointment of illustrious master of the local Council of Royal and Select Masters Monday evening at Pocatello, Mont. Illustrations Grand Master William Wallin making the appointment. Dr. Parrott received a dispensation for the organization of a local chapter.

Mr. Wallin was presented with the purple apron of the most illustrious grand master at the close of the banquet session.

Fred T. Parish, Bull, was named deputy master, and Alan P. Senior, principal conductor of the work. Proceeding the ceremonies a banquet was served. The candidates from Twin Falls, Bull, Filer, Kimberly, Burley and Rupert were guests of Mr. Wallin at a midnight lunch following the ceremonies.

Receiving the degree were: O. T. Brown, Kimberly; Max Burkhardt, Filer; R. A. Longfield, Twin Falls; Claude M. Gordon, Kimberly; Elmer Hollingsworth, Twin Falls; P. W. Harder, R. H. Hyde, Burley; H. H. Hedstrom, P. O. Novorka, C. R. Kingsbury, C. H. Krenzel, Burley; E. Morse, Dr. Parrott, Pocatello; P. Parish, Twin Falls; P. C. Parish, Bull; R. A. Reynolds, Twin Falls; Fred Reicher, Filer; O. H. Russell, P. Senior, Carl E. Sherwood, Ray Stuyter, Twin Falls; L. M. Smith, O. H. Shearer, Filer; George W. Weeber, Dr. B. Weaver, Twin Falls; C. B. Wiley, Rupert; Aaron Anderson, Filer.

## Boar Runs Loose Bringing Terror To Easter Throng

Strolling peacefully through the streets at intervals and at other times taking on the aspect of a wild animal, a huge boar terrorized numerous Twin Falls residents Sunday and finally wound up dead after some 25 bullets had pierced his thick hide.

Although he was more than a terror to many civilians, he was even a greater menace to a pair of Twin Falls police officers who led the attack and did their best to prevent the numerous "gunmen" from shooting one another.

Officers John Carlson and E. E. Lancaster, joined in the search after the hog had been reported at the intersection of Main avenue and Shoshone street. The animal was chased through the north and west parts of town, being cornered in the west section.

Lancaster, Carlson and a number of other men joined in the hunt. The animal started in chase of W. L. Gates, who was ripped from the rear. Having eluded the animal he reports having heard a noise behind him. He thought it was the hog and started out again, but turned to see Lancaster coming in his direction with the animal in pursuit. Both became entangled in a fence.

Lancaster escaped first and the

## Willie Willis

By ROBERT QUILEN



"They said I could go and then wouldn't let me. I guess it ain't wrong to break your word to anybody you can like."

hog started down an alley between Third and Fourth avenue west and was shot by Carlson. Unaffected he continued his march and was killed with four shots from the pistol of Lud Drexler.

The hog was bought at the sale grounds Saturday by Jack Terry of Hagerman. He was too near to load and Terry left him at the sale grounds. He escaped Sunday morning.

Excitement lasted for some time, but officers are glad that peace and quiet have again put in an appearance.

## DIRECTORY LIBRARY RECEIVED BY CHAMBER

Twin Falls Chamber of Commerce has been equipped with a directory library consisting of about 45 volumes through the courtesy of R. L. Folk and company of Salt Lake City, distributors of business directories.

These directories will be placed at the chamber of commerce offices and the public is invited to loan one of them.

The following directories have been received and other directories will be received in the near future: Anderson, Montana; Atlanta, Georgia; Boise, Idaho; Bozeman, Montana; Buffalo, New York; Casper,

Wyoming; Des Moines, Iowa; Durango, Colorado; Great Falls, Montana; Helena, Montana; Laramie, Wyoming; Lewiston, Montana; Logan, Utah; Miami, Florida; Minneapolis, Minnesota; Missoula, Montana; Modesto, California; New Orleans, Louisiana; Ogden, Utah; Oklahoma City, Oklahoma; Pittsburgh, Pennsylvania; Pocatello, Idaho; Portland, Oregon; Provo, Utah; Rock Springs, Wyoming; Salt Lake City, Utah; San Bernardino, California; Sheridan, Wyoming; Tulsa, Oklahoma; Twin Falls, Idaho; Wichita, Kansas.

Flare your grain cleaned and treated at Globe Seed & Feed. Adv.

Vigoro Fertilizer for lawns and shrubbery, also garden fertilizer. Ph. 191, Twin Falls Feed & Ice Co. Adv.

?? WHO'LL WIN OSWALD ??

## The Huge Live Turtle

See Him — Judge His Weight — Win Him and ... ?

## OLD TIME DANCE

SHOW AT 8 P. M. Friday, Apr. 17 DOORS OPEN

DANCE AT 9 P. M. 7:30 P. M.

R-A-D-I-O-L-A-N-D

**Another Sale of Fine Shrubbbery  
— Starts Wednesday Morning —  
At 8:00 o'Clock in the Economy Basement**

## 672 SHRUBS

As Described Below With Quantities of Each



20¢

- 50 Golden Bell—18 to 24 in.
- 35 Althea Pink—18 to 24 in.
- 15 Weigelia Rosea—18 to 24 in.
- 25 Deutzia Pride of Rochester—18 to 24 in.
- 25 Honeysuckle Pink—18 to 24 in.
- 12 Tamarix—18 to 24 in.
- 20 Callicarpa Purpurea—18 to 24 in.
- 20 Spiraea Froebelii—18 to 24 in.
- 40 Philadelphia Mock Orange—12 to 15 in.
- 75 Red Leaf Barberry—12 to 15 in.
- 15 Deutzia Lemoine—12 to 18 in.
- 25 Weigelia Eva Rathke—12 to 18 in.
- 37 Jap Barberry—12 to 18 in.
- 38 Jap Quince—12 to 18 in.
- 25 Snowberry—12 to 18 in.
- 50 Spirea Anthony Waters—12 to 15 in.
- 40 Forsythia—12 to 18 in.
- 50 Spirea Van Houttei—12 to 18 in.
- 30 Butterfly Magnificia—12 to 18 in.
- 40 Snowball—18 to 24 in.

The Roots Are Well Wrapped  
Every Bush Is Correctly Labeled

WE REGRET that because of the nature of this sale we are unable to accept phone or mail orders or to lay away any shrubs before the sale starts.

## Idaho Dep't. Store

"IF IT ISN'T RIGHT BRING IT BACK"

This is old Claude Pratt again. I just wanted to tell you that we expect that car of rough lumber about today. Call up before you come in. I'm speaking of that furnished lumber—\$10.00 per thousand. There's also 20,000 feet of that white pine cheap lap-siding, the kind we built our tourist camp with. It is also \$10.00 per thousand. It's a whole of a big car because there is about 45,000 feet in it. Say — I brand something. I don't know how true it is because you can hear so much now days. Several different ones have told me, "Pratt you're going to have some real oil competition. Some of the boys are getting together and selling a competitive oil at a very low price." Well, it may be true or not true, the thing I do know is that our oil is not a competitive oil. It's in a class all by itself and is guaranteed to give you better service than any other oil in America or your money back. We don't intend to enter into any kind of a price war. If anybody can sell axle grease for less than a penny, it is alright with me. But you better stay with old Claude Pratt as you may need him after the war is over. Come in and bring your car and get your hickory coupling pole.

We have another large supply of the standard size coming. 2x12, 2x14, 2x16, and smaller sizes. Same low price for a dandy rug.

CLAUDE C. PRATT  
is still on the road to the hospital.

## "Well, what are you waiting for?"

you risk nothing —  
you get double your money back  
if **DOUBLE-MELLOW OLD GOLDS**  
don't win you!



**DOUBLE-MONEY-BACK OFFER** In effect since Oct. 6, 1935

Smoke half a pack of Double-Mellow Old Golds. If you're not pleased, mail us the wrapper and the remaining ten cigarettes at any time within 30 days from this date, and we'll send you double the price you paid for the full package, plus postage.

(Signed) P. LORILLARD-COMPANY, Inc. (Established 1760)  
119 West 40th Street, New York City



**2 JACKETS OF "CELLOPHANE" PRIZE CROP TOBACCOES**  
seal-in the goodness of

## Lumber That Costs Less Per "Board-Foot-Year"

—is the lumber to put into your home for permanency and profit. The NET cost (the actual cost of the lumber in your house when finished, not the original cost at the yard), plus cost of labor, divided by the number of satisfactory years of service, equals the cost per "Board-Foot-Year."



## Insist on 4-Square Lumber

It costs less per board-foot-year because you use less 4-Square than other lumber, for these reasons:

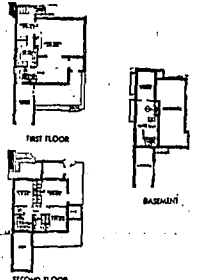
First: Accurately squared ends do away with most of the waste caused by hand-squaring.

Second: Packaged ends and protected faces eliminate splits and other damage and depreciation that occur in handling lumber.

Third: Full lengths enable your contractor to estimate quantities more accurately, eliminating another source of waste.

Fourth: 4-Square is properly seasoned. This is an important feature, because green or poorly seasoned lumber causes excessive warping and shrinkage that result in costly repair-bills. 4-Square's long life lowers the cost per board-foot-year.

Fifth: The use of 4-Square results in better construction. Workmen instinctively do better work with superior materials. Carpenters recognize the extra quality of 4-Square and its exclusive time-saving features.



Take Advantage of the

## Boise Payette Planning Service

A corps of trained and experienced home designers and draftsmen is at your disposal in planning your home. Let them combine your ideas with theirs for a beautiful, practical, comfortable MODERN home. There is no charge for this service!

## Financial Department Of Boise Payette At Your Service

Let us tell you how you can build your own home and pay for it like rent. If you have a lot and some cash, you can, under the F.I.A. plan, borrow the money to build at very low interest rates. There is no good reason for delaying longer the construction of your own home!



Start Your Building Plans With a Visit to

## Boise Payette Lumber Co.

"THERE'S A YARD NEAR YOU"