



REBEL UNIONS FACE LOSS OF CHARTERS

President of Labor Federation Predicts Collapse of Lewis Revolt

TAMPA, Fla., Nov. 13 (AP)—The local district department of the American Federation of Labor predicted today that the Lewis revolt unions, simultaneously President William Green predicted the Lewis revolt would collapse.

The department convention instructed John P. Frey, its president, to introduce in the A. F. of L. convention next week a resolution calling for revocation of the rebels' charters.

Green, his voice frequently breaking with emotion as he talked to the 1,500 delegates, said he would lead the fight against the rebels' charters. He said he would lead the fight against the rebels' charters.

WEATHER

FORECAST FOR TODAY AND TOMORROW—Idaho: Fair Saturday and Sunday; little change in temperature.

WEATHER CLEAR IN FAR WESTERN AREA

Barometric pressure continues high over the interior with the most remaining stationary over Yellowstone national park.

Green Speaks—Green, his voice frequently breaking with emotion as he talked to the 1,500 delegates, said he would lead the fight against the rebels' charters.

Little Romance In Spanish War—But Soldiers Find Time to Sing



Modern warfare, even in colored Spain, has no joy trappings. In territory conquered by the fascists there are no parades, no martial bands, few long columns of marching men. But the fascists and the Moors do like to sing—often their children.

Modern warfare, even in colored Spain, has no joy trappings. In territory conquered by the fascists there are no parades, no martial bands, few long columns of marching men. But the fascists and the Moors do like to sing—often their children.

SECRETARY PERKINS BALKS WAGE PLAN

Opinion Given in Answer to Request of Employee Representative

WASHINGTON, Nov. 13 (AP)—Secretary Perkins said tonight that he would not authorize a wage plan for the Carnegie-Hill office building.

The steel company had offered the two propositions in a single agreement. The secretary gave his opinion in answer to the request of two employee representatives who said they would accept a proposed 10 per cent wage increase offered by the company, but did not wish to sign an accompanying agreement which would cause wages to fluctuate upward and downward with the labor department.

FRANCE'S LAWMAKERS STAGE WILD BATTLE

When the deputies reconvened, they had a vote of confidence, passed by a Socialist deputy, by 274 to 201.

When the deputies reconvened, they had a vote of confidence, passed by a Socialist deputy, by 274 to 201. That vote came after the chamber had conducted the attack on Blanglo—charged by rightists with being a wage deserter—by a count of 477 to 107.

The clash in the chamber broke out after a fiery debate on the right charges, against Blanglo, presented by Deputy Henri Boucard. Blanglo, a Socialist, accused the speaker's stand, Jean Louis Truiter-Vignannour, a rightist, about "Blum means wages" and "Blum means unemployment."

JEROME PASTOR WILL GIVE LECTURE SERIES

Baptist churches throughout the state of Idaho are taking part in the nation-wide preaching mission by means of a general exchange of pastors.

Baptist churches throughout the state of Idaho are taking part in the nation-wide preaching mission by means of a general exchange of pastors. The exchange will be an eight-day period, on beginning Sunday night and the other the Sunday night following Thanksgiving day.

DEAL'S RESOLUTION HITS TRADE PACTS

Deal of the "most favored nation" clause of the tariff law. Mr. Deal said the "most favored nation" clause, by which concessions made to one country are automatically made to all other countries, is "a complete surrender to the enemy."

PEACE PLAINS FAIL AGAIN IN SHIP DISPUTE

and the citizens are paying the bill, said J. M. West, association secretary.

Green on White House—Both sides have been watching for possible White House action on the immediate action.

The 11th day of the strike in New York found both sides claiming victory. The American Association of Shipbuilders said the strike "never has failed so far."

BREVITIES

Returns to Spokane—H. D. Leigh of Spokane has returned to that city after a business tour. Parents of Daughter—Mr. and Mrs. W. J. Davis of Pullman are the parents of a daughter born yesterday at the hospital.

Degenerate Slashes Young Girl's Throat

CHICAGO, Nov. 13 (AP)—A degenerate dragged Antoinette Thrift, 11-year-old, to a school yard tonight, attempted to attack her and then slashed her fatally across the throat.

Woman Denies Guilt in Husband Slaying

NEBRASKA CITY, Neb., Nov. 13 (AP)—Mary Taylor, 23, pleaded innocent today to a charge of first-degree murder in connection with the death of her husband, Otha Taylor, 32, garage mechanic.

FORMER RESIDENT DIES IN AUTOMOBILE WRECK

Herman A. Martin, former resident of the Twin Falls area, died in a Nevada automobile accident Wednesday, according to word received here. He was one of the earliest engineers here and later formed a partnership with Charles Burton to conduct a coal business.

WANTED FOR

Violence at Houston—Philadelphia longshoremen discuss a renewal of their strike as a week's leave they have taken to an end with the refusal of shipowners to accept their demands.

WANTED FOR

Violence at Houston—Philadelphia longshoremen discuss a renewal of their strike as a week's leave they have taken to an end with the refusal of shipowners to accept their demands.

Brandeis Observes Eightieth Birthday

WASHINGTON, Nov. 13 (AP)—Associate Justice Louis Brandeis, 80, observed his 80th birthday today by listening to arguments before the supreme court—just as he has hundreds of other days during 70 more than 20 years on the bench.

ANNOUNCEMENTS

PRINROSE REBEKAH—Proceeding the regular meeting of the Prinrose Rebekah lodge Tuesday at eight o'clock there will be a dinner served at the Christian church, at 4:30 for all lodge members.

ROSS FIGHTS STATE'S LEVY ON PROPERTY

CHILlicothe, surrounded the farm Ross purchased, a year ago, under the name of Ross.

Lake Tahoe Resort Destroyed By Fire

PLACERVILLE, Calif., Nov. 13 (AP)—Plumes of smoke from Richwood, one of the picture Lake Tahoe resorts, and destroyed the postoffice, store, a summer cottage, a hotel and hotel annex today.

WANTED FOR

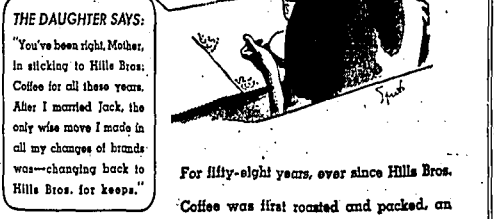
Violence at Houston—Philadelphia longshoremen discuss a renewal of their strike as a week's leave they have taken to an end with the refusal of shipowners to accept their demands.

WANTED FOR

Violence at Houston—Philadelphia longshoremen discuss a renewal of their strike as a week's leave they have taken to an end with the refusal of shipowners to accept their demands.

AND MOTHER THINKS

It's not the first year of even the fifth year of using it that makes you really appreciate Hills Bros. Coffee... but you'll use it through the years you come to know how it's really good to the end.



For fifty-eight years, ever since Hills Bros. Coffee was first roasted and packed, an exacting, unvarying standard of quality has been maintained. Times may change... but today, tomorrow, years from now, you can be certain always of the constant delight and enjoyment offered by Hills Bros. Coffee.



GOOD COFFEE DESERVES CARE IN BREWING. The Correct Kind of Hills Bros. Coffee is a standard set by a knowledge of coffee acquired through more than half a century of roasting and packing coffee. The Correct Kind is as fine as coffee should be ground. Finer grinding sacrifices flavor and aroma, as well as keeping qualities after the can is opened.

VOGEL'S PHONES 311-312 143 Shoshone St. No. 5 FREE DELIVERIES TODAY. Hamburg, lb. 10c - Pork Sausage, lb. 15c. BEEF FRANKFORS 2 LBS. 25c. 4-PYL BROOMS 31c. DRESSED NO. 1 TURKEYS 25c/LB. POT ROASTS 8c/LB. VEAL STEAK 12c/LB. LOIN PORK CHOPS OR RIBS 24c/LB. LEG OR LOIN VEAL ROAST 15c/LB. LOIN OR RIB VEAL CHOPS 15c. BEEF FRANKFORS 2 LBS. 29c. SOCKETS SALMON 21c. GREEN LIMA BEANS 10c CAN. PIERCES CATSUP QT. CAN 15c. 4 LBS. SHORTENING 45c. FIFTH PAN-CAKE FLOUR 5-LB. BAG 32c. BRIMFUL CORN FLAKES 9c FRG. TUNA FISH HALVES 14c. SHAYERS GRASS BUTT 3 CANS 19c. 4 LBS. PURE LARD 60c. GRAFFERTY DOZEN 29c. YAMS 4 LBS. 20c. BACON 27c/LB. HAMS 27c/LB. ROLLED ROASTS 18c/LB. HEARTS-FOUND 8c. CUBE STEAKS-FOUND 25c. BIRLON STEAK-FOUND 17c. TONGUES-FOUND 8c. LINK SAUSAGE-FOUND 22c. SWISS STEAK-17c. BEEF TATER-FOUND 10c. ROUND VEAL STEAK-LB. 22c. SHORT CUTS-FOUND 22c. PORK LIVER-FOUND 8c. BRAINS-FOUND 10c. LAMB CHOPS-FOUND 25c. CALL VOGEL'S-311 OR 312 TODAY FOR ANY EMERGENCY ORDER. WE GIVE YOU A 6-MINUTE DELIVERY ON SPECIAL ORDERS EVERY DAY. BETTER FOODS FOR LESS.

# FOOD NEWS



## 'N' Everything Nice

"Sugar an' spice and every-thing nice!"  
Only at this time of year it refers to fruit cakes and plum puddings instead of little girls. And it does take just about "everything nice" to make your cake delicious. Citron, candied fruits, and all the other "goodies" are being shown at local markets and make one long to get out the largest mixing bowl, and begin putting them together.

### Fruit Cake Aids

Here are a few suggestions on making and keeping all types of fruit cakes:  
For ordinary keeping, wrap the cake in waxed paper and keep in a tin box. If you want to preserve from the air for a long period of time, burying the cake in powdered or brown sugar will work very effectively.

Since fruit cakes need no icing some persons prefer to glaze them by spreading over the top, just before baking, a mixture of 1 part molasses to 4 of a white cake or for a white cake glaze of 1 part egg white, slightly beaten to 3 parts water.

Fruit cakes are usually baked in bread pans in order that they may be sliced for serving.  
To cook fruit cakes, one of the most popular methods is to steam first (when they are Plum Puddings and can be used as such) then allow to dry out to good cake texture in a slow oven. If they are baked, use a very moderate oven and until the last half hour of baking set the pan in another layer. If baked without the pan of hot water the oven must be very slow.

**FRUIT CAKE**  
1 1/2 cup simple sauce.  
1 cup sugar.  
3 tablespoons melted butter.  
1/2 teaspoon each of allspice, cloves, nutmeg and ginger.  
1 teaspoon cinnamon.  
2 eggs.  
2 cups seedless raisins.  
1 cup nut meat.  
1 cup citron.  
1/2 cup maraschino cherries.  
1/2 cup orange peel and pineapple.  
1/2 cup flour.  
1 teaspoon soda.  
Cream sugar and butter, add beaten eggs and whip until smooth. Mix dry ingredients together excepting soda and combine with first mixture. Add fruits. Combine apple sauce and soda and add to mixture just before baking. This fruit cake bakes faster than the ordinary, only requiring about one and one-half hours in moderate oven if baked in one loaf.

### CONDITIONS FAVOR IDAHO'S LIVESTOCK

CHOICE, Nov. 13 (AP)—Idaho livestock is doing well, federal statistics reported today on ranges that are in good condition.  
"Unless conditions recalculate unusually heavy feeding during the winter there should be a surplus of hay in practically all parts of the state this year," Richard C. Ross, federal crop statistician, said.  
A shortage of precipitation and freezing temperatures injured growth and quality of green pastures.

### CHRISTMAS SPIRIT BUILD UP POSTERED

BUFFALO, N. Y., Nov. 13 (AP)—Raymond P. Weil, a Christmas tree importer, said today that trees were being sold with preliminary titles "to get the public's Christmas spirit up early."  
He said trees already moving over many railroads were intended for store trimming, not for homes.  
"Business is good and merchants are starting their trimming earlier this year than ever before," he added.  
"They want to get the public's Christmas spirit up early."



**Idaho Maid-Bread**  
... And You'll Always Know You're Getting THE BEST  
FOR SALE IN TWIN FALLS AT:  
217-WAY MARKET DRIVE-IN MARKET  
CONSUMERS MARKET CITY PARK GROCERY  
O. P. WILGOS 411 AVENUE GROCERY  
SAFETY STORES KENT'S CITY GROCERY—First  
Also on Sale at  
Behl, Bliss, Hagerman, Holtzler and Castleford

## Here's a Fruit Cake For the Holidays That Has Everything

If you have a family that thinks fruit cake should be rich fruit cake, with all the trimmings, here is one that is rich and full of good things, but still digestible. It takes a good deal of mixing, baking and ripening, but is delicious when served with holiday dinners. It is dark and requires no frosting, but some persons prefer it glazed.

- BLACK FRUIT CAKE**  
(To Make Six Loaves)  
2 cups shortening.  
2-3 cups brown sugar.  
12 eggs beaten separate.  
1 cup molasses.  
4 cups flour.  
1/2 teaspoon soda.  
1/2 teaspoon cinnamon.  
4 teaspoons allspice.  
1/2 teaspoon nutmeg.  
1 lb. bleached almonds.  
1 pint preserved strawberries.  
2 lbs. seeded raisins.  
1 lb. Sultanina raisins.  
1/2 lb. citron, thinly sliced and cut in pieces.  
1 lb. currants.  
1/2 preserved lemon rind, minced.  
1/2 preserved orange rind, minced.  
1 cup elder or fruit juice.  
4 oz. melted chocolate.  
1 lb. candied cherries.  
Cream the shortening in a mixing

Magi to the Christ and ingredients which were an abomination to the Jews were used. It was often baked in pies the shape of a cradle and interesting story of pastry laid on top to represent the manger.

The latter was porridge mixed with milk, nuts and spices and had been popular for a good many years. It was an old dish dating back to early Christian times. The spices were used to represent the gifts of the

## LIGHT DESSERTS APPEAL TO SOME

At the conclusion of a hearty meal, a heavy dessert sometimes is not appreciated so much as the lighter kind.  
These light desserts can be served every day as attractive and "appealing" as a most impressive mince pie or plum pudding. Such a dessert is patacho or almond rennet-curd, which looks like a pudding, tastes like a curd, and is chiefly milk, cream flavored, combined with crunchy chopped nuts, and conglutinated with rennet powder into

remnet powder quickly until dissolved. Place immediately into 8 square plates and let stand undisturbed at room temperature until firm, about 10 minutes. Chill in refrigerator with a garnish of whipped cream and maple syrup.

A good substantial home dinner to accompany the rennet-curd is: vegetable soup, roast, potatoes and gravy, green, broiled potatoes, buttered green beans, and pineapple and raw cabbage salad with French dressing.

To present the most colorful appearance, the dessert should be made with patacho, which sticks its surface with green; but almonds are equally delicious in flavor, and are nicely tanned by quick toasting under the broiler.

### HEFLIN'S SISTER DIES

GRAND ISLAND, Neb., Nov. 13 (AP)—Dr. Edna Pella, a sister of former Senator Tom Hefflin of Idaho, died of pneumonia here today. She was from Grand Island's only woman physician.



Jimmie Hefflin says: "Our own ambition is to make The finest loaf that man can make."

—Schweickhardt's Bread  
218 MAIN ST. PHONE 491 W. IDAHO  
**EAT MORE SCHWEICKHARDT'S**

## Idaho Dept. Store's Saturday Savings on Foods

- IDAHOME Hard Wheat FLOUR** 48 Lb. Bag **\$1.39**
- CAMPBELL'S TOMATO SOUP**—10 1/2 oz. cans. 3 for **23c**
- SINCE-MEAT**—"Oro" Brand. 2 lb. jar **27c**
- PIKES PEAK CAKE FLOUR**—Large package **22c**
- OYSTERS**—"Crystal Bay" 3 1/2 oz. can. each **10c**
- ONE KELLOGG'S 40% Bran Flakes, One Kellogg's Whole Grain Shreds, One Nickey Mouse Bowl** **20c**

### PIKES PEAK PANCAKE FLOUR

- Large package **19c**
- PEAS**—A Large Sweet Pea, No. 2 Can 3 for **25c**
- PINEAPPLE JUICE**—DeMonte, 12 oz. can 3 for **25c**
- CATSUP**—"Favorite" Brand. 14 oz. bottle each **10c**

### KRAFF'S 8-oz. Package CHEESE

- American, Brick, Velveta and Pimento each **15c**
- SUGAR**—"White Satin" Fine Granulated 10 lb. bag **55c**
- TOMATOES**—Utah Solid Pack, No. 2 1/2 can **10c**
- COMB HONEY**—Very Fancy Quality Section 2 for **35c**
- MARSHMALLOWS**—1 lb. Cellophane package **12c**

### COFFEE—Chase and Sanborn's "Dated"

- 1 lb. Package **22c**
- CELERY**—Crisp Utah Variety per bunch **5c**
- OVALTINE**—The Food Beverage, large can **59c**
- WASHO Granulated Soap**, quality guaranteed, large package **25c**
- TOILET PAPER**—"Pajin" 4 rolls for **15c**

### HARMONY White Laundry SOAP

Made by the makers of Par Granulated Soap 10 bars **25c**

We are using two delivery trucks to handle the large volume of delivery orders. Please phone your order early thus insuring an early delivery.

Main Store phone 188, Grocery phones No. 0 and No. 1  
**Idaho Dept. Store**  
"If It Isn't Right, Bring It Back"

**IF YOU WANT QUALITY MEATS AT LOW PRICES Shop at**

**The INDEPENDENT MEAT CO.**  
Phones 162 - 163

**For The BEST In QUALITY MEATS**

Shop at our meat counters for all fresh cuts of Steer and Heifer meat—the best money can buy. A special treat for your Sunday Dinner—Surprise the family with a Turkey. Also Corned Hens and Fryers, Grain Fed Rabbits. We also feature Fresh Pina and Oysters at all times.

Try Some of Our Special Chill — "That Good Chill" — "Falls Brand"

Four Free Deliveries Daily — Phone 162 - 163  
"TODAY IT'S THIRTY TO BUY QUALITY"

# SAFEGWAY STORES

**It's NUT Week**  
IN ALL OUR STORES!

**A BIG FARMER-CONSUMER SALE!**

A fine crop of golden, thin-shelled nuts has been harvested for your table! They're bigger and sweeter than ever. All varieties are available... Walnuts, Almonds, Brazils, Pecans... in abundance. The prices are fair to all. Take home a supply.

## Oct. 13th To Oct. 21st, Inclusive

<b>Walnuts</b> California No. 1 Grade POUND <b>19c</b>	<b>Brazils</b> Large Size Fine Quality 2 POUNDS <b>35c</b>	<b>Almonds</b> 1 1/2 Soft Shell POUND <b>33c</b>	<b>Peanuts</b> Peanut Virginias Fresh Roasted 2 POUNDS <b>25c</b>
--	---	--	--

## Fine Assortment New CANDIES

<b>Chocolates</b> Old Fashion Drops 2 1/2 LBS. <b>25c</b>	<b>Gum Drops</b> Monster Size Tender Candy 2 POUNDS <b>23c</b>	<b>Satin Mix</b> A Real Quality Hard Mix 2 1/2 LBS. <b>25c</b>	<b>Bon-Bons</b> A Delicious Candy 2 POUNDS <b>29c</b>
---	---	--	---

<b>FLOUR</b> Harvest Blossom 48 LB. BAG <b>\$1.35</b> Kitchen Craft Our Very Best All Purpose Flour 48 LB. BAG <b>\$1.55</b>	<b>COFFEE</b> Air Way Brand POUND <b>16c</b> Dependable POUND CAN. <b>24c</b> Nob Hill POUND <b>20c</b>	<b>SYRUPS</b> Sleepy Hollow, Cane and Maple 5 L.B. CAN <b>61c</b> <b>CHEESE</b> Idaho Fine Quality POUND <b>20c</b> LOAF <b>98c</b>
---	---	---

TWIN FALLS DAILY NEWS

Daily Edition except on special days... Published every day except on special days...

SUBSCRIPTION RATES... MEMBER ASSOCIATED PRESS... NATIONAL REPRESENTATIVES

penalty, current, fought against the day when the nickel thriller does his final face-out.

AN EINSTEIN FOR HOUSING

Many of our best brains may be wanting their power directed into the intellectual interest instead of things vitally needed by mankind...

"Now we are spending millions to build two hundred-inch telescopes to scan the universe and determine whether it is getting measurably smaller or incalculably greater...

A KANSAS PROPHECY

What is going to happen in this country, and to this country, during President Roosevelt's second term?

WRONG PLACE TO LEAP

"Little Fellow" leaps into market; stocks high. The market is in a state of confusion...

NO CHECK ON CHEISERS

On the theory that the way to cut down relief costs is simply to cut down the amount of money available...

NICKEL NOVEL BOOM

There is a surprising revival of interest in the dime novel—now a nickel. G. P. Karcher, publisher of such literature...

NATIONAL WHIRLIGIG (NEWS BEHIND THE NEWS)

WASHINGTON PREFERENCE—President Roosevelt has carefully concealed his plans for submitting a constitutional amendment...

SHOVERS

Two powerful groups may force a clash between the White House and the Supreme Court...

A HERITED BUNKUM

Harry W. Cole, national commander of the I. O. O. F., says in a frank and admirable statement...

ATTACK

One half-dozen functionary groups head may be lopped off by the executioner...

SOULE OF THE GYNTER

Ocellia, daughter of an infantry company, sets out to comprehend the orientation effort...

BREAKFAST FOOD

HER NEWLY ACQUIRED GEAR JUST BEEN introduced to a notable extent...

New York Day by Day

By O. O. McINTYRE... NEW YORK, Nov. 14—Midnight is rarely so bewitching as in the wake of a downpour with wet streets...

MOUNTAIN VIEW

Arming Aircraft—George Arrington suffered a serious injury to his head Sunday while on a hunting excursion...

Armistice Tribute Paid To Nation's Unknown Soldier

Members of the United States American Legion, with their families, gathered for the Armistice observance...

A Dog's Life

HE WAS CHASING RABBITS and HIS FOLKS DIDN'T WAIT FOR HIM. THEY WERE IN A RUSH TO GET SOUTH FOR THE WINTER...

To Highest Command

ADMIRAL WILLIAM D. LEAHY (above), commander of the battleship USS Maryland...

AT BURLEY HOSPITAL

BURLEY, Nov. 13—Mrs. Florence Rasmussen was admitted to the Cottage hospital on Thursday...



Our Children

WHEN CHILDREN REFUSE TO EAT "I cannot get my four-year-old boy to eat his meals. He refuses everything I offer him..."

AT BURLEY HOSPITAL

BURLEY, Nov. 13—Mrs. Florence Rasmussen was admitted to the Cottage hospital on Thursday...

AT BURLEY HOSPITAL

BURLEY, Nov. 13—Mrs. Florence Rasmussen was admitted to the Cottage hospital on Thursday...

AT BURLEY HOSPITAL

BURLEY, Nov. 13—Mrs. Florence Rasmussen was admitted to the Cottage hospital on Thursday...

AT BURLEY HOSPITAL

BURLEY, Nov. 13—Mrs. Florence Rasmussen was admitted to the Cottage hospital on Thursday...

AT BURLEY HOSPITAL

BURLEY, Nov. 13—Mrs. Florence Rasmussen was admitted to the Cottage hospital on Thursday...

AT BURLEY HOSPITAL

BURLEY, Nov. 13—Mrs. Florence Rasmussen was admitted to the Cottage hospital on Thursday...

AT BURLEY HOSPITAL

BURLEY, Nov. 13—Mrs. Florence Rasmussen was admitted to the Cottage hospital on Thursday...

AT BURLEY HOSPITAL

BURLEY, Nov. 13—Mrs. Florence Rasmussen was admitted to the Cottage hospital on Thursday...

Copyright 1926 by The Bell Syndicate, Inc.





### GOVERNMENT EYES FOREIGN HOLDINGS

#### Roosevelt Orders Study of Methods to Control Stock Buying

WASHINGTON, Nov. 13 (AP)—With foreign investors holding huge quantities of American securities, President Roosevelt today termed such accumulations a dangerous factor and ordered a study of methods for avoiding any unsettling consequences.

The federal reserve board and the treasury were requested to study by legislation, if necessary—methods of controlling foreign purchases of domestic stocks and bonds and of meeting, in orderly fashion, any situation arising from the sudden sale of foreign owned shares.

Officials, including Chairman James M. Landis of the securities commission, made great haste in recent activity of the stock market, carrying many issues to post-decision heights, was an important influence motivating the move.

**Danger Recognized**

Mr. Roosevelt, at a press conference, said that his first concern was to keep the currencies of the principal nations relatively stable, in pursuance of the current "gentlemen's agreement" between France, Great Britain and the United States.

Foreign investors, he said, furnished a most important power in the purchasing of stocks, and if such purchases were carried beyond a certain point a dangerous situation resulted.

In the recent past, he continued, private groups and syndicates, by simultaneous attacks upon the franc, the guilder, or the pound have upset not only the value of the currency under attack but also the exchange rates of other currencies.

While this has provided a disturbing factor, it seemed to have been cared for by the "gentlemen's agreement." Now, he said, the problem was to see what could be done about a top heavy situation which would cause the same effect as an attack upon a currency.

The accumulation of large security holdings in one nation by another, he said, in summary, is a dangerous factor not only to the currency of that nation but to everybody else's currency.

### Warming Up Pickets



WITH 24-hour vigils maintained on the San Francisco waterfront during the maritime strike, pickets found the only excitement occurred when the early morning "coffee wagon" arrived.

### Pickets At Play



WITH the Los Angeles waterfront quiet although shipping is tied up by the maritime strike, pickets of the striking unions devote their time to card playing.

### SHALLEST BABY DIES

OAKLAND, Calif., Nov. 13 (AP)—Donald Ray Adams, raised the smallest official as the nation's smallest baby, died today. The child, weighing only 20 ounces and measuring seven inches in length, was born Armistice day.

### STATE FOREST OFFICE BRANCH GOES TO MC CALL

BOISE, Nov. 13 (AP)—The Idaho state land board voted today temporarily to move the south Idaho quarters of the state forest office from Boise to McCall.

The action was taken, A. J. Peary of Moscow, state forester, explained, to make room in the statehouse for legislative offices and to place the assistant state forester, Charles Zornes, more closely in contact with the state CCC camps in the McCall district.

### SOUTH DAKOTA DIGGER DISCOVERS PAY DIRT

STURDIS, S. D., Nov. 13 (AP)—Pay dirt worth about \$5 per hand full has given modern Slingua a touch of old time gold rush fever.

Sergeant John Bayless, while digging a cess pool at his home, found about 25 inches and small nuggets of gold. Some were as large as a grain of wheat.

It. T. Snyder, jeweler, appraised samples and reported as probably an unusually rich location and estimated that the handfull brought in consideration about \$5 in metal that 20 years ago had this same section of the black hills in an upsurge.

It is believed that Bayless is digging through an abandoned bed of Deadman creek and that considerable gold may be found.

### Train Derailed By Landslide



THE locomotive and several cars of a New York Central freight train were derailed by a landslide near Poughkeepsie, New York. Two trainmen were injured, and traffic over the line was blocked for several hours. This air view shows how several cars were toppled into Hudson river—(AP Photo).

### FILER

Bolansan Visit—Mr. and Mrs. W. D. Gillis of Boise visited here this week at the home of Mr. and Mrs. R. K. Dillingham.

At Hospital—W. E. DeKoltis is a patient at Twin Falls county hospital suffering from typhoid fever.

Returns Home—R. K. Dillingham returned recently from a business trip to Salt Lake City.

On Vacation Trip—Harold Brown and Howard Tegen left Monday on a vacation trip to Phoenix, Arizona, and points in California.

Visit Parents—Mr. and Mrs. J. S. Boles of Victor visited this week at the home of Mr. Boles' parents, Mr. and Mrs. W. W. Boles.

Returns to Hospital—Johnny Williamson, who was recently injured in an automobile accident, returned to Twin Falls county hospital this week for further medical treatment.

### UNION MOTOR COMPANY TO EXHIBIT NEW FORD

New Ford V-8 cars for 1937 which the Union Motor company, Main avenue north, is today to place on display for the first showing in Twin Falls, are to be brought from the freight yards here early this morning, according to assurances given yesterday to G. O. Padgett, Union Motor company proprietor.

Outside of Mr. and Mrs. Padgett, who last week attended a meeting of 800 Ford dealers at Detroit, there are few if any persons in Twin Falls who have yet seen the new cars.

Without definite information Mr. Padgett said last evening it was likely that the new cars to be shown here today are Fordor and Tudor sedan.

More than 5000 persons are expected to view the new cars at the Union Motor company showrooms today.

### MISSIONARY GROUPS SCHEDULE MEETING

Plans are being made for a Union Missionary meeting of all churches in the Ministerial association to be held at the Presbyterian Church December 4.

A covered dish luncheon will be served at noon and the meeting will

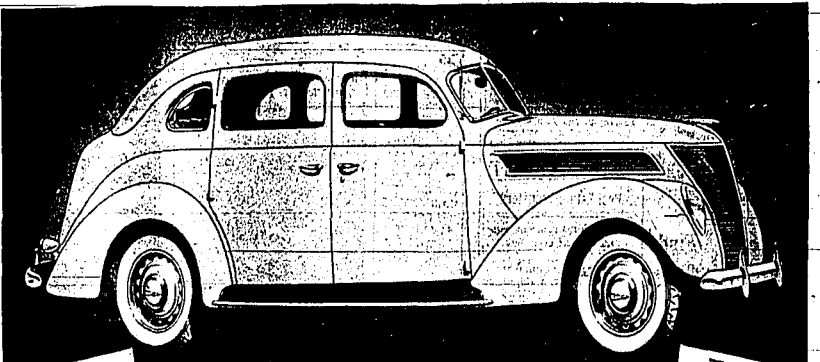
### CHRISTMAS! PREPARE NOW

- New Styles
- New Backgrounds
- New Prices

Photographs For XMAS at FLOWEN FOTO SHOP 154 1/2 National Bank Bldg.

# Announcing THE FORD V-8 FOR 1937

## The Quality Car in the Low-price Field



**V-8**  
85 HORSEPOWER  
Maximum Performance with Good Economy  
Horse 104.1611, 104.1612, 104.1613, 104.1614  
Displacement 233 cubic inch.

**Two Engine Sizes - One Wheelbase AND A NEW LOW PRICE**

**V-8**  
60 HORSEPOWER  
Good Performance with Maximum Economy  
Horse 104.1615, 104.1616, 104.1617, 104.1618  
Displacement 218 cubic inch.

**THE** New Ford V-8 for 1937 is the most beautiful Ford car ever offered. It is built in only one size—with one standard of roomy comfort and modern appearance. But you may have either the improved 85-horsepower V-8 engine for maximum performance—or the new 60-horsepower V-8 engine for maximum economy. The smaller engine makes possible a lighter car—with lower operating costs.

smoothness and quietness—even at speeds up to 70 miles an hour—with gasoline mileage so high that it creates an entirely new standard of economy in modern motor car operation.

We invite you to see this new Ford car, and arrange to drive one equipped with the engine that fits your own needs.

### NEW FEATURES OF THE 1937 FORD V-8 CAR

**APPEARANCE**—A newly designed car—wide and roomy, with a low center of gravity. Distinctive front end, with headlamps recessed in fender aprons. Modern 14-spoke hood hinged at the back. Larger luggage space. Spare tire enclosed with body. Completely new interiors. The slanting V-type windshield springs in closed car.

**ENGINES**—A choice of the improved V-8 85-horsepower engine or the new V-8 60-horsepower engine. More efficient cooling. Quicker performance. New economy.

**COMFORT AND QUIET**—By every modern standard of design, the 1937 Ford V-8 is a big, roomy car. Extra space is in the body, where you want it—not taken up by the engine under the hood. Comfort of the Ford Center-Pole Hilda is further increased by smoother action of the long-tapering springs, with new pressure lubrication. New methods of mounting body and engine make this a quieter car.

**SAFETY**

**BRAKES**—New Easy-Action Safety Brakes, of the cable and conduit control type. Positive and direct—The safety of steel from pedal to wheel! Self-energizing—car momentum is used to help the brakes. About one-third less pedal pressure is required to stop the car.

**BODY**—All-steel body construction. Not an ounce of wood used for structural strength. Frame structure is all steel—strengthened with steel panels, top, sides and floor. All are welded into a single steel unit of great protective strength. Safety Glass all around at no extra charge.

**BASE \$ 480 AND UP** At Dealer's Price

Taxes, Delivery and Handling, Bumpers, Spare Tire and Accessories Additional

Body types available with 60 or 85 horsepower engines (without de luxe equipment): Tudor Sedan, Tudor Touring Sedan, Fordor Sedan, Fordor Touring Sedan, Five-window Coupe, Roadster, Phaeton, Club Cabriolet, Club Convertible Cabriolet, Club Coupe, Convertible Sedan.

**AUTHORIZED FORD FINANCE PLANS \$25 DOWN** In month, after paid down payment, buy any used 1937 Ford V-8 Car—free new Ford dealer—careless in the United States. Ask your Ford dealer about the very payment plans of the National Credit Co.

### Improved 85-horsepower V-8 engine—Drives it and stretch the speedometer!

When you drive the 1937 Ford powered with the 85-horsepower V-8 engine, you are master of a modern power plant that gives you everything you can possibly demand in speed and acceleration. It is a better engine than ever—with a better cooling system and new smoothness of operation. Yet improved exhaustation enables it to deliver its thrilling performance with unusually good gasoline mileage.

### New 60-horsepower engine—Drives it and stretch the fuel gauge!

The new 60-horsepower V-type 8-cylinder engine is almost an exact replica of the "85"—except for size, weight and power. It delivers V-8

### SINUS INFECTION

PROFELY Responds to His New Treatment of Electrical Technique, Quiet, Effective, Lasting. Results in Forty-eight Hours. A Proven Scientific Method.

Write For Folder on Sinus Infection

**DR. H. W. HILL**

113 Main West Twin Falls, Idaho  
Phone 124—(Over Twin Falls Paid & Glass Co.)



**It's the ONE**

cough drop medicated with throat-soothing ingredients of Vicks VapoRub.

**VICKS COUGH DROP**

**MEN WANTED FOR AIR CONDITIONING INDUSTRY**

Due to the demand for trained men in this field, 40 Leading Manufacturers are co-operating with the Refrigeration and Air Conditioning Institute in preparing men for work in this new and rapidly growing industry.

These manufacturers increase this training program and direct supervision by their own appointed Board of Governors.

Applicants must be ambitious, have good references and be willing to prepare in their spare time in learning this new and unlimited field.

Interests arranged by appointment only. Write or phone Mr. Holbrook at the Park Hotel before noon to reserve your place in this new and exciting field.

**NEW CLASSES - ORGANIZED ON MONDAY, NOVEMBER 16 IN ALL COMMERCIAL SUBJECTS - AT - LINK'S School of Business**

TWIN FALLS, IDAHO (225 Main Ave. West)

A SPECIAL CASH DISCOUNT To All Who Enroll During This Coming Week For Our COMPLETE BUSINESS COURSE SCHOLARSHIP (Special Offer—Discontinued Nov. 21—1936)

DAY AND EVENING SESSIONS - PHONE 866

### 1937 FORD V-8 - ON DISPLAY TODAY AT FORD DEALERS' SHOWROOMS

# UNION MOTOR COMPANY

Your **FORD** Dealer

Twin Falls, Idaho

HONOR SOCIETY LISTS STUDENTS AT RUPERT

HONOR SOCIETY LISTS - Rupert high school honor roll committee of the honor roll committee of the Torch society of the school:

HIGH HONORS - Billie Bosch, Barbara Kenney, Phyllis Douglas, Bob Murphy, Edna Lacy, Clover Lacey, Mary Nichols, Mildred Paul.

TWIN FALLS PIONEER SUMMONED BY DEATH

Clarence Eugene Grandell, 52, resident of Twin Falls for many years, died Friday night at the hospital following a lingering illness.

KNOLL BOY SCOUTS TO RECEIVE AWARDS

Five members of Knoll Boy Scouts troop will receive awards at the next meeting of Twin Falls court of honor.

Railroads Find New Requirement For Locomotives

NEW YORK, Nov. 13 (AP) - The best road cars designed since 1931, railroads have found it necessary to compare approximately 1,000 new designs for locomotives, business observers noted today.

MAKE THIS MODEL AT HOME Twin Falls Daily News Pattern



FINAL TRIBUTE PAID MRS. VICTORIA RIGBY

BURLEY, Nov. 13 - Last rites were conducted Thursday afternoon for Mrs. Victoria Rigby, 78, of the Sublet L. D. S. church.

The Malta choir sang the opening number, "I Know My Father's Name." Other musical numbers were a duet by Mrs. Jessie Smith and Henry Thompson; a solo by Joseph P. Perry, solo by Henry Thompson and the choir number "Oh, My Father," by the choir.

HAGERMAN OBSERVES ARMISTICE SIGNING

HAGERMAN, Nov. 13 - Armistice day was observed in Hagerman by the American Legion with a program at the Park opera house beginning at eleven o'clock in which W. Adkinson of Boise Junior college was the principal speaker.

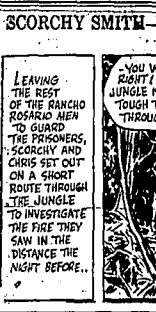
Real Estate Transfers

TUESDAY, NOVEMBER 10: Deed; R. Rendix to A. Kotesh, 31, s.w. NW 26 10 14.

UNION AIRLINES TO INCREASE SERVICE TO AIRPORT

RENO, Nev., Nov. 13 (AP) - A \$2,400,000 enlargement project of the company's airport, a hub-and-spoke through a company vice-president.

POPEYE NOT UNDER HIS OWN STEAM



JUST KIDS



SCORCHY SMITH



RETALIATION



A WOMAN ALWAYS HAS THE LAST WORD!



Would-Probe Poll



SENATOR KENNETH MCKELLAR Democrat of Tennessee is pleased to be announced he would ask for a Senate investigation of election pool which had forestalled a Republican victory.

NEIGHBORS' COUPES

TRINITY EPISCOPAL Church Rev. James B. Butler, vicar The Twenty Third Sunday after Trinity. 8 a. m. - Morning prayer and sermon.

First Methodist Church

T. W. Bowman, minister 10 a. m. - Sunday school. 11 a. m. Morning worship, Church Literature Sunday. Copies of church publications will be given out gratis.

Golden Rule Community

Ernest Finnan, Sunday school superintendent. 10 a. m. - Sunday school. 11 a. m. - Communion service. Morning meeting, "The Church as a School."

Hansen Community

Edgar L. White, minister 10:15 a. m. - Sunday school with William Lindan in charge. 11:30 a. m. - Regular morning worship with a sermon by the pastor. Special music by the chorus choir.

Church of the Nazarene

J. O. Schapp, pastor 10 a. m. - Bible school. Classes for all. 11 a. m. - Worship. Subject, "The Dried-Up Brook."

Hansen Community

Edgar L. White, minister 10:15 a. m. - Sunday school with William Lindan in charge. 11:30 a. m. - Regular morning worship with a sermon by the pastor. Special music by the chorus choir.

FUNERAL SERVICES FOR RUPERT

RUPERT, Nov. 13 - Funeral services for Floyd J. Simpson, four-year-old son of Mr. and Mrs. Bob Simpson of Rupert, who died in the L. D. S. hospital in Salt Lake City following an illness of six weeks, were conducted in the First ward L. D. S. church here Wednesday afternoon, Bishop D. C. Hyes of Rupert officiating. Interment was in Rupert cemetery.

FUNERAL SERVICES FOR RUPERT

Burial was the child's grandparents, Mrs. and Mrs. O. E. Dockstader, his parents; a young sister and brother, Luc Dene, and Arnold; and Mr. and Mrs. Oscar Parker with whom Mr. Simpson made his home for many years, all of Rupert.

T. F. B. U. She Has Had a Complete Secretarial And Business Training Course. Includes bookkeeping, shorthand, typing, and more.

GRIDIRON AGES RATE HUSKIES' NEW CEREAL TOPS FLAVOR. DON HUTSON, Alabama's great All-American, now starring with the Green Bay Packers, says: "There's no better Huskies flavor... and whole wheat sure is the ticket for our athletes!"



# Coast Line Up Against University of Montana

## Southern California's Trojans At Full Strength For Crucial Conflict With Favored Huskies

U.C.L.A. Bruins To Battle Cougars At Los Angeles

Stanford Improves

By RUSSELL NEVILL  
SAN FRANCISCO, Nov. 13 (AP)—Favored by many to determine the 1938 Pacific Coast conference championship tomorrow, the Southern California Trojans will lead the first round of the final round of the conference today.

The day's most important clash was the University of Washington against Southern California. The Bruins, who defeated Oregon State, 14-0, in the first round of the conference, will play the Trojans today at Los Angeles. The Trojans, who defeated Washington State, 14-0, in the first round, will play the Cougars today at Los Angeles.

Playing on its home field, Washington will line up a slight favorite to win. The Bruins, who were undefeated last year, will be led by Coach Tom Sorenson. The Trojans, who were also undefeated last year, will be led by Coach Elmer Layden.

The matter which the conference superiors will not be greatly surprised to see the upending that Saturday which saw Southern California lead the Trojans to a 14-0 victory over Washington State. The Trojans, who were also undefeated last year, will be led by Coach Elmer Layden.

California's upset win over Southern California yesterday is a mild favorite to defeat an Oregon team which has lost four conference games. The Trojans, who were also undefeated last year, will be led by Coach Elmer Layden.

Stanford will enjoy a lead in the conference today. The Trojans, who were also undefeated last year, will be led by Coach Elmer Layden.

UCLA's Bruins are battling for leadership. The Trojans, who were also undefeated last year, will be led by Coach Elmer Layden.

Traditional Games Boost Attendance  
Notre Dame Army Classic Leads List With Turn-Out of 80,000

CHICAGO, Nov. 13 (AP)—Paced by the outpouring of 80,000 fans for the Notre Dame Army classic at Soldier Field today, the traditional gridiron battles and big inter-collegiate struggles will give 1938 football season receipts an annual boost tomorrow.

Outstanding games and receipts are estimated as follows: Yale-Pittsboro, \$7,000; Texas-Minnesota, \$5,000; Northwestern-Michigan, \$4,000; Penn State-Pennsylvania, \$4,000; Minnesota-Texas, \$4,000; Utah-Washington State, \$4,000; Michigan-Nebraska, \$3,500; Dequeane-Carmegie Tech, \$3,500; Duke-South Carolina, \$3,000; S. California-Washington, \$3,000.

Trulman Kennedy Wins Boise Bout  
BOISE, Nov. 13 (AP)—Trulman Kennedy, 135, of Vancouver, British Columbia, scored a 10-round decision over Eddie Spina, 135, of Portland, Oregon, today in the first round of a four-round bout here.

## Two Intersectional Duels Top Program

Sports Writer's Hunch Points To Victory For Nebraska Over Pittsburgh

By ALAN GOULD  
CHICAGO, Nov. 13 (AP)—Besides furnishing the two first intersectional matches of the season, Nebraska-Pittsburgh at Lincoln and Army-Notre Dame at New York, tomorrow's college football jamboree may include whether some of the newly-distributed heavy-breaths have been interwoven with a few spots of polynoi virus.

Northwestern, the nation's current No. 1 team and Big Ten champion, "feared Michigan." White Fordham takes time out for the bowl game.

Washington State college, who was defeated once, meets the University of California at Los Angeles Bruins, losers of two games not still in the bowl game.

Playing on its home field, Washington will line up a slight favorite to win. The Bruins, who were undefeated last year, will be led by Coach Tom Sorenson.

California's upset win over Southern California yesterday is a mild favorite to defeat an Oregon team which has lost four conference games.

Stanford will enjoy a lead in the conference today. The Trojans, who were also undefeated last year, will be led by Coach Elmer Layden.

UCLA's Bruins are battling for leadership. The Trojans, who were also undefeated last year, will be led by Coach Elmer Layden.

Traditional Games Boost Attendance  
Notre Dame Army Classic Leads List With Turn-Out of 80,000

CHICAGO, Nov. 13 (AP)—Paced by the outpouring of 80,000 fans for the Notre Dame Army classic at Soldier Field today, the traditional gridiron battles and big inter-collegiate struggles will give 1938 football season receipts an annual boost tomorrow.

Outstanding games and receipts are estimated as follows: Yale-Pittsboro, \$7,000; Texas-Minnesota, \$5,000; Northwestern-Michigan, \$4,000; Penn State-Pennsylvania, \$4,000; Minnesota-Texas, \$4,000; Utah-Washington State, \$4,000; Michigan-Nebraska, \$3,500; Dequeane-Carmegie Tech, \$3,500; Duke-South Carolina, \$3,000; S. California-Washington, \$3,000.

Trulman Kennedy Wins Boise Bout  
BOISE, Nov. 13 (AP)—Trulman Kennedy, 135, of Vancouver, British Columbia, scored a 10-round decision over Eddie Spina, 135, of Portland, Oregon, today in the first round of a four-round bout here.

## Jones Calls for First Basketball Practice of Year

Four Lettermen Return to Bruin Ranks; Rosters Announced for Annual Boys' Do-Nut Tourney

Coach R. V. Jones of the Twin Falls Bruin basketball team announced first call for hoop practice for Monday night and he surveyed his prospects last evening.

Four lettermen returned to the Bruin ranks for the first game of the season for the Bruins will be played at Caldwell, December 19.

Also opening Monday night will be the annual Boys' Do-Nut Tourney, devoted into class and grade divisions.

Directing the team are H. D. Hechtner and Dale Waken and boys were being made last evening.

Returning to the Bruin ranks this year are four lettermen from last year's team.

Also opening Monday night will be the annual Boys' Do-Nut Tourney, devoted into class and grade divisions.

Directing the team are H. D. Hechtner and Dale Waken and boys were being made last evening.

Returning to the Bruin ranks this year are four lettermen from last year's team.

Also opening Monday night will be the annual Boys' Do-Nut Tourney, devoted into class and grade divisions.

Directing the team are H. D. Hechtner and Dale Waken and boys were being made last evening.

Returning to the Bruin ranks this year are four lettermen from last year's team.

Also opening Monday night will be the annual Boys' Do-Nut Tourney, devoted into class and grade divisions.

## Boxing Association's Officials Oppose Braddock-Louis Fight Unless Scheduled As Exhibition

Rapid Developments Mark Negotiations For Match

\$100,000 On Hand

By EDDIE BREITZ  
NEW YORK, Nov. 13 (AP)—A new rapid development marked today's negotiations for the fight between James J. Braddock and Louis Brouder, which is billed as the "fight of the century."

Official of the National Boxing Association, which Jerry J. Heenan, exhibitionally opposed the fight, said that the fight is being held as an exhibition.

Edward C. Foster of Providence, Rhode Island, secretary of the National Boxing Association, said that the fight is being held as an exhibition.

Also opening Monday night will be the annual Boys' Do-Nut Tourney, devoted into class and grade divisions.

Directing the team are H. D. Hechtner and Dale Waken and boys were being made last evening.

Returning to the Bruin ranks this year are four lettermen from last year's team.

Also opening Monday night will be the annual Boys' Do-Nut Tourney, devoted into class and grade divisions.

Directing the team are H. D. Hechtner and Dale Waken and boys were being made last evening.

Returning to the Bruin ranks this year are four lettermen from last year's team.

Also opening Monday night will be the annual Boys' Do-Nut Tourney, devoted into class and grade divisions.

Directing the team are H. D. Hechtner and Dale Waken and boys were being made last evening.

## Injuries Result in Changes for Missoula Clash

Vandals Delay Departure For Some of Games; Boise Held in Reserve Because of Bad Knee

MOSCOW, Idaho, Nov. 13 (AP)—Before leaving for Missoula, the Vandal football team today was told by the University of Montana that it would not be necessary to revamp the roster against the University of Montana tomorrow.

The Vandals are scheduled to arrive at Missoula tomorrow night. The game is being held at the University of Montana hotel.

Supporters of the popular Escobar gave him a rousing ovation. Several fist fights broke out in the galleries.

Also opening Monday night will be the annual Boys' Do-Nut Tourney, devoted into class and grade divisions.

Directing the team are H. D. Hechtner and Dale Waken and boys were being made last evening.

Returning to the Bruin ranks this year are four lettermen from last year's team.

Also opening Monday night will be the annual Boys' Do-Nut Tourney, devoted into class and grade divisions.

Directing the team are H. D. Hechtner and Dale Waken and boys were being made last evening.

Returning to the Bruin ranks this year are four lettermen from last year's team.

Also opening Monday night will be the annual Boys' Do-Nut Tourney, devoted into class and grade divisions.

Directing the team are H. D. Hechtner and Dale Waken and boys were being made last evening.

Also opening Monday night will be the annual Boys' Do-Nut Tourney, devoted into class and grade divisions.

## Football SCOREBOARD

Loyola (Mo. Orange) 6, Southern Methodist (Mo. Blue) 0	Eastern Illinois Teachers 7, Southern Illinois Teachers 11
Tulane College 9, Georgetown College 6	Arizona State Teachers 11, Arizona State Teachers 11
Eastern Illinois Teachers 7, Southern Illinois Teachers 11	Arizona State Teachers 11, Arizona State Teachers 11
Arizona State Teachers 11, Arizona State Teachers 11	Arizona State Teachers 11, Arizona State Teachers 11
Arizona State Teachers 11, Arizona State Teachers 11	Arizona State Teachers 11, Arizona State Teachers 11

## Hagerman Trims Wendell Eleven

Pirates Close Season With 19 to 0 Victory Over Class A Rivals

HAGERMAN, 11 (AP)—Coach Elmer Layden's Hagerman Pirates brought one of the most successful gridiron seasons in the history of Boise to a close today, by routing the Wendell eleven by a score of 19 to 0.

The invading Trojans, mentored by Dean Davidson, failed to penetrate the Pirate 20-yard marker as any line of defense.

After Dennis had speared the ball down the field on open play, Paine scored on the second play.

Summary:  
HAGERMAN (11) WENDELL (9)  
Paine 10, 12, 14, 16, 18, 20, 22, 24, 26, 28, 30, 32, 34, 36, 38, 40, 42, 44, 46, 48, 50, 52, 54, 56, 58, 60, 62, 64, 66, 68, 70, 72, 74, 76, 78, 80, 82, 84, 86, 88, 90, 92, 94, 96, 98, 100

## Bay Meadows Opens Fall Race Meeting

SAN MATEO, Calif., Nov. 13 (AP)—The 22nd day in the history of the Bay Meadows track opened today with the running-up of the Bay Meadows track open today.

Among the 1100 horses stabled or enrolled are such as Time Spent, Woodchuck, and others.

## High School Yankes Defeat Sky Rockets

Yankes of Twin Falls high school today defeated the Sky Rockets of Boise, 23 to 9, in the high school gym last evening in the second year of the meeting.

Lineups for the game follow: Yankes—Marsberg, Goe and Marsberg, forwards; Jones and Marsberg, guards; Marsberg, center; Marsberg, left guard; Marsberg, right guard; Marsberg, left tackle; Marsberg, right tackle; Marsberg, left end; Marsberg, right end; Marsberg, punter; Marsberg, kicker.

## BIG DISHES ON TODAY'S FOOTBALL MENU

CAFE DE PIGSKIN  
MENU  
ARMY vs NOTRE DAME  
MINNESOTA vs TEXAS  
PITTSBURGH vs NEBRASKA  
MARQUETTE vs MISSISSIPPI  
UTAH vs U. OF HAWAII  
NAVY vs HARVARD  
PRINCETON vs YALE  
ILLINOIS vs OHIO STATE  
IOWA vs PURDUE  
WASHINGTON vs SO. CALIFORNIA  
CALIFORNIA vs OREGON  
DUKE vs NORTH CAROLINA  
COLORADO vs UTAH STATE  
MONTANA vs LOUISIANA STATE  
STANFORD vs OREGON STATE  
SOUTH DAKOTA vs ARKANSAS  
TULANE vs GEORGIA  
GEORGIA TECH vs ALABAMA

Princeton football team ousted tonight on getting a two-year agreement with the Army. The effect even before the game was terrific.

MARKET'S RECENT LEADERS TUMBLE

Stock Losses Range From Fractions to Around Two Points

MARKETS AT A GLANCE

NEW YORK, Nov. 15 (AP)—Stocks—Heavy; specialties lead, but leaders continue to decline. Bonds—Lower; convertible issue point or so. Curb—Off; a few specialties resistant. Foreign—Exchange—steady; gold prices advanced. Cotton—Steady; bullion goods market active. Grain—Quiet; commission house buying. Coffee—Higher trade buying. OREGON: Wheat—Higher; Australian estimates bullish. Corn—Firm; influenced by wheat. Cattle—About steady. Hogs—Steady to 10c higher; top 19.90.

By FREDERICK GARDNER

NEW YORK, Nov. 15 (AP)—Further poor weather was encountered today, but stock market was buoyant. Recent leaders were shaken down to points and fractions to 1 point and a few much more. A scattering of specialties, including merchandising and amusement stocks, managed to weather the gale and most of them were barely hanging on the rail at the close.

Two Associated Press averages of 80 stocks lost 7/8 of a point at 11.2. Transfers totalled 2,822,350 shares against 2,881,710 yesterday.

A few electric and rail equipments were bought by prospects of growing orders.

Wheat dipped with metals, steel and mines, but they were no worse notwithstanding last week's freight loadings were off more than seasonably.

Among the Gainers

Dauco emerging with gains of fractions to a point or so included Warner Bros. at 19 1/2, Waltham 19 1/2, Allied Signal 21 1/2, General Electric at 25 1/2, Paragon 21 1/2, Woodworth 21 1/2, Drexel 21 1/2, New York American 21 1/2, Columbia 21 1/2, American Telephone & Telegraph 21 1/2, Douglas Aircraft 21 1/2, Chrysler 21 1/2, and others.

Among the Losers

Among losers were Chrysler at 19 1/2, General Motors 19 1/2, U. S. Steel 19 1/2, Bethlehem 19 1/2, General Electric 19 1/2, American Smelting & Refining 19 1/2, and others.

BAR SILVER

NEW YORK, Nov. 15 (AP)—Bar silver steady and unchanged at 45 1/2.

TWIN FALLS MARKETS

The Twin Falls district market yesterday was as follows:

Table listing market prices for various commodities like Wheat, Corn, Cattle, Hogs, etc. in Twin Falls.

Stock Market Averages

Table showing stock market averages for various indices like Dow Jones, S&P 500, etc.

Trend of Staple Prices

NEW YORK, Nov. 15.—The Associated Press weighted wholesale prices index of 25 commodities closed at 103.05 (new 1925 index).

GOVERNMENT BONDS

NEW YORK, Nov. 15 (AP)—Bond quotations: U.S. Gov. 11 1/2, U.S. Gov. 11 1/2, U.S. Gov. 11 1/2.

Federal Farm Mortgage

NEW YORK, Nov. 15 (AP)—Federal farm mortgage bonds: U.S. Gov. 11 1/2, U.S. Gov. 11 1/2.

Home Owners' Loan

NEW YORK, Nov. 15 (AP)—Home owners' loan bonds: U.S. Gov. 11 1/2, U.S. Gov. 11 1/2.

MONEY

NEW YORK, Nov. 15.—Call money steady, 1 per cent all day; prime commercial paper at 4 per cent.

FOREIGN EXCHANGE

NEW YORK, Nov. 15 (AP)—Trading in foreign exchange markets was quiet today in the absence of any sustained demand. Price fluctuations were small in terms of 1/16-1/32.

METALS

NEW YORK, Nov. 15 (AP)—Copper—Active; electrolytic spot and future 10.50; spot 10.42 1/2 at 10.37 1/2.

SUGAR

NEW YORK, Nov. 15 (AP)—Raw sugar was unchanged today at 37.0 for spots. No sales were reported.

SAN FRANCISCO PRODUCE

SAN FRANCISCO, Nov. 15 (AP)—U.S. and foreign produce: Apples 33 1/2; small, 20 1/2; butter and cheese unchanged.

LOS ANGELES PRODUCE

LOS ANGELES, Nov. 15 (AP)—(Produce exchange)—Receipts: Butter, 100 lbs. 21.00; eggs, 30 1/2; chickens, 200; turkeys (dressed) 20-25.

POTATO MARKETS

CHICAGO POTATO TRADES: CHICAGO PRICES: January Delivery: 2 cars \$2.80, 3 cars \$2.81, 4 cars \$2.82, 5 cars \$2.83, 6 cars \$2.84, 7 cars \$2.85, 8 cars \$2.86, 9 cars \$2.87, 10 cars \$2.88.

Time Tables

Table listing train schedules for various routes including Oregon Short Line, Wells Fargo, and others.

OTHER STAGE LINES

Table listing stage line services and routes between various cities.

FLIGHT SCHEDULES

Table listing flight schedules for airlines like Northwest, Boeing, etc.

DIXIE DUGAN HAY—HAY!



NEW YORK STOCK MARKET

Table listing stock market prices for various companies like Alcoa, American Express, etc.

CURR MARKET

Table listing current market prices for various commodities.

SPECIAL WIRE

Table listing special wire prices for various types of wire.

LIVESTOCK MARKETS

Table listing livestock market prices for various animals like cattle, hogs, etc.

PORTLAND LIVESTOCK

Table listing livestock market prices for various animals in Portland.

WINNEPEG GRAIN

Table listing grain market prices for various types of grain in Winnipeg.

CHICAGO CASH GRAIN

Table listing grain market prices for various types of grain in Chicago.

ST. JOSEPH LIVESTOCK

Table listing livestock market prices for various animals in St. Joseph.

LOS ANGELES LIVESTOCK

Table listing livestock market prices for various animals in Los Angeles.

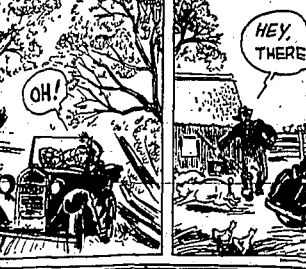
OMAHA LIVESTOCK

Table listing livestock market prices for various animals in Omaha.

LOS ANGELES POTATOES

Table listing potato market prices for various types of potatoes in Los Angeles.

WHEAT RESPONDS TO FOREIGN NEWS



medium to good yearlings steady; beef cows low, weak; culler grades... Wheat responds to foreign news...

GRAIN PRICES SCORE GAINS; AUSTRALIA'S EXPORTABLE SURPLUS SHRINKS

By JOHN P. BOUGHAY (Associated Press Staff Editor) CHICAGO, Nov. 15 (AP)—Wheat 10c 1/2 cent a bushel maximum today... Grain prices score gains...

DENVER LIVESTOCK

Table listing livestock market prices for various animals in Denver.

OGDEN LIVESTOCK

Table listing livestock market prices for various animals in Ogden.

CHICAGO, Nov. 15 (AP)—Grain Markets

Table listing grain market prices for various types of grain in Chicago.

CHICAGO LIVESTOCK

Table listing livestock market prices for various animals in Chicago.

CHICAGO, Nov. 15 (AP)—CASH

Table listing cash market prices for various commodities in Chicago.

ATTENTION BEAN GROWERS

Any quantity or lot of beans, small or large, covered by Bonded Warehouse Negotiable Receipt showing all charges paid to date and with a grade established thereon by the warehouse...

WHY NOT HAVE A COMFORTABLE HOME THIS WINTER?

Why not have a comfortable home this winter? May We Send You a Load of 'Aberdeen Coal'?

Auction Sale

NOVEMBER 18, AT 12:30 50 White Face Weaner Calves 15 White Face Feeder Steers 50 Young Feeder Cows 20 Feeder Heifers—Milk Cows Other Stock Not Listed

SIGRIST AUCTION YARDS

1/2 Mile So. of East Main

By J. P. McEvoy and J. H. STRIBEL



Food Moves

With the maritime strike halting shipments on the San Francisco waterfront, the union leaders allowed profitable food to move. The picture shows a union inspector giving a consignment the once-over.

For adult hair

This Bulletin will publish the following quotations: Domestic, secured basis: Texas—Jan 12 months (elect) 83-90; fine 8 months 87-90, fall 81-82.

FLAX

DULUTH, Nov. 15 (AP)—Flax on track 204 1/2-214 1/2; December 204 1/2-214 1/2.

PORTLAND HAY

PORTLAND, Ore., Nov. 15 (AP)—Hay quotations: 1st quality 11.00-11.25; 2nd quality 10.75-11.00.

Wool Market's Weekly Review

BOSTON, Nov. 15 (AP)—The Commercial Bulletin will publish the following quotations: Domestic, secured basis: Texas—Jan 12 months (elect) 83-90; fine 8 months 87-90, fall 81-82.

ATTENTION BEAN GROWERS

Any quantity or lot of beans, small or large, covered by Bonded Warehouse Negotiable Receipt showing all charges paid to date and with a grade established thereon by the warehouse...

WHY NOT HAVE A COMFORTABLE HOME THIS WINTER?

Why not have a comfortable home this winter? May We Send You a Load of 'Aberdeen Coal'?

Auction Sale

NOVEMBER 18, AT 12:30 50 White Face Weaner Calves 15 White Face Feeder Steers 50 Young Feeder Cows 20 Feeder Heifers—Milk Cows Other Stock Not Listed

SIGRIST AUCTION YARDS

1/2 Mile So. of East Main



**ALL-SCHOOL CAST PRESENTS COMEDY**

Final Performance Marked by Clever Characterizations; Scene Changes Featured

Performing with outstanding ability, an all-school cast last night presented the final performance of "The Town to Yesterday," by Dix and Butherford at the high school auditorium.

A laughing audience paid tribute to the mastery of comedy displayed by Asher B. Wilson and Altha Wells as they assisted Shirley Smith, the heroine, who ably carried most of the dramatic action of the play. Jennie Robinson displayed both histrionic ability and attractive voice in her dual role of modern young matron and a dark-eyed spy. Elizabeth Herbert Larson, who characterized the lover in both modern and medieval scenes did so with finesse and ease. Tragic Deming Paulson was presented ably by Dick Reynolds.

Scorned in Love  
Josephine Birch handled her roles with a finished technique as she characterized a lady scorned in love and who could not love. Neal Gibson effectively played the dual role of Will Leavach, a present day artist, and the swaggering Will '91, the Peacher of the year 1800.

Minor characters who managed their roles with finished art were Alvin Anderson, Bill Noel, Leavelle Newberry, Junior White, Ed Benoit, Janice Fay Gibson, Joyce Keiley and James Fridge.

The production featured an entire change in scene, which beginning with a modern drawing room, was transformed into a medieval castle room, a medieval castle room was again transformed into a drawing room, and a drawing room was again transformed into a drawing room. Authentic and lovely costumes to conform with time of the play were worn by the characters.

The cast was directed by Miss Florence M. Bee, high school dramatic coach. Tickets sales manager, Frank Carpenter and Junior Weirich, reported last evening that financially the play topped all former productions of high school dramatic groups.

**Willie Willis**  
By ROBERT QUILLER



"My dog didn't bite on purpose. He just slipped when I was foolish to see if he had any fangs."

**RED CROSS DRIVE GATHERS STRENGTH**

Twin Falls Campaign Chairman Reports 600 Members Enrolled

An even 600 persons had been enrolled as members of Twin Falls Red-Cross chapter at the close of the second day of an annual Red Cross roll call campaign last evening. Mrs. Burgeon McCoy, roll chairman, announced.

The campaign is to continue through today with headquarters at the Perrine hotel where volunteer subscribers are requested to bring their membership dollars to the roll room for the second day.

The roll call chairman expressed gratification over progress of the campaign thus far.

The new membership total reported last evening, she said, did not include any contributions in other towns within the chapter's area—Piler, Hollister, Rogerson, Kimberley, Hansen and Murrain.

Approximately 200 volunteer workers are engaged in the three-day roll call campaign.

**VAN ENGELEN HEADS MERCHANTS' BUREAU**

W. A. Van Engelen was elected chairman of Twin Falls Chamber of Commerce merchants' bureau succeeding E. C. Beach at the weekly luncheon meeting of the board of directors yesterday noon.

Resolutive arrangements were made to send a delegation to Nampa to attend a rate hearing November 17.

Secretary F. G. Thompson, who just returned from attending a national convention of chamber of commerce secretaries at Nampa, made a brief report of his trip and announced that date of the first monthly general membership meeting would be decided upon in the near future.

**HONORARY HIGH SCHOOL CLUB ELECTS OFFICERS**

Beta Sigma, high school honorary scholastic society, met yesterday with the new sponsor, Gladis Wallace. The following officers were elected: President, Roland Hutchings; vice president, Carl Edmunch; secretary, Jean Ostrand; and treasurer, Nathan Thibert. After discussion about the annual gift to be donated to the school by the club, a committee was appointed to look into the matter. On this committee are Gladys Bradley, Vera Beck, Ed Benoit, and Ann Preyer. A committee was also appointed to look into the matter of club eligibility. On it are Helen Sims, Virginia Warner, Arthur Valtion.

**FORMER TWIN FALLS RESIDENT SUMMONED**

Mrs. Helen King Waters, former resident of Twin Falls, was honored at funeral services Wednesday at Burka, California, according to word received here. Mrs. Waters died Tuesday.

The family left here in 1921 after 11 years residence. In addition to her husband, she is survived by a daughter, Betty Jean, her mother, four sisters and one brother, Harry King, and a cousin, Ray King of Twin Falls.

**BARN, HAYSTACK BURN IN-NIGHTTIME BLAZE**

Fire of undetermined origin destroyed early Saturday morning the barn and a 60-ton stack of hay on the farm occupied by James M. Hildebrand and family on Washington avenue, one and one-half miles north of Five Points, Twin Falls. The fire was discovered at about 5 o'clock and neighbors sprang to assist in preventing spread of the flames to the nearby residence, other buildings and another hay stack. There was no insurance. The fire burned a hole in the barn when it caught fire broke through the flames to reach safety outside. There were no other animals in the building.

Destroyed with the barn were an automobile and a boy's new bicycle, besides a quantity of grain, vegetables and tools.

Flames started at the west end of the barn where the automobile stood, Mr. Hildebrand said.

**PIONEER FILER MAN DIES AT HOSPITAL**

John P. Martin, 76, pioneer of Piler, died at Twin Falls county hospital at 9:30 o'clock Friday morning following a heart attack. He had been ill for the past two months.

He was born at Tillamook, Oregon and came to Piler 27 years ago, being engaged as a bee-keeper. He was born April 29, 1860, in Beaver county, Pennsylvania.

Surviving are his widow, Mrs. Theresa Martin of Piler; two brothers, William and Jack Martin of Pittsburgh, Pennsylvania, and two step-daughters, Mrs. Lilly Schick and Mrs. C. A. Love, both of Piler. Funeral services will be held Monday, but the place has not yet been announced. Interment will be in Beth cemetery.

The body rests at the Evans and Johnson funeral home in Buhl.

Study our SPECIALS listed below. As they march by your eye, note that each "special" is really a grand buy, and that the name of each product is its guarantee. Shop with us and save extra dollars each week.

**FLOUR**  
Sperry's Drifted Snow  
48 lb. Bag  
**\$1.63**

**DRIVE-IN MARKET**

**SUGAR**  
Idaho Beet, Fine Granulated  
10 lb. Bag  
**\$5.29**

GROCERY DEPT. PHONE 1500

MEAT DEPT. PHONE 29

**Crackers** 3 Lb. Caddy **39c**  
THAT N.B.C. BRAND  
SODAS LIGHTLY SALTED

**Milk**  
All Brands  
**10 Tall Cans 69c**

**Tuna Fish**  
White Star, Chicken of the Sea  
**7 Oz. Tin 15c**

**Chili Con Carne**  
La Frontera, Mexican Style  
**3 Cans 29c**

**Hienz Soup**  
Home Style—Ready to Serve  
**2 Large Cans 25c**

**Holly Cleanser**  
Scrubs, Cleans, Polishes  
**6 Cans 19c**

**Cranberries**  
Fancy Eastern—Fine For Sauce  
**Per Lb. 22c**

**Del Monte Canned VEGETABLES**

**Corn**  
Del Monte, Vacuum Packed, Golden Bantam  
**3 12 Oz. Tins 43c**  
Del Monte, Cream Style, Golden Bantam  
**3 No. 2 Tins 43c**

**PEAS**  
Del Monte, Early Garden, Sugar Peas  
**3 No. 2 Tins 43c**

**BEANS**  
Del Monte, Tender, Green Whole Stringless or Cut  
**3 No. 2 Tins 43c**

**SPINACH**  
Early Garden, Natural Green  
**3 No. 2 1/2 Tins 43c**  
CHOICE ASSORTED DEL MONTE VEGETABLES—CASE OF 24 CANS **\$3.39**

**TOMATO JUICE**  
Del Monte—A Food Drink High in Health Values for Both Adults and Children  
**46 Oz. Tin 19c**

**Grapefruit**  
Shaver's Fancy Florida, In Syrup  
**3 Cans 27c**

**Lettuce**  
Fancy California, Ice Pack  
**Head 5c**

**Celery**  
Utah, Fancy Jumbo—Grown in Utah  
**Bunch 10c**

**Oranges**  
Sweet and Juicy—Fine for Juice  
**2 Dozen 39c**

**Brussel Sprouts**  
(Fresh, Green)  
The Delicacy of the Season  
**3 Lbs. 25c**

**Brooms**  
Economy Brand—A-1—White Handle  
**35c Each**

**Cocoa** 16 Oz. Tin **10c**  
Fancy Breakfast Cocoa Known For It's High Quality  
WE RESERVE THE RIGHT TO LIMIT QUANTITIES

**Money Saving Prices At The Big Busy Meat Counter**

<b>Pot Roasts Beef</b> <b>8c L.B.</b>	<b>Shoulders Spring Lamb</b> <b>16c L.B.</b>	<b>FULL RUMP BEEF</b> <b>10c L.B.</b>	<b>PICNIC HAMS.</b> <b>20c L.B.</b>	<b>Pot Roasts Veal</b> <b>8c L.B.</b>	<b>Veal and Lamb Stews</b> <b>6c L.B.</b>
<b>2 Lbs. Sliced Liver</b> <b>15c</b>	<b>2 Lbs. Veal Sho. Steak</b> <b>25c</b>	<b>4 Lbs. SHORTENING</b> <b>44c</b>	<b>HALF OR WHOLE SALMON</b> <b>14c L.B.</b>	<b>Fresh Pig Feet</b> <b>5c L.B.</b>	<b>2 Lbs. Pork Steak</b> <b>39c</b>
<b>Beef Hearts</b> <b>6c L.B.</b>	<b>Beef Tongues</b> <b>8c L.B.</b>			<b>Beef Rib Boils</b> <b>2 LBS. 15c</b>	<b>Sirloin Steaks</b> <b>15c L.B.</b>

**Oysters and Chili Are In Season**  
WHEN BETTER MEATS ARE SOLD FOR LESS WE WILL SELL THEM

**USED Pickups And Trucks**

1936 V-8 FORD PICKUP the same as new **\$500**

1936 DODGE PICKUP, extra good **\$450**

1936 INTERNATIONAL PICKUP, 126" W.B., guaranteed **\$550**

1931 CHEV. 1 1/2-TON TRUCK, 157" W.B. dual wheels, has 7 1/2 x 12" bed **\$300**

1929 DODGE, long W.B., dual tires **\$250**

**McVEY'S INTERNATIONAL TRUCKS**