





# PRE-VIEW of Christmas

Van Engelen's

## TUCK AWAY A GIFT A DAY FOR CHRISTMAS



### SILK GOWNS A Lovely Gift to Give or to Keep

Just imagine her joy on Christmas morning when she discovers her gifts. Tailored or lace trimmed styles. Satins or silks make glamorous gifts. **\$2.98**



### SPREADS The Most Appreciated Gift for the Home

New candlewicks and rayons have just been received, **\$2.98** and they are beauties. Choose early tho, while the color range is complete. **\$1.98**



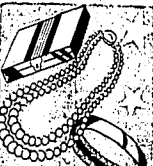
### ROBES

She'll adore a satin robe. Pay your tribute to "the lovely lady" by giving something intimate. **\$5.90**



### Costume Jewelry

Hundreds of gifts that makes choosing fun, for all are ideal gifts. Bracelets, rings, compacts, clips and earrings. **98c**



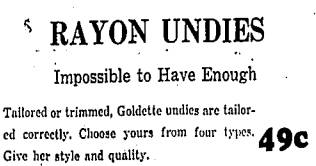
### Here's a Grand 'Keep Warm' Gift

Fine leather jackets, in pig grain. Choose from browns or blacks—good fitting coats, full lined—zipper fasteners, and action bucks. **\$6.50**



### HATS

Head the Gift List. Fine quality felts, in the season's correct colors. In the shape he likes. **\$2.98**



### RAYON UNDIES

Impossible to Have Enough

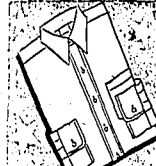
Tailored or trimmed, Goldette undies are tailored correctly. Choose yours from four types. Give her style and quality. **49c**



### She Can't Have Too Many HOSE

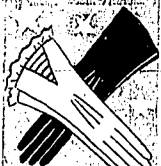
Humming Bird fine hosiery. In the correct shade—and all in steel-engraved gift boxes.

**59c 79c 98c \$1.25**



### Buy Him Several SHIRTS

If you gave him a dozen, he still wouldn't have too many. These are tailored of fine fabrics, smartly styled in attractive patterns. Pre-shrunk, no-wrink collars, or button down collars if you prefer. **\$1.49**



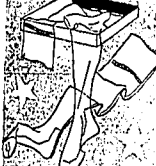
### GLOVES A Real Complementary Gift

Imported capes and real kids in slip-ons and novelty cuff styles. **\$1.98**



### Here's What She Wants CHASE PRODUCTS

In Chromium—Brass and Copper Circle Lamps, Breakfast Sets, Nut Crackers, Jam Sets, Smoker's Sets and new novelties.



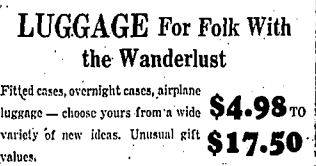
### SOCKS

Are Welcomed by All Men. Especially these. Packed three pairs in a Christmas gift box. **59c**



### Handle the Gift Solution With WARM GLOVES

In tape skins in pig skins—either slip on or snap styles—choose from blacks, browns and grays. **98c \$1.98**



### LUGGAGE For Folk With the Wanderlust

Fitted cases, overnight cases, airplane luggage—choose yours from a wide variety of new ideas. Unusual gift values. **\$4.98 TO \$17.50**



### LINENS for an Inexpensive

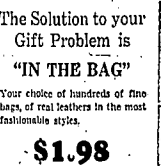
#### "Little" Xmas Present

Separate cloths, or dainty sets with napkins to match. Ideal gifts, these. **\$1.49**



### No Man Has Enough TIES

And Van Engelen's never had more ties to show you. Silks, wools, moires, repps, foulards in a thousand and one good looking patterns and colors. For his gift in attractive boxes. **49c 98c**



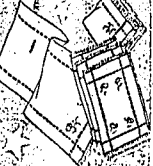
### The Solution to your Gift Problem is "IN THE BAG"

Your choice of hundreds of fine bags, of real leathers in the most fashionable styles. **\$1.98**



### Slippers A Comfy Gift to Lay at Her Feet

Glamorous slippers, practical slippers. The kind that slip on in a jiffy—mules, step-ins, scuffs and d'orays. **1.49**



### He'll Revel In a Gift of PAJAMAS

First colored broad cloths in slip-on or button styles—fine quality pajamas in patterns he'll like. **\$1.49**



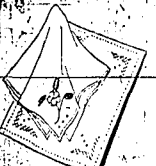
### BELT SETS

A Gift in the Modern Trend. Novelty sets in attractive packings—that look expensive. **49c**



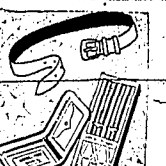
### Christmas wouldn't be Xmas without HANKIES

Lovely gifts, smart gifts for men, women and children—buy them separately or by the box—linen hankies, initialed handkerchiefs. **5c TO 49c**



### A Compliment to Her Taste and Yours SWEATERS

If you like sweaters like we think you do, you'll want several of these for Christmas gifts. They're smart and excellent values at this low price. **\$1.98**



Silk Remnants, a Gift to please any woman, the yard, 49c

# Van Engelen's











RELIEF, SCHOOLS  
CALL FOR FUNDSLegislature Expected to  
Provide for Needy,  
Education

BOISE, Dec. 16 (AP)—Approximately \$300,000 will be available from the state and federal governments for the aged, crippled, dependent, blind and unemployed, according to a statement by the Idaho cooperative relief agency, estimated tonight.

The state now has approximately \$200,000 in cash; another \$100,000 will be made available from sales tax collections and approximately \$200,000 will be forthcoming from the federal government, he estimated.

There is little doubt but that we will be able to care for the state's needy at least until February 1, and by that time the incoming legislative session will have had an opportunity to provide some other means of providing the state's share of relief money, Murdoch said.

The state now has approximately \$200,000 in cash; another \$100,000 will be made available from sales tax collections and approximately \$200,000 will be forthcoming from the federal government, he estimated.

Schools Need  
W. W. Cline, state superintendent of public instruction, estimated today that \$2,000,000 will be needed for the coming year. Cline's program of \$4,400,000 is carried out in the coming biennium. The state's share of the \$4,400,000 comes from present state revenue sources exclusive of ad valorem taxes.

Cline suggested that \$5.5 million state ad valorem tax would produce the balance and would permit reduction of school levies to 1 percent in all counties.

The income made by counties for school purposes now range from 20 mills to 724 mills.

WENDELL HIGH LISTS  
STUDENTS FOR HONORS

WENDELL, Dec. 16.—No Wendell high school student was named on the first honor roll for the second six weeks period, but second names were won by five students who had grades of 92 or 94.

Those named for second honors were Lorraine Anderson, Robert Callender, Clinton, Jim Gunnig and Warren Weinberg.

Third honors, averaging 81 or 82, were won by Gretchen Anderson, Fred Hild, Jane Ward and Yvonne Roth.

ONE MAN, ONE WOMAN  
ASK DIVORCE DECREES

One man and one woman started suits for divorce in the district court here yesterday.

On grounds of alleged desertion continuing for more than four years, Doris Larsen sued for divorce from Doris Larsen whom he married at Grand Junction, Colorado, December 17, 1927. There are no children and no property is involved. W. S. Dunn of Twin Falls is the petitioner's attorney.

Mrs. Bernice Paul, mother of a 14-month-old son, sued for divorce in her suit for divorce from Eugene Paul to whom she was married in Twin Falls, April 4, 1934. She asked for custody of the child and for a division of community property including a residence in Twin Falls. Raymond and Raymond are her attorneys.

RUPERT CAR STOLEN  
RUPERT, Dec. 16.—Oliver Hale of Rupert last night reported theft of his 1928 Dodge coupe from the streets of Rupert. The car carried Idaho license 7K-1424.

## Bleeding Gums Healed

The sight of sore gums is sickening. Irritable dentists often report the successful use of LETO'S PYORRHEA REMEDY on their very worst cases. If you will get a bottle and use as directed druggists will return money if it fails. Majestic Pharmacy—Ad.

Extra Fancy  
TURKEYS  
GEESE  
DUCKS

Roasting Chickens and  
Fat Hens  
For Better Selection,  
Place Your Order...  
NOW!

Orange and Lemon Peel  
27c LB.  
Popcorn That POPPS!  
10c LB.

LIBERTY MARKET

Phone 653

## AMUSEMENTS

## 'The Gay Desperado'

ROXY TO SHOW DRAMA  
OF MODERN AVIATION

Packing all of the romance, drama and thrills of modern commercial aviation into absorbing screen entertainment, "Without Orders" is scheduled for screening at the Roxy theater tomorrow. While the picture is said to be a masterpiece of thrilling taking thrills and many moments of high suspense, it is understood to stress safety of airline travel, and focus upon responsibility of air transport operators and pilots for the safety of their passengers. All of the modern devices of air science that have a bearing upon safety of the skies are dramatized as are the rigid discipline and regulations that govern pilots.

Billy Bihlers and Robert Armstrong lead the feature cast of the picture. In the airline stewardess and crack pilot who are linked in a warm romance that revolves about the latter's enthusiasm for aviation.

Vinton Howard, popular radio player who is well known for his "Jack Arnold" in the "Myrs and Mays" broadcasts, makes his screen debut as a personable young hero who turns into the flying game and into Mr. Armstrong's romance. Other in the cast are Arthur Grambling, Frances Gage and Charles Gage.

Something decidedly different in pictures with music comes to the Orpheum theater today. Pickford-Lasky's "The Gay Desperado" is the feature. The handsome Martin is said to give a great performance as the gay, swashbuckling Chivo, whose glorious career causes him to be kidnapped by a Mexican bandit chieftain (Carroll), who adopts American gangster methods, but is really a sentimental, music-loving fellow at heart. A fellow prisoner is attractive Ida Lupino with whom Martin falls in love. The balance of the picture is a series of laughs, songs and thrills which earns for it the title of being "the biggest night-bite since 'It Happened One Night'."

## MURTAUGH

Teacher-Villa — Miss Edna Mae Basile, teacher in the Burley school, spent the week-end here with her parents, Mr. and Mrs. Chas. Basile.

Visits Parents — Miss Bertha Boyce, Gooding college student, spent the week-end here with her parents, Mr. and Mrs. J. R. Boyce.

Poetsiana Visit — Mr. and Mrs. Ralph Whittle of Poetsiana spent Sunday with Mrs. Whittle's parents, Mr. and Mrs. David O. Moya.

Leave for California — Mr. and Mrs. Clifford Barry and family are leaving this week for California. They will visit Mr. and Mrs. Mary R. Barry in Santa Ana.

Return From Arizona — David O. Moya and Norris Goodman returned Tuesday morning after a week's trip to Arizona where they visited in Prescott, Mesa and Phoenix.

On Vacation — Mrs. Ida Brunson is leaving Friday to spend the holidays with relatives in Preston, Idaho, and Lewiston, Utah.

Try to Coast — Mr. and Mrs. John D. Coast to leave Thursday for Hemet, California, to spend two weeks with Mrs. Coast's brother and family.

Return Home — Mr. and Mrs. Roy Hunt and Miss Dorothy Hunt left for their home in Riverside, California, and Mrs. Jane Williams for her home in San Francisco, California, Tuesday. They were called here by the death of David Rees, their father.

Daughter Born — A baby girl was born to Mr. and Mrs. Floyd Curry Christmas day.

Christmas Opera — "The Magic Christmas Bell," a Christmas opera, featuring 150 children, will be presented in the high school auditorium Friday evening.

ORGANIZATIONS ELECT  
OFFICERS AT GOODING

GOODING, Dec. 16.—Officers for the coming year have been elected by a number of organizations in Gooding. Sections are being held now so that new officers can take up their duties soon after the beginning of the new year. Following are the officers that have been elected in recent meetings:

Royal Neighbors — Mrs. Edward Bryan, officer; Mrs. Sam Adams, vice officer; Mrs. Frances Buchanan, secretary; Mrs. Roy E. Hill, recorder; Mrs. Everett Deahner, marshal; Mrs. Loma Clifford, inner secretary; Mrs. Clyde Lewis, outer secretary; Mrs. A. Garber, manager; and Mrs. Luther Hennings, multi-charge.

Mrs. Roy Hill has been named delegate to the convention of the Royal Neighbors that will be held in Bonners Ferry, April 21, 1937. Joint installation of the officers will be held with Twin Falls district officers at Twin Falls, state, January 15. Mrs. Irma Kibler, state supervisor, will be in charge.

Eastern Star  
Companion chapter of the Eastern Star — Mrs. Clara Buchanan, president; Mrs. Everett Deahner, worthy patron; Mrs. Welliver Miller, conductress; Mrs. Ivar Skougstad, associate conductress; Mrs. J. W. Clouser, treasurer; and Mrs. W. E. Emerson, secretary.

King Solomon chapter of the Royal Neighbors — Mr. P. P. Potts, high priest; E. L. Sullivan, king; Dr. E. A. Johnson, scribe; E. H. Johnson, treasurer; and Mr. Mattson, secretary. Officers appointed for this organization were Welliver Miller, chaplain; J. W. Clouser, captain of the host; Lewis Helman, principal advisor; Oscar Dahm, royal high priest; and Mr. Mattson, master of the third veil; Dr. J. O. Cronwell, master of the second veil; and W. D. Cronwell, scribe.

Gooding Grange — William Bryan, master; E. E. Kiser, overseer; Harry Bryan, secretary; Mrs. J. W. Hudson, chaplain; Mrs. William Bryan, better; Roy Graves, secretary; Mrs. Harry Bryan, secretary; Mrs. Claire Bryan, lady assistant steward; and Mrs. V. W. Garman, treasurer.

Gooding I. O. O. F. Lodge — Charles Glad, noble grand; Richard Gort, vice grand; N. M. Bartley, secretary; and Archie Holt, treasurer. Rebekah lodge — Mrs. Ray Alban, noble grand; Mrs. John Kornher, vice grand; Mrs. Milton Roberts, secretary; and Mrs. O. O. Rosh, treasurer. And trustees, Mrs. Archie Holt, R. P. Ellis and Mrs. Janis Willis.

Modern Woodmen of America — Jack Barber, council; John M. Barber, secretary; Neil Warrington, bank; Charles Requet, clerk; Scott Brown, watchman; Martin Helman, secretary; and Mrs. A. E. Johnson, trustee for a one-year term.

YOUNG REPUBLICAN TO  
ADDRESS BANQUET RALLY

BOISE, Dec. 16 (AP)—William S. Holden of Idaho Falls, former chairman of the Young Republican League of Idaho, accepted today an invitation to address the Lincoln day banquet here February 12.

Daughter Born — A baby girl was born to Mr. and Mrs. Floyd Curry Christmas day.

Christmas Opera — "The Magic Christmas Bell," a Christmas opera, featuring 150 children, will be presented in the high school auditorium Friday evening.

Daughter Born — A baby girl was born to Mr. and Mrs. Floyd Curry Christmas day.

Christmas Opera — "The Magic Christmas Bell," a Christmas opera, featuring 150 children, will be presented in the high school auditorium Friday evening.

Daughter Born — A baby girl was born to Mr. and Mrs. Floyd Curry Christmas day.

Christmas Opera — "The Magic Christmas Bell," a Christmas opera, featuring 150 children, will be presented in the high school auditorium Friday evening.

Daughter Born — A baby girl was born to Mr. and Mrs. Floyd Curry Christmas day.

Christmas Opera — "The Magic Christmas Bell," a Christmas opera, featuring 150 children, will be presented in the high school auditorium Friday evening.

CO-OP OIL COMPANY  
PICKS OFFICIAL STAFF

Emory Woodruff of Buhl was elected chairman of the Twin Falls Cooperative Oil company at a meeting of the group held at Buhl last night and will serve during 1937. Other officers elected included A. E. De-

Alley of Twin Falls, vice-chairman; Curtis Hurd of Twin Falls, treasurer; and Harold Smith, also of Twin Falls, secretary.

The group was organized here about a year ago and recently announced plans for the construction of a second service station at Buhl. Other stations have been constructed at Twin Falls and surrounding towns. The group totals 200 members.

During Tuesday's meeting Mr. Woodruff outlined plans for next year's activities and talked on the possibility of the Buhl Valley association held last week.

The next meeting of the association will be held Monday, December 22, officers said.

The reliable Waterman fountain pens and sets, also Lincolnton stationery, are displayed at the Cline Book Store—Ad.

The reliable Waterman fountain pens and sets, also Lincolnton stationery, are displayed at the Cline Book Store—Ad.

The reliable Waterman fountain pens and sets, also Lincolnton stationery, are displayed at the Cline Book Store—Ad.

The reliable Waterman fountain pens and sets, also Lincolnton stationery, are displayed at the Cline Book Store—Ad.

The reliable Waterman fountain pens and sets, also Lincolnton stationery, are displayed at the Cline Book Store—Ad.

The reliable Waterman fountain pens and sets, also Lincolnton stationery, are displayed at the Cline Book Store—Ad.

The reliable Waterman fountain pens and sets, also Lincolnton stationery, are displayed at the Cline Book Store—Ad.

The reliable Waterman fountain pens and sets, also Lincolnton stationery, are displayed at the Cline Book Store—Ad.

The reliable Waterman fountain pens and sets, also Lincolnton stationery, are displayed at the Cline Book Store—Ad.

The reliable Waterman fountain pens and sets, also Lincolnton stationery, are displayed at the Cline Book Store—Ad.

The reliable Waterman fountain pens and sets, also Lincolnton stationery, are displayed at the Cline Book Store—Ad.

The reliable Waterman fountain pens and sets, also Lincolnton stationery, are displayed at the Cline Book Store—Ad.

The reliable Waterman fountain pens and sets, also Lincolnton stationery, are displayed at the Cline Book Store—Ad.

Schramm - Johnson  
Drugs

Gifts for Your Family, Relatives and Friends! Stop in Thursday, Friday and Saturday and See The Best Selections We've Ever Offered

Vick's NOSE DROPS 31c  
50c Size

Woodbury's CREAM 33c  
50c Size

Cod Liver Oil 39c

Dr. Lyon's TOOTH POWDER 31c

Aspirin 19c

Lifebouy 17c

Jad Salts 43c

TOPS

Electric MOVIE PROJECTOR

100' 700' Capacity Reel 2.12

100' 700' Capacity Reel 2.12

100' 700' Capacity Reel 2.12

100' 700' Capacity Reel 2.12

100' 700' Capacity Reel 2.12

100' 700' Capacity Reel 2.12

100' 700' Capacity Reel 2.12

100' 700' Capacity Reel 2.12

## CART OF THANKS

We wish to extend our heartfelt thanks to all who so kindly assisted and for the words of sympathy given at the death of our beloved husband and father.

MRS. A. W. JAMES  
AND FAMILY—Ad.

The new creations in Loretta's stationery are displayed at the Cline Book Store—Ad.

The reliable Waterman fountain pens and sets, also Lincolnton stationery, are displayed at the Cline Book Store—Ad.

The reliable Waterman fountain pens and sets, also Lincolnton stationery, are displayed at the Cline Book Store—Ad.

The reliable Waterman fountain pens and sets, also Lincolnton stationery, are displayed at the Cline Book Store—Ad.

The reliable Waterman fountain pens and sets, also Lincolnton stationery, are displayed at the Cline Book Store—Ad.

The reliable Waterman fountain pens and sets, also Lincolnton stationery, are displayed at the Cline Book Store—Ad.

The reliable Waterman fountain pens and sets, also Lincolnton stationery, are displayed at the Cline Book Store—Ad.

The reliable Waterman fountain pens and sets, also Lincolnton stationery, are displayed at the Cline Book Store—Ad.

The reliable Waterman fountain pens and sets, also Lincolnton stationery, are displayed at the Cline Book Store—Ad.

The reliable Waterman fountain pens and sets, also Lincolnton stationery, are displayed at the Cline Book Store—Ad.

The reliable Waterman fountain pens and sets, also Lincolnton stationery, are displayed at the Cline Book Store—Ad.

The reliable Waterman fountain pens and sets, also Lincolnton stationery, are displayed at the Cline Book Store—Ad.

The reliable Waterman fountain pens and sets, also Lincolnton stationery, are displayed at the Cline Book Store—Ad.

The reliable Waterman fountain pens and sets, also Lincolnton stationery, are displayed at the Cline Book Store—Ad.

The reliable Waterman fountain pens and sets, also Lincolnton stationery, are displayed at the Cline Book Store—Ad.

The reliable Waterman fountain pens and sets, also Lincolnton stationery, are displayed at the Cline Book Store—Ad.

## CART OF THANKS

We wish to extend our heartfelt thanks to all who so kindly assisted and for the words of sympathy given at the death of our beloved husband and father.

MRS. A. W. JAMES  
AND FAMILY—Ad.

The new creations in Loretta's stationery are displayed at the Cline Book Store—Ad.

The reliable Waterman fountain pens and sets, also Lincolnton stationery, are displayed at the Cline Book Store—Ad.

The reliable Waterman fountain pens and sets, also Lincolnton stationery, are displayed at the Cline Book Store—Ad.

The reliable Waterman fountain pens and sets, also Lincolnton stationery, are displayed at the Cline Book Store—Ad.

The reliable Waterman fountain pens and sets, also Lincolnton stationery, are displayed at the Cline Book Store—Ad.

The reliable Waterman fountain pens and sets, also Lincolnton stationery, are displayed at the Cline Book Store—Ad.

The reliable Waterman fountain pens and sets, also Lincolnton stationery, are displayed at the Cline Book Store—Ad.

The reliable Waterman fountain pens and sets, also Lincolnton stationery, are displayed at the Cline Book Store—Ad.

The reliable Waterman fountain pens and sets, also Lincolnton stationery, are displayed at the Cline Book Store—Ad.

The reliable Waterman fountain pens and sets, also Lincolnton stationery, are displayed at the Cline Book Store—Ad.

The reliable Waterman fountain pens and sets, also Lincolnton stationery, are displayed at the Cline Book Store—Ad.

The reliable Waterman fountain pens and sets, also Lincolnton stationery, are displayed at the Cline Book Store—Ad.

The reliable Waterman fountain pens and sets, also Lincolnton stationery, are displayed at the Cline Book Store—Ad.

The reliable Waterman fountain pens and sets, also Lincolnton stationery, are displayed at the Cline Book Store—Ad.

The reliable Waterman fountain pens and sets, also Lincolnton stationery, are displayed at the Cline Book Store—Ad.

The reliable Waterman fountain pens and sets, also Lincolnton stationery, are displayed at the Cline Book Store—Ad.





# 34 Pittsburgh Football Players Head For Rose Bowl

## Experts Name Yanks No. 1 Team Of 1936, Minnesota Second

### Grim Looking Panthers Voice Determination To Score First Victory In New Year's Classic

Players 'Not Just Going Out For The Ride'

#### Big 'Gate' Looms

PITTSBURGH, Dec. 16 (AP)—Pittsburgh Panthers headed west tonight for their fourth attempt to capture a Rose Bowl game—a grim looking bunch of youngsters.

Dr. John Bain (Jack) Sutherland, the coach, with his usual downy face, said as he waved farewell:

"We had our best practice of the season today. The boys are putting out their spirit to make the 'worst' of any prediction. I know we are going to try our best."

Of the many giant guards displayed in the team's grimace when he heard someone request a "fight" (Bugs) Gold, a former sophomore basketball player to pose with a "victory smile."

"That I crack him!" demanded the guard, while Oldberg and the others grew as solemn as in church.

Three other Pitt leaders with better records than the present squad which lost to Duquesne and with Fordham, have traveled to the coast and met disaster. The coach can't let the boys forget the 47-0 losing in 1930 and the 35-0 trouncing in 1933 by Southern California.

In 1927 Pitt lost to Harvard 7-6.

"Not going to stand here!" Bobby Lister, senior halfback, who pulled a leg muscle yesterday, and is the team's only casualty, remarked.

"It's my last college football trip, and we're not just going out for the ride. We know Washington has a strong veteran team and we must make up in spirit and determination what we may lack in experience."

The departing squad consisted of 34 players, three coaches and a score of other officials, students and others.

Second Rich "Gate" PARADISE, Calif. Dec. 16 (AP)—With ticket sales expected to bring in around \$200,000, the Washington Huskies and Pittsburgh Golden Panthers will probably play the second-round "fight" of the holiday of the Rose Bowl when they meet here New Year's day.

"Sold out" signs have decorated the main door of the headquarters since Monday, but it will be several days before the actual amount of cash taken in will be known.

The largest gate in the history of Pasadena's traditional football series was set in 1929 when the University of Southern California drew what was then a near-capacity crowd of 75,000 to the stadium.

The bowl was sold out on eight days for that game, and most of the seats went for \$10.00 and the first 10,000 for \$5.00.

The surprising seven-day sell-out this year was equaled a year ago when the Stanford-Southern Methodist game was announced. A packed house of 8,000 paid admissions for the encounter, receipts totaling \$25,172.28.

The surprising seven-day sell-out this year was equaled a year ago when the Stanford-Southern Methodist game was announced. A packed house of 8,000 paid admissions for the encounter, receipts totaling \$25,172.28.

The surprising seven-day sell-out this year was equaled a year ago when the Stanford-Southern Methodist game was announced. A packed house of 8,000 paid admissions for the encounter, receipts totaling \$25,172.28.

### PHELAN TOO BUSY TO DISCUSS RUMOR

SEATTLE, Dec. 16 (AP)—Coach Jimmy Phelan of the University of Washington football team, said today "I have no time for rumors," when asked about a report he might move to the University of Michigan.

"I have a team to get ready for a mighty important assignment in the Rose Bowl New Year's day and I'm too busy to talk about it," he said.

Phelan's Washington contract expires at the end of the present football season and although he has conferred with Ray Eckmann, athletic director, no agreement has been reached on a new contract.

### East Selects Stars For Charity Contest

#### Shrine Officials Announce Completion Of One Squad At San Francisco

SAN FRANCISCO, Dec. 16 (AP)—With selection of "Bucky" Bryan, Tulane halfback, Shrine officials announced completion of the East squad of college stars which will play here New Year's day in the annual East-West charity football game.

Twenty-two players are allowed on each squad. Three players remain to be selected for the western squad.

The East squad: Ends—Merle Wendt, Ohio State; Ken Nelson, Illinois; Donald Geyer, Northwestern; and Lawrence M. Kelley, Yale. Tackles—Ed Widdett, Minnesota; Charles Hamrick, Ohio State; Ken Reysa, Colgate; Fred Miller, Princeton; and Master Herring, Duke. Guards—Steve Reed, Stanford; Steve Reed, Northwestern; Carl P. Ray, Fordham. Centers—Earl Vandoren, Minnesota; Nat Pierce, Dartmouth. Quarterback—Ken Sandbeck, Princeton.

Halfbacks—Steve Tolt, Northwestern; John Drake, Purdue; Repeatedly, the vote was 4 to 1 in favor of the name by which the team has been known since 1927. The contest ended last midnight.

College Basketball COLUMBIA, Mo., Dec. 16 (AP)—Jack Frey, of Houston, Texas, quarterback on the University of Missouri 1936 football team, today was notified he had been selected to play on the all-star west team in the East-West New Year's game.

Don Paul, head football coach at Missouri, said Frey would leave tomorrow for San Francisco.

Second Rich "Gate" PARADISE, Calif. Dec. 16 (AP)—With ticket sales expected to bring in around \$200,000, the Washington Huskies and Pittsburgh Golden Panthers will probably play the second-round "fight" of the holiday of the Rose Bowl when they meet here New Year's day.

"Sold out" signs have decorated the main door of the headquarters since Monday, but it will be several days before the actual amount of cash taken in will be known.

The largest gate in the history of Pasadena's traditional football series was set in 1929 when the University of Southern California drew what was then a near-capacity crowd of 75,000 to the stadium.

The bowl was sold out on eight days for that game, and most of the seats went for \$10.00 and the first 10,000 for \$5.00.

The surprising seven-day sell-out this year was equaled a year ago when the Stanford-Southern Methodist game was announced. A packed house of 8,000 paid admissions for the encounter, receipts totaling \$25,172.28.

The surprising seven-day sell-out this year was equaled a year ago when the Stanford-Southern Methodist game was announced. A packed house of 8,000 paid admissions for the encounter, receipts totaling \$25,172.28.

The surprising seven-day sell-out this year was equaled a year ago when the Stanford-Southern Methodist game was announced. A packed house of 8,000 paid admissions for the encounter, receipts totaling \$25,172.28.

The surprising seven-day sell-out this year was equaled a year ago when the Stanford-Southern Methodist game was announced. A packed house of 8,000 paid admissions for the encounter, receipts totaling \$25,172.28.

### WELL PLEASED WITH TERMS



CHAMPION JAMES J. BRADDOCK (left) and Max Schmeling, shown at the New York boxing commission office, seemed well pleased with the terms of the agreement by which the champ and ex-champ will meet in a title bout in Madison Square Garden Boxing Club June 2.—(AP) Photo.

### Krieger Stops Harry Balsamo To Play Caldwell

'Battering Brakeman' Victim of Knockout in Seventh Round

NEW YORK, Dec. 16 (AP)—Bolted Harry Balsamo, middleweight, knocked Krieger, the "battering brakeman" back into the New York Yacht Club tonight with a seventh round knockout in his last round.

With Balsamo, hopelessly beaten lying flat on his back in the ring, Krieger, a former professional boxer, stepped in and put a stop to the fight.

The Harlem Italian hit the canvas four times in the third, once in the fourth and once in the fifth. The ropes saved him a fifth knockdown.

He landed easily both with rights and lefts but apparently did not have the stamina to follow through on his knockdown punches.

The Brooklyn lad's expert boxing made Balsamo badly with his creative devastating right. Once in the fifth, Harry batted Krieger into the ropes for what seemed to be the last time.

He landed easily both with rights and lefts but apparently did not have the stamina to follow through on his knockdown punches.

The Brooklyn lad's expert boxing made Balsamo badly with his creative devastating right. Once in the fifth, Harry batted Krieger into the ropes for what seemed to be the last time.

He landed easily both with rights and lefts but apparently did not have the stamina to follow through on his knockdown punches.

The Brooklyn lad's expert boxing made Balsamo badly with his creative devastating right. Once in the fifth, Harry batted Krieger into the ropes for what seemed to be the last time.

He landed easily both with rights and lefts but apparently did not have the stamina to follow through on his knockdown punches.

The Brooklyn lad's expert boxing made Balsamo badly with his creative devastating right. Once in the fifth, Harry batted Krieger into the ropes for what seemed to be the last time.

### Fighters Ready For Ring Duels

Primeau Predicts Biggest Crowd of Season for Cannon-Pierce Duel

With the stage set for Twin Falls American Legion 28-round boxing card at Legion Memorial hall tonight, promoter Ed Primeau took time out last evening to predict the "biggest crowd of the season" when Cannon and Pierce meet.

Primeau predicted that the advance sale for the bout of the season and said that large delegations of fans were expected from Jerome, Buhl, Burley and Rupert.

Both ready for the bout and bearing in mind a draw which they are sure to make, the two fighters, the Fort Douglas soldier and the husky Springfield boxer are expected to meet at 8:30 sharp.

Both claimed the decision in their last meeting and a "battle royal" is anticipated by those in charge of the event.

Cairns Looks Good Showing of Billy Lee's Cairns during the past few days has been outstanding and he has been the best light of his career when he meets Jim Harvey of Ogden in the six-round semi-windup, Primeau said.

The promoter, however, centered his remarks around the four-round special event which he claimed will be one of the best bouts on the card. Every slugging slugger in the ring tonight continued to claim that he would put the key to the duisty Louis Street, but the slugging arm, calmly maintained that "he's not fast enough to hit me, let alone to knock me out."

Herbie Blum of Filer, speedy ex-footbalter, worked out cautiously last night and polished himself off in top form for his bout with Johnny Hinner, former Hannan fighter, who would put the key to the duisty Louis Street, but the slugging arm, calmly maintained that "he's not fast enough to hit me, let alone to knock me out."

Jack Davis and Cliff Smith, a pair of Idaho high school champions, which was completed a few days ago. "Twin Falls" gym dedicating campaign, however, may close with the Caldwell gym as Coach R. V. Jones last night said that he had received word from Dave Burgher, Boise coach, relative to the Bruin's tentative new gym dedication game at the Capital City Saturday evening.

However, last week, informed Jones that he would let him know if the Boise gym is completed by that time. Last night eight men from his squad, 10 of whom will be chosen on the traveling squad to make the trip to Caldwell. Those named were: Ed Andrews, Art Tanner, Frank Carpenter, Wendell Almgren, Wayne Turner, Maurice Hartman, Boyd Brown, Elwood Nickerson, John Waters, Bob St. Clair and Wayne Sticks.

Boxing, Wrestling On Card At Rupert

RUPERT, Dec. 16—Approximately 300 men and boys of the community attended the annual "T" club basketball and wrestling night at the high school gymnasium Tuesday evening.

A total of 24 bouts arranged by Matchmaker: Lyman Hammon, the annual event sponsored by the "T" club, athletic organization of the local high school, was an outstanding affair.

Included were 20 boxing and four wrestling matches. High school boys put on 18 of these, with CCO boys and others furnishing the remainder. The Uila Coach Ed Joyce served as referee. All bouts were served as exhibitions and no decisions were announced.

South Central Idaho Players Win Awards

Three former south central Idaho high school athletes received variety football letters at the College of Idaho for performance during the past season, according to Coach John P. Page of the college.

Those from this district who received their "T" are Leonard Lett of Buhl, Cecil Dossert of Twin Falls and Del Burkhart of Jerome.

### U.S. Olympic Track, Field Squad Draws Third Place In Poll

World Series Winner Chosen For Fifth Time

NEW YORK, Dec. 16 (AP)—While the New York Yankees led it with best records, using ballparks, selected the world baseball champions as the No. 1 team of 1936 in the sixth annual Associated Press sports poll.

For the fifth straight year, and the second time for the Yankees, the world series winner has been chosen by observers participating in the nationwide poll as "sport's outstanding unit. Significantly, too, football furnished the runner-up for the third successive year.

Serving to confirm the results of the poll first Associated Press ranking poll, the United States Olympic track and field team.

The results of the poll with points tallied on a 3-2-1 basis:

TEAMS POINTS  
1. New York Yankees, world baseball champions 184  
2. Minnesota, football 112  
3. U. S. track and field squad, Olympic champions 68  
4. University of Washington 48

(Continued on Page 10)

### What to Give?

Store Open TONIGHT FOR MEN ONLY 7:30 to 9:30

### HERE'S HOW

We realize that the men folk are busy and busy and time is their chief asset. They want to give their wives something that will give them pleasure and comfort. They want to give them something that will give them pleasure and comfort. They want to give them something that will give them pleasure and comfort.

For more reasons we are opening our store and will find it easy to help you select the gift that will give them pleasure and comfort.

LOVELY INTIMATE THINGS

Lovely, intimate things that give pleasure and comfort to every woman who receives them. Choose the store tonight when only the store opens for men find a large selection... of countless quality.

Flannel Robes  
Lounge Robes  
Negligees  
Gold Stripe Hose  
Hand Bags

Scarf Sets  
Slips...  
Sweaters  
Hand Made Handkerchiefs  
Evening Coats

### THE MAYFAIR SHOP

### Idaho Wins Over Uclans, 30 to 26

Vandals Take Game Played Under California Rule of 'No Tip-Off'

MOSCOW, Idaho, Dec. 16 (AP)—Idaho overcame the 26-point basket ball series with the Uclans tonight with a 30 to 26 victory in a game marked by 35 personal fouls. The game was played under the California "No Tip-Off" rule.

The winners slipped ahead in the last half after a 16-15 deadlock at halftime. The Californians led through the first half, but the Vandals dominated play after the break and to pile up a 28 to 17 lead eight minutes before the end.

Three Idaho players—Johnny Johnson, head coach, and Ed Ball of the U. of C. A. were benched on personal fouls. Willis Bowman and Ed Ball of Idaho were benched on personal fouls. Willis Bowman and Ed Ball of Idaho were benched on personal fouls.

### Idaho Wins Over Uclans, 30 to 26

Vandals Take Game Played Under California Rule of 'No Tip-Off'

MOSCOW, Idaho, Dec. 16 (AP)—Idaho overcame the 26-point basket ball series with the Uclans tonight with a 30 to 26 victory in a game marked by 35 personal fouls. The game was played under the California "No Tip-Off" rule.

The winners slipped ahead in the last half after a 16-15 deadlock at halftime. The Californians led through the first half, but the Vandals dominated play after the break and to pile up a 28 to 17 lead eight minutes before the end.

Three Idaho players—Johnny Johnson, head coach, and Ed Ball of the U. of C. A. were benched on personal fouls. Willis Bowman and Ed Ball of Idaho were benched on personal fouls. Willis Bowman and Ed Ball of Idaho were benched on personal fouls.

### Idaho Wins Over Uclans, 30 to 26

Vandals Take Game Played Under California Rule of 'No Tip-Off'

MOSCOW, Idaho, Dec. 16 (AP)—Idaho overcame the 26-point basket ball series with the Uclans tonight with a 30 to 26 victory in a game marked by 35 personal fouls. The game was played under the California "No Tip-Off" rule.

The winners slipped ahead in the last half after a 16-15 deadlock at halftime. The Californians led through the first half, but the Vandals dominated play after the break and to pile up a 28 to 17 lead eight minutes before the end.

Three Idaho players—Johnny Johnson, head coach, and Ed Ball of the U. of C. A. were benched on personal fouls. Willis Bowman and Ed Ball of Idaho were benched on personal fouls. Willis Bowman and Ed Ball of Idaho were benched on personal fouls.

### Idaho Wins Over Uclans, 30 to 26

Vandals Take Game Played Under California Rule of 'No Tip-Off'

MOSCOW, Idaho, Dec. 16 (AP)—Idaho overcame the 26-point basket ball series with the Uclans tonight with a 30 to 26 victory in a game marked by 35 personal fouls. The game was played under the California "No Tip-Off" rule.

The winners slipped ahead in the last half after a 16-15 deadlock at halftime. The Californians led through the first half, but the Vandals dominated play after the break and to pile up a 28 to 17 lead eight minutes before the end.

Three Idaho players—Johnny Johnson, head coach, and Ed Ball of the U. of C. A. were benched on personal fouls. Willis Bowman and Ed Ball of Idaho were benched on personal fouls. Willis Bowman and Ed Ball of Idaho were benched on personal fouls.

### Idaho Wins Over Uclans, 30 to 26

Vandals Take Game Played Under California Rule of 'No Tip-Off'

MOSCOW, Idaho, Dec. 16 (AP)—Idaho overcame the 26-point basket ball series with the Uclans tonight with a 30 to 26 victory in a game marked by 35 personal fouls. The game was played under the California "No Tip-Off" rule.

The winners slipped ahead in the last half after a 16-15 deadlock at halftime. The Californians led through the first half, but the Vandals dominated play after the break and to pile up a 28 to 17 lead eight minutes before the end.

Three Idaho players—Johnny Johnson, head coach, and Ed Ball of the U. of C. A. were benched on personal fouls. Willis Bowman and Ed Ball of Idaho were benched on personal fouls. Willis Bowman and Ed Ball of Idaho were benched on personal fouls.

### Idaho Wins Over Uclans, 30 to 26

Vandals Take Game Played Under California Rule of 'No Tip-Off'

MOSCOW, Idaho, Dec. 16 (AP)—Idaho overcame the 26-point basket ball series with the Uclans tonight with a 30 to 26 victory in a game marked by 35 personal fouls. The game was played under the California "No Tip-Off" rule.

The winners slipped ahead in the last half after a 16-15 deadlock at halftime. The Californians led through the first half, but the Vandals dominated play after the break and to pile up a 28 to 17 lead eight minutes before the end.

Three Idaho players—Johnny Johnson, head coach, and Ed Ball of the U. of C. A. were benched on personal fouls. Willis Bowman and Ed Ball of Idaho were benched on personal fouls. Willis Bowman and Ed Ball of Idaho were benched on personal fouls.

### Idaho Wins Over Uclans, 30 to 26

Vandals Take Game Played Under California Rule of 'No Tip-Off'

MOSCOW, Idaho, Dec. 16 (AP)—Idaho overcame the 26-point basket ball series with the Uclans tonight with a 30 to 26 victory in a game marked by 35 personal fouls. The game was played under the California "No Tip-Off" rule.

The winners slipped ahead in the last half after a 16-15 deadlock at halftime. The Californians led through the first half, but the Vandals dominated play after the break and to pile up a 28 to 17 lead eight minutes before the end.

Three Idaho players—Johnny Johnson, head coach, and Ed Ball of the U. of C. A. were benched on personal fouls. Willis Bowman and Ed Ball of Idaho were benched on personal fouls. Willis Bowman and Ed Ball of Idaho were benched on personal fouls.

### Idaho Wins Over Uclans, 30 to 26

Vandals Take Game Played Under California Rule of 'No Tip-Off'

MOSCOW, Idaho, Dec. 16 (AP)—Idaho overcame the 26-point basket ball series with the Uclans tonight with a 30 to 26 victory in a game marked by 35 personal fouls. The game was played under the California "No Tip-Off" rule.

The winners slipped ahead in the last half after a 16-15 deadlock at halftime. The Californians led through the first half, but the Vandals dominated play after the break and to pile up a 28 to 17 lead eight minutes before the end.

Three Idaho players—Johnny Johnson, head coach, and Ed Ball of the U. of C. A. were benched on personal fouls. Willis Bowman and Ed Ball of Idaho were benched on personal fouls. Willis Bowman and Ed Ball of Idaho were benched on personal fouls.

## MARKET'S RECENT

Few Oils, Steels, Rails, and Utilities Manage to Score Gains

## MARKETS AT A GLANCE

(By The Associated Press)  
NEW YORK: Stocks: Irregular; leaders lag in quiet decline.  
Bonds: Mixed; treasury loans buoyant.

Cash: Ragged; some leaders weak.  
Foreign exchanges: Firm; sterling, francs gain.

Cotton: Steady; lower today; liquidation; some selling.

Sugar: Lower; increased spot offerings.  
Commodities: Steady; cotton, wheat, oil.

CHICAGO: Wheat: Firm; Winnipeg: Mixed; irregular; December settling-up.

Cattle: Strong to 25c up; pig: 10c.

Hogs: 10c to 15c higher; top: \$10.15.

BY FREDERICK GARDNER  
NEW YORK, Dec. 16.—Stocks: Irregular; leaders lag in quiet decline.

A few oil, steel, rail, utility and specialty stocks managed to make the journey with no gain.

Many recent leaders, however, yielded fractions to the point.

Some underplayed an inclination to stand aside and few who bought were about further speculation of industry.

The list started at a fast pace, but activity soon died down.

The Associated Press said that 60 stocks were off a point at 10:30.

Transit, aggregated 1,800 shares compared with 2,400,000 in the preceding session.

Major steel issues held their own.

Turned utilities benefited partly from another jump in electric power production.

Consolidated Oil, up 1/2 at 15 1/2, was the heaviest actor of the session.

RAIL SILVER  
NEW YORK, Dec. 16 (AP)—Rail silver, 1/2 lower at 45.

NEW YORK, Dec. 16 (AP)—Copper firm; electricity up; future: 1/2 up; 11 1/2.

The tinny spot and nearby 32 1/2 to 33; future 32 1/2 to 33 1/2.

Lead steady; spot New York 53 1/2 to 53 3/4; East St. Louis 53 1/2 to 53 3/4.

Zinc firm; East St. Louis spot and future 53 1/2.

Iron, aluminum, antimony, quicksilver, platinum and wolframite unchanged.

MONEY  
NEW YORK, Dec. 16 (AP)—Call money steady; 10 per cent; time loans steady; 60 days' money 10 per cent; 90 days' money 10 1/2 per cent; commercial paper unchanged; 10 per cent; U. S. reserve bank, 10 per cent.

COTTON  
NEW YORK, Dec. 16 (AP)—Cotton was generally steady today, but new arrivals buying following completion of the liquidating movement. March, 1939, 12 1/2 to 12 3/4; 1940, 12 1/2 to 12 3/4; 1941, 12 1/2 to 12 3/4; 1942, 12 1/2 to 12 3/4; 1943, 12 1/2 to 12 3/4; 1944, 12 1/2 to 12 3/4; 1945, 12 1/2 to 12 3/4; 1946, 12 1/2 to 12 3/4; 1947, 12 1/2 to 12 3/4; 1948, 12 1/2 to 12 3/4; 1949, 12 1/2 to 12 3/4; 1950, 12 1/2 to 12 3/4; 1951, 12 1/2 to 12 3/4; 1952, 12 1/2 to 12 3/4; 1953, 12 1/2 to 12 3/4; 1954, 12 1/2 to 12 3/4; 1955, 12 1/2 to 12 3/4; 1956, 12 1/2 to 12 3/4; 1957, 12 1/2 to 12 3/4; 1958, 12 1/2 to 12 3/4; 1959, 12 1/2 to 12 3/4; 1960, 12 1/2 to 12 3/4; 1961, 12 1/2 to 12 3/4; 1962, 12 1/2 to 12 3/4; 1963, 12 1/2 to 12 3/4; 1964, 12 1/2 to 12 3/4; 1965, 12 1/2 to 12 3/4; 1966, 12 1/2 to 12 3/4; 1967, 12 1/2 to 12 3/4; 1968, 12 1/2 to 12 3/4; 1969, 12 1/2 to 12 3/4; 1970, 12 1/2 to 12 3/4; 1971, 12 1/2 to 12 3/4; 1972, 12 1/2 to 12 3/4; 1973, 12 1/2 to 12 3/4; 1974, 12 1/2 to 12 3/4; 1975, 12 1/2 to 12 3/4; 1976, 12 1/2 to 12 3/4; 1977, 12 1/2 to 12 3/4; 1978, 12 1/2 to 12 3/4; 1979, 12 1/2 to 12 3/4; 1980, 12 1/2 to 12 3/4; 1981, 12 1/2 to 12 3/4; 1982, 12 1/2 to 12 3/4; 1983, 12 1/2 to 12 3/4; 1984, 12 1/2 to 12 3/4; 1985, 12 1/2 to 12 3/4; 1986, 12 1/2 to 12 3/4; 1987, 12 1/2 to 12 3/4; 1988, 12 1/2 to 12 3/4; 1989, 12 1/2 to 12 3/4; 1990, 12 1/2 to 12 3/4; 1991, 12 1/2 to 12 3/4; 1992, 12 1/2 to 12 3/4; 1993, 12 1/2 to 12 3/4; 1994, 12 1/2 to 12 3/4; 1995, 12 1/2 to 12 3/4; 1996, 12 1/2 to 12 3/4; 1997, 12 1/2 to 12 3/4; 1998, 12 1/2 to 12 3/4; 1999, 12 1/2 to 12 3/4; 2000, 12 1/2 to 12 3/4; 2001, 12 1/2 to 12 3/4; 2002, 12 1/2 to 12 3/4; 2003, 12 1/2 to 12 3/4; 2004, 12 1/2 to 12 3/4; 2005, 12 1/2 to 12 3/4; 2006, 12 1/2 to 12 3/4; 2007, 12 1/2 to 12 3/4; 2008, 12 1/2 to 12 3/4; 2009, 12 1/2 to 12 3/4; 2010, 12 1/2 to 12 3/4; 2011, 12 1/2 to 12 3/4; 2012, 12 1/2 to 12 3/4; 2013, 12 1/2 to 12 3/4; 2014, 12 1/2 to 12 3/4; 2015, 12 1/2 to 12 3/4; 2016, 12 1/2 to 12 3/4; 2017, 12 1/2 to 12 3/4; 2018, 12 1/2 to 12 3/4; 2019, 12 1/2 to 12 3/4; 2020, 12 1/2 to 12 3/4; 2021, 12 1/2 to 12 3/4; 2022, 12 1/2 to 12 3/4; 2023, 12 1/2 to 12 3/4; 2024, 12 1/2 to 12 3/4; 2025, 12 1/2 to 12 3/4; 2026, 12 1/2 to 12 3/4; 2027, 12 1/2 to 12 3/4; 2028, 12 1/2 to 12 3/4; 2029, 12 1/2 to 12 3/4; 2030, 12 1/2 to 12 3/4; 2031, 12 1/2 to 12 3/4; 2032, 12 1/2 to 12 3/4; 2033, 12 1/2 to 12 3/4; 2034, 12 1/2 to 12 3/4; 2035, 12 1/2 to 12 3/4; 2036, 12 1/2 to 12 3/4; 2037, 12 1/2 to 12 3/4; 2038, 12 1/2 to 12 3/4; 2039, 12 1/2 to 12 3/4; 2040, 12 1/2 to 12 3/4; 2041, 12 1/2 to 12 3/4; 2042, 12 1/2 to 12 3/4; 2043, 12 1/2 to 12 3/4; 2044, 12 1/2 to 12 3/4; 2045, 12 1/2 to 12 3/4; 2046, 12 1/2 to 12 3/4; 2047, 12 1/2 to 12 3/4; 2048, 12 1/2 to 12 3/4; 2049, 12 1/2 to 12 3/4; 2050, 12 1/2 to 12 3/4; 2051, 12 1/2 to 12 3/4; 2052, 12 1/2 to 12 3/4; 2053, 12 1/2 to 12 3/4; 2054, 12 1/2 to 12 3/4; 2055, 12 1/2 to 12 3/4; 2056, 12 1/2 to 12 3/4; 2057, 12 1/2 to 12 3/4; 2058, 12 1/2 to 12 3/4; 2059, 12 1/2 to 12 3/4; 2060, 12 1/2 to 12 3/4; 2061, 12 1/2 to 12 3/4; 2062, 12 1/2 to 12 3/4; 2063, 12 1/2 to 12 3/4; 2064, 12 1/2 to 12 3/4; 2065, 12 1/2 to 12 3/4; 2066, 12 1/2 to 12 3/4; 2067, 12 1/2 to 12 3/4; 2068, 12 1/2 to 12 3/4; 2069, 12 1/2 to 12 3/4; 2070, 12 1/2 to 12 3/4; 2071, 12 1/2 to 12 3/4; 2072, 12 1/2 to 12 3/4; 2073, 12 1/2 to 12 3/4; 2074, 12 1/2 to 12 3/4; 2075, 12 1/2 to 12 3/4; 2076, 12 1/2 to 12 3/4; 2077, 12 1/2 to 12 3/4; 2078, 12 1/2 to 12 3/4; 2079, 12 1/2 to 12 3/4; 2080, 12 1/2 to 12 3/4; 2081, 12 1/2 to 12 3/4; 2082, 12 1/2 to 12 3/4; 2083, 12 1/2 to 12 3/4; 2084, 12 1/2 to 12 3/4; 2085, 12 1/2 to 12 3/4; 2086, 12 1/2 to 12 3/4; 2087, 12 1/2 to 12 3/4; 2088, 12 1/2 to 12 3/4; 2089, 12 1/2 to 12 3/4; 2090, 12 1/2 to 12 3/4; 2091, 12 1/2 to 12 3/4; 2092, 12 1/2 to 12 3/4; 2093, 12 1/2 to 12 3/4; 2094, 12 1/2 to 12 3/4; 2095, 12 1/2 to 12 3/4; 2096, 12 1/2 to 12 3/4; 2097, 12 1/2 to 12 3/4; 2098, 12 1/2 to 12 3/4; 2099, 12 1/2 to 12 3/4; 2100, 12 1/2 to 12 3/4; 2101, 12 1/2 to 12 3/4; 2102, 12 1/2 to 12 3/4; 2103, 12 1/2 to 12 3/4; 2104, 12 1/2 to 12 3/4; 2105, 12 1/2 to 12 3/4; 2106, 12 1/2 to 12 3/4; 2107, 12 1/2 to 12 3/4; 2108, 12 1/2 to 12 3/4; 2109, 12 1/2 to 12 3/4; 2110, 12 1/2 to 12 3/4; 2111, 12 1/2 to 12 3/4; 2112, 12 1/2 to 12 3/4; 2113, 12 1/2 to 12 3/4; 2114, 12 1/2 to 12 3/4; 2115, 12 1/2 to 12 3/4; 2116, 12 1/2 to 12 3/4; 2117, 12 1/2 to 12 3/4; 2118, 12 1/2 to 12 3/4; 2119, 12 1/2 to 12 3/4; 2120, 12 1/2 to 12 3/4; 2121, 12 1/2 to 12 3/4; 2122, 12 1/2 to 12 3/4; 2123, 12 1/2 to 12 3/4; 2124, 12 1/2 to 12 3/4; 2125, 12 1/2 to 12 3/4; 2126, 12 1/2 to 12 3/4; 2127, 12 1/2 to 12 3/4; 2128, 12 1/2 to 12 3/4; 2129, 12 1/2 to 12 3/4; 2130, 12 1/2 to 12 3/4; 2131, 12 1/2 to 12 3/4; 2132, 12 1/2 to 12 3/4; 2133, 12 1/2 to 12 3/4; 2134, 12 1/2 to 12 3/4; 2135, 12 1/2 to 12 3/4; 2136, 12 1/2 to 12 3/4; 2137, 12 1/2 to 12 3/4; 2138, 12 1/2 to 12 3/4; 2139, 12 1/2 to 12 3/4; 2140, 12 1/2 to 12 3/4; 2141, 12 1/2 to 12 3/4; 2142, 12 1/2 to 12 3/4; 2143, 12 1/2 to 12 3/4; 2144, 12 1/2 to 12 3/4; 2145, 12 1/2 to 12 3/4; 2146, 12 1/2 to 12 3/4; 2147, 12 1/2 to 12 3/4; 2148, 12 1/2 to 12 3/4; 2149, 12 1/2 to 12 3/4; 2150, 12 1/2 to 12 3/4; 2151, 12 1/2 to 12 3/4; 2152, 12 1/2 to 12 3/4; 2153, 12 1/2 to 12 3/4; 2154, 12 1/2 to 12 3/4; 2155, 12 1/2 to 12 3/4; 2156, 12 1/2 to 12 3/4; 2157, 12 1/2 to 12 3/4; 2158, 12 1/2 to 12 3/4; 2159, 12 1/2 to 12 3/4; 2160, 12 1/2 to 12 3/4; 2161, 12 1/2 to 12 3/4; 2162, 12 1/2 to 12 3/4; 2163, 12 1/2 to 12 3/4; 2164, 12 1/2 to 12 3/4; 2165, 12 1/2 to 12 3/4; 2166, 12 1/2 to 12 3/4; 2167, 12 1/2 to 12 3/4; 2168, 12 1/2 to 12 3/4; 2169, 12 1/2 to 12 3/4; 2170, 12 1/2 to 12 3/4; 2171, 12 1/2 to 12 3/4; 2172, 12 1/2 to 12 3/4; 2173, 12 1/2 to 12 3/4; 2174, 12 1/2 to 12 3/4; 2175, 12 1/2 to 12 3/4; 2176, 12 1/2 to 12 3/4; 2177, 12 1/2 to 12 3/4; 2178, 12 1/2 to 12 3/4; 2179, 12 1/2 to 12 3/4; 2180, 12 1/2 to 12 3/4; 2181, 12 1/2 to 12 3/4; 2182, 12 1/2 to 12 3/4; 2183, 12 1/2 to 12 3/4; 2184, 12 1/2 to 12 3/4; 2185, 12 1/2 to 12 3/4; 2186, 12 1/2 to 12 3/4; 2187, 12 1/2 to 12 3/4; 2188, 12 1/2 to 12 3/4; 2189, 12 1/2 to 12 3/4; 2190, 12 1/2 to 12 3/4; 2191, 12 1/2 to 12 3/4; 2192, 12 1/2 to 12 3/4; 2193, 12 1/2 to 12 3/4; 2194, 12 1/2 to 12 3/4; 2195, 12 1/2 to 12 3/4; 2196, 12 1/2 to 12 3/4; 2197, 12 1/2 to 12 3/4; 2198, 12 1/2 to 12 3/4; 2199, 12 1/2 to 12 3/4; 2200, 12 1/2 to 12 3/4; 2201, 12 1/2 to 12 3/4; 2202, 12 1/2 to 12 3/4; 2203, 12 1/2 to 12 3/4; 2204, 12 1/2 to 12 3/4; 2205, 12 1/2 to 12 3/4; 2206, 12 1/2 to 12 3/4; 2207, 12 1/2 to 12 3/4; 2208, 12 1/2 to 12 3/4; 2209, 12 1/2 to 12 3/4; 2210, 12 1/2 to 12 3/4; 2211, 12 1/2 to 12 3/4; 2212, 12 1/2 to 12 3/4; 2213, 12 1/2 to 12 3/4; 2214, 12 1/2 to 12 3/4; 2215, 12 1/2 to 12 3/4; 2216, 12 1/2 to 12 3/4; 2217, 12 1/2 to 12 3/4; 2218, 12 1/2 to 12 3/4; 2219, 12 1/2 to 12 3/4; 2220, 12 1/2 to 12 3/4; 2221, 12 1/2 to 12 3/4; 2222, 12 1/2 to 12 3/4; 2223, 12 1/2 to 12 3/4; 2224, 12 1/2 to 12 3/4; 2225, 12 1/2 to 12 3/4; 2226, 12 1/2 to 12 3/4; 2227, 12 1/2 to 12 3/4; 2228, 12 1/2 to 12 3/4; 2229, 12 1/2 to 12 3/4; 2230, 12 1/2 to 12 3/4; 2231, 12 1/2 to 12 3/4; 2232, 12 1/2 to 12 3/4; 2233, 12 1/2 to 12 3/4; 2234, 12 1/2 to 12 3/4; 2235, 12 1/2 to 12 3/4; 2236, 12 1/2 to 12 3/4; 2237, 12 1/2 to 12 3/4; 2238, 12 1/2 to 12 3/4; 2239, 12 1/2 to 12 3/4; 2240, 12 1/2 to 12 3/4; 2241, 12 1/2 to 12 3/4; 2242, 12 1/2 to 12 3/4; 2243, 12 1/2 to 12 3/4; 2244, 12 1/2 to 12 3/4; 2245, 12 1/2 to 12 3/4; 2246, 12 1/2 to 12 3/4; 2247, 12 1/2 to 12 3/4; 2248, 12 1/2 to 12 3/4; 2249, 12 1/2 to 12 3/4; 2250, 12 1/2 to 12 3/4; 2251, 12 1/2 to 12 3/4; 2252, 12 1/2 to 12 3/4; 2253, 12 1/2 to 12 3/4; 2254, 12 1/2 to 12 3/4; 2255, 12 1/2 to 12 3/4; 2256, 12 1/2 to 12 3/4; 2257, 12 1/2 to 12 3/4; 2258, 12 1/2 to 12 3/4; 2259, 12 1/2 to 12 3/4; 2260, 12 1/2 to 12 3/4; 2261, 12 1/2 to 12 3/4; 2262, 12 1/2 to 12 3/4; 2263, 12 1/2 to 12 3/4; 2264, 12 1/2 to 12 3/4; 2265, 12 1/2 to 12 3/4; 2266, 12 1/2 to 12 3/4; 2267, 12 1/2 to 12 3/4; 2268, 12 1/2 to 12 3/4; 2269, 12 1/2 to 12 3/4; 2270, 12 1/2 to 12 3/4; 2271, 12 1/2 to 12 3/4; 2272, 12 1/2 to 12 3/4; 2273, 12 1/2 to 12 3/4; 2274, 12 1/2 to 12 3/4; 2275, 12 1/2 to 12 3/4; 2276, 12 1/2 to 12 3/4; 2277, 12 1/2 to 12 3/4; 2278, 12 1/2 to 12 3/4; 2279, 12 1/2 to 12 3/4; 2280, 12 1/2 to 12 3/4; 2281, 12 1/2 to 12 3/4; 2282, 12 1/2 to 12 3/4; 2283, 12 1/2 to 12 3/4; 2284, 12 1/2 to 12 3/4; 2285, 12 1/2 to 12 3/4; 2286, 12 1/2 to 12 3/4; 2287, 12 1/2 to 12 3/4; 2288, 12 1/2 to 12 3/4; 2289, 12 1/2 to 12 3/4; 2290, 12 1/2 to 12 3/4; 2291, 12 1/2 to 12 3/4; 2292, 12 1/2 to 12 3/4; 2293, 12 1/2 to 12 3/4; 2294, 12 1/2 to 12 3/4; 2295, 12 1/2 to 12 3/4; 2296, 12 1/2 to 12 3/4; 2297, 12 1/2 to 12 3/4; 2298, 12 1/2 to 12 3/4; 2299, 12 1/2 to 12 3/4; 2300, 12 1/2 to 12 3/4; 2301, 12 1/2 to 12 3/4; 2302, 12 1/2 to 12 3/4; 2303, 12 1/2 to 12 3/4; 2304, 12 1/2 to 12 3/4; 2305, 12 1/2 to 12 3/4; 2306, 12 1/2 to 12 3/4; 2307, 12 1/2 to 12 3/4; 2308, 12 1/2 to 12 3/4; 2309, 12 1/2 to 12 3/4; 2310, 12 1/2 to 12 3/4; 2311, 12 1/2 to 12 3/4; 2312, 12 1/2 to 12 3/4; 2313, 12 1/2 to 12 3/4; 2314, 12 1/2 to 12 3/4; 2315, 12 1/2 to 12 3/4; 2316, 12 1/2 to 12 3/4; 2317, 12 1/2 to 12 3/4; 2318, 12 1/2 to 12 3/4; 2319, 12 1/2 to 12 3/4; 2320, 12 1/2 to 12 3/4; 2321, 12 1/2 to 12 3/4; 2322, 12 1/2 to 12 3/4; 2323, 12 1/2 to 12 3/4; 2324, 12 1/2 to 12 3/4; 2325, 12 1/2 to 12 3/4; 2326, 12 1/2 to 12 3/4; 2327, 12 1/2 to 12 3/4; 2328, 12 1/2 to 12 3/4; 2329, 12 1/2 to 12 3/4; 2330, 12 1/2 to 12 3/4; 2331, 12 1/2 to 12 3/4; 2332, 12 1/2 to 12 3/4; 2333, 12 1/2 to 12 3/4; 2334, 12 1/2 to 12 3/4; 2335, 12 1/2 to 12 3/4; 2336, 12 1/2 to 12 3/4; 2337, 12 1/2 to 12 3/4; 2338, 12 1/2 to 12 3/4; 2339, 12 1/2 to 12 3/4; 2340, 12 1/2 to 12 3/4; 2341, 12 1/2 to 12 3/4; 2342, 12 1/2 to 12 3/4; 2343, 12 1/2 to 12 3/4; 2344, 12 1/2 to 12 3/4; 2345, 12 1/2 to 12 3/4; 2346, 12 1/2 to 12 3/4; 2347, 12 1/2 to 12 3/4; 2348, 12 1/2 to 12 3/4; 2349, 12 1/2 to 12 3/4; 2350, 12 1/2 to 12 3/4; 2351, 12 1/2 to 12 3/4; 2352, 12 1/2 to 12 3/4; 2353, 12 1/2 to 12 3/4; 2354, 12 1/2 to 12 3/4; 2355, 12 1/2 to 12 3/4; 2356, 12 1/2 to 12 3/4; 2357, 12 1/2 to 12 3/4; 2358, 12 1/2 to 12 3/4; 2359, 12 1/2 to 12 3/4; 2360, 12 1/2 to 12 3/4; 2361, 12 1/2 to 12 3/4; 2362, 12 1/2 to 12 3/4; 2363, 12 1/2 to 12 3/4; 2364, 12 1/2 to 12 3/4; 2365, 12 1/2 to 12 3/4; 2366, 12 1/2 to 12 3/4; 2367, 12 1/2 to 12 3/4; 2368, 12 1/2 to 12 3/4; 2369, 12 1/2 to 12 3/4; 2370, 12 1/2 to 12 3/4; 2371, 12 1/2 to 12 3/4; 2372, 12 1/2 to 12 3/4; 2373, 12 1/2 to 12 3/4; 2374, 12 1/2 to 12 3/4; 2375, 12 1/2 to 12 3/4; 2376, 12 1/2 to 12 3/4; 2377, 12 1/2 to 12 3/4; 2378, 12 1/2 to 12 3/4; 2379, 12 1/2 to 12 3/4; 2380, 12 1/2 to 12 3/4; 2381, 12 1/2 to 12 3/4; 2382, 12 1/2 to 12 3/4; 2383, 12 1/2 to 12 3/4; 2384, 12 1/2 to 12 3/4; 2385, 12 1/2 to 12 3/4; 2386, 12 1/2 to 12 3/4; 2387, 12 1/2 to 12 3/4; 2388, 12 1/2 to 12 3/4; 2389, 12 1/2 to 12 3/4; 2390, 12 1/2 to 12 3/4; 2391, 12 1/2 to 12 3/4; 2392, 12 1/2 to 12 3/4; 2393, 12 1/2 to 12 3/4; 2394, 12 1/2 to 12 3/4; 2395, 12 1/2 to 12 3/4; 2396, 12 1/2 to 12 3/4; 2397, 12 1/2 to 12 3/4; 2398, 12 1/2 to 12 3/4; 2399, 12 1/2 to 12 3/4; 2400, 12 1/2 to 12 3/4; 2401, 12 1/2 to 12 3/4; 2402, 12 1/2 to 12 3/4; 2403, 12 1/2 to 12 3/4; 2404, 12 1/2 to 12 3/4; 2405, 12 1/2 to 12 3/4; 2406, 12 1/2 to 12 3/4; 2407, 12 1/2 to 12 3/4; 2408, 12 1/2 to 12 3/4; 2409, 12 1/2 to 12 3/4; 2410, 12 1/2 to 12 3/4; 2411, 12 1/2 to 12 3/4; 2412, 12 1/2 to 12 3/4; 2413, 12 1/2 to 12 3/4; 2414, 12 1/2 to 12 3/4; 2415, 12 1/2 to 12 3/4; 2416, 12 1/2 to 12 3/4; 2417, 12 1/2 to 12 3/4; 2418, 12 1/2 to 12 3/4; 2419, 12 1/2 to 12 3/4; 2420, 12 1/2 to 12 3/4; 2421, 12 1/2 to 12 3/4; 2422, 12 1/2 to 12 3/4; 2423, 12 1/2 to 12 3/4;



## OVER 1000 SCHOOL CHILDREN TREATED

County Health Unit Immunizes Youngsters Against Diphtheria, Small Pox

Between one and two thousand school children in Twin Falls county have been immunized against diphtheria and vaccinated against small pox during the period starting November 16 and ending December 16, Dr. J. W. Hawkins, director of the county health unit said Wednesday.

Children receiving treatment throughout the county, including those of the city of Twin Falls totaled 718 receiving the diphtheria and 731 receiving small pox vaccinations. This number included children in thirteen rural schools and the boys of Fair and Bush, Dr. Hawkins said.

In Twin Falls city proper 440 were immunized against diphtheria and 404 against small pox. This number included children at Washington, Lincoln and Pierce public schools as well as St. Edward's Catholic school and the WPA nursery school.

Nurses Annis and Hawkins were assisted by public health nurses of the various districts.

The weekly health report released Wednesday at the unit offices located in the nurses' home of the county hospital, show six new cases of scarlet fever were reported and 11 new cases of chicken pox. The doctor described the health situation in the county as being very satisfactory.

Annual desire to have children of pre-school age immunized are urged to bring them to the unit offices any Saturday morning.

Between the hours of 9 a. m. and 11 a. m. This is a free service offered by the unit and parents may have the children immunized for either diphtheria, small pox or both, Dr. Hawkins said.

## MEMBERS COMPLETE

## 654 4-H PROJECTS

Four-H club projects completed in eight counties of South Central Idaho this year have reached the completion percentage of 78.8 as compared with 79 per cent in 1935, according to Earl B. Stansell, district club agent. County enrollment and percentages of completion were as follows: Blaine, 11, no completion; Camas, 39, 78.9 per cent; Cassia, 78, 80.1 per cent; Gooding, 155, 83.1 per cent; Jerome, 138, 81.3 per cent; Laramie, 47, 82.6 per cent; Minidoka, 82, 71.1 per cent; Twin Falls, 221, 81.4 per cent.

Gooding county had the largest variety of projects, 152 club members carrying 184 projects of eleven different kinds. Twin Falls county club members worked on 135 different projects, 218 members carrying the 221 projects. In Jerome county 173 members carried the 116 projects in eight different fields. Elmore and Minidoka counties each had six different projects and Camas county had five.

## WOOL GROWERS PLAN POCATELLI MEETING

Annual convention of the Idaho Wool Growers' association will be held in Pocatello January 14-15 and 16. Twin Falls members announced Wednesday. Members of livestock associations in Idaho will also attend the three-day convention.

Among important issues which will be discussed are matters of grading policy, the Taylor Orange act, national and state legislation. It is also planned to discuss the matter of bettering roads and excluding from grazing large areas of the state. These will be used for recreation and game purposes.

Many members of the association from the Twin Falls area plan to attend.

## Schilling

pure Vanilla

Frozen or baked

its flavor lasts

## Xmas Tree LAMPS

1c EACH

Complete Sets

Outside Weatherproof

110 Volt Set

BOB MILNER SALES CO.

Twin Falls, Idaho

## Willie Willis

By ROBERT QUINN



"Uncle Henry makes no mistake. How would he like to have somebody ask him silly questions before company like he was a nit-wit?"

## GROWERS DECLARE RATE RISE UNJUST

Wool Association Claims Service Charge of Railroad Unnecessary

The Idaho Wool Growers' association, through the organization's latest bulletin, charges railroads are unjustly collecting an extra service charge on livestock when shipped enroute for feed and water and rest.

"Late this summer," the bulletin reads, "the railroads began to collect extra charges on livestock when shipped enroute for feed, water and rest when required in compliance with federal or state law or upon request of the shipper. This charge involved an additional cost of two dollars per car and is just an additional cost to be borne by the shipper."

"This is conclusively a railroad charge placed into effect entirely for their benefit and adds that much to the freight bill in the movement of livestock to market. Justly, this can be considered an increase in freight rates, only obtained in just a little different manner than usual."

"Their attempt to increase freight rates have consistently been turned down by the interstate commerce commission. Further explanation as to the why and wherefore this extra charge is being collected will be heard after a hearing is called before the commission."

## COLD THOXINE

Wonderful relief for common cold, influenza, headache, throat, and chest ailments. 25¢ per bottle. 50¢ per bottle. 75¢ per bottle. 1.00 per bottle. 1.50 per bottle. 2.00 per bottle. 2.50 per bottle. 3.00 per bottle. 3.50 per bottle. 4.00 per bottle. 4.50 per bottle. 5.00 per bottle. 5.50 per bottle. 6.00 per bottle. 6.50 per bottle. 7.00 per bottle. 7.50 per bottle. 8.00 per bottle. 8.50 per bottle. 9.00 per bottle. 9.50 per bottle. 10.00 per bottle. 10.50 per bottle. 11.00 per bottle. 11.50 per bottle. 12.00 per bottle. 12.50 per bottle. 13.00 per bottle. 13.50 per bottle. 14.00 per bottle. 14.50 per bottle. 15.00 per bottle. 15.50 per bottle. 16.00 per bottle. 16.50 per bottle. 17.00 per bottle. 17.50 per bottle. 18.00 per bottle. 18.50 per bottle. 19.00 per bottle. 19.50 per bottle. 20.00 per bottle. 20.50 per bottle. 21.00 per bottle. 21.50 per bottle. 22.00 per bottle. 22.50 per bottle. 23.00 per bottle. 23.50 per bottle. 24.00 per bottle. 24.50 per bottle. 25.00 per bottle. 25.50 per bottle. 26.00 per bottle. 26.50 per bottle. 27.00 per bottle. 27.50 per bottle. 28.00 per bottle. 28.50 per bottle. 29.00 per bottle. 29.50 per bottle. 30.00 per bottle. 30.50 per bottle. 31.00 per bottle. 31.50 per bottle. 32.00 per bottle. 32.50 per bottle. 33.00 per bottle. 33.50 per bottle. 34.00 per bottle. 34.50 per bottle. 35.00 per bottle. 35.50 per bottle. 36.00 per bottle. 36.50 per bottle. 37.00 per bottle. 37.50 per bottle. 38.00 per bottle. 38.50 per bottle. 39.00 per bottle. 39.50 per bottle. 40.00 per bottle. 40.50 per bottle. 41.00 per bottle. 41.50 per bottle. 42.00 per bottle. 42.50 per bottle. 43.00 per bottle. 43.50 per bottle. 44.00 per bottle. 44.50 per bottle. 45.00 per bottle. 45.50 per bottle. 46.00 per bottle. 46.50 per bottle. 47.00 per bottle. 47.50 per bottle. 48.00 per bottle. 48.50 per bottle. 49.00 per bottle. 49.50 per bottle. 50.00 per bottle. 50.50 per bottle. 51.00 per bottle. 51.50 per bottle. 52.00 per bottle. 52.50 per bottle. 53.00 per bottle. 53.50 per bottle. 54.00 per bottle. 54.50 per bottle. 55.00 per bottle. 55.50 per bottle. 56.00 per bottle. 56.50 per bottle. 57.00 per bottle. 57.50 per bottle. 58.00 per bottle. 58.50 per bottle. 59.00 per bottle. 59.50 per bottle. 60.00 per bottle. 60.50 per bottle. 61.00 per bottle. 61.50 per bottle. 62.00 per bottle. 62.50 per bottle. 63.00 per bottle. 63.50 per bottle. 64.00 per bottle. 64.50 per bottle. 65.00 per bottle. 65.50 per bottle. 66.00 per bottle. 66.50 per bottle. 67.00 per bottle. 67.50 per bottle. 68.00 per bottle. 68.50 per bottle. 69.00 per bottle. 69.50 per bottle. 70.00 per bottle. 70.50 per bottle. 71.00 per bottle. 71.50 per bottle. 72.00 per bottle. 72.50 per bottle. 73.00 per bottle. 73.50 per bottle. 74.00 per bottle. 74.50 per bottle. 75.00 per bottle. 75.50 per bottle. 76.00 per bottle. 76.50 per bottle. 77.00 per bottle. 77.50 per bottle. 78.00 per bottle. 78.50 per bottle. 79.00 per bottle. 79.50 per bottle. 80.00 per bottle. 80.50 per bottle. 81.00 per bottle. 81.50 per bottle. 82.00 per bottle. 82.50 per bottle. 83.00 per bottle. 83.50 per bottle. 84.00 per bottle. 84.50 per bottle. 85.00 per bottle. 85.50 per bottle. 86.00 per bottle. 86.50 per bottle. 87.00 per bottle. 87.50 per bottle. 88.00 per bottle. 88.50 per bottle. 89.00 per bottle. 89.50 per bottle. 90.00 per bottle. 90.50 per bottle. 91.00 per bottle. 91.50 per bottle. 92.00 per bottle. 92.50 per bottle. 93.00 per bottle. 93.50 per bottle. 94.00 per bottle. 94.50 per bottle. 95.00 per bottle. 95.50 per bottle. 96.00 per bottle. 96.50 per bottle. 97.00 per bottle. 97.50 per bottle. 98.00 per bottle. 98.50 per bottle. 99.00 per bottle. 99.50 per bottle. 100.00 per bottle. 100.50 per bottle. 101.00 per bottle. 101.50 per bottle. 102.00 per bottle. 102.50 per bottle. 103.00 per bottle. 103.50 per bottle. 104.00 per bottle. 104.50 per bottle. 105.00 per bottle. 105.50 per bottle. 106.00 per bottle. 106.50 per bottle. 107.00 per bottle. 107.50 per bottle. 108.00 per bottle. 108.50 per bottle. 109.00 per bottle. 109.50 per bottle. 110.00 per bottle. 110.50 per bottle. 111.00 per bottle. 111.50 per bottle. 112.00 per bottle. 112.50 per bottle. 113.00 per bottle. 113.50 per bottle. 114.00 per bottle. 114.50 per bottle. 115.00 per bottle. 115.50 per bottle. 116.00 per bottle. 116.50 per bottle. 117.00 per bottle. 117.50 per bottle. 118.00 per bottle. 118.50 per bottle. 119.00 per bottle. 119.50 per bottle. 120.00 per bottle. 120.50 per bottle. 121.00 per bottle. 121.50 per bottle. 122.00 per bottle. 122.50 per bottle. 123.00 per bottle. 123.50 per bottle. 124.00 per bottle. 124.50 per bottle. 125.00 per bottle. 125.50 per bottle. 126.00 per bottle. 126.50 per bottle. 127.00 per bottle. 127.50 per bottle. 128.00 per bottle. 128.50 per bottle. 129.00 per bottle. 129.50 per bottle. 130.00 per bottle. 130.50 per bottle. 131.00 per bottle. 131.50 per bottle. 132.00 per bottle. 132.50 per bottle. 133.00 per bottle. 133.50 per bottle. 134.00 per bottle. 134.50 per bottle. 135.00 per bottle. 135.50 per bottle. 136.00 per bottle. 136.50 per bottle. 137.00 per bottle. 137.50 per bottle. 138.00 per bottle. 138.50 per bottle. 139.00 per bottle. 139.50 per bottle. 140.00 per bottle. 140.50 per bottle. 141.00 per bottle. 141.50 per bottle. 142.00 per bottle. 142.50 per bottle. 143.00 per bottle. 143.50 per bottle. 144.00 per bottle. 144.50 per bottle. 145.00 per bottle. 145.50 per bottle. 146.00 per bottle. 146.50 per bottle. 147.00 per bottle. 147.50 per bottle. 148.00 per bottle. 148.50 per bottle. 149.00 per bottle. 149.50 per bottle. 150.00 per bottle. 150.50 per bottle. 151.00 per bottle. 151.50 per bottle. 152.00 per bottle. 152.50 per bottle. 153.00 per bottle. 153.50 per bottle. 154.00 per bottle. 154.50 per bottle. 155.00 per bottle. 155.50 per bottle. 156.00 per bottle. 156.50 per bottle. 157.00 per bottle. 157.50 per bottle. 158.00 per bottle. 158.50 per bottle. 159.00 per bottle. 159.50 per bottle. 160.00 per bottle. 160.50 per bottle. 161.00 per bottle. 161.50 per bottle. 162.00 per bottle. 162.50 per bottle. 163.00 per bottle. 163.50 per bottle. 164.00 per bottle. 164.50 per bottle. 165.00 per bottle. 165.50 per bottle. 166.00 per bottle. 166.50 per bottle. 167.00 per bottle. 167.50 per bottle. 168.00 per bottle. 168.50 per bottle. 169.00 per bottle. 169.50 per bottle. 170.00 per bottle. 170.50 per bottle. 171.00 per bottle. 171.50 per bottle. 172.00 per bottle. 172.50 per bottle. 173.00 per bottle. 173.50 per bottle. 174.00 per bottle. 174.50 per bottle. 175.00 per bottle. 175.50 per bottle. 176.00 per bottle. 176.50 per bottle. 177.00 per bottle. 177.50 per bottle. 178.00 per bottle. 178.50 per bottle. 179.00 per bottle. 179.50 per bottle. 180.00 per bottle. 180.50 per bottle. 181.00 per bottle. 181.50 per bottle. 182.00 per bottle. 182.50 per bottle. 183.00 per bottle. 183.50 per bottle. 184.00 per bottle. 184.50 per bottle. 185.00 per bottle. 185.50 per bottle. 186.00 per bottle. 186.50 per bottle. 187.00 per bottle. 187.50 per bottle. 188.00 per bottle. 188.50 per bottle. 189.00 per bottle. 189.50 per bottle. 190.00 per bottle. 190.50 per bottle. 191.00 per bottle. 191.50 per bottle. 192.00 per bottle. 192.50 per bottle. 193.00 per bottle. 193.50 per bottle. 194.00 per bottle. 194.50 per bottle. 195.00 per bottle. 195.50 per bottle. 196.00 per bottle. 196.50 per bottle. 197.00 per bottle. 197.50 per bottle. 198.00 per bottle. 198.50 per bottle. 199.00 per bottle. 199.50 per bottle. 200.00 per bottle. 200.50 per bottle. 201.00 per bottle. 201.50 per bottle. 202.00 per bottle. 202.50 per bottle. 203.00 per bottle. 203.50 per bottle. 204.00 per bottle. 204.50 per bottle. 205.00 per bottle. 205.50 per bottle. 206.00 per bottle. 206.50 per bottle. 207.00 per bottle. 207.50 per bottle. 208.00 per bottle. 208.50 per bottle. 209.00 per bottle. 209.50 per bottle. 210.00 per bottle. 210.50 per bottle. 211.00 per bottle. 211.50 per bottle. 212.00 per bottle. 212.50 per bottle. 213.00 per bottle. 213.50 per bottle. 214.00 per bottle. 214.50 per bottle. 215.00 per bottle. 215.50 per bottle. 216.00 per bottle. 216.50 per bottle. 217.00 per bottle. 217.50 per bottle. 218.00 per bottle. 218.50 per bottle. 219.00 per bottle. 219.50 per bottle. 220.00 per bottle. 220.50 per bottle. 221.00 per bottle. 221.50 per bottle. 222.00 per bottle. 222.50 per bottle. 223.00 per bottle. 223.50 per bottle. 224.00 per bottle. 224.50 per bottle. 225.00 per bottle. 225.50 per bottle. 226.00 per bottle. 226.50 per bottle. 227.00 per bottle. 227.50 per bottle. 228.00 per bottle. 228.50 per bottle. 229.00 per bottle. 229.50 per bottle. 230.00 per bottle. 230.50 per bottle. 231.00 per bottle. 231.50 per bottle. 232.00 per bottle. 232.50 per bottle. 233.00 per bottle. 233.50 per bottle. 234.00 per bottle. 234.50 per bottle. 235.00 per bottle. 235.50 per bottle. 236.00 per bottle. 236.50 per bottle. 237.00 per bottle. 237.50 per bottle. 238.00 per bottle. 238.50 per bottle. 239.00 per bottle. 239.50 per bottle. 240.00 per bottle. 240.50 per bottle. 241.00 per bottle. 241.50 per bottle. 242.00 per bottle. 242.50 per bottle. 243.00 per bottle. 243.50 per bottle. 244.00 per bottle. 244.50 per bottle. 245.00 per bottle. 245.50 per bottle. 246.00 per bottle. 246.50 per bottle. 247.00 per bottle. 247.50 per bottle. 248.00 per bottle. 248.50 per bottle. 249.00 per bottle. 249.50 per bottle. 250.00 per bottle. 250.50 per bottle. 251.00 per bottle. 251.50 per bottle. 252.00 per bottle. 252.50 per bottle. 253.00 per bottle. 253.50 per bottle. 254.00 per bottle. 254.50 per bottle. 255.00 per bottle. 255.50 per bottle. 256.00 per bottle. 256.50 per bottle. 257.00 per bottle. 257.50 per bottle. 258.00 per bottle. 258.50 per bottle. 259.00 per bottle. 259.50 per bottle. 260.00 per bottle. 260.50 per bottle. 261.00 per bottle. 261.50 per bottle. 262.00 per bottle. 262.50 per bottle. 263.00 per bottle. 263.50 per bottle. 264.00 per bottle. 264.50 per bottle. 265.00 per bottle. 265.50 per bottle. 266.00 per bottle. 266.50 per bottle. 267.00 per bottle. 267.50 per bottle. 268.00 per bottle. 268.50 per bottle. 269.00 per bottle. 269.50 per bottle. 270.00 per bottle. 270.50 per bottle. 271.00 per bottle. 271.50 per bottle. 272.00 per bottle. 272.50 per bottle. 273.00 per bottle. 273.50 per bottle. 274.00 per bottle. 274.50 per bottle. 275.00 per bottle. 275.50 per bottle. 276.00 per bottle. 276.50 per bottle. 277.00 per bottle. 277.50 per bottle. 278.00 per bottle. 278.50 per bottle. 279.00 per bottle. 279.50 per bottle. 280.00 per bottle. 280.50 per bottle. 281.00 per bottle. 281.50 per bottle. 282.00 per bottle. 282.50 per bottle. 283.00 per bottle. 283.50 per bottle. 284.00 per bottle. 284.50 per bottle. 285.00 per bottle. 285.50 per bottle. 286.00 per bottle. 286.50 per bottle. 287.00 per bottle. 287.50 per bottle. 288.00 per bottle. 288.50 per bottle. 289.00 per bottle. 289.50 per bottle. 290.00 per bottle. 290.50 per bottle. 291.00 per bottle. 291.50 per bottle. 292.00 per bottle. 292.50 per bottle. 293.00 per bottle. 293.50 per bottle. 294.00 per bottle. 294.50 per bottle. 295.00 per bottle. 295.50 per bottle. 296.00 per bottle. 296.50 per bottle. 297.00 per bottle. 297.50 per bottle. 298.00 per bottle. 298.50 per bottle. 299.00 per bottle. 299.50 per bottle. 300.00 per bottle. 300.50 per bottle. 301.00 per bottle. 301.50 per bottle. 302.00 per bottle. 302.50 per bottle. 303.00 per bottle. 303.50 per bottle. 304.00 per bottle. 304.50 per bottle. 305.00 per bottle. 305.50 per bottle. 306.00 per bottle. 306.50 per bottle. 307.00 per bottle. 307.50 per bottle. 308.00 per bottle. 308.50 per bottle. 309.00 per bottle. 309.50 per bottle. 310.00 per bottle. 310.50 per bottle. 311.00 per bottle. 311.50 per bottle. 312.00 per bottle. 312.50 per bottle. 313.00 per bottle. 313.50 per bottle. 314.00 per bottle. 314.50 per bottle. 315.00 per bottle. 315.50 per bottle. 316.00 per bottle. 316.50 per bottle. 317.00 per bottle. 317.50 per bottle. 318.00 per bottle. 318.50 per bottle. 319.00 per bottle. 319.50 per bottle. 320.00 per bottle. 320.50 per bottle. 321.00 per bottle. 321.50 per bottle. 322.00 per bottle. 322.50 per bottle. 323.00 per bottle. 323.50 per bottle. 324.00 per bottle. 324.50 per bottle. 325.00 per bottle. 325.50 per bottle. 326.00 per bottle. 326.50 per bottle. 327.00 per bottle. 327.50 per bottle. 328.00 per bottle. 328.50 per bottle. 329.00 per bottle. 329.50 per bottle. 330.00 per bottle. 330.50 per bottle. 331.00 per bottle. 331.50 per bottle. 332.00 per bottle. 332.50 per bottle. 333.00 per bottle. 333.50 per bottle. 334.00 per bottle. 334.50 per bottle. 335.00 per bottle. 335.50 per bottle. 336.00 per bottle. 336.50 per bottle. 337.00 per bottle. 337.50 per bottle. 338.00 per bottle. 338.50 per bottle. 339.00 per bottle. 339.50 per bottle. 340.00 per bottle. 340.50 per bottle. 341.00 per bottle. 341.50 per bottle. 342.00 per bottle. 342.50 per bottle. 343.00 per bottle. 343.50 per bottle. 344.00 per bottle. 344.50 per bottle. 345.00 per bottle. 345.50 per bottle. 346.00 per bottle. 346.50 per bottle. 347.00 per bottle. 347.50 per bottle. 348.00 per bottle. 348.50 per bottle. 349.00 per bottle. 349.50 per bottle. 350.00 per bottle. 350.50 per bottle. 351.00 per bottle. 351.50 per bottle. 352.00 per bottle. 352.50 per bottle. 353.00 per bottle. 353.50 per bottle. 354.00 per bottle. 354.50 per bottle. 355.00 per bottle. 355.50 per bottle. 356.00 per bottle. 356.50 per bottle. 357.00 per bottle. 357.50 per bottle. 358.00 per bottle. 358.50 per bottle. 359.00 per bottle. 359.50 per bottle. 360.00 per bottle. 360.50 per bottle. 361.00 per bottle. 361.50 per bottle. 362.00 per bottle. 362.50 per bottle. 363.00 per bottle. 363.50 per bottle. 364.00 per bottle. 364.50 per bottle. 365.00 per bottle. 365.50 per bottle. 366.00 per bottle. 366.50 per bottle. 367.00 per bottle. 367.50 per bottle. 368.00 per bottle. 368.50 per bottle. 369.00 per bottle. 369.50 per bottle. 370.00 per bottle. 370.50 per bottle. 371.00 per bottle. 371.50 per bottle. 372.00 per bottle. 372.50 per bottle. 373.00 per bottle. 373.50 per bottle. 374.00 per bottle. 374.50 per bottle. 375.00 per bottle. 375.50 per bottle. 376.00 per bottle. 376.50 per bottle. 377.00 per bottle. 377.50 per bottle. 378.00 per bottle. 378.50 per bottle. 379.00 per bottle. 379.50 per bottle. 380.00 per bottle. 380.50 per bottle. 381.00 per bottle. 381.50 per bottle. 382.00 per bottle. 382.50 per bottle. 383.00 per bottle. 383.50 per bottle. 384.00 per bottle. 384.50 per bottle. 385.00 per bottle. 385.50 per bottle. 386.00 per bottle. 386.50 per bottle. 387.00 per bottle. 387.50 per bottle. 388.00 per bottle. 388.50 per bottle. 389.00 per bottle. 389.50 per bottle. 390.00 per bottle. 390.50 per bottle. 391.00 per bottle. 391.50 per bottle. 392.00 per bottle. 392.50 per bottle. 393.00 per bottle. 393.50 per bottle. 394.00 per bottle. 394.50 per bottle. 395.00 per bottle. 395.50 per bottle. 396.00 per bottle. 396.50 per bottle. 397.00 per bottle. 397.50 per bottle. 398.00 per bottle. 398.50 per bottle. 399.00 per bottle. 399.50 per bottle. 400.00 per bottle. 400.50 per bottle. 401.00 per bottle. 401.50 per bottle. 402.00 per bottle. 402.50 per bottle. 403.00 per bottle. 403.50 per bottle. 404.00 per bottle. 404.50 per bottle. 405.00 per bottle. 405.50 per bottle. 406.00 per bottle. 406.50 per bottle. 407.00 per bottle. 407.50 per bottle. 408.00 per bottle. 408.50 per bottle. 409.00 per bottle. 409.50 per bottle. 410.00 per bottle. 410.50 per bottle. 411.00 per bottle. 411.50 per bottle. 412.00 per bottle. 412.50 per bottle. 413.00 per bottle. 413.50 per bottle. 414.00 per bottle. 414.50 per bottle. 415.00 per bottle. 415.50 per bottle. 416.00 per bottle. 416.50 per bottle. 417.00 per bottle. 417.50 per bottle. 418.00 per bottle. 418.50 per bottle. 419.00 per bottle. 419.50 per bottle. 420.00 per bottle. 420.50 per bottle. 421.00 per bottle. 421.50 per bottle. 422.00 per bottle. 422.50 per bottle. 423.00 per bottle. 423.50 per bottle. 424.00 per bottle. 424.50 per bottle. 425.00 per bottle. 425.50 per bottle. 426.00 per bottle. 426.50 per bottle. 427.00 per bottle. 427.50 per bottle. 428.00 per bottle. 428.50 per bottle. 429.00 per bottle. 429.50 per bottle. 430.00 per bottle. 430.50 per bottle. 431.00 per bottle. 431.50 per bottle. 432.00 per bottle. 432.50 per bottle. 433.00 per bottle. 433.50 per bottle. 434.00 per bottle. 434.50 per bottle. 435.00 per bottle. 435.50 per bottle. 436.00 per bottle. 436.50 per bottle. 437.00 per bottle. 437.50 per bottle. 438.00 per bottle. 438.50 per bottle. 439.00 per bottle. 439.50 per bottle. 440.00 per bottle. 440.50 per bottle. 441.00 per bottle. 441.50 per bottle. 442.00 per bottle. 442.50 per bottle. 443.00 per bottle. 443.50 per bottle. 444.00 per bottle. 444.50 per bottle. 445.00 per bottle. 445.50 per bottle. 446.00 per bottle. 446.50 per bottle. 447.00 per bottle. 447.50 per bottle. 448.00 per bottle. 448.50 per bottle. 449.00 per bottle. 449.50 per bottle. 450.00 per bottle. 450.50 per bottle. 451.00 per bottle. 451.50 per bottle. 452.00 per bottle. 452.50 per bottle. 453.00 per bottle. 453.50 per bottle. 454.00 per bottle. 454.50 per bottle. 455.00 per bottle. 455.50 per bottle. 456.00 per bottle. 456.50 per bottle. 457.00 per bottle. 457.50 per bottle. 458.00 per bottle. 458.50 per bottle. 459.00 per bottle. 459.50 per bottle. 460.00 per bottle. 460.50 per bottle. 461.00 per bottle. 461.50 per bottle. 462.00 per bottle. 462.50 per bottle. 463.00 per bottle. 463.50 per bottle. 464.00 per bottle. 464.50 per bottle. 465.00 per bottle. 465.50 per bottle. 466.00 per bottle. 466.50 per bottle. 467.00 per bottle. 467.50 per bottle. 468.00 per bottle. 468.50 per bottle. 469.00 per bottle. 469.50 per bottle. 470.00 per bottle. 470.50 per bottle. 471.00 per bottle. 471.50 per bottle. 472.00 per bottle. 472.50 per bottle. 473.00 per bottle. 473.50 per bottle. 474.00 per bottle. 474.50 per bottle. 475.00 per bottle. 475.50 per bottle. 476.00 per bottle. 476.50 per bottle. 477.00 per bottle. 477.50 per bottle. 478.00 per bottle. 478.50 per bottle. 479.00 per bottle. 479.50 per bottle. 480.00 per bottle. 480.50 per bottle. 481.00 per bottle. 481.50 per bottle. 482.00 per bottle. 482.50 per bottle. 483.00 per bottle. 483.50 per bottle. 484.00 per bottle. 484.50 per bottle. 485.00 per bottle. 485.50 per bottle. 486.00 per bottle. 486.50 per bottle. 487.00 per bottle. 487.50 per bottle. 488.00 per bottle. 488.50 per bottle. 489.00 per bottle. 489.50 per bottle. 490.00 per bottle. 490.50 per bottle. 491.00 per bottle. 491.50 per bottle. 492.00 per bottle. 492.50 per bottle. 493.00 per bottle. 493.50 per bottle. 494.00 per bottle. 494.50 per bottle. 495.00 per bottle. 495.50 per bottle. 496.00 per bottle. 496.50 per bottle. 497.00 per bottle. 497.50 per bottle. 498.00 per bottle. 498.50 per bottle. 499.00 per bottle. 499.50 per bottle. 500.00 per bottle. 500.50 per bottle. 501.00 per bottle. 501.50 per bottle. 502.00 per bottle. 502.50 per bottle. 503.00 per bottle. 503.50 per bottle. 504.00 per bottle. 504.50 per bottle