

RIM TO RIM SOUGHT BY TWO FIRMS

Joint Gathering of Chamber of Commerce and Credit Men's Association Planned to Learn That Portland Capitalists Would Compete with Gohmanites for Privilege of Building.

The acute competition between Atlantic and Pacific means for the privilege of building the rim-to-rim bridge over the river near the city of Portland, Ore., was made public last evening at a joint meeting, was accentuated today by the publication of the following telegram from West Wall, N. J., chairman of the American Association of Engineers and West Wall, N. J., who was recently checking up for eastern capitalists: "Our clients are willing to proceed with the bridge and have facilities to send a traffic expert to Twin Falls to discuss any estimate."

The large gathering of business men which attended the meeting of the chamber of commerce and the Twin Falls Credit Men's Association under the auspices of a committee of 630 dinner at Tom's cafe last evening, at the Hotel Shiloh, in which the first national organization, held about the strategic importance of the position of Twin Falls. His statement that both ocean shores were competitive for the privilege of building the rim-to-rim bridge was received with applause. Mr. M. Murray, who constructed the Hannon bridge and a few minutes before told the chamber of commerce members that Portland capitalists were financing the construction of the bridge, with the aid of the Twin Falls Chamber of Commerce, through in direct competition with the New York capitalists behind Mr. De Gohman's plan.

Mr. Murray had on a previous visit drafted plans for the bridge but at that time the best offer was a proposition for the formation of a company, the holders of which would be partly made up of people here.

President Hodson drew on the efforts of the opening of the road south, and on the eventual construction of the line from Bullhead in connection with King Hill. He pointed out the active efforts made to secure this extension both by the people of Twin Falls county and of Boise.

Value of Credit Society.
The value of the Twin Falls Credit association was restated by Mr. Hodson by Wilbur, B. Hill, by John J. Hughes and others. There were various topics covered by George E. Hatch, Arthur W. G. Erickson, Eldridge, T. S. August, L. C. Erickson and C. E. Pickett, chairman of the board of the credit society. The members of the chamber of commerce, under the auspices of which gathering was held, today were determined to go to Florida and discuss the matter and then returning to Twin Falls, frankly.

Attacking Funeral Saturday at Three from Blue Chapel.
The funeral of the late F. A. Atkinson will be held tomorrow afternoon at 3 o'clock from the Blue Chapel and will be conducted by Rev. B. Worcester of the Twin Falls minister.

Mr. Atkinson in 1908 came to Idaho from Iowa where he was born Feb. 22, 1867. He was married to Mrs. F. A. Atkinson, his widow, Mrs. L. G. Atkinson, he is survived by several children. His mother, who lives at...

Today's Sport News WORLD SERIES POSTPONED ON ACCOUNT RAIN

Judge G. M. Landis Orders Games Postponed on Account of Rain After Confering with Managers of Both Clubs. Senators Favored by Rest.

WASHINGTON, Oct. 9.—The ultra-games of the world's series between Washington and Pittsburgh was postponed today because of rain. The decision upon the postponement was made by Judge G. M. Landis, after he and conference with representatives of the two clubs and had been by the umpires that the field be wet, rain would not be fit to play upon, even if the rain held off steadily throughout the morning and afternoon.

High School News
The girls' basketball division of the fall and winter athletics will begin its practice next week. The play will be under the supervision of Miss Ollie Hepler, the regular gymnasium teacher. Five of the four classes of the school will participate in the first contest which will be played at the school gymnasium, and also determine the winning class.

The High-Crest Thursday evening at 7:30 at the school. During the business meeting of the organization, a popular vote; the treasurer's report for the past month was given by Clinton Evans and Luther Gray was appointed club reported by the president, Loyd Perry, was discussed on "Home Organization and Management" followed the transaction of business. Twenty members were present.

Episcopal Services—There will be Sunday school at the Episcopal church at 9:45. There will be regular service at 11 o'clock conducted by a lay reader.

Local Briefs
Episcopal Services—There will be Sunday school at the Episcopal church at 9:45. There will be regular service at 11 o'clock conducted by a lay reader.

Attacking Funeral Saturday at Three from Blue Chapel.
The funeral of the late F. A. Atkinson will be held tomorrow afternoon at 3 o'clock from the Blue Chapel and will be conducted by Rev. B. Worcester of the Twin Falls minister.

Mr. Atkinson in 1908 came to Idaho from Iowa where he was born Feb. 22, 1867. He was married to Mrs. F. A. Atkinson, his widow, Mrs. L. G. Atkinson, he is survived by several children. His mother, who lives at...

LOCKIE GETS BAIL PENDING HIS APPEAL

Bond in Sum of \$5000. Paroled for 30 Days. Many Alleged Errors Ared; Arguments to Court.

Admitted to bail in the sum of \$5000 bond for which was signed this morning by George W. Johnson, of Elmer and C. E. Shilburn of the city. Judge W. J. Lockie, convicted of embezzlement of \$14,128 from the Idaho Power company, was released today pending his appeal, and a motion for a new trial was filed at the same time. Judge W. A. Hubbard, in his opinion, stated that the money had all been paid to the Idaho Power company, and that the defendant had been paid for the same amount.

Resident Dies in Oregon
John Walker Dies at Sullatonia in Oregon After An Operation for Tumor.
The body of John Walker arrived in Twin Falls this afternoon that was taken at once to the Drake undertaking parlors, where the funeral will be held at 10 o'clock tomorrow morning. Mr. Walker was a member of the Masonic lodge and of the local church.

Local Briefs
Episcopal Services—There will be Sunday school at the Episcopal church at 9:45. There will be regular service at 11 o'clock conducted by a lay reader.

Radio Fans Tubes Tested FREE
The only tube tester in southern Idaho for RADIO amateur enthusiasts. The Zenth Bill Helm, "The Radio Dealer" Opposite City Hall Phone 60.

Union Suits
Ladies' Medium Weight V-Neck, Knee Length
Just what you need for these chilly mornings; 75c

Two More Days!
All requests for attendance cancelled! Smothered! Smothered! Smothered! All requests for attendance cancelled! Smothered! Smothered! Smothered! All requests for attendance cancelled! Smothered! Smothered! Smothered!

Kennedy Packard
District Distributor

Public Sale
I Will Sell at Public Auction on Saturday Sale Grounds in Twin Falls, October 10th. 1 black team, full brothers, 7-8 years old, weight 3000 pounds. This team was raised at Cassin County Fair. No team in Twin Falls county any better. Also broodmares, weight 2000 pounds, good and gentle.

Classified Advertisements
Received too late for classification

City Briefs
Bargains in Used Stoves
1 16-inch Round \$25
1 14-inch Round \$32.50
1 12-inch Round \$18
1 10-inch Round \$17.50
1 8-inch Round \$12.50
1 6-inch Round \$7.50
1 4-inch Round \$4.50
1 2-inch Round \$2.50

Hoosier Exchange
Main Avenue

Motier!
Child's Harmless Laxative is "California Fig Syrup"

Radio Fans Tubes Tested FREE
The only tube tester in southern Idaho for RADIO amateur enthusiasts. The Zenth Bill Helm, "The Radio Dealer" Opposite City Hall Phone 60.

Union Suits
Ladies' Medium Weight V-Neck, Knee Length
Just what you need for these chilly mornings; 75c

Two More Days!
All requests for attendance cancelled! Smothered! Smothered! Smothered! All requests for attendance cancelled! Smothered! Smothered! Smothered! All requests for attendance cancelled! Smothered! Smothered! Smothered!

Kennedy Packard
District Distributor

Wright's

A GOOD PLACE TO TRADE

EDISON MAZDA LAMPS

Our stock is always complete. Any shape or color. Regular home size, 10 to 50
watt **27c**

After all, shopping at your favorite store is most satisfactory. After all one finds good merchandise at Wright's and always prices as low or but lower.

TUNGSTEN GLOBES

Broken stock, yet with many good selling watt numbers. While they last, 60-50 watt, at each **19c**

Our Stocks Are Larger and More Complete Than Ever. New Patrons Extended a Cordial Welcome



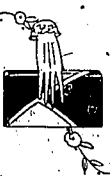
New Woolens

Woolen Plaids and Checks

Warm, durable woolen mixtures, forty inches wide, assorted in the best colors, checks and plaids. Yard **\$1.25**

Beacon Cloth
The ideal bathrobe material. Beautiful patterns in light and dark shades. Material 36 inches wide, yard **.95c**

Flannelette
Thirty-six inches wide, flannelette, heavy floeced, all in floral patterns. Yard **.59c**



Underarm Bag
Special assortment, patent leather, or suede, black or tan, embossed design. Each **\$1.75**



Children's Gloves
Of a heavy suede fabric. Beaver or fawn shades. Sizes 2 to 6 years. Pair **65c**



Umbrellas
Silk and linen mixture, Florida silk stripe finish. Wood or amber handles, trimmed in white and contrasting colors, attractive yet durable. Colors to match any costume. Each **\$3.95**

Corduroy

Thirty-three inches wide, genuine Bedford corduroy. Good for lining carriages, or for bathrobe purposes, colors blue, rose, flame, lavender and black. Yard **.85c**

All-Wool Serges

Quality storm serge, or fine French serges, 40 inches wide, plain colors in the open check patterns. Yard **\$2.25**

Coatings

Warm Astrachan, the ideal material for kiddies' coats - in tan, grey or brown. Fifty-six inches wide. Yard **\$3.95**

Outing Flannel

Thirty-six inches wide, heavy Amoskeag quality. Yard **.27c**

Infants' Cotton Hose

Fine corded cotton quality. In white or black or fawn. Sizes 4 to 6 1/2. Pair **.25c**

Crib Blankets

Genuine Moncon cloth, size 30x40, pink or blue, with nursery designs. Ea. **.95c**

Silk Combinations

Of heavy crepe. Either lace or tailored trim. Pongee, taffeta materials. New colors, each **\$2.95**

Fiber Silk Vests

Heavy weight, fiber silk. Lustrous finish. Honey dew, orchid or maize. Each **.98c**

Pongee Silk Bloomers

Genuine pure thread pongee silk. Double elastic, all sizes. At **\$1.95**

Kid Gloves

French kid. Perrin quality make. New style cuffs. Light tan, grey, black. Embroidered cuff. Pair **\$4.50**

Kid Gloves

Light-weight kid. Plain, two-button clasp. Tan, black or white **\$2.95**

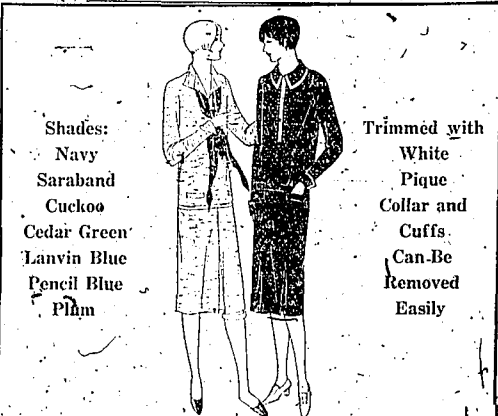
Suede Gloves

Heavy weight, quality. Durable and an excellent lent for auto uses. Cuff style. Brown only. Per pair **\$5.25**

Fabric Gloves

Fine Jersey quality. New cuff style in tan, brown or grey. With embroidered cuff. An excellent weight for fall use. Pair **.98c**

Children's Rompers
Heavy crepe or of Ben-frew gingham. Fine hand-work trim. Solid colors with contrasting trim. Age 6 years **\$2.95**



Shades:
Navy
Saraband
Cuckoo
Cedar Green
Lanvin Blue
Pencil Blue
Plum

Trimmed with
White
Pique
Collar and
Cuffs
Can-Be
Removed
Easily

DECIDEDLY NEW

Two-piece twiloshreen dresses, a new, warm woolen fabric. A new style; they are both popular

\$10.00

They must be made of iron so well they wear. **50c Pair**



"Pony Hose" for children have always stood the test. All Colors

SELECT NOW

PAY LATER

SPECIAL SALE

Wool Mixed Blankets

66 x 80 DOUBLE

\$4.50

Scarfs

Fine quality ecru linen, hemstitched, ready to be crocheted. All stamped for working. Pillow to match **\$1.25**

Guest Towels

Linen finish with colored borders in pink, blue or maize. Each **.98c**

Lunch Cloths

Stamped, ready for work on quality Indian. Head with permanent finish. Applique design in Maize. Each **\$1.45**

Laundry Bags

Stamped for working. Fine unbleached muslin with blue trim. Extra pockets for small sundries **\$1.25**

Linen Centers

Thirty-six inches, basket design, stamped on tan linen. Each **\$1.50**

Pillow Cases

Forty-two inch width. Stamped design to be worked in yellow or blue. Fine high-grade linen finish tubing. Pair **\$1.25**

Stamped Lunch Cloth with Napkin

On fine grade Indian Head. Two different designs. Each **\$1.00**

Silk and Wool Unions

Fine wool mixture with silk stripe, low neck, no sleeves, knee or ankle length. Each **\$2.50**

Ladies' Cotton Fleece Unions

Dutch neck, elbow sleeves, ankle length. Each **\$1.85**

Infants' Vest

Fold over style. Cotton and wool mixture with artificial silk stripe. Sizes 1 to 6 years. **\$1.25**

Val Lace

A profusion of these useful narrow laces. In ecru, black or white. Galaxy of designs. Yard **5c** and **10c**

Lunch Cloths

Fine ecru linen. Stamped for-embroidering. Thirty-six inch size **\$1.19**

Girls' Middies

Of fine quality Indian Head, whole sailor collar, large roomy size. **\$1.50**

Misses' Sweaters

Just arrived, girls' coat style sweaters, belts, with brushed wool collars. Warm and attractive in the new fall colors. **\$3.50**
26 to 36

Cool Weather Saturday Call For Warm Underwear



Ladies' Bloomers

Fine count. Rayon silk. Plain colors of purple, green, Copenhagen, American beauty with contrasting trim. Each **\$1.49**

Girls' Unions

Fine quality, bleached, with light fleece lined. Ages 2 to 12 year. **.85c**

Girls' Unions

Of silk and wool, ribbed, Dutch neck, long sleeves and ankle length. Ages 2 to 8 **\$2.25**; age 10. **\$2.95**

Boys' Unions

A fine quality grey ribbed union. Sizes 4 to 16 years, each **\$1.25**

Wistaria Glass

A new assortment of colored glass consisting of 42 pieces, nappies, bowls, soup bowls, spoon trays, candle sticks. Any of these lovely pieces, each, only **.98c**

Stamped Crib Blankets

A new thing in art. This has a stamped basket design, in lazy daisy or French knot. Thirty by forty inches **\$2.45**

Boys' Unions, Part Wool

Grey color. Long sleeves, ankle length. 2 to 8 years, **\$1.50** each; 8 to 16 years each **\$1.75**

Selby Arch Preserver Shoe Odds and Ends

Final close out, pair **\$2.19**

Cotton Umbrellas

A strong fine quality cotton covering, steel ribbed, with plain wood handle, colors black, red or green. Each **\$1.80**

Linin Handkerchiefs

Good size, colors: blue, rose and Nile. Each **10c**

Woolen Scarfs

Fashion's latest, Angora woolens, made and imported from Scotland. **\$2.95**
Striking new plaids

Wright's

A GOOD PLACE TO TRADE