

TWIN FALLS NEWS

VOLUME I.

TWIN FALLS, IDAHO, FRIDAY, MAY 12, 1905.

NUMBER 29.

MANY FARMERS SIGN THE ROLL

Association Now Has a Membership of Eighty Four—Last Meeting Well Attended—Many Questions Asked and Increasing Interest Shown.

Harmony and interest were the conspicuous features of the meeting of the Twin Falls Farmers' association held in the school house on Saturday evening, May 6. President Godard occupied the chair and the building was well filled. Eighty four members have signed the roll and the association is rapidly expanding. The members are getting over their bashfulness and beginning to ask questions. Superintendent McPherson was under fire for more than an hour and he enjoyed the proceedings immensely. The more questions asked, the better he is pleased. Questions show interest and interest means progress and prosperity. In his address Mr. McPherson used charts. He spoke on the growing of sugar beets and potatoes.

Regarding the culture of sugar beets, Mr. McPherson said that alfalfa or clover sod plowed under in the fall formed ideal soil for beets the following year. In the absence of this sod the farmers should manure their ground, plow it eight or 10 inches deep and thoroughly harrow it into a fine seed bed and thoroughly irrigate it before sowing their beet seed this year. This was necessary, he explained, because the present season was so far advanced and the ground was so dry.

The object in planting beets this year, Mr. McPherson added, was not to obtain profit so much as experience in raising beets. The farmers would have to have this experience anyway, he continued, before they could raise beets successfully and it was better that they should experiment with a small piece of ground at present than waste time and land later when the sugar factories shall have been established. The beet seed will probably be ready for distribution in Twin Falls in a very few days. Each farmer receiving seed will be requested to sign the following memorandum, which is self explanatory:

"The growing of sugar beets has become one of the most profitable crops grown on the farm wherever the farmer has learned to grow them properly. To get the best results, some instructions and experience is necessary. Believing that the Twin Falls tract is admirably adapted to the growth of the sugar beet, and in order to encourage the farmers to engage in this profitable branch of farming, the Twin Falls Land and Water company will furnish an instructor who will give the necessary instruction with regard to the growth of the sugar beet and will pay the farmer \$4.50 per ton for beets delivered at the nearest railroad station in carload lots for all beets testing.....

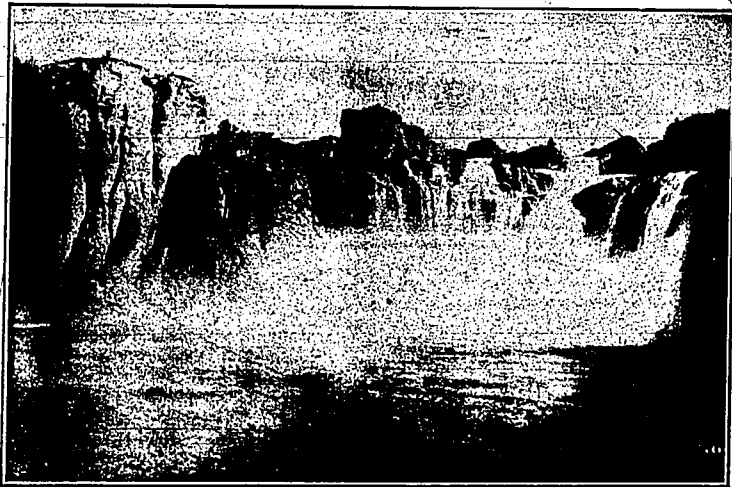
"The price of the seed will be deducted from the amount paid for the beets at the rate of _____ per pound.

"In consideration of the above, I agree to plant _____ of beet seed as directed by the superintendent of agriculture and follow all his directions to the best of my abil-

TWO VIEWS OF SHOSHONE FALLS, TAKEN WHEN GATES OF DAM WERE CLOSED AT MILNER.



When the gates of the Twin Falls dam at Milner were shut down for the first time on March 1, and the flow of the Snake river was completely stopped at that point for 12 hours, the effect upon Shoshone falls, 20 miles down stream from the dam, was startling. It had been predicted by many, among them several prominent engineers, that little or no water would pass over the falls during the period when the flow was stopped at Milner. Those who were familiar with the stream from Milner to the falls insisted, however, that the many springs which empty into the Snake river between those points would contribute a considerable volume of water. The latter theory proved correct, as is shown by the accompanying photographs. The upper picture was taken at 10 o'clock on the morning of March 2, when the flow of water at the falls was at its lowest. To the left of the spectators is shown a portion of the larger of two streams which poured over the crest of the falls. This stream was carefully measured and proved to carry more than 2000 second-feet. It is estimated that the smaller stream carried fully half that amount. The photograph was taken by Professor Barber of the Idaho State Normal school at Albion and several members of the faculty are shown standing on the very brink of the falls. Twenty minutes later the lower picture was taken by Mr. Barber from a point about opposite the hotel. It shows the condition of the falls about 10 minutes after the water began to rise. Ten minutes after the second picture was taken the water began to pour over the falls the full width of the canyon.



ity, and, upon request, make detailed report at the close of the season.

"Located on _____ Sec. _____
Tp. _____ R. _____
P. O. _____

The superintendent will make frequent calls upon those who plant sugar beet seed and will supply each one of them with a circular of instructions every two weeks. At the close of the season each farmer will be requested to furnish the superintendent with a detailed report of the result of his efforts which will be taken up in public meetings and discussed for the edification of those who are interested in beet culture. The object of this is to make the results

of each farmer's experience as far reaching as possible.

Potato Culture.

For potatoes the ground should be prepared in the same way as for sugar beets, that is manured, plowed deep and irrigated before planting. No irrigation should be used on either beets or potatoes before they show above ground.

Good potatoes can be grown on Twin Falls soil without manuring if proper care is given to the potato patch. Mr. McPherson emphasized the fact that mealy potatoes were most desirable. Excessive irrigation, he said, would not produce that quality.

Regarding the most desirable varieties of potatoes to plant, the superintendent mentioned the fol-

lowing: Hammond's Wonderful, Early Ohio, Burbank's Seedling, Peerless and White Star. Other varieties were also mentioned but the foregoing were prominently spoken of.

Superintendent McPherson has five potatoes of a new variety first produced last year in Idaho. He will plant them on the experimental farm, together with samples of Hammond's Wonderful which have taken the premium at every state fair since the variety was first introduced in Idaho.

At the close of the meeting an enlightening discussion was indulged in, many farmers taking part. Several good points were brought out and the desire for more information on pertinent subjects was stimulated.

DEATH CLAIMS MRS. POWELL

Summons Comes Without Warning While She is Busy With Her Duties at the Burrington and Death Follows in a Few Moments.

Mrs. Maud Powell was suddenly stricken with an attack of syncope on Tuesday evening in the kitchen at the Burrington hotel and expired in a few moments. Medical aid was instantly summoned but nothing could be done to prolong her life. Mrs. Powell's only son, Wilton Powell, who was associated with her in the management of the hotel, was by his mother's side when the unexpected summons came and was overcome with grief. It is supposed that the excitement incident to the opening of the hotel dining room and the rush of patrons overstimulated Mrs. Powell's heart action and brought on the fatal stroke.

The funeral took place on Thursday afternoon, interment being in the Twin Falls cemetery. The services were conducted by Rev. D. R. Osterhout of the Methodist church. A male quartette, consisting of Messrs. Cole, Osborne, Peterson and Spencer, sang an appropriate hymn. The pallbearers were C. M. Hill, C. M. Pierce, O. E. Barber and Dave Smith.

Mrs. Powell's sudden death was a great shock to the many who were familiar with the circumstances under which she was taken away. She and her son had just opened the dining room of the hotel and they were much pleased with the unexpected amount of patronage they received. The dining room was crowded and all was bustle in the kitchen. Mrs. Powell had taken a rest during the afternoon and was supervising the work in the kitchen. While engaged in wiping dishes she collapsed without warning and sank into the arms of an assistant who was standing beside her. At first it was thought she had fainted. A physician was called but his services were of no avail. She passed away without a show of consciousness. Her heartbroken son was the recipient of unlimited sympathy, not only because of his personal popularity but also on account of the circumstances surrounding his irreparable loss.

Mrs. Powell was 42 years and three months old at the time of her death. She was born in Findlay, Ohio, and raised at Leipsic in the same state. Two of her sisters reside near Cincinnati, Ohio. She came here from Salt Lake City about three weeks ago and quickly made many friends.

Wilton Powell will continue in charge of the Burrington. The dining room, which was closed on Thursday, was reopened on Friday morning.

The funeral of Mrs. Powell was the first held in Twin Falls at which an ordained pastor officiated. It was also the first at which there was a turnout of carriages.

Mrs. Powell's death drew attention to the cemetery question and it has been suggested that this question should be taken up at once. Now that the country is settling up it is being urged that the cemetery should be platted and irrigated.

TWIN FALLS NEWS

Published every Friday by
THE NEWS PUBLISHING COMPANY
TWIN FALLS, IDAHO

FRIDAY.....MAY 12, 1905

THRIVE WELL IN ARID DISTRICTS

Result of Interesting Tests by the Department of Agriculture With Kherson Oats—Specially Adapted to Twin Falls.

Kherson oats promise to become an important forage and stock feeding crop in many sections of the country since somewhat extensive trials made with it since its introduction by the department of agriculture have demonstrated not only heavy yields, but exceptionally good returns under conditions of drouth. They will thrive well in the arid sections and should prove an ideal crop for Twin Falls farmers.

A very important feature of the work of the experiment stations throughout the country is the introduction of new crops, and many valuable additions have thus been made to the list of plants which the country is capable of producing. The Kherson oats were brought from Russia in 1896. They have been pretty well tested by the Nebraska stations as to their adaptability to the corn belt of the United States. An advance proof of the experiment station work of the department of agriculture says of this promising forage crop: "The climate conditions most favorable to the growth of oats do not usually obtain in the corn belt and it has been difficult to find a variety of oats well adapted to this region. It is a curious fact that although the great corn producing States are likewise the largest producers of oats, they are not states in which the yield per acre is high.

"The Kherson oat is a vigorous but not rank grower. The straw is short, the leaves are broad and expose a large surface. The berries are light yellow in color and have a very thin hull. It usually

Growing crops must be protected from jack rabbits. The Etwood rabbit fencing will do it. For sale by Stock-growers Mer. Co., Shoshone, Ida.
If you are short on Kemmerer coal try the Nibley Channel Lumber Co.

weighs well per bushel and matures very early. In the dry season of 1901 it showed remarkable drouth resisting qualities."

The Kherson oat is stated to be a very heavy yielder and the indications are that in introducing this oat a great service has been rendered not only to the middle west where the rainfall is scant, but to other sections where drouth frequently cuts down the oat yield.

The Twin Falls soil is especially suited for Kherson oats and when it is possible to obtain seed in any quantity these oats will be extensively grown here.

Coffee! Coffee! Coffee!
Where? At the Twin Falls Grocery. When? All the time.
What kind? Best Mocha and Java.
How much?—From 20c to 45c per pound?
Will they grind it? Oh, yes! t-t

CELEBRATION FOR FOURTH OF JULY

Citizens Endeavoring to Arrange Suitable Program for National Holiday but Those Behind the Movement Find Little Encouragement.

It has been proposed that Twin Falls should befittingly celebrate the national holiday. A number of prominent citizens have taken the matter in hand but their efforts have not been seconded by those most likely to profit by the celebration. The spirit of loyalty seems to be slumbering in the bosoms of a large number of Twin Falls citizens and it is sadly in need of awakening. The "grab it and hold fast" idea will not work over time in this city.

Those who have taken the initial steps towards getting up a program have held three meetings but the attendance was so slim that the promoters are ready to give up in disgust. It is pointed out that the many farmers from other states who have settled on the Twin Falls tract will naturally expect a rousing celebration on the Fourth, such as they have been accustomed to in their old homes. The citizens of Twin Falls should provide a celebration of first quality for the farmers who have spent

All kinds repairing done at our tin shop.
GRIFFETH HARDWARE & PLNG. CO.,
Protect your growing crops with rabbit fencing. For sale by Stock-growers Mercantile Co., Shoshone, Ida.

Twin Falls Livery, Boarding and Transfer Stables
I. M. BURNETT, Manager
Good Rigs . . Prompt Service . . Prices Right
Horses Bought, Sold and Exchanged
Located on Thirteenth and Shoshone Ave. TWIN FALLS, IDAHO

C. R. SHAW, President H. O. MILNER, Sec. and Mgr.
Twin Falls Lumber Co., Ltd.
Capital Stock, \$50,000
DEALERS IN
All Kinds of Pine and Fir Lumber, Sash, Doors, Shingles, Ruberoid
Roofing, Lath, Cement, Hallack's Paint
TWIN FALLS, IDAHO

CHAS. E. MILLER
Carpenter and Builder
Special Attention to Making all kinds of Kitchen Furniture; Door and Window Frames made to order; Store Fixtures, etc., etc.
Shop, adjoining Page's Transfer Stable, on Twelfth Avenue TWIN FALLS, IDAHO

OUR NEW STOCK OF
BOOTS AND SHOES
IS COMING
TO MAKE ROOM FOR IT WE ARE CLOSING OUT OUR FURNITURE AND HOUSE FURNISHINGS
AT COST
WE NEED THE ROOM YOU NEED THE GOODS
WE HAVE SPECIAL BARGAINS IN PARLOR FURNITURE AND SEWING MACHINES. JUST WHAT YOU NEED. CALL AND SEE THEM. IT COSTS NOTHING TO INSPECT.
James F. Stott, Main Street, Opposite Pioneer Drug Store

their money so liberally in the city.

It is an assured fact that the railway will be here before July 4 and if a meritorious program were arranged it would draw many visitors to Twin Falls on that date. Doubtless there are many people in Pocatello, Albion, Oakley, Minidoka and elsewhere who would be glad to visit Twin Falls on the Fourth if it were made worth their while.

It is hoped that the citizens will wake up and make the first Fourth of July celebration in Twin Falls memorable.

WANTED.
Forty acres grubbed. Five miles southeast of town.
Twenty acres grubbed. Five miles southeast of town.
St. JOHN SKINNER.

MANY ESTRAYS ARE CAPTURED
No Livestock Allowed to Run at Large in Twin Falls.

A lively business is being transacted at the city pound. Every stray is being rounded up and impounded and the authorities are not playing favorites. The trustees are determined that shade and fruit trees and gardens shall not be destroyed by stock and owners who allow their stock to run at large will have to square themselves with the poundmaster on a cash basis. Already a number of animals have been impounded and these will be sold at auction in accordance with the provisions of the city ordinance governing estrays unless the owners redeem them within the time prescribed by law.

For Sale.
240 acre stock ranch 8 miles from Halley, in the best range in Idaho. Plenty free water for irrigation. \$25 per acre.
W. P. EASTWOOD, Halley, Idaho.

RATHER ROUGH ON THE ANIMALS
Careless Owners in the Habit of Starving Their Stock.

It has been observed that of late a number of horses and cattle have been tied up to sagebrush on private property and left to starve. This practice comes under the head of cruelty to animals and the city authorities propose to stop it. The owners will be warned and if a warning is not sufficient arrests will follow. There is plenty of feed for stock in Twin Falls. People may grumble at the price of hay and grain but there is an abundance of good grass close at hand. In one instance a team of horses and a cow were tied in the brush for days at a time and fed on straw, apparently taken from an old mattress.

Tents, camp stoves, stove pipe all sizes, roof caps, builders' hardware and tinware.
GRIFFETH HARDWARE & PLNG. CO., Red Iron building, Main St.

Wanted.
Desirable tenants for Twin Falls farms. Applicants are required to furnish references. Choice lands near town.
S. T. HAMILTON & CO.

Bower Land & Livestock Company
J. E. BOWER, Mgr.
Dealer in General Merchandise, Hay, Grain, Lumber, Cedar Posts, Meats of all Kinds, Work and Saddle Horses, and Milch Cows
DRY CREEK, IDAHO
Postoffice Address, Milner, Idaho

ELITE RESTAURANT
H. M. BUNNELL, Proprietor
Short Orders a Specialty
Prompt Service Bakery in Connection
Conlon Building, Twelfth Avenue
TWIN FALLS, IDAHO

CHARLES M. HILL UP TO DATE STUART H. TAYLOR
ESTABLISHED 1905
HILL & TAYLOR
REAL ESTATE, LOANS
INSURANCE AND RENTALS
If you want to sell your property, list it with us. If you want to buy we have a large list to select from. Prices right.
THE CARE OF PROPERTY FOR NON-RESIDENTS A SPECIALTY. TWIN FALLS, IDAHO

The Baker Transfer Co.
J. V. BAKER, Manager
Headquarters: Twin Falls Livery, Boarding and Transfer Co.
Located on 13th and Shoshone Ave. TWIN FALLS, IDAHO

KENNEDY PACKARD
REAL ESTATE, LAND LOCATIONS AND INVESTMENTS
The Interest of Patrons Carefully Considered.
MAIN STREET TWIN FALLS, IDAHO

The hack line in charge of O. G. Kerr, which runs between Twin Falls and Burley, leaves Twin Falls every morning at 8 o'clock and arrives at Burley at 6 p. m. Passengers will have an opportunity of viewing the great dam at Milner. Tickets can be had at Baker Transfer Co. office, 26-41
DAVIS & HEALY
Sanitary Plumbing and Tin Repairing
Estimates Made and Contracts Executed. All Work Guaranteed.
Located, Cor. Sixth Street and Tenth Avenue

PHENOMENAL GROWTH OF CASSIA COUNTY

Population and Assessed Valuation More Than Doubled in Twelve Months While Other Improvements have been in Keeping—D. S. Spencer Surprised at Changes Since His Last Visit.

D. S. Spencer, assistant general passenger and ticket agent of the Oregon Short Line, visited Twin Falls a few days ago for the first time in several months. On the occasion of Mr. Spencer's last visit there was but one lonesome building in the city. There are now hundreds of business houses and residences and the entire tract for miles on either side of Twin Falls is settled and a considerable portion of it is under cultivation. When Mr. Spencer last drove over the plain the only road was that over which the stage passed between Kelton, Utah, and Boise in the early days.

Needless to say Mr. Spencer was surprised and delighted. He found evidences of civilization on all sides of his farm, which fronts on Blue Lakes boulevard. Leading to his very door, as it were, was a tree fringed highway which is destined to become one of the most beautiful and popular drives in the state. The marvelous

changes impressed Mr. Spencer more than they would a stranger who could not appreciate them unless he was familiar with the conditions before the construction of the Twin Falls irrigation system. Twelve months ago Cassia county stood fifteenth among the Idaho counties in point of population. Today it is easily fifth or sixth and by the time the nation is ready to elect another president in November, 1906, Cassia county will roll up a vote which will crowd the leaders.

The assessed valuation of the county increased more than half a million dollars at one bound, and that on an extremely low basis of valuation. It is safe to assume that the valuation in the city of Twin Falls alone in two years hence will be greater than was that of the entire country two years ago.

There was not a mile of railway or telegraph line in Cassia county one year ago. In six weeks the Minidoka & Southwestern railway will be completed to Twin Falls and before the end of next year it will be extended to the Salmon river on the west. Telegraphic communication will come with the railway.

Albion, the county seat, boasted the only newspaper in the county 12 months ago. Now there are five up to date papers, any one of which would be a credit to any county. When the railway is completed to Twin Falls the county seat will be less inaccessible than it was.

This transformation has been worked by enterprise, cash and brains. The foundation of it all is the great canal system which has provided homes for thousands of families. Men of means have been attracted to Twin Falls and have made heavy investments without hesitation. The county has fairly leaped to the front and it now compels the respectful attention of the entire state and is probably better known throughout the country than any other county in Idaho because of the extensive advertising of the Twin Falls project.

There are no barnacles or moss on Cassia county nor will any be allowed grow.

We have made arrangements where by we can clear and plow lands for absent owners at a reasonable cost. Give us description of your land and we will name price. Also name date at which work must be completed.

S. T. HAMILTON & Co.

HAD NOT BEEN MISREPRESENTED

Charles Murray of Waltsburg Pleased with Twin Falls.

Charles Murray of Waltsburg, Washington, was a recent visitor in Twin Falls. Mr. Murray is engaged in the livery business in Waltsburg and having heard so much about Twin Falls he decided to come here and see what the city looked like. He said he found that nothing had been misrepresented. Mr. Murray stated that the spring had been very backward in the Waltsburg section, the rainfall being unusually heavy for that district.

Homeseekers' Rates.

The Union Pacific and Oregon Short Line railroads will sell round trip homeseekers' tickets to Idaho points on the first and third Tuesdays of February, March, April and May, 1905. These rates will apply from Missouri River points east as far as St. Paul, Chicago and St. Louis. The rate will be one first-class fare plus \$2.00 for the round trip. Tickets good 21 days.

Allen Mercantile Co.

General Merchandise

Whatever's Right

NEW SETTLERS FROM SUNNYSIDE

Samuel Woodhead and C. H. Eldred Move Families to Twin Falls.

Samuel Woodhead, whose farm is located three miles west of the city, has brought his family here from Sunnyside, Utah. Mr. Woodhead and C. H. Eldred, also of Sunnyside, located here last autumn. When they left Sunnyside their friends and neighbors gave a farewell party in their honor, one of the friends even going to the extent of composing a poem descriptive of farming in a new country. Sunnyside is an attractive place but Mr. Woodhead says he is well satisfied with the change. He has five broad shouldered sons who will do their share in making Twin Falls blossom.

Just received a car barb wire and Elwood field fencing. Stockgrowers Mercantile Co., Shoshone, Ida.

\$1,000 Reward

A reward of \$1,000 will be paid to any person proving the Filler and Wrapper used in the "CUBA FLORA" Cigar is not the best quality Havana Filler and Wrapper grown on the Island of Cuba. T. J. Wanek, Maker, Salt Lake City, Utah.

J. A. McCarthy has transferred the agency for the celebrated "Spotted Trout" and "Cuba Flora" brands of cigars, manufactured by T. J. Wanek, Salt Lake City, to the ALLEN MERCANTILE CO., Twin Falls. No better cigars are made.

A scuttie of Kemmerer coal is not so bad on a chilly morning. For sale by the Nibley Channel Lumber Co.

Sprague & Butler
DRUGGISTS

Stationery
Blank Books.
Kodaks
Toilet Water and
Perfumes
Cigars
Drugs and
Chemicals

Sprague & Butler
DRUGGISTS

Pioneer Drug Store

WILLIAMS & GOODING, Props.

Just Opened and Ready for Business

With a Full Line of Drugs, Patent Medicines, Druggists' Sundries, Perfumery, Confectionery and Cigars. Prescriptions carefully and accurately compounded from purest of Drugs.

Main Street, TWIN FALLS, IDAHO

BURRINGTON'S HOTEL

EUROPEAN PLAN

Advance requests for rooms will receive prompt attention

Tenth and Main Streets

TWIN FALLS, IDAHO

HORSESHOEING

BLACKSMITHING

C. F. BORDEN

Hardware, Lumber and Farm Implements
Wagons and Buggies

SHOSHONE, IDAHO

Twin Falls Stage Line

J. M. BURNETT, Manager

DAILY Stage leaves Shoshone via Blue Lakes for Twin Falls City. Passengers may have the privilege of returning via Blue Lakes or Shoshone Falls.

Shoshone Office,

Twin Falls Office, Main Street

J. E. BARNHURST & CO.

Real Estate and Insurance

General Brokerage in Connection

I can sell or rent your property. If you want to invest in Real Estate I CAN SAVE MONEY FOR YOU. Your business solicited.

Office Tarr Bldg., Main St., Twin Falls, Idaho

Agents for

IDAHO
STATE
NURSERY

FRANK BYRNE

McCree & Byrne

LEADING REAL ESTATE DEALERS

TWIN FALLS, IDAHO

GEORGE E. MCKEE

Rentals and
Collections

Insurance Solicited.

ROBERTS & OUGHTON
CONTRACTORS.

Stone, Brick and Concrete Work
Stone Cutting and Cemetery Work a Specialty
Estimates cheerfully furnished.

TWIN FALLS, IDAHO

P. H. HALL

Contractor and Builder

Estimates Cheerfully Furnished

TWIN FALLS CITY, IDAHO

IS A FIRM BELIEVER IN TWIN FALLS PROJECT

President F. W. Gooding of the Idaho Woolgrowers Association Establishes Residence on His Farm Adjoining the Kimberly Townsite—Expresses his Confidence in the Future of Twin Falls.

President Fred W. Gooding of the Idaho Woolgrowers association, has brought his family over to his farm, six miles east of Twin Falls, adjoining the new town site of Kimberly. He has established his residence there and is building a commodious home. Mr. Gooding is one of the most loyal "rooters" on the Twin Falls tract. By reason of his long experience in this section of the state he appreciates the merit of the irrigation project which he declares is quite as safe as government bonds.

"There is nothing experimental about this project," said Mr. Gooding. "To use a common expression, it is an absolute cinch. We who have been here for years know what the land will do when irrigated. Such a thing as crop failure is impossible. Nor is there the slightest danger from frost or poverty of soil. Here the farmer has everything in his own hands. It is just as Mr. McPherson has said—the farmer holds the controlling lever and he can produce whatever he wants. The soil has been tested and we know there is

no better anywhere. All the farmer has to do is to use his head. If he tries to follow threadbare ideas he will come to grief. On the other hand if he goes about it right from the start, lays out his ditches correctly, plants the proper crops to begin with and does not try to grow dollar bills in the beginning he is just as certain to prosper as he would be if the government guaranteed him a pension of a \$100 an acre. I have been over every foot of this country for years and I know what to expect from irrigation. I consider myself very fortunate to own a farm under the Twin Falls cap!

Coming as they do from a man who knows whereof he speaks, these statements are highly encouraging, even though they have made time and again by others for years. Mr. Gooding knows the west thoroughly and he would not move his family to the Twin Falls tract if he thought he was running any chance in so doing.

Mr. Gooding said the Idaho sheep were in better condition than they had been for years.

The unusual amount of rain had covered the range with more grass than had gladdened the hearts of the growers for many a day. Mutton had been shipped to Chicago this spring earlier than ever before; the wool clip was cleaner and better and the percentage of lambs was very satisfactory. These conditions, coupled with the prevailing high price of wool, left the growers in the most favorable circumstances.

There are about 2,500,000 less sheep in Idaho this year than there were two years ago, said Mr. Gooding, and considerably less than there were last spring. The fact that the Twin Falls tract was settling up would have no effect on the industry, he added, as it would not deprive the growers of any range to speak of. On the contrary it created a home market for mutton.

Mr. Gooding is a member of the state sanitary board and he is firm in his determination to exterminate sheep scab and diseases in cattle.

"The sheep men and cattle growers are falling in line," said Mr. Gooding, "and those who are not disposed to do the right thing in the way of keeping their flocks and herds clean will be made to comply with the law." Dr. Noble, the state veterinarian, is doing splendid work and we are assisting him in every way possible. If our plans carry, and there is no

reason why they should not, Idaho will soon have a reputation for clean sheep and cattle.

Mr. Gooding has sown 20 acres of grain on his farm already and has planted two acres of potatoes. This is only a starter as he intends to place more land under cultivation at once.

As Mr. Gooding travels extensively and has a very wide circle of acquaintance, he is in position to do great good for the Twin Falls section and that he will do so none of his friends doubt.

TO OPEN STORE WITH A DANCE

Farmers in Vicinity of Kimberly to Be the Guests of the Stockgrowers Mercantile Company on Monday Evening, May 15.

There will be "something doing" over at the Kimberly townsite on Monday evening, May 15, when the Stockgrowers Mercantile company's store will be completed and opened with a good, old fashioned "hoe down". The farmers for miles around have been invited and a large delegation from Twin Falls will take part in the festivities.

Mayor McMillan of Kimberly has agreed to brew the coffee and this announcement alone is sufficient to draw a crowd for "Mac" has a reputation in the coffee line. It was reported that he had also

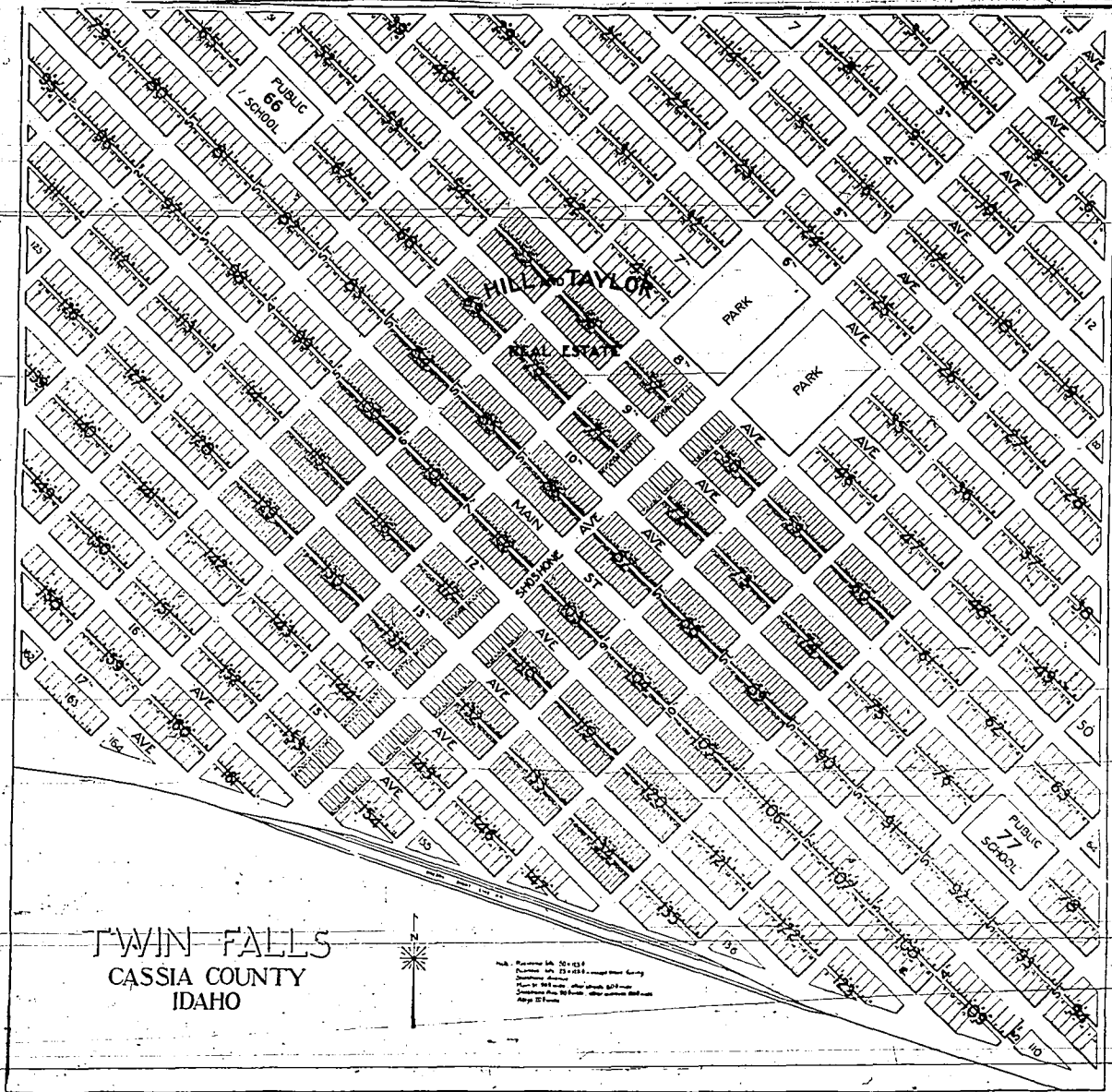
agreed to dance the Highland fling with his irrigating boots on but this has not been confirmed and is supposed to be a hoax started by Fred Gooding. There will also be something good to eat, cooked by sagebrush, which should go well with the good coffee.

Mr. McMillan was in Twin Falls on Monday to engage an orchestra for the dance. He said the ball would surely take place on Monday evening, unless the members of the orchestra had a previous engagement for that date which was unexpected. Due notice will be given in the event of a postponement.

A large number of farmers are settled around Kimberly, where irrigating is already in full blast. Agricultural Superintendent McPherson has accepted an invitation to attend the dance and deliver a brief address to the farmers.

Mr. McPherson would like to meet the wives of the farmers. Heretofore the women have not been able to attend the meetings in Twin Falls but they can combine business and pleasure by coming to the dance. They will learn something of interest in regard to gardening and dairying by listening to Mr. McPherson.

The Stockgrowers Mercantile company has placed its Kimberly store at Mr. McPherson's disposal for farmers' meetings hereafter and notice will be given of the meeting dates there.



For information concerning farm lands or city lots, write or call on Hill & Taylor, Real Estate and Insurance, Twin Falls, Idaho.

POWER PROJECTS NEAR CITY OF TWIN FALLS

Shoshone Falls Power Company, Limited is Working on Plants at Shoshone Falls, Twin Falls and Augur Falls—Movements of Newly Formed Shoshone Power Company Not Comprehended Here.

Outside of Twin Falls, a good deal is heard about the Shoshone power company, a corporation which is constantly being confounded with the Shoshone Falls Power Co., limited. Here little is known of the former company or its holdings on the Snake river. The Shoshone Power Co., limited, has men working on its power sites at Shoshone falls, Augur falls and Twin falls and will be ready to furnish light and power in the city of Twin Falls from the Shoshone falls plant before August 1.

Former Attorney General Bagley was reported to have been in

Boise a few days ago on business connected with the Shoshone Power company, of which he is general counsel. He is said to have stated that "the surveys in that section are in bad condition, as was brought out in the litigation over land and power sites" and he came to Boise for the purpose of getting a copy of the field notes from the surveyor general so that some of the lines might be traced out more definitely. Mr. Bagley is also quoted as saying that this company had established a camp and a force of men had begun clearing the ground preparatory

to beginning active operation on the proposed works.

It is possible that Mr. Bagley's statement might have been misconstrued. The litigation mentioned probably refers to that between Senator W. A. Clark of Montana and H. L. Hollister of Chicago which was long since settled in Mr. Hollister's favor. This litigation involved the title to a power site at Shoshone falls. The Shoshone Falls Power Co., limited, obtained its power site, which is two acres in extent, from the state. This site is located on the north side of the river at the falls. The company also has a perfect and prior right to practically all water available at the falls during the low water season. Senator Clark owns the power site on the south side of the river and his water right is next in priority to that of the Shoshone Falls Power Co., limited. It would thus appear that the Shoshone Power company holds no ground at Shoshone falls, unless it has been obtained from the state of Idaho, which claim has never been asserted, so far as the citizens of Twin Falls are informed. Even though it did secure a power site there, it is difficult to understand how a water right of any value could be obtained.

At Twin Falls the Shoshone Falls Power Co., limited, owns the land on both sides of the river and has the water right location undisputed. It has a force of men employed there at the present time and will before long have a large power plant in operation at that point.

On the south side of the Snake river at Augur Falls the Shoshone Falls Power Co., limited, owns the land, water right and power site. The north side of the Snake river canyon at Augur falls is a perpendicular bluff while on the south side there runs an old watercourse which the Shoshone Falls Power Co., limited, will utilize in diverting the water for its power plant. The company has a force of eight men at work there now.

It is reported that another force of engineers, presumably employed by the Shoshone Power company, is also located there, but where they intend to "head in", nobody knows.

In Twin Falls the impression prevails that the Shoshone Power company was organized for the purpose of bolstering up the Utah Light and Power company in its effort to force a 50 year franchise from the Salt Lake City council. If the company really has holdings of any value either at Shoshone falls, Augur falls or Twin falls and intends to build a plant at any of the three points named, so much better for the city of Twin Falls. The company may be withholding its plans for some cogent reason but until it comes out with a clear statement of its intentions there will naturally be some doubt in regard to the project.

The Shoshone Falls Power company, limited, is composed of such men as Governor Bliss of Michigan, President J. Frank Brand of the Commercial National bank of Saginaw, Michigan, H. L. Hollister of Chicago, I. B. Perrine of Blue Lakes, S. H. Hays of Boise, R. M. McCullom of Twin Falls and other prominent men with established reputations for carrying out their undertakings. C. H. Perrine has general supervision of the work at Shoshone falls, Augur falls and Twin falls and excellent progress is being made at all three points.

Griffith Hardware and Plumbing Co. make most everything out of tin or iron. Also do plumbing and electrical work. Red Iron building, Main St.

JUST OPENED

Hardware and Furniture

H. TOWNER, Prop.

Just received a carload of Furniture; also a carload of Nails and a full line of Hardware. Call and get prices

Located on Twelfth Avenue, near Shoshone Avenue
TWIN FALLS, IDAHO

I. B. PERRINE, President
PHILIP WEISNER, Vice President
Directors: FRANK F. JOHNSON, S. H. HAYS

FIRST NATIONAL BANK OF TWIN FALLS

J. M. MAXWELL, Cashier

CAPITAL STOCK \$25,000.00

General Banking Business Transacted

SOUTH MAIN STREET TWIN FALLS, IDAHO

LAND LOCATIONS INVESTMENTS

CHAS. H. MULL & CO.

REAL ESTATE AND INSURANCE

CARE OF PROPERTY FOR ABSENT OWNERS—A SPECIALTY.

TWIN FALLS, IDAHO

Shoshone Falls Stage Line

I. B. PERRINE, Proprietor.

Daily Stages leave Shoshone and Rock Creek every morning via Blue Lakes and Twin Falls City

Office, Main Street, Between Tenth and Eleventh Streets
TWIN FALLS CITY, IDAHO

J. C. Wooster

L. Pettit

IDAHO LUMBER CO.

L. PETTIT, Mgr.



North Main Street

TWIN FALLS, IDAHO

No Argument Necessary as to the soundness of our lumber—you'll be convinced if you will but give it a half fair trial, and that's what we ask you to do if you're not familiar with the stock in our yard. We guarantee selection, seasoning, prices and quick delivery. Glad to cater to specifications of any size. We want your trade.

Twin Falls Land and Water Co.

OFFICERS:

W. G. FILER, Vice-Pres. & Gen. Mgr., Salt Lake City, Utah.

F. H. BULL, President, Sharon, Pa.

M. B. DELONG, Sec. & Treas., Twin Falls, Idaho.

PAUL S. A. BICKEL, Chief Engineer, Twin Falls, Idaho.

M. M. MURTAUGH, Asst. Gen'l Mgr., Twin Falls, Idaho.

Address all Communications to the Secretary of the

Twin Falls Investment Co., Ltd.

TWIN FALLS CITY, IDAHO.

Sole Agents for Disposal of Water Rights, Lands and Town Lots.

OFFICERS:

C. B. HURTT, President, JOHN CROCKER, Treas., R. N. MCCULLUM, Secretary.

I. B. Perrine, Vice-President and Gen. Mgr., THOS. COSTELLO, Vice-Pres. and Eastern Mgr., GEO. P. SPRAGUE, Asst. Treas.

T. J. WOODS & CO.

REAL ESTATE

BUYERS FOR BARGAINS
BARGAINS FOR BUYERS

Clouchek Building, Main St., TWIN FALLS, IDAHO

OPEN FOR BUSINESS

If you want anything in the Line of Furniture, Stoves, Carpets, Linoleum, Bedding, Picture Framing, we can supply your wants. Our goods are new and up-to-date. Our prices are reasonable.

UNDERTAKING ESTABLISHMENT IN CONNECTION
O. J. BRENNAN Shoshone, Idaho

The Palace Saloon

R. W. JONES, Proprietor

A Full Line of Finest Wines, Liquors and Cigars

BILLIARD HALL IN CONNECTION

FAMILY TRADE SOLICITED.

MAIN STREET, TWIN FALLS CITY, IDAHO

Bon Ton Grill and Cafe

PRICE & CURTIS, Proprietors.

OPEN DAY AND NIGHT
Everything the Market Affords Served in a First-class Manner

MAIN STREET

TWIN FALLS, IDAHO

STUDEBAKER BROS.

Wagons, Buggies and Vehicles

THE STANDARD FOR QUALITY
FULL LINE IN STOCK

For Sale by C. O. MEIGS, Agent
Opposite Twin Falls Lumber Co. TWIN FALLS, IDAHO

DRAFT HORSES SUFFER AT HANDS OF DRIVERS

Overloaded Animals Frequently Whipped in Brutal Manner and Often Beaten With Chains by Teamsters in Their Impatience to Get Over the Grades at Blue Lakes.

The steep approach to the ferry on the south side of the grade at Blue Lakes was muddy and a strong wind blew in the face of the driver as he stood on the top of his heavy load of lumber and gathered up his reins. The boards were piled high on the front wagon and still higher on the trailer. The hind wheels of the trailer were warped out to such an extent that they momentarily threatened to collapse and the tracks they left were a full four inches wider than those of the front wagon. This, of course, did not make the trailer pull any easier.

The leaders were a light team of dark bays, neither one of which weighed more than half a ton. The wheelers were a trifle heavier and all four horses were scared with the marks of whip lashes. With a nervous jump the animals responded to the first touch of the driver's whip and bending low they moved the heavy wagons up to the foot of the approach. There the leaders slipped and stumbled to their knees while the wheelers squirmed and strained as the unhuman driver scored them with the cruel lash.

With a volley of oaths the driver set his brake, took a fresh grip

on the reins, shook his whip lash free from the harness and urged the tired horses forward. In vain the willing animals tugged and hauled. The load was beyond them but the chuckle headed driver only cursed the more and wielded the lash with greater vigor. Sometimes three of the four horses would go down at once on the muddy road but it mattered nothing to the driver.

Finally the off wheeler stumbled over on his side and refused to arise. The driver stung him with the lash in vain. Finding his whip useless, the driver unhooked a stake chain and brutally beat the fallen horse.

Bystanders suggested that the trailer be detached and the wagons hauled up the grade one at a time but the driver only responded with a streak of profanity. The grade was blocked and freighters were impatiently waiting to pass. Eventually another freighter hitched his team in front of the wearied and whip scared leaders and assisted in hauling the double load out of the way.

How the freighter managed to get to the top of the grade nobody knows and nobody cares, unless it be the merchant to whom the lum-

ber was consigned and who may have waited weeks for it.

This is a brief story of an actual occurrence. Similar occurrences are witnessed every day, many of them even more brutal in character than this. There exists a society for the prevention of cruelty to animals and it would be a mercy if the organization were to station a representative at Blue Lakes.

In their haste to get over the road with freight many drivers forget that a horse is a thing of life. They use no judgment whatever in taking the grades and the horses are tortured pitifully. Fortunately all drivers are not so savage. Some of them exercise care and it is a noticeable fact that these make better time and secure more business than their brutal competitors.

We wire your building safely and when the current is on guarantee the lights to burn? First class work in plumbing, electrical and tin. GRIFFITH HARDWARE & PLUMB. CO., Red Iron building, Main St.

DREAM OF BROILERS SHATTERED

Valuable Eggs Spoil While in Warehouse in Shoshone.

A well known lady of Twin Falls in mourning the loss of a setting of valuable eggs which she ordered from the east by express. The eggs reached Shoshone four days after they were shipped. That part of the journey was easy. Unfortunately for the consignee, the hen fruit was held in Shoshone for 30 days and when it reached Twin Falls it was ready for the required list. Now the lady is figuring on the amount of damages she should exact from the express company. It may be for a jury to decide just how many of the eggs might have incubated had the express service been prompt. Then the valuable time of the hen might be taken into consideration. The hen for which the eggs were ordered clucked herself into a high fever while waiting for the express package, so the story goes, and hens are hens in Twin Falls.

Wanted. For customers. I want 80 acres close in, also forty acres.

KENNEDY PACKARD. BENEFIT DANCE FOR BALL CLUB

To Be Given in Odd Fellows Hall on Wednesday May 17.

A dance for the benefit of the Twin Falls baseball club will be given in I. O. O. F. hall on Wednesday evening May 17. This will be the first entertainment in the new building and as citizens take pride in the ball team, a large attendance is expected. Ladies escorted by gentlemen will be admitted free. Tickets may be obtained from Acting Manager C. M. Price, Acting Secretary and Treasurer J. M. Shank, Captain L. O. Kiersted or the Liberal cigar store.

Terrific Race with Death. "Death was fast approaching," writes Ralph F. Fernandez, of Tampa, Fla., describing his fearful race with death, "as a result of liver trouble with heart disease, which had robbed me of sleep and of all interest in life. I had tried many different doctors and several medicines, but got no benefit until I began to use Electric Bitters. So wonderful was their effect, that in three days I felt like a new man, and today I am cured of all my troubles." Guaranteed at Sprague & Butler's drug store; price 50c.

Don't bother gathering sagebrush when you can buy Kemmerer coal cheaply from the Nibley Channel Lumber Co.

H. B. Johnson

Complete line of
HARDWARE

Just received a large consignment of stoves especially adapted for ranches.

POULTRY NETTING
BARB WIRE
SCREEN WIRE

BROADCAST SOWERS
Just the thing for sowing grass seed.

J. T. CASE IMPLEMENTS

Tenth Avenue
between Shoshone and Ninth Sts.
TWIN FALLS

G. H. JOHNSON, President H. T. WEST, Secretary and Manager

The Johnson Grubber Co., Ltd.



General Contractors
Sage Brush Cleared
by Contract. Machines Leased.
If you want your land cleared write us. We will leave it ready to seed; do a quick job and please you.
Address all correspondence to
Twin Falls, Idaho

Johnson Grubber, Patent applied for.

Alvord Sage-Brush Grubber and Land Cleaner

Prepares your Land for Tilling in the Easiest and Best Manner. Costs Less than any other Machine and Saves Expense in Running.
S. B. REYNOLDS. Sole Agent for Shoshone and Twin Falls Dist.
Will Contract to Clear Land at Reasonable Price. Address:
TWIN FALLS, IDAHO.

TWIN FALLS GROCERY

BRADLEY & PARSONS, Proprietors

Our Goods and Prices are Right, and We Solicit a Share of Your Patronage

Tenth Avenue, TWIN FALLS, IDAHO

S. T. Hamilton & Co.

REAL ESTATE AND INVESTMENTS

Office in Records Building :: TWIN FALLS, IDAHO

Perrine & Burton

GENERAL MERCHANDISE

We Are Now

Located In Our New Store

and will continue to carry a full line of first class goods

Montana Seed Oats, Seed Potatoes,
John Deere Plows, Bain Wagons,
Superior Drills, etc.

Corner Main Street and Shoshone Avenue TWIN FALLS, IDAHO

J. H. DAY R. D. L. BARSTOW

DAY & BARSTOW

REAL ESTATE INSURANCE

Office, Room 3, Jones Building
Postoffice Box 16 TWIN FALLS, IDAHO

"Like Mother Used to Make"

HARDER'S BREAD, PIES AND CAKES

Why fry out your sweet life over a gasoline stove when Harder is baking home made dainties in the big brick oven? Try them once and see.

FULL AND FRESH STOCK OF GROCERIES AND CANDIES

C. HARDER The Big Brick Oven with the High Chimney

Next Time You Go East

Be Sure
And Use The

UNION PACIFIC

and

Chicago, Milwaukee & St. Paul Line

The Route of the

OVERLAND LIMITED

Through Cars to Chicago

CLAUDE S. WILLIAMS, Commercial Agent
106 West 2nd South St., Salt Lake City, Utah.

THE DENVER & RIO GRANDE RAILROAD

"The Scenic Line of the World"

Are You Going East This Spring or Summer?

If you are you had better write to us for rates and some literature describing the beautiful scenery along our line—the finest on any railroad in the world.

Get our "Tourist's Handbook," "Panoramic Folder," "Crossing the Rockies," "Sights, Places and Resorts in the Rockies," "Utah," "With Nature in Colorado," Etc.

G. W. FITZGERALD, Gen. Agt.
BUTTE, MONTANA

C. & B. Clothing Co.

Have Just Received...

Spring Suits Underwear Gloves, Shoes

Everything you need to wear on the farm or in town. Cheapest and best our motto.

C. E. COLE, Manager.

BREVITIES

Children's day will be observed by the Union Sunday school on Sunday, May 18.

W. H. Snodgrass is building a residence at the corner of Eighth avenue and Eleventh street.

Union Sunday School meets every Sunday afternoon at 3 o'clock in the Twin Falls school house. All invited. General Manager Waite G. Fitch of the Twin Falls Land & Water Company was a Twin Falls visitor this week.

E. B. Critchlow returned from Salt Lake on Monday and left on Tuesday morning for Hailey where he had some legal business to look after.

Invitations are out for a reception at the residence of Mr. and Mrs. R. M. McCollum in honor of Mesdames I. B. Perrine and M. M. Murrough.

Mrs. C. A. Camp has moved her kindergarten and studio to the Baker residence on Ninth avenue. She has a fine class of pupils, all of whom are progressing nicely.

Mrs. S. W. Hazen has gone to West Bend, Iowa, to visit for the summer. Her son, Master Don Hazen, accompanied her. Mr. Hazen has joined the Homeless Twenty.

C. T. Miller was fined \$5 and costs in Justice Taylor's court for drawing a revolver upon Earl L. Turner. Heand Turner quarreled about a horse trade and the gun play followed.

Chairman Paul S. A. Bicket of the board of trustees of Twin Falls is visiting with his family in Helena, Montana. During his absence Trustee F. W. Eickhoff is acting chairman of the board.

Isaac Divine is clearing 40 acres about nine miles east of the city. Oats and alfalfa will be the principal crops this season. He reports that the grain in that section is looking exceptionally well.

S. H. Young of Salmon City, who has an excellent piece of land four miles and a half west of the city, has arrived in Twin Falls and will begin clearing his ground preparatory to planting.

John Benedict has erected a residence on his farm which adjoins the townsite of Twin Falls on the south. He is busy clearing land and will have a considerable portion under cultivation this year.

The Ladies' Aid society of the Methodist church will meet at the home of Mrs. J. A. Frater on Thursday, May 18. A good attendance is desired as the election of officers will take place at the meeting.

I. R. Darrow has returned from a visit in Colorado. He caught cold on the journey from Shoshone to Twin Falls and was confined to his room. Heand now stated that the weather was no better in Colorado than it was in Twin Falls.

Services will be held in the school house on Sunday afternoon at 2 p. m. and Sunday evening at 8 o'clock by Rev. R. D. Gerbout of the Methodist Episcopal church. Members of all denominations are cordially invited to attend.

Thomas Costello, vice president and eastern manager of the Twin Falls Investment company, has returned from Boise. He had a small basket of sunshine with him and he would have brought more but reported there was very little in the market.

R. M. Downey has purchased the City Meat market from Sanders & Davidson and will hereafter conduct the business himself. Mr. Downey is well known in Twin Falls and has many friends in this city who will be glad to see him make a success of the undertaking.

Work commenced on the Expert laundry building on Tuesday eve early in the week and the structure will be ready for occupancy in a few days. A complete, modern steam laundry plant has been ordered by the Expert proprietors and will be installed in about two weeks.

Mrs. C. D. Storey and family arrived from Boise and the Star lodging house again presents a homelike appearance. Mr. Storey was promptly disqualified by the Homeless Twenty when his family arrived but the consolation members of the organization promised to call and visit him.

H. L. Hollister has returned from Chicago. He was accompanied by President J. Frank Brand of the Commercial National bank of Saginaw, Michigan. Mr. Hollister and Mr. Brand have been inspecting the work on the power plants at Shoshone falls, Augur falls and Twin falls.

Nothing further has been heard of Dan Kingsley, the ferryman who was supposed to be going over Shoshone falls. A portion of a small basket he had picked up below the falls. Some profess to believe that Kingsley left the country and sent his skiff over the falls to convey that idea that he committed suicide.

A box supper will be given in the school house on May 23, for the purpose of raising additional funds for the erection of a paragon on a lot recently purchased by the ladies of the Methodist Episcopal church. A good musical program has been prepared and it is expected there will be a large attendance.

The Twin Falls Furniture company's stock has arrived and is now being unpacked and displayed in the I. O. O. F. building. The company has erected a warehouse in the rear of the building and will be ready for business in a day or two. The furniture stock came over from Boise in good condition and the company will be able to make a fine display.

Addison T. Smith and his son, Hugh Smith, have returned from Al-



ON THE SQUARE

WADE, THE TAILOR

The advantage of wearing fine custom made suits that you get your money's worth.

Wade's garments were built "on the square." The finest hair-cloth, imported French elastic, canvas and tons of thousands of small hand stitches make them absolutely shaps retaining.

All clothes made by us kept in perfect order for six months free of charge.

PRICES FROM \$16.35 UPWARDS

Our patterns will surprise and please you. Call and see

WADE, THE TAILOR

Main Street Next to the Bank

PROFESSIONAL CARDS

HAWLEY, PUCKETT & HAWLEY

Attorneys at Law

Rooms 5 to 10 Odd Fellows' Block

BOISE - IDAHO

HENDERSON, PIERCE, CRITCHLOW & BARRETTE

Attorneys at Law

Office with Twin Falls Land & Water Company

TWIN FALLS, IDAHO

S. H. HAYS

Attorney at Law

821 Main street BOISE, IDAHO.

C. M. PRICE

Attorney at Law

Collections a Specialty

Room 8, Jones Bldg., TWIN FALLS

JAMES H. RICHARDSON

ARCHITECT

North Main Street, opposite Idaho Lumber Co.

TWIN FALLS, IDAHO

COOKINHAM & HAYES

Twin Falls Engineering Co.

Later surveys a specialty

General engineering work

Office Hall Block, TWIN FALLS.

BALL BROTHERS

CONTRACTORS

Architectural Work a Specialty. See us for Plans and Estimates.

Ninth Avenue, between Tenth and Eleventh Sts.

TWIN FALLS, IDAHO.

ROY ATWOOD

Carpenter and Paper Hanger

All Work Guaranteed

TWIN FALLS, IDAHO

J. C. GARL

Contractor and Builder

Estimates furnished free of charge.

Office at the Twin Falls Hardware company's store.

TWIN FALLS IDAHO

Legal Notice.

Treasury Department,

Office of Comptroller of the Currency,

Washington, D. C., Feb. 13, 1905.

Whereas, by satisfactory evidence presented to the undersigned it has been made to appear

that the First National Bank of Twin Falls, in the

town of Twin Falls, in the County of Cassia and

State of Idaho, has complied with all the provisions

of the Statutes of the United States, and

is authorized to commence the business of banking,

and to act as Comptroller of the Currency, Deputy and Acting Comptroller of the Currency,

in accordance with the provisions of the Statutes of the United States.

In testimony whereof, witness my hand and seal of office this thirteenth day of February, 1905.

(SIGNED) J. P. KANE,

Deputy and Acting Comptroller of the Currency.

20-107

G. B. SIERER

REAL ESTATE & INSURANCE
TWIN FALLS, IDAHO

A few BARGAINS left. ONLY A FEW.
LIST YOUR PROPERTIES WITH ME

P. C. Perkins

D. V. Stimmel

Washington Livery, Feed and Sale Stable

Fast and Gentle Drivers
Stylish and Safe Carriages

The right prices and the right stock. STABLES in rear of
Hall House, Eleventh St.

R. W. GAGER

W. H. KENNEDY

Twin Falls Hardware Co.

GAGER & KENNEDY, Props.

Dealers in...

Stoves, Harness, Guns, Ammunition, Nails,
Wire and Builders' Hardware.

Steam Fitting and Plumbing

MAIN STREET TWIN FALLS, IDAHO

Nibley-Channel Lumber Co., Ltd.

C. B. CHANNEL, Mgr.

LUMBER AND COAL

Sash, Doors, Building Material and Builders' Hardware

Thirteenth Avenue, between Tenth and Eleventh Streets.

J. P. HARRAH

Contracts made for all kinds of
Excavations.

ESTIMATES CHEERFULLY FURNISHED
TWIN FALLS, IDAHO.

Try a pound of Chase & Sanborn's
scal brand coffee. Your money back
if it does not please you. Young &
Sons.

Keep your eye on The Liberal.

PLANNING MILL FOR TWIN FALLS

George Adams Purchases a Site and
Prepares to Build.

George Adams, who recently arrived from Salt Lake with his family, is preparing to build a planning mill and finishing plant on block 155 where he has secured a site. Mr. Adams has already ordered three carloads of lumber from the coast which will be shipped into Twin Falls by way of Shoshone. Immediately the lumber arrives the work of erecting the mill will begin.

M. N. POMEROY

CARPENTER

Inside Work a specialty. Plans and Estimates furnished

TWIN FALLS, IDAHO

"Something doing" at The Liberal.

Seed Potatoes. Extra fine seed potatoes, \$1.25 per hundred weight, for sale by The Stockgrower Mercantile Co., Shoshone.

It will be a first class plant with up to date equipment and will prove a great convenience.

Mr. Adams is an experienced man in his line of business. He showed that he possessed the right spirit when he brought his family here and immediately constructed a temporary residence. The mill will be in operation before the railroad reaches Twin Falls.

The Liberal made good its promise. Drop in at The Liberal and see.