

TWIN FALLS NEWS

VOLUME III.

TWIN FALLS NEWS, TWIN FALLS, IDAHO, FRIDAY, AUGUST 23, 1907.

NUMBER 43

CONTACT MINERS GAIN CONFIDENCE

NOW HAVE HOPES OF RAILWAY FACILITIES.

Isaac Reed Describes Conditions in the Promising Camp—Development Work Will Now Be Pushed and the Value of the Camp Demonstrated.

Isaac Reed, who is known to every man who has visited the Contact, Nevada, copper camp during the past 11 years, is in Twin Falls purchasing supplies and getting acquainted with the thriving young city. In 1882, when the Oregon Short Line was building westward through Idaho, Mr. Reed was engaged in the meat business in Shoshone. At that time Shoshone falls was a local sight and Portland was just beginning to change the landscape of the Blue Lake. Nobody dreamed that the "desert" or stock range along the Snake river would ever amount to anything.

"Now," said Mr. Reed, "the desert is gradually being wiped off the map. Civilization is crowding southward and I learn that another big irrigation project will cover practically all the territory between the Twin Falls canal and the foothills. An electric railway was surveyed through Contact a few days ago and it really seems as though we were about to be placed in touch with the world at last.

"Over at Contact a few of us who have faith in the camp have been working for years against adverse conditions, slowly developing our properties and always having in mind the time when we would have transportation facilities to carry our ores to the big smelters of the west. Hundreds of tons of 'ore' copper ore, averaging about 30 per cent copper, have been freighted from Contact to the railway at Wells, Nev., and there shipped east and west for smelting. This ore was all taken from shallow cuts and shafts, or surface work. There is an immense quantity of this class of ore in sight at Contact today. It could be shipped at a profit yet but those who own the mines prefer to wait until such time as it can be treated at home. Our ores also carry a good percentage of gold and silver, more than enough to pay the expense of smelting.

"Roughly speaking, the Contact district is about 20 miles in length and 10 miles wide. During the present summer hundreds of claims have been staked on the east side of the Salmon river opposite the old camp. Many fine showings have been exposed there and there is every indication that the copper zone is of almost unlimited extent. Wherever the ground has been prospected in the vicinity of Contact indications of copper have been found.

"In the old camp there are several properties on which extensive development work has been done. Among them are the Delano group of five claims in which hundreds of tons of high grade ore are blocked out; the Nevada Mining, Milling & Power company's group of 30 claims, including the Bluebird, Palo Alto, Magnolia, Blue Lens, Mammoth and other claims; the Bonanza group and a number of other properties which are in process of development. On all the claims mentioned many others more recently located the showing is exceptionally fine. Go anywhere you will in the district and you will find ore which will attract the attention of any man versed in copper mining.

"In fact of this showing it is naturally to be wondered why the development of the camp has not been more rapid. This is easily accounted for. We have had no boom and no speculators. Copper ore, no matter what its value may be, can be shipped at a profit so far and no further. While Contact is easy access, it is far removed from the big smelters and we have been compelled to wait for transportation facilities. The returns from our richest ore are being sent by the cost of transporting it long distances to the smelters. We know that four to six per cent ore can be worked under favorable conditions and we are now trying to supply ore of much higher grade than this is almost certain to be available. We can afford to wait. The time is at hand and our ore bodies are bound to entail capital and we are content to wait along until that time comes. While we are willing to show what we have anyone who comes along, we are not blowing about our camp. It shows for itself and any man who understands copper mining will appreciate Contact at a glance.

"We are sure we know that our proposed electric railway from Twin Falls," continued Mr. Reed, "the survey passes right through the camp, about a mile from the postoffice, and the road will tap the entire district very nicely. It will place us in close touch with the Oregon Short Line on the north and the Southern Pacific and Western Pacific on the south. This will give us the shipping facilities we need. We are half way to the north and south of the Pacific. Recently options have been taken by outside capitalists upon several promising claims in the district on which extensive development work will commence this fall. The intention is to open up the ore bodies at greater depth than has hitherto been reached and thus demonstrate the value of the ore. We are anxious to do this before, as I stated, on account of the lack of transportation. Rich as it is, the ore could not be profitably handled on account of this handicap. Now that we are promised railway facilities, I expect we will have no trouble in getting capital to develop the camp."

property, which includes the noted Brooklyn mine on which there is a shaft 200 feet deep; the Salmon River Mining company's group of several claims; the Key Wilson group; the Bonanza group and a number of other properties which are in process of development. On all the claims mentioned many others more recently located the showing is exceptionally fine. Go anywhere you will in the district and you will find ore which will attract the attention of any man versed in copper mining.

ADVERTISED LETTER LIST

List of letters remaining on hand in the Twin Falls postoffice for the week ending August 19, 1907. Parties calling for these letters will please say, "Advertised August 19, 1907."

Atkin, Miss Maude
Babson Bros.
Candler, Fred
Farrar, W. H.
Fuller, Levi (2)
Fleming, Miss Maggie
Grant, Mrs. O. M.
Hall, O. S.
Hawthorne, Mr.
Henderson, Everett
Hoffmann, Jos. (2)
Jones, J. T.
McKee Realty Co.
Knapp, J. L.
Lincea, Mrs. Mary
Mason, Phillip
Richardson, Miss Mildred
Rath, Miss L.
McSwain, A.
O'Fallon, Mr.
Smith, Mrs. Lucila
Tabor, J. R. (2)

Postage due on the above letters, 1c each. Letters remaining on hand at the end of 15 days will be sent to the dead letter office.

W. H. GREENHOW, Postmaster.

KIMBERLY-FOLKS GETTING STYLISH

TOWN NOW SPORTS A BARBER SHOP.

Farmers Can Have Their Alfalfa Trimmed Twice a Week—Office Fitted Up in the New Flour Mill—Reception to Mr. and Mrs. Edwards.

KIMBERLY, Idaho, Aug. 21.—Mr. and Mrs. M. H. Wright left Tuesday for Wendell, Idaho, where Mr. Wright will work upon the new hotel being built there. Wendell is one of the new towns of the north side, about ten miles west of Jerome. They expect to be away two or three months.

Mrs. W. H. Thomas arrived Wednesday from Hayden and is spending the week here visiting with Mr. and Mrs. Thomas. Mr. Thomas has fitted up the offices in the mill and is using these rooms as his home in the interim.

Miss Dalo Kerr of Boise arrived Tuesday to spend some time visiting with the Misses West at their home southeast of town.

Wheat is being hauled into the mill warehouse. Mr. Thomas has contracted for most of all the wheat raised in this vicinity.

MILNER BANK IS DOING BUSINESS

TEMPORARY QUARTERS IN THE LAND OFFICE.

Lake Above Dam to Be Stocked With Trout—Waterworks System Being Installed—Three Fires During Week—Ball Game at Oakley Sunday.

MILNER, Idaho, Aug. 22.—The Milner State Bank, Ltd., was opened Monday of this week and has been doing a very satisfactory business. Until the completion of the bank building the bank will be conducted in the land office under the temporary management of C. M. Haggood and H. R. Grant.

The pressed brick for the bank building has arrived and work will be rushed to completion at once. H. R. Geary of New York City has been appointed cashier of the bank and will take charge of the bank upon the arrival here.

Word has been received from the bureau of fisheries at Washington that the completion of the Twin Falls North Side Land & Water Company will have the lake above the dam stocked with trout fry, being greatly improved by the dam, and the water, and is another of the many things being done to add to the pleasures of Milner.

The waterworks system is being installed. A 25,000 gallon storage tank and standpipe is being erected on a 60-foot tower.

CANAL TRANSFER IS SANCTIONED

WORKS WILL BE TURNED OVER ON JANUARY 1.

Company Will Complete System in Accordance with Recommendations of Engineers and Will Not Vote Majority Stock After First Year.

The Twin Falls canal system will be transferred to the settlers on January 1, 1907. The Twin Falls Land & Water company will finish the incomplete work as recommended by Engineers Waller and Johnston. The organization of the operating company has been sanctioned by the state land board according to the terms of the contract between the state and the construction company. The time of the completion of the operating company will be named by the Land & Water company for the first year and will include these representative settlers. The Land & Water company has agreed not to vote the majority of the stock after the first year, at the expiration of which the settlers will have six representatives on the board and will thus be in absolute control of the operating company. The representatives of the settlers, who were present at the meeting of the board last week at which the transfer of the canal system was authorized, are perfectly satisfied with the terms of the transfer.

It was not to be expected that the control of so valuable and complex a property as that of the Twin Falls canal system could be accomplished without a hitch. The representatives of the settlers were not disposed to yield what they believed to be their rights and the company held to the terms of its contract. As there were far minded men on both sides, concession followed with the result that the settlers gained practically every important point. The officials of the company were not disposed to be stubborn and the representatives of the settlers feel well satisfied with the terms.

On one point only was there anything like a deadlock. The settlers wanted to name the directors of the operating company. It was shown that this would be in direct violation of the contract, which expressly provides that the directors shall be chosen by the construction company. The Land & Water company could not yield this point even had it been so disposed. By the agreement reached, the company will name three representative settlers to serve on the board of nine directors. It has likewise been agreed that the company will not vote the majority of the stock after the expiration of the first year. When this time has elapsed, the settlers will be allowed six of the nine directors and will thus have a majority of the board.

The company further agreed to comply with the recommendations made by the engineers regarding the completion of the works. This is considered to be a much better arrangement than that at first proposed, namely, that the company should put up a bond or turn over an amount of money equal to the estimated cost of finishing the work and let the settlers complete the construction. As the agreement stands the company will maintain its construction department and go right ahead until it has fulfilled every requirement demanded. It will probably be several weeks before the organization of the operating company is completed, as the organization and by-laws of the company will have to undergo careful scrutiny by the land board.

PREPARATIONS FOR THE FAIR

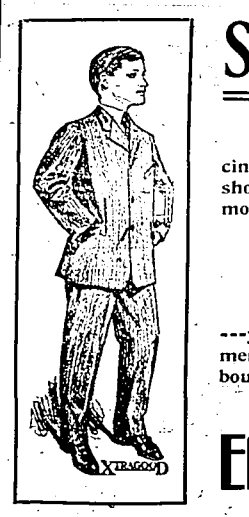
SUFFICIENT FUNDS RAISED TO INSURE SUCCESS.

North Side Company Donates \$500—Premium List Revised with the View of Encouraging the Farmers to Bring in Their Products.

The Twin Falls county fair, to be held on September 20, 27 and 28, promises to eclipse the brilliancy success of last year. Sufficient funds have been raised to meet the expense of the fair and the management has carefully revised the premium list and made many improvements on its first effort. While proper encouragement will be given to all exhibitors, it will be primarily a farmer's fair, the object being to bring out the best possible exhibits of farm and orchard products. With this in view the management has so arranged the premium list that it will not be a difficult matter for the farmers to exhibit as the requirements in this respect have been greatly modified.

The Twin Falls North Side Land & Water Co. did the handsome thing by the Farmers' federation by donating \$500 towards the expense of the fair. The north side opening will take place on October 1, the Tuesday following the fair, and it may be safely assumed that a large number of land settlers will come to Twin Falls some days before the opening to look over the south side tract and see what has been done here. They will in all probability want to see the fair exhibits in order that they may have a correct idea of the productive capacity of the lands under the Twin Falls canal system. As the north and south side tracts are identical in all respects, the demonstration on the south side will be the best possible advertisement for the north side tract. Appreciating this fact, and as further proof of its friendliness for the south side, the North Side company really gave the fair liberal support.

It has not been decided where the fair will be held. Two locations are being considered, the Buhner block and the building formerly occupied by Bonham & Peters. Space is the first requisite and compactness and economy are to be considered. The premium list has been revised and is now being printed. Two thousand copies of the list will be distributed in a short time.



Sturdy School Suits

This store is exclusive headquarters in this vicinity for XEROX'D clothing. Besides the style shown, we have a complete line of all the correct models for boys from 3 to 17 years of age.

OUR PRICES CANNOT BE BETTERED.

Fall Clothes for men arriving---coming in fast ---yes, and going out too, for already a good many men have liked the new styles so well they have bought their Fall Suits.

Enlarged Clothing Co.

The main canal of the Twin Falls system, as it appears today with almost a full head of water. This young river is 120 feet wide at the high water line, 50 feet wide on the bottom and 10 feet deep. It carries 3,000 second feet of water and is conceded to be a model of high grade canal construction. The flow of the canal is gradually being increased and close watch is being kept for the possible development of weak spots in the upper portion of the banks. The banks are gradually settling down solidly and will soon be as firm as rock. There is not a foot of side-hill construction on the canal and the cost of maintenance will be trifling compared with that of other systems.

IDAHO DEPARTMENT STORE



Our Special School Suits, \$3.50-\$6.00

Primary shipment of Boys' "Twentieth Century" and "Best Ever" two-piece Suits just opened up, and while these brands are well known to our old patrons, we will describe the points of advantage over other lines of Boys' clothing.

Twentieth Century Brand

Made of a good quality of Worsted and Cassimero with double-breasted Coat, lined with Sateen of at least a year's wearing quality.

Buttons-to-match cloth and finished neatly, sewn with silk throughout.

Knee Pants made with double knee, with waist belt sewn inside waist band and suspender buttons on outside—a good selection of materials to select from. Price,

\$3.50 and \$4.50

Boys' "Best Ever" School Suits

Made of all-Wool Novelty Suitings, rainproofed by the cravenette process, which prevents shrinking in case it is worn in the rain—mothproof, which means a great deal in the life of cloth.

Coats are Square Cut, Double Breasted of Tommy Todd style, lined with Farmer Skin, hand-made button holes worked with silk, sewed with silk throughout.

Pants have double seat and knees, are lined throughout with heavy twill.

These garments are made especially for fine fitting and to tell at

\$5.50 and \$6.00



Dress Goods Information

For the Guidance of Dress Goods buyers as set forth by the Reliable store.

Having covered the field thoroughly and inspected the foremost lines of Dress Goods, Suitings, Waistings, etc., shown for Fall wear, we are in a position to point out to our patrons the materials and colors that will be in vogue. While some of the old reliable staples will be worn more or less, the following will be among the novelties that will crowd the Dress Goods sections of the up-to-date stores throughout the country at large.

Broadcloths hold first place for Fall Suitings and especially in the novelty weaves, while Worsteds easily hold second place and on account of their being more suitable for a dusty country we predict they will sell freely in Twin Falls. Batistes, and especially Taffeta Batistes, have sold well for Fall, and Panamas have taken freely everywhere. Serges are showing renewed activity, especially in the French fabric in plain weaves, while high class Prunellas for as high as \$2.00 retailing have been taken by all large buyers.

FANCY WEAVES—Wool and Worsted Fancies in neat checks and stripes have been taken in large quantities by garment manufacturers and will be featured largely in Tailored Suits.

Principal Colors for Fall

Black holds first place in colors, with Dark Green, Cardinal, Navy and Royal following close. Shadow checks showing combinations of two or more of the above colors in dark shadings are considered the strongest, especially in Broadcloths, where the depth of the fabric enhances the beauty of the combined colorings.

We have placed our Dress Goods orders in New York for the Imported Fabrics and with the largest house in Chicago for the Domestic Goods, which we expect to be delivered about September first.

The advance numbers of the swiftest line of Ladies' Suits ever brought to Twin Falls are expected to arrive by express about August 25, to be followed by the largest order for Cloaks and Skirts ever brought to Twin Falls county.

Ladies look to us for the most attractive styles in high class merchandise obtainable in this district.

Proper Clothing Without a Prohibitive Price

Some manufacturers make some clothing dealers believe that theirs is the best clothing on earth. The dealer tries to make you believe it and expects you to pay \$10.00 for that name that is sewed under the coat collar. We buy clothing from several different makers. There is none better in the world than the fellows who make our clothes and you don't have to pay extra because the quality is good. We have the confidence in the cloth and therefore sew our own name to the inside of the collar, insuring a perfect guarantee.

Partial shipments of Men's Fall Suits are here—stouts, silms and regulars, in single and double breasted. The price is right—

\$15.00 to \$25.00

is the scale, all "hand-made" stuff elegantly finished.

Some Nobby Top Coats

are here. You need one for Fall.



Our Special School Shoes

We are the acknowledged leaders in Boys' Shoes. Our

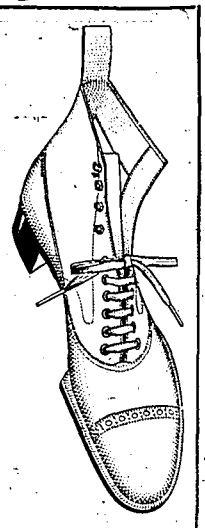
**"Buster Brown" and
"Keen Kickers"**

Brands are household favorites.

"Buster Brown" Blue Ribbon Shoes

In Box Calf, Vel Kid and Velour Calf cannot be surpassed in style, fit, finish, and the wearing quality can only be surpassed by our "Keen Kicker," which is made of kangaroo calf, double sole, of the best oak stock, sewed entirely with silk and has fast colored eyelets. Prices from

\$1.50 to \$2.50



September Patterns, 10c and 15c; Ladies' Home Journal, 15c; Fall Style Book, 20c, including order for one 15c Pattern Free. On Sale at our Pattern Counter.

Idaho Department Store

(Continued from Page 3.)

necessary machinery for loading box cars. We also noticed that with all this demand for coal and this great increase of population, there have not been any new mines opened up in the Wyoming coal fields, and while we admit that there is now under contemplation the opening of some other good mines by the Kemmerer and Quiny people, they are not yet producing coal for the market.

On the Union Pacific railroad, one mile from Rock Springs, Wyo., there exists a mine called the Wyoming Coal & Coke company, which now produces 300 tons of coal a day, which has to be hauled by wagons about a mile to the market. There is a road to said mine a "Y" ready to put on ties and rails, and the whole distance from this road, both tracks on the "Y" would be about a mile and a half, and still there is not a ton or a rail visible to supply that demand, nor to facilitate the output of this coal and put it upon the market to relieve distress. We have heard it said that the road would be put through and very shortly, but we have also heard that this same thing was said one or two years ago, and the track is as far off as ever.

There will be no adequate supply of coal produced in this section of country until the mine owners are encouraged by the transportation companies and the transportation companies wake up to the fact that they are common carriers and common carriers want the people who create them and through whose territory they run, that their business is to facilitate, help, encourage and promote every industry and enterprise and make living better and cheaper, that the common carrier is as much their duty as to pay dividends; not until then will we have coal sufficient for the wants of the people, and to which we are entitled.

Relative Prices. The price of lump coal at the mines is \$2 a ton, freight advanced on lump coal at one of the mines is 60 cents over this price, making lump coal cost here in Boise City from \$6 to \$6.50 a ton. Boise City from one of those mines is \$3.15 a ton. Butte from the same mine is \$3.75 a ton, making a difference against Boise of 19 cents. For this 19 cents Boise pays 75 cents a ton more for coal, or, in other words, the rate on coal from Kemmerer, Wyo., to Boise, 43 1/2 miles, is \$1. The same coal is hauled to Butte, Mont., 437 miles, for \$3.25.

We also, in our investigation, found that with the coal supply short, the output reduced, no railroad, no big smelter, no sugar beet factory, no large corporation of any kind, or nature, so far as we could ascertain, has suffered or is likely to suffer for the want of coal. Plenty of orange

monies and facilities are provided to these gigantic enterprises to carry on their business without interruption. It is only the hospitals, the schools and the common ordinary citizens who have a short supply of coal and have to bear the brunt of the suffering, and no delegations from any of these big corporations have been out begging for coal, but only the small humiliated petitioners for the interest of the ordinary mortal that have to resort to any of these measures.

Railroad's Attitude. We visited the Oregon Short Line Railway company on our trip and have their assurance that they will co-operate to their fullest extent with the coal miners to furnish cars and plenty of shipping facilities, except during the sugar beet season, so that the shortage of coal for private consumption should not be above 20 per cent less than it was last year.

If the coal supply is to be diverted to other channels, and the 3000 tons of coal that the Oregon Short Line now takes from the Kemmerer and Diamondville mines should by right be diverted to domestic purposes, and that amount of coal should be taken from the mines that have no domestic or commercial business. These mines are not, in our opinion, willing sellers to the Oregon Short Line. They would much prefer to sell to their old customers, to whose business amount of money had to look for existence. It is only by that great powerful and domineering influence of said railroad that they give up the coal.

If the railroads and the mine owners would come together and decree that the output of coal is 20 per cent less this year than it was last year, and that all users of coal, excepting the railroads, should have their supply curtailed 20 per cent it might, to a certain extent, hurt a few of the large corporations, but the compensation to work a few hours less in a month, but it would furnish an adequate supply of coal for domestic use and establish an equilibrium between the coal supply and the demand that would last away with all anxiety about a coal shortage during the winter.

Coal from Utah. Your committee, through its investigation, is led to believe that a certain amount of coal might be obtained during the months of October, November and December from some of the mines in the state of Utah, which coal could be shipped to our Boise dealers here and sold at retail to the private consumers during that period and thereby relieve the grant want that might exist—that time for coal as well as to produce a reasonable profit to the parties selling it. But the great obstacle in the way of accomplishing this is that the Oregon Short Line railroad and the Denver & Rio Grande have no traffic arrangements between them for that purpose. In other words, the closing of the Order gateway here some years ago makes it impossible to ship coal from the Utah mines into the territory of the Oregon Short Line railroad without paying the full rate on the Oregon Short Line from Og-

den to Boise, and the local charges from Ogden to the Utah mines, thereby increasing the cost of coal \$1.80 per ton. The Oregon Short Line will not reduce its rate from Ogden to Boise and they also claim that the Denver & Rio Grande will not enter into a Joint arrangement with them, or have not up to this present time. The Oregon Short Line claims that they hope to be able to bring forth amicable arrangements about this matter, but your committee is inclined to believe that all questions of harmony between these roads on this particular question is as far off today as it ever was and the premises are simply for the purpose of allaying the present urgent demands. The Denver & Rio Grande will not even allow its cars to be switched at Ogden on the Oregon Short Line tracks, and in order to get coal from Utah at present, even by paying these exorbitant charges on both roads, it would be necessary for the Oregon Short Line to furnish empty cars at Ogden for the Denver & Rio Grande to use to put their coal in and then switch the cars to the Oregon Short Line tracks when filled with coal.

This most deplorable condition of affairs, occasioned by the jealousy of two competing roads, outside the province of your committee, it is a matter for the interstate commerce commission of the United States to take up and adjudicate. Until that is done, in our opinion, it will be impossible to get Utah coal without exorbitant freight charges of \$5.80 a ton from the Utah mines into Boise City. It is recommended to your honorable body, as well as the people who consume coal, to be continually on the lookout to see that the prescribed amount of coal is forthcoming.

By these representatives of the people, other means ascertain whether the transportation companies are doing their duty so far as supplying the coal to the people during the months of September and October, and use such other means as is in their command to have additional tracks run, and more engines, and a more and a proper, honest and just distribution of the coal supply made.

If this is done, in our opinion, it is one need to suffer for want of coal during the coming winter, and when this year is past the conditions will materially improve and continue to improve from year to year until this mountain state will be equipped to use that fuel with which nature has so bountifully blessed it.

Respectfully submitted, M. ALEXANDER, A. E. CARLSON. Hospitality of a Practical Kind. A specially designed building will be constructed at the depot for the reception of delegates and visitors to the first annual Irrigation Congress and Interstate Exposition of Irrigation and Forestry in Sacramento in September. The structure is arranged for the comfort and convenience of all classes of travelers. The latter will be met on their arrival by duly authorized agents. After registering at the office provided for that purpose every one needs to suffer for want of coal during the coming winter, and when this year is past the conditions will materially improve and continue to improve from year to year until this mountain state will be equipped to use that fuel with which nature has so bountifully blessed it.

SCHOOL REOPENS ON SEPTEMBER 2 WITH A TEACHING CORPS OF SIXTEEN. Many Improvements Have Been Vacation—Grounds Made During Improved Heating Apparatus Overhauled and Sewer Connection Made.

The Bichel school in Twin Falls will open for the autumn term on Monday, September 2, with a corps of 16 teachers and a curriculum equal to that of any institution of the kind in this section. The school has been carefully selected, the curriculum studied and brought right up to date, and the school thoroughly renovated and placed in a perfectly sanitary and comfortable condition. No effort has been spared to make the Twin Falls school model in every respect. The number of wagons which will convey the children to and from the country has been increased to eight and the routes have been rearranged with the view of giving the children the best possible accommodation.

The phenomenal growth of the Twin Falls tract and the wonderful advancement of the city furnished the inspiration which has enabled the schools to keep pace with the progress of the country. To the settlers with families, educational advantages are a primary consideration and Twin Falls is up to the very second in this respect. With the Alton Normal school and the Academy of Idaho at Pocatello within easy distance of the Twin Falls tract, this section of the state is particularly favored in the matter of educational facilities and there is no need of citizens sending their children away to school.

During the summer vacation an independent school building was erected which permits of greater latitude in the matter of improvement. The high school course has been extended to four years. The school rooms have been furnished and equipped and the floors have been oiled throughout the entire building. The heating apparatus has been overhauled, and extra radiators have been placed in the rooms which were not sufficiently warm last winter. The trustees wisely stored 80 tons of coal in the basement to carry against a possible shortage during the winter. The boilers have been cleaned in brick to conserve the heat and all the piping has been covered with asbestos.

Irrigated Lands Co., Ltd. Twin Falls, Idaho OFFICE, NORTH WING HOTEL PERRINE. Money to Loan on Improved Farms. Real Estate. Insurance. Investments made for Non-Residents. The Benefits of 20 Years' Experience in Farming by Irrigation at the Service of Our Customers. A. McPHERSON. GEO. F. SPRAGUE. Twin Falls, Idaho.

THE FARMERS CORRAL Livery and Feed Stable Good Feeding Corral. Careful Attention Given to Stock. Phone 35. D. A. SEAMAN, Proprietor. THE FARMERS CORRAL 14th St., West of Shoshone Avenue, Twin Falls

Does Your Wife Complain About the old Cook Stove not baking as well as it used to? Is it not a fact that its hot days are over and that it would please the whole family if you bought a New Steel Range? We are showing some splendid ones and every one guaranteed for baking. Twin Falls Hardware Co. OPPOSITE THE POSTOFFICE

O'BRIEN & EASTMAN REAL ESTATE, LOANS AND INVESTMENTS Choice Farm and City Property. Postoffice Building. Real Estate Bought and Sold. Write for Information. Twin Falls, Idaho

Twin Falls Investment Co. LIMITED Sole Agents for Water Rights for all Carey Act Lands under the GREAT TWIN FALLS CANAL SYSTEM 25,000 Acres of Carey Act Land Still open for original entry under this Canal System Land, 50 cents per acre. Perpetual water rights, \$25 per acre, ten annual payments. Vehicles from Buhl furnished free to those who desire to inspect land. Prospective entrymen accompanied by competent locators.

BUHL Secretary, Twin Falls Investment Co., Ltd. TWIN FALLS, IDAHO

Great Twin Falls Canal System IDAHO 150,000 Acres Carey Act Land To Be Opened for Entry October 1st, 1907 \$35.50 Per Acre \$25 per acre in cash is paid at time of filing, the balance is divided into annual payments covering a period of ten years with 6 per cent interest on deferred payments. Under the Carey Act, people who have used all their government rights to take up land can still acquire 160 acres of Carey Act land. Filings may be made by power of attorney when parties intending to file cannot possibly come. The entire Twin Falls tract embraces 120,000 acres. The opening OCTOBER 1ST the last tract to be sold under the gravity system. There are three new towns in this opening—MILNER, JEROME and WENDEL. Surveys for an electric railroad reaching all the towns have been made and active construction from Milner and Jerome will be commenced August 1st, 1907. The contract from Jerome to Wendel will be let later in the season. Special rates will be given on the O. S. L. railroad to reach Jerome, where the opening takes place October 1st. Take the O. S. L. railroad to Shoshone or Twin Falls, where stages will make frequent trips to Jerome. For full information, circulars and printed matter, address R. M. McCollum, Secretary Twin Falls North Side Investment Co., Ltd. Milner, Idaho

A FATAL MISTAKE Is Often Made by the Wisest of Twin Falls People. It's a fatal mistake to neglect backache. Backache is the first symptom of kidney trouble. Strenuous complications follow. Doan's Kidney Pills cure them promptly. Don't delay until too late. Until it becomes diabetes, Bright's disease. Frank Schell, the well known retired veteran, residing on Cleveland avenue, North Idaho city, writes: "I have since I left the army, at intervals I had pain across my back. It grew much more severe in the fall of 1902 than it ever was before and I was compelled to do something for it. I called on a druggist and told him about my condition. He recommended Doan's Kidney Pills and I took a box of them. I ordered the claims made for it. For sale by all dealers, price 50 cents. Foster-McMillan Co., Buffalo, N. Y., sole agents for the United States. Remember the name, Doan's, and take no other." "The Doxie," ask Wilson Bros. OREGON SHORT LINE. Summer Tourist Excursion to Pacific Coast, 1907. From Pocatello to San Francisco and return, via Ogden and Southern Pacific, \$16.50; going via Ogden and returning via Portland, \$5.00. From Pocatello to Los Angeles and return, via Ogden and Southern Pacific, or Salt Lake & Los Angeles Ry., \$5.50; via Salt Lake & Los Angeles Ry., \$6.00. From Salt Lake & Los Angeles Ry., \$6.50. From Portland, any route, \$6.50. From Twin Falls, 50 per cent of double local fare for the round trip to Pocatello. Dates of sale, June 1 to September 15, inclusive. Going limit, 60 days from date of sale; stopovers within transit limit. Final limit, October 31, 1907. D. E. BURLEY, G. P. A., Salt Lake City. D. S. SPENCER, G. P. A., Salt Lake City. D. E. SULLIVAN, Agent, Twin Falls. "The Doxie," ask Moore & Wamsley

Desert Land, Final Proof—Notice for Publication. Halley, Idaho, June 28, 1907. Notice is hereby given that Robert...

Notice for Publication—Final Proof. I. Henrietta Bell of Twin Falls, who made entry No. 1871, under the provisions...

Notice for Publication—Final Proof. I. Robert J. Shields of Filer, Idaho, who made entry No. 1537, under the provisions...

Notice. Notice is hereby given that Otis E. Syster will make application to the board of county commissioners...

Notice for Publication. Department of the Interior, Land Office at Halley, Idaho, July 5, 1907. Notice is hereby given that Andrew...

Notice for Publication. Department of the Interior, Land Office at Halley, Idaho, July 5, 1907. Notice is hereby given that John...

Notice for Publication. Department of the Interior, Land Office at Halley, Idaho, July 5, 1907. Notice is hereby given that Solomon...

The Anheuser-Busch trophy complex and costly gold and silver prizes hung up for the competitive display of fruit...

Notice for Publication—Final Proof. I. Patrick W. Monahan of Buhl, Idaho, who made entry No. 1806, under the provisions...

Notice for Publication—Final Proof. I. Ernest W. Haag of Twin Falls, Idaho, who made entry No. 1890, and who was assignee of J. Estelle Bogie...

Notice for Publication—Final Proof. I. Besant Quigley of Twin Falls, Idaho, who made entry No. 834, under the provisions...

Choice Lands for Sale. We can sell you the choicest irrigated lands at a price and on terms that will be satisfactory.

Desert Land, Final Proof—Notice for Publication. United States Land Office, Halley, Idaho, July 24, 1907. Notice is hereby given that Daniel...

Notice for Publication—Final Proof. I. Eva Schenck of Twin Falls, Idaho, widow of John Schenck, who made entry No. 1790, under the provisions...

Notice of Sheriff's Sale. By virtue of an execution in my hands, issued out of the District court of the Sixth judicial district of the state of Idaho...

By C. W. DYER, Deputy Sheriff.

Notice for Publication—Final Proof. I. Charles T. Nowbry of Twin Falls, Idaho, heir of Reason T. Nowbry, who made entry No. 1820, under the provisions...

Notice for Publication—Final Proof. I. John T. Barnes of Hannon, who made entry No. 1812 and 1854, under the provisions...

Sheriff's Sale. State of Idaho, County of Twin Falls, ss.: By virtue of an execution issued out of the honorable District court for Blaine...

By C. W. DYER, Deputy Sheriff.

Notice for Publication—Final Proof. I. Edwin V. Berg of Twin Falls, who made entry No. 1886, under the provisions...

Notice for Publication—Final Proof. I. B. A. Baker of Twin Falls, the assignee of Robert M. Stewart, who made entry No. 189, under the provisions...

A Big Congress Assured. The biggest national convention of the year will be the Fifteenth National Irrigation congress that convenes in Sacramento in September.

"The Doxie," ask Wilson Bros.

T. J. WOODS, C. E. EVANS, C. D. THOMAS. Woods, Evans & Thomas. Real Estate, Insurance and Loans. Notary Public.

Save Your Money by Investing in Acreage Property Adjoining Twin Falls. MOORMAN'S FIRST ADDITION. We have the exclusive sale of Moorman's first addition adjoining Twin Falls on the new, within half block of the new school property, Stubbs' old ranch.

We Have the Best Line of Farm Property and Have our Own Teams to Show It to Purchasers. We are selling farms almost every day. Below are a few of our bargains.

City Property Is in Great Demand and We Have the Sale List—But Our Rent Lists are All Taken—If You Want to Rent Your Building See Us. NO. 99. \$1750—E. B. Williams property, 6 rooms, located near public schools, 50-foot lot, deeded.

We have a complete graded list of all land on North Side to be opened October 1st and we can locate you. Write or see us for information concerning North Side property. Remember We Have Plenty of Money to Loan on Farms at Ten Per Cent

BUHL SUFFERS GROWING PAINS

BUILDING BOOM DISTURBS THE NERVOUS CITIZENS.

Depot Is Nearing Completion—County Road to Be Opened to Clear Lake Ferry—Mike Regan's Son Meets With Painful Accident.

BUIHL, Idaho, Aug. 21.—Mrs. Patrick Joyce arrived Saturday from Chicago and made the heart of her husband bound with joy, as she had with her three sons, two months old, whom his father had never seen before. She went out to the ranch at once and now Pat has something besides white pigs to occupy his attention.

All this hammering and sawing, the twanging and chattering of saws and drills, and the noise of the machinery, the nerves, but we have to stand it. It is simply the growing pains of Buhl.

The Johnson-Evans building will soon be ready for business. The Dunn block on Broadway is just waking up. It will be occupied as a saloon by Howard & Talley as soon as it can be made ready for them.

Ed Larson has completed his warehouse on Main street. It is reported that a party of engineers who are surveying a line for the Western Pacific railroad are in the vicinity of the old line canal about six miles south of town.

A petition is being circulated and numerous signed for a county road along the range line from the northeast corner of the old line canal to the Snake river to connect with the bridge which will soon be built to Clear Lake to connect the north and south sides.

Jim Fatten returned Saturday from old Missouri, where he has spent several weeks visiting his relatives and friends, and he is still a member of the back-porch club, contrary to all expectations. He says that Buhl and the west end of the Twin Falls tract looks better than ever to him now, and that there are enough pretty girls in the neighborhood to enable him to select a life partner.

Charles Coker, superintendent of the canal construction, reports that he will have the big low line lateral on the extreme west end of the canal about a week. Charlie is a hustler and knows how to make the dirt fly.

Ed Nihart took the mail to Twin Falls Monday. He is a hustler and knows how to make the dirt fly. Fred Lankey has just completed an addition to his residence property on Thirtieth avenue.

Charles Coker, superintendent of the canal construction, reports that he will have the big low line lateral on the extreme west end of the canal about a week. Charlie is a hustler and knows how to make the dirt fly.

Under Sheriff Dyer came up from Twin Falls today on official business. Clifford Millikin is in Seattle and is expected back in a few days.

John A. Jacoby was pressed into service last week owing to the scarcity of carpenters in Buhl and the great demand for them. He sharpened up his tools and went in to help on the Dunn building.

The ten-year-old son of Mike Regan, the section foreman, met with a serious accident Monday which resulted in a compound comminuted fracture and dislocation of the right ankle. He was riding on a hand car and fell off, the car running over him. He was taken home and Dr. Monroe called. The doctor set the broken bone, dressed the wound. The patient is doing as well as could be expected under the circumstances.

on one of Chris Lund's eyes a Jew days ago for a whitened growth which extended from the inner side of the eye to near the pupil. The doctor removed the growth and the operation was successful. The patient is getting along nicely.

Judge F. E. Chamberlain of Twin Falls was a Buhl business visitor Wednesday. He was looking for an investment in this vicinity. He sees the future greatness of Buhl and wants a part of it.

W. S. Starr of Kimberly was a Buhl business visitor last week. Dr. Monroe reports George McDonald and Chris Swanson as being on the sick list.

W. H. Eldridge, the popular clothier of Twin Falls, who is doing the prove-up act with the rest of the nation on the west end of the Twin Falls Monday. All snakes are alike to him now, and every time he sees one he imagines it rattles whether it has any venom in it or not.

W. E. Garver, the Ottawa, Ill. Buhl booster, left Monday for Chicago where he will visit for a short time and boost for Buhl. He will then return to make this town his future home.

F. Crawford and wife of Maynard, Iowa, arrived in town Friday and went out at once to the former's ranch, which will be their home for the future. J. Schwamb and L. P. Voorhees of Chicago, Ill., registered at Hotel Buhl Saturday.

A. H. Hudson of Salt Lake was among those who were looking over the end of the line canal. Parlin Lilly took a day off Sunday and came in from the ranch to see how his friends were standing the rapid growth of Buhl.

Chas. M. Alorich of Salt Lake was a business visitor Saturday. E. T. Hunt of Boise spent a few days of last week looking over this end of the tract.

Chas. M. Alorich of Salt Lake was a business visitor Saturday. E. T. Hunt of Boise spent a few days of last week looking over this end of the tract.

W. B. Johnson and Dr. G. F. Baker of Twin Falls were in Buhl for a short time Monday. F. J. Dillon of Blackfoot, Idaho, was a guest of Hotel Buhl Tuesday. J. M. Dillon of Denver, Colo., was a land seer on this end of the tract Monday.

Strayed—A black mare branded J J on left shoulder and shod all around. A suitable reward will be paid to any one returning her to John A. Pacoby, Buhl, Idaho.

PROGRAM FOR IRRIGATIONISTS

CONGRESS AT SACRAMENTO TO ECLIPSE RECORD.

Many Prominent Men Will Be Heard and Spirited Debates Are Promised—Administration Policies Will Likely Be Warmly Debated.

The program of the Fifteenth National Irrigation congress is now nearly complete and it has been arranged within a few days. It will consist of about 25 or 30 set speeches and papers by men who are nationally prominent on questions of irrigation and state policy with reference to natural resources, relative to practical irrigation and practical forestry and the settlement of irrigated lands.

The program of the Fifteenth National Irrigation congress is now nearly complete and it has been arranged within a few days. It will consist of about 25 or 30 set speeches and papers by men who are nationally prominent on questions of irrigation and state policy with reference to natural resources, relative to practical irrigation and practical forestry and the settlement of irrigated lands.

The program of the Fifteenth National Irrigation congress is now nearly complete and it has been arranged within a few days. It will consist of about 25 or 30 set speeches and papers by men who are nationally prominent on questions of irrigation and state policy with reference to natural resources, relative to practical irrigation and practical forestry and the settlement of irrigated lands.

The program of the Fifteenth National Irrigation congress is now nearly complete and it has been arranged within a few days. It will consist of about 25 or 30 set speeches and papers by men who are nationally prominent on questions of irrigation and state policy with reference to natural resources, relative to practical irrigation and practical forestry and the settlement of irrigated lands.

The program of the Fifteenth National Irrigation congress is now nearly complete and it has been arranged within a few days. It will consist of about 25 or 30 set speeches and papers by men who are nationally prominent on questions of irrigation and state policy with reference to natural resources, relative to practical irrigation and practical forestry and the settlement of irrigated lands.

The program of the Fifteenth National Irrigation congress is now nearly complete and it has been arranged within a few days. It will consist of about 25 or 30 set speeches and papers by men who are nationally prominent on questions of irrigation and state policy with reference to natural resources, relative to practical irrigation and practical forestry and the settlement of irrigated lands.

The program of the Fifteenth National Irrigation congress is now nearly complete and it has been arranged within a few days. It will consist of about 25 or 30 set speeches and papers by men who are nationally prominent on questions of irrigation and state policy with reference to natural resources, relative to practical irrigation and practical forestry and the settlement of irrigated lands.

The program of the Fifteenth National Irrigation congress is now nearly complete and it has been arranged within a few days. It will consist of about 25 or 30 set speeches and papers by men who are nationally prominent on questions of irrigation and state policy with reference to natural resources, relative to practical irrigation and practical forestry and the settlement of irrigated lands.

The program of the Fifteenth National Irrigation congress is now nearly complete and it has been arranged within a few days. It will consist of about 25 or 30 set speeches and papers by men who are nationally prominent on questions of irrigation and state policy with reference to natural resources, relative to practical irrigation and practical forestry and the settlement of irrigated lands.

The program of the Fifteenth National Irrigation congress is now nearly complete and it has been arranged within a few days. It will consist of about 25 or 30 set speeches and papers by men who are nationally prominent on questions of irrigation and state policy with reference to natural resources, relative to practical irrigation and practical forestry and the settlement of irrigated lands.

For Men

Does the dealer know better than you what you need to wear? Just try us once at the present prices, and if you are not attracted by the goods you get we will be at fault. We're cleaning up the summer work—ending all summer things. Will you share?

Men's Cluett Shirts, were \$2.00, now \$1.50
Men's Monarch Shirts, were \$1.50, now \$1.00
Men's Straw Hats, were \$1.50 to \$7.50, now 50c to \$4.00

Big cuts in Underwear, Shirts of all kinds.
In all Clothing and Hats we are giving a good discount.
The biggest chance you have had to get Clothing at way down prices.
You are always welcome to take a look at our goods. Don't fail to see these bargains.

THE HUB

Clothing & Tailoring Co.

Main Street, Twin Falls

RED TAG TWINE

"The Tie that Binds."

The celebrated McCORMICK and PLYMOUTH—the most economic binding twine on the market. Guaranteed full length. Plenty in stock and two more cars on the way.

The Big 1907 Special M'Cormick Binders

Built for irrigated tracts. The kind that will stand the corrugations. The kind for which you can always get extras.

FOR SALE BY

The Consolidated Wagon & Machine Co.

Leading Implement Dealers Twin Falls, Idaho

seems like took an over full of alfalfa. Mr. Ross had paid \$70 for the cow and she was the main support of the family. The loss is a hard blow to J. A. Waters, the general proprietor, who is planning to have buyers make a personal selection.

The Weeter Lumber Co. received a car of lumber and one of posts this week.

J. F. Sanders, who has been attending to the townsite, departed for Spokane. He resigned his position to Mr. Ross, who is now in charge of the watering of trees. Some of the street crossings are getting in bad shape and should have culverts.

A letter was received from T. J. Ranch in Spokane in which he states that he will be heading for this locality about September to be present at the townsite opening.

Mrs. Gertrude Walton and sister, Mrs. Jones, were Twin Falls visitors this week.

The Hansen Social club will give another party this Friday evening.

Professor Hinton is loading out a car of baled hay. C. O. Meigs of Twin Falls is the purchaser. The professor just touches the high places of late when on the road. He has recently purchased a handsome carryall.

E. L. Rickle is busy getting his second crop of hay in the stack.

Paul Keith is doing carpenter work at the Weeter Co's lumber yard. Ed N. Smith was in town Wednesday taking out a load of lumber.

Carl Chamberlain of Colorado Springs, a member of the Chatsworth Farm Co., paid a visit to the ranch this week.

Alvin Ball was hauling out building material to complete his house this week.

Steinway, Vose & Sons, Mason & Hamlin and Jewett Pianos

Mason & Hamlin Organs
Knabe Angelus
Emerson Angelus

M. A. SWIFT

Pianos and Organs

COLUMBIA THEATRE
BOISE, IDAHO

Twin Falls Livery & Feed Barn

Horses Bought, Sold and Exchanged.
New Rigs, Good Teams, Reasonable Prices.
Excursions to Falls and Lakes Every Sunday.
Special Attention Given to Picnics and Family Parties.

Phone 18 GALLIHER & SONS, Props.

PLUMBING PROGRESS

The change that makes the progress of the years in house building is most evident in the plumbing of the home. Modern fixtures and open plumbing, conforming to sanitary laws and contributing to good health, are the most noteworthy improvements.

Our business is plumbing—improved plumbing. We sell and install "Standard" Porcelain Enameled plumbing fixtures and the guaranteed excellence of these goods backed by our own reputation assures you only the best.

Berry & Swank, Phone 107

Idaho Realty Co., Ltd.

We Are Here for Business.

REAL ESTATE

Both City and Farm Property

Correspondence Solicited.

If you have Property for Sale or Trade, list it with us. If you want to make an investment, Write Us and we will investigate it for you.

BUIHL, IDAHO

THRESHERS ARE BUSY AT HANSEN

NICK SMITH WILL HAVE A RUN OF ONE WEEK.

J. L. Ross loses a Valuable Cow—T. J. Rauch is About to Return to His Hansen Home—J. F. Sanders Moves to Spokane

HANSEN, Idaho, Aug. 22.—The Peter and the Paul threshing rig pulled into Nick Smith's place the first of the week but because of shortage of a portion of the equipment the rig has made little progress. The necessary supplies were wired for and failed to arrive. To expedite matters Mr. Peterson secured the use of a part of Barr's outfit of Burley and is rolling out the grain in proper fashion at present. Mr. Smith will have about a week's run.

J. L. Ross had the misfortune to lose a fine milch cow Tuesday. It

Splendid business opportunity. Cash proceeds from the business of the town for sale. For full particulars address P. O. Box 34, Twin Falls.

Money to loan on patented and improved lands. Irrigated Lands Co.

"The Doxie," ask Wilson Bros.

Amateur photography attended to by Blaise, the photographer.

Sacred tracts on Blue Lakes ave. Easy terms. Irrigated Lands Co.

There's only one tonic, IRONBREW. Bring in the baby and let Blaise take its picture.

For farm loans see J. H. Swan.