

TWIN FALLS NEWS

VOLUME III

TWIN FALLS NEWS, TWIN FALLS, IDAHO, FRIDAY, SEPTEMBER 13, 1907.

NUMBER 46

FARMERS' TAXES WILL BE LOWER

ALTHOUGH THE LEVY HAS BEEN
RAISED.

Reductions in Values of Farm Lands
and Live Stock Will Result in a Ma-
terial Saving for the Twin Falls
Farmers This Year.

The county commissioners have fixed the tax levy at \$2.25 on the hundred. The levy last year was \$2.10, but owing to the reductions made by the state board of equalization on the values of farm property and livestock, the taxes will be much lower for the Twin Falls farmers this year. For instance, land that was assessed at \$20 an acre last year, with a tax levy of \$2.10, was taxed 42 cents per acre. The same land this year is assessed at \$15.50 an acre, and taxed 37.5 cents per acre. The same ratio obtains on all farm lands. Last year cattle were assessed at \$18.00 and taxed 37.5 cents per head. This year they are valued at \$12 and the tax is 27 cents per head. Consequently the Twin Falls farmers will find their tax burdens materially lighter. City property will not get the benefit of the reductions made by the state board of equalization. The commissioners ordered the opening of a road from the northwest corner of town for a distance of two miles west. This will involve the building of grades and the bridging of Rock creek. The petitioners for the road will do the grading and the county will put in the bridge. The commissioners likewise opened another road one mile west to Rock creek on the section line one mile south of the township line from Blue Lakes avenue west.

A bond election will be held on October 5 for the purpose of determining whether the county shall be bonded for \$15,000 for the erection of a jail. A jail is urgently needed and there is no way in which it can be built without a bond issue.

MILNER HAS A BUSY WEEK

North Side Operations Keep Town in
Lively Condition.

MILNER, Idaho, Sept. 12.—O. D. Aiken is in Salt Lake City, where he went to locate the wire for the extension of the power line from the Great Shoshone & Twin Falls Water Power company to Jerome. The car has been located at Rock Springs, Wyo., and it is expected it will arrive by Saturday. The work of stringing the wire will be rushed through night and day in order to be completed for the opening. A number of arc lights will be burned at that time on the streets of the new city of the north side.

It has been suggested and the company is seriously considering the matter of purchasing a searchlight equipped with various colored effects to be operated from the bluff above Shoshone falls and played upon the falls at night during the Twin Falls fair and the north side opening.

Work on the north side canal system is progressing very satisfactorily. The contractors are very confident that the work will be finished by January 1st as per contract.

Between 500 and 600 letters of inquiry in regard to the North Side company's lands are being received at the various offices every day and every indication points to the largest land opening of the kind ever held in the United States. Every detail is being looked after in preparing accommodations for taking care of the big crowd that is looked for.

P. H. Hall is rushing the finishing touches on the Riverside Inn and expects to turn it over to the company before the end of the month.

GOVERNMENT MEN IN THE MAJORITY

HELD COMPLETE CONTROL OVER
IRRIGATION CONGRESS.

Hogged the Meeting and Squelched All
Criticisms—Idaho, the Leader of Ir-
rigated States, Was Denied a Place
on the Program.

Alex. McPherson has returned from the National Irrigation congress at Sacramento, where he represented the Twin Falls tract. After the adjournment of the congress Mr. McPherson went down to Los Angeles in the interest of the tract.

From the view point of a scientist or political economist, the papers read at the national congress were good, said Mr. McPherson, but so far as they related to the practical affairs of irrigation they were not of much merit. Practically all of the papers read at the congress were by government men, and the congress was controlled by the reclamation service. The much advertised opportunity for debate on the policies of the reclamation service was promptly throttled, and the representatives of the Carey act projects or private corporations were squelched whenever they made a move.

In my estimation the National Irrigation congress was a convulse of government employees, and from the point of view of the reclamation service, the organization will soon be in the hands of those who are interested in the reclamation of lands by drainage. It was plainly indicated that the government was in position to do more than complete the irrigation works, which it now has under construction. Not a single representative from Idaho, the only state in the Union which has already exhausted its government allotment of 1,000,000 acres of Carey act land, was given a place on the printed program. After a vigorous protest on the part of the delegates, Mr. Brady, of Pocatello and myself were allowed 10 minutes each to make an opportunity to come, as a delegate after a very able paper by Professor Fortier, in which he bewailed the fact that the government could not settle its lands, and I told them that the company I represented did not turn a man loose to "root or die," under conditions new to many, but met them with a plan and instructed them how to take care of themselves. Under these conditions success was almost inevitable. I deprecated the fact that the government treatment of settlers had a tendency to force them into radicalism and to shake their faith in the government and its policy.

The only state which made an exhibit worthy of itself at the congress was Utah. However, Idaho's small exhibits of prunes and plums took two trophies. The awards for sugar beets, which Idaho had three entries, will not be determined until after the analyses are made. I had a display of photographs from the Twin Falls tract, but I was sadly handicapped in not having something more substantial to show. The people wanted to see the real things, and pictures did not satisfy them. However, a great many announced their intention to attend the opening at Jerome on October 1. I found in my conversations with California capitalists that they were very much dissatisfied with labor conditions in their state and were seeking a field where the restrictions were not so aggravating. After crossing the state of California and looking at the visible supply of water, I can truthfully state that we waste more water on the Twin Falls tract than is available in the entire state of California for irrigation purposes at the present time. Many of the rivers and ditches are entirely dry. The spring floods are great, but the water is not available when it is most needed. This naturally makes settlement under California projects. We fail to appreciate the value of the Snake river and its tributaries to Idaho.

Crop conditions on the Twin Falls tract far exceed anything I saw in my travels. If intending settlers really understood the superiority of the opportunities now being offered under the Twin Falls canal system there would not be an acre of Carey act land left on either the north or south sides after the October opening.

ADDRESS BY MR. BRYAN
Hon. William Jennings Bryan has consented to deliver an address in Twin Falls on Sunday afternoon, Sept. 25. The hour has not yet been announced. It was not Mr. Bryan's intention to make a public appearance while in Idaho, but he was prevailed upon to speak on Sunday. He will undoubtedly be greeted by a splendid audience.

BIG IMPROVEMENT IN JEROME

New North Side Metropolis Is Growing Like a Weed.

JEROME, Idaho, Sept. 11.—H. S. Martin, who has been holding the position of resident construction engineer, has accepted the position of engineer in charge of the field survey of the electric line on the south side tract, and will have his office in the building. Mrs. Cookinham and their young son, Richard, accompanied Mr. Cookinham.

R. S. Cookinham has arrived to take the place left vacant by Mr. Martin and will have his office in the building. Mrs. Cookinham and their young son, Richard, accompanied Mr. Cookinham.

The new company restaurant and lodging house is just about ready for occupancy and in the course of a few days the company officers will have a permanent office in Jerome. The land department will probably continue to be located in the old building after the opening, when the office will be moved to the company house. Mrs. Goiden will have charge of the lodging house department.

Jerome is to have a park. Two blocks have been set aside for this purpose immediately adjoining the new company house. The location of the park will be located the public building. The blocks surrounding the park have been laid off for a residential district on the east side of town is ideal, for from that part a magnificent view of the whole north side tract is obtained. The view from the mountains on the north to the mountains on the south, and from Sugar-Loaf butte on the east to the Hagerman country on the west. The ground has been awarded to Paul R. Kartzke for a big company warehouse and commissary to be erected at Jerome.

Ground has been broken for the warehouse, which will be located on the corner of Locust street and Avenue B and will be in operation by the first of October. The building will be fully up to the standard of all the other company buildings and will be painted in the regulation company colors.

Immediately across from the land office in the park will be located the tent city. This will be for the accommodation of the people who will be present for the opening. It will be divided up into divisions—one for men, one for women, one for the engineering corps, and other divisions will be added as need may arise. The desert, dotted with the white tents, will form a picturesque setting in conjunction with the white and green of the company buildings.

A daily stage line has been established between Twin Falls and Jerome, commencing at the river point with a daily stage between Jerome and Shoshone. An overland trip can now be made very conveniently in one day between Twin Falls and Shoshone, in either direction.

The rock crushers have arrived and as soon as power can be turned on concrete blocks of a superior quality will be manufactured for use in the fire limit and elsewhere in town. Concrete is an ideal material for construction purposes in this country. A general party of progressive people in which to do business. Among the party were Messrs. O. J. Brennan, G. B. Keefe, C. W. Verselke and E. W. Horton. After an elaborate dinner in their honor given by R. M. McCollum the party proceeded toward Twin Falls, with the intention of returning to Shoshone falls.

For some time past the fruit growers adjoining the north side tract have realized that pioneers have a decided preference for reliable fruit. This accounts for the fact that Jerome has been blessed with watermelons by the wagonload, and watermelon parties

TWIN FALLS COUNTY FAIR PREMIUM LIST

Liberal Prizes Offered for Exhibits of Farm Products—Farmers Are Urged to Make Displays and by so Doing Help to Demonstrate the Productiveness of the Soil and Enhance the Value of Their Property—Rules and Regulations Governing the Handling of Exhibits.

The premium list for the Twin Falls County Fair is presented herewith. The list was prepared with the view of bringing out displays of farm products and live stock. While the prizes may not seem to be large, they were trimmed to fit conditions. The fair is out of debt and has a surplus to start with this year. The intention is to keep it out of debt and the management out of the cloth accordingly. The following are the officers of the federation:

OFFICERS.
President—W. S. Starr, Kimberly.
Secretary—C. E. Hagan, Butte.
Treasurer—John Peters, Twin Falls.
First Vice President—J. A. Waters, Twin Falls.
Second Vice President—J. E. Steinhorn, Murtaugh.
Third Vice President—Frank Russell, Buhl.
Fourth Vice President—B. Wilkins, Kimberly.
Fifth Vice President—James Fitzgerald, Piler.
Sixth Vice President—J. H. Angel, Mars.
Seventh Vice President—B. L. Hicks, Hansen.
A. McPherson, ex-officio member of all committees.

COMMITTEES.
Roads and Bridges.
F. E. Chamberlain, Chairman.
Nels Lind
F. Leo Johnson
Rural Telephone.
E. H. Bueh, Chairman.
J. E. Steinhorn
J. H. Angel
Seeds.
J. A. Waters, Chairman.
F. E. Drake
Transportation.
John Peters, Chairman.
C. A. McMaster

L. E. Prothro
A. C. Matterson
H. T. West
Nick Smith
W. B. Shinn
H. T. West

Announcements.
It is with pleasure that the Farmers' Federation of Twin Falls County presents this list of premiums and announcements for the Second Annual Fair, to be held at Twin Falls, September 26, 27 and 28, 1907.

We confidently believe that a careful perusal of this list will win the hearty co-operation of every farmer and business man on the tract. We ask every farmer, stockman, architect, manufacturer or business man in the county to make as creditable an exhibit of their products as possible.

The Twin Falls North Side Land & Water Co. will have an opening of 150,000 acres of land October 1. Many of those who expect to take up land on the North Side no doubt will attend the Twin Falls Fair. It will be very helpful to those coming when they see the productiveness of our wonderful country.

SPECIAL ANNOUNCEMENT.
It is to be understood that all products of the soil that are awarded premiums are to become the property of the Federation, to be used for the purpose of advertising.

An admission fee will be charged of 25 cents for adults and 15 cents for children between the ages of 5 and 12 years; younger children free.

Transportation.
The Oregon Short Line company will grant special rates to those desiring to attend the fair. While it is essentially a fair of the Twin Falls tract, we invite exhibits from any and all who wish to take advantage of this opportunity to show their goods.

Essential Features.
It is intended to make this second annual fair essentially an exposition of the products of Twin Falls County, consequently little attention will be paid to horse racing or other amusements. However, a committee has been appointed to look after the amusement side, and they will take care of this side of the fair.

At the closing of the fair there will be given an opportunity for those who make exhibits, if they so wish, to auction off and to dispose of the same as they see fit. All farmers or stock growers interested in live stock or machinery are notified to take cognizance of this fact.

1. A general supervision of the ground and entire exhibition will be vested in the President and Secretary of the Federation of Farmers.
2. Buildings will be open for exhibits September 25, and all exhibits must be in place by 12 o'clock on September 26, otherwise no premiums will be awarded to those arriving later.
3. All articles must be delivered to the proper division superintendent, who will see that they are properly entered and an identification tag given to each exhibitor.
4. All statements requisite to exhibitors making an entry in regard to date, etc., or whether articles were grown or produced in Twin Falls County, must be proven to the superintendent in charge. If required, the exhibitor must furnish the necessary evidence.
5. Each superintendent will appoint judges for his or her division. Three judges will be appointed for each division, with the exception of poultry, where a single judge will be appointed for a score of points. No fee will be charged in any department for making an exhibit.
6. Stalls and pens will be provided by the Fair Committee and shall be free to all bona fide exhibitors.
7. Application for stalls and pens for live stock must be filed three days prior to the opening of the fair in order that an adequate number may be provided.
8. Every article or animal entered for exhibition shall be under the control of the superintendent of the department in which entered, but in no case will the federal or committee be responsible for loss or damage to same which may occur.
9. All competing animals shall be exhibited and paraded in the ring at the discretion of the superintendent. Any exhibitor failing to comply with this rule will forfeit his exhibit.
10. No animal shall be decorated with unnecessary trappings.
11. Animals exhibited must be in the name of the bona fide owner, and must have been his or her property for at least 30 days prior to the opening of the fair, in order to have premium awarded. This would not bar any person from exhibiting any animal or article.
12. The age of all animals will date from birth.
13. No exhibits will be permitted to be removed from the fair grounds until 4 o'clock p. m., September 25, the last day of the fair.

Any dissatisfaction arising from the awarding of the judges, or the treatment by the superintendents, must be filed in writing with the president or secretary on or before 4 o'clock p. m. the last day of the fair.

Awards.
1. The Fair Committee will in so far as possible secure experts to award the premiums in all departments, and no appeal from the decision of the judges will be considered, except in cases of fraud.- 2. Judges shall hand in their report of awards to the superintendent, making a correct copy of the same, signed by the judge or judges, as the case may be.
- 3. When any article or animal having no competition is worthy of a premium, it shall be awarded, but in no case will a premium be awarded where merit does not stand out.
- 4. Any exhibitor attempting to interfere with the judges in the discharge of their work will be promptly excluded.
- 5. Awards will be as follows: Blue, first premium; yellow, second premium; Ribbons will be provided in all cases designated.

Superintendents.
Each superintendent will report each morning at 9 o'clock and give undivided attention to his department during the day. The superintendent

The Topcoat Season

A Topcoat feels pretty comfortable these cool evenings.
The popular Covert Coat is as high in favor as ever.
Ours are in light, medium and dark shades of brown and greenish tints, with serge body lining and satin sleeve lining.

\$10 and \$12.50

Eldridge Clothing Co.



(Continued on Page 7.)

tendent will give such instructions to the judge or judges before entering upon duties as will enable them to decide all questions that may come up for consideration, in accordance with the rules and regulations.

Payment of Premiums.

All premiums will be paid within 30 days from the date of the close of the fair, but the entry or identification tag must be presented to the secretary before payment will be made. Premiums not called for within 60 days will be forfeited.

Duties and Privileges of Exhibitors.

Exhibitors will give all necessary attention and care to whatever they may have on exhibition, and at the close of the fair take entire charge of the same.

The fair will close at 4 p. m., September 23, 1907.

During the awarding of the premiums in any department the exhibitors will remain with their exhibits and not follow the judges about nor interfere with them in any way.

Members or Employees.

No persons except members or employees of the Fair Committee shall be allowed in the building after the closing hours, except when written order of the superintendent of that department is issued.

PREMIUM LIST.

Division A--Horses and Mules.

C. A. McMASTERY, Superintendent
GEO. H. DARROW, Assistant Superintendent

LOT I--DRAFT HORSES.

	First.	Second.
1. Best draft stallion, any breed, 3 years old or over.	\$10.00	\$5.00
2. Best draft mare, any breed, 3 years old or over.	5.00	2.50
3. Best draft suckling colt, any breed.	5.00	2.50
4. Best draft stallion with two of his get.	10.00	5.00
5. Best draft mare, with suckling colt.	5.00	2.50
6. Best draft team (stallions barred).	5.00	2.50
7. Best yearling colt.	5.00	2.50

LOT II--ALL-WORK HORSES.

1. Best all-work stallion, 3 years old or over.	\$10.00	\$5.00
2. Best all-work mare, 3 years old or over.	5.00	2.50
3. Best all-work stallion with two of his get.	10.00	5.00
4. Best all-work mare with suckling colt.	5.00	2.50
5. Best all-work team (stallions barred).	5.00	2.50
6. Best yearling colt.	5.00	2.50

LOT III--ROADSTERS.

1. Best roadster stallion, 3 years old or over.	\$10.00	\$5.00
2. Best roadster mare, 3 years old or over.	5.00	2.50
3. Best roadster stallion with two of his get.	10.00	5.00
4. Best roadster mare with suckling colt.	5.00	2.50
5. Best gentleman's driving team; speed, style and action to be the test.	10.00	5.00
6. Best single driver, mare or gelding.	5.00	2.50
7. Best yearling colt.	5.00	2.50

LOT IV--MULES.

1. Best span of mules.	\$ 5.00	\$2.50
2. Best mule colt under 1 year.	5.00	2.50
3. Best jack.	10.00	5.00
4. Best mule.	5.00	2.50

Division B--Cattle--Beef Type.

JOHN PETERS, Superintendent
F. LEE JOHNSON, Assistant Superintendent

1. Best Shorthorn bull, registered.	\$10.00	\$5.00
2. Best Shorthorn cow.	5.00	2.50
3. Best 2-year-old heifer.	5.00	2.50
4. Best yearling heifer.	5.00	2.50
5. Best calf under 1 year.	5.00	2.50
6. Best Hereford bull, registered.	10.00	5.00
7. Best Hereford cow.	5.00	2.50
8. Best 2-year-old heifer.	5.00	2.50
9. Best yearling heifer.	5.00	2.50
10. Best calf under 1 year.	5.00	2.50
11. Best Aberdeen Angus bull, registered.	10.00	5.00
12. Best Aberdeen Angus cow.	5.00	2.50
13. Best 2-year-old heifer.	5.00	2.50
14. Best yearling heifer.	5.00	2.50
15. Best calf under 1 year.	5.00	2.50
16. Best Galloway bull, registered.	10.00	5.00

17. Best Galloway cow.	5.00	2.50
18. Best 2-year-old heifer.	5.00	2.50
19. Best yearling heifer.	5.00	2.50
20. Best calf under 1 year.	5.00	2.50
21. Best Red Polled bull, registered.	10.00	5.00
22. Best Red Polled cow.	5.00	2.50
23. Best Red Polled 2-year-old heifer.	5.00	2.50
24. Best yearling heifer.	5.00	2.50
25. Best calf under 1 year.	5.00	2.50
26. Best graded cross-bred dual purpose bull, any breed.	5.00	2.50
27. Best graded cross-bred dual purpose cow, any breed.	5.00	2.50
28. Best 2-year-old heifer.	5.00	2.50
29. Best yearling heifer.	5.00	2.50
30. Best calf under 1 year.	5.00	2.50

Division C--Sheep.

DON C. BRYAN, Superintendent
J. M. SPACKMAN, Assistant Superintendent

LOT I--MERINOS.

1. Best ram, 1 year old or over, registered.	\$ 5.00	\$2.50
2. Best ewe, 1 year old or over.	3.00	2.00
3. Best lambs under 6 months.	2.00	2.00

LOT II--COTSWOLDS.

1. Best ram, 1 year old or over.	5.00	2.50
2. Best ewe, 1 year old or over.	3.00	2.00
3. Best lambs under 6 months.	2.00	2.00

LOT III--SHROPSHIRE.

1. Best ram, 1 year old or over.	5.00	2.50
2. Best ewe, 1 year old or over.	3.00	2.00
3. Best lambs under 6 months.	2.00	2.00

LOT IV--LINCOLNS.

1. Best ram, 1 year old or over.	5.00	2.50
2. Best ewe, 1 year old or over.	3.00	2.00
3. Best lambs under 6 months.	2.00	2.00

LOT V--RAMBOUILLET.

1. Best ram, 1 year old or over.	5.00	2.50
2. Best ewe, 1 year old or over.	3.00	2.00
3. Best lambs under 6 months.	2.00	2.00

LOT VI--GRADES OR CROSS BREEDS.

1. Best ram, 1 year old or over.	5.00	2.50
2. Best ewe, 1 year old or over.	3.00	2.00
3. Best lambs under 6 months.	2.00	2.00

Division D--Swine.

B. A. BAKER, Superintendent
WALTER CRAVEN, Assistant Superintendent

LOT I--POLAND CHINA.

1. Best boar.	\$ 5.00	\$2.00
2. Best sow.	3.00	2.00
3. Best shoats, 3 or more under 6 months.	3.00	2.00

LOT II--BERKSHIRE.

1. Best boar.	\$ 5.00	\$2.00
2. Best sow.	3.00	2.00
3. Best shoats, 3 or more under 6 months.	3.00	2.00

LOT III--DURC JERSEY.

1. Best boar.	\$ 5.00	\$2.00
2. Best sow.	3.00	2.00
3. Best shoats, 3 or more under 6 months.	3.00	2.00

LOT IV--CHESTER WHITES.

1. Best boar.	\$ 5.00	\$2.00
2. Best sow.	3.00	2.00
3. Best shoats, 3 or more under 6 months.	3.00	2.00

LOT V--CROSS BRED OR GRADE.

1. Best boar.	\$ 5.00	\$2.00
2. Best sow.	3.00	2.00
3. Best shoats, 3 or more under 6 months.	3.00	2.00

Division E--Poultry.

MRS. E. F. McPHERSON, Superintendent
MRS. J. A. WATERS, Assistant Superintendent

Exhibit in this class, 100 (1 male and 2 females. Separate classes for mature birds (cocks and hens), and this year's hatch (cockerels and

pullets). All first prizes, \$2; all second prizes, \$1.

LOT I--AMERICAN.

1. Barred Plymouth Rocks, trio, cock and 2 hens.	
2. Barred Plymouth Rocks, trio, cockerel and 2 pullets.	
3. Buff Plymouth Rocks, trio, cock and 2 hens.	
4. Buff Plymouth Rocks, trio, cockerel and 2 pullets.	
5. White Plymouth Rocks, trio, cock and 2 hens.	
6. White Plymouth Rocks, trio, cockerel and 2 pullets.	
7. Partridge Wyandottes, trio, cock and 2 hens.	
8. Partridge Wyandottes, trio, cockerel and 2 pullets.	
9. Silver Laced Wyandottes, trio, cock and 2 hens.	
10. Silver Laced Wyandottes, trio, cockerel and 2 pullets.	
11. White Wyandottes, trio, cock and 2 hens.	
12. White Wyandottes, trio, cockerel and 2 pullets.	
13. Buff Orpingtons, trio, cock and 2 hens.	
14. Orpingtons, trio, cockerel and 2 pullets.	
15. Golden Wyandottes, trio, cock and 2 hens.	
16. Golden Wyandottes, trio, cockerel and 2 pullets.	
17. Buff Wyandottes, trio, cock and 2 hens.	
18. Buff Wyandottes, trio, cockerel and 2 pullets.	

LOT II--ASIAITICS.

1. Light Brahmas, trio, cock and 2 hens.	
2. Light Brahmas, trio, cockerel and 2 pullets.	
3. Dark Brahmas, trio, cock and 2 hens.	
4. Dark Brahmas, trio, cockerel and 2 pullets.	
5. Buff Cochins, trio, cock and 2 hens.	
6. Buff Cochins, trio, cockerel and 2 pullets.	
7. Partridge Cochins, trio, cock and 2 hens.	
8. Partridge Cochins, trio, cockerel and 2 pullets.	
9. Black Langshans, trio, cock and 2 hens.	
10. Black Langshans, trio, cockerel and 2 pullets.	

LOT III--MEDITERRANEANS.

1. Single Comb Brown Leghorns, trio, cock and 2 hens.	
2. Single Comb Brown Leghorns, trio, cockerel and 2 pullets.	
3. Rose Comb Brown Leghorns, trio, cock and 2 hens.	
4. Rose Comb Brown Leghorns, trio, cockerel and 2 pullets.	
5. Single Comb White Leghorns, trio, cock and 2 hens.	
6. Single Comb White Leghorns, trio, cockerel and 2 pullets.	
7. Buff Leghorns, trio, cock and 2 hens.	
8. Buff Leghorns, trio, cockerel and 2 pullets.	
9. Black Minorcas, trio, cock and 2 hens.	
10. Black Minorcas, trio, cockerel and 2 pullets.	

LOT IV--TURKEYS.

1. Bronze, trio.	
2. White Holland, trio.	
3. Buff, trio.	

LOT V--GEES.

1. Toulouse, trio.	
2. Embden, trio.	
3. Pekin, trio.	

LOT VI--DUCKS.

1. Pekin, trio.	
-----------------	--

Division F--Dairy.

JAMES FITZGERALD, Superintendent
FRANK RUSSELL, Assistant Superintendent

LOT I--DAIRY TYPE CATTLE.

1. Best Shorthorn bull, registered.	\$10.00	\$5.00
2. Best Shorthorn cow.	5.00	2.50
3. Best 2-year-old bull.	5.00	2.50
4. Best 2-year-old heifer.	5.00	2.50
5. Best 2-year-old heifer.	5.00	2.50
6. Best 1-year-old heifer.	5.00	2.50
7. Best calf under 1 year.	5.00	2.50
8. Best Holstein bull, registered.	10.00	5.00
9. Best Holstein cow.	5.00	2.50
10. Best 2-year-old bull.	5.00	2.50
11. Best 2-year-old heifer.	5.00	2.50
12. Best 2-year-old heifer.	5.00	2.50
13. Best 1-year-old heifer.	5.00	2.50
14. Best calf under 1 year.	5.00	2.50
15. Best Jersey bull, registered.	10.00	5.00
16. Best Jersey cow.	5.00	2.50
17. Best 2-year-old bull.	5.00	2.50
18. Best 2-year-old heifer.	5.00	2.50
19. Best 2-year-old heifer.	5.00	2.50
20. Best 1-year-old heifer.	5.00	2.50
21. Best calf under 1 year.	5.00	2.50
22. Best Brown Swiss bull, registered.	10.00	5.00

SENIOR & SEEBECK ADDITION

Suburban Acreage Tracts on the West Side of Blue Lakes Avenue, Adjoining Corporate Limits of Twin Falls. . . .

THE most desirable place for a home. On line of proposed electric railway. Ideal locations. Why not buy the best? Prices right and terms liberal. We have other desirable acreage at Twin Falls and first class farm property in all parts of the tract.

Money to loan on improved farms. No delays. We make our own examinations of title and property.

Irrigated Lands Co.

Geo. F. Sprague

Twin Falls, Idaho

Alex. McPherson

Summer---The Time for CEREALS

Summer is the time for Cereals—that is, the proper Cereals. Man should not eat meat during the summer months any more than he can help, as meat causes the blood to heat and over-exerts the digestive system. That is why one feels sluggish after a noonday meal of heavy foods. We carry all the best grades of cereals. Let us have your next order for this grade of goods and we know you will be satisfied.

Perrine & Burton

General Merchandise

Eureka Hotel

J. C. GIRDNER, Prop.

Everybody works at the Eureka hotel but father and he's too fat. He don't do nothing but bring in fresh vegetables from the ranch every day. That's why we can give you the best rates in Twin Falls. Give us a trial and be convinced. First class women cooks.

Good Clean Beds, 25 Cents.

Meal Ticket, good for 21 meals, \$4.00.

Board and room by the week, \$5.00.

Hot Cakes and Coffee for Breakfast, 10 cents.

Meal Hours from 6:30 a. m. to 7:30 p. m.

The Mission Cafe

The Best Restaurant in the City.
Everything New. Service Excellent.
Short Orders a Specialty.

Burgy & Cameron, Props.

Twin Falls Transfer Co.

General Draying and Piano Moving.

Yes, we have formed a combine, but not for the purpose of doing the people, but to give them the benefit of reduced expenses. Give us your trade and we will treat you right—Ours to give satisfaction.

Office Phone No. 13 Barn, 121 Residence, 22

Pennsylvania Anthracite Coal

We Also Handle
Charcoal and Blacksmith Coa

Filer Coal Co.

PHONE NO. 4, TWIN FALLS.

Orders left with the TWIN FALLS TRANSFER CO., Phone No. 13-A, will receive prompt attention.

Adams, Pilgerrim Co.

Lumber Yard and Planing Mill

Dealers in All Kinds of Building Material, including Builders' Hardware, Nails and Glass. MILL WORK A SPECIALTY.
Estimates Cheerfully Furnished.

YARD FACING RAILROAD TRACK AT THE FOOT OF 12TH ST.

Nibley-Channel Lbr. Co. Ltd.

DEALER IN ALL KINDS OF

Lumber, Coal, Lime, Portland Cement, Fence Posts, Builders' Hardware

Yards at RUPERT, BURLEY, KIMBERLY, TWIN FALLS, FILER.

23. Best Brown Swiss cow	5.00	2.50
24. Best 2-year-old bull	5.00	2.50
25. Best 1-year-old bull	5.00	2.50
26. Best 2-year-old heifer	5.00	2.50
27. Best 1-year-old heifer	5.00	2.50
28. Best calf under 1 year	5.00	2.50
29. Cow producing greatest quantity of butter fat in three milkings	5.00	3.00

LOT II.—BUTTER.

1. Ranch, in one or two-pound prints or squares, not less than 5 pounds considered as an exhibit	3.00	2.00
2. Creamery, in one or two-pound prints or squares, and to consist of not less than 20 pounds	5.00	3.00

LOT III.—CHEESE.

1. Factory	5.00	3.00
2. Home made	3.00	2.00

Division G—Farm Products.

J. A. WATERS, Superintendent
J. E. STEINOUR, Assistant Superintendent

VEGETABLES.

All first prizes, \$2.00; seconds, \$1.00.

1. Mangel wurzel (6).
2. Sugar beets (6).
3. Cabbage, 4 heartiest and largest heads.
4. Carrots, 15 pounds.
5. Potatoes, three varieties or more, not less than six of any variety.
6. Potatoes, early, 15 pounds.
7. Potatoes, late, 15 pounds.
8. Pumpkin display, not less than 2 of a kind.
9. Beets, table, not less than 6 in number.
10. Celery, 3 heads or more.
11. Cauliflower, 3 heads or more.
12. Tomato display, not less than 12.
13. Cucumbers, 1/2 dozen, table.
14. Cucumbers, 1/2 gallon, pickling.
15. Egg plants, 2 specimens.
16. Peppers, 5 different varieties, display.
17. Onions, yellow, 10 pounds.
18. Onions, red, 10 pounds.
19. Onions, white, 10 pounds.
20. Onions, one gallon, pickling, small white.
21. Onions, display, 4 or more varieties.
22. Parsnips, one dozen.
23. Watermelon display, 3 or more varieties, not less than 2 of a kind.
24. Watermelons, largest and heaviest specimen.
25. Cantaloupes, 1/2 dozen, quality first consideration.
26. Sweet corn display, 3 or more varieties, 6 ears of each kind.
27. Popcorn display, 2 or more varieties of each.
28. Summer squash, 3 of a kind.
29. Hubbard squash, 3 of a kind.
30. Sweetstakes, best collection of vegetables raised on one farm in 1907; not less than 3 specimens of each variety, number of varieties and neatness of display considered.

CEREALS.

First prize, \$1.00; second prize, 50c.

1. Wheat, winter, peck.
2. Wheat, spring, peck.
3. Oats, peck.
4. Barley, peck.
5. Rye, peck.
6. Corn in ear, peck.
7. Beans, white, peck.
8. Beans, colored, peck.
9. Hullless barley, peck.
10. Corn wheat, peck.

GRAIN IN SHEAF.

1. Wheat display, not less than 3 sheaves 6 inches in diameter, one of a kind, quality, variety and arrangement considered
2. Oats, same as above
3. Barley, same as above
4. Rye, same as above
5. Corn, same as above

MISCELLANEOUS.

1. Alfalfa display, not less than 2 sheaves 6 inches in diameter, 1 for each cutting, quality, quantity and arrangement considered
2. Red clover, same as above
3. Timothy, 1 sheaf
4. Brown corn, 1 sheaf
5. Bromus inornatus, 1 sheaf
6. Hops, 1 sheaf
7. Sweetstakes, best, largest and most attractive display of grains, grasses, vegetables and fruit raised by one individual or family

Division H—Orchard Products.

J. A. WATERS, Superintendent
J. E. STEINOUR, Assistant Superintendent

A plate of apples, pears, peaches and quinces will consist of 5 specimens. Prizes limited to 10 varieties.

First. Second.

1. Winter apples, 10 varieties
2. Fall apples, 10 varieties
3. Summer apples, 5 varieties
4. Pears, 5 varieties
5. Peaches, 5 varieties
6. Prunes and Plums, 5 varieties
7. Grapes, 5 varieties
8. Quinces, 2 varieties
9. Best exhibit of farm products grown by boy or girl under 16 years

Division I—Fine Arts.

MRS. FRANK EASTMAN, Superintendent
MRS. ZELL HARTDEGEN, Assistant Superintendent

RULES.

1. Only persons residing on the Twin Falls tract will be permitted to compete for money prizes. In photograph work, only pictures taken on the tract will be eligible to entry.
2. Evidence of originality to be furnished by the exhibitor whenever required by the judges.
3. No exhibitor will be given more than one premium under one premium number.
4. The name and address of the exhibitor, and the title of the work, must be firmly affixed on the back of each exhibit.
5. Assistants are in no case allowed to take part in or in any manner to interfere with the judges in making awards.
6. The judges are instructed to award premiums to worthy pictures only. Merit must exist whether there is any competition or not.

SUBDIVISION 1—OIL PAINTINGS.

First prize, \$1.00; second prize, 50c, and hon. mention.

Class A—Landscape.
Class B—Flowers.
Class C—Fruit.
Class D—Marine.
Class E—Figures.

SUBDIVISION 2—OIL AND WATER COLORS.

(Work done by anyone under 15 years.)

First prize, \$1.00; second prize, 50c, and hon. mention.

Class A—Landscape.
Class B—Flowers.
Class C—Fruit.

SUBDIVISION 3—WATER COLORS.

First prize, \$1.00; second prize, 50c, and hon. mention.

Class A—Landscape.
Class B—Flowers.
Class C—Fruit.
Class D—Marine.
Class E—Figures.

SUBDIVISION 4.

First prize, \$1.00; second prize, 50c, and hon. mention.
Best original sketch of local flowers, either oil or water colors.

SUBDIVISION 5.

First prize, \$1.00; second prize, 50c, and hon. mention.
Best original sketch of local landscape, either water colors or oil.

SUBDIVISION 6—PYROGRAPHY (on Wood & Leather).

First prize, \$1.00; second prize, 50c, and hon. mention.

Class A—Figure.
Class B—Conventional.

(Continued on Page 5.)

McCORNICK & CO., Bankers

Branch of McCornick & Co., Salt Lake

Transact a General Banking Business

TWIN FALLS, IDAHO

F. F. JOHNSON, President.

S. H. HAYS, Vice Pres.

First National Bank of Twin Falls

J. M. MAXWELL, Cashier

CAPITAL STOCK \$400,000

General Banking Business Transacted

Safety Deposit Boxes for Rent

COR. MAIN ST. AND SHOBHONE AVE. TWIN FALLS

Twin Falls Title & Abstract Co., Ltd.

Bonded Abstractors

NOW READY FOR BUSINESS

Complete set of Abstract Books for Twin Falls and Cassia Counties, together with water rights and mining property. Prices Reasonable. Business Promptly Attended To.

Office over First National Bank, Twin Falls, Idaho. Phone 134

Washington Livery Stable



Watch Out for Hart's New Rigs.

J. K. HART, Prop.

Phone 111

Why--It's Hot!

Yes, that's the way you get our toothsome and wholesome Bread, Cakes, Pies and Bakery of all kinds fresh from the oven daily. We are more than particular as to the purity and quality of all ingredients entering into our products. Likewise scrupulous as to cleanliness of pans and appliances. Special Cake baked to order at short notice.

HARDER'S BAKERY

PHONE 54.

Twin Falls Lumber Co., Ltd.

LUMBER

And Building Material

C. R. SHAW, President

H. O. MILNER, Sec. and Mgr.

Everybody Works but Father

He does nothing but run the bar at the Hotel Perrine, Twin Falls. Only the choicest brands of Wines, Liquors and Cigars

H. C. Sorenson & Co.

The ACADEMY OF IDAHO

POCATELLO

The following courses are given:

COLLEGE PREPARATORY—Prepares students for entering colleges, universities and technical schools.

COMMERCE—Fits students for commercial or business careers.

SHORTHAND AND TYPEWRITING—Thorough, practical work given. The demand for students is greater than can be supplied.

DOMESTIC ECONOMY—Fits students for household economies in all its phases.

MECHANIC ARTS—Instruction given in shop work, mechanical drawing, use and care of tools, etc.

MUSIC—Thorough work given in vocal and instrumental music.

PREPARATORY—Especially adapted for students who have not had adequate preparation, owing to lack of opportunity.

The Academy buildings and equipment are complete, and offer exceptional opportunities for educational work.

The school is supported by the state, and NO TUITION is charged. Board and room, \$16 per calendar month.

Address THE PRINCIPAL for a complete catalogue.



For Irrigation or Pumping

of any kind at the least expense use

Fairbanks-Morse

Gasoline Engines and Pumps

S. M. P. Co., P. O. Box 7, Corvallis, Ore.

FAIRBANKS, MORSE & CO.

Salt Lake City, Utah.

Please send me Illustrated Catalogue No. X 127

I want a.....H. P. Engine to run.....

Name.....Street No.....

Town.....State.....

TWIN FALLS NEWS

Official Paper of Twin Falls County.
George B. Fraser, Editor.

Published every Friday by
THE NEWS PUBLISHING COMPANY
TWIN FALLS, IDAHO

Subscription Rates.
One Year, in Advance, \$2.00
Six Months, in Advance, \$1.00
Reliable information regarding the city and country promptly and cheerfully furnished. Address all communications to The News Publishing Company, Twin Falls, Idaho.

Entered as second-class matter, December 12, 1904, at the postoffice at Twin Falls, Idaho, under the Act of Congress of March 3, 1879.

When the Twin Falls project was conceived, lands in that part of Idaho were worthless, except for grazing purposes. Even in large tracts the lands were valueless. They served no purpose and brought in no revenue. Witness the change wrought by irrigation. Men who had to be coaxed and urged to buy farm lands on the Twin Falls tract have been rendered independent by the advance in the price of their property. They need no urging now, for they are convinced that land values are bound to go higher still. There will be no harmful inflation of prices, but a steady movement upward to the right values.

Experienced irrigators from Colorado and Washington consider good irrigated land a gift at \$200 an acre. They do not hesitate to pay that for Twin Falls property. Land which cost the original entrymen \$35.00 per acre less than four years ago has changed hands within the past 30 days for no less than \$400 an acre. This was for small acreage tracts, however. For straight farm property \$200 an acre has been paid in several instances. Hundreds of farmers have sold part or all of their lands for three times the original cost. Every entryman on the tract has made money, or can make money today by turning over his land. Al Page of Wardner paid \$40 an acre for raw school land. Governor Gooding sold his quarter section, four miles from town, for double what it cost him and it could not be bought today for less than \$100 an acre. D. S. Spencer sold 80 acres a mile and a half from Twin Falls for \$100 an acre. Paul Bickel sold 80 acres for \$200 an acre, adjoining the city. Among the straight sales of farm lands recently made are the following, which show the actual market value of lands on the south side:

Admission T. Smith, 80 acres, \$150 per acre; A. L. Beasler, 40 acres, \$91 per acre; Frank Chamberlaine, 40 acres, \$100 per acre; D. P. Stubbs, 160 acres, \$150 per acre; F. E. Johnson, 80 acres, at \$125 per acre; John Ericson, 40 acres, \$150 per acre. Farm property on the south side, located five to fifteen miles from the city, is selling today for three times its original cost and is selling readily. The demand is keen. Under such conditions it is not surprising that people are looking forward eagerly to the North Side opening at Jerome on October 1. They do not propose to let another opportunity for safe and profitable investment slip by them. They have had their lesson from the south side.

There is a paragraph in the Kimberly correspondence this week which should appeal strongly to every farmer on the tract. It contains the information that the Kimberly farmers' warehouse returned 10 per cent on the investment—the first year. In addition to making it possible for the farmers in that locality to assemble their grain in quantity sufficient to make it marketable. The Kimberly farmers displayed sound judgment when they built their warehouse and their example is worthy of emulation.

There is a paragraph in the Kimberly correspondence this week which should appeal strongly to every farmer on the tract. It contains the information that the Kimberly farmers' warehouse returned 10 per cent on the investment—the first year. In addition to making it possible for the farmers in that locality to assemble their grain in quantity sufficient to make it marketable. The Kimberly farmers displayed sound judgment when they built their warehouse and their example is worthy of emulation.

There is a paragraph in the Kimberly correspondence this week which should appeal strongly to every farmer on the tract. It contains the information that the Kimberly farmers' warehouse returned 10 per cent on the investment—the first year. In addition to making it possible for the farmers in that locality to assemble their grain in quantity sufficient to make it marketable. The Kimberly farmers displayed sound judgment when they built their warehouse and their example is worthy of emulation.

There is a paragraph in the Kimberly correspondence this week which should appeal strongly to every farmer on the tract. It contains the information that the Kimberly farmers' warehouse returned 10 per cent on the investment—the first year. In addition to making it possible for the farmers in that locality to assemble their grain in quantity sufficient to make it marketable. The Kimberly farmers displayed sound judgment when they built their warehouse and their example is worthy of emulation.

There is a paragraph in the Kimberly correspondence this week which should appeal strongly to every farmer on the tract. It contains the information that the Kimberly farmers' warehouse returned 10 per cent on the investment—the first year. In addition to making it possible for the farmers in that locality to assemble their grain in quantity sufficient to make it marketable. The Kimberly farmers displayed sound judgment when they built their warehouse and their example is worthy of emulation.

There is a paragraph in the Kimberly correspondence this week which should appeal strongly to every farmer on the tract. It contains the information that the Kimberly farmers' warehouse returned 10 per cent on the investment—the first year. In addition to making it possible for the farmers in that locality to assemble their grain in quantity sufficient to make it marketable. The Kimberly farmers displayed sound judgment when they built their warehouse and their example is worthy of emulation.

There is a paragraph in the Kimberly correspondence this week which should appeal strongly to every farmer on the tract. It contains the information that the Kimberly farmers' warehouse returned 10 per cent on the investment—the first year. In addition to making it possible for the farmers in that locality to assemble their grain in quantity sufficient to make it marketable. The Kimberly farmers displayed sound judgment when they built their warehouse and their example is worthy of emulation.

There is a paragraph in the Kimberly correspondence this week which should appeal strongly to every farmer on the tract. It contains the information that the Kimberly farmers' warehouse returned 10 per cent on the investment—the first year. In addition to making it possible for the farmers in that locality to assemble their grain in quantity sufficient to make it marketable. The Kimberly farmers displayed sound judgment when they built their warehouse and their example is worthy of emulation.

There is a paragraph in the Kimberly correspondence this week which should appeal strongly to every farmer on the tract. It contains the information that the Kimberly farmers' warehouse returned 10 per cent on the investment—the first year. In addition to making it possible for the farmers in that locality to assemble their grain in quantity sufficient to make it marketable. The Kimberly farmers displayed sound judgment when they built their warehouse and their example is worthy of emulation.

There is a paragraph in the Kimberly correspondence this week which should appeal strongly to every farmer on the tract. It contains the information that the Kimberly farmers' warehouse returned 10 per cent on the investment—the first year. In addition to making it possible for the farmers in that locality to assemble their grain in quantity sufficient to make it marketable. The Kimberly farmers displayed sound judgment when they built their warehouse and their example is worthy of emulation.

There is a paragraph in the Kimberly correspondence this week which should appeal strongly to every farmer on the tract. It contains the information that the Kimberly farmers' warehouse returned 10 per cent on the investment—the first year. In addition to making it possible for the farmers in that locality to assemble their grain in quantity sufficient to make it marketable. The Kimberly farmers displayed sound judgment when they built their warehouse and their example is worthy of emulation.

There is a paragraph in the Kimberly correspondence this week which should appeal strongly to every farmer on the tract. It contains the information that the Kimberly farmers' warehouse returned 10 per cent on the investment—the first year. In addition to making it possible for the farmers in that locality to assemble their grain in quantity sufficient to make it marketable. The Kimberly farmers displayed sound judgment when they built their warehouse and their example is worthy of emulation.

There is a paragraph in the Kimberly correspondence this week which should appeal strongly to every farmer on the tract. It contains the information that the Kimberly farmers' warehouse returned 10 per cent on the investment—the first year. In addition to making it possible for the farmers in that locality to assemble their grain in quantity sufficient to make it marketable. The Kimberly farmers displayed sound judgment when they built their warehouse and their example is worthy of emulation.

IN MEMORIAM.

Whereas, it has been ordained by an all-wise Providence that the labors of our beloved president, Phoebe A. Crockett, in this society and in the community should come to an end. Resolved, That we submit to the judgment of the president of the universe, from whose ruling there is no appeal.

That we deplore the loss to this society, and extend our sympathy to the bereaved husband and children, and that these resolutions be made a part of the proceedings of this society.

LAURA C. ALBEE,
IDA E. ROBACK,
Committed, Rock Creek Ladies' Club

Notice of Attachment.
In the District Court of the Fourth Judicial District of the State of Idaho, in and for Twin Falls County.

Wester Lumber Co., a corporation, Plaintiff, vs. A. Dunken, defendant.

Notice is hereby given that a writ of attachment was issued out of the above mentioned court on the 11th day of September, 1907, in an action wherein Wester Lumber Co., a corporation, is plaintiff and A. Dunken is defendant, attaching the property of the said defendant to recover the sum of \$110, besides interest, with all costs, expenses and disbursements.

Witness my hand and seal of said court this 13th day of September, A. D. 1907. H. T. WEST,
Clerk of District Court.
(Seal)

By GEO. H. SMITH, Deputy SHIELDS & ASHTON,
Attorneys for Plaintiff.

Teachers' examinations for the second and third grades will be held in the office of the county superintendent in Twin Falls on October 2 and 4. These examinations will take the place of those which were to be held next May. Miss Edna Debow, superintendent.

Wanted—Glen for general housework. Apply to J. M. Maxwell, First National bank.

Notice to Contractors.
Grading of electric line at Jerome, Idaho, and grading of laterals near Milner, Idaho, can be had upon application to the Twin Falls North Side Land & Water company.

PAUL S. A. BICKEL,
Chief Engineer,
Milner, Idaho, Sept. 12, 1907.

Lost—Between Hazen ranch and Twin Falls, pair gold bowed glasses. Return to News office and get reward.

Large stock on hand. Twin Falls Hardware Co.

Cole's Hot Blast Heaters will burn either hard or soft coal. Twin Falls Hardware Co.

Cole's Hot Blast Heaters will burn either hard or soft coal. Twin Falls Hardware Co.

For Sale—Three cows, two registered Jerseys. George F. Peterson, Kimberly, Idaho.

Donald Land Tracts—Mrs. Frank Bone, 6th ave. bet. 10th and 11th streets.

Last call for Speckman's Fair View Ranch (P. V. R.) roasting cars of corn.

F. V. R. lettuce.

Wanted—Good sized second hand safe. Apply to News office.

The best summer drink, IRONBREW

"The Doxie," ask Wilson Bros.

"The Doxie," ask Moore & Wamsley

See Bryan-Filer hog adv. on page 7.

The Liberal Cigar Store is headquarters for A. G. Spaulding sporting goods.

Best line of Domestic and clear Havana cigars can be had at the Liberal Cigar Store.

WHEN HER BACK ACHES

A Woman Finds All Her Energy and Ambition Slipping Away.

Twin Falls woman knows how the aches and pains that come when the kidneys fail make life a burden. Back ache, hip pains, headaches, dizzy spells, distressing urinary troubles, all tell of sick kidneys and warn you of the stealthy approach of diabetes, dropsy and Bright's disease. Doan's Kidney Pills permanently cure all these disorders.

Mrs. E. Burnett, residing at 132 First avenue, Pocatello, Idaho, says: "I consider Doan's Kidney Pills a most excellent remedy and one that can be entirely depended upon by those who have any symptoms of kidney complaint. I suffered from experience because I suffered sometimes from aching pains across my back and through the region of the kidneys. Any hard work about the house which caused an extra strain across my back was sure to cause me much suffering on account of the pain which followed. I got Doan's Kidney Pills and received so much benefit from one box that I procured three others. I am happy to state that they cured all the trouble with the kidneys, all the annoying symptoms were removed, and I have had no trouble with my back since."

For sale by all dealers, price 50c. Foster-Milburn Co., Buffalo, N. Y., sole agents for the United States.

Remember the name—Doan's—and take no other.

ROCK—SAND—GRAVEL

C. CAMP.

Leave Orders at

TWIN FALLS CEMENT COMPANY.

Smoke "Supreme Court"

For Sale Everywhere.

See Bryan-Filer hog adv. on page 7.

Hotel for Sale—Doing good business in a growing town. Address A. G. Lammers, Filer, Idaho.

If in need of any odds and ends in the line of dishes, cooking utensils, enameled toilet ware, mirrors, furniture or a splendid small sized rattan Axo cook stove, please call at Mrs. Frank Durrington's in Kimberly.

Splendid business opportunity. Cash grocery store doing the business of the town for sale. For full particulars address P. O. Box 34, Twin Falls.

6-acre tracts on Blue Lakes ave. Easy terms. Irrigated lands.

"The Doxie," ask R. W. Jones.

We buy oats, wheat, barley, rye, potatoes, alfalfa and clover seed. TWIN FALLS GRAIN & PRODUCE CO.

The Pickling Season is On. Cucumbers, cabbage, cauliflower, beans and eggplant. John R. Newton, Phone 137.

"The Doxie," ask Moore & Wamsley

For Sale—One dozen full blooded Buff Leghorn roosters, 41 and 42 each. Write or inquire to C. E. LAY, Filer.

Don't take any chances from a hallstom. See Guy B. Sleror.

Money to loan on patented and improved lands. Irrigated Lands Co.

"The Doxie," ask R. W. Jones.

Two pleasant front rooms to rent, furnished, private family. Mrs. Marble, in Garlock house.

For half insurance see Guy B. Sleror.

We have a little money to loan on short time with good security. Brunk Brokerage & Realty Co.

For Sale.
Car each new out and wheat bags. TWIN FALLS GRAIN & PRODUCE CO.

Choice Lands.
We own and have for sale some choice irrigated lands, improved and unimproved, that we can sell you on very reasonable terms. The price will be satisfactory, the quality of the land and water supply second to none in the United States.

Write us for particulars.
THE NORTHWESTERN INVEST-

PROFESSIONAL CARDS

DR. H. W. GLOUCHEK.
Physician and Surgeon

Two Years Resident Physician at University of Michigan, Ann Arbor, Michigan.
TWIN FALLS CITY, IDAHO

DR. G. F. BAKER.
DENTIST

Office in Idaho Department Store Bldg.
Telephone No. 14
TWIN FALLS, IDAHO.

DR. H. T. BILLINGTON.
Osteopath

Consultation Free.
Office in Stokard Bldg. Phone 67.
TWIN FALLS, IDAHO.

DR. D. BROWN LEWERS.
DENTIST

Bradley & Smith Block, Opposite Hotel Perrine.
Graduate of Maryland.
Licentiate of Pennsylvania.
Phone No. 109

DR. J. M. ROGERS.
DENTIST

Office Pike Building (up stairs), Main Street.
TWIN FALLS, IDAHO

L. M. LUCY.
Lawyer

Office in the Pike Building
TWIN FALLS, IDAHO

P. H. HALL.
Contractor and Builder

Estimates cheerfully furnished.
Twin Falls, Idaho.

SWEELY & SWEELY.
Attorneys at Law.

Practice in all Courts.
TWIN FALLS : : : IDAHO.

S. H. HAYS.
Attorney at Law

821 Main street BOISE, IDAHO

BALL BROTHERS.
CONTRACTORS

Architectural Work a Specialty. See us for Ninth Avenue, between Tenth and Eleventh Sts.
TWIN FALLS, IDAHO

J. E. HAYES.
Civil Engineer

Phone 73
TWIN FALLS, IDAHO.

ROBERTS & OUGHTON.
CONTRACTORS

Stones, Brick and Concrete Work
Stone Cutting and Cemetery Work a Specialty
Estimates cheerfully furnished.
TWIN FALLS : : : IDAHO

CHAS. H. MULL.
Civil Engineer

Licensed Surveyor
U. S. Deputy Mineral Surveyor
P. O. Box 230. Leave orders at Redford's Drug Store.

H. E. HUNT.
Undertaker and Embalmer

Open Day and Night.
All Calls Promptly Attended To.
In Harder Building, on Tenth Avenue
TWIN FALLS.

MISS ALWINE REHMANN.
Teacher of Piano, Harmony, Musical History.

Graduate and Post Graduate of Upper Iowa University Conservatory of Music. Post Graduate course in Berlin, Germany.
Studio—Howe's Apartment House, Ninth Avenue, Facing Park.
TWIN FALLS, IDAHO.

L. E. KELTNER.
LICENSED AUCTIONEER

Write for Dates.
TWIN FALLS : : : IDAHO

D. W. BRUNK.
LICENSED AUCTIONEER

Fifteen Years' Experience.
Satisfaction guaranteed.
Office upstairs in Fox Building, Main Street, Twin Falls.

SECRET SOCIETIES

TWIN FALLS LODGE,
NO. 45, A. F. and A. M.

Regular meetings held the first Monday of each month. Sojourning brethren cordially welcome.
GEO. D. AIKEN, CHAS. H. MULL,
W. M., Secy.

TWIN FALLS LODGE NO. 23, I. O. O. F., instituted 1905.

Meets every Thursday evening at 7:30. Visiting brothers always welcome.
E. A. LITTLE, H. A. CRYDER,
Noble Grand, Secretary.

M. W. A., CAMP NO. 10890.

Meets 2nd and 4th Wednesdays of each month.
J. M. ROGERS, Consul.
D. W. BRUNK, Clerk.

Phone 123 Idaho Dept Store Bldg.

TWIN FALLS CHAPTER, O. E. S.

Meets second and fourth Mondays in every month in E. of P. Bldg.
Matron, MRS. J. B. ELLIS.

St. Margaret's Hall

One of the best boarding and day schools for girls in the Northwest. Refined home influences. The best location; beautiful grounds. A splendid new three-story addition during past year. Skilled faculty. Academic, Preparatory, Primary and Kindergarten departments. Offers College Preparatory course. Excellent advantages in Music, Art and Languages. Sixteenth Session begins September 8, 1907.

Send for Catalogue. Address

Miss Lucy G. Hester,
PRINCIPAL, BOISE, IDAHO.

ACCLIMATED IDAHO

Nursery Stock

All varieties of Fruit, Shade and Ornamental Trees most suitable to this section of the state. Pronounced by State Inspector Free of pests or diseases.

BOISE VALLEY NURSERY,
Caldwell, Idaho.
CHARLES P. HARTLEY, Prop.
H. T. PHIPPS, General Agent,
Twin Falls.

Phone No. 23

If you want your Drayage attended to promptly.

CITY DRAY CO.

M. L. BAYLEY, Manager

Office near Palace Meat Market

KIMBERLY

LIVERY STABLE

Good Rigs at all Times at Right Prices. Call and See Us.

M. Eignor, Prop.

KIMBERLY, IDAHO.

Santa Fe

Excursions

From Salt Lake and Ogden To Chicago and return, \$69.00 To St. Louis and return, \$62.50 On sale daily until September 30, 1907.

Mexico City and Return, \$78.40—Daily until September 30, 1907; choice of three routes.

Plenty of other Rates to Eastern Summer Resorts.

For further particulars apply to C. F. WARREN, A. T. & S. F. Ry. 411 Dooly Block, Salt Lake City, Utah.

LIVERY

FEED AND SALE STABLE.
Roadsters and Saddle Horses for hire. Horses bought, sold, boarded and exchanged. Best of care guaranteed. Good vehicles. New management.
C. H. LOWE
M'ALL BARN, TWIN FALLS.

THE PERRINE HOTEL
KEEPS OPEN ALL NIGHT.

L. J. Miller

Funeral Director and Furnisher

Four Doors West of Hotel Perrine.
Lady Attendant.
Service Chapel, with Private Room for Family.

My Personal Services to Care and Detail, including Cemetery Arrangements.
Telephone—Day or Night—103.

O. K. Candy Kitchen

Best and Purest Candies. 25c and 40c per Pound Box. Try it.

Sagebrush Grubbing and Plowing

Done by Traction Engine. For terms write to

Flam Cheney & Sons

3 Miles East of Twin Falls, Idaho—on Phone Line.

Home Grown Trees

Fruit, Shade and Ornamental

Sensuous and acclimated stock, thoroughly tested and suitable for the purpose of the Twin Falls tract. Inspection invited.

James A. Waters

Twin Falls Nursery

ONE MILE NORTH OF TOWN

NOTICE OF BOND ELECTION.

Notice is hereby given that at a special meeting of the Board of County Commissioners of Twin Falls County, Idaho, called and held for the purpose after mentioned purpose, on the 9th day of September, the following resolution was adopted, to-wit:

"Whereas, the Board of County Commissioners find it necessary and for the best interests of Twin Falls County, Idaho, that a fall be erected and equipped for said county, and it being found by said board that the expense of erecting such a suitable jail of suitable size and capacity and furnishing the same will be \$15,000, and that the same will exceed the revenue of the current year applicable thereto and to that purpose, and

"Whereas, the board deems it for the public good to bond the county in the said sum of \$15,000 for the purpose of providing funds therefor; therefore be it

"Resolved, by the board, that the above said foregoing proposition be submitted to a special election of the voters of said Twin Falls County."

In accordance with said resolution, a special election is called to be held on the 5th day of October, 1907, to determine whether the said commissioners are authorized to issue the bonds of said Twin Falls County in the sum of \$15,000 for the special purpose of building and equipping said jail for said county. The election above mentioned will be held in the several precincts in said county as hereinafter mentioned and the polls will be opened at the hour of 1 o'clock in the afternoon and will be closed at the hour of 7 o'clock in the evening of the same day.

Said bonds to be issued will be issued in denominations of \$1,000, or if necessary, will be issued in denominations of \$500 and \$100, and all of said bonds will bear a rate of interest not to exceed 6 per cent per annum, payable January 1 and July 1 of each year. Said bonds, or any part thereof, may, at the option of the county, be redeemed at any time after 10 years from the date of their issue, provided such time and option be stated upon the face of each bond, and each bond be redeemed in the order it is numbered.

GEORGE L. CROCKER,
Chairman
Attest: H. T. WEST, Clerk.

"The Doxie," ask Wilson Bros.

ADVERTISED LETTER LIST

List of letters remaining unclaimed in the Twin Falls postoffice for the week ending September 9, 1907. Parties calling for these letters will please say, "Advertised September 9, 1907."

Hullington, Henry.
Christopher, N. P.
Dentling, Emory
Driscoll, Tim
Dwight, Jas. H.
Egan, Dr. J. C.
Empire Lbr. Co.
Elkins, Jas.
Flynn, J. F.
Green, J. E.
Hallman, Alfred
Hall, Beasie D.
Keppen, H. O.
Lloyd, William
McDonnell, A. W.
Maxwell, Harry
Murtserg, M. M.
Sullivan, Del and Monk
Scott, Al

Postage due on the above letters, 1c each. Letters remaining at the end of 14 days will be sent to the dead letter office.

W. H. GREENHORN,
Postmaster.

HELP WANTED.
Three good waitresses at Hotel Perrine. E. B. WILLIAMS, Prop.

BREVITIES

State Mine Inspector Robert M. Bell was in Twin Falls this week looking over his desert farm.

The local real estate men have formed an organization for their mutual benefit.

President Frank H. Buhl and George A. Baird of the Land & Water Co. were in the city on Wednesday and Thursday.

A. D. McKinlay and Don Bryan went to Halley on Thursday to bring down 3,000 sheep which they bought to feed during the winter.

Dr. Pike has sold his residence to S. A. Marble and is moving into a suite of rooms in his Main street block in which his office is located.

The Short Line will extend its telegraph service to Buhl as soon as possible. Mr. Bruce, who has charge of the work, came in yesterday to look after the construction of the pole line and the stringing of the wire.

Charles E. Colles of The News is confined to his room with what appears to be mountain fever, though it is some time since he visited the mountains. How some people can afford these luxuries is astonishing.

John E. Hayes is suffering from an attack of fever. Mr. Hayes was in charge of the engineering work on the big Ox Bow tunnel when he was taken down. He came home on Wednesday to recuperate.

The Petersons, threatening outfit had a narrow escape from fire at the Celestian ranch on Wednesday. The straw pile and part of a wheat stack was burned and it was necessary to pull the big gun to save it. The outfit was not injured in the least.

German Lutheran services will be held in the Christian church on Sunday afternoon at 2:30, followed by English services at 3:30. English services will also be held at the Pilgr school at 10:30 a. m. All are cordially invited.

Fred Ramsay has 25 or 30 Rome Beauty apple trees which bore fruit this year and will have an exhibit at the fair. George Bassett also has a number of trees in bearing with some beautiful fruit. The trees were planted two years ago last April and were two years old when set out.

W. W. Humphrey returned yesterday from Yellowstone park. Mr. Humphrey reports that his company, the Monida & Yellowstone Transportation Co., took 5,000 people through the park this year. Of this number over 3,000 came in over the Yellowstone branch and the remainder over the Northern Pacific. The season will close on September 20.

Charles M. Hill has returned from an extended trip east in the course of which he visited many of the largest cities and boosted faithfully for Twin Falls.

Mr. and Mrs. Frank Burdick are going to Los Angeles for the winter. Mr. Burdick has 15 acres of blue stem wheat which he thinks will yield a record crop.

William Warberg and George B. Carro have purchased the experimental farm for \$12,000 and are subdividing it into acreage tracts. The deal was consummated by the Irrigated Lands Co.

Jacob Lockman came over from Nampa on Tuesday to see how the crops were turning out. He got lost in one of his old fields, so it is reported, and stamped his toe on a cantaloupe.

J. S. Keel is going to the coast for the winter, in the hope that a change of climate will benefit the health of his wife and child. Mr. Keel retains all his interests here and will return next year.

A daughter was born to Mr. and Mrs. John M. Maxwell on Tuesday, September 10. The baby weighed nine pounds and John weighed a ton. Mrs. Maxwell and daughter are doing nicely and John's right arm will soon get over the lameness incident to the many congratulations.

A. J. Senior and H. H. Seebeck closed a deal this week on the Irrigated Lands Co. for 40 acres of the Milner property facing on Blue Lakes avenue. The price paid was \$10,000. The tract has been subdivided into acreage and is now being sold. Professor J. R. Hinton bought the first lot.

Harry Allen dropped in this week from Salt Lake City, sold his farm and town lot for more than he expected to get for them and struck back for Zion. Mr. Allen is interested in a copper mine of great promise. After he has made his pile he will return to Twin Falls, which he still thinks is the only town in the country.

J. F. Bower, whose residence is on Ninth avenue, is picking his second crop of strawberries. He picked the first crop during the first week in July, after which he carefully cultivated and irrigated the berry patch. The second crop would, Mr. Bower believes, be better than the first had it not been for the cold, wet spell in August which gave the berries a setback. The fruit is excellent.

Nels Lind planted 145 pounds of wheat on an acre and a half of ground last spring. The wheat was a cross between Red Chaff and Allen and was presented to Mr. Lind by a gentleman in Washington. Mr. Lind cut the crop the other day and consumed six pounds of wheat in the operation. He took five loads of sheaves from the acre and a half and he believes he will get a record breaking yield.

Mrs. Kenyon of Burley is the guest of Mrs. McCollum this week.

Mrs. Wilbur Hill entertains a number of ladies to cards this afternoon.

The interior of the Idaho Department store is being redecorated and the woodwork painted. The lighting will also be improved and the store will present an unusually attractive appearance at fair time. There will be a great display at the store during fair week. The ladies' "ready to wear" section is receiving particular attention and is already full of new novelties.

A Carnegie medal for Ralph Cost of Buhl. The Idaho Department store delivery wagon team ran away this morning. Ralph happened to be mounted preparatory to starting for home. He quickly overtook the team, steered them safely through a maze of aspen trees and halted them before any damage was done. It was a clever piece of work and excited the admiration of a great crowd. It is in order for Pat Monahan to notify Mr. Carnegie at once.

Hon. L. G. Bradley of Lewiston, who represented Nez Perce county in the last legislature and who was so impressed with Twin Falls when the legislators visited the town last February that he decided to come back, has returned from the Sawtooth mountains, where he camped for three weeks. Mr. Bradley was engaged in the work of transcribing the county records at Albion for some time. He was on come back on the fourth side and is going after more at the October opening. Mr. Bradley said that hundreds of north Idaho citizens would take in the opening.

The Maroon school district has decided to buy a wagon to take the children to and from school. The trustees were in Twin Falls this week pricing wagons. They found that the first two wagons bought by the Twin Falls district from C. O. Meigs cost \$340 each. The third wagon was bought second hand from G. J. Erdmann for \$210. The fourth, fifth and sixth wagons were bought from Robert Steele at a cost of \$100 each. The present board bought the seventh wagon from the Consolidated Wagon & Machine Co. for \$400 and the eighth from C. O. Meigs for \$360.

Mr. and Mrs. C. C. Bedford returned home on Wednesday and were given a rousing reception. They were met at the train by a large number of friends and a brass band escorted them to their store, which was fantastically decorated for the occasion. The plate glass windows were plastered with red hearts and the front was festooned with old shoes, while the floor and the sidewalk in front of the store were covered with rice. Red hearts of all sizes were plastered all over the walls and large signs reading: "Free drinks at Bedford's" were smeared on the cement. Doc was game and he stood the ordeal manfully, knowing that while it was noisy it was nevertheless sincere.

Mr. and Mrs. Moon went to Nampa on Wednesday to remain for a visit of 10 days, after which they will proceed to Los Angeles for the winter. They will return in the spring.

O. J. Brennan, C. W. Wernicke, G. D. Koefler and E. W. Horton of Shoshone drove over from Jerome on Sunday evening and visited the falls on Monday. They stated that Shoshone was feeling the benefit of the development on the north side, which was very helpful.

These cool afternoons the "bridge fever" has started up again. The ladies have been playing frequently late and some are making very high scores. At Mrs. Barrett's bridge tea Miss McCollum was winner, at another Mrs. Davis, while Wednesday at Mrs. Pike's Mrs. Booth's score was phenomenal.

Mrs. S. T. Hamilton entertained her friends right royally three afternoons this week—Monday 15 ladies to a Kensington tea, Tuesday to cards, while Thursday, the Ladies Aid of the Presbyterian church enjoyed a delightful afternoon. She was ably assisted in serving refreshments by her two daughters, Beth and Little Ruth.

Franklin & Hayes of Pocatello have purchased the Jones block on Main street for \$12,000. The block has a frontage of 50 feet, which the building covers. Mr. Hayes, who closed the deal, said they had not decided what would be done in the way of improvement. They wanted to introduce good Pocatello beer in Twin Falls, said Mr. Hayes, and found that the easiest way to do it was to buy in. The property is valuable and Mr. Hayes made a good buy.

Hon. William Jennings Bryan received a cordial reception on his arrival yesterday. Mr. Bryan was met at the depot by a large number of citizens, and the Twin Falls band headed the procession up town. Mr. and Mrs. Bryan and daughter went straight through to Blue Lakes, where they will visit for a fortnight. Mr. Bryan wants a good rest and for that reason he shuns demonstrations. He expressed his astonishment at the change which had taken place since his last visit, six years ago, saying it had eclipsed anything he had ever seen.

A delightfully informal social affair occurred Wednesday evening at the home of R. M. McCollum, given complimentary to their friend, Mrs. Kenyon. Miss Elva served punch during the games of "500" and later light refreshments were served. The favors were given, first to Mrs. Mitchell, second to Mrs. Thomas; gentlemen, first, C. M. Hill; second, Mr. Nixon. Those present were Mr. and Mrs. W. O. Taylor, Dr. and Mrs. Boyd, Mr. and Mrs. Booth, Mr. and Mrs. C. M. Hill, Mr. and Mrs. Mitchell, Mr. and Mrs. Barrett, Dr. and Mrs. Pike, Mr. and Mrs. Tush, Mr. and Mrs. Swooley, Mr. and Mrs. Thomas, Mesdames Aiken, Nixon and Will Nixon.

We Handle Quickly



A great many lines in Stationery, but never juggle with prices. We furnish every facility for writing, for the business or the office, and the only magic there is about our trading is the low price that accompanies the highest quality. Whether you are an office provider or a home secretary, you will be interested in our offerings.

We carry a large line of Eaton - Thurber's Stationery, the most up-to-date and highest grade on the market.

Bedford Drug Co.

Pharmaceutical + Chemists

C. C. BEDFORD, Mgr. Twin Falls

James Fitzgerald left on Tuesday for Walla Walla, where he will buy a carload of dairy cows.

James A. Gallher & Son have started a stage line to Jerome. The stage leaves at 8 o'clock in the morning, returning in time to connect with the train in the evening.

Fred Voigt will leave today for the east, to be absent three weeks. He will visit his old home and take in a number of the big cities. Mr. Voigt has fairly earned a vacation, having been up against the hardest kind of grind for two years.

N. C. Beebe fully agrees with the sentiment of a story concerning the moods of cows, recently printed in the News. Mr. Beebe brought in 50 head of milk strain Durhams which he is selling two miles north of town. One of the cows, which had a calf at her side, took objection to Mr. Beebe's striped red shirt and disarranged his wardrobe, besides running him out of the lot. After an introduction to the shirt the cow became quite docile and ate out of Mr. Beebe's hand. The cows are attracting much attention and quite a number have been sold already.

Dr. H. L. Giffen of Webster City, Iowa, who has been dental parlors in the Boyd block on October 1. Dr. Giffen has rented Dr. Pike's residence and will bring his family with him. Iowans who are familiar with Dr. Giffen's work say he is a master in his profession. Personally the doctor is a delightful man to meet and they say he is an extra clever barber, which is a very good sign. His parlors will be equipped in the most modern style.

"The Doxie," ask Wilson Bros.

Introduce Your Boy to Us

and let him bring us his little savings. We have the Home Savings Banks which we loan to our savings depositors.

WE PAY YOU TO SAVE.

The Commercial & Savings Bank

Bale Ties—Bale Ties—Bale Ties. Large stock on hand. Twin Falls Hardware Co.

The Art of Dressing Well

Is no longer denied to the rank and file of society. To be dressed well does not necessarily mean to be attired in a \$50.00 suit, with hat, shoes and other accessories to match. We can give a man style and perfect fit in a garment made of first-class materials for a great deal less in dollars and cents.

We illustrate one of our latest models made for Fall wear of fancy worsted and lined with good dependable material for

\$16.50

NO. 7005—Made of Fancy Brown Shadow Checked Imported Worsted, lined with farmers' Satin, hand made collar and buttonholes, hand felted seams and stitched with silk throughout, a suit others are asking from \$35.00 to \$40.00 for, our price is

\$25.00

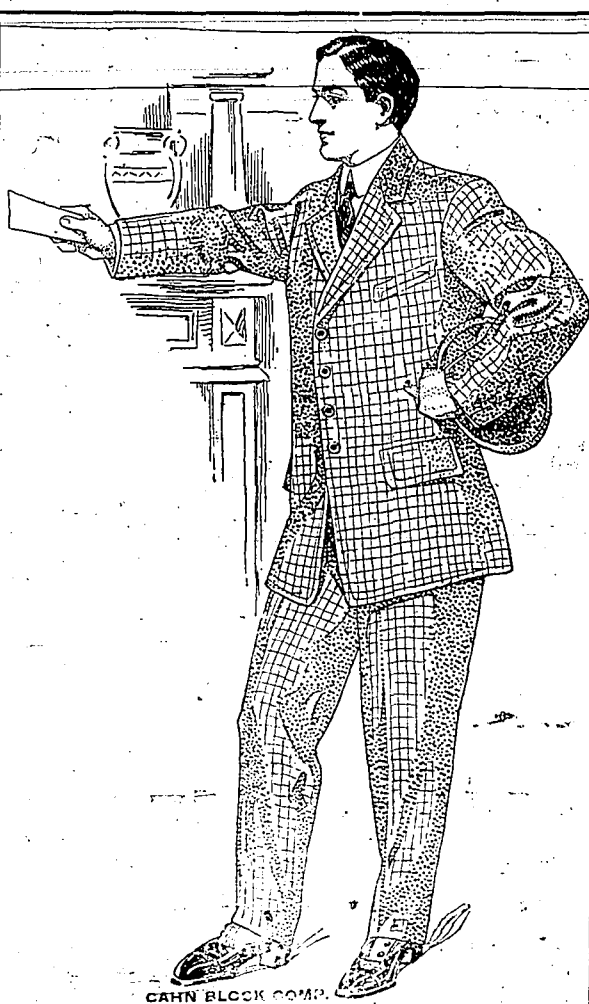
A Word to Stout Men

Our word for it that we can fit you better than any tailor made suit you ever had. This is no bluff. Come in and try them and be convinced. We are specialists on clothes for stout men. We study the fabrics, thereby suiting you in pattern of material as well as fit. Shipments are arriving with new numbers. Don't miss looking at our line before ordering a new suit. We lead in Men's and Boys' Clothing.

Our Quaker City Line of Clothing

arrives this week. It is a special line made to sell at \$10.00 and \$12.50, and it is a marvelous showing at the price.

IDAHO DEPT. STORE



CAHN BLOCK CO.

Great Twin Falls Canal System

IDAHO

150,000 Acres Carey Act Land

To Be Opened for Entry

October 1st, 1907

\$35.50 Per Acre

\$3.25 per acre in cash is paid at time of filing, the balance is divided into annual payments covering a period of ten years with 6 per cent interest on deferred payments.

Under the Carey Act, people who have used all their government rights to take up land can still acquire 100 acres of Carey Act land. Filings may be made by power of attorney when parties intending to file cannot possibly come.

The entire Twin Falls tract embraces 420,000 acres. The opening OCTOBER 1ST is the last tract to be sold under the gravity system.

There are three new towns in this opening—MILNER, JEROME and WENDEL. Surveys for an electric railroad reaching all the towns have been made and active construction from Milner and Jerome will be commenced August 1st, 1907. The contract from Jerome to Wendel will be let later in the season.

Special rates will be given on the O. S. L. railroad to reach Jerome, where the opening takes place October 1st. Take the O. S. L. railroad to Shoshone or Twin Falls, where stages will make frequent trips to Jerome.

For full information, circulars and printed matter, address

R. M. McCollum, Secretary

Twin Falls North Side Investment Co., Ltd.

Milner, Idaho

Class C—Naturalistic.
SUBDIVISION 7—DRAWINGS (in Pencil, Charcoal or Crayon).
First prize, 75c; second prize, 50c, and hon. mention.
Class A—Landscape.
Class B—Figure.
SUBDIVISION 8—PHOTOGRAPHY.
First prize, \$1.00; second prize, 50c, and hon. mention.
Class A—Local landscape.
Class B—Miscellaneous, local.
SUBDIVISION 9—TOOLED AND PAINTED LEATHER.
First prize, \$1.00; second prize, 50c, and hon. mention.

SUBDIVISION 10—CHINA PAINTING.
First. Second. Hon. Mention.
Class A—Plate, conventional \$.75 \$.50
Plate, naturalistic75 .50
Class B—Cup and saucer, conventional75 .50
Cup and saucer, naturalistic75 .50
Class C—Vase, conventional 1.00 .50
Vase, naturalistic 1.00 .50
Vase, small, conventional75 .50
Vase, small, naturalistic75 .50
Class D—Chop tray 1.00 .50
Class E—Shung bowl 1.00 .50
Class F—Small plates, odd shapes75 .50
Class G—Large pieces, pitchers, celery trays, etc 1.00 .50

Division J—Fine Needlework.

MRS. KENNEDY PACKARD Superintendent
MRS. EDWIN DAVIS Assistant Superintendent
MRS. T. O. BOYD Assistant Superintendent

Every care will be exercised by this department in caring for and returning goods received for exhibition, but in no case will the Fair Association become responsible for goods damaged or lost.

2. Competition in this department is confined to residents of Twin Falls county. Judges will not award premiums to unworthy exhibitors, articles borrowed for exhibition, articles incorrectly named.

3. No article can be entered for more than one premium.

4. Only meritorious articles entitled to reward.

5. The judges will make their awards in this department September 27, 1907, and no article will be eligible to a prize which is not on exhibition at 9 a. m. the first day of the Fair.

SUBDIVISION 1—FINE NEEDLEWORK.

First prize for each article, \$1.25; second prize, 50c.
Best embroidered shirtwaist.
Best embroidered undergarment.
Best embroidered adult's dress.
Best embroidered child's dress.
Best embroidered lunch cloth.
Best embroidered dolly.
Best embroidered center piece.
Best embroidered dresser scarf.
Best embroidered sofa pillow.
Best embroidered piano cover.

SUBDIVISION 2—DRAWN WORK.

Best shirt waist.
Best center piece.
Best dresser scarf.
Best handkerchief.
Best lunch cloth.
Best child's dress.

SUBDIVISION 3—LACE WORK.

Best piece crocheted tidy.
Best child's bonnet.
Best piece tatting.
Best piece crocheted lace.
Best piece knitted lace.
Best piece Point lace.
Best piece Battenburg.

SUBDIVISION 4—PLAIN SEWING.

Best hand-made rug.
Best rag carpet.
Best bed quilt.
Best bedspread.
Best silk quilt.
Best apron.
Best undergarment.
Best child's dress.

Division K—Kitchen and Pantry.

MRS. HENRIETTA SEEBECK Superintendent
MRS. A. C. CROSS Assistant Superintendent

1. No entry fee charged.
2. Exhibitors who fail to have their exhibits in place and entry cards attached by 12 o'clock, September 27, will be barred from competing for premiums.
3. The time for the awarding of prizes by the judges will be appointed by the superintendent of this division.
4. Quantity, quality and general appearance will have due consideration in the selection of exhibits.
5. The judges will have all privileges in opening jars of fruit, preserves, etc., for the purpose of tasting same in making their award.
6. All exhibitors in this department are prohibited from entering inside the railing, or from helping themselves in removing any of their exhibits at the close of the fair, only as they are waited upon by assistants appointed for that purpose. Any exhibitor violating this rule shall forfeit his premium.

SUBDIVISION 1—PASTRY.

First prize for each, 75c; second prize, 25c.
1. Bread, white, one loaf.
2. Bread, whole wheat, one loaf.
3. Bread, white, soft rising, one loaf.
4. Bread, rye, one loaf.
5. Bread, Graham, one loaf.
6. Bread, steamed, brown, one loaf.
7. Bread, apple, half dozen.
8. Parker house rolls, half dozen.
9. Best loaf of gingerbread.
10. Cream puffs, half dozen.
11. Cake, pound.
12. Cake, layer.
13. Cake, sponge.
14. Cake, fruit.
15. Cake, nut loaf.
16. Cake, angel.
17. Cake, dried apple.
18. Cake, devil's food.
19. Cake, bread.
20. Cake, white loaf.
21. Cake, German coffee.
22. Fruit cookies, half dozen.
23. Plain cookies.
24. White frosting on any kind of cake.
25. Dark frosting on any kind of cake.
26. Macaroons, one dozen.
27. Kisses, one dozen.
28. Lemon pie.
29. Cream pie.
30. Apple pie.
31. Mince pie.
32. Prune pie.
33. Pumpkin pie.
34. Cherry pie.
35. Doughnuts, half dozen.
36. Cheese straws, one dozen.
37. Best white loaf cake, made by girl under 14 years.
38. Best loaf white bread, made by girl under 14 years.

SUBDIVISION 2—CANDIES AND DESSERTS.

39. Candy, home made, one pound assorted creams.
40. Candy, home made, one pound assorted taffy.
41. Best and most artistic gelatine dessert.
42. Fudge.
43. Pincoco.

SUBDIVISION 3—SALADS.

44. Potato salad with oil or vinegar.
45. Shrimp salad, with oil or vinegar.
46. Lobster salad, with oil or vinegar.

SUBDIVISION 4—CANNED FRUITS, PRESERVES, ETC.

(See Rules 4 and 5).
47. Best collection of canned fruits, not less than three varieties, one jar of each variety.
48. Best collection of preserved fruits, not less than three varieties, one jar of each variety.
49. Best collection of jellies.
50. Best collection of pickles, sweet, sour and mixed.
51. Best bottle tomato catsup.
52. Best chile sauce.
53. Best collection of pickled fruits.
54. Best collection of jellies made by girls under the age of 16 years.
55. Best and largest display of fruits, jellies, jams, pickles, etc.
(Continued on Page Seven.)



No Substitution Here

WE SELL what is asked for, and it is always the genuine article, too. Every ingredient prescribed by physicians whose prescriptions are brought here is put into the medicine, the genuine ingredient of best quality. Nothing "just as good" in place of "or is sold here as" the thing asked for.

WE SELL THE GENUINE ONLY

Sprague's Pharmacy

NEXT TO POSTOFFICE

Closing Out Sale

One Thousand Tons of new crop Hay—Clover, Timothy and Alfalfa; 2 heavy work teams; my two famous registered stallions and the magnificent Percheron, King Brilliant, as well as the mammoth Kentucky bred Jack. Also 100-acre ranch all in alfalfa, clover, timothy; well fenced; good stock water, 6 1/2 miles from Twin Falls. Time and easy terms on ranch and stallions.

Inquire of C. A. McMASTER, Twin Falls, Idaho.

THE FARMERS CORRAL

Livery and Feed Stable

Good Feeding Corral. Careful Attention Given to Stock. Phone 35.

D. A. SEAMAN, Proprietor.

THE FARMERS CORRAL

14th St., West of Shoshone Avenue, Twin Falls

O'BRIEN & EASTMAN

REAL ESTATE, LOANS AND INVESTMENTS.
Chase Farm and City Property. Postoffice Building.
Real Estate Bought and Sold.
Write for Information. Twin Falls, Idaho

Twin Falls Investment Co.

LIMITED

Sole Agents for Water Rights for all Carey Act Lands under the

GREAT TWIN FALLS CANAL SYSTEM

25,000 Acres of
Carey Act Land

Still open for original entry under this Canal System

Land, 50 cents per acre. Perpetual water rights, \$25 per acre, ten annual payments.

Vehicles from Buhl furnished free to those who desire to inspect land. Prospective entrymen accompanied by competent locators.



BUHL

Buhl, located 17 miles west of the City of Twin Falls is the leading city on the west end of the tract and the distributing point for a large area, including the stock districts of Three Creek, Butte and Roseworth, likewise the farming and fruit growing districts of Hagerman, Kanoka, Flat and Balmora. The railway track is now completed between Twin Falls and Buhl, and train service has begun. Buhl has a splendid gravity system of waterworks, with a pressure of 100 pounds in the business section. It will soon be supplied with electric power and light. Business property values in Twin Falls have increased 500 per cent in less than two years. The same opportunities for investment are presented at Buhl. Now is the time to buy. Write for literature and further information. Address all communications to

Secretary, Twin Falls Investment Co., Ltd.
TWIN FALLS, IDAHO

A Peep at the Inside of THE IMPROVED VIKING SUIT
Patent applied for

Besides double seat and knees it has a patent lining reinforcement throughout

Riveted buttons
Extension waist-bands
Double seat from seam to seam
Double knee from seam to seam

All Seams taped, stitched and stayed three times
This ticket on suit is a guarantee of satisfaction

See that knee-it's double
See that seat-it's double

Becker Mayer & Company Chicago
Best Made Childrens Clothing

The above ticket is sewed on sleeve of every "Viking" Suit.

VIKING MARK
Guaranteed to give satisfaction.

PARENTS.—Note the extra lining attachment covering parts which are not made double, making it double throughout, thus relieving a great deal of the strain attendant upon seams and other parts. Our Guarantee to give ABSOLUTE SATISFACTION goes with every garment.

For Sale in Twin Falls by
The Hub Clo. & Tailoring Co.

All Hallows College

SALT LAKE CITY

Boarding and Day School for Boys

Under the Direction of the Marist Fathers.

Studies Will Be Resumed on Tuesday Morning, September 10, at 9 o'clock.

Students not known to the Faculty must furnish satisfactory recommendations from the school which they attended.

For Catalog apply to

Very Rev. President

Notice for Publication—Final Proof.

1. Eva Schenck of Twin Falls, Idaho, who made entry No. 1790, under the provisions of an act of the legislature of the state of Idaho, commonly known as the "Carey act," approved March 2, 1899, which embraces the NW 1/4, SE 1/4 of section 27, township 9 S., of range 10 E., do hereby give notice of my intention to make final proof to establish my claim to the land above described, and that I expect to prove that I have resided on, reclaimed and cultivated said land as required by law, before E. B. Williams, representative of the State Land board, at Twin Falls, Idaho, on the 14th day of September, 1907, by two of the following witnesses: George Crocker, L. S. Courtney, H. J. McGrath, John Hill, all of Twin Falls, Idaho.

EVA SCHENCK,
Widow of John Schenck, Entryman.

Notice for Publication—Final Proof.

1. Charles T. Newbury of Twin Falls, Idaho, who made entry No. 1800, under the provisions of an act of the legislature of the state of Idaho, commonly known as the "Carey act," approved March 2, 1899, which embraces lot 2, section 19, township 10 S., range 18 E., do hereby give notice of my intention to make final proof to establish my claim to the land above described, and that I expect to prove that I have resided on, reclaimed and cultivated said land as required by law, before E. B. Williams, representative of the State Land board, at Twin Falls, Idaho, on the 14th day of September, 1907, by two of the following witnesses: H. H. A. P. Horner, J. V. Keeler, Thomas Sweeney, all of Twin Falls, Idaho.

CHARLES T. NEWBURY,
Entryman.

Notice for Publication—Final Proof.

1. John T. Barnes of Hanson, who made entry No. 1819 and 1824, under the provisions of an act of the legislature of the state of Idaho, commonly known as the "Carey act," approved March 2, 1899, which embraces the NW 1/4, NE 1/4 of section 34, township 10 S., range 19 E., do hereby give notice of my intention to make final proof to establish my claim to the land above described, and that I expect to prove that I have resided on, reclaimed and cultivated said land as required by law, before E. B. Williams, representative of the State Land board, at Twin Falls, Idaho, on the 14th day of September, 1907, by two of the following witnesses: E. B. Rose, Samuel L. Barnes, C. E. Harvey, M. E. Rice, all of Hanson, Idaho.

JOHN T. BARNES,
Entryman.

Notice for Publication—Final Proof.

1. Edwin V. Berg of Twin Falls, who made entry No. 1886, under the provisions of an act of the legislature of the state of Idaho, commonly known as the "Carey act," approved March 2, 1899, which embraces the SE 1/4 of section 34, township 10 S., range 16 E., do hereby give notice of my intention to make final proof to establish my claim to the land above described, and that I expect to prove that I have resided on, reclaimed and cultivated said land as required by law, before E. B. Williams, representative of the State Land board, at Twin Falls, Idaho, on the 14th day of September, 1907, by two of the following witnesses: Irving H. Darrow, Charles H. Stinson, C. A. Tush, C. M. Barre, all of Twin Falls, Idaho.

EDWIN V. BERG,
Entryman.

Notice for Publication—Final Proof.

1. Blon Alva Baker of Twin Falls, the assignee of Robert N. Stewart, who made entry No. 185, under the provisions of an act of the legislature of the state of Idaho, commonly known as the "Carey act," approved March 2, 1899, which embraces the NW 1/4 of section 23, township 10 S., range 17 E., do hereby give notice of my intention to make final proof to establish my claim to the land above described, and that I expect to prove that I have resided on, reclaimed and cultivated said land as required by law, before E. B. Williams, representative of the State Land board, at Twin Falls, Idaho, on the 14th day of September, 1907, by two of the following witnesses: Clara Rehmman, L. B. Noble, Lela Snyder, E. J. Morgens, all of Twin Falls, Idaho.

BION ALVA BAKER,
Entryman.

Notice for Publication—Final Proof.

1. Charles B. Roberts of Rock Creek, Idaho, who made entry No. 1856, under the provisions of an act of the legislature of the state of Idaho, commonly known as the "Carey act," approved March 2, 1899, which embraces the NW 1/4 of section 23, township 11 S., range 18 E., do hereby give notice of my intention to make final proof to establish my claim to the land above described, and that I expect to prove that I have resided on, reclaimed and cultivated said land as required by law, before E. B. Williams, representative of the State Land board, at Twin Falls, Idaho, on the 14th day of September, 1907, by two of the following witnesses: James Stark, Frank Bower, D. Albee, Geo. H. Johnson, all of Rock Creek, Idaho.

CHARLES B. ROBERTS,
Entryman.

Notice for Publication—Final Proof.

1. Kate Hudson of Twin Falls, who made entry No. 1618, under the provisions of an act of the legislature of the state of Idaho, commonly known as the "Carey act," approved March 2, 1899, which embraces lot 2, section 23, township 10 S., range 14 E., do hereby give notice of my intention to make final proof to establish my claim to the land above described, and that I expect to prove that I have resided on, reclaimed and cultivated said land as required by law, before E. B. Williams, representative of the State Land board, at Twin Falls, Idaho, on the 14th day of September, 1907, by two of the following witnesses: W. H. Eldridge, Edw. W. Davis, J. E. Dodge, Arthur Peavey, all of Twin Falls, Idaho.

KATE HUDSON,
Entryman.

Notice of Attachment.

In the District Court of the Fourth judicial district of the State of Idaho, and for Twin Falls county.

Ed Larson, plaintiff, vs. Wiley T. Shoemaker and Eva B. Shoemaker, his wife—defendants.

Notice is hereby given that a writ of attachment was issued out of the above entitled court on the 17th day of August, 1907, in an action wherein Ed Larson is plaintiff and Wiley T. Shoemaker and Eva B. Shoemaker, his wife, are defendants, attaching the property of the said defendants to recover the sum of \$12.12 with interest, with all costs, expenses and disbursements.

Witness my hand and the seal of said court this 20th day of August: A. D. 1907.

H. T. WEST,
Clerk of District Court, Twin Falls County, Idaho.

Notice for Publication—Final Proof.

1. Frank C. Williams of Twin Falls, who made entry No. 1192, under the provisions of an act of the legislature of the state of Idaho, commonly known as the "Carey act," approved March 2, 1899, which embraces the NW 1/4 of section 9, township 11 S., range 17 E., do hereby give notice of my intention to make final proof to establish my claim to the land above described, and that I expect to prove that I have resided on, reclaimed and cultivated said land as required by law, before E. B. Williams, representative of the State Land board, at Twin Falls, Idaho, on the 14th day of September, 1907, by two of the following witnesses: Fred Williams, S. L. Cone, R. L. Davidson, William Davidson, all of Twin Falls, Idaho.

FRANK C. WILLIAMS,
Entryman.

Notice for Publication—Final Proof.

1. John F. Umphrey of Twin Falls, who made entry No. 1819, under the provisions of an act of the legislature of the state of Idaho, commonly known as the "Carey act," approved March 2, 1899, which embraces the NW 1/4 of section 23, township 10 S., range 16 E., do hereby give notice of my intention to make final proof to establish my claim to the land above described, and that I expect to prove that I have resided on, reclaimed and cultivated said land as required by law, before E. B. Williams, representative of the State Land board, at Twin Falls, Idaho, on the 14th day of September, 1907, by two of the following witnesses: Ed Knoll, Nick Klindische, J. H. Kindall, all of Twin Falls, Idaho.

JOHN F. UMPHREY,
Entryman.

Notice for Publication—Final Proof.

1. Ira Scribner of Filer, who made entry No. 616, and who is the assignee of H. V. Charet, who made entry No. 617, under the provisions of an act of the legislature of the state of Idaho, commonly known as the "Carey act," approved March 2, 1899, which embraces the NW 1/4 of section 34, township 10 S., range 16 E., do hereby give notice of my intention to make final proof to establish my claim to the land above described, and that I expect to prove that I have resided on, reclaimed and cultivated said land as required by law, before E. B. Williams, representative of the State Land board, at Twin Falls, Idaho, on the 14th day of September, 1907, by two of the following witnesses: Craig of Twin Falls, Benjamin F. Allen of Marion, and L. Young and W. Spencer of Filer, Idaho.

IRA SCRIBNER,
Entryman.

Notice for Publication—Final Proof.

1. Alfred B. Chamberlain of Buhl, Idaho, who made entry No. 1517, under the provisions of an act of the legislature of the state of Idaho, commonly known as the "Carey act," approved March 2, 1899, which embraces the NW 1/4 of section 10, township 10 S., range 14 E., do hereby give notice of my intention to make final proof to establish my claim to the land above described, and that I expect to prove that I have resided on, reclaimed and cultivated said land as required by law, before E. B. Williams, representative of the State Land board, at Buhl, Idaho, on the 8th day of October, 1907, by two of the following witnesses: Fred Nihart, Hyatt Tonsell, H. E. Thompson, Hyatt Howard, all of Buhl, Idaho.

ALFRED B. CHAMBERLAIN,
Entryman.

Notice for Publication—Final Proof.

1. Clara M. Turner of Twin Falls, assignee of John M. MacFarlane, who made entry No. 1516, under the provisions of an act of the legislature of the state of Idaho, commonly known as the "Carey act," approved March 2, 1899, which embraces the NW 1/4 of section 19, township 10 S., range 16 E., do hereby give notice of my intention to make final proof to establish my claim to the land above described, and that I expect to prove that I have resided on, reclaimed and cultivated said land as required by law, before E. B. Williams, representative of the State Land board, at Twin Falls, Idaho, on the 12th day of October, 1907, by two of the following witnesses: R. H. Wright, Eliza Davis, M. E. Houk, Morris Leckman, all of Twin Falls, Idaho.

CLARA M. TURNER,
Entryman.

Notice.

Twin Falls, Idaho, Sept. 2, 1907.

Notice is hereby given that the firm of S. T. Hamilton & Co., doing business at Twin Falls, Idaho, has this day been dissolved by mutual consent. S. T. Hamilton continues the business and will pay all claims against the firm and will receive all debts due said firm.

S. T. HAMILTON & CO.
S. T. HAMILTON.

For Sale—A 14-horsepower tractor, latest in safety construction, two colored ribbon attachment, price very reasonable to right party. Address G. A. KIERSTED, Minneapolis, Minn.

"The Dozie," ask Moore & Whelan. Keep healthy, drink IRONBREW.

Division L—Educational.

MISS EDNA DEBOW Superintendent
PROF. T. W. POTTER Assistant Superintendent
MISS BRITTMART WOLFE Assistant Superintendent

Best written story by girl under 10 years.
Best written story by boy or girl under 15 years.
Best written composition by child 10 to 12 years.
Best written composition by boy or girl 12 to 16 years.
Best penmanship, child under 10 years.
Best penmanship, boy or girl 10 to 15 years.
Best drawing, 16 years and under.
Best map, 10 to 15 years.

CHILDREN'S WORK (under 16 years).

1. Apron, fancy.
2. Apron, plain.
3. Best dressed doll.
4. Darning work.
5. Hemstitched handkerchief.
6. Patch work.
7. Patch work, at least six blocks.
8. Patch pillow.
9. Pin cushion.
10. Set of buttonholes (three).
11. Apron, fancy.
12. Apron, plain.
13. Best dressed doll.
14. Darning work.
15. Embroidery on linen.
16. Hemstitched handkerchief.
17. Darning work.
18. Set buttonholes (six).
19. Shirt waist, cotton, hand made.
20. Shirt waist, cotton, machine made.
21. Point lace.
22. Battenburg.

Division M—Flowers.

MRS. J. M. SPACKMAN Superintendent
MRS. CHAS. HILL Assistant Superintendent
MRS. G. B. SIERER Assistant Superintendent

1. Collection, not less than three varieties. \$5.00 \$3.00
2. Potted flowers. 2.00 1.00
3. Cut flowers. 3.00 1.00

Division N—Industrial.

C. O. MEIGS Superintendent
L. E. SALLADAY Assistant Superintendent

No entry fee charged.

W. WOOD WORK, TURNING, CARVING AND SCROLL. Diploma
1. Best display of carved wood work. Diploma
2. Best display of turned wood work. Diploma
3. Best display of scroll work. Diploma

BRICK AND STONE. Diploma
4. Best display of machine made brick. Diploma
5. Best display of hand made brick. Diploma
6. Best display of artificial building stone. Diploma
7. Best display of natural building stone. Diploma
8. Best display of cut stone. Diploma

HOME MADE IMPLEMENTS.

9. Best sawbrush grubber. Diploma
10. Best sawbrush rake. Diploma
11. Best box of machine. Diploma
12. Best land leveler. Diploma
13. Best road machine. Diploma
14. Best drag. Diploma
15. Best rabbit trap. \$5 in trees from Twin Falls nursery

Sports.

September 27—Second Day.

Saddle horse race, half mile. First. Second.
\$10.00 \$2.50
(Entrance fee, 50 cents; 3 to run.)

Pony race, quarter mile. 2.50
Boys' foot race, 75 yards. 1.00
Girls' foot race, 50 yards. 1.00

September 28—Third Day.

Quarter mile running race. 15.00 5.00
(Entrance fee, \$1.00; 3 to run.)
Three eighths mile running race. 20.00 5.00
(Entrance, \$1.50; 3 to run.)
Half mile chariot race. 25.00 10.00
(Four horses to each chariot.)
100-yard foot race. 10.00 5.00

Cows for Sale—30 head of Durham

cows for sale, two miles north of town. N. C. BEEBE.

OREGON SHORT LINE.

Summer Tourist Excursion to Pacific Coast, Sept. 1907.

From Pocatello to San Francisco and return, via Ogden and Southern Pacific, \$46.50; going via Ogden and returning via Portland, \$53.50.
From Pocatello to Los Angeles and return, via Ogden and Southern Pacific, or Salt Lake & Los Angeles Ry., \$68.50; via Salt Lake & Los Angeles Ry. via Salt Lake, \$49.50.
From Twin Falls, 80 per cent of double local fare for the round trip to Pocatello.

Dates of sale, June 1 to September 15, inclusive. Going limit, 60 days from date of sale; stopovers within transit limit, October 31, 1907.

D. E. BURLLEY, G. P. A., Salt Lake City.
A. G. P. A., Salt Lake City.
D. E. SULLIVAN, Agent, Twin Falls.

HOGS

HOGS

HOGS

HOGS

HOGS

HOGS

HOGS

HOGS

HOGS

HOGS

HOGS

HOGS

HOGS

HOGS

HOGS

HOGS

HOGS

HOGS

HOGS

HOGS

HOGS

HOGS

HOGS

MILWAUKEE

"The Milwaukee Leads"

The MILWAUKEE NEW NO. 13 BINDER is the strongest built.

Under in the field today and is the only binder that will stand the

irrigation ditches and do perfect work. Light running and easy to adjust.

Milwaukee Chain and Gear Mowers and Hay Rakes, the only

Rake that can stand raking agorah.

SWEEP RAKES, STACKERS AND BINDING TWINE.

Racine-Sattley Plows and Implements.

Phone 133.

Studebaker

Wagons, Buggies, Heavy

Hand Made Harness

Full line of extras and repairs for all machines carried constantly

in stock. Tents and Wagon Covers. Machine Woven Wire Fencing.

Nothing but the Best.

Phone 133.

C. O. Meigs

150,000 Acres Open for Homestead

Under the Carey Act, Oct. 1, 1907

WHY freeze out?

WHY drown out?

WHY dry out?

WHY hail out?

Come to sunny Idaho, where crops never fail. If you sow you

are sure of a bountiful harvest. For further information address

J. Benj. Hall

Attorney at Law Twin Falls Idaho

Looking for a Bargain?

See our List of Twin Falls Farm and City

property.

S. T. Hamilton & Co.

Stands Like a Stone Wall

Turns Cattle, Horses, Hogs—Is Practically Indestructible

AMERICAN FENCE

Buy your new fence for years to come. Get the big, heavy wire

hinge joint, the good galvanizing, the exactly proportioned quality of steel

that is not too hard nor too soft.

You can show you this fence in our stock and explain its strength and

superiority, not only in the roll but in the field. Come and see us and get

our price.

Twin Falls Hardware Co.

PLUMBING PROGRESS

The change that makes the progress of the pipe in house building is

modern fixtures and open plumbing, contributing

to sanitary laws and contributing to good health,

are the most noteworthy improvements

Our business is plumbing—improved plumbing.

We sell and install "Standard" Porcelain

framed plumbing fixtures and the guarantee

excellence of these goods backed by our own

reputation assures you only the best.

Berry & Swank, Phone 107

Bryan-Filer

Farm

