

FOURTH YEAR

TWIN FALLS NEWS, TWIN FALLS, IDAHO, FRIDAY, MAY 1, 1908.

NUMBER 27

JEROME TO HAVE  
A COUNTRY CLUBWILL INCLUDE VARIOUS KINDS  
OF AMUSEMENT.

Governor Gooding Much Pleased With  
the Rapidity of Development Work  
on the North Side—Stake Artists  
Defeat Engineers at Baseball.

JEROME, Ida., April 28.—J. M. Hale  
of the Twin Falls North Side Realty  
Co. transacted business in Wendell  
Monday.

Water Avers and family of Hager-  
man spent Thursday and Friday with  
Mr. and Mrs. Earl Foe.  
J. E. Barrows and family of Onta-  
rio, Oregon, passed through on Friday  
enroute to their new home on the  
Milner segregation.

John L. Gray, who enjoys the dis-  
tinction of being the very first settler  
on the North Side tract, is clearing  
his land of sagebrush and will sow  
winter wheat this fall.

Pat Hall has commenced the con-  
struction of a building for John Hen-  
derson on Main street to be occupied  
by the Booth Dry Goods Co. of Twin  
Falls.

Jerome has now a resident physi-  
cian in Dr. E. D. Piper of Chicago.  
The doctor comes well recommended  
and Jerome citizens are congratulat-  
ing themselves on being able to se-  
cure the services of one of the doc-  
tor's ability.

C. H. Chapin has let the contract  
for a two-story business building to  
be erected on Main street at once.  
Paul R. Kartzo of Burley will do the  
work. Mr. Chapin has a rental ready  
for the building on its completion.

F. W. Hastings, president of the  
Twin Falls North Side Realty Co., is  
making a short visit in his old home  
on Camas prairie.

The F. R. Berry camp of engineers  
is now located on the Briggs road  
south of Wendell, having completed  
their work near Shoshone springs.

A party of landowners arrived from  
Chicago Saturday. About 1500  
acres of land was filed on by members  
of the party.

The Jerome Juries held their regu-  
lar weekly meeting at the big court  
Friday evening. The regular order of  
business was transacted and several  
new members admitted. Major Fred  
R. Reed was an out of town visitor.

The H. L. Owens crew of engineers  
has completed its work on the survey  
on the electric line near Gooding and  
is now engaged on the lateral in the  
vicinity of Jerome.

Messrs. John Henderson and C. H.  
Chapin spent Sunday in Twin Falls.

Col. S. H. Avery has about 40 acres  
cleared and broken on his ranch near  
Wendell, and will experiment on dry  
farming, oats, wheat and potatoes  
which have been planted.

Paul R. Kartzo, who was a business  
visitor last week, reports that he  
has the contract for two business  
buildings in Wendell and one in Jer-  
ome for immediate construction.

John C. Williams has been in Wen-  
dell for the past few days overseeing  
the installing of a large tank to be  
used as a reservoir, the present water  
supply being insufficient since the es-  
tablishment of the camps on the elec-  
tric line.

The commissary that has been car-  
ried on by the Land & Water Co. for  
the accommodation of the public dur-  
ing the winter was taken over last  
week by Napton Bros. who will here-  
after have charge of it.

Grading on the electric line is be-  
ing pushed rapidly. Four camps are  
located between Jerome and Gooding  
and the present rate of progress  
there is no doubt that the road will  
be in active operation by early fall.

Ira Anderson left last week for Can-  
am prairie on a search for heavy horses.  
Anderson and Hastings have about 150  
acres of land to clear and though al-  
ready well equipped for the work will  
add two more teams to their outfit.

Mr. McKay is putting up a small  
cabin on Ash street and will send  
his family who are at present in D.  
telephone as soon as it is completed.

General regret was felt over the  
departure of P. Wilson for the  
near Twin Falls. Mr. Wilson  
has been in our newly erected  
phone and Jerome was a great  
part of his work, but had great  
for his future.

Faris & Kesel have their  
contract on the main line of  
town encountered very  
and the construction is going  
rapidly.

L. A. Goldsmith has been  
contract on a section of  
and has been  
In a fast game the team com-  
posed of the state  
one representing the  
day afternoon in  
the score  
endings were at the fifth in-  
the sixth when  
Underfoot for the score knocked  
out a home run sacrifice and  
the electric line sacrifice and  
a double play sacrifice the final

and deciding score.  
Artists  
Seaver, P.  
Irvine, C.  
Boden, I.  
Ludwig, T.  
McConnell, J.  
Hardy, S.  
Norton, L.  
Blatter, C.  
McConnell, R.  
Score:  
Stake artists, 00010010001  
Engineers, 00000000000  
Umpire, Rick.

C. H. Chapin has let the contract  
for a two-story business building to  
be erected on Main street at once.  
Paul R. Kartzo of Burley will do the  
work. Mr. Chapin has a rental ready  
for the building on its completion.

C. W. Young from the Yakima coun-  
ty is in town looking over the sit-  
uation with the view of investing.  
Mr. Young is already a property holder  
in Gooding and Wendell.

While catching for the Artists on  
Sunday Lloyd Irvine put one of his  
fingers out of joint. The finger is  
healing rapidly and he will be ready  
for the game next Sunday.

Samuel Champlain drove over from  
Twin Falls on Saturday to spend Sun-  
day with friends in Jerome. Mr.  
Champlain expressed himself as being  
well pleased with his position with  
the Salmon river people but his de-  
ar interests are still on this side of  
the river.

Mr. and Mrs. John Hale and Mrs.  
Becker entertained a few friends at  
a "green" luncheon on Tuesday. Cards  
and music were the form of en-  
tertainment. Plans for the permanent  
organization of a recreation club  
were talked over. Several varieties  
of entertainment will be embraced,  
cards and tennis being included.

Governor Frank Gooding and Major  
Fred R. Reed drove over from Good-  
ing on Sunday, leaving for Shoshone  
early on Monday morning. Governor  
Gooding expressed himself as great-  
ly surprised at the rapidity with which  
the work of development is being car-  
ried forward on the North Side tract.

He said the transformation of this  
great desolate stretch of sagebrush  
into productive farms and thriving  
towns seemed like a dream, and re-  
ported to be forging ahead, several  
business buildings and a \$10,000 hotel  
under construction at the present  
time. Situated as it is, surrounded  
by a fine farming country and at the  
junction of two main lines, steam and  
electric, it has a great future before  
it.

Although the weather man showed  
by his conduct that the grand prin-  
ciples of Old Fellowship had never been  
so advanced as they are at present,  
his efforts on Monday failed to lower the  
enthusiasm of the southern Idaho Odd  
Fellows, who assembled in Twin Falls  
to celebrate the 88th anniversary of  
the foundation of the order. Buhl, P.  
Kimberly, Albion, Heyburn, Rup-  
ert and Acquia were well represent-  
ed and the parade was extremely suc-  
cessful. C. Carlwright of Twin Falls  
delivered the address of welcome, and  
which responses were made by the  
County Attorney Hutter and the  
representative of the local lodge, who  
able address upon the occasion.

The Methodist church dinner  
in handsome style. The after-  
noon representatives of the various  
lodges of the order were present to  
celebrate the next anniversary in Rupert.  
The Rebekah lodge secret work in  
K. P. hall.

George Bandt, whose trees are fur-  
ther advanced than any others on the  
tract, and whose orchard is located  
between the city and Shoshone falls,  
reports that the frost did not hurt his  
blooms in the least.

It was noticed that some of the peach  
blossoms were touched, said Mr. Bas-  
sett, "but at that I will have to thin  
them out. The apricots, cherries, ap-  
ples and pears escaped entirely. I  
have made a careful examination of my  
orchard and I fail to see where I am  
hurt in the least."

Rock Creek and Blue Lakes experi-  
enced harm and no damage is reported  
elsewhere on the Twin Falls tract.  
The frost there was severe and harmful.  
Kansas will have no peach crop. Wis-  
consin had a blizzard and Colorado  
suffered severely.

The line up was:  
Engineers:  
Billdock, P.  
Krivaneck, C.  
D. Rugestad, I.  
Seibert, T.  
West, J.  
Trennell, S.  
Owens, L.  
Walton, C.  
Lacy, R.  
Score:  
Stake artists, 00010010001  
Engineers, 00000000000  
Umpire, Rick.

C. H. Chapin has let the contract  
for a two-story business building to  
be erected on Main street at once.  
Paul R. Kartzo of Burley will do the  
work. Mr. Chapin has a rental ready  
for the building on its completion.

The H. L. Owens crew of engineers  
has completed its work on the survey  
on the electric line near Gooding and  
is now engaged on the lateral in the  
vicinity of Jerome.

Messrs. John Henderson and C. H.  
Chapin spent Sunday in Twin Falls.

Col. S. H. Avery has about 40 acres  
cleared and broken on his ranch near  
Wendell, and will experiment on dry  
farming, oats, wheat and potatoes  
which have been planted.

Paul R. Kartzo, who was a business  
visitor last week, reports that he  
has the contract for two business  
buildings in Wendell and one in Jer-  
ome for immediate construction.

John C. Williams has been in Wen-  
dell for the past few days overseeing  
the installing of a large tank to be  
used as a reservoir, the present water  
supply being insufficient since the es-  
tablishment of the camps on the elec-  
tric line.

The commissary that has been car-  
ried on by the Land & Water Co. for  
the accommodation of the public dur-  
ing the winter was taken over last  
week by Napton Bros. who will here-  
after have charge of it.

Grading on the electric line is be-  
ing pushed rapidly. Four camps are  
located between Jerome and Gooding  
and the present rate of progress  
there is no doubt that the road will  
be in active operation by early fall.

Ira Anderson left last week for Can-  
am prairie on a search for heavy horses.  
Anderson and Hastings have about 150  
acres of land to clear and though al-  
ready well equipped for the work will  
add two more teams to their outfit.

Mr. McKay is putting up a small  
cabin on Ash street and will send  
his family who are at present in D.  
telephone as soon as it is completed.

General regret was felt over the  
departure of P. Wilson for the  
near Twin Falls. Mr. Wilson  
has been in our newly erected  
phone and Jerome was a great  
part of his work, but had great  
for his future.

Faris & Kesel have their  
contract on the main line of  
town encountered very  
and the construction is going  
rapidly.

L. A. Goldsmith has been  
contract on a section of  
and has been  
In a fast game the team com-  
posed of the state  
one representing the  
day afternoon in  
the score  
endings were at the fifth in-  
the sixth when  
Underfoot for the score knocked  
out a home run sacrifice and  
the electric line sacrifice and  
a double play sacrifice the final

## PIONEER DAY FOR TWIN FALLS COUNTY

At the reception to President Frank  
H. Buhl of the Twin Falls Land & Wa-  
ter Co. in Twin Falls on Tuesday, it  
was decided to celebrate April 28 here-  
after in Twin Falls county as the day  
when the pioneers may get together  
and recount their experiences and the  
holiday is to be called "Buhl Day" as  
a compliment to Mr. Buhl. A reso-  
lution to this effect was passed by  
unanimous vote and his proposal  
aroused intense enthusiasm.  
Mr. Buhl and his associates, George  
A. Blair, Ira Bassett and J. M. Mar-  
dock, were given a hearty welcome in  
Twin Falls. It was purely informal  
in character, and it meant all the more  
because it was genuine. The Commem-  
orative club of Twin Falls took the mat-  
ter up and carried it out with the  
greatest success.



FRANK H. BUHL

The day opened with a parade of  
the Twin Falls school children, head-  
ed by the Twin Falls band, the pre-  
dicted spectacle over witnessed on the  
tract. The children were cheered  
along the line and a better looking  
squad dressed or better behaved body  
of children never wore shoe leather.  
They marched past veterans and their  
appearance pleased and surprised all  
who saw them.

At the conclusion of the reception  
all present joined hands in a circle  
around Mr. Buhl and sang "Auld Land  
Syne."

Although they were very busy with  
their spring work, a large number of  
farmers came in to welcome the build-  
ers of the project and next year when  
more notices can be given and more  
time devoted to preparations, "Buhl  
Day" will be a "corke."

It spurred the company to renewed  
effort.  
"So far as I was concerned, it did  
not matter so much," declared Mr.  
Buhl. "If I had just all I invested in  
the Twin Falls project I would still  
have a home to go to, but the people  
who had every cent they possessed  
in the world tied up in Twin Falls  
land were not so fortunate and we al-  
ways felt that we had to protect them.  
Some of us might have been often  
discouraged but we never lost our  
faith in the project and it is very grat-  
ifying to see how it has turned out. The settlers made it all  
possible by their courage and energy.  
They stimulated us from beginning to  
end and I am glad to meet with you  
today and to see the wonderful work  
we have accomplished. It has been a

very expensive undertaking and while  
we have not yet begun to reap our  
profit, we shall be well rewarded  
before long."

Mr. Buhl was cheered time and again  
during his remarks. He met a number  
of the old timers and talked over pic-  
tures they had taken.

At the conclusion of the reception  
all present joined hands in a circle  
around Mr. Buhl and sang "Auld Land  
Syne."

Although they were very busy with  
their spring work, a large number of  
farmers came in to welcome the build-  
ers of the project and next year when  
more notices can be given and more  
time devoted to preparations, "Buhl  
Day" will be a "corke."

It spurred the company to renewed  
effort.  
"So far as I was concerned, it did  
not matter so much," declared Mr.  
Buhl. "If I had just all I invested in  
the Twin Falls project I would still  
have a home to go to, but the people  
who had every cent they possessed  
in the world tied up in Twin Falls  
land were not so fortunate and we al-  
ways felt that we had to protect them.  
Some of us might have been often  
discouraged but we never lost our  
faith in the project and it is very grat-  
ifying to see how it has turned out. The settlers made it all  
possible by their courage and energy.  
They stimulated us from beginning to  
end and I am glad to meet with you  
today and to see the wonderful work  
we have accomplished. It has been a

very expensive undertaking and while  
we have not yet begun to reap our  
profit, we shall be well rewarded  
before long."

Mr. Buhl was cheered time and again  
during his remarks. He met a number  
of the old timers and talked over pic-  
tures they had taken.

At the conclusion of the reception  
all present joined hands in a circle  
around Mr. Buhl and sang "Auld Land  
Syne."

Although they were very busy with  
their spring work, a large number of  
farmers came in to welcome the build-  
ers of the project and next year when  
more notices can be given and more  
time devoted to preparations, "Buhl  
Day" will be a "corke."

It spurred the company to renewed  
effort.  
"So far as I was concerned, it did  
not matter so much," declared Mr.  
Buhl. "If I had just all I invested in  
the Twin Falls project I would still  
have a home to go to, but the people  
who had every cent they possessed  
in the world tied up in Twin Falls  
land were not so fortunate and we al-  
ways felt that we had to protect them.  
Some of us might have been often  
discouraged but we never lost our  
faith in the project and it is very grat-  
ifying to see how it has turned out. The settlers made it all  
possible by their courage and energy.  
They stimulated us from beginning to  
end and I am glad to meet with you  
today and to see the wonderful work  
we have accomplished. It has been a

## THIS LOOKS GOOD.

Gus Vageler of the Twin  
Falls Grain & Produce Co.  
purchased today lots 11 and 12  
in block 184, just behind the  
soda water works of Bonell  
Bros. on Shoshone avenue. It  
was reported that Mr. Vage-  
ler bought the lots as a site  
for a grain elevator and flour-  
ing mill. He brought Messrs.  
J. K. Mullin and P. H. Mullin,  
two prominent mill men of  
Idaho, with him to Twin  
Falls this week and they  
have been figuring on the prop-  
erty. It is to be hoped that  
they have decided to put in a  
mill here.

## RATE FOR THE SALMON OPENING

Railroads Do the Handsome Thing for  
the Occasion.

"The Colorado-Illinoes have agreed" to  
apply homesteaders rates of one fare,  
plus \$2, for the round trip, on the first  
and third Thursdays of each month,  
beginning May 19 and extending until  
the end of the year. Those rates will  
apply from Denver, Colorado Springs  
and Pueblo to all points on the Oregon  
Short Line. The going tar-  
iff limit is 15 days and the return  
limit 21 days with stopovers  
within limits. In addition to this the  
Union Pacific has authorized the same  
rates from its line in Colo-  
rado north of Denver, including Chey-  
enne, also on its Kansas main line  
from Denver to Cheyenne on the same  
basis.

The Colorado & Southern will  
also make corresponding rates from  
points on its Fort Collins branch and  
possibly from points on its line north  
of Cheyenne.

The Oregon Short Line has granted  
a rate of two cents per mile to each  
direction for round-trip tickets to  
Twin Falls for the Salmon opening.  
Tickets will be sold on May 19, 30 and  
31 and June 10 and 11. The return  
limit 21 days with stopovers  
within limits. In addition to this the  
Union Pacific has authorized the same  
rates from its line in Colo-  
rado north of Denver, including Chey-  
enne, also on its Kansas main line  
from Denver to Cheyenne on the same  
basis.

The Colorado & Southern will  
also make corresponding rates from  
points on its Fort Collins branch and  
possibly from points on its line north  
of Cheyenne.

The Oregon Short Line has granted  
a rate of two cents per mile to each  
direction for round-trip tickets to  
Twin Falls for the Salmon opening.  
Tickets will be sold on May 19, 30 and  
31 and June 10 and 11. The return  
limit 21 days with stopovers  
within limits. In addition to this the  
Union Pacific has authorized the same  
rates from its line in Colo-  
rado north of Denver, including Chey-  
enne, also on its Kansas main line  
from Denver to Cheyenne on the same  
basis.

The Colorado & Southern will  
also make corresponding rates from  
points on its Fort Collins branch and  
possibly from points on its line north  
of Cheyenne.

The Oregon Short Line has granted  
a rate of two cents per mile to each  
direction for round-trip tickets to  
Twin Falls for the Salmon opening.  
Tickets will be sold on May 19, 30 and  
31 and June 10 and 11. The return  
limit 21 days with stopovers  
within limits. In addition to this the  
Union Pacific has authorized the same  
rates from its line in Colo-  
rado north of Denver, including Chey-  
enne, also on its Kansas main line  
from Denver to Cheyenne on the same  
basis.

The Colorado & Southern will  
also make corresponding rates from  
points on its Fort Collins branch and  
possibly from points on its line north  
of Cheyenne.

The Oregon Short Line has granted  
a rate of two cents per mile to each  
direction for round-trip tickets to  
Twin Falls for the Salmon opening.  
Tickets will be sold on May 19, 30 and  
31 and June 10 and 11. The return  
limit 21 days with stopovers  
within limits. In addition to this the  
Union Pacific has authorized the same  
rates from its line in Colo-  
rado north of Denver, including Chey-  
enne, also on its Kansas main line  
from Denver to Cheyenne on the same  
basis.

The Colorado & Southern will  
also make corresponding rates from  
points on its Fort Collins branch and  
possibly from points on its line north  
of Cheyenne.

The Oregon Short Line has granted  
a rate of two cents per mile to each  
direction for round-trip tickets to  
Twin Falls for the Salmon opening.  
Tickets will be sold on May 19, 30 and  
31 and June 10 and 11. The return  
limit 21 days with stopovers  
within limits. In addition to this the  
Union Pacific has authorized the same  
rates from its line in Colo-  
rado north of Denver, including Chey-  
enne, also on its Kansas main line  
from Denver to Cheyenne on the same  
basis.

The Colorado & Southern will  
also make corresponding rates from  
points on its Fort Collins branch and  
possibly from points on its line north  
of Cheyenne.

The Oregon Short Line has granted  
a rate of two cents per mile to each  
direction for round-trip tickets to  
Twin Falls for the Salmon opening.  
Tickets will be sold on May 19, 30 and  
31 and June 10 and 11. The return  
limit 21 days with stopovers  
within limits. In addition to this the  
Union Pacific has authorized the same  
rates from its line in Colo-  
rado north of Denver, including Chey-  
enne, also on its Kansas main line  
from Denver to Cheyenne on the same  
basis.

The Colorado & Southern will  
also make corresponding rates from  
points on its Fort Collins branch and  
possibly from points on its line north  
of Cheyenne.

The Oregon Short Line has granted  
a rate of two cents per mile to each  
direction for round-trip tickets to  
Twin Falls for the Salmon opening.  
Tickets will be sold on May 19, 30 and  
31 and June 10 and 11. The return  
limit 21 days with stopovers  
within limits. In addition to this the  
Union Pacific has authorized the same  
rates from its line in Colo-  
rado north of Denver, including Chey-  
enne, also on its Kansas main line  
from Denver to Cheyenne on the same  
basis.

The Colorado & Southern will  
also make corresponding rates from  
points on its Fort Collins branch and  
possibly from points on its line north  
of Cheyenne.

The Oregon Short Line has granted  
a rate of two cents per mile to each  
direction for round-trip tickets to  
Twin Falls for the Salmon opening.  
Tickets will be sold on May 19, 30 and  
31 and June 10 and 11. The return  
limit 21 days with stopovers  
within limits. In addition to this the  
Union Pacific has authorized the same  
rates from its line in Colo-  
rado north of Denver, including Chey-  
enne, also on its Kansas main line  
from Denver to Cheyenne on the same  
basis.

The Colorado & Southern will  
also make corresponding rates from  
points on its Fort Collins branch and  
possibly from points on its line north  
of Cheyenne.

The Oregon Short Line has granted  
a rate of two cents per mile to each  
direction for round-trip tickets to  
Twin Falls for the Salmon opening.  
Tickets will be sold on May 19, 30 and  
31 and June 10 and 11. The return  
limit 21 days with stopovers  
within limits. In addition to this the  
Union Pacific has authorized the same  
rates from its line in Colo-  
rado north of Denver, including Chey-  
enne, also on its Kansas main line  
from Denver to Cheyenne on the same  
basis.

The Colorado & Southern will  
also make corresponding rates from  
points on its Fort Collins branch and  
possibly from points on its line north  
of Cheyenne.

The Oregon Short Line has granted  
a rate of two cents per mile to each  
direction for round-trip tickets to  
Twin Falls for the Salmon opening.  
Tickets will be sold on May 19, 30 and  
31 and June 10 and 11. The return  
limit 21 days with stopovers  
within limits. In addition to this the  
Union Pacific has authorized the same  
rates from its line in Colo-  
rado north of Denver, including Chey-  
enne, also on its Kansas main line  
from Denver to Cheyenne on the same  
basis.

The Colorado & Southern will  
also make corresponding rates from  
points on its Fort Collins branch and  
possibly from points on its line north  
of Cheyenne.

The Oregon Short Line has granted  
a rate of two cents per mile to each  
direction for round-trip tickets to  
Twin Falls for the Salmon opening.  
Tickets will be sold on May 19, 30 and  
31 and June 10 and 11. The return  
limit 21 days with stopovers  
within limits. In addition to this the  
Union Pacific has authorized the same  
rates from its line in Colo-  
rado north of Denver, including Chey-  
enne, also on its Kansas main line  
from Denver to Cheyenne on the same  
basis.

MILNER FARMERS  
ARE ORGANIZEDFORM ASSOCIATION FOR THEIR  
MUTUAL BENEFIT.

Several Town Lots Sold This Week  
and a Number of Filings Made on  
the First Segregation—Opening of  
the Riverdale Inn.

MILNER, Ida., April 30.—There is  
great activity around Riverdale Inn  
this week. The hotel that has been  
so long in building, is finally to be  
opened tomorrow to the public. Har-  
vey Strong and force of men are busily  
engaged in furnishing the lavas and  
arranging them in attractive appear-  
ance. Lee W. Glass and force of  
electricians are putting in the chan-  
delliers and electric light fixtures.  
Miss Sullivan has a force putting the  
entire interior of the house in order  
and it is expected by this evening  
things will be pretty well arranged.  
There will be open house at the ho-  
tel tomorrow. Music will be fur-  
nished and dancing can be enjoyed by  
all who care to come.

Arnold Frankfort of Twin Falls has  
accepted position as clerk at Riverdale  
Inn and will assume his new duties  
today.

Miss Grace A. Klorsted, formerly of  
Milner, returned Friday evening to  
spend Saturday and Sunday with  
friends at the company house.

Harry W. Anderson, recorder, and  
Jas. W. Wheeler, assessor of Lincoln  
county, were transacting business in  
Milner Friday and Saturday of last  
week.

R. H. Schneeloch spent Saturday  
and Sunday in Twin Falls looking af-  
ter business matters. He is in that  
city.

Miss Clara L. Voder was the guest  
of friends in Twin Falls over Sunday.  
Mrs. D. O. Longenberger and daugh-  
ter, Miss Bertha, were in Twin Falls  
Tuesday shopping.

Miss Julia Sullivan was transacting  
business in Twin Falls Saturday.  
J. A. McCloud of York, Neb., is in  
Milner for the purpose of taking up  
some North Side land and visiting  
his friend, E. G. Bennett.

Paul R. Kartzo has finished the  
Kuhn and MacWatson cottages and  
left for Jerome where he has the  
contract for some work. M. J. Kirk-  
patrick and family will take posses-  
sion of the MacWatson cottage the  
first of the week.

Z. J. Lynch and wife were called  
to Rock Creek this week on account  
of the illness of Mrs. Lynch's  
sister, Mrs. Tule.

R. S. Fossenden is moving his fam-  
ily into the new house on their ranch  
this week. They have erected a very  
large and comfortable bungalow with  
all modern conveniences.

Alex. McPherson of Twin Falls was  
a Milner visitor Friday and Saturday  
last. He gave one of his in-  
structive lectures to the settlers on  
the North Side. At this meeting the  
settlers were permanently organized.  
The association is known as "The  
Milner Farmers' association."

J. C. Ream, who has been painting  
the tank and pump house at Milner,  
left for Burley Wednesday morning.  
The tank will be painted and ad-  
vertising people still continue to be  
interested in Milner townsite and the  
first segregation. Several lots were  
sold this week and others are being  
negotiated for. Also a number of small  
tracts were sold on the first segrega-  
tion. Only small tracts, are left in  
this segregation, but those few are  
very desirable.

D. C. MacWatson, P. S. A. Bickel  
and R. H. Schneeloch left for Boise  
last evening to attend a meeting of  
the stock train so to  
and around the house again.

Mrs. George Weldon who has been  
quite ill is so far recovered as to go  
and around the house again.

Mrs. George Weldon who has been  
quite ill is so far recovered as to go  
and around the house again.

Mrs. George Weldon who has been  
quite ill is so far recovered as to go  
and around the house again.

Mrs. George Weldon who has been  
quite ill is so far recovered as to go  
and around the house again.

Mrs. George Weldon who has been  
quite ill is so far recovered as to go  
and around the house again.

Mrs. George Weldon who has been  
quite ill is so far recovered as to go  
and around the house again.

Mrs. George Weldon who has been  
quite ill is so far recovered as to go  
and around the house again.

Mrs. George Weldon who has been  
quite ill is so far recovered as to go  
and around the house again.

Mrs. George Weldon who has been  
quite ill is so far recovered as to go  
and around the house again.

Mrs. George Weldon who has been  
quite ill is so far recovered as to go  
and around the house again.

Mrs. George Weldon who has been  
quite ill is so far recovered as to go  
and around the house again.

Mrs. George Weldon who has been  
quite ill is so far recovered as to go  
and around the house again.

Mrs. George Weldon who has been  
quite ill is so far recovered as to go  
and around the house again.

**GREBE-POULTRY CO.**  
R. D. No. 1 : : Boise, Idaho.  
STANDARD BREED POULTRY  
BUFF AND WHITE LEGHORNS  
WHITE PLYMOUTH ROCKS  
INDIAN RUNNER DUCKS.  
29 first pairs at Idaho Inter-Mountain  
fair, 1907. Write us for prices of  
stock and eggs—CATALOG FREE.

**EGGS! EGGS! EGGS!!!**  
I am now prepared to furnish eggs  
for hatching from the celebrated  
Wyckoff Strain Single Comb White  
Leghorns.

**MRS. B. F. McPHERSON,**  
Peavoy, Idaho.

## THRASHING MACHINERY

If in need of a thrashing ma-  
chine, clover, huller, horse  
powers, portable engine, saw  
mill machinery, or a Farm  
band cutter and soil feeder for  
separators, just drop a line to

**GEORGE F. MOORE**

Box 432  
TWIN FALLS, IDAHO.  
Agent for the Aultman-Taylor  
Machine Co. of Mansfield, O.

Some of the best buys  
in Real Estate are to be  
found around Hansen.

Let me show you some of our  
bargains in ranch property.

**W. N. ROSE**

Real Estate and General Merchandise.

**NOTARY PUBLIC.**

Hansen : : : Idaho

## BERKSHIRES

**PREMIER BARON'S**  
got at showing up far beyond our  
expectations, both in number of  
litters and quality. They show  
great length but not at the sacrifice  
of general conformation.

**THEIR MARKINGS ARE ABOUT  
PERFECT.**

We can book orders for a few of  
this spring's litters yet.

Call or write.

**J. E. STEINOUR, Murtaugh, Ida.**

## Always the Best

**THE CANDIES AND ICE CREAM**  
WE ARE MAKING DAIRY ARE  
GOOD AND PURE.

**ICE CREAM.**  
Per pint ..... 25c  
Per quart ..... 40c  
Per gallon ..... \$1.50  
Ice Cream—Parlor Now Open.

**PHONE No. 202.**

**O. K. CANDY KITCHEN**

## Sample Room for Drummers

WE have a splendid sample room  
in connection with our Transfer  
office in the Post Office building.

## Twin Falls Transfer & Storage Company

## MAN and WIFE

Wanted on Ranch

Man must understand irrigating  
and be temperate. Woman, good  
housekeeper and cook.

**GOOD WAGES TO RIGHT PARTIES.**

Call on

**Mrs. D. F. Clark, two miles east,  
or address.**

**P. O. Box 13, Twin Falls.**

**WANTED**—Party to grub 240 acres  
of land in Sucker flat. Twenty acres  
growing alfalfa, party to irrigate  
same and have use of it for feed. Ad-  
dress Sam Skinner, Box 151.

## TO ENCOURAGE THE MILWAUKEE

Measure to induce that Road to Build  
Southern Idaho.

In order that the Chicago, Milwaukee  
& St. Paul Railway Co. may be  
advised regarding the freight traffic  
into southern Idaho from points east  
of Omaha, the members of the Twin  
Falls Commercial club, at a meeting  
held Monday afternoon agreed to  
route all their business over that road  
for a period of six months. The Milwaukee  
line has been invited to send  
down into southern Idaho from Butte  
by the Idaho Woolgrowers association  
and all the commercial clubs in  
this section of the state. By showing  
the railway company the possi-  
bilities in the way of tonnage it is  
believed that strong inducements can  
be offered for an extension down the  
Snake river valley from Montana.

The following resolution was adopted:

Twin Falls, Idaho, April 27th, 1908.  
Mr. Reilly Atkinson, secretary, League  
of Southern Idaho Commercial clubs,  
Boise, Idaho.

Dear Sir:

The Twin Falls Commercial club  
at a meeting held here this p. m. for  
the purpose of considering a plan in  
secure statistics of the tonnage mov-  
ing from the east to southern Idaho  
by routing all freight through the  
Omaha gateway and over one line for  
a period of six months, expressed a  
unanimous opinion in favor of the plan  
and instructed their delegate, Mr. C.  
M. Hill, to work along those lines  
and to send and it was the senti-  
ment of the club that the C. & M.  
& St. P. Ry. should be the road favored.

Yours truly,

**C. E. BOOTH,**  
President,  
**JOHN BAIRDIDGE,**  
Secretary.

## OVER TAXED

Hundreds of Twin Falls Readers know  
What It Means.

The kidneys are overtaxed;  
Have too much to do.  
They tell about it in many aches  
and pains—

Backache, sideache, headache,  
Early symptoms of kidney ills.

Urinary troubles, diabetes, Bright's  
disease follow.

Mrs. Edwin Rushion, living in the  
second ward, Idaho Falls, Idaho, says:

"I can heartily recommend Doan's  
Kidney Pills as they effected a com-  
plete and permanent cure in the case  
of my son, now 18 years of age, who  
was suffering from kidney complaint.  
There was a terrible pain through his  
kidneys and across the small of his  
back and it was so acute that he was  
forced to go around in a stooped over  
position. His kidneys were too fre-  
quent in action he had inflammatory  
rheumatism in his legs and feet and  
the latter was so badly swollen that  
he could not put on his shoes and for  
weeks we had to wrap up his feet in  
handkerchiefs. We gave him many remedies  
but received no relief until we finally  
procured Doan's Kidney Pills and he  
began using them. He was wonder-  
fully relieved in a short time, steadily  
improved and was cured. He has not  
felt a symptom of rheumatism or kidney  
trouble since that time and we all  
gladly endorse Doan's Kidney Pills  
as the remedy that brought about this  
change in his condition."

For sale by all dealers. Price 50  
cents.

**Foster-McLurg Co., Buffalo, New**

**Remember the name—Doan's—and**

**take no other.**

**Seeds, Trees, Corn**

**WILL'S SILVER Anniversary**

**Catalogue of Everything FOR**

**FARM, GARDEN AND LAWN.**

**HANDSOME BOOK, PRINTED**

**IN FIVE COLORS. All about**

**HARDY ACCLIMATED SEEDS**

**and TREES.**

**OSCAR H. WILL & CO.**

**Blamark, North Dakota.**

**Notice to Creditors.**

Estate of Leander M. Lucy, deceased.

Notice is hereby given by the un-  
derdeclared administrators of the estate  
of Leander M. Lucy deceased, to the  
creditors of and all persons having  
claims against the said deceased, to  
exhibit them with the necessary  
 vouchers within the time after the  
first publication of this notice, to the  
said administrator, county of Twin  
Falls, state of Idaho.

FRANCES M. LUCY, Administratrix  
of the estate of Leander M. Lucy, de-  
ceased.

May 1-15-12, 1908.

**Notice for Publication—Final Proof.**

I, Frances F. Wyllie, who made entry  
No. 1074, under the provisions of an act  
of the legislature of the state of Idaho,  
commonly known as the "Carey act,"  
approved March 2nd, 1899, which em-  
braces the NE 1/4 of section 2, town-  
ship 11 S., range 18 E. B. M., do hereby  
give notice of my intention to make final  
proof to establish my claim to the land  
above described, and that I expect to prove  
that I have resided on, reclaimed and cul-  
tivated said land as required by law, before  
E. B. Williams at Twin Falls, Idaho, on the  
30th day of May, 1908, by two of the fol-  
lowing witnesses: F. A. Venable, W. H. Ham-  
lin, D. F. Denny, Clarence Budget and  
Ben Ditter, all of the county of Twin Falls,  
Idaho.

**FRANCES F. WYLLIE,**  
Entryman.

**Notice for Publication—Final Proof.**

I, Frances F. Wyllie, who made entry  
No. 1074, under the provisions of an act  
of the legislature of the state of Idaho,  
commonly known as the "Carey act,"  
approved March 2nd, 1899, which em-  
braces the NE 1/4 of section 2, town-  
ship 11 S., range 18 E. B. M., do hereby  
give notice of my intention to make final  
proof to establish my claim to the land  
above described, and that I expect to prove  
that I have resided on, reclaimed and cul-  
tivated said land as required by law, before  
E. B. Williams at Twin Falls, Idaho, on the  
30th day of May, 1908, by two of the fol-  
lowing witnesses: F. A. Venable, W. H. Ham-  
lin, D. F. Denny, Clarence Budget and  
Ben Ditter, all of the county of Twin Falls,  
Idaho.

**FRANCES F. WYLLIE,**  
Entryman.

**Notice for Publication—Final Proof.**

I, Frances F. Wyllie, who made entry  
No. 1074, under the provisions of an act  
of the legislature of the state of Idaho,  
commonly known as the "Carey act,"  
approved March 2nd, 1899, which em-  
braces the NE 1/4 of section 2, town-  
ship 11 S., range 18 E. B. M., do hereby  
give notice of my intention to make final  
proof to establish my claim to the land  
above described, and that I expect to prove  
that I have resided on, reclaimed and cul-  
tivated said land as required by law, before  
E. B. Williams at Twin Falls, Idaho, on the  
30th day of May, 1908, by two of the fol-  
lowing witnesses: F. A. Venable, W. H. Ham-  
lin, D. F. Denny, Clarence Budget and  
Ben Ditter, all of the county of Twin Falls,  
Idaho.

**FRANCES F. WYLLIE,**  
Entryman.

**Notice for Publication—Final Proof.**

I, Frances F. Wyllie, who made entry  
No. 1074, under the provisions of an act  
of the legislature of the state of Idaho,  
commonly known as the "Carey act,"  
approved March 2nd, 1899, which em-  
braces the NE 1/4 of section 2, town-  
ship 11 S., range 18 E. B. M., do hereby  
give notice of my intention to make final  
proof to establish my claim to the land  
above described, and that I expect to prove  
that I have resided on, reclaimed and cul-  
tivated said land as required by law, before  
E. B. Williams at Twin Falls, Idaho, on the  
30th day of May, 1908, by two of the fol-  
lowing witnesses: F. A. Venable, W. H. Ham-  
lin, D. F. Denny, Clarence Budget and  
Ben Ditter, all of the county of Twin Falls,  
Idaho.

**FRANCES F. WYLLIE,**  
Entryman.

**Notice for Publication—Final Proof.**

I, Frances F. Wyllie, who made entry  
No. 1074, under the provisions of an act  
of the legislature of the state of Idaho,  
commonly known as the "Carey act,"  
approved March 2nd, 1899, which em-  
braces the NE 1/4 of section 2, town-  
ship 11 S., range 18 E. B. M., do hereby  
give notice of my intention to make final  
proof to establish my claim to the land  
above described, and that I expect to prove  
that I have resided on, reclaimed and cul-  
tivated said land as required by law, before  
E. B. Williams at Twin Falls, Idaho, on the  
30th day of May, 1908, by two of the fol-  
lowing witnesses: F. A. Venable, W. H. Ham-  
lin, D. F. Denny, Clarence Budget and  
Ben Ditter, all of the county of Twin Falls,  
Idaho.

**FRANCES F. WYLLIE,**  
Entryman.

**Notice for Publication—Final Proof.**

I, Frances F. Wyllie, who made entry  
No. 1074, under the provisions of an act  
of the legislature of the state of Idaho,  
commonly known as the "Carey act,"  
approved March 2nd, 1899, which em-  
braces the NE 1/4 of section 2, town-  
ship 11 S., range 18 E. B. M., do hereby  
give notice of my intention to make final  
proof to establish my claim to the land  
above described, and that I expect to prove  
that I have resided on, reclaimed and cul-  
tivated said land as required by law, before  
E. B. Williams at Twin Falls, Idaho, on the  
30th day of May, 1908, by two of the fol-  
lowing witnesses: F. A. Venable, W. H. Ham-  
lin, D. F. Denny, Clarence Budget and  
Ben Ditter, all of the county of Twin Falls,  
Idaho.

**FRANCES F. WYLLIE,**  
Entryman.

**Notice for Publication—Final Proof.**

I, Frances F. Wyllie, who made entry  
No. 1074, under the provisions of an act  
of the legislature of the state of Idaho,  
commonly known as the "Carey act,"  
approved March 2nd, 1899, which em-  
braces the NE 1/4 of section 2, town-  
ship 11 S., range 18 E. B. M., do hereby  
give notice of my intention to make final  
proof to establish my claim to the land  
above described, and that I expect to prove  
that I have resided on, reclaimed and cul-  
tivated said land as required by law, before  
E. B. Williams at Twin Falls, Idaho, on the  
30th day of May, 1908, by two of the fol-  
lowing witnesses: F. A. Venable, W. H. Ham-  
lin, D. F. Denny, Clarence Budget and  
Ben Ditter, all of the county of Twin Falls,  
Idaho.

**FRANCES F. WYLLIE,**  
Entryman.

**Notice for Publication—Final Proof.**

I, Frances F. Wyllie, who made entry  
No. 1074, under the provisions of an act  
of the legislature of the state of Idaho,  
commonly known as the "Carey act,"  
approved March 2nd, 1899, which em-  
braces the NE 1/4 of section 2, town-  
ship 11 S., range 18 E. B. M., do hereby  
give notice of my intention to make final  
proof to establish my claim to the land  
above described, and that I expect to prove  
that I have resided on, reclaimed and cul-  
tivated said land as required by law, before  
E. B. Williams at Twin Falls, Idaho, on the  
30th day of May, 1908, by two of the fol-  
lowing witnesses: F. A. Venable, W. H. Ham-  
lin, D. F. Denny, Clarence Budget and  
Ben Ditter, all of the county of Twin Falls,  
Idaho.

**FRANCES F. WYLLIE,**  
Entryman.

## TEACH THIS TO THE CHILDREN

And They Will Understand All About  
Water Measurements.

The "inch," as applied to the mea-  
surement of water, originated with the  
placer miners and while it is not  
used as much as it formerly was, it is  
still the amount which will flow through  
an opening one inch square, or the  
equivalent thereof, under a pressure of  
four inches. (In Colorado, it is five  
inches.) At each of water is  
the opening should stand four inches  
higher than the top of the opening.  
The term inch is used in measuring  
water in small quantities.  
Thirty-eight and four-tenths Colo-  
rado inches flowing for one second  
equal one second foot, or one cubic  
foot of water per second.  
One second foot of water is equivalent  
to 448.8 gallons per minute.  
One cubic foot of water is equivalent  
to 7.48 gallons.  
One cubic foot of water weighs 62.5  
pounds.  
One gallon of water is equivalent to  
231 cubic inches.  
One second foot of water flowing  
for 12 hours and 6 minutes will cover  
one acre of land to a depth of one  
foot, which is the equivalent of one  
acre foot.  
One acre foot of water is equivalent  
to 43,560 cubic feet.  
One acre foot of water is equivalent  
to 325,851 gallons.

Thirty-eight and four-tenths Colo-  
rado inches flowing for one second  
equal one second foot, or one cubic  
foot of water per second.

One cubic foot of water is equivalent  
to 7.48 gallons.

One cubic foot of water weighs 62.5  
pounds.

One gallon of water is equivalent to  
231 cubic inches.

One second foot of water flowing  
for 12 hours and 6 minutes will cover  
one acre of land to a depth of one  
foot, which is the equivalent of one  
acre foot.

One acre foot of water is equivalent  
to 43,560 cubic feet.

One acre foot of water is equivalent  
to 325,851 gallons.

One acre foot of water is equivalent  
to 43,560 cubic feet.

One acre foot of water is equivalent  
to 325,851 gallons.

One acre foot of water is equivalent  
to 43,560 cubic feet.

One acre foot of water is equivalent  
to 325,851 gallons.

One acre foot of water is equivalent  
to 43,560 cubic feet.

One acre foot of water is equivalent  
to 325,851 gallons.

One acre foot of water is equivalent  
to 43,560 cubic feet.

One acre foot of water is equivalent  
to 325,851 gallons.

One acre foot of water is equivalent  
to 43,560 cubic feet.

One acre foot of water is equivalent  
to 325,851 gallons.

One acre foot of water is equivalent  
to 43,560 cubic feet.

One acre foot of water is equivalent  
to 325,851 gallons.

One acre foot of water is equivalent  
to 43,560 cubic feet.

One acre foot of water is equivalent  
to 325,851 gallons.

One acre foot of water is equivalent  
to 43,560 cubic feet.

One acre foot of water is equivalent  
to 325,851 gallons.

One acre foot of water is equivalent  
to 43,560 cubic feet.

One acre foot of water is equivalent  
to 325,851 gallons.

One acre foot of water is equivalent  
to 43,560 cubic feet.

One acre foot of water is equivalent  
to 325,851 gallons.

One acre foot of water is equivalent  
to 43,560 cubic feet.

One acre foot of water is equivalent  
to 325,851 gallons.

One acre foot of water is equivalent  
to 43,560 cubic feet.

One acre foot of water is equivalent  
to 325,851 gallons.

One acre foot of water is equivalent  
to 43,560 cubic feet.

One acre foot of water is equivalent  
to 325,851 gallons.

One acre foot of water is equivalent  
to 43,560 cubic feet.

One acre foot of water is equivalent  
to 325,851 gallons.

One acre foot of water is equivalent  
to 43,560 cubic feet.

One acre foot of water is equivalent  
to 325,851 gallons.

One acre foot of water is equivalent  
to 43,560 cubic feet.

One acre foot of water is equivalent  
to 325,851 gallons.

One acre foot of water is equivalent  
to 43,560 cubic feet.

One acre foot of water is equivalent  
to 325,851 gallons.

One acre foot of water is equivalent  
to 43,560 cubic feet.

One acre foot of water is equivalent  
to 325,851 gallons.

One acre foot of water is equivalent  
to 43,560 cubic feet.

One acre foot of water is equivalent  
to 325,851 gallons.

One acre foot of water is equivalent  
to 43,560 cubic feet.

One acre foot of water is equivalent  
to 325,851 gallons.

One acre foot of water is equivalent  
to 43,560 cubic feet.

One acre foot of water is equivalent  
to 325,851 gallons.

One acre foot of water is equivalent  
to 43,560 cubic feet.

One acre foot of water is equivalent  
to 325,851 gallons.

One acre foot of water is equivalent  
to 43,560 cubic feet.

One acre foot of water is equivalent  
to 325,851 gallons.

One acre foot of water is equivalent  
to 43,560 cubic feet.

One acre foot of water is equivalent  
to 325,851 gallons.

One acre foot of water is equivalent  
to 43,560 cubic feet.

One acre foot of water is equivalent  
to 325,851 gallons.

One acre foot of water is equivalent  
to 43,560 cubic feet.

One acre foot of water is equivalent  
to 325,851 gallons.

One acre foot of water is equivalent  
to 43,560 cubic feet.

One acre foot of water is equivalent  
to 325,851 gallons.

One acre foot of water is equivalent  
to 43,560 cubic feet.

One acre foot of water is equivalent  
to 325,851 gallons.

## Notice for Publication—Final Proof.

I, Edwin M. Crockett, of Rock Creek  
who made entry No. 1894, under the  
provisions of an act of the legislature  
of the state of Idaho, commonly  
known as the "Carey act," approved  
March 2, 1899, which embraces the SW  
1/4 of NE 1/4 of section 20, township 11  
S., range 18 E. B. M., do hereby give  
notice of my intention to make final  
proof to establish my claim to the land  
above described, and that I expect to  
prove that I have resided on, reclaimed  
and cultivated said land as required  
by law, before E. B. Williams at Twin  
Falls, Idaho, on the 30th day of May,  
1908, by two of the following witnesses:  
M. D. Crockett, John Donahoe and John  
Harmes, all of Rock Creek, Idaho.

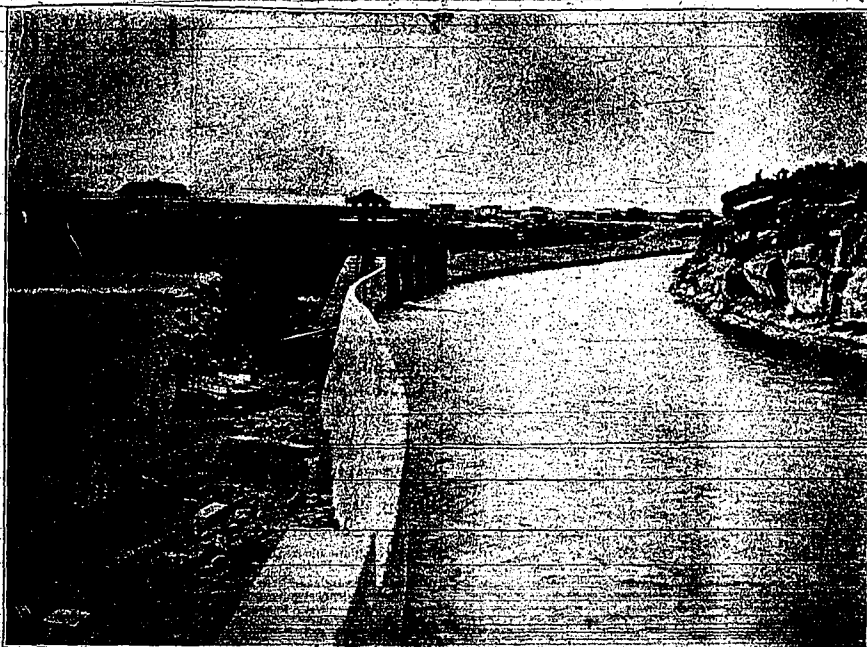
**EDWIN M. CROCKETT,**  
Entryman.

**Desert Land—Final Proof.**

United States Land Office,  
Halley, Idaho.

April 20, 1908.

Notice is hereby given to John D.  
Sawyers, of Rock Creek, Idaho, who  
has filed notice of intention to make  
proof on his desert land claim No.  
1229, for the NE 1/4 of NE 1/4 of section  
16, SW 1/4 of SW 1/4 of section 10, SW 1/4  
of SW 1/4 of section 11, NW 1/4 of NW 1/4  
of section 14, township 11 S., range 17  
E. B. M., before John F. Hansen, U. S.  
Commissioner at Rock Creek, Idaho,  
on the 30th day of May, 1908, that he  
has the following witnesses to prove  
the complete irrigation and reclama-  
tion of said land: Henry Jones, Arthur  
D. Norton, William G. Thompson, all  
of Rock Creek, Idaho.



View of the Twin Falls North Side Land & Water company's main canal, from a photograph by Horace C. Myers, Boise, taken from the bridge over the headgates. The canal is 60 feet wide on the bottom and carries eight feet of water, or 1800 cubic feet per second. The upper or right hand wall is blasted out of the solid lava rock. The lower or left hand wall is constructed of reinforced concrete, six feet wide on the bottom and anchored on bed rock. The five gates in the lower bank are for the purpose of turning the water back into the river in the event that such action should become necessary. The company house at Milner is shown above the gates and Riverside Inn shows on the left. To the right is a portion of the town of Milner.

## IRRIGATED LANDS CO., LTD.

Twin Falls, Idaho. Office, North Wing, Hotel Perrine.

We have carefully cruised the entire Salmon segregation and are prepared to locate settlers on choice lands, either by power of attorney, or in person, for a reasonable fee.

**A. McPherson** **George F. Sprague**  
**TWIN FALLS, IDAHO.**



Main canal, Twin Falls North Side Land & Water Co., in the big cut, two miles from Milner dam. This cut is one and one-half miles long, with a maximum depth of 24 feet. The canal in the cut is 60 feet wide on the bottom. The runways in the sides of the right bank are wide enough for teams and were used in hauling out the dirt. Approximately 400,000 square yards of earth were taken from this cut. In no place was rock encountered. The banks of the canal show the depth of soil.

### H. A. STROUD & CO.

Exclusive Real Estate and Investments.

Office in St. Regis Block  
Shoshone avenue, Ground Floor.  
We always have customers for land at its present value.

### H. A. STROUD & CO.

Who do as they advertise.

## Abstracts of Title FIRE INSURANCE

**Twin Falls Title & Abstract Co.**  
OVER FIRST NATIONAL BANK. PHONE 168.

The Largest Fire Insurance Agency in  
Southern Idaho.

## The Electric Mills

KIMBERLY, IDAHO

Will Pay or Contract the Highest Market Price for Wheat, Oats or Barley. Call, write or telephone us.

THE T. & K. MILLING CO.

W. H. THOMAS, Manager.

## Everybody Works but Father

He does nothing but run the bar at the Hotel Perrine, Twin Falls. Only the choicest brands of Wines, Liquors and Cigars

H. C. Sorenson & Co.

## Hotel Perrine

RIGHT UP TO DATE

Steam Heat

Electric Lights

Sample Rooms

E. B. WILLIAMS, PROPRIETOR.

Twin Falls,

Idaho.

## SEE J. K. MARTIN

before building your cisterns or having foundation work laid. All work guaranteed and promptly attended to. Address Twin Falls, Idaho or leave orders at J. V. Marshall Real Estate office.

## The Mission Cafe

The Best Restaurant in the City.  
Everything New. Service Excellent.  
Short Orders a Specialty.

: : : Opposite Postoffice : : :



## TWIN FALLS NEWS

George B. Fraser, Editor.

Published every Friday by  
THE NEWS PUBLISHING COMPANY  
TWIN FALLS, IDAHO.Subscription Rates.  
One Year, in Advance.....\$2.00  
Six Months, in Advance.....1.00

Reliable information regarding the city and county promptly and accurately furnished. Address all communications to The News Publishing Company, Twin Falls, Idaho.

Noted as second-class matter, December 7, 1907, at the postoffice at Twin Falls, Idaho, under Act of Congress of March 3, 1879.

The Commercial club of Twin Falls acted wisely in offering a right of way to the Idaho-Nevada Southern Railway company from the Snake river to the high-line canal. Thus far the farmers whose lands will be damaged by the construction of the railroad have shown a fair and generous disposition. Few comprehend what the building of this road means for Twin Falls. The barnacles who isolated two or three years ago that form land on the Twin Falls tract would never be worth \$100 an acre as incapable of appreciating anything of magnitude. No doubt those barnacles were created for the purpose of demonstrating the contemptible in human nature and arguing within the hearts of good men a stouter desire for the right and greater scorn for the wrong. The Twin Falls canal system, like the human system, casts out impurities which, in the case of the canal system, appear as knockers who correspond with the carbuncles on the human body. The oral supposition of the knocker is haunting to the loyal citizen who is always ready to boost for the project as a whole. When a man makes the statement that the Idaho-Nevada Southern will never be built, or that Twin Falls does not need the road anyway, he puts himself in the pimple class. He is on a par with the man who slips up to a stranger who has just bought land and tells him he has been robbed. He is the poison in the body politic, the footpad of commerce, the scum of society. Even a rattlesnake gives warning before he strikes his poison fangs into his victim; the knocker strikes without warning. There never was and there may never be again a cleaner or more meritorious enterprise than the Twin Falls project and its affiliations. No honest man can say one word against anything connected with the undertaking from its inception to date. Mistakes may have been made because the men who carried the enterprise through are human and therefore liable to err. The North Side company, which is behind the Salmon project, has been absolutely clean and fair. It weathered the financial storm when all other like companies, even the big railroads, quit operations. With a payroll of \$100,000 a month it kept the work going. Can that be said of any other construction company? It delivered water to the settlers on the first segregation in advance of the time promised and it will be ahead of the settlers on the second segregation next spring. No sane person who knows what is being done will question that prediction. Water will be delivered on the Salmon tract in the spring of 1910, whether the knockers object or not. The Idaho-Nevada Southern railway will be built from the Snake river to Wells, Nevada. Those of us who have been here for three years or more recall the predictions that the Short Line would never build into Twin Falls, and that if it did it would never build to Buhl; that the high line canal would never be built; that the North Side project was only a dream of Bert Perrine's. Most of the knockers have had their backs broken and their claws crushed but some of them are still doing business. In ancient days they used pillories for such persons; modern sociologists have not yet found a better remedy. You cannot make a silk purse out of a sow's ear but you can pinch the ear good and hard occasionally.

The direct primary will be given a trial by the Republicans of Twin Falls county in the forthcoming campaign. It has been tried elsewhere with varying results. The principal objection to it lies in the danger resulting from the apathy of the voters. The hungry office seeker and the scheming politician are at work all the time while the average voter is indifferent and pays no attention to what is going on until it is too late. In South Twin Falls precinct it was a very difficult

matter to secure judges and clerks for the primary election and had no effort been made the number of votes necessary to make the primary legal would not have been polled. While the direct primary places the nominations absolutely in the hands of the people and is supposed to eliminate the boss and his manipulation, it does not work out in practice unless the interest of the voters is aroused. In Kimberly, Hansen, Rock Creek, Murch, Butte and Rosworth precincts in Twin Falls county no primaries were held for the election of delegates to the Republican county convention at Buhl, notwithstanding the fact that the delegates elected at that convention will have a vote in the nomination of a president of the United States. The average voter takes everything for granted as a rule and unless he has a grudge against a candidate or a liking for another, or his corns are bruised he needs to be prodded before he will take an interest in politics. This is characteristic of the best citizens. The bar room and street corner politicians, who furnish the jawbones for the campaigns, are always on deck, getting their work in wherever they can. The story is as old as the hills and whether the direct primary will work a change for better or worse remains to be seen.

The News has received several spring poems, laudatory of Twin Falls. The sentiment is superb and is in thorough accord with that of the editor, but he hesitates to publish them for the reason that the diction and meter might cause Lindley Murray to turn over in his coffin and it would be cruel to disturb his rest. Some day, when the editor has time, he will endeavor to take the licks out of the poems as they contain many truths and some clever ideas.

NOTICE OF OPENING  
OF CAREY ACT  
LANDS

Boise, Idaho, April 23, 1908.  
By order of the state board of land commissioners of the state of Idaho, the following described lands are to be open for sale and settlement on and after June 1st, 1908, in tracts not to exceed 160 acres by any one qualified to enter the same under the provisions of an act of Congress approved August 12, 1894; June 11, 1896, and March 3, 1901, commonly known as the Carey acts, and an act of the legislature of Idaho, approved March 2, 1899, and the rules and regulations of the state board of land commissioners of Idaho in relation thereto: All that portion of the lands described in the contract between the United States and the state of Idaho, being segregation list No. 14, and which are situated in Twin Falls county, state of Idaho, and are more particularly described in the contract, which is on file with the state board of land commissioners, as follows:

| DESCRIPTION                 | ACRES  |
|-----------------------------|--------|
| Township 11 S., range 14 E. | 320    |
| Sec. 12, 8 1/4 of NW 1/4    | 640    |
| Sec. 13, all                | 640    |
| Sec. 24, all                | 640    |
| Sec. 25, all                | 640    |
| Township 11 S., range 15 E. | 639.80 |
| Sec. 1, all                 | 639.28 |
| Sec. 2, all                 | 639.28 |
| Sec. 4, all                 | 638.48 |
| Sec. 5, 8 1/4 of NW 1/4     | 320    |
| Sec. 7, 1/2 of NW 1/4       | 75.59  |
| Sec. 7, 1/2 of SW 1/4       | 80     |
| Sec. 7, 1/2 of SE 1/4       | 80     |
| Sec. 8, all                 | 640    |
| Sec. 9, all                 | 640    |
| Sec. 10, all                | 640    |
| Sec. 11, all                | 640    |
| Sec. 12, all                | 640    |
| Sec. 13, all                | 640    |
| Sec. 14, 1/2 of NW 1/4      | 320    |
| Sec. 15, all                | 640    |
| Sec. 17, all                | 640    |
| Sec. 18, all                | 631.80 |
| Sec. 19, all                | 632.08 |
| Sec. 20, all                | 640    |
| Sec. 21, 1/2 of NW 1/4      | 80     |
| Sec. 22, 1/2 of NW 1/4      | 80     |
| Sec. 22, 1/2 of SW 1/4      | 80     |
| Sec. 22, 1/2 of SE 1/4      | 80     |
| Sec. 22, 1/2 of SW 1/4      | 80     |
| Sec. 23, all                | 640    |
| Sec. 24, all                | 640    |
| Sec. 25, all                | 632.40 |
| Sec. 31, all                | 632.04 |
| Sec. 32, all                | 640    |
| Sec. 33, 1/2 of NW 1/4      | 320    |
| Sec. 34, 1/2 of NW 1/4      | 80     |
| Sec. 34, 1/2 of SW 1/4      | 80     |
| Township 11 S., range 16 E. | 320    |
| Sec. 2, 8 1/4 of NW 1/4     | 40     |
| Sec. 3, all                 | 639.64 |
| Sec. 4, all                 | 639.40 |
| Sec. 5, all                 | 639.40 |
| Sec. 6, all                 | 634.03 |
| Sec. 7, all                 | 634.52 |
| Sec. 8, all                 | 640    |
| Sec. 9, all                 | 640    |
| Sec. 10, 1/2 of NW 1/4      | 80     |
| Sec. 10, 1/2 of NE 1/4      | 80     |
| Sec. 10, 1/2 of SE 1/4      | 80     |
| Sec. 11, NW 1/4             | 160    |
| Sec. 11, 1/2 of SW 1/4      | 80     |
| Sec. 11, 1/2 of SE 1/4      | 80     |
| Sec. 12, 1/2 of NW 1/4      | 320    |

| DESCRIPTION                 | ACRES  |
|-----------------------------|--------|
| Sec. 12, 8 1/4 of NW 1/4    | 160    |
| Sec. 12, 8 1/4 of NE 1/4    | 80     |
| Sec. 13, all                | 640    |
| Sec. 14, 1/2 of NW 1/4      | 320    |
| Sec. 14, 1/2 of SE 1/4      | 160    |
| Sec. 15, all                | 640    |
| Sec. 17, all                | 640    |
| Sec. 18, all                | 635.80 |
| Sec. 19, 1/2 of NW 1/4      | 320    |
| Sec. 19, 1/2 of SE 1/4      | 320    |
| Sec. 19, 1/2 of SW 1/4      | 320    |
| Sec. 20, all                | 78.31  |
| Sec. 21, all                | 640    |
| Sec. 22, all                | 640    |
| Sec. 23, all                | 640    |
| Sec. 24, all                | 640    |
| Sec. 25, all                | 640    |
| Sec. 26, all                | 640    |
| Sec. 27, all                | 640    |
| Sec. 28, all                | 640    |
| Sec. 29, all                | 640    |
| Sec. 30, all                | 640    |
| Sec. 31, all                | 640    |
| Sec. 32, all                | 640    |
| Sec. 33, all                | 640    |
| Sec. 34, all                | 640    |
| Township 11 S., range 17 E. | 640    |
| Sec. 7, lot 2               | 17.39  |
| Sec. 7, lot 3               | 17.74  |
| Sec. 7, lot 4               | 18.09  |
| Sec. 7, 1/2 of NW 1/4       | 80     |
| Sec. 7, 1/2 of NE 1/4       | 80     |
| Sec. 7, 1/2 of SW 1/4       | 80     |
| Sec. 7, 1/2 of SE 1/4       | 80     |
| Sec. 8, 1/2 of NW 1/4       | 320    |
| Sec. 8, 1/2 of NE 1/4       | 80     |
| Sec. 8, 1/2 of SW 1/4       | 80     |
| Sec. 8, 1/2 of SE 1/4       | 80     |
| Sec. 9, 1/2 of NW 1/4       | 100    |
| Sec. 9, 1/2 of NE 1/4       | 40     |
| Sec. 9, 1/2 of SW 1/4       | 40     |
| Sec. 9, 1/2 of SE 1/4       | 40     |
| Sec. 10, 1/2 of NW 1/4      | 100    |
| Sec. 10, 1/2 of NE 1/4      | 40     |
| Sec. 10, 1/2 of SW 1/4      | 40     |
| Sec. 10, 1/2 of SE 1/4      | 40     |
| Sec. 11, all                | 655.44 |
| Sec. 12, all                | 19.55  |
| Sec. 13, lot 1              | 19.73  |
| Sec. 13, lot 2              | 19.81  |
| Sec. 13, lot 3              | 20.09  |
| Sec. 13, lot 4              | 20.09  |
| Sec. 14, NE 1/4             | 160    |
| Sec. 14, 1/2 of NW 1/4      | 80     |
| Sec. 14, 1/2 of NE 1/4      | 80     |
| Sec. 14, 1/2 of SW 1/4      | 80     |
| Sec. 14, 1/2 of SE 1/4      | 80     |
| Sec. 15, 1/2 of NW 1/4      | 320    |
| Sec. 15, 1/2 of NE 1/4      | 80     |
| Sec. 15, 1/2 of SW 1/4      | 80     |
| Sec. 15, 1/2 of SE 1/4      | 80     |
| Sec. 16, all                | 640    |
| Sec. 17, all                | 640    |
| Sec. 18, all                | 640    |
| Sec. 19, all                | 640    |
| Sec. 20, all                | 640    |
| Sec. 21, all                | 640    |
| Sec. 22, all                | 640    |
| Sec. 23, all                | 640    |
| Sec. 24, all                | 640    |
| Sec. 25, all                | 640    |
| Sec. 26, all                | 640    |
| Sec. 27, all                | 640    |
| Sec. 28, all                | 640    |
| Sec. 29, all                | 640    |
| Sec. 30, all                | 640    |
| Sec. 31, all                | 640    |
| Sec. 32, all                | 640    |
| Sec. 33, all                | 640    |
| Sec. 34, all                | 640    |
| Township 12 S., range 15 E. | 80     |
| Sec. 1, 1/2 of NW 1/4       | 320    |
| Sec. 1, 1/2 of NE 1/4       | 80     |
| Sec. 1, 1/2 of SW 1/4       | 80     |
| Sec. 1, 1/2 of SE 1/4       | 80     |
| Sec. 2, all                 | 640    |
| Sec. 3, all                 | 640    |
| Sec. 4, all                 | 640    |
| Sec. 5, all                 | 640    |
| Sec. 6, all                 | 640    |
| Sec. 7, all                 | 640    |
| Sec. 8, all                 | 640    |
| Sec. 9, all                 | 640    |
| Sec. 10, all                | 640    |
| Sec. 11, all                | 640    |
| Sec. 12, all                | 640    |
| Sec. 13, all                | 640    |
| Sec. 14, all                | 640    |
| Sec. 15, all                | 640    |
| Sec. 16, all                | 640    |
| Sec. 17, all                | 640    |
| Sec. 18, all                | 640    |
| Sec. 19, all                | 640    |
| Sec. 20, all                | 640    |
| Sec. 21, all                | 640    |
| Sec. 22, all                | 640    |
| Sec. 23, all                | 640    |
| Sec. 24, all                | 640    |
| Sec. 25, all                | 640    |
| Sec. 26, all                | 640    |
| Sec. 27, all                | 640    |
| Sec. 28, all                | 640    |
| Sec. 29, all                | 640    |
| Sec. 30, all                | 640    |
| Sec. 31, all                | 640    |
| Sec. 32, all                | 640    |
| Sec. 33, all                | 640    |
| Sec. 34, all                | 640    |
| Township 12 S., range 16 E. | 80     |
| Sec. 1, 1/2 of NW 1/4       | 320    |
| Sec. 1, 1/2 of NE 1/4       | 80     |
| Sec. 1, 1/2 of SW 1/4       | 80     |
| Sec. 1, 1/2 of SE 1/4       | 80     |
| Sec. 2, all                 | 640    |
| Sec. 3, all                 | 640    |
| Sec. 4, all                 | 640    |
| Sec. 5, all                 | 640    |
| Sec. 6, all                 | 640    |
| Sec. 7, all                 | 640    |
| Sec. 8, all                 | 640    |
| Sec. 9, all                 | 640    |
| Sec. 10, all                | 640    |
| Sec. 11, all                | 640    |
| Sec. 12, all                | 640    |
| Sec. 13, all                | 640    |
| Sec. 14, all                | 640    |
| Sec. 15, all                | 640    |
| Sec. 16, all                | 640    |
| Sec. 17, all                | 640    |
| Sec. 18, all                | 640    |
| Sec. 19, all                | 640    |
| Sec. 20, all                | 640    |
| Sec. 21, all                | 640    |
| Sec. 22, all                | 640    |
| Sec. 23, all                | 640    |
| Sec. 24, all                | 640    |
| Sec. 25, all                | 640    |
| Sec. 26, all                | 640    |
| Sec. 27, all                | 640    |
| Sec. 28, all                | 640    |
| Sec. 29, all                | 640    |
| Sec. 30, all                | 640    |
| Sec. 31, all                | 640    |
| Sec. 32, all                | 640    |
| Sec. 33, all                | 640    |
| Sec. 34, all                | 640    |
| Township 12 S., range 17 E. | 39.97  |
| Sec. 1, lot 1               | 40.23  |
| Sec. 2, lot 1               | 40.50  |
| Sec. 2, lot 2               | 40.76  |
| Sec. 2, lot 3               | 40.76  |
| Sec. 2, lot 4               | 40.76  |
| Sec. 2, lot 5               | 40.76  |
| Sec. 2, lot 6               | 40.76  |
| Sec. 2, lot 7               | 40.76  |
| Sec. 2, lot 8               | 40.76  |
| Sec. 2, lot 9               | 40.76  |
| Sec. 2, lot 10              | 40.76  |
| Sec. 2, lot 11              | 40.76  |
| Sec. 2, lot 12              | 40.76  |
| Sec. 2, lot 13              | 40.76  |
| Sec. 2, lot 14              | 40.76  |
| Sec. 2, lot 15              | 40.76  |
| Sec. 2, lot 16              | 40.76  |
| Sec. 2, lot 17              | 40.76  |
| Sec. 2, lot 18              | 40.76  |
| Sec. 2, lot 19              | 40.76  |
| Sec. 2, lot 20              | 40.76  |
| Sec. 2, lot 21              | 40.76  |
| Sec. 2, lot 22              | 40.76  |
| Sec. 2, lot 23              | 40.76  |
| Sec. 2, lot 24              | 40.76  |
| Sec. 2, lot 25              | 40.76  |
| Sec. 2, lot 26              | 40.76  |
| Sec. 2, lot 27              | 40.76  |
| Sec. 2, lot 28              | 40.76  |
| Sec. 2, lot 29              | 40.76  |
| Sec. 2, lot 30              | 40.76  |
| Sec. 2, lot 31              | 40.76  |
| Sec. 2, lot 32              | 40.76  |
| Sec. 2, lot 33              | 40.76  |
| Sec. 2, lot 34              | 40.76  |
| Sec. 2, lot 35              | 40.76  |
| Sec. 2, lot 36              | 40.76  |
| Sec. 2, lot 37              | 40.76  |
| Sec. 2, lot 38              | 40.76  |
| Sec. 2, lot 39              | 40.76  |
| Sec. 2, lot 40              | 40.76  |
| Sec. 2, lot 41              | 40.76  |
| Sec. 2, lot 42              | 40.76  |
| Sec. 2, lot 43              | 40.76  |
| Sec. 2, lot 44              | 40.76  |
| Sec. 2, lot 45              | 40.76  |
| Sec. 2, lot 46              | 40.76  |
| Sec. 2, lot 47              | 40.76  |
| Sec. 2, lot 48              | 40.76  |
| Sec. 2, lot 49              | 40.76  |
| Sec. 2, lot 50              | 40.76  |
| Sec. 2, lot 51              | 40.76  |
| Sec. 2, lot 52              | 40.76  |
| Sec. 2, lot 53              | 40.76  |
| Sec. 2, lot 54              | 40.76  |
| Sec. 2, lot 55              | 40.76  |
| Sec. 2, lot 56              | 40.76  |
| Sec. 2, lot 57              | 40.76  |
| Sec. 2, lot 58              | 40.76  |
| Sec. 2, lot 59              | 40.76  |
| Sec. 2, lot 60              | 40.76  |
| Sec. 2, lot 61              | 40.76  |
| Sec. 2, lot 62              | 40.76  |
| Sec. 2, lot 63              | 40.76  |
| Sec. 2, lot 64              | 40.76  |
| Sec. 2, lot 65              | 40.76  |
| Sec. 2, lot 66              | 40.76  |
| Sec. 2, lot 67              | 40.76  |
| Sec. 2, lot 68              | 40.76  |
| Sec. 2, lot 69              | 40.76  |
| Sec. 2, lot 70              | 40.76  |
| Sec. 2, lot 71              | 40.76  |
| Sec. 2, lot 72              | 40.76  |
| Sec. 2, lot 73              | 40.76  |
| Sec. 2, lot 74              | 40.76  |
| Sec. 2, lot 75              | 40.76  |
| Sec. 2, lot 76              | 40.76  |
| Sec. 2, lot 77              | 40.76  |
| Sec. 2, lot 78              | 40.76  |
| Sec. 2, lot 79              | 40.76  |
| Sec. 2, lot 80              | 40.76  |
| Sec. 2, lot 81              | 40.76  |
| Sec. 2, lot 82              | 40.76  |
| Sec. 2, lot 83              | 40.76  |
| Sec. 2, lot 84              | 40.76  |
| Sec. 2, lot 85              | 40.76  |
| Sec. 2, lot 86              | 40.76  |
| Sec. 2, lot 87              | 40.76  |
| Sec. 2, lot 88              | 40.76  |
| Sec. 2, lot 89              | 40.76  |
| Sec. 2, lot 90              | 40.76  |
| Sec. 2, lot 91              | 40.76  |
| Sec. 2, lot 92              | 40.76  |
| Sec. 2, lot 93              | 40.76  |
| Sec. 2, lot 94              | 40.76  |
| Sec. 2, lot 95              | 40.76  |
| Sec. 2, lot 96              | 40.76  |
| Sec. 2, lot 97              | 40.76  |
| Sec. 2, lot 98              | 40.76  |
| Sec. 2, lot 99              | 40.76  |
| Sec. 2, lot 100             | 40.76  |

| DESCRIPTION                 | ACRES |
|-----------------------------|-------|
| Sec. 6, lot 3               | 37.35 |
| Sec. 6, lot 3               | 37.18 |
| Sec. 6, 1/2 of NW 1/4       | 80    |
| Sec. 6, 1/2 of NE 1/4       | 80    |
| Sec. 6, 1/2 of SW 1/4       | 80    |
| Sec. 6, 1/2 of SE 1/4       | 80    |
| Sec. 7, lot 4               | 50.90 |
| Sec. 8, 1/2 of NW 1/4       | 320   |
| Sec. 8, 1/2 of NE 1/4       | 160   |
| Sec. 8, 1/2 of SW 1/4       | 160   |
| Sec. 8, 1/2 of SE 1/4       | 160   |
| Sec. 9, all                 | 640   |
| Sec. 10, all                | 320   |
| Township 13 S., range 16 E. | 80    |
| Sec. 1, 1/2 of NW 1/4       | 80    |
| Sec. 1, 1/2 of NE 1/4       | 80    |
| Sec. 1, 1/2 of SW 1/4       | 80    |
| Sec. 1, 1/2 of SE 1/4       | 80    |
| Sec. 2, 1/2 of NW 1/4       | 80    |
| Sec. 2, 1/2 of NE 1/4       | 80    |
| Sec. 2, 1/2 of SW 1/4       | 80    |
| Sec. 2, 1/2 of SE 1/4       | 80    |
| Sec. 3, 1/2 of NW 1/4       | 80    |
| Sec. 3, 1/2 of NE 1/4       | 80    |
| Sec. 3, 1/2 of SW 1/4       | 80    |
| Sec. 3, 1/2 of SE 1/4       | 80    |
| Sec. 4, 1/2 of NW 1/4       | 80    |
| Sec. 4, 1/2 of NE 1/4       | 80    |
| Sec. 4, 1/2 of SW 1/4       | 80    |
| Sec. 4, 1/2 of SE 1/4       | 80    |
| Sec. 5, 1/2 of NW 1/4       | 80    |
| Sec. 5, 1/2 of NE 1/4       | 80    |
| Sec. 5, 1/2 of SW 1/4       | 80    |
| Sec. 5, 1/2 of SE 1/4       | 80    |
| Sec. 6, 1/2 of NW 1/4       | 80    |
| Sec. 6, 1/2 of NE 1/4       | 80    |
| Sec. 6, 1/2 of SW 1/4       | 80    |
| Sec. 6, 1/2 of SE 1/4       | 80    |
| Sec. 7, all                 | 640   |
| Township 14 S., range 16 E. | 80    |
| Sec. 1, 1/2 of NW 1/4       | 80    |
| Sec. 1, 1/2 of NE 1/4       | 80    |
| Sec. 1, 1/2 of SW 1/4       | 80    |
| Sec. 1, 1/2 of SE 1/4       | 80    |
| Sec. 2, 1/2 of NW 1/4       | 80    |
| Sec. 2, 1/2 of NE 1/4       | 80    |
| Sec. 2, 1/2 of SW 1/4       | 80    |
| Sec. 2, 1/2 of SE 1/4       | 80    |
| Sec. 3, 1/2 of NW 1/4       | 80    |
| Sec. 3, 1/2 of NE 1/4       | 80    |
| Sec. 3, 1/2 of SW 1/4       | 80    |
| Sec. 3, 1/2 of SE 1/4       | 80    |
| Sec. 4, 1/2 of NW 1/4       | 80    |
| Sec. 4, 1/2 of NE 1/4       | 80    |
| Sec. 4, 1/2 of SW 1/4       | 80    |
| Sec. 4, 1/2 of SE 1/4       | 80    |
| Sec. 5, 1/2 of NW 1/4       | 80    |
| Sec. 5, 1/2 of NE 1/4       | 80    |
| Sec. 5, 1/2 of SW 1/4       | 80    |
| Sec. 5, 1/2 of SE 1/4       | 80    |
| Sec. 6, 1/2 of NW 1/4       | 80    |
| Sec. 6, 1/2 of NE 1/4       | 80    |
| Sec. 6, 1/2 of SW 1/4       | 80    |
| Sec. 6, 1/2 of SE 1/4       | 80    |
| Sec. 7, all                 | 640   |
| Township 15 S., range 16 E. | 80    |
| Sec. 1, 1/2 of NW 1/4       | 80    |
| Sec. 1, 1/2 of NE 1/4       | 80    |
| Sec. 1, 1/2 of SW 1/4       | 80    |
| Sec. 1, 1/2 of SE 1/4       | 80    |
| Sec. 2, 1/2 of NW 1/4       | 80    |
| Sec. 2, 1/2 of NE 1/4       | 80    |
| Sec. 2, 1/2 of SW 1/4       | 80    |
| Sec. 2, 1/2 of SE 1/4       | 80    |
| Sec. 3, 1/2 of NW 1/4       | 80    |
| Sec. 3, 1/2 of NE 1/4       | 80    |
| Sec. 3, 1/2 of SW 1/4       | 80    |
| Sec. 3, 1/2 of SE 1/4       | 80    |
| Sec. 4, 1/2 of NW 1/4       | 80    |
| Sec. 4, 1/2 of NE 1/4       | 80    |
| Sec. 4, 1/2 of SW 1/4       | 80    |
| Sec. 4, 1/2 of SE 1/4       | 80    |
| Sec. 5, 1/2 of NW 1/4       | 80    |
| Sec. 5, 1/2 of NE 1/4       | 80    |
| Sec. 5, 1/2 of SW 1/4       | 80    |
| Sec. 5, 1/2 of SE 1/4       | 80    |
| Sec. 6, 1/2 of NW 1/4       | 80    |
| Sec. 6, 1/2 of NE 1/4       | 80    |
| Sec. 6, 1/2 of SW 1/4       | 80    |
| Sec. 6, 1/2 of SE 1/4       | 80    |
| Sec. 7, all                 | 640   |
| Township 16 S., range 16 E. | 80    |
| Sec. 1, 1/2 of NW 1/4       | 80    |
| Sec. 1, 1/2 of NE 1/4       | 80    |
| Sec. 1, 1/2 of SW 1/4       | 80    |
| Sec. 1, 1/2 of SE 1/4       | 80    |
| Sec. 2, 1/2 of NW 1/4       | 80    |
| Sec. 2, 1/2 of NE 1/4       | 80    |
| Sec. 2, 1/2 of SW 1/4       | 80    |
| Sec. 2, 1/2 of SE 1/4       | 80    |
| Sec. 3, 1/2 of NW 1/4       | 80    |
| Sec. 3, 1/2 of NE 1/4       | 80    |
| Sec. 3, 1/2 of SW 1/4       | 80    |
| Sec. 3, 1/2 of SE 1/4       | 80    |
| Sec. 4, 1/2 of NW 1/4       | 80    |
| Sec. 4, 1/2 of NE 1/4       | 80    |
| Sec. 4, 1/2 of SW 1/4       | 80    |
| Sec. 4, 1/2 of SE 1/4       | 80    |
| Sec. 5, 1/2 of NW 1/4       | 80    |
| Sec. 5, 1/2 of NE 1/4       | 80    |
| Sec. 5, 1/2 of SW 1/4       | 80    |
| Sec. 5, 1/2 of SE 1/4       | 80    |
| Sec. 6, 1/2 of NW 1/4       | 80    |
| Sec. 6, 1/2 of NE 1/4       | 80    |
| Sec. 6, 1/2 of SW 1/4       | 80    |
| Sec. 6, 1/2 of SE 1/4       | 80    |
| Sec. 7, all                 | 640   |
| Township 17 S., range 16 E. | 80    |
| Sec. 1, 1/2 of NW 1/4       | 80    |
| Sec. 1, 1/2 of NE 1/4       | 80    |
| Sec. 1, 1/2 of SW 1/4       | 80    |
| Sec. 1, 1/2 of SE 1/4       | 80    |
| Sec. 2, 1/2 of NW 1/4       | 80    |
| Sec. 2, 1/2 of NE 1/4       | 80    |
| Sec. 2, 1/2 of SW 1/4       | 80    |
| Sec. 2, 1/2 of SE 1/4       | 80    |
| Sec. 3, 1/2 of NW 1/4       | 80    |
| Sec. 3, 1/2 of NE 1/4       | 80    |
| Sec. 3, 1/2 of SW 1/4       | 80    |
| Sec. 3, 1/2 of SE 1/4       | 80    |
| Sec. 4, 1/2 of NW 1/4       | 80    |
| Sec. 4, 1/2 of NE 1/4       | 80    |
| Sec. 4, 1/2 of SW 1/4       | 80    |
| Sec. 4, 1/2 of SE 1/4       | 80    |
| Sec. 5, 1/2 of NW 1/4       | 80    |
| Sec. 5, 1/2 of NE 1/4       | 80    |
| Sec. 5, 1/2 of SW 1/4       | 80    |
| Sec. 5, 1/2 of SE 1/4       | 80    |
| Sec. 6, 1/2 of NW 1/4       | 80    |
| Sec. 6, 1/2 of NE 1/4       | 80    |
| Sec. 6, 1/2 of SW 1/4       | 80    |
| Sec. 6, 1/2 of SE 1/4       | 80    |
| Sec. 7, all                 | 640   |
| Township 18 S., range 16 E. | 80    |
| Sec. 1, 1/2 of NW 1/4       | 80    |
| Sec. 1, 1/2 of NE 1/4       | 80    |
| Sec. 1, 1/2 of SW 1/4       | 80    |
| Sec. 1, 1/2 of SE 1/4       | 80    |
| Sec. 2, 1/2 of NW 1/4       | 80    |
| Sec. 2, 1/2 of NE 1/4       | 80    |
| Sec. 2, 1/2 of SW 1/4       | 80    |
| Sec. 2, 1/2 of SE 1/4       | 80    |
| Sec. 3, 1/2 of NW 1/4       | 80    |
| Sec. 3, 1/2 of NE 1/4       | 80    |
| Sec. 3, 1/2 of SW 1/4       | 80    |
| Sec. 3, 1/2 of SE 1/4       | 80    |
| Sec. 4, 1/2 of NW 1/4       | 80    |
| Sec. 4, 1/2 of NE 1/4       | 80    |
| Sec. 4, 1/2 of SW 1/4       | 80    |
| Sec. 4, 1/2 of SE 1/4       | 80    |
| Sec. 5, 1/2 of NW 1/4       | 80    |
| Sec. 5, 1/2 of NE 1/4       | 80    |
| Sec. 5, 1/2 of SW 1/4       | 80    |
| Sec. 5, 1/2 of SE 1/4       | 80    |
| Sec. 6, 1/2 of NW 1/4       | 80    |
| Sec. 6, 1/2 of NE 1/4       | 80    |
| Sec. 6, 1/2 of SW 1/4       | 80    |
| Sec. 6, 1/2 of SE 1/4       | 80    |
| Sec. 7, all                 | 640   |
| Township 19 S., range 16 E. | 80    |
| Sec. 1, 1/2 of NW 1/4       | 80    |
| Sec. 1, 1/2 of NE 1/4       | 80    |
| Sec. 1, 1/2 of SW 1/4       | 80    |
| Sec. 1, 1/2 of SE 1/4       | 80    |
| Sec. 2, 1/2 of NW 1/4       | 80    |
| Sec. 2, 1/2 of NE 1/4       | 80    |
| Sec. 2, 1/2 of SW 1/4       | 80    |
| Sec. 2, 1/2 of SE 1/4       | 80    |
| Sec. 3, 1/2 of NW 1/4       | 80    |
| Sec. 3, 1/2 of NE 1/4       | 80    |
| Sec. 3, 1/2 of SW 1/4       | 80    |
| Sec. 3, 1/2 of SE 1/4       | 80    |
| Sec. 4, 1/2 of NW 1/4       | 80    |
| Sec. 4, 1/2 of NE 1/4       | 80    |
| Sec. 4, 1/2 of SW 1/4       | 80    |
| Sec. 4, 1/2 of SE 1/4       | 80    |
| Sec. 5, 1/2 of NW 1/4       | 80    |
| Sec. 5, 1/2 of NE 1/4       | 80    |
| Sec. 5, 1/2 of SW 1/4       | 80    |
| Sec. 5, 1/2 of SE 1/4       | 80    |
| Sec. 6, 1/2 of NW 1/4       | 80    |
| Sec. 6, 1/2 of NE 1/4       | 80    |
| Sec. 6, 1/2 of SW 1/4       | 80    |
| Sec. 6, 1/2 of SE 1/4       | 80    |
| Sec. 7, all                 | 640   |
| Township 20 S., range 16 E. | 80    |
| Sec. 1, 1/2 of NW 1/4       | 80    |
| Sec. 1, 1/2 of NE 1/4       | 80    |
| Sec. 1, 1/2 of SW 1/4       | 80    |
| Sec. 1, 1/2 of SE 1/4       | 80    |
| Sec. 2, 1/2 of NW 1/4       | 80    |
| Sec. 2, 1/2 of NE 1/4       | 80    |
| Sec. 2, 1/2 of SW 1/4       | 80    |
| Sec. 2, 1/2 of SE 1/4       | 80    |
| Sec. 3, 1/2 of NW 1/4       | 80    |
| Sec. 3, 1/2 of NE 1/4       | 80    |
| Sec. 3, 1/2 of SW 1/4       | 80    |
| Sec. 3, 1/2 of SE 1/4       | 80    |
| Sec. 4, 1/2 of NW 1/4       | 80    |
| Sec. 4, 1/2 of NE 1/4       | 80    |
| Sec. 4, 1/2 of SW 1/4       | 80    |
| Sec. 4, 1/2 of SE 1/4       | 80    |
| Sec. 5, 1/2 of NW 1/4       | 80    |
| Sec. 5, 1/2 of NE 1/4       | 80    |
| Sec. 5, 1/2 of SW 1/4       | 80    |
| Sec. 5, 1/2 of SE 1/4       | 80    |
| Sec. 6, 1/2 of NW 1/4       | 80    |
| Sec. 6, 1/2 of NE 1/4       | 80    |
| Sec. 6, 1/2 of SW 1/4       | 80    |
| Sec. 6, 1/2 of SE 1/4       | 80    |
| Sec. 7, all                 | 640   |
| Township 21 S., range 16 E. | 80    |
| Sec. 1, 1/2 of NW 1/4       | 80    |
| Sec. 1, 1/2 of NE 1/4       | 80    |
| Sec. 1, 1/2 of SW 1/4       | 80    |
| Sec. 1, 1/2 of SE 1/4       | 80    |
| Sec. 2, 1/2 of NW 1/4       | 80    |
| Sec. 2, 1/2 of NE 1/4       | 80    |
| Sec. 2, 1/2 of SW 1/4       | 80    |
| Sec. 2, 1/2 of SE 1/4       | 80    |
| Sec. 3, 1/2 of NW 1/4       | 80    |
| Sec. 3, 1/2 of NE 1/4       | 80    |
| Sec. 3, 1/2 of SW 1/4       | 80    |
| Sec. 3, 1/2 of SE 1/4       | 80    |
| Sec. 4, 1/2 of NW 1/4       | 80    |
| Sec. 4, 1/2 of NE 1/4       | 80    |
| Sec. 4, 1/2 of SW 1/4       | 80    |
| Sec. 4, 1/2 of SE 1/4       | 80    |
| Sec. 5, 1/2 of NW 1/4       | 80    |
| Sec. 5, 1/2 of NE 1/4       | 80    |
| Sec. 5, 1/2 of SW 1/4       | 80    |
| Sec. 5, 1/2 of SE 1/4       | 80    |
| Sec. 6, 1/2 of NW 1/4       | 80    |
| Sec. 6, 1/2 of NE 1/4       | 80    |
| Sec. 6, 1/2 of SW 1/4       | 80    |
| Sec. 6, 1/2 of SE 1/4       | 80    |
| Sec. 7, all                 | 640   |
| Township 22 S., range 16 E. | 80    |
| Sec. 1, 1/2 of NW 1/4       | 80    |
| Sec. 1, 1/2 of NE 1/4       | 80    |
| Sec. 1, 1/2 of SW 1/4       | 80    |
| Sec. 1, 1/2 of SE 1/4       | 80    |
| Sec. 2, 1/2 of NW 1/4       | 80    |
| Sec. 2, 1/2 of NE 1/4       | 80    |
| Sec. 2, 1/2 of SW 1/4       | 80    |
| Sec. 2, 1/2 of SE 1/4       | 80    |
| Sec. 3, 1/2 of NW 1/4       | 80    |
| Sec. 3, 1/2 of NE 1/4       | 80    |
| Sec. 3, 1/2 of SW 1/4       | 80    |
| Sec. 3, 1/2 of SE 1/4       | 80    |
| Sec. 4, 1/2 of NW 1/4       | 80    |
| Sec. 4, 1/2 of NE 1/4       | 80    |
| Sec. 4, 1/2 of SW 1/4       | 80    |
| Sec. 4, 1/2 of SE 1/4       | 80    |
| Sec. 5, 1/2 of NW 1/4       | 80    |
| Sec. 5, 1/2 of NE 1/4       | 80    |
| Sec. 5, 1/2 of SW 1/4       | 80    |
| Sec. 5, 1/2 of SE 1/4       | 80    |
| Sec. 6, 1/2 of NW 1/4       | 80    |
| Sec. 6, 1/2 of NE 1/4       | 80    |
| Sec. 6, 1/2 of SW 1/4       | 80    |
| Sec. 6, 1/2 of SE 1/4       | 80    |
| Sec. 7, all                 | 640   |
| Township 23 S., range 16 E. | 80    |
| Sec. 1, 1/2 of NW 1/4       | 80    |
| Sec. 1, 1/2 of NE 1/4       | 80    |
| Sec. 1, 1/2 of SW 1/4       | 80    |
| Sec. 1, 1/2 of SE 1/4       | 80    |
| Sec. 2, 1/2 of NW 1/4       | 80    |
| Sec. 2, 1/2 of NE 1/4       | 80    |
| Sec. 2, 1/2 of SW 1/4       | 80    |
| Sec. 2, 1/2 of SE 1/4       | 80    |
| Sec. 3, 1/2 of NW 1/4       | 80    |
| Sec. 3, 1/2 of NE 1/4       | 80    |
| Sec. 3, 1/2 of SW 1/4       | 80    |
| Sec. 3, 1/2 of SE 1/4       | 80    |
| Sec. 4, 1/2 of NW 1/4       | 80    |
| Sec. 4, 1/2 of NE 1/4       | 80    |
| Sec. 4, 1/2 of SW 1/4       | 80    |
| Sec. 4, 1/2 of SE 1/4       | 80    |
| Sec. 5, 1/2 of NW 1/4       | 80    |
| Sec. 5, 1/2 of NE 1/4       | 80    |
| Sec. 5, 1/2 of SW 1/4       | 80    |
| Sec. 5, 1/2 of SE 1/4       | 80    |
| Sec. 6, 1/2 of NW 1/4       | 80    |
| Sec. 6, 1/2 of NE 1/4       | 80    |
| Sec. 6, 1/2 of SW 1/4       | 80    |
| Sec. 6, 1/2 of SE 1/4       | 80    |
| Sec. 7, all                 | 640   |
| Township 24 S., range 16 E. | 80    |
| Sec. 1, 1/2 of NW 1/4       | 80    |
| Sec. 1, 1/2 of NE 1/4       | 80    |
| Sec. 1, 1/2 of SW 1/4       | 80    |
| Sec. 1, 1/2 of SE 1/4       | 80    |
| Sec. 2, 1/2 of NW 1/4       | 80    |
| Sec. 2, 1/2 of NE 1/4       | 80    |
| Sec. 2, 1/2 of SW 1/4       | 80    |
| Sec. 2, 1/2 of SE 1/4       | 80    |
| Sec. 3, 1/2 of NW 1/4       | 80    |
| Sec. 3, 1/2 of NE 1/4       | 80    |
| Sec. 3, 1/2 of SW 1/4       | 80    |
| Sec. 3, 1/2 of SE 1/4       | 80    |
| Sec. 4, 1/2 of NW 1/4       | 80    |
| Sec. 4, 1/2 of NE 1/4       | 80    |
| Sec. 4, 1/2 of SW 1/4       | 80    |
| Sec. 4, 1/2 of SE 1/4       | 80    |
| Sec. 5, 1/2 of NW 1/4       | 80    |
| Sec. 5, 1/2 of NE 1/4       | 80    |
| Sec. 5, 1/2 of SW 1/4       | 80    |
| Sec. 5, 1/2 of SE 1/4       | 80    |
| Sec. 6, 1/2 of NW 1/4       | 80    |
| Sec. 6, 1/2 of NE 1/4       | 80    |
| Sec. 6, 1/2 of SW 1/4       | 80    |
| Sec. 6, 1/2 of SE 1/4       | 80    |
| Sec. 7, all                 | 640   |
| Township 25 S., range 16 E. | 80    |
| Sec. 1, 1/2 of NW 1/4       | 80    |
| Sec. 1, 1/2 of NE 1/4       | 80    |
| Sec. 1, 1/2 of SW 1/4       | 80    |
| Sec. 1, 1/2 of SE 1/4       | 80    |
| Sec. 2, 1/2 of NW 1/4       | 80    |
| Sec. 2, 1/2 of NE 1/4       | 80    |
| Sec. 2, 1/2 of SW 1/4       | 80    |
| Sec. 2, 1/2 of SE 1/4       | 80    |
| Sec. 3, 1/2 of NW 1/4       | 80    |
| Sec. 3, 1/2 of NE 1/4       | 80    |
| Sec. 3, 1/2 of SW 1/4       | 80    |
| Sec. 3, 1/2 of SE 1/4       | 80    |
| Sec. 4, 1/2 of NW 1/4       | 80    |
| Sec. 4, 1/2 of NE 1/4       | 80    |
| Sec. 4, 1/2 of SW 1/4       | 80    |
| Sec. 4, 1/2 of SE 1/4       | 80    |
| Sec. 5, 1/2 of NW 1/4       | 80    |
| Sec. 5, 1/2 of NE 1/4       | 80    |
| Sec. 5, 1/2 of SW 1/4       | 80    |
| Sec. 5, 1/2 of SE 1/4       | 80    |
| Sec. 6, 1/2 of NW 1/4       | 80    |
| Sec. 6, 1/2 of NE 1/4       | 80    |
| Sec. 6, 1/2 of SW 1/4       | 80    |
| Sec. 6, 1/2 of SE 1/4       | 80    |
| Sec. 7, all                 | 640   |
| Township 26 S., range 16 E. | 80    |
| Sec. 1, 1/2 of NW 1/4       | 80    |
| Sec. 1, 1/2 of NE 1/4       | 80    |
| Sec. 1, 1/2 of SW 1/4       | 80    |
| Sec. 1, 1/2 of SE 1/4       | 80    |
| Sec. 2, 1/2 of NW 1/4       | 80    |
| Sec. 2, 1/2 of NE 1/4       | 80    |
| Sec. 2, 1/2 of SW 1/4       | 80    |
| Sec. 2, 1/2 of SE 1/4       | 80    |
| Sec. 3, 1/2 of NW 1/4       | 80    |
| Sec. 3, 1/2 of NE 1/4       | 80    |
| Sec. 3, 1/2 of SW 1/4       | 80    |
| Sec. 3, 1/2 of SE 1/4       | 80    |
| Sec. 4, 1/2 of NW 1/4       | 80    |
| Sec. 4, 1/2 of NE 1/4       | 80    |
| Sec. 4, 1/2 of SW 1/4       | 80    |
| Sec. 4, 1/2 of SE 1/4       | 80    |
| Sec. 5, 1/2 of NW 1/4       | 80    |
| Sec. 5, 1/2 of NE 1/4       | 80    |
| Sec. 5, 1/2 of SW 1/4       | 80    |
| Sec. 5, 1/2 of SE 1/4       | 80    |
| Sec. 6, 1/2 of NW 1/4       | 80    |
| Sec. 6, 1/2 of NE 1/4       | 80    |
| Sec. 6, 1/2 of SW 1/4       | 80    |
| Sec. 6, 1/2 of SE 1/4       | 80    |
| Sec. 7, all                 | 640   |
| Township 27 S., range 16 E. | 80    |
| Sec. 1, 1/2 of NW 1/4       | 80    |
| Sec. 1, 1/2 of NE 1/4       | 80    |
| Sec. 1, 1/2 of SW 1/4       | 80    |
| Sec. 1, 1/2 of SE 1/4       | 80    |
| Sec. 2, 1/2 of NW 1/4       | 80    |
| Sec. 2, 1/2 of NE 1/4       | 80    |
| Sec. 2, 1/2 of SW 1/4       | 80    |
| Sec. 2, 1/2 of SE 1/4       | 80    |
| Sec. 3, 1/2 of NW 1/4       | 80    |
| Sec. 3, 1/2 of NE 1/4       | 80    |
| Sec. 3, 1/2 of SW 1/4       | 80    |
| Sec. 3, 1/2 of SE 1/4       | 80    |
| Sec. 4, 1/2 of NW 1/4       | 80    |
| Sec. 4, 1/2 of NE 1/4       | 80    |
| Sec. 4, 1/2 of SW 1/4       | 80    |
| Sec. 4, 1/2 of SE 1/4       | 80    |
| Sec. 5, 1/2 of NW 1/4       | 80    |
| Sec. 5, 1/2 of NE 1/4       | 80    |
| Sec. 5, 1/2 of SW 1/4       | 80    |
| Sec. 5, 1/2 of SE 1/4       | 80    |
| Sec. 6, 1/2 of NW 1/4       | 80    |
| Sec. 6, 1/2 of NE 1/4       | 80    |
| Sec. 6, 1/2 of SW 1/4       | 80    |
| Sec. 6, 1/2 of SE 1/4       | 80    |
| Sec. 7, all                 | 640   |
| Township 28 S., range 16 E. | 80    |
| Sec. 1, 1/2 of NW 1/4       | 80    |

## BREVITIES

Twin Falls defeated Buhl at baseball on Tuesday by a score of 13 to 10. The game was well worth the price of admission.

The Nilboy-Chambers company is furnishing the lumber for the new school building and already has a lot of it on the ground, also a carload of cement to be used for the foundation work.

Lorin P. Christman and Miss Elva Larson were married last Saturday evening at the home of Rev. H. W. Parker. The couple came from Ariz. and will make their home there.

Twenty-five carloads of emigrant effects and 63 local shipments in less than carload lots were received at the Twin Falls depot during the month of April. This shows how the settlers are coming in.

Mrs. J. M. Maxwell is visiting with Mrs. Pauline E. Weston. She left on Sunday morning and reached her destination without mishap, baby Mary standing the journey splendidly. Mrs. Maxwell will be absent two or three weeks.

P. H. Smith has purchased the southeast quarter of the southeast quarter of section 10, township 20, range 17, from A. B. Hutchinson for \$100 per acre. Mr. Smith said he could have bought the land much cheaper when he came here but it is a bargain at the price he paid.

The Oregon Short Line has granted a rate of 89 cents on apples from Twin Falls to Chicago at all points west, a reduction of 22 cents from the previous rate. This places Twin Falls on the same basis as Boise with respect to apple shipments, and as Boise has no trouble in reaching the eastern markets, Twin Falls should be able to do the same.

Chan Woodruff, recently purchasing agent for the construction department of the Milwaukee road, is here from Butte. He is an old schoolmate of Bob McCollum, whom he had not seen for 25 years. Bob has him pretty well. Carey cut broke already and is unable to stay with us. He is a thorough westerner and there we welcome him.

The Filer Commercial club has published a map of the Twin Falls tract and Soliman tract. Showing Filer in the center. The map is correct and is a very neat and clever piece of work. If the club keeps up that sort of work its effects will soon be apparent as Filer has every chance to be a splendid town and is now in fact. When it gets light and power, which will be in a very short time, it ought to hum.

Don C. Bryan, Harry F. Allen and Glenn P. McKinley have formed a partnership under the firm name of the Don Bryan Realty Co. They thought of calling the firm McKinley & Bryan but it recalled the stormy days of 1890 and 10 to 1, so they put in Don as the leader and let it go at that. The new firm line open an office in the Don Bryan building on Main street in front of the new Dime theatre. It is reported that they have a good hold in the real estate market, which they can rubber at the moving picture show. The members of the firm need no introduction. Don Bryan is one of the most prominent and most successful farmers of the tract and an authority on irrigation. He knows land when he sees it and he can talk irrigation with the best of them. The firm is already doing a big business which is increasing daily.

The Modern Woodmen will have a smoker in K. P. hall on Wednesday evening May 13th to which all Woodmen are invited.

The regular monthly meeting of the W. L. T. U. will be held at the home of Mrs. F. J. Friday, May 5th at 8:30. All members of the club are requested to attend this meeting.

V. R. Cockburn, a brother of Fred Cockburn, has arrived from Pittsburgh and will shortly be located at Milner with the North Side company. If he takes as well as Fred, and he hopes so, though he would, he will be a winner.

The Blackville Belles came through their entertainment with flying colors. The music was good, the jokes were crisp and timely and Joe Planteda's legdemania work was clever. Miller Evans and Arnold Frankel cheered up the ends and the entire performance was a credit to the Episcopal ladies and netted them a neat profit.

Beginning next Sunday morning the Presbyterians will hold their services in the K. P. hall, both morning and evening. Their new church building is completed. The change in meeting place is necessary on account of the leasing of the present hall by the Commercial Club for reading rooms.

J. K. Hart has received a Victor automobile which attracts considerable attention because of its construction. It has the same clearance as a low buggy and works well on rocky roads and in sagbrush. The machine is equipped with a 16-horsepower motor and it has so far met all requirements.

Mrs. R. M. McCollum and Miss Elva McCollum will leave tomorrow for San Francisco to witness the big naval demonstration. They are armed with letters of introduction to all the commanders from Admiral Evans down and if they don't see the fleet it will be because their eyesight is defective. Bob is too busy with the Salmon project to pay much attention to such trifles as battleships.

Week before last, Mrs. A. L. Besoro of Twin Falls put in the News a six-line advertisement of turkey and duck eggs for sale. Three days after the paper came out she received orders for 40 worth of eggs from Oakley and since then she has had so many orders that she was obliged to take out the advertisement. Moral, if you want to do business, advertise in the News.

C. G. Fargo arrived this week from Hot Springs, S. D., to make his home on his farm, which is within the city limits of Twin Falls. Mr. Fargo brought his family with him and he is a welcome addition to the city. His daughter, Miss Nellie Fargo, the well known pianist, had been telling her father about the growth of the city but he declared that "The half has not been told". Mr. Fargo reports that our old friend Major Tuckett is happy and prosperous and has not forgotten Twin Falls.

The Josephine Deffry company concluded an engagement of five nights at the rink Saturday last. Miss Deffry and her talented support enhanced the good impression made in Twin Falls on the occasion of her first visit to this city. The play presented during the second engagement bore evidence of thorough preparation, a feature of the Deffry plays which the people of Twin Falls appreciate. They were clean and they moved without friction. Manager Buha has made several changes for the better in the rink which makes it more comfortable for theatrical companies.

Rev. G. W. Archer of Boise has been appointed by the presiding elder of the Methodist church, pastor of the churches in Kimberly and Hapena for the remainder of the conference year. Rev. Archer will preach at Kimberly Sunday morning at 11, at Hansen at 7 and at Murtough at 8 p. m.

## SUNDAY SERVICES.

Presbyterian church, Rev. John Gourley, pastor. Services held every Sunday in the Smith building opposite Hotel Portland. Sunday school at 10 A. M. Preaching service at 11. Evening service at 7:30. Junior Epworth league at 4, senior at 7:00.

Methodist church, Rev. Henry W. Parker, pastor. Sunday school at 10 A. M. Preaching service at 11. Evening service at 7:30. Junior Epworth league at 4, senior at 7:00.

Baptist church, Rev. John H. Schumaker, pastor. Sunday school at 10 A. M. Preaching service at 11 A. M. Evening service at 7:30. Young People's meetings at 7:00.

The Brethren or Dunkards' church, Rev. A. K. Ketter, pastor. Sunday school at 10 A. M. Preaching at 11 A. M. Bible study at 10:30 P. M. Evening service at 7:30.

Christian church, Sunday school at 10 A. M. Preaching at 11 A. M. and 8:00 P. M. Y. P. C. E. at 7:00.

Notice for Publication—Final Proof, I. William R. Bell, of Filer, Idaho, assignee of James B. Miller, who made entry No. 942, under the provisions of an act of the legislature of the state of Idaho, commonly known as the "Caray act", approved March 2nd, 1899, which embraces E½ of NW¼ of section 14, township 10 S., range 15 E. B. M., do hereby give notice of my intention to make final proof to establish my claim to the land above described, and that I expect to prove that I have resided on, reclaimed and cultivated said land as required by law, before E. B. Williams, at Twin Falls, Idaho, on the 29th day of May, 1908, by two of the following witnesses: James T. Bell, Henrietta Bell and J. D. Fisher, all of Filer, Idaho.

WILLIAM R. BELL, Entryman.

WANTED—Good woman to iron. Falls Steam Laundry.

F. V. R. cabbage plants for sale. Fairview ranch, one-half mile NE of city.

Man and wife wanted to take charge of farm at once. Inquire St. John Skinner, at Abstract office over First National bank.

FOR SALE—600 lbs. of A. No. 1 home grown red clover seed. A. G. Fisher at Bedford's drug store.

Mill man with 20 years experience in filing saws, circulars and crosscuts, wants position. Also experienced lumberman. Address C. E. Gannon, Koshkonong, Mo.

## GRAND REVIEW OF WAR FLEET

San Francisco. Excursions via the Oregon Short Line May 1st and 2nd. Very low round trip rates with diverse routes and 30 days limit. Forty-eight war vessels of all classes in one of the greatest naval demonstrations of history. See O. S. L. agents for further particulars.

Private Sale. Three bedrooms, parlor set, dining room set, kitchen furniture and cooking utensils at a bargain. P. O. Box 216, Twin Falls, Idaho, or E. H. Adams, two miles north, one-half mile east on power line.

Notice to Contractors. The board of trustees of the First Presbyterian church of Twin Falls, Idaho will receive bids for the erection of the church building above the foundation, until Saturday evening, May 16th. Plans and specifications can be seen at Hill & Taylor's office. C. M. HILL, Chairman.

Furnished rooms to rent. Both electric lights and all modern conveniences, centrally located. Inquire J. C. Moore, Power office.

Art squares, rugs of all kinds and sizes. See our new line just received. Laverings—Furniture store.

Grubber for Sale. Five-foot Steeple grubber in first-class condition. Inquire of Frank Bower, Rock Creek, Idaho.

Notice for publication. Department of the Interior, Land office at Halley, Idaho.

Notice is hereby given that Frank A. French of Hansen, Twin Falls Co., Idaho, has filed notice of his intention to make final commutation proof in support of his claim, viz: Homestead entry No. 514 made Feb. 23, 1899, for the NW¼ of NE¼ and NW¼ of SE¼, and NE¼ of SW¼ of section 21, township 10 S., range 15 E. B. M., and that said proof will be made before John P. Hansen, U. S. Commissioner, at Rock Creek, Twin Falls county, Idaho, on June 23rd, 1908.

He names the following witnesses to prove his continuous residence upon, and cultivation of the land, viz: James L. Barnes, Bruce E. Rose, Lloyd Towne and Robert B. Roberts, all of Hansen, Idaho.

A. I. McMahon, Register.

May 1-15-22-29.

## SECRET SOCIETIES

TWIN FALLS LODGE, NO. 45 A. F. and A. M. Regular meetings held the first Monday of each month. Sojourning brethren cordially welcome. E. A. BAKER, Secy. CHAS. H. MULL, W. M.

M. W. A. CAMP NO. 10890. Meets 2nd and 4th Wednesdays of each month. D. W. BRUNK, Clerk. Idaho Dep't Store Bldg. Phone 123

TWIN FALLS CHAPTER, O. E. S. Meets second and fourth Mondays in every month in K. of P. hall. Matron, MRS. J. B. ELLIS.

TWIN FALLS LODGE NO. 23, L. O. F. instituted 1905. Meets every Thursday evening at 7:30. Visiting brothers always welcome. C. B. CARTWRIGHT, H. A. CRYDER, Noble Grand.

FOR SALE—40 bushels of Dick low wheat. Inquire St. John Skinner.

Girl wanted for general housework. Apply Mrs. Holohan, 9th St. and 7th Ave., Twin Falls.

Good set double harness for sale. Inquire W. J. Young at S. T. Hamilton's office.

Single comb Rhode Island Red eggs for hatching. W. L. Snyder, one mile east on power line.

For Photos True to life Go to

BISBEE'S Electric Studio

Twin Falls, Idaho.

Rock Spring Peacock Coal

We also carry charcoal for domestic purposes.

FILER COAL COMPANY. PHONE 4.



## A Good Bank Balance

Is a sure sign of independence. We would like to have you open an account with us, and now is a good time to begin. We pay interest on time deposits.

SAFE DEPOSIT BOXES FOR RENT.

## The Commercial &amp; Savings Bank

L. A. WARNER, Cashier.

## ASK YOUR GROCER FOR

Harder Bros.

Pasteurized Creamery Butter

No Better Butter Made. No Butter Better Made.

Twin Falls Creamery Co., Ltd.

Shoshone Spray Ice Cream

HARDER BROS. BEST.

At All Soda Fountains in Twin Falls. Private orders by mail or telephone promptly filled.

TELEPHONE 111. No. 85

## \$2,000 GIVEN AWAY

TO THE PERSON DRAWING THE 50TH NUMBER OUT OF THE BOX.

If you want the \$2,000 or to buy as good a stallion or Jack as ever came over the Rocky Divide read what I have to say.

I will make the season of 1908 in Twin Falls at the Breeder's Corner across 13th avenue, opposite Gallaher's Livery Barn, with my Famous Registered Morgan Stallions and the Great Percheron Horse, King Brilliant, the premium winner, also Honest Bob, the Kentucky bred mammoth Jack. The season will last from March 1st to Sept. 1st, 1908.

Terms of Service: \$10.00 cash for season, and for every mare bred, the owner will be entitled to a drawing number and the holder of the lucky number will get the choice of either of the following:

Frank E., the Registered Morgan Stallion, winner first premium Sweepstakes & Silver medal at Nebraska and Iowa State Fairs, over all in his class, either in German, French or American coach and roadster.

King Brilliant, the magnificent Percheron, or Honest Bob, the Kentucky Mammoth Jack.

We will give reasonable terms to parties wishing to insure mare in foal or living colt.

We will have the drawing on the first day of September, 1908 and on the same day will sell at auction to the highest bidder the stallions or Jack now owned by me after the selection of the lucky number. I will offer on the same day \$15 each for the best colt from each horse or Jack that I now own. Colts to be the get of last year's breeding. One or two year's terms will be given on the Stallions sold at auction at 10 per cent with good security.

Don't forget the 1st day of September, 1908, the date for the drawing of the \$2,000 Stallion, the premium awarded in the best colts and the auction sale of the Registered Morgan Stallion, King Brilliant the Percheron, and the Kentucky bred Mammoth Jack. All are as good as the best. If you miss this sale you will miss bargains.

DOC. HEDRICK, Attendant.

C. A. McMASTER, Owner, Twin Falls.

## STOP! LISTEN! READ!

## The Farmers Real Estate Co.

Office in Postoffice Building

Where the best bargains on the Twin Falls tract in ranch land and city property will be at our disposal. We will also buy and sell horses and try to keep on hand the BEST GRADE OF DAIRY COWS that we can get.

We welcome the farmer, the laborer, the business man and the investor to our office. Make known your wants whether you want to buy or sell and we are at your service, to make the best possible deals for you. As we are from Missouri, we are the boys that can show you the BEST BARGAINS to be had on the Twin Falls tract.

OUTSIDE CORRESPONDENCE SOLICITED AND PROMPT ATTENTION GIVEN TO ALL INQUIRIES.

REFERENCES—ANY BANK IN TWIN FALLS.

Capital Stock \$50,000

Yours for business,

WHITE & McMASTER.



Our Clothing Possesses the Distinction of Style and

Quality without the Handicap of High Price

At a time like the present, when some people feel it necessary to safeguard their interests in more careful investment and expenditures, it is even more important than usual to make your clothing money count for satisfaction and service. Our organization is equipped for service. Our stock represents the lines of America that are foremost in Quality at Modest Prices. All the newest style concepts are here, in suits—snappy, modish models without the ridiculous earmarks of foppishness; as well as the quiet, genteel effects favored by the moderate dresser. Among our lines which you all know by reputation are HART, SCHAFFNER & MARX and SINCERITY CLOTHES, famous for workmanship quality, as well as style.

ELDRIDGE CLOTHING & TAILORING CO.



## CIVILIZATION IN SHOSHONE BASIN

### TWO INNOCENT PORKERS CAUSE A STAMPEDE

Range Cattle Fail to Recognize the Hogs, and Refuse to Stay in the Corral With the Little Punters, Giving the Cowboys Trouble.

Civilization is encroaching upon Shoshone basin. In the southern portion of Twin Falls county. What was recently one of the greatest wild game sections of the west is now dotted with fields and the deer and sage hens are fleeing southward away from women and wagon tracks. The cabins of the homesteaders are increasing in number and the range cattle no longer stampede at the sight of a wagon.

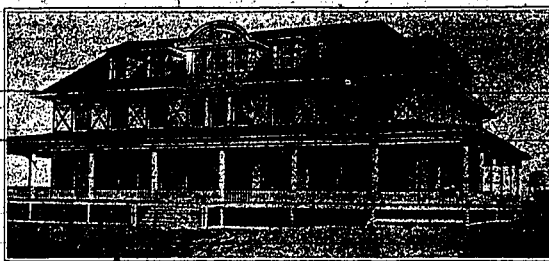
Twenty years ago the basin was a favorite range for deer. "Buck" Rice, who has ranged horses and cattle for 30 years in what is now southern Twin Falls county, maintained a camp where the forest rangers' cabin is now located. From the door of his cabin he could count deer by the hundred and it was no trick for him to go out after sundown and bring in a buck before dark.

The Sparks-Harrell Cattle Co. has maintained pastures and corrals along Shoshone creek and its tributaries from the basin to the Salmon river for years, using this as their summer range. Thousands of fat, sleek Herefords and Shorthorns grazed in the hills from early spring until "round-up" time in the fall when they were taken to Rock Creek and San Jacinto or the Snake river canyon for the winter.

With the development of the Twin Falls and Salmon river tracts came the homesteaders who picked out the most likely spots and proceeded to make themselves comfortable. They are "dry farmers" and from present indications they will be mighty dry this year for the basin has not with in the recollection of the oldest pioneer been so devoid of moisture at this time of year as it is at present. The summer showers in the hills are frequent but their effect is short lived. Notwithstanding the unfavorable conditions, the efforts of those who are making homes in the southern portion of the county are worthy of serious consideration. They must be given credit for taking a chance. If they win they will be classed as heroic pioneers; if they fail the wisecracks will be there with the "I told you so". At all events they have the nerve to try.

The advent of the homesteader has wrought a mighty change in the basin. The construction of the Twin Falls canal system on the south side of the Snake river reduced the area of the cattle range a full quarter of a million acres, and the Salmon project will cut off 150,000 acres more. But it is the homesteader who is really eating into the heart of the range. For the most part, the water is controlled by the cattlemen who can fence the springs if they so desire. Even in that event they can scarcely hold the range for the cattle will be so disturbed during the summer months that they will not fatten as they would if they were not molested. They will, of course, become accustomed to road traffic and will cease to take flight at the sight of a team of horses hitched to a wagon but they will weigh much less in the fall than they would if left to themselves.

Last autumn, when the "round-up" was in progress the rodeo outfit brought in a large bunch of cattle to



Riverside Inn, built by the Twin Falls North Side Land & Water Co. at Milner, Idaho. It contains 40 sleeping rooms, including six suites with private baths. There are also three public baths. The building is heated by steam, lighted by electricity, is connected with the city waterworks system and equipped with a cold storage plant. A porch 12 ft. wide surrounds three sides of the Inn. The first floor parlor is 21 feet 10 inches by 14 feet 6 inches. Directly above it on the second floor is another parlor of the same dimensions. The dining room is 31 feet 8 inches by 25 feet 10 inches. The office, dining room and parlors are furnished in Mission style. The grounds are being terraced and flower beds are being set out. This picture of Riverside Inn was taken by Chief Engineer Paul Bickel some time before the building was completed. The Inn was opened to the public this morning. It is one of the prettiest and best furnished hotels in the west. Commanding, as it does, the best view of the Milner dam and the falls formed by the dam, the Riverside Inn should be a popular resort for tourists. Salmon trout, weighing from three to five pounds, have been caught below the dam at Milner all winter. There is excellent boating on the lake above the dam and those who like a holiday on the water will find Milner a pleasant place to visit.

the corral at the foot of the timber on Shoshone creek. Branding and sorting had been in progress all day and the count of ears showed that every man had done his duty. With the advent of a good dinner served by "Neighbor" Jones in their nostrils, Colonel Frank Hubbs, Mel Crockett, Joe Stewart, Gay Trimmer, "Toots" Jones and other masters of the saddle and rope carefully gathered the cattle and moved them toward the corral. It was the last bunch of the day and the boys were thankful.

Just as the leaders of the herd approached the corral, they took alarm and began to head back. Joe Stewart, mounted on old "Chief", leaped to the front to see what was the matter. Before he could reach the scene of disturbance, hoofs and tails were flying in all directions and the boys were confronted with a stampede. Bellowing cows and bawling calves dashed madly back to the hills. Spurs rattled and ropes soared in the air as the startled cowboys strove to check the unexpected movement. No bunch of cattle that ever wore hair could get away from those riders. One by one the leaders were headed off and the startled bunch was gradually forced back to the gate of the corral.

Further than that the herd refused to budge and one of the boys dismounted and went forward to locate the trouble. The rest of the boys saw him chasing around, waving his hat and making frantic kicks at something on the ground. Finally he stopped and shouted to those who were holding the herd to come ahead. Slowly the cattle moved inside the corral. Scarcely had they passed the bars when the stock began to show signs of uneasiness again and the advance agent of the cow punchers began to get busy with his hat. Riding up close, the boys saw two diminutive hogs scurrying around the fence, squealing and grunting, to the intense annoyance of the cattle. The boys charged down on the porkers and chased them out of the pasture, but when they resumed branding they found that the hogs had eaten all the ear clippings and sundry other pickings that had accumulated during the day.

Nobody said a word. The last bunch was sorted and branded and the boys turned toward camp a full hour later

than they had expected.

"What in thunder delayed you fellows?", inquired "Neighbor" Jones. "We had to stop and round up some hogs," answered Frank Hubbs. "S'pose they belong to some of the ranchers?" continued Frank. "Guess they think they are going to raise crops on the flat but they'll soon find that they can't raise their voices in these hills." "What?" "That's all."

It was the first touch of civilization in the basin. This year the range cattle will have ample opportunity to become accustomed to the sight of hogs and they will not shy when a porker approaches. Their acquaintance with barbed wire will improve and they will not be so hard to "hold" as they were in the days of the deer and the antelope.

**Fruit and Shade Trees.**  
My trade has been large but I still have in surplus stock, 5000 pear trees, 5 to 8 feet of Bartlett's Cling Favorite, Rosemary and Flemish Beauty, 3000 apple trees in 3 to 8 foot whips in Jonathan, Northwest Greening, Wealthy Duchess and Yellow Transparent, Rome Beauty and Winesap, also Mammoth Black Twig. The above stock I will sell to good parties on one year's time with interest at 10 per cent from date of sale. We also have a large number of other kinds of stock at regular terms. 200 Carolina Poplar trees, 10 to 12 foot, elm trees, 8 to 10 foot. Write to the Blackfoot Nursery, Blackfoot, Idaho, for price list. O. F. SMITH, Prop.

It is wise for the Twin Falls farmers to buy their trees from the Twin Falls Nursery and avoid danger and delay in shipment and risk of trees not being acclimated. I grow my own trees and I am not a tree broker. JAMES A. WATERS, P. O. Box 694, Telephone 4A, Twin Falls.

**FOR RENT**—A ranch, one and a quarter miles from Buhl, 70 acres cleared, 30 acres plowed; two-room plastered house, and barn on easy terms. Apply to F. S. Marshall, Buhl, Idaho.

**FOR SALE**—Twelve head well broken young mares and geldings, weighing from 1200 to 1500 lbs. Sound and gentle. Prices right, money refunded if not as represented. J. F. Ellwail, at McFall's corral.

Ground feed, garden seeds, mixed grass seed for permanent pasture. Twin Falls Grain & Produce Co.

J. I. Case 15-horsepower engine and a 32 by 54 Case separator for sale. Both in first class condition. Address Box 432, Twin Falls, Idaho.

For out door photos of any kind see Blisbee.

**WANTED**—Contractors and men with teams to work on canal, 125 to 150 per cubic yard paid for handling dirt. \$2.00 per day for man and team. Address Engineering Dept., American Falls Canal & Power Co., Aberdeen, Idaho.

Dick Low Wheat.  
Milner Ferrine Lumber Co., Ltd., of Buhl, Idaho, still have a limited amount on hand.

Up-to-date photos at Blisbee's.

Forty acres of land four miles west of Twin Falls to rent on shares. J. E. Boswell, Twin Falls.

Berkshire and Poland China pigs, pure bred, for sale at Maple Hill farm, 2 1/2 miles southwest of Twin Falls. T. W. Potter.

You will make no mistake in listing your property with H. A. Stroud & Co.

Eggs for setting.  
Silver laced Wyandottes, \$1.50 for 15. Inquiry: Buhl's Dry Goods Co., Twin Falls.

Better see C. O. Meigs about that Hoosier Drill.

**FOR SALE OR RENT**—Two farms near Buhl, one 155 acres, the other 160. Will sell or make satisfactory arrangements for leasing. Address E. V. Assay, 4320 Drexel Boulevard Chicago, Ill.

**FOR SALE**—90 acres near Hagerman. First class water right, good buildings, orchard, etc. This is one of the best farms in the valley. For particulars address E. H. PURDY, Hagerman, Idaho.

**FOR SALE**—Pure bred, healthy, acclimated Poland China hogs. Can be seen where they were bred, one mile north of town. G. D. Alken, Twin Falls.

If you want to sell, see Carter, Clear & Wright. If you want to buy, see Carter, Clear & Wright.

## Twin Falls Transfer and Storage Co.

### FREIGHT, EXPRESS and HEAVY MOVING

GOOD SAMPLE ROOM IN CONNECTION. STORAGE TO RENT.  
Phone 13. Office in Postoffice Building

## TWIN FALLS CREAMERY

JACOBSEN & HOOPS, Props.

Anyone desiring milk cans or separators can secure them at as at wholesale prices.

Cream gathered from Kimberly and vicinity on Monday and Thursday; from Filer and vicinity on Tuesday and Friday; from Twin Falls and vicinity on Wednesday and Saturday.

Shoshone Ave. Near Depot.

R. A. CARTER J. N. CLAAR

## CARTER & CLAAR

Irrigated Fruit and Farm Lands. Hay and Stock Ranches.  
Acreage and City Property

Office on Main St., Fourth door west of postoffice Phone 105 TWIN FALLS, IDAHO.

### Hundreds of Land Buyers

## Will Visit

Twin Falls in the Next Thirty Days. If You Wish to Sell Your Farm or City Property, See

## S. T. Hamilton & Co.

## Twin Falls Investment Co.

LIMITED

Sole Agents for Water Rights for all Carey Act Lands under the

## GREAT TWIN FALLS CANAL SYSTEM

### 8,000 Acres of Carey Act Land

Still open for original entry under this Canal System

land, 50 cents per acre. Perpetual water rights, \$25 per acre, ten annual payments.

Vehicles from Buhl furnished free to those who desire to inspect land. Prospective entrymen accompanied by competent locators.



# BUHL



Buhl, located 17 miles west of the City of Twin Falls is the leading city on the west end of the tract and the distributing point for a large area, including the stock districts of Three Creek, Butte and Roseworth, likewise the farming and fruit-growing districts of Hagerman, Kanoka Flat and Salmon. The railway track is now completed between Twin Falls and Buhl, and train service has begun. Buhl has a splendid gravity system of waterworks, with a pressure of 100 pounds in the business section, it will soon be supplied with electric power and light. Business property values in Twin Falls have increased 500 per cent in less than two years. The same opportunities for investment are presented at Buhl. Now is the time to buy. Write for literature and further information. Address all communications to

## Secretary, Twin Falls Investment Co., Ltd.

TWIN FALLS, IDAHO



This view of Main street, Twin Falls, was taken by Horace C. Myers of Boise one month ago. Since that time work has commenced on several new buildings. Main street is one of the busiest thoroughfares in Idaho. It is constantly crowded with vehicles and the broad cement sidewalks are taxed to their full capacity to accommodate the pedestrians. The street is well lighted and well sprinkled and is in first-class condition, both as to grade and crossings. When it is considered that this street was not even a brush trail three years ago last Christmas and that Twin Falls has had no boom, the substantial and rapid growth of the city can be appreciated.

## DIRECT PRIMARY FOR REPUBLICANS

NOMINATIONS WILL BE MADE BY  
BALLOT.

Twin Falls County the First to De-  
clare in Favor of Testing This Sys-  
tem of Selecting Candidates for  
Public Office.

Candidates on the Republican ticket in Twin Falls county will be selected by the voters who will be given unrestricted opportunity to express their preference at the primaries. Any person who wishes to become a candidate for office can get on the ticket by securing the highest vote at the primaries. In order to do this it is necessary that the candidate should present to the voters a card bearing not less than 100 signatures. On receipt of this petition the committee will place the candidate's name upon a ticket which will be presented at the primaries. In addition to voting for the delegates to the convention, the voters will likewise cast their ballots for the candidates for county officers. The voters will receive the highest number of votes for the various offices will be nominated by the convention. The delegates to the Republican state convention, are instructed to work for the enactment of a direct primary law.

The Republican county convention, which met at Buhl on Saturday afternoon, resulted in several surprises. The trial was over three hours late and the delegates continuously fumbled their watches and prayed for haste in order that they might return to their homes for Sunday. County attorney Hutto put a quietus on their efforts by backing in with his direct primary resolution, and holding the door until he secured its adoption. He was opposed at the resolution but there was decided objection to the manner in which it was submitted. Mr. Hutto acted on the assumption that an effort was being made to shut out his resolution and instead of bringing it before the committee on platform and resolutions, as the rules provided, he took it before the convention and read it to the delegates at some length.

The convention was called to order by County Chairman C. D. Thomas, who read the call. A. D. McKinley of Maroon was temporary secretary. Chairman and Everett St. Sweney of Twin Falls, temporary secretary.

Carnahan of Filer, Mull of Twin Falls, Beers of Murtaugh, Hansen of Rock Creek and Sweney of Maroon were appointed a committee on credentials.

The committee on rules and order of business, consisted of Hutto of Twin Falls, Rutledge of Filer, Peters and Storer of Twin Falls and Harlan of Buhl.

Guthrie of Twin Falls, Dunn of Buhl, Moore of Maroon, McMillan of Twin Falls and William Spencer of Filer constituted the committee on platform and resolutions. The first delegation had been elected at a primary which closed at 5 o'clock in the afternoon. The second delegation was chosen at a primary which opened at 5 o'clock and closed two hours later. The committee decided that both primaries were irregular and in order to give Buhl representation each delegate was given one-half vote. This led to complications but the plan worked out all right and Buhl got what it wanted.

Maroon, with four votes in the convention, landed three delegates and one alternate as a result of the complication. Kimberly and Hansen precincts were not represented.

A motion was passed providing that all resolutions should be submitted to the committee on platform and resolutions in writing and without debate. Mr. Hutto had his direct primary resolution typewritten and failed to turn it in, pleading that he was engaged on another committee and did not have an opportunity to file his resolution. After the report of the committee had been received and adopted, he introduced his direct primary resolution as a supplement to the report and finally succeeded in securing its adoption.

The resolutions are as follows: Be it resolved by the Republicans of Twin Falls county in convention

assembled at Buhl, this 25th day of April, 1908:

I. That we heartily endorse and support the able administration of President Roosevelt and for his successor urge the nomination of one who will carry forward the policies already inaugurated.

II. We express our entire belief in the wisdom and integrity of Governor Frank R. Gooding and give our assurance that in his retirement from the position he has so ably filled, he carries with him the confidence and esteem of the Republicans of Twin Falls county.

III. We congratulate the state on the fact that our United States senators, by industry and ability, have become agents of great force in national legislation and pledge our support to the re-election of Senator W. B. Hoyburn.

IV. That we realize that the people of Twin Falls county are particularly interested in the membership of the state board of land commissioners. We therefore urge the election of James H. Brady as governor of the state will place at the head of that board one who is especially fitted through his business experience and knowledge of public affairs to guarantee a capable and business-like administration.

V. As a matter of sound government and of good politics, we are opposed to the sending of members of congress as delegates to national conventions, and our delegates to the Wallace convention are instructed to urge the selection of persons as delegates to the Chicago convention who are not now filling places in our national legislature.

VI. We instruct our delegates to use all their influence and best efforts to commit the Republican party of this state to a primary system of nominating by ballot all public officers.

The following delegates were elected:

To the delegate convention at Wallace, May 12: G. B. Fraser, Twin Falls; W. P. Guthrie, Twin Falls; A. D. McKinley, Maroon; George R. Dunn, Buhl; Alternates: J. W. Shields, Twin Falls; John F. Hansen, Rock Creek; P. W. Sweney, Buhl; T. E. Moore, Maroon.

To the state nominating convention, Boise, September 1: C. F. Gloversten, Twin Falls; T. E. Moore and W. R. Sweney, Maroon; W. D. Southworth, Buhl; Alternates: C. D. Thomas, M. J. Sweetley and C. D. Thomas of Twin Falls and Charles Arthur, Buhl.

## FEATURES OF THE SALMON PROJECT

NATURAL ADVANTAGES WHICH  
COUNT FOR MUCH.

Several Water Plains Known to Exist  
—Irrigation Water Will Have a  
Very High Duty—Free Range and  
Free Timber for Settlers.

To the city of Twin Falls and the settlers on the Twin Falls tract, the Salmon irrigation project is the most important enterprise, all features considered, that has been conceived since the inauguration of the Twin Falls project. The North Side enterprise is a magnificent undertaking and it has brought untold benefit to the south side of the Snake river. The project, which will ultimately reclaim a large tract of the North Side canal system, will bring with it the Idaho-Nevada Southern railway, a road which means more to southern Idaho, and particularly to the Twin Falls tract, than any other line that could possibly be built.

So far as location, topography and soil are concerned, the Salmon tract is merely an extension of the Twin Falls south side tract. The two are identical, with the exception that the Salmon is more level and contains scarcely any rock worth mentioning, in many places it has a well developed center drain and it gets more moisture in the form of rain and snow, the increase in precipitation, as shown by the weather bureau, being about five inches annually.

With the foothills as its base, the Salmon tract should be well sheltered from the west and southwest winds. Summer showers that never reach the break of the Snake river are of frequent occurrence on the Salmon tract, coming down within a few miles of the high line canal. Between Hahira butte, which is 10 miles straight south of Twin Falls, and the foothills, 10 miles south of the butte, is a flat on which the roads are muddy, and full of water holes when the highway on the Twin Falls tract are covered with dust. This condition may have been observed by anyone who has traveled over the road from Twin Falls to Goat springs, or to the Cassia national forest during the spring, early summer or autumn.

well water can be obtained. Deep creek is fed by a number of springs which head in the foothills. These springs flow until midsummer in average years.

On Soldier creek, which flows into Deep creek, W. G. Trammell has a ranch on which he raises alfalfa and grain for feed. "Buck" Rice, who has a farm on Cottonwood creek, a tributary of Deep creek, also grows alfalfa and alfalfa. His alfalfa today is much further advanced than any on the Twin Falls tract. His irrigation water usually gives out in July, but his well never fails. Mr. Rice is now engaged in drilling a deep well from which he hopes to get an artesian flow.

About five miles south and east of the Salmon dam is the Polat ranch, owned by the Sparks-Harrell company. This ranch is irrigated from springs which flow uniformly every year. It grows excellent crops and the strawberries, produced at the point have the reputation of being the finest in this part of the state.

A peculiar feature of the Salmon tract is its drainage, not a drop of which finds its way back into the Salmon river. A high "hog back" runs along the east bank of the stream from the Guyada line to the Snake river. Thus the water from the Salmon dam may be used over and over from one end of the tract to the other. Cedar draw, which heads at Goat springs, and Deep creek carry the Salmon drainage to the Snake river. The high line canal of the south side Twin Falls tract will get all the waste water from the Salmon, thus giving it a duty higher than any of record.

Another unique feature of the Salmon project is its absolute immunity from litigation or disagreement over water rights. Without prohibitory expense, water cannot be diverted from the Salmon river above the upper end of the reservoir, and if it were diverted, there is no land upon which it could be used.

The Cassia national forest, which joins the Salmon tract on the south and east, will furnish the settlers with free range and free timber. Without exceeding the annual limit of the free use privilege a settler may get enough poles to fence his farm and enough logs to build his home, stables or sheds. This timber is granted without the slightest restriction and there is no red tape or formality about the operation of getting it.

Altogether the Salmon is a very attractive project and the Twin Falls south side settlers would gobble up the whole tract themselves without injuring their appetites for land.

## HERE ARE A FEW OF OUR BAR- GAINS FOR THE NEXT 10 DAYS

### ACREAGE

Five acres on corner of Blue Lakes Boulevard and Fairview Avenue, all in alfalfa. \$1950.00. One-third cash, balance in two years at 6 per cent interest.  
Five acres, three-eighths of a mile from Twin Falls, all in alfalfa, \$800.00. One-third cash, balance in two years at six per cent interest.  
Four, five-acre tracts on the Murtaugh tract, fine land, no rocks, no draws, adjoining the city of Twin Falls, \$200.00 each. One-third cash and the balance in three years at six per cent interest.

### CITY PROPERTY

CHOICE TOWN LOTS, \$150.00 to \$300.00. One-third cash, balance in two years at 8 per cent interest.  
Five-roomed plastered house, 50-foot lot, \$1500.00—Terms.  
Two-roomed house, 50-foot lot, fruit trees three years old, house with stone foundation, cloth and papered. \$750.00 for deed.

### FARM PROPERTY

120 acres two and one-half miles from Twin Falls, all cleared, \$800.00 house, fruit trees, all fenced, a fine ranch \$85.00 per acre.  
160 acres, one and three-fourths miles from Twin Falls, all in crop, buyer gets one-third of the crop. A first class ranch, all A 1 land. \$85.00 per acre.  
40 acres, five miles from Twin Falls, five acres cleared, all first class land level and no rocks. First water out of low line canal, \$55.00 per acre.  
80 acres, three miles from Twin Falls, near ORCHALARA TRACT, 10 acres in orchard, good house and barn, 50 acres in alfalfa, \$85.00 per acre.

## WOODS & THOMAS

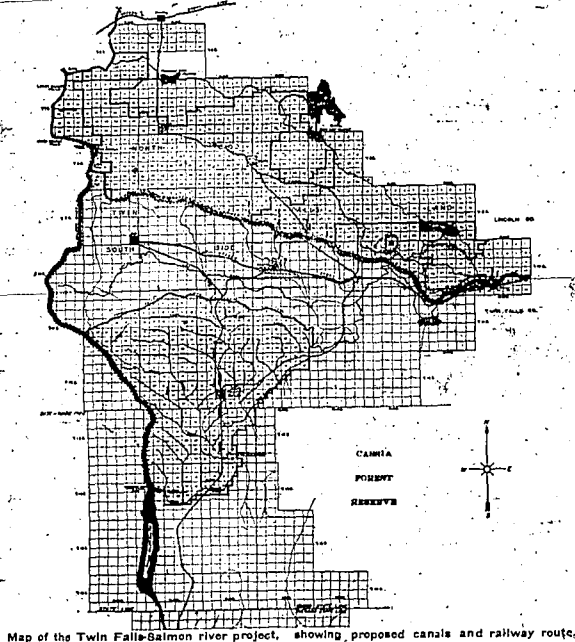
REAL ESTATE AND INSURANCE

## Missouri Land Co.

160 acres in Missouri to trade for land or city property.  
320 acres in eastern Kansas to trade for land or city property.

LIST YOUR LAND AND CITY PROPERTY WITH US.  
WE HAVE BUYERS FROM THE EAST.

Office, Room 5, over Commercial & Savings Bank.  
Twin Falls, Idaho.



Map of the Twin Falls-Salmon river project, showing proposed canals and railway routes.

Twenty-one miles south and two miles west of Twin Falls is a well of hot water which has been flowing constant for many years. It is owned by the Norton estate. Almost within a stone's throw of this well, the Jones brothers of Rock Creek have driven two wells which are flowing at the rate of more than 100 inches, or two second feet. The temperature of the water from these wells is 96 degrees. A mile or two further south is Goat springs, likewise hot. A short distance south and west of the well first mentioned are the Wild Horse springs, where the hot water oozes from a boggy formation. The presence of these hot springs indicates a water plain under that section of the Salmon tract which might easily be developed, the success of the Jones brothers furnishing sound proof of what can be done.

A few miles south and west of the hot springs are springs of cold water, many of which flow all the year. Most of them dry up in July or August, but there are a few which can be relied upon all the time. One of these springs is on the Deep creek ranch of the Sparks-Harrell company, about eight miles east of the Salmon dam and within the segregation. On this ranch the company irrigates a large meadow from which hay for winter feed is cut every year. The spring from which the water is taken forms a branch of Deep creek and the water sinks down to a gravel strata which underlies what is called the Deep creek flat, several thousand acres in extent. By digging down a few feet to the gravel on this flat

## SANITARY PLUMBING

WE carry nothing in stock but the best PLUMBING, FIXTURES and BRASS GOODS, all guaranteed. A full line of heating and engine supplies, pipe and pipe fittings of all kinds and sizes. We have the best stock of Garden Hose to be had, including the Red Hercules Hose, which is fully guaranteed. All kinds of tanks, pithers and force pumps and supplies. Sewer connections a specialty. Be sure and see our line before purchasing elsewhere or closing contracts for plumbing or heating. Job work given prompt attention and all work guaranteed. Estimates cheerfully furnished at any time. Tin Shop in connection.

## BERRY & SWANK

Phone 107.

12th Avenue

## Choice Residence Lots in the New Senior Addition

JUST OPENED FOR SALE  
LARGE LOTS, 77 x 190 ft.

EASY TERMS  
PRICES RIGHT

HILL & TAYLOR Real Estate, Insurance,  
Rentals. Phone 52.

## PALACE CLOTHING & SHOE CO.

ST. REGIS BLOCK, SHOSHONE AVE.

Headquarters For  
RELIABLE GOODS

at

LOWEST PRICES



## Buhl Market Day PROVES A SUCCESS

BIDS FAIR TO BE A PERMANENT INSTITUTION.

Considerable Amount of Property Changed Hands—Influx of Land-seekers Still Continues—Farm Improvements Are Extensive.

Buhl, Ida., April 29.—Mr. and Mrs. W. D. Southworth spent several days of last week in town.

The Buhl Boosters worsened the Twin Falls twisters Friday in a hotly contested game, the score being 4 to 3 in favor of Buhl.

The special train for Twin Falls yesterday was crowded with Buhlites who went to Twin Falls to attend the Buhl smoker. They report the doling there as being immense.

J. B. Jennings was in town Tuesday on business.

Miss Xenia Farlow visited Buhl Monday.

P. J. Costello of Twin Falls was a Buhl business visitor Thursday.

T. E. Osborne came up from Twin Falls last week for a short visit.

A. C. Fuller of Racine, Wis., was among the landseekers on this end of the tract last week.

B. Froese of Denver, Colo., was looking for an investment around Buhl Thursday.

W. H. Stiles of California registered at Hotel Buhl Thursday.

John Sevier of Portland, Oregon, was among the strangers in Buhl Friday.

G. A. Snodgrass, Earl Vanderford and Harold Vanderford of Hagerman were in Buhl Friday on business.

Ray Scott of Omaha, Neb., was a guest of Hotel Buhl Friday last week.

H. B. Bergstrom is clearing off his ranch south of town, for the purpose of making final proof.

J. J. Debolt of St. Joe, Missouri, was a Buhl business visitor last week.

Fred Halleck of Twin Falls was in the city for a few hours Saturday.

William Slack of Toquerville, Utah, spent Monday in Buhl on business.

S. H. Black of Longmont, Colo., was among the new homeseekers in Buhl last week.

L. O. Kiersted and C. E. Biscoe of Twin Falls were in Buhl on business Monday.

Howard Kleinman and Harvey Slack of Toquerville, Utah, registered at Hotel Buhl Friday.

M. D. Gerd of St. Joseph, Missouri, was looking for investments on the west end last week.

N. D. Stewart of Moline, Ill., was a Buhl visitor Monday.

H. Lindell of Ogden registered at Hotel Buhl Friday.

W. G. Alders of St. Joseph, Missouri, was among the landseekers in Buhl the early part of the week.

John P. Cohen of Murray, Utah, spent several hours in town Monday.

Chas. Smith of Salt Lake City, Utah, was in Buhl on business Tuesday.

M. O. Rugsley of Minneapolis, Minn., registered at Hotel Buhl Monday.

Mr. and Mrs. T. E. Moore and Daniel Moore of Maroa, were Buhl visitors Sunday.

J. W. Belknap came in from his ranch on business Saturday.

W. F. Frazier made a hurried trip in from the ranch Saturday.

Buhl's first market day was a grand success in every particular. A great deal of business was transacted and considerable property changed hands.

From the interest taken in the matter, it is safe to predict that it will be a permanent institution.

P. R. Allen came to town on urgent business. He is putting in hard ticks on the ranch these days. He feels cheerful however, for he says the boy is growing and will soon be able to irrigate.

J. A. Walker of Rock Creek was among our visitors on Saturday.

W. E. Garvey, ticket agent at Pocatello, came up from the Gate City Sunday to look after his interests here.

Mr. Garvey owns a ranch six miles southwest of town, and is a booster from away back in Illinois. He never loses an opportunity to put in a big boost for Buhl.

H. W. Smith came in from his ranch at Castleford on business Monday.

Don McCoy went to Twin Falls Monday on business and returned Tuesday.

L. H. Perkins came up from Twin Falls for a short visit Monday.

G. H. Whimmer of Rupert, Idaho, was a Buhl business visitor last week.

H. G. Stubbs left for his home in North Dakota Tuesday for a short visit. He recently filed on 160 acres and will soon return to tackle the sugarbush and get in a crop.

E. W. Tilley and B. Wilkins of Kimberly registered at Hotel Buhl Sunday.

W. A. Gardner of Caldwell, Idaho, spent several days of last week in and around Buhl looking over the country.

R. Bradford of Salt Lake City, Utah, was a Buhl business visitor Monday.

A. W. Gooding of Shoshone, Idaho, was a Buhl visitor Tuesday.

Mrs. F. B. Marshall will entertain the Ladies' guild at her home Thursday, the 7th of May.

Mr. and Mrs. Emil Braun of Twin Falls visited Mr. and Mrs. Ed Braun Tuesday.

Jim Patton went to Twin Falls Tuesday to attend the smoker and celebration, and he must be smoking yet, as he has not returned home.

Ben Howard is attending to his duties during his absence.

The Boosters went to Twin Falls Tuesday and had something handed to them. The score was 10 to 13, in favor of Twin Falls. Play ball.

Mrs. Ed Braun, who had the misfortune to break her leg several weeks ago, is able to sit up, and it is expected that she will soon be able to leave her bed.

## CLEAR LAKE FRUIT IS SAFE

No Damage From Frost in Canyon in That Vicinity.

CLEAR LAKE, Ida., April 27.—The weather has been very cool for the past few nights but no frost has appeared to injure the crops which are looking splendid. A banner yield of fruit is expected this year.

B. L. Rathbun and J. N. Hopkins visited Hagerman today.

John Christwell caught a monster strugon on Sunday. He only had his line out for two hours when the fish bit.

Mrs. A. G. Madolina is on the sick list this week.

Mrs. John N. Hopkins returned from Salt Lake City on Sunday.

Sam Hopkins came from Buhl and spent the day at Clear Lake.

Quite a crowd of visitors from the Twin Falls tract were here on Sunday.

Olis Syster and Fred Lamkey have been busy all week putting in potatoes.

Mrs. A. E. Duck was a Hagerman visitor on Sunday.

W. L. Colthorp of Hagerman were here on business this week.

John Banbury, who recently arrived from Chicago, and who purchased the Randall ranch last year, has a motor boat on the Snake river. He runs the boat from his own place to the upper Salmon falls. Those who have seen the craft say it is a "dandy". Mr. Banbury also brought his automobile with him.

Notice for Publication—Final Proof. J. Clara P. Smith, of Twin Falls, Idaho, assignee of Robert W. Steele, who has entry No. 1951, under the provisions of an act of the legislature of the state of Idaho, commonly known as the "Carey act", approved March 2nd, 1899, which embraces the NW 1/4 of SW 1/4 of section 25, township 10 S., range 14 E. B. M., do hereby give notice of my intention to make final proof to establish my claim to the land above described, and that I expect to prove that I have resided on, reclaimed and cultivated said lands as required by law, before E. B. Williams at Twin Falls, Idaho, on the 25th day of May, 1908, by two of the following witnesses: H. Howard and J. M. Shaak of Buhl, Idaho and F. E. Chamberlain of Twin Falls, Idaho.

CLARA P. SMITH, Entryman.

FOR SALE—Good refrigerator, first-class condition. Used one year. Call Mr. Oakley, Hotel Perrine.

FOR SALE—Seed oats, Whitelide and Big Four. Inquire two miles south of Kimberly, J. N. McMaster.



# "KICK"

IF IT ISN'T RIGHT

That's what we said to a customer yesterday when he tried on his new suit of clothes.

But it was right, and he kicked. He kicked to think that he had always been paying \$6 to \$8 more for a suit than we charged him; everything identically the same, as far as he could see.

## COME and SEE for YOURSELF

THAT'S THE EASY WAY

# O. A. STALKER

"THE HUB"

NEXT DOOR TO HARDER'S GROCERY.

# C. E. EVANS & CO.

Successors to Woods, Evans & Thomas.

## REAL ESTATE, RENTALS, COLLECTIONS and INSURANCE ACREAGE And CITY PROPERTY

You Will Find Us at the Same Old Stand.

You will miss something if you miss the

# Great White Sale and Sale of Mill Ends

at

# THE IDAHO DEPARTMENT STORE

beginning Saturday, May 2, and continuing one week. The only Department Store in South Idaho with a resident buyer in New York.

THOUSANDS OF YARDS OF THE FINEST WASH MATERIALS at 1-4 their regular values. Dozens of LADIES SHIRT WAISTS and SHIRT WAIST SUITS, must be sold regardless of cost, we have too many. A GOOD TIME TO BUY MEN'S CLOTHING DURING THIS WEEK OF SALE. MILL ENDS of Table Linens, Ginghams, Zephyrs, Nainsooks, Lawns, Dimities, Percales and Sheetings. They are sold at 1-3 LESS THAN REGULAR PRICE.

## During This Sale

Our Big Shoe Department will come in for its share of cut prices. Fifty pairs infants' Soft Sole Shoes, only 38c per pair. Sixty-five pairs of Ladies' shoes, fine dress to close at \$1.48, worth regular up to \$3.50. Many pairs of AMERICAN LADIES in this lot. Twenty-nine pairs AMERICAN GENTLEMAN Dress Shoes, to close at \$2.98, sold regular at \$4.00.

## 50 Silk Underskirts

just received direct from New York City, bought especially for this sale. They are values you will be more than pleased with and are priced, many of them, about half regular.

Every garment guaranteed new, and fresh from the mills, and WILL WEAR.

## Men's Hats

### BIG LINE OF SAMPLES

All New, from the common wool hat up to the finest fur, and from the common straw hat up to the finest Panamas. The saving on these samples is from one-half to one-third. Our special lot Men's hats, valued up to \$3.00, to close out

98c

## 75 Wash Suits

Suits for ladies; Whites, Blacks and Colors. They are all samples and are priced at better than 33 1-3 per cent discount. \$1.48 buys a suit worth \$2.25; \$1.98 takes suits valued at \$3.00; \$2.48 for suits worth up to \$3.00, and so on up to the finest grades of wash suits. THEY ARE VALUES YOU WILL APPRECIATE.

# VISIT THE GROCERY DEPARTMENT

Many specials there during this one week sale. Bring the children and turn them loose, we have plenty of room.

# IDAHO DEPARTMENT STORE

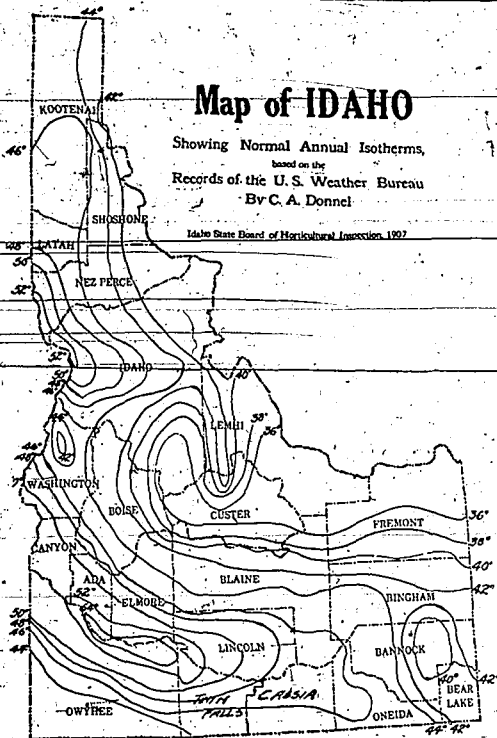
The Only Department Store on the Tract.



## Map of IDAHO

Showing Normal Annual Isotherms,  
based on the  
Records of the U. S. Weather Bureau  
By C. A. Donnel

Idaho State Board of Horticultural Inspection, 1907



On this map are shown the mean annual isotherms (or average temperatures) in Idaho. They give a good idea of the climatic conditions as they exist in the valleys. Line 36 passes through the coldest portion of the state, and line 52 extends through the warmest. Line 50 cuts through the center of the great fruit belt of the state of Idaho, covering Twin Falls, Lincoln, Elmore, Ada, Canyon and Washington counties in the southern portion of the state, leaving Idaho in Washington county and returning again to traverse a portion of Nez Perce, Idaho and Latah counties in the northern portion of the state. The information upon which these maps were based was gathered by the United States weather bureau and is therefore accurate. In addition to these general lines, as shown by the map, there are lesser lines that have been determined locally on the Twin Falls tracts, on which there seems to exist well defined frost belts. Some orchards may be effected while others will seldom, if ever, be injured by frosts late in the spring. On the still, clear nights, the air near the ground becomes chilled by contact with the cold earth and possesses a lower temperature than the higher strata. This cold air has a tendency to settle in the low places. Where the slope is gradual and the air movement is slow, it will be found that the lower places will be colder by several degrees than places higher up. In narrow valleys, where the flow of air is rapid, the mechanical heating process mentioned takes place and the air reaches the lower level possessing higher temperature. Some of the very best locations for orchards are found in the canyons and narrow gulches, but where the country is nearly level or rolling, it is usually found that the higher situations are safer than the depressions. This, however, may be mitigated to some extent by deep gulches, which act as siphons, carrying off the cold air that may accumulate. It is rarely possible to judge the advantages of a location solely by its appearance. The safest plan is to determine, if possible, by the use of a good thermometer in the hands of one who is familiar with local conditions.

### AMOUNT OF WATER RECEIVED BY THE DIFFERENT CROPS

This table was prepared by Alex McPherson, director of experiment farms for the Twin Falls North Side Land & Water Co., and forms a part of his annual report. It is very interesting to all irrigators, as it shows the amount of water used in irrigating the various crops, the time the water was applied, the amount wasted, the percentage of evaporation and the amount of water retained by the soil. By studying this table, an irrigator can obtain a very fair idea of how much water he is likely to need.

| Date  | Time            | Area       | Water Applied | Water Received | Water Lost   | Water Retained | Percentage of Evaporation | Percentage of Water Retained | Amount of Water Retained | Amount of Water Lost |
|---|-----------------|------------|---------------|----------------|--------------|----------------|---------------------------|------------------------------|--------------------------|----------------------|
| <b>Alfalfa and Pasture.</b>   |                 |            |               |                |              |                |                           |                              |                          |                      |
| May 23-29   | 144 hrs.        | 18%        | 50            | 1              | 7.71         | .70            | 0                         | 0                            | 1.64                     | 81.7                 |
| July 6-13   | 161 hrs.        | 18%        | 50            | 1              | 8.61         | 3.50           | 0                         | 0                            | 8.60                     | 29.0                 |
| July 26   | 132 hrs.        | 18%        | 50            | 1              | 7.05         | .12            | 1                         | 5                            | 3.12                     | 43                   |
| Aug. 2  | 108 hrs.        | 18%        | 50            | 1              | 6.79         | .43            | 4                         | 20                           | 5.33                     | 86                   |
| Aug. 6-11   | 108 hrs.        | 18%        | 50            | 1              | 29.16        | 4.76           | .3                        | 10.4                         | 18.69                    | 65                   |
| <b>Total</b>  | <b>545 hrs.</b> | <b>18%</b> | <b>50</b>     | <b>1</b>       | <b>29.16</b> | <b>4.76</b>    | <b>.3</b>                 | <b>10.4</b>                  | <b>18.69</b>             | <b>24.0</b>          |
| <b>Beans.</b>   |                 |            |               |                |              |                |                           |                              |                          |                      |
| July 29-31  | 66 hrs.         | 6          | 50            | 1              | 10.9         | 4.76           | .3                        | 15                           | 21                       | 18.59                |
| <b>Total</b>  | <b>66 hrs.</b>  | <b>6</b>   | <b>50</b>     | <b>1</b>       | <b>10.9</b>  | <b>4.76</b>    | <b>.3</b>                 | <b>15</b>                    | <b>21</b>                | <b>18.59</b>         |
| <b>Potatoes.</b>  |                 |            |               |                |              |                |                           |                              |                          |                      |
| July 18-21  | 98 hrs.         | 5%         | 50            | 1              | 17.28        | 4.76           | .4                        | 20                           | 32                       | 11.14                |
| July 31   | 108 hrs.        | 5%         | 50            | 1              | 19.20        | 0              | .4                        | 20                           | 40                       | 7.45                 |
| Aug. 3  | 108 hrs.        | 5%         | 50            | 1              | 36.43        | 4.76           | .4                        | 20                           | 36                       | 18.69                |
| <b>Total</b>  | <b>294 hrs.</b> | <b>5%</b>  | <b>50</b>     | <b>1</b>       | <b>36.43</b> | <b>4.76</b>    | <b>.4</b>                 | <b>20</b>                    | <b>36</b>                | <b>18.69</b>         |
| <b>Oats.</b>  |                 |            |               |                |              |                |                           |                              |                          |                      |
| July 13   | 14 hrs.         | 1          | 50            | 1              | 13.80        | 4.2            | .3                        | 15                           | 23                       | 13.17                |
| <b>Total</b>  | <b>14 hrs.</b>  | <b>1</b>   | <b>50</b>     | <b>1</b>       | <b>13.80</b> | <b>4.2</b>     | <b>.3</b>                 | <b>15</b>                    | <b>23</b>                | <b>13.17</b>         |
| <b>Wheat.</b>   |                 |            |               |                |              |                |                           |                              |                          |                      |
| July 14   | 12 hrs.         | 1          | 50            | 1              | 12.0         | 4.2            | .3                        | 15                           | 22                       | 14.37                |
| <b>Total</b>  | <b>12 hrs.</b>  | <b>1</b>   | <b>50</b>     | <b>1</b>       | <b>12.0</b>  | <b>4.2</b>     | <b>.3</b>                 | <b>15</b>                    | <b>22</b>                | <b>14.37</b>         |
| <b>Corn.</b>  |                 |            |               |                |              |                |                           |                              |                          |                      |
| July 24-25  | 22 hrs.         | 1          | 25            | 1/4            | 10.8         | 4.32           | .15                       | 7.5                          | 18                       | 11.64                |
| Aug. 12   | 12 hrs.         | 1          | 25            | 1/4            | 6.0          | 0              | .1                        | 5                            | 11                       | 6.95                 |
| <b>Total</b>  | <b>34 hrs.</b>  | <b>1</b>   | <b>25</b>     | <b>1/4</b>     | <b>16.8</b>  | <b>4.32</b>    | <b>.15</b>                | <b>12.5</b>                  | <b>29</b>                | <b>18.59</b>         |
| <b>Sugar Beets, Table Beets, Seed Onions, Carrots and Onions.</b>                 |                 |            |               |                |              |                |                           |                              |                          |                      |
| May 30  | 8 hrs.          | 1          | 25            | 1/4            | 5            | 4              | .1                        | 5                            | 5                        | 5                    |
| July 8  | 8 hrs.          | 1          | 25            | 1/4            | 5            | 4              | .1                        | 5                            | 5                        | 5                    |
| July 23   | 8 hrs.          | 1          | 25            | 1/4            | 5            | 4              | .1                        | 5                            | 5                        | 5                    |
| Aug. 1  | 8 hrs.          | 1          | 25            | 1/4            | 5            | 4              | .1                        | 5                            | 5                        | 5                    |
| <b>Total</b>  | <b>32 hrs.</b>  | <b>1</b>   | <b>25</b>     | <b>1/4</b>     | <b>20</b>    | <b>16</b>      | <b>.4</b>                 | <b>20</b>                    | <b>20</b>                | <b>20</b>            |
| <b>Cabbage, Tomatoes, Egg Plant, Peppers, Squash, Cantaloupe and Watermelons.</b> |                 |            |               |                |              |                |                           |                              |                          |                      |
| July 7  | 8 hrs.          | 1          | 25            | 1/4            | 5            | 4              | .1                        | 5                            | 5                        | 5                    |
| July 23   | 8 hrs.          | 1          | 25            | 1/4            | 5            | 4              | .1                        | 5                            | 5                        | 5                    |
| Aug. 12   | 8 hrs.          | 1          | 25            | 1/4            | 5            | 4              | .1                        | 5                            | 5                        | 5                    |
| <b>Total</b>  | <b>24 hrs.</b>  | <b>1</b>   | <b>25</b>     | <b>1/4</b>     | <b>15</b>    | <b>12</b>      | <b>.3</b>                 | <b>15</b>                    | <b>15</b>                | <b>15</b>            |

Note: A minor's inch, in Idaho, is the amount of water flowing through a hole one inch square under a four inch head. Fifty minor's inches is equal to one second foot or one cubic foot of water per second. Fifty minor's inches, or one second foot, would fill a one foot square with water running with a velocity of one foot per second.

## HIGH HONOR FOR A HANSEN GIRL

MISS NELLIE RAUCH EXCELS IN  
ORATORY.

Selected to Represent Northern Washington in the State Contest to Be Held in Walla Walla—School Will Close Next Friday.

HANSEN, Ida., April 30.—Nick Smith is loading out a car of hay for Victor & Brown of Rupert, for which he received \$10 per ton, F. O. B. Hansen.

Miss Ethel Kimerling of Hoyburn spent the week with Miss Dixler, returning to her home on Tuesday.

Mrs. George W. Crater taught school for Professor Scranton on Tuesday while the latter was away on business.

F. B. Griswold was a Twin Falls business visitor on Tuesday.

The good news reaches here from Spokane that Miss Nellie Rauch was the successful contestant in the "try-out" in the oratorical contest in the Spokane schools and will represent northern Washington in the scholastic oratorical contest in Walla Walla.

Miss Vivian Dixler and Miss Eva Walton were Twin Falls visitors on Wednesday.

Mr. Lockridge, who has been farming in the J. B. Smith place, has traded his labor for D. Thomas of Twin Falls for property in northern Idaho; whether he will shortly move. He will sell his personal property here at auction.

Miss Frances Brownlee returned on Wednesday from a brief visit in Twin Falls.

John Hammond of La Grande, Oregon, is visiting relatives and friends in Hansen and will probably locate here.

Louis Oliver was a business visitor in Twin Falls on Wednesday.

Quite a number of Hansen citizens attended the Odd Fellows' celebration in Twin Falls on Monday.

Mr. Gilbert of Twin Falls was interviewing the Hansen school board on Wednesday with the view of painting the school buildings.

Mr. Hughes, who has charge of P. H. Smith's ranch, south of town, arrived on Monday with a carload of splendid thoroughbred Red Polled cows. The animals were purchased in eastern Colorado and there are no better in the west.

George Washington has partially recovered from the injuries which he sustained last week when his mule, "Maud", treated him cruelly. He is again on duty.

H. G. Munger went to Murtaugh this week to do some cement work there.

Mrs. Crater will represent Hansen this week at the Sunday school convention in Boise. She will visit for several days with friends in the capital.

The basketball girls will have a game on the school grounds on Friday with the Kimberly girls. This will be the closing day of the school term and a lively time is expected.

FOR SALE—Underwood typewriter, almost new, \$70. R. H. Roys, county auditor's office.

Seed Potatoes. Good choice Burbank and Peerless potatoes for sale. Maple Hill farm, T. W. Potter.

Strawberries—Raspberries. For strawberry and raspberry plants see A. P. Senior, Sixth avenue and Blue Lakes boulevard, Twin Falls, Idaho.

## "The Twin Falls Country"

80,000 Acres Carey Act  
Lands Open for Entry Under

## THE TWIN FALLS- SALMON RIVER PROJECT

At Twin Falls, Idaho

June 1st, 1908

Registration books open May 25, '08  
Registration books close May 31, '08  
Drawing takes place June 1, '08

For booklet giving full information write  
R. M. McCOLLUM, Secretary

Twin Falls Investment Co., Ltd.

TWIN FALLS, IDAHO

Sole agents for sale of land and water rights

Carey Act Lands can be located by power of attorney. Blanks furnished on Application

## Go To San Francisco

For  
Grand Review of War  
Fleet in May

EXCURSIONS

Via

Oregon Short Line  
MAY 1st. and 2nd.

Diverse Routes

SEE AGENTS FOR RATES AND FURTHER PARTICULARS.

D. E. BURLEY,  
G. P. A.

D. S. SPENCER,  
A. G. P.

SALT LAKE CITY, UTAH.

E. J. OSTRANDER  
President

E. G. REED  
Sec. Treas.

## Ostrander-Reed Lbr. Co., Ltd.

All Kinds of Building Material

YARDS: JEROME  
WENDELL

Jerome, Ida.

GEORGE R. DUNN

J. M. SHANK

## DUNN & SHANK

Real Estate  
Farm and City Property

BUHL, : : : : IDAHO.

## PIANOS AND ORGANS

All Kinds of String Instruments.  
Sheet Music

SOLD ON EASY TERMS

TEACHING and REPAIRING.

WESTERN MUSIC CO.

CARLSON & HARRISON.

**The Iris Theatre**  
COSTELLO BUILDING  
Shoshone Avenue.

**NOW OPEN**

Performances every hour from 7:30 p. m. Entire change of program three times a week. House fully protected by exits, both front and rear.

**FREE FOR THE ASKING**

**California Sweet Pea Seeds**

every lady may obtain at this store a package of California Sweet Pea Seeds FREE OF CHARGE.

**RIEGER**

— THE CALIFORNIA PERFUMER —

has sent us 10,000 seeds to distribute free to all. Come at once before they are gone— you do not have to buy anything—the seeds are free, so come today.

Three handsome prizes are offered for the product of the seeds.

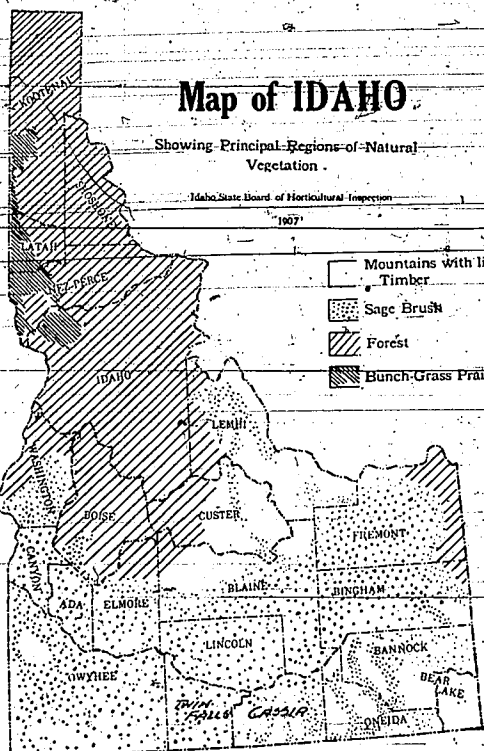
Plant the seed now—see our windows for prizes and date of contest.

Send Query Note to the largest perfumery.

Come in and sample it.

**MAJESTIC PHARMACY.**  
Opposite Hotel Perillo.

Our specialty, taking pictures of babies, at Bisbee's.



The natural vegetation of Idaho is shown on this map. It will be seen that the state is admirably divided, the northern portion being heavily wooded while the southern portion, including the great Snake river valley, is susceptible of irrigation. No state in the Union can show such natural resources, combining as they do the finest timber, the richest mines and the best agricultural land in the country.

Mining location blanks at The News office.

### RIGHT OF WAY IS GUARANTEED

TO THE IDAHO-NEVADA SOUTH-EASTERN RAILWAY.

Twin Falls Merchants Pledge Themselves to Provide the Railway Company With Free Right of Way From Snake River to the High Line.

At a meeting of the Twin Falls Commercial club on Wednesday afternoon it was unanimously agreed to guarantee the Idaho-Nevada Southern railway a free right of way from the Snake river at Shoshone falls to the high line canal in the southeast quarter of section 33, township 10 south, range 16 east. The company had already been tendered right of way from Hansen and Buhl for the proposed routes through those towns.

L. B. Perrine was present at the meeting and brought with him a number of maps of the road which were very interesting. It surprised many to learn that so far as the survey is concerned the contractors for the road might be let at any time, all the necessary data having been compiled.

A committee consisting of James A. Waters, C. J. Hahn, J. M. Maxwell, A. N. Sprague and G. B. Fraser was appointed to confer with the land owners and invite them to meet with the committee in Twin Falls on Friday or Saturday afternoon to talk over the right of way question.

According to the survey selected by the company, the railway will cut across, or partially across 16 subdivisions of 40 acres each. Beginning on the west bank of Rock creek the road cuts southwesterly across the property of C. G. Fargo. It trims the northwest corner of F. F. Johnson's 40 and cuts across the southeast corner of John Havlick's land; catches both of John Groh's 40's; passes diagonally across the land of John Benedict; takes off J. M. Rice's southwest corner; crosses through the center of L. A. Warner's 40 and takes a small strip from Charles Stokes's north 40. It strikes the quarter line between Worthington Kelly and James A. Martin and follows that line westward to the northwest corner of Bartha Stearns' 40; the southwest corner of the southwest of section 28, cutting diagonally across John Benedict's land, it takes off the northwest corner of Charles A. Weinmuller's property on which it crosses the low line canal; goes over George A. Lincoln's southeast corner; takes almost straight through the middle of L. E. Gorelli's 40 from north to south, swinging across the extreme north-west corner of A. P. Hensch's farm, on which it strikes the quarter line which it follows southward to the southeast corner of L. E. Danila's upper 16; touches the southeast corner of Theodore Krabschick's upper 40; and diagonally southwest across the lower 40, trimming the corner of Ernest M. Kimball's lower 16 on which it crosses the high line canal.

The route from Twin Falls to the Snake river has not been definitely selected. Several surveys have been made and it is possible that more than one line may be constructed. One survey runs through Orchelimum and another, follows Blue Lake avenue. It is believed that the farmers whose property will be cut up by the

railroad will be fair and reasonable in their demands. There is no disposition to harm anyone and while it would be unfair to ask a man to allow his farm to be chopped up for right of way without adequate compensation, in order that the general welfare might be served, at his expense, the farmers will, it is hoped, see the benefit which they will individually receive through the construction of the railway and not be stubborn in their demands. When it is considered that the farmers north and south of Hansen and Buhl are willing to give up a free right of way, the Twin Falls farmers can scarcely afford to be unreasonable. They will receive square treatment and the value of their land will be more than doubled when the road is built.

### DEATH OF MRS. GEO. D. WISELY

Occurred at Laredo, Texas, on Thursday, 27th of Last Week.

Mrs. George D. Wisely died at her home in Laredo, Texas, on Thursday, April 23, of lockjaw. Beyond this meager information, nothing is known regarding the circumstances connected with her death is known in Twin Falls. The funeral was held in her old home in Blairtown, Mo.

Mr. and Mrs. Wisely left Twin Falls last September for the south in the hope that a change of climate would benefit the health of their baby, now nine months old. The child improved rapidly and is now quite robust. Mr. Wisely is engaged in the drug business in Laredo and is doing well. He has the heartfelt sympathy of the people of Twin Falls in his bereavement.

Mrs. Wisely was one of the pioneer women of this city and she endeavored herself to all with whom she came in contact by reason of her unvarying kindness, heart and generosity. Ever mindful of the wants of her neighbors, she unselfishly sacrificed her own comfort for that of others. That she should have been taken from her husband and child at such a time is a blow to them which all who know them will keenly feel.

### WANTED—Good woman to iron.

Falls Steam Laundry.

F. V. R. cabbage plants for sale.

Fairview ranch, one-half mile NE of city.

Man and wife wanted to take charge of farm at once. Inquire St. John Skinner, at Abstract office over First National bank.

FOR SALE—500 lbs. of A No. 1 home grown red clover seed. A. G. Fisher at Bedford's drug store.

Man with 20 years experience in filing saws, circulars and cross-cuts, wants position. Also experienced millwright. Address C. E. Gannon, Keshkonong, Mo.

### GRAND REVIEW OF WAR FLEET

San Francisco. Excursions via the Oregon Short Line May 1st and 2nd. Very low round trip rates with 100% return and 20 days limit. Forty-eight war vessels of all classes in one of the greatest naval demonstrations of history. See O. S. L. agents for further particulars.

Private Sale. Three big parlor set, dining room set, kitchen furniture and cooking utensils at a bargain. P. O. Box 216, Twin Falls, Idaho, or E. H. Adams, two miles north, one-half mile east on power line.

### WE WANT YOUR STOCK PRODUCTS

Bring us your Hogs, Veal, Eggs and Mutton, and we will buy them.

**Highest Market Price Paid**  
**TWIN FALLS MEAT COMPANY**

### FRUIT TREES, SHADE TREES, ORNAMENTAL TREES

#### CARLOAD JUST ARRIVED

Will gladly sell these shrubs and trees, as long as they last, to those needing such.

See  
**I. B. PERRINE or S. H. BOLTON**

### J. H. BRYANT

#### Brick and Stone Mason

Care S. H. Bolton. Telephone 137.  
Twin Falls, Idaho

### Racine = = Satley

Plows, Disc Plows and Implements. All the Highest Grades.

The old reliable HOOSIER DRILLS always make friends.

### STUDEBAKER WAGONS and BUGGIES

Harness, Tents, Wagon Covers and Machine Extras. Always Pleased to Show Our Stock.

NOTHING BUT HIGH GRADE GOODS SOLD

### C. O. Meigs

Phone 133.

### Twin Falls Lumber Co., Ltd.

#### LUMBER

And Building Material

C. R. SHAW, President. H. O. MILLER, Sec. and Mgr.

### Twin Falls Livery & Feed Barn

Horses Bought, Sold and Exchanged.  
New Rigs, Good Teams, Reasonable Prices.  
Excursions to Falls and Lakes Every Sunday.  
Special Attention Given to Picnics and Family Parties.

Phone 18. GALLIHER & SONS, Props.

### Adams, Pilgerrim Co.

#### Lumber Yard and Planing Mill

Dealers in all kinds of Building Material, including Builders' Hardware, Nails and Glass. MILL WORK A SPECIALTY.  
Estimates Cheerfully Furnished.

YARD FACING RAILROAD TRACK AT THE FOOT OF 12TH ST.

**REAL ESTATE OFFICE OF**  
**Barnett Stillwell, Twin Falls, Idaho.**

LANDS BOUGHT AND SOLD. PROPERTY OF NON-RESIDENTS CARED FOR. RENTALS.  
Fire Insurance Written.

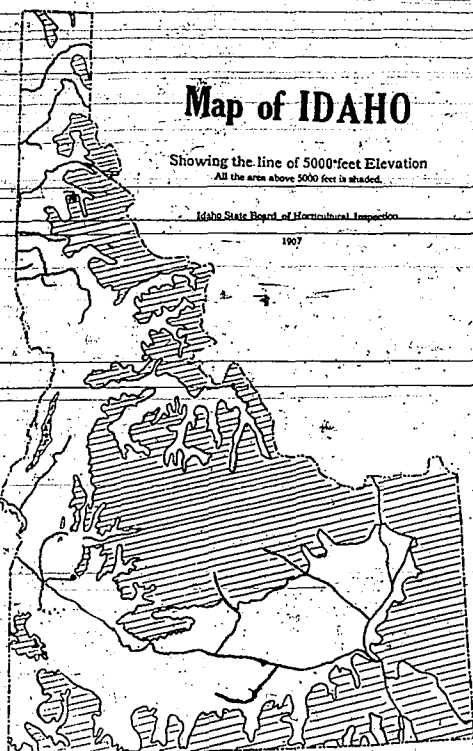
First Door Southwest of Idaho Department Store.

M. W. DENOVER, Gen. Mgr. J. H. SEAVER

**Motors, Fans, Fixtures and Supplies**  
**Electric Light and Power Wiring**

**Estimates Furnished**

**TWIN FALLS ELECTRICAL CO.**  
TWIN FALLS IDAHO.



This map shows the line of 5,000 feet elevation in the state of Idaho. All of the land lying below this elevation, as indicated by the shading, is considered agricultural land and is so classed.

If you are looking for tents or canvas see The Idaho Department Store. All sizes in stock.

Oregon Short Line Excursions. To Boise May 5th and 6th, for Idaho Sunday school association. To Payette May 4th and 5th, for Modern Woodmen of America. See agents for rates and further particulars.

FOR SALE—Second-hand Remington typewriter, in first class condition. Twin Falls Typewriter & Abstract Co. Over First National Bank.

WANTED—Resident, jobs to grub and clear, also cove pools and small culture to dig. J. R. Johnson, General delivery.

#### ATTENTION!

Why Not Patronize Home Talent? While S. W. Moley architect, will draw your plans and superintend your work and have it done right. Practice what you preach and get your plans at home and save the expense of going away from home.

Office in Dr. Boyd's Building.

#### MISTOOK HIM FOR THE BANKER

Mark Murtaugh Makes His Debut In a New Role.

Two young men were scuffling in front of McCormick & Co's. bank the other evening. Mark Murtaugh, who was in the bank at the time, stepped out and separated the belligerents. With Mark's bulky and muscular figure between them the scrappers could not get together and after Mark had given them a short and wholesome lecture they walked away in different directions.

A stranger, who had witnessed the incident, was describing it to a number of friends.

"I tell you that big banker was all right," declared the stranger. "He parted those men as though they were children and he gave them some mighty good advice. He looks as though he might go some himself if he had to."

His hearers were puzzled to know who the stranger meant. The fact that the man he referred to was clean shaven put Carl Hahn out of consideration, and Boyd Fuller was

thoroughly impossible. Later it transpired that Mark was the man who acted as peacekeeper and his friends are now joking him about the affair and asking him when he acquired the bank.

#### GRAND REVIEW OF WAR FLEET

San Francisco.

Excursions via the Oregon Short Line May 1st and 2nd. Very low round trip rates with diverse routes and 30 days limit. Forty-eight war vessels of all classes in one of the greatest naval demonstrations of history. See O. S. L. agents for further particulars.

FOR SALE—A two-gang 12-in. Syracuse plow. It has been used but one season plowing about 120 acres. A No. 1 team of mares weight about 2500 pounds, six and eight years old. Write or come to see.

J. E. Steinhorn, Murtaugh, Ida.

Choice Seed Potatoes. Burbank choice seed potatoes for sale. 80c per hundred. See samples and leave orders at Palace Meat Market.

#### HOW HUBBS BUTTE WAS NAMED

Called After a Well-Known Pioneer Cattleman.

On the map of the Salmon-segment there is shown, 10 miles due south of the city of Twin Falls, a butte called Hubbs butte. This landmark will soon become as well known as Cedar draw or Sucker flat. It stands out boldly and it can be seen for a long distance from any direction. Hubbs butte is above the canal line of the Salmon project and it will, until such time as land becomes more valuable, afford fine grazing for those owning farms in the vicinity.

The butte was named after Colonel Frank Hubbs, pioneer cowboy and cattleman. About 23 years ago, Colonel Hubbs, who was at that time the partner of the late A. D. Norton, made homestead proof on what is called the Warm creek field, against the foot hill at the south end of the road running south from Twin Falls. This field is watered from a water spring in the gulch above. It is used as a pasture.

Colonel Hubbs was once a prosperous stockman with a comfortable bank account. A couple of stormy winters and a few strokes of hard luck thinned his herds down and practically put him out of business. He still has his priceless reputation for honesty and reliability, a heritage more precious than the millions of Russell Sage. Any man who knows Frank would be willing to trust him to any extent. He has carried books of bank checks bearing the signatures of men of unlimited means and it is said of him that he was never known to spend a cent irregularly. Of late years Colonel Hubbs has been with the Sprague-Hall Cattle Co. He is now on one of the company's ranches in Elko county, Nevada. Happy and contented, with no regrets, he is a fine exponent of that true western spirit which moved the pioneers. He has lived for his friends and in their confidence, and trustfulness he has a fortune which most men might envy.

#### DIDN'T IMPRESS THE CHINK

Chinaman Fells a Freak Tree in the Blue Lakes Orchard.

In the lower portion of the Blue Lakes orchard stands a rock, six feet high and about 10 feet in diameter, from the top of which grew a juniper tree. The tree always attracted attention because of its unusual location and further for the reason that its roots had split the rock. It was one of the sights at Blue Lakes and it has been photographed by scores of camera artists.

A Chinese fruit picker was recently employed at the Lakes and was quartered in a little shanty not far from the rock. The Chink foraged for wood. Sagbrush was plentiful but the Mongol hated to grub it and did not like it as fuel. To him the tree that grew from the rock was just so much food for the grate and nothing more. Finding himself short of wood one day, the Chink swung his axe on the famous juniper and fell it to his cookstove.

When the destruction of the tree was discovered the Chinaman was fired. In fact Jake Fritz wanted to dig a hole beside the rock and drop the offending Mongol down to his central home by the shortest route. The forest service should send a few primers to China.

Room and board wanted by young man, private family preferred. H. A. Stroud & Co.

## CAREY ACT HOMES CHOICE IRRIGATED LANDS

50,000 acres open for original entry under the Canal System of the Twin Falls North Side Land & Water Co.

These lands are unsurpassed for the growth of fruits of all kinds, as shown by orchards which have been bearing for a number of years. They are especially suited for winter apples. Likewise grains and grasses.

Perpetual water rights \$35 an acre, payable, \$3 down, balance in installments covering a period of ten years with interest at 6 per cent.

ELECTRIC RAILWAY PROJECTED THROUGH ENTIRE TRACT. ABUNDANT FLOW OF CLEAR, WHOLESOME SPRING WATER OBTAINED WHEREVER WELLS HAVE BEEN DRILLED.

For Particulars Address

## TWIN FALLS NORTH SIDE INVESTMENT COMPANY

Milner, Jerome or Twin Falls, Idaho.

## R. M. NEWBRY

Horse Shoeing.

General Blacksmithing and Machinist. Repairing of all kinds promptly attended to.

Hansen, Idaho.

## STOCK MEN

## Rock and Stock Salt

AT

## Twin Falls Grain & Produce Company

## Nibley-Channel Lumber Co.

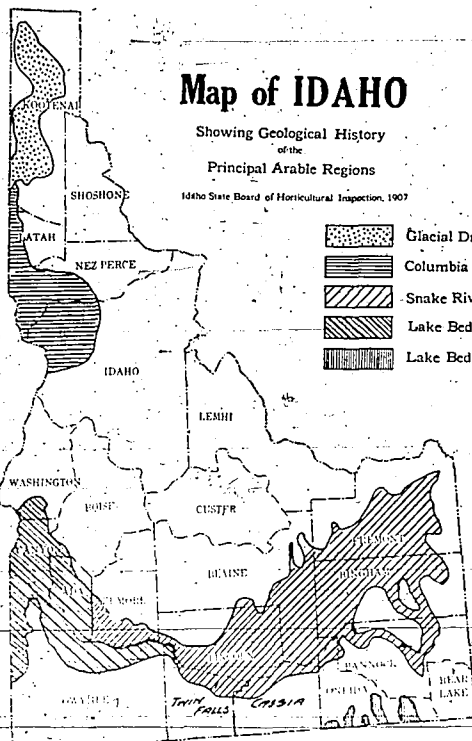
Headquarters for Lumber, Sash, Doors, Mouldings, Builders' Hardware, Red-Devil Portland Cement, Laramie Plaster, Oregon Lime, Paints, Oils, Glass, Murex Wall Tights, Ruberoid Roofing, Screen Doors, Rock Springs Coal.

TELEPHONE 28  
Offices and Yards  
13th Ave and 10th St.

## Map of IDAHO

Showing Geological History of the Principal Arable Regions

Idaho State Board of Horticultural Inspection, 1907



This map shows the geological history of Idaho. No doubt the greater portion of the southern section was once a great lake. Later the lava flow filled the lake beds, as indicated by the shaded portions of the map. Throughout the ages that followed, soil accumulated, composed of volcanic ash and drifted or washed material from the surrounding mountains and hills, forming a fertile and most enduring soil, very retentive of moisture and easily worked.

## DO YOU KNOW THAT THE Kimberly Mercantile Co.

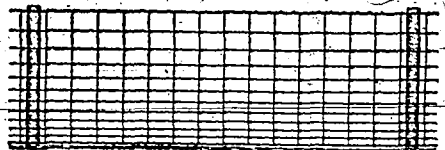
Carries everything that you need, some things that you can do without and a few luxuries; in the Grocery, Dry Goods and Boots and Shoe lines and that prices are right.

DON'T  
TAKE OUR  
WORD  
FOR IT

Come and See

## Stands Like a Stone Wall

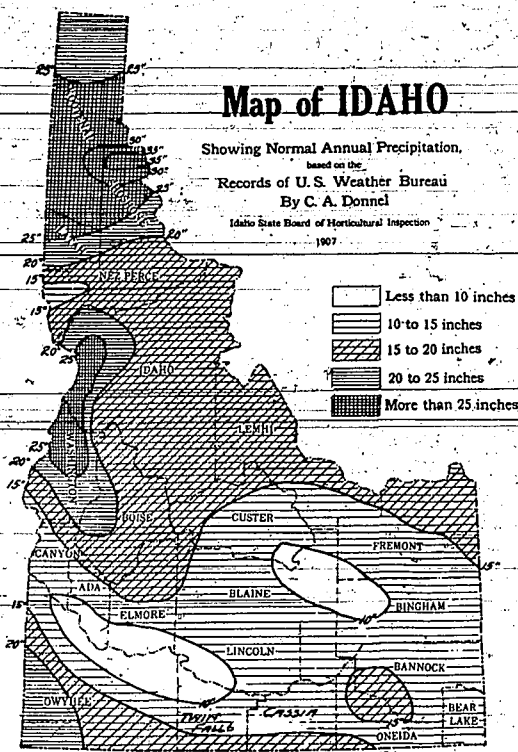
Turns Cattle, Horses, Hogs—Is Practically Indestructible



## AMERICAN FENCE

Buy your new fence for years to come. Get the big, heavy wire, the hinge joint, the good galvanizing, the exactly proportioned quality of steel that is not too hard nor too soft. We can show you this fence in our stock and explain its merits and superiority, not only in the roll but in the field. Come and see us and get our price.

Twin Falls Hardware Co.



This map indicates the normal precipitation in Idaho. It gives an average precipitation of 10 inches on the Twin Falls tracts, and 15 inches on the Salmon segregation. Properly cared for, 15 inches of precipitation will produce a good crop of grain. The evaporation from a water free surface during the irrigation season on the Twin Falls tract, with 10 inches of precipitation, is 18.59 inches. Of the Salmon project it can safely be said that there is much less evaporation, on account of the increase in precipitation over that on the Twin Falls tracts. That means that less water will be needed for irrigation purposes on the Salmon segregation.

## KIMBERLY SCHOOL IS WELL LOCATED

SPACIOUS GROUNDS SELECTED  
FOR BUILDING.

Town Lots Are Selling Fast and Town-site Company is Making Improvements—Kimberly Commercial Club Resumes Former Activity.

KIMBERLY, Ida., April 29.—Oscar Asbury arrived Tuesday from Nysan, Oregon, and is visiting the families of N. D. Cunningham and Mr. Cathey, south of town.

W. H. Thomas was in Twin Falls Monday on business.

Mrs. Lock arrived Tuesday from Salt Lake and is visiting her husband who has been running the electric light plant.

Mrs. E. U. McIntire has been at Rock Creek the past week attending her mother, Mrs. Jones, who has been quite sick. The butcher has had to batch in the meantime.

A. McDermid took his daughter, Miss Lennan, to Mrs. J. H. Mufford's where she is now boarding.

John E. Olson has contracted his 40-acre tract for sale at \$30.00 per acre. The place is being tended this year by Tom Logan.

At the election last week the voters decided to locate the new school building on the block west of the park. By closing the street between it gives a site 275 feet by 235 feet. The directors were given power to dispose of the old buildings. The best part of the location, however, is the fact that the location was decided upon unanimously. By keeping up that spirit we cannot help from getting to the front. The state land board offered par for \$15,000 bonds at 5 per cent interest, which will be accepted and the land board is examining the abstract to see if all legal requirements are complied with. Since the people of Kimberly are getting together unanimously it will make a difference in the growth of the town and community.

Thirty-eight lots have been sold in Kimberly in the past 10 days. Most of these were bought by home people, too. Manager Thomas is having the brush taken off and has over 1000 trees on the ground ready to set out and it makes the natives want to buy, and he is giving home people the first chance.

Mr. and Mrs. Stephens arrived from Missouri and will make Kimberly their home, moving into the Cunningham house.

Quite a number of our citizens visited Twin Falls Monday and attended the Odd Fellows celebration. Among them were E. W. Tipton, wife, B. Wilkins, E. W. Tipton, C. Brown, E. Blaismire, W. F. Breckon, W. R. Carley, C. C. Parks, H. Stricker, G. F. Peterson and others.

Rev. John Gentry of Twin Falls will preach in the schoolhouse at Kimberly on Sunday, May 3, at 3 p. m. Sunday school will be held at 2 p. m. to which everyone is invited.

The citizens of Kimberly met at the store room of the Kimberly Produce and Supply Co. Friday night and re-organized the Commercial club. W. H. Thomas was elected president; B. F. Hoover, vice president; W. H. Turner, secretary, and W. F. Breckon treasurer. Nineteen members signed up at the time and others are coming in. A committee was appointed to confer with the electric light people to see about the cost of putting two arc lights on the streets of Kimberly at night. The meeting adjourned to meet next Friday, and an invitation is extended to all the business men and farmers around Kimberly to be present.

It is reported that Carl B. Moore has sold his place half a mile west of town for \$100 per acre.

W. Peterson of the Majestic Pharmacy, Twin Falls, has purchased the stock of the Kimberly Drug Co. Mr. Peterson will put in a complete line of drugs and will also install a soda fountain. He has engaged Mr. Graham of Grand Junction to take charge of the store and as Mr. Graham is an experienced druggist of splendid reputation Kimberly is fortunate in having the benefit of his services. The public will show appreciation of Mr. Peterson's action by giving the new store good support.

New rooming house for 100 men, now open on east Main street near Clausen's grocery. Good beds. W. E. Palmer.

Ice Cream Delivered. Ice cream, all flavors made to order and delivered to any part of the city. 40 cents a quart, \$1.50 a gallon. This is the purest and best ice cream made in the city. If you try it once you will never want any other make. O. K. Candy Kitchen, Twin Falls. Telephone 202.

Two young men want room in private family. Address Box 175, Twin Falls, Idaho.

FOR RENT—80 acres, well improved, good house, barn, cistern and stable. Inquire S. T. Hamilton & Co.

FOR RENT—50 acres, one mile from Twin Falls. In cultivation. Inquire Irrigated Lands Company.

WANTED—To lease five-acre tract close in. Inquire of Barnett Stillwell, 1st door southwest I. D. store.

Amateur work a specialty at Disbee's.

None but experienced help at Disbee's to finish up your work.

Melga can show you the best time of high grade huggies and spring wagons in the city.

## Sprague's Pharmacy

Drugs WHAT IS THAT YOU WANT?

Rubber Goods

Useful Presents

Goods of Best Quality

See Us Before Buying

NEXT TO P. O. TWIN FALLS, IDAHO.

## The BEST of Groceries

is none too good for any family. Trading with us insures your getting the very best grade of groceries that the market produces, and the prompt filling and delivery of all orders.

No order is too small to receive our attention.

## Perrine & Burton

General Merchandise

F. F. JOHNSON, President. S. H. MAYES, Vice Pres.

## First National Bank of Twin Falls

J. M. MAXWELL, Cashier

CAPITAL STOCK \$40,000.00

General Banking Business Transacted

Safety Deposit Boxes for Rent.

COR. MAIN ST. AND SHOSHONE AVE. : TWIN FALLS

## THE FARMERS CORRAL

Livery, Feed and Sale Stable

HORSES BOUGHT AND SOLD.

GOOD FEEDING CORRAL. PHONE 55.

D. A. SEAMAN, Proprietor.

## NEW MEAT MARKET

Now Open

We have just opened a new meat market in the Messer Block on Main street just above the Hotel Perrine. We carry the best of everything in the way of meats and solicit a share of your patronage. Our phone number is 162.

F. J. TERRILL & SON.

## McCORNICK & CO., Bankers

Branch of McCornick & Co., Salt Lake

Transact a General Banking Business

TWIN FALLS, IDAHO

## Irrigated Lands Co., Ltd.

Twin Falls, Idaho

OFFICE, NORTH WING HOTEL PERRINE.

Money to Loan on Improved Farms.  
Real Estate. Insurance.  
Investments made for Non-Residents. The Benefits of 20  
Years' Experience in Farming by Irrigation at the  
Service of our Customers.

A. McPHERSON.

GEO. F. SPRAGUE.  
Twin Falls, Idaho.

### OREGON SHORT LINE.

Excursions to Wallace, Idaho, May 9th and 10th.

For state Republican convention. One fare for the round trip to Huntington plus \$13.25 beyond. Tickets limited to May 20th. Special train will be operated from Pocatello to Wallace, schedule of which will be announced through agents later.

D. E. BURLEY, O. P. & T. A., Salt Lake.

D. E. SULLIVAN, Agent, Twin Falls, May 18

Everything in legal blanks at The News office.

### Canal Work.

Twenty miles of canal and laterals under American Falls project ready to contract. Conditions very favorable. Can also use some good teams. \$4.50 per day. Board \$5.00 per week. Address Engineering Dept., American Falls Canal & Power Co., Aberdeen, Idaho.

Tents 8 x 10; 10 x 12; 12 x 14; 12 x 16 now on sale at The Idaho Department Store.

### Special.

We have a house and lot for sale at a bargain. See H. A. Stroud & Co.

### Hotel for Sale.

Is netting the owner \$150.00 per month. The only place in town. Interested come and see me.

A. G. LAMMERS, Ellier, Idaho.

Any size tent you may want, we can furnish it. We have in stock 8 x 10; 10 x 12; 12 x 14; 12 x 16 and all widths of duck. Idaho Department Store.

### Oregon Short Line Excursions.

To Salt Lake May 7th to 9th, for Trap Shooters tournament. To Boise May 12 and 13th, Idaho Sportsmen's association. To Walla Walla, Wash. May 15 to 21st, Northwest Sportsmen's association. See agents for rates and further particulars.

Mrs. E. L. Jones of Hansen would like to hear from families desiring the services of a dressmaker at their homes by the day or week. Experienced in high-class dress-making and ladies' tailoring.

Duck of all widths, also tents, all standard sizes and full 10 oz. weight at The Idaho Department Store.

Do You Want City Property? If so, see H. A. Stroud & Co., we have a fine list. Some good bargains.

## Look! Look!!

RESIDENCE LOTS CLEARED, CESSPOOLS AND CELLARS DUG.  
ODD JOBS OF ALL KIND PROMPTLY ATTENDED TO.

ADDRESS

F. R. JOHNSON

GENERAL DELIVERY.

TWIN FALLS, IDAHO.

# A \$400 Corner Lot Given Away by the Farmers Real Estate & Livestock Co.

Watch This Space For Full Particulars Next Week

We are now cruising thoroughly the Salmon River Project of 80,000 acres and when we get through cruising we will be in a position to assist our many friends and the strangers that will be with us to get the very best possible land locations. We can assure our customers that we will not locate anyone on land that will not be as we represent it or that we wouldn't want ourselves.

Our list of improved and unimproved ranches on the Twin Falls tract is the very best. If you want to wear diamonds and get the best that is to be had you cannot afford to miss the opportunity of getting C. A. McMaster of the Farmers Real Estate Company, and a Pioneer Farmer on this tract, to guide you to the most desirable land under the Twin Falls system.

WE GUARANTEE YOU SATISFACTION OR NO PAY.

Yours for legitimate business,

## White & McMaster

Offices in the Postoffice Building.

Twin Falls, Idaho.