

MANUFACTURE ON BIG SCALE IN TWIN FALLS

Professor O. M. Elliott Delivers Strong Arguments at Club Luncheon. Points Out Splendid Possibilities in Way of Home Production and Gives Reason for His View.

The advantages of Twin Falls as a manufacturing center were set forth to advantage by Professor O. M. Elliott at the regular meeting of the business men's luncheon at the Commercial club on Wednesday.

Members of Twin Falls are interested in the case of the contractor who engaged the members to make a point of attending these weekly "got to go" sessions pointing out that from the exchange of the big money, the work could come.

Members of the local club went to the traps to check the visitors and are enthusiastic over the exhibition given.

At Yates entertains friends. The Pioneer Basketball team will meet the local high school team at the gymnasium next Saturday night.

AME TO DECIDE CHAMPIONSHIP. The Pioneer Basketball team will meet the local high school team at the gymnasium next Saturday night.

F. M. BUCKLEY RETURNS

Called Away by Death of Sister-in-Law Under Business Conditions.

F. M. Buckley has returned from Chicago, where he was called on account of the death of his sister-in-law, Mrs. F. M. Buckley.

The Boston and New York markets for Wisconsin butter are in excellent condition.

Nebraska and Minnesota Mr. Buckley says a producer, grower and add, but little could be learned as to general conditions in either.

Much of the credit for the excellent financial outlook in Wisconsin, Mr. Buckley says is due to the immense acreage of Holstein cattle in the state.

WALLIS PRAISES LOCAL CONCERNS

MANAGEMENT OF LINCOLN PRODUCE CO. COMPLIMENTED.

System of Butcher and Cattle-Making All That Could Be Desired—Much Illness Caused by Use of Impure Ice.

Before leaving for the east, Hansel L. Wallis, state superintendent of agriculture, took occasion on Saturday to visit a number of local plants of the Lincoln Produce and Refrigerator company.

Mr. Wallis stated that the question of pure ice is becoming almost daily a matter of concern and that upon his return from the west he will bring with him a systematic tour of inspection of the various ice-producing plants of the state.

On the score of cleanliness and sanitation alone the plant is considered the greatest improvement in discussing the matter, he said.

That each vice-president assemble his machinery and make his report to the committee, was and necessarily is, a matter of importance.

TWIN FALLS STORES DIRTY?

James H. Wallis Replies to Assertions of Montgomery Ward & Co. as to Conditions in Local Places of Business.

With respect to the recent circular sent out by the mail-order firm of Montgomery Ward & Co., a copy of which I have before me, I desire to state as emphatically as possible that I have made frequent inspections of the various stores and business houses of Twin Falls handling groceries and other food products up to within a recently as the past 60 days, and have at all times found them thoroughly clean, up to date, and engaged in handling as fine a quality of goods as are to be found in any similar establishment in the state of Idaho.

The statement contained in the circular referred to, to the effect that the goods are thrown in almost any shape, is unwarranted and false in every particular.

State Dairy, Food and Sanitary Commissioner of Idaho.

COMMITTEE RECOMMENDS ROUTE

WAYS AND MEANS OF CONSTRUCTING 30 MILES OF HIGHWAY IN ONE DAY—BOARD OF COUNTY COMMISSIONERS COOPERATING WITH LEAGUE—THE PLAN OF WORK OUTLINED.

A meeting in the interest of the good road movement was held at the Commercial club rooms last Thursday evening.

Secretary Robert W. Spangler acted as chairman and the preliminary work has all been taken care of.

Upon motion of C. H. Mull the executive committee was authorized to apply to the county commissioners for the use of the steam rollers which will be carried and it is not expected that there will be any opposition.

Two petitions, one guaranteeing the services of a man and team upon the road for one day, and the other submitted by the county commissioners, were presented and generally signed by those present.

The matter of awarding a prize for the mile of road built was discussed, and the board of county commissioners was authorized that conditions would be set up in regard to the prize.

MINSTRELS SCORE A HIT

Songs and Jokes of High Order of Excellence and Audiences of Large Size at Every Show.

One of the best minstrel troupes shown in Twin Falls in a long time was that of the "The Lyric Theatre" Wednesday night, and which will be repeated tonight.

The regular numbers were all good, and some of the special acts deserve the very highest praise.

The local big band group, known as the "The Lyric Theatre" band, were shown in Twin Falls on Wednesday night.

State Dairy, Food and Sanitary Commissioner of Idaho.

CLUBS CO-OPERATE TO PRODUCE OPERA

MIKADO, THE WELL-KNOWN MUSICAL COMEDY TO BE GIVEN.

Twentieth Century Ladies and Apollo Club Join Forces—Army of Gen. "Artilia" All-Local Talent—Cate of Characters.

The Mikado, a comic Japanese opera, will be given under the auspices of the musical department of the Twentieth Century ladies, assisted by the Apollo club at the Commercial club on Friday evening of February 22 and 23.

Arbitrary Decisions of Officers Cause Many Injuries. The Twentieth Century ladies and Apollo club are co-operating to produce the musical comedy "The Mikado".

Arbitrary Decisions of Officers Cause Many Injuries. The Twentieth Century ladies and Apollo club are co-operating to produce the musical comedy "The Mikado".

REPUBLICANS DO HOMAGE TO LINCOLN

BANQUET AT BOISE IN MEMORY OF MARTYRED PRESIDENT.

Most Noted and Representative Gathering Ever Held in State—Hearty Endorsement Given to William H. Taft—Widespread Enthusiasm.

Never before in the history of the state has there been such a notable and representative gathering of the Republicans in this state.

The big banquet hall was decorated with the colors of the party and the atmosphere was one of the most inspiring ever witnessed in Idaho.

Although the toastmaster pleaded that the banquet was a political affair, the speakers did not fail to make a political contribution to the cause of the party.

When Charles L. Holtman, chairman of the Republican state committee, read the telegram addressed to the party by the president, pandemonium broke loose.

Arbitrary Decisions of Officers Cause Many Injuries. The Twentieth Century ladies and Apollo club are co-operating to produce the musical comedy "The Mikado".

Arbitrary Decisions of Officers Cause Many Injuries. The Twentieth Century ladies and Apollo club are co-operating to produce the musical comedy "The Mikado".

Arbitrary Decisions of Officers Cause Many Injuries. The Twentieth Century ladies and Apollo club are co-operating to produce the musical comedy "The Mikado".

Arbitrary Decisions of Officers Cause Many Injuries. The Twentieth Century ladies and Apollo club are co-operating to produce the musical comedy "The Mikado".

Correspondence

CLEAR LAKE.

We are having fine weather here. The fruit buds have started to swell. Ray Blackburn is preparing his ground for an early garden.

Mr. Fletcher of Boise City was here yesterday looking over his lands. John Christensen made another shipment of a gold bullion from his mine this week.

Ed Brook and wife were in Buhl yesterday.

Charles Hazard went to Buhl yesterday on business.

Ollie E. Syator went down to the Sand Springs valley on business the first of the week.

J. W. Briggs left for Wendell last week, where he expects to be for several days.

We became and were down from Buhl flabbing Saturday and Sunday. They report a good catch.

The men on the N. Haven place are busy planting their corn.

A. G. Madeline was hauling logs to the Chelwell house yesterday.

Mr. and Mrs. Campbell of Gooding, Idaho, attended the school convention here. They are teaching school here.

ARTESIAN CITY.

Artesian City, Feb. 12.—Mrs. W. B. Carter from Twin Falls left Tuesday for a visit with her parents, Mr. and Mrs. M. E. Eden.

B. D. Hunt, road superintendent for this district, attended the road meeting in the Hub City Tuesday evening. He will make an effort to get this district interested in the good road movement and will split the band of the big road dogs.

J. E. Stansell and C. O. Workman of Twin Falls Saturday to get repairs for their drilling rig.

Ray Pettigrew is putting in a new barn on his farmstead. He expects to make final work in the near future.

J. E. Baner made a business trip to the Hansen office, Tuesday.

H. E. Parson of Twin Falls has purchased J. B. Devera's hay crop and is baling it this week. It will be loaded at Murtagh.

John Cochran broke his ankle on the well drill last week, but has it repaired and at work again. He is now in the hospital in a better way than he may strike a few days.

J. C. Medley and brother, H. E. were here on business from the North Side about the road to completion.

W. C. Rose has moved his house on to his block here and is busy clearing for spring seeding.

Mr. H. E. Boone spent Monday night at the home of Mr. Tolman near Murtagh.

There is a very enthusiastic Methodist revival going on at Murtagh. Several from here were in attendance Monday evening.

J. W. Campbell of Dayton, Ohio, preside at the celebration of the 100th anniversary of the birth of George Washington. Remedy for his boy who had a cold, and before the bottle was all used, a boy of five dollars doctor's bill. Sold by all dealers.

LOCATION NOTICES

FOR NEVADA
A full supply always on hand at the Twin Falls News office.

Mikado, February 22d and 23d. Don't fail to see it.

We have a quantity of spruce poles which we will sell at actual cost of paper. News Publishing Company.

EARLY EUREKA POTATOES.
Special price for full delivery.
DARROW BROS. SEED STORE.

HANSEN.

Hansen, Feb. 12.—Mr. and Mrs. George Peterson returned Wednesday from an extended trip to Boston.

Porter Link sold his hay crop and is delivering it this past week.

James Fort's sheep shipment last week went to Texas. It consisted of two cars of hucks.

Mr. and Mrs. John E. Tolby celebrated their twentieth wedding anniversary at their home south of here Saturday evening. The evening was spent in dancing and merry-making in a delightful manner, and a pleasant time is reported by the guests.

Walton and Weir moved their horses to A. Walton's ranch near Murtagh, where they will finish the winter's feeding.

John Tolby is hauling hay for Roy Durk this past week.

A shortage of cars has caused the hay business to come to a standstill for several days.

Archibald Harris returned Thursday from his winter's vacation at Chicago.

J. H. Commerell and Harry Hamilton of Springfield were here Friday looking after their cattle. They were unable to secure any at this point.

Adam Link returned Friday from St. Louis, where he has been visiting for the past 30 days. Mr. Link's cousin, Frank Schlegel, came from the Missouri city for an extended visit with the Link brothers. Mr. Schlegel's home is in Berkeley, California. He left there in the early winter for St. Louis and is now headed in the garden.

T. G. Bacon & Co. moved another band of sheep from J. R. Hinton's ranch to Cookingham's place to finish the winter's feeding.

Mack Bryan is now baling hay for A. Felton. He did not work Saturday because of the shortage of hay cars.

The ladies aid will give a party at the Laycock home Friday night for the boys who take care of the church.

J. E. Hill of Twin Falls was here Friday to purchase hay for shipment. Mr. Hill was representing G. D. Aiken of the Idaho Cattle Co.

Ben Walton and sister, Eva, were passengers to Burley Saturday evening.

MURTAGH.

Murtagh, Feb. 12.—A. Johnson of Webster, Idaho, arrived in Murtagh Friday to visit his brother, Francis L. Johnson. The two men had not met since 1884 when J. A. Johnson left to make a home in Council Bluffs, Iowa for the West. Mr. Johnson has traveled in nearly every state west of the Missouri river and gives some very interesting accounts of trips to Honolulu, the Klondike and various other points of interest.

Mrs. N. G. Hall and daughter, Irene, and Wednesday evening in Twin Falls.

The home of Mr. and Mrs. L. Lee Johnson was the scene of a very pleasant gathering Sunday evening in honor of Mr. Johnson's birthday. Those present were Mr. and Mrs. J. H. Ford, Mrs. Martha Hansen, Mrs. Ray Fournisher, Mr. and Mrs. Francis L. Johnson and Mr. J. A. Johnson.

Prof. F. F. Lawwill and son, Randolph were shopping in Twin Falls Saturday.

Mr. Beveren of Twin Falls and Mr. Brown of Piler were in Murtagh Saturday visiting some friends.

Miss Ruth Kendal was visiting friends in Kimberly Saturday afternoon.

Mr. Harry Miller made a business trip to Kimberly and Twin Falls Saturday.

Miss Alta Tolman of Murtagh was a guest at an old party given last Wednesday evening by Mrs. Fred Bacon.

F. Lee Johnson and E. D. Hunt made a business trip to Twin Falls Thursday.

Frank Weidner and son, Boyd, were Twin Falls visitors Monday.

The usual literary meeting was held at the school house Friday evening. Ed Hansen and A. D. Beverin were Twin Falls visitors Saturday.

Saturday evening and Sunday Mr. and Mrs. J. E. Steinson were in Buhl attending the Sunday school convention held there.

Miss Mary Tipton of Twin Falls is spending a few weeks visiting at the home of Mrs. C. E. Bacon.

Mr. Ben Walton and wife are spending a few days in Murtagh, stopping at Mr. and Mrs. J. H. Boyd's.

Miss Anna Smith and Alice Tolman and Mr. and Mrs. Decker were among those from Murtagh who attended the party given last Thursday evening at Steinson's in Artesian City.

Miss Eunice Hoyt spent Tuesday at the home of Mrs. J. Fuller beyond Artesian City.

Saturday morning J. E. Tolman went to Oakley. He returned Sunday and was accompanied by his wife's sister, Mrs. Leola Steinfeld.

Nightly revival meetings are being conducted at the school house by Rev. Charles H. Harper.

Frank M. Weinhammer and Harry E. McMahon are shipping hay this week.

Other products of this vicinity to be shipped this week are from the R. J. Day ranch and wild hay from the Dower's farm.

Mr. William Morrison was transacting business in Twin Falls on Tuesday.

The Twin Falls Canal company's ditch gang arrived in Murtagh today to start work on the new canal near Lake Linden. Repairs on the canal in this vicinity are in progress.

KIMBERLY.

Kimberly, Feb. 12.—The show at the opera house Saturday evening, entitled "The Dilemma," was one of the best this ever has in Kimberly and the house was well filled.

Frank Ogg and Ed Perry have returned from Twin Falls, where they purchased and took away sheep to go to Twin Falls again next Monday for further duty.

W. F. Beckon has been on the sick list for several days, but is improved at this writing.

Mr. Thomas Richards was a Twin Falls visitor Tuesday. He recently purchased and took away sheep of the Menke place last east of town.

The ladies' fighter club met last Thursday in an all-day session and elected the following officers for the coming year: Mrs. H. M. Fletcher, president; Mrs. H. D. Masale, vice president; Mrs. W. B. Lewis, secretary; Mrs. H. H. Turner, treasurer. A fine luncheon was served at noon and about 20 members were present in addition to several of the men as special members on such occasions. The club is in good shape having all its debts paid and is the owner of the block near the school house known as the park, which this club has obtained and maintained for several years. They are always found working for the good of the community and deserves much credit for what they have done for Kimberly.

O. J. Peterson and wife have returned from a visit to relatives in Massachusetts.

R. F. Hoover expects to take a vacation soon and will visit friends and relatives in California and other points.

J. McDermid was in Twin Falls Monday.

TOBACCO 'GROWING' SUCCESS.

J. Van Bruzen, Exhibitor Good News Grower at Reg. Creek, Idaho. Several leaves of White Burley tobacco were placed on exhibition at the Twin Falls Commercial club this week by J. Van Bruzen of Rock Creek, Idaho. Mr. Van Bruzen has experimented in tobacco raising only in a small way and he has met with great success both this year and last and he is rather optimistic that tobacco could be made profitable here. The samples on exhibition are exceptionally fine and the farmers who are interested are invited to go to the Commercial club and see them.

If you have young children you have probably seen and will visit friends and their most common ailment. To correct this you will find Chamberlain's Stomach and Liver Tablets excellent. They are easy and pleasant to take and mild and gentle in effect. For sale by all dealers.

Read the Classified Ads.

RECEIVING

A fine assortment of Women's and Misses' Spring Suits At

REMARKABLE PRICES

Other products of this vicinity to be shipped this week are from the R. J. Day ranch and wild hay from the Dower's farm.

Mr. William Morrison was transacting business in Twin Falls on Tuesday.

The Twin Falls Canal company's ditch gang arrived in Murtagh today to start work on the new canal near Lake Linden. Repairs on the canal in this vicinity are in progress.

Jack Department Store
EVERYTHING TO EAT AND WEAR

RECEIVING

A fine assortment of Women's and Misses' Spring Suits At

REMARKABLE PRICES

RENTS COLLECTED

For Non-Residents and Management of Properties Given Personal Attention.

J. CLYDE LINDSAY
REAL ESTATE INVESTMENTS

MEMBER: Twin Falls County Real Estate Exchange, National Association of Real Estate Exchanges, Twin Falls County Commercial Club.

Bank references furnished.

Twin Falls, Idaho

VARNEY'S Saturday Special

February 17th

SOMETHING NEW
40c New England Chocolate

25c lb.

A rich cream Yorkie peanut coated with Hershey's best chocolate.

Home Cooked Lunches

NOTICE

Notice is hereby given that the Board of County Commissioners of Twin Falls County have discontinued the practice—prevalled during a part of the season of 1911, of allowing claims against the different funds of the County monthly. In the future all claims against the different funds should be on file with the Clerk of the Board by the 15th day of the second Monday in April, July, October and January.

By authority of the Board of County Commissioners:

O. G. ZUCK, Chairman,
Attat. E. J. FINOH, Clerk.

LOCATION NOTICES FOR NEVADA
A full supply always on hand at the Twin Falls News office.

8 Per Cent. FARM LOANS 8 Per Cent.

5 per cent. money and plenty of it to loan on improved farms, first mortgage. Money to loan subject to water contract.

CITY LOAN: Plenty of money to loan on city property.

IMMEDIATE ACTION BEST RATES EFFICIENT SERVICE

Twin Falls Title & Abstract Co., Ltd.
Hotel Petticoat Building, Twin Falls, Idaho

THE CLASSIFIED COLUMNS ARE INTERESTING

We Have But a Limited Quantity of CHOICE ALFALFA SEED FROM THE PARMA DISTRICT

You can buy other seed for less money, but it's not Parma seed. Ask your neighbor, who has that heavy stand of hay, what seed he sowed. The State Experimental Station test shows this seed to be 99 1-2 per cent. purity. You can save you money this season. Get our price before buying.

THE TWIN FALLS MILLING & ELEVATOR COMPANY

BROOKLYN TABERNACLE

BIBLE STUDIES WEDNESDAY EVENINGS

PREPARE FOR THE KINGDOM

Luke 11, 17-18 Feb. 18

"Repent ye, for the Kingdom of Heaven is at hand."—Matthew 10, 2

John the Baptist was the last of the Prophets and Jesus declared that none of them was His superior. "There has not arisen a greater than John the Baptist—and yet I say unto you that the least in the Kingdom of Heaven is greater than he."

John the Baptist was the last of the Prophets and Jesus declared that none of them was His superior. "There has not arisen a greater than John the Baptist—and yet I say unto you that the least in the Kingdom of Heaven is greater than he."

countures have constituted the antitype of John the Baptist. He was composed of the glorified Jesus and His glorified Bride, beyond the veil. Those glorified and the Kingdom of Heaven as surely as Abraham's Seed for the earth.

The church has cried in the wilderness. "Behold, I stand at the door and knock, and if any man will open the door, I will come in and will eat with him and he will eat with me."

"Art Thou the Messiah?" In John's day—multitude desired to be of the Kingdom, but while still holding on to their "gross sins," and so it had been throughout this Age.

Necessary to the Jews First Although God had not mentioned this "select" class, which He purposed to be members of the Messiah, He did, nevertheless, God determined that the opportunity to become members of this select, special class, should first of all go to Abraham's natural seed.

Later, it was sent on equal terms to the Gentiles. Saint Paul tells us that it was necessary that the Gospel Message should go first to the Jews because this was the Divine arrangement. But, alas, the Jews did not obtain that which he sought for—the best of God's gifts, the privilege of becoming members of the select class.

These things which John prophesied of Jesus were partially fulfilled more than eighteen centuries ago, but in another sense they are yet to be fulfilled.

These things which John prophesied of Jesus were partially fulfilled more than eighteen centuries ago, but in another sense they are yet to be fulfilled.

But now for the larger fulfillment—world-wide. In the end of this Age all the wheat class are to be gathered into the Kingdom of Heaven.

CHURCHES

CHURCH OF CHRIST—Special meeting—The Christian Evangelist Society of Twin Falls, will meet at 7:30 p. m. on Sunday, Feb. 18, at the church, 10th and 5th streets.

LUTHERAN CHURCH—Services at the Lutheran church next Sunday, corner Third and Fifth streets, Sunday school at 9:30 a. m. German preaching at 10:30 a. m. All are welcome.

M. E. CHURCH—Sunday school at 10 o'clock. Preaching at 11 o'clock. Communion services and reception of new members, evening services at 8:00 o'clock by mid-week services on Wednesday evening at 8:00 o'clock. Rev. W. S. Woodhill, pastor.

FIRST PRESBYTERIAN CHURCH—Corner Fourth and Second streets next Sabbath services. Sabbath school at 10 a. m. Mrs. M. F. Gouble, superintendent. Preaching at 11 a. m. evening services at 7:30 o'clock. Rev. John Gourley, pastor.

THE INTERNATIONAL BIBLE STUDENTS' CLASS—360 Third street, north. Meeting, Sunday.

SANT EDWARDS CATHOLIC CHURCH—Services at 10 o'clock on fourth Sunday of each month. First mass at 8 o'clock; second at 10. Sunday school at 2 o'clock. Rev. Joseph Bergman, pastor.

CHURCH OF THE TRINITARIAN—Fourth street and Third avenue, Sunday, Feb. 18, at 10 a. m. Preaching service, 11 a. m. Christian Workers meeting, 7 p. m. Evening preaching services, 8 p. m. Teachers' training class, Tuesday, 8 p. m.

FIRST BAPTIST CHURCH—Corner Fifth and Second streets. Sunday school will be held every Sunday at 10 o'clock. Preaching at 11 a. m. evening services at 8 p. m. Pastor

meetings every evening at 8 Rev. W. E. Henry, pastor.

CHRISTIAN SCIENCE SOCIETY—230 Third avenue east. Services Sunday, February 18, 11 a. m. Subject, "The Kingdom of Heaven is at hand." Testimonial meeting Wednesday, at 8 p. m.

ABENGIEN PROTESTANT EPISCOPAL CHURCH—Services will be held regularly every Sunday at 11 a. m. and 7:45 p. m. Sunday school at 10 o'clock. First communion in each month. All of whatever faith are welcome. Rev. R. W. Catlin, minister in charge. A home for all on Tuesday and Thursday evenings, 218 Third avenue north.

NO REASON FOR IT

You are Shown the Way Out

There can be no just reason why any reader of this will continue to suffer from the tortures of an aching back, the annoyance of urinary disorders, the dangers of serious kidney ailments when relief is at hand. It is the most positive proof given that there is no cure. The following is convincing proof:

I, C. Warner, 1505 North Garfield Ave., Pocatello, Idaho, says: "It gives me great pleasure to again recommend Doan's Kidney Pills and to confirm I satisfy their price when I publicly endorsed them in October, 1907. I was subject to attacks of kidney complaint for many years and during those years in my last attack I was compelled to take to my bed for a week. I passed gravel and the pain on occasions was almost unendurable. After taking the one bottle that relieved me until I began the use of Doan's Kidney Pills. The day that I began of this remedy was indeed a fortunate one for me. My kidney pills 'brought the attacks of gravel to cease and continued use removed every symptom of kidney complaint. I still take Doan's Kidney Pills off and on and they keep me in good health. I am almost 75 years of age and I can say from my experience with Doan's Kidney Pills is the best of proof of their merit."

For sale by all dealers. Price 50 cents. Doan's Kidney Pills, Buffalo, N. Y. Sole agents for the United States.

LARGE LIVE STOCK SHIPMENT

Trainload of Twenty-Nine Cows Leave Elmer in One Day. Elmer, Idaho, Feb. 12.—Talk about your big advertisements for the Twin Falls tract, but the shipment of stock that went out of this station last night is only a forerunner of what is to happen in the future. As a feeding ground Elmer has naturally attracted the attention of the big feeders and shippers, and from this year on there will be a steady stream of cars headed from here for the Great Omaha and Chicago markets.

Last Sunday L. L. Ormsby, one of the big shoopmen of Idaho, was in Elmer looking over the different bands that are being fitted for market. No better judge of sheep ever cast his eye over a band than this same man Ormsby, and when he stated that the bands that Frank Brown had fitted for market were the fattest and best bunch that he had ever seen in Southern Idaho, those who know the gentleman will not gainsay his judgment.

Among the shoopmen of cattle were Al Page with 250 head of fine fat steers, the McKinley estate with 200 head and perhaps others whose names were not learned. Among the sheep shoopmen were A. L. Houghshill, Norman Barker, William Parlow and Frank Brown.

The string of stock, making an especial train of 29 cars, certainly made an imposing spectacle as it pulled out from the area bound for the eastern markets. The train should have been decorated with streamers informing the country traversed that the stock was being shipped from Elmer, where the best land on the Twin Falls tract is to be found.—Elmer Journal.

Arkada, February 22d and 23d Don't fail to see it.

Money to loan, C. W. Walton, Twin Falls Title and Abstract Co.

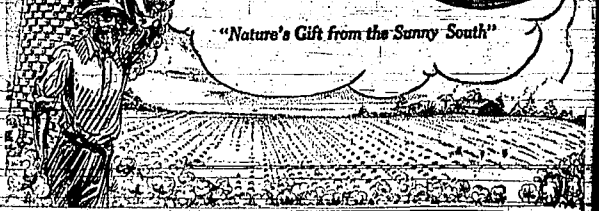
FROM SUNSHINE LAND

Cottolene is a vegetable product—without an ounce of hog fat in it. It is made from the choicest cotton oil, extracted from the seed picked on the fields of the Sunny South. It is a product of Nature, and makes wholesome, digestible, healthful food.

Cottolene is made in a cleanly manner—from Cottonfield to Kitchen human hands never touch the oil from which Cottolene is made. It is the one high-grade, absolutely pure and perfect cooking fat—and far preferable from a health and economic standpoint to butter, lard or any other fat.

Cottolene is more economical than butter or lard because it goes one-third farther.

Made only by THE N. K. FAIRBANK COMPANY

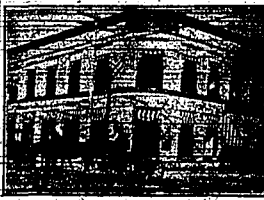


"Nature's Gift from the Sunny South"

The First National Bank of Twin Falls

J. J. Johnson, President J. H. Skonwold, Cashier

Capital Stock \$100,000.00 Surplus and Profits \$20,000.00



A conservative and safe banking concern, whose officers guard carefully the accounts of their patrons. Commodious quarters, including large and convenient fire proof safety deposit vaults.

WE INVITE YOUR PATRONAGE

Twin Falls Bank & Trust Co.

Of Twin Falls, Idaho
Capital Stock \$100,000

SAFETY DEPOSIT BOXES FOR RENT

OFFICERS
W. S. McCormick, President
H. J. Felling, Vice-President
C. J. Hahn, Cashier

DIRECTORS
W. S. McCormick, J. Y. Felling, H. A. McCormick, G. T. Hahn, H. C. Milton

OFFICE HOURS
A. M., 8:30 to 12:00
P. M., 1:00 to 5:00

TELEPHONE 423

DR. FREDERICK E. SNOOK

DENTIST

Over Ophium Theatre
Seaside Street North
TWIN FALLS, IDAHO

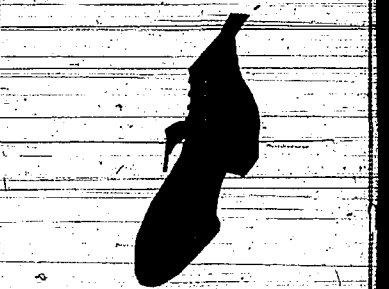
WE CATCH THE BEST POULTRY

trade in the community because we handle only fresh killed tender young birds. If "All Chickens Look Alike to You" try one of ours for a change. You'll find they don't taste alike and that our birds are tenderest and sweetest you ever tasted.

Independent Meat Market
Main Avenue, four doors above postoffice. Phone 163

Read the Classified Page, Advertise Your Wants.

Our Shoe Department is Now Complete With a Full Line of the Famous Star Brand Shoes



Ladies' and Misses' Society, Society Star, Satin, Verona, and Our Family.

Pluck, Patriot, Our Family, Stronger Than the Law, and Soft and Good, for men and boys.

Every pair guaranteed to give satisfaction or money refunded.

KIMBERLY STORE CO.

KIMBERLY, IDAHO

Insist on a Hartford Policy

The Hartford has paid \$1,000,000 for claims on property of its policy holders. This is larger indemnity than has ever been paid by any other American company. Insist on a HARTFORD policy.

Twin Falls Title & Abstract Co. Agents
TWIN FALLS, IDAHO

If you want printing done, by all means have it done right. The News printing department has machinery, equipment of the latest make, and men of skill and experience to handle them.

What Are You Going to Do About It?

Montgomery Ward & Co. ask you this question, Mr. Farmer, Mr. Mechanic, Mr. Everybody, residents of "South Idaho and Twin Falls in particular. This is the "stone-wall" question asked in a scurrilous circular edited by the above firm and mailed broadcast. Their circular is a condemnation not only of the merchants of Twin Falls, but the farmer as well. It is an insult to the intelligence of all persons to whom it was mailed.

Now WE Ask, What ARE You Going to Do About It?

What has Montgomery Ward or any other mail-order house ever done for Twin Falls and South Idaho? Did they help build the bridges across Rock Creek? Did they furnish the funds for a \$7000 fair to advertise the farmers' products? Who furnishes the funds to maintain the horticultural exhibits, the dairy conventions, the swine breeders' conventions, the poultry shows? Who opened up new markets for the products of the tract by building an \$8000 road to Jarbidge? Who buys your eggs, poultry, butter, milk, onions, spuds and fruits? Who assists your Commercial Club to exploit your lands and orchards, maintains your churches and helps build your school houses? YOU KNOW THE ANSWER: THE LOCAL MERCHANTS. How much money has Monte Ward invested in Southern Idaho? How much taxes do they pay for the support of your public institutions?

You Have Pride in Twin Falls

Monte Ward & Co. says about our stores: "Their stocks are far inferior to those of stores in towns not nearly as large in Kansas, Iowa, Illinois and the eastern states." We feel a great pride in our stores and know you do, and you know there is not a town of its size in the United States more up to date than your own Twin Falls and with stocks as good. If they misrepresent your beans and our stores, will they not misrepresent the quality of their goods and anything else?

Who Raised the Dirty Beans?

Monte Ward's man says in his circular: "The goods (white navy beans) shown me were machine run stock, very poorly cleaned, many of the small or trashy beans not taken out and withal very dirty." Mr. Farmer, there is not a store in Twin Falls selling other than home grown navy beans? This is where you come in direct competition with Monte Ward & Co. They seek to destroy your market. You raised 16,000 bushels of beans last year.

Did We Kick on Your Beans?

Are Our Stores Clean?

Here's Monte's exact words about our grocers:

"I was shocked beyond measure at the condition of the grocery stores, especially the fact that none I visited was a thoroughly clean and up-to-date establishment. The goods are thrown in almost anywhere and it is a wonder to me that the citizens do not compel them to clean up."

Are we dirty? You know, Mr. Consumer, that Twin Falls' grocery stores are strictly clean. After so gross a misrepresentation would you believe their other statements? Again they say:

"You, yourself, can go into the stores at Twin Falls and find just the same conditions that he did."

And that's real good advice. We want your inspection from collar to garret and will be pleased to show you. It's our pleasure.

WHO and WHAT WE ARE

This merchants' association is an organization for the purpose of boosting Twin Falls and making a better feeling among ourselves; to regulate credits and see that every man who is honest and entitled to it is accorded the proper credit.

Is Your Credit Good at Ward & Co's?

Other purposes are to open and find new markets for Twin Falls products; to regulate and encourage subscriptions to legitimate enterprises and advance the general welfare of the tract.

You Can Examine Our Goods

Monte Ward's "Country Store Keeper" says our goods are shabby and second grade. How can we misrepresent when you can examine our goods before you buy? You know their statement is not true. You are an intelligent people—would you believe any other statement they make?

Comparison of Prices

It is utterly impossible to compare prices from a catalogue without the article itself to compare. A \$4 shoe and a \$3 shoe may have the same description and yet the former have a better grade of material of the same description and better workmanship thereon. One may be a scab made and one union made. And it's a cinch the mail order houses don't use UNION MADE goods. We are willing, ready and anxious to compare prices. Just come along with catalogues and samples.

THE RESOLUTION That Brought Out Montgomery Ward's Wrath Here It Is

"Resolved, that whereas, we do not consider advertising in premium lists profitable to the members and is contrary to the rules of this organization, we withhold our endorsement, but we hereby approve of the plan of the Southern Idaho Poultry Association to solicit money and premiums, provided all advertising and premiums offered by mail order houses be refused."

We don't consider this kind of advertising proper or profitable, and we were willing to support the poultry organization with cash. Why should we donate our cash to provide an advertising medium for Monte Ward & Co.? Don't you think we're right? Would you?

IRRIGATED SOUTHERN IDAHO

Has been developed in seven years from a desert into a flourishing and prosperous country, and is populated by people of high intelligence from all parts of the United States. Did Montgomery Ward & Co. or any other mail order house contribute anything to the accomplishment of this condition? No, it was accomplished by the united effort of the local people. In order to accomplish all the things we still hope for, we must be united. We need you—you need us. United we stand, divided we fall.

What Are You Going to do About It?

MERCHANTS & MANUFACTURERS ASSOCIATION

TWIN FALLS NEWS

Official paper of Twin Falls County. Published Thursday by the TWIN FALLS NEWS PUBLISHING CO. R. A. READ, Manager. Subscription Rates: One Year, in advance \$2.00; Six Months, in advance \$1.00.

Entered as second-class matter, December 2, 1904, at the post office at Twin Falls, Idaho, under Act of Congress of March 3, 1879. Re-classified as second-class matter April 27, 1911, at the post office at Twin Falls, Idaho, under the Act of March 3, 1879.



GOOD WORK WELL DONE.

The signed statement of James H. Wallis which appears on the front page of this week's issue of the News, may be regarded as about the best thing of the kind for the purpose which Twin Falls could have.

Those reading the certificate need have no hesitancy in believing every word of it. It has long been known that if there was one special point in which Twin Falls merchants excelled it was in this very matter of plain and sanitary places of business. It has been the consistent aim of one and all to have the stores and offices of the city on a par with those of any place on earth when it comes to these two very important points.

Those reading the certificate need have no hesitancy in believing every word of it. It has long been known that if there was one special point in which Twin Falls merchants excelled it was in this very matter of plain and sanitary places of business.

A word as to the part taken by Mr. Wallis. This official was on his way to Washington, D. C., when intercepted by the telegram of the Merchants and Manufacturers association. He cancelled all his reservations for the entire trip and came to Twin Falls to render such help as he could.

Read his certificate carefully, consider the importance of the work he is doing in Idaho, and then place the result in the balance along with the sneaking, under-handed methods of the Chicago concern. Figure to yourself that, dollar for dollar, the Twin Falls merchants cannot afford to be undersold by any mail order house on earth, and then ask yourself the question whether it is better to buy without seeing the goods, wait two weeks for their delivery and then feel half-unsatisfied to have your neighbor know where you got them, or walk into a Twin Falls store with a feeling of honest pride in the great tract which makes such an institution possible, select your goods and go about your business with a clear conscience and a feeling of righteous satisfaction.

The merchants and business men have added thousands of dollars to the value of the farm lands of their tract through getting together, and giving their time and their money for the up-building of the Twin Falls tract. To be sure they have profited liberally, but hardly to the same extent as has the direct consumer who is neither a merchant nor class in that sense, a business man.

Let all classes get together, view the situation in the calm, cold light of reason, select a remedy, and then STICK TOGETHER.

Let no one overlook for a minute the importance of the work about to be taken up in the way of road building. The expense is so small as to be barely worth mentioning, while the advantages are six-fold.

Remember there is not a community on earth where high-priced lands are for sale that it was not first found necessary to provide good roads to give easy access to them. Bear in mind that every dollar expended in this work means many more added to the value of the farm, and last, but by no means least, when the day arrives, get out and do your share, and if you can not do this by giving your time and personal effort, give a sufficient contribution to permit of some one being hired in your place.

There is money in it for you. One of the finest examples of job printing to be found in the west is that now being gotten out by the News staff for the Thompson Realty company in the form of a booklet setting forth the advantages of the tract from a horticultural standpoint. The booklet contains a specimen of three-color printing which it would be hard to beat anywhere.

When you write to your friends in the east don't forget to say something about the weather. The idea of men going about with their coats in February should prove positively refreshing to many in the snow-bound middle western states.

NEWS FORUM

To the Editor of the Twin Falls News: Inasmuch as the Twin Falls News has been, perhaps, the indirect cause of the newly aroused interest in the matter of the sale of mail order business, I am permitted to state through your columns just what part the Postoffice association has had in the matter.

It has been the custom of all of these of the "character," to solicit aid for the annual show from whatever source it might be obtained. We have in the past received from various individuals and business concerns in the East, including the Postoffice association, advertising for our premium lists and premiums to be awarded to the winning exhibitors in amounts ranging from \$500 to \$10,000. I can assure you that I do not feel that this is a legitimate way of securing aid.

When the act of financing the last show presented itself to me as it had done in the past and solicited advertising and premiums from every source from which we felt we might expect returns, I thought of the source in question; Montgomery Ward & Co., of Kansas City, offered 1000 poultry drinking fountains, two each for \$1.00, and a quantity of other goods about 60 cents each. We solicited advertising and premiums in the usual manner and the result was that the premiums in Twin Falls when upon approaching one business man I was told that I could solicit no further aid from the Postoffice association.

It did not take long to change the scenes and set the stage for the unfolding of the present picture. It was not necessary to import any of the "props," for the reason that everything was already on the ground. From the remains of the oldtime order of things has arisen a community of men and women who are willing to work rather than talk, and who have the rock to show every one who cares to investigate the splendid prospects of what will some day be one of the greatest precolonial camps in America.

All this is good for Jarbridge. The inevitable result will be slow in coming, but come it must, and the serene confidence with which he comes is awaited speaks volumes for the people who by their efforts have made this possible.

Resolved, that whereas, we do not possess advertising in premium lists, and do not wish to create a precedent contrary to the rules of this organization, we withhold our endorsement therefrom. But we approve of the plan and do not wish to create a precedent contrary to the rules of this organization, we withhold our endorsement therefrom.

Resolved, that whereas, we do not possess advertising in premium lists, and do not wish to create a precedent contrary to the rules of this organization, we withhold our endorsement therefrom.

Resolved, that whereas, we do not possess advertising in premium lists, and do not wish to create a precedent contrary to the rules of this organization, we withhold our endorsement therefrom.

Resolved, that whereas, we do not possess advertising in premium lists, and do not wish to create a precedent contrary to the rules of this organization, we withhold our endorsement therefrom.

Resolved, that whereas, we do not possess advertising in premium lists, and do not wish to create a precedent contrary to the rules of this organization, we withhold our endorsement therefrom.

Resolved, that whereas, we do not possess advertising in premium lists, and do not wish to create a precedent contrary to the rules of this organization, we withhold our endorsement therefrom.

Resolved, that whereas, we do not possess advertising in premium lists, and do not wish to create a precedent contrary to the rules of this organization, we withhold our endorsement therefrom.

Resolved, that whereas, we do not possess advertising in premium lists, and do not wish to create a precedent contrary to the rules of this organization, we withhold our endorsement therefrom.

Resolved, that whereas, we do not possess advertising in premium lists, and do not wish to create a precedent contrary to the rules of this organization, we withhold our endorsement therefrom.

Resolved, that whereas, we do not possess advertising in premium lists, and do not wish to create a precedent contrary to the rules of this organization, we withhold our endorsement therefrom.

Resolved, that whereas, we do not possess advertising in premium lists, and do not wish to create a precedent contrary to the rules of this organization, we withhold our endorsement therefrom.

Resolved, that whereas, we do not possess advertising in premium lists, and do not wish to create a precedent contrary to the rules of this organization, we withhold our endorsement therefrom.

Resolved, that whereas, we do not possess advertising in premium lists, and do not wish to create a precedent contrary to the rules of this organization, we withhold our endorsement therefrom.

Resolved, that whereas, we do not possess advertising in premium lists, and do not wish to create a precedent contrary to the rules of this organization, we withhold our endorsement therefrom.

Resolved, that whereas, we do not possess advertising in premium lists, and do not wish to create a precedent contrary to the rules of this organization, we withhold our endorsement therefrom.

Resolved, that whereas, we do not possess advertising in premium lists, and do not wish to create a precedent contrary to the rules of this organization, we withhold our endorsement therefrom.

Resolved, that whereas, we do not possess advertising in premium lists, and do not wish to create a precedent contrary to the rules of this organization, we withhold our endorsement therefrom.

Resolved, that whereas, we do not possess advertising in premium lists, and do not wish to create a precedent contrary to the rules of this organization, we withhold our endorsement therefrom.

Resolved, that whereas, we do not possess advertising in premium lists, and do not wish to create a precedent contrary to the rules of this organization, we withhold our endorsement therefrom.

NEWS FORUM

To decide whether any action should be taken. I was present at that meeting at the secretary's request. There was considerable difference of opinion as to the best course to pursue. Some thought that it would be well to let the Postoffice association accept the proposition.

Whereas, it appears that the Southern Idaho Postoffice association has heretofore been approved, and whereas, it appears that the Southern Idaho Postoffice association has heretofore been approved, and whereas, it appears that the Southern Idaho Postoffice association has heretofore been approved.

Whereas, it appears that the Southern Idaho Postoffice association has heretofore been approved, and whereas, it appears that the Southern Idaho Postoffice association has heretofore been approved, and whereas, it appears that the Southern Idaho Postoffice association has heretofore been approved.

Whereas, it appears that the Southern Idaho Postoffice association has heretofore been approved, and whereas, it appears that the Southern Idaho Postoffice association has heretofore been approved, and whereas, it appears that the Southern Idaho Postoffice association has heretofore been approved.

Whereas, it appears that the Southern Idaho Postoffice association has heretofore been approved, and whereas, it appears that the Southern Idaho Postoffice association has heretofore been approved, and whereas, it appears that the Southern Idaho Postoffice association has heretofore been approved.

Whereas, it appears that the Southern Idaho Postoffice association has heretofore been approved, and whereas, it appears that the Southern Idaho Postoffice association has heretofore been approved, and whereas, it appears that the Southern Idaho Postoffice association has heretofore been approved.

Whereas, it appears that the Southern Idaho Postoffice association has heretofore been approved, and whereas, it appears that the Southern Idaho Postoffice association has heretofore been approved, and whereas, it appears that the Southern Idaho Postoffice association has heretofore been approved.

Whereas, it appears that the Southern Idaho Postoffice association has heretofore been approved, and whereas, it appears that the Southern Idaho Postoffice association has heretofore been approved, and whereas, it appears that the Southern Idaho Postoffice association has heretofore been approved.

Whereas, it appears that the Southern Idaho Postoffice association has heretofore been approved, and whereas, it appears that the Southern Idaho Postoffice association has heretofore been approved, and whereas, it appears that the Southern Idaho Postoffice association has heretofore been approved.

Whereas, it appears that the Southern Idaho Postoffice association has heretofore been approved, and whereas, it appears that the Southern Idaho Postoffice association has heretofore been approved, and whereas, it appears that the Southern Idaho Postoffice association has heretofore been approved.

Whereas, it appears that the Southern Idaho Postoffice association has heretofore been approved, and whereas, it appears that the Southern Idaho Postoffice association has heretofore been approved, and whereas, it appears that the Southern Idaho Postoffice association has heretofore been approved.

Whereas, it appears that the Southern Idaho Postoffice association has heretofore been approved, and whereas, it appears that the Southern Idaho Postoffice association has heretofore been approved, and whereas, it appears that the Southern Idaho Postoffice association has heretofore been approved.

Whereas, it appears that the Southern Idaho Postoffice association has heretofore been approved, and whereas, it appears that the Southern Idaho Postoffice association has heretofore been approved, and whereas, it appears that the Southern Idaho Postoffice association has heretofore been approved.

Whereas, it appears that the Southern Idaho Postoffice association has heretofore been approved, and whereas, it appears that the Southern Idaho Postoffice association has heretofore been approved, and whereas, it appears that the Southern Idaho Postoffice association has heretofore been approved.

Whereas, it appears that the Southern Idaho Postoffice association has heretofore been approved, and whereas, it appears that the Southern Idaho Postoffice association has heretofore been approved, and whereas, it appears that the Southern Idaho Postoffice association has heretofore been approved.

Whereas, it appears that the Southern Idaho Postoffice association has heretofore been approved, and whereas, it appears that the Southern Idaho Postoffice association has heretofore been approved, and whereas, it appears that the Southern Idaho Postoffice association has heretofore been approved.

Whereas, it appears that the Southern Idaho Postoffice association has heretofore been approved, and whereas, it appears that the Southern Idaho Postoffice association has heretofore been approved, and whereas, it appears that the Southern Idaho Postoffice association has heretofore been approved.

Whereas, it appears that the Southern Idaho Postoffice association has heretofore been approved, and whereas, it appears that the Southern Idaho Postoffice association has heretofore been approved, and whereas, it appears that the Southern Idaho Postoffice association has heretofore been approved.

Whereas, it appears that the Southern Idaho Postoffice association has heretofore been approved, and whereas, it appears that the Southern Idaho Postoffice association has heretofore been approved, and whereas, it appears that the Southern Idaho Postoffice association has heretofore been approved.

Whereas, it appears that the Southern Idaho Postoffice association has heretofore been approved, and whereas, it appears that the Southern Idaho Postoffice association has heretofore been approved, and whereas, it appears that the Southern Idaho Postoffice association has heretofore been approved.

Whereas, it appears that the Southern Idaho Postoffice association has heretofore been approved, and whereas, it appears that the Southern Idaho Postoffice association has heretofore been approved, and whereas, it appears that the Southern Idaho Postoffice association has heretofore been approved.

Whereas, it appears that the Southern Idaho Postoffice association has heretofore been approved, and whereas, it appears that the Southern Idaho Postoffice association has heretofore been approved, and whereas, it appears that the Southern Idaho Postoffice association has heretofore been approved.

Whereas, it appears that the Southern Idaho Postoffice association has heretofore been approved, and whereas, it appears that the Southern Idaho Postoffice association has heretofore been approved, and whereas, it appears that the Southern Idaho Postoffice association has heretofore been approved.

Whereas, it appears that the Southern Idaho Postoffice association has heretofore been approved, and whereas, it appears that the Southern Idaho Postoffice association has heretofore been approved, and whereas, it appears that the Southern Idaho Postoffice association has heretofore been approved.

NEWS FORUM

To decide whether any action should be taken. I was present at that meeting at the secretary's request. There was considerable difference of opinion as to the best course to pursue. Some thought that it would be well to let the Postoffice association accept the proposition.

Whereas, it appears that the Southern Idaho Postoffice association has heretofore been approved, and whereas, it appears that the Southern Idaho Postoffice association has heretofore been approved, and whereas, it appears that the Southern Idaho Postoffice association has heretofore been approved.

Whereas, it appears that the Southern Idaho Postoffice association has heretofore been approved, and whereas, it appears that the Southern Idaho Postoffice association has heretofore been approved, and whereas, it appears that the Southern Idaho Postoffice association has heretofore been approved.

Whereas, it appears that the Southern Idaho Postoffice association has heretofore been approved, and whereas, it appears that the Southern Idaho Postoffice association has heretofore been approved, and whereas, it appears that the Southern Idaho Postoffice association has heretofore been approved.

Whereas, it appears that the Southern Idaho Postoffice association has heretofore been approved, and whereas, it appears that the Southern Idaho Postoffice association has heretofore been approved, and whereas, it appears that the Southern Idaho Postoffice association has heretofore been approved.

Whereas, it appears that the Southern Idaho Postoffice association has heretofore been approved, and whereas, it appears that the Southern Idaho Postoffice association has heretofore been approved, and whereas, it appears that the Southern Idaho Postoffice association has heretofore been approved.

Whereas, it appears that the Southern Idaho Postoffice association has heretofore been approved, and whereas, it appears that the Southern Idaho Postoffice association has heretofore been approved, and whereas, it appears that the Southern Idaho Postoffice association has heretofore been approved.

Whereas, it appears that the Southern Idaho Postoffice association has heretofore been approved, and whereas, it appears that the Southern Idaho Postoffice association has heretofore been approved, and whereas, it appears that the Southern Idaho Postoffice association has heretofore been approved.

Whereas, it appears that the Southern Idaho Postoffice association has heretofore been approved, and whereas, it appears that the Southern Idaho Postoffice association has heretofore been approved, and whereas, it appears that the Southern Idaho Postoffice association has heretofore been approved.

Whereas, it appears that the Southern Idaho Postoffice association has heretofore been approved, and whereas, it appears that the Southern Idaho Postoffice association has heretofore been approved, and whereas, it appears that the Southern Idaho Postoffice association has heretofore been approved.

Whereas, it appears that the Southern Idaho Postoffice association has heretofore been approved, and whereas, it appears that the Southern Idaho Postoffice association has heretofore been approved, and whereas, it appears that the Southern Idaho Postoffice association has heretofore been approved.

Whereas, it appears that the Southern Idaho Postoffice association has heretofore been approved, and whereas, it appears that the Southern Idaho Postoffice association has heretofore been approved, and whereas, it appears that the Southern Idaho Postoffice association has heretofore been approved.

Whereas, it appears that the Southern Idaho Postoffice association has heretofore been approved, and whereas, it appears that the Southern Idaho Postoffice association has heretofore been approved, and whereas, it appears that the Southern Idaho Postoffice association has heretofore been approved.

Whereas, it appears that the Southern Idaho Postoffice association has heretofore been approved, and whereas, it appears that the Southern Idaho Postoffice association has heretofore been approved, and whereas, it appears that the Southern Idaho Postoffice association has heretofore been approved.

Whereas, it appears that the Southern Idaho Postoffice association has heretofore been approved, and whereas, it appears that the Southern Idaho Postoffice association has heretofore been approved, and whereas, it appears that the Southern Idaho Postoffice association has heretofore been approved.

Whereas, it appears that the Southern Idaho Postoffice association has heretofore been approved, and whereas, it appears that the Southern Idaho Postoffice association has heretofore been approved, and whereas, it appears that the Southern Idaho Postoffice association has heretofore been approved.

Whereas, it appears that the Southern Idaho Postoffice association has heretofore been approved, and whereas, it appears that the Southern Idaho Postoffice association has heretofore been approved, and whereas, it appears that the Southern Idaho Postoffice association has heretofore been approved.

Whereas, it appears that the Southern Idaho Postoffice association has heretofore been approved, and whereas, it appears that the Southern Idaho Postoffice association has heretofore been approved, and whereas, it appears that the Southern Idaho Postoffice association has heretofore been approved.

Whereas, it appears that the Southern Idaho Postoffice association has heretofore been approved, and whereas, it appears that the Southern Idaho Postoffice association has heretofore been approved, and whereas, it appears that the Southern Idaho Postoffice association has heretofore been approved.

Whereas, it appears that the Southern Idaho Postoffice association has heretofore been approved, and whereas, it appears that the Southern Idaho Postoffice association has heretofore been approved, and whereas, it appears that the Southern Idaho Postoffice association has heretofore been approved.

Whereas, it appears that the Southern Idaho Postoffice association has heretofore been approved, and whereas, it appears that the Southern Idaho Postoffice association has heretofore been approved, and whereas, it appears that the Southern Idaho Postoffice association has heretofore been approved.

Whereas, it appears that the Southern Idaho Postoffice association has heretofore been approved, and whereas, it appears that the Southern Idaho Postoffice association has heretofore been approved, and whereas, it appears that the Southern Idaho Postoffice association has heretofore been approved.

Whereas, it appears that the Southern Idaho Postoffice association has heretofore been approved, and whereas, it appears that the Southern Idaho Postoffice association has heretofore been approved, and whereas, it appears that the Southern Idaho Postoffice association has heretofore been approved.

Whereas, it appears that the Southern Idaho Postoffice association has heretofore been approved, and whereas, it appears that the Southern Idaho Postoffice association has heretofore been approved, and whereas, it appears that the Southern Idaho Postoffice association has heretofore been approved.

Government Statistics State

That orchards in the Yakima and Wenatchee valleys and other favored fruit sections will, on an average, all varieties included, net from \$200 to \$600 per acre, per annum.

THEY ALSO STATE

That a bearing orchard of good varieties of apples will justify a price of \$1000 to \$2000 per acre.

THEY ALSO STATE

That 10 acres in bearing orchard will produce a bigger income than the average quarter section of land in the best farming districts.

NATIONAL FRUIT EXPERTS

Who have investigated this locality state that there is no more favored location for apple production in the world.

We are incorporating a stock company for the purpose of taking over the J. C. Gardner 80-acre fruit farm, 3 miles west of Twin Falls.

This place has 50 acres in 5-year-old Jonathan, Rome Beauty and Ben Davis apples now in bearing and fruit from these trees formed a part of the exhibit at the National Land Show in Chicago in November 1911.

This place also has 10 acres in the leading varieties of peaches. These trees are 3 years old and will come into bearing this year. The balance of the orchard is three-year-old Jonathan and Rome Beauty apples with a family orchard of nearly all varieties of fruit.

Incorporation will be for \$50,000, divided

MONEY In the Big



into 100 shares of \$500 each; \$2000 shall be placed in bank as working capital and can be used for no other purpose.

Stock Will Be Non-Assessable

For further particulars call on or write to the

Thompson Realty Co.

217 Shoshone St., Twin Falls, Idaho,

Or any member of Twin Falls County Real Estate Exchange.

Thousands of Acres

On the Twin Falls Tract are being set in apples, and sold in 5 and 10 acre tracts at \$100 to \$300 per acre to be delivered at the end of one year when they come into bearing.

We know of but ONE BETTER INVESTMENT; and that is the J. C. Gardner orchard, NOW IN BEARING; at the SAME PRICE.

A FEW REASONS IN FAVOR OF THIS INVESTMENT

- 1. This orchard is NOW bearing and dividends will begin at once.
- 2. Fully one-half of the purchase price can be paid from the dividends.
- 3. In 5 years it will have returned the original investment with interest.
- 4. When matured it will return an annual dividend equal to the original investment.
- 5. Your security is ABSOLUTELY SAFE and in 5 years will increase to three or four times its present value.
- 6. Stock can now be purchased with one-third cash, balance extending over a period of four years.

THOMPSON REALTY CO., TWIN FALLS, IDAHO:

I hereby subscribe for..... shares of stock of the J. C. Gardner Orchard Company, at the par value of \$500 per share, payable as per plan No..... (Give number of payment plan desired.)

Payment Plan No. 1—All cash on delivery of stock certificate, 2 per cent discount on all cash.

Payment Plan No. 2—\$170 per share cash on delivery of stock certificate, balance in 4 annual payments of \$32.50 each, with interest at 6 per cent per annum.

Payment Plan No. 3—\$170 per share cash on delivery of stock certificate, balance in 6 semi-annual payments of \$11.25 each, with interest at 6 per cent per annum.

Payment Plan No. 4—\$170 per share cash on delivery of stock certificate, balance in 16 quarterly payments of \$10.62 each, with interest at 6 per cent per annum.

It is understood and agreed that subscriptions shall be filed numerically in the order in which they are received, and shares will be issued to subscribers for the first 100 shares, after which no more can be obtained. Also that 30 days will be given for investigation, and if not found just as represented subscriber shall be under no obligation to accept stock.

Dated

Name

Address

PACIFIC-NORTHWEST TO FURNISH APPLES

EASTERN STATES CAN NEVER COMPETE WITH WEST

W. McPherson, State Horticultural Inspector, Pullman Out Splendid Fruit Possibilities in Southwestern Idaho.

(By J. V. McPherson, State Horticultural Inspector.)

In the past six years somewhere near one-quarter of a million acres of land in Idaho, Oregon and Washington have been planted to fruit, the major portion of this territory producing 100,000,000 bushels of apples. This is 50 per cent of the entire apple growing area in the United States. The estimated value is about \$200,000,000, and probably every district in these three states, where transportation facilities are available, has its own orchards. Not more than 10 per cent of the total plantings have been made in full bearing, but this means, it is estimated that the yield of commercial fruit over the year which was the banner year of the northwestern fruit production—Idaho, Oregon, and Washington.

From the following figures it can be seen that the fruit industry has made in the last few years in fruit production when we compare it with other states. This estimate is based upon the conditions of 1910, rather than upon the present date, and the writer believes that the figures are in line with the state of Oregon in 1910 a total acreage of about 100,000 acres, with about five per cent in full bearing, and from this acreage 100,000 tons of fruit were shipped. Washington with 1,000,000 acres, and with a percentage in bearing a little larger than Oregon shipped something like 1,000,000 tons, with 60,000 acres and about 15 per cent in bearing shipped 250,000 tons. It is estimated that the value of a value of over \$200,000,000. The acreage planted to new orchards since the year 1900, and at the present time, we have something near 120,000 acres in orchards, and each year the acreage comes into bearing. It is estimated by one of the largest orchard companies in the state that in the next five years will be between five and seven thousand acres more, and possibly the output of 1910.

Recent Acreage in Twin Falls County. The latest plantings in Idaho this

season year in the Twin Falls country, thousands of acres being planted to orchards in Twin Falls and Lincoln counties. There was also a very large planting in the northern part of the state, where in the five northern counties, the State Horticultural department has inspected over 600,000 trees, and in these counties has heavy planting been done, but all over the state, and in the last year several large companies planted many thousands of acres to commercial orchards. The varieties planted vary somewhat according to location and local conditions, as well as the length of the growing season. The varieties that are most extensively raised at this time, and which are bringing the best prices on the eastern markets are the Jonathan, Rome Beauty and Winesap. These three being our leaders, although we can, and do raise many other standard varieties. In fact, we can raise any apple raised in the north west. The large plantings in the state of 1911 is of standard variety.

No Danger of Over-Production

This extensive planting of 1911 brought up the question in the minds of some of the large growers in Idaho as to whether the markets can take over the production of so much fruit. The Rocky mountain states west of the Rocky mountains will always be called upon to furnish the markets with the high-grade commercial apple. According to the statistics of 1910, the output of apples in Idaho, Oregon and Washington amounted to 5,328,000 boxes. This output alone would supply the market of New York and Chicago with fruit if it were distributed one box per person per year. And so the output of the northwestern states is less than one-half of what it was a generation ago. According to statistics for the year 1895, 50,040,000 bushels were raised, and for the year 1911, as estimated, only 20,000,000 bushels were produced, while the output of the northwestern states has increased. During the year of 1897 our export was 505,330 barrels; for 1910, and a portion of 1911, it was 775,000 barrels, and for the year 1910, 1,000,000 in the past 17 years. Thus, while the production has decreased, our export trade has greatly increased.

No Two Districts Alike. Another great factor in fruit production is that no two districts are alike in all respects. Each district has its marked peculiarities. No variety will grow alike in two districts, and in some instances the distinction is very marked. This condition is not, however, without its value. In the first place it justifies the planting of different varieties in different sections where it has been demonstrated that certain varieties grow to better advantage than others, and it is in this way that the tendency of the growers to set out an orchard disregarding circumstances, and to consider standard varieties which will not grow in the district in which they are planted, is greatly reduced. It will be a constant yielder year after year, if all of the states of the northwest were able to raise the same variety, they would not be a short time until there would be an over-production of those certain varieties, but there is a great difference in the growing sea-

son in the different localities in Idaho, where apples are produced. The effect of this condition is of great value, and is demonstrated by the fact that no surplus planting of any one variety has taken place to any great extent up to date, but the mixtures such as we are now raising have been such as to meet the wants of the trade, and on the other hand it will give the grower the best net returns according to the time and money which he has put into the production of this fruit. It also spreads the time of harvesting and marketing season over a period of months—beginning with the Wenatchee apple which is picked in the Boise, Payette and Weiser valleys from the first to the middle of September, and ending with the Winesap and Rome Beauty which come in the month of November.

A Great Demand for Fruit

Taking all of these conditions into consideration, and knowing that the eastern states are never competitors with the western slope in apple production on account of their climatic conditions, it is easily to be seen that if we hold on to our present high standard and try to better it, as fast as possible, that there never will be a time when first-class fruit will not be in demand.

In conclusion, the writer does not believe that there is a state west of the Rocky mountains that has a greater future in horticultural work than the state of Idaho. We can and do produce fruit of size, color and texture that cannot be surpassed in any section. The fruit growers of Idaho today are striving to produce quality rather than quantity, for they know that when we can attain the highest in quality, the price of the fruit will be very easy, and it is certain that within a very short period of years, Idaho will be classed as one of the best fruit-raising states of the west, both for quality and quantity in fruit production.

PLANT EQUIPMENT PURCHASED

Head of Candy Manufacturing Firm Returns from Trip. W. Zenas Smith, head of Smith & Smith, wholesale candy manufacturer, returned to Twin Falls this week from an extended business trip in the west. During his recent purchases of machinery and other things needed in the new plant which the business will occupy in the near future.

Mr. Smith says conditions in many places are more or less at a standstill as a result of the political excitement of the past few days, and that the machinery in the new plant will be commenced as soon as it arrives.

Mr. Smith will arrive at the new plant in the near future.

Tickets for the Mikado on sale at all drug stores. Reserved seats at Steels & Wilcox's. Price 75c.

FINE SHOWING OF IMPORTED HORSES

SMITH & McMASTER EXHIBIT THEIR RECENT PURCHASES

Will Make Trip to Europe in June to Import Stock Direct—Stock Farm—Breeding of Thoroughbreds Contemplated.

The horse parade of Smith & McMaster on Saturday last was one of the best exhibitions of horses ever seen on this tract, and it is doubtful if it has ever been equaled in the state.

The parade was headed by 16 head



Percheron Black, Foaled May 2, 1907, Imported August, 1911. U. S. No. 1066



Percheron Gray, Foaled April 18, 1905, Imported August, 1911. U. S. No. 1064

of imported stallions—Belgians, Shires and Percherons—all of them weighing a ton or more, and 20 mares. The stallions were not in the best condition to show, as they arrived late Friday evening. In spite of their hard journey they made an excellent showing, but will be in his better condition after they have rested up and become acclimated.

The stock was purchased from Stugmaster & Sons of Keota, Iowa, who are said to be the largest importers in the United States, and from that string of 130 stallions Smith & McMaster selected only the best individuals, among which are Halesy and Exploit, shown in the accompanying illustrations.

The stock which this firm has brought into the country in the past has done much to build up the industry on the tract, which is one of the best sections for horse raising in the country. However, the business is merely in its infancy as yet.

ANOTHER SCRAP SCHEDULED

The Battling Dane, Will Meet Jack Carpenter in Tomorrow's Fight.

Jack Carpenter and the Battling Dane, who meet in a 10-round boxing contest at the Dreamland Pavilion Friday night, are both training hard daily, and by the time of the first bout will be in the best condition.

This will be Carpenter's first bout in this section of the country, but he has been making on all top notches around here. Lake and Denver the past week in Bill Merrill's fight. He is a tough, willing fighter, who mixes things all the time and always gives the fans a run for their money.

But there is more than the usual amount of interest taken in the bout can be seen by the large crowd who watched the boys train every afternoon in the Adams building and from present indications Dreamland hall will be packed to the doors Friday night.

CLOSING-OUT

We are closing out of business and are making reduced prices on lumber and all other building materials. See us before prices rise.

WILBERG-FRENCH LUMBER CO., Ltd.

TEACHERS' EXAMINATION

Will be held at Twin Falls on February 22 and 24, 1912. Questions will be issued for first, second and third grade certificates.

POTTER, County Superintendent.

Tickets for the Mikado on sale at all drug stores. Reserved seats at Steels & Wilcox's. Price 75c.

LUMBER

At reduced prices. We are closing out our entire line of lumber, paint and hardware and can save you money.

WILBERG-FRENCH LUMBER CO., Ltd.

TREES FROM KIMBERLY NURSERY

Jonathan, Rome Beauty and Winesap in abundance, either one or two years old. Best quality and very low prices. I will surprise you. For instance, 1-year-old apple by the hundred, 75c and 24, 1912. Questions will be issued for first, second and third grade certificates.

Week in Society

Mrs. O. H. Burton entertained a number of her friends at 5:30 last Friday afternoon at her home on Shoshone avenue. The rooms were prettily decorated with pink carnations and white hydrangeas, and the price for supper was awarded to Mrs. B. Morse.

At the conclusion of the game, the hostess, assisted by Mesdames Great-Lander and Bullis, served delicious refreshments. A feature of the afternoon was the presentation of a handsome set of glass—candle sticks to Mrs. Morse by a number of her friends, the occasion being her birthday.

These invited were Mesdames W. F. Hill, Senior, Graham, W. Edwards, Helne, Grant, Morse, T. Reed, R. A. Reed, Milner, Oakley, Costello, John Costello, Prinson, Kelly, Kenney, Lawrence, Leander, Pollock, Chasman, Tobey, McCollum, Allen, Guthrie, Kenneth and Spangler.

Flower Masquerade
On Friday evening Miss Isabel Cole entertained about 25 of her schoolmates and friends at a delightful flower masquerade. The first prize awarded in the nature of masquerade contest was won by Florio-Bentley.

A peanut bowl caused much excitement, the first prize being won by Doris Styles. A theatrical drama was served by the hostess, sister, Mrs. Gault, assisted by Mr. Homer Sherman and Miss B. Bentley.

For Mrs. Morrill and Miss Alexander
In honor of Miss Morrill and Miss Alexander a delightful and enjoyable bridge party given by Mrs. B. Z. Morse at her home on Tenth avenue north last Saturday afternoon. The affair was in the nature of a Valentine party, the decorations being in red, with red hearts as score cards. Mrs. Greenhow was awarded prize for high score, a delicate book. As the guests of honor were also presented with books.

Refreshments were served in the dining room, where Miss Alexander and Mrs. Morrill presided at the table. Those invited were Mesdames Greenhow, Albright, Sprague, Ostrander, M. J. E. and Mrs. Nelson, Mc-Atey, Wilcox, Dixon, Nielson, W. O. Taylor and Dwight, and Miss Alexander.

Justamere Club Entertained
Mrs. Montrose Kinsey entertained the Justamere Inn "600" club last Tuesday evening, at which time Mr. and Mrs. Gilmore Kinsey captured the prize for high score.

This week Mrs. McDermott entertained the club and cards were abandoned for "Prose and Verse" by Mrs. Kierland, Mrs. Kinsey and Mr. Cattin were awarded prizes for being the most successful at the different games.

Wimodausi Club Entertained
Mrs. Charles R. Root entertained the members of the Wimodausi club and a dozen of their friends at her home on Tenth avenue on Wednesday afternoon. The house was prettily decorated in red hearts and valentines, and Valentine games were enjoyed during the afternoon, at the conclusion of which delicious refreshments were served, the decorations being carried out in the moon.

Enjoyable Dinner Party
Mr. and Mrs. J. L. Daube entertained at a delightful dinner party Tuesday evening. Covers were laid for about a half dozen of pink swan peas for the exquisite centerpiece. Present were Mr. and Mrs. Daubergman, Mr. and Mrs. Tippett and Mr. and Mrs. Koenig.

S. N. S. Bridge Club
The S. N. S. bridge club met at the home of Mrs. R. A. Reed on Saturday afternoon, when Mrs. Dwight captured the prize for highest score. Mrs. Robbins, Mrs. Wollon, Mrs. Malone and Mrs. Coughlin were the guests of the club.

For New York Guest
Mr. Purdy of the Chase National Bank of New York, Mr. and Mrs. E. B. Williams and Mr. and Mrs. F. B. Porter, the guests of Mrs. W. Edwards at Shoshone Falls and the Blue Lakes last Friday, enjoying a delicious trout dinner at the Lakes.

Luncheon Club Entertained
Mrs. Robert McCollum entertained the members of the Luncheon club at her home on Shoshone avenue Monday afternoon. Mrs. Robbins won the prize, a dainty hand made handkerchief, the work of the hostess.

Dinner on Private Car
D. B. Spencer, who came up from Salt Lake on Saturday, accompanied by his daughters, Dorothy and Katherine, and Miss Stella Porring, entertained Mr. and Mrs. J. B. Perline at dinner Sunday evening on the car "Yellow Girl."

Mr. and Mrs. Hance entertained informally at a fish dinner Tuesday evening.

Mr. and Mrs. Kohnstien entertained a few friends informally Sunday evening.

FARM FOR RENT
120 acres, North Blido; 3-room house, barn, etc.; will make attractive home to good man on 5-year lease. V. H. Chandler, Box 4, Twin Falls.

CLUBS

The unusual amount of talent to be found among the women of Twin Falls was further demonstrated at the opening meeting of the Twentieth-Century club Tuesday afternoon. The program was decidedly unique in that every member was the original producer of some member of the club and from first to last the program showed great care and thought combined with natural ability. The afternoon proved such a success that the president, Mrs. Morse, suggested that it be made an annual affair.

Mrs. George W. Kenneth opened the program with a delightful piano solo, pleasing with her audience an impressive list of birds singing in the setting sun. Mrs. R. H. Dixon's story, "A New Version of an IH Wind" portrayed a modern business man with narrow eyes reading women's clubs and his final awakening brought about by knowledge obtained by his wife on one of her secret club visits, which served them with sorrow in a critical situation. Mrs. W. E. Aaron gave a clever Japanese monologue in costume, and made the character of the little Japanese girl, evoking either the possible loss of her English husband seem very real. In her usual charming manner, Mrs. Dwight sang "The Windy City of Chicago" in words and music to this song, which were clever and called forth an appreciable round of applause. Mrs. Ostrander read "The Book of the Week" and recited "Unlucky Leaves," a poem which had for its theme the Book of Life. The songs comprising the disconcert of the book were held in the evening at Shoshone Falls.

Mrs. Gilbert delighted her hearers with a reading of "The Windy City" a pleasing delineation of stampeding cattle and cowboys reeling over the plains. Mrs. Packard's poem, "The Club Woman's Husband" was a humorous sketch of a husband neglected on account of his wife's club duties. The awful hardships of listening to contrasting tales of bond and free, ridiculous and appalling deserts while he also stewed prunes six days out of each week was a good hit at the department of matrimony. Mrs. Ostrander's final appeals were for a new department of the club, "Home, Sweet Home." Little Miss Linda Packard recited this poem very skillfully.

The program closed with a very pretty duet, "When the Autumn Leaves are Falling," sung by Mrs. Ostrander and Mrs. Koenig, accompanied by Mrs. Rogan. The words were written by Mrs. Dixon and the accompaniment, which was very appropriate, covering the idea of the falling of the leaves, was composed by Mrs. Rogan.

The domestic science department met on Monday afternoon at the home of Mrs. Rice at which time they voted to continue the visiting of home industries. Mrs. Heart gave a demonstration of bonding and splicing a fish fork, and Mrs. Koenig, who was awarded much interest, and Mrs. Hall read a very good paper on the preparation of a cooking of fish, giving the recipe for good value with different kinds.

This department will have charge of the next regular meeting of the Twentieth-Century club on Tuesday, February 27th, at which time Miss Ostrander, special instructor of domestic science at the Albion State Normal, will conduct the meeting, giving practical demonstrations of cake-making, also some new salads. A feature of the afternoon will be the "Kitchen Symphony." All the women of Twin Falls are cordially invited to this meeting.

The history and literature department of the Twentieth-Century club will meet at the home of Mrs. B. E. Morse on Saturday afternoon.

The regular meeting of the Fortnightly club was postponed until February 28.

Mikado, February 24d and 25d. Don't fail to see it.

CARNegie's GREAT REFORM
"What do I think the greatest reform of the present day?" asks Mr. Andrew Carnegie in the Strand. "What single act would I select for the most beneficial to the world? I would enact the abolition of war—I would abolish war between nations, which belies our claims to civilization. As long as men kill each other they are savages." But think, dear reader, what a tremendous act this would be, and of what far-reaching significance. A decree would be signed disbanding armies, dismantling navies, and putting ships, guns and weapons on a scrap-heap. It is certainly difficult to conceive of a more sweeping reform than this, but if it were brought about by a stroke of the pen it would probably throw millions of men in Idleness, and disorganize irreparably the whole machinery of civilization.

END THE ROMANCE
"It seems to me," said Batterby, "that we are knocking nearly all the romance and imagination out of life when we commiserate marriage—forget that's about what we are doing like the good old way of courting, the way that was the classiest thing went knights wore bold. I like the idea of pulling the editor, the drawing and snatching up the girl of my heart, and putting her on the middle before me and galloping away like mad! Wouldn't that suit you?" "No, it wouldn't," replied the other man. "The girl of my heart weighs 160 pounds."

Thompson Realty Co. SPECIALS

No. 23.
80 acres 3 3/4 miles from Twin Falls, 4-room house, cistern, barn, granary, all fenced, 4 acres in 1-year-old orchard, 65 acres in alfalfa. Price \$115 per acre—\$9000 cash.

No. 70.
77-1/2 acres, 1 mile from Camelford, adjoins land to be set in orchard by Ferguson Fruit and Land Co., about 12 acres cleared, balance unimproved. Price \$85 per acre—Will take \$250 cash and give 20 years to pay balance if desired.

No. 50.
80 acres, 1 mile from Berger, all No. 1 land; no improvements, not proved up. Price \$44 per acre—\$700 cash, balance assume water contract extending over a period of ten years.

No. 24.
400-acre desert entry valley, 6 miles from railroad, all No. 1 land, in Artesian well—belt, one-year's proof made. Price \$385.

No. 69.
40 acres, 1 1/2 miles from Hansen; 30 acres in alfalfa, balance ready for grain; no building. Price \$105 per acre; \$2000 cash.

No. 60.
10 acres in Orchulara sub-division; 1 mile from Twin Falls; 5-room house, 2 barns, fenced, half acre in strawberries. Price \$300 per acre; \$2250 cash.

No. 68.
10 acres in Orchulara sub-division, 3 1/2 mile from city; 3 acres in alfalfa, no improvements. Price \$280 per acre; \$800 cash.

No. 48.
10 acres in Orchulara sub-division, 1 mile from city, all in alfalfa, less fine. Price \$250 per acre; \$500 cash, easy terms on balance.

No. 78.
5 acres, 1 1/2 mile from city, 1 acre 3-year-old orchard, shack, stable. Price \$1600; \$250 cash, \$50 December, 1912, balance in 3 years.

No. 38.
4 acres, in Highland View, 1 mile from city, 3-room house. Price \$1200; \$360 cash.

No. 46.
1 acre on Blue Lakes boulevard, 1 1/4 mile from city limits; 1 1/4 mile from Ferrine 80, which has just sold for \$100,000. Price \$1000; \$350 cash.

No. 40.
Good residence lot on Ninth avenue east, best residence part of city lot 13 block 6. Price \$525; \$325 cash.

No. 2.
Good residence lot in Elm Park addition, deep well water piped to lot, several bearing peach trees, large strawberry bed. Price \$550; \$25 cash, \$20 monthly.

No. 4.
4-room house and good residence lot on Main avenue west, 2 blocks from Lincoln school; lawn, chicken house and yard, fenced. Price \$1250; \$350 cash, balance easy monthly payments without interest.

We have money to loan at 8 per cent, first mortgage security only.

We have for trade 60 acres improved near Bellingham, Wash., for land on Twin Falls or Salmon tracts.

80 acres near Fulton, Mo., improved, for Twin Falls property.

5-room modern house in Okiahoma City for Twin Falls property.

6-room house at Lincoln, Neb., for Twin Falls property; and many others. If you want to trade your Idaho property for property either east or west come in and see us. We may have just what you want.

THOMPSON REALTY CO.
217 Shoshone St.

Orpheum Theatre MOTION PICTURES

Friday and Saturday
PROGRAM

Saved by the Flag
Patriotic Drama

Mrs. Browning
Comedy

May's Suitsors
Comedy

The Ranch Girl's Mistake
Western Drama

4 Feature Photo Plays

Admission 5 and 10c
Doors open 7:00

Michigan Buggies

Winona Wagons

No. 1 Hay taken at \$5.50 in payment

The Kinney Company
West of Depot

Stock Salt, any Quantity

LEGAL-BLANKS
All legal supply always on hand at the Twin Falls News Office.



ARE YOU GOING TO BUILD?

SEE US BEFORE YOU BUY
OSTRANDER LUMBER CO.

FARM LOANS
We are prepared to make long time farm loans with liberal partial payment plans. Annual interest and the borrower selects the month to pay. We are always in funds.

J. H. MOREHOUSE
Twin Falls, Idaho
Office over Farmers and Merchants Bank

IDAHO DEPARTMENT STORE

Footwear for Spring

Our Spring Stock will fill all the requirements in up-to-date footwear in both style and fit. Make your selections while the stock is complete.

Up-to-Date Footwear

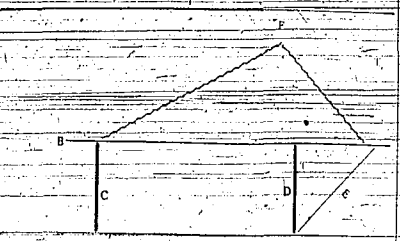
CONSTRUCTION AND USE OF THE "KING" DRAG

Instructions for Building an Implement at Small Cost, Which It Used Properly and Diligently Will Keep Highways in Good Condition

By F. E. Chamberlain
I think it safe to say that for many years to come the people of this community must be content with the roads that are being made by the most general type of road in use in the world and especially in the United States. We have in this country more than two millions of miles of these roads which must be kept in repair and fit for travel by some inexpensive method.

This leads naturally to the consideration of the King drag, an invention of D. W. King, of Missouri. It is a cheap and simple implement, costing but \$100 or over five dollars. It is the ultimate solution of the problem on the Twin Falls tract. I speak advisedly when I say, both from personal experience and from the opinion of men of the highest expert knowledge of dirt road construction and maintenance, that no other method of making and keeping in repair our roads is at one and the same time so cheap and efficient. It is in extensive use in most of the states of our Union and many foreign countries, and its use is unanimous as to its efficiency.

Construction of Drag
It must, however, be properly made and properly operated. Don't make the mistake of having too heavy a drag, but make so that one man can easily handle it and three horses can easily pull it. The drag should not make any use of square timber, but use instead of those with sharp edges. The squared timbers permit the grade to slip over instead of cutting the irregularities of the road surface.



As the term "spill log" loses its significance in a country where there are no logs to split, we must confine ourselves to the plank drag or grader which can be made in a very simple and efficient manner. It should be made of sound three-inch plank seven foot long and three inches wide, indicated by A and B in sketch. The planks should be laid level on the under or cutting edge of the plank we get the sharp cutting edge of the spill log. It is not covered as some people think, but is open edge 30 inches apart, with a liberal "back" that is, the front or cutting edge of the spill log is about 20 inches to the right of the rear one and runs toward toward the loam; this brings the rear plank the same distance to the left of the front one. This makes it much easier to handle.

These planks are fastened together with a six plank, 10 inches long, and D on sketch, or rather two of them, one on each side, running through the planks, taking care not to have the front end of the six plank beyond the surface of the front plank. The cutting edge must be as smooth as possible to the end that it may not clog in wet dirt. An additional holding the planks together and in line from the front is given by running two small iron rods at the sides of the braces through the planks and holding securely. The four braces should have the wooden ends of one-half inch and must fit the holes tightly. Shoe the front or cutting edge of the spill log with quarter-inch steel, four inches wide, and projecting at the right one-half inch beyond the edge and balancing gradually to the surface of the spill log at the left. Put a small draw-bolt about 18 inches from the right end of the spill log, and from the top edge of the front plank for a chain hitch, but the chain around the brace on the left and draw over the top of the spill log. This tends to hold the drag down and leaves the surface free of obstruction, so it may clear itself. Put a six brace (E) at the right end of the front plank, a few inches from the extreme end and leading back to where the six brace runs through the rear plank. This projects beyond the rear one. Put a platform of inch boards on top of the front one, hitch the chain (F) far enough on the right so that the front wheel will run at an angle of about 45 degrees, the right end, of course, being ahead. Get onto your drag and you will see that the efficiency of the front plank may be increased by setting it at a slight pitch, or slant, by cutting the shoulders of the six brace at an angle greater or less as may be desired. A grader that is not intended to tear bridges and culverts out of the road, however much the need may be.

Preparation of the Road Bed
If you want the road bed to be 24 feet wide, which is about right to begin with (for it can be widened the following year) leave about eight feet in the center and drag the furrows eight feet on each side. The furrows of increasing depth for a distance and start the ditch with a heavy "D" and draw round the furrows, being sure to drag the left and always the dirt towards the center of the road.

CLOSING OUT SALE
Everything at cost. W. S. Harris Drug Store, Buhl, Idaho.
MANDOLIN AND GUITAR INSTRUCTIONS
Mr. D. J. Moran has organized a mandolin and guitar orchestra, wishing to join, please apply to 420 Main Avenue north. Phone 368 Black.

JEROME NO MATCH FOR TWIN FALLS

NORTH SIDERS DEFEATED BY SCORE OF 4-1 TO 0

The Local Team Getting Into Fine Shape, with Good Chance of Winning State Championship—Great Things Expected of Them.

Last Thursday evening the boys' basket ball team put in a very famous Jerome team to the tune of 4 to 0. Jerome made it plainly known that they were coming here with their team at the hands of Twin Falls a short time ago. They got all they wanted except the revenge. That part of the programme they have still to get. The home boys played better than ever before. According to Coach Chapman they are just getting into shape and if this is so, some great things may be expected from them in the near future and they have an excellent chance of winning the state championship.

The result of the game was never in doubt. Twin Falls led at the end of the first half 25 to 4. By this time the Jerome team was all but exhausted.

The second half was a repetition of the first. Jerome steadily losing ground and Twin Falls forging ahead. Whitney kept up his record-making work, scoring 17 out of 43 points, which is some record for a center.

The Score
—Jerome (9)—Varnum and Sullivan forward; Pence, center; Robertson and Smith, guards.
Twin Falls (43)—Ballew, Weaver and Kirkpatrick, forwards; Whitney and C. Girder, center; C. Girder and Crater, guards.
Field Goals—Ballew, 3; Weaver, 1; Kirkpatrick, 4; Whitney, 3; C. Girder, 1; D. Girder, 2; Crater, 2; Robertson, 1; Smith, 2.
Free Throws—Whitney, 1; Varnum, 2.
Time—45 halves—45 minutes.
Referee, Jones.

Sick headache is caused by a disordered stomach. Take Chamberlain's Tablets and correct that and the headache will disappear. For sale by all dealers.

Royal has no substitute for making delicious home-baked foods.

ROYAL Baking Powder

ABSOLUTELY PURE

The only Baking Powder made from Royal Grape Cream of Tartar

NEW MODEL OF THE ROYAL STANDARD TYPEWRITER

The Royal always has been abreast with the best; here is a New Model which places it far in the lead. Read about Royal Model 5, every office manager, every stenographer, every up-to-date typewriter user.

It comprises every practical improvement found on any other machine, including:

- TWO-COLOR RIBBON, BACK-SPACER, TABULATOR,

And many new and valuable patented features that other typewriters do not have.

NO ADVANCE IN PRICE

\$75

is the price of Model 5—same as always; charged for Model 1 with tabulator.

Send for "The Royal Book," 32 pages of typewriter information—the finest typewriter catalog ever issued.—Yours for a postal card.

"Every Royal Sold Helps to Sell Another"

Royal Typewriter Co.

Royal Typewriter Building
New York

A Branch in Each Principal City

CHICHESTER'S PILLS
We have a quantity of scratch pads which we will sell at actual cost of paper. Now Publishing company.
EARLY BUREKA POTATOS
Special price for full delivery.
DARROW BROS.—SEED STORES

JANUARY 1, 1912

NEW-YORK LIFE INSURANCE COMPANY

OVER 66 YEARS OLD
Owned and Controlled by the Holders of OVER ONE MILLION POLICIES

346 and 348 Broadway, New York

Transactions for the Year 1911

This Company announces that it has received during the year 1911—over 77,000 POLICIES in the sum of about 175 MILLION DOLLARS of insurance on which the first premium has been paid to the Company in cash. The Company is now composed of the holders of over 1 MILLION POLICIES now in force for more than 2 BILLION TWO HUNDRED MILLION DOLLARS of paid insurance in force, being a gain for the year of more than 60 MILLION DOLLARS of paid insurance in force. During the year 1911 the Company has paid in dividends to its policyholders over 8,000 POLICYHOLDERS, over 24 MILLION DOLLARS. During the year the Company has paid to its living holders, in maturing policies and other cash benefits, over 28 MILLION DOLLARS. During the year the Company has loaned direct to 85,000 of its policy holders, on the sole security of their policies, more than 27 MILLION DOLLARS at 5 per cent interest, without fee or other charge. During the year the Company has paid to its policyholders in dividends nearly 9 MILLION DOLLARS.

Insuring the holders of over 1,000,000 Policies, who ARE—the Company, who OWN—the Company; and who ALONE receive the PROFITS of the Company.

See Mr. V. H. Chandler, Southern Idaho Representative, for a Policy in this Great Company

Sandwich Hay Press

The press that stands up to its work and does the most work. Three tons per hour and better have been baled with them on Twin Falls tract.

Recline-Seatley Buggies, Wagons, Delivery Wagons and implements... Hoosier Drills... Fairbanks Mergo Wind Mills and Pumps... Stover Gasoline Engines... Harness, Tents, Wagon and Barb Wire.

C. O. Meigs

Nothing but the best

Money to Loan

ON IMPROVED CITY PROPERTY

In amounts of \$500, \$650, \$1000, \$1600, \$2500.

ON IMPROVED FARMS

In any amounts to suit borrower.

The money is available within two days of date of application, and the rates and payment privileges are the most liberal.

Irrigated Lands Co.

First National Bank Building

NEW MANAGEMENT

The Palace Cleaning Comp'y

Has changed hands. R. E. Winans having sold his interest in the business. It is now in charge of Brewster & Wilks.

Suits Cleaned, Pressed and Repaired
First-Class Workmanship, Prompt Service

Open Day and Night Telephone 280 Red. Perrine Basement

CONVENTION OF SCHOOL TRUSTEES

MEETING TO BE HELD MONDAY AND TUESDAY, FEB. 19 AND 20

Noted Educators Will Speak on Topics of Vital Importance--Patrons of Schools and Others Interested to Be Present

The annual meeting of the school trustees of this county will be held at the High School auditorium in this city Monday and Tuesday, February 19 and 20.

As might be gathered, this meeting is not exclusively for school trustees. All patrons of the schools of other interested in educational work will be not only welcomed, but are urged to be present.

The complete program follows--

Monday, February 19

Violation of the Twin Falls City School Law

Opening session at the high school auditorium at 3:00 p. m.

Music--Pupils of Twin Falls schools

Address--W. T. Sandmeyer, Buhl, Idaho

Report--C. H. McQuown, Buhl, Idaho

Plant and Animal Life on the Farm--Illustrated lecture--Chas. W. Farr, assistant superintendent

Cook-county, Illinois

Music--Pupils of Twin Falls schools

Address--Miss Olive M. Young, Albion State Normal

7:30 p. m.

Music--High school orchestra

Address--W. T. Sandmeyer, Buhl, Idaho

Report--C. H. McQuown, Buhl, Idaho

Plant and Animal Life on the Farm--Illustrated lecture--Chas. W. Farr, assistant superintendent

Cook-county, Illinois

Music--Pupils of Twin Falls schools

Address--Miss Olive M. Young, Albion State Normal

9:30 a. m.

Music--Pupils of Twin Falls schools

Agriculture in the Rural Schools of Idaho--Prof. F. W. Cunningham, Albion State Normal

Discussion

How Agriculture is Taught in the Schools of Europe--E. T. Sandmeyer, Buhl, Idaho

Discussion--Guatavo Kuntze, Buhl, Idaho

Music--Pupils of primary grades--Miss Edith Koll, teacher

The Practical Benefit of Agriculture in the Rural Schools

Work--C. H. Taylor, commissioner of Twin Falls county

Discussion

The Rural School Building--Construction, Sanitation, Etc.--Prof. O. B. Bockel, State Normal

Discussion

Best Culture--A Practical and Profitable Study for Our Boys and Girls--Dr. D. R. Abbe, Crook Creek, Idaho

1:30 p. m.

Music--Pupils of Twin Falls schools

The Financial Side of Educational Work--W. E. Nixon, treasurer of Twin Falls City schools

Discussion--H. Turner, treasurer of Kimberly schools

Arbor Day at the School and Home--James A. Waters, Twin Falls, Idaho

Discussion--James Fitzgerald, Buhl, Idaho

Elementary Science in the Rural Schools--Supt. Earl B. Dooley, Ellettsville, Idaho

The Play and Its Place in Our Schools--C. H. McQuown, Buhl, Idaho

Music--Pupils of Twin Falls schools

Expert Teachers for Rural Schools of Idaho--Supt. O. M. Elliott, Twin Falls, Idaho

Rural--Play--Grounds and Play

EASTERN FIRM BUYS LOG CABIN GROUP AT JARBIDGE

Preliminary Work to Be Started--Gasoline, Engine Will Drive Machine Drills--Camp Short of Motor Power--Fuel Supply Uncertain

(Special Correspondence)

R. R. Cook Returns. Roy R. Cook, who has been spending the winter in Nebraska, came in yesterday for a visit. He will make another trip out before returning for the next season.

The work employing any number of men are all full-handed, and there is no other work to be started for at least two months. There is no work for the newcomers, and unless they are employed enough to hold them out, they will become a burden on the labor market.

REAL ESTATE

Discussion. J. H. Shields to J. L. Dunham, \$900, 5 acres in S.W. N.E. 14-1-14. J. W. Martin to W. T. Coombs, \$4000, S.W. S.E. 21-10-18. C. Vero Parks to J. H. Day, lot 16, block 8, lot 17, 18, 19, block 22, lot 23, block 7, & 12, lot 9, tract 1, Artesian City. T. M. Callahan et al to Christina Winfrey, \$225, lot 19, block 1, G. A. R. addition, T. S. E. A. C. Fouls et al, Mamie L. Fouls, \$1500, lot 2, block 2, T. F.

CONTRACT OFFERED-FARMERS

D. M. Ferry & Co. Make Good Proposition for Growing Pea Seed. A proposition of interest to every resident of the Twin Falls tract, and farmers especially, was presented to the Twin Falls Commercial club this week by H. H. Moore, representing the D. M. Ferry & Co. seed house of Detroit, Michigan.

HOME INDUSTRY DINNER

Ladies to Give Feed of Home-grown Products. The domestic science department of the Twentieth Century club will hold an active campaign in favor of patronizing home industry by giving a noonday dinner on Saturday, March 2, at which all foods served will be home grown.

A GOOD SUGGESTION

Proposition to Give Chicken Dinner to Road Workers. A farmer living along the proposed road from Hanson to Buhl has suggested that the women living on each mile of the road get together on the day the work is done and prepare a chicken dinner for the men working on the road.

LEGAL-BLANK

A full supply always on hand at the Twin Falls News office.

REAL ESTATE

Discussion. J. H. Shields to J. L. Dunham, \$900, 5 acres in S.W. N.E. 14-1-14. J. W. Martin to W. T. Coombs, \$4000, S.W. S.E. 21-10-18. C. Vero Parks to J. H. Day, lot 16, block 8, lot 17, 18, 19, block 22, lot 23, block 7, & 12, lot 9, tract 1, Artesian City. T. M. Callahan et al to Christina Winfrey, \$225, lot 19, block 1, G. A. R. addition, T. S. E. A. C. Fouls et al, Mamie L. Fouls, \$1500, lot 2, block 2, T. F.

Dr. Price's Cream Baking Powder. Made from pure, grape Cream of Tartar. Best for good food and good health. No alum.

"Diamond Edge" TOOLS. HATCHETS, CHISELS, AXES, FILES, BITS, SAWS. FOR SALE BY Twin Falls Hdw. Co.

When you want a dray phone 142. Warberg & Co. Office opposite Idaho Department Store.

Twin Falls Hdw. Co. When you want a dray phone 142. Warberg & Co. Office opposite Idaho Department Store.

Warberg & Co. Office opposite Idaho Department Store. "with strength and ease they always please" TWO HORSE OVERALLS. MADE BY LEVI STRAUSS & CO. QUALITY GUARANTEED.

THE CROSBY CO. Picture Framing. We have the best and most complete stock in the city. Why don't you do something for us? We are here to please.

THIS SPACE IS FOR SALE. It will be read by others just as it has been read by you. APPLY TO THE NEWS. Wanted--Good 80 to 120 acres Twin Falls property to be traded for Spokane property. Our client will pay cash difference in the trade--Woods & Thomas.

TWIN FALLS COUNTY REAL ESTATE EXCHANGE. MEMBER NATIONAL ASSOCIATION OF REAL ESTATE EXCHANGES. Our Exchange means absolute protection to both buyer and seller. The same conditions apply to the real estate man. Before coming, should you desire more specific information regarding Southern Idaho in general or Twin Falls in particular, just write any one of the following Exchange members: Young & Keel, J. E. White, Swim & Aldrich, Powers & Dew, J. Clyde Lindsey, Reese M. Williams, Thompson Realty Co., Hill & Taylor, Patrick & Letsch, Irrigated Lands Co., Woods & Thomas, Corcoran & Farmer, G. D. Aiken, H. H. Coggins, Williams & Ring, Gamble & Chapin, Denton Investment Co., Twin Falls Development Co., W. E. Palmer & Co., J. W. Craven, J. A. Vandenberg, Ferguson F. & L. Co., Zuck & Hayes, Kimberly, Idaho, F. C. Graves, Filer, Idaho, Hollister Realty Co., Hollister, Idaho.

AMERICAN BEAUTY AND MADAME GRACE CORSETS. Exclusively Made by KALAHAZOO CORSET COMPANY. Just what the name implies--Peerless, unapproached, unequalled, unrivalled, is an accurate description of the PEEPLESS PATENT BOOK FORM CARDS. They are more than cards; they are an expression of personality, individuality. They are not only better, but they represent actual economy, because they eliminate waste.

A Peerless Card. FOK SALE BY NEWS PUBLISHING CO. TWIN FALLS, IDAHO. Alladin rubbed the lamp and gave his orders THE MODERN EQUIVALENT You lift the Bell Telephone receiver and give your commands. The Mountain States Telephone and Telegraph Co.

PICTURE FRAMING? We have the best and most complete stock in the city. Why don't you do something for us? We are here to please. THE CROSBY CO. Picture Framing. Twin Falls.

THE FARMERS' & MERCHANTS' BANK. TWIN FALLS, IDAHO. CAPITAL \$100,000.00. OFFICERS: RUGS W. ALLRED, PRESIDENT; JOHN MAO BAR, VICE PRESIDENT; C. A. ROBINSON, MANAGER; G. L. CHAFFIN, CASHIER; F. R. COOK, ASST. CASHIER. A LOCAL BANK FOR LOCAL PEOPLE. To advertise or to go out of business--that is the question.

EASTERN CONDITIONS SENDING MANY WEST

**THOMPSON REALTY CO. WILL
PLEASED WITH OUTLOOK**
New Idea Suggested for Advertising
Hay at Points of Confinement All
Over Country—Activity in
Real Estate

Mr. J. Thompson of the Thompson Realty company in commenting on the real estate outlook, says his firm is receiving hundreds of letters of inquiry from the middle, through the states, due largely to the fact that the large potato and hay shipments to practically every city between the Rocky mountains and Chicago is one of the greatest export seasons in advertising this locality in the history of the territory. He believes that the large number of farmers, stock raisers, dairy men and feeders to the possibilities of this section.

While no definite announcement has been made that work will begin on the Brandon project this year, he believes the promoters and financial backers are all in the fact that there could not be a better opportunity time to launch and advertise this great project. This and the fact that rail road work is practically assured on both the Oregonian and the Idaho and the Pullman systems and the two electric roads now building out of Twin Falls, all indicate one of the most active and prosperous years in the history of the Twin Falls tract.

This company report recent sales as follows:
Perry acres, three miles northwest of Twin Falls, S.W. 1-4, Sec. 32-2-17, Harold Bonds to O. P. Sturgeon, Consideration, \$3000.
Perry acres, 2 1/2 miles northwest of Twin Falls, S.W. 1-4 N.W. 1-4, Sec. 2-10-17, E. C. Fribby to Edward Vance, Consideration, \$2000.
Perry acres five miles south of Kimberly, S.E. 1-4 S.E. 1-4, section 21-10-18, E. Frank Hoover to Chas. Schroppel, Consideration, \$2000.
Forty acres on the Salmon tract E. W. 14 N. E. 1-4, section 12-11-16; Harry Crookham to T. J. Cheney, Consideration, \$2500.
One acre in the Yeastman addition on Blue Lakes boulevard to Mrs. Shaw, Consideration, \$400.
One acre in the Yeastman addition on Blue Lakes boulevard; E. Vance to E. C. Fribby, Consideration, \$2500.
O. L. Miller to Livo Friedman, Consideration, \$375.

CLOSING OUT LUMBER
We are going out of business and are making reduced prices on lumber and all other building materials. See us before placing your order.
WILBERG-FRENCH LUMBER CO. LD.
At reduced prices we are closing out our entire line of lumber, paint and hardware and can save you money.
WILBERG-FRENCH LUMBER CO. LD.

Local Brevities

W. A. Harris of Hansen was registered at the Rogerson Tuesday.
J. H. Higley of Jerome is among the North Side visitors of the week.
E. Sandberg of Nampa was in this city on a business mission Friday last.
Mrs. E. Claiborn and daughter, Emily of Kimberly, spent Monday in the city.
Mr. and Mrs. C. H. Deweller of Hollier spent Monday with friends in the city.
D. S. Gray and Percy Jones of Black Creek were Magio City visitors early in the week.
Mrs. A. L. Houghtaling of Plover was in the city Monday on a combined business and pleasure trip.
The Woman's Socialist committee will meet at the home of Mrs. J. Crawford, 436 Fifth avenue east, Friday, February 10, at 2-p. m. Everybody welcome.
Willard Wyatt returned on Monday from a visit to the Big Lost Lake City. Mr. Wyatt left Twin Falls Friday, spending a day at Burley and coming to the town he says is looking fine.
Ed Gilbert was with a hot-rod automobile start, blown, given at his home on Monday night to about a dozen of his more intimate friends. The affair is being held at a party given by Ed Gilbert, and considers the outlook good for the future.
Don H. Bark in charge of duty of water investigations for the government in this state was in the city today. The purpose of this visit was to make a proposition to the Twin Falls Canal company, through its board of directors, to conduct investigations in this state in connection with a canal company would bear largest expense. The matter was taken under advisement by the directors, but no report has been made as yet.

MINSTRELS SCORE A HIT

(Continued from page 1)
ing well suited to the range and volume of the song. "Steamboat Bill" by Hilda and chorus was one of the hits of the evening. Songs and music were appreciated to the last word.
That it took James O'orman in "Songs for Girls" directed to sing scores one of the best hits of the evening. Possessing a voice of unusual richness the old songs of bygone days lost no popularity in the rendition. The orchestral accompaniment lent the last touch to what was one of the most delightful numbers on the bill.
The solo quartet and Alexander's Rag Time band were greeted with acclaim and the work of the quartet by the men was about the best thing of the kind ever seen in Twin Falls. The comedy was funny, and the music and voice-overs all they were intended to be and more. The two acts were applauded and encores again and again.
Madam Shebert-Hike.

The old was good throughout. The opening number called "Madam Shebert Hike," consisted of a number of songs in approved colored prima donna style by Willott Hance which were well chosen and well done. Young Mr. Hance has a voice of sympathetic sweetness, and his high notes were particularly good. He was opened twice and his three selections were equally pleasing. "Down by the Levee," the second act of the piece, consisted of songs with mandolin and guitar and all were well done. The old time darky melodies never sounded sweeter, and the vocal and stage settings were well chosen.
The closing act was one of the most ingenious and difficult on the bill and consisted of various musical stunts by Thoro, Lauterbach and Toby which pleased everyone in the house. Musical efforts on a string of half notes were better made than heard in Twin Falls. The piano accompaniments by Miss Vesta Thomas were well done and the also carpenter, HIG BROOK and property man, Hark Lauterbach had made the most of the material at hand. The costumes were all good. Mr. Geer as vocal director, established an enviable reputation for himself as this branch of the work was performed with a high degree of skill throughout.

Mr. C. Thomas, perhaps, belongs the major part of the credit for the general excellence of the performance throughout. Mr. Thomas worked out every detail of the work. Under his direction the stage effects, ensemble and all the rest of the multitude of small acts which amount to so much to the success of a piece were tried out time and again with a patience and perseverance which reflects in the highest credit on every member of the cast. His own part in the cast, that of interlocutor in the first part, was not easy one, and the fact that he carried it out so well is a credit to be taken as evidence of a capacity for work which would be hard to beat.
The performance will be repeated Thursday night when another bumper audience is expected.
Tickets for the Mikado on sale at all drug stores. Reserved seats at Skoels & Wiley's. Price 75c.

R. Campbell of Buhl was in the city on business Tuesday.
Rev. John Gourley and George E. Harlan left for Boise Tuesday evening to represent the Protestant churches in the meeting of the Men's and Religion-Forward movement, which is in session in that city this week.

Ensign Hankins of the Salvation Army, with headquarters at Denver, is in the city looking for a new location of a branch here and at Buhl. He is much pleased with the appearance of this section of northern Idaho, and hopes to get his work started here in the near future.

L. M. Blegler of Pocatello, representing the Log-Glass-Anson Hardware company of Omaha, with territory in southeastern Idaho, was in the city Thursday and stated that the business conditions in the field which he covers much improved over a year ago.
Thomas M. Robertson has just returned from the disintegrating mills that Mrs. Robertson was the victim of an accident at Southport near N. C. where she is at present on a visit to her old home. Mrs. Robertson's dress being caught in a spinney, she was killed and was seriously and painfully burned. Late telegrams announced that her complete recovery is assured.

George W. Tanner of Corvallis, Oregon is visiting his wife, L. A. Barber, this week. Mr. Tanner was obliged to come to Heyburn on business and took advantage of the opportunity to visit his wife in this vicinity. He realized that he is visiting Twin Falls at a season which he calls "the best of the best" and is pleased with what he has seen of the country.

A perceptible weighing 75 pounds was shot on the E. C. Willis ranch in Rock Creek canyon early in the week by John P. Fuller, Mr. Fuller claims the animal was the largest of its kind and species which has ever been seen, and was killed on 40 fruit trees on the Willis place. In fact, it was the animal was the largest of its kind and species which has ever been seen, and was killed on 40 fruit trees on the Willis place. In fact, it was the animal was the largest of its kind and species which has ever been seen, and was killed on 40 fruit trees on the Willis place.

ATTACK PROMPTLY REPELLED

Pure Food Commissioner James H. Wallis, Lands Aid to Merchants.
One of the most important steps so far taken in the work of repelling the attacks of Montgomery Ward & Company through the distribution of circulars of a false and misleading character over the Twin Falls tract, was the meeting of merchants and business men at the Commercial club with James H. Wallis, state pure food commissioner, on Saturday afternoon last.
Mr. Wallis had already been shown copies of the scurrilous advertising matter sent broadcast over Springfield by the mail order house, but did not hesitate to characterize as utterly untrue that portion of the matter which in any manner reflected upon the condition of the various pieces of business.

The local merchants, who were pleased with the action of Mr. Wallis in providing a certificate with which to combat the statements referred to in the full text of which is carried in this issue of the News.
STRAUS & GLAUBER DOING EFFECTIVE WORK.
We realize that the mail order house is doing considerable business in this county as well as all over the United States, which fact cannot be denied. The advertisements of their goods through the mail order catalogue is another modern way of doing business. It is simply more competition, and the survival of the fittest and the survival of the fittest and the survival of the fittest.

If we should ask any farmer to give the reason for patronizing the large city mail order houses he probably would give three reasons.
First, that the farmers feel that they could buy goods cheaper elsewhere.
Second, they feel that they ought to get better prices for their farm products when they sell or exchange them.
Third, that the roads are in such a bad condition that it's hard to come to towns; besides, the wear and tear on their wagon and harness is too heavy.

Now, we cannot expect anyone to trade with us unless our prices are as low as any one else, but we have taken up that proposition over since we located in the Twin Falls country, and our business policy has been to compete to make. We have been meeting and will continue to meet any mail order prices, for we are not willing enough to believe that we can compete any business unless we are willing to sell as cheap as anybody else.
We are not willing to compete on cheap, and we will agree to making to meet the prices of any mail order house, and we will guarantee every article of merchandise to be equally as represented, or your money back.

Second, we will try and do all in our power that the farmer will get reasonable prices for his produce. How can we expect the farmer to patronize home merchants if he hasn't and know he is not getting a just price for his goods when he sells them, and has to take scrip money or has to take it out in trade and in case he cannot get what he wants at such a place and good class to buy his merchandise with said scrip, he is discounted 10 per cent, as that is the discount the merchant has to stand that takes another merchant's scrip.
Now, is this treating the farmer square? Now these things ought to be adjusted as they will not adjust things.

There are two sides to every question, and we must give and take, as the saying is.
Regarding the roads, let us grind up lots of rock and build a good road. In Twin Falls can afford to have paved streets, why, the county ought to let us get together and we will realize that we have to pull together and co-operate amongst ourselves as this is the only way to build up this great commonwealth.
SOL STRAUS
BARTER AND EXCHANGE
TOLLIVER GERSE is trader for grain. E. E. Heston, on milk case.

Children's Eyes

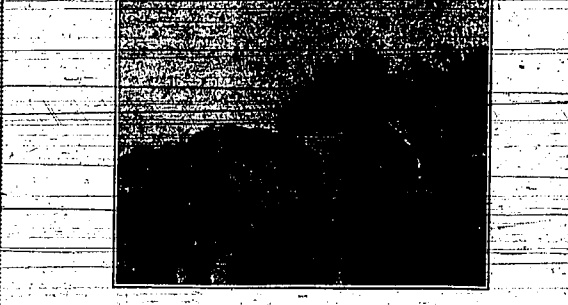


Require more careful attention than those of adults.
If your children complain of their eyes, have them looked after at once.
We fit eyes scientifically and grind the lenses to suit each individual case.
This kind of work costs you no more than the other kind.

Parrott Optical Co.
Scientific and Manufacturing Opticians
137 Main Avenue, East
Phone 219

From Cow to Carton

The Way Golden Vesta Comes to You Is Scientific and Sanitary



Golden Vesta is made of the best cream from the finest dairy herds on the Twin Falls tract, already becoming famous as a creamery country.

Golden Vesta gives you extra value for which you do not pay a cent, for it costs no more than any other standard high grade butter. Since you pay for quality, why not be sure you get it? Why not insist on Golden Vesta?

Because of this superlative goodness there is a constantly increasing sale for it. Your grocer has it.

Insist on your grocer including a pound of Golden Vesta in your next order and if it does not contain more butter goodness than any other butter you have ever used, your grocer is hereby authorized to refund full purchase money.

Lincoln Produce and Refrigerating Co.

Twin Falls, Idaho

ELECTION OF OFFICERS
Selections for Next Six Months Made by Twin Falls Traders Assembly

The semi annual election of officers of the Twin Falls Traders Assembly was held Tuesday evening, February 13, at Union hall. Those selected to administer the affairs of the organization for the next six months were:

President, E. B. Eastley; Vice-president, F. L. Hall; Recording secretary, G. V. Anderson; Financial secretary, W. B. Eastley; Treasurer, L. G. Burson, sergeant-at-arms, Fridolf Olson, organizer, J. C. Parker, guide, J. C. Harvey, trustee for term of 18 months.

CRIMINAL CASES TO BE HEARD
Charles Against Attergo-Hoellinger
Will Come Up in District Court

The cases against the men charged with the illegal sale of liquor will be taken up in district court beginning Monday next. Peterson & Lynch will have their hearings. Monday, George Weldon, Tuesday, W. E. Buxey, Wednesday, Thursday being the day of the hearing of the charge against Attergo-Hoellinger. The hearing will be taken until the following Monday, when the case against Art Triverson will come up, and Charles Peterson & Lynch will have their hearings. The balance of the defendants have all pleaded guilty.

CLOSING OUT LUMBER YARD
Wilberg-French Lumber Company Will Quit Business

After two years of business in Twin Falls, the Wilberg-French Lumber company has decided to close out its business. The company has acquired a mercantile stock in Mouth, Ore. and is now at that place.

MR. FARMER
Now is the time to see that your plow and harrows are in first class condition for your spring work. Don't delay.
There is no need to use dull disc plows as we have installed a New Wonder Disc Sharpener. This machine will turn out discs like new.
Remember that we have had thirty years experience in plow work of all kinds.
New shares our specialty.
The Farmers' Blacksmith Shop
E. E. Eastley Proprietor
Near wild Deutsch apparatus.

Mr. Wilberg, senior member of the firm, will be in charge of the stock until all the plows are sharpened. He will also have some other line of business in the city. Both gentlemen have had additions to their Twin Falls plant, and it is with regret that the French's departure is viewed by the business men of this city.
Mikado, February 25 and 26 Don't fail to see it.