

HAINES TAKES BATH OF OFFICE

IDAHO'S GOVERNOR SWORN IN PRESENCE OF LARGE NUMBER

Boise, January 8.—John M. Haines became Governor of Idaho at high noon, when he was sworn into office by Chief Justice James F. Ailshie in the hall of the house of representatives...

After the installation of the state officials, the senate and house organized, with C. S. French warden, the gavel in the house, and John W. Hart as president pro tem of the senate.

Speaker's Wings Clipped. In the house an effort was made to adopt the rules of the last session. As these rules gave the speaker the right to name all committees, the motion precipitated the first fight of the session.

GOVERNOR'S MESSAGE READ

John M. Haines Urges Economy and Efficiency in State Business.—Rearrangement Needed. (Special to The News.)

O. E. LUNCHEON. The officers of Twin Falls Chapter, Order of the Eastern Star, will serve a luncheon at the Masonic Temple next Tuesday evening...

General Index... The News

The publishers of The News desire, as far as may be possible, to place the reputation of this newspaper back of those companies, firms, and individuals presenting their claims to attention through the columns of The News.

THE NEWS' LOCAL ADVERTISERS' DIRECTORY.

Table listing various local businesses and their contact information, including Amusement, Groceries, Jewelers, Confectionery, Real Estate, and more.

GETTING DOWN TO WORK PROSPECTS BRIGHT FOR WEST END LINE

Agricultural Bureau Asks for Appropriation to Assist Farmers Who Grow Peas. An appropriation of \$1000 has been asked of the directors of the Commercial club by the agricultural bureau...

MEETING AT BUHL SHOWS PROPOSITION IS FAVORABLE

Committee of Property Owners Named to Secure Right of Way and Necessary Funds for Construction of Road. Definite steps are being taken to provide for the building of the electric line from Buhl to Castelfield...

PROFESSOR-ELLIOTT HONORED

At the annual meeting of the State Association of County and City School Superintendents, at Boise last week, Professor Elliott of Twin Falls, was elected vice-president of the association.

LEAVE FOR BOISE

Mr. and Mrs. J. H. Wiles left early in the week for Boise, where Mr. Wiles will look into the political situation in that city.

SAVE SUCKERS FOR TROUT, SAYS EXPERTS

COLORADO OFFICIAL CONTENDS THEY ARE NATURAL FOOD.

S. E. Land, Fish Culturist, Says Plan to Destroy Suckers in Idaho Through Streams is Utterly Ridiculous. That the contention of Frank H. Kendall, deputy state warden in Idaho, in effect that the suckers in the various trout streams of Idaho eat up the eggs and small trout, is utterly ridiculous...

STERLING WINS PRIZE

Takes First Place in State in Butter Making.—H. J. Young is Again Honored.

The first prize for butter making, carrying with it the Stranberg silver cup, was awarded the Champion Dairy and Produce company, of this city, at the annual meeting of the state dairy association held in Caldwell last week.

GOODING OUT OF RACE

(Special Dispatch to The News.) Boise, Idaho, January 8.—The News, Twin Falls, Idaho: Frank R. Gooding, former governor, is out of the race for the United States senate, as his attorneys have advised him that he is ineligible to the office of federal judge, as he refused to take the oath of office.

JEFFERSON IS HONORED

Praises of Founder of Democracy Held at Annual Banquet at Hotel Regener. Due honor was paid to Thomas Jefferson, the founder of Democracy, at the annual banquet of the Democratic Association...

HIGH GRADE HORSES TO GO ON PARADE

FINE STOCK EXHIBIT PLANNED FOR SATURDAY AFTERNOON.

The parade will pass down Main street at 2 p. m. and great preparations have been made for the event. There will be 30 to 35 head in line, and the average weight of all the animals will be better than that of the horses shown here brought to this section by Smith and McMaster...

LOCAL CAPITAL WILL BUILD NEW ROAD

CONSTRUCTION OF WESTERN PACIFIC BRANCH TO BE UNDERTAKEN AT HOME.

Twin Falls, Oakland, and San Francisco Railway Organized With Twin Falls Men as Officers. The organization of the Twin Falls, Oakland and San Francisco Railway by local men, as the first step in a long-term movement to build better railroad facilities for Southern Idaho, has been accomplished...

BASKET BALL SEASON OPENS

Local High School Team Will Play First Game Tomorrow Evening.

The local high school basketball season will open tomorrow, Friday evening, January 10, in the gymnasium. The Fliler team will match the Twin Falls boys in this game. Both are new line trim and a fast game is expected.

GOOD SEASON CLOSER

Burley Sugar Factory Makes a Good Showing in First Run. More than 40,000 sacks, equaling two thousand tons, of sugar were produced at the Burley sugar factory during the season...

THIRD ANNUAL MINTREL SHOW

The Twin Falls Band is making preparations to give their third annual minstrel show at the high school auditorium some time the latter part of February, the exact date to be announced later.

INSPECTION FRIDAY NIGHT

The annual inspection of Company D, National Guard of Idaho, of this county, will be held at the high school tomorrow, Friday night. Every member of the company is expected to report, so that the best showing possible can be made for the company.

Electrical Development in Southern Idaho

Rapid Progress in Scientific Application of Electricity Constitutes Interesting Chapter in History of This Section—Wonderful Possibilities of Further Growth.

E. A. WILCOX.

The growth and development of a state is dependent on its agricultural and mineral resources, its transportation facilities, the class, culture and capacity of its people, and without the possibility of diverting its natural resources and creating in the minds of all that interest and appreciation of the possibilities afforded that make for development and growth. It is through the mighty agency of electric power that agricultural and mineral resources are being developed, successful manufacturing enterprises undertaken, and the olive welfare of the state fostered and made attractive to its people.

Power Possibilities.
One of the greatest assets of the state of Idaho is its great water power resources. The general relief of Idaho, with its high snow-capped mountains and its extensive valleys and plains, provides waterfalls to furnish wonderful, never-failing resources for the generation of electric power. The natural fall of these streams is such that unlimited power may be harnessed and put to practical everyday use.

Developments on Snake River.
Perhaps the most remarkable opportunities for power development are found on the Snake River. The entire portion of its semi-circle course across southern Idaho, in and through the great Twin Falls country, where intensive irrigation tracts have so recently been developed through the timely aid of eastern capital furnished by the Kuhn interests, of Pittsburgh, and other enterprising capitalists.

At American Falls.
At American Falls, the Idaho Consolidated Power company, a Kuhn enterprise, is now developing approximately 10,000 horsepower in a natural development of 40,000 horsepower has been mapped out. Energy from this plant is at present transmitted to the Snake River in the form of electric power, which is being applied to Pocatello, American Falls, Ross Fork, and Blackfoot.

Minidoka Development.
At Minidoka, the United States reclamation service has completed a plant having an aggregate capacity of 10,000 horsepower. It is a natural head plant, and makes use of a 200 foot fall in the river.

Twin Falls Power Site.
At Twin Falls, on the Snake River, and a modern development of 10,000 horsepower is contemplated. When completed this will be one of the best and most attractive power installations in southern Idaho, and will form a part of the Great Shoshone and Twin Falls Water Power company's present system.

Shoshone Falls Power Development.
The Kuhn interests have constructed a large power plant at Shoshone Falls of 2000 horsepower capacity, and have made the necessary provisions in the hydraulic installation for an ultimate development of 10,000 horsepower. It is a natural head plant, and makes use of a 200 foot fall in the river.

Auger Falls.
The Auger Falls site, located a few miles below Shoshone Falls, makes a drop of 125 feet, and is capable of furnishing 10,000 horsepower without in any way augmenting the stream flow.

Thousand Springs Development.
A power plant designed to harness 8000 horsepower has been constructed at Thousand Springs, where several hundred second feet of water empties into the Snake river from an elevation of 75 feet. A generating capacity of 2000 horsepower has already been installed and the plant equipped to the system of the Great Shoshone and Twin Falls Water Power company.

Lower Salmon Development.
The lower Salmon power plant, designed and engineered by the Great Shoshone and Twin Falls Water Power company, a Kuhn enterprise, has a present capacity of 6500 horsepower, which will shortly be enlarged to five times its present size. The buildings and machinery are the best that money can buy, and are such that unexcelled service may be rendered to the company's consumers of electric energy.

Mald River Developments.
At the Mald River the Beaver River

Power company, a private enterprise, has constructed a power house near where the stream flows into the Snake river. The plant contains one large generating unit of several thousand horsepower capacity. Water is directed from the flume of the King Hill irrigation company by means of a large penstock and only a portion of the available head of the stream made use of.

Upper Snake River Power.
Although nature has favored central southern Idaho to a greater extent than almost any other part of the northwest, it must not be taken that water power facilities are limited to this section of the state alone. The Idaho Power and Transportation company has a development on the Snake river near Idaho Falls that supplies electricity for lighting and power to the city of Idaho Falls, Hilly, Hooburg, Sugar City and St. Anthony.

Western Idaho Power.
The Idaho-Oregon Light and Power company, of Boise, procures power from three power plants, the largest plant on the Boise river, the Horseshoe Bend plant on the Payette river, and the Sift Falls plant on the Snake river. This same company has a large power plant partly completed at Ox Bow, on the Snake River, which will be capable of delivering at least 10,000 horsepower of electrical energy.

In Northern Idaho.
Northern Idaho is supplied with power from a number of large hydro-electric plants. The Kootenai Power company and the Northwest Light and Power company furnish electricity for Wallace and the neighboring towns. The Idaho-Washington Light and Power company supplies Sandpoint, and the Big Bend Light and Power company supplies Grandeville and the adjoining communities. Many large and many smaller plants and in preparation to deliver electrical energy to several plants now in course of construction.

Southeastern Idaho.
The chief hydro-electric enterprises in the southeastern part of the state are the Bear Lake Power company,

having a plant on Paris Creek, and supplying Montpelier, Paris and Idaho neighboring towns. The High Creek Power company, having a plant on Cato river, and supplying Preston and a number of northern Utah towns, and the Yellowstone Power company at Graca, Idaho, on the Bear river, which delivers power over a long transmission line into Salt Lake, Utah, and other cities and towns adjacent thereto.

Manitosh Pumping Project.
The largest pumping project in the world is located near Minidoka, Idaho, and was completed three years ago by government reclamation service. Forty-eight thousand acres of land are watered with lifts varying from 30 to 90 feet. The High Line pumping project near Twin Falls, Idaho, comprises 4000 acres of land as is watered with lifts varying from 40 to 80 feet. The Twin Falls North Side pumping project, a Kuhn enterprise, is composed of 14,000 acres of choice land suggested under the Carey act law. The lifts vary from 35 to 90 feet in height.

Pumping Plants Near Boise.
The larger pumping plants supplied with power by the Idaho-Oregon Light and Power company are the Payette Heights plant, covering 4000 acres under a 146-foot lift, the Payette Oregon Slope plants covering 7000 acres under lifts of from 40 to 200 feet, and the Klamath colony plant, covering 2500 acres under several lifts varying from 90 to 70 feet. The same company is supplying power for the operation of many smaller plants and is preparing to deliver electrical energy to several plants now in course of construction.

Electric Heating.
Hand in hand with the development of irrigation pumping enterprises has come the adaptation and general use of electrical energy for heating pur-

poses in the territory supplied by the power companies. It is only in a country where current can be disposed of for irrigation and other purposes during the summer that surplus power may be made use of for general house heating in the winter season. These conditions seem to be peculiar to the state of Idaho alone.

Not only is this great natural asset being utilized in the homes of the rich; it is, on the contrary, being employed by all classes of people for heating dwellings, hotels, offices, churches, school houses, and other buildings. The use of electricity for this purpose seems to be confined mainly to the territory supplied by the Great Shoshone and Twin Falls Water Power company. The Kubns are carrying out their usual liberal policy of building up and assisting in the growth of the territory and making for the comfort and convenience of the people in the sections where they operate in this as well as in many similar matters.

Electric heating apparatus is comparatively inexpensive to install, and is thoroughly clean, safe and economical as compared with fuel heat. It must be tried in order to fully appreciate its convenience and many other good qualities.

Electric Cooking.
Among the more recent applications of the electric field are in its application to general use in the kitchen. It is no longer necessary for the housewife in sunny southern Idaho to sweater over a hot cook stove. She may now prepare her meals with the modern electric range, which dissipates no heat, other than that necessary for cooking the food. It may be done to

at a less cost than that of firing a fuel burning stove. The several power companies have adopted a liberal policy of charge for current used for cooking purposes. An idea of the rapidity with which this means of cooking is being adopted may be gained by stating that in the Twin Falls country about 50 complete electric ranges were sold by the Great Shoshone and Twin Falls Water Power company during August and September of the past year.

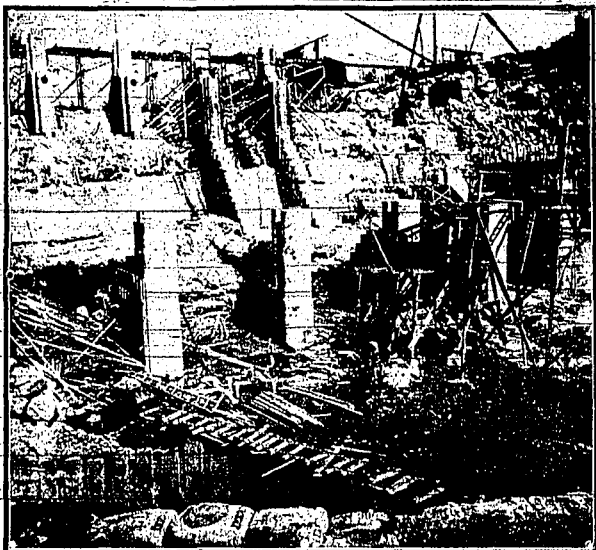
Electricity on the Farm.
The use of electricity is being adopted very widely on the Idaho farm. It is used for general lighting, heating and cooking purposes, and for driving the machinery, such as feed graders, alfalfa mills, water pumps, fanning mills, churning machines and miscellaneous farm devices. The power

companies have been very liberal in extending their lines to the different farms. Especially is this true of the Great Shoshone and Twin Falls Water Power company, which has constructed many extensions through the more thickly populated agricultural districts depending upon the future development of the territory in warrant the necessary expenditure.

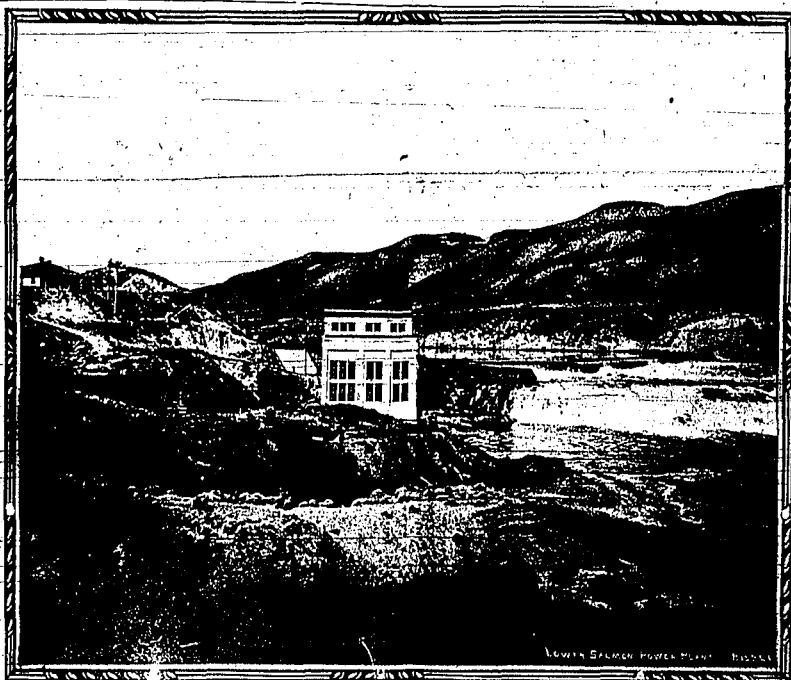
Improvement of Transportation.
A number of electrical railway enterprises have been in successful operation in Boise and through the neighboring territory, and electric trolley communities for several years. These railroads are constantly extending their tracks and improving their service. The northern part of the state also has the benefit of large interurban lines extending in various directions. Lately a number of electric railway enterprises have sprung up in different parts of Idaho in the more densely populated districts.

The most recent electric road to be built is in the Twin Falls country in the southern part of the state. It is being constructed by the Twin Falls Railway company, and electric trolleys will soon be running between the city of Twin Falls and Shoshone Falls by way of the scenic Blue Lake. The cars will be operated by means of the new Edison storage battery, and they are now on the road from the factory. Twenty miles of grade has been built, the ties laid and a large part of the rails have been placed. The road is of standard gauge that will permit of handling standard freight and passenger cars. The scenic attractions along the route are among the most wonderful and interesting in the world. A portion of the way is along the Snake river, which through this section has been appropriately named the "Canyon of a Thousand Wonders."

Wonderful Possibilities.
It has been pointed out that Idaho has been provided by nature itself with the most bountiful supply of natural resources imaginable. This great commonwealth, having much more than twice the area of Pennsylvania, has the prospect of a growth far exceeding that of any other state.



CONSTRUCTION OF NEW 30,000 HORSEPOWER PLANT AT AMERICAN FALLS.



LOWER SALMON FALLS AND POWER PLANT.



SHOSHONE FALLS POWER PLANT.



UPPER SALMON FALLS IN SNAKE RIVER.

TWIN FALLS IDAHO

EDITORIAL PAGE OF THE NEWS

JANUARY 9 1913

TWIN FALLS NEWS

A Progressive Republican County Seat Newspaper.

Published Thursdays by the Twin Falls News Publishing Company

R. A. READ Editor and Manager CARL G. ANDERSON Associate Editor

Subscription Rates: One year, in advance \$2.00 Six months, in advance \$1.25

Entered as second-class matter, December 2, 1904, at the post office at Twin Falls, Idaho, under the act of congress of March 3, 1879.

Re-entered as second-class matter April 27, 1911, at the post office at Twin Falls, Idaho, under the act of March 3, 1879.

Advertising rates upon application. Address all communications to The Twin Falls News. Phone for all purposes 23.

THE EDITOR AND THE COURT.

Granting that the Supreme Court of Idaho has the same right to protect its reputation as has any other institution in Idaho, there would seem to be altogether too great a tendency to judge harshly in the matter of the guilt or innocence of Messrs. Sheridan and Broxon, of the Capital News.

It is true that freedom of the press was provided for in the Constitution, yet no one today pretends to believe that there is no limit whatever to the length to which a newspaper may go in unsupported charges or personal vilification. The fact that the bulk of the articles referred to in the decision were published after the finding by the court, is not a leading feature. The case might have come up for re-hearing or it might not, the fact remains, a number of articles were published tending to create a belief that the Capital News believed the Supreme Court of Idaho to be unworthy of confidence. Had the newspaper in its attacks confined itself to those charges which it was able to substantiate, if any such existed, the outcome might have been altogether different.

From an unbiased standpoint, it is difficult to believe that the author of the libelous matter did not know full well that much of this was distinctly libelous in its character. Granting this and the Capital News is placed in the light of baiting the Supreme Court and daring it to do its worst. Following on this idea, it is difficult to see how the court could have done other than take cognizance of the matter.

The decision of the court which gave rise to the libelous comment attracted wide attention.

tion, in view of the surrounding circumstances and coming at a time when men's minds were aflame with political excitement, it is perhaps not to be wondered at that many conservative men grew intemperate in their remarks and that feeling on both sides should run high.

But the press of the country has a higher mission than an unlicensed indulgence in baseless criticism. Whether it be of a supreme court or the humblest individual, and that the Capital News erred in its methods and mission as a newspaper must eventually become clear to all. If such a crime as contempt of court exists, the newspaper in question undoubtedly committed it. The only question is as to whether or not the court should have taken cognizance of the action. Suppose the court had not done so, its functions as a legal body, the highest in the State, would have become seriously impaired in the minds of a majority of citizens.

As to the sentence, this paper has nothing to say, except to point out the following paragraph from the laws of Idaho:

Section 1184, Revised Code: Upon answer and evidence taken, the court or judge must determine whether the person proceeded against is guilty of the contempt charged, and if it be adjudged that he is guilty of the contempt, a fine may be imposed on him not exceeding five hundred dollars, or he may be imprisoned not exceeding five days, or both.

The News is no more concerned with the supposed technical grounds upon which the court based the penalty of ten days in jail than is the public generally. The intent of the Legislature is to the punishment to be inflicted for contempt is as plain as language can make it.

Law is no longer the decree ex cathedra, of a body of men, it is the Will of the People. The Supreme Court, by its judgment extending punishment beyond the statute, has placed its foot against a rolling cannon-ball.

Personally, it is difficult to avoid sympathizing with Messrs. Sheridan and Broxon, in the matter of the severity of the sentence.

TO HELP NEWS READERS.

With a view to bringing into closer touch with each other the various stores and business houses of Twin Falls and the readers of The News, beginning with this issue The News will carry a classified directory of its advertisers on its front page.

In doing this The News believes that two good results will be accomplished at one and the same time. News readers will be able to determine at a glance the shopping facilities of the week and the shops will be enabled to so order their advertising as to get even better results in the way of patronage than in the past.

In offering this directory, it will be the aim of The News to present to its readers a sum-

mary of the purchasing opportunities of the week in Twin Falls. Where sales of real merit are being held, the fact will be noted in the directory, and as far as possible all advertising will be excluded from The News columns, the quality and good faith of which is in any manner open to question.

The News believes in the principle of home buying as opposed to catalogue purchases, but the publishers also realize that so long as the argument of dollars and cents is on the side of the catalogue houses, just so long will the Twin Falls merchants fail to secure their full quota of local patronage. This principle is also well understood by a majority of local business men, who will take into consideration only the factor of value for the money in competition with the mail order houses.

The News directory will enable these to better present their claims for patronage, and should also serve to better call the attention of News readers to the merits of home sold goods.

The News would respectfully call the attention of the public to this new feature of its service.

TO CUT EXPENSES.

In the interests of economy, and as a means of signaling the beginning of a business administration of the affairs of Twin Falls county, The News would suggest to the commissioners the advisability of asking for bids for the county printing and placing the work where it can be done the cheapest.

This would undoubtedly save a good deal of money for the taxpayers, and would be in line with the platform demands of one of the political parties in the field last fall. It would also be in line with the vast majority of all states, the laws of which compel such procedure and with a majority of the counties of Idaho, where, without legal compulsion, county printing is awarded on a bid basis because it is the cheapest, fairest, and most efficient manner of securing the work.

If a local business house found it necessary to expend any very considerable sum of money for a certain quantity of a required commodity, the procedure would not require a moment's hesitation. Bids from the various dealers in the line sought would be invited, and the goods purchased from that dealer whose price and quality promised the best service at the lowest outlay.

The administration of the business of Twin Falls county does not differ materially from that of any other business, as far as the expenditure of money goes.

THE RIGHT MOVE.

Twin Falls is to be congratulated on the action of the Railroad Committee of the Commercial Club in its efforts towards the secur-

ing of better railroad facilities for southern Idaho.

No one pretends to deny that this section of the state would be the better for improved shipping facilities, and there is no question in the mind of anyone but what such improved facilities would be highly profitable to those interests providing them. But it is one thing to realize the need of a thing and quite another to secure it. This is the function which the railroad committee has taken upon itself and its efforts are not only entitled to the fullest support but the personnel of the committee is to be heartily commended for the splendid unselfishness of its object.

JOBS FOR THE FAMILY.

The action of Representative Peter G. Johnson, of Bingham county, in providing legislative jobs for two of his sons in open competition with the members at large, may help to solve the high cost of living problem in the Johnson family, but it is hardly in line with the spirit of fairness which the public has a right to expect from the members of its law-making bodies.

Neptotism has been clearly defined and is well understood by all. The Johnson action is one of the clearest cases that has yet come to notice, and should be frowned upon by the public generally. Two other members have secured positions for sons during this legislative session, but so far the Bingham member is the only man to work in more than one from his own immediate family.

A SOUND APPOINTMENT.

The appointment of Charles E. Booth, of Twin Falls county, as chairman of the committee on railroads should meet with general approval in this section. At the present time there is no county in Idaho which promises to be the scene of greater development along railroad lines in the near future than this.

The news that Fred T. Dubois is to be the choice of the Progressives of the legislature in the fight for short-term senator, need not be taken too seriously. Dubois is true to type as a political acrobat, but outside of the way he can hardly be expected to wield much power as a Republican, Progressive, or otherwise.

That Fred J. Nihart is not forgotten by his associates of the Eleventh session is apparent from his selection as a member of the committee on committees, and as chairman of the committee on immigration of the lower house.

This county appears to have gotten its wires crossed when it came to the matter of a selection of clerical assistance in connection with the session.

LOCAL CAPITAL WILL BUILD (Continued from Page 1)

Mon to be prepared for general circulation.

Railway Facilities Inadequate.

The present development of this territory is now far in advance of our railroad facilities, and this condition is growing worse from year to year. It was apparent three years ago that our railroad facilities were inadequate to handle the farm products, and the last two years have fully demonstrated the fact that the Oregon Short Line Railway is not in a position to take care of the freight originating on its lines.

We have been assured by financiers that when survey has been made; right of way and terminals secured; traffic arrangements were made \$250,000 of the bonds subscribed by people who are directly interested and to be benefited, they will take money over and proceed to build and equip the road at once.

Open New Territory.

An independent road from Twin Falls southward, to connect with the Western Pacific Railway, would not only give us a competing line, thereby doubling our service, but in addition give us new territory through which to open up in Twin Falls county and southern Idaho would be greatly benefited. On this basis we have reported the expense of survey, right of way, terminals and expenses connected therewith, at twenty five cents per acre, together with an assessment hereafter to be levied on all property situated in Twin Falls. With the contemplated service we would net an additional profit on all commodities. The profit on one car of hay alone would pay the assessment on thirty acres. If the hay could be shipped to market at the producer's option and not at the expense of the railroad, the advantages as above outlined to the people of the tract as a whole, we, the undersigned, realizing that the future of this country depends absolutely upon additional railroad facilities, and that the opening of the Panama Canal would be in a position to take advantage of the new markets, we heartily endorse any plan which will bring about the completion of a new railroad into this territory.

Market for Products.

We understand that it has been conservatively estimated that Nevada and California will practically consume all

of the products of this territory for a number of years to come, in the event that we can make deliveries as contemplated.

We therefore hereby pledge our hearty support to the undertaking and to assist in the matter of an audit committee to the end that the money collected will be justly and economically expended in the interests of those who believe as we do.

DON'T MISTAKE THE CAUSE

Many Twin Falls People Have Kidney Trouble and Don't Know It. Do You have a backache?

Are you tired and worn out? Feel dazed, nervous and depressed? Are the kidney secretions irregular? Highly colored? Contain sediment? Likely your kidneys are at fault. Weak kidneys give warnings of distress. Heed the warning; don't delay—Use a tested remedy.

R. Tova, farmer, Kimberly, Idaho, says: "I had lameness in my back which was brought on by overwork. Doan's Kidney Pills acted on my system almost at once and after I took them, I had free use of my back and it was just as strong as ever in three days. Another warning of my back could do no better than to give Doan's Kidney Pills a fair trial."

"When your back is lame—Remember the name!" Don't simply ask for a kidney remedy—ask distinctly for Doan's Kidney Pills—the same that Mr. Tova had. 50¢ all stores. Buffalo, N. Y. Wholesale Company, Props., Buffalo, New York.

NOTICE OF DISSOLUTION OF PARTNERSHIP.

Notice is hereby given that the co-partnership heretofore existing between J. L. Buttolph and W. H. Monroe, under the name and style of Buttolph and Monroe, Main avenue east, Twin Falls, Idaho, is this day dissolved by mutual consent. W. H. Monroe retiring from said co-partnership. J. L. Buttolph will continue to conduct the business at above address. All accounts due and owing said firm to become the property of said J. L. Buttolph and are due and payable to him, and the said J. L. Buttolph assumes all debts due and owing by said partnership. Dated at Twin Falls, Idaho, this 7th day of January, 1913. J. L. BUTTOLPH. W. H. MONROE.

RINK PROGRAM

SKATING NIGHTS Tuesday Friday Saturday

LADIES ONLY ON WEDNESDAY AFTERNOON

Any lady who has never skated on rollers may have three lessons free on Wednesday afternoons.

CHILDREN'S MATINEE Saturday afternoon, same as formerly

IT'S GREAT SPORT

Twin Falls Conservatory of Music Piano, Violin Vocal, Harmony

Thompson & Beauchamp SPECIALS

No. 203. Good 4-room plastered house, lot 50x125 feet, northeast front, nice home. Price \$1500. \$100 cash, \$25 monthly.

No. 211. 4-room modern house, lot 50x125, only 4 blocks from post office, a very neat and desirable home. Price \$2150. \$300 cash, balance \$20 monthly. Or payments may be made quarterly, semiannually, or annually.

No. 212. 4-room plastered house, barn for 4 horses, lot 50x125, north east front. Price \$1000. \$150 cash, balance \$20 monthly. This is a snap. Why pay rent when you can buy a home on above terms?

No. 198. 5 acres orchard, mostly in bearing. Price \$2275. \$150 cash, \$10 monthly payments, no interest.

No. 213. 2 1/2 acres, on Blue Lakes boulevard, and on electric car line, corner, all in fruit and mostly in bearing, very desirable for suburban home. Price, \$2000. Mostly cash.

Thompson & Beauchamp 121 Main Avenue East LOCATION NOTICES FOR NEVADA. A full supply always on hand at The Twin Falls News office.

THIS IS THE RIGHT PLACE OSTRANDER LUMBER CO. Shoshone St. & O. S. L. R. R. Track Twin Falls Idaho

The Idanha BOISE'S LEADING HOTEL ENTIRELY REMODELED Running hot and cold water in every room. Rooms \$1.00 to \$3.00 per day. Political and social center of Idaho. New Colonial dining-room. "That's the place to stop when in Boise." Eat, drink and meet your friends. CHAS. H. GROUT, Manager.

Twin Falls Bank & Trust Co. Of Twin Falls, Idaho. Capital and Profits \$115,000.00 Farm Loans W. S. McCormick President B. J. Felling Vice-President C. J. Hahn Cashier

SABBATH SCHOOL LESSON

JANUARY 12, 1913

MAN THE CROWN OF CREATION.

Gen. 1: 26-27; 2: 7, 9, 14-26

26. And God said, Let us make man in our image, after our likeness; and let them have dominion over the fish of the sea, and over the cattle, and over all the earth, and over every creeping thing that creepeth upon the earth.

27. So God created man in his image; male and female created he them.

28. And the Lord God formed man of the dust of the ground, and breathed into him the breath of life; and man became a living soul.

29. And the Lord God planted a garden in Eden; and there he put the man whom he had formed.

30. And out of the ground the Lord God caused to grow every tree that is pleasant to the sight, and good for food; the tree of life also in the midst of the garden, and the tree of the knowledge of good and evil.

31. And the Lord God took the man, and put him into the garden of Eden to dress it and to keep it.

15. Add the Lord God commanded the man, saying, Of every tree of the garden mayest thou eat freely.

17. But of the tree of the knowledge of good and evil, thou shalt not eat of it; for in the day that thou eatest thereof thou shalt surely die.

18. And the Lord God said, It is not good that the man should be alone; I will make him a help meet for him.

19. And out of the ground the Lord God formed every beast of the field, and every fowl of the air, and brought them unto Adam to see what he would call them: and whatsoever Adam called them, the same living creature, that was the name thereof.

20. And Adam gave names to all cattle, and to the fowl of the air, and to every beast of the field; but for Adam there was not found a helpmeet for him.

21. And the Lord God caused a deep sleep to fall upon Adam, and he slept; and he took one of his ribs, and closed up the flesh there.

22. And the rib, which the Lord God had taken from man, made he a woman, and brought her unto the man.

23. And Adam said, This is now bone of my bones, and flesh of my flesh; she shall be called Woman, because she was taken out of man.

24. And the Lord God said, Behold, I have given thee thy father and thy mother, and shall cleave unto his wife; and they shall be one flesh.

Golden Text—Gen. 1: 27

Introductory.

In this lesson we are called to notice particularly the two different accounts of the creation of the first man. Because the two accounts do not agree in every particular, some theologians claimed that they had different authors, and that these first chapters of Genesis are made up of sentences, phrases and words taken from different authors, rather than written by Moses, to whom they are usually ascribed. But it must not be thought (as it is not probable) that the author sat down and wrote consecutively all that we have here. We remember that the writing was not on paper, as we have it, and was not successively numbered sheets; but was on such material as could be moved in the desert. The writer was compelled to write a certain amount, but by very slow process, and when he had written all he was tired, or until he was weary, he would stop, and he laid his writing aside and did not return to it again, perhaps for a week, or a month or longer. So, when he returned to it, it was like beginning over again. So when Moses had finished his first chapter, he laid it aside and when he again began to write, he repeated in other words some things that he had said before. He looked at the subject from a different point of view, and did what almost every writer does in the production of a book—repeated himself. In different words, from a different viewpoint, in our first chapter the writer tells of the creation and making of the world, its plants and animals, and then, in verse 26, he begins to tell how man was made, after the beasts and other things.

Expository.

26. The writer represents God as talking counsel with himself, or with the other persons of the Godhead, saying, "Let us make man," or, "We will make man." He would make a being of another mold, who should have dominion over all the rest of the creation. And this person, man, should bear the ideal form, the form in which God himself would finally appear—the most perfectly adapted to all the offices which might be committed to him—in his body he should be God's; but more especially, he should have intelligence from the moral attributes of Godlike characteristics. He should be gentle, and yet intelligent, one with whom God could communicate with assurance that he was understood.

27. And so God created man in his own image. He did not create a man and a woman, male and female, in the case of the other living things, but made, or created, simply a man, a representative of a possible race. And he told the man that he was to be the ruler of all else. This is the highest of all earthly things.

28. Thus the writer stops for a time, with the first chapter.

Chapter 2.—When the writer again comes to his work, he retraces the same ground in a few words, which he has said before; as it were, calling attention to it; and he becomes more explicit in his coming to tell of the forming of the woman. He says that God first formed man of the dust of the ground; and breathed into him the breath of life, a process differing somewhat from that followed in the case of the other living things. It

was God's breath in him that made him intelligent, not superior in all things to the rest of the creation. He said that God begot man, or that the man-for-born-of-God, and so became a son of God. That is not true. God did not create him, but he was not a human being cast by his twice, but a true image of the man of God.

28. And now we are told how God made man. He did not generate him, but he created him. He planned a garden, a delightful place, having growing in it all that the man could desire. And he put him there, except that there was no other like himself.

9. In this garden God caused to grow all manner of goodly trees and fruits. He did not generate him, but he created the tree of life, of which it was not lawful for the man to eat. But there was another tree of which he was forbidden to eat. God laid upon him no difficult task; but simply commanded him to withhold his hand from that particular tree. That was easy. He was forbidden to touch it, or to cause to study them would take too much time. We can read them and understand them.

15. God put the man in this beautiful garden, located in a country called Eden. It was in the midst of what is even now a very desirable country, in what we think of as Armenia, the spot of which the Tigris and the Euphrates rivers flow. The only thing that the man had to do was to exercise his authority, and to keep from trimming the trees, and gathering their fruit.

16. He told the man that he was to eat of the tree of life, but not of that of a particular tree.

17. He told him that, if he ventured to eat of that tree, he would surely die. He told him that he was to eat of much that was good, but he knew that it was a thing to be dreaded and shunned.

18. God saw that man needed companionship of his own order, and resolved to give him what he needed, something which was more to be desired and more capable of giving happiness to a man than anything else in the world.

19. So he, as if remembering the writer's opinion of the matter, brought to the man to be recognized and named by him. This was a great thing, for man gave names to all the other animals.

20. But he was lonely. These other things were not what he wanted for himself, but he could not speak his language.

21. But God did not create, or make, another being out of non-material life, but what was of the same nature as the woman. He took a rib out of the side of the man, and of it he "built up" another being very much like the man, who had similar powers and faculties, who walked, as he walked, with eyes and mouth and hands and feet like his own.

22. Every particular about this person, he brought her to the man, that he might judge of her fitness to be his companion. The man was pleased with her, and he called her Eve, because she was a part of himself, bone of his bone, and flesh of his flesh. He called himself not Adam, but Ish, and he said, "This is now bone of my bones, and she was taken out of me."

24. And now the writer, under the inspiration of God, says: Because this Ishah was taken out of Ish, woman was taken out of man, therefore shall he be joined to her as to his other earthly thing. She is of all things dearest to him, and he to her. Of course, this was written long after man and woman were living as husband and wife. It simply tells how God regards the marriage relation. There is no better rule for our guidance.

Golden Text—Gen. 1: 27

Introductory.

In this lesson we are called to notice particularly the two different accounts of the creation of the first man. Because the two accounts do not agree in every particular, some theologians claimed that they had different authors, and that these first chapters of Genesis are made up of sentences, phrases and words taken from different authors, rather than written by Moses, to whom they are usually ascribed. But it must not be thought (as it is not probable) that the author sat down and wrote consecutively all that we have here. We remember that the writing was not on paper, as we have it, and was not successively numbered sheets; but was on such material as could be moved in the desert. The writer was compelled to write a certain amount, but by very slow process, and when he had written all he was tired, or until he was weary, he would stop, and he laid his writing aside and did not return to it again, perhaps for a week, or a month or longer. So, when he returned to it, it was like beginning over again. So when Moses had finished his first chapter, he laid it aside and when he again began to write, he repeated in other words some things that he had said before. He looked at the subject from a different point of view, and did what almost every writer does in the production of a book—repeated himself. In different words, from a different viewpoint, in our first chapter the writer tells of the creation and making of the world, its plants and animals, and then, in verse 26, he begins to tell how man was made, after the beasts and other things.

26. The writer represents God as talking counsel with himself, or with the other persons of the Godhead, saying, "Let us make man," or, "We will make man." He would make a being of another mold, who should have dominion over all the rest of the creation. And this person, man, should bear the ideal form, the form in which God himself would finally appear—the most perfectly adapted to all the offices which might be committed to him—in his body he should be God's; but more especially, he should have intelligence from the moral attributes of Godlike characteristics. He should be gentle, and yet intelligent, one with whom God could communicate with assurance that he was understood.

27. And so God created man in his own image. He did not create a man and a woman, male and female, in the case of the other living things, but made, or created, simply a man, a representative of a possible race. And he told the man that he was to be the ruler of all else. This is the highest of all earthly things.

28. Thus the writer stops for a time, with the first chapter.

Chapter 2.—When the writer again comes to his work, he retraces the same ground in a few words, which he has said before; as it were, calling attention to it; and he becomes more explicit in his coming to tell of the forming of the woman. He says that God first formed man of the dust of the ground; and breathed into him the breath of life, a process differing somewhat from that followed in the case of the other living things. It

1913, 10:30 a. m. Parents wishing to send their children to parochial school after Christmas are asked to announce their early. Rev. J. A. Schlichting.

CHURCH OF THE BROTHERS—Fourth street, and Third avenue north. Sunday school, 10 a. m. Preaching service, 11 a. m. Christian workers meeting, 7 p. m. Evening prayer services, 8 p. m. Teachers' training class, Tuesday, 8 p. m.

CHRISTIAN SCIENCE SOCIETY—130 Third avenue east. Services Sunday, January 11, 11 a. m. Subject: "Sacrament." Sunday school at 10 a. m. Testimonial meetings Wednesday, at 8 p. m.

\$100 Reward, \$100

The readers of this paper will be glad to learn that there is at least one dreaded disease that science has been able to cure in all its stages, and that is Carruth's Catarrh Cure is the only medicine that cures. Carruth's Catarrh Cure is a constitutional specific. It requires a constitutional treatment. Carruth's Catarrh Cure is taken internally, acting directly upon the blood and mucous surfaces of the system, thereby destroying the foundation of the disease, and giving the patient strength by building up the constitution and assisting nature in doing its work. The proprietor offers a free trial of Carruth's Catarrh Cure to any case that will pay for it. Carruth's Catarrh Cure is sold by all Druggists. Take Carruth's Family Pills for constipation. (Advertisement)

Money to loan—Swim & Aldrich. (Advertisement)

ATTEND INAUGURAL BALL

Former Senator and Mrs. Sweeley Go to Boise, to be gone some days.

In order to look over the political situation at the Capital and in the interests of certain pieces of legislation he has in mind—former Senator J. Sweeley, accompanied by Mrs. Sweeley, left for Boise Monday night, to be gone the better part of the week.

Senator and Mrs. Sweeley were among the guests at the inaugural Ball on Tuesday evening, together with one or two other Twin Falls parties.

SEVEN STATES HAVE MOUNTAINS ABOVE 15,000 FEET.

There are three states which can boast of mountains peaks exceeding 14,000 feet in height above sea level, according to the United States Geological Survey. They are California, with Mount Whitney, 14,505 feet—160 feet in height above sea level, exclusive of Alaska—Colorado, with Mount Massive and Mount Elbert, each 14,402 feet; and Washington, with Mount Rainier, 14,533 feet. Wyoming, Utah, New Mexico, and Nevada also have mountain peaks exceeding 13,000 feet in height.

K-C Baking Powder is guaranteed absolutely pure and wholesome.

There is no Rochelle salts, no harmful residue left in the food that is leavened with K C.

Even the most delicate can eat hot breads raised with K C without distress. Try K C Baking Powder breads if yeast-raised bread does not agree with you.



LOCAL MERCHANT WINS

W. R. Prieb Awarded Third Prize for Best Window Display in National Competition.

W. R. Prieb, jeweler, has been notified that he is the winner of third place, together with a handsome cash prize, in the national window display competition inaugurated and known as the "Simpson Christmas Window Contest." Mr. Prieb entered the contest at the eleventh hour, but once in the staff of the Prieb store turned loose with a vengeance, and within a few hours a photograph of the result was secured and duly forwarded to the judges. Mr. Prieb was inclined to believe that his efforts would land him among the first two dozen or so competitors, but was agreeably surprised upon being notified that he had come within two of winning first place.

The competition was open to jewelers over the entire United States.

Fit His Case Exactly.

"When father was sick about six years ago, he read an advertisement of Chamberlain's Tablets in the papers that fit his case exactly," writes Miss Margaret Campbell of St. Paul, Minn. "He purchased a box of them and he has not been sick since. My sister had stomach trouble and was also benefited by them." For sale by all dealers. (Advertisement)

JANUARY 1, 1913

New York Life Insurance Company

346 and 348 Broadway, New York

Over 67 years old. Owned and controlled by the holders of over ONE MILLION Policies.

TRANSACTIONS FOR THE YEAR 1912

During the year 1912 the Company has issued over 90,000 POLICIES for more than \$1,000,000,000 DOLLARS, on which the first premiums have been paid to the Company in cash.

The Company is now composed of the holders of over 1 MILLION POLICIES, protecting the homes and business interests of the world to the extent of about 2 BILLION 170 MILLION DOLLARS of paid insurance, a gain for the year of 63 millions of protection.

During the year 1912 the Company has paid in death-benefits on the lives of more than 8,000 policy-holders, over 25 MILLION DOLLARS.

During the year the Company has paid to its living policy-holders, in maturing policies and other cash benefits, about 32 MILLION DOLLARS.

During the year the Company has loaned direct to over 93,000 policy-holders, on the sole security of their policies, about 27 MILLION DOLLARS, at 5 per cent interest, without fee or other charge.

During the year the Company has paid to its policy-holders in dividends over 11 MILLION DOLLARS.

INSURANCE IN FORCE, ABOUT 2 BILLION 170 MILLION DOLLARS.

Insuring the holders of over 1,600,000 policies, who ARE the Company, who OWN the Company, and who ALONE receive the PROFITS of the Company.

V. H. Chanler, Resident Agent, Twin Falls

IF WE CAN INDUCE YOU TO TRY

Meritol

FOR THE PUBLIC HEALTH

ADAPTA

TRADE MARK

HAIR TONIC

ON OUR SAY SO, ON OUR POSITIVE GUARANTEE, YOUR MONEY BACK WITHOUT QUESTION IF YOU DON'T LIKE IT. WE WILL FEEL THAT WE HAVE DONE YOU A REAL SERVICE.

WE KNOW WHAT MERITOL HAIR TONIC IS MADE OF; IT IS MADE FOR US, AND WE KNOW THAT THERE IS NOTHING BETTER MADE FOR THE HAIR—MERITOL SEAMPOO PASTE IS JUST AS GOOD.

Majestic Pharmacy

Members American Drug & Press Association

Write Ideas for Moving Picture Plays!

YOU CAN WRITE PHOTO PLAYS & EARN \$25 OR MORE WEEKLY

We Will Show You How!

If you have ideas—if you can THINK—we will show you the secrets of this fascinating new profession. Positively no experience of literary excellence necessary. No "flowery language" is wanted.

The demand for photoplays is practically unlimited. The big film manufacturers are "moving heaven and earth" in their attempts to get enough good plots to supply the ever-increasing demand. They are offering \$100 and more for single scenarios of written ideas.

Nearly all of the big film companies; the buyers of photoplays, are located in or near NEW YORK CITY. Being right on the spot, and knowing at all times just what sort of plots are wanted by the producers, our SALES DEPARTMENT has a tremendous advantage over agencies situated in distant cities.

We have received many letters from the big film manufacturer, such as VITAGRAPH, EDISON, ESSANAY, LUBIN, SOLAX, IMP, REX, RELIANCE, OMBAMPION, COMET, MELIÉS, etc., urging us to send photoplays to them. We want more writers and we'll gladly teach you the secrets of success.

We are selling photoplays written by people who "never before wrote a line for publication"

Perhaps we can do the same for you. If you think of only one good idea every week, and will write it out as directed by us, and it sells for only \$25, a low figure,

You will earn \$100 Monthly for Spare Time Work

FREE—Send your name and address at once for free copy of our illustrated book "Moving Picture Playwriting"

Don't hesitate. Don't argue. Write NOW and learn just what this new profession may mean for you and your future.

NATIONAL AUTHORS' INSTITUTE

1543 Broadway
NEW YORK CITY

CHURCHES

CHURCH OF CHRIST—Corner Second and Fourth avenue east. Sunday school, 10 a. m.; sermon at worship, 11 a. m. All members urged to be present. Junior C. E. meeting, 7:30 p. m. (Advertisement)

FIRST PRESBYTERIAN CHURCH, Fourth avenue and Second street. Sabbath services: Bible school, 9:45 a. m.; W. J. Young, superintendent. Preaching, 11 a. m. and 7:30 p. m. Rev. M. Anderson, D. D., minister.

FIRST BAPTIST CHURCH—Corner of Fifth avenue and Second street. Sunday school will be held every Sunday at 10 a. m. Morning services 11 o'clock. Evening service at 7:30 o'clock. Prayer meeting every Wednesday evening at 8 o'clock. Rev. W. E. Henry, pastor.

M. E. CHURCH—Sunday school at 10 o'clock. Preaching at 11 o'clock. Communion services first Sunday of each quarter and reception of new members first Sunday of each month. Morning services at 9 o'clock; music by Sunday school orchestra and choir. Epworth League at 7:00 o'clock. Bible school Wednesday evenings at 8:00 o'clock. Rev. W. B. Woodhull, pastor.

SAINT EDWARDS' CATHOLIC CHURCH—Services first Sunday of each month. First mass at 8 o'clock; second at 10. Sunday school at 2:30 o'clock. Evening service at 7:30 o'clock. Rev. Father Flynn, pastor.

ABSENGION PROTESTANT EPISCOPAL CHURCH—Services will be held regularly every Sunday at 11 a. m. Sunday school at 10 a. m. Holy communion at 11 o'clock first Sunday of each month. All of whatever faith are welcome. Rev. R. W. Catlin, minister in charge. At home Tuesday and Wednesday evenings, 215 Third avenue north.

LUTHERAN CHURCH—Corner of Third and Fourth streets. Sunday school, 10 a. m. Preaching, 11 a. m. and 7:30 p. m. (Advertisement)

Markets

Classified Advertising

I Will Exchange

TWIN FALLS MARKETS.

Wholesale Produce.

Chop, \$1.20.
 Whole Beans, \$2.50.
 Brown Beans, \$2.75.
 Soybean, 10c.
 Oats, 10c.
 Potatoes, \$1.50.
 Apples, per box, \$1.15.

Meats.

Yeast, 7c to 10c, 60c.
 Pork, six months, 10c, 60c, 80c, 80c.
 Chickens, hens, 7c.
 Chickens, spring, 10c.
 Beef, cows, \$4.00 to \$4.50; steers, \$4.75 to \$5.50, live weight.
 Lamb, 6c, live.
 Cattle, 10c.
 Ranch eggs, 85c in trade.

Dairy Produce.

Furnished by the Starling Creamery.
 Butter, 24c.
 Butter, 24c.

Grain-Wholesale.

Spring wheat (soft) 1/2c per cwt.
 Winter wheat, \$1.15 per cwt.
 Oats, 10c.
 Corn, \$1.45 cwt.

Grain-Retail.

Wheat, in 500-lb. lots, sacked, \$1.25.
 Oats, in 500-lb. lots, sacked, \$1.20.
 Corn, sacked in 500 lb. lots, \$2.00.
 Cracked, 10c, 20c.

Weekly Live Stock Lotter.

Kansas City Cattle Yards, January 1, 1913.—Cattle received here this week, 100 head. Total for the week, 100 head. Total for the year, 100 head. Total for the month, 100 head.

year ago, but weights as well, the demand for these animals is increasing. The market is good, killers want augmented by 1000 head of yearling feeders. The demand for feeders is largely at \$4.50 to \$5.00, and of short fed steers at \$4.00 to \$4.50, rather a narrow margin. But, with the falling price of live stock, year, cheaper feed and better feed weather, and the cattle market so far have made good money. Fed steers are 10 to 15 cents per cwt. a week ago, but butcher grades are firm. Hogs are 10 to 15 higher. Dealers expect a better price for yearling feeders, in which event fat steers will do well to hold up steady. Fed steers are coming faster, the best selling at \$5.50 to \$7.50 this week, the market closing the week 10 to 15 lower on the best steers, as compared with Monday. Fluctuations in cattle prices are mild, and the undertone is firm. A few days of small supplies and prices would start upward with a rush. Butlers are looking for a fair price for their stock, but they will be fairly liberal, however.

Classified Advertisements

WANTED
 WANTED—Position by experienced stenographer. Can furnish references. Write to J. H. Brown, 412 Second avenue east, Twin Falls, or phone 357-38.

WANTED
 WANTED—Sewing, 325 Sixth avenue east.

WANTED
 WANTED—To buy calves. Address P. O. Box 1, Brown, Kimberly, Idaho, R. R. No. 1, box 10-B.

WANTED
 WANTED—Position as housekeeper on ranch, by lady with little daughter. Address box 530, Twin Falls.

WANTED
 WANTED—A position as experimenter by a young lady of experience and ability. Address 814 Fourth avenue north.

LAIDY NURSE
 LAIDY NURSE—Address 530 Second avenue East, Phone Red 439. Terms reasonable. Mrs. C. B. Rosen.

FOR SALE

FOR SALE
 FOR SALE—A parlor auto and dining room furniture, rugs, china set, etc. Inquire 2600 Sixth avenue north.

FOR SALE
 FOR SALE—5 tons of third crop alfalfa and 15 tons second crop. P. F. Trolly, 212 N. Rose, Twin Falls.

FOR SALE
 FOR SALE—or trade—acres near town for more land. Address box 585 city.

FOR SALE
 FOR SALE—30 acres good land, all in alfalfa, adjoining Hansen townsite. Address P. O. Butte, Artesian Cattle Co., 212 N. Rose, Twin Falls.

FOR SALE AT COST
 FOR SALE AT COST—160 acres on the original Twin Falls tract about 2 1/2 miles southwest of Buhl. Must sell. Address H. H. Froedheim, 218 Second avenue north, Twin Falls.

FOR SALE
 FOR SALE—Six Duro Jersey males, English registered. Apply to T. Conroy, R. 24, Twin Falls.

FOR SALE
 FOR SALE—Modern 7-room bungalow city park, on corner lot. Good location. Owner leaving city. Terms easy. If interested, address D. M. Carr News.

TYPENITERS
 TYPENITERS and expert repairs. Phone 218.

FOR SALE OR EXCHANGE
 FOR SALE OR EXCHANGE—Canada land. Good close in lot on 4th avenue west. Address A. J. M. Allison, 212 N. Rose, Twin Falls.

FOR EXCHANGE
 FOR EXCHANGE—140-acre ranch, close to townsite. Inquire to J. H. Brown, 412 Second avenue east, Twin Falls.

FOR TRADE OR SALE
 FOR TRADE OR SALE—chick, good plane, 414 Third avenue south.

FOR RENT
 TO RENT, PASTURE—horses and cattle; best grass and fresh water in state. Guarantee stock. If rent. Will accept cash. Buhl in Twin Falls, at reasonable rates. Arrange early and sign up. For all information call at O. C. Barn, Twin Falls.

FOR RENT
 FOR RENT—50 acres a mile from Buhl. Good terms to the right party. P. E. Chamberlain, Twin Falls.

FOR RENT
 FOR RENT—Store room on lot 15, block 89, Twin Falls. Also have office suite to lease in same building. No better location or finer rooms can be found in Twin Falls. Electric heat furnished for all purposes. Apply to er-writer the owner, W. P. Rice, Jerome, Idaho.

Legal Advertisements

NOTICE IS HEREBY GIVEN
 That at the regular meeting of the Board of County Commissioners of the County of Boundary, State of Idaho, to be held at the County Courthouse, Twin Falls, Idaho, on the 12th day of January, 1913, I will apply to the said Board for authority to hire two deputies and one collector, the number being necessary for the proper transaction of the business of the office of Sheriff of said Twin Falls County, and also for authority to employ such other and further help as may be necessary in case of emergency.

H. F. VANAUDELIN,
 Sheriff-elect, Twin Falls County, State of Idaho.

Railroad Time Cards

OREGON SHORT LINE
 No. 111—Erbabund, daily, 7:15 a. m.
 No. 112—Wardbund, daily, 7:15 p. m.
 No. 113—Chubb, Ar. 4:20 p. m.
 No. 114—Erbabund, daily, 7:15 p. m.
 No. 115—Wardbund, daily, 7:15 p. m.
 No. 116—Chubb, Ar. 4:20 p. m.
 No. 117—Departs 7:00 p. m. daily except Saturdays.
 No. 118—Arrives 7:40 p. m. daily except Saturdays.

IDAHO SOUTHERN RAILROAD

Effective December 12, 1911.
 Daily No. 1.
 11:00 a. m. Lv. Gooding. Daily No. 1.
 11:30 a. m. Lv. Jensen. Ar. 8:00 p. m.
 11:45 a. m. Lv. Chubb. Ar. 4:20 p. m.
 11:55 a. m. Lv. Appleton. Ar. 4:20 p. m.
 12:15 p. m. Lv. Ar. 4:20 p. m.
 G. P. & P. A., Milner, Idaho.

MILNER & NORTH SIDE R. R.

Effective November 10, 1912.
 Daily No. 4. Stations. Daily No. 3.
 1:00 p. m. Lv. Milner. Ar. 6:10 p. m.
 1:30 p. m. Lv. Chubb. Ar. 4:20 p. m.
 1:45 p. m. Lv. Island. Ar. 4:20 p. m.
 1:55 p. m. Lv. Marion. Ar. 4:20 p. m.
 2:10 p. m. Ar. Chubb. Lv. 4:00 p. m.

HOTELS AND ROOMS

HOTEL PERRINE
 THE OLDEST HOTELRY ON THE TWIN FALLS TRACT.
 Modern in appointments, with European Plan. Rates, \$1.00 per Day.
 E. G. Williams, Manager.

HOTEL ROGERSON
 Under new management. June 1, 1911.
 Thoroughly modern—20 Rooms with Bath.
 European Plan. Rates, \$1.00 per Day.
 L. M. GOSBERT, Proprietor.

THE WEAVER HOUSE
 Under New Management
 New building, new furniture, Steam Heat, Hot and Cold Water in Every Room. Free Bath, Transients at Special Rates.
 Mrs. J. B. Rogers, Manager.

MID-WINTER EXCURSIONS

January 31.—Low fares to San Francisco, Los Angeles, with all direct routes and limit of April 1.—See S. L. agents for rates and further particulars.

LOCATION NOTICES

FOR NEVADA.
 A full supply always on hand at the Twin Falls News office.

Legal Advertisements

NOTICE FOR PUBLICATION.
 DEPARTMENT OF THE INTERIOR, U. S. Land Office at Halley, Idaho, December 11, 1912.

Notice is hereby given that One J. Paulson, of Twin Falls, Idaho, Serial No. 992, made homestead entry on the 24th day of February, 1912, under the act of March 3, 1909, W-1-B-18-14 Section 17, Township 9 North, Range 13 East, Boise Meridian, has filed notice of intention to make final five year proof to establish claim to the land above described, before C. S. Sigeta, U. S. Commissioner, at Twin Falls, Idaho, on the 30th day of February, 1913.

Claimant names at witnesses: Arthur C. Steffen, James Nichols, all of Hillsdale, Idaho.
 P. F. HORNE, Register.

NOTICE FOR PUBLICATION.
 DEPARTMENT OF THE INTERIOR, U. S. Land Office at Halley, Idaho, December 11, 1912.

Notice is hereby given that John F. McDrew, of Twin Falls, Idaho, who, on October 20, 1911, made Homestead Entry Serial No. 01449 for S.W. 1/4, S.W. 1/4, Township 11 N., Range 14 E., B. M. of Township 10 North, Range 18 East, Boise Meridian, has filed notice of intention to make final five year proof to establish claim to the land above described, before C. S. Sigeta, U. S. Commissioner, at Twin Falls, Idaho, on the 7th day of February, 1913.

Claimant names at witnesses: William H. Turner, of Kimberly, Ida. D. R. Churchill, of Kimberly, Idaho. Edgell Peterson, of Kimberly, Idaho. E. W. Davis, of Twin Falls, Idaho.
 P. F. HORNE, Register.

NOTICE FOR PUBLICATION.
 (Final Proof).
 I, John M. Harrayn, of Murtaugh, Idaho, who made Entry No. 2619 under the act of March 3, 1909, W-1-B-18-14 Section 17, Township 9 North, Range 13 East, Boise Meridian, has filed notice of intention to make final five year proof to establish claim to the land above described, and that I expect to prove that I have resided on, reclaimed, and cultivated said land according to law, before W. H. Howard, Carey Act Land Commissioner, at Milner, Idaho, on the 4th day of February, 1913, by two of the following witnesses:

JOHN M. HARRYMAN, Entryman.
 Charles Ingram, of Murtaugh, Idaho; Arthur Waller, of Murtaugh, Idaho; Harry A. Fiblink, of Murtaugh, Idaho; Fredrick O. Okteberry, of Murtaugh, Idaho.

NOTICE FOR PUBLICATION.
 DEPARTMENT OF THE INTERIOR, U. S. Land Office at Halley, Idaho, December 11, 1912.

Notice is hereby given that William McDrew, of Twin Falls, Idaho, who, on June 7, 1907, made Homestead Entry (Serial 01449) No. 889, for northwest quarter Section 17, Township 11 North, Range 13 East, Boise Meridian, has filed notice of intention to make final five year proof to establish claim to the land above described, before C. S. Sigeta, U. S. Commissioner, at his office at Rock Creek, Twin Falls county, Idaho, on the 15th day of February, 1913.

Claimant names at witnesses: George W. Osborne, Clyde Dunken, William B. Hays, and Reginald Sharp, all of Rock Creek, Twin Falls county, Idaho.
 P. F. HORNE, Register.

NOTICE FOR PUBLICATION.
 Department of the Interior, U. S. Land Office at Halley, Idaho, December 7, 1912.

Notice is hereby given that William C. Warren, of Jerome, Idaho, who, on June 9, 1910, made Homestead Entry Serial No. 01449 for S.W. 1/4, S.W. 1/4, Township 11 N., Range 14 E., B. M. of Township 9 North, Range 13 East, Boise Meridian, has filed notice of intention to make three year proof to establish claim to the land above described, before Frank T. Disney, United States Commissioner, at Shoshone, Idaho, on the 30th day of February, 1913.

Claimant names at witnesses: P. A. Oakes, of Jerome, Idaho. C. H. Adams, of Jerome, Idaho. C. H. Ray, of Jerome, Idaho. J. H. May, of Jerome, Idaho.
 P. F. HORNE, Register.

NOTICE TO CREDITORS.
 In the Probate Court, County of Twin Falls, State of Idaho.
 In the matter of the Estate of William Ireland, deceased.

Notice is hereby given by the undersigned, Executor of the said estate of William Ireland, deceased, to the creditors of and all persons having claims against the said decedent, to exhibit to me within the time necessary, within ten months after the first publication of this notice, to the said Executor, at his office in the First National Bank Building, in the city of Twin Falls, Idaho, which place is fixed for the transaction of the business of the said estate. Dated December 10, 1912.

EDGAR L. ASHTON,
 Administrator of the estate of William Ireland, deceased.

ANNUAL MEETING OF STOCK-HOLDERS.
 The annual meeting of the stockholders of the Twin Falls Cattle Feeders' Association will be held on Friday, January 18, 1913, at K. P. Hall, Twin Falls, Idaho, at 2:30 p. m., for the election of directors and such other business as may come before the meeting.
 JOHN W. HARDIN, Secy.

LOCATION NOTICES
 FOR NEVADA.
 A full supply always on hand at the Twin Falls News office.

Professional Cards

J. BENJ. HALL
 ATTORNEY-AT-LAW
 First National Bank Building.

J. H. WISE
 LAWYER
 Fully authorized Collection Department, Office rooms 1 and 2 over Bank & Trust Co., Twin Falls, Idaho.

SWELEBY & SWELEBY
 ATTORNEYS-AT-LAW
 Practice in All Courts.
 Twin Falls, Idaho.

S. H. HAYS
 ATTORNEY-AT-LAW
 Boise City National Bank Building, Boise, Idaho.

JOHN E. WILLIAMS
 ATTORNEY-AT-LAW
 City Attorney.
 Room 111 Bank & Trust Building, Twin Falls, Idaho.

BABCOCK & GRAHAM
 LAWYERS
 Offices over Post Office, Twin Falls, Idaho.

C. M. BOOTH
 ATTORNEY-AT-LAW
 First National Bank Building, Twin Falls.

CLARK & WRIGHT
 LAWYERS
 Washington, D. C.
 Public Land Matters: Final Proof; Deed; Land; Contracts and Mining Cases; Etc.
 Associate With Attorney.

HOMER O. MILLS
 LAWYER
 Rooms 3 and 4 Gulbert Building
 Dentists

DR. D. BROWN LEWERS
 DENTIST
 Gulbert Bldg., over Warner's Candy Store.
 Graduate of Pennsylvania.
 Licentiate of Pennsylvania.
 Phone No. 124.

P. J. GROSSMAN
 UNDERTAKER AND EMBALMER.
 Successor to C. J. Walker.
 Private ambulance. Open day and night.
 In Harder Building, 414 1/2 Third Ave. East. Telephone 310.

THE CROSBY CO.
 FURNERAL DIRECTOR, GRADUATE AND LICENSED EMBALMER.
 Calls promptly attended, day or night.
 Private ambulance. Phone 162, 215 block, 312 Second avenue west.

E. V. BERG
 CIVIL AND ELECTRICAL ENGINEER
 Licensed Surveyor.
 Room 21, Johnson Building.
 Telephone No. 223 Bldg.

BURTON E. MORSE
 ARCHITECT
 Boyd Building
 Brokers.

O. T. STRONG & CO.
 JARVIS, NEVADA,
 COMMISSION BROKERS.
 All Jarvis and Nevada stock handled. What have you to buy or sell? Information gladly furnished.

KUNKEL & HIBBARD
 REAL ESTATE, LOANS AND INSURANCE.
 See us for termite and Salmon River Lands.
 Amsterdam, Idaho.

Secret Societies

GOLDEN ROD REBEKAH LODGE NO. 105 OF I. O. O. F.
 Meets second and fourth Friday of each month at 7:30 p. m. in K. P. Hall. Visiting members and guests welcome.
 Mrs. Emma Goble, S. W. 1114 K. P. Smith, Recording Secretary.

TWIN FALLS LODGE NO. 23, I. O. O. F.
 Instituted 1905. Meets every Thursday evening at 7:30. Visiting brothers always welcome.
 W. H. GIBNEY, Noble Officer.
 Noble Officer.

TWIN FALLS POST OFFICE.
 Arrival and Departure of Mails.
 From East. Close at 11:15 a. m. Departure. 11:30 a. m.
 From West. Close at 1:30 p. m. Departure. 2:00 p. m.
 General delivery open from 8 a. m. to 4 p. m. daily.
 W. H. GIBNEY, Postmaster.

Guarantee Abstract Company
 We Make Abstract of Titles
 Room 5 Commercial and Savings Bank Building.
 TWIN FALLS, IDAHO

“Diamond Edge” TOOLS

make glad the heart of tool users. They are sharp, ready to use, hold their edges and make work a pleasure. Cost no more than the other kind.

50 or 100 acres in fine quarter section (100 acres in alfalfa) for Twin Falls residence of other good property. Price 180 per acre.

22 acres close to Murtagh, all in alfalfa, for Twin Falls residence. Price \$125 per acre.

\$2100, 3 per cent farm mortgage as first payment on mortgage house of residence in Twin Falls.

50 or 100 acres fine land near the city of Bend, near stock. Price \$130 per acre.

Brick block, rented on long lease, at \$85 per month for good farm. Price \$9,000.

Modern residences for small unimproved acreage, near city. Price \$2000 and \$3000.

10 acres all in orchard, for a modern residence. Price \$4500

6-room residence, 5th avenue east, for higher class property & will pay difference.

J. CLYDE LINDBEY,
 Real Estate and Rentals.

“Diamond Edge” TOOLS

make glad the heart of tool users. They are sharp, ready to use, hold their edges and make work a pleasure. Cost no more than the other kind.

HATCHETS, CHISELS, AXES, FILES, BITS, SAWS.

FOR SALE BY

Twin Falls Hdw. Co.

When you want a dray phone

142

Warberg & Co.

Office opposite Idaho Department Store.

\$2000.00 Death Benefit

\$1500 weekly benefit for loss of sickness; \$1000 for loss of limb or speech; \$1000 for emergency relief benefit. Cost \$5.00 per year. No other dues or assessment. MEN and WOMEN between ages 16 to 65 are accepted. Reliable company with \$100,000.00 state deposit for the protection of policyholders and to guarantee the payment of claims. Write for further information—giving your age, sex and occupation. Address, Dept. 441.

American Registry Company
 Erie, Pa.

Guarantee Abstract Company

We Make Abstract of Titles

Room 5 Commercial and Savings Bank Building.

TWIN FALLS, IDAHO

Patents

Valuable Information Free. If you have an invention or any patent matter, write immediately to W. H. West, registered attorney, Loan & Trust Bldg., Washington, D. C.

1913

No, not an unlucky year for you, BUT FOR MR. 100 PER CENT PROFIT

1913

Our First 5 and 10c Embroidery Sale

WILL PROVE IT TO YOU

Now this lot of Embroideries are not odds and ends. They are from the largest manufacturer of this line in the world. The patterns are all new, designed by "Nichols," the greatest expert in this line of work. You will have fifty patterns to choose from. In both the 5 and 10c assortments there are **Insertions and Bands to match.** Notice our two window displays. That will give you some idea as to whether it will pay you to come to the sale on

Monday, January 13, 1913 The sale will continue for **13 days**

Watch for it, look out for it, then **COME TO IT**

Samples gladly sent to out-of-town customers

THE NEW 5 AND 10c STORE TWIN FALLS, IDAHO

Week in Society

Miss Lydia Boyd gave a delightful luncheon last Thursday afternoon at her beautiful home on Second avenue. When she entertained the members of the bridge club. The luncheon table was very attractively decorated with a large basket of white carnations and ferns, standing on a Venetian centerpiece. The place cards were dainty suburban girls, the work of the hostess. Mrs. E. J. Ostrander received the prize for high score at bridge. Present were Mrs. Geo. Allen, Mrs. M. J. Sweely, Mrs. R. M. McCollum, Mrs. T. O. Boyd, Mrs. C. W. Walton, Mrs. Chas. Robbins, Mrs. E. J. Roberts, and Mrs. R. A. Read.

Beautifully Appointed Dinner.
Mr. and Mrs. E. J. Ostrander entertained the members of their Auction bridge club at dinner Saturday evening at their attractive home on Main avenue. The centerpiece for the dinner table was a most attractively arranged basket of pink and white carnations, and pink shaded candles. The place cards were dainty little souvenirs, being calendars adorned with photos of the attractive scenes around Twin Falls.

Mrs. Read and Mr. Welton carried off the prizes for high score at auction bridge. Present were Mr. and Mrs. R. M. McCollum, Mr. and Mrs. Geo. Alkon, Mr. and Mrs. M. J. Sweely, Mr. and Mrs. R. A. Read, Mr. and Mrs. C. W. Walton, Mr. and Mrs. H. J. Felling, Mrs. C. A. Robinson, Mr. and Mrs. H. H. Morris, of St. Paul, Nebraska, Mr. Morris and Miss West, who were the guests of the club, were presented with bunches of carnations.

Club Notes.
The regular meeting of the Twin-Falls Country Club was called to order by the first vice-president, Mrs. Wilbur Hill, at Masonic hall Tuesday afternoon of this week. This was the first meeting of the club since the resignation of the first vice-president, under the direction of Mrs. O. M. Elliott, chairman of the Home and Educational Department, was one of the best ever held.
Two members of the program were songs by the little primary students of the Lincoln school, who made a distinct impression with their sweet voices and dainty features. Mrs. Ostrander read a very excellent review of "My Little Boy," which had been prepared by Mrs. Trovler, and Professor Elliott closed the program with a most interesting talk on "Singles and Development." Mr. Elliott dealt chiefly with the instincts of young children and their development for either good or bad, and his remarks were decidedly instructive.

Calendar.
The Domestic Science Department of the club will meet at Masonic hall Saturday afternoon, January 11th, at two o'clock. Miss Boyer, instructor of Domestic Science at the Lewiston State Normal, will give a talk during the afternoon, and the meeting promises to be one of the best ever held by the department. All members of the department and their friends are urged to be present.
The musical department will meet at the hall January 14, at 2:30. A good program is prepared for this day.

The Current Event Department will meet January 15, at the home of Mrs. M. J. Sweely.

The Home and Educational Department will meet at the hall next Monday afternoon at 2:30.

The History and Literature Department will meet at the home of Mrs. Bradley Friday, January 17. The play, "Julius Caesar," will be reviewed.
Mrs. A. D. Norton has returned home from a month's visit with friends in Washington and Oregon. Mrs. Norton is making her home at the Justusme Inn.
A. N. Sprague and C. A. Turbun left the first of the week for Salt Lake City, to purchase a stock of goods for their dry store, which they

ANNOUNCEMENTS
A benefit dance will be given by the Twin Falls Band Wednesday evening, January 15, at Cottillon Hall.
The Rev. Mr. Woodhull will preach at the Methodist church for the next three Sunday evenings on the "Conversions of Jesus." The first will be a "Roadside Talk on Division of Estates."

CLUBS
The Musical Club of the Twin-Falls Country Club will have a meeting at the Masonic temple Tuesday, January 14, at 2:30 p. m., with Mrs. McMartin as leader. The following program will be given:
1. American Operatic Compositions—Mrs. D. A. Baker
2. Solo, "Grand Valse de Bouquet"—Motel—Mrs. Harry Blinson.
3. Questions and Answers.
4. Solo—(a) "Forest Tones, from Robin Hood—De Koven.
(b) Answer—Robyn.
5. "Grand Opera in America—Mrs. W. E. Crozier.
6. Waltz Solo—Miss Alford.
All club members are invited.
MRS. D. E. REGAN, Chairman.

KIMBERLY PASTOR IS CALLED BY DEATH

REV. MR. HARDIN SUCCEEDS AFTER LINGERING ILLNESS.
Held Long Pastorate in Churches in Illinois—A Son and Father of Ministers—Son Will Continue Work at Kimberly.

The Rev. Frank Barnes Hardin died at his home at Kimberly last Thursday evening at 5 o'clock after a lingering illness, due to valvular heart trouble. He was 58 years of age. His illness had been critical for about two months prior to his death, and during the last week of his suffering he remained in an unconscious condition. The funeral services were held from Kimberly Methodist church Saturday afternoon, with the Rev. Mr. Parker officiating, assisted by the Rev. Mr. Woodhull, of this city, and the Rev. Mr. White, of Buhl. Interment was in the Twin Falls cemetery.
The Rev. Mr. Hardin was born in Noblesville, Indiana, but spent the greater portion of his ministry in the Rock River, Illinois, conference, holding important pastorates in Rockford and Chicago. He spent more than thirty years in the ministry. With his family he came to southern Idaho in October, 1909, and for two years presided over the Rupert church, coming west to the church at Kimberly. During his illness his services with the Kimberly church were carried on by his son, Rev. Floyd Hardin, who will continue as minister to that congregation. Mr. Hardin possessed a ranch near Twin Falls and it had been his intention to retire from the active ministry to the farm. His father, the Rev. Frank A. Hardin, of California, has been in the active ministry for more than sixty years, and made an extensive visit here last summer.

Selects Funeral Program.
Knowing that his life was soon to end, about a month ago Mr. Hardin selected the order of funeral services to be observed after his death. Passages of scripture, hymns and the list of pall bearers were all chosen at that time. Members of the Kimberly and Hansen churches officiated as pall bearers.
The Rev. Mr. Hardin was a man of exceptional educational attainments, being a scholar in the arts and sciences as well as in theology. Besides his wife he is survived by his son, the Rev. Floyd Hardin, of Kimberly, and two daughters, Mrs. H. J. Klingburg, of Twin Falls, and Mrs. Anabel Stewart, of Hanson, also his father-in-law, a brother in California, and a sister in Washington, D. C.

MID-WINTER EXCURSIONS
January 11.—Low fares to San Francisco and Los Angeles, with diverse routes and limit of April 1. See O. S. L. agents for rates and further particulars.

LEGAL BLANKS
A full supply always on hand at The Twin Falls Iowa office.
Wanted—Good 160 near Twin Falls, Swin & Aldrich—Advertiser.
DRAKE'S RED HOG RANCH
A fine herd of Red Hogs.
The famous Liberty strain of Duro-Jersey Hogs; the large, prolific breed; the kind that has \$50000 worth of fat hogs sold from one sow in 2 years on my ranch.
Choice Sows and Pedigreed Boars for Sale.
CALL OF WHITES
FRED E. DRAKE

TWO HORSE BRAND WAIST OVERALLS
A new pair FREE if they rip.
L. H. STANLEY & CO., INC.
312 N. 2nd St. Twin Falls, Idaho

WILLIS DIONEER BRAND Seeds Trees Corn
Everything Hardy and Acclimated
With Annual Catalog Free—Send Now
OSCAR H. WILL & CO.
BISMARCK, N. D.

R. R. CLAYTON, AUCTIONEER
SATISFACTION GUARANTEED
At Smith & McMaster Barn Twin Falls, Idaho
I AM GOING TO SELL SOMETHING AT ONCE. HAVE TO DO IT.
A good 80, 1 mile from Castleford, or 20 acres 2 1/2 miles from Twin Falls, Idaho, to car line in the 50 acre limit, joining Lester Park, 17 acres in orchard, & in pasture. Come and see it if you want a bargain, or write me to O. C.
ED. VANCE, 2 1-2 Miles N. E.

To the Householders of the Twin Falls Country

On January 1st I took possession of the Twin Falls Grocery and Mercantile Company, and it shall be my aim to conduct the business on the same broad lines that built up its splendid trade. My experience in the Grocery business justifies me in assuring the public that I can serve them to their entire satisfaction.

I will take advantage of every opportunity the market affords to secure for you special bargains. I solicit a continuance of your very liberal patronage of this store, assuring all the most courteous treatment.

J. G. ZOLLMAN,
Proprietor of the
Twin Falls Grocery and Mercantile Company

Hello Central! Give Me Twin Falls
I want to talk to the jolliest and best auctioneer in the world. Yes.
Col. J. J. Campbell
Just Arrived on the Twin Falls Tract.
He cried my sale last year in Oklahoma, the not proceeds exceeding my expectations by \$349.22. That's the way he does business. No ungrateful auctioneer in mine, thank you. I want the best; he gets results.
For dates phone 23, Twin Falls Iowa Office, at my expense, or address Box 1111.

"THE JEWEL"
Hall with Kitchen, Parlor, etc.
For Parties and Weddings
Culbert Building, Main Street, Twin Falls
LOCATION NOTICES
The Twin Falls News office.

FARM LOANS
Twin Falls Bank and Trust Co.
Just Arrived on the Twin Falls Tract.
He cried my sale last year in Oklahoma, the not proceeds exceeding my expectations by \$349.22. That's the way he does business. No ungrateful auctioneer in mine, thank you. I want the best; he gets results.
For dates phone 23, Twin Falls Iowa Office, at my expense, or address Box 1111.

8 Per Cent. FARM LOANS 8 Per Cent.
8 per cent. money and plenty of it to loan on improved farms, best mortgage. Money to loan subject to water contract.
CITY LOANS—Plenty of money to loan on city property.
IMMEDIATE ACTION BEST RATES EFFICIENT SERVICE
Twin Falls Title & Abstract Co., Ltd.
Hotel Perrine Building, Twin Falls, Idaho

THE FARMERS' & MERCHANTS' BANK
TWIN FALLS, IDAHO
CAPITAL \$100,000.00
OFFICERS: RUSSELL W. ALLRED, PRESIDENT; JOHN McRAE, VICE PRESIDENT; C. A. ROBINSON, MANAGER; C. H. CHAPMAN, CASHIER; F. R. COOK, ASST. CASHIER.
A LOCAL BANK FOR LOCAL PEOPLE
With Savings Department. A per cent. interest paid on time deposits.