

TAKE APPEAL TO SUPREME COURT

Idaho Power and Light Company Attack Right of Commission

CLAIM THAT ORDER IS UNCONSTITUTIONAL

The Order of Commission Bars Power Company From Establishing Twin Falls.

Helen, April 4.—The legitimacy of the public utilities commission to exist is attacked before the supreme court by the power company.

COMMUNICATION

I desire to call attention of the voters of the Blaine, Idaho, independent school district to the report of Inspector Wallis, as a violation of the present law.

The application for writs of review filed in Idaho falls in this case against the Idaho Power & Light Company.

DUCK TAKES RIDE

Found on Front End of Freight Car in the West.

JEFFERSON CLUB BANQUET

Annual Meeting and Banquet Will Be Held in This City, Monday, April 13.

BANKERS' CASH PROTEST

We call attention to each of our prices.

TRAIL BLAZE HERE

W. H. Thatcher Made Short Stop in City Last Friday

W. H. Thatcher, who during his life has crossed the continent three times, from ocean to ocean, passed through Twin Falls Friday on his way to Oregon.

COMMUNICATION

I desire to call attention of the voters of the Blaine, Idaho, independent school district to the report of Inspector Wallis, as a violation of the present law.

The application for writs of review filed in Idaho falls in this case against the Idaho Power & Light Company.

The application for writs of review filed in Idaho falls in this case against the Idaho Power & Light Company.

HARRIMAN VISITS CITY

Went on Tour of Inspection of the Idaho Division of the Short Line.

JEFFERSON CLUB BANQUET

Annual Meeting and Banquet Will Be Held in This City, Monday, April 13.

BANKERS' CASH PROTEST

We call attention to each of our prices.

BANKERS PREPARE FOR CONVENTION

Idaho Bankers to Meet in Twin Falls June 8, 9, '10

DELEGATES WILL BE PRESENT FROM ALL PARTS OF U. S.

Meeting to be the most interesting since the formation of the National Bankers' Association.

The Idaho Bankers' Association by their secretary, J. W. Johnson, is already at work preparing for the annual convention, which will be held here in this city.

The application for writs of review filed in Idaho falls in this case against the Idaho Power & Light Company.

The application for writs of review filed in Idaho falls in this case against the Idaho Power & Light Company.

EASTER BAZAAR

Under a League of Women Voters, Easter Bazaar, a Social Attraction.

DRUMS SENT TO JAIL

Bunch of Race Fighters Before Sent to Jail.

WANTED

Wanted—Continent girl to work Wednesday and Friday.

THE LOST RIVER PROJECTS SOLD

Utah Construction Company Is The Purchaser

PRICE PAID FOR PROJECT IS \$3,000,000

Construction Company Has Offer of \$3,000,000 for Labor and Material Furnished for Building Dam.

Haley, April 4.—The Lost River Irrigation project was sold at public auction here this afternoon by Special Agent J. E. Clinton, Jr., acting under authority of the Utah National Bank of Utah, for \$3,000,000.

The application for writs of review filed in Idaho falls in this case against the Idaho Power & Light Company.

The application for writs of review filed in Idaho falls in this case against the Idaho Power & Light Company.

TWO HATCHERIES CLOSE DOWN

Opposition to "Spray" Taking Will Close State Hatcheries.

DRUMS SENT TO JAIL

Bunch of Race Fighters Before Sent to Jail.

WANTED

Wanted—Continent girl to work Wednesday and Friday.

RANCHERS FORM ELECTRIC CO.

First Mutual Company Formed by Ranchers Near Rupert.

The first mutual electric light and power company to be formed among the farmers of this county independent of any town was organized this week and is known as the Farmers Electric Company, Limited.

The first official meeting of the company was held at the home of one of the members, George H. Blaine, on Friday afternoon.

CLEAN-UP DAY A SUCCESS

Idaho Falls, Monday, While Cleaning Up City.

The Clean-up day was immediately clean and bright, and the city was a picture of cleanliness.

FOUR-TOWN LEAGUE FORMED

Southwestern Idaho to Have South Falls.

THE OHIO SOCIETY

Next Meeting Will Be the First Thursday in May.

SIR KNIGHTS, ATTENTION

Knights of the Order of Sir Knights.

LUCKY ESCAPE FROM DEATH

Auto Runs Back Over Rock Creek-Grade

MRS. H. O. MILLER SUFFERS FRACTURE OF LIMB

Automobile Remains Upright After Forty Foot Drop Into Rocky Gully.

An accident which occurred "last night" in the town of Twin Falls, Idaho, was a happy ending, although one of the participants suffers from a fractured leg.

BARRED FROM BUILT FIELD

Idaho Power and Light Company Must Quit Work in West End City.

The Idaho Power & Light Company is barred from entering the built field.

THE PROMISE CALL

A Two Red Features at the Orphan and Red-Head Evening.

DEAUCHAMP SECURES BUSINESS

Frank Smith Sells Interest to Partner in Realty Firm.

OPPORTUNITY NO. 17

Opportunity No. 17.

THE TWIN FALLS TIMES

Published Twice a Week, Tuesdays and Fridays, in the Guthrie-Johnson Building, Main Street.

WILBUR S. HILL Editor and Publisher

Member of Eastern Idaho Press Club

INDEPENDENT REPUBLICAN

Entered as Second Class Matter at Post-Office, Oct. 18, 1910.

Subscription Rates: One year, in advance, \$2.00; Six months, 1.00.

TEL. 35

The subscription books of the TIMES are open to the inspection of advertisers.

DEMAND THIS LABEL



On All of Your Printed Matter... represents Good Workmanship, Good Prices, and Good Conditions.

The manner in which the citizens of Twin Falls responded to the work of cleaning up premises and streets and alleys shows that as a whole this city can boast of good citizens. The clean-up, while not altogether complete for that day, has made a wonderful difference in the appearance of the white city.

The railroad of the past in clamoring for a five per cent rate in the freight rates are making the same old arguments that have been exposed time and time again. Poor management, better financing and high rates are never "brown-shlo" the other side of the balance when the rate question is discussed from a railroad standpoint.

A SPECTACULAR MOVE. The state land board and the probate court of this state have made an arrangement which in the opinion of the people is a most commendable one.

state has some ten thousands of acres of the finest land in Idaho. These lands are now worth in the raw state from \$25 to \$50 per acre. When the promoters are through with them they will be worth, it is believed from \$15 to \$25 per acre.

TOLL TO MAIL ORDER HOUSES

Inland Empire of Northwest Loses Three Million Dollars That Way.

Everybody in the Inland Empire should realize the benefit their money will bring to them and to the community in which they live if it is kept in circulation here, instead of being sent out of the country to be used in the development of other facilities.

Public Improvements are paid for from the tax on property. Property values depend upon the population and development of the community. It is an effort that can be made that will do much to build up the Inland Empire, attract more people to this territory and to its activities and make possible public improvements that are needed at the lowest possible cost to each individual citizen.

HEALTH AND HYGIENE

By the Idaho State Board of Health.

To insure freedom from measles and to prevent the spread of the disease, certain important things must be done. The first and most important thing to do is to prevent the disease from coming into the home.

very possible that it is necessary to have the child in the hospital. To prevent this, a paper napkin or soft piece of gauze should be held over the mouth and nose of the patient while coughing and sneezing. This napkin or cloth should be placed in a closed paper bag and thrown away as soon as possible.

While it is to be admitted that under present conditions the child cannot be expected to reach maturity without contracting measles, the very high mortality under five years of age and the very high mortality under five years of age should lead parents to take steps possible to keep their children from having measles until after they are five years of age.

Local meetings throughout the country are making every effort to give such services as will make it possible for every child to have a thorough medical examination. Do not forget that you share directly in every benefit that comes to your community as a whole and that local merchants, with the advantages that the parent must now give to their children, are ready to cooperate with you in this effort.

Idaho Department Store EVERYTHING TO PAT AND WEAR



An Easter Showing of Women's and Men's Wear

Women's and Misses Suits and Dresses Moderately Priced

Our showing this season surpasses all previous attempts and you'll readily agree with us when you see the wonderful new assortment of styles and materials.

Spring Suits from \$13.50 to \$37.50 Spring Coats from \$7.00 to \$27.50 Spring Dresses from \$9.50 to \$35.00

Newest Fabrics and Weaves are Found in our Piece Goods Section

Crepes are very popular both in silk and cotton goods. Owing to their extreme softness, making them adaptable to pretty draping effects. Our display includes Crepe De Chine, Crepe Cascade, Crepe Chinoir and Oton Crepes of every description.

Spring Clothes for Particular Men

By particular men we mean men who are careful in buying the best made garments to be had. Men who are particular in regard to style and workmanship.

Suits Priced from \$12.50 to \$30.00

Women's and Misses Spring Shoes in All Styles

In Pump-Straps-Colonial, button-up forms in white patent and dull leathers. The prices range from \$2.50 to \$9.00. Misses' spring oxfords in Mary-lane styles in patent and dull leathers, also a complete showing of strap slippers, priced from 90c to \$2.25.



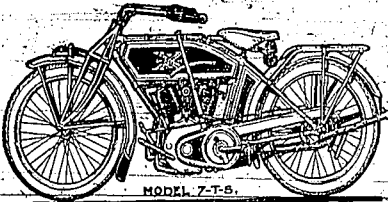
DR. G. F. BAKER DENTIST IDAHO DEPARTMENT STORE BUILDING Office Phone 14

Twin Falls, Idaho

City lots in Twin Falls, to exchange for other property. Address: 27-21 of Times. Mar 27-21 pd

# EXCELSIOR MOTOR CYCLES

The kind that go at all times—Smooth running and economical.



MODEL 7-T-5

Two Speed Model \$280



Regular 1 Speed \$245

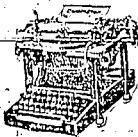
See the 1914 Models Before Buying

Regular parts kept in stock.  
Repairs made for any motor cycle.

**Gloystein Brothers**  
Next Door East of Cash Buyers Union

# Use a Remington or Smith Premier

Three Months For



\$5

WE will rent you an understroke model 6, 7, or 8 Remington Typewriter or understroke model Smith-Premier Typewriter for One-Quarter of a year—THREE MONTHS—for \$5.00—the most advantageous rental terms ever offered by the manufacturers.

And if you wish to buy a machine at the end of this rental period, the rental money already paid will be credited upon your purchase.

Rental Terms Visible Models

REMINGTON MONARCH  
SMITH-PREMIER

One Month \$3.00 Six Months \$15.00

Paragon Ribbons. Red Seal Carbon Papers.  
Recognized as the leading ribbon and carbon lines on the market

Machine Catalogs and Supplies Booklet on Request

Remington Typewriter Co.  
(Incorporated)

50 East First South St., Salt Lake City, Utah.

# C. D. THOMAS

Has a First-Class A0

With good improvements, small bearing orchard and only 2 1/2 miles from City Limits, is trade for 10 or 20 acres near town. Will give a good trade to the right party.

# C. D. THOMAS

Always has the bargains and makes money for his customers.

## THE ALFALFA WEEVIL

Mr. T. H. Parks, entomologist of the Extension Department of the University of Idaho, in a recent bulletin gives the following advice to alfalfa growers in regard to the control of alfalfa weevil.

The alfalfa weevil was accidentally introduced into Idaho from Europe, where it is present each year but not especially destructive.

It feeds principally upon alfalfa, and will not feed upon wild hay, grasses, or grain crops.

It has spread northward from Utah and is now present in Idaho in southern Owyhee county, and in very limited numbers in southern Franklin and Bear Lake counties.

The weevil will probably do no damage to alfalfa in the above counties in Idaho for at least two years.

It is spread by the wind, which probably carries the beetles long distances when they are flying in early spring and in July.

The alfalfa weevil does not infest the seed, and is not spread in that manner.

The greatest injury to alfalfa is done by the larvae or worms, which eat the leaves of the first crop, and prevent the second from growing for a time after the first crop has been cut.

There are three distinct stages of alfalfa, that reappear each year to injure the foliage from May until July.

It interferes with the production of seed from the first crop, but not from the second.

The adults are brown smut beetles about 3/16 inch long, and live over winter in cracks of alfalfa plants and sheltered places. In spring they feed on alfalfa and lay small, yellow eggs inside the stems, through punctures made with their mouth.

From the eggs, hatch small, yellowish green worms, which feed in the opening buds and young leaves at the tip of the plant. When fall comes, the worms go to the crown of the plant, and there winter around the base, and in about two weeks emerge from the cocoon as a fully developed beetle—the alfalfa weevil. The beetles live over winter to lay eggs the following spring.

There is but one brood each year.

There is no reason to believe that the alfalfa weevil will disappear suddenly, or even decrease in numbers by natural control.

The alfalfa weevil attacks alfalfa and alfalfa fields of weeds, rubbish and piles of waste hay.

Cultivate the alfalfa field in the spring before growth starts.

If the alfalfa weevil is present, cultivate with spring tooth harrow in the summer after the first crop has been cut, and so cover the stubble with a hard-frost while the ground is dry. This will crush the worms and cocoons present in the alfalfa crowns, and permit the second crop to grow at once.

How up old stands, and give alfalfa the care and attention given other crops.

Do not think that the alfalfa weevil will prevent the production of good crops.

Use repeated methods as preventive measures for fields in other the present year, at first.

Study the illustrations shown here, and report suspected injury to the Experiment station, in order to aid in exterminating the weevil in susceptible areas of new infestation.

**THE APPLICATION OF GREEN MATTERS.**

The benefit derived from incorporating green crops in soil as manure was noticed by the Romans.

The value of green manure in two-fold. Green clover, when turned in the soil, adds nitrogen directly to the soil. Later, when the clover is being decomposed, the carbohydrates which the decaying plant contains serve as a source of energy for a class of soil bacteria that are able to gather free nitrogen, independent of a host plant, from whole air into the soil.

It is to be noted that the nitrogen is not lost, but is later used by growing plants—oats, to the case and quickness in which these green crops are decomposed, the stimulation of the independent free nitrogen bacteria is brought about much sooner than will dry manure, that is, coarse and difficult to decompose.

If during a dry spell, the green manure is added in very great quantities, excessive evaporation may result.

Experiments have shown that the new process in the soil, from this kind of manure, is not great enough to prevent nitratification.

The farmer must use judgment in selecting the most economical crop for this purpose, his best selection, the stimulation of the independent free nitrogen bacteria is brought about much sooner than will dry manure, that is, coarse and difficult to decompose.

If during a dry spell, the green manure is added in very great quantities, excessive evaporation may result.

Experiments have shown that the new process in the soil, from this kind of manure, is not great enough to prevent nitratification.

The farmer must use judgment in selecting the most economical crop for this purpose, his best selection, the stimulation of the independent free nitrogen bacteria is brought about much sooner than will dry manure, that is, coarse and difficult to decompose.

If during a dry spell, the green manure is added in very great quantities, excessive evaporation may result.

Experiments have shown that the new process in the soil, from this kind of manure, is not great enough to prevent nitratification.

The farmer must use judgment in selecting the most economical crop for this purpose, his best selection, the stimulation of the independent free nitrogen bacteria is brought about much sooner than will dry manure, that is, coarse and difficult to decompose.

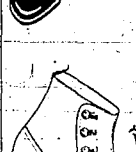
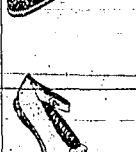
If during a dry spell, the green manure is added in very great quantities, excessive evaporation may result.

Experiments have shown that the new process in the soil, from this kind of manure, is not great enough to prevent nitratification.

The farmer must use judgment in selecting the most economical crop for this purpose, his best selection, the stimulation of the independent free nitrogen bacteria is brought about much sooner than will dry manure, that is, coarse and difficult to decompose.

If during a dry spell, the green manure is added in very great quantities, excessive evaporation may result.

Experiments have shown that the new process in the soil, from this kind of manure, is not great enough to prevent nitratification.



# BUTTOLPH SHOE STORE

TWIN FALLS

Our store is brim full of the newest creations in footwear that the markets of the world affords.

We have a style that is particularly adapted to your foot—One that will make your foot look trim and neat, and at the same time give you the maximum amount of comfort and wear.

We have the only exclusive shoe store on the tract, devoting our entire attention to footwear. We are therefore in a position to give you the best values for the money obtainable.

Yours for better values all the time.



Pia-Neto Shows

# THE TWIN FALLS BAND

PRESENT THEIR FOURTH ANNUAL

# MINSTREL SHOW

AT THE ORPHEUM THEATRE

MONDAY and TUESDAY NIGHTS

April 13 and 14

Many New and Novel Features—A Feast of Past and Present Fun.

Even the Police Cannot Arrest the Laughter

A Bunch of Fresh Jokes out of the Incubator, and all Guaranteed to Make the Pure Fun Law.

Complete Change of Program Each Night

Thirty-five of Twin Falls' Most Popular Entertainers (Both Ladies and Gentlemen) in the Newest Songs, Jokes and Sketches.

PRICES 75c and \$1.00

# List Your Property With Us

If you have a farm, business or residence property, or vacant lot for sale, give us a listing.

We would like to have a good lot of acre tracts listed up at once.

Our buyers will not be far off first and if the place is priced worth the money, you will have an advantage over a larger number.

SANGER

Realty and Investment Co.

quickly and is soft, churn at a lower temperature next time. If it comes firm and requires a long time to churn, a higher temperature should be used next time.

The churning temperature will be affected by the following factors:

1st. The hardness or softness of the butter fat. Fresh, breast and indigestible butterfat hardness or softness of butterfat.

2nd. Amount of whipping. Sour cream may be churned at a higher temperature than sweet cream.

3rd. Temperature of cream was held at previous to churning. High temperature in whipping and holding requires lower temperature in churning.

G. E. FLETCHER, Dairyman, Idaho Experiment Station.

**TO LEAVE THE EXTENSION DEPARTMENT.**

After three years of service as director of the Extension Department of the University of Idaho, Professor W. W. Olin has tendered his resignation to Acting President W. C. Caryle, the same to take place immediately.

Professor Olin has announced that he has accepted a position as agricultural commissioner for the U. S. G. & W. West Coast Pacific Railway Company, and wishes to be released from his work here the latter part of this month.

During his service Professor Olin inaugurated the Movable School feature of the extension work which carries the university directly to the farmer. He has been actively engaged in instructing the farmers of Idaho in better agriculture. We regret very much that Prof. Olin is leaving the state.

**TOO MUCH "CALORIE."**

Merely because the public is unprepared to grasp the full significance of the word calorie as applied to food products, it is quite popular nowadays to emphasize the value of food products solely on the basis of their calorie value (heat value). Starch and sugar have almost the best value of proteins. It is therefore, easily possible for food products composed of starch or sugar and to be equal or even surpassing protein in heat value, and still not contain any protein, a necessary component of food.

H. P. WASHINGTON, Idaho Experiment Station.

The members of the Twin Falls Band feature their annual offering in the minaret this year will be the best ever. The rehearsals of the full chorus of male and female voices, together with the orchestra, which are being held this week, have proven that the amateur members will be unusually attractive, while the company portion of the show will be well taken care of.

Twin Falls' new female impersonator will make some of the latest Parisian fashions a contribution to the list of the show. The Home Breaker, Adv.

Wanted: You as a Times' subscriber

SOCIETY NOTES

Society notes for this column will appear weekly.

The Luncheon club was delightfully entertained by Mrs. C. E. Davis at her beautiful home on Ninth avenue North Friday at one o'clock. The table was a beautiful sight to behold, daintily set on lace cloths and decorated with profusions of pink and white sweet peas. Bridge was played after the delicious luncheon for which Mrs. C. E. Davis was awarded very favorably for a large score.

Mrs. T. J. Wagon will entertain the members of the Young Married People's dinner club Wednesday at seven p. m.

The monthly evening musicale of the Twentieth Century club, which was held Thursday evening at the Masonic temple, was well attended by all the musical-loving people of the town. Zeta Heins and Mary Douglas opened the evening with a most beautifully played "Overture Raymond" by Liszt.

Messes Gardner and Parke sang a duet a very pleasing number. The lovely girl, the baritone and one of the best vocalists, Watzke were gracefully demonstrated to Misses Henriette Ostrander, Vera Thomas, Con and Mrs. Spangler. In a way that delighted and charmed the people. Then Miss Chas. C. J. Holt in his usual pleasant way.

Mrs. Ripley and Mrs. Guy Searer guests of the club from Ellet, accompanied by Mrs. Triditt, president of the club, rendered very pleasing solos which were highly appreciated.

Mrs. C. J. Holt in his usual pleasant way sang a Spanish-Drinking song, "A Perfect Day" by Mr. J. T. Baldwin, accompanied by Mrs. Heagan on the harp, and Mrs. Spangler on the cello, was one of the well rendered features of the evening.

Mrs. C. J. Holt in his usual pleasant way sang a humorous selection, "A Bear Story," which provoked much laughter and merriment, followed by a very pleasing number, "Barry MacNeil," by Misses Willey and Shoven and Misses Combs and Graham. Then Miss Combs chanted her hymn with a vocal solo, "A Cyprian Mother." An I. sang as only she can sing and gracefully responded to hearty applause.

The evening was brought to an excellent end by several selections by Mrs. Heagan's mandolin club, after which punch and Mrs. Heagan served and a social time enjoyed.

Much praise is due to Mrs. Heagan who as musical director of the club prepared the pleasing programs.

The ladies of the G. A. R. gave a very pleasant social evening in their members and guests Saturday at the R. P. hall. During the early part of the evening the following program, under the direction of Mrs. C. J. Holt.

Headlin, "Johnnie and the Teacher" Frances Smith. Vocal solo, "A Dream" - Margie Roberts. Piano solo, "Whispering - Vesta Thomas. Vocal solo, "Ben Buld" - A. Wilton Peck.

After the program delicious refreshments were served and a social time enjoyed. The free will offering for which each guest was presented with a candy bird cookie and a brand of his good will, is to be used to decorate the graves of the old soldiers on Decoration Day.

The members of the club of "Home Club" are to be entertained in home by Mrs. and Mrs. H. M. Elting, this evening at seven o'clock.

Invitations have been issued by Mrs. Felling for Friday afternoon luncheon. Mrs. C. E. Davis, who is the honor guest of Mrs. E. J. Ostrander.

Mrs. C. W. Walton was the charming guest at a dinner last evening honoring Mrs. C. E. Davis who is very highly decorated with the decorations. The delicious lunch corresponded with the decorations.

The guests present were Mrs. Messers and Mesdames Allen, Felling and Ostrander and Mrs. Davis.

The Saturday Luncheon club and last week, with Mrs. Cunningham. Prizes for high score were awarded to Mrs. Harsted and Mrs. J. O. Galley.

The Wednesday Aid and Home will meet this week with Mrs. Heagan.

The Missionary Society of the Christian church, met last Friday with Mrs. C. E. Davis. The table was a beautiful sight to behold, daintily set on lace cloths and decorated with profusions of pink and white sweet peas.

# Pre-Easter Specials at Booth's

**Ribbon Special 19c**

Fancy flowered ribbons in widths up to six inches. All pure silk. Special, ..... 10c

**Suit Special \$19.50**

The big suit values of Twin Falls are these snappy suits of Wool Crepe, Aberdeen and Silk Moire in all leading colors including tango, new blues and black. These suits are striking and new; both coat and skirt being exceptionally pretty.

**Easter Millinery**

This big department is busier than ever and is offering for Easter specially fine trimmed hats at prices unequalled, from \$3.50 up.

**Easter Damask \$1.00**

Special wide table damask in pure linen. Our regular \$1.35 linen for \$1.00. Makes the Easter table bright.

**Coat Special \$12.50**

These swell coats in Crepe, Hating, Checks and Serges are classy in flare and puff styles and are extra values chosen from our big department. Colors in tango, ope tan, etc.

**Kid Glove Special**

This week only for Easter wear: Regular \$1.50 kid gloves, ..... \$1.25 Regular \$2.00 kid gloves, ..... \$1.75 See our \$1.00 real kid glove. Many satisfied customers are wearing it.

**Our 25c Hose**

The 25c hose is the same hose we have always sold for 35c. We wanted the best 25c hose on earth and we made this 25c hose our special. You should see it.

**Cut Glass Tumblers 50c Set**

Star cut tumblers for pre-Easter sales - real cut glass.

**New Corsets for Easter**

Special \$1.00 Corsets This Week. To look the best in your new spring tops requires our late styles in Gossard or Bon Ton corsets. Get one before Easter and make your clothes fit and feel comfortable. Gossard Brassieres 50c and up.

**Our 50c Hose**

It's an improved silk like hose. We looked the markets over for the best 50c hose and could not find one. We made our 50c hose a very special number at 50c. It's the same hose exactly and it's a wonder priced at..... 50c

**50c Set**

**25% Discount on China**

This is our staple plain white real china and our gold band line and also our English ware. See the Easter table especially priced at the Fourth Off.

## Buy Booth's Easter Shoes

# BOOTH MERCANTILE CO.

wonderful work. The excellent program was prepared by Division 2, of which Mrs. Beauchamp is leader. Fifty Hikes were present at the meeting, being a small number compared to many previous meetings.

The Epworth Society of the M. E. church meets this Thursday with Mrs. Ripley. Everyone is cordially invited.

Among the very pleasant surprises of the season the greatest and most pleasant occurred last night when Miss H. Evelyn Moore, mathematically learned of the high school for the last three years, announced her engagement to a number of her friends. Miss Moore is a great favorite among the teachers and all the pupils of the high school and they will all wish her much happiness.

To Ernest Willey: You are hereby notified that the undersigned purchased, on March 7, 1912, SE NW 20-10-16, the 1910 tax thereon assessed to W. E. Prater; time for redemption of said property from tax sale expires July 17, 1911. A. G. Wilson, April 7-10-11.

To Leo Herzog: You are hereby notified that the undersigned purchased, on March 7, 1912, Lot 13, Block 2, Eastman Addition, said property being sold for the 1910 tax thereon assessed to Leo Herzog; time for redemption of said property from tax sale expires July 17, 1911. A. G. Wilson, April 7-10-11.

To M. E. Ellis: You are hereby notified that the undersigned purchased, on March 7, 1912, SE NW 20-10-16, the 1910 tax thereon assessed to W. E. Prater; time for redemption of said property from tax sale expires July 17, 1911. A. G. Wilson, April 7-10-11.

To Frank B. Brubaker: You are hereby notified that the undersigned purchased, on August 11, 1911, the SE NW 22-9-14, said property being sold for the 1910 tax thereon assessed to Frank B. Brubaker; time for redemption of said property from tax sale expires July 17, 1911. A. G. Wilson, April 7-10-11.

To Henry Hreud: (1/2) better and Joseph - My

To Wm. E. Brauman: You are hereby notified that the undersigned purchased, on August 31, 1911, the NW NE 16-9-16, said property being sold for the 1910 tax thereon assessed to E. E. Brauman; time for redemption from said sale expires July 17, 1911. A. G. Wilson, April 7-10-11.

To Earnest Dayhall: You are hereby notified that the undersigned purchased, on March 7, 1912, the SW SE 22-10-16, said property being sold for the 1910 tax thereon assessed to Earnest Dayhall; time for redemption of said property from the tax sale expires July 17, 1911. A. G. Wilson, April 7-10-11.

To Frank B. Brubaker: You are hereby notified that the undersigned purchased, on August 11, 1911, the SE NW 22-9-14, said property being sold for the 1910 tax thereon assessed to Frank B. Brubaker; time for redemption of said property from tax sale expires July 17, 1911. A. G. Wilson, April 7-10-11.

To Henry Klemish: You are hereby notified that the undersigned purchased, on August 11, 1911, the NE SE 22-10-16, said property being sold for the 1910 tax thereon assessed to Henry Klemish; time for the redemption of said property from said tax sale expires July 17, 1911. A. G. Wilson, April 7-10-11.

To Henry Clark: You are hereby notified that the undersigned purchased, on August 11, 1911, the NE SE 22-10-16, said property being sold for the 1910 tax thereon assessed to Henry Clark; time for the redemption of said property from said tax sale expires July 17, 1911. A. G. Wilson, April 7-10-11.

**BE READY FOR THE FLY SCREEN DOORS**

**GEM STATE LUMBER CO.**  
PHONE 41

To Henry Klemish: You are hereby notified that the undersigned purchased, on August 11, 1911, the NW NE 16-9-16, said property being sold for the 1910 tax thereon assessed to Henry Klemish; time for the redemption of said property from said tax sale expires July 17, 1911. A. G. Wilson, April 7-10-11.

**HOOSIER NEW AND SECOND HAND STORE**  
PHONE 540J  
New Location 207 Shohone Street South





The Royal Bakery will run a SPECIAL ON CAKES Every SATURDAY and wishes to announce for Saturday, April 4 Lajar-Cakes, Large Size 20c Jelly Rolls 10c Come in and Look Over the Goods

5,000 Boxes of Apples last year and not one worm in the orchard. That's Our Record

We have a new \$400.00 Power Sprayer and call do your spraying. For particulars phone or address J. R. Conway Twin Falls Phone After 6:00 o'Clock P. M.

PIANO TUNING CORRECTLY DONE AT \$3.00 a surely a good investment G. A. TOBEY T. F. Music House Phone 100 Twin Falls since 1908

ANSELL FOR CLEANING AND PRESSING CALL 216 RED

FARM AND CITY LOANS It will pay you to see us before closing a loan elsewhere. An abundance of money, quick action and best terms. SEE US Twin Falls Title and Abstract Co. Hotel Perrine Building, Twin Falls.

PICTURE FRAMING Artist Colors and Brushes REMILLER'S PAINT STORE 51 Main Ave. West

FOR RENT - Nice furnished rooms 227 1/2 Ave. N. 2-11-12. FOR RENT - 3 rooms, 4th-5th-6th furnished rooms, with sleeping porch. Mar 27-21-12. FOR RENT - Furnished room, 403 4th Avenue East. Apr 3-21-12. FOR RENT - Next two-room house, 147 1/2 3rd Ave. West. Apr 7-14-12.

Classified-Advertisements

ALL ADVERTISING UNDER THIS HEAD CASE IN ADVANCE

FOR SALE

FOR SALE - Enoka potato seed, 65c per 100 lbs. John Senechal, Mortlach, 7 miles east of Hansen on Main Twin Falls. Apr 7-14-12.

FOR SALE - Excellent eighty acres, choice land, desirable terms. Thirty acres in clover. Box 945, City. Apr 7-14-12.

FOR SALE - Good work team, harness and wagon, cheap. 355 2nd Avenue East. Mar 10-11-12.

FOR SALE - All kinds of garden plants. D. R. Frost, R. F. D. No. 2, Apr 3-May 12.

FOR SALE OR TRADE - One mountain buck, A-1 condition. Weaver rooms. Mar 21-Apr 3-7-10-12.

FOR SALE - At a bargain, one No. 1 Royal typewriter, used 1 month. Call at Weaver House, Mar 31-Apr 3-7-10-12.

Will sell at Luc's auction grounds, Twin Falls, Saturdays, April 4th: 1. Nichols & Shepherd separator, 2540. 2. Small motor, 1911. 3. Large garden city feeder, 7-in 4-ply belt 140 feet long. All in first class shape. Terms - Cash. H. B. Luc, Auctioneer.

FOR SALE - Fresh Holstein cow, A. N. Howell, Curry, Ida. Mar 30-12.

FOR SALE - 8-room modern house, good repair, if taken before the first of May. 641 4th Ave. W. Mar 27-31-12.

FOR SALE - Good four-room modern cottage, basement, choice location, reasonable terms. Address Box 405. Mar 27-Apr 2.

FOR SALE - Three good Jersey Ayrch cows, also DeLaval separator. John A. Johnson, Delano, Idaho. Apr 3-5-12.

FOR SALE - Early Parula seed potatoes and hogs. Patrick Wynn, 20 miles west and mile south. Phone 617-34. Mar 27-Apr 2.

FOR SALE - Ranch, Twin Falls, 100 acres, \$50 acre. For rent, ranch 35 acres. Geo. De Duckett, Cambridge rooming house, Twin Falls.

FOR SALE - Horse, buggy, and harness for \$25. Inquire Diamond Hardware Co. Mar 30-12.

FOR SALE - A brick building, 1920, chick brooding house, suitable for small shop or bus house. Will sell here to quick buyers - "A" care of illness. Mar 3-12.

FOR SALE - Barred Rock rooster, also some heavier breed. I. A. Appell, 101 Washington Ave. Feb. 10-12.

FOR SALE - 6-room modern house, furnace heat, at a bargain. L. M. Hatley, 351 3rd Ave. East. Jan 9-12.

FOR SALE - Apple seed, 15 cents per pound. No weed seed. Call for sample, 257 6th Ave. North. Mar 13-May 1-12.

TO TRADE - Three-room house for vacant lot. Address Box 151, City. Apr 7-10-11-12.

FOR TRADE - 8-room modern house well located, for land. P. A. Moon, 402 2nd Ave. West. Mar 29-12.

WANTED

WANTED - Farmer in contract SEED PEAS. Have a few hundred acres left. Inquire G. S. Brown, Hotel Perrine. Apr 3-12.

WANTED - A girl or woman to wash clothes. Apply at Hotel. 2 females. Apr 2-12.

WANTED - Washer by the day. Mrs. D. W. Hunter, R. F. D. No. 2, Twin Falls. 3-21-12-14-12.

WANTED - Situation by man and wife on ranch, no children. G. M. Stewart, R. F. D. No. 1, Box 95. Mar 21-Apr 27-30-12.

WANTED - 4000 potatoes. Telephone S. S. Nelson. Mar 21-12.

WANTED - Despond boy. Inquire 332 4th Ave. West. Mar 27-31-12.

WANTED - Sheep - Shearers. Have money to pay you. Inquire at M. E. Stanger, 623 West Boundary St., Twin Falls. Mar 24-27-31-Apr 3-12.

WANTED - Lace curtains to do up 25 and 40 cents a pair. 251 7th Ave. East. Mar 24-27-31-12.

WANTED - To herd by the month or season, cattle and horses. Will pay on best of feed and guarantee to deliver in O. K. shape. Can give references. Ten years in Twin Falls country. H. H. Brown, telephone 211. Mar 12-15-20-24-27-31-Apr 3-12.

WANTED - A woman or girl for general house work. Phone 505-B. Mar 3-12.

WANTED - \$1000 on So. Side 50, 20 acres grain, 10 alfalfa, 20 alfalfa. So. East T. F. M. Address A. E. Feb 13-12.

LOST

LOST - A bunch of keys between Russian hotel and depot. \$200 reward for return to hotel. Box 22. Apr 3-12.

LOST - Copper tray and grate. In plain. Reward for return to this office.

MISCELLANEOUS

Going east to interest people in the Idaho travel, start to be in Twin Falls by March. Would appreciate if you will mail your list to me at Twin Falls. R. H. Lahan, Feb 24-12.

FILER NEWS

(From the Filer Journal.) Miss Cass, of Idaho, bandaged with Filer friends and relatives. Mrs. Francis Brown was a Twin Falls visitor Saturday.

A small blaze in the south part of town, caused a little flurry of excitement on Monday. F. E. Allen was taken quite sick the first of the week, but is much better at this writing.

Novb Musser is home from school at Manhattan, Kansas, and Lester Musser is home from Moscow. O. C. Feltom, who purchased the Jake Musser place, paid Frank Brown \$200 for a splendid pair of mares yesterday.

A number of her friends pleasantly surprised Mrs. C. Stevens on April 1st, the occasion being her birthday anniversary. J. G. Christie proposes to try his hand on Kimberly people who need life insurance, in a few days. Charlie and Myrtle, who were otherwise, got-in despair.

The Ladies Aid Society held their Wednesday, April 4th, meeting at the Moslemas, Cass, Hines, Austin and Cedarholm. Everybody came and enjoyed a splendid lunch for 100. Robert Miller has traded for the Hakeson rooming house and will take possession at once. Mrs. Blackie returns to Lava Springs today for further treatment. Mr. Blackie will move out on their farm south of Filer.

We are gratified to see how our citizens are interested in the cleaning-up of the premises about their buildings. It adds much to the attractiveness of the entire city which we find the business-people-in-charge.

Prof. Dunley proclaims us that Filer will have a baseball team worthy of the name. If this proves true, our boys will have enthusiastic backing. The town is full of fans, who only ask that the name be played with some honor and Mr. Dunley like "when it comes to it" National team.

Mrs. Earl Murray was in Twin Falls Tuesday. Mrs. Francis Brown is on the sick list this week. Mrs. Will Thompson was a Twin Falls visitor Tuesday. Dr. Stauffer reports a job boy was born on the 22nd to Mr. and Mrs. N. J. Taylor.

Mrs. Shearer, Hibley and Trout are to Twin Falls tonight to take part in a musicale. There will be another Maxon piano benefit dance at the opera house, Saturday night, April 18. Frank Heilmann is spending an addition to his home on the splendid 29 1/2 block just north of Filer.

C. H. Taylor, the hotel man, was here on his way to the work on the Twin Falls Saturday night and while here purchased a buggy from one of our merchants. While Lammers came out of the hills at the end of the week and spent Sunday with relatives and friends.

John Kasser, of Monroe, Wis., loaded his car for Filer on the 30th ult. He expects to commence work on his cheese factory in two weeks. In spite of the winter weather, houses recently erected here are already occupied. The town is enjoying a steady growth, and that is what we want.

The M. E. revival meeting closed Sunday night, with a big meeting. Rev. Luce went from here to Kimberly where he will hold a series of meetings. Earl Walker noticed over to Julian Rock last Sunday. Accompanying him were Leonard Wood, Ray and Ed Lee and James Shinn.

O. C. Feltom, of Idaho, Okla., who purchased the Jacob Musser farm, arrived recently with the family. The pretty street Saturday and he will soon be settled in his new home.

QUICK RELIEF FOR STOMACH MISERY

Millon Will Put Your Sour, Gassy, Upset Stomach In Order. If you are a stomach sufferer do not despair - immediate, safe and sure relief is at hand. Millon's Stomach Tablets, sold in fifty-cent boxes at all drug stores, are a specific for out-of-order stomachs.

Millon is not only a quick diagnostic, but a stimulant and strengthening of the stomach walls. It increases the flow of digestive juices, and relieves all existing indigestion, dizziness or sour stomach, do not wait, do not suffer needlessly - take Millon today. Beware of cheap imitations if you are not satisfied plain - ADV.

If suffering with indigestion, dyspepsia, gastritis, or any of the various forms of stomach misery, undisturbed by any means, or distress after eating, headache, dizziness or sour stomach, do not wait, do not suffer needlessly - take Millon today. Beware of cheap imitations if you are not satisfied plain - ADV.

Wants a block or two and have a dollar or two at the Laverne Furniture Store. Out of the high rent district. Mar 10-12.

How do you like that meal at the Rogerson Lunch Counter - ADV. Mar 17-Apr 14-12.

Hog feed pigs, 1c lb. N. B. Keeney & Son, near Scribner Dairy - ADV. Mar 6-12.

Nursery stock, fruit trees of best quality. C. R. Fugate, Box 224, Twin Falls - ADV. Mar 17-24-31-12.

Small furnished house close in. Phone 277. Mar 27-31-12.

Ground lease at the Twin Falls Meat Company. Eight pounds for 25 cts. Apr. Jan 9-12.

When the checker, you wish to be the one to get the new, you wish to be the one to get the new, through the classified columns. A repetition of your want ad at small cost, might "pay" if you're trying to rent rooms.

Three Cars of New Furniture

During the past week we have been very busy unloading and handling three cars of furniture direct from the Eastern Factories.

By the time you read this advertisement, we expect to have samples of all these goods on our floors and to be better prepared than ever before to

To Serve Your Needs

Our store this always had the exclusive handling of a large number of well known Standard Lines and now in addition to these we offer

Some Very New and Interesting Things

Among these you will find, THE SENG Upholstered Bed, which folds down and rolls under any ordinary bed.

The Triumph Dream Bed Which opens and closes with one movement of the foot and operates so easily that a child can do it.

A New Line of Porch Furniture From Binghamton, New York, neater and more pleasing than the usual kind at about the same price.

We have lifted the offerings of the Big Eastern Markets until we feel very confident that nowhere in the west will you find a MORE COMPLETE SELECTION OF DEPENDABLE FURNITURE.

We have studied your interests in the matter of price until we can absolutely guarantee that no other dealer in the state will OFFER YOU BETTER VALUES.

Let us show you the goods; they speak for themselves.

OSTRANDER & CO. Furniture That Furnishes

VULCANIZING! ALL WORK GUARANTEED BEST EQUIPPED PLANT IN SOUTHERN IDAHO HARDY BROS. TIRE AND RUBBER COMPANY. Third Avenue North, Near Court House.

HIGHEST CASH PRICE PAID FOR ALFALFA HAY

On Board Cars or at Warehouse All Hay Paid For as Soon as Delivered

JOHN FINKE

Office 408 Second Ave. E. Phone 470 Twin Falls, Idaho

FOR RENT Western Auto Company

Garage and Machine Shop Tires and Accessories Agents for FORD CARS

J. H. McNICHOLS & CO. at Richfield, Idaho PHONE 200

Transfer & Garbage Hauled at Reasonable Prices

K. G. PHELPS

PROFESSIONAL CARDS. DR. J. H. HEMPLEN, Ophthalmic Physician. Rooms 3 and 4, Over Varnoy's Candy Store, Twin Falls, Idaho. Phone 146.

Rock Springs and Hiawatha COAL Coal that pleases and gives the heat.

NIBLEY-CHANNEL LUMBER CO. Phone 28

NOTICE TO CREDITORS. Estate of Mary Crensey, deceased. Notice is hereby given by the undersigned administrator of the estate of Mary Crensey, deceased, to the creditors of and all persons having claims against the said deceased, to exhibit them with the necessary vouchers, within four (4) months after the first publication of this notice...

OBEDIENCE NO. 16. An ordinance establishing Local Improvement District No. 18, in the city of Twin Falls, Idaho, for the purpose of applying certain streets and avenues and parts of streets and avenues to said city, and for the purpose of assessing the same for the expense thereof by special assessment levied against the abutting property.

NOTICE TO CREDITORS. Estate of Samuel A. Fredman, Deceased. NOTICE IS HEREBY GIVEN, BY THE UNDERSIGNED Henry J. Wall, administrator of the estate of Samuel A. Fredman, deceased, to the creditors of and all persons having claims against the said deceased, to exhibit them with the necessary vouchers within four months after the first publication of this notice...

Twin Falls Bank & Trust Co. W. S. McCornick, President; H. J. Failing, Vice President; G. T. Harkin, Cashier. Capital and Surplus \$125,000.00. The bank of personal service - We solicit your patronage - Farm Loans a Specialty.

THE FIRST NATIONAL BANK OF TWIN FALLS. We invite Your Business. Member Twin Falls Commercial Club.

DR. J. H. HEMPLEN, Ophthalmic Physician. Rooms 3 and 4, Over Varnoy's Candy Store, Twin Falls, Idaho. Phone 146.

NOTICE TO CREDITORS. Estate of Mary Crensey, deceased. Notice is hereby given by the undersigned administrator of the estate of Mary Crensey, deceased, to the creditors of and all persons having claims against the said deceased, to exhibit them with the necessary vouchers, within four (4) months after the first publication of this notice...

OBEDIENCE NO. 16. An ordinance establishing Local Improvement District No. 18, in the city of Twin Falls, Idaho, for the purpose of applying certain streets and avenues and parts of streets and avenues to said city, and for the purpose of assessing the same for the expense thereof by special assessment levied against the abutting property.

NOTICE TO CREDITORS. Estate of Samuel A. Fredman, Deceased. NOTICE IS HEREBY GIVEN, BY THE UNDERSIGNED Henry J. Wall, administrator of the estate of Samuel A. Fredman, deceased, to the creditors of and all persons having claims against the said deceased, to exhibit them with the necessary vouchers within four months after the first publication of this notice...

The Idaho State Bank of Twin Falls, Idaho. CAPITAL \$50,000. INTEREST PAID ON TIME DEPOSITS.

DR. J. H. HEMPLEN, Ophthalmic Physician. Rooms 3 and 4, Over Varnoy's Candy Store, Twin Falls, Idaho. Phone 146.

NOTICE TO CREDITORS. Estate of Mary Crensey, deceased. Notice is hereby given by the undersigned administrator of the estate of Mary Crensey, deceased, to the creditors of and all persons having claims against the said deceased, to exhibit them with the necessary vouchers, within four (4) months after the first publication of this notice...

OBEDIENCE NO. 16. An ordinance establishing Local Improvement District No. 18, in the city of Twin Falls, Idaho, for the purpose of applying certain streets and avenues and parts of streets and avenues to said city, and for the purpose of assessing the same for the expense thereof by special assessment levied against the abutting property.

NOTICE TO CREDITORS. Estate of Samuel A. Fredman, Deceased. NOTICE IS HEREBY GIVEN, BY THE UNDERSIGNED Henry J. Wall, administrator of the estate of Samuel A. Fredman, deceased, to the creditors of and all persons having claims against the said deceased, to exhibit them with the necessary vouchers within four months after the first publication of this notice...

INDEPENDENCE. Suppose you had been "tucking away" just a couple of dollars a week for the past 5 years. Would not that \$100.00 be very nice to have right now?

DR. J. H. HEMPLEN, Ophthalmic Physician. Rooms 3 and 4, Over Varnoy's Candy Store, Twin Falls, Idaho. Phone 146.

NOTICE TO CREDITORS. Estate of Mary Crensey, deceased. Notice is hereby given by the undersigned administrator of the estate of Mary Crensey, deceased, to the creditors of and all persons having claims against the said deceased, to exhibit them with the necessary vouchers, within four (4) months after the first publication of this notice...

OBEDIENCE NO. 16. An ordinance establishing Local Improvement District No. 18, in the city of Twin Falls, Idaho, for the purpose of applying certain streets and avenues and parts of streets and avenues to said city, and for the purpose of assessing the same for the expense thereof by special assessment levied against the abutting property.

NOTICE TO CREDITORS. Estate of Samuel A. Fredman, Deceased. NOTICE IS HEREBY GIVEN, BY THE UNDERSIGNED Henry J. Wall, administrator of the estate of Samuel A. Fredman, deceased, to the creditors of and all persons having claims against the said deceased, to exhibit them with the necessary vouchers within four months after the first publication of this notice...

Rock Island Plow Goods. Disc Harrows and Cultivators. 12-in. Walking Plow With Extra Share. Price \$12.65. E. C. Carlson, Agt., 501 Shoshone St.

DR. J. H. HEMPLEN, Ophthalmic Physician. Rooms 3 and 4, Over Varnoy's Candy Store, Twin Falls, Idaho. Phone 146.

NOTICE TO CREDITORS. Estate of Mary Crensey, deceased. Notice is hereby given by the undersigned administrator of the estate of Mary Crensey, deceased, to the creditors of and all persons having claims against the said deceased, to exhibit them with the necessary vouchers, within four (4) months after the first publication of this notice...

OBEDIENCE NO. 16. An ordinance establishing Local Improvement District No. 18, in the city of Twin Falls, Idaho, for the purpose of applying certain streets and avenues and parts of streets and avenues to said city, and for the purpose of assessing the same for the expense thereof by special assessment levied against the abutting property.

NOTICE TO CREDITORS. Estate of Samuel A. Fredman, Deceased. NOTICE IS HEREBY GIVEN, BY THE UNDERSIGNED Henry J. Wall, administrator of the estate of Samuel A. Fredman, deceased, to the creditors of and all persons having claims against the said deceased, to exhibit them with the necessary vouchers within four months after the first publication of this notice...

TWIN FALLS CAFE. KOTO, PROPRIETOR. BEST 25¢ MEAL IN THE CITY. Everything the Best the Market Offers. 134 MAIN AVE. SO. TWIN FALLS.

DR. J. H. HEMPLEN, Ophthalmic Physician. Rooms 3 and 4, Over Varnoy's Candy Store, Twin Falls, Idaho. Phone 146.

NOTICE TO CREDITORS. Estate of Mary Crensey, deceased. Notice is hereby given by the undersigned administrator of the estate of Mary Crensey, deceased, to the creditors of and all persons having claims against the said deceased, to exhibit them with the necessary vouchers, within four (4) months after the first publication of this notice...

OBEDIENCE NO. 16. An ordinance establishing Local Improvement District No. 18, in the city of Twin Falls, Idaho, for the purpose of applying certain streets and avenues and parts of streets and avenues to said city, and for the purpose of assessing the same for the expense thereof by special assessment levied against the abutting property.

NOTICE TO CREDITORS. Estate of Samuel A. Fredman, Deceased. NOTICE IS HEREBY GIVEN, BY THE UNDERSIGNED Henry J. Wall, administrator of the estate of Samuel A. Fredman, deceased, to the creditors of and all persons having claims against the said deceased, to exhibit them with the necessary vouchers within four months after the first publication of this notice...

WARBERG TRANSFER & STORAGE CO. Phone 142. 211 Shoshone Street S. BAGGAGE, PIANO MOVING, PACKING, VAN and STORAGE, CRATING, SHIPPING, COAL.

DR. J. H. HEMPLEN, Ophthalmic Physician. Rooms 3 and 4, Over Varnoy's Candy Store, Twin Falls, Idaho. Phone 146.

NOTICE TO CREDITORS. Estate of Mary Crensey, deceased. Notice is hereby given by the undersigned administrator of the estate of Mary Crensey, deceased, to the creditors of and all persons having claims against the said deceased, to exhibit them with the necessary vouchers, within four (4) months after the first publication of this notice...

OBEDIENCE NO. 16. An ordinance establishing Local Improvement District No. 18, in the city of Twin Falls, Idaho, for the purpose of applying certain streets and avenues and parts of streets and avenues to said city, and for the purpose of assessing the same for the expense thereof by special assessment levied against the abutting property.

NOTICE TO CREDITORS. Estate of Samuel A. Fredman, Deceased. NOTICE IS HEREBY GIVEN, BY THE UNDERSIGNED Henry J. Wall, administrator of the estate of Samuel A. Fredman, deceased, to the creditors of and all persons having claims against the said deceased, to exhibit them with the necessary vouchers within four months after the first publication of this notice...

REAL ESTATE BARGAINS. WHICH WE INVITE YOU TO INSPECT BEFORE BUYING. To arrive in Sucker Flat, all in high state cultivation; lays well; 2000± acres two miles, \$12,000 per acre. 100± acres two miles from Kimberly; all nice crop lands and lays well; 100± acres two miles from Kimberly; all nice crop lands on Main road, and barn, \$150 per acre. 120± acres 2 1/2 miles from Kimberly; high state cultivation; practically all alfalfa and timothy; all three tracts lay on Main Road, \$12,000 per acre. Good farms. 100± acres near Kimberly; all in alfalfa and timothy; no rocks; deep soil. 100± acres high state cultivation; no rock or timothy; good seven-year alfalfa and cereal crops; timothy - \$8000 per acre.

DR. J. H. HEMPLEN, Ophthalmic Physician. Rooms 3 and 4, Over Varnoy's Candy Store, Twin Falls, Idaho. Phone 146.

NOTICE TO CREDITORS. Estate of Mary Crensey, deceased. Notice is hereby given by the undersigned administrator of the estate of Mary Crensey, deceased, to the creditors of and all persons having claims against the said deceased, to exhibit them with the necessary vouchers, within four (4) months after the first publication of this notice...

OBEDIENCE NO. 16. An ordinance establishing Local Improvement District No. 18, in the city of Twin Falls, Idaho, for the purpose of applying certain streets and avenues and parts of streets and avenues to said city, and for the purpose of assessing the same for the expense thereof by special assessment levied against the abutting property.

NOTICE TO CREDITORS. Estate of Samuel A. Fredman, Deceased. NOTICE IS HEREBY GIVEN, BY THE UNDERSIGNED Henry J. Wall, administrator of the estate of Samuel A. Fredman, deceased, to the creditors of and all persons having claims against the said deceased, to exhibit them with the necessary vouchers within four months after the first publication of this notice...

GEORGE W. HOOVER. Farm Loans - REAL ESTATE - INSURANCE.

DR. J. H. HEMPLEN, Ophthalmic Physician. Rooms 3 and 4, Over Varnoy's Candy Store, Twin Falls, Idaho. Phone 146.

NOTICE TO CREDITORS. Estate of Mary Crensey, deceased. Notice is hereby given by the undersigned administrator of the estate of Mary Crensey, deceased, to the creditors of and all persons having claims against the said deceased, to exhibit them with the necessary vouchers, within four (4) months after the first publication of this notice...

OBEDIENCE NO. 16. An ordinance establishing Local Improvement District No. 18, in the city of Twin Falls, Idaho, for the purpose of applying certain streets and avenues and parts of streets and avenues to said city, and for the purpose of assessing the same for the expense thereof by special assessment levied against the abutting property.

NOTICE TO CREDITORS. Estate of Samuel A. Fredman, Deceased. NOTICE IS HEREBY GIVEN, BY THE UNDERSIGNED Henry J. Wall, administrator of the estate of Samuel A. Fredman, deceased, to the creditors of and all persons having claims against the said deceased, to exhibit them with the necessary vouchers within four months after the first publication of this notice...

Fine Washington Grow Plants. The Macdonald Strawberry and Cultivar. Remember, we are the best, either in size or quality. We have the advantage to write for prices to A. G. Cary & Son, Edmonds, Washington.



**For Everybody**

There have scarcely need our recommendation; they are old and well tried friends and are famous for long wear and good looks. They carry a four months guarantee and are made in all sizes for men, women and children.

**4 Pairs \$1.00**

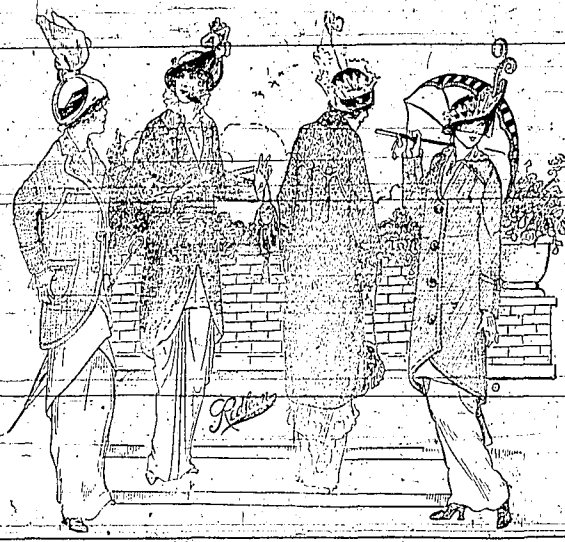
**Dainty New Line Ladies' Waists**



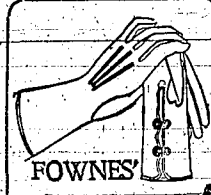
\$1.65 up to \$5.00

It is unreservedly conceded by those who have seen our new stock of ladies' waists, that we have the largest variety, finest qualities, and lowest prices in town. We are careful in our statements, knowing that too often exaggerations are made. It will pay you to run these over.

**THE WOOLTEX STORE**



**THE REDFERN STORE**



**FOWNES' Dents, Simmons**

The universally recognized three standard makes in sock-floves. That is why we carry them in our store. Our Easter stock is complete in all the prevailing and staple shades. We have all kinds in both long and short. Prices quoted are for kind and Suede.

**\$1.25 to \$1.75**

**Easter Models "Justrite" Corsets**

Front Lace Back Lace

\$1.00 up to \$5.00



Of the many makes of corsets this popular brand combines the most of the desirable style and comfort features. Once they have been used, nothing else satisfies. They have the Jenkins guarantee as well as the makers'. We have a full line, a style for everybody.

**Glorious Easter Finery at the Popular Store**

It is with justifiable pride that we call your attention to our Easter announcement. Our store is loaded with the newest and best things for your Easter outfit. It will afford us pleasure to show you these goods. We know that our Wooltexas and Redfern coats and suits are unequalled for those things which mean good clothing, and we know that the prices are very reasonable. Wooltexas and Redfern manufacturers present the very finest garments made in this broad land--fair minded competitors admit this fact. We trust that you will favor us with a comparison--here you will receive the best service and from intelligent salespeople.

**Pretty Easter Clothes For the Little Tots**

Many people have said to us, "Why do the Twin Falls Stores have so little assortment in goods for infants and small children?" We have taken the hint and laid in a big variety of such things and marked them at very reasonable prices. Be sure and see them on your next visit.

Many mothers have but little time for home sewing, and to such we are sure that our splendid stock will make strong appeal. Among these goods we have some cute little dresses with those dainty frills and ribbons. Also a charming lot of coats which are irresistible.



**Boys' Easter Clothes "Best-Ever" Brand**

When we know of better clothes for boys than this famous brand, we shall have them. To our knowledge there are none to equal them for hard wear, nothing to compare with them for style features, and no other clothes which have the pockets and additions so dear to the boys' hearts.

These clothes are strictly all pure wool and made from the best and strongest worsteds calculated to outwear all ordinary kinds. The makers specialize on boys' clothes only. The large number of delighted parents make us feel glad to have the exclusive agency on them.

Dresses 50c to \$2.00  
Coats \$2.00 to \$5

Pants 75c to \$1.75  
Suits \$4.00 to \$10

GREATEST VALUES  
BEST SERVICE  
LARGEST STOCKS  
PRICES LOWEST

IT PAYS TO TRADE WITH  
**JENKINS & COMPANY**  
"THE CASH STORE"

PARCEL POST  
FREE DELIVERY  
TO ANY POINT  
ON ANY GOODS.

**Men's Shoes**



**Easter Styles**

Discriminating men prefer "Packards" to all others, we cannot overstate them, because for style they are supreme and in the matter of wear they are without their equal, nothing but the best leather and best tanning process being used in their manufacture. Prices are

**\$3.25 to \$5.00**

**Ladies' Shoes**



**Easter Styles**

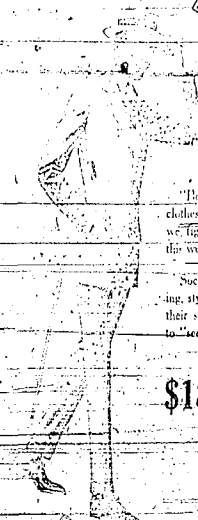
These are shoes and shoes... therefore we should remind you that we handle only strictly "all-leather" shoes, also that we have only the best makes and a splendid variety of styles and the latest shapes. Particular people but it pays to get their footwear of us.

**\$2.50 to \$4.00**

**Grand Easter Showing of Men's Clothing and Furnishings**

**Society Brand**

**For Men and Young Men**



"Show-ups," we might make you out on, regarding our clothes, but such is not our method of selling. Every suit sold we figure must gain us at least two new customers; to do this we must give good values and good service.

Society brand clothes represent all that is good in tailoring, style and fit. We could give you yards of "talk" about their special features and various styles--but isn't it better to "see" for yourself?

**\$18.00--\$20.00--\$22.50**  
**\$25.00**

**"The Reliable Store"**

**Kuppenheimer**

**Easter Clothes For Men**



**Imperial \$5 Hats**

Farewell winter--shake her now men--pay your attentions to the spring beauty. Cast off those winter lids. Don't forget that the "Imperial" hats are the leaders for style and quality, and that the cash store is the place to get them.

"Stilson" and "Langley" hats, we've a swell line of them. Our hats from the Men's hat factory, for we carry all the leading makes and can give you mighty good picking. There's a style for any head but a "pin-head" See the new flexible derbies; they're fine.

Our spring line of Kuppenheimer clothes is unusually large this season and portrays some new departures in the matter of style as well as construction. We will consider it a privilege and opportunity to present the new models for your serious consideration.

With all due modesty we tell you that this store has the reputation of commanding the largest and best clothing business. We feel that we have earned it by our conscientious study of each individual's needs.

**\$18.00--\$20.00--\$22.50**  
**\$25.00**

**"Only-Standard-Goods"**

