

THE TWIN FALLS TIMES

Published Twice a Week, Tuesdays and Fridays, in the Gau-Holoban Building, Main Street.

WILHELM S. HILL, Editor and Publisher.

Member of Eastern Idaho Press, Club

INDEPENDENT REPUBLICAN

Entered as Second Class Matter on Sept. 15, 1905, Oct. 7, 1910.

Subscription Rates: One year, in advance, \$2.00; Six months, 1.00.

1915

DEMAND THIS LABEL



On All of Your Printed Matter, If Good Workmanlike, Good Wages, and Good Conditions.

Twin Falls is certainly entitled to better telephone service for the price charged the consumers here. Under the present condition it is easier to walk three or four blocks than to try to talk over the telephone.

The independent proceedings against Justice Steele of the Northern Idaho District should be given little attention by the legislature unless it intends to go to the bottom of the matter for every district in the state.

The senate bill enabling act introduced by seven senators, is one of the most important measures ever introduced in Idaho's legislature and one that should be filled up by a legislature.

For a long time the 'yellow' press of America, which, however, and it is to say, has great influence upon the public mind, has been full of reports of irreparable damage to the country.

While Russia is annoyed with us for doing too much, Germany claims that we are not doing enough, and that we are not doing enough.

Before the spring fever strikes into the veins of the good citizens here, the thought would arise that a thorough cleanup campaign be started in the city.

View as a whole each rural community is a household—the home or domestic life of its inhabitants. In this life and have their being, and they make it what it is, to it its outward appearance an inward character.

Impress of their taste and handicraft. The world offers abundant evidence of the truth that a community in but the mirror or reflection of the character of its people.

The slogan adopted by many communities to be the 'city clean'—might well be amended to read: 'Help make our community clean, orderly and beautiful'.

The tastes and habits of a community as a whole may be cultivated and improved, just as the tastes and habits of each individual person in it may be improved.

OUR NEUTRALITY PLEASES NOBODY.

The innocent bystander, if properly hit by the brick, and not by the stone, is coming in for his full share of hard knocks.

There are 'legendary' journals there as well as here, and attempts in this country to divide the United States as though it were some United States.

Not in a hundred years has the sun of a New Year's day shown such scenes of sorrow and desolation as Europe presents at this time.

The trouble in war materials with England and France has assumed such dimensions as to jeopardize the neutrality not only of the American government, but indeed of the whole American nation.

Our Germany is convinced that America is determined to support the Allies. That knowledge will have serious consequences.

Can it be wondered at, even though it is unreasonable, and 'though of course we ought to see the American case, that we feel to the heart that America needs to reckon up the matter in cold dollars and cents rather than in terms of their blood and human suffering?

The well-known shipping expert, in discussing the question in detail in the Berlin Volksrecht Zeitung, says: 'Regarding it strictly in the light of the Declaration of London, one must come to the conclusion that the change of flag of the Dacia is illegal.'

The Paris Temps makes the novel suggestion that the Dacia incident was arranged by German agents as an attempt to put Anglo-American relations to a new test.

The infringement of neutrality is clear, even should the ship purchased remain in neutral ports or only leave for business with other neutrals.

A very sensible statement comes from the London Daily News, which, in the course of approving remarks on Mr. Bryan's recent defense of our neutrality, says for comparison of that nagging the United States is a dangerous practice.

There are 'legendary' journals there as well as here, and attempts in this country to divide the United States as though it were some United States.

Not in a hundred years has the sun of a New Year's day shown such scenes of sorrow and desolation as Europe presents at this time.

TALKS ON THIRTY

Series of 1915 No. 1. OUR BRIGHT FUTURE.

Our American future that is simply glowing in its possibilities. If every American from this time on practices economy and saves, the nation will be the dominant financial power of the world.

Not in a hundred years has the sun of a New Year's day shown such scenes of sorrow and desolation as Europe presents at this time.

The principal job ahead of the people of the United States just now is to save money. It has been very truly said: 'For 12 years we have borrowed money from Europe. We can't do so any longer.'

Some of our largest employers are realizing that and urging upon their employees: Just before Christmas every one of 700 men whose business it is to assist in the actual making of flour at one of his big mills in Minneapolis, received in his pay check a gift of \$25.

T. B. Hendricks & Son Manufacturers of Hendricks Sagebrush Grubbers. Twin Falls, Idaho. History of the First Scientific Grubber Ever Built. Includes an image of a large mechanical grubber.

Being a pioneer by nature and a machinist by trade, I decided some eight years ago to go to the Twin Falls country, which was then being opened for settlement, in search of a location in which to establish a business.

The new All-Steel Grubber which we are now manufacturing is the product of an experience extending over a period of more than eight years. We were the first in the field and have spared neither time nor money in our efforts to make it the acme of perfection.

CONSTRUCTION—The frame is constructed of bar steel one-half inch thicknesses ranging in width from one and one-half to two inches, and is amply braced to meet any extraordinary strains to which it may be subjected.

ADJUSTMENTS—There is a certain satisfaction in being the owner of a machine which is constructed so that adjustments can be easily made. On the New 'Hendricks' every operation relative to its adjustment is performed by the levers easily accessible to the operator's feet.

PAVS FOR ITSELF IN A SHORT TIME—There is as much difference between the present day method of harvesting grain and the reaper hook. Likewise the economy is as great in the one instance as in the other.

Today, one man with four good horses and a New All-Steel 'Hendricks' Grubber performs the labor of ten men. They do it better. Why? Because not a spear of grain is left unharvested behind the machine.

For a number of years there has been a steady advance in the cost of all material entering into the construction of all classes of farm machinery as well as in labor in building it.

For the 3 ft. horse power machine, F. O. B. Twin Falls, \$1500.00. For the 5 ft. engine power machine, F. O. B. Twin Falls, \$2000.00.

We invite correspondence and will pleasure in supplying you with any further information which you may desire.

For reference, we take pleasure in referring you to the banks or any business man of Twin Falls. Trusting that we may have the pleasure of receiving your order in the near future, we beg to remain, Very Respectfully Yours,

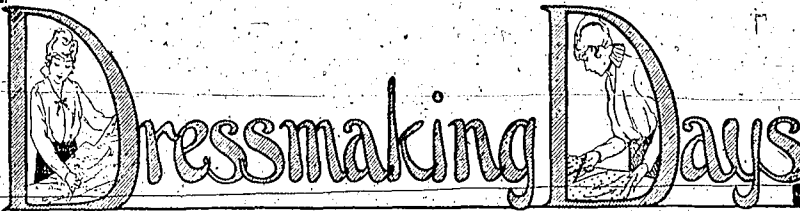
T. B. HENDRICKS & SON

TEACHERS' EXAMINATION. Will be held at Twin Falls on February 25, 26, 27th, 1915. Questions will be asked for state life, state, first, second and third grade certificates.

For Sale or Exchange FOR 40 acre alfalfa tract, 10 acres of orchard within two miles from Grandview, Washington, the Cream of the Yakima country. These standard varieties of apples, pear and peach fillers. More than eight carloads of peaches last year. Write

B. T. BYRNS, Owner. Moscow, Idaho. 64-acre book of instruction free with each order. Your order should be placed at once so we may reserve the plants of your choice. R. M. KILGORE CO., 312 E. Idaho, Boise, Idaho. Feb. 19-25 Mar. 5-12. Torie Kippert lenses fitted and made. 25 plants each of three of our by the Torie Optical Company are the finest lenses in the world.—Adv.

An Event of Instructive Interest to all in Twin Falls



FOR HOME SEWERS AND DRESSMAKERS

Saturday, Monday and Tuesday
February 20, 22 and 23

This store will be turned over to the housewives, home sewers and dressmakers who are now planning early spring and summer attire.

Our Efficient Salesladies

Who are prepared to offer authentic information in regard to the new modes for spring and Easter. Feel free to talk over your dress plans with them.

Bright, new and attractive displays of spring dress fabrics, trimmings and sewing helps of all kinds have been assembled for this 3-day event. Useful, timely suggestions offer themselves at every turn in this store. Our efficient saleslady will be on the alert to show you the new ideas in dress goods and accessories for the coming season.

It will be 3 days devoted to the introduction of new fabrics for your approval with all the additional and helpful features that dressmaking days naturally should include.

The instructive value of such an event alone is worth your attendance every day of these 3 days and joining will be an ideal pleasure. Comprehensive showings of the prettiest, newest and daintiest fabrics enhanced by equally charming displays of the most appropriate trimmings will conclusively impress upon you the importance of buying early. And too, many special values will be offered. But whether you buy now or later, come and come every day.

-To Make Choosing Easy

To aid you in choosing the proper trimmings and findings for a dress—to enable you to know the complete cost of all the materials necessary for a dress, we have arranged a number of displays with the entire cost shown on a card. Be sure and see them.

Many Very Special Values for These Three Days

You'll Admire the New Dress Woolens

Such a wonderful assortment of spring weaves that we are quite certain you'll be able to find just what you want. Gabardines are favorites, second only by rich cord-and-poplin weaves in woolsens and worsteds. The new military cloths, that is, fabrics, all held in color to the field uniforms will make these our Dressmaking days. We've priced them with your future patronage in mind.

- 46-in. All-Wool Corded Crepe, golden brown colors our regular \$1.50 values **85c.**
- 56-in. All-Wool Mahogany Color Ratine, our regular \$1.75 value **\$1.60**
- 50-inch All-Wool Double Weave Gabardine, all colors **\$1.60**
- 50-inch Palm Beach Cloth, plain tan, our regular price **\$1.25**
- 58-inch Palm Beach Cloth, plain tan with stripe **\$1.25**
- 42-inch Tussah Carina, the new cloth in all colors it sheds dust **\$1.25**

A Peep at the New Embroidery and Lace Dept.

A peep into our laces and embroideries will convince you we can supply all your needs for these three Dressmaking days. Any price you ask, from 3c to \$1.50 per yard.

Our Paper Pattern Dept.—The most up-to-date and new fashion ideas to make this event one of keen interest to you. With each dress pattern sold we will give one paper pattern free of your choice.

Not Less in Importance Are the Spring Silks

In many interesting new women stripes and high novelties in embroidered designs, featuring in the latter scattered floral patterns. Taffetas still retain a lead followed by foulards and voiles, introducing the new cords and stripes, checked designs and in color effects. The highest quality is evident in every bolt of new silk on display. The prices are quite modest to say the least.

All our new tub-silk, just the thing for men's shirts and ladies waists and dresses, our regular values from \$1.00 to \$1.25. Special for dressmaking days, \$1.00 per yard. Be sure to see these.

Two special qualities of 36-inch, imported Pongee silks, extra values at \$1.00 and \$1.25 a yard will be offered for these three Dressmaking Days at 75c & 85c. Best value ever offered in Standard Make 26-inch foulards in all the new shades for spring including sand and battleship gray, will be for your choosing during these three Dressmaking Days only.

The fancy taffetas are beautiful and lend themselves admirably to the new floral effects. A wide selection for \$1.00 per yard.

Notes on Dress Cottons

The novelties in spring and summer dress cottons will be the finest, elegantly and slender transparent materials. Cord trimmings on dainty sheer white grounds are the high novelty introduced in our splendid showing. You must see them in order to appreciate their value and importance in spring fashions, 15c to \$1 per yd.

Cotton Sewing and Thread Silks in Big Varieties

Dressmaking days find us splendidly equipped with thread for all purposes.



FARM COUNTRY

PRODUCE HARD-SHELLED EGG
Strong, Heavy Shell Is Not Necessarily Likely to Be Broken by Rough Handling as Weak One.

(By EUGENIA ST. MARTIN, WASHINGTON, Minn.)
The feeding of hens for the production of hard-shelled eggs, not easily breakable in handling, is possible and demands attention. Shells vary greatly in strength. A strong, heavy shell is not nearly so likely to be broken by the jars, jolts and rough handling incident to ordinary shipment as a weak one.

Chemical analysis shows that the shell of the egg is largely carbonate of lime, but that it also contains carbonate of magnesium, mineral phosphate and some organic matter. If strong shells are to be produced, the mineral elements must be lacking. Grains that are ordinarily fed do not contain these mineral elements in sufficient proportions, and an additional and separate supply is necessary. Fortunately, these mineral elements are available in much cheaper forms than in grains. Lime is the principal ingredient of oyster shells, which may be procured for about twenty dollars a ton. Iron, magnesia and other phosphorus in many kinds of artificial grit may be procured for about the same price, while these elements in grain would cost at least double these figures.

None—contains phosphorus—in appreciable amounts, besides lime, magnesia, etc., and while expensive, it is effective in giving the shell an evenness and toughness of texture which adds much to its strength. It is, therefore, often used as an ingredient for dry mash for laying flocks, usually in amount varying from three to five per cent.

Eggs that won't break give the poultryman greater profits than eggs that will. Make your hens lay the unbreakable kind.

GETTING MOST FROM TURKEY

Do Not Encourage Fowls to Come to Kitchen Door for Tit-Bits—Exercise Is of Importance.

Turkeys should not be encouraged to come about the kitchen door for tit-bits. The health of this fowl requires that it exercise. Far better have a flock of turkeys that come up only at roosting time than a flock hanging around the kitchen door. Feed



Bronze Turkey.

regularly twice a day when the range food is gone, and give all the sour milk that can be spared. See that their feet are free from cuts. They should be sheltered in an open shed, but better roost in the trees than in the chicken house unless conditions are unusually favorable and ventilation good. Turkeys are very susceptible to bad air and poor ventilation. They will come down with roup if allowed to roost over damp droppings in a dirty house.

Do not try to fatten in confinement. They are to be marketed, let them out into the field, and see that they have all they can eat for the three or four weeks just before Thanksgiving. A dose of oysum nuts given once a month is good for the flock. Give a teaspoonful to every ten birds in the pen. Provide plenty of grit and charcoal and all the onion available—tops and bulbs as well.

Profit in Broilers.
Difficult as it is the broiler is a nevertheless true that profit in raising broilers or first-class roasters comes only to him who uses pure-bred males, brood, breed, full-breasted birds, yellow legs and legs. The average little barnyard hen, with mottled male, as the size of her chicks, is incapable of producing a chick that will reach three weeks' weight before it is marketed at which period its value is usually to be \$1.00. It is the use of good broods that gives success and profit.

Poor Stuff Goes Wasting.
It is a fact that in market plump chickens, neatly dressed, free from pin feathers, with unbroken skin and perfectly clean legs, will find a ready sale. The poor stuff goes wasting.



ORCHARD TOPIC

DAMAGE BY CURRANT MAGGOT
Worst Part of Small Bush Fruit—Is Attack Causes Berries to Turn Red and Drop to Ground.

(By C. P. GILLIATT, Colorado Experiment Station.)
Perhaps the worst pest to the currant and gooseberry is the maggot. They get into the fruit before the berries are ripe, causing them to turn red and drop. The adult insect is a fly about the size of an ordinary house fly, but a light yellowish brown in color with dusky bands crossing the wings. This fly deposits its eggs in a place, just beneath the skin of the currant and gooseberries, which upon hatching develop into the maggot. The fruit drops to the ground and the maggot escapes and burrows a little beneath the surface of the soil and remains until the next spring. We do not know any remedy aside from that of allowing chickens to run



Harvesting the Currants.

among the currant and gooseberry bushes after the fruit is off, for the purpose of picking up these maggots in the older stages of their development. Spading the soil around the bushes so that the surface soil will be covered with four or five inches of fresh dirt will also destroy a great many of the larvae. This soil can be done toward gathering the latest crop and destroying it will also lessen the number of flies to destroy berries the following spring.

PLANTING THE WALNUT TREE

Prepare Soil Carefully and Plant Note Three Feet Apart in Furrows—Carefully Conserve Moisture.

Black walnut seeds are to be gathered in the fall, and the nuts carefully stored. The nuts are not to be buried even when they are planted, as the hull infests them in no way with the germination, and it may prevent the nut from drying out.

Gather the nuts, and alternate a layer of them with a layer of sand and straw. Moisture should be allowed to freeze. Let it remain moist and frozen all of the winter.

Plant the seed next spring, as soon as the ground is in a workable condition. Black walnut trees will not make a good growth unless the ground is rich, and they ought not to be planted on any other kind. Prepare the land carefully and plant the nuts three feet apart in furrows ten feet apart. Plant the trees four inches deep. As the black walnut is very sensitive to dry, parched conditions, it is necessary to give the trees good cultivation, and carefully conserve the moisture.

SAINGS OF PROF. HEDRICK

Careful Account Kept of Cost of Growing Apples and of Profits Under Intelligent Management.

Professor Hedrick of the New York state experiment station at Geneva has kept careful account of the cost of growing apples, and of the profits under intelligent management. The cost of growing an orchard was \$12.74 during the ten year period, or \$1.274 an acre, equal to 18 1/2 per cent on a \$500 investment. It expects the orchard to do as well or better during the next twenty years.

The question of tillage versus mulch in orchards has been often and heatedly discussed. Professor Hedrick states that for every dollar he has taken out of the soil he has put back he has taken \$1.54 out of the tillage cut. Apples are found more likely to rot on soil than on tillage trees. They are also earlier and drier. The tillage soil is about two weeks later, keeps better and is of higher quality. The tillage trees now are much better in their general appearance.

For Sale High Class Recorded Percheron Horses

Stallions and mares, ages from one to twelve years, size, quality and the best of breeding. Priced to sell.
DODD BROTHERS
Four miles west, six south, of Twin Falls.



Scientific American
A Standard Authority on Patents
WUNN & CO. 364 Broadway, New York

ALAN SIMMONS

In the District Court of the Fourth Judicial District of the State of Idaho, in and for Twin Falls County.

Etella G. Straley, plaintiff, vs. W. J. Straley, defendant.
The state of Idaho sends greeting to W. J. Straley, the above named defendant.
You are hereby notified that a complaint has been filed against you in the District Court of the Fourth Judicial District of the State of Idaho, in and for Twin Falls County by the above named plaintiff, and you are hereby directed to appear and answer said complaint within twenty days of the service of this summons if you wish to appear and answer said complaint within the time herein specified, the plaintiff will take judgment against you as prayed, to add complaint.

Witness my hand and the seal of the said District Court, this 16th day of February, 1915.
E. J. FINCH, Clerk.
Carl L. DeLenc, attorney for plaintiff. Residing at Twin Falls, Idaho, Feb. 16-23 Mar. 2-10-15.
"Going some, eh?" Dr. Barrett, the medical man, has fitted over 500 men in Twin Falls with glasses since 1910—Adv.

ADVERTISED LIST.

List of letters remaining unclaimed in the Twin Falls postoffice for the week ending Feb. 16, 1915. Parties owing for these letters will please pay advertisement Feb. 19, 1915.
Andrews, Wm. G.
Brimmer, Mrs. E. C.
Brown, Jennie
Clark, William
Darlund, Ilay
Davis, Miss Susan
Downing, Mr.
Evins, Joe
Fox, Jack
Gates, Mr. and Mrs.
Hayes, J. H.
Hamilton, Mollie, Mrs.
Irwin, Jacob
Jordan, Walter
Jones, Charles
Keller, Mrs.
Larson, H. J.
Lary, Miss Juanita
Lynn, Laura
Meyer, Wm. Wm. E.
Merrill, H. H.
O'Brien, Mrs. Ora
O'Connell, Mrs. Orla
Parker, Mrs.
Patterson, Mrs. T. C.
Petersen, C. J.
Postage due on above letters one cent each.

QUESTION OF SHELL COLOR

New York City Is Ready to Pay Premium for White Eggs—Flavor Is Controlled by Feeding.
There is a prejudice in the market regarding the color of the egg shell. It is a prejudice of long standing, and will, without doubt, remain with the buying public. The average American market prefers a brown color, while New York city is ready to pay a premium for white-shelled eggs. The brown egg buyers in particular claim that the egg is of a richer flavor. All this is imaginary, when we come to understand that it is food and not color of the shell that flavors the egg. It is reasonable to suppose the brown egg of the Brahma fed on onions could be as sweet as the white egg of the Leghorn fed on clover?
Best Ration for Fattening.
There is no ration better for fattening poultry for market than sweet potatoes and cornmeal. Cook the potatoes and add before removing from the fire just before cooking. Feed when cold. About a pound of cornmeal to a half peck of sweet potatoes makes a good ration.

SPRING SPECIALS at BOOTH'S

Most Attractive Suits \$15, \$20, \$25

At these prices we are showing wonderfully pretty new flare effect suits in serge, covert and gabardines. 100 new suits just in, affords an extra large assortment to choose from and we are giving our trade this opportunity to get their purchases made early and get the full seasons wear.

Editorial

I was never as well pleased with the outlook for spring. Maybe it is caused by the preparedness of this store for spring business—with a larger stock of dry goods of all kinds but at prices whereby they can be sold remarkably reasonable, that gives me the assurance of liberal patronage. Its bound to come. I want the shoppers, the "just lookers" to come in and welcome. Get acquainted with the new Booth store methods and prices.

E. BOOTH

Waist Special \$1.50

Very newest spring waists, lace trimmed voiles, crepes, organdies and seed voiles. Best values at \$1.50 we ever saw.

Saturday Specials

EMBROIDERY 5c

Worth up to .15c, cambric & Swiss edges and insertions. A one day extra special.

BLACK & WHITE CHECKS 5c

Very popular, different size checks, 36 and 48-inch width, will wash, dandy for 50c.

REPELETTE 10c

For Saturday only a good quality white repelette, a dandy fabric for underwear.

NEW DRESS OREPE 12 1/2c

Saturday we will open a line of 12 1/2c new flowered dress crepe that you can't resist.

9x12 RUGS \$19.50

High grade Axminster rugs, worth \$25.00 to \$30.00. Good patterns and colors.

DRAPERY 17 1/2c

Good quality serims and fancy 35c bordered drapery out Saturday at 17 1/2c.

Spring Silks and Woolen Goods

Every dressmaker and other customers, who have seen them have remarked at their beauty and the reasonable price. We have never seen such good values in crepe de chine, poplins and wash silks, anywhere in the U. S., and woolen goods are fine. The sales people are very enthusiastic, very pleased and anxious to show you.

100 New Spring Coats

\$7.50, \$10, \$15 up

This early offering of all-wool coverts, serges and novelties at these prices in the new English and Dutch styles and flare effects is made with a great deal of pride on our part. We feel that they can not be surpassed in the whole country.

Extra Good Bleached Muslin 10c

BOOTH MERCANTILE CO. New Line D. M. C. Art Packages

STORY OF "THE SQUAW MAN"

Well known Play in Which Dustin Farnum Stars for Movies.

James Wynnegate a handsome young English army officer is made the guardian of a trust fund raised by the mother of his regiment for the relief of the widows of those who die in battle. The Earl of Kerhill, a well-to-do English noble, is the trustee of the fund.

tion in life, for since the death of Kerhill, Carston's child has inherited the title and will be rich in the estate of his noble ancestor.

Nat'l High, the mother, learns that her son is to be taken from her. She lives with the Indian, studying and enjoying the life of the Indian. Her suspicious, she misconstrues the intent of the Indian in sending her to England and sends her to the East of Kerhill, who is at the ranch with English friends and is the director of the water works. The great mining camp slowly rolls away, the great mining camp dips beneath the horizon, nature's feet land in on the sky. Look south over the certain Indian plains and the "Squaw-Man" turns to her first love.

A COMMUNICATION

To THE TWIN FALLS TIMES:

Regarding the matter of selecting a manager for the Twin Falls Canal system, it would seem that some people are very desirous of retaining the services of Mr. Harlan and for the benefit of all concerned it might be well to explain in detail some unsettled questions, so that all may understand the nature of the matter.

1. Regarding the danger of malfeasance in the Harlan management, Mr. Jones, who has been in the employ of the company longer than Mr. Harlan, is competent to handle the management of the water works.

2. There is any foundation for the statement of the late Mr. Gutzwiller, that when it was first secured for him in his first year, 1911.

3. Are men who are graduates of reputable schools, and have spent fifteen years or more in this line of work, supposed to know as much about the business as a bank cashier?

4. Why do some localities receive an abundance of water, while other parts are burning up?

5. Why do some localities receive an abundance of water, while other parts are burning up?

GAME WARDEN FINED

Twin Falls Man Arrested for Trapping Out of Season.

C. L. Stephens, paid a fifty dollar fine in Justice Sauer's court yesterday.

14. Why did he so strenuously favor the duty of water feature of the experimental station in 1912 and in 1911 since the benefit of said station had not bearing whatever from the duty of water?

15. Where is the efficiency?

16. Why has Mr. Harlan found it necessary or advisable to manipulate the election of directors for the benefit of the water works?

MONEY TO LOAN

ON Farm Lands and Twin Falls Residence Property

SWIM & ALDRICH Bank & Trust Building

make out number up to 1915, when he mailed letter to a long list of non-residents advising them where to send their proxies?

17. Are managers expected to select the directors that employ them or does that right belong to the stockholders?

18. Would like very much to have you explain these questions.

E. R. HOODS

CARD OF THANKS

I wish to say more than as a means of thanking my many friends in Twin Falls for their kind words and deeds in my recent bereavement, the death of my wife. It is the comfort and assistance of such friends that makes it possible to bear up when we are called upon to go through such trials.

C. A. THOMPSON AND IMMEDIATE RELATIVES.

Subscribe for the Times Now.

GAME WARDEN FINED

Twin Falls Man Arrested for Trapping Out of Season.

C. L. Stephens, paid a fifty dollar fine in Justice Sauer's court yesterday.

14. Why did he so strenuously favor the duty of water feature of the experimental station in 1912 and in 1911 since the benefit of said station had not bearing whatever from the duty of water?

15. Where is the efficiency?

16. Why has Mr. Harlan found it necessary or advisable to manipulate the election of directors for the benefit of the water works?

wife. He further told the officers that he was in the employ of the department and was superintendent of the fish hatchery at Warm River. He expressed a desire to come to Idaho Falls rather than stay at St. Anthony or Hoxburg and to this the officers assented.

Mr. Stephens was apprehended by Sheriff Whitehead, of this city, and Mr. Stephens, and Sheriff Whitehead, assistant chief deputies of the game department.

The two deputies had been up in the Warm River and Squaw Creek country looking for violators of the law, when it was reported that deer were being unlawfully killed. They found nothing to establish this fact, however, and had given up the search last night and were waiting for the trails at Ashton, when a gamey sock in the

OPPOSE CHANGES IN HOG RATES

Industry Deserves Through Rate to California Markets.

Proposed advances in passenger rates will raise the Salt Lake route on home shipped into southern California have resulted in a decision by the public utilities commission to appear before the Interstate Commerce Commission in the interest of this.

Local rates from Idaho points to Salt Lake and the rate of the Salt Lake route from there south on apply on Idaho shipments. The matter is now in the hands of the Interstate Commerce Commission.

The sufficient commission believes the hog business in Idaho has reached sufficient dimensions to justify a through rate to southern California and the Interstate Commerce Commission will make an effort to secure this benefit.

An advance of \$21 a car would mean practically an increased expense of 26 cents to 46 cents on each head shipped to southern California. There are nearly three hundred thousand head of hogs raised in Idaho each year and a great portion are shipped to California.

The commission has also advised that certain carriers have proposed an advance on passenger rates effective March 1. It has intervened in this protest also.

Having the only direct line to the west coast, the Interstate Commerce Commission is now able to do the first class optional work cheaper than the rest. Parrott Optical Company—Adv.

C. L. Tubbs, of the Central Land & Investment Company, leaves today for central Idaho to locate a bunch of homesteaders on land under the largest homestead act. The next party will leave in a few days. If you want something good where you have plenty of good water, raise and timber call on W. Frank, 250 South Main, at the New and Second Street—Adv. Feb. 19.

If you are in need of anything in Times Want ad, will fill your want.

Want a Meal---

A good, clean, appetizing meal that will make you feel content and happy? If you have never eaten at our cafeteria, come. You see the food before you buy, you choose what you want, and your meal fits your appetite or your purse—or both. The cafeteria lunch is the cheapest and the best. Come and see if you do not agree with us.

THOMPSON'S CAFETERIA

129 Shoshone St. South, Twin Falls.

THE LYON & HEALY PIANO \$350



We announce an entirely new style, Lyon & Healy piano of most attractive design.

Choice of either mahogany, walnut or oak case. A magnificent instrument in every respect.

Introduced at the truly remarkable price of \$250.

The latest production of the great Lyon & Healy factories of Healy Station, Chicago.

A small cash payment and monthly payments of \$10.00 will be arranged. If not convenient to pay cash.

LOGAN PIANO CO.

ONE PRICE MERCHANTS
211 Shoshone St. South, Twin Falls, Idaho.

The Western Auto Company Announces a

FORD LIVERY SERVICE

Table with 2 columns: Name and Rate. Includes Ford, Buick, Chrysler, etc.

LARGEST INSURANCE AGENCY

- List of insurance agents: Lloyds, Phoenix, etc.

Hill & Taylor

CLOS BOOK STORE

BLANK BOOKS OFFICE SUPPLIES

Bargains in Rebuilt Typewriters

We Have Pictures

FARM AND CITY LOANS

ABSTRACTS

Twin Falls Title & Abstract Company

SHEEP FOR SALE

Ben Strobbenn

For Sale

MONARCH BARN

In the Twenty Million Dollar Mystery

By Harold McGrath

SYNOPSIS... Zadora is left an orphan at an early age. Her father is killed in a gold mine...

CHAPTER XL... "A MESSAGE FROM THE HEART" Storm was deeply concerned over the diamond affair...

rarely disturbed by any one but the janitor who was old Zadora and before the fire place in her room, twirling the bracelet and vaguely wondering why she felt this present of art...

"Come along then," Zadora said before the fire place in her room, twirling the bracelet and vaguely wondering why she felt this present of art...

PROFESSIONAL CARDS. F. A. WESTON, ARCHITECT. M. A. L. A.

DENTISTS. DR. D. BROWN LEWERS, Dentist. Specialist in Crown and Bridge Work.

ATTORNEYS. NORTH A STEPHAN, Attorneys-at-Law. General Practice.

ATTORNEYS. ASHER B. WILSON, Lawyer. Practise in all courts.

ATTORNEYS. W. L. GIBSON, Successor of C. J. Walker. "UNDEBTABLE"

UNDEBTABLE. J. C. POOTERFIELD, C. E. Mining, Hydraulic and Structural

LICENSED LAND SURVEYOR. FRATERNAL SOCIETY. M. W. A. CAMP

IDEHO SOUTHERN RAILROAD. Effective May 17, 1914.

MONARCH BARN. One year of black pollings, coming 2 years old, weight 3,000 pounds.

FOLGER'S COFFEE SALE

one week only
FEBRUARY
15 to 20, 1915

THIS COUPON IS GOOD FOR 10c. to 50c.
IF PRESENTED AT GROCERIES
FEBRUARY 15th to 20th, 1915
FOLGER'S GOLDEN GATE COFFEE

Number	Special sale price with coupon
1 15c	10c
2 25c	20c
3 35c	30c
4 45c	40c
5 55c	50c

Grocers will collect the difference from us
ENTER YOUR ORDER BELOW

Our object is to give everyone a chance to note the difference between 45 cent coffee and cheaper grades.

Hand the coupon to your grocer at his store. If he has no Folger's Golden Gate Coffee he can get the special value offered as we cheerfully forward him a single package at trade price, through any mail order agency.



J. A. FOLGER & CO., San Francisco

See the

Gray & Davis Electric Starter

on the Ford Car at the

Western Auto Co.

Twin Falls Bank & Trust Co.

W. S. McCORMICK, President H. J. FAILING, Vice President
C. J. HAHN, Cashier

Capital and Surplus \$125,000.00

The bank of personal service—We solicit your patronage
Farm Loans a Specialty

We Have Moved

To the Lloyd Block where with new and up-to-date fixtures we are now able to serve our patrons in first class style.

TWIN FALLS CAFE

OPEN DAY AND NIGHT

Capital - \$100,000
Surplus and Profits \$40,000

THE
FIRST NATIONAL BANK

OF TWIN FALLS

We Invite Your Business

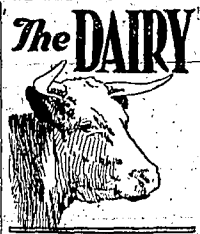
Member Twin Falls Commercial Club.

FOR SALE

One and one-fourth miles north of west end of Main street, Twin Falls.

1 team smooth mouth horses and harness; 1 cow giving milk; 1 heifer; one 14-day Kentucky saddle; one 23-1 Standard low wheel wagon; 2 sets of harness, wagon springs, 2 ton and 1 1/2 ton; 1 Deere hay rake; 1 barrow; 1 Milwaukee digger; 1 Dime stacker and buck rake; 1 good hand level; 1 good blacksmith outfit; 1 Maxell 2-cyl. rambolet; A-1 order; 5 or 6 tons of hay, some oats and wheat and barley; 1 steel range; 113, good, leather bed, canvas trunk, 65 qt. pockets, 12 qt. cherries. Bankable paper required.

W. J. MORAN, Box 82.



The DAIRY

GOOD FARM BUTTER MAKING

Greater Attention Should Be Given to Details Concerning Factors Affecting the Quality.

(By J. KIRKLEY)

The following few brief instructions will prove of great assistance to farm butter makers:

Churn at a temperature that will give a firm, flaky granule in the butter. This temperature varies slightly with the season, but ranges from 52 degrees to 62 degrees F.—The use of a thermometer and intelligent observation, as result of a few churnings, will enable the butter maker to determine the proper temperature at which to churn. Churn should be stopped when butter granules are large as corn kernels or peas. Time required for churning should be 25 to 30 minutes.

Use clear, pure water for washing the butter. It should not be more than three degrees colder or warmer than the buttermilk. Use amount of water equal to that of the buttermilk. In a barrel churn, reverse 12 to 18 times in washing.

Weigh the granular washed butter and salt at the rate of three-fourths ounce to one ounce per pound. Be sure the salt is well pulverized and sift it evenly over the granular butter before any of the moisture is worked out.

Work the butter sufficiently to distribute salt without injuring the grain or texture. Determine working by 1, appearance; 2, texture; 3, grittiness. Butter, when sufficiently worked, should present a firm, glossy appearance. The texture should resemble the broken end of a steel rod. There should be no grittiness due to the unevenly distributed or undissolved salt. This can be determined by taking a small piece of butter between the teeth and biting into it repeatedly; any grittiness will soon be observed. Insuffi-

cient working is generally shown by a mottled appearance in color on the cut surface. This is largely due to an uneven distribution of salt. This results in a salty condition and affects the keeping quality. The aim of the butter makers should be to produce a high grade article that is uniform week after week in flavor and composition. This can be done by careful methods, thorough churning and working.



KEEP SALT HANDY FOR COWS

Maintains Health of Animals and Encourages Heavy Milk Flow by Promoting Digestion.

Experiments have proved the average milk cow requires about an ounce of salt per day. Heavy milkers should have more. Keeping salt where the dairy cows can reach it at all times maintains their good health and encourages a heavy milk yield by promoting thorough digestion and assimilation and having a cooling effect on the whole system of the animals, at the same time making it easier to bring butter of a superior flavor and color at churning time.

SOME GRAIN IS NECESSARY

Cow Will Get Through Winter in Excellent Condition If Given Few Ears of Corn Each Day.

The cow that is to become a mother should not be allowed to get poor and weak during the winter months. It is practically impossible to get such a cow through the winter in winter in good condition without a grain feed. She may not need a great amount of grain, if she has plenty of forage that is nutritious, but she will need four or five ears of corn two or three times a day. There she will get through the winter in fine shape and have good flesh and plenty of strength at calving time.

The Barrier of Flames

A Splendid Interesting 2-part Story of a Dog's Love for His Little Mistress.

Starring "Shep"

Thanhouser's \$5,000.00 Scotch Collie
Also Featuring

Helen Badgley---The Thanhouser Kidlet

A Great Picture Play of a
THRILLING RESCUE

Helen, the child, is left alone at home when the house catches fire—but is rescued by her faithful collie, who alarms the firemen, climbs the ladder and leads the fire brigade to where the child is, with little Helen safe "shep" leaps from the top story of the burning house into the air below. A truly clever and wonderful performance of a dog. A feature interesting for children and grown ups as well.

One of the Features on the Program at the

Orpheum Theatre

Thursday, Friday and Saturday and Saturday Matinee--This Week

ROAD BUILDING

HEAVY SHORT ROAD ROLLER

Useful—Improvement—May Be Constructed by Using Wern-O-Mow-ing Machine and Concrete.

Perhaps you have a grader of some sort and road drag, but you need a heavy short roller. They cost too much to buy, so make one this way. Procure an old worn-out mowing machine, any make, write W. A. Hillman, Farmers' Mail and Order. Take off or break off all the parts that stick out past the wheels. Smooth off a bit of hard ground; now dig a small hole just large enough for the hub—then hammer up the roller; put a jacket of galvanized sheet iron around the wheels, secure it at short intervals with small stove bolts and make it fit neat and straight. Now fill the jacket with the hot fire concrete. Tamp it well and allow it to stand until the concrete is well set. Remove the jacket; keep the roller shaded and spray it for light or tending.

Have the blacksmith put an iron frame on this roller. Heavy tire iron will do, using the hubs for spindles. When a strong tongue is added you will have a good a roller as anybody else that will last a life time and will cost but little. Save the jacket to make more rollers with.

When your road is graded run the roller down the center, instead of on the sides, as now. Take two disk harrows the same number of disks and if possible the same kind. Turn the disk on the harrows so they will throw the dirt toward each other when placed side by side. Now set them close together side by side in the middle of the road to be worked. Take a light log chain and fasten the harrows together. Put a team on each harrow and drive down the road to be worked. Turn around; let out the chain a couple of feet; go back. Repeat the operation a number of times. You would be surprised how much dirt the disk harrow will cut up and how much it will move toward the center. Finish with drag or grader. This roll the center and you will have a road made at small cost.

We have organized a country club here and given each member a piece of land to draw near his home. We elected a dog boss so when it is just right to drag the boss calls all the members and in about two hours we have all the roads in the district straight. We have had very bad weather ever since organizing, but the plan appears to work well.

The Thrifty Man Will Surely Get Ahead.

One of the greatest gifts to systematic thrift is a savings bank account because it gives you a safe place to keep your savings and enables your money to earn liberal interest for you.

One Dollar Starts the Account
FOUR PER CENT INTEREST
SAVINGS DEPARTMENT

TWIN FALLS BANK AND TRUST COMPANY

J. H. McNICHOLS & CO.

PHONE 200

Transfer & Garbage Hauled at Reasonable Prices



This is an example of ingenious planning carried into successful execution. It will be noted that the granary forms the roof for the roof cellar, and that together they make a very substantial structure. Naturally, good serviceable material is essential if the careful planning is to result in permanent satisfaction.

Go on the market with grain and potatoes. Learn the market is right—and make enough in a couple of seasons to pay for a building like this.

Gem State Lumber Co.

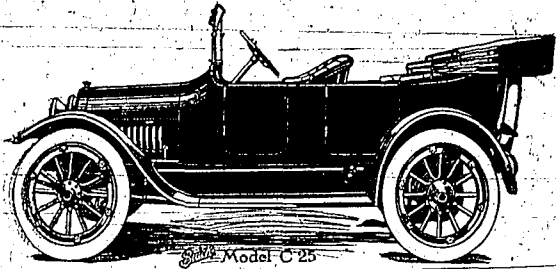
When the man for whom you ought to work has an opening for you, you'll find the news in the "Wanted" column.

Space for Each Here: Allow every man from four to six feet of floor space, better six. Use twelve inches each of flooring space (2x6) to four inches. The floors should be placed at least eighteen inches apart.

A repetition of your want ads—again and again if needed—may be good business sense if you're looking for work.

Our work boosts for itself. Paragon Optical Co.—Adv.

Read the want ads in The Times



Model C-25, Buick, 24 Horse Power, Brake Test, \$500.00 F. O. E. Factory.

BUICK SATISFACTION

WHAT YOU DESIRE AND DEMAND IN A MOTOR CAR, YOU WILL FIND IN A BUICK.

Here is one of the many sworn affidavits we have, telling of Buick satisfaction.

State of Idaho,
County of Twin Falls

This is to certify that I, Dr. O. F. Henning, of Jerome, Idaho, depose and say that I arrived in Twin Falls, Idaho, today from Monterey, California, in a 1914 Model B-25 Buick touring car. Said car being purchased last April and driven over 2300 miles between that time and today. That my speedometer registered 1006 miles from Monterey, California, to Twin Falls, Idaho, and during said distance said car consumed 45 1/2 gallons of common gasoline, by accurate measurement. Making a mileage of better than twenty-two miles per gallon of gasoline for the entire trip.

The condition of the roads being in places extremely poor, and from Cantner, Nevada, in here, very muddy. Said car being weighed today over the Twin Falls City scales and weighed 3020 lbs. This load being fully 100 lbs. lighter than over most of the trip. I had no mechanical troubles of any kind during the entire trip. I wish to further state that I found along the entire way a sort of Buick fraternalism and received every possible courtesy and assistance at the Buick garages at which I stopped that was possible to give and at no place was I charged for storage over night.

Subscribed in my presence and sworn to before me by Dr. O. F. Henning this 2nd day of October, A. D., 1914.

DR. O. F. HENNING

J. E. WHITE, Notary Public.

Has it ever occurred to you that you never saw a sworn statement regarding the gasoline mileage of those other cars. There is a reason. When they do tell of their mileages they do not do it in black and white over a sworn statement and before a notary public. We have several of these affidavits in our possession, and if you are going to buy a car, you had better look into this matter pretty closely. It makes a big difference at the end of the season if you have been only getting from 8 to 10 miles per gallon or from 20 to 21.

Come down and let us show you the reason of Buick gas economy.

Also kindly remember, under the trees that bear the fruit you will find the most hubs.

Our Dodge car will be here next Tuesday.

Lind Automobile Co.

Oldest Automobile Firm of Southern Idaho.

ing in a Bower gasoline tank in front of their place. He says he is the very latest make and works like a charm. Automobiles will find it handy as tanks can be filled direct through a hose.

The school board met Monday night and transacted routine business. They have elected Prof. Beckson as teacher at Hollister, for next year and will meet again on the 20th at which time they may hire the grade teachers. One of the largest attendance sales ever held in this section was the T. D. Connor sale on Tuesday. Everything sold well. Mrs. Connor and her friends and relatives in the north and Dan will probably go along for a little while longer.

Dick Davis met with a mishap Monday that will cause him to walk on crutches for a time. While out in the pasture horseback, his horse slipped and fell on the ice. That happened to be covered with straw and he failed to notice the ice. His horse fell on his ankle and broke some of the small bones of his foot.

The dance given by the L. O. F. last Friday evening was one of the most enjoyable parties of the season. Sixty couples responded to the invitation and spent an evening of rare enjoyment. The band was unusually decorated for the event, the music was all that could be desired, and the punch invigorating. The social features all that could be desired. The annual Old Yellow affairs are looked forward to with ever increasing interest.

The widow, Mrs. M. Vandenberg of the People's Store, is certainly an expert. So many compliments were sent her on a window display she had put up that the matter is certainly worthy of calling to the attention of the public. A traveling man who makes nearly every visit to Idaho, informed the Journal-Tuesday that the window in this store were the best dressed of any window in the state. This was certainly some compliment and one that should be a matter of pride to every citizen in Pler, as it is a big aid for the town.

Last Sunday, after church, at Mrs. L. F. Hostetter and sister were leaving town in their car, it was discovered that the bridge was off of one of the axles. As the sisters started to go, the sister jumped out of the car. Mrs. Hostetter held onto the lines while the car was down the street toward the elevator, when they turned back on town, finally running to a halt back of Hren-4 Hammerquist. In jumping out the sister sustained a few bruises while Mrs. Hostetter was unhurt. The buggy was taken to the shop for repairs.

The aviator, by means of a valve within reach of his hand, can stop under a cloud of darkness, can slow varying according to the length of pressure of his hand upon the valve. These small clouds can be seen from a distance of six miles, and the movement of the aeroplane appears to be scientifically to prevent them running together.

By the use of the Morse code it is an easy matter to send signals in this way from an aeroplane, and in addition it saves the necessity of a wireless receiving station, which is often difficult to operate during a campaign.

Horticultural News

PROPER TIME FOR TRIMMING

Grower of Raspberries and Blackberries Must Go Over His Patch Yearly and Remove Dead.

Raspberries and blackberry growers have a task that comes to other kind of fruit growing, says the Fruitman and Gardener. To be sure there are thinning and trimming in all fruit plantations or orchards, but the canner fruit men must do their patch once a year and remove the canes which but lately were fruit laden. Where a few days ago you picked fingers and dollars daily, there are now "dead stalks" to be discarded. The proper time to do this is the useless wastage is a much-discussed matter. The correct theory is, the sooner the better. That means the months following the harvest, say August 15th to September 15th. This is the best time because the quicker all insects and disease germs are removed the better. The brush heap incineration at the earliest possible date is good sense.

The practice is usually very different from theory. Perhaps in most cases our fruitmen are too busy in the summer season to do this work. It is done in the comparative leisure of winter. And that means at all right, provided you are not troubled with rats and bugs. If you are troubled, strain a point and clean out the berry patches early—do it even if you must pay high wages for labor.

LIME FOR THE FRUIT TREES

Gives Favorable Root Growth and Improves Quality and Quantity of Fruit—Grapes Are Sweeter.

To get the best crop of any fruit or grain there must be the best growth of tree or plant, and this is what lime provides. Dr. E. E. Hilliard, director of the California station, a high authority, says that lime increases and produces a stocky growth of trees so noticeable that one can tell the limestone section by that character of tree growth.

Observation has shown that lime gives a very favorable root growth and a well-balanced plant, top with roots—and that produces perfection of flowering and fruitation. A large quantity and a better quality are both distinctly noticeable in lime fertilization. Hilliard says also that lime improves the quality of the fruit; grapes, grown with it are notably sweeter. The sugar beet industry, which is regulated by scientific tests of quality, is most successful on limestone soils.

As lime is not very expensive, the right thing for every fruit grower to do is to make some comparative tests, which is best in mind that the carbonate form can be applied at any season and will not injure other plants or organic matter by direct contact. In fact, the carbonate itself, when pure or commercial fertilizer contains the lime without any waste of fertilizer elements.—Agriculturist.

WHAT ABOUT THAT SILO?

ITS TIME YOU WERE THINKING ABOUT IT

DON'T LET ANOTHER YEAR GO BY WITHOUT PUTTING A SILO ON YOUR FARM

Plant 10 to 20 Acres of Corn this Spring and be Ready to Fill a Silo Next Fall

Come in and See us—it Will Pay You. We Can Sell You a Good Silo for a Reasonable Price and Can Arrange Satisfactory Terms

Call on Us Write Us Phone Us No. 44

Ostrander Lumber Co.

TWIN FALLS

Two, four or six-room houses, improved, plans, \$500 to \$2500. Easy terms. P. Wheeler, 142 Walnut St. Feb. 19-25 pd

FOR SALE—Office machine, typewriter, adding machine, typewriter. Phone 522. W. H. Taylor. Feb. 19

Poultry for sale. High class Single Comb young White Leghorns and Rhode Island Reds. 449 3/4 Ave. East. Phone 391. Feb. 19 pd

FOR SALE—Gasoline in five gallon cans or more, 20 cents per gallon, cash. Lind Automobile Co. Jan 25

FOR SALE—Dishwash wheel, 2 1/2 miles northwest of Twin Falls, T. S. Turplewood. Feb. 21

FOR SALE—Good, young, hearty team of mules, also one lighter team. Cash or good note. I. H. Darrow, phone 614-N. Feb. 21

FOR SALE—Grade stallion, three-fourths Percheron and one-fourth Clyde, weight 1500. Sure foot setter, good breeder, extra good work horse. 5 years. W. E. Dush, R. F. D. No. 1, Pler. Feb. 8-14

FOR SALE—Two room house, and lot, \$500 first payment. See E. A. Moon, at shop near P. O. Jan 8-14

Horse, buggy and harness for sale; will weigh single or double, steady; survey, almost new. 101 Washington Avenue. Feb. 19-21

WANTED—Bones, turkeys and cabbage. P. Wheeler, 142 Walnut St. Feb. 19 pd

WANTED—By man and wife work on ranch, just from Greeley, Colo. Call at 147 S. Shoshone, or phone 108. Feb. 19 pd

WANTED—Girl for general housework. Apply 240 3/4 Ave. E. Feb. 19 pd

WANTED—By man and wife, work on ranch. 635 1/2 avenue west. Feb. 12-16-19-23 pd

DRESS MAKING—636 1/4 Ave. E. Feb. 19

FOR TRADE

FOR SALE OR TRADE—40 acres on Salmon River tract. Close if taken at once. Box 165, Twin Falls. Feb. 19-23 pd

FOR TRADE—Clyde lot for automobile or stock. D. M. Reed. Feb. 9 Mar. 12 pd

FOR RENT—Four room furnished house. Rent reasonable if taken permanently. Require at 148 Denver avenue. Feb. 16-19

FOR RENT—Furnished cottage adjoining city. With 16 acres, alfalfa, fruit, ideal for poultry and dairy. Cash rent. H. O. Rott, Cleveland avenue. Feb. 16

FOR RENT—Furnished 6-room modern house, good location, auto garage included. Apply Box 322, Feb. 19-21 pd

LODGING HOUSE FOR RENT—Four room—furnished 16-room furnished house. Best place in the city. Snap for rich person. See M. M. Trout, Shoshone apt. Feb. 9

HOUSEKEEPER WANTED—Two rooms and electric kitchen, elegantly furnished. 800 M. M. Galt, Shoshone apt. Feb. 19

FOR RENT—160 acres farm, 150 rolling city. With 16 acres alfalfa, fruit, ideal for poultry and dairy. Cash rent. H. O. Rott, Cleveland avenue. Feb. 16

FOR RENT—160 acres farm, 150 rolling city. With 16 acres alfalfa, fruit, ideal for poultry and dairy. Cash rent. H. O. Rott, Cleveland avenue. Feb. 16

FOR RENT—160 acres farm, 150 rolling city. With 16 acres alfalfa, fruit, ideal for poultry and dairy. Cash rent. H. O. Rott, Cleveland avenue. Feb. 16

FOR RENT—160 acres farm, 150 rolling city. With 16 acres alfalfa, fruit, ideal for poultry and dairy. Cash rent. H. O. Rott, Cleveland avenue. Feb. 16

FOR RENT—160 acres farm, 150 rolling city. With 16 acres alfalfa, fruit, ideal for poultry and dairy. Cash rent. H. O. Rott, Cleveland avenue. Feb. 16

FOR RENT—160 acres farm, 150 rolling city. With 16 acres alfalfa, fruit, ideal for poultry and dairy. Cash rent. H. O. Rott, Cleveland avenue. Feb. 16

FOR RENT—160 acres farm, 150 rolling city. With 16 acres alfalfa, fruit, ideal for poultry and dairy. Cash rent. H. O. Rott, Cleveland avenue. Feb. 16

FOR RENT—160 acres farm, 150 rolling city. With 16 acres alfalfa, fruit, ideal for poultry and dairy. Cash rent. H. O. Rott, Cleveland avenue. Feb. 16

FOR RENT—160 acres farm, 150 rolling city. With 16 acres alfalfa, fruit, ideal for poultry and dairy. Cash rent. H. O. Rott, Cleveland avenue. Feb. 16

FOR RENT—160 acres farm, 150 rolling city. With 16 acres alfalfa, fruit, ideal for poultry and dairy. Cash rent. H. O. Rott, Cleveland avenue. Feb. 16

When you buy the new Ford Sedan you buy the Service and Essential Comforts obtained in the lightest limousine—but you don't pay the extravagant first cost and the excessive maintenance expense. The new Ford Sedan is like the other 675,000 Fords already in use—low in Cost, high in Quality and the most economical car to run that was ever built—on the average of less than two cents per mile.

Ford Sedan \$975; Coupelet \$750; Town Car \$690; Touring Car \$490; Runabout \$440. All fully equipped, f. o. b. Detroit.

On sale at the

WESTERN AUTO CO.

Buyers will share in profits if we sell at retail 300,000 new Ford cars between August 1914 and August 1915.

F. F. BRACKEN, President. D. L. C. R. SCOTT, Vice President. URBAN TRACEY, Cashier.

The Idaho State Bank

Of Twin Falls, Idaho

CAPITAL \$50,000

INTEREST PAID ON TIME DEPOSITS

DIRECTORS: DAVID BROWN, C. FAHNEY, W. M. McMillan, F. C. SMITH, C. R. SCOTT, URBAN TRACEY

Have Your

Repair Work

done at

MOONS SHOP

Glazing a Specialty

On Main St. Near Post Office

Suggestions for Washington's Birthday

Ice Cream Brick with Hatchet Center
Ice Cream Brick with Maraschino Cherries
Cherry Mints—Cherry Sherbert
ORDERS FILLED PROMPTLY.

VARNEY---The Live Candy Man

158 Main West Phone 556