

SOME POSTSCRIPTS

A mounting of recent invention permits a single person to take a stereoscopic picture.

Traces of light have been detected in the ocean at depths of more than three hundred feet by British scientists.

By a new refrigeration process a Louisiana engineer claims to freeze a block of ice a foot thick in an hour.

The government of Peru will send two men to Cuba to study the cultivation and manufacture of tobacco for a year.

Shipped horses' skulls used first when the skull has been fattened and killed the horse in a second.

A hat that can be used repeatedly has been invented for the purpose of saving the wear and tear of the hat.

A piston train has been built for the purpose of saving the wear and tear of the piston and the connecting rod.

A new machine is an electric dynamometer apparatus that will show the power of an engine and the power of the engine in a second.

Research the most exact of a new machine that will show the power of an engine and the power of the engine in a second.

FROM THE PENCIL'S POINT

It's difficult for a doctor to cure a diseased mind.

A philosopher is a man who is a philosopher.

Research, we can't help feeling, nor can we help feeling.

It's not of your skin, it's before meeting into a glass house.

A good sense is of most benefit to some men than good advice.

Most men who are wise, however, in the end, are wise in the end.

Men who make good, don't sit down and wait for their ship to come.

A woman who is a woman, however, in the end, is a woman in the end.

There's a lot of men who are not men, but who are not men.

Most is the best of men, which is the best of men, which is the best of men.

It's not difficult to induce the other, but it's not difficult to induce the other.

It's not difficult to induce the other, but it's not difficult to induce the other.

It's not difficult to induce the other, but it's not difficult to induce the other.

It's not difficult to induce the other, but it's not difficult to induce the other.

It's not difficult to induce the other, but it's not difficult to induce the other.

It's not difficult to induce the other, but it's not difficult to induce the other.

It's not difficult to induce the other, but it's not difficult to induce the other.

It's not difficult to induce the other, but it's not difficult to induce the other.

It's not difficult to induce the other, but it's not difficult to induce the other.

It's not difficult to induce the other, but it's not difficult to induce the other.

It's not difficult to induce the other, but it's not difficult to induce the other.

It's not difficult to induce the other, but it's not difficult to induce the other.

It's not difficult to induce the other, but it's not difficult to induce the other.

It's not difficult to induce the other, but it's not difficult to induce the other.

It's not difficult to induce the other, but it's not difficult to induce the other.

It's not difficult to induce the other, but it's not difficult to induce the other.

It's not difficult to induce the other, but it's not difficult to induce the other.

It's not difficult to induce the other, but it's not difficult to induce the other.

It's not difficult to induce the other, but it's not difficult to induce the other.

It's not difficult to induce the other, but it's not difficult to induce the other.

It's not difficult to induce the other, but it's not difficult to induce the other.

It's not difficult to induce the other, but it's not difficult to induce the other.

It's not difficult to induce the other, but it's not difficult to induce the other.

It's not difficult to induce the other, but it's not difficult to induce the other.

It's not difficult to induce the other, but it's not difficult to induce the other.

It's not difficult to induce the other, but it's not difficult to induce the other.

It's not difficult to induce the other, but it's not difficult to induce the other.

It's not difficult to induce the other, but it's not difficult to induce the other.

3-5 Extra Features.
8 Styles of Bodies
Built by John W. Bate

Mitchell

\$1460 For 7-passenger Six—45 h. p.
127-inch Wheelbase.
\$1150 For Mitchell Junior—40 h. p.
120-inch Wheelbase Six.
Both Prices f. o. b. Racine.

Now 100% Over-Strong

Every Part Now Twice as Strong as Need Be

John W. Bate, the great Efficiency Engineer, now announces for the first time double-strength in every Mitchell part.

In the new Mitchells we are ready to announce the fulfillment of a three-year ambition.

Three years ago, after our visit in Europe, John W. Bate returned to the Mitchell plant.

He said, "I have one more thing to accomplish. And I have learned it from the European European engineers."

"We build cars too fast in America. We try to build them too cheap. We give too little thought to endurance."

"I want to build you a lifetime car. I want to give every part of the Mitchell at least 100 per cent overstrength."

Now It Is Done

Mr. Bate came back. Since then, he has given the Mitchell out 15 hours a day. The into the night, week after week for three years, he has worked on this problem in secret.

He has won out. His eyes in making tests to prove the strength of the Mitchell. When he found the strength of the Mitchell, he doubled it in the car.

We took part by part and brought back to the Mitchell. Then, he found a way to test each part to prove that it was the same.

In last year's Mitchell we claimed 80 per cent overstrength. This work was not then completed. This car we can claim for

every part twice the needed strength. And our daily tests prove this claim.

One Example—Springs

Let us cite one example—the Bate cantilever springs. You know how often springs break on 15 months in Mitchells. Not one but one of them ever has broken.

These Bate springs have now been used for 15 months in Mitchells. Not one but one of them ever has broken.

We have machines in our factory for testing them. These machines apply road action, hundreds of thousands of times. We have thus applied months of excessive vibration to one spring. And never one has broken.

Yet these long cantilever springs are the outstanding springs in the world. No Mitchell owner ever needs shock absorbers. Mitchell cars have no troubles in rebound springs. They are entirely unnecessary.

That is simply one part—one well-known

weakness. Hundreds of parts have been given equal strength. Now over 440 parts in the Mitchell are built of toughened steel, drop-forged or steel-stamped. The parts which go the major strains are all of Chrome-Vanadium. Many parts on which safety depends are almost double-size.

175,000-Mile Test

Two Bate-Built Mitchells have already run of 200,000 miles apiece. Seven of them have averaged over 175,000 miles each. That is over 30 years of rather active service.

So this new Mitchell in all probability is a lifetime car. With proper care, you should never wear it out. Troubles and repairs are as nearly eliminated as can be.

The Lifetime Car

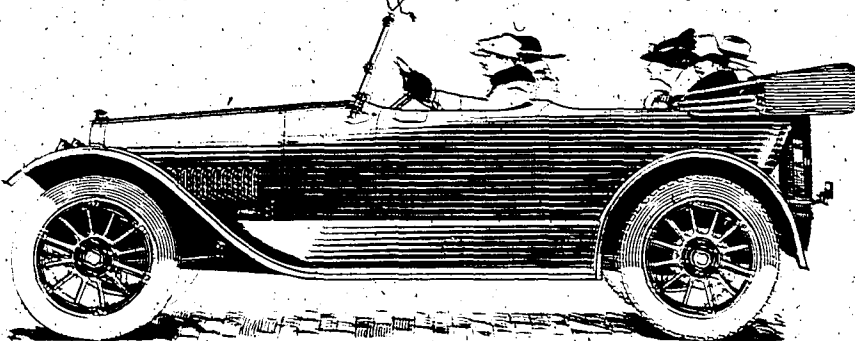
In times past, men bought a new car every year or two. Models were constantly changing. So a car's endurance seemed of less importance. That is why European cars so excelled American.

Now most buyers in the Mitchell class buy their cars to keep. And John W. Bate has built every Mitchell part to meet these new requirements.

That is the sovereign advantage we offer in Mitchell cars. It is not so visible as other extra features. But we figure it means double life to your car, plus safety and economy. And we know it overcomes every other result of John W. Bate's efficiency.

UTAH-IDAHO MOTOR CO.

Temporary Quarters in Western Block, One Block East of Rogerson Hotel



Rogerson Items

Many citizens, both residents and visitors, who were struck with surprise, were surprised to find that the Mitchell car was the only car of its kind in the city.

The Mitchell car was the only car of its kind in the city. It was the only car of its kind in the city.

The Mitchell car was the only car of its kind in the city. It was the only car of its kind in the city.

The Mitchell car was the only car of its kind in the city. It was the only car of its kind in the city.

The Mitchell car was the only car of its kind in the city. It was the only car of its kind in the city.

The Mitchell car was the only car of its kind in the city. It was the only car of its kind in the city.

The Mitchell car was the only car of its kind in the city. It was the only car of its kind in the city.

The Mitchell car was the only car of its kind in the city. It was the only car of its kind in the city.

The Mitchell car was the only car of its kind in the city. It was the only car of its kind in the city.

The Mitchell car was the only car of its kind in the city. It was the only car of its kind in the city.

The Mitchell car was the only car of its kind in the city. It was the only car of its kind in the city.

The Mitchell car was the only car of its kind in the city. It was the only car of its kind in the city.

The Mitchell car was the only car of its kind in the city. It was the only car of its kind in the city.

The Mitchell car was the only car of its kind in the city. It was the only car of its kind in the city.

Knull Items

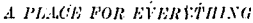
Many citizens, both residents and visitors, who were struck with surprise, were surprised to find that the Mitchell car was the only car of its kind in the city.

The Mitchell car was the only car of its kind in the city. It was the only car of its kind in the city.

The Mitchell car was the only car of its kind in the city. It was the only car of its kind in the city.

The Mitchell car was the only car of its kind in the city. It was the only car of its kind in the city.

The Mitchell car was the only car of its kind in the city. It was the only car of its kind in the city.



**TWIN FALLS BANK &
TRUST COMPANY**

sources is sufficient for a population of 30,000 people.

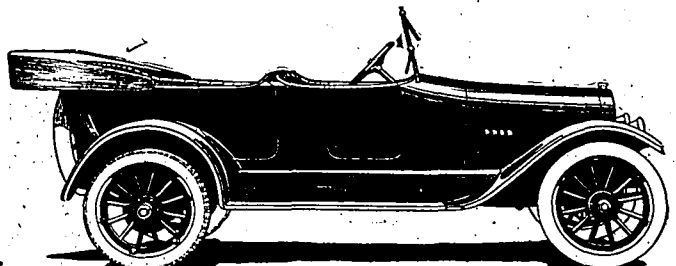
The receipts, from the present system for this current year will be \$39,000.00, or somewhat more, so that with the additional users who can be taken on under the new system the

Sents on sale at Skeels-Wileys. Reserved on and after Feb. 26.

126 Second Street East

\$1165--\$1195

Idaho Automobile & Supply Co.
STATE DISTRIBUTORS
TWIN FALLS, IDAHO. 138 Second Avenue South
PHONE 210



Aberdeen, Idaho

W. D. Griffin, Agent

W. D. Griffin, Agent

SOME POSTSCRIPTS

A mounting of recent invention permits a single-lens camera to take a stereoscopic picture.

Traces of light have been detected in the ocean at depths of more than three hundred feet by British scientists.

By a new refrigeration process a Louisiana engineer claims to freeze a block of ice a foot thick in an hour.

The government of Peru will send two men to Cuba to study the cultivation and manufacture of tobacco for a year.

Chopped banana stalks, used just after the fruit has been harvested, are utilized for horse feed in Queensland.

A key that can be used repeatedly has been invented for squeezing all the contents from collapsible metal tubes.

A private train has been built for the sultan of Egypt that is composed of cars that get their current from motors driven by gasoline engines.

Of German invention is an electric blue-printing apparatus that so reflects the rays from an arc lamp that all parts of the print are illuminated evenly.

Beneath the visor of a cap designed for athletes is another made of a material that is transparent but so colored as to shade the eyes from the sun.

FROM THE PENCIL'S POINT

It's difficult for a doctor to cure a diseased mind.

A sharper is a keen man with a dull conscience.

Somewhat we can't help feeling sorry for an ex-hero.

Be sure of your aim in life before moving into a glass house.

A good scare is of more benefit to some men than good advice.

Most men who are shadowed by detectives are more or less shady.

Men who make good don't sit down and wait for their ship to come in.

A woman may win a man's love without trying, but she can't keep it that way.

Bees can't talk, but they often get back at a fellow with a few stinging retorts.

Musie is the food of love—which is more than can be truthfully said of the onion.

It isn't difficult to induce the other chap to compromise when he realizes that you have the best of it.

IN OTHER CITIES

Camden, N. J., is to have a new ship building plant.

Atlantic City jitney busses are going out of business gradually.

Milwaukee has ten citizens with annual incomes in excess of \$100,000.

Cleveland hears men are being enlisted there for the Russian army.

Philadelphia will rush construction of two new sections of subway, to cost \$15,000,000.

Cincinnati women are organizing to raise funds to save the city's zoological gardens.

Pittsburgh board of education is trying to discharge woman teachers for getting married.

Washington, D. C., is to entertain in 1917 the twenty-seventh reunion of the Confederate Veterans and Sons of Veterans.

LITTLE SURPRISES

"Mister, here's them five tons of coal you ordered this morning."

"No, sir, this isn't the real, genuine olive oil; that's the reason we sell it so cheap."

"You don't need to waste any sympathy on me, old peg; I am satisfied with my job, my boss and my wages."

"Gentlemen, the conductor is asking us to move forward in the car. Come on, there's plenty of room."

"Toting man, we find that we have not been paying you enough, so we'll increase your salary \$10 a week, beginning today."—Portland Express.

THINGS WE NEVER HEAR

"No, I did not resign. I was fired."

"Wife, I believe you need a new gown."

"Your bill is very reasonable, indeed, doctor."

"I did not marry him for love; I wanted a position in society."

"It was not hard luck. We were defeated because they were the better players."

31 Extra Features
8 Styles of Bodies
Built by John W. Bate

Mitchell

\$1460 For 7-passenger Six—48 h. p.
127-inch wheelbase.
\$1150 For Mitchell Junior—40 h. p.
120-inch wheelbase Six.
Both Prices f. o. b. Racine.

Now 100% Over-Strength

Every Part Now Twice as Strong as Need Be

John W. Bate, the great Efficiency Engineer, now announces for the first time double-strength in every Mitchell part

In the new Mitchells we are ready to announce the fulfillment of a three-year ambition.

Three years ago, after one year in Europe, John W. Bate returned to the Mitchell plant.

He said, "I have one more thing to accomplish. And I have learned it from the foremost European engineers.

"We build cars too fast in America. We try to build them too cheap. We give too little thought to endurance.

"I want to build you a lifetime car. I want to give every part in the Mitchell at least 100 per cent over-strength."

Now It Is Done

Mr. Bate came back. Since then he has given the Mitchell car 15 hours a day. Far into the night, week after week for three years, he has worked on this problem of strength.

He has worn out fifty cars in making tests to prove the strength requirements. When he found the strength any part required, he doubled it in the car.

He took part by part and brought each to this standard. Then he found a way to test each part to prove that it met the standard.

In last year's Mitchell we claimed 50 per cent over-strength. This work was not then completed. This year we can claim for

every part twice the needed strength. And our daily tests prove this claim.

One Example---Springs

Let us cite one example—the Bate cantilever springs. You know how often springs break on the ordinary car.

These Bate springs have now been used for 18 months in Mitchells. Not one lost in one of them ever has broken.

We have machines in our factory for testing them. These machines apply road action hundreds of thousands of times. We have thus applied months of incessant vibration to one spring. And never one has broken.

Yet these long cantilever springs are the easiest-riding springs in the world. No Mitchell owner ever needs shock absorbers. Mitchell cars have no snubbers or rebound straps. They are utterly unnecessary.

That is simply one part—one well-known

weakness. Hundreds of parts have been given equal strength. Now over 440 parts in the Mitchell are built of toughened steel, drop-forged or steel-stamped. The parts which get the major strains are all of Chrome-Vanadium. Many parts on which safety depends are almost double-size.

175,000-Mile Test

Two Bate-Built Mitchells have already run of 200,000 miles apiece. Seven of them have averaged over 175,000 miles each. That is over 30 years of rather active service.

So this new Mitchell, in all probability, is a lifetime car. With proper care, you should never wear it out. Troubles and repairs are as nearly eliminated as can be.

The Lifetime Car

In times past, men bought a new car every year or two. Models were constantly changing. So a car's endurance seemed of less importance. That is why European cars so excelled American.

Now most buyers in the Mitchell class buy their cars to keep. And John W. Bate has rebuilt every Mitchell part to meet these new requirements.

That is the sovereign advantage we offer in Mitchell cars. It is not so visible as other extra features. But we figure it means double life to your car, plus safety and economy. And we know it over-tops every other result of John W. Bate's efficiency.

TWO SIZES

MITCHELL—a roomy, 7-passenger Six, with 127-inch wheelbase. A high-speed, economical 48 horsepower motor. Disappearing extra seat and 31 extra features included.

Price \$1460 f. o. b. Racine.

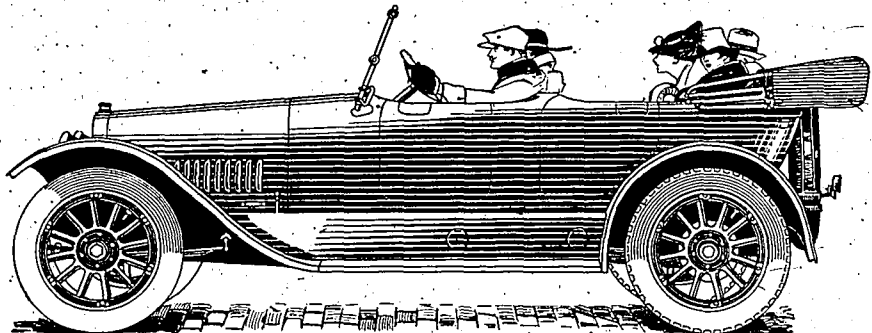
MITCHELL JUNIOR—a five-passenger Six on similar lines, with 120-inch wheelbase. A 40-horsepower motor—1.4-inch smaller body than larger Mitchell.

Price \$1150, f. o. b. Racine.

Also all styles of enclosed and convertible bodies. Also demountable tops.

UTAH-IDAHO MOTOR CO.

Temporary Quarters in Weaver Block, One Block East of Rogerson Hotel



Rogerson Items

John McKee returned from an extended visit in the central and southern states. He is fully convinced that no state equals old Idaho.

Walter Boone and Al. Jones of Rock Creek spent Sunday in Rogerson. Mrs. George Brile of Amsterdam visited Mesdames Lutz and Leighton the first of the week.

Messrs. J. A. Roberts, C. E. Munson, J. A. Stoddard of Twin Falls were in this section on business last week.

Mesdames Edna Deamer, Wm. McMillan, Champ Clarke, Jim Boyd and Bob Lutz were Twin Falls shoppers last week.

Our business men have organized a commercial club. A dance is under way for St. Patrick's day. It is evident that the enterprising business men of Rogerson are after more business.

Mrs. Leighton spent Sunday on her claim near Hollister.

Mrs. Larsen is making up lost time teaching Saturday.

A literary society, organized and managed by the students of our school holds its first meeting on Thursday evening, February 22 at the school house. Everybody invited to come and bring your friends. Also take part and help. It will continue during

March. Officers: Leila Holsley, president; Rex Averill, vice president; Helen Cochran, secretary.

Notwithstanding the cold weather, business is thriving.

Mrs. Adam Mye served an afternoon tea last week. She caught the patriotic spirit of the day and gave it expression by decorations in red, white and blue and miniature flags. A prize given for the greatest number of words made from the word Washington, was won by Mrs. E. Larsen. Invitations were extended to Mesdames Marshall, Thompson, Gibbs, Russell, Langford, Helme, McCorkle, Neely, Lutz, Clark, J. W. Langford, Gott, Scott, Luce, Leighton, Deamer, McMillan, Vanderhook and Miss Larsen.

The pupils are hustling to get the hardest work over before the spring fever set in. Attendance is splendid.

Knull Items

(Times' Special Correspondence)

Mr. and Mrs. C. E. Knull and Mr. and Mrs. F. W. Neal were among the Knull people who took in the "Birth of a Nation" last week.

Pong cars of potatoes were loaded at Knull this past week. All belonging to J. P. Johnson. Mr. Johnson will

have a small fortune when he gets his money for these potatoes.

The Hall-Wilsonale last Tuesday, broke the season's record, when it comes to a crowd.

F. Grieve and H. E. Holloway each loaded two cars of hay last week.

G. G. Victor returned from Nebraska last Saturday, where he has been visiting relatives and friends for three months. Mrs. Victor and Floyd accompanied him as far as Denver, where Mrs. Victor will be under the care of a specialist for a month. Will be glad to see them all home once more.

T. M. Baird is building an addition to his house, occupied by Mr. Black. It will be a nice little house when completed, with basement and porch.

There was an interesting meeting of the local W. C. T. U., held with the president, Mrs. F. Grieve, on last Thursday afternoon. There was a good attendance of members and several visitors. Mrs. Caldwell had charge of the program.

The 1916 three year old grandson of Mr. and Mrs. Wm. Hurrell is quite sick at three months. The parents are here on a visit from Canada. We hope the little fellow will soon be better.

Mrs. Erwin Jones and baby are guests of friends in this neighborhood before moving to their new home near Hazelton.

Mrs. D. S. Rice, has been having a seizure of gripe.

Mr. Warts, Mrs. G. B. Lohr's father, who was stricken with paralysis a week ago, is no better at this writing.

The young folks of the Baptist church gave Miss Lela Harrison a party last Friday night.

About twenty-five were present and a good time is reported. All left wishing her many more birthdays.

Mrs. F. W. Neale and daughter Marjorie were visitors in Twin Falls last Friday and Saturday at the Henry W. Brown home.

Ernest Silger of Kimberly, who recently purchased eighty acres west of the King farm, has been digging a cistern, and will commence a new house next week.

Rev. A. J. Kamman and family and Mrs. Henry Kamman are moving to their new home recently purchased near Filer.

Mrs. T. G. Peterman was taken to the Physicians and Surgeons' hospital at Twin Falls, for treatment. Her many friends will anxiously await her recovery.

Rev. Murphy of Boise, will preach at Pleasant View Presbyterian church on Sunday morning and evening, February 25. Every member is urged to be present and a cordial invitation to the public is extended.

Mrs. Ralph Alexander, wife and son of Pittsburg, Kansas, arrived here last Friday night, to make their home. Mrs. Alexander is a sister of V. E. Morgan.

They will live in the house vacated by Mrs. Alexander and farm that place the

coming year. We welcome these people to Idaho.

NOTICE TO CREDITORS

Estate of Millin Stowell Hicks, deceased.

Notice is hereby given by the undersigned administrator of the estate of Millin Stowell Hicks, deceased, to the creditors of and all persons having claims against the said deceased, to exhibit them with the necessary vouchers, within ten months after the first publication of this notice, to the said administrator at the office of A. R. Hicks, I. D. building, State of Idaho, this being the place fixed for the transaction of the business of said estate.

Dated and first publication, February 22, 1917.

THEODORE BARSALOU,
Administrator of the estate of Millin Stowell Hicks, deceased.

A paper's classified columns are the business barometer. Our barometer readers high and results are sure to follow from advertising placed with the paper having the largest classified representation.

Read the classified ads in this issue. Many interesting bargains are contained in our classified columns and you cannot afford to pass them by.



TWIN FALLS BANK & TRUST COMPANY

"A PLACE FOR EVERYTHING"

and everything in its place," is another adage which argues against your risking your valuables in pigeon holes, bureau drawers, in a trunk, between mattresses or behind the clock.

The Twin Falls Bank & Trust Company invites you to place them where you are assured of absolute safety and privacy—in a safe deposit box in its modern vaults.

TWIN FALLS BANK & TRUST COMPANY

Waterworks Report Filed By Consulting Engineer Louis C. Kelsey Yesterday

RECOMMENDS TAKING WATER
FROM ROCK CREEK AND FROM
THE HIGH LINE CANAL

**COST OF SYSTEM WOULD BE
ABOUT \$600,000**

Asserts That Rock Creek Water Is
Best By Tests Made—System Would
Include Filter—Big Enough for
30,000 Population.

The report of Louis C. Kelsey, special consulting engineer, was filed yesterday with City Clerk M. Williams. It was introduced to the report at the meeting of the council called for Tuesday night, but as there was no quorum no action could be taken. The plan as submitted presents a proposition for the construction of a new system at the approximate cost of \$600,000 taking water in from the Rock Creek on which filing has been made by Mayor E. M. Sweetley, and in the summer from the high line canal. The plan provides for a double reservoir with a capacity of more than 10,000,000 gallons, which Engineer Kelsey says will be sufficient to supply a city of 30,000. The city distributing system has been outlined in brief, the engineer says. Kelsey speaking of the present condition of the city water system said to a TIMES reporter that in three years the city could have a system unless a new one should be installed and that the one proposed was the cheapest and most feasible that would be large enough to supply the city, should it continue to grow anything like as rapidly as people have reason to anticipate that it will.

In brief, the report addressed to the board of Twin Falls, Mayor E. M. Sweetley, and the following synopsis of the recommendations of the engineer, says:

"In making the following brief I have not attempted to follow the exact wording of the report. This is on file with the City Clerk and is at all times open to inspection, and I would respectfully urge that whenever any question is raised, the original be referred to.

"The report of Mr. Louis C. Kelsey, the waterworks engineer employed by the council to investigate the possible source of water supply for the city and to recommend the most feasible and practical one, and to plan a system for the economical and effective distribution of water within the city, has been filed with the city clerk, and the action of the council. Because the report comprises over four pages of typewritten matter, two maps, two profiles, and five sheets of plans, besides reports of water analyses, and is too lengthy to be printed in full, I have prepared and submitted to the people the following extract, or brief, of the report in order that they may become familiar with the salient points covered, and understand in a general way what has been done and what is to be done.

"The report is in four principal parts, and deals with:

1. Sources.
 2. Supply and distribution system.
 3. Estimates of cost.
 4. Recommendations.
1. Sources: The sources considered are a combination of the High Line Canal for summer use and Rock Creek for winter. Blue Lakes, and the Snake River at Milner. The quality of water from each of the sources is found to be excellent from a chemical standpoint, but none except Rock Creek would be safe to use without proper purification methods. All can, however, be rendered entirely satisfactory by proper treatment. The quantity to be had from each of the sources is sufficient for a population of 30,000 people.

The High Line, Rock Creek and the

tion season have already attached for an amount much larger than the water to be had. This is not the case in the non-irrigating season.

(Report of J. Herman Harms, State chemist of Utah.)

Estimated cost to convey the water from each source to the reservoir:

1. High Line, Rock Creek \$176,161.00
2. Blue Lakes \$42,605.16
3. Milner \$440,875.12

The estimates for the Blue Lakes source is based on a maximum supply when installed of 9,000,000 gallons per day. The other source upon a basis of 10,500,000 per gallons per day. The city is now using in the summer about 4,500,000 per day.

2. Supply and distribution systems: The enlargement of the reservoir, to about twice its present capacity, built of reinforced concrete, and roofed and otherwise guarded to keep the water cool and free from contamination. It is planned in two sections so that one can be cleaned without interrupting the service, and has a complete system of gates and pipes to facilitate its economical and safe care and operation.

A filtration plant of the modern mechanical type, complete in every respect, and capable of removing from the water all germs, vegetable matter, and other matter, and leaving it pure, wholesome, and sweet, and free from any odor. In addition, and as an extra safeguard, the chlorine plant now owned by the city will be installed for use as needed.

The water is to be conveyed to the city from the filtration plant by two 30 inch mains, insuring against interruption of service, and the possibility of any trouble with both of them at the same time is very remote. These mains are of the wooden stave type, of the highest class material and to be laid under careful specifications.

The distribution system about the city is through mains gradually diminishing in size toward the outer parts of the city, the main being of less than four inches. The system is designed to afford a working pressure of 60 pounds to the square inch when the minimum amount of water is to be used. The normal pressure, when the use of water is at the lowest point, about 15 pounds.

The amount of water admitted to the filtration plant, and to the city mains, is automatically controlled, so that as the amount used increases the valves open to admit a greater flow; as it decreases the valves close.

The mains in the business district and at intersections are metal; other places of first class wooden stave pipe, and an excellent quality of water for city use. As in the case of Blue Lakes, this water will require purification treatment.

The water from the canals, Snake River water, is chemically almost as desirable as that from Blue Lakes, and is an excellent quality of water for city use. As in the case of Blue Lakes, this water will require purification treatment.

The number of fire hydrants is increased to 188, giving much more efficient fire protection.

Estimated cost of supply and distribution system:

- | | |
|------------------|--------------|
| Reservoir | \$176,161.00 |
| Filtration plant | \$42,605.16 |
| Supply mains | \$440,875.12 |
| Distribution: | |
| Wood and Steel | \$152,566.96 |
| Wood and Iron | \$176,807.62 |

4. Recommendations: (a) That the

High Line Rock Creek source be selected for the reasons that it is the cheapest to build, and the cheapest to maintain; that its depreciation is least; that the quality of water for winter use is the best to be had, and that the supply for summer will, by the same treatment, be rendered just as good as any water from any other source; that it is a gravity system.

(b) That the point of taking from the canal be changed to the High Line to avoid the waste water from the irrigated district between Hansen and the present point; that the water from the present point require a pipe line to bring to the reservoir, and this does not deteriorate under constant use as it would if used only during a part of the year and allowed to be empty the rest of the time.

(c) That the present distribution system be abandoned as soon as a new one can be installed for the reasons that it is highly inefficient; that it is a poor even the present needs of the city is in a bad state of repair, and would be a patch work job at the end, and expensive to maintain.

(d) That the new distribution system, the supply system, and the lead from the source to the reservoir, be made large enough when laid to provide for all anticipated growth in the city, the extra cost of the larger pipe being less than that of laying a smaller set now, and another smaller set when needed, and the system as planned will be permanent.

(e) That wooden stave mains of high grade be used except in the business district, because when properly made and laid they are serviceable, and durable, and cost much less than metal.

Comparative cost of installation and upkeep:

- | | |
|------------------------------------|---|
| High Line Rock Creek to reservoir, | \$176,161.00; to city, \$421,420.03; total, \$600,000.00; upkeep, \$42,605.16; |
| Blue Lakes to reservoir, | \$42,605.16; to city, \$421,420.03; total, \$464,025.19; upkeep, \$42,605.16; |
| Blue Lakes (without filter), | \$42,605.16; to city, \$421,420.03; total, \$464,025.19; upkeep, \$42,605.16; |
| Milner to reservoir, | \$440,875.12; to city, \$421,420.03; total, \$862,295.15; upkeep, \$440,875.12; |

The above comparison the figure for iron and wood mains is used for convenience. The difference in cost for steel and wood is \$18,240.65 less, and applies to all the estimates.

The upkeep includes all interest, salaries, supplies, and the other expenses of the waterworks department. The receipts from the present system for the current year will be \$39,000.00, or somewhat more, so that with the additional users who can be taken on under the new system, it

will be self supporting at the present rates.

If the matter be proceeded with at once, the system can be built and in complete operation by July 1, 1918. Parts of it before that time.

Murtaugh News

(Times Special Correspondence)

Mr. and Mrs. Rufus Hansen were in Twin Falls Tuesday, shopping and seeing the "Birth of a Nation."

Charles Worrell, Dave Williams, Bob McCall, Clifford Namaster, Rodney Pickett, Cella True, Zina Pickett, Bertha Bancroft, Mesdames Hensley, True Hunt and Engstrom, took in the "Birth of a Nation" Tuesday at Twin Falls. Mr. H. H. Brose Hall, W. C. Hall, Carroll True and Ben Miller were in Twin Falls on business Friday.

Mesdames Hunt and Engstrom returned home Friday night from Twin Falls, where they had spent the week while Mrs. Engstrom has been under a surgeon's care.

James Boyd and Roy Hunt were in Twin Falls Saturday on business. Minnie Hansen, who is attending high school in Twin Falls, came up to Murtaugh Friday evening to spend a few days with home folks.

Jessie Henaley of Castleford visited his wife here Friday evening. She returned to Twin Falls with him to spend Sunday.

Mrs. Leo Doly and daughter Dorothy, have come to American Falls to visit relatives for a few weeks.

The W. W. club will meet Friday at the home of Mrs. Charles Miller. Mr. and Mrs. R. R. Kendall, Bob Kendall and Mrs. E. C. Chance were in Twin Falls shoppers Saturday.

Mrs. J. A. Johnson and son Edward of Eagle, Colorado, are spending the week with P. Lee Johnson and family of Twin Falls.

A mid-winter picnic was given in the new school building Wednesday night by the Latin Aid society, assisted by several other ladies. A goodly number of about 150, attended. Dinner was served at 7:30, after which the evening was spent in games and program consisting of music, vocal and instrumental, and short talks on religion.

The L. D. S. young people enjoyed a dance in their amusement in last Wednesday evening, February 14. Several Hansen people came over Tuesday morning to take the train for Twin Falls to attend the "Birth of a Nation."

Miss Blanche Worrell received a fine Schumann piano Friday, which she purchased of Mrs. E. P. Hinton.

IDA M. TARBELL

AMERICA'S FOREMOST

**Journalist
Lecturer
Publicist**

ASSOCIATE EDITOR OF THE AMERICAN MAGAZINE
KEEN, LOGICAL THINKER—BRILLIANT SPEAKER

Hear Her

AT LAVERING THEATRE, TUESDAY, MARCH 6

PRICES 75c and \$1.00

Seats on sale at Skeels-Wileys. Reserved on and after Feb. 26.

SHEET MUSIC

We carry the famous

"CENTURY"

Edition—10c

now being advertised to

sixty million people

Here are a few random selections from our "Century" Catalog of 2000 titles:

PIANO SOLOS

Barcarolle, Chopin, Debussy, Liszt, Mendelssohn, Schumann, Tchaikovsky, Wagner, etc.

PIANO DUOS

Beethoven, Brahms, Chopin, Debussy, Liszt, Mendelssohn, Schumann, Tchaikovsky, Wagner, etc.

VOCAL SOLOS

Beethoven, Brahms, Chopin, Debussy, Liszt, Mendelssohn, Schumann, Tchaikovsky, Wagner, etc.

Come in and see the edition and get a Free Catalog

Logan Music Co.

126 Second Street East

The Old Reliable Paterson Six Is Coming \$1165--\$1195

IT WILL PAY YOU before buying your car this spring to investigate the Paterson. We have in the Paterson a BIG, ROOMY, Five Passenger and a Club Roadster, listing at \$1165, f. o. b. factory. Also a seven-passenger one same chassis for \$1195, which makes a very comfortable seven-passenger car. The Paterson is not an experimental car, as the Paterson people have been building automobiles for nine years and have built this particular model for four years.

We use in the Paterson the Red Seal Continental Motor, which is considered by all to be standard, and the best motor on the market today.

IN A GENERAL WAY the 1917 Paterson 6-45 is designed and constructed along the same lines as the previous year's model which was one of the most successful cars ever turned out by this company.

You will find, however, a number of improvements and refinements in the 1917 car. Particularly would we call your attention to the newly designed body with double coil. The body is longer and wider, and gives a great abundance of room. This matter of space is a particularly important one in a touring car. You will look far and wide among cars that sell anywhere near the Paterson price without overlooking another automobile where so much attention has been given to this particular detail.

The front seat is designed so that the driver may ride in perfect comfort with plenty of room. At the same time, the service brake pedal, clutch pedal, gear lever, steering wheel and instrument board are so located that the car can be driven with perfect ease.

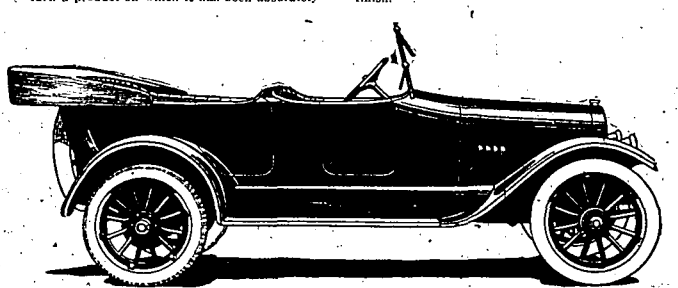
This idea of getting plenty of room is always highly appreciated by the owner once he has the car in operation. Since it is possible to get a four-door car at the Paterson price, it is a great economy to invest in a car on which you save only an insignificant sum and get in return a product on which it has been absolutely

necessary to skip and whose riding accommodations are cramped and uncomfortable.

The Paterson car you will find to be very complete in every detail. Not only is it complete, but you will also find very mechanical feature to be of well known and recognized standard value, and we advise you when making comparisons to be unusually careful in checking up every item and detail of equipment.

There are many cars today that are being sold at a price very close to that set for the Paterson 6-45. With only a casual study of the specifications, the equipment will check up about the same. However, a careful study is very liable to reveal that in one or perhaps two instances, it has been necessary to skip in order to meet a particular price, and while this one little item may seem insignificant at the start there is a big possibility of your being disappointed and dissatisfied after a few months of service.

Therefore, it will pay you well to make your decision with extreme care. Do not overlook a single item that is going to make for your convenience and enjoyment. Look carefully into such features as the motor—the ignition—the carburetion—the starting and lighting—the axle construction—altogether of course, with general make-up, material, workmanship and finish.



Idaho Automobile & Supply Co.

PHONE 210

STATE DISTRIBUTORS
TWIN FALLS, IDAHO

138 Second Avenue South

IRRIGATED LAND FOR SALE

Near Aberdeen, Idaho

40 acres with paid up water rights, choice rich land, good well water, good schools, 3 miles from Aberdeen. All in cultivation, 25 acres in alfalfa, well, stable, point collar, \$60 per acre. Easy terms.

40 acres, 3 miles from Aberdeen, 20 acres in alfalfa, \$62.50 per acre. One-fifth Cash.

40 acres four miles from town, all in cultivation, \$82.50 per acre, one-fifth cash, balance in nine equal payments, interest 6 per cent.

80 acres, 4 miles from town, all in cultivation, 20 acres in alfalfa, \$62.50 per acre. One-fifth cash.

160 acres one mile from town, all in cultivation, \$30.00 per acre, easy terms.

40 acres adjoining Aberdeen, 20 acres in alfalfa, \$125.00 per acre, easy terms.

160 acres, 3 miles from town, small house, well, some alfalfa, all in cultivation, \$62.50 per acre, easy terms.

40 acres, one mile from town, choice level land, all in cultivation, 20 buildings, \$30 per acre, one-fifth cash, balance on easy terms.

80 acres, 3 miles from town, good house and barn, 70 acres in alfalfa, on school wagon route, \$110 per acre.

240 acres one mile from Aberdeen, all in cultivation, \$50 per acre, easy terms. One-fifth cash.

40 acres, 3 miles from town, house, barn, 20 acres in alfalfa, a choice farm, \$90.00 per acre.

80 acres, one and one-half miles from Aberdeen, 15 acres in alfalfa, \$75 per acre. Cleared, \$30 per acre.

80 acres four miles from town all in cultivation, house, stable 15 acres in alfalfa, \$75 per acre.

W. D. Griffin, Agent

Aberdeen, Idaho

THE TWIN FALLS TIMES

Twice-A-Week
Published Tuesdays and Thursdays
by the
TIMES PRINTING & PUBLISHING
COMPANY, Ltd.
HAROLD M. SIMS, Editor

\$2.00 PER YEAR IN ADVANCE

Notice—Discontinuance: Many subscribers prefer not to have their subscriptions interrupted in case they fail to remit before expiration. Notwithstanding this, it is not assumed that continuous service is desired; still, subscribers are expected to notify us with reasonable promptness to stop if the paper is no longer desired.

Entered at the Twin Falls postoffice as second class matter as a twice-a-week publication, October 18, 1910.

The "Father of his Country" was born at Bridge Creek, Westmoreland County, Virginia, one hundred and eighty-five years ago today.

The so-called broad riots in New York City have induced some people to talk about federal "food control" through a commission. It can hardly have come to that at the present stage of the game.

A Chicago attorney is suing Federal Judge Landis for slander because the judge told one of the attorney's clients "he had better get a lawyer! It is possible that timely and good advice to one man may be slanderous to another."

Some flowers of sentiment, it appears, grow even in the murderous atmosphere of the German submarine. The captain of a "U-boat"—both boat and captain otherwise unnamed, but with a suggestion that the latter may have been responsible for the Lusitania horror—recently sank a Norwegian ship, but rescued the six year old daughter of its captain, made a mascot of her and carried her the eight day voyage to Heligoland. How touching!

The agitation over the passage of an anti-alien land law by the Idaho legislature has been renewed by the re-introduction into the senate of a bill for such an act. Regardless of the merits of the proposed legislation, it would seem that any patriotic body of

Americans would heed the president's request that the administration be not, at this time, thus embarrassed. As to the merits, there is at least room for discussion. If aliens and more especially Japanese, at whom the law is known to be aimed, are not land owners because present landlords so desire, will they be welcome to the ranks of renters? And if the renters ask another law protecting them from Japanese competition, what about the laborers? Is there not danger of entering upon an endless chain of troublesome class legislation?

THE GREAT QUESTION OF WATER

So far as the matured conclusions of the consulting engineer are concerned, the questions as to place, method and cost of new waterworks, and presumably, better water, for Twin Falls, are placed before the public in another column herewith.

As to the source of water, the engineer recommends taking the summer supply from the high line canal at a point in Section 26, T. 14 S., R. 18 E. This is eight miles south and eight miles east of Twin Falls and only about a mile and a half from the point where water is to be taken from Rock Creek, in Section 1, T. 26, R. 18 E.

The water obtained at each of these points, after settling, is to be conveyed by gravity to the site of the present works, where modern and sanitary filtration and storage are to be provided.

The estimated cost of getting the water from Rock Creek and the high line to the new reservoir at the present site is \$176,151.00; cost of bringing to the city and distribution therein, \$421,420. Total cost of proposed system (wood and iron), \$597,571.00—with annual upkeep expense of \$42,910.00.

The mayor urges that the people of Twin Falls give to this very important matter the most careful consideration; and that the city administration be given the benefit of all possible pertinent criticism and suggestion.

TARBELL LECTURE IS AROUSING INTEREST

People of Surrounding Towns Making Inquiries Regarding Famous Woman Who Speaks Here March 6.

Great interest is being manifested by the people in Twin Falls and vi-

city and in surrounding towns in the coming of Ida M. Tarbell to this city, March 6 for a lecture under the auspices of the Business Girls' club. The following words of appreciation for the noted woman by a well known worker are taken as correctly describing her character and ability:

"Ida M. Tarbell has frequently been called America's foremost journalist, in her publicity, both from the pen and the platform, has given the tenacity of light to social and industrial problems—not only of America, but the world. Miss Tarbell has been aptly called the world's torch bearer of industrial freedom. Miss Tarbell is not, like so many brilliant investigators, a mere doctrinaire, seeking facts to substantiate a pet hobby. On the contrary, whether in reading her books or hearing her from the platform, one is forcibly struck, not only with her mastery of all facts involved, but equally by the abiding truth and absolute fairness of her conclusions. Miss Tarbell is primarily a constructionist, rather than an iconoclast. As a positive force to prevent war through rational measures adopted to meet the industrial problems which precipitate war, Ida M. Tarbell is a most eloquent and most practical pacifist."

"As a platformist Miss Tarbell is unique. There is the same electricity and trenchant power in her speech that characterizes her Life of Lincoln; Life of Napoleon; History of the Standard Oil Company; The Tariff in Our Times; The Business of Being a Woman; etc. When Miss Tarbell speaks, the note of keenest interest is so instantaneously struck and then sustained that one realizes the orator in the brilliantly talking journalist in such eloquent passages as the following:

"We must organize men and women for labor as for war. Watch the perfection of the training and movement of the masses that at this moment are meeting in unspokeable, infernal slaughter in Europe. See how the humblest is fitted to his task. With what ease great bodies will, turn, advance, retreat. Consider how, after standing men in line that they may be knocked to pieces, they promptly and automatically collect such as have escaped, both friend and foe, and (oh, amazing and heart-breaking human logic) under the safe sign of the cross, tenderly nurse them back to health. If this can be done for war, should we do less for peace?"

"Ida M. Tarbell is not only a chief ornament of the Lyceum and Chautauquian, but as a prime worker in the movement, has utilized its unlimited possibilities for unlimited and effective publicity. She was associate editor of the Chautauquan from 1883 until 1894. From 1894 to 1900 she was associate editor of McClure's Magazine, when she made an increased circulation of 100,000 copies in her hands on the Standard Oil company. Miss Tarbell is now associate editor of the American Magazine."

GOVERNOR'S OFFICE IS VERY CONSPICUOUS COG

Practically Impossible to Pass Bill Over Veto of the Chief Executive This Session.

(Editorial Correspondence)
BOISE—The governor's office is daily becoming a more conspicuous cog in the legislative machine, by reason of the amount of legislative grist that is being turned out each day by the house and senate.

As soon as the legislature gets through with any measure, interest centers on the executive office, as it is well known that the present incumbent has no reluctance at all to express his disapproval of the legislature's efforts by means of an exercise of his veto power. Up to the present time the veto has not fallen upon any measure, but a few are being delayed in the governor's office, and their friends feel that the additional attention they are receiving bespeaks no good.

The governor has signed two county division bills creating the counties of Cuman and Butte out of Blaine. Both bills passed the two houses of the legislature without opposition, the Blaine county delegation sponsoring the measures for the division of that county. Considerable opposition has developed to the division of Bannock county, and third house members have been persistently at work attempting to defeat the passage of the Portland county bill in the house and senate. The bill went through the house easily enough and through a legislative somewhat escaped from the senate with the sanction of that body. The bill was killed in the senate last Wednesday afternoon, but on motion to reconsider Thursday morning, slipped through. Opponents of the bill predict that the governor will veto the measure while its friends are confident that they will be successful in making the town of Downey a county seat.

Any measure the governor sees fit to veto will probably fall to receive sufficient votes in the legislature to pass it over the veto. If an attempt be made, for it is said that a sufficient number of Democratic members of the house are pledged to support the governor in the exercise of his power. As

Classified Advertisements

Received Too Late For Classification.

FOR SALE OR TRADE—Two yearling colts for harness and single set of harness. Also one good work horse nine years old. W. L. Brown, R. F. D. No. 1.

WANTED—A middle aged lady would like a position as housekeeper. Phone 361 W.

FOR SALE—New bungalow, full basement, \$1375. Terms. 524 Eighth avenue east.

WANTED—A mail; one lying at home. Phone 420-R.

CUT PRICES ON SHOES

Shoes that are good—in that they possess QUALITY as well as appearance, and are offered at genuine bargain prices at a time like the present (which has no parallel in history) when all lines of shoes are scarce—there must be some sound reason for presenting such an offer to the public. AND HERE IT IS—A big shoe concern in Salt Lake sold us for CASH, all broken lines caused by their inability to renew contracts with the manufacturers, and thus compelling them to discontinue many of their most popular numbers.

The saving we made on the deal was from fifty to seventy-five per cent off present prices, and we offer them to you at the same saving.

We would feel justified in making this announcement in type measuring about two feet high—because the values are so big that they warrant it, but we prefer to have you rely upon our long established policy of "the truth and nothing but the truth." In our big ECONOMY BASEMENT you will find these shoes waiting for you to snap them up.

Toilet Soap Special

8 Cakes for 25c

Economy Basement

We have just received an extra good lot of Bed Spreads in the Marcellies; also Crinkled and Dimities. The prices are very reasonable.

FRIDAY & SATURDAY

SPECIALS

Dress Fabrics

On Friday and Saturday we offer you a choice line of yard wide dress fabrics in very pretty plaids. The plaids are so popular this spring we are sure that this offering will be taken full advantage of. The special price is FORTY NINE CENTS per yard.

Laces, Special

On Friday and Saturday we offer you a choice lot of laces. There are all kinds and every piece is a bargain. You know of course that the first choice is best so get here early for them. We shall put a limit of not more than twelve yards to one customer in order that they may be fairly distributed. Special price will be ONE CENT per yard.

Knit Gloves Special

An excellent variety of ladies' knit golf gloves in all colors at this very special price.

27c

On Main Floor

Some new Linens have arrived this week. Those round thread Art Linens, in 36-inch 40-inch and 45-inch wide. So much in demand.

The Greater

Idaho Dept. Store

Twin Falls

ORPHEUM THEATRE

THURSDAY, FRIDAY AND SATURDAY

Hughes, Leydon and Hughes

THE THREE GIRLS WITH HARP, VOICE AND VIOLIN—CLASSY, REFINED ENTERTAINERS.

The Lewis Dog Circus

TRAINED ANIMAL ACT.

ATTRACTIONS DIRECT FROM THE HIPPODROME CIRCUIT—ALSO FEATURE FOTO PLAYS

COMING MONDAY—ONE DAY ONLY.

The Second Idaho Regimental QUARTETTE

THE SINGING SOLDIER LADS, PRESENTING CAMP AND BORDER MELODIES—THE BEST FOUR SINGERS IN THE SECOND IDAHO REGIMENT.

FIRST SHOW AT 7 O'CLOCK PROMPTLY

ALWAYS A GOOD VARIETY—ALWAYS YOUR MONEY'S WORTH



SPEND THIRTS

And All Others Will Be Interested In Seeing The

Peerless Mme. PETROVA

—IN—

"EXTRAVAGANCE"

A Metro Wonderplay of supreme Power in 5 wonderful acts.

VAUDEVILLE PROGRAM

HURST AND DeVARS

CLEVER COMEDY TALKING AND SINGING ACT AND

STANLEY OVERTON

COMEDY CARTOONIST

CHILDREN'S MATINEE SATURDAY AFTERNOON, 2 P. M.

"THE THREE BEARS"

...ce, traveling and other expenses; \$5400, publication of reports; \$3600, law library at Boise; and \$1400 for the law library at Lewiston. The action in question is more accessible to the county seat of Franklin county and is in the southeastern portion of Bannock county, to vote upon the question of whether they wish it to remain a part of Bannock county or be annexed to Franklin county. The action in question is more accessible to the county seat of Franklin county and is in the southeastern portion of Bannock county, to vote upon the question of whether they wish it to remain a part of Bannock county or be annexed to Franklin county.

PERSONALS

Phone No. 88

Commissioner T. E. More returned yesterday from a trip to Boise. Captain P. W. McRoberts was in Marquette yesterday, en route to the sheriff's office.

Mr. and Mrs. James A. Fitzgerald returned yesterday from Los Angeles and Long Beach where they spent the winter.

Manager Johnson of the Johnson Auto Sales company left Tuesday evening for Salt Lake where he will attend the Salt Lake annual automobile show, which continues until the end of this week.

Mr. and Mrs. E. W. Faris, who have resided in Twin Falls for the past several years, have moved to Montpelier, Idaho, near Emmett. Mr. Faris will take charge of a ranch of several hundred acres at that place. The well wishes of their many friends go with them.

LOCAL BREVITIES

Phone 28

Warrant For Marmon.—A warrant was issued yesterday for E. S. Marmon charging him with the embezzlement of \$30 from the Ellor's Boise Music House.

Catholic Lenten Service.—There will be services in the Catholic church every Wednesday and Friday evening during Lent. The lenten season began yesterday, Ash Wednesday.

Spud Breakfast Preparing.—The spud breakfast set for March 8 is in the process of preparation as far as the "flow of souls" is concerned and many sparkling ideas are being evolved.

Swell Popcorn Stand.—The new Smith candy and popcorn stand at the corner of Main and Shoshone streets at the corner of the city is one of the sweetest things in town. All the apparatus is modern.

Salmon Settlers Meeting.—The annual election of directors of the Salmon River Settlers association will be held Friday, March 2, 1917, at Berger, Hollister and Rogerson, for the persons holding land in the corresponding districts.

Will Speak at Meeting.—Edward Anderson, formerly superintendent of schools in Springfield, Illinois, now in Twin Falls with his son-in-law, Mr. Butler, has consented to speak at the Parent-Teachers' meeting at the high school on Friday evening.

Broke Kne in Fall.—E. M. Guest of San Francisco representative of the National Discourt company while canvassing the city Tuesday afternoon broke his knee while on his way to a point where it was fractured by a similar accident last fall. He is now a guest at a local hospital.

State President Coming.—Primrose Robekah Lodge will hold a special meeting in the I. O. O. F. hall on Wednesday evening, February 28. Mrs. Edna Rose of Parma, Idaho, State President of Robekah assembly will be present. All members are requested to come out, a good time is expected.

Final Estimates \$18,500.—Final estimates on the cost of the Lilly grade place the cost at about \$18,500, according to the report of Engineer A. E. Fox to the county board. The people of Buhl have asked that a meeting of the board of commissioners be held in their city shortly to discuss this and other matters.

Summers Arrested.—W. R. Summers of Kimberly was arrested yesterday on a warrant sworn out before Probate Judge Duval on the charge of "leaving the carcasses of many sheep with in a quarter of a mile of an inhabited dwelling and with a quarter of a mile of a public highway more than twenty-four hours without burying same."

Will Sing at Rogerson Cafe.—In order to interest more of the business men in attending the gospel meeting now being held at the Methodist church, the Reverend Charles U. Butler, who is leading the singing during these meetings, will sing at the Rogerson cafe Saturday from 12 to 1:30 o'clock. Mr. Butler has a strong and pleasing baritone voice and all who have heard him have been pleased with his work. Mr. Butler has spent four years with the famous evangelist, Billy Sunday, leading the singing at the latter's revival meetings.



Nohols

Trousers with a Six

months' Guarantee

Made by a patent method

of weave and finish

that produces a

finishing workday and

holiday pants—wear-

proof, tearproof, scratch-

proof—during six months'

wear, you find we're

wrong, get a new pair

free.

Men's Trousers—\$2.50

Boys' Knickers—1.25

On sale here only.

STRAUS & GLAUBER

O. E. S. Meets.—The next regular meeting of the Twin Falls Chapter O. E. S. will be held Tuesday evening, February 27, in Masonic Temple at 8 p. m. There will be work.

Many Permits Granted.—During the past week a number of permits for buildings, several of which were previously described in THE TIMES have been granted. The following is the list: James Darkman, residence; T. J. Woods, garage; A. R. Ostrander, garage; A. J. Pavy, bus; James Black, residence; Dr. George H. Caldwell, East Lawn, large bungalow; P. B. Johnson, store building.

Married in Rupert.—Frank Sergio and Della Ray, who were refused a license to wed in this city this week by County Auditor E. J. Finch, are reported to have been married in Rupert later. Sergio is a Jap, and he and Della Ray were recently released from the county jail, where they had been confined on a charge of domestic violence. The reason for the refusal of the license was that when they sought a license County Auditor Finch refused it on the ground of racial differences. The couple then went to Rupert, where it is reported that the county auditor interpreted the law differently.

Mass Meeting Planned Later.—Owing to the fact that it has been impossible to get a quorum of the council together this week on account of the absence of Councilmen Bobler and Becken from the city, it will undoubtedly be impossible to make definite arrangements for the mass meeting to consider the waterworks plans submitted by the English Electric Co. and have tentatively suggested that it be held next Tuesday but no arrangements could be made without a council meeting, so the date has not yet been set. It will undoubtedly be later than at first intended, and will be announced when the council meets.

National and Local Patriotism.—The special service of the Episcopal church next Sunday evening will be largely in the interest of the proposed Twin Falls natatorium. Rector Francis says, "Assessment of church members is interested in the welfare of young people and therefore wishes to endorse the swimming pool project and to donate the offering on this occasion to that end." The service will be the singing by a boys' choir and by a quartette, consisting of the Misses Catherine Phillips, Edna Phillips, and Messrs. George Higgins and C. A. Lehigh. The church will be decorated with the national colors, and flags will be flown. The service will be in recognition of the country's diplomatic involvement.

Miss Roberts Speaks.—The Business Girls' association will hold a meeting at the home of Mrs. H. W. Young at 253 Fifth avenue north and enjoyed the usual weekly luncheon. Miss Margaret Roberts, daughter of General George H. Roberts of Boise and traveling librarian of Idaho, spoke on "The Woman's Age," not in a personal way regarding the period of mundane existence of any particular lady, but in a manner that indicated that the age in which we live is especially that of the woman. Miss Roberts urged wisdom and self-control in being governed by sentiment in political affairs, not to vote for any man because they "liked him and thought they were good." She urged party principles and be governed by them in exercising their suffrages.

Promoted to High School.—The following pupils have been promoted to the high school at the beginning of the present semester: Floyd, Alfred, Cora Baggs, Bethel Blake, Helene Brown, Albert Bailey, Emerson Bold, John Chamberlain, Lucille Dunn, Dean Davis, Edgar Davis, Robert Dingman, Alice Edwings, Eleanor Finch, Lloyd Foss, Mary Harris, Donald Hildreth, Harold Hildreth, John Humphrey, William Luck, Annetta McEwen, Helen McCauley, Beaulah Mills, Kate Montgomery, Leda Montague, Helen Hildreth, Hazel Lawrence Murphy, Wilmer Osborn, Cecil Patton, Jane Rose, Charles Patton, Cyril Hildreth, Leone Rydahl, Mathew Todey, Hazel Smith, Maurine Shifer, Violet Stevenson, Elton Southern, John Toupin, Stella Vance, Irene Warner, George Whitehead, George Ward.

MODEL COMPANY BECOMES EXCLUSIVE SHOE STORE

Large Stock of Men's Furnishings Sold Monday to Idaho Department Store—New Fixtures To Be Added.

A deal was closed Monday between the Model Shoe company and the Idaho Department store in which the latter took over the shoe company's stock of men's furnishings amounting to several thousand dollars. Involvement of stock was completed by Tuesday, the stock removed, and work began on the refitting of the Model store.

According to H. E. Barber, president of the shoe company, no time was lost in disposing of the stock after their decision to provide Twin Falls with an exclusive foot-wear establishment. Orders have already been entered for new fixtures and the store will be made up to date in every particular. A double line of upholstered opera chairs will be installed and for the convenience of their patrons, a ladies' rest room will be fitted out with comfortable chairs and desk for correspondence.

Some new lines of shoes will be added to the stock already carried and a feature of the new arrangement will be the hosiery department. This department will be made complete in every detail and a high class line of ladies' hosiery will be carried making their stock the best in the state.

An ad in our classified columns is the quickest and surest way to rent your house or spare room. A trial will convince you.

SOCIETY NOTES

Phone 28

Mrs. H. M. Brown entertained the Princess club, Thursday afternoon.

Mrs. Carl Hong and Mrs. Wm. Wagner will entertain at cards on Friday afternoon at the Hong home.

Mrs. R. T. Spafford will entertain at a checkered luncheon on Saturday at her home on Seventh avenue east.

Invitations have been issued for the regular club dance which will be held at Masonic hall on Friday evening.

Mrs. Star was hostess to the Acropolis club on Friday afternoon. Eight members were present to respond to roll call with current events. Mrs. Stover and Mrs. Thompson read papers on domestic science. Later in the afternoon dainty refreshments were served by the hostess.

Mrs. Salmon entertained the Ladies of the Salmon Social club on Thursday of last week. A business and social meeting was held. Eighteen members and three visitors, Mrs. Arzly, Mrs. Gahlin, Mrs. Kelly, Mrs. Mrs. Short, were present. A delicious luncheon was served, the place cards being small valentines with their couplets on lenten. The next meeting will be with Mrs. Lutzman on March 1.

On Tuesday afternoon Mrs. Ernest White entertained at a bridge party at her home on Eighth avenue. The guests were Mrs. Wolfe, Mrs. Putnam, Mrs. Moore, Mrs. Olson, Mrs. Erickson, Mrs. Gahlin, Mrs. Kelly, Mrs. Mrs. Short, Mrs. Kungely, Mrs. Karkis. A pretty hand painted place card was awarded Mrs. Moore for high score. After a pleasant afternoon at cards a dainty luncheon was served in two courses.

On Saturday Miss Maxwell gave another very delightful bridge party. The prizes were presented Mrs. Bentley and Mrs. Shroat. Those to enjoy this affair were the Mesdames Grant, Booth, Langley, Nickerson, Allen, McGregor, Woods, Bentley, R. A. Read, L. Smith, Skeels, Harrison, McEwen, Walters, Warren, Reed, Shroat, Piche, Sinclair, Wilson, Wright, and the Mesdames McMillan, Dwyer, and Bryant. Refreshments were served in two courses after a pleasant afternoon at cards.

Tuesday, February 27, will be open day at the Twentieth Century club, and the ladies of the community are cordially invited to come and enjoy the musical program arranged by Mrs. J. C. Bentley. It is to be a regular old fashioned program, with vocal and instrumental solos, duets, etc. The meeting will be in the Old Fellows hall and will call promptly at 2:30 o'clock. The parliamentary department will meet at the home of Mrs. Pike Friday afternoon, February 23, at 2:30 o'clock.

On Friday afternoon the home of Miss Jane Maxwell was the scene of a pretty bridge party. Mrs. Clouch and Mrs. Caldwell won high honors. A dainty two course luncheon was served at the close of the afternoon. Those present were the Mesdames E. J. Ostrander, Peavey, E. M. Sweezy, M. J. Sweezy, C. A. Robinson, Robinson, B. A. Hamilton, Hill, Guthrie, S. Hart, E. Williams, Foster, Clous, White, Young, Williams, Foster, Caldwell, Clouch, Eldridge, Barker, Sprague, Pike, B. E. Morse, Ralph Morse and Ambury.

A pleasant birthday party was arranged last Friday evening by Miss Lulu Kirkman for her parents, Mr. and Mrs. Kirkman, at their home at 237 Fifth avenue north. There is just a year and a day difference in the ages of Mr. and Mrs. Kirkman, the former celebrating his sixty-ninth birthday on Friday, February 16, and the latter observing her sixty-third birthday on Saturday, February 17. An impressive program was presented. An impromptu program consisting of songs, readings, and old style

radiations was carried out, followed by a short dance during which the guests of honor showed that they "were just as young as they used to be." A birthday supper was the last event which rounded out an enjoyable evening.

CHURCHES

St. Edward's Catholic
Corner of Second avenue and Fifth street east. Rev. N. P. Hahn, pastor. Sunday masses at 8:00 and 10:30 a. m. Evening services at 7:30 o'clock and week-day mass at 8:00 o'clock a. m.

Christian Church
"The One Foundation" will be the sermon theme at the morning service at the Christian church next Sunday. Front rank Bible school at 10:00 a. m. Senior C. E. at 6:30 p. m. "The One Foundation" will be the sermon theme at the evening service. Special music. Miss Corn M. Bicks will sing at the morning service. The public is always invited.

Methodist Episcopal
Sunday school at 10 a. m. Public worship at 11 a. m. and 7:30 p. m. Morning subject "The Will to Know." Evening subject "The Prostrate Christ." Bascom class for men at 5 p. m. Epworth League at 6:30 p. m. Services each night next week at 7:30. Mr. Butler will give a service in his own homelike way. Come and hear him in his solo work.

Ascension Episcopal Church
Corner Third avenue and Second street north. L. B. Franck, rector. Early celebration of the Holy Communion every Sunday at 7:30 a. m., except on the first Sunday of each month. Sunday school at 10 o'clock a. m. Regular morning service and sermon and full vested choir at 11 o'clock. Evening services at 7:30 every Sunday evening.

The special feature of the evening service will be music by the quartette. All are cordially invited to attend these services.

Presbyterian Church
All services in the High school auditorium. Sunday school, departments and classes for all at 10 a. m. Boyd Fuller, superintendent; Miss Pearson, superintendent of primary school; Sunday school at 10 o'clock a. m. Junior C. E. at 4 and C. E. at 6:30. The pastor will deliver the last sermon of the series at 11 a. m. subject "The Church of the Living and the Dead." The church of the living and the dead will be delivered, "Socrates and Christ—The Immortality of Soul." Strangers are cordially invited. Attractions, choir, in the morning and a male chorus in the evening will lead the service of praise.

Baptist Church
10 a. m. Sunday school.
11 a. m. Sermon, "Personal Purity in the Christian Life."
5 p. m. The Brotherhood. Every man who is interested in the big, live questions of the day is invited to come and participate in the questions and discussion, "War and Peace," at 6:30 p. m. The B. Y. P. U. in the church basement with group II leading.

7:30 p. m. Sermon, "The True Light that Lighteth up the World." The speaker will endeavor to disclose the darkness of sin, as manifesting itself in social and religious conditions at the beginning of the Christian era and then show how a bright and shining light manifested itself and has sent its life-giving rays into many parts of the world, ennobling, uplifting, and blessing human hearts and human relations. We invite you to our service and promise you good singing, friendliness and helpful service.

KIMBERLY COUPLE WED
ST. VALENTINE'S DAY
On Wednesday evening, February 14, at the home of Mr. and Mrs. W. S. Marquette of Kimberly, occurred the wedding of their daughter, Miss Lillian to Mr. Paul Willie Scott. The bride

Dear, dear Mother:

Every day since we left Cedar Rapids I have been thinking of you. The West is lovely, of course, and we are going to like Twin Falls ever so well, but it does seem a long way from Iowa—and you. If Frank were not the most thoughtful husband in the world, I believe I should be homesick, even though I have been so busy getting things unpacked and settled.

This morning at breakfast Frank and I planned a surprise for you—only I am going to tell you now so you will have the pleasure of anticipation. Since we were with you for so long, we know how empty your house seems to you without our babies in it, so we are going to have their photographs made to send to you.

I asked my neighbor to direct me to a good studio and she told me her children's portraits are always made at Bisbee's. This afternoon when I went shopping, I lingered long before the beautiful show-windows of THE BISBEE STUDIO. No young mother would be likely to pass them hurriedly for in them are so many splendid pictures of babies. Babies yawning, babies playing patty-cake, babies laughing, babies with action expressed in every tilt of the dear little heads and every gesture of the dimpled little hands—oh, they were simply lovely, Mother. I can scarcely wait to have our own children's pictures made. I'll let you know very soon all about it.

Your loving daughter,

RUTH.

The Letters She Wrote Home—No. 1.

was beautifully gowned in white silk swans taffeta, with an over drape of silk lace and pearl trimming. The groom wore a heavy blue serge. They were attended by Miss Hazel Wood and Mr. Jay Scott. Just before the ceremony Miss Beaulah Carlson, of Twin Falls sang sweetly, "I Love You Truly" while Miss Grace Toland played the piano. Two little girls, Ruth Scott and Neola Wilson, carried the bride and groom little white Arlene Wilson carried the wedding ring on a pink satin pillow. The impressive ceremony was solemnized by Rev. James of the M. E. church. After congratulations a delicious and beautiful repast was served in courtesy to the sixty guests in attendance. The couple were the recipients of many valuable checks, handsome and useful gifts. The bride is a graduate of the Long Beach, California high school and was employed as stenographer of the Swearingin & Wilson hardware store, being very popular among the young people of the town. The groom, Mr. and Mrs. A. M. Scott and has been manager of the Thomas Glover ranch for the past three years, and has marked ability. After March 1 the young couple will be at home to welcome their many friends at Kimberly.

TEN REEL FEATURE TELLS OF GRIPPING TALE OF '40ERS.
"The Argonauts," showing at the Isis theatre, Thursday and Friday, is one of the very few mammoth spectacles which hold the unfading interest for two hours throughout its "dramatic" scenes. The dramatic power of the story holds one from the first reel to the last. From beginning to end the play is a powerful lesson, and it is filled with dramatic situations.

PETROVA PICTURE WARNS AGAINST MASS EXTRAVAGANCE.
Are you extravagant? Are your expenses greater than your income? If they are, what will become of you and your loved ones in the future? All of these questions are strikingly answered in the great Metro-Popular Play and Players production, "Extravagance," with Mme. Petrova as the star, which will be seen here at the Idaho theatre on Friday and Saturday. The play denounces with a father and daughter who follow themselves by their own extravagance. The daughter's sister, an estimable man, is dragged into the maelstrom of financial ruin. From beginning to end the play is a powerful lesson, and it is filled with dramatic situations.

The Theatres

"FAIR AND WARNER" COMES TO LAVERING MARCH 2-3
Selwyn & Company will present their greatest success, "Fair and Warner," the farce by Avery Hopwood, which ran one year at the Harry Belafonte theatre, New York, and six months at the Cort theatre, Chicago, to unprecedented crowded houses, for an engagement at the Lavington theatre, March 2 and 3. They will present it with an ideal cast, in order that out-

Special Lace Sale at Booth's

"Another Package From Booth's"

LOT ONE—5c YARD

Laces for the whole summer. Zion made of fine mesh in beautiful patterns, compare with 15 and 20c laces, fit for ladies' dresses and children's wear, just as dainty and dandy as can be. 5c a yard.

LOT TWO—7 1-2c YARD

This lot includes Torchons and Maltese patterns, pretty and especially up to 2 inches wide, pretty for underwear and designing good for curtain edges. Think of only 7 1-2c a yard.

LOT THREE—10c YARD

Fine, dainty fillet laces, most wonderful in beauty and texture. Also plain val's of durability. All fine for dresses or underwear. These are extra at 10c.

LOT FOUR—12 1-2c YARD

Fancy, plait val's, good widths and strong threads, insertions to match and they are such as you would expect to get for 20c, but they're only 12 1-2c.

LOT FIVE—20c YARD

Wide and narrow fillet edges and insertions that look as pretty as hand made and only cost you 20c a yard. You need yards and yards of these this season. Buy Them Now.

"ANOTHER PACKAGE FROM BOOTH'S"

State Agents for Montana and Idaho.
GREAT FALLS, MONTANA

PROFESSIONAL and BUSINESS DIRECTORY

A conveniently classified Directory of reliable people who will appreciate your patronage. Give good service and entire satisfaction.

RATES—TWICE-A-WEEK
1 Month, per line..... 30c

For this Directory, THE TIMES solicits only the advertisements of permanent and established business houses and professional people. It therefore quotes no other rates for its Directory than those on a monthly basis.

ATTORNEYS

SWEETLEY & SWEETLEY, OFFICES
First National Bank Bldg.

ASHBURN WILSON, PRACTICE IN
all courts. Room 141st Nat. Bank Bldg.

GUTHRIE & BOWEN
W. P. Guthrie M. Bowen
Offices: Shoshone Building.

J. H. WISE, OFFICE ROOMS 6 AND 7,
Twin Falls Bank & Trust Co. Bldg.

E. M. WOLFE, OFFICE IN I. D. BLDG.

EXPERT ACCOUNTANT

J. H. HADCLIFFE
Expert Accountant, Auditor and Sys-
tematizer. Room 4, Power Building.

SEWING MACHINES

"SIT-STRATE WHITE" NOW ON
sale here. Calls promptly attend-
ed. L. A. Adams, husband
211 Shoshone street south, Warberg
Building.

OSTEOPATH

DR. EMMA C. CROSSLAND
McCormick Bldg. Phone 135
Res. 225 6th Ave. E.

FEED STORES

ABOHER HAY, GRAIN & FEED
Company. Wholesale and Retail de-
alers, baled hay, alfalfa meal, grain and
seed, custom grinding. 254-251 6th
Ave. W. Telephone 23. John Finko,
Prop.

FRATERNAL SOCIETIES

M. W. A. CAMP, No. 10890, meets
2nd and 4th Thursdays, Moose hall
H. C. Seranston, Consul. Paul Smith,
Clerk. Tel. 369-J.

10176, 10182, 10233, 10294, 10292, 10290,
10314, 10295, 10300, 10101, 10403, 10405,
8994, 10120, 10294, 10293, 10453, 9818,
9819, 9836, 9837, 10056, 10233, 10231,
10218, 10298, 10310, 9676, 9677, 9675,
9676, 9677, 9678, 9679, 9679, 9679,
9679, 10097, 10098, 10099, 10230, 10230,
10231, 9820, 9823, 10239, 10262, 9260,
10065, 10076, 10105, 10166, 10167, 10168,
9353, 9352, 9321, 9322, 10222, 10356, 9303,
9304, 9489, 9493, 9493, 9528, 9528, 9528,
9494, 9497, 9714, 9756, 9757, 9898, 9882,
9853, 9839, 10040, 10087, 10088, 10089,
10091, 10091, 10091, 10222, 10182, 10224,
10237, 10236, 9908, 10098, 10292, 10290,
10287, 10265, 10246, 10123, 9702, 9791,
100, 9827, 9840, 9842, 9841, 9842, 9871,
9298, 10001, 9110, 9294, 10239, 10347,
10225, 10227, 10273, 9204, 10239, 10248,
10429, 10021, 10170, 10202, 10204, 9603,
9604, 9665, 9605, 9759, 9760, 9805, 10071,
9810, 10056, 10111, 10112, 10317, 10145,
10089, 10295, 10297, 10298, 10297, 10308,
10296, 9744, 9765, 9765, 9886, 9889,
10075, 10284, 10057, 10197, 9773, 9557,
10059, 10060, 10434, and 10433.
The above numbers cover all out-
standing school warrants to date, ex-
cept the following, to-wit:
Nos. 8997, 9015, 9220, 9390, 9424,
9446, 9438, 10129, 10152, 10177, 10241,
10242, 10278, 10292, 10324, 10336, 10337,
10238, 10348, 10367, 10370, 10382, 10386,
10387, 10425, 10446, 10451.
Interest on the above called war-
rants commencing February 19, 1917.
Dated and posted, February 19, 1917.
H. COGGINS,
County Treasurer

NOTICE

Notice is hereby given by the un-
dersigned, that upon the 8th day of
March, 1917, at two o'clock p. m., I will
sell the following animals to satisfy
feed bill and credit to the highest bid-
der for cash, said sale will take place
at the stock yards in Twin Falls.
Said animals are described as fol-
lows:

One 2-year old heifer, white face,
dapple on left side of neck; under bit
both ears. Branded, combined three
fourths Star B on left hip.
One 3-year old red heifer.
One 2-year old ranch heifer.
One white faced cow.
One 5-year old steer, mottled faced.
One year old heifer, mottled faced.
All same markings and brand as
above.
One 2-year old mottled faced steer,
dapple in center of forehead, no ear
marks. Branded, spider cross on the
right hip.
Dated, February 22, 1917.
W. F. PORTER,
Stock Commissioner.

NOTICE

Resident owners who were not in
the sprinkling district last season,
and desiring to be included this season
are requested to present their peti-
tions to the city council not later
than March Fifth, 1917.
W. F. PORTER,
Street Commissioner.

NOTICE

To all members of Hansen Potato
Growers' Association:
You are hereby notified that a meet-
ing of the Hansen Potato Growers'
association will be held at its ware-
house Friday, March 9, 1917, at two
p. m. for the purpose of adopting a
new set of by-laws.

Filer Items

(From the Filer Journal)
There will be a grand military ball
Friday evening at the hall, given by
the neighborhood who so
recently returned from the war.
The proceeds go to the soldiers home
fund. The boys should have a
large attendance of the dancing pub-
lic.

J. W. Nicholson will build an addi-
tion to his blacksmith shop to be
used for a garage. He has taken the
agency for the busch car, and will be
in a position to do all kinds of auto
work. J. W. Nance, the well known
auto mechanic, will be associated with
him.

Mr. Bludsoe who recently moved to
Filer has bought the old building on
the Munyon lot and will move it on
the corner street opposite the Roy-
olds Moto company's garage and fix
it up for an automobile repair shop.
J. W. Gardner will be employed with
him.

Thursday morning at 3 o'clock Mrs.
Rhoda Nipper died of hemorrhage, age
thirty-five years. Mrs. Nipper was
the wife of A. W. Nipper, who lives
five miles northeast of Filer. The
family moved here about three years
ago from Tennessee. The deceased
leaves four children, together with
the little boy for whom she gave her
life. The sympathy of all our people
go out to the bereaved ones in their
hour of sorrow.

Wilfred Olson of Twin Falls was in
town yesterday looking for a house.
Mr. Olson expects to make Filer his
home in the future. As is known to
most men Mr. Olson is the agent here
for the Volger Seed company. The
Lake, Mr. Olson informed the jour-
nal that the Volger Seed company
would soon begin the erection of a
big seed house on their lots on the
right-of-way. The building is to be
of cement and a credit to the town. Mr.
Olson here as they are both well
known.

The following people were in at-
tendance at Twin Falls Friday night
at the Lila Domino show: Mr. and
Mrs. Truitt, Mr. and Mrs. Mr. and
Mrs. Edwards, Mr. and Mrs. Mr. and
Mrs. E. Moore, Mr. and Mrs. Charles Roy,
Miss Hazel DeKloze, Mr. and
Mrs. A. B. Wood, H. A. Perdue, Dale
Chipman, Miss Case, Miss Williams,
Miss Hicks, Mr. and Mrs. Drummend,
Miss Hilda, Mr. and Mrs. Drummend,
have decided to put on a race meet
at the fair grounds in July. They
have not fully decided on the dates,
but the Fourth is a possibility. They
have this kind of entertainment
tramping around in the hot sun with
nothing to do but drink lemonade and
eat candy in a manner of enter-
tainment could be provided for the
merry-go-rounds, etc., for the chil-
ren. As the matter develops, the

Journal will keep you posted, but get
ready to spend the Ever-Glorious in
the only place in the county where it
can be properly taken care of.

While returning from Twin Falls
recently with his family, E. H. Snyder
narrowly escaped death when his car
struck the railing of the first bridge
across Rock Creek, west of Twin
Falls. When nearing bridge his car
got into a rut and headed to the right
of the bridge. Being too near to pro-
ceed in light and instead of their
leaving the rut and righting itself as
was his intent, struck the right wing
of the bridge which gave way toward
the yawning cavity below, some 200
feet deep. The front right wheel
had already gone over the precipice
when the car stopped. The only dam-
age done was a bad scare and con-
siderable loss of sleep.

HOPEFUL BELGIAN GIRL



Miss Raymonde Coudert Glanzer, a
directress of the Aitup Belge, one of
the foremost relief organizations of
women in the French and Belgian war
zones, who has just arrived in the
United States. She says she has not
come to this country to talk "gloom,"
but that she brings a message of cheer,
founded on the hope for the future.
The United States has heard a lot
about the sufferings of the men in the
trenches, and of the women and chil-
dren who have been driven from their
homes," she says, "but I want to tell
of the regeneration that is taking
place; how we are helping people to
find themselves for the future and how
they are preparing for the new life
after the war is over."

So big it was harder to put on
than a 2 used to be. It was a
thing that ate at the core of the
war. It was a thing that was
big with knives and scissors, but
no more feeling for me. Two
drops of "Gels-it" did all the work.
It makes the corns soft and get so
soft that you can just pick it right
off with your fingers!

It has been nothing new dis-
covered for corns since "Gels-it"
was born. It's the new way—the
corns—oh, yes, it's the new way—
"Gels-it" is sold everywhere, 25c
a bottle, or a set of three by
E. Lawrence & Co., Chicago, Ill.

Sold in Twin Falls and recommended
as the world's best corn remedy by
Skeels-Wiley Drug company; City
Pharmacy; Bedford-Fisher Drug com-
pany.

Reasons
Why

Small Orders
A load for a barn or a stick for
a shelf—it's all the same to us.
You get willing, helpful service
either way.
The small ones give us a chance
to show you how we handle the
big ones.
You'll eventually make up your
mind to trade with us, so—
WHY NOT NOW?

GEM STATE LUMBER CO.

H. L. AUSTIN, Manager
Twin Falls, Idaho

Chocolates
Soft fluffy, creamy centers, delicious flavors.
Made in Twin Falls by
VARNEY, The Live Candy Man
Send a box to your friends and show them we are up-to-date
139 Main West Phone 366

BARGAINS IN REAL ESTATE

30 acres improved land 3 1/2
miles from Twin Falls, \$165.00
per acre, easy terms.

80 acres 3 1/2 miles from
Heavy station, well improved,
\$125.00 per acre, terms.

80 acres 1 1/2 miles from Sugar
Factory, well improved, \$175.00
per acre.

40 acres 2 1/2 miles from town,
some rough land, price, \$135.00
per acre, easy terms.

100 acres, all in alfalfa, 1 1/2
miles from Sugar Dump, \$210.00
per acre, good terms.

5-room house and bath, with
full basement and porches on
corner Ninth avenue, \$2550, easy
terms.

163 acres fine land with good
buildings in Hagerman valley,
\$20,000.00. This is a fine place
for sheep.

5-room house, with bath, on
corner lot in east part of city,
\$10,000.00. Small cash, balance
and monthly payments for bal-
ance.

4-room house, east part of the
city, \$1700.00, very easy terms.

FOR RENT

80 acres, 1 1/2 miles from Sugar
Factory, \$165.00 an acre, cash
rent.

List Your Property With Us

Hill & Taylor

Corns Loosen Off With Magic "Gels-It"



"I tell you, before I heard of
"Gels-it" I used to try one thing after
another for corns. I will tell you
I used bandages and they made my
feet sore."

So big it was harder to put on
than a 2 used to be. It was a
thing that ate at the core of the
war. It was a thing that was
big with knives and scissors, but
no more feeling for me. Two
drops of "Gels-it" did all the work.
It makes the corns soft and get so
soft that you can just pick it right
off with your fingers!

It has been nothing new dis-
covered for corns since "Gels-it"
was born. It's the new way—the
corns—oh, yes, it's the new way—
"Gels-it" is sold everywhere, 25c
a bottle, or a set of three by
E. Lawrence & Co., Chicago, Ill.

Sold in Twin Falls and recommended
as the world's best corn remedy by
Skeels-Wiley Drug company; City
Pharmacy; Bedford-Fisher Drug com-
pany.

**Are You
Interested
In Jarbidge**

We are a RELIABLE firm with good
connections in real estate, op-
erations and leases on mining prop-
erties.

J. W. Johns Co.
Jarbidge, Nevada.

OPPORTUNITY may be knocking at
your door in the form of a TIMES clas-
sified ad. Don't overlook her.

WANTS

IMPORTANT—Do not telephone THE TIMES office in regard to these Ads. No information can be given. Answers in care of THE TIMES must be written and mailed or left at THE TIMES office.

CLASSIFIED ADVERTISING RATES

1 Insertion, per word..... 1c
Minimum total charge to be not less than 25c.

Read your ad the first time it
appears and notify us immedi-
ately if an error appears.
Call or mail your requirements
or phone 35.

FOR SALE

FOR SALE—80 acre ranch, 3 1/2
miles south, 2 miles west of Jerome.
All improved and under cultivation,
fenced with rabbit proof fence. Price
\$850.00 per acre; \$1000.00 cash. This
is a good piece of land and a bargain.
Will sell at 40¢ if desired. C. H. Drayton,
Idaho-Ha Ranch, 3 miles south and 2
miles west of Jerome, telephone 104-
F-21.

Call at 137 North Shoshone Street
for bargains in used cars. H. F. Wat-
son.

FOR SALE—Plane, nearly new, in- quire Warburg Transfer Co.

STOCK OF GENERAL MERCHAN- dise for Sale—Will invoice about \$4000.00. Well located country town. Post office goes with store. Bargain if sold quick. Address P. O. Box 242, Twin Falls, Idaho.

FOR SALE—Ranch of 67 acres, well located. Terms. E. A. Moon, owner.

CALL 21—For class. Moon's Shop, near postoffice.

FOR SALE—One coming three year old and two year old Registered Percheron Stallions. These horses are good individuals and are rich in some of the best Percheron blood. They are priced right. Will make terms to suit purchaser or give a reasonable discount for cash. Claude Brown, Buhl, Idaho.

FOR SALE—White Sewing machine in good repair. Bargain. 209 Wash- ington avenue.

FOR SALE OR TRADE—5-room house in Gooding for Twin Falls, farm land, 20 acres tract preferred. Write B. L. Kinney, 222 Third avenue east.

FOR RENT—Two room for light housekeeping. Inquire at 222 Third avenue east. B. L. Kinney.

FOR SALE OR TRADE—Well im- proved 6-acre tract. Will take good auto in part payment. Also have prac- tically new Studebaker buggy, and a hand-made set of harness, for sale or trade. Address P. O. Box 63, city.

FOR SALE—Purchased C. R. L. R. Red cow, \$100 per 15 lbs. 1000 baby chicks 15c. Elsie Floverdew, Route 3, Twin Falls.

FOR SALE—Choice Duff Rock cockerels. Prices reasonable. Mrs. J. M. Pierce, Berger, Idaho.

FOR SALE—Rooming and boarding house at a bargain for cash. Doing a good business, in best location. Ad- dress "C" in care of the Times.

FOR SALE—About 100 sacks Net- ted Gem Seed Potatoes, Phone 511 J. I.

FOR SALE—Sewing machines: New Home, Singer, White, Wheeler & Wil- son, New Automatic, \$24. New Singers sold on easy payments. Sing- er Shop, 222 Main avenue south. Ma- chines rented.

LEGAL PUBLICATIONS.

NOTICE OF SHERIFF'S SALE

Frances C. Weisner, plaintiff, vs.
Edwin H. Adams and Alice A. Adams,
husband and wife, defendants.

Notice of Sheriff's Sale on For-
closure of Mortgage.

Under and by virtue of an order of
sale and decree of foreclosure, issued
out of the District Court of the Fourth
Judicial District, State of Idaho, in
and for the County of Twin Falls, on
the 10th day of February, 1917, in the
above entitled cause, wherein Frances
C. Weisner, and above named plaintiff,
obtained a decree against Edwin H.
Adams and Alice A. Adams, husband
and wife, defendants, on the 10th day
of February, 1917, which said decree
was recorded in Judgment Book 4, of said
Court, at page 335; I am commanded

to sell all that certain lot, piece, or
parcel of land situated in the County
of Twin Falls, State of Idaho, and
bounded and described as follows, to-
wit:

Lot numbered Four (4), in Block
numbered One (1) in Ashton addition
to the City of Twin Falls, State of
Idaho, according to the plat of same
on file and of record in the office of
the County Recorder of Twin Falls,
Idaho, together with the tenements,
hereditaments and appurtenances
thereto belonging or in anywise appar-
taining.

Notice is hereby given, that on the
12th day of March, 1917, at 10 o'clock
a. m. of that day, in front of the Court
House Door in the City of Twin Falls,
County of Twin Falls, State of Idaho,
I will in obedience to said order of
sale and decree of foreclosure, sell
the above described property, or as
much thereof as may be necessary to
satisfy plaintiff's decree with interest
thereon and costs, to the highest bid-
der for cash, lawful money of the
United States.

Dated, February 12, 1917.
FRANK M. KENDALL,
Sheriff of Twin Falls County, Idaho.
By W. G. ZIGLER,
Deputy Sheriff.

Longley & Walters, residence, Twin
Falls, Idaho, attorneys for plaintiff.
15-22; 3-13.

CALL FOR COUNTY WARRANTS

The following county warrants will
be paid upon presentation at the coun-
ty treasurer's office, Twin Falls, Idaho:
County School Warrants Nos. 8912;
8982, 9014, 9985, 9987, 9993, 10004,
10003, 9985, 9990, 9993, 10003, 10010,
10115, 10119, 10125, 10124, 10174, 10175,

HELP WANTED.

WANTED—Position on ranch for
man and wife. Write Roy Gipson,
Twin Falls, Ida.

WANTED—Reliable man to run
milk machine and do dairy work.
Machine experience not necessary but
must be good hand milker. Steady
employment year around at good
pay. H. A. Zink, Jerome, Idaho.

WANTED—Two strong women with
experience to scrub bills at Hogerson
cave at nights. Good wages.

WANTED—Married man to work
on ranch. Phone 511 J. C. W.
Griggs.

FOR RENT

FOR RENT—4-room house, all mod-
ern. Call 645 Second avenue north.

FOR RENT

FOR RENT—4-room house, all mod-
ern. Call 645 Second avenue north.

PARENT-TEACHERS TO DISCUSS DANCING

Interesting Program Promised For Friday—Prominent Persons to Give Pro and Con of Subjects.

In the plans of Mrs. John E. White, president of the high school division of the Parent-Teachers association, materialize, a very interesting program will be presented at the regular meeting of the association, at 7:45 o'clock Friday evening at the high school auditorium. Included in the program will be a formal and informal discussion by several prominent Twin Falls people regarding the proposition for obtaining the permission of the school board to set aside one hour for dancing every Friday afternoon in the high school.

This discussion comes as a result of the suggestion by several people to Mrs. White that the association endeavor to have one hour a week set aside as a social hour for the high school students. Feeling that no outside organization or the superintendent had jurisdiction over a matter of this kind, and that the proposition should be put to a vote of the students' parents, and following a motion

to that effect at the last meeting, Mrs. White sent out postal cards asking for an affirmative or negative opinion concerning the matter. These replies have been received by Mrs. White, and will be opened during the evening's program.

On the affirmative side, Mrs. White will speak for the children, V. H. Ormsby, for the public and the Reverend Francis, for the church. These same subjects for the negative side of the argument will be taken respectively by Mrs. Harman, Sheriff Kendall, and the Reverend Shepherd. A general discussion will follow, and if the result of the postal card vote is affirmative the matter will be presented to the school board for their earnest consideration, and it is thought that as a result of the vote, the attitude of the board will be favorable. There will also be discussed the proposition whether or not it would be desirable for the different high school classes to wear distinguishing uniforms.

The program for the evening will consist of music by the high school orchestra; report on class uniforms by the class chairman; a short paper on "Home Study vs. School Study" by Mrs. T. H. Ivin; announcement of result of postal card vote; formal discussion of dancing in high school; general discussion.

Our subscribers read the classified columns. Reach those subscribers cheaply and surely by placing your wants in our paper.

OFFICERS DID NOT "GET A BUM STEER"

Several Nice Questions of Law Prevented the Capture of Ruthless Outlaw From Plains.

A long, low, lanky, rakish looking steer created consternation in officialdom Saturday and raised several nice questions of jurisdiction among officers which they took due time to ponder, in order that they not rush "where angels fear to tread," without "having their technicalities on straight." The first appearance of the pirate of the sage brush, noted by Deputy State Inspector R. A. Graham at the stock yards, where he was making an inspection of a bunch of cattle. The animal manifestly did not ordinarily associate with the pampered, aristocratic kind that Graham was inspecting. The inspector waved his arm contemptuously and said, "Bum steer, interloper." The steer took umbrage at the attitude assumed by Graham and lowering his head, he replied "Boo!" which in the bovine tongue means "beat it," and sought the proximity of the inspector, evidently with hostile intent. Graham construed this as "an unfriendly act" and determined to sever all diplomatic relations at once. He had read in the Ladies Home Journal that Colonel Bryan had said that he took exercise by running. It occurred to Graham that he needed exercise so he intimidated the Commoner with better success than attended Nebraska. The steer was scarcely worthy of mention as an "also runner." Mr. Graham says that until that record breaking sprint he never realized the full significance of the meaning of the expression "his foot slipping." When he looked back from the heights of the fence, the steer was gazing after him in amazed admiration. His steeplechase then scaled the fence himself and rumbled through town. Graham then reported to the city officers. He said that he would get the animal only he had no authority except in the country and if the brute should resist arrest, he would have no legal right to take him. He had been reading Carranza's protest about following outlaws on the ground of others and knew what complications might ensue. Chief of Police W. J. Taylor looked up the decisions of the supreme court and decided that his jurisdiction was. Ross returned. Later several Shoe Sole cowboys came to town looking for the steer and presumably got him, as he has not been heard from since.



SCENE FROM "THE GREAT SECRET"

Featuring Francis H. Bushman and Beverly Bayne in the two-act play "The Hidden Hand" shown Monday, one day only at the Casino theatre.

berly road and started in the direction of the sugar factory. Finding his jurisdiction was, Ross returned. Later several Shoe Sole cowboys came to town looking for the steer and presumably got him, as he has not been heard from since.

SUGAR COMPANY THOUGHT TO BE

(Continued From Page 1)

ed up this year besides 1600 acres held over. This, according to the statement of one of their own men. They could run the factory a short time with reduced profits if they did not yield, but would lose money this year by not running at all.

Several discussed the allding scale suggested. The opinion seemed to be that this would be a bad thing unless that the tests were made at the dump after the beetle had dried somewhat. Instead of in the ground. The details of how the plan could work were not determined.

E. E. Henomy then read a letter from the Southern California Beet Growers' association in which it appeared that beet roots ran as high as eighteen per cent sucrose. Prices ranged from \$4.50 to \$5.50 a ton. The growers had not been properly organized. On an investment of \$95,000,000 they were getting less returns than the beet growers were getting. An investment of \$15,000,000. The California association declared that the Twin Falls growers should get at least eight dollars and said that their own association would shortly make strong demands for readjustment on the companies there. It was stated on the floor that Ohio growers got eighty

cents a hundred more than Idaho growers last year and that Swiss growers got ten dollars, although sugar sold at a lower price there than here.

A motion to consider the proposition of a sliding scale, ranging from seven dollars, according to quality, was killed and the meeting having by a roll call vote unanimously determined to stand on the eight dollar flat rate, it adjourned, subject to the call of the president.

Hollister News

(Times' Special Correspondence)

Mr. Golf has rented his farm on miles east of Hollister.

Mr. Henckle sold his five-acre tract to Mr. Dietrich.

Mr. Dietrich of Hollister has bought Mr. Hart's ranch of 40 acres east of town.

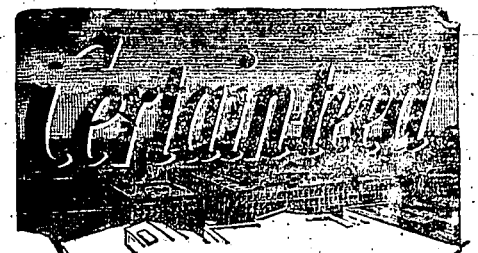
Mr. Reems loaded his personal property into his car last week and is shipping his goods to Wendell, where he expects to locate.

J. D. Burroughs returned last Friday from an extensive trip in Mexico, where he went to spend the holidays. He reports having a fine visit with friends and relatives.

Mr. Golf was a visitor in Hollister last Friday.

The apron and overall dance proved to be a great success as a very big crowd was present and all enjoyed themselves.

E. Larson will this week go to Boise, where he will assist the governor in regards to our water question here.



Above everything else CEMENT-TEED stands for quality, efficiency and economy. Any product bearing the name CEMENT-TEED will deliver all three in heaping measure.

Cement-teed Roofing

is the most efficient type of roofing for all kinds of buildings. For the sky-scraper a built up roof of CEMENT-TEED is now recognized as the ideal roof.

For factories, especially where the roof area is considerable, the light weight, economy and long life of CEMENT-TEED makes it by far the most desirable type of roof. For garages, out-houses, farm buildings, the economy and long life make CEMENT-TEED superior to any other. For residences CEMENT-TEED is the ideal roof.

CEMENT-TEED costs less to buy, lasts to last, and has no peeling of life. It is light weight, clean, sanitary and fire resistant. It will not dry out or rust, and is absolutely weatherproof.

CEMENT-TEED is made in rolls, plain and slate surfaced; also in slate surfaced shingles. Three thicknesses, but only one quality—the best. Guaranteed 5, 10 or 15 years, according to thickness (1, 2 or 3 ply), but will outlive the period of guarantee.

The long life of CEMENT-TEED is due to its quality and the superiority of a special blend of soft asphalt, kept soft, and prevented from drying out, by a coating of harder asphalt.

Cement-teed Paints and Varnishes

are made by experts and mixed by modern machinery, so that every can exactly conforms to the expert chemists' formula, both as to ingredients and color.

With modern facilities for manufacturing a full line of paints and varnishes, on a large scale with unlimited resources, and the extensive sales organization of the Cement-teed Products Corporation, costs are materially reduced, and CEMENT-TEED Paints can be sold for less than good paints usually cost.

The professional painter can not mix his own paint, and with CEMENT-TEED Paints any more than the small shoemaker can compete in price and style with the big shoe factory. It is better, both for the painter and the man who pays for the job, if the painter uses CEMENT-TEED Paint. All unskilled, inexperienced, wasteful and left-overs are avoided, and the quality is assured.

Besides, CEMENT-TEED Paint is guaranteed to give satisfaction. In case of the painter's guarantee you have the guarantee of a business which has become the largest of its kind in the world, because it makes and sells good goods at the lowest possible price, and backs them with all of its enormous resources.

If you are building or need a new roof, it will pay you to investigate CEMENT-TEED before deciding upon any other roof. For cash by Cashier, everywhere.



If you paint it will pay you to use CEMENT-TEED. It will employ a painter, instead, for his work, and as well as that, he can use CEMENT-TEED Paints.

CEMENT-TEED PRODUCTS CORPORATION
Proprietors of General Roofing Mfg. Co., Gregg Varnish Co., Menard City Paint & Color Co.

New York	Chicago	Pittsburgh	St. Louis	San Francisco
Philadelphia	Cleveland	Portland	San Antonio	San Jose
San Diego	Albany	Albuquerque	Alameda	Albany
Albany	Albany	Albany	Albany	Albany

Lavering Theatre

TWIN FALLS

Two Nights, Fri. and Sat., Mar. 2-3

Selwyn & Co., Presents

Fair and Warmer

AVERY HOPWOOD'S

GALE OF LAUGHTER

Begins With a Zephyr—Ends in a Whirlwind

A PLAY OF

Temperament and Temperature

One Year at The Eltinge Theatre, New York

The Record Breaking Mirth Maker

Prices \$1.00, \$1.50 and \$2.00

Seats Now Selling at Skeels-Wiley Drug Company.

Show starts promptly at 8:30. No one seated during acts.