

Worshak Nominated to Take Office Created by Death of Miller; Dives Until January, 1951

Former U. S. Sen. Henry C. Dworshak, R. Ida., today was appointed to the vacant vacancy created by the death of the man who beat him last November...

Appointed to the seat which had been held by the late Sen. Bert H. Miller, D., was Republican Gov. C. A. Robins. The selection of the 55-year-old former weekly publisher of Burley, who served in the senate from 1946 through 1948, came as a surprise...

Worshak, who served in the senate from 1946 through 1948, came as a surprise. His name had figured in early speculation but later reports had indicated he was out of the running.

Appointment of a Republican replaces the majority in the Democratic majority in the senate to eight votes. It now changes the lineup to Democratic and 48 Republican.

Miller Charged Opponent The 70-year-old Miller, who scored a political upset when he beat Dworshak in last-November's general election by a scant 1000 votes, died of a heart attack in Washington last October.

As a result of the countless conferees and the slow pace of the legislative program during the past six days I have named Henry C. Dworshak to succeed the late Sen. Bert H. Miller for the remainder of the term.

It appeared to me that a preponderance of sentiment expressed in the senate was in favor of the appointment of Henry C. Dworshak to succeed the late Sen. Bert H. Miller for the remainder of the term.

Worshak will serve only for the remainder of the first congress under the terms of the agreement...

Gillette Says Traffic Lights at Five Points to Cut Accidents

The traffic hazard at five points east and west will be eliminated or greatly minimized by the installation of traffic lights, according to Police Chief Howard W. Gillette...

Automatic controls will turn the red and green lights to red for four or five streets and amber flashers for through lanes at 11 p.m. each night...

Chief Gillette expressed the opinion that the danger of cars "backing up" across the railroad tracks on Blue Lakes boulevard south will be eliminated by the lights.

That amber light means to stop and not to proceed up to cut off before the red light comes on...

No pedestrian lights are planned for the intersection, though installation of traffic lights at Five Points east is pending, Gillette disclosed...

That amber light means to stop and not to proceed up to cut off before the red light comes on...

Major difficulty in regulating traffic is caused by local drivers, Gillette said. They stop for a red light, then do not start as soon as it turns green...

Major difficulty in regulating traffic is caused by local drivers, Gillette said. They stop for a red light, then do not start as soon as it turns green...

Jury Decree Includes All 11 on Trial

NEW YORK, Oct. 14 (AP)—A federal jury convicted 11 breaking American communist leaders today of conspiring to overthrow the U. S. government by force. Immediately afterward, Federal Judge Harold R. Medina found five of their lawyers guilty of criminal contempt during the nine-month trial and sent them to jail for terms varying from 30 days to six months.

Eugene Dennis, a defendant who acted as his own lawyer, also drew a six-month contempt sentence. The judge, after seven hours of jury deliberation that began Tuesday afternoon, a strike-ridden trial unprecedented in American history.

Appeal Denied It was hinted during the trial that certain of the leaders, who are certain to appeal to the U. S. supreme court, might drive the Communist underground in American history.

It was hinted during the trial that certain of the leaders, who are certain to appeal to the U. S. supreme court, might drive the Communist underground in American history.

It was hinted during the trial that certain of the leaders, who are certain to appeal to the U. S. supreme court, might drive the Communist underground in American history.

It was hinted during the trial that certain of the leaders, who are certain to appeal to the U. S. supreme court, might drive the Communist underground in American history.

It was hinted during the trial that certain of the leaders, who are certain to appeal to the U. S. supreme court, might drive the Communist underground in American history.

It was hinted during the trial that certain of the leaders, who are certain to appeal to the U. S. supreme court, might drive the Communist underground in American history.

3 Boys Are Arrested by Local Police

Arrestees of a Twin Falls billiard station attendant led to the arrest Friday of three youths who were charged with burglary in southern Idaho.

Arrestees of a Twin Falls billiard station attendant led to the arrest Friday of three youths who were charged with burglary in southern Idaho.

Arrestees of a Twin Falls billiard station attendant led to the arrest Friday of three youths who were charged with burglary in southern Idaho.

Arrestees of a Twin Falls billiard station attendant led to the arrest Friday of three youths who were charged with burglary in southern Idaho.

Arrestees of a Twin Falls billiard station attendant led to the arrest Friday of three youths who were charged with burglary in southern Idaho.

Arrestees of a Twin Falls billiard station attendant led to the arrest Friday of three youths who were charged with burglary in southern Idaho.

Recreation Plans Urged In All Cities

LEWISTON, Oct. 14 (AP)—Idaho Recreation Council urged that all cities plan recreation programs for their residents that they plan street and water projects.

LEWISTON, Oct. 14 (AP)—Idaho Recreation Council urged that all cities plan recreation programs for their residents that they plan street and water projects.

LEWISTON, Oct. 14 (AP)—Idaho Recreation Council urged that all cities plan recreation programs for their residents that they plan street and water projects.

LEWISTON, Oct. 14 (AP)—Idaho Recreation Council urged that all cities plan recreation programs for their residents that they plan street and water projects.

LEWISTON, Oct. 14 (AP)—Idaho Recreation Council urged that all cities plan recreation programs for their residents that they plan street and water projects.

LEWISTON, Oct. 14 (AP)—Idaho Recreation Council urged that all cities plan recreation programs for their residents that they plan street and water projects.

Civilian Board Asked To Settle Unity Row

WASHINGTON, Oct. 14 (AP)—Two key congressmen proposed today that President Truman name a civilian board to study the army's new defense plans which has erupted in the armed forces.

WASHINGTON, Oct. 14 (AP)—Two key congressmen proposed today that President Truman name a civilian board to study the army's new defense plans which has erupted in the armed forces.

WASHINGTON, Oct. 14 (AP)—Two key congressmen proposed today that President Truman name a civilian board to study the army's new defense plans which has erupted in the armed forces.

WASHINGTON, Oct. 14 (AP)—Two key congressmen proposed today that President Truman name a civilian board to study the army's new defense plans which has erupted in the armed forces.

WASHINGTON, Oct. 14 (AP)—Two key congressmen proposed today that President Truman name a civilian board to study the army's new defense plans which has erupted in the armed forces.

Hope Revived In 14-Day Tie Of U. S. Steel

PITTSBURGH, Oct. 14 (AP)—A 14-day strike of U. S. Steel workers today ended in a tie between the union and the company.

PITTSBURGH, Oct. 14 (AP)—A 14-day strike of U. S. Steel workers today ended in a tie between the union and the company.

PITTSBURGH, Oct. 14 (AP)—A 14-day strike of U. S. Steel workers today ended in a tie between the union and the company.

PITTSBURGH, Oct. 14 (AP)—A 14-day strike of U. S. Steel workers today ended in a tie between the union and the company.

PITTSBURGH, Oct. 14 (AP)—A 14-day strike of U. S. Steel workers today ended in a tie between the union and the company.

PITTSBURGH, Oct. 14 (AP)—A 14-day strike of U. S. Steel workers today ended in a tie between the union and the company.

Lions Club To Present Play Series Again

Three hit shows from Broadway will be presented here by the Twin Falls Lions club, according to the club's publicity chairman.

Three hit shows from Broadway will be presented here by the Twin Falls Lions club, according to the club's publicity chairman.

Three hit shows from Broadway will be presented here by the Twin Falls Lions club, according to the club's publicity chairman.

Three hit shows from Broadway will be presented here by the Twin Falls Lions club, according to the club's publicity chairman.

4 Candidates Selected for Youth Events

Four candidates for a one-day "youth" event at the school district will be selected by a committee of school board members.

Four candidates for a one-day "youth" event at the school district will be selected by a committee of school board members.

Four candidates for a one-day "youth" event at the school district will be selected by a committee of school board members.

Four candidates for a one-day "youth" event at the school district will be selected by a committee of school board members.

Four candidates for a one-day "youth" event at the school district will be selected by a committee of school board members.

Four candidates for a one-day "youth" event at the school district will be selected by a committee of school board members.

Film Industry Declares War For Criminals

HOLLYWOOD, Oct. 14 (AP)—The motion picture industry has declared war on criminals who have stolen the industry's identity.

HOLLYWOOD, Oct. 14 (AP)—The motion picture industry has declared war on criminals who have stolen the industry's identity.

HOLLYWOOD, Oct. 14 (AP)—The motion picture industry has declared war on criminals who have stolen the industry's identity.

Community Chest Drive Opener Is Set for Monday

The Community Chest drive will be opened Monday with a parade featuring the Twin Falls high school marching band.

The Community Chest drive will be opened Monday with a parade featuring the Twin Falls high school marching band.

The Community Chest drive will be opened Monday with a parade featuring the Twin Falls high school marching band.

The Community Chest drive will be opened Monday with a parade featuring the Twin Falls high school marching band.

The Community Chest drive will be opened Monday with a parade featuring the Twin Falls high school marching band.

The Community Chest drive will be opened Monday with a parade featuring the Twin Falls high school marching band.

Shippers Taking No Dispute View

IDAHO FALLS, Oct. 14 (AP)—The Idaho Shippers Association today took no dispute view of the new tariff on foreign goods.

IDAHO FALLS, Oct. 14 (AP)—The Idaho Shippers Association today took no dispute view of the new tariff on foreign goods.

IDAHO FALLS, Oct. 14 (AP)—The Idaho Shippers Association today took no dispute view of the new tariff on foreign goods.

Marooned Selway Hunters Released

MONTICELLA, Mont., Oct. 14 (AP)—About 100 marooned hunters were released by Selway firefighters today.

MONTICELLA, Mont., Oct. 14 (AP)—About 100 marooned hunters were released by Selway firefighters today.

MONTICELLA, Mont., Oct. 14 (AP)—About 100 marooned hunters were released by Selway firefighters today.

MONTICELLA, Mont., Oct. 14 (AP)—About 100 marooned hunters were released by Selway firefighters today.

MONTICELLA, Mont., Oct. 14 (AP)—About 100 marooned hunters were released by Selway firefighters today.

MONTICELLA, Mont., Oct. 14 (AP)—About 100 marooned hunters were released by Selway firefighters today.

Cotton Outlook Gloomy

WASHINGTON, Oct. 14 (AP)—Farmers face a bleak outlook for cotton as the market remains gloomy.

WASHINGTON, Oct. 14 (AP)—Farmers face a bleak outlook for cotton as the market remains gloomy.

WASHINGTON, Oct. 14 (AP)—Farmers face a bleak outlook for cotton as the market remains gloomy.

Tough

It is believed that the weather is tough on the crops, particularly the wheat.

It is believed that the weather is tough on the crops, particularly the wheat.

It is believed that the weather is tough on the crops, particularly the wheat.

It is believed that the weather is tough on the crops, particularly the wheat.

It is believed that the weather is tough on the crops, particularly the wheat.

It is believed that the weather is tough on the crops, particularly the wheat.

Voting Is Light

BULLY, Oct. 14 (AP)—With approximately 100 voters, the election was a light turnout.

BULLY, Oct. 14 (AP)—With approximately 100 voters, the election was a light turnout.

BULLY, Oct. 14 (AP)—With approximately 100 voters, the election was a light turnout.







## Twins Grin: Just One Social Security Number



One identifying characteristic is shown, Dan is left handed and David is right handed. Not being able to tell them apart, each has had a wash from the same plate. Unsmiling, they allowed they might consider the right pair of 'old-maid' twins. (Staff photo-photograph)

Twins brothers, Dan Gilin, left, and David Gilin, right, grin over their one and Uncle Sam's predicament—both have been employed under only one social security number. Lloyd C. Young, county, Twin Falls, district social security representative, smiles too as the 71-year-old Mountain Home man signs papers to start uncrumbling the difficulty.

## Twins Give Identical Answers From Similar Lives on Their Joint Puddle

By LETHA W. TESTER

GOODENO, Oct. 14—The life of an identical twin at times may have its humorous aspects but it can also have its troubles. That's the opinion of Dan and David Gilin, 11-year-old twins of Mountain Home, as they were trying to get the threads of their social security problem unscrambled here.

Having spent a colorful and active life in the west and also having passed the age limit of 60 at which time one may apply for social security benefits, the pair contacted Lloyd C. Young, of the social security administration, to get certain matters checked up for them.

It seems that since 1936 the man have each had the identical social security number, only one having been given credit for their years of labor. In checking back it appears the men generally have been employed on the same jobs at the same time.

And so if that were not enough, Dan was unfortunate enough to have lost his clothing and his original social security card one time in a fire.

In trying to solve the mystery of only one social security number for two separate individuals, Young had occasion to point out the frustration for such personal questions as are asked of an applicant.

"We don't do this to be nosy, but to help establish identity," he said. "But in this case even that was not

of much help since the files showed same parents, same birthplace, same ages, same jobs in most all cases and even a signature which can easily be read as identical."

When asked a question both men answered at once. In practically the same tone of voice, and nearly always beginning with the same words. It was almost uncanny, watching them try to carry out the confusion even more, they each have lost a tooth in the same place.

Neither is married, but both said they willingly would consider matrimony when the right pair of identical "old-maid" twins came into their lives. They were born July 10, 1931, at Mountain City, Mo. They have no known relatives.

Early manhood found the pair punching cattle in Colorado. Dan worked for the 24 Circle ranch at La Mar and David for the J-J ranch at Thatcher, Colo. One of the few times they were separated these ranches ran about 80,000 head.

Later the found the past employed in ramps as cooks, and the last job they held was with the Morrison-Rudman construction company at Bill. It was at the termination of this job when they decided to seek explanation of social security benefits.

They both began to tell the story of a certain lady friend who hit them a plan to tell the twin apart. She gave them hats of the same

color and shape but Dan's had a wide band and David's a narrow band. One identifying characteristic is Dan is left handed and David, right handed.

In relating job experiences they said that often their fellow workers did not know there was more than one man on the job. On the M-K job they were both hired on the same day and both left on the same day.

Young went into detail as to the possible cause of the confusion in the social security numbers. The reason became apparent in no time. He will have to go back over records of all jobs held by both men to find the beginning of the angle.

Dan... er, David—anyway one of the twins even had to pay income tax twice one year. Details on that incident became a blur, by that time nearly every person in the office felt he was "being dumb."

As Young said "This only happened once in a blue moon." Here!

hoping the skin is unscrambled for the pleasant gentlemen with the ready smiles and identical quips.

The capital building in Washington, D. C. is situated on a plateau 28 feet above the Potomac river.

**TOMORROW'S T. A. G. Used Appliance SPECIAL**

"Hot, Dumb" Combustible Electric & Coal RANGE All porcelain, cabinet top, with utility drawer and drop-wire cookers. \$109.50 Terms.

Tested — Approved Guaranteed

**DR. E. J. MILLER** Announces the new location of his office 226 Second Ave. North

**Richfield People List Visits, Trips**

RICHFIELD, Oct. 14—Mr. and Mrs. W. J. Tupper have gone to Kellogg to visit their son, Thomas Tupper, and family. The San Diego residents have visited friends here the past 10 days while looking after property interests.

Joe Crumlin, Weiser, spent several days here at the home of his mother-in-law, Mrs. Nellie Vaden. Mrs. Jack Moore, Eagle, is visiting Mr. cousin, Jims Crail, and other relatives.

Mr. and Mrs. G. D. Cordell, Opportunity, Wash., and Mr. and Mrs. Victor Richardson, Orofino, are spending this week with relatives, one at A. H. McKee and Lee Monroe.

**Taken to Boise**

KING HILL, Oct. 14—RAY ALLEN, youth, who was seriously burned last week when his home burned to the ground, is being taken to the St. Vincent hospital in Boise this week. He has been in the Gooding hospital since the accident.

**RETURNS FROM BOISE**

FAIRFIELD, Oct. 14—Ed Pratt, owner of a local store, spent several days here at the home of his mother-in-law, Mrs. Nellie Vaden. Mrs. Jack Moore, Eagle, is visiting Mr. cousin, Jims Crail, and other relatives.

Mr. and Mrs. G. D. Cordell, Opportunity, Wash., and Mr. and Mrs. Victor Richardson, Orofino, are spending this week with relatives, one at A. H. McKee and Lee Monroe.

**Days last week in Boise on treatment**

RAYOLD ORSHAN, helped of the other doctor by the doctor.

**LAME BACK CORRECTION**

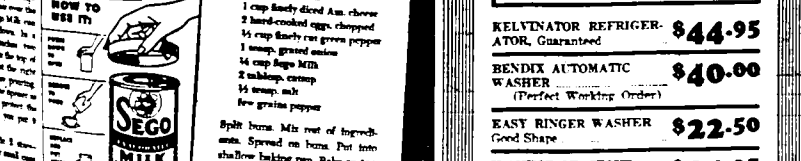
is pleasant and painless. Backaches may be associated with rheumatism, arthritis, lumberg, stomach and kidney disorders. If you have tried everything else, try self-massage. Relief is often obtained after first treatment.

**DR. ALMA HARDIN** CHIROPRACTOR 126 Main North Phone 2282

**"THEY GO TOGETHER" —Like Two Peas in a Pod—**

**WHAT GETS OUT MORE GRIME AND DIRT?**

**SANITONE DRY CLEANING**



How each season packs the soot, dust, and grit into fabric! But Sanitone Dry Cleaning carries on where others stop... get out all embedded dirt! Clothes are so thoroughly cleaned they look and feel like-new again! Spots and perspiration stains vanish! Sanitone leaves clothes fresh and clean smelling, cool! The better press stays in longer for extra days of perfect grooming. Try Sanitone and be convinced!

**PHONE 850 FOR EXPERT DRY CLEANING & SHIRT SERVICE**

**Men Love 'em! Barbecued Cheese Buns Husband-Tested Recipes**

FROM LEE TAYLOR'S KITCHEN

"THIS IS REALLY GOOD EATING" said the husbands who tested 'em.

Your husband and whole family will love this good-to-the-last-bite main dish! Made extra-delicious, extra-sourishing with Sego Milk—sweet country milk concentrated to double-richness. For better meals at lower cost, use Sego Milk in cooking and for coffee. It costs less generally than ordinary milk—less than half as much as cream.

**BARBECUED CHEESE BUNS**

4 small whole loaves  
1 cup finely diced Am. chives  
2 hard-cooked eggs, chopped  
1/2 cup finely cut green pepper  
1 soup. grated onion  
1 cup Sego Milk  
1/2 cup butter, melted  
1/2 cup salt  
1/2 cup green pepper

Split loaves. Mix rest of ingredients. Spread on buns. Put into shallow baking pan. Bake on top shelf of oven. Slightly hot (400° F.) until cheese melts, about 7 min. Serve hot.

**TO USERS OF SEGO MILK**

Ready To Use Purpose Can Oppener... Handy for opening and protective cover

**HOW TO USE IT**

1. Turn cover to the right to the top of the can.

2. Push down on the cover until it is flat against the top of the can.

3. Turn cover to the left to the bottom of the can.

4. Push down on the cover until it is flat against the bottom of the can.

5. Turn cover to the right to the top of the can.

6. Push down on the cover until it is flat against the top of the can.

7. Turn cover to the left to the bottom of the can.

8. Push down on the cover until it is flat against the bottom of the can.

9. Turn cover to the right to the top of the can.

10. Push down on the cover until it is flat against the top of the can.

11. Turn cover to the left to the bottom of the can.

12. Push down on the cover until it is flat against the bottom of the can.

13. Turn cover to the right to the top of the can.

14. Push down on the cover until it is flat against the top of the can.

15. Turn cover to the left to the bottom of the can.

16. Push down on the cover until it is flat against the bottom of the can.

17. Turn cover to the right to the top of the can.

18. Push down on the cover until it is flat against the top of the can.

19. Turn cover to the left to the bottom of the can.

20. Push down on the cover until it is flat against the bottom of the can.

21. Turn cover to the right to the top of the can.

22. Push down on the cover until it is flat against the top of the can.

23. Turn cover to the left to the bottom of the can.

24. Push down on the cover until it is flat against the bottom of the can.

25. Turn cover to the right to the top of the can.

26. Push down on the cover until it is flat against the top of the can.

27. Turn cover to the left to the bottom of the can.

28. Push down on the cover until it is flat against the bottom of the can.

29. Turn cover to the right to the top of the can.

30. Push down on the cover until it is flat against the top of the can.

31. Turn cover to the left to the bottom of the can.

32. Push down on the cover until it is flat against the bottom of the can.

33. Turn cover to the right to the top of the can.

34. Push down on the cover until it is flat against the top of the can.

35. Turn cover to the left to the bottom of the can.

36. Push down on the cover until it is flat against the bottom of the can.

37. Turn cover to the right to the top of the can.

38. Push down on the cover until it is flat against the top of the can.

39. Turn cover to the left to the bottom of the can.

40. Push down on the cover until it is flat against the bottom of the can.

41. Turn cover to the right to the top of the can.

42. Push down on the cover until it is flat against the top of the can.

43. Turn cover to the left to the bottom of the can.

44. Push down on the cover until it is flat against the bottom of the can.

45. Turn cover to the right to the top of the can.

46. Push down on the cover until it is flat against the top of the can.

47. Turn cover to the left to the bottom of the can.

48. Push down on the cover until it is flat against the bottom of the can.

49. Turn cover to the right to the top of the can.

50. Push down on the cover until it is flat against the top of the can.

51. Turn cover to the left to the bottom of the can.

52. Push down on the cover until it is flat against the bottom of the can.

53. Turn cover to the right to the top of the can.

54. Push down on the cover until it is flat against the top of the can.

55. Turn cover to the left to the bottom of the can.

56. Push down on the cover until it is flat against the bottom of the can.

57. Turn cover to the right to the top of the can.

58. Push down on the cover until it is flat against the top of the can.

59. Turn cover to the left to the bottom of the can.

60. Push down on the cover until it is flat against the bottom of the can.

61. Turn cover to the right to the top of the can.

62. Push down on the cover until it is flat against the top of the can.

63. Turn cover to the left to the bottom of the can.

64. Push down on the cover until it is flat against the bottom of the can.

65. Turn cover to the right to the top of the can.

66. Push down on the cover until it is flat against the top of the can.

67. Turn cover to the left to the bottom of the can.

68. Push down on the cover until it is flat against the bottom of the can.

69. Turn cover to the right to the top of the can.

70. Push down on the cover until it is flat against the top of the can.

71. Turn cover to the left to the bottom of the can.

72. Push down on the cover until it is flat against the bottom of the can.

73. Turn cover to the right to the top of the can.

74. Push down on the cover until it is flat against the top of the can.

75. Turn cover to the left to the bottom of the can.

76. Push down on the cover until it is flat against the bottom of the can.

77. Turn cover to the right to the top of the can.

78. Push down on the cover until it is flat against the top of the can.

79. Turn cover to the left to the bottom of the can.

80. Push down on the cover until it is flat against the bottom of the can.

81. Turn cover to the right to the top of the can.

82. Push down on the cover until it is flat against the top of the can.

83. Turn cover to the left to the bottom of the can.

84. Push down on the cover until it is flat against the bottom of the can.

85. Turn cover to the right to the top of the can.

86. Push down on the cover until it is flat against the top of the can.

87. Turn cover to the left to the bottom of the can.

88. Push down on the cover until it is flat against the bottom of the can.

89. Turn cover to the right to the top of the can.

90. Push down on the cover until it is flat against the top of the can.

91. Turn cover to the left to the bottom of the can.

92. Push down on the cover until it is flat against the bottom of the can.

93. Turn cover to the right to the top of the can.

94. Push down on the cover until it is flat against the top of the can.

95. Turn cover to the left to the bottom of the can.

96. Push down on the cover until it is flat against the bottom of the can.

97. Turn cover to the right to the top of the can.

98. Push down on the cover until it is flat against the top of the can.

99. Turn cover to the left to the bottom of the can.

100. Push down on the cover until it is flat against the bottom of the can.

101. Turn cover to the right to the top of the can.

102. Push down on the cover until it is flat against the top of the can.

103. Turn cover to the left to the bottom of the can.

104. Push down on the cover until it is flat against the bottom of the can.

105. Turn cover to the right to the top of the can.

106. Push down on the cover until it is flat against the top of the can.

107. Turn cover to the left to the bottom of the can.

108. Push down on the cover until it is flat against the bottom of the can.

109. Turn cover to the right to the top of the can.

110. Push down on the cover until it is flat against the top of the can.

111. Turn cover to the left to the bottom of the can.

112. Push down on the cover until it is flat against the bottom of the can.

113. Turn cover to the right to the top of the can.

114. Push down on the cover until it is flat against the top of the can.

115. Turn cover to the left to the bottom of the can.

116. Push down on the cover until it is flat against the bottom of the can.

117. Turn cover to the right to the top of the can.

118. Push down on the cover until it is flat against the top of the can.

119. Turn cover to the left to the bottom of the can.

120. Push down on the cover until it is flat against the bottom of the can.

121. Turn cover to the right to the top of the can.

122. Push down on the cover until it is flat against the top of the can.

123. Turn cover to the left to the bottom of the can.

124. Push down on the cover until it is flat against the bottom of the can.

125. Turn cover to the right to the top of the can.

126. Push down on the cover until it is flat against the top of the can.

127. Turn cover to the left to the bottom of the can.

128. Push down on the cover until it is flat against the bottom of the can.

129. Turn cover to the right to the top of the can.

130. Push down on the cover until it is flat against the top of the can.

131. Turn cover to the left to the bottom of the can.

132. Push down on the cover until it is flat against the bottom of the can.

133. Turn cover to the right to the top of the can.

134. Push down on the cover until it is flat against the top of the can.

135. Turn cover to the left to the bottom of the can.

136. Push down on the cover until it is flat against the bottom of the can.

137. Turn cover to the right to the top of the can.

138. Push down on the cover until it is flat against the top of the can.

139. Turn cover to the left to the bottom of the can.

140. Push down on the cover until it is flat against the bottom of the can.

141. Turn cover to the right to the top of the can.

142. Push down on the cover until it is flat against the top of the can.

143. Turn cover to the left to the bottom of the can.

144. Push down on the cover until it is flat against the bottom of the can.

145. Turn cover to the right to the top of the can.

146. Push down on the cover until it is flat against the top of the can.

147. Turn cover to the left to the bottom of the can.

148. Push down on the cover until it is flat against the bottom of the can.

149. Turn cover to the right to the top of the can.

150. Push down on the cover until it is flat against the top of the can.

151. Turn cover to the left to the bottom of the can.

152. Push down on the cover until it is flat against the bottom of the can.

153. Turn cover to the right to the top of the can.

154. Push down on the cover until it is flat against the top of the can.

155. Turn cover to the left to the bottom of the can.

156. Push down on the cover until it is flat against the bottom of the can.

157. Turn cover to the right to the top of the can.

158. Push down on the cover until it is flat against the top of the can.

159. Turn cover to the left to the bottom of the can.

160. Push down on the cover until it is flat against the bottom of the can.

161. Turn cover to the right to the top of the can.

162. Push down on the cover until it is flat against the top of the can.

163. Turn cover to the left to the bottom of the can.

164. Push down on the cover until it is flat against the bottom of the can.

165. Turn cover to the right to the top of the can.

166. Push down on the cover until it is flat against the top of the can.

167. Turn cover to the left to the bottom of the can.

168. Push down on the cover until it is flat against the bottom of the can.

169. Turn cover to the right to the top of the can.

170. Push down on the cover until it is flat against the top of the can.

171. Turn cover to the left to the bottom of the can.

172. Push down on the cover until it is flat against the bottom of the can.

173. Turn cover to the right to the top of the can.

174. Push down on the cover until it is flat against the top of the can.

175. Turn cover to the left to the bottom of the can.

176. Push down on the cover until it is flat against the bottom of the can.

177. Turn cover to the right to the top of the can.

178. Push down on the cover until it is flat against the top of the can.

179. Turn cover to the left to the bottom of the can.

180. Push down on the cover until it is flat against the bottom of the can.

181. Turn cover to the right to the top of the can.

182. Push down on the cover until it is flat against the top of the can.

183. Turn cover to the left to the bottom of the can.

184. Push down on the cover until it is flat against the bottom of the can.

185. Turn cover to the right to the top of the can.

186. Push down on the cover until it is flat against the top of the can.

187. Turn cover to the left to the bottom of the can.

188. Push down on the cover until it is flat against the bottom of the can.

189. Turn cover to the right to the top of the can.

190. Push down on the cover until it is flat against the top of the can.

191. Turn cover to the left to the bottom of the can.

192. Push down on the cover until it is flat against the bottom of the can.

193. Turn cover to the right to the top of the can.

194. Push down on the cover until it is flat against the top of the can.

195. Turn cover to the left to the bottom of the can.

196. Push down on the cover until it is flat against the bottom of the can.

197. Turn cover to the right to the top of the can.

198. Push down on the cover until it is flat against the top of the can.

199. Turn cover to the left to the bottom of the can.

200. Push down on the cover until it is flat against the bottom of the can.

201. Turn cover to the right to the top of the can.

202. Push down on the cover until it is flat against the top of the can.

203. Turn cover to the left to the bottom of the can.

204. Push down on the cover until it is flat against the bottom of the can.

205. Turn cover to the right to the top of the can.

206. Push down on the cover until it is flat against the top of the can.

207. Turn cover to the left to the bottom of the can.

208. Push down on the cover until it is flat against the bottom of the can.

209. Turn cover to the right to the top of the can.

210. Push down on the cover until it is flat against the top of the can.

211. Turn cover to the left to the bottom of the can.

212. Push down on the cover until it is flat against the bottom of the can.

213. Turn cover to the right to the top of the can.

214. Push down on the cover until it is flat against the top of the can.

215. Turn cover to the left to the bottom of the can.

216. Push down on the cover until it is flat against the bottom of the can.

217. Turn cover to the right to the top of the can.

218. Push down on the cover until it is flat against the top of the can.

219. Turn cover to the left to the bottom of the can.

220. Push down on the cover until it is flat against the bottom of the can.

221. Turn cover to the right to the top of the can.

222. Push down on the cover until it is flat against the top of the can.

223. Turn cover to the left to the bottom of the can.

224. Push down on the cover until it is flat against the bottom of the can.

225. Turn cover to the right to the top of the can.

226. Push down on the cover until it is flat against the top of the can.

227. Turn cover to the left to the bottom of the can.

228. Push down on the cover until it is flat against the bottom of the can.

229. Turn cover to the right to the top of the can.

230. Push down on the cover until it is flat against the top of the can.

231. Turn cover to the left to the bottom of the can.

232. Push down on the cover until it is flat against the bottom of the can.

233. Turn cover to the right to the top of the can.

234. Push down on the cover until it is flat against the top of the can.

235. Turn cover to the left to the bottom of the can.

236. Push down on the cover until it is flat against the bottom of the can.

237. Turn cover to the right to the top of the can.

238. Push down on the cover until it is flat against the top of the can.

239. Turn cover to the left to the bottom of the can.

240. Push down on the cover until it is flat against the bottom of the can.

241. Turn cover to the right to the top of the can.

242. Push down on the cover until it is flat against the top of the can.

243. Turn cover to the left to the bottom of the can.

244. Push down on the cover until it is flat against the bottom of the can.

245. Turn cover to the right to the top of the can.

246. Push down on the cover until it is flat against the top of the can.

247. Turn cover to the left to the bottom of the can.

248. Push down on the cover until it is flat against the bottom of the can.

249. Turn cover to the right to the top of the can.

250. Push down on the cover until it is flat against the top of the can.

251. Turn cover to the left to the bottom of the can.

252. Push down on the cover until it is flat against the bottom of the can.

253. Turn cover to the right to the top of the can.

254. Push down on the cover until it is flat against the top of the can.

255. Turn cover to the left to the bottom of the can.

256. Push down on the cover until it is flat against the bottom of the can.

257. Turn cover to the right to the top of the can.

258. Push down on the cover until it is flat against the top of the can.

259. Turn cover to the left to the bottom of the can.

260. Push down on the cover until it is flat against the bottom of the can.

261. Turn cover to the right to the top of the can.

262. Push down on the cover until it is flat against the top of the can.

263. Turn cover to the left to the bottom of the can.

264. Push down on the cover until it is flat against the bottom of the can.

265. Turn cover to the right to the top of the can.

266. Push down on the cover until it is flat against the top of the can.

267. Turn cover to the left to the bottom of the can.

268. Push down on the cover until it is flat against the bottom of the can.

269. Turn cover to the right to the top of the can.

270. Push down on the cover until it is flat against the top of the can.

271. Turn cover to the left to the bottom of the can.

272. Push down on the cover until it is flat against the bottom of the can.

273. Turn cover to the right to the top of the can.

274. Push down on the cover until it is flat against the top of the can.

275. Turn cover to the left to the bottom of the can.

276. Push down on the cover until it is flat against the bottom of the can.

277. Turn cover to the right to the top of the can.

278. Push down on the cover until it is flat against the top of the can.

279. Turn cover to the left to the bottom of the can.

280. Push down on the cover until it is flat against the bottom of the can.

281. Turn cover to the right to the top of the can.

282. Push down on the cover until it is flat against the top of the can.

283. Turn cover to the left to the bottom of the can.

284. Push down on the cover until it is flat against the bottom of the can.

285. Turn cover to the right to the top of the can.

286. Push down on the cover until it is flat against the top of the can.

287. Turn cover to the left to the bottom of the can.

288. Push down on the cover until it is flat against the bottom of the can.

289. Turn cover to the right to the top of the can.

290. Push down on the cover until it is flat against the top of the can.

291. Turn cover to the left to the bottom of the can.

292. Push down on the cover until it is flat against the bottom of the can.

293. Turn cover to the right to the top of the can.

294. Push down on the cover until it is flat against the top of the can.

295. Turn cover to the left to the bottom of the can.

296. Push down on the cover until it is flat against the bottom of the can.

297. Turn cover to the right to the top of the can.

298. Push down on the cover until it is flat against the top of the can.

299. Turn cover to the left to the bottom of the can.

300. Push down on the cover until it is flat against the bottom of the can.

301. Turn cover to the right to the top of the can.

302. Push down on the cover until it is flat against the top of the can.

303. Turn cover to the left to the bottom of the can.

304. Push down on the cover until it is flat against the bottom of the can.

305. Turn cover to the right to the top of the can.

306. Push down on the cover until it is flat against the top of the can.

307. Turn cover to the left to the bottom of the can.

308. Push down on the cover until it is flat against the bottom of the can.

309. Turn cover to the right to the top of the can.

310. Push down on the cover until it is flat against the top of the can.

311. Turn cover to the left to the bottom of the can.

312. Push down on the cover until it is flat against the bottom of the can.

313. Turn cover to the right to the top of the can.

314. Push down on the cover until it is flat against the top of the can.

315. Turn cover to the left to the bottom of the can.

316. Push down on the cover until it is flat against the bottom of the can.

317. Turn cover to the right to the top of the can.

318. Push down on the cover until it is flat against the top of the can.

319. Turn cover to the left to the bottom of the can.

320. Push down on the cover until it is flat against the bottom of the can.

321. Turn cover to the right to the top of the can.

322. Push down on the cover until it is flat against the top of the can.

323. Turn cover to the left to the bottom of the can.

324. Push down on the cover until it is flat against the bottom of the can.

325. Turn cover to the right to the top of the can.

326. Push down on the cover until it is flat against the top of the can.

327. Turn cover to the left to the bottom of the can.

328. Push down on the cover until it is flat against the bottom of the can.

329. Turn cover to the right to the top of the can.

330. Push down on the cover until it is flat against the top of the can.

331. Turn cover to the left to the bottom of the can.

332. Push down on the cover until it is flat against the bottom of the can.

333. Turn cover to the right to the top of the can.

334. Push down on the cover until it is flat against the top of the can.

335. Turn cover to the left to the bottom of the can.

336. Push down on the cover until it is flat against the bottom of the can.

337. Turn cover to the right to the top of the can.

338. Push down on the cover until it is flat against the top of the can.

339. Turn cover to the left to the bottom of the can.

340. Push down on the cover until it is flat against the bottom of the can.

341. Turn cover to the right to the top of the can.

342. Push down on the cover until it is flat against the top of the can.

343. Turn cover to the left to the bottom of the can.

344. Push down on the cover until it is flat against the bottom of the can.

345. Turn cover to the right to the top of the can.

346. Push down on the cover until it is flat against the top of the can.

347. Turn cover to the left to the bottom of the can.

348. Push down on the cover until it is flat against the bottom of the can.

349. Turn cover to the right to the top of the can.

350. Push down on the cover until it is flat against the top of the can.

351. Turn cover to the left to the bottom of the can.

352. Push down on the cover until it is flat against the bottom of the can.

353. Turn cover to the right to the top of the can.

354. Push down on the cover until it is flat against the top of the can.

355. Turn cover to the left to the bottom of the can.

356. Push down on the cover until it is flat against the bottom of the can.

357. Turn cover to the right to the top of the can.

358. Push down on the cover until it is flat against the top of the can.

359. Turn cover to the left to the bottom of the can.

360. Push down on the cover until it is flat against the bottom of the can.

361. Turn cover to the right to the top of the can.

362. Push down on the cover until it is flat against the top of the can.

363. Turn cover to the left to the bottom of the can.

364. Push down on the cover until it is flat against the bottom of the can.

365. Turn cover to the right to the top of the can.

366. Push down on the cover until it is flat against the top of the can.

367. Turn cover to the left to the bottom of the can.

368. Push down on the cover until it is flat against the bottom of the can.

369. Turn cover to the right to the top of the can.

370. Push down on the cover until it is flat against the top of the can.

371. Turn cover to the left to the bottom of the can.

372. Push down on the cover until it is flat against the bottom of the can.

373. Turn cover to the right to the top of the can.

374. Push down on the cover until it is flat against the top of the can.

375. Turn cover to the left to the bottom of the can.

376. Push down on the cover until it is flat against the bottom of the can.

377. Turn cover to the right to the top of the can.

378. Push down on the cover until it is flat against the top of the can.

379. Turn cover to the left to the bottom of the can.

380. Push down on the cover until it is flat against the bottom of the can.

381. Turn cover to the right to the top of the can.

382. Push down on the cover until it is flat against the top of the can.

383. Turn cover to the left to the bottom of the can.

384. Push down on the cover until it is flat against the bottom of the can.

385. Turn cover to the right to the top of the can.

386. Push down on the cover until it is flat against the top of the can.

387. Turn cover to the left to the bottom of the can.

388. Push down on the cover until it is flat against the bottom of the can.

389. Turn cover to the right to the top of the can.

390. Push down on the cover until it is flat against the top of the can.

391. Turn cover to the left to the bottom of the can.

392. Push down on the cover until it is flat against the bottom of the can.

393. Turn cover to the right to the top of the can.

394. Push down on the cover until it is flat against the top of the can.

395. Turn cover to the left to the bottom of the can.

396. Push down on the cover until it is flat against the bottom of the can.

397. Turn cover to the right to the top of the can.

398. Push down on the cover until it is flat against the top of the can.

399. Turn cover to the left to the bottom of the can.

400. Push down on the cover until it is flat against the bottom of the can.

401. Turn cover to the right to the top of the can.

402. Push down on the cover until it is flat against the top of the can.

403. Turn cover to the left to the bottom of the can.

404. Push down on the cover until it is flat against the bottom of the can.

405. Turn cover to the right to the top of the can.

406. Push down on the cover until it is flat against the top of the can.

407. Turn cover to the left to the bottom of the can.

408. Push down on the cover until it is flat against the bottom of the can.

409. Turn cover to the right to the top of the can.

410. Push down on the cover until it is flat against the top of the can.

411. Turn cover to the left to the bottom of the can.

412. Push down on the cover until it is flat









Sewing Is Given Church Meet... The members of the Presbyterian church... will be held at the church...

Pair Wed 50 Years Sunday... Mrs. M. B. P. and Mr. W. P. M. were married in a double ring ceremony at 11:30 a. m. in the Baptist church...

Gooding Legion Auxiliary Visited... Mrs. Hof addressed the members on auxiliary activities and announced that she is giving awards...

Weds in Home... Mrs. C. Swanson Feted by Hailey Bethany Group... Mrs. C. Swanson was feted by the Bethany group...

Repeats Vows... Paul-Girl Weds Donald Peck in Church Nuptials... Paul and Rita were married in a double ring ceremony...

Utah Girl Weds Former Resident... Marilyn Burton, daughter of Mr. and Mrs. William C. Burton...

Rebeksahs Donate To Special Fund... Rebekahs of the Twin Falls lodge have given \$25 to the special fund...

Planned for Scouts... Mrs. M. B. P. and Mr. W. P. M. were married in a double ring ceremony...

Leaders of "Blue Birds" Discuss Birthday Theme... "Discovery Unlimited," a Camp Fire and Blue Bird birthday project...

Talk on Europe Given at Meet... Mrs. J. B. Blak conducted memorial services for Mrs. Lulu Sullivan...

Elks Lodge Has Pinochle Session... The committee in charge of the event included Mr. and Mrs. Fred M. Swanson...

Calendar... Unity club will hold a coffee and talk Saturday at the Elder-Cain home...

Entertains Club... Mrs. J. B. Blak conducted memorial services for Mrs. Lulu Sullivan...

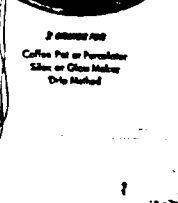
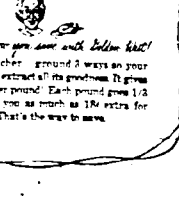
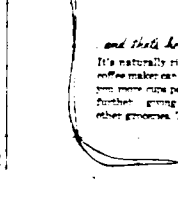
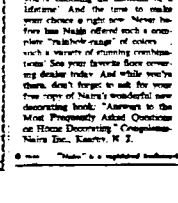
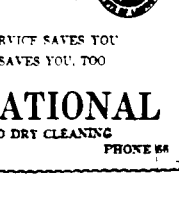
Rebeksahs Meet... Rebekahs of the Twin Falls lodge have given \$25 to the special fund...

an Martin pattern... The members of the Presbyterian church... will be held at the church...

Care of Your Children By ANGELO PATRI... Benjie was not doing well in school and he did not seem to be happy anywhere...

Weds in Home... Mrs. C. Swanson Feted by Hailey Bethany Group... Mrs. C. Swanson was feted by the Bethany group...

change to GOLDEN WEST'S RICHER FLAVOR get 20 EXTRA CUPS per pound! Let's talk about your kitchen floor... Golden West Coffee



Still Gets Headlines

Tulane, Bears Are Favored in Big Grid Contest

SIGE Issues Victory Cry For Western State Game

SOUTHERN IDAHO COLLEGE OF EDUCATION, Oct. 14—The victory cry went out today on the Southern Idaho College of Education campus as the Panther gridders went through their hard season pointing to a homecoming day win over the Western State Mountaineers. The tough contest will highlight activities during the annual homecoming festivities at Albion. Game time is scheduled for 2 p.m. on Panther field.

Twin Falls Tackles Tiger Squad Tonight

Two high school football games are on schedule for fans tonight in Magic Valley and one is scheduled for tomorrow night. The powerful Twin Falls Bruins will meet the Idaho Falls Tigers in a Big Six conference game at 8 p.m. at Lincoln field and the Glenna Ferry Pilots will play host to the Hagerman Pirates at 8 p.m. on the highly-rated and undefeated Hagerman team.

Panther Star

The Panther star in the physical contest of the season, only two are doubting starters, Stu House, Halley, veteran tackle, who has been in his rig in the Weber game last week and probably will be on the line in the Hagerman game. Fullback has an injured leg. The tackle position, which has been Cooper's big strength, has been still in ailing condition. Clarence Parham, who will see lots of action, missed the last week of practice because of the death of his father. However, his veteran back from Rupert, may be back in uniform after missing most of this week's play with an injured back.

AP STAFFS... Top defensive halfback for the Southern Idaho College of Education, who will see lots of action Saturday afternoon when the Panthers entertain the Western State Mountaineers at Albion. He is also one of the top offensive players in the state, hails from Twin Falls. (Blackie) (Photo-staff capturing)

Bowling Scores

Table with bowling scores for various leagues including Women's Major League, Men's Major League, and Men's Minor League. Columns include names, scores, and averages.



Jackie Robinson topped a remarkable career as an all-around athlete this year by leading the National League in batting and stolen bases. He was a major man in the Brooklyn Dodgers' climb to the top in the center league. While in college, he led the nation in yardage as a UCLA halfback.

Cougars Lose Star Halfback for Important Idaho Game Saturday

PULLMAN, Wash., Oct. 14 (AP)—Don Paul, Washington State's star halfback, was injured in scrimmaging and may not play against Idaho Saturday, Coach Phil Sarboos said Thursday.

Paul, who hurt his back earlier this year, aggravated the injury in the scrimmage Wednesday but it was not detected until Thursday. Sarboos said he did not wish to endanger Paul's back and that it was doubtful whether the Tacoma speedster would play against the Vandals at all.

Loss of Paul would seriously hurt the Cougars' chances of winning the 50th renewal of the Bitter Root-Vandal football rivalry.

Emmett Trips Jerome Squad In 21-7 Game

EMMETT, Oct. 14 (AP)—Bob Emmett left halfback, led the Emmett Mustangs to a 21-7 victory over Jerome Thursday night.

Emmett's star back, Bob Emmett, scored in the third quarter and led the Mustangs to a 21-7 victory over Jerome Thursday night.

Emmett's star back, Bob Emmett, scored in the third quarter and led the Mustangs to a 21-7 victory over Jerome Thursday night.

Emmett's star back, Bob Emmett, scored in the third quarter and led the Mustangs to a 21-7 victory over Jerome Thursday night.

NEW YORK, Oct. 14 (AP)—The business of football games is laughing and together with this down as one of the toughest. With an average of 793 on 142 correct games and 171

1949, Tulane vs. Notre Dame here's the top game of the week, maybe of the year. It has been so long since the Irish were beaten that most Notre Dame players don't know how to feel. They are favored again, by something like 13 points the last time you looked. It may be foolish, but we have a hunch the Green Wave isn't making the trip for fun. In an upset, Tulane, Southern California vs. California—The winner here can wreath UCLA for the Pacific coast conference and Rose Bowl honors. Both are unbeaten and Southern Cal is the favorite to win in this corner. In a close one, California.

Rice vs. Southern Methodist—The unbeaten Mustangs should be ready to fall before Rice, but the Army vs. Harvard—A hefty vote for Army.

One confident vote for North Carolina. Minnesota vs. Ohio State—A slim vote for Minnesota. UCL—A confident vote for UCLA. Cornell vs. Yale—Make it Cornell.

Michigan vs. Northwestern—With the pressure off, the Wolverine are expected to have a hand in the Michigan. Texas vs. Arkansas—The Longhorns aren't likely to drop two in a row, Texas.

Kansas vs. Oklahoma—No. 4 for Oklahoma. Stanford vs. Washington—Both teams have been having their best season yet. Stanford.

Running badly over the rest of the week-end's better games: FRIDA vs. Louisiana State or Georgia. Mississippi over Boston College. Purdue over Miami (Fla.). San Diego over Utah State, Georgetown over NYU.

Darmouth over Colgate, Pennsylvania over Columbia, Penn State over Nebraska, Pittsburg over Miami (Ohio), Rutgers over Syracuse, Holy Cross over Duquesne.

Michigan State over William and Mary, Navy over Wisconsin, Iowa over Indiana, Missouri over Illinois, Carolina State vs. Arizona or Washington and Lee.

Northwest and Pac West. Texas Christian, Texas and M. Oregon over Colorado, Oregon State over Montana, Washington State over Idaho, Montana State over Idaho State, Colorado A and B over Colorado State, Colorado State over Colorado college, Utah State over Denver, Wyoming over Utah State, Arizona State over Brigham Young.

Electric Motor REPAIR... HY... RODDER-ENTER... Phone 1997-2... 250 Main Ave. S.

Alabama over Tennessee, Georgia Tech over Auburn, Kentucky over the Citadel, Duke over North Carolina State vs. Arizona or Washington and Lee.

Northwest and Pac West. Texas Christian, Texas and M. Oregon over Colorado, Oregon State over Montana, Washington State over Idaho, Montana State over Idaho State, Colorado A and B over Colorado State, Colorado State over Colorado college, Utah State over Denver, Wyoming over Utah State, Arizona State over Brigham Young.

Electric Motor REPAIR... HY... RODDER-ENTER... Phone 1997-2... 250 Main Ave. S.

Alabama over Tennessee, Georgia Tech over Auburn, Kentucky over the Citadel, Duke over North Carolina State vs. Arizona or Washington and Lee.

Northwest and Pac West. Texas Christian, Texas and M. Oregon over Colorado, Oregon State over Montana, Washington State over Idaho, Montana State over Idaho State, Colorado A and B over Colorado State, Colorado State over Colorado college, Utah State over Denver, Wyoming over Utah State, Arizona State over Brigham Young.

Electric Motor REPAIR... HY... RODDER-ENTER... Phone 1997-2... 250 Main Ave. S.

Alabama over Tennessee, Georgia Tech over Auburn, Kentucky over the Citadel, Duke over North Carolina State vs. Arizona or Washington and Lee.

Northwest and Pac West. Texas Christian, Texas and M. Oregon over Colorado, Oregon State over Montana, Washington State over Idaho, Montana State over Idaho State, Colorado A and B over Colorado State, Colorado State over Colorado college, Utah State over Denver, Wyoming over Utah State, Arizona State over Brigham Young.

Electric Motor REPAIR... HY... RODDER-ENTER... Phone 1997-2... 250 Main Ave. S.

Alabama over Tennessee, Georgia Tech over Auburn, Kentucky over the Citadel, Duke over North Carolina State vs. Arizona or Washington and Lee.

Northwest and Pac West. Texas Christian, Texas and M. Oregon over Colorado, Oregon State over Montana, Washington State over Idaho, Montana State over Idaho State, Colorado A and B over Colorado State, Colorado State over Colorado college, Utah State over Denver, Wyoming over Utah State, Arizona State over Brigham Young.

Electric Motor REPAIR... HY... RODDER-ENTER... Phone 1997-2... 250 Main Ave. S.

ISC Cagers Set 1949-50 Schedule

POCATELLO, Oct. 14 (AP)—Basketball teams take to the courts at Idaho State college in a game against Utah State Agricultural college.

It will be the first of a 23-game season. Coach Fred Peterson said he would open practice sessions with seven letterman a pair of junior college transfers and four fourth grade newcomers.

The seven transfers are Jack Anderson and McCann and Lewis Cunningham of Downey, both former college students. Anderson and Lettermen are Wally Eyring, Al Byrum Jones, Byron Behrens, Mel Clark, Curtis Green, and Rainbury Wesley. Lewis, Lonnie Rainburn, Hiram, and Fred Knibb Rainbury move up from the freshman team.

Shooting Hours

Shooting hours for the 1949-50 season will be as follows: Oct. 14, 10 a.m. to 4 p.m.; Oct. 15, 10 a.m. to 4 p.m.; Oct. 16, 10 a.m. to 4 p.m.; Oct. 17, 10 a.m. to 4 p.m.; Oct. 18, 10 a.m. to 4 p.m.; Oct. 19, 10 a.m. to 4 p.m.; Oct. 20, 10 a.m. to 4 p.m.; Oct. 21, 10 a.m. to 4 p.m.; Oct. 22, 10 a.m. to 4 p.m.; Oct. 23, 10 a.m. to 4 p.m.; Oct. 24, 10 a.m. to 4 p.m.; Oct. 25, 10 a.m. to 4 p.m.; Oct. 26, 10 a.m. to 4 p.m.; Oct. 27, 10 a.m. to 4 p.m.; Oct. 28, 10 a.m. to 4 p.m.; Oct. 29, 10 a.m. to 4 p.m.; Oct. 30, 10 a.m. to 4 p.m.; Oct. 31, 10 a.m. to 4 p.m.

Walt Welaj Sold by Pioneer Loop

Walt Welaj, an umpire in the Pioneer League, has been sold to the Pioneer League by the Pioneer Loop.

Walt Welaj, an umpire in the Pioneer League, has been sold to the Pioneer League by the Pioneer Loop.

Walt Welaj, an umpire in the Pioneer League, has been sold to the Pioneer League by the Pioneer Loop.

Walt Welaj, an umpire in the Pioneer League, has been sold to the Pioneer League by the Pioneer Loop.

Walt Welaj, an umpire in the Pioneer League, has been sold to the Pioneer League by the Pioneer Loop.

Walt Welaj, an umpire in the Pioneer League, has been sold to the Pioneer League by the Pioneer Loop.

Walt Welaj, an umpire in the Pioneer League, has been sold to the Pioneer League by the Pioneer Loop.

Walt Welaj, an umpire in the Pioneer League, has been sold to the Pioneer League by the Pioneer Loop.

Walt Welaj, an umpire in the Pioneer League, has been sold to the Pioneer League by the Pioneer Loop.

Caught Pantless

A Los Angeles Rams player was caught pantless in the backfield during a game.

A Los Angeles Rams player was caught pantless in the backfield during a game.

A Los Angeles Rams player was caught pantless in the backfield during a game.

A Los Angeles Rams player was caught pantless in the backfield during a game.

A Los Angeles Rams player was caught pantless in the backfield during a game.

A Los Angeles Rams player was caught pantless in the backfield during a game.

A Los Angeles Rams player was caught pantless in the backfield during a game.

A Los Angeles Rams player was caught pantless in the backfield during a game.

A Los Angeles Rams player was caught pantless in the backfield during a game.

Elkburger Meal Stopped by State

POCATELLO, Oct. 14 (AP)—The Idaho state game warden has stopped the Elkburger meal.

POCATELLO, Oct. 14 (AP)—The Idaho state game warden has stopped the Elkburger meal.

POCATELLO, Oct. 14 (AP)—The Idaho state game warden has stopped the Elkburger meal.

POCATELLO, Oct. 14 (AP)—The Idaho state game warden has stopped the Elkburger meal.

POCATELLO, Oct. 14 (AP)—The Idaho state game warden has stopped the Elkburger meal.

POCATELLO, Oct. 14 (AP)—The Idaho state game warden has stopped the Elkburger meal.

POCATELLO, Oct. 14 (AP)—The Idaho state game warden has stopped the Elkburger meal.

POCATELLO, Oct. 14 (AP)—The Idaho state game warden has stopped the Elkburger meal.

POCATELLO, Oct. 14 (AP)—The Idaho state game warden has stopped the Elkburger meal.

Bengals to Use Winning Squad Against Bobcats

POCATELLO, Oct. 14 (AP)—Coach Johnny Weaver will field virtually the same lineup Saturday against the Bobcats.

POCATELLO, Oct. 14 (AP)—Coach Johnny Weaver will field virtually the same lineup Saturday against the Bobcats.

POCATELLO, Oct. 14 (AP)—Coach Johnny Weaver will field virtually the same lineup Saturday against the Bobcats.

POCATELLO, Oct. 14 (AP)—Coach Johnny Weaver will field virtually the same lineup Saturday against the Bobcats.

POCATELLO, Oct. 14 (AP)—Coach Johnny Weaver will field virtually the same lineup Saturday against the Bobcats.

POCATELLO, Oct. 14 (AP)—Coach Johnny Weaver will field virtually the same lineup Saturday against the Bobcats.

POCATELLO, Oct. 14 (AP)—Coach Johnny Weaver will field virtually the same lineup Saturday against the Bobcats.

POCATELLO, Oct. 14 (AP)—Coach Johnny Weaver will field virtually the same lineup Saturday against the Bobcats.

POCATELLO, Oct. 14 (AP)—Coach Johnny Weaver will field virtually the same lineup Saturday against the Bobcats.

Elkburger Meal Stopped by State

POCATELLO, Oct. 14 (AP)—The Idaho state game warden has stopped the Elkburger meal.

POCATELLO, Oct. 14 (AP)—The Idaho state game warden has stopped the Elkburger meal.

POCATELLO, Oct. 14 (AP)—The Idaho state game warden has stopped the Elkburger meal.

POCATELLO, Oct. 14 (AP)—The Idaho state game warden has stopped the Elkburger meal.

POCATELLO, Oct. 14 (AP)—The Idaho state game warden has stopped the Elkburger meal.

POCATELLO, Oct. 14 (AP)—The Idaho state game warden has stopped the Elkburger meal.

POCATELLO, Oct. 14 (AP)—The Idaho state game warden has stopped the Elkburger meal.

POCATELLO, Oct. 14 (AP)—The Idaho state game warden has stopped the Elkburger meal.

POCATELLO, Oct. 14 (AP)—The Idaho state game warden has stopped the Elkburger meal.

Elkburger Meal Stopped by State

POCATELLO, Oct. 14 (AP)—The Idaho state game warden has stopped the Elkburger meal.

POCATELLO, Oct. 14 (AP)—The Idaho state game warden has stopped the Elkburger meal.

POCATELLO, Oct. 14 (AP)—The Idaho state game warden has stopped the Elkburger meal.

POCATELLO, Oct. 14 (AP)—The Idaho state game warden has stopped the Elkburger meal.

POCATELLO, Oct. 14 (AP)—The Idaho state game warden has stopped the Elkburger meal.

POCATELLO, Oct. 14 (AP)—The Idaho state game warden has stopped the Elkburger meal.

POCATELLO, Oct. 14 (AP)—The Idaho state game warden has stopped the Elkburger meal.

POCATELLO, Oct. 14 (AP)—The Idaho state game warden has stopped the Elkburger meal.

POCATELLO, Oct. 14 (AP)—The Idaho state game warden has stopped the Elkburger meal.

Advertisement for G. I. & CIVILIAN TRUCK PARTS (New) with contact information for Twin Falls Auto Parts.

Advertisement for D-E-E-R HUNTERS! with contact information for Scott's Frozen Food Lockers.

Advertisement for Elkburger Meal Stopped by State with contact information for Twin Falls Auto Parts.







### Lawyer Asks Dismissal for Singer's Suit

**BOKROCK, Oct. 14 (AP)—**Attorneys for a Pacon, Wash. restaurant operator who refused to serve Negro diners filed "Hearl" suit last Friday that asked a federal court to dismiss her \$200 law suit.

Attorney Theodore D. Peterson told the court owner Harry Ois was not intended to serve Negro diners to stay in the restaurant business. Federal Judge Sam Driver took the dismissal motion under advisement. He said he will announce his decision later.

"This is not a matter of racial prejudice," Ois is a matter of color and race," Peterson said. "Mr. Ois tried at one time to cater to colored people but public demonstration hurt his business. White people refused to eat in his restaurant. It was a case of either excluding colored people or going out of business."

"At issue here is the right of free contract under private enterprise as against civil liberties," he added.

Attorney Willard Fox, representing Miss Scott, disagreed. He said it was a matter of white race only as against Negro race. He said that for persons who had been granted a long distance to play for us and entertain us.

Miss Scott has no route to Spokane when her bus stopped at Pacon for lunch. He said to white race only as against Negro race. He said that for persons who had been granted a long distance to play for us and entertain us.

### Praise Accorded Soroptimist Club For Fund Drive

**BURLEY, Oct. 14 (The Burley Soroptimist club was presented an award of merit for work in the cancer fund drive last evening.** Mrs. James Keith, county commissioner, making the presentation Wednesday evening at a dinner meeting of the club.

Mrs. Keith complimented the club on spearheading the drive which raised \$227 for the largest amount ever raised in Cassia county. She paid special tribute to the committee in charge which included Mrs. Marie Burgess, Mrs. Ann Park, Mrs. Jeannette Chamberlain, Mrs. Carol Thomson and Ellen Mae Oermoller.

Mrs. Evelyn Sherrard, president of the club, was in charge of the meeting. Guests were Mrs. Edith Clary, Mrs. Alice Trumbull, Mrs. Edna Sinclair and Mrs. Madeline Brown. A short founder's day program was given by Mrs. Rita Payne, Mrs. Jeannette Chamberlain and Mrs. Carolyn Stewhith.

Several new members will be initiated into the club on the evening of Oct. 22.

### U.S., Canada Sift Plans for Gigantic Dam

**OTTAWA, Oct. 14 (AP)—**What may become one of the largest international waterways dams in North America is being considered for construction by Canada and the United States on the border between British Columbia and Montana.

The international joint commission, weighing plans for the project said in a statement the dam was of the "greatest interest" to both countries.

**Strategic Location**

"The dam will be 'strategically located' on the Kootenay river in British Columbia and Montana."

The statement added: "It will afford complete flood protection to all lands in the Kootenay valley below the dam and will contribute very substantially to the control of floods on the lower Columbia river where the bulk of the danger occurs."

**Height Not Determined**

While the exact height of the dam has not been finally determined, A. O. Stanley, U. S. chairman of the commission, estimated it will be several hundred feet tall. The five-man commission and 300 technicians prepared to move westward to inspect boundary-water projects on the Canadian prairie.

### Never Fails Traveled and Visits Noted at Jerome

**LEWISTON, Oct. 14 (AP)—**Fire Chief D. Richard Gill was addressing the Lewiston Junior Chamber last night. His speech was interrupted.

He and his assistant chief, Harry Baker, were called to answer a fire alarm.

**Travel and Visits**

**Noted at Jerome**

**JEROME, Oct. 14 (AP)—**Mrs. Fred Ayo left Thursday for her home in Greytown, Wyo. after spending the past month with her husband and family, Mr. and Mrs. Hugh Taylor. Mr. and Mrs. Howard Jensen and Mr. and Mrs. Marvin Cole, Elgin, are attending homecoming activities at Moscow this week-end. Miss S. Bennett, Astoria, Ore., is visiting her son, Charles Fyne, and family and other relatives in Oakley and Hamilton.

Mr. and Mrs. Gordon Hofert have gone to Burlington, Wash., to make their home, where Mr. Hofert is employed. Mr. Hofert is the former Josephine Berghoch.

Mr. and Mrs. C. F. Mauer, Clatskanie, Calif., are guests of Miss's sister, Mrs. Ray Mann.

### Savant Flays Atomic Bomb 'Blind Faith'

**SAINT LOUIS CITY, Oct. 14 (AP)—**American should turn to production of international understanding through education rather than faith in the atomic bomb, a New York attorney declared here.

James Marshall, a member of the New York City board of education for the past 15 years, told members of the Utah Education association that he said, "We have some what the same childlike faith in the atom as a Maginot line that the French had in their fortification in 1929."

Marshall called for a change in the American attitude toward Russia from one of hostility to one of understanding, and for "revelation" of the principles of the declaration of independence.

"The way to realize them," he asserted, "is not by brandishing scientific knowledge and the bomb, but with atoms loaded with electrons of fear and distrust of hate, by helping people to help themselves."

Extension of the European recovery program, implementation of President Roosevelt's point-a, and "the interchange of knowledge and the atom," he said, are "creative things" upon which "faith and souls can be founded" and international understanding achieved.

**READ TIMES-NEWS WANT AD.**

**MILLIONS SAY... WHY PAY MORE!**

St. Joseph Aspirin is so pure, it takes less than 10 tablets only. It's 75% more, or over 50% more than the "2" count, or even more than the "4" count. Buy genuine "Aspirin at the best." Buy St. Joseph Aspirin.

**St. Joseph Aspirin**  
WORDS ARE FIRST AT 10:00  
10:00 A.M. SELLER AT 10:00

### MOVE TO FAIRFIELD

**FAIRFIELD, Oct. 14 (AP)—**Mr. and Mrs. Leonard Cline, who have spent most of the summer at their home here, have moved back to their Fairfield, Ore. home. The place they summered in was a good crop of winter wheat.

**The Best Prices in Town On QUALITY WALLPAPER**

48c Values, as low as 66c Values for \$1.20 Values for

Our CHRISTMAS TOYS ARE IN! LAY THEM AWAY NOW! Small Deposit Holds Your Selection.

**STATE HDWE. CO.**  
101 MAIN AVENUE EAST - TWIN FALLS

### Castleford Folks Tell Trips, Visits

**CASTLEFORD, Oct. 14 (AP)—**Leo Hendrickson visited Mr. and Mrs. E. H. Pepper while on route to Denver. Hendrickson is with the United States geological survey.

Mr. and Mrs. Fritz Nyboe spent several days in Arco visiting her brother and family, Mr. and Mrs. A. C. Stump.

Mrs. Herman Simpson, Shoux Falls, N. D., visited her uncle and aunt, Mr. and Mrs. Lucian Shields.

Mrs. Frank Leupin is visiting her daughter, Ms. in Moscow.

### Teachers Organize

**RICHFIELD, Oct. 14 (The Richfield faculty organized a local unit of the Teachers' association this evening.** Mrs. Nellie Vaden, vice president, and Mrs. Opal White, secretary-treasurer, Boyd Parshel was named delegate to the district meeting at Twin Falls Oct. 12 and Mrs. W. T. Favel, alternate.

### Lesson to Meet

**BURLEY, Oct. 14 (Past commanders of the Burley post of the American Legion will have charge of a program and refreshments at the regular Legion meeting tonight at the Odd Fellows hall.** Luke S. Drow, commander, reported that plans will be made for the fall and winter program of the Legion.

### LEGAL ADVERTISEMENTS

**NOTICE FOR PUBLICATION OF THE TRUSTS APPOINTED FOR PROBATE.**

**IN THE PROBATE COURT OF THE COUNTY OF TWIN FALLS, STATE OF IDAHO.**

**IN THE MATTER OF THE ESTATE OF WILLIAM H. LINDSEY, DECEASED.**

Notice is hereby given that the undersigned trustee of the above estate, in accordance with the terms of the will of said decedent, has caused a copy of the same to be filed for the record in the office of the County Clerk of Twin Falls, Idaho, on the 14th day of October, 1932, at 10:00 o'clock A. M., and that the same is now on file in the office of the County Clerk of Twin Falls, Idaho, and that the same is open to the inspection of all persons interested in the same, and that the same will be read at the probate court of the County of Twin Falls, Idaho, on the 18th day of October, 1932, at 10:00 o'clock A. M., and that the same will be read at the probate court of the County of Twin Falls, Idaho, on the 25th day of October, 1932, at 10:00 o'clock A. M., and that the same will be read at the probate court of the County of Twin Falls, Idaho, on the 31st day of October, 1932, at 10:00 o'clock A. M., and that the same will be read at the probate court of the County of Twin Falls, Idaho, on the 7th day of November, 1932, at 10:00 o'clock A. M., and that the same will be read at the probate court of the County of Twin Falls, Idaho, on the 14th day of November, 1932, at 10:00 o'clock A. M., and that the same will be read at the probate court of the County of Twin Falls, Idaho, on the 21st day of November, 1932, at 10:00 o'clock A. M., and that the same will be read at the probate court of the County of Twin Falls, Idaho, on the 28th day of November, 1932, at 10:00 o'clock A. M., and that the same will be read at the probate court of the County of Twin Falls, Idaho, on the 5th day of December, 1932, at 10:00 o'clock A. M., and that the same will be read at the probate court of the County of Twin Falls, Idaho, on the 12th day of December, 1932, at 10:00 o'clock A. M., and that the same will be read at the probate court of the County of Twin Falls, Idaho, on the 19th day of December, 1932, at 10:00 o'clock A. M., and that the same will be read at the probate court of the County of Twin Falls, Idaho, on the 26th day of December, 1932, at 10:00 o'clock A. M., and that the same will be read at the probate court of the County of Twin Falls, Idaho, on the 2nd day of January, 1933, at 10:00 o'clock A. M., and that the same will be read at the probate court of the County of Twin Falls, Idaho, on the 9th day of January, 1933, at 10:00 o'clock A. M., and that the same will be read at the probate court of the County of Twin Falls, Idaho, on the 16th day of January, 1933, at 10:00 o'clock A. M., and that the same will be read at the probate court of the County of Twin Falls, Idaho, on the 23rd day of January, 1933, at 10:00 o'clock A. M., and that the same will be read at the probate court of the County of Twin Falls, Idaho, on the 30th day of January, 1933, at 10:00 o'clock A. M., and that the same will be read at the probate court of the County of Twin Falls, Idaho, on the 6th day of February, 1933, at 10:00 o'clock A. M., and that the same will be read at the probate court of the County of Twin Falls, Idaho, on the 13th day of February, 1933, at 10:00 o'clock A. M., and that the same will be read at the probate court of the County of Twin Falls, Idaho, on the 20th day of February, 1933, at 10:00 o'clock A. M., and that the same will be read at the probate court of the County of Twin Falls, Idaho, on the 27th day of February, 1933, at 10:00 o'clock A. M., and that the same will be read at the probate court of the County of Twin Falls, Idaho, on the 6th day of March, 1933, at 10:00 o'clock A. M., and that the same will be read at the probate court of the County of Twin Falls, Idaho, on the 13th day of March, 1933, at 10:00 o'clock A. M., and that the same will be read at the probate court of the County of Twin Falls, Idaho, on the 20th day of March, 1933, at 10:00 o'clock A. M., and that the same will be read at the probate court of the County of Twin Falls, Idaho, on the 27th day of March, 1933, at 10:00 o'clock A. M., and that the same will be read at the probate court of the County of Twin Falls, Idaho, on the 3rd day of April, 1933, at 10:00 o'clock A. M., and that the same will be read at the probate court of the County of Twin Falls, Idaho, on the 10th day of April, 1933, at 10:00 o'clock A. M., and that the same will be read at the probate court of the County of Twin Falls, Idaho, on the 17th day of April, 1933, at 10:00 o'clock A. M., and that the same will be read at the probate court of the County of Twin Falls, Idaho, on the 24th day of April, 1933, at 10:00 o'clock A. M., and that the same will be read at the probate court of the County of Twin Falls, Idaho, on the 1st day of May, 1933, at 10:00 o'clock A. M., and that the same will be read at the probate court of the County of Twin Falls, Idaho, on the 8th day of May, 1933, at 10:00 o'clock A. M., and that the same will be read at the probate court of the County of Twin Falls, Idaho, on the 15th day of May, 1933, at 10:00 o'clock A. M., and that the same will be read at the probate court of the County of Twin Falls, Idaho, on the 22nd day of May, 1933, at 10:00 o'clock A. M., and that the same will be read at the probate court of the County of Twin Falls, Idaho, on the 29th day of May, 1933, at 10:00 o'clock A. M., and that the same will be read at the probate court of the County of Twin Falls, Idaho, on the 5th day of June, 1933, at 10:00 o'clock A. M., and that the same will be read at the probate court of the County of Twin Falls, Idaho, on the 12th day of June, 1933, at 10:00 o'clock A. M., and that the same will be read at the probate court of the County of Twin Falls, Idaho, on the 19th day of June, 1933, at 10:00 o'clock A. M., and that the same will be read at the probate court of the County of Twin Falls, Idaho, on the 26th day of June, 1933, at 10:00 o'clock A. M., and that the same will be read at the probate court of the County of Twin Falls, Idaho, on the 3rd day of July, 1933, at 10:00 o'clock A. M., and that the same will be read at the probate court of the County of Twin Falls, Idaho, on the 10th day of July, 1933, at 10:00 o'clock A. M., and that the same will be read at the probate court of the County of Twin Falls, Idaho, on the 17th day of July, 1933, at 10:00 o'clock A. M., and that the same will be read at the probate court of the County of Twin Falls, Idaho, on the 24th day of July, 1933, at 10:00 o'clock A. M., and that the same will be read at the probate court of the County of Twin Falls, Idaho, on the 31st day of July, 1933, at 10:00 o'clock A. M., and that the same will be read at the probate court of the County of Twin Falls, Idaho, on the 7th day of August, 1933, at 10:00 o'clock A. M., and that the same will be read at the probate court of the County of Twin Falls, Idaho, on the 14th day of August, 1933, at 10:00 o'clock A. M., and that the same will be read at the probate court of the County of Twin Falls, Idaho, on the 21st day of August, 1933, at 10:00 o'clock A. M., and that the same will be read at the probate court of the County of Twin Falls, Idaho, on the 28th day of August, 1933, at 10:00 o'clock A. M., and that the same will be read at the probate court of the County of Twin Falls, Idaho, on the 4th day of September, 1933, at 10:00 o'clock A. M., and that the same will be read at the probate court of the County of Twin Falls, Idaho, on the 11th day of September, 1933, at 10:00 o'clock A. M., and that the same will be read at the probate court of the County of Twin Falls, Idaho, on the 18th day of September, 1933, at 10:00 o'clock A. M., and that the same will be read at the probate court of the County of Twin Falls, Idaho, on the 25th day of September, 1933, at 10:00 o'clock A. M., and that the same will be read at the probate court of the County of Twin Falls, Idaho, on the 2nd day of October, 1933, at 10:00 o'clock A. M., and that the same will be read at the probate court of the County of Twin Falls, Idaho, on the 9th day of October, 1933, at 10:00 o'clock A. M., and that the same will be read at the probate court of the County of Twin Falls, Idaho, on the 16th day of October, 1933, at 10:00 o'clock A. M., and that the same will be read at the probate court of the County of Twin Falls, Idaho, on the 23rd day of October, 1933, at 10:00 o'clock A. M., and that the same will be read at the probate court of the County of Twin Falls, Idaho, on the 30th day of October, 1933, at 10:00 o'clock A. M., and that the same will be read at the probate court of the County of Twin Falls, Idaho, on the 6th day of November, 1933, at 10:00 o'clock A. M., and that the same will be read at the probate court of the County of Twin Falls, Idaho, on the 13th day of November, 1933, at 10:00 o'clock A. M., and that the same will be read at the probate court of the County of Twin Falls, Idaho, on the 20th day of November, 1933, at 10:00 o'clock A. M., and that the same will be read at the probate court of the County of Twin Falls, Idaho, on the 27th day of November, 1933, at 10:00 o'clock A. M., and that the same will be read at the probate court of the County of Twin Falls, Idaho, on the 4th day of December, 1933, at 10:00 o'clock A. M., and that the same will be read at the probate court of the County of Twin Falls, Idaho, on the 11th day of December, 1933, at 10:00 o'clock A. M., and that the same will be read at the probate court of the County of Twin Falls, Idaho, on the 18th day of December, 1933, at 10:00 o'clock A. M., and that the same will be read at the probate court of the County of Twin Falls, Idaho, on the 25th day of December, 1933, at 10:00 o'clock A. M., and that the same will be read at the probate court of the County of Twin Falls, Idaho, on the 1st day of January, 1934, at 10:00 o'clock A. M., and that the same will be read at the probate court of the County of Twin Falls, Idaho, on the 8th day of January, 1934, at 10:00 o'clock A. M., and that the same will be read at the probate court of the County of Twin Falls, Idaho, on the 15th day of January, 1934, at 10:00 o'clock A. M., and that the same will be read at the probate court of the County of Twin Falls, Idaho, on the 22nd day of January, 1934, at 10:00 o'clock A. M., and that the same will be read at the probate court of the County of Twin Falls, Idaho, on the 29th day of January, 1934, at 10:00 o'clock A. M., and that the same will be read at the probate court of the County of Twin Falls, Idaho, on the 5th day of February, 1934, at 10:00 o'clock A. M., and that the same will be read at the probate court of the County of Twin Falls, Idaho, on the 12th day of February, 1934, at 10:00 o'clock A. M., and that the same will be read at the probate court of the County of Twin Falls, Idaho, on the 19th day of February, 1934, at 10:00 o'clock A. M., and that the same will be read at the probate court of the County of Twin Falls, Idaho, on the 26th day of February, 1934, at 10:00 o'clock A. M., and that the same will be read at the probate court of the County of Twin Falls, Idaho, on the 5th day of March, 1934, at 10:00 o'clock A. M., and that the same will be read at the probate court of the County of Twin Falls, Idaho, on the 12th day of March, 1934, at 10:00 o'clock A. M., and that the same will be read at the probate court of the County of Twin Falls, Idaho, on the 19th day of March, 1934, at 10:00 o'clock A. M., and that the same will be read at the probate court of the County of Twin Falls, Idaho, on the 26th day of March, 1934, at 10:00 o'clock A. M., and that the same will be read at the probate court of the County of Twin Falls, Idaho, on the 2nd day of April, 1934, at 10:00 o'clock A. M., and that the same will be read at the probate court of the County of Twin Falls, Idaho, on the 9th day of April, 1934, at 10:00 o'clock A. M., and that the same will be read at the probate court of the County of Twin Falls, Idaho, on the 16th day of April, 1934, at 10:00 o'clock A. M., and that the same will be read at the probate court of the County of Twin Falls, Idaho, on the 23rd day of April, 1934, at 10:00 o'clock A. M., and that the same will be read at the probate court of the County of Twin Falls, Idaho, on the 30th day of April, 1934, at 10:00 o'clock A. M., and that the same will be read at the probate court of the County of Twin Falls, Idaho, on the 7th day of May, 1934, at 10:00 o'clock A. M., and that the same will be read at the probate court of the County of Twin Falls, Idaho, on the 14th day of May, 1934, at 10:00 o'clock A. M., and that the same will be read at the probate court of the County of Twin Falls, Idaho, on the 21st day of May, 1934, at 10:00 o'clock A. M., and that the same will be read at the probate court of the County of Twin Falls, Idaho, on the 28th day of May, 1934, at 10:00 o'clock A. M., and that the same will be read at the probate court of the County of Twin Falls, Idaho, on the 4th day of June, 1934, at 10:00 o'clock A. M., and that the same will be read at the probate court of the County of Twin Falls, Idaho, on the 11th day of June, 1934, at 10:00 o'clock A. M., and that the same will be read at the probate court of the County of Twin Falls, Idaho, on the 18th day of June, 1934, at 10:00 o'clock A. M., and that the same will be read at the probate court of the County of Twin Falls, Idaho, on the 25th day of June, 1934, at 10:00 o'clock A. M., and that the same will be read at the probate court of the County of Twin Falls, Idaho, on the 2nd day of July, 1934, at 10:00 o'clock A. M., and that the same will be read at the probate court of the County of Twin Falls, Idaho, on the 9th day of July, 1934, at 10:00 o'clock A. M., and that the same will be read at the probate court of the County of Twin Falls, Idaho, on the 16th day of July, 1934, at 10:00 o'clock A. M., and that the same will be read at the probate court of the County of Twin Falls, Idaho, on the 23rd day of July, 1934, at 10:00 o'clock A. M., and that the same will be read at the probate court of the County of Twin Falls, Idaho, on the 30th day of July, 1934, at 10:00 o'clock A. M., and that the same will be read at the probate court of the County of Twin Falls, Idaho, on the 6th day of August, 1934, at 10:00 o'clock A. M., and that the same will be read at the probate court of the County of Twin Falls, Idaho, on the 13th day of August, 1934, at 10:00 o'clock A. M., and that the same will be read at the probate court of the County of Twin Falls, Idaho, on the 20th day of August, 1934, at 10:00 o'clock A. M., and that the same will be read at the probate court of the County of Twin Falls, Idaho, on the 27th day of August, 1934, at 10:00 o'clock A. M., and that the same will be read at the probate court of the County of Twin Falls, Idaho, on the 3rd day of September, 1934, at 10:00 o'clock A. M., and that the same will be read at the probate court of the County of Twin Falls, Idaho, on the 10th day of September, 1934, at 10:00 o'clock A. M., and that the same will be read at the probate court of the County of Twin Falls, Idaho, on the 17th day of September, 1934, at 10:00 o'clock A. M., and that the same will be read at the probate court of the County of Twin Falls, Idaho, on the 24th day of September, 1934, at 10:00 o'clock A. M., and that the same will be read at the probate court of the County of Twin Falls, Idaho, on the 1st day of October, 1934, at 10:00 o'clock A. M., and that the same will be read at the probate court of the County of Twin Falls, Idaho, on the 8th day of October, 1934, at 10:00 o'clock A. M., and that the same will be read at the probate court of the County of Twin Falls, Idaho, on the 15th day of October, 1934, at 10:00 o'clock A. M., and that the same will be read at the probate court of the County of Twin Falls, Idaho, on the 22nd day of October, 1934, at 10:00 o'clock A. M., and that the same will be read at the probate court of the County of Twin Falls, Idaho, on the 29th day of October, 1934, at 10:00 o'clock A. M., and that the same will be read at the probate court of the County of Twin Falls, Idaho, on the 5th day of November, 1934, at 10:00 o'clock A. M., and that the same will be read at the probate court of the County of Twin Falls, Idaho, on the 12th day of November, 1934, at 10:00 o'clock A. M., and that the same will be read at the probate court of the County of Twin Falls, Idaho, on the 19th day of November, 1934, at 10:00 o'clock A. M., and that the same will be read at the probate court of the County of Twin Falls, Idaho, on the 26th day of November, 1934, at 10:00 o'clock A. M., and that the same will be read at the probate court of the County of Twin Falls, Idaho, on the 3rd day of December, 1934, at 10:00 o'clock A. M., and that the same will be read at the probate court of the County of Twin Falls, Idaho, on the 10th day of December, 1934, at 10:00 o'clock A. M., and that the same will be read at the probate court of the County of Twin Falls, Idaho, on the 17th day of December, 1934, at 10:00 o'clock A. M., and that the same will be read at the probate court of the County of Twin Falls, Idaho, on the 24th day of December, 1934, at 10:00 o'clock A. M., and that the same will be read at the probate court of the County of Twin Falls, Idaho, on the 31st day of December, 1934, at 10:00 o'clock A. M., and that the same will be read at the probate court of the County of Twin Falls, Idaho, on the 7th day of January, 1935, at 10:00 o'clock A. M., and that the same will be read at the probate court of the County of Twin Falls, Idaho, on the 14th day of January, 1935, at 10:00 o'clock A. M., and that the same will be read at the probate court of the County of Twin Falls, Idaho, on the 21st day of January, 1935, at 10:00 o'clock A. M., and that the same will be read at the probate court of the County of Twin Falls, Idaho, on the 28th day of January, 1935, at 10:00 o'clock A. M., and that the same will be read at the probate court of the County of Twin Falls, Idaho, on the 4th day of February, 1935, at 10:00 o'clock A. M., and that the same will be read at the probate court of the County of Twin Falls, Idaho, on the 11th day of February, 1935, at 10:00 o'clock A. M., and that the same will be read at the probate court of the County of Twin Falls, Idaho, on the 18th day of February, 1935, at 10:00 o'clock A. M., and that the same will be read at the probate court of the County of Twin Falls, Idaho, on the 25th day of February, 1935, at 10:00 o'clock A. M., and that the same will be read at the probate court of the County of Twin Falls, Idaho, on the 3rd day of March, 1935, at 10:00 o'clock A. M., and that the same will be read at the probate court of the County of Twin Falls, Idaho, on the 10th day of March, 1935, at 10:00 o'clock A. M., and that the same will be read at the probate court of the County of Twin Falls, Idaho, on the 17th day of March, 1935, at 10:00 o'clock A. M., and that the same will be read at the probate court of the County of Twin Falls, Idaho, on the 24th day of March, 1935, at 10:00 o'clock A. M., and that the same will be read at the probate court of the County of Twin Falls, Idaho, on the 31st day of March, 1935, at 10:00 o'clock A. M., and that the same will be read at the probate court of the County of Twin Falls, Idaho, on the 7th day of April, 1935, at 10:00 o'clock A. M., and that the same will be read at the probate court of the County of Twin Falls, Idaho, on the 14th day of April, 1935, at 10:00 o'clock A. M., and that the same will be read at the probate court of the County of Twin Falls, Idaho, on the 21st day of April, 1935, at 10:00 o'clock A. M., and that the same will be read at the probate court of the County of Twin Falls, Idaho, on the 28th day of April, 1935, at 10:00 o'clock A. M., and that the same will be read at the probate court of the County of Twin Falls, Idaho, on the 5th day of May, 1935, at 10:00 o'clock A. M., and that the same will be read at the probate court of the County of Twin Falls, Idaho, on the 12th day of May, 1935, at 10:00 o'clock A. M., and that the same will be read at the probate court of the County of Twin Falls, Idaho, on the 19th day of May, 1935, at 10:00 o'clock A. M., and that the same will be read at the probate court of the County of Twin Falls, Idaho, on the 26th day of May, 1935, at 10:00 o'clock A. M., and that the same will be read at the probate court of the County of Twin Falls, Idaho, on the 2nd day of June, 1935, at 10:00 o'clock A. M., and that the same will be read at the probate court of the County of Twin Falls, Idaho, on the 9th day of June, 1935, at 10:00 o'clock A. M., and that the same will be read at the probate court of the County of Twin Falls, Idaho, on the 16th day of June, 1935, at 10:00 o'clock A. M., and that the same will be read at the probate court of the County of Twin Falls, Idaho, on the 23rd day of June, 1935, at 10:00 o'clock A. M., and that the same will be read at the probate court of the County of Twin Falls, Idaho, on the 30th day of June, 1935, at 10:00 o'clock A. M., and that the same will be read at the probate court of the County of Twin Falls, Idaho, on the 7th day of July, 1935, at 10:00 o'clock A. M., and that the same will be read at the probate court of the County of Twin Falls, Idaho, on the 14th day of July, 1935, at 10:00 o'clock A. M., and that the same will be read at the probate court of the County of Twin Falls, Idaho, on the 21st day of July, 1935, at 10:00 o'clock A. M., and that the same will be read at the probate court of the County of Twin Falls, Idaho, on the 28th day of July, 1935, at 10:00 o'clock A. M., and that the same will be read at the probate court of the County of Twin Falls, Idaho, on the 4th day of August, 1935, at 10:00 o'clock A. M., and that the same will be read at the probate court of the County of Twin Falls, Idaho, on the 11th day of August, 1935, at 10:00 o'clock A. M., and that the same will be read at the probate court of the County of Twin Falls, Idaho, on the 18th day of August, 1935, at 10:00 o'clock A. M., and that the same will be read at the probate court of the County of Twin Falls, Idaho, on the 25th day of August, 1935, at 10:00 o'clock A. M., and that the same will be read at the probate court of the County of Twin Falls, Idaho, on the 1st day of September, 1935, at 10:00 o'clock A. M., and that the same will be read at the probate court of the County of Twin Falls, Idaho, on the 8th day of September, 1935, at 10:00 o'clock A. M., and that the same will be read at the probate court of the County of Twin Falls, Idaho, on the 15th day of September, 1935, at 10:00 o'clock A. M., and that the same will be read at the probate court of the County of Twin Falls, Idaho, on the 22nd day of September, 1935, at 10:00 o'clock A. M., and that the same will be read at the probate court of the County of Twin Falls, Idaho, on the 29th day of September, 1935, at 10:00 o'clock A. M., and that the same will be read at the probate court of the County of Twin Falls, Idaho, on the 6th day of October, 1935, at 10:00 o'clock A. M., and that the same will be read at the probate court of the County of Twin Falls, Idaho, on the 13th day of October, 1935, at 10:00 o'clock A. M., and that the same will be read at the probate court of the County of Twin Falls, Idaho, on the 20th day of October, 1935, at 10:00 o'clock A. M., and that the same will be read at the probate court of the County of Twin Falls, Idaho, on the 27th day of October, 1935, at 10:00 o'clock A. M., and that the same will be read at the probate court of the County of Twin Falls, Idaho, on the 3rd day of November, 1935, at 10:00 o'clock A. M., and that the same will be read at the probate court of the County of Twin Falls, Idaho, on the 10th day of November, 1935, at 10:00 o'clock A. M., and that the same will be read at the probate court of the County of Twin Falls, Idaho, on the 17th day of November, 1935, at 10:00 o'clock A. M., and that the same will be read at the probate court of the County of Twin Falls, Idaho, on the 24th day of November, 1935, at 10:00 o'clock A. M., and that the same will be read at the probate court of the County of Twin Falls, Idaho, on the 1st day of December, 1935, at 10:00 o'clock A. M., and that the same will be read at the probate court of the County of Twin Falls, Idaho, on the 8th day of December, 1935, at 10:00 o'clock A. M., and that the same will be read at the probate court of the County of Twin Falls, Idaho, on the 15th day of December, 1935, at 10:00 o'clock A. M., and that the same will be read at the probate court of the County of Twin Falls, Idaho, on the 22nd day of December, 1935, at 10:00 o'clock A. M., and that the same will be read at the probate court of the County of Twin Falls, Idaho, on the 29th day of December, 1935, at 10:00 o'clock A. M., and that the same will be read at the probate court of the County of Twin Falls, Idaho, on the 5th day of January, 1936, at 10:00 o'clock A. M., and that the same will be read at the probate court of the County of Twin Falls, Idaho, on the 12th day of January, 1936, at 10:00 o'clock A. M., and that the same will be read at the probate court of the County of Twin Falls, Idaho, on the 19th day of January, 1936, at 10:00 o'clock A. M., and that the same will be read at the probate court of the County of Twin Falls, Idaho, on the 26th day of January, 1936, at 10:00 o'clock A. M., and that the same will be read at the probate court of the County of Twin Falls, Idaho, on the 2nd day of February, 1936, at 10:00 o'clock A. M., and that the same will be read at the probate court of the County of Twin Falls, Idaho, on the 9th day of February, 1936, at 10:00 o'clock A. M., and that the same will be read at the probate court of the County of Twin Falls, Idaho, on the 16th day of February, 1936, at 10:00 o'clock A. M., and that the same will be read at the probate court of the County of Twin Falls, Idaho, on the 23rd day of February, 1936, at 10:00 o'clock A. M., and that the same will be read at the probate court of the County of Twin Falls, Idaho, on the 3rd day of March, 1936, at 10:00 o'clock A. M., and that the same will be read at the probate court of the County of Twin Falls, Idaho, on the 10th day of March, 1936, at 10:00 o'clock A. M., and that the same will be read at the probate court of the County of Twin Falls, Idaho, on the 17th day of March, 1936, at 10:00 o'clock A. M., and that the same will be read at the probate court of the County of Twin Falls, Idaho, on the 24th day of March, 1936, at 10:00 o'clock A. M., and that the same will be read at the probate court of the County of Twin Falls, Idaho, on the 31st day of March, 1936, at 10:00 o'clock A. M., and that the same will be read at the probate court of the County of Twin Falls, Idaho, on the 7th day of April, 1936, at 10:00 o'clock A. M., and that the same will be read at the probate court of the County of Twin Falls, Idaho, on the 14th day of April, 1936, at 10:00 o'clock A. M., and that the same will be read at the probate court of the County of Twin Falls, Idaho, on the 21st day of April, 1936, at 10:00 o'clock A. M., and that the same will be read at the probate court of the County of Twin Falls, Idaho, on the 28th day of April, 1936, at 10:00 o'clock A. M., and that the same will be read at the probate court of the County of Twin Falls, Idaho, on the 5th day of May, 1936, at 10:00 o'clock A. M., and that