

then a Lightning fighter plane cat-
apulted from the deck of an American war
ship. It is evidence that your war bon-
us is borne fruit. Catapult equipment for
the Navy costs \$27,000.

PRICE 5 CENTS

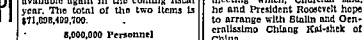
**AIRFIELD, - PASS
SEIZED TO FORCE
NIPS IN HARBOR**

By The Associated Press
American troops have completed encirclement of the remnant of Japanese forces on Attu island in the western Aleutians, the navy announced today, after capturing the partially completed enemy air field there.

The Japanese, the navy said, were caught in the Chichagof harbor area at the northeastern extremity of Attu after United

States forces captured Sarana pass flanking the enemy's positions from the southeast.

By SANDOR S. KLEIN
WASHINGTON, May 20 (U.P.) — American casualties thus far reported in the battle for Attu island have been comparatively light, Secretary



of War Henry L. Stimson declared today.

He said the American forces have won complete control of the Holtz bay area, including a partially completed flight strip.

American forces from Holtz bay on the north and Massacre bay in the south have joined on the central ridge of the island and are now concentrated in an attack on the Japanese positions on Chichagof harbor.

The operations on land are being conducted directly by D. S. Army forces under the command of Maj. Gen. Eugene H. Landrum. The forces which landed on Holtz bay were commanded by Col. Frank L. Gulin Jr.

The attack was planned some time ago and troops were specially trained for it. Transports and warships were assembled secretly and, apparently, the attack took the Japanese by surprise.

by surprise.
(Continued on Page 2, Column 1)

14 MINES CLOSED IN COAL STRIKES

PITTSBURGH, May 26 (AP)—Strikes of soft coal miners protesting their lack of a working contract spread in Pennsylvania and broke out in Ohio and Kentucky today, leaving more than 6,000 men idle and 14 mines closed.

The miners struck in protest against the war labor board's retention

The walkouts violated the union's agreement to continue working until May 31.

Workers unionists protesting they had no new contract and at Columbus a UMW spokesman said he feared miners in other pits might go out.

Decision Monday or Tuesday...
WASHINGTON, May 20 (AP)—The war labor board arranged its calendar today to permit a final decision in the soft coal dispute by next Monday or Tuesday.

Operators who had been asked to stand by for a possible call for further collective bargaining or questioning by a three-man panel disclosed that the board had withdrawn the request.

ed to view with favor. Draw demands for portal-to-portal compensation, payment for the time they spend in underground travel to and from their actual working places.

In addition, the panel majority is said to favor some of the minor demands, such as elimination of the cap lamp rental fee, amounting to seven or eight cents a day.

A deciding next Monday or Tuesday would be well in advance of expiration of the truce extended by UMWA President John L. Lewis to May 31.

STATE BOARD TO MEET
BOISE, May 20 (AP)—Members of the state board of education will hold their quarterly meeting in Moscow May 26. Robert E. Johnson, with graduation ceremonies at the University of Idaho, and E. Roberts, state superintendent,

WANKS ENCIRCLE AT JAPANESE

Bad weather which aided the surprise landings has subsequently hampered the progress of American forces. Interdicting with naval artillery and aerial bombardment, the Japanese are making a death stand against the American forces.

The attack was launched with an aircraft carrier, the USS *Yorktown*, and was directed against the Japanese forces which were entrenched in the eastern end of the island. The Japanese were heavily reinforced and the attack was a costly one.

The Japanese forces were heavily reinforced and the attack was a costly one. The Japanese forces were heavily reinforced and the attack was a costly one.

First Kaiser Steel Poured



Molten steel was poured from a 200-ton ladle into molds to make ingots as the first steel was tapped at the Kaiser company, Portland, Ore., May 23.

The steel was used for the construction of the new steel mill. The steel was used for the construction of the new steel mill.

Twin Falls News in Brief

Marriage License
Shiro Iwano and Yasuko Katayama, both of Butte, have obtained a marriage license here.

Mother Visits Son
Mrs. W. H. Harris, route one, in the Nampa area, visited her son, William Harris, and family.

Soldier in Training
Pvt. Clifford O. Wall, son of Mr. C. W. Wall, 119 Adams, had entered the armed force replacement center at Fort Knox, Ky., for basic training in the armored force.

Now at Iowa College
Harland Clark, U.S.N. son of Mr. and Mrs. W. H. Clark, has been transferred from Harvard to Iowa state college for an engineering course.

Sergeant Leaves
Sgt. Roy Patton has left for Lake field, Tex., after a visit with his parents and Mrs. J. P. Moxley. Sergeant Patton visited his brother, Bill Patton, and family at Provo on route to Texas.

Speeder Pays Fine
Norman J. Coor paid a fine of \$5 and 30 days' probation for speeding on Highway 101. The complaint was signed by W. L. Chancy, state policeman.

Two at Minneapolis
Donald W. Newcomb, 10, son of Mr. and Mrs. Carl E. Newcomb, route two, Twin Falls, and Norman E. Parmenter, 18, Newcomb, have enrolled at the University of Minnesota at Minneapolis.

Pioneer Mission to French
Rev. Francis J. Sullivan, pastor of the French mission, will visit the French mission at Idaho Falls, Blackfoot, Pocatello, and Boise, during his tour of the Pacific Northwest.

Spokane Visitor
Mrs. Glen C. Hemphill, Spokane, is visiting relatives in Twin Falls. She is the wife of Mr. Hemphill, who is a resident of Twin Falls.

Home Holiday Met
Twin Falls stores will close Monday, May 21, in observance of Memorial day, which will be observed on Sunday, May 22.

Pictured in Magazine
Fred Lett, a Linde, Lake City, a nephew of Miss Jeanette Lett, a resident of Twin Falls, was pictured in the latest issue of the magazine, "The American Girl".

JAPANESE ADMIT OWN LOSS HEAVY

The Japanese account said the Americans landed at Itoya and Itoya bay, on the east end of the 35-mile long island, under cover of heavy aerial and naval bombardment.

U. S. planes began an eight-hour assault at 8 a. m. May 23, the day the Japanese lost control of the island. The Japanese lost control of the island.

Straw Hat Days

Officially proclaimed by men's store representatives in the merchant bureau of the Chamber of Commerce, straw hat day will see local men donning their hats, and marking the season by one of the variety of shapes and shades which local stores now have on display.

Seen Today

This update-down U.S. sign in real estate office very much right-side-up today... John Hays, owner of the real estate office, is seen today.

WELDING COURSE WILL BE OPENED

Plans to begin a course of welding instruction at the State school shop Monday were announced by J. E. Marmont, assistant supervisor of war production training for the state board of vocational education.

COURT SUSTAINS SHERIFF IN SUIT

The two forces merged and are now attacking the Japanese garrison near Chickadee harbor. The court sustained the sheriff in his suit.

Young Chiang



The Hospital

Emergency beds will now be available Thursday at the Twin Falls county general hospital.

COUPON

POCKET COMB With Coupon, 4¢

ON SALE THURSDAY MAY 24 SATURDAY

Walgreen's

YOU'RE ALWAYS WELCOME AT WALGREEN'S DRUG STORES

TWIN FALLS & BURLEY

BARBASOL 30¢

50c Shave Cream, Tube (1oz.) or Jar (4oz.)

LIFEBUOY 7¢

Health Soap (1oz. Bar)

PHILLIPS' 39¢

Milk of Magnesia, 50c Size (1oz.)

WALDORF 29¢

Luxury Tissue Toilet Tissue (1oz.)

VEGETABLE PRICE CLIMB REVEALED

WASHINGTON, May 20 (AP)—Organized labor statistics announced a jump of 132 per cent in one month in the price of fresh vegetables and fruits as evidence of their charge that price control has been in effect.

Theater Where 3 Died to Be Razed

BALT LAKE CITY, May 20 (AP)—Workmen prepared to haul down the remaining walls of the Victory theater today as fire Chief Hansen ordered an investigation of the cause of the fire which killed the three men.

Nazis Put Allied Deaths at 50,000

The Berlin radio broadcast an allied German report today that allied forces in north Africa suffered casualties of 50,000 dead, 200,000 wounded and 120,000 captured.

★ Today & Friday

| | |
|-----------|-----|
| ASPERGUM | 11¢ |
| LARVEX | 7¢ |
| PETROGAL | 8¢ |
| NORITO | 8¢ |
| K-Y JELLY | 2¢ |
| AMOLIN | 3¢ |
| CUTEX | 1¢ |
| MENNEN | 4¢ |
| FEENAMINT | 19¢ |
| CLIMAX | 23¢ |
| PYREX | 20¢ |

Perfection Cold Cream 37¢

4-oz. Jar, Freshly Made

VITAMINS

Energy Your Diet with HIGH-POTENCY

Tennessean Asks for Idaho Spuds to Keep Sister Alive

BOISE, May 20 (AP)—A plea for Idaho potatoes was made today by Mrs. B. L. Vennart, Mellon Tenn., for her sister, Mrs. John H. Barker, who was reported to be ill.

CRYSTAL BALL

CRYSTAL BALL

With William Bendix

CHINA

YOUNG LADD

For Bare-Leg Make-Up SOOT-SAVERS 21¢

SOOT-SAVERS 21¢

For Bare-Leg Make-Up

LABS

LABS B COMPLEX 30 Tablets 1.00

LABS

LABS B COMPLEX 30 Tablets 1.00

LABS

LABS B COMPLEX 30 Tablets 1.00

PLANNING BOARD PROGRAM RAPPED

NEW-YORK, May 20 (AP)—U. S. Senator Robert A. Taft, R. O., said last night that the national resources planning board program for the post-war period would lead to a 50 per cent, at least, socialist economy.

"He addressed a dinner climaxed the 54th annual conference of the National Society of the Sons of the American Revolution.

"The program of the national resources planning board is plutocratic and it is a good thing," the Ohio senator said, "but it leads directly to the abolition of self government—in control of all industry by administrative boards of executive, legislative and judicial powers and to a 50 per cent, at least, socialist economy."

He said that he was planning a book would be for a "sound finance," and added that other points would be encouragement of the industry, minimum regulation of business, a return to private enterprise, a plan for new industries to encourage saving and investment and continuance of safeguards for economic security, health and public welfare.

Continuing his attack on the NRPB, Senator Taft said:

"The board gives lip service to private enterprise, but the measures which they propose would certainly bring it to an untimely end. The government, according to the report for 1942, is to provide technical engineering assistance in the conversion of war plants. The government is to provide control for the same purpose and, of course, guide the conversion along the lines which the brain-trusters think desirable."

Government Ownership

"The railroads are apparently to be taken over by a national transportation agency which shall also control the bus lines, air transport and pipe lines. The whole effect of the report on transportation is government ownership."

"It is suggested also that these be mixed corporations extended to manufacture aluminum, magnesium, synthetic rubber, ship building and aircraft. I think I need hardly point out that once the government enters an industry the days of private enterprise are over."

OAKLEY

Misses Claire and Helen Hale have left for Salt Lake City for employment.

Mrs. Hilda Fisher, California, is visiting friends in Oakley.

Officers of the Cassin camp, daughters of Utah Pioneers, Capt. Maud M. Clark, first vice captain, Alice Peterson, second vice captain, Mabel Brown and class leader, Mary Erickson attended the D.U.P. convention held in Burley.

Word has been received by Mr. and Mrs. J. J. Simmons that their son, Frank Simmons, is seriously ill. Frank is in the signal corps in Louisiana.

After six week of remodeling the Oakley second ward chapel, a large crowd attended the opening service Sunday.

Sea Beagle



Batty, the sea-going beagle pup, takes his daily dip in the ocean on the coast of Seaman Reef, off the coast of Alaska. The mascot went along with a navy ship when it sailed from an American port.

AUTO PLEASURE DRIVING BANNED

WASHINGTON, May 20 (AP)—The office of price administration last night reinstated the eastern ban on pleasure driving to meet a gasoline supply crisis resulting from the tremendous increase in military demands, and to assure adequate gasoline for farm production of food.

"Every effort will be made to reduce violators and not only to suspend their rights to any further rationing for the duration, or for an appreciable time," OPA said.

Administrator Prentiss M. Brown said that in the east "have hit an all-time low" and the ban is necessary to make sure that available fuel is "not dissipated in non-essential use."

Brown directed thousands of tractors engaged in vital food production from Maine to Virginia are threatened with forfeiture because of low gasoline supplies.

GOODING

Miss Olga O'Neil, daughter of Mr. and Mrs. Curs O'Neil, has returned to Tacoma, Wash., after visiting here while her brother, Leroy, Lloyd O'Neil, was in the hospital.

Leroy, who was in the hospital, returned to Camp Carson, Colo., after spending a night's furlough at the home of his parents, Mr. and Mrs. P. O. Requet.

Mrs. Katherine Hurdson has returned from Miami, Fla., where she has spent the past several months. She was accompanied home by her daughter, Mrs. Helen Adams, Balboa, Panama. Mrs. Adams had come by plane from Panama to attend the wedding of her son.

After six week of remodeling the Oakley second ward chapel, a large crowd attended the opening service Sunday.

Word has been received by Mr. and Mrs. J. J. Simmons that their son, Frank Simmons, is seriously ill. Frank is in the signal corps in Louisiana.

After six week of remodeling the Oakley second ward chapel, a large crowd attended the opening service Sunday.

Word has been received by Mr. and Mrs. J. J. Simmons that their son, Frank Simmons, is seriously ill. Frank is in the signal corps in Louisiana.

After six week of remodeling the Oakley second ward chapel, a large crowd attended the opening service Sunday.

Word has been received by Mr. and Mrs. J. J. Simmons that their son, Frank Simmons, is seriously ill. Frank is in the signal corps in Louisiana.

After six week of remodeling the Oakley second ward chapel, a large crowd attended the opening service Sunday.

Word has been received by Mr. and Mrs. J. J. Simmons that their son, Frank Simmons, is seriously ill. Frank is in the signal corps in Louisiana.

After six week of remodeling the Oakley second ward chapel, a large crowd attended the opening service Sunday.

Word has been received by Mr. and Mrs. J. J. Simmons that their son, Frank Simmons, is seriously ill. Frank is in the signal corps in Louisiana.

After six week of remodeling the Oakley second ward chapel, a large crowd attended the opening service Sunday.

Word has been received by Mr. and Mrs. J. J. Simmons that their son, Frank Simmons, is seriously ill. Frank is in the signal corps in Louisiana.

After six week of remodeling the Oakley second ward chapel, a large crowd attended the opening service Sunday.

Word has been received by Mr. and Mrs. J. J. Simmons that their son, Frank Simmons, is seriously ill. Frank is in the signal corps in Louisiana.

After six week of remodeling the Oakley second ward chapel, a large crowd attended the opening service Sunday.

Word has been received by Mr. and Mrs. J. J. Simmons that their son, Frank Simmons, is seriously ill. Frank is in the signal corps in Louisiana.

After six week of remodeling the Oakley second ward chapel, a large crowd attended the opening service Sunday.

Word has been received by Mr. and Mrs. J. J. Simmons that their son, Frank Simmons, is seriously ill. Frank is in the signal corps in Louisiana.

After six week of remodeling the Oakley second ward chapel, a large crowd attended the opening service Sunday.

Word has been received by Mr. and Mrs. J. J. Simmons that their son, Frank Simmons, is seriously ill. Frank is in the signal corps in Louisiana.

After six week of remodeling the Oakley second ward chapel, a large crowd attended the opening service Sunday.

Word has been received by Mr. and Mrs. J. J. Simmons that their son, Frank Simmons, is seriously ill. Frank is in the signal corps in Louisiana.

After six week of remodeling the Oakley second ward chapel, a large crowd attended the opening service Sunday.

Word has been received by Mr. and Mrs. J. J. Simmons that their son, Frank Simmons, is seriously ill. Frank is in the signal corps in Louisiana.

After six week of remodeling the Oakley second ward chapel, a large crowd attended the opening service Sunday.

Word has been received by Mr. and Mrs. J. J. Simmons that their son, Frank Simmons, is seriously ill. Frank is in the signal corps in Louisiana.

HELICOPTER AIR ROUTE PLANNED

LOS ANGELES, May 20 (AP)—Helicopters, those fantastic grasshoppers of the sky, that take off and land on roads and parking lots, would flitter through southern California skies carrying air mail and express under a plan advanced by Southern Airways.

The airline announced it would file a franchise application with the civil aeronautics board in Washington and that if its proposal is approved—

Helicopters, traveling on their rotating wings, will stop down on the roof of the postoffice's terminal annex in downtown Los Angeles with air mail just 12 minutes after the mail arrives at Lockheed air terminal in Burbank. Present ground-level travel time for the distance is 30 minutes.

Three separate helicopter routes originating at the air terminal will extend to Santa Ana, Long Beach and San Pedro for a total of 40 stops on roof tops, parking lots or fields near postoffices.

"My guess is that the increase in air mail volume will pay for the service," said James O. Ray, Southern Airways vice-president.

The Lehman Caves national monument of Nevada had 4,943 visitors during 1942.

It's Time To Switch

to a cool STRAW



Straw Hat Days — Friday — Saturday

Step out in style . . . in one of these cool, new straw hats we've just unpacked for your all summer long comfort. A cool tropical style straw is actually cooler than no hat at all. Come in right now and select the straw to see you thru summer . . . in cool comfort.

"LEGHORN"

Handsome cream Leghorn straw hat with tan Puggree band. Weatherized finish. Buckled as shown below.

"TWEEDCRAFT"

A smart, long wearing woven cotton "Straw" hat, in good looking brown and tan tweed effect. You'll like this smart style, the long wear, Weatherized.

SCOOP!

"FEATHER WATE"

A good looking fabric hat, in soft tan shade, you'll like for its light weight, and long wear, as well as snappy appearance. Tan or brown band.

"PANGO" TROPICAL

Handsome tropical straw in natural color, (light Cocoa) woven with an open mesh, with wine color, Puggree band. Weatherized.

"COCOA TROPICAL"

There's months of good looking service in this smart tropical straw. Cocoa color, with Puggree band in plain dark tones or bright prints.

"AIR-TWIST"

Our finest summer hat — cream woven fabric, in smart looking, cool open mesh that promises long summer comfort. Wide variety of plain or fancy Puggree bands. Weatherized.

STRAW HAT DAYS

FRIDAY & SATURDAY

at **Anderson Co.**

Twin Falls Store

NEW Stethoscope Invented by RCA

NEW YORK, May 20 (AP)—Radio Corporation of America has announced that Dr. Harry F. Olson, head of its acoustics research, has developed in RCA laboratories a new acoustic stethoscope, "no smaller in its range of hearing than it introduces many sounds doctors have never heard."

RCA said that "in much the same way that the RCA electron microscope is opening unseen worlds in the submicroscopic realm, this stethoscope . . . promises to widen the study of sound within the human body, adding that "the best of the best, normal or abnormal, respiratory noises, peristaltic squeaks, murmurs and groans all are amplified to facilitate diagnosis, based upon the structure of sound."

Goatish frogs have bodies 12 inches long, exclusive of their long legs.

READ TIMES-NEWS WANT ADS.

Twin Falls Store

Anderson Co.

QUALITY WORK CLOTHES

Help you do your Best

MEN'S 8 OZ. SANFORIZED OVERALLS \$1.59

MEN'S CHAMBRAY & COVERT WORK SHIRTS 98c

FULL 8 OZ. SANFORIZED Truckers Overalls \$1.98

SANFORIZED MATCHED SET Work Suits \$3.77

PANTS \$1.98 Shirt \$1.79

CAVALRY TWILL SANFORIZED UNIFORMS

PANTS \$3.98 JACKETS \$5.00

MENS SANFORIZED WHIPCORD PANTS \$2.49

OUR FAMOUS 8-INCH MULTIPLE FEATURE "OWYHEE" LOGGERS \$6.95

Double sole. • Logger heel. • Steel arch. • 8 inch top. • Try on a pair and see for yourself.

Anderson Co.

Twin Falls Store

BUY MORE U. S. BONDS AND STAMPS

Anderson Co.

Twin Falls Store

Anderson Co.

Twin Falls Store

Anderson Co.

Twin Falls Store

Anderson Co.

Twin Falls Store

Anderson Co.

Twin Falls Store

Anderson Co.

Twin Falls Store

Anderson Co.

Twin Falls Store

Anderson Co.

Twin Falls Store

Anderson Co.

Twin Falls Store

Anderson Co.

Twin Falls Store

Anderson Co.

Twin Falls Store

Anderson Co.

Twin Falls Store

Anderson Co.

Twin Falls Store

Anderson Co.

Twin Falls Store

Anderson Co.

Twin Falls Store

SENATOR INSISTS ON JAPAN DRIVE

WASHINGTON, May 20 (AP)—Senator Chandler, D. N. C., favors an immediate smashing campaign against Japan, declared last night that Winston Churchill's address left important questions unanswered.

While many legislators applauded the address, Chandler said the prime minister did not explain why Great Britain's forces in India had not made a more effective effort to open the Burma road nor what help either Great Britain or the United States can hope to get from Russia, or as to what Russia intends in the future with respect to world peace.

Characterizing the Japanese menace as "vital," Chandler called for "a realistic policy" aimed at knocking Japan out of the war before she can consolidate her gains.

Unable to Agree

"It is evident from Mr. Churchill's speech," Chandler said, "that he still feels that the defeat of Germany is of primary importance in this global war, and it is evident that he feels that with the defeat of Germany, the defeat of Japan would be inevitable. I find myself unable to agree with this position."

Unless the Burma road is reopened, Chandler said, there is a serious probability that China may be forced out of the war.

Chandler said earlier there was nothing in Churchill's speech "to cause me to change my opinion that this country must attack Japan first and consider Japan as the No. 1 enemy."

Senator Lucas, D. Ill., who disagreed with Chandler's thesis and urged that war strategy be left to those who had handled it so far, stated that the prime minister's address was "a magnificent representation of the purpose and power of the allied forces. It was a complete answer to those who want to plan and map strategy of the war on the floor of the United States senate. It should be the basis of the mind plan that Britain is in the war to the end."

Other Comments:

Senator Bankhead, D. Ala. — He fully exploited the idea that Great Britain would ever abandon the United States in the event of Hitler being knocked out of the war.

Senator Murdock, D. Utah — The outstanding statement, I think, was that we must entrust the most confidence in the President and his military leaders to conduct the war.

Senator Clark, D. Ida. — It was calculated to solidify the entire war effort.

Representative Knutson, R. Minn. — His speech was a front. His purpose was to delay opening a drive in the Orient, and immediate help for China. He still considers Britain the first line of defense.

Representative Fahn, R. N. Y. — Churchill gave a very comprehensive report of America and overseas the war up to date. His words should be well received by the nation.

Pupils From Five Schools Graduate

Fairview, May 20 (AP)—An exercise was held at Fairview hall when 14 pupils from Fairview, Wilbur, Springdale, Graysburg, and Burnside were graduated. Rev. Dunsenfield, pronounced the invocation and benediction. A solo written by Anita Miller of Fairview, and enacted by the members of the class gave the history and prophecy of the class. Musical numbers consisted of group singing by Fairview, a vocal solo by Jeanette Burnett, a chorus from Springdale, a vocal solo by Mrs. Harold Hensley, a vocal solo by Dorothy Chandler. The address was given by Rev. Dunsenfield.

Mrs. Burdette presented the graduates with the diplomas. Those receiving diplomas were Doris Brulley, Anita Mitchell, Doris Chandler, Jack Goulet, Jack Smalley, Arvid Hahn, and Ross Hill of Fairview; Vervon Jacob, Jeanette Goulet, and Roy Lee of Springdale; Margaret Cooper and Loyd Fry of Superior. Jeanette Burnett of Burnside, and Dorothy Chandler of Wilburdale.

ALBION

Jack Rowe and Harold Gray have left for New Port, Wash., where they will work this summer.

Miss Amy Lou Skille, Burley, arrived in Albion last week to assume her position here as secretary of J. C. Werner, director of the training school.

Devon Fordell left for Oakley where he will work in the forest this summer.

Norma Harris left for Weiser where she will attend business school this summer.

Mrs. Cora Price and family returned to Albion from Carey where they taught school. They will spend the summer in Albion.

Miss George Goss left for Camp Lejeune after spending a ten day tour through here visiting his mother, Mrs. Chris Allen.

Warren Robinson, a student at the Normal has received his call to report to Seattle, Wash. May 21 to be inducted into the armed forces.

Johnnie Latta, a Mountain Home visitor, visited friends and relatives here.

Rater left for Idaho Falls where she will work this summer.

Ben Mahoney, Weiser, visited his parents, Mr. and Mrs. Stephen Mahoney, en route home from Pocatello.

Mrs. J. Vard Chaburn was called to Rigby because of the illness of her father, E. O. LeCombes.

Mr. and Mrs. Leo Bell spent the week-end in Preston visiting her parents, Mr. and Mrs. Bell.

LONGER

LONDON, May 20 (AP)—A Dutch underground newspaper reports that Holland has been changing. Dr. Arita above the normal, prior to the invasion because their faces are longer those days. The Netherlands new agency said.

Nazi Generals Go for Ride



Three captured Nazi generals marched off to a plane that was to take them to a prison compound following their capture at Tunisia. Left to right: Maj. Gen. von Varnel, fifth armored army commander; Lieut. Gen. Karl Hühne, staff officer; and Maj. Gen. Kurt Haase, signal corps commander. (Signal corps radio photo)

Poorly-Equipped French Army Played Vital Role in Tunisia

By VIRGIL FINLEY
ALLIED HEADQUARTERS
North Africa, May 20 (AP)—A non-descript French army that defied a 100-mile front for weeks with only 15 machine guns and a few outposts, tanks and armored cars played a vital role in the allied conquest of Tunisia.

Full details of the stand made by the ill-equipped French force in the early days of the campaign are being unfolded here.

The 15 machine guns, it was learned today, were divided as follows: Four in the Elaf area; five in the Gabes area; four in the Gafsa area and five in the Point du Chatelet sector. The tanks were of what is regarded as "the oldest" variety in modern warfare.

Get Into Action Early

The French went into action eight days after the American and British landings when Gen. Henri II Giraud ordered the French troops to open the British concentrations and then protect the right- or southern flank as the British first army moved eastward toward Tunis and Bizerte.

Had it not been for the French, the allied drive into Tunisia might have been delayed for weeks.

The French were lacking in transport and had to march 75 miles to reach the forward line. They went into action immediately.

Their rations were scant. They were issued only sugar and coffee and had to take everything else off the land. By contrast, the Americans receive five pounds of rations for each man daily and the British three pounds.

By Dec. 10, the French had 40,000 men on the Tunisian line and by the end of the campaign their number had increased to around 50,000, including more than 5,000 Moroccan native troops, or Goums.

Use Captured Equipment

The French were clever at using captured axis equipment into their own fighting weapons. When they captured shells on Nov. 22, they used Italian tanks, mortars, machine guns and ammunition.

They took the Feld valley early in December with war tools that were almost exclusively former axis property.

The Goums proved themselves good mountain fighters and were kept at the front in reconnaissance work.

Maj. Gen. Grant Bradley, commander of the second American corps, requested two units of them for the use on Bizerte in the final stages of the battle. Often a single Goum would return on a donkey laden with as many as 30 German rifles.

POSSSES SEEKING PRISON ESCAPER

GUERNSEY, Wyo., May 20 (AP)—Posses searched rocky southeastern Wyoming country unsuccessfully for an armed fugitive who stole two automobiles and a horse in eluding arresting officers.

Under Sheriff Floyd Turner at Douglas identified the man as Pete Bond, alias Bill Carter, and said he was believed to be a Texas prison escapee.

Law enforcement officers of Platte, Goshute and Mohor counties, and state highway policemen blockaded roads in the sparsely settled section of Wyoming.

Turner reported that Guernsey county officers sought to arrest the man at a ranch near Douglas Monday, but that he escaped in a stolen car with a rifle and two pistols from the ranch, where he had been employed.

Some shots were exchanged between the fugitive and ranch employees when the man stole a horse south of Douglas and later when he stole a second automobile, Turner said. No one was injured.

The ranch owner southeast of here after an officer tried to stop the stolen automobile near Lusk. The car escaped into a hilly country road leading to Guernsey.

One Alvin Guthrie, Guernsey county said the search narrowed down to the area between Guernsey and Shoshone, Wyo.

Mothers Honored By Legion Women

HAZEN, May 20 (AP)—The Legion auxiliary sponsored a War Mothers' party at the Civic club rooms. Guests were mothers of service men of World War I and II.

The social program was presented to the 45 guests. Vocal solos by Mrs. Barbara Higgins and Mrs. Charlotte Van Riper accompanied at the piano by Miss Virginia Thayer; acrobatic demonstrations by Mrs. Barbara Higgins and vocal solos by Miss Billie Justice accompanied by her mother, Mrs. Arthur Justice; a reading, Miss Virginia Thayer; a medley of the service songs of World War I by Wendell Higgins on the clarinet accompanied at the piano by Miss Virginia Thayer; a talk by Mrs. Elsie Kennelton on "Why the Auxiliary Sells Poppies."

A door prize was won by Mrs. Joseph Neiffenger. Mrs. Allen Allen and Mrs. Ross Finch, presided at the silver service. The refreshment table was centered with a crystal set of red poppies with crystal candleholders with red, white, and blue candles. The menu and decoration committee consisted of Mrs. J. H. Russell, Mrs. Allen Allen and Mrs. Ross Finch. Mrs. Ernest Shillard was in charge of the program.

Five Members Taken In Hagerman Grange

HAZEN, May 20 (AP)—The Hagerman Grange held a meeting Monday evening for their regular meeting with 31 in attendance. The executive committee was instructed to investigate the purchasing of a new building.

Mr. and Mrs. Mark Steele, Mrs. Elizabeth Steele and Mr. and Mrs. E. Thayer were voted as members. During the lecture hour Mrs. A. E. Dennis gave a reading and a guessing game was played. Mrs. M. G. Parks, Mrs. Lyle Potter, Mrs. Joseph Neiffenger and Mrs. Mary Northrup were hostesses.

MATRESS
REBUILDING & RENOVATING
WOOL CARPETING
EVERETT COMPANY
222 Second Ave. S. Phone 21-W



What is the home furnishing situation?

Hoosier Furniture Co. Answers Your Questions.

Every day we are asked practical questions about our business. You are entitled to know the answers . . . clearly, directly. The manufacturing of home furnishings has been drastically curtailed by the war . . . but Hoosier Furniture Company has adequate stocks, yes, one of the most complete and well-balanced furniture stocks in the entire Pacific northwest! Practically all of this stock is of the same high quality that was manufactured before Pearl Harbor. There is no reason however, for "scare buying." Buy only what you need, take care of what you have. Put extra money in war savings bonds and stamps.

Are they still making furniture?

YES! Many furniture factories have been converted either partially or totally to war work but here is the law set down by our government: "Effective July 1st, 1943, furniture manufacturers must reduce their range of designs to 35% of the range of September, 1941." That means that if a manufacturer was producing 500 designs in September, 1941, he will now be allowed to make only 70 designs. Result, variety of designs will be reduced greatly.

Is there a luxury tax on furniture?

NO! There is No Luxury tax on home furnishings. The same applies to rugs, floor coverings, curtains, lamps, in fact all home furnishings except hall clocks and pieces made of gold or silver.

What about box springs & mattresses?

Cotton mattresses, the kind that enjoyed tremendous popularity years ago, are coming into their own again. They are good, comfortable, serviceable and with proper care (you can get instructions at Hoosier Furniture Co.) they'll serve you well.

Are down cushions available?

NO! Down is frozen. The government is using the down for flying suits and sleeping bags for the men in the service.

What is the new construction? This method has been developed since the restriction of vital materials. In upholstered furniture new construction means tight upholstery, hair and cotton filling and wood springs. However, Hoosier Furniture Company's present stocks is all made up of pre-war construction—quality construction that will give years of comfortable service!

Mr. and Mrs. Mark Steele, Mrs. Elizabeth Steele and Mr. and Mrs. E. Thayer were voted as members. During the lecture hour Mrs. A. E. Dennis gave a reading and a guessing game was played. Mrs. M. G. Parks, Mrs. Lyle Potter, Mrs. Joseph Neiffenger and Mrs. Mary Northrup were hostesses.

Worry of FALSE TEETH
Slipping or Irritating?
Don't be embarrassed by loose teeth slipping, rattling or wobbling when you eat, talk or laugh. Just apply a little FALSETEETH to your plates. This paste will provide you a comfortable feeling of added security and security by holding plates more firmly. The genuine, never peels, never cracks, never fades. Get FALSETEETH at any drug store.

Are all-wool rugs available?

YES! The government has released 30 million pounds of wool that was previously "frozen" but no mill is permitted to use more than 25% of the amount of wool used in the first half of 1941.

Hoosier Furniture Company is showing a few figured Wiltons, Chenilles, carved rugs and straight yarn broadloom of all wool but there are some mixed blends on the market and we are advised that their performance will be very satisfactory.

Can I still buy lamps?

YES! There is a limited selection. No more metal stands are being made but our stock of pre-war lamps is quite complete under the circumstances with a variety of shapes and sizes. The manufacture of All-Metal Lamps has ceased but new wood and porcelain and crockery mountings are both attractive and popular.

Make it last! Make it do!

There are dozens of simple ways to preserve what you have and what you may purchase in the near future. If you're in doubt drop into Hoosier Furniture Company for advice. The questions and answers above are based on existing limitations and restrictions. If and when new developments occur we will pass the information on to you.

What has become of Hoosier Furniture Co.'s pre-war Service?

It hasn't changed! True, delivery service has been curtailed, but you can expect the pre-war careful handling, the same high standard of quality and the same careful attention to installation details that have always been a Hoosier Furniture Company tradition.

Hoosier Furniture Co.

Elks Building Twin Falls, Idaho

INVASION PLANS GOING FORWARD

By HARRISON SALISBURY
LONDON, May 28 (AP)—Despite public appearance of calm, the British believe that a major allied diplomatic offensive is underway. The complete preparations for the coming invasion of Europe are being designed and directed by President Roosevelt and Prime Minister Churchill from Washington.

It appears to fall in three main categories:

1. Soften Italy by moves somewhat similar to those which preceded the north African landings.

2. Issues relating to Russia and particularly concerning central Europe and Balkan countries such as Poland, Jugoslavia, and Greece.

3. France.

Moves relating to Italy are fairly obvious, although some phases are believed to have been conducted with great secrecy. The allied objective is to assure in advance support within Italy and general weakening of Italy's will and power to resist invasion.

Stallia Parley?

The Russian moves have the wide-est scope of any of the three, the way for a Roosevelt-Churchill-Stalin conference in which an effort will be made to discuss the issues should be settled while the war is still going on and which should await the war's end.

The most pronounced Russian move at the moment is the Polish question, for which it is believed that strong Anglo-American efforts to achieve a solution are underway. These are not likely to bear fruit for several weeks but it is believed that the groundwork for nominal reconciliation of Russia and Poland is being laid.

There is certain to be no formal understanding due to insistence of Mr. Roosevelt and Mr. Churchill that all frontier issues await settlement after the war. But an informal understanding might be possible.

French Issue Pressing

Settlement of the growing move pressing as the day for the allied landing in France draws near.

General Charles De Gaulle and General Giraud are mentioned in the question of who for their unity meeting will be it is thought that a new move will be forthcoming shortly.

The Anglo-American attitude appears to be that it is up to the Gauls to make some concession unless he would rather not meet them.

He cannot expect the meeting place.

RATION REQUEST CARDS DELIVERED

WASHINGTON, May 28 (AP)—Maltmen this morning started to deliver 40,000,000 application blanks for ration book No. 2.

If this plan works, ration books probably will continue to be distributed by mail.

Ration book No. 3 is intended, the office of price administration said, merely as a replacement for books one and two when they run out of stamps.

The new books contain tabs with names of carriers and articles which are suitable for continuing for use after the war and rationing. The book also contains point value stamps suitable for cash goods and meat rationing.

The application cards will have three sections—one to be retained by the householder to help him keep his books if he applies for a new one; another a return address card to be used by OPA in mailing the books, and the third to list the name and age of each member of the family for whom a new book is requested.

Householders are not to mail the cards back to OPA until June because machinery to handle them won't be ready until then.

Army Thinks Its Fugitive Balloon Sets New Record

SAN FRANCISCO, May 28 (AP)—The army sought today to determine if a balloon found wrecked in a Colorado canyon could be Jenny, a fugitive barrage balloon which broke away from its moorings in the San Francisco bay area.

Major Raymond R. Ribal, barrage balloon officer, said that if the wreckage, discovered in California creek canyon near Grand Junction, Colo., is Jenny, then Jenny has set a new record for unauthorized balloon travel.

"It sounds like her," Major Ribal said. "None of the numbers we told were on her sides tally up. If she made it to Colorado, she would have a record all right. It's even than a thousand miles and the wreckage was reported seen here over which got 102 miles away from Camp Davis, N. C."

Jenny was traced as far as Tracy, Calif.

When we got there, she had blown again."

Major Ribal declined to claim a record for Jenny, however, he had five other balloons missing.

FILER

Mr. and Mrs. Warren Tegan are the parents of a daughter born May 12, at the Wendell hospital. Libby Tegan is with the allied forces in Africa.

W. E. Lude, Rapid City, arrived for a visit with relatives.

Miss Crab Davis and Miss Mildred Potter, instructors in the Idaho Falls schools, arrived home for the summer months.

Mountain goat parents, in order to teach their young the art of safe landings, push their kids over the edge of the cliff.

READ TIMES-NEWS WANT ADS.

Buhl Flier, Combat Veteran, Assigned to Caribbean Area

HEADQUARTERS, SIXTH AIR FORCE, Caribbean Area, May 28—Four officers of the air corps, seasoned veterans of many encounters with Axis pilots on the widely-scattered air battlefields of the war, are being assigned to the Caribbean area for the coming summer. They are Maj. Percy C. Stodert of New York City; Capt. John H. Gault of Seattle, Wash.; Lt. E. M. Morgan of Moorhead, Minn.; and Capt. B. C. Del Mester of Seattle, Wash.

These four men have a combined total of 10 months service overseas at the front in the southwest Pacific and the far east. They have recently been engaged in lectures on their experiences in men of the air force together with Col. Edwin H. Leuth.

Real Veterans

Major Stodert and Captain Gert served together as members of the same flying unit—a heavy bomber squadron—the major having been a pilot in the southwest Pacific for a year and Captain Gert for 23 months, part of the time in the Philippines. Major Stodert is a West Point graduate of the class of 1918 and was graduated from advanced flying school at Kelly Field, Tex., the following year.

Capt. Gert began his flying career in 1918, the same time but has previously been an engineering student at the University of California.

Captain Del Mester gave up a job as manager of a retail food store in Seattle to become a bombardier in the army air corps. He spent seven months in north Africa, dropping bombs on and installations during the month and went to India where he saw seven months more of service. He is a graduate engineer from the University of Washington.

Bombardier

Lieutenant Morgan, also a bombardier, began the war for 20 months in Java and, when the United States moved out, took up the job again in Australia, raising Japanese-held airfields from Australia.

He is a graduate of the University of Mississippi and has a college degree in business and commerce.

Lieutenant Morgan started out as a flying cadet, after a brief career in the insurance business, and was graduated from Barksdale field school in Louisiana.

All of these officers are entitled to wear the service ribbons indicative of the many honors and awards they have received from their service but are reluctant to discuss them. They prefer to say that the accomplishments of a bombardier crew on a combat mission are the results of teamwork on the part of the entire crew, working together.

Red Planes Raid Airfield, Troops

MOSCOW, May 28 (AP)—Russian planes bombed an airfield and troops and red army units destroyed 23 German defensive positions in a day of heavy pressure on the enemy lines in the Caucasus.

At Novorossiysk, the Soviet mid-day communiqué announced today.

Three German planes were shot down in combat with the red air force. The Soviet fliers started several fires and caused large explosions at the enemy air field.

Russian ground forces destroyed two German observation posts, five gun emplacements, four artillery and 12 trench mortar batteries at the approaches to Novorossiysk in the lower Kuban area of the Caucasus.

Dike Breaks

DUBOIS, Ida., May 28 (AP)—A break in the dike on the eastern side of Mud Lake flooded more than 300 acres of land and drowned several head of livestock. Watermaster Phil Henderson reported.

High winds pounded waters of the lake against the dike, which had been under construction. Just before the break, he said.

The break dropped the water content of the lake markedly, he said.

There are oysters that live in trees in Florida.

New Assignment



CAPT. JOHN H. GERT

Young Buhl flier, a veteran of plenty of action against the Japanese, has been assigned to the sixth air force in the Caribbean area to instruct pilots in combat tactics. (Army air force photo—staff engraving)

U. S. AIRMEN BAG 73 ENEMY CRAFT

ALLIED HEADQUARTERS, NORTH AFRICA, May 28 (AP)—American aerial squadrons hammering at the island stepping stones to Italy met almost 200 air resistance for the first time in a month during heavy raids on Sicily and Sardinia, but destroyed at least 73 enemy airplanes on the ground or in crushing air battles over the Mediterranean.

The American Flying Fortress, other bombers, and fighters killed down 29 enemy airplanes in air combat and destroyed at least 44 other enemy planes on the ground, including 37 which were blasted during a heavy attack on the Sicily air base at Mito. Four United States planes were lost.

Six more enemy planes around were directly hit by Billy Mitchell bombers at Mito striding in central Sardinia, despite the first real show of enemy air opposition since the end of the battle for Tunisia.

At least 50 enemy fighters jumped the Flying Fortresses when they bombed Mito airfield, near Trapani, starting big fires. Ten of the enemy were shot down by the Fortresses or Lightning escorts. More than 100 enemy fighters were destroyed by our bombers and 18 enemy planes were shot out of the air.

Scott Wrote Club Letter, Howell Says

The conviction that Orland A. Scott, U. S. A. representative, was the writer of a letter expressing Twin Falls Townsend club No. 8, opposition to the recall movement, was expressed here Wednesday by N. C. Howell, executive secretary of the Independent Voters league.

The letter referred to was one which Scott Tuesday announced at Boise as showing the opposition of the Twin Falls Townsend club to the recall movement, and disapproval of Howell's part in leading the movement.

Howell said he had been unable to obtain a copy of the letter from the secretary of the club and expressed the belief that it was dictated by Scott, who opposes the recall movement and Howell's activities in the Townsend organization.

Howell was accompanied here by J. W. Johnson, Emmett, president of the Independent Voters league.

"OLD MAID CASE"

GOODING, Ida., May 28 (AP)—Idaho's simmering Townsend Inter-club "new" continued today after Harold C. Howell, Boise club leader, said here that he reports a Twin Falls club had requested the press to discontinue use of his name in connection with the organization were probably false.

"It looks like the case of the old maid who disputed her handwriting, and sent herself a love note," said Howell, declaring that he himself had visited Twin Falls yesterday and found no indication that the resolution had been passed.

"It has the lady arm of Idaho but the voice of Jacob," Howell said, adding that Orland Scott, Townsend representative for Idaho, his principal adversary in the squabble, "being an ex-minister, will understand."

WANTED . . .

USED CARS FOR CASH Highest Prices Paid

GLEN G. JENKINS

UWW IS BARRED, ILLINOISANS SAY

SPRINGFIELD, Ill., May 28 (AP)—Officials of the Progressive Miners of America (PMA), contended today that the constitution of the American Federation of Labor would prohibit John L. Lewis from reaffirming his United Mine Workers with the AFL.

Lloyd A. Thrush, state president of the Progressives, said the AFL constitution "prohibits chartering of only one union covering a basic industry."

At Washington, William Green, AFL president, said he anticipated no difficulty in having both unions in the AFL. He said the Progressives might remain separate or unite with the UMW.

The Progressive miners, composed of former UMW members, withdrew from the parent organization in 1933 during a heated dispute occasioned by Lewis' approval of a reduced wage scale after battles from a state referendum on the question had been voted.

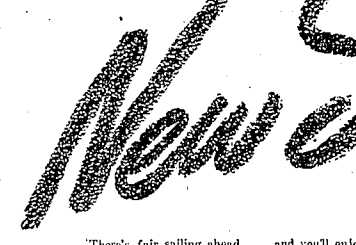
The Progressives' strength lies principally in Illinois, where the union claims 15,000 employed members and holds bargaining contracts covering 135 mines. The Progressives also claim secret membership in West Virginia and Kentucky.

READ TIMES-NEWS WANT ADS.

THE FUR SHOP

PHONE 413

There's no priority on summer comfort ... get it with a choice from one of these



There's fair sailing ahead . . . and you'll enjoy the fair weather more with a lightweight, smarter-than-ever straw! They're put no priority on your comfort and enjoyment in headgear this year . . . so blossom early in a straw. As ever, you'll find our selection one of the most complete.

108 Cocoanut Straws, Tropical Meshes

... in pinch-front styles with 3 inch brims ... matching and contrasting bands in Palm Beach, light tan and Panama colors. These are all samples of regular 98c to \$1.98 hats.

79c

72 Genuine Mesh Straw Hats

... with guaranteed leatherette sweat-band. Pinch front shapes with assorted colored Pugaree bands topping 3-inch brims. Natural, honey, linen shades. Regular \$1.49 values.

98c

FANCY BRAID STRAWS

... featured especially in telescope shapes in two fine, popular shades . . . honey and leghorn. A better hat . . . a better value, too! Choose in Straw Hat Days—Friday and Saturday at

\$149



SPECIALS
In Our Men's Store
FOR STRAW HAT DAYS
Friday and Saturday



36 Genuine Cocoanut STRAW HATS

... genuine leatherette sweat-bands in the popular pinch front shapes, 2 1/2 and 3 inch brims in cocoanut brown shades. These hats are drawn from regular \$1.98 values.

\$129

Genuine Sisal Straws

Monaka and Panama mesh . . . the lightest weight and coolest hat! Telescope and pinch-front shapes . . . and all with the up-to-the-minute 3 inch brims.

\$169 and \$198

Genuine Panamas

These Panama hat bodies were made in Ecuador. They are shown in honey and leghorn shades, trimmed with matching Pugaree bands with 2 1/2 and 3 inch brims.

\$298

Stetson Straws

Genuine imported Stetson . . . light as a feather, cool, of course and with a rakish appearance to flatter any masculine appearance . . . color with tall-brims.

\$400

Stetson Panamas

Real Panamas . . . styled as only Stetson can style them. The harmonizing bands set off the rich natural color to their best advantage . . . and you get the benefit.

\$5

Idaho Department Store
"If It Isn't Right, Bring It Back"

Army Thinks Its Fugitive Balloon Sets New Record

SAN FRANCISCO, May 28 (AP)—The army sought today to determine if a balloon found wrecked in a Colorado canyon could be Jenny, a fugitive barrage balloon which broke away from its moorings in the San Francisco bay area.

Major Raymond R. Ribal, barrage balloon officer, said that if the wreckage, discovered in California creek canyon near Grand Junction, Colo., is Jenny, then Jenny has set a new record for unauthorized balloon travel.

"It sounds like her," Major Ribal said. "None of the numbers we told were on her sides tally up. If she made it to Colorado, she would have a record all right. It's even than a thousand miles and the wreckage was reported seen here over which got 102 miles away from Camp Davis, N. C."

Jenny was traced as far as Tracy, Calif.

When we got there, she had blown again."

Major Ribal declined to claim a record for Jenny, however, he had five other balloons missing.

FILER

Mr. and Mrs. Warren Tegan are the parents of a daughter born May 12, at the Wendell hospital. Libby Tegan is with the allied forces in Africa.

W. E. Lude, Rapid City, arrived for a visit with relatives.

Miss Crab Davis and Miss Mildred Potter, instructors in the Idaho Falls schools, arrived home for the summer months.

Mountain goat parents, in order to teach their young the art of safe landings, push their kids over the edge of the cliff.

READ TIMES-NEWS WANT ADS.

Ask Yourself - "Will my trip help win the War?"

There are only so many trains—so many Pullmans—so many coaches—so many dining cars. No more can be had.

This equipment was more than adequate for peace-time travel even during vacation periods. Today it is barely sufficient to meet the transportation needs of our armed forces. And we know you'll agree that the men in war service should have first consideration.

Therefore, we ask you, as a patriotic American, to question yourself as to the necessity of your trip by rail. Is it important to the winning of the war? Or, as might be the case, is it a truly emergency trip necessitated, for example, by serious illness in the family? These are questions which call for a conscientious answer.

Uncle Sam will appreciate your cooperation. It's for your country's welfare.

The Progressive

UNION PACIFIC RAILROAD

ROAD OF THE STREAMLINEDS AND THE CHALLENGERS

Idaho Department Store
"If It Isn't Right, Bring It Back"

NAZIS MAY DROP RUSS OFFENSIVE

ANKARA, Turkey, May 20 (AP)—Travelers recently returned from Europe reported today there are indications the Germans may forego their expected Russian offensive this summer in order to keep large reserves of men and equipment ready for quick movement to the west or south in event of an allied invasion.

At present, these sources said, the German armor more concentrated over the possibility of an allied thrust through the Balkans than an attack on their Atlantic wall, and consequently are preparing defense positions in southeastern Europe.

Reports from the Balkans declared that while the axis defenses there are not complete the allies nevertheless have found them a "tough-but not impossible"—nut to crack.

The general opinion here is that the allies' delayed the knockout blow to the axis because they are afraid about the areas south of them had been expected in Berlin or Rome, and that this surprise is responsible for the current heavy preparations in the Balkans.

At present, less than one full German division is reported in the Balkans, although the Germans recently have thoroughly overhauled communications and command systems, and prepared advance base sites for quick movement of troops if this move necessary.

Greece currently is believed to host the largest axis garrison in the Balkans, with most than 20 Italian divisions, three German divisions and possibly a cross division band there.

RECALL OPPOSED BY CIVIC FORCES

BOISE, May 20 (AP)—Idaho's new liquor law enforcement agency received the praise of the Idaho Allied Civic Forces and the Citizens' Committee for the Recall, but the governor and members of the legislature are opposed to the group at closing sessions of its annual convention.

A. Y. Butterfield of Postville was selected for the office of third vice-president in charge of the recall campaign work. All other principal officers were re-elected.

One resolution commending the governor and legislature for liquor control measures was adopted.

"An accomplishment of enforcement so far,"

"It is generally agreed that the recall to support Governor Hottelstein in this program of law enforcement, and we will make every effort to remove him from office."

The temperance section of the board of education also was commended, and another resolution urged the legislature to remove all alcoholic drinks, including beer, from schools of minor in the services.

Members named to the executive council included the following: Mr. and Mrs. George Weber of Shoshone, Mr. and Mrs. Fred Moore of Boise, and Mr. and Mrs. B. J. Gooding.

SLAV GUERRILLAS FIGHT GERMANS

LONDON, May 20 (AP)—Yugoslav guerrillas are locked in a bitter battle with the new German expeditionary force in the Bosnian and Herzegovina mountains. Yugoslav sources reported today.

The Nazis, they said, have burned seven villages and killed hundreds of patriots in trying to break their resistance.

The battle in the Bosnian mountains was described by the German radio, which said that troops and SS units had been sent to suppress "armed banditry." Reports received here said the battle had been going on for five days with heavy casualties on both sides.

A Yugoslav spokesman said the fighting in the Montenegrin mountains was near the village of Ovchar. The guerrillas were reported to have killed 476 Italians and captured 730 axis soldiers.

3 Sisters Share In \$3,700 Estate

Three sisters share the \$3,700 estate of Mrs. Martin, who died Jan. 17, 1943, at Long Beach, according to the will, which has been filed in probate court.

The property listed in the petition for probate of the will includes one Twin Falls lot valued at \$2,000 and another valued at \$1,700, heirs of the three sisters, Orlene Martin and Mary J. Waggoner, both of Long Beach, Calif., and Blanche Petre, Alhambra, Calif. She will manage Georgia Martin, who filed the petition, as executrix. However, the petition asks that Reese M. Williams, Twin Falls real estate man, be named administrator, with will annexed.

The will bequeaths the \$3,700 property to Mary, Waggoner and Blanche Petre, share and share alike, with the rest of the property going to Georgia Martin. Judge C. A. Bailey set the hearing for 10 a. m. May 31.

Real Estate Transfers Information Furnished by Twin Falls Title and Abstract Company

MAY 11
Deed: R. W. Mettley to J. R. Guyler, \$1000. Lots 20, 21, 22, Blk. 31, Kimber.
Deed: J. A. Johnson to L. R. Arvink, \$1500. Lots 10, 23 part 9, Blk. 1, Highland View.
Deed: M. J. Firms to E. A. Noon, 110, 112, 114, 116, 118, 120 Blue Lake Road.
Deed: R. Roeder to H. L. Lott, \$1,000. Blk. 11, 12.
Deed: Part of Section 30, Co. 1, Range 23, S. 2, T. 2, R. 2, E. 2, to J. A. Johnson, \$1,000. Blk. 1, Sunnyside district, Sunset Memorial park.
MAY 12
Deed: M. J. Lott to M. J. Vickers, \$1,000. Blk. 11, 12.

Ration Books to Be Mailed by Prison Inmates



To San Quentin prisoners goes the big problem of mailing the new No. 3 ration books to residents of the western United States. Here, guard with trolley can handle work at boxes of books as loaded onto trucks for delivery to San Quentin prison.

Sleeping Bag Scene Kept in "For Whom the Bell Tolls"

NEW YORK, May 20 (AP)—Those who have been wondering about the sleeping bag scene in "For Whom the Bell Tolls" can relax—in the book or the picture.

Alfred Hitchcock, who plays Pablo in the Ernest Hemingway play, says he is aware of a stack of whathears that go private directional hands, but he has been laid on the sleeping bag, but he says he is not the moving range of the political favor of the original novel.

"It is anti-fascist," he said. "There can be no mistake about that. And it shows both the good and the bad sides of the communists. They won't kill any more than they like the book."

Actually, Hitchcock does not see much in the picture that is politically significant in either the book or the picture, which is to be released with a hoop-ya New York premiere the first week in July.

"Bashful Love story"

"It is essentially a love story with a background of blood, fighting and killings," he explained. "Gary Cooper, a wonderful character, is a communist, but they show what is wrong with the communists. I want Cooper and Ingrid Bergman are anti-fascist and you are with them from the start."

"Tamboff, who has been touring army and navy camps selling posters and sailors how to make love in Russian in case they ever get shipped to the USSR, said now that he himself had a scene with that sleeping bag. He admits that won't create such a stir as Bergman-Cooper scenes.

"There are several scenes of the sleeping bag," he said. "Miss Bergman is in it with Cooper but she is such a wonderful actress, she plays it so clean, so beautifully, that there is no suggestion of anything."

Wife Enthusiastic

As for his own character, Pablo, the husband of Pilar, Tamboff said he has not seen the picture in its entirety yet but believes it is a strong part, his wife is enthusiastic about it, he said.

"She is," he added. "That she thinks it is too dirty."

He hastened to add that she was referring to his makeup, which is that of an unwashed peasant.

HEYBURN

Mrs. Tillie Clunkbeard left for Los Angeles after visiting her son, Mr. and Mrs. Martin Anderson, Ogden and Mrs. Keith Leimann, Westville, Idaho, were guests last week of Mr. and Mrs. Anne Jordan.

Carol Ritzell, Logan, returned last week to work at the flour mill in Stockton, Calif., are visiting with the Dell Holmes.

Miss Sorenson and Junior Drake returned home from a visit to Salt Lake City.

More Vegetables May Be Released

WASHINGTON, May 20 (AP)—The 1943 pack is as large as expected, the war food administration said. 20,000,000 more cases of canned fruits, juices and vegetables will be available for civilian consumption this year than originally scheduled.

The government's announcement said will need 7,000,000 cases fewer of canned fruits and juices and 25,000,000 cases fewer of canned vegetables than the quantities previously established.

BUHL

Mrs. Harold Cary and daughter Leslie Ann, Portland, are visiting here and in Twin Falls next week.

Dr. M. A. Drake is expected home Thursday from Rochester, Minn., where he has been doing post graduate work at the Mayo brothers.

Buhl was well represented at the child delinquency meeting Tuesday in Twin Falls by C. C. Voeller, Glen Buckendorf, George Lathrop, Floyd M. Byers and Mrs. M. A. Drake and Mrs. Jones.

"WELL, LOOK WHO'S HERE!"

Widows, indeed, is Old Sunny Brook, after you've been unable to get a fur in a while. It's a real "must-have" for your neighborhood, keep asking for Old Sunny Brook! More will arrive before long.

CHEERFUL AS ITS NAME

OLD SUNNY BROOK KENTUCKY STRAIGHT BOURBON WHISKEY. BRAND 946 Proof

National Distillers Products Corporation, New York, N. Y.

DAIRY INDUSTRY PLANS PROGRAM

CHICAGO, May 20 (AP)—The National Dairy Industry Association has worked out a plan for financing a nationwide eight-point program, already approved by the war food administration, to increase milk production, W. T. Mordkin, committee chairman, announced.

Nardin said the program urged dairy farmers to provide abundant pastures, provide good hay, provide clean, well-labeled containers, feed freemaking, feed good roughage, feed balanced ration, feed to avoid summer slump, raise calves with less milk and send more milk to market.

The committee chairman said: "This is an emergency program on which all branches of the dairy industry are in complete agreement. The eight points are tested practical ways to help provide more milk as an aid to the war."

Larkin Graduates Fortieth Class

CAREY, May 20.—The Carey grade school graduation exercises were conducted recently at the high school auditorium. The program opened with a song by the class and address of welcome by class president, Francis C. Patten. The mental drill was presented by Lorraine Duvor and Nelda Simpson. The graduation address was given by County Sup. Mark T. Patterson, who was in his sixth year of his term.

Indians Praised For War Service

PORT HALL, May 20 (AP)—Tribal patriarchs, mothers with babies on backs and the scattering of young men have converged here for the annual tribal Pow Wow of Shoshone and Bannock Indian tribes. More than 400 strong, but noticeably missing were the young men who are now in the armed services. The delegates met and discussed means to aid in the war effort.

Willie George, chairman of the Port Hall tribal council, called upon his people for greater food production, pointing to the every day necessities of the war.

Graves, Port Hall superintendent, praised delegates for the tribes part in the war. Much already has been contributed by the American Indian, he said, to speed eventual victory.

Woman Works too Hard, Collapses

SALFORD, Eng., May 20 (AP)—George Haining, McCormack, Salford, whose husband is in the south Pacific, fainted as she reported for work at a laundry which is threatened with closure by lack of labor.

Represent Buhl

BUHL, May 20.—Buhl American Legion and auxiliary were represented by several leaders at the spring meeting of the fifth district. District Commander J. F. Yetter and Mrs. Yetter, president of the district auxiliary, Kenneth Shrader, district adjutant, and Mrs. Shrader, Mrs. Irene Vinton, district secretary, Mrs. Ann Gleim, president of the Buhl auxiliary, and Al Ames attended the meeting held at Kimberly.

REPAIRS FOR ALL MAKES OF SEWING Machines

PROMPT SERVICE REASONABLE RATES

SINGER SEWING MACHINE CO. 131 Exchange St. Phone 243

Here's a semi-wedge that will be outstanding all summer. Platform sole with open toe — by Altrap.

\$6.85

C. of C. Chief



Erlo Johnson of Spokane, Wash., has been selected president of the United States Chamber of Commerce for the 1943-44 period.

FAIRVIEW

Superior school closed Friday with a basket dinner at the school.

Fairview school closed Saturday with a basket dinner at noon. Three pupils at Fairview have had a perfect attendance. They are Willy, Otto Wagner and Willy Clifton. The children at Fairview have this year bought over \$7500.00 of bonds and stamps.

Teachers next year at Superior will be Mrs. Russell Parker, who will again teach the upper grades, and Miss Joyce Carson in the primary room.

Harold Hamby returned home from Wheeler, O.

Mr. and Mrs. William Sytton have received word that their son, Clark, now stationed at Elger, Ark., has been promoted to the rank of sergeant, in the air force.

Mrs. Will Spence visited friends in Boise.

Paul Kohout is expected home for a thirty-day furlough.

Mr. and Mrs. Arthur Mirande and daughter, Anita, have moved to Twin Falls to make their home. Edward Mirande has gone to Washington in the blitzer trust control.

Kenneth and Gladys Mirande are forming the ranch this summer. Mrs. Jimmy Grimm, Sun Valley, visited at the Ed Harding home.

BOTT SUPPORTS PENSION RAISE

BOISE, May 20 (AP)—Governor Bottelstein has made public an exchange of correspondence with Sen. W. Lee McDaniel, Texas, in which the governor repeated previous statements that the favors an increase in pension payments for the needy aged to meet increased costs of living.

McDaniel wrote the governor urging support for or comment on a bill he has introduced to increase old-age pensions under the social security program by 25 per cent.

The governor replied, "I am in hearty accord with an increase in pension payments sufficient to offset the increased costs of living. I support the bill in principle, but I am not prepared to take any action on it until I believe that any move along these lines is certainly a step in the right direction, because these old folks are desperately hit in some instances."

The governor disclosed the correspondence as ordered A. Scott, national Townsend representative, announced that the state central executive council of the Idaho State organization has adopted resolutions condemning Harold Hottelstein, executive secretary of the Independent Voters League, and calling upon Townsend members to oppose Hottelstein's plan to recall Bottelstein and members of the legislature.

INDIGNANT

LOS ANGELES, May 20 (AP)—Olen Robertson, 16, Compton, Calif., national Townsend representative, announced that the state central executive council of the Idaho State organization has adopted resolutions condemning Harold Hottelstein, executive secretary of the Independent Voters League, and calling upon Townsend members to oppose Hottelstein's plan to recall Bottelstein and members of the legislature.

WELL PAY

WIRE or WOOD HANGERS

Bring them in! Well pay cash and because of this shortage, we must ask customers to send hangers with their apparel unless they wish it returned without hangers.

RICHARDSON'S Cleaners and Dyers 241 - Twin Falls - Vlet

HUDSON-CLARK LEAD THE PARADE WITH

SMART COOL RIGHT!

WHITE For Summer Wear

Again Hudson-Clark scores with the season's first selection of important whites! Here in our big stock you'll be able to make an easy, satisfactory selection of white for wear now and all through the summer. The prices indicate the substantial value you'll receive in return for your ration stamp number 171

How Important Is STAMP NO. 17

Pretty! This stamp represents a pair of shoes for some member of your family. Without it, your money is worthless — spend your stamp so carefully as you would cash and expect to get the best value possible. This is assured you here at Hudson-Clark!

Shelby's white "Towner" — one of our most popular shoes for those who wish smartness combined with cool comfort.

\$6.95

Altrap's white, high-heeled pump with the vaginal open toe! You'll wear it tonight and joyfully through the summer.

\$6.85

Shown at the left is an Altrap tie in a medium heel — stable as bread — but catchy as spring with its dainty toe effect.

\$6.85

Hudson-Clark

SHOE STORE

DRIVES LOOM ON NAZIS AND JAPS

By DE WITT MACKENZIE

(Wide World Photo Service)
British Prime Minister Churchill in his address at the joint session of congress made a couple of remarks which give rise to the question of whether he has signalled any fundamental change in allied strategy, and they are these:

1. "I regard the strategic of effective and immediate aid to China as one of the most urgent of our common tasks."
2. "Opinion, Mr. President, is divided as to whether the use of air power could by itself bring about the collapse of Germany and Italy. The experiment is well worth trying, so long as other measures are not excluded."

These striking passages naturally make one wonder whether the high command has abandoned the program of regarding Italy as enemy No. 1, and has given up the idea of invading the continent at the earliest feasible moment.

However, Churchill's speech fails to reveal to my ears any change in the basic policy laid down at the beginning of 1942. The welcome declaration that "effective and immediate aid" is to be given to harassed China, thus throwing more weight into the war on Japan, doesn't mean that the allies are easing up in their attack on Hitler and are moving all their war equipment into the Pacific. It does mean that at long last the allies now have announced sufficient striking power so that they can devote more energy to both jobs at once.

We seem to get plenty of substantiation for that thought in this important statement by the prime minister:

Nazis Are Key
"In our conference in January, 1942, between the President and myself, we were given our high-level advisers, it was evident that while the defeat of Japan would mean the defeat of Germany, the defeat of Germany would infallibly mean the ruin of Japan. The realization of this simple truth does not mean that both sides should not proceed together."

Another indication of the allied determination not to slacken in the European campaign is seen in Churchill's statement that "we must be prepared to give the Japanese a considerable but practical to take more of the weight off Russia in 1943." Still, doing everything to the maximum and practical for the Muscovites wouldn't necessarily include invasion and establishment of that second front which they are so anxious to see in France. Here we come up against the premier's suggestion about trying to knock Italy and Germany out by bombing. Does this mean that invasion has been abandoned?

It's hard to believe so. Mr. Churchill is a great believer in the efficacy of air power—who isn't? These days as we see this fighting service playing a major part in our progress toward victory? However, he is a military expert of long standing, and nobody ever heard him say that you could occupy an enemy country and map up its army with airplanes. Somewhere along the line a big allied army has got to be put on the ground to deal with Hitler's powerful land force.

RATION CALENDAR

MEATS, BUTTER, CHEESE
OLIO, EGGS—P, C and H red stamps valid now. 4 stamps valid next Monday. All good through May 31.

FRUITS AND VEGETABLES
CANNED—G, H and J blue stamps valid through May 31.

COFFEE—Stamp No. 23 good for one pound through May 31.

SUGAR—Stamp 12 good for five pounds through May 31.

GASOLINE—No. 8 coupons in basic A books good for four gallons until May 22. Other books good, but designated amounts until expiration dates noted on books.

FOOTWEAR—Stamp No. 17 good for one pair of shoes through June 15.

TIRES—Ration certificates not necessary for passenger automobile tires, and quota restrictions removed on rationing certificates for recapping truck tires. Holders of gasoline ration for more than 240 miles per month now entitled to ration tires through rationing certificates if present ratings are not expirable.

Don't park your car in the sun as graduates under the sun's rays.

War ration book No. 1 good for one pair of shoes through June 15.

Don't park your car in the sun as graduates under the sun's rays.

Don't park your car in the sun as graduates under the sun's rays.

Don't park your car in the sun as graduates under the sun's rays.

Don't park your car in the sun as graduates under the sun's rays.

Don't park your car in the sun as graduates under the sun's rays.

Don't park your car in the sun as graduates under the sun's rays.

Don't park your car in the sun as graduates under the sun's rays.

Don't park your car in the sun as graduates under the sun's rays.

Don't park your car in the sun as graduates under the sun's rays.

Don't park your car in the sun as graduates under the sun's rays.

Don't park your car in the sun as graduates under the sun's rays.

Life Blood From Bottle on Guinea Front



From a bottle hung on a stick, Clayton Mitchell of Wyandotte, Mich., (mustache), and Maj. William Gettick of Baltimore (back to camera) administered blood plasma to a wounded soldier—life blood, soldiers call it. This scene is in New Guinea. (Army Signal Corps photo from OWI.)

BENES WARNS OF 3RD WAR DANGER

NEW YORK, May 20 (AP)—Dr. Edvard Benes, president of Czechoslovakia, told the Council of Foreign Relations last night that he believed the United States "will have won their victory on the European battlefield" next year, but warned that unless precautions are taken "Germany will find a way to bring about a third world war."

"I believe," he said, "that the present war gives us the opportunity of annihilating, finally and forever, the infamous 'Pan-German' 'Young Men's League' policy which has been systematically applied for the last two centuries."

It could be smothered, he said, by collaboration between Poland, Czechoslovakia and the Soviet Union.

"If we three can arrive at a complete agreement," he said, "the German imperialist and bloodthirsty 'Young Men's League' can be liquidated forever."

"If we succeed in this, we shall secure not only the future of Poland and Czechoslovakia, but we shall make a fundamental and substantial contribution to the security of the whole of Europe. If we fail, however, there will be another European catastrophe. Somehow or other, Germany will find a way of bringing about a third world war. In all sincerity I say this is my deepest political conviction."

Before discussing the problems of peace, Dr. Benes said that "next year, I believe, the United Nations will have won their victory on the European battlefield."

JUSTICE WILL SPEAK
CALDWELL, May 20 (AP)—Justice Raymond L. Gould, of the Idaho supreme court will deliver the commencement address at graduation exercises at the Caldwell high school tomorrow.

War ration book No. 1 good for one pair of shoes through June 15.

TIRES—Ration certificates not necessary for passenger automobile tires, and quota restrictions removed on rationing certificates for recapping truck tires. Holders of gasoline ration for more than 240 miles per month now entitled to ration tires through rationing certificates if present ratings are not expirable.

Don't park your car in the sun as graduates under the sun's rays.

Don't park your car in the sun as graduates under the sun's rays.

Don't park your car in the sun as graduates under the sun's rays.

Don't park your car in the sun as graduates under the sun's rays.

Don't park your car in the sun as graduates under the sun's rays.

Don't park your car in the sun as graduates under the sun's rays.

Don't park your car in the sun as graduates under the sun's rays.

Don't park your car in the sun as graduates under the sun's rays.

Don't park your car in the sun as graduates under the sun's rays.

Don't park your car in the sun as graduates under the sun's rays.

Don't park your car in the sun as graduates under the sun's rays.

Don't park your car in the sun as graduates under the sun's rays.

Don't park your car in the sun as graduates under the sun's rays.

Don't park your car in the sun as graduates under the sun's rays.

Don't park your car in the sun as graduates under the sun's rays.

Don't park your car in the sun as graduates under the sun's rays.

Don't park your car in the sun as graduates under the sun's rays.

Don't park your car in the sun as graduates under the sun's rays.

STRICT BAN PUT ON EAST DRIVING

WASHINGTON, May 20 (AP)—The 8,000,000 motorists in the area from Maine to Virginia face harsh penalties—including fines and jail—now for the duration—if they drive for pleasure heretofore.

Price Administrator Phillips M. Brown stopped the new ban on non-essential driving on 11 eastern states, the District of Columbia, and eight eastern counties of West Virginia last night.

There have been reports for days that the gasoline supply situation in the east was becoming serious. Brown admitted that supplies have hit an all-time low, but that the situation is so critical that farm tractors in some areas are almost out of use and the prospects are that thousands of farm tractors would have been idle within a few days.

Brown tacitly admitted that his attempt to control pleasure driving by the "motor ration" had failed. But he said that the crisis resulted from "tremendously increased military demands." He didn't explain exactly what the military demands were, but he said that all available supplies are being rushed overseas in preparation for the promised invasion of Europe.

There will be no cut in the value of A, B or C ration coupons, but OPA investigators and local police authorities will begin rigid enforcement of the ban with indications that the responsibility of proof of essentiality of motor vehicle use will be the motorist's.

Every effort will be made to detect violators and not only to revoke their present ration, but to suspend their right to further ration for the duration, or for as appreciable time, Brown said. In applying to governors of the affected states for cooperation in enforcing the ban, he requested local and state police to:

1. Stop and question all motorists driving under circumstances which indicate a violation of the ban.

2. Question all motorists stopped for traffic violations to ascertain if they are violating the ban.

3. Check on motorists found at race tracks, amusement parks, beaches and other places where their presence is prima facie evidence of a violation.

Driving restrictions will be similar to those which applied during the original ban. Motorists' ration line may be used only for trips needed with the motorist's occupation or with family or personal necessities. All other driving—except vacation travel—is forbidden.

(4) Advancing to workers of some duty from employers within the United States who are under contractual obligation to reimburse such workers for such advances;

(5) employment of personnel and other administrative expenses; and (6) payment to or reimbursement of other public or private agencies or individuals for furnishing services or facilities for such purposes.

Such extension services may enter into agreements with other public and private agencies and individuals and utilize the facilities and services of such agencies and individuals in carrying out the purposes of the program.

Such extension services may enter into agreements with other public and private agencies and individuals and utilize the facilities and services of such agencies and individuals in carrying out the purposes of the program.

Such extension services may enter into agreements with other public and private agencies and individuals and utilize the facilities and services of such agencies and individuals in carrying out the purposes of the program.

Such extension services may enter into agreements with other public and private agencies and individuals and utilize the facilities and services of such agencies and individuals in carrying out the purposes of the program.

Such extension services may enter into agreements with other public and private agencies and individuals and utilize the facilities and services of such agencies and individuals in carrying out the purposes of the program.

Such extension services may enter into agreements with other public and private agencies and individuals and utilize the facilities and services of such agencies and individuals in carrying out the purposes of the program.

Such extension services may enter into agreements with other public and private agencies and individuals and utilize the facilities and services of such agencies and individuals in carrying out the purposes of the program.

Such extension services may enter into agreements with other public and private agencies and individuals and utilize the facilities and services of such agencies and individuals in carrying out the purposes of the program.

Such extension services may enter into agreements with other public and private agencies and individuals and utilize the facilities and services of such agencies and individuals in carrying out the purposes of the program.

Such extension services may enter into agreements with other public and private agencies and individuals and utilize the facilities and services of such agencies and individuals in carrying out the purposes of the program.

Such extension services may enter into agreements with other public and private agencies and individuals and utilize the facilities and services of such agencies and individuals in carrying out the purposes of the program.

Such extension services may enter into agreements with other public and private agencies and individuals and utilize the facilities and services of such agencies and individuals in carrying out the purposes of the program.

Such extension services may enter into agreements with other public and private agencies and individuals and utilize the facilities and services of such agencies and individuals in carrying out the purposes of the program.

Such extension services may enter into agreements with other public and private agencies and individuals and utilize the facilities and services of such agencies and individuals in carrying out the purposes of the program.

Such extension services may enter into agreements with other public and private agencies and individuals and utilize the facilities and services of such agencies and individuals in carrying out the purposes of the program.

Such extension services may enter into agreements with other public and private agencies and individuals and utilize the facilities and services of such agencies and individuals in carrying out the purposes of the program.

Such extension services may enter into agreements with other public and private agencies and individuals and utilize the facilities and services of such agencies and individuals in carrying out the purposes of the program.

Such extension services may enter into agreements with other public and private agencies and individuals and utilize the facilities and services of such agencies and individuals in carrying out the purposes of the program.

Such extension services may enter into agreements with other public and private agencies and individuals and utilize the facilities and services of such agencies and individuals in carrying out the purposes of the program.

Such extension services may enter into agreements with other public and private agencies and individuals and utilize the facilities and services of such agencies and individuals in carrying out the purposes of the program.

Such extension services may enter into agreements with other public and private agencies and individuals and utilize the facilities and services of such agencies and individuals in carrying out the purposes of the program.

Such extension services may enter into agreements with other public and private agencies and individuals and utilize the facilities and services of such agencies and individuals in carrying out the purposes of the program.

Such extension services may enter into agreements with other public and private agencies and individuals and utilize the facilities and services of such agencies and individuals in carrying out the purposes of the program.

Such extension services may enter into agreements with other public and private agencies and individuals and utilize the facilities and services of such agencies and individuals in carrying out the purposes of the program.

Such extension services may enter into agreements with other public and private agencies and individuals and utilize the facilities and services of such agencies and individuals in carrying out the purposes of the program.

Such extension services may enter into agreements with other public and private agencies and individuals and utilize the facilities and services of such agencies and individuals in carrying out the purposes of the program.

Such extension services may enter into agreements with other public and private agencies and individuals and utilize the facilities and services of such agencies and individuals in carrying out the purposes of the program.

Such extension services may enter into agreements with other public and private agencies and individuals and utilize the facilities and services of such agencies and individuals in carrying out the purposes of the program.

Top Pilots



Squadron Leader Lance Wado (left), of Tucson, Ariz., American commander of an RAF fighter squadron, shares honors with Flight Lieutenant Neville Frederick Bink (below), an air-scoring pilot in many Africa. Both shot down 22 planes, Africa headquarters in north Africa reported.

Qualifies in V-12

MURTAUGH, May 20 (AP)—De Von Herbert, 21, son of J. H. and Mrs. Fred Herbert, Murtaugh, has returned from Dole and Portland, where he passed the examinations given for naval reserve officer candidate training under the V-12 program. He will enter one of the colleges giving this special training for either the July or November session. Herbert was graduated from the Murtaugh high school this spring, and is the first of his class to enlist in the service.

One farm in the Panama canal zone is devoted to raising four-leaf clover.

Pigger from Texas joins "BROWN DERBY MEN"

Poster Features Minute Man

BOTT SAYS OGD DID GREAT JOB

BOISE, May 20 (AP)—In the opinion of Gov. C. A. Bott, all Idaho people should "take their hats off" today to the members of the Idaho office of civilian defense on the occasion of their second anniversary.

Bott, in a letter to Jess Hawley of Boise, chairman of the state OCD, praised the organization for its work in the past year, among other things, for the blood control work carried out in southern Idaho recently.

"Your patriotic zeal has brought results and, after two years, Idaho can certainly look with pride to her office of civilian defense, which stands ready to act upon a moment's notice, should the emergency arise," the governor said.

Bott also said he was pleased to commend Hawley for the OCD work in Mountain Home, where an attempt was made "to promote recreation and general improvement of living conditions for the thousands who are now making their temporary homes there."

STARS
HOLLYWOOD, May 20 (AP)—Pete Smith's short subject, "The President's Dog," opened today at three theaters, billed "With an all-star cast including Franklin Roosevelt, Winston Churchill and Jimmy Doolittle."

BOISE PAYETTE LUMBER COMPANY
"There's A Yard Near You"

WOODY SEAL MOTOR CO.
Twin Falls, Idaho
In connection with our present business we have taken up
REAL ESTATE
WOULD APPRECIATE YOUR LISTINGS
Phone 988-R Write Box 782
We have people with ready cash for farms, acreages or city property.
The **Magic Valley Realty Co.**
180 3rd Ave. West W. T. SEAL, Mgr.

JAPS POUND AT JAPS IN BURMA

NEW DELHI, May 19 (AP)—(Delayed)—Bombers of the 10th U. S. air force blasted Japanese supply lines and dumps with more than 100 tons of explosives in five raids along the vital Irrawaddy river in eastern Burma yesterday in their latest day's operation to cut off communications and food to the Japanese.

Before dawn the 10th U. S. in this theater delivered such a heavy weight of bombs. Liberators alone dropped 17 tons and medium bombers operating in the coordinated raids delivered the remainder.

Big Fires
Big fires were kindled by every formation that went into every plane and it probably shot down one or two.

Two formations of heavy bombers concentrated on the Japanese supply line at Mung, five miles northwest of Magwe. They reported a majority of their bombs made direct hits, causing big fires that could be seen 30 miles. When the second formation left for home fires could be observed for 100 miles.

The other formations attacked at Mung, 150 air miles up the Irrawaddy. One raided 60 miles, 90 miles, and 100 miles, demolishing warehouses and burning railroad tracks. A fourth formation bombed 100 miles south of Magwe, leaving behind what looked like a fuel dump fire.

Other formations struck at Lanchang, 100 miles up the Irrawaddy, and at Mung, 150 miles up the Irrawaddy. Bombs and incendiaries were seen to burst among the Japanese supply lines and dumps.

The day before American planes (delayed) raided the Japanese at Mung, 150 miles up the Irrawaddy, hitting rolling stock and buildings.

Not a plane was lost in the two days' operations.

WHY U. S. DIDN'T HALT JAPS EARLY

BOISE, May 20 (AP)—The American army air forces could have stopped the Japanese advance on Pearl Harbor, but the attempt probably would have meant the eventual loss of the war, Gen. Robert P. Taylor, Boise, said today.

The acting commander in the second air force and only officer of his rank in Idaho, asserted in an interview the Japanese could have been stopped by the present "unimaginable power" behind the offensive of 1941.

"It was necessary for us to sit back and watch our progress be 'thru down' and killed in such places as Philippines and Java without being able to go to the aid of them," he said.

"Had we stopped our entire air force into the conflict at that time, we would have thrown the Japs at us temporarily, but the war would have been lost. I don't believe a more difficult decision was ever made than that by the chief of staff to retain in this country the major portion of the experienced men around which we had to build our tremendous new air force."

"You don't know," he added, "have given their lives because of inadequate equipment and insufficient preparation for war. Let us take this one lesson and never forget it."

Memory is lost between the ages of 11 and 44, according to an eminent London doctor.

Time Tables

| Schedules of passenger trains and motor buses leaving Twin Falls, Idaho | | |
|---|-------------|-------------|
| TWIN FALLS-BOISE-IDAHO FALLS | | |
| BOISE-IDAHO FALLS | | |
| No. 811 arrive | 10:30 a. m. | Idaho Falls |
| No. 812 leave | 10:40 a. m. | Idaho Falls |
| No. 813 arrive | 10:50 a. m. | Idaho Falls |
| No. 814 leave | 11:00 a. m. | Idaho Falls |
| IDAHO FALLS-BOISE | | |
| No. 815 arrive | 11:10 a. m. | Boise |
| No. 816 leave | 11:20 a. m. | Boise |
| No. 817 arrive | 11:30 a. m. | Boise |
| No. 818 leave | 11:40 a. m. | Boise |
| BOISE-IDAHO FALLS | | |
| No. 819 arrive | 11:50 a. m. | Idaho Falls |
| No. 820 leave | 12:00 p. m. | Idaho Falls |
| No. 821 arrive | 12:10 p. m. | Idaho Falls |
| No. 822 leave | 12:20 p. m. | Idaho Falls |
| IDAHO FALLS-BOISE | | |
| No. 823 arrive | 12:30 p. m. | Boise |
| No. 824 leave | 12:40 p. m. | Boise |
| No. 825 arrive | 12:50 p. m. | Boise |
| No. 826 leave | 1:00 p. m. | Boise |
| BOISE-IDAHO FALLS | | |
| No. 827 arrive | 1:10 p. m. | Idaho Falls |
| No. 828 leave | 1:20 p. m. | Idaho Falls |
| No. 829 arrive | 1:30 p. m. | Idaho Falls |
| No. 830 leave | 1:40 p. m. | Idaho Falls |
| IDAHO FALLS-BOISE | | |
| No. 831 arrive | 1:50 p. m. | Boise |
| No. 832 leave | 2:00 p. m. | Boise |
| No. 833 arrive | 2:10 p. m. | Boise |
| No. 834 leave | 2:20 p. m. | Boise |
| BOISE-IDAHO FALLS | | |
| No. 835 arrive | 2:30 p. m. | Idaho Falls |
| No. 836 leave | 2:40 p. m. | Idaho Falls |
| No. 837 arrive | 2:50 p. m. | Idaho Falls |
| No. 838 leave | 3:00 p. m. | Idaho Falls |
| IDAHO FALLS-BOISE | | |
| No. 839 arrive | 3:10 p. m. | Boise |
| No. 840 leave | 3:20 p. m. | Boise |
| No. 841 arrive | 3:30 p. m. | Boise |
| No. 842 leave | 3:40 p. m. | Boise |
| BOISE-IDAHO FALLS | | |
| No. 843 arrive | 3:50 p. m. | Idaho Falls |
| No. 844 leave | 4:00 p. m. | Idaho Falls |
| No. 845 arrive | 4:10 p. m. | Idaho Falls |
| No. 846 leave | 4:20 p. m. | Idaho Falls |
| IDAHO FALLS-BOISE | | |
| No. 847 arrive | 4:30 p. m. | Boise |
| No. 848 leave | 4:40 p. m. | Boise |
| No. 849 arrive | 4:50 p. m. | Boise |
| No. 850 leave | 5:00 p. m. | Boise |
| BOISE-IDAHO FALLS | | |
| No. 851 arrive | 5:10 p. m. | Idaho Falls |
| No. 852 leave | 5:20 p. m. | Idaho Falls |
| No. 853 arrive | 5:30 p. m. | Idaho Falls |
| No. 854 leave | 5:40 p. m. | Idaho Falls |
| IDAHO FALLS-BOISE | | |
| No. 855 arrive | 5:50 p. m. | Boise |
| No. 856 leave | 6:00 p. m. | Boise |
| No. 857 arrive | 6:10 p. m. | Boise |
| No. 858 leave | 6:20 p. m. | Boise |
| BOISE-IDAHO FALLS | | |
| No. 859 arrive | 6:30 p. m. | Idaho Falls |
| No. 860 leave | 6:40 p. m. | Idaho Falls |
| No. 861 arrive | 6:50 p. m. | Idaho Falls |
| No. 862 leave | 7:00 p. m. | Idaho Falls |
| IDAHO FALLS-BOISE | | |
| No. 863 arrive | 7:10 p. m. | Boise |
| No. 864 leave | 7:20 p. m. | Boise |
| No. 865 arrive | 7:30 p. m. | Boise |
| No. 866 leave | 7:40 p. m. | Boise |
| BOISE-IDAHO FALLS | | |
| No. 867 arrive | 7:50 p. m. | Idaho Falls |
| No. 868 leave | 8:00 p. m. | Idaho Falls |
| No. 869 arrive | 8:10 p. m. | Idaho Falls |
| No. 870 leave | 8:20 p. m. | Idaho Falls |
| IDAHO FALLS-BOISE | | |
| No. 871 arrive | 8:30 p. m. | Boise |
| No. 872 leave | 8:40 p. m. | Boise |
| No. 873 arrive | 8:50 p. m. | Boise |
| No. 874 leave | 9:00 p. m. | Boise |
| BOISE-IDAHO FALLS | | |
| No. 875 arrive | 9:10 p. m. | Idaho Falls |
| No. 876 leave | 9:20 p. m. | Idaho Falls |
| No. 877 arrive | 9:30 p. m. | Idaho Falls |
| No. 878 leave | 9:40 p. m. | Idaho Falls |
| IDAHO FALLS-BOISE | | |
| No. 879 arrive | 9:50 p. m. | Boise |
| No. 880 leave | 10:00 p. m. | Boise |
| No. 881 arrive | 10:10 p. m. | Boise |
| No. 882 leave | 10:20 p. m. | Boise |
| BOISE-IDAHO FALLS | | |
| No. 883 arrive | 10:30 p. m. | Idaho Falls |
| No. 884 leave | 10:40 p. m. | Idaho Falls |
| No. 885 arrive | 10:50 p. m. | Idaho Falls |
| No. 886 leave | 11:00 p. m. | Idaho Falls |
| IDAHO FALLS-BOISE | | |
| No. 887 arrive | 11:10 p. m. | Boise |
| No. 888 leave | 11:20 p. m. | Boise |
| No. 889 arrive | 11:30 p. m. | Boise |
| No. 890 leave | 11:40 p. m. | Boise |
| BOISE-IDAHO FALLS | | |
| No. 891 arrive | 11:50 p. m. | Idaho Falls |
| No. 892 leave | 12:00 a. m. | Idaho Falls |
| No. 893 arrive | 12:10 a. m. | Idaho Falls |
| No. 894 leave | 12:20 a. m. | Idaho Falls |
| IDAHO FALLS-BOISE | | |
| No. 895 arrive | 12:30 a. m. | Boise |
| No. 896 leave | 12:40 a. m. | Boise |
| No. 897 arrive | 12:50 a. m. | Boise |
| No. 898 leave | 1:00 a. m. | Boise |
| BOISE-IDAHO FALLS | | |
| No. 899 arrive | 1:10 a. m. | Idaho Falls |
| No. 900 leave | 1:20 a. m. | Idaho Falls |
| No. 901 arrive | 1:30 a. m. | Idaho Falls |
| No. 902 leave | 1:40 a. m. | Idaho Falls |
| IDAHO FALLS-BOISE | | |
| No. 903 arrive | 1:50 a. m. | Boise |
| No. 904 leave | 2:00 a. m. | Boise |
| No. 905 arrive | 2:10 a. m. | Boise |
| No. 906 leave | 2:20 a. m. | Boise |
| BOISE-IDAHO FALLS | | |
| No. 907 arrive | 2:30 a. m. | Idaho Falls |
| No. 908 leave | 2:40 a. m. | Idaho Falls |
| No. 909 arrive | 2:50 a. m. | Idaho Falls |
| No. 910 leave | 3:00 a. m. | Idaho Falls |
| IDAHO FALLS-BOISE | | |
| No. 911 arrive | 3:10 a. m. | Boise |
| No. 912 leave | 3:20 a. m. | Boise |
| No. 913 arrive | 3:30 a. m. | Boise |
| No. 914 leave | 3:40 a. m. | Boise |
| BOISE-IDAHO FALLS | | |
| No. 915 arrive | 3:50 a. m. | Idaho Falls |
| No. 916 leave | 4:00 a. m. | Idaho Falls |
| No. 917 arrive | 4:10 a. m. | Idaho Falls |
| No. 918 leave | 4:20 a. m. | Idaho Falls |
| IDAHO FALLS-BOISE | | |
| No. 919 arrive | 4:30 a. m. | Boise |
| No. 920 leave | 4:40 a. m. | Boise |
| No. 921 arrive | 4:50 a. m. | Boise |
| No. 922 leave | 5:00 a. m. | Boise |
| BOISE-IDAHO FALLS | | |
| No. 923 arrive | 5:10 a. m. | Idaho Falls |
| No. 924 leave | 5:20 a. m. | Idaho Falls |
| No. 925 arrive | 5:30 a. m. | Idaho Falls |
| No. 926 leave | 5:40 a. m. | Idaho Falls |
| IDAHO FALLS-BOISE | | |
| No. 927 arrive | 5:50 a. m. | Boise |
| No. 928 leave | 6:00 a. m. | Boise |
| No. 929 arrive | 6:10 a. m. | Boise |
| No. 930 leave | 6:20 a. m. | Boise |
| BOISE-IDAHO FALLS | | |
| No. 931 arrive | 6:30 a. m. | Idaho Falls |
| No. 932 leave | 6:40 a. m. | Idaho Falls |
| No. 933 arrive | 6:50 a. m. | Idaho Falls |
| No. 934 leave | 7:00 a. m. | Idaho Falls |
| IDAHO FALLS-BOISE | | |
| No. 935 arrive | 7:10 a. m. | Boise |
| No. 936 leave | 7:20 a. m. | Boise |
| No. 937 arrive | 7:30 a. m. | Boise |
| No. 938 leave | 7:40 a. m. | Boise |
| BOISE-IDAHO FALLS | | |
| No. 939 arrive | 7:50 a. m. | Idaho Falls |
| No. 940 leave | 8:00 a. m. | Idaho Falls |
| No. 941 arrive | 8:10 a. m. | Idaho Falls |
| No. 942 leave | 8:20 a. m. | Idaho Falls |
| IDAHO FALLS-BOISE | | |
| No. 943 arrive | 8:30 a. m. | Boise |
| No. 944 leave | 8:40 a. m. | Boise |
| No. 945 arrive | 8:50 a. m. | Boise |
| No. 946 leave | 9:00 a. m. | Boise |
| BOISE-IDAHO FALLS | | |
| No. 947 arrive | 9:10 a. m. | Idaho Falls |
| No. 948 leave | 9:20 a. m. | Idaho Falls |
| No. 949 arrive | 9:30 a. m. | Idaho Falls |
| No. 950 leave | 9:40 a. m. | Idaho Falls |
| IDAHO FALLS-BOISE | | |
| No. 951 arrive | 9:50 a. m. | Boise |
| No. 952 leave | 10:00 a. m. | Boise |
| No. 953 arrive | 10:10 a. m. | Boise |
| No. 954 leave | 10:20 a. m. | Boise |
| BOISE-IDAHO FALLS | | |
| No. 955 arrive | 10:30 a. m. | Idaho Falls |
| No. 956 leave | 10:40 a. m. | Idaho Falls |
| No. 957 arrive | 10:50 a. m. | Idaho Falls |
| No. 958 leave | 11:00 a. m. | Idaho Falls |
| IDAHO FALLS-BOISE | | |
| No. 959 arrive | 11:10 a. m. | Boise |
| No. 960 leave | 11:20 a. m. | Boise |
| No. 961 arrive | 11:30 a. m. | Boise |
| No. 962 leave | 11:40 a. m. | Boise |
| BOISE-IDAHO FALLS | | |
| No. 963 arrive | 11:50 a. m. | Idaho Falls |
| No. 964 leave | 12:00 p. m. | Idaho Falls |
| No. 965 arrive | 12:10 p. m. | Idaho Falls |
| No. 966 leave | 12:20 p. m. | Idaho Falls |
| IDAHO FALLS-BOISE | | |
| No. 967 arrive | 12:30 p. m. | Boise |
| No. 968 leave | 12:40 p. m. | Boise |
| No. 969 arrive | 12:50 p. m. | Boise |
| No. 970 leave | 1:00 p. m. | Boise |
| BOISE-IDAHO FALLS | | |
| No. 971 arrive | 1:10 p. m. | Idaho Falls |
| No. 972 leave | 1:20 p. m. | Idaho Falls |
| No. 973 arrive | 1:30 p. m. | Idaho Falls |
| No. 974 leave | 1:40 p. m. | Idaho Falls |
| IDAHO FALLS-BOISE | | |
| No. 975 arrive | 1:50 p. m. | Boise |
| No. 976 leave | 2:00 p. m. | Boise |
| No. 977 arrive | 2:10 p. m. | Boise |
| No. 978 leave | 2:20 p. m. | Boise |
| BOISE-IDAHO FALLS | | |
| No. 979 arrive | 2:30 p. m. | Idaho Falls |
| No. 980 leave | 2:40 p. m. | Idaho Falls |
| No. 981 arrive | 2:50 p. m. | Idaho Falls |
| No. 982 leave | 3:00 p. m. | Idaho Falls |
| IDAHO FALLS-BOISE | | |
| No. 983 arrive | 3:10 p. m. | Boise |
| No. 984 leave | 3:20 p. m. | Boise |
| No. 985 arrive | 3:30 p. m. | Boise |
| No. 986 leave | 3:40 p. m. | Boise |
| BOISE-IDAHO FALLS | | |
| No. 987 arrive | 3:50 p. m. | Idaho Falls |
| No. 988 leave | 4:00 p. m. | Idaho Falls |
| No. 989 arrive | 4:10 p. m. | Idaho Falls |
| No. 990 leave | 4:20 p. m. | Idaho Falls |
| IDAHO FALLS-BOISE | | |
| No. 991 arrive | 4:30 p. m. | Boise |
| No. 992 leave | 4:40 p. m. | Boise |
| No. 993 arrive | 4:50 p. m. | Boise |
| No. 994 leave | 5:00 p. m. | Boise |
| BOISE-IDAHO FALLS | | |
| No. 995 arrive | 5:10 p. m. | Idaho Falls |
| No. 996 leave | 5:20 p. m. | Idaho Falls |
| No. 997 arrive | 5:30 p. m. | Idaho Falls |
| No. 998 leave | 5:40 p. m. | Idaho Falls |
| IDAHO FALLS-BOISE | | |
| No. 999 arrive | 5:50 p. m. | Boise |
| No. 1000 leave | 6:00 p. m. | Boise |

Burley Contributing Army Wing-Winners



Among Burley's other contributions to the armed forces are two aviation cadets now at Goodfellow field. To receive their final phase of their army air training. To make the Idaho delegation complete is a young officer of Burley. Above, the three Idahoans are shown clustered on a B-17, one of the 420-bomber planes they fly at Goodfellow field. Left to right, Clair A. Whitehead, and W. C. Whitehead. Burley: Frederick J. Behrend, 20, son of Mr. and Mrs. John Behrend, Blackfoot, and Charles E. Lynch, 24, son of Mr. and Mrs. J. C. Lynch, Burley. (Army air forces photo—staff engraving)

ULTIMATUM HITS PAY-AS-GO HOPES

WASHINGTON, May 20 (AP)—The Senate Finance committee said today that it will not support a bill that would allow a taxpayer to pay as he goes for a new tax liability this session.

The committee said it will not support a bill that would allow a taxpayer to pay as he goes for a new tax liability this session.

The committee said it will not support a bill that would allow a taxpayer to pay as he goes for a new tax liability this session.

General Praises Wendover's Base

BOISE, May 20 (AP)—The Wendover, Utah, air base is the outstanding base in the northwest for training of heavy bomber pilots and crews, Brig. Gen. Robert P. Travis, a second air force wing commander, said in an interview today.

Travis, 38, was born in Savannah, Ga., and is a West Point graduate. He became one of the air force's youngest commanders when he was assigned to the Alkali Flats controversy in north Idaho. Gen. C. A. Tolson, then military director in his regular command.

The governor said it made a great deal of difference whether Idaho or the federal government created the question of construction of a dam there.

The federal government proposed dam at several northern points, including Alkali Flats, for a huge post-war water reservoir that would be built in the northwest. However, towns of Washington, Oregon, the entire state of Idaho to Hertz, Mont. It would supply water to increase the storage capacity of Priest Rapids in north Idaho. However, towns of Sandpoint and Priest River would be flooded in portions, as well as agricultural lands.

The First River Chamber of Commerce reportedly and favored the project.

"The state's right issue is clearly defined in the Alkali Flats dam matter," Tolson said. "Idaho was not intended officially until the Sandpoint chamber's resolution and the reached its executive desk, and the governor then entered an immediate investigation that brought to light the federal government's plans."

Another dam for the gigantic project was proposed at Clark Fork on the Columbia river in Oregon, and reclamation dam projects were contemplated at points including the Flathead lake area of Montana.

Only about one American male in every 200 attains a height of six feet.

ISSUE OF STATE RIGHTS INVOLVED

BOISE, May 20 (AP)—The extent of state rights for all states may be determined soon by settlement of the Alkali Flats controversy in north Idaho. Gov. C. A. Tolson, then military director in his regular command.

The governor said it made a great deal of difference whether Idaho or the federal government created the question of construction of a dam there.

The federal government proposed dam at several northern points, including Alkali Flats, for a huge post-war water reservoir that would be built in the northwest. However, towns of Washington, Oregon, the entire state of Idaho to Hertz, Mont. It would supply water to increase the storage capacity of Priest Rapids in north Idaho. However, towns of Sandpoint and Priest River would be flooded in portions, as well as agricultural lands.

The First River Chamber of Commerce reportedly and favored the project.

"The state's right issue is clearly defined in the Alkali Flats dam matter," Tolson said. "Idaho was not intended officially until the Sandpoint chamber's resolution and the reached its executive desk, and the governor then entered an immediate investigation that brought to light the federal government's plans."

Another dam for the gigantic project was proposed at Clark Fork on the Columbia river in Oregon, and reclamation dam projects were contemplated at points including the Flathead lake area of Montana.

Only about one American male in every 200 attains a height of six feet.

BIG FOUR AGREE AT FOOD PARLEY

By H. O. THOMPSON
HOT SPRINGS, VA., May 20 (AP)—The big four of the United Nations—the United States, Great Britain, China and the Soviet Union—agreed today to be in general agreement on the accomplishments to be expected from the international food conference.

The four major nations have been in frequent consultation and no points of conflict have yet developed.

There remains, of course, considerable work before the actual recommendations of the conference can be decided. But under the leadership of the four principal delegations the conference was leading toward the following general results:

1—Creation of a world agricultural commission to carry on and expand the programs supported here.

2—A declaration in favor of reducing world tariffs.

3—A declaration advocating continued agricultural expansion throughout the world.

4—Approval of reports stressing the new importance of nutrition as a fundamental goal, for different sections of the world.

5—Recommendations that the 44 governments represented here pledge themselves to accept continuing responsibilities for seeing that their people are better fed in the post-war world.

SOS by Balloon



New aid for airmen or sailors afloat at sea is a 35-pound portable radio transmitter that sends a continuous SOS. Hydrogen inflated balloons, above, carries aerial afloat.

PARENTS BLAMED FOR DELINQUENCY

BOISE, May 20 (AP)—Parents are more to blame for juvenile delinquency than children, Rev. Patrick Aherm, pastor of St. Charles Catholic church, today said at the southwestern Idaho FBI-sponsored law enforcement conference held yesterday.

Aherm told 200 representatives, including church and civil officials and law enforcement officers, that civic and community organizations should accept chief part of the responsibility for delinquency, and bring up a "code of ethics" for parents.

He said primary causes of delinquency are mental, or physical defects, a disturbed or incomplete home life, failure of school to provide for his needs, and failure on the part of civic and social organizations.

Kenneth Legan, Butte, special agent in charge of the federal bureau of investigation, in charge of the Idaho conference, said wartime conditions and wrought the increase in delinquency.

Legan said male arrests had decreased because of the army draft, and that increase has primarily been among girls. He said the answer to the problem lies with individual communities, he declared.

To OWI Post



Palmer Hoyt (above), publisher of the Portland (Ore.) Oregonian, was appointed domestic director of the office of war information.

Meat Rations for Seeing-Eye Dogs

BOISE, May 20 (AP)—C. C. Anderson, state OPA director, today announced that limited quantities of rationed meat will be released for feeding specially trained "seeing-eye" dogs for blind persons, providing homestead or other food cannot be obtained in the vicinity.

Local rationing boards are authorized to give blind persons up to 12 extra points weekly in such cases, in their discretion, to be spent for low point-value meats.

High Vitamin — High Quality UNRATED — LOW POINT VALUES AND LOW-PRICED FOODS AT THE Idaho Department Store

Strawberries
Birds Eye Fresh Frozen
Berries (6 Points)
16 oz. Pkg. **33c**

FRESH PEAS

138 MAIN AVE. S. TWIN FALLS, IDAHO

SERIAL STORY
Beth Carter, WAAC
BY LORETTE COOPER

The Story: Beth Carter, WAAC, is Major Rick Jackson's "one-man staff" on the tiny camouflage island in the Pacific where his unit of the Coast Artillery Barrage Battalion battles in hard. Major Jackson tells Beth she is to assist him in tracking down suspected information leaks but no one else on the island knows in what capacity she is there. Their first encounter is by the appearance of a strange young woman who immediately takes possession of him. The next day Beth overhears Lila Danton whispering to a friend in passing to the plane that brought her and her companion, Rick Moth, into a forced landing on the island. And an important paper is missing!

MYSTERIOUS STEPS

Beth's tone had been unmistakable. Beth was being accused. "I haven't seen it, Major," she said, certainly and somewhat tensely, reverting to the official address in her own concern over the situation. "I haven't been away from my desk since I sat down to work this morning, and no one but you has been in here with me." Beth studied her face a moment. "You're sure?" he asked. "You're absolutely sure?" "To be exact," Beth answered, "I did leave the office on two occasions. Both times I placed every paper in this of this desk in this drawer and locked it. I am positive no paper escaped me." Beth said, "I suggest that you go into the safe and look the directors before the papers were removed this morning, or it was taken during one of my absences."

"Impossible!" "All right, it's impossible," Beth looked Beth straight in the eye. "You told me that I might have to do a little detective work while I was here."

"I did say exactly that. I think I said that treachery from within was suspected, and you were to help me prevent it."

"In this case, Major, it sums it all up to the same thing. Will you give me permission to offer an opinion?"

Beth smiled, but was no smile of much. In it there was weariness and some desperation. "Go ahead. Only if I don't think it's good. I'll do what I'm thinking of doing anyway—I'll search everyone and everything until that detective is found."

"That's a very poor idea. It would be better to permit no one to leave this island or communicate with anyone off the island until the detective is found."

Beth narrowed his eyes. "I think I know what you're hinting at."

"I'm hinting at nothing specific. That is a good general procedure, regardless of who is here."

Beth paused. She decided she might as well say it. "Since you brought up the subject, Lila Danton and Rick Moth."

"How would Rick take this?" "Go on," he said.

"I'd like to point out that Lila and Rick might have had opportunity to investigate this safe. I remember now that once when I went out of the office Lila Danton was identifying herself to a guard at the end of the corridor—I didn't see Mr. Moth with her but he might have been nearby or I might not have noticed him."

"Maybe Lila had been a little overzealous to get a scoop," he said. "Maybe the safe was left open some time when neither of us realized it."

"First, you're a major and my commanding officer and I'm supposed to be giving orders. But if I were in command, I'd order you, regardless of whether I suspected anyone particularly, to put into effect that plan immediately. I'd order very especially that the Danton-Moth plane should not be allowed to leave." She swallowed hard.

Beth looked at his watch. Then he gathered up all the papers, books, notes included, and put them into the safe. "Be sure the door is closed," he said to her. She made certain. He motioned her to his side. In a whisper, he said, "I'm changing the combination. Listen closely."

It was difficult to memorize the new combination. Here was proof that he still trusted her.

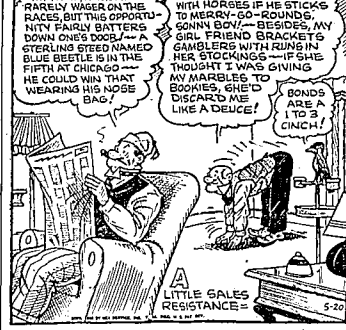
After supper, Beth took a walk. While she was strolling on the far side of the cove, she made her decision. She would do some sleuthing on her own.

She could see the airplane which carried Lila Danton and Rick Moth riding on the wall. A couple of hundred yards away, Beth turned back and, stooping, retraced her steps until she entered the house which covered the peak. Then she moved swiftly off alone, the path which led around the cove. In a few minutes she was on a small, foliage-hidden knoll just above the portion of the beach off which the airplane rode at anchor. This plane itself was within 50 yards, yet she was hidden.

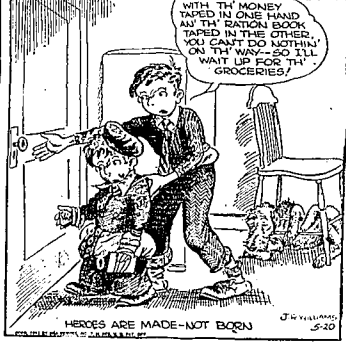
She watched the plane intently. A light shone for a second, but it was extinguished almost immediately. The moon had risen and the night was bright, brighter by far than the last night she had spent on the mainland, only 40 hours before.

Her concentration on the airplane was interrupted by the unmistakable sound of footsteps coming toward her.

BOARDING HOUSE MAJOR HOOPLE



OUT OUR WAY By WILLIAMS



LIFE'S LIKE THAT By NEHER



SIDE GLANCES By GALBRAITH



SCORCHY By FRANK ROBBINS



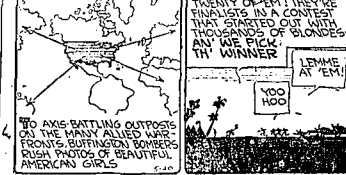
RED RYDER



WASH TUBS



BOOTS AND HER BUDDIES



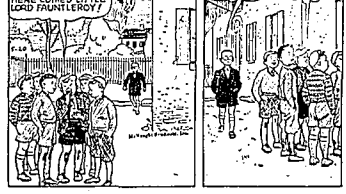
GASOLINE ALLEY



THE GUMPS



DIXIE DUGAN



THIMBLE THEATER



ALLEY OOP



By FRED HARMAN



By ROY CRANE



By EDGAR MARTIN



By KING



By GUS EDSON



By McEVOY and STRIEBEL



By V. T. HAMLIN



By V. T. HAMLIN



STOCKS DROP ON MINE WALKOUTS

Livestock Markets

WHEAT ADVANCES ON FLOOD NEWS

NEW YORK, May 29 (AP)—Stock market in-and-outers today found enough new money to help: profit-taking on the two-session upswing and early calls for a reduced or converted uptrend loomed near the close.

But the market, from a technical bull's-eye standpoint, was that settling weaker was urgent. Dealing was fast-paced on the stock exchange, adding to Wednesday's advance. Volume then began to decline, as did the time for the day's final proceedings as around 1,300 a.m.

NEW YORK, May 29 (AP)—Stock market in-and-outers today found enough new money to help: profit-taking on the two-session upswing and early calls for a reduced or converted uptrend loomed near the close.

But the market, from a technical bull's-eye standpoint, was that settling weaker was urgent. Dealing was fast-paced on the stock exchange, adding to Wednesday's advance. Volume then began to decline, as did the time for the day's final proceedings as around 1,300 a.m.

[illegible]

New York Stocks

NEW YORK, May 29 (UPI)—The market closed lower.

| | |
|-------------------------|--------|
| Added issues | 12 1/2 |
| Chalmers | 10 1/2 |
| American Can | 83 3/4 |
| General Electric | 83 1/2 |
| International Composite | 10 1/2 |

OLDEN LIVESTOCK

CHICAGO, May 29 (UPI)—Cattle and hogs were sold in the market today. The following prices were reported:

| | |
|--------|--------|
| Choice | 10 1/2 |
| Prime | 9 1/2 |
| Good | 8 1/2 |
| Medium | 7 1/2 |
| Low | 6 1/2 |

POTATOES

CHICAGO, May 29 (UPI)—A market for potatoes was held today on the stock exchange. The following prices were reported:

| | |
|--------|--------|
| Choice | 10 1/2 |
| Prime | 9 1/2 |
| Good | 8 1/2 |
| Medium | 7 1/2 |
| Low | 6 1/2 |

[illegible][illegible][illegible][illegible][illegible][illegible]

| | | | | | | | | | | | | | | | | | | | | | | | | | | | | | | | | | | | | | | | | | | | | | | | | | | | | | | | | | | | | | | | | | | | | | | | | | | | | | | | | | | | | | | | | | | | | | | | | | | | | | | | | | | | | | | | | | | | | | | | | | | | | | | | | | | | | | | | | | | | | | | | | | | | | | | | | | | | | | | | | | | | | | | | | | | | | | | | | | | | | | | | | | | | | | | | | | | | | | | | | | | | | | | | | | | | | | | | | | | | | | | | | | | | | | | | | | | | | | | | | | | | | | | | | | | | | | | | | | | | | | | | | | | | | | | | | | | | | | | | | | | | | | | | | | | |
|---|--|----------|----------------|-------|--------|---------------|-------|-------|---------------|-------|-----------|---------------|-------|------------|---------------|-------|------------|---------------|-------|--------------|---------------|-------|--------|---------------|-------|-------|---------------|-------|-----------|---------------|-------|------------|---------------|-------|------------|---------------|-------|--------------|---------------|-------|--------|---------------|-------|-------|---------------|-------|-----------|---------------|-------|------------|---------------|-------|------------|---------------|-------|--------------|---------------|-------|--------|---------------|-------|-------|---------------|-------|-----------|---------------|-------|------------|---------------|-------|------------|---------------|-------|--------------|---------------|-------|--------|---------------|-------|-------|---------------|-------|-----------|---------------|-------|------------|---------------|-------|------------|---------------|-------|--------------|---------------|-------|--------|---------------|-------|-------|---------------|-------|-----------|---------------|-------|------------|---------------|-------|------------|---------------|-------|--------------|---------------|-------|--------|---------------|-------|-------|---------------|-------|-----------|---------------|-------|------------|---------------|-------|------------|---------------|-------|--------------|---------------|-------|--------|---------------|-------|-------|---------------|-------|-----------|---------------|-------|------------|---------------|-------|------------|---------------|-------|--------------|---------------|-------|--------|---------------|-------|-------|---------------|-------|-----------|---------------|-------|------------|---------------|-------|------------|---------------|-------|--------------|---------------|-------|--------|---------------|-------|-------|---------------|-------|-----------|---------------|-------|------------|---------------|-------|------------|---------------|-------|--------------|---------------|-------|--------|---------------|-------|-------|---------------|-------|-----------|---------------|-------|------------|---------------|-------|------------|---------------|-------|--------------|---------------|-------|--------|---------------|-------|-------|---------------|-------|-----------|---------------|-------|------------|---------------|-------|------------|---------------|-------|--------------|---------------|-------|--------|---------------|-------|-------|---------------|-------|-----------|---------------|-------|------------|---------------|-------|------------|---------------|-------|--------------|---------------|-------|--------|---------------|-------|-------|---------------|-------|-----------|---------------|-------|------------|---------------|-------|------------|---------------|-------|--------------|---------------|-------|--------|---------------|-------|-------|---------------|-------|-----------|---------------|-------|------------|---------------|-------|------------|---------------|-------|--------------|---------------|-------|--------|---------------|-------|-------|---------------|-------|-----------|---------------|-------|------------|---------------|-------|------------|---------------|-------|--------------|
| <p> farm department announced today that it had approved grain markets for 23 state health agents for providing information on availability of grain to needy people.</p> <p> The agents will be working with men in the four lowest price grades of the armed services, and purchasing for the families.</p> <p> States whose programs have been approved are:</p> <p> Alabama Wyoming.</p> <p> Plans submitted by several other states will be acted upon within the next few days, the department said.</p> | <table border="1"> <tr> <td>Fax meal</td> <td>\$7.00-\$10.00</td> <td>11.16</td> </tr> <tr> <td>Barley</td> <td>\$1.00-\$1.25</td> <td>11.16</td> </tr> <tr> <td>Wheat</td> <td>\$1.00-\$1.25</td> <td>11.16</td> </tr> <tr> <td>Corn meal</td> <td>\$1.00-\$1.25</td> <td>11.16</td> </tr> <tr> <td>Soft wheat</td> <td>\$1.00-\$1.25</td> <td>11.16</td> </tr> <tr> <td>Hard wheat</td> <td>\$1.00-\$1.25</td> <td>11.16</td> </tr> <tr> <td>Other grains</td> <td>\$1.00-\$1.25</td> <td>11.16</td> </tr> <tr> <td>Barley</td> <td>\$1.00-\$1.25</td> <td>11.16</td> </tr> <tr> <td>Wheat</td> <td>\$1.00-\$1.25</td> <td>11.16</td> </tr> <tr> <td>Corn meal</td> <td>\$1.00-\$1.25</td> <td>11.16</td> </tr> <tr> <td>Soft wheat</td> <td>\$1.00-\$1.25</td> <td>11.16</td> </tr> <tr> <td>Hard wheat</td> <td>\$1.00-\$1.25</td> <td>11.16</td> </tr> <tr> <td>Other grains</td> <td>\$1.00-\$1.25</td> <td>11.16</td> </tr> <tr> <td>Barley</td> <td>\$1.00-\$1.25</td> <td>11.16</td> </tr> <tr> <td>Wheat</td> <td>\$1.00-\$1.25</td> <td>11.16</td> </tr> <tr> <td>Corn meal</td> <td>\$1.00-\$1.25</td> <td>11.16</td> </tr> <tr> <td>Soft wheat</td> <td>\$1.00-\$1.25</td> <td>11.16</td> </tr> <tr> <td>Hard wheat</td> <td>\$1.00-\$1.25</td> <td>11.16</td> </tr> <tr> <td>Other grains</td> <td>\$1.00-\$1.25</td> <td>11.16</td> </tr> <tr> <td>Barley</td> <td>\$1.00-\$1.25</td> <td>11.16</td> </tr> <tr> <td>Wheat</td> <td>\$1.00-\$1.25</td> <td>11.16</td> </tr> <tr> <td>Corn meal</td> <td>\$1.00-\$1.25</td> <td>11.16</td> </tr> <tr> <td>Soft wheat</td> <td>\$1.00-\$1.25</td> <td>11.16</td> </tr> <tr> <td>Hard wheat</td> <td>\$1.00-\$1.25</td> <td>11.16</td> </tr> <tr> <td>Other grains</td> <td>\$1.00-\$1.25</td> <td>11.16</td> </tr> <tr> <td>Barley</td> <td>\$1.00-\$1.25</td> <td>11.16</td> </tr> <tr> <td>Wheat</td> <td>\$1.00-\$1.25</td> <td>11.16</td> </tr> <tr> <td>Corn meal</td> <td>\$1.00-\$1.25</td> <td>11.16</td> </tr> <tr> <td>Soft wheat</td> <td>\$1.00-\$1.25</td> <td>11.16</td> </tr> <tr> <td>Hard wheat</td> <td>\$1.00-\$1.25</td> <td>11.16</td> </tr> <tr> <td>Other grains</td> <td>\$1.00-\$1.25</td> <td>11.16</td> </tr> <tr> <td>Barley</td> <td>\$1.00-\$1.25</td> <td>11.16</td> </tr> <tr> <td>Wheat</td> <td>\$1.00-\$1.25</td> <td>11.16</td> </tr> <tr> <td>Corn meal</td> <td>\$1.00-\$1.25</td> <td>11.16</td> </tr> <tr> <td>Soft wheat</td> <td>\$1.00-\$1.25</td> <td>11.16</td> </tr> <tr> <td>Hard wheat</td> <td>\$1.00-\$1.25</td> <td>11.16</td> </tr> <tr> <td>Other grains</td> <td>\$1.00-\$1.25</td> <td>11.16</td> </tr> <tr> <td>Barley</td> <td>\$1.00-\$1.25</td> <td>11.16</td> </tr> <tr> <td>Wheat</td> <td>\$1.00-\$1.25</td> <td>11.16</td> </tr> <tr> <td>Corn meal</td> <td>\$1.00-\$1.25</td> <td>11.16</td> </tr> <tr> <td>Soft wheat</td> <td>\$1.00-\$1.25</td> <td>11.16</td> </tr> <tr> <td>Hard wheat</td> <td>\$1.00-\$1.25</td> <td>11.16</td> </tr> <tr> <td>Other grains</td> <td>\$1.00-\$1.25</td> <td>11.16</td> </tr> <tr> <td>Barley</td> <td>\$1.00-\$1.25</td> <td>11.16</td> </tr> <tr> <td>Wheat</td> <td>\$1.00-\$1.25</td> <td>11.16</td> </tr> <tr> <td>Corn meal</td> <td>\$1.00-\$1.25</td> <td>11.16</td> </tr> <tr> <td>Soft wheat</td> <td>\$1.00-\$1.25</td> <td>11.16</td> </tr> <tr> <td>Hard wheat</td> <td>\$1.00-\$1.25</td> <td>11.16</td> </tr> <tr> <td>Other grains</td> <td>\$1.00-\$1.25</td> <td>11.16</td> </tr> <tr> <td>Barley</td> <td>\$1.00-\$1.25</td> <td>11.16</td> </tr> <tr> <td>Wheat</td> <td>\$1.00-\$1.25</td> <td>11.16</td> </tr> <tr> <td>Corn meal</td> <td>\$1.00-\$1.25</td> <td>11.16</td> </tr> <tr> <td>Soft wheat</td> <td>\$1.00-\$1.25</td> <td>11.16</td> </tr> <tr> <td>Hard wheat</td> <td>\$1.00-\$1.25</td> <td>11.16</td> </tr> <tr> <td>Other grains</td> <td>\$1.00-\$1.25</td> <td>11.16</td> </tr> <tr> <td>Barley</td> <td>\$1.00-\$1.25</td> <td>11.16</td> </tr> <tr> <td>Wheat</td> <td>\$1.00-\$1.25</td> <td>11.16</td> </tr> <tr> <td>Corn meal</td> <td>\$1.00-\$1.25</td> <td>11.16</td> </tr> <tr> <td>Soft wheat</td> <td>\$1.00-\$1.25</td> <td>11.16</td> </tr> <tr> <td>Hard wheat</td> <td>\$1.00-\$1.25</td> <td>11.16</td> </tr> <tr> <td>Other grains</td> <td>\$1.00-\$1.25</td> <td>11.16</td> </tr> <tr> <td>Barley</td> <td>\$1.00-\$1.25</td> <td>11.16</td> </tr> <tr> <td>Wheat</td> <td>\$1.00-\$1.25</td> <td>11.16</td> </tr> <tr> <td>Corn meal</td> <td>\$1.00-\$1.25</td> <td>11.16</td> </tr> <tr> <td>Soft wheat</td> <td>\$1.00-\$1.25</td> <td>11.16</td> </tr> <tr> <td>Hard wheat</td> <td>\$1.00-\$1.25</td> <td>11.16</td> </tr> <tr> <td>Other grains</td> <td>\$1.00-\$1.25</td> <td>11.16</td> </tr> <tr> <td>Barley</td> <td>\$1.00-\$1.25</td> <td>11.16</td> </tr> <tr> <td>Wheat</td> <td>\$1.00-\$1.25</td> <td>11.16</td> </tr> <tr> <td>Corn meal</td> <td>\$1.00-\$1.25</td> <td>11.16</td> </tr> <tr> <td>Soft wheat</td> <td>\$1.00-\$1.25</td> <td>11.16</td> </tr> <tr> <td>Hard wheat</td> <td>\$1.00-\$1.25</td> <td>11.16</td> </tr> <tr> <td>Other grains</td> <td>\$1.00-\$1.25</td> <td>11.16</td> </tr> <tr> <td>Barley</td> <td>\$1.00-\$1.25</td> <td>11.16</td> </tr> <tr> <td>Wheat</td> <td>\$1.00-\$1.25</td> <td>11.16</td> </tr> <tr> <td>Corn meal</td> <td>\$1.00-\$1.25</td> <td>11.16</td> </tr> <tr> <td>Soft wheat</td> <td>\$1.00-\$1.25</td> <td>11.16</td> </tr> <tr> <td>Hard wheat</td> <td>\$1.00-\$1.25</td> <td>11.16</td> </tr> <tr> <td>Other grains</td> <td>\$1.00-\$1.25</td> <td>11.16</td> </tr> <tr> <td>Barley</td> <td>\$1.00-\$1.25</td> <td>11.16</td> </tr> <tr> <td>Wheat</td> <td>\$1.00-\$1.25</td> <td>11.16</td> </tr> <tr> <td>Corn meal</td> <td>\$1.00-\$1.25</td> <td>11.16</td> </tr> <tr> <td>Soft wheat</td> <td>\$1.00-\$1.25</td> <td>11.16</td> </tr> <tr> <td>Hard wheat</td> <td>\$1.00-\$1.25</td> <td>11.16</td> </tr> <tr> <td>Other grains</td> <td>\$1.00-\$1.25</td> <td>11.16</td> </tr> <tr> <td>Barley</td> <td>\$1.00-\$1.25</td> <td>11.16</td> </tr> <tr> <td>Wheat</td> <td>\$1.00-\$1.25</td> <td>11.16</td> </tr> <tr> <td>Corn meal</td> <td>\$1.00-\$1.25</td> <td>11.16</td> </tr> <tr> <td>Soft wheat</td> <td>\$1.00-\$1.25</td> <td>11.16</td> </tr> <tr> <td>Hard wheat</td> <td>\$1.00-\$1.25</td> <td>11.16</td> </tr> <tr> <td>Other grains</td> <td>\$1.00-\$1.25</td> <td>11.16</td> </tr> <tr> <td>Barley</td> <td>\$1.00-\$1.25</td> <td>11.16</td> </tr> <tr> <td>Wheat</td> <td>\$1.00-\$1.25</td> <td>11.16</td> </tr> <tr> <td>Corn meal</td> <td>\$1.00-\$1.25</td> <td>11.16</td> </tr> <tr> <td>Soft wheat</td> <td>\$1.00-\$1.25</td> <td>11.16</td> </tr> <tr> <td>Hard wheat</td> <td>\$1.00-\$1.25</td> <td>11.16</td> </tr> <tr> <td>Other grains</td> </tr></table> | Fax meal | \$7.00-\$10.00 | 11.16 | Barley | \$1.00-\$1.25 | 11.16 | Wheat | \$1.00-\$1.25 | 11.16 | Corn meal | \$1.00-\$1.25 | 11.16 | Soft wheat | \$1.00-\$1.25 | 11.16 | Hard wheat | \$1.00-\$1.25 | 11.16 | Other grains | \$1.00-\$1.25 | 11.16 | Barley | \$1.00-\$1.25 | 11.16 | Wheat | \$1.00-\$1.25 | 11.16 | Corn meal | \$1.00-\$1.25 | 11.16 | Soft wheat | \$1.00-\$1.25 | 11.16 | Hard wheat | \$1.00-\$1.25 | 11.16 | Other grains | \$1.00-\$1.25 | 11.16 | Barley | \$1.00-\$1.25 | 11.16 | Wheat | \$1.00-\$1.25 | 11.16 | Corn meal | \$1.00-\$1.25 | 11.16 | Soft wheat | \$1.00-\$1.25 | 11.16 | Hard wheat | \$1.00-\$1.25 | 11.16 | Other grains | \$1.00-\$1.25 | 11.16 | Barley | \$1.00-\$1.25 | 11.16 | Wheat | \$1.00-\$1.25 | 11.16 | Corn meal | \$1.00-\$1.25 | 11.16 | Soft wheat | \$1.00-\$1.25 | 11.16 | Hard wheat | \$1.00-\$1.25 | 11.16 | Other grains | \$1.00-\$1.25 | 11.16 | Barley | \$1.00-\$1.25 | 11.16 | Wheat | \$1.00-\$1.25 | 11.16 | Corn meal | \$1.00-\$1.25 | 11.16 | Soft wheat | \$1.00-\$1.25 | 11.16 | Hard wheat | \$1.00-\$1.25 | 11.16 | Other grains | \$1.00-\$1.25 | 11.16 | Barley | \$1.00-\$1.25 | 11.16 | Wheat | \$1.00-\$1.25 | 11.16 | Corn meal | \$1.00-\$1.25 | 11.16 | Soft wheat | \$1.00-\$1.25 | 11.16 | Hard wheat | \$1.00-\$1.25 | 11.16 | Other grains | \$1.00-\$1.25 | 11.16 | Barley | \$1.00-\$1.25 | 11.16 | Wheat | \$1.00-\$1.25 | 11.16 | Corn meal | \$1.00-\$1.25 | 11.16 | Soft wheat | \$1.00-\$1.25 | 11.16 | Hard wheat | \$1.00-\$1.25 | 11.16 | Other grains | \$1.00-\$1.25 | 11.16 | Barley | \$1.00-\$1.25 | 11.16 | Wheat | \$1.00-\$1.25 | 11.16 | Corn meal | \$1.00-\$1.25 | 11.16 | Soft wheat | \$1.00-\$1.25 | 11.16 | Hard wheat | \$1.00-\$1.25 | 11.16 | Other grains | \$1.00-\$1.25 | 11.16 | Barley | \$1.00-\$1.25 | 11.16 | Wheat | \$1.00-\$1.25 | 11.16 | Corn meal | \$1.00-\$1.25 | 11.16 | Soft wheat | \$1.00-\$1.25 | 11.16 | Hard wheat | \$1.00-\$1.25 | 11.16 | Other grains | \$1.00-\$1.25 | 11.16 | Barley | \$1.00-\$1.25 | 11.16 | Wheat | \$1.00-\$1.25 | 11.16 | Corn meal | \$1.00-\$1.25 | 11.16 | Soft wheat | \$1.00-\$1.25 | 11.16 | Hard wheat | \$1.00-\$1.25 | 11.16 | Other grains | \$1.00-\$1.25 | 11.16 | Barley | \$1.00-\$1.25 | 11.16 | Wheat | \$1.00-\$1.25 | 11.16 | Corn meal | \$1.00-\$1.25 | 11.16 | Soft wheat | \$1.00-\$1.25 | 11.16 | Hard wheat | \$1.00-\$1.25 | 11.16 | Other grains | \$1.00-\$1.25 | 11.16 | Barley | \$1.00-\$1.25 | 11.16 | Wheat | \$1.00-\$1.25 | 11.16 | Corn meal | \$1.00-\$1.25 | 11.16 | Soft wheat | \$1.00-\$1.25 | 11.16 | Hard wheat | \$1.00-\$1.25 | 11.16 | Other grains | \$1.00-\$1.25 | 11.16 | Barley | \$1.00-\$1.25 | 11.16 | Wheat | \$1.00-\$1.25 | 11.16 | Corn meal | \$1.00-\$1.25 | 11.16 | Soft wheat | \$1.00-\$1.25 | 11.16 | Hard wheat | \$1.00-\$1.25 | 11.16 | Other grains | \$1.00-\$1.25 | 11.16 | Barley | \$1.00-\$1.25 | 11.16 | Wheat | \$1.00-\$1.25 | 11.16 | Corn meal | \$1.00-\$1.25 | 11.16 | Soft wheat | \$1.00-\$1.25 | 11.16 | Hard wheat | \$1.00-\$1.25 | 11.16 | Other grains | \$1.00-\$1.25 | 11.16 | Barley | \$1.00-\$1.25 | 11.16 | Wheat | \$1.00-\$1.25 | 11.16 | Corn meal | \$1.00-\$1.25 | 11.16 | Soft wheat | \$1.00-\$1.25 | 11.16 | Hard wheat | \$1.00-\$1.25 | 11.16 | Other grains | \$1.00-\$1.25 | 11.16 | Barley | \$1.00-\$1.25 | 11.16 | Wheat | \$1.00-\$1.25 | 11.16 | Corn meal | \$1.00-\$1.25 | 11.16 | Soft wheat | \$1.00-\$1.25 | 11.16 | Hard wheat | \$1.00-\$1.25 | 11.16 | Other grains |
| Fax meal | \$7.00-\$10.00 | 11.16 | | | | | | | | | | | | | | | | | | | | | | | | | | | | | | | | | | | | | | | | | | | | | | | | | | | | | | | | | | | | | | | | | | | | | | | | | | | | | | | | | | | | | | | | | | | | | | | | | | | | | | | | | | | | | | | | | | | | | | | | | | | | | | | | | | | | | | | | | | | | | | | | | | | | | | | | | | | | | | | | | | | | | | | | | | | | | | | | | | | | | | | | | | | | | | | | | | | | | | | | | | | | | | | | | | | | | | | | | | | | | | | | | | | | | | | | | | | | | | | | | | | | | | | | | | | | | | | | | | | | | | | | | | | | | | | | | | | | | | | | | | | | | | | | |
| Barley | \$1.00-\$1.25 | 11.16 | | | | | | | | | | | | | | | | | | | | | | | | | | | | | | | | | | | | | | | | | | | | | | | | | | | | | | | | | | | | | | | | | | | | | | | | | | | | | | | | | | | | | | | | | | | | | | | | | | | | | | | | | | | | | | | | | | | | | | | | | | | | | | | | | | | | | | | | | | | | | | | | | | | | | | | | | | | | | | | | | | | | | | | | | | | | | | | | | | | | | | | | | | | | | | | | | | | | | | | | | | | | | | | | | | | | | | | | | | | | | | | | | | | | | | | | | | | | | | | | | | | | | | | | | | | | | | | | | | | | | | | | | | | | | | | | | | | | | | | | | | | | | | | | |
| Wheat | \$1.00-\$1.25 | 11.16 | | | | | | | | | | | | | | | | | | | | | | | | | | | | | | | | | | | | | | | | | | | | | | | | | | | | | | | | | | | | | | | | | | | | | | | | | | | | | | | | | | | | | | | | | | | | | | | | | | | | | | | | | | | | | | | | | | | | | | | | | | | | | | | | | | | | | | | | | | | | | | | | | | | | | | | | | | | | | | | | | | | | | | | | | | | | | | | | | | | | | | | | | | | | | | | | | | | | | | | | | | | | | | | | | | | | | | | | | | | | | | | | | | | | | | | | | | | | | | | | | | | | | | | | | | | | | | | | | | | | | | | | | | | | | | | | | | | | | | | | | | | | | | | | |
| Corn meal | \$1.00-\$1.25 | 11.16 | | | | | | | | | | | | | | | | | | | | | | | | | | | | | | | | | | | | | | | | | | | | | | | | | | | | | | | | | | | | | | | | | | | | | | | | | | | | | | | | | | | | | | | | | | | | | | | | | | | | | | | | | | | | | | | | | | | | | | | | | | | | | | | | | | | | | | | | | | | | | | | | | | | | | | | | | | | | | | | | | | | | | | | | | | | | | | | | | | | | | | | | | | | | | | | | | | | | | | | | | | | | | | | | | | | | | | | | | | | | | | | | | | | | | | | | | | | | | | | | | | | | | | | | | | | | | | | | | | | | | | | | | | | | | | | | | | | | | | | | | | | | | | | | |
| Soft wheat | \$1.00-\$1.25 | 11.16 | | | | | | | | | | | | | | | | | | | | | | | | | | | | | | | | | | | | | | | | | | | | | | | | | | | | | | | | | | | | | | | | | | | | | | | | | | | | | | | | | | | | | | | | | | | | | | | | | | | | | | | | | | | | | | | | | | | | | | | | | | | | | | | | | | | | | | | | | | | | | | | | | | | | | | | | | | | | | | | | | | | | | | | | | | | | | | | | | | | | | | | | | | | | | | | | | | | | | | | | | | | | | | | | | | | | | | | | | | | | | | | | | | | | | | | | | | | | | | | | | | | | | | | | | | | | | | | | | | | | | | | | | | | | | | | | | | | | | | | | | | | | | | | | |
| Hard wheat | \$1.00-\$1.25 | 11.16 | | | | | | | | | | | | | | | | | | | | | | | | | | | | | | | | | | | | | | | | | | | | | | | | | | | | | | | | | | | | | | | | | | | | | | | | | | | | | | | | | | | | | | | | | | | | | | | | | | | | | | | | | | | | | | | | | | | | | | | | | | | | | | | | | | | | | | | | | | | | | | | | | | | | | | | | | | | | | | | | | | | | | | | | | | | | | | | | | | | | | | | | | | | | | | | | | | | | | | | | | | | | | | | | | | | | | | | | | | | | | | | | | | | | | | | | | | | | | | | | | | | | | | | | | | | | | | | | | | | | | | | | | | | | | | | | | | | | | | | | | | | | | | | | |
| Other grains | \$1.00-\$1.25 | 11.16 | | | | | | | | | | | | | | | | | | | | | | | | | | | | | | | | | | | | | | | | | | | | | | | | | | | | | | | | | | | | | | | | | | | | | | | | | | | | | | | | | | | | | | | | | | | | | | | | | | | | | | | | | | | | | | | | | | | | | | | | | | | | | | | | | | | | | | | | | | | | | | | | | | | | | | | | | | | | | | | | | | | | | | | | | | | | | | | | | | | | | | | | | | | | | | | | | | | | | | | | | | | | | | | | | | | | | | | | | | | | | | | | | | | | | | | | | | | | | | | | | | | | | | | | | | | | | | | | | | | | | | | | | | | | | | | | | | | | | | | | | | | | | | | | |
| Barley | \$1.00-\$1.25 | 11.16 | | | | | | | | | | | | | | | | | | | | | | | | | | | | | | | | | | | | | | | | | | | | | | | | | | | | | | | | | | | | | | | | | | | | | | | | | | | | | | | | | | | | | | | | | | | | | | | | | | | | | | | | | | | | | | | | | | | | | | | | | | | | | | | | | | | | | | | | | | | | | | | | | | | | | | | | | | | | | | | | | | | | | | | | | | | | | | | | | | | | | | | | | | | | | | | | | | | | | | | | | | | | | | | | | | | | | | | | | | | | | | | | | | | | | | | | | | | | | | | | | | | | | | | | | | | | | | | | | | | | | | | | | | | | | | | | | | | | | | | | | | | | | | | | |
| Wheat | \$1.00-\$1.25 | 11.16 | | | | | | | | | | | | | | | | | | | | | | | | | | | | | | | | | | | | | | | | | | | | | | | | | | | | | | | | | | | | | | | | | | | | | | | | | | | | | | | | | | | | | | | | | | | | | | | | | | | | | | | | | | | | | | | | | | | | | | | | | | | | | | | | | | | | | | | | | | | | | | | | | | | | | | | | | | | | | | | | | | | | | | | | | | | | | | | | | | | | | | | | | | | | | | | | | | | | | | | | | | | | | | | | | | | | | | | | | | | | | | | | | | | | | | | | | | | | | | | | | | | | | | | | | | | | | | | | | | | | | | | | | | | | | | | | | | | | | | | | | | | | | | | | |
| Corn meal | \$1.00-\$1.25 | 11.16 | | | | | | | | | | | | | | | | | | | | | | | | | | | | | | | | | | | | | | | | | | | | | | | | | | | | | | | | | | | | | | | | | | | | | | | | | | | | | | | | | | | | | | | | | | | | | | | | | | | | | | | | | | | | | | | | | | | | | | | | | | | | | | | | | | | | | | | | | | | | | | | | | | | | | | | | | | | | | | | | | | | | | | | | | | | | | | | | | | | | | | | | | | | | | | | | | | | | | | | | | | | | | | | | | | | | | | | | | | | | | | | | | | | | | | | | | | | | | | | | | | | | | | | | | | | | | | | | | | | | | | | | | | | | | | | | | | | | | | | | | | | | | | | | |
| Soft wheat | \$1.00-\$1.25 | 11.16 | | | | | | | | | | | | | | | | | | | | | | | | | | | | | | | | | | | | | | | | | | | | | | | | | | | | | | | | | | | | | | | | | | | | | | | | | | | | | | | | | | | | | | | | | | | | | | | | | | | | | | | | | | | | | | | | | | | | | | | | | | | | | | | | | | | | | | | | | | | | | | | | | | | | | | | | | | | | | | | | | | | | | | | | | | | | | | | | | | | | | | | | | | | | | | | | | | | | | | | | | | | | | | | | | | | | | | | | | | | | | | | | | | | | | | | | | | | | | | | | | | | | | | | | | | | | | | | | | | | | | | | | | | | | | | | | | | | | | | | | | | | | | | | | |
| Hard wheat | \$1.00-\$1.25 | 11.16 | | | | | | | | | | | | | | | | | | | | | | | | | | | | | | | | | | | | | | | | | | | | | | | | | | | | | | | | | | | | | | | | | | | | | | | | | | | | | | | | | | | | | | | | | | | | | | | | | | | | | | | | | | | | | | | | | | | | | | | | | | | | | | | | | | | | | | | | | | | | | | | | | | | | | | | | | | | | | | | | | | | | | | | | | | | | | | | | | | | | | | | | | | | | | | | | | | | | | | | | | | | | | | | | | | | | | | | | | | | | | | | | | | | | | | | | | | | | | | | | | | | | | | | | | | | | | | | | | | | | | | | | | | | | | | | | | | | | | | | | | | | | | | | | |
| Other grains | \$1.00-\$1.25 | 11.16 | | | | | | | | | | | | | | | | | | | | | | | | | | | | | | | | | | | | | | | | | | | | | | | | | | | | | | | | | | | | | | | | | | | | | | | | | | | | | | | | | | | | | | | | | | | | | | | | | | | | | | | | | | | | | | | | | | | | | | | | | | | | | | | | | | | | | | | | | | | | | | | | | | | | | | | | | | | | | | | | | | | | | | | | | | | | | | | | | | | | | | | | | | | | | | | | | | | | | | | | | | | | | | | | | | | | | | | | | | | | | | | | | | | | | | | | | | | | | | | | | | | | | | | | | | | | | | | | | | | | | | | | | | | | | | | | | | | | | | | | | | | | | | | | |
| Barley | \$1.00-\$1.25 | 11.16 | | | | | | | | | | | | | | | | | | | | | | | | | | | | | | | | | | | | | | | | | | | | | | | | | | | | | | | | | | | | | | | | | | | | | | | | | | | | | | | | | | | | | | | | | | | | | | | | | | | | | | | | | | | | | | | | | | | | | | | | | | | | | | | | | | | | | | | | | | | | | | | | | | | | | | | | | | | | | | | | | | | | | | | | | | | | | | | | | | | | | | | | | | | | | | | | | | | | | | | | | | | | | | | | | | | | | | | | | | | | | | | | | | | | | | | | | | | | | | | | | | | | | | | | | | | | | | | | | | | | | | | | | | | | | | | | | | | | | | | | | | | | | | | | |
| Wheat | \$1.00-\$1.25 | 11.16 | | | | | | | | | | | | | | | | | | | | | | | | | | | | | | | | | | | | | | | | | | | | | | | | | | | | | | | | | | | | | | | | | | | | | | | | | | | | | | | | | | | | | | | | | | | | | | | | | | | | | | | | | | | | | | | | | | | | | | | | | | | | | | | | | | | | | | | | | | | | | | | | | | | | | | | | | | | | | | | | | | | | | | | | | | | | | | | | | | | | | | | | | | | | | | | | | | | | | | | | | | | | | | | | | | | | | | | | | | | | | | | | | | | | | | | | | | | | | | | | | | | | | | | | | | | | | | | | | | | | | | | | | | | | | | | | | | | | | | | | | | | | | | | | |
| Corn meal | \$1.00-\$1.25 | 11.16 | | | | | | | | | | | | | | | | | | | | | | | | | | | | | | | | | | | | | | | | | | | | | | | | | | | | | | | | | | | | | | | | | | | | | | | | | | | | | | | | | | | | | | | | | | | | | | | | | | | | | | | | | | | | | | | | | | | | | | | | | | | | | | | | | | | | | | | | | | | | | | | | | | | | | | | | | | | | | | | | | | | | | | | | | | | | | | | | | | | | | | | | | | | | | | | | | | | | | | | | | | | | | | | | | | | | | | | | | | | | | | | | | | | | | | | | | | | | | | | | | | | | | | | | | | | | | | | | | | | | | | | | | | | | | | | | | | | | | | | | | | | | | | | | |
| Soft wheat | \$1.00-\$1.25 | 11.16 | | | | | | | | | | | | | | | | | | | | | | | | | | | | | | | | | | | | | | | | | | | | | | | | | | | | | | | | | | | | | | | | | | | | | | | | | | | | | | | | | | | | | | | | | | | | | | | | | | | | | | | | | | | | | | | | | | | | | | | | | | | | | | | | | | | | | | | | | | | | | | | | | | | | | | | | | | | | | | | | | | | | | | | | | | | | | | | | | | | | | | | | | | | | | | | | | | | | | | | | | | | | | | | | | | | | | | | | | | | | | | | | | | | | | | | | | | | | | | | | | | | | | | | | | | | | | | | | | | | | | | | | | | | | | | | | | | | | | | | | | | | | | | | | |
| Hard wheat | \$1.00-\$1.25 | 11.16 | | | | | | | | | | | | | | | | | | | | | | | | | | | | | | | | | | | | | | | | | | | | | | | | | | | | | | | | | | | | | | | | | | | | | | | | | | | | | | | | | | | | | | | | | | | | | | | | | | | | | | | | | | | | | | | | | | | | | | | | | | | | | | | | | | | | | | | | | | | | | | | | | | | | | | | | | | | | | | | | | | | | | | | | | | | | | | | | | | | | | | | | | | | | | | | | | | | | | | | | | | | | | | | | | | | | | | | | | | | | | | | | | | | | | | | | | | | | | | | | | | | | | | | | | | | | | | | | | | | | | | | | | | | | | | | | | | | | | | | | | | | | | | | | |
| Other grains | \$1.00-\$1.25 | 11.16 | | | | | | | | | | | | | | | | | | | | | | | | | | | | | | | | | | | | | | | | | | | | | | | | | | | | | | | | | | | | | | | | | | | | | | | | | | | | | | | | | | | | | | | | | | | | | | | | | | | | | | | | | | | | | | | | | | | | | | | | | | | | | | | | | | | | | | | | | | | | | | | | | | | | | | | | | | | | | | | | | | | | | | | | | | | | | | | | | | | | | | | | | | | | | | | | | | | | | | | | | | | | | | | | | | | | | | | | | | | | | | | | | | | | | | | | | | | | | | | | | | | | | | | | | | | | | | | | | | | | | | | | | | | | | | | | | | | | | | | | | | | | | | | | |
| Barley | \$1.00-\$1.25 | 11.16 | | | | | | | | | | | | | | | | | | | | | | | | | | | | | | | | | | | | | | | | | | | | | | | | | | | | | | | | | | | | | | | | | | | | | | | | | | | | | | | | | | | | | | | | | | | | | | | | | | | | | | | | | | | | | | | | | | | | | | | | | | | | | | | | | | | | | | | | | | | | | | | | | | | | | | | | | | | | | | | | | | | | | | | | | | | | | | | | | | | | | | | | | | | | | | | | | | | | | | | | | | | | | | | | | | | | | | | | | | | | | | | | | | | | | | | | | | | | | | | | | | | | | | | | | | | | | | | | | | | | | | | | | | | | | | | | | | | | | | | | | | | | | | | | |
| Wheat | \$1.00-\$1.25 | 11.16 | | | | | | | | | | | | | | | | | | | | | | | | | | | | | | | | | | | | | | | | | | | | | | | | | | | | | | | | | | | | | | | | | | | | | | | | | | | | | | | | | | | | | | | | | | | | | | | | | | | | | | | | | | | | | | | | | | | | | | | | | | | | | | | | | | | | | | | | | | | | | | | | | | | | | | | | | | | | | | | | | | | | | | | | | | | | | | | | | | | | | | | | | | | | | | | | | | | | | | | | | | | | | | | | | | | | | | | | | | | | | | | | | | | | | | | | | | | | | | | | | | | | | | | | | | | | | | | | | | | | | | | | | | | | | | | | | | | | | | | | | | | | | | | | |
| Corn meal | \$1.00-\$1.25 | 11.16 | | | | | | | | | | | | | | | | | | | | | | | | | | | | | | | | | | | | | | | | | | | | | | | | | | | | | | | | | | | | | | | | | | | | | | | | | | | | | | | | | | | | | | | | | | | | | | | | | | | | | | | | | | | | | | | | | | | | | | | | | | | | | | | | | | | | | | | | | | | | | | | | | | | | | | | | | | | | | | | | | | | | | | | | | | | | | | | | | | | | | | | | | | | | | | | | | | | | | | | | | | | | | | | | | | | | | | | | | | | | | | | | | | | | | | | | | | | | | | | | | | | | | | | | | | | | | | | | | | | | | | | | | | | | | | | | | | | | | | | | | | | | | | | | |
| Soft wheat | \$1.00-\$1.25 | 11.16 | | | | | | | | | | | | | | | | | | | | | | | | | | | | | | | | | | | | | | | | | | | | | | | | | | | | | | | | | | | | | | | | | | | | | | | | | | | | | | | | | | | | | | | | | | | | | | | | | | | | | | | | | | | | | | | | | | | | | | | | | | | | | | | | | | | | | | | | | | | | | | | | | | | | | | | | | | | | | | | | | | | | | | | | | | | | | | | | | | | | | | | | | | | | | | | | | | | | | | | | | | | | | | | | | | | | | | | | | | | | | | | | | | | | | | | | | | | | | | | | | | | | | | | | | | | | | | | | | | | | | | | | | | | | | | | | | | | | | | | | | | | | | | | | |
| Hard wheat | \$1.00-\$1.25 | 11.16 | | | | | | | | | | | | | | | | | | | | | | | | | | | | | | | | | | | | | | | | | | | | | | | | | | | | | | | | | | | | | | | | | | | | | | | | | | | | | | | | | | | | | | | | | | | | | | | | | | | | | | | | | | | | | | | | | | | | | | | | | | | | | | | | | | | | | | | | | | | | | | | | | | | | | | | | | | | | | | | | | | | | | | | | | | | | | | | | | | | | | | | | | | | | | | | | | | | | | | | | | | | | | | | | | | | | | | | | | | | | | | | | | | | | | | | | | | | | | | | | | | | | | | | | | | | | | | | | | | | | | | | | | | | | | | | | | | | | | | | | | | | | | | | | |
| Other grains | \$1.00-\$1.25 | 11.16 | | | | | | | | | | | | | | | | | | | | | | | | | | | | | | | | | | | | | | | | | | | | | | | | | | | | | | | | | | | | | | | | | | | | | | | | | | | | | | | | | | | | | | | | | | | | | | | | | | | | | | | | | | | | | | | | | | | | | | | | | | | | | | | | | | | | | | | | | | | | | | | | | | | | | | | | | | | | | | | | | | | | | | | | | | | | | | | | | | | | | | | | | | | | | | | | | | | | | | | | | | | | | | | | | | | | | | | | | | | | | | | | | | | | | | | | | | | | | | | | | | | | | | | | | | | | | | | | | | | | | | | | | | | | | | | | | | | | | | | | | | | | | | | | |
| Barley | \$1.00-\$1.25 | 11.16 | | | | | | | | | | | | | | | | | | | | | | | | | | | | | | | | | | | | | | | | | | | | | | | | | | | | | | | | | | | | | | | | | | | | | | | | | | | | | | | | | | | | | | | | | | | | | | | | | | | | | | | | | | | | | | | | | | | | | | | | | | | | | | | | | | | | | | | | | | | | | | | | | | | | | | | | | | | | | | | | | | | | | | | | | | | | | | | | | | | | | | | | | | | | | | | | | | | | | | | | | | | | | | | | | | | | | | | | | | | | | | | | | | | | | | | | | | | | | | | | | | | | | | | | | | | | | | | | | | | | | | | | | | | | | | | | | | | | | | | | | | | | | | | | |
| Wheat | \$1.00-\$1.25 | 11.16 | | | | | | | | | | | | | | | | | | | | | | | | | | | | | | | | | | | | | | | | | | | | | | | | | | | | | | | | | | | | | | | | | | | | | | | | | | | | | | | | | | | | | | | | | | | | | | | | | | | | | | | | | | | | | | | | | | | | | | | | | | | | | | | | | | | | | | | | | | | | | | | | | | | | | | | | | | | | | | | | | | | | | | | | | | | | | | | | | | | | | | | | | | | | | | | | | | | | | | | | | | | | | | | | | | | | | | | | | | | | | | | | | | | | | | | | | | | | | | | | | | | | | | | | | | | | | | | | | | | | | | | | | | | | | | | | | | | | | | | | | | | | | | | | |
| Corn meal | \$1.00-\$1.25 | 11.16 | | | | | | | | | | | | | | | | | | | | | | | | | | | | | | | | | | | | | | | | | | | | | | | | | | | | | | | | | | | | | | | | | | | | | | | | | | | | | | | | | | | | | | | | | | | | | | | | | | | | | | | | | | | | | | | | | | | | | | | | | | | | | | | | | | | | | | | | | | | | | | | | | | | | | | | | | | | | | | | | | | | | | | | | | | | | | | | | | | | | | | | | | | | | | | | | | | | | | | | | | | | | | | | | | | | | | | | | | | | | | | | | | | | | | | | | | | | | | | | | | | | | | | | | | | | | | | | | | | | | | | | | | | | | | | | | | | | | | | | | | | | | | | | | |
| Soft wheat | \$1.00-\$1.25 | 11.16 | | | | | | | | | | | | | | | | | | | | | | | | | | | | | | | | | | | | | | | | | | | | | | | | | | | | | | | | | | | | | | | | | | | | | | | | | | | | | | | | | | | | | | | | | | | | | | | | | | | | | | | | | | | | | | | | | | | | | | | | | | | | | | | | | | | | | | | | | | | | | | | | | | | | | | | | | | | | | | | | | | | | | | | | | | | | | | | | | | | | | | | | | | | | | | | | | | | | | | | | | | | | | | | | | | | | | | | | | | | | | | | | | | | | | | | | | | | | | | | | | | | | | | | | | | | | | | | | | | | | | | | | | | | | | | | | | | | | | | | | | | | | | | | | |
| Hard wheat | \$1.00-\$1.25 | 11.16 | | | | | | | | | | | | | | | | | | | | | | | | | | | | | | | | | | | | | | | | | | | | | | | | | | | | | | | | | | | | | | | | | | | | | | | | | | | | | | | | | | | | | | | | | | | | | | | | | | | | | | | | | | | | | | | | | | | | | | | | | | | | | | | | | | | | | | | | | | | | | | | | | | | | | | | | | | | | | | | | | | | | | | | | | | | | | | | | | | | | | | | | | | | | | | | | | | | | | | | | | | | | | | | | | | | | | | | | | | | | | | | | | | | | | | | | | | | | | | | | | | | | | | | | | | | | | | | | | | | | | | | | | | | | | | | | | | | | | | | | | | | | | | | | |
| Other grains | \$1.00-\$1.25 | 11.16 | | | | | | | | | | | | | | | | | | | | | | | | | | | | | | | | | | | | | | | | | | | | | | | | | | | | | | | | | | | | | | | | | | | | | | | | | | | | | | | | | | | | | | | | | | | | | | | | | | | | | | | | | | | | | | | | | | | | | | | | | | | | | | | | | | | | | | | | | | | | | | | | | | | | | | | | | | | | | | | | | | | | | | | | | | | | | | | | | | | | | | | | | | | | | | | | | | | | | | | | | | | | | | | | | | | | | | | | | | | | | | | | | | | | | | | | | | | | | | | | | | | | | | | | | | | | | | | | | | | | | | | | | | | | | | | | | | | | | | | | | | | | | | | | |
| Barley | \$1.00-\$1.25 | 11.16 | | | | | | | | | | | | | | | | | | | | | | | | | | | | | | | | | | | | | | | | | | | | | | | | | | | | | | | | | | | | | | | | | | | | | | | | | | | | | | | | | | | | | | | | | | | | | | | | | | | | | | | | | | | | | | | | | | | | | | | | | | | | | | | | | | | | | | | | | | | | | | | | | | | | | | | | | | | | | | | | | | | | | | | | | | | | | | | | | | | | | | | | | | | | | | | | | | | | | | | | | | | | | | | | | | | | | | | | | | | | | | | | | | | | | | | | | | | | | | | | | | | | | | | | | | | | | | | | | | | | | | | | | | | | | | | | | | | | | | | | | | | | | | | | |
| Wheat | \$1.00-\$1.25 | 11.16 | | | | | | | | | | | | | | | | | | | | | | | | | | | | | | | | | | | | | | | | | | | | | | | | | | | | | | | | | | | | | | | | | | | | | | | | | | | | | | | | | | | | | | | | | | | | | | | | | | | | | | | | | | | | | | | | | | | | | | | | | | | | | | | | | | | | | | | | | | | | | | | | | | | | | | | | | | | | | | | | | | | | | | | | | | | | | | | | | | | | | | | | | | | | | | | | | | | | | | | | | | | | | | | | | | | | | | | | | | | | | | | | | | | | | | | | | | | | | | | | | | | | | | | | | | | | | | | | | | | | | | | | | | | | | | | | | | | | | | | | | | | | | | | | |
| Corn meal | \$1.00-\$1.25 | 11.16 | | | | | | | | | | | | | | | | | | | | | | | | | | | | | | | | | | | | | | | | | | | | | | | | | | | | | | | | | | | | | | | | | | | | | | | | | | | | | | | | | | | | | | | | | | | | | | | | | | | | | | | | | | | | | | | | | | | | | | | | | | | | | | | | | | | | | | | | | | | | | | | | | | | | | | | | | | | | | | | | | | | | | | | | | | | | | | | | | | | | | | | | | | | | | | | | | | | | | | | | | | | | | | | | | | | | | | | | | | | | | | | | | | | | | | | | | | | | | | | | | | | | | | | | | | | | | | | | | | | | | | | | | | | | | | | | | | | | | | | | | | | | | | | | |
| Soft wheat | \$1.00-\$1.25 | 11.16 | | | | | | | | | | | | | | | | | | | | | | | | | | | | | | | | | | | | | | | | | | | | | | | | | | | | | | | | | | | | | | | | | | | | | | | | | | | | | | | | | | | | | | | | | | | | | | | | | | | | | | | | | | | | | | | | | | | | | | | | | | | | | | | | | | | | | | | | | | | | | | | | | | | | | | | | | | | | | | | | | | | | | | | | | | | | | | | | | | | | | | | | | | | | | | | | | | | | | | | | | | | | | | | | | | | | | | | | | | | | | | | | | | | | | | | | | | | | | | | | | | | | | | | | | | | | | | | | | | | | | | | | | | | | | | | | | | | | | | | | | | | | | | | | |
| Hard wheat | \$1.00-\$1.25 | 11.16 | | | | | | | | | | | | | | | | | | | | | | | | | | | | | | | | | | | | | | | | | | | | | | | | | | | | | | | | | | | | | | | | | | | | | | | | | | | | | | | | | | | | | | | | | | | | | | | | | | | | | | | | | | | | | | | | | | | | | | | | | | | | | | | | | | | | | | | | | | | | | | | | | | | | | | | | | | | | | | | | | | | | | | | | | | | | | | | | | | | | | | | | | | | | | | | | | | | | | | | | | | | | | | | | | | | | | | | | | | | | | | | | | | | | | | | | | | | | | | | | | | | | | | | | | | | | | | | | | | | | | | | | | | | | | | | | | | | | | | | | | | | | | | | | |
| Other grains | \$1.00-\$1.25 | 11.16 | | | | | | | | | | | | | | | | | | | | | | | | | | | | | | | | | | | | | | | | | | | | | | | | | | | | | | | | | | | | | | | | | | | | | | | | | | | | | | | | | | | | | | | | | | | | | | | | | | | | | | | | | | | | | | | | | | | | | | | | | | | | | | | | | | | | | | | | | | | | | | | | | | | | | | | | | | | | | | | | | | | | | | | | | | | | | | | | | | | | | | | | | | | | | | | | | | | | | | | | | | | | | | | | | | | | | | | | | | | | | | | | | | | | | | | | | | | | | | | | | | | | | | | | | | | | | | | | | | | | | | | | | | | | | | | | | | | | | | | | | | | | | | | | |
| Barley | \$1.00-\$1.25 | 11.16 | | | | | | | | | | | | | | | | | | | | | | | | | | | | | | | | | | | | | | | | | | | | | | | | | | | | | | | | | | | | | | | | | | | | | | | | | | | | | | | | | | | | | | | | | | | | | | | | | | | | | | | | | | | | | | | | | | | | | | | | | | | | | | | | | | | | | | | | | | | | | | | | | | | | | | | | | | | | | | | | | | | | | | | | | | | | | | | | | | | | | | | | | | | | | | | | | | | | | | | | | | | | | | | | | | | | | | | | | | | | | | | | | | | | | | | | | | | | | | | | | | | | | | | | | | | | | | | | | | | | | | | | | | | | | | | | | | | | | | | | | | | | | | | | |
| Wheat | \$1.00-\$1.25 | 11.16 | | | | | | | | | | | | | | | | | | | | | | | | | | | | | | | | | | | | | | | | | | | | | | | | | | | | | | | | | | | | | | | | | | | | | | | | | | | | | | | | | | | | | | | | | | | | | | | | | | | | | | | | | | | | | | | | | | | | | | | | | | | | | | | | | | | | | | | | | | | | | | | | | | | | | | | | | | | | | | | | | | | | | | | | | | | | | | | | | | | | | | | | | | | | | | | | | | | | | | | | | | | | | | | | | | | | | | | | | | | | | | | | | | | | | | | | | | | | | | | | | | | | | | | | | | | | | | | | | | | | | | | | | | | | | | | | | | | | | | | | | | | | | | | | |
| Corn meal | \$1.00-\$1.25 | 11.16 | | | | | | | | | | | | | | | | | | | | | | | | | | | | | | | | | | | | | | | | | | | | | | | | | | | | | | | | | | | | | | | | | | | | | | | | | | | | | | | | | | | | | | | | | | | | | | | | | | | | | | | | | | | | | | | | | | | | | | | | | | | | | | | | | | | | | | | | | | | | | | | | | | | | | | | | | | | | | | | | | | | | | | | | | | | | | | | | | | | | | | | | | | | | | | | | | | | | | | | | | | | | | | | | | | | | | | | | | | | | | | | | | | | | | | | | | | | | | | | | | | | | | | | | | | | | | | | | | | | | | | | | | | | | | | | | | | | | | | | | | | | | | | | | |
| Soft wheat | \$1.00-\$1.25 | 11.16 | | | | | | | | | | | | | | | | | | | | | | | | | | | | | | | | | | | | | | | | | | | | | | | | | | | | | | | | | | | | | | | | | | | | | | | | | | | | | | | | | | | | | | | | | | | | | | | | | | | | | | | | | | | | | | | | | | | | | | | | | | | | | | | | | | | | | | | | | | | | | | | | | | | | | | | | | | | | | | | | | | | | | | | | | | | | | | | | | | | | | | | | | | | | | | | | | | | | | | | | | | | | | | | | | | | | | | | | | | | | | | | | | | | | | | | | | | | | | | | | | | | | | | | | | | | | | | | | | | | | | | | | | | | | | | | | | | | | | | | | | | | | | | | | |
| Hard wheat | \$1.00-\$1.25 | 11.16 | | | | | | | | | | | | | | | | | | | | | | | | | | | | | | | | | | | | | | | | | | | | | | | | | | | | | | | | | | | | | | | | | | | | | | | | | | | | | | | | | | | | | | | | | | | | | | | | | | | | | | | | | | | | | | | | | | | | | | | | | | | | | | | | | | | | | | | | | | | | | | | | | | | | | | | | | | | | | | | | | | | | | | | | | | | | | | | | | | | | | | | | | | | | | | | | | | | | | | | | | | | | | | | | | | | | | | | | | | | | | | | | | | | | | | | | | | | | | | | | | | | | | | | | | | | | | | | | | | | | | | | | | | | | | | | | | | | | | | | | | | | | | | | | |
| Other grains | \$1.00-\$1.25 | 11.16 | | | | | | | | | | | | | | | | | | | | | | | | | | | | | | | | | | | | | | | | | | | | | | | | | | | | | | | | | | | | | | | | | | | | | | | | | | | | | | | | | | | | | | | | | | | | | | | | | | | | | | | | | | | | | | | | | | | | | | | | | | | | | | | | | | | | | | | | | | | | | | | | | | | | | | | | | | | | | | | | | | | | | | | | | | | | | | | | | | | | | | | | | | | | | | | | | | | | | | | | | | | | | | | | | | | | | | | | | | | | | | | | | | | | | | | | | | | | | | | | | | | | | | | | | | | | | | | | | | | | | | | | | | | | | | | | | | | | | | | | | | | | | | | | |
| Barley | \$1.00-\$1.25 | 11.16 | | | | | | | | | | | | | | | | | | | | | | | | | | | | | | | | | | | | | | | | | | | | | | | | | | | | | | | | | | | | | | | | | | | | | | | | | | | | | | | | | | | | | | | | | | | | | | | | | | | | | | | | | | | | | | | | | | | | | | | | | | | | | | | | | | | | | | | | | | | | | | | | | | | | | | | | | | | | | | | | | | | | | | | | | | | | | | | | | | | | | | | | | | | | | | | | | | | | | | | | | | | | | | | | | | | | | | | | | | | | | | | | | | | | | | | | | | | | | | | | | | | | | | | | | | | | | | | | | | | | | | | | | | | | | | | | | | | | | | | | | | | | | | | | |
| Wheat | \$1.00-\$1.25 | 11.16 | | | | | | | | | | | | | | | | | | | | | | | | | | | | | | | | | | | | | | | | | | | | | | | | | | | | | | | | | | | | | | | | | | | | | | | | | | | | | | | | | | | | | | | | | | | | | | | | | | | | | | | | | | | | | | | | | | | | | | | | | | | | | | | | | | | | | | | | | | | | | | | | | | | | | | | | | | | | | | | | | | | | | | | | | | | | | | | | | | | | | | | | | | | | | | | | | | | | | | | | | | | | | | | | | | | | | | | | | | | | | | | | | | | | | | | | | | | | | | | | | | | | | | | | | | | | | | | | | | | | | | | | | | | | | | | | | | | | | | | | | | | | | | | | |
| Corn meal | \$1.00-\$1.25 | 11.16 | | | | | | | | | | | | | | | | | | | | | | | | | | | | | | | | | | | | | | | | | | | | | | | | | | | | | | | | | | | | | | | | | | | | | | | | | | | | | | | | | | | | | | | | | | | | | | | | | | | | | | | | | | | | | | | | | | | | | | | | | | | | | | | | | | | | | | | | | | | | | | | | | | | | | | | | | | | | | | | | | | | | | | | | | | | | | | | | | | | | | | | | | | | | | | | | | | | | | | | | | | | | | | | | | | | | | | | | | | | | | | | | | | | | | | | | | | | | | | | | | | | | | | | | | | | | | | | | | | | | | | | | | | | | | | | | | | | | | | | | | | | | | | | | |
| Soft wheat | \$1.00-\$1.25 | 11.16 | | | | | | | | | | | | | | | | | | | | | | | | | | | | | | | | | | | | | | | | | | | | | | | | | | | | | | | | | | | | | | | | | | | | | | | | | | | | | | | | | | | | | | | | | | | | | | | | | | | | | | | | | | | | | | | | | | | | | | | | | | | | | | | | | | | | | | | | | | | | | | | | | | | | | | | | | | | | | | | | | | | | | | | | | | | | | | | | | | | | | | | | | | | | | | | | | | | | | | | | | | | | | | | | | | | | | | | | | | | | | | | | | | | | | | | | | | | | | | | | | | | | | | | | | | | | | | | | | | | | | | | | | | | | | | | | | | | | | | | | | | | | | | | | |
| Hard wheat | \$1.00-\$1.25 | 11.16 | | | | | | | | | | | | | | | | | | | | | | | | | | | | | | | | | | | | | | | | | | | | | | | | | | | | | | | | | | | | | | | | | | | | | | | | | | | | | | | | | | | | | | | | | | | | | | | | | | | | | | | | | | | | | | | | | | | | | | | | | | | | | | | | | | | | | | | | | | | | | | | | | | | | | | | | | | | | | | | | | | | | | | | | | | | | | | | | | | | | | | | | | | | | | | | | | | | | | | | | | | | | | | | | | | | | | | | | | | | | | | | | | | | | | | | | | | | | | | | | | | | | | | | | | | | | | | | | | | | | | | | | | | | | | | | | | | | | | | | | | | | | | | | | |
| Other grains | \$1.00-\$1.25 | 11.16 | | | | | | | | | | | | | | | | | | | | | | | | | | | | | | | | | | | | | | | | | | | | | | | | | | | | | | | | | | | | | | | | | | | | | | | | | | | | | | | | | | | | | | | | | | | | | | | | | | | | | | | | | | | | | | | | | | | | | | | | | | | | | | | | | | | | | | | | | | | | | | | | | | | | | | | | | | | | | | | | | | | | | | | | | | | | | | | | | | | | | | | | | | | | | | | | | | | | | | | | | | | | | | | | | | | | | | | | | | | | | | | | | | | | | | | | | | | | | | | | | | | | | | | | | | | | | | | | | | | | | | | | | | | | | | | | | | | | | | | | | | | | | | | | |
| Barley | \$1.00-\$1.25 | 11.16 | | | | | | | | | | | | | | | | | | | | | | | | | | | | | | | | | | | | | | | | | | | | | | | | | | | | | | | | | | | | | | | | | | | | | | | | | | | | | | | | | | | | | | | | | | | | | | | | | | | | | | | | | | | | | | | | | | | | | | | | | | | | | | | | | | | | | | | | | | | | | | | | | | | | | | | | | | | | | | | | | | | | | | | | | | | | | | | | | | | | | | | | | | | | | | | | | | | | | | | | | | | | | | | | | | | | | | | | | | | | | | | | | | | | | | | | | | | | | | | | | | | | | | | | | | | | | | | | | | | | | | | | | | | | | | | | | | | | | | | | | | | | | | | | |
| Wheat | \$1.00-\$1.25 | 11.16 | | | | | | | | | | | | | | | | | | | | | | | | | | | | | | | | | | | | | | | | | | | | | | | | | | | | | | | | | | | | | | | | | | | | | | | | | | | | | | | | | | | | | | | | | | | | | | | | | | | | | | | | | | | | | | | | | | | | | | | | | | | | | | | | | | | | | | | | | | | | | | | | | | | | | | | | | | | | | | | | | | | | | | | | | | | | | | | | | | | | | | | | | | | | | | | | | | | | | | | | | | | | | | | | | | | | | | | | | | | | | | | | | | | | | | | | | | | | | | | | | | | | | | | | | | | | | | | | | | | | | | | | | | | | | | | | | | | | | | | | | | | | | | | | |
| Corn meal | \$1.00-\$1.25 | 11.16 | | | | | | | | | | | | | | | | | | | | | | | | | | | | | | | | | | | | | | | | | | | | | | | | | | | | | | | | | | | | | | | | | | | | | | | | | | | | | | | | | | | | | | | | | | | | | | | | | | | | | | | | | | | | | | | | | | | | | | | | | | | | | | | | | | | | | | | | | | | | | | | | | | | | | | | | | | | | | | | | | | | | | | | | | | | | | | | | | | | | | | | | | | | | | | | | | | | | | | | | | | | | | | | | | | | | | | | | | | | | | | | | | | | | | | | | | | | | | | | | | | | | | | | | | | | | | | | | | | | | | | | | | | | | | | | | | | | | | | | | | | | | | | | | |
| Soft wheat | \$1.00-\$1.25 | 11.16 | | | | | | | | | | | | | | | | | | | | | | | | | | | | | | | | | | | | | | | | | | | | | | | | | | | | | | | | | | | | | | | | | | | | | | | | | | | | | | | | | | | | | | | | | | | | | | | | | | | | | | | | | | | | | | | | | | | | | | | | | | | | | | | | | | | | | | | | | | | | | | | | | | | | | | | | | | | | | | | | | | | | | | | | | | | | | | | | | | | | | | | | | | | | | | | | | | | | | | | | | | | | | | | | | | | | | | | | | | | | | | | | | | | | | | | | | | | | | | | | | | | | | | | | | | | | | | | | | | | | | | | | | | | | | | | | | | | | | | | | | | | | | | | | |
| Hard wheat | \$1.00-\$1.25 | 11.16 | | | | | | | | | | | | | | | | | | | | | | | | | | | | | | | | | | | | | | | | | | | | | | | | | | | | | | | | | | | | | | | | | | | | | | | | | | | | | | | | | | | | | | | | | | | | | | | | | | | | | | | | | | | | | | | | | | | | | | | | | | | | | | | | | | | | | | | | | | | | | | | | | | | | | | | | | | | | | | | | | | | | | | | | | | | | | | | | | | | | | | | | | | | | | | | | | | | | | | | | | | | | | | | | | | | | | | | | | | | | | | | | | | | | | | | | | | | | | | | | | | | | | | | | | | | | | | | | | | | | | | | | | | | | | | | | | | | | | | | | | | | | | | | | |
| Other grains | \$1.00-\$1.25 | 11.16 | | | | | | | | | | | | | | | | | | | | | | | | | | | | | | | | | | | | | | | | | | | | | | | | | | | | | | | | | | | | | | | | | | | | | | | | | | | | | | | | | | | | | | | | | | | | | | | | | | | | | | | | | | | | | | | | | | | | | | | | | | | | | | | | | | | | | | | | | | | | | | | | | | | | | | | | | | | | | | | | | | | | | | | | | | | | | | | | | | | | | | | | | | | | | | | | | | | | | | | | | | | | | | | | | | | | | | | | | | | | | | | | | | | | | | | | | | | | | | | | | | | | | | | | | | | | | | | | | | | | | | | | | | | | | | | | | | | | | | | | | | | | | | | | |
| Barley | \$1.00-\$1.25 | 11.16 | | | | | | | | | | | | | | | | | | | | | | | | | | | | | | | | | | | | | | | | | | | | | | | | | | | | | | | | | | | | | | | | | | | | | | | | | | | | | | | | | | | | | | | | | | | | | | | | | | | | | | | | | | | | | | | | | | | | | | | | | | | | | | | | | | | | | | | | | | | | | | | | | | | | | | | | | | | | | | | | | | | | | | | | | | | | | | | | | | | | | | | | | | | | | | | | | | | | | | | | | | | | | | | | | | | | | | | | | | | | | | | | | | | | | | | | | | | | | | | | | | | | | | | | | | | | | | | | | | | | | | | | | | | | | | | | | | | | | | | | | | | | | | | | |
| Wheat | \$1.00-\$1.25 | 11.16 | | | | | | | | | | | | | | | | | | | | | | | | | | | | | | | | | | | | | | | | | | | | | | | | | | | | | | | | | | | | | | | | | | | | | | | | | | | | | | | | | | | | | | | | | | | | | | | | | | | | | | | | | | | | | | | | | | | | | | | | | | | | | | | | | | | | | | | | | | | | | | | | | | | | | | | | | | | | | | | | | | | | | | | | | | | | | | | | | | | | | | | | | | | | | | | | | | | | | | | | | | | | | | | | | | | | | | | | | | | | | | | | | | | | | | | | | | | | | | | | | | | | | | | | | | | | | | | | | | | | | | | | | | | | | | | | | | | | | | | | | | | | | | | | |
| Corn meal | \$1.00-\$1.25 | 11.16 | | | | | | | | | | | | | | | | | | | | | | | | | | | | | | | | | | | | | | | | | | | | | | | | | | | | | | | | | | | | | | | | | | | | | | | | | | | | | | | | | | | | | | | | | | | | | | | | | | | | | | | | | | | | | | | | | | | | | | | | | | | | | | | | | | | | | | | | | | | | | | | | | | | | | | | | | | | | | | | | | | | | | | | | | | | | | | | | | | | | | | | | | | | | | | | | | | | | | | | | | | | | | | | | | | | | | | | | | | | | | | | | | | | | | | | | | | | | | | | | | | | | | | | | | | | | | | | | | | | | | | | | | | | | | | | | | | | | | | | | | | | | | | | | |
| Soft wheat | \$1.00-\$1.25 | 11.16 | | | | | | | | | | | | | | | | | | | | | | | | | | | | | | | | | | | | | | | | | | | | | | | | | | | | | | | | | | | | | | | | | | | | | | | | | | | | | | | | | | | | | | | | | | | | | | | | | | | | | | | | | | | | | | | | | | | | | | | | | | | | | | | | | | | | | | | | | | | | | | | | | | | | | | | | | | | | | | | | | | | | | | | | | | | | | | | | | | | | | | | | | | | | | | | | | | | | | | | | | | | | | | | | | | | | | | | | | | | | | | | | | | | | | | | | | | | | | | | | | | | | | | | | | | | | | | | | | | | | | | | | | | | | | | | | | | | | | | | | | | | | | | | | |
| Hard wheat | \$1.00-\$1.25 | 11.16 | | | | | | | | | | | | | | | | | | | | | | | | | | | | | | | | | | | | | | | | | | | | | | | | | | | | | | | | | | | | | | | | | | | | | | | | | | | | | | | | | | | | | | | | | | | | | | | | | | | | | | | | | | | | | | | | | | | | | | | | | | | | | | | | | | | | | | | | | | | | | | | | | | | | | | | | | | | | | | | | | | | | | | | | | | | | | | | | | | | | | | | | | | | | | | | | | | | | | | | | | | | | | | | | | | | | | | | | | | | | | | | | | | | | | | | | | | | | | | | | | | | | | | | | | | | | | | | | | | | | | | | | | | | | | | | | | | | | | | | | | | | | | | | | |
| Other grains | \$1.00-\$1.25 | 11.16 | | | | | | | | | | | | | | | | | | | | | | | | | | | | | | | | | | | | | | | | | | | | | | | | | | | | | | | | | | | | | | | | | | | | | | | | | | | | | | | | | | | | | | | | | | | | | | | | | | | | | | | | | | | | | | | | | | | | | | | | | | | | | | | | | | | | | | | | | | | | | | | | | | | | | | | | | | | | | | | | | | | | | | | | | | | | | | | | | | | | | | | | | | | | | | | | | | | | | | | | | | | | | | | | | | | | | | | | | | | | | | | | | | | | | | | | | | | | | | | | | | | | | | | | | | | | | | | | | | | | | | | | | | | | | | | | | | | | | | | | | | | | | | | | |
| Barley | \$1.00-\$1.25 | 11.16 | | | | | | | | | | | | | | | | | | | | | | | | | | | | | | | | | | | | | | | | | | | | | | | | | | | | | | | | | | | | | | | | | | | | | | | | | | | | | | | | | | | | | | | | | | | | | | | | | | | | | | | | | | | | | | | | | | | | | | | | | | | | | | | | | | | | | | | | | | | | | | | | | | | | | | | | | | | | | | | | | | | | | | | | | | | | | | | | | | | | | | | | | | | | | | | | | | | | | | | | | | | | | | | | | | | | | | | | | | | | | | | | | | | | | | | | | | | | | | | | | | | | | | | | | | | | | | | | | | | | | | | | | | | | | | | | | | | | | | | | | | | | | | | | |
| Wheat | \$1.00-\$1.25 | 11.16 | | | | | | | | | | | | | | | | | | | | | | | | | | | | | | | | | | | | | | | | | | | | | | | | | | | | | | | | | | | | | | | | | | | | | | | | | | | | | | | | | | | | | | | | | | | | | | | | | | | | | | | | | | | | | | | | | | | | | | | | | | | | | | | | | | | | | | | | | | | | | | | | | | | | | | | | | | | | | | | | | | | | | | | | | | | | | | | | | | | | | | | | | | | | | | | | | | | | | | | | | | | | | | | | | | | | | | | | | | | | | | | | | | | | | | | | | | | | | | | | | | | | | | | | | | | | | | | | | | | | | | | | | | | | | | | | | | | | | | | | | | | | | | | | |
| Corn meal | \$1.00-\$1.25 | 11.16 | | | | | | | | | | | | | | | | | | | | | | | | | | | | | | | | | | | | | | | | | | | | | | | | | | | | | | | | | | | | | | | | | | | | | | | | | | | | | | | | | | | | | | | | | | | | | | | | | | | | | | | | | | | | | | | | | | | | | | | | | | | | | | | | | | | | | | | | | | | | | | | | | | | | | | | | | | | | | | | | | | | | | | | | | | | | | | | | | | | | | | | | | | | | | | | | | | | | | | | | | | | | | | | | | | | | | | | | | | | | | | | | | | | | | | | | | | | | | | | | | | | | | | | | | | | | | | | | | | | | | | | | | | | | | | | | | | | | | | | | | | | | | | | | |
| Soft wheat | \$1.00-\$1.25 | 11.16 | | | | | | | | | | | | | | | | | | | | | | | | | | | | | | | | | | | | | | | | | | | | | | | | | | | | | | | | | | | | | | | | | | | | | | | | | | | | | | | | | | | | | | | | | | | | | | | | | | | | | | | | | | | | | | | | | | | | | | | | | | | | | | | | | | | | | | | | | | | | | | | | | | | | | | | | | | | | | | | | | | | | | | | | | | | | | | | | | | | | | | | | | | | | | | | | | | | | | | | | | | | | | | | | | | | | | | | | | | | | | | | | | | | | | | | | | | | | | | | | | | | | | | | | | | | | | | | | | | | | | | | | | | | | | | | | | | | | | | | | | | | | | | | | |
| Hard wheat | \$1.00-\$1.25 | 11.16 | | | | | | | | | | | | | | | | | | | | | | | | | | | | | | | | | | | | | | | | | | | | | | | | | | | | | | | | | | | | | | | | | | | | | | | | | | | | | | | | | | | | | | | | | | | | | | | | | | | | | | | | | | | | | | | | | | | | | | | | | | | | | | | | | | | | | | | | | | | | | | | | | | | | | | | | | | | | | | | | | | | | | | | | | | | | | | | | | | | | | | | | | | | | | | | | | | | | | | | | | | | | | | | | | | | | | | | | | | | | | | | | | | | | | | | | | | | | | | | | | | | | | | | | | | | | | | | | | | | | | | | | | | | | | | | | | | | | | | | | | | | | | | | | |
| Other grains | \$1.00-\$1.25 | 11.16 | | | | | | | | | | | | | | | | | | | | | | | | | | | | | | | | | | | | | | | | | | | | | | | | | | | | | | | | | | | | | | | | | | | | | | | | | | | | | | | | | | | | | | | | | | | | | | | | | | | | | | | | | | | | | | | | | | | | | | | | | | | | | | | | | | | | | | | | | | | | | | | | | | | | | | | | | | | | | | | | | | | | | | | | | | | | | | | | | | | | | | | | | | | | | | | | | | | | | | | | | | | | | | | | | | | | | | | | | | | | | | | | | | | | | | | | | | | | | | | | | | | | | | | | | | | | | | | | | | | | | | | | | | | | | | | | | | | | | | | | | | | | | | | | |
| Barley | \$1.00-\$1.25 | 11.16 | | | | | | | | | | | | | | | | | | | | | | | | | | | | | | | | | | | | | | | | | | | | | | | | | | | | | | | | | | | | | | | | | | | | | | | | | | | | | | | | | | | | | | | | | | | | | | | | | | | | | | | | | | | | | | | | | | | | | | | | | | | | | | | | | | | | | | | | | | | | | | | | | | | | | | | | | | | | | | | | | | | | | | | | | | | | | | | | | | | | | | | | | | | | | | | | | | | | | | | | | | | | | | | | | | | | | | | | | | | | | | | | | | | | | | | | | | | | | | | | | | | | | | | | | | | | | | | | | | | | | | | | | | | | | | | | | | | | | | | | | | | | | | | | |
| Wheat | \$1.00-\$1.25 | 11.16 | | | | | | | | | | | | | | | | | | | | | | | | | | | | | | | | | | | | | | | | | | | | | | | | | | | | | | | | | | | | | | | | | | | | | | | | | | | | | | | | | | | | | | | | | | | | | | | | | | | | | | | | | | | | | | | | | | | | | | | | | | | | | | | | | | | | | | | | | | | | | | | | | | | | | | | | | | | | | | | | | | | | | | | | | | | | | | | | | | | | | | | | | | | | | | | | | | | | | | | | | | | | | | | | | | | | | | | | | | | | | | | | | | | | | | | | | | | | | | | | | | | | | | | | | | | | | | | | | | | | | | | | | | | | | | | | | | | | | | | | | | | | | | | | |
| Corn meal | \$1.00-\$1.25 | 11.16 | | | | | | | | | | | | | | | | | | | | | | | | | | | | | | | | | | | | | | | | | | | | | | | | | | | | | | | | | | | | | | | | | | | | | | | | | | | | | | | | | | | | | | | | | | | | | | | | | | | | | | | | | | | | | | | | | | | | | | | | | | | | | | | | | | | | | | | | | | | | | | | | | | | | | | | | | | | | | | | | | | | | | | | | | | | | | | | | | | | | | | | | | | | | | | | | | | | | | | | | | | | | | | | | | | | | | | | | | | | | | | | | | | | | | | | | | | | | | | | | | | | | | | | | | | | | | | | | | | | | | | | | | | | | | | | | | | | | | | | | | | | | | | | | |
| Soft wheat | \$1.00-\$1.25 | 11.16 | | | | | | | | | | | | | | | | | | | | | | | | | | | | | | | | | | | | | | | | | | | | | | | | | | | | | | | | | | | | | | | | | | | | | | | | | | | | | | | | | | | | | | | | | | | | | | | | | | | | | | | | | | | | | | | | | | | | | | | | | | | | | | | | | | | | | | | | | | | | | | | | | | | | | | | | | | | | | | | | | | | | | | | | | | | | | | | | | | | | | | | | | | | | | | | | | | | | | | | | | | | | | | | | | | | | | | | | | | | | | | | | | | | | | | | | | | | | | | | | | | | | | | | | | | | | | | | | | | | | | | | | | | | | | | | | | | | | | | | | | | | | | | | | |
| Hard wheat | \$1.00-\$1.25 | 11.16 | | | | | | | | | | | | | | | | | | | | | | | | | | | | | | | | | | | | | | | | | | | | | | | | | | | | | | | | | | | | | | | | | | | | | | | | | | | | | | | | | | | | | | | | | | | | | | | | | | | | | | | | | | | | | | | | | | | | | | | | | | | | | | | | | | | | | | | | | | | | | | | | | | | | | | | | | | | | | | | | | | | | | | | | | | | | | | | | | | | | | | | | | | | | | | | | | | | | | | | | | | | | | | | | | | | | | | | | | | | | | | | | | | | | | | | | | | | | | | | | | | | | | | | | | | | | | | | | | | | | | | | | | | | | | | | | | | | | | | | | | | | | | | | | |
| Other grains | \$1.00-\$1.25 | 11.16 | | | | | | | | | | | | | | | | | | | | | | | | | | | | | | | | | | | | | | | | | | | | | | | | | | | | | | | | | | | | | | | | | | | | | | | | | | | | | | | | | | | | | | | | | | | | | | | | | | | | | | | | | | | | | | | | | | | | | | | | | | | | | | | | | | | | | | | | | | | | | | | | | | | | | | | | | | | | | | | | | | | | | | | | | | | | | | | | | | | | | | | | | | | | | | | | | | | | | | | | | | | | | | | | | | | | | | | | | | | | | | | | | | | | | | | | | | | | | | | | | | | | | | | | | | | | | | | | | | | | | | | | | | | | | | | | | | | | | | | | | | | | | | | | |
| Barley | \$1.00-\$1.25 | 11.16 | | | | | | | | | | | | | | | | | | | | | | | | | | | | | | | | | | | | | | | | | | | | | | | | | | | | | | | | | | | | | | | | | | | | | | | | | | | | | | | | | | | | | | | | | | | | | | | | | | | | | | | | | | | | | | | | | | | | | | | | | | | | | | | | | | | | | | | | | | | | | | | | | | | | | | | | | | | | | | | | | | | | | | | | | | | | | | | | | | | | | | | | | | | | | | | | | | | | | | | | | | | | | | | | | | | | | | | | | | | | | | | | | | | | | | | | | | | | | | | | | | | | | | | | | | | | | | | | | | | | | | | | | | | | | | | | | | | | | | | | | | | | | | | | |
| Wheat | \$1.00-\$1.25 | 11.16 | | | | | | | | | | | | | | | | | | | | | | | | | | | | | | | | | | | | | | | | | | | | | | | | | | | | | | | | | | | | | | | | | | | | | | | | | | | | | | | | | | | | | | | | | | | | | | | | | | | | | | | | | | | | | | | | | | | | | | | | | | | | | | | | | | | | | | | | | | | | | | | | | | | | | | | | | | | | | | | | | | | | | | | | | | | | | | | | | | | | | | | | | | | | | | | | | | | | | | | | | | | | | | | | | | | | | | | | | | | | | | | | | | | | | | | | | | | | | | | | | | | | | | | | | | | | | | | | | | | | | | | | | | | | | | | | | | | | | | | | | | | | | | | | |
| Corn meal | \$1.00-\$1.25 | 11.16 | | | | | | | | | | | | | | | | | | | | | | | | | | | | | | | | | | | | | | | | | | | | | | | | | | | | | | | | | | | | | | | | | | | | | | | | | | | | | | | | | | | | | | | | | | | | | | | | | | | | | | | | | | | | | | | | | | | | | | | | | | | | | | | | | | | | | | | | | | | | | | | | | | | | | | | | | | | | | | | | | | | | | | | | | | | | | | | | | | | | | | | | | | | | | | | | | | | | | | | | | | | | | | | | | | | | | | | | | | | | | | | | | | | | | | | | | | | | | | | | | | | | | | | | | | | | | | | | | | | | | | | | | | | | | | | | | | | | | | | | | | | | | | | | |
| Soft wheat | \$1.00-\$1.25 | 11.16 | | | | | | | | | | | | | | | | | | | | | | | | | | | | | | | | | | | | | | | | | | | | | | | | | | | | | | | | | | | | | | | | | | | | | | | | | | | | | | | | | | | | | | | | | | | | | | | | | | | | | | | | | | | | | | | | | | | | | | | | | | | | | | | | | | | | | | | | | | | | | | | | | | | | | | | | | | | | | | | | | | | | | | | | | | | | | | | | | | | | | | | | | | | | | | | | | | | | | | | | | | | | | | | | | | | | | | | | | | | | | | | | | | | | | | | | | | | | | | | | | | | | | | | | | | | | | | | | | | | | | | | | | | | | | | | | | | | | | | | | | | | | | | | | |
| Hard wheat | \$1.00-\$1.25 | 11.16 | | | | | | | | | | | | | | | | | | | | | | | | | | | | | | | | | | | | | | | | | | | | | | | | | | | | | | | | | | | | | | | | | | | | | | | | | | | | | | | | | | | | | | | | | | | | | | | | | | | | | | | | | | | | | | | | | | | | | | | | | | | | | | | | | | | | | | | | | | | | | | | | | | | | | | | | | | | | | | | | | | | | | | | | | | | | | | | | | | | | | | | | | | | | | | | | | | | | | | | | | | | | | | | | | | | | | | | | | | | | | | | | | | | | | | | | | | | | | | | | | | | | | | | | | | | | | | | | | | | | | | | | | | | | | | | | | | | | | | | | | | | | | | | | |
| Other grains | \$1.00-\$1.25 | 11.16 | | | | | | | | | | | | | | | | | | | | | | | | | | | | | | | | | | | | | | | | | | | | | | | | | | | | | | | | | | | | | | | | | | | | | | | | | | | | | | | | | | | | | | | | | | | | | | | | | | | | | | | | | | | | | | | | | | | | | | | | | | | | | | | | | | | | | | | | | | | | | | | | | | | | | | | | | | | | | | | | | | | | | | | | | | | | | | | | | | | | | | | | | | | | | | | | | | | | | | | | | | | | | | | | | | | | | | | | | | | | | | | | | | | | | | | | | | | | | | | | | | | | | | | | | | | | | | | | | | | | | | | | | | | | | | | | | | | | | | | | | | | | | | | | |
| Barley | \$1.00-\$1.25 | 11.16 | | | | | | | | | | | | | | | | | | | | | | | | | | | | | | | | | | | | | | | | | | | | | | | | | | | | | | | | | | | | | | | | | | | | | | | | | | | | | | | | | | | | | | | | | | | | | | | | | | | | | | | | | | | | | | | | | | | | | | | | | | | | | | | | | | | | | | | | | | | | | | | | | | | | | | | | | | | | | | | | | | | | | | | | | | | | | | | | | | | | | | | | | | | | | | | | | | | | | | | | | | | | | | | | | | | | | | | | | | | | | | | | | | | | | | | | | | | | | | | | | | | | | | | | | | | | | | | | | | | | | | | | | | | | | | | | | | | | | | | | | | | | | | | | |
| Wheat | \$1.00-\$1.25 | 11.16 | | | | | | | | | | | | | | | | | | | | | | | | | | | | | | | | | | | | | | | | | | | | | | | | | | | | | | | | | | | | | | | | | | | | | | | | | | | | | | | | | | | | | | | | | | | | | | | | | | | | | | | | | | | | | | | | | | | | | | | | | | | | | | | | | | | | | | | | | | | | | | | | | | | | | | | | | | | | | | | | | | | | | | | | | | | | | | | | | | | | | | | | | | | | | | | | | | | | | | | | | | | | | | | | | | | | | | | | | | | | | | | | | | | | | | | | | | | | | | | | | | | | | | | | | | | | | | | | | | | | | | | | | | | | | | | | | | | | | | | | | | | | | | | | |
| Corn meal | \$1.00-\$1.25 | 11.16 | | | | | | | | | | | | | | | | | | | | | | | | | | | | | | | | | | | | | | | | | | | | | | | | | | | | | | | | | | | | | | | | | | | | | | | | | | | | | | | | | | | | | | | | | | | | | | | | | | | | | | | | | | | | | | | | | | | | | | | | | | | | | | | | | | | | | | | | | | | | | | | | | | | | | | | | | | | | | | | | | | | | | | | | | | | | | | | | | | | | | | | | | | | | | | | | | | | | | | | | | | | | | | | | | | | | | | | | | | | | | | | | | | | | | | | | | | | | | | | | | | | | | | | | | | | | | | | | | | | | | | | | | | | | | | | | | | | | | | | | | | | | | | | | |
| Soft wheat | \$1.00-\$1.25 | 11.16 | | | | | | | | | | | | | | | | | | | | | | | | | | | | | | | | | | | | | | | | | | | | | | | | | | | | | | | | | | | | | | | | | | | | | | | | | | | | | | | | | | | | | | | | | | | | | | | | | | | | | | | | | | | | | | | | | | | | | | | | | | | | | | | | | | | | | | | | | | | | | | | | | | | | | | | | | | | | | | | | | | | | | | | | | | | | | | | | | | | | | | | | | | | | | | | | | | | | | | | | | | | | | | | | | | | | | | | | | | | | | | | | | | | | | | | | | | | | | | | | | | | | | | | | | | | | | | | | | | | | | | | | | | | | | | | | | | | | | | | | | | | | | | | | |
| Hard wheat | \$1.00-\$1.25 | 11.16 | | | | | | | | | | | | | | | | | | | | | | | | | | | | | | | | | | | | | | | | | | | | | | | | | | | | | | | | | | | | | | | | | | | | | | | | | | | | | | | | | | | | | | | | | | | | | | | | | | | | | | | | | | | | | | | | | | | | | | | | | | | | | | | | | | | | | | | | | | | | | | | | | | | | | | | | | | | | | | | | | | | | | | | | | | | | | | | | | | | | | | | | | | | | | | | | | | | | | | | | | | | | | | | | | | | | | | | | | | | | | | | | | | | | | | | | | | | | | | | | | | | | | | | | | | | | | | | | | | | | | | | | | | | | | | | | | | | | | | | | | | | | | | | | |
| Other grains | \$1.00-\$1.25 | 11.16 | | | | | | | | | | | | | | | | | | | | | | | | | | | | | | | | | | | | | | | | | | | | | | | | | | | | | | | | | | | | | | | | | | | | | | | | | | | | | | | | | | | | | | | | | | | | | | | | | | | | | | | | | | | | | | | | | | | | | | | | | | | | | | | | | | | | | | | | | | | | | | | | | | | | | | | | | | | | | | | | | | | | | | | | | | | | | | | | | | | | | | | | | | | | | | | | | | | | | | | | | | | | | | | | | | | | | | | | | | | | | | | | | | | | | | | | | | | | | | | | | | | | | | | | | | | | | | | | | | | | | | | | | | | | | | | | | | | | | | | | | | | | | | | | |
| Barley | \$1.00-\$1.25 | 11.16 | | | | | | | | | | | | | | | | | | | | | | | | | | | | | | | | | | | | | | | | | | | | | | | | | | | | | | | | | | | | | | | | | | | | | | | | | | | | | | | | | | | | | | | | | | | | | | | | | | | | | | | | | | | | | | | | | | | | | | | | | | | | | | | | | | | | | | | | | | | | | | | | | | | | | | | | | | | | | | | | | | | | | | | | | | | | | | | | | | | | | | | | | | | | | | | | | | | | | | | | | | | | | | | | | | | | | | | | | | | | | | | | | | | | | | | | | | | | | | | | | | | | | | | | | | | | | | | | | | | | | | | | | | | | | | | | | | | | | | | | | | | | | | | | |
| Wheat | \$1.00-\$1.25 | 11.16 | | | | | | | | | | | | | | | | | | | | | | | | | | | | | | | | | | | | | | | | | | | | | | | | | | | | | | | | | | | | | | | | | | | | | | | | | | | | | | | | | | | | | | | | | | | | | | | | | | | | | | | | | | | | | | | | | | | | | | | | | | | | | | | | | | | | | | | | | | | | | | | | | | | | | | | | | | | | | | | | | | | | | | | | | | | | | | | | | | | | | | | | | | | | | | | | | | | | | | | | | | | | | | | | | | | | | | | | | | | | | | | | | | | | | | | | | | | | | | | | | | | | | | | | | | | | | | | | | | | | | | | | | | | | | | | | | | | | | | | | | | | | | | | | |
| Corn meal | \$1.00-\$1.25 | 11.16 | | | | | | | | | | | | | | | | | | | | | | | | | | | | | | | | | | | | | | | | | | | | | | | | | | | | | | | | | | | | | | | | | | | | | | | | | | | | | | | | | | | | | | | | | | | | | | | | | | | | | | | | | | | | | | | | | | | | | | | | | | | | | | | | | | | | | | | | | | | | | | | | | | | | | | | | | | | | | | | | | | | | | | | | | | | | | | | | | | | | | | | | | | | | | | | | | | | | | | | | | | | | | | | | | | | | | | | | | | | | | | | | | | | | | | | | | | | | | | | | | | | | | | | | | | | | | | | | | | | | | | | | | | | | | | | | | | | | | | | | | | | | | | | | |
| Soft wheat | \$1.00-\$1.25 | 11.16 | | | | | | | | | | | | | | | | | | | | | | | | | | | | | | | | | | | | | | | | | | | | | | | | | | | | | | | | | | | | | | | | | | | | | | | | | | | | | | | | | | | | | | | | | | | | | | | | | | | | | | | | | | | | | | | | | | | | | | | | | | | | | | | | | | | | | | | | | | | | | | | | | | | | | | | | | | | | | | | | | | | | | | | | | | | | | | | | | | | | | | | | | | | | | | | | | | | | | | | | | | | | | | | | | | | | | | | | | | | | | | | | | | | | | | | | | | | | | | | | | | | | | | | | | | | | | | | | | | | | | | | | | | | | | | | | | | | | | | | | | | | | | | | | |
| Hard wheat | \$1.00-\$1.25 | 11.16 | | | | | | | | | | | | | | | | | | | | | | | | | | | | | | | | | | | | | | | | | | | | | | | | | | | | | | | | | | | | | | | | | | | | | | | | | | | | | | | | | | | | | | | | | | | | | | | | | | | | | | | | | | | | | | | | | | | | | | | | | | | | | | | | | | | | | | | | | | | | | | | | | | | | | | | | | | | | | | | | | | | | | | | | | | | | | | | | | | | | | | | | | | | | | | | | | | | | | | | | | | | | | | | | | | | | | | | | | | | | | | | | | | | | | | | | | | | | | | | | | | | | | | | | | | | | | | | | | | | | | | | | | | | | | | | | | | | | | | | | | | | | | | | | |
| Other grains | \$1.00-\$1.25 | 11.16 | | | | | | | | | | | | | | | | | | | | | | | | | | | | | | | | | | | | | | | | | | | | | | | | | | | | | | | | | | | | | | | | | | | | | | | | | | | | | | | | | | | | | | | | | | | | | | | | | | | | | | | | | | | | | | | | | | | | | | | | | | | | | | | | | | | | | | | | | | | | | | | | | | | | | | | | | | | | | | | | | | | | | | | | | | | | | | | | | | | | | | | | | | | | | | | | | | | | | | | | | | | | | | | | | | | | | | | | | | | | | | | | | | | | | | | | | | | | | | | | | | | | | | | | | | | | | | | | | | | | | | | | | | | | | | | | | | | | | | | | | | | | | | | | |
| Barley | \$1.00-\$1.25 | 11.16 | | | | | | | | | | | | | | | | | | | | | | | | | | | | | | | | | | | | | | | | | | | | | | | | | | | | | | | | | | | | | | | | | | | | | | | | | | | | | | | | | | | | | | | | | | | | | | | | | | | | | | | | | | | | | | | | | | | | | | | | | | | | | | | | | | | | | | | | | | | | | | | | | | | | | | | | | | | | | | | | | | | | | | | | | | | | | | | | | | | | | | | | | | | | | | | | | | | | | | | | | | | | | | | | | | | | | | | | | | | | | | | | | | | | | | | | | | | | | | | | | | | | | | | | | | | | | | | | | | | | | | | | | | | | | | | | | | | | | | | | | | | | | | | | |
| Wheat | \$1.00-\$1.25 | 11.16 | | | | | | | | | | | | | | | | | | | | | | | | | | | | | | | | | | | | | | | | | | | | | | | | | | | | | | | | | | | | | | | | | | | | | | | | | | | | | | | | | | | | | | | | | | | | | | | | | | | | | | | | | | | | | | | | | | | | | | | | | | | | | | | | | | | | | | | | | | | | | | | | | | | | | | | | | | | | | | | | | | | | | | | | | | | | | | | | | | | | | | | | | | | | | | | | | | | | | | | | | | | | | | | | | | | | | | | | | | | | | | | | | | | | | | | | | | | | | | | | | | | | | | | | | | | | | | | | | | | | | | | | | | | | | | | | | | | | | | | | | | | | | | | | |
| Corn meal | \$1.00-\$1.25 | 11.16 | | | | | | | | | | | | | | | | | | | | | | | | | | | | | | | | | | | | | | | | | | | | | | | | | | | | | | | | | | | | | | | | | | | | | | | | | | | | | | | | | | | | | | | | | | | | | | | | | | | | | | | | | | | | | | | | | | | | | | | | | | | | | | | | | | | | | | | | | | | | | | | | | | | | | | | | | | | | | | | | | | | | | | | | | | | | | | | | | | | | | | | | | | | | | | | | | | | | | | | | | | | | | | | | | | | | | | | | | | | | | | | | | | | | | | | | | | | | | | | | | | | | | | | | | | | | | | | | | | | | | | | | | | | | | | | | | | | | | | | | | | | | | | | | |
| Soft wheat | \$1.00-\$1.25 | 11.16 | | | | | | | | | | | | | | | | | | | | | | | | | | | | | | | | | | | | | | | | | | | | | | | | | | | | | | | | | | | | | | | | | | | | | | | | | | | | | | | | | | | | | | | | | | | | | | | | | | | | | | | | | | | | | | | | | | | | | | | | | | | | | | | | | | | | | | | | | | | | | | | | | | | | | | | | | | | | | | | | | | | | | | | | | | | | | | | | | | | | | | | | | | | | | | | | | | | | | | | | | | | | | | | | | | | | | | | | | | | | | | | | | | | | | | | | | | | | | | | | | | | | | | | | | | | | | | | | | | | | | | | | | | | | | | | | | | | | | | | | | | | | | | | | |
| Hard wheat | \$1.00-\$1.25 | 11.16 | | | | | | | | | | | | | | | | | | | | | | | | | | | | | | | | | | | | | | | | | | | | | | | | | | | | | | | | | | | | | | | | | | | | | | | | | | | | | | | | | | | | | | | | | | | | | | | | | | | | | | | | | | | | | | | | | | | | | | | | | | | | | | | | | | | | | | | | | | | | | | | | | | | | | | | | | | | | | | | | | | | | | | | | | | | | | | | | | | | | | | | | | | | | | | | | | | | | | | | | | | | | | | | | | | | | | | | | | | | | | | | | | | | | | | | | | | | | | | | | | | | | | | | | | | | | | | | | | | | | | | | | | | | | | | | | | | | | | | | | | | | | | | | | |
| Other grains | | | | | | | | | | | | | | | | | | | | | | | | | | | | | | | | | | | | | | | | | | | | | | | | | | | | | | | | | | | | | | | | | | | | | | | | | | | | | | | | | | | | | | | | | | | | | | | | | | | | | | | | | | | | | | | | | | | | | | | | | | | | | | | | | | | | | | | | | | | | | | | | | | | | | | | | | | | | | | | | | | | | | | | | | | | | | | | | | | | | | | | | | | | | | | | | | | | | | | | | | | | | | | | | | | | | | | | | | | | | | | | | | | | | | | | | | | | | | | | | | | | | | | | | | | | | | | | | | | | | | | | | | | | | | | | | | | | | | | | | | | | | | | | | | | |

| | | | | |
|---|-----------------------|---------|--|------|
| than 1,500,000 bushels of popcorn annually. | Grade No. 1 | \$18.00 | Medium size shelled | \$20 |
| | (Use dealer quoted) | | Commercial | \$20 |
| | | | Pallets | \$20 |
| | REANS | | Premium size shelled, 54 pounds and up | \$20 |
| The Italians used poison gas in the Ethiopian campaign in 1935. | Great Northern No. 1 | \$4.38 | Eggs in dealer's quoted | \$20 |
| | (See dealer's quoted) | \$4.38 | (Use dealer's quoted) | |

GRADUATES HEAR TALK BY BISHOP

HAILEY, May 25 — Graduation address was given by Right Rev. Frank A. Rice at the 47th commencement of the Hailey high school. Alice L. Lyle, high class valedictorian, chose "Education for Democracy" as her topic.

"Deeds Not Words" was the subject of the assembly by Marjorie Jensen. Yoda Peterson and Betty Jean Jacobs provided music for the music.

Class Documents Read
Rev. James Ogle gave invocation and benediction was offered by Miss Augusta Jackley. Aron Decker and presented the class history; Carolyn Scott, the class president; and Lela Moeck, the valedictorian.

Helen House sang "Till We Meet Again" with accompaniment by Miss Tom Walker. Helen Stanfield sang "Gang of Mine" as a duet. Presentation of services was made by Supt. E. O. Foster and Dr. E. W. Post awarded the diploma. Superintendent Foster announced that Alice Lyle had been awarded a scholarship for the coming year at the College of Idaho and the V-12 test, was awarded a three-year college course in aeronautical engineering. Powers is enlisted as an apprentice aviator.

Graduates were Joe Astorgue, Lee D. Bough, Thomas C. Brown, Colner, Elizabeth Curtis, Belle J. E. House, James L. Hurst, June Irving, H. Robert Jackson, who is serving in the navy at Camp Farragut, Marjorie A. Jensen, Ruth A. LeVelle, Joyce Lyle, William Malloy, Lois Olson, Robert D. Morris, R. Morris, Jerrold D. Morse, Marion U. S. Army, Robert H. Peterson, Don F. Powers, Ann Elizabeth Price, Lionel Thomas Renter, Ann Teresa Irene Sherrill, Gerald Eberman, Leanne Stanfield and Charles Dean Wilson.

CAREY
Dr. and Mrs. Marvin Beebe, Seattle, and Mrs. John Robinson, at the home of Mr. and Mrs. T. C. Parker. Mrs. Robinson has returned to Boise.
Mrs. Don Patterson visited at the home of Mr. and Mrs. T. C. Parker before returning to Farragut where her husband is stationed. Mrs. Patterson called at Carey after visiting in Pocatello with her brother who has been in Panama with the army for the past two years. His training station is Brigham City, Utah, where he is connected with the Bushnell general hospital. Mrs. Patterson's daughter, Ann Marie, is visiting with her parents. Mrs. Carey and her children left for Albion after school closed this week.

The kodak bear comes from Alaska.

In Wake of London Raid



Residents of London, one wearing a bandage on her head, stand near the wreckage left by German bombs in a night aerial attack—the heaviest raid since February. Photo radioed from London to New York.



From where I sit...

by Joe Marsh

Pete Swanson fancies himself as an armchair strategist. Sometimes he gets so tangled up, I just can't resist trying to straighten him out.
For instance, the other day he was waxing indignant about our beer right in camp. Said that was just codding the troops and would ruin discipline.
I told him the actual facts had already been established by a study the Government made. Their report said chaplains and the military police agree that instead of raising discipline, 3.3 beer sold in Army camps provides our soldiers with a mild form of relaxation without impairing their efficiency.
Well, Pete allowed that the chaplains and military police are a pretty good authority on what's right for soldiers. I've noted lately he's been confining his remarks to the broader phases of strategy.

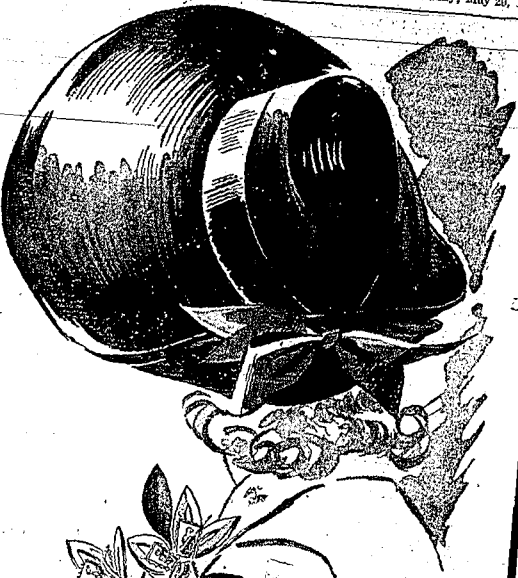
Joe Marsh

Copyright, 1948, Irving Industry Foundation

the
BIGGER....
the
PRETTIER

... that's the story for this big group of millinery we have just unpacked! Choose them here for summer from straws, felts, bedecked in colorful checked taffetas. They're summery! They're sprightly!

\$298
MAIN FLOOR READY-TO-WEAR



Pin-Stripe
Worsted
SLACKS



\$8.50

"Tailored" in their effect in navy, black or brown featuring the pin stripe for trimness. Fly front with button-stitched side seams. They're just unpacked. MAIN FLOOR READY-TO-WEAR

**REMNANT
SPECIAL!**

for
**FRIDAY and
SATURDAY**

Here's a four-star special from our Main Floor Dry Goods Department... remnants saved from our regular stocks and now offered for your selection. Scores of lengths and materials including — woolsens, rayons, cottons, plain prints, rayon prints, cotton prints and plain shades in percales, sheers, curtain materials with some cretonnes in the group. Offered for Friday and Saturday only at

1/2 PRICE



\$9.75
MAIN FLOOR SHOE DEPT.

Reference Page for Motorists WARTIME VERSION

BATTERY — Have it checked every time you buy gas.
TIRES — Keep inflated to wartime pressure of 32 pounds all around. Switch around as suggested by government every 5000 miles.

TIRE INSPECTION DATES — For holders of 'A' cards, second inspection by September 30.
For holders of 'B' cards, second inspection not later than June 30.
For holders of 'C' cards, second inspection not later than May 31. Don't delay!

GASOLINE RATIONING — (or Mileage Control) Dates — for holders of 'A' books, coupon 5 expires May 21; coupon 6 expires July 21. For holders of 'B' and 'C' books, valid dates for coupons vary. Dates are shown on the front of each mileage ration book.

OIL — Change every 1000 miles. Use Vico Motor Oil, especially refined for use in this territory and selected by private contractors who are constructing big government jobs in record time.

GASOLINE — Pep 88 is likewise refined for most efficient use in these high altitudes. You get maximum mileage with each 4 gallons.



CARE FOR YOUR CAR... FOR YOUR COUNTRY
HELP YOUR GOVERNMENT — Use the motor oil that is the product of the United States. Buy it from the dealer who has the Vico Motor Oil logo. Buy it from the dealer who has the Vico Motor Oil logo. Buy it from the dealer who has the Vico Motor Oil logo.

UTAH OIL REFINING COMPANY STATIONS AND DEALERS IN ITS PRODUCTS

NEW!

RAYON DRESSES

Just arrived in novelty one and two piece styles. Polka dots, geometric and floral prints. Sizes 14 to 20.

\$3.98 and \$4.98

ECONOMY BASEMENT SPECIALS

NEW! CHAMOIS

100% oil tanned... Guaranteed washable. Special for cleaning windows, Venetian blinds, furniture, automobiles. Try this new Queen Brand. Size 12"x16".

75¢

NEW!

"SPONGE-PAK"

Genuine sponge packed in cat-tuf. Gives longer wear. Soft when wet... will not scratch. Cleans instantly.

69¢

Idaho Department Store
"If It Isn't Right, Bring It Back"