

LET YOUR

heart decide your contribution to the Red Cross fund. In every way, the Red Cross stands behind YOUR job as YOUR girl.

VOL. 25, NO. 274

A Regional Newspaper Serving

Official City and County Newspaper

TWIN FALLS

Nine Irrigated Idaho Counties

Member of Audit Bureau of Circulations Associated Press and United Press

PRICE 6 CENTS

3 KEY CITIES GERMAN DEFENSE FACE RED THREAT

By HARRISON SALISBURY  
MOSCOW, March 2 (UP)—Russian armies hammering at the three main bastions of the German defense line in the east, a crackling 300-mile German front line closed in on the almost encircled and burning Estonian city of Narva, stormed streets by street through Pskov, and ripped in to the near defenses of Vitebsk.

Field dispatches indicated that the German defense line from the Gulf of Finland down northern Estonia, the region bordering Latvia, and into White Russia was giving away under synchronized Soviet offense.

Catapult reports said the Nazis had put the torch to Narva, stronghold commanding the Gulf of Finland, and with scores of villages in the area, a desperate fallback toward Tallinn.

Southeast 100 miles, the transportation route to the Gulf of Finland was split, and army assault units were shuffling steadily through the city and the fall of the gateway to Latvia was reported imminent.

Another 200 miles to the south, Siberian veterans were smashing the lines of Vitebsk, key base of northern White Russia, from the north, east, south, and southwest, and were within six miles of the city proper.

The so-called "sweep around Narva" is one of the biggest river crossing operations of the Baltic campaign, carried out by Russian troops in the Narva river valley, the scene of Peter I's great victory over the Swedes in 1704.

The red army's vanguard reached the Narva river south of the city of Narva on Feb. 1 after a 10-day march. The Germans fleeing headlong from Leningrad.

The Red army found the west bank of the Narva defended by a thick belt of pillboxes, trenches, barbed wire, and machine guns. The line for Narva was held by 200,000 men.

The Red army's vanguard reached the Narva river south of the city of Narva on Feb. 1 after a 10-day march. The Germans fleeing headlong from Leningrad.

The Red army found the west bank of the Narva defended by a thick belt of pillboxes, trenches, barbed wire, and machine guns. The line for Narva was held by 200,000 men.

The Red army's vanguard reached the Narva river south of the city of Narva on Feb. 1 after a 10-day march. The Germans fleeing headlong from Leningrad.

The Red army found the west bank of the Narva defended by a thick belt of pillboxes, trenches, barbed wire, and machine guns. The line for Narva was held by 200,000 men.

The Red army's vanguard reached the Narva river south of the city of Narva on Feb. 1 after a 10-day march. The Germans fleeing headlong from Leningrad.

The Red army found the west bank of the Narva defended by a thick belt of pillboxes, trenches, barbed wire, and machine guns. The line for Narva was held by 200,000 men.

The Red army's vanguard reached the Narva river south of the city of Narva on Feb. 1 after a 10-day march. The Germans fleeing headlong from Leningrad.

Heads Argentina



Heading the shaky government established in Argentina after the ouster of President Pedro Ramirez was Gen. Edelmiro F. Farrell. A feeble attempt to resist against the Farrel government, led by Col. Tomas Lopez, was put down without bloodshed yesterday.

The special session of the legislature, convening the date of the internal election from Aug. 8 to Aug. 12, cut two months off the period that would normally have been allotted for election procedures.

As a result, candidates for county offices can start filing their names as early as Feb. 12. The deadline for filing, it appears now, will be May 13—meaning the candidate must have been completely ready a month earlier than the usual opening date for filing of petitions.

This means potential candidates must make up their minds very early, and the number of candidates may not be so crowded as in former years.

Start of registration for voters under existing law, was set for March 15, but was postponed to March 20.

Since this frequently has not been changed, registrants in the 33 precincts of Twin Falls county will start doing business next Monday. In view of the earlier election, registration will presumably close at 10 p.m. on Feb. 12.

The official Finnish news agency confirmed last night that Finland had rejected the offer of mediation proposed by Russia and that it had been communicated to Germany.

The newspaper Morgenthaun reported that the German situation at a long, gloomy session yesterday.

Col. Gen. Eduard Dietl, German commander in Finland, said he was ordered to evacuate his 100,000 troops to Norway in the event of a Russian attack.

German soldiers published in Berlin said Finland's withdrawal from the war would cause greater surprise in Germany than the cessation of hostilities.

A dispatch from the United Press said that the German situation at a long, gloomy session yesterday.

Col. Gen. Eduard Dietl, German commander in Finland, said he was ordered to evacuate his 100,000 troops to Norway in the event of a Russian attack.

German soldiers published in Berlin said Finland's withdrawal from the war would cause greater surprise in Germany than the cessation of hostilities.

Col. Gen. Eduard Dietl, German commander in Finland, said he was ordered to evacuate his 100,000 troops to Norway in the event of a Russian attack.

German soldiers published in Berlin said Finland's withdrawal from the war would cause greater surprise in Germany than the cessation of hostilities.

British Torpedo Jap Air Carrier; U. S. Push Gains

By RICHARD C. BERGHOFF  
Associated Press War Writer  
Five submarine chasers shepherding a 7,000-ton Japanese aircraft carrier through Malacca strait couldn't prevent a British submarine from pelting torpedoes crashing into the Jap's hull and probably sinking her, the British admiralty announced today.

It is through Malacca strait, which separates Malaya from the island of Sumatra, that most of the supplies to Japan's army in Burma must pass.

The admiralty also said other submarines scored torpedo hits on a Japanese carrier in the same area, but not in the same action, and sank a medium-sized supply ship. A smaller supply ship was shelled into submission.

In the southwest Pacific war zone, allied headquarters yesterday predicted quickly-captured Monie, a Japanese island in the Philippines, "will shortly be in our air force," and reported the enemy's first major counter-attack against the American beachhead had been repulsed.

The aircraft, based on Los Angeles Island, is the larger of two in the Admiralty and the prize for the U. S. Navy's first major victory in the Pacific.

In the southwest Pacific war zone, allied headquarters yesterday predicted quickly-captured Monie, a Japanese island in the Philippines, "will shortly be in our air force," and reported the enemy's first major counter-attack against the American beachhead had been repulsed.

The aircraft, based on Los Angeles Island, is the larger of two in the Admiralty and the prize for the U. S. Navy's first major victory in the Pacific.

In the southwest Pacific war zone, allied headquarters yesterday predicted quickly-captured Monie, a Japanese island in the Philippines, "will shortly be in our air force," and reported the enemy's first major counter-attack against the American beachhead had been repulsed.

The aircraft, based on Los Angeles Island, is the larger of two in the Admiralty and the prize for the U. S. Navy's first major victory in the Pacific.

In the southwest Pacific war zone, allied headquarters yesterday predicted quickly-captured Monie, a Japanese island in the Philippines, "will shortly be in our air force," and reported the enemy's first major counter-attack against the American beachhead had been repulsed.

The aircraft, based on Los Angeles Island, is the larger of two in the Admiralty and the prize for the U. S. Navy's first major victory in the Pacific.

In the southwest Pacific war zone, allied headquarters yesterday predicted quickly-captured Monie, a Japanese island in the Philippines, "will shortly be in our air force," and reported the enemy's first major counter-attack against the American beachhead had been repulsed.

The aircraft, based on Los Angeles Island, is the larger of two in the Admiralty and the prize for the U. S. Navy's first major victory in the Pacific.

In the southwest Pacific war zone, allied headquarters yesterday predicted quickly-captured Monie, a Japanese island in the Philippines, "will shortly be in our air force," and reported the enemy's first major counter-attack against the American beachhead had been repulsed.

The aircraft, based on Los Angeles Island, is the larger of two in the Admiralty and the prize for the U. S. Navy's first major victory in the Pacific.

DIFERENCES OF SCHOOL AID SLOWS PLAN

BOISE, March 2 (UP)—Differences within a joint state-house education committee, as to the form of bill designed to provide financial relief for hard-pressed public school districts, slowed the legal machinery of the bill's passage today.

Committee members, second proposed bills for several hours yesterday, still reaching a decision as to the content of the measure to be introduced.

The second special session, called to consider the bill, was held in the state house today. The bill, which would provide financial relief for hard-pressed public school districts, was introduced by Representative...

Committee members, second proposed bills for several hours yesterday, still reaching a decision as to the content of the measure to be introduced.

The second special session, called to consider the bill, was held in the state house today. The bill, which would provide financial relief for hard-pressed public school districts, was introduced by Representative...

Committee members, second proposed bills for several hours yesterday, still reaching a decision as to the content of the measure to be introduced.

The second special session, called to consider the bill, was held in the state house today. The bill, which would provide financial relief for hard-pressed public school districts, was introduced by Representative...

Committee members, second proposed bills for several hours yesterday, still reaching a decision as to the content of the measure to be introduced.

The second special session, called to consider the bill, was held in the state house today. The bill, which would provide financial relief for hard-pressed public school districts, was introduced by Representative...

Committee members, second proposed bills for several hours yesterday, still reaching a decision as to the content of the measure to be introduced.

The second special session, called to consider the bill, was held in the state house today. The bill, which would provide financial relief for hard-pressed public school districts, was introduced by Representative...

Committee members, second proposed bills for several hours yesterday, still reaching a decision as to the content of the measure to be introduced.

The second special session, called to consider the bill, was held in the state house today. The bill, which would provide financial relief for hard-pressed public school districts, was introduced by Representative...

Committee members, second proposed bills for several hours yesterday, still reaching a decision as to the content of the measure to be introduced.

The second special session, called to consider the bill, was held in the state house today. The bill, which would provide financial relief for hard-pressed public school districts, was introduced by Representative...

Yanks Blast Enemy Attack; Launch Offensive at Anzio

ALLIED HEADQUARTERS, Naples, March 2 (UP)—Battle-hardened American troops went over to the attack on the Anzio front and fought the German 14th army's veterans back across the beachhead today after weathering the first shock of a major Nazi offensive that had punched a mile-deep salient in their lines.

The third battle of the beachhead continued in full fury early today as the counter-attacking Americans swarmed to their trenches and drove the enemy's German back step by step across a 300-yard, bottleneck midway between Cisterna and Aprilia.

Front reports said about two-thirds of the enemy salient had been regained by noon yesterday and that the Americans still were punching forward in savage hand-to-hand fighting today.

Heavy rain was pouring down on the battlefield, but the Americans were determined to hold their ground.

Front reports said about two-thirds of the enemy salient had been regained by noon yesterday and that the Americans still were punching forward in savage hand-to-hand fighting today.

Heavy rain was pouring down on the battlefield, but the Americans were determined to hold their ground.

Front reports said about two-thirds of the enemy salient had been regained by noon yesterday and that the Americans still were punching forward in savage hand-to-hand fighting today.

Heavy rain was pouring down on the battlefield, but the Americans were determined to hold their ground.

Front reports said about two-thirds of the enemy salient had been regained by noon yesterday and that the Americans still were punching forward in savage hand-to-hand fighting today.

Heavy rain was pouring down on the battlefield, but the Americans were determined to hold their ground.

Front reports said about two-thirds of the enemy salient had been regained by noon yesterday and that the Americans still were punching forward in savage hand-to-hand fighting today.

Heavy rain was pouring down on the battlefield, but the Americans were determined to hold their ground.

Front reports said about two-thirds of the enemy salient had been regained by noon yesterday and that the Americans still were punching forward in savage hand-to-hand fighting today.

Heavy rain was pouring down on the battlefield, but the Americans were determined to hold their ground.

Front reports said about two-thirds of the enemy salient had been regained by noon yesterday and that the Americans still were punching forward in savage hand-to-hand fighting today.

WAR BULLETIN

ALLIED HEADQUARTERS, Naples, March 2 (UP)—After weeks of fighting, German troops were driven back to the attack on the beachhead today after weathering the first shock of a major Nazi offensive that had punched a mile-deep salient in their lines.

Heavy rain was pouring down on the battlefield, but the Americans were determined to hold their ground.

Front reports said about two-thirds of the enemy salient had been regained by noon yesterday and that the Americans still were punching forward in savage hand-to-hand fighting today.

Heavy rain was pouring down on the battlefield, but the Americans were determined to hold their ground.

Front reports said about two-thirds of the enemy salient had been regained by noon yesterday and that the Americans still were punching forward in savage hand-to-hand fighting today.

Heavy rain was pouring down on the battlefield, but the Americans were determined to hold their ground.

Front reports said about two-thirds of the enemy salient had been regained by noon yesterday and that the Americans still were punching forward in savage hand-to-hand fighting today.

Heavy rain was pouring down on the battlefield, but the Americans were determined to hold their ground.

Front reports said about two-thirds of the enemy salient had been regained by noon yesterday and that the Americans still were punching forward in savage hand-to-hand fighting today.

Heavy rain was pouring down on the battlefield, but the Americans were determined to hold their ground.

Front reports said about two-thirds of the enemy salient had been regained by noon yesterday and that the Americans still were punching forward in savage hand-to-hand fighting today.

Heavy rain was pouring down on the battlefield, but the Americans were determined to hold their ground.

Front reports said about two-thirds of the enemy salient had been regained by noon yesterday and that the Americans still were punching forward in savage hand-to-hand fighting today.

Heavy rain was pouring down on the battlefield, but the Americans were determined to hold their ground.

Front reports said about two-thirds of the enemy salient had been regained by noon yesterday and that the Americans still were punching forward in savage hand-to-hand fighting today.

Heavy rain was pouring down on the battlefield, but the Americans were determined to hold their ground.

Front reports said about two-thirds of the enemy salient had been regained by noon yesterday and that the Americans still were punching forward in savage hand-to-hand fighting today.

Heavy rain was pouring down on the battlefield, but the Americans were determined to hold their ground.

Front reports said about two-thirds of the enemy salient had been regained by noon yesterday and that the Americans still were punching forward in savage hand-to-hand fighting today.

## KNOX URGES U. S. SERVICE PROGRAM

(From Page One)

both the manufacturer who makes the weapons, and the worker who is employed by him, to serve in a manner which will best promote our country."

He said there would be no manpower problem "if the people who are not fully employed would go to work where they are needed, and if everyone would play on the job."

He added, that is not the case and it is "apparent that the present program for selective and controlled

As an example of the navy's manpower problem, Knox cited the fact that during 1943 increased work in nine navy yards required a 32,000-percent increase in the working force. But to achieve that increase, Knox said, the nine yards—because of heavy turnover—had to hire a total of 214,000 persons. In other words, he said, in order to get the labor force to do the work, the navy had to hire seven workers.

## How To Relieve Bronchitis

ickly allays the cough or you are  
have your money back.

**CREOMULSION**  
Coughs, Chest Colds, Bronchitis

**NO EMPTY  
TUBES**

**ENDED NOW!**  
h Paste and Shav-  
Cream may now  
urchased without  
Empty Tubes!

**AP 8<sup>c</sup>**  
(Cakes) ...

---

**MILK OF  
LAKTESIA 39<sup>c</sup>**  
(Liquor 1)

---

**TOOTH  
PASTE 30<sup>c</sup>**

**3 for 11c**

**PETROLATUM  
FOR BURNS**

Amber, white,  
3½-ounce jar. **7c**

Velvet-Suds  
LARGE BAR  
SWAN SOAP  
10c  
(Limit 3)  
40c Bottle  
MAR-O-OIL

SHAMPOO  
29¢  
(Limit 1)

Bottle 50  
SODA-MINT  
TABLETS  
11¢  
(Limit 1)

Package of  
**5 GEM**  
**RAZOR BLADES**  
Single Edge  
**23¢**  
Save on

THE PREP  
Franklin-Arlington  
SHAVE CREAM  
79¢

1,000 Lights  
50 BOOK MATCHES  
MADE BY D. D. 9¢

# The Way You'll Look This Spring! SEE IT!

CHECK EVERY ITEM IN OUR BIG 16 PAGE

**CIRCULAR OUT TODAY!**

Read it, cover to cover... every item in this big circular is specially selected for value, for style, for the latest, and for long life. Smattering during this busy season. You'll enjoy reading this big "Catalog" of merchandise you'll want, and need in the many months to come.

Here's Your Perfect Suit for Spring!

"KENTCRAFT" and "CLIPPER-CRAFT"

**SUITS \$30**

All Wool Worsted  
Smart Tweeds  
Single and Double  
Breasted—  
New Spring Patterns

Known from coast to coast... Clipper Craft, and Kentcraft, are 1-A on any man's list of preferred suits. Styled right, made right, and tailored from 100% all wool fabrics. Spring shades, blues, browns, greys. In sizes 35 to 46. Choose your spring suit today.



**YOUNG MEN'S FINE FUR FELT HATS**  
Truly fine dress hats... bound or raw edge brims, with contrasting bands... In all the new styles and colors. Sizes 6 3/4 to 7 3/4.  
**\$5.00 and \$6.00**

HERE'S YOUR OPPORTUNITY TO STOCK UP ON "GOOD"

**Dress Shirts**

Stripes  
Patterns  
In All  
the Colors  
of the  
New Season  
**\$1.19**



Practical fit shirts... they are pre-shrunk, full cut and come in a wonderful collection of new spring stripe patterns. Trubiened collars, launder them often and they come out new and fresh looking every time. Stock up during this event.

Sizes  
14 to 17  
33 to 35  
Sleeve

SAVE! OUR FAMOUS "SUN VALLEY"

**SPORT SHIRTS \$2.33**

Fits right, always looks smooth and fresh. You'll like these popular convertible collar, long sleeve sport shirts that come in attractive tan, blue, brown and canary colors. Regular values of \$2.50, now to clear out at a bargain price.

NEW SPRING TONES! ALL WOOL!

**SPORT COATS**

Fine tailored, clean cut sport coats in plain tones or plaids in fine all wool fabrics. Size 34 to 42. **\$16.95**

Good looking coats that pay off in satisfaction the first day out. Herringbones, tweeds or plaid colors in all wool fabrics. Luxury tailored. **\$14.95**



AND HERE ARE Charming "Betty Winston" CASUALS **\$8.95**

So gay, so young, so spirit lifting. Dazzling flower prints in silky rayon crepes, rayon jerseys... and all with slim tucked waists to make your own look wonderfully tiny. Sizes 8 to 14, 16 to 20. Some larger.

YOU'LL LIVE—LOVE AND LAUGH IN GAY

**PRINTED DRESSES**

**\$5 and \$5.95**

As sure as spring itself, you'll want more than one of these grand print dresses to lift your spirits, to make you feel young, gay and fresh as a spring zephyr. Jersey, bembags, bermudas, flower and polka dot prints in a riot of gay color. Sizes 8 to 15, 16 to 20, and 22 to 24.

BRIGHT "LOMBARDY" PRINT

**FROCKS**

Our most beautiful, fresh as a daisy dresses for spring... styles that make you look young, like sparkling... and with sleek of compliments. Clinging pastel jerseys, smooth rayon crepes topped with frothy fingerie trims. Gay versatile styles you'll wear morning 'til late.

**\$10.75 and \$12.95**



in suits it's...

**COLOR \$22.50**

- Red
- Aqua
- Gold
- Toast
- Powder

Keep your "Colors" flying, even in your new spring suit... Yes, it's color that plays the leading role this spring, to start right at the very beginning by selecting one of these top fashions. Featured are handsome three button and link button models, with front and back kick pleat skirts.

and you'll love

**COLOR IN COATS, TOO**

- Red
- Blue
- Lilac
- Cocoa
- Navy
- Gold
- Green
- Toast
- Brown

A leading fashion, "Borrowed from Brother" style, featured in Vogue and Charmi magazines. Here is a smart tweed Chesterfield, or tweed convertible of imported all wool fabric. Smooth fitting, man tailored coats, styled for women. **\$22.50**

"As advertised in Glamour" our famous Fidelity coats with dressmaker details for the young and forward looking... destined to go round the clock. They'll look slim and lovely over your favorite frocks. Navy, black, blue and **\$25.00**

Boy boy coats. No. 1 on the list parade for spring. All the gay colors you want to win compliments all spring long. Sizes 12 to 20. **\$22.50**

If you prefer the fitted rector style, you'll find them all at Anderson's, in all nine colors listed above, in sizes 12 to 20. **\$22.50**



NEW SELECTION

**COSTUME JEWELRY \$1.00**

FOR SPRINGTIME LOVELINESS

**Millay Hosiery**

Hosiery lovelies, created of a sheer, high twist rayon that boasts surprising wear. Lovely rayons that look as sheer, fit as beautifully as any hose you've ever worn. Newest springtime shades. Sizes 8 1/4 to 10 1/4. **92c PAIR**

Pretty Feminine

**Bonnets**

TRIMMED WITH VEILS, FLOWERS, RIBBONS

**\$2.98 to \$7.95**



"Head-First" into spring in a bright new straw... Flower and velvet bow bedecked, striking veil accents. You'll want them with your first spring prints.

**All Spring's Brightest Colors!**

**Anderson Co.**  
TWIN FALLS POPULAR DEPARTMENT STORE  
HANDSOME TAILORED Wool Slacks  
For informal wear, or for that sport coat combination... **\$6.50 To \$8.50**  
Hard finish gabardine, woad, twill, in colors of brown, blue, tan. Sizes 28 to 36 waist.

THE WAR ISN'T WON YET! Invest in WAR BONDS!





## RED CROSS OPENS DRIVE IN JEROME

JEROME, March 2—The American Red Cross war drive was launched in Jerome county today morning, with solicitors starting their canvassing of the respective districts to which they were assigned recently. Jerome county's drive is set at March 3. Persons who have not been contacted and who have not been asked to come to headquarters in the old First Security bank building.

It was announced recently by L. W. Dearing, Red Cross chairman of this county, that he had appointed Mrs. L. V. Burkel as acting chairman for the local chapter. Mrs. Axline Fay Peters is knitting chairman of the chapter. With the recent appointment of Mrs. Burkel, work will be resumed on the making of different articles and garments desired by the national organization to meet needs in the field.

The sewing rooms are located in the basement of the Jerome county court house and will open Mar. 7, and every Tuesday and Friday afternoon thereafter from 2 to 5 p. m.

The quota for the Jerome county chapter includes bed sheets, housewares, linens, towels, pajamas, slippers, pajamas, jackets, wash cloths and bed jackets.

It was announced that there is material on hand for approximately 500 pieces. This includes the hospital quota which was recently received from the area office. It is anticipated that this quota will be done by April 15.

Mrs. Burkel has secured the services of two assistants for the different phases of the work. Mrs. William Grant, who will be in charge of packing and shipping and Mrs. H. L. Ellis, cutting chairman. Others will be appointed.

**JEROME**  
Mr. and Mrs. Marlow Freeman received a call informing them of the birth of a son to their daughter, Mrs. H. J. Dearing, at St. Luke's Hospital. The former Mrs. Marquette Freeman, Jerome.

A farewell gift was presented Mrs. Crystal Dorman by friends when they gathered at the home of Mrs. Dorman and Mrs. Frank Titus for a joint birthday party for Mrs. Dorman and Mrs. Clark L. Titus.

Plans to leave soon for Pocatello where Mr. Dorman is employed by the U. S. railroad mail service. Mrs. and Mrs. E. M. Churchman were recent hosts to members of their dinner bridge club. At cards, prizes were awarded Mrs. H. O. Garbino and Mrs. A. L. Woodard, who tied for high place; Mrs. J. Shirley and L. W. Graving and H. O. Garbino, high and low for men.

Mike Jones was host to a number of friends at a picnic party at the F. L. Thomas residence. Prizes were awarded Mrs. Thomas and Mike Jones.

Mrs. C. W. Gerbich had as recent guests Mrs. and Mrs. M. O. Orsborn, Elveth, Wash.

E. G. Drahman, former high school teacher, and now with the armed services, was home recently to visit his mother and infant daughter. He has been stationed at Camp Allen, Calif.

Charles Platin, son of Mr. and Mrs. P. A. Platin and a former student, has completed his navy V-12 training at Pocatello and departed this week for a midshipman's school in the east. He was home recently to visit his mother in Jerome. His father is with the doctors, stationed at Camp Allen, Calif.

**Time Tables**  
Schedule of passenger, freight and motor bus service through Twin Falls, IDAHO, UNION PACIFIC, TWIN FALLS, IDAHO, DAILY  
No. 521 arrive 10:15 a. m.  
No. 521 leave 10:30 a. m.  
No. 522 arrive 10:30 a. m.  
No. 522 leave 10:45 a. m.  
No. 523 arrive 10:45 a. m.  
No. 523 leave 11:00 a. m.  
No. 524 arrive 11:00 a. m.  
No. 524 leave 11:15 a. m.  
No. 525 arrive 11:15 a. m.  
No. 525 leave 11:30 a. m.  
No. 526 arrive 11:30 a. m.  
No. 526 leave 11:45 a. m.  
No. 527 arrive 11:45 a. m.  
No. 527 leave 12:00 p. m.  
No. 528 arrive 12:00 p. m.  
No. 528 leave 12:15 p. m.  
No. 529 arrive 12:15 p. m.  
No. 529 leave 12:30 p. m.  
No. 530 arrive 12:30 p. m.  
No. 530 leave 12:45 p. m.  
No. 531 arrive 12:45 p. m.  
No. 531 leave 1:00 p. m.  
No. 532 arrive 1:00 p. m.  
No. 532 leave 1:15 p. m.  
No. 533 arrive 1:15 p. m.  
No. 533 leave 1:30 p. m.  
No. 534 arrive 1:30 p. m.  
No. 534 leave 1:45 p. m.  
No. 535 arrive 1:45 p. m.  
No. 535 leave 2:00 p. m.  
No. 536 arrive 2:00 p. m.  
No. 536 leave 2:15 p. m.  
No. 537 arrive 2:15 p. m.  
No. 537 leave 2:30 p. m.  
No. 538 arrive 2:30 p. m.  
No. 538 leave 2:45 p. m.  
No. 539 arrive 2:45 p. m.  
No. 539 leave 3:00 p. m.  
No. 540 arrive 3:00 p. m.  
No. 540 leave 3:15 p. m.  
No. 541 arrive 3:15 p. m.  
No. 541 leave 3:30 p. m.  
No. 542 arrive 3:30 p. m.  
No. 542 leave 3:45 p. m.  
No. 543 arrive 3:45 p. m.  
No. 543 leave 4:00 p. m.  
No. 544 arrive 4:00 p. m.  
No. 544 leave 4:15 p. m.  
No. 545 arrive 4:15 p. m.  
No. 545 leave 4:30 p. m.  
No. 546 arrive 4:30 p. m.  
No. 546 leave 4:45 p. m.  
No. 547 arrive 4:45 p. m.  
No. 547 leave 5:00 p. m.  
No. 548 arrive 5:00 p. m.  
No. 548 leave 5:15 p. m.  
No. 549 arrive 5:15 p. m.  
No. 549 leave 5:30 p. m.  
No. 550 arrive 5:30 p. m.  
No. 550 leave 5:45 p. m.  
No. 551 arrive 5:45 p. m.  
No. 551 leave 6:00 p. m.  
No. 552 arrive 6:00 p. m.  
No. 552 leave 6:15 p. m.  
No. 553 arrive 6:15 p. m.  
No. 553 leave 6:30 p. m.  
No. 554 arrive 6:30 p. m.  
No. 554 leave 6:45 p. m.  
No. 555 arrive 6:45 p. m.  
No. 555 leave 7:00 p. m.  
No. 556 arrive 7:00 p. m.  
No. 556 leave 7:15 p. m.  
No. 557 arrive 7:15 p. m.  
No. 557 leave 7:30 p. m.  
No. 558 arrive 7:30 p. m.  
No. 558 leave 7:45 p. m.  
No. 559 arrive 7:45 p. m.  
No. 559 leave 8:00 p. m.  
No. 560 arrive 8:00 p. m.  
No. 560 leave 8:15 p. m.  
No. 561 arrive 8:15 p. m.  
No. 561 leave 8:30 p. m.  
No. 562 arrive 8:30 p. m.  
No. 562 leave 8:45 p. m.  
No. 563 arrive 8:45 p. m.  
No. 563 leave 9:00 p. m.  
No. 564 arrive 9:00 p. m.  
No. 564 leave 9:15 p. m.  
No. 565 arrive 9:15 p. m.  
No. 565 leave 9:30 p. m.  
No. 566 arrive 9:30 p. m.  
No. 566 leave 9:45 p. m.  
No. 567 arrive 9:45 p. m.  
No. 567 leave 10:00 p. m.  
No. 568 arrive 10:00 p. m.  
No. 568 leave 10:15 p. m.  
No. 569 arrive 10:15 p. m.  
No. 569 leave 10:30 p. m.  
No. 570 arrive 10:30 p. m.  
No. 570 leave 10:45 p. m.  
No. 571 arrive 10:45 p. m.  
No. 571 leave 11:00 p. m.  
No. 572 arrive 11:00 p. m.  
No. 572 leave 11:15 p. m.  
No. 573 arrive 11:15 p. m.  
No. 573 leave 11:30 p. m.  
No. 574 arrive 11:30 p. m.  
No. 574 leave 11:45 p. m.  
No. 575 arrive 11:45 p. m.  
No. 575 leave 12:00 p. m.  
No. 576 arrive 12:00 p. m.  
No. 576 leave 12:15 p. m.  
No. 577 arrive 12:15 p. m.  
No. 577 leave 12:30 p. m.  
No. 578 arrive 12:30 p. m.  
No. 578 leave 12:45 p. m.  
No. 579 arrive 12:45 p. m.  
No. 579 leave 1:00 p. m.  
No. 580 arrive 1:00 p. m.  
No. 580 leave 1:15 p. m.  
No. 581 arrive 1:15 p. m.  
No. 581 leave 1:30 p. m.  
No. 582 arrive 1:30 p. m.  
No. 582 leave 1:45 p. m.  
No. 583 arrive 1:45 p. m.  
No. 583 leave 2:00 p. m.  
No. 584 arrive 2:00 p. m.  
No. 584 leave 2:15 p. m.  
No. 585 arrive 2:15 p. m.  
No. 585 leave 2:30 p. m.  
No. 586 arrive 2:30 p. m.  
No. 586 leave 2:45 p. m.  
No. 587 arrive 2:45 p. m.  
No. 587 leave 3:00 p. m.  
No. 588 arrive 3:00 p. m.  
No. 588 leave 3:15 p. m.  
No. 589 arrive 3:15 p. m.  
No. 589 leave 3:30 p. m.  
No. 590 arrive 3:30 p. m.  
No. 590 leave 3:45 p. m.  
No. 591 arrive 3:45 p. m.  
No. 591 leave 4:00 p. m.  
No. 592 arrive 4:00 p. m.  
No. 592 leave 4:15 p. m.  
No. 593 arrive 4:15 p. m.  
No. 593 leave 4:30 p. m.  
No. 594 arrive 4:30 p. m.  
No. 594 leave 4:45 p. m.  
No. 595 arrive 4:45 p. m.  
No. 595 leave 5:00 p. m.  
No. 596 arrive 5:00 p. m.  
No. 596 leave 5:15 p. m.  
No. 597 arrive 5:15 p. m.  
No. 597 leave 5:30 p. m.  
No. 598 arrive 5:30 p. m.  
No. 598 leave 5:45 p. m.  
No. 599 arrive 5:45 p. m.  
No. 599 leave 6:00 p. m.  
No. 600 arrive 6:00 p. m.  
No. 600 leave 6:15 p. m.  
No. 601 arrive 6:15 p. m.  
No. 601 leave 6:30 p. m.  
No. 602 arrive 6:30 p. m.  
No. 602 leave 6:45 p. m.  
No. 603 arrive 6:45 p. m.  
No. 603 leave 7:00 p. m.  
No. 604 arrive 7:00 p. m.  
No. 604 leave 7:15 p. m.  
No. 605 arrive 7:15 p. m.  
No. 605 leave 7:30 p. m.  
No. 606 arrive 7:30 p. m.  
No. 606 leave 7:45 p. m.  
No. 607 arrive 7:45 p. m.  
No. 607 leave 8:00 p. m.  
No. 608 arrive 8:00 p. m.  
No. 608 leave 8:15 p. m.  
No. 609 arrive 8:15 p. m.  
No. 609 leave 8:30 p. m.  
No. 610 arrive 8:30 p. m.  
No. 610 leave 8:45 p. m.  
No. 611 arrive 8:45 p. m.  
No. 611 leave 9:00 p. m.  
No. 612 arrive 9:00 p. m.  
No. 612 leave 9:15 p. m.  
No. 613 arrive 9:15 p. m.  
No. 613 leave 9:30 p. m.  
No. 614 arrive 9:30 p. m.  
No. 614 leave 9:45 p. m.  
No. 615 arrive 9:45 p. m.  
No. 615 leave 10:00 p. m.  
No. 616 arrive 10:00 p. m.  
No. 616 leave 10:15 p. m.  
No. 617 arrive 10:15 p. m.  
No. 617 leave 10:30 p. m.  
No. 618 arrive 10:30 p. m.  
No. 618 leave 10:45 p. m.  
No. 619 arrive 10:45 p. m.  
No. 619 leave 11:00 p. m.  
No. 620 arrive 11:00 p. m.  
No. 620 leave 11:15 p. m.  
No. 621 arrive 11:15 p. m.  
No. 621 leave 11:30 p. m.  
No. 622 arrive 11:30 p. m.  
No. 622 leave 11:45 p. m.  
No. 623 arrive 11:45 p. m.  
No. 623 leave 12:00 p. m.  
No. 624 arrive 12:00 p. m.  
No. 624 leave 12:15 p. m.  
No. 625 arrive 12:15 p. m.  
No. 625 leave 12:30 p. m.  
No. 626 arrive 12:30 p. m.  
No. 626 leave 12:45 p. m.  
No. 627 arrive 12:45 p. m.  
No. 627 leave 1:00 p. m.  
No. 628 arrive 1:00 p. m.  
No. 628 leave 1:15 p. m.  
No. 629 arrive 1:15 p. m.  
No. 629 leave 1:30 p. m.  
No. 630 arrive 1:30 p. m.  
No. 630 leave 1:45 p. m.  
No. 631 arrive 1:45 p. m.  
No. 631 leave 2:00 p. m.  
No. 632 arrive 2:00 p. m.  
No. 632 leave 2:15 p. m.  
No. 633 arrive 2:15 p. m.  
No. 633 leave 2:30 p. m.  
No. 634 arrive 2:30 p. m.  
No. 634 leave 2:45 p. m.  
No. 635 arrive 2:45 p. m.  
No. 635 leave 3:00 p. m.  
No. 636 arrive 3:00 p. m.  
No. 636 leave 3:15 p. m.  
No. 637 arrive 3:15 p. m.  
No. 637 leave 3:30 p. m.  
No. 638 arrive 3:30 p. m.  
No. 638 leave 3:45 p. m.  
No. 639 arrive 3:45 p. m.  
No. 639 leave 4:00 p. m.  
No. 640 arrive 4:00 p. m.  
No. 640 leave 4:15 p. m.  
No. 641 arrive 4:15 p. m.  
No. 641 leave 4:30 p. m.  
No. 642 arrive 4:30 p. m.  
No. 642 leave 4:45 p. m.  
No. 643 arrive 4:45 p. m.  
No. 643 leave 5:00 p. m.  
No. 644 arrive 5:00 p. m.  
No. 644 leave 5:15 p. m.  
No. 645 arrive 5:15 p. m.  
No. 645 leave 5:30 p. m.  
No. 646 arrive 5:30 p. m.  
No. 646 leave 5:45 p. m.  
No. 647 arrive 5:45 p. m.  
No. 647 leave 6:00 p. m.  
No. 648 arrive 6:00 p. m.  
No. 648 leave 6:15 p. m.  
No. 649 arrive 6:15 p. m.  
No. 649 leave 6:30 p. m.  
No. 650 arrive 6:30 p. m.  
No. 650 leave 6:45 p. m.  
No. 651 arrive 6:45 p. m.  
No. 651 leave 7:00 p. m.  
No. 652 arrive 7:00 p. m.  
No. 652 leave 7:15 p. m.  
No. 653 arrive 7:15 p. m.  
No. 653 leave 7:30 p. m.  
No. 654 arrive 7:30 p. m.  
No. 654 leave 7:45 p. m.  
No. 655 arrive 7:45 p. m.  
No. 655 leave 8:00 p. m.  
No. 656 arrive 8:00 p. m.  
No. 656 leave 8:15 p. m.  
No. 657 arrive 8:15 p. m.  
No. 657 leave 8:30 p. m.  
No. 658 arrive 8:30 p. m.  
No. 658 leave 8:45 p. m.  
No. 659 arrive 8:45 p. m.  
No. 659 leave 9:00 p. m.  
No. 660 arrive 9:00 p. m.  
No. 660 leave 9:15 p. m.  
No. 661 arrive 9:15 p. m.  
No. 661 leave 9:30 p. m.  
No. 662 arrive 9:30 p. m.  
No. 662 leave 9:45 p. m.  
No. 663 arrive 9:45 p. m.  
No. 663 leave 10:00 p. m.  
No. 664 arrive 10:00 p. m.  
No. 664 leave 10:15 p. m.  
No. 665 arrive 10:15 p. m.  
No. 665 leave 10:30 p. m.  
No. 666 arrive 10:30 p. m.  
No. 666 leave 10:45 p. m.  
No. 667 arrive 10:45 p. m.  
No. 667 leave 11:00 p. m.  
No. 668 arrive 11:00 p. m.  
No. 668 leave 11:15 p. m.  
No. 669 arrive 11:15 p. m.  
No. 669 leave 11:30 p. m.  
No. 670 arrive 11:30 p. m.  
No. 670 leave 11:45 p. m.  
No. 671 arrive 11:45 p. m.  
No. 671 leave 12:00 p. m.  
No. 672 arrive 12:00 p. m.  
No. 672 leave 12:15 p. m.  
No. 673 arrive 12:15 p. m.  
No. 673 leave 12:30 p. m.  
No. 674 arrive 12:30 p. m.  
No. 674 leave 12:45 p. m.  
No. 675 arrive 12:45 p. m.  
No. 675 leave 1:00 p. m.  
No. 676 arrive 1:00 p. m.  
No. 676 leave 1:15 p. m.  
No. 677 arrive 1:15 p. m.  
No. 677 leave 1:30 p. m.  
No. 678 arrive 1:30 p. m.  
No. 678 leave 1:45 p. m.  
No. 679 arrive 1:45 p. m.  
No. 679 leave 2:00 p. m.  
No. 680 arrive 2:00 p. m.  
No. 680 leave 2:15 p. m.  
No. 681 arrive 2:15 p. m.  
No. 681 leave 2:30 p. m.  
No. 682 arrive 2:30 p. m.  
No. 682 leave 2:45 p. m.  
No. 683 arrive 2:45 p. m.  
No. 683 leave 3:00 p. m.  
No. 684 arrive 3:00 p. m.  
No. 684 leave 3:15 p. m.  
No. 685 arrive 3:15 p. m.  
No. 685 leave 3:30 p. m.  
No. 686 arrive 3:30 p. m.  
No. 686 leave 3:45 p. m.  
No. 687 arrive 3:45 p. m.  
No. 687 leave 4:00 p. m.  
No. 688 arrive 4:00 p. m.  
No. 688 leave 4:15 p. m.  
No. 689 arrive 4:15 p. m.  
No. 689 leave 4:30 p. m.  
No. 690 arrive 4:30 p. m.  
No. 690 leave 4:45 p. m.  
No. 691 arrive 4:45 p. m.  
No. 691 leave 5:00 p. m.  
No. 692 arrive 5:00 p. m.  
No. 692 leave 5:15 p. m.  
No. 693 arrive 5:15 p. m.  
No. 693 leave 5:30 p. m.  
No. 694 arrive 5:30 p. m.  
No. 694 leave 5:45 p. m.  
No. 695 arrive 5:45 p. m.  
No. 695 leave 6:00 p. m.  
No. 696 arrive 6:00 p. m.  
No. 696 leave 6:15 p. m.  
No. 697 arrive 6:15 p. m.  
No. 697 leave 6:30 p. m.  
No. 698 arrive 6:30 p. m.  
No. 698 leave 6:45 p. m.  
No. 699 arrive 6:45 p. m.  
No. 699 leave 7:00 p. m.  
No. 700 arrive 7:00 p. m.  
No. 700 leave 7:15 p. m.  
No. 701 arrive 7:15 p. m.  
No. 701 leave 7:30 p. m.  
No. 702 arrive 7:30 p. m.  
No. 702 leave 7:45 p. m.  
No. 703 arrive 7:45 p. m.  
No. 703 leave 8:00 p. m.  
No. 704 arrive 8:00 p. m.  
No. 704 leave 8:15 p. m.  
No. 705 arrive 8:15 p. m.  
No. 705 leave 8:30 p. m.  
No. 706 arrive 8:30 p. m.  
No. 706 leave 8:45 p. m.  
No. 707 arrive 8:45 p. m.  
No. 707 leave 9:00 p. m.  
No. 708 arrive 9:00 p. m.  
No. 708 leave 9:15 p. m.  
No. 709 arrive 9:15 p. m.  
No. 709 leave 9:30 p. m.  
No. 710 arrive 9:30 p. m.  
No. 710 leave 9:45 p. m.  
No. 711 arrive 9:45 p. m.  
No. 711 leave 10:00 p. m.  
No. 712 arrive 10:00 p. m.  
No. 712 leave 10:15 p. m.  
No. 713 arrive 10:15 p. m.  
No. 713 leave 10:30 p. m.  
No. 714 arrive 10:30 p. m.  
No. 714 leave 10:45 p. m.  
No. 715 arrive 10:45 p. m.  
No. 715 leave 11:00 p. m.  
No. 716 arrive 11:00 p. m.  
No. 716 leave 11:15 p. m.  
No. 717 arrive 11:15 p. m.  
No. 717 leave 11:30 p. m.  
No. 718 arrive 11:30 p. m.  
No. 718 leave 11:45 p. m.  
No. 719 arrive 11:45 p. m.  
No. 719 leave 12:00 p. m.  
No. 720 arrive 12:00 p. m.  
No. 720 leave 12:15 p. m.  
No. 721 arrive 12:15 p. m.  
No. 721 leave 12:30 p. m.  
No. 722 arrive 12:30 p. m.  
No. 722 leave 12:45 p. m.  
No. 723 arrive 12:45 p. m.  
No. 723 leave 1:00 p. m.  
No. 724 arrive 1:00 p. m.  
No. 724 leave 1:15 p. m.  
No. 725 arrive 1:15 p. m.  
No. 725 leave 1:30 p. m.  
No. 726 arrive 1:30 p. m.  
No. 726 leave 1:45 p. m.  
No. 727 arrive 1:45 p. m.  
No. 727 leave 2:00 p. m.  
No. 728 arrive 2:00 p. m.  
No. 728 leave 2:15 p. m.  
No. 729 arrive 2:15 p. m.  
No. 729 leave 2:30 p. m.  
No. 730 arrive 2:30 p. m.  
No. 730 leave 2:45 p. m.  
No. 731 arrive 2:45 p. m.  
No. 731 leave 3:00 p. m.  
No. 732 arrive 3:00 p. m.  
No. 732 leave 3:15 p. m.  
No. 733 arrive 3:15 p. m.  
No. 733 leave 3:30 p. m.  
No. 734 arrive 3:30 p. m.  
No. 734 leave 3:45 p. m.  
No. 735 arrive 3:45 p. m.  
No. 735 leave 4:00 p. m.  
No. 736 arrive 4:00 p. m.  
No. 736 leave 4:15 p. m.  
No. 737 arrive 4:15 p. m.  
No. 737 leave 4:30 p. m.  
No. 738 arrive 4:30 p. m.  
No. 738 leave 4:45 p. m.  
No. 739 arrive 4:45 p. m.  
No. 739 leave 5:00 p. m.  
No. 740 arrive 5:00 p. m.  
No. 740 leave 5:15 p. m.  
No. 741 arrive 5:15 p. m.  
No. 741 leave 5:30 p. m.  
No. 742 arrive 5:30 p. m.  
No. 742 leave 5:45 p. m.  
No. 743 arrive 5:45 p. m.  
No. 743 leave 6:00 p. m.  
No. 744 arrive 6:00 p. m.  
No. 744 leave 6:15 p. m.  
No. 745 arrive 6:15 p. m.  
No. 745 leave 6:30 p. m.  
No. 746 arrive 6:30 p. m.  
No. 746 leave 6:45 p. m.  
No. 747 arrive 6:45 p. m.  
No. 747 leave 7:00 p. m.  
No. 748 arrive 7:00 p. m.  
No. 748 leave 7:15 p. m.  
No. 749 arrive 7:15 p. m.  
No. 749 leave 7:30 p. m.  
No. 750 arrive 7:30 p. m.  
No. 750 leave 7:45 p. m.  
No. 751 arrive 7:45 p. m.  
No. 751 leave 8:00 p. m.  
No. 752 arrive 8:00 p. m.  
No. 752 leave 8:15 p. m.  
No. 753 arrive 8:15 p. m.  
No. 753 leave 8:30 p. m.  
No. 754 arrive 8:30 p. m.  
No. 754 leave 8:45 p. m.  
No. 755 arrive 8:45 p. m.  
No. 755 leave 9:00 p. m.  
No. 756 arrive 9:00 p. m.  
No. 756 leave 9:15 p. m.  
No. 757 arrive 9:15 p. m.  
No. 757 leave 9:30 p. m.  
No. 758 arrive 9:30 p. m.  
No. 758 leave 9:45 p. m.  
No. 759 arrive 9:45 p. m.  
No. 759 leave 10:00 p. m.  
No. 760 arrive 10:00 p. m.  
No. 760 leave 10:15 p. m.  
No. 761 arrive 10:15 p. m.  
No. 761 leave 10:30 p. m.  
No. 762 arrive 10:30 p. m.  
No. 762 leave 10:45 p. m.  
No. 763 arrive 10:45 p. m.  
No. 763 leave 11:00 p. m.  
No. 764 arrive 11:00 p. m.  
No. 764 leave 11:15 p. m.  
No. 765 arrive 11:15 p. m.  
No. 765 leave 11:30 p. m.  
No. 766 arrive 11:30 p. m.  
No. 766 leave 11:45 p. m.  
No. 767 arrive 11:45 p. m.  
No. 767 leave 12:00 p. m.  
No. 768 arrive 12:00 p. m.  
No. 768 leave 12:15 p. m.  
No. 769 arrive 12:15 p. m.  
No. 769 leave 12:30 p. m.  
No. 770 arrive 12:30 p. m.  
No. 770 leave 12:45 p. m.  
No. 771 arrive 12:45 p. m.  
No. 771 leave 1:00 p. m.  
No. 772 arrive 1:00 p. m.  
No. 772 leave 1:15 p. m.  
No. 773 arrive 1:15 p. m.  
No. 773 leave 1:30 p. m.  
No. 774 arrive 1:30 p. m.  
No. 774 leave 1:45 p. m.  
No. 775 arrive 1:45 p. m.  
No. 775 leave 2:00 p. m.  
No. 776 arrive 2:00 p. m.  
No. 776 leave 2:15 p. m.  
No. 777 arrive 2:15 p. m.  
No. 777 leave 2:30 p. m.  
No. 778 arrive 2:30 p. m.  
No. 778 leave 2:45 p. m.  
No. 779 arrive 2:45 p. m.  
No. 779 leave 3:00 p. m.  
No. 780 arrive 3:00 p. m.  
No. 780 leave 3:15 p. m.  
No. 781 arrive 3:15 p. m.  
No. 781 leave 3:30 p. m.  
No. 782 arrive 3:30 p. m.  
No. 782 leave 3:45 p. m.  
No. 783 arrive 3:45 p. m.  
No. 783 leave 4:00 p. m.  
No. 784 arrive 4:00 p. m.  
No. 784 leave 4:15 p. m.  
No. 785 arrive 4:15 p. m.  
No. 785 leave 4:30 p. m.  
No. 786 arrive 4:30 p. m.  
No. 786 leave 4:45 p. m.  
No. 787 arrive 4:45 p. m.  
No. 787 leave 5:00 p. m.  
No. 788 arrive 5:00 p. m.  
No. 788 leave 5:15 p. m.  
No. 789 arrive 5:15 p. m.  
No. 789 leave 5:30 p. m.  
No. 790 arrive 5:30 p. m.  
No. 790 leave 5:45 p. m.  
No. 791 arrive 5:45 p. m.  
No. 791 leave 6:00 p. m.  
No. 792 arrive 6:00 p. m.  
No. 792 leave 6:15 p. m.  
No. 793 arrive 6:15 p. m.  
No. 793 leave 6:30 p. m.  
No. 794 arrive 6:30 p. m.  
No. 794 leave 6:45 p. m.  
No. 795 arrive 6:45 p. m.  
No. 795 leave 7:00 p. m.  
No. 796 arrive 7:00 p. m.  
No. 796 leave 7:15 p. m.  
No. 797 arrive 7:15 p. m.  
No. 797 leave 7:30 p. m.  
No. 798 arrive 7:30 p. m.  
No. 798 leave 7:45 p. m.  
No. 799 arrive 7:45 p. m.  
No. 799 leave 8:00 p. m.  
No. 800 arrive 8:00 p. m.  
No. 800 leave 8:15 p. m.  
No. 801 arrive 8:15 p. m.  
No. 801 leave 8:30 p. m.  
No. 802 arrive 8:30 p. m.  
No. 802 leave 8:45 p. m.  
No. 803 arrive 8:45 p. m.  
No. 803 leave 9:00 p. m.  
No. 804 arrive 9:00 p. m.  
No. 804 leave 9:15 p. m.  
No. 805 arrive 9:15 p. m.  
No. 805 leave 9:30 p. m.  
No. 806 arrive 9:30 p. m.  
No. 806 leave 9:45 p. m.  
No. 807 arrive 9:45 p. m.  
No. 807 leave 10:00 p. m.  
No. 808 arrive 10:00 p. m.  
No. 808 leave 10:15 p. m.  
No. 809 arrive 10:15 p. m.  
No. 809 leave 10:30 p. m.  
No. 810 arrive 10:30 p. m.  
No. 810 leave 10:45 p. m.  
No. 811 arrive 10:45 p. m.  
No. 811 leave 11:00 p. m.  
No. 812 arrive 11:00 p. m.  
No. 812 leave 11:15 p. m.  
No. 813 arrive 11:15 p. m.  
No. 813 leave 11:30 p. m.  
No. 814 arrive 11:30 p. m.  
No. 814 leave 11:45 p. m.  
No. 815 arrive 11:45 p. m.  
No. 815 leave 12:00 p. m.  
No. 816 arrive 12:00 p. m.  
No. 816 leave 12:15 p. m.  
No. 817 arrive 12:15 p. m.  
No. 817 leave 12:30 p. m.  
No. 818 arrive 12:30 p. m.  
No. 818 leave 12:45 p. m.  
No. 819 arrive 12:45 p. m.  
No. 819 leave 1:00 p. m.  
No. 820 arrive 1:00 p. m.  
No. 820 leave 1

## GOODING PTA HAS SPECIAL PROGRAM

GOODING, March 2.—A past president's program was featured at the Gooding P. T. A. meeting in the Junior high school auditorium. The business session was conducted by Mrs. A. C. Hatley, president.

The association members favored holding a health "summer round-up" plans for the summer program for school children are progressing. A report being made at the meeting. Each summer session is pledged to urge all members of their various organizations to can extensively next summer for school lunch needs.

Announcement was made of the March meeting which will be held in cooperation with the Gooding branch of American Association of University Women who are sponsoring an art exhibit to be held here March 20 and 21. Mrs. W. E. Kierpatrick, Moscow, will be the A. U. W. speaker on Tuesday. The principal of the Twin Falls high school, will be a special speaker at the meeting. A reception of the members will be held on Monday evening, March 20.

The nominating committee appointed by Mrs. Hatley, chairman, Mrs. E. C. Jorgensen, included Mrs. Clara Nelson and Mrs. Hilda Crispin.

Hill pictures for attendance were won by Mrs. Betty Smith in the Junior high and Mrs. Mary Alice Peck from the Junior high school. Both rooms were winners at the last meeting. The special singing was led by Mrs. Jorgensen with Mrs. Albert Dickson playing piano accompaniment.

Mrs. Hatley turned the meeting over to Mrs. J. E. Farmer, a past president, who introduced the program. Piano numbers were presented by Mary Jean Robertson and Marjorie Nelson and vocal numbers by Alice Brown and Mrs. Billie. Mrs. Jorgensen playing accompaniment. Janet Barrett was the featured soloist. Mrs. Jorgensen and Mrs. Frank Vetter, and other past presidents, spoke briefly. A birthday cake baked by Mrs. Farmer was cut and served in observance of Founder's day and a special offering was taken.

## BUHL

Mrs. Morris Gre and three children have returned to Buhl from Vancouver, Wash. where Mrs. Gre has been in war work.

Robert Gaudin, aviation machinist, his main line class, son of Mr. and Mrs. Oscar Carlson, who has been taking special training in Columbus, O., recently spent a few days with his parents on his first furlough in two years. Carlson has been serving with the fleet in both the Atlantic and Pacific areas.

Mr. and Mrs. Leo Jankowski are back from a month's visit with their parents in Indiana.

Mrs. Grant King, Nampa, and Mr. and Mrs. Jasper King, Tacoma, Wash., were recent visitors at the Lloyd Hayes home.

Mr. and Mrs. Jeff Hill and children have moved from Portland, Ore., where Mr. Hill has been engaged in defense work to the farm of his father, Riley Hill, where he will help his father and brothers on their large farm. Mrs. Riley Hill, who has been visiting in Portland with them, returned at the same time.

Wilbur Boehle is in Portland attending the Gurnsey cattle association tour, and visiting his sister and other relatives and friends.

John Wagner is back from a trip to St. Louis, Mo.

Mr. and Mrs. J. A. Jensen visited recently in Olympia, Wash., with their son, Harry Jensen, before he left for New York in preparation for going overseas. They also visited at Eugene, Ore., with Mrs. Jensen's mother, Mrs. Johanna Peterson.

Mr. and Mrs. Alex Herak, Garret, Neb., are visiting their daughter, Mrs. Ward Moffat.

Mrs. Frank Thatcher has returned from a trip to California.

Mr. and Mrs. Henry Oliver, who have been visiting in Oklahoma and Texas, are guests of Mr. and Mrs. Virgil Jensen. They are en route to their home in Spokane, Wash.

Mr. and Mrs. William Connor have returned from a week's visit with relatives in Portland.

Mr. and Mrs. Arthur Houk are California visitors.

Mrs. Foster Sorenson has returned from Los Angeles, Calif.

Mrs. Josephine Roubinek and Carl Roubinek were recent visitors in Salt Lake City.

Miss June Stoddard and Miss Lois Orville, both of Boise, have been visiting at the M. K. Cunningham home.

## Muss Mussy



## CATTLE RAISERS MEET IN GOODING

GOODING, March 2.—Annual meeting of the Gooding county Cattle Raising association was held in the county court room with all members present. President E. W. Dyer, Gooding, presided. G. A. Luther, Gooding, is secretary.

Open discussion was held on various aspects of cattle raising, touching principally on the eradication of lice by the construction of dipping vats and the use of the cattle grub by spray machine. The Gooding association contemplates purchasing one of the spray machines. Fred Moser was hired as herder for the coming season for the twelve-second consecutive year.

Leo Rice, Gooding, was taken in new member. Wallace Hailing, district ranger, Halley, met with the group. Members present were Cliff Toome, Gooding, and Fred Moser, W. W. Wilson, Ray Morgan and Tom Jerome.

Members of other associations attending were John Varth and Roy Mink, Gooding, of the Black Canyon association; Don Sandy, Shoshone, and Maxine Patterson, Gooding, of the Thorn Creek association.

A banquet was attended in the evening at the Lincoln inn after which the group reassembled at the home of Leo Rice for a social evening.

## No Truck Stickers

JEROME, March 2.—Announcement today by Clarence P. Smith, county assessor, said that though the stickers for passenger car plates have arrived and are now on sale, the stickers for the trucks and trailers have not been received but are expected momentarily.

## No Point and VALUES

on healthful, nutritious foods to start the month. High in nutrition — low in point and money value.

PEAS "Sun Valley Lodge" Mixed Sizes	CORN "Tenderheart" White Corn
10 points No. 2 can ..... <b>12c</b>	(10 points) No. 2 can ..... <b>12c</b>
SYRUP "Amazo" Waffle Syrup 1 1/2 pound	CRACKERS "Premium"
jar ..... <b>13c</b>	2 pound box ..... <b>33c</b>

LARD (12 points) Pure white "Excel" 5 pounds ..... <b>70c</b>
BACON (1 point) Jowl bacon for seasoning, lb. .... <b>21c</b>
TOMATO SOUP (4 points) Campbell ..... <b>9c</b>

TOMATOES (12 points each) "Garden" No. 2 1/2 cans each ..... <b>11c</b>
Baking Powder (15 points) shortening 16-oz. can ..... <b>17c</b>
SNOWDRIFT (15 points) shortening 16-oz. can ..... <b>69c</b>

MILK (1 point) can all tall cans 4 for ..... <b>39c</b>
RAISIN BRAN Breakfast food 10-oz. pkg. .... <b>12c</b>
Relish Spread 8-oz. jar ..... <b>17c</b>

PEACH JAM Pure peach jam 3-pound jar ..... <b>39c</b>
---

MACKEREL "Val Vita"	BUTTER "Challenge"
16-oz. can (12 points) ..... <b>15c</b>	Highest score (16 points) lb. .... <b>49c</b>

EGGS Large fresh ranch eggs dozen ..... <b>30c</b>
MIXED NUTS Fancy quality, all new nuts 5-lb. can ..... <b>35c</b>

COFFEE "Golden West" glass jar One pound ..... <b>29c</b>
RICE Fancy quality "Blue Rose" 3 pounds ..... <b>29c</b>

SOAP Ivory, medium size bar ..... <b>6c</b>
Baking Powder "Shillings" 12-oz. can ..... <b>35c</b>

TAPIOCA "Minute" 8-oz. pkg. .... <b>12c</b>
Wheat Sparkies Puffed Wheat, "Quaker" package ..... <b>9c</b>

OATS "Mothers" premium 3-pound pkg. .... <b>29c</b>
SUPER-SUDES ..... <b>25c</b>

Water Softener "Blue Seal" 12-oz. pkg. .... <b>15c</b>
MATCHES "Royal Arms" 6 box carton ..... <b>22c</b>

LUX FLAKES For all finer laundering 5 ounce pkg. .... <b>9c</b>
TOILET SOAP "Creme Oil" 6 bars ..... <b>25c</b>

Free deliveries to all parts of the city Monday, Wednesday and Saturday—East and South 10:00 a. m. to north and west, 3:00 p. m.

IDAHO DEPT. STORE

"If It Isn't Right — Bring It Back"

## Entire Amount of Tax Must Be Paid

A fairly widespread misunderstanding on the amount of federal income tax payment which may be

postponed past the estimated March 15 is reported by Cecil Pfost, deputy internal revenue collector. "Many people have the idea," he said, "that they can postpone payment of half of their tax. That is not the case. All that can be postponed is half of the 'unforgotten tax,'"

which is item 11c on form 1040 and item 12 on form 1040-1. "The amount to be postponed, Pfost pointed out, is not based on the total tax remaining due, as shown on line 14 of form 1040-1 and on line 20 of form 1040-1. "If a person has no 'unforgotten

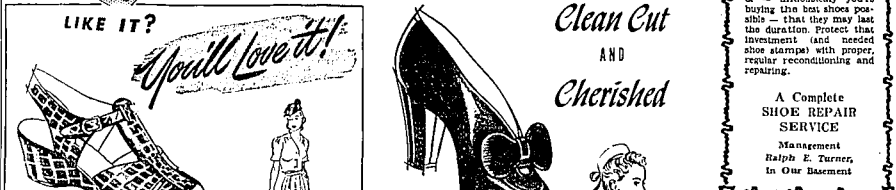
tax," said Pfost, "the total amount shown due on the return is the and payable on or before March 15, 1944." A taxpayer is "forgotten" three-fourths of his tax for either 1943 or 1944, whichever is earlier. Pfost pointed out, half of the remainder

may be postponed until March 15, 1945, but that is the only postponement permitted. The average yield of Canadian wheat land is 16 bushels per acre. READ TIMES-NEWS WANT ADS.

# TRULY, A FAMILY SHOE STORE

with a style, quality and correct fit for every member of your family... THESE VALUES PROVE THAT STATEMENT

BOTH DONE WITH LINES THAT ARE Clean Cut AND Cherished



Style 112 A LEAFY SHOE This is the Easy-Goe... a smartly grained alligator print calf. It's tough and sturdy at the hard-jawed gator, but it's as soft as a spring flower. Choose a pair... \$7.85

## BUSTER BROWN SHOES

styled to make "Little Folks" feel like "Big Folks"

Naturalizer THE SHOE WITH THE BEAUTIFUL FIT Suave simplicity! The charm of likely lines... Beautiful leathers... uncluttered detail. Both styles shown, in Army Russet Calf... both with exactly beautiful fit.

Our Famous Brands of WORK SHOES

KEEP AMERICANS ON THE JOB

Important work demands a important footwear... and nowhere is there more important work going on than right here in Magic Valley's fiscal A wide range of quality shoes that start at only— \$3.98 up.

Important work demands a important footwear... and nowhere is there more important work going on than right here in Magic Valley's fiscal A wide range of quality shoes that start at only— \$3.98 up.

Important work demands a important footwear... and nowhere is there more important work going on than right here in Magic Valley's fiscal A wide range of quality shoes that start at only— \$3.98 up.

Important work demands a important footwear... and nowhere is there more important work going on than right here in Magic Valley's fiscal A wide range of quality shoes that start at only— \$3.98 up.

Important work demands a important footwear... and nowhere is there more important work going on than right here in Magic Valley's fiscal A wide range of quality shoes that start at only— \$3.98 up.

Important work demands a important footwear... and nowhere is there more important work going on than right here in Magic Valley's fiscal A wide range of quality shoes that start at only— \$3.98 up.

Important work demands a important footwear... and nowhere is there more important work going on than right here in Magic Valley's fiscal A wide range of quality shoes that start at only— \$3.98 up.

Important work demands a important footwear... and nowhere is there more important work going on than right here in Magic Valley's fiscal A wide range of quality shoes that start at only— \$3.98 up.

Important work demands a important footwear... and nowhere is there more important work going on than right here in Magic Valley's fiscal A wide range of quality shoes that start at only— \$3.98 up.

Important work demands a important footwear... and nowhere is there more important work going on than right here in Magic Valley's fiscal A wide range of quality shoes that start at only— \$3.98 up.

## JAP DEFENSES IN PACIFIC WEAKEN

WASHINGTON, March 2 (AP)—Two high military men agreed Wednesday that Japan is powerless to break up the "leaps and bounds" American attack in the Pacific but are worried that the Japanese are "playing possum" in hopes of a last-minute handout on some of the amazing blow.

The Marshall campaign provided the last with a handwriting on the wall, said Maj. Gen. Willis H. Hale, commander of the Seventh Air Force in the central Pacific. The pattern for the future will be to render ineffective every island group which stands between us and the Japanese homeland.

Lt. Gen. A. Vandegrift, commander of the Marine Corps, expressed the belief that the Japanese are lying back in an attempt to hilt the United States into a negotiated settlement. Nevertheless, he said, "we have no intention of being lured into letting down our guard."

Noting at a press conference here that islands taken in the Marshall provide bases from which land planes can strike at Tokyo, Hale said that his force is "already blunting at the Carolines—anyone who wants to know where it is going from there only need look at the map."

The map shows a line of Japanese islands, the Marianne and the Bonin, running north on direct line to Tokyo, which is 1,500 miles from Tokyo. To the west of the line is the Philippines.

Gen. Hale said the Japanese attack was an effective surprise because the Japanese detection devices had been booby-trapped in advance by army planes.

## Robbery Suspect Taken to Spokane

SPOKANE, Wash., March 2 (AP)—Police Leroy White, alias James H. Bailey, was brought here today from Boise to await grand jury action on a federal charge of bank robbery in connection with an \$8,000 hold-up raid on the Old National east side branch here.

White was arrested at Twin Falls last week. He had been arrested there by his band and sent to Boise and today he was taken before a United States commissioner to be informed of his constitutional rights.

Lewis William Hemmert, arrested under the same charge and arraigned at Missoula, Mont., arrived yesterday and went before the commissioner. Hemmert said he is the attorney and requested a pre-sentence investigation. No plea was entered.

## WIFE TAKEN TO SPOKANE

BOISE, March 2 (AP)—Mrs. Virginia Bailey, who came here from her home at Klamath Falls, Ore., to see her husband, James H. Bailey, held under arrest in connection with a Spokane bank robbery, left in custody of a United States marshal today for Washington.

## KTFI Radio Schedule

	MARCH 2-3	
6:00C	THURSDAY	*12:30P
6:00	<i>Golden Hour</i>	
6:30	Aldrich Family	
7:00	Musical Hall	
7:30	Concert	
8:00	Bob Crook and orchestra	
8:30	Marshall and Gosselin	
9:00	Shuffert Brothers	
9:30	Marionette of Versailles	
10:00	Edith Ryan	
10:30	Marionette of Washington—news	
11:00	Marionette of the New World	
11:30	Marionette of the New World	
12:00	Marionette of the New World	
12:30	Marionette of the New World	
1:00	Marionette of the New World	
1:30	Marionette of the New World	
2:00	Marionette of the New World	
2:30	Marionette of the New World	
3:00	Marionette of the New World	
3:30	Marionette of the New World	
4:00	Marionette of the New World	
4:30	Marionette of the New World	
5:00	Marionette of the New World	
5:30	Marionette of the New World	
6:00	Marionette of the New World	
6:30	Marionette of the New World	
7:00	Marionette of the New World	
7:30	Marionette of the New World	
8:00	Marionette of the New World	
8:30	Marionette of the New World	
9:00	Marionette of the New World	
9:30	Marionette of the New World	
10:00	Marionette of the New World	
10:30	Marionette of the New World	
11:00	Marionette of the New World	
11:30	Marionette of the New World	
12:00	Marionette of the New World	
12:30	Marionette of the New World	
1:00	Marionette of the New World	
1:30	Marionette of the New World	
2:00	Marionette of the New World	
2:30	Marionette of the New World	
3:00	Marionette of the New World	
3:30	Marionette of the New World	
4:00	Marionette of the New World	
4:30	Marionette of the New World	
5:00	Marionette of the New World	
5:30	Marionette of the New World	
6:00	Marionette of the New World	
6:30	Marionette of the New World	
7:00	Marionette of the New World	
7:30	Marionette of the New World	
8:00	Marionette of the New World	
8:30	Marionette of the New World	
9:00	Marionette of the New World	
9:30	Marionette of the New World	
10:00	Marionette of the New World	
10:30	Marionette of the New World	
11:00	Marionette of the New World	
11:30	Marionette of the New World	
12:00	Marionette of the New World	
12:30	Marionette of the New World	
1:00	Marionette of the New World	
1:30	Marionette of the New World	
2:00	Marionette of the New World	
2:30	Marionette of the New World	
3:00	Marionette of the New World	
3:30	Marionette of the New World	
4:00	Marionette of the New World	
4:30	Marionette of the New World	
5:00	Marionette of the New World	
5:30	Marionette of the New World	
6:00	Marionette of the New World	
6:30	Marionette of the New World	
7:00	Marionette of the New World	
7:30	Marionette of the New World	
8:00	Marionette of the New World	
8:30	Marionette of the New World	
9:00	Marionette of the New World	
9:30	Marionette of the New World	
10:00	Marionette of the New World	
10:30	Marionette of the New World	
11:00	Marionette of the New World	
11:30	Marionette of the New World	
12:00	Marionette of the New World	
12:30	Marionette of the New World	
1:00	Marionette of the New World	
1:30	Marionette of the New World	
2:00	Marionette of the New World	
2:30	Marionette of the New World	
3:00	Marionette of the New World	
3:30	Marionette of the New World	
4:00	Marionette of the New World	
4:30	Marionette of the New World	
5:00	Marionette of the New World	
5:30	Marionette of the New World	
6:00	Marionette of the New World	
6:30	Marionette of the New World	
7:00	Marionette of the New World	
7:30	Marionette of the New World	
8:00	Marionette of the New World	
8:30	Marionette of the New World	
9:00	Marionette of the New World	
9:30	Marionette of the New World	
10:00	Marionette of the New World	
10:30	Marionette of the New World	
11:00	Marionette of the New World	
11:30	Marionette of the New World	
12:00	Marionette of the New World	
12:30	Marionette of the New World	
1:00	Marionette of the New World	
1:30	Marionette of the New World	
2:00	Marionette of the New World	
2:30	Marionette of the New World	
3:00	Marionette of the New World	
3:30	Marionette of the New World	
4:00	Marionette of the New World	
4:30	Marionette of the New World	
5:00	Marionette of the New World	
5:30	Marionette of the New World	
6:00	Marionette of the New World	
6:30	Marionette of the New World	
7:00	Marionette of the New World	
7:30	Marionette of the New World	
8:00	Marionette of the New World	
8:30	Marionette of the New World	
9:00	Marionette of the New World	
9:30	Marionette of the New World	
10:00	Marionette of the New World	
10:30	Marionette of the New World	
11:00	Marionette of the New World	
11:30	Marionette of the New World	
12:00	Marionette of the New World	
12:30	Marionette of the New World	
1:00	Marionette of the New World	
1:30	Marionette of the New World	
2:00	Marionette of the New World	
2:30	Marionette of the New World	
3:00	Marionette of the New World	
3:30	Marionette of the New World	
4:00	Marionette of the New World	
4:30	Marionette of the New World	
5:00	Marionette of the New World	
5:30	Marionette of the New World	
6:00	Marionette of the New World	
6:30	Marionette of the New World	
7:00	Marionette of the New World	
7:30	Marionette of the New World	
8:00	Marionette of the New World	
8:30	Marionette of the New World	
9:00	Marionette of the New World	
9:30	Marionette of the New World	
10:00	Marionette of the New World	
10:30	Marionette of the New World	
11:00	Marionette of the New World	
11:30	Marionette of the New World	
12:00	Marionette of the New World	
12:30	Marionette of the New World	
1:00	Marionette of the New World	
1:30	Marionette of the New World	
2:00	Marionette of the New World	
2:30	Marionette of the New World	
3:00	Marionette of the New World	
3:30	Marionette of the New World	
4:00	Marionette of the New World	
4:30	Marionette of the New World	
5:00	Marionette of the New World	
5:30	Marionette of the New World	
6:00	Marionette of the New World	
6:30	Marionette of the New World	
7:00	Marionette of the New World	
7:30	Marionette of the New World	
8:00	Marionette of the New World	
8:30	Marionette of the New World	
9:00	Marionette of the New World	
9:30	Marionette of the New World	
10:00	Marionette of the New World	
10:30	Marionette of the New World	
11:00	Marionette of the New World	
11:30	Marionette of the New World	
12:00	Marionette of the New World	
12:30	Marionette of the New World	
1:00	Marionette of the New World	
1:30	Marionette of the New World	
2:00	Marionette of the New World	
2:30	Marionette of the New World	
3:00	Marionette of the New World	
3:30	Marionette of the New World	
4:00	Marionette of the New World	
4:30	Marionette of the New World	
5:00	Marionette of the New World	
5:30	Marionette of the New World	
6:00	Marionette of the New World	
6:30	Marionette of the New World	
7:00	Marionette of the New World	
7:30	Marionette of the New World	
8:00	Marionette of the New World	
8:30	Marionette of the New World	
9:00	Marionette of the New World	
9:30	Marionette of the New World	
10:00	Marionette of the New World	
10:30	Marionette of the New World	
11:00	Marionette of the New World	
11:30	Marionette of the New World	
12:00	Marionette of the New World	
12:30	Marionette of the New World	
1:00	Marionette of the New World	
1:30	Marionette of the New World	
2:00	Marionette of the New World	
2:30	Marionette of the New World	
3:00	Marionette of the New World	
3:30	Marionette of the New World	
4:00	Marionette of the New World	
4:30	Marionette of the New World	
5:00	Marionette of the New World	
5:30	Marionette of the New World	
6:00	Marionette of the New World	
6:30	Marionette of the New World	
7:00	Marionette of the New World	
7:30	Marionette of the New World	
8:00	Marionette of the New World	
8:30	Marionette of the New World	
9:00	Marionette of the New World	
9:30	Marionette of the New World	
10:00	Marionette of the New World	
10:30	Marionette of the New World	
11:00	Marionette of the New World	
11:30	Marionette of the New World	
12:00	Marionette of the New World	
12:30	Marionette of the New World	
1:00	Marionette of the New World	
1:30	Marionette of the New World	
2:00	Marionette of the New World	
2:30	Marionette of the New World	
3:00	Marionette of the New World	
3:30	Marionette of the New World	
4:00	Marionette of the New World	
4:30	Marionette of the New World	
5:00	Marionette of the New World	
5:30	Marionette of the New World	
6:00	Marionette of the New World	
6:30	Marionette of the New World	
7:00	Marionette of the New World	
7:30	Marionette of the New World	
8:00	Marionette of the New World	
8:30	Marionette of the New World	
9:00	Marionette of the New World	
9:30	Marionette of the New World	
10:00	Marionette of the New World	
10:30	Marionette of the New World	
11:00	Marionette of the New World	
11:30	Marionette of the New World	
12:00	Marionette of the New World	
12:30	Marionette of the New World	
1:00	Marionette of the New World	
1:30	Marionette of the New World	
2:00	Marionette of the New World	
2:30	Marionette of the New World	
3:00	Marionette of the New World	
3:30	Marionette of the New World	
4:00	Marionette of the New World	
4:30	Marionette of the New World	
5:00	Marionette of the New World	
5:30	Marionette of the New World	
6:00	Marionette of the New World	
6:30	Marionette of the New World	
7:00	Marionette of the New World	
7:30	Marionette of the New World	
8:00	Marionette of the New World	
8:30	Marionette of the New World	
9:00	Marionette of the New World	
9:30	Marionette of the New World	
10:00	Marionette of the New World	
10:30	Marionette of the New World	
11:00	Marionette of the New World	
11:30	Marionette of the New World	
12:00	Marionette of the New World	
12:30	Marionette of the New World	
1:00	Marionette of the New World	
1:30	Marionette of the New World	
2:00	Marionette of the New World	
2:30	Marionette of the New World	
3:00	Marionette of the New World	
3:30	Marionette of the New World	
4:00	Marionette of the New World	
4:30	Marionette of the New World	
5:00	Marionette of the New World	
5:30	Marionette of the New World	
6:00	Marionette of the New World	
6:30	Marionette of the New World	
7:00	Marionette of the New World	
7:30	Marionette of the New World	
8:00	Marionette of the New World	
8:30	Marionette of the New World	
9:00	Marionette of the New World	
9:30	Marionette of the New World	
10:00	Marionette of the New World	
10:30	Marionette of the New World	
11:00	Marionette of the New World	
11:30	Marionette of the New World	
12:00	Marionette of the New World	
12:30	Marionette of the New World	
1:00	Marionette of the New World	
1:30	Marionette of the New World	
2:00	Marionette of the New World	
2:30	Marionette of the New World	
3:00	Marionette of the New World	
3:30	Marionette of the New World	
4:00	Marionette of the New World	
4:30	Marionette of the New World	
5:00	Marionette of the New World	
5:30	Marionette of the New World	
6:00	Marionette of the New World	
6:30	Marionette of the New World	
7:00	Marionette of the New World	
7:30	Marionette of the New World	
8:00	Marionette of the New World	
8:30	Marionette of the New World	
9:00	Marionette of the New World	
9:30	Marionette of the New World	
10:00	Marionette of the New World	
10:30	Marionette of the New World	
11:00	Marionette of the New World	
11:30	Marionette of the New World	
12:00	Marionette of the New World	
12:30	Marionette of the New World	
1:00	Marionette of the New World	
1:30	Marionette of the New World	
2:00	Marionette of the New World	
2:30	Marionette of the New World	
3:00	Marionette of the New World	
3:30	Marionette of the New World	
4:00	Marionette of the New World	
4:30	Marionette of the New World	
5:00	Marionette of the New World	
5:30	Marionette of the New World	
6:00	Marionette of the New World	
6:30	Marionette of the New World	
7:00	Marionette of the New World	
7:30	Marionette of the New World	
8:00	Marionette of the New World	
8:30	Marionette of the New World	
9:00	Marionette of the New World	
9:30	Marionette of the New World	
10:00	Marionette of the New World	
10:30	Marionette of the New World	
11:00	Marionette of the New World	
11:30	Marionette of the New World	
12:00	Marionette of the New World	
12:30	Marionette of the New World	
1:00	Marionette of the New World	
1:30	Marionette of the New World	
2:00	Marionette of the New World	
2:30	Marionette of the New World	
3:00	Marionette of the New World	
3:30	Marionette of the New World	
4:00	Marionette of the New World	
4:30	Marionette of the New World	
5:00	Marionette of the New World	
5:30	Marionette of the New World	
6:00	Marionette of the New World	
6:30	Marionette of the New World	
7:00	Marionette of the New World	
7:30	Marionette of the New World	
8:00	Marionette of the New World	
8:30	Marionette of the New World	
9:00	Marionette of the New World	
9:30	Marionette of the New World	
10:00	Marionette of the New World	
10:30	Marionette of the New World	
11:00	Marionette of the New World	
11:30	Marionette of the New World	
12:00	Marionette of the New World	
12:30	Marionette of the New World	
1:00	Marionette of the New World	
1:30	Marionette of the New World	
2:00	Marionette of the New World	
2:30	Marionette of the New World	
3:00	Marionette of the New World	
3:30	Marionette of the New World	
4:00	Marionette of the New World	
4:30	Marionette of the New World	
5:00	Marionette of the New World	
5:30	Marionette of the New World	
6:00	Marionette of the New World	
6:30	Marionette of the New World	
7:00	Marionette of the New World	
7:30	Marionette of the New World	
8:00	Marionette of the New World	
8:30	Marionette of the New World	
9:00	Marionette of the New World	
9:30	Marionette of the New World	
10:00	Marionette of the New World	
10:30	Marionette of the New World	
11:00	Marionette of the New World	
11:30	Marionette of the New World	
12:00	Marionette of the New World	
12:30	Marionette of the New World	
1:00	Marionette of the New World	
1:30	Marionette of the New World	
2:00	Marionette of the New World	
2:30	Marionette of the New World	
3:00	Marionette of the New World	
3:30	Marionette of the New World	
4:00	Marionette of the New World	
4:30	Marionette of the New World	
5:00	Marionette of the New World	
5:30	Marionette of the New World	
6:00	Marionette of the New World	
6:30	Marionette of the New World	
7:00	Marionette of the New World	
7:30	Marionette of the New World	
8:00	Marionette of the New World	
8:30	Marionette of the New World	
9:00	Marionette of the New World	
9:30	Marionette of the New World	
10:00	Marionette of the New World	
10:30	Marionette of the New World	
11:00	Marionette of the New World	
11:30	Marionette of the New World	
12:00	Marionette of the New World	
12:30	Marionette of the New World	
1:		



## BLUEPRINT DRAWING FOR PEACE AUTOS

By DAVID J. WIEKE.  
DETROIT, March 2 (AP)—How soon after hostilities cease do we get automobiles? How soon after the war will it be the industry to get back to the 1941 production level? How low will the level of production continue in the post-war era?

These are a few of the questions coming with increasing frequency to the home offices of the nation's automobile companies and the answers, according to some of the industry's leading executives, still depend upon many intangibles.

Generally, the former automobile makers believe they can begin delivering cars again within a few months after the war ends, but from that point they start talking about "all other conditions being equal."

The car manufacturers are fairly well agreed that on the basis of present labor and material costs the cost of the automobile will run up to 25 per cent more than did in 1942.

In Detroit quarters it has been said that the reconstruction job will be an even greater one than was that of the war, and that it will require more time to complete. Industry spokesmen explain that the reconstruction of the country after Pearl Harbor made money no object.

It is very definitely may be an object, they say, in the reconstruction program. Most of the war-time production has anticipated their possible financial requirements in arranging for the reconstruction of the country.

Having put everything into the war effort, the former automobile manufacturers will have to start their reconstruction program virtually from scratch.

**Rigged Auto Year**  
The 4,232,481 passenger cars and trucks the industry produced in 1941 had a wholesale value of \$3,029,222, 022. It was the highest year in the volume output in the industry's history. Yet in two years of almost war good production the industry has jumped its annual output rate to over \$10,000,000,000.

"All other conditions being equal," the industry can produce 6,000,000 vehicles annually for from eight to 10 years after the war and still not catch up with the individual's demand of demand, according to expert industry opinion.

## ALBION

Mr. and Mrs. Blaine Wight and daughter Delma Ray spent several days in Idaho City, where they had been visiting for the past week.

Mr. and Mrs. Rex Engling and family, American Falls, visited at the home of his parents, Mr. and Mrs. W. Engling.

Miss Selma Erickson left for her home in Chicago, after spending two weeks here with her father, Gus Erickson, who is seriously ill.

Mr. and Mrs. Wallace Averil received a phone call from their son who is in the army and is attending the University of Indiana at Bloomington, after they had been taken out of school and would be sent overseas anytime.

Miss Len Stetson, Mountain Home, visited her father, Dr. J. Stetson.

## LEGAL ADVERTISEMENTS

### NOTICE

NOTICE IS HEREBY GIVEN THAT I, David King, will, at the next regular meeting of the Idaho State Board of Pardons, to be held at the Statehouse, Boise, Idaho, on the first Wednesday of April, 1944, make application for a Pardon and/or Commutation of Sentence from that certain judgment of conviction of Ferguson, made and entered in the Court of the 11th Judicial District of the State of Idaho in and for the County of Teton on or about July 26, 1942.

Dated at Boise, Idaho, February 21, 1944.

Applicant: David King.  
Publish: March 2, 9, 16, 23, 1944.

### NOTICE TO CREDITORS

IN THE PROBATE COURT OF TWIN FALLS COUNTY, IDAHO: Elizabeth Dennis, Deceased. In the Matter of the Estate of Elizabeth Dennis, Deceased.

Notice is hereby given by the undersigned Judge Dennis, Administrator of the estate of Elizabeth Dennis, deceased, to the creditors of and all persons having claims against the said deceased, to exhibit them with the necessary vouchers, within four months after the first publication of this notice, to the said administrator at the law office of Roy C. Stanley, Public Administrator, Building, Twin Falls, Idaho, County of Twin Falls, State of Idaho, for payment or satisfaction of such claims or debts.

Dated at Boise, Idaho, February 21, 1944.

Applicant: LOUIS M. STANLEY, Jr.  
Publish: Feb. 24, March 2, 9, 16, 1944.

### NOTICE

NOTICE IS HEREBY GIVEN THAT I, Bruce Harris, will, at the next regular meeting of the Idaho State Board of Pardons, to be held at the Statehouse, Boise, Idaho, on the first Wednesday of April, 1944, make application for a Pardon and/or Commutation of Sentence from that certain judgment of conviction of Ferguson, made and entered in the Court of the 11th Judicial District of the State of Idaho in and for the County of Teton on or about July 26, 1942.

Dated at Boise, Idaho, February 21, 1944.

Applicant: BRUCE HARRIS.  
Publish: Feb. 24, March 2, 9, 16, 1944.

### NOTICE

NOTICE IS HEREBY GIVEN THAT I, Gordon Lucas, will, at the next regular meeting of the Idaho State Board of Pardons, to be held at the Statehouse, Boise, Idaho, on the first Wednesday of April, 1944, make application for a Pardon and/or Commutation of Sentence from that certain judgment of conviction of Ferguson, made and entered in the Court of the 11th Judicial District of the State of Idaho in and for the County of Teton on or about July 26, 1942.

Dated at Boise, Idaho, February 21, 1944.

Applicant: GORDON LUCAS.  
Publish: Feb. 24, March 2, 9, 16, 1944.

## New Position



J. EARL POWERS  
Albion State Normal graduate to accept post at Washington state prison, (Staff Engraving)

## Normal Registrar Takes Prison Post

ALBION, March 2 (AP)—J. Earl Powers, who has been registrar of the Albion State Normal school for the past 17 years, has accepted a position at Walla Walla, Wash., as educational director at the Washington state prison.

Mr. Powers plans to leave for Walla Walla the middle of this month. Mrs. Powers and daughter, Nancy, will remain here until the end of the school year.

The normal registrar is the second highest member to accept a post on the staff of the Washington penal institution.

## PHILIPPINES U.S. GOAL IN PACIFIC

By JOHN M. HIGHTOWER

WASHINGTON, March 2 (AP)—Beyond the admiralty islands in the Philippines.

This was military Washington's reaction to the news that the combined forces of General Douglas MacArthur had made their way planning to land on the island of Mindanao.

The admiralty islands are little islands, almost unknown in this country, but they are considered of great strategic importance. It may be argued in their favor.

1. For the future—the southwest Pacific campaign now takes a definite swing to the west in the opinion of the Philippines where America's land forces in the Pacific are being sent, to come to grips with the armies of Japan in major fighting.

2. First U.S. Offensive  
The first time the first American offensive of the war, the invasion of Guadalcanal in August, 1942, has been brought to its logical conclusion with the cutting off of the key base in both the Solomon Islands and New Guinea.

3. For the present—the New Britain stronghold of Rabaul loomed the war there is one of mounting importance, and the base has been rendered so useless to the enemy by the combination of bombing and direct air and sea attack that the cleanup may be spread over weeks or months if that is cheaper.

102,000 Cut Off  
MacArthur's command estimated 100,000 enemy troops at Rabaul in addition to 22,000 previously trapped in the Solomons.

These forces moreover are additional to perhaps 30,000 cut off in the central Pacific by capture of the islands of New Britain and New Guinea.

4. For the future—the New Britain stronghold of Rabaul loomed the war there is one of mounting importance, and the base has been rendered so useless to the enemy by the combination of bombing and direct air and sea attack that the cleanup may be spread over weeks or months if that is cheaper.

102,000 Cut Off  
MacArthur's command estimated 100,000 enemy troops at Rabaul in addition to 22,000 previously trapped in the Solomons.

These forces moreover are additional to perhaps 30,000 cut off in the central Pacific by capture of the islands of New Britain and New Guinea.

4. For the future—the New Britain stronghold of Rabaul loomed the war there is one of mounting importance, and the base has been rendered so useless to the enemy by the combination of bombing and direct air and sea attack that the cleanup may be spread over weeks or months if that is cheaper.

102,000 Cut Off  
MacArthur's command estimated 100,000 enemy troops at Rabaul in addition to 22,000 previously trapped in the Solomons.

These forces moreover are additional to perhaps 30,000 cut off in the central Pacific by capture of the islands of New Britain and New Guinea.

4. For the future—the New Britain stronghold of Rabaul loomed the war there is one of mounting importance, and the base has been rendered so useless to the enemy by the combination of bombing and direct air and sea attack that the cleanup may be spread over weeks or months if that is cheaper.

102,000 Cut Off  
MacArthur's command estimated 100,000 enemy troops at Rabaul in addition to 22,000 previously trapped in the Solomons.

These forces moreover are additional to perhaps 30,000 cut off in the central Pacific by capture of the islands of New Britain and New Guinea.

4. For the future—the New Britain stronghold of Rabaul loomed the war there is one of mounting importance, and the base has been rendered so useless to the enemy by the combination of bombing and direct air and sea attack that the cleanup may be spread over weeks or months if that is cheaper.

102,000 Cut Off  
MacArthur's command estimated 100,000 enemy troops at Rabaul in addition to 22,000 previously trapped in the Solomons.

These forces moreover are additional to perhaps 30,000 cut off in the central Pacific by capture of the islands of New Britain and New Guinea.

4. For the future—the New Britain stronghold of Rabaul loomed the war there is one of mounting importance, and the base has been rendered so useless to the enemy by the combination of bombing and direct air and sea attack that the cleanup may be spread over weeks or months if that is cheaper.

102,000 Cut Off  
MacArthur's command estimated 100,000 enemy troops at Rabaul in addition to 22,000 previously trapped in the Solomons.

These forces moreover are additional to perhaps 30,000 cut off in the central Pacific by capture of the islands of New Britain and New Guinea.

4. For the future—the New Britain stronghold of Rabaul loomed the war there is one of mounting importance, and the base has been rendered so useless to the enemy by the combination of bombing and direct air and sea attack that the cleanup may be spread over weeks or months if that is cheaper.

102,000 Cut Off  
MacArthur's command estimated 100,000 enemy troops at Rabaul in addition to 22,000 previously trapped in the Solomons.

These forces moreover are additional to perhaps 30,000 cut off in the central Pacific by capture of the islands of New Britain and New Guinea.

4. For the future—the New Britain stronghold of Rabaul loomed the war there is one of mounting importance, and the base has been rendered so useless to the enemy by the combination of bombing and direct air and sea attack that the cleanup may be spread over weeks or months if that is cheaper.

102,000 Cut Off  
MacArthur's command estimated 100,000 enemy troops at Rabaul in addition to 22,000 previously trapped in the Solomons.

These forces moreover are additional to perhaps 30,000 cut off in the central Pacific by capture of the islands of New Britain and New Guinea.

4. For the future—the New Britain stronghold of Rabaul loomed the war there is one of mounting importance, and the base has been rendered so useless to the enemy by the combination of bombing and direct air and sea attack that the cleanup may be spread over weeks or months if that is cheaper.

102,000 Cut Off  
MacArthur's command estimated 100,000 enemy troops at Rabaul in addition to 22,000 previously trapped in the Solomons.

## FACILITIES LACK HITS BLOOD BANK

WASHINGTON, March 2 (AP)—Some people, reading and hearing national Red Cross appeals for blood, for plasma, worry because there is no place in their community to take it.

But facilities for making the plasma, best-known remedy for shock, are limited. Only 12 laboratories can do the job. They are working at capacity.

There are only 35 Red Cross centers for collecting the blood. They are in the larger centers of population and reasonably close to the laboratories.

The blood must reach the laboratories within 24 hours after exsanguination. During that time it must be specially handled in special containers.

When collecting units also operate from the 35 centers, reach 80 additional communities, visit them on scheduled days.

Because the territory is wide and there is little 24-hour time, some mobile units can visit a community only once in three months.

All this still leaves plenty of communities lacking a donor center or a visit by the mobile unit. People in these places and their families, cities, need not worry.

Mobile units of the Red Cross, which has been given the blood collecting job by the armed forces, is to maintain present sources.

It does not plan to seek new ones in new locations. Reason: the time and distance factors mentioned above.

Some centers send their mobile collectors ranging out many miles, some only five or six miles.

The larger the population, the more the blood available close at hand the heavier the load on the center's ability to handle the blood bank.

Each year the Red Cross filled 14 quarts of four million pints, which means that every week more than 75,000 Americans use a pint. The Red Cross expects to fill this year's quota of five million pints.

In liquid form the plasma lasts one year; frozen, it last three; powdered, it is good for five.

## Navy Airman Hurt



O. ZANE COUPE  
Jerome young man, aviation radio man first class in the navy, injured in plane crash somewhere in the southwest Pacific. (Staff Engraving)

Sahara is the Arabic word for "wilderland."

Jerome young man, aviation radio man first class in the navy, injured in plane crash somewhere in the southwest Pacific. (Staff Engraving)

Sahara is the Arabic word for "wilderland."

Jerome young man, aviation radio man first class in the navy, injured in plane crash somewhere in the southwest Pacific. (Staff Engraving)

Sahara is the Arabic word for "wilderland."

Jerome young man, aviation radio man first class in the navy, injured in plane crash somewhere in the southwest Pacific. (Staff Engraving)

Sahara is the Arabic word for "wilderland."

Jerome young man, aviation radio man first class in the navy, injured in plane crash somewhere in the southwest Pacific. (Staff Engraving)

Sahara is the Arabic word for "wilderland."

Jerome young man, aviation radio man first class in the navy, injured in plane crash somewhere in the southwest Pacific. (Staff Engraving)

Sahara is the Arabic word for "wilderland."

Jerome young man, aviation radio man first class in the navy, injured in plane crash somewhere in the southwest Pacific. (Staff Engraving)

Sahara is the Arabic word for "wilderland."

Jerome young man, aviation radio man first class in the navy, injured in plane crash somewhere in the southwest Pacific. (Staff Engraving)

Sahara is the Arabic word for "wilderland."

Jerome young man, aviation radio man first class in the navy, injured in plane crash somewhere in the southwest Pacific. (Staff Engraving)

Sahara is the Arabic word for "wilderland."

Jerome young man, aviation radio man first class in the navy, injured in plane crash somewhere in the southwest Pacific. (Staff Engraving)

Sahara is the Arabic word for "wilderland."

Jerome young man, aviation radio man first class in the navy, injured in plane crash somewhere in the southwest Pacific. (Staff Engraving)

Sahara is the Arabic word for "wilderland."

Jerome young man, aviation radio man first class in the navy, injured in plane crash somewhere in the southwest Pacific. (Staff Engraving)

Sahara is the Arabic word for "wilderland."

Jerome young man, aviation radio man first class in the navy, injured in plane crash somewhere in the southwest Pacific. (Staff Engraving)

Sahara is the Arabic word for "wilderland."

Jerome young man, aviation radio man first class in the navy, injured in plane crash somewhere in the southwest Pacific. (Staff Engraving)

Sahara is the Arabic word for "wilderland."

Jerome young man, aviation radio man first class in the navy, injured in plane crash somewhere in the southwest Pacific. (Staff Engraving)

Sahara is the Arabic word for "wilderland."

Jerome young man, aviation radio man first class in the navy, injured in plane crash somewhere in the southwest Pacific. (Staff Engraving)

Sahara is the Arabic word for "wilderland."

Jerome young man, aviation radio man first class in the navy, injured in plane crash somewhere in the southwest Pacific. (Staff Engraving)

Sahara is the Arabic word for "wilderland."

Jerome young man, aviation radio man first class in the navy, injured in plane crash somewhere in the southwest Pacific. (Staff Engraving)

Sahara is the Arabic word for "wilderland."

Jerome young man, aviation radio man first class in the navy, injured in plane crash somewhere in the southwest Pacific. (Staff Engraving)

Sahara is the Arabic word for "wilderland."

Jerome young man, aviation radio man first class in the navy, injured in plane crash somewhere in the southwest Pacific. (Staff Engraving)

## NAVY AIR RADIO OPERATOR HURT

DETROIT, March 2—Aviation Radio man first class in the Navy, O. Zane Coupe, son of Mr. and Mrs. Cecil Coupe, Detroit, has been wounded in action as a result of a plane crash somewhere in the southwest Pacific, his parents here have been informed by the navy department.

Zane was graduated from the navy school last year. He is now on a ship in the navy. His mother said that he had been in a hospital about a month, later being sent to a rest camp and then back to his duty on a ship.

His mother said that he had been in a hospital about a month, later being sent to a rest camp and then back to his duty on a ship.

His mother said that he had been in a hospital about a month, later being sent to a rest camp and then back to his duty on a ship.

His mother said that he had been in a hospital about a month, later being sent to a rest camp and then back to his duty on a ship.

His mother said that he had been in a hospital about a month, later being sent to a rest camp and then back to his duty on a ship.

His mother said that he had been in a hospital about a month, later being sent to a rest camp and then back to his duty on a ship.

His mother said that he had been in a hospital about a month, later being sent to a rest camp and then back to his duty on a ship.

His mother said that he had been in a hospital about a month, later being sent to a rest camp and then back to his duty on a ship.

His mother said that he had been in a hospital about a month, later being sent to a rest camp and then back to his duty on a ship.

His mother said that he had been in a hospital about a month, later being sent to a rest camp and then back to his duty on a ship.

His mother said that he had been in a hospital about a month, later being sent to a rest camp and then back to his duty on a ship.

His mother said that he had been in a hospital about a month, later being sent to a rest camp and then back to his duty on a ship.

His mother said that he had been in a hospital about a month, later being sent to a rest camp and then back to his duty on a ship.

His mother said that he had been in a hospital about a month, later being sent to a rest camp and then back to his duty on a ship.

His mother said that he had been in a hospital about a month, later being sent to a rest camp and then back to his duty on a ship.

His mother said that he had been in a hospital about a month, later being sent to a rest camp and then back to his duty on a ship.

His mother said that he had been in a hospital about a month, later being sent to a rest camp and then back to his duty on a ship.

His mother said that he had been in a hospital about a month, later being sent to a rest camp and then back to his duty on a ship.

His mother said that he had been in a hospital about a month, later being sent to a rest camp and then back to his duty on a ship.

His mother said that he had been in a hospital about a month, later being sent to a rest camp and then back to his duty on a ship.

His mother said that he had been in a hospital about a month, later being sent to a rest camp and then back to his duty on a ship.

His mother said that he had been in a hospital about a month, later being sent to a rest camp and then back to his duty on a ship.

His mother said that he had been in a hospital about a month, later being sent to a rest camp and then back to his duty on a ship.

His mother said that he had been in a hospital about a month, later being sent to a rest camp and then back to his duty on a ship.

His mother said that he had been in a hospital about a month, later being sent to a rest camp and then back to his duty on a ship.

His mother said that he had been in a hospital about a month, later being sent to a rest camp and then back to his duty on a ship.

His mother said that he had been in a hospital about a month, later being sent to a rest camp and then back to his duty on a ship.

His mother said that he had been in a hospital about a month, later being sent to a rest camp and then back to his duty on a ship.

His mother said that he had been in a hospital about a month, later being sent to a rest camp and then back to his duty on a ship.

His mother said that he had been in a hospital about a month, later being sent to a rest camp and then back to his duty on a ship.

His mother said that he had been in a hospital about a month, later being sent to a rest camp and then back to his duty on a ship.

His mother said that he had been in a hospital about a month, later being sent to a rest camp and then back to his duty on a ship.

His mother said that he had been in a hospital about a month, later being sent to a rest camp and then back to his duty on a ship.

His mother said that he had been in a hospital about a month, later being sent to a rest camp and then back to his duty on a ship.

His mother said that he had been in a hospital about a month, later being sent to a rest camp and then back to his duty on a ship.

His mother said that he had been in a hospital about a month, later being sent to a rest camp and then back to his duty on a ship.

His mother said that he had been in a hospital about a month, later being sent to a rest camp and then back to his duty on a ship.

His mother said that he had been in a hospital about a month, later being sent to a rest camp and then back to his duty on a ship.

His mother said that he had been in a hospital about a month, later being sent to a rest camp and then back to his duty on a ship.

His mother said that he had been in a hospital about a month, later being sent to a rest camp and then back to his duty on a ship.

His mother said that he had been in a hospital about a month, later being sent to a rest camp and then back to his duty on a ship.

His mother said that he had been in a hospital about a month, later being sent to a rest camp and then back to his duty on a ship.

## Detail for Today Sweating It Out



SWEATING IT OUT means waiting for something with a maximum of anticipation. It is a lot to wait for a long time in the rear of a long slow line he is SWEATING IT OUT. If he expects a promotion in the near future he is SWEATING IT OUT. Nobody expects a promotion in the near future he is SWEATING IT OUT. Nobody expects a promotion in the near future he is SWEATING IT OUT.

SWEATING IT OUT means waiting for something with a maximum of anticipation. It is a lot to wait for a long time in the rear of a long slow line he is SWEATING IT OUT. If he expects a promotion in the near future he is SWEATING IT OUT. Nobody expects a promotion in the near future he is SWEATING IT OUT.

SWEATING IT OUT means waiting for something with a maximum of anticipation. It is a lot to wait for a long time in the rear of a long slow line he is SWEATING IT OUT. If he expects a promotion in the near future he is SWEATING IT OUT. Nobody expects a promotion in the near future he is SWEATING IT OUT.

SWEATING IT OUT means waiting for something with a maximum of anticipation. It is a lot to wait for a long time in the rear of a long slow line he is SWEATING IT OUT. If he expects a promotion in the near future he is SWEATING IT OUT. Nobody expects a promotion in the near future he is SWEATING IT OUT.

SWEATING IT OUT means waiting for something with a maximum of anticipation. It is a lot to wait for a long time in the rear of a long slow line he is SWEATING IT OUT. If he expects a promotion in the near future he is SWEATING IT OUT. Nobody expects a promotion in the near future he is SWEATING IT OUT.

SWEATING IT OUT means waiting for something with a maximum of anticipation. It is a lot to wait for a long time in the rear of a long slow line he is SWEATING IT OUT. If he expects a promotion in the near future he is SWEATING IT OUT. Nobody expects a promotion in the near future he is SWEATING IT OUT.

SWEATING IT OUT means waiting for something with a maximum of anticipation. It is a lot to wait for a long time in the rear of a long slow line he is SWEATING IT OUT. If he expects a promotion in the near future he is SWEATING IT OUT. Nobody expects a promotion in the near future he is SWEATING IT OUT.

SWEATING IT OUT means waiting for something with a maximum of anticipation. It is a lot to wait for a long time in the rear of a long slow line he is SWEATING IT OUT. If he expects a promotion in the near future he is SWEATING IT OUT. Nobody expects a promotion in the near future he is SWEATING IT OUT.

SWEATING IT OUT means waiting for something with a maximum of anticipation. It is a lot to wait for a long time in the rear of a long slow line he is SWEATING IT OUT. If he expects a promotion in the near future he is SWEATING IT OUT. Nobody expects a promotion in the near future he is SWEATING IT OUT.

SWEATING







Pub. Feb. 24, Mar. 2, 1944









## Bright Plaid Skirts

Lively colors mark the advent of spring — and this year more than ever, your costume should reflect spring's spirit. We've chosen a large assortment of these early colored plaid skirts for your selection. Sizes are 26 to 32.

**\$590 to 790**

## Cardigan Sweaters

... in lavender and cherry cherry shades to complement your spring day-wear costumes. Cardigans can be chosen for conservatively styled costumes — and the dash of color will live it for spring

**\$4.98**

## AMERICAN RED CROSS 1944 WAR FUND DRIVE

Help Keep the Red Cross by His Side — Subscribe Now!

## SLIP-OVER SWEATERS

Bright colors for 'teen age wear — and older, too! Roll up the sleeves in bunches or leave them sleek and slim. In combination with just as colorful skirts, your spring knock-about, shop-about costume is set.

**\$298 to \$790**

MAIN FLOOR  
READY-TO-WEAR  
DEPARTMENT



## CHILDREN'S DRESSES

Happily selected for youngsters' wear were these bright prints and plain colors in snug, cute dresses—just right for daytime wear at school or play. Sizes 3 to 14

**\$1.98 and \$2.98**

MAIN FLOOR READY-TO-WEAR DEPARTMENT

A NEW SHIPMENT JUST RECEIVED



**Growing Feet Need POLL-PARROT Shoes WITH 10 WAY BUILT-IN FIT**

The staghline crowds about the beauty who dances so lightly. Lucky girl! Her feet were not neglected in childhood. Boys' and girls' shoes must fit growing feet correctly... as long as they are worn. So never buy children's shoes on looks alone. Be sure! Demand Poll-Parrot and Star Brand shoes with ten-way BUILT-IN FIT. Boys and girls love their grown-up styles for all occasions.

**\$198 to \$395**

10 WAY BUILT-IN FIT

1. Room for growing toes
2. Correlated heel-to-ball fit
3. No binding leashes
4. Age-conforming arches
5. Anti-bumping toes
6. Snug, pear-shaped heels
7. Straight-head lasts
8. Free-action flexibility
9. Soft, durable uppers
10. Selected long-wearing soles

**Poll-Parrot SHOES**

MAIN FLOOR SHOE DEPT.



INFANTS'

## Corduroy 'Overalls'

**\$249**

Just received a new shipment of new narrow-cord — two front patch pockets, reinforced throughout. Colors Red, Blue, Green, Brown, Wine. Sizes 2 to 6.

MAIN FLOOR DRY GOODS DEPARTMENT

Misses'

## Rayon Panties

Finest quality trikot knit rayon — White or tea rose. Sizes 2 to 8. Elastic back in tea rose shade—elastic all around in white.

**79c**

MAIN FLOOR DRY GOODS DEPT.



the 'Aristocrat of Sandals' **PEACOCK**

**Countess**

**\$975**

FEATURED IN BLACK PATENT

A proud little shoe, well-bred in the art of flattery! Ingeniously cut, with a wide strap to sheath your instep! A regal companion for all costumes!

THE SMARTEST FEET ARE WEARING PEACOCK SHOES

MAIN FLOOR SHOE DEPARTMENT

## Novelty Jewelry

**98c and up**

New spring styles in a large assortment of colors — Necklaces, Bracelets, Pins and Ear Rings.

MAIN FLOOR

## Percal Prints

**29c Per Yard**

Just received a big shipment of newest patterns. 36-in. widths. All are fast to washing — you will want several pieces of this fabric when you see them.

MAIN FLOOR  
DRY GOODS  
DEPARTMENT

## New SLIP-ON SPORT PUMPS

Soft brown elk in high tongue moccasin style. Genuine "Airflex Bearfoot" soles, low rubber heels. Leather insoles; sewed construction. Sizes 4 to 8. D and C widths.

**\$398**

ECONOMY BASEMENT

New!

## Children's Non-Ration Sandals

Dark green fabric — strap around ankle style. Flat heels, sewed soles. Sizes 12 to 3.

**\$198**

ECONOMY BASEMENT

# IDAHO DEPARTMENT STORE

"If It Isn't Right, Bring It Back"