

BUY EXTRA  
WAR BONDS



VOL. 27, NO. 48

# Times

A Regional Newspaper Serving

TWIN FALLS, IDAHO, MONDAY EVENING, JUNE 12, 1944

Nine Irrigated Idaho Counties

Member of Audit Bureau of Circulations  
Associated Press and United Press

## WAR BULLETIN

SUPREME HEADQUARTERS ALLIED EXPEDITIONARY FORCE, June 12 (AP)—More than 1,400 flying Fortress and Liberator, the greatest number ever dispatched in one mission, shot down 17 enemy aircraft in blazes 18 miles inland and six bridges in France today. Twenty-one allied planes were lost.

PRICE 5 CENTS

## Your Responsibility to Them

(An Editorial)

The men in our fighting forces are risking and giving their lives to preserve America. While they are fighting overseas, it's the responsibility of those who remain at home to act as guardians over all those things these men hold dear—to keep this country as strong as possible.

To keep our country strong we must elect the most capable candidates available for every public office. That's the only method of building and maintaining a real democracy.

It's YOUR duty—your responsibility to these fighting men—to VOTE to the best of your ability!

## New Pacific Assaults Hinted in Isle Blast

By WILLIAM F. TYREE

PEARL HARBOR, June 12 (AP)—A two-way aerial offensive on enemy bases protecting the Philippines appeared under way today following the second attack by a powerful U. S. Pacific fleet task force on the Marianas and the first land-based raid by Liberator bombers on Palau island.

Virtually all types of combat ships, including battleships, were believed to have comprised the task force which struck the island of Palau, 100 miles east of the Marianas. The attack was believed to be a prelude to a major assault on the principal islands of Saipan, Tinian and Guam in the second fleet attack in four months on the strategic group.

**JAPS GAINING IN CHINA OFFENSIVE**  
CHUNGKING, June 12 (AP)—Two powerful Japanese armies were reported beating down desperate Chinese resistance at both ends of a 200-mile front line in central China today, according to a report from the Japanese government.

The northern wing of the two-power offensive, spearheaded by 80,000 veteran enemy troops, broke into the outskirts of Chungking today, according to a report from the Japanese government.

The southern wing, which was reported to have broken through the defenses of Chungking, was reported to have captured the city of Kungling, 110 miles south of Chungking and about 250 miles south of Canton.

Military spokesmen described the enemy forces as the heaviest units ever sent by the Japanese to the front. They overcame Canton and Hankow in 1938.

**Chinese Attack**  
Meanwhile, Chinese forces attacking toward the Burma frontier in the mountains west of the Salween river, moved in a series of attacks after completing the capture of the Burma road town of Tachung, 15 miles to the south.

At the same time, other Chinese troops broke through the Japanese line at Myittha, 10 miles to the north, and the nearby town of Myittha, 10 miles to the north.

At the same time, other Chinese troops broke through the Japanese line at Myittha, 10 miles to the north, and the nearby town of Myittha, 10 miles to the north.

At the same time, other Chinese troops broke through the Japanese line at Myittha, 10 miles to the north, and the nearby town of Myittha, 10 miles to the north.

At the same time, other Chinese troops broke through the Japanese line at Myittha, 10 miles to the north, and the nearby town of Myittha, 10 miles to the north.

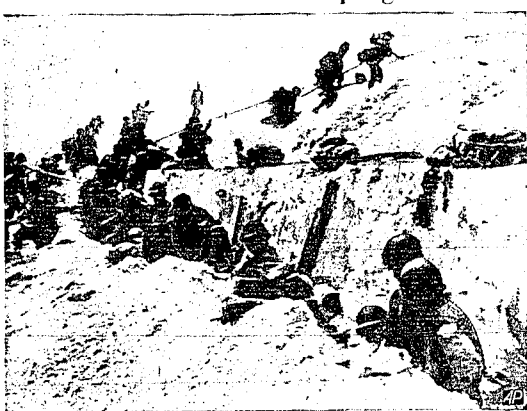
At the same time, other Chinese troops broke through the Japanese line at Myittha, 10 miles to the north, and the nearby town of Myittha, 10 miles to the north.

At the same time, other Chinese troops broke through the Japanese line at Myittha, 10 miles to the north, and the nearby town of Myittha, 10 miles to the north.

At the same time, other Chinese troops broke through the Japanese line at Myittha, 10 miles to the north, and the nearby town of Myittha, 10 miles to the north.

At the same time, other Chinese troops broke through the Japanese line at Myittha, 10 miles to the north, and the nearby town of Myittha, 10 miles to the north.

## Yanks Go Over the Top Again



Sons of American doughboys who 16 years ago "went over the top" in France during battles of the first World War, repeat with a charge over the top in new battles against the Germans in World War II. Northern France. Other troops wait beside a wall for their orders to go into action. (AP wirephoto from signal corps radio photo).

## FARMER KNIFED; Light Total Looms in County Primary Vote

Despite importance of a wartime election in the democratic school of thought, the Twin Falls county primary election Tuesday may hit an all-time modern low in aggregate ballots cast.

That was the indication Monday afternoon following a Times-News telephone survey of most parts of the county.

Bank and fire voters, as distinct from party workers, indicated in rural areas that if the weather is clear they probably won't have time to visit the polls. Farm work is now too close to hand for many voters.

The probability that long-deferred farm work may be able to move some Tuesday was not only cutting down forecasts of the total vote but was bringing problems to election board officials in each precinct. The boards in rural areas are now being asked to prepare for a possible shortage of ballots.

The alteration occurred, Lincoln county officials said, in a clearing behind the Motor Mart garage in the presence of two or three other men who were immediately taken to the office of a Shoshone physician, from where he was brought to Twin Falls in an ambulance by Lincoln county Sheriff Jerry Puckett.

The knife was described as a folding pocket variety by deputy sheriffs. Both men involved in the dispute are married men with families.

**BUS OVERTURNS**  
BOISE, June 12 (AP)—A Union Pacific bus overturned 12 miles east of here early today, hospitalizing one passenger. The bus was carrying 12 passengers and a driver.

The bus was carrying 12 passengers and a driver. The driver was injured and the bus was overturned.

The bus was carrying 12 passengers and a driver. The driver was injured and the bus was overturned.

The bus was carrying 12 passengers and a driver. The driver was injured and the bus was overturned.

The bus was carrying 12 passengers and a driver. The driver was injured and the bus was overturned.

The bus was carrying 12 passengers and a driver. The driver was injured and the bus was overturned.

The bus was carrying 12 passengers and a driver. The driver was injured and the bus was overturned.

## Invaders Push Way 18 Miles Inland to Capture Stronghold

By JAMES H. LONG

**SUPREME HEADQUARTERS ALLIED EXPEDITIONARY FORCE, June 12 (AP)**—American troops have driven 18 miles inland in the middle of the Normandy beachhead, capturing the whole forest of Cerisy, and the German high command said today the strategic stronghold of Carentan had fallen to U. S. forces.

The smashing advance through the Cerisy forest punched the deepest dent yet in the Nazi line.

Doughboys were converging on St. Lo, communications hub in the center of Normandy, less than nine miles away, from the north and east.

Headquarters did not confirm the fall of Carentan, guarding the narrow neck of Cherbourg peninsula, but said Americans were within 14 miles of Cherbourg itself from the southeast, and had punched halfway across the shape, threatening to seal off the tip.

**FOE COMPLETELY ROUTED IN ITALY**  
ALLIED HEADQUARTERS, Naples, June 12 (AP)—The triumphant allied fifth army raced almost unopposed over the coastal and mountain districts of southern Italy since Rome today and a headquarters spokesman announced that the German 14th army, which once numbered 160,000 men, "has ceased to exist" as a fighting force.

All remnants of organized resistance vanished in the path of the fifth army columns and official reports said the last retreat had become a chaotic rout. Bands of Germans were fleeing on foot and in horse-drawn farm carts, battling each other in the dust for trucks and cars in a panic race to escape.

A few enemy rear guards, never more than one or two companies strong, attempted vainly to stem the allied advance, but they were annihilated by the fifth army's tanks and artillery.

Simultaneously, British eighth army columns drove the battered German 10th army in headlong retreat on a broad front extending from the bank of the Tiber 20 miles above Rome to the mouth of the Pescara river, on the Adriatic coast.

With their right flank exposed by the British drive, the German 10th army was forced to retreat in a headlong rush toward the Adriatic coast.

**FLASHES of LIFE**  
By Associated Press  
SECRET  
CAMP LEWIS, Pa., June 12 (AP)—The "warrior" of the American Civil War, General Sherman, is being honored by the army's administration. "Your job is to win the war," he said.

He received a letter saying simply: "I'll be in town for the week end."

What's worrying the corporal now is: (1) What week end? (2) Who's the girl?

**Interstate Plane Service Is Begun**  
WASHINGTON, June 12 (AP)—The first regularly scheduled airline trip ever made by an Idaho firm began today when Jerry Zimmerman, owner of the Zimmerman Air Transport, took off at 8 a. m. for Boise.

Zimmerman said he would operate a daily schedule between Lewiston and Boise and return for a 30-day trial period. If the public demand is great enough, he will be carried on the line.

An office will be established in Boise, Zimmerman said.

**New Veto Battle Seen in Capital**  
WASHINGTON, June 12 (AP)—President Roosevelt and congress appeared headed today toward another major veto battle, this time over an amendment-aided price control extension bill denounced by the administration as a menace to the fight against inflation.

**German Women at Coast Guns To Help Repel Allied Attack**  
By DUDLEY AN HARMON  
BRITISH INVASION FORCE, June 12 (AP)—German women are being trained to man coastal defense guns in France, it was revealed today as preparations were made to defend the 250 of them in a prisoner of war camp.

The women, expected to arrive with the next group of prisoners, will be assigned the same treatment as the men.


They will be assigned the same treatment as the men.

## Gooding Resident Called by Death

She was born February 7, 1869, in Tama county, Ia., and came from Norton, Kan., to Gooding in 1934. She was a member of the Methodist church.

Mrs. Higgins is survived by her husband, four sons, Roy Higgins, Gooding; Earl Higgins, Great Bend, Kan.; Cpl. Walter T. Higgins, serving in England; Phillip Higgins, Gooding; and two daughters, Mrs. Florence Boatman, Bliss, and Mrs. Edith Bright, Gooding. Also there are eleven grandchildren and one great-grandchild.

not been made pending word from the son in Kansas, but the funeral has been tentatively set for Wednesday at 2 p. m. at the Thompson chapel with Rev. E. R. Kaemmer, the Methodist church, officiating.



Reelect Ira H.

# Masters

Secretary of State  
(He's an FDR Democrat)

Ira Masters was born on a Kansas farm. Coached football and taught school for \$30 per month. He was state champion of Red Cross, Boy Scouts

Utah Legislator, endorsed by Idaho Allied Civic League, he knows Idaho

He was elected Secretary of State in 1936 with a majority of nearly 40,000 and made good. We need

(Pd. Pol. Adv.)

# IRER

## DEED LUMBER

and we may be able to know how many jobs and can be done without vic-regulations? If not al-

**E GETTING  
TRICTED**

★

Government comes first and  
ONE MILLION FEET  
Government use to sup-

n allocated lumber. But  
should not call on us  
will have an additional  
ET available, which we  
n Falls territory.

your needs in  
ade from our Yard, 201  
two blocks back of Post  
be opened soon.

# IBER

**BER  
PANY**  
diary to  
ER COMPANY

phone. Phone is needed  
ent business.

## IDAHOANS URGED TO VOTE TUESDAY

BOISE, June 12 (AP)—State chairman of the Democratic and Republican parties today issued statements urging the electorate to vote in tomorrow's Idaho primary to exercise one of the rights for which the nation is fighting.

"The Republicans of Idaho will spend tomorrow from a list of very able candidates the participants who run for office this coming November and thereafter exert a very large control over the destinies of our nation," said Betty Atkinson, state Republican chairman.

"The 1944 elections are the most important ever held in the United States," said Democratic state Chairman Robert Coulter.

"I can't believe that any Republican in Idaho who has a boy or girl in the armed forces of engaged in war work will share the duty of voting tomorrow, thus saying to himself:

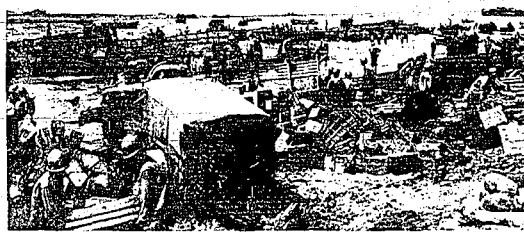
"Let the boys and girls in France or Asia do the whole job. I am too busy to do my part."

"I don't ask more than one-third of the registered voters will vote at the polls—although the selection of candidates is of transcendent importance—but we must all vote this Tuesday if we possibly can do so to keep faith with those who are gone."

Said Coulter:

"While we all want to win the war in the quickest time possible, we must not forget the home front. The officials we elect now will be

## Equipment for Invasion



Piled on an English beach is equipment for the allied invasion of France just before shipment to back up the allied troops. The problem of supply is one of the greatest of the invasion. (NEA photo)

## Labor Supervisor Is Grandpa Now; Another Sherman

When O. J. Bellwood, assistant labor supervisor for Twin Falls, was told off for his Saturday morning work, he was told off by his mother-in-law, Mrs. Bellwood, who is now a grandmother.

## Officers Chosen By Burley Lions

BURLEY, June 12—Officers of the new president of Burley Lions club to succeed Dick Sepp, retiring president, following the election of the club officers.

## Last Rites for John L. Stewart

BURLEY, June 12—Final rites for John L. Stewart, were held at the Albertson funeral chapel, with the Rev. H. H. Conley of the Twin Falls Seventh Adventist church officiating.

Mr. Stewart, two-year director of the Twin Falls Lions club, died at his home in Burley, Idaho, June 11, 1944.

## Rupert Fire Chief Retires From Post

RUPERT, June 12—Frank Harris, who has been a member of Rupert

fire department since June 22, 1922, and for chief since August, 1932, has tendered his resignation and retired from active service with the department.

Chief Harris has recently been a patient at the Veterans hospital, Boise, and was acting on the advice of his physician, Roy Cowell, who advised him to retire.

Mr. Harris has been a member of the department since June 22, 1922, and for chief since August, 1932.

He has been a member of the department since June 22, 1922, and for chief since August, 1932.

He has been a member of the department since June 22, 1922, and for chief since August, 1932.

He has been a member of the department since June 22, 1922, and for chief since August, 1932.

He has been a member of the department since June 22, 1922, and for chief since August, 1932.

He has been a member of the department since June 22, 1922, and for chief since August, 1932.

He has been a member of the department since June 22, 1922, and for chief since August, 1932.

He has been a member of the department since June 22, 1922, and for chief since August, 1932.

He has been a member of the department since June 22, 1922, and for chief since August, 1932.

The Press, Peruvian Island, are credited with the development of cocoa.

## EUGENE BEAUTY STUDIO

Now giving the most efficient operators. Phone 60 for appointments. Across from court-house.

## MISTER CONTRACTOR

Put a sharp tooth against that dirt lifting job and you'll save power, cut costs, move dirt and pile up profits.

We sharpen ditcher, shovel and scarifier teeth.

WE RUN TWO SHIFTS

Krengel's

INCORPORATED

Plumbing • Paint • Electrical Supplies

# Attic-Wool Insulation Continues to Prove Itself

the most efficient, the easiest installed, the most satisfactory insulation available AT THE LOWEST INSTALLED PRICE

INVESTIGATE THE QUALITIES OF ATTIC-WOOL NO OBLIGATION INCURRED IN ASKING FOR AN ESTIMATE

This is a Partial List of Users of Attic-Wool Ask Your Neighbor About Its Advantages

ATTIC-WOOL, the modern insulation, continues to prove itself in scores more of Magic Valley homes... everywhere it is installed it brings immediate success in solving a number of household problems. Attic-Wool, a light, thoroughly insulative material which is fire-preventive, is manufactured right here in Twin Falls and through members of our firm. We can guarantee its satisfaction to you and we take pride in reproducing here many of the thousands of users of Attic-Wool... testimony to its outstanding qualities.

ATTIC-WOOL is the answer to coal rationing—for with the installation of Attic-Wool, you will make an immediate saving in coal of at least one-third of former consumption. Coal rationing—by that name, or any name—is a certainty. This is the time to take steps to make sure that the limited supply of coal which you receive will go the farthest in heating your home. ATTIC-WOOL helps preserve the life of your roof. Because it shields the roofing material or shingles from the shock of changing temperatures, it gives the roof a chance for longer life—without less expense to you.

ATTIC-WOOL is important too, because it keeps your home coolly comfortable in the blazing days of summer sun. There is no hot weather discomfort when your home is insulated with Attic-Wool for Attic-Wool keeps out the heat as thoroughly as it keeps the heat in when winter winds blow.

ATTIC-WOOL can be easily installed in your home without fuss or muss—blown into the attic with a hose, there is no drifting dust or particles to upset your well-made housekeeping plans. The average house is insulated with Attic-Wool in a few short hours.

AND REMEMBER that Attic-Wool is the most satisfactory, the most efficient insulation to be had and is ready for you now at the LOWEST INSTALLED PRICE. Don't wait—we suggest you act now and place your order now. If you wish, we shall be glad to call at your home—anywhere in Magic Valley—and give you a free estimate of the installation costs. We know you'll agree with us that the savings you make in household costs will far offset the small cost of installation of this highly satisfactory and popular insulation.

By installing Reynolds Cotton Insulation in your attic yourself, you keep out winter blasts—keep in precious heat. Tests show it to be more efficient per inch thickness than any other insulation available. Result—a warmer house in winter... saving up to 30% in fuel consumption... greater year-round comfort.

It's easy to install, too—no special tools required. Moreover, the small initial cost is returned in greater fuel economy! See us today and get our low cost estimate on this new, efficient insulation!

Effectively... Economically... Quickly

REYNOLDS COTTON INSULATION

CALL 809 for a FREE ESTIMATE

REYNOLDS COTTON INSULATION

REYNOLDS COTTON INSULATION

REYNOLDS COTTON INSULATION

REYNOLDS COTTON INSULATION

REYNOLDS COTTON INSULATION









# Social and Club News

## Want a Mate, Girls? Try Africa!

### WACS Set Home for "Diversion"

CAREY, June 12.—Two bottles of Coca-Cola a week and occasionally a Hershey bar, assuming if they can get the water for transportation. Coca-Cola is the thing, but at least it's water, so wonderfully "soft" mattresses of cork that it's an "occasion" when they can stay home for an evening. Now one morning for the first time in 20 years, these are things which are a part of the lives of the states WACS in Africa, according to information received by her parents. Recently she received the good conduct ribbon, according to information received by her parents. The letter, written to Mr. and Mrs. C. Carey, told her to be in Africa, her daily work and her reaction to the country and its surroundings. Excerpts follow:

"Here for Duration  
We have passed the 14th month of work for landing in north Africa, getting the command post in here all this time but now there are all of WACS in this place as well as the command post in north Africa. I am sure that I will be here as long as the first of us will be here for the duration.  
I have enjoyed my work a lot. It has been extremely interesting as I have been working with the command post in north Africa. I have been connected with it under the North African Economic Council which has been the country get established and also has food for the army."

Based on Council  
My love is the American consul here as well as being the head of the section of the headquarters. We also have political matters in our day's work. All the men who are in the civilian state department men or civilian agency men from Washington, who are supposed to be the brain trusters of the nation. (Somebody's a fool!)  
But I have really been able to see how things actually work from the political-diplomatic side as well as the battle side. There are definitely two phases of the war, the battle side and the battle side just half of it.  
I enjoyed the first 10 months here but now I am in a little bit of a lull. I am limited in what we can do and places we can go. Some of the things we can do are to go to the front lines and see the things that are going to be our transportation for it. Last summer we were able to go to the front lines on a ration scale comparable to yours."

"Stay Home"  
We girls have a social calendar but not after to many months of being the MOST POPULAR girls in town. We have been having parties as a diversion. Then, living here we wear one out. A year ago we could keep up with 10 hours of working and three more of social life, but now we are a little bit more tired. Anyway, after a while the glamour wears off. We had a quite a struggle with the boys when we first came here as there were only 200 of us, but eventually our number has increased to a better ratio with the boys. I know that there are a lot of stories about us at home, but we are still the same girls as always. It seems as though the home front always believed the worst about its army boys."

There is lots of time to drink here, as that is the main liquid for the troops and we all have consumed our share but now the stuff tastes horrid and we have had to drink. We get two bottles a week and even occasionally a Hershey bar, so you see, it isn't too hard here.  
One of the things I like to do is to go to the front lines and see the things that are going to be our transportation for it. Last summer we were able to go to the front lines on a ration scale comparable to yours."

There is a lot of time to drink here, as that is the main liquid for the troops and we all have consumed our share but now the stuff tastes horrid and we have had to drink. We get two bottles a week and even occasionally a Hershey bar, so you see, it isn't too hard here.  
One of the things I like to do is to go to the front lines and see the things that are going to be our transportation for it. Last summer we were able to go to the front lines on a ration scale comparable to yours."

There is a lot of time to drink here, as that is the main liquid for the troops and we all have consumed our share but now the stuff tastes horrid and we have had to drink. We get two bottles a week and even occasionally a Hershey bar, so you see, it isn't too hard here.  
One of the things I like to do is to go to the front lines and see the things that are going to be our transportation for it. Last summer we were able to go to the front lines on a ration scale comparable to yours."

There is a lot of time to drink here, as that is the main liquid for the troops and we all have consumed our share but now the stuff tastes horrid and we have had to drink. We get two bottles a week and even occasionally a Hershey bar, so you see, it isn't too hard here.  
One of the things I like to do is to go to the front lines and see the things that are going to be our transportation for it. Last summer we were able to go to the front lines on a ration scale comparable to yours."

There is a lot of time to drink here, as that is the main liquid for the troops and we all have consumed our share but now the stuff tastes horrid and we have had to drink. We get two bottles a week and even occasionally a Hershey bar, so you see, it isn't too hard here.  
One of the things I like to do is to go to the front lines and see the things that are going to be our transportation for it. Last summer we were able to go to the front lines on a ration scale comparable to yours."

There is a lot of time to drink here, as that is the main liquid for the troops and we all have consumed our share but now the stuff tastes horrid and we have had to drink. We get two bottles a week and even occasionally a Hershey bar, so you see, it isn't too hard here.  
One of the things I like to do is to go to the front lines and see the things that are going to be our transportation for it. Last summer we were able to go to the front lines on a ration scale comparable to yours."

There is a lot of time to drink here, as that is the main liquid for the troops and we all have consumed our share but now the stuff tastes horrid and we have had to drink. We get two bottles a week and even occasionally a Hershey bar, so you see, it isn't too hard here.  
One of the things I like to do is to go to the front lines and see the things that are going to be our transportation for it. Last summer we were able to go to the front lines on a ration scale comparable to yours."

There is a lot of time to drink here, as that is the main liquid for the troops and we all have consumed our share but now the stuff tastes horrid and we have had to drink. We get two bottles a week and even occasionally a Hershey bar, so you see, it isn't too hard here.  
One of the things I like to do is to go to the front lines and see the things that are going to be our transportation for it. Last summer we were able to go to the front lines on a ration scale comparable to yours."

There is a lot of time to drink here, as that is the main liquid for the troops and we all have consumed our share but now the stuff tastes horrid and we have had to drink. We get two bottles a week and even occasionally a Hershey bar, so you see, it isn't too hard here.  
One of the things I like to do is to go to the front lines and see the things that are going to be our transportation for it. Last summer we were able to go to the front lines on a ration scale comparable to yours."

There is a lot of time to drink here, as that is the main liquid for the troops and we all have consumed our share but now the stuff tastes horrid and we have had to drink. We get two bottles a week and even occasionally a Hershey bar, so you see, it isn't too hard here.  
One of the things I like to do is to go to the front lines and see the things that are going to be our transportation for it. Last summer we were able to go to the front lines on a ration scale comparable to yours."

There is a lot of time to drink here, as that is the main liquid for the troops and we all have consumed our share but now the stuff tastes horrid and we have had to drink. We get two bottles a week and even occasionally a Hershey bar, so you see, it isn't too hard here.  
One of the things I like to do is to go to the front lines and see the things that are going to be our transportation for it. Last summer we were able to go to the front lines on a ration scale comparable to yours."



BONNIE MAHONEY

## CARE OF YOUR CHILDREN

By ANGELO PATRI

This is the growth of graduates and a host of children and young folk will be graduated from the school. The first feeling is one of relief. They are free of lessons and the routine of school life. They will want to get to work and start their own life.

Those who have prepared themselves for useful work, graduates of vocational schools, colleges, universities, are ready but those from the elementary schools and high schools are not prepared in their mind of skills and it would be a waste to allow them to step out. They should stay in school and be graduated from high school, vocational school, or college. If they are professional workers who need specialized courses, to the colleges.

There are many places open to young people today and the temptation to enter the working fields is strong. Wages are high and opportunities are many. It is easy to tell oneself that it is duty, calling. It is not duty that calls a child. Education is unfinished, but imagination the inclination to be free of school hours of discipline and to be grown-up and independent.

To begin with, the places that are open now because of the war, will be closed when the war is over. Then what? A job at a moment for the rest of one's life? Youth is the learning time. It is then that the body and mind are in the best condition for learning, for gathering special experiences. After school let him and a job taken on, the attitudes of body and mind are changed and it is difficult to get back into the attitude of a learner. It is better to stay in school and finish the course and then go to work.

Each School Year Valuable  
Every year in school adds to the power of the pupil. It adds to his intelligence, to his ability, to his skill and to his understanding. Every year in school adds to his knowledge, his wisdom, and his ability to solve problems. Every year in school adds to his character, his habits, and his ability to work with others. Every year in school adds to his health, his strength, and his ability to take care of himself. Every year in school adds to his life, his future, and his ability to make a contribution to society.

Every year in school adds to the power of the pupil. It adds to his intelligence, to his ability, to his skill and to his understanding. Every year in school adds to his knowledge, his wisdom, and his ability to solve problems. Every year in school adds to his character, his habits, and his ability to work with others. Every year in school adds to his health, his strength, and his ability to take care of himself. Every year in school adds to his life, his future, and his ability to make a contribution to society.

Every year in school adds to the power of the pupil. It adds to his intelligence, to his ability, to his skill and to his understanding. Every year in school adds to his knowledge, his wisdom, and his ability to solve problems. Every year in school adds to his character, his habits, and his ability to work with others. Every year in school adds to his health, his strength, and his ability to take care of himself. Every year in school adds to his life, his future, and his ability to make a contribution to society.

Every year in school adds to the power of the pupil. It adds to his intelligence, to his ability, to his skill and to his understanding. Every year in school adds to his knowledge, his wisdom, and his ability to solve problems. Every year in school adds to his character, his habits, and his ability to work with others. Every year in school adds to his health, his strength, and his ability to take care of himself. Every year in school adds to his life, his future, and his ability to make a contribution to society.

Every year in school adds to the power of the pupil. It adds to his intelligence, to his ability, to his skill and to his understanding. Every year in school adds to his knowledge, his wisdom, and his ability to solve problems. Every year in school adds to his character, his habits, and his ability to work with others. Every year in school adds to his health, his strength, and his ability to take care of himself. Every year in school adds to his life, his future, and his ability to make a contribution to society.

Every year in school adds to the power of the pupil. It adds to his intelligence, to his ability, to his skill and to his understanding. Every year in school adds to his knowledge, his wisdom, and his ability to solve problems. Every year in school adds to his character, his habits, and his ability to work with others. Every year in school adds to his health, his strength, and his ability to take care of himself. Every year in school adds to his life, his future, and his ability to make a contribution to society.

Every year in school adds to the power of the pupil. It adds to his intelligence, to his ability, to his skill and to his understanding. Every year in school adds to his knowledge, his wisdom, and his ability to solve problems. Every year in school adds to his character, his habits, and his ability to work with others. Every year in school adds to his health, his strength, and his ability to take care of himself. Every year in school adds to his life, his future, and his ability to make a contribution to society.

Every year in school adds to the power of the pupil. It adds to his intelligence, to his ability, to his skill and to his understanding. Every year in school adds to his knowledge, his wisdom, and his ability to solve problems. Every year in school adds to his character, his habits, and his ability to work with others. Every year in school adds to his health, his strength, and his ability to take care of himself. Every year in school adds to his life, his future, and his ability to make a contribution to society.

Every year in school adds to the power of the pupil. It adds to his intelligence, to his ability, to his skill and to his understanding. Every year in school adds to his knowledge, his wisdom, and his ability to solve problems. Every year in school adds to his character, his habits, and his ability to work with others. Every year in school adds to his health, his strength, and his ability to take care of himself. Every year in school adds to his life, his future, and his ability to make a contribution to society.

Every year in school adds to the power of the pupil. It adds to his intelligence, to his ability, to his skill and to his understanding. Every year in school adds to his knowledge, his wisdom, and his ability to solve problems. Every year in school adds to his character, his habits, and his ability to work with others. Every year in school adds to his health, his strength, and his ability to take care of himself. Every year in school adds to his life, his future, and his ability to make a contribution to society.

Every year in school adds to the power of the pupil. It adds to his intelligence, to his ability, to his skill and to his understanding. Every year in school adds to his knowledge, his wisdom, and his ability to solve problems. Every year in school adds to his character, his habits, and his ability to work with others. Every year in school adds to his health, his strength, and his ability to take care of himself. Every year in school adds to his life, his future, and his ability to make a contribution to society.

Every year in school adds to the power of the pupil. It adds to his intelligence, to his ability, to his skill and to his understanding. Every year in school adds to his knowledge, his wisdom, and his ability to solve problems. Every year in school adds to his character, his habits, and his ability to work with others. Every year in school adds to his health, his strength, and his ability to take care of himself. Every year in school adds to his life, his future, and his ability to make a contribution to society.

Every year in school adds to the power of the pupil. It adds to his intelligence, to his ability, to his skill and to his understanding. Every year in school adds to his knowledge, his wisdom, and his ability to solve problems. Every year in school adds to his character, his habits, and his ability to work with others. Every year in school adds to his health, his strength, and his ability to take care of himself. Every year in school adds to his life, his future, and his ability to make a contribution to society.

Every year in school adds to the power of the pupil. It adds to his intelligence, to his ability, to his skill and to his understanding. Every year in school adds to his knowledge, his wisdom, and his ability to solve problems. Every year in school adds to his character, his habits, and his ability to work with others. Every year in school adds to his health, his strength, and his ability to take care of himself. Every year in school adds to his life, his future, and his ability to make a contribution to society.

Every year in school adds to the power of the pupil. It adds to his intelligence, to his ability, to his skill and to his understanding. Every year in school adds to his knowledge, his wisdom, and his ability to solve problems. Every year in school adds to his character, his habits, and his ability to work with others. Every year in school adds to his health, his strength, and his ability to take care of himself. Every year in school adds to his life, his future, and his ability to make a contribution to society.

Every year in school adds to the power of the pupil. It adds to his intelligence, to his ability, to his skill and to his understanding. Every year in school adds to his knowledge, his wisdom, and his ability to solve problems. Every year in school adds to his character, his habits, and his ability to work with others. Every year in school adds to his health, his strength, and his ability to take care of himself. Every year in school adds to his life, his future, and his ability to make a contribution to society.

Every year in school adds to the power of the pupil. It adds to his intelligence, to his ability, to his skill and to his understanding. Every year in school adds to his knowledge, his wisdom, and his ability to solve problems. Every year in school adds to his character, his habits, and his ability to work with others. Every year in school adds to his health, his strength, and his ability to take care of himself. Every year in school adds to his life, his future, and his ability to make a contribution to society.

Every year in school adds to the power of the pupil. It adds to his intelligence, to his ability, to his skill and to his understanding. Every year in school adds to his knowledge, his wisdom, and his ability to solve problems. Every year in school adds to his character, his habits, and his ability to work with others. Every year in school adds to his health, his strength, and his ability to take care of himself. Every year in school adds to his life, his future, and his ability to make a contribution to society.

## Golden Wedding Couples Will Celebrate June 26

The Golden Wedding circle, now numbering 218 members, will attend the annual theater party, arranged by Mr. and Mrs. Joe Koehler on June 26 at the Roxy theater. The circle includes 48 couples and 39 "singles," some of whom have been married more than 65 years.  
"Due to paper shortages, individual invitations will not be sent out this year, but any person or persons who have been married and have lived together for 50 years are eligible for membership, whether or not both are now living." Mrs. A. T. Rutherford, corresponding secretary of the circle, said Monday.

Twin Falls Kiwanis club members will furnish transportation as in former years, and refreshments will be served again this year at Campbell's cafe. Those wishing transportation are asked to telephone Mrs. Rutherford or Mrs. Koehler.

The Golden Wedding club party had its first meeting Aug. 15, 1921, when Mr. and Mrs. Koehler entertained in honor of the golden wedding anniversary of his mother, Mrs. Adolf Heller, of Moscow, Idaho.

Also honored on that occasion, were Mr. and Mrs. A. Morgan, parents of Mrs. F. H. Morgan, and Mr. and Mrs. C. H. Perry, parents of Mrs. C. H. Perry, residents of Twin Falls.

There is no territorial boundary limit as to who may attend the parties. The interest in the celebration of the fact that the residents of Missouri, Utah and Washington are also included in the celebration is "Pride of the Vanguards," starring Gay Cooper and Teresa Wiltch.

The Golden Wedding club will meet at the home of Mrs. Bessie Sims, 320 second avenue north, Wednesday at 2 p.m. Roll call and luncheon will be members' favorite points. Every member is asked to bring a dish.

Ladies Aid society of the Community church will meet with Mrs. Ulla Allen Wednesday at 7 p.m. at the Community church for a potluck luncheon.

Manzanita club will meet Wednesday at 2:30 p.m. at the home of Mrs. Charles Mulder. Mrs. Lulu Mulder will be hostess and Mrs. Elsie Lundgren will be in charge of the program.

Women's Union League will meet Wednesday at 8 p.m. at the Labor temple. Members are requested to bring sandwiches and lunch.

The Good will club will meet Wednesday at 2:30 p.m. with Mrs. Howard Rogers, 233 North, Roll call will be followed with a social to fathers. White elephant will be furnished by Mrs. Dorothy Ward.

The Good will club will meet Wednesday at 2:30 p.m. with Mrs. Howard Rogers, 233 North, Roll call will be followed with a social to fathers. White elephant will be furnished by Mrs. Dorothy Ward.

The Good will club will meet Wednesday at 2:30 p.m. with Mrs. Howard Rogers, 233 North, Roll call will be followed with a social to fathers. White elephant will be furnished by Mrs. Dorothy Ward.

The Good will club will meet Wednesday at 2:30 p.m. with Mrs. Howard Rogers, 233 North, Roll call will be followed with a social to fathers. White elephant will be furnished by Mrs. Dorothy Ward.

The Good will club will meet Wednesday at 2:30 p.m. with Mrs. Howard Rogers, 233 North, Roll call will be followed with a social to fathers. White elephant will be furnished by Mrs. Dorothy Ward.

The Good will club will meet Wednesday at 2:30 p.m. with Mrs. Howard Rogers, 233 North, Roll call will be followed with a social to fathers. White elephant will be furnished by Mrs. Dorothy Ward.

The Good will club will meet Wednesday at 2:30 p.m. with Mrs. Howard Rogers, 233 North, Roll call will be followed with a social to fathers. White elephant will be furnished by Mrs. Dorothy Ward.

The Good will club will meet Wednesday at 2:30 p.m. with Mrs. Howard Rogers, 233 North, Roll call will be followed with a social to fathers. White elephant will be furnished by Mrs. Dorothy Ward.

The Good will club will meet Wednesday at 2:30 p.m. with Mrs. Howard Rogers, 233 North, Roll call will be followed with a social to fathers. White elephant will be furnished by Mrs. Dorothy Ward.

The Good will club will meet Wednesday at 2:30 p.m. with Mrs. Howard Rogers, 233 North, Roll call will be followed with a social to fathers. White elephant will be furnished by Mrs. Dorothy Ward.

The Good will club will meet Wednesday at 2:30 p.m. with Mrs. Howard Rogers, 233 North, Roll call will be followed with a social to fathers. White elephant will be furnished by Mrs. Dorothy Ward.

The Good will club will meet Wednesday at 2:30 p.m. with Mrs. Howard Rogers, 233 North, Roll call will be followed with a social to fathers. White elephant will be furnished by Mrs. Dorothy Ward.

The Good will club will meet Wednesday at 2:30 p.m. with Mrs. Howard Rogers, 233 North, Roll call will be followed with a social to fathers. White elephant will be furnished by Mrs. Dorothy Ward.

The Good will club will meet Wednesday at 2:30 p.m. with Mrs. Howard Rogers, 233 North, Roll call will be followed with a social to fathers. White elephant will be furnished by Mrs. Dorothy Ward.

The Good will club will meet Wednesday at 2:30 p.m. with Mrs. Howard Rogers, 233 North, Roll call will be followed with a social to fathers. White elephant will be furnished by Mrs. Dorothy Ward.

The Good will club will meet Wednesday at 2:30 p.m. with Mrs. Howard Rogers, 233 North, Roll call will be followed with a social to fathers. White elephant will be furnished by Mrs. Dorothy Ward.

The Good will club will meet Wednesday at 2:30 p.m. with Mrs. Howard Rogers, 233 North, Roll call will be followed with a social to fathers. White elephant will be furnished by Mrs. Dorothy Ward.

The Good will club will meet Wednesday at 2:30 p.m. with Mrs. Howard Rogers, 233 North, Roll call will be followed with a social to fathers. White elephant will be furnished by Mrs. Dorothy Ward.

The Good will club will meet Wednesday at 2:30 p.m. with Mrs. Howard Rogers, 233 North, Roll call will be followed with a social to fathers. White elephant will be furnished by Mrs. Dorothy Ward.

The Good will club will meet Wednesday at 2:30 p.m. with Mrs. Howard Rogers, 233 North, Roll call will be followed with a social to fathers. White elephant will be furnished by Mrs. Dorothy Ward.

## Past State Head To Install Staff Of Catholic Unit

Mrs. Theodore Guckert, past state president of the Idaho Council of Catholic Women, will be installing officer at the traditional birthday luncheon of the Catholic Women's League Thursday at 12:30 p.m. at the Elks lodge. Any woman member of the parish is eligible to attend this annual event, according to Mrs. Guckert, general chairman of arrangements.

Mrs. John Bolton will be installed as new president of the unit, succeeding Mrs. George Walker in addition to her staff of officers, other guests honored at the luncheon will be the retiring officers and past presidents.

Handmade favors, blue decorations and white papers will comprise the luncheon.

Assisting Mrs. Bolton on the committee are Mrs. Owen Robertson, Mrs. A. H. Stuckert, Mrs. Joseph Leclair and Mrs. Andrew Carter.

## Two Share Honor At Farewell Tea

A farewell courtesy in the form of a tea was arranged Friday at the home of Mrs. Marion Holloway, Herman Dutton and Mrs. Howard Burkhardt, complementing Mrs. E. J. Berkley, who will leave on Monday for McPherson, Kan., and Mrs. Everett Holloway, who is moving to New York.

Mrs. Bernard Martin, guest of honor, was Mrs. Marion Holloway, Mrs. Howard Burkhardt, Mrs. E. J. Berkley, Mrs. Everett Holloway, Mrs. A. D. Huber, Mrs. Vernon Melton, Mrs. Norris Shovel and Mrs. Everett Huber.

They will leave their last look at a sprig of vaseline is spread very thing over the lid.

World's Largest Seller at 10

World's Largest Seller at 10

World's Largest Seller at 10

World's Largest Seller at 10

World's Largest Seller at 10

World's Largest Seller at 10

World's Largest Seller at 10

World's Largest Seller at 10

World's Largest Seller at 10

World's Largest Seller at 10

World's Largest Seller at 10

World's Largest Seller at 10

World's Largest Seller at 10

World's Largest Seller at 10

World's Largest Seller at 10

World's Largest Seller at 10

World's Largest Seller at 10

World's Largest Seller at 10

World's Largest Seller at 10

World's Largest Seller at 10

World's Largest Seller at 10

## Brethren Church Sponsors Picnic

The Sunday school department of the Church of the Brethren at the recommendation of the Brethren class will sponsor a picnic July 4 with members of the E. L. Ransberry family as honor guests. It will be their last Sunday in Twin Falls before leaving for McPherson, Kan.

Plans for the outing were made at a dinner meeting of the Brethren Sunday at the home of Mr. and Mrs. Ray Shaffer. The class voted to sponsor an extensive program of church and personal improvement.

Mrs. J. H. Smith presided in the absence of Mrs. Marion Holloway. Several quartet selections were presented by Dr. P. G. Thompson, Dr. Edward G. Thompson and Mrs. Marion Holloway.

Mrs. J. H. Smith was a guest of the group. Devotionals were in charge of Mrs. Ikenberry and Earl Holloway.

The DAY camp will hold its regular meeting at the Legion hall Thursday at 8 p.m. Election of officers will be held.

Dr. H. J. Schwartz M. D.

Announces the opening of offices for the practice of medicine and surgery in the

Baugh Building Phone 781

Baugh Building Phone 781

Baugh Building Phone 781

Baugh Building Phone 781

Baugh Building Phone 781

Baugh Building Phone 781

Baugh Building Phone 781

Baugh Building Phone 781

Baugh Building Phone 781

Baugh Building Phone 781

Baugh Building Phone 781

Baugh Building Phone 781

Baugh Building Phone 781

Baugh Building Phone 781

Baugh Building Phone 781

Baugh Building Phone 781

Baugh Building Phone 781

Baugh Building Phone 781

Baugh Building Phone 781

Baugh Building Phone 781

Baugh Building Phone 781

Baugh Building Phone 781

## SAFETYWAY Guaranteed Values

Really fresh is the way Safetyway sells produce. Take advantage of it now. Take advantage, too, of Safetyway's method of pricing fresh fruits and vegetables by weight, so you get accurate money's worth every time in every purchase!

Homemakers' GUIDE

How To Dress Up Salad Dressings

A GOOD ready-to-use salad dressing is, in itself, guaranteed to add zest to meals. But there are also a number of simple little ways to make them even more appetizing. For instance:

FOR RICH COLOR, combine shredded raw beet and the juice of 1/2 lemon with 1 cup salad dressing or mayonnaise—mix thoroughly. Use on any raw or cooked vegetable salad.

FOR HOT VEGETABLES, try this homemade hollandaise: mix 1 cup salad dressing or mayonnaise, 2 eggs, prepared mustard, 1 tbsp. lemon juice and a dash of paprika on cauliflower, for example.

FOR MEAT OR FISH, combine 2 tbsp. finely chopped chives (green tops of onions will do), with 1 cup salad dressing—tosshouse on vegetable salads, too.

FOR SPARKLY mix 1 cup salad dressing with 3/4 cup fruit juice (any kind), and use generously as a topping for fruits—may be topped by adding a bit of honey.

Use RAISINS in this Simple Salad

Delightful





## Markets and Finance

OLD BRAND	
Great Northern, No. 1	\$4.00
Great Northern, No. 2	\$3.90
(Six dealers quoted)	
White	\$3.80
(Five dealers quoted)	
Small red, 95s	\$3.75
Small red, 96s	\$3.60
(Two dealers quoted)	
LIVE POULTRY	
Broilers, under 2 1/2 lbs.	\$7.00
Broilers, 2 1/2 to 3 1/2 lbs.	\$6.50
Broilers, 3 1/2 to 4 1/2 lbs.	\$6.00
Broilers, 4 1/2 lbs. and up	\$5.50
Broilers, 4 1/2 lbs. and up	\$5.00
Broilers, 4 1/2 lbs. and up	\$4.50
Broilers, 4 1/2 lbs. and up	\$4.00



# CLASSIFIED ADVERTISING

Phone 38

Phone 38

## WANT AD RATES

(Based on Cost per Line)  
 1 day ..... 10¢  
 2 days ..... 18¢  
 3 days ..... 25¢  
 4 days ..... 32¢  
 5 days ..... 38¢  
 6 days ..... 45¢  
 7 days ..... 52¢  
 8 days ..... 58¢  
 9 days ..... 65¢  
 10 days ..... 72¢  
 11 days ..... 78¢  
 12 days ..... 85¢  
 13 days ..... 92¢  
 14 days ..... 98¢  
 15 days ..... 1.05  
 16 days ..... 1.12  
 17 days ..... 1.18  
 18 days ..... 1.25  
 19 days ..... 1.32  
 20 days ..... 1.38  
 21 days ..... 1.45  
 22 days ..... 1.52  
 23 days ..... 1.58  
 24 days ..... 1.65  
 25 days ..... 1.72  
 26 days ..... 1.78  
 27 days ..... 1.85  
 28 days ..... 1.92  
 29 days ..... 1.98  
 30 days ..... 2.05  
 31 days ..... 2.12  
 32 days ..... 2.18  
 33 days ..... 2.25  
 34 days ..... 2.32  
 35 days ..... 2.38  
 36 days ..... 2.45  
 37 days ..... 2.52  
 38 days ..... 2.58  
 39 days ..... 2.65  
 40 days ..... 2.72  
 41 days ..... 2.78  
 42 days ..... 2.85  
 43 days ..... 2.92  
 44 days ..... 2.98  
 45 days ..... 3.05  
 46 days ..... 3.12  
 47 days ..... 3.18  
 48 days ..... 3.25  
 49 days ..... 3.32  
 50 days ..... 3.38  
 51 days ..... 3.45  
 52 days ..... 3.52  
 53 days ..... 3.58  
 54 days ..... 3.65  
 55 days ..... 3.72  
 56 days ..... 3.78  
 57 days ..... 3.85  
 58 days ..... 3.92  
 59 days ..... 3.98  
 60 days ..... 4.05  
 61 days ..... 4.12  
 62 days ..... 4.18  
 63 days ..... 4.25  
 64 days ..... 4.32  
 65 days ..... 4.38  
 66 days ..... 4.45  
 67 days ..... 4.52  
 68 days ..... 4.58  
 69 days ..... 4.65  
 70 days ..... 4.72  
 71 days ..... 4.78  
 72 days ..... 4.85  
 73 days ..... 4.92  
 74 days ..... 4.98  
 75 days ..... 5.05  
 76 days ..... 5.12  
 77 days ..... 5.18  
 78 days ..... 5.25  
 79 days ..... 5.32  
 80 days ..... 5.38  
 81 days ..... 5.45  
 82 days ..... 5.52  
 83 days ..... 5.58  
 84 days ..... 5.65  
 85 days ..... 5.72  
 86 days ..... 5.78  
 87 days ..... 5.85  
 88 days ..... 5.92  
 89 days ..... 5.98  
 90 days ..... 6.05  
 91 days ..... 6.12  
 92 days ..... 6.18  
 93 days ..... 6.25  
 94 days ..... 6.32  
 95 days ..... 6.38  
 96 days ..... 6.45  
 97 days ..... 6.52  
 98 days ..... 6.58  
 99 days ..... 6.65  
 100 days ..... 6.72  
 101 days ..... 6.78  
 102 days ..... 6.85  
 103 days ..... 6.92  
 104 days ..... 6.98  
 105 days ..... 7.05  
 106 days ..... 7.12  
 107 days ..... 7.18  
 108 days ..... 7.25  
 109 days ..... 7.32  
 110 days ..... 7.38  
 111 days ..... 7.45  
 112 days ..... 7.52  
 113 days ..... 7.58  
 114 days ..... 7.65  
 115 days ..... 7.72  
 116 days ..... 7.78  
 117 days ..... 7.85  
 118 days ..... 7.92  
 119 days ..... 7.98  
 120 days ..... 8.05  
 121 days ..... 8.12  
 122 days ..... 8.18  
 123 days ..... 8.25  
 124 days ..... 8.32  
 125 days ..... 8.38  
 126 days ..... 8.45  
 127 days ..... 8.52  
 128 days ..... 8.58  
 129 days ..... 8.65  
 130 days ..... 8.72  
 131 days ..... 8.78  
 132 days ..... 8.85  
 133 days ..... 8.92  
 134 days ..... 8.98  
 135 days ..... 9.05  
 136 days ..... 9.12  
 137 days ..... 9.18  
 138 days ..... 9.25  
 139 days ..... 9.32  
 140 days ..... 9.38  
 141 days ..... 9.45  
 142 days ..... 9.52  
 143 days ..... 9.58  
 144 days ..... 9.65  
 145 days ..... 9.72  
 146 days ..... 9.78  
 147 days ..... 9.85  
 148 days ..... 9.92  
 149 days ..... 9.98  
 150 days ..... 10.05  
 151 days ..... 10.12  
 152 days ..... 10.18  
 153 days ..... 10.25  
 154 days ..... 10.32  
 155 days ..... 10.38  
 156 days ..... 10.45  
 157 days ..... 10.52  
 158 days ..... 10.58  
 159 days ..... 10.65  
 160 days ..... 10.72  
 161 days ..... 10.78  
 162 days ..... 10.85  
 163 days ..... 10.92  
 164 days ..... 10.98  
 165 days ..... 11.05  
 166 days ..... 11.12  
 167 days ..... 11.18  
 168 days ..... 11.25  
 169 days ..... 11.32  
 170 days ..... 11.38  
 171 days ..... 11.45  
 172 days ..... 11.52  
 173 days ..... 11.58  
 174 days ..... 11.65  
 175 days ..... 11.72  
 176 days ..... 11.78  
 177 days ..... 11.85  
 178 days ..... 11.92  
 179 days ..... 11.98  
 180 days ..... 12.05  
 181 days ..... 12.12  
 182 days ..... 12.18  
 183 days ..... 12.25  
 184 days ..... 12.32  
 185 days ..... 12.38  
 186 days ..... 12.45  
 187 days ..... 12.52  
 188 days ..... 12.58  
 189 days ..... 12.65  
 190 days ..... 12.72  
 191 days ..... 12.78  
 192 days ..... 12.85  
 193 days ..... 12.92  
 194 days ..... 12.98  
 195 days ..... 13.05  
 196 days ..... 13.12  
 197 days ..... 13.18  
 198 days ..... 13.25  
 199 days ..... 13.32  
 200 days ..... 13.38  
 201 days ..... 13.45  
 202 days ..... 13.52  
 203 days ..... 13.58  
 204 days ..... 13.65  
 205 days ..... 13.72  
 206 days ..... 13.78  
 207 days ..... 13.85  
 208 days ..... 13.92  
 209 days ..... 13.98  
 210 days ..... 14.05  
 211 days ..... 14.12  
 212 days ..... 14.18  
 213 days ..... 14.25  
 214 days ..... 14.32  
 215 days ..... 14.38  
 216 days ..... 14.45  
 217 days ..... 14.52  
 218 days ..... 14.58  
 219 days ..... 14.65  
 220 days ..... 14.72  
 221 days ..... 14.78  
 222 days ..... 14.85  
 223 days ..... 14.92  
 224 days ..... 14.98  
 225 days ..... 15.05  
 226 days ..... 15.12  
 227 days ..... 15.18  
 228 days ..... 15.25  
 229 days ..... 15.32  
 230 days ..... 15.38  
 231 days ..... 15.45  
 232 days ..... 15.52  
 233 days ..... 15.58  
 234 days ..... 15.65  
 235 days ..... 15.72  
 236 days ..... 15.78  
 237 days ..... 15.85  
 238 days ..... 15.92  
 239 days ..... 15.98  
 240 days ..... 16.05  
 241 days ..... 16.12  
 242 days ..... 16.18  
 243 days ..... 16.25  
 244 days ..... 16.32  
 245 days ..... 16.38  
 246 days ..... 16.45  
 247 days ..... 16.52  
 248 days ..... 16.58  
 249 days ..... 16.65  
 250 days ..... 16.72  
 251 days ..... 16.78  
 252 days ..... 16.85  
 253 days ..... 16.92  
 254 days ..... 16.98  
 255 days ..... 17.05  
 256 days ..... 17.12  
 257 days ..... 17.18  
 258 days ..... 17.25  
 259 days ..... 17.32  
 260 days ..... 17.38  
 261 days ..... 17.45  
 262 days ..... 17.52  
 263 days ..... 17.58  
 264 days ..... 17.65  
 265 days ..... 17.72  
 266 days ..... 17.78  
 267 days ..... 17.85  
 268 days ..... 17.92  
 269 days ..... 17.98  
 270 days ..... 18.05  
 271 days ..... 18.12  
 272 days ..... 18.18  
 273 days ..... 18.25  
 274 days ..... 18.32  
 275 days ..... 18.38  
 276 days ..... 18.45  
 277 days ..... 18.52  
 278 days ..... 18.58  
 279 days ..... 18.65  
 280 days ..... 18.72  
 281 days ..... 18.78  
 282 days ..... 18.85  
 283 days ..... 18.92  
 284 days ..... 18.98  
 285 days ..... 19.05  
 286 days ..... 19.12  
 287 days ..... 19.18  
 288 days ..... 19.25  
 289 days ..... 19.32  
 290 days ..... 19.38  
 291 days ..... 19.45  
 292 days ..... 19.52  
 293 days ..... 19.58  
 294 days ..... 19.65  
 295 days ..... 19.72  
 296 days ..... 19.78  
 297 days ..... 19.85  
 298 days ..... 19.92  
 299 days ..... 19.98  
 300 days ..... 20.05  
 301 days ..... 20.12  
 302 days ..... 20.18  
 303 days ..... 20.25  
 304 days ..... 20.32  
 305 days ..... 20.38  
 306 days ..... 20.45  
 307 days ..... 20.52  
 308 days ..... 20.58  
 309 days ..... 20.65  
 310 days ..... 20.72  
 311 days ..... 20.78  
 312 days ..... 20.85  
 313 days ..... 20.92  
 314 days ..... 20.98  
 315 days ..... 21.05  
 316 days ..... 21.12  
 317 days ..... 21.18  
 318 days ..... 21.25  
 319 days ..... 21.32  
 320 days ..... 21.38  
 321 days ..... 21.45  
 322 days ..... 21.52  
 323 days ..... 21.58  
 324 days ..... 21.65  
 325 days ..... 21.72  
 326 days ..... 21.78  
 327 days ..... 21.85  
 328 days ..... 21.92  
 329 days ..... 21.98  
 330 days ..... 22.05  
 331 days ..... 22.12  
 332 days ..... 22.18  
 333 days ..... 22.25  
 334 days ..... 22.32  
 335 days ..... 22.38  
 336 days ..... 22.45  
 337 days ..... 22.52  
 338 days ..... 22.58  
 339 days ..... 22.65  
 340 days ..... 22.72  
 341 days ..... 22.78  
 342 days ..... 22.85  
 343 days ..... 22.92  
 344 days ..... 22.98  
 345 days ..... 23.05  
 346 days ..... 23.12  
 347 days ..... 23.18  
 348 days ..... 23.25  
 349 days ..... 23.32  
 350 days ..... 23.38  
 351 days ..... 23.45  
 352 days ..... 23.52  
 353 days ..... 23.58  
 354 days ..... 23.65  
 355 days ..... 23.72  
 356 days ..... 23.78  
 357 days ..... 23.85  
 358 days ..... 23.92  
 359 days ..... 23.98  
 360 days ..... 24.05  
 361 days ..... 24.12  
 362 days ..... 24.18  
 363 days ..... 24.25  
 364 days ..... 24.32  
 365 days ..... 24.38  
 366 days ..... 24.45  
 367 days ..... 24.52  
 368 days ..... 24.58  
 369 days ..... 24.65  
 370 days ..... 24.72  
 371 days ..... 24.78  
 372 days ..... 24.85  
 373 days ..... 24.92  
 374 days ..... 24.98  
 375 days ..... 25.05  
 376 days ..... 25.12  
 377 days ..... 25.18  
 378 days ..... 25.25  
 379 days ..... 25.32  
 380 days ..... 25.38  
 381 days ..... 25.45  
 382 days ..... 25.52  
 383 days ..... 25.58  
 384 days ..... 25.65  
 385 days ..... 25.72  
 386 days ..... 25.78  
 387 days ..... 25.85  
 388 days ..... 25.92  
 389 days ..... 25.98  
 390 days ..... 26.05  
 391 days ..... 26.12  
 392 days ..... 26.18  
 393 days ..... 26.25  
 394 days ..... 26.32  
 395 days ..... 26.38  
 396 days ..... 26.45  
 397 days ..... 26.52  
 398 days ..... 26.58  
 399 days ..... 26.65  
 400 days ..... 26.72  
 401 days ..... 26.78  
 402 days ..... 26.85  
 403 days ..... 26.92  
 404 days ..... 26.98  
 405 days ..... 27.05  
 406 days ..... 27.12  
 407 days ..... 27.18  
 408 days ..... 27.25  
 409 days ..... 27.32  
 410 days ..... 27.38  
 411 days ..... 27.45  
 412 days ..... 27.52  
 413 days ..... 27.58  
 414 days ..... 27.65  
 415 days ..... 27.72  
 416 days ..... 27.78  
 417 days ..... 27.85  
 418 days ..... 27.92  
 419 days ..... 27.98  
 420 days ..... 28.05  
 421 days ..... 28.12  
 422 days ..... 28.18  
 423 days ..... 28.25  
 424 days ..... 28.32  
 425 days ..... 28.38  
 426 days ..... 28.45  
 427 days ..... 28.52  
 428 days ..... 28.58  
 429 days ..... 28.65  
 430 days ..... 28.72  
 431 days ..... 28.78  
 432 days ..... 28.85  
 433 days ..... 28.92  
 434 days ..... 28.98  
 435 days ..... 29.05  
 436 days ..... 29.12  
 437 days ..... 29.18  
 438 days ..... 29.25  
 439 days ..... 29.32  
 440 days ..... 29.38  
 441 days ..... 29.45  
 442 days ..... 29.52  
 443 days ..... 29.58  
 444 days ..... 29.65  
 445 days ..... 29.72  
 446 days ..... 29.78  
 447 days ..... 29.85  
 448 days ..... 29.92  
 449 days ..... 29.98  
 450 days ..... 30.05  
 451 days ..... 30.12  
 452 days ..... 30.18  
 453 days ..... 30.25  
 454 days ..... 30.32  
 455 days ..... 30.38  
 456 days ..... 30.45  
 457 days ..... 30.52  
 458 days ..... 30.58  
 459 days ..... 30.65  
 460 days ..... 30.72  
 461 days ..... 30.78  
 462 days ..... 30.85  
 463 days ..... 30.92  
 464 days ..... 30.98  
 465 days ..... 31.05  
 466 days ..... 31.12  
 467 days ..... 31.18  
 468 days ..... 31.25  
 469 days ..... 31.32  
 470 days ..... 31.38  
 471 days ..... 31.45  
 472 days ..... 31.52  
 473 days ..... 31.58  
 474 days ..... 31.65  
 475 days ..... 31.72  
 476 days ..... 31.78  
 477 days ..... 31.85  
 478 days ..... 31.92  
 479 days ..... 31.98  
 480 days ..... 32.05  
 481 days ..... 32.12  
 482 days ..... 32.18  
 483 days ..... 32.25  
 484 days ..... 32.32  
 485 days ..... 32.38  
 486 days ..... 32.45  
 487 days ..... 32.52  
 488 days ..... 32.58  
 489 days ..... 32.65  
 490 days ..... 32.72  
 491 days ..... 32.78  
 492 days ..... 32.85  
 493 days ..... 32.92  
 494 days ..... 32.98  
 495 days ..... 33.05  
 496 days ..... 33.12  
 497 days ..... 33.18  
 498 days ..... 33.25  
 499 days ..... 33.32  
 500 days ..... 33.38  
 501 days ..... 33.45  
 502 days ..... 33.52  
 503 days ..... 33.58  
 504 days ..... 33.65  
 505 days ..... 33.72  
 506 days ..... 33.78  
 507 days ..... 33.85  
 508 days ..... 33.92  
 509 days ..... 33.98  
 510 days ..... 34.05  
 511 days ..... 34.12  
 512 days ..... 34.18  
 513 days ..... 34.25  
 514 days ..... 34.32  
 515 days ..... 34.38  
 516 days ..... 34.45  
 517 days ..... 34.52  
 518 days ..... 34.58  
 519 days ..... 34.65  
 520 days ..... 34.72  
 521 days ..... 34.78  
 522 days ..... 34.85  
 523 days ..... 34.92  
 524 days ..... 34.98  
 525 days ..... 35.05  
 526 days ..... 35.12  
 527 days ..... 35.18  
 528 days ..... 35.25  
 529 days ..... 35.32  
 530 days ..... 35.38  
 531 days ..... 35.45  
 532 days ..... 35.52  
 533 days ..... 35.58  
 534 days ..... 35.65  
 535 days ..... 35.72  
 536 days ..... 35.78  
 537 days ..... 35.85  
 538 days ..... 35.92  
 539 days ..... 35.98  
 540 days ..... 36.05  
 541 days ..... 36.12  
 542 days ..... 36.18  
 543 days ..... 36.25  
 544 days ..... 36.32  
 545 days ..... 36.38  
 546 days ..... 36.45  
 547 days ..... 36.52  
 548 days ..... 36.58  
 549 days ..... 36.65  
 550 days ..... 36.72  
 551 days ..... 36.78  
 552 days ..... 36.85  
 553 days ..... 36.92  
 554 days ..... 36.98  
 555 days ..... 37.05  
 556 days ..... 37.12  
 557 days ..... 37.18  
 558 days ..... 37.25  
 559 days ..... 37.32  
 560 days ..... 37.38  
 561 days ..... 37.45  
 562 days ..... 37.52  
 563 days ..... 37.58  
 564 days ..... 37.65  
 565 days ..... 37.72  
 566 days ..... 37.78  
 567 days ..... 37.85  
 568 days ..... 37.92  
 569 days ..... 37.98  
 570 days ..... 38.05  
 571 days ..... 38.12  
 572 days ..... 38.18  
 573 days ..... 38.25  
 574 days ..... 38.32  
 575 days ..... 38.38  
 576 days ..... 38.45  
 577 days ..... 38.52  
 578 days ..... 38.58  
 579 days ..... 38.65  
 580 days ..... 38.72  
 581 days ..... 38.78  
 582 days ..... 38.85  
 583 days ..... 38.92  
 584 days ..... 38.98  
 585 days ..... 39.05  
 586 days ..... 39.12  
 587 days ..... 39.18  
 588 days ..... 39.25  
 589 days ..... 39.32  
 590 days ..... 39.38  
 591 days ..... 39.45  
 592 days ..... 39.52  
 593 days ..... 39.58  
 594 days ..... 39.65  
 595 days ..... 39.72  
 596 days ..... 39.78  
 597 days ..... 39.85  
 598 days ..... 39.92  
 599 days ..... 39.98  
 600 days ..... 40.05  
 601 days ..... 40.12  
 602 days ..... 40.18  
 603 days ..... 40.25  
 604 days ..... 40.32  
 605 days ..... 40.38  
 606 days ..... 40.45  
 607 days ..... 40.52  
 608 days ..... 40.58  
 609 days ..... 40.65  
 610 days ..... 40.72  
 611 days ..... 40.78  
 612 days ..... 40.85  
 613 days ..... 40.92  
 614 days ..... 40.98  
 615 days ..... 41.05  
 616 days ..... 41.12  
 617 days ..... 41.18  
 618 days ..... 41.25  
 619 days ..... 41.32  
 620 days ..... 41.38  
 621 days ..... 41.45  
 622 days ..... 41.52  
 623 days ..... 41.58  
 624 days ..... 41.65  
 625 days ..... 41.72  
 626 days ..... 41.78  
 627 days ..... 41.85  
 628 days ..... 41.92  
 629 days ..... 41.98  
 630 days ..... 42.05  
 631 days ..... 42.12  
 632 days ..... 42.18  
 633 days ..... 42.25  
 634 days ..... 42.32  
 635 days ..... 42.38  
 636 days ..... 42.45  
 637 days ..... 42.52  
 638 days ..... 42.58  
 639 days ..... 42.65  
 640 days ..... 42.72  
 641 days ..... 42.78  
 642 days ..... 42.85  
 643 days ..... 42.92  
 644 days ..... 42.98  
 645 days ..... 43.05  
 646 days ..... 43.12  
 647 days ..... 43.18  
 648 days ..... 43.25  
 649 days ..... 43.32  
 650 days ..... 43.38  
 651 days ..... 43.45  
 652 days ..... 43.52  
 653 days ..... 43.58  
 654 days ..... 43.65  
 655 days ..... 43.72  
 656 days ..... 43.78  
 657 days ..... 43.85  
 658 days ..... 43.92  
 659 days ..... 43.98  
 660 days ..... 44.05  
 661 days ..... 44.12  
 662 days ..... 44.18  
 663 days ..... 44.25  
 664 days ..... 44.32  
 665 days ..... 44.38  
 666 days ..... 44.45  
 667 days ..... 44.52  
 668 days ..... 44.58  
 669 days ..... 44.65  
 670 days ..... 44.72  
 671 days ..... 44.78  
 672 days ..... 44.85  
 673 days ..... 44.92  
 674 days ..... 44.98  
 675 days ..... 45.05  
 676 days ..... 45.12  
 677 days ..... 45.18  
 678 days ..... 45.25  
 679 days ..... 45.32  
 680 days ..... 45.38  
 681 days ..... 45.45  
 682 days ..... 45.52  
 683 days ..... 45.58  
 684 days ..... 45.65  
 685 days ..... 45.72  
 686 days ..... 45.78  
 687 days ..... 45.85  
 688 days ..... 45.92  
 689 days ..... 45.98  
 690 days ..... 46.05  
 691 days ..... 46.12  
 692 days ..... 46.18  
 693 days ..... 46.25  
 694 days ..... 46.32  
 695 days ..... 46.38  
 696 days ..... 46.45  
 697 days ..... 46.52  
 698 days ..... 46.58  
 699 days ..... 46.65  
 700 days ..... 46.72  
 701 days ..... 46.78  
 702 days ..... 46.85  
 703 days ..... 46.92  
 704 days ..... 46.98  
 705 days ..... 47.05  
 706 days ..... 47.12  
 707 days ..... 47.18  
 708 days ..... 47.25  
 709 days ..... 47.32  
 710 days ..... 47.38  
 711 days ..... 47.45  
 712 days ..... 47.52  
 713 days ..... 47.58  
 714 days ..... 47.65  
 715 days ..... 47.72  
 716 days ..... 47.78  
 717 days ..... 47.85  
 718 days ..... 47.92  
 719 days ..... 47.98  
 720 days ..... 48.05  
 721 days ..... 48.12  
 722 days ..... 48.18  
 723 days ..... 48.25  
 724 days ..... 48.32  
 725 days ..... 48.38  
 726 days ..... 48.45  
 727 days ..... 48.52  
 728 days ..... 48.58  
 729 days ..... 48.65  
 730 days ..... 48.72  
 731 days ..... 48.78  
 732 days ..... 48.85  
 733 days ..... 48.92  
 734 days ..... 48.98  
 735 days ..... 49.05  
 736 days ..... 49.12  
 737 days ..... 49.18  
 738 days ..... 49.25  
 739 days ..... 49.32  
 740 days ..... 49.38  
 741 days ..... 49.45  
 742 days ..... 49.52  
 743 days ..... 49.58  
 744 days ..... 49.65  
 745 days ..... 49.72  
 746 days ..... 49.78  
 747 days ..... 49.85  
 748 days ..... 49.92  
 749 days ..... 49.98  
 750 days ..... 50.05  
 751 days ..... 50.12  
 752 days ..... 50.18  
 753 days ..... 50.25  
 754 days ..... 50.32  
 755 days ..... 50.38  
 756 days ..... 50.45  
 757 days ..... 50.52  
 758 days ..... 50.58  
 759 days ..... 50.65  
 760 days ..... 50.72  
 761 days ..... 50.78  
 762 days ..... 50.85  
 763 days ..... 50.92  
 764 days ..... 50.98  
 765 days ..... 51.05  
 766 days ..... 51.12  
 767 days ..... 51.18  
 768 days ..... 51.25  
 769 days ..... 51.32

# 5<sup>TH</sup> WAR LOAN

## STARTS TODAY!

IT'S FOR INVASION!  
FOR VICTORY!  
FOR YOUR BOY!



WHY YOU ARE ASKED TO  
**INVEST MORE**  
During the "ZERO HOUR" Drive



Invasion barges, tanks, field guns cost thousands upon thousands of dollars. Invasion demands more and ever more fighting equipment to insure Victory. The money must come from every patriotic American at home.

### BOOST YOUR PLEDGE

As America faces its "Zero Hour", our armed forces march unflinchingly forward. They are ready to die if need be.

And now, on the home front comes the command—back up our fighting men with the biggest War Loan of all. This is the "Zero Hour" Drive. Our duty is clear...

If you are on the payroll savings plan, buy extra bonds in this drive.

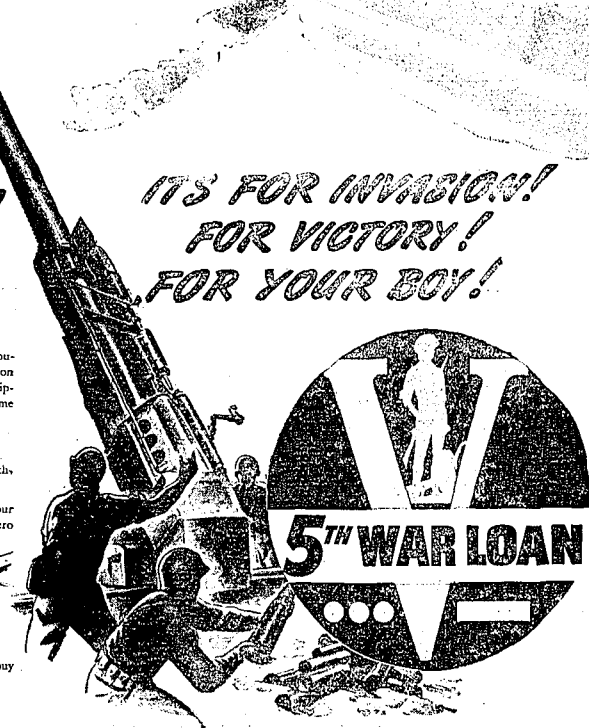
If you buy War Bonds regularly at your bank or Post Office, double your War Bond investment. But, whatever you do, whoever you are, ask yourself this question: "What have I done today that some mother's son should die for me tonight?" Then buy your extra \$100—or \$200—or \$300 Bond. It's for Victory!

**WELCOME THE VICTORY VOLUNTEERS**  
when they come to tell you about War Bonds



NOW, AS America goes all out for invasion—you *must* join the fight, too! No matter how much you have done—you *must* do more! It is a solemn duty for every American to buy MORE War Bonds during the 5th WAR LOAN DRIVE—to keep the attack going—to help safeguard your country and your own boys in the fight. The job is big—you've got to dig!

It's a question of simple arithmetic: War costs more today than ever—and during invasion, the demands for supplies reach their peak. A heavy bomber costs about \$250,000. A 155 mm. howitzer costs \$23,000. Fighter planes cost \$50,000.



## Back the Attack!—BUY MORE THAN BEFORE!

The Albion  
Alexander's  
G. G. Anderson Co.  
The Amalgamated Sugar Company

Barnard Auto Co.  
Bean Growers' Warehouse Association  
Dialma Cyclery

Bertha Campbell's Store  
Dr. Wallace-Bond  
The Bowladrome  
Hunting Tractor Co.  
Claude Brown Music & Furniture Co.  
Miles J. Browning, Inc.

Jose M. Chass  
Clox Book Store  
Continental Oil Co.

Deweller Bros., Inc.  
Diamond Hardware Co.  
Dumas-Warner Music Store

Fidelity National Bank  
Farmers Auto Inter-Insurance Exchange  
First Federal Savings & Loan Association  
Ford Transfer  
Globe Seed & Feed Co.

Home Lumber & Coal Co.  
Hosmer Furniture Co.  
Howard Tractor Co.  
Hudson-Clark Shoe Store

Idaho Department Store  
Idaho Egg Producers Co-op Association  
Idaho Packing Co.  
Idaho Hide & Tallow Co.  
Intermountain Seed Co.

Glen G. Jenkins, Chevrolet  
Jerome Co-op Creamery  
Kinney's Wholesale Co.

M. H. King Co.  
Krongel's Hardware  
Kugler's Jewelers

Dr. J. E. Laugenwalter  
Magel Auto Co.  
Maple Valley Processing Company  
Maple City Fuel Co.  
The Mayfair Shop  
McVey's Implement & Hardware  
Stuart Morrison Tire Shop  
Nelland Laundry & Dry Cleaners  
O. R. Nelson, Inc.  
J. J. Newberry Co.

Nye Bros. City Fuel Co.  
Orange Transportation Co., Inc.  
The Orpheum and Idaho Theaters  
Ostrander Lumber Co.  
Pacific Diamond-II Bag Company  
The Paris Co.  
Parlan Launderers & Dry Cleaners  
The Park Hotel  
E. & G. Jewelers  
Richardson's Cleaners & Dyers  
E. L. Roberts, Jeweler  
Rowles-Black Co.  
Rogerson Hotel & Coffee Shop  
Sawyer Store, Inc.

Sav-Mor Drug  
Dr. Geo. P. Scholer, Optometrist  
Sawtooth Co.  
Self Manufacturing Co.  
Sherwood Typewriter Exchange  
Hearn-Hochuk and Co.  
Shell Oil Co. & J. Holmes  
Sierling Jewelry Co.  
Summer-Sand & Gravel Co.  
Bert A. Sweet & Son, Furniture  
Times-News  
Trinidad Bean & Elevator Co.

Twin Falls Bank & Trust Company  
Twin Falls Flour Mills  
Twin Falls Feed & Ice Co.  
Twin Falls Motor Co.  
Twin Falls Mortuary  
Twin Falls Motor Transit Co.  
Union Motor Co.  
Van Engelen  
The Vogue  
Warberg Bros. Coal & Transfer Co.  
White Mortuary  
Washington Market

This is an official U.S. Treasury advertisement—prepared under auspices of Treasury Department and War Advertising Council