

WAR BULLETIN

WASHINGTON, Dec. 21 (UP)—Japanese forces destroyed a small enemy plane probably destroyed seven, and damaged 11 during a raid on the Japanese aerial city of Manila, Manchuria, the war department announced today.

VOL. 27, NO. 218

Times News

A Regional Newspaper Serving

TWIN FALLS

Nine Irrigated Idaho Counties

TWIN FALLS, IDAHO, THURSDAY, DECEMBER 21, 1944

Member of Audit Bureau of Circulations Associated Press and United Press

FINAL CITY EDITION

PRICE 5 CENTS

NAZIS CRASH INTO TWIN FALLS

COMPLETE YANK VICTORY NEARS ON LEYTE ISLE

GEN. MACARTHUR'S HEADQUARTERS, PHILIPPINES, Dec. 21 (P)—American conquest of rugged Leyte island—the outcome "will decide the fate of the greater east war," Japan's Premier Kato said Dec. 12—nearly accomplished today.

"The battle is rapidly drawing to an end," announced Gen. Douglas MacArthur two months and a day after he returned to the Philippines Oct. 20 with amphibious forces, landing on Leyte's east coast.

On Mindanao island, radio said the Yanks sought to cover up "reverses" on Leyte by vaulting to the Chinese side of the island seven days ago—there was no enemy ground activity and his air command was light," today's communiqué said. Nine disaster planes were downed.

Nippon Rising Plans
Irreversible disasters were depicted for the nipponese on mountainous northwest Leyte. That deadly battlefield is crossed north and south by a single corridor road from Pinanapan to Ormoc and linked by a supplementary road to the west coast of Palompon.

Two American divisions slanking south from Pinanapan and a third slanking north from Ormoc have fought to within a mile of a juncture along the corridor road from Pinanapan to Ormoc and linked by a supplementary road to the west coast of Palompon.

Two American divisions slanking south from Pinanapan and a third slanking north from Ormoc have fought to within a mile of a juncture along the corridor road from Pinanapan to Ormoc and linked by a supplementary road to the west coast of Palompon.

POTATO PERMITS TOTAL 100 CARS

Permits for shipment of more than 100 cars of potatoes from the Magic Valley area, have been issued by the WPA office in Twin Falls since Tuesday.

A shortage of railroad cars has added to the problems that potato raisers of this area have faced during the past 10 days.

Potato shippers picked up their army food orders and during the WPA-100 controversy regarding the number of shipments. It was decided that 100 cars are needed at this time to meet the cars of the immediate situation.

Additional cars were becoming available Thursday afternoon, but their number was small and indications were that it would be some time before potato shipments would return to normal.

The government is buying one million three cars of potatoes shipped from there to insure supplies for the armed service.

Ruling of Jerome Court Affirmed

BOISE, Dec. 21 (P)—The supreme court today affirmed the ruling of U. S. District Judge J. L. Taylor in a case involving the estate of William W. Taylor, who died in 1938.

The ruling was in favor of the Taylor family, who claimed a 100-acre highway district in a Jerome county claim.

The case, known as Taylor v. Taylor, was heard by Judge Taylor in 1943, and the ruling was affirmed today by the supreme court.

The ruling was in favor of the Taylor family, who claimed a 100-acre highway district in a Jerome county claim.

American Headquarters Admits Disastrous Reverses in Line of Bloodiest Battles in History; Belgium Break Not Yet Reached

PARIS, Dec. 21 (UP)—German armored spearheads have driven 30 miles inside Belgium, supreme allied headquarters reported today, severing the main lateral Liege-Arlon highway in a drive which had knocked a hole of 25 miles or more in American first army lines in south Belgium and the northern half of Luxembourg. The Germans are now 30 miles in Belgium. Screaming German infantry men charged head-on into the American machine guns today and went down like ducks in a shooting gallery until the street was littered with squirming, bloody heaps of flesh. The Germans paid a terrible price but they took their

losses and went on to overwhelm the American gunners defending a town near Monschau. Reinforced American troops rallied to stem the German breakthrough on the northern flank of the Belgian salient, but the nazis' main armored forces to the south are rolling forward through the Ardennes at a pace that may already have carried half-way across Luxembourg. It was acknowledged at headquarters that American arms have suffered their worst defeat since the fall of the Philippines in 1942, and that the battle, already one of the bloodiest in United States' history, has still not reached its peak.

Killed, Missing



JOAN BERRY TELLS JURY ABOUT BABY

JOAN BERRY TELLS JURY ABOUT BABY

LOS ANGELES, Dec. 21 (P)—A woman, who told her husband she had a baby, was told today by a jury that she had not. The jury found that the woman had not had a baby, and that she had been lying to her husband.

Yankees Given Worst Setback Since Manila

PARIS, Dec. 21 (UP)—This is the worst setback since the fall of the Philippines in 1942. The German army has driven 30 miles into Belgium, severing the main lateral Liege-Arlon highway. The Germans are now 30 miles in Belgium. Screaming German infantry men charged head-on into the American machine guns today and went down like ducks in a shooting gallery until the street was littered with squirming, bloody heaps of flesh. The Germans paid a terrible price but they took their



THE HEAVIEST GERMAN COUNTER-OFFENSIVE OF THE WAR

CAFE SHUTDOWN WILL HIT DINERS

Persons who eat their meals out are going to need some means from heaven—or invitations to private homes—to survive the Christmas season. Most of the cafes and restaurants in Twin Falls will be closed Sunday, Monday, and Tuesday. At least two eating places will observe holiday hours.

Weather still was one of the greatest handicaps to the American defense

Weather still was one of the greatest handicaps to the American defense. Dense clouds and fog still blanketed most of the fighting front and early reports suggested allied tactical air forces, grounded almost completely yesterday, had been unable to join in the battle along this morning.

Cassian Killed in Holland Fighting

BURLEY, Dec. 21 (P)—Pvt. Glendon Hill, formerly of Burley, was killed in action in Holland, according to information reaching his family and unit. Mr. and Mrs. Jack Doolittle, of Burley, are the parents of the deceased.

Another Civil War in Spain Nearing

LONDON, Dec. 21 (P)—Possibility of another civil war in Spain was suggested by some sources today as the result of the German invasion of the Basque country.

FLASHES OF LIFE

LOUISVILLE, Ky., Dec. 21—A 24-year-old farmer, Albert Joseph Hines, police court prosecutor today said he was "dazed" by the news that farm boys had registered for selective training.

CATHOLICS SCORE STAND OF MAYOR

LOS ANGELES, Dec. 21 (UP)—The Los Angeles Catholic inter-racial council today termed a "disgrace to the community" Mayor Fletcher Bowron's "ridiculous" rejection of the Japanese-American community.

Foe Reported Planning East Front Drive

LONDON, Dec. 21 (UP)—Stockholm reports credited to anti-Nazi German sources today said the German high command is preparing a significant Christmas offensive on the eastern front to coincide with the new drive in the west.

CEILINGS ON LIVE CATTLE IN OFFING

WASHINGTON, Dec. 21 (P)—Reports the government is ready to fix price ceilings on live cattle offing prices, which are believed to be in excess of 10 cents a pound.

Kiss Advocates Deser Leader

BATON ROUGE, La., Dec. 21 (P)—A "kiss" was the theme of a speech by a leader of the Louisiana State University students, who urged the students to support the war effort.

Canadians Hold Ground in Italy

ROME, Dec. 21 (P)—German forces are throwing "heavy" attacks against the Canadian bridgehead across the Italian Narviolo north of Pisa, but the Canadians are holding their ground.

WFA Reverses Itself on Beef

NEW YORK, Dec. 21 (P)—Meat prices today reversed a 10-cent advance in the price of beef, as the war food administration reversed its earlier ruling and made a 10-cent price increase.

He Smokes Her out of 12 Packages

NEW YORK, Dec. 21 (P)—A woman who smoked 12 packages of cigarettes today was told by a jury that she had not.

4 Probes Started Into Lupo's Death

REVERLY HILL, Cal., Dec. 21 (P)—Four separate investigations today were started into the death of a man named Lupo, who was found dead in a field.

1944 Santa Claus Travels on Bomber

SAN DIEGO, Dec. 21 (UP)—A 1944 Santa Claus is expected to travel on a bomber plane today, as the Santa Claus Club in San Diego is preparing for the holiday.

Prayer to Employees

WASHINGTON, Dec. 21 (P)—President and Mrs. Roosevelt today prayed for the employees of the federal government.

1944 Santa Claus Travels on Bomber

SAN DIEGO, Dec. 21 (UP)—A 1944 Santa Claus is expected to travel on a bomber plane today, as the Santa Claus Club in San Diego is preparing for the holiday.

GERMANS ARE 30 MILES IN BELGIUM

(From Two Pages)
 was estimated by a German news agency that the German army had advanced 30 miles into Belgium. The German army had advanced 30 miles into Belgium. The German army had advanced 30 miles into Belgium.

The German army had advanced 30 miles into Belgium. The German army had advanced 30 miles into Belgium. The German army had advanced 30 miles into Belgium.

The German army had advanced 30 miles into Belgium. The German army had advanced 30 miles into Belgium. The German army had advanced 30 miles into Belgium.

The German army had advanced 30 miles into Belgium. The German army had advanced 30 miles into Belgium. The German army had advanced 30 miles into Belgium.

The German army had advanced 30 miles into Belgium. The German army had advanced 30 miles into Belgium. The German army had advanced 30 miles into Belgium.

The German army had advanced 30 miles into Belgium. The German army had advanced 30 miles into Belgium. The German army had advanced 30 miles into Belgium.

The German army had advanced 30 miles into Belgium. The German army had advanced 30 miles into Belgium. The German army had advanced 30 miles into Belgium.

Twin Falls Pair Goes Into WAVE

Two local girls, Miss Betty Jean Smith and Miss Patricia Ann Moon, will report for duty with the WAVE program Thursday, Dec. 21.

Miss Smith, 18, is a senior at Twin Falls high school. Miss Moon, 17, is a junior at the same school.

Both girls are active in the community and will be representing Twin Falls in the WAVE program.

The WAVE program is a national effort to provide information and entertainment for the armed forces.

Miss Smith and Miss Moon will be working with the WAVE program in Twin Falls.

The WAVE program is a national effort to provide information and entertainment for the armed forces.

Miss Smith and Miss Moon will be working with the WAVE program in Twin Falls.

The WAVE program is a national effort to provide information and entertainment for the armed forces.

Miss Smith and Miss Moon will be working with the WAVE program in Twin Falls.

The WAVE program is a national effort to provide information and entertainment for the armed forces.

Miss Smith and Miss Moon will be working with the WAVE program in Twin Falls.

\$14,180,000 FOR IDAHO HIGHWAYS

BOISE, Dec. 21 (AP)—President Roosevelt announced today that the federal government has approved a highway program totaling \$14,180,000 for Idaho.

The program will be used for the construction and improvement of highways in Idaho.

The program will be used for the construction and improvement of highways in Idaho.

The program will be used for the construction and improvement of highways in Idaho.

The program will be used for the construction and improvement of highways in Idaho.

The program will be used for the construction and improvement of highways in Idaho.

The program will be used for the construction and improvement of highways in Idaho.

The program will be used for the construction and improvement of highways in Idaho.

The program will be used for the construction and improvement of highways in Idaho.

The program will be used for the construction and improvement of highways in Idaho.

The program will be used for the construction and improvement of highways in Idaho.

The program will be used for the construction and improvement of highways in Idaho.

Twin Falls News in Brief

Coleman to Reloc. City Commissioner Orville M. Coleman announced today that he will be relocating his office to the new city hall.

Residence. Mr. and Mrs. Victor Spence, formerly of Twin Falls, are returning from a trip to the coast.

Montana Visitor. Mrs. R. K. Kinslow and son, Robert, are visiting in Montana.

Student Visits. Misses Viola and Hilma Sweet, sophomore students at the University of Idaho, arrived in Twin Falls today.

Visa Parents. Prudence Smith, daughter of Mr. and Mrs. Juneau H. Smith, is here for a two-week vacation.

Idaho Falls Guest. Mr. and Mrs. Bert Woods, Idaho Falls, are visiting in Twin Falls.

Moore Gathering. The Moore family and friends are gathered in Twin Falls for a holiday celebration.

Marriage License. A marriage license was issued today for the wedding of Mr. and Mrs. [Name].

Gasoline Theft. Several automobiles were found with gasoline tanks drained in Twin Falls.

Divorce Sought. A divorce was sought today by a woman in Twin Falls.

Major and Wife Visit. Major and Mrs. Charles Ballou, and daughter, Jane, are spending the holidays in Twin Falls.

Truck Hits Truck. A truck with a semi-trailer, driven by a driver from [Location], crashed into a car in Twin Falls.

Northside Youth Injured in France

Joseph M. Leavelle, son of Mr. Joe M. Leavelle, is recovering from wounds sustained recently in action in France.

Private Leavelle, 21, of the 10th Infantry, was wounded in the leg and arm during the recent fighting in France.

Private Leavelle is being treated at a military hospital in France.

Private Leavelle is being treated at a military hospital in France.

Private Leavelle is being treated at a military hospital in France.

Private Leavelle is being treated at a military hospital in France.

Private Leavelle is being treated at a military hospital in France.

Private Leavelle is being treated at a military hospital in France.

Private Leavelle is being treated at a military hospital in France.

Private Leavelle is being treated at a military hospital in France.

Private Leavelle is being treated at a military hospital in France.

Private Leavelle is being treated at a military hospital in France.

Burglar Scorns Wrapped Gifts

A burglar prowled through the home of a family in Twin Falls, Idaho, and stole wrapped gifts.

The burglar was caught by the police and is being held in custody.

The burglar was caught by the police and is being held in custody.

The burglar was caught by the police and is being held in custody.

The burglar was caught by the police and is being held in custody.

The burglar was caught by the police and is being held in custody.

The burglar was caught by the police and is being held in custody.

The burglar was caught by the police and is being held in custody.

The burglar was caught by the police and is being held in custody.

The burglar was caught by the police and is being held in custody.

The burglar was caught by the police and is being held in custody.

The burglar was caught by the police and is being held in custody.

Lodge of Masons Installs Officers

Newly elected and appointed officers were installed Wednesday evening at a special session of the Twin Falls Lodge, A. F. and A. M. No. 1044.

The lodge is a branch of the Freemasons and has been active in the community.

The lodge is a branch of the Freemasons and has been active in the community.

The lodge is a branch of the Freemasons and has been active in the community.

The lodge is a branch of the Freemasons and has been active in the community.

The lodge is a branch of the Freemasons and has been active in the community.

The lodge is a branch of the Freemasons and has been active in the community.

The lodge is a branch of the Freemasons and has been active in the community.

The lodge is a branch of the Freemasons and has been active in the community.

The lodge is a branch of the Freemasons and has been active in the community.

The lodge is a branch of the Freemasons and has been active in the community.

The lodge is a branch of the Freemasons and has been active in the community.

WEATHER

For Twin Falls and vicinity: Generally clear or foggy tonight; light rain or snow showers Friday. High 45, low 25.

The army, navy and marine corps ship to deliver and receive supplies about 2,000 tons of the cases a month.

Keep the White Flag of Safety Flying

Keep the White Flag of Safety Flying

Keep the White Flag of Safety Flying

Merchant Marine Pair Visits Home

ALBION, Dec. 21 (AP)—Marine and Mrs. [Name] returned home today after a long absence.

The couple returned home after a long absence.

The couple returned home after a long absence.

The couple returned home after a long absence.

Magic Valley Funerals

TWIN FALLS—Funeral services for Mrs. [Name] will be held at 2 p. m. Friday at the Magic Valley funeral home.

Funeral services for Mrs. [Name] will be held at 2 p. m. Friday at the Magic Valley funeral home.

Funeral services for Mrs. [Name] will be held at 2 p. m. Friday at the Magic Valley funeral home.

Funeral services for Mrs. [Name] will be held at 2 p. m. Friday at the Magic Valley funeral home.

Cadet Dies in Crash

PRINCE, Dec. 21 (AP)—Orville M. Coleman, a cadet at the University of Idaho, died in a plane crash today.

Orville M. Coleman, a cadet at the University of Idaho, died in a plane crash today.

Orville M. Coleman, a cadet at the University of Idaho, died in a plane crash today.

Orville M. Coleman, a cadet at the University of Idaho, died in a plane crash today.

Forgery Accusation Hits Ex-Serviceman

CHANDLER, Ariz., Dec. 21 (AP)—A man charged with forgery following his arrest here last week by police in connection with the passing of an ill check at the Marketers grocery, 320 Shoshone, was charged today with forgery.

The man was charged with forgery following his arrest here last week by police in connection with the passing of an ill check at the Marketers grocery, 320 Shoshone, was charged today with forgery.

The man was charged with forgery following his arrest here last week by police in connection with the passing of an ill check at the Marketers grocery, 320 Shoshone, was charged today with forgery.

The man was charged with forgery following his arrest here last week by police in connection with the passing of an ill check at the Marketers grocery, 320 Shoshone, was charged today with forgery.

Morris Humphries Dies at Hospital

MORRIS K. HUMPHRIES, 33-year-old son of Mr. and Mrs. Morris K. Humphries, died at the Twin Falls county hospital today.

Morris K. Humphries, 33-year-old son of Mr. and Mrs. Morris K. Humphries, died at the Twin Falls county hospital today.

Morris K. Humphries, 33-year-old son of Mr. and Mrs. Morris K. Humphries, died at the Twin Falls county hospital today.

Morris K. Humphries, 33-year-old son of Mr. and Mrs. Morris K. Humphries, died at the Twin Falls county hospital today.

Little Lulu Cartoon

Little Lulu cartoon by G. B. Kline. "Cats Men & Cat Men" and "Lulu's War News."

Little Lulu cartoon by G. B. Kline. "Cats Men & Cat Men" and "Lulu's War News."

Little Lulu cartoon by G. B. Kline. "Cats Men & Cat Men" and "Lulu's War News."

Little Lulu cartoon by G. B. Kline. "Cats Men & Cat Men" and "Lulu's War News."

PRODUCE

Oranges 27c, New Crop, Navel, 27c, Sweet Potatoes 29c, 3 lbs., Grapefruit 34c, Lettuce 10c, Large Bold, iceberg, lb.

Oranges 27c, New Crop, Navel, 27c, Sweet Potatoes 29c, 3 lbs., Grapefruit 34c, Lettuce 10c, Large Bold, iceberg, lb.

Oranges 27c, New Crop, Navel, 27c, Sweet Potatoes 29c, 3 lbs., Grapefruit 34c, Lettuce 10c, Large Bold, iceberg, lb.

Oranges 27c, New Crop, Navel, 27c, Sweet Potatoes 29c, 3 lbs., Grapefruit 34c, Lettuce 10c, Large Bold, iceberg, lb.

TURKEYS

U. S. No. 1 Graded Bird, lb. 46c, Lamb Chops 42c, Lamb Chops 35c, Beef Roast 29c.

U. S. No. 1 Graded Bird, lb. 46c, Lamb Chops 42c, Lamb Chops 35c, Beef Roast 29c.

U. S. No. 1 Graded Bird, lb. 46c, Lamb Chops 42c, Lamb Chops 35c, Beef Roast 29c.

U. S. No. 1 Graded Bird, lb. 46c, Lamb Chops 42c, Lamb Chops 35c, Beef Roast 29c.

School Program

The Allendale school presented its annual Christmas program under the direction of Mrs. Leonard Huddleston.

Mrs. Huddleston left Saturday for Texas to spend the Christmas holidays with her husband who is stationed at Camp Howze, Tex.

The moth of the silk worm has lost the ability to fly and is completely dependent upon man for survival.

The moth of the silk worm has lost the ability to fly and is completely dependent upon man for survival.

Saturday, December 23

**Last Day to Pay First Half 1944 Taxes
Without Penalty**
Books then will be closed until Fourth
Saturday in January

ROSE J. WILSON
County Treasurer

ce Sale!

S
PERS
AR
efunds

No. 1

Pairs

e Tubbies
 from \$1.00
 & **Pair**

No. 2

3 Pairs

Price \$2.29
in all sizes, but a good assortment of styles.

to Clear



¢ Pair


No. 3

6 Pairs

s. Good range of sizes.
\$2.50 pair

Priced

¢ Pair



No. 4

3 Pairs

blue sandal types

Sizes

\$3.98 pair

Priced



Pair

Person

[illegible]

THEY BUY QUEER THINGS FOR YULE

NEW YORK, Dec. 21 (AP)—Christmas shopping reports from retail stores read "business as usual—plus!" But a new item has been added to the selling-hotlist: queer things for yule.

"I can begin to tell you how dreadful they are," one department store buyer said. "They're long canes with mother's fingers printed on them. But we can't keep them out of the store."

"That should give you some idea of the trend of the item," she added. "Many others are predicted there will be some queer—or did they say unusual—Christmas presents this year."

"I'm a ribbon on it and we'll sell it for Christmas," declared a department store buyer for Macy's. "People are asking for what they want and then taking what they can get."

One store held a special sale of its "extra" stock of Christmas candy, but another advertised a telephone attachment used extensively in offices, the "perfect gift for the large family, one-phone home—makes the telephone as private as a telephone booth."

Any item that hints of being queer really has a chance even to get the feel of the counter. Bloomington's recently advertised a supply of aluminum roasting pans rejected by the army.

"I can't imagine them as Christmas presents," a buyer said, "but people lined up for half a block."

32 Months Over, Soldier Returns

KIMBERLY, Dec. 21 — After 32 months overseas, Alvin Glenn, 34, of Kimberly, returned home today.

Glenn, who served in the 8888 Central Postal Directory, was discharged from the service in October, 1941.

Glenn, who served in the 8888 Central Postal Directory, was discharged from the service in October, 1941.

LEGAL ADVERTISEMENTS

NOTICE TO CREDITORS
In the Probate Court of the County of Twin Falls, State of Idaho

ESTATE OF HENRY DICK AND CHRISTINA DICK, husband and wife, deceased.

Notice is hereby given by the undersigned administrator of the estate of Henry Dick and Christina Dick, deceased, and wife, deceased.

Notice is hereby given by the undersigned administrator of the estate of Henry Dick and Christina Dick, deceased, and wife, deceased.

Notice is hereby given by the undersigned administrator of the estate of Henry Dick and Christina Dick, deceased, and wife, deceased.

Notice is hereby given by the undersigned administrator of the estate of Henry Dick and Christina Dick, deceased, and wife, deceased.

Notice is hereby given by the undersigned administrator of the estate of Henry Dick and Christina Dick, deceased, and wife, deceased.

Notice is hereby given by the undersigned administrator of the estate of Henry Dick and Christina Dick, deceased, and wife, deceased.

Notice is hereby given by the undersigned administrator of the estate of Henry Dick and Christina Dick, deceased, and wife, deceased.

Notice is hereby given by the undersigned administrator of the estate of Henry Dick and Christina Dick, deceased, and wife, deceased.

Notice is hereby given by the undersigned administrator of the estate of Henry Dick and Christina Dick, deceased, and wife, deceased.

Notice is hereby given by the undersigned administrator of the estate of Henry Dick and Christina Dick, deceased, and wife, deceased.

Notice is hereby given by the undersigned administrator of the estate of Henry Dick and Christina Dick, deceased, and wife, deceased.

It'll Wave in Japan Again



This American flag—first over to wave over Japan—will be sent to General MacArthur, who will raise it over the Philippines. The ancient flag, which was used by the United States in the Philippines, was captured by the Japanese in 1942.

The flag, which was captured by the Japanese in 1942, was captured by the Japanese in 1942.

The flag, which was captured by the Japanese in 1942, was captured by the Japanese in 1942.

The flag, which was captured by the Japanese in 1942, was captured by the Japanese in 1942.

The flag, which was captured by the Japanese in 1942, was captured by the Japanese in 1942.

The flag, which was captured by the Japanese in 1942, was captured by the Japanese in 1942.

The flag, which was captured by the Japanese in 1942, was captured by the Japanese in 1942.

The flag, which was captured by the Japanese in 1942, was captured by the Japanese in 1942.

The flag, which was captured by the Japanese in 1942, was captured by the Japanese in 1942.

The flag, which was captured by the Japanese in 1942, was captured by the Japanese in 1942.

The flag, which was captured by the Japanese in 1942, was captured by the Japanese in 1942.

The flag, which was captured by the Japanese in 1942, was captured by the Japanese in 1942.

The flag, which was captured by the Japanese in 1942, was captured by the Japanese in 1942.

The flag, which was captured by the Japanese in 1942, was captured by the Japanese in 1942.

The flag, which was captured by the Japanese in 1942, was captured by the Japanese in 1942.

The flag, which was captured by the Japanese in 1942, was captured by the Japanese in 1942.

The flag, which was captured by the Japanese in 1942, was captured by the Japanese in 1942.

The flag, which was captured by the Japanese in 1942, was captured by the Japanese in 1942.

The flag, which was captured by the Japanese in 1942, was captured by the Japanese in 1942.

The flag, which was captured by the Japanese in 1942, was captured by the Japanese in 1942.

The flag, which was captured by the Japanese in 1942, was captured by the Japanese in 1942.

The flag, which was captured by the Japanese in 1942, was captured by the Japanese in 1942.

The flag, which was captured by the Japanese in 1942, was captured by the Japanese in 1942.

The flag, which was captured by the Japanese in 1942, was captured by the Japanese in 1942.

The flag, which was captured by the Japanese in 1942, was captured by the Japanese in 1942.

The flag, which was captured by the Japanese in 1942, was captured by the Japanese in 1942.

The flag, which was captured by the Japanese in 1942, was captured by the Japanese in 1942.

The flag, which was captured by the Japanese in 1942, was captured by the Japanese in 1942.

The flag, which was captured by the Japanese in 1942, was captured by the Japanese in 1942.

The flag, which was captured by the Japanese in 1942, was captured by the Japanese in 1942.

GIRL RETURNED IN KIDNAP CASE

Sheriff Warren W. Lowery returned a 14-year-old Twin Falls county girl to her home in Kimberly Wednesday night following her capture after she had been held in captivity for 10 days.

The girl, who was named Mary, was captured by a man who had been holding her in captivity for 10 days.

The girl, who was named Mary, was captured by a man who had been holding her in captivity for 10 days.

The girl, who was named Mary, was captured by a man who had been holding her in captivity for 10 days.

The girl, who was named Mary, was captured by a man who had been holding her in captivity for 10 days.

The girl, who was named Mary, was captured by a man who had been holding her in captivity for 10 days.

The girl, who was named Mary, was captured by a man who had been holding her in captivity for 10 days.

The girl, who was named Mary, was captured by a man who had been holding her in captivity for 10 days.

The girl, who was named Mary, was captured by a man who had been holding her in captivity for 10 days.

The girl, who was named Mary, was captured by a man who had been holding her in captivity for 10 days.

The girl, who was named Mary, was captured by a man who had been holding her in captivity for 10 days.

The girl, who was named Mary, was captured by a man who had been holding her in captivity for 10 days.

The girl, who was named Mary, was captured by a man who had been holding her in captivity for 10 days.

The girl, who was named Mary, was captured by a man who had been holding her in captivity for 10 days.

The girl, who was named Mary, was captured by a man who had been holding her in captivity for 10 days.

The girl, who was named Mary, was captured by a man who had been holding her in captivity for 10 days.

The girl, who was named Mary, was captured by a man who had been holding her in captivity for 10 days.

The girl, who was named Mary, was captured by a man who had been holding her in captivity for 10 days.

The girl, who was named Mary, was captured by a man who had been holding her in captivity for 10 days.

The girl, who was named Mary, was captured by a man who had been holding her in captivity for 10 days.

The girl, who was named Mary, was captured by a man who had been holding her in captivity for 10 days.

The girl, who was named Mary, was captured by a man who had been holding her in captivity for 10 days.

The girl, who was named Mary, was captured by a man who had been holding her in captivity for 10 days.

The girl, who was named Mary, was captured by a man who had been holding her in captivity for 10 days.

The girl, who was named Mary, was captured by a man who had been holding her in captivity for 10 days.

The girl, who was named Mary, was captured by a man who had been holding her in captivity for 10 days.

The girl, who was named Mary, was captured by a man who had been holding her in captivity for 10 days.

The girl, who was named Mary, was captured by a man who had been holding her in captivity for 10 days.

The girl, who was named Mary, was captured by a man who had been holding her in captivity for 10 days.

The girl, who was named Mary, was captured by a man who had been holding her in captivity for 10 days.

The girl, who was named Mary, was captured by a man who had been holding her in captivity for 10 days.

The girl, who was named Mary, was captured by a man who had been holding her in captivity for 10 days.

The girl, who was named Mary, was captured by a man who had been holding her in captivity for 10 days.

The girl, who was named Mary, was captured by a man who had been holding her in captivity for 10 days.

The girl, who was named Mary, was captured by a man who had been holding her in captivity for 10 days.

The girl, who was named Mary, was captured by a man who had been holding her in captivity for 10 days.

ROOSEVELT SIGNS Highway Measure

WASHINGTON, Dec. 21 (AP)—President Roosevelt has signed a bill authorizing a \$1,073,250,000 federal contribution toward a \$3,172,200,000 three-year postwar highway program.

In an accompanying statement, the president said the measure would provide advance planning of "needed facilities on a sound basis."

"Now is becoming a challenge to the nation," the president said.

"You'll Be Glad You Got That HANDY HOT"

Before the war, Belgium's trade with the United States averaged \$100,000,000 a year.

Before the war, Belgium's trade with the United States averaged \$100,000,000 a year.

Before the war, Belgium's trade with the United States averaged \$100,000,000 a year.

Before the war, Belgium's trade with the United States averaged \$100,000,000 a year.

Before the war, Belgium's trade with the United States averaged \$100,000,000 a year.

Before the war, Belgium's trade with the United States averaged \$100,000,000 a year.

Before the war, Belgium's trade with the United States averaged \$100,000,000 a year.

Before the war, Belgium's trade with the United States averaged \$100,000,000 a year.

Before the war, Belgium's trade with the United States averaged \$100,000,000 a year.

Before the war, Belgium's trade with the United States averaged \$100,000,000 a year.

Before the war, Belgium's trade with the United States averaged \$100,000,000 a year.

Before the war, Belgium's trade with the United States averaged \$100,000,000 a year.

Before the war, Belgium's trade with the United States averaged \$100,000,000 a year.

Before the war, Belgium's trade with the United States averaged \$100,000,000 a year.

Before the war, Belgium's trade with the United States averaged \$100,000,000 a year.

Before the war, Belgium's trade with the United States averaged \$100,000,000 a year.

Before the war, Belgium's trade with the United States averaged \$100,000,000 a year.

Before the war, Belgium's trade with the United States averaged \$100,000,000 a year.

Before the war, Belgium's trade with the United States averaged \$100,000,000 a year.

Before the war, Belgium's trade with the United States averaged \$100,000,000 a year.

Before the war, Belgium's trade with the United States averaged \$100,000,000 a year.

Before the war, Belgium's trade with the United States averaged \$100,000,000 a year.

Before the war, Belgium's trade with the United States averaged \$100,000,000 a year.

Before the war, Belgium's trade with the United States averaged \$100,000,000 a year.

Before the war, Belgium's trade with the United States averaged \$100,000,000 a year.

Before the war, Belgium's trade with the United States averaged \$100,000,000 a year.

Before the war, Belgium's trade with the United States averaged \$100,000,000 a year.

Before the war, Belgium's trade with the United States averaged \$100,000,000 a year.

Before the war, Belgium's trade with the United States averaged \$100,000,000 a year.

Before the war, Belgium's trade with the United States averaged \$100,000,000 a year.

Before the war, Belgium's trade with the United States averaged \$100,000,000 a year.

Before the war, Belgium's trade with the United States averaged \$100,000,000 a year.

WATER SOFTENERS Medicine Cabinets Commonwealth Bath Tubs

ROBT E. LEE SALES CO. 426-430 Main Ave. S. PH. 1357 PLUMBING & HEATING

ROBT E. LEE SALES CO. 426-430 Main Ave. S. PH. 1357 PLUMBING & HEATING

ROBT E. LEE SALES CO. 426-430 Main Ave. S. PH. 1357 PLUMBING & HEATING

ROBT E. LEE SALES CO. 426-430 Main Ave. S. PH. 1357 PLUMBING & HEATING

ROBT E. LEE SALES CO. 426-430 Main Ave. S. PH. 1357 PLUMBING & HEATING

ROBT E. LEE SALES CO. 426-430 Main Ave. S. PH. 1357 PLUMBING & HEATING

ROBT E. LEE SALES CO. 426-430 Main Ave. S. PH. 1357 PLUMBING & HEATING

ROBT E. LEE SALES CO. 426-430 Main Ave. S. PH. 1357 PLUMBING & HEATING

ROBT E. LEE SALES CO. 426-430 Main Ave. S. PH. 1357 PLUMBING & HEATING

ROBT E. LEE SALES CO. 426-430 Main Ave. S. PH. 1357 PLUMBING & HEATING

ROBT E. LEE SALES CO. 426-430 Main Ave. S. PH. 1357 PLUMBING & HEATING

ROBT E. LEE SALES CO. 426-430 Main Ave. S. PH. 1357 PLUMBING & HEATING

ROBT E. LEE SALES CO. 426-430 Main Ave. S. PH. 1357 PLUMBING & HEATING

ROBT E. LEE SALES CO. 426-430 Main Ave. S. PH. 1357 PLUMBING & HEATING

ROBT E. LEE SALES CO. 426-430 Main Ave. S. PH. 1357 PLUMBING & HEATING

ROBT E. LEE SALES CO. 426-430 Main Ave. S. PH. 1357 PLUMBING & HEATING

ROBT E. LEE SALES CO. 426-430 Main Ave. S. PH. 1357 PLUMBING & HEATING

ROBT E. LEE SALES CO. 426-430 Main Ave. S. PH. 1357 PLUMBING & HEATING

ROBT E. LEE SALES CO. 426-430 Main Ave. S. PH. 1357 PLUMBING & HEATING

ROBT E. LEE SALES CO. 426-430 Main Ave. S. PH. 1357 PLUMBING & HEATING

ROBT E. LEE SALES CO. 426-430 Main Ave. S. PH. 1357 PLUMBING & HEATING

ROBT E. LEE SALES CO. 426-430 Main Ave. S. PH. 1357 PLUMBING & HEATING

ROBT E. LEE SALES CO. 426-430 Main Ave. S. PH. 1357 PLUMBING & HEATING

ROBT E. LEE SALES CO. 426-430 Main Ave. S. PH. 1357 PLUMBING & HEATING

ROBT E. LEE SALES CO. 426-430 Main Ave. S. PH. 1357 PLUMBING & HEATING

ROBT E. LEE SALES CO. 426-430 Main Ave. S. PH. 1357 PLUMBING & HEATING

ROBT E. LEE SALES CO. 426-430 Main Ave. S. PH. 1357 PLUMBING & HEATING

ROBT E. LEE SALES CO. 426-430 Main Ave. S. PH. 1357 PLUMBING & HEATING

ROBT E. LEE SALES CO. 426-430 Main Ave. S. PH. 1357 PLUMBING & HEATING

ROBT E. LEE SALES CO. 426-430 Main Ave. S. PH. 1357 PLUMBING & HEATING

ROBT E. LEE SALES CO. 426-430 Main Ave. S. PH. 1357 PLUMBING & HEATING

ROBT E. LEE SALES CO. 426-430 Main Ave. S. PH. 1357 PLUMBING & HEATING

ROBT E. LEE SALES CO. 426-430 Main Ave. S. PH. 1357 PLUMBING & HEATING

ROBT E. LEE SALES CO. 426-430 Main Ave. S. PH. 1357 PLUMBING & HEATING

ROBT E. LEE SALES CO. 426-430 Main Ave. S. PH. 1357 PLUMBING & HEATING

ROBT E. LEE SALES CO. 426-430 Main Ave. S. PH. 1357 PLUMBING & HEATING

THE FIRST trans-Atlantic yacht race was run in December, 1866, between three American schooners.

It is likewise a notice to the 44 state legislatures which convene in 1945 that the highway program will require their prompt and vigorous attention.

States could supply \$1,000,000,000 on a 15-50 matching basis to be

States could supply \$1,000,000,000 on a 15-50 matching basis to be

States could supply \$1,000,000,000 on a 15-50 matching basis to be

States could supply \$1,000,000,000 on a 15-50 matching basis to be

States could supply \$1,000,000,000 on a 15-50 matching basis to be

States could supply \$1,000,000,000 on a 15-50 matching basis to be

States could supply \$1,000,000,000 on a 15-50 matching basis to be

States could supply \$1,000,000,000 on a 15-50 matching basis to be

States could supply \$1,000,000,000 on a 15-50 matching basis to be

States could supply \$1,000,000,000 on a 15-50 matching basis to be

States could supply \$1,000,000,000 on a 15-50 matching basis to be

States could supply \$1,000,000,000 on a 15-50 matching basis to be

States could supply \$1,000,000,000 on a 15-50 matching basis to be

States could supply \$1,000,000,000 on a 15-50 matching basis to be

States could supply \$1,000,000,000 on a 15-50 matching basis to be

States could supply \$1,000,000,000 on a 15-50 matching basis to be

States could supply \$1,000,000,000 on a 15-50 matching basis to be

States could supply

STETTINIUS HAS OFFICE 'GREENED'

By FREDERICK C. OTHMAN
WASHINGTON, Dec. 21.—Secretary of State Edward R. Stettinius said he was going to reorganize the state department by "greening" the office, according to a statement made by Cordell Hull's private secretary, Mr. Tolson.

Then he went to work in the third floor of his new headquarters. He made a list of his new assistants, secretaries and clerks, and he made a list of his new assistants, secretaries and clerks, and he made a list of his new assistants, secretaries and clerks.

Next door to the headquarters of Undersecretary George C. Davis is another office, and a granddaddy's clock is still ticking in a room. In the middle of the room is a woman, holding the end of a dark green velvet rope. The rope is held by a woman, holding the end of a dark green velvet rope. The rope is held by a woman, holding the end of a dark green velvet rope.

Company K holds Individual Drills
Individual drill was the main business of the company K, Idaho state guard, held in the Legion hall, Tuesday night.

UNIT
Pvt. Phil W. Crane left for his new post at the George Meade, Md., following the week's tour of duty at the home of his parents, Mr. and Mrs. Alfred Crane. His wife accompanied him as far as Des Moines, Ia., where she is employed.

Real Estate Transfers
Information furnished by Twin Falls Title and Abstract Company

WARRANTY DEC. 18
C. Elliott, \$10; lot 1, Henderson Bickel addition to Twin Falls.

Farewell to Arms—For a Night



Former company, all at one time members of Company E, 11th engineers, national guard, met in the Park hotel to get together after the war. The men in regular army uniforms have had at least 32 months in service and war from 1917 to 1919. The men in dress uniforms were from 1917 to 1919. The men in dress uniforms were from 1917 to 1919.

Births Outnumber Deaths in Idaho
BOISE, Dec. 21.—Births outnumbered deaths in Idaho more than two to one during November. Mrs. Mabel Elder, assistant director of the division of vital statistics, said today.

Boys' Choir Singing At Church Program
The annual Christmas service and singing by the boys' choir of the Methodist Episcopal church will be held at 7 p. m. Friday in the church.

FILER
AMM J. Dale Harding arrived in Twin Falls today from Philadelphia to spend a few days with his parents, Mr. and Mrs. E. Harding.

3 Magic Valley Sailors Graduate
Six Idaho sailors were included in the latest class graduated from service schools at this U. S. Navy training center.

REAL ESTATE TRANSFERS
Information furnished by Twin Falls Title and Abstract Company

WARRANTY DEC. 18
C. Elliott, \$10; lot 1, Henderson Bickel addition to Twin Falls.

15 Per Cent Fewer Mexican Workers Available in 1945

By O. A. KELKER
Mexican national workers available in 1945 for work on Idaho farms will be 15 per cent less in number than the 3,700 which were employed in the state this season, Col. Wilson R. Buie, assistant director of labor, war food administration, Washington, D. C., told farm labor sponsor committee officials meeting here Wednesday.

Sailor Guest at Plumber Banquet
Members of the plumbers and steamfitters local No. 70 held their annual banquet meeting Sunday at the Park hotel.

Worried WAVE Gets a Break—Finds Relative
By JEAN DINKELKRA
It was 5:25 P. M. when the second of the "WAVE" (Women's Army Auxiliary Corps) members of the Twin Falls Chapter of Commerce, who were on their way to the Twin Falls Chapter of Commerce, who were on their way to the Twin Falls Chapter of Commerce.

Pacific Veteran Visits in Oakley
OAKLEY, Dec. 21.—Visiting his wife, Mrs. Mabel Elder, and his daughter, Mrs. Mabel Elder, and his daughter, Mrs. Mabel Elder, and his daughter, Mrs. Mabel Elder.

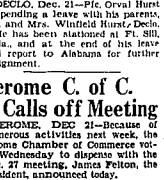
\$65 Damage Here In Car Collision
Damage estimated at \$65 as the result of a two-car collision in the 100 block of Buchanan street.

In Grateful Appreciation
of your patronage, your patriotism and patience in enduring the shortage of merchandise, we extend the Season's Greetings and best wishes for the new year.

STEEL GOODS HOME NEEDS
No. 4 Furnace Scoop \$1.75
18-Inch Snow Shovel \$1.50
11-Inch Barn Shovel \$1.40

Burley Man, 30, Hurt in Germany

BURLEY, Dec. 21.—A telegram from the war department informing that her husband, Pvt. ARNOLD Woolley, 30, was slightly wounded in action on Dec. 2 in Germany. Mr. Woolley is a son of an American mother and a Belgian father.



Jerome C. C. Calls off Meeting
JEROME, Dec. 21.—A number of activities next week, the Jerome Chamber of Commerce voted Wednesday to disperse with the Dec. 27 meeting, Jerome Felton, the president, announced today.

Wines with a past
...for your pleasure today

Italian Swiss Colony

PRIVATE STOCK

...for your pleasure today

...for your pleasure today

Twin Falls, Idaho

Markets and Finance

[illegible]

lightly above for wheeled westerns;	July	1.32	1.33	1.33
medium 155 to 160	Sept.	1.31	1.32	1.31
was \$1.40; choice				
late Wednesday.				
STOCK				
(WFA) - Hogs:				
medium, approx. 4.25	Dec.	.69	.72	.69

July
Sept.

[illegible][illegible][illegible][illegible][illegible][illegible]

1. The first step is to identify the problem or question that needs to be answered. This involves understanding the context and the specific requirements of the task.



To Accommodate Late
Shoppers - We Will
Remain

Open
Saturday
Night Until
9 P. M.

Last Minute

GIFT SUGGESTIONS

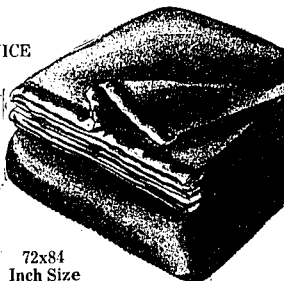
FOR BEDTIME COMFORT GIVE Chatham BLANKETS

for
WARMTH WITH SERVICE

100% wool blanket, medium weight
service quality single blanket with
satin binding. Recommended by the
U. S. Bureau of Home Economics—

\$10⁹⁰

GIVE A BLANKET
FOR CHRISTMAS



72x84
Inch Size

SATIN COVERED COMFORTERS

72x84
Inch Size



Filled with finest quality
lamb's wool batting. Trap-
unto design. Solid colors of
green, rust, blue, rose—

\$19⁹⁵

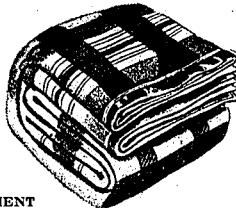
THIS SHIPMENT JUST RECEIVED

25% Wool

Double Bed BLANKETS

A warm durable bed blanket
in large plaid design. Full size
72x84. Satin binding. Colors:
Rose, blue, green, rust—

\$4⁹⁸



MAIN FLOOR DRY GOODS DEPARTMENT



Children's

Jumpers

Children's jumpers in colors
of red, brown, blue, tan and
navy. Peasant embroidery
trim. Pleasant, practical gifts
in spun rayon materials—

\$5⁹⁰

Sizes:
7 to 14

MAIN FLOOR READY-TO-WEAR DEPARTMENT

Pretty Cotton

Aprons

IDEAL
CHRISTMAS
GIFTS

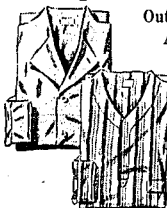
Printed cotton aprons in
light background floral de-
sign and pie-ace trim. The
popular bib styles—

\$2.49

MAIN FLOOR
READY-TO-WEAR
DEPARTMENT

Boys' Pajamas

Outing and Broadcloth
Ages 6 to 16 years



Boys like the warm com-
fort of these fancy check,
plaid outing pajamas in
button front, coat styles—
or for those who prefer
them these neat shirting
stripe broadcloth pajamas
are very neat and com-
fortable. Slipover styles—

\$1.49
Boys' Balcony

**JUST
RECEIVED!**

In Our
EXCLUSIVE JUVENILE
SHOE DEPARTMENT

A Nice Shipment of
EDWARDS & TRIMFOOT
CHILDREN'S

SHOES

New Numbers In
WHITE SHOES
BROWN OXFORDS
PATENT STRAPS

These are all high grade shoes that many
of you have been waiting for. While this is
a nice shipment, they will not last long.
Sizes go fast...

In Size Ranges from
3 to 5, 5½ to 8, 8½ to 11½, 12 to 13

Poorly fitted shoes during child-
hood often undermine a child's
general health...cause nervous-
ness...retard scholastic progress
...interfere with health-building
play...cause lasting foot ill-
ness later years.

Our X-Ray Fitting Service lets you see
that your child's shoes fit properly...
that they will assist active develop-
ment, healthy feet, keep
plant bones and mus-
cles in proper align-
ment. We make no
charge for the "house
of prevention". Use it
freely...whether you're
ready to buy or not.



**ALL
SHOES
X-RAY
FITTED**

When It Comes to Fit
It Costs No More to
Be Sure...

JUST RECEIVED

Easel Black Boards **\$2.49**

A Gift For Pleasant Dreams...

Men's Pajamas

While they last these
men's outing pajamas
offer a well appreciated
gift for the man about
the home - For those
who desire smart, stir-
ring warmth we offer the
heavier fancy stripe and
novelty designs in bot-
tom front styles, or the
lighter weights in plain
stripe outing in staple
patterns.

A Gift of
Comfort Is
Always
Appreciated



\$1.79 and \$2.98

SIZES
A B C D

Main Floor Men's Store

For the Younger Boy

Wool Jackets

Sturdy 2-tone wool mixed
jackets in Coatsack style
button fitted bottom and
cuffs... Novelty multi-
tone plaid body with plain
color sleeves. Ages 3 to 6—

\$5.90

BOYS' BALCONY



It doesn't take much to make a man content
after a hard day...an easy chair, his fa-
vorite tobacco, the evening paper and a pair of
comfy slippers from I. D. Store. Wrap up a
pair of warm slippers for him this Christmas.

Just Received!

ROMEOS \$2⁹⁸

In Tan Crushed Kid

A slipper for men, elas-
tic side insert for snug
pliable fit.

*Shell Enjoy
Loafing in Luxury*



Just In!

ANOTHER LATE SHIPMENT

Comphies
Indoor Casuals



\$2.98

• FITTING POINTS—
Soft, plush with
delicate embroi-
dery to make
comfy-dex.

\$3.95

• QUIETING PARTY—
Rayon fabric, bell,
fluffy embroi-
dery for elegance.
Open back.

\$3.95

MAIN FLOOR SHOE DEPARTMENT

IDAHO DEPARTMENT STORE

"The Christmas Store"