

100

Lines to Use Luxury Plane In September

NEW YORK, Aug. 2 (AP)—A new luxury airliner now is being given final tests and will go into service early in September, flying from coast-to-coast in 10 hours on a dawn-to-dusk schedule. It is Douglas' DC-4 with a pressurized cabin permitting flights in the sub-stratosphere.

United States Plans
United Airlines, which has ordered 25 of the \$1,000,000 planes, describes the craft as "the first postwar transport luxury liner," and will designate them as the Mainliner 300.
The new designation marks another milestone in the history of air transportation. United's first transport was known as the Mainliner 100—the number indicating its air speed; then came Mainliner 200, which cruised at 230 miles an hour. Both the Mainliner 100, a DC-3, and the Mainliner 200, a DC-4, are in service now.

Weights 42 Tons
The new ship, powered by four Pratt and Whitney engines developing 8,400 horsepower, will weigh 42 tons, fully loaded. United plans to use some of them for sleepers with accommodations for 26 passengers, who will retire when the plane leaves New York in the evening and lie on the west coast in time for breakfast the next morning.
On the daylight runs the planes will carry 52 passengers. The capacity is even greater, but United wants more room for the passengers. The fleet of DC-4's will be fitted with lounge-type chairs.

LEGAL ADVERTISEMENTS

NOTICE OF SALE OF REAL ESTATE AT PRIVATE SALE IN THE PROBATE COURT OF TWIN FALLS COUNTY, IDAHO.

In the matter of the estate of ELIA A. HALL, deceased.

NOTICE IS HEREBY GIVEN, that I, Ervin E. Hall, the undersigned, executor of the estate of

Ervin E. Hall, deceased, will on or after the 5th day of August, 1946, sell, at private sale to the highest and best bidder, upon terms and conditions hereinafter set forth, and subject to the confirmation of the above entitled court, all the right, title, interest and estate of the decedent which the decedent had at the time of her death, as well as all right, title, interest and estate which has since accrued, by operation of law or otherwise, to the estate of said decedent since her death, in and to the following described real estate:

All that certain lot or parcel of land situated in the County of Twin Falls, State of Idaho, and particularly described as follows, to-wit:

West 1/4 (W1/4) of the

Northwest quarter (NW1/4) of Section Thirty-Four (34), Township Ten (10) South, Range Sixteen (16) East of Boise Meridian. Together with all and singular the tenements, hereditaments and appurtenances.

The terms and conditions of sale are as follows: The sale is for cash and the money of the United States; not less than ten per cent of the amount bid to be deposited with the bid, balance of the purchase price to be paid upon the confirmation of sale by the Probate Court and delivery of the Executors deed. Sellers reserve the 1946 crop and possession of said premises until December 1, 1946. Executor to furnish Abstract of Title or Title Insurance showing merchantable title to said real estate. Executor reserves the right to reject any or all bids and the deposits of all unsuccessful bidders will be returned.

All bids and offers must be in writing and delivered to the undersigned Executor at the office of his Attorney Edward Babcock, located in the Fidelity National Bank Building, Twin Falls, Idaho, or may be filed in the office of the Clerk of the above entitled court, at any time before making the sale.

Dated this 20th day of July, 1946.

ERVIN E. HALL,

Executor of the estate of Elia A. Hall, deceased

Pub.: July 22, 26, Aug. 2, 1946.

Whoever you think of waterproofing, think of HYDROIZ! Always ready for your use with Insured guarantee of a perfect job.

Green Trailer and Lumber Co. 422 2nd Ave. South

Radio Schedules KTFI (1270 KILOCYCLES) ABC

WJBO FRIDAY

6:00 Vacation for Music
6:30 Mystery Theater
7:00 News
7:30 Sports
8:00 The Big Broadcast
8:30 The Big Broadcast
9:00 The Big Broadcast
9:30 The Big Broadcast
10:00 The Big Broadcast
10:30 The Big Broadcast
11:00 The Big Broadcast

SATURDAY

6:00 Home Aflame
6:30 The Big Broadcast
7:00 The Big Broadcast
7:30 The Big Broadcast
8:00 The Big Broadcast
8:30 The Big Broadcast
9:00 The Big Broadcast
9:30 The Big Broadcast
10:00 The Big Broadcast
10:30 The Big Broadcast
11:00 The Big Broadcast

SUNDAY

6:00 Home Aflame
6:30 The Big Broadcast
7:00 The Big Broadcast
7:30 The Big Broadcast
8:00 The Big Broadcast
8:30 The Big Broadcast
9:00 The Big Broadcast
9:30 The Big Broadcast
10:00 The Big Broadcast
10:30 The Big Broadcast
11:00 The Big Broadcast

MONDAY

6:00 Home Aflame
6:30 The Big Broadcast
7:00 The Big Broadcast
7:30 The Big Broadcast
8:00 The Big Broadcast
8:30 The Big Broadcast
9:00 The Big Broadcast
9:30 The Big Broadcast
10:00 The Big Broadcast
10:30 The Big Broadcast
11:00 The Big Broadcast

TUESDAY

6:00 Home Aflame
6:30 The Big Broadcast
7:00 The Big Broadcast
7:30 The Big Broadcast
8:00 The Big Broadcast
8:30 The Big Broadcast
9:00 The Big Broadcast
9:30 The Big Broadcast
10:00 The Big Broadcast
10:30 The Big Broadcast
11:00 The Big Broadcast

WEDNESDAY

6:00 Home Aflame
6:30 The Big Broadcast
7:00 The Big Broadcast
7:30 The Big Broadcast
8:00 The Big Broadcast
8:30 The Big Broadcast
9:00 The Big Broadcast
9:30 The Big Broadcast
10:00 The Big Broadcast
10:30 The Big Broadcast
11:00 The Big Broadcast

THURSDAY

6:00 Home Aflame
6:30 The Big Broadcast
7:00 The Big Broadcast
7:30 The Big Broadcast
8:00 The Big Broadcast
8:30 The Big Broadcast
9:00 The Big Broadcast
9:30 The Big Broadcast
10:00 The Big Broadcast
10:30 The Big Broadcast
11:00 The Big Broadcast

FRIDAY

6:00 Home Aflame
6:30 The Big Broadcast
7:00 The Big Broadcast
7:30 The Big Broadcast
8:00 The Big Broadcast
8:30 The Big Broadcast
9:00 The Big Broadcast
9:30 The Big Broadcast
10:00 The Big Broadcast
10:30 The Big Broadcast
11:00 The Big Broadcast

SATURDAY

6:00 Home Aflame
6:30 The Big Broadcast
7:00 The Big Broadcast
7:30 The Big Broadcast
8:00 The Big Broadcast
8:30 The Big Broadcast
9:00 The Big Broadcast
9:30 The Big Broadcast
10:00 The Big Broadcast
10:30 The Big Broadcast
11:00 The Big Broadcast

SUNDAY

6:00 Home Aflame
6:30 The Big Broadcast
7:00 The Big Broadcast
7:30 The Big Broadcast
8:00 The Big Broadcast
8:30 The Big Broadcast
9:00 The Big Broadcast
9:30 The Big Broadcast
10:00 The Big Broadcast
10:30 The Big Broadcast
11:00 The Big Broadcast

MONDAY

6:00 Home Aflame
6:30 The Big Broadcast
7:00 The Big Broadcast
7:30 The Big Broadcast
8:00 The Big Broadcast
8:30 The Big Broadcast
9:00 The Big Broadcast
9:30 The Big Broadcast
10:00 The Big Broadcast
10:30 The Big Broadcast
11:00 The Big Broadcast

TUESDAY

6:00 Home Aflame
6:30 The Big Broadcast
7:00 The Big Broadcast
7:30 The Big Broadcast
8:00 The Big Broadcast
8:30 The Big Broadcast
9:00 The Big Broadcast
9:30 The Big Broadcast
10:00 The Big Broadcast
10:30 The Big Broadcast
11:00 The Big Broadcast

WEDNESDAY

6:00 Home Aflame
6:30 The Big Broadcast
7:00 The Big Broadcast
7:30 The Big Broadcast
8:00 The Big Broadcast
8:30 The Big Broadcast
9:00 The Big Broadcast
9:30 The Big Broadcast
10:00 The Big Broadcast
10:30 The Big Broadcast
11:00 The Big Broadcast

THURSDAY

6:00 Home Aflame
6:30 The Big Broadcast
7:00 The Big Broadcast
7:30 The Big Broadcast
8:00 The Big Broadcast
8:30 The Big Broadcast
9:00 The Big Broadcast
9:30 The Big Broadcast
10:00 The Big Broadcast
10:30 The Big Broadcast
11:00 The Big Broadcast

FRIDAY

6:00 Home Aflame
6:30 The Big Broadcast
7:00 The Big Broadcast
7:30 The Big Broadcast
8:00 The Big Broadcast
8:30 The Big Broadcast
9:00 The Big Broadcast
9:30 The Big Broadcast
10:00 The Big Broadcast
10:30 The Big Broadcast
11:00 The Big Broadcast

SATURDAY

6:00 Home Aflame
6:30 The Big Broadcast
7:00 The Big Broadcast
7:30 The Big Broadcast
8:00 The Big Broadcast
8:30 The Big Broadcast
9:00 The Big Broadcast
9:30 The Big Broadcast
10:00 The Big Broadcast
10:30 The Big Broadcast
11:00 The Big Broadcast

SUNDAY

6:00 Home Aflame
6:30 The Big Broadcast
7:00 The Big Broadcast
7:30 The Big Broadcast
8:00 The Big Broadcast
8:30 The Big Broadcast
9:00 The Big Broadcast
9:30 The Big Broadcast
10:00 The Big Broadcast
10:30 The Big Broadcast
11:00 The Big Broadcast

MONDAY

6:00 Home Aflame
6:30 The Big Broadcast
7:00 The Big Broadcast
7:30 The Big Broadcast
8:00 The Big Broadcast
8:30 The Big Broadcast
9:00 The Big Broadcast
9:30 The Big Broadcast
10:00 The Big Broadcast
10:30 The Big Broadcast
11:00 The Big Broadcast

TUESDAY

6:00 Home Aflame
6:30 The Big Broadcast
7:00 The Big Broadcast
7:30 The Big Broadcast
8:00 The Big Broadcast
8:30 The Big Broadcast
9:00 The Big Broadcast
9:30 The Big Broadcast
10:00 The Big Broadcast
10:30 The Big Broadcast
11:00 The Big Broadcast

WEDNESDAY

6:00 Home Aflame
6:30 The Big Broadcast
7:00 The Big Broadcast
7:30 The Big Broadcast
8:00 The Big Broadcast
8:30 The Big Broadcast
9:00 The Big Broadcast
9:30 The Big Broadcast
10:00 The Big Broadcast
10:30 The Big Broadcast
11:00 The Big Broadcast

THURSDAY

6:00 Home Aflame
6:30 The Big Broadcast
7:00 The Big Broadcast
7:30 The Big Broadcast
8:00 The Big Broadcast
8:30 The Big Broadcast
9:00 The Big Broadcast
9:30 The Big Broadcast
10:00 The Big Broadcast
10:30 The Big Broadcast
11:00 The Big Broadcast

FRIDAY

6:00 Home Aflame
6:30 The Big Broadcast
7:00 The Big Broadcast
7:30 The Big Broadcast
8:00 The Big Broadcast
8:30 The Big Broadcast
9:00 The Big Broadcast
9:30 The Big Broadcast
10:00 The Big Broadcast
10:30 The Big Broadcast
11:00 The Big Broadcast

SATURDAY

6:00 Home Aflame
6:30 The Big Broadcast
7:00 The Big Broadcast
7:30 The Big Broadcast
8:00 The Big Broadcast
8:30 The Big Broadcast
9:00 The Big Broadcast
9:30 The Big Broadcast
10:00 The Big Broadcast
10:30 The Big Broadcast
11:00 The Big Broadcast

SUNDAY

6:00 Home Aflame
6:30 The Big Broadcast
7:00 The Big Broadcast
7:30 The Big Broadcast
8:00 The Big Broadcast
8:30 The Big Broadcast
9:00 The Big Broadcast
9:30 The Big Broadcast
10:00 The Big Broadcast
10:30 The Big Broadcast
11:00 The Big Broadcast

MONDAY

6:00 Home Aflame
6:30 The Big Broadcast
7:00 The Big Broadcast
7:30 The Big Broadcast
8:00 The Big Broadcast
8:30 The Big Broadcast
9:00 The Big Broadcast
9:30 The Big Broadcast
10:00 The Big Broadcast
10:30 The Big Broadcast
11:00 The Big Broadcast

TUESDAY

6:00 Home Aflame
6:30 The Big Broadcast
7:00 The Big Broadcast
7:30 The Big Broadcast
8:00 The Big Broadcast
8:30 The Big Broadcast
9:00 The Big Broadcast
9:30 The Big Broadcast
10:00 The Big Broadcast
10:30 The Big Broadcast
11:00 The Big Broadcast

WEDNESDAY

6:00 Home Aflame
6:30 The Big Broadcast
7:00 The Big Broadcast
7:30 The Big Broadcast
8:00 The Big Broadcast
8:30 The Big Broadcast
9:00 The Big Broadcast
9:30 The Big Broadcast
10:00 The Big Broadcast
10:30 The Big Broadcast
11:00 The Big Broadcast

THURSDAY

6:00 Home Aflame
6:30 The Big Broadcast
7:00 The Big Broadcast
7:30 The Big Broadcast
8:00 The Big Broadcast
8:30 The Big Broadcast
9:00 The Big Broadcast
9:30 The Big Broadcast
10:00 The Big Broadcast
10:30 The Big Broadcast
11:00 The Big Broadcast

FRIDAY

6:00 Home Aflame
6:30 The Big Broadcast
7:00 The Big Broadcast
7:30 The Big Broadcast
8:00 The Big Broadcast
8:30 The Big Broadcast
9:00 The Big Broadcast
9:30 The Big Broadcast
10:00 The Big Broadcast
10:30 The Big Broadcast
11:00 The Big Broadcast

SATURDAY

6:00 Home Aflame
6:30 The Big Broadcast
7:00 The Big Broadcast
7:30 The Big Broadcast
8:00 The Big Broadcast
8:30 The Big Broadcast
9:00 The Big Broadcast
9:30 The Big Broadcast
10:00 The Big Broadcast
10:30 The Big Broadcast
11:00 The Big Broadcast

SUNDAY

6:00 Home Aflame
6:30 The Big Broadcast
7:00 The Big Broadcast
7:30 The Big Broadcast
8:00 The Big Broadcast
8:30 The Big Broadcast
9:00 The Big Broadcast
9:30 The Big Broadcast
10:00 The Big Broadcast
10:30 The Big Broadcast
11:00 The Big Broadcast

MONDAY

6:00 Home Aflame
6:30 The Big Broadcast
7:00 The Big Broadcast
7:30 The Big Broadcast
8:00 The Big Broadcast
8:30 The Big Broadcast
9:00 The Big Broadcast
9:30 The Big Broadcast
10:00 The Big Broadcast
10:30 The Big Broadcast
11:00 The Big Broadcast

TUESDAY

6:00 Home Aflame
6:30 The Big Broadcast
7:00 The Big Broadcast
7:30 The Big Broadcast
8:00 The Big Broadcast
8:30 The Big Broadcast
9:00 The Big Broadcast
9:30 The Big Broadcast
10:00 The Big Broadcast
10:30 The Big Broadcast
11:00 The Big Broadcast

WEDNESDAY

6:00 Home Aflame
6:30 The Big Broadcast
7:00 The Big Broadcast
7:30 The Big Broadcast
8:00 The Big Broadcast
8:30 The Big Broadcast
9:00 The Big Broadcast
9:30 The Big Broadcast
10:00 The Big Broadcast
10:30 The Big Broadcast
11:00 The Big Broadcast

THURSDAY

6:00 Home Aflame
6:30 The Big Broadcast
7:00 The Big Broadcast
7:30 The Big Broadcast
8:00 The Big Broadcast
8:30 The Big Broadcast
9:00 The Big Broadcast
9:30 The Big Broadcast
10:00 The Big Broadcast
10:30 The Big Broadcast
11:00 The Big Broadcast

FRIDAY

6:00 Home Aflame
6:30 The Big Broadcast
7:00 The Big Broadcast
7:30 The Big Broadcast
8:00 The Big Broadcast
8:30 The Big Broadcast
9:00 The Big Broadcast
9:30 The Big Broadcast
10:00 The Big Broadcast
10:30 The Big Broadcast
11:00 The Big Broadcast

SATURDAY

6:00 Home Aflame
6:30 The Big Broadcast
7:00 The Big Broadcast
7:30 The Big Broadcast
8:00 The Big Broadcast
8:30 The Big Broadcast
9:00 The Big Broadcast
9:30 The Big Broadcast
10:00 The Big Broadcast
10:30 The Big Broadcast
11:00 The Big Broadcast

SUNDAY

6:00 Home Aflame
6:30 The Big Broadcast
7:00 The Big Broadcast
7:30 The Big Broadcast
8:00 The Big Broadcast
8:30 The Big Broadcast
9:00 The Big Broadcast
9:30 The Big Broadcast
10:00 The Big Broadcast
10:30 The Big Broadcast
11:00 The Big Broadcast

MONDAY

6:00 Home Aflame
6:30 The Big Broadcast
7:00 The Big Broadcast
7:30 The Big Broadcast
8:00 The Big Broadcast
8:30 The Big Broadcast
9:00 The Big Broadcast
9:30 The Big Broadcast
10:00 The Big Broadcast
10:30 The Big Broadcast
11:00 The Big Broadcast

TUESDAY

6:00 Home Aflame
6:30 The Big Broadcast
7:00 The Big Broadcast
7:30 The Big Broadcast
8:00 The Big Broadcast
8:30 The Big Broadcast
9:00 The Big Broadcast
9:30 The Big Broadcast
10:00 The Big Broadcast
10:30 The Big Broadcast
11:00 The Big Broadcast

WEDNESDAY

6:00 Home Aflame
6:30 The Big Broadcast
7:00 The Big Broadcast
7:30 The Big Broadcast
8:00 The Big Broadcast
8:30 The Big Broadcast
9:00 The Big Broadcast
9:30 The Big Broadcast
10:00 The Big Broadcast
10:30 The Big Broadcast
11:00 The Big Broadcast

THURSDAY

6:00 Home Aflame
6:30 The Big Broadcast
7:00 The Big Broadcast
7:30 The Big Broadcast
8:00 The Big Broadcast
8:30 The Big Broadcast
9:00 The Big Broadcast
9:30 The Big Broadcast
10:00 The Big Broadcast
10:30 The Big Broadcast
11:00 The Big Broadcast

FRIDAY

6:00 Home Aflame
6:30 The Big Broadcast
7:00 The Big Broadcast
7:30 The Big Broadcast
8:00 The Big Broadcast
8:30 The Big Broadcast
9:00 The Big Broadcast
9:30 The Big Broadcast
10:00 The Big Broadcast
10:30 The Big Broadcast
11:00 The Big Broadcast

SATURDAY

6:00 Home Aflame
6:30 The Big Broadcast
7:00 The Big Broadcast
7:30 The Big Broadcast
8:00 The Big Broadcast
8:30 The Big Broadcast
9:00 The Big Broadcast
9:30 The Big Broadcast
10:00 The Big Broadcast
10:30 The Big Broadcast
11:00 The Big Broadcast

SUNDAY

6:00 Home Aflame
6:30 The Big Broadcast
7:00 The Big Broadcast
7:30 The Big Broadcast
8:00 The Big Broadcast
8:30 The Big Broadcast
9:00 The Big Broadcast
9:30 The Big Broadcast
10:00 The Big Broadcast
10:30 The Big Broadcast
11:00 The Big Broadcast

12:45 Musical Memoirs
1:00 Radio in the Life
1:15 Musical Memoirs
1:30 Musical Memoirs
1:45 Musical Memoirs
2:00 Musical Memoirs
2:15 Musical Memoirs
2:30 Musical Memoirs
2:45 Musical Memoirs
3:00 Musical Memoirs
3:15 Musical Memoirs
3:30 Musical Memoirs
3:45 Musical Memoirs
4:00 Musical Memoirs
4:15 Musical Memoirs
4:30 Musical Memoirs
4:45 Musical Memoirs
5:00 Musical Memoirs
5:15 Musical Memoirs
5:30 Musical Memoirs
5:45 Musical Memoirs
6:00 Musical Memoirs
6:15 Musical Memoirs
6:30 Musical Memoirs
6:45 Musical Memoirs
7:00 Musical Memoirs
7:15 Musical Memoirs
7:30 Musical Memoirs
7:45 Musical Memoirs
8:00 Musical Memoirs
8:15 Musical Memoirs
8:30 Musical Memoirs
8:45 Musical Memoirs
9:00 Musical Memoirs
9:15 Musical Memoirs
9:30 Musical Memoirs
9:45 Musical Memoirs
10:00 Musical Memoirs
10:15 Musical Memoirs
10:30 Musical Memoirs
10:45 Musical Memoirs
11:00 Musical Memoirs
11:15 Musical Memoirs
11:30 Musical Memoirs
11:45 Musical Memoirs
12:00 Musical Memoirs
12:15 Musical Memoirs
12:30 Musical Memoirs
12:45 Musical Memoirs
1:00 Musical Memoirs
1:15 Musical Memoirs
1:30 Musical Memoirs
1:45 Musical Memoirs
2:00 Musical Memoirs
2:15 Musical Memoirs
2:30 Musical Memoirs
2:45 Musical Memoirs
3:00 Musical Memoirs
3:15 Musical Memoirs
3:30 Musical Memoirs
3:45 Musical Memoirs
4:00 Musical Memoirs
4:15 Musical Memoirs
4:30 Musical Memoirs
4:45 Musical Memoirs
5:00 Musical Memoirs
5:15 Musical Memoirs
5:30 Musical Memoirs
5:45 Musical Memoirs
6:00 Musical Memoirs
6:15 Musical Memoirs
6:30 Musical Memoirs
6:45 Musical Memoirs
7:00 Musical Memoirs
7:15 Musical Memoirs
7:30 Musical Memoirs
7:45 Musical Memoirs
8:00 Musical Memoirs
8:15 Musical Memoirs
8:30 Musical Memoirs
8:45 Musical Memoirs
9:00 Musical Memoirs
9:15 Musical Memoirs
9:30 Musical Memoirs
9:45 Musical Memoirs
10:00 Musical Memoirs
10:15 Musical Memoirs
10:30 Musical Memoirs
10:45 Musical Memoirs
11:00 Musical Memoirs
11:15 Musical Memoirs
11:30 Musical Memoirs
11:45 Musical Memoirs
12:00 Musical Memoirs
12:15 Musical Memoirs
12:30 Musical Memoirs
12:45 Musical Memoirs
1:00 Musical Memoirs
1:15 Musical Memoirs
1:30 Musical Memoirs
1:45 Musical Memoirs
2:00 Musical Memoirs
2:15 Musical Memoirs
2:30 Musical Memoirs
2:45 Musical Memoirs
3:00 Musical Memoirs
3:15 Musical Memoirs
3:30 Musical Memoirs
3:45 Musical Memoirs
4:00 Musical Memoirs
4:15 Musical Memoirs
4:30 Musical Memoirs
4:45 Musical Memoirs
5:00 Musical Memoirs
5:15 Musical Memoirs
5:30 Musical Memoirs
5:45 Musical Memoirs
6:00 Musical Memoirs
6:15 Musical Memoirs
6:30 Musical Memoirs
6:45 Musical Memoirs
7:00 Musical Memoirs
7:15 Musical Memoirs
7:30 Musical Memoirs
7:45 Musical Memoirs
8:00 Musical Memoirs
8:15 Musical Memoirs
8:30 Musical Memoirs
8:45 Musical Memoirs
9:00 Musical Memoirs
9:15 Musical Memoirs
9:30 Musical Memoirs
9:45 Musical Memoirs
10:00 Musical Memoirs
10:15 Musical Memoirs
10:30 Musical Memoirs
10:45 Musical Memoirs
11:00 Musical Memoirs
11:15 Musical Memoirs
11:30 Musical Memoirs
11:45 Musical Memoirs
12:00 Musical Memoirs
12:15 Musical Memoirs
12:30 Musical Memoirs
12:45 Musical Memoirs
1:00 Musical Memoirs
1:15 Musical Memoirs
1:30 Musical Memoirs
1:45 Musical Memoirs
2:00 Musical Memoirs
2:15 Musical Memoirs
2:30 Musical Memoirs
2:45 Musical Memoirs
3:00 Musical Memoirs
3:15 Musical Memoirs
3:30 Musical Memoirs
3:45 Musical Memoirs
4:00 Musical Memoirs
4:15 Musical Memoirs
4:30 Musical Memoirs
4:45 Musical Memoirs
5:00 Musical Memoirs
5:15 Musical Memoirs
5:30 Musical Memoirs
5:45 Musical Memoirs
6:00 Musical Memoirs
6:15 Musical Memoirs
6:30 Musical Memoirs
6:45 Musical Memoirs
7:00 Musical Memoirs
7:15 Musical Memoirs
7:30 Musical Memoirs
7:45 Musical Memoirs
8:00 Musical Memoirs
8:15 Musical Memoirs
8:30 Musical Memoirs
8:45 Musical Memoirs
9:00 Musical Memoirs
9:15 Musical Memoirs
9:30 Musical Memoirs
9:45 Musical Memoirs
10:00 Musical Memoirs
10:15 Musical Memoirs
10:30 Musical Memoirs
10:45 Musical Memoirs
11:00 Musical Memoirs
11:15 Musical Memoirs
11:30 Musical Memoirs
11:45 Musical Memoirs
12:00 Musical Memoirs
12:15 Musical Memoirs
12:30 Musical Memoirs
12:45 Musical Memoirs
1:00 Musical Memoirs
1:15 Musical Memoirs
1:30 Musical Memoirs
1:45 Musical Memoirs
2:00 Musical Memoirs
2:15 Musical Memoirs
2:30 Musical Memoirs
2:45 Musical Memoirs
3:00 Musical Memoirs
3:15 Musical Memoirs
3:30 Musical Memoirs
3:45 Musical Memoirs
4:00 Musical Memoirs
4:15 Musical Memoirs
4:30 Musical Memoirs
4:45 Musical Memoirs
5:00 Musical Memoirs
5:15 Musical Memoirs
5:30 Musical Memoirs
5:45 Musical Memoirs
6:00 Musical Memoirs
6:15 Musical Memoirs
6:30 Musical Memoirs
6:45 Musical Memoirs
7:00 Musical Memoirs
7:15 Musical Memoirs
7:30 Musical Memoirs
7:45 Musical Memoirs
8:00 Musical Memoirs
8:15 Musical Memoirs
8:30 Musical Memoirs
8:45 Musical Memoirs
9:00 Musical Memoirs
9:15 Musical Memoirs
9:30 Musical Memoirs
9:45 Musical Memoirs
10:00 Musical Memoirs
10:15 Musical Memoirs
10:30 Musical Memoirs
10:45 Musical Memoirs
11:00 Musical Memoirs
11:15 Musical Memoirs
11:30 Musical Memoirs
11:45 Musical Memoirs
12:00 Musical Memoirs
12:15 Musical Memoirs
12:30 Musical Memoirs
12:45 Musical Memoirs
1:00 Musical Memoirs
1:15 Musical Memoirs
1:30 Musical Memoirs
1:45 Musical Memoirs
2:00 Musical Memoirs
2:15 Musical Memoirs
2:30 Musical Memoirs
2:45 Musical Memoirs
3:00 Musical Memoirs
3:15 Musical Memoirs
3:30 Musical Memoirs
3:45 Musical Memoirs
4:00 Musical Memoirs
4:15 Musical Memoirs
4:30 Musical Memoirs
4:45 Musical Memoirs
5:00 Musical Memoirs
5:15 Musical Memoirs
5:30 Musical Memoirs
5:45 Musical Memoirs
6:00 Musical Memoirs
6:15 Musical Memoirs
6:30 Musical Memoirs
6:45 Musical Memoirs
7:00 Musical Memoirs
7:15 Musical Memoirs
7:30 Musical Memoirs
7:45 Musical Memoirs
8:00 Musical Memoirs
8:15 Musical Memoirs
8:30 Musical Memoirs
8:

Crowd Cheers Beet Machine Success Here

By JOHN BROWN
It doesn't take a football game or a parade to excite cheers. They can be just as spontaneous and just as loud in a sugar beet field, for that is what happened Thursday afternoon when a new type four-row beet harvester and a two-row lift-beet loader came through with the goods west of Twin Falls.

The scene was the ranch of Gale Bevercome, secretary-treasurer of the Twin Falls County Beet Growers' association. Being tested was the new machinery, which, after minor adjustments, "purred" well, in the words of Bevercome.

Those present at the demonstration of the equipment produced by the Kliest Beet Harvester company of Pocatello, included Jesse Hainline, chief agricultural superintendent of the Amalgamated Sugar company, which has acquired the development of the units. Commenting upon its possibilities, said Hainline observed that, "This represents a definite advancement in the sugar beet industry, which if it is to progress, must turn more and more to machinery."

How It Works
The machinery consists of a four-row harvester, tractor powered, in which four circular spinning blades slice off the tops of the beets as smoothly as any knife. The tops are then carried to the side of the machine by a belt-type conveyor and the rows are ready for the two-row lifter, which picks them from the beets from the ground while the machine moves ahead at a good clip across the field.

Seven Years Work
A brief history of the machines shows that they have been developed after seven years of experimentation from the original single-row type. This process was assisted by the Amalgamated Sugar company and the Utah-Idaho Sugar company and has been followed closely by the Beet Sugar Development foundation of Ft. Collins, Colo., through experimentation headed by Phillip B. Smith, manager.

Actual manufacture of the equipment is by the Olson Manufacturing company, Boise, which has turned out 200 units this season. Units sold in Idaho total 75.

A demonstration was offered Wednesday before about 200 beet growers at the Bevercome ranch, selected because of its outstanding crop, which at present is averaging 15 tons to the acre.

Following minor adjustments made after the initial demonstration, the equipment operated to the satisfaction of growers present, who feel that it comes the closest of any machine to solving the problem of mechanization.

One Per Hour
It is estimated that the Kliest beet harvester will cover about an acre an hour, replacing approximately 10 men in the field. Due to the scarcity of farm labor that has been experienced in this section, the machine is a definite boon to the industry.

Throughout the experimental phases of the equipment's development, Harry A. Brock, district manager of the Amalgamated Sugar company, has been helpful in providing suggestions and in arranging contacts with growers, according to Clinton Crockett, executive vice-president of the Kliest Beet Harvester company.

Others present for the demonstration, besides Crockett, included Supt. Hainline's son, Paul, E. T. Prather, San Francisco, Calif., president of the company; W. B. McCollum, vice-president and general manager and a Santa Maria, Calif., mining engineer; Ruyne Crockett, secretary-treasurer, Pocatello; Dave Crockett, Pocatello, salesman; and C. H. McCollum, Los Angeles, Calif., field engineer.

Hospital Receives Shoshone Mayor
SHOSHONE, Aug. 2.—Mayor Ben Darrath, Shoshone, was taken to the Gooding hospital Wednesday. Attendants reported that the diagnosis of his condition was not yet completed but that his condition was termed "good" this morning.

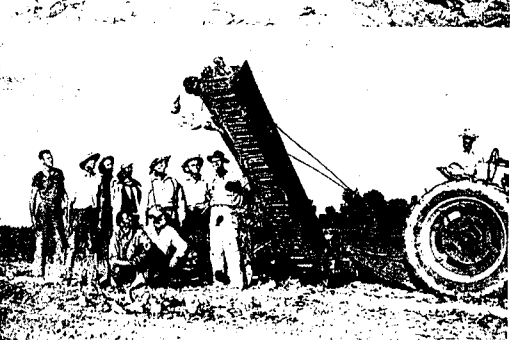
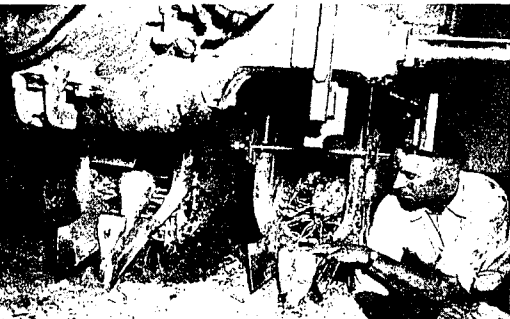
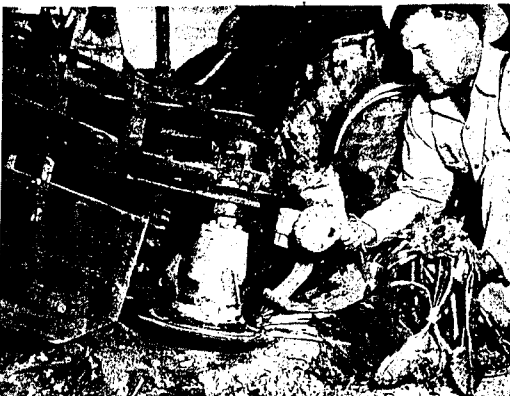
Two other Shoshone residents, Sally Sue Pratt, 9, and Mrs. William Thompson, underwent major surgery at the Gooding hospital Tuesday. Condition of the pair was reported as "good."

An early Roman writer tells how the Gauls of France made soap with tallow and wood ashes.

Pop's in the Dark Room, Using Up All the Supplies He Just Bought at GUS KELKER'S

KELKER PHOTO SHOP
2266
SPECIALTY FLOWER PHOTO
"Free Kodak Dealer"

New Machine Tops, Lifts, Loads Beets



Top photo, Jesse Hainline of Amalgamated Sugar company inspects work of harvester as whirling blades lift into another four beets. . .

Center, Gale Bevercome, secretary-treasurer of the Twin Falls County Beet Growers' association, views big blades that lift beets from the ground. . .

... before they begin upward journey on conveyor ready to be dumped into truck. (Photos by John Brown-staff engravings)

Local Man, Now Polio Director, Speaks on Radio

Dr. Hart Van Ripper, son of Mrs. Stella Phinney, Reed apartments, Twin Falls, medical director of the National Foundation for Infantile Paralysis, will be the guest on the radio program "Adventures in Science" at 11:45 a.m. MST Saturday, Mrs. John E. Hays, Idaho

director of the foundation, announced at a meeting of the local chapter, and at a medical session attended school in Buhl and graduated from the Twin Falls high school. The Saturday broadcast will be his network debut for the national foundation, Mrs. Hays said.

In the earliest days of the church, it was considered irrelevant to appear gloved before a member of the clergy.

WELDING and General OVERHAULING CLIFF'S WELDING AND REPAIR SHOP
On East Third Street Phone 1141-1 (2nd house east of old alfalfa mill)

DANCE EVERY NITE
It's always cool at the east end of Elizabeth. Meet your friends at WARNER'S CLUB 400

Free Farm Bulk Delivery
24 HOUR SERVICE DAY OR NIGHT
FOR YOUR CARS OR TRUCKS HERE

Using Our Famous **GASOLINE**
GREASES AND OILS
BULK PLANT and SERVICE STATION
HIGHWAY 30 EAST ON KIMBERLY ROAD
UNITED OIL CO.
OF IDAHO
Special Attention Given to Truckers



LEGAL ADVERTISEMENTS

NOTICE OF PRIVATE SALE OF REAL ESTATE
IN THE PROBATE COURT OF TWIN FALLS COUNTY, STATE OF IDAHO
IN THE MATTER OF THE ESTATE OF CHARLES P. SMITH, DECEASED
NOTICE IS HEREBY GIVEN, That the undersigned Administrator of the estate of Charles P. Smith, deceased, will sell at private sale to the highest bidder, subject to confirmation by the said Probate Court, on or after the 5th day of August, 1946, at ten o'clock A. M. of said day, all the right, title and interest of said decedent, being an undivided one-half interest, in and to the following described real property situated in Twin Falls County, State of Idaho, to-wit:

Lot A, C, D and E in Block One Hundred Three (103) of the Townsite of Twin Falls, Idaho, according to the official plat thereof on file and of record in the office of the County Recorder of Twin Falls County, Idaho; and Lot Twenty-eight (28) and Twenty-nine (29) in Block Eighty-six (86) of the Townsite of Twin Falls, Idaho, according to the official plat thereof on file and of record in the office of the County Recorder of Twin Falls County, Idaho, subject to a balance principal on a mortgage covering said real property in the sum of \$12,355.95.

Said Administrator reserves the right to sell said property in separate parcels if he deems it for the best interests of said estate. Said property will be sold for cash, subject to taxes and assessments to be levied and assessed against said property for the year 1947, the 1946 taxes to be prorated. Abstract of title to be furnished by the undersigned. Bids in writing for said property will be received by the undersigned Administrator at the law office of Frank L. Stephan, Twin Falls, Idaho, or at the County Building, Twin Falls, Idaho. The undersigned Administrator shall have the right to reject any and all bids.

Dated this 18th day of July, 1946.
J. ROYCE EDWARDS
Administrator of the estate of Charles P. Smith, deceased.
Published August 2, 1946.

NOTICE OF SALE OF REAL ESTATE AT PRIVATE SALE
IN THE PROBATE COURT OF TWIN FALLS COUNTY, STATE OF IDAHO.

In the matter of the estate of RAY TOLBY, deceased.
NOTICE IS HEREBY GIVEN, That the undersigned Administrator of the estate of Ray Tolby, deceased, will on or after the 5th day of August, 1946, sell at private sale to the highest bidder, subject to the terms and conditions hereinafter set forth, and subject to the confirmation of the above entitled court, all the right, title, interest and estate of the decedent which the decedent had at the time of his death, as well as the right, title and interest which has accrued, by operation of law or otherwise, to the estate of said decedent since his death, in and to the following described real estate:

An undivided one-half interest in that certain real estate situated in the County of Twin Falls, State of Idaho, and more particularly described as follows, to-wit: That part of Lot one (1), Section One (1), Township Eleven (11) South, Range

Four (4) East, and West of the Highline Canal of the Twin Falls Canal Company, together with all and singular the tenements, hereditaments and appurtenances thereunto in anywise by law or otherwise.

The terms and conditions of sale are, as follows: The sale is for cash, lawful money of the United States; at least ten per cent of the amount bid to be tendered with the bid and the balance of the purchase price to be paid on the confirmation of the sale by the above entitled court and the delivery of the abstract showing clear title or title insurance.

All bids and offers must be in writing and delivered to the undersigned Administrator at the office of her attorney Edward Babcock, located in the Fidelity National Bank Building, Twin Falls, Idaho, or may be filed in the office of the Clerk of the above entitled court, at any time before making the sale.

Dated this 18th day of July, 1946.
MINNIE MAE HUGHES
Administrator of the Estate of Ray Tolby, deceased.
Pub: July 23, 25, 26, Aug. 2, 1946.

Funeral Designs
Let us design your floral offering. Diverse of styles.
"Flowers for Every Occasion"

The Artistic FLORAL SHOP
Twin Falls, Idaho
Phone 626

CONGRATULATIONS—AND BEST WISHES
for the Opening of the
JAMES FOODLINER
Twin Falls Newest, Modern Food Mart

★
ZION'S WHOLESALE GROCERIES

PIPE LINES—INSTALLED
Concrete, Welded Steel, or Corrugated Pipe Lines—furnished complete including trenching, layout, and Turnkey operation if desired.
All Types of Irrigation Equipment, Flumes, headgates, etc.

ARMCO DRAINAGE & METAL PRODUCTS, INC.
HOUSE • CANNONVILLE • TONAWANDA • ONTARIO

Corrugated
gated
Culverts
Are
Back!

Call one of our plans for an expert to check your job.

TWIN FALLS (Back Jerome Coop) PHONE 625

LEGAL ADVERTISEMENTS

highest and best bidder upon the terms and conditions hereinafter set forth, and subject to the confirmation of the above entitled court, all the right, title, interest and estate of the decedent which the decedent had at the time of his death, as well as the right, title and interest which has accrued, by operation of law or otherwise, to the estate of said decedent since his death, in and to the following described real estate:

An undivided one-half interest in that certain real estate situated in the County of Twin Falls, State of Idaho, and more particularly described as follows, to-wit: That part of Lot one (1), Section One (1), Township Eleven (11) South, Range

Four (4) East, and West of the Highline Canal of the Twin Falls Canal Company, together with all and singular the tenements, hereditaments and appurtenances thereunto in anywise by law or otherwise.

The terms and conditions of sale are, as follows: The sale is for cash, lawful money of the United States; at least ten per cent of the amount bid to be tendered with the bid and the balance of the purchase price to be paid on the confirmation of the sale by the above entitled court and the delivery of the abstract showing clear title or title insurance.

All bids and offers must be in writing and delivered to the undersigned Administrator at the office of her attorney Edward Babcock, located in the Fidelity National Bank Building, Twin Falls, Idaho, or may be filed in the office of the Clerk of the above entitled court, at any time before making the sale.

Dated this 18th day of July, 1946.
MINNIE MAE HUGHES
Administrator of the Estate of Ray Tolby, deceased.
Pub: July 23, 25, 26, Aug. 2, 1946.

WE EXTEND OUR BEST WISHES
to the
JAMES FOODLINER
on their
GRAND OPENING
We wish them every success in the operation of their new, modern food store.

DAVIDSON WHOLESALE CO.

PENNEY'S
NEW ARRIVALS
FOR SATURDAY SELLING

Sew For Fall!
Rayon Sports Flannel
Make your fall clothes new with some of this deluxe rayon sports flannel. It's 40" wide and comes in blue, green, maize, lavender, brown or black. For Saturday morning. **98¢ yd.**

Cool-Looking
PRINTED LAWN
There's still lots of hot weather ahead, so get some of this cool, printed lawn and make a dainty dress or blouse. Excellent for table clothes too. 36" wide. **35¢ yd.**

Splashed With Flowers
LUNCH CLOTHS
Made of finely woven cotton. White background is splashed with multicolor floral designs to give your table a cheery air. **1.59**

Large Size FLOUR SQUARES
You'll find dozens of uses for these flour squares. They're extra large. Already washed, bleached, and ironed. Absorbent and durable. **22¢**

Full Length
MEN'S HOSE
An item that has been scarce for some time. These are full length, made of cotton and rayon. Come in plain colors. **25¢**

All Cotton
LADIES' ANKLETS
Ladies' plain top ribbed style anklet of mercerized cotton in assorted plain colors. **25¢**

Cool, Ankle Supporting
GYM SHOES
For Girls **1.59**

Fluffy, Washable...
CHENILLE ROBES
6.25

Enjoy the luxury of wearing one of these thick-as-moss chenille robes, after your bath and on chilly nights! In the ever-popular wrap-around style with a big pocket for your comb and such! Of pre-knuck, washable cotton chenille in bouquets of lovely colors! Sizes 12 to 20.

MEN'S ATHLETIC SHOES
Designed for outdoor or gymnasium wear. Easy to buy. **1.98**

BOYS' ATHLETIC SHOES
Have sturdy black duck upper and grey non-marking rubber sole. **1.79**

LEGAL ADVERTISEMENTS

Eighteen (18) East of Boise Meridian, lying North and West of the Highline Canal of the Twin Falls Canal Company, together with all and singular the tenements, hereditaments and appurtenances thereunto in anywise by law or otherwise.

The terms and conditions of sale are, as follows: The sale is for cash, lawful money of the United States; at least ten per cent of the amount bid to be tendered with the bid and the balance of the purchase price to be paid on the confirmation of the sale by the above entitled court and the delivery of the abstract showing clear title or title insurance.

All bids and offers must be in writing and delivered to the undersigned Administrator at the office of her attorney Edward Babcock, located in the Fidelity National Bank Building, Twin Falls, Idaho, or may be filed in the office of the Clerk of the above entitled court, at any time before making the sale.

Dated this 18th day of July, 1946.
MINNIE MAE HUGHES
Administrator of the Estate of Ray Tolby, deceased.
Pub: July 23, 25, 26, Aug. 2, 1946.

WE EXTEND OUR BEST WISHES
to the
JAMES FOODLINER
on their
GRAND OPENING
We wish them every success in the operation of their new, modern food store.

DAVIDSON WHOLESALE CO.

PENNEY'S
NEW ARRIVALS
FOR SATURDAY SELLING

Sew For Fall!
Rayon Sports Flannel
Make your fall clothes new with some of this deluxe rayon sports flannel. It's 40" wide and comes in blue, green, maize, lavender, brown or black. For Saturday morning. **98¢ yd.**

Cool-Looking
PRINTED LAWN
There's still lots of hot weather ahead, so get some of this cool, printed lawn and make a dainty dress or blouse. Excellent for table clothes too. 36" wide. **35¢ yd.**

Splashed With Flowers
LUNCH CLOTHS
Made of finely woven cotton. White background is splashed with multicolor floral designs to give your table a cheery air. **1.59**

Large Size FLOUR SQUARES
You'll find dozens of uses for these flour squares. They're extra large. Already washed, bleached, and ironed. Absorbent and durable. **22¢**

Full Length
MEN'S HOSE
An item that has been scarce for some time. These are full length, made of cotton and rayon. Come in plain colors. **25¢**

All Cotton
LADIES' ANKLETS
Ladies' plain top ribbed style anklet of mercerized cotton in assorted plain colors. **25¢**

Cool, Ankle Supporting
GYM SHOES
For Girls **1.59**

Fluffy, Washable...
CHENILLE ROBES
6.25

Enjoy the luxury of wearing one of these thick-as-moss chenille robes, after your bath and on chilly nights! In the ever-popular wrap-around style with a big pocket for your comb and such! Of pre-knuck, washable cotton chenille in bouquets of lovely colors! Sizes 12 to 20.

MEN'S ATHLETIC SHOES
Designed for outdoor or gymnasium wear. Easy to buy. **1.98**

BOYS' ATHLETIC SHOES
Have sturdy black duck upper and grey non-marking rubber sole. **1.79**

LEGAL ADVERTISEMENTS

Eighteen (18) East of Boise Meridian, lying North and West of the Highline Canal of the Twin Falls Canal Company, together with all and singular the tenements, hereditaments and appurtenances thereunto in anywise by law or otherwise.

The terms and conditions of sale are, as follows: The sale is for cash, lawful money of the United States; at least ten per cent of the amount bid to be tendered with the bid and the balance of the purchase price to be paid on the confirmation of the sale by the above entitled court and the delivery of the abstract showing clear title or title insurance.

All bids and offers must be in writing and delivered to the undersigned Administrator at the office of her attorney Edward Babcock, located in the Fidelity National Bank Building, Twin Falls, Idaho, or may be filed in the office of the Clerk of the above entitled court, at any time before making the sale.

Dated this 18th day of July, 1946.
MINNIE MAE HUGHES
Administrator of the Estate of Ray Tolby, deceased.
Pub: July 23, 25, 26, Aug. 2, 1946.

WE EXTEND OUR BEST WISHES
to the
JAMES FOODLINER
on their
GRAND OPENING
We wish them every success in the operation of their new, modern food store.

DAVIDSON WHOLESALE CO.

PENNEY'S
NEW ARRIVALS
FOR SATURDAY SELLING

Sew For Fall!
Rayon Sports Flannel
Make your fall clothes new with some of this deluxe rayon sports flannel. It's 40" wide and comes in blue, green, maize, lavender, brown or black. For Saturday morning. **98¢ yd.**

Cool-Looking
PRINTED LAWN
There's still lots of hot weather ahead, so get some of this cool, printed lawn and make a dainty dress or blouse. Excellent for table clothes too. 36" wide. **35¢ yd.**

Splashed With Flowers
LUNCH CLOTHS
Made of finely woven cotton. White background is splashed with multicolor floral designs to give your table a cheery air. **1.59**

Large Size FLOUR SQUARES
You'll find dozens of uses for these flour squares. They're extra large. Already washed, bleached, and ironed. Absorbent and durable. **22¢**

Full Length
MEN'S HOSE
An item that has been scarce for some time. These are full length, made of cotton and rayon. Come in plain colors. **25¢**

All Cotton
LADIES' ANKLETS
Ladies' plain top ribbed style anklet of mercerized cotton in assorted plain colors. **25¢**

Cool, Ankle Supporting
GYM SHOES
For Girls **1.59**

Fluffy, Washable...
CHENILLE ROBES
6.25

Enjoy the luxury of wearing one of these thick-as-moss chenille robes, after your bath and on chilly nights! In the ever-popular wrap-around style with a big pocket for your comb and such! Of pre-knuck, washable cotton chenille in bouquets of lovely colors! Sizes 12 to 20.

MEN'S ATHLETIC SHOES
Designed for outdoor or gymnasium wear. Easy to buy. **1.98**

BOYS' ATHLETIC SHOES
Have sturdy black duck upper and grey non-marking rubber sole. **1.79**

Electrical REPAIRING
Prompt Service on
• Electric Motors
• Refrigerators
• Electric Ranges
• Appliances
• Stoves and
• Oil Burners
DETWEILER'S
PHONE 199

Electrical REPAIRING
Prompt Service on
• Electric Motors
• Refrigerators
• Electric Ranges
• Appliances
• Stoves and
• Oil Burners
DETWEILER'S
PHONE 199

The bomb probably produced a cavity in the water, Parsons said, and as a result, the stern of the Saratoga "smacked bottom" and was ruptured on the ooral floor of the lagoon.

The fact that the Saratoga tore loose from her moorings at only one end indicated the waters closed in again before she could suffer the same fate, he said.

The Saratoga lasted seven hours and 33 minutes after the baker day bomb burst but the Arkansas disappeared almost immediately.

"The Arkansas probably fell down and hit the bottom of the lagoon and bounced," Parsons said.

OFF BIKINI ATOLL, Aug. 2 (UPI)—The battleship *Arkansas* may have plunged to her doom in a momentary hole created in the water of Bikini lagoon by the atomic bomb, Rear Adm. William S. Parsons said today.

Parsons, deputy commander of joint task force one for technical direction, said in a review of last week's test that the *Arkansas* may have been hurled upward by the

[illegible]

Dr. Wm. E. Babcock
VETERINARIAN
618 11th St. N., Buhl, Idaho
Residence 5117

RAINBOLT'S

PHONE 2295
For Immediate Pick-up
Radio Service
ANDERSON-FAIRBANK
Next to Young's Drug

DELIVERY SERVICE



PHONE 354 **WE RENT CHAIRS**
for all occasions
PROMPT EFFICIENT INSURED

2



Schill
Iced

After play, cool off with Schilling Tea-iced-it's so fragrant and so refreshing.



You'll Have a Pic
FOOD

...nic at our
SALE
TURDAY
SPECIALS

FOR BETTER
EAT MORE VEG
FRESH LOCAL
CARROTS
LARGE ICE PACK
LETTUCE

MARKET
663 MAIN AVE. EAST
FOR NUTRITION
VEGETABLES

8¢ Bunch

12¢ lb.

12416.



POTATOES
FRESH TENDER
GREEN BEANS
CALIFORNIA
GRAPEFRUIT
SUNKIST JUICY
ORANGES

THESE NALLEY'S FOOD PRO

10 lbs.	35¢
NS	13¢ lb.
	12¢ lb.
	12¢ lb.

12 oz. **236**

Meats

**SOUTHERN MAID
LAUNDRY
SOAP, bar. 10c
NO LIMIT**

49¢ lb.
35¢ lb.
ON 35¢ lb.
OPS 35¢ lb.
L COMFORT AND



PAN
AMERICAN
Spaghetti
With Meat Sauce
No. 1 Can
16c

SAVE!

Crossword Puzzle.

ACROSS

1. Turkey commander
2. Street name
3. Parisian
4. Street boys
5. Street Indian
6. Turkish imperial standard
7. Lively
8. Low land
9. Film
10. City in Iowa
11. Maudie
12. Ancient Greek
13. Egg dish
14. Label
15. Order of from
16. Philippine
17. White pass
18. Kind of tree
19. Number
20. Soldier's head
21. Onit in pro-
22. Tail of work
23. Flower
24. Intermittent
25. Kind of wood
26. Kind of wood
27. Kind of wood
28. Kind of wood
29. Kind of wood
30. Kind of wood
31. Kind of wood
32. Kind of wood
33. Kind of wood
34. Kind of wood
35. Kind of wood
36. Kind of wood
37. Kind of wood
38. Kind of wood
39. Kind of wood
40. Kind of wood
41. Kind of wood
42. Kind of wood
43. Kind of wood
44. Kind of wood
45. Kind of wood
46. Kind of wood
47. Kind of wood
48. Kind of wood
49. Kind of wood
50. Kind of wood
51. Kind of wood
52. Kind of wood
53. Kind of wood
54. Kind of wood
55. Kind of wood
56. Kind of wood
57. Kind of wood
58. Kind of wood
59. Kind of wood
60. Kind of wood
61. Kind of wood
62. Kind of wood
63. Kind of wood
64. Kind of wood
65. Kind of wood
66. Kind of wood
67. Kind of wood
68. Kind of wood
69. Kind of wood
70. Kind of wood
71. Kind of wood
72. Kind of wood
73. Kind of wood
74. Kind of wood
75. Kind of wood
76. Kind of wood
77. Kind of wood
78. Kind of wood
79. Kind of wood
80. Kind of wood
81. Kind of wood
82. Kind of wood
83. Kind of wood
84. Kind of wood
85. Kind of wood
86. Kind of wood
87. Kind of wood
88. Kind of wood
89. Kind of wood
90. Kind of wood
91. Kind of wood
92. Kind of wood
93. Kind of wood
94. Kind of wood
95. Kind of wood
96. Kind of wood
97. Kind of wood
98. Kind of wood
99. Kind of wood
100. Kind of wood

DOWN

1. Accumulate
2. Nature spirit
3. Kind of rain
4. Turkish sea
5. One's own
6. Turkey
7. Wait for
8. Married woman's title
9. Photograph
10. Turkey
11. Turkey
12. Turkey
13. Turkey
14. Turkey
15. Turkey
16. Turkey
17. Turkey
18. Turkey
19. Turkey
20. Turkey
21. Turkey
22. Turkey
23. Turkey
24. Turkey
25. Turkey
26. Turkey
27. Turkey
28. Turkey
29. Turkey
30. Turkey
31. Turkey
32. Turkey
33. Turkey
34. Turkey
35. Turkey
36. Turkey
37. Turkey
38. Turkey
39. Turkey
40. Turkey
41. Turkey
42. Turkey
43. Turkey
44. Turkey
45. Turkey
46. Turkey
47. Turkey
48. Turkey
49. Turkey
50. Turkey
51. Turkey
52. Turkey
53. Turkey
54. Turkey
55. Turkey
56. Turkey
57. Turkey
58. Turkey
59. Turkey
60. Turkey
61. Turkey
62. Turkey
63. Turkey
64. Turkey
65. Turkey
66. Turkey
67. Turkey
68. Turkey
69. Turkey
70. Turkey
71. Turkey
72. Turkey
73. Turkey
74. Turkey
75. Turkey
76. Turkey
77. Turkey
78. Turkey
79. Turkey
80. Turkey
81. Turkey
82. Turkey
83. Turkey
84. Turkey
85. Turkey
86. Turkey
87. Turkey
88. Turkey
89. Turkey
90. Turkey
91. Turkey
92. Turkey
93. Turkey
94. Turkey
95. Turkey
96. Turkey
97. Turkey
98. Turkey
99. Turkey
100. Turkey

OUT OUR WAY

By WILLIAMS



SIDE GLANCES

By GALBRAITH



THIS CURIOUS WORLD

By FERGUSON



BOARDING HOUSE MAJOR HOOPLE



LIFE'S LIKE THAT

By NEHER



RED RYDER



THIMBLE THEATER



STARRING POPEYE



VIC FLINT

By MICHAEL O'MALLEY and RALPH LANE



WASH TUBBS

By LESLIE TURNER



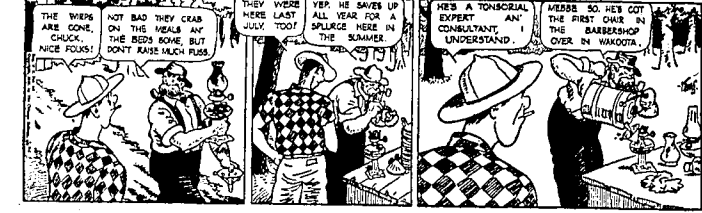
BOOTS AND HER BUDDIES

By EDGAR MARTIN



GASOLINE ALLEY

By KING



THE GUMPS

By GUS EDSON



DIXIE DUGAN

By McEVY and STRIEBEL



SCORCHY

By EDMOND GOOD



ALLEY OOP

By V. T. HAMLIN



Phone
38

CLASSIFIED ADVERTISING

Phone
38

WANT AD RATES

(Based on Cost-per-word)
1 day 10¢ per word
2 days 15¢ per word
3 days 20¢ per word
4 days 25¢ per word
5 days 30¢ per word
6 days 35¢ per word
7 days 40¢ per word
8 days 45¢ per word
9 days 50¢ per word
10 days 55¢ per word
11 days 60¢ per word
12 days 65¢ per word
13 days 70¢ per word
14 days 75¢ per word
15 days 80¢ per word
16 days 85¢ per word
17 days 90¢ per word
18 days 95¢ per word
19 days 1.00 per word
20 days 1.05 per word
21 days 1.10 per word
22 days 1.15 per word
23 days 1.20 per word
24 days 1.25 per word
25 days 1.30 per word
26 days 1.35 per word
27 days 1.40 per word
28 days 1.45 per word
29 days 1.50 per word
30 days 1.55 per word
31 days 1.60 per word
32 days 1.65 per word
33 days 1.70 per word
34 days 1.75 per word
35 days 1.80 per word
36 days 1.85 per word
37 days 1.90 per word
38 days 1.95 per word
39 days 2.00 per word
40 days 2.05 per word
41 days 2.10 per word
42 days 2.15 per word
43 days 2.20 per word
44 days 2.25 per word
45 days 2.30 per word
46 days 2.35 per word
47 days 2.40 per word
48 days 2.45 per word
49 days 2.50 per word
50 days 2.55 per word
51 days 2.60 per word
52 days 2.65 per word
53 days 2.70 per word
54 days 2.75 per word
55 days 2.80 per word
56 days 2.85 per word
57 days 2.90 per word
58 days 2.95 per word
59 days 3.00 per word
60 days 3.05 per word
61 days 3.10 per word
62 days 3.15 per word
63 days 3.20 per word
64 days 3.25 per word
65 days 3.30 per word
66 days 3.35 per word
67 days 3.40 per word
68 days 3.45 per word
69 days 3.50 per word
70 days 3.55 per word
71 days 3.60 per word
72 days 3.65 per word
73 days 3.70 per word
74 days 3.75 per word
75 days 3.80 per word
76 days 3.85 per word
77 days 3.90 per word
78 days 3.95 per word
79 days 4.00 per word
80 days 4.05 per word
81 days 4.10 per word
82 days 4.15 per word
83 days 4.20 per word
84 days 4.25 per word
85 days 4.30 per word
86 days 4.35 per word
87 days 4.40 per word
88 days 4.45 per word
89 days 4.50 per word
90 days 4.55 per word
91 days 4.60 per word
92 days 4.65 per word
93 days 4.70 per word
94 days 4.75 per word
95 days 4.80 per word
96 days 4.85 per word
97 days 4.90 per word
98 days 4.95 per word
99 days 5.00 per word
100 days 5.05 per word

HELP WANTED—MALE

2500 hours, wanted as a mechanic for a new car, with experience in engine work. Write P. O. Box 11, Twin Falls, Idaho.

WANTED—EXPERIENCED AUTO MECHANIC

Northside Auto Co.
PHONE 1828-11 OR 184

HELP WANTED—MALE AND FEMALE

Wanted: Office employees. Must be high school graduates, able to operate typewriter. Write P. O. Box 11, Twin Falls, Idaho.

Attention: WAITRESSES

WE NEED SEVERAL MORE EXPERIENCED WAITRESSES FOR THIS SPECIAL LINK SPOT NIGHT

SEE A GRAND SHOW AND GET PAID FOR IT.

REGISTER NOW WITH "MARCEL" AT THE TURF CLUB FOR LINK SPOT NIGHT

Phone 1206

BUSINESS OPPORTUNITIES

FOR SALE: Heavy duty, good working business. Write P. O. Box 11, Twin Falls, Idaho.

WANTED: DEALERS

Wanted: Dealers for a new line of products. Write P. O. Box 11, Twin Falls, Idaho.

LOST AND FOUND

Lost: A pair of shoes. Found: A pair of shoes. Write P. O. Box 11, Twin Falls, Idaho.

EXCELLENT BUSINESS OPPORTUNITY

100 UNIT COURT AND LOVELY MODERN HOME on Highway 10. Price for quick sale. Phone 112 or call at 112 St. W.

WANTED: DEALERS

Wanted: Dealers for a new line of products. Write P. O. Box 11, Twin Falls, Idaho.

FOR RENT OR LEASE

Modern, brick garage with service station. Excellent facilities. Doing Good Business. SHELL OIL CO. TWIN FALLS, IDAHO

TWO LOANS

IDAHO FINANCE CO. LOANS

LOANS AND FINANCING

W. C. ROBINSON (Arrows from Radio Bldg.) 120 Main south Phone 187

C. ROY HENDERSON

When in need of a LOAN SECURITIES CREDIT CORP. Radio Bldg. Phone 680

HELP WANTED—FEMALE

Wanted: Girl for general housework. Write P. O. Box 11, Twin Falls, Idaho.

WANTED: EXPERIENCED WAITRESSES

Wanted: Experienced waitresses. Write P. O. Box 11, Twin Falls, Idaho.

HELP WANTED—MALE

Men to show trucks. Write P. O. Box 11, Twin Falls, Idaho.

EXPERIENCED FIRST CLASS

SEEKING FIRST CLASS SHEET METAL MECHANIC. Write P. O. Box 11, Twin Falls, Idaho.

HELP WANTED

TO TAKE DOWN The Legion Carnival SATURDAY NIGHT \$1.00 PER HOUR APPLY SHOW GRADUATES BEPORS P. M. SATURDAY

WANTED—RENT, LEASE

Wanted: Rent or lease for a new car. Write P. O. Box 11, Twin Falls, Idaho.

WANTED

To rent or lease a 2 or 3 room house. Write P. O. Box 11, Twin Falls, Idaho.

REAL ESTATE WANTED

Wanted: To buy or lease a new car. Write P. O. Box 11, Twin Falls, Idaho.

HOMES FOR SALE

2 ROOM house to be moved. Write P. O. Box 11, Twin Falls, Idaho.

WANTED: DEALERS

Wanted: Dealers for a new line of products. Write P. O. Box 11, Twin Falls, Idaho.

ONE 6 ROOM MODERN

One 6 room modern house. Write P. O. Box 11, Twin Falls, Idaho.

NEW

2 bedroom house, modern. Write P. O. Box 11, Twin Falls, Idaho.

10 ACRES

10 acres of land. Write P. O. Box 11, Twin Falls, Idaho.

MODERN

6 room house, modern. Write P. O. Box 11, Twin Falls, Idaho.

PHONE 563

REAL ESTATE FOR SALE

Cherry, Idaho. Write P. O. Box 11, Twin Falls, Idaho.

EXCELLENT

3 room house, modern. Write P. O. Box 11, Twin Falls, Idaho.

ON AUGUST 3, 1946

See J. E. WHITE, Agency 120 Main Ave. East

IMMEDIATE POSSESSION

6 room house, modern. Write P. O. Box 11, Twin Falls, Idaho.

RESEE M. WILLIAMS

Large home. Write P. O. Box 11, Twin Falls, Idaho.

FOR SALE

6 room house, modern. Write P. O. Box 11, Twin Falls, Idaho.

PHONE 1829-M

\$4,500.00 FOR A 6 ROOM MODERN HOME

6 room house, modern. Write P. O. Box 11, Twin Falls, Idaho.

PHONE 726R

QUICK SALE! 90 ACRE FARM

90 acre farm. Write P. O. Box 11, Twin Falls, Idaho.

ELMER PETERS

Phone 2118

BUSINESS AND PROFESSIONAL DIRECTORY

• BICYCLE SALES & SERVICE

Wheeler, Idaho. Phone 181

• CLEANERS & DYERS

Wheeler, Idaho. Phone 181

• COMMERCIAL PRINTING

Wheeler, Idaho. Phone 181

• FLOOR SANDING

Wheeler, Idaho. Phone 181

HOMES FOR SALE

2 room house to be moved. Write P. O. Box 11, Twin Falls, Idaho.

LOVELY HOME

6 room house, modern. Write P. O. Box 11, Twin Falls, Idaho.

SPECIAL!

1 bedroom house, modern. Write P. O. Box 11, Twin Falls, Idaho.

SPECIAL HOMES

2 bedroom house, modern. Write P. O. Box 11, Twin Falls, Idaho.

MRS. W. J. McFARLAND

Phone 116-W or 8-1

ONE 6 ROOM MODERN

One 6 room modern house. Write P. O. Box 11, Twin Falls, Idaho.

NEW

2 bedroom house, modern. Write P. O. Box 11, Twin Falls, Idaho.

10 ACRES

10 acres of land. Write P. O. Box 11, Twin Falls, Idaho.

MODERN

6 room house, modern. Write P. O. Box 11, Twin Falls, Idaho.

PHONE 563

REAL ESTATE FOR SALE

Cherry, Idaho. Write P. O. Box 11, Twin Falls, Idaho.

EXCELLENT

3 room house, modern. Write P. O. Box 11, Twin Falls, Idaho.

ON AUGUST 3, 1946

See J. E. WHITE, Agency 120 Main Ave. East

IMMEDIATE POSSESSION

6 room house, modern. Write P. O. Box 11, Twin Falls, Idaho.

RESEE M. WILLIAMS

Large home. Write P. O. Box 11, Twin Falls, Idaho.

FOR SALE

6 room house, modern. Write P. O. Box 11, Twin Falls, Idaho.

PHONE 1829-M

\$4,500.00 FOR A 6 ROOM MODERN HOME

6 room house, modern. Write P. O. Box 11, Twin Falls, Idaho.

PHONE 726R

QUICK SALE! 90 ACRE FARM

90 acre farm. Write P. O. Box 11, Twin Falls, Idaho.

ELMER PETERS

Phone 2118

FARMS FOR SALE

2 room house to be moved. Write P. O. Box 11, Twin Falls, Idaho.

LOVELY HOME

6 room house, modern. Write P. O. Box 11, Twin Falls, Idaho.

SPECIAL!

1 bedroom house, modern. Write P. O. Box 11, Twin Falls, Idaho.

SPECIAL HOMES

2 bedroom house, modern. Write P. O. Box 11, Twin Falls, Idaho.

MRS. W. J. McFARLAND

Phone 116-W or 8-1

ONE 6 ROOM MODERN

One 6 room modern house. Write P. O. Box 11, Twin Falls, Idaho.

NEW

2 bedroom house, modern. Write P. O. Box 11, Twin Falls, Idaho.

10 ACRES

10 acres of land. Write P. O. Box 11, Twin Falls, Idaho.

MODERN

6 room house, modern. Write P. O. Box 11, Twin Falls, Idaho.

PHONE 563

REAL ESTATE FOR SALE

Cherry, Idaho. Write P. O. Box 11, Twin Falls, Idaho.

EXCELLENT

3 room house, modern. Write P. O. Box 11, Twin Falls, Idaho.

ON AUGUST 3, 1946

See J. E. WHITE, Agency 120 Main Ave. East

IMMEDIATE POSSESSION

6 room house, modern. Write P. O. Box 11, Twin Falls, Idaho.

RESEE M. WILLIAMS

Large home. Write P. O. Box 11, Twin Falls, Idaho.

FOR SALE

6 room house, modern. Write P. O. Box 11, Twin Falls, Idaho.

PHONE 1829-M

\$4,500.00 FOR A 6 ROOM MODERN HOME

6 room house, modern. Write P. O. Box 11, Twin Falls, Idaho.

PHONE 726R

QUICK SALE! 90 ACRE FARM

90 acre farm. Write P. O. Box 11, Twin Falls, Idaho.

ELMER PETERS

Phone 2118

FARMS FOR SALE

2 room house to be moved. Write P. O. Box 11, Twin Falls, Idaho.

LOVELY HOME

6 room house, modern. Write P. O. Box 11, Twin Falls, Idaho.

SPECIAL!

1 bedroom house, modern. Write P. O. Box 11, Twin Falls, Idaho.

SPECIAL HOMES

2 bedroom house, modern. Write P. O. Box 11, Twin Falls, Idaho.

MRS. W. J. McFARLAND

Phone 116-W or 8-1

ONE 6 ROOM MODERN

One 6 room modern house. Write P. O. Box 11, Twin Falls, Idaho.

NEW

2 bedroom house, modern. Write P. O. Box 11, Twin Falls, Idaho.

10 ACRES

10 acres of land. Write P. O. Box 11, Twin Falls, Idaho.

MODERN

6 room house, modern. Write P. O. Box 11, Twin Falls, Idaho.

PHONE 563

REAL ESTATE FOR SALE

Cherry, Idaho. Write P. O. Box 11, Twin Falls, Idaho.

EXCELLENT

3 room house, modern. Write P. O. Box 11, Twin Falls, Idaho.

ON AUGUST 3, 1946

See J. E. WHITE, Agency 120 Main Ave. East

IMMEDIATE POSSESSION

6 room house, modern. Write P. O. Box 11, Twin Falls, Idaho.

RESEE M. WILLIAMS

Large home. Write P. O. Box 11, Twin Falls, Idaho.

FOR SALE

6 room house, modern. Write P. O. Box 11, Twin Falls, Idaho.

PHONE 1829-M

\$4,500.00 FOR A 6 ROOM MODERN HOME

6 room house, modern. Write P. O. Box 11, Twin Falls, Idaho.

PHONE 726R

QUICK SALE! 90 ACRE FARM

90 acre farm. Write P. O. Box 11, Twin Falls, Idaho.

ELMER PETERS

Phone 2118

FARM IMPLEMENTS

2 room house to be moved. Write P. O. Box 11, Twin Falls, Idaho.

LOVELY HOME

6 room house, modern. Write P. O. Box 11, Twin Falls, Idaho.

SPECIAL!

1 bedroom house, modern. Write P. O. Box 11, Twin Falls, Idaho.

SPECIAL HOMES

2 bedroom house, modern

Nevills Party To End River Voyage Today

LEWISTON, Aug. 2 (AP)—The Nevada Salmon river boating expedition had left that river and was well on the Snake late today. The expedition is scheduled to arrive in Lewiston late this afternoon.

A plan piloted by Jack Housh, Zimmerman Air Transport, carrying Mrs. Norman D. Nevill, wife of the boatman guiding the expedition, and Mrs. Irvine W. Reynolds, wife of another member of the party, flew over the boats and dropped mail and food this afternoon.

The Nevills party left Salmon July 18. Supplies were flown to the saloon during a brief stop July 22 at Mackay bar. The boats were left for the first trip to Lewiston where they expected to arrive tomorrow.

The Salmon river journey is the first of two river expeditions planned in Idaho this month by Nevill and his party. After docking at Lewiston, they plan to take the boats over Highway 2 to Weiser for a scheduled start Aug. 6 on a trip down the Snake river to the 7,000 foot deep gorge of Hell canyon. They expect to arrive again at Lewiston Aug. 16.

Nevills Leads Cruise

Nevill is leading the ride down the Salmon in the "WEN," a lighted wooden craft that carried him successfully four times on the boiling rapids of the grand canyon of the Colorado. Two duplicates of the boat and a "semi-catastrophe" type San Juan river boat were being used by the rest of the group.

The crew of the boats were Preston Walker, Grand Junction, Minn.; and Dr. O. D. Manton, San Francisco, all experienced river riders.

When the party left Salmon, Ralph B. Knepper, publisher of the Recorder-Herald there, said he believed the Nevill group was the largest yet to attempt the journey down the river.

Jerome Cancels Opening of Pool

JEROME, Aug. 2—The new \$27,000 Jerome swimming pool, scheduled for dedication Aug. 2, will not be opened this year, Del Scherer, Jerome superintendent of schools, announced today.

At a titration system is unworkable at this time, city council members reached an informal agreement not to open the pool until the system is installed, according to Mayor L. W. O'Brien.

Work on the project was begun in April under Jayce sponsorship and the dedication ceremony was being planned when the decision of the council was announced.

The pool will be completed within the next ten days, Scherer said, with the exception of the filtration equipment.

Eden, Hunt to Vote On School Merger

JEROME, Aug. 2—An election to determine if the Hunt school district area is to be annexed into the Eden area will be held Aug. 20, according to Nellie Roberts, Jerome county superintendent of schools.

Ballots will be cast in Eden and Hunt between 2 and 8 p. m. The Hunt school district is an unincorporated territory in the county, Superintendent Roberts said.

READ TIMES-NEWS WANT ADS

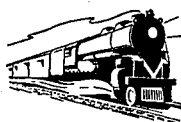
Cravida
FUMIGATION
Bedbugs, Moths, Fleas, Ticks
See Orla Williams
Twin Falls or City Floral
Phone 361 or 648

Travel in Comfort

on the UNION PACIFIC



Many comforts and services which were discontinued during the war have been resumed. Extra fast schedules reduce time from coast to coast as much as 10 1/2 hours. Make early reservations.



UNION PACIFIC RAILROAD

HEAD OF THE STREAMLINE AND THE CHALLENGER

THE SEASONED TRAVELER GOES BY TRAIN

TO VACATIONISTS...

Union Pacific serves more western scenic regions than any other railroad. These include California, Pacific Northwest, Colorado, Yellowstone and the National Parks of Southern Utah-Arizona.

For complete information, inquire at your nearest Union Pacific ticket office.

Be Specific
say "Union Pacific"

Statistical Study of Children's Health Is Underway in City

A statistical study of the medical treatment and care of children in Twin Falls is being made as part of a national survey, according to Dr. Harold Tremaine, Boise, state director for the study of child health services.

Speaking before members of the Twin Falls chapter of the Infantile Paralysis Foundation Wednesday night at the home of Mrs. John E. Hayes, state chairman for the National Foundation, Tremaine outlined the four-part survey.

"It is desirable to know," he said, "how many physicians, dentists, physical therapists and nurses are working in the field of children's diseases."

"We are desirous of knowing what procedures exist for the isolation of children with acute contagious diseases."

What Facilities

It is important to know what facilities exist for a diagnosis of children's diseases and what preventive care is available for the children," he said.

In Idaho, the physician pointed out, it is possible to make an individual study of child health situation. Doctors, nurse services will be asked personally for information about children.

Dr. Tremaine pointed out that this survey is not in any way a criticism but an attempt to find facts to better the people in Idaho as well as the nation.

"It is desirable of having adequate care for their children," he said.

He emphasized that this study will call attention to the use of preventive medicine rather than taking care of children only after they are sick.

Mrs. Hayes said that collection of the facts of this survey must be completed before the end of the year, although it will be another year or so before the facts can be translated into conclusions.

Questions being sent to doctors and others involved in the survey contain the following questions: How many pre-school children are there in the community? What special hospital facilities are available for children? What mental hygiene services are provided for children? What health services are available for physically handicapped children?

"The report will build confidence between the doctor and the people of the community, help to bring recognition to the needs of all sick children and open new fields of preventive medicine," Tremaine said.

The survey, started last January, will be financed one-half by the contributions of all the chapters of

PLUMBING AND PLUMBING FIXTURES IN THE NEW JAMES FOODLINER WERE INSTALLED BY US!

Congratulations,

Mr. James, upon completion of your splendid new store. All Magic Valley will be proud of it!

A & B PLUMBING & HEATING CO.

760 Main Ave. South

Phone 286

Dworshak to Attend Boise Meet Sunday

BOISE, Aug. 2 (AP)—Republican state headquarters announced today that Rep. Henry C. Dworshak, R-Ida, the party's senatorial nominee in the November election, would come to Boise Sunday after attending the western Republican meeting in Salt Lake City.

Carl H. Stiers, national chairman, is scheduled to arrive in Boise Sunday also.

READ TIMES-NEWS WANT ADS

99 Scouts Camp Out at Sawtooth

A total of 99 Boy Scouts from eight Magic Valley troops is now at Camp Sawtooth near Ketchum, Robert W. DeBurr, field executive, said Thursday.

The troops are cooking their own meals and carrying out their own programs—wild-owl-night-hike—being held at Norton Lake, Prairie Lake and Boulder peak. A softball tournament "among the pine" is being held and the boys are getting

plenty of fishing and swimming, DeBurr said.

Now at the camp are troops 59 and 60, Twin Falls; troops 12 and 14, Burley; troops 28, 40 and 41, Jerome; and troops 8, Richfield.

READ TIMES-NEWS WANT ADS

8:30 - TONITE - 8:30
RIDING CLUB'S
JAMBOREE
at the Frontier Riding Club
RODEO GROUNDS
Adm. Adults . . . 60c Tax card.
Child . . . 30c Inc.

SPECIAL SALE OF BOMB SHELLS

SORRY... No Phone - No Mail Orders
—Compare These Prices—
Savings You Haven't Seen In Years!

SALE OF LADIES HIGH STYLE HATS
REDUCED FROM VALUES UP TO 10.00
Large assortment of colors—You will find brand names nationally known at terrific saving—
SALE PRICED \$2.88 EACH

SALE OF WHITE HAND BAGS
REGULAR 5.95 AND 5.00 SELLERS
White fabrics—White plastics—large assortment of styles and designs—
CLEARANCE PRICE FOR ONLY \$2.88

SALE OF WOMEN'S HARVEST AND GARDEN HATS
REGULAR PRICE 50c AND 65c
Extra large brims to keep out the sun—fancy bands and designs—
ON SALE FOR ONLY 18c EACH

EXTRA SPECIAL Infants' Flannel ROBES
REGULAR 2.49 and 3.59
Sizes 2 to 6—Famous Diamond Robes—Colors, Pink & Blue—Slightly Soiled
Drastically Reduced For Quick Clearance
88c EACH

EXTRA SPECIAL Sale of SHOES
72 Pairs Odds and Ends
Boys Work Oxfords, Boys Work Shoes, Children's Candy Stripe Slip Sandals.
Sale Price 56c pair

100 Pairs Childrens PLAY SANDALS
Regular Price 2.79
On Sale now at great savings. Solid leather construction, open strap styles in colors Red, White and Natural Tan—Sizes 9 to 3.
For Only—\$1.04 pair

You Must Be Here In Person—NO PHONE OR MAIL ORDERS!

DRASTIC REDUCTION ON Ladies DRESSES

Slightly soiled, marked down for complete clearance, our loss is your gain—
REDUCED FROM VALUES UP TO 14.95
Sale Price \$2.28
Balcony Store

SAVE-up to 90%—SAVE Rummage Table Bargains
Drastic Reductions—Greater Savings For You!

Children's PURSES
Regular 1.00, Now... **4c**
Tiny Tot SUMMER BONNETS, Regular 1.98, Now... **44c**
Little Girls Dressy STRAW HATS for the 6 and 8 years old, Regular 3.29, Now... **96c**
BABY RATTLES with neck chain, Regular 25c, Now... **3c**

SALE OF CHILDREN'S STRAW HATS
Regular 39c Sellers
Natural Straw Colors with fancy Bands—Full range of colors
Out They Go For Only **11c EACH**

SALE OF SHELF AND LINING PAPER
Regular 59c per roll
White only—100 feet per roll—14 inches wide
Ideal for many household uses—On Sale For Only **15c ROLL**

SALE of Children's Cotton and Rayon School DRESSES
Regular Price was 3.98
Four colors to buy from—Odds and ends in sizes, but a good selection.
Out They Go For Only—\$1.28

43 PAIRS Clearance Women's Summer Casual SANDALS
Regular 4.95 OPA Ceiling
Colors, White, Red and White, Brown and White. Ties and Straps, platform wedgies.
Special Sale Price \$1.28 pair
FULL RANGE OF SIZES

SALE of Ladies Straw Garden HATS
REDUCED FROM 39c
Colors Blue, Green and Rust
Reduced for Quick Sale
YOUR CHOICE **12c EACH**

Men's Leather BILLFOLDS, Regular 1.00, Now... 21c
BUBBLE BATH and TOILET WATER, Regular 79c, Now... 23c
Men's SOCK-DRYERS, Regular 1.25, Now... 33c
Growing Girls BLOUSES for back to school, Reg. 2.00, Now 57c

C. C. ANDERSON Company