





















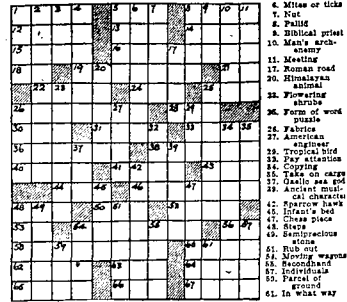




## Crossword Puzzle

1. Across  
2. Nuisance  
3. Opposite of  
4. Cautious  
5. Vague  
6. Command to  
7. Back  
8. Excitement  
9. To  
10. White  
11. West Basin  
12. Insect  
13. Enraged  
14. Great leader  
15. Plan  
16. Final feature  
17. Single song  
18. Child  
19. Old-time  
20. Part of a  
21. Part of a  
22. Part of a  
23. Part of a  
24. Part of a  
25. Part of a  
26. Part of a  
27. Part of a  
28. Part of a  
29. Part of a  
30. Part of a  
31. Part of a  
32. Part of a  
33. Part of a  
34. Part of a  
35. Part of a  
36. Part of a  
37. Part of a  
38. Part of a  
39. Part of a  
40. Part of a  
41. Part of a  
42. Part of a  
43. Part of a  
44. Part of a  
45. Part of a  
46. Part of a  
47. Part of a  
48. Part of a  
49. Part of a  
50. Part of a  
51. Part of a  
52. Part of a  
53. Part of a  
54. Part of a  
55. Part of a  
56. Part of a  
57. Part of a  
58. Part of a  
59. Part of a  
60. Part of a  
61. Part of a  
62. Part of a  
63. Part of a  
64. Part of a  
65. Part of a  
66. Part of a  
67. Part of a  
68. Part of a  
69. Part of a  
70. Part of a  
71. Part of a  
72. Part of a  
73. Part of a  
74. Part of a  
75. Part of a  
76. Part of a  
77. Part of a  
78. Part of a  
79. Part of a  
80. Part of a  
81. Part of a  
82. Part of a  
83. Part of a  
84. Part of a  
85. Part of a  
86. Part of a  
87. Part of a  
88. Part of a  
89. Part of a  
90. Part of a  
91. Part of a  
92. Part of a  
93. Part of a  
94. Part of a  
95. Part of a  
96. Part of a  
97. Part of a  
98. Part of a  
99. Part of a  
100. Part of a

Solution of Saturday's Puzzle



## BOARDING HOUSE MAJOR HOOPLE



## LIFE'S LIKE THAT By NEHER



"Let's divide it and play around again... My wife'll only take it away!"

## RED RYDER



## THIMBLE THEATER



## OUT OUR WAY By WILLIAMS



## SIDE GLANCES By GALBRAITH



"Imagine you warning Dorothy not to marry until she's sure he's the right man! Where would you be if I had waited around with that idea?"

## THIS CURIOUS WORLD By FERGUSON



## By FRED HARMAN



## STARRING POPEYE



## VIC FLINT



## By MICHAEL O'MALLEY and RALPH LANE



## WASH TUBS



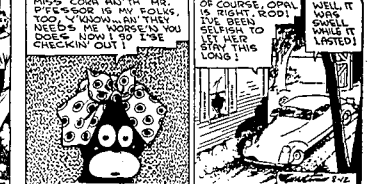
## By LESLIE TURNER



## BOOTS AND HER BUDDIES



## By EDGAR MARTIN



## GASOLINE ALLEY



## By KING



## THE GUMPS



## By GUS EDSON



## DIXIE DUGAN



## By McEVoy and STRIEBEL



## SCORCHY



## By RODD WILLARD



## ALLEY OOP



## By V. T. HAMLIN





# Markets and Finance

## Stocks Livestock Grain

### Markets at a Glance

**NEW YORK**  
Stocks: Mixed. Industrial  
Stocks: Mixed. Selected  
Stocks: Mixed. Selected  
Stocks: Mixed. Selected  
Stocks: Mixed. Selected

**NEW YORK**  
Grain: Mixed. Selected  
Grain: Mixed. Selected  
Grain: Mixed. Selected  
Grain: Mixed. Selected

**NEW YORK**  
Livestock: Mixed. Selected  
Livestock: Mixed. Selected  
Livestock: Mixed. Selected  
Livestock: Mixed. Selected

**NEW YORK**  
Grain: Mixed. Selected  
Grain: Mixed. Selected  
Grain: Mixed. Selected  
Grain: Mixed. Selected

**NEW YORK**  
Livestock: Mixed. Selected  
Livestock: Mixed. Selected  
Livestock: Mixed. Selected  
Livestock: Mixed. Selected

**NEW YORK**  
Grain: Mixed. Selected  
Grain: Mixed. Selected  
Grain: Mixed. Selected  
Grain: Mixed. Selected

**NEW YORK**  
Livestock: Mixed. Selected  
Livestock: Mixed. Selected  
Livestock: Mixed. Selected  
Livestock: Mixed. Selected

**NEW YORK**  
Grain: Mixed. Selected  
Grain: Mixed. Selected  
Grain: Mixed. Selected  
Grain: Mixed. Selected

**NEW YORK**  
Livestock: Mixed. Selected  
Livestock: Mixed. Selected  
Livestock: Mixed. Selected  
Livestock: Mixed. Selected

**NEW YORK**  
Grain: Mixed. Selected  
Grain: Mixed. Selected  
Grain: Mixed. Selected  
Grain: Mixed. Selected

**NEW YORK**  
Livestock: Mixed. Selected  
Livestock: Mixed. Selected  
Livestock: Mixed. Selected  
Livestock: Mixed. Selected

**NEW YORK**  
Grain: Mixed. Selected  
Grain: Mixed. Selected  
Grain: Mixed. Selected  
Grain: Mixed. Selected

**NEW YORK**  
Livestock: Mixed. Selected  
Livestock: Mixed. Selected  
Livestock: Mixed. Selected  
Livestock: Mixed. Selected

**NEW YORK**  
Grain: Mixed. Selected  
Grain: Mixed. Selected  
Grain: Mixed. Selected  
Grain: Mixed. Selected

**NEW YORK**  
Livestock: Mixed. Selected  
Livestock: Mixed. Selected  
Livestock: Mixed. Selected  
Livestock: Mixed. Selected

**NEW YORK**  
Grain: Mixed. Selected  
Grain: Mixed. Selected  
Grain: Mixed. Selected  
Grain: Mixed. Selected

**NEW YORK**  
Livestock: Mixed. Selected  
Livestock: Mixed. Selected  
Livestock: Mixed. Selected  
Livestock: Mixed. Selected

**NEW YORK**  
Grain: Mixed. Selected  
Grain: Mixed. Selected  
Grain: Mixed. Selected  
Grain: Mixed. Selected

### Markets at a Glance

**NEW YORK**  
Stocks: Mixed. Industrial  
Stocks: Mixed. Selected  
Stocks: Mixed. Selected  
Stocks: Mixed. Selected

**NEW YORK**  
Grain: Mixed. Selected  
Grain: Mixed. Selected  
Grain: Mixed. Selected  
Grain: Mixed. Selected

**NEW YORK**  
Livestock: Mixed. Selected  
Livestock: Mixed. Selected  
Livestock: Mixed. Selected  
Livestock: Mixed. Selected

**NEW YORK**  
Grain: Mixed. Selected  
Grain: Mixed. Selected  
Grain: Mixed. Selected  
Grain: Mixed. Selected

**NEW YORK**  
Livestock: Mixed. Selected  
Livestock: Mixed. Selected  
Livestock: Mixed. Selected  
Livestock: Mixed. Selected

**NEW YORK**  
Grain: Mixed. Selected  
Grain: Mixed. Selected  
Grain: Mixed. Selected  
Grain: Mixed. Selected

**NEW YORK**  
Livestock: Mixed. Selected  
Livestock: Mixed. Selected  
Livestock: Mixed. Selected  
Livestock: Mixed. Selected

**NEW YORK**  
Grain: Mixed. Selected  
Grain: Mixed. Selected  
Grain: Mixed. Selected  
Grain: Mixed. Selected

**NEW YORK**  
Livestock: Mixed. Selected  
Livestock: Mixed. Selected  
Livestock: Mixed. Selected  
Livestock: Mixed. Selected

**NEW YORK**  
Grain: Mixed. Selected  
Grain: Mixed. Selected  
Grain: Mixed. Selected  
Grain: Mixed. Selected

**NEW YORK**  
Livestock: Mixed. Selected  
Livestock: Mixed. Selected  
Livestock: Mixed. Selected  
Livestock: Mixed. Selected

**NEW YORK**  
Grain: Mixed. Selected  
Grain: Mixed. Selected  
Grain: Mixed. Selected  
Grain: Mixed. Selected

**NEW YORK**  
Livestock: Mixed. Selected  
Livestock: Mixed. Selected  
Livestock: Mixed. Selected  
Livestock: Mixed. Selected

**NEW YORK**  
Grain: Mixed. Selected  
Grain: Mixed. Selected  
Grain: Mixed. Selected  
Grain: Mixed. Selected

**NEW YORK**  
Livestock: Mixed. Selected  
Livestock: Mixed. Selected  
Livestock: Mixed. Selected  
Livestock: Mixed. Selected

**NEW YORK**  
Grain: Mixed. Selected  
Grain: Mixed. Selected  
Grain: Mixed. Selected  
Grain: Mixed. Selected

**NEW YORK**  
Livestock: Mixed. Selected  
Livestock: Mixed. Selected  
Livestock: Mixed. Selected  
Livestock: Mixed. Selected

**NEW YORK**  
Grain: Mixed. Selected  
Grain: Mixed. Selected  
Grain: Mixed. Selected  
Grain: Mixed. Selected

### Markets at a Glance

**NEW YORK**  
Stocks: Mixed. Industrial  
Stocks: Mixed. Selected  
Stocks: Mixed. Selected  
Stocks: Mixed. Selected

**NEW YORK**  
Grain: Mixed. Selected  
Grain: Mixed. Selected  
Grain: Mixed. Selected  
Grain: Mixed. Selected

**NEW YORK**  
Livestock: Mixed. Selected  
Livestock: Mixed. Selected  
Livestock: Mixed. Selected  
Livestock: Mixed. Selected

**NEW YORK**  
Grain: Mixed. Selected  
Grain: Mixed. Selected  
Grain: Mixed. Selected  
Grain: Mixed. Selected

**NEW YORK**  
Livestock: Mixed. Selected  
Livestock: Mixed. Selected  
Livestock: Mixed. Selected  
Livestock: Mixed. Selected

**NEW YORK**  
Grain: Mixed. Selected  
Grain: Mixed. Selected  
Grain: Mixed. Selected  
Grain: Mixed. Selected

**NEW YORK**  
Livestock: Mixed. Selected  
Livestock: Mixed. Selected  
Livestock: Mixed. Selected  
Livestock: Mixed. Selected

**NEW YORK**  
Grain: Mixed. Selected  
Grain: Mixed. Selected  
Grain: Mixed. Selected  
Grain: Mixed. Selected

**NEW YORK**  
Livestock: Mixed. Selected  
Livestock: Mixed. Selected  
Livestock: Mixed. Selected  
Livestock: Mixed. Selected

**NEW YORK**  
Grain: Mixed. Selected  
Grain: Mixed. Selected  
Grain: Mixed. Selected  
Grain: Mixed. Selected

**NEW YORK**  
Livestock: Mixed. Selected  
Livestock: Mixed. Selected  
Livestock: Mixed. Selected  
Livestock: Mixed. Selected

**NEW YORK**  
Grain: Mixed. Selected  
Grain: Mixed. Selected  
Grain: Mixed. Selected  
Grain: Mixed. Selected

**NEW YORK**  
Livestock: Mixed. Selected  
Livestock: Mixed. Selected  
Livestock: Mixed. Selected  
Livestock: Mixed. Selected

**NEW YORK**  
Grain: Mixed. Selected  
Grain: Mixed. Selected  
Grain: Mixed. Selected  
Grain: Mixed. Selected

**NEW YORK**  
Livestock: Mixed. Selected  
Livestock: Mixed. Selected  
Livestock: Mixed. Selected  
Livestock: Mixed. Selected

**NEW YORK**  
Grain: Mixed. Selected  
Grain: Mixed. Selected  
Grain: Mixed. Selected  
Grain: Mixed. Selected

**NEW YORK**  
Livestock: Mixed. Selected  
Livestock: Mixed. Selected  
Livestock: Mixed. Selected  
Livestock: Mixed. Selected

**NEW YORK**  
Grain: Mixed. Selected  
Grain: Mixed. Selected  
Grain: Mixed. Selected  
Grain: Mixed. Selected

## Rupert Camp Soldier Hurt In Car Crash

RUPERT, Aug. 12 (AP)—Condition of Sgt. John B. Corley, soldier at the POW camp here, who was injured in an auto accident Saturday, was reported as satisfactory today by attendants at the Cottage hospital.

The veteran received a fractured right knee cap and fractured right elbow as the result of a crash that occurred at 6 p. m. Saturday at the T. A. Frison service station on Highway 1.

The 1941 coupe driven by Sergeant Corley stopped on two parked cars at the station and crashed into a parked auto owned by Frison. Impact of the crash pushed the injured left side of the car into the collision.

Sgt. Corley was completely demobilized and the front end of the car was damaged.

Three small children of Clarence Sparks, who was with him at the time of the accident, were injured and taken to a Burley physician. The children were reported to be in good condition.

The other car, owned by Edwin Hunter, received damage to wheels, radiator and fender.

Elmer Lawson filed suit against Sumner D. Lawson charging cruelty and neglect of his two minor children. The couple was married Jan. 1, 1933, at Delta, Colo.

Charging cruelty and neglect, the plaintiff charged that the defendant had failed to provide for the support and maintenance of the two minor children.

The suit was filed in the district court at Burley. The defendant is a resident of the town of Delta, Colo.

The suit was filed in the district court at Burley. The defendant is a resident of the town of Delta, Colo.

The suit was filed in the district court at Burley. The defendant is a resident of the town of Delta, Colo.

The suit was filed in the district court at Burley. The defendant is a resident of the town of Delta, Colo.

The suit was filed in the district court at Burley. The defendant is a resident of the town of Delta, Colo.

The suit was filed in the district court at Burley. The defendant is a resident of the town of Delta, Colo.

The suit was filed in the district court at Burley. The defendant is a resident of the town of Delta, Colo.

The suit was filed in the district court at Burley. The defendant is a resident of the town of Delta, Colo.

The suit was filed in the district court at Burley. The defendant is a resident of the town of Delta, Colo.

The suit was filed in the district court at Burley. The defendant is a resident of the town of Delta, Colo.

The suit was filed in the district court at Burley. The defendant is a resident of the town of Delta, Colo.

## New Goldilocks Maybe—But She Got Varied Haul

Three sheets blankets, three colored blankets, a suitcase, a pink silk night cloth and a checked quilt.

City police are investigating to determine whether the lady was authorized and other circumstances surrounding the incident.

The lady was arrested on charges of larceny and possession of stolen goods.

The lady was released on \$500 bond and is to appear in court on August 14.

The lady was released on \$500 bond and is to appear in court on August 14.

The lady was released on \$500 bond and is to appear in court on August 14.

The lady was released on \$500 bond and is to appear in court on August 14.

The lady was released on \$500 bond and is to appear in court on August 14.

The lady was released on \$500 bond and is to appear in court on August 14.

The lady was released on \$500 bond and is to appear in court on August 14.

The lady was released on \$500 bond and is to appear in court on August 14.

The lady was released on \$500 bond and is to appear in court on August 14.

The lady was released on \$500 bond and is to appear in court on August 14.

The lady was released on \$500 bond and is to appear in court on August 14.

The lady was released on \$500 bond and is to appear in court on August 14.

The lady was released on \$500 bond and is to appear in court on August 14.

The lady was released on \$500 bond and is to appear in court on August 14.

The lady was released on \$500 bond and is to appear in court on August 14.

The lady was released on \$500 bond and is to appear in court on August 14.

## Shuttle Plan Put in Jaycee, C. of C. Laps

Chamberlain, said a committee may be appointed by the chamber and that the matter will be considered with other civic groups.

Postoffice OK needed. Chamberlain pointed out that any group attempting to work out details for the shuttle service would have to be considered by the postoffice.

It was brought out at the committee meeting that the shuttle service from Twin Falls to Shoshone or any other airport to make airline connection was "primarily a matter of Empire Airline."

Chamberlain pointed out that the shuttle service from Twin Falls to Shoshone or any other airport to make airline connection was "primarily a matter of Empire Airline."

Chamberlain pointed out that the shuttle service from Twin Falls to Shoshone or any other airport to make airline connection was "primarily a matter of Empire Airline."

Chamberlain pointed out that the shuttle service from Twin Falls to Shoshone or any other airport to make airline connection was "primarily a matter of Empire Airline."

Chamberlain pointed out that the shuttle service from Twin Falls to Shoshone or any other airport to make airline connection was "primarily a matter of Empire Airline."

Chamberlain pointed out that the shuttle service from Twin Falls to Shoshone or any other airport to make airline connection was "primarily a matter of Empire Airline."

Chamberlain pointed out that the shuttle service from Twin Falls to Shoshone or any other airport to make airline connection was "primarily a matter of Empire Airline."

Chamberlain pointed out that the shuttle service from Twin Falls to Shoshone or any other airport to make airline connection was "primarily a matter of Empire Airline."

Chamberlain pointed out that the shuttle service from Twin Falls to Shoshone or any other airport to make airline connection was "primarily a matter of Empire Airline."

Chamberlain pointed out that the shuttle service from Twin Falls to Shoshone or any other airport to make airline connection was "primarily a matter of Empire Airline."

Chamberlain pointed out that the shuttle service from Twin Falls to Shoshone or any other airport to make airline connection was "primarily a matter of Empire Airline."

Chamberlain pointed out that the shuttle service from Twin Falls to Shoshone or any other airport to make airline connection was "primarily a matter of Empire Airline."

Chamberlain pointed out that the shuttle service from Twin Falls to Shoshone or any other airport to make airline connection was "primarily a matter of Empire Airline."

Chamberlain pointed out that the shuttle service from Twin Falls to Shoshone or any other airport to make airline connection was "primarily a matter of Empire Airline."

Chamberlain pointed out that the shuttle service from Twin Falls to Shoshone or any other airport to make airline connection was "primarily a matter of Empire Airline."

Chamberlain pointed out that the shuttle service from Twin Falls to Shoshone or any other airport to make airline connection was "primarily a matter of Empire Airline."

Chamberlain pointed out that the shuttle service from Twin Falls to Shoshone or any other airport to make airline connection was "primarily a matter of Empire Airline."

## 553 Area Claims Are Compensable

A total of 553 unemployment compensation and severance pay adjustment allowance claims are compensable, figures released Monday by A. E. Glah, claims taker, show.

Last week 34 initial unemployment claims were taken and 26 new veteran claims were received. Of the total, 388 are unemployment claims and 164 are veteran claims.

This is the highest unemployment claim total posted here in some time and the bulk of the claimants are women who recently were discharged from potato dehydration jobs in Burley.

The announcer, when taken to the hospital by ambulance, was unconscious, but by afternoon he had regained consciousness and spent a good night, according to attendants from the building.

According to Mrs. Florence Culp, manager of the station, the call had been furnished on previous occasions with no effects from the gas.

Investigation of the near-tragedy was being conducted Monday to prevent a repetition of the incident. It was believed that the fumes may have been carried by the air conditioning system.

The announcer, when taken to the hospital by ambulance, was unconscious, but by afternoon he had regained consciousness and spent a good night, according to attendants from the building.

According to Mrs. Florence Culp, manager of the station, the call had been furnished on previous occasions with no effects from the gas.

Investigation of the near-tragedy was being conducted Monday to prevent a repetition of the incident. It was believed that the fumes may have been carried by the air conditioning system.

The announcer, when taken to the hospital by ambulance, was unconscious, but by afternoon he had regained consciousness and spent a good night, according to attendants from the building.

According to Mrs. Florence Culp, manager of the station, the call had been furnished on previous occasions with no effects from the gas.

Investigation of the near-tragedy was being conducted Monday to prevent a repetition of the incident. It was believed that the fumes may have been carried by the air conditioning system.

The announcer, when taken to the hospital by ambulance, was unconscious, but by afternoon he had regained consciousness and spent a good night, according to attendants from the building.

According to Mrs. Florence Culp, manager of the station, the call had been furnished on previous occasions with no effects from the gas.

Investigation of the near-tragedy was being conducted Monday to prevent a repetition of the incident. It was believed that the fumes may have been carried by the air conditioning system.

The announcer, when taken to the hospital by ambulance, was unconscious, but by afternoon he had regained consciousness and spent a good night, according to attendants from the building.

According to Mrs. Florence Culp, manager of the station, the call had been furnished on previous occasions with no effects from the gas.

Investigation of the near-tragedy was being conducted Monday to prevent a repetition of the incident. It was believed that the fumes may have been carried by the air conditioning system.

The announcer, when taken to the hospital by ambulance, was unconscious, but by afternoon he had regained consciousness and spent a good night, according to attendants from the building.

## Radio Worker Overcome but Survives Gas

Malone then went downstairs and called to a woman who was passing, and she in turn notified the Twin Falls police department.

According to the call, Officer Roy Linnell entered the building looking for a handkerchief over his nose and succeeded in carrying Thomas Malone down the flight of stairs.

At this point, Linnell was partly overcome, and Malone and Ed Bohm, janitor, completely removing Thomas from the building.

The announcer, when taken to the hospital by ambulance, was unconscious, but by afternoon he had regained consciousness and spent a good night, according to attendants from the building.

According to Mrs. Florence Culp, manager of the station, the call had been furnished on previous occasions with no effects from the gas.

Investigation of the near-tragedy was being conducted Monday to prevent a repetition of the incident. It was believed that the fumes may have been carried by the air conditioning system.

The announcer, when taken to the hospital by ambulance, was unconscious, but by afternoon he had regained consciousness and spent a good night, according to attendants from the building.

According to Mrs. Florence Culp, manager of the station, the call had been furnished on previous occasions with no effects from the gas.

Investigation of the near-tragedy was being conducted Monday to prevent a repetition of the incident. It was believed that the fumes may have been carried by the air conditioning system.

The announcer, when taken to the hospital by ambulance, was unconscious, but by afternoon he had regained consciousness and spent a good night, according to attendants from the building.

According to Mrs. Florence Culp, manager of the station, the call had been furnished on previous occasions with no effects from the gas.

Investigation of the near-tragedy was being conducted Monday to prevent a repetition of the incident. It was believed that the fumes may have been carried by the air conditioning system.

The announcer, when taken to the hospital by ambulance, was unconscious, but by afternoon he had regained consciousness and spent a good night, according to attendants from the building.

According to Mrs. Florence Culp, manager of the station, the call had been furnished on previous occasions with no effects from the gas.

Investigation of the near-tragedy was being conducted Monday to prevent a repetition of the incident. It was believed that the fumes may have been carried by the air conditioning system.

The announcer, when taken to the hospital by ambulance, was unconscious, but by afternoon he had regained consciousness and spent a good night, according to attendants from the building.

According to Mrs. Florence Culp, manager of the station, the call had been furnished on previous occasions with no effects from the gas.

Investigation of the near-tragedy was being conducted Monday to prevent a repetition of the incident. It was believed that the fumes may have been carried by the air conditioning system.

The announcer, when taken to the hospital by ambulance, was unconscious, but by afternoon he had regained consciousness and spent a good night, according to attendants from the building.

### Stock Averages

(Compiled by Associated Press)

**NEW YORK**  
Dow Jones Industrial Average: 156.12  
S&P 500: 156.12  
NYSE Composite: 156.12

**NEW YORK**  
Dow Jones Industrial Average: 156.12  
S&P 500: 156.12  
NYSE Composite: 156.12

**NEW YORK**  
Dow Jones Industrial Average: 156.12  
S&P 500: 156.12  
NYSE Composite: 156.12

**NEW YORK**  
Dow Jones Industrial Average: 156.12  
S&P 500: 156.12  
NYSE Composite: 156.12

### Stock Averages

(Compiled by Associated Press)

**NEW YORK**  
Dow Jones Industrial Average: 156.12  
S&P 500: 156.12  
NYSE Composite: 156.12

**NEW YORK**  
Dow Jones Industrial Average: 156.12  
S&P 500: 156.12  
NYSE Composite: 156.12

**NEW YORK**  
Dow Jones Industrial Average: 156.12  
S&P 500: 156.12  
NYSE Composite: 156.12

**NEW YORK**  
Dow Jones Industrial Average: 156.12  
S&P 500: 156.12  
NYSE Composite: 156.12

### Stock Averages

(Compiled by Associated Press)

**NEW YORK**  
Dow Jones Industrial Average: 156.12  
S&P 500: 156.12  
NYSE Composite: 156.12

**NEW YORK**  
Dow Jones Industrial Average: 156.12  
S&P 500: 156.12  
NYSE Composite: 156.12

**NEW YORK**  
Dow Jones Industrial Average: 156.12  
S&P 500: 156.12  
NYSE Composite: 156.12

**NEW YORK**  
Dow Jones Industrial Average: 156.12  
S&P 500: 156.12  
NYSE Composite: 156.12

### Stock Averages

(Compiled by Associated Press)

**NEW YORK**  
Dow Jones Industrial Average: 156.12  
S&P 500: 156.12  
NYSE Composite: 156.12

**NEW YORK**  
Dow Jones Industrial Average: 156.12  
S&P 500: 156.12  
NYSE Composite: 156.12

**NEW YORK**  
Dow Jones Industrial Average: 156.12  
S&P 500: 156.12  
NYSE Composite: 156.12

**NEW YORK**  
Dow Jones Industrial Average: 156.12  
S&P 500: 156.12  
NYSE Composite: 156.12

### Stock Averages

(Compiled by Associated Press)

**NEW YORK**  
Dow Jones Industrial Average: 156.12  
S&P 500: 156.12  
NYSE Composite: 156.12

**NEW YORK**  
Dow Jones Industrial Average: 156.12  
S&P 500: 156.12  
NYSE Composite: 156.12

**NEW YORK**  
Dow Jones Industrial Average: 156.12  
S&P 500: 156.12  
NYSE Composite: 156.12

**NEW YORK**  
Dow Jones Industrial Average: 156.12  
S







