

ATLANTA, Dec. 23 (AP)—A special agent for the National Board of Fire Underwriters told a Fulton county grand jury today that the rapid spread of flames from Wincoff hotel fire Dec. 7 indicated the work of a skilled arsonist.

## Top Court Rules In Favor of Pair Of Draft Evaders

WASHINGTON, Dec. 23 (AP)—The supreme court threw out convictions of two Jehovah's Witnesses for violating the draft law today in decisions of far-reaching importance to other conscientious objectors.

The court held the men were denied proper trials by lower courts which refused to hear evidence on contentions that draft classifications of the defendants were improper. In both cases, the convicted men contended they should be classified as ministers of the gospel exempt from the draft.

## Guests Flock To Resort for Opening Days

SUN VALLEY, Dec. 23 (AP)—More than 300 guests at this winter resort attended the official opening of the Ram, one of the lodge eating houses Sunday night. Observing a Sun Valley tradition, famous skier and actor James Cagney, who was the table of the lodge.

Among those attending the ceremony were Mrs. Cagney and her husband, Lucian Ballard, who arrived Sunday, and Darryl F. Zanuck, movie producer who recently bought an arm playing polo in Palm Springs and was not expected to be able to attend this season. But Cagney, who had him out on Dollar Mountain skiing despite one rain in a sling.

Raymond W. Millard and his wife and J. H. Hines, Jr., Chicago, Ill., were among the notable guests. The opening ceremony was held at the Ram, which is the official opening Saturday night. Reservations are being refused.

Among those attending the ceremony were Mrs. Cagney and her husband, Lucian Ballard, who arrived Sunday, and Darryl F. Zanuck, movie producer who recently bought an arm playing polo in Palm Springs and was not expected to be able to attend this season. But Cagney, who had him out on Dollar Mountain skiing despite one rain in a sling.

Among those attending the ceremony were Mrs. Cagney and her husband, Lucian Ballard, who arrived Sunday, and Darryl F. Zanuck, movie producer who recently bought an arm playing polo in Palm Springs and was not expected to be able to attend this season. But Cagney, who had him out on Dollar Mountain skiing despite one rain in a sling.

## Taylor Urges President to Follow FDR

WASHINGTON, Dec. 23 (AP)—A fellow Democrat today urged President Truman to make his first public statement of the union-aided strong policy for continued new deal principles developed by President Roosevelt.

Senator Hiram Bingham, D., Idaho, said in a statement that Mr. Truman would be reduced to the ceremonial status of the British king if he refused to make a statement to meet the demands of the Republican party.

Mr. Bingham said that the Republican party would not conflict with the Republican point of view, Taylor said.

"In England the speech from the throne at the opening of parliament is written by the majority party. The king merely reads it. The American President, however, is not a rubber stamp. He is the leader of his party and he formulates his own policy."

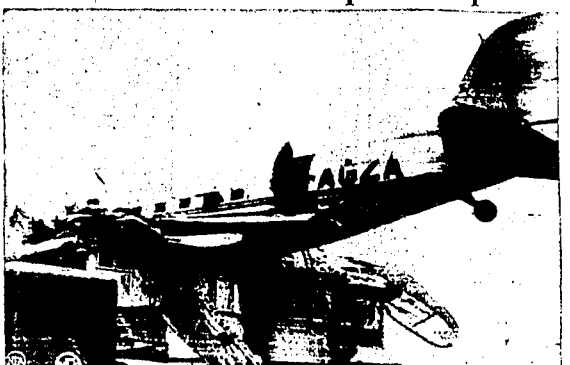
Taylor said Mr. Truman had an obvious mandate from the people to fight for peace. He said the President should follow the lead of President Roosevelt and make a statement to meet the demands of the Republican party.

Taylor said Mr. Truman had an obvious mandate from the people to fight for peace. He said the President should follow the lead of President Roosevelt and make a statement to meet the demands of the Republican party.

Taylor said Mr. Truman had an obvious mandate from the people to fight for peace. He said the President should follow the lead of President Roosevelt and make a statement to meet the demands of the Republican party.



Plane Crashes on Housetop Near Airport



Great Dakota plane lies precariously suspended above apartment house near airport at Northolt, England, when it crashed after takeoff. There were no injuries. (NEA radio telephone)

## U. S. Ship Leaves Chinese Port After Ultimatum From Russians

DAIREN, Manchuria, Dec. 23 (Delayed AP)—A United States navy ship pulled out of the port of Dairen this afternoon after receiving a verbal ultimatum from Russian military officials to the effect that unless you leave within 20 minutes we will not be responsible for the consequences.

Previously, the Russian military commander in charge of the city had refused to permit an American businessman with full clearance from U. S. authorities to depart. Also denied permission to land were two American newspapers, representing the combined world press.

Russian troops have occupied Dairen since the Japanese surrender. Although the Chinese-Russian treaty of 1945 called for its designation as a free port under Chinese administration, Soviet forces still are in control of the city.

The vessel was on a second routine courier mission to Dairen carrying diplomatic mail and supplies to the U. S. consulate there.

In view of the fact that the details of the first trip had been reported, two correspondents were permitted to take passage on this trip by Adm. Charles M. Cooke, commander of the seventh fleet, in order to be present in event their going ashore would meet with the approval of local authorities.

The ship arrived at Dairen Dec. 18, and requested permission to remain in port for 48 hours. This was accepted without comment by the Soviet authorities who met the ship.

The ship remained in the harbor two additional hours while U. S. Consul General H. Merrill Benninghoff attempted a last minute appeal to the Soviet military authorities to permit an American businessman, Jesse L. Poole, Atlanta, Ga., representing the Standard Vacuum Oil company to go ashore with a letter to the Soviet ultimatum was delivered.

The ultimatum ordered the ship to leave despite the fact that neither the diplomatic case nor the commanding officer of the ship were aboard. They were at the American consulate waiting for the final appeal to the Soviet commander.

The Russian military commander of the city, Maj. Gen. V. I. Voroshilov, refused to see the American consul general, however, and the ultimatum was delivered in the presence of his military aides.

Restrictions for Phones Dropped

WASHINGTON, Dec. 23 (AP)—Government restrictions on installation of telephones will be removed after Jan. 1, it was announced today by the Federal Communications Commission.

A spokesman for the civilian production administration said the telephone decontrol order is due Dec. 31. At present prospective telephone subscribers are classified and installations made on a priority basis.

Some legislators fear that the removal of restrictions on telephone installation would result in a shortage of phones, particularly in the case of new construction.

White Christmas

Not in Prospect

By the Associated Press

There will be no snow for Christmas over most of the nation.

That's the word from the Chicago weather bureau, which added that any snow that might fall would be a light dusting of flakes.

The forecasters thought Santa might be able to use influence that they don't have.

Present snow cover is limited to North Dakota and Montana and portions of South Dakota, Minnesota, Wisconsin, Michigan, New York, Ohio, Pennsylvania, West Virginia and Maryland.

Present snow cover is limited to North Dakota and Montana and portions of South Dakota, Minnesota, Wisconsin, Michigan, New York, Ohio, Pennsylvania, West Virginia and Maryland.

## 5,000 Homeless in Wake Of Big Earthquake

TOKYO, Dec. 23 (AP)—Homeless survivors of the Japanese earthquake and tidal wave, estimated unofficially as high as 600,000, were cheered by warmer, sunny weather today as they hurried their belongings and began cleaning the ruins. U. S. army spokesmen said the situation was "well under control" after reports from Okinawa prefecture, where British units are stationed, showed conditions "well in hand for the present with no outside help needed."

Japanese and allied rescue teams met great difficulties as they struggled to reach the center of the stricken area. Refugees cluttered the roads. Disrupted communications delayed casualty reports and calls for help.

Death toll reports from Shikoku and southern Honshu islands showed wide discrepancies. The latest United Press tabulation, compiled in close collaboration with American, British and Japanese agencies, listed 968 persons known dead, 4,491 injured and 63 missing.

Kyodo, Japanese news agency, said the number of killed was "expected to top the 2,000 mark."

This figure doubles Kyodo's own total less a few hours earlier and which previously was the highest of all tabulations. Kyodo admitted accurate information on the death toll was unavailable but "all indications point now that the number of fatalities will soar above 2,000."

A supreme headquarters announcement placed the death toll for 13 prefectures at 691, with 578 persons injured and 268 missing. The prefecture buildings had been washed away by the tidal wave. The waters swept away or wrecked 2,193 ships.

The headquarters reported 7,420 homes destroyed and 26,469 damaged in the sections hardest hit by Japan's second major quake disaster of the century.

Japanese news officials reported 5,847 buildings demolished beyond repair and 14,000 more less seriously damaged. This source said 233 of the destroyed buildings had been washed away by the tidal wave. The waters swept away or wrecked 2,193 ships.

All reports agreed that there were apparently no casualties among the survivors. The United Press Correspondent Peter Kalichar, covering the devastated Wakayama area in southern Honshu, reported that Maj. Gen. Charles M. Cooke, U. S. army commander in Japan, had been forced to land at Shikoku when his reconnoitering plane, run out of gas, he reported that he had found four army counter intelligence men in the stricken peninsula.

The four men were believed to be those previously reported marooned and captured from the stricken peninsula.

Two air corps men who were sighted from the air at Kushimoto on the southern tip of Wakayama peninsula, were not found when they were believed to have made their way to safety.

Funeral processions lined the roads in the Wakayama area. Bereaved Japanese mourners carried their dead in coffins on crude, hastily built platforms. Friends and flower bearers led the processions.

Representatives of the Buhl highway district, which property owners along the path of the project predicted that the Buhl Chamber of Commerce would withdraw its protest after the highway was opened.

Representatives of the Buhl highway district, which property owners along the path of the project predicted that the Buhl Chamber of Commerce would withdraw its protest after the highway was opened.

Representatives of the Buhl highway district, which property owners along the path of the project predicted that the Buhl Chamber of Commerce would withdraw its protest after the highway was opened.

Representatives of the Buhl highway district, which property owners along the path of the project predicted that the Buhl Chamber of Commerce would withdraw its protest after the highway was opened.

Representatives of the Buhl highway district, which property owners along the path of the project predicted that the Buhl Chamber of Commerce would withdraw its protest after the highway was opened.

Representatives of the Buhl highway district, which property owners along the path of the project predicted that the Buhl Chamber of Commerce would withdraw its protest after the highway was opened.

Representatives of the Buhl highway district, which property owners along the path of the project predicted that the Buhl Chamber of Commerce would withdraw its protest after the highway was opened.

Representatives of the Buhl highway district, which property owners along the path of the project predicted that the Buhl Chamber of Commerce would withdraw its protest after the highway was opened.

Representatives of the Buhl highway district, which property owners along the path of the project predicted that the Buhl Chamber of Commerce would withdraw its protest after the highway was opened.

Representatives of the Buhl highway district, which property owners along the path of the project predicted that the Buhl Chamber of Commerce would withdraw its protest after the highway was opened.

Representatives of the Buhl highway district, which property owners along the path of the project predicted that the Buhl Chamber of Commerce would withdraw its protest after the highway was opened.

Representatives of the Buhl highway district, which property owners along the path of the project predicted that the Buhl Chamber of Commerce would withdraw its protest after the highway was opened.

Representatives of the Buhl highway district, which property owners along the path of the project predicted that the Buhl Chamber of Commerce would withdraw its protest after the highway was opened.

Representatives of the Buhl highway district, which property owners along the path of the project predicted that the Buhl Chamber of Commerce would withdraw its protest after the highway was opened.

100

PHONE 2418

CATERING TO  
PARTIES - CLUBS - LODGES

28 | *Consulate of V. S. S. S. S.*


1

1

1. *Journal of the American Medical Association*, 1997; 277: 1033-1037.

1

1c	No. 1 Hussets	\$1.59	No. 2 Hussets	98c
5c	50 Pound Bag		50 Pound Bag	
	<b>AVACADOS</b>	Calavos, The 9 Vitamin Fruit		33c
	<b>COCOANUTS</b>	Fresh Honduras, medium size		17c
	<b>PARSNIPS</b>	Fresh, Crisp White	7¢	



**SAFeway**



## KENTUCKY TOPS U. S. CAGERS

## SPORTS

## Pin Tournaments Set Here

## Elks' Tryouts To Be Opened Friday Night

Bowlers of Twin Falls and the Magic Valley today began making preparations for a number of tournaments which have been placed on the schedule by the city's tennis association. The tournaments will include the tryouts for the All-State Elks, the Magic Valley championship and the American Bowling Congress' annual event at Los Angeles, Calif.

The tryouts for the Elks' tournament will be staged Friday, Sunday and Monday nights at the bowling center. The tryouts for the Magic Valley championship will be staged at the bowling center Jan. 3 and 4. The tryouts for the American Bowling Congress' annual event will be staged in Salina, Kan.

Committee Named  
Stone, who is on the Elks' national tournament committee, has selected the following committee for the local and state tryouts: Roy Weller, chairman; Homer and W. Bertch, C. C. Carlson and Clyde Ross. The Magic Valley championship tournament will be in team, doubles, singles and all-around. The tournament is expected to attract more than 50 teams.

ABC Dates Set  
Stone announced that the ABC had allotted three Twin Falls teams March 30 and 31 in the roll team, doubles and singles in the tournament at All-State. However, there may be a change in the bowling time in order to allow Twin Falls bowlers to compete in both the Elks' tournament and ABC.

Entry in the ABC will be a milestone in Twin Falls bowling. No team from this area has ever before competed in the big event.

PORTLAND WINS  
HONOLULU, Dec. 23 (AP)—Portland University scored on the first play from scrimmage and then went on to defeat the Hawaiian state football team here last night, 12-0, before 2,000 spectators.

## BOWLING Scores

CHURCH LEAGUE			
Handicap	1st	2nd	3rd
Handicap	144	144	442
Handicap	144	144	442
Handicap	144	144	442
Handicap	144	144	442
Handicap	144	144	442
Handicap	144	144	442
Handicap	144	144	442
Handicap	144	144	442
Handicap	144	144	442

CHURCH LEAGUE			
Handicap	1st	2nd	3rd
Handicap	144	144	442
Handicap	144	144	442
Handicap	144	144	442
Handicap	144	144	442
Handicap	144	144	442
Handicap	144	144	442
Handicap	144	144	442
Handicap	144	144	442
Handicap	144	144	442

CHURCH LEAGUE			
Handicap	1st	2nd	3rd
Handicap	144	144	442
Handicap	144	144	442
Handicap	144	144	442
Handicap	144	144	442
Handicap	144	144	442
Handicap	144	144	442
Handicap	144	144	442
Handicap	144	144	442
Handicap	144	144	442

CHURCH LEAGUE			
Handicap	1st	2nd	3rd
Handicap	144	144	442
Handicap	144	144	442
Handicap	144	144	442
Handicap	144	144	442
Handicap	144	144	442
Handicap	144	144	442
Handicap	144	144	442
Handicap	144	144	442
Handicap	144	144	442

CHURCH LEAGUE			
Handicap	1st	2nd	3rd
Handicap	144	144	442
Handicap	144	144	442
Handicap	144	144	442
Handicap	144	144	442
Handicap	144	144	442
Handicap	144	144	442
Handicap	144	144	442
Handicap	144	144	442
Handicap	144	144	442

CHURCH LEAGUE			
Handicap	1st	2nd	3rd
Handicap	144	144	442
Handicap	144	144	442
Handicap	144	144	442
Handicap	144	144	442
Handicap	144	144	442
Handicap	144	144	442
Handicap	144	144	442
Handicap	144	144	442
Handicap	144	144	442

CHURCH LEAGUE			
Handicap	1st	2nd	3rd
Handicap	144	144	442
Handicap	144	144	442
Handicap	144	144	442
Handicap	144	144	442
Handicap	144	144	442
Handicap	144	144	442
Handicap	144	144	442
Handicap	144	144	442
Handicap	144	144	442

CHURCH LEAGUE			
Handicap	1st	2nd	3rd
Handicap	144	144	442
Handicap	144	144	442
Handicap	144	144	442
Handicap	144	144	442
Handicap	144	144	442
Handicap	144	144	442
Handicap	144	144	442
Handicap	144	144	442
Handicap	144	144	442

CHURCH LEAGUE			
Handicap	1st	2nd	3rd
Handicap	144	144	442
Handicap	144	144	442
Handicap	144	144	442
Handicap	144	144	442
Handicap	144	144	442
Handicap	144	144	442
Handicap	144	144	442
Handicap	144	144	442
Handicap	144	144	442

CHURCH LEAGUE			
Handicap	1st	2nd	3rd
Handicap	144	144	442
Handicap	144	144	442
Handicap	144	144	442
Handicap	144	144	442
Handicap	144	144	442
Handicap	144	144	442
Handicap	144	144	442
Handicap	144	144	442
Handicap	144	144	442

CHURCH LEAGUE			
Handicap	1st	2nd	3rd
Handicap	144	144	442
Handicap	144	144	442
Handicap	144	144	442
Handicap	144	144	442
Handicap	144	144	442
Handicap	144	144	442
Handicap	144	144	442
Handicap	144	144	442
Handicap	144	144	442

CHURCH LEAGUE			
Handicap	1st	2nd	3rd
Handicap	144	144	442
Handicap	144	144	442
Handicap	144	144	442
Handicap	144	144	442
Handicap	144	144	442
Handicap	144	144	442
Handicap	144	144	442
Handicap	144	144	442
Handicap	144	144	442

CHURCH LEAGUE			
Handicap	1st	2nd	3rd
Handicap	144	144	442
Handicap	144	144	442
Handicap	144	144	442
Handicap	144	144	442
Handicap	144	144	442
Handicap	144	144	442
Handicap	144	144	442
Handicap	144	144	442
Handicap	144	144	442

CHURCH LEAGUE			
Handicap	1st	2nd	3rd
Handicap	144	144	442
Handicap	144	144	442
Handicap	144	144	442
Handicap	144	144	442
Handicap	144	144	442
Handicap	144	144	442
Handicap	144	144	442
Handicap	144	144	442
Handicap	144	144	442

CHURCH LEAGUE			
Handicap	1st	2nd	3rd
Handicap	144	144	442
Handicap	144	144	442
Handicap	144	144	442
Handicap	144	144	442
Handicap	144	144	442
Handicap	144	144	442
Handicap	144	144	442
Handicap	144	144	442
Handicap	144	144	442

CHURCH LEAGUE			
Handicap	1st	2nd	3rd
Handicap	144	144	442
Handicap	144	144	442
Handicap	144	144	442
Handicap	144	144	442
Handicap	144	144	442
Handicap	144	144	442
Handicap	144	144	442
Handicap	144	144	442
Handicap	144	144	442

CHURCH LEAGUE			
Handicap	1st	2nd	3rd
Handicap	144	144	442
Handicap	144	144	442
Handicap	144	144	442
Handicap	144	144	442
Handicap	144	144	442
Handicap	144	144	442
Handicap	144	144	442
Handicap	144	144	442
Handicap	144	144	442

CHURCH LEAGUE			
Handicap	1st	2nd	3rd
Handicap	144	144	442
Handicap	144	144	442
Handicap	144	144	442
Handicap	144	144	442
Handicap	144	144	442
Handicap	144	144	442
Handicap	144	144	442
Handicap	144	144	442
Handicap	144	144	442

CHURCH LEAGUE			
Handicap	1st	2nd	3rd
Handicap	144	144	442
Handicap	144	144	442
Handicap	144	144	442
Handicap	144	144	442
Handicap	144	144	442
Handicap	144	144	442
Handicap	144	144	442
Handicap	144	144	442
Handicap	144	144	442

CHURCH LEAGUE			
Handicap	1st	2nd	3rd
Handicap	144	144	442
Handicap	144	144	442
Handicap	144	144	442
Handicap	144	144	442
Handicap	144	144	442
Handicap	144	144	442
Handicap	144	144	442
Handicap	144	144	442
Handicap	144	144	442

CHURCH LEAGUE			
Handicap	1st	2nd	3rd
Handicap	144	144	442
Handicap	144	144	442
Handicap	144	144	442
Handicap	144	144	442
Handicap	144	144	442
Handicap	144	144	442
Handicap	144	144	442
Handicap	144	144	442
Handicap	144	144	442

CHURCH LEAGUE			
Handicap	1st	2nd	3rd
Handicap	144	144	442
Handicap	144	144	442
Handicap	144	144	442
Handicap	144	144	442
Handicap	144	144	442
Handicap	144	144	442
Handicap	144	144	442
Handicap	144	144	442
Handicap	144	144	442

## WILDCATS Gain 24th Straight Basket Victory

## BY COENLUS RYAN

NEW YORK, Dec. 23 (AP)—A week-end of upsets which sharply pruned the list of unbeaten college basketball teams ended today as the pattern for season play—left the national picture a scrambled one today.

It still was too early to make definite choice of any one team as the best bet in the country was still possible to name Kentucky, New York University, Minnesota, Iowa, West Virginia and Oregon among those most likely to succeed.

Other unbeaten teams All-American under the City college of New York, Texas, Wyoming, Syracuse, Western Michigan, Holy Cross, Oregon State, Purdue and Seton Hall. Western Michigan, Long Island U., Southern California, Washington and Louisiana State, still had a good chance to end the season with national honors.

So, too, did Illinois, which caused more talk by losing two games last week than it could have by winning them and staying undefeated.

The second defeat came Saturday night and Illinois sold 32 to 23 Indiana at California, which had been beaten by Illinois on Friday, 58 to 35.

On the short end of a 9-7 count with about four minutes to go, automatic Ole Graham, former Northwestern All-American, fired a 19-yard touchdown pass through the semi-darkness to Dante Lavelli, former Ohio State end, for the clinching counter.

The Browns didn't have an individual capable of winning a berth on the all-pro honorary team, but as a batch of rough and ready point-producing specialists they were something new in the play-off pay-off.

Launching the season with seven straight wins, the Browns sagged for two losses in mid-season and then roared through six more victories to annex the western laurels, scoring 42 points to 137. Seven home games of the regular season attracted more than 400,000 fans, and just to illustrate their versatility they boys ran over prospects in the first league tilt, 66 to 14, with nine different men sharing the nine-touchdown avalanche.

READ TIMES-NEWS WANT ADS.

## Cory Engen Wins Snow Cup Race

ALTA, Utah, Dec. 23 (AP)—Defending cup-winner Cory Engen, Snow Basin, Utah, did what he did best, the giant slalom course here yesterday in one minute 33.6 seconds to capture the Snow Cup race for the second successive year.

His time was 3.5 seconds better than that of Dick Munn, Sun Valley, Idaho.

Winner of the women's race was Bryndol Craven of the California ski association, with a time of 2:25.4. May Jennings, University of Utah, was second. Miss Craven's name will be engraved with that of Engen on the Herbert A. Snow trophy as 1946 champion.

The race was run in a blinding fog, and a light snow falling on the dry, fast track brought frequent spills to competitors. Most seriously hurt was Harry Morgan, Richfield, Utah, captain of the University of California ski team, who fell at the start of the precipitous track and pulled a leg muscle.

Big Improvement  
SYRACUSE, N. Y., Dec. 23 (AP)—In beating Boston U., 41 to 6, in the 1946 opener, Syracuse scored more points than in its entire 1945 football campaign.

Horsemen—NOW—  
"LAWRENCE" SADDLES  
AND LEATHER GOODS  
The ROD & GUN SHOP  
846 Main South

Idaho Hide & Tallow Co.  
Will Also Pick up Hogs If They Are Close.  
PHONE US COLLECT  
Twin Falls 314  
Gooding 47—Report 33

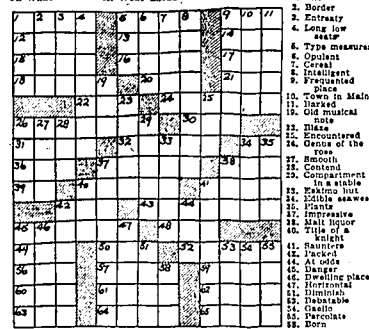
# Crossword Puzzle

ACROSS  
1. Stippled against  
2. State of war  
3. Seal  
4. Mutt  
5. Reptile  
6. Age  
7. Scrutiny  
8. Land cat  
9. Assort  
10. Press  
11. Number  
12. Dislike  
13. Dance of the  
14. Tipping  
15. While

DOWN  
16. Underland  
17. Exact likeness  
18. Gown by  
19. Article  
20. Cider  
21. Cabbage salad  
22. Curly hair  
23. Pillager  
24. Watch  
25. Belonging to us  
26. Central Amer.  
27. Ido tree  
28. Fresh  
29. Large volume  
30. Dress  
31. Ours  
32. Musical  
33. Dislike  
34. Dance of the  
35. Tipping  
36. While



Solution of Saturday's Puzzle



## BOARDING HOUSE MAJOR HOOPLE



## LIFE'S LIKE THAT By NEHER

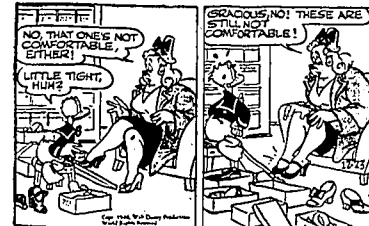


"I'll bet you get a big happy thrill out of delivering so much Christmas joy, Mr. Scott."

## RED RYDER



## DONALD DUCK



## OUT OUR WAY

By WILLIAMS

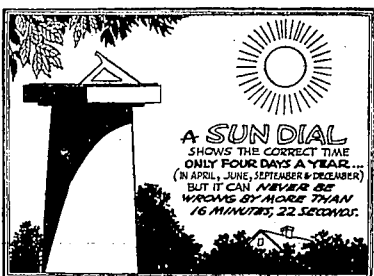


## SIDE GLANCES By GALBRAITH



"This is going to be a much nicer Christmas for Pop—he won't have any cardboard trains to put together!"

## THIS CURIOUS WORLD By FERGUSON



12-23 E. M. BELL, L. & PAT. OFF.

## By FRED HARMAN



## By WALT DISNEY



## VIC FLINT



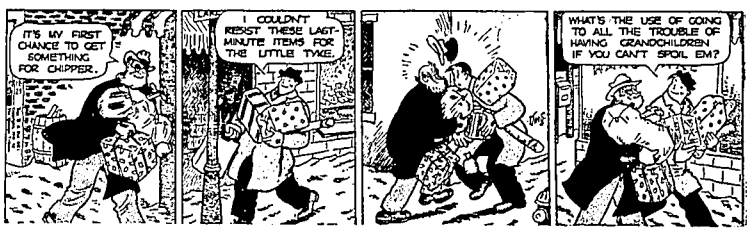
## WASH TUBBS



## BOOTS



## GASOLINE ALLEY



## THE GUMPS



## DIXIE DUGAN



## SCORCHY



## LI'L ABNER



## ALLEY OOP







Phone  
38

1987 CHRYSLER 5-passenger coupe.

1951 FORD coupe, low mileage, fly over  
 Texaco Station opposite bus depot.  
 1952 FLYMOUTH sedan, motor just  
 overhauled, in good shape. Call 1944  
 Also 1946 Hudson motor.  
 1928 TWO door Chevrolet, 1929 low  
 half Chevrolet truck, 1946 4DR  
 berry  
 1934 V-8 under school, 2 north, 5  
 Washington school, Phone 61444  
 1 p. m.  
 1946 YORD sedan, like new, 5 new

1929 DODGE 4-door sedan, new paint, tires and motor. See Ragdale at Motor, Buhl, Idaho.

1928 FORD Deluxe coach, exception clean motor and tires good. Call 1921 (between 9 and 8, or 128 East Avenue 8).

1930 FLYMOUTH (tutor sedan, good condition throughout, good tires, \$1,300.— south Harley corner, Buhl. Phone 31.

1928 CHEVROLET 2 door town car new paint, reconditioned motor,

1941 FLUID drive Dodge luxury  
brand new brakes, tires, Coops,  
heater. Must sell or trade for pick  
Phone 12312, Rupert.

1942 PLYMOUTH club coupe, Radio,  
er. good tires, motor just overha  
\$1,450.00 or would consider trade  
truck. 1219 4th Avenue East

FOR SALE 1939 V-8 Ford deluxe Me  
motor, spotlight, radio and 2 be  
Excellent condition, 4 miles north, a  
east of southwest corner of Filer.

USED CARS  
CASH FOR YOUR CAR  
BROWNING'S  
PHONE 1930  
Adm Browning, 634 Washington

1942 DE SOTO

**VERY CLEAN  
McVEY'S**

---

**SPOT CASH!**

We pay the highest cash prices

Cars and Trucks  
**McVEY'S**

---

**NEW**  
And Completely Rebuilt  
**FORD — CHEVROLET**  
**DODGE & PLYMOUTH**

Run in that car or truck  
and we'll set in one for you.  
**CALL 7-J KIMBERLY**

---

**PAINT  
AND  
BODY WORK**

HAVING COMPLETED MOST  
OF OUR BACKLOG OF  
BODY WORK,  
WE ARE NOW IN  
A POSITION TO HANDLE  
YOUR  
BODY  
FENDER

INCLUDING TRUCKS  
Let Us  
Make You a Bid  
On That Job  
TWIN FALLS  
MOTOR COMPANY  
PAINT

**553 MAIN AVE. E. - TWIN FALLS**  
**—PHONE 2005—**

---

**TRUCKS AND TRAILERS**

**PRACTICALLY** new Studebaker 4x4,  
2254, Wendell, Idaho, Earl Nielsen

**1946 MOBILE** Child trailer house, also  
1915 Kimbrough road.

**1933 INTERNATIONAL** 1 1/2-ton  
tires and motor A-1, good but be  
chopped hay rack. Call 1923-11.  
**FOR SALE** 1940 Ford pick-up. In  
condition. Call The Dog-House in  
Ing. Phone 230-J.  
**1937 STUDEBAKER** pick-up. Ex-  
shape. Very good tires. Everton M.  
Co. 318 2nd Avenue South.  
**FOR SALE**—3x24 cottage trailer w/  
heater, davenport bed, \$500. Moved

1912 FORD 2-ton tractor, 4125 tire speed axle, fifth wheel, Bendix vacuum brakes. Scott Oil Co., Kimberly road.

HOUSE trailer for sale. Latest 1946 furnished ready to move into. Buy last a lifetime, yet light enough anywhere. See it at 325 8th avenue

COVERED WAGON TRAILER HO  
-22 ft. PRICED FOR QUICK SA  
7/10 mile north West Fire Poi

**DOES  
YOUR TRUCK NEED  
PARTS OR REPAIRS?**  
See us for  
Complete parts and repairs  
**TRUCK  
SALES & SERVICE CO.**  
212 1st Ave. S. Phone

**TRAILER HOMES**  
We now have a large display  
**NEW TRAILERS**  
PAN AMERICAN - PALACE  
COLUMBIA - TRAVELITE  
MOBILE GLIDE - UNIVERSAL  
1 USED TRAILERS  
NEW AND USED TRAILERS

**BEN S. ROBISON**  
1800 Kimberly Road Phone 1

---

**1959 CADILLAC COUPE**  
**— HOUSE TRAILERS**  
1945 ROY CRAFT, 24 ft.  
1946 STREAMLINE HOUSE TRAILER

1 Wheel Lounge trailers  
1/2 ton Daimlers, all-steel utility trailers  
**COMPLETE FACILITIES  
FOR AUTO REPAIR**  
**JESSE M. CHASE**  
202 Shoshone W. Phone

**TRAILER HOMES**  
We now have a large display  
**NEW TRAILERS**  
PAN AMERICAN - PALACI  
COLUMBIA - TRAVELITE  
MOBILE CABIN - UNIVERSA  
1 USED TRAILERS  
NEW AND USED TRAILERS  
EIGHT AND SOLD  
**BEN S. ROBISON**  
1800 Kimberly Road, Ferns 1

**1959 CADILLAC COUPE.**  
— **HOUSE TRAILERS**  
1948 ROY CRAFT, 24 ft.  
1946 STREAMLINE HOUSE TRAIL  
1941 LORAIN, 22 ft.  
1941 LORAIN, 22 ft.  
1/2 ton Datsun, all-new shiny tra  
COMPLETE FACILITIES  
FOR AUTO TRAVEL  
**JESSE M. CHASE**  
702 Shoshone W. Phone

