

Country Club Members Set Work Sunday

Improvements on the grounds of the Blue Lakes Country club in Snake river canyon north of Twin Falls will begin to take shape Sunday when a volunteer clean-up party starts clearing out picnic sites and leveling tables.

Notices have been sent to all members of the club, urging them to report at Blue Lakes on Sunday at 8 a.m. or as soon thereafter as possible. It has been suggested that they bring their families and picnic lunches with them if they like.

Heads Committee

The work party will be in charge of the grounds committee headed by A. Westergren. Others on the committee are C. B. Shivers, Robert Carnahan, Glen Tritt, Charles E. Sieber, J. H. Dandford and R. S. Toffelmire.

Westergren urged all members to bring whatever equipment they might have, such as shovels, axes, saws, hammers, rakes and weed sprayers.

The main picnic site will be established in the trees near the lakes where about a dozen tables will be located. Twenty-two tables of the forest service type already have been purchased from government surplus. Plans also call for stores and garbage containers.

Road Rebuilt

During the last several months the main road to the club grounds has been rebuilt by the Duffy Reed Construction company. The road has been widened and gravelled all the way from U. S. highway No. 83 to the club grounds. With the exception of oiling the hairpin turn, which is being done this week, work on the road has been completed.

Committees meantime have made complete surveys of the club's premises, selecting a number of picnic sites and making tentative plans for the future location of the club house and golf course which will be the next major developments.

All members have been provided with keys to the gate which has been placed across the road at the top of the canyon.

Traffic Fines

Payment of one fine for running a stop light and 12 more overtime parking fines has been made in Twin Falls city traffic court.

Virgil P. Heiken paid a fine of \$15 plus \$3 costs for running a stop light after pleading guilty to that charge before Municipal Judge J. O. Humphrey.

Fines of \$1 for overtime parking were paid by Mrs. Frank Judd, Miss Riley, Idaho motor club, Charles A. Alderson, Jack Ritchey, Carl Maxwell, Mrs. E. H. Smith, Mrs. L. J. Condie, Harry Noh, Mrs. R. W. Snyder, Don Cox and H. A. McCook.

Weather

Twin Falls and vicinity—Clear tonight and Thursday. Temperatures little changed. High yesterday 83, low 63. This morning 83.

By The Associated Press

Station	Max	Min	Prev
Albuquerque	88	67	77
Bismarck	88	67	77
Boise	88	67	77
Chicago	88	67	77
Denver	88	67	77
New Orleans	88	67	77
New York	88	67	77
Omaha	88	67	77
Phoenix	88	67	77
Pocatello	88	67	77
Rock Springs	88	67	77
Salt Lake City	88	67	77
St. Louis	88	67	77
St. Paul	88	67	77
Washington	88	67	77

STAGE OF SNAKE RIVER

The level of Snake river was low Wednesday as shown by the flow over Shoshone falls (only a trickle of water going over the falls).

Keep the White Flag of Safety Flying



Now 16 days without a traffic death in our Magic Valley.

State Apportions School Payments Of Last Quarter

BOISE, July 16 (AP)—The state department of education today apportioned the final quarterly 1946-47 school year installment of \$104,686.88 from the public school income fund to the state's 44 counties. The counties in turn will allocate the funds to the school districts on a class room attendance basis.

In all, \$2,174,000 in state appropriation and endowment earnings were distributed to the school districts for the last school year. The current installment is only four per cent of the total.

For the next school year, the districts will get \$4,000,000 in state funds plus an additional \$600,000 in endowment earnings—the greatest sum ever received from state sources.

The allocation of the July 16 installment to counties follows: Blaine \$24,720, Camas \$64,666, Cassia \$40,812, Elmore \$64,655, Gooding \$2,021.04, Jerome \$2,605.54, Lincoln \$3,475.4, Minidoka \$2,860.14, and Twin Falls \$3,895.68.

Probe Demanded Of Bureau Case On Ballot Fraud

WASHINGTON, July 16 (AP)—Senator Kam, R., Mo., asked the senate today to investigate the justice department's handling of a 1946 Kansas city election probe, charging that Attorney General Tom Clark had tried to "whitewash the whole incident."

He called up his motion to discharge the judiciary committee, which voted Monday to postpone action indefinitely on Kam's resolution which would call for such an inquiry by the senate.

"No believer in good government or fair play will want any part in whitewashing a whitewash," he declared.

His demand grew out of the justice department's investigation into alleged irregularities in the Kansas City Democratic primary in which former Rep. Roger Guernsey was defeated by Enos Axtell, who was endorsed by President Truman. Axtell lost the general election race to Rep. Reeves, R., Mo.

Furture regulations compelled enforcement to speed up each other only by means of a speaking tube.

Magic Valley Funerals

TWIN FALLS—Funeral services for William C. Griggs will be held at the Twin Falls mortuary at 2 p.m. Thursday with the Rev. E. L. White officiating. Interment will be in the Twin Falls cemetery.

JEROME—Funeral services for Mr. L. Lewis will be held at 7 p.m. Wednesday at Wiley's funeral home chapel. Bishop Charles Andrus will officiate. Burial will be in the Jerome cemetery.

Range Survey Set for Idaho Game Agency

BOISE, July 16 (AP)—The state fish and game commission will next cooperate in a survey of three game areas in the state to determine the conflict between wildlife and domestic stock for grazing stands.

The commission adopted a program to study the situation following a conference yesterday at their annual meeting with Ray Swanson, Pocatello, director and member of the wildlife committee of the Idaho Cattlemen's association and Leon Weeks, association secretary.

Area Road

The grazing conflict exists in the Pocatello game preserve between elk and domestic stock, the Lost River valley, where antelope range, and the deer areas of the Caribou national forest.

Swanson also recommended to the commission that one central agency—be preferably the U. S. forest service—be designated to supervise the big game program in Idaho. Big game is principally at present controlled by the state fish and game department but the U. S. wildlife service, the Taylor grazing service and the forest service participate in game management.

Assessment Proposed

Swanson also proposed that the government adopt a policy whereby an assessment is paid on big game to assist in conserving grazing areas of state including soil conservation and reforestation.

The assessment, Swanson said, would correspond with that now paid by stockmen on cattle and sheep grazing on Idaho rangeland.

The commission also voted to dispose of the evergreen hatchery on the Weiser river near Council in Adams county. Operation of the hatchery has not proved "feasible or advisable," the commission said.

Posse Drilling for Fair Performance

BURLEY, July 16—The Cassia county sheriff's mounted posse now is busy drilling for its next public performance at the Cassia county fair Aug. 20 to 23, Sheriff Paul H. Clark said today.

The posse received considerable praise for its showing at the Pocatello over the week-end. The posse members had new uniforms and hats for the Pocatello showing.

Elected Chairman

GLENNIS FERRY, July 16—Mrs. Cosina Felt, Glennis Ferry, was elected chairman of the Elmore county board of education when the group was organized at Mountain Home recently. Mrs. Mary W. Lester, Mountain Home, was chosen vice-chairman.

The Lucin cut-off, across Great Salt lake, Utah, is the longest railway in the world in the United States. It is 12 miles long.

The Hospital

Emergency beds only were available Wednesday at the Twin Falls county general hospital. Visiting hours from 2 to 4 and 7 to 8 p.m.

ADMITTED

Mrs. Will Winter, Mrs. Donald Alger, Mrs. Dudley Orscoli, June Sexton and Mrs. Cecil Martin, all Twin Falls.

DISMISSED

Mrs. A. J. Finley, Mabel E. Brewer, Mrs. Henry Gorski and Mrs. Charles Meyer and son, all Twin Falls; Ernest D. Bloom, Filer; Barlow Hickman and Mrs. L. N. McDonald, both of Shoshone; Ronald Keil, Murtaugh; Mrs. Jim Jaker and son and Mrs. Fred Stokobery, all Burley; Mrs. E. J. Piersey and Mrs. Everett Hughes and son, all Eden, and Mrs. Thomas Terry and son, Stanley.

Twin Falls News in Brief

Marriage License

Arnold Harper, Oakley, and Darlene Boothie, Burley, received a marriage license Tuesday at the court house.

Tours Canada

Mrs. Anne Knight is now spending her vacation touring Canada. She expects to return to Twin Falls about Aug. 1.

Knoll Grange to Meet

The Knoll grange will meet at 8:30 p.m. Friday at the community center. A program in connection with "safety week" will be presented.

Mrs. Parkinson Returns

Mrs. G. T. Parkinson returned Monday from a two-months' visit with her son, Robert W. Parkinson, and his wife at Western City, Mo., and G. T. Parkinson, Jr., and family of Evanston, Wyo.

Births

A daughter was born to Mr. and Mrs. Owen Severance, Hazelton, Tuesday, at Twin Falls county general hospital. The baby weighed 7 pounds 12 ounces. Wednesday a daughter was born to Mr. and Mrs. Cecil H. Martin, Twin Falls.

Petition Filed

Priscilla Hartley filed a petition Tuesday in probate court asking an assessment of administration of the estate of A. J. Hartley who died July 3. Her petition lists as heirs two daughters and herself as widow. The estate is described as consisting of real property in Twin Falls valued at \$5,000. Probate Judge S. T. Hammett set 10 a.m. July 28, as the time for hearing on the matter.

Student Engineer Jobs Listed Here

College students with engineering experience have an opening for a summer job this week that is a training in that line. A. J. Meeks, manager of the Twin Falls state employment office said Wednesday. The U. S. geological survey wants three or four men to work out of the Jerome office for the rest of the summer. Meeks pointed out that engineering students would be well qualified to do the work which includes mapping streams, measuring elevations and establishing section corners. The pay, Meeks points out, is exceptionally good for a vacation job.

Workers would be able to live in Twin Falls and drive to work each morning. He added that additional information can be obtained at the Twin Falls office of the state employment service.

Orders have been received extending the time of the marine mobile recruiting unit in Twin Falls to July 20, 7/8 p.m. Elzy Kees, recruiter, reports. Former orders called for a move to Boise Wednesday.

The mobile unit will move to Boise for two weeks after leaving Twin Falls.

Buhl, Filer to Get Navy Recruit Visit

Buhl and Filer are scheduled for visit by the Twin Falls navy recruiting service this week, CQM Edgar Palmer reports.

Prospective navy applicants will be able to contact navy representatives at the post office in Buhl at 9:30 a.m. and the post office in Filer at 11:30 a.m. Thursday.

ATTEND CONVENTION

GLENNIS FERRY, July 16—Mr. and Mrs. G. F. Robertson and Mr. and Mrs. William Peterson are in Portland, Ore., where the men are attending the national convention of the Elks lodge.

AWOL

HASTINGS, Neb., July 16 (AP)—It was a beautiful wedding, but the bridegroom missed it.

The organist at the First Methodist church played nuptial music. The soloist sang, the candles were lighted and the bride party welcomed some 150 guests.

Then the Rev. Ralph Mazzusen rose to the feet and told the assembled guests that the bridegroom, Mr. Robert Kellogg, and Miss E. C. Osterhagen had been married a few hours earlier so that Kellogg could be rushed to the hospital for an emergency appendectomy.

Cross Complaint In Divorce Case Charges Beating

A cross-complaint denying charges made by her husband, in a divorce complaint filed with the district clerk June 27, has been filed by Alene Molony who has accused her husband, Henry D. Molony, of extreme cruelty and with beating her repeatedly.

In the original complaint, filed by Molony, he charged extreme cruelty in that his wife was "jealous and intractable."

In her complaint Mrs. Molony denied his charges and accused him of beating her on six different occasions, the first being only six weeks after their wedding in July, 1946.

Two of the beatings were so severe as to make it necessary for her to have medical treatment, her statement said.

She also charged Molony with borrowing approximately \$1,500 from her for the payment of bills, and said the money had not been repaid.

She further accused Molony with spraying the arm of her daughter, by a former marriage, while the daughter allegedly witnessed one of the beatings.

Mrs. Molony said that after each beating he would apologize, beg her forgiveness and say that he would never do it again and that each time she believed him.

In her cross complaint, Mrs. Molony asked to be awarded all the community property of the marriage, payment of the alleged \$1,500 debt, court costs and permanent alimony.

A new electric typewriter sets up an enthralling and prints it in one operation after the operator has had time to correct it.

ROXY

COLORED BY REFRIGERATION

YOU'LL LOVE IT

Romance-for-Keeps

—glew with laughter and city excitement!

LORETTA YOUNG
JOSEPH COTTEN
ETHEL BARRYMORE

"The Farmer's Daughter"

—CHARLES BICKARD and
—MILVANA ROBERTSON

Seen Today

Bill Hurborne from Burley getting warm introduction to Twin Falls when his car bursts into flames on first day here. . . Improved air-conditioning system consisting of fan blowing across pan of water. . . Trophies for model airplane meet Sunday on display in Idaho Power window. . . Small boy at health unit winning when mama announces he's come for shots. . . Horde of youngsters playing around revival tent on Second avenue and Third street north. . . Three couples boarding motorcycles for Boise after spending night in Twin Falls. . . Large black dog sprawling over good share of sidewalk near four-corners during mid-morning siesta. . . Baby buggy parked in traffic-congested alley. . . Idaho license 37-67-37 and Tennessee license 4-22341. . . Just seen: Ruthanne Hayes, Mito Pearson, Bob Greenleaf, Reba Jarman, Billy Jenkins, W. W. Lowery, Wilmoth McIntire, Mrs. C. W. Collier and Broda Rayburn. . . And overheard: Disc-happy newsmen muttering that he nearly answered telephone by saying, "City Electric" and local farmer proudly telling of his two cherry trees that produced \$277.28 worth of cherries.

Magic Valley Vet Rejects Hunt Unit

BURLEY, July 16—One of the six Magic Valley veterans who won a homestead on the Hunt relocation project has forfeited his right to the unit, S. R. Marean, Burley, superintendent of the Minidoka project, announced.

Floyd V. Stanger, Hazelton, was the fifth veteran to reject the land in the drawing. Stanger's farm contained 104.84 acres, of which 76 were irrigable. A total of 426 acres are in sagebrush and 33.4 acres were cleared.

Read Times-News Want Ads

PECK-WYMAN

The Yearling

Starts TOMORROW

She's a WOLFI

Hilarious Howl Hit!

RAY MILLAND
TERESA WRIGHT
BRIAN DONLEVY

in TROUBLE with WOMEN

Novelty News

JOAN LESLIE

ROBERT HUTTON

JANIE GETS MARRIED

THURSDAY FRIDAY

BRANDENBURG

RICHARD TRAVIS
MICHELLE CHERIE

LORETTA YOUNG

JOSEPH COTTEN

ETHEL BARRYMORE

"The Farmer's Daughter"

—CHARLES BICKARD and
—MILVANA ROBERTSON

Attention Odd Fellows

Regular Meeting, July 17

I. O. O. F. Hall 233 2nd Ave. E.

LOOP PICNIC

Sunday, July 20

Buhl City Park

Pot Luck Dinner 1 p.m.

T. L. Sullivan W. Harold Metz
Noble Grand Secretary

Lots of Zip...on Any Trip!

MAGIC VALLEY

"MAGIC VALLEY YESTERDAYS"

At the Riding Arena in

TWIN FALLS

Thursday - Friday - Saturday

Here's A Treat Never Before Duplicated Here

300 VOICE CHOIR

In Addition to a

CAST OF 100 PERSONS

Including Pioneers, Miners, Cowboys, Indians
Team of Oxen

ADMISSIONS:

CHILDREN 12 AND UNDER	50c
GENERAL ADMISSION	\$1.00
RESERVED SEATS	\$1.50

ALL PRICES PLUS TAX

TICKETS ON SALE AT WRAY'S CAFE

You'll recognize what's new and different the instant you're away from that big red pump with a tankful of Conoco N-tane. For here's a new-day gasoline both fit and ready for any trip... 'round the town or coast-to-coast... with... **QUICK SHARPS** starts... **RACING HOUND** getaways... smooth, L-O-N-G mile-after-mile-after-mileage that's made for you... for NOW!

Copyright 1947, Continental Oil Co.

C. C. ANDERSON

Company

**INVITE YOU TO VISIT
OUR LARGE FURNITURE
STORE AND—**

Better Your Home...

Better Your Living

With the Help of Our Easy Payment Plans!



**Pabco Guaranty
Linoleum Rugs**

Stainless sheen surface,
heavy weight, heavy
duty. Guaranteed five
years replacement of this
rug-guaranteed if found
defective within five
years abuse and com-
mercial use excepted.

6x9	\$7⁹⁵
7½x9	\$8⁹⁵
9x10½	\$11⁹⁵
9x12	\$12⁹⁵



**CHROME
Dinette Sets**

Here's value plus. Resists chipping, rust, stains,
cleans in a wink. Easily cleaned white porcelain
enamel top, convenient, extension leaves open to
seat six. Chairs have padded seats and
curved backs, covered in washable leatherette.
Available in three colors, blue and white, black
and white, red and white.

New Low Price

\$7⁹⁵

\$16.00 Down
\$6.00 PER MONTH

ANDERSONS present these mattresses,
first in durability and construction. These
mattresses are constructed with steel coil
springs, insulated with layers of sisal and
cotton lint, covered in quality long wearing
ticking. New Low Price

\$29⁹⁵



**Standard Size
COIL SPRINGS**

These coil springs are made of finely
tempered steel, "bouncy" enough to
impart to your sleeping hours more
comfort than you ever thought ex-
isted. New Low Price.

\$13⁸⁸

\$5.00 Down
Monthly Payments



INNERSPRING MATTRESS

**Standard Size
COIL SPRINGS**

These coil springs are made of finely
tempered steel, "bouncy" enough to
impart to your sleeping hours more
comfort than you ever thought ex-
isted. New Low Price.

\$13⁸⁸

\$5.00 Down
Monthly Payments

USE YOUR CHARGE ACCOUNT
3 WAYS TO PAY

- BUDGET ACCOUNTS
- REGULAR 30-DAY ACCOUNT
- LONG TERM CONTRACT

C. C. ANDERSON

FURNITURE

Austria Sitting In 'Middle' on U. S. Aid Plan

By J. M. ROBERTS, JR.

AP Foreign Affairs Staff
Western Europe may be about to capitalize on the Marshall proposal, and eastern Europe may get some benefit from Russia's effort to offset that program, but Austria is caught squarely in the middle.

The Russians occupy her oil fields and one of her most productive areas generally. They protest her acceptance of relief under close American supervision and threaten not to let it operate in their zone. They consider the attendance at the Paris economic conference an insult. They try to keep her out of the United Nations. They object to U. S. troops paying their own occupation costs. There are hints of economic reprisals for the little country's western leanings.

Even if Moscow takes no direct steps, the Austrian situation is serious. Russia, trying to prevent the eye-opening impact of western wealth on her ragged, hungry people, has shut it off from the economy of the rest of Europe. This draws a line between western Austria and the trade to the east upon which she leans heavily. To save herself from complete Russian domination, it appears she must remain on western charity until these markets can be reopened to her.

The Americans know that if they yield the Russians will get control of Austria economically, with political hegemony following almost automatically. If, in pique or desperation, Russia now decides to clean out her occupation zone completely, no amount of treaty making can assure Austria. She was never able to establish a very stable economy after dissolution of the Austro-Hungarian empire, anyway.

Club Brawl Costs 2 Eden Men \$200

SHOSHONE, July 16—Frank and James Stanger, Eden, each were fined \$100 plus \$3 court costs by Justice of the Peace Frank Dice when they pleaded guilty to causing a disturbance at the Peace Club. They were arrested by Night Marshal Lute Austin, after they allegedly had followed two other Eden men to the night club and started what was described as a "free-for-all" brawl.

Twin Falls Radio Schedules

KLIX (1240 KILOCYCLES) ABC MONDAY	KVMV (1450 KILOCYCLES) KVMV MONDAY	KTFI (1270 KILOCYCLES) KTFI MONDAY
WEDNESDAY	WEDNESDAY	WEDNESDAY
7:00 Betty Lou Hazy	6:00 "Magical Music"	6:00 Magic and Taz
7:15 News	7:00 "Magical Music"	7:00 "Magical Music"
7:30 "Mama"	7:15 "Rainbow" Playboys	7:00 "Magical Music"
7:45 "Bill Miller's Show"	7:30 "Magical Music"	7:00 "Magical Music"
8:00 "Licks Out"	8:00 "Fulton News, Jr."	7:00 "Magical Music"
8:15 "Rainbow Rendezvous"	8:30 "Magical Music"	7:00 "Magical Music"
8:30 "Edna Howard"	THURSDAY	7:00 "Magical Music"
8:45 "The Story"	6:00 Editor's Daily	7:00 "Magical Music"
9:00 "The Story"	6:15 Editor's Dairy	7:00 "Magical Music"
9:15 "The Story"	6:30 Editor's Dairy	7:00 "Magical Music"
9:30 "The Story"	6:45 Editor's Dairy	7:00 "Magical Music"
9:45 "The Story"	7:00 Editor's Dairy	7:00 "Magical Music"
10:00 "The Story"	7:15 Editor's Dairy	7:00 "Magical Music"
10:15 "The Story"	7:30 Editor's Dairy	7:00 "Magical Music"
10:30 "The Story"	7:45 Editor's Dairy	7:00 "Magical Music"
10:45 "The Story"	8:00 Editor's Dairy	7:00 "Magical Music"
11:00 "The Story"	8:15 Editor's Dairy	7:00 "Magical Music"
11:15 "The Story"	8:30 Editor's Dairy	7:00 "Magical Music"
11:30 "The Story"	8:45 Editor's Dairy	7:00 "Magical Music"
11:45 "The Story"	9:00 Editor's Dairy	7:00 "Magical Music"
12:00 "The Story"	9:15 Editor's Dairy	7:00 "Magical Music"
12:15 "The Story"	9:30 Editor's Dairy	7:00 "Magical Music"
12:30 "The Story"	9:45 Editor's Dairy	7:00 "Magical Music"
12:45 "The Story"	10:00 Editor's Dairy	7:00 "Magical Music"
13:00 "The Story"	10:15 Editor's Dairy	7:00 "Magical Music"
13:15 "The Story"	10:30 Editor's Dairy	7:00 "Magical Music"
13:30 "The Story"	10:45 Editor's Dairy	7:00 "Magical Music"
13:45 "The Story"	11:00 Editor's Dairy	7:00 "Magical Music"
14:00 "The Story"	11:15 Editor's Dairy	7:00 "Magical Music"
14:15 "The Story"	11:30 Editor's Dairy	7:00 "Magical Music"
14:30 "The Story"	11:45 Editor's Dairy	7:00 "Magical Music"
14:45 "The Story"	12:00 Editor's Dairy	7:00 "Magical Music"
15:00 "The Story"	12:15 Editor's Dairy	7:00 "Magical Music"
15:15 "The Story"	12:30 Editor's Dairy	7:00 "Magical Music"
15:30 "The Story"	12:45 Editor's Dairy	7:00 "Magical Music"
15:45 "The Story"	13:00 Editor's Dairy	7:00 "Magical Music"
16:00 "The Story"	13:15 Editor's Dairy	7:00 "Magical Music"
16:15 "The Story"	13:30 Editor's Dairy	7:00 "Magical Music"
16:30 "The Story"	13:45 Editor's Dairy	7:00 "Magical Music"
16:45 "The Story"	14:00 Editor's Dairy	7:00 "Magical Music"
17:00 "The Story"	14:15 Editor's Dairy	7:00 "Magical Music"
17:15 "The Story"	14:30 Editor's Dairy	7:00 "Magical Music"
17:30 "The Story"	14:45 Editor's Dairy	7:00 "Magical Music"
17:45 "The Story"	15:00 Editor's Dairy	7:00 "Magical Music"
18:00 "The Story"	15:15 Editor's Dairy	7:00 "Magical Music"
18:15 "The Story"	15:30 Editor's Dairy	7:00 "Magical Music"
18:30 "The Story"	15:45 Editor's Dairy	7:00 "Magical Music"
18:45 "The Story"	16:00 Editor's Dairy	7:00 "Magical Music"
19:00 "The Story"	16:15 Editor's Dairy	7:00 "Magical Music"
19:15 "The Story"	16:30 Editor's Dairy	7:00 "Magical Music"
19:30 "The Story"	16:45 Editor's Dairy	7:00 "Magical Music"
19:45 "The Story"	17:00 Editor's Dairy	7:00 "Magical Music"
20:00 "The Story"	17:15 Editor's Dairy	7:00 "Magical Music"
20:15 "The Story"	17:30 Editor's Dairy	7:00 "Magical Music"
20:30 "The Story"	17:45 Editor's Dairy	7:00 "Magical Music"
20:45 "The Story"	18:00 Editor's Dairy	7:00 "Magical Music"
21:00 "The Story"	18:15 Editor's Dairy	7:00 "Magical Music"
21:15 "The Story"	18:30 Editor's Dairy	7:00 "Magical Music"
21:30 "The Story"	18:45 Editor's Dairy	7:00 "Magical Music"
21:45 "The Story"	19:00 Editor's Dairy	7:00 "Magical Music"
22:00 "The Story"	19:15 Editor's Dairy	7:00 "Magical Music"
22:15 "The Story"	19:30 Editor's Dairy	7:00 "Magical Music"
22:30 "The Story"	19:45 Editor's Dairy	7:00 "Magical Music"
22:45 "The Story"	20:00 Editor's Dairy	7:00 "Magical Music"
23:00 "The Story"	20:15 Editor's Dairy	7:00 "Magical Music"
23:15 "The Story"	20:30 Editor's Dairy	7:00 "Magical Music"
23:30 "The Story"	20:45 Editor's Dairy	7:00 "Magical Music"
23:45 "The Story"	21:00 Editor's Dairy	7:00 "Magical Music"
24:00 "The Story"	21:15 Editor's Dairy	7:00 "Magical Music"
24:15 "The Story"	21:30 Editor's Dairy	7:00 "Magical Music"
24:30 "The Story"	21:45 Editor's Dairy	7:00 "Magical Music"
24:45 "The Story"	22:00 Editor's Dairy	7:00 "Magical Music"
25:00 "The Story"	22:15 Editor's Dairy	7:00 "Magical Music"
25:15 "The Story"	22:30 Editor's Dairy	7:00 "Magical Music"
25:30 "The Story"	22:45 Editor's Dairy	7:00 "Magical Music"
25:45 "The Story"	23:00 Editor's Dairy	7:00 "Magical Music"
26:00 "The Story"	23:15 Editor's Dairy	7:00 "Magical Music"
26:15 "The Story"	23:30 Editor's Dairy	7:00 "Magical Music"
26:30 "The Story"	23:45 Editor's Dairy	7:00 "Magical Music"
26:45 "The Story"	24:00 Editor's Dairy	7:00 "Magical Music"
27:00 "The Story"	24:15 Editor's Dairy	7:00 "Magical Music"
27:15 "The Story"	24:30 Editor's Dairy	7:00 "Magical Music"
27:30 "The Story"	24:45 Editor's Dairy	7:00 "Magical Music"
27:45 "The Story"	25:00 Editor's Dairy	7:00 "Magical Music"
28:00 "The Story"	25:15 Editor's Dairy	7:00 "Magical Music"
28:15 "The Story"	25:30 Editor's Dairy	7:00 "Magical Music"
28:30 "The Story"	25:45 Editor's Dairy	7:00 "Magical Music"
28:45 "The Story"	26:00 Editor's Dairy	7:00 "Magical Music"
29:00 "The Story"	26:15 Editor's Dairy	7:00 "Magical Music"
29:15 "The Story"	26:30 Editor's Dairy	7:00 "Magical Music"
29:30 "The Story"	26:45 Editor's Dairy	7:00 "Magical Music"
29:45 "The Story"	27:00 Editor's Dairy	7:00 "Magical Music"
30:00 "The Story"	27:15 Editor's Dairy	7:00 "Magical Music"
30:15 "The Story"	27:30 Editor's Dairy	7:00 "Magical Music"
30:30 "The Story"	27:45 Editor's Dairy	7:00 "Magical Music"
30:45 "The Story"	28:00 Editor's Dairy	7:00 "Magical Music"
31:00 "The Story"	28:15 Editor's Dairy	7:00 "Magical Music"
31:15 "The Story"	28:30 Editor's Dairy	7:00 "Magical Music"
31:30 "The Story"	28:45 Editor's Dairy	7:00 "Magical Music"
31:45 "The Story"	29:00 Editor's Dairy	7:00 "Magical Music"
32:00 "The Story"	29:15 Editor's Dairy	7:00 "Magical Music"
32:15 "The Story"	29:30 Editor's Dairy	7:00 "Magical Music"
32:30 "The Story"	29:45 Editor's Dairy	7:00 "Magical Music"
32:45 "The Story"	30:00 Editor's Dairy	7:00 "Magical Music"
33:00 "The Story"	30:15 Editor's Dairy	7:00 "Magical Music"
33:15 "The Story"	30:30 Editor's Dairy	7:00 "Magical Music"
33:30 "The Story"	30:45 Editor's Dairy	7:00 "Magical Music"
33:45 "The Story"	31:00 Editor's Dairy	7:00 "Magical Music"
34:00 "The Story"	31:15 Editor's Dairy	7:00 "Magical Music"
34:15 "The Story"	31:30 Editor's Dairy	7:00 "Magical Music"
34:30 "The Story"	31:45 Editor's Dairy	7:00 "Magical Music"
34:45 "The Story"	32:00 Editor's Dairy	7:00 "Magical Music"
35:00 "The Story"	32:15 Editor's Dairy	7:00 "Magical Music"
35:15 "The Story"	32:30 Editor's Dairy	7:00 "Magical Music"
35:30 "The Story"	32:45 Editor's Dairy	7:00 "Magical Music"
35:45 "The Story"	33:00 Editor's Dairy	7:00 "Magical Music"
36:00 "The Story"	33:15 Editor's Dairy	7:00 "Magical Music"
36:15 "The Story"	33:30 Editor's Dairy	7:00 "Magical Music"
36:30 "The Story"	33:45 Editor's Dairy	7:00 "Magical Music"
36:45 "The Story"	34:00 Editor's Dairy	7:00 "Magical Music"
37:00 "The Story"	34:15 Editor's Dairy	7:00 "Magical Music"
37:15 "The Story"	34:30 Editor's Dairy	7:00 "Magical Music"
37:30 "The Story"	34:45 Editor's Dairy	7:00 "Magical Music"
37:45 "The Story"	35:00 Editor's Dairy	7:00 "Magical Music"
38:00 "The Story"	35:15 Editor's Dairy	7:00 "Magical Music"
38:15 "The Story"	35:30 Editor's Dairy	7:00 "Magical Music"
38:30 "The Story"	35:45 Editor's Dairy	7:00 "Magical Music"
38:45 "The Story"	36:00 Editor's Dairy	7:00 "Magical Music"
39:00 "The Story"	36:15 Editor's Dairy	7:00 "Magical Music"
39:15 "The Story"	36:30 Editor's Dairy	7:00 "Magical Music"
39:30 "The Story"	36:45 Editor's Dairy	7:00 "Magical Music"
39:45 "The Story"	37:00 Editor's Dairy	7:00 "Magical Music"
40:00 "The Story"	37:15 Editor's Dairy	7:00 "Magical Music"
40:15 "The Story"	37:30 Editor's Dairy	7:00 "Magical Music"
40:30 "The Story"	37:45 Editor's Dairy	7:00 "Magical Music"
40:45 "The Story"	38:00 Editor's Dairy	7:00 "Magical Music"
41:00 "The Story"	38:15 Editor's Dairy	7:00 "Magical Music"
41:15 "The Story"	38:30 Editor's Dairy	7:00 "Magical Music"
41:30 "The Story"	38:45 Editor's Dairy	7:00 "Magical Music"
41:45 "The Story"	39:00 Editor's Dairy	7:00 "Magical Music"
42:00 "The Story"	39:15 Editor's Dairy	7:00 "Magical Music"
42:15 "The Story"	39:30 Editor's Dairy	7:00 "Magical Music"
42:30 "The Story"	39:45 Editor's Dairy	7:00 "Magical Music"
42:45 "The Story"	40:00 Editor's Dairy	7:00 "Magical Music"
43:00 "The Story"	40:15 Editor's Dairy	7:00 "Magical Music"
43:15 "The Story"	40:30 Editor's Dairy	7:00 "Magical Music"
43:30 "The Story"	40:45 Editor's Dairy	7:00 "Magical Music"
43:45 "The Story"	41:00 Editor's Dairy	7:00 "Magical Music"
44:00 "The Story"	41:15 Editor's Dairy	7:00 "Magical Music"
44:15 "The Story"	41:30 Editor's Dairy	7:00 "Magical Music"
44:30 "The Story"	41:45 Editor's Dairy	7:00 "Magical Music"
44:45 "The Story"	42:00 Editor's Dairy	7:00 "Magical Music"
45:00 "The Story"	42:15 Editor's Dairy	7:00 "Magical Music"
45:15 "The Story"	42:30 Editor's Dairy	7:00 "Magical Music"
45:30 "The Story"	42:45 Editor's Dairy	7:00 "Magical Music"
45:45 "The Story"	43:00 Editor's Dairy	7:00 "Magical Music"
46:00 "The Story"	43:15 Editor's Dairy	7:00 "Magical Music"
46:15 "The Story"	43:30 Editor's Dairy	7:00 "Magical Music"
46:30 "The Story"	43:45 Editor's Dairy	7:00 "Magical Music"
46:45 "The Story"	44:00 Editor's Dairy	7:00 "Magical Music"
47:00 "The Story"	44:15 Editor's Dairy	7:00 "Magical Music"
47:15 "The Story"	44:30 Editor's Dairy	7:00 "Magical Music"
47:30 "The Story"	44:45 Editor's Dairy	7:00 "Magical Music"
47:45 "The Story"	45:00 Editor's Dairy	7:00 "Magical Music"
48:00 "The Story"	45:15 Editor's Dairy	7:00 "Magical Music"
48:15 "The Story"	45:30 Editor's Dairy	7:00 "Magical Music"
48:30 "The Story"	45:45 Editor's Dairy	7:00 "Magical Music"
48:45 "The Story"	46:00 Editor's Dairy	7:00 "Magical Music"
49:00 "The Story"	46:15 Editor's Dairy	7:00 "Magical Music"
49:15 "The Story"	46:30 Editor's Dairy	7:00 "Magical Music"
49:30 "The Story"	46:45 Editor's Dairy	7:00 "Magical Music"
49:45 "The Story"	47:00 Editor's Dairy	7:00 "Magical Music"
50:00 "The Story"	47:15 Editor's Dairy	7:00 "Magical Music"
50:15 "The Story"	47:30 Editor's Dairy	7:00 "Magical Music"
50:30 "The Story"	47:45 Editor's Dairy	7:00 "Magical Music"
50:45 "The Story"	48:00 Editor's Dairy	7:00 "Magical Music"
51:00 "The Story"	48:15 Editor's Dairy	7:00 "Magical Music"
51:15 "The Story"	48:30 Editor's Dairy	7:00 "Magical Music"
51:30 "The Story"	48:45 Editor's Dairy	7:00 "Magical Music"
51:45 "The Story"	49:00 Editor's Dairy	7:00 "Magical Music"
52:00 "The Story"	49:15 Editor's Dairy	7:00 "Magical Music"
52:15 "The Story"	49:30 Editor's Dairy	7:00 "Magical Music"
52:30 "The Story"	49:45 Editor's Dairy	7:00 "Magical Music"
52:45 "The Story"	50:00 Editor's Dairy	7:00 "Magical Music"
53:00 "The Story"	50:15 Editor's Dairy	7:00 "Magical Music"
53:15 "The Story"	50:30 Editor's Dairy	7:00 "Magical Music"
53:30 "The Story"	50:45 Editor's Dairy	7:00 "Magical Music"
53:45 "The Story"	51:00 Editor's Dairy	7:00 "Magical Music"
54:00 "The Story"	51:15 Editor's Dairy	7:00 "Magical Music"
54:15 "The Story"	51:30 Editor's Dairy	7:00 "Magical Music"
54:30 "The Story"	51:45 Editor's Dairy	7:00 "Magical Music"
54:45 "The Story"	52:00 Editor's Dairy	7:00 "Magical Music"
55:00 "The Story"	52:15 Editor's Dairy	7:00 "Magical Music"
55:15 "The Story"	52:30 Editor's Dairy	7:00 "Magical Music"
55:30 "The Story"	52:45 Editor's Dairy	7:00 "Magical Music"
55:45 "The Story"	53:00 Editor's Dairy	7:00 "Magical Music"
56:00 "The Story"	53:15 Editor's Dairy	7:00 "Magical Music"
56:15 "The Story"	53:30 Editor's Dairy	7:00 "Magical Music"
56:30 "The Story"	53:45 Editor's Dairy	7:00 "Magical Music"
56:45 "The Story"	54:00 Editor's Dairy	7:00 "Magical Music"
57:00 "The Story"	54:15 Editor's Dairy	7:00 "Magical Music"
57:15 "The Story"	54:30 Editor's Dairy	7:00 "Magical Music"
57:30 "The Story"	54:45 Editor's Dairy	7:00 "Magical Music"
57:45 "The Story"	55:00 Editor's Dairy	7:00 "Magical Music"
58:00 "The Story"	55:15 Editor's Dairy	7:00 "Magical Music"
58:15 "The Story"	55:30 Editor's Dairy	7:00 "Magical Music"
58:30 "The Story"	55:45 Editor's Dairy	7:00 "Magical Music"
58:45 "The Story"	56:00 Editor's Dairy	7:00 "Magical Music"
59:00 "The Story"	56:15 Editor's Dairy	7:00 "Magical Music"
59:15 "The Story"	56:30 Editor's Dairy	7:00 "Magical Music"
59:30 "The Story"	56:45 Editor's Dairy	7:00 "Magical Music"
59:45 "The Story"	57:00 Editor's Dairy	7:00 "Magical Music"
60:00 "The Story"	57:15 Editor's Dairy	7:00 "Magical Music"
60:15 "The Story"	57:30 Editor's Dairy	7:00 "Magical Music"
60:30 "The Story"	57:45 Editor's Dairy	7:00 "Magical Music"
60:45 "The Story"	58:00 Editor's Dairy	7:00 "Magical Music"
61:00 "The Story"	58:15 Editor's Dairy	7:00 "Magical Music"
61:15 "The Story"	58:30 Editor's Dairy	7:00 "Magical Music"
61:30 "The Story"	58:45 Editor's Dairy	7:00 "Magical Music"
61:45 "The Story"	59:00 Editor's Dairy	7:00 "Magical Music"
62:00 "The Story"	59:15 Editor's Dairy	7:00 "Magical Music"
62:15 "The Story"	59:30 Editor's Dairy	7:00 "Magical Music"
62:30 "The Story"	59:45 Editor's Dairy	7:00 "Magical Music"
62:45 "The Story"	60:00 Editor's Dairy	7:00 "Magical Music"
63:00 "The Story"	60:15 Editor's Dairy	7:00 "Magical Music"
63:15 "The Story"	60:30 Editor's Dairy	7:00 "Magical Music"
63:30 "The Story"	60:45 Editor's Dairy	7:00 "Magical Music"
63:45 "The Story"	61:00 Editor's Dairy	7:00 "Magical Music"
64:00 "The Story"	61:15 Editor's Dairy	7:00 "Magical Music"
64:15 "The Story"	61:30 Editor's Dairy	7:00 "Magical Music"
64:30 "The Story"	61:45 Editor's Dairy	7:00 "Magical Music"
64:45 "The Story"	62:00 Editor's Dairy	7:00 "Magical Music"
65:00 "The Story"	62:15 Editor's Dairy	7:00 "Magical Music"
65:15 "The Story"	62:30 Editor's Dairy	7:00 "Magical Music"
65:30 "The Story"	62:45 Editor's Dairy	7:00 "Magical Music"
65:45 "The Story"	63:00 Editor's Dairy	7:00 "Magical Music"
66:00 "The Story"	63:15 Editor's Dairy	7:00 "Magical Music"
66:15 "The Story"	63:30 Editor's Dairy	7:00 "Magical Music"
66:30 "The Story"	63:45 Editor's Dairy	7:00 "Magical Music"
66:45 "The Story"	64:00 Editor's Dairy	7:00 "Magical Music"
67:00 "The Story"	64:15 Editor's Dairy	7:00 "Magical Music"
67:15 "The Story"	64:30 Editor's Dairy	7:00 "Magical Music"
67:30 "The Story"	64:45 Editor's Dairy	7:00 "Magical Music"
67:45 "The Story"	65:00 Editor's Dairy	7:00 "Magical Music"
68:00 "The Story"	65:15 Editor's Dairy	7:00 "Magical Music"
68:15 "The Story"	65:30 Editor's Dairy	7:00 "Magical Music"
68:30 "The Story"	65:45 Editor's Dairy	7:00 "Magical Music"
68:45 "The Story"	66:00 Editor's Dairy	7:00 "Magical Music"
69:00 "The Story"	66:15 Editor's Dairy	7:00 "Magical Music"
69:15 "The Story"	66:30 Editor's Dairy	7:00 "Magical Music"
69:30 "The Story"	66:45 Editor's Dairy	7:00 "Magical Music"
69:45 "The Story"	67:00 Editor's Dairy	7:00 "Magical Music"
70:00 "The Story"	67:15 Editor's Dairy	7:00 "Magical Music"
70:15 "The Story"	67:30 Editor's Dairy	7:00 "Magical Music"
70:30 "The Story"	67:45 Editor's Dairy	7:00 "Magical Music"
70:45 "The Story"	68:00 Editor's Dairy	7:00 "Magical Music"
71:00 "The Story"	68:15 Editor's Dairy	7:00 "Magical Music"
71:15 "The Story"	68:30 Editor's Dairy	7:00 "Magical Music"
71:30 "The Story"	68:45 Editor's Dairy	7:00 "Magical Music"
71:45 "The Story"	69:00 Editor's Dairy	7:00 "Magical Music"
72:00 "The Story"	69:15 Editor's Dairy	7:00 "Magical Music"
72:15 "The Story"	69:30 Editor's Dairy	7:00 "Magical Music"
72:30 "The Story"	69:45 Editor's Dairy	7:00 "Magical Music"
72:45 "The Story"	70:00 Editor's Dairy	7:00 "Magical Music"
73:00 "The Story"	70:15 Editor's Dairy	7:00 "Magical Music"
73:15 "The Story"	70:30 Editor's Dairy	7:00 "Magical Music"
73:30 "The Story"	70:45 Editor's Dairy	7:00 "Magical Music"
73:45 "The Story"	71:00 Editor's Dairy	7:00 "Magical Music"
74:00 "The Story"	71:15 Editor's Dairy	7:00 "Magical Music"
74:15 "The Story"	71:30 Editor's Dairy	7:00 "Magical Music"
74:30 "The Story"	71:45 Editor's Dairy	7:00 "Magical Music"
74:45 "The Story"	72:00 Editor's Dairy	7:00 "Magical Music"
75:00 "The Story"	72:15 Editor's Dairy	7:00 "Magical Music"

RETURNS TO TEXAS
HEYBURN, July 16—Mrs. Frank Clark has returned to her home in Dallas, Tex., after visiting her sister, Mrs. Parley Croft.

FOR DELICIOUS Goodness

POTATO CHIPS

try Idaho Sunrise Potato Chips

because they're made right here in Twin Falls (not shipped in) and rushed to your grocer at their flavor peak, tender, crisp, delicious.

NOW AT YOUR GROCERS

Know-How Assured

FRANK ALTMAN, July 16 (AP)—The grandson of the late Morris Altman is going to know how to defend himself—with his fists. In his will, Altman left \$500 in trust "for the physical training of my grandson, John A. Burdick, from the time he reaches his 12th birthday until he reaches college, due emphasis to be given to the manly art of self-defense."

VISIT AT HOLISTER

HOLISTER, July 16—Guests of Mr. and Mrs. Leroy Mayo recently were Mr. and Mrs. W. R. Gardner and daughter, Yvonne, San Diego, Calif., and Mr. and Mrs. T. R. Bauldree and daughter, Dianna, Los Angeles, Calif.

LITERALLY Cream TURNS TO CREAM IN YOUR MOUTH

CARDINET'S U-NO

FREEZE 'EM!

3 More Arsenic Poisonings Told

SALT LAKE CITY, July 16 (AP)—Three new cases of arsenic poisoning from soy sauce were reported here today. According to Dr. S. Okami, who is treating 23 victims of the poisoning, additional cases have been reported in Riverton and Brigham Canyon. The Japanese, Okami explained, who are the chief users of the sauce, use only a little each day thus making it difficult to detect the poisoning for several days.

Improvements Made In Richfield's Park

RICHFIELD, July 16—The Richfield Grange picnic Sunday at the village marked the first group gathering in the park to take advantage of improvements installed recently. A new water hydrant has been installed underneath the village water tank and a four by six foot open air rock grill has been built in the west end of the park. The U. S. department of agriculture released the first hybrid onion in 1944.

ISC's Fall Term To Open Sept. 15

POCAHELLO, July 16 (AP)—The fall term at Idaho State college will open Sept. 15, with registration scheduled Sept. 12-13, Dr. John R. Nichols, president, said.

Freshman day will be which time entrance exams will be given for students in the college. Under the four-year plan goes into effect for the first September, upper division students will be registered.

Third Thursday IS JULY 17TH

and Once Again . . . It's

Remnant Day Van Engelens

We Connect With Van Service Anywhere In America

MOVING

FORD TRANSFER & STORAGE

UTAH—IDAHO—CALIF.—NEVADA—OREGON

Skilled, Efficient, Careful Movers. Packing, Moving, Storage at Low Cost

FORD Transfer & Storage

IGA

NEW LOWER PRICES

MEAN GREATER SAVINGS AT IGA

You'll be amazed at the bigger savings that await you at your neighborhood IGA store. Just compare THESE EVERYDAY LOW PRICES! Every one of them saves you money!

Penney's is an Old Hand at Saving You Money

We run our stores the way a thrifty housekeeper runs her home. We don't sell on credit. We don't deliver. Cash-and-carry saves a lot of money — for YOU. We buy carefully, with a sharp eye for quality (nothing's a bargain if it isn't good as well as cheap).

Yes, we're old hands at saving you money. Our customers know it — and trust us. And we wouldn't sell out that confidence for anything in the world.

FOR WORK FOR PLAY

Boys' Bib

OVERALLS

Sizes 4 to 16

\$179

Big Mac quality is back again. Thrifty mothers will buy now for summer and back to school wear. Quantities are still limited on this important item.

Tough Wearing

Boys'

Blue Chambray

Shirts

98¢

The first in years—a very important item for boys—Made just like men's. You'll like the thrifty price and fine wearing quality.

JEANS—TOUGHEST OF ALL PANTS—COST YOU LESS!

FOR GIRLS 12 to 20 years **\$229**

FOR BOYS 6 to 16 years **\$169**

Sanitized blue denim dungarees with upper double closing. Copper rivets and double stitching at points of strain. Perfect fitting.

Compare—you'll find more dollar value in Big Mac's Strong metal rivets at every strain point! Sanitized to stay in fit... built to TAKE IT!

Suitable Apparel for Magic Valley Yesterday's PAGEANT THURS., FRI., SAT. This Week Lets All Be There

CORN IDA DELL, CREAM STYLE NO. 2 CAN. EACH **15¢**

Prune Plums Hunt's Fancy 2½ Can **28¢**

BABY FOODS Gerber's 3 for **22¢**

BISCUIT FLOUR A-1 2½ lbs. Pkg. **43¢**

BLACK TEA Lipton's Delicious Iced or Hot ½ Pound Package **51¢**

HEMO LIQUID OR POWDERED LARGE SIZE — EACH **59¢**

PICNIC SPECIALS AND TREATS

We have everything you need for that snack, picnic or outing. Just to mention a few...

Van Camp's Vienna, All Meat, No Cereal

SAUSAGE No. 1½ Can **16¢**

Pierces Tomato Sauce

PORK & BEANS No. 2½ Can **24¢**

Eat It Hot or Cold

SPAM 12 Oz. Can **39¢**

Libby's Genuine

DEVILED HAM No. 1½ Can **18¢**

Pierces Diced

BEETS No. 2 Can **12¢**

CHOICE MEATS

You'll find everything from your Sunday roast to your picnic cold cuts at your own IGA merchant meat counter. And remember he guarantees his meats for he knows they're fresh, tender, delicious. Just try him this week.

FRESH VEGETABLES

Oranges Med. Size, Sweet Juicy, Lb. **7¢**

Cantaloupes 4½ Size **2 for 25¢**

Lettuce Iceberg, Solid Heads, Lb. **6¢**

Watermelons Ideal for that Picnic, Lb. **4½¢**

Lemons Sunlight, Full of Juice, Pound **14¢**

Cantaloupes Large 27 Size Junbo, Lb. **8¢**

New Spuds Smooth Firm, 10 lbs. **49¢**

Tomatoes Firm, Ripe slicers, Lb. **23¢**

There's an IGA Store in Your Area

BUHL ERB BROTHERS MARKET

BURLEY ECONOMY GROCERY SHELBY DRIVE-IN PIK "N" PAK

CAREY PATERSON'S GROCERY

CASTLEFORD C. & M. FOOD SERVICE

GOODING J. C. PAINTER & CO.

HAILEY STOP & SHOP

JEROME CITY MARKET HI-WAY MARKET

RICHFIELD PIPER'S GROCERY

DEULO SHAW'S MARKET

DIETRICH DIETRICH MERCANTILE

EDEN BOB'S DRIVE-IN

FAIRFIELD RAY JONES & SON

FILER FILER MEAT CO.

RUPERT MARKET BASKET MEACHAM FOOD STORE WHITLEY'S MARKET

SHOSHONE W. & R. STORE

TWIN FALLS DRIVEWAY MARKET JAMES' FOODLINER YORK'S FOOD

IGA

LOW PRICES EVERY DAY

Ovaltine

Chocolate or Plain

Large Size **67¢**

Small Size **37¢**

Dromedary Ginger Bread

MIX

Just add Water, Pkg. **23¢**

Franco-American Spaghetti

For That Quick Lunch **14¢**

Tall Cans

Palmolive SOAP

Reg. Size **9¢**

Bath Size **12¢**

SEGO MILK

4 Tall Cans **49¢**

Royal Solid Pack Tomatoes

No. 2½ Cans **21¢**

Per Package

RAISIN BRAN **15¢**

Per Pkg.

Kellogg's CORN FLAKES **15¢**

13 oz. Pkg. **14¢**

Kellogg's RICE KRISPIES

LIFEBUOY

Lifebuoy

3 for **27¢**

Produce Prices Subject to Daily Market Changes

Labor Camp's Future Status Is 'Uncertain'

(From Page One)

concerned about the problem of housing farm labor in the future. It is understood that a bill is now pending in congress providing that such labor centers as the one near here shall be turned over to farm labor groups. Pending congressional action, nothing definite can be worked out along this line.

Operate Own Camps

Other Magic Valley county farm labor sponsoring bodies already are operating their own camps. Gooding county has two, one at Wendell and one at Gooding. Jerome county has camps at Eden, Hazelton and Jerome. Lincoln county's camp is at Shoshone. Minidoka county's is at Paul, and Cassia operates centers at Burley and Oakley.

Briefly, the labor camps fit into the agricultural picture in this manner: The U. S. government has entered into an international contract with the Mexican government for labor from Mexico, and in turn contracts with each individual laborer. The extension service of the state determines where this labor is needed. The U. S. department of agriculture's production and marketing administration labor branch pays for transportation and travel of the laborers and attends to numerous other administrative details in seeing that the contract is adhered to.

County Responsible

When the workers arrive, it is the responsibility of the county farm labor group to provide for their housing and food requirements, either in organization-owned facilities or by paying the government for use of sleeping and dining quarters.

Aside from playing an important part in handling imported labor in this manner, the camp provides housing for migrant laborers who would otherwise stay at other points to work.

Harry A. Elcock, district manager of the Agricultural Workers Union, commented Wednesday that "it would be unfortunate if this camp were allowed to leave this territory, for it would interfere with the supply of migrant labor that is vitally needed."

Mayor Interested

Also interested in the fate of the camp is Mayor H. O. Lauterbach of Twin Falls who has dispatched letters and telegrams to Senators Henry Dworshak and Glenn Taylor requesting information from Washington, D. C., on what will be done with the camp.

"There have been many instances in which government installations have been turned over to cities or other units for operation," Mayor Lauterbach observed, "and it seems to me that this camp would be made available to the farm labor sponsoring group or to some other interest that can operate it in its entirety for agricultural purposes."

Shipment Advised

Meanwhile, the center management has been advised to ship any property not being used to the warehouse of the other Idaho labor supply center at Caldwell. Also, the regional headquarters for the centers has been recently transferred from Portland, Ore., to nearby Swan Island where the war assets administration is centrally located, indicating that the camp may be turned over to the WAA for disposal.

The physical properties of the center include 48 well-constructed frame one-family homes. These consist of a front room used as dining room and kitchen, two bedrooms and a lavatory. A modern garage is provided for each house.

36 "Barracks"

Also there are 36 barrack-type shelters of six rooms each capable of housing as many individuals as

Sediment

Although small particles of sediment have been reported in the city water system, Pira B. Wilson, city water superintendent, Wednesday said there was no cause for alarm.

Wilson said reports had been received that sediment deposits, resembling wood splinters, had been clogging a few water taps in which screen filters were used, but added there had been no increased number of these reports recently.

Pineapple Strike Ended Suddenly

HONOLULU, July 16 (AP)—The strike in Hawaii's \$5,000,000 pineapple industry ended today as abruptly as it began six days ago.

Federal Labor Conciliator Nathan P. Feinsinger announced that the OGO Longshoremen's and Warehousemen's union had called off the strike and that the industry had agreed to reopen contract negotiations immediately.

ILWU Chief Harry Bridges said workers would return to their jobs at noon.

When negotiations are resumed, the industry will stand on its offer of a 10-cent hourly pay boost and a union will proceed with a demand for a 15-cent increase. Base pay is 9 cents for men and 70 cents for women.

Mercy Flight Takes Ill Woman to Utah

ODGEN, July 16 (AP)—A mercy flight to Gunnison, Colo., was made Tuesday by Col. Alma O. Winn, of Hill field, to transport Mrs. Wolff, wife of chief justice of state supreme court, to LDS hospital in Salt Lake City.

Mrs. Wolff had suffered a sudden attack of pneumonia. It was necessary to fly her to Salt Lake due to roughness of auto or train travel and her ill condition. Colonel Winn is commanding officer of Hill field air reserve detachment.

There are rooms or three average families.

Other assets include a community hall appraised at \$40,000 for bonding, an administrative building and a medical clinic. Grounds are landscaped and gravelled roads make every portion of the center accessible by auto.

A small community in itself, with a maximum capacity of 250 four to five-member families, the center is largely self-governing with a council and chairman operating under the manager form of government.

Carter Packing Co. sponsors

As a Public Service
EVERY THURSDAY 7 P. M.
KLIX DIAL 1340
American Broadcasting Company



MacArthur to President Bid

TOKYO, July 16 (AP)—MacArthur-for-President speculation from Wisconsin landed in silence here today. Efforts were unavailing to obtain General MacArthur's comment on a statement by Lansing Hoyt, chairman of the Wisconsin MacArthur-for-President club, that "I'm positive he will be available" as a Republican presidential candidate in 1948.

Discussion declined.

Hoyt declared he had learned from "a source on the highest level in Tokyo" that MacArthur would accept, but headquarters officers declined to discuss his announcement, issued after the general told a visiting Wisconsin editor he intended to settle down in Milwaukee, his boyhood home.

There was a feeling at headquarters that this instant pressure more would be brought on the five-star supreme commander for the allied powers to enter politics—as it was frequently during the war. Several times he has denied having any political ambitions.

To Stay on Job

MacArthur repeatedly has insisted he would remain here until the job is completed. Lately he has clarified this to mean he will stay on until the peace treaty is signed. He has expressed belief the treaty would be completed in one year to 18 months—or between July 1948 and January 1949.

MacArthur, 67 years old last Jan. 26, first disclosed his intention to settle in Milwaukee to James Packman, managing editor of the Milwaukee Sentinel, whom the general greeted Monday with the remark "It's good to meet somebody from my home state."

4 Drivers at Burley Pay Speeding Fines

BURLEY, July 16—Four motorists paid \$25 fines and \$3 costs with appearing before Police Judge Henry W. Tucker Tuesday morning on charges of speeding.

Fined were Paul Sherrod, Lubbock, Tex.; Wesley L. Carlson and Jack L. Jensen, Burley, and Fred Wheeler, Edmonton, Alberta, Canada.

SUMMER SALADS NEED THIS EXCITING TANGY Flavor

Tangy
PERFECT
FOR ALL SALADS
MADE BY
NALLEY'S

BOISE PAYETTE
LUMBER COMPANY
"There's a Yard Near You"

C. A. Buffington, Manager
Twin Falls, Idaho

Blue Pencil Goes To Clyde Koontz

"The American Sense of Humor" was the subject at the Toastmasters dinner meeting Tuesday night at the Park hotel. Dr. Gordon Tobin was toastmaster of the evening.

Graydon Smith talked on "Higher Mathematics." Leonard Jacob talked on the "Police Gazette" and early humor magazines and Clyde Koontz's subject was "Humor in Politics."

The "blue pencil" award for the best talk went to Clyde Koontz. Critics were Boyd Lytle, Hugh Phillips, William Cramer and Calvin Lowe. Grammarian was Alvin Nelson.

Table topics conducted by Charles Steier consisted of one-minute impromptu speeches by every member of the club on one of three subjects—the Marshall plan, Russia and flying saucers.

Guests were Ivan Skinner and Horace Hardy.

Patterson Is Set To Quit in Merge

WASHINGTON, July 16 (AP)—Secretary of War Robert P. Patterson was reported today to be ready to quit his post as soon as congressional passes the armed forces unification bill.

Patterson said he has not submitted his resignation to President Truman. He was scheduled to confer with Mr. Truman at 3:30 p. m. EDT.

A former federal judge in New York, the secretary is said to have the inside track on an appointment to the first vacancy in the U. S. supreme court.

READ TIMES-NEWS WANT ADS.

ADD NEW Beauty TO YOUR ROOMS WITH...

KEM-TONE
... the Modern, Miraculous Wall Finish

One coat covers most any interior surface like magic. Dries in an hour. No fuss! No must! No bother! Just add water to paste form and apply with brush or roller. Easy to clean. Available in 13 of the newest, smartest pastel colors. Economical, too... one gallon does an average room.

\$3.49 PER GAL.

BOISE PAYETTE
LUMBER COMPANY
"There's a Yard Near You"

C. A. Buffington, Manager
Twin Falls, Idaho

Falk's-Selling Agents for SEARS

JULY CLEARANCES

"OUT-THEY-GO" SALE

15% to 50% Off!

MANY ITEMS BELOW COST—SHARE IN STORE WIDE SAVINGS

Auto Accessories

Tire Pump
Folding handle
Reg. \$2.25. NOW **\$1.98**

Vulcanizing Clamp
Heavy duty
Reg. \$2.58. NOW **\$2.48**

Musical Horn
Plays Old Gray Mare or Old Oaken Bucket
Regular \$17.90 **\$15.95**

Hydraulic Jack
Heavy duty 12-ton
Capacity. Reg. \$23.95 **\$19.88**

SPORTING GOODS

.22 Rifle
Winchester Bolt Action. Reg. \$12.50 **\$12.98**

Camp Cots
Hardwood frame, heavy canvas. Reg. \$6.50 **\$5.88**

HOUSEHOLD SUPPLIES

Assorted Brushes
Vegetable bottle, etc.
NOW ONLY **7c**

Scouring Ball
Net of woven steel. Reg. 10c **4c**

Dish Set
Floral Pattern.
For 8 Reg. \$19.95 **\$13.88**

Frozen Food Packing Kit
Assorted containers
Reg. \$4.79. NOW **\$2.88**

Shower Mat
18 x 18 Rubber
Reg. \$1.49. NOW **98c**

Salt & Pepper Shaker Sets
Clever shapes
Reg. 25c each. NOW **5c**

Dust Mop
Reversible head.
Reg. \$1.00. NOW **98c**

Clothes Hamper
2 1/2 ft. Deep
Woven venter **\$1.89**

Kneeling Pads
Sponge rubber.
Reg. 60c. NOW **37c**

HARDWARE

Razor Blades
Dunlap thin.
Package of 10 **9c**

Porch Lite
Overhead lantern type
Reg. \$2.95 **\$2.44**

Breast Drill
Heavy duty. 4 in. chuck. Reg. \$5.49. NOW **\$3.49**

Screen Door Grill
Steel Mesh Door Protector. Reg. \$1.98 **49c**

Rugs & Furniture

9x12 Chenille Rugs
Brown, blue, green
Reversible. Reg. \$47.50 **19.95**

Oval Throw Rug
30 x 60 Puritan.
Reg. \$10.95. NOW **\$3.79**

Jersey Rag
24 x 48 Throw Rug.
Regular \$2.50 **\$1.89**

Living Room Sets

2-Piece Velour
Velour or Frieze
Reg. \$279.95. NOW **\$198.95**

Desk Lamp
Fluorescent
Regular \$14.95. NOW **\$9.88**

Hurricane Lamp
Early American design. Reg. \$11.95. NOW **\$4.95**

TABLE LAMP
China Base, Silk shade. Reg. \$13.95. **\$9.98**

Clearance

PLEXI GLASS Bath Room Accessories

Glass Holder Reg. 19c NOW **7c**

Robe Hook Reg. 5c NOW **2c**

Brush Holder Reg. 19c NOW **7c**

Paper Holder Reg. 49c NOW **13c**

SOAP DISH Reg. 19c. NOW **7c**

Clearance

Ping Pong Set

Reg. \$6.69 NOW **\$4.39**

Four 3-ply bats one rubber foot, handle required. 66" 11-on net, heavy duty posts.

Clearance

Kitchen Fixture

Reg. \$7.50 NOW **\$4.88**

Gives plenty of light on any kitchen task. Easy to clean. Without bulbs.

Clearance

8 oz. Tumblers

Reg. 5c NOW **3c**

Heavy ribbed water glass at a price you can't afford to miss. Stock up.

Clearance

Ironing Board Pad

Reg. 25c NOW **9c**

Heavy resilient 1 1/2" fiber makes ironing easy. A steel at this low price.

SWING ROCKERS

Best Velour. Reg. \$21.95. NOW **\$19.95**

Wine Tapestry. Reg. \$65.88. NOW **\$42.12**

Green Velour. Reg. \$74.50. NOW **\$42.12**

Wine Frieze. Reg. \$74.50. NOW **\$42.12**

Wine Velour. Reg. \$68.88. NOW **\$38.88**

Use Sears Easy Pay Plan

TWIN FALLS, IDAHO
Phone 1640

PAUSE...DRINK

Coke for me

BOTTLED UNDER AUTHORITY OF THE COCA-COLA COMPANY BY
TWIN FALLS COCA-COLA BOTTLING COMPANY

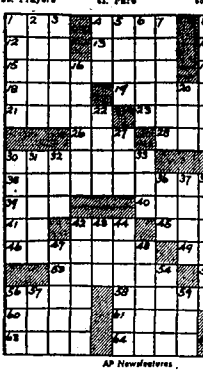
SPUDS . . 10 lbs. 45¢

Zale-Graziano Bout Tonight to Set Record

Figure 1. A schematic diagram of the experimental design. The subjects were divided into two groups: the control group and the experimental group. The control group received a standard 12-week training program, while the experimental group received a modified 12-week training program. The experimental group was further divided into two subgroups: the low-intensity group and the high-intensity group. The low-intensity group received a low-intensity training program, while the high-intensity group received a high-intensity training program. The subjects were then divided into two groups: the control group and the experimental group. The control group received a standard 12-week training program, while the experimental group received a modified 12-week training program. The experimental group was further divided into two subgroups: the low-intensity group and the high-intensity group. The low-intensity group received a low-intensity training program, while the high-intensity group received a high-intensity training program.

Crossword Puzzle

- ACROSS
- 1. Tub
 - 2. Bessie
 - 3. Arabian cloth
 - 4. Poker stake
 - 5. Lorraine
 - 6. Dutch wife
 - 7. Playful
 - 8. Italian opera
 - 9. Color study
 - 10. Humanian coin
- DOWN
- 1. Dwell
 - 2. Dwell
 - 3. Dwell
 - 4. Dwell
 - 5. Dwell
 - 6. Dwell
 - 7. Dwell
 - 8. Dwell
 - 9. Dwell
 - 10. Dwell



YES, IT'S HIM AGAIN—AND WE'VE ONLY BEEN AWAY TWO DAYS! THE POLICE ARE ALWAYS RAIDING SOMETHING!

IT'S HIM, THEN, BECAUSE HE'S ALWAYS IN SOMETHING!

BORN THIRTY YEARS TOO SOON!

OUT OUR WAY By WILLIAMS

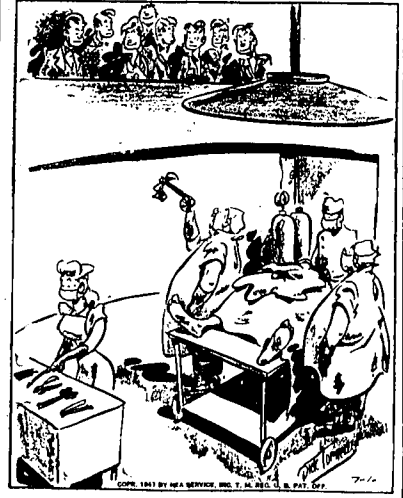


SIDE GLANCES By GAILBRAITH



"We might as well turn right around and go home—the children have emptied all the picnic baskets on the way!"

CARNIVAL By Dick Turner



"And now, for a year's free tuition, plus all laboratory costs—what is this?"

By FRED HARMAN



By WALT DISNEY



BOARDING HOUSE MAJOR HOOPLE



LIFE'S LIKE THAT By NEHER

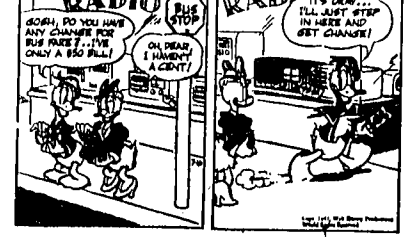


"Listen, Romeo... Can't you pick up Sis a little later next time so she has time to wipe the dishes?"

RED RYDER



RADIO



Phon
38

MISC. FOR SALE

CLASSWARE, berry sets, refrigerator hot
 top, slippers, tumblers, butter dishes
 King's
WOOD table model radio. \$25. New back
 able Dolly for trailer house \$125. 230
 West River avenue.
 1945 R. D. shaft drive motorcycle. New
 overhaul. 4 mile north, 1/4 west of North
 five points. Call 6512-J5.
FAIRBANKS-Morse well pump and fil-
 tings. 50 feet 1 1/2 black iron pipe. Phone
 6896RI, across from Cozy Corner.
FURNITURE, APPLIANCES

OR PAINTS, Putnam gas range, 6-burner
 cret. 155 Ash.
 BOATPOINT electric store, apartment 35,
 112 Ash.
 TROOP SALE: Good used electric iron. Call
 21902 after 5 p. m.
 USED dining room set for sale. Phone
 1949, Twin Falls, Idaho.
 DREHOMS Suits; beds; draped tables;
 chairs, chests. The Bargain Barn.
 5-PIECE breakfast set, \$16.00.
 Terms. Wilson-Dates Appliance.
 INTERNATIONAL oil heater with electric
 blower, used 8 months. Phone 026161.
 GLEAM colored Chatter Oak range, in good
 condition. Call 564 Fifth Avenue North.
 MAUSSTIC coal range, monkey store with

3 ROOMS furniture, sold separately or
together, \$43 4th Avenue West. Phone
1836-J.

NEARLY new davenco and General Elec-
tric toaster, 1315 Kimberly Road, space
No. 42.

FURNITURE repairing, refinishing, re-
plating, spring re-Using. Hays Furniture
Phone 72.

BEDROOM suite, chest of drawers, davenport, davenport and club chair, occasional chair, desk, dining table, platform rocker, magazine rack, 2 end tables, 3 table models, radios, breakfast set, sewing machine, two 2x12 wool rugs and pads, several

**OVAL
BRAIDED RUGS**

20x32		\$1.29
24x48		\$2.29
30x60		\$3.79
48x78		\$7.89

**FOR REAL
FURNITURE BARGAINS
"DRIVE OUT AND SAVE"
HARRY MUSGRAVE
MERCHANDISE MART**

PICTURES
SCENERIES—FLORALS—
RELIGIOUS
LARGE DISTRIBUTION!

85c up to \$11.95
BUY NOW AND SAVE
WESTERN
AUTO SUPPLY

SPARTON

PORTABLE RADIOS
Complete with batteries
— \$44.95 —
* * *

LAWN FURNITURE
LAWN CHAIRS\$5.75 each
* * *

ARVIN RADIOS

* * *
 ELECTRIC RANGES
 * * *
 40 GALLON
 ELECTRIC WATER HEATERS
 — \$95.00 —
 SELF'S
 HARDWARE & APPLIANCES

200 Ind. Ave. S. Phone 831

Beautiful "Boro"
KITCHEN CABINETS

- WHITE DUCO BAKED ENAMEL FINISH
- KILN DRIED, HARDWOOD THROUGH-

- NO WARP
- STURDY CONSTRUCTION
- NO TINY DOORS

CINDER
PRODUCTS CO.
PHONE 61 JEROME, IDAHO

IRON SIGNS, truck lettering, banners, gold leaf, commercial signs, Tri-Rite Advertising, 1822 1/2 Kimberly Road, Phone 1809K.

SEPTIC tank and cesspool cleaning, sewers and lines cleaned by Roto Rooter, R. C. Jones, Phone 3875J, 187 West Fifth ave. nra.

Earwigs
Have been found in

IF YOU HAVE THEM ...
CONTROL THEM
IF YOU DON'T ...
SPRAY TO PREVENT
THEM
THEY MIGRATE FAST!
CALL

For
Control of insects and free information
on your insect problem.
PHONE 230

AUTOS FOR SALE

1945 FORD super deluxe, modern, good cond. 935 Main street, 1945 Buick Wildcat, 1945 Chevrolet, 1945 Buick Wildcat, 1945 Oldsmobile sedan, good condition, good drive. Phone 24214, Filad.

CASH for your car. Severance Motor Sales, 201 fed avenue west. Phone 4194-W.

1941 Chevrolet and a present company. Excellent condition. 1533 1/2 Avenue East.

Will sell this week 1936 Chevrolet, 1936 Buick, Buick other makes. M. H. Ramgers after 5 p. m.

URGENTLY needed: Late model cars, good conditions. Write Ben 876 or call 201 fed avenue west, Filad.

400 MERCURY sedan, 1945, 1946, 1947, spotlights, for lights, radio, 1945, 1946, 1947, 1948, 1949, 1950, 1951, 1952, 1953, 1954, 1955, 1956, 1957, 1958, 1959, 1960, 1961, 1962, 1963, 1964, 1965, 1966, 1967, 1968, 1969, 1970, 1971, 1972, 1973, 1974, 1975, 1976, 1977, 1978, 1979, 1980, 1981, 1982, 1983, 1984, 1985, 1986, 1987, 1988, 1989, 1990, 1991, 1992, 1993, 1994, 1995, 1996, 1997, 1998, 1999, 2000, 2001, 2002, 2003, 2004, 2005, 2006, 2007, 2008, 2009, 2010, 2011, 2012, 2013, 2014, 2015, 2016, 2017, 2018, 2019, 2020, 2021, 2022, 2023, 2024, 2025, 2026, 2027, 2028, 2029, 2030, 2031, 2032, 2033, 2034, 2035, 2036, 2037, 2038, 2039, 2040, 2041, 2042, 2043, 2044, 2045, 2046, 2047, 2048, 2049, 2050, 2051, 2052, 2053, 2054, 2055, 2056, 2057, 2058, 2059, 2060, 2061, 2062, 2063, 2064, 2065, 2066, 2067, 2068, 2069, 2070, 2071, 2072, 2073, 2074, 2075, 2076, 2077, 2078, 2079, 2080, 2081, 2082, 2083, 2084, 2085, 2086, 2087, 2088, 2089, 2090, 2091, 2092, 2093, 2094, 2095, 2096, 2097, 2098, 2099, 2100, 2101, 2102, 2103, 2104, 2105, 2106, 2107, 2108, 2109, 2110, 2111, 2112, 2113, 2114, 2115, 2116, 2117, 2118, 2119, 2120, 2121, 2122, 2123, 2124, 2125, 2126, 2127, 2128, 2129, 2130, 2131, 2132, 2133, 2134, 2135, 2136, 2137, 2138, 2139, 2140, 2141, 2142, 2143, 2144, 2145, 2146, 2147, 2148, 2149, 2150, 2151, 2152, 2153, 2154, 2155, 2156, 2157, 2158, 2159, 2160, 2161, 2162, 2163, 2164, 2165, 2166, 2167, 2168, 2169, 2170, 2171, 2172, 2173, 2174, 2175, 2176, 2177, 2178, 2179, 2180, 2181, 2182, 2183, 2184, 2185, 2186, 2187, 2188, 2189, 2190, 2191, 2192, 2193, 2194, 2195, 2196, 2197, 2198, 2199, 2200, 2201, 2202, 2203, 2204, 2205, 2206, 2207, 2208, 2209, 2210, 2211, 2212, 2213, 2214, 2215, 2216, 2217, 2218, 2219, 2220, 2221, 2222, 2223, 2224, 2225, 2226, 2227, 2228, 2229, 2230, 2231, 2232, 2233, 2234, 2235, 2236, 2237, 2238, 2239, 2240, 2241, 2242, 2243, 2244, 2245, 2246, 2247, 2248, 2249, 2250, 2251, 2252, 2253, 2254, 2255, 2256, 2257, 2258, 2259, 2260, 2261, 2262, 2263, 2264, 2265, 2266, 2267, 2268, 2269, 2270, 2271, 2272, 2273, 2274, 2275, 2276, 2277, 2278, 2279, 2280, 2281, 2282, 2283, 2284, 2285, 2286, 2287, 2288, 2289, 2290, 2291, 2292, 2293, 2294, 2295, 2296, 2297, 2298, 2299, 2300, 2301, 2302, 2303, 2304, 2305, 2306, 2307, 2308, 2309, 2310, 2311, 2312, 2313, 2314, 2315, 2316, 2317, 2318, 2319, 2320, 2321, 2322, 2323, 2324, 2325, 2326, 2327, 2328, 2329, 2330, 2331, 2332, 2333, 2334, 2335, 2336, 2337, 2338, 2339, 2340, 2341, 2342, 2343, 2344, 2345, 2346, 2347, 2348, 2349, 2350, 2351, 2352, 2353, 2354, 2355, 2356, 2357, 2358, 2359, 2360, 2361, 2362, 2363, 2364, 2365, 2366, 2367, 2368, 2369, 2370, 2371, 2372, 2373, 2374, 2375, 2376, 2377, 2378, 2379, 2380, 2381, 2382, 2383, 2384, 2385, 2386, 2387, 2388, 2389, 2390, 2391, 2392, 2393, 2394, 2395, 2396, 2397, 2398, 2399, 2400, 2401, 2402, 2403, 2404, 2405, 2406, 2407, 2408, 2409, 2410, 2411, 2412, 2413, 2414, 2415, 2416, 2417, 2418, 2419, 2420, 2421, 2422, 2423, 2424, 2425, 2426, 2427, 2428, 2429, 2430, 2431, 2432, 2433, 2434, 2435, 2436, 2437, 2438, 2439, 2440, 2441, 2442, 2443, 2444, 2445, 2446, 2447, 2448, 2449, 2450, 2451, 2452, 2453, 2454, 2455, 2456, 2457, 2458, 2459, 2460, 2461, 2462, 2463, 2464, 2465, 2466, 2467, 2468, 2469, 2470, 2471, 2472, 2473, 2474, 2475, 2476, 2477, 2478, 2479, 2480, 2481, 2482, 2483, 2484, 2485, 2486, 2487, 2488, 2489, 2490, 2491, 2492, 2493, 2494, 2495, 2496, 2497, 2498, 2499, 2500, 2501, 2502, 2503, 2504, 2505, 2506, 2507, 2508, 2509, 2510, 2511, 2512, 2513, 2514, 2515, 2516, 2517, 2518, 2519, 2520, 2521, 2522, 2523, 2524, 2525, 2526, 2527, 2528, 2529, 2530, 2531, 2532, 2533, 2534, 2535, 2536, 2537, 2538, 2539, 2540, 2541, 2542, 2543, 2544, 2545, 2546, 2547, 2548, 2549, 2550, 2551, 2552, 2553, 2554, 2555, 2556, 2557, 2558, 2559, 2560, 2561, 2562, 2563, 2564, 2565, 2566, 2567, 2568, 2569, 2570, 2571, 2572, 2573, 2574, 2575, 2576, 2577, 2578, 2579, 2580, 2581, 2

1946 FORD COUPE (4)
1940 PLYMOUTH SEDAN
1959 MERCURY SEDAN
1990 PACKARD SEDAN
1937 FORD COUPE (60)
1936 CHEVROLET SEDAN
1934 CHEVROLET TUDOR (Standard)
1928 FORD PICK-UP
1940 INTERNATIONAL PICK-UP
1936 FORD TRUCK with rack

SEVERSON & SPARKS

1936 CHEVROLET
BUSINESS COUPE
A-1 MECHANICAL CONDITION

1934 DODGE
BUSINESS COUPE

**BOTH CARS ARE
READY TO GO
PRICED FOR QUICK SALE**

Terms Can Be
Arranged

GORE MOTOR CO.

**BEN BROWNING
AUTOMOBILES**
453 Main Ave. East
Phone 1980

1946 PLYMOUTH SPECIAL DE
LUXE SEDAN.

1946 FORD SEDAN, RADIO,

1942 STUDEBAKER CHAMP-
ION SEDAN.
1939 FORD SUPER SEDAN.
1937 OLDSMOBILE "6" SEDAN,
VERY CLEAN.
1934 CHEVROLET SEDAN.
1934 CHEVROLET COUPE.

If you are planning to sell your car drive into our lot. We pay highest cash prices. Or we will take your car on consignment—Sell it for you—arrange all business—Guarantee and Finance for a small commission. Part cash only.

TRUCKS AND TRAILERS

15-FOOT trailer house. Inquire 1976 3rd Avenue West.

FOR SALE: 1937 Chevrolet truck, good rubber. Phone 618212.

1935 FORD pick-up. Good shape. Inquire 228, 2nd Avenue East.

1927 FORD 1 1/2 ton truck, with 1947 motor. Phone 1707-NM.

NEW 2-cock stock trailer. C. E. Ryan Blacksmith Shop, Hazen.

1935 DODGE semi-truck and trailer. Rust Auto Service, Phone 162.

1936 CHEVROLET truck, flat rack. Inquire 1976 3rd Avenue West.

1950 FORD 1/2 ton pickup, excellent condition, \$175. 400 Second avenue east, S. 1/4 S. 1/2 E.

1941 SCHULT 22-ft. trailer house, Excellent condition. Cheap. House 28 Park Labor Camp.

1988 CHEVROLET pickup, motor 3/4 ton, excellent. 1987 Chevrolet sedan. 1 w/ Sugar Factory.

NEW factory trailer homes, completely furnished, \$975 and up. J. Park, 11114 S. Loyalist Road.

1988 Chevrolet trailer house, 8 rooms, big in. Loyalist Road. Reasonable. \$995. 1, Pioneer Park.

27-FOOT trailer house for sale. Built w/ refrigerator, reasonable. Maquil, Burlington.

1988 GLIDER trailer house, 22 foot, 4. excellent condition. \$24. 5th Park.

1948 STUDEBAKER, 4-9 yard dump truck. Will pull together or separate. 1918 K. Barry Road, Georgia. Phone 2-1000.

1948 CHEVROLET 24 ton truck. Load wheel base, new motor, 4 new 325 tire. Excellent farm truck. Greenwood Service, Phone 25-1, Hensley.

HOUNE trailer, clean job, late model, reasonable price. Can use 1937 or earlier or Pick-up preferred. 1814 Kimberly Road, Pioneer Park, space 46. Inquire at 25-1000.

**5 1/2-ton GMC
DUMP TRUCK**

Excellent condition, making \$140.00 per ton 2-hour shift a day. Inquire at 25-1000.

**CLAWSON'S SERVICE
ON HIGHWAY 10, MONTANA**

1940
INTERNATIONAL
1½ TON TRUCK
Long Wheelbase
McVEYS
181 1st Ave. N. Phone 17

DOES
YOUR TRUCK NEED
PARTS OR REPAIRS?

TRUCKS

SALES & SERVICE CO.

148 2nd Ave. E.
Phone 2-1000
7-2 ME

**TRUCKERS
OR FARMERS
FOR SALE**

1948 civilian model
Kaiser gas truck
6 cyl broken sh,
leaker with oil
only 1 year
tires, windshield
WHEELS

1. **Introduction**
 2. **Background**
 3. **Methodology**
 4. **Results**
 5. **Conclusion**
 6. **References**
 7. **Appendix**
 8. **Index**
 9. **Table of Contents**
 10. **Figure 1**
 11. **Figure 2**
 12. **Figure 3**
 13. **Figure 4**
 14. **Figure 5**
 15. **Figure 6**
 16. **Figure 7**
 17. **Figure 8**
 18. **Figure 9**
 19. **Figure 10**
 20. **Figure 11**
 21. **Figure 12**
 22. **Figure 13**
 23. **Figure 14**
 24. **Figure 15**
 25. **Figure 16**
 26. **Figure 17**
 27. **Figure 18**
 28. **Figure 19**
 29. **Figure 20**
 30. **Figure 21**
 31. **Figure 22**
 32. **Figure 23**
 33. **Figure 24**
 34. **Figure 25**
 35. **Figure 26**
 36. **Figure 27**
 37. **Figure 28**
 38. **Figure 29**
 39. **Figure 30**
 40. **Figure 31**
 41. **Figure 32**
 42. **Figure 33**
 43. **Figure 34**
 44. **Figure 35**
 45. **Figure 36**
 46. **Figure 37**
 47. **Figure 38**
 48. **Figure 39**
 49. **Figure 40**
 50. **Figure 41**
 51. **Figure 42**
 52. **Figure 43**
 53. **Figure 44**
 54. **Figure 45**
 55. **Figure 46**
 56. **Figure 47**
 57. **Figure 48**
 58. **Figure 49**
 59. **Figure 50**
 60. **Figure 51**
 61. **Figure 52**
 62. **Figure 53**
 63. **Figure 54**
 64. **Figure 55**
 65. **Figure 56**
 66. **Figure 57**
 67. **Figure 58**
 68. **Figure 59**
 69. **Figure 60**
 70. **Figure 61**
 71. **Figure 62**
 72. **Figure 63**
 73. **Figure 64**
 74. **Figure 65**
 75. **Figure 66**
 76. **Figure 67**
 77. **Figure 68**
 78. **Figure 69**
 79. **Figure 70**
 80. **Figure 71**
 81. **Figure 72**
 82. **Figure 73**
 83. **Figure 74**
 84. **Figure 75**
 85. **Figure 76**
 86. **Figure 77**
 87. **Figure 78**
 88. **Figure 79**
 89. **Figure 80**
 90. **Figure 81**
 91. **Figure 82**
 92. **Figure 83**
 93. **Figure 84**
 94. **Figure 85**
 95. **Figure 86**
 96. **Figure 87**
 97. **Figure 88**
 98. **Figure 89**
 99. **Figure 90**
 100. **Figure 91**
 101. **Figure 92**
 102. **Figure 93**
 103. **Figure 94**
 104. **Figure 95**
 105. **Figure 96**
 106. **Figure 97**
 107. **Figure 98**
 108. **Figure 99**
 109. **Figure 100**
 110. **Figure 101**
 111. **Figure 102**
 112. **Figure 103**
 113. **Figure 104**
 114. **Figure 105**
 115. **Figure 106**
 116. **Figure 107**
 117. **Figure 108**
 118. **Figure 109**
 119. **Figure 110**
 120. **Figure 111**
 121. **Figure 112**
 122. **Figure 113**
 123. **Figure 114**
 124. **Figure 115**
 125. **Figure 116**
 126. **Figure 117**
 127. **Figure 118**
 128. **Figure 119**
 129. **Figure 120**
 130. **Figure 121**
 131. **Figure 122**
 132. **Figure 123**
 133. **Figure 124**
 134. **Figure 125**
 135. **Figure 126**
 136. **Figure 127**
 137. **Figure 128**
 138. **Figure 129**
 139. **Figure 130**
 140. **Figure 131**
 141. **Figure 132**
 142. **Figure 133**
 143. **Figure 134**
 144. **Figure 135**
 145. **Figure 136**
 146. **Figure 137**
 147. **Figure 138**
 148. **Figure 139**
 149. **Figure 140**
 150. **Figure 141**
 151. **Figure 142**
 152. **Figure 143**
 153. **Figure 144**
 154. **Figure 145**
 155. **Figure 146**
 156. **Figure 147**
 157. **Figure 148**
 158. **Figure 149**
 159. **Figure 150**
 160. **Figure 151**
 161. **Figure 152**
 162. **Figure 153**
 163. **Figure 154**
 164. **Figure 155**
 165. **Figure 156**
 166. **Figure 157**
 167. **Figure 158**
 168. **Figure 159**
 169. **Figure 160**
 170. **Figure 161**
 171. **Figure 162**
 172. **Figure 163**
 173. **Figure 164**
 174. **Figure 165**
 175. **Figure 166**
 176. **Figure 167**
 177. **Figure 168**
 178. **Figure 169**
 179. **Figure 170**
 180. **Figure 171**
 181. **Figure 172**
 182. **Figure 173**
 183. **Figure 174**
 184. **Figure 175**
 185. **Figure 176**
 186. **Figure 177**
 187. **Figure 178**
 188. **Figure 179**
 189. **Figure 180**
 190. **Figure 181**
 191. **Figure 182**
 192. **Figure 183**
 193. **Figure 184**
 194. **Figure 185**
 195. **Figure 186**
 196. **Figure 187**
 197. **Figure 188**
 198. **Figure 189**
 199. **Figure 190**
 200. **Figure 191**
 201. **Figure 192**
 202. **Figure 193**
 203. **Figure 194**
 204. **Figure 195**
 205. **Figure 196**
 206. **Figure 197**
 207. **Figure 198**
 208. **Figure 199**
 209. **Figure 200**
 210. **Figure 201**
 211. **Figure 202**
 212. **Figure 203**
 213. **Figure 204**
 214. **Figure 205**
 215. **Figure 206**
 216. **Figure 207**
 217. **Figure 208**

Model Planes 'Field' Ready For Contests

Twin Falls' recently-completed model airport at Harmon park will get off to a flying start, figuratively speaking, when it will be the site of specialized aviation events Sunday during the statewide model plane contest to be staged here.

Model plane enthusiasts have previously carried on their hobby on improvised fields, but, through co-operative support of a group of organizations, the circular airport has been completed for daily use, as well as such events as the state meet.

Meet sanctioned Sunday's meet is sanctioned by the Academy of Model Aeronautics, according to Frank Tidwell, a sponsor of the Magic Valley Gas Bugs, one of the organizations instrumental in bringing about construction of the model take-off and landing strip. The track is 10 feet wide, 15 feet in radius and is of special, smoothly surfaced concrete to give the small crafts the best possible chance to "do their stuff."

Other organizations cooperating in financing the project were the Junior Chamber of Commerce, the civil air patrol squadron, the Lions club and the Elks lodge.

Many Entries Expected With more than 100 entries expected in the meet here, the day's events will open with free-flight competition at 10 a. m. at the Twin Falls municipal airport. Then at 1 p. m. the scene of activities will shift to the new model airport where "U" control, speed and stunt events will be held. Preceding this phase of the meet, a brief dedication ceremony will be held, according to Tidwell.

In conjunction with the model plane meet, the Junior Chamber of Commerce is sponsoring an air show to begin at 5 p. m. Sunday at the airport south of Twin Falls. This will feature such events as aerial acrobatics, comedy flying, flight through a gasoline fire and parachuting.

Two Area Women Going to Alaska

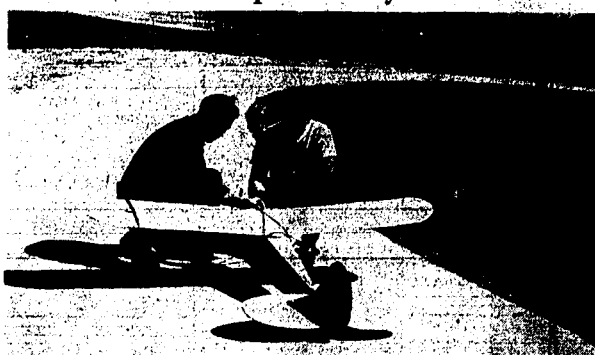
SHOSHONE, July 16.—Two Magic Valley women are en route to Alaska on a combined visit, work, and vacation trip. They are Mrs. Lou Reed, Rupert, and Mrs. Marie Burton, Lincoln county deputy assessor, who left here Saturday.

Mrs. Burton will visit her son, Orville Burton, who is employed in Seward, Alaska. Both women said they plan to work during a part of their three-month vacation.

Next Saturday they are to board the S. S. Baranof, which will stop at Ketchikan, Juneau, and other Alaskan ports. They are to arrive at Seward on July 25, and expect to return here in October.

RETURN TO HOME UNITY, July 16.—Mr. and Mrs. Phil Crane and son have returned to their home in Bremerton, Wash., after a 10-day visit here.

New Model Airport Ready for Action



Shown preparing to give a model Piper cub plane a test run on the new model airport at Harmon park are Frank Tidwell and Ray Bush, sponsors of the Magic Valley Gas Bugs. The 10-foot circular concrete strip, with a 75-foot radius, will be the scene of a portion of the state model airplane meet to be held here Sunday. (Staff photo-engraving)

Idaho Opposed to Road Aid Change

SALT LAKE CITY, July 16 (AP)—Gov. C. A. Robins of Idaho today said any tax revision plan to cut federal highway aid to public land states would be opposed in the Gem state.

In this assertion the Republican governor agreed with Democratic Gov. Vail Pittman, Nev. Both are attending the governors' conference here.

Robins said he would have to study any such plan advanced before making a definite statement, but added that if the 15 per cent taxing power employed by the federal government for highways were turned over to the states the revenue would not be as much as federal aid funds are at present.

Primary crops of Arkansas are cotton, wheat, corn, oats, white and sweet potatoes, hay and fruit.

Bowel Cleaning Power of Inner-Aid Medicine

One man recently took INNER-AID three days and said afterward that he never would have believed his body contained so much filthy substance. He says his stomach, intestines, bowels and whole system were so thoroughly cleansed that his constant headaches came to an end, several pimply skin eruptions on his face dried up overnight, and even the rheumatic pains in his knees disappeared. At present he is an altogether different man, feeling fine in every way.

INNER-AID contains 12 Great Herbs, they cleanse bowels, clear gas from stomach, act on sluggish liver and kidneys. Miserable people soon feel different all over. So don't go on suffering! Get INNER-AID. Sold by all drug stores. Adv.

Idaho's Crop Output to Set All-Time High

BOISE, July 16 (AP)—Repeating earlier tentative forecasts, the U. S. bureau of agricultural economics said today that "Idaho crop production in total promises to exceed all previous records this year."

Production of two per cent greater than last year's all-time high was predicted in the agency's report on conditions July 1. "A combination of uniformly good yields per acre and record crop acreages is responsible," the monthly summary said.

The report said the index of total production on July 1 "points to a total output 35 per cent greater than the 1935-36 average."

Total Acreage Largest The total acreage of field crops for harvest is the largest on record, surpassing last year's total by about three per cent. The 1,253,000 acres of sugar beets indicated for harvest set new records.

Other highlights of the report: Potato acreage is smaller than in any of the preceding four years.

Bean acreage is the greatest since 1934.

Dry pea acreage is the smallest since 1932.

New Beet Record Seen New production records for wheat and sugar beets are indicated. The wheat crop—if realized—will be nearly a sixth larger than the 1946

Los Angeles Man Named Elks Ruler

PORTLAND, Ore., July 16 (AP)—Lafayette A. Lewis, Los Angeles attorney, today was new grand exalted ruler of the Benevolent and Protective Order of Elks.

Lewis, former head of the order's California organization, was elected yesterday at a meeting of the executive council during the 33rd annual convention here.

Lewis succeeded Charles E. Broughton, Sheboygan, Wis., newspaper publisher.

record crop. The best crop would be more than a third larger than the record set last year.

Yields per acre are not expected to establish new records, but are better than average for nearly all crops.

PILES Hurt Like Sin! But Now I Grin

Thousands change groans to grins. Use a doctor's formula to relieve discomfort of piles. Best drugstore by name: Thompson's Minor Clinic. Bursuring QUICK relief of pain, itch, irritation. Tends to soften, shrink swelling. Use rectory ointment. Thompson's Minor's Rectal Ointment or Special Suppositories today. Follow label directions. For sale at all drug stores everywhere. In Twin Falls at Star-Mor Drug and Walgreens.

Mapping Salt Lake

CLEARFIELD, Utah, July 16 (AP)—Recently the navy started a marine survey of the great Salt Lake and the work will continue until the lake depths and all submerged objects are accurately charted. It was learned here today. The navy is charting the lake for possible use as a landing area for flying boats when needed and also to operate boats to be brought from the coast for Utah's naval reserve.

ON NORTHWEST TRIP UNITY, July 16.—Bishop and Mrs. L. S. Crane have gone on a two-weeks trip to the Northwest. They will visit their son, Lynn Crane, Seattle.

Nevada, Oregon, Utah, Washington

INSURED MOVING ALL OVER THE WEST

VANDER BROS.
COMPLETE MOVING SERVICE
Phone 246

DIRECT CONNECTION WITH VAN LINES
ALL OVER THE U. S.

INSURED MOVING
TO ANY POINT
IN THE U. S.

Eleanor's Visit Worried Halsey

NEW YORK, July 16 (AP)—Piet Admiral William F. Halsey said today he dreaded the visit of Mrs. Eleanor Roosevelt to his south Pacific area command in 1943 but he later decided she had accomplished much for the morale of his men.

Writing in the Saturday Evening Post, the former third fleet commander said he "marveled" at Mrs. Roosevelt's hardihood and told of

her eagerness to visit Guadalcanal at a time when he believed the trip too dangerous for her.

Halsey also wrote of arguments with Gen. Douglas MacArthur.

Despite his argument with MacArthur, which "always ended pleasantly," Halsey said he could recall "no flaw in our relationship." He expressed his deep admiration for the general's wartime leadership and his "masterly administration" of occupied Japan.

READ TIMES-NEWS WANT ADS.

Kool-Aid
MAKES 10 BIG DELICIOUS DRINKS
AT 13¢

IT ENDS SATURDAY! KRENGEL'S BIG '47 Summer Sale

JUST 3 MORE DAYS

GOLDEN ROD OIL CANS Two sizes in these famous oil cans with the 5 year guarantee. Get yours before this sale ends. NOW \$200 - \$220	WIRE BRUSHES Fine Osborn wire brushes noted for their quality. Get them now while the price is reduced. NOW 30¢
LOAD BINDERS Play safe with Krengel's heavy duty load binders. Not many of these at this low price so come in early. NOW \$515	DOO KLIP SHEARS Keep your yard neat and trim with these quality clippers. It's no job at all with these shears. NOW \$150
DURABLE B. M. C. PLIERS Seven and nine inch sizes in these pliers built so the jaws are parallel at any opening for maximum gripping. NOW \$100 - \$160	BARBED WIRE STRETCHERS Duna Dobbins stretchers, 500 pound capacity with both blocks of malleable iron. Complete with full length steel rope. NOW \$168
COW STANCHIONS Feature adjustable width with heavy steel frame and hard maple wood lining. Get your needs at this low price. NOW \$360	ROLLER SKATES Good quality, durable ball bearing skates. These will delight the kiddies and withstand hard use. NOW \$295
ROUND END Stock Tanks 10 feet long of 18 gauge galvanized corrugated construction. A good value at their former price, buy NOW! NOW \$2723	COW HOBBLER Excellent quality, quickly adjustable to any length. Hobblers make milking a pleasure. Come and get them. NOW 35¢

SHOP AND SAVE AT
KRENGEL'S
INCORPORATED
318 Second Ave. So. Phone 485 TWIN FALLS, IDA.

Thursday - Friday - Saturday END-OF-THE-SEASON DOLLAR DAYS

IN A FINAL REGROUPING AND REPRICING OF
WOMEN'S SUMMER FOOTWEAR

In our policy to keep our stocks clean by not carrying over styles from one season to another we have drastically cut all remaining summer shoes for a quick clearance. So if you need summer shoes and particularly if you wear a narrow size, be sure and be here!

57 PAIRS
LADIES'
• Play Shoes
• Casuals
• Sandals
Colors of white, brown, green and black. Leathers and suedes. Mostly narrow widths.
Regular Values to \$6.95

103 PAIRS
Ladies' Casuals
and a few Dress Shoes
Regular Values to \$9.95
\$2

A few Lady Nettleton street shoes in white buck in this group. Open toes in white beige, red and brown. Lots of sandals in broken sizes and odd lots.

79 PAIRS LADIES' SUMMER
• DRESS SHOES
• STREET SHOES
• OXFORDS
• CASUALS
Odd pairs from such famous lines as Peacock, Vitality, David Frank and Sandler. Not a large group, but a wonderful value if your size is here.
\$3

SEE - MAGIC VALLEY YESTERDAYS
— JULY 17, 18 and 19—RIDING CLUB ARENA —
Idaho Department Store
"If It Isn't Right, Bring It Back"

CLOSE-OUT SALE OF SUMMER Dresses

LOTS OF
STYLES
PLENTY OF
SIZES

1/3 OFF

ONE SPECIAL RACK Blouses

Good Assortment
Styles and Sizes
33 1/3 OFF

See "Magic Valley Yesterdays"
Zimmerman's
READY-TO-WEAR
129 Shoshone St. North