

ord Pact  
ps Wages  
f 126,000

PROFIT, Sept. 4 (AP) — Motor company boosted  
ages of its 126,000 plants  
today and otherwise  
history in a new five-

rank O&A Contract  
last of the auto industry's  
to fall in line with the  
at the same level.  
in unprecedented manner.  
The miscellaneous Labor day  
agencies linked one contract  
CIO United Auto Workers  
to a brand new one.  
agent hours  
cost hourly cost-of-living  
in 1950 production were  
to be subject to re-  
in event of a fall in living

Duplicate GI Pact  
using the wage to the cost  
to that against duplicating  
and General Motors pro-

Increase in worker produc-  
tion monthly to 125, including  
to that of 1945, including  
to that of 1945, including  
to that of 1945, including

3 cents-an-hour cost of liv-  
ing for 16,000 skilled work-  
ers to be subject to re-

to reduction.  
Deleted 3 days  
and until reached the  
at after three days and  
of next negotiations.  
The pact does not estimate  
of next negotiations.

The union declared it  
will not negotiate until  
the \$100,000 and \$50,000  
of the company.

Effective Sept. 1  
made statements indicat-  
ing complete satisfaction  
of the pact. It is expected  
Friday, Sept. 1, and ex-

to a higher price  
made case—the Ford, Mer-

its Against  
Bitterness

son Gain  
Bitterness

INGTON, Sept. 4 (AP) —  
Secretary of Defense  
man reached a new note  
to a contract a consider-

Johnson's predecessor  
to be resigned in  
to die of illness and an  
and a new contract. "Two

to whom letter  
Walter H. Austin, D., N.  
the resignation, Dr. N.  
to date. No immediate

to whom letter  
Walter H. Austin, D., N.  
the resignation, Dr. N.  
to date. No immediate

to whom letter  
Walter H. Austin, D., N.  
the resignation, Dr. N.  
to date. No immediate

to whom letter  
Walter H. Austin, D., N.  
the resignation, Dr. N.  
to date. No immediate

to whom letter  
Walter H. Austin, D., N.  
the resignation, Dr. N.  
to date. No immediate

to whom letter  
Walter H. Austin, D., N.  
the resignation, Dr. N.  
to date. No immediate

to whom letter  
Walter H. Austin, D., N.  
the resignation, Dr. N.  
to date. No immediate

to whom letter  
Walter H. Austin, D., N.  
the resignation, Dr. N.  
to date. No immediate

# Times News

A Regional Newspaper Serving  
TWIN FALLS  
Nine Irrigated Idaho Counties

FAIRS ENDING  
The 1946 fair season in Magic Valley  
ends this week with events at Shoshone,  
Troy and Burley. The Burley fair  
was being held Monday at Burley. Plans  
for the Troy fair started Monday and  
Jernice county's fair Tuesday with  
events lasting the rest of the week.

## Lincoln Fair Goes into Full Swing



Members of the Burnham Grange here put on the finishing touches for their exhibit at the Lincoln county fair which opened Monday at Shoshone. The two-day fair will Tuesday night with a free dance. With the exception of the Grange exhibits, most of the exhibits were entered by 4-H clubs and FFA members.

Members of the Burnham Grange here put on the finishing touches for their exhibit at the Lincoln county fair which opened Monday at Shoshone. The two-day fair will Tuesday night with a free dance. With the exception of the Grange exhibits, most of the exhibits were entered by 4-H clubs and FFA members.

Members of the Burnham Grange here put on the finishing touches for their exhibit at the Lincoln county fair which opened Monday at Shoshone. The two-day fair will Tuesday night with a free dance. With the exception of the Grange exhibits, most of the exhibits were entered by 4-H clubs and FFA members.

Members of the Burnham Grange here put on the finishing touches for their exhibit at the Lincoln county fair which opened Monday at Shoshone. The two-day fair will Tuesday night with a free dance. With the exception of the Grange exhibits, most of the exhibits were entered by 4-H clubs and FFA members.

Members of the Burnham Grange here put on the finishing touches for their exhibit at the Lincoln county fair which opened Monday at Shoshone. The two-day fair will Tuesday night with a free dance. With the exception of the Grange exhibits, most of the exhibits were entered by 4-H clubs and FFA members.

Members of the Burnham Grange here put on the finishing touches for their exhibit at the Lincoln county fair which opened Monday at Shoshone. The two-day fair will Tuesday night with a free dance. With the exception of the Grange exhibits, most of the exhibits were entered by 4-H clubs and FFA members.

Members of the Burnham Grange here put on the finishing touches for their exhibit at the Lincoln county fair which opened Monday at Shoshone. The two-day fair will Tuesday night with a free dance. With the exception of the Grange exhibits, most of the exhibits were entered by 4-H clubs and FFA members.

Members of the Burnham Grange here put on the finishing touches for their exhibit at the Lincoln county fair which opened Monday at Shoshone. The two-day fair will Tuesday night with a free dance. With the exception of the Grange exhibits, most of the exhibits were entered by 4-H clubs and FFA members.

Members of the Burnham Grange here put on the finishing touches for their exhibit at the Lincoln county fair which opened Monday at Shoshone. The two-day fair will Tuesday night with a free dance. With the exception of the Grange exhibits, most of the exhibits were entered by 4-H clubs and FFA members.

Members of the Burnham Grange here put on the finishing touches for their exhibit at the Lincoln county fair which opened Monday at Shoshone. The two-day fair will Tuesday night with a free dance. With the exception of the Grange exhibits, most of the exhibits were entered by 4-H clubs and FFA members.

Members of the Burnham Grange here put on the finishing touches for their exhibit at the Lincoln county fair which opened Monday at Shoshone. The two-day fair will Tuesday night with a free dance. With the exception of the Grange exhibits, most of the exhibits were entered by 4-H clubs and FFA members.

Members of the Burnham Grange here put on the finishing touches for their exhibit at the Lincoln county fair which opened Monday at Shoshone. The two-day fair will Tuesday night with a free dance. With the exception of the Grange exhibits, most of the exhibits were entered by 4-H clubs and FFA members.

Members of the Burnham Grange here put on the finishing touches for their exhibit at the Lincoln county fair which opened Monday at Shoshone. The two-day fair will Tuesday night with a free dance. With the exception of the Grange exhibits, most of the exhibits were entered by 4-H clubs and FFA members.

Members of the Burnham Grange here put on the finishing touches for their exhibit at the Lincoln county fair which opened Monday at Shoshone. The two-day fair will Tuesday night with a free dance. With the exception of the Grange exhibits, most of the exhibits were entered by 4-H clubs and FFA members.

Members of the Burnham Grange here put on the finishing touches for their exhibit at the Lincoln county fair which opened Monday at Shoshone. The two-day fair will Tuesday night with a free dance. With the exception of the Grange exhibits, most of the exhibits were entered by 4-H clubs and FFA members.

Members of the Burnham Grange here put on the finishing touches for their exhibit at the Lincoln county fair which opened Monday at Shoshone. The two-day fair will Tuesday night with a free dance. With the exception of the Grange exhibits, most of the exhibits were entered by 4-H clubs and FFA members.

Members of the Burnham Grange here put on the finishing touches for their exhibit at the Lincoln county fair which opened Monday at Shoshone. The two-day fair will Tuesday night with a free dance. With the exception of the Grange exhibits, most of the exhibits were entered by 4-H clubs and FFA members.

Members of the Burnham Grange here put on the finishing touches for their exhibit at the Lincoln county fair which opened Monday at Shoshone. The two-day fair will Tuesday night with a free dance. With the exception of the Grange exhibits, most of the exhibits were entered by 4-H clubs and FFA members.

Members of the Burnham Grange here put on the finishing touches for their exhibit at the Lincoln county fair which opened Monday at Shoshone. The two-day fair will Tuesday night with a free dance. With the exception of the Grange exhibits, most of the exhibits were entered by 4-H clubs and FFA members.

Members of the Burnham Grange here put on the finishing touches for their exhibit at the Lincoln county fair which opened Monday at Shoshone. The two-day fair will Tuesday night with a free dance. With the exception of the Grange exhibits, most of the exhibits were entered by 4-H clubs and FFA members.

Members of the Burnham Grange here put on the finishing touches for their exhibit at the Lincoln county fair which opened Monday at Shoshone. The two-day fair will Tuesday night with a free dance. With the exception of the Grange exhibits, most of the exhibits were entered by 4-H clubs and FFA members.

Members of the Burnham Grange here put on the finishing touches for their exhibit at the Lincoln county fair which opened Monday at Shoshone. The two-day fair will Tuesday night with a free dance. With the exception of the Grange exhibits, most of the exhibits were entered by 4-H clubs and FFA members.

Members of the Burnham Grange here put on the finishing touches for their exhibit at the Lincoln county fair which opened Monday at Shoshone. The two-day fair will Tuesday night with a free dance. With the exception of the Grange exhibits, most of the exhibits were entered by 4-H clubs and FFA members.

## Korean Red Troops Stabbed To South From Pohang, Blocked in Other Sectors

TOKYO, Sept. 4 (UP)—Communist shock troops recaptured a bitterly contested town southwest of Pohang today and stabbed southward five to six miles beyond it in the gravest threat yet to the Korean peninsula.

The mountain town of Angang, eight miles southwest of Pohang, changed hands three times during the day as the battle swayed back and forth across the western approaches to the No. 2 port in the allied beachhead.

Tank-led American troops stormed Angang early this afternoon, a few hours after they had lost it. But in another few hours the enemy was back in force to retake it from the Yanks and strike swiftly beyond it virtually to complete the envelopment of Pohang.

The American had better jump on the other end of the northern front. There the first cavalry division is fighting its way back into a walled town some 15 miles north of Pohang. There the enemy has a spearhead force of so-called "booby" units.

The enemy's main force is still in the area. It is expected to be in the area. It is expected to be in the area. It is expected to be in the area.

The enemy's main force is still in the area. It is expected to be in the area. It is expected to be in the area. It is expected to be in the area.

The enemy's main force is still in the area. It is expected to be in the area. It is expected to be in the area. It is expected to be in the area.

The enemy's main force is still in the area. It is expected to be in the area. It is expected to be in the area. It is expected to be in the area.

The enemy's main force is still in the area. It is expected to be in the area. It is expected to be in the area. It is expected to be in the area.

The enemy's main force is still in the area. It is expected to be in the area. It is expected to be in the area. It is expected to be in the area.

The enemy's main force is still in the area. It is expected to be in the area. It is expected to be in the area. It is expected to be in the area.

The enemy's main force is still in the area. It is expected to be in the area. It is expected to be in the area. It is expected to be in the area.

The enemy's main force is still in the area. It is expected to be in the area. It is expected to be in the area. It is expected to be in the area.

The enemy's main force is still in the area. It is expected to be in the area. It is expected to be in the area. It is expected to be in the area.

The enemy's main force is still in the area. It is expected to be in the area. It is expected to be in the area. It is expected to be in the area.

The enemy's main force is still in the area. It is expected to be in the area. It is expected to be in the area. It is expected to be in the area.

The enemy's main force is still in the area. It is expected to be in the area. It is expected to be in the area. It is expected to be in the area.

The enemy's main force is still in the area. It is expected to be in the area. It is expected to be in the area. It is expected to be in the area.

The enemy's main force is still in the area. It is expected to be in the area. It is expected to be in the area. It is expected to be in the area.

The enemy's main force is still in the area. It is expected to be in the area. It is expected to be in the area. It is expected to be in the area.

The enemy's main force is still in the area. It is expected to be in the area. It is expected to be in the area. It is expected to be in the area.

The enemy's main force is still in the area. It is expected to be in the area. It is expected to be in the area. It is expected to be in the area.

The enemy's main force is still in the area. It is expected to be in the area. It is expected to be in the area. It is expected to be in the area.

The enemy's main force is still in the area. It is expected to be in the area. It is expected to be in the area. It is expected to be in the area.

The enemy's main force is still in the area. It is expected to be in the area. It is expected to be in the area. It is expected to be in the area.

The enemy's main force is still in the area. It is expected to be in the area. It is expected to be in the area. It is expected to be in the area.

## Displays Crowd Facilities At Fair in Lincoln County

SHOSHONE, Sept. 4.—Because of the large number of displays at the Lincoln county fair in Shoshone this year, the high school gymnasium is being used for the first time.

The fair opened officially Monday morning and will continue through Tuesday. The gymnasium is being used to house the flower show, sponsored by the civic club, merchant exhibits and four new community booths. Although the fair did not open until Mon-

day, the fair did not open until Monday morning and will continue through Tuesday. The gymnasium is being used to house the flower show, sponsored by the civic club, merchant exhibits and four new community booths. Although the fair did not open until Mon-

day, the fair did not open until Monday morning and will continue through Tuesday. The gymnasium is being used to house the flower show, sponsored by the civic club, merchant exhibits and four new community booths. Although the fair did not open until Mon-

day, the fair did not open until Monday morning and will continue through Tuesday. The gymnasium is being used to house the flower show, sponsored by the civic club, merchant exhibits and four new community booths. Although the fair did not open until Mon-

day, the fair did not open until Monday morning and will continue through Tuesday. The gymnasium is being used to house the flower show, sponsored by the civic club, merchant exhibits and four new community booths. Although the fair did not open until Mon-

day, the fair did not open until Monday morning and will continue through Tuesday. The gymnasium is being used to house the flower show, sponsored by the civic club, merchant exhibits and four new community booths. Although the fair did not open until Mon-

day, the fair did not open until Monday morning and will continue through Tuesday. The gymnasium is being used to house the flower show, sponsored by the civic club, merchant exhibits and four new community booths. Although the fair did not open until Mon-

day, the fair did not open until Monday morning and will continue through Tuesday. The gymnasium is being used to house the flower show, sponsored by the civic club, merchant exhibits and four new community booths. Although the fair did not open until Mon-

day, the fair did not open until Monday morning and will continue through Tuesday. The gymnasium is being used to house the flower show, sponsored by the civic club, merchant exhibits and four new community booths. Although the fair did not open until Mon-

day, the fair did not open until Monday morning and will continue through Tuesday. The gymnasium is being used to house the flower show, sponsored by the civic club, merchant exhibits and four new community booths. Although the fair did not open until Mon-

day, the fair did not open until Monday morning and will continue through Tuesday. The gymnasium is being used to house the flower show, sponsored by the civic club, merchant exhibits and four new community booths. Although the fair did not open until Mon-

day, the fair did not open until Monday morning and will continue through Tuesday. The gymnasium is being used to house the flower show, sponsored by the civic club, merchant exhibits and four new community booths. Although the fair did not open until Mon-

day, the fair did not open until Monday morning and will continue through Tuesday. The gymnasium is being used to house the flower show, sponsored by the civic club, merchant exhibits and four new community booths. Although the fair did not open until Mon-

day, the fair did not open until Monday morning and will continue through Tuesday. The gymnasium is being used to house the flower show, sponsored by the civic club, merchant exhibits and four new community booths. Although the fair did not open until Mon-

day, the fair did not open until Monday morning and will continue through Tuesday. The gymnasium is being used to house the flower show, sponsored by the civic club, merchant exhibits and four new community booths. Although the fair did not open until Mon-

day, the fair did not open until Monday morning and will continue through Tuesday. The gymnasium is being used to house the flower show, sponsored by the civic club, merchant exhibits and four new community booths. Although the fair did not open until Mon-

day, the fair did not open until Monday morning and will continue through Tuesday. The gymnasium is being used to house the flower show, sponsored by the civic club, merchant exhibits and four new community booths. Although the fair did not open until Mon-

day, the fair did not open until Monday morning and will continue through Tuesday. The gymnasium is being used to house the flower show, sponsored by the civic club, merchant exhibits and four new community booths. Although the fair did not open until Mon-

day, the fair did not open until Monday morning and will continue through Tuesday. The gymnasium is being used to house the flower show, sponsored by the civic club, merchant exhibits and four new community booths. Although the fair did not open until Mon-

## Worst Storm In 16 Years Blasts Japan

TOKYO, Sept. 4 (UP)—Japan's worst typhoon in 16 years subsided and swept harmlessly northward today, leaving an officially tabulated casualty list of 250 persons dead, 243 missing and 2,170 injured.

Nation's rural police headquarters, which compiled reports of widespread suffering and destruction, estimated at least 300,000 persons were affected by the typhoon and 20,000 left homeless.

No Troops Hurt  
No United States or allied occupation personnel were killed or injured, late reports indicated. A typhoon at General Douglas MacArthur's headquarters slanted military installations escaped damage, and the storm blew itself out in line for Japan-based planes to head for the Korean peninsula on schedule this morning.

The typhoon, which was reaching a peak of 110 miles an hour, hit hardest in the neighboring industrial center of Osaka. Kobe and Kyoto on Honshu, the main Japanese home island.

It moved northwest into the sea of Japan, 200 miles northwest of Tokyo. There it swung inland and hit Aki, 275 miles northwest of Tokyo, finally making out to sea toward the northern island of Hokkaido. Its force lost, it was labeled officially as merely a tropical low pressure area instead of a typhoon.

The storm was said to have done 11,145 houses, half wrecked, 40,176, and flooded, wholly or partly, 10,240.

It moved northwest into the sea of Japan, 200 miles northwest of Tokyo. There it swung inland and hit Aki, 275 miles northwest of Tokyo, finally making out to sea toward the northern island of Hokkaido. Its force lost, it was labeled officially as merely a tropical low pressure area instead of a typhoon.

The storm was said to have done 11,145 houses, half wrecked, 40,176, and flooded, wholly or partly, 10,240.

It moved northwest into the sea of Japan, 200 miles northwest of Tokyo. There it swung inland and hit Aki, 275 miles northwest of Tokyo, finally making out to sea toward the northern island of Hokkaido. Its force lost, it was labeled officially as merely a tropical low pressure area instead of a typhoon.

The storm was said to have done 11,145 houses, half wrecked, 40,176, and flooded, wholly or partly, 10,240.

It moved northwest into the sea of Japan, 200 miles northwest of Tokyo. There it swung inland and hit Aki, 275 miles northwest of Tokyo, finally making out to sea toward the northern island of Hokkaido. Its force lost, it was labeled officially as merely a tropical low pressure area instead of a typhoon.

The storm was said to have done 11,145 houses, half wrecked, 40,176, and flooded, wholly or partly, 10,240.

It moved northwest into the sea of Japan, 200 miles northwest of Tokyo. There it swung inland and hit Aki, 275 miles northwest of Tokyo, finally making out to sea toward the northern island of Hokkaido. Its force lost, it was labeled officially as merely a tropical low pressure area instead of a typhoon.

The storm was said to have done 11,145 houses, half wrecked, 40,176, and flooded, wholly or partly, 10,240.

It moved northwest into the sea of Japan, 200 miles northwest of Tokyo. There it swung inland and hit Aki, 275 miles northwest of Tokyo, finally making out to sea toward the northern island of Hokkaido. Its force lost, it was labeled officially as merely a tropical low pressure area instead of a typhoon.

The storm was said to have done 11,145 houses, half wrecked, 40,176, and flooded, wholly or partly, 10,240.

It moved northwest into the sea of Japan, 200 miles northwest of Tokyo. There it swung inland and hit Aki, 275 miles northwest of Tokyo, finally making out to sea toward the northern island of Hokkaido. Its force lost, it was labeled officially as merely a tropical low pressure area instead of a typhoon.

The storm was said to have done 11,145 houses, half wrecked, 40,176, and flooded, wholly or partly, 10,240.

It moved northwest into the sea of Japan, 200 miles northwest of Tokyo. There it swung inland and hit Aki, 275 miles northwest of Tokyo, finally making out to sea toward the northern island of Hokkaido. Its force lost, it was labeled officially as merely a tropical low pressure area instead of a typhoon.

The storm was said to have done 11,145 houses, half wrecked, 40,176, and flooded, wholly or partly, 10,240.

It moved northwest into the sea of Japan, 200 miles northwest of Tokyo. There it swung inland and hit Aki, 275 miles northwest of Tokyo, finally making out to sea toward the northern island of Hokkaido. Its force lost, it was labeled officially as merely a tropical low pressure area instead of a typhoon.

The storm was said to have done 11,145 houses, half wrecked, 40,176, and flooded, wholly or partly, 10,240.

It moved northwest into the sea of Japan, 200 miles northwest of Tokyo. There it swung inland and hit Aki, 275 miles northwest of Tokyo, finally making out to sea toward the northern island of Hokkaido. Its force lost, it was labeled officially as merely a tropical low pressure area instead of a typhoon.

## North Korean Girl Slays 5 of 7 GIs Caught on Hill

MASAN FRONT, Korea, Sept. 4 (AP)—A Korean girl communist shot seven American prisoners last night with a tommygun. They were moved down to the seven American left for dead, brot to talk their hands were bound behind them.

Five died. A South Korean guard also was killed. The girl, who was 17 years old, was captured in the act. All were members of the signal corps unit stationed on the hill.

Nation's rural police headquarters, which compiled reports of widespread suffering and destruction, estimated at least 300,000 persons were affected by the typhoon and 20,000 left homeless.

No Troops Hurt  
No United States or allied occupation personnel were killed or injured, late reports indicated. A typhoon at General Douglas MacArthur's headquarters slanted military installations escaped damage, and the storm blew itself out in line for Japan-based planes to head for the Korean peninsula on schedule this morning.

The typhoon, which was reaching a peak of 110 miles an hour, hit hardest in the neighboring industrial center of Osaka. Kobe and Kyoto on Honshu, the main Japanese home island.

It moved northwest into the sea of Japan, 200 miles northwest of Tokyo. There it swung inland and hit Aki, 275 miles northwest of Tokyo, finally making out to sea toward the northern island of Hokkaido. Its force lost, it was labeled officially as merely a tropical low pressure area instead of a typhoon.

The storm was said to have done 11,145 houses, half wrecked, 40,176, and flooded, wholly or partly, 10,240.

It moved northwest into the sea of Japan, 200 miles northwest of Tokyo. There it swung inland and hit Aki, 275 miles northwest of Tokyo, finally making out to sea toward the northern island of Hokkaido. Its force lost, it was labeled officially as merely a tropical low pressure area instead of a typhoon.

The storm was said to have done 11,145 houses, half wrecked, 40,176, and flooded, wholly or partly, 10,240.

It moved northwest into the sea of Japan, 200 miles northwest of Tokyo. There it swung inland and hit Aki, 275 miles northwest of Tokyo, finally making out to sea toward the northern island of Hokkaido. Its force lost, it was labeled officially as merely a tropical low pressure area instead of a typhoon.

The storm was said to have done 11,145 houses, half wrecked, 40,176, and flooded, wholly or partly, 10,240.

It moved northwest into the sea of Japan, 200 miles northwest of Tokyo. There it swung inland and hit Aki, 275 miles northwest of Tokyo, finally making out to sea toward the northern island of Hokkaido. Its force lost, it was labeled officially as merely a tropical low pressure area instead of a typhoon.

The storm was said to have done 11,145 houses, half wrecked, 40,176, and flooded, wholly or partly, 10,240.

It moved northwest into the sea of Japan, 200 miles northwest of Tokyo. There it swung inland and hit Aki, 275 miles northwest of Tokyo, finally making out to sea toward the northern island of Hokkaido. Its force lost, it was labeled officially as merely a tropical low pressure area instead of a typhoon.

The storm was said to have done 11,145 houses, half wrecked, 40,176, and flooded, wholly or partly, 10,240.

It moved northwest into the sea of Japan, 200 miles northwest of Tokyo. There it swung inland and hit Aki, 275 miles northwest of Tokyo, finally making out to sea toward the northern island of Hokkaido. Its force lost, it was labeled officially as merely a tropical low pressure area instead of a typhoon.

The storm was said to have done 11,145 houses, half wrecked, 40,176, and flooded, wholly or partly, 10,240.

It moved northwest into the sea of Japan, 200 miles northwest of Tokyo. There it swung inland and hit Aki, 275 miles northwest of Tokyo, finally making out to sea toward the northern island of Hokkaido. Its force lost, it was labeled officially as merely a tropical low pressure area instead of a typhoon.

The storm was said to have done 11,145 houses, half wrecked, 40,176, and flooded, wholly or partly, 10,240.

It moved northwest into the sea of Japan, 200 miles northwest of Tokyo. There it swung inland and hit Aki, 275 miles northwest of Tokyo, finally making out to sea toward the northern island of Hokkaido. Its force lost, it was labeled officially as merely a tropical low pressure area instead of a typhoon.

The storm was said to have done 11,145 houses, half wrecked, 40,176, and flooded, wholly or partly, 10,240.

It moved northwest into the sea of Japan, 200 miles northwest of Tokyo. There it swung inland and hit Aki, 275 miles northwest of Tokyo, finally making out to sea toward the northern island of Hokkaido. Its force lost, it was labeled officially as merely a tropical low pressure area instead of a typhoon.

The storm was said to have done 11,145 houses, half wrecked, 40,176, and flooded, wholly or partly, 10,240.

## Prisoner Batters Way Out of Minidoka Jail

RUPERT, Sept. 4.—Battering his way through a brick wall with a metal door handle, John Davis, 24, Wheeling, W. Va., escaped Sunday afternoon from the Minidoka county jail here.

County, city and state officials are looking for Davis and for a 1930 automobile which disappeared from in front of the hospital, a block from the jail, at about the same time Davis escaped. The automobile belongs to George B'Kouras, Rupert.

Davis escaped from the jail while Deputy Sheriff Lloyd Stewart and his family were in the jail building. There was a car in the building at the time Davis escaped. The car was a 1930 Buick sedan.

Davis escaped from the jail while Deputy Sheriff Lloyd Stewart and his family were in the jail building. There was a car in the building at the time Davis escaped. The car was a 1930 Buick sedan.

Davis escaped from the jail while Deputy Sheriff Lloyd Stewart and his family were in the jail building. There was a car in the building at the time Davis escaped. The car was a 1930 Buick sedan.

Davis escaped from the jail while Deputy Sheriff Lloyd Stewart and his family were in the jail building. There was a car in the building at the time Davis escaped. The car was a 1930 Buick sedan.





C. C. Anderson's

salute the laboring men of Twin Falls and Magic Valley on this day by adding to pay tribute to those who provide us with the luxuries and necessities we daily take for granted. To these men and women we offer our appreciative "thank you" on this Labor day.

# "It's C.C. ANDERSON'S in Twin Falls"

## FOR YOUR HOME NEEDS

**Don't Wait!!**

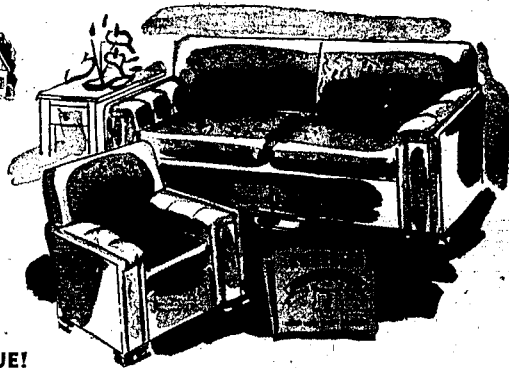
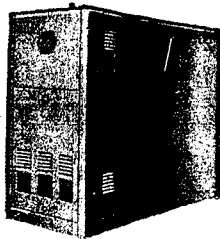
GET PREPARED FOR OLD MAN WINTER NOW!

**ECONO HEAT**

**Oil-Fired Furnace**

\$0,000 BTU

**340.00**



Reg. 3.00!  
FOLDING  
CANVAS  
LAWN  
CHAIR  
1.49

\$300.00 VALUE!

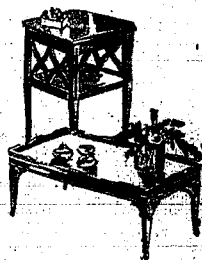
### 9-Pc. Living Room Group

Only 25.00 Down!

**249.50**

This Wonderful Group Includes:

- 2-Pc. Kroehler Living Room Suite
- Upholstered in fine deep heavy Mohair Jacquard Frieze.
- Leather Top Coffee Table!
- 2 Leather Top End Tables!
- 2 Table Lamps!
- Floor Lamp!
- 30x60 Shag Rug!



JUST \$34 DOWN, Convenient Terms On Balance  
INSTALLATION by  
**Experienced Engineers!**  
FREE ESTIMATE!

Lo-Boy, furnace pictured above, has body of heavy electric welded steel, casing of double-lined sheet steel, baked enamel finish, rounded corners. Complete with high pressure atomizing oil-burner, stainless steel fire pot, air filters, heavy-duty centrifugal blower and motor.

Econo-Heat Furnaces, are expressly designed for Northwest climatic conditions.

### 3-Piece BATHROOM SET

- STEEL TUB ..... 94.95
- Cast Iron
- LAVATORY ..... 30.25
- Close Coupled Wash Down
- CLOSET ..... 44.00

Complete with trim..... **170.00**

It's Well Worth Repeating

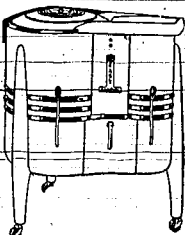
Full-Size 2-Tub

### Easy Spindrier

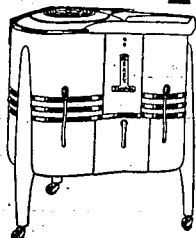
**149.95**

**ONLY \$5 DOWN**

30 MONTHS ON BALANCE



Model 505



Appliance Dept.  
Second Floor.

#### 3-PIECE Cannon Towel Set

Included with the purchase of an **EASY SPINDRIER**

See The Brand New Easy Spindrier Today! It's Waiting For You! It's wonderful 'cause... no set tubs are needed! Wonderful 'cause... it has full-size tub! Wonderful 'cause... it spins clothes "damp-dry"! Get your clothes on the line in a hurry... see this More-Than-Wonderful Easy Spindrier Today!

A Value You Can't Afford to Miss!



### Going Hunting?

See These Values Today!

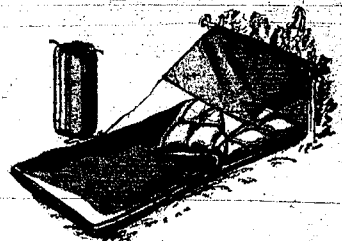
Reg. 19.30 Wool Filled 36" x 80

### Sleeping Bag

**14.88**

Extra-heavy, water repellent outer cover, filled with soft 100% wool. Polds easily!

EASY TERMS



#### RIFLES

- WINCHESTER mod. 94 30-30, 32 spec., 28-28 **62.45**
- MARLIN mod. 330 30-30 **62.20**
- STEVENS mod. 925 30-30, Reg. 42.85 **38.00**
- WINCHESTER mod. 61 22 Pump Rifle **49.95**
- WINCHESTER mod. 62 22 Pump Rifle **42.95**
- WINCHESTER mod. 61 22 Automatic **63.50**

#### SHOTGUNS

- WINCHESTER mod. 25, 12 gauge **72.85**
- WINCHESTER mod. 42, 410 gauge **73.95**
- WINCHESTER mod. 20, 12 gauge **84.95**
- ITHACA mod. 27, 12, 16, 20 gauge **78.93**
- STEVENS mod. 50 410 ga. tubular repeater **75.45**
- WINCHESTER mod. 27, 12, 14, 20, Single barrel **25.95**
- WINCHESTER mod. 27, 12, 14, 20, Single barrel **21.35**

#### CAMPING NEEDS

- Reg. 5.95 PUP **39.95**
- UMBRELLA TENT 20 Cal. 4" x 4" **12.95**
- Reg. 10.00 "Soldierman" AIR MATTRESS **9.95**
- COLUMBIA 2-BURNER CAMP STOVE **9.95**

#### PISTOLS

- Hi-Standard mod. ED Military 38.00 5 1/2" 4 1/2" Cal.
- Colt Match Target Woodsmen 38.00 22 Cal. 4 1/2" x 4 1/2"
- Colt Woodsmen Sport 38.00 38 Cal. 4 1/2"
- Colt Woodsman 38.00 38 Cal. 4 1/2"
- Colt Woodsman 38.00 38 Cal. 4 1/2"
- Colt Woodsman 38.00 38 Cal. 4 1/2"

#### AMMUNITION

- Western Super X, Peters High Velocity, Remington Express
- 12 gauge **2.80 box**
- 16 gauge **2.45 box**
- 12 gauge **2.80 box**
- 410 gauge **2.80 box**

C. C. ANDERSON'S, Your Appliance Headquarters

FREE PARKING!

Ask About Our Convenient Credit Terms





BOISE'S COACHER HURLS \$100,000 STIFF ELBOW? TO BLANK COWBOYS 10

Final Home Games In Doubleheader

By BOB GILMAN
If you believe what you read in the Boise paper, Twin Falls has won the 1956 season...

Cards Rally To Defeat Russets 11-8

By The Associated Press
The Pocatello Cardinals crushed their Johnny-come-lately Pioneer league team to one and one-half innings last night...

Richfield Opens Season With Diet

RICHFIELD, Sept. 9.—The Richfield football team has opened its season with a diet...

Golfers Enter Semi-Finals in Annual Times-News Tournament

Golfers entered the semi-finals today in the annual Times-News Magic Valley tournament after a giant round Sunday...

First Football Games Set Today

Football makes its 1956 debut for Magic Valley teams today with two games scheduled in Snake Valley at Pocatello...

Family Affair

The Hickey family seems to be dominating the Idaho Falls football scene...

Prospects for Gooding Team Are Not Bright

GOODING, Sept. 9.—With only three letters remaining on prospects for the 1956 football season...

Sportsmen State District Meeting At Glenns Ferry

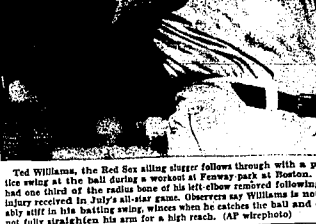
GLENN'S FERRY, Sept. 9.—The sportsmen of the Magic Valley met for the annual meeting of the Idaho Sportsmen's Association...

Rickey Assumes Blame for Team

HOLLYWOOD, Sept. 9.—Boss-licker Bert Rickey of the Broadway team has assumed blame for the dodger difficulty...

Bowling Meet

All fall are asked to meet at 8 p.m. Tuesday at the Bonanza room residents to vote their opinions on various practices...



Ted Williams, the Red Sox all-star slugger follows through with a practice swing at the ball during a workout at Pocatello...

Kiner's Homerun Pace Keeps Pirates Happy

By The Associated Press
Ralph Kiner's up hill battle to equal baseball's most coveted slugging record—Babe Ruth's sensational 60 homerun season...

Russet Pilot Still Holds Hitting Lead

Mark "Mark" Marucci, manager and catcher of the Idaho Falls Russets continued to set the pace for batters in the Pioneer League...

Yanks as Champs

Yankees are the only team in the National League that has won 100 games in two consecutive seasons...

Howell Slates First Scrimmage

BOISE, Sept. 9.—Coach Dick Howell will probably send his University of Idaho Varsity into its first football scrimmage...

Idaho Falls Seeks First Big Six Win In Three Years, but Prospects Dark

IDAHO FALLS, Sept. 9.—The Idaho Falls Tigers haven't won a big six high school conference game for two years and the prospects aren't much better this year...

Pliers Jump to Lead

The Pliers started right off the first inning and proceeded to belt Larry Ward, Twin Falls pitcher...

McCaferly Takes Over

McCaferly took over the reins of the Pliers in the sixth inning...

King got the thumb and had to be scooped out of the field by police in the seventh frame...

King got the thumb and had to be scooped out of the field by police in the seventh frame...

YANKS BUY MURKINS

NEW YORK, Sept. 9.—The New York Yankees have purchased their second first baseman from their Kansas City farm...

YANKS BUY MURKINS

NEW YORK, Sept. 9.—The New York Yankees have purchased their second first baseman from their Kansas City farm...

YANKS BUY MURKINS

NEW YORK, Sept. 9.—The New York Yankees have purchased their second first baseman from their Kansas City farm...

SCORE BOARD
NATIONAL LEAGUE
Chicago 10, St. Louis 1
Cleveland 10, Philadelphia 1
Pittsburgh 10, Cincinnati 1

AMERICAN LEAGUE
Detroit 10, Boston 1
New York 10, Philadelphia 1
Cleveland 10, Philadelphia 1

PIONEER LEAGUE
TWIN FALLS 10, Boise 1
Pocatello 10, Idaho Falls 1
Coeur d'Alene 10, Lewiston 1

GAME SOLD OUT
BERKELEY, Calif., Sept. 4.—University of California officials have announced that the game sold out for the traditional "big game" between the Red football eleven and Stanford on Nov. 25.

Other games include: Sept. 20—Boise at Idaho Falls, Idaho Falls, night. Oct. 2—Idaho Falls at Pocatello, Pocatello, night. Oct. 20—Blackfoot at Idaho Falls, day. Oct. 27—At Nampa, Nov. 3—Sugar Salem at Idaho Falls, day. Nov. 11—At Pocatello, day.

WANTED! dead or alive Horses - Mules - Cows For Prompt Pick-up... PERCY GREENE TROUT FARM

THOUSANDS THIS YEAR... BUDGER MINERAL BALTS HELP CONTROL BLOATING... GLOBE SEED AND FEED CO.

ARE YOU FAMILIAR WITH BLUE CORAL... Blue Coral is not like an ordinary wax... Schwartz Auto PACKARD MOTOR CARE - DIAMOND 140 2nd Ave. E.









