

Tree Removal After 43 Years Is Big Project



An Hbler Construction company trailer transport and the Dean Myers wrecking service combined to roll this six- or seven-ton tree stump from a 43-year-old tree onto a truck at the Alfred Peters residence, two miles east of Twin Falls, Tuesday. (Staff photo-engraving)

Road-Widening Plans Lead to Removal of Giant Poplar Tree

The widening of Addison avenue east and just plain old age led to the removal of a 43-year-old Lombardy poplar tree from the Alfred Peters place two miles east of Twin Falls.

The combined efforts of the Vaughn Landscaping and Tree service, Hbler Construction company and the Dean Myers Wrecking service were required to remove the 125-foot landmark. The biggest job was in loading the six- or seven-ton stump onto a trailer transport.

Myers weighted down the front end of his wrecker by attaching it to a truck loaded with parts of the trunk and limbs. Only then was he able to use a roll hitch and chain to roll the stump onto the trailer.

Peters said he feared the aged tree might blow down some night. If it were not removed, also, he had to get it out of the way so he could move other shrubbery to make way for the wider highway.

Club to Meet

HANSEN, Feb. 18—Members of the Friendship club will meet Thursday afternoon at the home of Mrs. Kenneth Haylor with Mrs. Vernon Stroberg as assistant hostess.

Visits Related

PAUL, Feb. 18—Mrs. Alex Uffelman and daughter, Sacramento, Calif., have returned home after visiting her parents, Mr. and Mrs. Henry Rau.

LAME BACK CORRECTION

Is pleasant and painless. Backaches may be associated with rheumatism, arthritis, lumbago, stomach and kidney disorders. If you have tried everything else try Adjustments. Relief is often obtained after first treatment. 128 Main North - Phone 2328 DR. ALMA HARDIN CHIROPRACTOR

Magic Valley Job Openings Decline

Magic Valley job opportunities showed a decrease last week, according to R. S. Cutler, Twin Falls employment security office manager. Storms tended to reduce employment activities. Only 65 job openings were listed with area employment offices last week for a decrease of 35 over the number reported the week before.

Visits Reported

DECELO, Feb. 18—Mr. and Mrs. Emer DeLo and family, Kamala Falls, Ore., are visiting his parents, Mr. and Mrs. John Borst. Gayne Zollinger, who has been visiting in Louisiana, has returned to Declo.

FINES IMPOSED
GOODING, Feb. 18—Annex, 23-man, Bob Burden and W. A. Shonoh, all Gooding, and William Paneth, Shonoh, each paid fines of \$1 for improper parking when they appeared in city police court Monday. H. O. Willis made the arrests.

Exclusive Magic Valley Applicators For
JOHNS-MANVILLE ROOFING



WHETHER . . . ?
Much depends on whether you choose a first grade New Roof for your home. Roofs we build withstand weather and "wear" for far longer years of service. Making for lowest cost per year of service, and eliminating repair annoyance and expense.

IF YOU NEED . . . Asphalt Shingles - Shakes - Asbestos Siding - Built-up Roofs - Aluminum Screens - Insulation - Weather Stripping . . . Call collect, we'll pay the bill!

FREE ESTIMATES — NO OBLIGATIONS

NOTHING DOWN — 36 MONTHS ON BALANCE
MAGIC CITY ROOFING & IMPROVEMENT CO.
George Wrecking—Phone 2995 - 495 W. Addison—Dan Dandale

Spreads
ing, Korea
leader Avers
Korea, Feb. 18 (AP)—Nations are being supplied by Korea are being supplied by the same source. South Korean spokesman Rhee said today. The narcotics are said to be from Japan and North Korea. The narcotics are said to be from Japan and North Korea. The narcotics are said to be from Japan and North Korea.

General
up Air Tour
Feb. 18 (AP)—Radio personality Arthur Godfrey is leaving today from a tour of the United States. He is carrying LeMay, and Godfrey landed at Mitchell air field after a 10-day swing in Europe, France and England.

PTA to Meet
KIMBERLY, Feb. 18—The Kimberly PTA will meet in the hot lunch room at 8 p.m. Monday. A founders day play will be presented by the high school English class.

Predicted
Peach Crop
S. C., Feb. 18 (AP)—The Peach Council has the 1953 national fresh peach crop estimated at 5,200,000 bushels or 4,370 bushels above 1952 estimates of 1953 production, in bushels, in 22,500,000 Colorado and 300,000 Idaho 240,000.

"CASCADE"
BALER TWINE
MADE FROM SUPERIOR QUALITY HENEQUEN FIBRE
• FULL LENGTH • FULL STRENGTH • FULL WEIGHT •
\$9.00
PER 40 LB. BALE, F.O.B. TWIN FALLS
McVEY'S Inc.
161 THIRD AVENUE WEST

BRING YOUR EGGS to
IDAHO EGG PRODUCERS
Friday and Saturday—and every day all through the year for . . .
HIGHEST CASH PRICES

I KNOW
IDA-BEST FEEDS
All Tested and Proven
★ Starting mash
★ Laying mash
★ Growing mash
A Balanced Feed for Every Farm Need
IDAHO EGG PRODUCERS
COOPERATIVE MARKETING ASSN.

Initiated
UNIVERSITY OF IDAHO, Moscow, Feb. 18—Four Magic Valley students at the University of Idaho have been initiated in Blue Key, national senior honorary society. They are William Parsons and Robert Palmer, Butley; William Ringert, Castleford, and John Thomas, Dietrich.

President Warrin G. Harding was the first U. S. President who could drive his own car although official guards would not permit him to do so during his term in office.

ONE RACK DRESSES
1/3 OFF
Crepe and Faille. Assorted styles, colors and sizes.
FASHIONS MEZZANINE

BARREL TUMBLERS
Reg. 15c each
9c each
The Glass that every woman should have in her kitchen. The favorite family size. Clear Glass, very durable.
HOUSEWARES-BASEMENT

OCCASIONAL CHAIRS

33.00 each
Buy in Paris. Two smart styles! Select in matched pairs . . . or select different styles! Tapestry and velvet covering! Hardwood-frames! Year's lowest price on such BEAUTIFUL CHAIRS! Attractive decorator colors!

Will Buy These
and many more
SPECIAL VALUES
During Poultry Days!!

MILLAY HOSE
60 Gauge, 15 Denier
Plain and dark seams. Colors, Town Taupe and Country Beige. Sizes 8 1/2 to 11.
HOSEIERY MAIN FLOOR
Reg. 98c
87c

30" Sq. Bleached White FLOUR SACKS
5 for 1.00
DOMESTIC STREET FLOOR

Men's Flannel WORK SHIRTS Reg. 2.98 1.99 Sanitized, fancy plaids. Size 14 1/2 to 18 1/2. Work Clothes Basement	1 Rack Children's All Wool and Corduroy DRESSES JUMPERS SKIRTS 2.00 and 3.00 Sizes 2 to 14. Substn sizes 2 to 14. Assorted styles and colors. Main Floor	Rayon Knit SLIPS Reg. 1.98 1.49 White and Tea Rose. Sizes 21 to 42. Lingerie Main Floor
--	--	---

34 Piece Melody Silverplate • Chest Included • Guaranteed Reg. 14.95 Value 9.95 No Federal Tax Schubachs Main Floor	1 GROUP HATS Excellent Values to 5.00 1.00 Assorted colors and styles. Millinery Mezzanine	Boy's Combed Yarn COTTON BRIEFS 6 months guaranteed wear. Sizes small, medium and large. 3 for 1.00 Boys' Furnishings Main Floor
--	--	---

POULTRY DAYS Friday and Saturday only Shop 'till 9 Friday Night.
PHONE 2700 201 MAIN AVENUE EAST
C. C. ANDERSON'S
"MAGIC" MOST COMPLETE DEPARTMENT STORE
We invite you to open a charge account. Just say "Charge It!"

Subscription Rates

By the month \$1.50
By the quarter \$4.50
By the year \$15.00

By Mail—Payable in Advance

Within Idaho \$1.25
By the month \$1.25
By the quarter \$3.75
By the year \$12.00

Outside of Idaho \$1.50
By the month \$1.50
By the quarter \$4.50
By the year \$15.00

All notices required by law or by order of court of compliance with publication laws. Send notices to 50-1016, Idaho Code. Second-class postage paid at Twin Falls, Idaho.

TUCKER'S NATIONAL WHIRLIGIG

WASHINGTON—A slow but steady erosion or even elimination of numerous social, economic and political "reforms" achieved in the early, rosy days of the New Deal has resulted from a series of legislative and judicial decisions in all sections of the country.

Although the federal judiciary is slow to act, its decisions have had a cumulative effect on the national scene. As a result of two years of Roosevelt-Truman appointments, the high court has not been too kind to the work of the White House benefactors.

Even the supreme court, though nominally "democratic and counseled" by the Federal Reserve Board, has been outwitted or whittled down only in the lower courts, the high tribunal is expected to continue to write the bill of emotional, ill-considered or sloppy legislation.

POT SHOTS

THEY'RE GOLD MINES

Congratulations to the editor on a timely editorial about giving the new administration and especially Secretary Benson a chance to open up the mines in Washington.

Coincidental or not, in the list of bills introduced in the state legislature the senate mine and mining committee introduced SB 277 to provide a popular vote on the slot machine repeal bill.

Do they mine with those machines? I thought they were measured bands!

Pauline Joe (Smith)

HOW THINGS APPEAR FROM PEGLER'S ANGLE

This letter will be collected with my by Dr. Pearson as a political conspirator, who has employed at least two communist "leg-men," one of whom once was caught in the act of going through highly secret state department documents conveniently left exposed for his purposes by a functionary who stepped out of his office.

I call attention again to the fact that some kind of American daily papers of the great American free press have continued to throw their readers the malicious, motivated mendacity of the lying long after his secretary was established beyond question as a lying blackguard.

I refer to a book called "McCarthy, the Man, the Senator, the Scoundrel" by two members of Pearson's staff. These characters are Jack Anderson and Ronald W. May. Whether or not these individuals are referred to in my mention of Pearson's two communist "leg-men," I have no knowledge whether either of them is a communist.

My intention here is to call into question the good faith of both the New York Times and the Herald-Tribune and of John B. Oakes, editor of the editorial board, and Robert K. Carr, who holds their chair of "Political Science" at Dartmouth College.

On Oct. 26, shortly before the election you will note, the New York Times published a political blast against McCarthy in the guise of a book review by Oakes. Although the dust jacket of this book plainly states that Anderson is an employee of Dr. Pearson and every newspaperman and most other informed Americans know that McCarthy lied hell out of Pearson in a public place, Mr. Oakes of the editorial board of the New York Times conceals this relationship from those readers of the Times who read his review.

I wrote Oakes, calling his attention to this culpable omission of a material fact, an offense which, in the case of a lawyer before a court, would call for serious disciplinary action. I put appropriate questions to Oakes.

I have received no acknowledgment from either Oakes or Arthur

Cruelty Charged In Divorce

A complaint for divorce in district court charged that Mrs. Adella Bell Wald was guilty of cruelty.

According to the petition, Mrs. Wald had been married to her husband for 20 years and had two children. She charged that her husband was a drunkard and gambler and that he had been cruel to her for many years.

The divorce was granted by Judge W. G. Walker on Feb. 10. Mrs. Wald was awarded custody of the children and a portion of the marital property.

POSSIBLE KEY TO UNITY

Western statesmen and lawmakers will be haggling for months and possibly years over major strides toward the unity of Europe. But there no longer is anything theoretical about one of the major problems—the joining of Western Europe's coal and steel resources and facilities in one vast industrial complex.

As of now, the European coal and steel community is a fact, and that much of the great dream of unity must be accounted a reality.

Since coal and steel are the fundamentals of a modern industrial economy, this development is a long step toward the economic unity of Western Europe. But at the same time it would be wise to recognize the limitations of this notable move.

For one thing, it does after all embrace only coal and steel. Only with the experience gained in the operation of this plan will it be possible eventually to press for wider application to other industrial fields.

Secondly, Great Britain, one of the leading coal and steel producers, is not a member of the new community. The British have set up a committee to keep in close contact with the six-nation organization, but their absence from full membership unquestionably restricts the program's potential effectiveness.

And, of course, not even the most extreme optimist shuts his eyes to the fact that this experiment in continental "unity" is sure to create and groan for a long time before it runs smoothly.

The officials of the coal and steel community are bucking down to a frightening task. In the months ahead they must slash their way through a jungle of restrictions of many kinds—tariff barriers, quota limits, discriminatory freight rates, price-fixing and production subsidies.

Inevitably there will be many controversies rising in the day-to-day practical working out of the project. Reality is almost always harsher than the dream.

Yet, men everywhere who are wedded to freedom must pray that the community's able officials can ride out these beginning storms. It would well be that the whole cause of European unity—so basic to the broader world-being and security of the entire free world—will rest upon the success or failure of this great unification effort.

EFFECT OF JUDICIAL REVIEW

The central and significant feature of the effect of the judicial review is the reestablishment of individual liberties and the limitation of the federal government's power and jurisdiction.

Being only human, American jurists have not been immune from the influence of the "big government" is not more desirable here than in Moscow or Peking.

The courts have exemplified this attitude dramatically in their enunciation of the lobby, the Hatch and the anti-trust acts. The key section of the lobby law was held unconstitutional because it sought to deprive the "public right" of "petition" to those convicted under it.

The so-called "clean politics" legislation has been held to violate the individual freedom of speech in a more national case, the supreme court threw out a conviction of communists on the ground that the department of justice's original list of subversives was unconstitutional.

It arbitrarily branded certain organizations as "subversive" without any supporting evidence or giving the alleged red groups the right to be heard.

BUSINESS SHAKELAS LOOKED—Business and industry have been unshaken to a certain extent and there is a persistent trend by the judiciary to free private enterprise from the shackles of government. In the current dust of the Eisenhower administration, the court adopted a rule of reason—that is, common sense—in many cases many persons named in the catch-all act.

Similarly, the courts have softened the effect of the Fair Labor Act and the other labor laws on employers in the growing chain of the unions. Annulment of the more friendly and sympathetic attitude of the Eisenhower group, the jurists no longer are automatically intimidated by the bureaucratic findings. On the contrary, many of these rulings have been held to be "whimsical," as in the steel industry litigation.

PUPS FOR KIDS DEPT.

Dear Pot Shots:

We have three pups to give away to children. They are part cocker spaniel and Australian shepherd. We live a half mile north at the end of the new highway out of Wendell east. (P. S. note: How's that again?)

Adam P. Schiest

HO HUM DEPT.

In Orange, Tex., a husband was awarded a divorce on his complaint that his bride of three days took her pet dog to bed every night. (AP news item)

Mattie Bee friend?

NAME JOB A CHANGE

Dear Pot:

Six weeks of the new administration and no change yet in the post-office stamp!

Still using (I use the term loosely) the scratchy old Democratic numbers. Sometimes I think that the economy trend can't be carried too far. It's time for a change.

Fen Scalescher (Twin Falls)

FAMOUS LAST LINE

"We didn't think we'd see anyone we knew."

GENTLEMAN IN THE FOURTH BOW

STATE RIGHTS GAIN

The Truman-Champan-Braun amendment to build a national-wide federal power empire has been blocked in the state legislatures of Virginia, Idaho and California. Their pro-protection interpretations of various land and conservation laws, dating back to the time of President Roosevelt, have been challenged by the courts.

Another aspect of this development is greater recognition of the rights of the states within the federal union. Although the supreme court has yet to review many of these rulings, numerous decisions recognize the states' right to enact laws dealing with segregation and similar matters.

ECONOMISTS HOPEFUL

Present declines in farm prices—particularly meat and cotton—offer no signs of the beginning of another 1929-1932 depression, according to top officials of department of agriculture.

While a number of senators and congressmen have pointed with alarm to the fact that depression generally begins with a drop in farm prices, agriculture economists insist there is no such in the making now.

Secretary of Agriculture Ezra Taft Benson, asked if he saw any parallel to 1929 in today's situation, said flatly, "No, I do not."

O. V. Wells, head of the bureau of agricultural economics, told the senate agriculture committee that the drop in prices is not like that of 1929-1932. "After reaching a peak of over 300 in January, 1948, the index of prices received by farmers dropped to 240 in December, 1949. It then rose for two years to an average of 302 for 1951.

The drop all through 1952 brought the index to about 250, but in 1953, according to BAE, it is possible in 1953, according to BAE.

The latest BAE "outlook digest" points out that the sharp decline in farm prices is about ended now, and "even some increase is in prospect for the next few months."

In an effort to reassure farmers and stop the mild panic, the digest emphasizes that of 11 major groups of farm products, the price of meat and wool is lower now (by about 10 per cent) than before the war began in Korea.

Cotton and fruit are up less than 1 per cent over pre-Korea levels. Tobacco is 8 per cent higher, grains 12 per cent higher, dairy products 30 per cent higher, poultry and eggs 40 per cent higher, truck crops 19 per cent higher and vegetables 55 per cent higher.

What burns the farmer, of course, is that prices are now below the 1951 Korean war and pre-war peaks. Cotton, truck crops and meat are 30 per cent below these peaks and wool prices are off 57 per cent.

WHY NOT TWO TERMS

Several years ago the Idaho legislature passed a resolution calling for a popular election on a constitutional amendment limiting the governor to one four-year term in office. The amendment was approved, and although Governor Jordan is the only one to come under its provisions, it has already become evident that the amendment has not accomplished its objective. It is thought that the previous two-year term of governor was too short, to provide a proper continuity in the administration of the state's affairs. A four-year term, it is believed, would provide that continuity and would be a more realistic period of office. The amendment, however, has concerned a number of Idahoans. The provision that the governor cannot succeed himself, as he was allowed to do under the old two-year-term arrangement.

The house yesterday passed a resolution proposing to give this clause to allow the governor to succeed himself once—to serve a maximum of eight years in the statehouse. Such an alteration, we believe is in order, and we hope that the house resolution will receive similar support in the senate. If passed there it will go before the people for vote in 1954.

Former Governor Jordan is now embarking on the final two years of his term, and because they are the final two years, he is, in effect, a "lame duck" governor. That is, there is no possibility of his being all in office when the next legislature meets, and as a result his executive functions are seriously hampered; his patronage powers are mostly gone, his influence upon the legislature is automatically diminished, and his entire administration—his staff and his appointed officers, or "cabinet"—has lost much of its potency in directing the affairs of the state. Under the provisions of the proposed amendment, that situation would not be in effect until at least the last half of his next term. Whether or not he wins reelection, or even runs again, the possibility that he might do so would prevent the "lame duck" condition from existing until the end of his final term. (There would be no "lame duck" terms "at all" any period in which no governor was elected.)—Exchange.

BROADCASTERS' IDENTITY

The radio news of Idaho was successful in getting a bill through the Idaho house which frees them of any responsibility in connection with libelous statements of political candidates. The bill, which is state and a medium for expressing public opinion, has never shirked its responsibility in this respect by asking immunity for the reckless, untruthful or malicious statements of individuals.

The legend of the free press has developed on the assumption of joint responsibility for what is said by the person who uses it. As a rule, the person who speaks and a safeguard to wild, irresponsible statements of politicians or others, the Fourth Estate, carries where liability for untruthful statements encroaches. Broadcasters want to avoid this responsibility.

If effective, the bill would allow the broadcasters to claim it to be the financial interests it represents should certainly not ask for libelous potential wrongs by seeking immunity. The bill would also require that the liability should be placed on the person who makes the statement, should become a public hazard. (See Idaho North Side News.)

VAN ENGELENS

POULTRY DAYS SPECIALS

GIANT-SIZE READY-TO-USE

DISH TOWELS

30"x36" HEMMED LAUNDERED 30¢ Plus Tax

SPRINGS NEWEST STYLES & COLORS

HANDBAGS

BLACK PATENT NAVY RED 2.40 Plus Tax

SANFORIZED, COLORFAST PLAIDS AND SOLIDS

CHILDREN'S DRESSES

SIZES 6-14 2.00

VAN ENGELENS

SPECIALS for Poultry Days

in Twin Falls—Friday & Saturday

Reg. \$2.40

EXTRA SPECIAL CHOCOLATE COVERED CHERRIES

In Rich cordial cream. 1-lb. box for only 47¢

ST-REGIS ALARM CLOCK 1.49

CENTURY-ELECTRIC HEATING PAD

4-POSITION SWITCH ALL RUBBER CORD SET REMOVABLE COVER

NOW ON SALE POULTRY DAYS 3.39

TELECHRON DECORATOR ELECTRIC KITCHEN CLOCK

REG. 6.95 SPECIAL 4.95 FRIDAY & SAT.

RACINE—3 PIECE HAIR CUTTING SET

SET CONSISTS OF: ELECTRIC CLIPPERS, BARBER COMB AND SHEARS ON-SALE FOR ONLY 10.95

WE GIVE 25% GREEN STAMPS

Say-Mor Drug

Twin Falls 137 Main West

It's well that Noah didn't have to get a bill passed by Congress before he could build his ark.

Winds Visits in U.S. Capital

WASHINGTON, Feb. 18 (AP)—Adlai Stevenson, who spent his three-day visit in the nation's capital today, will leave for Chicago tomorrow for a campaign tour.

Stevenson, who was accompanied by his wife and two children, was met at the airport by the Democratic National Committee president, who is expected to take office in May.

Stevenson's visit to Washington was the first of a series of trips he will make to various parts of the country to promote his candidacy for the White House.

Stevenson, who is a former governor of Illinois, is one of the leading candidates for the Democratic nomination in the 1956 presidential election.

Stevenson's visit to Washington was the first of a series of trips he will make to various parts of the country to promote his candidacy for the White House.

Skaters Prepare Benefit Numbers



Bobbie Bower, left, and Barbara Ensey polka spiral routines from their jump specialty exhibition for the third annual roller skating and talent show in Twin Falls Wednesday and Thursday evenings. (Staff photo-enslaving)

Preserve Leader Passes in Boise

BOISE, Feb. 18—Warren Lynn, 74, who was commander of the Idaho State Reserve Officers' Association, died at his home in Boise today.

Lynn, who was a member of the Idaho State Reserve Officers' Association, died of a heart attack.

More Than 200 Local Skaters And Dancers Appear in Event

More than 200 skaters and dancers also appeared in Gooding and Burley. No goal has been set for the 1953 benefit. However, \$2,258 was raised from last year's performances.

Taking part in the two-hour show are skating groups from the grade schools, Junior high schools, high school and the Rhythm Roller Skate club. Special dance numbers will be presented by pupils of the Meris Stoddard dance school.

Included in the show's 46 separate numbers are jumping exhibitions, precision drills, lifts, and acrobatic skating, novelty numbers, dance routines and talent acts.

Tickets will be available at the door. No reserve tickets are being sold.

O. A. Kicker is master of ceremonies.

ATTEND BANQUET
JEROME, Feb. 18—The Lincoln day banquet in Boise Saturday were Mr. and Mrs. Guy S. Simons, Mr. and Mrs. Gus Callen, Mr. and Mrs. E. H. Gallen, Mr. and Mrs. William Meiser and Mr. and Mrs. Julian Ricketta.

MAGIC VALLEY
POULTRY DAYS
SPECIAL!
HARMONICAS
REGULAR 25c
LIMIT ONE
TO EACH
CUSTOMER
5¢ ea.
In the Record Department
CLAUDE BROWN
"Your Baldwin Acrosonic Piano Dealer"
143 MAIN EAST PHONE 834

**ATTEND THE
POULTRY INSTITUTE**
PLAN TO ATTEND THE
FIRST ANNUAL
POULTRY INSTITUTE
IN TWIN FALLS FEB. 20TH
We know you will enjoy the fine speeches as they will have "food for thought" for you.
ENJOY TOP PRODUCTION
You, too, will enjoy top egg production from your flocks if you feed SWIFT'S POULTRY FEEDS—from chicks to layers. Balanced rations at fair prices can't be beat. Why not try them today?
SWIFT & COMPANY
PHONE 185 TWIN FALLS

ELECTED

BOISE, Feb. 18—Shirley Egerton, has been named as a chapter of the Student Association that has been elected in Eastern Washington.

Kenneth McNew, Rhythm Roller Rink manager, reports the show has been moved to the gymnasium to provide additional seating facilities. Last year's show played before three overflow crowds in Twin Falls. It

BIG VALUES

FARMERS AND POULTRYMEN
Be sure to attend Magic Valley's Poultry Institute at the Twin Falls Friday Morning at 8:45. An important program has been arranged for your enjoyment.

Stopetwosome
60c Deodorant
Plus 60c Shampoo
Get BOTH..... **1.00**

\$2 TUSSY
Cleansing Creams 1.25
Each 4-oz. jar.
Choose Pink or Emulsified cream. One suits your skin perfectly.
8-oz. Size, 8-oz. Jar..... **2.25**

**V. P. STICK
DEODORANT**
No rubbing in—No wiping off.
—No messiness—100 size—SPECIAL..... **59c**

**Grove's
Bromo Quinine**
Cold tablets **39c**
16's.....

FLASHBULBS
Press 25. carton **98c**
10 for.....

**Relieve Acid Indigestion
Bisodol Powder**
3-Ounce Box..... **59c**

HAND in HAND
With Your Doctor
Skilled hands working together help to maintain greater health in our community. We take pride in our years of assistance to your family doctor... filling his prescriptions with care, skill and devotion to the faithful interpretations of his orders.

DOAN'S PILLS 90c Size..... **55c**
SWEETHEART SOAP 3 Reg. Size **23c**

ABSORBINE, JR. 1.25 size..... **78c**
KLEENEX Box of 300..... **19c**
EPSOM SALTS U.S.P.—1 Lb..... **12c**

Light and Bright
by Richard Hudnut is an entirely different kind of home hair lightener that won't wash out. Not a dye or rinse, it's a simple single solution you apply directly to your hair to gradually lighten and brighten a little or a lot. So safe, too... Light and Bright contains no ammonia. 1.50, plus tax.

ASPIRIN TABS
USP—100's
2 FOR..... **39c**
LISTERINE
49c Bottles
2 FOR..... **69c**
VITAMIN A CAPS.
50-M Units..... **3.95**
100 for.....
Anacin Tablets
Bottle of 50..... **59c**
CITRATE OF MAGNESIA
25c Size..... **14c**
Soft PRO "39"
TOOTHBRUSH
Over 2,000 bristles..... **59c**

FRESH LARGE GRADE A
EGGS one doz. \$30.00

For Poultry Days Only!! Friday and Saturday we will give \$30 for one dozen eggs when applied on the famous Model ECA74 Westinghouse Range shown here. THAT'S RIGHT—\$30 for a dozen eggs!

We will give \$30 for a dozen eggs PLUS: A Greater Trade-in Allowance On Your Old Range... on the purchase price of this range—Friday and Saturday only.

***SUPER COROX UNIT GETS RED HOT IN 30 SECONDS**
Here's the fastest heating surface unit on the market today. Yes, this sensational new Super Corox Unit gets hot instantly... RED HOT in 30 seconds. That's real speed.

You Can Be Sure... if It's Westinghouse

Full Price 279.95
YOUR OLD RANGE WILL MAKE YOUR DOWN PAYMENT

See It Today!
SEE ALL THESE TOP QUALITY FEATURES

- Miracle Sealed Oven That Bakes perfectly in Any Rack Position!
- Tell-A-Glance Controls for Quick Identification of Selected Heat!
- Completely Automatic-Cooking of Entire Meals!

—Your Wisest Buy is Westinghouse—
M & Y ELECTRIC IS OPEN UNTIL 9:00 P.M. EVERY FRIDAY
Phones 154-837
441 Main Avenue East

TROLINGER'S

PUC Rejects Intervention On Gas Case

(From Page One)

only has on file a number of applications and petitions from groups who presently are interested in the purchase of natural gas from your apparatus here and the production of industry and the general public.

"Subsequent to the granting of a certificate by the federal power commission we will grant a certificate or certificates of convenience and necessity to such qualified and well-financed organizations as may be necessary to effect efficient distribution of gas throughout the area into which it has been introduced."

Testimony Given

Pacific started presenting testimony Tuesday on its reserves and the amount allocated to the various opposing parties—Northwest Natural Gas company and Westcoast Transmission company.

Meanwhile, it appears the hearing will recess all next week. Monday is a legal holiday and examination of the evidence is expected to begin next week. PUC engineers also have indicated they are anxious to begin an investigation of the gas reserves to be submitted this week and have some kind of report ready when the hearings reopen.

Magic Valley Radio Schedules

KLIX (1215 KILOCYCLES) WEDNESDAY	KTFI AM-FM (1470 KILOCYCLES) WEDNESDAY	KEEP (1470 KILOCYCLES) WEDNESDAY	KBIO (1230 KILOCYCLES) WEDNESDAY
6:00 News	6:00 News	6:00 News	6:00 News
6:30 News	6:30 News	6:30 News	6:30 News
7:00 News	7:00 News	7:00 News	7:00 News
7:30 News	7:30 News	7:30 News	7:30 News
8:00 News	8:00 News	8:00 News	8:00 News
8:30 News	8:30 News	8:30 News	8:30 News
9:00 News	9:00 News	9:00 News	9:00 News
9:30 News	9:30 News	9:30 News	9:30 News
10:00 News	10:00 News	10:00 News	10:00 News
10:30 News	10:30 News	10:30 News	10:30 News
11:00 News	11:00 News	11:00 News	11:00 News
11:30 News	11:30 News	11:30 News	11:30 News
12:00 News	12:00 News	12:00 News	12:00 News
12:30 News	12:30 News	12:30 News	12:30 News
1:00 News	1:00 News	1:00 News	1:00 News
1:30 News	1:30 News	1:30 News	1:30 News
2:00 News	2:00 News	2:00 News	2:00 News
2:30 News	2:30 News	2:30 News	2:30 News
3:00 News	3:00 News	3:00 News	3:00 News
3:30 News	3:30 News	3:30 News	3:30 News
4:00 News	4:00 News	4:00 News	4:00 News
4:30 News	4:30 News	4:30 News	4:30 News
5:00 News	5:00 News	5:00 News	5:00 News
5:30 News	5:30 News	5:30 News	5:30 News
6:00 News	6:00 News	6:00 News	6:00 News

Pair Rescued After Owyhee County Crash

BOISE, Feb. 10.—Two men were rescued by a plane Tuesday from the Owyhee desert, where they had crashed while conducting an aerial survey of game birds.

The men, James Cutler and Alward R. Miller, sustained no serious injuries. They remained at the crash scene more than 24 hours before a rescue plane picked them up.

—Injuries slight—

Cutler, a Boise pilot, received a painful cut on his knee and Miller, a fish and game department employe, received only bruises.

Miller said their light plane crashed about 12:30 p.m. Monday and they were spotted by a rescue plane just about 24 hours later. They arrived in Boise about 4:30 p.m. today.

He said they apparently were forced down by turbulent air from a canyon. The same drift, he added, probably saved their lives, as it caused the plane to clear away from the canyon wall, which it missed by a few feet.

Landings Difficult

Glenn E. Higby, pilot, who flew the men back, said he had to land about two miles away from the crash scene, in the nearest clearing he could find in the thick sagebrush.

The men were found about 30 miles south of Bruneau after a three-hour search, covering some 1,000 square miles, in which 100 planes participated.

The plane was "stroked pretty badly," Higby said.

It will include the fourth grade song (blue group), the fifth grade beginning band and the sixth grade band. Wayne James, director, said the program was planned to acquire parents and the public with the grade school instrumental program.

Not War?

INDIANAPOLIS, Ind., Feb. 10.—A superior court judge ruled yesterday that the KKK's constitution is not a war and that insurance beneficiaries of a soldier killed in the fighting there were entitled to double indemnity.

Judge John L. Ninkovic told attorneys for the Metropolitan Insurance company, "What you want is for the court to rule there is a state of war between the U. S. and some foreign power. To sit this court, to assume the functions of congress . . . is asking too much."

—Ninkovic ordered the insurance company to pay double indemnity on a \$1,000 policy to Mrs. Lila F. McClintock, whose son, Sgt. Charles E. Anderson, was killed in combat in 1918.

Activity Planned

BOGHONE, Feb. 10.—Club Bonita of den No. 1 met after school Monday at the home of Mrs. John Thomas, leader, and planned activities in the Feb. 25 pack meeting at the Lincoln school auditorium. The theme of the program will be "patriotism." Each den will participate in the ceremony, trophies will be placed on proper folding of the flag and reciting of it.

BURN, Feb. 10.—The Burns High School Drama Club will appear Wednesday evening in charge of a benefit concert.

Poultry, Egg Potential for Valley Noted

(From Page One)

national production contest sponsored by Swift and company. This distinction can be attributed chiefly to the excellent growing conditions, particularly in the Snake Valley area.

According to Davis, locally produced eggs bring about 12 cents more per dozen on the west coast market than do eggs produced in the Midwest, which presently supplies most of the west's demand for eggs. Area farmers are missing the opportunity to raise a price on the coast market, where Idaho eggs, superior in quality to midwestern eggs, are in constant demand.

—Bred to suit the market for poultry table use has made it the greatest meat enterprise with Swift and company. Packaged poultry accounts for more than 80 per cent of Swift's sales.

Some \$700,000,000 chickens were grown in the United States last year, he said. The total included six times the number of broilers produced in 1940.

Consumption has increased from 18.6 pounds per person over the nation in 1928 to nearly 33 pounds last year.

Scientific improvements in handling and marketing have stimulated both the demand and this production. Where a decade ago it took 14 pounds of feed and 14 to 16 hours of time to produce a three-pound broiler, the same result can be achieved today in 10 weeks with nine pounds of feed.

Bred to suit the market for poultry table use has made it the greatest meat enterprise with Swift and company. Packaged poultry accounts for more than 80 per cent of Swift's sales.

Some \$700,000,000 chickens were grown in the United States last year, he said. The total included six times the number of broilers produced in 1940.

Consumption has increased from 18.6 pounds per person over the nation in 1928 to nearly 33 pounds last year.

Scientific improvements in handling and marketing have stimulated both the demand and this production. Where a decade ago it took 14 pounds of feed and 14 to 16 hours of time to produce a three-pound broiler, the same result can be achieved today in 10 weeks with nine pounds of feed.

Legislative Log

By The Associated Press

HB 246—Revenue and taxation—Local option for sale of tobacco.

HB 247—Revenue and taxation—Local option for sale of tobacco.

HB 248—Revenue and taxation—Local option for sale of tobacco.

HB 249—Revenue and taxation—Local option for sale of tobacco.

HB 250—Revenue and taxation—Local option for sale of tobacco.

HB 251—Revenue and taxation—Local option for sale of tobacco.

HB 252—Revenue and taxation—Local option for sale of tobacco.

HB 253—Revenue and taxation—Local option for sale of tobacco.

HB 254—Revenue and taxation—Local option for sale of tobacco.

HB 255—Revenue and taxation—Local option for sale of tobacco.

HB 256—Revenue and taxation—Local option for sale of tobacco.

HB 257—Revenue and taxation—Local option for sale of tobacco.

HB 258—Revenue and taxation—Local option for sale of tobacco.

HB 259—Revenue and taxation—Local option for sale of tobacco.

HB 260—Revenue and taxation—Local option for sale of tobacco.

HB 261—Revenue and taxation—Local option for sale of tobacco.

HB 262—Revenue and taxation—Local option for sale of tobacco.

HB 263—Revenue and taxation—Local option for sale of tobacco.

HB 264—Revenue and taxation—Local option for sale of tobacco.

HB 265—Revenue and taxation—Local option for sale of tobacco.

HB 266—Revenue and taxation—Local option for sale of tobacco.

HB 267—Revenue and taxation—Local option for sale of tobacco.

HB 268—Revenue and taxation—Local option for sale of tobacco.

HB 269—Revenue and taxation—Local option for sale of tobacco.

HB 270—Revenue and taxation—Local option for sale of tobacco.

Local Firm's Bid On Buses Is Low

RUPERT, Feb. 10.—The Twin Falls Equipment company was low bidder on six school buses to be bought by the Minidoka county class A school district. The board of trustees opened bids at a meeting here Monday night.

The Twin Falls firm bid \$1,450 each on four Chevrolet buses, \$2,102 on one GMC bus and \$2,170 on one Ford bus. Bids were submitted by six Rupert dealers. Lowest of the local bids was made by the Thomas Motor company which bid \$1,475 for sale of a Dodge bus.

The board met in a special session to consider the bids.

Students to Give Musical Program

WEDNESDAY, Feb. 18.—Instrumental music students of the Lincoln school will present a program for the public at 8 p.m. Wednesday at the school auditorium.

Features of the entertainment

- More Eggs
- Less Feed Cost Per Doz. Eggs
- More Profit

Tests made by hundreds of poultrymen show Hy-Lines lay about a case more eggs a month per 100 birds housed than other chickens. In feed tests, Hy-Lines cut costs 5 to 8c per dozen eggs laid. Earn more money with thrifty Hy-Line layers. Order yours now.

Don't Miss the Twin Falls First Annual POULTRY INSTITUTE FRIDAY

February 20th at the Turf Club

Make MORE MONEY with thrifty Hy-Line HYBRID LAYERS

• More Eggs

• Less Feed Cost Per Doz. Eggs

• More Profit

Tests made by hundreds of poultrymen show Hy-Lines lay about a case more eggs a month per 100 birds housed than other chickens. In feed tests, Hy-Lines cut costs 5 to 8c per dozen eggs laid. Earn more money with thrifty Hy-Line layers. Order yours now.

CARTER HATCHERY 735 MAIN AVE. S. PHONE 295-W

Trapped in Revolt-Riddled Ghandohai

FOUR BIG STARS in their most exciting role!

THUNDER IN THE EAST

DEBORAH KERR

CHARLES BOYER

CORINNE CALVERT

TOMORROW Orpheum

C. of C. Seats New Officers At Shoshone

SHOSHONE, Feb. 10.—Herb Love, new president of the Shoshone Chamber of Commerce, presided at a meeting of the chamber Monday and outlined activities for the coming month.

The farmers banquet date was set for March 10 at the Lincoln chamber cafeteria. Committees appointed by Love include: J. L. Cameron, Camden Meyer and Fred Kohl who will assist Love in outlining the program; John Thomas, chairman of the committee on entertainment; and Martin and Jack Keith, who will handle tickets, and Meyer, who will be in charge of the menu.

The chamber wants a record as objection to the government taking over the entire designated area near Carey as a result of the cash donation was voted for the post fund. E. L. Gomez will act as secretary until the first meeting in March when Fred Schwab, new secretary, will take office.

Kohl introduced the county canning kitchen problem and the chamber decided to write a letter requesting the county to discontinue plans for opening of the kitchen.

The letter will point out the unfeasible aspects of the project which were determined by the chamber committee which investigated the project. Cost of putting the canning kitchen in order for operation is excessive, the committee believes, and through investigation with other Magic Valley kitchens, the committee determined that it is doubtful if Lincoln county could maintain the kitchen.

Contract Granted On Road Project

POCAHELLO, Feb. 10.—A \$270,000 contract for the grading an eight-mile stretch on road 20, highway 20 in northeastern Idaho was awarded Tuesday to the Bronman Construction company, Pocatello. C. H. Kelly, district highway engineer, announced.

The contract calls for the grading of the highway from a point on the Rye Grass flats to the Blackfoot bridge across the Snake river.

cent of eggs consumed in the state, he said.

Davis said the egg production in Idaho is down 40 per cent from the levels of 1944, 1945 and 1946. Many farmers abandoned raising chickens and turned their full attention to the production of cash crops, which have been in high demand since the war, he said.

However, whenever they are ready to return to producing eggs, the market will readily welcome them, because there is no substitute for fresh eggs, Davis concluded.

Orpheum NOW! Ends Wed.

THE SILVER WHIP

DALE RORY ROBERTSON-CALHOUN-WAGNER

THIRD ANNUAL POLIO BENEFIT SKATING and TALENT SHOW

T. F. HIGH SCHOOL GYM WED. and THURS., FEB. 18-19 8:00 P.M.

ADULTS 1.00 STUDENTS 50c

All Proceeds Go To March of Dimes

Rhapsody in Rhythm KTFI

Thurs., Feb. 19, 7:30 P.M.

- Sweet Polka Dot
- Lovely Game Back
- Minstrelship Rag
- Doo-Wacky Rag
- I Wish I Was

GEO. C. WOODS

Tractor Repair Center

Phone 239-1 - Twin Falls

TO YOUR TRACTOR

Now Thru. Sat. The IDAHO THEATRE

WILL BRING TWIN FALLS A NEW THEATRICAL EXPERIENCE

Curtain Time SHOWINGS

3 PERFORMANCES DAILY 2:30 7:15 and 9:30 p.m.

Of the BEST in "Art" and Off-Beat Motion Pictures—Both American and Foreign—Presented Under IDEAL conditions with No Interruptions or Distractions "Curtain Time" Showings Will Be On A Discriminating ADULT LEVEL—No Children's Tickets Sold!

We Take Pleasure in Announcing As Our First CURTAIN TIME PRESENTATION

FABULOUS ENCHANTING SPECTACLE with The Stars of "THE RED SHOES"

Tales of Hoffmann

by Jacques Offenbach color by TECHNICOLOR A Loew's Films Release

REGULAR PRICES 40c Mat. 60c Eve.

EXTRA Color Cartoon World News

Tagged

BOISE, Feb. 10.—Sen. Glenn Bardenheier, D. Bonner, one-half of the north Idaho Democrat combination which defeated the incumbent in the senate Tuesday on a county option slot machine bill, refused to sign from senate attaches Tuesday morning.

It was a toy slot machine dangling from a key ring.

DENTAL PLATES

Teeth Refined

Relined - Repaired

TEETH REPLACED WHILE YOU WAIT

"FIT RITE"

Denture Material

SALES LABORATORY

137 1/2 Main W. (Upstairs)

Phone 2888

CALCINATOR

AUTOMATIC DISPOSAL UNIT

Twin Falls Electric

762 Main N. Phone 286-J

Orpheum NOW! Ends Wed.

THE SILVER WHIP

DALE RORY ROBERTSON-CALHOUN-WAGNER

THIRD ANNUAL POLIO BENEFIT SKATING and TALENT SHOW

T. F. HIGH SCHOOL GYM WED. and THURS., FEB. 18-19 8:00 P.M.

ADULTS 1.00 STUDENTS 50c

All Proceeds Go To March of Dimes

Hy-Line HYBRID LAYERS

• More Eggs

• Less Feed Cost Per Doz. Eggs

• More Profit

Tests made by hundreds of poultrymen show Hy-Lines lay about a case more eggs a month per 100 birds housed than other chickens. In feed tests, Hy-Lines cut costs 5 to 8c per dozen eggs laid. Earn more money with thrifty Hy-Line layers. Order yours now.

CARTER HATCHERY 735 MAIN AVE. S. PHONE 295-W

Now Thru. Sat. The IDAHO THEATRE

WILL BRING TWIN FALLS A NEW THEATRICAL EXPERIENCE

Curtain Time SHOWINGS

3 PERFORMANCES DAILY 2:30 7:15 and 9:30 p.m.

Of the BEST in "Art" and Off-Beat Motion Pictures—Both American and Foreign—Presented Under IDEAL conditions with No Interruptions or Distractions "Curtain Time" Showings Will Be On A Discriminating ADULT LEVEL—No Children's Tickets Sold!

We Take Pleasure in Announcing As Our First CURTAIN TIME PRESENTATION

FABULOUS ENCHANTING SPECTACLE with The Stars of "THE RED SHOES"

Tales of Hoffmann

by Jacques Offenbach color by TECHNICOLOR A Loew's Films Release

REGULAR PRICES 40c Mat. 60c Eve.

EXTRA Color Cartoon World News

Orpheum

THURSDAY, FEB. 12

THUNDER IN THE EAST

DEBORAH KERR

CHARLES BOYER

CORINNE CALVERT

TOMORROW Orpheum

Agency Notes Protests Over Housing

WASHINGTON, Feb. 18 (AP)—The housing program is being attacked today by a group of congressmen and their constituents from the U. S. House of Representatives.

Members of the committee on housing and urban development are expected to report to the full committee on the housing program.

The committee on housing and urban development is expected to report to the full committee on the housing program.

Probably

WASHINGTON, Feb. 18 (AP)—The weather bureau expects most of the country to be as cool or cooler than usual in the next 30 days.

The outlook for the period from mid-February to mid-March calls for temperatures to average below normal over the eastern half of the nation.

Under the Roosevelt and Truman regimes, news conferences were mostly devoted to "Q and A."

Under the Roosevelt and Truman regimes, news conferences were mostly devoted to "Q and A."

Farmers in Area Meet in Jerome

SHOSHONE, Feb. 18—The Idaho annual conference for Farmers Union members was held Saturday at the Grange hall in Jerome.

Mixed Reaction Follows First Press Meet of New President

WASHINGTON, Feb. 18 (AP)—President Eisenhower called most of the shots at his news conference Tuesday, picking most of the topics of discussion and allowing reporters only 15 minutes to pose questions at him.

Under the Roosevelt and Truman regimes, news conferences were mostly devoted to "Q and A."

Under the Roosevelt and Truman regimes, news conferences were mostly devoted to "Q and A."

Undreamed of Wonders

ALL TRANSISTOR HEARING AID ONLY \$74.50

Acousticon Strub Co. 1003 Main St., Boise, Idaho

Woman Released

Mrs. Betty L. Miller, 19, Boise, has been released from the county jail on a \$500 bond.

CHOKED with GAS?

THANK HEAVENS! Most attacks are acid indigestion. When it strikes take Bell-ans tablets.

Utah Firm Bids Low on AEC Job

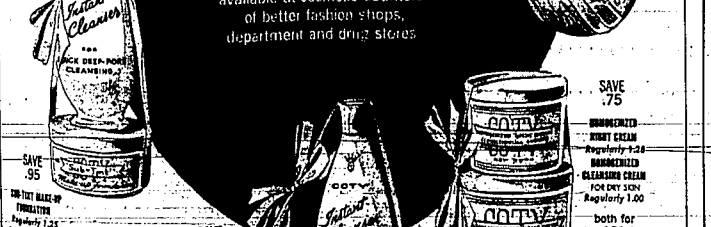
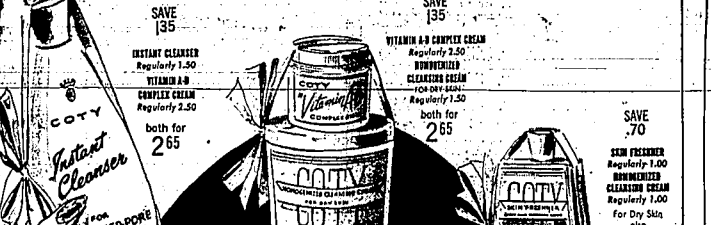
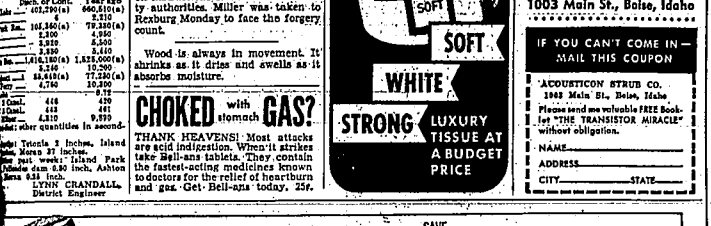
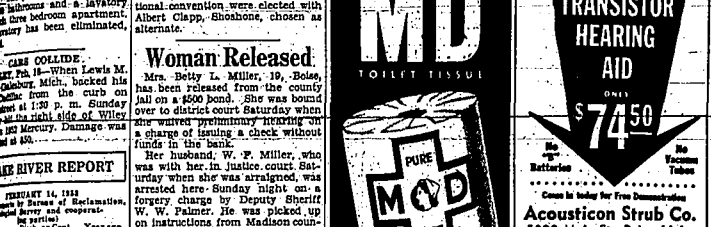
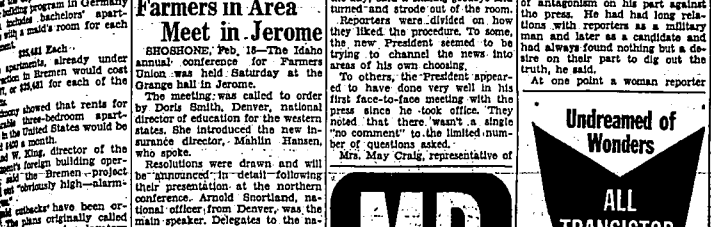
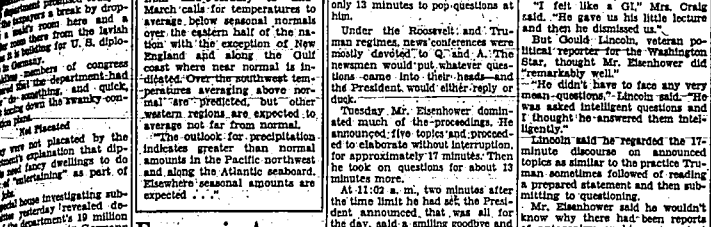
IDAHO FALLS, Feb. 18 (AP)—Utah Construction Company, Salt Lake City, was apparent low bidder Tuesday on a contract to construct the first phase of an aircraft propulsion reactor testing station at the atomic energy commission installation, northwest of here.

Banquet Served

HEYBURN, Feb. 18—A banquet for the second ward Boy Scouts and Explorer group and their parents was held in the LDS church Friday evening.

Open Friday Til 9 p.m.

SOMETHING TO TALK ABOUT FRIDAY and SATURDAY



PUMPS REPAIR, PARTS and SERVICE

Prompt . . . Economical . . . Efficient Repairs on any Make DISTRIBUTORS Fairbanks Morse-Pomona Pumps Rogers Farm Store

SEARS ROEBUCK and CO. SOMETHING TO TALK ABOUT

Cocoa Mats

● 2.39 Value ● Large 12x21-inch size ● Just shake it out to clean

Ironing Boards

● 8.95 Value ● Easy to open, close and store ● Rubber-tip legs protect floors

Tiny Tot's CORDUROYS

Regular 1.49 99c

Sero-Tone Finish

● Regular 3.69 ● Washable ● So easy to do

Long Sleeve POLO SHIRTS

89c and 98c values 77c

Canadian Peat Moss

Reg. 4.25 Large Bags, only 3.66

16-Garment Bags

Special Full Length Zipper! Reg. 2.59 Now Only 1.59

MD TOILET TISSUE

PURE MOP SOFT WHITE STRONG LUXURY TISSUE AT A BUDGET PRICE

WATER RIVER REPORT

Station	Feb. 14, 1953	Year ago
At the Falls	102.20(a)	66.50(b)
At the Falls	102.20(a)	66.50(b)
At the Falls	102.20(a)	66.50(b)

THANK HEAVENS!

Most attacks are acid indigestion. When it strikes take Bell-ans tablets.

COITY "DAILY DOUBLES"

every pair a winner!

COITY "DAILY DOUBLES"

every pair a winner!

COITY "DAILY DOUBLES"

every pair a winner!

COITY "DAILY DOUBLES"

every pair a winner!

COITY "DAILY DOUBLES"

every pair a winner!

COITY "DAILY DOUBLES"

every pair a winner!

Utah Firm Bids Low on AEC Job

IDAHO FALLS, Feb. 18 (AP)—Utah Construction Company, Salt Lake City, was apparent low bidder Tuesday on a contract to construct the first phase of an aircraft propulsion reactor testing station at the atomic energy commission installation, northwest of here.

Banquet Served

HEYBURN, Feb. 18—A banquet for the second ward Boy Scouts and Explorer group and their parents was held in the LDS church Friday evening.

Open Friday Til 9 p.m.

SOMETHING TO TALK ABOUT FRIDAY and SATURDAY

Cocoa Mats

● 2.39 Value ● Large 12x21-inch size ● Just shake it out to clean

Ironing Boards

● 8.95 Value ● Easy to open, close and store ● Rubber-tip legs protect floors

Tiny Tot's CORDUROYS

Regular 1.49 99c

Sero-Tone Finish

● Regular 3.69 ● Washable ● So easy to do

Long Sleeve POLO SHIRTS

89c and 98c values 77c

Canadian Peat Moss

Reg. 4.25 Large Bags, only 3.66

Lag in Roads Hurts Safety, Dealers Hear

SAN FRANCISCO, Feb. 10.—America's highway building program has lagged so far behind automobile production since the end of World War II the safety of motorists has become imperiled greatly.

Dealer Walter B. Cooper, P. O. Box 104, told the 20th annual National Automobile Dealers Association convention today that the new miles of highways built since World War II could not even pay the new taxes produced in the same period.

He added that even though Americans spent more than one billion dollars on road maintenance last year, more is spent for insurance on automobiles than for the streets and highways they use.

Accident Loss Cited

Cooper emphasized his point by saying economic loss from accidents in 1935 totaled \$4 billion dollars—more than was spent on the system of highways, streets and off-street parking facilities.

He said something must be done immediately to remedy the highway construction problem in the country.

"If we wait for public opinion to force action," Cooper said, "then we can expect action that will not be to our liking."

Voices Warning

"If we continue to permit 40,000 people per year to be killed through the use of the product we sell, then we can look for legislation which will not correct the situation but which could well prove disastrous to our industry."

Cooper told the other dealers if we work together an organization we can do a lot toward stimulating official action.

The convention holds its final sessions today.

Decree Filed Here For Volpi's Estate

A decree of distribution in the estate of Fred Volpi, who died in Twin Falls county Sept. 10, 1935, was filed in district court Tuesday by the Twin Falls Bank and Trust company, executor of the estate.

Heir Fred Volpi, a son, receives the entire estate. His father stipulated the son was to receive the estate when he became 25 years old.

Volpi was 23 Feb. 11, according to the decree.

The estate consists of 80 acres of land about 1/2 mile and one-half mile from the city, and an investment account with the First Federal Savings and Loan association, Twin Falls, an electric stove, three shares of capital stock in the Twin Falls Bank and Trust company and \$5,000 in U. S. treasury bonds.

Other survivors listed are five brothers, John Volpi, Stockton, Calif., and Jack, Quito, Pitkin and Pomplio Volpi, all Parma, Italy.

Buhl Area Pupils Registered at ISC

IDAHO STATE COLLEGE, Pocatello, Feb. 10.—Eighteen students from Buhl and five from Castleford are among the 1,000 enrolled at Idaho State college for the second semester.

Buhl students are Jim H. Clayton, Alan E. Chambers, Ross Taylor, Fay A. Bagley, Charles B. Fuller, E. Francis Geer, Floyd E. Gilmore, William A. Herring, James H. Hill, Raymond C. Houk, Milford E. Keeney, Eugene E. Lawton, Paul M. Parsons, John J. Ross, Shirley A. Samuel, Leonard D. Shott, Jack R. Smith and Ormond T. Smith.

Residents from Castleford are Edward M. Anderson, Arlita Blackham, George T. Heselholt, Ted Gulley and Dolores J. Smith.

Gooding Courts Keeping Salt Lake City Man Busy

GOODING, Feb. 10.—W. B. Steadman, Salt Lake City, had a busy time in courts Monday and Tuesday.

On Monday he was fined \$15 and \$3 costs in the Wendell Justice of the Peace court on a charge of speeding in a school zone and on Tuesday he was fined \$300 by Probate Judge James P. Gossett on a charge of writing a check with insufficient funds in the bank.

Steadman pleaded guilty when arraigned in both courts. Judge Gossett also sentenced him to six months in the county jail, sentence to be suspended upon payment of the fine. He also directed that Steadman make good on the checks he had written.

Visits Reported

KLINGE HILL, Feb. 10.—Mr. and Mrs. Loyal Hill and son have returned from visiting her parents in Caldwell.

Mr. and Mrs. Ira Smithwick, Bozeman, Mont., have returned home after visiting Mr. and Mrs. John Parks.

Vote Related on Slot Option Plan

BOISE, Feb. 10.—Here's the roll call vote by which the Idaho state option slot machine licensing law:

Democrats for: Albeck, Albertini, Evans, Hamilton, Middlemist. Total 4.

Republicans for: Barlow, Blackstock, Burnett, Cardiff, Collin, Cook, Cooper, Davis, DeWalt, Eimers, Freeman, Goodwin, Heath, Hoff, Irwin, Luckens, Meadows, Moore, Morgan, Moss, Murdock, Murphy, Naegle, Schwendman, Starr, Steen, Tatcher, Ward, Wherry, White, Wright. Total 31.

Democrats against: Bandell, Burton, Cooley, Gaffney, Hechtner, Rasor. Total 2.

Republicans against: Bahr, Ransom. Total 2.

The word "priest" is a contracted form of the word "prebyter."

CRUSHED GRAVEL
For Your Drive
PHONE COLONIAL 415

ALMOST 1/3 IS PATENTED OIL-CREME-BASE

So simple!

Just one NUTRI-TONIC waving lotion for ALL types of Hair

—including little-girls' hair... and—so lavishly Oil-rich, it waves in little as 10 minutes

All textures of hair respond wonderfully to the mild, sure action of Nutri-Tonic permanent's ONE waving lotion.

Nutri-Tonic's timing eliminates any need for lotions of various strengths. Ability to judge the one most suited for your hair is no longer a problem.

You simply stop the waving by neutralizing when test curls show you have just the amount of curl you want. Nutri-Tonic neutralizer rebuilds hair strength, then locks the waves in... makes them last longer... permits re-waving at customary intervals.

Nutri-Tonic is so Oil-rich it gives the loveliest of all waves. Saves up to 7 hours time.

Oil-rich Nutri-Tonic Permanent MILLIONS GIVEN IN BEAUTY SALONS

SAV-MOR DRUG
TWIN FALLS — BUHL

MUSIC CENTER'S BIG BARGAIN EVENT

A STORE-WIDE CLEARANCE

Including

- APPLIANCES
- RADIOS
- PIANOS
- RECORDS
- Musical Instruments

We don't often have a sale, but when we do, there is always a reason for it, and the values are always terrific! Right now, we find that not only are we over-stocked, but must also have more room immediately for a famous new line. So we are slashing prices to clear our stocks. You'll find sensational bargains in every department, including brand new late model merchandise, close-out items, floor samples, demonstrators. Stop in, shop our store and see for yourself how much you can SAVE!

ALL DRASTICALLY REDUCED!

HERE ARE JUST A FEW EXAMPLES OF THE BARGAINS YOU'LL FIND

We Don't Have Room to List Them All. You'll Find Scores of Other Fine Money-Saving Values

CLOSE-OUT BARGAINS IN BRAND NEW-LATE MODEL G-E APPLIANCES

G-E 6-Ft. REFRIGERATOR	reg. 209.95	167.95
G-E 8-Ft. REFRIGERATOR	reg. 269.95	215.95
G-E 8-Ft. REFRIGERATOR	reg. 249.95	189.95
G-E 8-Ft. REFRIGERATOR	reg. 279.95	223.95
G-E 2-Door REFRIGERATOR	reg. 467.00	374.95
G-E 11-Ft. FREEZER	reg. 429.95	339.95
G-E 8-Ft. FREEZER	reg. 339.95	269.95
G-E WRINGER WASHER, deluxe	reg. 174.00	139.95
G-E AUTOMATIC WASHER	reg. 299.95	239.95
G-E CLOTHES DRYER	reg. 249.95	199.95
G-E FLAT PLATE IRONER	reg. 294.75	250.75
G-E Combination Sink & Dishwasher complete with Disposal	reg. 525.00	325.00
G-E TABLE-MODEL RADIO	reg. 34.95	24.95
G-E TABLE MODEL RADIO	reg. 41.95	29.95

G-E ELECTRIC CLOCKS To Be Closed-Out at 20% Off!

CLOSE-OUT ON ALL G-E ELECTRIC BLANKETS!

BARGAINS in "Magnavox" RADIO-PHONOGRAPHS

2 Only TRADITIONAL CONCERTO	reg. 272.00	179.50
1 Only CONTEMPORARY	reg. 243.00	215.00
2 Only AMERICAN TRADITIONAL	reg. 425.00	325.00
1 Only AMERICAN MODERN	reg. 425.00	355.00
1 Only PROVINCIAL (Savoy)	reg. 316.00	269.50
1 Only PROVINCIAL (Maple)	reg. 316.00	269.50
1 Only REGENCY	reg. 395.00	295.00

BARGAINS in PIANOS

NEW WURLITZER, blonde plastic, returned from rental	reg. 683.00	595.00
NEW WURLITZER, blonde mahogany, slightly damaged	reg. 700.00	625.00
NEW CHICKERING, mahogany, reduced for immediate clearance	reg. \$1,175	995.00
NEW SEVERYEY STUDIO UPRIGHT, returned from rental	reg. 780.00	695.00
USED HOWARD	reg. 260.00	225.00
USED PEERLESS	reg. 175.00	140.00
USED BELL & CO.	reg. 195.00	175.00
USED HUNTINGTON		50.00
USED MARON & HAMLIN		35.00

Sale Starts THURSDAY at 9 a. m.

BARGAINS in RECORDS

ONE-GROUP STANDARD RECORDS 4 for \$1.00

ONE GROUP 45 RPM RECORDS 20% Off

ONE GROUP popular and western artists on standard records 20% Off

Including Dick Jorgans, Les Brown, Roy Acuff, Jimmy Davis, Bob Wills and others.

BARGAINS in BENDIX WASHERS

GUARANTEED GOOD CONDITION

GROUP NO. 1 (5 Only)...	45.00	GROUP NO. 2 (5 Only)...	70.00
-------------------------	-------	-------------------------	-------

BENDIX-WASHER (NON-BOLT DOWN) 135.00

BENDIX DRYER 130.00

BARGAINS in USED APPLIANCES

ALL RE-CONDITIONED AND GUARANTEED

1 only G-E RANGE	reg. 135.00	95.00
4 only HOTPOINT RANGES	reg. 75.00	45.00
1 only HOTPOINT Apartment Range	reg. 75.00	59.50
1 only FRIGIDAIRE DeLuxe Range	reg. 110.00	75.00
1 only MARION DeLuxe RANGE	reg. 125.00	90.00
2 only Kelvinator Ranges, A-1 shape	reg. 90.00	69.95
1 only FRIGIDAIRE Standard Range	reg. 85.00	64.95
1 only Kelvinator REFRIGERATOR	reg. 125.00	84.50
1 only Frigidaire Cold Wall Refrig.	reg. 150.00	99.95
2 only G-E REFRIGERATORS	reg. 125.00	84.50
1 only Coronado REFRIGERATOR	reg. 89.95	69.95
1 only Coldspot REFRIGERATOR	reg. 75.00	49.95
1 only Crosley REFRIGERATOR	reg. 29.95	19.95

AS LITTLE AS \$5.00 DOWN WILL DELIVER

MUSICAL INSTRUMENTS

Video 120-Bass Accordion with case. Reg. 410.00, now—335.00

National Guitar and case (deluxe). Reg. 159.50, now—89.50

Used Accordions—35.00 to 200.00

American Prep Trumpet—reg. 112.50, now—59.50

Slightly Used Flute, was 125.00, now—89.50

New Wood Clarinet, was 134.50—now—99.50

New Metal Clarinet, was 192.50—now—89.50

LOOK for the RED TAGS AND SEE FOR YOURSELF HOW MUCH YOU CAN SAVE!

Red sale tags with new slashed prices have been placed right over the regular price tags. Every RED TAG means BARGAIN — and you can see for yourself just how much you can save on every item.

Easy Terms

ZIMMERMAN'S

EGG DAYS

VALUES FOR

CLOSE OUT WEAR-PRUF SLIPS 3.95 AND 4.50 VALUES	2.00
1 GROUP BLOUSES & SWEATERS VALUES TO 7.95	2.00
10 ONLY WINTER COATS Values to 75.00	25.00

OUR ENTIRE STOCK OF DRESSES REDUCED TO REGARDLESS OF FORMER PRICE 5.00 and 10.00

NOTICE: New Store Hours — Fridays 12 Noon to 9 P.M. — Other Days 9:30 A.M. to 5:30 P.M.

Zimmerman's

MUSIC CENTER

OPPOSITE the POST OFFICE

Union Blasts Farm Region Labor Import

WASHINGTON, Feb. 15 (AP)—An AFL farm union official said Tuesday that unless large-scale farmers stop depending on imported labor, native Americans will be driven out of agricultural employment within a few years.

H. L. Mitchell, president of the AFL-National Agricultural Workers union, made the statement at a meeting of labor department's committee on farm labor. The committee, an advisory group, is composed of 18 representatives of the AFL and CIO.

Mitchell criticized the labor department for failure to prevent illegal deductions from Mexican national wages for tying carrots in the Salinas valley of California.

He said the California labor department had found the deduction made from domestic workers' wages to be in violation of the state labor code, but the district attorney in Salinas refused to file criminal prosecution charges against the employers.

Petition Is Filed In Estate Matter

A petition for letters of administration in the estate of William D. Drew, who died in Twin Falls county Jan. 29, has been filed in probate court by his widow, Mrs. Nova Drew.

Listing the real and personal property as community property, Mrs. Drew states it consists of a home valued at \$7,000, personal property of \$1,200 and the whole estate does not exceed \$8,200.

Hearing in the case has been set for 10 a.m. March 2. Benoit and Benoit represent the petitioner.

Demo Solons for Rockies Organize

WASHINGTON, Feb. 15 (AP)—Rocky mountain states Democrats in the house elected Representative Fernandez, D. N. M., as member of the house Democratic steering committee Tuesday.

Representative Apinal, D. Colo., was named as whip for the group; Representative Pfost, D. Ida., secretary; and Representative Devinney, D. N. M., a member of the Democratic congressional committee.

States included in the Rocky mountain area are Montana, Colorado, Wyoming, Utah, Idaho, Nevada, Arizona and New Mexico.

Hoops Bids Low On Road Project

BOISE, Feb. 15 (AP)—Hoops Construction company, Twin Falls, was apparent low bidder Tuesday for construction of a roadway, road, bituminous surface and two concrete bridges on 10,177 miles of the Bull-Castleroad road in Twin Falls county.

The state highway department said Hoops bid \$400,075.

Dean of Boys Honored by PTA



Kenneth E. Kati, Twin Falls high school dean of boys, receives a life membership card in the Idaho Congress of Parents and Teachers from Mrs. Donald Bailey, Twin Falls Junior-Senior PTA president. (Staff photo-engraving)

Honorary Life Membership in PTA Awarded to Dean of Boys

Kenneth E. Kati, high school dean of boys, was awarded a PTA honorary life membership by Mrs. Donald Bailey, president, at the annual Founders' day meeting of the Junior-Senior PTA Monday.

Ken McDonald, PTA president, and Mary Latham, PTA president, spoke on aims and accomplishments of the organizations.

A violin duet was played by Mary Ann Merrill and Kaye Angerbauser, accompanied by Mrs. Jay Merrill.

The national PTA president's Founders' day message was given by Mickey Hulbert, junior-high school speech student.

Mary Dee Arrington presented a humorous reading urging members of PTA to subscribe to the National Parent-Teachers magazine.

A film, "Ideas on the March," concluded the program.

Refreshments were served under the direction of Mrs. William King; Mrs. Floyd Maddocks, Mrs. Art Ferris, Mrs. Vera Munson, Mrs. Helen Bohler, Mrs. L. W. Roth, Mrs. E. W. Schumacher and Mrs. Orrin Fuller.

The next meeting will be held at the high school March 16. Officers will be elected.

* Indies are often called the Antilles.

Rhee Claims U. S. Policies Create Spiral

SEOUL, Korea, Feb. 15 (AP)—President Syngman Rhee said today the United States is responsible for inflation in South Korea and must agree to a "new as you go" system for buying Korean currency.

Rhee said the Republic of Korea has printed "quantities of useless paper money" to meet U. S. army demands.

He said the U. S. has paid \$3 million dollars for war currency and still owes \$7 million dollars.

Settlement Sought

"The debt figure is based on South Korea's demand that we be paid for at the official rate of 4000 to the dollar. The U. S. is pressing for a settlement at 18,000 to the dollar."

"This amounts to the black market rate," Rhee said, "what country uses the black market rate for its official transactions?"

Stopped Dec. 15

"We stopped advancing war Dec. 15. That means no more loans to the U. S. We said, 'Say what you own, then if you need more war you can buy it with dollars.'"

The government called in all war this week and began issuing a new currency, the whan, pegged at 60 to the dollar. Officials hoped the new issue would halt inflation.

The deserts around the Red sea have almost no rainfall, but the sea side moisture to the air to provide a hot, moist heat.

\$267,500 on \$1.20 Wager Is Won by Venezuela Widow

CARACAS, Venezuela, Feb. 15 (AP)—A 35-year-old widow with eight children won \$267,500 on a \$1.20 bet by being the only person to pick the winners of six horse races Sunday at Caracas Hippodrome track.

Concepcion Blanco de Herrera, a laundress of San Juan de Los Morros, capital of the state of Guariquo, placed the bet Saturday when she had only another \$1.20 left to purchase food. She said it was the second time she had bet on the \$15 weekly washing clothes.

Senora de Herrera's children range from 23 to 7 years of age. She said she would buy some houses, set up her boys in business, and put the rest of the money in the bank.

Senora de Herrera, who cannot read nor write, won her fortune by taking part in Venezuela's popular pastime of "five and six" betting on horses. A bettor can pick the horses in the final six races of the day with a minimum bet of \$1.20 which allows naming one horse in each race.

Promoted

BUHLEY, Feb. 15—L. R. Earl, former resident of rural Buhley, has been promoted to road supervisor of engineers with the Northern Pacific railroad. He is stationed at Helena, Mont.

Earl is a graduate of SICE and was a civic leader in his high school. He has been with the railroad since 1941 and is the son of U. L. Earl, Buhley.

Chester Arthur, Mrs. Field, W., had a birthday month then that of any other President.

NOTE: Due to the most favorable response from customers by having our early-wait of the day, we will continue this policy:

FRIDAY STORE HOURS
12:00 NOON 'TIL 9:00



New Spring Arrivals

"SHORTIE COATS"



Jointly or separately... We'll find one place you go... The things you do... Fashion... clouds spring shade.

19.75 and 2

We Will Accept "Egg Money"

Outstanding Purchase of

NEW SPRING DRESSES

Come, pick an armload of these spring-fresh, gay-polit-ed new dresses. Colorful, lit-tle prints that will fairly sing around the house and on the way to market. Dresses to wear, proudly and often. Our spring crop is in full bloom—see them today.

8.95 and 9.95

save exactly 1/3

Identical Luxury Features Found in TOP QUALITY \$59.50 MATTRESSES!

Sealy ANNIVERSARY mattress

\$39.95

DISCONTINUED 1952 PATTERN!

During Sealy's Once-A-Year Anniversary Sale!

WEIGH ONE AGAINST THE OTHER!

Some Coil-Count as Luxurious \$59.50 Mattresses!
Some Quality Construction!
Some Pre-Built Borders!
Some "Body-Balanced" Innerspring Unit!
Some Tailored Handles for Easy Turning!
Some Deluxe Decorator-Designed Long-Wearing Covers!
Some Quality Matching Box-Spring for Just \$39.95 in Both Twin and Full Size!

Falk's... Your Fashion Store

Falk's EGG DAY BARGAINS

FOR FRIDAY and SATURDAY ONLY

Ladies' **BLOUSES**

Large assortment of Tailored and Dressy Styles. Lots of colors, all sizes from 32 to 40. Nylona - Rayons - Crepes - Sheers... are included.

Regular \$5.98 and \$6.98 **2.49**
Regular \$7.98, now only **2.99**
Regular \$8.98, now only **3.49**

"Just Hatched" **COSTUME JEWELRY**

One Lot—

NECKLACES - BRACELETS - EARRINGS - PINS
A Wide Variety of Styles and Selections!

Here is an opportunity for you to select your own spring jewelry... or that little added gift, at a budget price. Regular values to \$2.00—**59¢**

FRIDAY and SATURDAY, CHOICE

HEY! MOM! Look at These "Cackling" GOOD BARGAINS!

GIRLS' DRESSES

Every conceivable style, size and color. Lovely fabrics in Plaids, Plaids, stripes, Checks and Prints. Many with gay trimming. Nationally-known brands that you know... Fabrics that wear and wash beautifully. Sizes 3 to 6x... 7 to 14 and Sub-teen sizes 8 to 14.

1/2 Price

ALL NOW PRICED TO GO AT JUST

Falk's... Your Fashion Store

BRING IT HERE!

Your EGG MONEY Means MORE at

Hoosier Furniture Co.

207 SHOSHONE NORTH PHONE 351

"ROTTEN EGG" SPECIAL

for Poultry Dept.

FRIDAY and SATURDAY

ONE RACK OF **ODDS & ENDS**

COATS, BLOUSES, SKIRTS, AND MANY OTHER ITEMS, TOO NUMEROUS TO MENTION. ALL SPECIALLY PRICED FOR "POULTRY DAYS" IN TWIN FALLS.

1/2 PRICE

All Less Than

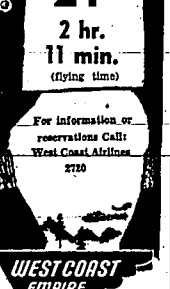
THE MAYFAIR

Plane Blast Viewed by Plane's Crew

Banquet Served
KING HILL, Feb. 16—Members of the King Hill school faculty entertained the school board and their wives at a banquet recently. J. L. Clark was master of ceremonies. The teachers were assisted by Mrs. John Kelley and Mrs. Gail Jones.

Serving Paul Bunyan's Empire

Fly to Lewiston Clarkston \$24.30
2 hr. 11 min. (flying time)
For information or reservations Call: West Coast Airlines 2720



WEST COAST AIRLINES

City Plans of FA Announced

Feb. 18—Plans for the rest of the year were discussed at a business meeting of the Magic Valley FFA district at the high school auditorium. The district is composed of 12 chapters. Also attending were Keith Clark, adviser, and leaders from the six chapters. A speech contest will be held in Burley next and egg contest on Feb. 28. Contests on May 28. Mechanics contest will be held on April 23.

POULTRY DAYS BARGAINS

Firestone LEADS AGAIN!

Now **895** SIZE 6.00-16 AND YOUR OLD TIRES NO EXCESS TAX TO PAY

BARGAINS IN OTHER SIZES TOO!

6.75-16	9.99
6.50-16	10.29
6.75-15	10.20
7.00-15	11.29
7.00-16	12.40

Firestone GUARANTEED NEW-TREADS

SUPER SPECIAL!

Big 18x15 1/2-Inch Rubber **Floor Mats** For Car and Home An 89c Value **39c**

Choice of Four Colors—Red, Blue, Green, Black

AT YOUR FIRESTONE STORES South Main Phone 3750

WHAT'S NEW IN USED CARS

It is still our opinion the used car buyers of Magic Valley have been paying too much money for used cars. Starting immediately, we are lowering our prices to our used car buyers. To put it bluntly, We are sick of this inflation. . . . HOW ABOUT YOU?

HERE ARE EXAMPLES OF OUR PRICE REDUCTIONS

STOCK NO.	DESCRIPTION	Calling Price	Former Price	NOW
F-237	1950 FORD '6' Tudor Custom Very Clean - Good Tires - Immaculate Inside.	\$1464	\$1195	\$ 895
F-184-A	1946 CHEVROLET Styline 4-Door Fully Equipped - Very Clean - Reconditioned. A REAL REDUCTION!	\$ 863	\$ 795	\$ 495
BT-1069-C	1946 PONTIAC Sedanette Six Radio - Heater - Good Tires - Good Paint - Good Car.	\$ 908	\$ 750	\$ 445
F-250	1948 FORD Super Deluxe Fordor Radio - Heater - Columbia Overdrive - A Real Nice Ford.	\$1008	\$ 895	\$ 645
R-3	1946 PLYMOUTH 4-Door Radio - Heater - New Paint - Plymouth Buyers . . . See This One!	\$ 841	\$ 795	\$ 495
F-2-A	1949 FORD Custom Tudor '8' A Real Good Car For Anyone.	\$1251	\$1195	\$ 995
R-7	1946 NASH 4-Door Radio - Heater - A Good Car and Clean Throughout.	\$ 763	\$ 695	\$ 445
F-8	1949 FORD V-8 Custom Tudor Has Overdrive - Heater - Good Tires - Really Clean.	\$1311	\$1195	\$ 995
F-13	1949 DODGE Wayfarer 2-Door Sun Visor - Heater - This Car Is In Tip-Top Shape.	\$1450	\$1250	\$ 945
F-14	1951 PLYMOUTH 4-Door Cranbrook If You Want A Really Good Car At A Knockdown Price—HERE IT IS!	\$1722	\$1695	\$1395
R-18	1950 OLDSMOBILE Club Sedan Hydraulic - Radio - Heater - A Real Deal at Union Motors!	\$2021	\$1695	\$1295
R-21	1947 LINCOLN 4-Door Radio - Heater - A Big Car With Less Than Small-Car Price.	\$1112	\$ 895	\$ 445
R-12	1946 PLYMOUTH Deluxe 4-Door Fine Motor - Good Tires - Clean - An Ideal Family Car.	\$ 841	\$ 695	\$ 495
D-254-B	1947 FORD Station Wagon Radio - Heater - Leather Upholstery - Excellent Over All.	\$1012	\$ 795	\$ 545
D-37-A	1950 CHEVROLET 2-Door Heater - Good Tires - Good Paint.	\$1555	\$1295	\$1095

ATTENTION! TRUCK BUYERS

Our truck department is of the same opinion as we are about inflation, and is reducing prices accordingly.

1950 DODGE 3/4-Ton Pickup
T-1001-4 - Speed Transmission - Deluxe Cab - 5 Good Tires - worth \$1199 **\$ 934.78**

1948 CHEVROLET 1/2-Ton Pickup
T-1024A—This Is A \$200 Unit of Anybody's Money. To go now at **\$ 586.77**

1949 FORD F-1 Express
DT-1003—This Ford Is Worth At Least \$1000. We'll Take. **\$ 834.05**

1950 FORD F-6
F-2002—This 2-Tonner Will Go Out And Work With \$3000 New Ones! Only **\$1039.18**

1949 STUDEBAKER 3/4-Ton
T-1065A—The Stock Rack And Grain Bed on This Studie Is Worth \$300 Itself **\$ 806.75**

1947 FORD V-8, 2-Ton, 195" W. B.
T-1010—We Have Been Asking \$880 For This Unit. But Now It's Only **\$ 630.00**

1949 Studebaker 1/2-Ton Pickup
T-1018—You'll Get \$1100 Worth of Pickup On This One For Only **\$ 895.23**

1952 CHEVROLET 1/2-Ton, 4-Speed
T-1017—Why Buy A New One For Several Hundred Dollars More Than **\$1480.00**

1950 FORD F-2 "6," 4-Speed
T-1021—This Ford Should Go For \$1295—It's Yours Now For **\$1096.25**

1948 FORD 1/2-Ton "6," 3-Speed
T-1022—Again, You Can Pick Up \$200 On This Top Unit. **\$ 798.56**

1948 INTERNATIONAL 3/4-Ton
M3-1012A—This Truck Is Solid And Should Bring \$995. We Want **\$ 755.00**

DO YOU NEED CASH?

To Meet March 15-Deadline

If you own a post-war car, want a better one and need some money, your car will make the down payment and we can give you up to \$250 in cash on a later-model unit!

WE HAVE 6 1952 DEMONSTRATORS

SAVE UP TO **\$600** On one of these units

MAKE US AN OFFER

We're just liable to take it

1949 MERCURY Club Coupe
Radio - Heater - Overdrive - Satiny Black. F-29.

1949 LINCOLN Sport Coupe
Automatic Transmission - Push-Button Windows - Very Low Mileage. Stock No. F-35.

1950 OLDS "88" 2-Door
New Red-Paint-Job - Radio - Heater - A Really Snappy Old! Stock No. F-30.

1946 DODGE 2-Door
Heater - Really Clean. Stock No. F-21A.

1947 DeSOTO Convertible
New Red Finish - Good Top - Radio - Heater. Stock No. R-11.

ALL Our USED CARS Are LIFETIME GUARANTEED. All Are WINTERIZED.



UNION MOTORS

MAIN AT FIFTH WEST

Open Evenings and Sunday Telephone 2815

Long Secret White House Shelter Seen

WASHINGTON, Feb. 10 (AP)—House members revealed today the long secret White House bomb shelter is buried three stories deep under steel and concrete and big enough to house "maybe 100 people."

"They said it comprises several good sized rooms, bare of furniture but equipped with first aid supplies, utilities and a radiation-proof air conditioner."

Some of the lawmakers inspecting the shelter after a luncheon with President Eisenhower yesterday thought it odd that the shelter is located not under the west wing of the White House, where the President works, but at the junction of the mansion itself and the east wing, where most of the 200-odd White House employees work.

Even so, they figured it would take the President only a few seconds to race to the shelter in event of an unexpected air attack.

One inside the shelter's bank vault doors, they said, there won't be much question of the President's security.

Rep. Albert Thomas, D., Tex., told a reporter it was built with stone blocks in mind and was plenty strong to "do the job."

Brake Valve Gets Blame in Accident

WASHINGTON, Feb. 10 (AP)—The Interstate Commerce commission said today an incorrectly placed brake valve caused the spectacular wreck of a runaway express train in Washington's Union station.

The 200 locomotive and 11 rail cars carrying brake valves placed in a similar position, he checked immediately to make sure they carried the same number as the train's.

The wreck on Jan. 15 came when the Federal express train, Boston operated jointly by the New Haven and Pennsylvania railroads, failed to stop as it came into the station.

It ran off the dead-end rails, and crashed into the concourse of the huge station, only three blocks from the nation's capital.

Crash Blamed on Tornado



Cost guardsmen go about the grim task of recovering bodies from the Gulf of Mexico near Mobile Point, Ala., where a National airlines DC-6 crashed, killing all 46 persons aboard. A preliminary investigation blamed the crash on "unexpected tornado conditions." (NEA telephone)

Accident Proves Truman Is "Mr."

KANSAS CITY, Mo., Feb. 10 (AP)—Time was when Harry S. Truman's presence in an automobile with a motorcycle escort, a secret serviceman and a general under-stander that anything in the road would get out of the way.

But the former President found out the hard way yesterday that being a plain citizen can make a big difference.

A state patrol car carrying Mr. and Mrs. Truman collided with a truck at a Kansas City intersection. No one was injured and both vehicles received only minor damage.

Sgt. Arthur H. Bell of the Missouri highway patrol, driving the Truman's home, and the truck driver, William May, 29, were charged with careless and reckless driving and each posted \$25 bond.

When large game animals inhabit a country, they make trails often followed by man. Many roads follow what once were game trails.

Adequate

NEW YORK, Feb. 10 (AP)—A description of the citizens of the American melting pot has been boiled down to a single word—"Average."

Walter J. Oliver, chief judge of the U. S. customs court, coined the word Tuesday as a label for all Americans and as a reminder that "we are all of one family."

He said it is a contraction of the words "Catholic," "Protestant" and "Jew."

Oliver spoke at a brotherhood week meeting.

VISITING SISTER

HALLEY, Feb. 10 (AP)—Mrs. Ray McCordick left Monday with Mr. and Mrs. John Gummerson, expert, for Morongo Valley, Calif., to visit Mrs. McCordick's and Mrs. Gummerson's sister, Mrs. Rosella Hess, who is ill.

Alaska did not become an organized territory of the United States until 1912.

Gain Noted in Belief Postwar Boom Near Its Peak in U. S.

NEW YORK, Feb. 10 (AP)—The number of persons believing the postwar boom is at or near its peak grows steadily.

But an equally vocal group is just as confident that the decline—when and if it comes—will be slow and shallow.

The debate comes to the fore again with a warning by Dwight W. Michener, director of research of Chase National Bank, New York.

Addressing a personnel conference in Chicago sponsored by the American Management Association, Michener lines up arguments for his belief that the major force of the postwar boom "may be largely behind us."

Some building and plant expansion have been "abnormally" large in recent years, suggesting the economy are some built-in props.

Most observers expect the defense program to stay at a high level, al-

though conceding its upward push to the economy is about over. With defense spending high for several years, industrial production won't fall off too much, they argue.

"The farm price picture is the darkest at the moment. Commodity prices, taken as a whole, reached their peaks about two years ago. Since they have sagged, but still are ending a little lower."

Farmers are hurt now, with their income dropping and troublesome supplies of many farm products threatening to keep prices down.

But however inadequate the par-

ty supports may look to farmers now, they still will keep prices from going into a tailspin—according to those who believe the economy is in no present danger of a sharp break.

Classes Resumed
FAIRFIELD, Feb. 10.—Kindergarten classes were resumed Monday after being closed three weeks because of sickness in the community. Classes for pre-school children, which began on Jan. 4, are held at the home of Mr. and Mrs. Lonzo Baldwin. Mrs. Baldwin is the teacher.

Dance Held
KING VALLEY, Feb. 10.—A dance was held at the school. Hostesses were Mrs. Earl Ellis, Mrs. Robert Green, Mrs. Gilbert Foster, Mrs. Mr. and Mrs. Alvin Green. Daughters called for the dances.

BUDDY'S POULTRY SPECIALS

HOT CROSS BUNS	PARKER HOUSE ROLLS	TEA ROLLS
One dozen	One dozen	One dozen
44c	29c	27c

BUDDY'S PASTRY SHOP

MOVING & STORAGE

ARE YOU MOVING?

Wait

ACROSS TOWN... or ACROSS the NATION

We Can Move You!

We are exclusive Magic Valley Agents for Allied Van Lines, Inc.

Which enables us to move you anywhere in the United States, quickly, inexpensively

SO IF YOU WANT TO MOVE OR STORE... PHONE **2468**... MAKE A DATE WITH

Warberg Bros.

MOVING—STORAGE

"I Like"

VODKA Martini

It's EXTRA dry!

So smooth it leaves you breathless

Smirno

the greatest name in VODKA

80 proof. Made from 100% grain. See. Pierre Sainhoff, Dist. Inc., New York.

Canadian Views On Korea Given

OTTAWA, Feb. 10 (AP)—Canada will oppose any extension of the war in Korea unless the action would end the war.

External Affairs Minister Lester Pearson gave this view of the Canadian position to the house of commons last night as he concluded a four-day debate on foreign affairs.

He said the danger and difficulty of imposing a blockade on the red China coast far outweighed the military advantages to be gained. He indicated that he does not believe such a blockade would end the war.

Furthermore, he said, any China blockade should be made through the United Nations and not by one country alone.

Bannock License Staff Is Reduced

POCAHONTO, Feb. 10 (AP)—In an economy move Tuesday, the BANNER county driver's license bureau was moved into the courthouse and its staff was ordered cut from four persons to two.

In making the move, the county commissioner's office said it would save \$500 a year in rent alone.

SMART CHICKS KNOW THE PLACE TO GO

It's RUNNING'S

— COMPLETE GIFT SHOP —

Featuring a varied selection of fine gifts—Ceramics—Cups and Saucers—China—Lacy Susans—Leather Goods—Costume Jewelry.

— FINE STATIONERS —

Personalized Stationery—Greeting Cards for all occasions—Pen and Pencil Sets—Office Supplies

— PARTY SHOP —

Where you'll find a complete selection of supplies for every party—Tables—Favors—Nuts—Cups—Matching—Pillows—Covers, Napkins and Cups—Games and Game Books—Prizes—Coasters—and a variety of fun favors.

RUNNING'S

Get the jump on the Easter Bunny

SEARS ROEBUCK AND CO.

Pre-Easter LAV-AWAY

springtime fashions for the grammar grade crowd

coat and matching bag

One of the nicest signs of Spring we've seen... the brand new coats designed especially for fashion-conscious little misses. We've illustrated one of our favorites... a graceful, swingy coat in novelty wool tweed with saucy pockets, turnback cuffs and a chic little matching handbag. Gold, pink, blue or natural. 7 to 14.

\$14.95 plus Fed. tax on handbag

Boys' Searalon DREs Trousers
4-10... **3.75**
Rayon, acetate and 21% nylon gabardine Permanent spot, crease resistant finish
Sizes 25-30... **4.75**

Boyville Jr. 2 Pkts Casual Suits
12.95 Value
Rayon... 2 pair of shirts... 1 matched gabardine... 2 the fancy front, size

Fitted Style Wool Covert Coats
12.50
Delicate piped lace trimmed detachable wind collar, cuffs. Rolled unpressed seams. Red, navy. Sizes 3-6x.

dainty cotton blouse
\$1.98
Adorably feminine little blouses in starchy, white or pretty pastels, with those touches of ruffles and embroidery every girl loves. They're Sanforitized* too. 7 to 14.

regulation blue jeans
\$1.98
Sanforitized* blue jeans—every youngster's favorite for work and playtime—with regulation double orange stitching, bar tacking and copper rivets. 7 to 14. max. shrinkage 1%.

EGG DAYS FEATURES
Friday and Saturday IN OUR FEED DEPT.

"Cream of the Valley" FEED!

- CHICK STARTER
- DEVELOPING MASHES
- LAYING MASHES
- SCRATCHES

DAIRY FEEDS (ALL KINDS)

Twin Falls Feed & Ice Co.
135 Fifth Ave. South Phone 191

"Satisfaction guaranteed or your money back" **SEARS** FREE PARKING

Markets and Finance

Stocks

MARKETS AT A GLANCE

NEW YORK—The Dow Jones industrial average closed at 164.44, up 1.14 points from 163.30. The S&P 500 index closed at 48.12, up 0.12 points from 48.00. The volume of trading was 1.2 billion shares.

CHICAGO—The grain futures market was active, with wheat leading the way. The price of No. 2 soft winter wheat rose to 1.12 1/2 per bushel, up from 1.11 1/2. Corn advanced to 48 1/2 cents per bushel, up from 48 cents. Soybeans were steady at 1.00 per bushel.

PORTLAND—The lumber market was quiet, with prices for various grades of lumber ranging from 100 to 120 cents per board foot.

LOS ANGELES—The oil market was active, with prices for various grades of oil ranging from 10 to 15 cents per gallon.

Livestock

CHICAGO, Feb. 18 (UP)—Cattle 1800 head; market steady; top steer 11.00; top cow 10.00; top bull 9.00. Hogs 1200 head; market steady; top pig 10.00. Sheep 1000 head; market steady; top ewe 10.00.

PORTLAND, Feb. 18 (UP)—Cattle 600 head; market steady; top steer 11.00; top cow 10.00. Hogs 1200 head; market steady; top pig 10.00. Sheep 1000 head; market steady; top ewe 10.00.

LOS ANGELES (FARM)—Cattle 1000 head; market steady; top steer 11.00; top cow 10.00. Hogs 1200 head; market steady; top pig 10.00. Sheep 1000 head; market steady; top ewe 10.00.

Grain

CHICAGO, Feb. 18 (UP)—Wheat 1800 bushels; market steady; No. 2 soft winter wheat 1.12 1/2; No. 2 hard winter wheat 1.10; No. 2 white wheat 1.08. Corn 48 1/2; soybeans 1.00; oats 45.

PORTLAND, Feb. 18 (UP)—Wheat 1800 bushels; market steady; No. 2 soft winter wheat 1.12 1/2; No. 2 hard winter wheat 1.10; No. 2 white wheat 1.08. Corn 48 1/2; soybeans 1.00; oats 45.

LOS ANGELES (FARM)—Wheat 1800 bushels; market steady; No. 2 soft winter wheat 1.12 1/2; No. 2 hard winter wheat 1.10; No. 2 white wheat 1.08. Corn 48 1/2; soybeans 1.00; oats 45.

Senate Panel Calls Benson Into Hearing

(From Page One)

Be supposed now are daily products, at a level of 75 to 90 per cent.

Ends March 31.

The present program, covering a year ending March 31, is designed to support producer prices of milk and butterfat at 90 per cent of parity.

Continuation of the 90 per cent support was recommended by all but two of 14 members of an industrial advisory committee called in by Benson Tuesday to discuss the matter.

Declaring prices and heavier than normal production for this season have required the department to buy butter valued at \$42,000,000 and the department \$7,124,000 since last Nov. 20.

The committee also has bought \$17,629,000 worth of dried milk since last April.

Oppose High Price

Benson has indicated he opposes permanent high-level price supports now in effect for major crops. He could reduce the dairy supports, but he is not likely to do so as long as the law requires prices of grains, a major item in milk production, to be supported at high levels.

The advisory committee expressed unanimous agreement that efforts to reduce the dairy supports should be directed over the long pull to return to a free economy and the elimination of artificial supports.

Allen practices the farm statement Eisenhower made to newsmen Tuesday.

Senator Murray, D., Mont., said he was sure farmers would be disappointed in the President's news conference remarks.

Officials of Seed Firm Hold 2-Day Meeting at Filer

FILER, Feb. 18.—Officials of the Associated Seed Growers from all parts of the United States and of Canada are meeting in Filer to discuss weed problems, improved farming methods, insect control, tillage and harvesting and threshing methods. The two-day session will close at 10 a. m. Tuesday.

Vance Smith, state soil extension specialist, was the principal speaker Tuesday. Donald M. Clark, vice president and general manager, New Haven, Conn., and Dr. Floyd Winter, vice president in charge of the breeding department, also New Haven, are attending the meeting and spoke at the Tuesday session.

A banquet for the officials was served Tuesday noon. Keith Hamilton, Hamilton, Mont., northwestern production manager, also is on the program.

F. M. Hudson, manager of the Filer branch of the seed grower, arranged the meeting. He was assisted by Corneil Visser, manager of production research at Filer; Bob Klotzschauer, his assistant; W. C. Hemingway, manager of the Western branch of the seed grower; James Luther, Hemingway's assistant, and Feldman Ray Neal, Vance Smith, Leath Plummer, Worth Plummer, Charles Williams and Harold Blakey.

Did You Know? SEARS, ROEBUCK and CO.

Have one of the Most Complete

RADIO

REPAIR SHOPS
IN MAGIC VALLEY

Bring your radio repairs to Sears for courteous, fast, expert service.

All service and parts used are fully guaranteed

Phone 2860

SEARS 403 West Main

Officials of Seed Firm Hold 2-Day Meeting at Filer

FILER, Feb. 18.—Officials of the Associated Seed Growers from all parts of the United States and of Canada are meeting in Filer to discuss weed problems, improved farming methods, insect control, tillage and harvesting and threshing methods. The two-day session will close at 10 a. m. Tuesday.

Vance Smith, state soil extension specialist, was the principal speaker Tuesday. Donald M. Clark, vice president and general manager, New Haven, Conn., and Dr. Floyd Winter, vice president in charge of the breeding department, also New Haven, are attending the meeting and spoke at the Tuesday session.

A banquet for the officials was served Tuesday noon. Keith Hamilton, Hamilton, Mont., northwestern production manager, also is on the program.

F. M. Hudson, manager of the Filer branch of the seed grower, arranged the meeting. He was assisted by Corneil Visser, manager of production research at Filer; Bob Klotzschauer, his assistant; W. C. Hemingway, manager of the Western branch of the seed grower; James Luther, Hemingway's assistant, and Feldman Ray Neal, Vance Smith, Leath Plummer, Worth Plummer, Charles Williams and Harold Blakey.

Parking Fines

A total of \$20 in bonds for overtime parking was collected by city police Tuesday.

Posting \$1 each were G. M. Stevenson, L. L. Cunningham, Gene Cagle, Hal Hankins, Wesley Stravik, C. A. Holm, Glen E. Jenkins, Wayne Bates, LeRoy Algra, K. Anderson, Ivan E. Barr, Don Orndorff, F. G. Pater, Jim Winterholer, Gene State Paper company, A. L. Wierching, Paul Velley and David Hilly (three).

NEWBERRY'S EGG DAYS

THAT SHOUT COME A-RUNNIN'

Multifilament Bemberg

Slips..99¢

Lace trim bottoms and bodices—Blas cut—adjustable shoulder straps. Colors of white and pink. Sizes 32 to 40.

Jerome's Quota

JEROME, Feb. 18.—Four Jerome county men will be called for induction into the armed forces in March, Mrs. Adrain Van Hook, clerk of the draft board, said Wednesday.

The men will report to Boise March 15. Six men will be called for pre-induction physical examinations and will report to Boise on March 17.

Malta Twins Are Paid Final Honor

MALTA, Feb. 18.—Honorary services for Francis and Staffany Gunnell, infant son and daughter of Mr. and Mrs. Francis Paul Gunnell, Malta, were conducted Monday in the Malta cemetery by J. Henry Thompson, LDS bishop.

The twin was born Feb. 12, at Salt Lake City and died Feb. 14, March. Her parents, survivors in Malta, were conducted Monday by Mrs. Hannah Nye, Malta.

Prayer at the McCulloch Burial funeral home was offered by William J. Gunnell, Bishop Thompson.

The Grayeide prayer was given by Afton Nye, counselor in the LDS stake presidency. A male quartet sang.

18x36" Terry TOWELS

One color, Blue only. Regular 39¢ quality. CLOSE-OUT PRICE—

4 for \$1

Butter and Eggs

SAN FRANCISCO, Feb. 18 (UP)—Eggs 14 1/2; market steady; No. 1 14 1/2; No. 2 14. Butter 44 1/2; market steady; No. 1 44 1/2; No. 2 44.

CHICAGO, Feb. 18 (UP)—Eggs 14 1/2; market steady; No. 1 14 1/2; No. 2 14. Butter 44 1/2; market steady; No. 1 44 1/2; No. 2 44.

Guaranteed Income

NO SELLING

All locations obtained for you by company representative, you operate the route only. No experience needed, can be operated in spare time as little as 4 hours per week.

You must have car, references and \$500.00 cash which is protected by iron-clad money-back guarantee.

Spare time should net up to \$1000 per week, full time more. Liberal financial assistance given on expansion program.

—Reply giving phone to Box 16-B, Times-News—

Newberry's BIG DOLLAR

Blouse Sale

Potatoes-Onions

IDAHO FALLS, Feb. 18 (UP)—Potato 1.10; market steady; No. 1 1.10; No. 2 1.05. Onions 1.00; market steady; No. 1 1.00; No. 2 0.95.

CHICAGO, Feb. 18 (UP)—Potato 1.10; market steady; No. 1 1.10; No. 2 1.05. Onions 1.00; market steady; No. 1 1.00; No. 2 0.95.

Importation

KILL overwintering Alfalfa Weevils early die drin does it!

The best, easiest, and lowest cost way to kill alfalfa weevils is to destroy it in the adult stage in early spring—before it lays its eggs. From these eggs the destructive larvae come. Apply dieldrin as soon as possible after the weevil comes out of hibernation.

Adult weevils lay eggs when alfalfa is 1 to 2 1/2 inches tall... or at the first growth stage. Proper timing of the dieldrin treatment, therefore, is of primary importance.

Diieldrin can be applied two ways. For ground applications a dosage of 8 gallons of an emulsion containing just 1/4 pound of diieldrin kills the weevil. When applying from the air 1/4 pound of diieldrin in 2 gallons of diesel oil per acre will do the job.

Alfalfa that has been protected from weevil attack by diieldrin assures higher quality, top yield from first cutting and healthy stock production.

See your local insecticide dealer for supplies and write for literature and application instructions today.

Jullus Hymon & Company Division
SHELL CHEMICAL CORPORATION
CHEMICAL PARTNERS OF INDUSTRY AND AGRICULTURE
P. O. BOX 2171, DIVISOR, ILLINOIS

Agents: Chicago, Houston, Los Angeles, New York, San Francisco, Seattle, Valley, Wash.

Newberry's Blouse Sale

Here's a special savings opportunity which Newberry's can give you on these first quality Spring blouses. It's not a closeout, it's not a special buy, it's a great chance to choose a new fashion style in smart rayons and cottons at much, much less than you usually pay so early in the season. Hurry in, Sizes 32 to 38.

FARMERS, EGG PRODUCERS—Attend the Poultry Institute All Day Friday at the Turf Club

J. J. NEWBERRY CO. Open 9:30 to 5:30 Daily.. 'til 9 Fridays

Twin Falls Livestock Prices

Cattle	11.00
Hogs	10.00
Sheep	10.00
Wool	1.00
Grain	1.00
Butter	44.00
Eggs	14.00
Potatoes	1.10
Onions	1.00

Meeting Postponed

Buhl, Feb. 18.—Meeting of the Buhl city council, scheduled for Tuesday night, was postponed to next Tuesday night.

The council has slated a study of the work accomplished in codifying the city's ordinances but more time was needed to get the codifications ready, officials said.

Twin Falls Markets

Wheat	1.12 1/2
Corn	48 1/2
Soybeans	1.00
Oats	45
Butter	44 1/2
Eggs	14 1/2
Potatoes	1.10
Onions	1.00
Wool	1.00
Grain	1.00

Three Selected

PAUL, Feb. 18.—Three girls of the Journalism club of the Paul high school have been chosen to attend the Journalism press clinic at Scott on Saturday and Sunday.

They are Dorothy Hathaway, editor of the Paul school paper; Colleen Nielson, associate editor, and Mary McCall, past editor.

Party Planned

JEROME, Feb. 18.—The Appleton PTA will sponsor a public card party Friday night at the Appleton school.

CASH FOR DEAD and USELESS ANIMALS

PHONE COLLECT

Gooding 47 Rupert 55
Twin Falls 814

IDAHO HIDE & TALLOW CO.

Stalin, Indian Envoy to Russ Hold Meeting

MOSCOW, Feb. 18 (AP)—Indian Ambassador K. P. S. Menon told a press conference today his 30-minute conversation with Soviet Premier Joseph Stalin last night was primarily a courtesy visit. He refused to disclose details.

He advised newsmen against speculation on the subject of his talk. But before he cautioned newsmen observers had started speculating the talks might have been on Chinese-Korean problems.

"General Discussion" Menon said his discussion with Stalin was very general and he found the Soviet leader "remarkably fit and full of physical and mental vigor."

An Indian embassy spokesman said only that the meeting was "friendly and cordial."

Asked about reports in foreign papers in Moscow that the Indian envoy had discussed Korea with Stalin, the embassy spokesman asked: "How do they know?"

Works on Report On his return from the Kremlin last night Menon worked on a report to New Delhi until early this morning.

The foreign diplomatic corps in Moscow assumed the visit was primarily a courtesy call by the Indian ambassador. He was the second non-communist ambassador received recently by Stalin. Argentine Ambassador Leopoldo Bravo was received by the premier less than two weeks ago.

Trial Is Ordered On Theft of Slots

ST. ANTHONY, Feb. 18 (AP)—Floyd Johnson, 39, Boise, was bound over to district court Tuesday by Probate Judge Frank L. Soule, Fremont county, on a charge of first degree burglary.

Johnson was charged with burglary in the theft of slot machines from a cafe at Newdale, an \$8,000 property bond was continued by Judge Soule.

Probate Judge Edgar Gordon, Teton county, bound Johnson over to district court Monday at Briga and continued his bond of \$4,000 on a similar charge.

He has been charged in Teton county with first degree burglary in the theft of slot machines from a cafe in Teton.

Where to From Here?



One of two lions that escaped from the Shrine circus in Memphis, Tenn., finds no human being in sight in a downtown area usually crowded with people. Spectators thought it was part of the act as the lions strayed within "fencing distance" of children before their capture five minutes later. (NEA Photo)

Deadline Set for Job Application

BOISE, Feb. 18 (AP)—Final date for filing applications for the present system of merit examinations is Feb. 25. Thomas H. Charney, Idaho merit system supervisor, said Tuesday.

The examinations are for conservation officers and other fish and game department jobs; interviewers with the employment security agency; and sanitarians, chemists and nurses with the department of public health.

Arson Checked in Waterfront Blaze

BALTIMORE, Md., Feb. 18 (AP)—Authorities checked the possibility today that a fire bug touched off the \$1 million dollar fire that swept the city's historic waterfront.

The 18-alarm blaze, whipped by high winds and punctuated by oil tank explosions, destroyed or badly damaged seven buildings and two piers yesterday.

Four firemen were hurt as nearly three-fourths of the city force spent more than two and a half hours bringing the fire under control.

Atomic Statement Is Laid to Lag in Air Defense Interest

WASHINGTON, Feb. 18 (AP)—Concern over lagging public interest in the volunteer airwatch part of the air defense program appeared today to be partly responsible for President Eisenhower's reiterated declaration that Russia does indeed have atomic weapons.

Mr. Eisenhower, on his own initiative, spoke up on the subject at his news conference Tuesday.

He read the statement by Chairman Gordon Dean of the atomic energy commission on Jan. 30, issued after former President Truman had stated doubt that Russia had workable atomic bombs. Dean said the Soviets had exploded three atomic bombs. The president said he thought Dean's statement was absolutely true, word for word.

The President's voluntary discussion of Soviet bomb making capability was against this background: 1. The air force program for recruiting an ultimate total of more than 50,000 men, women and youths in the air force program for hostile planes which may slip through the radar network is far behind sched-

ule. By the end of last year only over 22,000 persons in the 27 northern and coastal states involved in "Operation Skywatch" had volunteered.

2. The federal civil defense administration, also troubled by indifference in many areas to its program, declared in a report Monday the red air force was capable of sending 400 planes against any place in the U. S.; that one all-out attack with atom bombs could bring 11 million killed and injured.

3. A full-dress briefing on atomic warfare—operational as well as political—given Eisenhower Monday by top civilian and military officials. It was possible, of course, that Eisenhower could have been advised of some new evidence indicating another Soviet atomic test.

The system for detecting atomic explosions—wholly presumably include upper air sampling for telltale traces of fission products, isotopic instruments and agent reports—is being steadily expanded and improved. Dean, in his Jan. 30 statement, spoke emphatically of the

Reason

CLEVELAND, Feb. 18 (AP)—Ever search in vain for an airship when you're eating lunch in a restaurant?

Chances are the absence was intentional to make you eat faster, says an official of the Ohio Restaurant association.

Vice President Robert R. Williams told restaurant men here Tuesday twice as many patrons can be served if airships are removed.

"scientific and technical evidence" he said left no doubt of the existence of atomic weapons in the USSR.

Mr. Eisenhower's evident interest in the atomic program has raised some speculation whether he might choose to witness one or more of the test explosions in the spring test series in Nevada, or perhaps one of the later big-scale experimental shots at Eniwetok in the Pacific next fall.

Truman—during whose administration a score or more test shots were fired—never attended any of the experiments.

READ TIMES-NEWS WANT ADS.

Speaker Listed
BHOONGHO, Feb. 18—The Rev. Tracy Gibson, who spent five years in south India, will be featured speaker at evening services at the Ghoshana First Baptist church on March 1.

Fines Paid
GOODENO, Feb. 18—The court Monday fined Leverage Jones, Twin Falls; Edward Harry Deak, Blaine; and Mary Winter, Goodeno, for violation of State Police law.

Sugar cane is a giant grass.

BEST!

World's speed drinking record for 10,000 meters - 16:51.4 minutes!

KENTUCKY STRAIGHT BOURBON WHISKEY FULLY AGED

THIS WHISKEY IS 4 YEARS OLD • 86 PROOF • THE HILL & HILL CO., LOUISVILLE, KY.

DEXTER'S Sensational Egg-O-Matic

\$60.85 VALUE

BUY NOW SAVE

EXTRA GIFT OFFER!

EASY TERMS

LOUIS EVANS

Bosement East of Postoffice

PENNEY'S

ALWAYS FIRST QUALITY!

Something to Grow Poultry Days

FRIDAY AND SATURDAY!

DOLLAR DAY VALUES Shop Friday 'Til 9:00 P.M.

• Twin Falls Store

Denim Jackets

Blanket Lined

Washable, blanket lined jackets for that extra warmth on these cold mornings. Short, zipper front or longer button style.

3.44

Sizes 36-46

Farmers, Egg Producers, Attend Poultry Institute Friday at the Turf Club

Smart, Bark Weave DRAW DRAPERIES

Crammed with value from their unusual fabric right down to the last finishing detail! Fine acetate rayon pinch pleated, blind stitched to hito smoothly stitched. Lovely colors! 80" wide, 2 1/2 yards long.

SPECIAL **3.98** Pair

SPECIAL VALUES FOR MEN

COTTON FLANNEL SHIRTS Bright Plaids, Sizes S-M-L-XL..... 1.50

Final Reductions TOP COATS..... 20.00 All wool, Gabardines, Tweeds — Broken sizes

All Remaining WINTER JACKETS..... 8.00 to 12.00 Broken sizes — Odd lots

EXTRA VALUE!

Men's Sanforized Chambray WORK SHIRTS

Value features usually found in more expensive shirts! Shirts are popular sturdy blue chambray with dress-type collar that retains its shape. Full cut, with long tails and strongly stitched seams. Hurry for your purchase and save now!

\$1.98

SIZES 15-18

Cotton Uplift Bras

Save plenty here, elastic front insert, wide double hook back closing. Penney low price.

2/1.00

Lace-trimmed Rayon Slips

Big savings! Lovely slips at such a low price you will want several. Sizes 32-42.

1.00

Cotton Plisse House Coats

Beautiful colors, easy to launder, needs no ironing. Sizes 20-20.

3.98

SPECIAL VALUES FOR WOMEN

NYLON SLIPS White only, sizes 32-42..... 2.00

Rayon Printed HEADSCARFS..... 7.00

FOR GIRLS

Large Group GIRLS' BLOUSES..... Embossed cottons, sizes 7-14..... 1.00

TODDLERS DRESSES Embossed cottons, sizes 1-3..... 1.00

FOR THE HOME

COTTON LOOPED RUGS Bright colors, rubberized back..... 1.00

NATION-WIDE SHEETS Full Sizes Twin Sizes..... 1.00

Quartet Practices for Lions Club Mintrel Show



Members of one of the Lions club quartets which will appear in the Lions' mintrel show on a number in a rehearsal Monday night. Left to right, they are Smokey Vernon, professional director of the show, Robert D. Wilson, Ralph McFarlane, U. J. Elmsness and Dr. O. T. Lake. (Staff photo-gravure)

Lions, Felions Preparing Mintrel Show Presentation

Members of one of the Lions club quartets which will appear in the Lions' mintrel show on a number in a rehearsal Monday night. Left to right, they are Smokey Vernon, professional director of the show, Robert D. Wilson, Ralph McFarlane, U. J. Elmsness and Dr. O. T. Lake. (Staff photo-gravure)

Gooding Property Is Sold by Board

GOODING, Feb. 18—Eleven and one-half city blocks were sold to Frank Henderson by the city council Monday night on Henderson's high bid of \$2,020. The property is located along the railroad tracks.

Scouts Meet

SHOSHONE, Feb. 18—Club Scouts of den 3 met after school Friday at the home of Mrs. Martina Onida. Mrs. Claude Matthews, den mother, was in charge of the meeting and flag folding was discussed and demonstrated.

Consignors

BLACKFOOT, Feb. 18—Consignors from Maglo Valley to the pure bred swine sale at the Eastern Idaho fairground Wednesday include Clark Mills and son, Twin Falls; J. Harland Monroe, Twin Falls, and Lylo Barton, Rupert.

Events Related

SHOSHONE, Feb. 18—Mrs. Hazel Miller, Helena, Mont., is visiting her daughter, Mrs. Earl Driesel, and family.

Scouts Meet

SHOSHONE, Feb. 18—The Krasty Kids 4-H club met Friday after school in the home economics room at the high school to discuss new projects.

Richfield Guests

RICHFIELD, Feb. 18—Guests of Mr. and Mrs. J. O. Felderman are Mrs. Grace Halsey and son, Union, Ore.; Mrs. Blanche Friesland; and Howard Mills, Aborckee, Mont., and George Oscar Mills, Tilden, Nev.

Area Resident

SHOSHONE, Feb. 18—Capt. Gail ... son of Mr. and Mrs. ... recently ...

Only CREAM OF KENTUCKY gives you DOUBLE RICH taste!

POULTRY Specials

ALL METAL WARDROBES

Need extra closet space? Then here's your answer. This all metal wardrobe has reinforced double doors that open wide to let you hang your clothes. It has a shelf for your hat and a metal bar to hold those winter coats. We have only a limited number at this price.

\$17.95

UTILITY TABLES WITH CASTERS

Here is a sturdy two or three shelf utility table on wheels to answer every need in your kitchen. It has semi-tubular steel legs, with casters. A tough baked-on enamel finish: Legs white; top and shelves, white, red or yellow.

ONE SHELF	TWO SHELF
\$4.95	\$5.95

SWEET'S

Deco Dial Lines Near Completion

DECLO, Feb. 18—Deco's new dial telephone system will go into operation on March 7, officials of the Mountain States Telephone and Telegraph company, announced Tuesday.

CASH NOW! AUTO FURNITURE

RELIANCE CREDIT CORP.

Opposite Times-News, Phone 2330

FRIDAY & SATURDAY POULTRY DAY SPECIALS

Bennett's FLOOR ENAMEL

REGULAR 1.75 QUART	1.00
REGULAR 5.65 GALLON	3.50

ETERIOR TRIM & SHUTTER

Reg. 1.55 Qt.	1.00
Reg. 5.40 Gal.	3.50

BENNETT'S QUICK ENAMEL

Reg. 2.05 Qt.	1.00
Reg. 6.56 Gal.	3.50

TWIN FALLS GLASS & PAINT

We Give S&H Green Stamps

Across from Postoffice Twin Falls

SAVE AT ROPER'S POULTRY DAYS

Friday and Saturday
February 20th and 21st

WORK CLOTHES - DOWN STAIRS STORE

DICKIES Army Twill Matched Outfits Better quality at a lower price Sun Tan & Spruce Green Fully Sanitized	CLOTH HATS New shipments in! RAIN-RESISTANT ALL SIZES \$1.00 - \$1.49 \$1.98	HEAVY COTTON SWEAT SHIRTS ALL SIZES Gray & Red \$1.98
Shirts . . . \$3.25 Pants . . . \$4.25	WHITE COMBED Cotton-Shorts Long-wearing brief 2 Pair \$1.00	GRAY-RANDOM Work Sox NYLON-REINFORCED 5 Poly \$1.00
DICKIES BLUE DENIM SNAP BUTTON SHIRT ALL SIZES \$3.25	JACKETS & SURCOATS AT CLEARANCE PRICES 100% Wool Quilted Linings \$7.95 JACKETS \$5.87 \$9.95 SURCOATS \$6.87 \$12.95 SURCOATS \$8.87 OTHER FINE COATS AT BIG REDUCTIONS	WORK SHOES VUL-CORK OR GRO-CORD SOLES STURDY UPPERS \$5.00 Only ENDIGOTT-JOHNSON WORK SHOES VUL-CORK SOLE HORSESHOE UPPERS ONE PIECE BACK Only \$6.95 MAIN FLOOR

SPORT AND DRESS CLOTHES

ALL WOOL SLACKS BY LISSNER PLEATED FRONTS BROWN, TAN, BLUE \$10.95	DRESS SHIRTS Most Sizes \$4.50 and \$3.95 Values \$2.87	MILLER-SNAP-BUTTON Gabardine Shirts Western form fitting Turquoise, Rust, White \$4.95
BROADMOOR SPORT SOCKS New Patterns 55c pr.	HUNDREDS OF HANDSOME NEW SPRING SUITS HAVE ARRIVED Try Some On Today \$49.50 to \$79.50	

ROPER'S

If It's From Roper's It's Dependable

TWIN FALLS STORE

ISC Enrolls 43 Pupils in Burley Area

IDAHO STATE COLLEGE, Pocatello, Feb. 18—Forty-three students from the Burley area are among the 1200 enrolled at Idaho State college for the second semester. Of these, 23 are from Burley, 3 from Albion, 3 from Almo, 1 from Eida, 3 from Heyburn, 3 from Malba, 3 from Oakley and 3 from Paul.

Burley students are Marvin L. Anderson, O. Ross Beale, Keith E. Bingham, Fred G. Bowen, Shirley Ann Chambers, Gene S. Collins, Jack L. Dwyler, James O. Despain, Douglas W. Duff, Rita J. Fairchild, Lois J. Gochour, Larry A. Horn, John M. Huntington, Rulon S. Hurs, Bryant A. Jensen, Richard E. Jensen, Ned Kitchin, Don C. Moffitt, Junia Moffitt, Verlie McCulloch, Phil D. Nelwanger, James P. Rowland, Jerry T. Rowland, Keith E. Stokes and Louise Wolf.

Albion students are Floyd B. Barker and John V. Chastburn.

Students registered from Heyburn are Dean A. Connor, Vernon F. Ravston and Lyle Usoda.

Malba students are Dwayne R. Anderson, Zenith E. Baker and Larry G. Gardner. Students from Oakley are Beverly Brackenburg, Percy Christiansen and Murray B. Marindale. Paul students are E. Donald Barclay, Arnold G. Sampe and Harold P. Sampe.

Also enrolled is Annie M. Barker of Eida.

Folks in Heyburn Travel, Entertain

HEYBURN, Feb. 18—Mr. and Mrs. Richard Blodde and family spent the week-end and visiting in Salt Lake City and Payson, Utah. Mr. and Mrs. Elmer Higgins have returned from San Luis Obispo, Calif., where they visited their son, Stevens Higgins, and family. Mr. and Mrs. Ernest Handy and Mr. and Mrs. Ladell Handy visited Mr. and Mrs. Glen Bader, Mr. and Mrs. Dwight and Mr. and Mrs. Gerald Handy in Salt Lake City Sunday.

Mr. and Mrs. Clifford Slack Ogden, were week-end guests of Mr. and Mrs. Claude Stimpson. Mr. and Mrs. Iamnu Abo and family moved to Denver, Colo., Saturday.

MEETING HELD

JEROME, Feb. 18—Nearly 200 holders of southern Idaho mines union insurance attended educational sessions here Saturday at the Jerome Grange hall. The sessions were conducted by Mahlin S. Hansen, Boise, director of insurance sales for Idaho.

"Breaking on the wheel" was an ancient form of torture in which the victim was stretched out on a wheel and all his bones broken with an iron bar.

Residents of Filer Travel, Entertain

FILER, Feb. 18—The Rev. and Mrs. Tom Spahr and family have returned from Yakima, Wash. Mr. and Mrs. Henry Dyer, Anchorage, Alaska, who have been visiting Mr. and Mrs. Ernest Moulshag, have returned home.

Mr. and Mrs. Clyde Tomblase and Mrs. J. J. Neale. Where? Flemmier has returned to Salt Lake City, where visiting his parents, Mr. and Mrs. John Flemmier.

Mr. and Mrs. Morland, Winters, Calif., is visiting his brother, Earl Morland, and family.

Valley Grange Opposes Slots

JEROME, Feb. 18—Resolutions opposing slot machines were passed by members of the Jerome Grange at a meeting Friday night at the Grange hall. Members were requested to contact state representatives in Boise voicing their opposition to the machines.

Don Callen, sole chairman for the Grange, reported \$49236 had been collected by the Grange for the March 10 dinner. He explained that \$50 of this amount had been contributed by the Grange through the sponsorship of a card party. Richard Handy, member of the executive board, was instructed to purchase a filing cabinet for the secretary. Plans to erect additional cupboards in the kitchen also were made.

Mrs. Coral Sparks home economics chairman, reported serving dinners to the Grange supply and at the cattle feeders tour. Don Taylor introduced Mrs. Mabel Bevelin, who related experiences of her recent trip to Cuba. Sam Eakin showed slides depicting life in Cuba.

The social hour was conducted by Mr. and Mrs. A. E. Bartholomew, Mrs. Ernest Clark and Mr. and Mrs. Ben Thomason. Mrs. Carl Hughes, lecturer, announced the program for the Feb. 27 meeting. It will include a travelogue of trip to England by Mr. and Mrs. Ernest Clarkson, a musical reading by Marie Van Orman, clarinet solo by Carol Ann Sparks and novelty dance selections by Carol Wilcomb, Jean Stauffer and Gabyon Baird.

READ TIMES-NEWS WANT ADS.

DRAPERIES—CARPETS

CUSTOM MADE
Direct Factory Representatives
Bringing You Factory-to-You Prices!
Interior Decorating Service
Free Estimates
Let us submit samples that will harmonize with your present color schemes.

Larson Home Furn. Co.
133 SHOSHONE SO. • PHONE 1412

Sacred Music Concert Used to Swell Donations to Polio Drive

BOHIL, Feb. 18—Buhl music lovers had a special treat Sunday when they attended a concert of sacred music presented by two local musicians, Mrs. William Watt, soprano and Mrs. John Orsdon, organist.

The concert, originally planned for nearsightedness, was held so that a special treat Sunday when they attended a concert of sacred music presented by two local musicians, Mrs. William Watt, soprano and Mrs. John Orsdon, organist.

The concert, originally planned for nearsightedness, was held so that a special treat Sunday when they attended a concert of sacred music presented by two local musicians, Mrs. William Watt, soprano and Mrs. John Orsdon, organist.

Mrs. Watt set the mood for reverence with her first number, "Psalter," by Gounod. She then sang the difficult runs in the triumphant "Lord, Thy Glory Praise the Heavens" by Rossini. Her next selection was "City of Rachel," by Salter, was particularly well received.

Mrs. Orsdon played the "Easter Hymn" from "Cavalleria Rustic."

Divorces Granted By Rupert Court

RUPERT, Feb. 18—Three divorces were granted and a case for failure to pay child support was tried in district court Saturday before Judge Kales Lowe.

Wayno Johnson was granted a divorce from Helinda Johnson on the grounds of cruel and inhuman treatment. He is to pay \$25 a month for the support of one minor child, custody of whom was awarded to the defendant.

Bonnie Farmer—second—decree of divorce from Harold Farmer. She also was awarded custody of three minor children. The defendant will pay \$125 a month for the support of the children until the youngest is 21 years of age. Orsdon and Gresson were attorneys for the plaintiffs in both cases.

In a third case, Ruth Kaiser received a decree of divorce from Richard Kaiser with Lawrence Duffin representing the plaintiff.

The charge of contempt of court for failure to pay child support in the plaintiffs in both cases. Judge Lowe decreed, however, that he still owes \$150 for the last two payments. The case was transferred here from California. Sherman Bellwood is representing the plaintiff.

Herd Tested

BUHL, Feb. 18—The Holstein herd of Charles A. Reed, Buhl, made up of 14 cows, averaged 420 pounds of butterfat and 12,400 pounds of milk during a test conducted by the Holstein-Friesian association of America.

One cow owned by Reed produced 857 pounds of butterfat and 16,098 pounds of milk during a 347-day test conducted by the association.

Trucker Fined

RUPERT, Feb. 18—Alvin Kenner, Rupert, pleaded guilty in justice court Saturday to a charge of driving an overloaded truck. He was fined \$10 and costs by Justice of the Peace Frank Fritsch. The complaint was signed by State Patrolman R. W. Johnson.

Harvard University takes the name from John Harvard who died in 1633, leaving the school his library and half his estate.

Pre-fluffed for lighter baking!

Let Us Move You
OUR MOVE IS YOUR MOVE

FORD
TRANSFER & STORAGE
PHONE 227

At your **SAFEWAY STORE**

We Welcome All Out-EGG PRODUCING Friends and Farmers to the TWIN FALLS 1st Annual POULTRY INSTITUTE FRIDAY, Feb. 20 - TURF CLUB

Be Sure to Start Your Chicks this Year
NEW PURINA STARTENA-CHECKER
YOUR STORE WITH THE CHECKERBOARD

Lindemoor Farm Store
318 Shoshone St. West

READ TIMES-NEWS WANT ADS

It's a Sell-Out!
New Philip Morris King-Size
sweeping the country!

Tremendous demand from Coast-to-Coast! Stocks sold out in few days!

BECAUSE of the tremendous demand for the new PHILIP MORRIS King Size... factory-fresh stock is being rushed to your dealer every hour, every day. If your dealer has been temporarily out of stock—please ask again. For never before has there been a king-size cigarette that tastes so good—smokes so smooth—feels so comfortable as the new PHILIP MORRIS King Size.

Yes, call again—and CALL FOR PHILIP MORRIS! Take it from the millions of smokers who have already tried them... it's AMERICA'S FINEST CIGARETTE.

Folks agree... Coke is delicious with lunch

You see, Coke has its own matchless flavor that blends perfectly with food. No other drink tastes so good with so many things.

DRINK Coca-Cola

BOTTLED UNDER AUTHORITY OF THE COCA-COLA COMPANY BY TWIN FALLS COCA-COLA BOTTLING COMPANY

CALL FOR **PHILIP MORRIS**

Badges Given to Scouts at Banquet Meets

Approximately 100 Scouts and Cub Scouts attended a banquet and award ceremony at the Elks club last Friday night. The banquet was held in the dining hall of the Methodist church. The following Scouts received their badges for the past year: G. S. Brubaker, G. S. Casius, Russell Paris, W. T. Taylor and John J. Taylor. The banquet was given by the Elks club and group along with the Freeman. A welcome was given by Verle Sullivan, club president.

Education Council Confers at Rupert

SUPPLER, Feb. 18.—The Minidoka county unified education council, consisting of nine members, discussed ways to promote education and improve the educational opportunities of the children of the county at a meeting Thursday at the school administration office. Carl Warner, superintendent of schools, explained the various school bills that have been enacted and those to be considered by the legislature. The group adopted a resolution to send a letter of commendation to Gov. Len Jordan and Minidoka county legislators for their action in the measures that have been passed and to urge their continued support of the state's nine county unified education program.

School Visited by University Agent

BURLEY, Feb. 18.—Guy P. Wicks, University of Idaho field agent, made his annual visit to Burley high school Friday, Principal Earl Carlson reports. Accompanying Wicks were Mrs. C. Cartel, dean of women; Ray Cox, assistant principal; president, and Erlene Clyde, president of associated women students. A film showing the university campus was shown to the senior class. Following a talk by Wicks on college training, individual conferences were held for students wishing additional information.

Visiting in Paul

PAUL, Feb. 18.—Pic. Ted Hatch, son of Mr. and Mrs. Tom Hatch, arrived home Friday following his discharge from the army. He spent 18 months in Germany.

Itching or Dry Eczema

Why scratch and become irritated? Medicinal Remedies—acting in natural skin softens, soothes and relieves itching relief. Try it today.

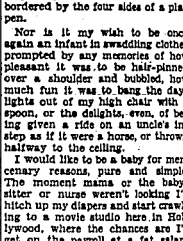
GET your FARM LOANS

See J. E. WHITE For New Low Rates and Terms 127 Main East Phone 247

Hank Longs to Be Movie Baby At Blue-Chip Scale for Wage

By HENRY McLEMORE
"HOLLYWOOD, Calif.—I'll go one better the poet who cried, "Oh, let me be a child again."
"Oh, let me be a baby again, the smaller the better," is my plea.
This is not because I am overly fond of the stuff babies have to drink out of bottles, or because I am daffy about having my world bordered by the four sides of a play pen.
Nor is it my wish to be once again an infant in swaddling clothes prompted by any memories of how pleasant it was to be half-dressed over a shoulder and bobbed, how much fun it was to bang the daylights out of my high chair with a spoon, or the delight, even, of being given a ride on an uncle's hip as if it were a horse, or thrown halfway to the ceiling.
I would like to be a baby for mercenary reasons, pure and simple. The moment mama or the baby-sitter or nurse weren't looking I'd hitch up my dispers and start crawling to a movie studio here in Hollywood, where the chances are I'd get on the payroll at a fat salary for doing nothing at all but being my own infant self.
There's a good steady demand by studios for babies. I don't mean babies who can tap dance, sing,

play the clarinet, or Benny, play half a dozen musical instruments, and do their own bargaining with the studio.
I mean just plain babies, whose only talents are those they were born with such as crying, yawning, sleeping, squirming; more crying and more yawning.
If I could become a baby again I'd choose to be one between 15 and 29 days old.
This is the top money-making age. Babies who have had their 15th anniversary but haven't lived long enough to celebrate the start of their second month on earth, are paid \$75 per day.
And what a working day! By California law they are prohibited from appearing before the camera for more than 30 seconds at a time, working more than 20 minutes a day, and must not be on the movie lot more than two hours a day.
That's mighty good dough for gurgling, yawning, crying and squirming. And they don't have to take any nonsense from producers, directors, assistant directors, or the like. Just sleep and take it easy. It beats about any job I know, even that of calling out stops on a trans-Atlantic liner.
The only worry the 15-to-29-day-old movie star has is the same one that pesters us all—growing old.
The day baby becomes 30 days of age he takes a one-third slash in salary to \$50 per day. Just what happens to a baby's appearance or temperament in the short space of 24 hours is beyond me, but the men of Hollywood are all wise, and they no doubt can see that the baby



McLemore

looks older, elderly than he did the day before.
Until he reaches the advanced age of three months the baby star continues to knock down 50 bucks a day. When that fatal day arrives, and he starts downhill toward the fourth month, his salary check undergoes another whack, and he is worth only 25 dollars a day.
After six months the baby must get out and root for himself, for when he passes the half-year mark he becomes simply an extra at \$18.50 per working day.
At my age I guess I am worth exactly nothing.
(Distributed by McLaughlin syndicate, Inc.)

ATTENTION ONIONS GROWERS

If you are planning an acreage of Yellow Sweet Spanish Onions this year, we can offer a limited amount of the finest certified Blue Tag seed available.

Call or Write:
LAYTON C. WARREN or REX WARREN
Route 3—Twin Falls, Idaho

Do YOU Need A GEARMOTOR?
GET MASTER
AN INDUSTRIAL MOTOR
MADE FOR YOUR JOB!
Ask For MASTER When You Buy Your Dealer Can Get It For You!

PAUL ROBERTS
356 4th Ave. West - Phone 2145
TRUCK LANE -- TWIN FALLS

POULTRYMEN!

BEAT THE DROP IN EGG PRICES

BY INCREASING PRODUCTION WITH

BUGLER LAYING MASH

Get More Eggs With Bugler
20% Protein Mash

100 lbs. \$5.⁰³ (Cheaper by the ton)

GLOBE SEED & FEED CO.

WE GRIND WE MIX
ON TRUCK LANE — TWIN FALLS

Deaths Reported in View Vicinity

Feb. 18.—Plans for the funeral were made Monday morning at the residence of the deceased and the funeral will be held at 10 o'clock Tuesday at the home of Mrs. J. E. White, 127 Main East. The funeral will be held at 10 o'clock Tuesday at the home of Mrs. J. E. White, 127 Main East. The funeral will be held at 10 o'clock Tuesday at the home of Mrs. J. E. White, 127 Main East.

Only Mammal Known to Lay Two Eggs

The platypus is the only mammal known to lay two eggs and the other sex.

WASATCH CITY

STOP AT STATIONS WHERE YOU SEE THESE SIGNS



Phillips 66

Phillips 66

Phillips 66

Phillips 66

Phillips 66

Phillips 66

Phillips 66

Phillips 66

Phillips 66

Phillips 66

Phillips 66

Phillips 66

Phillips 66

Phillips 66

Phillips 66

Phillips 66

Phillips 66

Phillips 66

Phillips 66

It must be Good! It's Guaranteed to Satisfy!

When you refill with Phillips 66 Heavy Duty Premium Motor Oil you get a printed certificate—your guarantee of satisfaction! Use this great oil for ten days, or up to 1,000 miles. If you aren't completely satisfied on every count, go to any Phillips 66 Dealer and he'll refill your car's crankcase with any other available oil you want, at Phillips expense.

Surpasses the Recommendations of U. S. Car Makers!

An Extra Measure of Protection!

Not just safe enough... but "super safe"! Yes, Phillips 66 Heavy Duty Premium Motor Oil surpasses the recommendations of manufacturers for any and all makes of cars. You can depend on this extra-sturdy, extra-efficient oil for wear protection, bearing protection, cleaning action... under conditions more extreme than any your motor is ever likely to face! It has a built-in "safety margin" over and above normal driving requirements. That's why you can have confidence in Phillips 66 Heavy Duty Premium Motor Oil!

Get "Lubri-tection"

SEARS ROEBUCK AND CO.

here's everything for a memorable spring!

designed-for-drama

spring coats

Focal point of your Spring wardrobe... your elegant new coat in wonderful cloud-light wools. Lines that are easy to wear... fabrics that are fun to feel... colors that sing! Magic-mood iridescent linings!

\$24.95

superbly tailored suits \$12.95

The rayon and acetate fabrics that successfully mimic expensive wools, with handsome details like collar trim, velvet-lined pockets, ribbing. Most popular Spring styles. Always smart.

sweetheart bonnet \$2.98

For the prettiest Spring and Easter of your life... choose this sweetheart bonnet in fine toy (straw) cloth, beautifully wreathed in flowers, with rayon velvet edging and veiling. Black, navy, white, red, brown, natural, lilac and pink.

3 ways to buy! • will call • easy payments • cash, if you wish

Satisfaction guaranteed or your money back! SEARS Free Parking

Crossword Puzzle

Crossword puzzle grid with clues for Across and Down. Includes a solution for 'Yesterday's Puzzle'.

OUT OUR WAY By WILLIAMS



SIDE GLANCES By GALBRAITH



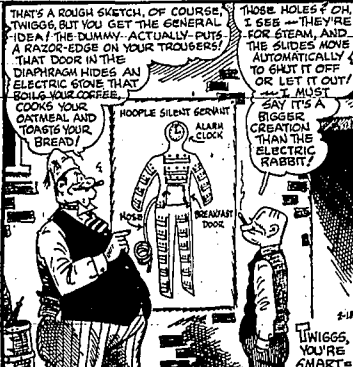
"No use trying to sell him our most expensive shoes... He's rich enough not to be afraid to ask for something cheaper!"

CARNIVAL By DICK TURNER

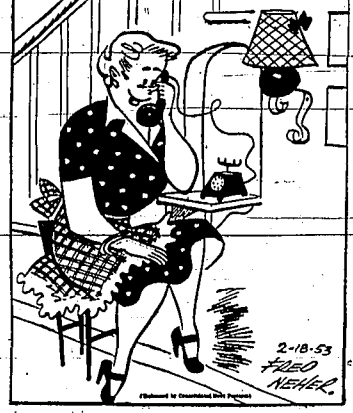


"The dog didn't talk, Mister—the parrot's a ventriloquist!"

BOARDING HOUSE - MAJOR HOOPLE



LIFE'S LIKE THAT By NEHER



"Central 681, please... and will you cut me off in 40 minutes... I have a cake in the oven."

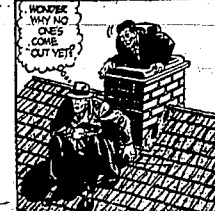
THE GUMPS



DONALD DUCK By WALT DISNEY



VIC FLINT



CAPTAIN EASY



BOOTS



GASOLINE ALLEY



BUGS BUNNY



DIXIE DUGAN



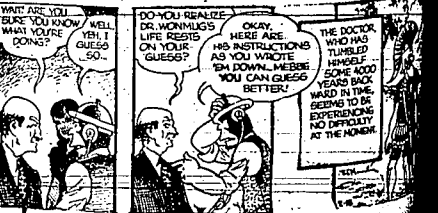
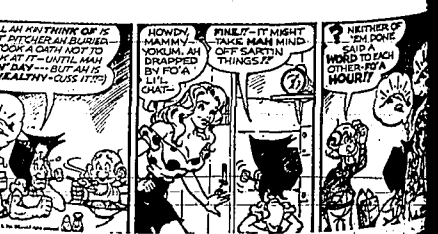
SCORCHY



LI'L LABNER



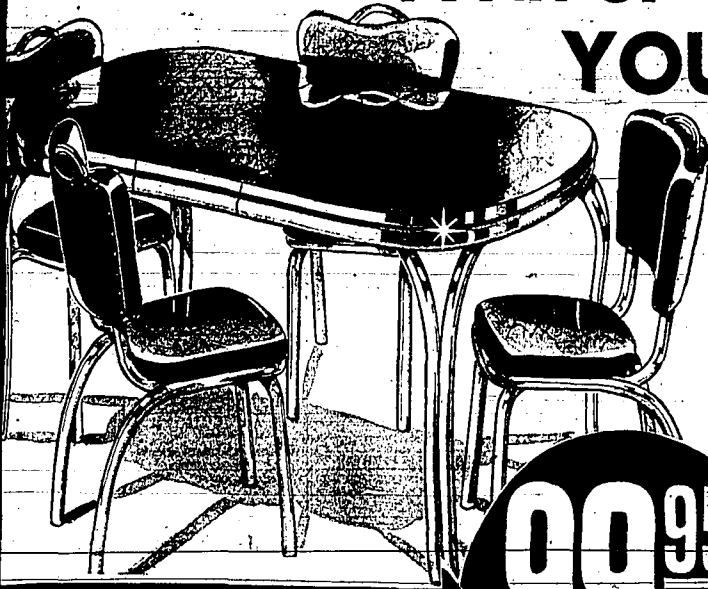
ALLEY OOP



Family
**WESTERN AUTO
SUPPLY CO.**

The West's Oldest and Largest Retailers of Auto Supplies

With or Without Egg Money YOU WILL SAVE AT WESTERN



169.95 VALUE!

**SAVE \$70 ... and get
2 outstanding features!**

66x48" Table Extends to 60" to Seat with Exclusive Jack Knife Self-Storing Extension Leaf
Ply Table Top—5 Layers of Tough Glass Fir, Between 2 Layers of Wear-Resistant Plastic
17 Layer Melamine Plastic Top Resists Spilling, Buckling, Alcohol, Food Acid, Water and Burns

- Matching Mother-of-Pearl Design Table Tops and Chair Seats in Your Choice of Grey, Yellow or Red
- Graceful Queen Anne Legs Won't Wobble, Buckle! Patented Spring Locking Device Keeps Legs Steady
- 3 in. Moulded Shredded Foam Rubber Seats, Covered in Durable Plastic Which Won't Peel, Fade, Burn, Scuff.

99⁹⁵

Use Our Thrifty Payment Plan
**\$5.00 HOLDS
YOUR SET**

**YOUR CREDIT
IS GOOD
Use Our
THRIFTY
PAYMENT
PLAN**

SPECIAL PURCHASE!

**SPECIAL
PRICE!**

LOWEST PRICE IN YEARS!

Innerspring Mattresses

FULL OR TWIN SIZE

22.88
\$1.14 per week payable monthly

Years of good night's sleep on this 180-coil mattress. Comfortable, cushioned insulators prevent "coil-feel". ACA ticking.

220-COIL MATTRESS AND BOX SPRING

FULL OR TWIN SIZE

32.50
\$1.63 per week payable monthly

BOX SPRING makes mattress extra comfortable. Free-built border.

405-COIL MATTRESS AND BOX SPRING

FULL OR TWIN SIZE

37.50
\$1.88 per week payable monthly

BOX SPRING, weight equalization, dual insulator.

BUY-ON-THIRTY-PAYMENT-PLAN
Small down payment delivers mattress, box spring or both! Easy monthly terms.

169.95 VALUE!

SAVE \$70 ... and get 2 outstanding features!

66x48" Table Extends to 60" to Seat with Exclusive Jack Knife Self-Storing Extension Leaf
Ply Table Top—5 Layers of Tough Glass Fir, Between 2 Layers of Wear-Resistant Plastic
17 Layer Melamine Plastic Top Resists Spilling, Buckling, Alcohol, Food Acid, Water and Burns

- Matching Mother-of-Pearl Design Table Tops and Chair Seats in Your Choice of Grey, Yellow or Red
- Graceful Queen Anne Legs Won't Wobble, Buckle! Patented Spring Locking Device Keeps Legs Steady
- 3 in. Moulded Shredded Foam Rubber Seats, Covered in Durable Plastic Which Won't Peel, Fade, Burn, Scuff.

EXTRA SPECIAL!

\$50.00

TRADE-IN

For your old set on any new

**2-PIECE
SOFA
SUITE**

179.95 to

269.95

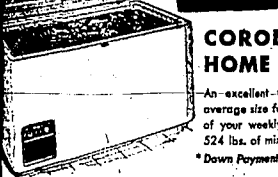
169.95 VALUE!

SAVE \$70 ... and get 2 outstanding features!

66x48" Table Extends to 60" to Seat with Exclusive Jack Knife Self-Storing Extension Leaf
Ply Table Top—5 Layers of Tough Glass Fir, Between 2 Layers of Wear-Resistant Plastic
17 Layer Melamine Plastic Top Resists Spilling, Buckling, Alcohol, Food Acid, Water and Burns

- Matching Mother-of-Pearl Design Table Tops and Chair Seats in Your Choice of Grey, Yellow or Red
- Graceful Queen Anne Legs Won't Wobble, Buckle! Patented Spring Locking Device Keeps Legs Steady
- 3 in. Moulded Shredded Foam Rubber Seats, Covered in Durable Plastic Which Won't Peel, Fade, Burn, Scuff.

FIRST TIME AT THIS LOW PRICE



Famous CORONADO "Super 709"

- 25 lb. Freezer Chest
 - Fine Polar Power Unit
 - 5 Year Written Warranty
 - Big Trade-In Allowance
- 199.95**
- NO CASH DOWN! Trade-in your refrigerator. Up to 24 Mos. to pay.
- Designed for efficiency! All the features you want: 2 dor-racks, full-width freezer, giant 12 qt. crisper, one-piece porcelain interior—13.17 sq. ft. shelf area.
- *Down Payment Without Trade-in May Be as Little as 5%.

AMERICA'S GREATEST VALUE!

CORONADO 15 cu. ft. HOME FREEZERS 364.95

An excellent freezer-buy-for-an average size family. Saves up to 1/3 of your weekly food costs. Stores 524 lbs. of mixed food.

NO CASH DOWN! Trade-in your old refrigerator. Up to 24 Mos. to pay.

*Down Payment May Be as Little as 5%. Trade-In Applies

1/2 PRICE TIRE SALE

BUY ONE "GIANT" TIRE AT OUR LOW SALE PRICE OF 11.98 AND GET YOUR NEXT GIANT FOR ONE HALF PRICE!

Save! One Half Price Sale—"Giant!"

ROADMASTER TIRES

Buy the first Roadmaster at the low sale price of \$11.98. Next tire—

First line quality tire with our famous double guarantee; Lifetime written guarantee against defects, 18 month guarantee against road hazards.

670-15 Size: First tire 16.88*. Next tire 8.44*
*Plus Tax, Exchange

5.99
600/16 Plus Tax, Exchange

1/2 Price

CREST INNER TUBES

Buy one tube at the regular price of \$2.75. Next tube at 1/2 price.

1.20
Plus Tax, Exchange

*Plus Tax

6.01 FOR YOUR BATTERY

6.01 FOR YOUR BATTERY

VARCON BATTERY

Greatest Battery Value Ever Offered

HURRICANE '53' Regular Outright Price \$14.99

Marvel of the battery industry! VARCON Hurricane '53'. A 100% premium quality battery. Power-packed performance the year 'round!

LONG TYPE for Buick, Olds, Pontiac; Packard Group 26; Exchange.....**16.99** Group 1 Exchange

40 MONTH GUARANTEE!

Think of it! Guaranteed performance—1st May, 1954. Other famous name batteries with only a 27 to 33 month guarantee sell for \$25 to \$30 or more!

OTHER VARCON BATTERIES AS LOW AS \$8.95 Gp. 1 Exchange

SPECIAL! DUST PANS
Only..... **9c**

SPECIAL! FREE! Ceiling Paper With All HOME GUARD Wallpaper

SPECIAL! WALDORF TOILET TISSUE
6 Rolls..... **44c**

SPECIAL! Coronado "Chatterbox" RADIO
Only **12.88**

Several More V-8s Eyed by Auto Makers

DETROIT, Feb. 10.—Several more V-8 engines are undergoing tests in the auto industry's laboratories and proving grounds. They may be among new items offered in 1938 model cars.

Among makes talked about in this connection are Chevrolet and Pontiac, but a couple of others are planning to replace present V-8 powerplants in the near future.

It is fairly well understood that the Chevrolet V-8 engine in prospect, whether it will be introduced in the 1934 line or later still is uncertain. Also uncertain is whether the V-8 will replace the present six-cylinder engine or supplement it.

Buick Starts

Buick introduced the V-8 in both its Roadmaster and super models last year, retaining the straight-eight for the special series. Dodge also brought out a V-8 in its 1934 line of cars.

This emphasizes the growing trend toward that type of power plant but it is not clear whether straight-eight and six-cylinder engines will continue to be in use by 1935. This, of course, is speculation. However, it is a matter of record that where a car maker produces both a six-cylinder and a V-8 model, the cylinders attract more buyers.

12-Cylinder Users

Twelve of the present carmakers build eight-cylinder models and most of the new models will be in a lot of engineering research has been devoted to V-8 engines. But so far the results have not been promising enough to lead a car maker to install one in a stock model car.

Answers Given on Questions in Ruckus Over Sliding Prices of Farm Products

WASHINGTON, Feb. 10.—Questions and answers about the farm product price problem that has set off a controversy between Secretary of Agriculture Ezra Tamm and some members of Congress, might have been answered by the following:

For the past two years, prices of farm products have moved gradually downward. The level of all farm products is now 11 per cent under the level of 1934.

Cotton in now selling at 27.75 cents a pound compared to 41.25 cents two years ago; hops at 17.00 to 19.00 cents compared to 20; beef cattle at \$17.75 to 20 compared to \$27.75 to 28 cents a pound compared to 38 cents.

Some crops, like wheat, have not dropped so sharply in price. But they are higher than the government price and others have not dropped so much as prices received by farmers so farmers net income has shrunk even on these crops.

What is "parity"?

Parity is the price which a commodity has received in the past. The government says it will give the farmer a fair return on his crop in relation to his cost of production and living expenses. The "parity" price also is supposed to be fair to people who buy the commodity.

At of last month, 17 out of 23 major crops were selling below their parity price. Wheat was 14 per cent under its parity price of \$2.44; the bushel; oats were eight per cent below their parity price of 68 cents a bushel; soybeans were 65 per cent below their parity of \$2.38 a box.

What caused the farm price drop?

Three factors are blamed generally for the decline in farm prices: a falling off in foreign demand; a large surplus of beef cattle on the domestic market; a general weakening in inflationary pressures since the 1920s.

Some crops have their own specific problems. Butter and other dairy products face a severe increasing competition from vegetable oils. The herd buildup phase of the normal cattle cycle the past four years has cost the producer of beef cattle average prices have shown some of the biggest drops.

Why hasn't the decline shown up at retail food counters?

A few cents per cent rise in costs of marketing farm foods last year almost wiped out the 11 per cent decrease in food prices the consumer might have expected. It takes big and sustained drops at the farm level for prices to change at retail level.

What about government price supports?

The agriculture department is now prohibited by law to support six basic crops, wheat, corn, cotton, peanuts, rice and tobacco, at 90 per cent of their parity price. That mandatory high level requirement expires in 1934.

Butterfat, milk and other dairy products can be supported anywhere from 75 to 90 per cent of parity at the discretion of the agriculture secretary. Now the price of the dairy products are set at 80 per cent of parity, but they must be re-set by March 31 when current dairy year ends.

Mohair, honey and tung nuts must be supported at 60 per cent of parity or higher but the government has a free rein on support levels of all other crops. It can support them up to 90 per cent of parity or not support them at all.

Currently it is supporting prices of barley, oats, rye, sorghum, flaxseed, soybeans, beans, American eggplant, cotton, cottonseed, crude pine gum and olive oil under that discretionary authority. Most support 80 per cent of parity.

Is Benson ignoring the support law?

No. On the contrary, he has repeatedly emphasized his intention of observing the "spirit and intent" of the law.

of the price support law until it expires at the end of next year.

What is the argument all about?

Some farm state congressmen are concerned, immediately, because Benson has increased maximum years under the law to lower support prices on all but the six basic crops. He has retained demands for a specific pledge that he will not do so.

More fundamentally, these lawmakers interpret Benson's public statements as a strong indication that he favors a different kind of farm law after 1934—one that would give him even broader discretion in setting low or high price supports as he feels necessary to discourage production of a particular crop.

Why would Benson want to lower supports?

Some farm experts contend that dropping support levels is a better way to discourage overproduction of a surplus crop than placing direct government controls—such as acreage allotments—on farmers' planting. "Flexible" supports also might save the government many millions and Benson has indicated he has spent buying up surplus crops.

What do Benson's opponents want?

A drive is already under way in congress to extend the present farm law with rigid high price supports made crops, through 1937. Many of the farm state congressmen are convinced that flexible price supports are political poison.

Folks in Emerson List Trips, Visits

EMERSON, Feb. 10.—Mr. and Mrs. C. A. May visited in Salt Lake City Saturday.

Mr. and Mrs. C. D. Hollenbeck returned from Idaho Falls Saturday.

Mrs. Mary Walters returned from Boise Saturday. She was accompanied by Mr. and Mrs. Norman Bennett and family.

Mr. and Mrs. Steve Galla, Jr., Mr. and Mrs. and Mrs. Keith Johnson, Durley, were in Aberdeen Friday.

Phillip Bates and Thomas Bates, Pletzen, N. M., and Ralph Bates, Sumner, Ore., who visited here Saturday, returned home Sunday.

Mr. and Mrs. Ray, who visited here Saturday, have returned home. Their daughter, Mrs. Harley Newcomb, Redding, Ore., a registered nurse, is caring for her mother at the Rupert hospital.

Mrs. Irene Stoddard and her son, Lowell and daughter, Mr. and Mrs. Sam Ray, who visited here Saturday, have returned home. Their daughter, Mrs. Harley Newcomb, Redding, Ore., a registered nurse, is caring for her mother at the Rupert hospital.

Mrs. Irene Stoddard and her son, Lowell and daughter, Mr. and Mrs. Sam Ray, who visited here Saturday, have returned home. Their daughter, Mrs. Harley Newcomb, Redding, Ore., a registered nurse, is caring for her mother at the Rupert hospital.

Classified

WANT AD RATES
(Based on Colop-wood)

1 day	10¢ per word
2 days	18¢ per word
3 days	25¢ per word
4 days	32¢ per word
5 days	38¢ per word
6 days	45¢ per word
7 days	52¢ per word
8 days	58¢ per word
9 days	65¢ per word
10 days	72¢ per word
11 days	78¢ per word
12 days	85¢ per word
13 days	92¢ per word
14 days	98¢ per word
15 days	1.05 per word

(A minimum of 10 words is required in any one classified ad below.)

Words 1 2 3 4 5 6 7 8 9 10 11 12 13 14 15

10 15 20 25 30 35 40 45 50 55 60 65 70 75 80 85 90 95 100

Unless your credit has been established, cash must accompany your order.

DEADLINES FOR Classified Ads

Monday's ads—3 p.m. deadline
Tuesday's ads—12 noon deadline
Wednesday's ads—10 a.m. deadline
Thursday's ads—8 a.m. deadline
Friday's ads—6 a.m. deadline

This paper reserves the right to sell and use any classified advertising copy that is not used as advertised. Errors should be reported immediately. No allowances will be made for more than one incorrect insertion.

SPECIAL NOTICES

RUGS and specialty cleaning. Phone 244. Mrs. J. C. Galt.

SPENCER Camera. Mrs. Lyle Galt. Phone 244. 1212 1/2 Avenue East, Twin Falls.

WEINERKIND'S Contract. Licensed. Mrs. Lyle Galt. Phone 244. 1212 1/2 Avenue East, Twin Falls.

ALCOHOLIC BEVERAGES. Mrs. Lyle Galt. Phone 244. 1212 1/2 Avenue East, Twin Falls.

FRATERNITY. Mrs. Lyle Galt. Phone 244. 1212 1/2 Avenue East, Twin Falls.

BEAUTY SHOPS

PERMANENTS \$2.00, \$3.00, \$4.00, \$5.00. Mrs. Lyle Galt. Phone 244. 1212 1/2 Avenue East, Twin Falls.

COMPLETE beauty service by advanced students. Mrs. Lyle Galt. Phone 244. 1212 1/2 Avenue East, Twin Falls.

COIFFURE. Mrs. Lyle Galt. Phone 244. 1212 1/2 Avenue East, Twin Falls.

STEAM BATHS

FOR REFLECTION. Mrs. Lyle Galt. Phone 244. 1212 1/2 Avenue East, Twin Falls.

CHIROPRACTORS

DR. D. JOHNSON. 114 Third street east. Phone 244.

LEGAL ADVERTISEMENTS

to be considered for either \$5 or 10 per page. Specifications may be obtained from Wm. Powers, Attorney at Law, 1212 1/2 Avenue East, Twin Falls, Idaho.

The Board reserves the right to reject any or all bids, and to waive formalities.

Clerk of the Board of Trustees, Wm. Powers, Attorney at Law, 1212 1/2 Avenue East, Twin Falls, Idaho, Feb. 11, 1938.

NOTICE TO CREDITORS

IN THE PROBATE COURT OF COUNTY OF TWIN FALLS, IDAHO.

ESTATE OF MRS. NELLIE DRAKE, DECEASED.

Notice is hereby given by the undersigned Executor of the Estate of Mrs. Nellie Drake, late of the County of Twin Falls, Idaho, that all persons having claims against the said decedent, or deriving title from her, by necessary vouchers, within four months after the date of the said notice, to the said Executor at the law office of Wm. Powers, Attorney at Law, 1212 1/2 Avenue East, Twin Falls, Idaho, within the place of said estate.

Dated January 28, 1938.

WILLIAM POWERS, Executor of the Estate of Mrs. Nellie Drake, deceased.

Published: Feb. 10, 25, March 4, 11, 1938.

SITUATIONS WANTED

GUERIN handling any or best work. Phone 244.

OUTDOOR cleaning, all terms products. Phone 244.

KNOX centrally in home. 424 4th Avenue East. Phone 244.

INDIAN in my home. 424 4th Avenue East. Phone 244.

DRESCAMER alterations. Ladies. Phone 244. Twin Falls.

FRANCOIS Only 60¢ per hour. 224 4th Avenue East. Phone 244.

FAMILY breaks and men's laundry done. Phone 244. Twin Falls.

ORDER alterations. Call early. 440 4th Avenue East. Phone 244.

EXPERIENCED dairy hand wants dairy work. Phone 244.

REPAIRING alterations, children's clothes. Phone 244.

MELBA hairdressing. 1212 1/2 Avenue East. Phone 244.

EXPERIENCED accountant wants part time job. Phone 244.

WALLPAPER cleaning, walls and ceilings. Phone 244.

FREE estimate. My school boy called part time employment. Call evenings. Phone 244.

PAINTING and paperhanging. Free estimate. Call anytime. A. L. Whelan. Phone 244.

PAINTING interior and exterior. Work guaranteed. Phone 244.

FAMILY for men would like farm or stock raising. Phone 244.

EXPERIENCED farm hand wants job. Phone 244.

WANTED experienced farm hand. Phone 244.

Church Holds LDS Meeting

SHOESHONE, Feb. 10.—Courtship and Marriage" was the subject discussed at the LDS Sunday evening service by President G. H. Hendrickson.

Harrell Thomas, bishop's counselor, introduced the speaker and other members of the program and conducted the business meeting. Loma Larsen and Oona Carothers made an appeal for funds for the children's hospital. The stake conference was announced for March 7 and 8. The meeting on March 7 will be held at Shoeshone.

Ernest Warburton, Clyde Harper and W. L. Openhaw, all Shoeshone, were assisted as officers of the stake's second quorum of elders at the Priesthood meeting in Carey earlier in the day. Burton Thomas sang a solo accompanied by Mrs. Velma Allen and Mrs. Olyde Harper.

Ward MIA officers were sustained with Oscar Stimpson, Clyde Harper and Mrs. Olyde Harper introduced as new officers in the executive department. Other officers are F. N. Stowell, W. M. A. J. Dille, Junior M. Men leader; Dean Barney and Fayette Beck, Scout leaders; Roy Kelly, Ross Boyd and Oona Sorenson, messengers of the Scout committee; Alan Johnson, special interest leader; Mrs. Fayette Beck; W. M. A. J. Dille; Mrs. V. Sorenson, secretary; Mrs. Beck, MIA interest leader; Fred Hansen, Mrs. P. N. Stowell, Bee Hove leaders and Mrs. Don Schmedtke, Junior M. Men leader.

High council services at the next Sunday evening services are Lloyd Lee and Isaac Miller, Richfield.

In his youth, George Washington surveyed the streets of his home town, Alexandria, Va.

Springdale People Travel, Entertainment

SPRINGDALE, Feb. 10.—Opl. Kenneth O. Bassett has been discharged from the army after two years and six months in Korea. He spent 10 months in Korea.

Mrs. John Sanders and daughter, Mrs. E. O. Christensen, and family Sunday.

Mr. and Mrs. D. M. Burgess and Mrs. and Mrs. Ed Anderson have returned from San Francisco.

Raids Marchant has returned to See. Let City after visiting her parents, Mr. and Mrs. G. S. Marchant.

Mr. and Mrs. Harvey Freston are visiting their daughter, Mrs. Robert Putman, and family in LaGrand, Ore.

Junior Student Is Queen for Dance

BUHL, Feb. 10.—Dorothy Bolton, a junior at the Buhl high school, was crowned queen of the sweetest ball sponsored Friday at the school by the Y-Women. She was elected by members of the Buhl association.

Mrs. Doris Morris, Y-Women adviser, Barbara Livingston, Joan Jensen, Phyllis Reid, Mrs. Howard Reid and Mrs. James Johnson were sponsors of the dance. Luit, principal of the high school, crowned the queen.

During intermission an acrobatic team of students trained by Phyllis Patrick provided entertainment and Mrs. and Mrs. James Johnson presented the theme song for the dance.

Buhl Rotary Sets Farmers Banquet

BUHL, Feb. 10.—Plans are nearing completion for the annual Rotary club farmers banquet Feb. 26 in the 2nd club auditorium.

Stanley Webber, chairman, announces that Alfred Peters, manager of the canal company, will be main speaker for the event. Women of the Buhl Grange will serve the 7:30 p.m. dinner.

Other committee members include Joe Edgett, Ed Cary and Don V. Hight.

MYF Meets

FAIRFIELD, Feb. 10.—"Dates" was the topic of discussion led by Dee Lee Sunday evening at the high school. The speaker was Mr. and Mrs. Ed Sandellin. Eleven girls, eight boys and their leader, Lorne Baldwin, were present.

The program was presented by Mrs. Baldwin, who was composed of Marie Sandellin, Pat Wilcher and Claude Ballard.

Project Discussed For Area Grange

SHOESHONE, Feb. 10.—Community service projects for the year were discussed at a meeting of Wood County Grange on Feb. 10 at the Polo fund. Sponsors will be the Grange, WRC Home Economics club, North Shoshone Home Improvement club, Farm Bureau and Farmers' union. The dance will be held at the Wood River Center Grange hall.

Mrs. Don Sandy, lecturer, was in charge of the program. Valentine recitations were given by Adele Sandy and other readings were given by Roberta Hill, Fred Kott and Donald Sandy.

Juvenile Grange members participated in the entertainment and applications for two new members were accepted.

Youths Meet

SHOESHONE, Feb. 10.—A continuation of the study on "How to Use Leisure Time" was held at the Methodist Youth Center meeting Sunday night at the church. Lola Gehrig, Sandra Schwager and Fred Hughes were the main speakers. Mrs. C. W. Dill, adviser, supervised the meeting.

Attendant

IDAHO STATE COLLEGE, Pocatello, Feb. 10.—Keith Robert, Twin Falls, served as one of the king's attendants at the annual Lambda Delta Sigma sweethearts ball at the ICS institute at Idaho State college.

Edith Dean, Piler, served as chairman of the program committee.

Call for Bids

Sealed bids will be received by the Clerk of the Board of Trustees, Twin Falls County, at the office of the Clerk of the Board of Trustees, 1212 1/2 Avenue East, Twin Falls, Idaho, until 5 p.m. March 10, 1938.

For 1.0 acre of land (see map) and 2.0 acre of land (see map) and 3.0 acre of land (see map) and 4.0 acre of land (see map) and 5.0 acre of land (see map) and 6.0 acre of land (see map) and 7.0 acre of land (see map) and 8.0 acre of land (see map) and 9.0 acre of land (see map) and 10.0 acre of land (see map) and 11.0 acre of land (see map) and 12.0 acre of land (see map) and 13.0 acre of land (see map) and 14.0 acre of land (see map) and 15.0 acre of land (see map) and 16.0 acre of land (see map) and 17.0 acre of land (see map) and 18.0 acre of land (see map) and 19.0 acre of land (see map) and 20.0 acre of land (see map) and 21.0 acre of land (see map) and 22.0 acre of land (see map) and 23.0 acre of land (see map) and 24.0 acre of land (see map) and 25.0 acre of land (see map) and 26.0 acre of land (see map) and 27.0 acre of land (see map) and 28.0 acre of land (see map) and 29.0 acre of land (see map) and 30.0 acre of land (see map) and 31.0 acre of land (see map) and 32.0 acre of land (see map) and 33.0 acre of land (see map) and 34.0 acre of land (see map) and 35.0 acre of land (see map) and 36.0 acre of land (see map) and 37.0 acre of land (see map) and 38.0 acre of land (see map) and 39.0 acre of land (see map) and 40.0 acre of land (see map) and 41.0 acre of land (see map) and 42.0 acre of land (see map) and 43.0 acre of land (see map) and 44.0 acre of land (see map) and 45.0 acre of land (see map) and 46.0 acre of land (see map) and 47.0 acre of land (see map) and 48.0 acre of land (see map) and 49.0 acre of land (see map) and 50.0 acre of land (see map) and 51.0 acre of land (see map) and 52.0 acre of land (see map) and 53.0 acre of land (see map) and 54.0 acre of land (see map) and 55.0 acre of land (see map) and 56.0 acre of land (see map) and 57.0 acre of land (see map) and 58.0 acre of land (see map) and 59.0 acre of land (see map) and 60.0 acre of land (see map) and 61.0 acre of land (see map) and 62.0 acre of land (see map) and 63.0 acre of land (see map) and 64.0 acre of land (see map) and 65.0 acre of land (see map) and 66.0 acre of land (see map) and 67.0 acre of land (see map) and 68.0 acre of land (see map) and 69.0 acre of land (see map) and 70.0 acre of land (see map) and 71.0 acre of land (see map) and 72.0 acre of land (see map) and 73.0 acre of land (see map) and 74.0 acre of land (see map) and 75.0 acre of land (see map) and 76.0 acre of land (see map) and 77.0 acre of land (see map) and 78.0 acre of land (see map) and 79.0 acre of land (see map) and 80.0 acre of land (see map) and 81.0 acre of land (see map) and 82.0 acre of land (see map) and 83.0 acre of land (see map) and 84.0 acre of land (see map) and 85.0 acre of land (see map) and 86.0 acre of land (see map) and 87.0 acre of land (see map) and 88.0 acre of land (see map) and 89.0 acre of land (see map) and 90.0 acre of land (see map) and 91.0 acre of land (see map) and 92.0 acre of land (see map) and 93.0 acre of land (see map) and 94.0 acre of land (see map) and 95.0 acre of land (see map) and 96.0 acre of land (see map) and 97.0 acre of land (see map) and 98.0 acre of land (see map) and 99.0 acre of land (see map) and 100.0 acre of land (see map) and 101.0 acre of land (see map) and 102.0 acre of land (see map) and 103.0 acre of land (see map) and 104.0 acre of land (see map) and 105.0 acre of land (see map) and 106.0 acre of land (see map) and 107.0 acre of land (see map) and 108.0 acre of land (see map) and 109.0 acre of land (see map) and 110.0 acre of land (see map) and 111.0 acre of land (see map) and 112.0 acre of land (see map) and 113.0 acre of land (see map) and 114.0 acre of land (see map) and 115.0 acre of land (see map) and 116.0 acre of land (see map) and 117.0 acre of land (see map) and 118.0 acre of land (see map) and 119.0 acre of land (see map) and 120.0 acre of land (see map) and 121.0 acre of land (see map) and 122.0 acre of land (see map) and 123.0 acre of land (see map) and 124.0 acre of land (see map) and 125.0 acre of land (see map) and 126.0 acre of land (see map) and 127.0 acre of land (see map) and 128.0 acre of land (see map) and 129.0 acre of land (see map) and 130.0 acre of land (see map) and 131.0 acre of land (see map) and 132.0 acre of land (see map) and 133.0 acre of land (see map) and 134.0 acre of land (see map) and 135.0 acre of land (see map) and 136.0 acre of land (see map) and 137.0 acre of land (see map) and 138.0 acre of land (see map) and 139.0 acre of land (see map) and 140.0 acre of land (see map) and 141.0 acre of land (see map) and 142.0 acre of land (see map) and 143.0 acre of land (see map) and 144.0 acre of land (see map) and 145.0 acre of land (see map) and 146.0 acre of land (see map) and 147.0 acre of land (see map) and 148.0 acre of land (see map) and 149.0 acre of land (see map) and 150.0 acre of land (see map) and 151.0 acre of land (see map) and 152.0 acre of land (see map) and 153.0 acre of land (see map) and 154.0 acre of land (see map) and 155.0 acre of land (see map) and 156.0 acre of land (see map) and 157.0 acre of land (see map) and 158.0 acre of land (see map) and 159.0 acre of land (see map) and 160.0 acre of land (see map) and 161.0 acre of land (see map) and 162.0 acre of land (see map) and 163.0 acre of land (see map) and 164.0 acre of land (see map) and 165.0 acre of land (see map) and 166.0 acre of land (see map) and 167.0 acre of land (see map) and 168.0 acre of land (see map) and 169.0 acre of land (see map) and 170.0 acre of land (see map) and 171.0 acre of land (see map) and 172.0 acre of land (see map) and 173.0 acre of land (see map) and 174.0 acre of land (see map) and 175.0 acre of land (see map) and 176.0 acre of land (see map) and 177.0 acre of land (see map) and 178.0 acre of land (see map) and 179.0 acre of land (see map) and 180.0 acre of land (see map) and 181.0 acre of land (see map) and 182.0 acre of land (see map) and 183.0 acre of land (see map) and 184.0 acre of land (see map) and 185.0 acre of land (see map) and 186.0 acre of land (see map) and 187.0 acre of land (see map) and 188.0 acre of land (see map) and 189.0 acre of land (see map) and 190.0 acre of land (see map) and 191.0 acre of land (see map) and 192.0 acre of land (see map) and 193.0 acre of land (see map) and 194.0 acre of land (see map) and 195.0 acre of land (see map) and 196.0 acre of land (see map) and 197.0 acre of land (see map) and 198.0 acre of land (see map) and 199.0 acre of land (see map) and 200.0 acre of land (see map) and 201.0 acre of land (see map) and 202.0 acre of land (see map) and 203.0 acre of land (see map) and 204.0 acre of land (see map) and 205.0 acre of land (see map) and 206.0 acre of land (see map) and 207.0 acre of land (see map) and 208.0 acre of land (see map) and 209.0 acre of land (see map) and 210.0 acre of land (see map) and 211.0 acre of land (see map) and 212.0 acre of land (see map) and 213.0 acre of land (see map) and 214.0 acre of land (see map) and 215.0 acre of land (see map) and 216.0 acre of land (see map) and 217.0 acre of land (see map) and 218.0 acre of land (see map) and 219.0 acre of land (see map) and 220.0 acre of land (see map) and 221.0 acre of land (see map) and 222.0 acre of land (see map) and 223.0 acre of land (see map) and 224.0 acre of land (see map) and 225.0 acre of land (see map) and 226.0 acre of land (see map) and 227.0 acre of land (see map) and 228.0 acre of land (see map) and 229.0 acre of land (see map) and 230.0 acre of land (see map) and 231.0 acre of land (see map) and 232.0 acre of land (see map) and 233.0 acre of land (see map) and 234.0 acre of land (see map) and 235.0 acre of land (see map) and 236.0 acre of land (see map) and 237.0 acre of land (see map) and 238.0 acre of land (see map) and 239.0 acre of land (see map) and 240.0 acre of land (see map) and 241.0 acre of land (see map) and 242.0 acre of land (see map) and 243.0 acre of land (see map) and 244.0 acre of land (see map) and 245.0 acre of land (see map) and 246.0 acre of land (see map) and 247.0 acre of land (see map) and 248.0 acre of land (see map) and 249.0 acre of land (see map) and 250.0 acre of land (see map) and 251.0 acre of land (see map) and 252.0 acre of land (see map) and 253.0 acre of land (see map) and 254.0 acre of land (see map) and 255.0 acre of land (see map) and 256.0 acre of land (see map) and 257.0 acre of land (see map) and 258.0 acre of land (see map) and 259.0 acre of land (see map) and 260.0 acre of land (see map) and 261.0 acre of land (see map) and 262.0 acre of land (see map) and 263.0 acre of land (see map) and 264.0 acre of land (see map) and 265.0 acre of land (see map) and 266.0 acre of land (see map) and 267.0 acre of land (see map) and 268.0 acre of land (see map) and 269.0 acre of land (see map) and 270.0 acre of land (see map) and 271.0 acre of land (see map) and 272.0 acre of land (see map) and 273.0 acre of land (see map) and 274.0 acre of land (see map) and 275.0 acre of land (see map) and 276.0 acre of land (see map) and 277.0 acre of land (see map) and 278.0 acre of land (see map) and 279.0 acre of land (see map) and 280.0 acre of land (see map) and 281.0 acre of land (see map) and 282.0 acre of land (see map) and 283.0 acre of land (see map) and 284.0 acre of land (see map) and 285.0 acre of land (see map) and 286.0 acre of land (see map) and 287.0 acre of land (see map) and 288.0 acre of land (see map) and 289.0 acre of land (see map) and 290.0 acre of land (see map) and 291.0 acre of land (see map) and 292.0 acre of land (see map) and 293.0 acre of land (see map) and 294.0 acre of land (see map) and 295.0 acre of land (see map) and 296.0 acre of land (see map) and 297.0 acre of land (see map) and 298.0 acre of land (see map) and 299.0 acre of land (see map) and 300.0 acre of land (see map) and 301.0 acre of land (see map) and 302.0 acre of land (see map) and 303.0 acre of land (see map) and 304.0 acre of land (see map) and 305.0 acre of land (see map) and 306.0 acre of land (see map) and 307.0 acre of land (see map) and 308.0 acre of land (see map) and 309.0 acre of land (see map) and 310.0 acre of land (see map) and 311.0 acre of land (see map) and 312.0 acre of land (see map) and 313.0 acre of land (see map) and 314.0 acre of land (see map) and 315.0 acre of land (see map) and 316.0 acre of land (see map) and 317.0 acre of land (see map) and 318.0 acre of land (see map) and 319.0 acre of land (see map) and 320.0 acre of land (see map) and 321.0 acre of land (see map) and 322.0 acre of land (see map) and 323.0 acre of land (see map) and 324.0 acre of land (see map) and 325.0 acre of land (see map) and 326.0 acre of land (see map) and 327.0 acre of land (see map) and 328.0 acre of land (see map) and 329.0 acre of land (see map) and 330.0 acre of land (see map) and 331.0 acre of land (see map) and 332.0 acre of land (see map) and 333.0 acre of land (see map) and 334.0 acre of land (see map) and 335.0 acre of land (see map) and 336.0 acre of land (see map) and 337.0 acre of land (see map) and 338.0 acre of land (see map) and 339.0 acre of land (see map) and 340.0 acre of land (see map) and 341.0 acre of land (see map) and 342.0 acre of land (see map) and 343.0 acre of land (see map) and 344.0 acre of land (see map) and 345.0 acre of land (see map) and 346.0 acre of land (see map) and 347.0 acre of land (see map) and 348.0 acre of land (see map) and 349.0 acre of land (see map) and 350.0 acre of land (see map) and 351.0 acre of land (see map) and 352.0 acre of land (see map) and 353.0 acre of land (see map) and 354.0 acre of land (see map) and 355.0 acre of land (see map) and 356.0 acre of land (see map) and 357.0 acre of land (see map) and 358.0 acre of land (see map) and 359.0 acre of land (see map) and 360.0 acre of land (see map) and 361.0 acre of land (see map) and 362.0 acre of land (see map) and 363.0 acre of land (see map) and 364.0 acre of land (see map) and 365.0 acre of land (see map) and 366.0 acre of land (see map) and 367.0 acre of land (see map) and 368.0 acre of land (see map) and 369.0 acre of land (see map) and 370.0 acre of land (see map) and 371.0 acre of land (see map) and 372.0 acre of land (see map) and 373.0 acre of land (see map) and 374.0 acre of land (see map) and 375.0 acre of land (see map) and 376.0 acre of land (see map) and 377.0 acre of land (see map) and 378.0 acre of land (see map) and 379.0 acre of land (see map) and 380.0 acre of land (see map) and 381.0 acre of land (see map) and 382.0 acre of land (see map) and 383.0 acre of land (see map) and 384.0 acre of land (see map) and 385.0 acre of land (see map) and 386.0 acre of land (see map) and 387.0 acre of land (see map) and 388.0 acre of land (see map) and 389.0 acre of land (see map) and 390.0 acre of land (see map) and 391.0 acre of land (see map) and 392.0 acre of land (see map) and 393.0 acre of land (see map) and 394.0 acre of land (see map) and 395.0 acre of land (see map) and 396.0 acre of land (see map) and 397.0 acre of land (see map) and 398.0 acre of land (see map) and 399.0 acre of land (see map) and 400.0 acre of land (see map) and 401.0 acre of land (see map) and 402.0 acre of land (see map) and 403.0 acre of land (see map) and 404.0 acre of land (see map) and 405.0 acre of land (see map) and 406.0 acre of land (see map) and 407.0 acre of land (see map) and 408.0 acre of land (see map) and 409.0 acre of land (see map) and 410.0 acre of land (see map) and 411.0 acre of land (see map) and 412.0 acre of land (see map) and 413.0 acre of land (see map) and 414.0 acre of land (see map) and 415.0 acre of land (see map) and 416.0 acre of land (see map) and 417.0 acre of land (see map) and 418.0 acre of land (see map) and 419.0 acre of land (see map) and 420.0 acre of land (see map) and 421.0 acre of land (see map) and 422.0 acre of land (see map) and 423.0 acre of land (see map) and 424.0 acre of land (see map) and 425.0 acre of land (see map) and 426.0 acre of land (see map) and 427.0 acre of land (see map) and 428.0 acre of land (see map) and 429.0 acre of land (see map) and 430.0 acre of land (see map) and 431.0 acre of land (see map) and 432.

PHONES FOR SALE
Wanted to be moved, 1000
Wanted to be moved, 1000

Phone 38
SHOP YOUR CLASSIFIED ADS

Phone 38
SHOP YOUR CLASSIFIED ADS

Phone 38
SHOP YOUR CLASSIFIED ADS

1932 Buick
Roadster, nickel coupe, 2000
1932 Buick
Roadster, nickel coupe, 2000

POSSESSION TODAY
Wanted to be moved, 1000
Wanted to be moved, 1000

FARMS FOR SALE
40 ACRES with modern home, good soil
60 ACRES with modern home, good soil

FARM IMPLEMENTS
Portable-Potato Sorters
Portable-Potato Washers

LIVESTOCK & POULTRY
4 GUINEYS, 4 Hens, 1000 lbs.
4 GUINEYS, 4 Hens, 1000 lbs.

MISCELLANEOUS FOR SALE
1934 VAC car tractor, also 11-foot
1934 VAC car tractor, also 11-foot

AUTOS FOR SALE
1932 PLYMOUTH Sedan, 4 door, good
1932 PLYMOUTH Sedan, 4 door, good

CURLEY'S AWAY
We Want to Clean Out The Used
We Want to Clean Out The Used

BETTER BUYS
in
Used Cars and Trucks

READ EVERY WORD
We have positively the best buy in the
We have positively the best buy in the

PHOSPHATE BROADCASTERS
Drill Type
Whitening Type

REGISTERED DURCO
BOWS AND GILTS
J. H. MONROE
Box 111, Twin Falls, Idaho

BLUFFERS
Artificial Insecticide service, including
Artificial Insecticide service, including

FIR LUMBER
SIS Grade 4
OR MIXTER
\$50 MFT

TWENTY MORE
M U S T G O
BY FEB. 20th

FRIDAY - SATURDAY
SUNDAY
-Look These Cars Over-
1932 DeSoto Five Drive "7" 4 door

GOODWILL USED CARS
1932 Ford Custom 4 door, Radio
1932 Ford Custom 4 door, Radio

READ EVERY WORD
We have positively the best buy in the
We have positively the best buy in the

PHOSPHATE BROADCASTERS
Drill Type
Whitening Type

REGISTERED DURCO
BOWS AND GILTS
J. H. MONROE
Box 111, Twin Falls, Idaho

BLUFFERS
Artificial Insecticide service, including
Artificial Insecticide service, including

FIR LUMBER
SIS Grade 4
OR MIXTER
\$50 MFT

TWENTY MORE
M U S T G O
BY FEB. 20th

FRIDAY - SATURDAY
SUNDAY
-Look These Cars Over-
1932 DeSoto Five Drive "7" 4 door

GOODWILL USED CARS
1932 Ford Custom 4 door, Radio
1932 Ford Custom 4 door, Radio

READ EVERY WORD
We have positively the best buy in the
We have positively the best buy in the

PHOSPHATE BROADCASTERS
Drill Type
Whitening Type

REGISTERED DURCO
BOWS AND GILTS
J. H. MONROE
Box 111, Twin Falls, Idaho

BLUFFERS
Artificial Insecticide service, including
Artificial Insecticide service, including

FIR LUMBER
SIS Grade 4
OR MIXTER
\$50 MFT

TWENTY MORE
M U S T G O
BY FEB. 20th

FRIDAY - SATURDAY
SUNDAY
-Look These Cars Over-
1932 DeSoto Five Drive "7" 4 door

GOODWILL USED CARS
1932 Ford Custom 4 door, Radio
1932 Ford Custom 4 door, Radio

READ EVERY WORD
We have positively the best buy in the
We have positively the best buy in the

PHOSPHATE BROADCASTERS
Drill Type
Whitening Type

REGISTERED DURCO
BOWS AND GILTS
J. H. MONROE
Box 111, Twin Falls, Idaho

BLUFFERS
Artificial Insecticide service, including
Artificial Insecticide service, including

FIR LUMBER
SIS Grade 4
OR MIXTER
\$50 MFT

TWENTY MORE
M U S T G O
BY FEB. 20th

FRIDAY - SATURDAY
SUNDAY
-Look These Cars Over-
1932 DeSoto Five Drive "7" 4 door

GOODWILL USED CARS
1932 Ford Custom 4 door, Radio
1932 Ford Custom 4 door, Radio

READ EVERY WORD
We have positively the best buy in the
We have positively the best buy in the

PHOSPHATE BROADCASTERS
Drill Type
Whitening Type

REGISTERED DURCO
BOWS AND GILTS
J. H. MONROE
Box 111, Twin Falls, Idaho

BLUFFERS
Artificial Insecticide service, including
Artificial Insecticide service, including

FIR LUMBER
SIS Grade 4
OR MIXTER
\$50 MFT

TWENTY MORE
M U S T G O
BY FEB. 20th

FRIDAY - SATURDAY
SUNDAY
-Look These Cars Over-
1932 DeSoto Five Drive "7" 4 door

GOODWILL USED CARS
1932 Ford Custom 4 door, Radio
1932 Ford Custom 4 door, Radio

READ EVERY WORD
We have positively the best buy in the
We have positively the best buy in the

PHOSPHATE BROADCASTERS
Drill Type
Whitening Type

REGISTERED DURCO
BOWS AND GILTS
J. H. MONROE
Box 111, Twin Falls, Idaho

BLUFFERS
Artificial Insecticide service, including
Artificial Insecticide service, including

FIR LUMBER
SIS Grade 4
OR MIXTER
\$50 MFT

TWENTY MORE
M U S T G O
BY FEB. 20th

FRIDAY - SATURDAY
SUNDAY
-Look These Cars Over-
1932 DeSoto Five Drive "7" 4 door

GOODWILL USED CARS
1932 Ford Custom 4 door, Radio
1932 Ford Custom 4 door, Radio

READ EVERY WORD
We have positively the best buy in the
We have positively the best buy in the

PHOSPHATE BROADCASTERS
Drill Type
Whitening Type

REGISTERED DURCO
BOWS AND GILTS
J. H. MONROE
Box 111, Twin Falls, Idaho

BLUFFERS
Artificial Insecticide service, including
Artificial Insecticide service, including

FIR LUMBER
SIS Grade 4
OR MIXTER
\$50 MFT

TWENTY MORE
M U S T G O
BY FEB. 20th

FRIDAY - SATURDAY
SUNDAY
-Look These Cars Over-
1932 DeSoto Five Drive "7" 4 door

GOODWILL USED CARS
1932 Ford Custom 4 door, Radio
1932 Ford Custom 4 door, Radio

READ EVERY WORD
We have positively the best buy in the
We have positively the best buy in the

PHOSPHATE BROADCASTERS
Drill Type
Whitening Type

REGISTERED DURCO
BOWS AND GILTS
J. H. MONROE
Box 111, Twin Falls, Idaho

BLUFFERS
Artificial Insecticide service, including
Artificial Insecticide service, including

FIR LUMBER
SIS Grade 4
OR MIXTER
\$50 MFT

TWENTY MORE
M U S T G O
BY FEB. 20th

FRIDAY - SATURDAY
SUNDAY
-Look These Cars Over-
1932 DeSoto Five Drive "7" 4 door

GOODWILL USED CARS
1932 Ford Custom 4 door, Radio
1932 Ford Custom 4 door, Radio

READ EVERY WORD
We have positively the best buy in the
We have positively the best buy in the

PHOSPHATE BROADCASTERS
Drill Type
Whitening Type

REGISTERED DURCO
BOWS AND GILTS
J. H. MONROE
Box 111, Twin Falls, Idaho

BLUFFERS
Artificial Insecticide service, including
Artificial Insecticide service, including

FIR LUMBER
SIS Grade 4
OR MIXTER
\$50 MFT

TWENTY MORE
M U S T G O
BY FEB. 20th

FRIDAY - SATURDAY
SUNDAY
-Look These Cars Over-
1932 DeSoto Five Drive "7" 4 door

GOODWILL USED CARS
1932 Ford Custom 4 door, Radio
1932 Ford Custom 4 door, Radio

READ EVERY WORD
We have positively the best buy in the
We have positively the best buy in the

PHOSPHATE BROADCASTERS
Drill Type
Whitening Type

REGISTERED DURCO
BOWS AND GILTS
J. H. MONROE
Box 111, Twin Falls, Idaho

BLUFFERS
Artificial Insecticide service, including
Artificial Insecticide service, including

FIR LUMBER
SIS Grade 4
OR MIXTER
\$50 MFT

TWENTY MORE
M U S T G O
BY FEB. 20th

FRIDAY - SATURDAY
SUNDAY
-Look These Cars Over-
1932 DeSoto Five Drive "7" 4 door

GOODWILL USED CARS
1932 Ford Custom 4 door, Radio
1932 Ford Custom 4 door, Radio

READ EVERY WORD
We have positively the best buy in the
We have positively the best buy in the

PHOSPHATE BROADCASTERS
Drill Type
Whitening Type

REGISTERED DURCO
BOWS AND GILTS
J. H. MONROE
Box 111, Twin Falls, Idaho

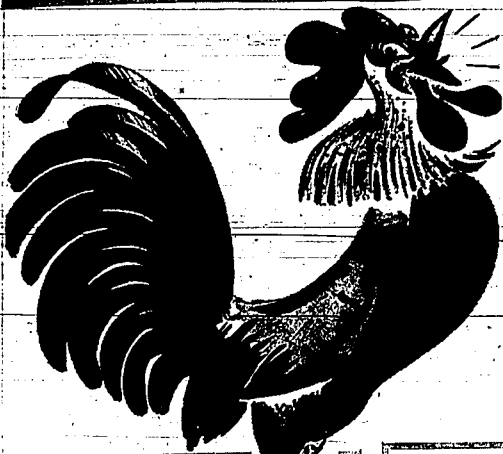
BLUFFERS
Artificial Insecticide service, including
Artificial Insecticide service, including

FIR LUMBER
SIS Grade 4
OR MIXTER
\$50 MFT

TWENTY MORE
M U S T G O
BY FEB. 20th

FRIDAY - SATURDAY
SUNDAY
-Look These Cars Over-
1932 DeSoto Five Drive "7" 4 door

GOODWILL USED CARS
1932 Ford Custom 4 door, Radio
1932 Ford Custom 4 door, Radio



"SOMETHING TO CROW ABOUT"

Whether You Buy These Specials With "EGG-MONEY" Or Any Other Kind Of Money - You Will...

Save More Than 1/3 the Actual Cost

FRIDAY AND SATURDAY - POULTRY DAYS

POULTRY Specials

First Quality—Heavy Terry

TOWELS

- Assorted Pastel Colors
- Full 22" x 44" Size
- All First-Quality
- Regular 79c Value

Domestics Downstairs **59c**

SPECIAL PURCHASE! Rayon

PANELS

Cream color only, Sizes 42x81 inch. Regular 1.98 value. **98c**

POULTRY Specials

Men's Fine Wool

SPORT SHIRTS

- Sport and Regular Styles
- Fine Plaids and Shadow Plaids
- Reds and Greens and Browns
- Sizes 14 1/2 to 17. Values to 6.95

While They Last. Friday and Saturday **4.00**

Men's Dept.

POULTRY Specials

LARGE GROUP BOYS'

SPORT SHIRTS

Printed Patterns - Novelty Colors and Designs ... in Seersucker and Broadcloth. Long- and short-sleeve styles. 4 to 16 years. Values to 1.98.

EGG DAY SPECIALS! **1.19**

Lad 'N Lassie Shop—Downstairs

POULTRY Specials

Munsingwear

GOWNS

SPECIAL **1.98**

First quality rayon gowns that are valued to \$3.00, regularly priced. 25 down in this group. Assorted styles and colors. Sizes 32 to 50. You will want several of these at this price.

Lingerie—Main Floor

SPECIAL GROUP CHILDREN'S

SHOES

Assorted Styles, Colors and Kinds. Broken Sizes—Real Bargains if you find the size. In our downstairs shoe department.

1/2 Price

Men's Fancy Cotton

ANKLETS

Bright Colors, Assorted Styles. Elastic Tops. Sizes 10 1/2 to 13.

REGULAR 50c VALUES SPECIAL **3 pr. \$1**

Men's Department

POULTRY Specials

SPECIAL PURCHASE

Munsingwear

RAYON-KNIT

GOWNS

for Girls—Ages 4 to 16

1.98

Pastel shades. Assorted styles. This is an outstanding value. Cute, clever styles and a real buy. You'll save on this Egg Day Special.

Lassie Shop—Downstairs

POULTRY Specials

NYLON

GOWNS

Munsingwear first-quality, all-nylon rayon gowns. Regular 8.95 values. Assorted styles and colors. There are only 5 dozen in the group. Better shop early! Sizes from 32 to 44.

Lingerie—Main Floor

4.98

POULTRY Specials

Ladies Comfortable

DUSTERS

Assorted Colors and Styles. Cotton and French Crepe. Values to 5.95 and 6.95.

NOW! SPECIAL **3.00**

Main Floor Ready-to-Wear

Ladies Dressy & Sport

BLOUSES

Washable crepe. Assorted colors and styles. Regular values to 3.98.

Main Floor Ready-to-Wear **2.00**

Men's Cotton Flannel

SHIRTS

Assorted Fine Plaids. Fully Washable. Sizes 14 1/2 to 17 ... reg. 1.98. EGG DAY SPECIAL

Men's Department **1.50**

One Lot of Men's

SHOES

Dress and Work Styles - Odds and Ends - Broken Sizes. Some are real old-fashioned bargains!

1/2 Price

Main Floor—Shoe Dept.

POULTRY Specials

BOY'S NOVELTY PRINTED

T-SHIRTS

By "Jantzen." New spring patterns, colors and styles. All sizes. Real values at this price.

Lad 'N Lassie Shop—Downstairs

1.98 to 3.50

Idaho Department Store Co.

ESTABLISHED IN 1906

TWIN FALLS, IDAHO

We Give I.D.S. Green Stamps