







# TUCKER'S NATIONAL WHIRLIGIG

Every Sunday this Twin Falls newspaper carries a column of news and information from the Washington news service. It is a column of news and information from the Washington news service. It is a column of news and information from the Washington news service.

WASHINGTON—It is true, says F. C. Roughton, N.Y., that the atmosphere at Washington is a bit of a whirligig. It is a bit of a whirligig. It is a bit of a whirligig.

UNWISE TALK—Too many Roosevelt-Truman officials and members of the White House staff accepted invitations to "lunch" receptions and dinners, where they talked whisky but not too wisely.

SEAWAY DECISIONS NEEDED—For more than two decades the St. Lawrence seaway project has been a topic of bitter controversy in and out of congress.

ON THE OTHER SIDE, the fresh-water lake ports of the Great Lakes and the whole, expansive midwestern region argued honestly that it meant greater economic development.

After World War II, they added another argument—the depletion of American oil reserves compelled resort to outside sources, with newly discovered stocks in the Quebec-Labrador area among the most convenient and desirable.

Opponents scoffed at this contention, labeling it just a smoke screen for the old argument. And they had sufficient strength to keep the project bottled up in congress year after year.

The economics of transportation are not simple. The railroads fought the Panama canal, too, because they thought it would ruin their transcontinental business. It did not.

Canada under this plan would of course have chief control of seaway facilities. Inasmuch as these steps appeared to be more than mere bluff, American lawmakers began to realize that ship traffic important to America might before too long be moving through a waterway over which this country had no governing voice.

Whether these same considerations might prevail in the more explosive house is uncertain. But at the very least, the project deserves to come to the floor for a vote. The St. Lawrence seaway has been held in the suspended state too long. We owe it to ourselves and our friends up north to decide one way or another.

DWORSHAK'S MANEUVER—Before he reversed himself, some of the keenest political observers in Washington were blaming Idaho's Senator Dworshak for rather "sordid maneuvering" in the fighting over admittance of Hawaii and Alaska to statehood.

As the press services had pointed out, it appeared beyond any doubt that there was political motivation in Republican leaders' insistence that Hawaii and Alaska be considered separately.

The reason was quite simple. Hawaii is expected to vote Republican and Alaska Democratic.

Then, however, Senator Dworshak cast a balance-of-power vote tying Hawaii and Alaska together in a senate committee bill.

Now that the senator has reversed himself, it appears likely that an Hawaii-only statehood bill will be sent to the senate for consideration.

Meantime, those who suspected "sordid maneuvering" may be looking to Senator Dworshak for a more plausible explanation of his actions. They contend he was seeking personal advantage at the expense of the peoples of political states, and the larger national interest.

A college professor says that hard work gains promotion. It all depends on how many relatives some possess have.

# POT SHOTS

IT'S ALL OVER NOW—You've got all over now except maybe for a bit of kicking around in the next month or so. Just in case you aren't up on current events, the groundhog is supposed to give his time-honored and worthless prediction of things to come in the line of weather.

But does that make real good sense? Suppose the groundhog emerges from his hole on a cloudy day the day after tomorrow. It is sensible to suppose he'll come in on a sunny day, isn't it?

PUPS FOR KIDS DEPT.—Dear Pot Shots: We have three nearly all-black female pups who would like to give away. They are 8 weeks old. Our phone number is Twin Falls 0280-35. We are located on a one-half mile west of South Park.

GOTTA STEP LIVELY—Dear Pot: Ever heard about the peace and quiet in the country? Ha! Birds, squirrels, children and adults find protection in the city. It's the animals that may be shot.

OUR BULLETIN BOARD—Rubber Stamp Fairy—Sorry, but Pot Shots tries to avoid matters of politics and religion. Anyway, your contribution is not original, is it?

IT'S SAFE NOW!—I wrote in the shoe of "A Parent" I would rush right out and give the money to the state. It was limited to Twin Falls.

FOAMOUS LARK LINE—And he's an expert at misunderstanding things. GENTLEMAN IN THE FOURTH ROW

CORONET CAMERAS—CORONET CAMERAS CENTER for everything you need for your own inexpensive darkroom. Come in today and see the new equipment.

CORONET CAMERAS—CORONET CAMERAS CENTER for everything you need for your own inexpensive darkroom. Come in today and see the new equipment.

CORONET CAMERAS—CORONET CAMERAS CENTER for everything you need for your own inexpensive darkroom. Come in today and see the new equipment.

CORONET CAMERAS—CORONET CAMERAS CENTER for everything you need for your own inexpensive darkroom. Come in today and see the new equipment.

CORONET CAMERAS—CORONET CAMERAS CENTER for everything you need for your own inexpensive darkroom. Come in today and see the new equipment.

CORONET CAMERAS—CORONET CAMERAS CENTER for everything you need for your own inexpensive darkroom. Come in today and see the new equipment.

CORONET CAMERAS—CORONET CAMERAS CENTER for everything you need for your own inexpensive darkroom. Come in today and see the new equipment.

CORONET CAMERAS—CORONET CAMERAS CENTER for everything you need for your own inexpensive darkroom. Come in today and see the new equipment.

CORONET CAMERAS—CORONET CAMERAS CENTER for everything you need for your own inexpensive darkroom. Come in today and see the new equipment.

CORONET CAMERAS—CORONET CAMERAS CENTER for everything you need for your own inexpensive darkroom. Come in today and see the new equipment.

# HOW THINGS APPEAR FROM PEGLER'S ANGLE

CIUDAD TRUJILLO—Dominican Republic—Sprengle Braden formerly a biographer in the Latin American phase of our state department, recently has damaged the communists in the department.

But the Dominican government insists that Braden himself was a biographer of the communists. He was a personal friend of Lister Brindley, a communist in the Russian army, and soon became Lister's lieutenant-colonel in the "red" army.

When the Dominican brigades were brought into the Madrid and Aranjuez fronts, Gustavo Duran formed part of the high Russian general staff at Tarazona where they left and hidous recollections.

After Tarazona it appears that he went to Moscow. It appears that he is now in Washington as a collaborator with Sprengle Braden, chief of a section of the state department.

McCarthy then said Braden was Duran's "champion" and introduced Duran into the state department. He was ambassador, Dec. 21, 1941, in which Braden said Duran had been recommended by a "certain" of "unimpeachable patriotism and integrity" to spy on "fascist" activities in Cuba, whose government was then and still is "pro-fascist."

"Fascist" means, among other things, anti-communist. McCarthy said he had a report that Duran was a "brother-in-law" of Michael Straight, the millionaire publisher of the New Republic, of which Braden was editor for a couple of years.

McCarthy writes that he has a photograph of Duran in the state department of more than average intelligence. I freely admit that I had only a foggy idea of the facts and figures until I came here this month ago.

So it occurs to me that the American people are almost utterly ignorant of the evil activities of Sprengle Braden and his associates with weapons and aided by political collusion from the United States.

In an address to the Dominican committee of the senate that he had been frustrated by state department reds, the Dominican government says that on Dec. 28, 1941, Braden refused to grant a license to the quantity of arms and munitions to the Dominican Republic.

At that time, Emilio Garcia Godoy, now the ambassador to Spain, wrote that Braden's refusal to grant a license was "a direct insult to the Dominican Republic."

Concurrently, the ambassador said in an official Dominican publication, "the quantity of arms and munitions to the Dominican Republic was refused."

Nowadays, Braden says we must "clean house" in the state department to assist the Latin American anti-reds, of whom Trujillo certainly is the most aggressive and the strongest in the military sense. But the Dominicans charge that he worked in close harmony with an influential employee of the state department who had been a colonel of the red Spanish Republican army.

The Dominican documents name this man as Gustavo Duran, and Ben. Joe McCarthy has sent me a sworn testimony taken by the Tydings committee some years ago in which McCarthy thoroughly canvassed Duran's career.

McCarthy put these rhetorical questions to Trujillo: "What was the mysterious power which enabled him (Duran) to continue to serve as confidential assistant to the Dominican Republic and the department's South American affairs? Why was this man permitted voluntarily to resign in the face of a 'black' charge which had gotten him the important task of going to the U.N. and screening refugees coming into this nation?"

McCarthy introduced a "confidential intelligence report" from Col. Wendell O. Johnson, the American military attaché in Santo Domingo, Jan. 4, 1941, which said as follows: "The case general (general judicial proceedings) has information about the crimes committed under the command of Duran's 'chock' (illegal) army. He was one of the principal organizers of the popular militia created by the communists."

He was a personal friend of Lister Brindley, a communist in the Russian army, and soon became Lister's lieutenant-colonel in the "red" army. When the Dominican brigades were brought into the Madrid and Aranjuez fronts, Gustavo Duran formed part of the high Russian general staff at Tarazona where they left and hidous recollections.

After Tarazona it appears that he went to Moscow. It appears that he is now in Washington as a collaborator with Sprengle Braden, chief of a section of the state department.

# That So!

Female of Species Prove Real Leaders—Nature lovers, heraldy designers and artists notwithstanding, females in the wild have been found to be more than just decorative.

But without question, the female of the species is the leader. In every mammalian group, from the lowest to the highest, she is the leader. In the face of adversity, she is the one who leads the group to safety.

Richfield Brings in \$25,000—RICHFIELD, Kan., Jan. 10.—The Richfield field office has brought in \$25,000 in the last few days. The office has been very successful in its work.

Brings in \$25,000—RICHFIELD, Kan., Jan. 10.—The Richfield field office has brought in \$25,000 in the last few days. The office has been very successful in its work.

Brings in \$25,000—RICHFIELD, Kan., Jan. 10.—The Richfield field office has brought in \$25,000 in the last few days. The office has been very successful in its work.

Brings in \$25,000—RICHFIELD, Kan., Jan. 10.—The Richfield field office has brought in \$25,000 in the last few days. The office has been very successful in its work.

Brings in \$25,000—RICHFIELD, Kan., Jan. 10.—The Richfield field office has brought in \$25,000 in the last few days. The office has been very successful in its work.

Brings in \$25,000—RICHFIELD, Kan., Jan. 10.—The Richfield field office has brought in \$25,000 in the last few days. The office has been very successful in its work.

Brings in \$25,000—RICHFIELD, Kan., Jan. 10.—The Richfield field office has brought in \$25,000 in the last few days. The office has been very successful in its work.

Brings in \$25,000—RICHFIELD, Kan., Jan. 10.—The Richfield field office has brought in \$25,000 in the last few days. The office has been very successful in its work.

Brings in \$25,000—RICHFIELD, Kan., Jan. 10.—The Richfield field office has brought in \$25,000 in the last few days. The office has been very successful in its work.

Brings in \$25,000—RICHFIELD, Kan., Jan. 10.—The Richfield field office has brought in \$25,000 in the last few days. The office has been very successful in its work.

Brings in \$25,000—RICHFIELD, Kan., Jan. 10.—The Richfield field office has brought in \$25,000 in the last few days. The office has been very successful in its work.

Brings in \$25,000—RICHFIELD, Kan., Jan. 10.—The Richfield field office has brought in \$25,000 in the last few days. The office has been very successful in its work.

Brings in \$25,000—RICHFIELD, Kan., Jan. 10.—The Richfield field office has brought in \$25,000 in the last few days. The office has been very successful in its work.

Brings in \$25,000—RICHFIELD, Kan., Jan. 10.—The Richfield field office has brought in \$25,000 in the last few days. The office has been very successful in its work.

Brings in \$25,000—RICHFIELD, Kan., Jan. 10.—The Richfield field office has brought in \$25,000 in the last few days. The office has been very successful in its work.

## That So!

Female of Species Prove Real Leaders

Nature lovers, heraldy designers and artists notwithstanding, females in the wild have been found to be more than just decorative.

But without question, the female of the species is the leader. In every mammalian group, from the lowest to the highest, she is the leader. In the face of adversity, she is the one who leads the group to safety.

## Richfield Brings in \$25,000

RICHFIELD, Kan., Jan. 10.—The Richfield field office has brought in \$25,000 in the last few days. The office has been very successful in its work.

## Brings in \$25,000

RICHFIELD, Kan., Jan. 10.—The Richfield field office has brought in \$25,000 in the last few days. The office has been very successful in its work.

## Brings in \$25,000

RICHFIELD, Kan., Jan. 10.—The Richfield field office has brought in \$25,000 in the last few days. The office has been very successful in its work.

## Brings in \$25,000

RICHFIELD, Kan., Jan. 10.—The Richfield field office has brought in \$25,000 in the last few days. The office has been very successful in its work.

## Brings in \$25,000

RICHFIELD, Kan., Jan. 10.—The Richfield field office has brought in \$25,000 in the last few days. The office has been very successful in its work.

## Brings in \$25,000

RICHFIELD, Kan., Jan. 10.—The Richfield field office has brought in \$25,000 in the last few days. The office has been very successful in its work.

## Brings in \$25,000

RICHFIELD, Kan., Jan. 10.—The Richfield field office has brought in \$25,000 in the last few days. The office has been very successful in its work.

## Brings in \$25,000

RICHFIELD, Kan., Jan. 10.—The Richfield field office has brought in \$25,000 in the last few days. The office has been very successful in its work.

## Brings in \$25,000

RICHFIELD, Kan., Jan. 10.—The Richfield field office has brought in \$25,000 in the last few days. The office has been very successful in its work.

## SEAWAY DECISIONS NEEDED

For more than two decades the St. Lawrence seaway project has been a topic of bitter controversy in and out of congress.

## ON THE OTHER SIDE

the fresh-water lake ports of the Great Lakes and the whole, expansive midwestern region argued honestly that it meant greater economic development.

## After World War II

they added another argument—the depletion of American oil reserves compelled resort to outside sources, with newly discovered stocks in the Quebec-Labrador area among the most convenient and desirable.

## Opponents scoffed at this contention

labeling it just a smoke screen for the old argument. And they had sufficient strength to keep the project bottled up in congress year after year.

## The economics of transportation

are not simple. The railroads fought the Panama canal, too, because they thought it would ruin their transcontinental business. It did not.

## Canada under this plan

would of course have chief control of seaway facilities. Inasmuch as these steps appeared to be more than mere bluff, American lawmakers began to realize that ship traffic important to America might before too long be moving through a waterway over which this country had no governing voice.

## Whether these same considerations

might prevail in the more explosive house is uncertain. But at the very least, the project deserves to come to the floor for a vote. The St. Lawrence seaway has been held in the suspended state too long. We owe it to ourselves and our friends up north to decide one way or another.

## DWORSHAK'S MANEUVER

Before he reversed himself, some of the keenest political observers in Washington were blaming Idaho's Senator Dworshak for rather "sordid maneuvering" in the fighting over admittance of Hawaii and Alaska to statehood.

## As the press services had pointed out

it appeared beyond any doubt that there was political motivation in Republican leaders' insistence that Hawaii and Alaska be considered separately.

## The reason was quite simple

Hawaii is expected to vote Republican and Alaska Democratic.

## TUCKER'S NATIONAL WHIRLIGIG

Every Sunday this Twin Falls newspaper carries a column of news and information from the Washington news service. It is a column of news and information from the Washington news service.

## WASHINGTON—It is true

says F. C. Roughton, N.Y., that the atmosphere at Washington is a bit of a whirligig. It is a bit of a whirligig. It is a bit of a whirligig.

## UNWISE TALK—Too many Roosevelt-Truman officials

and members of the White House staff accepted invitations to "lunch" receptions and dinners, where they talked whisky but not too wisely.

## SEAWAY DECISIONS NEEDED

For more than two decades the St. Lawrence seaway project has been a topic of bitter controversy in and out of congress.

## ON THE OTHER SIDE

the fresh-water lake ports of the Great Lakes and the whole, expansive midwestern region argued honestly that it meant greater economic development.

## After World War II

they added another argument—the depletion of American oil reserves compelled resort to outside sources, with newly discovered stocks in the Quebec-Labrador area among the most convenient and desirable.

## Opponents scoffed at this contention

labeling it just a smoke screen for the old argument. And they had sufficient strength to keep the project bottled up in congress year after year.

## The economics of transportation

are not simple. The railroads fought the Panama canal, too, because they thought it would ruin their transcontinental business. It did not.

## Canada under this plan

would of course have chief control of seaway facilities. Inasmuch as these steps appeared to be more than mere bluff, American lawmakers began to realize that ship traffic important to America might before too long be moving through a waterway over which this country had no governing voice.

## Whether these same considerations

might prevail in the more explosive house is uncertain. But at the very least, the project deserves to come to the floor for a vote. The St. Lawrence seaway has been held in the suspended state too long. We owe it to ourselves and our friends up north to decide one way or another.

## POT SHOTS

## IT'S ALL OVER NOW

You've got all over now except maybe for a bit of kicking around in the next month or so. Just in case you aren't up on current events, the groundhog is supposed to give his time-honored and worthless prediction of things to come in the line of weather.

## But does that make real good sense?

Suppose the groundhog emerges from his hole on a cloudy day the day after tomorrow. It is sensible to suppose he'll come in on a sunny day, isn't it?

## PUPS FOR KIDS DEPT.

Dear Pot Shots: We have three nearly all-black female pups who would like to give away. They are 8 weeks old. Our phone number is Twin Falls 0280-35. We are located on a one-half mile west of South Park.

## GOTTA STEP LIVELY

Dear Pot: Ever heard about the peace and quiet in the country? Ha! Birds, squirrels, children and adults find protection in the city. It's the animals that may be shot.

## OUR BULLETIN BOARD

Rubber Stamp Fairy—Sorry, but Pot Shots tries to avoid matters of politics and religion. Anyway, your contribution is not original, is it?

## IT'S SAFE NOW!

I wrote in the shoe of "A Parent" I would rush right out and give the money to the state. It was limited to Twin Falls.

## FOAMOUS LARK LINE

And he's an expert at misunderstanding things. GENTLEMAN IN THE FOURTH ROW

## CORONET CAMERAS

CORONET CAMERAS CENTER for everything you need for your own inexpensive darkroom. Come in today and see the new equipment.

## CORONET CAMERAS

CORONET CAMERAS CENTER for everything you need for your own inexpensive darkroom. Come in today and see the new equipment.

## HOW THINGS APPEAR FROM PEGLER'S ANGLE

## CIUDAD TRUJILLO—Dominican Republic—Sprengle Braden

formerly a biographer in the Latin American phase of our state department, recently has damaged the communists in the department.

## But the Dominican government insists that Braden himself

was a biographer of the communists. He was a personal friend of Lister Brindley, a communist in the Russian army, and soon became Lister's lieutenant-colonel in the "red" army.

## When the Dominican brigades were brought into the Madrid and Aranjuez fronts

Gustavo Duran formed part of the high Russian general staff at Tarazona where they left and hidous recollections.

## After Tarazona it appears that he went to Moscow

It appears that he is now in Washington as a collaborator with Sprengle Braden, chief of a section of the state department.

## McCarthy then said Braden was Duran's "champion"

and introduced Duran into the state department. He was ambassador, Dec. 21, 1941, in which Braden said Duran had been recommended by a "certain" of "unimpeachable patriotism and integrity" to spy on "fascist" activities in Cuba, whose government was then and still is "pro-fascist."

## "Fascist" means, among other things, anti-communist

McCarthy said he had a report that Duran was a "brother-in-law" of Michael Straight, the millionaire publisher of the New Republic, of which Braden was editor for a couple of years.

## McCarthy writes that he has a photograph of Duran

in the state department of more than average intelligence. I freely admit that I had only a foggy idea of the facts and figures until I came here this month ago.

## So it occurs to me that the American people are almost utterly ignorant

of the evil activities of Sprengle Braden and his associates with weapons and aided by political collusion from the United States.

## In an address to the Dominican committee of the senate

that he had been frustrated by state department reds, the Dominican government says that on Dec. 28, 1941, Braden refused to grant a license to the quantity of arms and munitions to the Dominican Republic.

## That So!

Female of Species Prove Real Leaders

Nature lovers, heraldy designers and artists notwithstanding, females in the wild have been found to be more than just decorative.

But without question, the female of the species is the leader. In every mammalian group, from the lowest to the highest, she is the leader. In the face of adversity, she is the one who leads the group to safety.

## Richfield Brings in \$25,000

RICHFIELD, Kan., Jan. 10.—The Richfield field office has brought in \$25,000 in the last few days. The office has been very successful in its work.

## Brings in \$25,000

RICHFIELD, Kan., Jan. 10.—The Richfield field office has brought in \$25,000 in the last few days. The office has been very successful in its work.

## Brings in \$25,000

RICHFIELD, Kan., Jan. 10.—The Richfield field office has brought in \$25,000 in the last few days. The office has been very successful in its work.

## Brings in \$25,000

RICHFIELD, Kan., Jan. 10.—The Richfield field office has brought in \$25,000 in the last few days. The office has been very successful in its work.

## Brings in \$25,000

RICHFIELD, Kan., Jan. 10.—The Richfield field office has brought in \$25,000 in the last few days. The office has been very successful in its work.

## Brings in \$25,000

RICHFIELD, Kan., Jan. 10.—The Richfield field office has brought in \$25,000 in the last few days. The office has been very successful in its work.

## Brings in \$25,000

RICHFIELD, Kan., Jan. 10.—The Richfield field office has brought in \$25,000 in the last few days. The office has been very successful in its work.

## Brings in \$25,000

RICHFIELD, Kan., Jan. 10.—The Richfield field office has brought in \$25,000 in the last few days. The office has been very successful in its work.

## Brings in \$25,000

RICHFIELD, Kan., Jan. 10.—The Richfield field office has brought in \$25,000 in the last few days. The office has been very successful in its work.

## SEAWAY DECISIONS NEEDED

For more than two decades the St. Lawrence seaway project has been a topic of bitter controversy in and out of congress.

## ON THE OTHER SIDE

the fresh-water lake ports of the Great Lakes and the whole, expansive midwestern region argued honestly that it meant greater economic development.

## After World War II

they added another argument—the depletion of American oil reserves compelled resort to outside sources, with newly discovered stocks in the Quebec-Labrador area among the most convenient and desirable.

## Opponents scoffed at this contention

labeling it just a smoke screen for the old argument. And they had sufficient strength to keep the project bottled up in congress year after year.

## The economics of transportation

are not simple. The railroads fought the Panama canal, too, because they thought it would ruin their transcontinental business. It did not.

## Canada under this plan

would of course have chief control of seaway facilities. Inasmuch as these steps appeared to be more than mere bluff, American lawmakers began to realize that ship traffic important to America might before too long be moving through a waterway over which this country had no governing voice.

## Whether these same considerations

might prevail in the more explosive house is uncertain. But at the very least, the project deserves to come to the floor for a vote. The St. Lawrence seaway has been held in the suspended state too long. We owe it to ourselves and our friends up north to decide one way or another.

## DWORSHAK'S MANEUVER

Before he reversed himself, some of the keenest political observers in Washington were blaming Idaho's Senator Dworshak for rather "sordid maneuvering" in the fighting over admittance of Hawaii and Alaska to statehood.

## As the press services had pointed out

it appeared beyond any doubt that there was political motivation in Republican leaders' insistence that Hawaii and Alaska be considered separately.

## The reason was quite simple

Hawaii is expected to vote Republican and Alaska Democratic.

## TUCKER'S NATIONAL WHIRLIGIG

Every Sunday this Twin Falls newspaper carries a column of news and information from the Washington news service. It is a column of news and information from the Washington news service.

## WASHINGTON—It is true

says F. C. Roughton, N.Y., that the atmosphere at Washington is a bit of a whirligig. It is a bit of a whirligig. It is a bit of a whirligig.

## UNWISE TALK—Too many Roosevelt-Truman officials

and members of the White House staff accepted invitations to "lunch" receptions and dinners, where they talked whisky but not too wisely.

## SEAWAY DECISIONS NEEDED

For more than two decades the St. Lawrence seaway project has been a topic of bitter controversy in and out of congress.

## ON THE OTHER SIDE

the fresh-water lake ports of the Great Lakes and the whole, expansive midwestern region argued honestly that it meant greater economic development.

### Public Forum

#### Says Eisenhower Follows Trail Pioneered by Roosevelt

It is determined to state of a political-economic depression. Going back still to the fall of 1932, I read that September, 1932, would go down as one of the important dates in all history since at that time our President and his department made an agreement whereby the United States took over control of the world financial, military and economic affairs. We agreed to support, defend, and guarantee the colonial rights of the British, French and Dutch, who have vast colonial possessions in Asia and elsewhere.

We need stronger curbs on the power of our executive department. We need to find out whether the members of our supreme court are dead or just sleeping for 20 years; we don't need to increase our congressmen's pay and we need a real, red-blooded American as President of the United States.

MRS. BUD SMITH (Bills)

#### Advisory Committee to Survey Nursing Needs for Gem State

It is to be noted that an advisory committee representing the state of Idaho has decided to make a statewide survey of nursing needs. The committee is composed of representatives of the nursing profession, the medical profession, the state health department, and the state legislature. The survey is being conducted by the Idaho State Board of Nursing, which is the state's regulatory body for the nursing profession. The survey will determine the current and future needs for nursing services in Idaho, and will provide a basis for the development of a comprehensive nursing plan for the state. The survey will be completed by the end of the year, and the results will be presented to the state legislature.

#### The Tax Comparison Shows Citizens Pay Biggest Tab

IN A CITIZEN'S PAY BIGGEST TAB, the average citizen pays more in taxes than any other group in the country. This is according to a study by the American Tax Association, which found that the average citizen pays 15.5 percent of his income in taxes, compared to 12.5 percent for corporations and 10 percent for the federal government. The study also found that the average citizen pays more in taxes than any other group in the world, with the exception of the Japanese, who pay 18 percent. The study was based on data from the Internal Revenue Service, and is the most comprehensive study of its kind.

#### Key to Security and Your Home

THE FINEST START YOU CAN MAKE toward ultimate independence is the decision to own your own home. You can realize this more quickly by letting us show you how a low-cost loan can pay the way.

Put your home financing problems up to us. We'll suggest the happiest solution for you.

ST. FEDERAL SAVINGS & LOAN ASSOCIATION OF TWIN FALLS

#### Appreciation for Drive Help Noted by Lodge Women

Editor, Times-News: We of the Women of the Moose would like to take this opportunity to thank each and every one who helped to make the "Mothers March" a success. Nearly \$4,000 was taken in for this march. Our special thanks goes to the "Moose mothers" who did the soliciting for our donations. We also thank City Manager Joseph Latimore for letting us use the city hall as headquarters for the night of the drive and Mr. Strunk for staying late to keep the city hall open for us.

MRS. W. A. PARRIS (Senior regent, Women of the Moose)

#### Pre-School PTA Recognizes Help At Kindergarten

Editor, Times-News: For several years, the pre-school PTA has sponsored a kindergarten for five-year-old children, which has proved most helpful in preparing them for first-grade experience. Since this is a cooperative undertaking, with fees kept down to a minimum, we rely heavily on services given to us without cost by those who are acquainted with the project. Recently, we have received very fine publicity from the press and radio, and wish publicly to express our appreciation. Only by continued cooperation like this can such non-profit undertakings flourish.

MAJORIE H. KURDEKA (Kindergarten chairman, Pre-School PTA)

#### 'Propaganda' of Surpluses Said Hurting Farmer

Editor, Times-News: Another strike against agriculture is the propaganda of surplus. Our own department of agriculture uses this against us by quoting millions of bushels of surplus wheat, millions of pounds of surplus butter, etc. Did you ever hear of millions of surplus automobiles or farm implements or millions of surplus shoes or millions of yards of surplus dress materials or too many barbers, lawyers, teachers and doctors? No, you don't because other professions and industries use the propaganda of scarcity, but the propaganda of surplus is used chiefly against agriculture.

MRS. HOWARD W. MILLS (Wendell)

#### AGAIN WE NEED CASINGS FOR OUR FAMOUS O.K. CAPS

So For 3 Days Only--Mon.-Tue.-Wed.

We Are Offering OK's NEW 1st Line TIRES

(116 Level) at These Terrific Prices

670x15 10.95

WHEELS BALANCED 75c including weights ONLY .. 10.95

Your Choice RECAPS or SNOW CAPS

670x15 6.75 Walnut or Savard Exchange

At C.H. Rubber Welders 556-4th Ave. W. on Truck Lane

WORLD'S FINEST RECAPPING

#### Congressman To Speak for Valley's GOP

(Times News Staff) 77th and 78th sessions of congress, but resigned in September of 1943 to serve in the armed forces for three and one-half years. He was elected to the 80th congress and re-elected three times.

He has served on committees identified with merchant marine and fisheries, water, immigration and naturalization, veterans affairs, armed services and atomic energy. He is a member of the following national organizations: Masons, Myrtle Shrine, Elks, Royal Order of Veterans, Knights of Pythias, Grange, Eagles, Moose, Lions, Patriotic Order of Sons of America, United Commercial Travelers, 40 & Sons of American Revolution, American Legion, Veterans of Foreign Wars, Amvets.

He served three terms as national commander of the VFW and two terms as Pennsylvania commander. Representative Van Zandt was born in Altoona, Pa., Dec. 18, 1893. His railroad career started in 1915 as a molder apprentice in the Pennsylvania railroad shops at Altoona. He rose to district passenger agent, a position he held in 1933 when he was elected to congress.

#### Suits Are Filled To Collect Bills

Three civil actions were alleged non-payment of debts have been filed in probate court here.

In one suit Mr. and Mrs. William G. Smith seek a \$450 judgment against Emilene Hart and Arnold Fairchild. The plaintiffs claim they leased a tavern, two houses and a two-apartment house located just west of Buhl to the defendants Sept. 10, 1962. They charge the defendants failed to pay rent in the amount of the judgment. J. W. Taylor represents the plaintiffs.

The other two actions were filed by Clyde Smith, operator of Jasper's Independent Gas and Oil company, Piler.

He seeks a \$174 judgment against Dean Shelton over alleged non-payment of a bill for fuel oil and groceries.

The second suit is against Bud Casinger. Smith claims Casinger has failed to pay a \$13.35 grocery bill. John H. Turnbull represents Smith in both actions.

#### Nurse Capped

Pat Beasley, daughter of Mr. and Mrs. William Beasley, 620 Third avenue north, was among 23 nursing students who received their caps during a ceremony conducted Friday at St. Luke's hospital, Boise.

The exercise marked the end of the first six months of training for the class. Mr. and Mrs. Beasley attended the ceremony. They were accompanied by Mr. and Mrs. Harvey Wood, Gooding.

#### Power Authority Will Be Speaker At Gooding Meet

SHOSHONE, Jan. 20--Charles C. Dill, Spokane, Wash., attorney and recognized authority on electrical power and Columbia basin development, will speak at a meeting at 1 p.m. Thursday at the legion hall here.

The session is being sponsored by the Gooding chapter of the National Farmers Union.

Clint Sinclair, Joseph, Ore., construction engineer, also will be present.

Dill's topic will be the expanding need for power in the Pacific northwest.

He is known as a public power advocate and is regarded as one of the fathers of the Grand Coulee project, sponsor of the meeting report.

Sponsors reported the general public is invited to attend the meeting.

#### Lodge Initiates 3 New Members

Clyde Edelman, Robert Heuther, and Jennie Fisher have been initiated into the Loyal Order of Moose. Members of the Bille club voted to hold meetings the first and third Tuesdays and the second and fourth Wednesdays of each month. Plans were made for the annual dance to be held Feb. 13 in the Legion hall. They voted to send the Moose bowling team to the state tournament. Members of the Jerome lodge were guests for the evening. Paul Carlson, lodge governor, conducted the meeting.

#### WE DO Repairing Re-Finishing Re-Tying Upholstering

We Guarantee our Work and We Guarantee our Price Will SAVE YOU MONEY!

Reupholstered Davenport \$49  
Portable Sewing Machine \$49  
Radio Phonograph \$39  
Kerosene Vacuum Cleaner \$15  
Twin Radio \$15  
Twin Bed, new mattress \$75  
Twin Trunk \$12.50  
Twin Wood Rug \$12.50  
Norge Elec. Range \$44  
New Blank Bed \$12  
Play Pen \$12  
Bollway Bed \$12.50

Youth bed, high chairs, desk, book case, dinette, walnut buffet, ironing board, corner cupboard, record cabinet, rockers, occasional chairs, kitchen cabinet, electric washers, oil heaters, trunk, beds, springs, mattresses.

**HAYES FURN. EXCH.**  
460 Main South Ph. 73

#### Recital Given

A recital was given by the piano students of Mrs. Delmar Tarleton Saturday afternoon at her home studio.

Participating in the recital were Jimmy Brown, Marshall Palmer, Marvin Reinken, Marilyn Snow, Beverly Anderson, Toni Martin, Terry Burkhalter, Cecile Hall, Douglas Brown, Jr., Barbara Taylor, Nancy Lierman, Lola Miller, Charlene Reinken, Diane Volyard, Bethene Treashad, Nancy Hitt, Dianne Padilla, Judy Tremblay and Lola Mae Killinger.

#### CASH FOR CARS

If you need immediate cash we will buy your Car or Equity

#### WE NEED CARS

SEE US IF YOU NEED THE CASH

#### GORE MOTOR CO.

162 Main South Phone 128

#### 100% nylon fleece washable topper

complete with Vinylite plastic bag



#### \$25

you just can't buy a finer quality topper at this amazing low price

- So washable you just dip it in lukewarm suds
- ... use an automatic washer or wash by hand
- ... no pressing needed ... just hang out and wear
- 100% nylon lining, tapes and threads; shoulder pads
- Shrink-proof, mothproof, mildewproof
- Water-repellent ... sheds rain
- Unbelievably lightweight and luxurious
- Snowy white, pink or blue
- Misses' sizes 10 to 20

SEARS ROEBUCK AND CO. Phone 2860-400 Main South FREE PARKING

## Drivers Fined

**KIMBERLY, Jan. 30.**—Walker paid a fine of \$25 Saturday night when he appeared before Justice M. J. Barry. Potter and Pleasants failed to display their plates on his car. State M. J. Barry, Jr., issued the fine.

**Edwin W. Walker.**—Paid a fine of \$2 and \$3 costs Friday when he pleaded guilty of driving an expired operator's license. Floor Richard Foots issued the citation.

---

**RETURN TO FULLER, Jan. 30.**—William Rude and son, Jr., returned from a visit with in Illinois.

TALENT  
JUBILEE

**TOMORROW**  
And EVERY  
**MONDAY** Night  
for Two More  
Weeks at  
8 P.M. from



**DOORS OPEN 12:45**



# ROOPE

Order by **TECHNICAL**

**JOHN WARRICK and FRANK ROBERTS** • *Spies in the Sky*  
**JOHN ALLEN and ALBERT R. WARRICK** • *Smash-Up in the*  
**E • A WARRICK PRODUCTION**

# ALDO

**55...she led them along the path of MURDER!**



# THE OF ME

OR RE  
T!  
*City of*  
... ..

**Violence**  
 von Martin Scorsese • Regie  
 Skript von John Wahl • Drehbuch von  
 John Wahl, John A. Lee, und John A. Lee

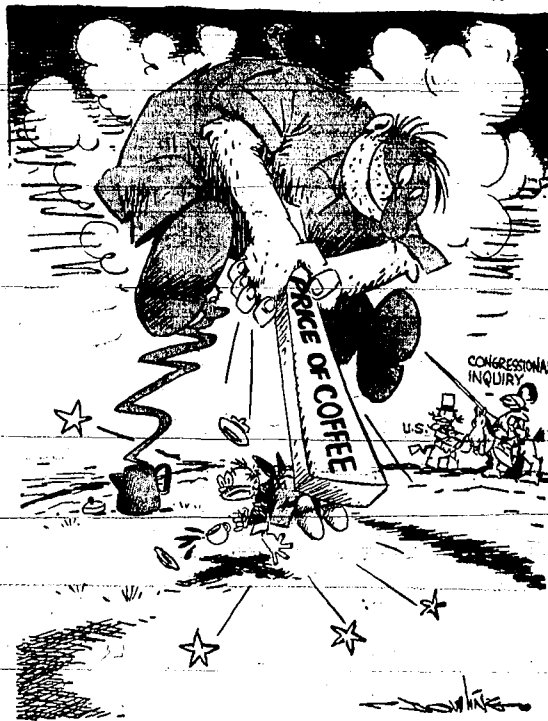
### Service Prize Celebrated by Local Grange

The annual banquet was held at the Twin Falls Grange hall last night. The Grange committee had a very successful evening. The banquet was given by Mrs. J. W. Jordan. The program was very interesting. The Grange has a long history of service to the community. The banquet was a success. The Grange is proud of its service to the community. The banquet was a success. The Grange is proud of its service to the community.

### Members Selected for H Club Meet

The first meeting of the H Club was held last night. The members were very interested. The club is a new organization. The members are very active. The club is a success. The members are proud of their club. The club is a success. The members are proud of their club.

## How to Get the Genie Back in the Pot?



**HERE WE GO AGAIN!** As a sequel to our very popular "MONEY FOR MUSIC" Quiz Program, recently completed, we invite you to help us celebrate—

## Twin Falls' Golden Anniversary

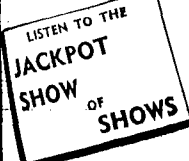
BY PLAYING

# "From '04

# To '54" ON KEEP

MONDAY thru FRIDAY 12:45 Noon to 1:15 P.M.

STARTING MONDAY, FEBRUARY 1st!



Prizes and Cash Awards for Magic Numbers and correct answers to questions concerning people and events that have contributed to the growth and progress of Twin Falls during the past "50 Magic Years." KEEP tuned for the clues broadcast throughout the day, every day, Monday through Friday. It's a new, exciting fun game for all the family. Anyone can win.

## "FROM" FOUR TO FIFTY-FOUR"

Brought to you by these civic minded progressive merchants

- Mac's Quilt-Craft
- Shoe Repair
- Wedding
- Home's Paint and Furniture
- Security Equipment Co.
- East Side Market
- Book Store
- West's Furniture
- OK Rubber Wonders
- Wahl's IGA Grocery
- Wahl's Mobil Service
- Whitely-Mandolani's Men's Shop
- Kingsbury Pharmacy
- Cardinal Food Market
- The Toy House
- West Five Points Mobil Service
- Fogg's Drive-In Market
- East Five Points Mobil Service
- Gambie's Western Auto Supply Co.
- Troy National Laundry & Dry Cleaners
- Sherwood Typewriter Exchange



# KEEP AND CBS

1450 ON YOUR MAGIC VALLEY DIAL "WHERE THE STARS SHINE DAY AND NIGHT"

Magic Valley Golden Jubilee Talent Show at Orpheum Theatre - Monday Night. Go if you can. If you can't, keep tuned to KEEP... we'll broadcast the show directly from the theatre.

## ... Our New Fashion Collection

Early-Morning Fashions... featuring the "School-Girl" look of Spring '54... prettily present in the Paris Co. Suits and Coats. The latest in designs and fabrics, styled for your taste, your figure and your budget. From head to toe our wide Spring selection will suit your fancy.

# YOUNG as SPRINGTIME



**RIGHT: ORNAMENTAL BEAUTY:** Marked as a winner by sparkling rhinestones that top allits on each side of the jacket bottom... this exquisite worsted pin check suit is tailored to perfection. Sizes 7-18. **39.50**

**LEFT: FASHION BRILLIANCE:** Iridescent pongee becomes immortal in a classic box suit. Gold bullion emblem adorns collar with notched lapels. Unique neckline distinguishes the deep sheer cape blouse. **39.50**



**LEFT: VASE MILLION:** The Paris Co. suit of the hour... a classic box suit with a high collar and a small hat. The suit is made of a light-colored fabric with a high collar and a small hat. The suit is made of a light-colored fabric with a high collar and a small hat. **39.50**

### USE OUR LAYAWAY

Choose your Spring Coat or Suit Early and take advantage of the larger selections and complete stocks. A small down payment will hold any article until Easter.

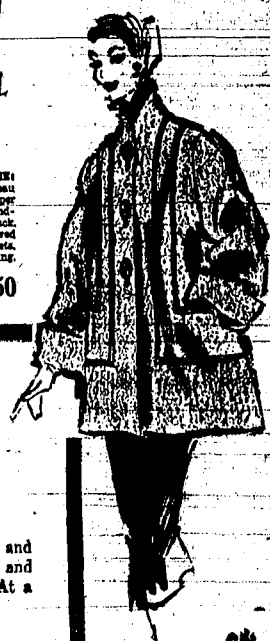


**RIGHT: BOUCLE SHORTS:** Pretty promise for Spring... best pongee styled in a classic box suit. The suit is made of a light-colored fabric with a high collar and a small hat. The suit is made of a light-colored fabric with a high collar and a small hat. **39.50**

### EXTRA SPECIAL BLOUSE VALUES!

Smart new Spring styles and colors in nylons, crepes and rayons. Sizes 32 to 38. At a sensational low price!

Values to **2.99** 7.95



It's always A-1 weather... when you and Machine get together. Water-repellent... Iridescent sharkskin. The gathered cuffs are attractively fashioned with crescent flaps and button trim. Pointed lapels duplicate the lines of pointed sleeve insets. Millium Iridescent taffeta lining. 6-18 and 8-17. **39.50**

Don't Forget the Golden Talent Jubilee Show at the Orpheum Theatre Monday Night!

# Idaho FHA Association Sets Annual Meet Here

Twin Falls will be host to the annual convention of the Idaho Association of FHA chapters in high schools throughout Idaho, are expected to attend the sessions, Miss Graves reported.

## Sets Date



Miss Graves is supervisor of home economics education, Idaho department of vocational education, and state FHA adviser.

Mr. John E. Hayes, Twin Falls, past president of the National Congress of Parents and Teachers, will be the featured speaker at the opening business during the morning of March 25. Election of state officers will follow her address.

Sessions will be held in the Junior high school auditorium.

Delegates will register the evening of March 23, when they will be guests of the Twin Falls high school chapter at a mixer event, Miss Graves said.

The banquet, traditional highlight of the convention, will be held the evening of March 24.

On March 27 newly-elected officers will be installed, ending this convention, the adviser reported.

## Tells Plans



SANDRA MAE ROGERS  
(Staff engraving)

# Miss Harvey's Betrothal Told

Mr. and Mrs. Norman Harvey, Butte, Mont., announce the engagement of their daughter, Audrey Harvey, Twin Falls, to Dale Anderson, Weiser.

The wedding will take place March 28 in Twin Falls.

Miss Harvey attended Butte schools and was graduated from St. Luke's hospital and nursing school at Boise. She is employed in the office of Dr. Charles B. Beymer.

Anderson attended Weiser schools and was graduated from the University of Idaho. He is affiliated with Sigma Alpha Epsilon fraternity and is Sigma Phi forestry honorary. He is a forest supervisor with Boise Payette Lumber company at Oso, Oreg.

# Members Seated By Moose Group

Mrs. Dale Bower and Mrs. Jennie Fisher were accepted as members of the Women of the Moose at the meeting Tuesday in the Moose hall.

Final plans were made by officers and escorts to attend the mid-winter conference at Gilman, Wyo. Saturday and Sunday. It was voted to send a contribution for the college of regents' fund to the conference.

Committee reports were given by Mrs. Edith Morton, publicity; Mrs. Bob Hoffman, home-making; Mrs. W. W. Holmgren, Moosecraft; and Mrs. Katharine Pick, first care.

Special reports were made on the progressive dinner for polo by Mrs. Art Parry and Mrs. Paul Carlson.

Mrs. Lantia Childs and Mrs. Clifford Waring reported on the work done by the home-making committee.

Mrs. Waring told of the activities of the Rifle club and asked all members who were interested in joining to contact her.

A party observing members' birthdays will be held Feb. 16 in the Moose hall. The meeting was conducted by Mrs. Parry, senior regent.

# OES Introduces Bethel Guardian

RUPERT, Jan. 30—Mrs. Roland Jones was presented as the guardian of the new Bethel Guardian at the meeting of Rupert chapter No. 30, Order of the Eastern Star, Thursday evening at the Masonic temple.

Obligation ceremony was conducted by Mrs. Pricie Sears, worthy matron.

Mrs. Anna Hile gave the landmarks. Refreshments were served by Mrs. Robert Rinehart, Mrs. Mildred Wallon, Mrs. Jennie Sawyer and Robert Rinehart.

The next meeting Feb. 11 will feature a program by the men of the chapter.

## Birthday Noted

SHOSHONE, Jan. 30—Mrs. Mary Cox was honored on her 71st birthday anniversary Wednesday afternoon at the home of Mr. and Mrs. Marx Nelson. In the evening the entertained Mr. and Mrs. Roy Dean.

RIGHT FROM YOUR HEART  
TO THOSE YOU HOLD DEAR

GILSON Valentine  
MADE IN THE U.S.A.

We have lovely Valentines  
Who do you have in mind?  
Stop and see our big array  
'Cause we have every kind!

**CLOS BOOK STORE**  
121 Main Avenue West  
WE GIVE 5&H GREEN STAMPS

# Honorees Receive Gifts at Ball



Three girls having the best attendance records at church activities in their respective LDS wards received gifts Friday night at the Green and Gold ball sponsored by the first, third and fifth wards. Here R. Alan Smith, third ward bishop, presents the gift to Vivi Clausen, as well as Reddinger, left, first ward, and Veon Hanson, right, fifth ward. (Staff photo—engraving)

# Green, Gold Ball Honors Girls for Activity Records

Devotion girls of the LDS first, third and fifth wards were honored for their church attendance records Friday night at a Green and Gold ball at the Tabernacle.

Sally Reddinger, first ward; Vivi Clausen, third ward; and Veon Hanson, fifth ward, were presented gifts by the ward bishops for having the highest records in each ward.

Others honored were Marlene Maus, Caroline Fry, Jacqueline James, Delicia Hill, Marilyn Schow, Judy Anderson, Layla Potter, Lorraine Potter, Gail Fletcher, Mary Ann Merrill, Katherine Merrill, Alice Billman, Lolita Stevens and Leah Stanger.

Theme of the dance, "Deep Purple," was carried out with purple decorations of the recreation hall. The honored girls names were inscribed on a white heart-shaped scroll.

Arion Bastian's orchestra furnished music and students from Merle Steward dance school, entertained at intermission. Bernard Brown sang the theme song. Don Flinders was master of ceremonies.

# We, the Women

By RUTH MILLETT

A wife writes me: "Every now and then you print a letter from a wife who is having mother-in-law trouble. Just a short time ago I could have been one of those wives. But I discovered the solution to my problem."

"Without my even realizing it my mother-in-law and I had become rivals—each trying to outdo the other, and sometimes I am ashamed to say, pointing up each other's faults in a lady-like way, of course."

"When it finally dawned on me how childishly we were both behaving I decided that I could end the rivalry all by myself by refusing to be a part of it."

"From that moment on instead of trying to outdo my mother-in-law I openly admitted my shortcomings. Her, asked her advice about some things, and I felt that I was helping her for a lot of young wives."

"Of course it would work for a lot of wives. But there are two catches to it."

"First of all, the wife would have to grow up enough to see how foolish it is for a man's mother and his wife to treat each other like rivals."

"And secondly, the wife would have to change her own attitude instead of wishing her mother-in-law would change her."

"Any woman who is ready to grow up enough to overcome both those obstacles ought to be able to get along with a mother-in-law."

# I. F. LDS Temple Rites Unite Miss Mecham, Shaffer

GANNETT, Jan. 30 — Twilla Mecham, daughter of Wallace Mecham, Carey, and Pvt. Robert G. Shaffer, son of Mr. and Mrs. V. L. Shaffer, Gannett, exchanged marriage vows in the Idaho Falls LDS temple Thursday.

The ceremony was performed by Francis M. Davis, counselor to the president of the temple. The couple's fathers stood with them for the ceremony.

The bride wore a ballerina length gown of white-nylon and lace over satin. Her bouquet was a white orchid nestled in pink rosettes.

For her wedding trip the bride wore a navy blue suit and white accessories.

The bride is a 1949 graduate of the Carey high school. After her graduation she was employed in the First Security bank at Hailey, until 13 months ago when she accepted a position with the atomic energy commission at Idaho Falls.

Shaffer is a graduate of the Hailey high school. Active in baseball circles, he was a pitcher for the Twin Falls Cowboys in 1942. Since entering the service in 1943, he has played on the army team at San Luis Obispo, Calif.

Shaffer has just completed 20 months in radio training at Ft. Monmouth, N. J. He will report for duty Feb. 3 at Camp Carson, Colo. His bride plans to continue her work until March, when she will join him.

# Benefit Raises Fund for Blind

Mrs. L. E. Hinton, Mrs. Jake Elter and Mrs. James M. O'Connell were prize winners Thursday afternoon at the benefit bridge party held in the YWCA hall under sponsorship of Delta Gamma sorority.

Proceeds of the party will be used to aid a blind student at the Gooding state school for the deaf and blind.

The tea table decorations and favors featured sorority colors. Mrs. Cecil Jones and Mrs. Elmer Hollingsworth poured.

Committee for the event included Mrs. Robert Reese, chairman; Mrs. Woody Reed, Mrs. Edward L. Beggs, Mrs. E. W. McRoberts, Mrs. Vivian Nixon and Mrs. Gordon Oldham.

# Women of Moose At Buhl Initiate, Choose Members

BUHL, Jan. 30—Initiation ceremonies, acceptance of new members and reports were featured at the meeting of Women of the Moose Thursday night at the Moose hall.

Formal initiation ceremonies were held for Mrs. Dorothy Thier, Mrs. Mary King were elected to membership in the group.

Committee reports were given by Mrs. Lloyd Ayres, Mrs. R. W. Wilson, Mrs. Ralph Lamb and Mrs. Amanda Thier. Announcements of events scheduled for February included a dinner to be served to the Buhl Country club members with Mrs. Tom Smith as chairman.

The hospital guild and public relations committee will sponsor a card party and photograph contest. A cooked food sale will be held Feb. 13, with Mrs. Lloyd Ayres as chairman.

A contribution was voted to the college of regents' administrative fund. Pro tem officers included Mrs. Homer Bean, Mrs. Eva Sedvig, Mrs. A. E. Woodruff and Mrs. Pauly Pryor. The mystery box was received by Mrs. Woodruff. Mrs. Frank Suburg, a member of the Jerome chapter, was a guest.

Following the meeting motion pictures were shown by Henry Wavra and refreshments were served by Mrs. James Lauda, Mrs. A. J. Machack, Mrs. Ralph Lamb, Mrs. Mary Miller and Mrs. Chester Peterson.

# Mentor Club Will Honor Husbands

Mentor club made plans Wednesday afternoon to serve dinner for members and their husbands Feb. 7 in the Idaho Power company auditorium. The no-host event will begin at 7 p.m.

Tom Alworth spoke to the club on Idaho's community property law. The club met at the home of Mrs. Walter Miller. Mrs. H. H. Crow was assistant hostess. Members answered roll call by giving titles of new books. Mrs. Clyde Allen, president, conducted the meeting.

Guests included Mrs. Lee Eldridge, Mrs. N. Ewing, Mrs. Earl Miller, Mrs. Marvin Mathews and Mrs. Mark Knoll.

Mrs. John Parish received the white elephant.

# Officers Elected At Club Meet

FILED, Jan. 30—Mrs. L. E. Hinton was re-elected president of the Matrons' club at the meeting day at the home of Mrs. Robert Reese.

Other officers are Mrs. F. Murphy, vice president, and Mrs. Laite, secretary.

Plans were made to meet members' husbands at a dinner Feb. 8. Mrs. E. D. Vance, Frank Sikka, Mrs. Robert O. J. Childs and Mrs. G. C. are making the arrangements.

# Just Arrived... NEW SPRING SHIPMENT of ROTHMOOR SUITS and COATS



So Very Smart  
... This Short  
Missy Suit

by

**ROTHMOOR**

Designed in latest pattern  
this young short line suit  
softly rounded collar, hand  
contrasting lines. Two-tone  
straight skirt with inverted  
flares 3 to 36.

**\$79.00**

**BERTHA E. CAMPBELL STORE**  
131 MAIN AVENUE EAST

# Miss Rogers and Stoller to Marry

PAUL, Jan. 30—Mr. and Mrs. Ben Rogers, Paul, announce the engagement of their daughter, Sandra Mae, to DRILL STOLLER, son of Mr. and Mrs. Walter Stoller, Paul.

Miss Rogers is a 1933 graduate of Heyburn high school, and is employed in the school of nursing at St. Alphonsus hospital in Boise. Stoller was graduated from Paul high school two years ago.

A date has not been set for the wedding.

# 3 WSCS Circles Feature Lessons

WENDELL, Jan. 30—The three WSCS circles, the Methodist Women's Society of Christian Service met Thursday.

Mrs. A. J. Ritter was hostess to Ruth Nease circle. Seven members and one guest attended.

Mrs. Marvin Robinson read an article. Mrs. Guy Johnson was hostess to the Dorcas circle. Mrs. Ed Johnson, chairman, presided. Mrs. H. S. Barton and Mrs. James Eaton presented the lesson and devotion. Mrs. Cora Prith read an article.

# Guests Greeted

WENDELL, Jan. 30—The Wesleyan group of the Methodist church met Wednesday evening with Mrs. and Mr. Robert Caldwell. Guests attended from the Gooding Methodist young adult group.

Devotions were led by Lloyd Anderson. Mrs. James Freeman was in charge of the entertainment. Business meeting was conducted by Caldwell.

Mrs. Mary Parsons assisted the hosts in serving refreshments.

# Job's Daughters Seat Candidates

WENDELL, Jan. 30 — Wendell Bethel No. 12 International Order of Job's Daughters, Wednesday night initiated 10 new members.

Ellen Campbell, honored queen, presided at the initiation. Candidates included Judith Tate, Marcelle Woody, Marjorie Spry, Elora Parrott, Joan Owsley, Kay Jensen, Julie Strickling, Ann King, Jeri Gates and Bernice French.

Musical for the ceremony featured a duet sung by Edna Lou Roberts and JoAnn Berry and a solo by Nancy Campbell.

The librarians' report was given by Linda Lamb.

Joan McCloud, Nedra Wiswell, Lois Hartley, Elene Coleman and Marilyn Peterson served refreshments. The group spent the remainder of the evening in circle dancing.

# Bride Honored

SHOSHONE, Jan. 30—Mrs. Lyle Shoffner was honored at a bridal shower Thursday evening by Mrs. E. J. White at the White home in north Shoshone. Mrs. Clifford is the former Jean Stokkenberry, Shoshone. Assisting with arrangements were Mrs. William Bell and Mrs. Ward Mills.

# Dinner Served

MURTAUGH, Jan. 30—The Happy Hour club met Wednesday at the home of Mrs. Earl Young for a day-long meeting and a potluck dinner.

Roll call was answered with "How do you do, my friend?" The white elephant was received by Mrs. R. E. Dehl.

WHITEHALL DISTINCTIVE

# House Signs

AVAILABLE IN 5 SIZES

And hundreds of authentic figures and designs

Let the friendly warmth of a Whitehall House Markers greet your guests. Several finishes are available in all metal. Hammered Cast Aluminum included.

WHITEHALL

## Weather Vanes

3 SIZES

81-UNUSUAL DESIGNS

HOME - OUTDOOR - FORTS

It's a much a part of your home as your landscaping.

ORDER YOURS TODAY

WE DO ANY KIND OF ORNAMENTAL IRON WORK - INSIDE OR OUTSIDE!

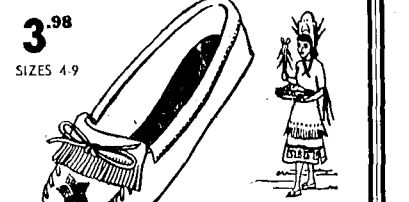
★ RAILINGS ★ GRILLS ★ PILLARS ★ FURNITURE ★ PLANTER BRACKETS

**KRENGEL MACHINE CO.**  
211 THIRD AVE. SOUTH PHONE 486

# AT VAN ENGELNS

# "Indian princess" by Guild MOCCASIN

Authentic Indian-inspired moccasin... beautifully made of genuine butter-soft cowhide... hand-beaded. Airform cushion insole for that light-as-air feeling. Choose from many Indian-bright colors.



3.98

SIZES 4-9

MATCHING BAGS

Authenticity-Ripped Buckskin Bags... Beaded - Fringed!

Done in the fashionable trend of the original American Indian... but of course, Guild has added all the casual qualities of the modern call-skin.

3.98 (plus tax)

**VAN ENGELNS**





## Pirates Rally to Nip Bobcats in Close 56-52 Tilt

**Indians  
Garner  
51-45 Win**

**BUHL, Jan. 30**—The Buhl Indians jumped to an early first-quarter lead and increased it all the way as they defeated the Oakley Hornets 51-4.

Alva Davis and Bill Clayton shared top scoring honors for the Buhl five with 14 tallies each. Kelt Franks was top scorer for the Oakie club with 13 markers.

Buhl got off to a 12-8 lead at the end of the first quarter and increased it to 30-19 at the half. The Indians kept the 11-point margin throughout the third period and wasn't until Buhl coach Lee Popplewell began to substitute heavily.

the final period that the Hornets were able to score effectively. In the preliminary game, Burl Jayvess dropped the Oakley Jayvess 54-45.

**BURL 51, OAKLEY 45**

Burl	fg	ft	p	pp	Oakley	fg	ft	p	pp
Rodrig	1	3	3	10	K. Franks	3	7	5	15

Davis	4 4 2 1	Woodhouse	2 2 1
Clayton	4 4 2 1	Sharp	4 2 4
Clackson	1 1 4 7	Kay Franks	2 0 8
Smooty	0 1 2 1	Gastard	2 3 5
Weaver	0 0 0 0	Ortnaffield	0 0 0
Lawton	0 0 2 0	Harper	0 0 2
Bordewick	3 1 4 3	L. Franks	0 0 2
Rehmond	0 0 2 0	Orr	0 0 0
Andrews	0 0 0 0		

Totals	16	19	21	51	Totals	15	18	21
Score by quarters:								
Beth					12	22	48	
Oakley					8	19	24	

## Amiable Piersall

### Agrees to Terms


BOSTON, Jan. 30 (AP)—Outfielder Jim Piersall, agreeable to "playing anywhere they want me," Saturday signed his 1954 Boston Red Sox contract.

Rated as one of baseball's great

est defensive rightfielders, Pizarro will move over to center next season to make room for Jackie Jensen, the slugger recently obtained from the Washington Senators.

JOHANNESBURG, South Africa  
Jan. 30 (U)—Don Cockell outpointed  
Johnny Arthur in 15 rounds Satur-  
day night to retain his British ex-  
pire heavyweight title.

100



100

Downstairs



*Stud.*

Page 118

## Buhl's Co-Op Supply Holds Ninth Session

BUEHL, Jan. 30.—Ninth annual meeting of Buhl Cooperative supply stockholders was held Thursday at the Moose hall. Approximately 200 attended the luncheon and business meeting.

Orson Culler, Blackfoot, public relations delegate of the Pacific Supply Co-Op, Walla Walla, Wash., spoke on the definition of a cooperative and why and how it functions.

M. R. Gothern, president, presided and gave the directors' report. Reports also were given by Fred Rand, local manager, and Leonard Leth, vice president, who gave the audit report. Leth said a successful year had been completed with a gross volume of business of \$317,000 with a net savings of six per cent or \$18,800.

The membership adopted a resolution changing the capital structure from \$50,000 to \$100,000. A plan was also adopted for members to return their savings in cash at the close of each fiscal year.

Leonard Leth was re-elected to the board. Ernest Voss was elected to succeed Oscar Johnson, whose term has expired. Other directors include Frank Atkins, Melvin Jacobs and Gathen.

The board of directors voted to call in 1948 certificates of equity in the amount of \$10,400 to be paid back to the members.

Other out of town guests included Weldon Kelly, district warehouse manager, Pocatello; Howard Cross, Caldwell; Cliff Amick, manager of the Twin Falls Co-Op supply; Charles Barker, Pocatello, and J. N. Sharp, Piler. Prizes were won by Mrs. J. A. Isaacson, Mrs. Bill Stone, Chester Noh, Mr. and Mrs. Pat Ruland, Harry Wignation, George Leth, Mrs. Melvin Moore,

## \$310 Is Added for 'March of Dimes' In Wendell Event

WENDLELL, Jan. 30.—The Idaho club annual polo benefit night Wednesday at the high school gymnasium added \$310 to the March of Dimes fund, Dr. Richard Hagerman, Wendell chairman, reports.

The patchwork quilt made and donated by Mrs. Hugh Caldwell, was sold for \$150.50 by Dutch auction. Cakes donated by Methodist, LDS, Lutheran and Presbyterian-Baptist churches and other miscellaneous items were auctioned by Howard Wignar.

Sporting events were directed by Dr. M. E. Schell and Roy Irons. Clyde Peterson was master of ceremonies. Events included basketball games between Hagerman junior high boys and Wendell eighth grade boys and between Hagerman and Wendell women's boxing bouts and boxing glove basketball. Wendell won the boys' game 31-21 and Hagerman women won 30-11. Referee was Jerry Giesler and Keith Hamilton.

Taking part in the boxing bouts were Loris Johnson, Larry Merritt, Ron Lanoster and Mel Jaramillo. The Wendell Trojans defeated Wendell with the collection of donations.

Coffee and doughnuts were sold by the Wendell Granges and auxiliary with the proceeds given to the fund.

**DINNER PLANNED**  
HAGERMAN, Jan. 30.—A potluck dinner will be served members of the Hagerman Grange at 3 p.m. Monday. Dancing will follow. The public is invited to attend. Mrs. Florence Parrott is in charge of the dinner.

Carl Webb, Castelford, and Ernest Lanson, Piler.

The dinner was served by the Women of the Moose under the direction of Mrs. Tom Norwood and Mrs. Chester Wignation.

## Sheriff Talks At Meeting of Hansen PTA

HANSEN, Jan. 30.—Twin Falls County Sheriff Jesse Oakley spoke at the PTA meeting Thursday evening. He stressed honesty in home and schools as a help in prevention of crime by youth. He stressed keeping them in the classrooms above all difficulties.

The Rev. Kenneth Held, pastor of the Hansen Community Methodist church, gave the invocation. The president, Mrs. W. E. Jones, conducted the session. Mrs. George Crockett, secretary, read a message from the National president. Treasurer Ted Crockett reported a balance of \$268.77 in the treasury. Mrs. Charles Baily reported a speaker is planned for the study group meeting in February. Mrs. A. J. Fryer, hostess chairman, was given permission to pay \$50 for the hot lunch dishes purchased last fall and to purchase a 22-quart mixer for the lunch room.

Mrs. Betty Robison, health chairman, reported and asked Capt. Bernard Hopwood to explain the use of a telephonic machine, used to determine the weight of the school children. Members decided to recommend purchase of such a machine to be used in all schools in the county.

A call for clothing for the children's clothing drives will be handled by the PTA. Anything clean and wearable in clothing and shoes should be brought to the health room during the month of February.

Hopwood announced plans for the basketball tournament to be held starting Feb. 3, in Hansen's new gymnasium. He asked help of several adults to help police the gym.

Mrs. R. W. Larsen, Mrs. Charles Baily, Mrs. Clarence Werner and Mrs. W. D. Wiseman were appointed to a nominating committee to choose

## Scouters Debate Future Activity, Receive Reports

BURLEY, Jan. 30.—Oasis district Scout leaders met Wednesday night at Burley with 25 attending from Oakley, Burley, Malia and Declo.

Reports were heard from Ernest Blauer, chairman of the organization and assistant committee—Harold Tieder, committeeman from the Hart river area, and Lloyd Smith, on the council meeting at Twin Falls Jan. 20.

Harvey White, Malia, was selected as chairman of the finance drive for the Ball river area. T. E. Rutchless was named advancement chairman for the same area.

The first board of review is scheduled Feb. 4, and the court of honor is planned during Boy Scout week, Feb. 7-13. Bernard Wrigley, chairman, made the report.

Ray Daugh, field scout executive, discussed the importance of parent participation in the scouting program. He also said each troop should sponsor some program during Boy Scout week.

The next district meeting will be held at Oakley high school Feb. 24, candidates at the next meeting Feb. 26.

PTA founders' day will be observed at the next meeting. A life membership pin will be given to the person most deserving at this time. The person will be chosen by the officers.

Von Neuberger was program chairman. Sharon Naylor played two accordion selections.

**IMPOSSIBLE?**  
No, automatic service is not impossible. See it done on the World's Service Machine with the famous wonder wheel.

Magic Valley Sewing Center  
717 Main West Phone 2865

## Widow, Children To Share Estate

Three children and the widow of Harry Driscoll will share his estate, according to a decree of distribution filed in district court here Saturday.

The widow, Mrs. Mabel E. Driscoll, was bequeathed a life estate in Mr. Driscoll's property. The children, Robert Driscoll, Richard Driscoll and Mary Driscoll Nelson were named. The property, subject to the widow's life estate, when the daughter became 25 years old. She reached that age Oct. 23, 1953.

The estate is listed as several tracts of land in Latah county, 80 acres of land about three miles northwest of Piler and a tract of land in Nez Perce county.

Bernard Melville was living on a farm near Pittsfield, Mass., during the late summer of 1950, when he wrote "Moby Dick," a sea tale.

## T. F. Office Fills 33,000 Openings For Jobs in 1953

More than 33,000 jobs were filled by the Twin Falls employment security office in 1952, according to R. A. Outler, Twin Falls office manager.

Statistics released Saturday show the office filled 88,797 agricultural jobs and 4,310 non-agricultural jobs for a total of 93,107 placements.

The previous year 19,864 agricultural and 4,516 non-agricultural placements were made.

Five thousand ninety-one work applications were received during 1952, including 2,466 new work applications. Some 500 counseling interviews, 197 aptitude tests and 80 proficiency tests were given by the staff personnel.

## Auditions Slated For Music Grant

Auditions for the Marie Morrissey Kath scholarship, sponsored by the National Federation of Music Clubs, will be held March 30 at Idaho State college. The scholarship provides assistance to a talented student between the ages of 16 and 26 who is unable to finance his musical education.

The scholarship consists of \$250 a year. Anyone wishing further information may contact Mrs. Max L. Brown, Idaho auditions chairman, 558 Millmore street.

**Counsel Offered**  
Lloyd Young, Twin Falls social security office manager, will be available for counseling from 1 to 3:30 p.m. Tuesday at the Burley employment office.

## RETURN FROM HAGERMAN, Jan. 30.

Mrs. Harry Lanson, who was on a mission trip, they visited in California and with relatives. They also went fishing at Lake Tahoe.

**LAME BACK CORRECTOR**  
Is pleasant, is pleasant with rheumatism, numbness, stiffness, disorders, it everything else. The next, relief is after first treatment.

DR. ALMA H. CHAPMAN  
128 Main West, Twin Falls

**brand new!**

# PRINT DRESSES

in washable rayon prints

**First Signs of A Bright Spring!**

They're here—ready to give your wardrobe a mid-winter lift! Don't miss our first showing of gay Spring prints!

Come, pick your favorite from our flower-bright array of smart styles!

**8<sup>98</sup>**  
and up

**L'AIGLON**

Springtime sheer

What is so new and so fresh as a sheer in the springtime? L'Aiglon proves it once again in this rayon sheer with accents of matching gingham. It has a very wide many-gored skirt with unpressed pleats all-round. Navy.

**newest Ship'n Shore exclusive!**

the pocket-tail *Shortible* for your skirts, suits, shorts and jeans!

**2<sup>98</sup>**

**Ship'n Shore**

An all-in-wonder... both a casual shirt and a dress-up blouse! Ship'n Shore's "Shortible" goes wherever you want to go, does whatever you want it to do! Wear the tails out... use the pockets for all your essentials. Wear tails tucked in... for separates and mid-length Pin-checked gingham, woven with diamond clip dots, pastels, sun-tones that wash and wash! Sizes 30 to 38.

Come see our many other new Ship'n Shore's!

# SEARS ROEBUCK AND CO. FEBRUARY SALES FOR HOMES

Flatter Your Furniture with Slip Covers that get a second look! SAVE NOW!

## SLIP COVER SALE!

**8<sup>88</sup>**

CHAIR STYLES  
Regularly 9.98

**18<sup>88</sup>**

SOFA STYLES  
Regularly 19.98

Sears Easy Payment Plan on Purchases of \$25 or More

**Now! Get Extra Savings on Slip Covers That Look, Fit and Wear Like Costly Custom-Mades**

These are Harmony House exclusives with casual good looks... knowing decorator detailing usually found only in more expensive slip covers. They'll wonderfully brighten your furniture—really beautify your home. Gay floral pattern comes in your choice of Harmony House Down Gray, Tuscan Wine, Mint Green... each a perfect complement to the smart multicolor stripe patterns. Visit Sears today! See these bargains for yourself!

- ★ Sturdy Washable Twill
- ★ Trim Fit Adjustments
- ★ Decorator Detailing
- ★ Reversible Cushion
- ★ Cord Welted Piping
- ★ Choice of Gay Colors

Some styles of furniture cannot be fitted with ready-made slip covers. Sears makes CUSTOM Covers for all styles not listed below.

Matching Studio Couch Covers... 14.98

Matching Bed and Bath (Diavero) Covers... 15.98

Bring Measurement of Widest Part of Your Sofa's Back

**Satisfaction guaranteed or your money back! SEARS**

Phone 2860  
403 Main W. Free Parking

Don't Miss the Big Magic Valley Golden Ticket at the Orpheum Theatre Monday, 8 P.M.

ESTABLISHED IN 1908  
**Idaho Department of Agriculture**  
314 S. 3rd St. Boise, Idaho

# Makers Fall Short of Output Goals

By JAMES A. WILSON  
TWIN FALLS, Jan. 30.—The auto makers' output goal for 1953 was not met, and yet to be bettered. The production of cars and trucks in 1953 was 1,000,000 units, compared with the goal of 1,100,000 units. The deficit was 100,000 units.

The deficit was made up of 50,000 cars and 50,000 trucks. The deficit was made up of 50,000 cars and 50,000 trucks. The deficit was made up of 50,000 cars and 50,000 trucks.

The deficit was made up of 50,000 cars and 50,000 trucks. The deficit was made up of 50,000 cars and 50,000 trucks. The deficit was made up of 50,000 cars and 50,000 trucks.

The deficit was made up of 50,000 cars and 50,000 trucks. The deficit was made up of 50,000 cars and 50,000 trucks. The deficit was made up of 50,000 cars and 50,000 trucks.

# Avers VA Claims Services

TWIN FALLS, Jan. 30 (AP)—General Aver's VA claims services are being expanded to include the handling of claims for veterans and their families.

The expansion of services is part of a program to improve the efficiency of the VA claims process. The program includes the hiring of additional staff and the improvement of the claims handling system.

The expansion of services is part of a program to improve the efficiency of the VA claims process. The program includes the hiring of additional staff and the improvement of the claims handling system.

The expansion of services is part of a program to improve the efficiency of the VA claims process. The program includes the hiring of additional staff and the improvement of the claims handling system.

The expansion of services is part of a program to improve the efficiency of the VA claims process. The program includes the hiring of additional staff and the improvement of the claims handling system.

The expansion of services is part of a program to improve the efficiency of the VA claims process. The program includes the hiring of additional staff and the improvement of the claims handling system.

The expansion of services is part of a program to improve the efficiency of the VA claims process. The program includes the hiring of additional staff and the improvement of the claims handling system.

The expansion of services is part of a program to improve the efficiency of the VA claims process. The program includes the hiring of additional staff and the improvement of the claims handling system.

The expansion of services is part of a program to improve the efficiency of the VA claims process. The program includes the hiring of additional staff and the improvement of the claims handling system.

The expansion of services is part of a program to improve the efficiency of the VA claims process. The program includes the hiring of additional staff and the improvement of the claims handling system.

## United to Use New Passenger Planes on Idaho Runs



Conveys such as this one will be placed in operation by United Air Lines for Twin Falls about March 1. The plane will link Twin Falls with Boise, Salt Lake City and Denver with one roundtrip daily to start. The Conquest is powered by two Pratt and Whitney engines.

## Newest Twin-Engined Airliner To Serve Twin Falls March 1

The nation's newest twin-engined airliner—United Air Lines' Mainliner Conquest—will be placed in scheduled operations here March 1, giving Twin Falls travelers new high standards in short-haul transportation, says A. S. Outing, station ground services manager.

Cutting said the transport, which

weighs 4,500 horsepower on takeoff. The plane is 78-feet, 2-inches long with a wingspan of 135-feet, 8-inches. It is 27-feet, 6-inches high. The cruising speed is about 270 miles per hour. (UAL photo—staff engraving)

**BOARDS TO MEET**  
SHOSHONE, Jan. 30.—The February meeting of Shoshone city council will be held at 8 p.m. Tuesday at the city hall. A meeting of the city library board is set for 7 p.m. that night at the library rooms.

**RESUMES STUDIES**  
HACKERMAN, Jan. 30.—Ronald Hulme, son of Mr. and Mrs. Ralph Hulme, who received his discharge from the army last fall, has resumed his studies at Brigham Young university.

## Band Members

SHOSHONE, Jan. 30.—The all-state band that will perform in Boise Feb. 4 to 6 will include three Shoshone high school pupils. They are Alice Forsman, playing clarinet; Marlene Curaway, bass clarinet; and Diane Langness, drum.

The three were chosen from a list of seven sent in by the school. Howard Kniffin, music instructor, will accompany the students.

Puerto Rico is the only land under the U.S. flag on which Columbus set foot.

**TELEVISION**  
Voted BEST 7 to 1  
Insist On Service  
When You Buy TV  
VER COX'S  
Communications  
Radio  
610 Main No. Phone 2205

**Bettydine**  
IS GOOD BREAD

## PENNEY'S

ALWAYS FIRST QUALITY!

Visit Penney's Cotton  
Shop and Choose from  
Hundreds of New Fussy Cottons

**STRIPED CRINKLE COTTON**  
**2.79**

It's smart—it's cool—it needs no ironing. Attractive trims—red, blue, grey.

**Easy-to-Care for PIQUE IN PRINTS**  
**2.79**

Exciting charmers in colorful waffle pique—they wash and wear beautifully.

**EMBOSSED COTTON, PIPED JET BLACK**  
**2.79**

It's bound to please... this bewitching Penney frock with dramatic piping, sparkling jewel buttons! Rich-looking, easy-care fabric in pink, blue, mauve or aqua. 12-20; 14-24½. Call for it now!

**CALL FOR PENNEY'S COTTON NOW 2.79**

Many variety in style. Perfect selection.

**TWIN FALLS STORE**

**COTTON SHOP**

**SOLIDS! PRINTS! PATTERNS!**  
**COTTON DRESSES**

Choose from hundreds of exciting, fussy cotton dresses at Penney's—Shop and save during this February Dress Event!

**2.79**

For Misses!  
For Juniors!  
For Women!  
For Half-Sizes!

**Sanforized No-Iron COTTON PLISSE**  
**2.79**

Famous for good looks, easy care, modest price. Compliment catching trims—cheerful checks. See these in many new and wonderful colors.

## Building Project Is Probed

TWIN FALLS, Jan. 30 (AP)—Two inquiries into the interior department here Friday to seek about Portland's construction of a million dollar building.

The inquiry was made by the VA department. The inquiry was made by the VA department. The inquiry was made by the VA department.

The inquiry was made by the VA department. The inquiry was made by the VA department. The inquiry was made by the VA department.

The inquiry was made by the VA department. The inquiry was made by the VA department. The inquiry was made by the VA department.

The inquiry was made by the VA department. The inquiry was made by the VA department. The inquiry was made by the VA department.

The inquiry was made by the VA department. The inquiry was made by the VA department. The inquiry was made by the VA department.

The inquiry was made by the VA department. The inquiry was made by the VA department. The inquiry was made by the VA department.

The inquiry was made by the VA department. The inquiry was made by the VA department. The inquiry was made by the VA department.

## INSURANCE COUNSELING

Insurance progresses like any other business or commodity, and it is very possible that your present policies are out-of-date and inadequate. BE SURE — let us review your insurance. Our service includes friendly constructive insurance counseling.

**STEIN-McMURRAY-ANDERSON AGENCY**  
JOHN ANDERSON, Manager  
BANK & TRUST BLDG. PHONE 2444

**joyce**

**WOODCHUCK** ... A swift little sport shoe to enliven a country landscape or tread a campus path with the fashion-informed!

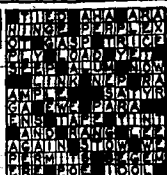
On Joyce's Famed Spoonhill Lat, with springy cushion-crepe sole, Smooth Butterkip Leather in Red .. Apple Butter .. Tapioca.

**WOODCHUCK**  
**8.95**

**Hudson's**

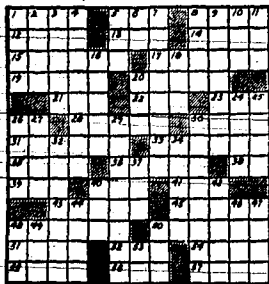
## Crossword Puzzle

- |                                      |                          |
|--------------------------------------|--------------------------|
| ACROSS                               | 30. Volcano              |
| 1. Diplomat                          | 31. Save from memory     |
| 2. Cocaine                           | 32. Rubber               |
| 3. Small quail                       | 33. Scandal              |
| 4. Medicinal plant                   | 34. vine                 |
| 5. Fungus                            | 35. Conceals             |
| 6. Medley                            | 36. Compass point        |
| 7. Hard                              | 37. Roman                |
| 8. Kind of wool                      | 38. Collect              |
| 9. Prophets                          | 39. Consume              |
| 10. Checking for device              | 40. Companion of players |
| 11. Part of a wheel                  | 41. Punish by a fine     |
| 12. Past name for a relative         | 42. Gathered together    |
| 13. Very old woman                   | 43. mobile               |
| 14. In what way                      | 44. American humorist    |
| 15. Exile                            | 45. Old music instrument |
| 16. Regulation of bodily temperature | 46. English river        |



### Solution of Yesterday's Puzzle

- |                                       |                                    |
|---------------------------------------|------------------------------------|
| 7. Number of<br>periods in<br>a year  | 9. Predom-<br>inantly              |
| 10. Hebrew<br>letter                  | 11. Also                           |
| 12. One of a<br>people of<br>Caucasus | 13. Unit of<br>length              |
| 14. Appalling                         | 15. That<br>woman                  |
| 16. Crony                             | 16. A hind-<br>quarter             |
| 17. Held public<br>notice             | 17. Merchandise                    |
| 18. Likened                           | 18. Nature of<br>surface           |
| 19. Tail bird                         | 19. Something<br>more than<br>that |
| 20. Toward the<br>past                | 20. Toward the<br>past             |
| 21. Pink                              | 21. English<br>tutor               |
| 22. Favourite<br>pronoun              | 22. Favourite<br>pronoun           |
| 23. Pouch                             | 23. Pouch                          |
| 24. Jewish                            | 24. Jewish                         |
| 25. Gaelic                            | 25. Gaelic                         |
| 26. Arziris                           | 26. Arziris                        |
| 27. German<br>river                   | 27. German<br>river                |
| 28. Behave                            | 28. Behave                         |
| 29. Un-<br>re-<br>mited               | 29. Un-<br>re-<br>mited            |
| 30. Few                               | 30. Few                            |
| 31. German<br>pronoun                 | 31. German<br>pronoun              |



**BOARDING HOUSE - MAJOR HOOPLE**



## LIFE'S LIKE THAT

**By NEHER**



"If you're so anxious to be alone, I'll take a quarter and go with Junior to the movies."

## THE GUMPS



## DONALD DUCK

By WALT DISNEY



## OUT OUR WAY

**By WILLIAMS**



## SIDE GLANCES

**By GALBRAITH**



"How long is your mother going to stay? I'd sure like to get out of the house someday without these rubbers and muffler!"

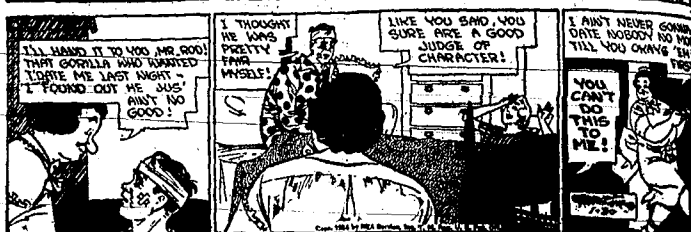
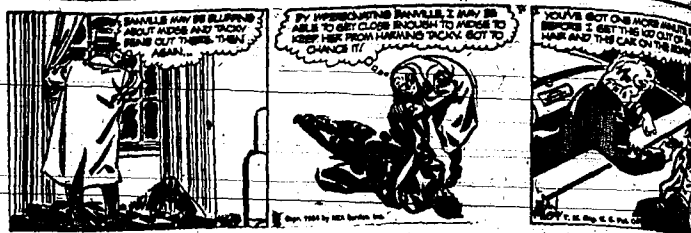
## CARNIVAL

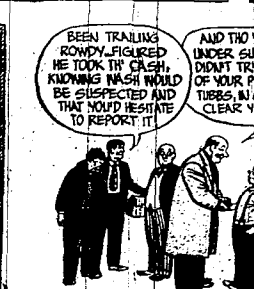
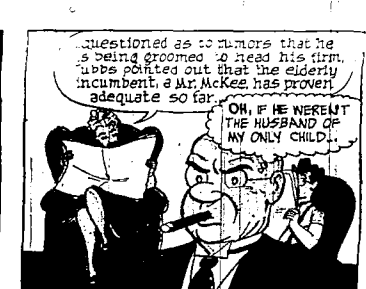
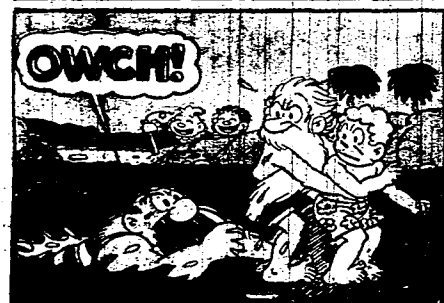
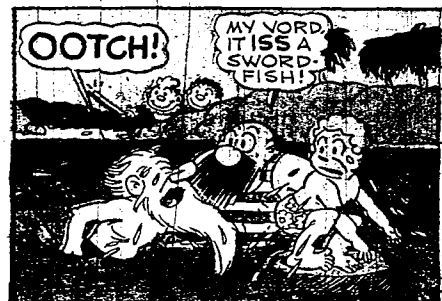
**By DICK TURNER**

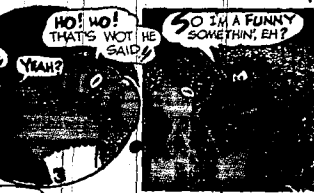


"What's protocol for this dinner we're giving, Smedley? Do I seat the senators and representatives according to the number of investigations they've held?"

VIC	CAPTAIN	BOOTS	GASOLINE	BUGS	DIXIE	SCORCHY	LILL	ALLEY	OO
FLINT	EASY	ALLIE	BUNNY	DUGAN			ABNER		

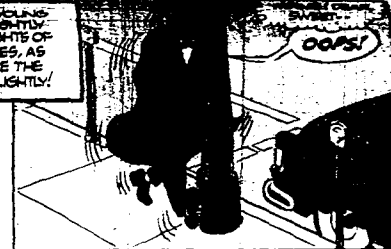






IT'S WINTER, TOO, A YOUNG MAN'S MIND MAY LIGHTLY TURN TOWARD THOUGHTS OF LOVE, AND SOMETIMES, AS IN THE CASE OF LOUIE THE LETTERBOX, NOT SO LIGHTLY.

By Michael O'Malley











**CARS FOR SALE**  
 AUTOMOBILES, Trucks & Trucks  
 1957 FORD Full Line, 4 door, 2 door, 1957  
 1957 FORD Full Line, 4 door, 2 door, 1957

**1957**  
**NASH RAMBLER**  
**STATION WAGON**  
 Fully Equipped  
**\$1695**  
 Phone 3700

**BARGAINS!**  
 1957 FORD Full Line, 4 door, 2 door, 1957  
 1957 FORD Full Line, 4 door, 2 door, 1957  
 1957 FORD Full Line, 4 door, 2 door, 1957

**RED CAP CORNER**  
 1 Mile North of Kimberly

**BUTTERCUP!**  
 Here's Your Chance to  
 Own A Late Model  
 Car for A Fraction of  
 Its Original Cost!  
 It's equipped with Fresh-  
 Air Heater, Over-  
 drive, Full Hubcaps  
 Finished in Attractive  
 Two-Tone Metal-  
 lics Green and Navy.  
 The interior is very  
 nice and the tires are  
 like new. Clean and  
 modern looking. **Price**  
 like a 'kitten. You'll  
 feel up to date in this  
 beauty!

**It's a—**  
 1951 Kaiser  
 DeLuxe 4-Door  
 for only  
**\$879**

**UNION MOTORS**  
 —2 Big Lots—  
 Open Breakfast and Saturday

**Liquidation**  
**AT**  
**AUCTION**  
**PRICES**

1951 MERCURY with radio, heater and  
 overdrive. \$1295

1951 PLYMOUTH with heater  
 \$1295

**1951 FORD**  
 \$1295

1950 CHEVROLET Sedan  
 \$1295

**1949 FORD**  
 \$1295

1949 PRAIRIE with Radio, heater  
 overdrive. \$1295

**1949 PLYMOUTH**  
 \$1295

1948 CHEVROLET Radio and heater  
 \$1295

**1948 CHEVROLET 4-door**  
 \$1295

**1948 CHEVROLET 4-door**  
 \$1295

**1948 DODGE**  
 \$1295

1948 OLDSMOBILE Radio and  
 heater. \$1295

**1947 FORD**  
 \$1295

1947 PRAIRIE with radio, heater  
 \$1295

1947 MERCURY 4-door, Radio, heater.  
 \$1295

1947 OLDSMOBILE Standard trans-  
 mission. \$1295

**1947 PLYMOUTH 4-door, Radio**  
 \$1295

**1947 CHEVROLET 4-door, Heater**  
 \$1295

1946 CHEVROLET Club Coupe  
 Radio, heater \$1195

**1946 CHEVROLET**  
 \$1195

1946 FORD 4-door, Radio, heater,  
 \$1195

**1946 FORD 4-door**  
 \$1195

1946 FORD Club Coupe  
 \$1195

**1946 CHEVROLET 4-door, heater**  
 \$1195

1945 JEEP, Completely equipped,  
 Atlanta Car, New problem.  
 \$1195

**1945 FORD 4-door, Dual, Heater**  
 \$1195

**1945 DODGE 4-door, heater**  
 \$1195

**1945 INTERNATIONAL Sedan, heater**  
 \$1195

**NORTHERN**  
**Auto Co.**

## Pruett Gives Answers for Odd Queries

By J. HUGH PRUETT  
Astronomer, Richardson Division  
Oregon Higher Education System

Answers to questions recently received from several readers likely will be of interest to others.

1. "Can the distant planet Uranus be seen with the naked eye?"  
When nearest the earth, Uranus' brightness is rated as 5.74 magnitude. Magnitude is a scale of brightness as the dimmest visible without optical aid. The number (the light) is on a clear, moonless night, far away from artificial illumination. A person with excellent eyesight barely can glimpse this remote planet.

2. "Is Venus now near inferior conjunction, or superior conjunction?"  
Venus moves on an orbit nearer the sun than is the earth's orbit. It is lost in the sun's rays for some time when passing almost between us and the sun (inferior conjunction), and when on the far side of the sun from us (superior conjunction). Venus was at superior conjunction last Friday, so will be too near the sun for evening observation for some time.

3. "You recently wrote about digging a hole entirely through the earth, getting all the air out of it and dropping a man into the hole. How could you get all the air out of it?"  
I don't know. I do know the experiment would not work if the air were left in the hole for it would be extremely dense at the earth's center.

The same correspondent asks if the man would not stop when he reached the earth's center arm if I had pumped all the air out of the 8,000-mile hole. No, he would oscillate back and forth from one side of the earth to the other. A freely-swinging pendulum does not stop when it reaches the lowest part of its swing. And an auto allowed to coast down a hill into a valley will not stop in the valley but will run a considerable distance up a hill on the other side. If there were no friction of air, bearings or track, the momentum gained in the downhill run would carry it up just as far on the other side.

4. "What makes the sun and moon shine and why doesn't the sun go through phases (new sun, first quarter, full sun, etc.) like the moon?"  
The sun shines because its surface is so extremely hot, 50 times hotter than the boiling point of water. The moon, earth and planets are relatively cold bodies and shine just because the sun's light illuminates them.

Half of the earth, the moon, or any planet (the side turned toward the sun) is illuminated. Phases of the moon are due to the fact that we do not see all the lighted half excepting at full moon. The earth would show similar phases to a moon-inhabitant. Any half of the sun is glowing. So we always have "full sun."

Run "Quarters"

5. "What makes the sun and moon shine and why doesn't the sun go through phases (new sun, first quarter, full sun, etc.) like the moon?"  
The sun shines because its surface is so extremely hot, 50 times hotter than the boiling point of water. The moon, earth and planets are relatively cold bodies and shine just because the sun's light illuminates them.

Half of the earth, the moon, or any planet (the side turned toward the sun) is illuminated. Phases of the moon are due to the fact that we do not see all the lighted half excepting at full moon. The earth would show similar phases to a moon-inhabitant. Any half of the sun is glowing. So we always have "full sun."

Run "Quarters"

6. "What makes the sun and moon shine and why doesn't the sun go through phases (new sun, first quarter, full sun, etc.) like the moon?"

The sun shines because its surface is so extremely hot, 50 times hotter than the boiling point of water. The moon, earth and planets are relatively cold bodies and shine just because the sun's light illuminates them.

Half of the earth, the moon, or any planet (the side turned toward the sun) is illuminated. Phases of the moon are due to the fact that we do not see all the lighted half excepting at full moon. The earth would show similar phases to a moon-inhabitant. Any half of the sun is glowing. So we always have "full sun."

Run "Quarters"

7. "What makes the sun and moon shine and why doesn't the sun go through phases (new sun, first quarter, full sun, etc.) like the moon?"

The sun shines because its surface is so extremely hot, 50 times hotter than the boiling point of water. The moon, earth and planets are relatively cold bodies and shine just because the sun's light illuminates them.

Half of the earth, the moon, or any planet (the side turned toward the sun) is illuminated. Phases of the moon are due to the fact that we do not see all the lighted half excepting at full moon. The earth would show similar phases to a moon-inhabitant. Any half of the sun is glowing. So we always have "full sun."

Run "Quarters"

8. "What makes the sun and moon shine and why doesn't the sun go through phases (new sun, first quarter, full sun, etc.) like the moon?"

The sun shines because its surface is so extremely hot, 50 times hotter than the boiling point of water. The moon, earth and planets are relatively cold bodies and shine just because the sun's light illuminates them.

Half of the earth, the moon, or any planet (the side turned toward the sun) is illuminated. Phases of the moon are due to the fact that we do not see all the lighted half excepting at full moon. The earth would show similar phases to a moon-inhabitant. Any half of the sun is glowing. So we always have "full sun."

Run "Quarters"

9. "What makes the sun and moon shine and why doesn't the sun go through phases (new sun, first quarter, full sun, etc.) like the moon?"

The sun shines because its surface is so extremely hot, 50 times hotter than the boiling point of water. The moon, earth and planets are relatively cold bodies and shine just because the sun's light illuminates them.

Half of the earth, the moon, or any planet (the side turned toward the sun) is illuminated. Phases of the moon are due to the fact that we do not see all the lighted half excepting at full moon. The earth would show similar phases to a moon-inhabitant. Any half of the sun is glowing. So we always have "full sun."

Run "Quarters"

10. "What makes the sun and moon shine and why doesn't the sun go through phases (new sun, first quarter, full sun, etc.) like the moon?"

The sun shines because its surface is so extremely hot, 50 times hotter than the boiling point of water. The moon, earth and planets are relatively cold bodies and shine just because the sun's light illuminates them.

Half of the earth, the moon, or any planet (the side turned toward the sun) is illuminated. Phases of the moon are due to the fact that we do not see all the lighted half excepting at full moon. The earth would show similar phases to a moon-inhabitant. Any half of the sun is glowing. So we always have "full sun."

Run "Quarters"

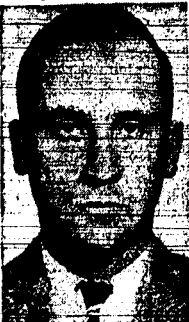
11. "What makes the sun and moon shine and why doesn't the sun go through phases (new sun, first quarter, full sun, etc.) like the moon?"

The sun shines because its surface is so extremely hot, 50 times hotter than the boiling point of water. The moon, earth and planets are relatively cold bodies and shine just because the sun's light illuminates them.

Half of the earth, the moon, or any planet (the side turned toward the sun) is illuminated. Phases of the moon are due to the fact that we do not see all the lighted half excepting at full moon. The earth would show similar phases to a moon-inhabitant. Any half of the sun is glowing. So we always have "full sun."

Run "Quarters"

## Missionary



WILLIAM L. RICHESON

... son of Mr. and Mrs. T. G. Richeson, Wendell, will leave New York on Feb. 18 on a 30-month LDS mission. He will enter the mission home in Salt Lake City on Feb. 2. A farewell party in his home will be held at 8 p.m. Friday at the Wendell LDS ward home. (Staff engraving)

## Shoshone People Relate Activities

SHOSHONE, Jan. 30.—W. E. Gross spent Thursday in Pocatello where he attended a luncheon meeting of the Phil Delta Chi, a national fraternity. Mr. William Writeman and daughter, Kennedick, Wash. are visiting Mr. and Mrs. W. B. Douw and other relatives here. Mr. and Mrs. William Carter and sons visited in Kayville, Utah, this week. Mr. and Mrs. Dean Clark, north of Shoshone, are visiting in Pocatello. Mr. and Mrs. Harry Dugger, Idaho Falls, visited Mr. and Mrs. George Moore Friday.

## PLATTER CHATTER

STANDARD and 45 RPM

- Bimbo: Changing Partners 29c
- See Wee King 29c
- Till Then: I Found Your Letter—Hilltoppers 80c
- Answer Me, My Love: Why—King Cole 80c
- Big Latin Serenade: You're My Downfall—Johnny and Jack 80c
- Make Love To Me: Adios Amigo—Stanford 80c

## CHILDREN'S 78s

- Tito: The Balletina 50c
- Jingle Bells 50c
- Pinocchio 50c
- Little White Duck 50c
- Sleepy Town Train 50c

—ORDER BY MAIL—

Order Records The Easy Way! ... By Mail! Check the records you want and mail this ad with remittance. Include your name and address and 70c for postage. All prices include tax.

for "INVESTMENTS IN PLEASURE"

**MUSIC CENTER**

PHONE 2844

In The Detweiler Building

ACROSS FROM THE POST OFFICE

100% TO MEET

SHOSHONE, Jan. 30.—A loop meeting for area Odd Fellows will be held at the Shoshone IOOF hall at 8 p.m. Tuesday.

100% TO MEET

SHOSHONE, Jan. 30.—A loop meeting for area Odd Fellows will be held at the Shoshone IOOF hall at 8 p.m. Tuesday.

100% TO MEET

SHOSHONE, Jan. 30.—A loop meeting for area Odd Fellows will be held at the Shoshone IOOF hall at 8 p.m. Tuesday.

100% TO MEET

SHOSHONE, Jan. 30.—A loop meeting for area Odd Fellows will be held at the Shoshone IOOF hall at 8 p.m. Tuesday.

100% TO MEET

SHOSHONE, Jan. 30.—A loop meeting for area Odd Fellows will be held at the Shoshone IOOF hall at 8 p.m. Tuesday.

100% TO MEET

SHOSHONE, Jan. 30.—A loop meeting for area Odd Fellows will be held at the Shoshone IOOF hall at 8 p.m. Tuesday.

100% TO MEET

SHOSHONE, Jan. 30.—A loop meeting for area Odd Fellows will be held at the Shoshone IOOF hall at 8 p.m. Tuesday.

100% TO MEET

SHOSHONE, Jan. 30.—A loop meeting for area Odd Fellows will be held at the Shoshone IOOF hall at 8 p.m. Tuesday.

100% TO MEET

SHOSHONE, Jan. 30.—A loop meeting for area Odd Fellows will be held at the Shoshone IOOF hall at 8 p.m. Tuesday.

100% TO MEET

SHOSHONE, Jan. 30.—A loop meeting for area Odd Fellows will be held at the Shoshone IOOF hall at 8 p.m. Tuesday.

100% TO MEET

SHOSHONE, Jan. 30.—A loop meeting for area Odd Fellows will be held at the Shoshone IOOF hall at 8 p.m. Tuesday.

## PTA's Founders Will Be Honored

Annual founders' day luncheon sponsored by the Twin Falls PTA council will be held at 2 p.m. Monday in the Bickel school auditorium.

Mrs. John E. Heyer, founders' day chairman for the National Congress of Parents and Teachers, will be among guests.

Hospitality, membership and founders' day chairman from the Shoshone PTA council will be present. Mrs. Edna Hale, council president, Mrs. W. G. Montgomery is chairman of the event. Hostess committee is headed by Mrs. J. Paul Fuller.

## Film Shown

SHOSHONE, Jan. 30.—A film on the lumber industry was shown to the Shoshone Rotary club meeting Wednesday and E. L. Gones spoke on his experiences in Rotary.

Fred Matis, Wendell, and Arthur Crow, Boise, were guests.

VISIT REPORTED

SHOSHONE, Jan. 30.—Mr. and Mrs. Virgil Norwood and daughter, have returned from visiting Mr. and Mrs. Orris Shelby and family in Ferncroft, Ida.

## Winner Named in Speaking Contest

SHOSHONE, Jan. 30.—Thomas P. Mahan was winner in the second round of contest speeches being given by members of the Jerome Toastmasters club. Mahan's winning speech was titled "Should 18-year olds be allowed to vote?"

Competing in the second round, which was held Wednesday night, were Pat Crutcher, Vic Camozzi and Vic Haines. Dr. E. Donovan Mattson was winner of the first round.

Winners of each round will compete for the honor of representing the club at the district contest.

Charles L. Herliem was toastmaster and Dr. Mattson was table topic master. John Emerson is in charge of the contest.

## Operetta Planned

SHOSHONE, Jan. 30.—"Chonilla," an operetta in gypsy setting, has been chosen for presentation at the local high school, Howard Knowles, high school music instructor, reported.

The exact date of the operetta has not been set but it will be some time in March, Knowles said.

Winners of each round will compete for the honor of representing the club at the district contest.

Charles L. Herliem was toastmaster and Dr. Mattson was table topic master. John Emerson is in charge of the contest.

## Dr. Robert V. S.

OPTOMETRIST  
(Formerly at Jerome)

Is Now at 227 Shoshone Street North.  
Eyes Examined—Call Collect 1500  
COMPLETE OPTICAL SERVICE  
We invite you to come in and see our large and complete line of eyeglass frames.

# SEARS

ROEBUCK AND CO. LIMITED QUANTITIES

## Special Purchase

# COLDSPOT

## Spacemaster

Our REGULAR PRICE would be

SALE PRICED AT ONLY—

# 199<sup>95</sup>

Big 9 Cu. Ft.

5.00 Down, 9.50 Month

● BIG 9 CUBIC FOOT SIZE WITH LOTS

- Handy Shelves Built Into Door for Added Storage
- Large, Roomy Freezer Chest Freezes and Stores
- Big Vegetable Crisper Across the Bottom
- Adjustable Shelves for Versatility!

● 11 Cu. Ft. Model at \$40 SAVINGS—

11 cu. ft. Thermo-Defrost Deluxe Coldspot Refrigerator—Specially Priced at

**You Save \$40**

## Lincoln Induction Quota Set at One

SHOSHONE, Jan. 30.—One Lincoln county man is due for induction into military service in February. Mrs. W. E. Dickinson, selective service clerk, announces. There will be no pre-induction physical examinations for local men during the month, she added.

The man selected will be given 10 days' notice, will be notified Feb. 7 and will go to Boise Feb. 17.

A meeting of the selective service board is set for Feb. 8 for classification of new registrants and for reclassification of others.

100% TO MEET

SHOSHONE, Jan. 30.—A loop meeting for area Odd Fellows will be held at the Shoshone IOOF hall at 8 p.m. Tuesday.

100% TO MEET

SHOSHONE, Jan. 30.—A loop meeting for area Odd Fellows will be held at the Shoshone IOOF hall at 8 p.m. Tuesday.

100% TO MEET

SHOSHONE, Jan. 30.—A loop meeting for area Odd Fellows will be held at the Shoshone IOOF hall at 8 p.m. Tuesday.

100% TO MEET

SHOSHONE, Jan. 30.—A loop meeting for area Odd Fellows will be held at the Shoshone IOOF hall at 8 p.m. Tuesday.

100% TO MEET

SHOSHONE, Jan. 30.—A loop meeting for area Odd Fellows will be held at the Shoshone IOOF hall at 8 p.m. Tuesday.

100% TO MEET

SHOSHONE, Jan. 30.—A loop meeting for area Odd Fellows will be held at the Shoshone IOOF hall at 8 p.m. Tuesday.

100% TO MEET

SHOSHONE, Jan. 30.—A loop meeting for area Odd Fellows will be held at the Shoshone IOOF hall at 8 p.m. Tuesday.

100% TO MEET

SHOSHONE, Jan. 30.—A loop meeting for area Odd Fellows will be held at the Shoshone IOOF hall at 8 p.m. Tuesday.

100% TO MEET

SHOSHONE, Jan. 30.—A loop meeting for area Odd Fellows will be held at the Shoshone IOOF hall at 8 p.m. Tuesday.

100% TO MEET

SHOSHONE, Jan. 30.—A loop meeting for area Odd Fellows will be held at the Shoshone IOOF hall at 8 p.m. Tuesday.

100% TO MEET

SHOSHONE, Jan. 30.—A loop meeting for area Odd Fellows will be held at the Shoshone IOOF hall at 8 p.m. Tuesday.

100% TO MEET

SHOSHONE, Jan. 30.—A loop meeting for area Odd Fellows will be held at the Shoshone IOOF hall at 8 p.m. Tuesday.

100% TO MEET

SHOSHONE, Jan. 30.—A loop meeting for area Odd Fellows will be held at the Shoshone IOOF hall at 8 p.m. Tuesday.

## Clothes' Calendar



Your calendar of enjoyment from your clothes will lengthen when you treat them to regular dry cleaning. Our method is modern, efficient and satisfactory. Stop in today.



**TROY**  
**National LAUNDRY CLEANERS**  
TWIN FALLS 66 • GOODING 7

WE SELL — WE INSTALL — WE SERVICE

## Your Choice 4 or 6 Qt. Pressure Saucepan



Sale Priced **9.99**

- Saves time, work, fuel and vitamins
- Absolutely safe, leakproof, over-pressure plug
- Mirror-bright aluminum for lasting beauty

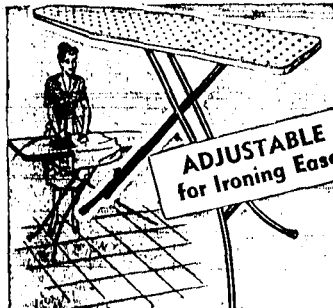
## ADJUSTABLE IRONING BOARD

You would expect to pay at least 9.95.

Now Only **6.99**

- Adjustable from 26 to 38-in. height
- Safety catch locks firmly in place
- All steel—crushes light legs

Pad and Cover Set 3.00



ADJUSTABLE for Ironing Ease

Satisfaction guaranteed or your money back

**SEARS**

Phone 2860  
403 Main Avenue West



KENMORE Electric—

## DOUBLE OVEN RANGE

Sale priced at

**19**

The 41 inch range gives you lots of work area. Ovens are controlled. 3 Burners plus Deep-Well Cooker, 2 Large Storage Drawers. Similar Single Oven, 30-inch Range Sale Priced at \$14.95.

Free Parking

—FRIDAY NITE IS "FAM" at Sears. Come as you are.