

Union Side to Labor Dispute Told at Meet

Whether the new walk-out fight... Noting the local action has the strongest behind it, Smith said...

Keep the White Flag of Safety Flying

A special meeting to organize two new PTA units was held Monday night at the Biotech school auditorium...

Two New PTA Groups Being Formed Here

A special meeting to organize two new PTA units was held Monday night at the Biotech school auditorium...

Twin Falls News in Brief

Dance Planned - A popular dance sponsored by the YWCA... Degree is Stated - Felton Black, son of Mr. and Mrs. L. M. Kuka...

Knights Tosses Giant Party to 10,000 Guests

SAN FRANCISCO, Aug. 21 (AP)—California Gov. Goodwin J. Knight became the host with the most last night...

Seen Today

Youth wearing blue struts shoes and western style straw-hat... Walter Irwin Wagner, 70, former resident of Twin Falls...

Former Resident Taken by Death

Walter Irwin Wagner, 70, former resident of Twin Falls, died at 10:30 a.m. Monday at the Biotech school hospital in Boise...

Five Children Yanked From Watery Doom

ABERDEEN, Aug. 21 (UP)—Five Idaho children owed their lives today to two navy officers and a boat operator who came to the rescue when a boat capsized in the American Falls reservoir near here...

Settlement in Car Accident Is OK'd

BOISE, Aug. 21 (UP)—Federal Judge Fred Taylor today approved an out-of-court settlement of the \$34,544 lawsuit filed by the Twin Falls Kennel club...

Flames Close Stibnite Mine

STIBNITE, Aug. 21 (UP)—The mercury mine of the Holly Mines corporation closed on Aug. 21 today...

Lincoln Canvass

SHOSHONE, Aug. 21 (UP)—The only change in the top of the ballot in Lincoln county's official canvass was the loss of one vote previously reported...

Woman Is Angry At Finding of Oil

GEORGETOWN, Tex., Aug. 21 (UP)—"It's just revolting," said Mrs. H. Percy when drillers struck oil...

Blaine Residents Near Blood Gouge

HAILEY, Aug. 21—Blaine county came within 25 pints of meeting its 150 pint blood quota Monday...

Hospitals

Magic Valley Memorial - Visiting hours at Magic Valley Memorial hospital are from 2 to 4 and 7 to 9 a.m.

Gooding Memorial

Visiting hours at Gooding County Memorial hospital are from 2 to 4 and 7 to 9 a.m.

Gooding Memorial

Visiting hours at Gooding County Memorial hospital are from 2 to 4 and 7 to 9 a.m.

Gooding Memorial

Visiting hours at Gooding County Memorial hospital are from 2 to 4 and 7 to 9 a.m.

Gooding Memorial

Visiting hours at Gooding County Memorial hospital are from 2 to 4 and 7 to 9 a.m.

Gooding Memorial

Visiting hours at Gooding County Memorial hospital are from 2 to 4 and 7 to 9 a.m.

Gooding Memorial

Visiting hours at Gooding County Memorial hospital are from 2 to 4 and 7 to 9 a.m.

Gooding Memorial

Visiting hours at Gooding County Memorial hospital are from 2 to 4 and 7 to 9 a.m.

Gooding Memorial

Visiting hours at Gooding County Memorial hospital are from 2 to 4 and 7 to 9 a.m.

St. Benedict's, Jerome

Visiting hours at St. Benedict's hospital are from 2 to 4 and 7 to 9 a.m.

St. Benedict's, Jerome

Visiting hours at St. Benedict's hospital are from 2 to 4 and 7 to 9 a.m.

St. Benedict's, Jerome

Visiting hours at St. Benedict's hospital are from 2 to 4 and 7 to 9 a.m.

St. Benedict's, Jerome

Visiting hours at St. Benedict's hospital are from 2 to 4 and 7 to 9 a.m.

St. Benedict's, Jerome

Visiting hours at St. Benedict's hospital are from 2 to 4 and 7 to 9 a.m.

St. Benedict's, Jerome

Visiting hours at St. Benedict's hospital are from 2 to 4 and 7 to 9 a.m.

St. Benedict's, Jerome

Visiting hours at St. Benedict's hospital are from 2 to 4 and 7 to 9 a.m.

St. Benedict's, Jerome

Visiting hours at St. Benedict's hospital are from 2 to 4 and 7 to 9 a.m.

St. Benedict's, Jerome

Visiting hours at St. Benedict's hospital are from 2 to 4 and 7 to 9 a.m.

St. Benedict's, Jerome

Visiting hours at St. Benedict's hospital are from 2 to 4 and 7 to 9 a.m.

St. Benedict's, Jerome

Visiting hours at St. Benedict's hospital are from 2 to 4 and 7 to 9 a.m.

St. Benedict's, Jerome

Visiting hours at St. Benedict's hospital are from 2 to 4 and 7 to 9 a.m.

St. Benedict's, Jerome

Visiting hours at St. Benedict's hospital are from 2 to 4 and 7 to 9 a.m.

St. Benedict's, Jerome

Visiting hours at St. Benedict's hospital are from 2 to 4 and 7 to 9 a.m.

St. Benedict's, Jerome

Visiting hours at St. Benedict's hospital are from 2 to 4 and 7 to 9 a.m.

St. Benedict's, Jerome

Visiting hours at St. Benedict's hospital are from 2 to 4 and 7 to 9 a.m.

St. Benedict's, Jerome

Visiting hours at St. Benedict's hospital are from 2 to 4 and 7 to 9 a.m.

St. Benedict's, Jerome

Visiting hours at St. Benedict's hospital are from 2 to 4 and 7 to 9 a.m.

St. Benedict's, Jerome

Visiting hours at St. Benedict's hospital are from 2 to 4 and 7 to 9 a.m.

St. Benedict's, Jerome

Visiting hours at St. Benedict's hospital are from 2 to 4 and 7 to 9 a.m.

St. Benedict's, Jerome

Visiting hours at St. Benedict's hospital are from 2 to 4 and 7 to 9 a.m.

St. Benedict's, Jerome

Visiting hours at St. Benedict's hospital are from 2 to 4 and 7 to 9 a.m.

St. Benedict's, Jerome

Visiting hours at St. Benedict's hospital are from 2 to 4 and 7 to 9 a.m.

St. Benedict's, Jerome

Visiting hours at St. Benedict's hospital are from 2 to 4 and 7 to 9 a.m.

St. Benedict's, Jerome

Visiting hours at St. Benedict's hospital are from 2 to 4 and 7 to 9 a.m.

St. Benedict's, Jerome

Visiting hours at St. Benedict's hospital are from 2 to 4 and 7 to 9 a.m.

St. Benedict's, Jerome

Visiting hours at St. Benedict's hospital are from 2 to 4 and 7 to 9 a.m.

St. Benedict's, Jerome

Visiting hours at St. Benedict's hospital are from 2 to 4 and 7 to 9 a.m.

St. Benedict's, Jerome

Visiting hours at St. Benedict's hospital are from 2 to 4 and 7 to 9 a.m.

St. Benedict's, Jerome

Visiting hours at St. Benedict's hospital are from 2 to 4 and 7 to 9 a.m.

St. Benedict's, Jerome

Visiting hours at St. Benedict's hospital are from 2 to 4 and 7 to 9 a.m.

St. Benedict's, Jerome

Visiting hours at St. Benedict's hospital are from 2 to 4 and 7 to 9 a.m.

St. Benedict's, Jerome

Visiting hours at St. Benedict's hospital are from 2 to 4 and 7 to 9 a.m.

St. Benedict's, Jerome

Visiting hours at St. Benedict's hospital are from 2 to 4 and 7 to 9 a.m.

St. Benedict's, Jerome

Visiting hours at St. Benedict's hospital are from 2 to 4 and 7 to 9 a.m.

St. Benedict's, Jerome

Visiting hours at St. Benedict's hospital are from 2 to 4 and 7 to 9 a.m.

St. Benedict's, Jerome

Visiting hours at St. Benedict's hospital are from 2 to 4 and 7 to 9 a.m.

St. Benedict's, Jerome

Visiting hours at St. Benedict's hospital are from 2 to 4 and 7 to 9 a.m.

St. Benedict's, Jerome

Visiting hours at St. Benedict's hospital are from 2 to 4 and 7 to 9 a.m.

St. Benedict's, Jerome

Visiting hours at St. Benedict's hospital are from 2 to 4 and 7 to 9 a.m.

St. Benedict's, Jerome

Visiting hours at St. Benedict's hospital are from 2 to 4 and 7 to 9 a.m.

St. Benedict's, Jerome

Visiting hours at St. Benedict's hospital are from 2 to 4 and 7 to 9 a.m.

St. Benedict's, Jerome

Visiting hours at St. Benedict's hospital are from 2 to 4 and 7 to 9 a.m.

St. Benedict's, Jerome

Visiting hours at St. Benedict's hospital are from 2 to 4 and 7 to 9 a.m.

St. Benedict's, Jerome

Visiting hours at St. Benedict's hospital are from 2 to 4 and 7 to 9 a.m.

St. Benedict's, Jerome

Visiting hours at St. Benedict's hospital are from 2 to 4 and 7 to 9 a.m.

St. Benedict's, Jerome

Visiting hours at St. Benedict's hospital are from 2 to 4 and 7 to 9 a.m.

St. Benedict's, Jerome

Visiting hours at St. Benedict's hospital are from 2 to 4 and 7 to 9 a.m.

St. Benedict's, Jerome

Visiting hours at St. Benedict's hospital are from 2 to 4 and 7 to 9 a.m.

St. Benedict's, Jerome

Visiting hours at St. Benedict's hospital are from 2 to 4 and 7 to 9 a.m.

St. Benedict's, Jerome

Visiting hours at St. Benedict's hospital are from 2 to 4 and 7 to 9 a.m.

St. Benedict's, Jerome

Visiting hours at St. Benedict's hospital are from 2 to 4 and 7 to 9 a.m.

St. Benedict's, Jerome

Visiting hours at St. Benedict's hospital are from 2 to 4 and 7 to 9 a.m.

St. Benedict's, Jerome

Visiting hours at St. Benedict's hospital are from 2 to 4 and 7 to 9 a.m.

St. Benedict's, Jerome

Visiting hours at St. Benedict's hospital are from 2 to 4 and 7 to 9 a.m.

St. Benedict's, Jerome

Visiting hours at St. Benedict's hospital are from 2 to 4 and 7 to 9 a.m.

Weather

Magic Valley—Fair with some increased cloudiness next evening; moderate to heavy showers tomorrow...

Weather

Magic Valley—Fair with some increased cloudiness next evening; moderate to heavy showers tomorrow...

Weather

Magic Valley—Fair with some increased cloudiness next evening; moderate to heavy showers tomorrow...

Weather

Magic Valley—Fair with some increased cloudiness next evening; moderate to heavy showers tomorrow...

Weather

Magic Valley—Fair with some increased cloudiness next evening; moderate to heavy showers tomorrow...

Weather

Magic Valley—Fair with some increased cloudiness next evening; moderate to heavy showers tomorrow...

Weather

Magic Valley—Fair with some increased cloudiness next evening; moderate to heavy showers tomorrow...

Weather

Magic Valley—Fair with some increased cloudiness next evening; moderate to heavy showers tomorrow...

Weather

Magic Valley—Fair with some increased cloudiness next evening; moderate to heavy showers tomorrow...

Weather

Magic Valley—Fair with some increased cloudiness next evening; moderate to heavy showers tomorrow...

Weather

Magic Valley—Fair with some increased cloudiness next evening; moderate to heavy showers tomorrow...

Weather

Magic Valley—Fair with some increased cloudiness next evening; moderate to heavy showers tomorrow...

Weather

Magic Valley—Fair with some increased cloudiness next evening; moderate to heavy showers tomorrow...

Weather

Magic Valley—Fair with some increased cloudiness next evening; moderate to heavy showers tomorrow...

Weather

Magic Valley—Fair with some increased cloudiness next evening; moderate to heavy showers tomorrow...

Weather

Magic Valley—Fair with some increased cloudiness next evening; moderate to heavy showers tomorrow...

Weather

Magic Valley—Fair with some increased cloudiness next evening; moderate to heavy showers tomorrow...

Weather

Magic Valley—Fair with some increased cloudiness next evening; moderate to heavy showers tomorrow...

Weather

Magic Valley—Fair with some increased cloudiness next evening; moderate to heavy showers tomorrow...

Weather

Magic Valley—Fair with some increased cloudiness next evening; moderate to heavy showers tomorrow...

Weather

Magic Valley—Fair with some increased cloudiness next evening; moderate to heavy showers tomorrow...

Weather

Magic Valley—Fair with some increased cloudiness next evening; moderate to heavy showers tomorrow...

Weather

Magic Valley—Fair with some increased cloudiness next evening; moderate to heavy showers tomorrow...

Weather

Magic Valley—Fair with some increased cloudiness next evening; moderate to heavy showers tomorrow...

Weather

Magic Valley—Fair with some increased cloudiness next evening; moderate to heavy showers tomorrow...

Weather

Magic Valley—Fair with some increased cloudiness next evening; moderate to heavy showers tomorrow...

Weather

Magic Valley—Fair with some increased cloudiness next evening; moderate to heavy showers tomorrow...

Weather

Magic Valley—Fair with some increased cloudiness next evening; moderate to heavy showers tomorrow...

Weather

Magic Valley—Fair with some increased cloudiness next evening; moderate to heavy showers tomorrow...

Weather

Magic Valley—Fair with some increased cloudiness next evening; moderate to heavy showers tomorrow...

Weather

Magic Valley—Fair with some increased cloudiness next evening; moderate to heavy showers tomorrow...

Weather

Magic Valley—Fair with some increased cloudiness next evening; moderate to heavy showers tomorrow...

Weather

Magic Valley—Fair with some increased cloudiness next evening; moderate to heavy showers tomorrow...

Weather

Magic Valley—Fair with some increased cloudiness next evening; moderate to heavy showers tomorrow...

Weather

Magic Valley—Fair with some increased cloudiness next evening; moderate to heavy showers tomorrow...

Weather

Magic Valley—Fair with some increased cloudiness next evening; moderate to heavy showers tomorrow...

Weather

Magic Valley—Fair with some increased cloudiness next evening; moderate to heavy showers tomorrow...

Weather

Magic Valley—Fair with some increased cloudiness next evening; moderate to heavy showers tomorrow...

Weather

Magic Valley—Fair with some increased cloudiness next evening; moderate to heavy showers tomorrow...

Weather

Magic Valley—Fair with some increased cloudiness next evening; moderate to heavy showers tomorrow...

Weather

Magic Valley—Fair with some increased cloudiness next evening; moderate to heavy showers tomorrow...

Weather

Magic Valley—Fair with some increased cloudiness next evening; moderate to heavy showers tomorrow...

Weather

Magic Valley—Fair with some increased cloudiness next evening; moderate to heavy showers tomorrow...

Weather

Magic Valley—Fair with some increased cloudiness next evening; moderate to heavy showers tomorrow...

Weather

Magic Valley—Fair with some increased cloudiness next evening; moderate to heavy showers tomorrow...

Weather

Table with 2 columns: Name, Amount. Includes 'By the month', 'By the year', 'By the month', 'By the year'.

BLOODIER AND BLOODIER
Now we have another accident story about Eugene Hagler...

With Idaho's traffic deaths totaling 153 so far this year as compared to 107 during the same period in 1933...

When the next session of the state legislature convenes, it will be interesting to note whether the law-makers will continue to close their eyes to all this slaughter...

The hoodlumism of teen-age drivers has become a real menace in Idaho, and unless we face this problem realistically...

The solution rests in bringing that small percentage under rigid control. That calls for drastic action by the state...

In an effort to halt the nation's headlong rush into the most calamitous traffic toll of any year since the end of 1916...

To "facilitate enforcement, increase the safety of the highways and bring about uniformity of traffic laws..."

The recommended laws should discourage traffic violations and make law enforcement more effective. The proposed changes have long been favored by most of the nation's courts and enforcement agencies...

"Our traffic problem is boiling away at headlong speed. Already we are approaching 1,000,000 accidents a year at a cost of some five billion dollars..."

When opportunity is disguised as hard work it keeps a lot of folks from succeeding.

TUCKER'S NATIONAL WHIRLIGIG
WASHINGTON—The prominence and headline accorded to women in the proceedings of both the Republican and Democratic national conventions is no accident...

WOMEN'S POLITICAL IMPORTANCE
In short, the politicians believe women have come of economic age as well as political age.

BENEFICIARIES MAY GIVE KEY CREDIT—Social security applications under the new act will be given priority...

WOOLING FEMININE BLOC—In their wooling of the feminine bloc, the Republicans admittedly adopted the standard practice of the Democrats...

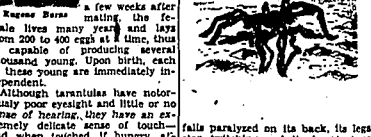
DBS CHAMPS WIN!
There is vindication coming for all those males who have been staunch members of the DBS club these last few years...

THE COURT TAKES A STAND
Members of the Oregon Supreme Court maintains all have in their dignity been to the defense of the male in that narrowing part of this world still free of women...

SLICKING UP PARTY SLOGANS
With a bragadoolee some may think dubious, Ohio is wont call this the cradle of presidents...

THE FINEST STOCK IN rodeo business this season
RIDES CONCESSIONS By Leo Zimmers of Creswell, Oregon

Is That So!
Stupid Tarantula Wise Digger Wasps
In digging animals, one is always baffled: Where does blind instinct leave off? And where, possibly, does reasoning begin?



Almost immediately, the tarantula falls paralyzed on its back, its legs stop twitching and its heart stops beating. Yet it is not dead, only stunned...

As soon as the egg, within the female wasp is almost ready to be laid—and note the timing—the mother wasp at once goes tarantula-hunting...

WASHINGTON, Aug. 21.—A record 183,187,643 visits were counted at 2,034 state parks over the nation during 1933, the national park service reported yesterday.

WELCOME TO THE JEROME COUNTY FAIRGROUNDS - JEROME, IDAHO
\$9,000.00 IN PREMIUMS FOR FAIR PARTICIPANTS
3 BIG DAYS THURSDAY - FRIDAY - SATURDAY

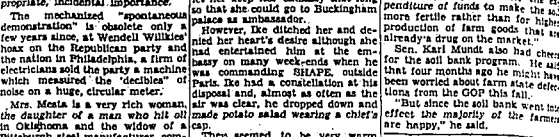
PARADE - THURSDAY, 2 P.M.
The finest parade this year! 75 Floats - Bands - Cowboys - Real Indians - Horses - Posses. This event will open the big 1934 Jerome Fair.

AMATEUR HORSE SHOW
FRIDAY, August 24 at 2:00 P.M.
GRAND PARADE OF LIVESTOCK
FRIDAY, August 24 at 7:00 P.M.

TRACTOR DRIVING CONTEST
SATURDAY, August 25 at 10:00 A.M.
NIGHT RODEO
RCA Approved - Paul Scott of Pocatello, Producer - Jack Oakie, Announcer

THURS. - FRI. - SAT. at 8:00 P.M.
General Admission: Adults \$1.20 - Children 50c
SADDLE BRONC RIDDING
BULLBACK RIDING
BULL DOGGING
BRAHMA BULL RIDING
CALF ROPING
SEE THE TOP COWBOYS
Fortunately the rodeo this year has between two major shows in other states giving the best riders in the business a stop-off in Jerome.

HOW THINGS APPEAR FROM PEGLER'S ANGLE
CHICAGO - Mrs. Pegler Meala's nice made a great hit for a long season on Broadway. She played it on her husband's friend, Harry Truman, the Boston man to the above during one of her visits home and was chivalrously invited to Chicago in 1932.



She is a very rich woman, a Republican, but when Truman was elected vice president she gave a banquet for him, typical of Washington social life, at the Suburra club.

Now she became a Democrat, an easy transition because she had no strong political convictions. She has been for years a personal friend of the late Mrs. Jim Parry, Beech, who was so much into it with politics, however, detested the repulsive professional female new dealers and sport such a much time as she possibly could in New York.

Perle's festivities were indignantly advertised and their social quality was so coarse that she was recognized lampooned in "Call Me Madam" which was very much like the old-fashioned "olio" of the rucous Columbia which burlesque about the 1920's.

WASHERS! WIVES!
Get Pep, Vim, Feel Younger.
Thousands of complete new, worn-out, faded, and broken down washers, washboards, and tubs for sale...

GRANGE MEETS
The Mountain Rock Grange, meeting at the Mountain Rock Community hall, voted last week to suspend meetings until Sept. 21. Check for \$100 that the captain got \$20 each.

WE MAKE WOOD FRAMES
Photostats Commercial Photos
KELKER STUDIO
1816 ADDISON EAST
Across From Medical Arts

REAL INDIANS!
A band of real Indians from the Bonnac tribe will ride in the parade in full regalia, making a colorful sight you'll never forget. They will also sell a real Indian village at the fairgrounds.

THURSDAY - East End Day
FRIDAY - North Side Day
SATURDAY - South Side Day
Features - Specialties
LIBERTY HORSE DRILL TEAM
SHEPHERD DOGS
JEROME POSSETTES
SAWTOOTH RANGERS

Miss Miller and Lee Wed in Rite

HEYBURN, Aug. 21—Arlo Lee and Connie Miller were married Friday at the LDS temple, Salt Lake City. The bride is the daughter of Mr. and Mrs. Herman Miller, Ogden. Lee is the son of Mr. and Mrs. Joseph V. Lee. A reception was held for the couple at the home of Bertha Ecker, Ogden. Another reception is planned for Friday evening at the Heyburn first ward LDS church. Attending the ceremony were Lee's parents, Mr. and Mrs. Willard Wilson, Mrs. Edna Tilley and daughter, Rardecna, Mrs. Delano Miller, Mr. and Mrs. Norman Lee and Mr. and Mrs. William Hellevell.

Bridge Played

PAULI, Aug. 21—The Pauli Bridge Club met Friday at the home of Mrs. Claude Greenwell for dinner and bridge. Prizes were won by Mrs. James Stevens, Mrs. Reed Arthur and Mrs. Gilbert Blake. Mrs. Blake was a guest.

Marian Martin Pattern



9364 10-18 by Marian Martin. Fashion shows a far-eastern influence in the sleeveless lines of this casual dress. Its beautifully draped (even without a belt) is famous for its figure-flattery. Have it now with any mandarin collar; make a cool accented-neck version next summer. Pattern 9364: Misses' sizes 10, 12, 14, 16, 18. Size 16 takes 3 1/2 yards 36-inch fabric. This easy-to-sew pattern gives perfect fit. Complete illustrated Sew Chart shows you every step. Send thirty-five cents in coins for this pattern—add 6 cents for each pattern for 14-size mailing. Send to Marian Martin, care of THE NEW Pattern Dept., 232 West 18th Street, New York 11, N.Y. Print plainly name, address with coin and style number.

Recite Wedding Vows



MR. AND MRS. DONALD L. RAHE (Sticker photo—staff engraving)

Lutheran Ceremony Unites Ruth M. Billier and D. Rahe

Ruth Marilyn Billier, daughter of Mr. and Mrs. Julius Billier, Filer, was united in marriage with Donald L. Rahe, Indianapolis, Ind., son of Mr. and Mrs. Louis Rahe, Aurora, Ind., Saturday afternoon at the Immanuel Lutheran church. The Rev. Armand Mueller performed the double ring ceremony before arrangements of yellow and white gladioli. The bride, given in marriage by her father, chose a floor length gown of nylon tulle designed in a princess style with a sweetheart neckline and an overskirt of appliqued lace. Her fingertip veil of illusion was held by a lace headpiece trimmed with aquila and pearls. She carried a bouquet of yellow roses and wore a blue sash and a penny in her shoe. Mrs. Theodore Behm, sister of the bride, was the matron of honor. The bridesmaid was Hedwig Werner, Park Ridge, N. J. They wore floor-length gowns of aqua tulle and aqua headpiece and carried bouquets of yellow gladioli. Cecil Rahe was best man for his brother. The ushers were Theodore Behm, Midlothian, Ill., and David Billier, Filer. Margaret Thoren, Leavenworth, Kans., played the wedding music and "Let Us Walk With Jesus." For her daughter's wedding Mrs. Billier chose a navy blue afternoon dress with pink accessories. Mrs. Rahe wore a gown of light blue lace. Their corsages were of white carnations and yellow roses. The reception was held at the home of the bride's parents. A luncheon was served at individual tables covered with yellow cloths and centered with bouquets of pink roses.

Social Calendar

The Steamrollers Weight Reduction club will meet at 8 p.m. Wednesday at the hospital building. Election of officers and other business for vote air scheduled. All members are urged to attend.

The Lent-A-Hand club will hold its August picnic at 1 p.m. Wednesday at the city park. The Boys and Girls Square Dance club will hold a dance at 8:20 p.m. Wednesday at the DAV hall. All square dancers are invited and asked to bring doughnuts.

The Good Will club will meet at Harmon hotel at 2 p.m. Wednesday with Mrs. Lloyd Kelly as hostess. Roll call will be answered by "the most unusual place" ever lived—Mrs. A. G. Huston will give the program.

SHOSHONE—The LDS Primary will hold weekly classes beginning at 2:45 p.m. Wednesday. The classes have been held at 9:30 a.m. during the summer vacation.

FILER—LDS MIA will have an actively and exciting party Wednesday evening for young people of that age group at the LDS recreation hall.

SHOSHONE—Lucky 13 club will meet at 2:30 p.m. Friday at the home of Mrs. Joe O'Brien.

HOLLISTER—The Hollister Orange Home economic committee has requested that entries for the sewing contest be brought to the meeting Wednesday at the Grange hall, Aurora, with dresses and rules will be judged.

Engaged



RUTH SANDERSON... whose engagement to Walter T. Paul, son of Mr. and Mrs. Dalton Charles, Challis, is announced by her parents, Mr. and Mrs. Hugh A. Sanderson, Hansen, the wedding is planned for Sept. 16. (Klicker photo—staff engraving)

Picnic Held

HEYBURN, Aug. 21—The Birthday club had its annual picnic and social gathering Saturday evening at Neptune park. Guests were Mr. and Mrs. George Blainker, Heyburn, Calif., and Mr. and Mrs. Leiflicher and sons, Mead, AFH. Have crisp brown sticks on hand for that spaghetti-and-salad supper.

Care of Your Children

By ANGELO PATRI

Did you ever notice how much of the dangerous tools on their own. All such tools, all such knives, should be kept where children cannot get them. Tools and machinery have great fascination for children, so they and the children must be taught to use the tools and care for them, because they will always have to use them. The sooner they learn how, the better for all concerned. This means a bit of sacrifice on the parent's side. It is often inconvenient to go to the shop and stand by while a child learns to use and care for a tool, but, after all, it is necessary for the child's future skill and his safety.

The care of a tool is an important part of this training. When a worker finishes with a tool, he ought to take time then and there to clean it, polish it if necessary, and put it in its place. It is to see a fine tool tossed here or there, left dirty, unloiled, uncared for, so that when it is needed again it is rusted, dulled, or nowhere to be found.

As the children grow, they should be allowed to use sharper tools. The early years are the best ones for this learning. While learning, they must be supervised by an older person who understands the use of the tool and its proper care. Of course, only the older boys and girls will be allowed to use such dangerous tools as electric saws and cutters. They must be taught the careful use of these and essential care before being trusted with use.

As the children grow, they should be allowed to use sharper tools. The early years are the best ones for this learning. While learning, they must be supervised by an older person who understands the use of the tool and its proper care. Of course, only the older boys and girls will be allowed to use such dangerous tools as electric saws and cutters. They must be taught the careful use of these and essential care before being trusted with use.

As the children grow, they should be allowed to use sharper tools. The early years are the best ones for this learning. While learning, they must be supervised by an older person who understands the use of the tool and its proper care. Of course, only the older boys and girls will be allowed to use such dangerous tools as electric saws and cutters. They must be taught the careful use of these and essential care before being trusted with use.

Miss Gambrel Is Wed to Johnson

In-Local Church

Sara Jean Gambrel, daughter of Mr. and Mrs. Floyd Gambrel, Eden, became the wife of Kenneth Johnson, son of Mr. and Mrs. Dean Johnson, Hazelton, Sunday afternoon at the First Christian church. The Rev. Glen Hutton performed the ceremony before baskets of gladioli, carnations and asters in white colors. Margaret Dilly played the wedding music and accompanied Keith Johnson, Astoria, who sang "Because" and "The Lord's Prayer." The bride wore a navy blue gown with a white sash and a penny in her shoe. She carried a bouquet of red roses with white satin streamers tied with red roses. Mrs. Woodruff Tucker was matron of honor for her sister. She wore a pale blue gown in a ballroom length and carried red roses with white gladioli. The bridesmaids were Shirley Brown, in pink; Gladys Yost, in yellow; Colleen Johnson, sister of the bridegroom, in salmon; and Wilma Yost, in pale green. They carried white gladioli bouquets. Woodruff Tucker and Diana "Turkey" were the flower girls. The ring bearer was Danny Kivvy, Mountain Home. Gary Johnson, brother of the bridegroom, was the best man. The ushers were Clinton Yost, Russell Heunemann, Reed Perkins and Bob Zellner.

For her daughter's wedding Mrs. Gambrel wore a bride lace afternoon dress with dusty rose and black accessories and a corsage of pink and white carnations. Mrs. Johnson chose a cream colored satin sheath dress embroidered with pink and blue and black velvet accessories. The reception was held at the "Turf" club. The four tiered wedding cake decorated with pink roses was placed on a mirror surrounded by red roses and greenery.

Reception assistants were Mrs. Keith Johnson, Mrs. Frank Kury, Mrs. Charles Brenner and Mrs. Phillip Cochrum. Mrs. Don Leber and Mrs. Donald Zuck arranged the gifts. Marilyn Pickett was in charge of the gift book. Keith Johnson sang "O, Promise Me" accompanied by Miss Dilly, who also played background. For the wedding trip to Salt Lake City the new Mrs. Johnson chose a dark suit with pink accessories and the corsage from her bouquet. He is stationed at Camp Pendleton, Calif., where they will make their home.

"My doctor prescribes St. Joseph Aspirin For Children" by Mrs. W. B. KATZ, M.D. is approved by more doctors than any other children's aspirin. Children like its pure orange taste. Keep it handy.

ST. JOSEPH ASPIRIN FOR CHILDREN

Wed in Church Services



MR. AND MRS. KENNETH JOHNSON (Petrygrove photo—staff engraving)

ENTERTAINING CLUB... GLENNS FERRY, Aug. 21—The Goss and Roush families held a reunion Sunday in Hull Memorial park. Mr. and Mrs. Chris Goss, King Hill, were guests.

PASTE ME ON YOUR TV SET. Put me around in back where I'll never show... But you'll know I'm there when you need the best in TELEVISION SERVICE PHONE 2750

GUARANTEED SERVICE SERVICE CENTER ANDERSONS

QUALITY DENTAL REPAIR LAB New Denture \$55! Plates Repaired - Teeth Replaced Plates Relined WHILE U WAIT FIT RITE DENTAL LAB Phone 3658 QUALITY DENTAL LAB Phone OIdward 6-3591, Buxley

SAVE 00 \$10.00 Model 306

...on this SINGER AUTOMATIC FOR 1 WEEK ONLY Choice of cabinets as illustrated and others according to available stock, some in their original cartons. FIRST COME! - FIRST SERVED! HUNDREDS OF DECORATIVE STITCH VARIATIONS This amazing Singer* machine does beautiful decorative zigzag stitching easily and quickly FINEST STRAIGHT SEWING TOOL! The kind of sewing you do most is done best on this wonderful Singer automatic SINGER NEW MACHINE WARRANTY Your assurance the finest because no-one builds a sewing machine like Singer UNEQUALLED SINGER SERVICE There's always a Singer Sewing Center conveniently located near you, waiting to serve your needs. Now at your SINGER SEWING CENTER. Listed in the telephone book under SEWING, SEWING, SEWING, SEWING. Ph. 243 Twin Falls, 120 Main N.

HERE COMES THE CALGARY by Bobbie Brooks. Here are those fabulous fashion partners... the CALGARY ensembles by BOBBIE BROOKS... greasier and even more wonderful than ever! The two most perfect plaid partners ever... in exquisite combinations... flares plus matching solid tones... you to choose from in the belted short jacket... the boxy jacket... three exquisite skirt styles and for added excitement... a perfect fitting pair of woolen slacks. And to complete the picture... a cloud-soft tuffly full-fashioned sweater. Sizes for misses and juniors. the jackets... 14.95 the slacks... 10.95 the walkers... 8.95 the slacks... 12.95 LAYAWAY NOW FOR FALL! THE MAYFAIR SHOP

Suare Honors in Midget League



The Carpenters Local 1858 snared top honors in the Midget league, taking first both in the league standings and in the tournament. From left to right, are Garwin Lorain, Larry Ambroz, Walter Hardesty, Jim Blakley, Duane Hardesty and Dale Durham, standing, left to right.

Dreamer

LOS ANGELES, Aug. 21 (The) Rabbi William M. Kramer opened yesterday's city council meeting with the following invocation: "I pray for the council, the standard of its act. Raise them, father, and lower the tax."

Shoshone Voters OK Cemetery Tax

SHOSHONE, Aug. 21—Only twelve people decided to keep the Lincoln county cemetery maintenance district tax at 15 cents on the \$100 valuation this year by a vote of 10 to 10. A 10-cent levy can be made without a referendum but if the levy exceeds that amount an election must be held. It was 15 cents last year and 20 cents the year before. Judges were Mrs. Caroline Walker, Delirich, Mrs. Donald Sandy, Shoshone, and Mrs. Margaret Haddock, Shoshone.

Takes Time

Richard D. Drake, 143 Addison avenue, took his legal limo of 24 hours Tuesday to enter a plea in Twin Falls justice court to a charge of losing a check without sufficient funds in the bank. Justice of the Peace J. O. Pumphrey fined Drake's bond at \$100. He was arrested Monday by city police on a complaint signed Aug. 19, charging him with losing a \$25 check to Roper's Clothing company.

Vote Unchanged

GOODING, Aug. 21—Gooding county commissioners, meeting Monday to canvass the vote in the primary election last week, found no errors in the tallies reported election night.

Taylor Loses 8 Votes in Cassia

BURLEY, Aug. 21—Glen Taylor lost eight votes in the official Cassia county vote canvass completed Monday while his opponent for the Democratic nomination for the U.S. senate, Frank Church, kept the same figure as previously reported. Taylor's official tally was 364 compared to 372 in the first report. The Church figure of 271 remained the same. Changes in the Republican tally will not affect the outcome of the vote but this is a list of the official and unofficial tallies where changes are evident. The official canvass is given first: Herman Welker, 1103-1107; William Holden, 828-870; John Barnham, 423-430; Dr. J. Ray Davis, 592-596; C. LeRoy Garner, 1551-1546; R. T. Harper, 1123-1129; Dale Smith, 1231-1223; LePage Layton, 2823-2810; Jeanette Y. Chamberlain, 2120-2823, and Don C. Loveland, 2120-2820.



New car loans

Don't despair! Buy a new car... conveniently. Loans arranged in confidence. Use your car as collateral.

SECURITIES

Credit Corporation PHONE 680 239 Main Ave. W., Twin Falls

WANT A JOB IN SOUTHERN CALIFORNIA?

ROHR AIRCRAFT CORPORATION

WILL TRAIN YOU FREE WHILE YOU EARN FULL PAY

If you have had experience (or school training) in work such as: body and fender work, tractor repair man, filling station attendant, garage mechanic, etc. — if you are between 18 and 30 years of age, interested in moving to beautiful Southern California for an aircraft job with a fine future in all types of aircraft production work such as: Aircraft Sheet Metal Mechanic, Form Block Maker, Jig and Fixture Builder...

APPLY NOW!

Rohr Aircraft Corporation, fast-growing aircraft company with more than 8000 employees, has two modern plants — at beautiful Chula Vista, 7 miles south of San Diego, and at Riverside in California's citrus center, 30 miles southeast of Los Angeles.

For a better job, a bigger future in fast-growing, balmy Southern California...

AIRMAIL THIS COUPON TODAY!

MR. J. L. HOHR, Rohr Aircraft Corporation, Chula Vista, California. My name is... I want to be trained by Rohr Aircraft Corporation for aircraft work at Riverside or Chula Vista, California. Please send me an application for employment by return mail. I am... years old, and I understand that I will be required to pass a physical examination and pre-employment physical examination to be accepted for work in your Chula Vista or Riverside plants. I have had experience as... and my schooling... I understand that there is no obligation on my part to Rohr Aircraft Corporation when I mail this coupon to you, and that should I be accepted for employment in either of your plants that the training will be completely free and absolutely no cost to me. Also, I understand that should I be accepted for employment by Rohr Aircraft Corporation I will be paid the regular hourly rate for the type of work I will perform. My address is...

HURRY! HURRY! HURRY!

ONLY A FEW NIGHTS LEFT to enjoy this crazy pair!

FREE BUS SERVICE

Don French's Famous **HORSE SHU CLUB**

South on Highway 93 at Nevada State Line

WE NEED 10,000 BUSHELS MIXED GRAIN

—Ask for Quotations—

Globe Seed & Feed Co.

222 4th Avenue South Phone 401

Leave all your cares and troubles at home... and com'on down to the HORSE SHU CLUB

THE LAUGHS ARE ON US!

with the famous **ROMER & HOWARD Comedy Duo**

direct from Harrah's Club at Lake Tahoe

Again Don French brings you the tops in big-city entertainment. Nothing's too good for our Horse-Shu customers! Don't miss this zany pair—they'll keep you in stitches all evening.

9:00 P.M. TO 2:00 A.M. NIGHTLY

HURRY! HURRY! HURRY!

ONLY A FEW NIGHTS LEFT to enjoy this crazy pair!

FREE BUS SERVICE

Don French's Famous **HORSE SHU CLUB**

South on Highway 93 at Nevada State Line

WHY WE CALL IT... Priest Lake

Editor's Note: This is one in a series of stories on the origin of the names of things in Idaho and Utah.

By The Associated Press

Northern Idaho's Priest Lake got its name in a roundabout fashion. It was the site of missionary work carried on in the 1840s by Father John Rootman, head of the Jesuits in the area.

The Indians had difficulty pronouncing the name Rootman, so they called the priest Kaniku.

Father Rootman died in 1853 and was buried in the lake, which took the name Kaniku.

It was called that until 1890 when the Great Northern railroad, building its line through the area, changed the name to Priest Lake.

The town of Priest River was laid out in 1891 and the GN completed a depot there, and it was incorporated in 1894.

TRUCK INSURANCE

TOM HOVENDEN AGENCY

127 Main East Phone 1096

Work to Start

SHOSHONE, Aug. 21—The fall re-seeding program by the bureau of land management will begin Monday. John Keith, range manager, reports.

About 2,500 acres will be seeded at Wasipi, near Minidoka. Bureau crews will do the work.

SCREWDRIVER

(Vodka in orange juice)

Smirnoff

the greatest mixer by VODKA

40 Proof. Dist. from grain. Ste. Pierre Smirnoff (Div. of Heublein), Hartford, Conn., U.S.A.

It leaves you breathless

Look right at the rodeo in LEVI'S

Get Yours At **ROPER'S** Men's & Boys' Wear

WE GIVE 2 X GREEN STAMPS

Verti-Stripe LEVIS

Sizes 6-12 2.98 Sizes 14-18 3.98

LEVI Double-Knees

Sizes 4-12 2.98

HUCKIES . . . 3.50

IDAHO DEPARTMENT STORE

TWIN FALLS

Just in time for back-to-school!

NEW! LEVI'S DENIMS in exclusive Verti-stripes

Only Levi's has 'em! Verti-stripes denim—a brand new, rich-looking denim with muted vert. teal striping woven right in! Tailored, with the traditional LEVI'S skill into handsome slacks, popular Peg-Tops, and smart zipper-front jackets with striped knit trim.

VERTI-STRIPES GREY • VERTI-STRIPES BLUE
VERTI-STRIPES GREEN • VERTI-STRIPES TAN (also Solid Lighter Blues)

TWILL CINCHBACKS and PEG-TOPS, TOO!

New updated "Ivy look" LEVI'S Cinchbacks with slim, narrow cut, back belt-buckle strap. Sanforized. White • Sky Blue • Olive Drab • Tan • Grey • Black

Deep-pleated LEVI'S Peg-Tops with full knee, narrow cuffs, Hollywood waistband. Sanforized. White • Sky Blue • Tan • Turquoise • Grey • Black

Waist sizes 28 to 36 • Stock up now for back-to-school!

LEVI STRAUSS & CO.

LEVI'S

AMERICA'S FINEST OVERALLS

Buy Your LEVI'S at... **ANDERSON'S**

Crossword Puzzle

ACROSS

1. Strips
2. Bright
3. Goggles
4. Of the mouth
5. Turmeric
6. Outbreak
7. Foundation
8. Coasters
9. Compound
10. Bard
11. Indoor game
12. Satisfied
13. Obtained
14. Composition
15. New star
16. Charm
17. Talking bird
18. Support

DOWN

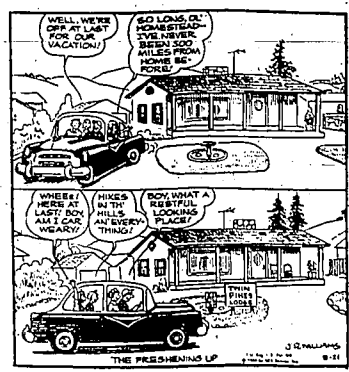
1. Loose
2. Garnet
3. Armenian
4. River
5. Cone
6. Dormant
7. Curve
8. Folds
9. Young
10. Was carried
11. Those not in office
12. Drives
13. Altimeter
14. Injunct
15. Lantern
16. Herds of
17. Skip
18. Foodfish
19. Trolley
20. Side
21. Watches
22. Throat
23. Night before
24. Spanish jar
25. Paper meas.
26. 54 hours
27. Compass
28. Mount
29. Mountain pass
30. Take food

Solution of Yesterday's Puzzle

1. Thorough
2. fates
3. abbrev.
4. socialite
5. Was carried
6. Those not in office
7. Drives
8. Altimeter
9. Injunct
10. Lantern
11. Herds of
12. Skip
13. Foodfish
14. Trolley
15. Side
16. Watches
17. Throat
18. Night before
19. Spanish jar
20. Paper meas.
21. 54 hours
22. Compass
23. Mount
24. Mountain pass
25. Take food

FOR TIME 23 MIN. BY HANDICAPERS 8-21

OUT-OUR WAY By WILLIAMS



SIDE GLANCES By GALBRAITH



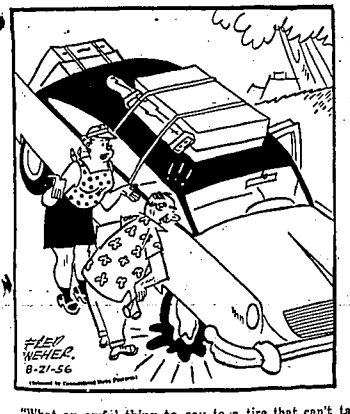
CARNIVAL By DICK TURNER



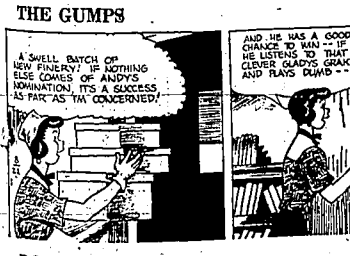
BOARDING HOUSE - MAJOR HOOPLE



LIFE'S LIKE THAT By NEHER



THE GUMPS



DONALD DUCK



DAN L'HALE CAPTAIN EASY BOOTS GASOLINE ALLEY BUGS BUNNY DIXIE DUGAN SCORCHY LI LABNER ALLEY OOP



REAL ESTATE FOR SALE

400 ACRE RANCH
160 irrigated, balance dry land pasture...

EXCEPTIONAL
2 BEDROOM HOME, attached garage...

THE SECURITY AGENCY
123 Main Avenue, Twin Falls, Idaho

ROBERT DANFORTH, BROKER
Member Multiple Listing

18 ACRES of beautiful farm land
with 1200 sq. ft. house...

3 BEDROOM HOME, large rooms
with full bath...

THE GEM
Real Estate Agency
410 Main South, Phone 1024

FARMS FOR RENT
WANT in lease of 100 acre tract...

FARMS FOR SALE
10 ACRES, 43 1/2 acres water, price
reasonable...

10 ACRES, 43 1/2 acres water, price
reasonable...

10 ACRES, 43 1/2 acres water, price
reasonable...

10 ACRES, 43 1/2 acres water, price
reasonable...

10 ACRES, 43 1/2 acres water, price
reasonable...

10 ACRES, 43 1/2 acres water, price
reasonable...

10 ACRES, 43 1/2 acres water, price
reasonable...

10 ACRES, 43 1/2 acres water, price
reasonable...

10 ACRES, 43 1/2 acres water, price
reasonable...

10 ACRES, 43 1/2 acres water, price
reasonable...

10 ACRES, 43 1/2 acres water, price
reasonable...

10 ACRES, 43 1/2 acres water, price
reasonable...

10 ACRES, 43 1/2 acres water, price
reasonable...

10 ACRES, 43 1/2 acres water, price
reasonable...

10 ACRES, 43 1/2 acres water, price
reasonable...

10 ACRES, 43 1/2 acres water, price
reasonable...

10 ACRES, 43 1/2 acres water, price
reasonable...

10 ACRES, 43 1/2 acres water, price
reasonable...

10 ACRES, 43 1/2 acres water, price
reasonable...

10 ACRES, 43 1/2 acres water, price
reasonable...

10 ACRES, 43 1/2 acres water, price
reasonable...

10 ACRES, 43 1/2 acres water, price
reasonable...

market place
of magic valley

FARM IMPLEMENTS
PAUL ROBERTS WELDING AND MANUFACTURING

SPECIAL... SPECIAL!
123 Main Avenue, Twin Falls, Idaho

BALE LOADERS
12 Years proven success. Don't
wait. Get them while we have
them!

SEE NEW!
2- or 4-ROW
BOLT TOPPERS

JESSER EQUIPMENT CO.
Phone 2514 181 Addition

PAUL ROBERTS WELDING AND MANUFACTURING
123 Main Avenue, Twin Falls, Idaho

USED FARM MACHINERY
COMBINES & BALERS

TRACTORS
1-JUBILEE, 1943 model, A-1
1-FORD PERUN, 1943 model, A-1

BEET TOPPERS
1-OPPEL 14, 16, 20, 24, 28, 32, 36, 40, 44, 48, 52, 56, 60, 64, 68, 72, 76, 80, 84, 88, 92, 96, 100, 104, 108, 112, 116, 120, 124, 128, 132, 136, 140, 144, 148, 152, 156, 160, 164, 168, 172, 176, 180, 184, 188, 192, 196, 200, 204, 208, 212, 216, 220, 224, 228, 232, 236, 240, 244, 248, 252, 256, 260, 264, 268, 272, 276, 280, 284, 288, 292, 296, 300, 304, 308, 312, 316, 320, 324, 328, 332, 336, 340, 344, 348, 352, 356, 360, 364, 368, 372, 376, 380, 384, 388, 392, 396, 400, 404, 408, 412, 416, 420, 424, 428, 432, 436, 440, 444, 448, 452, 456, 460, 464, 468, 472, 476, 480, 484, 488, 492, 496, 500, 504, 508, 512, 516, 520, 524, 528, 532, 536, 540, 544, 548, 552, 556, 560, 564, 568, 572, 576, 580, 584, 588, 592, 596, 600, 604, 608, 612, 616, 620, 624, 628, 632, 636, 640, 644, 648, 652, 656, 660, 664, 668, 672, 676, 680, 684, 688, 692, 696, 700, 704, 708, 712, 716, 720, 724, 728, 732, 736, 740, 744, 748, 752, 756, 760, 764, 768, 772, 776, 780, 784, 788, 792, 796, 800, 804, 808, 812, 816, 820, 824, 828, 832, 836, 840, 844, 848, 852, 856, 860, 864, 868, 872, 876, 880, 884, 888, 892, 896, 900, 904, 908, 912, 916, 920, 924, 928, 932, 936, 940, 944, 948, 952, 956, 960, 964, 968, 972, 976, 980, 984, 988, 992, 996, 1000

TRACTORS
1-JUBILEE, 1943 model, A-1
1-FORD PERUN, 1943 model, A-1

TRACTORS
1-JUBILEE, 1943 model, A-1
1-FORD PERUN, 1943 model, A-1

TRACTORS
1-JUBILEE, 1943 model, A-1
1-FORD PERUN, 1943 model, A-1

TRACTORS
1-JUBILEE, 1943 model, A-1
1-FORD PERUN, 1943 model, A-1

TRACTORS
1-JUBILEE, 1943 model, A-1
1-FORD PERUN, 1943 model, A-1

TRACTORS
1-JUBILEE, 1943 model, A-1
1-FORD PERUN, 1943 model, A-1

TRACTORS
1-JUBILEE, 1943 model, A-1
1-FORD PERUN, 1943 model, A-1

TRACTORS
1-JUBILEE, 1943 model, A-1
1-FORD PERUN, 1943 model, A-1

TRACTORS
1-JUBILEE, 1943 model, A-1
1-FORD PERUN, 1943 model, A-1

TRACTORS
1-JUBILEE, 1943 model, A-1
1-FORD PERUN, 1943 model, A-1

TRACTORS
1-JUBILEE, 1943 model, A-1
1-FORD PERUN, 1943 model, A-1

TRACTORS
1-JUBILEE, 1943 model, A-1
1-FORD PERUN, 1943 model, A-1

TRACTORS
1-JUBILEE, 1943 model, A-1
1-FORD PERUN, 1943 model, A-1

TRACTORS
1-JUBILEE, 1943 model, A-1
1-FORD PERUN, 1943 model, A-1

TRACTORS
1-JUBILEE, 1943 model, A-1
1-FORD PERUN, 1943 model, A-1

TRACTORS
1-JUBILEE, 1943 model, A-1
1-FORD PERUN, 1943 model, A-1

TRACTORS
1-JUBILEE, 1943 model, A-1
1-FORD PERUN, 1943 model, A-1

TRACTORS
1-JUBILEE, 1943 model, A-1
1-FORD PERUN, 1943 model, A-1

TRACTORS
1-JUBILEE, 1943 model, A-1
1-FORD PERUN, 1943 model, A-1

TRACTORS
1-JUBILEE, 1943 model, A-1
1-FORD PERUN, 1943 model, A-1

TRACTORS
1-JUBILEE, 1943 model, A-1
1-FORD PERUN, 1943 model, A-1

TRACTORS
1-JUBILEE, 1943 model, A-1
1-FORD PERUN, 1943 model, A-1

TRACTORS
1-JUBILEE, 1943 model, A-1
1-FORD PERUN, 1943 model, A-1

CLASSIFIED ADS

LIVESTOCK & POULTRY
POULTRY SALES, 214 N. Main St., Twin Falls, Idaho

MISCELLANEOUS FOR SALE
MISCELLANEOUS FOR SALE, 214 N. Main St., Twin Falls, Idaho

RADIO AND MUSIC
USED Radios, 214 N. Main St., Twin Falls, Idaho

TRUCKS AND TRAILERS
TRUCKS AND TRAILERS, 214 N. Main St., Twin Falls, Idaho

BLUFFVIEW ARTIFICIAL
BLUFFVIEW ARTIFICIAL, 214 N. Main St., Twin Falls, Idaho

BALE LOADERS
BALE LOADERS, 214 N. Main St., Twin Falls, Idaho

SEE NEW!
2- or 4-ROW
BOLT TOPPERS

JESSER EQUIPMENT CO.
Phone 2514 181 Addition

PAUL ROBERTS WELDING AND MANUFACTURING
123 Main Avenue, Twin Falls, Idaho

USED FARM MACHINERY
COMBINES & BALERS

TRACTORS
1-JUBILEE, 1943 model, A-1
1-FORD PERUN, 1943 model, A-1

TRACTORS
1-JUBILEE, 1943 model, A-1
1-FORD PERUN, 1943 model, A-1

TRACTORS
1-JUBILEE, 1943 model, A-1
1-FORD PERUN, 1943 model, A-1

TRACTORS
1-JUBILEE, 1943 model, A-1
1-FORD PERUN, 1943 model, A-1

TRACTORS
1-JUBILEE, 1943 model, A-1
1-FORD PERUN, 1943 model, A-1

TRACTORS
1-JUBILEE, 1943 model, A-1
1-FORD PERUN, 1943 model, A-1

TRACTORS
1-JUBILEE, 1943 model, A-1
1-FORD PERUN, 1943 model, A-1

TRACTORS
1-JUBILEE, 1943 model, A-1
1-FORD PERUN, 1943 model, A-1

TRACTORS
1-JUBILEE, 1943 model, A-1
1-FORD PERUN, 1943 model, A-1

TRACTORS
1-JUBILEE, 1943 model, A-1
1-FORD PERUN, 1943 model, A-1

TRACTORS
1-JUBILEE, 1943 model, A-1
1-FORD PERUN, 1943 model, A-1

TRACTORS
1-JUBILEE, 1943 model, A-1
1-FORD PERUN, 1943 model, A-1

TRACTORS
1-JUBILEE, 1943 model, A-1
1-FORD PERUN, 1943 model, A-1

TRACTORS
1-JUBILEE, 1943 model, A-1
1-FORD PERUN, 1943 model, A-1

TRACTORS
1-JUBILEE, 1943 model, A-1
1-FORD PERUN, 1943 model, A-1

TRACTORS
1-JUBILEE, 1943 model, A-1
1-FORD PERUN, 1943 model, A-1

TRACTORS
1-JUBILEE, 1943 model, A-1
1-FORD PERUN, 1943 model, A-1

TRACTORS
1-JUBILEE, 1943 model, A-1
1-FORD PERUN, 1943 model, A-1

TRACTORS
1-JUBILEE, 1943 model, A-1
1-FORD PERUN, 1943 model, A-1

TRACTORS
1-JUBILEE, 1943 model, A-1
1-FORD PERUN, 1943 model, A-1

TRACTORS
1-JUBILEE, 1943 model, A-1
1-FORD PERUN, 1943 model, A-1

CLASSIFIED ADS

LIVESTOCK & POULTRY
POULTRY SALES, 214 N. Main St., Twin Falls, Idaho

MISCELLANEOUS FOR SALE
MISCELLANEOUS FOR SALE, 214 N. Main St., Twin Falls, Idaho

RADIO AND MUSIC
USED Radios, 214 N. Main St., Twin Falls, Idaho

TRUCKS AND TRAILERS
TRUCKS AND TRAILERS, 214 N. Main St., Twin Falls, Idaho

BLUFFVIEW ARTIFICIAL
BLUFFVIEW ARTIFICIAL, 214 N. Main St., Twin Falls, Idaho

BALE LOADERS
BALE LOADERS, 214 N. Main St., Twin Falls, Idaho

SEE NEW!
2- or 4-ROW
BOLT TOPPERS

JESSER EQUIPMENT CO.
Phone 2514 181 Addition

PAUL ROBERTS WELDING AND MANUFACTURING
123 Main Avenue, Twin Falls, Idaho

USED FARM MACHINERY
COMBINES & BALERS

TRACTORS
1-JUBILEE, 1943 model, A-1
1-FORD PERUN, 1943 model, A-1

TRACTORS
1-JUBILEE, 1943 model, A-1
1-FORD PERUN, 1943 model, A-1

TRACTORS
1-JUBILEE, 1943 model, A-1
1-FORD PERUN, 1943 model, A-1

TRACTORS
1-JUBILEE, 1943 model, A-1
1-FORD PERUN, 1943 model, A-1

TRACTORS
1-JUBILEE, 1943 model, A-1
1-FORD PERUN, 1943 model, A-1

TRACTORS
1-JUBILEE, 1943 model, A-1
1-FORD PERUN, 1943 model, A-1

TRACTORS
1-JUBILEE, 1943 model, A-1
1-FORD PERUN, 1943 model, A-1

TRACTORS
1-JUBILEE, 1943 model, A-1
1-FORD PERUN, 1943 model, A-1

TRACTORS
1-JUBILEE, 1943 model, A-1
1-FORD PERUN, 1943 model, A-1

TRACTORS
1-JUBILEE, 1943 model, A-1
1-FORD PERUN, 1943 model, A-1

TRACTORS
1-JUBILEE, 1943 model, A-1
1-FORD PERUN, 1943 model, A-1

TRACTORS
1-JUBILEE, 1943 model, A-1
1-FORD PERUN, 1943 model, A-1

TRACTORS
1-JUBILEE, 1943 model, A-1
1-FORD PERUN, 1943 model, A-1

TRACTORS
1-JUBILEE, 1943 model, A-1
1-FORD PERUN, 1943 model, A-1

TRACTORS
1-JUBILEE, 1943 model, A-1
1-FORD PERUN, 1943 model, A-1

TRACTORS
1-JUBILEE, 1943 model, A-1
1-FORD PERUN, 1943 model, A-1

TRACTORS
1-JUBILEE, 1943 model, A-1
1-FORD PERUN, 1943 model, A-1

TRACTORS
1-JUBILEE, 1943 model, A-1
1-FORD PERUN, 1943 model, A-1

TRACTORS
1-JUBILEE, 1943 model, A-1
1-FORD PERUN, 1943 model, A-1

TRACTORS
1-JUBILEE, 1943 model, A-1
1-FORD PERUN, 1943 model, A-1

TRACTORS
1-JUBILEE, 1943 model, A-1
1-FORD PERUN, 1943 model, A-1

Phone 38

AUTOS FOR SALE
1955 CHEVROLET, \$100.00. New tires...

LET US PROVE THAT
IT'S WORTH THE DRIVE
FOR BUHL MOTOR CO.

ROY'S USED CARS
H. L. BEER & EARL HENAGE
CALL 388-W JEROME

1955 CHEVROLET 4-Door Station Wagon
1955 PLYMOUTH 4-Door Sedan

1955 CHEVROLET 2-Door Sedan
1955 PLYMOUTH 4-Door Sedan

1955 CHEVROLET 4-Door Sedan
1955 PLYMOUTH 4-Door Sedan

1955 CHEVROLET 4-Door Sedan
1955 PLYMOUTH 4-Door Sedan

1955 CHEVROLET 4-Door Sedan
1955 PLYMOUTH 4-Door Sedan

1955 CHEVROLET 4-Door Sedan
1955 PLYMOUTH 4-Door Sedan

1955 CHEVROLET 4-Door Sedan
1955 PLYMOUTH 4-Door Sedan

1955 CHEVROLET 4-Door Sedan
1955 PLYMOUTH 4-Door Sedan

1955 CHEVROLET 4-Door Sedan
1955 PLYMOUTH 4-Door Sedan

1955 CHEVROLET 4-Door Sedan
1955 PLYMOUTH 4-Door Sedan

1955 CHEVROLET 4-Door Sedan
1955 PLYMOUTH 4-Door Sedan

1955 CHEVROLET 4-Door Sedan
1955 PLYMOUTH 4-Door Sedan

1955 CHEVROLET 4-Door Sedan
1955 PLYMOUTH 4-Door Sedan

1955 CHEVROLET 4-Door Sedan
1955 PLYMOUTH 4-Door Sedan

1955 CHEVROLET 4-Door Sedan
1955 PLYMOUTH 4-Door Sedan

1955 CHEVROLET 4-Door Sedan
1955 PLYMOUTH 4-Door Sedan

1955 CHEVROLET 4-Door Sedan
1955 PLYMOUTH 4-Door Sedan

1955 CHEVROLET 4-Door Sedan
1955 PLYMOUTH 4-Door Sedan

1955 CHEVROLET 4-Door Sedan
1955 PLYMOUTH 4-Door Sedan

1955 CHEVROLET 4-Door Sedan
1955 PLYMOUTH 4-Door Sedan

1955 CHEVROLET 4-Door Sedan
1955 PLYMOUTH 4-Door Sedan

1955 CHEVROLET 4-Door Sedan
1955 PLYMOUTH 4-Door Sedan

1955 CHEVROLET 4-Door Sedan
1955 PLYMOUTH 4-Door Sedan

1955 CHEVROLET 4-Door Sedan
1955 PLYMOUTH 4-Door Sedan

1955 CHEVROLET 4-Door Sedan
1955 PLYMOUTH 4-Door Sedan

1955 CHEVROLET 4-Door Sedan
1955 PLYMOUTH 4-Door Sedan

1955 CHEVROLET 4-Door Sedan
1955 PLYMOUTH 4-Door Sedan

1955 CHEVROLET 4-Door Sedan
1955 PLYMOUTH 4-Door Sedan

AUTOS FOR SALE

1955 CHEVROLET, \$100.00. New tires...

1955 CHEVROLET 4-Door Station Wagon
1955 PLYMOUTH 4-Door Sedan

1955 CHEVROLET 2-Door Sedan
1955 PLYMOUTH 4-Door Sedan

1955 CHEVROLET 4-Door Sedan
1955 PLYMOUTH 4-Door Sedan

1955 CHEVROLET 4-Door Sedan
1955 PLYMOUTH 4-Door Sedan

1955 CHEVROLET 4-Door Sedan
1955 PLYMOUTH 4-Door Sedan

1955 CHEVROLET 4-Door Sedan
1955 PLYMOUTH 4-Door Sedan

1955 CHEVROLET 4-Door Sedan
1955 PLYMOUTH 4-Door Sedan

1955 CHEVROLET 4-Door Sedan
1955 PLYMOUTH 4-Door Sedan

1955 CHEVROLET 4-Door Sedan
1955 PLYMOUTH 4-Door Sedan

1955 CHEVROLET 4-Door Sedan
1955 PLYMOUTH 4-Door Sedan

1955 CHEVROLET 4-Door Sedan
1955 PLYMOUTH 4-Door Sedan

1955 CHEVROLET 4-Door Sedan
1955 PLYMOUTH 4-Door Sedan

1955 CHEVROLET 4-Door Sedan
1955 PLYMOUTH 4-Door Sedan

1955 CHEVROLET 4-Door Sedan
1955 PLYMOUTH 4-Door Sedan

1955 CHEVROLET 4-Door Sedan
1955 PLYMOUTH 4-Door Sedan

1955 CHEVROLET 4-Door Sedan
1955 PLYMOUTH 4-Door Sedan

1955 CHEVROLET 4-Door Sedan
1955 PLYMOUTH 4-Door Sedan

1955 CHEVROLET 4-Door Sedan
1955 PLYMOUTH 4-Door Sedan

1955 CHEVROLET 4-Door Sedan
1955 PLYMOUTH 4-Door Sedan

Exhibit Chief Is Named for Jerome Event

JEROME, Aug. 21—Elmer Loomis, Jerome, will be superintendent of the exhibit for the Jerome County fair. Exhibits close Aug. 22 at 3 p. m. for this department. Judging begins about 10 a. m. Thursday. Exhibits in produce department shall be those grown in communities of Jerome county. Persons making entries for others must give the name of the grower.

Products must be grown in 1954 unless otherwise mentioned. Grain, grasses and seeds that do not mature before the fair may be produce of last year. Any booth containing fruit or vegetables obtained from stores will be disqualified.

Entries are not limited, but no exhibitor shall receive more than two ribbons in any one class. In the event of only one entry in any one class the exhibit will be awarded a ribbon on merit alone. Entrymen removing exhibits before the close of the fair will forfeit ribbons.

The determination of the quality factor for community exhibits will be based on the number of first, second and third places received by the individual entries in the booth.

Articles may be entered for prizes and also as part of collective exhibits, but separate entries must be made for each article. The record of entries placed in his hands by the exhibitor on merit alone. Entrymen removing exhibits before the close of the fair will forfeit ribbons.

The various classes to be entered are vegetables and fruits—cabbage, pumpkins, squash, sugar beets, sweet corn (six ears to an exhibit), pop corn (six ears to an exhibit), peaches (five constitute an exhibit), pears (five constitute an exhibit), corn (six ears to an exhibit) and miscellaneous.

The Amalgamated Sugar company offers special awards to those entering sugar: best, first prize, five bushels; second prize, five second best bushels—100 lbs. white satin sugar; third prize, five third best bushels—25 lbs. white satin sugar. A prize will also be given on beets judged on weight. First prize, largest single beet—25 lbs. white satin sugar; second prize, second largest single beet—10 lbs. white satin sugar; third prize, third largest single beet—5 lbs. white satin sugar.

The classes of fruits are apples, grapes (four clusters to a plate), peaches (five constitute a plate), pears (five constitute a plate), plums (ten constitute a plate) prunes (ten to a plate) small fruits, seed crops, barley, beans, field corn, legume seeds, oats, peas, wheat and shear grain and grasses (sheaves shall be two inches in diameter).

First prize for the community exhibit awards will be \$55, second prize, \$40 and third prize, \$25. All exhibits must be left in their respective places until 10 p. m. Aug. 23.

Big Grain Yield Combined

A yield of more than 129 bushels per acre of mixed grain was reported Monday by V. R. Sharp, Twin Falls farmer. The grain was harvested from 17 acres on the Sharp farm by Eugene Griff, who termed it the "best yield I've seen in 10 years of combining." Griff, left, and Sharp, right, are shown combining part of the 183 acres of wheat on the Sharp farm. The wheat averaged slightly over 100 bushels per acre, also well above average. (Staff photo-entourage)



A yield of more than 129 bushels per acre of mixed grain was reported Monday by V. R. Sharp, Twin Falls farmer. The grain was harvested from 17 acres on the Sharp farm by Eugene Griff, who termed it the "best yield I've seen in 10 years of combining." Griff, left, and Sharp, right, are shown combining part of the 183 acres of wheat on the Sharp farm. The wheat averaged slightly over 100 bushels per acre, also well above average. (Staff photo-entourage)

Heavy Yield for Mixed Grains Recorded by Farmer in Area

They reported a yield of slightly over 100 bushels of wheat per acre for 183, also well above average. County Agricultural Agent C. W. Deigh said that although he doesn't know the record yield for Twin Falls county, Sharp's crop "is certainly a near-record at least."

Mr. and Mrs. Sharp are renting the farm, located southeast of Twin Falls, from Mrs. Ruth S. Francis, Sanderson, Calif.

PEACHES ARE NOW RIFE at Crystal Springs ORCHARD

Phone 0243-R1, Filar, Idaho PICKED OR YOU PICK

Visits Listed

SHOSHONE, Aug. 21—Mr. and Mrs. Jerry Reed have returned home from Portland.

Mr. and Mrs. Harrell Thorne and daughter spent the week-end at Bountiful, Utah, visiting her brother, E. M. Hayes and family.

ACCEPTED AT COLLEGE

HANSEN, Aug. 21—Richard E. Hansen, a 1950 graduate of Hansen high school, has been accepted for entrance at Boise Junior college.

Smith, the son of Carol Earnest Smith, is currently in the air force.

LEAVE WENDELL

WENDELL, Aug. 21—Mr. and Mrs. Ernest Lawson and son have moved to Kootenai, Mo.

VODKA MARTINI

So smooth it leaves you breathless.

Smirnoff
the greatest name in VODKA

50 Proof. 60 ml. from grain, St. Pierre Smirnoff, Fil. Div. of Heublein, Hartford, Conn., U.S.A.

Show me LUXURY!

Look at the President Classic sedan! You'll see style, clean and uncluttered—luxury you never thought possible in the low price field. It's "Show Me" month at your Studebaker Dealer. Stop in and say, "Show Me," today!

NOW is the time to buy Studebaker

See your neighborhood Studebaker Dealer!

Harold M. Wilhelm, D.C.

Chiropractic Physician

Announces

The relocation of his office from 133 N. Lincoln to—

905 N. Lincoln, Jerome, Idaho

MARTHA HYER
starring in "SHOWDOWN AT ABILENE"
A U-I Picture
Produced by Technicolor

CURE FOR BOREDOM

Bored with your tasteless menus? Make 'em taste "come hither"? Then Hollywood Special Formula Bread is the "cure" for you! An artful blend of 16 different grain and vegetable flours, this flavor-rich loaf will add zest and sparkle to your daily diet. Insist on the genuine.

FREE! Hollywood Diet and Calorie Guide. Write to Eleanor Gray, 100 W. Monroe St., Chicago 2, Illinois

Hollywood
Special Formula BREAD
Baked without shortening

Eddy's Bakery of Pocatello

Standard's new radiation-resistant lubricants are helping put atomic power to work

Progress in the West means...

1956

atomic energy will be needed to help meet 1975 power demands of nearly twice those of 1956

1975

BY 1975 the world will use nearly twice as much energy as it does today—and atomic power will be needed to supply part of the growing demand. Helping develop this new power, Standard research teams have been working with the Atomic Energy Commission on many projects during the past 10 years.

One of our most urgent problems was to find lubricants for atomic machinery able to withstand withering radiation. Using a brand-new base derived from petroleum, Standard scientists developed oils that last two to three times longer than conventional lubricants—and speed the day when commercial atomic power will help drive planes and ships, and generate electricity for your home.

STANDARD OIL COMPANY OF CALIFORNIA
puts petroleum progress to work for you

Westinghouse Campaign Specials

New Deluxe ICE SLICE TRAY \$118

Watch WESTINGHOUSE and M & Y... Where big things are happening for you!

\$3.00 COPPERTONE COVER*

99¢ save \$2.01 with the purchase of this

REG. \$4.95

BOWL and STAND

Turns a portable mixer into a table mixer!

only **99¢**

Westinghouse AUTOMATIC Fry Pan

\$22.95

Exclusive Square Heating Element—Hot spot?—cold spot!

Exclusive Open-Safety Handle—Safe cooler, makes washing easier!

Exclusive Thermometer—Set size to order!

*For glass cover, if you prefer

WITH A NEW WESTINGHOUSE 2-TONE

PORTABLE MIXER

The extra-powered hand mixer with Speed-Go switch—makes complete 1-hand operation possible! Speed selector... beater ejector... rests on bed... hangs on wall. Choice of: Pink-and-white • Turquoise-and-white • Yellow-and-white • All-white.

NOW ONLY \$18.95

FOR YOUR WESTINGHOUSE APPLIANCE STORE PHONE 154

M & Y ELECTRIC

441 MAIN AVENUE EAST TWIN FALLS