

AL WETTERSON LOWELL DODGE
Business Manager Advertising Manager
Editorial and general office: 100 N. Main, 1st floor, Twin Falls, Idaho 83301.
Phone: 332-1111.
All ads accepted by mail or by order. Payment in advance. No ad accepted for less than \$5.00. The advertiser is responsible for the content of the advertisement. The publisher is not responsible for the content of the advertisement. The publisher is not responsible for the content of the advertisement.

TUCKER'S NATIONAL WHIRLIGIG

WASHINGTON—It remains for a distinguished member of the House of Representatives, William McClellan, Jr., to give substance to organized labor's contention that the only remedy for the unemployment problem is a shorter work week with no cut in pay.

It is the contention of the House member that the unemployment problem is not a result of a shortage of jobs, but a result of a shortage of money. He believes that the only way to create more jobs is to increase the money supply.

McClellan, Jr., is a member of the House of Representatives from the state of Tennessee. He is a member of the House of Representatives from the state of Tennessee. He is a member of the House of Representatives from the state of Tennessee.

POT SHOTS

GOOSE CREEK MOUNTAINS
Dear Pot Shots:
Recently someone asked what the mountain southeast of Twin Falls was called.

Saw a map of T. F. county and they called it Goose Creek mountains.

Parmer's wife

"WASHINGTON CALLING" BY MARQUIS CHILDS

WASHINGTON—That you are here at the moment of the fall of the Roman Empire is a fact that is not generally known. The fall of the Roman Empire is a fact that is not generally known. The fall of the Roman Empire is a fact that is not generally known.

Home Blaze In Missouri Fatal for 7

EXCAVATION—SARING—March 15—Seven children, aged in age from 18 months to 12 years died last night in a fire that destroyed the Ralph Ford home in a village near Excelsior Springs.

The highway patrol said the fire apparently started between 10 p.m. and 11:30 p.m. The Excelsior Springs fire department arrived at the home at 11:30 p.m. and found the children dead.

FIRST MONTH IN OFFICE

President Kennedy's first month in office was a great deal more crowded than former President Eisenhower's back in 1953.

A day by day review of the two periods produces a list of Kennedy actions more than three times as long as Ike's.

Parlisan politicians naturally disagree as to the reason for Kennedy's much braker pace.

Democrats say he simply is acting as he must, to meet developing crises abroad and a recession at home. Republicans argue he is consciously stirring an emergency mood so he can ram his favored legislation through Congress and later take credit for curing trouble.

Both sides agree that the two men have sharply differing views of the office, with the incumbent committed to a driving use of presidential power and Eisenhower preferring a more cautious approach.

In the first month of his presidency, Kennedy sent Congress half a dozen orders on such topics as the general economy, the nation's health, specific anti-recession proposals, a program to boost farm income and ease supplies of corn and feed grains.

He in that period held one press conference, almost as the month was up. President Kennedy has held four.

Eisenhower became quickly engrossed in trying to end the Korean war, but decisive action was still months off. Kennedy was plunged into crisis in Laos, the Congo, the United Nations. He conferred steadily with key U.S. diplomats from the trouble spots, with foreign affairs advisers, and visiting diplomats.

Principal legislative move was to draft an 11-point program of "must" bills. Most of the bills he later sent to Capitol Hill in later weeks.

In the matter of executive orders, the former president ordered all controls off silver and placed directly the U.S. Seventh fleet to stop guarding Red China against Formosa, named a commission to plan a unified food war strategy.

The initial Kennedy month saw bills going to Congress to aid depressed areas, ease unemployment strains, hike farm income, provide medical care for the aged, add 59 new federal judges, boost the federal minimum wage floor.

The new President's executive orders, aimed largely at arresting a home front downturn and a gale of outpouring to nations abroad, poured out in volume.

Kennedy acted to increase help to the needy and put more money into the lagging economy. To the latter, he took several steps to stimulate housing and general construction, cut losses immediately from the highway building that otherwise might not be spent for money. He took a hand in two strikes.

Historians will say both the men and their times were different. And they will have to decide which man's "first month" did most for the United States in the troubled postwar era.

NOT MUCH CHANCE IN 1964

Despite Senator Goldwater's winning personality, few expect the most hard-bolted Republican graybeards go along with the idea that the Arizona senator has any chance for the Republican presidential nomination in 1964. They are realistic rather than wishful thinkers.

In their opinion, no man who opposes the very idea of social security; federal assistance to the needy, the aged and the unfortunate; legislation for the protection of the sick, the aged and the poor; and for aid to mention only a few of his "hates," would have a chance of election.

It has been demonstrated—only last November—that about 12 large cities in electorally powerful states can determine the outcome. Had President Kennedy lost those of them, he would have been defeated badly.

It is inconceivable that Senator Goldwater could corral as many votes in those metropolitan centers as former Vice President Nixon did. He would be slaughtered by the labor, Negro and other rural elements, not to mention Republican liberals.

It is argued that Senator Goldwater would appeal to the millions who oppose and despise the "big government" and "big state," to the "forgotten American." He undoubtedly would.

But the political difficulty is that they tend to live in states with insignificant influence in the electoral college. The Nixon-Kennedy contest proved that. Moreover, Nixon's victories in Middle West and farm areas is attributed to the religious issue as well as to any revolt against the Democrats' social and economic theories.

This analysis, if correct, bolsters Rockefeller's 1964 chances.

FEWER MEN, MORE GOODS—Such means, he continued, cannot provide permanent employment for the laid-off.

He said that the only way to provide permanent employment and the increased productivity by a smaller number of employees is to hold onto the money.

He seemed to criticize the administration's plan to ease unemployment by accelerating government spending. He said that the only way to provide permanent employment and the increased productivity by a smaller number of employees is to hold onto the money.

He said that the only way to provide permanent employment and the increased productivity by a smaller number of employees is to hold onto the money.

He said that the only way to provide permanent employment and the increased productivity by a smaller number of employees is to hold onto the money.

He said that the only way to provide permanent employment and the increased productivity by a smaller number of employees is to hold onto the money.

He said that the only way to provide permanent employment and the increased productivity by a smaller number of employees is to hold onto the money.

He said that the only way to provide permanent employment and the increased productivity by a smaller number of employees is to hold onto the money.

He said that the only way to provide permanent employment and the increased productivity by a smaller number of employees is to hold onto the money.

He said that the only way to provide permanent employment and the increased productivity by a smaller number of employees is to hold onto the money.

He said that the only way to provide permanent employment and the increased productivity by a smaller number of employees is to hold onto the money.

He said that the only way to provide permanent employment and the increased productivity by a smaller number of employees is to hold onto the money.

He said that the only way to provide permanent employment and the increased productivity by a smaller number of employees is to hold onto the money.

He said that the only way to provide permanent employment and the increased productivity by a smaller number of employees is to hold onto the money.

He said that the only way to provide permanent employment and the increased productivity by a smaller number of employees is to hold onto the money.

He said that the only way to provide permanent employment and the increased productivity by a smaller number of employees is to hold onto the money.

He said that the only way to provide permanent employment and the increased productivity by a smaller number of employees is to hold onto the money.

He said that the only way to provide permanent employment and the increased productivity by a smaller number of employees is to hold onto the money.

He said that the only way to provide permanent employment and the increased productivity by a smaller number of employees is to hold onto the money.

He said that the only way to provide permanent employment and the increased productivity by a smaller number of employees is to hold onto the money.

He said that the only way to provide permanent employment and the increased productivity by a smaller number of employees is to hold onto the money.

He said that the only way to provide permanent employment and the increased productivity by a smaller number of employees is to hold onto the money.

He said that the only way to provide permanent employment and the increased productivity by a smaller number of employees is to hold onto the money.

POLE'S OKAY!

Mr. Feiler has managed to get his name on the envelope, and he has been named as the leading newspaper all over the country.

He said that the only way to provide permanent employment and the increased productivity by a smaller number of employees is to hold onto the money.

He said that the only way to provide permanent employment and the increased productivity by a smaller number of employees is to hold onto the money.

He said that the only way to provide permanent employment and the increased productivity by a smaller number of employees is to hold onto the money.

He said that the only way to provide permanent employment and the increased productivity by a smaller number of employees is to hold onto the money.

He said that the only way to provide permanent employment and the increased productivity by a smaller number of employees is to hold onto the money.

He said that the only way to provide permanent employment and the increased productivity by a smaller number of employees is to hold onto the money.

He said that the only way to provide permanent employment and the increased productivity by a smaller number of employees is to hold onto the money.

He said that the only way to provide permanent employment and the increased productivity by a smaller number of employees is to hold onto the money.

He said that the only way to provide permanent employment and the increased productivity by a smaller number of employees is to hold onto the money.

He said that the only way to provide permanent employment and the increased productivity by a smaller number of employees is to hold onto the money.

He said that the only way to provide permanent employment and the increased productivity by a smaller number of employees is to hold onto the money.

He said that the only way to provide permanent employment and the increased productivity by a smaller number of employees is to hold onto the money.

He said that the only way to provide permanent employment and the increased productivity by a smaller number of employees is to hold onto the money.

He said that the only way to provide permanent employment and the increased productivity by a smaller number of employees is to hold onto the money.

He said that the only way to provide permanent employment and the increased productivity by a smaller number of employees is to hold onto the money.

He said that the only way to provide permanent employment and the increased productivity by a smaller number of employees is to hold onto the money.

He said that the only way to provide permanent employment and the increased productivity by a smaller number of employees is to hold onto the money.

He said that the only way to provide permanent employment and the increased productivity by a smaller number of employees is to hold onto the money.

He said that the only way to provide permanent employment and the increased productivity by a smaller number of employees is to hold onto the money.

He said that the only way to provide permanent employment and the increased productivity by a smaller number of employees is to hold onto the money.

He said that the only way to provide permanent employment and the increased productivity by a smaller number of employees is to hold onto the money.

PUFF FOR KIDS DEPT.

A block and brown puppy, small and about a year old, needs a new home. You can find out more by phoning 332-5138 or pick him up at the little pink house on the corner of Main and 1st.

Albertson, one mile west and another mile north.

Post Show: This full-grown, handsome, found about three weeks ago, can be kept by the person who found the mother. He is for free after 6 p.m. in 1966.

HOW'S THAT AGAIN?
Post Show: The word Idaho is an Indian word. It means "Light on the mountain."

Bole was named after some French trappers who said "Les Bole" at their first sight of the area.

And Twin Falls has some historical significance also. North of the city is a bridge reaching across Snake River, and its one of the highest-arched bridges in the world.

Yeah, Idaho's history will almost be complete if they name a few more things. Er, I'm only joking about what the future would translate.

(Twin Falls)
BANTAMS FOR FREE DEPT.
Post Show: For free, colorful bantam chicks. Come in the evening after the children have gone to bed. We have three and one-half miles west of Eden.

FAMILY LAKE LINE
... He thinks he's too old to ride a bicycle.

GENTLEMAN IN THE FOURTH ROW

NEW AT - ROPERS

Rough, Tough Wear Can't Fade

Hush Puppies

breathin' brushed pigskin by Wolverine

Even the most active teenager finds it mighty hard to mistreat a pair of Hush Puppies. Steel shanks not only give the right support but keep the shoes in shape. And they're triple Helix-laminated. A brisk-brushing removes any surface soil. Ground in stains disappear with soap and water. Choose from styles, sizes and widths for everyone.

HUSH PUPPY GOLF SHOES \$12.95

It's from ROPERS ... It's Right!

NEW AT - ROPERS

LOWEST CARPET PRICES!

"Drive Out and Save" Walker's

NEW AT - ROPERS

NEW AT - ROPERS

Sidelined

NEW YORK, March 15 (AP)—Irish playwright Brendan Behan, who had planned to brighten up the St. Patrick's parade here on Friday, has been outlawed from the line of march by a judge who declared him a "disorderly person."

By his reputation in the press and abroad he is a disorderly person, so let him stay on the stage where he belongs," said a judicial spokesman.

Behan, who had planned to brighten up the St. Patrick's parade here on Friday, has been outlawed from the line of march by a judge who declared him a "disorderly person."

Behan, who had planned to brighten up the St. Patrick's parade here on Friday, has been outlawed from the line of march by a judge who declared him a "disorderly person."

Behan, who had planned to brighten up the St. Patrick's parade here on Friday, has been outlawed from the line of march by a judge who declared him a "disorderly person."

Behan, who had planned to brighten up the St. Patrick's parade here on Friday, has been outlawed from the line of march by a judge who declared him a "disorderly person."

Behan, who had planned to brighten up the St. Patrick's parade here on Friday, has been outlawed from the line of march by a judge who declared him a "disorderly person."

Behan, who had planned to brighten up the St. Patrick's parade here on Friday, has been outlawed from the line of march by a judge who declared him a "disorderly person."

Behan, who had planned to brighten up the St. Patrick's parade here on Friday, has been outlawed from the line of march by a judge who declared him a "disorderly person."

Behan, who had planned to brighten up the St. Patrick's parade here on Friday, has been outlawed from the line of march by a judge who declared him a "disorderly person."

Behan, who had planned to brighten up the St. Patrick's parade here on Friday, has been outlawed from the line of march by a judge who declared him a "disorderly person."

Behan, who had planned to brighten up the St. Patrick's parade here on Friday, has been outlawed from the line of march by a judge who declared him a "disorderly person."

Behan, who had planned to brighten up the St. Patrick's parade here on Friday, has been outlawed from the line of march by a judge who declared him a "disorderly person."

Behan, who had planned to brighten up the St. Patrick's parade here on Friday, has been outlawed from the line of march by a judge who declared him a "disorderly person."

Behan, who had planned to brighten up the St. Patrick's parade here on Friday, has been outlawed from the line of march by a judge who declared him a "disorderly person."

Behan, who had planned to brighten up the St. Patrick's parade here on Friday, has been outlawed from the line of march by a judge who declared him a "disorderly person."

Behan, who had planned to brighten up the St. Patrick's parade here on Friday, has been outlawed from the line of march by a judge who declared him a "disorderly person."

Behan, who had planned to brighten up the St. Patrick's parade here on Friday, has been outlawed from the line of march by a judge who declared him a "disorderly person."

Behan, who had planned to brighten up the St. Patrick's parade here on Friday, has been outlawed from the line of march by a judge who declared him a "disorderly person."

Behan, who had planned to brighten up the St. Patrick's parade here on Friday, has been outlawed from the line of march by a judge who declared him a "disorderly person."

Behan, who had planned to brighten up the St. Patrick's parade here on Friday, has been outlawed from the line of march by a judge who declared him a "disorderly person."

Behan, who had planned to brighten up the St. Patrick's parade here on Friday, has been outlawed from the line of march by a judge who declared him a "disorderly person."

Home Blaze In Missouri Fatal for 7

Sidelined

NEW YORK, March 15 (AP)—Irish playwright Brendan Behan, who had planned to brighten up the St. Patrick's parade here on Friday, has been outlawed from the line of march by a judge who declared him a "disorderly person."

Behan, who had planned to brighten up the St. Patrick's parade here on Friday, has been outlawed from the line of march by a judge who declared him a "disorderly person."

Behan, who had planned to brighten up the St. Patrick's parade here on Friday, has been outlawed from the line of march by a judge who declared him a "disorderly person."

Behan, who had planned to brighten up the St. Patrick's parade here on Friday, has been outlawed from the line of march by a judge who declared him a "disorderly person."

Behan, who had planned to brighten up the St. Patrick's parade here on Friday, has been outlawed from the line of march by a judge who declared him a "disorderly person."

Behan, who had planned to brighten up the St. Patrick's parade here on Friday, has been outlawed from the line of march by a judge who declared him a "disorderly person."

Behan, who had planned to brighten up the St. Patrick's parade here on Friday, has been outlawed from the line of march by a judge who declared him a "disorderly person."

Behan, who had planned to brighten up the St. Patrick's parade here on Friday, has been outlawed from the line of march by a judge who declared him a "disorderly person."

Behan, who had planned to brighten up the St. Patrick's parade here on Friday, has been outlawed from the line of march by a judge who declared him a "disorderly person."

Behan, who had planned to brighten up the St. Patrick's parade here on Friday, has been outlawed from the line of march by a judge who declared him a "disorderly person."

Behan, who had planned to brighten up the St. Patrick's parade here on Friday, has been outlawed from the line of march by a judge who declared him a "disorderly person."

Behan, who had planned to brighten up the St. Patrick's parade here on Friday, has been outlawed from the line of march by a judge who declared him a "disorderly person."

Behan, who had planned to brighten up the St. Patrick's parade here on Friday, has been outlawed from the line of march by a judge who declared him a "disorderly person."

Behan, who had planned to brighten up the St. Patrick's parade here on Friday, has been outlawed from the line of march by a judge who declared him a "disorderly person."

Behan, who had planned to brighten up the St. Patrick's parade here on Friday, has been outlawed from the line of march by a judge who declared him a "disorderly person."

Behan, who had planned to brighten up the St. Patrick's parade here on Friday, has been outlawed from the line of march by a judge who declared him a "disorderly person."

Behan, who had planned to brighten up the St. Patrick's parade here on Friday, has been outlawed from the line of march by a judge who declared him a "disorderly person."

Behan, who had planned to brighten up the St. Patrick's parade here on Friday, has been outlawed from the line of march by a judge who declared him a "disorderly person."

Behan, who had planned to brighten up the St. Patrick's parade here on Friday, has been outlawed from the line of march by a judge who declared him a "disorderly person."

Behan, who had planned to brighten up the St. Patrick's parade here on Friday, has been outlawed from the line of march by a judge who declared him a "disorderly person."

Behan, who had planned to brighten up the St. Patrick's parade here on Friday, has been outlawed from the line of march by a judge who declared him a "disorderly person."

Behan, who had planned to brighten up the St. Patrick's parade here on Friday, has been outlawed from the line of march by a judge who declared him a "disorderly person."

Can't Get Auto Insurance?

Under age. Over age. Poor driving record, etc.

We Insure You!

TABER INSURANCE AGENCY

113 Sheehy St. N. Rm. 212

RE 3-7371 for Quilley

RE 3-7371 for Quilley

RE 3-7371 for Quilley

RE 3-7371 for Quilley

RE 3-7371 for Quilley

RE 3-7371 for Quilley

RE 3-7371 for Quilley

RE 3-7371 for Quilley

RE 3-7371 for Quilley

RE 3-7371 for Quilley

RE 3-7371 for Quilley

RE 3-7371 for Quilley

RE 3-7371 for Quilley

RE 3-7371 for Quilley

RE 3-7371 for Quilley

RE 3-7371 for Quilley

RE 3-7371 for Quilley

RE 3-7371 for Quilley

KING COAL

WARBERG'S

RE 3-7371 for Quilley

RE 3-7371 for Quilley

RE 3-7371 for Quilley

RE 3-7371 for Quilley

RE 3-7371 for Quilley

RE 3-7371 for Quilley

RE 3-7371 for Quilley

RE 3-7371 for Quilley

RE 3-7371 for Quilley

RE 3-7371 for Quilley

RE 3-7371 for Quilley

RE 3-7371 for Quilley

RE 3-7371 for Quilley

RE 3-7371 for Quilley

JEROME

Your Nearby Shopping Center

- ★ No Parking Meters
- ★ No Confusing One-Way Streets
- ★ Plenty of Free Parking Lots
- ★ Lowest Prices in the Valley
- ★ Fast, Friendly, Courteous Service
- ★ You Save Every Day in Jerome
- ★ Open Saturday Until 9 p.m.
- ★ Watch this Space Every Wed.

THURSDAY - FRIDAY - SATURDAY DOORBUSTERS

BUBBLE BATH

in Banks...

"Huckleberry Hound"	1.25
"Yogi BEAR"	1.25
"Baba Looney"	1.25
"Quick Draw McGraw"	1.25
"Huckleberry Hound" lg. size	2.98

HAND PUPPETS & BUBBLE BATH

or bar soap	1.00
Bubble Bath	49c
Bath soap	1.00

(All prices plus tax)

Thriftyway

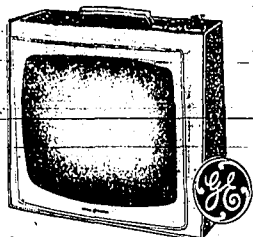
DRUG STORE

Phone EA 4-4711

JEROME

19 Inch "Celebrity Portable"
PORTABLE G.E.

TV \$169



The latest, newest, smartest design for best reception. "The proof is in the picture!" New Daylight Blue - New Hi-Power Chassis - Full-Power Transformer - Cooler Operating - Longer Life - Dust-Sealed Dark-Safety Window!

IDAHO ELECTRIC CO.

318 South Lincoln

U.S. "GOOD" GRADE BEEF

Round Steaks . lb. 73c

Bertie's Large Fresh

STEWING
HENS

79c

EACH

OUR OWN FRESH MADE DAILY

Ground Beef . 2 lbs. 79c

BUTCHER BOY



MARKET

321 So. Lincoln

No Crease - No Wrinkles

ONLY

4.95

for Limited
Time Only



SPECIAL
Verified Value
WARRANTY

NEW! LIGHTWEIGHT

TRAVEL LUGGAGE

Perfect for guys and gals on the go in planes, trains or cars. Holds 6 to 8 dresses, or 4 to 6 suits. Poles and stands just like a suitcase—with a firm grip handle for easy carrying. Hangs like a garment bag to keep clothes wrinkle-free! Use it for storage when not traveling. For limited time only at this price—SO HURRY!

HARDER'S, Inc.

JEROME

See C. E. and SAVE!

SAVIN' O' THE GREEN SALE

Regular 45c Size

Bab-O Cleanser

and 3.00 Copper Bottom SAUCE PAN with Free Coupon for 1.00

Lanolinized Pin Curl & Wave Set

SPRAY BOMB

Regular 2.98 Value Special at only 99c

Extra Heavy "Kitchen Charm"

WAX PAPER

Full 100 foot roll 21c

Twin Pack - large 13x13 1/2 inch size "Garden"

Paper Napkins

Full 200 count 59c

Finest Quality

Rubbing Alcohol

Regular 60c Value Limit 2 to customer ea. 19c

THE FAMILY BARBER SET

- Electric Clippers
- Barber Comb
- Butch Attachment
- Tube of Clipper Oil
- Barber Shears
- Tapering Comb
- Cleaning Brush

5.95

COMPLETE

Many of these sets sold for \$12.00

Satisfaction Guaranteed or Your Money Back.

Ultra Violet SUN TAN

LAMP

Get ready for Spring—Have That Sun Tan Early!

Reg. 12.00 Value Special at only 8.88

Automatic shut-off ELECTRIC

VAPORIZER

Runs all night — reg. 6.93

Limited quantity While they last 4.98

New! Just Arrived

Lovely New Styles in —

Just one of the many we have for you...

MISS TRUDEY

Ric-rac and Rosebuds

... go round and round on we little checks for a "ging-ham" background. Use Amel and Cotton, just drip dry and wear the dress that enhances your own fashion-flair. — Lavender, Gold, or Pink — sizes 2 to 12.



Tody's Togs

JEROME 206 East Main EA 4-4686

SAVE \$250

Brand-new 1960 Model NORGE UPRIGHT

FREEZER

Regular 549.95 SPECIAL \$295

6 Good Used (National Brands)

REFRIGERATORS

Get'em while they last up from 59.95

PATZ APPLIANCE CENTER

239 West Main - Jerome - EA 4-2581

FIX UP NOW and SAVE!

...WHILE PRICES ARE LOW!

FENCING SPECIAL!



BARB WIRE

1 1/2 GAUGE 2 FT. GALVANIZED SPOOL 8.45

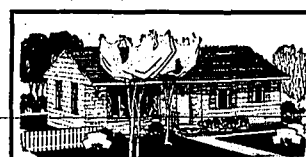
STEEL POSTS

6 1/2 FT. HEAVY STUDDED "T" — EACH 99c

LIGHTING FIXTURES

LARGE COMPLETE STOCK

Now 25% Off



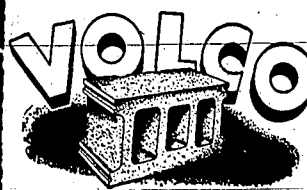
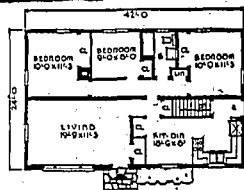
3 BEDROOM HOME

"Ready to Move" on your own foundation.

JUST ONE OF THE MANY PLANS AVAILABLE

PATCO HOME

\$5995.00



Everything to Build Anything

BUILDERS SUPPLY

JEROME

McCLEERY DRUG

J. A. MORLEY

YOU ARE MORE THAN A CUSTOMER IN JEROME... YOU ARE A NEIGHBOR AND A FRIEND AND ARE TREATED ACCORDINGLY!!

Hospital Aide Talks at Area Guild Confab

WEDNESDAY, March 15—A talk by Mrs. Mary Kay Kelly, hospital aide, was the featured attraction of the regular meeting of the Twin Falls Area Guild, held Monday afternoon at the hotel.

Mrs. Kelly expressed appreciation of the staff for the work of the hospital and stressed the need for the hospital to be a part of the community. She said the hospital is a place where people can get the best of medical care and that the hospital is a place where people can get the best of medical care.

Mrs. Kelly, president-elect, presided at the meeting in the absence of the president, Mrs. A. P. Kelly.

Mrs. Kelly announced plans for operation of the snack bar at the hospital and named Mrs. Hannon as chairman of the project. She asked that anyone wishing to donate dishes or other items for use in the bar could do so by contacting Mrs. Goffman, who will be in charge of the bar.

Mrs. Kelly also announced that she will be working on the hospital's new building and that she will be working on the hospital's new building.

Mrs. Kelly also announced that she will be working on the hospital's new building and that she will be working on the hospital's new building.

Mrs. Kelly also announced that she will be working on the hospital's new building and that she will be working on the hospital's new building.

Mrs. Kelly also announced that she will be working on the hospital's new building and that she will be working on the hospital's new building.

Mrs. Kelly also announced that she will be working on the hospital's new building and that she will be working on the hospital's new building.

Mrs. Kelly also announced that she will be working on the hospital's new building and that she will be working on the hospital's new building.

Mrs. Kelly also announced that she will be working on the hospital's new building and that she will be working on the hospital's new building.

Mrs. Kelly also announced that she will be working on the hospital's new building and that she will be working on the hospital's new building.

Mrs. Kelly also announced that she will be working on the hospital's new building and that she will be working on the hospital's new building.

Mrs. Kelly also announced that she will be working on the hospital's new building and that she will be working on the hospital's new building.

Mrs. Kelly also announced that she will be working on the hospital's new building and that she will be working on the hospital's new building.

Mrs. Kelly also announced that she will be working on the hospital's new building and that she will be working on the hospital's new building.

Mrs. Kelly also announced that she will be working on the hospital's new building and that she will be working on the hospital's new building.

Mrs. Kelly also announced that she will be working on the hospital's new building and that she will be working on the hospital's new building.

Mrs. Kelly also announced that she will be working on the hospital's new building and that she will be working on the hospital's new building.

Mrs. Kelly also announced that she will be working on the hospital's new building and that she will be working on the hospital's new building.

Mrs. Kelly also announced that she will be working on the hospital's new building and that she will be working on the hospital's new building.

Mrs. Kelly also announced that she will be working on the hospital's new building and that she will be working on the hospital's new building.

Mrs. Kelly also announced that she will be working on the hospital's new building and that she will be working on the hospital's new building.

Mrs. Kelly also announced that she will be working on the hospital's new building and that she will be working on the hospital's new building.

Mrs. Kelly also announced that she will be working on the hospital's new building and that she will be working on the hospital's new building.

Mrs. Kelly also announced that she will be working on the hospital's new building and that she will be working on the hospital's new building.

Mrs. Kelly also announced that she will be working on the hospital's new building and that she will be working on the hospital's new building.

Mrs. Kelly also announced that she will be working on the hospital's new building and that she will be working on the hospital's new building.

Mrs. Kelly also announced that she will be working on the hospital's new building and that she will be working on the hospital's new building.

Former-Miss Idaho Helps Contestants



Tamara Ashby, left, daughter of Mr. and Mrs. Wendell McMurray, former Miss Idaho, instructs Lorna Dayley, seated, daughter of Mr. and Mrs. Kendall Dayley, and Sally Woodhouse, right, daughter of Mr. and Mrs. Elmer Woodhouse, on the art of applying make-up in helping them prepare for the Miss Idaho contest scheduled for April 1. All nine contestants met with Miss Ashby in the Egyptian room of the National hotel to receive tips and instructions. Miss Ashby was voted "Miss Idaho" by the judges of the contest. She is now a beauty, personality, talent, popularity, ballroom dancing and cake baking. (Staff photo-expressing)

Fewer Credits Given Nod by School Board

BURLEY, March 15—The board of trustees of Burley school district No. 12 decided to follow state requirements of 24 credits for high school graduation when they met Monday evening.

The board will recommend that students carry five subjects per semester for a school year when the present 24 credits were needed for graduation, reports Rex Engleking, superintendent.

In other business, school bus contract bids were accepted from 12 bidders on all 16 routes of the district. The bids were taken under advisement and the successful bidder will be notified after the next meeting of the board.

Mrs. Howard Parish was hired to instruct in the junior high school for the ensuing year. She has served as a substitute teacher for some time in the local school system. She received her teaching degree from Oregon State college.

Engleking also reported that schools will observe a four-day holiday for Easter. There will be no school on Friday, March 17, and Saturday, March 18.

Mrs. Kelly also announced that she will be working on the hospital's new building and that she will be working on the hospital's new building.

Mrs. Kelly also announced that she will be working on the hospital's new building and that she will be working on the hospital's new building.

Mrs. Kelly also announced that she will be working on the hospital's new building and that she will be working on the hospital's new building.

Mrs. Kelly also announced that she will be working on the hospital's new building and that she will be working on the hospital's new building.

Mrs. Kelly also announced that she will be working on the hospital's new building and that she will be working on the hospital's new building.

Mrs. Kelly also announced that she will be working on the hospital's new building and that she will be working on the hospital's new building.

Mrs. Kelly also announced that she will be working on the hospital's new building and that she will be working on the hospital's new building.

Mrs. Kelly also announced that she will be working on the hospital's new building and that she will be working on the hospital's new building.

Mrs. Kelly also announced that she will be working on the hospital's new building and that she will be working on the hospital's new building.

Mrs. Kelly also announced that she will be working on the hospital's new building and that she will be working on the hospital's new building.

Man Sentenced In Forgery Case

BOZEMAN, March 15—Willard Mills, Oakley, was sentenced to not more than five years in the state penitentiary by Judge Edward Hays Monday for forgery. He forged a check on Charles Brown, former publisher of the Oakley paper.

Judge Hays appointed Peter Snow as counsel for Mrs. Willard Mills, Oakley, when she was arrested Monday for obtaining money under false pretenses. She attempted to cash a check on Charles Brown.

Brown was being cared for by the Mills and is now in a Buhray nursing home. Mrs. Mills will appear in court Monday.

Mass Celebrated For Mrs. T. B. Lee

BURLEY, March 15—Regular mass was held for Mrs. T. B. Lee, at, Monday morning at the Saint Theresa church of the Little Flower with Rev. P. J. O'Driscoll as celebrant.

Monetary pallbearers were Dr. J. R. Kircher, Dr. L. M. Kelly, Dr. H. E. Dean, Joe Viskum, Frank Heilig, K. E. Bachman, Dr. R. E. Bentley and K. C. Bailew. Active pallbearers were Frank Spencer, Russell Smedley, Harry Paucher, Lee Nelson, Frank Wilson and Karl Wilton.

Funeral services were held at the Pleasant View cemetery.

The most powerful lightsource in the United States is located at Oak Island, N. C. It has 14 million candlepower.

Leaders Meet

ALAMO, March 15—A LMS ward officers and teachers of the Sunday school held a preparatory meeting Sunday with Robert Ward, superintendent, conducting. Plans were made for an Easter program to be given in the Sunday school on Easter Sunday, April 2. All classes will participate.

Mrs. Kelly also announced that she will be working on the hospital's new building and that she will be working on the hospital's new building.

Mrs. Kelly also announced that she will be working on the hospital's new building and that she will be working on the hospital's new building.

House Building Permit Is Asked

Nelson and Miller, Twin Falls, applied Tuesday at the city hall for permission to construct two new single family wood frame dwellings.

Estimated cost on each is \$12,000. One house will be constructed at 118 Fremont drive and the second will be built at 633 Candy drive.

Stacy Dietz, 247 Jackson street, applied for a building permit Tuesday to build a 12- by 16-foot addition to his single family wood frame dwelling. Cost is set at \$1,000.

Parley Set

FILED, March 15—The Clover Lutheran school will set out at noon Friday and the afternoon will be spent in parent-teacher consultations. Each parent will be given a chance to talk with her children's teachers about their progress in school.

Teachers of the three rooms are Emil Luthemann, Mrs. Ross Stenett and Carole Westver.

Divorces Granted

BURLEY, March 15—Two divorces were granted by District Judge Edward Hays Monday on charges of mental cruelty.

Mrs. Betty Lee Haysington was divorced from Charles Haysington, Burley, and Mrs. Patricia Ann Haysington was divorced from Charles Haysington, Burley.

HEAD TIMES-NEWS WANT ADS

DRIVEWAYS
Graded-Graveled
Custom Hauling
FREE ESTIMATES
RE 3-1829
Magic Valley
Asphalt Paving Co.

FROSTOP DRIVE-IN

Featuring the Very Best in:

- ROOT BEER
- SANDWICHES
- SHAKES
- MALTS
- FRENCH FRIES

Will Re-open

Thursday—March 16th

Watch for our Re-opening Special

SHOPPER'S SPECIAL

15-30 Ampere
FUSE PLUGS
5 FOR 29c

We Give GOLD STRIKE STAMPS

TROLINGER

ON SALE THURSDAY, FRIDAY & SATURDAY

YOUR FRIENDLY Walgreen Agency

EASTER SUNDAY APRIL 2nd

Full fashion beauty...

GLORY NYLON HOSIERY

51 Gauge 100
15 Denier.....

Twelve Inch ZIPPER BAG

In assorted colors and plaids..... 1.59

Dr. West TOOTH BRUSH

Destroys toothbrush germs

69c

Germ Fighter

Sheaffer Special!

Scripter Ballpoint Pen, complete with refill 2.49

Plus extra refill — 79c

Plus free handwriting booklet.

Reg. Value 3.28

All for Only 98c (Limited Time Only!)

JEWELITE

Hair Brush and Comb \$3

Popular styled fiber

EASTER CARDS

5c to 35c

WOMEN'S TIMEX WATCHES

Modern to styling..... \$16.95

EGG DYE

For Easter Egg Coloring..... 10c and 25c

Hollow Mold CHOCOLATE BUNNIES

Pure milk chocolate. All sizes and shapes.

43c to 85c

Easter Baskets

Fancy woven baskets with assorted candy, chocolate and cream eggs

79c to 3.98

50 Free with 100 OLA-BERON 12

Combination of 9 vitamins and Liver, Iron and Copper

5.59

Builds Richer Blood to Aid Health... Bulk Pep

\$8.88 VALUE!

ISODINE GARGLE

For minor sore throat pain. 4-oz. bottle..... 1.69

A.P.C. TABLETS Plus NASAL INHALER

Fast cold relief combination. BOTH ONLY 98c

Ayds Candy For Reducing

Caramel or Fudge 30 Day Supply..... 3.25

Just a reminder...

We Are Moving

to our new location at

140 Second Ave. East

Twin Falls Next to Greyhound Bus Depot

and will be

CLOSED

March 17 and March 18

to complete our move

We will see you at our new location

Monday, Mar. 20

Business as Usual

UNION MOTORS, Inc.

CHOICE OF THE DISCRIMINATING

Open the doors to many of America's finest homes and you will find Beam's Choice. Discriminating people everywhere recognize it's distinctive flavor and outstanding character... the result of charcoal filtering after 6 full years of aging. You too will enjoy this 90 proof pure mash bourbon made from the 16-year-old Beam family formula.

BEAM'S CHOICE

CHARCOAL FILTERED (green label)

KENTUCKY STRAIGHT BOURBON WHISKY DISTILLED AND BOTTLED BY THE JAMES B. BEAM DISTILLING CO., CLEMONT, BEAM, KENTUCKY

[illegible]

SALE

As I am quitting farming I will sell the following at public auction, located 3 1/2 miles south of South Park, Twin Falls, on the Airport Road.

FRIDAY, MARCH 17

SALE TIME: 12:30 P.M. LUNCH ON GROUNDS BY: Dixie's Diner

MACHINERY	TRACTORS
International model 1841 best harrow with new tire coupling unit, complete with dolly cart, picking table, and all attachments With front end for H. Parnall Bingle front end for H. Parnall International model No. 39 16-inch tumble plow, 2-way, 20 years old, in good shape John Deere 10-foot tandem disk I.L.C. 4-section wood harrow with telescoping drawbar, new last year 2-Section steel harrow with draw bar 10-foot wood float with roller on back I.L.C. model No. 31 mature loader with double Hy Ramas for I.L.C. M or H Chattin 6-foot double wing ditcher I.L.C. 4 or 6 row bean and beet cultivator for M or H I.L.C. 4 or 6 row bean cutter for M or H I.L.C. model No. 43 6-row bean and beet drill on rubber with complete attachments for beans and beets I.L.C. 10-foot phosphate drill, 3 years old, just like new I.L.C. 7-foot mower, H or M mount John Deere semi-trail side rake with bean basket, just like new with dual rubber Heavy duty tool bar with 4 coil chains and Val-ler model corn cultivator with 2 P.H. I.L.C. field cultivators Easex weed sprayer with new Briggs & Stratton engine, P.H. Ford Markers Oxarians-double action hydraulic pump, P.T.O. driven, complete overhaul Stock rack for SS-61 Chevrolet pickup Block rack for 1960 Ford pickup 4 Beet scalpers, made of blow steel	M Parnall, complete Super Kill overhaul, one year old, almost 2000 lbs. tire, good paint, ready to work H Parnall, A-1 shape, good paint and tires N-N Ford Ferguson, good tires, ready for work
TRUCKS	
1961 Chevrolet, 7-ton. long wheel base, 2-speed axle, 15-foot combination bed and grain bed, good condition 1941 Dodge 1/2-ton pick-up, new tires	
SHOP TOOLS	
225 Amp. Glen Roberts welder with table Electric grinder, with stones and buffer Electric drill press Vise also—Anvil—Black and Decker 1/4-in. drill 6-ton chain hoist and other miscellaneous tools	
MISCELLANEOUS	
Log chains, shovels, forks, I.L.C. weed chopper feiner, 4 Acma corrugators, 8 Self angle iron corrugators, complete set of cultivator tools for beans and beets, Duo Therm oil stove with fan and thermostat, incense pots and galvanized pipe and other miscellaneous items 500 Bales of straw	

TERMS: Cash, financing on large items before sale date!

SALE MANAGED BY MESSERSMITH AUCTION SERVICE

MUNN, Owner

AUCTIONEERS: Irvin Ellers, Kimberly
J. W. Messersmith, Jerome

CLERK: J. W. Messersmith, Gen
State Realty, Twin Falls

AUCTION SALE

Friday, March 17 One o'clock

Will sell at Public Auction on the premises located: 1 Mile West, 3 1/4 Miles South of Declo the following:

Tractor sprayer	International M Tractor
Miskin scraper	International Manure Loader
International potato planter	Heavy duty bar
2 hay wagons on rubber	International tumble-bottom plow
Corrugators, shanks and shovels	International 4-row beet and bean drill
Bean sacker	Eversman land leveller. Nearly new
500-gal. gas tank	Case 4-bar siderack. Nearly new
International 18-hoe grain drill	International tandem disc
Chicken wire	International mower. 6-ft. cut
9 laying hens	International wire-tie hay baler
6-inch grain elevator	Bean tickler
Water tanks	International manure spreader on steel
Quantity of head gates	3-section spike harrow
Quantity of grain sacks	Springtooth harrow
Quantity of fence posts	Snowco 20-ft. baled hay piler. With
Quantity of cornal poles	new motor
100 bales of straw	Grain roller
200 bushels of certified oats	60-ft. belt
100 bushels of Lemhi wheat	Bean cutter

Some small tools. Many miscellaneous small items

TERMS OF SALE—CASH

Nothing to be moved until settled for.

Fred C. Stiens

OWNER

Clyde Holden and Bill Estes

AUCTIONEERS

SEARS
ROEBUCK AND CO.

SPRING SALE!

STARTS THURSDAY—3 BIG DAYS!

OPEN THURSDAY NIGHT 'Til 9 p.m.

- HOT DOGS
- COCA-COLA
- COFFEE
- DO-NUTS

5^c

FREE HAMS! THUR.-FRI.-SAT. FREE HAMS!

With Purchases Totaling \$125 or More for All 3 Days!



JUBILEE SPECIAL!
Modern-Style Planter at an Amazing Low Price

Use as a jardiniere for holding plants or plant right in it

1.27

What a buy! Made of easy-to-clean, extra-heavy plastic; has deep saucer for sub-watering; holds 6 to 8-in. diam. plants. Turquoise, white or bronze color with gold color marbelizing. 3 days only.



JUBILEE SPECIAL!
Plant now for summer beauty!
Holland Glad Bulbs

3 Days Only
7 colors to choose from

Reduced to **2^c** ea

Buy them by the dozens at this price—have hundreds of giant-size blossoms in a beautiful rainbow of color all summer long! Disease-free Holland Imported. Hurry to Sears!



Choice Chocolate Peanut Clusters

3 lbs. **1.00**
Spanish peanuts, roasted to perfection then covered with rich luscious chocolate.



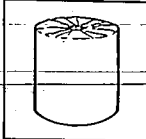
Giant Sale of House Plants

Special **2 for 44c**
Beautiful assortment of foliage plants for your home... all in handsome pots.



Shatter Proof Door Mirrors

12x18-in. **1.44**
So convenient. Sturdy, wind-up glass mirror. Copper plated back. Seamed edge.



Jubilee Special!
Toilet Tissue

Limit 4 Rolls
Roll **7c**
Good quality; soft, absorbent, a color: white, pink, yellow.

Jubilee Special!
BOY'S SHIRTS
SHORT SLEEVES

99c

ONLY **99c**
Attractive Sanforized cotton shirts in assorted prints or gingham patterns. Large selection of colors. Sizes 6 to 16.



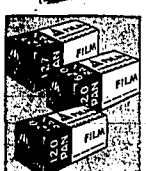
Jubilee Special!
Nylon Briefs

3 Days Only **23c**
Women's white nylon tricot briefs. Elastic top, legs. Stock up!



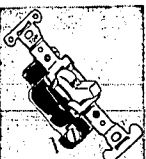
Men's Handsome Dress-Up Argyles

All Cotton **22c**
Get a big supply now in Sears complete new selection. Sizes 16 to 32 in the newest tones.



Sale! All-Weather Tower Pan Film

Today **4 rolls \$1**
Sizes 127, 130, 350-reg. 3 for \$1.10! Film is extra fine grain for clear prints and enlargements. Save Now!



Silent! Silent! Wall Switches

Special **47c**
Ideal for every room in the house! Operates in any position... **BUY SEVERAL!**



Save on Luxury!
Super Soft Terry Towel 2 for 99c

Big 22x24 cotton terry bath towel in 5 lovely Harmony House colors and white. 18" x 24" Handtowel 3/99c—12" x 12" Washcloth 6/99

JUBILEE SPECIAL!
3 DAYS ONLY!
Large Selection

GIRLS capris and pedal pushers

Favorite Fabrics... Prints or solids.

99c

Top sail, saten sail ho and duck; hand front includes the new split leg Capri styles... sizes 7 to 14.

White they last!

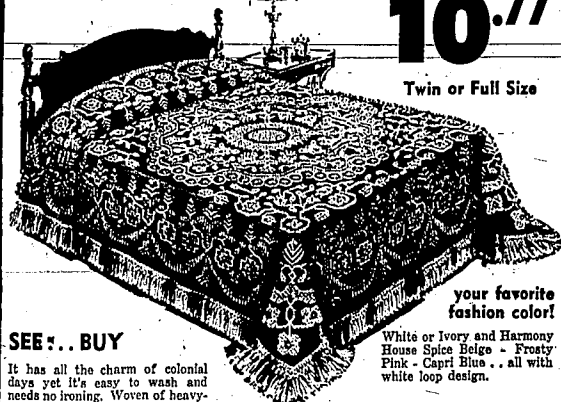
SEARS ~~75~~ DIAMOND JUBILEE
SPECTACULAR

"Virginia Reel" Bedspread

REMEMBER, JUST SAY "CHARGE IT"
Heirloom Style Reproduction
REG. \$14.98

10.77

Twin or Full Size



your favorite fashion color!

SEE... BUY

It has all the charm of colonial days yet it's easy to wash and needs no ironing. Woven of heavy-weight cotton yarns with a sweep of double-knotted fringe... and it's reversible!

White or Ivory and Harmony House Spice Beige - Frosty Pink - Capri Blue - all with white loop design.

Plump, buoyant Dacron* pillows
pretty pink rosebud print

REG. 4.98... NOW

3.47



3 DAYS ONLY

Enjoy plump, buoyant comfort at unusually big savings with *DuPont Dacron polyester fiber-filled pillows. Smooth cotton cover with dainty rosebuds sprinkled on white. Zipper closing lets you remove cover for laundering. Non-allergenic! 20x26 inches.

"Satisfaction guaranteed or your money back."

SEARS FREE PARKING

JUST ARRIVED! LATEST FASHIONS

EASTER DRESSES

FOR GIRLS OF ALL AGES

LARGE SELECTION

ONLY 3.98 1 to 6x

Your choice of many styles in pastel cottons or beautiful soft nylons with lace trim.

Sizes 7 to 16 3.98

BOUFFANTS
Nylon Marquisette full skirts with lace and ribbon. Nylon Marquisette bodices. Elastic-back bodices.

Sizes 2 to 6x 1.97

Sizes 7 to 14 1.98

Easter hat 'n' bag sets... many dainty ruffly styles. 2.98 plus tax

Soft, soft topper in washable nylon fleece! Acetate tulle! Lining: White, pink or blue.

4-6x 6.98

Marvel

at the lovely colors!

Brocade duster of rayon and cotton jacquard. An indispensable fashion in navy, black, beige. Sizes 8 to 18. 9.99

Sprightly plaid cotton topper. Classic clutch style in gray, tan or gold tone plaids. Comes in misses' sizes 8-18. 9.99

Suede cloth topper of Acrilan® acrylic. A wash and wear fashion with the look of wool. White, beige or green. 8 to 18. 9.99

See Our Large Selection of The Latest Fashions in COATS-TOPPERS-DUSTERS and DRESSES and All Priced With You in Mind. SEARS FASHION DEPT.

WOMEN'S 9.98
Sizes 10-18

Reduced! For the First Time!

3 DAYS ONLY

Charmode

FEATHERLIFT BRA

airy-light and lasting

Reg. 2.98 now only **1.88**

Sears exclusive Featherlift is the stay-firm lift that molds you to a lovelier silhouette, lasts the life of the bra. White cotton. 32-36, A; 32-40, B; 32-42, C; 32-44, D.

Remember Just Say "Charge It"

WOMEN'S PETTICOATS
Bouffant styling in ruffly pastel nylon, petal soft or very full. **3.98**

the look of fine calf and patent in

Handsome Plastic Handbags

Reg. 4.98 Now Only **4.44** plus tax

Each bag is beautifully styled and expertly crafted with zipper section, open pocket, rayon faille lining. In black plastic patent plus calf-look bone, red, black or navy.

Latest Smart Styling WITH BUILT-IN COMFORT

SEE OUR LARGE SELECTION OF MANY MORE STYLES - COLORS by Kerrybrook

Black patent, bone or white calf. **10.98**

Jet heel, black or white. **5.98**

Black patent, bone or white calf. **10.98**

Black or white calf. **10.98**

SEARS ROEBUCK AND CO. FREE DELICIOUS 10 LBS. EASTER HAM

With Your SEARS Purchase Totaling \$25 or more in all departments for all three days!

THUR. - FRI. - SAT. ONLY

• HOT DOGS
• COCA-COLA
• COFFEE
• DO-NUTS

5¢

OPEN THURSDAY UNTIL 9 P.M.

EASTER SHOES FOR LITTLE LADIES

AS LOW AS **2.98**

See our large selection of Easter Shoes for little ladies of all ages.

Black patent or white. Strap is removable. 12-3. **5.98**

12-3. **5.98**

Important This Easter

the dress-up look of plaid sports coats and plain slacks

blazer coat in rich new spring colors

Your choice of either gold or green colors. Size 4-12. **10.98**

BOYS' SPORT SUITS
In Plaid or Plain

Latest fashion in popular colors and styles. In sizes 4 to 12. **5.88 to 13.99**

Boy's sported cotton white shirt. Sizes 4-18. **1.97**

Boy's wash 'n' wear dress slacks. Sizes 4-10. **2.98**

Hold part wool blend sportcoat in popular three flap pocket styling. In all the season's fashion colors. Men's sizes 36 to 46. **21.98**

Young men look and feel fashion right in these bold plaid patterned sport coats contrasted with the new trim, tapered plain-toned slacks.

good looking dress shoes that offer TOPS IN FIT AND LONG WEAR!

Only **5.98** Pair

A terrific assortment of spring shoes for boys. All have Goodyear welt construction for shape retaining wear, sturdy nylon stitching, durable long-wearing Guardtex outer sole and leather insole for smooth inside.

Black shoe, all-on. **1.98**

Brown or black moc toe. 2 to 7. **5.98**

Black oxford. 2 to 7. **5.98**

Black oxford. 2 to 7. **5.98**

YELLOW TAG SPECIALS

Look for the Yellow Tags in all Depts. Specially Priced Unadvertised Bargains!

SAVE ON OFFICE EQUIPMENT

OUR LIGHTNING FAST "TOWER" ELECTRIC ADDER

Adds
Subtracts
Multiplies
All Electrically

Reg. 129.95 **NOW \$99**

Tax Included
Only 5.00 Down on Sears Easy-Pay Plan

Two-Drawer Office File **17.88**

Steel Letter File Has 4 Big Drawers **33.88**

Desk, Storage File Combination **12.88**

YOUR CHOICE BOYS' or GIRLS' BICYCLES

31.88

IN CARTON U-HAUL

ALLSTATE REMANUFACTURED ENGINES

NEW MOTOR GUARANTEE

13 to 13 Ford
13 to 13 Chev.
13 to 13 6-cyl.
13 to 13 6-cyl. Dodge-Plymouth

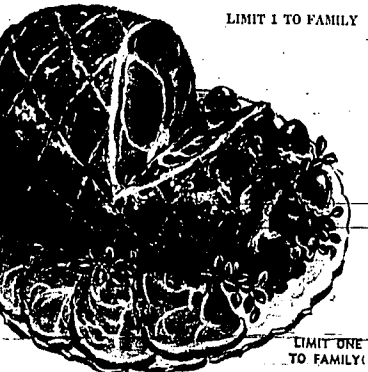
138.88

Only 10% Down

Why consider a costly overhaul? We'll arrange and finance installation of an Allstate engine for your car.

Low cost installation also arranged

Open Thurs.-Fri. Nights 'Til 9 p.m.
Free Parking—Shop Easy!



BEAUTIFUL TRANSLUCENT CHINA

66 pc. Set
ONLY **38.88**

YOUR CHOICE OF 4 PATTERNS

Each set is of fine quality petal-thin china—uniform luster and fine texture.

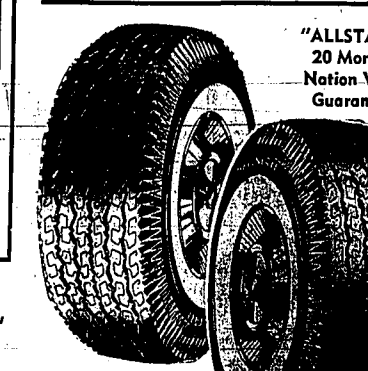
SAVE! 15% OFF ON AWNINGS

CUSTOM ORDERED FOR YOUR WINDOWS

YOUR CHOICE CLOTH or METAL

3 DAYS ONLY

FREE ESTIMATES CALL TODAY RE 3-0821



Tube-Type Blackwall	Tube-Type Whitewall	Tubeless Blackwall	Tubeless Whitewall
Price Without Trade-In, Each Plus Tax	Price Without Trade-In, Each Plus Tax	Price Without Trade-In, Each Plus Tax	Price Without Trade-In, Each Plus Tax
6.70x15 20.10	14.84	24.10	17.84
7.10x15 22.35	16.94	26.35	19.94
7.60x15 24.85	19.94	28.85	22.94

Attention, Light Truck Owners! Express Haulers

The perfect tire for city streets and country roads

6.00x16 Blackwall 6 ply rating **15.88** Plus Tax NO TRADE REQUIRED

6.50x16, 19.88 7.00x15, 25.88

Ideal tire for light delivery service or farm-to-town trucks. Compare Allstate price, quality!

QUALITY MASTER-MIXED DECOR-EZE LATEX FLAT PAINT

3 DAYS ONLY **2.97** GAL.

Our good quality flat finish that makes decorating a breeze! Use it to give new beauty to bedrooms, living rooms and dining rooms. One gallon does the walls of a 9x12-ft. room. Choose from lovely new colors that flatter your furnishings.

Colored Wall MURALS

Your Choice 4 Scenes ONLY **1.44**

Large 30x30 Inch Size

PICTURE-FRAMES

Wood Frames are pre-cut
Sanded—Ready to finish **1.99**

SAVE ON WIRE

USE SEARS CABLE FOR ALL HOME WIRING

12-2 250-ft. Coil. **3 1/2c** FT.

Rugged cable resists damage from fire, moisture. Ideal for all home use.

Complete 3 P.C. Bathroom Ensemble

128.88

Gleaming white porcelain enameled cast iron fixtures. All the "trimmings" to modernize your bath. Matching lavatory and toilet of acid-proof vitreous china. Save now at Sears low price.

SAVE! 10% OFF

HOMART 3 in 1 ROOFING

10 Year Guarantee

Large Color Selection

NO MONEY DOWN 36 MONTHS TO PAY ON SEARS M.C.P. GUAR. INSTALLATION!

NOW! 1st Quality Tires

At Lowest Prices In Years!

Economy, Performance, Dependability with ALLSTATE SILENT CUSHION

Tyrex® Rayon Blackwall **14.84** 6.70x15

Tyrex® Rayon Whitewall **17.84** 6.70x15

Plus Tax and Old Tire Off Your Car

*Tyrex is the Certification Mark of Tyrex, Inc., for Viscom Tire Cord

Tube-Type Blackwall	Tube-Type Whitewall	Tubeless Blackwall	Tubeless Whitewall
Price Without Trade-In, Each Plus Tax	Price Without Trade-In, Each Plus Tax	Price Without Trade-In, Each Plus Tax	Price Without Trade-In, Each Plus Tax
6.70x15 20.10	14.84	24.10	17.84
7.10x15 22.35	16.94	26.35	19.94
7.60x15 24.85	19.94	28.85	22.94

The Economy Buy of the Year! The "Allstate"

A brand new tire—Tyrex® Rayon Guaranteed 32 months

6.70x15 Blackwall Tube-type **9.84** plus tax and old tire off your car

*Tyrex is the Certification Mark of Tyrex, Inc., for Viscom Tire Cord

The buy of the year! Guaranteed nationwide for 12 months against all road hazards.

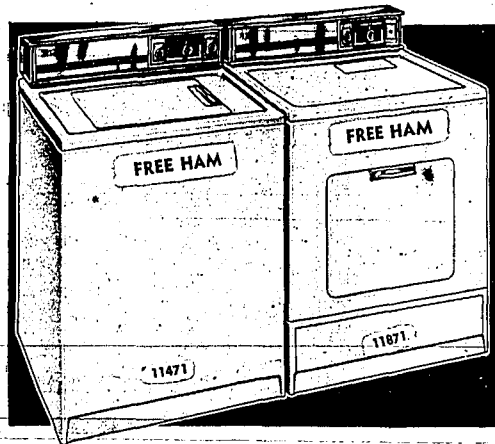


SPRING APPLIANCE SALE

3 DAYS ONLY! SAVE NOW!

PLUS FREE EASTER HAM WITH MOST APPLIANCES!!!

FAMOUS 1961 KENMORE—America's Biggest-Selling
WASHERS and DRYERS! Now BETTER Than Ever, And—
PRICED TO SELL OUT



3 Days Only
Automatic WASHER

\$228
\$10 DOWN DELIVERS

ELECTRIC DRYER

\$168
\$5 DOWN DELIVERS

Only \$10 Down Buys Both
on Sears Easy Payment Plan

✓ Check These Most-Wanted Features!

THE WASHER

- Safe, all-fabric washing with 2 automatic cycles
- 2-speed agitation and spin
- You set the water level to fit the size of wash load
- Choice of 1 wash and 2 rinse water temperatures
- Off-balance load shut-off with warning buzzer
- Spin action stops when lid is opened... a safety feature
- Porcelain enamel tub, top and lid resist rust
- Lint filter, Auto-Swirl agitator, deep-soil scrubber
- Lighted, easy-to-read dial

THE DRYER

- Safe, all-fabric drying with 2 automatic cycles
- Choice of 3 drying temperatures, plus air without heat for stuffing pillows
- Easy-to-clean, top-mounted lint trap
- Germicidal light for sunbath-fresh drying
- Convenient Load-A-Door
- Safety door stops drying action when it is opened
- Flexible User for all-fabric drying; Interior light

EXCLUSIVE! 2 YEAR SERVICE CONTRACT AVAILABLE

\$41 OFF BIG 17" PORTABLE TV

A Powerful "Personal" Set designed for rugged use. Sturdy plastic case, removable safety glass. 155° square-inch viewing area.

128.88

\$5 DOWN DELIVERS



Big 23" Console TV

ONLY

168.88

Bigger, clearer picture in mahogany cabinet. Tinted-glass-for-glare-free viewing and with big 281-square-inch screen!

WE SERVICE WHAT WE SELL



\$5 Down

BEST SEWING BUY IN TOWN!

Kenmore Double-Needle Automatic Zig-Zag

PLUS FREE HAM

SAVE \$70

Regular 269.95 **199.99**

HURRY! 3 DAYS ONLY!

Its wonderful abilities will amaze you!

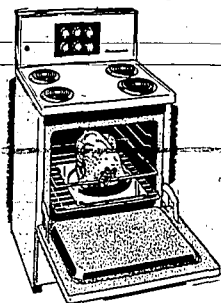
- Double-needle-for smart 2-color sewing
- 3 needle-positions provide more variety
- Expands stitches without thinning out
- 30 discs for beautiful decorative designs
- Fine straight stitching, buttons etc.

New Electric Kenmore
30-in. Range for '61

Giant 24-in. wide banquet-feast oven **138.88**
\$5 DOWN DELIVERS

Handsome, thrifty! With so many practical features... 7-heat selector switch for each top unit, fast over preheat, easy-clean design, much more! Oven Rotisserie optional at small extra charge.

WE SERVICE WHAT WE SELL



PLUS FREE HAM

12.2 Cu. Ft. Coldspot Economy Refrigerator

Big Capacity, with full door storage

188.88
\$5 DOWN DELIVERS

Family size—has full-width door shelves that holds dozens of items, even half-gallon cartons. Freezer chest and chiller store 87 pounds of food. Tight-seal magnetic door. Flush fit all around!

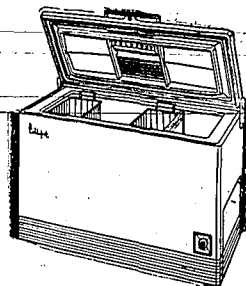
PLUS FREE HAM

17.1 Cu. Ft. Coldspot Chest Stores 598 lbs.

Durable porcelain enameled interior

258.88
\$10 DOWN DELIVERS

Flush hinges permit placing freezer flush against back wall. Has two sliding storage baskets and fast-freeze compartment. Wide-angle interior light. Cold control on front. Lock and keys.



SEARS 75 DIAMOND JUBILEE

SPECTACULAR

\$20 OFF!

America's Only TWO-SPEED Twin-Brush Home Polisher

HURRY!

3 Days Only

39.88
\$5 Down on Sears Easy Payment Plan

Other polishers as low as 24.88!

Reg. Selling at 59.95

All These Accessories Assure You a Custom Job

- 2 Scrub Brushes
- 2 Soap-Wax Dispensers
- 2 Polishing Brushes
- 2 Steel Wool Pads
- 2 Felt Buffing Pads
- 2 Ring Shampoo Buffing Pads

POLISHES to a lasting finish

BUFFS table-tops and corners

CLEANS RUGS with deep rubbing action

"Satisfaction guaranteed or your money back" **SEARS**

OPEN THURSDAY-FRIDAY NIGHT 'TIL 9
FREE PARKING—SHOP EASY

Crossword Puzzle

ACROSS

- Stand still
- 19th region
- Mandarin
- Finished
- Yard
- Flowed
- Not the least portion
- Cheap apartment house
- Empower
- Feld
- Dormant
- Irish
- American scholar
- Long-loved person
- Span of years
- Imbecile
- Egg comb

DOWN

31. Military recruit
32. This crinkled cloth
42. Russian lake
43. Sutures
44. To reside
81. The Wise
82. Entire amount
83. Independent
84. Turkish abbr.
85. Scotch river
86. Transmitted
87. Nautil
1. Razor sharpener
2. Shake-speare's river
3. Girl's name
4. High pitched
5. Compound
6. Female rabbit
7. Yellowish pulp dye
8. Robbin
9. Opposed to labor
10. Chinese dynasty
11. Insect
12. Demagogue
13. Russian Bolshevik leader
22. Willow
23. Wander
24. Early American
25. Sheet of cotton for quilts
27. Spectre
28. That can be worn
30. Day's march
32. Day positively
38. Bib. character
39. Teuton
41. Calkin
42. Siamese coins
45. Festive
46. An affluent of the Elbe
47. Moorish
48. Acquired
49. Eng. country festival
50. Soft metal

OUT OUR WAY

By WILLIAMS



SIDE GLANCES

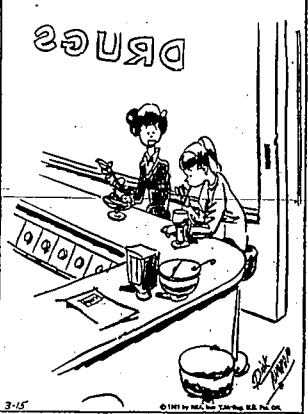
By GALBRAITH



"Remember, it's for the charity fund, girls, so let's all get in there and haggie, haggie, haggie!"

CARNIVAL

By DICK TURNER



"That Higgins boy must be older than you think. He said he could remember getting sick one time on 60 cents!"

BOARDING HOUSE - MAJOR HOOPLE



LIFE'S LIKE THAT

By NEHER



THE STORY OF MARTHA WAYNE



DONALD DUCK

By WALT DISNEY



DAN L'HALE

CAPTAIN EASY

FRECKLES

GASOLINE ALLEY

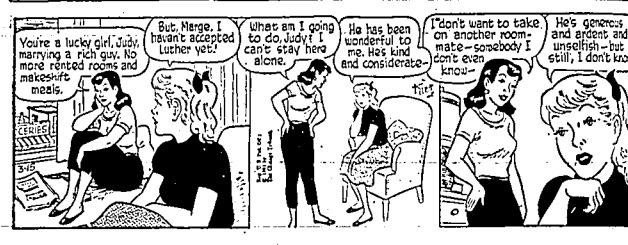
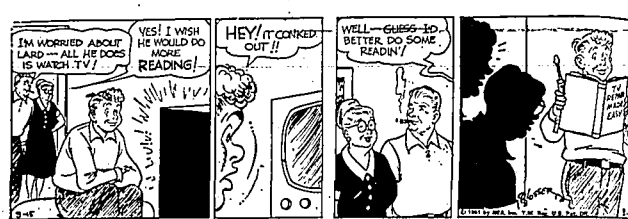
BUGS BUNNY

DIXIE DUGAN

SCORCHY

L'LABNER

ALLEY OOP



LYNWOOD SHOPPING CENTER

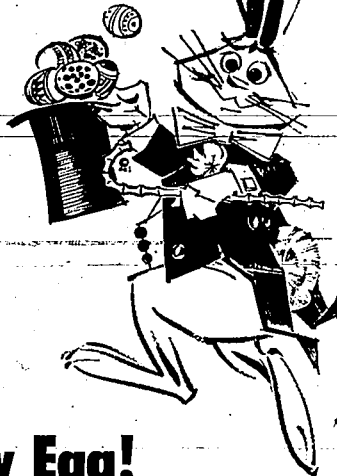
PHANTOM BUNNY HERE IN PERSON

Friday, Saturday, March 17th and 18th



Easter **GIFT** *Excitement*
FOR EVERYONE!

3,000 EASTER EGGS
WILL BE GIVEN AWAY!



LOOK

Cash In Every Egg!

Values Up to \$2.00!

Plastic Egg With Every Purchase
(While They Last!)

**EASTER BASKET
OF SPECIAL BUYS!**

Noma's BOOKS

11 a.m. to 7 p.m. Friday Until 8
BEST SELLERS—PAPER BACKS

THURS. - FRI. - SAT. IS OUR

Green Tag Sale

FOR FULL DETAILS SEE
OUR AD ON PAGE 6

Music **BOX**

HEADQUARTERS FOR

EASTER

Cards - Plush Toys
Baskets and Candy

LARGE Selection Artificial

FLOWERS

Values to 29c ea. . . . **79c doz.**

Regular 1.98 Plush

EASTER TOYS . . 1.39

Regular 39c Complete

Easter Egg Kit . . 29c

LARGE Selection

Easter Baskets

Both Filled
or Empty **19c up**

**Penny-Wise
DRUGS**

OPEN SUNDAY 9 a.m. to 9 p.m.

FOR A THRIFTY
EASTER

Make It Yourself With
Skirt Lengths

CHOICE OF
Orlon, Acrilan, Nylon, Rayon
and Cotton. 60-inch width.

\$1.50
Value **99c**

Beautiful Classic Print
Embossed Cotton
SKIRT LENGTHS

ZIPPER
FREE **1.88**

LARGEST SELECTION
of LADIES' AND GIRLS'
HUSBANDS IN TWIN FALLS

For all Easter needs, it's

KING'S LYNWOOD SHOPPING CENTER

Magic Valley's Largest Variety Store

SEE THE
SAFEWAY

FULL
PAGE
AD IN
THURS.
PAPER

FANTHOM
BUNNY
FRIDAY
and
SATURDAY

Easter news

checks burst into bloom
bouffant

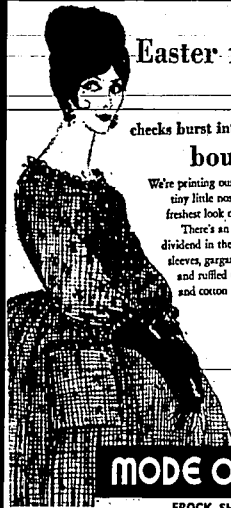
We're printing our checks with
tiny little nosebags for the
freshest look of the season!
There's an extra fashion
dividend in the new bloused
sleeves, gurgantuan pockets
and ruffled trim. Acetate
and cotton fabric. 10-16.

8.99

The New
Petite
Juniors
are in!

MODE O'DAY

Open Until 9 P.M. Fridays 'til Easter!

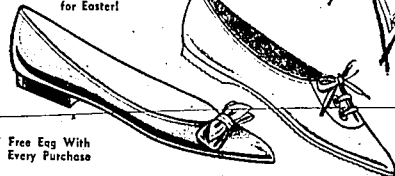


One glance tells you she's wearing
robinettes.

... and it's the glance that makes the difference!
You'll feel light and gay (perhaps even a
little risqué) as you parade in your new
Robinettes. They're so much fun!

Buy them Now
for Easter!

6.95



Free Egg With
Every Purchase

SUBURBAN SHOES

SEE OUR COMPLETE LINE OF CHILDREN'S SHOES FOR EASTER

LYNWOOD SHOPPING CENTER

elegant
cottons



White Stag
PRE-TEENWEAR

Perfect for our change-
able weather, White
Stag's pre-teen ensemble
of bulky-weave 100% cot-
ton, country casual—but
yet so marvelously
dressy. The trimly fitted
button-front jacket has a
big-girl, high rounded,
collarless neckline, three-
quarter dolman sleeves.
The skirt has soft wide
box pleats, trim and nar-
row waistband.

"Westchester Jacket"
Sizes 8-14. \$8.98
"Seaside Skirt"
Sizes 8-14. \$9.98

the
PARIS
jr.

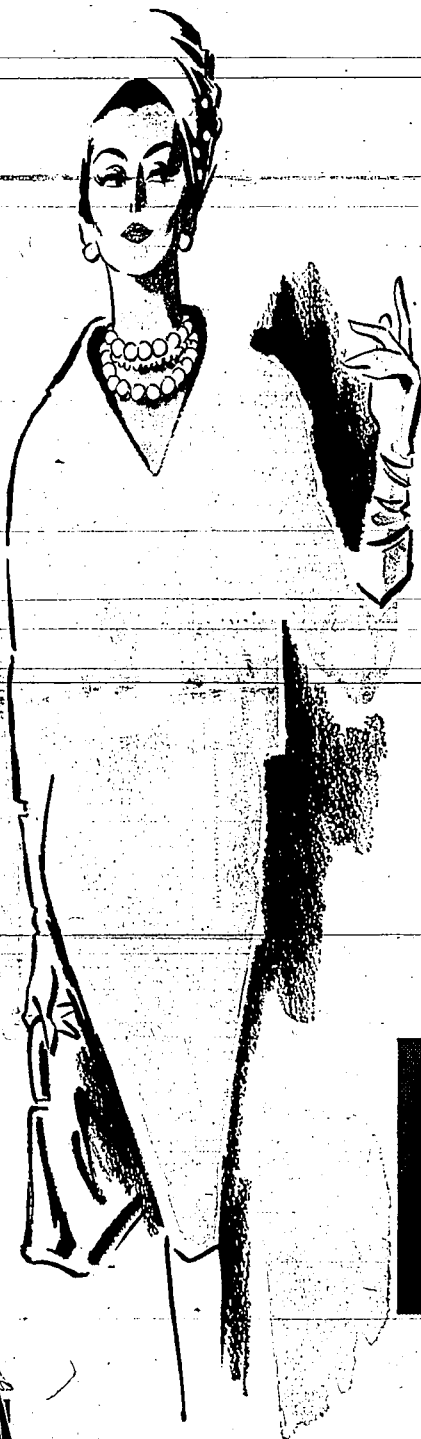
FAMILY
HOME

Times & News
TWIN FALLS, IDAHO

PICTORIAL
EDITORIAL

SPRING FASHION EDITION

TWIN FALLS, IDAHO, WEDNESDAY, MARCH 15, 1961



cintillating colors



paradoxical contrasts



rich-looking fabrics



infinite variety



newsworthy silhouettes



grand selections

SPELL OUT THE GAY EXCITEMENT FOR THE NEW SEASON AHEAD

Suddenly it's spring — and Easter is a-coming!

Suddenly, too — the gals and the guys, the young and the young in spirit — feel the exhilaration of this beautiful season that's so colorfully and dramatically expressed in our gala preview of wonderful fashions and light hearted accessories.



EASTER
IS
EARLY
THIS
YEAR

First Checks of Spring



There's a first hint of spring in these navy and white separates. Trim capri pants and sleeves cropped just left, are blend of crease and wool. Checked skirt, right, in same fabric is permanently box-pleated and worn with solid navy jacket.

Patterned Fabrics Will Make Comeback in Business Shirts

Patterned fabrics will make a comeback in business shirts for spring, 1961.

British type stripes, spaced stripes, small overblends and checks will all make the grade in shirts as well as strong tones of blue, gray, tan and red. Ivory and olive tones will please the wearers of Ivy-type clothes.

Short-sleeved shirts in all the

and stripes will be among the other patterns. Look for more deep solid shades for wear with bodied patterned jackets and shirts.

Spring sports shirts feature deep front plaques with three and four buttons. On some shirts, the pocket practically reaches the belt-line of the shirts.

There's new, too, in neck styles. High V necks, boatnecks, cross-over necks, and many fancy colorful designs, give sports shirts a sportier, more American connotation.

Sport shirt sleeves have lots of fashion interest. Whereas the short sleeve was outstanding in seasons past, for this spring and summer the less conventional three-quarter sleeve is the favored length. Stylized of knit shirts have embellished sleeves with yokes, rills and two-button cuff treatments.

Pockets, too, are not what they used to be. Now they're oversized and noted for detailing. They appear at the bottom of the shirt and, on the sleeve, as well as in conventional places.

Furniture Adds Charm



New furniture draws from early American sources for motifs and detailing. Small chest has a flip top is convert to a server. Splice chest affords extra storage space. Grandfather clock is new version of an old-timer.

Americana Is Easy Winner in Home Furnishings for Spring

By KAY SIEMWOOD
(Newspaper Enterprise Association)

"Traditional American sears like the eagle to the top spot in spring-time home furnishings.

From authentic museum reproductions to modern adaptations of historical motifs, from the casual and cozy to the more formal, new furniture designs explore every facet of what is rather loosely called early American or colonial. (It's a long way from the Puritan settlers to Tidewater, Va.)

You don't even have to worry that new furniture will look factory-fresh. The boys have been busy with chains, spikes and blow torches to distress and weather the wood to achieve the desired aged, distressed look.

A speedy aging process gives brass hardware in one collection the soft patina and worn-in look that formerly took several generations of use. Painted finishes are artfully worn down to the wood grain along cabinet and drawer edges to simulate the much-handled look of the antique.

As I threaded my way through apool beds and ladder-backed chairs, poked into tiny nooks and spice chests, I noticed the clear finishes on American cherry, pine, maple and pecan, and tried over commodious rockers at the International home furnishings market, one point was apparent. There is a warmth and comfortable homeliness about this new colonial furniture that would fit smoothly into most of our homes.

Probably of greatest interest to those of us who are not shopping for a whole roomful of furniture are the numbers of accent pieces which are functional and charming. In one outstanding collection, the designer, Robert Bergelin, has included such useful but hard to find pieces as a strong high chair with a rustic, cast-iron, swivel table with a replaceable fabric bag attached to one drawer, and storage chests with tops to turn them into servers or desk surfaces. Small spice chests in natural wood or painted gray-blue finish can be mounted on a wall.

If you've been yearning for a grandfather clock to chime the time away, you'll be in clover with the selection available this spring. Wallpapers, curtain and upholstery fabrics have caught—the American fever, too. The American eagle is emblazoned in gold and color on fabrics of many weights. Matching papers and fabrics in other appropriate patterns are ready to make redecorating a breeze if colonial is your theme. Fabric manufacturers have more than one instance have teamed with furniture manufacturers to make available various goods in lighter certain values to match with upholstery.

Marriages of Today Better; Reasons Told

ST. PAUL, Minn. 478—Reuben Hill, director of the University of Minnesota Family Study center, says he has found five reasons why today's marriages are happier.

—Husband and wife are more frequently partners in the realm of earning and spending the family income.

—Authority in decision making is more likely to be shared in all phases of life, including recreation, choice of friends, sex relations and child rearing.

—There is today a much less pronounced division of labor within the home.

—Integration of recreation for both sexes has increased the possibilities of companionship in play.

—Trends in the husband-wife relationship have their counterparts in the parent-child relation, where increasing sharing of authority and greater companionship between the generations have made parents and children closer friends than their predecessors.

"Easter Parade" Will Be Dazzler

ST. PAUL, March 15 (UPI)—The 1961 spring fashions are full of gay and daring colors. But before that April spree in the dress shops, a University of Minnesota home economist has a word of warning.

"Your personal coloring is the key to choosing becoming color in your clothes," according to Mrs. Charlotte Baumgartner.

When choosing any piece of clothing, Mrs. Baumgartner suggested, "consider what will best suit you: your skin, hair and eyes."

"The key to color fashion," she said, "is to emphasize the desirable characteristics."

For instance, you can make blue eyes more intense by wearing a blue dress slightly more grayed than are the eyes, produce the same effect by wearing a small amount of the same hue if it is more intense. For example, try a vibrant blue necktie.

Men's Hats Are In Small Shapes

Small shapes continue to set the style pace in men's hats for spring. Look for more medium shades as opposed to the dark colors that have dominated felt styling for the past several years.

Lightweight, crushable bodies will be more popular than ever.

Easy Fit, Little Collar Feature Suits This Spring



Easy fit and little or no collar will characterize the spring suit this year. Suit with suit lines, left, is a lace wool; the collar is pink. Jacket is buttoned over pink-and-yellow print silk blouse in this George Carmel design. Arched green is the collar, center, for suit.

Russia's Women Won't Wear Red

MOSCOW, March 15 (UPI)—The well-dressed Russian woman won't wear red this summer.

Soviet fashion designers have issued their commands to Mrs. and Miss Russia—subdued colors combining elegance with practicality.

Radio Moscow, in its home service program, added the Soviet twist to the recently concluded European fashion show.

"Various shades of brown, beige, gray and blue are in vogue this season," the broadcaster said. "They predominate in the new dresses of the all-union collection of 1961."

Lifting the veil on what goes on behind the Soviet fashion scene, Radio Moscow said the new fashions have been created by designers of the House of Fashion, who met at a conference held in Moscow.

There will be used in dressy models as well as in casual shapes and upturns in back are another fashion-worthy note.

Flight of Collars Is Marked In "New Frontiers" for Suit

NEW YORK, March 15 (NEA)—The "new frontiers" in suit fashions have brought us one certainty for spring, the flight of the collar with this, there's simplicity of line and clean strong color.

Jacket lengths run to short or mid-arm point and have a very gentle tilt. Many of these display enormous buttons in pairs. Shapes for these buttons are interesting and they seem to be a sort of consolation prize for the vanished collar.

"The checks of last spring are back, but this year they're bolder and louder than ever. Olive green or brick red checks combine with white for really new and different color combinations. Very feminine suits are done in pastels on white. But they're still checked all over.

Woolens are really lightweight this year with the result that you can have a spring suit in a clear, beautiful color and a gauzy wool. These new suits are versatile for they can take you to a winter resort if you're lucky, go under a coat when you're back home and help you make the transition into winter attire.

Yellow, rose, fuchsia and violet—these are just some of the colors of spring. Look for button, clear colors than you've ever seen before for your first spring suit. Imagine how pretty a strawberry pink suit would look under your dark winter coat!

If you're shy about doing without a collar on your spring suit, pick one with a ring band or a standup collar of fabric. This will help you make the transition into winter attire.

Yellow, rose, fuchsia and violet—these are just some of the colors of spring. Look for button, clear colors than you've ever seen before for your first spring suit. Imagine how pretty a strawberry pink suit would look under your dark winter coat!

Coloring Is Key To Good Fashion

NEW YORK, March 15 (NEA)—Gay and brilliant colors will turn the Easter parade into a real dazzler for onlookers across the country this year.

Great will be the traditional trims, navies and blacks of years past. Walking in their place will be violet and sunny yellow, hot pink and clear green, vivid blue, raspberry and deep turquoise.

Colors in these many coats will display other fashion changes, too. The near-disappearance of the collar, for instance, the brief sleeves, the chunky buttons. These are essentially young coats but they are meant for chic women of every age.

Though many of these new coats follow sleek and narrow lines, some of them show width. Designers are aware that some women like to look to suit beneath a coat. Or that they prefer a wide skirt in any season.

Bold blocks of contrasting colors in one garment look new. This is a springing treatment for navy and white, black and white.

Tall Silhouette for Spring



Tall silhouette, left, a spring hat favorite, is shown here in a high, high hat of straw with grandy trim. By Irene, the fragrance accent is Red Lila by Lenthier. For feminine flattery on a spring evening fashion suggests this mellow, hot color. Clifton, right, draped high and knotted in front for more interest. By John Fredericks.

Suit Mood 'Soft' For This Spring

NEW YORK, March 15 (NEA)—The suit mood for Easter, 1961, is a soft one, soft, feminine, gentle.

Lots of tricky things have been done with the collared neckline. It's really a matter of having your cake and eating it. Designers have created collars, necklines with soft attachments, and collarless necklines that borrow the collar of the blouse beneath.

Jackets, nipped to the waistline or the top of the hip bone, are cut along easy lines. The skirt beneath may be pleated or straight. And the total effect will be young.

The exciting colors of the coats in the Easter parade will be reflected again in these new suits. Green, straw-berry mouse, beige, red, blue turquoise will march on their own or in company with one of the new suits.

REVIVE SEERSUCKER
Seersucker revival is noted in sportswear, casual dresses, children's wear. New colors and patterns, such as plain-and-puckered stripes, give it freshness and individuality.

THE SILK SUIT— TO BE CONTINUED AFTER EASTER

Ladylike, gently tailored — the sort of suit you'll feel wonderful in from now on. From our Easter-and-after collections ... near right: lined jacket and skirt in navy or French nude, squared-off in white; lined white silk blouse, \$9.95. Far right: textured silk skirt and lined jacket in navy or toost, \$9.95.



the VOGUE



open Friday night until 9

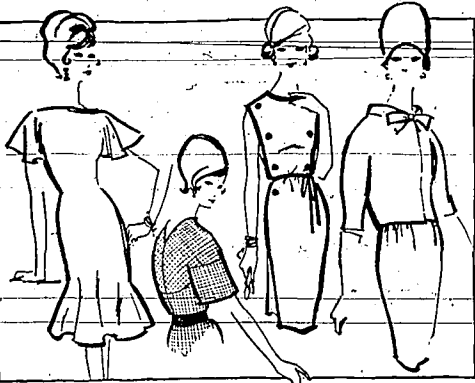
starts today at the new Vogue
schiaparelli sale

Our exclusive and world-famous Schiaparelli stockings do for your legs what eye shadow does for your eyes — flatter outrageously! It's their fabulous fit, exquisite colors and wonderful wear. Why not stock up for months to come of these once-a-year prices!

over-the-knee or seamless stretch, full fashioned; regularly 2.00
1.65
demi-toe seamless; regularly 1.65
1.35

VOGUE

Sketches Show New York Styles



Style trends here were sketched from New York Couture group's spring collections. Left to right: Black dress with fluid hem, by Esters, is accented by shoulder strap. White elbow-length top, black checkered dress by Hushoff. Medium-length black dress accented by plying on Donald Brooks sleeveless dress. Mollie Parnis created the two-piece suit dress.

Supple, Simple Lines Require Proper Types of Accessories

NEW YORK, March 15 (AP)—You with a high fashion IQ will be very smart indeed in the simple, simple lines of spring's styles. But you may need to turn up on style detailing a bit, if you are to make the grade in selecting proper accessories for that new wardrobe.

On this page are sketches of trend setting detailing as they appear on the costumes which New York Couture group members showed for the fashion press.

Study them for an education on what you will need in lingerie, jewelry, scarves, gloves and hats to go with them and you'll score high on anyone's test for taste.

Common sense and next season's silhouette (aim with the merest fullness) tells you to pack up your voluminous bouffants in favor of sheath slips or petticoats with a minimum of flounce.

Stick up on all kinds, colors and sizes of scarves for a variety of uses.

Wide, collarless necklines, stand-away or funnel-shaped collars on coats and dresses demand scarves as a matter of self preservation on chilly days.

Tied around loose-fitting overblouses and dresses, long scarves become colorful sashes looped in front.

Draped around arms left bare by this season's sleeveless dress styles, long long scarves are softly feminine styles.

Belt. Designers' choices for their original.

Flapperish fashions call for the

Country Look Putting Mark On Wallpaper

The country look from many lands arrives in wallpaper to decorate American homes for spring.

To early American and Williamsburg-style documentaries are added French styles, Spanish-influence designs, and English 18th century floral, bird and foliage patterns.

Wallpaper accents elegance in damask and medallion patterns; 18th century English florals and 18th century French designs, often on simulated silk backgrounds for added richness.

Colors vary from dark and glowing to delicate and dainty. New dark backgrounds owe much to the colors of the Orient. Persian blues, rich reds, muted browns, tawny golds, terra cotta and deep blues are used as background colors.

Among the light shades, violets and misty blue lead. Sunny yellow comes to the fore.

Matching fabrics and wallpapers are widely available to bring a custom look to any interior. New wallpaper panels, relatives of the mural, but complete in themselves, can be used in many areas that are too small to take a mural.

Cape sleeves, short-wide sleeves or no sleeves at all in this spring's coats, dresses and suits call for a handsome supply of gloves all lengths.

To be sure you will wear short gloves, with sleeveless dresses, the warm, in these wide, short-sleeved coats, you'll buy them to reach past the elbow.

Hats. Flapperish fashions call for the tall, or not-at-all tall.

Van's Fashions You'll Love



flatter your pretty Easter costume with

LOVELY STOCKINGS



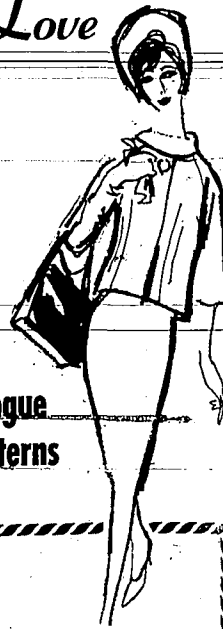
1.35-1.50

Humming Bird

Whatever your costume colour, Humming Bird has the perfect Spring shade for it. These exquisite stockings are preferred by smart women everywhere. Their flawless fit, long-wearing quality and wide variety of styles will endear them to you, too. So treat your lovely legs to the best. Stop in today for a complete Spring hosiery wardrobe in beautiful colour.

COLORS: Cream Puff, Moonstone, Flaming Peach, Straw, Fern, Orchid Blush

Vogue Patterns



No. 4161—Straight and easy... this suit is hallmarked by new slimmest that stems from gently curved seaming and softness in the rolled collar blouse... taking to soft wools, and jerseys or shantung.

VOGUE PATTERNS—Always the smartest... now the easiest!

TRIUNE

THE NEW FURNITURE CLASSIC

by Drexel

LIVING ROOM · DINING ROOM
AND BEDROOM PIECES

a new tradition
in classic design



MAHOGANY AWARD WINNER
SECOND YEAR IN SUCCESSION
NOW ON DISPLAY at



The New Collarless Silhouette

Beautifully tailored in this charming model of "Northfield J Adore," all wool, self bound round the slip, cardigan neckline front and edge. Four-button closing, 3/4 slip sleeve. Available in beige, gold, pink, lilac, green, coral.

Sizes 8 to 16 32.50

SPRING COATS

24.50 to 34.50
39.50 to 49.50

Dreamy
Roses



...bloom on our "Rose Garden" waltz gown

by KAYSER LINGERIE

Night-blooming lace roses frame the neckline and accent the Empire waist of our delightful waltz gown. They glow again on the drifting sheer overlay of the bouffant skirt. Sweet dream! Sizes 32 to 40 in Blue Bonnet with white lace, Pink with beige lace, or Lilac, Tealrose, Foxy Pink or White. \$4.79

..and remember your Easter gloves

Pretty detail—very short to very long, colorful new in Easter Gloves. Nice costume completers are in our collection.

1.00-1.98-2.98

VanEngelens

Enchanting fashions for babes, toddlers and the crib set by nannette



We've a rainbow of fashions for little folks... exquisitely styled and beautifully made in fresh new colors and easy-care fabrics. They're perfect gifts for the new baby through toddler years. Come in and see them today.



BABE SIZES 6, 12, 18, 24 mos.
TODDLER SIZES 2, 3, 4, 5
BOY "M" SIZES CHILD SETS 4 & 5

Regardless of Hairdo, There's New Spring Hat for Every Head



Here are just a few of the new hat shapes for spring. The cloche goes romantic. Alcy cloche by Emme in pale green organdy, lower left, has butterfly trim. The miniature hat, in this pink tulle version by John Fredericks. Sally Victor does a dashing straw hat with a combed, lower center, in many forms this spring. This one, by Sophie, is in white textured straw with patent leather band. Sophisticated sailor, upper right, by Mr. Arnold is in coffee, black and white strawcloth. Lower right, by Lily Dache is made of little pink straw flowers crowned with veiling.

No One Way Found to Wear Spring Hat; They're Varied

NEW YORK, March 15 (UHA)—No matter what your hairdo, there's a hat type for you. This spring, Turban, doll hat, sailor, cloche or breton—one of them is for you. Or even two. There is no one way to wear a hat this spring. The sailor tilts

forward over the eyes. So does the miniature or doll hat. The turban is worn slightly back of the hairline and so is the cloche. Both the turban and the cloche have depth but they're not as high as last year's styles. Many of the new spring hats in girls' dresses, more than suggest the 1930's. These protie hats have brims that swoop up in front and down in back or at the side. They are dashing, young and done for the most part in brilliant colored straws. They're perfect for the holiday with wavy bangs, forward-curving cheek curl. Those flustering little head-IMITATIONS '31 Alriche fibers that carefreely imitate silk or cotton get wide use

Tips Given for Better Care of "Luxury" Fiber

Here are tips for prolonging the life of garments made from the luxury fiber, cashmere. Wash must items instead of dry-cleaning because the "laundering" action retards the softness of the fiber and keeps it fluffy. However, check instructions written on the tag of the garment to be sure of what you should do. To wash a sweater: Make a pattern tracing the shape on a piece of paper. Submerge in warm or cool water in which the soap has already been dissolved, and soak for about five minutes. Agitate slightly but avoid rubbing. Rinse without agitation at least twice in cool water. Roll in bath towels and spread on a dry towel. Dry away from the heat. Adjust the sweater to the size and shape of the paper cut-out. Keep sweaters flat in a drawer to retain their shape. Hang suits, coats on heavy hangers. After each wearing—air—and brush the garment before putting away.

DECORATING HELP New help for the home decorator comes in the form of broad wall-paper borders that can be trimmed to widths, varying from 10 to 20 inches. They're especially useful in kitchens, to decorate small areas above and below cupboards, appliances.

HEAD TIMES-NEWS WANT ADS

Spring Coat Uses Wool



Bright blue wool coat by Arthur Jablow, left, is nine-tenths length, leaving only one-tenth of dress in view at hemline. The collarette "cardigan" has a three-button front-closure and a wide pocket. It is a shiny black straw by John Fredericks. Taupe suit of silk and worsted, right, also by Jablow, features demilobe jacket of hip slip length and is worn with a pale beige straw.

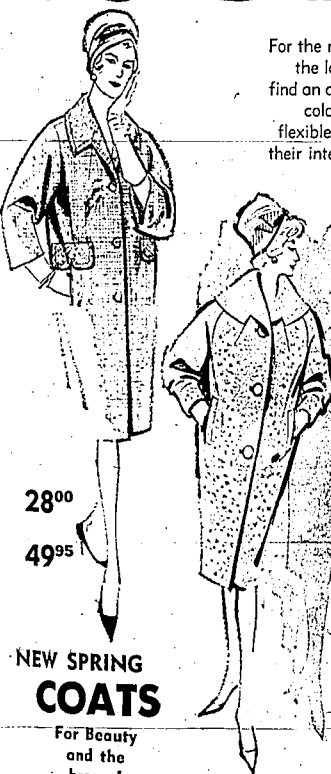
VanEngelens THIRD THURSDAY REMNANT DAYS

TERRIFIC VALUES ON A BIG GROUP OF FABRICS OF EVERY DESCRIPTION! ALL FIRST QUALITY! SAVE NOW! Prices Greatly Reduced THURS. - FRI. - SAT.



You'll be the Loveliest Lady in the EASTER PARADE

For the most enchanting Easter you've ever welcomed... see yourself, let your audience see you, as the loveliest lady in a fashion parade that goes on, into a wonderful summer. Here, you'll find an assortment of styles and ideas that work magical results for you and your wardrobe. The colors: breathtaking. Silhouettes: wearable beautiful, willowy and relaxed. Fabrics: intriguing-flexible knits, lacy weaves, pebbled and ribbed effects. Suits, dresses, coats, costumes in all of their interpretation are intent on flattering you.



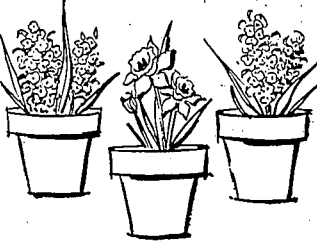
28⁰⁰
49⁹⁵

NEW SPRING COATS

For Beauty and the breeze!

In any weather, here's how to keep warm in the loveliest way: select your new spring coat from our selection of top fashions by Bettinean.

Use the Paris layaway—or open a 30-60-90 day account. No service charge.



HATS for Easter parading

It's an Easter tradition... to wear a beautiful, flattering glamorous hat in the fashion parade. See and choose from our colorful new array.

8⁹⁸ to 14⁹⁸



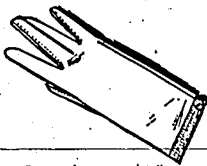
LOU-ETTE Originals

For a very special season, we've fashions to help you feel special, too... more feminine, prettier than ever... young, lively, gala, you'll find the perfect expression in new styles from our unusually attractive and complete collection.

24.95

Elegance to carry... new handbags for a well-groomed Easter. We've just the shape, just the size you want, in patent, many leather textures, colors.

29¹⁴ 98



Openwork, pretty detail, very short to very long... the news to note in Easter gloves. The nicest costume complements are in our collection.

100-398

the PARIS

When in Rome



Flare Is New Trend in Hair

AP Newsfeature
Flare has leaped from skirts to hair.

The new twist in fashions, according to the Hair Fashion Council of America, is the "Charleston Flip."

But don't assume from the name that trend was inspired by those head-buzzing spit curl hairdos of 1920s-boop-be-doop days. Rather, flared skirts of the era, which have recently made a comeback, prompted hairdressers to sweep women's locks back from their foreheads in that same swirling movement.

Basically, the new-old hair style is a short, crownlike allouette. On the side of the part the hair is brushed off the face. On the opposite side the wave is close to the head. The back follows the crown wave pattern ending close to the nape of the neck in a carefree manner.

The hair-care organization of hair stylists met in Chicago recently to exchange technique with the new style. It was designed to fit the new tiny bikini hats from Paris as well as trimmed clothes, the council's style director Joseph Sano says.

The warm blush tones of red with golden highlights is expected to be this year's most important hair shade.

Fashionettes

United Press International
Fashion-mates for sport: bracelets and earrings. The drop earring ranging from the single long drop to shawer drops, beaded drops and pear-shaped drops is worn with bracelets that match in texture, twisted design, color.

A lady gets her head "bumped" in a new hair style, the French hairdresser Michel of Paris has devised for his New York clientele. Nevering the usual permanent wave in which the hair ends are curled while the top is left smooth and straight and the hair being given more to the top of the head. It's bunched up at the crown.

Designer Marc Bohan, at the House of Christian Dior in Paris, described his spring collection as one with a theme of "youth and lightness."

The right blouse in '61 is apt to be a ruffled-front cotton with contrast edges on the ruffles, or a ruffled blouse with the buttons centered in big, embroidered dashes, or one with a yoke effect and bateau neck.

Picking blouse this spring will be like picking flowers in a garden. Some spring color schemes flower box print with aquas of muted, colored blossoms forming a striped pattern on a neutral-toned blouse; the "big apple" print.

Jaunts Reported

For Valley Areas
HAGBERMAN, March 15 — Mr. and Mrs. E. E. Barry and Kay, ca. Nev., visiting E. E. Barry's son, Roger, a student at Ricks college, Rexburg, and attended a farewell testimonial for Kent Harris.

Mr. and Mrs. Orval Hymus accompanied Mrs. George Pass to her home in Provo. The Hymuses also visited his parents in Lehi and their son and daughter-in-law in Pocatello before returning home.

Mr. and Mrs. Delmer Vost and family, Salt Lake City, visited his parents, Mr. and Mrs. Arthur Vost. Guests of Mr. and Mrs. Orval Broadbent were their daughter, Betty, and Nita Nielsen and Irene Broadbent, all students at Ricks college.

Springdale Areas Report

SPRINGDALE, March 15 — Mr. and Mrs. E. E. Barry and Kay, ca. Nev., visiting E. E. Barry's son, Roger, a student at Ricks college, Rexburg, and attended a farewell testimonial for Kent Harris.

Mr. and Mrs. Orval Hymus accompanied Mrs. George Pass to her home in Provo. The Hymuses also visited his parents in Lehi and their son and daughter-in-law in Pocatello before returning home.

Mr. and Mrs. Delmer Vost and family, Salt Lake City, visited his parents, Mr. and Mrs. Arthur Vost. Guests of Mr. and Mrs. Orval Broadbent were their daughter, Betty, and Nita Nielsen and Irene Broadbent, all students at Ricks college.

ADD BUTTONS
Along with color, button ornament the simple silhouette. They're jumbo sizes, and come in interesting shapes.

Three-piece dress costumes are updated for spring with chiffon blouses. Chiffon appears, too, in dresses and separates for any hour of the day or night.

New for Bride



Gown ensemble is new idea for the bride. Late cape can be attached to the back of the full-length gown, forming a wrap-around train. Her diamond jewelry includes a ribbon-spray pin to highlight the headpiece.

Paris Features Drapes, Flairs and Pleats for 1961



From lush carpeted haute couture houses in the world's fashion capital comes a fluid, feminine look for '61. Jacques Heim features it in a daytime dress, left, with a surah of textured nylon and silk, pleated skirt, and loose bolero. A ball gown by Madame Gres, center, has a voluminous skirt of white nylon with a symmetrical drape and a bodice faced with black lace. Marc Bohan, new designer for Christian Dior, used gold nylon tulle for a dinner gown, right, with softly blowing top, and a skirt which gently flares from trimly fitted hips. The dress is typical of the dominant line in his collection.

Former Swiss Man Develops New Kind of Watch; No Tick

BY FRANCIS STILEY
NEW YORK, March 15 — To most Americans, Switzerland and watchmaking go together.

Max Hetzel was one Swiss who didn't care a tick about the watchmaking.

And what did he do? He wound up inventing an electronic watch which not only doesn't tick but doesn't have to be wound.

He may wind up as less than a hero in his native land as a result. Hetzel believes his new timepiece will make conventional watches obsolete eventually. Switzerland is renowned for manufacture of conventional watches.

Hetzel's watch is termed the "H-watch" and is expected to be used to replace the conventional watch within one minute.

Shoes Make Fashion Points



Black and white spring fashions combination, left, appears in sandal pump of white calf with fringed tongue of black grained leather. After-five shoes, right, make a fashion point in patent leather highlighted by pastel-colored inserts in kid.

Young Fashions are bright and colorful for TOTS thru TEENS

I have Daddy fooled by my new Kate Greenway—when I wear the jacket, it's my new suit, and when I don't, then it's my dress. White linen-look dress and flower printed jacket in blue or clay green.



Young lads too, like to "dress-up" for Spring and Easter and we have just the things they like the best.

The TINY SHOP

123 EAST MAIN

Bathing Caps Are Changed

AP Newsfeature
How can you be a bathing beauty when you look bald-headed with a cap on?

This used to be a puzzle to beach maidens as they stuffed their cap-toppers under scalp-peeking caps and hoped that their hair would stay dry.

But times and bathing caps have changed. Still utilitarian but no longer strictly so, they are now frivolously fashioned to soften facial features. Some styles are frothy clumps of colorful rubber flowers. Still another is a top of plush full of waterproof polka dot ruffles.

Besides taking the whimsical shapes of hats, today's rubberized bathing toppers are also fashioned after what a woman always wears on her head—her hair. With platinum blonde, brunette, or brunette shades to choose from, she can stick to her natural hair hue, or change at a snap of a cap to another color.

Thus a girl's curls can go suburban in style, safely arranged in rubber away from the water.

SKIRT FULLNESS

Pleats, gathers, gores shape more free-flowing skirts.

Knitted Costume



Knitted costume, in three parts that might mix with the rest of the wardrobe is easy going—anywhere. In Tanya Orin Centre.

READ TIMES-NEWS WANT ADS

Give your face and scalp a facial

Boni Bell TEN-O-SIX SHAMPOO and LOTION



2 oz. Shampoo gift without charge, with \$3.00 purchase of regular 8 oz. Lotion.

FOR AN IMMEDIATE SKIN 10-0-6 LOTION

Reaches deep to remove blemishes causing oiliness and dirt—a problem skin treatment.

CITY DRUG

hudson's

TWIN FALLS BURLEY

EASTER FASHION PARADE OF VALUES!

New spring shoes, pumps and straps, medium and high heels in black patents and colors.

Values to 13.95

8.99

hudson's

Twin Falls—Burley

SPRING

opening

hudson's ... YOUR FAMILY SHOE STORE

- Deliso Deb
- Pavila
- Johansen
- Naturalizer
- Lady Florshiem
- Smartaire
- Life Stride
- Selby Arch Preservers
- Town and Country
- Rogues
- Demosette
- Glamour Deb
- Buster Brown
- Varsity Vogue
- And Many Others

You'll want to outfit every member of the family with a pair of our new shoes for Easter. So attractive, comfortable and pretty. Choose from a fabulous selection of the newest in styles ... your favorite heels in patent and leathers in all of spring's newest colors.

To further supplement your family's shoes, hudson's is introducing boys' shoes for all shoes, from **3.95 to 22.95.**

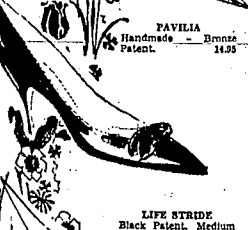
Name brand hosiery in all the new shades **69c to 1.95**



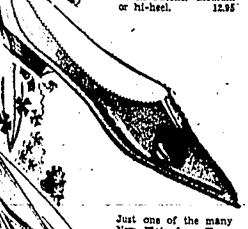
NATURALIZER
Black - Camel - Tan -
or Black. 11.95



PAVILA
Handmade - Bronze
Patent. 14.95



LIFE STRIDE
Black Patent. Medium
or hi-heel. 12.95



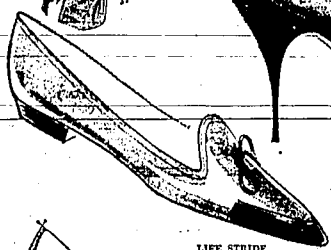
Just one of the many
New Flats from Town
and Country. \$35



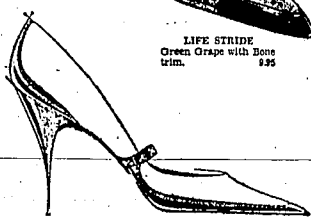
LIFE STRIDE
Black or White. Medi-
um or hi-heel. 12.95



NATURALIZER
Black or White. 12.95



LIFE STRIDE
Green Grape with Buck
trim. \$25



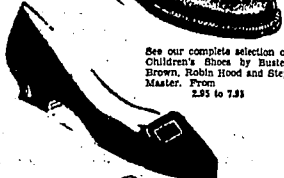
JOHANSEN
Brown and White
Speculator 12.95
See the complete line
of New Johansens in all
of Spring's new pastel
shades!



See the New Jet Heels
—several styles from
7.95



See our complete selection of
Children's Shoes by Buster
Brown, Robin Hood and Skip
Master. From
2.95 to 7.95



2.95 - 19.95



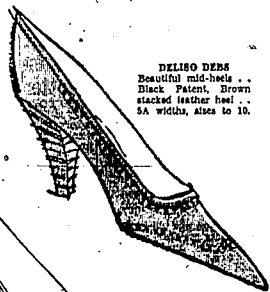
NATURALIZER
White - Black Patent -
or Bone. Sizes to 11, 4A
to B, widths. 13.95



PEDWIN
Burg top slip-on. Black
or Brown. 10.95
Other Styles from \$35



Men's and Big Boys'
Department, Downstairs
Shoes by Florsheim -
Allen Edmonds - French
Shirner - Robles -
Pedwin - Star Clift.
From 7.95 to 24.95.
Sizes from 6 to 15 and
widths from AAA to EE.



DELISO DEB
Beautiful mid-heels -
Black Patent, Brown
stacked leather heel -
5A widths, sizes to 10.



SELBY-Fifth Avenue
Black with Buck Trim.
See the new line of
Selby's—from 14.95



RHYTHM STEP
Luster Oalf in China
Doll Blue, Strawberry
and Nude. 14.95



TOWN AND COUNTRY
Black Patent. See the
new jet heels by Town
and Country.



**FLATS and
SPORT SHOES**
By Glamour Deb - Rob-
bie - and Others.
White Leather, sabot
stump, 4A widths, sizes
to 12. From 4.95

ROBLES
Tuxen slush toe. Brown
or Black. 11.95
Others from 11.95

hudson's

OPEN A HUDSON CHARGE ACCOUNT for all your purchases or use
our convenient layaway plan. Rear entrance just off the metered park-
ing lot.

New and bigger stock of Children's Corrective
Shoes by Shelly Music—shoes with long coun-
ters. Wedged Thomas heel, wide steel arch—also,
club foot shoes and Dennis Brown splints for
runt or sick.

Half-Size Figure Considered in New Fashions This Spring



The woman who wears half-size fashions can pick and choose from really handsome designs this spring. A two-piece costume, left, combines slim skirt with a hip-length jacket. Both jacket hip band and collar are accented with satin. Mint green coat, center, pairs slim dress with waist-length jacket. Lilac silk two-piece dress, right, has trim, self-buttoned jacket. Harlequin stitching trim hip band and collar. These are Paula Dean designs.

Shoe Plants Are Turning Out Entirely New Lines for 1961

By JEAN SPRAIN WILSON (AP Fashion Writer)

You can let down, shorten, pinch in or let out dresses to keep them from revealing their age, but you can't save your shoes, avoid the fashion obsolescence happily being perpetrated by the shoe industry for spring.

New low, heel and shank designs have got you coming, going and sideways, too.

Here is what will be on a fashionable foot this spring, according to the National Shoe Institute.

At a compromise to the round-toe holdovers, shoe designers have softened last year's wilchy pointed toes to ovals.

You will be in step in pumps with plunging throats, toes elongated an inch or so beyond the toe spread, and with side walls that give the shoe front a flattened or squared look.

You can expect at least three heel innovations: the plain, the cat's back, and the all-steel heel.

The high skinny heel with a steel spike through the center has given way to an all-metal one.

The super-strength permit-the-Louis heel to be shaved to a mere tenth of an inch at its narrowest point.

Blackened wooden heels on casual shoes are sculptured into variety of plain shapes, playing on shadow for design.

Another variation of the low wooden heel is carved drastically

Desinger Urging Women to Wear Flattering Outfits

NEW YORK, March 15 (NEA)—Jean Louis is a handsome couture designer who knows so much about women's figures he feels protective.

He designs for some of the world's most elegant women, but he believes that the first step in becoming well dressed is to be an individual. "Wear what you look best in," he insists.

"You shouldn't try to copy fashions you see a favorite actress wear. It isn't designed for you and if you feel embarrassed in your clothes you can't look good in them."

"You can't copy anyone else and be a star—and that goes for all women, not just actresses."

Jean Louis is strong for hats. "Men like them," he says. "You can always catch a man's eye with a hat. In the 20s everyone wore hats; then there was bare-headed period. Now they're coming back, because women realize that one minute after you come out of the hairdresser's you can be a mess. But real hats—hats that frame your face and give you a well-dressed look."

For you who will stick with solid shades are shoes combining not two, but three contrasting colors to set off your costume.

And because this is the rainy season in the garment industry, spring fashion-consciousness will also be your reason for shunning your extreme in strawberry red and pink combinations, the shoe people say.

Along with the usual fabric and leather, spring styles will sport repelle, lizard and snakeskin—and with sequins at that.

Wearer of Half-Size Dresses Not Forgotten in New Styles

NEW YORK, March 15 (NEA)—This is no longer true. For half-size dresses have blossomed into fashion. The half-size figure, either in a young or mature woman, is the one that is shorter-waisted and fuller than the average miss's 8 to 16 figure type. Half-sizes range from 12½ to 22½.

By and large, the woman who takes a half-size can stay in the swim of fashion. She can wear much the same styles that other women wear, except if they are designed with her figure problems in mind.

This spring, she will find the jacket costume done just for her. Jackets have widened shoulders to create the illusion of a slim hip line. Skirts are cut on easy lines with a slight fullness at the back. Sleeves are on the bias to slim down the upper arm.

Though there's no strong emphasis on any single part of the figure, the necklines are always cut for maximum flattery. Bodices are especially young cuts but offer discreet cut and clever design of tailing is used on the top half of the dress to call attention away from the hip line. Colors for these new fashions are as beautiful as some of them show width. Designs show for smaller sizes. There are as are that some women soft, clear lilacs; crisp black and like to tuck a suit beneath a coat; or that others prefer a wide skirt, white foul print; vivid blues and in mint greens.

Gay Colors Will Lead for Easter

NEW YORK, March 15 (NEA)—Day and brilliant colors will turn the Easter parade into a real daze for onlookers across the country this year.

One will be the traditional grays, navies and blacks of yesteryear. Walking in their place will be violet and sunny yellow, hot pink and clear green, vivid blue, raspberry and deep turquoise.

Colors in these many colors will display other fashion changes, too. The near-disappearance of the collar, for instance, the brief sleeves, the chunky buttons. These are essentially young cuts but offer discreet cut and clever design of tailing is used on the top half of the dress to call attention away from the hip line. Colors for these new fashions are as beautiful as some of them show width. Designs show for smaller sizes. There are as are that some women soft, clear lilacs; crisp black and like to tuck a suit beneath a coat; or that others prefer a wide skirt, white foul print; vivid blues and in mint greens.

Backs Bared for 1961's Swimwear

By United Press International

For pool-bathing, it's the deep back plunge in 1961 swimwear. California sportswear makers feature swim suits with no-backs or low backs, and dress designers carry the baredness into sunbaths. Helping to keep both the swim suits and sunbath dresses com-

Platypumps New for '61



Squared toe is a new shoe development for 1961. The Capetoe shoes, shown in New York, are of soft butter-cream kid. Because the toe resembles a duck-billed platypus, the shoes are called "platypumps."

SPECIAL INTRODUCTORY OFFER!



WALKER'S
453 Main Ave. East Twin Falls

Sharply Tapered Shoes Mark Teens' Fashions This Spring

Teens walk the fashion path this spring in sharply tapered leather shoes. Cool co-eds have round-toe shoes in favor of double and even triple pumps, reports shoe fashion service of Leather Industries of America.

With characteristic enthusiasm, high school girls have taken to the pencil-slim silhouette in a wide range of styles, colors and leather textures.

White dress and party pumps tend to be most pointed, casual

while cool greens, hot oranges and grained leather shoes. Black patent leather pumps are popular in afternoon and travel leather. There is acceptance of two and three leathers and more in overlays, patchwork or simple effects.

Though boys have loved this season, cut-outs and fancy patterns alternate with simple detail interest. "Fun" shoe styles with interchangeable straps, buckles and bows are particularly favored by the school crowd—but chiefly for class and casual flares.

READ TIMES-NEWS WANT AD

Patent... Exclamation Point by Palizzio...CREATOR OF THE NEW YORK LOOK

Punctuation for the start of Spring. Black, beautiful patent news, the smartest look ahead.

24.95 the pair.

patterson's SHOES

150 MAIN NORTH

talented go-togethers for day-time, date-time, play-time...

it's Tarpoon time by Bobbie Brooks

Fashion's best styles appear in our Tarpoon separates. Culottes, your favorite shirts, pleated and slim skirts and pants in every popular length. All perfectly color-cued in easy-care cotton plaids and solids. Lively spring color combinations; sizes 7 to 15. Aqua and bone, lilac and bone.

Roll Up Blouse, pepper pot plaid	4.98
Walkers, solid tarpoon	4.98
Straight Skirt, tarpoon plaid	8.98
Roll-Up Blouse, tarpoon-trim	3.98
Short Sleeve Blouse, solid broadcloth	3.98
Vest, tarpoon plaid	6.98
Culottes, tarpoon plaid	9.98
Pleated Skirt, tarpoon plaid	9.98
Copri Pant, solid tarpoon	7.98
Copri Pant, tarpoon plaid	8.98
Straight Skirt, solid tarpoon	7.98

New Spring JANTZEN LADIES' SPORTSWEAR NOW AT ROPER'S

New for Spring Evenings



Small gown for spring evenings is in white silk chiffon. This design has a big pink rose at the waist.

Wide Variety Noted in Style For Spring Evening Dresses

NEW YORK, March 15 (NEA)—There's no single "look" for evening dresses this spring. Rather, there are bubble skirts and bias cuts, tiered skirts and slim skirts.

There's just as much variety in the materials. While there's definitely more top than ever before, wrap-up technique may be used via a cape stole, a corset dipping way down in the back, or sleeves or squared-off ends with single straps.

Both the bias cut and the corset suggest the 1930s strongly. In heavy, fluid white crepe, a evening dress with bloused top and neckline is very definitely

the bubble skirt is favored by top designers for the fall. Evening gown, used in combination with a modified tank top, may be done all in one fabric, or a bodice or skirted silk to skirt with a "plain" skirt.

The woman who will take her evening dress shirt, skirt and blouse will have no trouble finding in the store this spring. She picks from a shoal tiered from 10 to 12 in lace so that it resembles a slim column.

Or she can have a bloused top, multi-banded dress with straight, multi-banded, narrowly pleated skirt. She can choose a very wide skirt with matching cape.

READ TIMES-NEWS WANT ADS

Spring Gives New Lift for Outdoor Life

In the spring the family's fancy turns to outdoor living, with plans to create or add to a "family room" on the porch, patio, terrace or lawn.

Lightweight, weather-resistant furniture for spring and summer outdoor enjoyment is growing in abundance and handsome appearance. Dining sets, seating and occasional pieces make elegant use of colors and materials, from plastics to reswood and aluminum.

In fact, more and more pieces of furniture are being designed to double for either indoor or outdoor use, so that the family can enjoy them the year around.

Outdoor living means outdoor eating, too. Cooking and serving equipment can be chosen either for dual indoor and outdoor use, or especially for the outdoors.

Most families will probably prefer a combination of the two. For instance, colorful cooking utensils, plates and glassware are beautiful style and stainless steel tableware are both practical and presentable indoors and out.

On the other hand, special equipment for the barbecue is part of the fun of eating outside—even if it's only a bright apron for Dad to wear when he's the chef.

Hangbag Has New Finishes And Textures

Fashion comes to hand this spring in a new collection of leather and handbags and finishes.

On the surface, spring handbags range from smooth and suede leathers to textured finishes, waxy patinas and rich bark patterns.

Patent leather is seen in a variety of handsome and roomy shapes.

Leading silhouette of the spring is the "east-west" bag, a long, slim, horizontal handbag—usually seen in smooth leather. Its simple lines blend quietly with this season's fluid costume lines.

Other shapes vary from a small suede leather clutch for late day or evening to smooth and grained leather pouches custom-finished with gold hinges and handles.

"Woody" textured leather finishes make a bid for popularity with suits and late-day costumes. One newmaker, reminiscent of the familiar vanity box handbag, features a "bustop" opening and spacious interior.

In bright, light and vivid colors, it serves as an eye-catching costume highlight.

There's fashion news in shaped handbags. Big bow-type handbags in light leathers for daytime show metal-plated ceramic flares of all nations, scroll-worked names of metal, or foreign greetings.

Toile and shoulder-strap bags appear in "soft" and "scuff" resistant leathers in some of the "brightest" spring colors yet. Light colors in the orange family predominate.

Bright, jeweled clasps appear on vivid-colored suede cocktail bags with tasteful detail.

FOR SPORTSWEAR

Young spring versions of the culotte are mostly intended for sportswear, and come in "bandstand," above-knee lengths.

New Wools With Lacy Lightness Are Featured for Spring



Featherweight woolen fabrics with a really lacy lightness are used for these spring fashions. Off-white tweed is plaided boldly in black, left, in this three-piece ensemble center. Jacket has elbow-length sleeves. Coat, right, with blossoms back is a contrast with light-colored tweed. All fabrics are British wools.

Color Is Spark For Excitement In New Styles

Color is the spark that kindles a blaze of excitement in spring fashion.

Strawberry pink, lemon yellow, poppy red, brilliant blue, vivid turquoise, spicy green, pungent orange, glowing gold, blooming lilac—if it's in the spectrum, it's a fashionable color this season.

Perhaps a slight edge goes to the many shades of vibrant pink, but colors of all kinds are abundantly available.

Since simplicity keynotes the subtle spring styles, a woman can, by indulging her own tastes in the selection of color, give her wardrobe both individuality and fashion.

Colors are both hot and cool. There are plenty of pastels, but usually they're clear rather than misty.

The neutral-black navy gray, beige, white-black newest when mingled with color. Bright colors go over dark shades, flowered silk coats cover navy or black dresses.

Three-piece ensembles often feature overtones in vivid prints or contrasting solids.

Free-wheeling color combinations are part of the new spring with turquoise or orange, with lilac, for example. Hot colors blaze in bold checks, "crazy" stripes light up prints.

Go-Togethers Are Used for Home Touch

"Go-togethers" are favorites of the American woman for her own wardrobe, and now she is finding the same idea increasingly helpful in dressing her home.

Manufacturers get together to provide drapery fabrics and wallpaper designed to mix and match just as those indispensable sweaters and blouses, skirts and pants do. Even carpeting and other floor coverings are part of the planning.

This season the idea is carried into upholstery fabrics. Several patterns and textures are offered in coordinated colors, plus appropriate accent colors. For instance, there are striped fabrics accompanied by coordinated plaids, to match the stripes.

These home fashion go-togethers show a lively interest in color, with elegance favored in patterns from dramatic—abstracts—to authentic early American designs. Upholstery fabrics, soft and luxurious, are often enhanced by quilting and embroidery.

Elegance is developed through use of hues with a royal tradition—lilac, lavender and deeper purples—as well as—pink, turquoise, sage and avocado greens. Neutral hues are not neglected but lightened, with white, off-white and

Range of Color, Beauty Noted in Bag Accessories

Accessories for the handbag develop a new range of color and beauty for spring.

Coordinated wallets, eyeglass cases and cigarette cases match or complement the handbags.

To use with a black handbag, there are accessories of printed miniature tapestry or brocade as well as authentic redempt and embroidered silk.

For the tailored or sports bag, copies of favorite spectator sport trims are shown. These include pinked edges with perforations, tiny hock and bow effects, and combinations of colors and textures.

Pastel leathers in new purse accessories have special trims that pick up the detail of a special handbag, such as flowers or stitching.

LINGERIE COLOR SURE

Lingerie takes on more color for spring. And it's coordinated: bra, girdle and slips all match. Favored colors are peach, aqua, beige, pink and pale blue.

Swimsuit beige among the most frequently seen.

Accompaniments to the elegant look are damask and jacquard-upholstery fabrics, which harmonize with softer lines in new furniture for spring.

New Silhouette for Spring to 'Date' Any Remaining Clothes

NEW YORK, March 15 (NEA)—Even if you should have a chemoise or two left in your closet, don't haul them out this spring. You'll be strictly dated.

For the new silhouette (Democrat call it the "Jackie Kennedy look") has nothing to do with the sack. The sack was exactly that, from neck to knee.

But the new spring look evolves from the silhouette of past seasons, actually. It hasn't sprung full-blown from any one source. All top designers have their interpretation of the relaxed or easy silhouette.

Characteristics of this silhouette are the dropped waistline, the set-in belt, the gentle fit, the narrow but artfully cut skirt. Dresses often are sleeveless and coats are collarless, with elbow-length sleeves.

Fabrics are the lightest and latest wools ever. Thus, they adapt beautifully to ensembles. Even the overblown for a three-piece.

SWEATER VARIETY

Summer sweaters in pullover and cardigan styles are winning more new friends and the assortment of spring materials, styles, and colors are staggering the imagination. They range from golf jacket to cardigan.

Fabrics are the lightest and latest wools ever. Thus, they adapt beautifully to ensembles. Even the overblown for a three-piece.

Accompaniments to the elegant look are damask and jacquard-upholstery fabrics, which harmonize with softer lines in new furniture for spring.

Swimsuit beige among the most frequently seen.

Accompaniments to the elegant look are damask and jacquard-upholstery fabrics, which harmonize with softer lines in new furniture for spring.

Accompaniments to the elegant look are damask and jacquard-upholstery fabrics, which harmonize with softer lines in new furniture for spring.

Accompaniments to the elegant look are damask and jacquard-upholstery fabrics, which harmonize with softer lines in new furniture for spring.

Accompaniments to the elegant look are damask and jacquard-upholstery fabrics, which harmonize with softer lines in new furniture for spring.

Accompaniments to the elegant look are damask and jacquard-upholstery fabrics, which harmonize with softer lines in new furniture for spring.

Accompaniments to the elegant look are damask and jacquard-upholstery fabrics, which harmonize with softer lines in new furniture for spring.

Accompaniments to the elegant look are damask and jacquard-upholstery fabrics, which harmonize with softer lines in new furniture for spring.

Accompaniments to the elegant look are damask and jacquard-upholstery fabrics, which harmonize with softer lines in new furniture for spring.

Accompaniments to the elegant look are damask and jacquard-upholstery fabrics, which harmonize with softer lines in new furniture for spring.

Accompaniments to the elegant look are damask and jacquard-upholstery fabrics, which harmonize with softer lines in new furniture for spring.

Accompaniments to the elegant look are damask and jacquard-upholstery fabrics, which harmonize with softer lines in new furniture for spring.

Accompaniments to the elegant look are damask and jacquard-upholstery fabrics, which harmonize with softer lines in new furniture for spring.

Decorous BUT Daring

Wend your way charmingly through spring and summer in Acoen's decorated darling. Curving silhouette pump is highlighted by the beautiful merger of a button and bow. Accent triple needle points the toe... slims the sky high heel.

Roxanne White or Bone, 12.95

Van Engelen

your EASTER costume

Where else but at Mayfair could you choose your entire Easter outfit with such firm knowledge that everything... coat, suit, dress, down to the last tiny accessory... will be so fashion perfect and utterly becoming? Our racks are full, our shelves overflowing! Come! See! Revel in our Easter collections!

the Mayfair shop

Ideas, Opulence and Color Join to Give Beauty and Comfort



Low, deep seating and button tufting are spring style notes for the home, in this sumptuous sectional and pair of little barrel chairs. The sectional is built almost down to the floor, with creased legs, and has deep, button-tufted seat cushions. Chairs have button-tufted back. Furniture by Valley.



Towels do double duty in this attractive kitchen. Hemmed at the top, they add a note of color at the window. Harmonizing pattern, colorful, too, serves at the sink. Towels for window arrangement are clipped to rods. Patterns, "Compote" and "Mosaic," are by Morgan-Jones.



Combination living-bedroom takes its theme from draperies in fashionable soft shades of avocado and antique gold. Coordinating solid shade of antique gold is used for sofa cover, with avocado carpeting. Background, Waverly's "Madagascar" print, with sewing area, from Singer. Floor pillows might be added, covered in coordinating fabrics and with slipper slippers inserted on a Singer Silent D-Master.



Limited space can become a useful, pleasing bathroom vanity as illustrated here. Note how mirror and lighting have been employed to attractive, space-developing effect. Counter and adjoining wall surfaces are paneled with Marlite plastic-surfaced hardboard in new marble pattern.



Coordinates that make decorating easy are gaily-printed bedspread, matching gingham-plaid draperies, "Daybreak" bedspread, draperies in cotton fabric of cotton and Avieson rayon.



Kinky design note for door is this knob and escutcheon, featuring a lion's head. By Schlage Lock company.

Speakers Noted
RICHLIFF, March 15-Speakers Sunday evening at the Richfield LDS sacrament meetings were Walter Stevens, Mrs. W. T. Flavel and Mrs. Clifford Ward. Prayers were offered by Howard Campbell and Leon Chapp.

OFFER STYLE
There's style choice in cotton knit skirts for little boys-pullovers, V and crew necks, fashioned collars and the poncho look, with a V front and back.



Charm of the past comes to modern living in early American furnishings. Complimenting Colonial design of a four-poster bed and triple dresser, carpeting captures American hand-crafted, hooked effect. The carpet, in deepproof wool, with interwoven colors, is Lee's Mountain Maple; the furniture is by Baumritter.

Fashions May Have Hints of Flapper Style

BY JOY MILLER
AP Women's Editor

"This is our ideal," gushed a woman's magazine in the "Twenties." Gone are the busts, the hips, the curves of yesterday. Woman's figure is the reclamation point of the world!

Today, as if women didn't have enough to ponder about with collars, the Jackie look and liquid diets, along comes the Paris haute couture in a flap about the flapper.

It's going to be the Roaring Twenties all over again, whoop some, exulting, gleefully eyeing the flat-bottomed, low waisted, flare-then silhouette dominating the Paris collections.

But cooler—if unshingled—heads are bound to prevail. Most experts agree fashion is geared to go only forward. It can be seduced with nostalgia, influenced by the past, inspired by a recollection in Paris, but what emerges is a new silhouette designed for the contemporary woman.

If we women are going to be flappers, we'll be new, 1961 version of the same magazine described thusly:

"... Byones plucked to a throat, hair skinned severely back—smooth, straight and shiny—face hard and brilliant as a poster—a portrait of fashion today. Only three decades from the Age of Innocence to This Freedom!

"Everyone is so engagingly frank... ladies restore their connections at the table between each fox trot and make it snappy" is the latest word.

We're now more than three decades from That Freedom. And you can bet your old tin lizzy that the movies of the Twenties—mod and manners—will be going to look pretty funny to us on television, flapper revival or no flapper revival.

NEW FABRIC IDEAS
Take any fabric—cotton knit, for example. It can become a smart and comfortable coat, when it is laminated with new multicellular plastic foam.

READ TIMES-NEWS WANT ADS

Women Pleased Over Gym Craze

The gym craze is really spreading. And it's about time. Women who have never in their lives before attempted an exercise of any kind are suddenly starting to walk down flabby arms and thighs, trim down waistlines and hips.

If you have found that you just will not exercise at home, then go to a gym and have the company of other women. Lots of women like the feeling of companionship.

Six Grandmothers

Buhl, March 15-Deborah Susan Bern, 18-month-old daughter of Mr. and Mrs. Richard Bern, Kemper, has six grandmothers in addition to concluding the fifth generation on her mother's side of the family. Her mother is the former Jackie Richmond, Buhl.

The youngsters' grandmothers are Mrs. Glenn Hutchinson, Buhl, and Mrs. Darrell Bern, Ontario, Ore. Mrs. John Rogers, Buhl, and Mrs. Ann Richmond, Buhl, are her great-grandmothers, and Mrs. J. S. Bern, Ontario, Ore., and Mrs. Pearl Robinson, Twin Falls, are her great-great-grandmothers.

Feminine Blouse



Embroidered leaves and berries outline on this feminine overblouse, in Springmaid's Dora cotton. It is a Macchore Classic.

College Choir Slates Concert

BURLEY, March 15—The Chapel choir from Northwest Christian college, Eugene, Ore., will present a "Program of Singing" in the Burley First Christian Church, at 8 p.m. Monday.

The choir is an ensemble of 11 men and 11 women's voices directed by Prof. Maude Slack Woodyard. Professor Gilbert Kistler is assistant director and Marian Brown is accompanist.

The program will include three groups of sacred choral numbers. The composition includes traditional, folk songs and modern arrangements. Members of the chapel choir are students who are preparing themselves for service in the churches, either in church vocations or as volunteer workers.

Professor Woodyard specializes in vocal music and choral directing. She gives individual lessons in voice and directs the choral group of some 10 members, which presents a program of classical sacred music annually during the college commencement season.

A member of the ACC faculty travels with the choir and speaks briefly during the concert about the place of music in the church and the program of education offered by the college. The program is open to the public. A free will offering will be taken to defray traveling expenses. The Rev. Emil J. Heston, local pastor, says.

and Mrs. Joe Durfee and Mrs. Mrs. Curtis Durfee made a business trip to Boise.

Good Headway



Ideal for business or evening wear is this low-crown, narrow brim hat with pinwheel crown. Proportioned to complement the trim lines of the new spring suits. Hosiery \$2.50.

Luncheon Held

FILED, March 15-Gail Montgomery, Margie Smith, Charles Nicholson and Kenny Flora, Flavel, cheerleaders, attended a cheerleaders' luncheon at the Rogers hotel, Twin Falls.

New ideas for pep assemblies and different ways to help support the team were exchanged. Paul Olson, tournament chairman, gave a talk on sportsmanship.

COLLARETS LOOK

Many fashions abound collars altogether; others have hand or ring collars. For contrast, there are ultra-wide collars.

Almo News

ALMO, March 15-Guests of Mr. and Mrs. Floyd Knight were Fred Wheeler and Nelson Stevens, Salt Lake City, and Latte Wheeler, Ogden.

Mr. and Mrs. Leo Durfee, Almo.

COAT DUTTS combinations for spring. They may be half solid, half checked, or a house logo and smooth wool. COATS 175 new colors and textures.

CARPET for every Budget by

Gulistan - Firth - Collaway - Magee

- 5.95** FAT CHAFF—Textured long staple cotton in 14 soft colors per yard
- 6.95** NYL-PUFF—A fluffed DuPont nylon carpet in 13 soft colors—ideal for bedrooms per yard
- 7.95** ROSELLE—A carpet with the modern Karakul look. 3-Ply, tightly-woven, all-wool looped pile per yard
- 8.95** MARQUE—A textured all-wool tufted carpet in plain and tweeds. An exceptionally good carpet for the money per yard
- 9.95** SUGAR CUBE—One of 1960's best sellers! Made of wool and nylon in contrasting heights of pile—you can't go wrong on this number per yard
- 10.95** NOCTURN—A brand-new carpet with monochromatic color charm. Heavy textured looped pile of the very best wool yarn per yard
- 11.95** STAUNTON—All-wool tufted carpet with a new look—random sheared high pile with a low supporting loop pile per yard
- 12.95** GRENADE—A 7½" low Axminster—none finer in a wide range of patterns, including attractive sculptured designs per yard
- 13.95** PEDIGREE—An all-wool sculptured loop pile Wilton—completely modern, yet redolent of the gracious charm of the past per yard
- 23.50** ROYAL RENAISSANCE—All-wool Wilton with classic beauty and grace that cannot be equaled—truly craftsmanship at its best per yard

Carpet Selection of Several Hundred Different Numbers!

In Wool - Nylon - Cotton - Acrylic

Kenverl's

348-Addison W.

Twin Falls Phone RE 3-3169

at **Iris'** you'll find

ELEGANT VARIATIONS ON **Spring Fashion Themes**

We are proud to offer you a fine selection of beautiful pure silk shantung Costume Suits by Andrew Arkin. For our petites, Abs Schrader and Alper Schwartz.

Our Mr. Morris and Anne Fogartys have been a little slow to arrive this season but we now can offer you a fine selection in both of these wonderful lines and at a new low price. Prices start as low as \$25.95.

We have always carried a large stock of Jerry Gildens, McArthur's and Murray Millman's for those who want a fine dress reasonably priced. These come in cotton, pure silk, jersey and cotton knit.

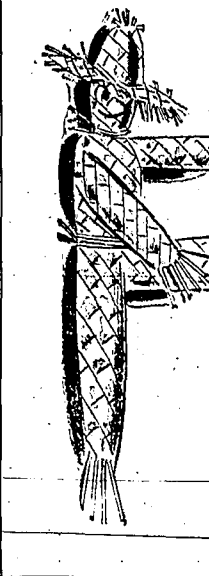
We have just completed our new Sportswear Department and now can offer you a fine selection in Frank Lee Golf Wear as well as Manhattan Blouses with a skirt and shorts to match. This is the first time Manhattan has put out coordinates.

We have beautiful Graduation and Party Dresses in Topsey, Rendezvous and Sportlane Deb. These materials are fine and easy to care for.

SHOP US... I Am Sure You Will Find It Worth Your While!

Iris'

Country Cobbler's Open Season On Straws



Vogue smart shoes

SUNNY CASUALS THAT ARE "NATURALS" FOR YOUR CAREFREE LIFE...

Light and Cool as a Spring Breeze! So flexible, you hardly know they're on! Delightful footwear for all the lazy days of Spring and Summer when "taking-it-easy" is uppermost in your mind.



NEXT TO LLOYD'S JEWELRY

8.95



6.95



4.99

Paris-Headlines



Thick beige and black felt gathered in three layers around the face and headed by a black leather la French milliner fasciata for spring.



Was there? This huge mushroom hat keeps the sun off the face. Designed by Jean Barthelemy, it was presented in Paris during winter shows.

Spring Bride to Get White Choice Of Gown in 1961

Current bridal collections offer the widest selection for the spring bride.

Personal elegance is retained, along with the air of new fashion. Fabrics are luxurious — lace, organza, tulle, silk, satin, and so on and silks of all kinds and styling is dramatic.

Boas and gowns with bouffant or bell-shaped skirts take varying trains, some of which are removable. In fact, the convertible aspect of wedding dresses is notable, making many suitable for a grand ball as well as a wedding.

A lace train, for instance, is removable to become a cape. A head of lace comes off to show a solid bodice.

Fashion notes include the detachable tulle. Back interest for wedding gown is developed through fashionable cow neckline, highlighted by a silk organza cabbage tie.

A separate lace redingote covers the wedding gown, while the white aspect of wedding dresses is notable, making many suitable for a grand ball as well as a wedding.

COAT COSTUMES Dress-plus-coat vies with dress-plus-jacket for spring popularity. Present fashion approach is to combine two or more colors, or just and solid.

"Caprice"



"Caprice" is the fitting name for this feminine bathing suit, hand-worked while shown by the Donna Vittoria fashion house of Rome and presented at showing of spring and summer fashions (AP wirephoto).

Knits Give Perfect Solution For Chic Dresser on Budget

NEW YORK, March 15 (NEA)—For the girl who wants to look chic on a budget, this spring cotton knits provide the perfect solution.

For they've been given new styling.

Limitation Noted About Cashmere From Test Tube

By The Associated Press Today men turn fibers out of test tubes that look and feel like cashmere but their limitations have been noted.

They can do nothing to match the romantic lure or long wearing quality of luxury hair or from an Asia goat's belly.

Not much else in the feminine wardrobe today has a history that crosses as many centuries, touches as many cultures and walks of life as something cashmere.

"That is why men like Arthur Dery, president of one of the country's largest cashmere garment manufacturing companies, flinches not a whit at the mass production and low selling price of chemically fuzzy fibers."

"A cashmere sweater is a prestige item like a good milk coat," he says. "You can get something cheaper to look like but nothing that is as alive, or drapes as well, or wears as long."

Spring Fashions Feature Colors

ST. PAUL, March 15 (AP)—The 1961 spring fashions are full of red, vivid and daring colors. They before that April appear in the dress shops, a University of Minnesota home economist has a word of warning.

"Your personal coloring is the key to choosing becoming color in your clothes," according to Mrs. Charlotte Baumgartner.

When choosing any piece of clothing, Mrs. Baumgartner suggested, "consider what will best suit your own skin, hair and eyes."

"The key to color fashion," she said, "is to emphasize the desirable characteristics."

For instance, you can make blue eyes more incisive by wearing a blue dress slightly more grayed than are the eyes. Or produce the same effect by wearing a small amount of the same hue if it is more intense. For example, try a violent blue necklace.

ling and the same lovely colors used for far more expensive fashions. Some of them also have a special touch which eliminates sagging, tearing and shrinking. And many of them are partially or fully lined. (This is a point to check carefully when you shop particularly when buying pants or slim skirts.)

This spring, the violet and hot pink shades are done in patterned and solid color knits. There are plaids, stripes, lacelike effects.

In putting together a wardrobe of cotton knit separates, you have a free hand in mixing and matching colors. Or in contrasting patterns with solid shades. You also have an opportunity to acquire clothes with a perfect fit. For should you take a size 12 jacket or shirt and a size 10 skirt, you can buy both that way, thus eliminating need for expensive alterations.

Cotton knits are washable. But if you bring to the school of thought that sends summer clothes to the dry cleaner, you'll have your cotton knits dry cleaned. They'll retain a smooth look and brilliant color far longer.

Color Adds Zest To 1961 Clothes For Small Boys

Color adds new zest to little boys' clothing for spring '61. Lightweight fabrics, especially seersucker or the seersucker look, gain ground.

Bulls lean toward the try, with natural shoulder. There are worsteds, worsted blends, wool blends and all-wool gingham, white lightweight cotton blends look to after Easter.

Colors seen here include medium olive, gray, black, and blue compounds, in solids, muted glen plaids, checks.

Solid all-wool blazers top the sports jacket list, in olive, blue or putty. Madras guinea, strong plaids, checks, stripes and new baubles show up. The white sports coat is new.

Seersucker look marks both jackets and separate slacks. Some other fabrics for slacks are gabardine, tropicals, polished cottons, cord, poplin, in tan, black, bone, olive, blue tones, stripes and plaids.

Sport shirts for little boys appear in a variety of ice cream hues, as well as olive and gold. Laminating process with plastic foam turns virtually any fabric into



These cotton knit fashions for spring are done in clear, lively, vibrant stripes, colors and for wing collar shirt. It's worn with colors and often combine a stripe, print or plaid with a matching slim cotton knit skirt. Color for both is hazy. The Chanel solid color. Slip and slim-digree pants, left, are worn with over-fluence shows, right, in jacket and skirt of plaid woven cotton. Shirt that has subtle striping. Color is time peel. Candy cane pepper. Colors are blue and green. All fashions here are by Altus.

New Furnishing Looks Important

By AP Newsfeatures New home furnishings look important, even in lower-priced home accessories, one pleasing feature of the recent International home furnishings show in Chicago.

Well accessories are an example. Cheap prints, gaily brackets, and planters have been replaced by handsome wood, metal and tile wall accessories in 4th century, modern or classical designs.

Old tavern signs, cookie cutters, and silhouette prints are found in colonial settings. A pair of hand-painted wooden plaques shows old Chinese figures on a background of antique silver leaf.

Lightweight, warm outerwear for the boys.

READ TIMES-NEWS WANT ADS

How to Look Chic on Small Budget



These cotton knit fashions for spring are done in clear, lively, vibrant stripes, colors and for wing collar shirt. It's worn with colors and often combine a stripe, print or plaid with a matching slim cotton knit skirt. Color for both is hazy. The Chanel solid color. Slip and slim-digree pants, left, are worn with over-fluence shows, right, in jacket and skirt of plaid woven cotton. Shirt that has subtle striping. Color is time peel. Candy cane pepper. Colors are blue and green. All fashions here are by Altus.

EASTER IS DRESS-UP TIME for BOYS!

AT ROPER'S All Wool Suits

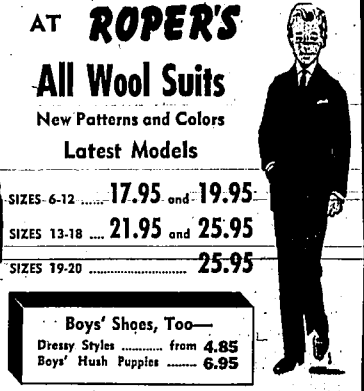
New Patterns and Colors Latest Models

SIZES 6-12 17.95 and 19.95

SIZES 13-18 21.95 and 25.95

SIZES 19-20 25.95

Boys' Shoes, Too— Dressy Styles from 4.85 Boys' Hush Puppies 6.95



SPORT COATS

All-Wool, Wool-Orlon Wash'n Wear Dacron-Cotton

SIZES 6-12 10.95-13.95

SIZES 13-18 11.95-19.95

SIZES 19-20 12.95-19.95

"Model" Wash'n Wear WHITE SHIRTS Convertible Cuffs Sizes 6-12 12½-14½ 2.98

NEW PICTURE PATTERN Sweat Shirts

¾-Sleeve boat necks and long sleeve. Band collars. Sizes 12-18.

ONLY 2.49

Sport Shirts

Sedgfield 1.98

Lanier 2.98

Lancer Jr. 3.98

Dress Slacks

- Wash and Wear
- Dacron/Wool
- Rayon/Acetate/Fabric

Sizes 6-12 4.98-7.95

Sizes 13-20 5.98-9.95

Slims 4.98-7.95

Huskies 9.95

Forah Rambl-Cord 3.98 and 4.98

Forah "Gold Stripes" Nylon Reinforced, Longer Wear 4-12 Reg. & Slim 2.98

13-16 Reg., Slim and Huskies 3.75

Knit Shirts

- Rob Roy
- Puritan
- Jantzen
- Don Moor

1.98 and 2.98

Expert Free ALTERATIONS!

CANDERSON'S

EASTER SHOES FOR THE ENTIRE FAMILY!

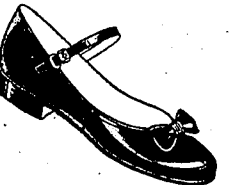
Select Your Easter Shoes for the Entire Family from Our Famous Brand Selections.

STREET FLOOR



CHILDREN'S WHITE "PIGMYLION" WASHABLE, 5-8, 8½-3

3.99 & 4.99



CHILDREN'S PATENTS Choose from Many Styles

3.99 to 5.99



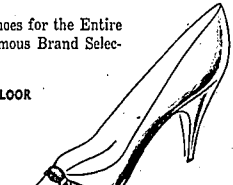
MEN'S DRESS OXFORDS by BRISTOL PARK

9.95 to 16.95



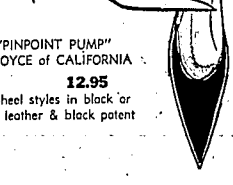
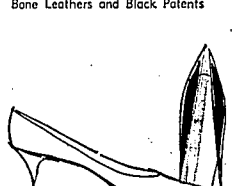
BOYS' DRESS OXFORDS. Antique Brown or Black

4.99 to 6.99



"COUTURIER" by RED CROSS

13.99



"PINPOINT PUMP" by JOYCE OF CALIFORNIA

12.95



Mid-heel styles in black or white leather & black patent

White Lustre, Black and Bone Leather.

"STRAP-HAPPY" by JOYCE OF CALIFORNIA

10.95

If it's from ROPER'S... It's Right!

ROPER'S

Twin Falls • Buhl • Burley • Rupert

BOYS' TIES

Bow Ties 75c

Ready-tied clip-on ties \$1

New narrow ties \$1

Slimmer



Tapered comfort is featured in this blucher in supple smooth black leather. Refined stitching curves far up the back to emphasize the slender lines. "Southern tie" and slim leather sole add to the long thin look.



This high-riding slip-on shoe, grained, burnished brown leather. Features a wide "lack" stitch.



Just right for casual wear are these two-rye shoes in tan leather. Soft and supple, slim leather sole "breathes" in fresh air.

Slimmer Line Reported for Shoes of Men

Men put their best foot forward this season in slim, trim shoes of spring-weight leathers. Jaunty is the word for masculine footwear fashions as new leather shoes shed ounces and styles taper down. Reports the fashion service of Leather Industries of America.

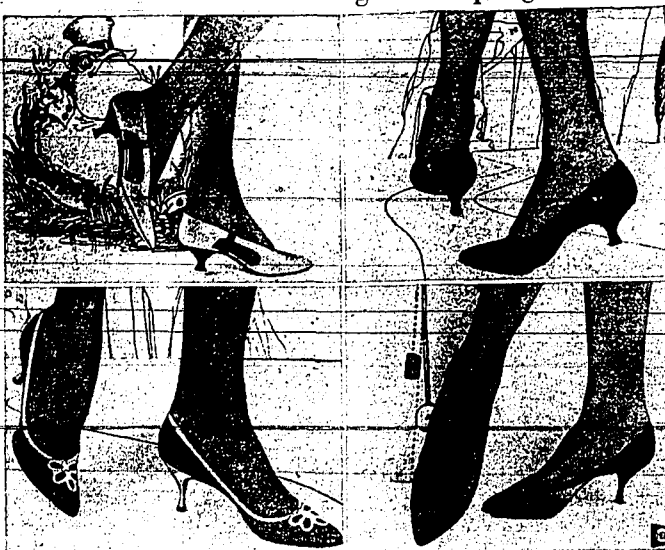
The slim, sophisticated look at ground level — you see it from head to toe in Ivy and Continental fashions — is achieved by tapering the forepart of the shoe. By no means "needle" sharp, the long-line silhouette of men's dress and casual footwear still accommodates the masculine foot in complete comfort. Lighter, more supple leather guarantees flexible ease in walking and full support in standing.

Slender shapes are made to look even trimmer through the use of inventive detailing. Double rows of stitching carried further up the vamp, "shaped" throats, higher lumens and decorative stripes or double crests tie the shoe "stretch" the look of the shoe without sacrificing foot room. Light, ultra-pliable leather soles are cut close to the shape of the shoe to emphasize its slim contours.

The slip-on — leather — is favored style. Handsome and comfortable in springweight smooth and grained leather, dress slip-ons underline the neat trim appearance of the young man on his way up in the business world. In just-as-light brushed or smooth leathers, the casual slip-on takes its ease in the living room, on the patio or outdoors. Elastic goring which offers vertebrae, snug fit is a leading style.

The high-riding look is widely seen in slip-ons — some with high square lumps.

Sleek Little Shoes Designed for Spring Use



The sleek, elegant and lightweight shoes of spring are poised on shapely heels. Delicate pump, upper left, gets shiny black patent leather trim. Lace collar pump, upper right, has fringe of patent leather. Little princess heel in patent. White kid overlay, lower left, lends a lady effect to this shiny pump with slim heel. Pump with open, airy look, lower right, has kid stripes in a lattice effect.

Comfort Gets Role in Furs In New Style

Pure in a variety of pelts, all butters — and lengths — are more than just the dictates of fashion for spring. They are designed with an eye to wearing comfort as well as elegance.

Dramatic, or small and versatile are scarves, ascots, mile long boas and stoles, but the newest trend is for short fur pieces in capes, boleros and jackets for day or evening wear.

Little formal jackets and capes or "hus-me" smaller stoles with capelet backs are ideal for slim of full skirts. Jackets are seen in different lengths because many designers firmly believe that each woman should be able to select a jacket in the best-suited length to fit her own particular way of life.

Pure in color — natural or new — offer a wider selection of pelts than ever before. In the natural form, of course, there are mink, ermine, chinchilla, sable and fox.

Natural Alaska fur seal now is sheared to achieve a pastel amber color with luster. Of the dyed furs, black or mocha dyed South-west African Persian lamb and white or beige American broadtail are among the most popular.

Generally speaking, the fur collar.

Shoes for Boys In 1961 Follow Fathers' Styles

In boys' shoes for spring, the fashion follows in fathers' styles. In 1961, it's the same old story — the slim, tapered toe box and brushed leathers.

For older boys there are styles, and the slim, tapered toe box styling are highlighted. One is the slip-on with the high crease, the other featuring flat seam detailing. The look for leisure. Another approach is the elasticated slip-on with a thin goring, placket closure and "house" top.

Burnished browns, with green undertones, and a wide variety of colors are marked for color interest. Or, youngsters may choose leathers in matte or smooth finish, in black or tan in grained or brushed leather.

FLAIDS, CHECKS. Checks in spring fashion are expanded, colorful, flared or large and open.

Sections stress furs for utmost luxury and lasting charm. Furs so expensive in their design that they are not limited to a single strand but will go on throughout the year, looking like pretty hair, and are usually characterized by a generally speaking, the fur collar.

Girls to Have New Styling, Bright Color

Fresh styling and bright colors combine in little girls' spring shoes for school, dress and play.

Construction is kept reasonably light, with newly-developed leathers supplying flexibility and gentle support, notes shoe fashion service of Leather Industries of America.

Rounded toe although it gives way to slim, tapered shape. Blended shell pumps resemble mother's "needle" toe footwear. Little girls' shoes are full-fashioned until after their feet are accommodated — then the toe is tapered.

Styles include alp-on, pump, swivel-strap shoes, boot straps, Mary Janes and eyelet ties. Shaped heels add to variety and interest. Black patent leather — in Mary Janes, shell pumps or "T"-strap shoes — shines brightly. Deep colors are popular and practical for early Easter.

Light, high colors in brushed and smooth leathers brighten the spring season, and there are grained and smooth leather shoes in white and a range of bone tones. Leather and patent leather are equally favored for party and dress-up occasions.

Look, Not Line, Being Changed In Foundations

Since there is no extreme change in the outerwear silhouette, foundations vary in look rather than line this spring.

Girdles, brassieres, corsets and bra-lettes gain in prettiness. They're done up with frills which tie the figure so as not to be revealed under dress, with corded straps, with elegantly detailed laces and satin appliques.

The fabrics are sheer, the colors either clear and bright or subtle and pale. Turquoise, mauve, apricot and a range of pinks join the basic beige, white and black.

Drop-dipping cut necklines and "one-shoulder" fashions have focused attention on improved designs in bras without straps and on backless bras with narrow straps that attach to the girdle in back so that cross and anchor at the waistline.

Also highlighted in most foundations collections are lingerie, but controlling, long-legged pantie girdles and smooth corsets.

COLORS BRIGHTEN. Hot orange, gold, green, carnation pink, air-force blue, all in vivid hues, make news in lustrous highly polished tones for sport shirts. A process called mercerization makes fine cotton fabrics more acceptable to the new bright dyes.

READ TIMES-NEWS WANT ADS

Shoe Style Notions Change On Color, Height of Heels

NEW YORK, March 15 (NCA)—Unmistakably, notions about shoe fashions are changing. Black, brown and navy no longer make up an adequate shoe wardrobe. But it isn't just color that has changed.

Ideas about heel heights are shifting, too. Low and medium heels can go dancing these days, other spring but with this variation, some toes are slightly squared off as in an 18th century shoe. And in some shoes, this air is heightened by a flattened vamp to produce a delicate, elegant look. For evening, the needle toe is queen. This produces a shoe whole with peanut shades.

Colors once considered special have become wardrobe basics. The red shoe, for instance, is basic with navy, color black, navy, white, pink, gray, orange, beige, off-white and the light, bright shades of brown are all basic; so is yellow.

This is a spring when heels contrast in color with the rest of the shoe. As for height, the prettiest new heel height is the two-inch.

SEERSUCKER GAINING. Seersucker will achieve far greater acceptance this spring and summer in sports jackets, casual suits, slacks, walk shorts and sports shirts. Many of these cool, crinkly fabrics are made in wash-wear construction.

ACCENT ON COMFORT. Glove leathers, supple smooth and grained leathers emphasize the comfort of casual shoes.

READ TIMES-NEWS WANT ADS

won't wrinkle — ever!



Thermo-bathed®
VAN HEUSEN®
Century Vantage

—This shirt has everything! The soft Century collar with its patented, one-piece construction won't curl or wrinkle... ever! Vantage fabric is perfected wash-and-wear and also thermo-bathed to keep its fresh pressed look all day.

Wrinkles just keep vanishing. Easy care... fine tailoring... yet it costs only

5.00



Now,
"EVERKREASED"™

Trousers on all Kuppenheimer Lightweight All-Wool Suits

Thanks to our exclusive "everKreased" process, the vagaries of the weather can no longer affect your appearance... or that of your Kuppenheimer suit. The trouser crease is in to stay... regardless of rain, heat or wear... it remains intact. Even in summer's sweltering days you'll look and feel fresh as the proverbial daisy... in your "everKreased" Kuppenheimer. From \$95

Really New

footwear's greatest comfort-style combination!



19.95

FREEMAN CONTOUR CUSHION SHOES for Men

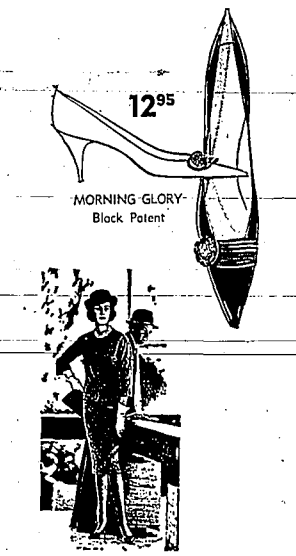
For Key Moderns who prize comfort... new, never-before comfort sensation in superbly styled footwear! Exclusive Freeman design combines comfort-curved heel and soft buoyant foam insole... a combination that molds naturally to your foot, makes every step pure pleasure! Stop in... feel for yourself!

CONVENIENT REAR-OF-STORE PARKING

SHIRLEY-MENDIOLA

OPEN FRIDAYS—UNTIL 9

Williams SHOES



12.95

MORNING GLORY—Black Patent

EXCLAMATION POINTS!

Soft, Soave, Supple little heels for brightening up the city scenery... for lightening flashes around Suburban Sprigmy... springtime... with the inimitable Joyce touch you love. Very choice!

joyce... a way of life!

14.95

SPRING HOLIDAY—Bone and Tan Bone and Green

10.95

FLAPJACK—Bone or Black Patent

Flare Is Single Big Look in Paris Spring Fashions



The single big look to emerge from the current Paris collections is the flare. By means of pleats, godets or the trumpet line, the flare time through Paris collections like wildfire. But there is no general silhouette, the one with gentle, easy lines. This has to do with the old theme. It is lightly draped to the body and is fresh, new and fresh. Skirts generally remain short, very short is the knee. Marc Bohan's first collection for the House of Dior is a tremendous success. His braided nylon tulle evening gown at left, has lowered belt line. The new air flare shows to advantage in the coat dress, center, by Cardin. Flared skirt has knife-pleated at top. Fabric is lightweight chevron of orlon and wool in pale tan. The unusual combination of white pleats and black mink at right are used in this coat by Pierre Balmain. Fabric is orlon, rayon and cotton combination.

Straight Skirts Out as Paris Designs Feature Flared Look

By ROSSETTE HARGROVE
Associated Enterprise Assn.
PARIS, March 15 (NEA)—Girls can take out their straight skirts and put on their flared skirts. Paris collections are this season's new look. The fashion revolution, the first for Dior's new look, and chief credit for this one can go to the House of Dior, too. But for her short evening dresses, she, his flared, swirling, short, full, beneath a bloused bodice, and the straight skirt faded, wrapped coats, too, and also makes use of godets.
 Jean Patou: The slightly flared look here along with lots of sleeveless dresses, the bloused look and plenty of pleats.
 Michel Doms: Coats with the flared look accomplished by pleated, full, full, full, full-length, unfitted jackets and collars. (Many collections show collarless suits).
 Nearly every Paris house has the flare look but each designer has it differently. Here is a box of ideas by house:
 The Marc Bohan revises the waist of Christian Dior with the flared line. The silhouette flares at the bust and hips, flared, and the skirt. A soft silhouette, it is new.

Thrifty Buys for Your Spring Sewing

Just a swatch of all the fine fabrics waiting for you here! See yards and yards of fresh new materials for thrifty spring sewing. Worth singing about! Worth a lot in beauty, long-lasting wear, wardrobe economy. Vivacious floral prints, new modors, silks and blends... fashionably yours for spring.

and Sew Save SHOP

FABRIC SHOP

138 MAIN NORTH TWIN FALLS

Jacques Esterel: Lots of blousing in coats. Some wide coats show caplike backs. Dresses for daytime show blousing, too.
Jacques Griffe: Pleating here, too, with the total look fresh and youthful. He shows the unfitted torso for both suits and dresses. Lots of sleeveless numbers here.
Madeleine de Rauff: Coats are wide at the back, fitted at the front. Skirts for daytime dresses are straight.
Margy Rouff: More pleats here. A long-torso look aided by pleated skirts, floating panels. When skirts are not pleated, they're flared.
Gerge Matia: Pleats and godets.

COATS, TWO WAYS
 Coat fashion follows two predominant lines. One is slim, influenced by the side-skirted caftan; the other is sweeping, influenced by the cape.
 The planet Venus at intervals of about a year and a half draws close to Earth and becomes our evening star, bright enough to cast a shadow.

READ TIMES-NEWS WANT ADS

Grown-up Mood Is Tots' Feature

NEW YORK, March 15 (NEA)—In a grown-up mood, small fashions for the Easter parade display little caplets, ruffles, Chanel-type jackets and slacks, not collared.
 This is the year when tots will try to look like miniature fashion plates. What mom has, they have, too. And this includes the coordinated accessory idea. For children, this takes the form of a fluffy umbrella matched to a dress.
 Small sister will walk proudly in the Easter parade wearing an ensemble, even as mother does. Cotton coats and faille, chambrays, broadcloths, piques, seersuckers, organzas and polished cottons are used for out-and-dress trains in matching or contrasting colors.

Suits to Be Soft For Easter, 1961

NEW YORK, March 15 (NEA)—The suit mood for Easter, 1961, is a soft, air, soft, feminine, gentle.
 Lots of tricky things have been done with the collarless neckline. It's really a matter of having your cake and eating it. Designers have created collarless necklines with scarf attachments, and collarless necklines that borrow the collar of the blouse beneath.
 Jackets, nipped to the waistline at the top of the hip bone, are off along easy lines. The skirt beneath may be pleated or straight. And the total effect will be young.
 The exciting colors of the coats in the Easter parade will be reflected again in these new suits. Green, asparagus, moose, beige, red, blue, turquoise will march on their own or in company with one of the new suits.

Designer Waging War on Copying

NEW YORK, March 15 (NEA)—Jean Louis is a handsome couture designer who knows so much about women's figures he feels protected.
 He designs for some of the world's most elegant women, but he believes that the first step in becoming well dressed is to be an individual. "Wear what you look best in," he insists.
 "You shouldn't try to copy fashions you see a favorite actress wear. It isn't designed for you and if you feel embarrassed in your

Wool Knits Blossom for Spring



The classic sleeveless sheath takes on a new look for spring, left. It's done by Jane Powell in amythist mohair wool knit. Skirt of hand-knitted wool in rainbow stripes is worn, right, with wool knit top in solid color. This is a Nike Grial design.

VARIETY OF SUITS
 Suits are outstanding for their variety, offering jackets in every length from bolero to tunic, and skirts slim, pleated or softly gathered. It is usually easy and graceful.
SOMETHING DIFFERENT
 To "something old, something new," add "something different" for the bride who chooses her wedding gown in an unusual fabric such as linen, and in a style that reflects the latest trends.

SPRING

comes first to . . .

Bertha Campbell's Store

Lang

Sprightly little posies sprinkled on oil cotton froufrou in a simplified easy sheath with a dust of shoulder bows. Lavender, green or red. \$ to 15. 72.95

Styled for Easter

NEW HATS by Schiaparelli

Lace Trimmed

DATE DRESSES by Junior House

Always Right for Any Season

Nelly Dons

Bertha CAMPBELL'S STORE

Synonymous with Spring

An unveiling of round-the-clock Designer Fashions in our exclusive one-of-a-kind collection . . . and at a price to suit everyone's purse!

DRESSES . . .
 Daytime, Dressy, Afternoon, After-Five, Formal, newest in material . . . smartest in design

BRIDAL DRESSES . . .
 Veils - Bridesmaid Dresses

GRADUATION DRESSES and SUITS—Gorgeous styles, all at budget prices
SUITS—Are bold in colors . . . styles carefree

SEPARATES—Bradley - Lady Manhattan - Miss Pat. Skirts, Blouses, Capris, Jammies . . . all matching, many styles

BLOUSES and T-SHIRTS—Lady Manhattan, Gabey, Jane Colby. For every need, both dressy and sport.

HANDBAGS—Beautiful selection of the newest in handbags for that smart costume.

BELTS—Top-grain leathers

CAPRI PANTS—Our Jack Winter pants are definitely the best fitting pants to be had!

PEDAL PUSHERS - SHORTS - JAMMIES—All are famous names, all with Matching Tops

HANES HOSIERY—All the newest Spring and Summer shades

SWIM SUITS—What can flatter a figure more than a Cole of California or a Sea Nymph swim suit with Matching Cap, Beach Coat and Toe Petals?

SHAHEN DRESSES—Our Honolulu Sun Dresses and Matched Sets are here again! You were delighted with their beautiful patterns and little prices last year. They are even more beautiful this year

SILF SKIN GIRDLES—Regular and super control

COTTON KNIT SUITS—Those wonderful . . . colorful . . . washable knits for year 'round wear

SWEATER COATS—The latest fashion . . . use it as a Spring Coat; beautiful and inexpensive

SWEATERS—Bulkiest - Jeweled - Vests - Jackets. Wool or orlon, fashioned to your every need

JEWELRY—To compliment every costume from dawn to dark . . . exclusive at Anne's Casuals!

"Dress-Like-a-Million—Not Like a Million Others"

We Invite Layaways
 A Small Deposit Holds Your Selection

Anne's Casuals

138 Main North

Chiffon Evening Gown



Honey is the color for this short and beautiful spring evening gown in silk chiffon. Beaded bodice is completely beaded; skirt has fine pleats in this Larry Aldrich design.

Toppers Ranked High in Fashion

New fashion significance this season goes to the topper. Always a basic in most spring wardrobes, now the short topper is making news, too. Just below the first of all, it's shorter — hip length or above. Along with the

new length goes new styling, which carries out such spring themes as the no-collar cardigan neckline, shortened sleeves and color aplenty.

CROPPED TOPPERS

Toppers for spring stop at new shorter length — just below the waist. This is reflected both in length and above. Along with the



this spring the man who knows

Kuppenheimer Clothes

will enjoy the comfort that comes with perfection of fit. Of course, he'll also enjoy the confidence that comes from being correctly attired. But, now for the first time, Kuppenheimer trousers are "everKreased"™ for permanent crease retention... an extra plus of practicality. Why not treat yourself to a Kuppenheimer suit? The new Spring styles in compound Vintage-grape and olive tones are magnificent! Fitting you is our main concern.

Kuppenheimer Suits with "everKreased" trousers \$90 to \$110

Sport Coats \$55 to \$69.50 "everKreased" Slacks \$32.50



AN INVESTMENT IN GOOD APPEARANCE

THE **LD** MEN'S STORE
Idaho Dept. Store of Twin Falls

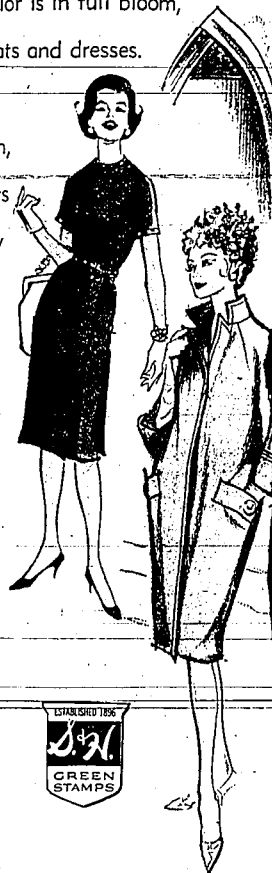
We Give S&H Green Stamps!

Easertime and the fashions are blooming

For Easter '61 and you, we present a bouquet of beautiful flatterer, fabulous fashions. Color is in full bloom, in a garden of costumes, coats and dresses.



Among the finest flowers of the season, you'll find: gay prints and plaids... easy lines, expressed by flares, pleats, cape effects... new ways with necklines and sleeves... bold buttons, adroit seaming. See, choose the news.



Cape-influenced coat, boldly plaided, swings out in a flattering flare, with open neckline, wide, cropped sleeves.

Dots add extra fashion dash to a silk dress with wide, notched collar, self belt and newly fashionable full skirt.

Off-center buttoning is fashion feature of this dress with fluid lines, lowered waist; it's crisped by a white collar.

Seaming on the sleeves, buttons on the pockets highlight a fluid-line clutch coat with notched stand-up collar.

ALL MODERATELY PRICED

The Color of Spring By Air Step

14.95

The soft lustre leather with feminine grace and famous Air Step fit. Three beautiful shades... Soft Green, Pink or Blue.



HOSIERY

By

Munsingwear

Ladies' nylons in your choice of full-fashioned or seamless, and in sheer, semi-sheer and service-weights. Fashion's latest shades.

1.35 & up

Sizes 8 1/2 to 11
Proportioned Lengths



Use Your
I.D. CHARGE ACCOUNT

Pay 1/3 in April, 1/3 in May and 1/3 in June. Or use our convenient monthly installment plan.



Among your most important fashion choices for Easter and spring... the lingerie lovelies that go under your costumes. See, choose.



Munsingwear Slips

Ladies' nylon tricot, style-wise slips attractively trimmed with lace at bodice. Pull cut for comfort, with the best in construction features. 32 to 44 and available in proportioned lengths. White. Up from \$1.95

—HALF SLIPS from.....2.98—

THE **LD** OF TWIN FALLS
IDAHO DEPARTMENT