

Algerians Shout Hopes for Peace; Troops Near City

ALGIERS, Aug. 31 (UPI)—Thousands of Algerians stormed through the streets today calling for an end to the newly-independent country's latest crisis. National liberation army (ALN) troops were poised within 80 miles of the city in a show of strength intended to quash a rebellion of military commanders in Algiers. Radio broadcasts every 10 minutes, apparently from willays (military zone) four which controls the city, denounced the demonstrators. "S'baa s'neen baraket" ("Seven years is enough") the war-weary Algerians cried in the streets.

British Court Denies Final Spy Request

LONDON, Aug. 31 (UPI)—Convicted Soviet spy Dr. Robert A. Soblen had his final court case denied today by the United States and a life term in prison today. Then, in effect, he was ordered on the grounds of the British home office to let him go free.

A three-judge court of appeal turned down the plea against deportation this afternoon, and the pale-faced espionage agent was ordered to await final steps for his return to New York.

Algeria had been calm this morning and business was as usual, but shops, cafes and built-up places began closing down as the demonstrations spread.

"Brother Algerians," the radio broadcast said, "Algerians are going to Algeria in the south, at Orlanville, at Sidi Abbes, at Sidi Ali, and in the Kabylie. Go out and demonstrate at four o'clock to prevent this class between brothers."

Satellite Bill Has Approval By Kennedy

WASHINGTON, Aug. 31 (UPI)—President Kennedy signed today, setting up the legal framework for a satellite communications satellite bill, to be handled this country's part in a global network for satellites.

He said the space system will provide benefits for all people and contribute to world peace and understanding.

A large group of top officials who have the power to organize the corporation," he said.

The general public, the communications industry, and the federal government all will have resources that will reasonably hope to benefit.

Crowds View Fair Displays In Minidoka

RUBERT, Aug. 31 — Record crowds viewed the displays and exhibits at the Minidoka fair today, stock Friday as the Minidoka county fair went into its second day. The fair was held in the large number of entries.

Dairy cows and horses in the 4-H entries were judged this morning and will be judged Friday afternoon.

There were about 200 entries in the open classes and 100 in the 4-H entries. The fair was a large applesauce section. Officials reported entries from four states and throughout southern Idaho.

A miniature rodeo will be staged at 7:30 p.m. today for youngsters and will continue at 2 p.m. Saturday there will be a children's pony race.

Interest in the commercial display and exhibits was high by the southeastern Idaho health unit showing the proper preparation of a steak and hot dogs to avoid contamination.

Judging was completed today at the home economics division in the afternoon. The public judges said the county home demonstration club had entered many varied displays of sewing and handicrafts.

The style revue at 8 p.m. Saturday at Minidoka county high school will conclude the three-day event.

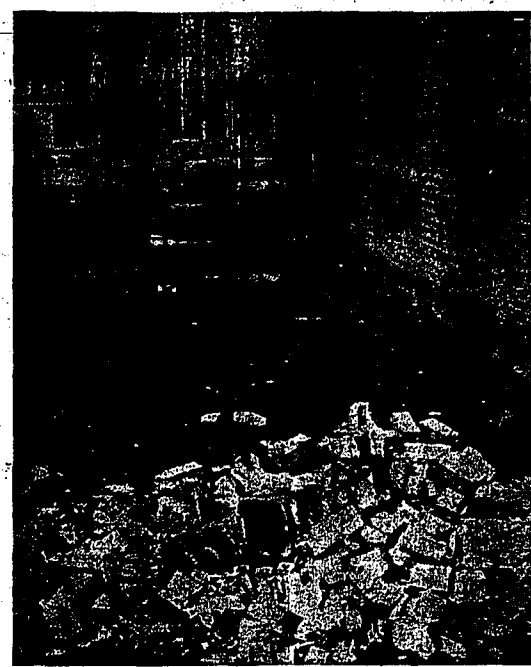
NFO Drive to Boost Prices Starts in 16 States Tonight

CORNINO, Ia., Aug. 31 (UPI)—Members of the National Farmers Organization (NFO) in 16 states tonight began a commodity market campaign in an effort to boost meat and grain prices. The drive brought an expression of sympathy from Agriculture Secretary Orville Freeman.

Some 20,000 NFO members kept unanimously Tuesday at Des Moines, Ia., to begin an "all-out" drive to help with livestock, corn and soybeans off the market until processors sign collective bargaining agreements.

Oren Lee Staley, Rees, Mo., NFO spokesman, said the drive would begin to show results in the nation's meat market within a week. The NFO claims to represent more than a quarter of the nation's pork and beef raisers.

"We are showing enthusiastic response from farmers in general," Staley said.



BRICKS JARRED LOOSE from buildings by strong earthquake in northern Utah Thursday smashed onto the back of this car parked in a Logan alley. No one was hurt. (AP wirephoto)

Utah's Cache Valley Residents Begin Mopping up After Quake

LOGAN, Aug. 31 (AP)—Residents of northern Utah's Cache valley pitched in today to begin the massive cleanup and repair job necessary after a 6.5 magnitude earthquake which caused widespread damage Thursday morning. And there was still apprehension, as some feared additional strong shocks might knock down buildings weakened by Thursday's severe, but short, tremor. Residents reported slight tremors during the night. In the Clarkston-Newton area, residents were warned to hold their water after the water supply line ruptured. The line had been repaired today, but there was still a water shortage.

Logan's springs of culinary water, Dewitt Springs in Logan canyon, had increased its flow by three second feet.

Crews were checking the water supply line of the town of Richmond in Cherry Creek Canyon.

One public building was considered a total loss. It was the Benson steak tabernacle of the LDS church at Richmond. The structure was damaged extensively. Cracks appeared inside and outside at downtown Logan. Logan's town building at Utah State University here was damaged.

Logan junior high school reported damage to the building because of the possibility of cave-ins at the structure where walls were jarred loose.

But most of the schools in the area planned classes as usual today. The University of Utah department of geophysics placed the epicenter of the quake 10 miles northwest of Logan.

The shock was so strong it sent the needle off the seismograph at Salt Lake City.

There were several small tremors after the initial shock. Residents of the area were cautioned that later aftershocks were possible, but could not be predicted.

SECRET TRIP ENDS
BERLIN, Aug. 31 (UPI)—East German communist leader Walter Ulbricht flew home from Moscow today ending a month-long Soviet visit that was shrouded in secrecy.

Mite Infestation Diagnosed After Smallpox Scare in N. Y.

NEW YORK, Aug. 31 (UPI)—Two persons suspected of having smallpox but not having the disease, Bellevue hospital said today.

The cases had caused a quarantine of 200 persons at Idlewild airport—where they had arrived from Brazil—last week.

Instead of having smallpox, the hospital said, the two persons were suffering from mite infestation.

A mite is a spider-like insect that sometimes infests animals or plants.

But, before the case was closed up, about 200 persons had been placed under quarantine. They included passengers aboard the Pan Am jetliner which was quarantined and Idlewild employees with whom they came in contact.

The city has been smallpox free since 1929.

Aug. 11. It was learned then that a boy found to be suffering from smallpox had traveled through the city en route from Brazil.

4 Big Steel Firms Congress Charges

WASHINGTON, Aug. 31 (UPI)—The senate antitrust subcommittee voted today to recommend contempt of congress citations against four big steel companies and nine of their officers for defying subpoenas for production cost data. The vote was five to two along straight party lines. The eighth member of the committee, Sen. Alexander Wiley, R., Wis., was out of town. The action came only a few hours after the four companies and the nine officers failed to show up as ordered by the subcommittee, headed by Sen. Estes Kefauver, D., Tenn., and to produce the requested cost data.

Kefauver had accused the four firms and defiant executives of "contumacious conduct" when they failed to appear at the hearing.

Twenty witness chairs mutely testified to the companies' boycott of the hearing. Subpoenas had been served on both the officials and the company ordering their appearance.

After calling the roll of the four companies—Bethlehem Steel, Republic, National and Armco—and the nine subpoenaed officials, Kefauver announced that the refusals to appear as "willful premeditated contempt of congress and of the committee of a duly authorized committee."

In urging contempt action, Kefauver said: "It is amazing that such representatives of these large steel companies completely ignored a duly constituted committee in defiance of the senate and its processes."

He said their conduct was "unusually flagrant" as the subcommittee had worked out an agreement with U. S. Steel which consented to keep all cost data confidential.

To bring contempt action against the nine executives, the citations must be approved by the subcommittee, its parent judiciary committee and the senate itself. The citations would then be sent to the justice department for prosecution.

U. S. Farmers Okay Wheat Control Again

WASHINGTON, Aug. 31 (UPI)—The nation's wheat farmers have voted to continue controls on wheat acreage and marketing margin in 12 such states since 1941.

Unofficial returns from the 39 commercial wheat states when balloting in the referendum was conducted Thursday gave 191,243 out of 214,844 acres to the acreage quotas designed to restrict production in order to reduce costs.

This was a favorable margin of 88.4 per cent. Approval by at least 60.7 per cent—two-thirds—of growers voting was required. Last year quotas were approved by an 87.4 per cent margin.

The previous year was 73.3 per cent for the 1953 crop.

Returns in 16 states fell below the 60.7 per cent level. These included Kansas, the No. 1 wheat producing state, as well as such crop belt states as Colorado, Colorado, Montana and Idaho.

The decline in the support for controls stirred speculation in Washington that the possibility of a referendum might have on pending legislation.

Wheat Board Talk Blasted by Smylie

Gov. Robert E. Smylie, on his second day in Magic Valley, blasted his opponent's suggestion that the wheat commission be abolished. He issued a statement Friday in Carey, where he is conferring on campaign plans, stating that Vernon K. Smith's suggestion "is a bad administration, ill-conceived economy and would be a step backward for every wheat farmer in Idaho."

The governor met Thursday evening in a closed session from Magic Valley in the Rogerson hotel Roundup room here.

Although they hid their actual planning until after the meeting, news releases handed out before the meeting made it evident that the governor intended to conduct a personalized campaign, meet as many people as he possibly could and tell them the positive side of the state's record since Smylie first became governor.

The governor hopes to win votes by pointing out that 40,000 more jobs are available than there were in 1953 and manufacturing employment is up 27 per cent. This outstrips other Northwest states and is 32 per cent more than the gain registered by Nevada, he said.

In the statement issued Friday morning in Carey, Governor Smylie said: "The wheat commission has already established a magnificent record of services. Their successful effort to secure a 20 per cent reduction in freight rates for Idaho wheat will almost justify the commission's existence for many years to come. It has my support, and will have it in the future because its endeavors put dollars in the pockets of Idaho farmers," the governor said.

Smith, the Democratic nominee for governor, had been quoted as saying he favored abolishing the (Continued on Page 3, Column 2)

Wieners Added to "Store Night" Gifts

One more grocery item was added Friday to the arsenal of goodies to be given to the first 1,500 women attending tonight's game between the Magic Valley Cowboys and Postville Oilers at Joyce park.

Independent Meat company has added a package of eight Postville Wieners to the grocery bonanza.

The "Country Store Night" is sponsored by the Times-News. Admission for adults is 10 cents and a coupon which will be found on the sports page of today's Times-News. Children under 14 will be admitted free.

The first 2,000 men going through the turnstiles will receive a half pound of Buller's coffee free. Besides the winners, the first 1,500 women will be given a package of Bradshaw's spun noodle, package of Buns-Bites Frozen French Fries, point end of a loaf of Postville bread, can of Green Giant Niblets corn, can of Indian Oats applesauce and one package of Nalley's New Potato Chips.

Estes Favors Reiterated at Senate Probe

WASHINGTON, Aug. 31 (UPI)—Republicans greeted Undersecretary Charles S. Murphy today with a renewed interest in the case of the late Sen. Carl F. Estes.

Estes' name was mentioned in a report by the senate investigations subcommittee said information given the investigators today convinced him that the Estes scandal did not occur merely because of the testimony in a sprawling, untidy agency.

The new information, taken from agriculture department records, showed Estes was the only cotton producer in the United States who was under investigation for overplanting in 1961.

Nevertheless, Curtis said, department officials subsequently named Estes to the national cotton advisory committee and gave him "all those opportunities" to prove his good faith in 1962.

Curtis declared: "I can't escape the feeling that somewhere, someone did respond to gift giving, free wheebling, influential allies. Bill Estes to give him treatment beyond what any other farmer in the United States would have received."

Talks Start in Railroad Strike

CHICAGO, Aug. 31 (UPI)—Leaders of the strike-bound Chicago and North Western Railway and the striking Order of Railroad Telegraphers met today in a three-hour hotel dining room to discuss their dispute at a federal mediator's urging.

The management and union executives sat down with poker-faces for the closed door meeting with Francis A. O'Neill, Jr., of the national mediation board.

Controlled

LOS ANGELES, Aug. 31 (UPI)—Firemen today were in complete control of one of two giant brush fires that broke out Tuesday in 200 acres of valuable watered land and had contained a twin blaze that broke out almost simultaneously.

Fire officials declared the Newhall-Piacenta canyon fire controlled last night and said the Catalina-Hisley canyon fire had been quenched by fire lines. Control of the remaining fire was forecast for later today.



HOMEWARD BOUND, Mrs. John F. Kennedy and daughter, Caroline, were goodbyes as they boarded plane at Rome airport for flight to U. S. and Labor day reunion with the President in Newport, R. I. They have been vacationing at Ravenna, Italy. (AP wirephoto via radio from Rome)

Heglar Youth Injured From Gun Accident

BURLEY, Aug. 31 — Kenneth Woodbury, 12-year-old son of Mr. and Mrs. Lyle Woodbury, was injured in the accidental shooting of a .22 caliber rifle from Magic Valley in the Rogerson hotel Roundup room here.

Although they hid their actual planning until after the meeting, news releases handed out before the meeting made it evident that the governor intended to conduct a personalized campaign, meet as many people as he possibly could and tell them the positive side of the state's record since Smylie first became governor.

The governor hopes to win votes by pointing out that 40,000 more jobs are available than there were in 1953 and manufacturing employment is up 27 per cent. This outstrips other Northwest states and is 32 per cent more than the gain registered by Nevada, he said.

In the statement issued Friday morning in Carey, Governor Smylie said: "The wheat commission has already established a magnificent record of services. Their successful effort to secure a 20 per cent reduction in freight rates for Idaho wheat will almost justify the commission's existence for many years to come. It has my support, and will have it in the future because its endeavors put dollars in the pockets of Idaho farmers," the governor said.

Smith, the Democratic nominee for governor, had been quoted as saying he favored abolishing the (Continued on Page 3, Column 2)

Traffic Deaths

Magic Valley
1961.....158
1962.....170

Idaho
1961.....37
1962.....40

Truman Slated At Idaho Dinner

WASHINGTON, Aug. 31 (UPI)—Former President Harry S. Truman will address a campaign dinner in eastern Idaho on September 14, it was announced here today.

Rep. Ralph Harding, E. Idaho, said Truman has agreed to make the Idaho appearance on his behalf. Harding said Truman has agreed to make the Idaho appearance on his behalf. Harding said Truman has agreed to make the Idaho appearance on his behalf.

"I indicates his high regard for the people of our state."

Lincoln Fair Results

CLOTHING
Division II
 Blue: Judi Haggan, Joanna Peck, Marilyn Manning, Dorothy Deeds red: Candace Jackson, Barbara Horn, Diana Holsley, Linda Riley, Joy Alexander and Adele Sandy.
Division III
 Blue: Virginia Ross, Joanna Peck, Sandra O'Dell and Carol Thorpe; red: Mary Tewa, Carlene Sheer, Adele Sandy, Evelyn Silva, Glemmie O'Connell.
Stylish Separates
 Blue: Linda Sanders, Maryann Lee, Mary Chaffield, Ed, Carlee Riley and Carol Thorpe.
Wearable Woolens
 Blue: Virginia Ross, Agnes Schuler and Carlee Riley.

DAIRY
Division I
 Linda Abern, Richard Elmberg, Kathie Flavel, Dorothy Abern, Arnold Ross, Pat Ward, first; David Beck, Gayle McRoberts, second; Virginia Ross, Linda Abern, Debbie Cluett, Shirley Magoffin and Jeff Ward, second.
Division II
 Rodney Riley, Tommy Race, Dennis Race, Mike Ward, Rodney Fridmore, first; Dennis Beck, Karen McRoberts and Dena Chaffield, second.
Division III
 Carlee Riley, Mary Chaffield, Kathy Ross, Glenda Guthrie, Pat Riley, Linda Riley, Kathy Riley, Clarence Tewa, first; Dennis Beck, Mary Chaffield, Mary Chaffield, second; Virginia Ross, Linda Abern, Debbie Cluett, Shirley Magoffin and Jeff Ward, second.

Horse
 Rusty Tewa, Mary Tewa, first in fitting and showing; Mary Tewa, Rusty Tewa, Carlene Sheer, second in quality of animal.
FFA Beef
 Quality, Larry Braun, three first; Steve Roegner and Oib Belacqua, first.

Fitting and Showing
 First year, Kathy Larson, Deanne Sutzman, Mary Nelson, Glen Nelson, Deanne Sutzman, Rusty Tewa, Danny Larson, first; Darrell Hulet, Donald Croft, Actis Sandy, second.
Quality of Animals
 Deanne Sutzman, Actis Sandy, Deanne Sutzman, Glen Nelson, Mike Nelson, Rusty Tewa, Deanne Sutzman, Glen Nelson, Ronald Croft, Kathy Larson, Danny Larson and Darrell Hulet, first.

Fitting and Showing
 Tim Hill, Gail Guthrie and Gordon Croft, first.
 Quality of animals, Gordon Croft, Tim Hill, two entries, Gail Guthrie, all first.
Facility
 Quality, Beck, Gumm, Carlee Riley—two entries, Donald Bennett and Ginger Ross, first; Ginger Ross—two entries, second.

Dairy
 Up to 1 year old, Richard Elmberg, Dorothy Akins, Kathy Ross, Arnold Ross, Debbie Guthrie, Rod R. Ward, Evelyn Riley, Kathy Flavel, Gayle McRoberts, Dena Chaffield, all first; Nelson Ken, Ken Hulet, Glenda Guthrie, Virginia Ross, Miss Swainston, Kelly Swainston, David Ross, Jeff Ward, Linda Akins and Cheryl Magoffin, first, second.
 From 1 to 2-year-olds, Clarence Tewa, Pat Ward, Evelyn Silva, Tommy Race, Karen McRoberts, Rod Fridmore and Linda Abern, first; Mike Ward, Dena Chaffield, Dorothy Deeds, Dennis Race, Laurence Tewa, and Rusty Tewa, second.
 Three-year-olds, Carlee Riley, Kathy Ross, Pat Riley, Linda Riley, first; Virginia Ross, Mary Chaffield, June Fridmore, Judy Tewa, second; Clarence Tewa, David Chaffield and Terry Swainston—third.

Winners of Trophies
 FFA livestock judging contest, showing in Richfield livestock



DRAWING WAS HELD Thursday afternoon during the weekly event of the Twin Falls Downtown Merchants association. From left: C. E. (Ed) Bossard, chairman of the association; C. H. (Cap) Mearns, who has been named "merchandise merchant in Twin Falls" by the association, and Gail Carpenter, co-chairman of the drawing with Bossard. Each week the drawing will be held

Judging contest, Pat Ward; home economics judging contest, Agnes Schuler; 4-H style revue, Agnes Schuler; high point fitting and showing in Richfield livestock club, West End club with Richfield club and Daisy Dairy club with Carlee Riley.
 Top clothing project in Hansen's Lassie club, pinkie shears, Carlee Riley; high point FFA boy, Tim Hill; high point 4-H boy, Richard Tewa; high point fit to home economics, Carlee Riley; top 4-H beef project—received silver belt buckle and certificate—Deann Sutzman, top FFA beef project, Tim Hill.
 Outstanding girl in 4-H, Virginia Ross, received a writawatch from First Security foundation; Idaho club congress scholarship, Virginia Ross for clothing achievement; Mary Tewa for food achievement; Gene Cheney for general achievement; Patrick Cheney, for boys achievement; Carlee Riley for dairy animal achievement.
 The \$10 barn award was won by Carlee Riley, livestock club, for keeping their section on the barn at the fair cleanest.
 Other trophies: Claudia Knutson and Diana Metta, clothing I; Marilyn Manning, clothing II; Carlene Sheer and Sandra O'Connell, clothing III; Mary Chaffield, clothing-stylish separates; Carlee Riley, wearable woolens; Carlee Riley, family living trophy; Katherine Pagoosa; garden, Debbie Knowles; wedding, Henry Tewa; health, Jud Hannah; safety, Susan Hall; junior leadership, Carlee Riley; child care, Marya Brylies; handicraft, Debbie Knowles; household electrification, Henry Tewa; forestry, Kathy Ross; entomology, Laurence Tewa; rabbit show, Louise Struchen; outstanding first year 4-H member in dairy, a halter, to Dorothy Akins.
 Ida Gem Dairyman awards: Dairy—first year, Dorothy Akins, Cathie Pinnel, Evelyn Abers; second year, Tom Race, Rodney Riley, Dennis Race, and first year, Carlee Riley, Patrick Riley and Linda Riley.
 Livestock fitting and showing, 4-H beef, Danny Larson; 4-H dairy, Carlee Riley; 4-H sheep, Dean Hulet; 4-H horse, Richard Tewa; FFA beef, Tim Hill; FFA dairy, Carlee Riley.
 Home economics demonstration trophy winners—Becky O'Connell—junior—Mary Chaffield, senior.

Poody trophy winners—Denise Sutzman, first year; Maurcen

Board for PTA Has Plans Meet

Washington school PTA executive board held a planning meeting at the home of Mr. and Mrs. John Coleman.
 Members of the board attending the meeting were Mr. and Mrs. Coleman, co-presidents; Mr. and Mrs. James Danner, co-vice presidents; Mrs. Stanley E. Snow, secretary; Stanley E. Snow, treasurer; Mrs. Ed Mansfield, room mother chairman; Mrs. Norman Olsen, hospitality; Mrs. Robert James, publicity; Mrs. Larry Dean Anderson, membership, and Mrs. Taylor Blesinger, summer roundup.
 Mrs. Grant Osterhout, stamp; Mrs. Jack Clough, mailing; Mrs. Claude Whitte and Mrs. Vivian Atkinson, welfare; Mrs. Ivan Johnson, Blue Birds; John Sexton, Cub Scouts, and Mrs. William Foster and Mrs. Randall Wilson, school magazine.
 Mrs. Mary Helen Ferry, principal, also attended.

250 Acres Burn

SHOPHONE, Aug. 31—A range fire burned 250 acres along the old and new highways between Wendell and Crooking Thursday afternoon, bureau of land management officers here reported.
 A helicopter, two tankers and one airtanker crew from the BLM office were dispatched to the site. The fire was reported at 2:30 p.m. and was declared out by 4 p.m. Thursday.

Friday, Aug. 31 Twin Falls Times

PRINCIPALS OF BURLEY, Aug. 31—Principals of Cagle county their first meeting of the Wednesday evening. Moore said school problems discussed.
 TRY TIMES-NEWS WANT AD FOR FAST, SELLING RESULTS

INSTANT TIRES!

MAGEL TIRE COMPANY

SAT. 11 to 6 Only
1/2 BERTIE'S BAR-B-Qued CHICKEN
 with all the Trimmings **49¢**
FOOD FAIR
 BUHL

Clothes Modeled By 4-H Club at Grange Meeting

Members of the Busy Doers 4-H club modeled their clothing projects during the Tuesday meeting of the Knoll Club.
 After modeling, 4-H club members presented gifts to leaders, Mrs. June Eldridge, Mrs. Betty Dossert and Mrs. Shirley Hull.
 Members modeling were Jane Anderson, Cindy Hull, Judy Dossert, Jeannie Dossert, Janice Hartwig, Cathy Helreich, Glenda Eldridge, Dora Blaksoie, Bonnie Ulman, Linda Colner, and Day Brown.
 Grange members made final plans for decorating the fair booth at the Twin Falls county fair. It was announced the booth will be decorated Sunday afternoon.
 A. E. Harper, Filer, will replace Paul Gline, Twin Falls, as area insurance agent for the Grange Insurance association, with headquarters in Gratie.

Mrs. Gray Paid Last Honor Here

Funeral services for Mrs. Neoma Gray were held at 3:30 p.m. Friday at Reynolds funeral chapel with the Rev. Donald Z. Hoffmann officiating.
 Dues was sung by Mrs. A. D. Nye and Mrs. Amos Reed. Organist was Mrs. Donald Hoffmann.
 Active pallbearers were Al Nye, John Farish, Ralph Bogar, John Nye, Franklin Sharp and Albert Wegener.
 Honorary pallbearers were Carl West, John Flatz, Phil Cargill, Bill Riley, Morris Moore and Bill Couberty.
 Concluding rites were held at Sunset Memorial park.
 Murphy, second year; Joy Alexander, third year; Marilyn Alexander, fourth year; Sheila Murphy, fifth year, and Marva Brylies outdoor foods.

at 2:30 p.m. Thursday at the corner of Main avenue and Shoshone street south. The cash prize for being present will be raised \$40 each week and if the person whose name is drawn is not present, he will be sent \$10 as a consolation prize. Next week the cash award for being present will be \$30. Tickets are available from association members. (Times-News photo)

BLAST-OFF For A Fun-Filled LABOR DAY WEEK-END CLUB 93 CAFE

★ La Velle and Roberta Barton
 ★ Harvey and Hazel Wright

Friday, Saturday, Sunday, Monday

\$5 TO \$100

EVERY 30 MINUTES ON THE WHEEL OF FORTUNE

at the ... **Piano & Organ**
'MUSTIE' BRAUN
 Playing All Your Favorites

Free MONDAY DINNER
 Served at 1:00 p.m. Adults Only

RIB STEAK Dinner 1.50

Get Your Tickets Now FOR THE Sweepstakes Drawing To Be Held On Sept. 16

This announcement is neither an offer to sell nor a solicitation of offers to buy any of these securities. The offering is made only by the prospectus.

First public offering \$150,000.00

BOWLADROME, INC. COMMON STOCK

75,000 shares—price \$2.00 per share

TO BONA FIDE RESIDENTS OF THE STATE OF IDAHO ONLY

Copies of the prospectus may be obtained from the underwriter, E. W. McRoberts & Co., Twin Falls.

The Bowladrome bowling center, located at Eastland Drive and Kimberly Road, Twin Falls, is the largest Brunswick automatic pinsetter bowling center in Idaho. It is currently starting its fourth season of operation at its present location.

E. W. McRoberts & Co.
 Box C, Twin Falls, Idaho

I Yes, please send official prospectus on the sale of Bowladrome, Inc. stock. I understand there is no obligation.

NAME _____
 ADDRESS _____

E. W. McROBERTS & CO.
 Twin Falls Phone 733-6013

WE FIT THEM ALL

Long or Short
 Slim or Stout

Whatever Your Build... Enjoy The Pleasure of **MADE-TO-MEASURE**

Come in now for true satisfaction in style and fit. Our economical prices will please you.

MAJOR ALTERATIONS

Double Breasted to Single Breasted SUITS **\$15**

FRAZIER'S TAILOR SHOP
 OVER NEWBERRY'S

Times-News

A consolidation of Feb. 8, 1945, of the Idaho Evening Star and the Twin Falls News...
Published daily and Sunday at 125 Second Street West, Twin Falls, Idaho by the Times-News Publishing Company.
JACK ROWE... JACK MULLIN...
AL WESTERN... LOWELL DICK... WILEY DODDS...
STAN GIBNEY... PAUL STANLEY...
All news reported by law or by order of court of record...
Copyright © 1952 by Times-News Publishing Company.
Official City and County Newspaper

Political Motives

A few weeks ago, Magic Valley farmers were being quite vocal in their criticism of the Freeman-Kennedy farm bill. It was denounced as an effort to impose some sort of government controls over nearly every phase of agriculture. Some nearly every farmer felt the farm bill, which was defeated, as a manifestation of the bureaucrats' ultimate dream of complete control.

Had the farm bill become law, it has been suggested strongly that it could have been used to bring about a good deal of political change. That sort of thing isn't unusual with federal agencies, and certainly not with the department of agriculture.

If any illustration is needed, the current food stamp plan will serve as well as anything. Of course, the food stamp plan is operated by the government as a means of helping needy citizens and at the same time disposing of some of the nation's gigantic surpluses of food.

The workings of the food stamp plan aren't important, but there might be considerable interest in some of the approaches. Keep in mind that the food stamp plan is operated by Secretary of Agriculture Orville Freeman. First of all, the geographical areas in which food stamps are distributed coincide with congressional districts, not individual counties or states. It's a rather peculiar coincidence that need areas should coincide with the districts need to elect members to the house of representatives.

Next, the food stamp plan has been instituted in 26 congressional districts and 25 of them are represented by Democrats. Again, here's a remarkable coincidence.

Figures of the department of labor show the highest rate of unemployment in the nation exists in the Johnstown area of Pennsylvania. That's in the district represented by John P. Saylor, who happens to be a Republican and an outspoken critic of the administration. No food stamps have been distributed in the Johnstown area. Another coincidence comes to light in plans of Secretary Freeman to expand the food stamp plan. It will be extended into new areas—congressional districts that is effective on the first of three months, October, November and December. Of course, it's just as scheduled across the nation on Nov. 6. The Dec. 1 starting date apparently was a slip.

As has been pointed out, it's nothing unusual for politicians to use every bureau, service and facility of the government to further their own purposes. And little party by any means. Yet one veteran reporter in Washington has found current use of the food stamp plan quite objectionable. He writes: "But it would appear that playing politics with human misery through the medium of the food stamp plan is the height of political selfishness and shabbiness."

STRENGTH IN NORTH

Development of the North Atlantic Treaty Organization down through the years has not been free of troubles and problems. Even now it is not without its problems. It is the fall strength envisioned in original plans, has no cooperation of individual nations been as great as possible. Yet NATO has served a purpose, and as reported by Dwight D. Eisenhower after a six-week stay in Europe. "It's in much better shape than its critics say."

The former President reports progress of Europe in the postwar period had been remarkable and he finds a spirit of progress and evidence of growth. "The people are not particularly worried," he declares. Undoubtedly NATO has played a big role in contributing to the peace of mind of Europeans. It has been regarded by the communists as a thorn in their side although there has been a question of how effective NATO would be in event of hostilities.

Another factor in the progress and prosperity of Europe that Mr. Eisenhower did not touch on during his report. Although it hasn't hit full stride, the European Common Market has been a tremendous factor in economic progress. It's a resistance to communism. If nothing unforseen interferes with the growth of the Common Market, it might go down in European history as one of the most important developments in centuries.

The Common Market is opening up trade and cooperation in political and economic matters. Proof of the importance of the Common Market is found in the reaction of Eastern European countries that are not members now and also in communist reaction. Nationally, most of the nations of Europe may petition for membership.

And already, there is evidence that the communists regard the Common Market as a more of a menace to their aims than NATO.

WHIRLIGIG

BY BAY TUCKER
WASHINGTON, Aug. 31—Former President Eisenhower warned some time ago against the possibility that the military men at the Pentagon might enjoy too much economic power. He said that the billions they disburse in the rearmament program, his own military and industrial background and experience accounted for his concern over the situation.
Thrummer recent developments on Capitol Hill indicate that he knew where he was speaking, although his warning has not been heeded.
The fact is that many of the generals and admirals empowered to award multi-million dollar contracts appear to have been remarkably careless in their handling of the taxpayers' money, otherwise labeled as "public funds."
The military men's vast expenditures on luxuries in building a stockpile of essential materials for a possible World War III provided evidence of the unlimited of their money.
Although the amount and kind of commodities acquired should have been determined or at least influenced by the Pentagon's chief, it is estimated that the stockpile has a three billion dollar surplus over actual needs.

NO PROTESTS—The Pentagons did not protest when the military men shored up depressed industries in this country, or to provide an indirect form of foreign aid to Latin American countries.
They did not advise against shipping arms and costly training missions to Latin America as a contribution to "hot" military defense. Most of the weapons were obsolete for modern warfare, they were good enough to strengthen military clubs and keep the military industrial complex as Batista's, Peron's and Trujillo's.
It was an American-educated colonial commander who, after the war, crashed through the gates of the presidential palace in Peru, and helped to oust the only democratic regime elected in Peru's turbulent history.

DUMPING GROUNDS—Although the state department must share some blame for the arrangement of the military junkyard in the Pentagon which is basically responsible.
Our national defense planners know that the United States alone must defend western Europe. The United States must defend western Europe. It is an extremely remote possibility. The arms which we supply to these "banana republics" have more military potential than does the United States. Only three Latin American countries furnished token forces in World War II.
It was an American-educated colonial commander who, after the war, crashed through the gates of the presidential palace in Peru, and helped to oust the only democratic regime elected in Peru's turbulent history.

CASE IN POINT—An especially sensational example of the military's waste of taxpayers' money is the case of a Russian invasion. This is an extremely remote possibility. The arms which we supply to these "banana republics" have more military potential than does the United States. Only three Latin American countries furnished token forces in World War II.
It was an American-educated colonial commander who, after the war, crashed through the gates of the presidential palace in Peru, and helped to oust the only democratic regime elected in Peru's turbulent history.

Representative Wilson has forwarded the details of the translator transaction to the attorney general for investigation and possible prosecution. The case involves a Russian invasion. This is an extremely remote possibility. The arms which we supply to these "banana republics" have more military potential than does the United States. Only three Latin American countries furnished token forces in World War II.
It was an American-educated colonial commander who, after the war, crashed through the gates of the presidential palace in Peru, and helped to oust the only democratic regime elected in Peru's turbulent history.

VIEWS OF OTHERS

ACADEMIA'S THICKET
Correct English composition is not necessarily good English composition. This is one of the significant conclusions from a study of college students in the English department at the University of Chicago, known here as director of the 1952 Portland high school curriculum study (Kitchhaber).

Dr. Kitchhaber, who has returned to Oregon as chairman of English composition at the University of Oregon, conducted the study for the new revised English text for the state of Oregon. It was supported by a Carnegie grant. His findings, as reported by the New York Herald Tribune, are as follows: "The study of college students in the English department at the University of Chicago, known here as director of the 1952 Portland high school curriculum study (Kitchhaber)."
In conformity with the preceding point, it is not surprising that the parties to the study, examples of which are given in the accompanying table, are negligible values or as no values at all, as comprising even no similarity (or dissimilarity), such as "the study of college students in the English department at the University of Chicago, known here as director of the 1952 Portland high school curriculum study (Kitchhaber)."

Our Bulletin Board
829-5441, Hazleton—Because of the obvious advertising feature, Pot Shots cannot handle your queries in type. However, we made some inquiries here and there and failed to turn up any information. One household and she hadn't heard of any such dealer for the last two years. Sorry.

PAMOUS LAST LINE
"Perhaps proverbly isn't a disgrace, but it certainly can be inconvenient."
GENTLEMAN IN THE FOURTH ROW

No Progress



POT SHOTS

SUPPORTED?
Last Sunday we were driving around the country when we went through a particularly weedy district. The fields on both sides of the road had lots of weeds and contrasted quite sharply with what one generally sees in Idaho Valley.
The sight moved one of the passengers to observe that the district seemed to have gone into raising weeds.
The Back Seat Driver ventured out loud, "Do they have a support program and a acreage allowance?"
Iris Drive (Jerome)
KITTENS FOR KIDS DEPT.
Have two Siamese cats to give away, one a female 1½ years old and the other, a male 5 months old. Both are wonderful house pets and friendly. You can get them at 226 Jefferson St. (Twin Falls).

YOU ERR SLIGHTLY
Pot Shots note: Point No. 1: It's the territorial centennial, not the state. Point No. 2: The year is 1862, not 1892.
OH, REALLY NOW!
See where we're going to have some advice against peddling our obvious advertising feature, Pot Shots cannot handle your queries in type. However, we made some inquiries here and there and failed to turn up any information. One household and she hadn't heard of any such dealer for the last two years. Sorry.

The Doctor Says

BY HAROLD THOMAS
200 pounds or scrubbing on hands-and-knees...
Those who are struggling with the weight problem concentrate almost exclusively on diet. Rarely do we consider ourselves with variations in energy output.
As an example of the average daily expenditure of calories...
Washington—President Eisenhower announcing the appointment of W. Willard Wirtz as secretary of labor.

QUOTES FROM THE NEWS
By United Press International
WASHINGTON—President Eisenhower announcing the appointment of W. Willard Wirtz as secretary of labor.
I know he will carry on in the field of labor and management in the public interest.

MOSCOW—United Nations Acting Secretary General...
MORCOW—United Nations Acting Secretary General...
The best driver on the highway are those being followed by police cars.

COVERING THE CAPITAL WITH PETER EDSON

WASHINGTON, Aug. 31 (REAP)—Most significant feature of the new farm legislation just approved by the senate is that it contains not one mention which is influenced by the House.
The House bill was introduced by the House. It was a compromise between the two bills.
It is now admitted by the department of agriculture officials that the administration's farm programs by committee work on the farm bill is extremely complicated. The wonder is that the system had not broken down long ago.
Recognizing this weakness, Agriculture Secretary Orville Freeman had a 10-member committee working on the farm bill. The committee includes former secretary of agriculture, Charles C. Brannan, Dr. Joseph P. Kamp, Kansas State is heading the effort by the end of September to submit a new bill to the committee system on the farm bill.
In that connection, it is called that nearly every Democratic and Republican farm leader has been working for years on the farm bill. It is a program run by farmers, not by bureaucrats in Washington.
It sounds wonderful in a political speech in the farm bill. But the system which has been set up is a program run by farmers.
The trouble was that the bill was introduced in the House. It was a program run by farmers, not by bureaucrats in Washington.
It is now apparent that the great irregularity in the Billie Bill States operations under government farm programs was in his handling of cotton allotments. It is found loopholes in the government regulations and he made money through them.
The new farm legislation as passed by both senate and house doesn't even mention the word "cotton."
The new farm legislation as passed by both senate and house doesn't even mention the word "cotton."
The new farm legislation as passed by both senate and house doesn't even mention the word "cotton."

WASHINGTON NEWS
BY JACK BELL
WASHINGTON, Aug. 31 (AP)—Voters are expected to choose this fall between conflicting Democratic and Republican claims about the economy. The figures show the economy still in moving fast enough to please the voters.
Drawing on the same source of information, Republicans contend that under the Democrats the economy isn't keeping pace with growth or what Western Europe is doing. They point to Eisenhower's record in the election to ask an immediate tax cut as a sign something is amiss.
The pattern of conflicting political pronouncements during the past few days.
Sen. Calif. Engle, D., Calif., in the property tax in California. He is a Republican and a Democrat. He is a Republican and a Democrat. He is a Republican and a Democrat.

WASHINGTON NEWS
BY JACK BELL
WASHINGTON, Aug. 31 (AP)—Voters are expected to choose this fall between conflicting Democratic and Republican claims about the economy. The figures show the economy still in moving fast enough to please the voters.
Drawing on the same source of information, Republicans contend that under the Democrats the economy isn't keeping pace with growth or what Western Europe is doing. They point to Eisenhower's record in the election to ask an immediate tax cut as a sign something is amiss.
The pattern of conflicting political pronouncements during the past few days.
Sen. Calif. Engle, D., Calif., in the property tax in California. He is a Republican and a Democrat. He is a Republican and a Democrat. He is a Republican and a Democrat.

OSWALD JACOBY, BRIDGE
The American North-South bidding is shown in the North hand. This pair was playing a convention that a single raise in a minor suit was a game force. Hence, North's two club responses. South's two spade rebids were to the effect of club, South's eight was covered by West ten and dummy's jack.
South could have made the hand by playing two high spades from dummy and winning with the queen in his hand. This could lead the queen of clubs. West's best play would be to duck. That would not establish a trick in dummy while any other play would allow South to lead with the ace of clubs. South would have to take a diamond finesse, but finesses aren't to be taken. South missed this play and wound up dead two.
Q—THE BIDDING IS BEING...
South West North East
1♠ Pass West Pass
2♣ Pass East Pass
3♠ Pass West Pass
4♠ Pass East Pass
Opening Lead ♠10

OSWALD JACOBY, BRIDGE
The American North-South bidding is shown in the North hand. This pair was playing a convention that a single raise in a minor suit was a game force. Hence, North's two club responses. South's two spade rebids were to the effect of club, South's eight was covered by West ten and dummy's jack.
South could have made the hand by playing two high spades from dummy and winning with the queen in his hand. This could lead the queen of clubs. West's best play would be to duck. That would not establish a trick in dummy while any other play would allow South to lead with the ace of clubs. South would have to take a diamond finesse, but finesses aren't to be taken. South missed this play and wound up dead two.
Q—THE BIDDING IS BEING...
South West North East
1♠ Pass West Pass
2♣ Pass East Pass
3♠ Pass West Pass
4♠ Pass East Pass
Opening Lead ♠10

OSWALD JACOBY, BRIDGE
The American North-South bidding is shown in the North hand. This pair was playing a convention that a single raise in a minor suit was a game force. Hence, North's two club responses. South's two spade rebids were to the effect of club, South's eight was covered by West ten and dummy's jack.
South could have made the hand by playing two high spades from dummy and winning with the queen in his hand. This could lead the queen of clubs. West's best play would be to duck. That would not establish a trick in dummy while any other play would allow South to lead with the ace of clubs. South would have to take a diamond finesse, but finesses aren't to be taken. South missed this play and wound up dead two.
Q—THE BIDDING IS BEING...
South West North East
1♠ Pass West Pass
2♣ Pass East Pass
3♠ Pass West Pass
4♠ Pass East Pass
Opening Lead ♠10

Stocks

NEW YORK, Aug. 31 (AP)—Stocks showed surprising strength before the Labor day holiday...

MARKETS AT GLANCE

NEW YORK, Aug. 31 (AP)—In demand, bonds; extremely mild trading...

Grains

CHICAGO, Aug. 31 (UPI)—Grain Chicago board of trade as delivery...

Livestock

MONTREAL, Aug. 31 (AP)—(UDDA) Cattle and sheep; mostly choice steers...

Everybody's Money

The aftermath to President Kennedy's firings... should not be limited to a demagogic dramatization of topophiles...

Jerome Fair Results

Netted gains, Frontier Grade, blue; Jerome Grade, red; Sugar Loaf Grade, white...

Business Mirror

own without everyone getting on the ground game... Business has become so involved in political decisions...

NEW YORK STOCK EXCHANGE

Table with columns for various stock indices and prices.

CHICAGO

Table with columns for various commodity prices.

PORTLAND

Table with columns for various commodity prices.

GRAIN FUTURES

Table with columns for various grain futures prices.

Wall Street Chatter

NEW YORK, Aug. 31 (AP)—Kenneth Ward of Hayden, Stone and company says a period of hesitation and consolidation will be the order of the day...

Grains and Seeds

Alfalfa seed, Jerome Grade, red; Alfalfa seed, Jerome Grade, white; Alfalfa seed, Jerome Grade, blue...

Field Beans—Community

Great Northern, Frontier Grade, blue; Lem Utter, red; Frontiers, white; garden variety, Frontier Grade, blue...

Potatoes, Onions

Table with columns for various potato and onion prices.

Trust Funds

Table with columns for various trust fund prices.

Unlisted Stocks

Table with columns for various unlisted stock prices.

Wool

Table with columns for various wool prices.

Roundabout Way Got Bus to Texas

PHOENIX, Aug. 31 (AP)—A former Fifth Avenue bus from New York, vintage 1925, is one of the attractions this year at Six Flags Over the Sun...

Itchy Arizonian Beating Bananas

PHOENIX, Aug. 31 (AP)—The folks in westside Phoenix neighborhood were preoccupied with the meanings of a prowl.

Jury Foreman Serves Illegally

ATLANTA (AP)—A Fulton county jury was called to court for about four months when the foreman, Jack Zernberg, was recalled to court in an adjoining county and was ineligible to serve.

Erna Marquardt Taken by Death

GOODING, Aug. 31—Erna Kay Marquardt, 18, daughter of Mr. and Mrs. Christian Marquardt, died Thursday evening at the Gooding Memorial hospital after a short illness...

Butter, Eggs

Table with columns for various butter and egg prices.

Street Project About Half Done

Twin Falls street department has reported about half of the street planned this year...

Twins Markets

Table with columns for various market prices.

DOUBLE YOUR GAS SAVINGS WITH "P" STAMPS

Don Pieper's GAS FOR LESS 340 Addison Ave. West

NOW COMES THE BIG ONE! TWIN FALLS COUNTY

5 RODEO EVENTS \$4,950 Rodeo Purse Money Clowns - Specialty Acts

Next Week WEDNESDAY THURSDAY FRIDAY SATURDAY

HORSE RACING "BEN HUR" CHARIOT RACES

Children's Day and Judging... Wednesday East End Day... Thursday West End Day... Friday

Erna Marquardt Taken by Death

GOODING, Aug. 31—Erna Kay Marquardt, 18, daughter of Mr. and Mrs. Christian Marquardt, died Thursday evening at the Gooding Memorial hospital after a short illness...

Butter, Eggs

Table with columns for various butter and egg prices.

Street Project About Half Done

Twin Falls street department has reported about half of the street planned this year...

Twins Markets

Table with columns for various market prices.

DOUBLE YOUR GAS SAVINGS WITH "P" STAMPS

Don Pieper's GAS FOR LESS 340 Addison Ave. West

HORSE RACING "BEN HUR" CHARIOT RACES

Children's Day and Judging... Wednesday East End Day... Thursday West End Day... Friday

Erna Marquardt Taken by Death

GOODING, Aug. 31—Erna Kay Marquardt, 18, daughter of Mr. and Mrs. Christian Marquardt, died Thursday evening at the Gooding Memorial hospital after a short illness...

Butter, Eggs

Table with columns for various butter and egg prices.

Street Project About Half Done

Twin Falls street department has reported about half of the street planned this year...

Twins Markets

Table with columns for various market prices.

DOUBLE YOUR GAS SAVINGS WITH "P" STAMPS

Don Pieper's GAS FOR LESS 340 Addison Ave. West

HORSE RACING "BEN HUR" CHARIOT RACES

Children's Day and Judging... Wednesday East End Day... Thursday West End Day... Friday

Along Fences and Canals

Tom Schafers, manager of the Camas Prairie Grain Growers elevator, reports Harrison farms at Hill City had some dryland wheat that produced 40 bushels to the acre this year. Charles Weaver also had a high yield of wheat. Most farmers are reporting better than usual yields.

Fairfield residents report frost has nipped the tops of tender garden plants in Camas prairie.

Bean cutting operations are under way this week at the George Barlak ranch west of Buhl.

The Donald Schroeders, who ranch west of Buhl, have just completed hauling their straw as well as harvesting grain. Mrs. Schroeder noted they harvested between 75 and 95 bushels of wheat per acre.

Gooding farmers are reporting exceptionally high yields of grain this fall. Roy Ricker got 125 bushels per acre of certified oats on a 10 1/2-acre field on his ranch just north of Gooding. George Moody, who operates the Thorn Creek ranch north of Gooding, had 60 bushels of Lambi wheat to the acre on a 60-acre field.

Recent visitors from Iowa at the Reuben Lerman ranch, Piler, were impressed with the wheat yields on Idaho farms. At the Paul Sander ranch they were amazed at the height of the wheat stalks and even pulled up a good-sized handful which they carefully wrapped to take home and show Iowans how tall the wheat grows in Idaho.

Wayne Ferguson, Gooding part-time farmer, reports a yield of 112 bushels per acre of mixed grain. He harvested seven acres north of Gooding near Big Wood river, where he has a brother-in-law, Willbur Short. Ferguson works during the day as a mechanic in a local garage.

Ed Koster, Gooding county agent, reports grain crops in the Kooting area are yielding better than average with the harvest about 85 per cent completed. He adds pea aphid on the alfalfa crop seems to be letting up, with fewer calls than earlier in the season.

Tuttle farmers are becoming anxious about the maturing of their corn for silage because of cool weather now and during most of the summer. Unless weather warms soon there will be a great many underdeveloped pods in the small red Mexican beans at cutting time. Some pinto beans are being cut now.

Harvey Wood, Gooding, reports he has one field of beans about ready for cutting. He also reports his potato crop looks outstanding this year because of cool weather, and says he has quite a few No. 1 potatoes in hills he has checked.

Ira Parks has sold his sheep and will replace them with cattle on his ranch south of Abilene. The sheep, about 500 head, have been taken to grazing land near Soda Springs.

Cattle are being moved to new locations in Pasadena Valley from the ranches of Mr. and Mrs. Earl Carman and Mr. and Mrs. Martin Woodward, King Hill.

Mr. and Mrs. George Allen, King Hill, have lost a valuable quarter horse stallion, Nigger Duster. The stallion was valued at approximately \$1,500. His death was attributed to complications from a cold.

Bert Tracy, Almo, made a trip to Montana for a truckload of yearling ewe lambs which he delivered to the Burk Scholter farm in Springdale.

Harold Ward, Almo, cleaned out his stock well recently. It had rained in, causing it to go dry. He had to install extra casing but it is working satisfactorily now.

Atley Cahoon has moved his range cattle from the Taylor grazing land in Junction to his fields in Almo.

The first crop of grain raised on the homestead owned by Glen Jones near Deers, Idaho, is a fair yield. The field is a 10-acre sugarcorn land, south of Almo, late fall and cleaned the brush. This spring they leveled and plowed again before planting. They have just cut and are under cultivation. A good-producing well made the crop possible, they say.

Dwayne Ward is drilling a stock well on his crested wheat grass seeding south of Almo.

Donald Chandler is combining grain for the farmers in the Elba valley. The grain yield is better than it has been for several years, he reports.

U.S. Manufactured Feed Records Minor Increase

CHICAGO, Ill., Aug. 31.—Manufactured feed manufacturers' association reports that U.S. manufactured feed production for the first half of 1962 compared with the same period of 1961, according to Oakley M. Ray, director, Market Research, American Feed Manufacturers' Association.

First quarter tonnage increased five per cent, while the second quarter tonnage was one per cent below a year earlier, Ray reported. The report, issued from the AFMA office here, also showed an increase of three per cent for the 12 months ending June 30.

Six of nine regions increased tonnage during January-June above the same period of 1961. The East North Central and New England regions decreased one per cent and the East South Central region was down 1 1/2 per cent.

According to the report, the largest increases occurred in the West. The Pacific region increased 14 per cent, while both the Mountain and West South Central regions were up five per cent.

In the AFMA, the greatest percentage increase occurred in beef and sheep feeds which boosted year earlier levels by 15 per cent during January-June 1962. Hog feed tonnage was up eight, per cent and dairy feeds, six per cent.

The sharpest decline occurred in turkey tonnage which was down 18 per cent. This compares with a 1 1/2 per cent increase in the January-June period as reported by USDA. Broiler feed tonnage decreased six per cent compared with a reported three per cent decrease in broiler chicks hatched during the six-month period. Starter-grower egg feeds decreased five per cent, while the January-June hatch of eggs was up 10 per cent.

The feed tonnage reports are based on the sales by member companies of the association, and are compiled by the market research department of AFMA.

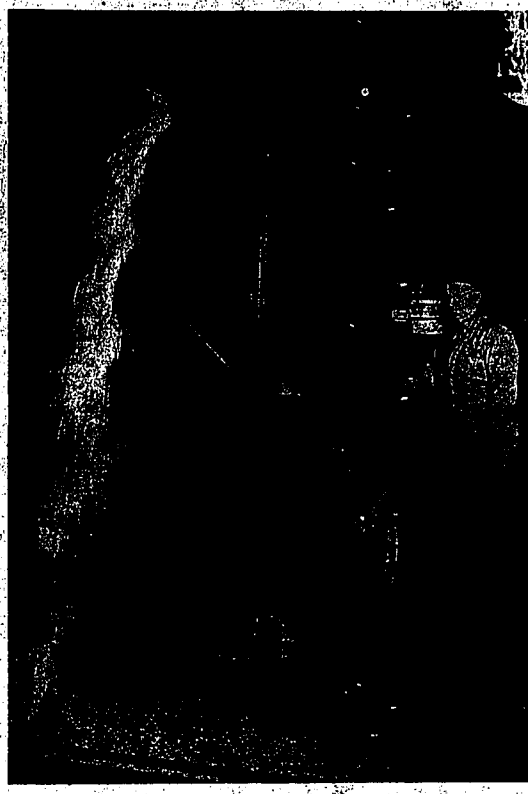
Complete help here for HOME IMPROVEMENTS

- Planning Help
- Building Help
- Financing Help

PHONE 733-3901
Anderson LUMBER CO.

Time News Farm AND Ranch

Magic Valley's Week-End Farm Paper



SHEELED CORN from an overhead storage bin is cracked by the new John Deere 22 portable rollermill and it is agerated into an elevator pit. The mill is available in two models, a power-take-off and one powered by electricity. Compact design makes it easy to install the mill for permanent feed handling. The cast rollers are adjusted on sealed ball bearings, and the rolls are adjustable to vary the degree of cracking.

Portable Roller Mill Offers Choice of Cracking Methods

MOLINE, Ill., Aug. 31.—A roller mill that turns shelled corn, milo, and small grains into palatable animal feed has been announced by John Deere. The John Deere 22 Roller Mill is available in two models, a PTO-driven portable model and an electric-motor-driven stationary model. The portable mill can be transported easily and set up quickly for on-the-spot feed processing. Compact design makes the stationary mill convenient for installing in a permanent feed-handling system.

Each mill has two 10-inch-diameter 20-inch-long cast rolls precision aligned on sealed ball bearings. Space between the rolls can be adjusted while the mill is running to vary the degree of cracking.

There is a choice in rolls. A fine roll with 14 corrugations, of grooves, per inch is recommended to farmers who want chiefly to roll oats, barley or wheat. This roll is also satisfactory for shelled corn and milo. A medium roll with 10 corrugations per inch

Referendum Ballot for Wool Slated

The referendum of wool and lamb products coming up in September is to determine their approval or disapproval of a new agreement to continue financing an advertising and market development program for wool and lambs, announced Carl Boyd, chairman, Twin Falls county agricultural stabilization and conservation committee.

He emphasized that the outcome of the referendum will not affect continuation of the wool incentive payment program, which was extended for four years under legislation enacted last summer.

According to the chairman, the government payments to farmers accounted for less than four per cent of their gross farm income in 1961, according to economic research service. If carried out under terms of an agreement between the secretary of agriculture and the American Sheep Producers Council, Inc., as authorized by law.

Under previous agreements approved by wool growers, voting in referendums in 1955 and 1959, the deductions from producer wool payments to finance the market development program have amounted to one cent per pound for shorn wool and five cents per hundredweight for lambs. Under the new agreement the deductions cannot exceed these rates.

Ballots will be mailed to producers in county, and all ballots should be received by Sept. 10. The voting will take place over the two-week period starting Sept. 10, and all ballots must be received by the AGCS county offices not later than Sept. 21 in order to be counted.

Producers eligible to vote in the referendum are all those who have owned sheep or lambs six months of age or older, for any one period of at least 30 days since Jan. 1, 1962. Each producer will report the number of sheep and lambs on his ballot. Approval by producers having at least two-thirds of the vote of production represented by votes in the referendum will be required. If the agreement is to be extended.

THE TIMES-NEWS WANT ADS

Frost

Should the weather pattern remain unchanged, there is a strong likelihood that Magic Valley farmers will be feeling the effects of continuing light frosts in the next few days.

Cold air masses are moving down from Canada, reports Creighton B. Nelson, meteorologist, Twin Falls weather station. Unless the picture changes, Magic Valley farmers should keep an eye out for possible changes to severe frosts.

Federal Payment Minor for Farms

WASHINGTON, Aug. 31.—Government payments to farmers accounted for less than four per cent of their gross farm income in 1961, according to economic research service.

Of their realized gross farm income, cash receipts from marketings were 35.4 billion dollars; government payments were 1.5 billion dollars, and nonmoney income represented by products consumed on the farm and the value of housing accounted for 3.2 billion dollars.

From the \$9.9 billion dollar gross production expenses subtracted 27.1 billion dollars and inventory changes added 2 billion dollars, resulting in a net income of 13 billion dollars. During the first six months of 1962 their net was at an annual rate of 12.8 billion dollars.

BEAN B AND PLOW S

- Sharpened •
- Rebuilding •

BRING THEM TO ACME MACHINERY

HORSE SHOEOING

For The Best CALL Morfy Hubel 326-4413

IT'S NEW! IT'S DIFFERENT! New Farmhand Beet Harvester Gets MORE Beets, CLEANER Beets



And the Unbeatable 250 2-ROW HARVESTER

These new Farmhand multiple-row Sugar Beet Harvesters get all your beets—and get them cleaner than ever before possible. Why . . . ? Because Farmhand's famous patented "Hit" wheels are now incorporated with a new cleaning system that gives every beet twice the amount of cleaning action. Farmhand's rubber "balls" wrap off most-of-the-dirt-as-the-beets-are-ripped-out-of-the-ground. All beets travel the full length of the new riend system. Rubber lips between steel riends give a flexing action for added cleaning efficiency, and prevent rock damage or jamming. Move them twice as much cleaning chain as on other machines gives Farmhand Harvesters unexcelled cleaning ability.

SEE THEM BOTH ON DISPLAY AT

CAMERON'S Inc.
RUPERT
VALLEY-TRACTOR-IMP.
BUHL

INTERSTATE EQUIPMENT
JEROME
CHISHOLM Farm
BURLEY
TWIN FALLS TRACTOR and IMP. CO.
TWIN FALLS

NOW Is The Time to put FERTILIZER on your STUBBLE

For All Your Needs on Fertilizers—Contact Us Phone GA 3-5511

HENRY'S FARM SALES

Long Distance Phone EN-375

KIMBERLY

Agriculture Imports Are Increasing

WASHINGTON, Aug. 31—The value of agricultural imports to the United States in the period from 1951 through 1961 rose up three per cent from the corresponding period a year earlier. The value was \$1,102,000,000 in these 10 months, a latest period for which data is available.

The value of supplementary or partially competitive imports for the 10 months was \$1,007,000,000 compared with \$1,007,000,000 in the previous year. The gain reflected 31 per cent larger purchases of animals and animal products, principally dutiable cattle, beef and veal, apparel wool, and hides and skins. Imports of vegetable oils, fats and waxes also gained substantially in this period. Other increases were in cotton gins and preparations, and seeds and products. Nuts and preparations declined. Turkey showed little change. Other major imports were unchanged from a year earlier.

The complementary, or non-competitive, imports were six per cent smaller for the 10 months. The value was \$1,095,000,000 compared with \$1,122,000,000 the previous year. The decline reflected lower prices for major products such as coffee, cocoa beans and crude natural rubber.

Strong U.S. demand encouraged exports and net exports increased to a record \$67 million pounds in January-April 1962, up from \$57 million for the period a year earlier.

The United States has become an attractive market for livestock from the strong demand for meat products. The market in the United States also contributed to increased imports of beef and veal during the 10 months. The other hand, production of low grade meats has increased substantially in Australia, New Zealand and the Central American Republics.

California To Battle New Fungus

SACRAMENTO, Aug. 31—An extensive effort will be made in California to control a fungus called cytospora, believed to be the cause of apricot-limb-dieback.

Surveys indicate that this plant disease occurs in nine counties. Monterey, Mendocino, Santa Clara, Alameda, Contra Costa, Solano, Yuba, San Joaquin and Stanislaus counties.

Growth in Santa Clara County, where apricot-limb-dieback has been a problem for some time, has been noted recently at the University of California in Davis for help in isolating the causative agent and devising means to control it.

Cooperatives Must Expand To Keep Pace

WASHINGTON, Aug. 31—Because agriculture is destined to see the least "let-up" in the coming years, it should expand the operations of both marketing and purchasing cooperatives, a top government official advised.

The need for expansion of farm cooperatives in both marketing and farm supply areas lies in the changing structure of the industry, firms doing business with farmers, R. B. Thoburn, government farm credit administrator, explained. "The marketing and industrial firms become fewer, larger, and more completely integrated.

The farmer's bargaining position becomes correspondingly weaker unless he unites with other farmers to help themselves. It is help enterprises that handle the off-farm phases of his farm business."

Farmers are now buying only 15 per cent of their farm supplies through retail cooperatives, he said in pointing out growth potential of cooperatives.

Livestock Dollars Transacted Each Week Depend on Accuracy of Scales

By G. E. CHAMBERS

Every transaction in the livestock industry involves an establishment of weight in one form or another. When animals are sold live or dressed, the buyer and the seller determine their costs and profits by what goes over the scales.

A great many dollars that change hands each week at the various livestock auction yards depends on the accuracy of the scales at the yards. The checking and making certain that honest transactions are made involves a complicated process.

Typical of the livestock transactions that happen each week is the procedure of the Twin Falls Livestock Commission company. Practically every sales yard in southern Idaho has some form of inspection in addition to meeting the requirements of the buyers and stockyards.

According to Claud Whitte, Twin Falls Livestock Commission inspector, the accuracy of the scales is a determining factor in the company's business. Most of the sales in southern Idaho have a certified inspector check their scales, and the scales are checked every six months.

Some states and areas have no company inspectors at each yard. The scales rest on the balance "knives." There is a balance "knife" on each corner of the scale and one in the center of the scale. Should the scales get out of balance, one of these balance "knives" will slip out of its socket and in addition to the "knives" on the scale, there are other balance "knives" on the scales and the accuracy of the scales is jeopardized.

The weightmaster is forbidden by law to sell or purchase livestock or to speculate in any form with livestock when he is sitting in the scale booth. In addition, each scale guide for production of high quality eggs is also stipulated by the state and is bondable.

Saleyards never know when federal or state inspectors might attend a sale. They have to be ready to pass inspection at any time that happens to be in progress.

According to Whitte the scales take a real pounding during a sale.

J. P. Seaback, commission company manager, notes there are many "prag" transactions over scales that haven't been inspected for a long time. But these are

private and are the business of the buyer and the seller. Whitte pointed out that there are many livestock buyers and sellers who have a real sharp eye when it comes to judging livestock and it would take a clever scheme to fool them on weight.

Some states and areas have no form of private or state inspection and those doing business in these sections are at the mercy of the weigher. There is one agency of the federal government that deals with scale inspection, the agricultural marketing service.

The big job in the AMB scales and weighing branch is one of livestock service to the seller, service to the buyer, and service to every individual who eats meat.

Robert D. Thompson, chief of the scales and weighing branch, sums up the goal of this agency with this comment: "To see that livestock sold on the basis of weight is accurately weighed on correct scales."

Going further, Thompson identifies three major tasks of the branch as to see that all livestock scales are tested regularly at six-month intervals, as required by regulations; to instruct livestock weighers on proper weighing practices and on their individual responsibilities; and to conduct investigations of weighing practices and correct any unfair practices discovered and reported.

One task would not be so difficult if all men were honest, Thompson said. "We are aided, however, by the fact that all livestock scales are tested regularly to treat others fairly and honestly."

A few, regrettable, are not honest—and these are able to take many thousands of dollars annually from honest livestock men through illegal weights.

The bulletin contains a table summarizing the United States standards for quality of individual shell eggs with specifications for quality factors of shell, all egg, white and yolk of the egg. Full "another" bulletin enumerates U.S. weight classes for consumer grades for shell eggs.

The importance of correct weighing, correct humidity, frequent gathering, washing, shell treatment with oil, or otherwise, and proper marketing is discussed and illustrated with charts and graphs summarizing research in quality factors of the University of Idaho agricultural experiment station. An eight-page guide for production of high quality eggs is also stipulated.

Copies of this new Idaho agricultural experiment station bulletin may be obtained from county agricultural agents.

TRY TIMES-NEWS WANT ADS

INSPECTING ONE OF THE "BUSINESS KNIVES" ON THE SCALES USED AT THE TWIN FALLS LIVESTOCK COMMISSION COMPANY

Claud Whitte, the scales inspector at the Twin Falls Livestock Commission company, is shown inspecting one of the scales used at the yard. The scales are inspected regularly to see that they are accurate. A flashlight is used to inspect the scales. Routine inspection is necessary to make sure all transactions are honest. (Times-News photo)

He said some of the best techniques used by dishonest weighmasters include moving the scale poles, weight aids, before putting the weight tickets, adding weight to the scale pans or to the counter balance weights in a weighbeam scale; moving the tare poles and locking weighmasters to prevent the public from determining if the scales are at zero balance.

Whitte points out the state and federal regulations are the minimums that must be met. An auction company must take additional steps to insure accuracy if it is to offer a thorough honest service to the livestock industry. And the livestock industry is one of southern Idaho's largest industries.

Most auction yards will take into consideration any new idea that will improve service and accuracy in their operations, said Whitte.

OIL TREATED UTAH STOKER SLACK \$15 per ton Delivered Idaho Falls, Idaho. Fuel Co. 112-0621—Twin Falls

Just Received another new load REDWOOD FOR FENCING

Start planning now for this new GARAGE

No down payment 5 years to pay CRESS BUILDING SUPPLY 5-Blue Lakes North

Egg Bulletin States Many Improvements

UNIVERSITY OF IDAHO, Moscow, Aug. 31—High quality eggs from producers to consumers is the subject of newly released Idaho agricultural experiment station bulletin No. 379.

Authors are E. A. Sauter, University of Idaho poultry husbandry department, and Robert Black, university extension poultryman.

Step-by-step recommendations and suggestions are given in this bulletin for achieving and maintaining high egg quality. Construction details for the cooling room and a suggested layout for an ideal storage packing-cooler building are given.

The bulletin contains a table summarizing the United States standards for quality of individual shell eggs with specifications for quality factors of shell, all egg, white and yolk of the egg. Full "another" bulletin enumerates U.S. weight classes for consumer grades for shell eggs.

The importance of correct weighing, correct humidity, frequent gathering, washing, shell treatment with oil, or otherwise, and proper marketing is discussed and illustrated with charts and graphs summarizing research in quality factors of the University of Idaho agricultural experiment station. An eight-page guide for production of high quality eggs is also stipulated.

Copies of this new Idaho agricultural experiment station bulletin may be obtained from county agricultural agents.

TRY TIMES-NEWS WANT ADS

SPECIAL PURCHASE

Roll Ends of Plastic Material

2 Yards by 30" 88¢

Large Variety of Colors

BOYS' SPORT SHIRTS

Nationally Advertised Water King and Kolesport Assorted styles and Patterns, Knits, Flannels

\$1.88 and up

BRYSON'S BI-RITE

226 MAIN N.

the heat's on!

PACIFIC hi cal HEATING OIL

Crisp fall mornings reminds us now is the time to order Pacific's new formula Hi Cal heating oil. More comfort...more heat calories per gallon this year than ever before!

New Pacific Hi Cal is clean and full burning—prolongs burner life, minimizes need for service calls. And, at your local Pacific Cooperatives you always get farmer-minded service, prompt delivery plus volume savings...cooperatively.

Sure sign **P** for comfort

MEMBER PACIFIC COOPERATIVES

TWIN FALLS CO-OP SUPPLY

Soil Survey Reports Are Interesting

WASHINGTON, Aug. 31—Soil conservation surveys completed and published last year in California, Florida, to Alaska, to Hawaii, according to Soil Conservation Director Donald A. Williams.

Williams said the number of surveys that are completed and published annually has more than tripled since 1957.

The increase reflects the growing demand for soil information by state and federal planners, highway departments, and others outside agriculture. Williams said they are using the reports to "study gravel deposits, to find airports that are standing up under the pounding of jet aircraft, and to learn whether the soil erosion subdivisions is suitable to septic tanks."

"Farmers use the surveys to decide what to plant where and how to plant it. They also use the reports to better in cultivated crops, pasture, or trees."

Each report covers an area of about one county in size. It includes aerial photographs of every foot of ground in the survey area. Soil types are outlined on the photographs. The report also gives such facts as soil depth, slope, suitable uses, erosion and drainage problems, and the location of alkali and dry areas.

Earning Set for Sugar Beet Average

...the average sugar beet acreage in the state is 1,000 acres. The average yield is 100 tons per acre. The average price is \$10 per ton. The average cost is \$10 per ton. The average profit is \$0 per ton.

Tax Revision Could Affect Cooperatives

WASHINGTON, Aug. 21.—The House Finance Committee today reported legislation relating to the taxation of cooperatives and their members. The committee's report is a part of the current revision bill, which passed the House last week.

...the bill passed by the House will permit cooperatives to deduct expenses for depreciation on their property. It also provides for a new method of computing the value of stock owned by members.

Inland Empire Wheat Crop Average Higher Than 1961

SPOKANE, Aug. 21.—Lush crops of wheat, ranging from 10 to 30 bushels over the average yield, were rolling to elevators throughout the Inland Empire this week.

Infection in Stock Costly

DES MOINES, Ia., Aug. 21.—Farmers may be looking at much more than a few dollars a year as a result of internal parasite infections of their livestock, says the American Foundation for Animal Health.

Farm Units End Losing Funds

OLYMPIA, Wash., Aug. 21.—The department of institutions today announced that it has ended its farm units program. The program, which was started in 1961, had cost the state \$1 million.

BUYERS SHOW INTEREST

BOODING, Aug. 21.—Maurice J. Booding, Northville, Mich., a 3-year-old bull, four females, from Charles H. Booding, registered Milking Shorthorn.

Farmers Notice!

To serve you better before bean harvest we will keep our ...

USED MACHINERY YARD OPEN FRIDAY NIGHTS 'Til 9 p.m. Through Sept. 14th

Drop down and inspect our good selection of USED MACHINES as well as the new CASE 600 SPECIAL COMBINE.

WILLIAMS TRACTOR CO.

"Buy the Best" "Buy Case"

Speaking Teams by Western Bean Unit Offered to Seek Solution of Surplus

Members of the Western Bean Dealers Association are trying to determine the attitude of the individual grower. The association is offering to send a team of speakers to visit with growers and discuss the surplus problem.

Advantages of Nordan Grass Seed Explained in Bulletin

UNIVERSITY OF IDAHO, Moscow, Aug. 21.—The advantages of Nordan grass seed for range and pasture are explained in a new bulletin. The bulletin is available to growers for a small fee.

Railroad to Grant Awards For 4-H Work

CHICAGO, Aug. 21.—Two new 4-H scholarships are offered to current or former club members. The scholarships are for 4-H projects and are worth \$400 each.

Behind Schedule

BUELL, Aug. 21.—The seasonal corn pack operation at the Green Giant company here is running slightly behind schedule because of the wet weather.

Costs Climbing

WASHINGTON, Aug. 21.—Consumer's food costs rose almost 3 percent during the first half of 1962 over a year earlier, according to an economic research service survey.

GOING TO MOVE?

We'll do it better, Faster

Ford Transfer & Storage Co.

PHONE 733-5274

AGRICULTURAL CREDIT PRODUCES WEALTH

It starts with the land... and it spreads to the towns and cities of all America.

The wealth of our natural resources, assisted by human ingenuity and effort, equipment and money, produces the strength that holds our nation firm in a world of turmoil.

Your Production Credit Association loans money for the further development of this wealth from the land. You'll find farm-minded PCA folks near you, ready to assist you in financing the improvement and productivity — in have a supply of ready cash when you need it.

Column OF TIME & MONEY-SAVING IDEAS

"You can divide a pie or round cake into five equal parts by first dividing it into ten equal parts. This divides the two large sections on the right and left of the pie in half."

When you plan to purchase a new or used car, truck, or other vehicle, make it worth your effort. Payments are divided to fit your budget and the bank will give you the best interest rate on your own insurance firm.

FIDELITY NATIONAL BANK

of Twin Falls

Twin Falls - Branch of Fidelity National Bank

NOTOR BRANCH 123 3rd AVE. EAST

Member F.D.I.C.

Ready for Fall Planting

ELGIN WHEAT 4.50
RED WHEATS 4.75
FALL MIXED GRAINS (Wheat and Barley) 4.50
ALPINE BARLEY 4.00
RYE GRAIN 3.50

We have available for raising on contract —

- Gaines Wheat
- Idaho Club Barley
- Alpine Barley

GLOBE Seed & Feed Co.

FOR RENT

Ideal for wholesale - retail of flour, sorghum or repair - also dog parking, heavy traffic count.

15' x 40' commercial 1500
1800 Kimberly Road 733-4397

Acme's at the Fair

MORE ACME POTATO CHAINS ARE SOLD IN IDAHO THAN ALL OF THE OTHER MAKES COMBINED!

See these samples at our display on the road to the midway at the TWIN FALLS FAIR

- Foam Rubber Coated Links
- Vine Chain
- Extended Pitches
- Long or Short Pitches
- Rubberized Pocket Chain
- Any type of Flight
- Potato Planter Press Wheels
- Potato Cultivating Blades
- Cones with Steel Bearings
- Acme Potato Press Hillers
- All types of Sprockets
- All types of Idlers
- Steel and Rubber Rollers
- Kickers - 32 to 1.88 pitch
- Acme Corrugators
- Side Rake Teeth
- Grass Boards
- 9-Kinds of Tool Bar Clamps
- Fertilizer Injector Blades
- Spring Finger Weeder
- Hydraulic Grain Truck Dumps
- Hydraulic Presses & Systems
- Custom Manufacturing

Acme is the only manufacturer in the world that makes all sizes of beat and potato chains, plates or vulcanized with foam rubber coating. Made in Idaho, sold all over (including Hawaii).

Acme Machine WORKS, Inc.

500 Main FILER, IDAHO

An Idaho Company, working in Idaho, building a better Idaho.

KEEPERS AMERICA STRONG

CONTACT YOUR NEAREST OFFICE

SOUTHERN IDAHO PRODUCTION CREDIT WORKS OFFICE AN ASSOCIATION

Column OF TIME & MONEY-SAVING IDEAS

"You can divide a pie or round cake into five equal parts by first dividing it into ten equal parts. This divides the two large sections on the right and left of the pie in half."

When you plan to purchase a new or used car, truck, or other vehicle, make it worth your effort. Payments are divided to fit your budget and the bank will give you the best interest rate on your own insurance firm.

FIDELITY NATIONAL BANK

of Twin Falls

Twin Falls - Branch of Fidelity National Bank

NOTOR BRANCH 123 3rd AVE. EAST

Member F.D.I.C.



LOT OF BULL, a Hereford with a beautiful set of horns, was "snuffing" himself when the photographer happened along. When the woman climbed over the fence the bull got up to take a closer look. The camera snapped and then it was the bull's move—but the photographer moved first and got out of there. (Times-News photo)

Knoll Creek Station to Probe Elko Water Angle

UNIVERSITY OF NEVADA, Reno, Aug. 31—An Elko county experiment station that once looked like a small forest because of the sagebrush is now abounding in luxuriant grasses as a result of range reclamation experiments under way at Knoll Creek field laboratory of the University of Nevada's agricultural experiment station.

Idaho Group Departs to Tour Russia

NAMPA, Aug. 31 (AP)—The southwestern Idaho and eastern Oregon farmers and wives left this week for a 21-day tour of farms in the Soviet Union.

New Cereal Pest Active In Midwest

WASHINGTON, Aug. 31 (AP)—A cereal leaf beetle found in this country before is damaging oats and corn in Michigan and Indiana.

...a result of the water table being at an optimum depth for sagebrush roots. So why not remove the sagebrush and use the water for something better? They are checking out their theory by measuring the depth to the water table in areas with and without sagebrush.

...The party plans to stop at Brussels, Belgium, to see headquarters of the European Common Market, then fly to Moscow.

WASHINGTON, Aug. 31 (AP)—Plains area farmers are getting their fields ready for wheat planting and because of lack of rain in recent weeks, the job is a hot, dry, dusty one.

...The exhibit will introduce new wheat foods to the people of Pakistan and will include a mobile bakery equipment for commercial bakery promotion as well as for the use of housewives.

...The joint hearing will provide opportunity for evidence to be presented on changing pricing provisions of the Texas contract for simultaneous action to be taken to preserve price alignment among the markets.

WASHINGTON, Aug. 31 (AP)—The commodity credit corporation reported \$2.3 million dollars worth of barter contracts during fiscal 1962.

...The exhibit will introduce new wheat foods to the people of Pakistan and will include a mobile bakery equipment for commercial bakery promotion as well as for the use of housewives.

...The joint hearing will provide opportunity for evidence to be presented on changing pricing provisions of the Texas contract for simultaneous action to be taken to preserve price alignment among the markets.

WASHINGTON, Aug. 31 (AP)—The commodity credit corporation reported \$2.3 million dollars worth of barter contracts during fiscal 1962.

Downey Will Journey To Pakistan

DOWNNEY, Aug. 31—Downey will represent Western Wheat Associates and Wheat Exporters Association at the United States Trade Fair in Karachi, Pakistan, Oct. 12 to Nov. 20, said Western Wheat Executive Vice President Richard K. Baum, Portland, Oregon.

Combining In Full Swing In Lincoln

RICHFIELD, Aug. 31—Wheat combining has been in full swing for the past two weeks with the largest yields reported to date by Ernest Walker's winter wheat at his farm west of Richfield.

WASHINGTON, Aug. 31 (AP)—The commodity credit corporation reported \$2.3 million dollars worth of barter contracts during fiscal 1962.

WASHINGTON, Aug. 31 (AP)—The commodity credit corporation reported \$2.3 million dollars worth of barter contracts during fiscal 1962.

Search Fails to Find New Trace of Beetles

NO NEW TRACES of the cereal leaf beetle were discovered in a search of the Elko county area, according to the agricultural experiment station.

Public Hearing Scheduled to Amend 3 West Milk Orders

SEATTLE, Aug. 31—Proposals to amend three West milk orders to adopt a common basis for milk pricing are to be heard in public hearings in the city this week.

Bureau Reports Record Harvest

WASHINGTON, Aug. 31—The bureau of recreation reports that 1961 gross harvest from land irrigated by reclamation projects topped the billion-dollar mark for the third consecutive year.

WASHINGTON, Aug. 31 (AP)—The commodity credit corporation reported \$2.3 million dollars worth of barter contracts during fiscal 1962.

WASHINGTON, Aug. 31 (AP)—The commodity credit corporation reported \$2.3 million dollars worth of barter contracts during fiscal 1962.

WASHINGTON, Aug. 31 (AP)—The commodity credit corporation reported \$2.3 million dollars worth of barter contracts during fiscal 1962.

New Cheese
WASHINGTON, Aug. 31 (AP)—A new cheese invented by Michigan State University scientists has passed government tests with flying colors.

REBUILT ENGINES
C.I.L. CO. MOTORS
for Cars - Jeeps and Pickups.
As Low as \$138.00 (Cher) Exchange
Farm & City Distributing
Twin Falls — Burley

We now have some good **Used Farm Machinery**
1 No. 55 John Deere COMBINE
1 No. 5, 1-No. 8, 1 No. 9 John Deere MOWER
AND OTHER MISCELLANEOUS ITEMS
We now have a good stock of **BALER TWINE**
See us for all your needs in **PARTS & SERVICE**
McGEE'S FARM SERVICE
John McGee BELLVIEW Ph. 025 12

NEW LOW PRICE!
CUT-AWAY SHOWING ROD REINFORCEMENT
DURA-FEEDER
Pre-Cast Colonial Concrete Bunk Feeder
SAVE \$6.80 PER SECTION
Now \$32 PER 8 ft. SECTION
F.O.B. Plant in Twin Falls
YOUR BEST FEED BUNK BUY!
Colonial Concrete
Phone 731-3800 or 731-3499
Plant Located West of Twin Falls, just off Highway 30

Carr's Coin-Op Dry Clean
7 lbs. 1.00
1111 W. Addison
LUCILLE CARR, Owner

Tank-up for WINTER
With Our Quality **FUEL OIL**
Don't Wait ACT NOW!
Get on Our Check Return System
United Oil Co.
733-7033
Kimberly Road — Twin Falls

Did You Know That We Have in Stock:
• WELL CASINGS
• SHELBY TUBING
• VALVES SIZES 1/2" to 16"
• PIPE (black and galvanized)
• STEEL (bar, angles, flats)
• PILLOW BLOCKS — BEARINGS
• AIR COMPRESSORS
• ELECTRIC MOTORS (new and used)
• GEAR DRIVES AND PULLEYS
• Hundreds of Miscellaneous items
SOUTHERN IDAHO PIPE & STEEL
250 South Park Ave. 733-8599
LYNN & ARCHIE LANGDON

NEW LOW PRICE!
CUT-AWAY SHOWING ROD REINFORCEMENT
DURA-FEEDER
Pre-Cast Colonial Concrete Bunk Feeder
SAVE \$6.80 PER SECTION
Now \$32 PER 8 ft. SECTION
F.O.B. Plant in Twin Falls
YOUR BEST FEED BUNK BUY!
Colonial Concrete
Phone 731-3800 or 731-3499
Plant Located West of Twin Falls, just off Highway 30

Miss Sawyer Is Huffman's Bride In Chapel Rites

MELISSA ANN SAWYER, daughter of Mr. and Mrs. Malcolm H. Sawyer, of Twin Falls, Idaho, was married to Mr. Hans E. Huffman, son of Mr. and Mrs. Frank Huffman, of Twin Falls, Idaho, in a military ceremony Aug. 18 at Hells air force base chapel.

The double-ring rites were performed by the Rev. Hans E. Sandrock, chaplain, Washington, D. C.

The bride, given in marriage to her father, wore a lagoon tulle gown with a detachable train accented at the back waist with black organza. A scalloped neckline and bodice trimmed with remounted Alençon lace petals completed the gown.

The all-illusion veil was held by a circle of white satin roped with seed pearls. She carried a white gardenia corsage in white tulle.

Maid of honor was Karen Weaver, sister of the bride. Best man was Mr. Robert H. Mitchell, sister of the bride, and Rudy Mitchell, both of Denver. Flower girl was Stacy Leatham, Hells air force base.

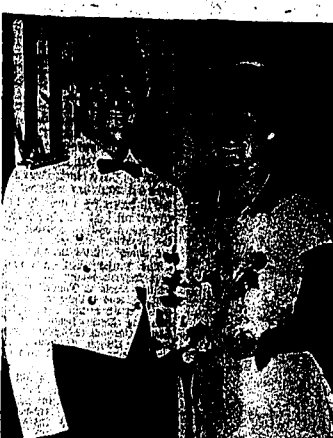
Such attendant wore a white tulle dress with a full white organza overskirt. Each wore a crown of a spray of green and white wild flowers and carried a bouquet of white carnations.

The flower girl wore a white tulle dress with a full white organza overskirt. She carried a bouquet of white carnations.

The groom wore a white tulle suit with a white waistcoat and a white bow tie. He carried a bouquet of white carnations.

The bride's parents hosted a rehearsal dinner at the Hells air force base.

The bride's parents hosted a rehearsal dinner at the Hells air force base.



LIEUT. AND MRS. DALE E. HUFFMAN

Golden Wedding Anniversary Is Marked by Pair

FAIRFIELD, Aug. 31—About 150 friends and relatives attended the open house celebration of the 50th wedding anniversary of Mr. and Mrs. George Abbott.

The white lace-covered table featured a three-tiered wedding cake, decorated by Mrs. James Yarnes and Mrs. Verne Larson, and baked by Mrs. Glenn Miller. Floral decorations were made of gladioli and chrysanthemums.

Serving were Mrs. Tom Abbott, Tacoma, Wash.; Mrs. Jack Abbott, Albuquerque, N. M.; Mrs. Lee Almona, Portland, Ore.; Mrs. Glenn Miller, Corvallis, Fessenden Miller registered guests.

Children of the couple attending were Mr. and Mrs. Jack Abbott and family, Albuquerque, N. M.; and Mrs. Glenn Miller and family, Corvallis.

Frederick third, Mrs. L. I. Culbertson, first, and Edith Treiber, second.

"Black and white," Mrs. Culbertson, first; Mrs. Earl Goode, second; and Mrs. Lila Benedict, third.

"Low basket," Mrs. Culbertson, first; "High basket," Mrs. Culbertson, first; Schorran, second; and Mrs. Lila Benedict, third.

"Bountiful harvest," Miss Treiber, first; Mrs. Helene Wilkinson, second and third; "Worthy arrangement," Mrs. Culbertson, first; Mrs. Reed Hanson, second; and Mrs. Lynn Manning, third.

"Emerald spire," Mrs. L. I. Culbertson, first; Edith Treiber, second; and Mrs. Earl Goode, third.

"Rainbow hues," Mrs. L. I. Culbertson, first; "Country lane," Mrs. L. I. Culbertson, first; George Barnard, second; and Edith Treiber, third.

"Cherry blossom," Mrs. L. I. Culbertson, first; "Sunshine," Edith Treiber, first; Mrs. G. L. Goode, first; and Mrs. Earl Goode, second.

"Emerald spire," Mrs. L. I. Culbertson, first; Edith Treiber, second; and Mrs. Earl Goode, third.

"Rainbow hues," Mrs. L. I. Culbertson, first; "Country lane," Mrs. L. I. Culbertson, first; George Barnard, second; and Edith Treiber, third.

"Cherry blossom," Mrs. L. I. Culbertson, first; "Sunshine," Edith Treiber, first; Mrs. G. L. Goode, first; and Mrs. Earl Goode, second.

Annual Rupert Flower Show Is Termed Success

RUPERT, Aug. 31—Great interest was shown in the annual fall flower show sponsored by the Rupert Women's club Saturday, according to Mrs. Camden Meyer, chairman.

A large number of entries than in past shows were displayed, she said.

"Rose of the day," a Peace rose was entered by Joseph Schorran.

Strawapples winner was Mrs. L. I. Culbertson.

Judges were Mrs. William Henschel of the Rupert Floral and Lloyd Knopff of Lloyd's Floral, who judged cut flowers, and Mrs. A. Hankins, Twin Falls, who judged arrangements.

Winners in the rose division, hybrid tea, are Mrs. L. I. Culbertson, second; peace rose, Joseph Miller, first and third; and Elmer Goetzman, second and third.

Hybrid tea, by color, Joseph Miller, first; Jerry Schorran, second; Ernest Welch, third.

Floribunda, Miller, first; Elmer Goetzman, second; and Jerry Schorran, third.

Reed Hanson, third; miniature, one cluster, Mrs. Anna Daisson, second; and Mrs. Lynn Manning, third.

Large, Mrs. Lynn Manning, third; any type rose, three varieties, Miller, first and second.

Arrangements, planters, Mrs. L. I. Culbertson, first; Mrs. Lowell French, second; "Transcendental," Mrs. L. I. Culbertson, first; Jerry Schorran, second; and Mrs. Reed Hanson, third.

Levander Blue, Dilly, Dilly; Mrs. Earl Goode, first; Mrs. G. L. Hanson, second; "Sunshine," Edith Treiber, first; Mrs. G. L. Goode, first; and Mrs. Earl Goode, second.

"Emerald spire," Mrs. L. I. Culbertson, first; Edith Treiber, second; and Mrs. Earl Goode, third.

"Rainbow hues," Mrs. L. I. Culbertson, first; "Country lane," Mrs. L. I. Culbertson, first; George Barnard, second; and Edith Treiber, third.

"Cherry blossom," Mrs. L. I. Culbertson, first; "Sunshine," Edith Treiber, first; Mrs. G. L. Goode, first; and Mrs. Earl Goode, second.

Marian Martin Pattern

9246

SMART FOR SCHOOL

On break fall days, you are to go to school in smart suit. Perfect choice is this pleated-sleeve dress with easy, demi-line. Choose fine flannel or wool.

Printed Pattern 9246: 10 pieces 8 1/2 x 14, size 10 takes yards 84-inch.

Twenty-five cents in coins for return—add 10 cents for shipping pattern for first-class mail.

Send to Marian Martin, Times-News Dept., 222 West 10th St., New York, N.Y. Put on envelope name, address with name, style number.

Family name, address with name, style number.

Family name, address with name, style number.

Family name, address with name, style number.

Food for Americans

By GAYNOR MADDOX

KEEP PICNIC DISHES HOT

On top of hot chicken mixture, add chicken, until biscuits are done, 10 to 15 minutes.

Beef Stew

(Makes 4 servings)

3 pounds stewing beef

2 tablespoons corn oil

1 tablespoon paprika

2 tablespoons water, first

1 envelope golden onion soup

2 cups water

1 (1 1/2-ounce) can tomato puree

4 to 6 medium potatoes, pared and cubed.

Cut beef into 1-inch cubes. Heat corn oil in deep skillet or Dutch oven. Brown beef until lightly browned on all sides. Sprinkle with paprika; add 2 tablespoons water. Cover 5 minutes. Stir in golden onion soup; 2 cups water and tomato puree; simmer 15 minutes. Add potatoes; cook until tender; about 15 minutes.

NERVOUS ? ? ? . . . Get the capsule specifically formulated for the relief of nervousness, instability, restless insomnia, nervous stomach and nervous headaches. . . . Get KING'S ANTI-TENSION FORMULA Available at Drugstore Centers.

Indian Woman Doctor Operates From Wheelchair

NEW YORK, Aug. 31—"I'm completely independent now," said Dr. Mary Verghese with a shy smile. "I feel equal to anything."

She was sitting in a wheelchair that she had just manufactured actually down the hall at New York University's Institute of physical medicine and rehabilitation. With long, supple fingers she smoothed the white medical jacket she wears over her hair and settled back to discuss her work.

Dark-haired Dr. Verghese is a paraplegic surgeon from India, who does operations from her wheelchair. Now 37, she is finishing up resident training at the Institute on World Rehabilitation fund fellowship, working with rehabilitation patients who have lost use of limbs as the gentle, soft-spoken doctor wheels up alongside.

"I can understand their problem better than most people who hasn't had to undergo physical rehabilitation," she explained.

Actually Dr. Verghese is just being a doctor. Her own legs can neither feel nor move.

"Immediately after the accident I didn't believe I could do anything," she said.

The car accident occurred in 1954, when she was just two years out of medical school and was clerking in obstetrics at the Christian Medical college and hospital at Vellore, South India. The hospital staff was on its way to a picnic.

After three operations the vertebrae in her fractured spine were fused into a solid column of bone from head to pelvis. This was done by the hand of Glenn Miller. Floral decorations were made of gladioli and chrysanthemums.

"Months after the accident I started to do physical therapy. I needed assistance to get into a wheelchair, but now I can do it by myself. I can travel anywhere alone. The wheelchair folds into cars," she said.

At the end of August she'll go to London for a month's study of rehabilitation centers, returning to Vellore in October to establish India's first complete department for physical rehabilitation.

Rex Parsons, first; Mrs. Culbertson, second; and Mrs. Lila Benedict, third.

Spoon type, bronze, Mrs. Culbertson, first; lavender, Mrs. Culbertson, second; and Mrs. Lila Benedict, third.

"Aster," white, Mrs. John Trevino, first; Mrs. L. I. Culbertson, second and third; pink, Mrs. Culbertson, first and second; and Mrs. Audrey Newirth, third.

Mrs. John Trevino, second; and Mrs. Audrey Newirth, third.

Mrs. John Trevino, second; and Mrs. Audrey Newirth, third.

Mrs. John Trevino, second; and Mrs. Audrey Newirth, third.

Mrs. John Trevino, second; and Mrs. Audrey Newirth, third.



MR. AND MRS. LEROY MELLIES (Crasnon photo)

Billie Frost Is Married to LeeRoy Mellies

GOODING, Aug. 31—Billie Jean Frost, daughter of Mr. and Mrs. William E. Frost, Eagle, became the bride of LeeRoy Mellies Aug. 31 at the Meridian Methodist church.

Mellies is the son of Mr. and Mrs. Everett Mellies, Gooding. The ceremony was performed by the Rev. Paul V. Larus of the Eagle Methodist church before 100 guests.

The bride's floor-length gown was of Chantilly lace and net, with a fitted bodice featuring a scalloped neckline and long pointed sleeves. Her elbow-length veil was held by a tiara of seed pearls and sequins. She carried a bouquet of yellow roses and white carnations.

Sally Moeman, cousin of the bride, was maid of honor. She wore a street-length princess style gown of white green beaded tulle.

Other bridal attendants were Ethel Edgerston, Ruma, and Mrs. Edwin Stevens, Gooding. They wore lavender and golden yellow gowns respectively.

Miss Audrey Newirth, bridebearer, and Margene Muller and Darlene Muller, all Eagle, were flower girls.

Lee Frost, brother of the bride, and David Smith, a cousin of the bride, were candlelighters.

Kenneth DeTorne, Boise was best man. Larry DeTorne, Bilton, Miss., and Edwin Stevens, Gooding, were ushers.

Juanita Gibbons, New Plymouth, was soloist, accompanied by Mrs. Audrey Newirth, Gooding. Mrs. Kent Keller was organist.

Mrs. Frost wore a two-piece dress with a green and white floral pattern.

The mother of the bridegroom chose a green linen dress with white accessories. Each wore a pink carnation corsage.

Serving at the reception for 125 guests were Mrs. Fred Frost, Mrs. Phillip Hoff, Mrs. James Haney and Mrs. H.E. Cherry.

The new Mrs. Mellies is a graduate of Meridian high school and St. Alphonsus hospital school of nursing. She is employed at the hospital.

Mellies was graduated from Gooding high school and served four years in the air force. He attends Boise Junior college.

After a wedding trip to northern Idaho and Canada, the couple will reside at 843 Victoria drive, Boise.

At a bridal shower given prior to the wedding were Mrs. Lloyd Wood, Mrs. Frank Haney, Mrs. Gene Muller. The bridegroom's mother hosted a rehearsal dinner at the home of Mr. and Mrs. Howard Bohart, Boise.

Miss Johnson's Betrothal to Cope Announced

RICHFIELD, Aug. 31—The betrothal of Patricia Elaine Johnson to Cecil C. Cope, Jr., son of Mr. and Mrs. Cecil Cope, Sr., Shoshone, is announced by her parents, Mr. and Mrs. Kenneth Johnson, Richfield.

The bride-elect is a 1950 graduate of Richfield high school and has been employed at Sun Valley and the Bank of Idaho, Richfield branch.

Cope is a 1937 graduate of Declo high school and served six months active duty with the army reserves. He is employed at KKKX radio, Twin Falls.

No definite wedding date has been set.

Baptist Circle Honors Woman

Members of the Ivah Henelle circle of the First Baptist church met for a coffee hour at the home of Mrs. Glen Chapman.

The gathering was in honor of Mrs. Robert Burchell who is moving to Rich where her husband will be pastor of the Rich First Baptist church. A gift was presented to Mrs. Burchell. A gift was presented to Mrs. Burchell. A gift was presented to Mrs. Burchell.

Mrs. Burchell's mother, Mrs. Edward Hoffman, Paramount, Calif., Mrs. Burchell's mother, was a special guest.

Miss Howells, O'Dell Engaged

Miss Homer Smith, Twin Falls, announces the engagement of her daughter, Shirley Howells, to John L. O'Dell, son of Mrs. Berta Howells, Sun Valley, and O'Dell, Twin Falls.

Miss Howells and Mr. O'Dell attended Twin Falls schools. He is employed by Nelson-Moore Construction company.

They plan to be married Sept. 1.

ROCHE LABORATORIES Offers Career Opportunities for Pharmaceutical Salesmen

Are you a successful pharmaceutical salesman?

Do you feel you have potential for eventual advancement to executive positions in sales and other areas of pharmaceutical marketing?

The rapid and continuing growth trend of Roche Laboratories has created the need for more good sales representatives, and offers unlimited opportunity for individual growth.

Qualified applicants are invited to write to Mr. John N. West, Division Sales Manager, Box 639, Lafayette, California.

The Horse Shu Club Presents . . .

Donnie James and his Saddletones

WED. NIGHT FROM 6 p.m. BUFFET 97c

Turkey, Sparrhen, Cold Chix with trimmings

FREE TICKETS on a complete BOAT OUTFIT

Includes: Boat, motor, trailer, waterskis, life jackets, etc. Drawing Sunday, September 9.

DANCING

Specializing in CREATIVE—MODERN MODERN JAZZ—TAP BALLROOM

- International Style
- American & Latin
- Latest Dance Fads

REGISTER NOW!

NIELSEN School of Dance

Phone 733-6343

Member International Society of Dance Master

FREE! SUNDAY BUFFET

OLD FASHIONED BUFFET Starting at 2 p.m.

FREE CASH Drawings (Adults Only) FRI., SAT., SUN. PLUS—Free Boat Tickets

WEDNESDAY NIGHT BALLOON NIGHT

\$250 CASH DRAWINGS

100.00 GRAND PRIZE

WILL BE GIVEN TO ONE LUCKY PERSON (nothing to buy!)

Horse Show Club

Jackpot's Finest TAKE 93 SOUTH TO NEVADA!

Food for Americans

By GAYNOR MADDOX

KEEP PICNIC DISHES HOT

On top of hot chicken mixture, add chicken, until biscuits are done, 10 to 15 minutes.

Beef Stew

(Makes 4 servings)

3 pounds stewing beef

2 tablespoons corn oil

1 tablespoon paprika

2 tablespoons water, first

1 envelope golden onion soup

2 cups water

1 (1 1/2-ounce) can tomato puree

4 to 6 medium potatoes, pared and cubed.

Cut beef into 1-inch cubes. Heat corn oil in deep skillet or Dutch oven. Brown beef until lightly browned on all sides. Sprinkle with paprika; add 2 tablespoons water. Cover 5 minutes. Stir in golden onion soup; 2 cups water and tomato puree; simmer 15 minutes. Add potatoes; cook until tender; about 15 minutes.

NERVOUS ? ? ? . . . Get the capsule specifically formulated for the relief of nervousness, instability, restless insomnia, nervous stomach and nervous headaches. . . . Get KING'S ANTI-TENSION FORMULA Available at Drugstore Centers.

MONDAY 6:30 P.M. THE LIBERTY SPARKS 1270 KC 10 YOU

SMART FOR SCHOOL

On break fall days, you are to go to school in smart suit. Perfect choice is this pleated-sleeve dress with easy, demi-line. Choose fine flannel or wool.

Printed Pattern 9246: 10 pieces 8 1/2 x 14, size 10 takes yards 84-inch.

Twenty-five cents in coins for return—add 10 cents for shipping pattern for first-class mail.

Send to Marian Martin, Times-News Dept., 222 West 10th St., New York, N.Y. Put on envelope name, address with name, style number.

Family name, address with name, style number.

Family name, address with name, style number.

Family name, address with name, style number.

WE WILL BE . . . CLOSED

Sat., Sept. 1 & Mon., Sept. 3

Ramsey's Complete Window Dressing

426 Main Ave. S. 733-1979

Times-News Comics for the Entire Family

Come and Get It

Answer to Previous Puzzle



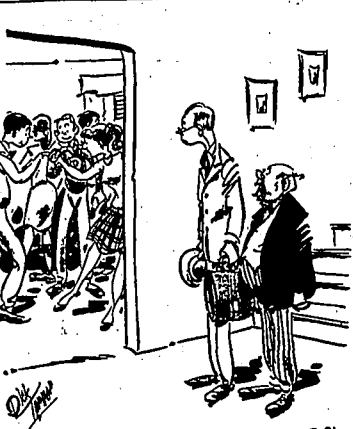
- | | |
|--------------------|--------------------|
| ACROSS | DOWN |
| 1 Green vegetable | 30 Suit drink |
| 2 Butter melting | 31 Food container |
| 3 Stew | 32 Contractions |
| 4 Small rattle | 33 Wine |
| 5 Past | 34 One centur. |
| 6 Bread spread | 35 Unemployed |
| 7 Scientist | 36 Minimalist |
| 8 Electrified | 37 Ex (pref.) |
| 9 Particle | 38 Close |
| 10 Description | 39 Snow vehicle |
| 11 Maid | 40 Prepare too |
| 12 Consecutive | 41 Essential being |
| 13 Cloth measure | 42 Dinner signal |
| 14 Money maker | 43 Flamingo |
| 15 Money maker | 44 Kind of cereal |
| 16 Seasoned | 45 Relax |
| 17 Shopping place | 46 Landed |
| 18 Kind of pickles | 47 Thicket |
| 19 Fruit egg | 48 Ziger |
| 20 Window (pref.) | 49 Weight unit |
| 21 Sunroom | 50 Window part |
| 22 Put back | 51 Tropical plant |
| 23 TV dimension | 52 Military rank |
| 24 Stud | 53 Small fish |
| 25 French island | 54 Simpled food |
| 26 Dinner signal | 55 Cooking vessel |
| 27 Grocery cart | 56 Neck piece |
| 28 Love god | 57 Minutes |
| 29 Landed | 58 Kind of bread |
| 30 Wine | 59 Heretic band |
| 31 Food container | 60 Dove's home |
| 32 Contractions | 61 Roman date |
| 33 Wine | 62 High notes |
| 34 One centur. | 63 Fish fillet |
| 35 Unemployed | 64 Narrative |
| 36 Minimalist | 65 Lattice |
| 37 Ex (pref.) | |
| 38 Close | |
| 39 Snow vehicle | |
| 40 Prepare too | |
| 41 Essential being | |
| 42 Dinner signal | |
| 43 Flamingo | |
| 44 Kind of cereal | |
| 45 Relax | |
| 46 Landed | |
| 47 Thicket | |
| 48 Ziger | |
| 49 Weight unit | |
| 50 Window part | |
| 51 Tropical plant | |
| 52 Military rank | |
| 53 Small fish | |
| 54 Simpled food | |
| 55 Cooking vessel | |
| 56 Neck piece | |
| 57 Minutes | |
| 58 Kind of bread | |
| 59 Heretic band | |
| 60 Dove's home | |
| 61 Roman date | |
| 62 High notes | |
| 63 Fish fillet | |
| 64 Narrative | |
| 65 Lattice | |

Side Glasses



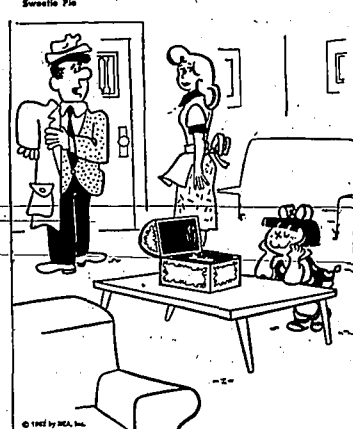
"We must all be kind to Marguerite. I'm afraid she'll lose the will to plant!"

Carnival



"We've tried to make our home attractive to her friends! New furniture, a cheerful welcome and the biggest refrigerator we could find!"

Sweetie Pie



"How did she ever find a music box that plays jazz?"

Martha Wayne



"I MADE A DEAL WITH YOUR FATHER, BUT MY FEELINGS FOR YOU ARE FOR REAL... HONEST!"

Beige Beauty



"I'M BACK WITH THE FACTS TO FIX THE LIGHT, ELMER!"

LT Abner



Captain Easy



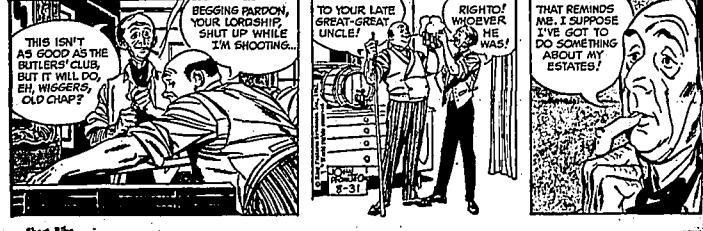
Freakies



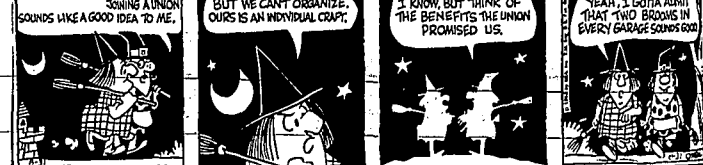
Gasoline Alley



Sip Kirby



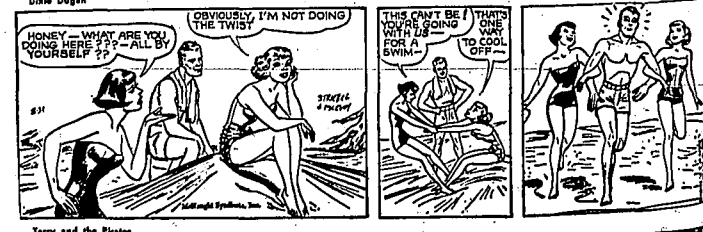
Short Life



Alley Oop



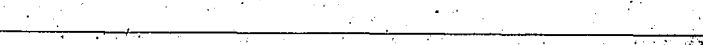
Diane Dugan



Terry and the Pirates



THE GREAT SCIENTIST



BACK-TO-SCHOOL CASH BY SELLING WHAT YOU DON'T NEED!

Aug. 31 - Sept. 1, 1962
16 Twin Falls Times-News

Forms For Sale
BEFORE BUYING, check form, stock records, etc.
OR RENT - see ad. Double area, low price...
A-1 RENT crop, 60 acre, 2nd hand...
FOR ACTION in real estate call...
SELLING, buying or trading, I have...
WEEK END GARAGE, 20 x 30...
40 ACRE farm, 1/2 mile off highway...
ALWAYS a good selection of tractors...
CALL TODAY! 214 Shoshone Street...

Buildings - 52
BUILDING LOTS
FIVE CHOICE AREAS
Plans may be drawn to your specifications.
FIA - or financing - CONVENTIONAL
LONG term as well as interim financing...
KEY REALTY
121 Shoshone Street West

Rooms - Room & Board 76
ROOM or room and board. Prefer low cost.
PRIVATE entrance, air conditioned...
BEDROOM with kitchen, refrigerator...
HOME away from home, comfortable...
CLEAN, comfortable sleeping room...
Business-Office Rentals 80
OFFICE space, will remodel to suit...
CHECK your milkers with a milk...
DELUXE OFFICE SUITE
Walk upstairs and save like mad...
C. LOONEY, REALTOR
The BEST
Farm Homes-Ranches-Commercial

Farms For Rent 84
160 ACRES northside farm, good land...
JOHN LEASE or sell 250 acres...
200 ACRES, 1/2 mile off highway...
160 ACRES, 200 acres northside farm...
WANT TO RENT? See ad. Double area...
WEEK END GARAGE, 20 x 30...
40 ACRE farm, 1/2 mile off highway...
ALWAYS a good selection of tractors...
CALL TODAY! 214 Shoshone Street...

Other Rentals 86
MOORE REALTY: Parties, receptions, clubs...
MACK'S U-DRIVE
Furniture, appliances and home furnishings...
HERTZ SYSTEM
Ltc. Phone 733-2646, Twin Falls, Idaho
Wanted to Rent 88
FURNITURE for 600, must be good...
WANTED TO RENT? See ad. Double area...
WEEK END GARAGE, 20 x 30...
40 ACRE farm, 1/2 mile off highway...
ALWAYS a good selection of tractors...
CALL TODAY! 214 Shoshone Street...

Apartment - Furnished 70
1 ROOMS, close in, 218 4th Street...
NEWER duplex, fireplace, carpet, one bedroom...
2 ROOMS, close in, 218 4th Street...
NICE, clean 3 room apartment, adults only...
FOUR ROOMS, adults, no pets, 402 4th Street...
2 APARTMENTS: Three rooms, bath and first floor...
FOUR ROOMS, private bath and sun room...
3 ROOMS, strictly furnished, ground floor...
2 ROOMS, 1st and 2nd, ground floor, private entrance...
THERE ARE large rooms and bath...
LADY'S single apartment, radiant heat...
COMFORTABLE housekeeping room...
MARK NICE 2 bedroom apartment...
NICE ONE-ROOM apartment, also sleeping room...
Apartment - Unfurnished 72
1 ROOM, clean, water and sewer furnished...
NEWER duplex, fireplace, carpet, one bedroom...
2 ROOMS, close in, 218 4th Street...
NICE, clean 3 room apartment, adults only...
FOUR ROOMS, adults, no pets, 402 4th Street...
2 APARTMENTS: Three rooms, bath and first floor...
FOUR ROOMS, private bath and sun room...
3 ROOMS, strictly furnished, ground floor...
2 ROOMS, 1st and 2nd, ground floor, private entrance...
THERE ARE large rooms and bath...
LADY'S single apartment, radiant heat...
COMFORTABLE housekeeping room...
MARK NICE 2 bedroom apartment...
NICE ONE-ROOM apartment, also sleeping room...

Trade Your Home For A Farm
7 miles from Twin Falls, 3 bedroom home...
160 ACRES, 2 bedroom home...
Country Living
19 ACRES, 7 miles from town, 2 bedroom home...
LIMBWOOD REALTY
810 Blue Lake Blvd. No. 134-2111

House - Unfurnished 73
1 ROOM, clean, water and sewer furnished...
NEWER duplex, fireplace, carpet, one bedroom...
2 ROOMS, close in, 218 4th Street...
NICE, clean 3 room apartment, adults only...
FOUR ROOMS, adults, no pets, 402 4th Street...
2 APARTMENTS: Three rooms, bath and first floor...
FOUR ROOMS, private bath and sun room...
3 ROOMS, strictly furnished, ground floor...
2 ROOMS, 1st and 2nd, ground floor, private entrance...
THERE ARE large rooms and bath...
LADY'S single apartment, radiant heat...
COMFORTABLE housekeeping room...
MARK NICE 2 bedroom apartment...
NICE ONE-ROOM apartment, also sleeping room...

Appliance Repairing
Beverly Smith, appliance repair, 10 years experience...
Home Service
Concrete basement forming, W. H. Cooper...
Bicycles
Danlos Cycles, Schwinn dealer, complete sales and repair...
Motorcycles
Danlos Cycles, 461 Main Avenue East...
New Laws
"Plan Now" for better results, Meyer Landscaping...
Painting
Interior and exterior, Nap Hastings...
Bookkeeping
Part-time bookkeeping, auditing, tax returns...
Electrical Experts
Contract, home, industrial, and refrigeration...
Excavation
Glen Falkenberg, excavations, trenching, back filling...
Lawnmower Excavating, Hammers, ditching, fill dirt...
Radiator Service
Cliff and Jack's service, "Auto and Home" Radiators...
Real Estate
Real Estate, Insurance, Bonds, City, State, Federal...
Furnace Cleaning
Expert furnace cleaning, 315 years of experience...

Farm Implements 90
INTERNATIONAL cover, 60" wide, 20' long...
WANTED! Used spool bulk bed...
SPRINT, 60" wide, 20' long...
INTERNATIONAL, 40" wide, 20' long...
WANT TO BUY? See ad. Double area...
WEEK END GARAGE, 20 x 30...
40 ACRE farm, 1/2 mile off highway...
ALWAYS a good selection of tractors...
CALL TODAY! 214 Shoshone Street...

Harvest Time
HARVEST TIME FAST APPROACHING
Orders must be placed soon...
BALED HAY LOADERS
A better loader for less money...
PAUL EQUIPMENT and Welding Shop
PAUL
1640

Special!!
Clover and Alfalfa Seed Combine \$1,500 Off
MASSEY-HARRIS-1955
Model 50 Special \$2500
OEH
Self unloading forage box
JOHN DEERE
Best harvester with hopper \$1200
ZITLAW MOTORS
Wendell 414-1111

MISCELLANEOUS
3-110 Chuckwags for chopped hay or corn.
3-International TOMMIS DEERE best harvester.
USED BALERS
14-T with engine OLIVER "P.O. P.T.O. INTERNATIONAL" 45" P.T.O.
USED COMBINES
151 INTERNATIONAL Self propelled with grain and bean attachment...
45 JOHN DEERE, excellent.
70 CASE, best special.

GEM EQUIPMENT SALES, INC.
"Your JOHN DEERE Dealer"
14 mile south of Motter's corner Phone 733-7171.

Hay-Grain and Feed 94
COURT HAULING Hay, grain, feed...
WANTED! Used spool bulk bed...
SPRINT, 60" wide, 20' long...
INTERNATIONAL, 40" wide, 20' long...
WANT TO BUY? See ad. Double area...
WEEK END GARAGE, 20 x 30...
40 ACRE farm, 1/2 mile off highway...
ALWAYS a good selection of tractors...
CALL TODAY! 214 Shoshone Street...

Animal Breeding 100
BRED purebred, 400 lb. yearling...
BRED purebred, 400 lb. yearling...
BRED purebred, 400 lb. yearling...
BRED purebred, 400 lb. yearling...
BRED purebred, 400 lb. yearling...

PAUL EQUIPMENT and Welding Shop
PAUL
1640

Tractor and Car for rent
AVIS-RENT-A-CAR SYSTEM
New Plans Under 10% Service
MACK'S U-DRIVE
Furniture, appliances and home furnishings...
HERTZ SYSTEM
Ltc. Phone 733-2646, Twin Falls, Idaho
Wanted to Rent 88
FURNITURE for 600, must be good...
WANTED TO RENT? See ad. Double area...
WEEK END GARAGE, 20 x 30...
40 ACRE farm, 1/2 mile off highway...
ALWAYS a good selection of tractors...
CALL TODAY! 214 Shoshone Street...

MISCELLANEOUS
3-110 Chuckwags for chopped hay or corn.
3-International TOMMIS DEERE best harvester.
USED BALERS
14-T with engine OLIVER "P.O. P.T.O. INTERNATIONAL" 45" P.T.O.
USED COMBINES
151 INTERNATIONAL Self propelled with grain and bean attachment...
45 JOHN DEERE, excellent.
70 CASE, best special.

GEM EQUIPMENT SALES, INC.
"Your JOHN DEERE Dealer"
14 mile south of Motter's corner Phone 733-7171.

Pets and Pet Supplies 110
WANTED! Used spool bulk bed...
SPRINT, 60" wide, 20' long...
INTERNATIONAL, 40" wide, 20' long...
WANT TO BUY? See ad. Double area...
WEEK END GARAGE, 20 x 30...
40 ACRE farm, 1/2 mile off highway...
ALWAYS a good selection of tractors...
CALL TODAY! 214 Shoshone Street...

Good Things to Eat
WANTED! Used spool bulk bed...
SPRINT, 60" wide, 20' long...
INTERNATIONAL, 40" wide, 20' long...
WANT TO BUY? See ad. Double area...
WEEK END GARAGE, 20 x 30...
40 ACRE farm, 1/2 mile off highway...
ALWAYS a good selection of tractors...
CALL TODAY! 214 Shoshone Street...

Removal
REMOVAL
Of Dead and Useless LIVESTOCK
PHONE US COLLECT
Twin Falls 733-4185-4141
IDAHO HILL & TALLOW CO.

Appliances 120
GOOD clean used ranges, 418 and up...
MINOR sink, 40" wide, 30" deep...
NEW 60" refrigerator...
DINING ROOM set, 2-piece, wood grain...
GOOD used carpets, living room and dining room...
USED breakfast set...
USED 2000 watt electric...
USED 3-piece living room set...
USED 2000 watt electric...
USED 3-piece living room set...

Musical Instruments 124
GOOD upright piano for sale...
USED 17 1/2" American, serial...
FOUR SALE, Good used...
GOOD used...
NEW Kimball piano...
USED 17 1/2" American, serial...
USED 3-piece living room set...
USED 2000 watt electric...
USED 3-piece living room set...

Special Sheep Sale
Saturday, September 1st
Beginning at 1 p.m.
All Classes - ewe, breeding ewe, and
and feeder lambs, ewe and slaughter
lambs.
Among the early entrants are:
WILEY FARM, Twin Falls...
SOUTHERN LIVESTOCK COMPANY...
These are an excellent set of
penns for the buyers...
Another group of 150 white-face
ewes, 200 lbs. and over...

Ontario Livestock Commission Company
For further information call the
ONTARIO LIVESTOCK
COMMISSION COMPANY
Phone 888-8636
ONTARIO, OREGON
"More livestock for the buyers...
more buyers for the livestock..."

Poultry and Rabbits 108
FOR SALE! Live steaming hens...
BRED purebred, 400 lb. yearling...
BRED purebred, 400 lb. yearling...
BRED purebred, 400 lb. yearling...
BRED purebred, 400 lb. yearling...

Factory Radio & TV
810 Main Street
Good Things to Eat
131
FIVEKIB for table or buffet...
WANT TO BUY? See ad. Double area...
WEEK END GARAGE, 20 x 30...
40 ACRE farm, 1/2 mile off highway...
ALWAYS a good selection of tractors...
CALL TODAY! 214 Shoshone Street...

Quick Action Services
Use this handy Directory as a guide to dependable
service Today . . . and every day
24 Hour
Answering Service
If the Telephone of Any Advertiser in This Directory is Not Answered,
Dial 733-2386, Telephone Answering Service, Day or Night.
The Advertiser Will Be Notified to Call You.
To Place Your Business Service Ad, Dial 733-0931. Three lines, one month, only \$548

Quick Action Services
Use this handy Directory as a guide to dependable
service Today . . . and every day
24 Hour
Answering Service
If the Telephone of Any Advertiser in This Directory is Not Answered,
Dial 733-2386, Telephone Answering Service, Day or Night.
The Advertiser Will Be Notified to Call You.
To Place Your Business Service Ad, Dial 733-0931. Three lines, one month, only \$548

Committees Are Reported By BPW Club

JEROME, Aug. 31—Mrs. Jack Russell, president of the Business and Professional Women, announces standing committees for the year.

Mrs. W. F. White will be program coordinator; Mrs. Raymond Sulter, career advancement chairman; Mrs. John Wiswall, finance; Mary Marshall, health and safety; Mrs. Irene R. Miller, Wendell International relations; Edith Mancolas, legislation; Mrs. Jewell Dewey, public relations; Mrs. Mary Rice Long, historian; Mrs. Russell Hamna, hospitality; Mrs. Lois Jepson, national BPW week; Mrs. Hilda Cox, projects; Martha Meyers, publicity, and Mrs. Sam Ezkin, parliamentarian.

Mrs. R. E. Oids was elected second vice president. Mrs. Irene R. Miller was elected recording secretary, replacing Mrs. John George, who resigned.

Plans for guest night, Monday, Sept. 24 were discussed. Mrs. E. Oids, membership chairman, will be in charge, assisted by Mrs. Sulter and Mrs. Meyers. Mrs. Oids announced invitations will be sent to guests soon.



LINDA MARIE PATTERSON will be honored at a testimonial at 8 p.m. Sunday at the Richfield LDS ward chapel. Miss Patterson, daughter of Bishop and Mrs. Elmo Patterson, Richfield, has been called on a mission to south Germany at Lutzerath, Germany. She is a 1959 graduate of Richfield High school and attended BYU at Provo, Utah, three years. Following a week at a mission home in Salt Lake City she will fly to Germany Sept. 17 for two years.

No Luck

STEVENAGE, England, Aug. 31 (U)—Two-year-old Catherine Burton watched birds swoop around her nursery window and decided to try flying for herself.

She plunged 18 feet to a concrete path Thursday, but a clothesline broke her fall. Cathy told her mother: "I only wanted to fly like the pigeons."

The hospital reported Cathy had minor internal injuries.

School at Clover Has 79 Students

PLER, Aug. 31—The Clover Lutheran school has an enrollment of 79 pupils, announces Emil Lindemann, principal.

The school has three teachers. Bernice Pohl will be in charge of grades one, two and three; Mrs. Carol Bennett will teach grades four and five; and Lindemann will teach the sixth, seventh and eighth grades.

Mrs. Martin Hartwig is cook for the hot lunch program.

City Librarian Quits at Jerome

JEROME, Aug. 31—Mrs. Elizabeth White has resigned as librarian at the Jerome library.

She was librarian for 16 years. The library board is seeking someone to replace Mrs. White.

It was pointed out that applicants need not have any formal library training. Applications may be submitted to Mrs. Isabel Hendricks at the city hall.

Mrs. Boyd Freeman has been hired as assistant librarian.

DAUGHTER BORN

HAGERMAN, Aug. 31—A daughter was born Aug. 28 to Mr. and Mrs. Ray Lewis. Former residents now living in San Antonio, Tex. Mr. and Mrs. Fred Leach and Mrs. Florence Parrott are parents of the couple.

BUY TIMES-NEWS WANT ADS FOR FAST SELLING RESULTS

Last Honor Paid To Mrs. Taylor

BURLEY, Aug. 31—Funeral services for Mrs. Caroline (Lena) Nelson Taylor were held 11 p.m. Wednesday in the Burley LDS first ward chapel with Bishop William E. Toolson officiating. The family prayer was given by Toll Taylor. Meditation music was played by Kathleen Frank. Invocation was by Cannon Nelson and the obituary was read by Bishop William E. Toolson. Solos were sung by Edith Dunn and Alfred Thaxton. The benediction was by Hazen Hatch.

Accompanists were Lella Hoggan and Atton Cunningham. Speaker was John E. Brown. Pallbearers were Carl Nickolsen, Tom Nickolsen, Jim Gillette, Jack Taylor, Hal Taylor and Keith Powell. Floral arrangements were under the direction of members of the Burley Literary club and Bon Ruter club.

Final rites were held in the Pleasant View cemetery. The grave was dedicated by President William Isaac Lee.

133 ENROLLED

BLISS, Aug. 31—According to Supv. Dale Wagem, Bliss high school enrollment is 83. There are 100 grade school students. A football game will be played between Bliss and Hagerman at 2 p.m., Saturday at Hagerman.



'At home or away...
**7500 AGENTS
TO SERVE YOU**

LOU HELLER
Orpheum Bldg.
Phone 733-6650

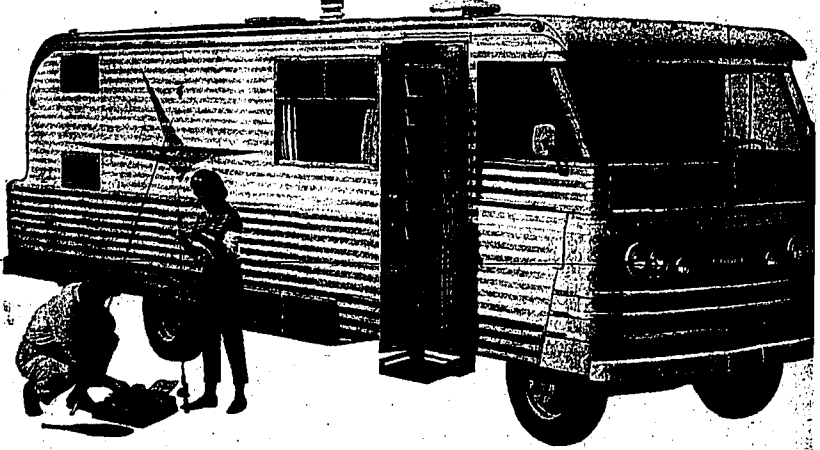


"The Fun Spot South of the Border"

NOW FEATURED IN THE GALA ROOM

For The Labor Day
Week-end Holiday

STUART NATHANSON'S "GIRLSVILLE, U.S.A." ALL-STAR REVUE!



A spacious, marvelously comfortable home on wheels — that's the all-new Dodge Motor Home. Self-powered, so that you and your family can nap, cook, eat and play while cruising smoothly at highway speeds. Ideal for either short weekend trips or extended vacation tours. Colorful, luxurious interior, lifetime aluminum exterior. Standard equipment includes: A 3-burner gas stove, gas refrigerator, and gas furnace, all operating on bottled liquid-gas (LPG). Automatic water system and complete bath facilities. Tiled floors, choice of bed and bunk arrangements. 200 hp V8 engine, 3-speed pushbutton automatic transmission, and power brakes.

THE BIG NEW DODGE MOTOR HOME To Be Given FREE on Sunday, October 21

NO OBLIGATION! NOTHING TO BUY! REGISTER FREE AT CACTUS PETE!

FRIDAY NIGHT
SEAFOOD BUFFET
ALL YOU CAN EAT **2.50**

SUNDAY, 1:00 'til 8:00 p.m.
RANCH DINNER
Served in the GALA ROOM **1.50**
CHILDREN 1.00

SATURDAY NIGHT
REGULAR BUFFET
ALL YOU CAN EAT **2.50**

DODGE MOTOR HOMES Sold
By **BOB REESE MOTOR CO.**
500 Block 2nd So. in Twin Falls

CACTUS PETE'S

YOU CAN TRAIN QUICKLY NOW FOR A POSITION IN BUSINESS

REGISTER
NOW!
FALL



Term Starts Sept. 4
Evening Classes Sept. 10th
CAREER COURSES

Secretarial — Accounting — Business Administration — Stenographic — General Business.

SHORT COURSES

Clerk Typist — Brush up in Shorthand — Typing — Comptometry — Office Machines — Filing — Bookkeeping.

Courses are offered for beginners, or those desiring a brush-up course in previous skills.

TWIN FALLS BUSINESS COLLEGE
Fully Accredited as a 2 year School of Business by the Accrediting Commission for Business Schools.