

... ..

News Around Idaho

POCATELLO, Aug. 9 (AP)—The mother of a Pocatello naval hero killed in World War II says she was unable to accept an invitation to be a guest aboard the ship named for her son, Mrs. J. J. Everett, said today that the ship would visit the Pacific Coast, where she was born, for a three-day stay during that city's annual Seattle celebration. "I'd like to go," she said, "but I just don't have the time to do so."

POCATELLO, Aug. 9 (AP)—Idaho State university's campus will be partially destroyed during the summer session, which drew the largest summertime enrollment in the history of the school, ends today with final class sessions and the closing of the summer session will be annual summer shut-down of the student union building and library. The union building will be closed from Aug. 10 to Sept. 2, and the library from Aug. 10 to Sept. 2.

POCATELLO, Aug. 9 (AP)—Idaho State university's two newest buildings are rapidly nearing completion and should be ready for use early in the fall semester. John Kerbel, director of the physical plant, said today that painting and floor covering are now being done in the education building, and the campus school wing of the building is virtually finished. The two top floors of the physical science building are now being painted and the lower two floors are in various stages of completion.

BOISE, Aug. 9 (AP)—The Idaho supreme court has ordered a lawsuit against the state highway board transferred to third district court for trial of factual questions involved, and a recommendation judgment. The McGroarty Triangle company claims \$47,448 from the state on a contract for construction of a section of Idaho highway 15 between McCammon and Portneuf.

YOUR BIRTHDAY and HOROSCOPE

FRIDAY, Aug. 9—Born today, you have a keenly scientific mind, given to approaching all questions from a "find the facts" point of view. This is true whether your field is in one of the sciences or not. Of course, an amazing amount of sense of logic, you are able to argue almost any point effectively in a debate, whether in speech or on paper—you make a formidable foe or a fierce and clever opponent. You are one of those who are on the "edge" of things.

IT IS said by your nature, however, that, despite your scientific facts, you should wish some things to remain unexplained and unexplained. For, like so many born at this time, you have a mystical side that thrives not on acquired knowledge but on intuition and instinct. To deny this side of yourself would be to deny the part of you that you could heed would be not to try!

You have a general fondness for and need of society; at the same time, however, you may have a feeling of being "left out" by it. It is this, it is something you must try to overcome, for you can only be happy if it is not so, then be happy for it and do not allow any sense of rejection to warp your view.

Among those born on this date are: Dryden, (actor); dramatist; Bob O'Connell, basketball "great"; Sara Treadwell, poet; Henry D. Knickerbocker.

To find what is in store for you tomorrow, select your birthday and read the corresponding paragraph. Let your birthday star be your daily guide.

Saturday, Aug. 10
LEO (July 24-Aug. 23)—If you want today's ladder to show a credit entry, keep close to home and attend to family matters.

VIRGO (Aug. 24-Sept. 23)—Avoid extravagance of any kind today. Keep reserves of money and emotions, mental energy well in hand.

LIBRA (Sept. 24-Oct. 23)—Allow your creative instincts full play. Look into the possibility and pleasure of artistic expression.

SCORPIO (Oct. 24-Nov. 22)—Close to nature, where it is possible—and partake of an invigorating, healthful atmosphere.

SAGITTARIUS (Nov. 23-Dec. 21)—Complete work begun yesterday. A good day for considering the future.

CAPRICORN (Dec. 22-Jan. 20)—Saturday for avoiding what- ever business isn't absolutely necessary. Stick to personal affairs.

AQUARIUS (Jan. 21-Feb. 19)—Conservative action, pushed methodically in the direction should bring the best results.

PISCES (Feb. 20-March 20)—Self-advertisement of a kind but advantageous nature—would do much to put you in the social drivers seat.

ARIES (March 21-April 20)—You've made your plans; now act on them. Proceeding calmly, cope with off that peck!

Taurus (April 21-May 21)—Accomplish routine chores; morning. Use the remainder of the day for leisure-time activities.

GEMINI (May 22-June 21)—You have your choice of many attractive fields of interest today. Be wise in your selection.

CANCER (June 22-July 21)—Frustrating and conflicting demands could cause tensions. Keep personal relationships on a superficial plane.

SATURDAY, Aug. 10—Born today, you have a basically adventurous disposition usually nature that instinctively knows the value of staying put—at least enough for time to get things begin to "pay off" in other words, you would love to see the world, to partake all that has to offer—but you are very well aware that a rolling stone gathers no moss. And "rolling" something you would very much like.

RIO REY (The Brightest Screen in Idaho)
FRIDAY and SATURDAY
"IT HAPPENED AT THE WORLD'S FAIR"
Starring ELVIS PRESLEY
12 to 14 Years and Under, FREE
CHILD, 11 years and under, FREE
SAND LON PRICES Monday, Tuesday, Wednesday \$1.00 per seat

Paul Water Tests Prove Satisfactory

PAUL, Aug. 9—The water meter for the new village water pump house will begin to be tested Wednesday evening by members of the village board and were found satisfactory. Mayor Tom Pelton said today.

Pouring of the cement floor in the pump house will begin today or Saturday and pumping is scheduled sometime next week. The board approved having metered water used by commercial and also private residents who are large users. Pelton pointed out that some of the level level is too high for normal irrigation. This calls for extra water to be pumped from the well to service these areas.

The board adopted ordinances concerning water and sewer, authorizing a raise in the water rate of \$1 more per month effective Sept. 1—and also providing for more accurate record keeping.

The garbage rate also will be raised \$1 per month starting Sept. 1.

Delegates from the Paul Orange met with the board and received approval on their street numbering project. This numbers will begin at Highway 20, which, according to the village is 20th street, and Main street, which according to the village, is 21st street.

Now Playing ★ GRAND-VU ★

1st RUN!

THE TWO MOMENT MARKERS OF ALL TIME!

THE GODZILLA **ALL NEW!**

IN COLOR PLUS CO-HIT

THE MUMMY **ALL NEW! IN TERRIFYING TECHNICOLOR!**

KING KONG 8:15
MUMMY 10:00

ADULTS 1:00 • STD. 75
CHILD FREE UNDER 12

JIM WILLIAMSON

Back again to Sing and Play your favorite ballads, Monday, Wednesday, Friday and Saturday Nights!

Enjoy . . .

An Evening of Fun at Twin Falls' Newest Night Club

THE ALLEY

TOWN MOTEL
CONVENIENTLY LOCATED 3 BLOCKS FROM CITY CENTER

FINE FOOD
OPEN SUNDAY FOR YOUR DINING-CONVENIENCE
BANQUETS SERVED IN THE "IDaho ROOM"

THE ALLEY ON TRUCK LANE AT SHOSHONE STREET SO. Between Griggs' Town Motel & Restaurant

Here's Your Personal Trip to 2 of the Most Beautiful Places in the World! Grand Teton Mountains vs. the Alps. See Them Both in Two Wonderful Motion Pictures!

Plus
Troy Donahue
Angie Dickinson
Russano Brazzi
Suzanne Pleshette

Spencer's Mountain
FILMED AT JACKSON, WYO.

Rome Adventure
HENRY FONDA • MAUREEN O'HARA
GARY MARSHALL • MONICA CRISP
PAUL COLBY • MARY MCGEE
TECHNICOLOR • WARNER BROS.

Mountain 8:00
Adventure 10:15

Adults 1.00 • Student 75c • Child Free Under 12 • Each Plays Once Only

Now Playing ★ Motor-Vu

GRILLS GRADUATED
WEDDELL, Aug. 9—Mrs. and Mr. Ray Price and Mrs. and Mr. Albert Bruner and family visited Ogden to attend commencement exercises at St. Benedict's school of nursing Thursday. Members of the class are Linda Price Wald and Maude Bruner. They will be employed at the hospital there.

LIVE MUSIC

by the Mel-Casters
EVERY SATURDAY NIGHT—9 P.M. TO 1 A.M.
DANCING—ONE FOOD

BANK CLUB

IN OUR NEW LOCATION
421 W. MAIN JEROME — N. MAGIC VALLEY CAFE

ORPHEUM
COURTESY REFRIGERATION

Please do not reveal the middle of this picture!

PARAMOUNT PICTURES PRESENTS
JERRY LEWIS as THE NUTTY PROFESSOR
(A Jerry Lewis Production) TECHNICOLOR

DOORS OPEN 1:45
ADULT \$1.00 TIL 5 P.M.
ADULT \$1.50 5 P.M. TO 11 P.M.
CHILD \$1.00 ALL TIMES

What does he become? What kind of monster?
Any scientist who makes a girl like this can't be all mad!

STELLA PLUS "EAST OF KILAMANJARO"
Co-Hit

DOORS OPEN 1:45
ADULT \$1.00 TIL 5 P.M.
ADULT \$1.50 5 P.M. TO 11 P.M.
CHILD \$1.00 ALL TIMES

\$550 SWEEPSTAKE
SUNDAY, Aug. 11
Bring Your Sweepstake Tickets
22-\$25.00 PRIZES

Free!
DANCING NIGHTLY
Jackpot's Finest Entertainment

SUNDAY DINNER!

starting at 1 p.m.-adults only

LUCKY LICENSE
Wednesday & Thursday
Register Yours All Week
Win \$25 • \$10 • \$5

Wheel of FORTUNE

FRIDAY-SATURDAY
Win up to—
\$100
Every Few Minutes

Motels
CLUB 93 CAFE
Leville & Roberts Barton
Harvey & Hazel Wright

CANNING HENS
Cut-up, ready to can.
POULTRY SUPPLY
733-3168

Public Dance SATURDAY NIGHT
BAIRDITORIUM
1021 Blue Lakes No.
Music by The RHYTHMAIRES

PRICES
ADULT \$1.00 TIL 5 P.M.
AFTER 5 P.M. \$1.25
CHILD 50c ALL TIMES

SHOW TIMES
"The" 10:30-11:30-12:30-1:30
"Tommy" 1:30-2:30-3:30-4:30-5:30-6:30
DOORS OPEN 1:00 P.M.

Hayley's in a whirl!

Walt Disney
Summer Magic
HAYLEY BURL DOROTHY DEBORAH
MILLS IVES MCGUIRE WALLEY
EQUUS MERKEL HODGES POLLARD BROWN

TECHNICOLOR
Starring by LARRY KECOR
Screenplay by LARRY KECOR
Produced by LARRY KECOR
Directed by LARRY KECOR

PLUS THIS DISNEY FEATURETTE IN COLOR
TUFFY and TUBBY
two pranksters turn a playground into pandemonium!

Walt Disney presents
YELLOWSTONE CUBS

USE TIMES-NEWS WANT ADS FOR RESULTS

MUSTIE BRAUN
At the Piano and Organ
Playing and singing your favorite songs.

SUNDAY DINNER!

starting at 1 p.m.-adults only

LUCKY LICENSE
Wednesday & Thursday
Register Yours All Week
Win \$25 • \$10 • \$5

Wheel of FORTUNE

FRIDAY-SATURDAY
Win up to—
\$100
Every Few Minutes

Motels
CLUB 93 CAFE
Leville & Roberts Barton
Harvey & Hazel Wright

Contracts Awarded to Study Pests

U. S. Raises Estimate of Sugar Total

**WEBB
PUMP**
When it comes
to Submersible
PUMPS
Nothing matches
JACUZZI!

**QUALITY - PRICE
10 YEAR WARRANTY
PUMP**

Grass-Growth Is Excellent In Soil Unit

"It is unusual for grass in this area to reach such high yields," said Hedrick, "but it proves that if given sufficient moisture, alfalfa can be an excellent forage for southern Idaho."

Ogden Sale To Attract Top Animals

Increased interest is rapidly generated for a to-view-this-year's "stud" offerings. Along with the

Overstock Sale!
IMPORTED
BALING

**BALING
WIRE**

NOW
GOING
FOR **9.95** BOX

**IDAHO GRANGE
WHOLESALE**

Shoshone - Gooding

A high-contrast, black and white photograph of a large, dark, textured object, possibly a piece of machinery or a large animal, lying on a light-colored, textured surface. The object is heavily shadowed, and the background is a light, grainy surface.

How grass can grow is the decision reached by Harold Hove, Twin Falls, after inspection shows that harvesting of grass seed is nearing its peak. (photo)

killed her first nine pigs as soon as they were born. The Franks were disturbed, but decided to give the Hampshire-Yorkshire another chance.

The second births occurred. The traumatic sow killed the first pig, but the Franks quickly grabbed the next nine when they

mother sow, who had just weaned her own litter, adopted the hungry little pig.

The Franks plan to send the sow to a place that would correct her psychological problems. It's called a packing house.

FOR FAST SELLING RESULTS

AGRICULTURAL

CREDIT PRODUCES WEALTH

IN YOUR COMMUNITY

When the combines roll and the harvest comes in, your community experiences a new vitality. This strength and stability of every community depends in large part upon agricultural production. Your nearby PRODUCTION CREDIT ASSOCIATIONS are a strong factor in assisting farmers and ranchers to produce this wealth from the good earth.



for Economic Strength and Stability, see

SOUTHERN IDAHO

PRODUCTION CREDIT

ASSOCIATION

MAIN OFFICE
Twin Falls
733-8411

EST. 1934
BUREAU OF CREDIT GRADING
TWIN FALLS, IDAHO 83421

Feed Grain Signup Program Ignores Setup in Wheat Allotment Provisions

Agility for feed grain production in Canada in 1964 will not be contingent on a producer's standing exactly within the wheat price range. The Canadian Wheat Board chairman, agricultural stabilization and conservation minister, said today.

"It is felt, he explained, that the wheat price will be maintained in conserving use level will insure that any acreage that is not planted to wheat this year will be planted to feed grain in 1964. Feed grain will be planted because the acreage available for planting in the spring of 1964 is planned to be planted to feed grain."

As recommended by the chairman pointed out, the department of agriculture will be making the wheat price a factor in the circumstances. The main factor in the price of feed grain is an important factor in the price of feed grain.

The allotment on a complying feed farm would be at the expense of some other self-supporting crop.

The provision which was considered earlier but not adopted was one authorizing feed grain program participants who also complied with a 1964 wheat or corn acreage allotment on feed grain acre or feed grain on wheat acres.

The feed grain program for 1965 announced recently, will support farm income and reduce government grain stocks and costs more effectively than would alternative programs for wheat and corn acreage decontrol. At the same time, it will keep the program as nearly like the 1963 program as possible.

Full information is available at the Twin Falls office.

The chairman explained that these program decisions were reached after extensive consideration. The effects of the substitution provision on producers' income were reviewed and discussed with agricultural leaders, including members of the national agricultural advisory commission. The conclusion was that in 1964 the complex-

Mice

Population of field mice in Twin Falls county is above average. Agent Donald Youis reports that, however, damage to crops in this county is minor compared to that reported in Jerome and Latah counties.

In the latter counties, damage to grain, potatoes and new seedling of alfalfa is extremely serious, Youis says.

Poison grain is the best control and Twin Falls county farmers are urged to keep a close watch on the mouse population as a quick build up in numbers is possible.

TRACTOR FUEL
UNITED MOTOR OIL
and
GREASES
STANDARD "DELO"
MOTOR OIL

<p>Purchasers of WHEAT-BARLEY, OATS and Mixed GRAINS!</p> <p>★</p> <p>POULTRY and DAIRY FEEDS!</p>	<p>MOTOR OIL</p>	<p>KELLY TIRES DELCO BATTERIES</p>
<p>TWIN FALLS FEED & ICE</p> <p>"CREAM OF THE VALLEY FEEDS"</p>	<p><i>Proven Quality Products From Your Own -- HOME OWNED and OPERATED</i></p>	<p>UNITED OIL CO</p> <p>AMERICAN FALLS ABERDEEN BURLEY HAZELTON</p> <p>TWIN FALLS</p>

Harvest Time Sale!

MILLER HEAVY DUTY

See the nylon tire built for the
Geared-to-the-Road TIRES

NYLON



TRUCK

TIRES

6.50x16 6 Ply ...	15.95	
7.00x15 6 Ply ...	18.95	8 25x20 10 Ply ... 35.50

ALL PRICES PLUS TAX and RECAPABLE CASING

Miller Truck Tires are all FULL SIZE HEAVY DUTY
ALL NYLON CONSTRUCTION... Long mileage skid-resistant tread.

GET OUR PRICES ON FAST
GUARANTEED RECAPPING
ALL SIZES — ALL TYPES

STUART MORRISON

TIRE CO.

206 4th Ave. W. (Franklin Ave.) 733-1464

gram
to
The
and
for

Feed Supply Increases Over 1962

WASHINGTON, Aug. 9 (AP)—The supply of feed for livestock is expected to be 10 to 15 percent greater than last year, according to a report from the U.S. Department of Agriculture.

The report, based on a survey of feed inventories in 1962, shows that the supply of feed for livestock is expected to be 10 to 15 percent greater than last year, according to a report from the U.S. Department of Agriculture.

S. to Boost Feed Grain Payments to Offset Expected Wheat Surplus

WASHINGTON, Aug. 9 (AP)—The U.S. government is expected to announce a new program to boost feed grain payments to offset the expected wheat surplus.

Study Shows Increases Can Come From Irrigated Areas

WASHINGTON, Aug. 9 (AP)—A study by the U.S. Department of Agriculture shows that increases in crop production can come from irrigated areas.

Heavy Duty Tractor Now Farm Line

LOWATER, O., Aug. 9 (AP)—A heavy duty tractor with a 100-horsepower engine is now being used on the farm line.

Yes! We BUY or STORE GRAIN
ALL TYPES OR MIXED
Top Market Prices—Bonded and Insured
Allison Feed Mills
245-4315
FILER



Local Farm Cost Report For ACP Due

Farmers who have completed conservation plans and are eligible for the Agricultural Conservation Program (ACP) must submit a cost report by August 10, 1963.

Farm Bureau Seeks New Wheat Plan

WASHINGTON, Aug. 9 (AP)—The Farm Bureau is seeking a new wheat plan to replace the current one, which is due to expire next year.

Record Animal Population Seen

WASHINGTON, Aug. 9 (AP)—The U.S. Department of Agriculture predicts a record animal population in 1963, with a total of 1.1 billion head of cattle and 1.2 billion head of sheep.

Greater Use of Credit Is Noted

MINNEAPOLIS, Aug. 9 (AP)—Farmers are using more credit than ever before, according to a report from the U.S. Department of Agriculture.

Ranchers! Farmers! Feeders! Special Feeder Sale!

at the
Twin Falls Livestock Comm. Co.
AUGUST 14th, 1963
Consignments in and more being taken
Get Your Consignments In Early!
ALL CLASSES OF LIVESTOCK SOLD
THIS WEDNESDAY AND EVERY WEDNESDAY!
For Marketing Information Call...
JIM SEABECK OFFICE
733-2249 733-7474
733-7169

GOOD USED EQUIPMENT
Good Selection
• WINDROWERS
• BALERS • COMBINES
• TRACTORS • MACHINERY
of various kinds
COME IN MAKE US A BID
You'll be glad you tried us!
WENDELL EQUIPMENT CO.
536-2454, 536-2351
YOUR EXCLUSIVE NORTHSIDE "CASE" DEALER

ALBERS SHO-GLO
Nurse Cow Replacer for Show Animals
• SHO-GLO
The Feed of Champions
• SHO-GLO combined with Albers CALF MANA increases appetite and promotes a smooth, healthy finished animal.
• SHO-GLO contains the needed food elements to bring your show animals to prime finish.
• SHO-GLO contains various disease resistant elements and vitamins so essential for alert, correct showing animals.

DRIVE SUMMER-SAFE
GET KELLY WHITEWALLS
THEY ARE WHITER!
ALBERS MILLING CO.
"A Division of Carnation"
TRUCK LANE TWIN FALLS

CELEBRITY NYLON EXTRA
LIFETIME GUARANTEE \$980
ROAD HAZARD \$180
PER TIRE ALLOWANCE

PRESTIGE NYLON
21-MONTH GUARANTEE \$180
PER TIRE ALLOWANCE

Safe Trac S-NYLON
15-MONTH ROAD HAZARD GUARANTEE \$1495
PER TIRE ALLOWANCE
WATERBURY
1245 Overland Phone 678-2427
GOODING
A. McComb 121 4th Ave. Phone 524-9221
RUPERT
Floyd Fruit 511 S. 1st Phone 624-6451

Field Tour Slated for Potato Study

Potatoes will be discussed in the field, in the Twin Falls and Cascade communities, on Friday, Aug. 16, according to Twin Falls County Agent Donald Youst. Dr. Richard Chubb, extension potato specialist, university of Idaho extension service, Boise, will be on hand to informally discuss problems of growing potatoes with growers.

The first stop will be at the Duane Ramseyer farm at 9:30 a.m. Friday. The field is located four and one-fourth miles north of the southwest corner of Filer, or two and one-fourth miles north of Reservoir.

The afternoon stop will be in the Blue Gulch area west of Filer. The group will assemble at the home of G. W. McClain, two and one-half miles west of Filer at 1:30 p.m. McClain will then guide the group to the Blue Gulch area. All potato growers are invited to attend either or both of the discussions.

New Idea Is Now Owner of Tractor Line

COLDWATER, O., Aug. 9.—Purchase of the Uni-Tractor and Uni-Implement portion of the Minneapolis-Moline, Inc., agricultural equipment line was consummated today, according to Curry W. Slough, group vice president and president of the new idea.

Production of the Uni-Tractor will be transferred to the Minneapolis-Moline, Inc., plant in Minneapolis, Minn., starting late in 1963. The new idea is now continuing to manufacture the engine and transmission for the Uni-Tractor at the Lake Street plant in Minneapolis for New Idea. New Idea does not have engine production facilities.

According to Slough, production and marketing plans for the Uni-Tractor will not be affected at all through 1963. When asked about future marketing plans, Slough said that the Uni-Tractor will be marketed by the Minneapolis-Moline name throughout 1964.

"New Idea's distribution plans have not been studied as yet, but are better studied currently on a market by market basis in order to arrive at a point where Uni-Tractor will provide maximum penetration of the market," McClain said.

McClain also said that Uni-Implement is scheduled to be marketed by New Idea under the Minneapolis-Moline name throughout 1964.

Idaho Now Well Fixed for Hay

BOISE, Aug. 9.—Idaho appears pretty well fixed for hay this year, the University of Idaho extension service has observed in the July issue of the "Economic Facts for Idaho Agriculture." The analysis was prepared by Wayne Robinson, marketing information economist.

Stocks of hay on Idaho farms the report said, were up materially from a year earlier. The same was true of surrounding Western states. Hay stocks were estimated at 322,000 tons. This was 16 percent above the same period in 1962, but a shade below average. Idaho farmers estimated in March that their hay acreage would be four percent less than it was last year. On June 1 the Idaho crop was above average at 23 percent of normal.

Prospects in Western states point to about an average crop. After a late spring start because of cool, wet weather, hay in the Northwest showed improvement during May. With good weather, total supplies for next year should be larger than last year.

The report said Idaho's sweet cherry production is forecast at 200,000 tons, about seven percent more than last year and 21 percent above the five-year average. The state's apple crop, at a whole, is down 21 percent.

CAMAS COUNTY grassman of the year, Gwynn Rice, Hill City, examines a head of intermediate wheat grass on one of his farms. Much of the property on which he now grows crops was formerly sagebrush and weed-covered swampland. (Times-News photo)

Fairfield Grassman Puts Swampland to Good Use

FAIRFIELD, Aug. 8.—The conversion of swampland into productive hay and grass cropland is one of the outstanding achievements of Gwynn Rice, who has been named Camas county grassman of the year. He has worked long and hard with the soil conservation service to convert his farm to their plan and to win the coveted title. His plan calls for additional improvements over the years.

Today, meadow foothill and a good hay crop grows on swampland that once was covered with sagebrush and unsuitable grasses and weeds. Topsoil plowing and weeding grows on sloping hillside.

He has fields of manchar broom as high as his head and some of the intermediate wheatgrass is higher than his head and all are loaded with seed heads.

Land that was eroded and practically worthless has been leveled and is producing good crops. Fat Angus grass on pasture that was once sagebrush-covered swampland.

Rice began farming in the Hill City area in 1959 in partnership with his late father, Dale E. Rice. He farms land that was homesteaded by his grandfather. More than 60 head of horses were needed to work it in those days. Tractors were put into use in 1961.

Wheat and native pasture were his main crops. The wheat ground was getting depleted from the continual cropping. Rice has purchased additional land until he is now farming 4,580 acres. He has 1,475 acres of pasture and 3,107 acres of cropland. Of the only 180 are under irrigation.

In 1960 he planted 160 acres of alfalfa, which was his first planting of legumes, in order to try and build up the ground.

He signed up in 1962 with the Mayfield soil conservation district when it was formed in 1957. The technician, Leifon Baird and Camas County Agent John H. Paulsen both have given him valuable aid and advice and have been a great help to him in carrying out his plans.

His farm was in the natural

sagebrush sprayed, burned and beaten.

By experience he has found that plowing and re-seeding of the swamps are the best methods of ridding them of the undesirable growth. He has been plowing them to meadow foothill, Rice's canary grass and bird-foot trefoil. As he worked up the swamps he leveled them and installed drainage ditches.

Rice has built new fences around his pastures and has cross-fenced them for rotation. Two artesian wells and three springs provide ample year-round water for all the cattle needs in the pastures. He has about 350 head of black Angus cows and calves on his pastures and he leases some of the pastured land to sheepmen.

Proper fertilization has played an important part in his program and he applies from 20 to 30 pounds of anhydrous ammonia to the acre on his wheat land and from 30 to 40 pounds per acre on his grass and clover plots. He has insisted on planting only top quality certified seed. He has traveled around and attended meetings on seed production.

Rice is farming his spread with the help of his 18-year-old son and one full-time, year-round hired man. During haying he hires some custom baling and stacking done. His equipment is repaired in his own machine shop, which is modern and heated.

He has been very careful to keep an accurate and complete record system. A large chart hangs on the wall of his office.

One of the largest stocks of Building Supplies in Magic Valley

Harney's BUILDING SUPPLY

212 Monroe St., W. Kimberly. The store that underlies the store, that underlies the store, that underlies the store.

DON, RITA, RON 423-5516

Representatives for

• Chero-Bay Pipelines
• Mueller Bulk Tank
• Used Pipe Lines
• Used Can Coolers

"We want to make a little money off a lot of people, not lots of money off just a few."

Foreign Meat Purchases By U. S. Make New Record

WASHINGTON, Aug. 8.—The United States sold 10 foreign countries in 1962 livestock, meat, and meat products worth \$118 million dollars. During the same year, it bought from overseas a record \$46 million dollars worth of livestock, meat and meat products.

The foreign agricultural service said about 60 per cent of the export value was taken up by tallow and grease, and hides and skins. The United States also sold some lamb, variety meats, mohair, beef, veal, pork and some live animals—cattle, pigs, and sheep.

The imports included one and one-fourth billion pounds of beef and veal, much of it boned, beef and canned beef; mutton and some lamb and pork, wool, some live cattle, and hides and skins.

The United States was the second largest importer of red meat during 1962, exceeded only by the United Kingdom. The red meat imports, amounting to \$10 million dollars, accounted for 54 per cent of the total import value.

FEED IS GOOD
A good dairy cow in one year puts away almost 4,000 pounds of grain and protein feed, 4,700 pounds of hay and 3,400 pounds of silage and wastes it down about 25,000 pounds of water. In return she gives about 11,000 pounds of milk. This is why dairymen substitute wheelbarrows and push-button for muscle and sweat.

and some live animals—cattle, pigs, and sheep.

The United States was the second largest importer of red meat during 1962, exceeded only by the United Kingdom. The red meat imports, amounting to \$10 million dollars, accounted for 54 per cent of the total import value.

FEED IS GOOD
A good dairy cow in one year puts away almost 4,000 pounds of grain and protein feed, 4,700 pounds of hay and 3,400 pounds of silage and wastes it down about 25,000 pounds of water. In return she gives about 11,000 pounds of milk. This is why dairymen substitute wheelbarrows and push-button for muscle and sweat.



WE BUILD BEET AND GRAIN BEDS FOR ALL TRUCKS. ORDER YOURS NOW WHILE WE HAVE DRIED LUMBER. BEST BUILT BEDS IN THE ENTIRE AREA. SEE THEM... GET OUR PRICES.

BALDWIN MFG. Co. 409 2nd Ave. South Twin Falls

SEE TIMES-NEWS WANT ADS FOR FAST SELLING RESULTS



You Can't Force a Business to Make a Profit!

Every year in good times and bad, many businesses don't make money. Their costs may be too high, their prices too low, or there may be many other things wrong for profitable operation. At the end of the year, although they served many people well, there aren't any profits.

Since they have no net income, they pay no income tax!

Now take a co-op. During the year its customers (who own it) buy goods and services as they need them. At the end of the year, after all expenses have been paid, any money remaining is refunded to customers on the basis of their purchases.

After these refunds have been made, there is no net income to tax.

Everyone shares in CO-OP BENEFITS

These businesses have one thing in common. Neither made a profit. The first one tried to and couldn't; the co-op didn't want to, and didn't.

Neither paid an income tax because neither had net income.

CO-OPS ARE EFFICIENCY

This message brought to you by your Magic Valley Cooperatives...

Buhl Co-Op Supply BUHL
Cooperative Supply Assn., Inc. BURLEY
Jerome Grange Supply JEROME
Mini-Cassia Marketing Assn., Inc. RUPERT
Minidoka County Co-Op Supply RUPERT
Twin Falls Co-Op Supply TWIN FALLS
Bean Warehouse Assn. TWIN FALLS

Everyone Can Buy from the Co-ops

Announcing

THE APPOINTMENT OF

SOUTHERN IDAHO EQUIPMENT CO.

AS DISTRIBUTOR FOR

WACK TRUCKS

PARTS—SALES—SERVICE

WE TRADE • WE FINANCE

TWIN FALLS
1925 Kimberly Road
733-3377

IDAHO FALLS
1055 N. Yellowstone
522-0060

POCATELLO
Resident Salesman
233-1667

Open House Is Slated for Anniversary

Open house will be held in honor of Mrs. Bernard G. Ochs' 50th wedding anniversary Sunday afternoon, Aug. 11, at the Senior Citizens Center, 1000 N. Main St., from 2 to 5 p.m. The party will be held at the home of the couple's daughter, Mrs. W. C. Henningsen, 1000 N. Main St., at 3 p.m. The couple requests no gifts.

Rupert Couple To Celebrate Anniversary

RUPERT, Aug. 9.—Mr. and Mrs. Frank Maricle, longtime residents of Minidoka county, will celebrate their 50th wedding anniversary Aug. 10, friends and family may call from 2 to 5 p.m. at the home of their daughter and son-in-law, Mr. and Mrs. Howard Brunus, Rupert. The couple was married Aug. 10, 1913, at Entail, Ill. They moved to Rupert in January, 1937. They have a son, Ernie P. Maricle, and a daughter, Mrs. Doris Brunus. They have five grandchildren and five great-grandchildren. The couple requests no gifts.

Birthday-Feted At Reunion

HANSEN, Aug. 9.—A family reunion was held honoring Mrs. Annie Smith, whose 80th birthday anniversary will be Aug. 10. The reunion was held at the home of her son-in-law and daughter, Mr. and Mrs. Alfred Hansen, 1000 N. Main St. A supper was held on the lawn at the home.

Marian Martin Pattern



9480-5
by Marion Martin
Fun, friends, her favorite music, make a girl look forward to school opening with delight. Princess shape—so perfect.
Printed Pattern 9480: Girls' Size 8, 10, 12, 14. Size 10: 1 1/2 yards 44-inch blouse; 1 1/2 yards 36-inch skirt. Cut in 10 pieces for each skirt. For first-class making and special handling, send to Marion Martin, 222 West 18th St., New York 11, N. Y. Print plainly name, address with zone, size and style number.
Clo coupon for \$50 free pattern in big, new Fall-Winter Pattern Catalog, just out; 35¢ design kit; Send \$50 for Catalog.

It's NO Secret

WHEN YOU HAVE US DO YOUR
ROOFING and SIDING
You don't have to worry about
MATERIAL OR WORKMANSHIP
It's no secret of how LONG or how DEPENDABLE
our work has been in this area.
Ask Anyone—
Our Satisfied Customers Speak for Us!
FREE ESTIMATES!
DAN DANIELS
ROOFING CO.
"Give Me a Place to Stand and I'll Roof the World"
191 ROSE ST. TWIN FALLS 733-2179

191 ROSE ST. TWIN FALLS 733-2179



MR. AND MRS. GEORGE A. CROWE

Delores Ochs Is Married to George Crowe

RUPERT, Aug. 9.—The marriage of Delores Ochs, daughter of Mr. and Mrs. Floyd Ochs, Genesee, and George Raymond Crowe, son of the Rev. and Mrs. James R. Crowe, was solemnized July 20, in the Genesee Community church.
Father of the bridegroom officiated at the double ring ceremony. The church was decorated with arrangements of the gladioli and blue gladioli and lighted candles flanked the altar.
Original music was by Elton Hampton and Mrs. Martin Stolt. The bride, given in marriage by her father, wore a floor-length gown of white Venetian lace, tulle over satin with the skirt falling into a chapel train. The gown was styled with a fitted bodice, long sleeves fastened with lace-covered buttons at the wrist and a modified V neckline. Her hair was pulled up in a crown of seed pearls.
She carried a white globe-throated orchid on a white ribbon. Her jewelry was a strand of pearls, a gift from the bridegroom.
Mrs. Wayne Reid, Moscow, sister of the bride, was maid of honor. Marilyn Seltzer, Mrs. Gary Bennett were bridesmaids. They were French blue brocade tulle gowns styled with a scooped neckline and street-length bell-shaped skirts. They carried white fans with blue carnations.
Jennifer Reid, daughter of Mr. and Mrs. Wayne Reid, and niece of the bride, was flower girl. Her white lace over tulle dress was styled with a full skirt, cap sleeves and a satin sash. She carried a white lace basket from which she threw white petals.
Kris Ochs, nephew of the bride, was ringbearer. John Crowe, brother of the bridegroom, Howard Reid, was best man. Thelma and Michael Nelson, Moscow, were bridesmaids and brothers of the bridegroom.
The bride's mother chose an aqua blue linen sheath dress with white accessories. Her corsage was pale yellow rosebuds. The bridegroom's mother wore a dusty rose colored lace dress with white accessories. Her corsage was white rosebuds.
A reception was held in the Fellowship hall of the church. Anna Mary Crowe, sister of the bridegroom, was in charge of the guest book.
The bride's table was centered with a three-tiered wedding cake. The cake was decorated by Mrs. Jack Reams, Moscow, and Mrs. Sheldon Russell, Poring. Mrs. Judy Deimler and Mrs. Martin Stolt, Michael Ann Ochs and Kathy Dahmen, nieces of the bride, were in charge of the bridegroom's cake. For her wedding trip, the bride wore an off-white linen-silk sheath with jacket of beige and blue. Her accessories were beige and black. She wore the orchid from her bridal bouquet.
The bride was graduated from the University of Idaho in 1942 and was a member of Delta Gamma, sorority. The past year she taught school in Abbotsford school, Anchorage, Alaska.
The bridegroom is a graduate of the University of Idaho in 1942 and was a member of Delta Gamma, sorority. The past year he taught high school, Anchorage, Alaska.
The couple will reside in Alaska, where both will teach this year in the Anchorage Independent school district.

Food for Americans

By GAYNOR MADDOX
When a cookbook adds to your knowledge, and also is beautifully made and fascinatingly written, that is happy news. Such a book is the new "Food for the Emperor" by John D. Keys of San Francisco. The introduction by the author, a learned Chinese gentleman, will make you much wiser about Chinese cuisine, and the recipes will inspire you. Many of the recipes are accompanied by short translations of Chinese praise and descriptions of the beauty and wonder of food.
Here is one example of "Food for the Emperor" called Chung-Yu Kuei Gai (Roast Young Chicken Stuffed with Fresh Mushrooms and Spring Onion).
CHUNG-YU KUEI GAI
1 roasting chicken (4 pounds) 1/2 pound fresh mushrooms, sliced
2 sliced scallions
2 or 4 thin slices ginger
1 cup chicken stock
1/2 cup rice wine or sherry
1 tablespoon sugar
Cornstarch sliver
Cut the scallions into 2-inch lengths, using both the green and white parts. Wash in hot water, drain, then dry them thoroughly in a clean towel. Slice the ginger. Slice slowly in a small amount of oil. After two minutes, add the chicken and saute for several minutes, but do not allow the chicken to brown. Remove from the fire and allow to cool.
Dress the chicken and rub it with the butter. Brown the chicken with the mushroom-scallop mixture, truss and lard it well, then sear in a roasting pan. Mix together the chicken stock, soy sauce, wine and sugar, and pour over the chicken. Bake in the oven, basting often. Carve and arrange on a platter together with the stuffing. Thicken 1/2 cup of the drippings with cornstarch sliver and pour over the chicken.

one lotion protects you against bugs and sunburn, too!

NEW TANEASTIC IR-9

Proved in jungle research! Proved in desert research! Taneastic IR-9 gives you outdoor protection you've never had before! Keeps away flies, mosquitoes, and other pesky bugs for hours—protects you against sunburn with one of America's leading suntan lotions. Try it! Taneastic IR-9 chases bugs away while you tan!

See a S.I. Co., Div. of Botany Industries, Inc., Reno, Nevada

\$9.95

Handy 2-oz. plastic tube \$9.95
Family-size, 4-oz. plastic squeeze bottle \$15.00 (plus Fed. tax)

DAN DANIELS ROOFING CO.

Camp Fire Girls Attend Camp Tawakani

Camp Fire Girls' Camp Tawakani, 40 miles from Twin Falls, provided camping experiences for 100 girls during July 31st and 32nd. Camp Fire resident camp sessions, two day camps for Twin Falls council, and an overnight session for the Burley council. Throughout the sessions campers and counselors participated in many fun activities. The first Blue Bird session was designated "Counsellor's meeting." The first Camp Fire week, "Lucania," meant "Having Fun Together" and featured Indian activities. The second Camp Fire week was "Pioneer" week, while the third was "Counsellor's meeting." The over-all theme being the Idaho Territorial Centennial. Activities were coordinated with these subjects. Counselors were called by Indian names, and all cabins were so designated.
Many activities were enjoyed, with cookouts, overnights, stunt nights and a variety of classes. These included camp craft, nature-craft, sports—and games, handicraft, singing, and first aid. In campcraft, the Camp Fire "Progression in Outdoor Living" program was featured, and over 150 girls earned the special "Pawfoot Finder" honor, and several earned the second or "Trail Maker" award.
During the last week, a new opportunity was offered to the girls, a course in counselor training. These girls learned the basic requirements for good counselors, and specific ideas for use with younger girls, and were allowed to assist the staff during the classes.
The highlight of each week was the Council Fire where each girl received the beads and honors she had earned during the week. At this time many parents were guests.
Phyllis Williams, Coeur d'Alene, director, carried out the Camp Fire centered activities around honor and campcraft progression. On her staff were Mrs. Agnes Lewis, nurse; Mrs. Jane Pollock, first aid; Mrs. Charles Peterson, cook; Charles Featherston, handyman; six senior counselors; six aides. Senior counselors were Ann Peavey, Janice Reid, Ed Ann Day, Edwin Robinson and Vicki Fied, Twin Falls, and Patricia Dresser, Caldwell. Aides were Bonnie La Jeunesse, Rexburg, Robert Plim, Linda Hatfield and Pat Harrison, Twin Falls, and Colleen Ellis, Burley.

Following the Resident camp sessions, two day camps were held by the Twin Falls council, and an overnight camp by the Burley council. Counselors for the Twin Falls camps were Horstion club and Junior High Camp Fire members. They are Edith B. Connel, Phila. Lande, Dewey, Roberta Finn, Janice Berkley, Lorraine Phillips, Paula Carlson, Linda Goss, Rita Mireale, Kim Frazier, Susanna Baisch, Janis Nelson, Janice Martin, Becky Meunier, Bernol, Shannon, Finn and Peggy Williams.
Activities included flag ceremonies, camp sing, hike up Mt. Tawakani, handicraft, creative dramatics, games and dinner in the lodge. Buses were used to transport the campers to and from the camp.
In charge of the Day camps were Mrs. James Vandenberg, executive director; Mrs. Duane Hankins and Mrs. A. C. Hilt, assisted by Mrs. Archie Turner, Mrs. Wesley Stewart and Mrs. Henry Buchanan of the Leaders' association, and several mothers. Burley council's overnight was supervised by Mrs. R. H. Seymour.

CLASS PARTY HELD
SPRINGDALE, Aug. 9.—LDS Young Married's class held its party at the home of the Ballman park. Mr. and Mrs. Ralph West and Mr. and Mrs. Rex Wright were in charge of the event. A miniature golf party is set for next month's meeting.

"If you plant it—
or feed it . . .
GLOBE SEED
WILL HAVE IT"

**Twin Falls
Feed & Ice. Co.
Phone 733-1297**



OFFICERS WERE INSTALLED for the Twin Falls Garden club at a morning meeting in the garden of Mrs. C. W. Dalgh. They are from left, Mrs. C. W. Dalgh, Secretary; Mrs. Lily Johnson, Vice president; and Mrs. T. W. Hicks, president. Not pictured is Mrs. Paul Standley, treasurer. Mrs. Floyd Bandy was installing officer. (Times-News photo)

Officers Are Installed for Garden Club

Mrs. T. W. Hicks was installed president of the Twin Falls Garden club at a morning meeting in the garden of Mrs. C. W. Dalgh. They are from left, Mrs. C. W. Dalgh, Secretary; Mrs. Lily Johnson, Vice president; and Mrs. T. W. Hicks, president. Not pictured is Mrs. Paul Standley, treasurer. Mrs. Floyd Bandy was installing officer. (Times-News photo)

Baggett Family Reunion Held

BUHL, Aug. 9.—Descendants of the late James Madison Baggett and Minerva, Magdeline Houston Baggett, Twin Falls, held their first family reunion at Payette lakes, McGill.
The group elected David Baggett, Torrance, Calif., as president, and Leon Terrier, Corvallis, Ore., as secretary-treasurer to make arrangements for a family reunion next year.
Holding also a MS degree in genetics and plant breeding from Pennsylvania State University, college of agriculture, Pohnke worked for Chalkin Valley Seed company, Bosman, Mont., and is presently employed by the International Bean company.
Pohnke demonstrated germination, water, salt, and chrysanthemum cuttings and showed how a rex begonia leaf could produce many plants from proper cutting of leaf veins. Rooting will occur in 10 days.
Pohnke said the cut on other types of cuttings should be smooth and below a node. Excess leaves are removed to reduce transpiration. Cuttings of tropical plants need warmth and high humidity for proper development. Sterile sand is best medium for rooting the cuttings. In humid areas Pohnke stated it is easier to raise cabbage from cuttings than from seed.
Mrs. Victor W. Nelson, president, conducted the business meeting. Mrs. Clyde Ramsey read the collect. Mrs. Dalgh gave the secretary's report. Officers' annual reports were given by Mrs. Sam Porter, Mrs. Ramsey and Mrs. Nelson.
The club approved the program for the coming year and accepted invitation to meet with the Jerome Garden club Sept. 13.

Just one of our New Campus Fashions!

PIE CHERRIES
Pitted & Sugared
We have them now.
**Twin Falls
Feed & Ice. Co.
Phone 733-1297**

vicky vaughn

Check This For The Way to make a grand entrance at campus dailies. Depend on Vicky Vaughn for a surprising (and exciting) combination of beautiful black lace on wrinkle-free, woven cinkingham. Note the newly cuffed, puff sleeves, shiny little black buttons, patent belt and unpressed pleated skirt. Altogether delectable in brown, blue or green with black. Sizes 5-15 and Petite Jr. 3P-13P.
only the LOOK is expensive
Only 12.95

THE Mayfair SHOP
149 MAIN AVE. E.

DAILY SERVICE ON KODAK FINISHING

Quick service on color
LEEDOM PHOTO SHOP
123 Shoshone Ave.—on the alley
Twin Falls

Newberrys

you always find more in a Newberry store
FRIDAY NIGHT SPECIALS!
5 p.m. to 9 p.m.

PLASTIC DRAPES
Lined plastic. Hundreds of colors and patterns. Slight irregularities
2 pr. \$1
5 only Plastic
WADING POOLS . . . 1.43
LITTLE PRO'S BATTING DEVICE
Reg. 2.95 . . . 33¢
Reg. 4.95 . . . 66¢
Reg. 6.95 . . . 1.07
WHILE THEY LAST



Simons Triggers 17-Hit Attack With 4 Singles

Second baseman Dan-Simons cracked out four singles in five at bats Thursday night to highlight a 17-hit attack that carried the Magic Valley Cowboys past the Pocatello Chiefs 12-6. The big scoring night, fourth in the four-game series, wrapped up the current home stand. The clubs will meet again Friday night at Pocatello with the Cowboys expected to begin a crucial three-game series with pace-setting Great Falls. The night also saw the Magic Valley attendance surpass 30,000.

The Cowboys' hitting, which also was helped two runs worth by Pocatello errors, gave the team to rookie Gary Demaris. But Demaris wasn't around at the end, giving up four straight hits and being lifted in favor of Earl Phillips in the eighth inning.

A total of eight doubles banged off the walls of Joyce park and there were three homers. Jim Campbell hit his third with a double and a two-run double by Fox in his second time at bat. Jackie Falls hit three in five runs.

The Yanks unleashed their power in the fourth as Jim-Simons started things off with a single. The inning included a two-run homer by Bill Murphy, singles by Mike Heggen and Leroy Rogers and a two-run double by Fox in his second time at bat. Jackie Falls hit three in five runs.

Yankees Use Big Inning to Drop Billings

BILLINGS, Aug. 9 (AP)—Idaho Falls scored seven runs in the fourth inning and with the help of some timely relief pitching by Billings 7-5 Thursday night.

Had it not been for Billings' error, Idaho Falls would have been earlier. Pletch had two solo home runs, a double and a two-run double by Fox in his second time at bat. Jackie Falls hit three in five runs.

The Yanks unleashed their power in the fourth as Jim-Simons started things off with a single. The inning included a two-run homer by Bill Murphy, singles by Mike Heggen and Leroy Rogers and a two-run double by Fox in his second time at bat. Jackie Falls hit three in five runs.

Circuit Blow Lets Mets Nip Cardinals 3-2

NEW YORK, Aug. 9 (AP)—Duke Carmel ruled the St. Louis Cardinals' mauling Thursday with an eighth-inning tie-breaking home run for a 3-2 New York Mets victory.

Carmel, a utility man with the Cardinals until July 25 when he was assigned to the Mets, hit his first homer as a Met and his second of the year off reliever man Bobby Baxter with two out and nobody on. It was the little lefty's third defeat.

St. Louis New York

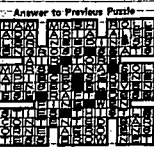
Pitcher	W	L	SV	IP	H	R	E
Carmel	1	0	0	7.0	10	10	1
Baxter	0	1	0	1.0	0	0	0
Wade	0	1	0	1.0	0	0	0
White	0	1	0	1.0	0	0	0
Johnson	0	1	0	1.0	0	0	0
Young	0	1	0	1.0	0	0	0
Almon	0	1	0	1.0	0	0	0
Taylor	0	1	0	1.0	0	0	0
McCarthy	0	1	0	1.0	0	0	0
Radach	0	1	0	1.0	0	0	0
Shane	0	1	0	1.0	0	0	0
Colman	0	1	0	1.0	0	0	0
Wright	0	1	0	1.0	0	0	0
Wade	0	1	0	1.0	0	0	0
White	0	1	0	1.0	0	0	0
Johnson	0	1	0	1.0	0	0	0
Young	0	1	0	1.0	0	0	0
Almon	0	1	0	1.0	0	0	0
Taylor	0	1	0	1.0	0	0	0
McCarthy	0	1	0	1.0	0	0	0
Radach	0	1	0	1.0	0	0	0
Shane	0	1	0	1.0	0	0	0
Colman	0	1	0	1.0	0	0	0
Wright	0	1	0	1.0	0	0	0
Wade	0	1	0	1.0	0	0	0
White	0	1	0	1.0	0	0	0
Johnson	0	1	0	1.0	0	0	0
Young	0	1	0	1.0	0	0	0
Almon	0	1	0	1.0	0	0	0
Taylor	0	1	0	1.0	0	0	0
McCarthy	0	1	0	1.0	0	0	0
Radach	0	1	0	1.0	0	0	0
Shane	0	1	0	1.0	0	0	0
Colman	0	1	0	1.0	0	0	0
Wright	0	1	0	1.0	0	0	0
Wade	0	1	0	1.0	0	0	0
White	0	1	0	1.0	0	0	0
Johnson	0	1	0	1.0	0	0	0
Young	0	1	0	1.0	0	0	0
Almon	0	1	0	1.0	0	0	0
Taylor	0	1	0	1.0	0	0	0
McCarthy	0	1	0	1.0	0	0	0
Radach	0	1	0	1.0	0	0	0
Shane	0	1	0	1.0	0	0	0
Colman	0	1	0	1.0	0	0	0
Wright	0	1	0	1.0	0	0	0
Wade	0	1	0	1.0	0	0	0
White	0	1	0	1.0	0	0	0
Johnson	0	1	0	1.0	0	0	0
Young	0	1	0	1.0	0	0	0
Almon	0	1	0	1.0	0	0	0
Taylor	0	1	0	1.0	0	0	0
McCarthy	0	1	0	1.0	0	0	0
Radach	0	1	0	1.0	0	0	0
Shane	0	1	0	1.0	0	0	0
Colman	0	1	0	1.0	0	0	0
Wright	0	1	0	1.0	0	0	0
Wade	0	1	0	1.0	0	0	0
White	0	1	0	1.0	0	0	0
Johnson	0	1	0	1.0	0	0	0
Young	0	1	0	1.0	0	0	0
Almon	0	1	0	1.0	0	0	0
Taylor	0	1	0	1.0	0	0	0
McCarthy	0	1	0	1.0	0	0	0
Radach	0	1	0	1.0	0	0	0
Shane	0	1	0	1.0	0	0	0
Colman	0	1	0	1.0	0	0	0
Wright	0	1	0	1.0	0	0	0
Wade	0	1	0	1.0	0	0	0
White	0	1	0	1.0	0	0	0
Johnson	0	1	0	1.0	0	0	0
Young	0	1	0	1.0	0	0	0
Almon	0	1	0	1.0	0	0	0
Taylor	0	1	0	1.0	0	0	0
McCarthy	0	1	0	1.0	0	0	0
Radach	0	1	0	1.0	0	0	0
Shane	0	1	0	1.0	0	0	0
Colman	0	1	0	1.0	0	0	0
Wright	0	1	0	1.0	0	0	0
Wade	0	1	0	1.0	0	0	0
White	0	1	0	1.0	0	0	0
Johnson	0	1	0	1.0	0	0	0
Young	0	1	0	1.0	0	0	0
Almon	0	1	0	1.0	0	0	0
Taylor	0	1	0	1.0	0	0	0
McCarthy	0	1	0	1.0	0	0	0
Radach	0	1	0	1.0	0	0	0
Shane	0	1	0	1.0	0	0	0
Colman	0	1	0	1.0	0	0	0
Wright	0	1	0	1.0	0	0	0
Wade	0	1	0	1.0	0	0	0
White	0	1	0	1.0	0	0	0
Johnson	0	1	0	1.0	0	0	0
Young	0	1	0	1.0	0	0	0
Almon	0	1	0	1.0	0	0	0
Taylor	0	1	0	1.0	0	0	0
McCarthy	0	1	0	1.0	0	0	0
Radach	0	1	0	1.0	0	0	0
Shane	0	1	0	1.0	0	0	0
Colman	0	1	0	1.0	0	0	0
Wright	0	1	0	1.0	0	0	0
Wade	0	1	0	1.0	0	0	0
White	0	1	0	1.0	0	0	0
Johnson	0	1	0	1.0	0	0	0
Young	0	1	0	1.0	0	0	0
Almon	0	1	0	1.0	0	0	0
Taylor	0	1	0	1.0	0	0	0
McCarthy	0	1	0	1.0	0	0	0
Radach	0	1	0	1.0	0	0	0
Shane	0	1	0	1.0	0	0	0
Colman	0	1	0	1.0	0	0	0
Wright	0	1	0	1.0	0	0	0
Wade	0	1	0	1.0	0	0	0
White	0	1	0	1.0	0	0	0
Johnson	0	1	0	1.0	0	0	0
Young	0	1	0	1.0	0	0	0
Almon	0	1	0	1.0	0	0	0
Taylor	0	1	0	1.0	0	0	0
McCarthy	0	1	0	1.0	0	0	0
Radach	0	1	0	1.0	0	0	0
Shane	0	1	0	1.0	0	0	0
Colman	0	1	0	1.0	0	0	0
Wright	0	1	0	1.0	0	0	0
Wade	0	1	0	1.0	0	0	0
White	0	1	0	1.0	0	0	0
Johnson	0	1	0	1.0	0	0	0
Young	0	1	0	1.0	0	0	0
Almon	0	1	0	1.0	0	0	0
Taylor	0	1	0	1.0	0	0	0
McCarthy	0	1	0	1.0	0	0	0
Radach	0	1	0	1.0	0	0	0
Shane	0	1	0	1.0	0	0	0
Colman	0	1	0	1.0	0	0	0
Wright	0	1	0	1.0	0	0	0
Wade	0	1	0	1.0	0	0	0
White	0	1	0	1.0	0	0	0
Johnson	0	1	0	1.0	0	0	0
Young	0	1	0	1.0	0	0	0
Almon	0	1	0	1.0	0	0	0
Taylor	0	1	0	1.0	0	0	0
McCarthy	0	1	0	1.0	0	0	0
Radach	0	1	0	1.0	0	0	0
Shane	0	1	0	1.0	0	0	0
Colman	0	1	0	1.0	0	0	0
Wright	0	1	0	1.0	0	0	0
Wade	0	1	0	1.0	0	0	0
White	0	1	0	1.0	0	0	0
Johnson	0	1	0	1.0	0	0	0
Young	0	1	0	1.0	0	0	0
Almon	0	1	0	1.0	0	0	0
Taylor	0	1	0	1.0	0	0	0
McCarthy	0	1	0	1.0	0	0	0
Radach	0	1	0	1.0	0	0	0
Shane	0	1	0	1.0	0	0	0
Colman	0	1	0	1.0	0	0	0
Wright	0	1	0	1.0	0	0	0
Wade	0	1	0	1.0	0	0	0
White	0	1	0	1.0	0	0	0
Johnson	0	1	0	1.0	0	0	0
Young	0	1	0	1.0	0	0	0
Almon	0	1	0	1.0	0	0	0
Taylor	0	1	0	1.0	0	0	0
McCarthy	0	1	0	1.0	0	0	0
Radach	0	1	0	1.0	0	0	0
Shane	0	1	0	1.0	0	0	0
Colman	0	1	0	1.0	0	0	0
Wright	0	1	0	1.0	0	0	0
Wade	0	1	0	1.0	0	0	0
White	0	1	0	1.0	0	0	0
Johnson	0	1	0	1.0	0	0	0
Young	0	1	0	1.0	0	0	0
Almon	0	1	0	1.0	0	0	0
Taylor	0	1	0	1.0	0	0	0
McCarthy	0	1	0	1.0	0	0	0
Radach	0	1	0	1.0	0	0	0
Shane	0	1	0	1.0	0	0	0
Colman	0	1	0	1.0	0	0	0
Wright	0	1	0	1.0	0	0	0
Wade	0	1	0	1.0	0	0	0
White	0	1	0	1.0	0	0	0
Johnson	0	1	0	1.0	0	0	0
Young	0	1	0	1.0	0	0	0
Almon	0	1	0	1.0	0	0	0
Taylor	0	1	0	1.0	0	0	0
McCarthy	0	1	0	1.0	0	0	0
Radach	0	1	0	1.0	0	0	0
Shane	0	1	0	1.0	0	0	0
Colman	0	1	0	1.0	0	0	0
Wright	0	1	0	1.0	0	0	0
Wade	0	1	0	1.0	0	0	0
White	0	1	0	1.0	0	0	0
Johnson	0	1	0	1.0	0	0	0
Young	0	1	0	1.0	0	0	0
Almon	0	1	0	1.0	0	0	0
Taylor	0	1	0	1.0	0	0	0
McCarthy	0	1	0	1.0	0	0	0
Radach	0	1	0	1.0	0	0	0
Shane	0	1	0	1.0	0	0	0
Colman	0	1	0	1.0	0	0	0
Wright	0	1	0	1.0	0	0	0
Wade	0	1	0	1.0	0	0	0
White	0	1	0	1.0	0	0	0
Johnson	0	1	0	1.0	0	0	0
Young	0	1	0	1.0	0	0	0
Almon	0	1	0	1.0	0	0	0
Taylor	0	1	0	1.0	0	0	0
McCarthy	0	1	0	1.0	0	0	0
Radach	0	1	0	1.0	0	0	0
Shane	0	1	0	1.0	0	0	0
Colman	0	1	0	1.0	0	0	0
Wright	0	1	0	1.0	0	0	0

Don Pieper's
GAS FOR LESS
240 Addison Ave. West

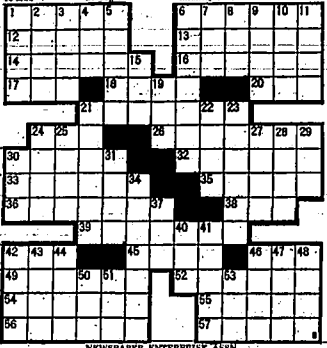
Times-News Comics for the Entire Family

Anniversaries

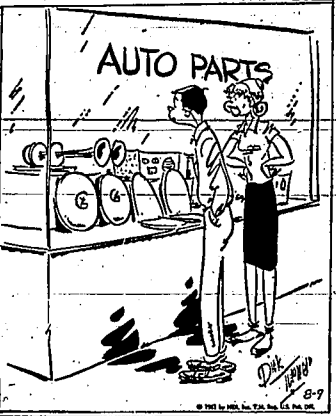
ACROSS	48 Then character	49 Pronunciation
1 First wedding	50 Gully	aid (dish)
6 50th	51 Artery inner	41 42 43
12 anniversary	52 54 Pills	44 45 46
13 100th	53 55 56 57	47 48 49
14 100th	58 59 60 61	50 51 52
15 100th	62 63 64 65	53 54 55
16 100th	66 67 68 69	56 57 58
17 100th	70 71 72 73	59 60 61
18 100th	74 75 76 77	62 63 64
19 100th	78 79 80 81	65 66 67
20 100th	82 83 84 85	68 69 70
21 100th	86 87 88 89	71 72 73
22 100th	90 91 92 93	74 75 76
23 100th	94 95 96 97	77 78 79
24 100th	98 99 100	80 81 82
25 100th		83 84 85
26 100th		86 87 88
27 100th		89 90 91
28 100th		92 93 94
29 100th		95 96 97
30 100th		98 99 100



"Watch your language in front of the children, dear! Maybe we should all sing something!"



NEWSPAPER ENTERPRISE ASSN.



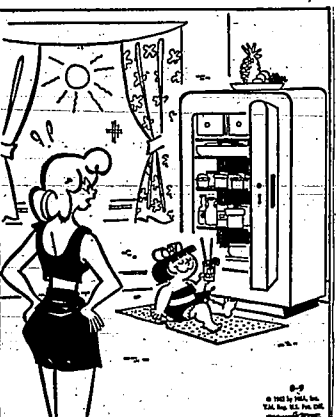
"What would I suggest to make your car more attractive? How about paying for your own gasoline occasionally?"



STEP ONE IN THE MAJOR'S NEW PLAN



THE MEDDLER



"SWEETIE PIE"



Ben Casey



Ben Casey



Ben Casey



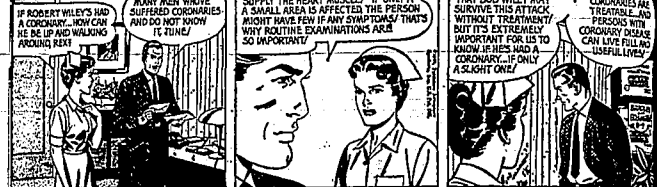
Ben Casey



Ben Casey



Ben Casey



Ben Casey



Ben Casey



Ben Casey



Ben Casey



Ben Casey



Ben Casey



Ben Casey

Aug. 9-10, 1963
Twin Falls Times-News 17
Automobiles For Sale 200

GREENHILL
 1000 Greenhills, low
 bid, \$275. Will trade for older
 model. Phone 3-3000 or see ad
 in Star.

**USE THE TIMES - NEWS
 PAPER DIRECTORY
 ONLY \$4.00 PER MONTH**

MOTOR CO.
 Buhl _____ 624-1419

**GMC 1968 2-ton stock truck. 3-speed
 3-speed, 18' removable rack, low
 mileage. Excellent condition. \$1,450.
 Hession 329-5271.**

Tru. Reg. U. S. Pat. Off.
Copyright 1942 by United Fr.

"I wish Alvin weren't so cute he fascinates me, but I like him."

changeable. One min-
the next I can't stand
!"

Wedge. factory - dealer - HARRAUGH	FONT
MOORE, Gooding, Idaho.	421
RD 1947 convertible Fairlane "200":	spce
Good condition; new upholstery: 535	RAM
Alturas Drive, 722-6815.	con
EVROLET 1959 BelAir; Buick 1952	trac
LaSalle. Phone 722-6431.	CHEV
	520

FIAT, 1943. Catalina sport coupe. 4-cyl. 170 horsepower, 4-speed trans. \$3,200. 735-7433.	North BACNA ceptile inception
FORD 1955 station wagon. Air conditioning, new tires! \$1995. will be up or down. Phone 733-3115.	CHEVR 6-cyl
ROLET 1961 convertible. See at Quincy Street.	FLYMC over

NO. 1951, original paint, ex-
tremely clean, loaded with extras.
near 238 North Washington. *
OLDT 1955 2-door. Stick shift.
under. Phone Jerome 224-5171.
OUTH, 1957 Savoy 4-door. V8,
drivive, 64997 116 Fillmore.

733-5197

ONK MOTOR CO.
Plymouth, GMC Dealer
Burley. 674-6166

Tru. Reg. U. S. Pat. Off.
Copyright 1942 by United Fr.

"I wish Alvin weren't so cute he fascinates me, but I like him."

changeable. One min-
the next I can't stand
!"

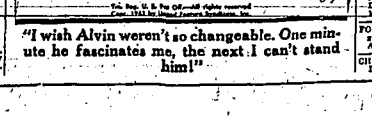
Wedge. factory - dealer - HARRAUGH	FONT
MOORE, Gooding, Idaho.	421
RD 1947 convertible Fairlane "200":	spce
Good condition; new upholstery: 535	RAM
Alturas Drive, 722-6815.	con
EVROLET 1959 BelAir; Buick 1952	trac
LaSalle. Phone 722-6431.	CHEV
	520

FIAT, 1943. Catalina sport coupe. 4-cyl. 170 horsepower, 4-speed trans. \$3,200. 735-7433.	North BACNA ceptile inception
FORD 1955 station wagon. Air conditioning, new tires! \$1995. will be up or down. Phone 733-3115.	CHEVR 6-cyl
ROLET 1961 convertible. See at Quincy Street.	FLYMC over

NO. 1951, original paint, ex-
tremely clean, loaded with extras.
near 238 North Washington. *
OLDT 1955 2-door. Stick shift.
under. Phone Jerome 224-5171.
OUTH, 1957 Savoy 4-door. V8,
drivive, 64997 116 Fillmore.

733-5197

ONK MOTOR CO.
Plymouth, GMC Dealer
Burley. 874-8188



"I wish Alvin weren't so changeable. One minute he fascinates me, the next I can't stand him!"

Friday Night SEAFOOD BUFFET

Abalone Steaks Frog Legs
 (Plain or in Barbecue Sauce)
 White Fish Halibut Scallops
 Eastern Oysters
 Cold Table with Choice of Eight Salads
 Seafood Jello Molds
 Lobster Newberg Kipperd Salmon
 Choice of Dessert
 Hot Rolls Coffee Butter

All You Can Eat **\$2.50**



Saturday Night REGULAR BUFFET

Roast Baron of Beef
 Choice Prime Ribs au Jus
 (Rare-Medium-Well)
 Smoked Spare Ribs
 Sirloin Tips
 Baked Virginia Ham with all the trimmings

All You Can Eat **\$2.50**



Old Fashioned Ranch Dinner

SERVED EVERY SUNDAY

Family Style in The
GALA ROOM!

\$1.50—Child 1.00

WIN A NEW THUNDERBIRD SEPTEMBER 15th

Register Now! Register Often!
 No Purchase Necessary
 See this New Auto on
 display at
 "THE FUN SPOT"

SUNDAY, AUGUST 11

**\$1,000.00
SUPER
CASH PRIZE**

For "Cactus Pete's" Membership Club

FREE

Registration Starts
at 12:00 Noon

2:30	\$50 ⁰⁰	7:30	\$100 ⁰⁰
3:30	\$50 ⁰⁰	8:30	\$100 ⁰⁰
4:30	\$50 ⁰⁰	9:30	\$100 ⁰⁰
5:30	\$50 ⁰⁰	10:30	\$100 ⁰⁰
6:30	\$100 ⁰⁰	11:30	\$300 ⁰⁰

JOIN THE MEMBERSHIP CLUB SUNDAY!



PRESENTING . . .

The Diamonds

World-famous Mercury Recording
stars will be at "Pete's" to sing and
entertain you for your evening enjoy-
ment.

"The FUN SPOT
South of the Border"



JEANNIE

and

WILL

at the Gala Bar

Cactus Pete's